



RED ANGUS • SOUTH DEVON • OPTIMIZERS



*"The Program that Builds Cowherds"*

# Tuesday, May 3, 2011

1:00 pm • Napoleon Livestock • Napoleon, ND

Sale Day Phone: 1-800-932-8821

Broadcast via internet: [www.napoleonlivestock.com](http://www.napoleonlivestock.com)

*Selling in Catalog Order:*

**60 Bulls • 100 Females**

Red Angus • South Devon • Optimizers



# Welcome to



*"Heterosis Headquarters"*

*40th Annual Production Sale*



**Dan – (701) 424-3726**  
**Jeff – (701) 485-3762**  
**John – (701) 485-3766**  
**Jack – (701) 485-3206**

Welcome to Dahl Land & Cattle Co.'s 40th Annual Sale.

The time has come in the cattle business for all segments of the industry to be profitable. We are currently seeing record high prices for cattle from calves to slaughter cattle. As cattle producers, let's take some time to enjoy the feeling. Hopefully, inflation won't be rearing its ugly head in the near future but, with higher petroleum prices all inputs seem to be going up so, we do need higher prices to combat that.

The winter of 2010 – 2011 has not been a pleasant one to say the least. For the third year in a row we all have toughed out a brutal winter. Cattle have required a lot more feed to stay warm much less do any growing. In reading many of the sale catalogs we've received this winter and spring there seems to be excuses being made about the weather causing higher birth weights or not being able to do gain testing because of the conditions. We live in North Dakota and know what it takes to make it here.

Our cattle have to be able to perform under our weather conditions. Our goal is to produce cattle with low birth weights that perform well with no creep to mask what nature can produce. In other words, we are looking for genetics that will give us a big spread from birth to weaning and beyond. At the same time our cattle must be structurally functional and be fertile. It is a fairly lofty goal and one we continue to work diligently on. We have lowered our culling criteria for birth weight by 5 pounds this past year. Thanks to 2010 being a great grass year our weaning weight is up.

On a 110-day-gain test we have had several of the bulls gaining 4 pounds per day or more. Just about all the bulls were gaining 3 pounds or more per day. The bulls have been on a 54 mega-calorie ration of 15 pounds of ground hay, 4 pounds of wet distiller's grain and 12 pounds of cracked corn. This is the first year since we've been selling bulls that we didn't chop corn for silage and we've been very pleased on how well the cattle have done. The bulls are ultra-sounded for rib-eye area and fat, they are semen tested and ready to go to work.

We are again starting the sale with a large group of replacement yearling heifers. These heifers come right from the heart of the replacement heifers we raised. We've already culled out the extremes. These heifers will be able to go directly into your cowherd. A cowherd is only as good as the cows that are in it and we feel these heifers will be able to rise to the top in most cowherds. The heifers have been grown and not pushed. They were on a 35 mega-calorie ration of 3 pounds cracked corn, 4 pounds of wet distiller's grain and 23 pounds of ground hay. Both the heifers and bulls also received a mineral package that contained rumensin.

In closing, we want to "Thank you" for your continued support and confidence in our program. We look forward to serving you in the future. We also want to thank Our Lord for bringing us through another year, for helping us with our decisions and for providing our nation and ourselves with countless blessings.

## Bull Credit

***If you purchased females from us in 2010, you can receive a \$100 credit towards the purchase of a Dahl Land & Cattle Co. bull.***

## Yearling Bull Data

- 82 lbs – Avg. Actual BW
- 715 lbs – Avg. Adj. 205 Wt.
- 1177 lbs – Avg. Adj. 365 Wt.

## Calving-Ease Code

- 1 Use only on cows
- 2 Use on cows & heifers with a known birth weight and calving ease history
- 3 Use on heifers and all cows

Our recommendations are based on our cow female histories for birth weights and calving ease. Also, with aid from EPDs based on our reference sires and the individual animal.



# DAHL LAND & CATTLE CO.

## Annual Production Sale

# May 3, 2011

1:00 p.m. CDT

Napoleon Livestock Market • Napoleon, ND

**Sale Day Phone:**

1-800-932-8821, 701-754-2216

**Sale Day Internet:**

www.napoleonlivestock.com

**Lunch:** Starting at 11:30 am CDT

**Sale Order:** Yearling Heifers start the sale,  
Yearling Bulls selling in catalog order

**Auctioneer:**

**Roger Jacobs** .....406-373-6124 (home)  
Billings, MT ..... (406) 698-7686 (cell)

*If you cannot attend the sale and are interested in making a purchase, please contact our professional independent representative.*

**Representatives:**

**Terry Robinson** .....701-255-3037 (home)  
Farm & Ranch Guide...701-471-5153 (cell)  
**Scott Ressler** .....701-782-4360 (home)  
ND Stockmen’s Assn 701-223-2522 (office)  
**Kris Petersen** .....701-377-2345 (home)  
Cattle Business Weekly....701-339-0305 (cell)

**Professional Independent Representative:**

**Ray Erbele**.....701-226-7288 (cell)  
701-754-2216 (w), 7 01-424-3307 (home)  
**Steve Koester**.....701-400-1611 (cell)  
701-475-2736 (home)

*Catalog & Promotion by Cow Camp Promotions,  
Tracey Koester, Steele, ND, 701-475-2736  
Printing by United Printing, Bismarck, ND, 701-223-0505*

*Dahl Land & Cattle Co. Annual Production Sale*

## Sale Terms & Conditions

**Bidding:** All animals sell to the highest bidder. Any disputes will be settled by the auctioneer and his decision will be final.

**Mail and Phone Bids:** Mail or phone bids will be handled in strict confidence by us and we ask that they be in our hands in ample time prior to sale date.

**Napoleon Auction Market Alternative Bidding Options:** We will be offering the Dahl Production Sale on the internet. To bid from your computer, you will need to follow these steps:

- 1) Log on to [www.napoleonlivestock.com](http://www.napoleonlivestock.com) and click the green oval that says: "Live Auction."
- 2) Click on "Viewer Registration" and register your information. Click the "Proceed" button at the bottom.

This should all be done at least one day prior to the sale to allow time for approval. If you purchase any animals, you will need to contact Napoleon Livestock at 1-800-932-8821 to make payment arrangements and to make arrangements to pick up your livestock. You must have DSL to be able to bid during the sale.

**Terms:** Terms of the sale are cash or check, payable immediately upon the conclusion of the sale and before animals are moved.

**Purchases and Risk:** All animals are the owner’s risk prior to the sale and become buyer’s property as soon as declared sold by the auctioneer.

**Announcements:** Any errors or changes of information printed in this catalog will be announced from the auction block and such announcements shall take precedence.

**Breeding Guarantee:** All bulls in this sale are guaranteed to have passed a fertility examination by our veterinarian. The buyer of each bull will receive a certificate of such exam upon paying for the bull. We assume no liability, legal or otherwise, to make any further guarantee to the buyer. No other warranty is expressed or implied.

**Liability:** All persons who attend this sale do so at their own risk. Dahl Land & Cattle Co. and Napoleon Livestock Market assume no liability for any accidents that may occur. Neither do they assume any liability for loss or injury to livestock due to theft, mysterious disappearance, sickness, improper handling or Act of God.

**Herd Veterinarian:** Dr. Dan Schuler, Wishek Veterinary Clinic

**Health:** All cattle in this sale are in excellent condition and health. All females have been officially calthood Bangs and Preg-Guard Gold 10 vaccinated. All shots and treatments comply with the ND Beef Quality Assurance Program and Pfizer’s Beef Friendly program. Where needed, health certificates will be furnished for shipment anywhere in the U.S. Sight Unseen Purchases are fully guaranteed for soundness and quality.

**Contract:** The above terms and guarantee constitute a contract between buyer and seller of each animal sold.

**Bull Delivery:**

- \$25 discount if you take your bull home sale day
- If buyer can’t haul bull on sale day, we will feed your bull at our feedlot, buyer’s risk
- One week at no charge and \$2 per day thereafter
- We will waive the feed costs if the buyer picks up the bull within two weeks of sale date
- We will cooperate with delivery wherever possible

# RED ANGUS HERD SIRES

## DLC Sir Classic 5102



## A DLC SIR CLASSIC 5102

RED POLLED 100% 1A #1063916

BADLANDS CLASSIC 069

{ QV ROBIN HOOD 917 G33  
RED RACHEL R405

DLC MS CHIEFTON 720

{ DLC CHIEFTON 3107  
DLC LADY RAMBO 274

|        |            |
|--------|------------|
| BD     | BW         |
| 4/7/05 | 78         |
| 205 WT | WR         |
| 744    | 103        |
| 365 WT | YR         |
| 1254   | 103        |
| %IMF   | REA        |
| 3.23   | 14.25      |
| FAT    | DAM'S MPPA |
| 0.26   | 104.2      |

### EPDs/BREED RANKING

| CED | BW   | WW  | YW  | Milk | TM  | ME  | HPG | CEM | Stay | Marb  | YG    | CW  | REA  | Fat   |
|-----|------|-----|-----|------|-----|-----|-----|-----|------|-------|-------|-----|------|-------|
| 7   | -1.7 | 25  | 47  | 17   | 29  | 5   | 6   | -1  | 7    | -0.28 | -0.12 | 26  | 0.07 | -0.02 |
| 34% | 26%  | 74% | 77% | 53%  | 71% | 61% | 87% | 84% | 66%  | 96%   | 16%   | 77% | 45%  | 14%   |

5102 is incredibly eye appealing and flashy. He has exceptional structure, balance and thickness and sires calves with moderate BWs, smooth design, thickness and performance. His stylish, perfectly structured dam was a terrific producer with an MPPA over 104.

Ignity Profile: Tenderness: 9 Fat Thickness: 7 YG: 7 REA: 5 CEM: 8 % Choice: 7 Marb: 7

## B DLC LOGAN LAD 4125

RED POLLED 100% 1A #991948

DLC MR. LOGAN 2122

{ DLC LOGAN 9118  
DLC LADY PICASSO 272

DLC MS CHIEFTON 082

{ DLC CHIEFTON 6124  
DLC MS WHEEL O' FORTUNE

|         |            |
|---------|------------|
| BD      | BW         |
| 4/30/04 | 85         |
| 205 WT  | WR         |
| 676     | 100        |
| 365 WT  | YR         |
| 1117    | 99         |
| %IMF    | REA        |
| 4.57    | 11.03      |
| FAT     | DAM'S MPPA |
| 0.23    | 107.7      |

### EPDs/BREED RANKING

| CED | BW  | WW  | YW  | Milk | TM  | ME  | HPG | CEM | Stay | Marb | YG    | CW  | REA   | Fat   |
|-----|-----|-----|-----|------|-----|-----|-----|-----|------|------|-------|-----|-------|-------|
| 4   | 0.2 | 30  | 56  | 23   | 38  | 3   | 6   | 5   | 7    | 0.03 | -0.07 | 34  | -0.11 | -0.04 |
| 57% | 56% | 60% | 63% | 18%  | 28% | 45% | 86% | 33% | 75%  | 58%  | 30%   | 59% | 77%   | 3%    |

Kuhns purchased DLC Logan Lad 4125 from Dahls. His offspring have moderate birth weights with growth and power. His dam has a perfect udder and good feet and legs, traits which she passed along to him.

Ignity Profile: Tenderness: 7 Marb: 7 % Choice: 7 YG: 8 Ribeye: 3

## DLC Logan Lad 4125



## C BIEBER ROB ROY 10444

RED POLLED 100% 1A #1037612

BIEBER ROB ROY 6990

{ BIEBER STRAIGHT ARROW  
BIEBER LASS 5627

BIEBER EULCA 8969

{ LCHMN TOP BILLING 1854F  
BIEBER EULCA 7445

|         |            |
|---------|------------|
| BD      | BW         |
| 6/12/05 | 92         |
| 205 WT  | WR         |
| 728     | 115        |
| 365 WT  | YR         |
| 1196    | 110        |
| %IMF    | REA        |
| 2.7     | 14.37      |
| FAT     | DAM'S MPPA |
| 0.21    | 104.4      |

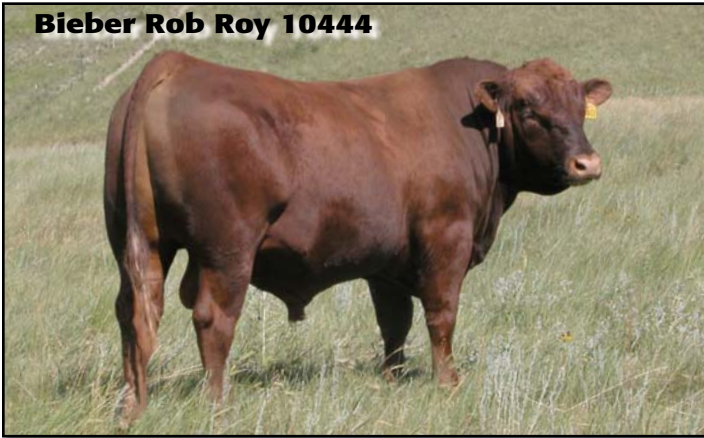
### EPDs/BREED RANKING

| CED | BW  | WW  | YW  | Milk | TM  | ME  | HPG | CEM | Stay | Marb  | YG    | CW  | REA  | Fat |
|-----|-----|-----|-----|------|-----|-----|-----|-----|------|-------|-------|-----|------|-----|
| 2   | 4.7 | 46  | 73  | 19   | 42  | 5   | 8   | 4   | 4    | -0.34 | -0.06 | 50  | 0.33 | 0   |
| 73% | 99% | 17% | 32% | 37%  | 13% | 59% | 76% | 44% | 95%  | 98%   | 34%   | 20% | 13%  | 44% |

The Rob Roy has very strong carcass traits and exhibits length, thickness and a wide top, all which he is passing on to his progeny. His first daughters are in production at Leland Red Angus and they look like they will make great cows.

Ignity Profile: Tenderness: 9 Marb: 9 % Choice: 9 YG: 8 Ribeye: 3

## Bieber Rob Roy 10444



## D MLK CRK EPIC 7176

RED POLLED 100% 1A #1165028

BECKTON EPIC R397 K

{ BECKTON EPIC K F075  
BECKTON KIT F468 JL

MLK CRK LAKOTA 555

{ BUF CRK GIULIANI L851  
MLK CRK LAKOTA 239

|         |            |
|---------|------------|
| BD      | BW         |
| 3/20/07 | 78         |
| 205 WT  | WR         |
| 695     | 100        |
| 365 WT  | YR         |
| 1196    | 106        |
| %IMF    | REA        |
| 3.35    | 12.64      |
| FAT     | DAM'S MPPA |
| 0.22    | 98.3       |

### EPDs/BREED RANKING

| CED | BW   | WW  | YW  | Milk | TM  | ME | HPG | CEM | Stay | Marb  | YG   | CW  | REA  | Fat  |
|-----|------|-----|-----|------|-----|----|-----|-----|------|-------|------|-----|------|------|
| 11  | -4.8 | 25  | 54  | 13   | 26  | -4 | 11  | 3   | 16   | -0.07 | -0.1 | 26  | 0.22 | 0.01 |
| 9%  | 2%   | 74% | 65% | 78%  | 86% | 4% | 18% | 52% | 3%   | 78%   | 18%  | 81% | 19%  | 69%  |

We used the Epic bull on heifers and he has proven himself a rock-solid heifer bull with a 73 lb. BW average on 17 calves for his first year. He is also out of a very good cow family at Milk Creek.



John, Brooke and Jeff

# RED ANGUS HERD SIRES

## E KOESTER CHEYENNE 706

**RED POLLED 99.3% 1B #1216330**

LCC CHEYENNE B221L

{ BFCK CHEROKEE CNYN 4912  
HXC 701G

LELAND CHATEAU 744-3013

{ GLACIER CHATEAU 744  
LELAND CRKT 2195-3117C

|         |            |
|---------|------------|
| BD      | BW         |
| 8/22/07 | 82         |
| 205 WT  | WR         |
| 570     | 90         |
| 365 WT  | YR         |
| 1172    | 96         |
| %IMF    | REA        |
| 2.69    | 12.37      |
| FAT     | DAM'S MPPA |
| 0.18    | 4/95.1     |

### EPDs/BREED RANKING

| CED | BW   | WW  | YW  | Milk | TM  | ME  | HPG | CEM | Stay | Marb | YG    | CW  | REA  | Fat  |
|-----|------|-----|-----|------|-----|-----|-----|-----|------|------|-------|-----|------|------|
| 6   | -1.5 | 25  | 56  | 21   | 34  | 6   | 10  | 7   | 9    | 0.34 | -0.03 | 32  | 0.17 | 0.02 |
| 36% | 25%  | 73% | 60% | 22%  | 47% | 67% | 30% | 12% | 47%  | 7%   | 48%   | 64% | 26%  | 82%  |

## Koester Cheyenne 706



## F LORENZEN SANTIAM ENCORE 8400

**RED POLLED 100% 1A #1242937**

PIE GRIDMASTER 589

{ LCB HOSS A444N  
PIE KRUGGER KANYON 353

SANTIAM'S GOLDIE K21

{ LCHMN GOLD ROBBER 1909E  
SANTIAM'S GOLDIE

|        |            |
|--------|------------|
| BD     | BW         |
| 2/6/08 | 82         |
| 205 WT | WR         |
| 847    | 111        |
| 365 WT | YR         |
| 1432   | 110        |
| %IMF   | REA        |
| 3.16   | 16.42      |
| FAT    | DAM'S MPPA |
| 0.34   | 10/105.6   |

### EPDs/BREED RANKING

| CED | BW  | WW | YW | Milk | TM  | ME  | HPG | CEM | Stay | Marb | YG   | CW | REA  | Fat  |
|-----|-----|----|----|------|-----|-----|-----|-----|------|------|------|----|------|------|
| -1  | 3   | 50 | 91 | 15   | 40  | 9   | 12  | 2   | 11   | 0.01 | 0.09 | 59 | 0.21 | 0.03 |
| 94% | 97% | 5% | 5% | 65%  | 14% | 87% | 15% | 64% | 25%  | 61%  | 91%  | 3% | 20%  | 89%  |



Crossbred cow and calf

## G LSF HIGH YIELD 8088U

**RED POLLED 100% 1A #1248523**

MESSMER PACKER S008

{ MESSMER JOSHUA 019P  
MESSMER MILLIE 124P

LSF COVER GIRL K1426 R5057

{ BROWN VACATION H7106  
LSF COVER GIRL K1426

|        |            |
|--------|------------|
| BD     | BW         |
| 2/6/08 | 80         |
| 205 WT | WR         |
| 711    | 102        |
| 365 WT | YR         |
| 1205   | 101        |
| %IMF   | REA        |
| 4.98   | 13.03      |
| FAT    | DAM'S MPPA |
| 0.22   | 3/96.2     |

### EPDs/BREED RANKING

| CED | BW   | WW  | YW  | Milk | TM  | ME  | HPG | CEM | Stay | Marb | YG    | CW  | REA  | Fat   |
|-----|------|-----|-----|------|-----|-----|-----|-----|------|------|-------|-----|------|-------|
| 7   | -1.4 | 26  | 56  | 18   | 30  | 6   | 14  | 7   | 15   | 0.23 | -0.17 | 32  | 0.29 | -0.02 |
| 28% | 26%  | 72% | 62% | 48%  | 67% | 67% | 3%  | 12% | 5%   | 17%  | 5%    | 65% | 12%  | 11%   |

## LSF High Yield 8088U



## EPD NOTES

Expected Progeny Differences (EPDs) give cattlemen a useful tool with which to evaluate the genetic potential of breeding animals.

The printed EPDs in this catalog have been furnished to us by the Red Angus Association of America and the North American South Devon Association.

### EPD Breed Averages for 2010-Born Cattle

#### Red Angus

| CED | BW   | WW | YW | Milk | TM | ME | HPG | CEM | Stay | Marb | YG    | CW | REA  | Fat  |
|-----|------|----|----|------|----|----|-----|-----|------|------|-------|----|------|------|
| 5   | -0.1 | 32 | 60 | 17   | 33 | 4  | 10  | 3   | 9    | 0.08 | -0.03 | 36 | 0.09 | 0.00 |

#### South Devon

| BW  | WW | YW | SC   | MILK | MWW | FAT  | REA  | MARB | C WT |
|-----|----|----|------|------|-----|------|------|------|------|
| 2.8 | 41 | 78 | -0.2 | 23   | 43  | 0.01 | 0.22 | 0.2  | 25.8 |



South Devon Lot 33 as a calf

# SOUTH DEVON HERD SIRES



**X-E Rock P296**

**H** **X-E ROCK P296**  
**RED POLLED PUREBRED #181098**

SBCC 8103

X-E AMBER M296

{ LEACHMAN DEVONAIRE 9034E  
 SLF LADY 1027A

{ CIMARRON HUSTLER 036K  
 896 SD/SM DAM

|                |           |
|----------------|-----------|
| BD             | BW        |
| <b>1/30/04</b> | <b>84</b> |
| 205 WT         | WR        |
| <b>698</b>     | YR        |
| <b>1274</b>    | REA       |
| %IMF           |           |
| FAT            |           |

**EPDs/BREED RANKING**

| BW         | WW        | YW        | SC         | MILK      | MWW       | FAT         | REA         | MARB       | C WT        |
|------------|-----------|-----------|------------|-----------|-----------|-------------|-------------|------------|-------------|
| <b>2.2</b> | <b>42</b> | <b>94</b> | <b>0.0</b> | <b>33</b> | <b>54</b> | <b>0.01</b> | <b>0.12</b> | <b>0.4</b> | <b>32.9</b> |
| 35%        | 50%       | 15%       | 30%        | 1%        | 10%       | 25%         | 95%         | 30%        | 30%         |

*Correctly named, "The Rock" is exactly that! He sires massive thickness, volume and muscling. He will moderate BW plus, his calf crop has shown excellent performance and ultrasound carcass data. "The Rock" is very correct, thick and easy fleshing. He was our pick of bulls at the 2005 Midland Bull Test offering.*  
**Ignity Profile: Tenderness: 6 Fat Thickness: 6 YG: 6 REA: 6 CWT: 6 % Choice: 7 Marb: 6**

**I** **DLC LEGACY 55**  
**RED POLLED PUREBRED #190782**

SBCC ROYAL LEGACY 5123

DLC MISS BOLERO 221

{ NORTH PADDLE LEGACY 32L  
 MJB HEATHER 8671H

{ DLC BOLERO LAD 96  
 DLC MS ROYAL 012

|                |            |
|----------------|------------|
| BD             | BW         |
| <b>4/20/07</b> | <b>80</b>  |
| 205 WT         | WR         |
| <b>735</b>     | <b>104</b> |
| 365 WT         | YR         |
| <b>1264</b>    | <b>103</b> |
| %IMF           | REA        |
| FAT            |            |

**EPDs/BREED RANKING**

| BW         | WW        | YW        | SC         | MILK      | MWW       | FAT         | REA         | MARB       | C WT        |
|------------|-----------|-----------|------------|-----------|-----------|-------------|-------------|------------|-------------|
| <b>1.7</b> | <b>35</b> | <b>62</b> | <b>0.0</b> | <b>30</b> | <b>47</b> | <b>0.01</b> | <b>0.19</b> | <b>0.2</b> | <b>18.6</b> |
| 25%        | 75%       | 90%       | 30%        | 10%       | 30%       | 25%         | 70%         | 45%        | 90%         |

*Our choice of the SBCC Royal Legacy 5123 sons to carry on those genetics. 55 is a very stylish, correctly structured, moderate-framed bull with solid EPDs, especially in his carcass EPDs. His offspring are showing a lot of style and structural correctness.*  
**Ignity Profile: Tenderness: 6 Fat Thickness: 3 YG: 5 REA: 6 CEM: 6 % Choice: 5 Marb: 5**



**DLC Legacy 55**

**J** **DLC MR ROYAL DUKE 40**  
**RED POLLED FULLBLOOD #190325**

DLC ROYAL DUKE 63

DLC MISS IMPACT 321

{ DLC ROYAL PRINCE  
 CIMARRON SUNSET 803H

{ CIMARRON IMPACT 758G  
 DLC MS MONARCH 878

|                |            |
|----------------|------------|
| BD             | BW         |
| <b>4/11/06</b> | <b>90</b>  |
| 205 WT         | WR         |
| <b>814</b>     | <b>110</b> |
| 365 WT         | YR         |
| <b>1352</b>    | <b>107</b> |
| %IMF           | REA        |
| FAT            | DAM'S MPPA |

**EPDs/BREED RANKING**

| BW         | WW        | YW        | SC         | MILK      | MWW       | FAT         | REA         | MARB       | C WT        |
|------------|-----------|-----------|------------|-----------|-----------|-------------|-------------|------------|-------------|
| <b>2.4</b> | <b>40</b> | <b>86</b> | <b>0.7</b> | <b>32</b> | <b>52</b> | <b>0.00</b> | <b>0.16</b> | <b>0.2</b> | <b>26.5</b> |
| 40%        | 60%       | 30%       | 1%         | 5%        | 15%       | 70%         | 80%         | 45%        | 50%         |

*40 is a powerful performance bull who sires tremendous growth in his offspring. 40's calves are thick topped, deep bodied with length of side. If you are looking for growth take a look at 40's calves.*  
**Ignity Profile: Tenderness: 6 Fat Thickness: 5 YG: 5 REA: 3 CEM: 8 % Choice: 5 Marb: 5**

**K** **DLC LEGACY 67U**  
**RED POLLED FULLBLOOD #193777**

SBCC ROYAL LEGACY 5123

DLC MISS BOLERO 535

{ NORTH PADDLE LEGACY 32L  
 MJB HEATHER 8671H

{ DLC BOLERO LAD K98  
 DLC MISS ROYAL 119

|                |            |
|----------------|------------|
| BD             | BW         |
| <b>4/14/08</b> |            |
| 205 WT         | WR         |
| 365 WT         | YR         |
| %IMF           | REA        |
| FAT            | DAM'S MPPA |

**EPDs/BREED RANKING**

| BW         | WW        | YW        | SC          | MILK      | MWW       | FAT         | REA         | MARB       | C WT        |
|------------|-----------|-----------|-------------|-----------|-----------|-------------|-------------|------------|-------------|
| <b>3.0</b> | <b>49</b> | <b>74</b> | <b>-0.2</b> | <b>23</b> | <b>47</b> | <b>0.01</b> | <b>0.25</b> | <b>0.3</b> | <b>23.4</b> |
| 55%        | 20%       | 60%       | 55%         | 45%       | 30%       | 25%         | 30%         | 35%        | 65%         |



**DLC Hudson 82U**

**L** **DLCC HUDSON 82U**  
**RED POLLED PERCENTAGE #192574**

MJB SHUR LOC 106S

DLCC PRINCESS MIA 78P

{ DLCC SURE-ENUF  
 MJB PROMISE 4550P

{ DLCC POLLED PRO 111H  
 DLCC POPEYE 170K

|                |            |
|----------------|------------|
| BD             | BW         |
| <b>3/20/08</b> |            |
| 205 WT         | WR         |
| 365 WT         | YR         |
| %IMF           | REA        |
| FAT            | DAM'S MPPA |

**EPDs/BREED RANKING**

| BW         | WW        | YW        | SC         | MILK      | MWW       | FAT         | REA         | MARB       | C WT        |
|------------|-----------|-----------|------------|-----------|-----------|-------------|-------------|------------|-------------|
| <b>1.3</b> | <b>53</b> | <b>86</b> | <b>0.0</b> | <b>25</b> | <b>52</b> | <b>0.01</b> | <b>0.29</b> | <b>0.3</b> | <b>33.3</b> |
| 20%        | 15%       | 30%       | 30%        | 30%       | 15%       | 25%         | 15%         | 35%        | 20%         |

## PUREBRED YEARLING HEIFER OFFERING

Purebred heifers will be selling in groups of 10.

Buyers will have the option to purchase choice two times, then the balance will be sold to go.

**Group 1:** 10 head of purebred Red Angus heifers.

**Group 2:** 10 head of purebred South Devon heifers.

## COMMERCIAL YEARLING HEIFER OFFERING

Commercial heifers will be sold at a minimum of five head gate cut. On bigger drafts, the buyer of the last heifers in the ring (should there be a cut made), will have the option to take the remaining heifers of that group for the same price.

**Group 3:** 10 head of Red Angus x South Devon F1 (Pr♀-Cow) heifers.

**Group 4:** 10 head of black Red Angus (Pr♀-Cow) heifers.

**Group 5:** 10 head of black Optimizer heifers.

**Group 6:** 10 head of red Optimizer heifers.

**Group 7:** 20 head three-quarter blood Red Angus (Pr♀-Cow) heifers.

**Group 8:** 20 head halfblood Red Angus (Pr♀-Cow) heifers.

All heifers have been Bangs vaccinated.

## Red Angus Replacements for Professional Cattlemen

The maternal qualities of Red Angus females make them an obvious cornerstone for commercial cow/calf operations.

- Early Puberty with High Fertility
- Easy Calving
- Moderate Frame with Low Maintenance
- Maternal Efficiency
- Longevity
- Docile Disposition
- Unbiased, Reliable EPDs
- "Angus" Carcass Qualities

# Pr♀-Cow

Red Angus Association of America  
(940) 387-3502 • www.redangus.org

### 100 Sale Heifers

Avg BW – 71 lbs.

Avg 205 Wt – 678 lbs.

All Heifers Bangs Vaccinated



*For more information on this and other Red Angus programs, contact:*

- The only tag that provides USDA-verification of Angus.
- Offers source verification to ranch of origin.
- The first USDA Process Verified Program.
- Added Value Services for both ranchers and feeders.
- Experienced staff assistance.

 **Red Angus  
Marketing Programs**

(940) 387-3502 • Fax (940) 383-4036 • www.RedAngus.org

# RED ANGUS HERD BULL PROSPECTS



Lot 1

1

## DLC ENCORE LAD 0134

RED POLLED 99.9% 1B #1373130

|              |                |
|--------------|----------------|
| BD           | BW             |
| 4/23/10      | 88             |
| 205 WT       | 365 WT         |
| 719          | 1142           |
| TEST ADG     | SC             |
| 3.00         | 37             |
| %IMF         | REA            |
| 2.72         | 13.30          |
| CALVING EASE | DAM'S AGE/MPPA |
| 1            | 6/100.7        |

LORENZEN SANTIAM ENCORE 8400

{ PIE GRIDMASTER 589  
SANTIAM'S GOLDIE K21

DLC MISS LOGAN 472

{ DLC MR. LOGAN 2122  
DLC MS ROBIN HOOD 256

### EPDs

| CED | BW  | WW | YW | Milk | TM | ME | HPG | CEM | Stay | Marb  | YG   | CW | REA  | Fat  |
|-----|-----|----|----|------|----|----|-----|-----|------|-------|------|----|------|------|
| -1  | 3.3 | 39 | 74 | 13   | 32 | 7  | 10  | 2   | 9    | -0.06 | 0.07 | 50 | 0.00 | 0.01 |

Cattlemen should like this well-balanced, structurally correct herd bull candidate. He comes from a great cow family. Super udder structures go back through his pedigree. His sire (owned by Koester Red Angus) is a new line in our program. 0134 should sire those eye-appealing, balanced, thick-made calves that will rise to the top of the calf crop. Retaining one-half semen interest.



Lot 2

2

## DLC CLASSIC 0101

RED POLLED 99.9% 1B #1373127

|              |                |
|--------------|----------------|
| BD           | BW             |
| 4/7/10       | 92             |
| 205 WT       | 365 WT         |
| 714          | 1232           |
| TEST ADG     | SC             |
| 3.60         | 40             |
| %IMF         | REA            |
| 3.27         | 12.60          |
| CALVING EASE | DAM'S AGE/MPPA |
| 1            | 6/99.2         |

DLC SIR CLASSIC 5102

{ BADLANDS CLASSIC 069  
DLC MS CHIEFTON 720

DLC MISS LOGAN 464

{ DLC MR. LOGAN 2122  
DLC MS ROBIN HOOD 263

### EPDs

| CED | BW  | WW | YW | Milk | TM | ME | HPG | CEM | Stay | Marb  | YG    | CW | REA   | Fat   |
|-----|-----|----|----|------|----|----|-----|-----|------|-------|-------|----|-------|-------|
| 2   | 1.1 | 30 | 57 | 14   | 29 | 5  | 7   | 3   | 7    | -0.14 | -0.05 | 35 | -0.11 | -0.02 |

This long-bodied Classic son seems to be doing everything right. He is the most stylish, longest bodied Red Angus bull we've raised to date. Structurally correct, solid feet and legs, and his dam is one of the best looking Angus cows you'll find. 0101 is sure to be an outstanding herd sire, producing exciting sons and beautiful daughters. Retaining one-half semen interest.



# RED ANGUS HERD BULL PROSPECTS



Lot 3

3

## DLC MR CLASSIC 0100

RED POLLED 99.7% 1B #1373155

DLC SIR CLASSIC 5102

{ BADLANDS CLASSIC 069  
DLC MS CHIEFTON 720

DLC MS GRAND CANYON 670

{ LELAND GRAND CANYON 3129  
DLC MS CHIEFTON 076

|                |                |
|----------------|----------------|
| BD             | BW             |
| <b>3/30/10</b> | <b>90</b>      |
| 205 WT         | 365 WT         |
| <b>849</b>     | <b>1250</b>    |
| TEST ADG       | SC             |
| <b>3.40</b>    | <b>40</b>      |
| %IMF           | REA            |
| <b>3.22</b>    | <b>14.20</b>   |
| CALVING EASE   | DAM'S AGE/MPPA |
| <b>1</b>       | <b>4/102.2</b> |

### EPDs

| CED      | BW          | WW        | YW        | Milk      | TM        | ME       | HPG       | CEM      | Stay     | Marb         | YG           | CW        | REA         | Fat         |
|----------|-------------|-----------|-----------|-----------|-----------|----------|-----------|----------|----------|--------------|--------------|-----------|-------------|-------------|
| <b>4</b> | <b>-0.2</b> | <b>33</b> | <b>61</b> | <b>17</b> | <b>33</b> | <b>5</b> | <b>10</b> | <b>2</b> | <b>8</b> | <b>-0.11</b> | <b>-0.06</b> | <b>27</b> | <b>0.08</b> | <b>0.00</b> |

*This heavy-weaning Classic son should be looked at by performance-minded cattlemen that want those heavy calves to market either at weaning time or as backgrounded calves. 0100 is packed full of muscle and depth. His Canyon dam is correct, long-bodied and has a perfect udder. Retaining one-half semen interest.*



Lot 4

4

## DLC ROB ROY 0127

RED POLLED 100% 1A #1373139

BIEBER ROB ROY 10444

{ BIEBER ROB ROY 6990  
BIEBER EULCA 8969

DLC MS KING ROB 557

{ KUHN'S KING ROB  
DLC LOGAN LADY 261

|                |                |
|----------------|----------------|
| BD             | BW             |
| <b>4/19/10</b> | <b>88</b>      |
| 205 WT         | 365 WT         |
| <b>767</b>     | <b>1219</b>    |
| TEST ADG       | SC             |
| <b>3.10</b>    | <b>44</b>      |
| %IMF           | REA            |
| <b>3.30</b>    | <b>13.60</b>   |
| CALVING EASE   | DAM'S AGE/MPPA |
| <b>1</b>       | <b>5/96.2</b>  |

### EPDs

| CED      | BW         | WW        | YW        | Milk      | TM        | ME       | HPG      | CEM      | Stay     | Marb         | YG           | CW        | REA         | Fat          |
|----------|------------|-----------|-----------|-----------|-----------|----------|----------|----------|----------|--------------|--------------|-----------|-------------|--------------|
| <b>5</b> | <b>0.8</b> | <b>28</b> | <b>50</b> | <b>21</b> | <b>35</b> | <b>5</b> | <b>8</b> | <b>4</b> | <b>6</b> | <b>-0.09</b> | <b>-0.08</b> | <b>28</b> | <b>0.09</b> | <b>-0.01</b> |

*Great performance across the board describes this big, soggy Rob Roy son. 0127 is tremendously thick from end to end, yet he displays a modest birth weight of 88 lbs. His dam is a smaller framed, perfect-uddered King Rob daughter with a pleasant personality. Retaining one-half semen interest.*

# RED ANGUS HERD BULL PROSPECTS



Lot 5

## 5 DLC CHEYENNE 0118

RED POLLED 99.7% 1B #1373184

KOESTER CHEYENNE 706

{ LCC CHEYENNE B221L  
LELAND CHATEAU 744-3013

DLC MS HIGH PRAIRIE 759

{ LELAND HIGH PRAIRIE 5363R  
DLC MS DESIGN 083

|              |                |
|--------------|----------------|
| BD           | BW             |
| 4/11/10      | 85             |
| 205 WT       | 365 WT         |
| 672          | 1053           |
| TEST ADG     | SC             |
| 2.90         | 36             |
| %IMF         | REA            |
| 3.49         | 13.50          |
| CALVING EASE | DAM'S AGE/MPPA |
| 2            | 3/96.9         |

### EPDs

|     |     |    |    |      |    |    |     |     |      |      |      |    |      |      |
|-----|-----|----|----|------|----|----|-----|-----|------|------|------|----|------|------|
| CED | BW  | WW | YW | Milk | TM | ME | HPG | CEM | Stay | Marb | YG   | CW | REA  | Fat  |
| 4   | 0.0 | 26 | 54 | 18   | 31 | 5  | 10  | 4   | 10   | 0.20 | 0.03 | 35 | 0.04 | 0.03 |

A moderate birth weight Cheyenne son out of a beautiful High Prairie cow. This bull has good carcass EPDs with a negative BW EPD.

## 6 DLC ROB ROY 0121

RED POLLED 99.9% 1B #1373140

BIEBER ROB ROY 10444

{ BIEBER ROB ROY 6990  
BIEBER EULCA 8969

DLC LADY LOGAN 563

{ DLC LOGAN 9118  
DLC MS GOLDEN 723

|              |                |
|--------------|----------------|
| BD           | BW             |
| 4/7/10       | 92             |
| 205 WT       | 365 WT         |
| 740          | 1201           |
| TEST ADG     | SC             |
| 4.10         | 39             |
| %IMF         | REA            |
| 2.58         | 15.80          |
| CALVING EASE | DAM'S AGE/MPPA |
| 1            | 5/99.6         |

### EPDs

|     |     |    |    |      |    |    |     |     |      |       |       |    |      |       |
|-----|-----|----|----|------|----|----|-----|-----|------|-------|-------|----|------|-------|
| CED | BW  | WW | YW | Milk | TM | ME | HPG | CEM | Stay | Marb  | YG    | CW | REA  | Fat   |
| 2   | 2.1 | 28 | 50 | 21   | 35 | 4  | 7   | 4   | 8    | -0.12 | -0.10 | 32 | 0.26 | -0.02 |

This Rob Roy son displayed good gainability with a 4-lb./dat gain on test, typical of the Rob Roy calves – a lot of growth and efficiency.

## 7 DLC MR ROB ROY 0130

RED POLLED 98.5% 1B #1373113

BIEBER ROB ROY 10444

{ BIEBER ROB ROY 6990  
BIEBER EULCA 8969

DLC MS RED TOP 151

{ RED CR TOP 54D  
DLC LADY KONG 308

|              |                |
|--------------|----------------|
| BD           | BW             |
| 4/24/10      | 92             |
| 205 WT       | 365 WT         |
| 789          | 1315           |
| TEST ADG     | SC             |
| 3.40         | 36             |
| %IMF         | REA            |
| 3.66         | 15.20          |
| CALVING EASE | DAM'S AGE/MPPA |
| 1            | 9/99.2         |

### EPDs

|     |     |    |    |      |    |    |     |     |      |       |       |    |      |       |
|-----|-----|----|----|------|----|----|-----|-----|------|-------|-------|----|------|-------|
| CED | BW  | WW | YW | Milk | TM | ME | HPG | CEM | Stay | Marb  | YG    | CW | REA  | Fat   |
| 2   | 3.9 | 44 | 73 | 12   | 34 | 5  | 10  | 1   | 3    | -0.09 | -0.15 | 46 | 0.48 | -0.02 |

Here is a tremendously high performance Rob Roy son. Cattlemen who want those scale-topping calves should take a long look at this guy. 0130 posted a 862-lb. WW and over 1300-lb. YW. He ranks in the top 25% of the breed in YW.

## 8 DLC MR LOGAN 0126

RED POLLED 100% 1A #1373128

DLC LOGAN LAD 4125

{ DLC MR. LOGAN 2122  
DLC MS CHIEFTON 082

DLC MISS CLASSIC 466

{ BADLANDS CLASSIC 069  
DLC MS CHIEFTON 076

|              |                |
|--------------|----------------|
| BD           | BW             |
| 4/23/10      | 94             |
| 205 WT       | 365 WT         |
| 789          | 1262           |
| TEST ADG     | SC             |
| 3.50         | 39             |
| %IMF         | REA            |
| 2.87         | 13.20          |
| CALVING EASE | DAM'S AGE/MPPA |
| 1            | 6/106.5        |

### EPDs

|     |     |    |    |      |    |    |     |     |      |       |       |    |       |       |
|-----|-----|----|----|------|----|----|-----|-----|------|-------|-------|----|-------|-------|
| CED | BW  | WW | YW | Milk | TM | ME | HPG | CEM | Stay | Marb  | YG    | CW | REA   | Fat   |
| 2   | 1.3 | 33 | 60 | 19   | 35 | 4  | 9   | 4   | 7    | -0.14 | -0.05 | 33 | -0.09 | -0.03 |

This Logan son is really doing thing the right way. He posted excellent weights and balanced EPDs. He's long and thick made. His dam has an MPPA of 107.



Lot 7



Lot 9

## 9 DLC EPIC 0111

RED POLLED 99.9% 1B #1373174

MLK CRK EPIC 7176

{ BECKTON EPIC R397 K  
MLK CRK LAKOTA 555

DLC MS CLASSIC 882

{ DLC MR CLASSIC 4115  
DLC MS LOGAN 450

|              |                |
|--------------|----------------|
| BD           | BW             |
| 3/30/10      | 86             |
| 205 WT       | 365 WT         |
| 814          | 1262           |
| TEST ADG     | SC             |
| 3.90         | 38             |
| %IMF         | REA            |
| 3.78         | 12.70          |
| CALVING EASE | DAM'S AGE/MPPA |
| 2            | 2/104.4        |

### EPDs

|     |      |    |    |      |    |    |     |     |      |       |       |    |      |      |
|-----|------|----|----|------|----|----|-----|-----|------|-------|-------|----|------|------|
| CED | BW   | WW | YW | Milk | TM | ME | HPG | CEM | Stay | Marb  | YG    | CW | REA  | Fat  |
| 4   | -1.2 | 35 | 66 | 14   | 31 | 0  | 10  | 2   | 12   | -0.04 | -0.07 | 29 | 0.02 | 0.00 |

This Epic son really has been an eye catcher from day one. He was born unassisted out of a first-calf heifer and posted weights of 814 lbs. at weaning and 1200 lbs. at yearling, gaining just under 4 lbs./day. 0111 has good EPDs, great structure, length of body and comes from one of our top cow families.

# RED ANGUS HEIFER BULLS

10

## DLC EPIC 0165

RED POLLED 100% 1A #1373170

MLK CRK EPIC 7176

{ BECKTON EPIC R397 K  
MLK CRK LAKOTA 555

DLC MS CLASSIC 872

{ DLC MR CLASSIC 4115  
DLC MISS HOBO 394

|              |                |
|--------------|----------------|
| BD           | BW             |
| 4/28/10      | 80             |
| 205 WT       | 365 WT         |
| 777          | 1331           |
| TEST ADG     | SC             |
| 4.10         | 36             |
| %IMF         | REA            |
| 2.63         | 15.80          |
| CALVING EASE | DAM'S AGE/MPPA |
| 2            | 2/102.4        |

### EPDs

| CED | BW   | WW | YW | Milk | TM | ME | HPG | CEM | Stay | Marb  | YG    | CW | REA  | Fat  |
|-----|------|----|----|------|----|----|-----|-----|------|-------|-------|----|------|------|
| 7   | -1.6 | 29 | 56 | 12   | 27 | 1  | 10  | 3   | 11   | -0.18 | -0.09 | 27 | 0.28 | 0.01 |

This is a heifer bull with extra gas, gaining 4 lbs./day on test. 0165 has extra length, smoothness and frame. He was born unassisted out of a first-calf heifer.



Lot 10

11

## DLC EPIC 0119

RED POLLED 100% 1A #1373171

MLK CRK EPIC 7176

{ BECKTON EPIC R397 K  
MLK CRK LAKOTA 555

DLC MS CLASSIC 873

{ DLC MR CLASSIC 4115  
DLC MS CHIEFTON 717

|              |                |
|--------------|----------------|
| BD           | BW             |
| 4/11/10      | 82             |
| 205 WT       | 365 WT         |
| 742          | 1202           |
| TEST ADG     | SC             |
| 4.00         | 39             |
| %IMF         | REA            |
| 3.10         | 14.10          |
| CALVING EASE | DAM'S AGE/MPPA |
| 2            | 2/100.8        |

### EPDs

| CED | BW   | WW | YW | Milk | TM | ME | HPG | CEM | Stay | Marb  | YG    | CW | REA  | Fat  |
|-----|------|----|----|------|----|----|-----|-----|------|-------|-------|----|------|------|
| 4   | -0.5 | 30 | 59 | 13   | 28 | 0  | 8   | 1   | 12   | -0.15 | -0.06 | 33 | 0.15 | 0.01 |

Another heifer bull out of an Epic. He was born unassisted, posting a 4 lb./day gain on test.

12

## DLC EPIC 0114

RED POLLED 99.7% 1B #1373164

MLK CRK EPIC 7176

{ BECKTON EPIC R397 K  
MLK CRK LAKOTA 555

DLC MS TREND SETTER 862

{ BASIN TREND SETTER 6074  
DLC MISS CLASSIC 440

|              |                |
|--------------|----------------|
| BD           | BW             |
| 4/7/10       | 70             |
| 205 WT       | 365 WT         |
| 742          | 1131           |
| TEST ADG     | SC             |
| 3.30         | 39             |
| %IMF         | REA            |
| 3.48         | 14.00          |
| CALVING EASE | DAM'S AGE/MPPA |
| 3            | 2/100.8        |

### EPDs

| CED | BW   | WW | YW | Milk | TM | ME | HPG | CEM | Stay | Marb | YG    | CW | REA  | Fat  |
|-----|------|----|----|------|----|----|-----|-----|------|------|-------|----|------|------|
| 9   | -3.2 | 25 | 48 | 16   | 28 | -1 | 8   | 3   | 13   | 0.02 | -0.11 | 24 | 0.18 | 0.00 |

Heifer bull. A smooth-made son of Epic out of a beautiful Trend Setter daughter. 0114 has well-balanced EPDs and is strong in carcass traits.

13

## DLC EPIC 0110

RED POLLED 99.9% 1B #1373167

MLK CRK EPIC 7176

{ BECKTON EPIC R397 K  
MLK CRK LAKOTA 555

DLC MS ABOVE & BEYOND 867

{ LCC ABOVE & BEYOND 1300J  
DLC MS GRAND CANYON 642

|              |                |
|--------------|----------------|
| BD           | BW             |
| 3/19/10      | 60             |
| 205 WT       | 365 WT         |
| 740          | 1098           |
| TEST ADG     | SC             |
| 3.40         | 37             |
| %IMF         | REA            |
| 2.68         | 13.40          |
| CALVING EASE | DAM'S AGE/MPPA |
| 3            | 2/100.4        |

### EPDs

| CED | BW   | WW | YW | Milk | TM | ME | HPG | CEM | Stay | Marb | YG    | CW | REA   | Fat  |
|-----|------|----|----|------|----|----|-----|-----|------|------|-------|----|-------|------|
| 14  | -5.0 | 21 | 48 | 19   | 30 | -1 | 11  | 6   | 12   | 0.02 | -0.03 | 25 | -0.01 | 0.02 |

Heifer bull. Calving ease is built in to this Epic and Above & Beyond calf.

14

## DLC EPIC 0112

RED POLLED 99.6% 1B #1373160

MLK CRK EPIC 7176

{ BECKTON EPIC R397 K  
MLK CRK LAKOTA 555

DLC MS CANYON 852

{ LELAND GRAND CANYON 3129  
DLC MS CLASSIC 389

|              |                |
|--------------|----------------|
| BD           | BW             |
| 3/31/10      | 55             |
| 205 WT       | 365 WT         |
| 724          | 1165           |
| TEST ADG     | SC             |
| 3.30         | 37             |
| %IMF         | REA            |
| 2.94         | 13.20          |
| CALVING EASE | DAM'S AGE/MPPA |
| 3            | 2/99.6         |

### EPDs

| CED | BW   | WW | YW | Milk | TM | ME | HPG | CEM | Stay | Marb  | YG    | CW | REA  | Fat  |
|-----|------|----|----|------|----|----|-----|-----|------|-------|-------|----|------|------|
| 10  | -2.7 | 28 | 56 | 16   | 30 | 1  | 10  | 3   | 10   | -0.04 | -0.03 | 35 | 0.08 | 0.01 |

Heifer bull. Another calving ease son of Epic with an actual birth weight of 55 lbs. Out of a super, young Canyon daughter.

15

## DLC EPIC 0116

RED POLLED 100% 1A #1373172

MLK CRK EPIC 7176

{ BECKTON EPIC R397 K  
MLK CRK LAKOTA 555

DLC MS CLASSIC 874

{ DLC MR CLASSIC 4115  
DLC MS CHIEFTON 716

|              |                |
|--------------|----------------|
| BD           | BW             |
| 4/7/10       | 80             |
| 205 WT       | 365 WT         |
| 710          | 1243           |
| TEST ADG     | SC             |
| 4.20         | 36             |
| %IMF         | REA            |
| 2.95         | 13.20          |
| CALVING EASE | DAM'S AGE/MPPA |
| 3            | 2/98.8         |

### EPDs

| CED | BW   | WW | YW | Milk | TM | ME | HPG | CEM | Stay | Marb  | YG   | CW | REA  | Fat  |
|-----|------|----|----|------|----|----|-----|-----|------|-------|------|----|------|------|
| 4   | -0.3 | 30 | 60 | 13   | 29 | 0  | 10  | 1   | 11   | -0.14 | 0.01 | 36 | 0.07 | 0.02 |

Heifer bull. Calving ease with performance, posting a yearling weight of over 1200 lbs. with a 4.3 lb./day gain.

16

## DLC EPIC 0109

RED POLLED 100% 1A #1373169

MLK CRK EPIC 7176

{ BECKTON EPIC R397 K  
MLK CRK LAKOTA 555

DLC CLASSIC LASS 871

{ DLC MR CLASSIC 4115  
DLC MS DESIGN 088

|              |                |
|--------------|----------------|
| BD           | BW             |
| 3/20/10      | 62             |
| 205 WT       | 365 WT         |
| 706          | 1161           |
| TEST ADG     | SC             |
| 3.30         | 36             |
| %IMF         | REA            |
| 3.20         | 15.50          |
| CALVING EASE | DAM'S AGE/MPPA |
| 3            | 2/98.8         |

### EPDs

| CED | BW   | WW | YW | Milk | TM | ME | HPG | CEM | Stay | Marb  | YG    | CW | REA  | Fat  |
|-----|------|----|----|------|----|----|-----|-----|------|-------|-------|----|------|------|
| 10  | -3.3 | 21 | 47 | 12   | 23 | -0 | 9   | 3   | 11   | -0.14 | -0.08 | 28 | 0.26 | 0.01 |

Heifer bull. Another small-headed, smooth-fronted calving-ease son of Epic. Dam comes from a great producing cow line.

# RED ANGUS YEARLING BULLS



Lot 17

## 17 DLC MR CHEYENNE 0122

RED POLLED 99.7% 1B #1373181

KOESTER CHEYENNE 706

{ LCC CHEYENNE B221L  
{ LELAND CHATEAU 744-3013

DLC MS ABOVE & BEYOND 750

{ LCC ABOVE & BEYOND 1300J  
{ DLC MISS CLASSIC 574

|              |                |
|--------------|----------------|
| BD           | BW             |
| 4/13/10      | 80             |
| 205 WT       | 365 WT         |
| 775          | 1219           |
| TEST ADG     | SC             |
| 3.00         | 36             |
| %IMF         | REA            |
| 4.43         | 13.40          |
| CALVING EASE | DAM'S AGE/MPPA |
| 2            | 3/101.4        |

### EPDs

|     |      |    |    |      |    |    |     |     |      |      |       |    |       |      |
|-----|------|----|----|------|----|----|-----|-----|------|------|-------|----|-------|------|
| CED | BW   | WW | YW | Milk | TM | ME | HPG | CEM | Stay | Marb | YG    | CW | REA   | Fat  |
| 9   | -1.9 | 26 | 56 | 19   | 32 | 4  | 10  | 8   | 8    | 0.23 | -0.01 | 28 | -0.02 | 0.02 |

A modest birth weight, smooth-made Cheyenne son with solid EPDs and strong carcass traits. His dam is a great Above & Beyond daughter with a 102 MPPA. Be sure to look up this complete bull on sale day.

## 18 DLC CHEYENNE 0123

RED POLLED 99.7% 1B #1373182

KOESTER CHEYENNE 706

{ LCC CHEYENNE B221L  
{ LELAND CHATEAU 744-3013

DLC MS RAMPAGE 751

{ OHRR 31K MK RAMPAGE 8P  
{ DLC MISS LOGAN 570

|              |                |
|--------------|----------------|
| BD           | BW             |
| 4/13/10      | 80             |
| 205 WT       | 365 WT         |
| 728          | 1178           |
| TEST ADG     | SC             |
| 3.40         | 38             |
| %IMF         | REA            |
| 3.77         | 13.10          |
| CALVING EASE | DAM'S AGE/MPPA |
| 2            | 3/99.4         |

### EPDs

|     |      |    |    |      |    |    |     |     |      |      |       |    |      |      |
|-----|------|----|----|------|----|----|-----|-----|------|------|-------|----|------|------|
| CED | BW   | WW | YW | Milk | TM | ME | HPG | CEM | Stay | Marb | YG    | CW | REA  | Fat  |
| 7   | -2.1 | 21 | 45 | 21   | 31 | 6  | 11  | 6   | 10   | 0.20 | -0.08 | 24 | 0.00 | 0.00 |

A look-a-like of Lot 17! Smooth-made, beefy, strong carcass son of Cheyenne. SC: 38 cm.

## 19 DLC MR CLASSIC 0105

RED POLLED 100% 1A #1373112

DLC SIR CLASSIC 5102

{ BADLANDS CLASSIC 069  
{ DLC MS CHIEFTON 720

DLC MS LADIES MAN 148

{ DLC LADIES MAN 8157  
{ DLC MS CHIEFTON 846

|              |                |
|--------------|----------------|
| BD           | BW             |
| 4/13/10      | 70             |
| 205 WT       | 365 WT         |
| 643          | 1024           |
| TEST ADG     | SC             |
| 2.90         | 38             |
| %IMF         | REA            |
| 2.19         | 12.90          |
| CALVING EASE | DAM'S AGE/MPPA |
| 2            | 9/99.3         |

### EPDs

|     |      |    |    |      |    |    |     |     |      |       |       |    |       |       |
|-----|------|----|----|------|----|----|-----|-----|------|-------|-------|----|-------|-------|
| CED | BW   | WW | YW | Milk | TM | ME | HPG | CEM | Stay | Marb  | YG    | CW | REA   | Fat   |
| 7   | -1.3 | 19 | 37 | 17   | 26 | 4  | 5   | 2   | 7    | -0.22 | -0.08 | 30 | -0.07 | -0.02 |

This light birth weight son of Classic has extra eye appeal and length of body. His 9-year-old dam has a perfect udder and excellent feet

## 20 DLC CLASSIC 0131

RED POLLED 99.6% 1B #1373148

DLC SIR CLASSIC 5102

{ BADLANDS CLASSIC 069  
{ DLC MS CHIEFTON 720

DLC MS GRAND CANYON 641

{ LELAND GRAND CANYON 3129  
{ DLC MISS HOBO 251

|              |                |
|--------------|----------------|
| BD           | BW             |
| 4/23/10      | 75             |
| 205 WT       | 365 WT         |
| 703          | 1152           |
| TEST ADG     | SC             |
| 3.50         | 32             |
| %IMF         | REA            |
| 3.51         | 12.70          |
| CALVING EASE | DAM'S AGE/MPPA |
| 2            | 4/98.0         |

### EPDs

|     |      |    |    |      |    |    |     |     |      |       |       |    |       |       |
|-----|------|----|----|------|----|----|-----|-----|------|-------|-------|----|-------|-------|
| CED | BW   | WW | YW | Milk | TM | ME | HPG | CEM | Stay | Marb  | YG    | CW | REA   | Fat   |
| 7   | -1.7 | 22 | 43 | 19   | 30 | 6  | 9   | 3   | 8    | -0.08 | -0.08 | 28 | -0.02 | -0.01 |

He is a light birth weight Classic son - long bodied, smooth fronted and good structured. His Canyon dam did OK raising him after she injured half of her udder last summer.

## 21 DLC HIGH YIELD 0135

RED POLLED 99.7% 1B #1373137

LSF HIGH YIELD 8088U

{ MESSMER PACKER S008  
{ LSF COVER GIRL K1426 R5057

DLC MISS CANYON 552

{ LELAND GRAND CANYON 3129  
{ DLC MS RED HANFORD 839

|              |                |
|--------------|----------------|
| BD           | BW             |
| 4/21/10      | 82             |
| 205 WT       | 365 WT         |
| 676          | 1120           |
| TEST ADG     | SC             |
| 3.30         | 37             |
| %IMF         | REA            |
| 3.91         | 14.40          |
| CALVING EASE | DAM'S AGE/MPPA |
| 2            | 5/94.5         |

### EPDs

|     |      |    |    |      |    |    |     |     |      |      |       |    |      |       |
|-----|------|----|----|------|----|----|-----|-----|------|------|-------|----|------|-------|
| CED | BW   | WW | YW | Milk | TM | ME | HPG | CEM | Stay | Marb | YG    | CW | REA  | Fat   |
| 7   | -1.8 | 21 | 46 | 16   | 27 | 6  | 15  | 6   | 11   | 0.15 | -0.13 | 27 | 0.21 | -0.01 |

This High Yield son should be a replacement heifer producer! He has Heifer Pregnancy (HPG) and Stayability EPD rankings along with good carcass traits. His Canyon mother always gives birth to light birth weight calves.

## 22 DLC ENCORE 0128

RED POLLED 99.9% 1B #1373124

LORENZEN SANTIAM ENCORE 8400

{ PIE GRIDMASTER 589  
{ SANTIAM'S GOLDIE K21

DLC MS LOGAN 450

{ DLC LOGAN 9118  
{ DLC MS CHIEFTON 844

|              |                |
|--------------|----------------|
| BD           | BW             |
| 4/18/10      | 75             |
| 205 WT       | 365 WT         |
| 767          | 1222           |
| TEST ADG     | SC             |
| 3.20         | 40             |
| %IMF         | REA            |
| 3.01         | 13.50          |
| CALVING EASE | DAM'S AGE/MPPA |
| 2            | 6/103.7        |

### EPDs

|     |      |    |    |      |    |    |     |     |      |      |      |    |      |      |
|-----|------|----|----|------|----|----|-----|-----|------|------|------|----|------|------|
| CED | BW   | WW | YW | Milk | TM | ME | HPG | CEM | Stay | Marb | YG   | CW | REA  | Fat  |
| 4   | -0.6 | 27 | 57 | 22   | 35 | 6  | 10  | 3   | 12   | 0.09 | 0.01 | 37 | 0.00 | 0.01 |

0128 is a light birth weight Encore son out of one of the great Logan cows. This calf ratioed 102 at weaning. His dam has an MPPA of 104 and she is a perfect-uddered, great-structured, long-bodied, top-producing female.

## 23 DLC LOGAN LAD 0125

RED POLLED 100% 1A #1373153

DLC LOGAN LAD 4125

{ DLC MR. LOGAN 2122  
{ DLC MS CHIEFTON 082

DLC MISS KING ROB 648

{ KUHN'S KING ROB  
{ DLC MS DESIGN 088

|              |                |
|--------------|----------------|
| BD           | BW             |
| 4/23/10      | 78             |
| 205 WT       | 365 WT         |
| 780          | 1140           |
| TEST ADG     | SC             |
| 3.30         | 37             |
| %IMF         | REA            |
| 3.38         | 13.20          |
| CALVING EASE | DAM'S AGE/MPPA |
| 2            | 4/103.3        |

### EPDs

|     |      |    |    |      |    |    |     |     |      |      |       |    |       |       |
|-----|------|----|----|------|----|----|-----|-----|------|------|-------|----|-------|-------|
| CED | BW   | WW | YW | Milk | TM | ME | HPG | CEM | Stay | Marb | YG    | CW | REA   | Fat   |
| 7   | -1.6 | 19 | 39 | 23   | 32 | 4  | 7   | 4   | 7    | 0.00 | -0.11 | 20 | -0.07 | -0.03 |

Here is a light birth weight Logan calf who will be a heifer producer. 0125 ratioed 103 at weaning and his King Rob dam has a 103 MPPA.

# RED ANGUS YEARLING BULLS

**24**

## DLC ENCORE LAD 0137

**RED POLLED 99.8% 1B #1373119**

LORENZEN SANTIAM ENCORE 8400 { PIE GRIDMASTER 589  
SANTIAM'S GOLDIE K21

DLC MISS LOGAN 396 { DLC LOGAN 9118  
DLC MS CHIEFTON 851

|              |                |
|--------------|----------------|
| BD           | BW             |
| 4/22/10      | 84             |
| 205 WT       | 365 WT         |
| 758          | 1186           |
| TEST ADG     | SC             |
| 3.20         | 36             |
| %IMF         | REA            |
| 2.92         | 13.30          |
| CALVING EASE | DAM'S AGE/MPPA |
| 1            | 7/102.3        |

**EPDs**

|     |     |    |    |      |    |    |     |     |      |      |      |    |      |      |
|-----|-----|----|----|------|----|----|-----|-----|------|------|------|----|------|------|
| CED | BW  | WW | YW | Milk | TM | ME | HPG | CEM | Stay | Marb | YG   | CW | REA  | Fat  |
| 2   | 0.8 | 34 | 69 | 20   | 37 | 6  | 10  | 3   | 13   | 0.09 | 0.04 | 45 | 0.01 | 0.01 |

*This Encore son has good YW, Stay and Carcass EPD rankings. His heavy-milking Logan dam has an MPPA of 102.*



Red Angus cow #466

**25**

## DLC CLASSIC 0102

**RED POLLED 99.5% 1B #1373151**

DLC SIR CLASSIC 5102 { BADLANDS CLASSIC 069  
DLC MS CHIEFTON 720

DLC MS GRAND CANYON 644 { LELAND GRAND CANYON 3129  
DLC MS RED TOP 152

|              |                |
|--------------|----------------|
| BD           | BW             |
| 4/11/10      | 94             |
| 205 WT       | 365 WT         |
| 761          | 1182           |
| TEST ADG     | SC             |
| 2.90         | 44             |
| %IMF         | REA            |
| 2.60         | 14.70          |
| CALVING EASE | DAM'S AGE/MPPA |
| 1            | 4/103.3        |

**EPDs**

|     |     |    |    |      |    |    |     |     |      |       |       |    |      |      |
|-----|-----|----|----|------|----|----|-----|-----|------|-------|-------|----|------|------|
| CED | BW  | WW | YW | Milk | TM | ME | HPG | CEM | Stay | Marb  | YG    | CW | REA  | Fat  |
| 1   | 2.3 | 36 | 65 | 18   | 36 | 6  | 9   | 1   | 7    | -0.10 | -0.04 | 41 | 0.22 | 0.00 |

*This is a bull that brings some very positive qualities to the table. He is long, thick and ranks high in YW EPD. His Canyon dam has an MPPA of 103.*

**26**

## DLC MR ENCORE 0129

**RED POLLED 99.9% 1B #1373116**

LORENZEN SANTIAM ENCORE 8400 { PIE GRIDMASTER 589  
SANTIAM'S GOLDIE K21

DLC MISS LOGAN 260 { DLC LOGAN 9118  
DLC MS GOLDEN 723

|              |                |
|--------------|----------------|
| BD           | BW             |
| 4/20/10      | 80             |
| 205 WT       | 365 WT         |
| 708          | 1191           |
| TEST ADG     | SC             |
| 3.60         | 41             |
| %IMF         | REA            |
| 3.50         | 13.20          |
| CALVING EASE | DAM'S AGE/MPPA |
| 1            | 8/95.7         |

**EPDs**

|     |     |    |    |      |    |    |     |     |      |      |       |    |      |       |
|-----|-----|----|----|------|----|----|-----|-----|------|------|-------|----|------|-------|
| CED | BW  | WW | YW | Milk | TM | ME | HPG | CEM | Stay | Marb | YG    | CW | REA  | Fat   |
| 3   | 0.3 | 25 | 51 | 18   | 31 | 6  | 9   | 4   | 11   | 0.05 | -0.06 | 35 | 0.04 | -0.01 |

*This yellow Encore son is really thick topped and displays a good, thick quarter. He ranks high for REA. His dam is yet another correctly structured, perfectly uddered, strong-footed Logan cow.*

**27**

## DLC CLASSIC 0124

**RED POLLED 99.0% 1B #1373152**

DLC SIR CLASSIC 5102 { BADLANDS CLASSIC 069  
DLC MS CHIEFTON 720

DLC MS GRAND CANYON 645 { LELAND GRAND CANYON 3129  
DLC MS UMPIRE 617

|              |                |
|--------------|----------------|
| BD           | BW             |
| 4/19/10      | 82             |
| 205 WT       | 365 WT         |
| 753          | 1128           |
| TEST ADG     | SC             |
| 3.50         | 37             |
| %IMF         | REA            |
| 3.52         | 12.60          |
| CALVING EASE | DAM'S AGE/MPPA |
| 1            | 4/99.1         |

**EPDs**

|     |     |    |    |      |    |    |     |     |      |       |       |    |       |      |
|-----|-----|----|----|------|----|----|-----|-----|------|-------|-------|----|-------|------|
| CED | BW  | WW | YW | Milk | TM | ME | HPG | CEM | Stay | Marb  | YG    | CW | REA   | Fat  |
| 5   | 0.3 | 30 | 56 | 17   | 32 | 6  | 8   | 1   | 7    | -0.02 | -0.01 | 33 | -0.06 | 0.01 |

*"Long" best describes this Classic bull. He has balanced EPDs and is strong for growth. He posted over a 750-lb. weaning weight and gained 3.5 lbs./day on test.*



Red Angus-cross cow with her heifer calf



Red Angus-cross cow with Optimizer heifer calf

**28**

## DLC CLASSIC 0132

**RED POLLED 99.7% 1B #1373149**

DLC SIR CLASSIC 5102 { BADLANDS CLASSIC 069  
DLC MS CHIEFTON 720

DLC MS GRAND CANYON 642 { LELAND GRAND CANYON 3129  
DLC MS CHIEFTON 709

|              |                |
|--------------|----------------|
| BD           | BW             |
| 4/20/10      | 85             |
| 205 WT       | 365 WT         |
| 729          | 1128           |
| TEST ADG     | SC             |
| 3.50         | 36             |
| %IMF         | REA            |
| 2.92         | 12.30          |
| CALVING EASE | DAM'S AGE/MPPA |
| 1            | 4/99.1         |

**EPDs**

|     |     |    |    |      |    |    |     |     |      |       |       |    |       |      |
|-----|-----|----|----|------|----|----|-----|-----|------|-------|-------|----|-------|------|
| CED | BW  | WW | YW | Milk | TM | ME | HPG | CEM | Stay | Marb  | YG    | CW | REA   | Fat  |
| 4   | 0.1 | 25 | 48 | 18   | 30 | 6  | 8   | 1   | 8    | -0.10 | -0.04 | 29 | -0.07 | 0.00 |

*A good performing bull whose dam has produced a top-selling heifer in last year's sale. His Canyon dam is one of the best-looking, most structurally correct, perfect-uddered cows in the herd.*



## *South Devon*

*The only major beef breed without any known lethal genetic defects!*



### **DLC Rock 50U**

*Champion Junior Bull, 2010 National Western Stock Show*



### **DLCC Hudson 82U**

*Reserve Champion Junior Bull, 2010 National Western Stock Show*



# SOUTH DEVON HERD BULL PROSPECTS



Lot 29

**29**

## DLC MR LEGACY 77

**RED POLLED FULLBLOOD #198442**

DLC LEGACY 55

{ SBCC ROYAL LEGACY 5123  
{ DLC MISS BOLERO 221

DLC MISS ROYAL 616

{ DLC MR ROYAL 115  
{ DLC ASTOUND LASS 335

|                |              |
|----------------|--------------|
| BD             | BW           |
| <b>4/16/10</b> | <b>90</b>    |
| 205 WT         | 365 WT       |
| <b>822</b>     | <b>1360</b>  |
| TEST ADG       | SC           |
| <b>3.90</b>    | <b>40</b>    |
| %IMF           | REA          |
| <b>2.06</b>    | <b>15.7</b>  |
| CALVING EASE   | PROG/AVG WR  |
| <b>1</b>       | <b>3/113</b> |

### EPDs

| BW         | WW        | YW         | MILK      | MWW       | FAT         | REA         | MARB       | RY%        | C WT        | STAY | CED        | CEM        |
|------------|-----------|------------|-----------|-----------|-------------|-------------|------------|------------|-------------|------|------------|------------|
| <b>3.6</b> | <b>63</b> | <b>103</b> | <b>31</b> | <b>63</b> | <b>0.01</b> | <b>0.21</b> | <b>0.1</b> | <b>0.8</b> | <b>33.4</b> |      | <b>0.9</b> | <b>0.3</b> |

*We are starting the South Devon sale with this performance bull. He is a growth leader and maternally strong. His numbers predict his potential. 77 posted a weaning weight of 822 lbs. with a ratio of 120 and an impressive 1,360-lb. yearling weight. He is also a big ribeye bull with a ratio of 110. Selling full possession and one-half semen interest.*



Lot 30

**30**

## DLC HUDSON LAD 017

**RED SCURRED PERCENTAGE #198434**

DLCC HUDSON 82U

{ MJB SHUR LOC 106S  
{ DLCC PRINCESS MIA 78P

DLC BOLERO LASS 600

{ DLC BOLERO LAD K98  
{ DLC MISS ROYAL 120

|                |              |
|----------------|--------------|
| BD             | BW           |
| <b>4/11/10</b> | <b>80</b>    |
| 205 WT         | 365 WT       |
| <b>703</b>     | <b>1286</b>  |
| TEST ADG       | SC           |
| <b>4.00</b>    | <b>35</b>    |
| %IMF           | REA          |
| <b>3.51</b>    | <b>17.4</b>  |
| CALVING EASE   | PROG/AVG WR  |
| <b>2</b>       | <b>3/100</b> |

### EPDs

| BW         | WW        | YW        | MILK      | MWW       | FAT         | REA         | MARB       | RY%        | C WT        | STAY | CED        | CEM        |
|------------|-----------|-----------|-----------|-----------|-------------|-------------|------------|------------|-------------|------|------------|------------|
| <b>1.7</b> | <b>43</b> | <b>69</b> | <b>26</b> | <b>47</b> | <b>0.02</b> | <b>0.21</b> | <b>0.6</b> | <b>0.7</b> | <b>22.6</b> |      | <b>2.3</b> | <b>0.4</b> |

*Here is one of the most exciting South Devon bulls to sell this season. He is correct, soggy and packed full of meat. 017 has a modest birth weight, a weaning ratio of 103 and he gained 4 lbs./day on test. He comes out of one of the great Bolero daughters. Selling full possession and one-half semen interest.*

# SOUTH DEVON HERD BULL PROSPECTS



Lot 31

**31**

## DLC MR LEGACY 76

**RED POLLED PUREBRED #198450**

DLC LEGACY 55

{ SBCC ROYAL LEGACY 5123  
{ DLC MISS BOLERO 221

DLC MS ROYAL 40-637

{ DLC MR ROYAL 40  
{ DLC MISS ROYAL 130

|                |             |
|----------------|-------------|
| BD             | BW          |
| <b>4/13/10</b> | <b>96</b>   |
| 205 WT         | 365 WT      |
| <b>700</b>     | <b>1209</b> |
| TEST ADG       | SC          |
| <b>3.30</b>    | <b>40</b>   |
| %IMF           | REA         |
| <b>1.72</b>    | <b>14.7</b> |
| CALVING EASE   | PROG/AVG WR |
| <b>1</b>       | <b>3/96</b> |

### EPDs

| BW       | WW        | YW        | MILK      | MWW       | FAT         | REA         | MARB       | RY%        | C WT        | STAY | CED        | CEM        |
|----------|-----------|-----------|-----------|-----------|-------------|-------------|------------|------------|-------------|------|------------|------------|
| <b>4</b> | <b>42</b> | <b>74</b> | <b>26</b> | <b>47</b> | <b>0.01</b> | <b>0.22</b> | <b>0.1</b> | <b>0.8</b> | <b>20.8</b> |      | <b>0.3</b> | <b>0.2</b> |

*A performance bull doing everything right. He combines all the good traits and comes from a cow line with productivity and longevity. If you want scale-topping calves, don't overlook this herd bull prospect! Selling full possession and one-half semen interest.*



Lot 32

**32**

## DLC ELGACY 94

**RED POLLED FULLBLOOD #198435**

DLC LEGACY 55

{ SBCC ROYAL LEGACY 5123  
{ DLC MISS BOLERO 221

DLC BOLERO LASS 601

{ DLC BOLERO LAD K98  
{ DLC MISS MARVEL 306

|                |              |
|----------------|--------------|
| BD             | BW           |
| <b>4/21/10</b> | <b>82</b>    |
| 205 WT         | 365 WT       |
| <b>693</b>     | <b>1219</b>  |
| TEST ADG       | SC           |
| <b>3.30</b>    | <b>37</b>    |
| %IMF           | REA          |
| <b>3.65</b>    | <b>15.1</b>  |
| CALVING EASE   | PROG/AVG WR  |
| <b>1</b>       | <b>3/105</b> |

### EPDs

| BW         | WW        | YW        | MILK      | MWW       | FAT         | REA         | MARB       | RY%        | C WT        | STAY | CED        | CEM        |
|------------|-----------|-----------|-----------|-----------|-------------|-------------|------------|------------|-------------|------|------------|------------|
| <b>1.8</b> | <b>37</b> | <b>60</b> | <b>29</b> | <b>47</b> | <b>0.03</b> | <b>0.24</b> | <b>0.4</b> | <b>0.7</b> | <b>18.6</b> |      | <b>1.5</b> | <b>1.2</b> |

*Here is a power bull that easily fits into the top end of the sale. He is a stylish son of 55T who is packed with muscle. Moderate birth weight with all the performance to fit into any type of breeding program. He has a 15-inch ribeye with the marbling of an Angus. Selling full possession and one-half semen interest.*



# SOUTH DEVON YEARLING BULLS



Lot 33

## 33 DLC MR ROCK 75

RED SCURRED PUREBRED #198399

X-E ROCK P296 { SBCC 8103  
X-E AMBER M296

DLC MISS MARVEL 306 { B3C SQUIRT "EM" OUT 5L  
DLC MISS ROYAL 108

|              |             |
|--------------|-------------|
| BD           | BW          |
| 4/22/10      | 88          |
| 205 WT       | 365 WT      |
| 703          | 1234        |
| TEST ADG     | SC          |
| 3.40         | 43          |
| %IMF         | REA         |
| 2.40         | 14.8        |
| CALVING EASE | PROG/AVG WR |
| 1            | 6/102       |

**EPDs**

| BW  | WW | YW | MILK | MWW | FAT  | REA  | MARB | RY% | C WT | STAY | CED | CEM |
|-----|----|----|------|-----|------|------|------|-----|------|------|-----|-----|
| 2.2 | 43 | 78 | 30   | 52  | 0.02 | 0.16 | 0.3  | 0.5 | 24.6 |      | 1.1 | 0.9 |

The powerhouse son of Rocky may look familiar! He is who we call "the calendar boy." He also was in the Bull Days Pen of Three. He is out of one of the top cows in the herd who is picture perfect! He is one of the best Rock sons we've produced! 75 has great numbers across the board. He is a herd bull through and through. Selling full possession and one-half semen interest.

## 34 DLC LEGACY 79

RED SCURRED FULLBLOOD #198440

DLC LEGACY 55 { SBCC ROYAL LEGACY 5123  
DLC MISS BOLERO 221

DLC MISS ROYAL 613 { DLC MR ROYAL 115  
DLC MISS BOLERO 338

|              |             |
|--------------|-------------|
| BD           | BW          |
| 4/16/10      | 90          |
| 205 WT       | 365 WT      |
| 713          | 1157        |
| TEST ADG     | SC          |
| 3.10         | 32          |
| %IMF         | REA         |
| 2.37         | 14.0        |
| CALVING EASE | PROG/AVG WR |
| 1            | 3/102       |

**EPDs**

| BW  | WW | YW | MILK | MWW | FAT  | REA | MARB | RY% | C WT | STAY | CED | CEM  |
|-----|----|----|------|-----|------|-----|------|-----|------|------|-----|------|
| 3.4 | 48 | 83 | 28   | 52  | 0.02 | 0.2 | 0.4  | 0.7 | 25.3 |      | 1.1 | -0.1 |

Clean, smooth, long bodied and full of thickness. This 55T son had a weaning ratio of 104. His dam is a beautiful cow and comes from a long line of top-producing females.

## 35 DLC ROCKY 71

RED POLLED FULLBLOOD #198431

X-E ROCK P296 { SBCC 8103  
X-E AMBER M296

DLC MS ASTOUND 541 { DLC ASTOUND LAD 202  
DLC ROYAL LADY 240

|              |             |
|--------------|-------------|
| BD           | BW          |
| 4/15/10      | 84          |
| 205 WT       | 365 WT      |
| 723          | 1071        |
| TEST ADG     | SC          |
| 2.90         | 36          |
| %IMF         | REA         |
| 2.62         | 13.3        |
| CALVING EASE | PROG/AVG WR |
| 1            | 3/106       |

**EPDs**

| BW  | WW | YW | MILK | MWW | FAT  | REA  | MARB | RY% | C WT | STAY | CED | CEM |
|-----|----|----|------|-----|------|------|------|-----|------|------|-----|-----|
| 2.8 | 52 | 92 | 29   | 55  | 0.01 | 0.17 | 0.1  | 0.7 | 30.1 |      | 1.5 | 0.6 |

A maternal bull that will produce good replacement females. His dam is a heavy milking cow with perfect feet and legs and is also an easy keeper. 71 had a weaning ratio of 106.

## 36 DLC HUDSON LAD 101

RED POLLED PUREBRED #198467

DLCC HUDSON 82U { MJB SHUR LOC 106S  
DLCC PRINCESS MIA 78P

DLC ROCKETTE 736 { X-E ROCK P296  
DLC MISS IMPACT 402

|              |             |
|--------------|-------------|
| BD           | BW          |
| 4/19/10      | 82          |
| 205 WT       | 365 WT      |
| 737          | 1243        |
| TEST ADG     | SC          |
| 3.10         | 35          |
| %IMF         | REA         |
| 2.22         | 16.0        |
| CALVING EASE | PROG/AVG WR |
| 1            | 2/105       |

**EPDs**

| BW  | WW | YW | MILK | MWW | FAT  | REA | MARB | RY% | C WT | STAY | CED | CEM |
|-----|----|----|------|-----|------|-----|------|-----|------|------|-----|-----|
| 2.4 | 54 | 95 | 26   | 53  | 0.01 | 0.2 | 0.4  | 0.8 | 33.2 |      | 1.8 | 0.1 |

This bull is a powerful meat wagon with breed-leading numbers. The top Hudson son to sell this season. Balanced numbers in each trait and lots of performance. His dam is a perfect-structured, great-uddered, sound-footed Impact daughter.

## 37 DLC MR LEGACY 86

RED POLLED FULLBLOOD #198494

DLC LEGACY 67U { SBCC ROYAL LEGACY 5123  
DLC MISS BOLERO 535

DLC MS ROYAL LAD 826U { DLC ROYAL LAD 21  
DLC MISS IMPACT 321

|              |             |
|--------------|-------------|
| BD           | BW          |
| 3/30/10      | 85          |
| 205 WT       | 365 WT      |
| 844          | 1335        |
| TEST ADG     | SC          |
| 3.70         | 40          |
| %IMF         | REA         |
| 2.28         | 14.4        |
| CALVING EASE | PROG/AVG WR |
| 1            | 1/122       |

**EPDs**

| BW  | WW | YW  | MILK | MWW | FAT  | REA | MARB | RY% | C WT | STAY | CED | CEM |
|-----|----|-----|------|-----|------|-----|------|-----|------|------|-----|-----|
| 4.7 | 69 | 111 | 26   | 60  | 0.01 | 0.2 | 0.5  | 0.7 | 36.5 |      | 0.8 | 0.1 |

Performance-minded cattlemen will want to take a good, long look at this guy. Check out his numbers. His 2-year-old dam did an excellent job raising him and he hasn't slowed down!

## 38 DLC LEGACY 92

RED SCURRED FULLBLOOD #198443

DLC LEGACY 55 { SBCC ROYAL LEGACY 5123  
DLC MISS BOLERO 221

DLC MS ROYAL L21-618 { DLC ROYAL LAD 21  
DLC MS BOLERO 219

|              |             |
|--------------|-------------|
| BD           | BW          |
| 4/22/10      | 86          |
| 205 WT       | 365 WT      |
| 743          | 1158        |
| TEST ADG     | SC          |
| 2.80         | 39          |
| %IMF         | REA         |
| 2.63         | 14.3        |
| CALVING EASE | PROG/AVG WR |
| 1            | 2/108       |

**EPDs**

| BW  | WW | YW | MILK | MWW | FAT  | REA  | MARB | RY% | C WT | STAY | CED | CEM  |
|-----|----|----|------|-----|------|------|------|-----|------|------|-----|------|
| 4.1 | 52 | 87 | 28   | 54  | 0.01 | 0.18 | 0.5  | 0.7 | 26.1 |      | 0.8 | -0.3 |

This 55T son posted a 109 weaning ratio, a 101 ribeye ratio and a 104 marbling ratio. His dam is an easy keeping, feminine cow with a long line of top-producing females.

## 39 DLC MR LEGACY 88

RED POLLED FULLBLOOD #198479

DLC LEGACY 67U { SBCC ROYAL LEGACY 5123  
DLC MISS BOLERO 535

DLC ROCKETTE 803U { X-E ROCK P296  
DLC MISS IMPACT 104

|              |             |
|--------------|-------------|
| BD           | BW          |
| 4/14/10      | 82          |
| 205 WT       | 365 WT      |
| 724          | 1128        |
| TEST ADG     | SC          |
| 2.60         | 37          |
| %IMF         | REA         |
| 2.09         | 14.9        |
| CALVING EASE | PROG/AVG WR |
| 1            | 1/106       |

**EPDs**

| BW | WW | YW | MILK | MWW | FAT  | REA  | MARB | RY% | C WT | STAY | CED | CEM |
|----|----|----|------|-----|------|------|------|-----|------|------|-----|-----|
| 3  | 48 | 82 | 25   | 49  | 0.01 | 0.18 | 0.3  | 0.7 | 26   |      | 1.4 | 1.2 |

This 67U son was born unassisted out of a 2-year-old cow and weaned off over 700 lbs. with a ratio of 106. He has a pleasant personality and is very structurally correct.

# SOUTH DEVON YEARLING BULLS

**40**

## DLC MR ROCK 93

RED SCURRED PUREBRED #198412

X-E ROCK P296

{ SBCC 8103  
{ X-E AMBER M296

DLC ROYAL LASS 415

{ DLC MR ROYAL 115  
{ DLC MISS IMPACT 995

**EPDs**

| BW  | WW | YW | MILK | MWW | FAT  | REA  | MARB | RY% | C WT | STAY | CED | CEM |
|-----|----|----|------|-----|------|------|------|-----|------|------|-----|-----|
| 2.8 | 46 | 93 | 28   | 51  | 0.02 | 0.17 | 0.5  | 0.5 | 30.9 |      | 1.4 | 0.0 |

*This Rock son is out of one of the top cows in the country! He should make a great breeding bull for any kind of breeding program and he should produce top-quality replacements.*

| BD           | BW          |
|--------------|-------------|
| 4/23/10      | 86          |
| 205 WT       | 365 WT      |
| 688          | 1160        |
| TEST ADG     | SC          |
| 3.00         | 38          |
| %IMF         | REA         |
| 2.37         | 14.8        |
| CALVING EASE | PROG/AVG WR |
| 1            | 3/103       |

**41**

## DLC BLACK LEGACY 96

BLACK SCURRED PUREBRED #198426

DLC LEGACY 55

{ SBCC ROYAL LEGACY 5123  
{ DLC MISS BOLERO 221

DLC LADY IMPACT 526

{ DLC IMPACT LAD 343  
{ DLC MS IMPACT 020

**EPDs**

| BW | WW | YW | MILK | MWW | FAT  | REA  | MARB | RY% | C WT | STAY | CED | CEM |
|----|----|----|------|-----|------|------|------|-----|------|------|-----|-----|
| 2  | 31 | 62 | 26   | 41  | 0.01 | 0.11 | 0.5  | 0.5 | 16.4 |      | 2   | 0.1 |

*This black 55T son comes out of a long, clean, smooth-made cow who has an average birth weight of 80 lbs. on four calves. After being tested on his first calf crop, he has the potential to be a heifer bull.*

| BD           | BW          |
|--------------|-------------|
| 4/24/10      | 82          |
| 205 WT       | 365 WT      |
| 647          | 1148        |
| TEST ADG     | SC          |
| 3.10         | 38          |
| %IMF         | REA         |
| 2.15         | 12.4        |
| CALVING EASE | PROG/AVG WR |
| 2            | 3/98        |

**42**

## DLC MR HUDSON 104

RED POLLED PUREBRED #198458

DLCC HUDSON 82U

{ MJB SHUR LOC 106S  
{ DLCC PRINCESS MIA 78P

DLC MISS BOLERO 711

{ DLC BOLERO LAD K98  
{ DLC LADY MARVEL 309

**EPDs**

| BW  | WW | YW | MILK | MWW | FAT  | REA  | MARB | RY% | C WT | STAY | CED | CEM |
|-----|----|----|------|-----|------|------|------|-----|------|------|-----|-----|
| 1.2 | 36 | 62 | 26   | 44  | 0.02 | 0.24 | 0.5  | 0.8 | 22   |      | 2.3 | 0.7 |

*Here's another stout, thick-made Hudson son. He scanned over 15 inches of ribeye with a 108 ratio and 101 ratio for marbling.*

| BD           | BW          |
|--------------|-------------|
| 4/28/10      | 80          |
| 205 WT       | 365 WT      |
| 676          | 1144        |
| TEST ADG     | SC          |
| 3.00         | 35          |
| %IMF         | REA         |
| 2.55         | 15.4        |
| CALVING EASE | PROG/AVG WR |
| 2            | 2/103       |

**43**

## DLC ROYAL LAD 81

RED POLLED PERCENTAGE #198461

DLC MR ROYAL DUKE 40

{ DLC ROYAL DUKE 63  
{ DLC MISS IMPACT 321

DLC MS COTEAU 719

{ DLC MR COTEAU P50  
{ DLC LADY IMPACT 526

**EPDs**

| BW  | WW | YW | MILK | MWW | FAT  | REA  | MARB | RY% | C WT | STAY | CED | CEM |
|-----|----|----|------|-----|------|------|------|-----|------|------|-----|-----|
| 0.4 | 31 | 65 | 28   | 43  | 0.00 | 0.08 | 0.3  | 0.6 | 18.3 |      | 3.2 | 0.1 |

*This 40S son is a long-bodied, taller-framed bull who should cross very well on Angus-type cows. He has a modest 82-lb. birth weight and his dam is a clean-made, perfect-uddered, sound-footed cow.*

| BD           | BW          |
|--------------|-------------|
| 4/11/10      | 82          |
| 205 WT       | 365 WT      |
| 656          | 1228        |
| TEST ADG     | SC          |
| 3.00         | 39          |
| %IMF         | REA         |
| 2.36         | 13.8        |
| CALVING EASE | PROG/AVG WR |
| 1            | 2/93        |

**44**

## DLC MR ROYAL 82

RED POLLED FULLBLOOD #198433

DLC MR ROYAL DUKE 40

{ DLC ROYAL DUKE 63  
{ DLC MISS IMPACT 321

MJB DAQUARI 5624R

{ DLCC SURE-ENUF  
{ MJB ROYALTY 6507F

**EPDs**

| BW  | WW | YW | MILK | MWW | FAT  | REA  | MARB | RY% | C WT | STAY | CED | CEM |
|-----|----|----|------|-----|------|------|------|-----|------|------|-----|-----|
| 2.8 | 42 | 81 | 27   | 48  | 0.01 | 0.25 | 0.2  | 0.8 | 26.8 |      | 1.4 | 0.8 |

*This bull really came on in the feeding test period gaining 4.1 lbs./day and he is one of the largest scrotal bulls in the offering. His dam is a sweetheart to be around; she comes from the Jim Brown ranch in Montana.*

| BD           | BW          |
|--------------|-------------|
| 4/22/10      | 92          |
| 205 WT       | 365 WT      |
| 670          | 1282        |
| TEST ADG     | SC          |
| 4.10         | 42          |
| %IMF         | REA         |
| 3.29         | 14.0        |
| CALVING EASE | PROG/AVG WR |
| 1            | 3/100       |

**45**

## DLC BLACK LEGACY 78

BLACK POLLED FULLBLOOD #198460

DLC LEGACY 55

{ SBCC ROYAL LEGACY 5123  
{ DLC MISS BOLERO 221

DLC MS BLACK ENUF 717

{ DLCC BLACK ENUF 127J  
{ DLC MISS ROYAL 514

**EPDs**

| BW  | WW | YW | MILK | MWW | FAT  | REA  | MARB | RY% | C WT | STAY | CED | CEM |
|-----|----|----|------|-----|------|------|------|-----|------|------|-----|-----|
| 1.3 | 34 | 59 | 25   | 42  | 0.01 | 0.21 | 0.2  | 0.7 | 17.8 |      | 1.9 | 0.9 |

*Here's a black, smooth-made, clean-fronted, long-bodied 55T son with potential to be a heifer bull. His dam comes from one of the top calving-ease bloodlines in the breed.*

| BD           | BW          |
|--------------|-------------|
| 4/19/10      | 82          |
| 205 WT       | 365 WT      |
| 668          | 1012        |
| TEST ADG     | SC          |
| 2.90         | 37          |
| %IMF         | REA         |
| 2.35         | 12.0        |
| CALVING EASE | PROG/AVG WR |
| 2            | 2/100       |

**46**

## DLC HUDSON LAD 84

RED POLLED PUREBRED #198441

DLCC HUDSON 82U

{ MJB SHUR LOC 106S  
{ DLCC PRINCESS MIA 78P

DLC MISS ROYAL 614

{ DLC MR ROYAL 115  
{ DLC MISS BOLERO 007

**EPDs**

| BW  | WW | YW | MILK | MWW | FAT  | REA  | MARB | RY% | C WT | STAY | CED | CEM  |
|-----|----|----|------|-----|------|------|------|-----|------|------|-----|------|
| 3.1 | 46 | 81 | 28   | 51  | 0.01 | 0.25 | 0.4  | 0.8 | 28   |      | 1.7 | -0.1 |

*An 82U son out of a consistent-producing Royal x Bolero cowline. He has very strong carcass rankings and should be a great prospect for any crossbreeding program.*

| BD           | BW          |
|--------------|-------------|
| 4/20/10      | 88          |
| 205 WT       | 365 WT      |
| 669          | 1263        |
| TEST ADG     | SC          |
| 4.20         | 35          |
| %IMF         | REA         |
| 2.61         | 14.6        |
| CALVING EASE | PROG/AVG WR |
| 1            | 3/101       |

**47**

## DLC MR LEGACY 87

RED POLLED FULLBLOOD #198492

DLC LEGACY 67U

{ SBCC ROYAL LEGACY 5123  
{ DLC MISS BOLERO 535

DLC MS ROYAL LAD 824U

{ DLC ROYAL LAD 21  
{ DLC BOLERO LASS 326

**EPDs**

| BW | WW | YW | MILK | MWW | FAT  | REA  | MARB | RY% | C WT | STAY | CED | CEM |
|----|----|----|------|-----|------|------|------|-----|------|------|-----|-----|
| 3  | 41 | 69 | 20   | 40  | 0.02 | 0.23 | 0.6  | 0.7 | 20.9 |      | 1.6 | 0.6 |

*An 67U son out of a consistent-producing Royal x Bolero cowline. He has very strong carcass rankings and should be a great prospect for any crossbreeding program.*

| BD           | BW          |
|--------------|-------------|
| 4/11/10      | 80          |
| 205 WT       | 365 WT      |
| 657          | 1021        |
| TEST ADG     | SC          |
| 2.90         | 33          |
| %IMF         | REA         |
| 2.95         | 14.6        |
| CALVING EASE | PROG/AVG WR |
| 1            | 1/96        |

# SOUTH DEVON YEARLING BULLS

**48**

## DLC ROCKIES 84X (74X)

RED POLLED FULLBLOOD #198334

X-E ROCK P296

{ SBCC 8103  
{ X-E AMBER M296

DLC ROYAL LASS 014

{ DLC ROYAL PRINCE  
{ DLC MISS FULLCHARGE

**EPDs**

| BW  | WW | YW | MILK | MWW | FAT  | REA  | MARB | RY% | C WT | STAY | CED | CEM |
|-----|----|----|------|-----|------|------|------|-----|------|------|-----|-----|
| 2.2 | 37 | 74 | 25   | 43  | 0.01 | 0.17 | 0.3  | 0.6 | 21.9 |      | 1.8 | 0.9 |

His dam may be old, but she hits every time. 74 is well balanced across the board. He has a modest 82-lb. birth weight and a 102 ratio for marbling.

**49**

## DLC LEGACY 95

RED POLLED PUREBRED #198438

DLC LEGACY 55

{ SBCC ROYAL LEGACY 5123  
{ DLC MISS BOLERO 221

DLC MISS BOLERO 605

{ DLC BOLERO LAD K98  
{ DLC MISS IMPACT 954

**EPDs**

| BW  | WW | YW | MILK | MWW | FAT  | REA  | MARB | RY% | C WT | STAY | CED | CEM |
|-----|----|----|------|-----|------|------|------|-----|------|------|-----|-----|
| 2.2 | 25 | 57 | 21   | 33  | 0.02 | 0.21 | 0.4  | 0.7 | 18.2 |      | 1.2 | 1   |

Another modest birth weight bull whose maternal pedigree is structured that way for several generations. His dam had an udder injury last summer so his weaning performance was less than expected. A good pedigree for sound South Devon genetics.

**"Feeding *Vita Ferm* has given us the performance results we need for 20 years."**

**– Dan Dahl**



**Dorothy Orts**  
**877-428-6370 • 701-840-1984**

# OPTIMIZER YEARLING BULLS



Lot 50

## 50 DLC BLACK COTEAU 133

BLACK SCURRED PERCENTAGE #198505

DLC SPARKY 6170 { DLC BANKSHOT 4128  
DLC MS HIGH PLAINS P55

DLC MS RED COTEAU 893U { DLC SIR CLASSIC 5102  
DLC MS ROYAL DUKE 300

|              |             |
|--------------|-------------|
| BD           | BW          |
| 3/30/10      | 86          |
| 205 WT       | 365 WT      |
| 742          | 1190        |
| TEST ADG     | SC          |
| 2.80         | 39          |
| %IMF         | REA         |
| 1.62         | 12.2        |
| CALVING EASE | PROG/AVG WR |
| 1            | 1/107       |

| EPDs |    |    |      |     |      |      |      |     |      |      |     |     |
|------|----|----|------|-----|------|------|------|-----|------|------|-----|-----|
| BW   | WW | YW | MILK | MWW | FAT  | REA  | MARB | RY% | C WT | STAY | CED | CEM |
| 2.4  | 47 | 89 | 28   | 52  | 0.01 | 0.28 | -0.1 | 0.8 | 31   |      | 0.6 | 0.4 |

133 has a lot of style, growth and his is consistent across the board. He has extra length and frame. He is smooth made and out of a great young cow. He posted over 700 lbs. weaning weight and has a weaning ratio of 107.

## 51 DLC RED COTEAU 0145

RED POLLED PERCENTAGE #198393

DLC SIR CLASSIC 5102 { BADLANDS CLASSIC 069  
DLC MS CHIEFTON 720

DLC MS IMPACT 211 { CIMARRON IMPACT 758G  
CIMARRON OKALENA 844H

|              |             |
|--------------|-------------|
| BD           | BW          |
| 4/11/10      | 86          |
| 205 WT       | 365 WT      |
| 721          | 1163        |
| TEST ADG     | SC          |
| 3.40         | 35          |
| %IMF         | REA         |
| 2.34         | 14.6        |
| CALVING EASE | PROG/AVG WR |
| 1            | 7/92        |

| EPDs |    |    |      |     |      |      |      |     |      |      |     |     |
|------|----|----|------|-----|------|------|------|-----|------|------|-----|-----|
| BW   | WW | YW | MILK | MWW | FAT  | REA  | MARB | RY% | C WT | STAY | CED | CEM |
| 0.9  | 48 | 92 | 16   | 40  | 0.01 | 0.22 | 0.1  | 0.8 | 33.4 |      | 1.7 | 0.3 |

0145 has a terrific profile! Long, smooth, thick – a real cowman's bull! He is a balanced bull in all traits. This cow family is hard to beat – modest birth weights, plenty of milk and performance. He is a perfect herd bull candidate for any crossbreeding program.

## 52 DLC BLACK COTEAU 0158

BLACK POLLED PERCENTAGE #198480

DLC SPARKY 6170 { DLC BANKSHOT 4128  
DLC MS HIGH PLAINS P55

DLC ROCKETTE 805U { X-E ROCK P296  
DLC MISS BOLERO 221

|              |             |
|--------------|-------------|
| BD           | BW          |
| 4/20/10      | 85          |
| 205 WT       | 365 WT      |
| 812          | 1234        |
| TEST ADG     | SC          |
| 3.60         | 37          |
| %IMF         | REA         |
| 2.26         | 14.2        |
| CALVING EASE | PROG/AVG WR |
| 1            | 1/119       |

| EPDs |    |     |      |     |      |      |      |     |      |      |     |     |
|------|----|-----|------|-----|------|------|------|-----|------|------|-----|-----|
| BW   | WW | YW  | MILK | MWW | FAT  | REA  | MARB | RY% | C WT | STAY | CED | CEM |
| 2.8  | 54 | 101 | 36   | 63  | 0.01 | 0.26 | 0.1  | 0.7 | 36.2 |      | 1   | 0.6 |

This performance calf is a cowman's dream. He posts a 800-lb. weaning weight, a 1,200-lb. yearling weight, and is strong on carcass traits. Be sure to take a look at him in the presale pen.

## 53 DLC BLACK COTEAU 0160

BLACK POLLED PERCENTAGE #198486

DLC SPARKY 6170 { DLC BANKSHOT 4128  
DLC MS HIGH PLAINS P55

DLC MS SURE ENUF 814U { DLCC SURE-ENUF  
DLC BOLERO LASS 601

|              |             |
|--------------|-------------|
| BD           | BW          |
| 4/7/10       | 80          |
| 205 WT       | 365 WT      |
| 654          | 1162        |
| TEST ADG     | SC          |
| 3.10         | 36          |
| %IMF         | REA         |
| 2.42         | 12.1        |
| CALVING EASE | PROG/AVG WR |
| 2            | 1/96        |

| EPDs |    |    |      |     |      |      |      |     |      |      |     |     |
|------|----|----|------|-----|------|------|------|-----|------|------|-----|-----|
| BW   | WW | YW | MILK | MWW | FAT  | REA  | MARB | RY% | C WT | STAY | CED | CEM |
| 0.7  | 32 | 60 | 28   | 44  | 0.02 | 0.32 | 0.0  | 0.9 | 22.8 |      | 2.3 | 1.5 |

This double black, modest birth weight son of Sparky seems to be doing all things right. He has style and balanced performance.



Lot 52

## 54 DLC RED COTEAU 0150

RED SCURRED PERCENTAGE #198391

DLC SIR CLASSIC 5102 { BADLANDS CLASSIC 069  
DLC MS CHIEFTON 720

DLC MISS ROYAL 120 { DLC ROYAL PRINCE  
DLC MS SUPERIOR 772

|              |             |
|--------------|-------------|
| BD           | BW          |
| 5/3/10       | 88          |
| 205 WT       | 365 WT      |
| 694          | 1267        |
| TEST ADG     | SC          |
| 3.90         | 37          |
| %IMF         | REA         |
| 3.14         | 14.5        |
| CALVING EASE | PROG/AVG WR |
| 1            | 8/102       |

| EPDs |    |    |      |     |      |      |      |     |      |      |     |     |
|------|----|----|------|-----|------|------|------|-----|------|------|-----|-----|
| BW   | WW | YW | MILK | MWW | FAT  | REA  | MARB | RY% | C WT | STAY | CED | CEM |
| 1.1  | 44 | 85 | 24   | 46  | 0.02 | 0.18 | 0.3  | 0.6 | 27.1 |      | 1.3 | 0.5 |

This young bull is one of the top-marbling bulls in the sale offering. He posted a 102 ratio at weaning and gained just shy of 4 lbs./day on test.

## 55 DLC RED COTEAU 0144

RED POLLED PERCENTAGE #198395

DLC SIR CLASSIC 5102 { BADLANDS CLASSIC 069  
DLC MS CHIEFTON 720

DLC MS ROYAL 237 { DLC ROYAL PRINCE  
DLC MS SUPERIOR 881

|              |             |
|--------------|-------------|
| BD           | BW          |
| 4/8/10       | 94          |
| 205 WT       | 365 WT      |
| 675          | 1250        |
| TEST ADG     | SC          |
| 3.90         | 40          |
| %IMF         | REA         |
| 3.71         | 15.0        |
| CALVING EASE | PROG/AVG WR |
| 1            | 6/101       |

| EPDs |    |    |      |     |      |      |      |     |      |      |     |     |
|------|----|----|------|-----|------|------|------|-----|------|------|-----|-----|
| BW   | WW | YW | MILK | MWW | FAT  | REA  | MARB | RY% | C WT | STAY | CED | CEM |
| 1.7  | 45 | 93 | 18   | 41  | 0.01 | 0.24 | 0.2  | 0.7 | 31.1 |      | 1   | 0.5 |

This performance bull has one of the biggest scrotal measurements in the offering, plus he has the largest marbling score in the sale. 0144 is the bull for all commercial cattlemen to check out. He'll work in any breeding program.

# OPTIMIZER YEARLING BULLS

**56** **DLC MR BLK COTEAU 128**  
**BLACK POLLED PERCENTAGE #198474**

DLC SPARKY 6170 { DLC BANKSHOT 4128  
 DLC MS HIGH PLAINS P55

DLC MISS COTEAU 004U { DLC LOGAN 4108  
 DLC MISS COTEAU 776

|              |             |
|--------------|-------------|
| BD           | BW          |
| 4/12/10      | 90          |
| 205 WT       | 365 WT      |
| 664          | 1179        |
| TEST ADG     | SC          |
| 3.50         | 36          |
| %IMF         | REA         |
| 2.57         | 12.3        |
| CALVING EASE | PROG/AVG WR |
| 1            | 1/97        |

**EPDs**

| BW  | WW | YW | MILK | MWW | FAT  | REA  | MARB | RY% | C WT | STAY | CED  | CEM |
|-----|----|----|------|-----|------|------|------|-----|------|------|------|-----|
| 2.9 | 37 | 68 | 28   | 46  | 0.02 | 0.28 | -0.1 | 0.8 | 23.2 |      | -0.8 | 0.4 |

The black bull will work in any program with a black cow base. He is thick and has plenty of style and structural correctness. His dam is one of those really great young cows who you hope to build a cowherd out of. 128 is a top-marbling bull.

**57** **DLC BLACK COTEAU 0153**  
**BLACK POLLED PERCENTAGE #198471**

LELAND HIGH PRAIRIE 5363R { LORENZEN HIGH PRAIRIE 2356  
 LELAND CHEROKEE 26-3102

DLC MS COTEAU 913 { DLC HIGH PLAINS P38  
 DLC MISS BOLERO 501

|              |             |
|--------------|-------------|
| BD           | BW          |
| 4/15/10      | 82          |
| 205 WT       | 365 WT      |
| 671          | 1111        |
| TEST ADG     | SC          |
| 2.80         | 39          |
| %IMF         | REA         |
| 2.29         | 11.5        |
| CALVING EASE | PROG/AVG WR |
| 2            | 2/99        |

**EPDs**

| BW   | WW | YW | MILK | MWW | FAT  | REA  | MARB | RY% | C WT | STAY | CED | CEM |
|------|----|----|------|-----|------|------|------|-----|------|------|-----|-----|
| -0.9 | 22 | 49 | 24   | 35  | 0.01 | 0.22 | 0.1  |     | 17.1 |      | 2.7 | 1.1 |

Here is a double black modest birthweight bull sired by the carcass bloodline bull, High Prairie 5363. He should work well in any crossbreeding program.

**58** **DLC BLACK COTEAU 0156**  
**BLACK POLLED PERCENTAGE #198487**

DLC SPARKY 6170 { DLC MS HIGH PLAINS P55  
 DLCC SURE-ENUF

DLC BANKSHOT 4128 { DLC MS ROYAL 40-637

|              |             |
|--------------|-------------|
| BD           | BW          |
| 3/20/10      | 55          |
| 205 WT       | 365 WT      |
| 649          | 1059        |
| TEST ADG     | SC          |
| 2.90         | 35          |
| %IMF         | REA         |
| 2.00         | 13.0        |
| CALVING EASE | PROG/AVG WR |
| 2            | 1/94        |

**EPDs**

| BW   | WW | YW | MILK | MWW | FAT  | REA  | MARB | RY% | C WT | STAY | CED | CEM |
|------|----|----|------|-----|------|------|------|-----|------|------|-----|-----|
| -2.6 | 27 | 50 | 26   | 40  | 0.01 | 0.31 | -0.1 | 0.9 | 19.8 |      | 2.3 | 1.1 |

Check out the birth-to-weaning spread on this double black bull. He's balanced in traits as well as structure and muscle.

**59** **DLC BLACK COTEAU 135**  
**BLACK SCURRED PERCENTAGE #198506**

DLC SPARKY 6170 { DLC BANKSHOT 4128  
 DLC MS HIGH PLAINS P55

DLC MS RED COTEAU 894U { DLC SIR CLASSIC 5102  
 DLC IMPACT LASS 029

|              |             |
|--------------|-------------|
| BD           | BW          |
| 4/5/10       | 70          |
| 205 WT       | 365 WT      |
| 660          | 1160        |
| TEST ADG     | SC          |
| 3.20         | 40          |
| %IMF         | REA         |
| 2.75         | 13.9        |
| CALVING EASE | PROG/AVG WR |
| 2            | 1/95        |

**EPDs**

| BW   | WW | YW | MILK | MWW | FAT  | REA  | MARB | RY% | C WT | STAY | CED | CEM |
|------|----|----|------|-----|------|------|------|-----|------|------|-----|-----|
| -0.9 | 33 | 73 | 27   | 43  | 0.01 | 0.26 | 0.0  | 0.8 | 28.4 |      | 3.1 | 0.7 |

A light birth weight bull born unassisted out of a 2-year-old heifer. 135 has one of the largest scrotal measurements in this sale. He has potential to be a heifer bull sire.

**60** **DLC RED COTEAU 0152**  
**RED POLLED PERCENTAGE #198410**

DLC LOGAN LAD 4125 { DLC MR LOGAN 2122  
 DLC MS CHIEFTON 082

DLC MS IMPACT 407 { DLC IMPACT SON 80  
 DLC MS ROYAL 028

|              |             |
|--------------|-------------|
| BD           | BW          |
| 4/24/10      | 90          |
| 205 WT       | 365 WT      |
| 660          | 1060        |
| TEST ADG     | SC          |
| 2.80         | 45          |
| %IMF         | REA         |
| 3.37         | 14.4        |
| CALVING EASE | PROG/AVG WR |
| 1            | 4/98        |

**EPDs**

| BW  | WW | YW | MILK | MWW | FAT  | REA  | MARB | RY% | C WT | STAY | CED  | CEM |
|-----|----|----|------|-----|------|------|------|-----|------|------|------|-----|
| 2.5 | 38 | 75 | 17   | 36  | 0.02 | 0.28 | 0.3  | 0.8 | 27.7 |      | -0.1 | 0.3 |

Here is a bull with extra style, length of body an a 45 cm. scrotal measurement. His cow family is hard to beat! Expect sale-topping steers and heifers to put back into the herd out of this Logan son.

**61** **DLC RED COTEAU 083**  
**RED POLLED PERCENTAGE #198397**

DLC SIR CLASSIC 5102 { BADLANDS CLASSIC 069  
 DLC MS CHIEFTON 720

DLC MISS ROYAL 241 { DLC ROYAL PRINCE  
 DLC MS BLK SUPERIOR 787

|              |             |
|--------------|-------------|
| BD           | BW          |
| 4/26/10      | 74          |
| 205 WT       | 365 WT      |
| 633          | 1155        |
| TEST ADG     | SC          |
| 3.70         | 37          |
| %IMF         | REA         |
| 2.46         | 14.6        |
| CALVING EASE | PROG/AVG WR |
| 2            | 7/99        |

**EPDs**

| BW   | WW | YW | MILK | MWW | FAT  | REA  | MARB | RY% | C WT | STAY | CED | CEM |
|------|----|----|------|-----|------|------|------|-----|------|------|-----|-----|
| -1.7 | 33 | 71 | 21   | 38  | 0.01 | 0.23 | 0.1  | 0.7 | 25.2 |      | 3.5 | 1   |

An exciting young bull – "style" best describes this Classic bull. He is a light birth weight bull who gained with the top of them on test. He also scanned one of the better ribeye areas in his group.

**62** **DLC MR BLK COTEAU 139**  
**BLACK POLLED PERCENTAGE #198473**

DLC SPARKY 6170 { DLC BANKSHOT 4128  
 DLC MS HIGH PLAINS P55

DLC MISS COTEAU 002U { DLC LOGAN 4108  
 DLC MISS COTEAU 799

|              |             |
|--------------|-------------|
| BD           | BW          |
| 4/10/10      | 82          |
| 205 WT       | 365 WT      |
| 655          | 1075        |
| TEST ADG     | SC          |
| 2.50         | 35          |
| %IMF         | REA         |
| 2.23         | 12.8        |
| CALVING EASE | PROG/AVG WR |
| 2            | 1/96        |

**EPDs**

| BW  | WW | YW | MILK | MWW | FAT  | REA  | MARB | RY% | C WT | STAY | CED | CEM |
|-----|----|----|------|-----|------|------|------|-----|------|------|-----|-----|
| 1.6 | 34 | 64 | 29   | 46  | 0.02 | 0.27 | -0.1 | 0.8 | 21.6 |      | 0.4 | 0.5 |

He may be last in the sale but he is not the least! This calf comes out of one of the best young cows in our herd. This black bull will work in all crossbreeding programs. He'll maintain pounds and give you added value in replacement females you'll want to keep!



Central Dakota Bull Days

# INFORMATION ON EXPECTED PROGENY DIFFERENCES (EPDs)

## Red Angus Guide to EPDs

Courtesy of the Red Angus Association of America  
For more information on EPDs, visit [redangus.org](http://redangus.org).

**CED** ..... Calving Ease Direct – predicts the probability of calves being born unassisted out of 2-year-old heifers.

**BW**..... Birth Weight – predicts the difference, in pounds, for birth weight, and is also used in the calculation of Red Angus' Calving Ease Direct (CED) EPD.

**WW** ..... Weaning Weight – predicts the difference, in pounds, for weaning weight (adjusted to age of dam and a standard 205 days of age).

**YW**..... Yearling Weight – predicts the expected difference, in pounds, for yearling weight (adjusted to a standard 365 days of age).

**Milk** .... Milk – predicts the difference in maternal production of an individual animal's daughters as expressed by the weaning weight of their calves.

**TM** ..... Total Maternal – predicts the rancher's actual observation of weaning weights of calves raised by an animal's daughters.  $TM\ EPD = Milk\ EPD + 1/2\ (WW\ EPD)$

**ME** ..... Maintenance Energy – predicts a bull's daughters that will require less feed to maintain her body weight and condition; thus increasing profitability.

**HPG**..... Heifer Pregnancy – predicts the probability of heifers conceiving to calve at two years of age.

**CEM** .... Calving Ease Maternal – predicts the probability of a given animal's daughters calving unassisted at two years of age.

**STAY**.... Stayability – predicts the probability that a bull's daughters will remain in the herd until at least 6 years of age.

**MARB** .. Marbling Score – predicts differences for carcass marbling score as expressed in marbling score units. Higher marbling scores are positively correlated with higher carcass quality grades.

**YG** ..... Yield Grade – predicts differences in USDA Yield Grade score, and is expressed in USDA Yield Grade units.

**CW**..... Carcass Weight – predicts differences in hot carcass weight and is expressed in pounds. Because Red Angus' CW EPD is a multi-trait.

**REA** ..... Rib Eye Area – predicts differences of carcass Rib Eye Area between the 12th and 13th rib.

**FAT** ..... 12th Rib Fat Thickness – predicts differences for carcass fat depth over the 12th rib, as expressed in inches.

## South Devon Guide to EPDs

Courtesy of the North American South Devon Association  
For more information on EPDs, visit [southdevon.com](http://southdevon.com).

**Birth EPD** (pounds) is based on the measured birth weight of progeny, adjusted for dam age. The lower the value the lighter the calf at birth and the lower the likelihood of a difficult birth. This is particularly important when selecting sires for use over heifers.

**Weaning EPD** (pounds) is calculated from the weight of progeny taken between 80 and 300 days of age. Values are adjusted to 205 days and for age of dam. This EPD is the best single estimate of an animal's genetic merit for growth to early ages.

**Yearling EPD** (pounds) is calculated from the weight of progeny taken between 301 and 450 days of age, adjusted to 365 days and for age of dam. This EPD is the best single estimate of a sire's genetic merit for yearling weight.

**Scrotal Circumference EPD** (centimetres) is calculated from measurements of scrotal size in yearling bulls, adjusted to 365 days. Scrotal circumference is a good indicator of puberty, fertility and semen quality/quantity. Increased scrotal size will also result in decreased age of puberty in daughters and greater lifetime production. Positive EPD values indicate larger scrotal circumference.

**Milk EPD** (pounds) is an estimate of an animal's milking ability. For sires, this EPD indicates the effect of the daughter's milking ability, inherited from the sire, on the weaning and yearling weights of her calves. For dams, it indicates her own milking ability.

**Maternal Weaning Weight EPD** (pounds) is a combination of Milk and Weaning EPDs and estimates the genetic merit of the animal to produce a calf at weaning.



*This steer was part of a load sold on 11/12/10 off the cow with a pay weight of 667 lbs., no creep and topped the market that day. Here is what the buyer said about that load.*

*"There were zero treats and zero death loss, extremely happy with them. These cattle shipped to Knobbe Feedlot, Westpoint, NE. Thanks again Dahls for the many years your ranch has allowed me to represent your Ranch. "Tremendous Pride" is the most fitting word I can describe when I get to call a feedlot to market animals raised on the Dahl Ranch."*

*Thank you to the bidders and  
buyers at our 2010 sale...*





6442 55th Ave SE  
Gackle, ND 58442

**FIRST CLASS**  
US POSTAGE  
**PAID**  
BISMARCK, ND  
PERMIT #256

*Please bring this catalog with you to the sale.*

*Heterosis Headquarters*

