



DAMAR FARMS

Best of Both Worlds

Female Sale

Saturday, October 1, 2011

At the Farm • Emerald, Wisconsin • 12 Sharp

It is with great anticipation and excitement that we welcome each and every one to our "Best of Both Worlds" female sale. The beef cattle industry is at an all-time high. The demand for good quality cattle is stronger than it's ever been and, we at Damar Farms are proud of the offering that we have assembled. The genetic lots are the best in the industry from Mimi's mother, Tarmily, to Messmer Pandora, which is Joshua's mother, to Messmer Millie, which is Packer's mother, to great cows such as Copper Queen and Messmer Esther.

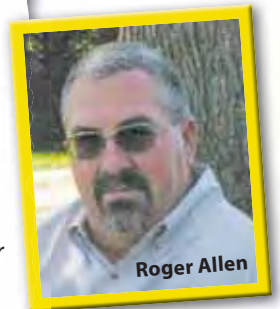
We always take pride in offering our very best including half interest in the great Mimi and other donors that are proven. Our bred heifers are the cream of our crop. There are many full sisters to choose from as well as outstanding individuals that are destined to become donors. They are all guaranteed A.I.'ed with no cleanup bulls used.

The young, bred cows selling are from the core of our herd. These as well are all guaranteed A.I. bred to some of the most progressive bulls in our breed. We plan mated every individual –some were for show and some were for genetic values.

The open heifers are simply phenomenal. From the best in genetic values to the show ring winners – either Red Angus or Simmental – I will put these youngsters up against anyone's. From the most famous cow families to the most proven herd sires there are calves in here that will compete at any level. These babies were hand selected by myself from over 600 heifer calves. They are up-to-date on all their vaccinations and are all P.I. tested negative. Every animal has been poured and are ready to take their voyage to their new owners.

We have met so many new people and eagerly waiting to meet more of you. Thank you Doc and the Damar family for allowing all of this to happen. Consider this your invitation to join us on September 31st and October 1st for friendship and camaraderie. We know you will not be disappointed.

Roger Allen



Roger Allen

Welcome!

I would like to extend a big welcome to you all on behalf of my wife Mary and myself. We greatly appreciate last year's buyers from the U.S. and Canada that made our first production sale a tremendous success. This year we look forward to expanding our total offering. The cattle are looking great! They have EPDs to go with the phenotype and structure to survive in any climate you put them in. We take pride in studying pedigrees and numbers. Take a look and you will appreciate what they will be able to do for your program.

I invite you to make the weekend a family trip and bring your junior members. Damar is a great resource for juniors to purchase winning show heifers from! Roger has handpicked the show heifers from a group of 600. You have undoubtedly seen Damar at shows. Nothing would give us more satisfaction than to have you beat us in the ring with a Damar animal.

We have an exceptional crew here at Damar and I am proud of them all. You are always welcome to visit our operations at Emerald, Mondovi or Strum. While Damar has been a Red Angus breeder for 14 years, our Simmental and percentage herd is growing rapidly through A.I. and embryo transplant. With a 1,200-head cow herd we have again transferred 600 embryos so far this year.

We will have our sale lots on display from noon on, Friday, September 30, 2011. Please join us for our pre-sale Friday night event to be held in the big tent on the Emerald farm. Those of you who made it last year undoubtedly remember the food, drinks and music. We are doing it again this year, bringing back the Marshall Star Band and the delicious steak supper. Just remember, what happens in Emerald, stays in Emerald.

Saturday, the sale lots will again be on display from 8:30 a.m. on. Join us for lunch at 11. Don't be late because the sale will start exactly at noon.

I hope you enjoy your time here with us. Mary and I look forward to seeing you.

Sincerely,

Dave (Doc) Hehli



Dave and Mary

Join us for the Second Annual **DAMAR FARMS BEST OF BOTH WORLDS FEMALE SALE**

Saturday, October 1, 2011 • 12:00 SHARP! CST • At the Emerald Farm • 2609 County Road S • Emerald, WI

Sale Day Phones: 715-265-7093 • 715-684-9222 • 217-552-8558 • 615-427-8608

SCHEDULE OF EVENTS:

Friday, September 30th

12:00 NoonSale Cattle on Display

In the big tent on the farm ...

5 - 7:00 pmSteak Supper Served

6 - 9:00 pmMarshall Star Band
plays for your entertainment.
EVERYONE WELCOME!

Saturday, October 1st

8:30 amCattle on Display
(Donuts and Refreshments Served)

11:00 amComplimentary Lunch

12:00 Noon Sharp!Best of Both Worlds Female Sale

SALE LOCATION: 2609 County Road S Emerald, WI
Wisconsin Interstate 94 to Exit 19. Hwy 63 North 12 miles to County Road S. Turn East (right) and go 4 1/2 miles. Watch for signs.

SALE HEADQUARTERS:

AmericInn 715-684-5888
Baldwin, WI (17 miles south of the farm off I-94 Exit 19 & Hwy 63)
Ask for the Damar Farms Sale special rate \$69.99.
Block held until September 21, 2011.

OTHER AREA MOTELS:

Super 8 Motel800-800-8000 or 715-684-2700
Baldwin, WI (17 miles south of the farm off I-94 Exit 19 & Hwy 63)
Ask for Damar Farm block special rate \$71.10.
Block held until September 17, 2011.
Super 8 Motel • New Richmond, WI715-246-7829

AIRPORTS:

Minneapolis/St. Paul International Airport
Served by all major airlines (55 miles from the farm)
Eau Claire, WI
Served by most major airlines (55 miles from the farm)
New Richmond, WI
Can accommodate private planes (13 miles from the farm)

SALE TERMS: All Simmental cattle sell under the terms and conditions of the American Simmental Association. All Red Angus cattle sell under the terms and conditions of the American Red Angus Association.

LIVESTOCK INSURANCE: Cattle insurance will be available sale day through Jame Secondino Krieger – American Live Stock, Inc. 812-208-0956.

ANNOUNCEMENTS: Announcements made sale day from the auction block during the sale takes precedence over printed material associated with this sale. Anyone attending this sale attends at his or her own risk. Breeders or any sale staff will not be held responsible for any personal injury to anyone attending this sale.

TRUCKING: Damar Farms and sale staff will assist buyers in coordinating and making the most economical trucking arrangements possible.

SALE CONSULTANTS:

Bryan Mackenzie403-627-8266
Greg Miller608-778-8785
Sam Lorenzen541-215-2687
Scott Werlein715-495-6131
Stuart Gilbert641-919-0196

PUBLICATION REPRESENTATIVES:

Kelly Schmidt – American Simmental Assoc. Field Rep406-599-2395
Tom Rooney – Lee Agri-Media515-491-6025
Shane Ryan – Lee Agri-Media309-371-7490

AUCTIONEERS:

Col. Tracy Harl402-469-3852
Col. Kyle Gilchrist641-919-1077

All video provided by DV Auction.

WATCH AND BID ONLINE FOR FREE AT DV Auction.com!

Real time bidding will be available via the Internet for this sale. Live video/audio will allow buyers to bid on animals as if they were present at the auction. Internet buyers must create an account and register to bid 24 hours prior to the sale at www.dvauction.com. Instructions are available on the inside back cover of this catalog or, by calling Justin Dikoff at (605) 290-0635.



SALE MANAGEMENT:

Roger Allen, Damar Farms
roger@damarfarms.com

Owners: Dave and Mary Hehli
Strum, WI

Sales and Marketing: Roger Allen
2609 County Road S • Emerald, WI 54013
715-265-7093 Office • 715-684-9222 Roger

Mitch Larson: 715-225-7908

Ennis Wallace: 731-415-4299

**VIEW VIDEO AND SALE CATALOG ONLINE AT
WWW.DAMARFARMS.COM**



DFRA Tarmily N512



OLC Echeta J165



SRN Copperqueen 0899



Messmer Bertha S158



Messmer Esther 2254



Messmer Ginnie 9862



DFRA E Moon R516



Messmer Pandora M186



Right to Flush "Pick of the Herd"

We wanted to start our Best of Both Worlds Female Sale off with something for everyone. We are offering the right to flush any cow that is owned solely by Damar Farms to the bull of your choice. We have opened the gates – Red Angus or Simmental. The genetic balance from the carcass cows of Messmers, to Shamrock Nook, or the powerful Perks cows, all the way from the youngest Damar cows including Tarmily (dam of Mimi) to the older Boot Jack cows – the Red Angus selection is wide open. On the Simmental side – from the ASA's most prolific cow, Harts Hollywood Queen E700, having over 275 calves reported and still going strong and her daughter, Radiant; or the great carcass-performing Karrie or her Power Drive daughter T47K.

The buyer will pay the flush cost and semen. The cow will remain at Damar and Midwest Embryo Transfer will do the work. The only limit on this opportunity is the flush must be completed by 4/1/2012.

RED ANGUS

- DFRA Tarmily N512 – #1066666
- OLC Echeta J165 – #707977
- Messmer Bertha S158 – #1109518
- Messmer Esther 2254 – #774016
- Messmer Ginnie 9862 – #605314
- Messmer Millie 124P – #969162
- Messmer Pandora M186 – #834374
- Messmer Zina 9922 – #657889
- Red Brylor Inatexxi 166M – #1275049
- SRN Copperqueen 0899 – #954419
- DFRA Bonnebelle N327 – #942258
- DFRA E Moon R516 – #1066694
- Red Soo Line Annie 8509 – CAN # 1480405

SIMMENTAL

- Hart Hollywood Queen E700 – #1828947
- Hooks Karrie 47K – #2068555
- Triple C Karrie T47K – #2393723
- Triple C Sheer Class U1924 – #2471238
- Triple C Radiant W57W – #2487971



Triple C Karrie T47K



Hooks Karrie 47K



Hart Hollywood Queen E700



Triple C Sheer Class U1924



Triple C Radiant W57W



Messmer Millie 124P



Red Brylor Inatexxi 166M



Messmer Zina 9922



DFRA Bonnebelle N327



Red Soo Line Annie 8509



2 DAMAR MIMI W085

RAAA#: 1329048 Tattoo: W085 100% Cat. 1A Red Angus
 BD: 4/1/09 Act. BW: 79 Adj. WW: 622

EPDs	
CE	9
BW	-1.8
WW	25
YW	48
M	18
TM	31
ME	3
HPG	6
CEM	4
STAY	8
Marb	0.10
YG	-0.14
CW	26
REA	-0.02
Fat	-0.04

RED COMPASS MULBERRY 449M
 RED FINE LINE MULBERRY 26P
 RED DUS FAYETTE 8G
 BIEBER MAKE MIMI 7249
 DFRA TARMILY N512
 DFRA TARMILY N305

Half Interest Sells!

Mimi is an amazing individual. Her flawless phenotype combined with her muscle shape and her moderate frame with her length of spine and feminine front made her an all-time favorite to anyone who saw her. Her mother, Tarmily, is a picture-perfect cow. Her sire, Mulberry, is still making history in the Red Angus breed. If you want to put your program in the forefront of the beef industry, then partner up with us and join in the excitement this young female brings to the table. We are selling one-half interest in this great young cow.

2A DAMAR YAMIMI Y223

RAAA#: 1426806 Tattoo: Y223 100% Cat. 1A Red Angus
 BD: 2/4/11 Act. BW: 84

EPDs	
CE	
BW	1.5
WW	33
YW	59
M	11
TM	27
ME	
HPG	9
CEM	
STAY	8
Marb	-0.03
YG	-0.07
CW	37
REA	-0.01
Fat	-0.03

RED TER-RON RELOAD 703T
 RED TER-RON REAL DEAL 01W
 RED K ADAMS SAVANAH 11S
 BIEBER MAKE MIMI 7249
 DFRA TARMILY N512
 DFRA TARMILY N305

Half Interest Sells!

Y223 is a maternal sister to Mimi. She is out of our exciting young bull, Real Deal, and Mimi's mother, Tarmily. She is super deep bodied, long spined and free moving. Her performance is unbelievable and her structure is second to none. We have put a lot of faith into this cow family and are only offering one-half interest in this next great Red Angus heifer. We would like to keep possession at least through Denver. Yamimi gets us excited about being part of the Red Angus breed.

2B EMBRYOS - DFRA TARMILY N512

3 or 5 Transferable Embryos
 DFRA Tarmily N512 x Red Ter-Ron Real Deal 01W

Proj. EPDs	
CE	4
BW	1.2
WW	32
YW	59
M	11
TM	27
ME	0
HPG	9
CEM	0
STAY	8
Marb	-0.03
YG	-0.07
CW	37
REA	0.00
Fat	-0.03

RED TER-RON RELOAD 703T
 RED TER-RON REAL DEAL 01W
 RED K ADAMS SAVANAH 11S
 BIEBER MAKE MIMI 7249
 DFRA TARMILY N512
 DFRA TARMILY N305

These embryos are full sibs to Lot 2A. The potential here is unlimited. They are exportable and the buyer has choice of three or five embryos.



GB EMBRYOS - DFRA TARMILY N512

3 or 5 Transferable Embryos
 DFRA Tarmily N512 x Red Fine Line Mulberry 26P

Proj. EPDs	
CE	4
BW	-0.3
WW	45
YW	84
M	17
TM	39
ME	3
HPG	6
CEM	4
STAY	8
Marb	0.12
YG	0.4
CW	50
REA	0.04
Fat	0.01

RED COMPASS MULBERRY 449M
 RED FINE LINE MULBERRY 26P
 RED DUS FAYETTE 8G
 BIEBER MAKE MIMI 7249
 DFRA TARMILY N512
 DFRA TARMILY N305

These embryos are full sibs to the all-time favorite, Mimi. How fun would that be to possibly own a sister to Mimi? Selling choice of 3 or 5 embryos and they are exportable.



Real Deal

Mulberry



Hart Hollywood Queen E700



DAMAR QUEEN ME Y215

ASA#: 2587205 Tattoo: Y215 Purebred Simmental
BD: 2/2/11 Act. BW: 94



DAMAR QUEEN LUCY Y216

ASA#: 2587206 Tattoo: Y216 Purebred Simmental
BD: 2/2/11 Act. BW: 86



DAMAR PRECIOUS QUEEN

ASA#: 2587207 Tattoo: Y217 Purebred Simmental
BD: 2/3/11 Act. BW: 76



DAMAR SHEAR BEAUTY Y218

ASA#: 2585930 Tattoo: Y218 Purebred Simmental
BD: 2/3/11 Act. BW: 87

NICHOLS LEGACY G151
HOOKS SHEAR FORCE 38K
C&D TRACY

BLACK MAX
HART HOLLYWOOD QUEENE700
SGT P13

EPDs	
CE	7.6
BW	-1.1
WW	26.1
YW	38.6
MCE	3.8
MM	0.8
MWW	13.9
CEM	18.7
CW	-16.6
YG	-0.03
Marb	0.35
BF	0.01
REA	-0.01
API	117.0
TI	65.0

These four full sisters take after their mother Hollywood Queen. They are deep-bodied heifers with plenty of muscle and internal capacity. They are extra-wide based and free moving. Their mother, Hollywood Queen, is the most prolific cow in the Simmental breed having over 275 offspring registered. Their full sibs, Ultimate Force and Radiant, just show us how powerful these four heifers are. We will be selling choice.



EMBRYOS - TRIPLE C RADIANT W57W

3 or 5 Transferable Embryos
Triple C Radiant W57W x OLF Odin U5

ELLINGSON LEGACY M229
OLF ODIN U5
OLF LADY TRIATHLON S655

HOOKS SHEAR FORCE 38K
TRIPLE C RADIANT W57W
HART HOLLYWOOD QUEENE700

Proj. EPDs	
CE	11.4
BW	-2.2
WW	27.1
YW	48.8
MCE	3.0
MM	3.6
MWW	17.1
CEM	20.6
CW	-11.7
YG	-0.15
Marb	0.27
BF	-0.01
REA	0.28
API	125.7
TI	66.6

This is the first time we've ever offered embryos out of our young donor, Radiant. These embryos by Odin will be exciting. Odin is our new Simmental herd sire that is homozygous polled and homozygous black. He has outstanding genetic values to match his phenomenal phenotype.



Lot 3



Lot 3A



Lot 3B



Lot 3C



OLF Odin U5

Triple C Radiant W57W





TRIPLE C GIRLFRIENDS310

ASA#: 2336724 Tattoo: S310 Purebred Simmental
 BD: 2/9/06 Act. BW: 73 Adj. WW: 622

EPDs	
CE	7.5
BW	-0.3
WW	30.3
YW	60.2
MCE	4.6
MM	10.0
MWW	25.2
CEM	28.9
CW	-1.9
YG	-0.14
Marb	0.23
BF	0.03
REA	0.63
API	134.7
TI	65.9

WLE POWER STROKE
 HC POWER DRIVE 88H
 KAPPES LADY IRISH F88
 LCHMAN LUCKY BUCK 7049C
TRIPLE C GO GIRL K34G
 TRIPLE C REWARDS QUEEN H

Bred 5/27/11
 to OLF Odin US

Girlfriend has been one of our leading Simmental donors at Damar. Only because we are dissolving a partnership would a cow of the stature be offered for sale. She works extremely well in transplant and sells bred to Odin, our new Simmental herd sire, with phenomenal genetic values.



DAMAR GIRLTALK Y243

ASA#: 2587231 Tattoo: Y243 Purebred Simmental
 BD: 2/21/11 Act. BW: 60

EPDs	
CE	9.0
BW	1.1
WW	37.3
YW	64.9
MCE	6.4
MM	3.1
MWW	21.8
CEM	21.9
CW	2.6
YG	-0.05
Marb	0.28
BF	0.03
REA	0.41
API	124.0
TI	68.0

CNS DREAM ON L186
 DHF JADES DREAMWORKS
 RF BLACK JADE 950N
 HC POWER DRIVE 88H
TRIPLE C GIRLFRIENDS310
 TRIPLE C GO GIRL K34G

Girltalk is an impressive individual out of Girlfriend and Dreamworks. She is long and clean about her design with plenty of internal dimension and base width. If you need a Simmental show heifer, take a good look and Girltalk – she will get it done!



EMBRYOS - TRIPLE C GIRLFRIENDS310

3 Transferable Embryos
 Triple C Girlfriend310 x DHF Jades Dreamworks

Proj. EPDs	
CE	9.0
BW	1.2
WW	37.3
YW	64.9
MCE	6.4
MM	3.1
MWW	21.8
CEM	21.9
CW	2.7
YG	-0.06
Marb	0.28
BF	0.03
REA	0.42
API	123.9
TI	68.4

CNS DREAM ON L186
 DHF JADES DREAMWORKS
 RF BLACK JADE 950N
 HC POWER DRIVE 88H
TRIPLE C GIRLFRIENDS310
 TRIPLE C GO GIRL K34G

These embryos by Dreamworks will be full sibs to Girltalk. Selling three.



KA Irresistable X703 was one of the high selling open females in last year's sale. She sold to Morgan Bутtenhauf of Kansas.



Lot 5A



BROWN MS MAKE MY DAY L6

RAAA#: 794697 Tattoo: L6724 100% Cat. 1A Red Angus
BD: 1/23/01 Act. BW: 82 Adj. WW: 478

BJR EASY RIDER 781
BJR MAKE MY DAY 981
BJR TOW KANA 117-710

LCHMAN LITTLE JOHN 1509D
RABR MS LITTLE JOHN H65
RABR MS 161

Every year in Damar's sale we sell some proven donor cows. Browns Make My Day L6724 is exactly that. She has proven time and time that she produces a large quantity of embryos with a high conception rate. At one time, L6724 was the no. one marbling EPD cow in the Red Angus breed. She has that deep, dark color that so many of us try to reproduce. She sells open and ready to flush.

EPDs	
CE	5
BW	-2.7
WW	14
YW	32
M	6
TM	12
ME	-2
HPG	10
CEM	3
STAY	7
Marb	0.42
YG	0.15
CW	16
REA	-0.32
Fat	0.06



DAMAR BREAKIN HEARTS Y231

RAAA#: 1426989 Tattoo: Y032 100% Cat. 1A Red Angus
BD: 2/14/11 Act. BW: 65

BECKTON LANCER F442 T
LJC JAVELIN M08
LJC LOGAN E56 945

BJR MAKE MY DAY 981
BROWN MS MAKE MY DAY L6
RABR MS LITTLE JOHN H65

Breaking Hearts is one of my favorite heifers selling. She is dark in color, long in her side, free in her movement and big in her middle. This young Javelin daughter has potential not only in the show ring, but better yet as a brood cow.

EPDs	
CE	
BW	-0.6
WW	32
YW	59
M	4
TM	20
ME	3
HPG	6
CEM	
STAY	10
Marb	0.34
YG	-0.02
CW	35
REA	0.04
Fat	0.01



Lot 6A



DAMAR MADELEINE Y032

RAAA#: 1426941 Tattoo: Y032 100% Cat. 1A Red Angus
BD: 2/7/11 Act. BW: 81

PFFR SHAQ 607
BADLANDS NET WORTH 23U
BADLANDS MEDORA 406

BJR MAKE MY DAY 981
BROWN MS MAKE MY DAY L6
RABR MS LITTLE JOHN H65

Madeleine is sired by Net Worth. We feel the Net Worth daughters will make awesome cows. Madeleine is no exception – she is full bodied and free moving while maintaining her easy fleshing ability.

EPDs	
CE	
BW	1.4
WW	41
YW	76
M	10
TM	31
ME	-0
HPG	10
CEM	
STAY	9
Marb	0.36
YG	0.06
CW	48
REA	0.08
Fat	0.02



MESSMER PANDORA M39

RAAA#: 834260 Tattoo: M39 100% Cat. 2 Red Angus
BD: 2/26/02 Act. BW: 89 Adj. WW: 669

LCHMN ON TARGET 1016E
LCHMN BULLSEYE 1379G
LEACHMAN DINA C1001

BUF CRK CHF 824-1658
MESSMER PANDORA 9498
NODAK LADY CHIEF

Pandora M39 is an easy-fleshing, sound-moving, problem-free Messmer donor cow that combines all the good traits into a very desirable package. She is a big-boned, thick-muscled and moderate-framed cow that is easy fleshing. This cow works well in transplant producing 10 no. one embryos last flush. If you need a problem-free cow, then Pandora M39 is for you.

EPDs	
CE	6
BW	-0.5
WW	26
YW	54
M	25
TM	38
ME	1
HPG	8
CEM	4
STAY	9
Marb	0.28
YG	0.19
CW	32
REA	-0.32
Fat	0.04



DAMAR DREAM WORTHY Y203

RAAA#: 1426992 Tattoo: Y203 100% Cat. 1A Red Angus
BD: 1/1/11 Act. BW: 80

PFFR SHAQ 607
BADLANDS NET WORTH 23U
BADLANDS MEDORA 406

LCHMN BULLSEYE 1379G
MESSMER PANDORA M39
MESSMER PANDORA 9498

Pandora's natural calf by Net Worth is a growthy individual that has tremendous weight-per-day-of-age. With the maternal traits of Net Worth combined with Pandora M39, this youngster is destined to be a good one.

EPDs	
CE	
BW	1.6
WW	45
YW	87
M	20
TM	42
ME	1
HPG	9
CEM	
STAY	10
Marb	0.29
YG	0.08
CW	56
REA	0.08
Fat	0.01

7 DAMAR LOOKIN GOOD W057

RAAA#: 1329039 Tattoo: W057 100% Cat. 1A Red Angus
 BD: 3/24/09 Act. BW: 78 Adj. WW: 616

EPDs	
CE	2
BW	-0.0
WW	47
YW	86
M	14
TM	37
ME	5
HPG	7
CEM	5
STAY	8
Marb	-0.03
YG	0.06
CW	52
REA	0.01
Fat	0.00

RED COMPASS MULBERRY 449M
 RED FINE LINE MULBERRY 26P
 RED DUS FAYETTE 8G

BJR MONU 4X-303
 DFRA LAKOTA 532L
 BJR LAKOTA 224-936

Damar Looking Good is a young Mulberry daughter that we flushed twice this year. She is extended in her skeleton and really long in her front. She is perfect uddered and is extremely free moving. We wanted to offer one of our best and Looking Good was our choice. She works well in transplant. We are selling 100% in her entirety.



7A DAMAR LOOKIN REAL GOOD Y267

RAAA#: 1426854 Tattoo: Y267 100% Cat. 1A Red Angus
 BD: 3/17/11 Act. BW: 61

EPDs	
CE	
BW	0.9
WW	35
YW	71
M	10
TM	27
ME	
HPG	
CEM	
STAY	8
Marb	-0.10
YG	0.01
CW	46
REA	-0.03
Fat	-0.02

RED TER-RON RELOAD 703T
 RED TER-RON REAL DEAL 01W
 RED K ADAMS SAVANAH 11S

RED FINE LINE MULBERRY 26P
 DAMAR LOOKIN GOOD W057
 DFRA LAKOTA 532L

Looking Real Good is a Real Deal daughter of Looking Good. She is a really wide-based and high-volumed youngster that is moderate in her kind and easy in her fleshing.



8 RED QAS STARDUST 19C 17J 17L

RAAA#: 1275050 Tattoo: 17L 100% Cat. 1A Red Angus
 BD: 1/5/01 Act. BW: 78 Adj. WW: 639

EPDs	
CE	6
BW	-1.7
WW	8
YW	24
M	17
TM	21
ME	-1
HPG	8
CEM	2
STAY	7
Marb	-0.18
YG	-0.12
CW	13
REA	0.00
Fat	-0.01

FCC RAMBO 502
 BJR RAMBLER 516Z
 BJR GOLDI 355-1122
 ROCK CREEK TREK
 RED QAS STARDUST TREK 19C 17
 RED KEN STARDUST 19C

*Bred 6/18/11
 to DAMAR WYATT W250*

Stardust 17L has been a very consistent producer for us at Damar. She is long in her kind and deep in her side. She is a very sound structured and clean in her lines. She produces cattle that are attractive in their appearance and free in their movement. Only because of our commitment to sell our best do we offer this proven donor.



8A DAMAR STARDUST X281

RAAA#: 1417199 Tattoo: X281 100% Cat. 1A Red Angus
 BD: 8/14/10 Act. BW: 85 Adj. WW: 664

Stardust is a high-volumed, heavy weight-per-day-of-age heifer that is free moving and will add pounds to your calf crop.

8B DAMAR THROTTLE DUST X271

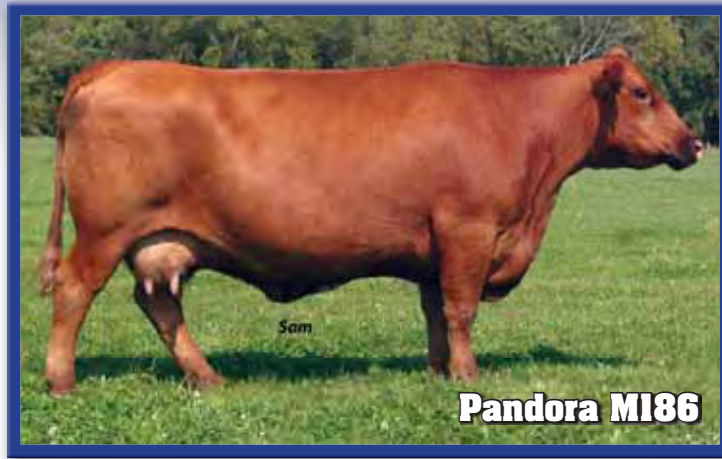
RAAA#: 1417219 Tattoo: X271 100% Cat. 1A Red Angus
 BD: 8/7/10 Act. BW: 87 Adj. WW: 685

RD TER-RON FULLY LOADED 540R
 RED 6 MILE FULL THROTTLE171T
 RED SIX MILE WITZEL 360J
 BJR RAMBLER 516Z
 RED QAS STARDUST 19C 17J 17L
 RED QAS STARDUST TREK 19C 17

Throttle Dust more resembles her mother. She is more extended in her front and clean in her lines. These young heifers will make brood cows.

EPDs	
CE	2
BW	-0.2
WW	24
YW	51
M	13
TM	24
ME	-0
HPG	8
CEM	2
STAY	7
Marb	-0.08
YG	-0.02
CW	31
REA	-0.08
Fat	-0.01





DAMAR JULIET Y002

RAAA#: 1426938 Tattoo: Y002 100% Cat. 1A Red Angus
 BD: 1/23/11 Act. BW: 81

BKT JULIAN 7526 G
 BECKTON JULIAN GG B571
 BKT MARTA 9A13 JL

LELAND MARIAS 271K
 MESSMER PANDORA M186
 MESSMER PANDORA 9976

Damar Juliet is a full sister to Messmer Joshua and Messmer Jericho W041. Her mother Pandora M186 was a true matriarch of the Messmer program. Now at Damar, she has continued her unbelievable ability to reproduce cattle that are the right kind. Phenotypically, Juliet is a silhouette of her mother Pandora. Study your lessons here – they don't get much better from her genetic values to her massive phenotype. This one has what it takes.

EPDs	
CE	
BW	-2.5
WW	33
YW	68
M	21
TM	37
ME	1
HPG	13
CEM	
STAY	14
Marb	0.15
YG	-0.06
CW	37
REA	0.20
Fat	0.01



DAMAR DORA'S STATEMENT Y209

RAAA#: 1426993 Tattoo: Y209 100% Cat. 1A Red Angus
 BD: 1/7/11 Act. BW: 84

LJC LANCER 806
 LJC MISSION STATEMENT P27
 LJC HANNAH 106

LELAND MARIAS 271K
 MESSMER PANDORA M186
 MESSMER PANDORA 9976

Dora's Statement is equally as impressive. Her genetic values for some are more impressive. It's not easy to produce this kind of cattle with as much earning potential as these youngsters have. With cows like Pandora, it makes it fun – they simply do it every time. We will be selling choice of these two breed changers.

EPDs	
CE	
BW	0.6
WW	42
YW	90
M	22
TM	43
ME	7
HPG	15
CEM	
STAY	11
Marb	0.23
YG	-0.13
CW	56
REA	0.52
Fat	-0.02



MESSMER PANDORA M186

3 or 5 Transferable Embryos
 Messmer Pandora M186 x Red Fine Line Mulberry 26P

RED COMPASS MULBERRY 449M
 RED FINE LINE MULBERRY 26P
 RED DUS FAYETTE 8G

LELAND MARIAS 271K
 MESSMER PANDORA M186
 MESSMER PANDORA 9976

Embryos by Mulberry and Pandora. Selling choice of three or five. They are exportable. We wanted to offer something different and we feel the offspring here will be phenomenal.

EPDs	
CE	0
BW	1.2
WW	46
YW	93
M	22
TM	45
ME	6
HPG	8
CEM	7
STAY	8
Marb	0.12
YG	0.10
CW	58
REA	0.05
Fat	0.01

10 DAMAR MILLIE'S CUT Y177

RAAA#: 1426981 Tattoo: Y177 100% Cat. 1A Red Angus
 BD: 3/28/11 Act. BW: 75

10A DAMAR COWBOY'S DREAM Y198

RAAA#: 1426985 Tattoo: Y198 100% Cat. 1A Red Angus
 BD: 4/2/11 Act. BW: 75

RED LAZY MC STOUT 30S
 RED LAZY MC COWBOY CUT 26U
 RED LAZY MC STAR 185M

VGW TOP PICK 130
MESSMER MILLIE 124P
 MESSMER MILLIE 9416

We feel these two Cowboy Cut daughters have as much to offer as any Red Angus in the sale. When we imagined the mother of Packer (which is Millie) and the pedigree of Cowboy Cut crossing, we felt it could be special. It truly is. These two youngsters combine a lot of good traits. They are free moving, up headed, attractive calves that have a world of body and internal dimension. We will sell choice of these two young heifers.

10B EMBRYOS - MESSMER MILLIE 124P

3 or 5 Transferable Embryos
 Messmer Millie 124P x WEBR TC Card Shark 1015

WEBR DOC HOLLIDAY 2N
WEBR TC CARD SHARK 1015
 PFFR MS NYACK 237

VGW TOP PICK 130
MESSMER MILLIE 124P
 MESSMER MILLIE 9416

Embryos by Card Shark and Millie. Your choice of three or five and they are exportable. We are thrilled to own a semen interest in Card Shark, the reserve grand champion bull in Denver this past year. This mating will be interesting by taking a phenotypically special individual like Card Shark and mating him to a genetic-wonders cow like Millie. It has to be thrilling!

11 EMBRYOS - SRN COPPERQUEEN 0899

3 Transferable Embryos
 SRN Copperqueen 0899 x Red Ter-Ron Real Deal 01W

RED TER-RON RELOAD 703T
RED TER-RON REAL DEAL 01W
 RED K ADAMS SAVANAH 11S

FORSTER BLAZE 6129
SRN COPPERQUEEN 0899
 FORSTER COPPRQUEEN 7179

Copper Queen is the most asked about cow in the Damar program. In the short time I've been involved with the Red Angus breed, this cow family has created a lot of excitement. Therefore we are offering three embryos by the great Canadian bull, Real Deal.

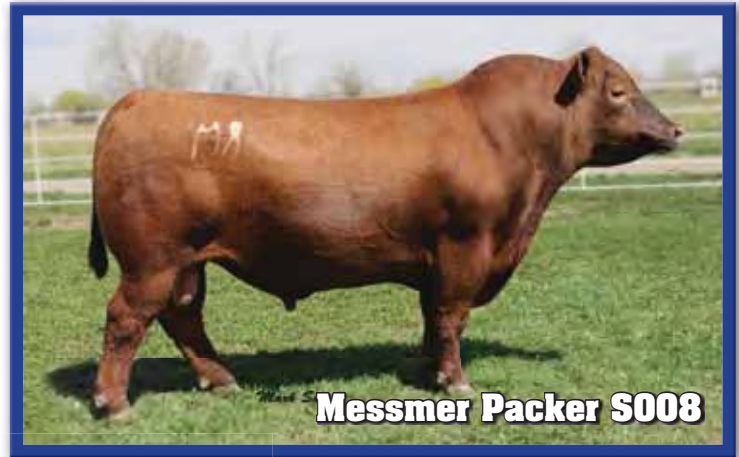


Real Deal



Messmer Millie 124P

EPDs	
CE	
BW	1.6
WW	42
YW	74
M	14
TM	35
ME	3
HPG	11
CEM	
STAY	9
Marb	0.09
YG	0.05
CW	47
REA	-0.01
Fat	0.01



Messmer Packer S008

EPDs	
CE	2
BW	0.5
WW	40
YW	72
M	14
TM	34
ME	6
HPG	10
CEM	3
STAY	8
Marb	0.10
YG	0.08
CW	44
REA	0.00
Fat	0.2



WEBR TC Card Shark 1015

EPDs	
CE	2
BW	2.2
WW	23
YW	48
M	12
TM	24
ME	3
HPG	9
CEM	2
STAY	7
Marb	0.22
YG	-0.05
CW	32
REA	0.01
Fat	-0.1



SRN Copperqueen 0899



TMRA LAKOTA PRIDE S064

RAAA#: 1146022 Tattoo: S064 100% Cat. 1A Red Angus
 BD: 4/20/06 Act. BW: 63 Adj. WW: 554

LCC ABOVE & BEYOND 1300J

DFRA VERN P463

BJR VERNICE 45-4124

Bred 5/13/11

to RED BRYLOR BIG ROCK 85T

TPIE LAKOTA II 1086

DFRA LAKOTA PRIDE P407

LOG WESTERN PRIDE 641

EPDs

CE	10
BW	-2.7
WW	19
YW	43
M	30
TM	40
ME	1
HPG	9
CEM	7
STAY	9
Marb	0.07
YG	-0.07
CW	23
REA	-0.12
Fat	-0.02

Lakota Pride is the most impressive Red Angus cow at Damar. She is as impressive in person as she is in her picture. She is massive middled, huge hiped, free moving, and very attractive. She sells bred to our senior herd sire, Big Rock, who does a great job of producing the right kind.



SRN ELEANOR 6199

RAAA#: 1092967 Tattoo: 6199 100% Cat. 1A Red Angus
 BD: 2/12/06 Act. BW: 77 Adj. WW: 534

BECKTON LANCER F442 T
SCHULER SILVER BULLET 4604P
 SOR DUCHESS GROB 2052M

Bred 4/20/11

to RED TER-RON REAL DEAL 01W

LCHMN GRANDCANYON 1244G
LCC ELEANOR LA961
 LEACHMAN ELEANOR

This cow is the easiest keeping cow at Damar. A wise cow man once said she gains weight on wind, water and weeds. She is massive in her design and moderate in her frame. She is a problem-free cow that brings in a fat calf every year. She is quality enough and should be flushed as a donor.

EPDs

CE	5
BW	-0.8
WW	31
YW	66
M	14
TM	30
ME	2
HPG	9
CEM	7
STAY	7
Marb	0.01
YG	-0.10
CW	39
REA	0.04
Fat	-0.04



DFRA MATTIE T723

RAAA#: 1219349 Tattoo: T723 100% Cat. 1A Red Angus
 BD: 4/3/07 Act. BW: 67 Adj. WW: 523

RBJR ADVANCE A709
PERKS ADVANCE 121R

PERKS MISS RAMBO 8105

Bred 6/2/11

to RED BRYLOR BIG ROCK 85T

BJR HAWK 747
BJR MATTIE 142-111
 BJR MATTIE-677-6153

Mattie is a well-balanced young cow that combines a lot of good traits into a neat package. She sells bred to Big Rock, our senior herdsire.

EPDs

CE	7
BW	-0.1
WW	29
YW	56
M	9
TM	24
ME	8
HPG	5
CEM	5
STAY	6
Marb	-0.38
YG	-0.13
CW	34
REA	0.21
Fat	-0.02



DFRA CHERABELLE S637

RAAA#: 1146768 Tattoo: S637 100% Cat. 1A Red Angus
 BD: 4/22/06 Act. BW: 67 Adj. WW: 634

LCC ABOVE & BEYOND 1300J
DFRA VERN P463
 BJR VERNICE 45-4124

Bred 5/24/11

to RED BRYLOR BIG ROCK 85T

TPIE LAKOTA II 1086
DFRA CHERABELLE P415
 DFRA CHERABELLE 403

Charabelle is a sleeker fronted cow that weans a heavy calf every year. The Vern daughters have great maternal values. They are easy fleshing and milk well.

EPDs

CE	10
BW	-1.6
WW	24
YW	49
M	23
TM	35
ME	2
HPG	9
CEM	8
STAY	11
Marb	0.11
YG	-0.04
CW	28
REA	-0.07
Fat	-0.01



DAMAR MAUREEN Y100

RAAA#: 1426825 Tattoo: Y100 100% Cat. 1A Red Angus
 BD: 3/11/11 Act. BW: 80

RED FINE LINE MULBERRY 26P
RED BRYLOR BIG ROCK 85T
 RED CYT CHARITY 10P

PERKS ADVANCE 121R
DFRA MATTIE T723
 BJR MATTIE 142-111

Maureen is a lot like her mother – well balanced and complete.

EPDs

CE	
BW	0.4
WW	27
YW	57
M	15
TM	28
ME	
HPG	5
CEM	
STAY	7
Marb	-0.19
YG	0.00
CW	34
REA	0.03
Fat	0.01



DAMAR REAL CHEERY Y029

RAAA#: 1426818 Tattoo: Y029 100% Cat. 1A Red Angus
 BD: 2/16/11 Act. BW: 83

RED TER-RON RELOAD 703T
RED TER-RON REAL DEAL 01W
 RED K ADAMS SAVANAH 115

DFRA VERN P463
DFRA CHERABELLE S637
 DFRA CHERABELLE P415

Real Cherry is a Real Deal daughter that is very complete in her design. She is a big middled and free moving. She has that "show me" attitude that helps her attractive profile.

EPDs

CE	
BW	1.9
WW	28
YW	53
M	15
TM	28
ME	
HPG	
CEM	
STAY	9
Marb	-0.03
YG	-0.04
CW	34
REA	-0.07
Fat	-0.02





DFRA MATTIE S638

RAAA#: 1146721 Tattoo: S638 100% Cat. 1A Red Angus
BD: 4/22/06 Act. BW: 65 Adj. WW: 559

BADLANDS MR BEEF 805
DFRA CHERABULLE M218
BJR CHERABELLE 232B-122

BJR HAWK 747
BJR MATTIE 142-111
BJR MATTIE-677-6153

Bred 5/5/11
to RED BRYLOR BIG ROCK 85T

These Mr. Beef granddaughters make really nice cows. This particular one is moderate framed and easy fleshing. We chose this year to mate her to Big Rock, our exciting Mulberry son.

EPDs	
CE	9
BW	-1.3
WW	32
YW	59
M	16
TM	32
ME	8
HPG	9
CEM	6
STAY	8
Marb	-0.17
YG	-0.10
CW	33
REA	0.13
Fat	-0.02



DAMAR GOOD DEAL W045

RAAA#: 1373231 Tattoo: W045 100% Cat. 1A Red Angus
BD: 3/19/09 Act. BW: 70 Adj. WW: 526

LCC NEW CHAPTER A705L
LOOSLI NEW DEAL 503
LCC ABSAROKA MA 587

DFRA LAKOME P473
DFRA DIPY DO T728
DFRA DIPY DO R569

Bred 6/15/11
to RED BRYLOR BIG ROCK 85T

Good Deal is a younger cow that is sired by New Deal. We wanted to offer a group of really nice young cows and this one fits the mold. She is complete in every way from her genetic values to her phenotype. We mated her back the same way too Big Rock because it worked so well this time.

EPDs	
CE	9
BW	-2.0
WW	29
YW	55
M	19
TM	34
ME	5
HPG	12
CEM	3
STAY	11
Marb	0.27
YG	0.01
CW	30
REA	-0.04
Fat	0.01



DAMAR REAL MADDY Y022

RAAA#: 1426817 Tattoo: Y022 100% Cat. 1A Red Angus
BD: 2/14/11 Act. BW: 88

RED TER-RON RELOAD 703T
RED TER-RON REAL DEAL 01W
RED K ADAMS SAVANAH 115

DFRA CHERABULLE M218
DFRA MATTIE S638
BJR MATTIE 142-111

Real Maddy is a Real Deal daughter – that is why we like our Real Deal heifers lot. They possess more muscle, more volume and more weight-per-day-of-age than most Red Angus.

EPDs	
CE	
BW	3.1
WW	34
YW	57
M	11
TM	28
ME	
HPG	
CEM	
STAY	8
Marb	-0.17
YG	-0.07
CW	37
REA	0.04
Fat	-0.03



DAMAR ROCKIN IT BIG Y195

RAAA#: 1426882 Tattoo: Y195 100% Cat. 1A Red Angus
BD: 4/1/11 Act. BW: 72

RED FINE LINE MULBERRY 26P
RED BRYLOR BIG ROCK 85T
RED CYT CHARITY 10P

LOOSLI NEW DEAL 503
DAMAR GOOD DEAL W045
DFRA DIPY DO T728

This young April-born heifer will catch your eye with her style and body confirmation. She is feminine fronted and smooth designed. Give her some TLC and time – you will like her more every day you own her.

EPDs	
CE	
BW	-0.8
WW	27
YW	56
M	19
TM	33
ME	
HPG	
CEM	
STAY	9
Marb	0.14
YG	0.07
CW	32
REA	-0.10
Fat	0.03



3J MS COUNTRY GINA S140

RAAA#: 1158877 Tattoo: S140 100% Cat. 1A Red Angus
BD: 10/13/06 Act. BW: 88 Adj. WW: 592

GLACIER CHATEAU 744
GLACIER HI COUNTRY 926
GLACIER VERDALE 361

BFCK CHEROKEE CNYN 4912
PELTON MISS GINA 5225M
PELTONS SUE 1510

Bred 5/27/11
to BECKTON LANCER S281 T7

Country Gina is a cow we like a great deal. She has some nice growth numbers to go along with her fancy phenotype. This cow we chose to mate back to Lancer S281 for a March calf next year.

EPDs	
CE	2
BW	2.2
WW	45
YW	76
M	13
TM	36
ME	3
HPG	9
CEM	-2
STAY	10
Marb	-0.03
YG	-0.05
CW	48
REA	0.24
Fat	-0.01



DFRA MATTIE T738

RAAA#: 1219343 Tattoo: T738 100% Cat. 1A Red Angus
BD: 4/8/07 Act. BW: 70 Adj. WW: 549

GLACIER CHATEAU 744
DFRA TIDY B
BJR TIDY BEE 232-140

BADLANDS TARGET 836
DFRA 541L
DFRA MATTIE

Bred 5/10/11
to RED BRYLOR BIG ROCK 85T

T738 is another problem-free, easy-fleshing cow that will only make you money.

EPDs	
CE	4
BW	0.3
WW	21
YW	45
M	22
TM	33
ME	4
HPG	9
CEM	5
STAY	9
Marb	0.02
YG	-0.04
CW	28
REA	0.01
Fat	0.00



DFRA LANA T776

RAAA#: 1219306 Tattoo: T776 100% Cat. 1A Red Angus
BD: 5/18/07 Act. BW: 69 Adj. WW: 754

LCC ABOVE & BEYOND 1300J
DFRA VERN P463
BJR VERNICE 45-4124

BJR MONU 4X-303
DFRA LANA 113
BJR LANA 968-481

Bred 5/3/11
to RED BRYLOR BIG ROCK 85T

Lana is another Vern daughter that possesses nice genetic values. She is a wide-based, thick-topped, moderate-framed cow that maintains her body condition well.

EPDs	
CE	11
BW	-2.4
WW	33
YW	60
M	21
TM	38
ME	6
HPG	9
CEM	6
STAY	10
Marb	-0.07
YG	-0.01
CW	33
REA	-0.10
Fat	-0.01





21

DAMAR LOUISE U811

RAAA#: 1276384 Tattoo: U811 100% Cat. 1A Red Angus
BD: 3/25/08 Act. BW: 87 Adj. WW: 565

BFCK CHEROKEE CNYN 4912
LCC NEW CHAPTER A705L
MISS LL ROB LOW 929

Bred 5/7/11
to RED BRYLOR BIG ROCK 85T

BJR RAM 171
BJR LOUISE 171-6181
BJR LOUISE 3140-4129

Louise is another combination cow. She is long in her design and straight in her top. She moves with freedom and is a very muscular. Her genetic values balance up nicely.

EPDs	
CE	6
BW	1.3
WW	40
YW	63
M	14
TM	34
ME	0
HPG	12
CEM	-2
STAY	11
Marb	0.17
YG	-0.04
CW	40
REA	0.27
Fat	0.02



22

DAMAR PAULA U813

RAAA#: 1276448 Tattoo: U813 100% Cat. 1A Red Angus
BD: 3/27/08 Act. BW: 85 Adj. WW: 566

BFCK CHEROKEE CNYN 4912
LCC CHEYENNE B221L
HXC 701G

Bred 5/19/11
to NBAR HAMLEY S913

DFRA ROCKER 425
DFRA PAULA N317
BJR PAULA 551-7H23

Paula is one of our favorite "U" model cows. She is perfect in her phenotype being long spined, clean fronted and massive middled. She is adequate in her muscle shape and free in her motion. She sells bred to the exciting young bull, Hamley, for a early March baby.

EPDs	
CE	5
BW	-1.0
WW	41
YW	77
M	16
TM	37
ME	4
HPG	10
CEM	6
STAY	10
Marb	0.18
YG	0.03
CW	45
REA	0.39
Fat	0.05



23

DAMAR U833

RAAA#:

1276381 Tattoo: U833 100% Cat. 1A Red Angus
BD: 4/3/08 Act. BW: 78 Adj. WW: 552

PERKS CHATEAU 309R
COLEY'S SYNERGY 621S
STAR G HEART ATTACK JUDE

Estimated bred 6/12/11
to DAMAR BERTHAS BOY X427

DFRA ROCKER 425
DFRA LAKOTA R582
DFRA LAKOTA N349

U833 is phenotypically a picture-perfect cow. Just study her picture and you will appreciate her as much as we do. She is moderate framed, free moving, perfect uddered and very ladylike. She sells bred to Berthas Boy, our junior herd sire by Net Worth and Messmer Bertha. His genetic values are second to none. This mating will be impressive.

EPDs	
CE	3
BW	-1.0
WW	24
YW	55
M	14
TM	26
ME	8
HPG	7
CEM	6
STAY	4
Marb	0.01
YG	-0.06
CW	32
REA	-0.06
Fat	-0.02

24 **DAMAR LAKOTA U835**

RAAA#: 1276414 Tattoo: U835 100% Cat. 1A Red Angus
BD: 4/5/08 Act. BW: 87 Adj. WW: 540

GLACIER CHATEAU 744
GLACIER HI COUNTRY 926
GLACIER VERDALE 361

Bred 5/19/11
to MESSMER PACKER 5008

BRJR MAXINE F536
DFRA LOKOTA 510L
BJR LAKOTA 232-794

This High Country daughter is another complete and well-balanced individual. These "U" model cows are impressive individually – or more so as a group. This particular one we chose to A.J. to Packer for an early March calf.

EPDs

CE 4
BW 0.2
WW 30
YW 54
M 22
TM 37
ME 5
HPG 9
CEM 1
STAY 8
Marb -0.52
YG -0.04
CW 33
REA 0.30
Fat 0.03

25 **DAMAR EMARKOTA U837**

RAAA#: 1276281 Tattoo: U837 100% Cat. 1A Red Angus
BD: 4/7/08 Act. BW: 87 Adj. WW: 470

PERKS CHATEAU 309R
COLEY'S SYNERGY 621S
STAR G HEART ATTACK JUDE

Bred 6/23/11
to RED TER-RON REAL DEAL 01W

TPIE LAKOTA II 1086
DFRA EMARKOTA P418
DFRA EMAR 412

Emarkota is sired by Coleys Synergy bull. She is more moderate in her frame but still is attractive fronted and high volumed. She sells bred to our exciting young Canadian Show Bull of the Year, Real Deal.

EPDs

CE 5
BW 0.4
WW 18
YW 42
M 12
TM 20
ME 7
HPG 6
CEM 4
STAY 7
Marb 0.22
YG -0.11
CW 27
REA 0.03
Fat -0.02

26 DAMAR TINA U838

RAAA#: 1276383 Tattoo: U838 100% Cat. 1A Red Angus
 BD: 4/8/08 Act. BW: 98 Adj. WW: 508

BFCK CHEROKEE CNYN 4912
LCC GRAVITY B252L
 HXC 950J

Bred 6/11/11
 to **DAMAR BERTHAS BOY X427**

DFRA ROCKER 425
DFRA TINA N319
 DFRA TINA 506L

This high-volume Gravity daughter has tremendous volume and is really sound structured. She sells carrying the service of Berthas Boy, our new junior herd sire, that has awesome genetic values.

EPDs	
CE	5
BW	1.2
WW	36
YW	70
M	11
TM	29
ME	2
HPG	10
CEM	3
STAY	8
Marb	-0.25
YG	-0.16
CW	44
REA	0.45
Fat	-0.02

27 DAMAR LAKOTA U840

RAAA#: 1276298 Tattoo: U840 100% Cat. 1A Red Angus
 BD: 4/9/08 Act. BW: 85 Adj. WW: 453

BECKTON LANCER F442 T
PAR ULTIMATE DIRECTION 1018R
 PAR SELMA NA359

Bred 6/17/11
 to **RED BRYLOR BIG ROCK 85T**

DFRA ROCKER 425
DFRA LAKOTA P442
 DFRA LAKOTA M205

Lakota is an Ultimate Direction daughter that is also the mother of a bred heifer selling. She is moderate framed and easy keeping. Her mother is a Rocker daughter that is a money-making machine. Rocker is one of the best-kept secrets at Damar farm. His daughters simply make great cows!

EPDs	
CE	8
BW	-2.1
WW	27
YW	58
M	20
TM	33
ME	4
HPG	9
CEM	3
STAY	12
Marb	-0.02
YG	-0.05
CW	33
REA	0.19
Fat	0.01

28 DAMAR HI-MS TONY U854

RAAA#: 1276457 Tattoo: U854 100% Cat. 1A Red Angus
 BD: 4/14/08 Act. BW: 60 Adj. WW: 466

GLACIER CHATEAU 744
GLACIER HI COUNTRY 926
 GLACIER VERDALE 361

Bred 5/10/11
 to **DAMAR BERTHAS BOY X427**

DFRA ROCKER 425
DFRA MS TONY N344
 DFRA MS TONY 519L

This High Country daughter is more moderate in her frame and smaller in her design. She rebreeds quickly while maintaining her body condition.

EPDs	
CE	4
BW	1.0
WW	47
YW	85
M	13
TM	37
ME	6
HPG	10
CEM	5
STAY	8
Marb	0.04
YG	0.07
CW	53
REA	0.05
Fat	0.01

29 DAMAR KANA U849

RAAA#: 1276441 Tattoo: U849 100% Cat. 1A Red Angus
 BD: 4/14/08 Act. BW: 95 Adj. WW: 670

GLACIER CHATEAU 744
GLACIER HI COUNTRY 926
 GLACIER VERDALE 361

Bred 5/18/11
 to **MESSMER PACKER S008**

BJR MONU 4X-573
DFRA KANA M239
 BJR KANA 4X-587

This is another High Country daughter that is out of a really good Monu 4X cow. She is a larger framed individual that maintains herself well. Her first calf is in our replacement pen. This time she sells bred to Packer who is one of the most used bulls in the red Angus breed this year.

EPDs	
CE	1
BW	2.2
WW	50
YW	88
M	16
TM	41
ME	7
HPG	9
CEM	0
STAY	9
Marb	-0.12
YG	0.07
CW	56
REA	0.18
Fat	0.02

30 DAMAR MAKE TILLY U857

RAAA#: 1276302 Tattoo: U857 100% Cat. 1A Red Angus
 BD: 4/16/08 Act. BW: 80 Adj. WW: 481

BECKTON LANCER F442 T
LSF JBOB EUREKA 6063S
 LSF BLACKBIRD 4055 MA326

Bred 5/13/11
 to **DAMAR BERTHAS BOY X427**

BIEBER MAKE MIMI 7249
DFRA MAKE TILLY R501
 DFRA TILLY N314

Tilly is sired by Eureka which is one of our senior herd sires that came from Ludvigsons. His daughters are real calving ease cows that are perfect uddered and problem free. This cow, Tilly, is no exception.

EPDs	
CE	7
BW	-2.4
WW	17
YW	36
M	24
TM	33
ME	2
HPG	8
CEM	2
STAY	11
Marb	0.01
YG	-0.10
CW	19
REA	-0.05
Fat	-0.02

31 DAMAR DUTCHESS U859

RAAA#: 1276299 Tattoo: U859 100% Cat. 1A Red Angus
 BD: 4/17/08 Act. BW: 75 Adj. WW: 399

BECKTON LANCER F442 T
LSF JBOB EUREKA 6063S
 LSF BLACKBIRD 4055 MA326

Bred 4/21/11
 to **RED TER-RON REAL DEAL 01W**

DFRA ROCKER 425
DFRA DUTCHESS P444
 DFRA DUTCHESS M243

Dutchess is another Eureka out of one of those good Rocker cows. This one sells bred to Real Deal, the great Canadian bull that we own United States semen rights on. This calf will be something special.

EPDs	
CE	6
BW	-2.6
WW	14
YW	31
M	23
TM	29
ME	3
HPG	9
CEM	5
STAY	10
Marb	0.66
YG	-0.18
CW	16
REA	0.04
Fat	-0.03

32 DAMAR EUREKA SUN U868

RAAA#: 1276316 Tattoo: U868 100% Cat. 1A Red Angus
 BD: 4/20/08 Act. BW: 80 Adj. WW: 567

BECKTON LANCER F442 T
LSF JBOB EUREKA 6063S
 LSF BLACKBIRD 4055 MA326

Bred 5/3/11
 to **RED BRYLOR BIG ROCK 85T**

LCC RIBEYE A133L
DFRA SUN R532
 BJR SUN 232B-075

Another young Eureka-sired cow that goes back to a very hard-working Ribeye daughter. This one is more muscular and higher volumed than most. She sells bred to our Big Rock bull that does such a good job for us.

EPDs	
CE	4
BW	-1.3
WW	33
YW	55
M	21
TM	37
ME	3
HPG	8
CEM	-4
STAY	12
Marb	-0.24
YG	-0.10
CW	31
REA	0.40
Fat	0.02



33 DAMAR ESTONIA U869

RAAA#: 1276308 Tattoo: U869 100% Cat. 1A Red Angus
 BD: 4/20/08 Act. BW: 73 Adj. WW: 510

BROWN VACATION H7106
LCOC VACATION A193R
 LCC ECLIPSE NA582
 DFRA CHERABULLE M218
DFRA ESTONIA S601
 DFRA ESTONIA 546L

*Estimated bred 6/4/11
 to DAMAR BERTHAS BOY X427*

Estonia is a Vacation daughter that has done a good job with her first two calves. She is a smaller cow with nice genetic values that is rebred to our Berthas Boy.

EPDs
CE 7
BW -2.9
WW 23
YW 47
M 23
TM 35
ME 7
HPG 11
CEM 5
STAY 12
Marb 0.40
YG -0.09
CW 24
REA 0.07
Fat -0.01

34 DAMAR BARCELONA U877

RAAA#: 1276276 Tattoo: U877 100% Cat. 1A Red Angus
 BD: 4/28/08 Act. BW: 88 Adj. WW: 415

BECKTON LANCER F442 T
LSF JBOB EUREKA 6063S
 LSF BLACKBIRD 4055 MA326
 BJR MONU 4X-573
DFRA BARCELONA P410
 BJR BARCELONA 2004

*Bred 5/18/11
 to RED FINE LINE MULBERRY
 26P*

Barcelona is a smaller framed, free-moving cow that maintains her body condition well. Her attitude is second to none – she is easy going and a pleasure to be around. This year we chose to mate her to Mulberry for a first of March calf.

EPDs
CE 4
BW -0.9
WW 17
YW 36
M 21
TM 29
ME 5
HPG 8
CEM 1
STAY 13
Marb 0.35
YG -0.07
CW 21
REA -0.28
Fat -0.04



35 DAMAR CHERABELLE U930

RAAA#: 1288805 Tattoo: U930 100% Cat. 1A Red Angus
 BD: 7/24/08 Act. BW: 75 Adj. WW: 426

BUF CRK ROMEO L081
DFRA LAKOME P473
 DFRA LAKOTA 531L
 LSF COMBINATION A301M
DFRA CHERABELLE S605
 DFRA CHERABELLE P405

*Bred 4/20/11
 to BADLANDS NET WORTH 23U*

U930 is another picture-perfect cow. She is moderate in her frame, long in her spine and clean about her front. She has a well-designed udder that assures us of the longevity that she possesses. She sells due to Badlands Net Worth. Pay attention – here this mating will be special.

EPDs
CE 5
BW -1.5
WW 29
YW 55
M 7
TM 22
ME 5
HPG 12
CEM 4
STAY 7
Marb 0.12
YG -0.02
CW 31
REA -0.02
Fat 0.00



36 DAMAR BAILEY W023

RAAA#: 1356003 Tattoo: W023 100% Cat. 1A Red Angus
 BD: 3/7/09 Act. BW: 90 Adj. WW: 619

RED COMPASS MULBERRY 449M
RED FINE LINE MULBERRY 26P
 RED DUS FAYETTE 8G
 BJR MAKE MY DAY 981
OLC ECHETA J165
 BECKTON ECHETA G757 WR

*Bred 6/23/11
 to MESSMER PACKER 5008*

Bailey is a larger frame, higher weight-per-day-of-age cow that has an interesting set of genetic values. With her pedigree – Mulberry and Echeta – she is destined to be a great cow. In last year's Best of Both Worlds Sale, Wildcat Creek purchase a full sister to Bailey. She sells bred to the exciting bull, Packer.

EPDs
CE 2
BW 0.1
WW 46
YW 91
M 22
TM 45
ME 6
HPG 6
CEM 6
STAY 8
Marb 0.43
YG 0.07
CW 55
REA 0.01
Fat 0.00

37 DAMAR CONNIE W042

RAAA#: 1342644 Tattoo: W042 100% Cat. 1A Red Angus
 BD: 3/16/09 Act. BW: 85 Adj. WW: 655

LJC LANCER 806
BROWN COMMITMENT S7206
 BROWN MS SHAZZAM P7940
 LCC CHEYENNE B221L
DFRA BLOCKANA T706
 DFRA BLOCKANA R527

*Bred 5/19/11
 to BADLANDS NET WORTH 23U*

Connie is a unique individual. This young cow possesses some interesting traits. Her genetic values are intriguing with her marbling number being very high. She is moderate framed, super sound and free moving. When combining all these traits, we should be keeping this cow.

EPDs
CE 1
BW 1.6
WW 54
YW 93
M 14
TM 41
ME 9
HPG 9
CEM 2
STAY 15
Marb 0.71
YG 0.14
CW 58
REA 0.08
Fat 0.03

38 DAMAR MODESTY W052

RAAA#: 1342747 Tattoo: W052 100% Cat. 2 Red Angus
 BD: 3/20/09 Act. BW: 72 Adj. WW: 576

RED NORTHLINE ROB ROY 122K
RED DMM BRYLOR THUMP 2T
 RED STEN ESSENCE 42G
 SHOCO DATA
3J MS SHOCO MAID S508
 BECKTON BARMAID L958 HR

*Bred 6/23/11
 to RED BRYLR RSTD HIGH
 CAPACITY*

Modesty is a Thump daughter that is free moving and very attractive. She sells rebred to High Capacity.

EPDs
CE 6
BW -1.0
WW 33
YW 60
M 16
TM 33
ME 6
HPG 8
CEM 7
STAY 6
Marb 0.05
YG 0.04
CW 34
REA -0.15
Fat 0.00



DAMAR NOREEN W051

RAAA#: 1342740 Tattoo: W051 100% Cat. 1A Red Angus
BD: 3/20/09 Act. BW: 85 Adj. WW: 549

VGW KING OF THE WEST
5L NORSEMAN KING 2291
NORSEMAN 1312 PJM

DFRA ROCKER 425
DFRA BLOCKANA R589
DFRA BLOCKANA 516L

Bred 6/23/11
to RED TER-RON REAL DEAL
01W

Noreen is a Norseman King daughter that goes back to one of those good Rocker cows. She sells bred to our Real Deal bull.

EPDs	
CE	2
BW	1.0
WW	27
YW	59
M	17
TM	31
ME	3
HPG	10
CEM	-2
STAY	8
Marb	0.10
YG	-0.14
CW	38
REA	0.43
Fat	0.00



DAMAR LAMARIA W048

RAAA#: 1342783 Tattoo: W048 100% Cat. 1A Red Angus
BD: 3/20/09 Act. BW: 68 Adj. WW: 755

TPIE LAKOTA 9166
TPIE LAKOTA II 1086
RCRA ROSEBUD 933

LCC MAJOR LEAGUE A502M
DFRA MATTIE T742
BJR MATTIE 677-755

Bred 6/23/11
to RED TER-RON REAL DEAL
01W

Lamaria is a moderate-framed Lakota daughter that is long sided and moves with ease.

EPDs	
CE	8
BW	-1.9
WW	36
YW	62
M	19
TM	37
ME	2
HPG	9
CEM	4
STAY	9
Marb	0.09
YG	-0.10
CW	34
REA	0.03
Fat	-0.03



DAMAR PRISCILLA W091

RAAA#: 1342705 Tattoo: W091 100% Cat. 1A Red Angus
BD: 4/1/09 Act. BW: 88 Adj. WW: 586

ROYS HIGH NOON 3805
MCPHEE PACIFIC PRIDE 4127
JST REBELAS M3231

TPIE LAKOTA II 1086
DFRA CHERABELLE P405
BJR CHERABELLE 232B-122

Bred 6/23/11
to RED BRYLR RSTD HIGH
CAPACITY

Priscilla is sired by Pacific Pride. We like the Pacific Pride cattle for the growth and muscle expression they show us. This one has nice carcass values and will make a strong addition to anyone's herd.

EPDs	
CE	2
BW	2.3
WW	46
YW	79
M	13
TM	36
ME	5
HPG	8
CEM	4
STAY	9
Marb	0.27
YG	-0.09
CW	51
REA	0.37
Fat	-0.01



DAMAR KAMI W113

RAAA#: 1342699 Tattoo: W113 100% Cat. 1A Red Angus
BD: 4/12/09 Act. BW: 75 Adj. WW: 625

GLACIER CHATEAU 744
GLACIER HI COUNTRY 926
GLACIER VERDALE 361

DFRA ROCKER 425
DFRA LAKINA N342
BJR LAKINA 1193-6243

Bred 5/23/11
to RED BRYLOR BIG ROCK 85T

Kami is another good High Country daughter out of a Rocker cow that is bred back to Big Rock. This is a "can't lose" situation.

EPDs	
CE	6
BW	-1.5
WW	34
YW	63
M	17
TM	34
ME	5
HPG	9
CEM	4
STAY	8
Marb	0.05
YG	-0.01
CW	36
REA	0.16
Fat	0.02



DAMAR CORDELIA W114

RAAA#: 1342677 Tattoo: W114 100% Cat. 1A Red Angus
BD: 4/13/09 Act. BW: 75 Adj. WW: 578

GLACIER CHATEAU 744
GLACIER HI COUNTRY 926
GLACIER VERDALE 361

BJR EXCEL 149-5176
BJR CHICKADE 1924-421
BJR CHICKADE 4468-2133

Bred 6/23/11
to RED LAZY MC HONKY TONK
11X

Cordelia is out of one of our good Boot Jack cows. These Boot Jack cows have longevity bred into them. This one sells bred to Honky Tonk, the exciting young bull that our good friend Clint Morasch bred in Canada. Only because we offer some of our best is this young cow selling.

EPDs	
CE	5
BW	-0.9
WW	29
YW	53
M	12
TM	27
ME	4
HPG	9
CEM	1
STAY	9
Marb	0.06
YG	-0.08
CW	31
REA	0.02
Fat	-0.02



DAMAR HI DUTCHESS W131

RAAA#: 1342712 Tattoo: W131 100% Cat. 1A Red Angus
BD: 4/25/09 Act. BW: 78 Adj. WW: 581

GLACIER CHATEAU 744
GLACIER HI COUNTRY 926
GLACIER VERDALE 361

BJR MONU 4X-573
DFRA DUTCHESS P430
DFRA DUTCHESS 520L

Bred 6/23/11
to RED TER-RON REAL DEAL
01W

Hi Duchess is a High Country daughter that is long and sleek in her design. She goes back to Boot Jack breeding that assures us she will be here for a long time. Another one selling bred to Real Deal goes to show how much faith we have in this young sire.

EPDs	
CE	4
BW	-0.0
WW	33
YW	61
M	15
TM	31
ME	5
HPG	9
CEM	1
STAY	9
Marb	-0.06
YG	-0.02
CW	37
REA	0.07
Fat	0.00



DAMAR HYE W142

RAAA#: 1355996 Tattoo: W142 100% Cat. 1A Red Angus
BD: 5/8/09 Act. BW: 79 Adj. WW: 416

GLACIER CHATEAU 744
GLACIER HI COUNTRY 926
GLACIER VERDALE 361

BJR R 6243-5104
DFRA LAKOTA R580
BJR LAKOTA 041-829

Bred 6/23/11
to RED LAZY MC HONKY TONK
11X

This young cow sells bred to Lazy MC Honky Tonk. He is an awesome individual to look at. Check him out on our reference sire pages in the back.

EPDs	
CE	5
BW	-0.5
WW	16
YW	31
M	15
TM	23
ME	3
HPG	9
CEM	2
STAY	7
Marb	-0.09
YG	-0.10
CW	18
REA	0.00
Fat	-0.01



DAMAR ELLI W148

RAAA#: 1348602 Tattoo: W148 100% Cat. 1A Red Angus
BD: 6/4/09 Act. BW: 72 Adj. WW: 614

BECKTON LANCER F442 T
HXC HEMI 4400P
HXC 701G

SCHULER SILVER BULLET 4604P
SRN ELEANOR 6199
LCC ELEANOR LA961

Bred 6/23/11
to RED TER-RON REAL DEAL
01W

Elli's dam sells as Lot 13. She is a moderate-framed, easy-going young cow that did a nice job with her first calf. She also sells bred to the Canadian Show Bull of the Year, Real Deal.

EPDs	
CE	7
BW	-0.9
WW	39
YW	72
M	8
TM	27
ME	3
HPG	8
CEM	8
STAY	10
Marb	0.42
YG	0.03
CW	42
REA	-0.02
Fat	0.00



47

DAMAR BONNIBERRY X172

RAAA#: 1397187 Tattoo: X172 100% Cat. 1A Red Angus
 BD: 3/20/10 Act. BW: 75 Adj. WW: 576
 Bred May 26, 2011 to MESSMER PACKER 5008

47A

DAMAR BERRYBELL X175

RAAA#: 1397191 Tattoo: X175 100% Cat. 1A Red Angus
 BD: 3/20/10 Act. BW: 68 Adj. WW: 484
 Bred May 25, 2011 to MESSMER PACKER 5008

47B

DAMAR BLUMBELL X178

RAAA#: 1397189 Tattoo: X178 100% Cat. 1A Red Angus
 BD: 3/21/10 Act. BW: 85 Adj. WW: 556
 Bred May 25, 2011 to MESSMER PACKER 5008

47C

DAMAR MABLE X202

RAAA#: 1397194 Tattoo: X202 100% Cat. 1A Red Angus
 BD: 3/24/10 Act. BW: 75 Adj. WW: 492

RED COMPASS MULBERRY 449M
 RED FINE LINE MULBERRY 26P
 RED DUS FAYETTE 8G
 DFRA ROCKER 425
 DFRA BONNEBELL N327
 RD BONNEBELL 5E

Bred May 25, 2011
 to MESSMER PACKER 5008

EPDs	
CE	2
BW	0.1
WW	46
YW	91
M	16
TM	39
ME	7
HPG	5
CEM	7
STAY	5
Marb	0.00
YG	0.15
CW	55
REA	0.07
Fat	0.04

Wow what an awesome set of bred heifers. We wanted to start this section off with our best and, all things considered, these four full sisters are really good. Look at their pictures, watch their videos, study their genetic values, and you will agree with us that Bonnebell N327 is more than worthy of the title – Damar donor. We are obviously excited about this young donor cow but, more importantly, these four bred heifers that are selling. Any one of the four will make great additions to any one's herd. Also if you notice they all settled first service to Messmer Packer.



47D

EMBRYOS - DFRA BONNEBELL N327

3 or 5 Transferable Embryos
 DFRA Bonnebell N327 x Red Fine Line Mulberry 26P

RED COMPASS MULBERRY 449M
 RED FINE LINE MULBERRY 26P
 RED DUS FAYETTE 8G
 DFRA ROCKER 425
 DFRA BONNEBELL N327
 RD BONNEBELL 5E

Full sib embryos to the four superstars that sell as Lots 47 A, B and C.

Proj. EPDs	
CE	2
BW	0.0
WW	46
YW	91
M	16
TM	39
ME	7
HPG	5
CEM	6
STAY	6
Marb	0.00
YG	0.15
CW	55
REA	0.07
Fat	0.04



Mulberry



Packer



DAMAR BAILIE X001

RAAA#: 1397235 Tattoo: X001 100% Cat. 1A Red Angus
 BD: 1/20/10 Act. BW: 72 Adj. WW: 505

EPDs	
CE	5
BW	-0.3
WW	44
YW	86
M	14
TM	36
ME	7
HPG	7
CEM	9
STAY	7
Marb	0.04
YG	0.10
CW	52
REA	-0.03
Fat	0.01

RED COMPASS MULBERRY 449M
 RED FINE LINE MULBERRY 26P
 RED DUS FAYETTE 8G

Bred May 25, 2011
 to MESSMER PACKER 5008

HLH BUSTER 406 603
 PERKS MISS BUSTER 202R
 PERKS MISS ADVANCE 012R

Bailie has been a standout all year. Check out her profile – it doesn't get any better. She is long bodied, clean fronted, deep ribbed, expressive muscled and, best of all, free moving. If you are interested in starting a Red Angus herd or need a new donor to help build your existing herd, check out this heifer. She flat gets it done.



DAMAR EASY ON THE EYE X063

RAAA#: 1367990 Tattoo: X063 100% Cat. 1A Red Angus
 BD: 2/26/10 Act. BW: 82 Adj. WW: 740

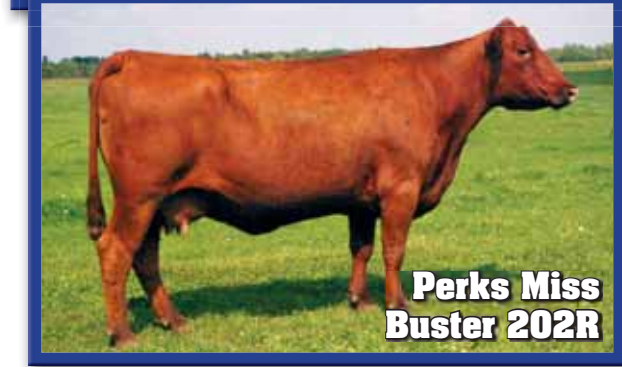
EPDs	
CE	3
BW	0.1
WW	43
YW	82
M	10
TM	32
ME	4
HPG	9
CEM	5
STAY	7
Marb	-0.10
YG	0.02
CW	50
REA	-0.05
Fat	-0.02

RD TER-RON FULLY LOADED 540R
 RED 6 MILE FULL THROTTLE171T
 RED SIX MILE WITZEL 360J

Bred June 18, 2011
 to C-BAR ANTICIPATION 101W

DFRA ROCKER 425
 DFRA TINA N319
 DFRA TINA 506L

Easy On The Eye is a female that everyone who sees her, appreciates her. She looks just like her picture. She has that extra volume and soft look combined with muscle shape and design that makes her a favorite to anyone. This heifer's mother, N319, produces the good ones every year. With her skeletal freedom and her fleshing ability, the longevity is bred into this one.



DAMAR PASSION X166

RAAA#: 1387634 Tattoo: X166 100% Cat. 1A Red Angus
 BD: 3/19/10 Act. BW: 80 Adj. WW: 634

EPDs	
CE	0
BW	1.0
WW	42
YW	82
M	19
TM	40
ME	8
HPG	7
CEM	4
STAY	9
Marb	-0.03
YG	0.10
CW	51
REA	-0.06
Fat	0.01

RED COMPASS MULBERRY 449M
 RED FINE LINE MULBERRY 26P
 RED DUS FAYETTE 8G

Bred August 5, 2011
 to C-BAR ANTICIPATION 101W

BJR MONU 4X-303
 DFRA JOPLIN 501L
 BJR JOPLIN 6232-3246

Passion was one of our show heifers that stood second in Denver and recently won her class at the Iowa State fair. This Mulberry youngster puts of lot of the desirable traits together. Her best attributes are her structural correctness, her softness of middle and her lady-like look. We used Genex's young bull, C Bar Anticipation, on some of our heifers this breeding season. We are excited about his calves and have confidence he will work on heifers like Passion.



Damar Sophie, owned by Shuey Stock Farms





DAMAR INAROCK X006

RAAA#: 1397212 Tattoo: X006 100% Cat. 1A Red Angus
 BD: 2/8/10 Act. BW: 80 Adj. WW: 561

Bred May 25, 2011 to MESSMER PACKER S008



DAMAR ROCKIN X013

RAAA#: 1397216 Tattoo: X013 100% Cat. 1A Red Angus
 BD: 2/11/10 Act. BW: 87 Adj. WW: 480

RED FINE LINE MULBERRY 26P
 RED BRYLOR BIG ROCK 85T
 RED CYT CHARITY 10P

Bred June 11, 2011
 to C-BAR ANTICIPATION 101W

BADLANDS BONUS 702
 RED BRYLOR INATEXXI 166M
 RED BRYLOR INATEXXI 102F

EPDs
CE 1
BW 0.5
WW 30
YW 65
M 16
TM 30
ME 4
HPG 6
CEM 2
STAY 6
Marb -0.09
YG 0.06
CW 41
REA -0.14
Fat 0.00

These two Big Rock daughters of Inatexxi are extreme in their skeleton and fancy in their design. They are long-bodied, free-moving heifers that are sure to make nice cows. One is bred to Packer and the other to Anticipation. Either will have a desirable calf.



DAMAR FORGET ME NOT X192

RAAA#: 1368018 Tattoo: X192 100% Cat. 1A Red Angus
 BD: 3/22/10 Act. BW: 87 Adj. WW: 654

RED HEARTLAND KNIGHT CHARM 1
 RD TER-RON FULLY LOADED 540R
 RED TER-RON GOLDIE 240L

Bred May 25, 2011
 to MESSMER PACKER S008

BADLANDS BONUS 702
 RED BRYLOR INATEXXI 166M
 RED BRYLOR INATEXXI 102F

EPDs
CE -6
BW 3.7
WW 38
YW 67
M 3
TM 22
ME 2
HPG 7
CEM -2
STAY 7
Marb -0.19
YG -0.08
CW 46
REA 0.04
Fat -0.04

Forget Me Not is one of our Fully Loaded bred heifers selling. We plan mated all the registered cattle this year and Packer works best with this young bred heifer. The combination of the two will produce a very desirable calf.



EMBRYOS - RED BRYLOR INATEXXI 166M

3 Transferable Embryos
 Red Brylor Inatexxi 166M x Red Brylor Big Rock 85T

RED FINE LINE MULBERRY 26P
 RED BRYLOR BIG ROCK 85T
 RED CYT CHARITY 10P

BADLANDS BONUS 702
 RED BRYLOR INATEXXI 166M
 RED BRYLOR INATEXXI 102F

Proj. EPDs
CE 1
BW 0.5
WW 30
YW 65
M 16
TM 31
ME 4
HPG 6
CEM 2
STAY 6
Marb -0.08
YG 0.07
CW 41
REA -0.14
Fat 0.01

These embryos are full sisters to Lot 51 and 51A.



DAMAR FLECKA X187

RAAA#: 1397283 Tattoo: X187 100% Cat. 1A Red Angus
 BD: 3/21/10 Act. BW: 60 Adj. WW: 426

RED HEARTLAND KNIGHT CHARM 1
 RD TER-RON FULLY LOADED 540R
 RED TER-RON GOLDIE 240L

Bred May 25, 2011
 to MESSMER PACKER S008

BJR MAKE MY DAY 981
 OLC ECHETA J165
 BECKTON ECHETA G757 WR

EPDs
CE -3
BW 2.1
WW 37
YW 68
M 10
TM 29
ME 3
HPG 8
CEM 1
STAY 9
Marb 0.26
YG -0.08
CW 44
REA 0.10
Fat -0.03

These full sisters by Fully Loaded are deep middled and moderate framed. Their mother, Echeta, is an impressive cow with a great set of genetic values. Being mated to Packer and Anticipation, the offspring of either will be something to watch.



DAMAR FLECHETAXI88

RAAA#: 1397284 Tattoo: X188 100% Cat. 1A Red Angus
 BD: 3/21/10 Act. BW: 62 Adj. WW: 547

Bred June 13, 2011 to C-BAR ANTICIPATION 101W

53

DAMAR LANABERRY XI61

RAAA#: 1397119 Tattoo: X161 100% Cat. 1A Red Angus
 BD: 3/16/10 Act. BW: 75 Adj. WW: 490
 Bred May 26, 2011 to MESSMER PACKER S008

53A

DAMAR BERRY LANA XI82

RAAA#: 1397124 Tattoo: X182 100% Cat. 1A Red Angus
 BD: 3/21/10 Act. BW: 80 Adj. WW: 529
 Bred May 26, 2011 to MESSMER PACKER S008

53B

DAMAR MULANA XI84

RAAA#: 1397126 Tattoo: X184 100% Cat. 1A Red Angus
 BD: 3/21/10 Act. BW: 85 Adj. WW: 523

RED COMPASS MULBERRY 449M
 RED FINE LINE MULBERRY 26P
 RED DUS FAYETTE 8G
 BJR REDLIGHTNING447-930
 DFRA BLOCKANA 101
 BJR BLOCKANA 232B-390

Bred June 21, 2011
 to HXC CONQUEST 4405P

These three full sisters resemble their mother a great deal. They are all moderate-framed, attractive, easy-fleshing and free-moving heifers with longevity guaranteed. Their mother, Blockana 101, goes back to the Boot Jack program where longevity was a must. Over the past two years, this cow has produced more embryos with a higher conception rate than any cow at Damar. If longevity and fertility is important, any of this trio of heifers will work.

EPDs
CE 2
BW 1.1
WW 43
YW 84
M 18
TM 40
ME 4
HPG 6
CEM 6
STAY 8
Marb -0.01
YG 0.06
CW 52
REA 0.01
Fat 0.00



Damar Molly W056 – A full sister that we have consigned to the Mulberry Mayheim Sale.

54

DAMAR TIDY PACKAGE XI09

RAAA#: 1397270 Tattoo: X109 100% Cat. 1A Red Angus
 BD: 3/3/10 Act. BW: 76 Adj. WW: 514
 Bred June 8, 2011 to C-BAR ANTICIPATION 101W

54A

DAMAR TIDY BACKER XI29

RAAA#: 1397272 Tattoo: X129 100% Cat. 1A Red Angus
 BD: 3/7/10 Act. BW: 84 Adj. WW: 543

MESSMER JOSHUA 019P
 MESSMER PACKER S008
 MESSMER MILLIE 124P
 BJR FANCY PANTS 355-71L
 BJR TIDY BEE 232-140
 BJR TIDY BEE 117-4280

Bred May 25, 2011
 to C-BAR ANTICIPATION 101W

These two moderate-sized, free-moving, Tidy Bee daughters are once again bred for longevity. Their mother, Tidy Bee, is a Boot Jack cow that still produces large numbers of high-quality embryos. Both heifers are bred to C Bar Anticipation, the young Genex sire that was recommended to us to use on these fabulous Packer daughters.

EPDs
CE 4
BW -0.8
WW 30
YW 56
M 14
TM 28
ME 3
HPG 10
CEM 3
STAY 11
Marb 0.34
YG -0.09
CW 33
REA 0.22
Fat 0.00



54B

EMBRYOS - BJR TIDY BEE 232-140

3 or 5 Transferable Embryos
 NJR Tidy Bee 232-140 x NBAR Hamley S913

PIE BILLINGS 487
 NBAR HAMLEY S913
 NBAR KELLY 913
 BJR FANCY PANTS 355-71L
 BJR TIDY BEE 232-140
 BJR TIDY BEE 117-4280

Proj. EPDs
CE 5
BW -0.8
WW 20
YW 36
M 14
TM 24
ME 4
HPG 7
CEM 4
STAY 6
Marb 0.15
YG -0.09
CW 21
REA -0.04
Fat -0.01

We tried something different here – mating old genetics with new genetics. We think it will work tremendously.





DAMAR ROCKANA X008

RAAA#: 1397252 Tattoo: X008 100% Cat. 1A Red Angus
 BD: 2/10/10 Act. BW: 85 Adj. WW: 570
 Bred May 26, 2011 to MESSMER PACKER S008



DAMAR BIG KANA X014

RAAA#: 1397253 Tattoo: X014 100% Cat. 1A Red Angus
 BD: 2/12/10 Act. BW: 85 Adj. WW: 561

RED FINE LINE MULBERRY 26P
RED BRYLOR BIG ROCK 85T
 RED CYT CHARITY 10P
 BJR MONU 4X-303
BJR KANA 4X-587
 BJR KANA 171-830

Bred May 25, 2011 to MESSMER PACKER S008

EPDs	
CE	4
BW	-0.9
WW	32
YW	68
M	18
TM	34
ME	5
HPG	7
CEM	4
STAY	9
Marb	-0.25
YG	0.00
CW	40
REA	-0.03
Fat	-0.01



DAMAR KANATTE X221

RAAA#: 1397261 Tattoo: X221 100% Cat. 1A Red Angus
 BD: 3/28/10 Act. BW: 82 Adj. WW: 540
 Bred May 25, 2011 to HXC CONQUEST 4405P



DAMAR THUMPANA X234

RAAA#: 1397251 Tattoo: X234 100% Cat. 1A Red Angus
 BD: 4/1/10 Act. BW: 88 Adj. WW: 609

RED NORTHLINE ROB ROY 122K
RED DMM BRYLOR THUMP 2T
 RED STEN ESSENCE 42G

Bred June 12, 2011 to RED BRYLOR BIG ROCK 85T

BJR MONU 4X-303
BJR KANA 4X-587
 BJR KANA 171-830

EPDs	
CE	4
BW	0.3
WW	41
YW	77
M	17
TM	38
ME	6
HPG	8
CEM	3
STAY	7
Marb	-0.24
YG	0.03
CW	46
REA	-0.11
Fat	-0.02

Where else can you go to find this many sisters in one place at public auction? Only at Damar with over 1,200 cows can we offer this opportunity. These girls are fertile and easy doing. They are perfect examples of what Red Angus females should be. They are bred up early and guaranteed to the A.I. dates.



X018 who sold in last year's sale is a maternal sister to Lots 55, 55A, 55C and 55C.



Thump



King Rob



Net Worth



DAMAR EXPRESSION X120

RAAA#: 1427316 Tattoo: X120 100% Cat. 1A Red Angus
 BD: 3/6/10 Act. BW: 92 Adj. WW: 587
 Bred May 26, 2011 to RED BRYLOR BIG ROCK 85T



DAMAR EXPRESS X143

RAAA#: 1368022 Tattoo: X143 100% Cat. 1A Red Angus
 BD: 3/11/10 Act. BW: 95 Adj. WW: 626

LEACHMAN ROBUST 7222
LMAN KING ROB 8621
 LEACHMAN ELEANOR
 ODP EXPRESS 3105
CFRA MS EXPRESS 9919
 LMG 4008

Bred May 25, 2011 to MESSMER PACKER S008

EPDs	
CE	0
BW	1.7
WW	31
YW	62
M	18
TM	33
ME	5
HPG	9
CEM	2
STAY	7
Marb	-0.21
YG	0.03
CW	40
REA	0.04
Fat	0.01

Only in a sale of this magnitude can you find two full sisters sired by King Rob and out of the good donor cow, Express 9919. There will not be many more of these good King Rob daughters anywhere. Take it advantage when you can and take one – or both – home with you.



DAMAR ELLENWORTH X060

RAAA#: 1397262 Tattoo: X060 100% Cat. 1A Red Angus
 BD: 2/26/10 Act. BW: 82 Adj. WW: 627
 Bred June 7, 2011 to MESSMER PACKER S008



DAMAR ELEANETTA X104

RAAA#: 1397264 Tattoo: X104 100% Cat. 1A Red Angus
 BD: 3/2/10 Act. BW: 84 Adj. WW: 608

PFFR SHAQ 607
BADLANDS NET WORTH 23U
 BADLANDS MEDORA 406
 BECKTON LANCER F442 T
SRN ELEANOR 4302
 LCHMN ELEANOR J1266

Bred May 26, 2011 to MESSMER PACKER S008

EPDs	
CE	1
BW	3.5
WW	54
YW	93
M	13
TM	40
ME	-1
HPG	10
CEM	2
STAY	12
Marb	0.11
YG	-0.06
CW	61
REA	0.40
Fat	-0.01

Another pair of full sisters out of Badlands Net Worth bull and a good Shamrock Nook cow. The 4302 cow has done a tremendous job for us. With Net Worth's accident, there will be no more semen available. Take advantage when you can and, better yet, take both sisters which are bred to Packer.

58

DAMAR ROCKINA XI18

RAAA#: 1397104 Tattoo: X118 100% Cat. 1A Red Angus
BD: 3/5/10 Act. BW: 81 Adj. WW: 483

RED FINE LINE MULBERRY 26P

RED BRYLOR BIG ROCK 85T
RED CYT CHARITY 10P

Bred May 25, 2011
to MESSMER PACKER 5008

LMAN KING ROB 8621

MESSMER IDA 9959
MESSMER IDA 9613

Rockina should be up in the sale catalog. They are listed by age and this one is really, really good. She has the extra body length and feminine front combined with more muscle shape and internal dimension than most. She stands on great feet and legs which enable her to be free flowing. She settled first service to Packer for a first of March coupon., Rockina will end up in someone's donor pen.

EPDs	
CE	4
BW	-0.7
WW	27
YW	56
M	24
TM	37
ME	5
HPG	10
CEM	8
STAY	8
Marb	-0.13
YG	0.08
CW	33
REA	-0.05
Fat	0.03



Lot 58

59

DAMAR INGA XI97

RAAA#: 1397131 Tattoo: X197 100% Cat. 1A Red Angus
BD: 3/23/10 Act. BW: 75 Adj. WW: 562

PFFR SHAQ 607

BADLANDS NET WORTH 23U
BADLANDS MEDORA 406

Bred June 24, 2011
to RED BRYLOR BIG ROCK 85T

LMAN KING ROB 8621

MESSMER INGRID 2066
MESSMER INGRID 9666

Inga is an impressive Net Worth daughter out of a good Messmer cow. She looks like her picture – heavy muscled, straight topped, long bodied and a very lady like. If you are looking for a front-pasture cow or a donor, Inga has all the credentials.

EPDs	
CE	-1
BW	4.1
WW	52
YW	95
M	18
TM	44
ME	5
HPG	11
CEM	5
STAY	8
Marb	0.15
YG	-0.01
CW	63
REA	0.37
Fat	0.00



Lot 59

60

DAMAR SMOOTHIE X606

ASA#: 2557331 Tattoo: X606 Purebred Simmental
BD: 2/1/10 Act. BW: 89 Adj. WW: 735

HC POWER DRIVE 88H

TRIPLEC EL PODEROSO REY
JSF FIESTA

Bred May 1, 2011
to OLF ODIN US

KS SMOOTHIE F047

PUETTS MS SMOOTHIE
KS BLACKFOOT F026

Damar Smoothie is the only Simmental bred heifer selling. She is extremely broody in her design being big middled and thick rumped. She has a tremendous weight-per-day-of-age and stands on tremendous bone and large feet. She sells bred to Odin, our new Simmental sire that is homozygous black and homozygous polled. His genetic values allows him to stand out as one of the breed's leaders.

EPDs	
CE	8.0
BW	0.6
WW	28.8
YW	63.3
MCE	1.1
MM	9.9
MWW	24.2
CEM	19.2
CW	1.7
YG	0.02
Marb	0.08
BF	0.03
REA	0.20
API	105.5
TI	59.8



Lot 60

61

DAMAR MARIA W160

RAAA#: 1360708 Tattoo: W160 100% Cat. 1A Red Angus
BD: 8/8/09 Act. BW: 65 Adj. WW: 566

RED BRYLOR PASQUOLE 213P

RED BRYLOR SQUALL 230S
RED CYT FANNY 15P

Bred March 28, 2011
to MESSMER JERICO W041

DFRA ROMEO P471

DFRA MARIA T789
DFRA MARIA R584

Maria is the start of a group of fall-born bred heifers that are bred to calve early January. This Squall-sired heifer is tested free and is moderate framed and free moving. We used the Messmer Jericho W041 bull – which is a full brother to Messmer Joshua – on a group of heifers this year. The few calves we had born are definitely calving ease and appear they will grow fast.

EPDs	
CE	12
BW	-2.5
WW	33
YW	62
M	16
TM	32
ME	2
HPG	9
CEM	8
STAY	9
Marb	-0.11
YG	0.00
CW	34
REA	-0.04
Fat	0.00

62

DAMAR BUSTING OUT W166

RAAA#: 1360751 Tattoo: W166 100% Cat. 1A Red Angus
BD: 8/9/09 Act. BW: 74 Adj. WW: 455

PERKS ADVANCE 121R

COLEY'S MOJITO 503R
NER COPPER QUEEN 2657

Bred March 28, 2011
to MESSMER PACKER 5008

HLH BUSTER 406 603

PERKS MISS BUSTER 202R
PERKS MISS ADVANCE 012R

Busting Out is a Mojito-sired bred heifer that goes back to the good 202R cow from Perks. She is a smaller frame heifer with tremendous depth of body and muscle shape. She sells bred for an early January calf to Packer.

EPDs	
CE	5
BW	1.3
WW	44
YW	83
M	11
TM	33
ME	10
HPG	9
CEM	7
STAY	7
Marb	-0.17
YG	0.00
CW	52
REA	0.10
Fat	-0.01

63 DAMAR AVANDE'S GIRL W165

RAAA#: 1360754 Tattoo: W165 100% Cat. 1A Red Angus
 BD: 8/9/09 Act. BW: 72 Adj. WW: 438

EPDs

CE	1
BW	1.2
WW	44
YW	85
M	13
TM	35
ME	5
HPG	5
CEM	7
STAY	7
Marb	0.00
YG	0.09
CW	53
REA	-0.01
Fat	0.01

RED COMPASS MULBERRY 449M
 RED FINE LINE MULBERRY 26P
 RED DUS FAYETTE 8G

Bred March 28, 2011
 to MESSMER PACKER S008

BJR ADVANCE A709
 PERKS MISS ADVANDE 9066
 HMV SUPER STARESS 505

Avande's Girl is another Mulberry daughter in which we sold her mother, 9066, in last year's Best of Both Worlds Female Sale. She resembles her mother being wide sprung, long bodied, and deep throughout. We felt the combination of Packer on these Mulberry daughters would be tremendous.



64 DAMAR KANABERRY W171

RAAA#: 1360728 Tattoo: W171 100% Cat. 1A Red Angus
 BD: 8/10/09 Act. BW: 70 Adj. WW: 522

EPDs

CE	2
BW	0.3
WW	48
YW	93
M	18
TM	42
ME	6
HPG	6
CEM	4
STAY	9
Marb	-0.19
YG	0.03
CW	56
REA	0.07
Fat	-0.01

RED COMPASS MULBERRY 449M
 RED FINE LINE MULBERRY 26P
 RED DUS FAYETTE 8G

Bred March 28, 2011
 to MESSMER PACKER S008

BJR MONU 4X-303
 BJR KANA 4X-587
 BJR KANA 171-830

Kanaberry is a deep-bodied, free-moving daughter of Mulberry and our Boot Jack cow, Kana. She possesses some nice growth EPDs and has that attractive Mulberry phenotype.

65 DAMAR MISS LAKOTA W177

RAAA#: 1360763 Tattoo: W177 100% Cat. 1A Red Angus
 BD: 8/11/09 Act. BW: 63 Adj. WW: 545

EPDs

CE	10
BW	-3.2
WW	14
YW	34
M	23
TM	30
ME	5
HPG	9
CEM	7
STAY	8
Marb	-0.02
YG	-0.13
CW	17
REA	-0.01
Fat	-0.02

TPIE LAKOTA 9166
 TPIE LAKOTA II 1086
 RCRA ROSEBUD 933

Bred March 28, 2011
 to MESSMER PACKER S008

DFRA ROSE MOON N313
 DFRA T737
 DFRA PAULA N317

These Lakota daughters make really impressive cows. This one is extra long bodied and clean fronted. She is a larger frame heifer with tremendous weight-per-day-of-age. This Packer mating should be interesting.



66 DAMAR DIPITY DO W182

RAAA#: 1360750 Tattoo: W182 100% Cat. 1A Red Angus
 BD: 8/15/09 Act. BW: 78 Adj. WW: 426

EPDs

CE	1
BW	2.6
WW	39
YW	71
M	9
TM	28
ME	7
HPG	8
CEM	3
STAY	9
Marb	-0.13
YG	-0.10
CW	47
REA	0.19
Fat	-0.03

PERKS ADVANCE 121R
 COLEY'S MOJITO 503R
 NER COPPER QUEEN 2657

Bred March 28, 2011
 to MESSMER PACKER S008

BJR FANCY PANTS 355-71L
 BJR DIPY DO 232-929
 BJR DIPY DO 117-781

A Mojito-sired bred heifer that is more compact in her style being thicker and deeper. She also sells bred to Packer for an early January calf.

67 DAMAR PRINCESS W955

RAAA#: 1425618 Tattoo: W955 100% Cat. 1A Red Angus
 BD: 8/19/09 Act. BW: 70 Adj. WW: 471

EPDs

CE	
BW	0.1
WW	35
YW	61
M	11
TM	29
ME	
HPG	8
CEM	
STAY	8
Marb	0.12
YG	-0.09
CW	34
REA	0.19
Fat	-0.01

BIEBER MAKE MIMI 7249
 DFRA LUKE S625
 DFRA LAKINA N342

Bred March 28, 2011
 to MESSMER JERICO W041

PIE ADVANCE 5520
 DFRA PRINCESS T815
 BJR PRINCESS 968-452

Princess is a well-balanced, combination heifer that is sired by DFRA Luke which is a Bieber Make Mimi son that we used here very successfully.

68 DAMAR PRIDE N JOY W192

RAAA#: 1360731 Tattoo: W192 100% Cat. 1A Red Angus
 BD: 8/20/09 Act. BW: 75 Adj. WW: 541

EPDs

CE	0
BW	1.5
WW	38
YW	77
M	19
TM	38
ME	3
HPG	7
CEM	5
STAY	7
Marb	0.06
YG	0.03
CW	49
REA	0.06
Fat	0.00

RED COMPASS MULBERRY 449M
 RED FINE LINE MULBERRY 26P
 RED DUS FAYETTE 8G

Bred March 28, 2011
 to MESSMER PACKER S008

RD WESTERN JUSTICE
 LOG WESTERN PRIDE 641
 REG. #326861

Pride N Joy is a Mulberry out of a good Western Pride cow. She is a high weight-per-day-of-age female that sells bred to Packer for an early calf.



DAMAR QUEEN BEE X027

RAAA#: 1367936 Tattoo: X027 100% Cat. 1A Red Angus
BD: 2/3/10 Act. BW: 63 Adj. WW: 546

MESSMER JOSHUA 019P
MESSMER PACKER S008
MESSMER MILLIE 124P

Bred May 28, 2011
to C-BAR ANTICIPATION 101W

FORSTER BLAZE 6129
SRN COPPERQUEEN 0899
FORSTER COPPRQUEEN 7179

Queen Bee is one of our favorite Packer daughters selling. Her mother the Copper Queen cow does a phenomenal job of reproducing the right kind. This heifer is moderate in her frame and sound in her structure. Her full sister last year sold to Lazy MC in Canada.

EPDs	
CE	3
BW	-0.6
WW	31
YW	62
M	15
TM	30
ME	6
HPG	10
CEM	3
STAY	10
Marb	0.05
YG	-0.02
CW	37
REA	0.22
Fat	0.02



DAMAR RED LADY X003

RAAA#: 1396950 Tattoo: X003 100% Cat. 1A Red Angus
BD: 2/5/10 Act. BW: 75 Adj. WW: 473

MESSMER JOSHUA 019P
MESSMER PACKER S008
MESSMER MILLIE 124P

Bred May 25, 2011
to C-BAR ANTICIPATION 101W

BUF CRK CHF 824-1658
MESSMER RED LADY 9836
NODAKLADY POUNDMAKER

This heifer is another favorite Packer-bred female selling. Her mother is the famous Messmer Red Lady cow that has the ability to stamp all her calves alike. They are moderate framed, easy fleshing and structurally correct.

EPDs	
CE	4
BW	-0.2
WW	30
YW	58
M	12
TM	27
ME	2
HPG	13
CEM	2
STAY	8
Marb	0.14
YG	-0.02
CW	35
REA	0.21
Fat	0.02



DAMAR ROCKNHOD X007

RAAA#: 1397242 Tattoo: X007 100% Cat. 1A Red Angus
BD: 2/8/10 Act. BW: 88 Adj. WW: 566

RED FINE LINE MULBERRY 26P
RED BRYLOR BIG ROCK 85T
RED CYT CHARITY 10P

Bred May 27, 2011
to C-BAR ANTICIPATION 101W

CFLD REBELLAS ROBINHOOD
PERKS MISS ROBINHOOD 205R
PERKS MISS RAMBO 8908

Rocknhod is a full sister to our high-selling open heifer in last year's Best of Both Worlds Female Sale. She sold to Shoal Creek of Iowa. This one is a spitting image of her. Like their mother, they are deep middled, wide based and easy feeding.

EPDs	
CE	4
BW	-0.0
WW	28
YW	58
M	11
TM	25
ME	6
HPG	7
CEM	7
STAY	7
Marb	0.05
YG	0.16
CW	36
REA	-0.04
Fat	0.06



DAMAR EMMA X044

RAAA#: 1367961 Tattoo: X044 100% Cat. 1A Red Angus
BD: 2/13/10 Act. BW: 77 Adj. WW: 599

MESSMER JOSHUA 019P
MESSMER PACKER S008
MESSMER MILLIE 124P

Bred June 18, 2011
to C-BAR ANTICIPATION 101W

LCC NEW CHAPTER A705L
DAMAR LEONA U826
DFRA LENA 426

Emma is another Packer daughter that goes back to a New Chapter cow. This cow milks really heavy and is easy fleshing. Emma sells bred to Anticipation for a late March calf.

EPDs	
CE	2
BW	1.4
WW	47
YW	84
M	16
TM	39
ME	4
HPG	13
CEM	0
STAY	14
Marb	0.27
YG	0.01
CW	52
REA	0.31
Fat	0.02



DAMAR FULL MATTIE X052

RAAA#: 1397018 Tattoo: X052 100% Cat. 1A Red Angus
BD: 2/19/10 Act. BW: 75 Adj. WW: 515

RD TER-RON FULLY LOADED 540R
RED 6 MILE FULL THROTTLE171T
RED SIX MILE WITZEL 360J

Bred June 12, 2011
to C-BAR ANTICIPATION 101W

DFRA TIDY B
DFRA MATTIE T739
DFRA 541L

Our Full Throttle heifers our large middled and big hipped. This one is no exception – she is level topped and square hipped.

EPDs	
CE	1
BW	0.7
WW	30
YW	61
M	15
TM	29
ME	2
HPG	9
CEM	4
STAY	9
Marb	0.02
YG	0.03
CW	38
REA	-0.08
Fat	0.00



DAMAR SQUABELLE X053

RAAA#: 1397049 Tattoo: X053 100% Cat. 1A Red Angus
BD: 2/21/10 Act. BW: 69 Adj. WW: 558

RED BRYLOR PASQUOLE 213P
RED BRYLOR SQUALL 230S
RED CYT FANNY 15P

Bred May 26, 2011
to MESSMER JERICHO W041

MESSMER JUDGE 36N
DAMAR CHERABELLE U818
DFRA CHERABELLE S637

We really like the Squall females. They are moderate framed, big ribbed and easy doing. This one tested free and sells bred to MESSMER JERICHO W041 for an early spring calf.

EPDs	
CE	12
BW	-1.8
WW	36
YW	65
M	14
TM	32
ME	2
HPG	9
CEM	10
STAY	13
Marb	0.00
YG	-0.02
CW	37
REA	0.05
Fat	0.00



DAMAR MARIA THUMP X054

RAAA#: 1397015 Tattoo: X054 100% Cat. 1A Red Angus
BD: 2/23/10 Act. BW: 87 Adj. WW: 547

RED NORTHLINE ROB ROY 122K
RED DMM BRYLOR THUMP 2T
RED STEN ESSENCE 42G

Bred May 25, 2011
to MESSMER PACKER S008

DFRA ROSE MOON N313
DFRA MARIA T736
BJR MARIA 45-984

This Thump daughter balances out nicely. Her phenotype is long sided, free moving, high volumed, with plenty of muscle. She combines this all into a neat, feminine package.

EPDs	
CE	4
BW	0.7
WW	33
YW	63
M	19
TM	36
ME	7
HPG	8
CEM	6
STAY	5
Marb	-0.04
YG	0.11
CW	39
REA	-0.22
Fat	0.01



76 DAMAR STORMY X057

RAAA#: 1397144 Tattoo: X057 100% Cat. 1A Red Angus
 BD: 2/25/10 Act. BW: 81 Adj. WW: 551

PFFR SHAQ 607
BADLANDS NET WORTH 23U
 BADLANDS MEDORA 406

*Bred May 25, 2011
 to MESSMER PACKER 5008*

RBJR MAXINE F536
DFRA MS STMPDR 542L
 BJR MS STMPDR 232-4139

Stormy is one of the few Net Worth daughters that we are selling. We feel they will make functional cows that will contribute to the Red Angus breed. This one we chose to mate to Packer and feel the calf will be special.

EPDs

CE 2
 BW 2.0
 WW 44
 YW 81
 M 17
 TM 39
 ME 3
 HPG 10
 CEM 2
 STAY 9
 Marb 0.23
 YG -0.05
 CW 51
 REA 0.27
 Fat -0.01

77 DAMAR THANGA X065

RAAA#: 1397265 Tattoo: X065 100% Cat. 1A Red Angus
 BD: 2/27/10 Act. BW: 91 Adj. WW: 605

RED NORTHLINE ROB ROY 122K
RED DMM BRYLOR THUMP 2T
 RED STEN ESSENCE 42G

*Bred May 25, 2011
 to MESSMER PACKER 5008*

DFRA MELMON 534L
DFRA ANGIE S667
 DFRA 429K

Thanga is a thick-designed and well-balanced bred heifer that puts a lot of good in a moderate package.

EPDs

CE 4
 BW 0.8
 WW 38
 YW 71
 M 19
 TM 38
 ME 6
 HPG 8
 CEM 5
 STAY 4
 Marb 0.01
 YG 0.11
 CW 44
 REA -0.17
 Fat 0.01

78 DAMAR ZINAWORTH X070

RAAA#: 1397102 Tattoo: X070 100% Cat. 1A Red Angus
 BD: 2/28/10 Act. BW: 85 Adj. WW: 598

PFFR SHAQ 607
BADLANDS NET WORTH 23U
 BADLANDS MEDORA 406

*Bred May 26, 2011
 to MESSMER PACKER 5008*

LMAN KING ROB 8621
MESSMER ZINA 9922
 MESSMER ZINA 9476

The 9922 cow from Messmers does a good job of producing cattle that are high volume and structurally correct. This Net Worth daughter of hers will make the right kind.

EPDs

CE 1
 BW 3.0
 WW 45
 YW 85
 M 20
 TM 42
 ME 5
 HPG 12
 CEM 5
 STAY 8
 Marb 0.03
 YG -0.05
 CW 56
 REA 0.16
 Fat -0.03

79 DAMAR BLOKERRY X071

RAAA#: 1397135 Tattoo: X071 100% Cat. 1A Red Angus
 BD: 2/28/10 Act. BW: 80 Adj. WW: 563

RED COMPASS MULBERRY 449M
RED FINE LINE MULBERRY 26P
 RED DUS FAYETTE 8G

*Bred June 12, 2011
 to C-BAR ANTICIPATION 101W*

BJR RAMBO 502-6243
DFRA BLOCKANA 419
 BJR BLOCKANA 620-113

Only in a sale like this can you find this many outstanding bred heifers with pedigrees like we have. This Mulberry heifer once again goes back to the Boot Jack breeding. With the phenotype and longevity this heifer has, she is destined to make a nice cow for some progressive breeder.

EPDs

CE 1
 BW 1.9
 WW 42
 YW 80
 M 16
 TM 37
 ME 3
 HPG 5
 CEM 6
 STAY 6
 Marb 0.02
 YG 0.11
 CW 51
 REA -0.09
 Fat 0.01



80 DAMAR BELLA XI14

RAAA#: 1397142 Tattoo: X114 100% Cat. 1A Red Angus
 BD: 3/5/10 Act. BW: 85 Adj. WW: 626

TKP BODACIOUS 693
RED BRYLOR BODASIOUS 79K
 RED BRYLOR CHEROK 40X

*Bred May 25, 2011
 to MESSMER PACKER 5008*

RBJR MAXINE F536
DFRA BONNIE BELL 550L
 BJR BONNIE BELL 757-504

This young Bodasious brood cow prospect is extra long bodied and clean in her lines. She is adequate in her muscle and excels in her structure.

EPDs

CE 2
 BW -0.2
 WW 26
 YW 49
 M 19
 TM 31
 ME 6
 HPG 10
 CEM 1
 STAY 5
 Marb -0.20
 YG -0.11
 CW 30
 REA 0.11
 Fat -0.02

81 DAMAR NETTIE XI21

RAAA#: 1396977 Tattoo: X121 100% Cat. 1A Red Angus
 BD: 3/6/10 Act. BW: 86 Adj. WW: 567

PFFR SHAQ 607
BADLANDS NET WORTH 23U
 BADLANDS MEDORA 406

*Bred May 25, 2011
 to MESSMER PACKER 5008*

DFRA ROCKER 425
DFRA MATTIE R564
 DFRA MATTIE M220

Another Net Worth daughter selling that goes back to one of those good Rocker cows. We feel this Packer mating on the Net Worth cows will be the ticket.

EPDs

CE 3
 BW 3.0
 WW 56
 YW 100
 M 13
 TM 41
 ME 4
 HPG 11
 CEM 5
 STAY 8
 Marb 0.22
 YG 0.04
 CW 64
 REA 0.24
 Fat 0.00

82 DAMAR INTRIGUE XI25

RAAA#: 1368027 Tattoo: X125 100% Cat. 1A Red Angus
 BD: 3/7/10 Act. BW: 85 Adj. WW: 637

LCC HEAVEN OR BUST1000B
GLACIER MARIAS 548
 GLACIER REBALAS

*Bred May 22, 2011
 to RED BRYLOR BIG ROCK 85T*

LMAN KING ROB 8621
MESSMER PANDORA 9976
 MESSMER PANDORA 9498

Intrigue is just that – interesting. She is like a three-quarter sister to Pandora M186. Just think of the value here! Extra long bodied, free moving and sleek fronted best describes this nice-designed bred heifer.

EPDs

CE 2
 BW -0.4
 WW 30
 YW 61
 M 27
 TM 42
 ME 7
 HPG 12
 CEM 6
 STAY 10
 Marb 0.25
 YG 0.05
 CW 36
 REA -0.07
 Fat 0.01

83 DAMAR MISS RAMNET XI24

RAAA#: 1397275 Tattoo: X124 100% Cat. 1A Red Angus
BD: 3/7/10 Act. BW: 82 Adj. WW: 523

PFFR SHAQ 607
BADLANDS NET WORTH 23U
BADLANDS MEDORA 406

*Bred May 25, 2011
to MESSMER PACKER S008*

4L RAMBO R621
PERKS MISS RAMBO 8105
PJMCM GOLDEN BOY 305

We sold the dam of this heifer in last year's sale. She has two full sisters selling in this year's sale as open heifers, Lot 112 and Lot 112A. With the proven cow family and the added value of Net Worth, this one is a sure thing.

EPDs	
CE	2
BW	3.1
WW	48
YW	87
M	8
TM	32
ME	3
HPG	7
CEM	4
STAY	7
Marb	0.06
YG	-0.06
CW	57
REA	0.45
Fat	0.00

84 DAMAR LOADED LADY XI34

RAAA#: 1367996 Tattoo: X134 100% Cat. 1A Red Angus
BD: 3/9/10 Act. BW: 83 Adj. WW: 708

RED HEARTLAND KNIGHT CHARM 1
RD TER-RON FULLY LOADED 540R
RED TER-RON GOLDIE 240L

*Bred May 26, 2011
to MESSMER PACKER S008*

BIEBER MAKE MIMI 7249
DFRA TARMILY N512
DFRA TARMILY N305

Loaded Lady is a maternal sister to Mimi, Lot 2. She is more extended in her skeleton but remains free in her movement and attractive in her appearance. It will be interesting to see this Packer-born calf out of this cow family.

EPDs	
CE	0
BW	1.7
WW	39
YW	65
M	5
TM	24
ME	-0
HPG	8
CEM	0
STAY	9
Marb	-0.04
YG	-0.12
CW	41
REA	0.13
Fat	-0.04

85 DAMAR TAMWORTH XI52

RAAA#: 1397145 Tattoo: X152 100% Cat. 1A Red Angus
BD: 3/13/10 Act. BW: 82 Adj. WW: 616

PFFR SHAQ 607
BADLANDS NET WORTH 23U
BADLANDS MEDORA 406

*Bred May 26, 2011
to MESSMER PACKER S008*

BADLANDS TARGET 836
DFRA TARMAR 432
BJR EMU-MAR 091-112

The Net Worth daughters are long, feminine fronted, with plenty of rib shape. This one also sells bred to Packer. Just think of the load of half sisters all bred to Packer that you could assemble here.

EPDs	
CE	4
BW	2.9
WW	51
YW	88
M	8
TM	34
ME	1
HPG	9
CEM	4
STAY	9
Marb	0.05
YG	0.00
CW	57
REA	0.09
Fat	-0.02

86 DAMAR AMAZING XI48

RAAA#: 1367997 Tattoo: X148 100% Cat. 1A Red Angus
BD: 3/13/10 Act. BW: 82 Adj. WW: 592

MESSMER JOSHUA 019P
MESSMER PACKER S008
MESSMER MILLIE 124P

*Bred June 12, 2011
to RED BRYLOR BIG ROCK 85T*

BFCK CHEROKEE CNYN 4912
DFRA BLOCKANA R527
DFRA BLOCKANA 101

Another nice Packer-sired bred heifer that is very complete from phenotype to her genetic values. Packer does a great job producing cattle that are the same type and kind with good genetic value. We are proud to own Packer's mother, Messmer Millie. Just a note for the future – we have eight full sibs to Packer due next spring.

EPDs	
CE	4
BW	-0.7
WW	30
YW	59
M	18
TM	33
ME	3
HPG	11
CEM	-1
STAY	16
Marb	0.20
YG	-0.06
CW	35
REA	0.33
Fat	0.02

87 DAMAR CHICKNET XI49

RAAA#: 1397146 Tattoo: X149 100% Cat. 1A Red Angus
BD: 3/13/10 Act. BW: 87 Adj. WW: 595

PFFR SHAQ 607
BADLANDS NET WORTH 23U
BADLANDS MEDORA 406

*Bred May 25, 2011
to MESSMER PACKER S008*

BJR MONU 4X-573
DFRA CHIKADE 522L
BJR CHIKADE 677-356

These Net Worth daughters out of the Boot Jack cows we feel will be the the right kind – phenotypically attractive and genetically sound – especially mated like this one to Packer.

EPDs	
CE	1
BW	3.4
WW	53
YW	94
M	16
TM	43
ME	2
HPG	10
CEM	2
STAY	11
Marb	0.16
YG	-0.01
CW	61
REA	0.25
Fat	-0.01

88 DAMAR BIG NAROCKIN XI53

RAAA#: 1397188 Tattoo: X153 100% Cat. 1A Red Angus
BD: 3/15/10 Act. BW: 79 Adj. WW: 509

RED FINE LINE MULBERRY 26P
RED BRYLOR BIG ROCK 85T
RED CYT CHARITY 10P

*Bred May 27, 2011
to MESSMER PACKER S008*

DFRA ROCKER 425
DFRA NAN N315
DFRA NAN 544L

We don't have many of these Big Rock heifers out of the Rocker cows. We sure like the way this one is designed. She is well balanced from head to tail and, being bred to Packer, will only enhance the possibilities.

EPDs	
CE	5
BW	-1.8
WW	21
YW	49
M	21
TM	31
ME	4
HPG	7
CEM	6
STAY	7
Marb	0.01
YG	0.03
CW	28
REA	-0.06
Fat	0.02

89 DAMAR FULLY LOUISE XI63

RAAA#: 1397281 Tattoo: X163 100% Cat. 1A Red Angus
BD: 3/17/10 Act. BW: 82 Adj. WW: 503

RED HEARTLAND KNIGHT CHARM 1
RD TER-RON FULLY LOADED 540R
RED TER-RON GOLDIE 240L

*Bred May 25, 2011
to MESSMER PACKER S008*

BADLANDS TARGET 836
DFRA LOUISE 443
BJR LOUISE 757-2155

Fully Louise is a dark red, larger framed heifer that is sired by the Fully Loaded bull. Our Fully Loaded offspring gain weight rapidly and are structurally correct. This one sells bred to the calving-ease leader, Packer.

EPDs	
CE	-3
BW	3.0
WW	24
YW	42
M	3
TM	15
ME	-1
HPG	9
CEM	0
STAY	6
Marb	-0.15
YG	-0.13
CW	30
REA	0.08
Fat	-0.03

90 DAMAR DUTCHESS XI86

RAAA#: 1396963 Tattoo: X186 100% Cat. 1A Red Angus
BD: 3/21/10 Act. BW: 82 Adj. WW: 545

RED NORTHLINE ROB ROY 122K
RED DMM BRYLOR THUMP 2T
RED STEN ESSENCE 42G

*Bred May 26, 2011
to MESSMER JERICO W041*

BJR MONU 4X-573
DFRA DUTCHESS P430
DFRA DUTCHESS 520L

This Thump-sired heifer is deep in her side and free in her movement. She carries the service of Messmer Jericho W041, the exciting young bull that is a full brother to Joshua.

EPDs	
CE	4
BW	0.5
WW	35
YW	64
M	17
TM	34
ME	5
HPG	8
CEM	4
STAY	6
Marb	-0.02
YG	0.07
CW	39
REA	-0.17
Fat	0.00



DAMAR BIG THELMA X180

RAAA#: 1397095 Tattoo: X180 100% Cat. 1A Red Angus
BD: 3/21/10 Act. BW: 82 Adj. WW: 556

RED FINE LINE MULBERRY 26P
RED BRYLOR BIG ROCK 85T
RED CYT CHARITY 10P

Bred May 25, 2011
to MESSMER PACKER 5008

LMAN KING ROB 8621
GMRA THELMA 915
GMRA RAMEY 215

EPDs	
CE	4
BW	-0.4
WW	27
YW	62
M	20
TM	33
ME	5
HPG	7
CEM	7
STAY	6
Marb	-0.08
YG	0.14
CW	38
REA	-0.02
Fat	0.05

Big Thelma is a well-balanced heifer. She combines structural correctness, muscle shape, length of body and over all eye appeal into a very acceptable and attractive package. She also sells bred to Packer for an early calf.



DAMAR ROSALYNX196

RAAA#: 1397286 Tattoo: X196 100% Cat. 1A Red Angus
BD: 3/23/10 Act. BW: 65 Adj. WW: 564

ARROWHEAD BRANDED BEEF L107
RED BRYLOR A L C STRONG 116S
RED BRYLOR KARMA 12K

Bred May 25, 2011
to MESSMER PACKER 5008

TPIE LAKOTA II 1086
DFRA ROSELA R577
DFRA ROSELA 434

EPDs	
CE	9
BW	-0.1
WW	33
YW	62
M	17
TM	34
ME	1
HPG	10
CEM	6
STAY	9
Marb	0.05
YG	-0.01
CW	37
REA	-0.12
Fat	-0.02

Rosalyn is a smaller framed, more compact heifer that is easy fleshing and is sure to make a nice cow. The Strong daughters are high performing and profitable.



DAMAR MISS THROTTLE X216

RAAA#: 1397155 Tattoo: X216 100% Cat. 1A Red Angus
BD: 3/26/10 Act. BW: 80 Adj. WW: 467

RD TER-RON FULLY LOADED 540R
RED 6 MILE FULL THROTTLE171T
RED SIX MILE WITZEL 360J

Bred May 26, 2011
to MESSMER PACKER 5008

RBJR ADVANCE A709
PERKS MISS ADVANCE 109R
PERKS MISS RAMBO 809Z

EPDs	
CE	1
BW	1.6
WW	39
YW	72
M	10
TM	29
ME	5
HPG	6
CEM	4
STAY	8
Marb	0.03
YG	0.05
CW	46
REA	-0.03
Fat	0.00

Miss Throttle is a darker red, smaller designed heifer that is big boned and large footed. She has that brood cow look that we all desire.



DAMAR MARION X210

RAAA#: 1397181 Tattoo: X210 100% Cat. 1A Red Angus
BD: 3/26/10 Act. BW: 75 Adj. WW: 639

PFFR SHAQ 607
BADLANDS NET WORTH 23U
BADLANDS MEDORA 406

Bred May 26, 2011
to MESSMER PACKER 5008

BJR MONU 4X-573
DFRA MARIA M223
BJR MARIA 45-984

EPDs	
CE	1
BW	2.9
WW	49
YW	87
M	17
TM	41
ME	4
HPG	9
CEM	2
STAY	10
Marb	0.20
YG	0.01
CW	57
REA	0.23
Fat	0.00

Marion is a bit larger, dark red, bred heifer that is adequate in her volume and free in her structure. Her mother, M223, is a large-volume, free-moving Monu 4X cow that milks really well.



DAMAR MISS QUAIL X225

RAAA#: 1397248 Tattoo: X225 100% Cat. 1A Red Angus
BD: 3/27/10 Act. BW: 70 Adj. WW: 511

RED BRYLOR PASQUOLE 213P
RED BRYLOR SQUALL 230S
RED CYT FANNY 15P

Bred May 25, 2011
to MESSMER JERICHO W041

RBJR ADVANCE A709
PERKS MISS ADVANDE 9066
HMV SUPER STARESS 505

EPDs	
CE	10
BW	-1.5
WW	34
YW	63
M	9
TM	26
ME	3
HPG	7
CEM	7
STAY	9
Marb	-0.20
YG	-0.01
CW	36
REA	0.04
Fat	-0.01

This heifer is a bit larger framed but is square and straight made. She also sells bred early to the great Pandora son, Jericho.



DAMAR DEXTRA X100

RAAA#: 1397012 Tattoo: X100 100% Cat. 1A Red Angus
BD: 4/14/10 Act. BW: 75 Adj. WW: 602

BADLANDS PFFR NEW DESIGN 347
BADLANDS DESIGN 22S
BADLANDS MINDY 62Z

Bred May 25, 2011
to MESSMER PACKER 5008

DFRA ROSE MOON N313
DFRA DEXAN T701
DFRA DEXAN M207

EPDs	
CE	3
BW	0.3
WW	35
YW	72
M	23
TM	40
ME	10
HPG	11
CEM	3
STAY	10
Marb	-0.03
YG	0.11
CW	44
REA	0.06
Fat	0.04

Dextra is sired by our Badlands Design 22S bull. He does a great job of producing attractive, high-performing cattle. In last years Best of Both Worlds Sale, one of the high-selling open heifers was sired by him. This heifer is really good in her rib and is moderate in her frame.

GO BOLD!

LORENZEN RANCHES *welcomes* DAMAR FARMS

as a NEW COOPERATOR *for our* 2012 BULL SALE

.....

SELLING 350 HEAD of ELITE BULLS

275 YEARLING RED ANGUS

25 FALL RED ANGUS BULLS
(featuring 5 Full Brothers to JOSHUA)

50 RED & BLACK COMPOSITE BULLS



LORENZEN DMR ~ *He Sells!* ~

CED	BW	WW	YW	MILK	TM	ME	HPG	CEM	STAY	MARB	REA
12	-2.4	33	68	21	37	1	13	9	15	.15	.2

Sons & Grandsons by PIE GRIDMASTER 589, MESSMER PACKER, MESSMER JOSHUA, EXPECTATION, LEADING EDGE, MISSION STATEMENT, 5L REFEREE, and MULLBERRY.

.....

Go to www.lorenzenranches.com *or* www.beefnw.com *for details*

LORENZEN RANCHES
RED ANGUS SINCE 1959

Correspondence to Larry Lorenzen
PH 541.276.6108 | FAX 541.276.9696
or Sam Lorenzen PH 541.215.2687
P.O. Box 1519, Pendleton, Oregon 97801
larrylorenzen@hughes.net | lorenzenranches.com



Correspondence to Ron Rowan
PH 541.898.2106
ron@beefnw.com | beefnw.com





Lot 97



Lot 98



DAMAR ELTHEA X301

RAAA#: 1417241 Tattoo: X301 100% Cat. 1A Red Angus
 BD: 9/1/10 Act. BW: 75 Adj. WW: 774

RD TER-RON FULLY LOADED 540R
 RED 6 MILE FULL THROTTLE171T
 RED SIX MILE WITZEL 360J

BJR MAKE MY DAY 981
UBAR ELEANOR 001
 LCHMN ELEANOR H1164

Elthea is a deep-bodied, long-spined, fall-born heifer that we showed at the Iowa State fair. She is smooth in her design and nice in her muscle shape. She won her class and was Reserve Senior Heifer Calf Champ.

EPDs	
CE	2
BW	-0.1
WW	36
YW	70
M	16
TM	35
ME	4
HPG	9
CEM	4
STAY	8
Marb	0.20
YG	0.04
CW	42
REA	-0.13
Fat	-0.01



DAMAR MISS CHATEAU X251

RAAA#: 1417226 Tattoo: X251 100% Cat. 1A Red Angus
 BD: 8/15/10 Act. BW: 80 Adj. WW: 710

RED NORTHLINE ROB ROY 122K
 RED DMM BRYLOR THUMP 2T
 RED STEN ESSENCE 42G

GLACIER CHATEAU 744
PERKS MISS CHATEAU 215R
 PERKS MISS ADVANCER

Miss Chateau is a well-balanced heifer. She combines the correct muscle shape with length of body, structural correctness and internal dimension – all into a very attractive package. Her mother, 215R, is a massive, wide-based Perks cow that is easy fleshing. Miss Chateau sells open and ready to service.

EPDs	
CE	3
BW	0.3
WW	35
YW	68
M	16
TM	33
ME	7
HPG	8
CEM	7
STAY	6
Marb	0.08
YG	0.09
CW	41
REA	-0.15
Fat	0.01



DAMAR GIRL TALK X288

ASA#: 2576909 Tattoo: X288 Purebred Simmental
 BD: 9/6/10 Act. BW: 72 Adj. WW: 598

EPDs	
CE	10.9
BW	-1.0
WW	36.5
YW	61.1
MCE	4.0
MM	4.8
MWW	23.1
CEM	23.1
CW	-3.0
YG	-0.11
Marb	0.41
BF	0.02
REA	0.45
API	139.3
TI	74.3

HOOKS SHEAR FORCE 38K
 TRIPLE C L. TAYLOR
 LUCAS JOSIE 19K

LCHMAN LUCKY BUCK 7049C
 TRIPLE C GO GIRL K34G
 TRIPLE C REWARDS QUEEN H

Girl Talk is a full sister to Showgirl, the fall heifer that Koty has been showing this summer. If you are interested in proven genetics with off-the-chart genetic values, then take a serious look at this heifer. Her mother, Go Girl is one of the all-time great Simmental cows in the breed. Girl Talk's sire L. Taylor has rapidly become a standout for his EPDs. They are simply unbelievable with high accuracies. Only because we want to share our best are we offering Girl Talk.



L. Taylor



DAMAR LYNN X276

RAAA#: 1417230 Tattoo: X276 100% Cat. 1A Red Angus
 BD: 8/10/10 Act. BW: 74 Adj. WW: 708



DAMAR LAKEN X275

RAAA#: 1417233 Tattoo: X275 100% Cat. 1A Red Angus
 BD: 8/16/10 Act. BW: 69 Adj. WW: 696

EPDs	
CE	3
BW	0.2
WW	49
YW	92
M	15
TM	39
ME	5
HPG	14
CEM	2
STAY	14
Marb	0.14
YG	-0.01
CW	55
REA	0.34
Fat	0.01

MESSMER JOSHUA 019P
 MESSMER PACKER S008
 MESSMER MILLIE 124P

BECKTON WARRIOR N645 T1
 MESSMER LINDA S129
 MESSMER LINDA 2322

This pair of young Packer heifers is out of our Messmer Linda donor. Their genetic values are intriguing. To have that much growth while maintaining average maternal and above-average carcass numbers is really special. These two girls are long and clean fronted with plenty of internal dimension and base width. Take them home, care for them, breed them, and watch them become two of your better cows.



Go Girl K34G



Packer



DAMAR GINGER X313

RAAA#: 1417209 Tattoo: X313 100% Cat. 1A Red Angus
 BD: 8/19/10 Act. BW: 74 Adj. WW: 717

EPDs	
CE	5
BW	-2.3
WW	34
YW	74
M	21
TM	38
ME	6
HPG	13
CEM	6
STAY	10
Marb	0.15
YG	0.03
CW	42
REA	0.29
Fat	0.04

MESSMER JOSHUA 019P
 MESSMER PACKER S008
 MESSMER MILLIE 124P

LMAN KING ROB 8621
 MESSMER GINNIE 9862
 MESSMER GINNIE 9211

Ginger is out of Packer and one of my favorite Messmer cows, Ginnie. Study this cow's picture and imagine her mated with Packer – that's what Ginger is. She is a moderate-framed, feminine-fronted and massive-middled youngster. Take her home and feed her and breed her.



Ginnie 9862

Half Interest Sells!



Lot 102



DAMAR YOU GO GIRL Y132

RAAA#: 1426973 Tattoo: Y132 100% Cat. 1A Red Angus
 BD: 3/17/11 Act. BW: 88

EPDs	
CE	
BW	2.1
WW	42
YW	69
M	18
TM	39
ME	-1
HPG	11
CEM	
STAY	12
Marb	-0.21
YG	0.02
CW	45
REA	-0.06
Fat	-0.02

- RED SIX MILE AVIATOR 217P
- RED SIX MILE SAKIC 832S**
- RED SIX MILE SIERA 257P
- BFCK CHEROKEE CNYN 4912
- BASIN BONNEBELL 3851**
- BASIN BONNEBELL H308

You Go Girl is the reason why we do what we do. When the calves are this good, it's not only fun but it's easy. Just study this heifer's picture, her genetic values and video, and you will appreciate her as much as we do. She is expressive muscled being thick topped, square hiped and wide based. She has tremendous volume being deep middled, deep flanked and deep in her heart. She is moderate in her kind and soft in her design. Her best attributes are her structural correctness and free movement combined with the right amount of bone and angles where she should flex. When combining all these good traits with her genetics from her sire, Sakic, and her mother, Bonnebell, the sky is the limit here. We are offering one half-interest with no possession in this great youngster. We feel she has as much earning potential as any lot offered.



Lot 103



103 DAMAR TOO HOT

ASA#: 2587209 Tattoo: Y221 Purebred Simmental
BD: 2/3/11 Act. BW: 92

EPDs	
CE	7.2
BW	0.9
WW	26.7
YW	50.0
MCE	2.5
MM	3.8
MWW	17.1
CEM	
CW	-6.3
YG	-0.01
Marb	0.09
BF	0.01
REA	0.06
API	93.0
TI	53.0

WLE POWER STROKE
TCF POWER DRIVE R2411
KAPPES LADY IRISH F88
TRIPLEC POWERRANGER K588
CPR TOO HOT N78
AVCC BLAZIN

Damar Too Hot is a very interesting young heifer. She is sired by a clone to Power Drive and out of a black baldy cow that is a granddaughter of Power Drive. She is expressive muscled, free moving, and has that "show me" attitude. She is extra long bodied, level hiped and level topped. Not only will she make a great show heifer, her best attribute will be as a brood cow. Never in the history of the Simmental breed has a bull had such an impact as Power Drive. His daughters and granddaughters are making the impact of a great sire. They are easy-fleshing cows with tremendous udders. They simply have the ability to reproduce better than themselves. Too Hot will be one of those great-producing cows.



104 DAMAR GINNIE'S BACK Y533

RAAA#: 1426967 Tattoo: Y533 100% Cat. 1A Red Angus
BD: 2/5/11 Act. BW: 77

104A DAMAR GET BACK GINNIE Y226

RAAA#: 1426969 Tattoo: Y226 100% Cat. 1A Red Angus
BD: 2/9/11 Act. BW: 80

104B DAMAR GINNIE'S FLAME Y242

RAAA#: 1426968 Tattoo: Y242 100% Cat. 1A Red Angus
BD: 2/21/11 Act. BW: 68

MESSMER JOSHUA 019P
MESSMER PACKER S008
MESSMER MILLIE 124P
LMAN KING ROB 8621
MESSMER GINNIE 9862
MESSMER GINNIE 9211

EPDs	
CE	
BW	-2.3
WW	34
YW	74
M	21
TM	38
ME	6
HPG	13
CEM	
STAY	11
Marb	0.16
YG	0.03
CW	42
REA	0.30
Fat	0.04

Serious Red Angus cowmen pay attention here! These three full sisters are the future of our breed. They are moderate-framed, easy-fleshing, sound-structured cattle that have tremendous genetic values. In today's economy with feed costs and the general costs of doing business, this type of cattle will survive. We will sell choice of this trio of heifers.





DAMAR KRISSA Y034

ASA#: 2587217 Tattoo: Y034 Purebred Simmental
BD: 2/17/11 Act. BW: 90



DAMAR KRISTIAN Y058

ASA#: 2587219 Tattoo: Y058 Purebred Simmental
BD: 2/22/11 Act. BW: 85



DAMAR KRISTY Y072

ASA#: 2587220 Tattoo: Y072 Purebred Simmental
BD: 2/26/11 Act. BW: 86

STF MONTANA BLACK KF25
STF DOMINIQUE R170
DLS BLACK BALDIE L170
GW LUCKY STRIKE 147G
HOOKS KARRIE 47K
HOOKS BLACK MANDY 21F

We wanted to do something special with Karrie so we chose Dominique. Boy, did that ever work! This trio of heifers is impressive. They are long-spined, big-middled, youngsters that possess extra eye appeal and charisma. If you need a Simmental show heifer or, better yet, a donor cow that will add a different twist in pedigree, check out these three youngsters.

EPDs	
CE	6.8
BW	1.0
WW	23.6
YW	46.2
MCE	2.7
MM	2.1
MWW	13.9
CEM	14.0
CW	-8.3
YG	-0.05
Marb	0.56
BF	0.01
REA	0.17
API	115.0
TI	67.0



DAMAR KEKE Y308

ASA#: 2587228 Tattoo: Y308 Purebred Simmental
BD: 4/4/11 Act. BW: 79

HOOKS SHEAR FORCE 38K
TRIPLE C L. TAYLOR
LUCAS JOSIE 19K
HC POWER DRIVE 88H
TRIPLE C KARRIE T47K
HOOKS KARRIE 47K

If you focus on genetic values like we do, this young April heifer has got it going for her. We feel our L. Taylor bull is the best Simmental bull available that combines outstanding genetic values with outstanding phenotype. Keke just needs TLC and time she will mature into a profitable investment.

EPDs	
CE	10.4
BW	-1.0
WW	32.5
YW	59.5
MCE	4.2
MM	5.3
MWW	21.5
CEM	21.0
CW	-3.6
YG	-0.10
Marb	0.50
BF	0.03
REA	0.50
API	139.0
TI	74.0





DAMAR KAREN

ASA#:

2587211 Tattoo: Y228 Purebred Simmental
BD: 2/9/11 Act. BW: 96

EPDs	
CE	10.4
BW	-1.0
WW	32.5
YW	59.5
MCE	4.2
MM	5.3
MWW	21.5
CEM	21.0
CW	-3.6
YG	-0.10
Marb	0.50
BF	0.03
REA	0.50
API	139.0
TI	74.0

HOOKS SHEAR FORCE 38K
TRIPLE C L. TAYLOR
LUCAS JOSIE 19K

HC POWER DRIVE 88H
TRIPLE C KARRIE T47K
HOOKS KARRIE 47K

We purchased Karen's, Triple C Karrie T47K, out of Triple C's dispersal. We felt this Power Drive daughter would do a phenomenal job producing Simmental calves. She has done just that. The combination with Taylor works extremely well – not only from phenotypical stand point but genetically as well. Checkout Karen and you will know what we mean.



KARRIE T47K



DAMAR KAYLA Y314

ASA#: Pending Tattoo: Y314 Purebred Simmental
BD: 4/6/11 Act. BW: 76



DAMAR KAYMENNA Y320

ASA#: Pending Tattoo: Y320 Purebred Simmental
BD: 4/9/11 Act. BW: 81

EPDs	
CE	1.4
BW	31.2
WW	52.6
MCE	3.3
MM	-1.7
MWW	13.9
CEM	-4.2
CW	0.08
YG	0.08
Marb	0.28
BF	0.03
REA	-0.08
API	109.1
TI	

DHFJADESSECRETAGENTT501
DHF DRAKKAR W242
DHF STARLIGHT FUSION

HC POWER DRIVE 88H
TRIPLE C KARRIE T47K
HOOKS KARRIE 47K

We bought into the Drakkar bull having high hopes for him. He has produced the kind of females we expected. We didn't have a single bull calf born. These two April-born babies have a tremendous future ahead of them. Whether in the show ring or the pasture, these two will be impressive.



DRAKKAR



Damar Mimi W085 – 2011 Reserve Junior Champion Red Angus Female, National Western Stock Show, Denver, Colo.



The Western Region Champion Heifer Shown by Charles Watson and owned with Damar Farms



Shuey's Amber, owned with Shuey Stock Farms from Nebraska. She was Reserve Grand Champion Heifer at the Iowa State Fair Regional Junior Heifer Show.



107 DAMAR BESSIE Y090

RAAA#: 1426900 Tattoo: Y090 100% Cat. 1A Red Angus
BD: 3/7/11 Act. BW: 75

RED LAZY MC STOUT 30S
RED LAZY MC COWBOY CUT 26U
RED LAZY MC STAR 185M

BJR MONU 4X-303
DFRA LANA 113
BJR LANA 968-481

Bessie is one of the thickest, levelest topped, squarest hiped, widest based young show heifers in the offering. If you are looking for that one heifer that will get it done in the show ring, this big-middled Cowboy Cut would be one on my list.

EPDs	
CE	
BW	-0.8
WW	33
YW	57
M	16
TM	32
ME	
HPG	9
CEM	
STAY	9
Marb	-0.17
YG	-0.04
CW	33
REA	-0.04
Fat	-0.01



107A DAMAR LACING IT UP Y230

RAAA#: 1426908 Tattoo: Y230 100% Cat. 1A Red Angus
BD: 2/11/11 Act. BW: 80

107B DAMAR FANCY LACE Y240

RAAA#: 1426907 Tattoo: Y240 100% Cat. 1A Red Angus
BD: 2/18/11 Act. BW: 76

RD TER-RON FULLY LOADED 540R
RED 6 MILE FULL THROTTLE171T
RED SIX MILE WITZEL 360J

BJR MONU 4X-303
DFRA LANA 113
BJR LANA 968-481

These two full sisters have "cow power" written all over them. They are wide-sprung, clean-fronted, free-moving heifers that are moderate in their frame and right in their kind.

EPDs	
CE	
BW	-0.8
WW	33
YW	63
M	13
TM	29
ME	
HPG	9
CEM	
STAY	9
Marb	-0.12
YG	-0.03
CW	37
REA	-0.07
Fat	-0.02

108 DAMAR ESTHER'S GAL Y202

RAAA#: 1426920 Tattoo: Y202 100% Cat. 1A Red Angus
BD: 1/1/11 Act. BW: 85

MESSMER JOSHUA 019P
MESSMER PACKER S008
MESSMER MILLIE 124P

GLACIER MARIAS 548
MESSMER ESTHER 2254
MESSMER ESTHER A900

Esther's Gal is a high-volume, free-moving Packer daughter that is a maternal sister to Messmer Judge. Also, when Messmers sold choice of their entire heifer crop, a full sister was chosen for over \$5000. Check out Esther's Gal. She comes from a proven cow family and will only get better.

EPDs	
CE	
BW	-0.5
WW	37
YW	67
M	18
TM	36
ME	6
HPG	12
CEM	
STAY	11
Marb	0.48
YG	-0.02
CW	40
REA	0.16
Fat	0.01



108A EMBRYOS - MESSMER ESTHER 2254

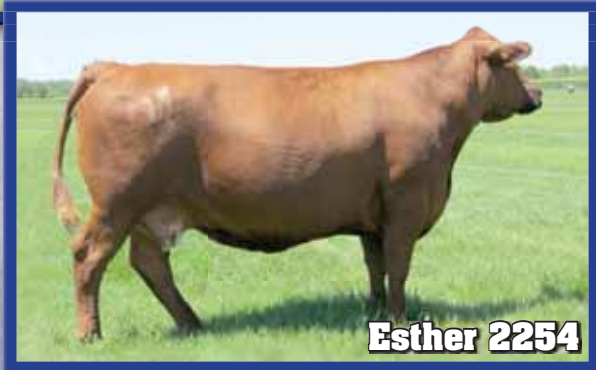
3 or 5 Transferable, Exportable Embryos
Messmer Esther 2254 x Red Ter-Ron Real Deal 01W

RED TER-RON RELOAD 703T
RED TER-RON REAL DEAL 01W
RED K ADAMS SAVANAH 11S

GLACIER MARIAS 548
MESSMER ESTHER 2254
MESSMER ESTHER A900

The Esther cow has surfaced in our donor pen by producing some of the high-gaining, correct individuals that make us money.

EPDs	
CE	0
BW	2.3
WW	29
YW	53
M	16
TM	30
ME	4
HPG	10
CEM	3
STAY	8
Marb	0.20
YG	-0.04
CW	35
REA	-0.05
Fat	-0.02





109

KA DMR FIRECRACKER Y254

ASA#: 2587858 Tattoo: Y254 Purebred Simmental
BD: 3/4/11 Act. BW: 80

109A

KA DMR ROCKETTE Y255

ASA#: 2587860 Tattoo: Y255 Purebred Simmental
BD: 3/7/11 Act. BW: 78

109B

KA DMR SPARKLES Y257

ASA#: 2587859 Tattoo: Y257 Purebred Simmental
BD: 3/2/11 Act. BW: 83

109C

KA DMR FIREWORKS Y258

ASA#: 2587857 Tattoo: Y258 Purebred Simmental
BD: 3/2/11 Act. BW: 81

CNS DREAM ON L186
WAGR DREAM CATCHER 03R
3C MELODY M668 BZ

HC POWER DRIVE 88H
KA TCF INDEPENDENCE S30L
TRIPLE C KRISSIE L30Y

EPDs	
CE	7.4
BW	1.0
WW	26.9
YW	50.9
MCE	3.6
MM	3.3
MWW	16.8
CEM	21.1
CW	-5.6
YG	-0.05
Marb	0.46
BF	0.00
REA	0.14
API	127.0
TI	67.0



These four litter-mate sisters have impressed many individuals this summer. Their mother, Independence, was a sale topper at one of Triple C's sales. Their sire, Dream Catcher, continues to produce the right kind of cattle with superior genetic values. These four heifers are as even as any in the sale. They are structurally correct with plenty of muscle and base width. They are feminine fronted and all have that "show me" look. We will be selling choice.



Koty's senior pictures with Shamoo



DAMAR GOLDIE ROCKS Y265

RAAA#: 1426958 Tattoo: Y265 100% Cat. 1A Red Angus
 BD: 3/14/11 Act. BW: 77

RED FINE LINE MULBERRY 26P
 RED BRYLOR BIG ROCK 85T
 RED CYT CHARITY 10P

RED GEIS PRIME RIB 411
 RED PASQUIA GOLDIE 17J
 BLUE SPRUCE GOLDIE 96E

This year we are blessed to have so many good open heifers to choose from. Goldie Rocks is definitely at the top of that list. Just study her picture. This youngster's future is tremendous. If you need a big-time show heifer, look her up sale day.

EPDs

CE	
BW	0.2
WW	27
YW	61
M	18
TM	31
ME	2
HPG	8
CEM	
STAY	9
Marb	0.05
YG	0.07
CW	38
REA	-0.08
Fat	0.02



DAMAR REAL GOLD Y026

RAAA#: 1426956 Tattoo: Y026 100% Cat. 1A Red Angus
 BD: 2/15/11 Act. BW: 80

RED TER-RON RELOAD 703T
 RED TER-RON REAL DEAL 01W
 RED K ADAMS SAVANAH 11S

RED GEIS PRIME RIB 411
 RED PASQUIA GOLDIE 17J
 BLUE SPRUCE GOLDIE 96E

It's a shame we didn't get pictures of these two heifers. Be sure and look them up on the video – they are really special. They have that look of their mother with extra muscle and base with. We will sell choice with Damar definitely keeping one of these two .

EPDs

CE	
BW	2.9
WW	30
YW	60
M	11
TM	26
ME	0
HPG	10
CEM	
STAY	9
Marb	-0.04
YG	-0.02
CW	41
REA	-0.03
Fat	-0.02



DAMAR REAL GOLDEN Y055

RAAA#: 1426957 Tattoo: Y055 100% Cat. 1A Red Angus
 BD: 2/20/11 Act. BW: 80



Shamoo



DMR/KA RAZZY Y275

ASA#: Pending Tattoo: Y275 Purebred Simmental
 BD: 4/3/11 Act. BW: 83



DMR/KA DAZZLE Y276

ASA#: Pending Tattoo: Y276 Purebred Simmental
 BD: 4/2/11 Act. BW: 83

DHFJADESSECRETAGENTT501
 DHF DRAKKAR W242
 DHF STARLIGHT FUSION
 TRIPLE C ULTIMATE FORCE
 KA SHAMOO U130
 LILY 130P

EPDs
CE
BW 1.5
WW 31.2
YW 52.6
MCE
MM -1.7
MWW 13.9
CEM
CW -4.2
YG 0.08
Marb 0.28
BF 0.03
REA -0.01
API 109.1
TI



We are as excited about these two heifer babies as any offered in this sale. They are sired by the young, exciting three-quarter blood bull, Drakkar. Their mother, Shamoo, was the popular Denver Champion in 2010. If you're looking to put some excitement in your Simmental program, either one of these fancy show heifer babies will get the job done. Study the pictures, study the video, study the genetics and you decide which one you like best. Damar will keep the other.



Miss Rambo 8105



DAMAR MISS WORTHINGTON Y206

RAAA#: 1426996 Tattoo: Y206 100% Cat. 1A Red Angus
BD: 1/2/11 Act. BW: 79



DAMAR EASY ON THE EYES Y207

RAAA#: 1426997 Tattoo: Y207 100% Cat. 1A Red Angus
BD: 1/2/11 Act. BW: 90

PFFR SHAQ 607
BADLANDS NET WORTH 23U
BADLANDS MEDORA 406

4L RAMBO R621
PERKS MISS RAMBO 8105
PJMC MS GOLDEN BOY 305

We are offering a few of these good Net Worth heifers. With his semen being limited, his offspring are only going to become more valuable. Take your choice of these two dark red, January-born heifers. They will both make nice cows that are trim made and structurally correct.

EPDs	
CE	
BW	3.1
WW	48
YW	87
M	8
TM	32
ME	3
HPG	7
CEM	
STAY	8
Marb	0.06
YG	-0.08
CW	57
REA	0.46
Fat	0.00



Lot 113



DAMAR ANNIE LEE Y212

RAAA#: 1426991 Tattoo: Y212 100% Cat. 1A Red Angus
BD: 1/30/11 Act. BW: 82

PIE BILLINGS 487
NBAR HAMLEY S913
NBAR KELLY 913

RED DWAJO GLADIATOR 32L
RED SOO MS ANNIE 3154
RED MEM ICECAP ANNIE 22Z

Annie Lee is a Hamely daughter that we purchased in her mother at Soo Lines dispersal sale. We went up there looking for a new donor for our program. We knew when we saw Annie 509U she was the one. We also purchased her mother which is Annie Lee's mother. You will be hearing great things from the Annie family in the near future at Damar farms.

EPDs	
CE	
BW	-0.3
WW	26
YW	45
M	12
TM	25
ME	4
HPG	
CEM	
STAY	7
Marb	0.09
YG	-0.07
CW	26
REA	0.06
Fat	0.00



Bertha S158



DAMAR MISS BESSIE Y103

RAAA#: 1426963 Tattoo: Y103 100% Cat. 1A Red Angus
BD: 3/11/11 Act. BW: 87



DAMAR STATEMENT'S BEST Y134

RAAA#: 1426974 Tattoo: Y134 100% Cat. 1A Red Angus
BD: 3/18/11 Act. BW: 87

LJC LANCER 806
LJC MISSION STATEMENT P27
LJC HANNAH 106

MESSMER JOSHUA 019P
MESSMER BERTHA S158
MESSMER BERTHA 062P

These two youngsters excite me as much as any two sisters in the sale. From their great genetic values to their killer phenotype, they will be favorites on sale day. They are moderate in their frame, wide in their structure, and soft in their look. I am really proud to have this large of a selection of high-quality heifer calves. Take your pick – we are selling choice.

EPDs	
CE	
BW	-1.0
WW	41
YW	87
M	18
TM	38
ME	5
HPG	15
CEM	
STAY	13
Marb	0.25
YG	-0.20
CW	52
REA	0.55
Fat	-0.03



Bertha's Boy X427

115 DAMAR TAKE ONE Y246

RAAA#: 1426893 Tattoo: Y246 100% Cat. 1A Red Angus
BD: 2/22/11 Act. BW: 79

115A DAMAR SHAKIN IT UP Y247

RAAA#: 1426892 Tattoo: Y247 100% Cat. 1A Red Angus
BD: 2/22/11 Act. BW: 60

BECKTON LANCER F442 T
LJC JAVELIN M08
LJC LOGAN E56 945

BJR FANCY PANTS 355-71L
BJR TIDY BEE 232-140
BJR TIDY BEE 117-4280

The Javelin-sired cattle impress me with their flushing ability and their correctness of feet and legs. The Tidy Bee cow adds the attractive look and the "show me" attitudes. We will sell choice of these two females.



117 DAMAR LINDA'S PACKAGE Y225

RAAA#: 1426952 Tattoo: Y225 100% Cat. 1A Red Angus
BD: 2/5/11 Act. BW: 80

MESSMER JOSHUA 019P
MESSMER PACKER S008
MESSMER MILLIE 124P

BECKTON WARRIOR N645 T1
MESSMER LINDA S129
MESSMER LINDA 2322

Our Messmer Linda cow has surfaced as one with great genetic values. When mated to Packer they become even more impressive. The bull mates to this young heifer are outstanding. This heifer combines all the good traits we need in the Red Angus breed.

118 DAMAR WORKING GAL Y229

RAAA#: 1426990 Tattoo: Y229 100% Cat. 1A Red Angus
BD: 2/10/11 Act. BW: 70

RED FINE LINE MULBERRY 26P
RED BRYLOR BIG ROCK 85T
RED CYT CHARITY 10P

PIE ADVANCE 5520
DAMAR PRIDE U942
DFRA PRIDE M235

Working Gal has been impressive all year. Her mother is one of our favorites. With Working Gal's confirmation, she will be a favorite on sale day.

116 DAMAR MARGARET Y210

RAAA#: 1426925 Tattoo: Y210 100% Cat. 1A Red Angus
BD: 1/10/11 Act. BW: 91

PFFR SHAQ 607
BADLANDS NET WORTH 23U
BADLANDS MEDORA 406

BJR MNU 4X-573
DFRA MARIA M223
MJR MARIA 45-984

Margaret is a high-performing Net Worth daughter that is dark red in color and has that long sleek front like most Net Worths do. Her mother is a very heavy milking Monu 4X daughter that raises a big calf every year.

EPDs	
CE	
BW	4.1
WW	51
YW	87
M	17
TM	42
ME	
HPG	
CEM	
STAY	10
Marb	0.2
YG	0.01
CW	57
REA	0.23
Fat	0.01

EPDs	
CE	
BW	0.7
WW	33
YW	57
M	9
TM	25
ME	4
HPG	5
CEM	
STAY	10
Marb	0.28
YG	-0.19
CW	35
REA	0.24
Fat	-0.04





DAMAR BLON-DEE Y021

RAAA#: 1426807 Tattoo: Y021 100% Cat. 1A Red Angus
BD: 2/13/11 Act. BW: 87

RED TER-RON RELOAD 703T
RED TER-RON REAL DEAL 01W
RED K ADAMS SAVANAH 11S

DFRA ROCKER 425
DFRA BLOCKANA R589
DFRA BLOCKANA 516L

Blon-Dee is one of my favorite Real Deal daughters. She is deep in her kind, moderate in her skeleton and really free moving. She is already halter broke. We showed her at the Iowa State Fair where she stood second in class to the Reserve Grand heifer.

EPDs

CE
BW 3.1
WW 29
YW 54
M 13
TM 27
ME
HPG
CEM
STAY 8
Marb -0.08
YG -0.03
CW 36
REA 0.00
Fat -0.01



DAMAR BEING REAL Y020

RAAA#: 1426794 Tattoo: Y020 100% Cat. 1A Red Angus
BD: 2/13/11 Act. BW: 70

PFFR SHAQ 607
BADLANDS NET WORTH 23U
BADLANDS MEDORA 406

BJR MONU 4X-573
DFRA BARCELONA P410
BJR BARCELONA 2004

Being Real is my pick of the Net Worth heifers. She is long bodied, thick made and extremely attractive. You juniors that need a show heifer – put her on your list.

EPDs

CE
BW -0.2
WW 42
YW 88
M 16
TM 37
ME
HPG
CEM
STAY 11
Marb 0.18
YG -0.03
CW 57
REA 0.17
Fat -0.02



DAMAR BLOCKANNA Y236

RAAA#: 1426804 Tattoo: Y236 100% Cat. 1A Red Angus
BD: 2/16/11 Act. BW: 89

RED FINE LINE MULBERRY 26P
RED BRYLOR BIG ROCK 85T
RED CYT CHARITY 10P

BFCK CHEROKEE CNYN 4912
DFRA BLOCKANA R527
DFRA BLOCKANA 101

These Big Rock daughters are some of my favorites. They are long in their design, free in their movement and very attractive. An old cowboy once said, "If you're gonna feed them, they may as well be good. They all eat the same." Blockanna will be one of those good ones.

EPDs

CE
BW 1.3
WW 31
YW 55
M 20
TM 36
ME
HPG 7
CEM
STAY 11
Marb 0.02
YG 0.01
CW 33
REA 0.08
Fat 0.02



DAMAR TIDY BEE BIG Y237

RAAA#: 1426926 Tattoo: Y237 100% Cat. 1A Red Angus
BD: 2/16/11 Act. BW: 81

RED FINE LINE MULBERRY 26P
RED BRYLOR BIG ROCK 85T
RED CYT CHARITY 10P

DFRA ROCKER 425
DFRA TIDY BEE M234
DFRA TIDY BEE 427

We don't have many Big Rock-sired heifers out of Rocker cows. Maybe we should have more if they're as good as this one. If you can't tell, we really like our Big Rock calves.

EPDs

CE
BW 0.4
WW 30
YW 62
M 17
TM 32
ME
HPG
CEM
STAY 7
Marb 0.02
YG 0.07
CW 38
REA -0.11
Fat 0.01



DAMAR NETTY ROSE Y033

RAAA#: 1426930 Tattoo: Y033 100% Cat. 1A Red Angus
BD: 2/17/11 Act. BW: 85

PFFR SHAQ 607
BADLANDS NET WORTH 23U
BADLANDS MEDORA 406

TPIE LAKOTA II 1086
DFRA ROSELA P429
BJR ROSELA 232B-1119

Netty Rose is a complete heifer being well balanced and free moving. We are excited about our Net Worth calves and think you will be to.

EPDs

CE
BW 2.4
WW 41
YW 72
M 15
TM 35
ME
HPG
CEM
STAY 9
Marb 0.07
YG -0.11
CW 46
REA 0.27
Fat -0.02

124 DAMAR DEVLynn Y038

RAAA#: 1426808 Tattoo: Y038 100% Cat. 1A Red Angus
BD: 2/18/11 Act. BW: 80

RED LAZY MC STOUT 30S
RED LAZY MC COWBOY CUT 26U
RED LAZY MC STAR 185M

PERKS ADVANCE 121R
DFRA PERKS DO S630
BJR DIPY DO 232-929

Devlynn is a thick-bodied Cowboy Cut heifer that is heavy boned and big footed. She has lots of internal dimension and base width that assures us she will be easy fleshing.

EPDs	
CE	
BW	1.3
WW	35
YW	63
M	8
TM	25
ME	
HPG	7
CEM	
STAY	8
Marb	-0.16
YG	-0.04
CW	40
REA	-0.02
Fat	-0.02



125 DAMAR MAKIN A STATEMENT Y036

RAAA#: 1426928 Tattoo: Y036 100% Cat. 1A Red Angus
BD: 2/18/11 Act. BW: 75

LJC LANCER 806
LJC MISSION STATEMENT P27
LJC HANNAH 106

BHR LOGAN 734B
DFRA LAKOTA N330
DFRA LAKOTA 435

Makin A Statement is super long bodied, free moving and easy keeping. We think our Mission Statement heifers are going to make exceptional cows. For sure this one will.

EPDs	
CE	
BW	-1.1
WW	24
YW	54
M	17
TM	29
ME	3
HPG	15
CEM	
STAY	11
Marb	0.28
YG	-0.22
CW	32
REA	0.48
Fat	-0.02



126 DAMAR TILLY Y015

RAAA#: 1426820 Tattoo: Y015 100% Cat. 1A Red Angus
BD: 2/19/11 Act. BW: 95

PFFR SHAQ 607
BADLANDS NET WORTH 23U
BADLANDS MEDORA 406

DFRA MELMON 534L
DFRA TILLY S679
DFRA TILLY M244

Tilly is a Net Worth daughter that possesses the highest growth numbers in the sale. She has that extra body capacity that enables her to gain weight rapidly.

EPDs	
CE	
BW	5.1
WW	64
YW	102
M	20
TM	52
ME	
HPG	
CEM	
STAY	8
Marb	0.12
YG	0.02
CW	64
REA	0.20
Fat	-0.01

127 DAMAR INABERRY Y049

RAAA#: 1426955 Tattoo: Y049 100% Cat. 1A Red Angus
BD: 2/20/11 Act. BW: 78

RED COMPASS MULBERRY 449M
RED FINE LINE MULBERRY 26P
RED DUS FAYETTE 8G
BJR MAKE MY DAY 981
RED MEM INATEX 14H
RED BRYLOR INATEX 37Y

Inaberry is an embryo we purchased. She is extremely sound in her skeleton and moves with freedom. She is an easy-going heifer with a nice attitude.

EPDs	
CE	0
BW	1.3
WW	41
YW	84
M	15
TM	36
ME	3
HPG	6
CEM	4
STAY	7
Marb	0.19
YG	0.12
CW	53
REA	-0.04
Fat	0.03

128 DAMAR ROSALIN Y042

RAAA#: 1426812 Tattoo: Y042 100% Cat. 1A Red Angus
BD: 2/20/11 Act. BW: 90

PFFR SHAQ 607
BADLANDS NET WORTH 23U
BADLANDS MEDORA 406

DFRA TIDY B
DFRA ROSELA S664
DFRA ROSELA 430

Rosalin is a whistle-fronted female that has an attractive look. She has that dark, cherry red color that we all appreciate.

EPDs	
CE	
BW	3.5
WW	43
YW	71
M	17
TM	39
ME	
HPG	
CEM	
STAY	9
Marb	0.20
YG	-0.11
CW	45
REA	0.23
Fat	-0.03





Lot 129



DAMAR TIPPER Y046

RAAA#: 1426799 Tattoo: Y046 100% Cat. 1A Red Angus
BD: 2/20/11 Act. BW: 75

MESSMER JOSHUA 019P
MESSMER PACKER S008
MESSMER MILLIE 124P

BIEBER MAKE MIMI 7249
DFRA MAKE TILLY R501
DFRA TILLY N314

If all the Packer heifers were this nice, every Red Angus cow in the breed would be bred to him. She is long structured, long fronted and very attractive in her appearance. She has positive maternal and carcass traits.

EPDs

CE
BW -1.6
WW 33
YW 64
M 16
TM 33
ME 3
HPG 10
CEM
STAY 10
Marb 0.25
YG -0.02
CW 37
REA 0.15
Fat 0.01



Lot 130



DAMAR HONEY DEW Y060

RAAA#: 1426793 Tattoo: Y060 100% Cat. 1A Red Angus
BD: 2/22/11 Act. BW: 78

RED FINE LINE MULBERRY 26P
RED BRYLOR BIG ROCK 85T
RED CYT CHARITY 10P

TPIE LAKOTA II 1086
DFRA EMARKOTA P418
DFRA EMAR 412

This Big Rock heifer is extended in her skeleton and thick about her muscle. She is clean in her lines and big in her bone.

EPDs

CE
BW -0.5
WW 23
YW 50
M 17
TM 28
ME
HPG
CEM
STAY 7
Marb 0.07
YG 0.01
CW 30
REA -0.12
Fat 0.00



Lot 131



DAMAR MS SUNNY GAL Y064

RAAA#: 1426809 Tattoo: Y064 100% Cat. 1A Red Angus
BD: 2/24/11 Act. BW: 75

MCPHEE PACIFIC PRIDE 4127
DAMAR WYATT W250
DFRA TAROKEE S642

RED YY RED KNIGHT 640F
MLK CRK SUN GAL 614
BJR SUN GAL 4X-561

Sunny Gal and is sired by one of our herd sires at Damar, Damar Wyatt W250. He is a Pacific Pride son that we use exclusively on our purebred cows. This picture does not do her justice. She is deeper and chubbier than she appears. Pay attention the next few years – we will have several sired by Wyatt W250.

EPDs

CE
BW 0.0
WW 39
YW 73
M 10
TM 30
ME 2
HPG 6
CEM
STAY 11
Marb 0.12
YG -0.09
CW 45
REA 0.20
Fat -0.02



Lot 132



DAMAR BLING-BLING Y091

RAAA#: 1426911 Tattoo: Y091 100% Cat. 1A Red Angus
BD: 3/7/11 Act. BW: 84

RED LAZY MC STOUT 30S
RED LAZY MC COWBOY CUT 26U
RED LAZY MC STAR 185M

BJR REDLIGHTNING447-930
DFRA BLOCKANA 101
BJR BLOCKANA 232B-390

Bling-Bling is a typical Cowboy Cut being heavy muscle with big bone. She is deep in her middle and moderate in her frame.

EPDs

CE
BW 1.1
WW 36
YW 64
M 17
TM 35
ME
HPG
CEM
STAY 9
Marb -0.12
YG 0.01
CW 40
REA -0.07
Fat -0.01

133 DAMAR ROCKETTE Y098

RAAA#: 1426811 Tattoo: Y098 100% Cat. 1A Red Angus
BD: 3/10/11 Act. BW: 75

MESSMER JOSHUA 019P
MESSMER PACKER S008
MESSMER MILLIE 124P

LCC MAJOR LEAGUE A502M
DFRA ROCKER S611
BJR ROCKER 1193-353

Rockette is out of my favorite Rocker cow. Check out the genetic values this youngster has. She is lean in her picture but I promise you this – she looks better in her video. She is the most extended in her frame and length of body of any Packer heifer selling. Buy her with confidence. She will only get better.

EPDs	
CE	
BW	-0.6
WW	47
YW	84
M	12
TM	35
ME	5
HPG	11
CEM	
STAY	11
Marb	0.45
YG	0.01
CW	49
REA	0.27
Fat	0.02



134 DAMAR LAKINYA Y109

RAAA#: 1426824 Tattoo: Y109 100% Cat. 1A Red Angus
BD: 3/13/11 Act. BW: 80

RED TER-RON RELOAD 703T
RED TER-RON REAL DEAL 01W
RED K ADAMS SAVANAH 11S

DFRA TIDY B
DFRA LAKINA T766
DFRA LAKINA 523L

Lakinya is one of my favorite Real Deal heifers. Study her picture, study her video – I think this one will be competitive. She is loose structured with big bone and a huge top. She is long and extended and I feel with feed and time, she will only get better.

EPDs	
CE	
BW	2.0
WW	29
YW	57
M	14
TM	28
ME	
HPG	
CEM	
STAY	8
Marb	-0.07
YG	-0.06
CW	38
REA	-0.03
Fat	-0.03



135 DAMAR CHERREAL Y135

RAAA#: 1426828 Tattoo: Y135 100% Cat. 1A Red Angus
BD: 3/18/11 Act. BW: 82

RED TER-RON RELOAD 703T
RED TER-RON REAL DEAL 01W
RED K ADAMS SAVANAH 11S

DFRA VERN P463
DFRA CHERABELLA T759
DFRA CHERABELLE R513

These Real Deal heifers really excite me. They are big middled, high-volume calves that are big boned and are heavy at weaning. It will be fun to watch these heifers mature into cows.

EPDs	
CE	
BW	1.6
WW	25
YW	48
M	16
TM	28
ME	
HPG	
CEM	
STAY	9
Marb	0.01
YG	-0.04
CW	31
REA	-0.09
Fat	-0.02



Lindsay Larson and her Supreme Champion cow-calf pair at the Buffalo Co. Fair.

136 DAMAR SEXY GIRL Y248

ASA#: Pending Tattoo: Y248 Purebred Simmental
BD: 2/24/11 Act. BW: 80

DHFJADESSECRETAGENTT501
DHF DRAKKAR W242
DHF STARLIGHT FUSION

BF OK34 DAYTONA
TRIPLE C SEXY GIRL S026
TRIPLE C GO GIRL K34G

Sexy Girl took a terrible picture. Be sure and watch her video – she's interesting. She is massive boned, big middled and wide based with a sweet front end. Juniors that need a show heifer should check out this black baldy on sale day.

EPDs	
CE	
BW	1.2
WW	31.4
YW	54.7
MCE	
MM	-1.1
MWW	14.7
CEM	
CW	-3.4
YG	0.1
Marb	0.21
BF	0.04
REA	0.06
API	119.95
TI	



137 DAMAR KUDOS Y182

ASA#: 2587225 Tattoo: Y182 Purebred Simmental
BD: 4/2/11 Act. BW: 74

EPDs	
CE	6.6
BW	2.2
WW	25.3
YW	46.2
MCE	2.4
MM	0.8
MWW	13.4
CEM	18.5
CW	-6.6
YG	-0.01
Marb	0.25
BF	0.02
REA	0.13
API	105.0
TI	58.0

STF DOMINANCE T171
HARKERS/JS DOMINATION
GCF MISS CALIENTE

JS BURNING UP 33R
TRIPLE C KUDOS
TRIPLE C NO DOUBT N26L

Kudos has an interesting pedigree. She has national champions on both sides. This young April heifer has a tremendous future. She is super clean fronted with plenty of shape and eye appeal. Check her out on the video – she has potential.



The new barn

138 DAMAR TAYLOR Y238

ASA#: 2587230 Tattoo: Y238 Halfblood Simmental
BD: 2/17/11 Act. BW: 73

EPDs	
CE	
BW	-1.3
WW	29.9
YW	51.8
MCE	
MM	6.9
MWW	21.9
CEM	
CW	-8.7
YG	-0.10
Marb	0.25
BF	0.01
REA	0.28
API	112.0
TI	64.0

HOOKS SHEAR FORCE 38K
TRIPLE C L. TAYLOR
LUCAS JOSIE 19K

P147

We were going to keep these halfblood Taylor daughters until next year but, we decided to offer a select few now. They are truly something special. They are soft made and structurally correct.

139 DAMAR TAYLOR Y234

ASA#: 2589679 Tattoo: Y234 Purebred Simmental
BD: 2/15/11 Act. BW: 77

EPDs	
CE	0.0
BW	-2.3
WW	24.9
YW	50.2
MCE	0.0
MM	-0.7
MWW	11.8
CEM	
CW	-10.8
YG	0.06
Marb	0.43
BF	0.04
REA	-0.04
API	119.0
TI	68.0

HOOKS SHEAR FORCE 38K
TRIPLE C L. TAYLOR
LUCAS JOSIE 19K

BJR REDLIGHTNING447-930
DFRA BLOCKANA 101
BJR BLOCKANA 232B-390

This halfblood heifer is a result of flushing two of our best – the Simmental bull, Triple C L. Taylor and the Red Angus donor, DFRA Blockana 101. We just love these halfbloods. They're fault-free cattle. They have the hybrid vigor to make them more fertile and gain more rapidly. We can't wait to see how good they are as cows.

140 DAMAR MISS PLUS

ASA#: 2587212 Tattoo: Y250 Halfblood Simmental
BD: 2/24/11 Act. BW: 99

EPDs	
CE	
BW	4.4
WW	41.4
YW	68.6
MCE	
MM	1.1
MWW	21.8
CEM	
CW	9.5
YG	0.02
Marb	0.18
BF	0.03
REA	0.26
API	81.0
TI	56.0

HC POWER DRIVE 88H
TRIPLE C POWER PLUS N23L
TRIPLE C SHINEY L23D

P131

We used Power Plus on some of these commercial black cows. They are a bit larger framed but also have more muscle. This particular one is extremely long sided and structurally sound.

141 DAMAR TAYLOR Y264

ASA#: 2587213 Tattoo: Y264 Halfblood Simmental
BD: 3/18/11 Act. BW: 70

EPDs	
CE	
BW	-1.4
WW	29.7
YW	51.5
MCE	
MM	6.9
MWW	21.8
CEM	
CW	-9.1
YG	-0.10
Marb	0.25
BF	0.01
REA	0.28
API	112.0
TI	64.0

HOOKS SHEAR FORCE 38K
TRIPLE C L. TAYLOR
LUCAS JOSIE 19K

P144

Y264 is my favorite of these halfbloods. Look at her picture and watch her video and you will also appreciate her for her balance and softness in a very eye-appealing package.



Lot 140



Lot 141

142 DAMAR TAYLOR Y266

ASA#: 2587215 Tattoo: Y266 Halfblood Simmental
BD: 3/16/11 Act. BW: 81

HOOKS SHEAR FORCE 38K
TRIPLE C L. TAYLOR
LUCAS JOSIE 19K

P79

A tremendous cow prospect here.

EPDs
CE
BW 0.1
WW 33.7
YW 57.6
MCE
MM 6.1
MWW 23.0
CEM
CW -3.3
YG -0.08
Marb 0.25
BF 0.01
REA 0.28
API 106.0
TI 64.0

143 DAMAR TAYLOR Y270

ASA#: 2587216 Tattoo: Y270 Halfblood Simmental
BD: 3/21/11 Act. BW: 80

HOOKS SHEAR FORCE 38K
TRIPLE C L. TAYLOR
LUCAS JOSIE 19K

P252

Y270 is a soft-made, deep-middled one that is structurally correct and easy fleshing.

EPDs
CE
BW -0.1
WW 33.2
YW 56.8
MCE
MM 6.2
MWW 22.8
CEM
CW -4.0
YG -0.08
Marb 0.25
BF 0.01
REA 0.28
API 107.0
TI 64.0

144 DAMAR SHOW ME Y273

ASA#: 2587218 Tattoo: Y273 Halfblood Simmental
BD: 3/23/11 Act. BW: 102

CNS DREAM ON L186
ELLE RED DREAM W42B
ELLE PHARAH P42

Y50

Show Me has been a standout since birth. She is the only red halfblood we are offering. Study her picture and imagine her with her head up. She is like her name says – "show me." When you see her on the video, you will agree.

EPDs
CE
BW 3.3
WW 37.0
YW 61.4
MCE
MM 1.9
MWW 20.4
CEM
CW 3.7
YG -0.01
Marb 0.16
BF 0.00
REA 0.08
API 84.0
TI 55.0



145 DAMAR TAYLOR Y281

ASA#: 2587226 Tattoo: Y281 Halfblood Simmental
BD: 4/2/11 Act. BW: 79

HOOKS SHEAR FORCE 38K
TRIPLE C L. TAYLOR
LUCAS JOSIE 19K

P30

We thought this April-born baby needs to be shown. She is cool in her kind being soft designed, free moving and very eye appealing.

EPDs
CE
BW 0.4
WW 34.4
YW 58.7
MCE
MM 5.9
MWW 23.1
CEM
CW -2.2
YG -0.08
Marb 0.25
BF 0.01
REA 0.28
API 104.0
TI 63.0



Grand Champion Female - Damar Mimi



Champion Pair of Heifers - Damar Mimi & Damar Olivia

Reference Sires



Taylor

#2341606 - Triple C L. Taylor

CE	BW	WW	YW	MCE	MM	MWW	STAY	CW	YG	MARB	BF	REA	API	TI
14.5	-1.8	38.0	64.2	4.3	4.2	23.2	20.0	-2.3	-0.09	0.49	0.02	0.43	144.2	78.6

L. Taylor is our homozygous polled and black main Simmental herd sire. He is the sire of 3 of our 5 bulls in our 2010 Denver Champion Pen of 5 Bulls. Taylor's genetic values are unmatched. Study them as most are in the top 5% of the breed and some in the top 1%. Bring your semen tanks sale day, we are having a semen special on him sale day only!



Dreamworks

#2390164 - DHF Jades Dreamworks

CE	BW	WW	YW	MCE	MM	MWW	STAY	CW	YG	MARB	BF	REA	API	TI
10.4	2.6	44.2	69.6	8.2	-3.8	18.3	14.9	7.2	0.03	0.33	0.03	0.20	113.0	70.8



Anticipation

#1361141 - C-BAR ANTICIPATION 101W

CED	BW	WW	YW	MILK	TM	ME	HPG	CEM	STAY	MARB	YG	CW	REA	FAT
3	-1.0	42	82	20	42	15	7	12	7	0.53	0.02	48	0.14	0.01



Big Rock

#1338929 - Red Brylor Big Rock 85T

CED	BW	WW	YW	MILK	TM	ME	HPG	CEM	STAY	MARB	YG	CW	REA	FAT
3	-1.1	22	57	20	30	3	6	8	7	0.01	0.13	34	-0.15	0.04



Drakkar

#2501206 - DHF Drakkar W242

CE	BW	WW	YW	MCE	MM	MWW	STAY	CW	YG	MARB	BF	REA	API	TI
0.0	27.8	48.0		-3.6	10.3			-9.0	0.12	0.30	0.04	-0.18	106.2	61.1

Reference Sires



Messmer Packer

#1109534 - Messmer Packer S008

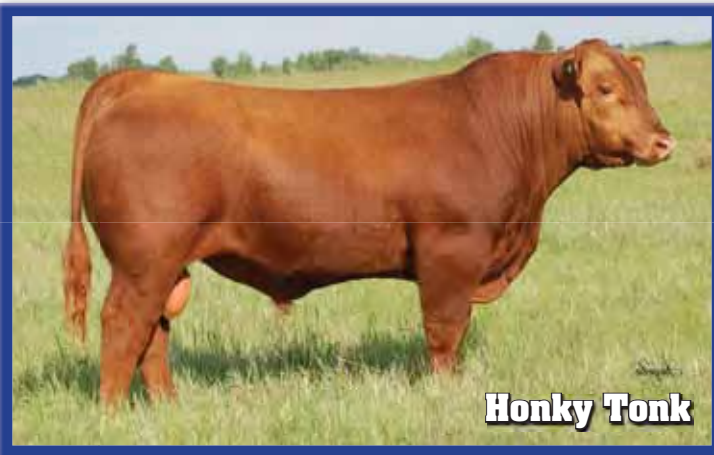
CED	BW	WW	YW	MILK	TM	ME	HPG	CEM	STAY	MARB	YG	CW	REA	FAT
3	-1.4	44	85	11	33	5	13	4	13	0.39	0.01	49	0.35	0.03



Ultimate Force

#2336713 - Triple C Ultimate Force

CE	BW	WW	YW	MCE	MM	MWW	STAY	CW	YG	MARB	BF	REA	API	TI
9.9	0.9	36.6	56.4	5.4	-2.2	16.1	18.7	-3.1	0.02	0.42	0.03	0.10	124.6	70.5



Honky Tonk

#1417389 - Red Lazy MC Honky Tonk 11X

CED	BW	WW	YW	MILK	TM	ME	HPG	CEM	STAY	MARB	YG	CW	REA	FAT
3	1.4	32	58	15	31	1	9	0	9	-0.09	0.03	37	-0.02	0.01



Odin

#2471211 - OLF Odin U5

CE	BW	WW	YW	MCE	MM	MWW	STAY	CW	YG	MARB	BF	REA	API	TI
14.3	-3.2	28.1	58.9	2.0	6.5	20.5	22.4	-6.8	-0.26	0.19	-0.02	0.56	133.8	68.5



Net Worth

#1267422 - Badlands Net Worth 23U

CED	BW	WW	YW	MILK	TM	ME	HPG	CEM	STAY	MARB	YG	CW	REA	FAT
-1	5.5	68	120	15	49	2	11	4	10	0.29	-0.04	80	0.48	-0.02



Power Drive

#2326709 - TCF Power Drive R2412

CE	BW	WW	YW	MCE	MM	MWW	STAY	CW	YG	MARB	BF	REA	API	TI
8.4	1.7	24.1	50.8	3.3	5.7	17.7	20.8	-4.3	-0.05	0.13	0.01	0.17	107.5	56.5

Reference Sires



Card Shark

#1371275 - WEBR TC Card Shark 1015

CED	BW	WW	YW	MILK	TM	ME	HPG	CEM	STAY	MARB	YG	CW	REA	FAT
2	-0.8	35	63	15	32	6	7	4	6	-0.06	0.13	37	-0.09	0.04



Real Deal

#1354320 - Red Ter-Ron Real Deal 01W

CED	BW	WW	YW	MILK	TM	ME	HPG	CEM	STAY	MARB	YG	CW	REA	FAT
-1	4.3	28	56	6	21	0	10	1	7	-0.16	-0.04	40	-0.06	-0.03



Mulberry

#1151261 - Red Fine Line Mulberry 26P

CED	BW	WW	YW	MILK	TM	ME	HPG	CEM	STAY	MARB	YG	CW	REA	FAT
-1	1.3	54	107	18	46	5	4	9	6	0.13	0.19	66	0.04	0.04



Bertha's Boy

#1367942 - Damar Berthas Boy X427

CED	BW	WW	YW	MILK	TM	ME	HPG	CEM	STAY	MARB	YG	CW	REA	FAT
3	1.8	51	97	17	42	3	11	5	13	0.17	-0.14	61	0.34	-0.05



2011 NATIONAL WESTERN STOCK SHOW – DENVER, COLORADO



Preparing for the pen show.



Damar Mimi W085 – Junior Reserve Champion Female



Final touches before the pen show.



Junior Show

Watch & bid online for FREE at

DVAuction
Broadcasting Real-Time Auctions

View the Auction Live!
Bid Online... you're ringside
right at your desk!

Buying online is as easy as 1, 2, 3...

1. Create an account at www.dvauction.com under the "register" tab
2. Apply for bidding approval by clicking on the "details" tab at least 24 hours prior to the auction-a DV representative will notify you once you have been approved
3. Tune in for the sale and make you purchases!

High speed internet is required for successful bidding-be sure to check the lag-time monitor in the top left corner to ensure real-time broadcasts.

Proxy Bidding-if you can't make time to watch the sale, register a proxy bid and let our system represent your bid while you're away. Look for the "proxy bid" tab on the auction listing, and fill in your maximum bids. We'll handle the rest!

Having troubles? During the auction, you can type a message to the operator at any time for assistance. Our full-time support team can also always be reached at (402) 474-5557.



DVAuction
Broadcasting Real-Time Auctions

DVA Rep. Justin Dikoff (605) 290-0635 - email: jdikoff@dvauction.com
Please feel free to contact me with questions about the sale or to view the cattle for you.

Damar Farms
2609 County Road S
Emerald, WI 54013

PRESORTED
FIRST CLASS MAIL
U.S. POSTAGE PAID
EAU CLAIRE, WI
PERMIT NO. 2000



DAMAR FARMS
Best of Both Worlds
Female Sale
Saturday, October 1, 2011

At the Farm • Emerald, Wisconsin • 12 Sharp