



Female Sale

**Monday,
October 31, 2011**

**1:00 pm MDT
Fallon Co. Fairgrounds,
Baker, MT**

Selling **261**

Real-World Red Angus Females

32 Donor-Quality Cows

(Complete dispersion of '00, '01, '02 and '03 models)

1 Reference Sire

(Pasture rights on Beckton Epic R397 K)

25 Bred Heifers

(High-indexing females of 2010 crop)

25 Open Heifers (From top-indexing dams)

178 Commercial Bred Heifers

(Replacement quality, from our top bull customers)



This sale will be broadcast live on the internet.
DVAuction
Broadcasting Real-Time Auctions
Real time bidding & proxy bidding available.

Welcome



We would like to take this opportunity to thank you for taking interest in our program and welcome you to our first attempt at a female sale on our own. We feel that we have assembled a group of females in this offering that possess the needed attributes of which the Red Angus breed was founded upon. These attributes began with functionality. This includes good udder structure, good feet and legs, longevity, fertility and fleshing ability. Included above the basic functional traits are good dispositions, performance and phenotype.

The mature cows that we are dispersing have proven their functionality over the years. Most of our cows will be trailed 5-7 miles at least twice a year and, if they can't make the trek because of feet and leg problems, they don't stick around. We believe that functionality of the udder includes teat diameter, length and placement along with udder suspension but, more importantly, it is not that they are picture perfect but that we won't assist a calf to get started on an udder because of structure problems. The best thing to do is to eliminate the problem regardless of the cow's credentials and paperwork.

None of the cows have missed calving on time which speaks for their longevity, fertility and fleshing ability because they had to perform and breed in our environment with limited feed inputs. Many of these cows are bred AI this year as they have been in the past which also attests to their ability to work in the environment that we challenge them in.

The bred heifers in this offering have been selected through a process that we feel will produce the best cows down the road. We began with 117 heifers and went through their registration papers looking at their weaning ratio, their dam's MPPA and their granddam's MPPA. A majority of these heifers will have a minimum of two out of these three ratios at 100 or better. The few that don't meet that criteria that have a dam or granddam or both that have been exceptional cows which allowed them into the selection of this sale. The majority of these heifers' dams and granddams are still in production and many are offered in this sale.

The open heifers were selected on a basis similar to the bred heifers in that we looked at heifers whose dam and/or granddam had a good production history, and we looked at the heifers that we felt would index well. We excluded any heifers whose dam would be offered in this sale as we wanted to keep them to replace their dam.

We also tried to go through the different sire groups that we are using and offer some heifers from each sire group. Some of these heifers could be considered show prospects but, in the end, all of them should be very functional, highly productive cows with longevity.

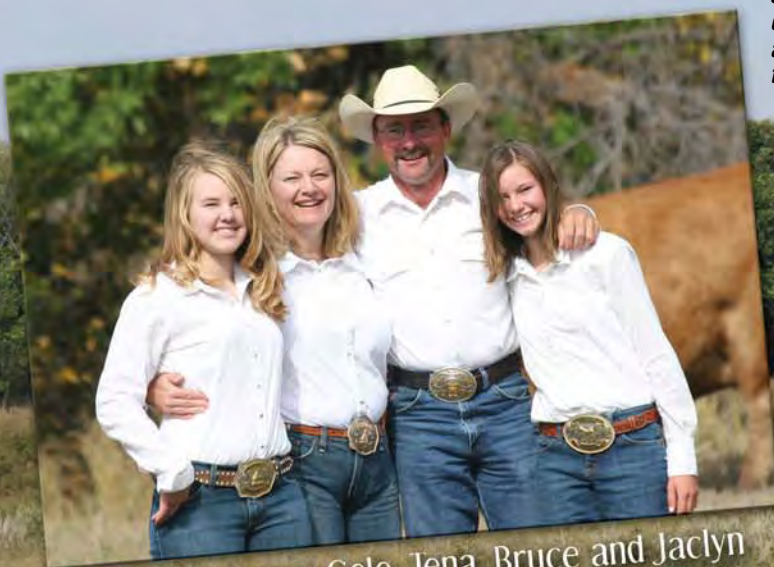
We hope that the selection criteria for these sale females will allow their future owners to be profitable with their purchases and pleased with their functionality, performance and phenotype. More importantly, through this offering, we hope to establish new friendships with those that we come in contact with on account of this sale because at the end of the day, it's the people that we get to meet that makes this business worth while.

God Bless You,
Milk Creek Reds
Bruce, Tena, Cele & Jaclyn Ketchum

*As servants of the Lord,
we are striving to be
stewards of the land and
cattle that He created and
allowed us to manage so
that we may glorify Him.*



Bruce & Tena Ketchum
1721 Plevna Road • Plevna, MT 59344
(406) 778-3819 ketchum@midrivers.com
www.milkcreekreds.com



The Ketchums: Cele, Tena, Bruce and Jaclyn

*Quality Red Angus Cattle
Bred to Function Efficiently*





Welcome



Kyle Gilchrist, Sale Manager

Welcome to the 2011 Milk Creek Red Angus Sale!

The Red Angus enthusiasm continues to mount as this fall's auction season gets into full swing. I have had the privilege to market several great Red Angus bulls and females over the last decade and meet a lot of fantastic cattlemen and woman from across North America. I enjoy managing and auctioneering some of the top sales in the country including the NILE in Billings, Mont., the Bet On Red Sale in Reno, Nev., and the NWSS Mile High Classic Auction in Denver, Colo. To paraphrase, I get to see a lot of great Red Angus cattle in my work and travels.

In early September, my travels took me to Bruce & Tena Ketchum's Milk Creek Ranch of Plevna, Mont. Rarely have I seen as many great Red Angus cows in one place, at one time in my life. This offering is more than a few of the great ones. This offering encompasses a program that I will try to explain to you the best I can.

These cattle run in big country with miles and miles of unobstructed grasslands. The disposition (particularly given these conditions) is beyond excellent. (We got out of the truck and the cattle literally climbed buttes and bluffs to come be with us.) The feet and leg structure has got to be sound with absolutely no tolerance for excuses. After several hours of looking through cattle, I finally saw one with cracked hooves and before I could ask, Bruce said, "This one is going to be culled and is going to town."

The calves are explosive, weaning in the 625-675 lb. range on average with no creep feed. And the udders – these cows have as good of udder suspension, teat placement and size, (as a group) than any single female you can name in the breed. They are good!

With all of these accolades said, the priority question remains. "What is a 9-, 10-, 11- or 12-year-old cow worth?" Only you can decide for your program but let me suggest some food for thought. Isn't a 12-year-old cow with sound feet and legs, a perfect udder, a calm disposition and a proven track record of weaning acceptable calves worth more than a young cow without much data, or a heifer calf? I can't tell you what these mature cows are going to sell for, but I can tell you that they will make as good of donor cow as you will find anywhere. And I can also tell you that the bred heifers and heifer calves in this offering are from one of the greatest Red Angus programs in the world.

I encourage you to come and see these cows for yourself. If you cannot make the trip, I would be glad to discuss them with you and will be at the Milk Creek herd on Sunday evening October 30th through sale time. I would be glad to handle any bids and will represent the cattle honestly and to the best of my ability.

I look forward to seeing you either at the ranch or in Baker, Mont. on October 31st.

Best Regards,
Kyle Gilchrist



View the catalog online at: www.redcows.net
or contact us for your catalog today!!

	Gilchrist Auction Co.	
	Kyle Gilchrist	Kathy LaScala
	641/919-1077	913/486-7184
	redcowseller@yahoo.com	katelascala@gmail.com
A production of Star G Ranch, Inc.		14075 120th St. • Douds, IA 52551

Sale Information



Milk Creek Reds Mature Cow Dispersal

Monday, October 31, 2011

1 p.m. MDT • Fallon Co. Exhibit Hall • Baker, MT

32 Donor-Quality Cows (Complete dispersion of '00, '01, '02 and '03 models)

1 Reference Sire (Pasture rights on Beckton Epic R397 K)

25 Bred Heifers (High-indexing females of 2010 crop)

25 Open Heifers (From top-indexing dams)

178 Commercial Bred Heifers (Replacement quality, from our top bull customers)

SALE DAY LUNCH:

Complimentary lunch and pie will be served at 11:30 a.m.

SALE LOCATION:

Fallon County Exhibit Hall, Fallon County Fairgrounds,
3440 HWY 7 South, Baker Mont. 406-778-2451

RANCH LOCATION:

2093 Plevna Rd S, Plevna, Mont.....406-778-3819 (Home)

CATTLE VIEWING:

The sale cattle can be viewed at the ranch until noon on sale day. Please contact us if you would like to view the cattle prior to Oct. 29 so we can accommodate you. Please join us Sunday evening for a gathering of fun, food and fellowship at the ranch.

SALE ORDER:

The cattle will not be present at the sale location as the sale will be a video auction. Due to high speed internet access the sale will be located at the Fallon County Exhibit Hall. The cattle will sell in Catalog order. The Sale will begin at 1:00 pm.

SALE VIDEO

The video of the sale cattle will be available to view at www.milkcreekreds.com or www.billpelton.com by October 10, 2011. If you don't have high speed internet or are unable to view the video over the internet contact us for a DVD on the sale cattle.

SALE CONTACTS:

Milk Creek Reds

Bruce and Tena Ketchum406-778-3819 (Home)
406-978-3819 (Cell)

Auctioneer:

Scott Weishaar.....701-872-5299

Sale Manager:

Kyle Gilchrist.....641-919-1077

Sale Day Video:

Bill Pelton Livestock.....406-671-5100 (cell)

DV Auction:

Tami McIntosh308-870-3661

ACCOMMODATIONS:

Baker, Mont.

(If planning to stay please reserve early as the oil field activity can cause room shortages.)

Montana Motel.....406-778-3315 or 800-779-8353

Roy's Motel.....406-778-3321

Sagebrush Inn.....406-778-3341

Miles City, Mont.

Comfort Inn.....406-234-3141

Holiday Inn Express406-234-1000

AIR TRANSPORTATION

Billings, Mont.....230 miles

Rapid City, S.D.....190 Miles

Bismark, N.D.....230 miles

PHONE ORDERS

If you are unable to attend the sale and do not have access to the internet, we will take phone orders prior to the sale. If there are several people needing to use this method for the sale we will set up a conference call for you to call into during the sale. Please call a few days in advance if this is needed so that we may set this up and get you the necessary phone number and information ahead of sale time.

TERMS

The terms of the sale are cash. All settlements will be made with clerks of the sale immediately following the conclusion of the sale and before any cattle will be released. We will follow the Terms and Conditions set forth by the Red Angus Association of America. Announcements made by seller on sale day take precedence over any statements printed in this catalog or advertisement.

DELIVERY

For those bringing trailers sale day we will arrange to have the cattle delivered to the Fallon County Fairgrounds immediately after the sale so that you may load your purchases. Please let the registration table know that you would like to load after the sale when you pick up your buyer's number. We will work with customers to arrange for delivery with trucking firms of the buyers choice. If possible, we will try to pool cattle together going similar directions to conserve transportation expenses for buyers.

TRUCKING

Woolly Trucking.....406-670-1877

Lathrup Trucking.....847-426-5009

LIABILITY

All persons who attend the sale and cattle viewing do so at their own risk. The owners assume no liability, legal or otherwise, for any accidents that occur on the sale or viewing premises.

HERD HEALTH PROGRAM

Heifer calves are vaccinated with Vision 7 at branding, Bovishield 5 Gold and One Shot Ultra 7 in September, and will be poured with Dectomax prior to the sale. All sale females will be Bangs vaccinated and will have readable tags and tattoos for shipment. The bred heifers are vaccinated as calves similar to the heifer calves. This spring they were vaccinated with PregGuard 10 and boosted with Pfizer VL5. They will be poured with Dectomax prior to the sale. The mature cows are vaccinated with PregGuard 10 in the spring and will be poured with Dectomax prior to the sale. All bred females were ultrasounded for pregnancy by Fallon County Vet Service and that data is available in this catalog on each lot.

CATALOG & PROMOTION:

Tracey Koester Cow Camp Promotions, (701) 475-2736



Sale Information

WATCH AND BID ONLINE AT DVAuction.com

Can't make the sale?

We are pleased to bring you real-time Internet bidding and a live broadcast of this sale through DV Auction. To watch or bid online, simply complete the following steps:

- Visit the DVAuction web site at www.dvauction.com
- Click on the "Register" tab
- Enter a user name, password and your contact information.
- Click on "Apply for Bidding."
- Select the sale from the list of other auctions and click "Apply".
- Complete the process by filling out the Banking & Lending information requested.

Be sure to include a personal contact at your bank, we will contact them in order to get a credit reference.

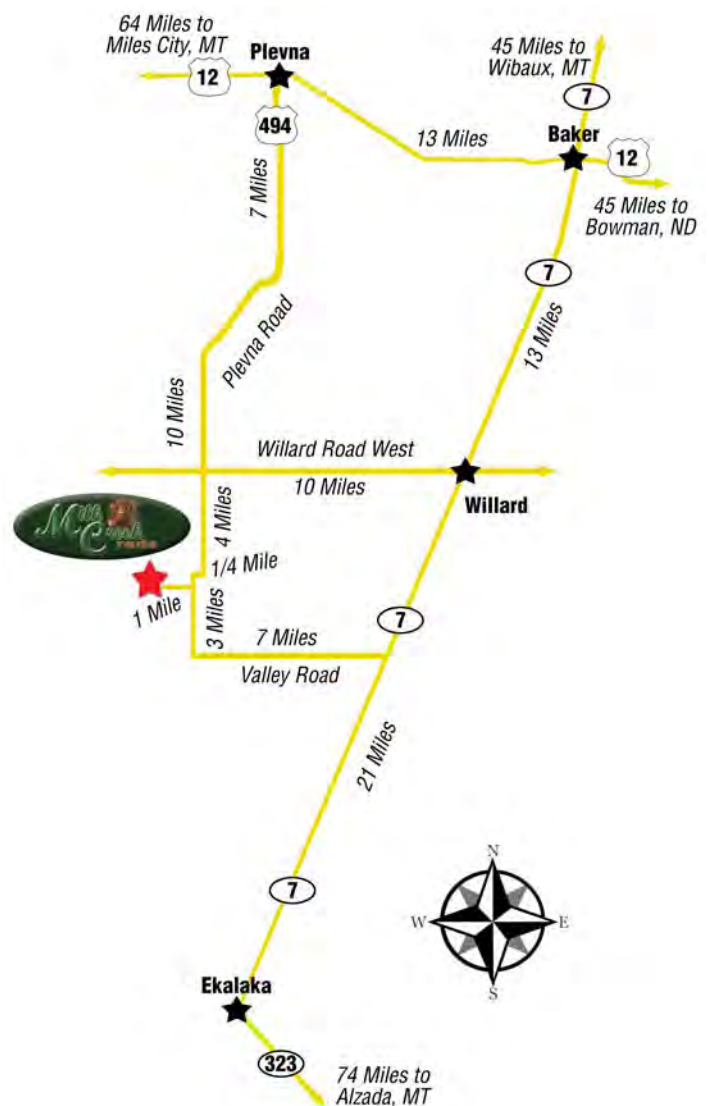
If you would prefer to be approved using your credit card, call (402) 474-5557.

Please be sure to apply for bidding at least a day in advance of the sale-every effort will be made to process your application in a timely manner.

DVAuction will contact you once you have been approved to bid. We do not provide buyer numbers until you have purchased a lot in the sale, and that number is only usable for that auction. After the sale contact the sale owner or manager to make arrangements for payment and delivery of your online purchases.

Please Note: High speed Internet access (DSL, T-1, or Broadband) is required to be able to bid successfully during the sale. If you have any questions, please contact DVAuction at (402) 474-5557 or email support@dvauction.com.

Proxy Bidding: If you can't access a computer during the sale, you can now place a "proxy bid" through DVAuction. Simply follow the instructions listed above, and as the sale date nears there will be a "Proxy Bidding" link under the sale listing on the main page of DVAuction. You can then place the maximum amount that you'd like to bid, and our system will represent your bid just as if you were there.



Can't make the sale?
Watch it LIVE and bid in
real-time on
DVAuction
Broadcasting Real-Time Auctions
www.dvauction.com
 Technical Support
 (402) 474-5557 | support@dvauction.com

Reference Sires



Reference Sire A



A

BECKTON EPIC R397 K

REG. # **1042135** IATTOO: **R397 WF** BD: **3/19/05** **100% 1A**

BECKTON EPIC D404
BECKTON EPIC K F075
 BECKTON BELGA D483 KR

BECKTON SAGA KJ B702
 BECKTON KURUBA B508 PC
 BECKTON KAISER FD 9253
 BECKTON BELGA A036 MB

BECKTON JULIAN GG B571
BECKTON KIT F468 JL
 BECKTON KIT A517 NP

BKT JULIAN 7526 G
 BKT MARTA 9A13 JL
 BKT NEPTUNE 8460 R
 BCHRCH KIT935 35L416

CED	BW	WW	YW	Milk	TM	ME	HPG	CEM	Stay	Marb	YG	CW	REA	Fat	
7	-0.6	49	93	12	36	-8	12	5	15	0.13	0.11	55	0.30	0.05	
TOP BREED %	30%	43%	11%	7%	78%	36%	3%	25%	36%	6%	36%	88%	10%	15%	94%

Selling pasture rights and 1%-non-semen-revenue share of Beckton Epic R397 K. This bull is currently under a lease contract with ABS Global to collect and market semen. See page 19 for more information. He may be viewed at Origen southeast of Billings on I-90, exit 469.



B

5L BLAZIN TRAIL 1336-237V

REG. # **1261640** IATTOO: **237V FLR** BD: **2/23/08** **100% 1A**

5L NORSEMAN KING 2291
5L SIGNATURE 5615
 5L RUBY 199-01

VGW KING OF THE WEST
 NORSEMAN 1312 PJM
 LCHMN GRANDCANYON 1244G
 5L MISS BURKE 72-199

5L BLAZIN HOBO 404-5654
5L SHEILA 343-1336
 5L SHEILA 1341-343

O C C EMBLAZON 854E
 5L SEOLA 282-404
 CKRA LONE MOUNTAIN 106
 5L SHEILA 258-1341

CED	BW	WW	YW	Milk	TM	ME	HPG	CEM	Stay	Marb	YG	CW	REA	Fat
0	1.7	64	114	14	46	4	13	0	8	0.29	0.00	70	0.60	0.02
TOP BREED %	89%	84%	1%	1%	76%	3%	45%	8%	86%	55%	11%	61%	1%	81%

Sire of some of the bred heifers. 237V was our pick of the performance bulls in 5L's 2009 sale. Later that spring RAAA came out with the test for OS and 237V tested as a carrier. We used him anyway and tested his progeny for OS. Progeny are powerful and high performers with above-average muscling and depth.



Reference Sire C



C

5L TRAILBLAZER 1766-188V

REG. # **1261783** IATTOO: **188V FLR** BD: **2/19/08** **100% 1A**

5L NORSEMAN EXPRESS
5L TRAVLIN EXPRESS 1892-6295
 5L SUNSHINE 699-1892

5L NORSEMAN KING 2291
 5L MARTHA 197-159
 SPOKESMAN OF 5L
 5L SUNSHINE 29-699

5L EXPLORER 589-7414
5L SERENA 3234-1766
 5L SERENA X199-3234

O C C HUNTER 928H
 XXX MATTIE 589 HM
 O C C MIDAS 615M
 5L SERENA X6142-199

CED	BW	WW	YW	Milk	TM	ME	HPG	CEM	Stay	Marb	YG	CW	REA	Fat	
8	-2.2	29	53	22	37	0	9	3	12	0.44	-0.11	29	0.22	0.00	
TOP BREED %	18%	16%	65%	69%	17%	33%	15%	60%	58%	21%	4%	15%	75%	20%	45%

Sire and service sire of some of the bred heifers. 188V was our pick of the calving-ease bulls in 5L's 2009 sale. We have used him on heifers the past three seasons and really like his moderate-framed, eye-appealing offspring.



Reference Sires



Reference Sire D



D
MLK CRK EXPRESS 9127
 REG. # **1309400** IATTOO: **9127 BTK** BD: **2/18/09** **100% 1A**

5L NORSEMAN EXPRESS [5L NORSEMAN KING 2291
 5L GRAND EXPRESS 453-5655 [5L MARTHA 197-159
 5L RUBY 01-453 [5L NORSEMAN KING 2291
 [5L RUBY 199-01

BJR PROOF 224-159 [BJR PROOF 20A-5162
 [BJR LAKINA 677-3197

MLK CRK SHEBA 043 [GLACIER CUB 446
 [MLK CRK SHEBA 556
 MLK CRK SHEBA 869

CED	BW	WW	YW	Milk	TM	ME	HPG	CEM	Stay	Marb	YG	CW	REA	Fat
8	-1.7	32	54	19	35	-0	10	2	5	-0.03	-0.15	30	0.40	0.01
TOP BREED %														

Sire to some of the heifer calves. 9127 was purchased in our 2010 sale by Ross Knott and Paul Birnie of Nebraska. We used the bull AI on heifers and cows and we think that you will appreciate the depth of body and fleshing ability of these moderate-framed, high-performance heifers. His dam sells as Lot 1 in the sale.



Reference Sire E



E
MLK CRK KNIGHT 7153
 REG. # **1164885** IATTOO: **7153 BTK** BD: **2/26/07** **100% 1A**

RED YY 23L TOPPER 408D [BJR TOPPER AGAIN 23L
 [RED DEVOLANE ROZINE 8B

RED YY RED KNIGHT 640F [RED LINE FLAME 11N
 [REDLINE GOLDIE 40K
 RED TOP GOLDIE 40U

BJR PROOF 224-159 [BJR PROOF 20A-5162
 [BJR LAKINA 677-3197

MLK CRK SHEBA 043 [GLACIER CUB 446
 [MLK CRK SHEBA 556
 MLK CRK SHEBA 869

CED	BW	WW	YW	Milk	TM	ME	HPG	CEM	Stay	Marb	YG	CW	REA	Fat
6	-0.0	38	55	7	26	-2	7	7	7	0.03	-0.11	32	0.12	-0.02
TOP BREED %														
37%	53%	34%	64%	92%	81%	12%	78%	19%	66%	54%	19%	63%	37%	14%

Sire of some of the heifer calves and service sire to some of the mature cows. 7153 sold in our 2008 sale to Heart River Ranch and Diamond B Red Angus. He sires dark-red, attractive calves that have plenty of performance. Heart River and Diamond B have first-calf daughters in production with very nice udders. His Dam sells as Lot 1.



Reference Sire F



F
MLK CRK EXPRESS 9141
 REG. # **1309401** IATTOO: **9141 BTK** BD: **2/22/09** **100% 1A**

5L NORSEMAN EXPRESS [5L NORSEMAN KING 2291
 5L MARTHA 197-159

5L GRAND EXPRESS 453-5655 [5L NORSEMAN KING 2291
 5L RUBY 01-453 [5L RUBY 199-01

MLK CRK CUB 722 [GLACIER CUB 446
 [MLK CRK LAKOTA 152-HOBO

MLK CRK SHEBA 079 [BJR MONU 4X-303
 [BJR SHEBA 171-878
 BJR SHEBA 4X-551

CED	BW	WW	YW	Milk	TM	ME	HPG	CEM	Stay	Marb	YG	CW	REA	Fat
-1	1.2	39	72	15	34	4	7	-1	8	-0.08	-0.11	45	0.54	0.01
TOP BREED %														

Sire of some of the heifer calves and service sire to some of the mature cows. 9141 is a bull that we retained out of the 2009 calf crop to replace his sire 5L Grand Express. He is a very attractive, moderate-framed bull that packs a lot of muscle and depth. He is also very easy fleshing and this picture was taken one month after he came out of pasture with 80 head of cows. Our open heifer NILE consignment is sired by 9141.

Reference Sires



Reference Sire G



G

LACY KING 9240

REG. # 1356331

TATTOO: 9240 LACY BD: 9/27/09 100% 1A

5L SIGNATURE 5615
LACY SIGNATURE 7006
LACY REBALAS 53L

5L NORSEMAN KING 2291
5L RUBY 199-01
SHOCO RAMBLE 72
LACY MISS LOGAN 12H

CCF GOLD BAR 0251
LACY LAKOTA 7155
LACY MS CHEROKEE 94M

LCHMN GOLD ROBBER 1909E
GMRA PRINCESS 720
BFCK CHEROKEE CNYN 4912
LACY MIS LASS 145K

CED	BW	WW	YW	Milk	TM	ME	HPG	CEM	Stay	Marb	YG	CW	REA	Fat
5	-1.8	28	56	25	39	3	11	0	12	0.23	-0.02	32	0.15	0.02
TOP BREED %														
42%	18%	69%	62%	4%	18%	45%	26%	90%	21%	16%	50%	65%	32%	81%

Service sire to some of the bred heifers and cows. 9240 was purchased last fall from Dale and Kay Lacy of Lacy Red Angus in Missouri. When we visited the Lacys, there were two sire groups of young cows that we really liked (moderate framed, easy fleshing, good feet and udders). 9240 combines those two sires and follows with the moderate frame and above-average muscle.



Reference Sire H



H

MLK CRK REDSTONE

REG. # 1309407

TATTOO: 9102 BTK BD: 2/9/09 100% 1A

BECKTON JULIAN GG B571
TR JULIAN LT142
TR LANA G760

BKT JULIAN 7526 G
BKT MARTA 9A13 JL
BECKTON CODY V E023
BECKTON LANA E828 SC

BECKTON EPIC R397 K
MLK CRK LENA 763
MLK CRK LENA 533

BECKTON EPIC K F075
BECKTON KIT F468 JL
MLK CRK CHATEAU 3101
MLK CRK LENA 313

CED	BW	WW	YW	Milk	TM	ME	HPG	CEM	Stay	Marb	YG	CW	REA	Fat
16	-3.9	38	67	20	39	-1	15	11	15	0.35	0.13	35	-0.02	0.06
TOP BREED %														

Service sire to some of the heifers. Redstone was purchased by ABS in our 2009 sale. We have used him on heifers the past two years and appreciate that he brings a balanced phenotype and EPD package to our breeding program.



Reference Sire I



I

MUSHRUSH IMPRESSIVE CA U236

REG. # 1295159

TATTOO: U236 MUS BD: 9/10/08 100% 1A

BECKTON LANCER F442 T
BUF CRK LANCER R017
BUF CRK JULIET N036

BECKTON LANCER T A664
BKT SUFFEINA A828 DM
BECKTON JULIAN GG B571
BUF CRK PRIMROSE 5679

TR JULIAN LT142
MUSHRUSH MADAM LT R265
MUSHRUSH ROBIN M125

BECKTON JULIAN GG B571
TR LANA G760
BFCK CHEROKEE CNYN 4912
MUSHRUSH ZENA 0165

CED	BW	WW	YW	Milk	TM	ME	HPG	CEM	Stay	Marb	YG	CW	REA	Fat
16	-4.5	43	72	17	38	-1	11	4	18	0.00	0.12	36	0.27	0.08
TOP BREED %														
1%	3%	17%	28%	55%	26%	11%	25%	44%	1%	62%	95%	52%	15%	99%

Sire of some of the heifer calves and service sire to some of the bred heifers and mature cows. Impressive is a Genex sire that was produced by Joe and Connie Murrush in Kansas. He is very moderate, yet thick and deep. I think you will appreciate some of the lower quarter thickness in some of his daughters.



Reference Sires



RIDGE TRADESMAN 6237-0002

REG. # **1379120** IATTOO: **0002 OTT** BD: **1/9/10** **100% 1A**

5L TRADITION 203-6145
5L TRADESMAN 1715-6237
 5L LAKOTA 41C-1715

BIEBER DESIGN 1325-082
PVRA DESIGN LASS 515
 FCC RAMBO 502 133

O C C LEGEND 616L
 5L HAZEL 1821-203

5L TRAVELING GRAND 5113
 BASIN LAKOTA C999

SCHULER DYN 027-082
 RAB INDIGO 1073-982

FCC RAMBO 502
 FN STACKER 5489-4847

CED	BW	WW	YW	Milk	TM	ME	HPG	CEM	Stay	Marb	YG	CW	REA	Fat
7	-0.7	22	50	22	34	3	8	3	8	-0.11	-0.03	30	-0.01	0.00
TOP BREED %														
24%	36%	84%	74%	13%	52%	39%	79%	58%	65%	89%	45%	70%	68%	44%

Service sire of some of the cows. 0002 was purchased from Sandbur Ridge Red Angus in Nebraska this past spring. He offers as much lower quarter and top as I have seen and does it on a moderate frame. He came out of pasture looking as good as he went in, which is impressive for a yearling bull.



TR JULIAN WT951

REG. # **1324422** IATTOO: **WT951 TR2A** BD: **2/20/09** **100% 1A**

BECKTON JULIAN GG B571
TR JULIAN LT151
 MS GEOMETRIC 917

BECKTON CODY V E023
TR LANA G760
 BECKTON LANA E828 SC

BKT JULIAN 7526 G
 BKT MARTA 9A13 JL

BJR YO 121
 MS GEOMETRIC

BECKTON CODY C401
 BECKTON BIRDIE C353 VG

BECKTON SCAMP 8954
 BECKTON LANA B695 SG

CED	BW	WW	YW	Milk	TM	ME	HPG	CEM	Stay	Marb	YG	CW	REA	Fat
14	-3.0	33	62	16	33	4	13	9	13	0.25	0.01	33	0.05	0.02
TOP BREED %														

Sire of some of the heifer calves. We bought 951 in Beckton's 2010 sale to use on heifers. His dam is the Lana G760 cow of Tongue River which produced a herdsire at Mushrush Red Angus in Kansas, called TR Julian LT 142, which we used AI and really like the females that he produced. His sire was purchased by Leachmans the same year and went on to be a high-carccass bull.



Reference Sire L



MLK CRK EPIC 8171

REG. # **1238940** IATTOO: **8171 BTK** BD: **3/4/08** **100% 1A**

BECKTON EPIC K F075
BECKTON EPIC R397 K
 BECKTON KIT F468 JL

GLACIER CHATEAU 744
MLK CRK SHEBA 403
 MLK CRK SHEBA 055

BECKTON EPIC D404
 BECKTON BELGA D483 KR

BECKTON JULIAN GG B571
 BECKTON KIT A517 NP

LMAN KING ROB 8621
 GLACIER REBALA

BUF CRK BARNEY 3474
 MLK CRK SHEBA 556

CED	BW	WW	YW	Milk	TM	ME	HPG	CEM	Stay	Marb	YG	CW	REA	Fat
9	-3.1	35	76	18	36	-1	10	7	14	0.33	0.04	42	0.19	0.04
TOP BREED %														
14%	9%	40%	21%	43%	37%	9%	35%	12%	10%	8%	77%	35%	24%	94%

Sire of some of the heifer calves and bred heifers, as well as service sire to some of the bred heifers. 8171 was purchased in our 2009 sale by Select Sires of Ohio. We have used him on heifers for 3 years now and like the calving ease and performance of his calves. His dam has always brought in calves at the top of the group.

ET brothers that sired bred heifers and heifer calves in the sale. These two 5L bulls we used AI to bring in some of the outcross genetics from the Melhoff program. I think you will like the females that they have produced.



5L TRADESMAN 1715-6237

REG. # **1187423** IATTOO: **6237 FLR7** BD: **2/2/07** **100% 1A**

O C C LEGEND 616L
5L TRADITION 203-6145
 5L HAZEL 1821-203

5L TRAVELING GRAND 5113
5L LAKOTA 41C-1715
 BASIN LAKOTA C999

O C C EMBLAZON 854E
 O C C BLACKBIRD 632J

5L NORSEMAN KING 2291
 5L HAZEL 45-1821

LCHMN GRANDCANYON 1244G
 5L ADINA 525-691 ET

FCC RAMBO 502
 BJR LAKOTA 002-955

CED	BW	WW	YW	Milk	TM	ME	HPG	CEM	Stay	Marb	YG	CW	REA	Fat
12	-1.5	24	66	27	39	10	11	8	8	0.16	0.23	39	-0.12	0.07
TOP BREED %														
11%	29%	75%	41%	8%	25%	90%	33%	13%	60%	32%	99%	44%	78%	98%



5L TRADEMARK 1715-6317

REG. # **1187421** IATTOO: **6317 FLR** BD: **2/3/07** **100% 1A**

O C C LEGEND 616L
5L TRADITION 203-6145
 5L HAZEL 1821-203

5L TRAVELING GRAND 5113
5L LAKOTA 41C-1715
 BASIN LAKOTA C999

O C C EMBLAZON 854E
 O C C BLACKBIRD 632J

5L NORSEMAN KING 2291
 5L HAZEL 45-1821

LCHMN GRANDCANYON 1244G
 5L ADINA 525-691 ET

FCC RAMBO 502
 BJR LAKOTA 002-955

CED	BW	WW	YW	Milk	TM	ME	HPG	CEM	Stay	Marb	YG	CW	REA	Fat
6	2.3	34	72	23	40	10	11	7	8	0.03	-0.04	47	0.25	0.00
TOP BREED %														
32%	92%	46%	28%	13%	17%	93%	28%	12%	60%	55%	42%	19%	16%	45%

Mature Cows



MLK CRK Knight 7153, son

Lot 1



1

MLK CRK SHEBA 043

REG. # 726564 IATTOO: 043 BTK BD: 3/26/00 100% 1A

BJR PROOF 20A-5162
BJR PROOF 224-159
BJR LAKINA 677-3197

GLACIER CUB 446
MLK CRK SHEBA 869
MLK CRK SHEBA 556

RED CR PROOF 20A
BJR GOLDI 355-1122
BJR RAMBLER 5162
BJR LAKINA 50M-191
GLACIER GRIZ 146
GLACIER FRITZ 241
GILCHRIST CHIEF W515
MLK CRK SHEBA 3L-RAM1

BW/Ratio	83	101
WW/Ratio	677	110
PROGENY AVERAGES		
	# of Hd Ratio	
BW	8	93
WW	8	104
MPPA	103.4	

CED	BW	WW	YW	Milk	TM	ME	HPG	CEM	Stay	Marb	YG	CW	REA	Fat
9	-2.5	22	36	23	34	-4	10	5	4	0.06	-0.10	18	-0.01	-0.01
TOP BREED %														
11%	11%	77%	86%	15%	41%	5%	36%	30%	99%	39%	18%	89%	53%	29%

Bred AI on 5/12/11 to C-T GRAND STATEMENT for an expected calving date of 2/14/12, bull.

Lot 1 can easily be identified as one of the most influential cows in the Milk Creek program. She is the dam to not only one, but two national seedstock herd bulls: MLK CRK Knight 7153, used in the Milk Creek, Heart River Ranch and Diamond B Red Angus herds, and MLK CRK Express 9127 in the Sandbur Ridge Red Angus and Birnie Red Angus programs in Nebraska. Sheba 043 is a boxy-made, tank of a cow!



MLK CRK Express 9127, son



2011 Heifer Calves



2

MLK CRK LAKOTA 059

REG. # 726534 IATTOO: 059 BTK BD: 2/13/00 100% 1A

LEACHMAN HEAVENLY 8141
LCC HEAVEN OR BUST1000B
LMAN MARY 9003

GLACIER LOGAN 210
MLK CRK LAKOTA 851
MLK CRK LAKOTA 812-HOBO

LCHMN MDLD HVYWT2463
LEACHMAN DINA 7011
LEACHMAN ROBUST 7222
LEACHMAN MARY 7904
BFLO CR VC CHIEF 105
GLACIER REBALAS
BUF CRK HOBO 1961
PCH LAKOTA 118

BW/Ratio	71	87
WW/Ratio	585	95
PROGENY AVERAGES		
	# of Hd Ratio	
BW	9	95
WW	9	100
MPPA	100.1	

CED	BW	WW	YW	Milk	TM	ME	HPG	CEM	Stay	Marb	YG	CW	REA	Fat
9	-4.5	14	27	20	27	3	14	13	7	0.01	-0.05	10	-0.35	-0.02
TOP BREED %														
11%	3%	93%	94%	31%	76%	36%	3%	1%	71%	52%	39%	96%	99%	13%

Bred AI on 5/12/11 to BECKTON EPIC R397K for an expected calving date of 2/14/12, bull.

A very solid "middle of the road" cow nursing a tremendous heifer calf during my visit to the Milk Creek pastures in September. She is loaded with some of the great Red Angus sires of years past in Heaven Or Bust, Logan and Hobo 1961.



Mature Cows



Lot 3



3

MLK CRK CHIEF 062

REG. # 726579
 TASSEL ROBIN HOOD 173E
 LELAND RBN HOOD173-8050
 LELAND MONA 2X-6074
 RED CR TOP 48D
 MS HAMMEL TOP CHIEF 637
 HAMMEL CHIEFDOM GIRL348

IATTOO: 062 BTK BD: 2/15/00 100% 1A

LMAN ROBIN HOOD 1174B
 TASSEL LARKABA 13A
 LEACHMAN MONU 2X 8096
 BKK DYNALARK 5146-C30
 LEACHMAN RED TOP 8658
 RED CR LARKABA 68Y
 LEACHMAN CHIEFDOM 2X
 MISS BIG VALUE 629

BW/Ratio	74	87
WW/Ratio	608	95
PROGENY AVERAGES		
# of Hd Ratio		
BW	9	103
WW	9	97
MPPA	97.7	

CED	BW	WW	YW	Milk	TM	ME	HPG	CEM	Stay	Marb	YG	CW	REA	Fat
6	-0.5	26	54	15	27	2	10	8	4	-0.05	0.03	32	-0.07	0.01
TOP BREED %														
29%	38%	67%	56%	69%	75%	31%	38%	7%	98%	68%	77%	56%	68%	72%

Bred AI on 5/12/11 to MUSHRUSH IMPRESSIVE U236 for an expected calving date of 2/18/12, heifer.
 MLK CRK Chief 062 is the dam of the highest MPPA cow in the offering (Lot 13) with a 108.4!
 Rarely in auctions do you get the chance to buy "the factory" of the greatest cows in the program,
 but here she is in all of her PROVEN glory – and she is carrying a heifer calf for 2012!



MLK CRK Capstone 901, brother



4

MLK CRK BLOCKANNA 065

REG. # 708250
 BUF CRK BARON 2678
 BUF CRK BARNEY 3474
 OLE SUNFLOWER 359 PB08
 GLACIER LOGAN 210
 MLK CRK BLOCKANNA 768
 MLK CRK BLOCKANNA 576

IATTOO: 065 BTK BD: 2/17/00 100% 1A

BUF CRK BARON 1958
 BUF CRK CARRIE VC888
 RCN COUNTERPOINT 582
 RCN SUNFLOWER-CH 359
 BFLO CR VC CHIEF 105
 GLACIER REBALAS
 GILCHRIST CHIEF W515
 BJR KANA 441-4221

BW/Ratio	92	110
WW/Ratio	681	100
PROGENY AVERAGES		
# of Hd Ratio		
BW	9	97
WW	9	103
MPPA	102.3	

CED	BW	WW	YW	Milk	TM	ME	HPG	CEM	Stay	Marb	YG	CW	REA	Fat
2	0.8	43	80	18	40	18	6	4	10	0.23	0.08	49	-0.32	-0.03
TOP BREED %														
72%	64%	11%	8%	44%	16%	99%	92%	43%	35%	12%	91%	10%	98%	5%

Bred AI on 5/12/11 to C-T GRAND STATEMENT for an expected calving date of 2/14/12.
 Blockana 065 is a maternal sister to MLK CRK Capstone 901, renowned within the breed as one of
 the premier female-making sires. Seth Leachman tried to get Bruce to put this female in the NILE a
 few years ago – she is the largest barreled cow in the offering ... and she is good!



Mature Cows



MLK CRK Express 9141, son



MLK CRK Titliest 4158, son

Lot 5



5

MLK CRK SHEBA 079

REG. # 726570 TATTOO: 079 BTK BD: 2/23/00 100% 1A

GLACIER CUB 446
MLK CRK CUB 722
 MLK CRK LAKOTA 152-HOBO
 BJR MONU 4X-303
BJR SHEBA 4X-551
 BJR SHEBA 171-878

GLACIER GRIZ 146
 GLACIER FRITZ 241
 BUF CRK HOBO 1961
 MLK CRK LAKOTA 802-RAMB
 RED SSS MONU4X 237C
 RCRA SAMANTHA
 BJR RAM 171
 BJR SHEBA 578-149

BW/Ratio	78	96
WW/Ratio	575	93
PROGENY AVERAGES		
	# of Hd	Ratio
BW	8	102
WW	8	100
MPPA	100.3	

CED	BW	WW	YW	Milk	TM	ME	HPG	CEM	Stay	Marb	YG	CW	REA	Fat	
0	-1.8	20	43	18	28	5	4	-1	10	-0.16	-0.11	24	0.06	-0.01	
TOP BREED %	88%	18%	82%	76%	47%	72%	58%	99%	90%	36%	90%	15%	79%	36%	29%

Open.

This is my top pick for best phenotype cow of the day. She is the dam of MLK CRK Express 9141, owned by Milk Creek Reds, and MLK CRK Titliest 4158 that was purchased in the 2005 sale by Green Mountain Red Angus and Accelerated Genetics. At 11 years old, she is sound as a dollar, very smooth in her pattern – a great cow!





Mature Cows



The 2011-2012 JRA Board of Directors (l to r): Shana Morcom, second vice president, Arlington, Wash.; Alyssa Looney, public relations director, Denton, Texas; Cele Ketchum, first vice president, Plevna, Mont.; Laura Daniel, president, LaGrange, Ga.



6

MLK CRK LANA 087

REG. # 726549
TASSEL ROBIN HOOD 173E
LELAND RBN HOOD173-8050
LELAND MONA 2X-6074
BUF CRK CHF 824-1658
MLK CRK LANA 760
MLK CRK LANA 704-HOBO

IATTOO: 087 BTK BD: 3/17/00 100% 1A

LMAN ROBIN HOOD 1174B
TASSEL LARKABA 13A
LEACHMAN MONU 2X 8096
BKK DYNALARK 5146-C30
BUF CRK CHIEF092-824
BFLO CRK CARRIE VC473
BUF CRK HOBO 1961
PCH LANA 107

BW/Ratio	69	83
WW/Ratio	568	89
PROGENY AVERAGES		
# of Hd Ratio		
BW	8	87
WW	8	89
MPPA	90.6	

CED	BW	WW	YW	Milk	TM	ME	HPG	CEM	Stay	Marb	YG	CW	REA	Fat
13	-6.6	3	14	16	18	5	12	6	5	0.29	-0.04	-0	-0.20	0.02
TOP BREED %														
2%	1%	99%	99%	59%	98%	62%	13%	20%	91%	8%	43%	99%	91%	86%

Bred AI on 5/12/11 to MLK CRK KNIGHT 7153 for an expected calving date of 2/14/12, heifer.

This is the smallest cow in the offering with a dynamite udder. Moderation often equates to efficiency and this moderate-sized cow had a very nice calf at side during my September visit. I'd wager that she weans close to 70% of her body weight.



Lot 7



7

MLK CRK ASTER 164

REG. # 803218
BUF CRK BARON 2678
BUF CRK BARNEY 3474
OLE SUNFLOWER 359 PB08
LARSON RED LIGHTNING
MLK CRK ASTER 769
BJR ASTER 50M-151

IATTOO: 164 BTK BD: 2/17/01 100% 1A

BUF CRK BARON 1958
BUF CRK CARRIE VC888
RCN COUNTERPOINT 582
RCN SUNFLOWER-CH 359
LMN IMPRESSIVE ROB1095B
LARSON CRIS 926
RED LINE CYCLONE
BJR ASTER 830-884

BW/Ratio	96	113
WW/Ratio	654	101
PROGENY AVERAGES		
# of Hd Ratio		
BW	7	118
WW	7	102
MPPA	101.3	

CED	BW	WW	YW	Milk	TM	ME	HPG	CEM	Stay	Marb	YG	CW	REA	Fat
-4	5.1	43	72	18	39	6	9	2	7	0.10	-0.01	51	-0.03	-0.03
TOP BREED %														
99%	99%	11%	18%	46%	17%	66%	67%	70%	77%	30%	58%	8%	58%	5%

Bred AI on 5/12/11 to C-T GRAND STATEMENT for an expected calving date of 2/14/12, bull.

Aster 164 is an extremely long-bodied, attractive Barney daughter with very strong EPDs across the board. Her power should come as no mystery with a super Red Lightning dam to back her. Her 2010 bull calf sold into the Chuck Feddes and C-T programs this past spring.



Lot 8



8

MLK CRK TINA 170

REG. # 803183
BJR JR 107-136
MLK CRK CORNERSTONE JC
BJR SUN GAL 4X-561
BJR EASY RIDER 781
BJR TINA 800-866
BJR TINA 413-489

IATTOO: 170 BTK BD: 3/1/01 100% 1A

BJR JR 107
BTH RAMBO MISS 136
BJR MONU 4X-303
BJR SUN GAL 1193-375
BJR HI ROLLER 211
BJR DIPY DO 355-809
BJR RED HAWK 704
BJR TINA 002-158

BW/Ratio	90	105
WW/Ratio	638	99
PROGENY AVERAGES		
# of Hd Ratio		
BW	6	108
WW	7	104
MPPA	103.4	

CED	BW	WW	YW	Milk	TM	ME	HPG	CEM	Stay	Marb	YG	CW	REA	Fat
-1	1.9	39	71	20	40	-6	9	-6	11	0.05	0.09	45	-0.06	0.01
TOP BREED %														
93%	82%	19%	20%	31%	15%	3%	64%	99%	27%	42%	93%	17%	66%	72%

Bred AI on 5/12/11 to MUSHRUSH IMPRESSIVE U236 for an expected calving date of 2/14/12, heifer.2

Lot 8 is a straight Bootjack-bred female (her sire was in dam at their '98 Dispersal). If high efficiency is at the heart of your program, you had better take a look at Tina 170. She has an excellent udder with superior milk production.

Mature Cows



Lot 9



9

MLK CRK LAKOTA 173

REG. # 803230

TATTOO: 173 BTK BD: 3/12/01 100% 1A

BJR JR 107-136
MLK CRK CORNERSTONE JC
BJR SUN GAL 4X-561

BJR JR 107
BTH RAMBO MISS 136
BJR MONU 4X-303
BJR SUN GAL 1193-375

LARSON RED LIGHTNING
MLK CRK LAKOTA 858
MLK CRK LAKOTA 604-HOBO

LMN IMPRESSIVE ROB1095B
LARSON CRIS 926
BUF CRK HOBO 1961
PCH LAKOTA 112

BW/Ratio	88	105
WW/Ratio	706	109
PROGENY AVERAGES		
# of Hd	Ratio	
BW	8	105
WW	8	105
MPPA	104.0	

CED	BW	WW	YW	Milk	TM	ME	HPG	CEM	Stay	Marb	YG	CW	REA	Fat
1	2.0	39	72	24	43	2	8	-3	11	-0.26	0.06	46	-0.15	-0.01
TOP BREED %														
81%	84%	20%	18%	14%	7%	29%	73%	96%	20%	98%	86%	15%	84%	29%

Bred NS to MLK CRK EXPRESS 9141 for an expected calving date of 3/9/12, heifer.

Lakota 173 is a super high-volumed, long-bodied cow with an excellent udder. Her sire – Cornerstone – was injured and put down with just two calf crops. Don't miss your chance at a rare daughter.



Lot 10
and her 2011
heifer calf



10

MLK CRK ASTER 175

REG. # 803193

TATTOO: 175 BTK BD: 3/12/01 100% 1A

BJR JR 107-136
MLK CRK CORNERSTONE JC
BJR SUN GAL 4X-561

BJR JR 107
BTH RAMBO MISS 136
BJR MONU 4X-303
BJR SUN GAL 1193-375

PCH RAMBO 701
MLK CRK ASTER 462
BJR ASTER 50M-151

FCC RAMBO 502
PCH LAKOTA 112
RED LINE CYCLONE
BJR ASTER 830-884

BW/Ratio	76	88
WW/Ratio	627	97
PROGENY AVERAGES		
# of Hd	Ratio	
BW	8	101
WW	8	100
MPPA	99.7	

CED	BW	WW	YW	Milk	TM	ME	HPG	CEM	Stay	Marb	YG	CW	REA	Fat
4	-1.2	25	45	20	32	-3	8	-9	11	0.10	-0.10	26	0.09	-0.01
TOP BREED %														
49%	26%	70%	73%	33%	52%	6%	81%	99%	26%	30%	18%	75%	30%	29%

Bred AI on 5/12/11 to BECKTON EPIC R397K for an expected calving date of 2/14/12, heifer.

This full-bodied Cornerstone daughter is a TANK! Her 2011 heifer calf is a beautifully chiseled, feminine-fronted beast with lots of style. If you like your cows built with high capacity and lots of rib, you will love MLK CRK Aster 175.



Jaclyn and Nickel



11

MLK CRK MALTA 176

REG. # 803278

TATTOO: 176 BTK BD: 3/12/01 100% 1A

BJR JR 107-136
MLK CRK CORNERSTONE JC
BJR SUN GAL 4X-561

BJR JR 107
BTH RAMBO MISS 136
BJR MONU 4X-303
BJR SUN GAL 1193-375

BJR YOGO 355-71L
BJR HMA MLTA 074-544
BJR HMA MLTA334-1191

BJR YOGO 002-104
RD TOWAW BLOCKANA71L
SODAK OSCAR 3334
BJR HOMA MLTA30K-863

BW/Ratio	88	102
WW/Ratio	660	102
PROGENY AVERAGES		
# of Hd	Ratio	
BW	8	105
WW	8	102
MPPA	101.6	

CED	BW	WW	YW	Milk	TM	ME	HPG	CEM	Stay	Marb	YG	CW	REA	Fat
-2	2.5	38	64	20	39	-0	4	-9	14	-0.03	-0.07	42	0.04	-0.03
TOP BREED %														
96%	89%	24%	32%	30%	18%	14%	99%	99%	6%	63%	29%	25%	41%	5%

Bred NS to MLK CRK EXPRESS 9141 for an expected calving date of 3/19/12, heifer.

This hard-working cow's dam was a Milk Creek purchase from the '98 Bootjack Ranch Dispersal. Malta 176 is another super, high-volume cow carrying a heifer calf for 2012.



Mature Cows



Lot 12



12

MLK CRK LAKOTA 189

REG. # 803185
 BJR JR 107-136
 MLK CRK CORNERSTONE JC
 BJR SUN GAL 4X-561
 BUF CRK HOBO 1961
 MLK CRK LAKOTA 152-HOBO
 MLK CRK LAKOTA 802-RAMB

TATTOO: 189 BTK BD: 4/1/01 100% 1A

BJR JR 107
 BTH RAMBO MISS 136
 BJR MONU 4X-303
 BJR SUN GAL 1193-375
 BUF CRK HOBO 1413
 BUF CR CARRIE VC1174
 FCC RAMBO 502
 PCH LAKOTA 112

BW/Ratio	86	100
WW/Ratio	674	100
PROGENY AVERAGES		
# of Hd Ratio		
BW	8	106
WW	8	97
MPPA	97.6	

CED	BW	WW	YW	Milk	TM	ME	HPG	CEM	Stay	Marb	YG	CW	REA	Fat
-3	2.0	37	58	9	28	0	5	-10	11	-0.18	0.13	38	-0.32	0.01
TOP BREED %														
98%	84%	26%	46%	92%	74%	18%	98%	99%	22%	92%	98%	39%	98%	72%

Bred NS to BECKTON EPIC R397K for an expected calving date of 4/2/12, heifer.

At 10 years of age, this cow is a very modern-sized, thick-made, excellent-uddered female. She is most notably a maternal sister to MLK CRK Cub 722 – the bull that was used extensively in the Milk Creek program and nationwide with great success.



Lot 13



MLK CRK Epic 0160, son



13

MLK CRK CHIEF 208

REG. # 853632
 BASIN HOBO 79E
 DOUBLE FORK 079Z

TATTOO: 208 BTK BD: 2/12/02 100% 1A

LELAND RBN HOOD173-8050
 MLK CRK CHIEF 062
 MS HAMMEL TOP CHIEF 637

BUF CRK HOBO 1961
 LMRM 832 8220 9015
 LEACHMAN EBV T007242
 DOUBLE FORK 835
 TASSEL ROBIN HOOD 173E
 LELAND MONA 2X-6074
 RED CR TOP 48D
 HAMMEL CHIEFDOM GIRL348

BW/Ratio	73	90
WW/Ratio	547	92
PROGENY AVERAGES		
# of Hd Ratio		
BW	7	97
WW	6	110
MPPA	108.4	

CED	BW	WW	YW	Milk	TM	ME	HPG	CEM	Stay	Marb	YG	CW	REA	Fat
9	-2.2	25	52	32	45	-2	11	10	11	0.17	0.04	28	-0.08	0.02
TOP BREED %														
11%	14%	69%	60%	1%	4%	8%	30%	2%	22%	19%	80%	68%	71%	86%

Bred AI on 5/12/11 to C-T GRAND STATEMENT for an expected calving date of 2/14/12, bull.

This female should first grab your attention with her 108.4 MPPA. Upon analysis, she is a great cow (my notes even say extreme for phenotype and look!). She produced an unbelievable heifer calf in 2011 for the Milk Creek program. Don't miss her dam selling as Lot 3.



MLK CRK Chief 062, dam

Mature Cows



14

MLK CRK LAKOTA 218

REG. # 853588 IATTOO: 218 BTK BD: 2/18/02 100% 1A

BUF CRK CHF 824-1658
MLK CRK CAPSTONE 901
 MLK CRK BLOCKANNA 768

 LARSON RED LIGHTNING
MLK CRK LAKOTA 953
 MLK CRK LAKOTA 112-RAMB

BUF CRK CHIEF092-824
 BFLO CRK CARIE VC473
 GLACIER LOGAN 210
 MLK CRK BLOCKANNA 576
 LMN IMPRESSIVE ROB1095B
 LARSON CRIS 926
 FCC RAMBO 502
 CFLD LAKOTA 112-914

BW/Ratio	84	100
WW/Ratio	649	103
PROGENY AVERAGES		
# of Hd Ratio		
BW	7	105
WW	6	105
MPPA	104.1	

CED	BW	WW	YW	Milk	TM	ME	HPG	CEM	Stay	Marb	YG	CW	REA	Fat
5	-0.1	33	63	24	40	7	7	1	6	0.02	0.07	38	-0.46	-0.03
TOP BREED %														
38%	46%	40%	35%	12%	13%	80%	89%	79%	84%	49%	89%	37%	99%	5%

Bred NS to LACEY KING 9240 for an expected calving date of 3/7/12, heifer.
 A very heavy-milking (and rare) Capstone daughter that weaned an exceptional 2011 bull calf. There is a long story behind Capstone but due to an office error in releasing 5,000 semen abroad, there was nearly zilch in the U.S. These Capstone daughters are great milkers and should be purchased any time you get the chance!



15

MLK CRK LAKOTA 223

REG. # 853617 IATTOO: 223 BTK BD: 2/20/02 100% 1A

BUF CRK CHF 824-1658
BFCR CHEROKEE CNYN 4912
 MRM 1431 8611 9109

 LELAND RBN HOOD173-8050
MLK CRK LAKOTA 050
 MLK CRK LAKOTA 850

BUF CRK CHIEF092-824
 BFLO CRK CARIE VC473
 BUF CRK CHEROKEE1431
 MRM 8454 8219 8611
 TASSEL ROBIN HOOD 173E
 LELAND MONA 2X-6074
 GLACIER CUB 446
 MLK CRK LAKOTA 651

BW/Ratio	82	100
WW/Ratio	587	99
PROGENY AVERAGES		
# of Hd Ratio		
BW	6	106
WW	6	104
MPPA	102.9	

CED	BW	WW	YW	Milk	TM	ME	HPG	CEM	Stay	Marb	YG	CW	REA	Fat
3	1.1	37	64	19	38	6	10	-6	13	0.16	-0.07	40	0.23	0.00
TOP BREED %														
61%	70%	24%	34%	39%	23%	68%	33%	99%	13%	20%	29%	32%	12%	52%

Bred AI on 5/12/11 to MUSHRUSH IMPRESSIVE U236 for an expected calving date of 2/14/12, heifer.
 Lakota 223 is a moderate-sized Cherokee Canyon daughter with lots of body. Her EPDs, MPPA and full range of stats make her a highly regarded female in the 2011 Milk Creek Mature Cow Dispersal.



Lot 16

Lot 16's granddaughter who sells in the 2011 Prestigious Nile Red Angus Sale



16

MLK CRK LAKINA 228

REG. # 853608 IATTOO: 228 BTK BD: 3/1/02 100% 1A

GLACIER MARIAS 548
MLK CRK MARIAS 013
 MLK CRK LANA 558

 BUF CRK BARNEY 3474
MLK CRK LAKINA 071
 MLK CRK LAKINA 5148-GEM

LCC HEAVEN OR BUST1000B
 GLACIER REBALAS
 PCH RAMBO 701
 MLK CRK LANA 704-HOBO
 BUF CRK BARON 2678
 OLE SUNFLOWER 359 PB08
 PCH YOGOS GEM Y35
 BJR LAKINA 3140-334

BW/Ratio	82	100
WW/Ratio	639	107
PROGENY AVERAGES		
# of Hd Ratio		
BW	7	94
WW	7	101
MPPA	100.5	

CED	BW	WW	YW	Milk	TM	ME	HPG	CEM	Stay	Marb	YG	CW	REA	Fat
6	-2.0	26	48	28	41	4	10	5	9	0.03	-0.05	26	0.07	0.01
TOP BREED %														
29%	16%	67%	68%	3%	12%	48%	50%	30%	45%	47%	39%	74%	34%	72%

Bred AI on 5/12/11 to BECKTON EPIC R397K for an expected calving date of 2/14/12, bull.
 A great "middle of the road" phenotype cow that is much more than average. She is the granddam of Milk Creek's 2011 Nile heifer calf and records a negative BW with a +28 Milk EPD! Lot 16 is a great producing Red Angus female.



17

MLK CRK BONIBEL 229

REG. # 853560 IATTOO: 229 BTK BD: 3/3/02 100% 1A

GLACIER CUB 446
MLK CRK CUB 722
 MLK CRK LAKOTA 152-HOBO

 MLK CRK HOBO 5228
MLK CRK BONIBEL 664
 PCH BONNEBELL Y35

GLACIER GRIZ 146
 GLACIER FRITZ 241
 BUF CRK HOBO 1961
 MLK CRK LAKOTA 802-RAMB
 BUF CRK HOBO 1961
 BJR ASTER 50M-151
 BJR FIRE POW 416
 PCH BONNEBELL1272-828

BW/Ratio	91	106
WW/Ratio	610	97
PROGENY AVERAGES		
# of Hd Ratio		
BW	7	109
WW	7	101
MPPA	100.7	

CED	BW	WW	YW	Milk	TM	ME	HPG	CEM	Stay	Marb	YG	CW	REA	Fat
-4	2.2	36	66	12	30	5	3	2	9	-0.23	-0.04	43	-0.09	-0.04
TOP BREED %														
99%	86%	28%	29%	84%	64%	63%	99%	70%	51%	96%	43%	23%	73%	2%

Bred AI on 5/12/11 to MUSHRUSH IMPRESSIVE U236 for an expected calving date of 2/14/12, heifer.
 Bonibel 229 is a long-bodied, feminine-fronted, no-miss kind of a cow. During my pasture visit in September, she had a sensational heifer calf nursing. Don't miss the opportunity to buy another great female carrying a heifer calf for 2012.



18

MLK CRK RED TOP 232

REG. # 853636 IATTOO: 232 BTK BD: 3/6/02 100% 1A

GLACIER CUB 446
MLK CRK CUB 722
 MLK CRK LAKOTA 152-HOBO

 RED CR TOP 48D
MS HAMMEL RED TOP 6309
 RRR MISS CANADA 664

GLACIER GRIZ 146
 GLACIER FRITZ 241
 BUF CRK HOBO 1961
 MLK CRK LAKOTA 802-RAMB
 LEACHMAN RED TOP 8658
 RED CR LARKABA 68Y
 ODP 25P 4124
 HAMMEL POWER 308

BW/Ratio	80	93
WW/Ratio	550	87
PROGENY AVERAGES		
# of Hd Ratio		
BW	7	96
WW	7	95
MPPA	96.2	

CED	BW	WW	YW	Milk	TM	ME	HPG	CEM	Stay	Marb	YG	CW	REA	Fat
1	-2.8	15	36	11	18	5	2	0	8	-0.12	-0.05	19	-0.15	-0.01
TOP BREED %														
81%	9%	92%	86%	88%	97%	62%	99%	86%	60%	84%	39%	89%	84%	29%

Bred NS to BECKTON EPIC R397K for an expected calving date of 3/19/12, bull.
 Lot 18 is a very attractive, excellent-uddered Cub daughter. The value of the 8-, 9-, 10- and 11-year-olds in this offering is immeasurable when it comes to your future operation. With proven performance, sound feet, legs and udder, and the added element of longevity, these older cows' calves should be the building blocks for any serious Red Angus operation.



Mature Cows



Lot 19



19

MLK CRK LAKOTA 239

REG. # 853599

TATTOO: 239 BTK BD: 3/16/02 100% 1A

BJR JR 107-136
MLK CRK CORNERSTONE JC
BJR SUN GAL 4X-561

BJR JR 107
BTH RAMBO MISS 136
BJR MONU 4X-303
BJR SUN GAL 1193-375

BUF CRK CHF 824-1658
MLK CRK LAKOTA 950
MLK CRK LAKOTA 773

BUF CRK CHIEF092-824
BFLO CRK CARIE VC473
GLACIER CUB 446
MLK CRK LAKOTA 604-CENT

BW/Ratio	75	90
WW/Ratio	644	102
PROGENY AVERAGES		
# of Hd Ratio		
BW	7	102
WW	7	98
MPPA	98.7	

CED	BW	WW	YW	Milk	TM	ME	HPG	CEM	Stay	Marb	YG	CW	REA	Fat
3	-0.2	32	60	21	37	-2	9	-7	11	-0.09	-0.01	36	-0.13	-0.02
TOP BREED %														
61%	44%	42%	42%	26%	26%	9%	55%	99%	26%	78%	58%	44%	81%	13%

Bred AI on 5/12/11 to BECKTON EPIC R397K for an expected calving date of 2/14/12, heifer.

Here is a really good cow with an excellent udder, sound feet and the final Cornerstone daughter of the offering. When we walked up to her in the pasture, Bruce's comment was "I'd take a pasture full of these." If you're building females, she is carrying a heifer calf for 2012!



Cele and Jac showing in the Red Angus Overall Class



20

MLK CRK MELODY 245

REG. # 853650

TATTOO: 245 BTK BD: 3/22/02 100% 1A

BUF CRK CHF 824-1658
BFCK CHEROKEE CNYN 4912
MRM 1431 8611 9109

BUF CRK CHIEF092-824
BFLO CRK CARIE VC473
BUF CRK CHEROKEE1431
MRM 8454 8219 8611

BJR RAMBO 5202
BJR MELODY 519-923
BJR MELODY 117-726

FCC RAMBO 502
BJR HNK GAL 1272-312
BJR FIRE-MAN 0150
BJR MELODY 578-5243

BW/Ratio	87	
WW/Ratio	614	
PROGENY AVERAGES		
# of Hd Ratio		
BW	7	86
WW	7	96
MPPA	96.7	

CED	BW	WW	YW	Milk	TM	ME	HPG	CEM	Stay	Marb	YG	CW	REA	Fat
12	-4.2	16	26	18	26	-1	7	-3	13	0.07	-0.17	10	0.09	-0.01
TOP BREED %														
3%	3%	91%	94%	47%	81%	11%	86%	96%	12%	37%	4%	97%	30%	29%

Bred NS to MLK CRK EXPRESS 9141 for an expected calving date of 3/5/12, heifer.

Melody 245 is a moderate-sized, high-efficiency cow. With feed costs soaring, efficiency should be a major component in every beef operation in the country. Lot 20 is just the kind of cow to keep profitability in your program.



Lot 21



21

MLK CRK LAKOTA 301

REG. # 954180

TATTOO: 301 BTK BD: 2/9/03 100% 1A

BUF CRK BARNEY 3474
MLK CRK FOUNDATION 110
MLK CRK LAKOTA 850

BUF CRK BARON 2678
LOLE SUNFLOWER 359 PB08
GLACIER CUB 446
MLK CRK LAKOTA 651

FCC RAMBO 502
MLK CRK LAKOTA 112-RAMB
CFLD LAKOTA 112-914

CV FOUR TIMES
COPPER LASS 2392
RCN DYNAMO 614
CAWFIELD LAKOTA 914

BW/Ratio	67	
WW/Ratio	579	
PROGENY AVERAGES		
# of Hd Ratio		
BW	6	95
WW	6	96
MPPA	96.9	

CED	BW	WW	YW	Milk	TM	ME	HPG	CEM	Stay	Marb	YG	CW	REA	Fat
11	-3.9	18	43	28	37	13	6	8	9	0.26	-0.06	21	-0.33	-0.04
TOP BREED %														
5%	4%	87%	76%	3%	26%	98%	93%	7%	40%	10%	34%	85%	99%	2%

Bred NS to RIDGE TRADESMAN 0002 for an expected calving date of 3/13/12, heifer.

Lakota 301 has super phenotype with excellent rib shape, great feet and an excellent udder. Her MPPA was wrecked due to an injured calf going onto her record a couple of years ago with a ratio in the 80s - she will out-produce her numbers.

Mature Cows



Lot 22



22

MLK CRK ASTER 307

REG. # 898755

IATTOO: 307 BTK BD: 2/12/03 100% 1A

BUF CRK CHF 824-1658
MLK CRK CAPSTONE 901
MLK CRK BLOCKANNA 768

BUF CRK CHIEF092-824
BFLO CRK CARIE VC473
GLACIER LOGAN 210
MLK CRK BLOCKANNA 576

BUF CRK BARNEY 3474
MLK CRK ASTER 164
MLK CRK ASTER 769

BUF CRK BARON 2678
OLE SUNFLOWER 359 PB08
LARSON RED LIGHTNING
BJR ASTER 50M-151

BW/Ratio	80	98
WW/Ratio	681	102
PROGENY AVERAGES		
# of Hd Ratio		
BW	6	108
WW	6	105
MPPA	104.0	

CED	BW	WW	YW	Milk	TM	ME	HPG	CEM	Stay	Marb	YG	CW	REA	Fat
2	2.3	48	86	18	43	7	9	2	6	0.22	0.09	55	-0.25	-0.02
TOP BREED %														
72%	87%	4%	4%	44%	8%	81%	55%	70%	80%	13%	93%	4%	95%	13%

Open.

Lot 22 came up open at preg check time and offers a proven cow ready to flush NOW! One of the few Capstone daughters in existence today, she is a beautifully clean-fronted cow with an excellent udder. With her top 4% of the breed status for WW, YW & CW, she would make a powerful donor matron for any program.



23

MLK CRK LANA 311

REG. # 954181

IATTOO: 311 BTK BD: 2/13/03 100% 1A

LMAN KING ROB 8621
GLACIER CHATEAU 744
GLACIER REBALA

LEACHMAN ROBUST 7222
LEACHMAN ELEANOR
LCHMN MDLD HVYWT2463
GLACIER REBALAS

BUF CRK HOBO 1961
MLK CRK LANA 704-HOBO
PCH LANA 107

BUF CRK HOBO 1413
BUF CR CARRIE VC1174
ALALTA ACRES THOR 9S
BJR LANA 830-961

BW/Ratio	63	
WW/Ratio	537	
PROGENY AVERAGES		
# of Hd Ratio		
BW	6	89
WW	6	97
MPPA	97.9	

CED	BW	WW	YW	Milk	TM	ME	HPG	CEM	Stay	Marb	YG	CW	REA	Fat
10	-5.2	18	37	21	30	6	12	8	10	-0.04	-0.10	15	0.06	0.00
TOP BREED %														
7%	2%	87%	85%	28%	65%	67%	11%	7%	29%	66%	18%	93%	36%	52%

Bred NS to BECKTON EPIC R397K for an expected calving date of 3/7/12, bull.

Lana 311 is a moderate-sized, boxy-built, high-efficiency cow. She isn't your ordinary Chateau daughter for looks, but definitely has the maternal characteristics you would expect. Her dam has that incredible udder design of the Hobo 1961 daughters and comes from the legendary Lana cow family from the Bootjack Ranch era of the '90s.



Cele and Hazer



24

MLK CRK LENA 313

REG. # 898718

IATTOO: 313 BTK BD: 2/14/03 100% 1A

BUF CRK CHF 824-1658
MLK CRK CAPSTONE 901
MLK CRK BLOCKANNA 768

BUF CRK CHIEF092-824
BFLO CRK CARIE VC473
GLACIER LOGAN 210
MLK CRK BLOCKANNA 576

BJR CENT 1081
BJR LENA 1081-921
BJR LENA 2476-5210

BJR CENTENNIAL 800
BJR LAKINA 355-3197
BIEBER TOPPER 2476
BJR LENA 355-3196

BW/Ratio	79	92
WW/Ratio	694	107
PROGENY AVERAGES		
# of Hd Ratio		
BW	6	103
WW	6	101
MPPA	100.7	

CED	BW	WW	YW	Milk	TM	ME	HPG	CEM	Stay	Marb	YG	CW	REA	Fat
5	-0.0	41	71	18	38	7	9	2	7	0.10	0.04	43	-0.15	-0.01
TOP BREED %														
38%	48%	15%	19%	47%	20%	75%	65%	70%	68%	30%	80%	23%	84%	29%

Bred AI on 5/12/11 to MUSHRUSH IMPRESSIVE U236 for an expected calving date of 2/14/12, heifer.

Another really good-uddered, long-bodied Capstone daughter. As mentioned earlier, these Capstone daughters are really good and really hard to find due to shipping all available semen abroad on an office clerical error - get 'em while you can! Her dam was a purchase from the '98 Bootjack Ranch Dispersal Auction.



25

MLK CRK LAKOTA 316

REG. # 898770

IATTOO: 316 BTK BD: 2/14/03 100% 1A

LMAN KING ROB 8621
GLACIER CHATEAU 744
GLACIER REBALA

LEACHMAN ROBUST 7222
LEACHMAN ELEANOR
LCHMN MDLD HVYWT2463
GLACIER REBALAS

MLK CRK CORNERSTONE JC
MLK CRK LAKOTA 189
MLK CRK LAKOTA 152-HOBO

BJR JR 107-136
BJR SUN GAL 4X-561
BUF CRK HOBO 1961
MLK CRK LAKOTA 802-RAMB

BW/Ratio	87	107
WW/Ratio	643	97
PROGENY AVERAGES		
# of Hd Ratio		
BW	5	110
WW	5	105
MPPA	104.2	

CED	BW	WW	YW	Milk	TM	ME	HPG	CEM	Stay	Marb	YG	CW	REA	Fat
-6	2.3	41	73	17	37	6	8	-3	11	-0.09	0.10	47	-0.04	0.02
TOP BREED %														
99%	87%	14%	17%	57%	25%	71%	72%	96%	20%	78%	94%	14%	61%	86%

Bred AI on 5/12/11 to C-T GRAND STATEMENT for an expected calving date of 2/14/12, bull.

This is a typical Chateau daughter with a feminine, extended front and long body. She is very smooth in her makeup and comes from the cow family that produced MLK CRK Cub 722. Her dam sells as Lot 12.



Mature Cows



Lot 26



26

MLK CRK MALTA 319

REG. # 898763 TATTOO: 319 BTK BD: 2/16/03 100% 1A

GLACIER CUB 446
MLK CRK CUB 722
 MLK CRK LAKOTA 152-HOBO
 MLK CRK CORNERSTONE JC
MLK CRK MALTA 176
 BJR HMA MLTA 074-544

GLACIER GRIZ 146
 GLACIER FRITZ 241
 BUF CRK HOBO 1961
 MLK CRK LAKOTA 802-RAMB
 BJR JR 107-136
 BJR SUN GAL 4X-561
 BJR YOGO 355-71L
 BJR HMA MLTA334-1191

BW/Ratio	82	101
WW/Ratio	660	99
PROGENY AVERAGES		
# of Hd Ratio		
BW	5	107
WW	5	107
MPPA	105.7	

CED	BW	WW	YW	Milk	TM	ME	HPG	CEM	Stay	Marb	YG	CW	REA	Fat
-8	1.6	41	74	21	42	7	2	-7	12	-0.10	-0.01	47	-0.06	-0.03
TOP BREED %														
99%	78%	15%	15%	25%	10%	74%	99%	99%	15%	80%	58%	14%	66%	5%

Bred NS to HOLDEN LJ 924 for an expected calving date of 2/28/12, heifer.

Malta 319 is a stout-made, straight-topped cow with lots of capacity. An exceptional set of EPDs across the board along with a 105.7 MPPA make this female one of the top prospects to watch on sale day!



Lot 27



27

MLK CRK LAKOTA 329

REG. # 898725 TATTOO: 329 BTK BD: 2/25/03 100% 1A

BFLO CR VC CHIEF 105
GLACIER LOGAN 210
 GLACIER REBALAS
 LMAN KING ROB 8621
MLK CRK LAKOTA 021
 MLK CRK LAKOTA 152-HOBO

OK DOUBLE CHIEF 4430
 LMD MADCAP RC237
 CREEK SIDE COPPER
 GLACIER HI-RB-LS
 LEACHMAN ROBUST 7222
 LEACHMAN ELEANOR
 BUF CRK HOBO 1961
 MLK CRK LAKOTA 802-RAMB

BW/Ratio	77	92
WW/Ratio	598	92
PROGENY AVERAGES		
# of Hd Ratio		
BW	6	94
WW	6	100
MPPA	100.1	

CED	BW	WW	YW	Milk	TM	ME	HPG	CEM	Stay	Marb	YG	CW	REA	Fat
2	-2.4	21	43	20	30	10	9	11	13	0.22	-0.03	23	-0.07	0.00
TOP BREED %														
72%	12%	80%	76%	35%	63%	92%	68%	1%	12%	13%	49%	81%	68%	52%

Bred NS to BECKTON EPIC R397K for an expected calving date of 3/7/12, bull.

This super Logan 210 daughter is smooth made and, simply put, an excellent Red Angus cow. Her dam is a maternal sister to MLK CRK Cub 722 by King Rob. If you study pedigrees and remember the really great bulls of the breed from years past, Lot 27 will be on your "hit list" on sale day.



Lot 28



28

MLK CRK THELMA 331

REG. # 898776 TATTOO: 331 BTK BD: 2/27/03 100% 1A

LMAN KING ROB 8621
GLACIER CHATEAU 744
 GLACIER REBALAS
 BUF CRK HOBO 1961
MLK CRK THELMA 179-HOBO
 MLK CRK THELMA 731-ZORO

LEACHMAN ROBUST 7222
 LEACHMAN ELEANOR
 LCHMN MDLD HVYWT2463
 GLACIER REBALAS
 BUF CRK HOBO 1413
 BUF CR CARRIE VC1174
 RD ZORO OF JHE
 BJR THELMA 1272-167

BW/Ratio	91	107
WW/Ratio	659	101
PROGENY AVERAGES		
# of Hd Ratio		
BW	6	96
WW	6	102
MPPA	101.3	

CED	BW	WW	YW	Milk	TM	ME	HPG	CEM	Stay	Marb	YG	CW	REA	Fat
4	-0.1	31	70	19	35	8	11	9	10	0.00	0.01	43	0.16	0.02
TOP BREED %														
49%	46%	47%	22%	37%	38%	84%	20%	4%	34%	55%	68%	24%	20%	86%

Bred AI on 5/12/11 to BECKTON EPIC R397K for an expected calving date of 2/14/12, heifer.

Thelma 331 is a powerful cow with a very nice udder. In the September pasture tour, she was touting a splendid heifer calf at side that should drive her MPPA even higher. Note she is carrying a heifer calf for 2012 delivery.

Open Heifers



Lot 29



29

SIXE MS BOEING

REG. # 931158

TATTOO: 331 SIXE BD: 3/15/03 100% 1A

GLACIER LOGAN 210
SIXL BOEING 747
MISS RHP VAN 127

BFLO CR VC CHIEF 105
GLACIER REBALAS
BHR VAN 840
MISS CHIEF 522

RED FLYING K CHIEF 7U
MS RED FLYING EMULOUS
MISS EMULOUS 558

PBC D0202 6M H0904
RED FLYING K PRIDE 18H
STEWARTS PATRIOT
MISS EMULOUS 351

BW/Ratio	68	90
WW/Ratio	606	99
PROGENY AVERAGES		
# of Hd Ratio		
BW	6	100
WW	5	101
MPPA	100.5	

CED	BW	WW	YW	Milk	TM	ME	HPG	CEM	Stay	Marb	YG	CW	REA	Fat
5	-1.8	13	32	24	31	3	9	7	11	0.11	-0.04	18	-0.08	0.01
TOP BREED %														
38%	18%	94%	90%	11%	60%	34%	55%	12%	25%	29%	43%	90%	71%	72%

Bred NS to RIDGE TRADESMAN 0002 for an expected calving date of 3/7/12, bull.

Lot 29 was a purchase from Lars Hanson via the North Dakota Red Select Sale. She has been a good, solid producer and stood the test of the Milk Creek pastures with a 100.5 MPPA. With Logan 210 and H0904 in the pedigree, Ms Boeing is an easy-fleshing female.



Lot 30



30

MLK CRK SHEBA 333

REG. # 898788

TATTOO: 333 BTK BD: 3/3/03 100% 1A

LMAN KING ROB 8621
GLACIER CHATEAU 744
GLACIER REBALA

LEACHMAN ROBUST 7222
LEACHMAN ELEANOR
LCHMN MDLD HVYWT2463
GLACIER REBALAS

MLK CRK HOBO 5228
MLK CRK SHEBA 655
MLK CRK SHEBA 3L-RAM2

BUF CRK HOBO 1961
BJR ASTER 50M-151
FCC RAMBO 502
RED LINE SHEBA 3L

BW/Ratio	97	114
WW/Ratio	565	87
PROGENY AVERAGES		
# of Hd Ratio		
BW	6	114
WW	5	108
MPPA	105.8	

CED	BW	WW	YW	Milk	TM	ME	HPG	CEM	Stay	Marb	YG	CW	REA	Fat
0	2.0	31	63	17	32	9	11	8	10	-0.08	0.02	42	0.07	0.01
TOP BREED %														
88%	84%	47%	34%	57%	53%	88%	25%	7%	34%	76%	73%	26%	34%	72%

Bred AI on 5/12/11 to C-T GRAND STATEMENT for an expected calving date of 2/14/12, heifer.

Sheba 333 is a larger volumed, long-bodied, attractive cow with an excellent udder! Her 2012 heifer calf by Grand Statement should be an exciting event for the operation that gets to take her home.



Lot 31



31

MLK CRK EMUMAR 336

REG. # 898819

TATTOO: 336 BTK BD: 3/8/03 100% 1A

SHOCO SIR ROBIN
VGW TITLEIST 1106
VGW LIGHT-STAR 9721

LMAN ROBIN HOOD 1174B
LVDAR BARLEE GB 3
LARSON RED LIGHTNING
VGW HEAVY-STAR 9101

BJR JR 107-136
MLK CRK EMU MAR 951
BJR EMU-MAR 293-112

BJR JR 107
BTH RAMBO MISS 136
BJR DUKE 5176-929
BJR EMU-MAR 677-701

BW/Ratio	87	103
WW/Ratio	660	101
PROGENY AVERAGES		
# of Hd Ratio		
BW	6	97
WW	5	102
MPPA	101.7	

CED	BW	WW	YW	Milk	TM	ME	HPG	CEM	Stay	Marb	YG	CW	REA	Fat
3	0.4	32	60	23	39	6	8	4	8	-0.06	-0.01	37	0.07	0.01
TOP BREED %														
61%	56%	44%	42%	15%	18%	66%	77%	43%	63%	71%	58%	41%	34%	72%

Bred AI on 5/12/11 to BECKTON EPIC R397K for an expected calving date of 2/18/12, bull.

One of the larger framed cows in the program producing a super heifer calf in 2011. Her dam was in-dam at the '98 Bootjack Ranch Dispersal Auction and comes from the famed Emu-Mar cow family. Expect great things in her 2012 Epic bull calf.



Mature Cows & Sire



Jac showing her yearling heifer



32

SEEGER ABBIE

REG. # 897840
CALIFORNIA SUPREME 2087
LODI PRINCE 2632
JIL 2560

MLK CRK LIGHT 912
SEEGER ABBIE 176
SEEGER ABBIE

TATTOO: 380 SEEG BD: 2/24/03 100% 1A

DENVER DYNASTY
BECKY 1706
ESQUIRE 1018
MARILYN 1994

LARSON RED LIGHTNING
MLK CRK LANA 704-HOBO
RD ER DREAMMAKER 36D
BJR LAKOTA 27C-230

BW/Ratio	75	98
WW/Ratio	538	104
PROGENY AVERAGES		
# of Hd Ratio		
BW	5	100
WW	5	93
MPPA	94.9	

CED	BW	WW	YW	Milk	TM	ME	HPG	CEM	Stay	Marb	YG	CW	REA	Fat
3	0.4	23	49	12	24	2	11	0	15	-0.09	0.00	31	-0.07	0.00
TOP BREED %														
61%	56%	75%	65%	83%	88%	27%	20%	86%	4%	78%	64%	60%	68%	52%

Bred AI on 5/12/11 to BECKTON EPIC R397K for an expected calving date of 2/14/12, heifer.

Seeger Abbie is the final cow in the Milk Creek Mature Cow Dispersal section of this offering. She is a smooth-made, boxy-designed, square-hipped daughter of Lodi Prince from the Seeger Dispersal 2003. Her heifer calf by Epic will cause great excitement in February 2012.

Pasture Rights Sell!



Beckton Epic R397 K



A

BECKTON EPIC R397 K

REG. # 1042135 TATTOO: R397 WF BD: 3/19/05 100% 1A

BECKTON EPIC D404
BECKTON EPIC K F075
BECKTON BELGA D483 KR

BECKTON SAGA KJ B702
BECKTON KURUBA B508 PC
BECKTON KAISER FD 9253
BECKTON BELGA A036 MB

BECKTON JULIAN GG B571
BECKTON KIT F468 JL
BECKTON KIT A517 NP

BKT JULIAN 7526 G
BKT MARTA 9A13 JL
BKT NEPTUNE 8460 R
BCHRCH KIT935 35L416

CED	BW	WW	YW	Milk	TM	ME	HPG	CEM	Stay	Marb	YG	CW	REA	Fat
7	-0.6	49	93	12	36	-8	12	5	15	0.13	0.11	55	0.30	0.05
TOP BREED %														
30%	43%	11%	7%	78%	36%	3%	25%	36%	6%	36%	88%	10%	15%	94%

Selling pasture rights and 1% non-semen-revenue share of Beckton Epic R397 K. This bull is currently under a lease contract with ABS Global to collect and market semen. Buyer will have access to the bull during spring breeding seasons (April – July); as well as fall breeding seasons (Oct – March) in those years that the bull is not needed by ABS for semen collection. The buyer will receive use of the bull and up to 50 straws of semen for in-herd use only at cost of collection. ABS will arrange for pickup and delivery of the bull at their expense.

Catalog and video online at www.milkcrekreds.com

Milk Creek Reds Female Sale – 19

Bred Heifers



Cele and Gala



33

REG. # 1372007

MLK CRK LAKOTA 006

IATTOO: 006 BTK BD: 2/8/10 100% 1A

5L TRADITION 203-6145
5L TRADEMARK 1715-6317
5L LAKOTA 41C-1715

[O C C LEGEND 616L
5L HAZEL 1821-203
5L TRAVELING GRAND 5113
BASIN LAKOTA C999

SHOCO DATA
MLK CRK LAKOTA 429
MLK CRK LAKOTA 066

[SHOCO SIR ROBIN
VDAR BLACKANA 303
[MLK CRK CUB 722
MLK CRK LAKOTA 863

BW/Ratio	82	
WW/Ratio	673	
Dam's MPPA	102.2	

CED	BW	WW	YW	Milk	TM	ME	HPG	CEM	Stay	Marb	YG	CW	REA	Fat
3	1.6	35	65	19	36	11	10	5	12	0.03	-0.02	42	0.04	-0.01
TOP BREED %														
65%	81%	40%	39%	37%	33%	99%	50%	27%	24%	56%	51%	32%	54%	20%

Bred AI on 5/17/11 to STEADFAST BOAZ for an expected calving date of 2/20/12, heifer.

Lot 33 is the start to a sensational bred heifer offering. Lakota 006 is one of only two 5L Trademark daughters in the offering – Trademark is the full brother to 5L Tradesman. These 5L bulls were brought into the Milk Creek program to add an outcross dimension into their pedigrees. Her dam is a solid 7-year-old cow posting a 102.2 MPPA.



Lot 34



34

REG. # 1371987

MLK CRK LAKOTA 009

IATTOO: 009 BTK BD: 2/8/10 100% 1A

5L TRADITION 203-6145
5L TRADEMARK 1715-6317
5L LAKOTA 41C-1715

[O C C LEGEND 616L
5L HAZEL 1821-203
5L TRAVELING GRAND 5113
BASIN LAKOTA C999

GLACIER CHATEAU 744
MLK CRK LAKOTA 316
MLK CRK LAKOTA 189

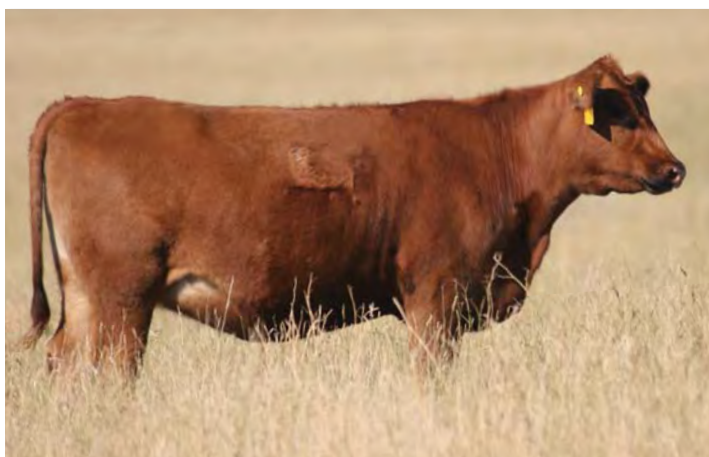
[LMAN KING ROB 8621
GLACIER REBALA
[MLK CRK CORNERSTONE JC
MLK CRK LAKOTA 152-HOBO

BW/Ratio	83	
WW/Ratio	668	
Dam's MPPA	104.2	

CED	BW	WW	YW	Milk	TM	ME	HPG	CEM	Stay	Marb	YG	CW	REA	Fat
0	2.3	38	72	20	38	8	10	2	10	-0.03	0.04	47	0.10	0.01
TOP BREED %														
91%	90%	30%	24%	30%	20%	90%	51%	74%	44%	72%	79%	17%	40%	67%

Bred NS to MLK CRK REDSTONE for an expected calving date of 3/25/12.

OK – just so you know, this was my pick of the bred heifers when I went through the Milk Creek herd in early September. She is very smooth made with a “hard body” look. Her dam sells as Lot 25 with an MPPA of 104.2, so you have an opportunity to pick up a mother-daughter package and start your own Lakota cow family.



Lot 35



35

REG. # 1372062

MLK CRK LAKOTA 012

IATTOO: 012 BTK BD: 2/9/10 100% 1A

MLK CRK CUB 722
RED CROWFOOT OLE'S OSCAR
RED CROWFOOT OMEGA 9179J

[GLACIER CUB 446
MLK CRK LAKOTA 152-HOBO
[RED PRICE 631
RED OMEGA 7456'

MLK CRK DATA 4154
MLK CRK LAKOTA 652
MLK CRK LAKOTA 223

[SHOCO DATA
MLK CRK LAKOTA 953
[BFCK CHEROKEE CNYN 4912
MLK CRK LAKOTA 050

BW/Ratio	78	96
WW/Ratio	625	98
Dam's MPPA	101.6	

CED	BW	WW	YW	Milk	TM	ME	HPG	CEM	Stay	Marb	YG	CW	REA	Fat
5	-1.3	31	62	21	36	7	5	5	9	0.19	0.01	36	0.12	0.02
TOP BREED %														
41%	26%	55%	48%	24%	34%	83%	99%	27%	57%	19%	67%	53%	36%	83%

Bred AI on 5/17/11 to LACY'S KING 9240 for an expected calving date of 2/20/12, bull.

The Ole's Oscar cattle continue to intrigue cattlemen across the planet with moderate birth weights and explosive growth and very desirable carcass traits. Another great Lakota female from the herd renowned for sound feet and legs, and superior udder qualities.



Bred Heifers



Lot 36



36

MLK CRK LANA 023

REG. # 1372122 IATTOO: 023 BTK BD: 2/13/10 100% 1A

BECKTON LANCER F442 T
 BUF CRK LANCER-F L297
 BUF CRK LASS 4158

BECKTON LANCER T A664
 BKT SUFFEINA A828 DM
 BUF CRK IOWA 2886
 BUF CRK LASS 1559

MLK CRK DATA 4156
 MLK CRK LANA 844
 MLK CRK LANA 352

SHOCO DATA
 MLK CRK LANA 558
 VGW TITLEIST 1106
 MLK CRK LANA 052

BW/Ratio	67	91
WW/Ratio	621	100
Dam's MPPA	100.0	

CED	BW	WW	YW	Milk	TM	ME	HPG	CEM	Stay	Marb	YG	CW	REA	Fat
14	-3.9	30	50	18	33	1	9	6	9	0.01	-0.08	24	0.10	0.00
TOP BREED %														
2%	5%	60%	72%	42%	53%	21%	64%	16%	55%	61%	23%	82%	40%	44%

Bred AI on 5/17/11 to STEADFAST BOAZ for an expected calving date of 2/20/12, bull.

Bred heifers are usually your best investment in any program. With their combination of youth and their fertility confirmed, it just makes good sense to buy the "next generation" from a proven program ... especially from one as good as Milk Creek Reds!



37

MLK CRK LAKOTA 034

REG. # 1372065 IATTOO: 034 BTK BD: 2/17/10 100% 1A

BECKTON LANCER F442 T
 BUF CRK LANCER-F L297
 BUF CRK LASS 4158

BECKTON LANCER T A664
 BKT SUFFEINA A828 DM
 BUF CRK IOWA 2886
 BUF CRK LASS 1559

MLK CRK DATA 4154
 MLK CRK LAKOTA 657
 MLK CRK LAKOTA 876

SHOCO DATA
 MLK CRK LAKOTA 953
 GLACIER CUB 446
 MLK CRK LAKOTA 565

BW/Ratio	90	110
WW/Ratio	651	102
Dam's MPPA	98.2	

CED	BW	WW	YW	Milk	TM	ME	HPG	CEM	Stay	Marb	YG	CW	REA	Fat
8	-0.9	29	53	18	32	-4	8	2	10	0.05	0.01	31	-0.01	0.01
TOP BREED %														
17%	32%	63%	66%	48%	60%	4%	87%	74%	46%	50%	67%	67%	67%	67%

Bred AI on 5/17/11 to RED CROWFOOT OLE'S OSCAR for an expected calving date of 2/20/12, heifer.

Without question, the Lakota cow family is a dominant force in the Milk Creek program. I will be honest when I say it may not matter which bred heifer you buy, the question probably will be: "Did you buy enough of them?" Pick and choose, or sort them anyway you like. I'll assure you it will be hard to pinpoint which one you should add to your Red Angus program.



38

MLK CRK LAKOTA 036

REG. # 1372014 IATTOO: 036 BTK BD: 2/18/10 100% 1A

BKT JULIAN 7526 G
 BUF CRK GIULIANI L851
 BUF CRK MARIGOLD1230

BECKTON JULIAN 6592
 BKT BELGA 6746 GS
 BUF CRK CHIEF092-824
 BUF CRK MARIGOLD 837

VGW TITLEIST 1106
 MLK CRK LAKOTA 445
 MLK CRK LAKOTA 183

SHOCO SIR ROBIN
 VGW LIGHT-STAR 9721
 MLK CRK CORNERSTONE JC
 MLK CRK LAKOTA 651

BW/Ratio	89	108
WW/Ratio	616	97
Dam's MPPA	103.1	

CED	BW	WW	YW	Milk	TM	ME	HPG	CEM	Stay	Marb	YG	CW	REA	Fat
5	1.2	34	68	12	29	4	12	3	9	-0.18	0.00	43	0.07	0.00
TOP BREED %														
41%	74%	44%	33%	89%	77%	53%	9%	59%	58%	96%	61%	28%	47%	44%

Bred AI on 5/17/11 to MLK CRK EPIC 8171 for an expected calving date of 2/20/12, bull.

This Giuliani bred heifer comes from a strong Lakota cow with a 103.1 MPPA. As you sort this pen, the uniformity across all 25 females is staggering. 036 is bred to MLK CRK Epic 8171, the bull leading the Select Sires line-up for Red Angus genetics.



39

MLK CRK LAKOTA 038

REG. # 1372155 IATTOO: 038 BTK BD: 2/18/10 100% 1A

BECKTON LANCER F442 T
 BUF CRK LANCER-F L297
 BUF CRK LASS 4158

BECKTON LANCER T A664
 BKT SUFFEINA A828 DM
 BUF CRK IOWA 2886
 BUF CRK LASS 1559

MLK CRK TITLEIST 4158
 MLK CRK LAKOTA 819
 MLK CRK LIGHTNING 804

VGW TITLEIST 1106
 MLK CRK SHEBA 079
 LARSON RED LIGHTNING
 MLK CRK LAKOTA Y46-HOBO

BW/Ratio	88	117
WW/Ratio	664	106
Dam's MPPA	102.4	

CED	BW	WW	YW	Milk	TM	ME	HPG	CEM	Stay	Marb	YG	CW	REA	Fat
7	0.1	35	59	19	36	-2	7	1	8	-0.08	-0.03	35	0.06	0.00
TOP BREED %														
23%	51%	41%	54%	39%	34%	6%	93%	84%	63%	85%	46%	53%	49%	44%

Bred AI on 5/17/11 to STEADFAST BOAZ for an expected calving date of 2/20/12, bull.

A paternal sister to Lots 36 & 37 with added growth and a strong 102.4 MPPA dam to back her. With Buffalo Creek's Final Chapter sale this fall, these genetics will become harder and harder to get in the future. Lot 39 is another chance at a great Lakota female from the Milk Creek program.



40

MLK CRK LANA 047

REG. # 1371984 IATTOO: 047 BTK BD: 2/28/10 100% 1A

5L SIGNATURE 5615
 5L BLAZIN TRAIL 1336-237V
 5L SHEILA 343-1336

5L NORSEMAN KING 2291
 5L RUBY 199-01
 5L BLAZIN HOBO 404-5654
 5L SHEILA 1341-343

GLACIER CHATEAU 744
 MLK CRK LANA 311
 MLK CRK LANA 704-HOBO

LMAN KING ROB 8621
 GLACIER REBALA
 BUF CRK HOBO 1961
 PCH LANA 107

BW/Ratio	81	98
WW/Ratio	655	103
Dam's MPPA	97.9	

CED	BW	WW	YW	Milk	TM	ME	HPG	CEM	Stay	Marb	YG	CW	REA	Fat
5	-1.8	42	76	17	38	5	13	4	10	0.13	-0.05	43	0.33	0.01
TOP BREED %														
41%	20%	17%	17%	53%	23%	61%	8%	42%	48%	30%	36%	27%	8%	67%

Bred AI on 5/17/11 to MUSHRUSH IMPRESSIVE U236 for an expected calving date of 2/20/12, bull.

This fantastic bred heifer is a daughter of Lot 23 in this auction. Her combination of Chateau and Signature genetics make her a very captivating female. Check out her perfect EPD stats along with great individual performance. She would make a "front pasture" addition to any herd.

Bred Heifers



41 MLK CRK BONNIBEL 052
REG. # 1372170 IATTOO: 052 BTK BD: 3/3/10 100% 1A

5L TRAVLIN EXPRESS 1892-6295
5L TRAILBLAZER 1766-188V
5L SERENA 3234-1766

5L NORSEMAN EXPRESS
5L SUNSHINE 699-1892
5L EXPLORER 589-7414
5L SERENA X199-3234

RIDGE OSCAR 625
MLK CRK BONIBEL 841
MLK CRK BONNIE BELLE 619

RED CROWFOOT OLE'S OSCAR
RIDGE CASEY 004-4106
SHOCO DATA
MLK CRK BONIBEL 982

BW/Ratio	78	105
WW/Ratio	659	106
Dam's MPPA	102.4	

CED	BW	WW	YW	Milk	TM	ME	HPG	CEM	Stay	Marb	YG	CW	REA	Fat	
8	-1.9	31	55	21	36	3	8	6	11	0.28	-0.09	31	0.20	0.00	
TOP BREED %	17%	19%	55%	62%	23%	34%	40%	76%	16%	29%	9%	20%	68%	20%	44%

Bred AI on 5/17/11 to MLK CRK EPIC 8171 for an expected calving date of 2/20/12, bull.
Trailblazer was a bull that Bruce purchased in the 2009 5L Sale and has contributed greatly to the program. With low birth weights, moderate frame and high efficiency females, he is poised to make a mark on the entire Red Angus industry. Note this fantastic Bonnebel's dam with a 102.4 MPPA.

43 MLK CRK EMUMAR 067
REG. # 1371994 IATTOO: 067 BTK BD: 3/6/10 100% 1A

BECKTON EPIC K F075
BECKTON EPIC R397 K
BECKTON KIT F468 JL

BECKTON EPIC D404
BECKTON BELGA D483 KR
BECKTON JULIAN GG B571
BECKTON KIT A517 NP

VGW TITLEIST 1106
MLK CRK EMUMAR 336
MLK CRK EMU MAR 951

SHOCO SIR ROBIN
VGW LIGHT-STAR 9721
BJR JR 107-136
BJR EMU-MAR 293-112

BW/Ratio	88	106
WW/Ratio	657	103
Dam's MPPA	101.7	

CED	BW	WW	YW	Milk	TM	ME	HPG	CEM	Stay	Marb	YG	CW	REA	Fat	
5	0.4	41	78	17	38	-1	10	4	14	0.03	0.06	48	0.18	0.03	
TOP BREED %	41%	58%	18%	14%	52%	23%	9%	46%	42%	9%	56%	86%	16%	23%	92%

Bred AI on 5/17/11 to IMPRESSIVE for an expected calving date of 2/20/12, bull.
From the Emumar cow family originating at the Bootjack Ranch comes this tremendous Epic daughter. Her dam sells as Lot 31 in this offering and has a truly breathtaking heifer calf headed for the weaning pen at Milk Creek. If you like stout and robust, take a look at Lot 43.

42 MLK CRK LAKOTA 054
REG. # 1372022 IATTOO: 054 BTK BD: 3/3/10 100% 1A

BECKTON EPIC K F075
BECKTON EPIC R397 K
BECKTON KIT F468 JL

BECKTON EPIC D404
BECKTON BELGA D483 KR
BECKTON JULIAN GG B571
BECKTON KIT A517 NP

BUF CRK HOB0 1961
MLK CRK LAKOTA 501
MLK CRK LAKOTA 301

BUF CRK HOB0 1413
BUF CR CARRIE VC1174
MLK CRK FOUNDATION 110
MLK CRK LAKOTA 112-RAMB

BW/Ratio	84	102
WW/Ratio	667	105
Dam's MPPA	100.9	

CED	BW	WW	YW	Milk	TM	ME	HPG	CEM	Stay	Marb	YG	CW	REA	Fat	
10	-2.2	33	66	18	34	0	11	8	15	0.13	0.05	37	-0.07	0.01	
TOP BREED %	8%	15%	49%	37%	48%	48%	16%	28%	4%	6%	30%	83%	49%	81%	67%

Bred AI on 5/17/11 to IMPRESSIVE for an expected calving date of 2/20/12, heifer.
Try to write a better scenario for sale day and you'll be hard pressed to do it. This Lakota is backed by Epic, Hobo 1961 and Foundation 110, and is carrying an Impressive heifer calf. If you are building a Red Angus program, these cutting-edge Milk Creek females carrying heifer calves can get you to the pay window faster!

44 MLK CRK MELODY 068
REG. # 1371978 IATTOO: 068 BTK BD: 3/6/10 100% 1A

BECKTON EPIC K F075
BECKTON EPIC R397 K
BECKTON KIT F468 JL

BECKTON EPIC D404
BECKTON BELGA D483 KR
BECKTON JULIAN GG B571
BECKTON KIT A517 NP

BFCK CHEROKEE CNYN 4912
MLK CRK MELODY 245
BJR MELODY 519-923

BUF CRK CHF 824-1658
MRM 1431 8611 9109
BJR RAMBO 5202
BJR MELODY 117-726

BW/Ratio	86	104
WW/Ratio	633	100
Dam's MPPA	96.7	

CED	BW	WW	YW	Milk	TM	ME	HPG	CEM	Stay	Marb	YG	CW	REA	Fat	
8	-1.6	34	62	14	31	-4	9	1	17	0.10	-0.02	35	0.19	0.02	
TOP BREED %	17%	22%	43%	46%	76%	63%	3%	56%	84%	1%	37%	51%	54%	21%	83%

Bred AI on 5/17/11 to OLE'S OSCAR for an expected calving date of 2/20/12, heifer.
Another female that tracks back into the Bootjack program and the Melody cow family. In the Bootjack Dispersal of '98, the Melodys were certainly on the top of their game and sold very well. This Epic daughter has the added bonus of an Ole's Oscar heifer "in the pouch" and her dam can be evaluated as Lot 20 in this super offering.



Jac on Nickel and Cele on Gala

45 MLK CRK LAKOTA 071
REG. # 1372030 IATTOO: 071 BTK BD: 3/7/10 100% 1A

BECKTON EPIC R397 K
MLK CRK EPIC 8171
MLK CRK SHEBA 403

BECKTON EPIC K F075
BECKTON KIT F468 JL
GLACIER CHATEAU 744
MLK CRK SHEBA 055

SHOCO DATA
MLK CRK LAKOTA 526
MLK CRK LAKOTA 183

SHOCO SIR ROBIN
VDAR BLACKANA 303
MLK CRK CORNERSTONE JC
MLK CRK LAKOTA 651

BW/Ratio	84	102
WW/Ratio	624	98
Dam's MPPA	102.2	

CED	BW	WW	YW	Milk	TM	ME	HPG	CEM	Stay	Marb	YG	CW	REA	Fat	
4	-0.3	41	76	17	38	4	10	4	15	0.21	0.06	46	0.07	0.02	
TOP BREED %	53%	43%	20%	17%	52%	25%	51%	44%	42%	6%	16%	86%	21%	47%	83%

Bred AI on 5/17/11 to STEADFAST BOAZ for an expected calving date of 2/20/12, bull.
Several of the top Milk Creek bred heifers are Epic daughters, showing the value of his service to this program. This outstanding bred heifer is backed by a dam with a 102.2 MPPA from one of the strongest maternal herds in the country. Don't just buy one or two of these Epics, load the whole trailer on October 31st!



Bred Heifers



Lot 46



46

MLK CRK BONIBEL 076

REG. # 1372031 IATTOO: 076 BTK BD: 3/8/10 100% 1A

BECKTON EPIC K F075
BECKTON EPIC R397 K
BECKTON KIT F468 JL

BECKTON EPIC D404
BECKTON BELGA D483 KR
BECKTON JULIAN GG B571
BECKTON KIT A517 NP

SHOCO DATA
MLK CRK BONIBEL 527
MLK CRK BONIBEL 219

SHOCO SIR ROBIN
VDAR BLACKANA 303
BFCK CHEROKEE CNYN 4912
MLK CRK BONIBEL 658

BW/Ratio	90	109
WW/Ratio	681	107
Dam's MPPA	102.2	

CED	BW	WW	YW	Milk	TM	ME	HPG	CEM	Stay	Marb	YG	CW	REA	Fat
5	0.2	47	82	11	35	-1	12	4	17	0.20	0.03	49	0.29	0.03
TOP BREED %														
41%	53%	8%	10%	91%	43%	8%	13%	42%	1%	18%	75%	13%	10%	92%

Bred NS to 5L TRAILBLAZER1766-188V for an expected calving date of 3/27/12.

Another of the great Epic daughters and a 3/4 sister to Lot 45. This one is bred to the fantastic outcross bull, 5L Trailblazer, and offers another strong cow MPPA of 102.2 in her dam. From the Bonibel cow family, they have more than proven their worth in the Red Angus world.



47

MLK CRK LAKOTA 078

REG. # 1371990 IATTOO: 078 BTK BD: 3/5/10 100% 1A

5L SIGNATURE 5615
5L BLAZIN TRAIL 1336-237V
5L SHEILA 343-1336

5L NORSEMAN KING 2291
5L RUBY 199-01
5L BLAZIN HOBO 404-5654
5L SHEILA 1341-343

GLACIER LOGAN 210
MLK CRK LAKOTA 329
MLK CRK LAKOTA 021

BFLO CR VC CHIEF 105
GLACIER REBALAS
LMAN KING ROB 8621
MLK CRK LAKOTA 152-HOBO

BW/Ratio	89	108
WW/Ratio	679	107
Dam's MPPA	100.1	

CED	BW	WW	YW	Milk	TM	ME	HPG	CEM	Stay	Marb	YG	CW	REA	Fat
0	0.4	46	84	16	39	7	11	5	11	0.25	0.00	51	0.26	0.01
TOP BREED %														
91%	58%	8%	8%	63%	18%	82%	27%	27%	31%	12%	61%	11%	13%	67%

Bred AI on 5/17/11 to OLE'S OSCAR for an expected calving date of 2/20/12, heifer.

This Blazin Trail daughter combines Logan 210 with King Rob in her dam's pedigree. Talk about the Who's Who in the early years of Red Angus development! This Lakota female has some of the greatest sires known to the breed ... and she is carrying an Ole's Oscar heifer!



48

MLK CRK BLOCKANNA 080

REG. # 1372021 IATTOO: 080 BTK BD: 3/15/10 100% 1A

BECKTON EPIC R397 K
MLK CRK EPIC 8171
MLK CRK SHEBA 403

BECKTON EPIC K F075
BECKTON KIT F468 JL
GLACIER CHATEAU 744
MLK CRK SHEBA 055

MLK CRK CUB 722
MLK CRK BLOCKANNA 470
MLK CRK BLOCKANNA 768

GLACIER CUB 446
MLK CRK LAKOTA 152-HOBO
GLACIER LOGAN 210
MLK CRK BLOCKANNA 576

BW/Ratio	90	109
WW/Ratio	661	104
Dam's MPPA	102.0	

CED	BW	WW	YW	Milk	TM	ME	HPG	CEM	Stay	Marb	YG	CW	REA	Fat
1	-0.9	37	76	18	37	5	7	4	11	0.20	0.04	44	-0.03	0.00
TOP BREED %														
84%	32%	31%	18%	43%	29%	59%	92%	42%	28%	18%	79%	24%	72%	44%

Bred NS to 5L TRAILBLAZER1766-188V for an expected calving date of 3/15/12.

From the Blockanna cow family comes another great Epic daughter in this offering. Her dam is a solid 102.0 MPPA female that has proven to be a benchmark in the program. I can't remind you enough of the value in buying these "next generation" bred heifers that will not only impact your herd but the entire Red Angus industry for years to come!



49

MLK CRK LAKOTA 089

REG. # 1372147 IATTOO: 089 BTK BD: 3/24/10 100% 1A

BECKTON EPIC K F075
BECKTON EPIC R397 K
BECKTON KIT F468 JL

BECKTON EPIC D404
BECKTON BELGA D483 KR
BECKTON JULIAN GG B571
BECKTON KIT A517 NP

BUF CRK CHF 824-1658
MLK CRK LAKOTA 950
MLK CRK LAKOTA 773

BUF CRK CHIEF092-824
BFLO CRK CARIE VC473
GLACIER CUB 446
MLK CRK LAKOTA 604-CENT

BW/Ratio	68	85
WW/Ratio	725	114
Dam's MPPA	106.0	

CED	BW	WW	YW	Milk	TM	ME	HPG	CEM	Stay	Marb	YG	CW	REA	Fat
9	-2.8	37	70	19	38	-3	12	3	12	0.06	0.02	38	0.11	0.02
TOP BREED %														
12%	10%	32%	28%	36%	25%	4%	16%	59%	20%	48%	72%	43%	38%	83%

Bred AI on 5/17/11 to IMPRESSIVE for an expected calving date of 2/20/12, bull.

As you search for proven performance with great maternal traits, you have to be impressed with heifers like Lot 49 and her amazing dam that touts a 106.0 MPPA! Another super Lakota female destined for great things in the Red Angus world ... can you imagine her not being in your pasture after October 31?

Catalog and video online at www.milkcreekreds.com



50

MLK CRK LAKOTA 090

REG. # 1372160 IATTOO: 090 BTK BD: 3/24/10 100% 1A

5L TRAVLIN EXPRESS 1892-6295
5L TRAILBLAZER 1766-188V
5L SERENA 3234-1766

5L NORSEMAN EXPRESS
5L SUNSHINE 699-1892
5L EXPLORER 589-7414
5L SERENA X199-3234

RED YY RED KNIGHT 640F
MLK CRK LAKOTA 825
MLK CRK LAKOTA 611

RED YY 23L TOPPER 408D
RED TOP GOLDIE 40U
MLK CRK TITLEIST 4158
MLK CRK LAKOTA 239

BW/Ratio	82	110
WW/Ratio	682	109
Dam's MPPA	103.6	

CED	BW	WW	YW	Milk	TM	ME	HPG	CEM	Stay	Marb	YG	CW	REA	Fat
5	-0.0	35	61	15	32	1	7	4	12	0.15	-0.10	37	0.15	-0.02
TOP BREED %														
41%	49%	40%	48%	73%	59%	19%	90%	42%	25%	26%	16%	48%	30%	8%

Bred NS to MLK CRK REDSTONE for an expected calving date of 3/13/12.

If you value moderation in size and high efficiency in your beef animals, you will appreciate these Trailblazer daughters. Trailblazer was Milk Creek's choice of the bulls in the 2009 5L Bull Sale and he has met all expectations with heifers calving successfully to him and the eye appeal of the resulting progeny.

Milk Creek Reds Female Sale - 23

Bred Heifers



51

MLK CRK BLOCKANNA 094

REG. #1372036 IATTOO: 094 BTK BD: 3/25/10 100% 1A

BECKTON EPIC K F075
BECKTON EPIC R397 K
BECKTON KIT F468 JL

BECKTON EPIC D404
BECKTON BELGA D483 KR
BECKTON JULIAN GG B571
BECKTON KIT A517 NP

BUF CRK GIULIANI L851
MLK CRK BLOCKANA 544
MLK CRK BLOCKANA 877

BKT JULIAN 7526 G
BUF CRK MARI GOLD1230
GLACIER CUB 446
MLK CRK BLOCKANNA 576

BW/Ratio	80	97
WW/Ratio	697	110
Dam's MPPA	105.5	

CED	BW	WW	YW	Milk	TM	ME	HPG	CEM	Stay	Marb	YG	CW	REA	Fat
8	-0.9	40	79	15	34	-4	12	5	14	0.05	0.09	47	0.09	0.03
TOP BREED %														
17%	32%	23%	13%	75%	44%	3%	11%	27%	10%	50%	92%	18%	42%	92%

Bred AI on 5/17/11 to OLE'S OSCAR for an expected calving date of 2/20/12, heifer.

When you can match high efficiency (top 3% ME) with proven top performance (dam's MPPA 105.5) and do it in a negative BW package, you had better grab on with both hands. I have touted the value of these Milk Creek bred heifers but you truly must come see for yourself how spectacular a large cow herd can be. You will be amazed!



53

MLK CRK SUN GAL 098

REG. #1372041 IATTOO: 098 BTK BD: 3/30/10 100% 1A

BECKTON EPIC K F075
BECKTON EPIC R397 K
BECKTON KIT F468 JL

BECKTON EPIC D404
BECKTON BELGA D483 KR
BECKTON JULIAN GG B571
BECKTON KIT A517 NP

LSF COMBINATION A301M
MLK CRK SUN GAL 552
BJR SUN GAL 4X-561

LCHMN TOP BRASS 1049H
WHF LASS 27G-29J
BJR MONU 4X-303
BJR SUN GAL 1193-375

BW/Ratio	86	104
WW/Ratio	639	101
Dam's MPPA	98.5	

CED	BW	WW	YW	Milk	TM	ME	HPG	CEM	Stay	Marb	YG	CW	REA	Fat
2	0.4	46	88	6	29	0	11	1	15	0.20	0.10	53	0.13	0.03
TOP BREED %														
76%	58%	8%	6%	99%	78%	15%	30%	84%	5%	18%	94%	7%	34%	92%

Bred AI on 5/17/11 to LACY'S KING 9240 for an expected calving date of 2/20/12, bull.

This outstanding bred heifer caught my attention in my early September visit and I had her marked as high on my list as any of them. The Sun Gal's are a strong-producing cow family originating in the Bootjack Program of the '90s with unsurpassed heart girth and substance. This Epic daughter is no exception with great depth of rib and future production written all over her.



Lot 55



52

MLK CRK LAKOTA 095

REG. #1371967 IATTOO: 095 BTK BD: 3/25/10 100% 1A

BECKTON EPIC K F075
BECKTON EPIC R397 K
BECKTON KIT F468 JL

BECKTON EPIC D404
BECKTON BELGA D483 KR
BECKTON JULIAN GG B571
BECKTON KIT A517 NP

MLK CRK CORNERSTONE JC
MLK CRK LAKOTA 173
MLK CRK LAKOTA 858

BJR JR 107-136
BJR SUN GAL 4X-561
LARSON RED LIGHTNING
MLK CRK LAKOTA 604-HOBO

BW/Ratio	80	97
WW/Ratio	672	106
Dam's MPPA	104.0	

CED	BW	WW	YW	Milk	TM	ME	HPG	CEM	Stay	Marb	YG	CW	REA	Fat
5	-0.1	43	81	18	39	-3	10	1	15	-0.06	0.08	49	0.07	0.02
TOP BREED %														
41%	47%	14%	11%	46%	16%	5%	43%	84%	4%	81%	91%	14%	47%	83%

Bred AI on 5/17/11 to OLE'S OSCAR for an expected calving date of 2/20/12, bull.

This long-bodied Epic daughter should certainly catch your eye among a great set of bred heifers. Her dam sells as Lot 9 and carries a proven 104.0 MPPA. Her individual stats are impressive and she could be carrying your next Ole's Oscar herd sire!



54

MLK CRK LAKOTA 0102

REG. #1372109 IATTOO: 0102 BTK BD: 3/31/10 100% 1A

BECKTON EPIC K F075
BECKTON EPIC R397 K
BECKTON KIT F468 JL

BECKTON EPIC D404
BECKTON BELGA D483 KR
BECKTON JULIAN GG B571
BECKTON KIT A517 NP

BUF CRK GIULIANI L851
MLK CRK LAKOTA 769
MLK CRK LAKOTA 356

BKT JULIAN 7526 G
BUF CRK MARI GOLD1230
MLK CRK MARIAS 013
MLK CRK LAKOTA 969

BW/Ratio	64	81
WW/Ratio	617	97
Dam's MPPA	102.0	

CED	BW	WW	YW	Milk	TM	ME	HPG	CEM	Stay	Marb	YG	CW	REA	Fat
9	-2.0	35	70	17	34	-1	13	6	14	-0.07	0.00	39	0.20	0.02
TOP BREED %														
12%	17%	42%	29%	59%	49%	8%	7%	16%	9%	84%	61%	40%	20%	83%

Bred AI on 5/31/11 to STEADFAST BOAZ for an expected calving date of 3/7/12, bull.

You must appreciate heifers like Lakota 0102 with her high ME and HPG stats that are as relevant to the beef industry today as any time in the past. Fertility and conversion in today's high cost of production is what will keep an operation viable in the future. Don't overlook the contribution she can add to your program.



55

MLK CRK LANA 0107

REG. #1372161 IATTOO: 0107 BTK BD: 4/2/10 100% 1A

5L TRAVLIN EXPRESS 1892-6295
5L TRAILBLAZER 1766-188V
5L SERENA 3234-1766

5L NORSEMAN EXPRESS
5L SUNSHINE 699-1892
5L EXPLORER 589-7414
5L SERENA X199-3234

RED YY RED KNIGHT 640F
MLK CRK LANA 827
MLK CRK LANA 670

RED YY 23L TOPPER 408D
RED TOP GOLDIE 40U
SHOCO DATA
MLK CRK LANA 558

BW/Ratio	68	93
WW/Ratio	708	113
Dam's MPPA	105.2	

CED	BW	WW	YW	Milk	TM	ME	HPG	CEM	Stay	Marb	YG	CW	REA	Fat
9	-2.2	35	59	16	33	3	8	6	12	0.22	-0.12	32	0.16	-0.02
TOP BREED %														
12%	15%	41%	54%	67%	55%	36%	84%	16%	21%	15%	11%	64%	29%	8%

Bred NS to MLK CRK REDSTONE for an expected calving date of 4/6/12.

This Trailblazer daughter is a beautiful, dark-red color, is wedge-shaped and loaded with meat and muscle. I don't care what your breed of choice is, heifers like Lana 0107 will be as much in demand in the future as they are today. Her dam is a powerful 3-year-old cow with an attention-getting 105.2 MPPA!



Bred Heifers



Jac's first mule deer



56

MLK CRK LENA 0108

REG. # **1372166** TATTOO: **0108 BTK** BD: **4/4/10** **100% 1A**

5L TRAVLIN EXPRESS 1892-6295 5L NORSEMAN EXPRESS
 5L TRAILBLAZER 1766-188V 5L SUNSHINE 699-1892
 5L SERENA 3234-1766 5L EXPLORER 589-7414
 5L SERENA X199-3234

SHOCO DATA 5L SHOCO SIR ROBIN
 MLK CRK LENA 835 5L VDAR BLACKKANA 303
 MLK CRK LENA 212 5L BASIN HOBO 79E
 5L BJR LENA 1081-921

BW/Ratio	92	122
WW/Ratio	737	118
Dam's MPPA	107.2	

CED	BW	WW	YW	Milk	TM	ME	HPG	CEM	Stay	Marb	YG	CW	REA	Fat	
1	2.9	50	83	18	43	3	10	5	13	0.30	0.05	53	0.13	0.01	
TOP BREED %	84%	94%	4%	9%	46%	5%	37%	41%	27%	12%	8%	83%	7%	34%	67%

Bred NS to MLK CRK REDSTONE for an expected calving date of 3/13/12, heifer.

Lot 56 is one of the few offered today carrying the service to Redstone. MLK CRK Redstone is the ABS sensation that is causing a great deal of excitement for them, but more importantly, for Red Angus breeders across the country. Don't miss your chance at having a Redstone heifer in your 2012 weaning pen from one of the great Milk Creek bred heifers selling October 31.



Lot 57



57

MLK CRK SHEBA 0115

REG. # **1372082** TATTOO: **0115 BTK** BD: **4/16/10** **100% 1A**

5L SIGNATURE 5615 5L NORSEMAN KING 2291
 5L BLAZIN TRAIL 1336-237V 5L RUBY 199-01
 5L SHEILA 343-1336 5L BLAZIN HOBO 404-5654
 5L SHEILA 1341-343

RED YY RED KNIGHT 640F 5L RED YY 23L TOPPER 408D
 MLK CRK SHEBA 725 5L RED TOP GOLDIE 40U
 MLK CRK SHEBA 558 5L BUF CRK GIULIANI L851
 5L MLK CRK SHEBA 043

BW/Ratio	78	98
WW/Ratio	671	106
Dam's MPPA	105.1	

CED	BW	WW	YW	Milk	TM	ME	HPG	CEM	Stay	Marb	YG	CW	REA	Fat	
3	0.5	45	79	11	33	1	12	3	9	0.09	-0.09	48	0.34	-0.01	
TOP BREED %	65%	60%	10%	14%	93%	52%	23%	15%	59%	51%	40%	20%	16%	7%	20%

Bred AI on 5/31/11 to LACY'S KING 9240 for an expected calving date of 3/7/12, bull.

Well, here is your final chance at a bred heifer in this phenomenal offering of sound, functional and highly desired Red Angus bred females. Blazin Trail is the Milk Creek pick for performance from the 2009 5L Bull Sale and definitely will add superior muscling and depth in his progeny. From the Sheba cow family, this powerful heifer's dam posts an impressive 105.1 MPPA in the Milk Creek program.



Open Heifers



58

MLK CRK LENA 104

REG. # 1429481 IATTOO: 104 BTK BD: 2/9/11 100% 1A

BECKTON EPIC R397 K
MLK CRK EPIC 8171
MLK CRK SHEBA 403

BECKTON EPIC K F075
BECKTON KIT F468 JL
GLACIER CHATEAU 744
MLK CRK SHEBA 055

MLK CRK DATA 4156
MLK CRK LENA 950
MLK CRK LENA 313

SHOCO DATA
MLK CRK LANA 558
MLK CRK CAPSTONE 901
BJR LENA 1081-921

BW/Ratio	58	87
WW/Ratio	573	97
Dam's MPPA	98.8	

CED	BW	WW	YW	Milk	TM	ME	HPG	CEM	Stay	Marb	YG	CW	REA	Fat
	-4.2	31	64	17	32				11	0.21	0.03	41	0.06	0.02
TOP BREED %														

Lot 58 kicks off a fantastic set of heifer calves that sell from oldest to youngest. Lena 104 is a moderate-sized heifer that has that "sculpted design" look in a "hard body" muscle pattern. She is one of only three Epic 8171 daughters in the heifer calf section, and she will make a great cow like her dam.



Jac and Pumbaa



Lot 59



59

MLK CRK BONNEBELL 1107

REG. # 1429467 IATTOO: 1107 BTK BD: 2/10/11 100% 1A

5L GRAND EXPRESS 453-5655
MLK CRK EXPRESS 9127
MLK CRK SHEBA 043

5L NORSEMAN EXPRESS
5L RUBY 01-453
BJR PROOF 224-159
MLK CRK SHEBA 869

SHOCO DATA
MLK CRK BONNEBELL 633
MLK CRK BONNEBELL 459

SHOCO SIR ROBIN
VDAR BLACKANA 303
PCH RAMBO 701
PCH BONNEBELL Y4

BW/Ratio	84	102
WW/Ratio	646	103
Dam's MPPA	104.9	

CED	BW	WW	YW	Milk	TM	ME	HPG	CEM	Stay	Marb	YG	CW	REA	Fat
	-0.5	34	53	18	35	3	9		7	-0.04	-0.12	31	0.21	-0.01
TOP BREED %														

A super, deep-flanked heifer that is full bodied and deep ribbed. If you like your cattle "loaded" for performance and able to convert forage into beef, Bonnell 1107 is your kind. Her sire is now in the progressive herds of Sandbur Ridge Red Angus and Birnie Red Angus of Nebraska.



60

MLK CRK SUN GAL 109

REG. # 1429469 IATTOO: 109 BTK BD: 2/11/11 100% 1A

RED YY RED KNIGHT 640F
MLK CRK KNIGHT 7153
MLK CRK SHEBA 043

RED YY 23L TOPPER 408D
RED TOP GOLDIE 40U
BJR PROOF 224-159
MLK CRK SHEBA 869

LSF COMBINATION A301M
MLK CRK SUN GAL 669
BJR SUN GAL 4X-561

LCHMN TOP BRASS 1049H
LWHF LASS 27G-29J
BJR MONU 4X-303
BJR SUN GAL 1193-375

BW/Ratio	76	92
WW/Ratio	587	93
Dam's MPPA	98.2	

CED	BW	WW	YW	Milk	TM	ME	HPG	CEM	Stay	Marb	YG	CW	REA	Fat
	-1.5	35	61	4	21	3	9		8	0.14	-0.03	41	0.05	-0.01
TOP BREED %														

From the Sun Gal cow family originating at the late Cliff Haugen's Bootjack Ranch. This heifer is a dark-red beauty and a granddaughter of the ever popular Red Knight bull of Canada.



61

MLK CRK FIREFLY 110

REG. # 1429487 IATTOO: 110 BTK BD: 2/11/11 100% 1A

5L GRAND EXPRESS 453-5655
MLK CRK EXPRESS 9127
MLK CRK SHEBA 043

5L NORSEMAN EXPRESS
5L RUBY 01-453
BJR PROOF 224-159
MLK CRK SHEBA 869

MLK CRK FOUNDATION 110
MLK CRK FIREFLY 4109
MLK CRK FIREFLY 251

BUF CRK BARNEY 3474
MLK CRK LAKOTA 850
MLK CRK CORNERSTONE JC
MLK CRK FIREFLY 656

BW/Ratio	83	99
WW/Ratio	644	102
Dam's MPPA	103.1	

CED	BW	WW	YW	Milk	TM	ME	HPG	CEM	Stay	Marb	YG	CW	REA	Fat
	-0.3	35	65	22	39		10		8	-0.01	-0.04	40	0.08	-0.01
TOP BREED %														

This Express 9127 heifer from the Firefly cow family has plenty of "future cow" look. She is extremely smooth-shouldered with a big-barreled, high-capacity design. Don't miss her dam's 103.1 MPPA! Her sire is the -1.7 BW, +.40 REA sensation now in the Sandbur Ridge and Birnie Red Angus programs of Nebraska.



Open Heifers



Lot 62



62

MLK CRK ASTER 117

REG. # 1429474 TATTOO: 117 BTK BD: 2/11/11 100% 1A

RED YY RED KNIGHT 640F
 MLK CRK KNIGHT 7153
 MLK CRK SHEBA 043

BUF CRK GIULIANI L851
 MLK CRK ASTER 759
 MLK CRK ASTER 404

RED YY 23L TOPPER 408D
 RED TOP GOLDIE 40U

BJR PROOF 224-159
 MLK CRK SHEBA 869

BKT JULIAN 7526 G
 BUF CRK MARIGOLD1230

GLACIER CHATEAU 744
 MLK CRK ASTER 067

BW/Ratio	84	103
WW/Ratio	628	100
Dam's MPPA	99.4	

CED	BW	WW	YW	Milk	TM	ME	HPG	CEM	Stay	Marb	YG	CW	REA	Fat
	-0.7	34	56	10	26		11		8	-0.09	-0.10	30	0.14	-0.01
TOP BREED %														

Here is a rare daughter of MLK CRK Knight 7153 (a son of Lot 1 in this offering). Aster 117 is a fancy February heifer with lots of style and "look" and, like her dam, will make a tremendous cow.



Matriarch's View



63

MLK CRK LAKINA 118

REG. # 1429482 TATTOO: 118 BTK BD: 2/12/11 100% 1A

BECKTON EPIC R397 K
 MLK CRK EPIC 8171
 MLK CRK SHEBA 403

5L GRAND EXPRESS 453-5655
 MLK CRK LAKINA 905
 MLK CRK LAKINA 640

BECKTON EPIC K F075
 BECKTON KIT F468 JL

GLACIER CHATEAU 744
 MLK CRK SHEBA 055

5L NORSEMAN EXPRESS
 5L RUBY 01-453

MLK CRK TITLLEIST 4158
 MLK CRK LAKINA 425

BW/Ratio	62	91
WW/Ratio	590	100
Dam's MPPA	100.0	

CED	BW	WW	YW	Milk	TM	ME	HPG	CEM	Stay	Marb	YG	CW	REA	Fat
	-4.2	28	60	20	34				11	0.14	-0.07	34	0.30	0.02
TOP BREED %														

This Epic 8171 daughter is a long-bodied, extended-fronted female with lots of femininity and design. She comes from a highly efficient and moderate-sized Lakina cow.



Lot 64



64

MLK CRK LAKOTA 122

REG. # 1429464 TATTOO: 122 BTK BD: 2/13/11 100% 1A

5L TRADITION 203-6145
 5L TRADESMAN 1715-6237
 5L LAKOTA 41C-1715

SHOCO DATA
 MLK CRK LAKOTA 526
 MLK CRK LAKOTA 183

OCC LEGEND 616L
 5L HAZEL 1821-203

5L TRAVELING GRAND 5113
 BASIN LAKOTA C999

SHOCO SIR ROBIN
 LVDAR BLACKANA 303

MLK CRK CORNERSTONE JC
 MLK CRK LAKOTA 651

BW/Ratio	94	113
WW/Ratio	676	108
Dam's MPPA	103.1	

CED	BW	WW	YW	Milk	TM	ME	HPG	CEM	Stay	Marb	YG	CW	REA	Fat
	2.2	42	82	21	42	10	10		10	0.13	0.16	45	-0.08	0.04
TOP BREED %														

Well here she is!! This is the heifer used throughout the catalog beside each lot number and in the national ad campaign for this auction. Her dam has a flawless udder and both she and her dam are big-barreled, five-star kind of females. If you want one of the best, look up Lot 64 on sale day!

Open Heifers



Lot 65



65

MLK CRK BONNEBELL 123

REG. # 1429479 IATTOO: 123 BTK BD: 2/13/11 100% 1A

BUF CRK LANCER R017
MUSHRUSH IMPRESSIVE CA U236
MUSHRUSH MADAM LT R265

BECKTON LANCER F442 T
BUF CRK JULIET N036
TR JULIAN LT142
MUSHRUSH ROBIN M125

BUF CRK GIULIANI L851
MLK CRK BONNEBELL 865
MLK CRK BONNEBELL 401

BKT JULIAN 7526 G
BUF CRK MARIGOLD1230
MLK CRK FOUNDATION 110
MLK CRK BONNEBELL 203

BW/Ratio	82	102
WW/Ratio	597	95
Dam's MPPA	101.4	

CED	BW	WW	YW	Milk	TM	ME	HPG	CEM	Stay	Marb	YG	CW	REA	Fat
	-1.3	38	69	15	34	3	11		13	-0.09	0.07	42	0.15	0.04
TOP BREED %														

Lot 65 is a stylish, well-balanced heifer with no extremes. Her tremendous dam posts a highly productive 101.4 MPPA and comes from the Bonnebell cow family that dominated the Bootjack Ranch pastures of the '90s. If you want a highly productive cow, take a look at Bonnebell 123.



Lot 66



66

MLK CRK BONNEBELL 127

REG. # 1429488 IATTOO: 127 BTK BD: 2/14/11 100% 1A

5L GRAND EXPRESS 453-5655
MLK CRK EXPRESS 9127
MLK CRK SHEBA 043

5L NORSEMAN EXPRESS
5L RUBY 01-453
BJR PROOF 224-159
MLK CRK SHEBA 869

LSF COMBINATION A301M
MLK CRK BONNEBELL 430
MLK CRK BONNEBELL 717

LCHMN TOP BRASS 1049H
WHF LASS 27G-29J
FCC RAMBO 502
PCH BONNEBELL Y50

BW/Ratio	94	113
WW/Ratio	704	112
Dam's MPPA	102.9	

CED	BW	WW	YW	Milk	TM	ME	HPG	CEM	Stay	Marb	YG	CW	REA	Fat
	1.6	45	74	10	33	6	12		5	-0.06	-0.12	34	0.28	0.00
TOP BREED %														

This February heifer certainly could be one of the top show prospects in the heifer calf pasture. She has that "smooth-as-a-seal" look and is extremely deep ribbed. Her dam has an absolutely unbelievable udder and is the epitome of the Red Angus breed. She is a paternal sister to Lots 59, 61 and 67.



Lot 67



67

MLK CRK LAKINA 133

REG. # 1429486 IATTOO: 133 BTK BD: 2/15/11 100% 1A

5L GRAND EXPRESS 453-5655
MLK CRK EXPRESS 9127
MLK CRK SHEBA 043

5L NORSEMAN EXPRESS
5L RUBY 01-453
BJR PROOF 224-159
MLK CRK SHEBA 869

MLK CRK FOUNDATION 110
MLK CRK LAKINA 425
MLK CRK LAKINA 228

BUF CRK BARNEY 3474
MLK CRK LAKOTA 850
MLK CRK MARIAS 013
MLK CRK LAKINA 071

BW/Ratio	82	98
WW/Ratio	677	108
Dam's MPPA	104.4	

CED	BW	WW	YW	Milk	TM	ME	HPG	CEM	Stay	Marb	YG	CW	REA	Fat
	-2.1	32	61	26	42		10		8	0.05	-0.10	32	0.19	0.00
TOP BREED %														

This gorgeous, flat-topped heifer has extreme rib capacity and a massive, meat-filled flank. Lakina 133 is a "solid chunk" of beef and certainly possesses a future brood cow look. If you're adding to the top of your herd, take a look at Lot 67.



Open Heifers



Headed to water



68

MLK CRK ASTER 136

REG. # 1429472 TATTOO: 136 BTK BD: 2/14/11 100% 1A

5L TRADITION 203-6145
5L TRADESMAN 1715-6237
5L LAKOTA 41C-1715

MLK CRK TITLEIST 4158
MLK CRK ASTER 741
MLK CRK ASTER 175

[OCC LEGEND 616L
5L HAZEL 1821-203
5L TRAVELING GRAND 5113
BASIN LAKOTA C999
VGW TITLEIST 1106
MLK CRK SHEBA 079
MLK CRK CORNERSTONE JC
MLK CRK ASTER 462

BW/Ratio	76	93
WW/Ratio	573	91
Dam's MPPA	92.0	

CED	BW	WW	YW	Milk	TM	ME	HPG	CEM	Stay	Marb	YG	CW	REA	Fat
	-2.7	19	49	21	30	6	8		8	0.08	0.04	27	0.01	0.03
TOP BREED %														

This Aster x Tradesman daughter is a very nicely designed, "on target" sized heifer with great balance and femininity. Heifers like her with a negative BW and over 20 Milk will certainly keep you in the cattle business for a long time.



Lot 69



69

MLK CRK EMUMAR 141

REG. # 1429483 TATTOO: 141 BTK BD: 2/16/11 100% 1A

BECKTON EPIC R397 K
MLK CRK EPIC 8171
MLK CRK SHEBA 403

5L GRAND EXPRESS 453-5655
MLK CRK EXPRESS 9147
MLK CRK EMUMAR 641

[BECKTON EPIC K F075
BECKTON KIT F468 JL
GLACIER CHATEAU 744
MLK CRK SHEBA 055
5L NORSEMAN EXPRESS
5L RUBY 01-453
LCC VAQUERO 1412J
MLK CRK EMUMAR 854

BW/Ratio	68	101
WW/Ratio	632	107
Dam's MPPA	102.8	

CED	BW	WW	YW	Milk	TM	ME	HPG	CEM	Stay	Marb	YG	CW	REA	Fat
	-2.7	36	72	16	35				11	0.20	-0.04	36	0.18	0.02
TOP BREED %														

Lot 69 is an incredible-designed, dark-red, attractive heifer with an excellent muscle pattern. Loaded with some of the breed's top genetics including Epic, Chateau, Norseman and Vaquero, you know she will make a great cow!



MLK CRK Lakota 953, maternal granddam



70

MLK CRK LAKOTA 145

REG. # 1429484 TATTOO: 145 BTK BD: 2/18/11 100% 1A

BUF CRK LANCER R017
MUSHRUSH IMPRESSIVE CA U236
MUSHRUSH MADAM LT R265

5L GRAND EXPRESS 453-5655
MLK CRK LAKOTA 975
MLK CRK LAKOTA 953

[BECKTON LANCER F442 T
BUF CRK JULIET N036
TR JULIAN LT142
MUSHRUSH ROBIN M125
5L NORSEMAN EXPRESS
5L RUBY 01-453
LARSON RED LIGHTNING
MLK CRK LAKOTA 112-RAMB

BW/Ratio	83	121
WW/Ratio	521	88
Dam's MPPA	95.2	

CED	BW	WW	YW	Milk	TM	ME	HPG	CEM	Stay	Marb	YG	CW	REA	Fat
	-0.2	32	56	19	36	2			12	-0.10	-0.01	33	0.26	0.04
TOP BREED %														

Lakota 145 comes from a first-calf heifer that is just coming on in the Milk Creek program. Her dam is a smaller, high efficiency female that excels in production. Lot 70 is in this offering for her pedigree which includes a maternal granddam that sold through the Santa Sale for \$6,000.

Open Heifers



Lot 71



71

MLK CRK LANA 154

REG. # **1429468** TATTOO: **154 BTK** BD: **2/23/11** **100% 1A**
 5L GRAND EXPRESS 453-5655 [5L NORSEMAN EXPRESS
 MLK CRK EXPRESS 9141 [5L RUBY 01-453
 MLK CRK SHEBA 079 [MLK CRK CUB 722
 [BJR SHEBA 4X-551
 VDAR RAMBO 323 [FCC RAMBO 502
 MLK CRK LANA 664 [BJR BLOCKNA2206-3149
 MLK CRK LANA 704-HOBO [BUF CRK HOBO 1961
 [PCH LANA 107

BW/Ratio	84	102
WW/Ratio	651	104
Dam's MPPA	102.0	

CED	BW	WW	YW	Milk	TM	ME	HPG	CEM	Stay	Marb	YG	CW	REA	Fat
	0.1	34	62	16	34	3	6		9	-0.02	-0.09	36	0.28	0.00
TOP BREED %														

Lot 71 is a long, clean-fronted feminine heifer with great balance nose to tail. Her dam is another excellent-uddered Milk Creek cow from the Lana cow family. If you value great performance and maternal traits with tremendous ribeye characteristics, check out Lana 154.



Lot 72



72

MLK CRK THELMA 155

REG. # **1429465** TATTOO: **155 BTK** BD: **2/24/11** **100% 1A**
 BECKTON EPIC K F075 [BECKTON EPIC D404
 BECKTON EPIC R397 K [BECKTON BELGA D483 KR
 BECKTON KIT F468 JL [BECKTON JULIAN GG B571
 [BECKTON KIT A517 NP
 MLK CRK CHATEAU 3101 [GLACIER CHATEAU 744
 MLK CRK THELMA 331 [MLK CRK LAKOTA 850
 MLK CRK THELMA 331 [GLACIER CHATEAU 744
 [MLK CRK THELMA 179-HOBO

BW/Ratio	86	103
WW/Ratio	686	109
Dam's MPPA	101.7	

CED	BW	WW	YW	Milk	TM	ME	HPG	CEM	Stay	Marb	YG	CW	REA	Fat
	-1.1	39	76	20	39	2	12		13	0.12	0.07	39	0.16	0.04
TOP BREED %														

This long-bodied, statuesque heifer has a clean shoulder with great neck extension. Her granddam sells as Lot 28 in this offering and offers a line-bred Chateau pedigree. Heifers like Thelma 155 will keep your balance sheet in the black with longevity, fertility and performance.



Chuck and Annette Steffan

Following the 2011 Red Angus National Convention in Durham, N.C., in September, we took a side trip to the Atlantic Ocean.



Iena with Annette Steffan



73

MLK CRK SALLEE 160

REG. # **1429477** TATTOO: **160 BTK** BD: **2/26/11** **100% 1A**
 5L GRAND EXPRESS 453-5655 [5L NORSEMAN EXPRESS
 MLK CRK EXPRESS 9141 [5L RUBY 01-453
 MLK CRK SHEBA 079 [MLK CRK CUB 722
 [BJR SHEBA 4X-551
 SHOCO DATA [SHOCO SIR ROBIN
 HRR SALLEE 766 [VDAR BLACKANA 303
 HRR SALLEE 212 [BJR MAKE MY DAY 981
 [HRR SALLEE 001

BW/Ratio	83	102
WW/Ratio	609	97
Dam's MPPA	100.1	

CED	BW	WW	YW	Milk	TM	ME	HPG	CEM	Stay	Marb	YG	CW	REA	Fat
	0.5	37	66	14	32		7		9	0.09	-0.05	43	0.25	0.00
TOP BREED %														

This February Express 9141 heifer is a really strong female with a deep flank and stout-made body. If you want a pasture full of "beef queens" from some of the breed's most respected cow herds, you should buy a load of these open heifers.



Open Heifers



Lot 74



74 MLK CRK LANA 162

REG. # 1429470 IATTOO: 162 BTK BD: 2/27/11 100% 1A

TR JULIAN LT151
TR JULIAN WT951
TR LANA G760

SHOCO DATA
MLK CRK LANA 670
MLK CRK LANA 558

BECKTON JULIAN GG B571
LMS GEOMETRIC 917
BECKTON CODY V E023
BECKTON LANA E828 SC
SHOCO SIR ROBIN
VDAR BLACKANA 303
PCH RAMBO 701
MLK CRK LANA 704-HOBO

BW/Ratio	86	104
WW/Ratio	578	92
Dam's MPPA	100.4	

CED	BW	WW	YW	Milk	TM	ME	HPG	CEM	Stay	Marb	YG	CW	REA	Fat
	-0.7	33	58	16	33	7	11		11	0.16	0.01	35	0.05	0.02
TOP BREED %														

The Lana heifers certainly seem to dominate these fantastic Milk Creek calves and this one comes with a wide base and super deep and capacious rib. Her dam is a highly productive 100.4 MPPA Shoco Data daughter with great body type.



Lot 75



75 MLK CRK VAL 170

REG. # 1429480 IATTOO: 170 BTK BD: 3/3/11 100% 1A

5L GRAND EXPRESS 453-5655
MLK CRK EXPRESS 9141
MLK CRK SHEBA 079

BUF CRK GIULIANI L851
MLK CRK VAL 886
BJR VAL 4X-5114

5L NORSEMAN EXPRESS
5L RUBY 01-453
MLK CRK CUB 722
BJR SHEBA 4X-551
BKT JULIAN 7526 G
BUF CRK MARIGOLD1230
BJR MONU 4X-303
BJR VAL 041-017

BW/Ratio	60	75
WW/Ratio	660	105
Dam's MPPA	101.4	

CED	BW	WW	YW	Milk	TM	ME	HPG	CEM	Stay	Marb	YG	CW	REA	Fat
	-3.6	33	68	11	28	2	10		9	-0.18	-0.05	44	0.26	0.00
TOP BREED %														

If you want daughters built like their dam, look up this super heifer. She is another high-volume, deep-ribbed heifer from a high-efficiency, moderate-sized cow with an absolutely excellent udder. If this heifer grows into half the cow her dam is, she will make lots of money for her new owner!



76 MLK CRK THELMA 175

REG. # 1429473 IATTOO: 175 BTK BD: 3/7/11 100% 1A

TR JULIAN LT151
TR JULIAN WT951
TR LANA G760

SHOCO DATA
MLK CRK THELMA 733
MLK CRK THELMA 315

BECKTON JULIAN GG B571
LMS GEOMETRIC 917
BECKTON CODY V E023
BECKTON LANA E828 SC
SHOCO SIR ROBIN
VDAR BLACKANA 303
MLK CRK CUB 722
MLK CRK THELMA 193

BW/Ratio	81	99
WW/Ratio	612	97
Dam's MPPA	103.1	

CED	BW	WW	YW	Milk	TM	ME	HPG	CEM	Stay	Marb	YG	CW	REA	Fat
	-0.7	38	68	15	34	6	10		11	0.16	0.05	44	-0.01	0.01
TOP BREED %														

This Thelma x Julian combination really clicked in this March heifer with plenty of thickness, a smooth design and lots of style. Show Heifer Alert – she could fit nearly any March show string slot in the country.



77 MLK CRK LAKINA 180

REG. # 1429475 IATTOO: 180 BTK BD: 3/10/11 100% 1A

TR JULIAN LT151
TR JULIAN WT951
TR LANA G760

BECKTON EPIC R397 K
MLK CRK LAKINA 766
MLK CRK LAKINA 502

BECKTON JULIAN GG B571
LMS GEOMETRIC 917
BECKTON CODY V E023
BECKTON LANA E828 SC
BECKTON EPIC K F075
BECKTON KIT F468 JL
BFCK CHEROKEE CNYN 4912
MLK CRK LAKINA 156

BW/Ratio	82	101
WW/Ratio	598	95
Dam's MPPA	105.8	

CED	BW	WW	YW	Milk	TM	ME	HPG	CEM	Stay	Marb	YG	CW	REA	Fat
	-1.5	37	69	19	37	1	13		15	0.21	0.04	46	0.14	0.02
TOP BREED %														

Lakina 180 has a very good hip, a great, deep, hind quarter and is ultra attractive! Her dam is one of the "guarded jewels" in the Milk Creek pastures. With a 105.8 MPPA and from the Lakina cow family, Lot 77's dam is bound for great things in the Red Angus world. You'd better own a direct daughter while the opportunity exists!

Open Heifers



Golden autumn in southeast Montana



78

MLK CRK BONNEBELL 190

REG. # 1429476 IATTOO: 190 BTK BD: 3/17/11 100% 1A

TR JULIAN LT151
TR JULIAN WT951
TR LANA G760

BECKTON JULIAN GG B571
LMS GEOMETRIC 917
BECKTON CODY V E023
BECKTON LANA E828 SC

BECKTON EPIC R397 K
MLK CRK BONNEBELL 746
MLK CRK BONIBEL 510

BECKTON EPIC K F075
BECKTON KIT F468 JL
BUF CRK HOB0 1961
MLK CRK BONIBEL 658

BW/Ratio	86	105
WW/Ratio	690	110
Dam's MPPA	105.1	

CED	BW	WW	YW	Milk	TM	ME	HPG	CEM	Stay	Marb	YG	CW	REA	Fat
0.0	40	72	16	35	-0	13			14	0.18	0.03	36	0.06	0.02
TOP BREED %														

This March 17th heifer is one of the youngest in the offering but you'd never guess it with her deep-rib design and tremendous thickness. Her sire, WT951, is a maternal brother to TR Julian LT142, the bull renowned for his 4.41 IMF (ratio 125) and 15.22 REA (ratio 116). Paternal sisters to Lot 78 in this offering include Lots 74, 76 and 77.



79

MLK CRK LAKINA 191

REG. # 1429478 IATTOO: 191 BTK BD: 3/17/11 100% 1A

BECKTON EPIC K F075
BECKTON EPIC R397 K
BECKTON KIT F468 JL

BECKTON EPIC D404
BECKTON BELGA D483 KR
BECKTON JULIAN GG B571
BECKTON KIT A517 NP

RED YY RED KNIGHT 640F
MLK CRK LAKINA 801
MLK CRK LAKINA 156

RED YY 23L TOPPER 408D
RED TOP GOLDIE 40U
MLK CRK CAPSTONE 901
MLK CRK LAKINA 156

BW/Ratio	76	95
WW/Ratio	629	100.0
Dam's MPPA	101.1	

CED	BW	WW	YW	Milk	TM	ME	HPG	CEM	Stay	Marb	YG	CW	REA	Fat
-2.5	39	73	12	31	-3	9			12	0.13	-0.02	42	0.09	-0.01
TOP BREED %														

Lakina 191 is a very fancy, dark-red heifer offering moderation in frame size. With the high costs of feed inputs these days, heifers like Lot 79 are in big demand for their efficiency and high returns with minimal inputs. Her dam is a solid Red Knight daughter posting a 101.1 MPPA.



80

MLK CRK LAKOTA 192

REG. # 1429485 IATTOO: 192 BTK BD: 3/17/11 100% 1A

BECKTON EPIC K F075
BECKTON EPIC R397 K
BECKTON KIT F468 JL

BECKTON EPIC D404
BECKTON BELGA D483 KR
BECKTON JULIAN GG B571
BECKTON KIT A517 NP

VGW TITLEIST 1106
MLK CRK LAKOTA 445
MLK CRK LAKOTA 183

SHOCO SIR ROBIN
VGW LIGHT-STAR 9721
MLK CRK CORNERSTONE JC
MLK CRK LAKOTA 651

BW/Ratio	84	101
WW/Ratio	668	106
Dam's MPPA	103.5	

CED	BW	WW	YW	Milk	TM	ME	HPG	CEM	Stay	Marb	YG	CW	REA	Fat
-0.2	45	85	17	40	1	10			12	0.05	0.07	53	0.19	0.03
TOP BREED %														

Lot 80 is a really thick-made Epic R397 K daughter based off of the Lakota cow family. These Milk Creek heifers offer the latest genetics from one of the premier programs in the country. Lakota 192's dam is a top-producing cow posting a 103.5 MPPA.



81

MLK CRK LAKOTA 193

REG. # 1429471 IATTOO: 199 BTK BD: 3/22/11 100% 1A

BECKTON EPIC K F075
BECKTON EPIC R397 K
BECKTON KIT F468 JL

BECKTON EPIC D404
BECKTON BELGA D483 KR
BECKTON JULIAN GG B571
BECKTON KIT A517 NP

SHOCO DATA
MLK CRK LAKOTA 736
MLK CRK LAKOTA 173

SHOCO SIR ROBIN
VDAR BLACKANA 303
MLK CRK CORNERSTONE JC
MLK CRK LAKOTA 858

BW/Ratio	90	109
WW/Ratio	689	110
Dam's MPPA	102.6	

CED	BW	WW	YW	Milk	TM	ME	HPG	CEM	Stay	Marb	YG	CW	REA	Fat
1.9	51	89	15	40	0	11			13	0.05	0.10	52	0.14	0.03
TOP BREED %														

Don't overlook this March 22nd Epic daughter. It is hard to evaluate these younger heifers against the power and strength of their older contemporaries but I will assure you, Lot 81 will hold her own with the best of them. Her dam has an impressive 102.6 MPPA and comes from the astounding Lakota cow family at Milk Creek.



82

MLK CRK SHEBA 1018

REG. # 1429466 IATTOO: 1018 BTK BD: 4/15/11 100% 1A

5L GRAND EXPRESS 453-5655
MLK CRK EXPRESS 9141
MLK CRK SHEBA 079

5L NORSEMAN EXPRESS
5L RUBY 01-453
MLK CRK CUB 722
BJR SHEBA 4X-551

MLK CRK CHATEAU 3101
MLK CRK SHEBA 548
MLK CRK SHEBA 355

GLACIER CHATEAU 744
MLK CRK LAKOTA 850
MLK CRK MARIAS 013
MLK CRK SHEBA 079

BW/Ratio	74	89
WW/Ratio	726	116
Dam's MPPA	103.8	

CED	BW	WW	YW	Milk	TM	ME	HPG	CEM	Stay	Marb	YG	CW	REA	Fat
-3.7	26	53	25	38		9			9	0.02	-0.12	23	0.25	0.01
TOP BREED %														

Here is another show prospect with super front extension and that "goose neck" with loads of performance behind her. She is the youngest heifer in the offering and deserves your consideration if you need to fill an April slot in your show string. More importantly, her dam has an incredibly excellent udder and a smooth muscle design that will pass on to her outstanding 2011 daughter.

Commercial Females



These commercial lots will be located at the commercial breeders location until delivery is arranged. Delivery will be F.O.B. the consigners ranch load out area. Any interested buyers who want to view the cattle can contact the consigner or Milk Creek Reds to arrange for a tour of the cattle.



84 70 HEAD OF BRED HEIFERS

CONSIGNOR: **REG AND LANA HOFF**
FORSYTH, MONTANA • 406-356-7576

Offering 70 head of home-raised, one-iron bred heifers. Heifers have been vaccinated with Novartis Virashield 3 VL 5 and will be poured with Ivermectin. Heifers are located 10 miles northwest of Forsyth, Mont. Buyer with the winning bid can buy gate cut in increments of 10 or take the entire lot. Heifers were ultrasounded for pregnancy by Fallon County Vet Service.

84A 40 head of AI bred heifers. Heifers were AI'ed to MLK CRK Epic 8171 on June 1, 2011. Heifers will be due to calve March 10th according to the calendar but with calving ease bulls, expect early calves due to shorter gestations.

84B 30 head of bull-bred heifers. Heifers were pasture exposed following the AI date of June 1 to calving-ease sons of MLK CRK Epic 8171 and TR Julian LT 142. They will calve starting approximately 20 days after the AI heifers and will calve for 30 days.



85 58 HEAD OF BRED HEIFERS

CONSIGNOR: **TIM AND TORI DWYER**
SIDNEY, MONTANA • 701-565-2256

Offering 58 head of home-raised, one-iron, Red angus bred heifers. These heifers are bred to calving-ease Red Angus bulls sired by TR Julian 142 and a maternal brother to TR Julian LT 142. Bulls were turned out with the heifers on June 27th and pulled August 3, 2011. Heifers have been vaccinated with PregGuard 10 this spring and were boosted this fall with breeding shots and given their first round of ScourGuard as well as poured with Ivomec. Heifers were ultrasound pregnancy tested by Wibaux Vet Clinic. Winning bidder has the option of buying gate cut in increments of 10, or buying the entire lot. Heifers are located 25 miles southeast of Ekalaka, Mont.



86 50 HEAD OF BRED 3-YEAR-OLDS

CONSIGNOR: **JACK AND ROSINA OWEN**
ALZADA, MONTANA • 406-775-6750

Offering 50 head of home-raised, solid-red, one-iron coming 3-year-olds. These moderate-framed young cows are easy to be around, yet they are not pampered. They have been raised in an environment that will test their ability to raise a good calf, breed back and be functionally sound. Milk Creek Bulls were turned out on July 1st and left in for 45 days. Jack says that with this date he will always expect his first calves around the 1st of April. The cows have been given Pregguard 10 as yearlings and have been boosted with Virashield 6 each fall after. They will be poured and pregnancy tested prior to delivery.

Cows are located 20 + miles North of Alzada, Mont., or, 40 + miles south of Ekalaka, Mont. Winning bidder will have the option of selecting in groups of 10 gate cut or, will be able to select the entire group.





Gilchrist Auction Co.

Kyle Gilchrist

641/919-1077

redcowseller@yahoo.com

Kathy LaScala

913/486-7184

katelascala@gmail.com

A production of
Star G Ranch, Inc.

14075 120th St. • Douds, IA 52551

FIRST CLASS

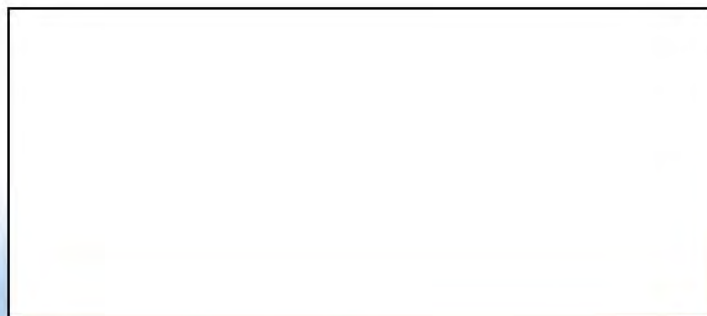
US POSTAGE

PAID

MONTEZUMA, IA

PERMIT #30

**TIME-DATED MATERIAL
DO NOT DELAY!**



Female Sale

**Monday,
October 31, 2011**

1:00 pm MDT

Fallon Co. Fairgrounds, Baker, MT

Selling **261**

Real-World Red Angus Females

32 Donor-Quality Cows

(Complete dispersion of '00, '01, '02 and '03 models)

1 Reference Sire

(Pasture rights on Beckton Epic R397 K)

25 Bred Heifers

(High-indexing females of 2010 crop)

25 Open Heifers (From top-indexing dams)

178 Commercial Bred Heifers

(Replacement quality, from our top bull customers)