



# SANDHILLS *Red Select*

*2nd Annual Genetic Opportunity Sale*

**Monday, March 21, 2011**

1:30 p.m. CST • Valentine Livestock Market, Valentine, NE

101 Red Angus Bulls – Yearlings, 18-mo.-olds & Virgin 2-year-olds

10 Reg. Red Angus Replacement Heifers

60 Commercial Red Angus Replacement Heifers



**Raising the Rancher's Kind –**

*"What? We're  
doing it again?"*

*Balanced. Efficient and Functional.*

**Birnie Red Angus**

Paul & Milissa Birnie  
Broken Bow, NE  
(308) 872-8343 Home  
(308) 870-1556 Cell  
paul@sandhillsredselect.com

**Bruns Red Angus**

Kelly & Cindy  
Bruns  
Bloomfield, NE  
(402) 841-7320  
kcbruns@gpcom.net

**Choat Cattle Co.**

St. Edward, NE  
Wayne (402) 678-3439  
Dave (402) 981-1586  
stocho@gpcom.net (Wayne)  
StodolaD@aol.com (Dave)

**Cooksley  
Red Angus**

Ben & Jilleen Cooksley  
Anselmo, NE  
(308) 749-0419  
milirndia@neb-sandhills.net

**Sandbur Ridge  
Red Angus**

Ross A. & Lane Knott  
Petersburg, NE  
(402) 843-8726  
rknott@gpcom.net

## 2ND ANNUAL GENETIC OPPORTUNITY SALE

It is our pleasure and privilege to welcome you to the Sandhills Red Select 2nd Annual Genetic Opportunity Sale. We appreciate the opportunity to serve you and your genetic needs.

The Sandhills Red Select Genetic Opportunity Sale is a concept and sale event that was born from common goals and philosophies. Each of the cooperators involved in this project has a desire to provide the commercial cattle sector with Red Angus bulls and females that are moderate in size, efficient in function and sound in structure in order to reduce the cost of production and improve profitability.

We coined the term, "Raising the Rancher's Kind," as a result of trying to identify the type of program that we wanted to collectively represent. The Rancher's Kind simply embodies good honest bulls that work hard, are dependable and do their job well. The Rancher's Kind symbolizes females that are moderate, fertile, easy keeping, structurally correct and soft in their disposition.

Hopefully, as you view each of our programs and have the opportunity to review and research the cattle that we will be offering for sale that you will agree that as a group they are a balanced, efficient and functional set of animals aimed at improving your profitability. While there are genetic differences between all of the cooperators, we all share a similar vision of raising problem free genetically superior cattle.

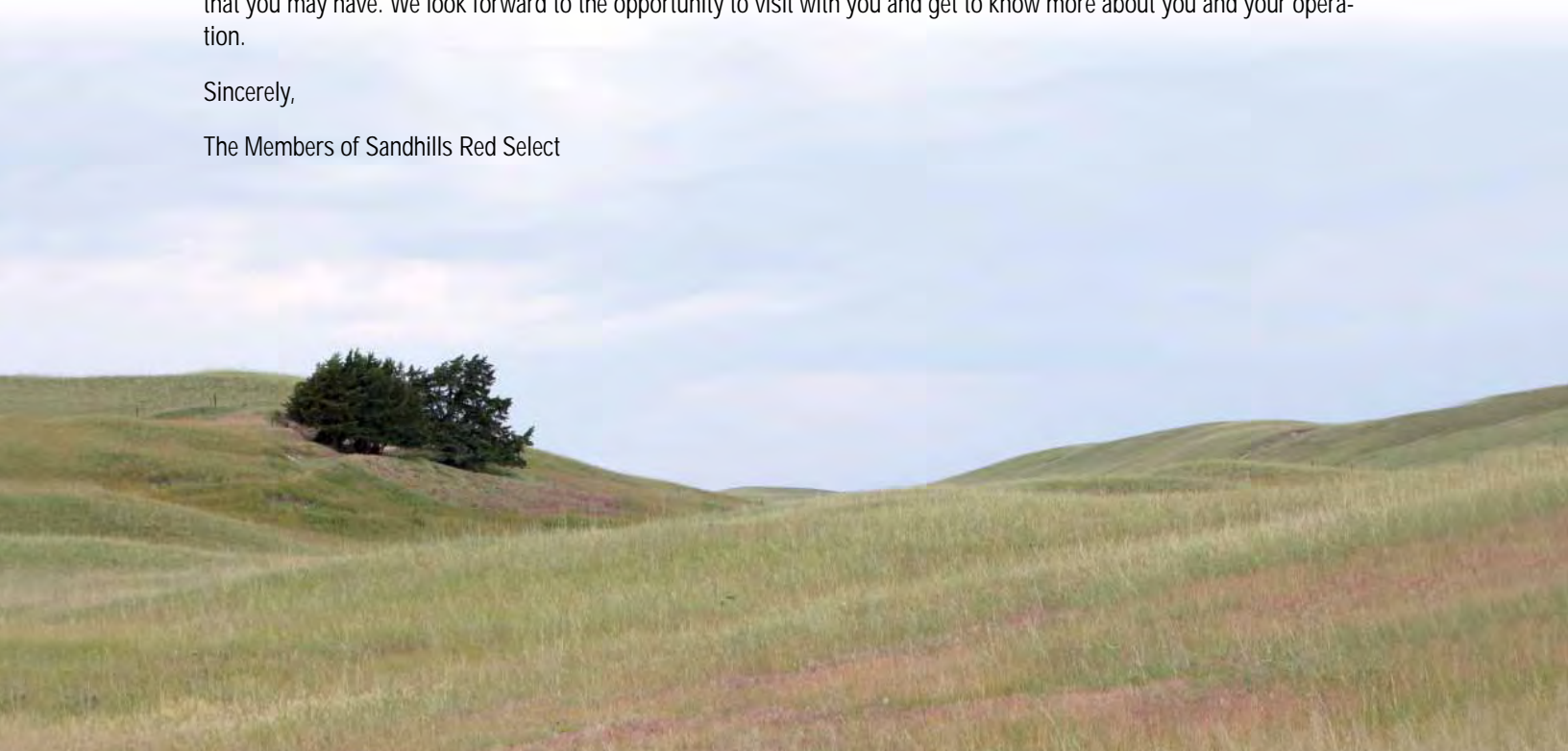
The offering consists of a mixture of long-aged bulls, yearling bulls, registered heifers and commercial heifers in hopes that the diversity of our offering matches the diversity and demands of each of your operations and needs. Please take time to look through the entire catalog as there is quality spread throughout.

Our operations work in similar fashion to your own. We are all low-input operators that expect our cows to breed and raise a calf within a strict time frame and without a lot of pampering. None of the bulls have seen creep feed, nor have they been pushed to boast of average daily gains and performance. Our measure of performance directly correlates to how our animals perform and thrive in your herd and in your environment. These bulls are bred and fed to last and are cared for as such. We are selecting and developing our genetics in a way that we feel will benefit our herds and yours.

Thank you all for taking the time to attend and view our sale. Please feel free to contact any one of us with any questions that you may have. We look forward to the opportunity to visit with you and get to know more about you and your operation.

Sincerely,

The Members of Sandhills Red Select



## GENERAL SALE INFORMATION

### MONDAY, MARCH 21, 2011

1:30 p.m. CT, Valentine Livestock Market, Valentine, Nebraska

Cookies and rolls will be provided in the morning.

Complimentary lunch will be served starting at 12:00 p.m.

Cattle will sell in catalog order.

### SELLING:

- 65 Registered Red Angus Yearling Bulls
- 36 Long Aged Registered Red Angus Bulls
- 10 Registered Red Angus Replacement Heifers
- 35 Commercial Red Angus Replacement Heifers
- 25 Commercial Red Baldy Replacement Heifers
- 5 Premium Embryo Lots

### AUCTIONEER:

Mike Baxter ..... (402) 387-1861

### SALE DAY STAFF AND GUESTS:

- Galen Gerdes – Nebraska Farmer ..... (308) 380-0302
- Doug Hogan – Tri State Livestock News ..... Cell: (605) 391-5346  
Office: (866) 581-7493
- Grant Conover – Cattle Business Weekly ..... (515) 419-1004
- Myron Edelman – Red Angus Association ..... (307) 351-6032

### SALE DAY PHONES:

- Valentine Livestock Auction: ..... (800) 682-4874
- Paul Birnie: ..... (308) 870-1556
- Wayne Choat: ..... (402) 678-3439
- Ben Cooksley: ..... (308) 872-1007
- Ross Knott: ..... (402) 843-8726
- Dave Stodola: ..... (402) 981-1586
- Kelly Bruns: ..... (402) 841-7320

### LIVESTOCK INSURANCE:

Insurance available through American Livestock Insurance,  
TV Tommy Jones, agent ..... (307) 632-5118

All purchases are the buyers' responsibility as soon as they are sold.

### ACCOMMODATIONS:

- Valentine's Niobrara Lodge ..... (877) 376-3003 or (402) 376-3000  
803 East Highway 20
- Comfort Inn, 101 Main St. .... (402) 376-3300
- Dunes Lodge & Suites, Highways 20 & 83 ..... (402) 376-3131
- Trade Winds Motel, East Highway 20 & 83 ..... (402) 376-1600

### GUARANTEE:

All bulls are guaranteed breeders and are guaranteed healthy on sale day. They will have passed a semen test and breeding soundness exam. Scrotal measurements will be available sale day. Bulls are guaranteed to be breeders during the first breeding season. Breeding season is defined as the 90 day period following the first turnout of the bulls. Individual breeders will work with customers on a case-by-case basis concerning guarantees. Heifers are guaranteed by the sellers as outlined in the RAAA Code of Ethical Sale Practices.

### DELIVERY AND LOAD-OUT:

Delivery will be at the lowest cost possible from the seller's base operation. Bulls not delivered by April 15 will incur a \$3 per day feeding cost thereafter. A \$100 credit will be offered for bulls taken home on sale day. Trucking for all females will be the buyer's responsibility.

### SIGHT UNSEEN PURCHASES:

We encourage you to utilize Superior Livestock Auction as a means to facilitate your absentee purchases. However, if you are unable to use this service, please feel free to contact any one of the respective breeders to accommodate your requests. Let us know your needs and your budget range and we will work with honesty and integrity to help purchase the best possible cattle on your behalf. If you are unsatisfied with the purchase that we make on your behalf, then you don't own the animals.

### TERMS AND CONDITIONS:

- The Auctioneer in charge will settle any disputes as to bids, and his decision on such matters will be final.
- All sales are cash in U.S. funds unless prior arrangements have been made with the sellers.
- Any announcements made on sale day take precedence over printed material.
- Health certificates will be furnished for shipment anywhere in the United States.
- Any death or injury after the animal is sold is at the buyers' risk.
- Anyone attending this sale attends at his/her own risk.
- A retained interest will be retained by those designated as such in the sale. On all the bulls the buyer receives full possession and full salvage value.
- All registered cattle sell under the suggested Sale Terms and Conditions set forth by the Red Angus Assn. of America.

### ONLINE CATALOG:

[www.sandhillsredselect.com](http://www.sandhillsredselect.com) & [www.cowcampcatalogs.com](http://www.cowcampcatalogs.com)

## SANDBUR RIDGE RED ANGUS



Ross and Lane Knott

Welcome to the Second Annual Sandhills Red Select Production Sale. It is hard to believe that it is time again for another production sale.

There have been a lot of changes in the past year regarding markets, prices, outlooks and inventories. However, one thing has not changed and that is good doing, holistic genetics are still more profitable today and especially tomorrow than ever before. Feed costs continue to escalate and it makes no difference if you raise all your feed or you buy it, IT COSTS MONEY TO FEED HARD DOING CATTLE, LOTS OF MONEY!

My breeding program has stayed focused on all aspects of beef production from conception to consumption and includes female productivity, fertility and longevity. Our females are bred to have a moderate frame and high volume, the results of which are noticeable in the carcass ultrasound data that reflects 1.26 square inches of REA/CWT in the bulls that were ultrasound this spring. The genetics we are offering in this sale are predictable and dependable.

I hope you can attend our sale as all the breeders in this offering are dedicated to providing you with the best, most real cattle we can produce. We do not breed for the highest attainable EPD package and we do not subscribe to the bull of the month club promoted by so many breeders.

My focus will always be to raise moderate-framed, forage-converting, high-fertility, low-maintenance, problem-free cattle, with a soft disposition. Not all of our cattle are there, which is why we are offering only the top end of our 2010 born bull calves. I am very confident that the bulls in this offering will do the things that are said they will do.

Please stop by, Lane and I would be glad to have you at our place and I would love to show you our operation.

**Ross A. & Lane Knott**  
PO Box 43 • Petersburg, NE 68652-0043  
(402) 843-8726  
rknott@gpcom.net

## BIRNIE RED ANGUS



Paul and Milissa Birnie, Oliver and Hunter

"Living the dream!" That's what my friend, Jeff, always tells me when I ask him how he's doing. I knew that his optimism was contagious, but I didn't expect it to ignite the entire ag economy. Indeed we are "living the dream" in production agriculture today.

We consider ourselves fortunate to be chasing our dream of raising Red Angus cattle in the Beef State. However, we are also thankful for the friendships and relationships that we have developed as a result of pursuing our passion. We thank you for your interest in our program and for the opportunity to learn more about you and yours.

Our program and management style is focused on using the lowest cost feed resources available to us. Our cows calve and summer on our pasture south of Broken Bow. Once the calves are weaned we winter the cows on crop residue. Last winter we made it through without feeding any hay. We believe our cows should work for us and not the other way around and as a result they must forage year round. Part of managing an operation this way is finding calving ease genetics that are able to prosper under these conditions. Our offering this year is centered on low birth weight bulls that will produce easy-keeping, capacious females.

The bulls and heifers that we are offering have subscribed to a complete herd health and vaccination program. We don't aim to achieve extraordinary average daily gains while developing our cattle as we believe in adequate growth to maintain structure, durability and longevity. The bulls were grown at 3 lbs. per head per day and the heifers were allowed to develop on corn stalk residue and minimal supplementation in order to allow them the ability to thrive in your environment. Ours is a modest program designed to fit somewhere in the middle of all of the extremes the industry has to offer.

Thank you again for the opportunity to provide you with your genetics. We look forward to seeing and visiting with you on sale day. Meanwhile, we're going to keep on living the dream.

**Paul & Milissa Birnie**  
610 S. 7th Ave • Broken Bow, NE 68822  
(308) 872-8343 Home • (308) 870-1556 Cell  
paul@sandhillsredselect.com

# CHOAT CATTLE CO.



Wayne and Jody Choat, Faith, Weston and Claire

Welcome to the second annual Sandhills Red Select Genetic Opportunity sale. We are happy to once again have some of our 2-year-old bulls and open yearling heifers in the sale. Thank you also to past, as well as, future customers for your interest in our cattle and program.

Our cows are wintered and calved on the family farm just outside of St Edward, Neb. From there they go to the Sandhills to spend summers raising their calves. Our cattle thrive in these different environments and that should allow them to work well anywhere in the surrounding area.

Our cow herd has been selected to be functional, fertile and fault free. We don't pamper them or make excuses for them. Disposition is also extremely important for us as we have small children around wanting to help and two old grandpas helping that don't move very fast. I think you will find the cattle easy to work with and handle.

We only sell bulls as 2-year-olds. This gives us a chance to see how they grow out and develop. They are never pushed and we feel they should be able to breed more cows for a longer period of time as a result. We also sell bulls on another sale in December. These bulls here were specifically selected for this sale back in October – they have never been offered before.

The bulls were run on grass until we brought them in this winter in preparation for the sale. At that time they were put on a high roughage ration of ground alfalfa, corn silage and a little bit of cracked corn. The bulls are hard, not fat. They have been fertility tested and are in good breeding condition.

The heifers in the sale all come out our replacement pen. If we had the room we would keep all of them. Several are at the top of their sire groups. Six of the heifers are Normandy Canyon daughters. (Note that Normandy Canyon's dam is also the dam of Norseman King.) The bull is gone, so this is the last chance to acquire a number of females out of this sire. The Normandy Canyon daughters in our herd are very good cows that are moderate framed with excellent foot and leg structure. They have beautiful udders with small teat size.

Our goal continues to be to provide genetics that are efficient, functional, and, of course, profitable for our customers. Thanks again for your interest in our cattle and program. We look forward to meeting you on sale day.

# COOKSLEY RED ANGUS



Ben and Jilleen Cooksley, Ryan, Colin and Claire

Hard to believe another bull sale is already here. It has been a busy year for us Jilleen is finishing up nursing school. The summer flew by with Ryan and Claire in 4H and baseball. Fall football and Basketball keeps Ryan going all the time. Claire is all about horses and cattle work that involves horses. Colin started preschool and believes firmly he can quit because he knows everything they are teaching him. We have learned he has an exceptional ability to repeat things hours after he hears them (which get me in trouble regularly) between the cows and coaching I never have to worry if I'll be busy. We are enjoying it all.

Cooksley Red Angus was started in 1989 by Stuart and Cynthia Cooksley with the purchase of 40 heifers from Jerry Teahon and a Coppertop Chief 301 son from Ole Redland. We started this herd with one goal in mind sandhills adapted Red Angus bulls for our own use. Currently we are using several 5L Blazin Ram sons they are moderate easy fleshing. With the focus in our breeding program being disposition, calving ease, low maintenance, growth, and eye appeal.

Our cows calve in August after our commercial cows are done. The cows are wintered through on minimum inputs. Calves are weaned in March. These calves fed 3 lbs. distillers and hay until May. Then they will run on range until December then come in and are fed DDG, oats, corn and hay. They winter on a meadow with plenty of room to rough house and exercise. The bulls are hard and ready to cover the miles and the cows.

Our large commercial herd allows us to use a large number of our own bulls per year. We usually use a lot of bulls from new herd sires before they are offered for sale in any numbers. This allows us to be fairly sure of what we are offering. We don't have a lot of new hot sires, but what we have are good proven lines.

Our customers past and present thank you for your trust and we hope to serve you to your satisfaction. If your new customers come and look around I believe on the Sandhills Red Select Sale you can find everything that is good about the Red Angus breed. I think there a bull here no matter what your criteria are. Call or stop by for a visit anytime.

Wayne (402) 678-3439 • Dave (402) 981-1586  
1311 Beaver St. • St. Edward, NE 68660-4481  
stocho@gpcom.net (Wayne)  
StodolaD@aol.com (Dave)

Ben & Jilleen Cooksley  
81824 Hwy 2 • Anselmo, NE 68813-7845  
(308) 749-0419  
milirndia@neb-sandhills.net

# BRUNS RED ANGUS



Kelly and Cindy Bruns, Cole and Kate

Bruns Red Angus is located in NE Nebraska near Bloomfield. The ranch is operated by Kelly and Cindy, along with children Cole and Kate. Our cows run on improved pastures and some native pastures in the summer and crop residue in the winter. We select out cows for moderate size, fleshing ability, maternal traits and disposition. They are expected to perform in a low-input environment. We look forward to meeting you and welcome you to visit us anytime.

**Kelly and Cindy Bruns**  
 88088 538th Avenue • Bloomfield, NE  
 (402) 373-4906 (h) • (402) 841-7320 (c)  
 kcbruns@gpcom.net



## HOW TO PARTICIPATE AS AN ABSENTEE BUYER

We have made preparations to bid and buy livestock through Superior Productions' "Call or Click-To-Bid" service for those unable to attend in person on sale day. Please note that all of the lots in the sale will also be available for viewing online prior to sale day at [www.superiorlive.com](http://www.superiorlive.com).

## HERE'S HOW IT WORKS

**Turn in Bids Over the Phone.** This is our traditional method of buying livestock. To get started simply go online to [www.superiorlive.com](http://www.superiorlive.com) and click on the tab titled "REGISTER FOR YOUR BUYER'S NUMBER". Print the registration form, fill it out and fax it in (817/378-3380) to Superior Productions with a signature on it. You can also mail it in to the address provided on the form. Upon receipt of this information Superior will call you with a buyer's number and the bid line phone number that you will use on sale day to place bids over the phone.

**Click-To-Bid.** This is Superior's newest way to buy cattle! Registration is free, but you must become a member of [www.superiorclicktobid.com](http://www.superiorclicktobid.com) to sign up. Becoming a member is easy – just go to the homepage of [www.superiorclicktobid.com](http://www.superiorclicktobid.com) and follow the outlined steps to get started. Input your information and select a username and password. You will receive an e-mail confirming you are a member. From that point forward you just have to sign in and select the sale you would like to register for and once approved by the ranch you will receive an e-mail confirming which sale you are now registered for.

**Viewing the Auction.** The sale will be broadcast via satellite on Dish Network channel 231 and DirecTV channel 345. The sale will also be broadcast live on the internet at [www.superiorclicktobid.com](http://www.superiorclicktobid.com) – just go to the home page and select the auction. Remember you can call in to bid whether you watch on the TV or on the internet, but you must be a member of [www.superiorclicktobid.com](http://www.superiorclicktobid.com) to "click-to-bid". Your computer must have Flash Media Player installed to view the auction.

**Bidders who are successful in making purchases via satellite or internet will be contacted by the ranch after the sale to settle payment and make shipping arrangements.**

## Rancher's Guide to EPDs

Courtesy of the Red Angus Assn. of America • For more information on EPDs, visit [redangus.org](http://redangus.org).

**CED..... Calving Ease Direct** – predicts the probability of calves being born unassisted out of 2-year-old heifers.

**BW..... Birth Weight** – predicts the difference, in pounds, for birth weight, and is also used in the calculation of Red Angus' Calving Ease Direct (CED) EPD.

**WW..... Weaning Weight** – predicts the difference, in pounds, for weaning weight (adjusted to age of dam and a standard 205 days of age).

**YW..... Yearling Weight** – predicts the expected difference, in pounds, for yearling weight (adjusted to a standard 365 days of age).

**Milk..... Milk** – predicts the difference in maternal production of an individual animal's daughters as expressed by the weaning weight of their calves.

**TM..... Total Maternal** – predicts the rancher's actual observation of weaning weights of calves raised by an animal's daughters. TM EPD = Milk EPD + 1/2 (WW EPD)

**ME..... Maintenance Energy** – predicts a bull's daughters that will require less feed to maintain her body weight and condition; thus increasing profitability.

**HPG..... Heifer Pregnancy** – predicts the probability of heifers conceiving to calve at two years of age.

**CEM..... Calving Ease Maternal** – predicts the probability of a given animal's daughters calving unassisted at two years of age.

**STAY..... Stayability** – predicts the probability that a bull's daughters will remain in the herd until at least six years of age.

**MARB.... Marbling Score** – predicts differences for carcass marbling score as expressed in marbling score units. Higher marbling scores are positively correlated with higher carcass quality grades.

**YG..... Yield Grade** – predicts differences in USDA Yield Grade score, and is expressed in USDA Yield Grade units.

**CW..... Carcass Weight** – predicts differences in hot carcass weight and is expressed in pounds. Because Red Angus' CW EPD is a multi-trait.

**REA..... Rib Eye Area** – predicts differences of carcass Rib Eye Area between the 12th and 13th rib.

**FAT..... 12th Rib Fat Thickness** – predicts differences for carcass fat depth over the 12th rib, as expressed in inches.



## A 5L TRADESMAN 1715-6237 #1187423

BD 2/02/2007 BW 87 WW 721 YW 1264 Cat. 1A % 100%

O C C LEGEND 616L  
5L TRADITION 203-6145  
5L HAZEL 1821-203

5L TRAVELING GRAND 5113  
5L LAKOTA 41C-1715  
BASIN LAKOTA C999

%IMF 4.54  
REA 12.52  
BF 0.40

CED	BW	WW	YW	Milk	TM	ME	HPG	CEM	Stay	Marb	REA	Fat
12	-1.5	24	50	21	32	6	12	7	9	0.07	-0.02	0.06

He is 5L Tradition's best son to date. Descends from highly maternal lineage with Rambo 502, Grand Canyon, Emblazon and Norsman King as the pillars of the pedigree. Sires moderate framed, heavy muscled bulls with great scrotal circumference. The females are soft and capacious with quiet dispositions.



5L Tradesman 1715-6237



5L Lakota 41C-1715, Dam of 5L Tradesman 1715-6237



## B 5L NORSEMAN KING 2291 # 806707

BD 2/9/01 BW 97 WW 721 YW 1142 Cat. 1A % 100%

VGW ACE 613  
VGW KING OF THE WEST  
VGW MT TABITHA 9633

376 P J M 141  
NORSEMAN 1312 PJM  
P J M POWERPOINT 2009

%IMF 3.57  
REA 14.61  
BF 0.25

CED	BW	WW	YW	Milk	TM	ME	HPG	CEM	Stay	Marb	REA	Fat
2	0.7	28	66	14	28	-1	8	-8	9	0.27	0.75	-0.01

The most heavily registered bull in the breed for good reason. He is a herd changer and produces great females. His ability to transmit his consistent type and kind across a wide array of matings is unmatched. Bull calves are early maturing, with the ribeye area and muscle that the industry needs.



5L Norseman King 2291



## C 5L NORMANDY CANYON 6024 #982043

BD 982043 BW 86 WW 611 YW 1225 Cat. 1A % 100%

BUF CRK CHF 824-1658  
LCHMN GRANDCANYON 1244G  
KRN REBA'S ROBIN

376 P J M 141  
NORSEMAN 1312 PJM  
P J M POWERPOINT 2009

%IMF 3.51  
REA 12.51  
BF 0.38

CED	BW	WW	YW	Milk	TM	ME	HPG	CEM	Stay	Marb	REA	Fat
0	-0.5	5	41	22	25	6	10	2	6	-0.07	0.07	0.06

A maternal sibling to Norseman King, his females will be his legacy. They are soft natured, easy fleshing cows with tremendous capacity, foot and leg structure and excellent udder qualities.



5L Normandy Canyon 6024



## D 5L AVALANCHE 525-1014 #982029

BD 2/8/04 BW 77 WW 647 YW 1238 Cat. 1A % 100%

ROCKN D AMBUSH 1531  
5L AMBUSH 587-5292  
5L MS DYNAMO 54-587

GLACIER LOGAN 210  
5L ADINA 293-525  
5L ADINA 109-293

%IMF 4.64  
REA 12.76  
BF 0.26

CED	BW	WW	YW	Milk	TM	ME	HPG	CEM	Stay	Marb	REA	Fat
9	0.1	25	43	17	30	-1	16	12	13	0.57	0.29	-0.01

One of the most under-appreciated bulls in the industry today. Consistently produces offspring with low birth weights on an easy keeping moderate frame with outstanding carcass quality.

# REFERENCE SIRES



## E MESSMER JED V510 #1238680

BD 2/24/08 BW 84 WW 641 YW 1246 Cat. 1A % 100%

BKT JULIAN 7526 G  
BECKTON JULIAN GG B571  
BKT MARTA 9A13 JL

LMAN KING ROB 8621  
MESSMER GINNIE 9862  
MESSMER GINNIE 9211

%IMF 4.22  
REA 14.27  
BF 0.35

CED	BW	WW	YW	Milk	TM	ME	HPG	CEM	Stay	Marb	REA	Fat
16	-4.4	24	57	22	34	1	13	11	16	0.15	0.33	0.05

Purchased at Messmer's 2009 production sale, Jed is an own son of the most sought after sire in the breed, Julian GG B571. Jed's dam Messmer Ginnie 9211 had a 104.9 MPPA on 9 natural calves. V510 is a calving-ease specialist that sires moderate, easy fleshing cattle with great maternal qualities.



## F CHOAT TRAILBLAZER T707 #1194994

BD 2/19/07 BW 74 WW 406 YW Cat. 1A % 100%

BUF CRK HOBO 1413  
BUF CRK HOBO 1961  
BUF CR CARRIE VC1174

FCC RAMBO 502  
MLK CRK LAKOTA 112-RAMB  
CFLD LAKOTA 112-914

%IMF  
REA  
BF

CED	BW	WW	YW	Milk	TM	ME	HPG	CEM	Stay	Marb	REA	Fat
9	-0.5	32	58	15	31	7	6	8	8	-0.04	-0.41	-0.02

A maternal powerhouse. His sire was the leading Red Angus semen seller at ABS for many years and shows up in the pedigrees of outstanding cows across the country. His dam is one of the best Rambo daughters ever.



## G 5L SIGNATURE 2585-6017 #1187296

BD 1/24/07 BW 80 WW 784 YW 1275 Cat. 1A % 100%

5L NORSEMAN KING 2291  
5L SIGNATURE 5615  
5L RUBY 199-01

O C C LEGEND 616L  
5L ROXIE X 851-2585  
XXX ROXIE 851 MR

%IMF 3.80  
REA 14.36  
BF 0.24

CED	BW	WW	YW	Milk	TM	ME	HPG	CEM	Stay	Marb	REA	Fat
-2	3.3	36	72	17	35	2	11	-2	9	0.35	0.32	0.02

An OS free son of 5L Signature 5615 (see reference sire M). Lots of rib shape. He sires daughters that are very broody and functional with near perfect udders. His sons are well balanced with lots of volume, rib and flank.



## H MUSHRUSH LTJULIAN LG S005 #1115157

BD 2/6/06 BW 56 WW 557 YW 1119 Cat. 1A % 100%

BECKTON JULIAN GG B571  
TR JULIAN LT142  
TR LANA G760

MUSHRUSH PIONEER 0014  
MUSHRUSH LOGA N288  
MUSHRUSH LOGAN 9155

%IMF 3.98  
REA 13.13  
BF 0.44

CED	BW	WW	YW	Milk	TM	ME	HPG	CEM	Stay	Marb	REA	Fat
19	-8.3	5	26	28	31	-6	16	11	14	0.04	-0.02	0.06

Nicknamed "DeVito", this TR Julian LT 142 son is in the top 1% of the breed for birth weight. He sires low birth weight, high volumed cattle with low maintenance energy requirements. His 1st daughters did an excellent job of raising their calves in 2010 and displayed softness, quiet dispositions and excellent udder qualities.



Steadfast Boaz T71



## I STEADFAST BOAZ T71 #1158668

BD 2/25/07 BW 75 WW 623 YW 1127 Cat. 1A % 100%

TR JULIAN LT142  
MUSHRUSH ROCKET P016  
MUSHRUSH LANA 9037

TR JULIAN LT142  
MUSHRUSH LANA LT R040  
MUSHRUSH LANA 1035

%IMF 3.98  
REA 11.59  
BF 0.47

CED	BW	WW	YW	Milk	TM	ME	HPG	CEM	Stay	Marb	REA	Fat
16	-2.3	27	55	17	30	-2	14	9	19	-0.06	-0.02	0.03

Boaz is a double bred Grandson of TR Julian LT 142 and was bred for the sole purpose of concentrating the gene pool of Julian GG B571. His CED and STAY EPD's rank in the top 1% of the breed.



## J RED SIX MILE SAKIC 832S #1160318

BD 2/26/06 BW 82 WW 906 YW Cat. 1A % 100%

RED WILDMAN DENALI 19L  
RED SIX MILE AVIATOR 217P  
RED RSL SUE 400F

RED SIX MILE CUJO 800M  
RED SIX MILE SIERA 257P  
RED BOUNTY B MISS SIERA BAR

%IMF  
REA  
BF

CED	BW	WW	YW	Milk	TM	ME	HPG	CEM	Stay	Marb	REA	Fat
3	1.1	44	68	20	42	1	7	7	8	-0.41	-0.11	-0.02

A Canadian bred bull with outcross genetics, Sakic consistently produces dark red, deep bodied cattle with depth and thickness on a moderate frame.



Red Six Mile Sakic 832S





## K 5L RAM DIRECT 5166-6386 #1115719

BD 2/16/06 BW 73 WW 650 YW 1203 Cat. 1A % 100%

C A FUTURE DIRECTION 5321  
5L DIRECT FIRE 1641-6443  
5L FIREFLY 174-1641 ET

BJR RAM 5162-6243  
BIEBER TESS 5166  
BIEBER TESS 4634

%IMF 4.34  
REA 13.34  
BF 0.26

CED	BW	WW	YW	Milk	TM	ME	HPG	CEM	Stay	Marb	REA	Fat
5	0.0	18	45	17	25	-5	14	4	6	0.23	0.21	-0.01



5L Ruby 01-453, Dam of 5L Grand Express 453-5655



## L 5L GRAND EXPRESS 453-5655 #1048095

BD 2/5/05 BW 78 WW 665 YW 1143 Cat. 1A % 100%

5L NORSEMAN KING 2291  
5L NORSEMAN EXPRESS  
5L MARTHA 197-159

5L NORSEMAN KING 2291  
5L RUBY 01-453  
5L RUBY 199-01

%IMF 2.51  
REA 15.37  
BF 0.23

CED	BW	WW	YW	Milk	TM	ME	HPG	CEM	Stay	Marb	REA	Fat
4	0.3	39	68	13	33	5	12	-1	7	-0.09	0.64	0.01

A line-bred son of Norseman King 2291 out of a full sister to 5L Signature 5615, G.E. sires long sided, feminine females with ideal udders. His sons are very masculine with excellent growth and a high libido. G.Es dam, 5L Ruby 01-453 is an exquisite, triangular female with a picture perfect udder.



5L Grand Express 453-5655



## M 5L SIGNATURE 5615 #1047725

BD 2/4/05 BW 83 WW 713 YW 1312 Cat. 1A % 100%

VGW KING OF THE WEST  
5L NORSEMAN KING 2291  
NORSEMAN 1312 PJM

LCHMN GRANDCANYON 1244G  
5L RUBY 199-01  
5L MISS BURKE 72-199

%IMF 5.45  
REA 14.85  
BF 0.44

CED	BW	WW	YW	Milk	TM	ME	HPG	CEM	Stay	Marb	REA	Fat
0	0.1	38	82	25	44	5	14	-4	7	0.56	0.41	0.04

The most complete bull in the breed. If Signature were OS free, there is no doubt that he would be the most widely used Red Angus bull today. All sons in the sale are tested OS Free.



5L Signature 5615



## N 5L BLAZIN RAM 5166-7504 #982096

BD 2/20/04 BW 79 WW 650 YW 1254 Cat. 1A % 100%

D H D TRAVELER 6807  
O C C EMBLAZON 854E  
DIXIE ERICA OF C H 1019

BJR RAM 5162-6243  
BIEBER TESS 5166  
BIEBER TESS 4634

%IMF 3.46  
REA 13.46  
BF 0.33

CED	BW	WW	YW	Milk	TM	ME	HPG	CEM	Stay	Marb	REA	Fat
10	-2.1	40	70	3	23	-4	8	3	11	-0.20	0.45	0.04

"Larry," as he is known at the Cooksley Ranch, has been the mainstay herd bull since the day he set foot on the place. A black/red carrier out of the great Bieber Tess 5166 cow, Larry produces wedge shaped females with scope, dimension and great udder qualities. His sons are masculine and easy fleshing with exceptional rib eye area and muscle.



## O 3S RAMBLAZON 6508 #1139484

BD 4/1/06 BW 76 WW 718 YW Cat. 1A % 100%

OCC EMBLAZON 854E  
5L BLAZIN RAM 5166-7504  
BIEBER TESS 5166

SONIC 737 SCN  
SANDY 459-855  
TEAHON BIG GIRL 855

%IMF  
REA  
BF

CED	BW	WW	YW	Milk	TM	ME	HPG	CEM	Stay	Marb	REA	Fat
7	-0.6	29	63	15	29	6	7	2	10	-0.12	0.40	0.03

A dark cherry red tank, Ramblazon displays extreme volume, spring of rib and muscle on a moderate frame. He descends from the Teahon Big Girl cow family, which has been a prolific female line at the Cooksley Ranch.



**P 5L TIMELY TRADITION 653-88V #1261055**

BD 2/9/08 BW 80 WW 561 YW 1016 Cat. 1A % 100%

O C C LEGEND 616L  
**5L TRADITION 203-6145**  
 5L HAZEL 1821-203

5L PRIME TIME 2559  
**5L SEOLA 404-653**  
 5L SEOLA 282-404

%IMF 2.86  
 REA 11.16  
 BF 0.22

CED	BW	WW	YW	Milk	TM	ME	HPG	CEM	Stay	Marb	REA	Fat
10	-1.3	21	46	21	31	-4	11	7	9	0.03	0.06	0.03

Timely Tradition is a walking herd bull at Cooksley Red Angus. He is a moderate framed calving ease sire with good dimension and depth. We are very excited to get more calves out him this year.



**Q CUB 679-006 #1158293**

BD 7/29/06 BW 62 WW 725 YW 994 Cat. 1A % 100%

GLACIER CUB 446  
**MLK CRK CUB 722**  
 MLK CRK LAKOTA 152-HOBO

7U COPPER'S PRIME STAKE  
**ABIGAIL 006 SCN**  
 MISS OLE 422 SCN

%IMF  
 REA  
 BF

CED	BW	WW	YW	Milk	TM	ME	HPG	CEM	Stay	Marb	REA	Fat
2	-2.9	18	36	15	24	3	4	1	9	-0.07	-0.09	-0.01

Long sided, dark red and standing on outstanding feet and legs. 679 consistently transmits his type and projects his flawless structure on to his offspring.



**R 5L BLAZIN RED 1354-6166 #1115981**

BD 2/13/06 BW WW 623 YW 1248 Cat. 1A % 100%

O C C EMBLAZON 854E  
**5L BLAZIN HOBO 404-5654**  
 5L SEOLA 282-404

5L AMBUSH 587-5292  
**5L REBA 60-1354**  
 5L REBA 298-60

%IMF 3.26  
 REA 14.39  
 BF 0.32

CED	BW	WW	YW	Milk	TM	ME	HPG	CEM	Stay	Marb	REA	Fat
-3	3.5	43	78	10	32	3	11	3	12	0.01	0.30	0.01

A big volume outcross sire, Blazin Red stacks the maternal lines of OCC Emblazon, Hobo 1961, Rockin D Ambush and Grand Canyon. His progeny display capacity and spring of rib on a modest frame. The daughters are very productive with excellent udders.



**S DUNLOUISE RED NATIVE F207 #1236620**

BD 10/12/06 BW 64 WW 592 YW Cat. 1A % 100%

ERNEST OF BUCHAAM  
**PRATTLE OF HAYMOUNT**  
 PARTICLE OF HAYMOUNT

DUNLOUISE EXCALIBUR Y070  
**EVERSFIELD RED NENA D252**  
 BUDGEHILL NENA Z008

%IMF  
 REA  
 BF

CED	BW	WW	YW	Milk	TM	ME	HPG	CEM	Stay	Marb	REA	Fat
14	-6.6	-29	-26	25	10	2	6	4	4	0.01	-0.19	0.03

Scottish outcross genetics with sure fire calving ease. Red Native offspring are deep bodied, easy keeping and wide based on a smaller frame.



## 60 COMMERCIAL OPEN HEIFERS

We are selling 60 head of commercial replacement heifer calves. They should be weighing around 625 lbs. by sale day. These heifers are right out of the heart of our commercial herds. All of the heifers have been bang vaccinated and are part of a full herd health program. They have been developed on winter range, crop residue and some minor supplementation in order to allow them to grow nice and slow and ultimately flourish in your environment. The heifers will sell before the bulls in groups of no less than 5, with the option to purchase all from each respective consignor. We can help source trucking, if needed, but the buyer is responsible for trucking expense. Buy the heifers and then pony up for some heifer bulls from a Sandhills Red Select consignor.

### 10 HEAD – COMMERCIAL RED ANGUS HEIFERS FROM BIRNIE RED ANGUS

### 25 HEAD – COMMERCIAL RED ANGUS HEIFERS FROM COOKSLEY RED ANGUS

### 25 HEAD – COMMERCIAL RED BALDY HEIFERS FROM COOKSLEY RED ANGUS



CHOAT CATTLE COMPANY

**1 CHOAT HOBO RAM 922** #1338618

BD 3/18/09 BW 80 WW 616 YW Cat. 1A % 100%

BUF CRK HOBO 1961  
**CHOAT TRAILBLAZER T707**  
 MLK CRK LAKOTA 112-RAMB

5L NORMANDY CANYON 6024  
**CHOAT QUEEN T742**  
 BIEBER QUEEN 5958

%IMF N/A  
 REA N/A  
 BF N/A

Dam's MPPA 108.0 Dam's Age 2

CED	BW	WW	YW	Milk	TM	ME	HPG	CEM	Stay	Marb	REA	Fat
5	0.5	29	59	17	31	3	7	5	6	0.03	-0.24	0.00

A deep, thick bull with lots of maternal genetics. Hobo 1961, Rambo 502, and Grandcanyon plus an outstanding Bieber cow. Scrotal 38 cm.



Lot 1



Lot 2



CHOAT CATTLE COMPANY

**2 CHOAT SIGNATURE 9137** #1338487

BD 4/20/09 BW 90 WW 556 YW Cat. 1A % 100%

5L SIGNATURE 5615  
**5L SIGNATURE 2585-6017**  
 5L ROXIE X 851-2585

GLACIER PIONEER 939  
**RIDGE LARKEISA F412-379**  
 BKT LARKEISA F412 RU

%IMF N/A  
 REA N/A  
 BF N/A

Dam's MPPA 93.6 Dam's Age 6

CED	BW	WW	YW	Milk	TM	ME	HPG	CEM	Stay	Marb	REA	Fat
1	1.7	33	61	13	30	4	11	-1	13	0.17	0.20	0.00

A long, deep ribbed well-balanced bull. Good EPD numbers. Scrotal 40 cm.



Milk Creek Lakota 112-Ramb (251).  
 Choat foundation matriarch.

Grand dam to Lots 1, 3, 4, 7, 8 and 10. Shown here at 14 years of age. She had her last natural calf at 16.



CHOAT CATTLE COMPANY

**3 CHOAT HOBO RAM 919** #1338599

BD 3/17/09 BW 65 WW 509 YW Cat. 1A % 100%

BUF CRK HOBO 1961  
**CHOAT TRAILBLAZER T707**  
 MLK CRK LAKOTA 112-RAMB

CHOAT KNIGHT RIDER R512  
**CHOAT OPHELIA T740**  
 AHF OPHELIA 5110

%IMF N/A  
 REA N/A  
 BF N/A

Dam's MPPA 104.0 Dam's Age 2

CED	BW	WW	YW	Milk	TM	ME	HPG	CEM	Stay	Marb	REA	Fat
11	-2.4	21	40	18	29	3	6	6	10	0.07	-0.19	-0.02

A dark red heifer bull with calving ease that goes back 3 generations. Scrotal 38 cm.



Lot 3

## Red Angus Average EPDs

Average EPDs for Proven and Opportunity Sires

CED	BW	WW	YW	Milk	TM	ME	HPG	CEM	Stay	Marb	REA	Fat
6	-0.3	32	61	17	33	4	9	4	9	0.08	0.06	0.00

Average EPDs for Non-Parents Under Two Years of Age

CED	BW	WW	YW	Milk	TM	ME	HPG	CEM	Stay	Marb	REA	Fat
5	-0.1	32	60	17	33	4	10	3	9	0.08	0.09	0.00



Lot 4



CHOAT CATTLE COMPANY

## 4 CHOAT HOBO RAM 947 #1338603

BD	BW	WW	YW	Cat.	%
3/28/09	78	572		1A	100%
BUF CRK HOBO 1961 <b>CHOAT TRAILBLAZER T707</b> MLK CRK LAKOTA 112-RAMB					
RED CROWFOOT OLE'S OSCAR <b>CHOAT JUANA T713</b> AHF JUANA 565R					
%IMF	REA	BF	Dam's MPPA Dam's Age		
N/A	N/A	N/A	101.6 2		

CED	BW	WW	YW	Milk	TM	ME	HPG	CEM	Stay	Marb	REA	Fat
8	-1.2	32	60	18	34	5	5	8	7	0.07	-0.18	0.00

A calving ease bull that's big ribbed and good footed. Lots of maternal genetics. Hobo 1961, Rambo 502, and Ole's Oscar. Scrotal 36 cm.



CHOAT CATTLE COMPANY

## 5 CHOAT SIGNATURE 962 #1338491

BD	BW	WW	YW	Cat.	%
3/31/09	88	517		1A	100%
5L SIGNATURE 5615 <b>5L SIGNATURE 2585-6017</b> 5L ROXIE X 851-2585					
VGW CHATEAU 128 <b>RIDGE CASEY 038-369</b> RIDGE CASEY 867-038					
%IMF	REA	BF	Dam's MPPA Dam's Age		
N/A	N/A	N/A	104.8 6		

CED	BW	WW	YW	Milk	TM	ME	HPG	CEM	Stay	Marb	REA	Fat
2	1.4	29	60	16	30	1	9	1	10	0.06	0.14	0.01

A very athletic, smooth made, big nutted bull. Dam posts a 104.8 MPPA on 6 calves. Scrotal 46 cm.



Lot 5



CHOAT CATTLE COMPANY

## 6 CHOAT PIC PER 9124 #1338620

BD	BW	WW	YW	Cat.	%
4/15/09	70	530		2	100%
O C C PICTURE PERFECT 738P <b>S A PICTURE PERFECT 73 633</b> S A 353 TRAVELER 633 862					
SHOCO DATA <b>CHOAT LANA T7126</b> MLK CRK LANA 704-HOBO					
%IMF	REA	BF	Dam's MPPA Dam's Age		
N/A	N/A	N/A	98.8 2		

CED	BW	WW	YW	Milk	TM	ME	HPG	CEM	Stay	Marb	REA	Fat
10	-2.1	24	40	14	26	4	10	6	6	0.24	-0.06	0.01

A black-hided Red Angus bull. He brings together some of the best Ohlde and Jauer genetics. He is deep, thick and moderate framed with excellent calving ease. Scrotal 35 cm.



Lot 6



CHOAT CATTLE COMPANY

## 7 CHOAT HOBO RAM 945 #1338591

BD	BW	WW	YW	Cat.	%
3/28/09	90	595		1A	100%
BUF CRK HOBO 1961 <b>CHOAT TRAILBLAZER T707</b> MLK CRK LAKOTA 112-RAMB					
FEDDES GRAND 430 <b>CHOAT BOLDRULER T769</b> RIDGE BOLDRULER 4212					
%IMF	REA	BF	Dam's MPPA Dam's Age		
N/A	N/A	N/A	104.3 2		

CED	BW	WW	YW	Milk	TM	ME	HPG	CEM	Stay	Marb	REA	Fat
2	2.2	41	73	15	35	5	8	5	5	0.03	-0.19	-0.01

A solid bull. He combines a moderate frame with plenty of growth and muscle. Scrotal 38 cm.



CHOAT CATTLE COMPANY

## 8 CHOAT HOBO RAM 9101 #1338582

BD	BW	WW	YW	Cat.	%
4/8/09	82	642		1A	100%
BUF CRK HOBO 1961 <b>CHOAT TRAILBLAZER T707</b> MLK CRK LAKOTA 112-RAMB					
FEDDES GRAND 430 <b>CHOAT MS COPPER T752</b> OHRR 35K MS COPPER 17N					
%IMF	REA	BF	Dam's MPPA Dam's Age		
N/A	N/A	N/A	102.0 2		

CED	BW	WW	YW	Milk	TM	ME	HPG	CEM	Stay	Marb	REA	Fat
3	1.6	46	81	16	39	7	9	5	5	-0.03	-0.08	-0.01

A high-growth, thick-made, rugged bull with some outstanding cows in his background. Scrotal 37 cm.



## 9 CHOAT RAM DIRECT 9166 #1338542

BD	BW	WW	YW	Cat.	%
5/6/09	80	611		1A	100%
5L DIRECT FIRE 1641-6443					
5L RAM DIRECT 5166-6386					
BIEBER TESS 5166					
MLK CRK FLAGSTONE					
RIDGE FLAG 6102					
RIDGE MONA 303-414					
%IMF	REA	BF	Dam's MPPA	Dam's Age	
N/A	N/A	N/A	106.0	3	

CHOAT CATTLE COMPANY

CED	BW	WW	YW	Milk	TM	ME	HPG	CEM	Stay	Marb	REA	Fat
6	-1.3	23	52	21	32	-1	11	5	8	0.27	-0.05	0.00

Heifer bull that is easy moving and carries his weight well. Top in herd weaning ratio of 117. Scrotal 42 cm.



## 10 CHOAT HOBO RAM 958 #1338579

BD	BW	WW	YW	Cat.	%
3/30/09	60	615		1A	100%
BUF CRK HOBO 1961					
CHOAT TRAILBLAZER T707					
MLK CRK LAKOTA 112-RAMB					
FEDDES GRAND 430					
CHOAT GOLDIE T757					
RIDGE GOLDIE 025-386					
%IMF	REA	BF	Dam's MPPA	Dam's Age	
N/A	N/A	N/A	104.8	2	

CHOAT CATTLE COMPANY

CED	BW	WW	YW	Milk	TM	ME	HPG	CEM	Stay	Marb	REA	Fat
10	-2.9	29	57	20	34	6	8	6	6	0.04	-0.21	-0.01

Heifer bull with 60-lb. birth weight and 615-lb. 205-day weight. Scrotal 36 cm.



## 11 SIG 1189 SCN #1398508

BD	BW	WW	YW	Cat.	%
8/2/09	94	492		1B	84.4%
5L SIGNATURE 5615					
5L SIGS LANCE R21-T08					
5L DAPHNE N24-R21					
7U COPPER'S PRIME STAKE					
CHRISTY 437 SCN					
NUGGET GIRL-455-BCN					
%IMF	REA	BF	Dam's MPPA	Dam's Age	
N/A	N/A	N/A	97.8	5	

COOKSLEY RED ANGUS

CED	BW	WW	YW	Milk	TM	ME	HPG	CEM	Stay	Marb	REA	Fat
5	2.4	39	70	14	33	1	9	3	10	0.18	0.25	0.01

A mountain of a bull that has great carcass bulls in his pedigree



Lot 10



Lot 12



## 12 BLK SIG 539-741 SCN #1352678

BD	BW	WW	YW	Cat.	%
8/15/09	77	590		1A	100%
5L SIGNATURE 5615					
5L BLACK SIG 1892-6067					
5L SUNSHINE 699-1892					
5L BLAZIN RAM 5166-7504					
TESS 741-SCN					
ABBY 222					
%IMF	REA	BF	Dam's MPPA	Dam's Age	
N/A	N/A	N/A	102.4	2	

COOKSLEY RED ANGUS

CED	BW	WW	YW	Milk	TM	ME	HPG	CEM	Stay	Marb	REA	Fat
5	0.0	37	68	18	36	3	12	2	11	0.11	0.14	0.01

Low BW bull that really came on this winter. He's one of my top picks



Lot 13



## 13 TOKEN 509 SCN #1399829

BD	BW	WW	YW	Cat.	%
8/5/09	84	511		1A	100%
5L GRAND EXPRESS 453-5655					
RIDGE TOKEN 748					
MMN BOXELDER KAY L42					
TASSEL ROBIN HOOD 78E					
RIDGE AQUILA 366-073 ET					
AQUILA 366					
%IMF	REA	BF	Dam's MPPA	Dam's Age	
N/A	N/A	N/A	101.2	9	

COOKSLEY RED ANGUS

CED	BW	WW	YW	Milk	TM	ME	HPG	CEM	Stay	Marb	REA	Fat
3	0.8	24	52	21	33	7	10	4	7	0.02	0.28	-0.01

Grand Express x Robinhood really produced a performance bull and 509 has lived up to it

# AGED BULLS



## 14 PAUL 649-471 SCN #1352642

BD	BW	WW	YW	Cat.	%
7/28/09	82	517		1A	100%
GLACIER MARIAS 548					
<b>GLACIER PIONEER 939</b>					
GLACIER ICE FAYET					
BFCK CHEROKEE CNYN 4912					
<b>ANITA 471-129</b>					
SCN-MISS OLE-129					
%IMF	REA	BF	Dam's MPPA Dam's Age		
N/A	N/A	N/A	105.3 5		

COOKSLEY RED ANGUS

CED	BW	WW	YW	Milk	TM	ME	HPG	CEM	Stay	Marb	REA	Fat
1	1.4	36	55	11	30	2	8	-6	13	0.14	0.25	-0.01

This Pioneer son is out of one our best young cows



## 15 CUB 479-517 SCN #1352644

BD	BW	WW	YW	Cat.	%
7/19/09	80	474		1A	100%
MLK CRK CUB 722					
<b>CUB 679-006</b>					
ABIGAIL 006 SCN					
BFCK CHEROKEE CNYN 4912					
<b>ANITA 517-014</b>					
COWGIRL 014 SCN					
%IMF	REA	BF	Dam's MPPA Dam's Age		
N/A	N/A	N/A	99.3 4		

COOKSLEY RED ANGUS

CED	BW	WW	YW	Milk	TM	ME	HPG	CEM	Stay	Marb	REA	Fat
2	-0.9	26	51	12	26	2	6	-3	10	0.00	0.12	-0.01

Larger framed 679 son out of a good Cherokee Canyon Cow



## 16 RAM 609-61 SCN #1352672

BD	BW	WW	YW	Cat.	%
7/19/09	68	488		1A	100%
O C C EMBLAZON 854E					
<b>5L BLAZIN RAM 5166-7504</b>					
BIEBER TESS 5166					
NSF RED LEADER N010W					
<b>ABBY 61-810</b>					
TEAHON HEAVENLY 810					
%IMF	REA	BF	Dam's MPPA Dam's Age		
N/A	N/A	N/A	98.8 3		

COOKSLEY RED ANGUS

CED	BW	WW	YW	Milk	TM	ME	HPG	CEM	Stay	Marb	REA	Fat
9	-1.0	31	56	9	25	6	10	4	8	-0.07	0.26	0.02

A heifer bull that should sire calves that really perform well.



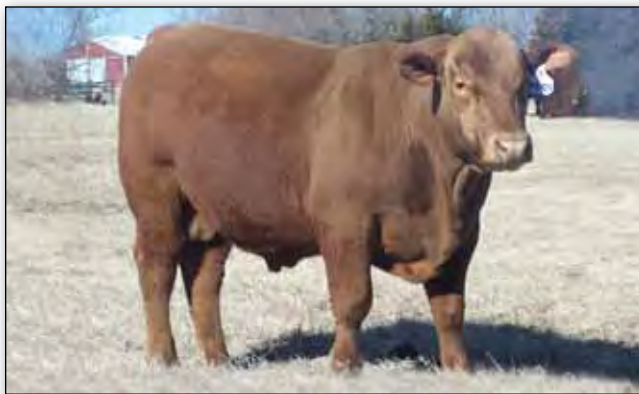
## 17 CUB 469-408 SCN #1352636

BD	BW	WW	YW	Cat.	%
7/29/09	81	471		1A	100%
MLK CRK CUB 722					
<b>CUB 679-006</b>					
ABIGAIL 006 SCN					
SONIC 737 SCN					
<b>SANDY 408-915</b>					
GEANA 915 SCN					
%IMF	REA	BF	Dam's MPPA Dam's Age		
N/A	N/A	N/A	98.7 5		

COOKSLEY RED ANGUS

CED	BW	WW	YW	Milk	TM	ME	HPG	CEM	Stay	Marb	REA	Fat
3	-1.7	10	27	17	22	-3	7	2	8	-0.05	-0.06	-0.02

This bull goes back to our great 915 cow. With Cub 722 this bull should be a female producer.



Lot 18



## 18 SIG 1039 SCN #1398510

BD	BW	WW	YW	Cat.	%
9/4/09	90	559		1B	99.9%
5L SIGNATURE 5615					
<b>5L SIGS LANCE R21-T08</b>					
5L DAPHNE N24-R21					
T3 CHIEF 2887					
<b>CRS DIAMND VELVET 552</b>					
BMFD ABBY 6020					
%IMF	REA	BF	Dam's MPPA Dam's Age		
N/A	N/A	N/A	104.6 4		

COOKSLEY RED ANGUS

CED	BW	WW	YW	Milk	TM	ME	HPG	CEM	Stay	Marb	REA	Fat
1	2.3	39	71	16	35	-2	6	1	9	0.23	0.14	0.01

This wide-topped bull has a long list of breed-changing bulls in his pedigree.



## 19 SIG 1169 SCN #1398509

BD	BW	WW	YW	Cat.	%
8/30/09	86	512		1B	99.9%
5L SIGNATURE 5615					
<b>5L SIGS LANCE R21-T08</b>					
5L DAPHNE N24-R21					
BFCK CHEROKEE CNYN 4912					
<b>PANHANDLE SANDCHERRY 295</b>					
PANHANDLE ROSE 818					
%IMF	REA	BF	Dam's MPPA Dam's Age		
N/A	N/A	N/A	97.4 7		

COOKSLEY RED ANGUS

CED	BW	WW	YW	Milk	TM	ME	HPG	CEM	Stay	Marb	REA	Fat
4	0.5	38	68	15	33	2	9	-4	10	0.19	0.40	0.02

If you like the Lot 11 bull, this bull looks just like him.



Lot 19 and Lot 15



## 20 SIG 1009 SCN #1398511

BD 7/28/09 BW 85 WW 482 YW Cat. 1B % 99.9%

5L SIGNATURE 5615  
5L SIGS LANCE R21-T08  
5L DAPHNE N24-R21

KC MANAGER 627  
**PANHANDLE ELANIE 9059**  
PANHANDLE ROBIN 724

%IMF N/A  
REA N/A  
BF N/A  
Dam's MPPA 97.1  
Dam's Age 10

CED	BW	WW	YW	Milk	TM	ME	HPG	CEM	Stay	Marb	REA	Fat
5	-0.4	27	52	14	28	-5	8	3	9	0.12	0.29	0.02

Another calving-ease bull who also has a -4 ME.



## 21 RED RAM 529-855 SCN #1352691

BD 7/19/09 BW 79 WW 521 YW Cat. 1A % 100%

5L BLAZIN HOBO 404-5654  
5L BLAZIN RED 1354-6166  
5L REBA 60-1354

TEAHON BIG BOY 713  
**TEAHON BIG GIRL 855**  
TEAHON CHINOOK 594

%IMF N/A  
REA N/A  
BF N/A  
Dam's MPPA 100.6  
Dam's Age 12

CED	BW	WW	YW	Milk	TM	ME	HPG	CEM	Stay	Marb	REA	Fat
2	1.3	29	60	14	29	3	10	0	10	0.01	0.22	0.00

This soggy Blazin Red bull's dam has a 100.6 MPPA on 11 hd. She always has a top-end calf.



Dam of Lot 22



Lot 21



## 22 SAKIC 439-915 SCN #1352689

BD 7/19/09 BW 78 WW 488 YW Cat. 1A % 100%

RED SIX MILE AVIATOR 217P  
RED SIX MILE SAKIC 832S  
RED SIX MILE SIERA 257P

616-VERN-SCN  
**GEANA 915 SCN**  
TEAHON STMPDR 409

%IMF N/A  
REA N/A  
BF N/A  
Dam's MPPA 93.5  
Dam's Age 10

CED	BW	WW	YW	Milk	TM	ME	HPG	CEM	Stay	Marb	REA	Fat
5	-0.6	24	41	13	25	-6	8	5	8	-0.26	-0.07	-0.03

A Sakic bull out of the best cow to walk our place. She has a calf like this every year with a -14 ME EPD. We are using two brother to this bull on registered cows. 733 will have the best group of bulls next year.



Lot 22



Lot 23



## 23 SAKIC 489-896 SCN #1352683

BD 7/23/09 BW 79 WW 566 YW Cat. 2 % 100%

RED SIX MILE AVIATOR 217P  
RED SIX MILE SAKIC 832S  
RED SIX MILE SIERA 257P

TEAHON BIG BOY 713  
**TEAHON BIG GIRL 896**  
TEAHON JOCK 574

%IMF N/A  
REA N/A  
BF N/A  
Dam's MPPA 109.0  
Dam's Age 11

CED	BW	WW	YW	Milk	TM	ME	HPG	CEM	Stay	Marb	REA	Fat
4	0.1	27	47	22	35	0	7	3	9	-0.20	-0.02	-0.02

Another good Sakic bull who's mother has 109 MPPA on 9 head. He has a touch of white on his navel.



Lot 24



COOKSLEY RED ANGUS

## 24 HAYMOUNT 449-4200 SCN #1352638

BD	BW	WW	YW	Cat.	%
7/19/09	67	432		1A	100%
PRATTLE OF HAYMOUNT					
<b>DUNLOUISE RED NATIVE F207</b>					
EVERSFIELD RED NENA D252					
PANHANDLE SANDMAN 088					
<b>PANHANDLE SANDY 4200</b>					
BMFD BETH 786					
%IMF	REA	BF	Dam's MPPA Dam's Age		
N/A	N/A	N/A	92.9 5		

CED	BW	WW	YW	Milk	TM	ME	HPG	CEM	Stay	Marb	REA	Fat
10	-3.1	-5	6	17	15	9	8	5	3	0.01	-0.15	0.01

A Red Native son that has been a top bull since birth. Don't cross him off because of his EPDs. Take a look first!



COOKSLEY RED ANGUS

## 25 RAM 639-2281 SCN #1352654

BD	BW	WW	YW	Cat.	%
8/16/09	76	565		2	100%
O C C EMBLAZON 854E					
<b>5L BLAZIN RAM 5166-7504</b>					
BIEBER TESS 5166					
BJR MONU 4X-303					
<b>7U SAMIE 2281</b>					
7U MISS EENIE 9646					
%IMF	REA	BF	Dam's MPPA Dam's Age		
N/A	N/A	N/A	100.3 7		

CED	BW	WW	YW	Milk	TM	ME	HPG	CEM	Stay	Marb	REA	Fat
7	-1.2	38	67	5	24	-0	8	2	10	-0.20	0.12	0.00

This black bull should be a calving-ease deluxe.



Lot 25



COOKSLEY RED ANGUS

## 26 RAM 689-528 SCN #1352646

BD	BW	WW	YW	Cat.	%
8/15/09	78	520		1A	100%
O C C EMBLAZON 854E					
<b>5L BLAZIN RAM 5166-7504</b>					
BIEBER TESS 5166					
GLACIER PIONEER 939					
<b>PEGGY 501-072</b>					
SANDY 072 BCN					
%IMF	REA	BF	Dam's MPPA Dam's Age		
N/A	N/A	N/A	104.4 4		

CED	BW	WW	YW	Milk	TM	ME	HPG	CEM	Stay	Marb	REA	Fat
5	0.1	36	61	8	26	1	8	1	11	-0.07	0.28	0.01

A well-made bull combines two of my favorites - Ram x Pioneer.



COOKSLEY RED ANGUS

## 27 RAM 659-3360 SCN #1352655

BD	BW	WW	YW	Cat.	%
8/5/09	80	514		2	100%
O C C EMBLAZON 854E					
<b>5L BLAZIN RAM 5166-7504</b>					
BIEBER TESS 5166					
MESSMER RED OPTION 9902					
<b>7U RED OPAL 3360</b>					
7U ESTER MONU 5020					
%IMF	REA	BF	Dam's MPPA Dam's Age		
N/A	N/A	N/A	100.5 6		

CED	BW	WW	YW	Milk	TM	ME	HPG	CEM	Stay	Marb	REA	Fat
6	-0.7	39	69	5	25	2	11	1	9	-0.10	0.14	0.00

This black bull should be a calving-ease deluxe. He has a touch of white on his navel.



COOKSLEY RED ANGUS

## 28 RAM 429-338 SCN #1352635

BD	BW	WW	YW	Cat.	%
9/20/09	74	589		1A	100%
O C C EMBLAZON 854E					
<b>5L BLAZIN RAM 5166-7504</b>					
BIEBER TESS 5166					
HLH HI TECH 885 032					
<b>HANNA 338-896</b>					
TEAHON BIG GIRL 896					
%IMF	REA	BF	Dam's MPPA Dam's Age		
N/A	N/A	N/A	102.8 6		

CED	BW	WW	YW	Milk	TM	ME	HPG	CEM	Stay	Marb	REA	Fat
7	-0.9	36	65	12	31	2	8	2	12	-0.15	0.22	0.01

A smaller-framed bull should be calving ease. Probably the friendliest bull we have.



COOKSLEY RED ANGUS

## 29 GRAND 619-575 SCN #1352663

BD	BW	WW	YW	Cat.	%
8/1/09	79	502		1A	100%
MLK CRK CUB 722					
<b>CUB 679-006</b>					
ABIGAIL 006 SCN					
PANHANDLE SKEETER 440					
<b>CRS DIAMND NEW MARKET 575</b>					
7U SPRADETTE 2255					
%IMF	REA	BF	Dam's MPPA Dam's Age		
N/A	N/A	N/A	101.6 4		

CED	BW	WW	YW	Milk	TM	ME	HPG	CEM	Stay	Marb	REA	Fat
4	-0.8	28	49	13	27	10	6	5	9	-0.06	-0.01	-0.01

Well-made calving ease bull - super clean up front and made to have calves that fall out.





**30 RAM 519-446 SCN** #1352640

BD 9/15/09 BW 60 WW 557 YW Cat. 2 % 100%

O C C EMBLAZON 854E  
**5L BLAZIN RAM 5166-7504**  
 BIEBER TESS 5166

LCC ABOVE & BEYOND 1300J  
**ABBY 446-222**  
 ABBY 222

%IMF N/A  
 REA N/A  
 BF N/A

Dam's MPPA 100.9 Dam's Age 5

CED	BW	WW	YW	Milk	TM	ME	HPG	CEM	Stay	Marb	REA	Fat
14	-4.0	27	53	14	28	3	9	7	9	-0.07	0.15	0.02

Another black Ram son with Above and Beyond. Should be a sleep-all-night heifer bull.



Lot 30



**31 BLK SIG 549-778 SCN** #1352681

BD 7/23/09 BW 68 WW 501 YW Cat. 1A % 100%

5L SIGNATURE 5615  
**5L BLACK SIG 1892-6067**  
 5L SUNSHINE 699-1892

FEDDES BIG SKY R9  
**SKY 778-SCN**  
 PEGGY 592-371

%IMF N/A  
 REA N/A  
 BF N/A

Dam's MPPA 96.4 Dam's Age 2

CED	BW	WW	YW	Milk	TM	ME	HPG	CEM	Stay	Marb	REA	Fat
7	-1.9	28	54	25	39	4	15	2	10	0.26	-0.03	-0.01

Small framed bull should be calving ease.



**32 RAM 459-1720 SCN** #1352653

BD 8/5/09 BW 84 WW 536 YW Cat. 1A % 100%

5L GRAND EXPRESS 453-5655  
**RIDGE TOKEN 748**  
 MMN BOXELDER KAY L42

BJR MAKE MY DAY 981  
**7U MS DAWN 1720**  
 7U MISS MINEY 9650

%IMF N/A  
 REA N/A  
 BF N/A

Dam's MPPA 105.3 Dam's Age 8

CED	BW	WW	YW	Milk	TM	ME	HPG	CEM	Stay	Marb	REA	Fat
3	0.5	27	55	18	32	3	8	3	8	0.20	0.15	-0.01

Good Token bull should put some pounds on the ground.



**33 RIDGE CHANDLER 9410** #1363381

BD 8/27/09 BW 85 WW 561 YW Cat. 1A % 100%

5L TRAVLIN MATT 6223  
**RIDGE CHANDLER 576**  
 RIDGE BRANDINA 42A-268

LEACHMAN MONU 2X 8096  
**FEDDES BLOCKANA 935**  
 FED'S BLOCKANA 4225

%IMF N/A  
 REA N/A  
 BF N/A

Dam's MPPA 99.9 Dam's Age 10

CED	BW	WW	YW	Milk	TM	ME	HPG	CEM	Stay	Marb	REA	Fat
3	2.6	29	58	20	35	5	4	7	9	0.14	-0.25	0.04

Ridge Chandler 9410 is a long sided, stout made bull with an excellent stride. He is out of the Feddes Blockana 935 cow and she is greatness.



Lot 33



**34 RIDGE STOCK EXPRESS 405** #1373438

BD 7/20/09 BW 80 WW 414 YW Cat. 2 % 100%

5L NORSEMAN EXPRESS  
**5L GRAND EXPRESS 453-5655**  
 5L RUBY 01-453

TC STOCKMAN 979  
**POSS QUEEN 3130**  
 MINERTS QUEEN 4137

%IMF N/A  
 REA N/A  
 BF N/A

Dam's MPPA N/A Dam's Age 6

CED	BW	WW	YW	Milk	TM	ME	HPG	CEM	Stay	Marb	REA	Fat
5	0.5	24	41	14	26	3	11	1	6	-0.05	0.32	0.00

This bull has a lot of potential with a different pedigree combining grand express with some good foundation black angus genetics.



**35 RIDGE LARRY 9407** #1390329

BD 8/18/09 BW 77 WW 424 YW Cat. 2 % 100%

O C C EMBLAZON 854E  
**5L BLAZIN RAM 5166-7504**  
 BIEBER TESS 5166

MLK CRK FLAGSTONE  
**RIDGE CASEY 215-591**  
 RIDGE CASEY 028-215

%IMF N/A  
 REA N/A  
 BF N/A

Dam's MPPA 98.6 Dam's Age 4

CED	BW	WW	YW	Milk	TM	ME	HPG	CEM	Stay	Marb	REA	Fat
8	-2.8	29	58	18	33	3	10	4	10	-0.04	0.19	0.03

9407 is a heifer bull that doesn't give up anything in performance take a look I think you'll agree. This is one of Ben's favorites.

# YEARLING BULLS



## 36 RIDGE 9000 COMMERCIAL

BD BW WW YW Cat. %

OCC EMBLAZON 854E  
**5L BLAZIN RAM 5166-504**  
 BIEBER TESS 5166

BUFCRK SIOUX CNYON 4759  
**RIDGE GOLDIE 989-025**  
 DDF GOLDIE 989

%IMF **N/A**  
 REA **N/A**  
 BF **N/A**  
 Dam's MPPA **98.8** Dam's Age **9**

SANDBUR RIDGE  
 RED ANGUS

CED	BW	WW	YW	Milk	TM	ME	HPG	CEM	Stay	Marb	REA	Fat
8	-1.5	26	51	12	25	-0	11	4	9	-0.04	0.17	0.01

Projected EDPs.

9000 is a good bull, wide topped and long. This red bull is out of a registered cow just not registered himself.



## 37 RIDGE TRADESMAN 6237-0006 #1379124

BD BW WW YW Cat. %

5L TRADITION 203-6145  
**5L TRADESMAN 1715-6237**  
 5L LAKOTA 41C-1715

BIEBER DESIGN 1325-082  
**PVRA DESIGN LASS 515**  
 FCC RAMBO 502 133

%IMF **3.41**  
 REA **11.47**  
 BF **0.22**  
 Dam's MPPA **105.6** Dam's Age **14**

SANDBUR RIDGE  
 RED ANGUS

CED	BW	WW	YW	Milk	TM	ME	HPG	CEM	Stay	Marb	REA	Fat
7	-0.6	23	42	19	31	1	9	2	9	-0.04	0.00	0.02

The first of three flush – multidimensional herd bull candidates.

PVRA Design Lass 515 is a 16-year-old cow that is structurally very sound and maintains great fleshing ability. During her calf-raising years she produced 12 natural calves with a 106 weaning ratio and a 104 yearling ratio, earning her a 105.6 MPPA. 515's dam was a Rambo 502 daughter that raised 9 calves and earned a 103.9 MPPA. If you like cattle that will perform and be a positive influence on your operation for years to come you need to be looking at the offspring from 515.



Lot 37



## 38 RIDGE TRADESMAN 6237-0004 #1379122

BD BW WW YW Cat. %

5L TRADITION 203-6145  
**5L TRADESMAN 1715-6237**  
 5L LAKOTA 41C-1715

BIEBER DESIGN 1325-082  
**PVRA DESIGN LASS 515**  
 FCC RAMBO 502 133

%IMF **2.79**  
 REA **12.12**  
 BF **0.22**  
 Dam's MPPA **105.6** Dam's Age **14**

SANDBUR RIDGE  
 RED ANGUS

CED	BW	WW	YW	Milk	TM	ME	HPG	CEM	Stay	Marb	REA	Fat
7	-0.6	23	42	19	31	1	9	2	9	-0.04	0.00	0.02

Second flush brother, proven and predictable genetics, makes for a uniform calf crop.



Lot 39



## 39 RIDGE TRADESMAN 6237-0002 #1379120

BD BW WW YW Cat. %

5L TRADITION 203-6145  
**5L TRADESMAN 1715-6237**  
 5L LAKOTA 41C-1715

BIEBER DESIGN 1325-082  
**PVRA DESIGN LASS 515**  
 FCC RAMBO 502 133

%IMF **2.25**  
 REA **13.10**  
 BF **0.13**  
 Dam's MPPA **105.6** Dam's Age **14**

SANDBUR RIDGE  
 RED ANGUS

CED	BW	WW	YW	Milk	TM	ME	HPG	CEM	Stay	Marb	REA	Fat
7	-0.6	23	42	19	31	1	9	2	9	-0.04	0.00	0.02

Third flush brother and my pick of the 3 from a phenotype standpoint. The dam to these flush brothers is a 16 year old Bieber Design daughter with a 105.6 MPPA on 12 natural calves. In the majority of breeder's circles they flush virgin heifers to speed up time. I prefer to let time determine the genetics we should be using! Retaining a 50% Semen Interest.



## 40 RIDGE TRADESMAN 0014 #1379118

BD 2/6/10 BW 78 WW 633 YW 1088 Cat. 1A % 100%

5L TRADITION 203-6145  
5L TRADESMAN 1715-6237  
5L LAKOTA 41C-1715

LCHMN GOLD ROBBER 1909E  
RIDGE CASEY 028-215  
RIDGE CASEY 871-028

%IMF 3.72  
REA 13.29  
BF 0.30  
Dam's MPPA 106.5  
Dam's Age 8

SANDBUR RIDGE  
RED ANGUS

CED	BW	WW	YW	Milk	TM	ME	HPG	CEM	Stay	Marb	REA	Fat
8	-1.8	24	48	28	40	7	14	5	10	0.11	0.12	0.05

This Tradesman son is a HERD BULL PROSPECT. BWR 94, WWR 109, YWR 103. He started below the average on birth weight, grew rapidly to weaning time and posted a yearling ratio that will keep the cow herd size and energy requirements at a manageable level. Dam is 9 years old with a 106.5 MPPA on 7 calves, granddam is 11 with a 103.8 MPPA on 9 calves, great-granddam is 13 with a 104.7 MPPA on 11 calves, and all three are still producing in the herd. The great-great granddam had a 102.6 MPPA on 9 calves and her last calf is currently being used as a herd bull in my operation. A well-balanced carcass bull. This is a great prospect! Retaining a 50% Semen Interest.



Lot 40



## 41 RIDGE TRADESMAN 0010 #1378994

BD 2/3/10 BW 69 WW 534 YW 1054 Cat. 2 % 100%

5L TRADITION 203-6145  
5L TRADESMAN 1715-6237  
5L LAKOTA 41C-1715

BON VIEW BANDO 598  
RIDGE DORA 366-280ET  
AQUILA 366

%IMF 2.46  
REA 11.04  
BF 0.23  
Dam's MPPA 105.1  
Dam's Age 8

SANDBUR RIDGE  
RED ANGUS

CED	BW	WW	YW	Milk	TM	ME	HPG	CEM	Stay	Marb	REA	Fat
14	-3.0	13	38	26	33	4	10	9	10	0.03	-0.13	0.04

A black/red gene carrier, this Tradesman son is a heifer bull prospect. His CED is in the top 3% of the breed and his BW EPD is in the top 9%. His mother is a 9 year old cow with a 105.1 MPPA, and his grandmother produced 10 natural calves and posted a 107.7 MPPA.



Lot 41



## 42 RIDGE NORSEMAN KING 0042 #1379078

BD 2/12/10 BW 83 WW 694 YW 1226 Cat. 1A % 100%

VGW KING OF THE WEST  
5L NORSEMAN KING 2291  
NORSEMAN 1312 PJM

5L NORMANDY CANYON 6024  
RIDGE AQUILA 552-8066  
RIDGE AQUILA 213-552

%IMF 2.43  
REA 15.27  
BF 0.31  
Dam's MPPA 108.0  
Dam's Age 2

SANDBUR RIDGE  
RED ANGUS

CED	BW	WW	YW	Milk	TM	ME	HPG	CEM	Stay	Marb	REA	Fat
2	-0.2	28	71	19	33	4	8	-3	8	0.09	0.53	0.01

STUD, STUD, STUD. This bull is excellent, he has tremendous muscle, outstanding style, top of the pen performance, and is all nicely packaged into a dark red herd bull! Norseman King 0042 is a wide based big nutted bull that will sire exceptional male calves and females that you will want to keep in your replacement pen. Monster ribeye with 1.4 inches per cwt and 15.3 inch REA. Retaining a 50% Semen Interest.



Lot 42



## 43 RIDGE NORSEMAN KING 0034 #1379065

BD 2/10/10 BW 71 WW 537 YW 1049 Cat. 1A % 100%

VGW KING OF THE WEST  
5L NORSEMAN KING 2291  
NORSEMAN 1312 PJM

RIDGE SUPERIOR 533  
RIDGE MONA 970-8122  
OTT-MONA-758-970

%IMF 3.16  
REA 11.25  
BF 0.20  
Dam's MPPA 97.2  
Dam's Age 2

SANDBUR RIDGE  
RED ANGUS

CED	BW	WW	YW	Milk	TM	ME	HPG	CEM	Stay	Marb	REA	Fat
6	-1.4	21	54	19	29	-2	9	-3	10	0.18	0.31	0.01

Good Norseman King son out of a first calf heifer. Her family tree is really impressive.



## 44 RIDGE NORSEMAN KING 0011 #1379082

BD 2/3/10 BW 64 WW 530 YW 968 Cat. 1A % 100%

VGW KING OF THE WEST  
5L NORSEMAN KING 2291  
NORSEMAN 1312 PJM

5L NORMANDY CANYON 6024  
RIDGE SHEILA 5103-8020  
RIDGE SHEILA 212-5103

%IMF 2.43  
REA 11.87  
BF 0.15  
Dam's MPPA 96.8  
Dam's Age 2

SANDBUR RIDGE  
RED ANGUS

CED	BW	WW	YW	Milk	TM	ME	HPG	CEM	Stay	Marb	REA	Fat
5	1.2	25	48	16	29	3	8	-2	8	0.11	0.32	0.00

Well balanced bull, from a strong performance cow family, should develop into a very good herd sire.

# YEARLING BULLS



Lot 45



SANDBUR RIDGE  
RED ANGUS

## 45 RIDGE SIGNATURE 0027 #1378997

BD 2/9/10 BW 77 WW 590 YW 1122 Cat. 1A % 100%

5L NORSEMAN KING 2291  
5L SIGNATURE 5615  
5L RUBY 199-01

LEACHMAN EBV 6703  
BLUE RIDGE LARKA 2106  
BLUE RIDGE DYNAGIRL 412

%IMF 4.10  
REA 11.93  
BF 0.31

Dam's MPPA 98.1  
Dam's Age 8

CED	BW	WW	YW	Milk	TM	ME	HPG	CEM	Stay	Marb	REA	Fat
5	-2.5	20	50	24	34	3	8	2	5	0.39	-0.22	0.03

First Signature son to sell, he has been tested OS free. This dark red bull has lots of gas in his tank. Use him on heifers and keep the performance in the calves. High marbling sire with over 1.1 inch of REA per cwt.



SANDBUR RIDGE  
RED ANGUS

## 46 RIDGE SIGNATURE 0057 #1379108

BD 2/15/10 BW 82 WW 538 YW 1173 Cat. 1A % 100%

5L NORSEMAN KING 2291  
5L SIGNATURE 5615  
5L RUBY 199-01

AQUILA RAMBO 622  
LONK AQUILA H836  
AQUILA BC 448

%IMF 4.21  
REA 13.61  
BF 0.27

Dam's MPPA 102.2  
Dam's Age 12

CED	BW	WW	YW	Milk	TM	ME	HPG	CEM	Stay	Marb	REA	Fat
2	-0.5	24	59	22	34	1	10	0	7	0.25	0.29	0.02

These Signature calves really performed well from weaning to yearling. This bull will give you added value in the daughters he leaves behind. His mother is 13 and has had 11 calves and earned a 102.2 MPPA. 0057 has tested OS free.



Lot 46



SANDBUR RIDGE  
RED ANGUS

## 47 RIDGE SIGNATURE 0075 #1379031

BD 2/23/10 BW 86 WW 498 YW 998 Cat. 1A % 100%

5L NORSEMAN KING 2291  
5L SIGNATURE 5615  
5L RUBY 199-01

SHOCO DATA  
RIDGE REBALS 168-609  
RIDGE REBALS 729-168

%IMF 3.55  
REA 11.71  
BF 0.22

Dam's MPPA 96.0  
Dam's Age 4

CED	BW	WW	YW	Milk	TM	ME	HPG	CEM	Stay	Marb	REA	Fat
1	0.7	32	63	18	34	7	11	0	6	0.35	0.16	0.04

The last Signature son in my offering, a well balanced bull and tested OS free.



Grazing Sandhills grass.



SANDBUR RIDGE  
RED ANGUS

## 48 RIDGE UPSTREAM 0083 #1379012

BD 3/1/10 BW 69 WW 621 YW 1037 Cat. 1A % 100%

MLK CRK FLAGSTONE  
RIDGE UPSTREAM 8089  
RIDGE CASEY 861-454

MLK CRK FLAGSTONE  
RIDGE CASEY 004-571  
RIDGE CASEY 863-004

%IMF 2.78  
REA 13.41  
BF 0.41

Dam's MPPA 103.5  
Dam's Age 5

CED	BW	WW	YW	Milk	TM	ME	HPG	CEM	Stay	Marb	REA	Fat
7	-4.2	25	37	30	43	9	7	4	13	0.18	0.12	0.02

This bull is a result of a brother sister mating. He is an excellent heifer bull candidate and his offspring will be very consistent. His 6 year old mother boasts a 103.5 MPPA and her BW EPD of -6.4 puts her in the top 1% of the breed.



Lot 48



## 49 RIDGE ZENITH 0107 #1379018

BD	BW	WW	YW	Cat.	%
3/14/10	73	669	1162	1A	100%
5L MTN NORSE 71-7994			%IMF	3.09	
5L ZENITH 1425-5767			REA	14.04	
5L OSCE 233-1425			BF	0.35	
MLK CRK FLAGSTONE			Dam's MPPA	100.9	
RIDGE AQUILA 213-552			Dam's Age	5	
RIDGE AQUILA 366-213ET					

SANDBUR RIDGE  
RED ANGUS

CED	BW	WW	YW	Milk	TM	ME	HPG	CEM	Stay	Marb	REA	Fat
8	-2.5	34	64	24	41	9	9	3	10	0.10	0.18	0.01

Excellent heifer bull prospect. Zenith 0107 started out at 73 pounds and a BW ratio of 88, went on to a 669 pound weaning weight earning him a 115 ratio and finished with a 1162 pound yearling weight and a 110 ratio. Lots of options for this great bull.



Lot 49



## 50 RIDGE UNMATCHED 0115 #1379023

BD	BW	WW	YW	Cat.	%
3/21/10	73	647	1085	1A	100%
5L GRAND EXPRESS 453-5655			%IMF	2.74	
RIDGE UNMATCHED 8039			REA	13.89	
BLUE RIDGE LAKOTA 290			BF	0.26	
5L OUTFITTER 97-2221			Dam's MPPA	104.9	
RIDGE TESS 5166-5309			Dam's Age	4	
BIEBER TESS 5166					

SANDBUR RIDGE  
RED ANGUS

CED	BW	WW	YW	Milk	TM	ME	HPG	CEM	Stay	Marb	REA	Fat
6	-0.6	35	55	13	30	3	10	3	7	-0.03	0.23	0.00

Calving ease bull with an interesting pedigree. The sire to this calf is a line bred Norsemen King/Grand Canyon bull I raised, his calves are doing well and you will be seeing more of them. Dam to this bull has a 104.9 MPPA on her offspring.



## 51 RIDGE UNMATCHED 0118 #1379024

BD	BW	WW	YW	Cat.	%
3/23/10	79	630	1065	1A	100%
5L GRAND EXPRESS 453-5655			%IMF	3.52	
RIDGE UNMATCHED 8039			REA	11.91	
BLUE RIDGE LAKOTA 290			BF	0.32	
5L TRAVELING GRAND 5113			Dam's MPPA	102.6	
RIDGE VANESSA 814K-5307ET			Dam's Age	4	
OCC VANESSA 814K					

SANDBUR RIDGE  
RED ANGUS

CED	BW	WW	YW	Milk	TM	ME	HPG	CEM	Stay	Marb	REA	Fat
4	0.5	38	63	16	35	7	13	3	5	0.12	-0.04	0.02

Well balanced bull, with the right kind of performance. This bull will make great replacement females and steer calves that will gain and grade.



## 52 RIDGE BOAZ 0012 #1379085

BD	BW	WW	YW	Cat.	%
2/4/10	58	566	1016	1A	100%
MUSHRUSH ROCKET P016			%IMF	2.45	
STEADFAST BOAZ T71			REA	10.77	
MUSHRUSH LANA LT R040			BF	0.22	
MUSHRUSH LT JULIAN LG S005			Dam's MPPA	99.2	
RIDGE MONA 620-8162			Dam's Age	2	
RIDGE MONA 303-620					

SANDBUR RIDGE  
RED ANGUS

CED	BW	WW	YW	Milk	TM	ME	HPG	CEM	Stay	Marb	REA	Fat
18	-5.0	18	41	21	30	-2	14	10	18	-0.04	-0.11	0.04

Great Heifer Bull!!! The next few bulls are bred to give you sleep all night calving ease. This bull is a tightly bred Beckton Julian GG B571, the hottest calving ease sire in the breed for predictable calving ease and low maintenance replacement females.



Lot 52



Lot 53



## 53 RIDGE BOAZ 0025 #1379075

BD	BW	WW	YW	Cat.	%
2/8/10	67	561	972	1A	100%
MUSHRUSH ROCKET P016			%IMF	2.87	
STEADFAST BOAZ T71			REA	11.33	
MUSHRUSH LANA LT R040			BF	0.16	
RIDGE SUPERIOR 533			Dam's MPPA	98.8	
RIDGE MONA 308-8134			Dam's Age	2	
RIDGE MONA 303-308					

SANDBUR RIDGE  
RED ANGUS

CED	BW	WW	YW	Milk	TM	ME	HPG	CEM	Stay	Marb	REA	Fat
12	-3.9	15	45	24	31	-3	13	7	15	0.04	-0.01	0.02

Heifer Bull, ranking in the top 6% of the breed for Calving Ease Direct, top 4% for Birth Weight EPD, top 4% for Maintenance Energy and top 9% for Calving Ease Maternal. A great package for any program wanting to sale on labor.

# YEARLING BULLS



## 54 RIDGE BOAZ 0029 #1379064

BD	BW	WW	YW	Cat.	%
2/9/10	74	564	1091	1A	100%
MUSHRUSH ROCKET P016			%IMF	3.05	
<b>STEADFAST BOAZ T71</b>			REA	11.94	
MUSHRUSH LANA LT R040			BF	0.17	
RIDGE SUPERIOR 533			Dam's MPPA	Dam's Age	
<b>RIDGE AQUILA H836-8080</b>			99.2	2	
LONK AQUILA H836					

SANDBUR RIDGE  
RED ANGUS

CED	BW	WW	YW	Milk	TM	ME	HPG	CEM	Stay	Marb	REA	Fat
11	-2.2	23	56	17	29	-2	12	6	14	0.04	0.08	0.02

Heifer Bull, this Boaz bull has more frame and performance for those of you selling your steers and heifers.



## 55 RIDGE BOAZ 0050 #1379089

BD	BW	WW	YW	Cat.	%
2/13/10	74	569	1069	1A	100%
MUSHRUSH ROCKET P016			%IMF	2.64	
<b>STEADFAST BOAZ T71</b>			REA	9.59	
MUSHRUSH LANA LT R040			BF	0.17	
MUSHRUSH LTJULIAN LG S005			Dam's MPPA	Dam's Age	
<b>RIDGE LARKA 6101-8155</b>			99.6	2	
RIDGE LARKA 2106-6101					

SANDBUR RIDGE  
RED ANGUS

CED	BW	WW	YW	Milk	TM	ME	HPG	CEM	Stay	Marb	REA	Fat
13	-2.9	21	51	20	30	-2	13	9	14	0.03	-0.27	0.04

Heifer Bull, 0050 is line bred for calving ease and low maintenance. Well balanced and dark red.



## 56 RIDGE BOAZ 0016 #1379097

BD	BW	WW	YW	Cat.	%
2/7/10	79	593	1024	1A	100%
MUSHRUSH ROCKET P016			%IMF	2.69	
<b>STEADFAST BOAZ T71</b>			REA	11.81	
MUSHRUSH LANA LT R040			BF	0.17	
MUSHRUSH LTJULIAN LG S005			Dam's MPPA	Dam's Age	
<b>RIDGE NELL 601-8149</b>			101.2	2	
RIDGE NELL 601					

SANDBUR RIDGE  
RED ANGUS

CED	BW	WW	YW	Milk	TM	ME	HPG	CEM	Stay	Marb	REA	Fat
11	-2.6	22	48	21	32	-0	14	8	14	0.00	-0.07	0.03

Heifer Bull. This calf has lots of performance for a calving ease bull. He is also line bred for consistent, predictable offspring.



Lot 56



## 57 RIDGE BOAZ 0048 #1379104

BD	BW	WW	YW	Cat.	%
2/13/10	59	517	955	1A	100%
MUSHRUSH ROCKET P016			%IMF	3.36	
<b>STEADFAST BOAZ T71</b>			REA	11.49	
MUSHRUSH LANA LT R040			BF	0.21	
BECKTON JULIAN G1 J526			Dam's MPPA	Dam's Age	
<b>MARS J526 506 818</b>			96.0	2	
MARS C355 LALA 506					

SANDBUR RIDGE  
RED ANGUS

CED	BW	WW	YW	Milk	TM	ME	HPG	CEM	Stay	Marb	REA	Fat
18	-4.6	20	38	16	26	-2	12	7	17	0.07	-0.13	0.02

Outstanding calving ease in this line bred Julian bull. Top 1% Calving Ease Direct, Top 2% Birth Weight EPD. The last Boaz bull in my offering and if you bought all 6 for your replacement heifers you will be very satisfied for years to come.



Lot 57



## 58 RIDGE AVALANCHE 0058 #1379068

BD	BW	WW	YW	Cat.	%
2/15/10	81	648	1031	1A	100%
5L AMBUSH 587-5292			%IMF	3.10	
<b>5L AVALANCHE 525-1014</b>			REA	12.91	
5L ADINA 293-525			BF	0.24	
5L GRAND EXPRESS 453-5655			Dam's MPPA	Dam's Age	
<b>RIDGE CASEY 028-8044</b>			104.8	2	
RIDGE CASEY 871-028					

SANDBUR RIDGE  
RED ANGUS

CED	BW	WW	YW	Milk	TM	ME	HPG	CEM	Stay	Marb	REA	Fat
6	0.1	31	49	20	35	2	14	6	12	0.26	0.34	0.01

The next 4 bulls are all Avalanche sons, and all have great carcass ability and are out of first calve heifers. This bull's mother posted a 104.8 MPPA on her first try. This is a good bull.




## 59 RIDGE AVALANCHE 0055 #1379066

BD	BW	WW	YW	Cat.	%
2/14/10	77	590	1030	1A	100%
5L AMBUSH 587-5292			%IMF	4.25	
<b>5L AVALANCHE 525-1014</b>			REA	13.30	
5L ADINA 293-525			BF	0.20	
5L GRAND EXPRESS 453-5655			Dam's MPPA	Dam's Age	
<b>RIDGE CASEY 978-8034</b>			100.8	2	
OTT-CASEY-F412-978					

SANDBUR RIDGE  
RED ANGUS

CED	BW	WW	YW	Milk	TM	ME	HPG	CEM	Stay	Marb	REA	Fat
8	-0.7	27	50	17	31	2	15	7	12	0.35	0.38	0.00

0055 is from a great cow family and this bull's mother is outstanding. Top 10% MARB EPD and Top 12% REA EPD. Highest marbling sire in the offering with 141 IMF ratio and 110 REA ratio. Retaining 1/2 semen interest.



**60 RIDGE AVALANCHE 0030** #1379070

BD	BW	WW	YW	Cat.	%
2/9/10	79	594	1046	1A	100%

5L AMBUSH 587-5292  
**5L AVALANCHE 525-1014**  
 5L ADINA 293-525


SANDBUR RIDGE  
 RED ANGUS

5L MTN NORSE 71-7994  
**RIDGE KAY 142-8004**  
 MMN BOXELDER KAY L42

%IMF	REA	BF	Dam's MPPA	Dam's Age
3.72	13.84	0.17	101.2	2

CED	BW	WW	YW	Milk	TM	ME	HPG	CEM	Stay	Marb	REA	Fat
6	-0.2	28	54	19	34	3	13	8	12	0.37	0.43	-0.01

Well balanced Avalanche son, his mother is an extremely attractive young cow. Top 7% MARB EPD and Top 10% REA EPD. Good bull that creates a lot of options for his new owner. Excellent carcass data with 123 IMF ratio and 110 REA ratio.



**61 RIDGE AVALANCHE 0032** #1379090

BD	BW	WW	YW	Cat.	%
2/10/10	82	551	974	1A	100%

5L AMBUSH 587-5292  
**5L AVALANCHE 525-1014**  
 5L ADINA 293-525

SANDBUR RIDGE  
 RED ANGUS

5L GRAND EXPRESS 453-5655  
**RIDGE LAKOTA 651-8008**  
 MLK CRK LAKOTA 651


%IMF	REA	BF	Dam's MPPA	Dam's Age
2.69	12.05	0.23	98.4	2

CED	BW	WW	YW	Milk	TM	ME	HPG	CEM	Stay	Marb	REA	Fat
5	0.5	28	48	17	31	4	14	9	12	0.26	0.26	-0.01

The final Avalanche son, a little more frame and from a solid cow line.



Lot 62



**62 MARTY 60 SCN** #1398512

BD	BW	WW	YW	Cat.	%
1/19/10	70	486	1060	1A	100%

5L TRADITION 203-6145  
**5L TIMELY TRADITION 653-88V**  
 5L SEOLA 404-653


COOKSLEY RED  
 ANGUS

NSF RED LEADER N010W  
**ABBY 524-2037**  
 SANDY 2037

%IMF	REA	BF	Dam's MPPA	Dam's Age
N/A	N/A	N/A	101.6	4

CED	BW	WW	YW	Milk	TM	ME	HPG	CEM	Stay	Marb	REA	Fat
8	-0.8	22	49	20	31	-1		7	8	0.04	0.07	0.02

One of the best bulls we have raised in a while. He does everything I like to see in a bull.



**63 MARTY 50 SCN** #1398514

BD	BW	WW	YW	Cat.	%
1/11/10	68	546	1058	1A	100%

5L TRADITION 203-6145  
**5L TIMELY TRADITION 653-88V**  
 5L SEOLA 404-653

COOKSLEY RED  
 ANGUS

MRM LANCER 916  
**MARS 916 505 802**  
 MARS 110 AMELIA 505

%IMF	REA	BF	Dam's MPPA	Dam's Age
N/A	N/A	N/A	101.2	2

CED	BW	WW	YW	Milk	TM	ME	HPG	CEM	Stay	Marb	REA	Fat
12	-2.5	25	53	19	32	0	10	7	12	0.17	-0.04	0.02

Another Tradition calving-ease bull.



**64 MARTY 30 SCN** #1398515

BD	BW	WW	YW	Cat.	%
1/11/10	72	453	941	1A	100%

5L TRADITION 203-6145  
**5L TIMELY TRADITION 653-88V**  
 5L SEOLA 404-653

COOKSLEY RED  
 ANGUS

PANHANDLE SURPRISE 703  
**PANHANDLE BLISS 0142**  
 DMS MISS FORTUNE 2026


%IMF	REA	BF	Dam's MPPA	Dam's Age
N/A	N/A	N/A	100.1	9

CED	BW	WW	YW	Milk	TM	ME	HPG	CEM	Stay	Marb	REA	Fat
8	-0.6	13	26	17	23	-5	9	6	9	-0.11	-0.03	0.02

A small-framed, calving-ease bull.



Ryan Cooksley helping AI in 10-degree weather.



**65 KING 40-817 SCN** #1398513

BD	BW	WW	YW	Cat.	%
1/11/10	76	512	1050	1A	100%

5L NORSEMAN KING 2291  
**5L MILLENNIUM KING 1651-144V**  
 5L FIREFLY 174-1651 ET

COOKSLEY RED  
 ANGUS

BECKTON EPIC KM M115  
**MARS M115 306 817**  
 MARS CHEROKEE 105 306

%IMF	REA	BF	Dam's MPPA	Dam's Age
N/A	N/A	N/A	98.8	2

CED	BW	WW	YW	Milk	TM	ME	HPG	CEM	Stay	Marb	REA	Fat
7	-0.9	32	64	21	37	-2	12	1	15	0.37	0.33	0.02

Larger framed bull will work on hfrs or cows.

# YEARLING BULLS



Lot 66



BIRNIE RED ANGUS

## 66 BIRNIE NATIVE 006 #1371745

BD 4/9/10 BW 68 WW 558 YW 1077 Cat. 1A % 100%

PRATTLE OF HAYMOUNT  
DUNLOUISE RED NATIVE F207  
EVERSFIELD RED NENA D252

7U COPPER'S PRIME STAKE  
CHRISTY 241  
MISS VERN 712-SCN

%IMF N/A  
REA N/A  
BF N/A  
Dam's MPPA 97.8  
Dam's Age 8

CED	BW	WW	YW	Milk	TM	ME	HPG	CEM	Stay	Marb	REA	Fat
11	-3.6	-7	8	18	15	3	7	5	6	0.03	-0.12	0.02

Dark cherry red in color, 006 combines heifer bull calving ease with depth, dimension and a solid hip. His dam has one of the best dispositions of any cow in our herd.



BIRNIE RED ANGUS

## 67 BIRNIE BOAZ 018 #1371732

BD 4/13/10 BW 82 WW 618 YW 1069 Cat. 1A % 100%

MUSHRUSH ROCKET P016  
STEADFAST BOAZ T71  
MUSHRUSH LANA LT R040

MESSMER JOSHUA 019P  
BIRNIE DORY JIBA 806-655  
LARSON DORY JIBA 655-251

%IMF N/A  
REA N/A  
BF N/A  
Dam's MPPA 100.0  
Dam's Age 2

CED	BW	WW	YW	Milk	TM	ME	HPG	CEM	Stay	Marb	REA	Fat
11	-0.4	39	74	18	37	2	13	8	16	0.03	0.08	0.01

018 is out of a rare and coveted first calf daughter or Messmer Joshua 019P. If you are looking for Julian GG B571 bloodlines to provide you with moderate framed, easy keeping females that produce pounds at weaning; then look no further. 018 is the result of mating a double bred grandson of LT 142 to a granddaughter of B571. This is a designed mating aimed at providing you with a consistent dependable calf crop. Boaz 018 ranks in the top 25% of the breed for CED, WW, YW, TM, HPG, CEM, HPG and STAY.



Lot 67



BIRNIE RED ANGUS

## 68 BIRNIE NATTY LIGHT 003 #1371731

BD 4/6/10 BW 64 WW 547 YW 1046 Cat. 1A % 100%

PRATTLE OF HAYMOUNT  
DUNLOUISE RED NATIVE F207  
EVERSFIELD RED NENA D252

LARSON RED LIGHTNING  
BIRNIE FLO-MARIE 701-185  
LARSON FLO-MARIE 185

%IMF N/A  
REA N/A  
BF N/A  
Dam's MPPA 101.4  
Dam's Age 3

CED	BW	WW	YW	Milk	TM	ME	HPG	CEM	Stay	Marb	REA	Fat
9	-4.1	-2	11	27	27	2	7	3	5	0.01	-0.25	0.01

I am paying homage to some of my most impoverished and resourceful days in college here. Natty Light 003 hails directly from the acclaimed Larson Flo-Marie 185 cow family. He combines maternal strength and calving ease in a moderate well muscled package. Turn him out on heifers and look forward to keeping the females as replacements.



Lot 68



BIRNIE RED ANGUS

## 69 BIRNIE DEBOO 022 #1371747

BD 4/20/10 BW 84 WW 526 YW 1040 Cat. 2 % 100%

DDA SURE ENOUGH 6D  
RDDA SURE SHOT 108H  
DDA MELISA 419

HUGHES ANCHORWEIGHT  
ABBY 209  
TEAHON HEAVENLY 887

%IMF N/A  
REA N/A  
BF N/A  
Dam's MPPA 102.9  
Dam's Age 8

CED	BW	WW	YW	Milk	TM	ME	HPG	CEM	Stay	Marb	REA	Fat
6	-0.5	17	36	19	28	2	9	5	6	-0.05	-0.03	0.02

022 is a black/red carrier with outcross genetics focused on maternal goodness. He is a wide based, broad topped bull with plenty of depth. His dam produced a \$3,900 bull a year ago that sold to Terry Pinkelman of Wynot, NE.



Lot 69





## 70 BIRNIE NATIVE 020 #1371749

BD 4/15/10 BW 80 WW 527 YW 1048 Cat. 1A % 100%

PRATTLE OF HAYMOUNT  
**DUNLOUISE RED NATIVE F207**  
 EVERSFIELD RED NENA D252

HLH HI TECH 885 032  
**HANNA 324-884**  
 TEAHON HEAVENLY 884

%IMF N/A  
 REA N/A  
 BF N/A

Dam's MPPA 101.6 Dam's Age 7

CED	BW	WW	YW	Milk	TM	ME	HPG	CEM	Stay	Marb	REA	Fat
8	-2.2	-1	16	20	20	7	7	4	6	-0.06	-0.14	0.01

This bull exhibits the depth and dimension of his dam. He is thick made and carries a lot of meat on a moderate frame. Suitable for grass fed programs.



## 71 BIRNIE NATIVE 021 #1371744

BD 4/15/10 BW 70 WW 496 YW 923 Cat. 1A % 100%

PRATTLE OF HAYMOUNT  
**DUNLOUISE RED NATIVE F207**  
 EVERSFIELD RED NENA D252

TEAHON HEAVENLY 477  
**DARCY 1130**  
 TEAHON DMS 708

%IMF N/A  
 REA N/A  
 BF N/A

Dam's MPPA 96.2 Dam's Age 9

CED	BW	WW	YW	Milk	TM	ME	HPG	CEM	Stay	Marb	REA	Fat
12	-4.3	-9	-5	18	13	2	8	5	4	0.01	-0.17	0.01

A calving ease bull with a lot of longevity on the maternal side of the pedigree.



Lot 72



## 72 BRUNS MERIT 003 #1403831

BD 3/23/10 BW 83 WW 584 YW Cat. 1A % 100%

5L NORSEMAN KING 2291  
**5L MERIT 431-8526**  
 5L ADINA 525-431 ET

CFLD REBELLAS ROBINHOOD  
**CFLD REBELLA 2012-MA221**  
 CFLD REBELLAH 912-935

%IMF 3.37  
 REA 15.79  
 BF 0.27

Dam's MPPA 94.5 Dam's Age 8

CED	BW	WW	YW	Milk	TM	ME	HPG	CEM	Stay	Marb	REA	Fat
-2.5	23	48	16	28	7	10	8	0.08	0.22	-0.01		

A Merit 431-8526 son out of one of my favorite cows who is 8 years old and still going. This calf hit the ground and exploded.



## 73 BRUNS GLACIER TERRAIN 004 #1403830

BD 2/3/10 BW 71 WW 558 YW Cat. 1A % 100%

TASSEL ROBIN HOOD 78E  
**GLACIER TERRAIN 999**  
 GLACIER HI-RB-LS

JACOBSON Y CREEK R5054  
**JACOBSON CHRIS 8024**  
 LIEN CRIS R537

%IMF 2.89  
 REA 9.87  
 BF 0.23

Dam's MPPA 101.2 Dam's Age 2

CED	BW	WW	YW	Milk	TM	ME	HPG	CEM	Stay	Marb	REA	Fat
-1.6	22	41	21	32	4	7	8	-0.11	-0.17	-0.01		

A Glacier Terrain 999 son that is the cow-making kind.



Lot 73



## 74 BRUNS LEGEND DESIGN 002 #1403829

BD 2/23/10 BW 65 WW 500 YW Cat. 1A % 100%

5L NORSE DESIGN 673-5035  
**5L LEGEND DESIGN 2415-7057**  
 5L ROXIE 2142-2415

5L TRAVLIN EXPRESS 1892-6295  
**5L SALEE 2386-3158**  
 5L SALEE 1362-2386

%IMF 4.06  
 REA 12.01  
 BF 0.26

Dam's MPPA 96.8 Dam's Age 2

CED	BW	WW	YW	Milk	TM	ME	HPG	CEM	Stay	Marb	REA	Fat
-3.7	16	40	19	27					13	0.47	0.23	0.03

Heifer Bull. A Legend Design son out of a Travlin Express heifer. A 65-lb. BW and 500-lb WW. Should make some stylish daughters.



Lot 74

# YEARLING BULLS



## 75 BRUNS HOB0 KID 001 #1403828

BD	BW	WW	YW	Cat.	%
3/24/10	72	564		1A	100%
5L NORSEMAN 1834-5566					
<b>5L COUNTRY KIDS S446-72V</b>					
JW BAR ZIKA S446					
5L TRADITION 203-6145					
<b>5L REDBIRD 1944-668</b>					
5L BLACKBIRD 1322-1944					
%IMF	REA	BF	Dam's MPPA Dam's Age		
3.47	11.54	0.23	101.6 2		

BRUNS RED ANGUS

CED	BW	WW	YW	Milk	TM	ME	HPG	CEM	Stay	Marb	REA	Fat
-0.6	21	52	21	32	-3				13	0.13	0.23	0.02

Norseman King twice, OCC Emblazon 854E, Lchmn Grand Canyon - this bull was made for the grass finisher.



## 76 BRUNS FRANCHISE 005 #1403833

BD	BW	WW	YW	Cat.	%
4/14/10	85	569		1A	100%
O C C EMBLAZON 854E					
<b>5L FRANCHISE 525-8606</b>					
5L ADINA 293-525					
BASIN HOB0 79E					
<b>5L REBA 1071-53</b>					
5L REBA 298-1271					
%IMF	REA	BF	Dam's MPPA Dam's Age		
N/A	N/A	N/A	101.1 7		

BRUNS RED ANGUS

CED	BW	WW	YW	Milk	TM	ME	HPG	CEM	Stay	Marb	REA	Fat
-2.8	21	39	23	33	-2	12			15	0.25	-0.08	0.01

An OCC Emblazon 854E grandson and double bred Glacier Logan 210. Another female maker that can survive with minimal inputs.



## 77 RIDGE UPHOLD 0036 #1379057

BD	BW	WW	YW	Cat.	%
2/10/10	69	630	1090	2	100%
O C C HEADLINER 661H					
<b>OCC UPHOLD 831U</b>					
OCC VANESSA 871L					
5L NORSEMAN KING 2291					
<b>RIDGE LAKOTA 7301</b>					
MLK CRK LAKOTA 112-RAMB					
%IMF	REA	BF	Dam's MPPA Dam's Age		
2.72	12.65	0.27	103.6 2		

SANDBUR RIDGE RED ANGUS

CED	BW	WW	YW	Milk	TM	ME	HPG	CEM	Stay	Marb	REA	Fat
10	-2.6	24	55	17	30	3	7	3	10	0.10	0.15	0.00

Calving ease bull, black hide and carrying a red gene. Interesting pedigree, sire is line bred to Traveler 6807 and the cow goes back to the great Milk Creek Lakota 112-Ramb. This bull does everything well.



Lot 77



## 78 RIDGE COTTON 0148 #1379033

BD	BW	WW	YW	Cat.	%
4/17/10	80	698	1179	2	100%
ASAPH OF VOLGA 0522					
<b>ANIMAL OF VOLGA 0884</b>					
ALONNA OF VOLGA 9771					
RED CROWFOOT OLE'S OSCAR					
<b>RIDGE LASS 477-643</b>					
RIDGE LASS 275-477					
%IMF	REA	BF	Dam's MPPA Dam's Age		
N/A	N/A	N/A	102.2 4		

SANDBUR RIDGE RED ANGUS

CED	BW	WW	YW	Milk	TM	ME	HPG	CEM	Stay	Marb	REA	Fat
6	-1.3	26	59	19	32	5	7	6	6	0.07	-0.12	0.03

Calving ease and great performance in this black hided bull. The sire of this bull and the next is from the Cotton Angus herd in South Dakota. I am introducing some outside genetics that compliment the type and kind of cattle my operation is seeking to consistently reproduce.



Lot 78



## 79 RIDGE COTTON 0128 #1379047

BD	BW	WW	YW	Cat.	%
3/31/10	72	599	1078	2	100%
ASAPH OF VOLGA 0522					
<b>ANIMAL OF VOLGA 0884</b>					
ALONNA OF VOLGA 9771					
5L NORSEMAN KING 2291					
<b>RIDGE MONA 303-740</b>					
TONI 1					
%IMF	REA	BF	Dam's MPPA Dam's Age		
2.82	13.24	0.29	105.1 3		

SANDBUR RIDGE RED ANGUS

CED	BW	WW	YW	Milk	TM	ME	HPG	CEM	Stay	Marb	REA	Fat
9	-2.8	7	26	19	23	-1	9	2	7	-0.01	0.09	0.02

Calving ease, low energy requirement and a young cow with a 105.1 MPPA. Good Bull here!



Sandhills Red Select bulls



## 80 RIDGE JULIAN S005-0099 #1379061

BD 3/10/10 BW 71 WW 624 YW 1084 Cat. 1A % 100%

TR JULIAN LT142  
MUSHRUSH LTJULIAN LG S005  
MUSHRUSH LOGA N288

5L NORSEMAN KING 2291  
RIDGE SARA F7-8025  
BARGER F7

%IMF 3.10  
REA 12.63  
BF 0.21

Dam's MPPA 103.2  
Dam's Age 2

SANDBUR RIDGE  
RED ANGUS

CED	BW	WW	YW	Milk	TM	ME	HPG	CEM	Stay	Marb	REA	Fat
13	-5.1	16	40	23	31	-4	13	5	12	0.10	0.12	0.03

This is an outstanding heifer bull from a great cow family. Purchase with confidence and use him on a lot of females!!! -5.1 BWEVD and a 108 weaning ratio. This is a Julian bred bull from my herd bull. Rare combination of low birth, low ME and above average carcass quality. Retaining 1/2 semen interest.



Lot 80



Lot 81



## 81 RIDGE JULIAN S005-0088 #1379073

BD 4/17/10 BW 73 WW 544 YW 924 Cat. 1A % 100%

TR JULIAN LT142  
MUSHRUSH LTJULIAN LG S005  
MUSHRUSH LOGA N288

5L NORSEMAN KING 2291  
RIDGE KIMBERLY 290-8079  
RIDGE KIMBERLY 366-290ET

%IMF N/A  
REA N/A  
BF N/A

Dam's MPPA 97.6  
Dam's Age 2

SANDBUR RIDGE  
RED ANGUS

CED	BW	WW	YW	Milk	TM	ME	HPG	CEM	Stay	Marb	REA	Fat
7	-0.4	19	35	19	29	-3	13	0	13	0.25	0.12	0.03

Heifer bull, moderate frame, lots of middle, and top 4% of the breed for maintenance emery requirements.



## 82 RIDGE JULIAN S005-0111 #1379081

BD 3/21/10 BW 67 WW 471 YW 882 Cat. 1A % 100%

TR JULIAN LT142  
MUSHRUSH LTJULIAN LG S005  
MUSHRUSH LOGA N288

5L NORMANDY CANYON 6024  
RIDGE LAKOTA 554-8112  
RIDGE LAKOTA 651-554

%IMF 3.21  
REA 9.80  
BF 0.29

Dam's MPPA 92.8  
Dam's Age 2

SANDBUR RIDGE  
RED ANGUS

CED	BW	WW	YW	Milk	TM	ME	HPG	CEM	Stay	Marb	REA	Fat
8	-1.8	9	22	21	26	1	12	7	10	0.03	-0.14	0.04

Heifer bull, moderate frame, another calving ease bull with a Julian background.



Mushrush LT Julian LG S005 "Devito"



## 83 RIDGE THUNDER 0154 #1379040

BD 4/25/10 BW 74 WW 623 YW 989 Cat. 1A % 100%

5L NORSEMAN KING 2291  
RIDGE THUNDER 709  
RIDGE SHEILA 009

5L NORMANDY CANYON 6024  
RIDGE CENT 439-7130  
RIDGE CENT 289-439

%IMF N/A  
REA N/A  
BF N/A

Dam's MPPA 100.9  
Dam's Age 3

SANDBUR RIDGE  
RED ANGUS

CED	BW	WW	YW	Milk	TM	ME	HPG	CEM	Stay	Marb	REA	Fat
4	-1.8	22	46	17	29	4	9	0	9	0.01	0.29	0.00

Heifer bull, moderate frame, good individual performance data, low birth, explosive growth to weaning time and level off at a year of age. Good combination for staying in business.



## 84 RIDGE THUNDER 0157 #1379041

BD 4/28/10 BW 73 WW 674 YW 1052 Cat. 1A % 100%

5L NORSEMAN KING 2291  
RIDGE THUNDER 709  
RIDGE SHEILA 009

5L NORMANDY CANYON 6024  
RIDGE BIRD 4202-7118  
RIDGE BIRD 12Z-4202

%IMF N/A  
REA N/A  
BF N/A

Dam's MPPA 105.4  
Dam's Age 3

SANDBUR RIDGE  
RED ANGUS

CED	BW	WW	YW	Milk	TM	ME	HPG	CEM	Stay	Marb	REA	Fat
6	-1.3	19	51	16	26	3	9	1	7	-0.10	0.19	0.00

Calving ease bull, low birth weight, adjusted weaning weight of 674 and a young mother with a 105.4 MPPA. Good all around bull.

# YEARLING BULLS



Lot 85



SANDBUR RIDGE  
RED ANGUS

## 85 RIDGE NORMANDY 0069 #1378996

BD	BW	WW	YW	Cat.	%
2/19/10	96	586	1130	2	100%
					%IMF
					3.43
					REA
					11.67
					BF
					0.32
					Dam's MPPA
					97.4
					Dam's Age
					8

LCHMN GRANDCANYON 1244G  
5L NORMANDY CANYON 6024  
NORSEMAN 1312 PJM  
VERMLION DATELINE 7078  
RIDGE BLACKBIRD 366-285ET  
AQUILA 366

CED	BW	WW	YW	Milk	TM	ME	HPG	CEM	Stay	Marb	REA	Fat
1	0.8	17	60	20	29	6	9	4	11	0.05	0.03	0.04

First Normandy Canyon son to sell in my offering. He is a dark red meat wagon of a bull. Bigger framed, lots of performance and lots of volume.



SANDBUR RIDGE  
RED ANGUS

## 86 RIDGE NORMANDY 0070 #1379002

BD	BW	WW	YW	Cat.	%
2/20/10	87	633	1117	1A	100%
					%IMF
					2.89
					REA
					12.79
					BF
					0.23
					Dam's MPPA
					102.5
					Dam's Age
					7

LCHMN GRANDCANYON 1244G  
5L NORMANDY CANYON 6024  
NORSEMAN 1312 PJM  
GLACIER LOGAN 210  
RIDGE CASEY 983-354  
OTT-CASEY-F20-983

CED	BW	WW	YW	Milk	TM	ME	HPG	CEM	Stay	Marb	REA	Fat
-1	0.5	20	51	23	33	5	11	5	10	0.13	0.00	0.03

Two shots of Canyon out of a Logan daughter. This combination has worked well for lots of breeders. Big steer calves in the fall and replacement females that will stay in the herd and produce for a long time. Multiple options with this great prospect.



Lot 86



SANDBUR RIDGE  
RED ANGUS

## 88 RIDGE NORMANDY 0082 #1379113

BD	BW	WW	YW	Cat.	%
3/1/10	94	528	1007	1A	100%
					%IMF
					2.33
					REA
					12.21
					BF
					0.16
					Dam's MPPA
					98.9
					Dam's Age
					9

LCHMN GRANDCANYON 1244G  
5L NORMANDY CANYON 6024  
NORSEMAN 1312 PJM  
GLACIER PIONEER 939  
RIDGE MONA 303-158  
TONI 1

CED	BW	WW	YW	Milk	TM	ME	HPG	CEM	Stay	Marb	REA	Fat
-1	2.0	21	55	16	27	4	9	2	9	0.06	0.06	0.03

Growth and carcass are the attributes of this good bull.



SANDBUR RIDGE  
RED ANGUS

## 87 RIDGE NORMANDY 0073 #1379109

BD	BW	WW	YW	Cat.	%
2/22/10	87	616	1008	1A	100%
					%IMF
					3.07
					REA
					10.51
					BF
					0.21
					Dam's MPPA
					101.3
					Dam's Age
					11

LCHMN GRANDCANYON 1244G  
5L NORMANDY CANYON 6024  
NORSEMAN 1312 PJM  
LEACHMAN HEAVENLY 8141  
OTT-SHEILA-F12-958  
BARGER F12

CED	BW	WW	YW	Milk	TM	ME	HPG	CEM	Stay	Marb	REA	Fat
4	-0.3	21	47	20	30	9	9	2	5	-0.05	-0.22	0.06

Good Normandy bull from a 12 year old cow with a 101.3 MPPA. Have you noticed how many high producing older cows live at my place? This increases your comfort level when you know a bull is raised by a cow that has done it for a long time.



SANDBUR RIDGE  
RED ANGUS

## 90 RIDGE BLAZIN RED 0026 #1379111

BD	BW	WW	YW	Cat.	%
2/8/10	84	651	1099	1A	100%
					%IMF
					3.05
					REA
					11.72
					BF
					0.29
					Dam's MPPA
					104.0
					Dam's Age
					10

5L BLAZIN HOBO 404-5654  
5L BLAZIN RED 1354-6166  
5L REBA 60-1354  
HOLDEN HI HO 753  
RIDGE CASEY 863-004  
OTT-CASEY-F7-863

CED	BW	WW	YW	Milk	TM	ME	HPG	CEM	Stay	Marb	REA	Fat
2	-0.1	34	51	22	39	4	10	3	14	0.03	0.19	0.02

Great Herd bull prospect here. The Blazin Red females are making excellent cows and the sons are really adding pounds to the calf crop. This bull's mother is an 11 year old with a 104 MPPA on 9 calves with a 95 BW ratio, 105 WW ratio and 100 YW ratio. A full brother sold to Cooksley Red Angus a year ago. Retaining 50% semen interest.



SANDBUR RIDGE  
RED ANGUS

## 89 RIDGE NORMANDY 0103 #1378995

BD	BW	WW	YW	Cat.	%
3/11/10	84	509	985	1A	100%
					%IMF
					3.61
					REA
					11.74
					BF
					0.20
					Dam's MPPA
					97.9
					Dam's Age
					8

LCHMN GRANDCANYON 1244G  
5L NORMANDY CANYON 6024  
NORSEMAN 1312 PJM  
BON VIEW BANDO 598  
RIDGE DORA 366-283ET  
AQUILA 366

CED	BW	WW	YW	Milk	TM	ME	HPG	CEM	Stay	Marb	REA	Fat
6	-1.3	4	34	24	26	3	10	6	8	0.08	-0.08	0.04

Different pedigree on the bottom side of this Normandy son.



## 91 RIDGE BLAZIN RED 0071 #1379016

BD	BW	WW	YW	Cat.	%
2/21/10	92	577	1020	1A	100%
5L BLAZIN HOBO 404-5654					
5L BLAZIN RED 1354-6166					
5L REBA 60-1354					
SSS BOOMER 803B					
RIDGE CASEY 871-508					
OTT-CASEY-F20-871					
%IMF	REA	BF	Dam's MPPA Dam's Age		
2.45	13.89	0.21	102.4 5		

SANDBUR RIDGE  
RED ANGUS

CED	BW	WW	YW	Milk	TM	ME	HPG	CEM	Stay	Marb	REA	Fat
-1	2.6	32	54	19	35	5	8	3	12	-0.17	0.24	0.00

Lots of power in this Blazin Red son. His mother is from a great cow family and at 6 years old has posted a 102.4 MPPA.



Ollie in his playground



Lot 92



## 92 RIDGE BLAZIN RED 0076 #1379030

BD	BW	WW	YW	Cat.	%
2/24/10	82	594	1051	1A	100%
5L BLAZIN HOBO 404-5654					
5L BLAZIN RED 1354-6166					
5L REBA 60-1354					
SHOCO DATA					
RIDGE LILA 101-602					
RIDGE LILA 979-101					
%IMF	REA	BF	Dam's MPPA Dam's Age		
3.97	11.33	0.32	100.7 4		

SANDBUR RIDGE  
RED ANGUS

CED	BW	WW	YW	Milk	TM	ME	HPG	CEM	Stay	Marb	REA	Fat
2	0.6	37	62	15	34	5	11	6	11	0.21	0.02	0.01

Excellent bull in 0076. Dark red, great cow family and positive carcass. This bull does everything right.



## 93 RIDGE RAMBLAZON 0072 #1379014

BD	BW	WW	YW	Cat.	%
2/21/10	94	590	1076	1A	100%
5L BLAZIN RAM 5166-7504					
3S RAMBLAZON 6508					
SANDY 459-855					
SSS BOOMER 803B					
RIDGE CASEY F7-538					
BARGER F7					
%IMF	REA	BF	Dam's MPPA Dam's Age		
2.35	13.40	0.28	100.4 5		

SANDBUR RIDGE  
RED ANGUS

CED	BW	WW	YW	Milk	TM	ME	HPG	CEM	Stay	Marb	REA	Fat
3	1.3	30	58	17	32	4	7	0	10	-0.18	0.16	0.00

Another Emblazon bred bull from a SSS Boomer 803B daughter. Dark red, attractive and from a cow family with lots of longevity. Good Bull.



Lot 93



## 94 RIDGE RAMBLAZON 0049 #1379020

BD	BW	WW	YW	Cat.	%
2/13/10	94	602	1011	1A	100%
5L BLAZIN RAM 5166-7504					
3S RAMBLAZON 6508					
SANDY 459-855					
MLK CRK FLAGSTONE					
RIDGE SANDY 001-595					
RIDGE SANDY 985-001					
%IMF	REA	BF	Dam's MPPA Dam's Age		
3.96	12.89	0.31	103.8 5		

SANDBUR RIDGE  
RED ANGUS

CED	BW	WW	YW	Milk	TM	ME	HPG	CEM	Stay	Marb	REA	Fat
2	0.8	35	58	19	37	10	7	1	10	0.06	0.19	0.01

Last of the Emblazon influence bulls in this years offering and he is good. Mother is 6 years old with a 103.8 MPPA, nice balance and lots of uses for this herd bull.



Lot 94

# YEARLING BULLS



## 95 RIDGE EXPRESS 0067 #1379001

BD 2/18/10 BW 106 WW 601 YW 1157 Cat. 1A % 100%

5L NORSEMAN EXPRESS  
5L GRAND EXPRESS 453-5655  
5L RUBY 01-453

GLACIER PIONEER 939  
RIDGE CASEY 861-454  
OTT-CASEY-F7-863

%IMF 2.78  
REA 13.36  
BF 0.28  
Dam's MPPA 101.8  
Dam's Age 6

SANDBUR RIDGE  
RED ANGUS

CED	BW	WW	YW	Milk	TM	ME	HPG	CEM	Stay	Marb	REA	Fat
-2	2.2	40	75	15	35	5	10	-1	10	0.04	0.39	0.02

This bull is a load. The actual birth weight is high, the cow carried him a few days past the projected due date. This bigger framed stud will add pounds, style and lots of REA to the calf crop.



## 96 RIDGE ULTIMATUM 0142 #1379005

BD 4/8/10 BW 84 WW 639 YW 1043 Cat. 1A % 100%

RIDGE CHANDLER 576  
RIDGE ULTIMATUM 8146  
BLUE RIDGE KIMA 794

SELL COPPERTOP 608  
OTT-CASEY-F20-871  
BARGER F20

%IMF N/A  
REA N/A  
BF N/A  
Dam's MPPA 104.7  
Dam's Age 12

SANDBUR RIDGE  
RED ANGUS

CED	BW	WW	YW	Milk	TM	ME	HPG	CEM	Stay	Marb	REA	Fat
3	0.6	24	34	22	34	5	7	2	12	-0.10	-0.15	0.00

Younger bull this April 2010 calf has good performance and is out of a 13 year old cow with a 104.7 MPPA, she is going into my flush program, she has earned her spot with an outstanding production record. Good bull, great cow, buy with confidence.



## 97 RIDGE RED NATIVE 0063 #1379062

BD 2/17/10 BW 91 WW 562 YW 1030 Cat. 1A % 100%

PRATTLE OF HAYMOUNT  
DUNLOUISE RED NATIVE F207  
EVERSFIELD RED NENA D252

5L BLAZIN RED 1354-6166  
RIDGE SAMOLA F12-8059  
BARGER F12

%IMF 2.58  
REA 12.84  
BF 0.15  
Dam's MPPA 98.8  
Dam's Age 2

SANDBUR RIDGE  
RED ANGUS

CED	BW	WW	YW	Milk	TM	ME	HPG	CEM	Stay	Marb	REA	Fat
0	-0.2	7	32	19	22	4	8	-1	7	-0.03	-0.02	0.02

Good performance on this Red Native son, his Blazin Red mother is going to be a good one.



## 98 RIDGE NATIVE 0204 #1404391

BD 4/12/10 BW 68 WW 512 YW 926 Cat. 1A % 100%

PRATTLE OF HAYMOUNT  
DUNLOUISE RED NATIVE F207  
EVERSFIELD RED NENA D252

BIEBER DESIGN 1325-082  
PVRA DESIGN LASS 515  
FCC RAMBO 502 133

%IMF N/A  
REA N/A  
BF N/A  
Dam's MPPA 105.6  
Dam's Age 15

SANDBUR RIDGE  
RED ANGUS

CED	BW	WW	YW	Milk	TM	ME	HPG	CEM	Stay	Marb	REA	Fat
	-3.2	-4	4	22	20	-1	6		6	-0.07	-0.09	0.01

These last four bulls are embryo calves. They are calving ease bulls, out of the mother to the lead off bulls in the yearling section of my offering. Expect calving ease, and soft replacement heifers. Great grass-converting cattle.



Dunlouise Red Native F207



## 99 RIDGE NATIVE 0205 #1404392

BD 4/12/10 BW 82 WW 518 YW 953 Cat. 1A % 100%

PRATTLE OF HAYMOUNT  
DUNLOUISE RED NATIVE F207  
EVERSFIELD RED NENA D252

BIEBER DESIGN 1325-082  
PVRA DESIGN LASS 515  
FCC RAMBO 502 133

%IMF N/A  
REA N/A  
BF N/A  
Dam's MPPA 105.6  
Dam's Age 15

SANDBUR RIDGE  
RED ANGUS

CED	BW	WW	YW	Milk	TM	ME	HPG	CEM	Stay	Marb	REA	Fat
	-3.2	-4	4	22	20	-1	6		6	-0.07	-0.09	0.01



## 100 RIDGE NATIVE 0200 #1404388

BD 4/8/10 BW 56 WW 431 YW 909 Cat. 1A % 100%

PRATTLE OF HAYMOUNT  
DUNLOUISE RED NATIVE F207  
EVERSFIELD RED NENA D252

BIEBER DESIGN 1325-082  
PVRA DESIGN LASS 515  
FCC RAMBO 502 133

%IMF N/A  
REA N/A  
BF N/A  
Dam's MPPA 105.6  
Dam's Age 15

SANDBUR RIDGE  
RED ANGUS

CED	BW	WW	YW	Milk	TM	ME	HPG	CEM	Stay	Marb	REA	Fat
	-3.2	-4	4	22	20	-1	6		6	-0.07	-0.09	0.01



## 101 RIDGE NATIVE 0208 #1404394

BD 4/14/10 BW 78 WW 506 YW 917 Cat. 1A % 100%

PRATTLE OF HAYMOUNT  
DUNLOUISE RED NATIVE F207  
EVERSFIELD RED NENA D252

BIEBER DESIGN 1325-082  
PVRA DESIGN LASS 515  
FCC RAMBO 502 133

%IMF N/A  
REA N/A  
BF N/A  
Dam's MPPA 105.6  
Dam's Age 15

SANDBUR RIDGE  
RED ANGUS

CED	BW	WW	YW	Milk	TM	ME	HPG	CEM	Stay	Marb	REA	Fat
	-3.2	-4	4	22	20	-1	6		6	-0.07	-0.09	0.01



5L Normandy Canyon 6024, sire of Lots 102 - 107



Ryan Cooksley's first goose



Lot 102



## 102 CHOAT TESS N3113-59X #1400058

BD 4/10/10 BW 75 WW 538 YW Cat. 1A % 100%

LCHMN GRANDCANYON 1244G  
5L NORMANDY CANYON 6024  
NORSEMAN 1312 PJM

BIEBER TOP ARROW 7793  
LONK TESS N3113  
BIEBER TESS 5166

Dam's MPPA 102.2 Dam's Age 7

CED	BW	WW	YW	Milk	TM	ME	HPG	CEM	Stay	Marb	REA	Fat
3	-0.6	18	47	20	29	-3	10	1	6	-0.18	0.26	0.05

A Normandy Canyon daughter that goes back to the Bieber Tess 5166 cow. This is the cow that produced many outstanding females in the 5L herd. These are excellent maternal genetics. You don't want to miss out on this one.



## 103 CHOAT LARKABA 2110-74X #1400046

BD 4/14/10 BW 88 WW 613 YW Cat. 1A % 100%

LCHMN GRANDCANYON 1244G  
5L NORMANDY CANYON 6024  
NORSEMAN 1312 PJM

GLACIER MARIAS 548  
BLUE RIDGE LARKABA 2110  
BLUE RIDGE LARKABA

Dam's MPPA 104.2 Dam's Age 8

CED	BW	WW	YW	Milk	TM	ME	HPG	CEM	Stay	Marb	REA	Fat
-1	2.4	25	57	21	34	7	8	3	7	0.00	0.04	0.03

We would never part with this female except that she carries a little more white on her underside than we like. In 7 calves, the dam has produced 3 sale bulls and 4 replacement heifers.



Lot 103



## 104 CHOAT CHIEFDOM 4208-86X #1400066

BD 4/19/10 BW 82 WW 564 YW Cat. 1A % 100%

LCHMN GRANDCANYON 1244G  
5L NORMANDY CANYON 6024  
NORSEMAN 1312 PJM

RIDGE SUNTELL 204  
RIDGE CHIEFDOM 686-4208  
OTT-753-686

Dam's MPPA 102.4 Dam's Age 6

CED	BW	WW	YW	Milk	TM	ME	HPG	CEM	Stay	Marb	REA	Fat
1	0.9	21	50	18	29	4	10	3	5	-0.04	0.01	0.03

Moderate framed Normandy Canyon daughter out of a very good cow family. Four females out of this cow family are currently in the herd.



Lot 104

# OPEN REGISTERED HEIFERS



Birnie calves



CHOAT CATTLE COMPANY

## 105 CHOAT BOLDRULER 4212-69X #1400067

BD 4/13/10 BW 94 WW 521 YW Cat. 1A % 100%

LCHMN GRANDCANYON 1244G  
5L NORMANDY CANYON 6024  
NORSEMAN 1312 PJM

RIDGE SUNTELL 204  
RIDGE BOLDRULER 4212  
OTT-750-688

Dam's MPPA 101.1  
Dam's Age 6

CED	BW	WW	YW	Milk	TM	ME	HPG	CEM	Stay	Marb	REA	Fat
-2	3.7	19	47	19	29	4	9	2	6	-0.07	0.01	0.02

A 3/4 sister to the 86X heifer above. Also moderate framed and out of a top cow family.



CHOAT CATTLE COMPANY

## 106 CHOAT GOLDEN MARIE 316-84X #1400048

BD 4/19/10 BW 50 WW 506 YW Cat. 1A % 100%

LCHMN GRANDCANYON 1244G  
5L NORMANDY CANYON 6024  
NORSEMAN 1312 PJM

LCHMN GOLD ROBBER 1909E  
KDS GOLDEN MARIE 316  
KDS DAY MARIE 128

Dam's MPPA 94.7  
Dam's Age 7

CED	BW	WW	YW	Milk	TM	ME	HPG	CEM	Stay	Marb	REA	Fat
7	-6.4	9	43	21	25	8	12	5	7	0.16	0.11	0.03

Another Normandy Canyon daughter out of a Gold Robber cow. She only weighed 50 lbs. at birth but has grown out to be a nice looking heifer.



Lot 106



CHOAT CATTLE COMPANY

## 107 CHOAT PANSY 477P-39X #1400061

BD 4/1/10 BW 54 WW 480 YW Cat. 1A % 100%

LCHMN GRANDCANYON 1244G  
5L NORMANDY CANYON 6024  
NORSEMAN 1312 PJM

RED SSS ILLUSIVE 167H  
BCRR PANSY 477  
FORSTER PANSY 0157

Dam's MPPA 93.3  
Dam's Age 6

CED	BW	WW	YW	Milk	TM	ME	HPG	CEM	Stay	Marb	REA	Fat
3	-0.5	6	31	19	21	1	8	4	5	-0.14	0.05	0.02

A twin to another heifer out of a Bullis Creek bred cow who likes to have twins. She gets a little run down by that, but always breeds back early. Having the twins and getting run down adversely affect her MPPA.



Lot 107



CHOAT CATTLE COMPANY

## 108 CHOAT CHERRY T719-76X #1399975

BD 4/14/10 BW 86 WW 594 YW Cat. 1A % 100%

5L SIGNATURE 5615  
5L SIGNATURE 2585-6017  
5L ROXIE X 851-2585

RED CROWFOOT OLE'S OSCAR  
CHOAT CHERRY T719  
AHF CHERRY 561R

Dam's MPPA 100.6  
Dam's Age 3

CED	BW	WW	YW	Milk	TM	ME	HPG	CEM	Stay	Marb	REA	Fat
1	2.5	41	75	16	36	3	9	2	9	0.31	0.24	0.02

We have several of these 6017 daughters that go back to Ole's Oscar cows. All the others are in the replacement pen, but felt we needed offer one here as a representative of the group. We are calving our first daughters out of the 6017 bull this spring. They are very feminine with excellent udder attachment and teat size.



Lot 108





CHOAT CATTLE COMPANY

## 109 CHOAT SHEILA T7104-71X #1399969

BD 4/13/10 BW 80 WW 539 YW Cat. 1A % 100%

5L SIGNATURE 5615  
5L SIGNATURE 2585-6017  
5L ROXIE X 851-2585

5L NORMANDY CANYON 6024  
CHOAT SHEILA T7104  
RIDGE SHEILA 009-459

Dam's MPPA 100.6  
Dam's Age 3

CED	BW	WW	YW	Milk	TM	ME	HPG	CEM	Stay	Marb	REA	Fat
1	1.4	26	59	18	31	5		1	9	0.13	0.21	0.03

We are calving our first daughters out of the 6017 bull. They are a little bigger framed with lots of volume. Udder attachment and teat size are tops. Another 6017 daughter that comes out of a super cow family. Ross Knott from Sandbur Ridge bought her 3/4 sister at the Kearney Classic last year.



Lot 109



Lot 110



CHOAT CATTLE COMPANY

## 110 CHOAT LAKOTA 535R-99X #1399893

BD 4/24/10 BW 74 WW 571 YW Cat. 1A % 100%

BECKTON JULIAN GG B571  
MESSMER JED V510  
MESSMER GINNIE 9862

BASIN CHEROKEE 2905  
AHF OPHELIA 535R  
AHF OPHELIA K055

Dam's MPPA 102.2  
Dam's Age 5

CED	BW	WW	YW	Milk	TM	ME	HPG	CEM	Stay	Marb	REA	Fat
13	-2.1	37	68	14	32	2	12	5	12	0.23	0.15	0.03

This is the first crop of heifers out of the V510 bull. They are all moderate framed and should make some outstanding cows.



CHOAT CATTLE COMPANY

## 111 CHOAT MS FIRE 108X #1399900

BD 4/28/10 BW 60 WW 509 YW Cat. 1A % 100%

BECKTON JULIAN GG B571  
MESSMER JED V510  
MESSMER GINNIE 9862

RED CROWFOOT OLE'S OSCAR  
CHOAT MS FIRE R551  
KDS BE MISSFIRE 325

Dam's MPPA 102.5  
Dam's Age 5

CED	BW	WW	YW	Milk	TM	ME	HPG	CEM	Stay	Marb	REA	Fat
15	-5.8	22	53	20	30		9	11	11	0.18	0.15	0.03

Another V510 daughter out of a top Ole's Oscar daughter. Good cow family.



Oliver Birnie and Hunter Thomas



Done for the day at Cooksley Ranch



## 112 EMBRYO PACKAGE

Buyer is purchasing 3 embryos with the guarantee of one pregnancy if implanted by a certified embryo technician. Buyer can purchase an additional 3 embryos at the same price per embryo.

5L DESTINATION 893-6215  
5L PERSPECTIVE 3244-8167  
5L SILKWOOD 1148-3244

SANDBUR RIDGE  
RED ANGUS

GLACIER CHATEAU 744  
MMN BOXELDER KAY L42  
BUCKEYE BRANDI

CED	BW	WW	YW	Milk	TM	ME	HPG	CEM	Stay	Marb	REA	Fat
2	1.4	44	75	16	38	4	12	6	11	0.32	0.27	0.02

5L Perspective is the young sensational growth and carcass bull raised by Larry Mehlhoff and Boxelder Kay L42 is a moderate framed cow with a lot of muscle and style that she transmits into her offspring. L42's calves have ratioed 117 for %IMF and 113 for REA. This mating will produce outstanding progeny that will be loaded with carcass.



## 114 EMBRYO PACKAGE

Buyer is purchasing 3 embryos with the guarantee of one pregnancy if implanted by a certified embryo technician. Buyer can purchase an additional 3 embryos at the same price per embryo.

ANKONIAN DYNAMO  
UMPIRE 1000  
KARAMA 657E OF SAYRE

SANDBUR RIDGE  
RED ANGUS

HLH HOBO 105 306  
BARGER F12  
LEACHMAN SAMOLA 5960

CED	BW	WW	YW	Milk	TM	ME	HPG	CEM	Stay	Marb	REA	Fat
7	-1.3	12	28	12	18	3	6	-1	7	-0.12	-0.14	0.01

Umpire 1000 is the calving ease specialist and female producer that started several of today's popular blood lines. F12 combines Hobo 1961, Rambo 502, Midland Chf M251 and PBC D0802. Every once and a while it is good to go back and reintroduce the genetics that we started with and this combination will allow the buyer to do just that.



## 116 EMBRYO PACKAGE

Buyer is purchasing 3 embryos with the guarantee of one pregnancy if implanted by a certified embryo technician. Buyer can purchase an additional 3 embryos at the same price per embryo.

5L SIGNATURE 5615  
RIDGE ENHANCED 9002  
SHOCO BLOCKANA R91

SANDBUR RIDGE  
RED ANGUS

LEACHMAN MONU 2X 8096  
FEDDES BLOCKANA 935  
FED'S BLOCKANA 4225

CED	BW	WW	YW	Milk	TM	ME	HPG	CEM	Stay	Marb	REA	Fat
4	1.3	27	55	22	36	5	8	6	6	0.31	-0.18	0.03

Ridge Enhanced 9002 is an OS Free son of 5L Signature 5615, he is dark red, very correct, and his first calves look very good. The dam to 9002 is Shoco Blockana R91 she is 15 years old and a great FCC Rambo 502 daughter. Feddes Blockana 935 is a moderate frame, big volumed, great footed cow that raised 9 calves before entering into my embryo program. She is a Monu 2X 8096 daughter out of a Hobo 1961 by Rambo bred cow. Several breed greats are combined into this embryo lot.



## 113 EMBRYO PACKAGE

Buyer is purchasing 3 embryos with the guarantee of one pregnancy if implanted by a certified embryo technician. Buyer can purchase an additional 6 embryos at the same price per embryo.

LCHMN GRANDCANYON 1244G  
5L NORMANDY CANYON 6024  
NORSEMAN 1312 PJM

SANDBUR RIDGE  
RED ANGUS

GLACIER LOGAN 210  
MLK CRK LAKOTA 651  
MLK CRK LAKOTA Y46-HOBO

CED	BW	WW	YW	Milk	TM	ME	HPG	CEM	Stay	Marb	REA	Fat
4	-1.2	14	43	23	30	10	10	8	9	0.01	-0.05	0.02

5L Normandy Canyon has been a herd sire at Sandbur Ridge for the past 6 years; the daughters he has left us with are moderated framed and easy fleshing. The udder quality is very good and the disposition is excellent. Lakota 651 was purchased from Bruce and Tina Ketchum at the first Santa Sale. She earned a 104.2 MPPA on 11 head of natural calves and has been a flush cow for the past couple of years.



## 115 EMBRYO PACKAGE

Buyer is purchasing 3 embryos with the guarantee of one pregnancy if implanted by a certified embryo technician.

5L GRAND EXPRESS 453-5655  
5L EXPRESSO 1744-612V  
5L LAKOTA 41C-1744

SANDBUR RIDGE  
RED ANGUS

HLH HOBO 105 306  
BARGER F7  
LBC D5809

CED	BW	WW	YW	Milk	TM	ME	HPG	CEM	Stay	Marb	REA	Fat
8	-1.5	28	46	17	31	2	11	4	9	0.1	-0.07	0.01

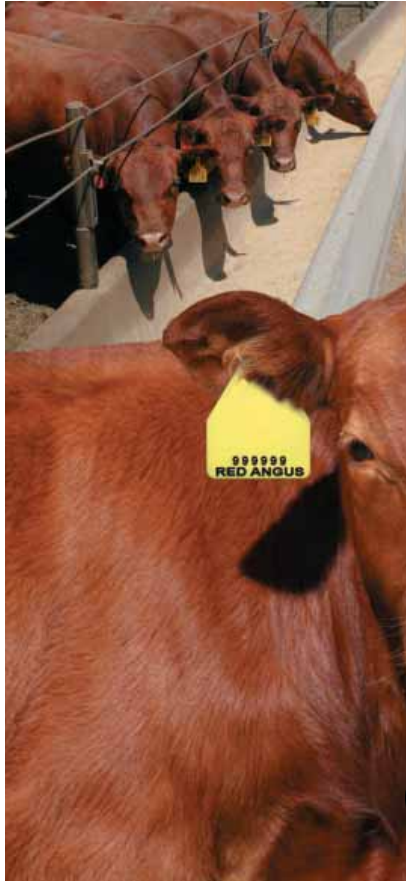
5L Expresso was the high selling bull in the fall 2009 5L Ranch Red Angus sale, he is an outstanding individual with a unique combination of growth and carcass. The F7 cow is currently 15 years old and in my embryo program, she produced 13 calves and earned a 101.2 MPPA, her last calf is going to be used as my heifer bull this spring. This mating creates all kinds of wonderful possibilities, calving ease bulls with growth and carcass and females that you will consider priceless.



Cooksleys sorting pairs



Sandbur Ridge cows



# The BEST VALUE in Age & Source Verification

## Real Rancher Solutions:

- USDA approved for Age and Source Verification, plus Traceability to Angus Bloodlines
- Free Feeder Cattle Marketing Services
- Value-Based Marketing Options through Angus America and Meyer Natural Angus
- Available in either a Visual Tag only, or Combination: Visual Tag & RFID Tag

**No Enrollment Fee!**

**Your Source for  
Guaranteed Angus!**

Contact us today for Certified Red Angus value-added opportunities!



- Traceability to at least 50% Red Angus Bloodlines
- Source Verified to Ranch of Origin
- Group Age Verified



(940) 387-3502  
[www.RedAngus.org](http://www.RedAngus.org)

# Pro-Cow

**Replacement females  
with all the right Tools!**



Visit our website at [www.redangus.org](http://www.redangus.org)  
or call us at the RAAA National Office at  
(940) 387-3502 for more information today!

The Maternal side of any cow/calf operation collectively has a genetic impact equivalent to that operation's herdbulls. Additionally, their potential to affect producers' bottom lines through reduced maintenance costs is far greater.

The Red Angus Pro-Cow program was developed to assist commercial producers in capturing the added value of the superior Red Angus maternal genetics by:

- Promoting the maternal benefits of their Red Angus influenced replacements.
- Expanding marketing opportunities for the female half of their calf crop.

## What's in it for you?

- **FREE** listing of your replacement females on the RAAA website.
- Targeted promotion of the maternal benefits of Red Angus influenced replacements.
- Opportunity to merchandise replacements out of Red Angus, Angus Plus and Red Angus Hybrid/ Composite bulls.
- RAAA staff working with industry partners & existing markets to provide greater sales opportunities.



# Red Angus Marketing Programs



Paul Birnie  
610 South 7th Avenue  
Broken Bow, NE 68822

FIRST CLASS  
US POSTAGE  
PAID  
BISMARCK, ND  
PERMIT #256

CHANGE SERVICE REQUESTED



**Raising the Rancher's Kind –**

*Balanced, Efficient and Functional.*



*2nd Annual Genetic Opportunity Sale*

**Monday March 21, 2011**

1:30 p.m. CST • Valentine Livestock Market, Valentine, NE

