



# **DAMAR FARMS**

*Best of Both Worlds 3*

**Female Sale**

**Saturday, Sept. 29, 2012**

**At the Farm • Emerald, Wisconsin • 11 a.m. Sharp**

# Welcome!

Join us online or at our Emerald Farm, Saturday, September 29, 2012 at 11 AM Central Time for our Best of Both Worlds 3 Production Sale. DV Auction will host this video only auction for us. Please be sure to register with DV Auction prior to the sale so you don't miss out. All sale cattle will be on display at our Emerald Farm, but will not be run through the ring. Videos and the online sales catalog will be available two weeks prior to the sale.



Dave and Mary

## Sales Format:

As those of you who were able to join us for our spring bull sale recall, Damar Farms utilized a fast paced, fair sales format for selling our animals. Every animal will have an opening base price. We will start selling our halter broken open show animals first. If you are the only bidder on the animal, Kyle Gilchrist will sell you the animal. If there is more than one bidder, Kyle will auction that animal. Any animal without a bidder will be available for a final go around after the remainder of the animals have gone through their first round. If the animal doesn't sell the second time, Damar Farms will keep the genetics for its in-herd use. After the halter broken open show animals are sold, we will use the same sales format for the registered bred heifers. Our embryo and semen lots will sell after the registered bred heifers and unlike the cattle, will only have one round of bidding. We have found this auction method moves rapidly, so please be prepared to bid.

This sale gives you the opportunity to purchase great show winning genetics. With Damar Farms putting 600 embryos into their 1200+ spring calving animals, your options are near limitless. And while it's extremely exciting for us to see the DMR brand in the winner's circle, Damar Farms also concentrates on carcass numbers. Lorenzen What's Good (Messmer Pandora X Mission Statement) sold for \$28,000 in February 2012 and was bred by Damar Farms. These genetics will also be available September 29th.

Damar Farms buys cattle all over North America and we are well aware that trucking is a big issue for most buyers. That is why we are proud to offer free trucking of our sale cattle to central locations in the United States. Please call our Show Cattle Manager, Ennis Wallace, at 731-415-4299 about central locations or auction information.

Sincerely,

Dave (Doc) Hehli

## Want to keep receiving information about Damar Farms' upcoming sales?

Sign up for our mailing list at [www.damarfarms.com](http://www.damarfarms.com) or send an email to [info@damarfarms.com](mailto:info@damarfarms.com). We're going paperless, so don't miss out! We promise to only email you the important happenings at Damar Farms. Be sure to join today!

Join us for Our Third Annual

**DAMAR FARMS BEST OF BOTH WORLDS 3 FEMALE SALE**

Saturday, Sept. 29, 2012 • 11 a.m. CST SHARP! • At the Emerald Farm and online at [DVAuction.com](http://DVAuction.com)

2609 County Road S • Emerald, WI

Sale Day Phones: 731-415-4299 • 715-265-7093 • 641-919-0196

**SCHEDULE OF EVENTS:**

**Friday, September 28**

12:00 Noon .....Sale Cattle on Display!

**Saturday, September 29**

8:00 am.....Cattle on Display  
(Donuts and Refreshments Served)

11:00 am Sharp!.....Best of Both Worlds Female Sale

Join us for lunch after the sale.

**SALE LOCATION:** 2609 County Road S Emerald, WI  
Wisconsin Interstate 94 to Exit 19. Hwy 63 North 12 miles to County Road S. Turn East (right) and go 4 1/2 miles. Watch for signs.

**OTHER AREA MOTELS:**

AmericInn..... 715-684-5888

Super 8 Motel .....800-800-8000 or 715-684-2700  
Baldwin, WI (17 miles south of the farm off I-94 Exit 19 & Hwy 63)

Super 8 Motel • New Richmond, WI .....715-246-7829

**SALE TERMS:** All Simmental cattle sell under the terms and conditions of the American Simmental Association. All Red Angus cattle sell under the terms and conditions of the American Red Angus Association.

**LIVESTOCK INSURANCE:** Cattle insurance will be available sale day through Jame Secondino Krieger – American Live Stock, Inc. 812-208-0956.

**ANNOUNCEMENTS:** Announcements made sale day from the auction block during the sale takes precedence over printed material associated with this sale. Anyone attending this sale attends at his or her own risk. Breeders or any sale staff will not be held responsible for any personal injury to anyone attending this sale.

**TRUCKING:** Damar Farms will deliver cattle to central locations. Arrangements should be made at the time of settlement.

**SALE CONSULTANTS:**

Scott Werlein..... 715-495-6131

Stuart Gilbert..... 641-919-0196

**AUCTIONEER:**

Col. Kyle Gilchrist.....641-919-1077

All video provided by DV Auction.

**WATCH AND BID ONLINE FOR FREE AT DVAuction.com!**

Real time bidding will be available via the Internet for this sale. Live video/audio will allow buyers to bid on animals as if they were present at the auction. Internet buyers must create an account and register to bid 24 hours prior to the sale at [www.dvauction.com](http://www.dvauction.com). Call Justin Dikoff at (605) 290-0635 with any questions.



**SALES AND MARKETING:**

Ennis Wallace:

Cell phone.....731-415-4299

Owners: Dave and Mary Hehli, Strum, WI

**Catalog and Promotion:** Cow Camp Promotions • Tracey Koester

**Watch & bid online for FREE at** **DVAuction**  
Broadcasting Real-Time Auctions

**View the Auction Live!  
Bid Online... you're ringside  
right at your desk!**

Buying online is as easy as 1, 2, 3...

1. Create an account at [www.dvauction.com](http://www.dvauction.com) under the "register" tab
2. Apply for bidding approval by clicking on the "details" tab at least 24 hours prior to the auction-a DV representative will notify you once you have been approved
3. Tune in for the sale and make you purchases!

**High speed internet** is required for successful bidding-be sure to check the lag-time monitor in the top left corner to ensure real-time broadcasts.

**Proxy Bidding**-if you can't make time to watch the sale, register a proxy bid and let our system represent your bid while you're away. Look for the "proxy bid" tab on the auction listing, and fill in your maximum bids. We'll handle the rest!

**Having troubles?** During the auction, you can type a message to the operator at any time for assistance. Our full-time support team can also always be reached at (402) 474-5557.

**DVAuction**  
Broadcasting Real-Time Auctions

DVA Rep. Justin Dikoff (605) 290-0635 - email: [jdikoff@dvauction.com](mailto:jdikoff@dvauction.com)  
Please feel free to contact me with questions about the sale or to view the cattle for you.



**DAMAR LAKINA Z102**

RAAA#: 1509469 Tattoo: Z102 100% Cat. 1A Red Angus  
 BD: 1/1/12 Act. BW: 84 Adj. WW: 771

**EPDs**

CE
BW -1.6
WW 60
YW 97
M 15
TM 45
ME 8
HPG 9
CEM
STAY 8
Marb 0.50
YG -0.04
CW 25
REA 0.07
Fat 0.02

RED COMPASS MULBERRY 449M  
 RED FINE LINE MULBERRY 26P  
 RED DUS FAYETTE 8G

Base Price: \$5,000

DFRA CHERABULLE M218  
 DFRA LAKINA S645  
 BJR LAKINA 1193-6243

*Z102 is a Mulberry and S645 daughter. What an exciting female to start the catalog off with. This January-born female sired by the breed giant, Mulberry 26P, puts a lot of desirable traits together. Her attributes are her structural correctness, soft middle, long slender neck all in a "lady-like look." She traces back to those good Boot Jack cows. Z102's dam, S645, will be in the donor pen next spring. Here lies a once-in-a-lifetime opportunity. Reserve Junior Calf Champion at 2012 Iowa State Fair.*



**DAMAR OH BABY Z084**

RAAA#: 1509479 Tattoo: Z084 100% Cat. 1A Red Angus  
 BD: 2/11/12 Act. BW: 65 Adj. WW:

**EPDs**

CE
BW 0.4
WW 33
YW 55
M 13
TM 30
ME 3
HPG
CEM
STAY 4
Marb
YG
CW
REA
Fat

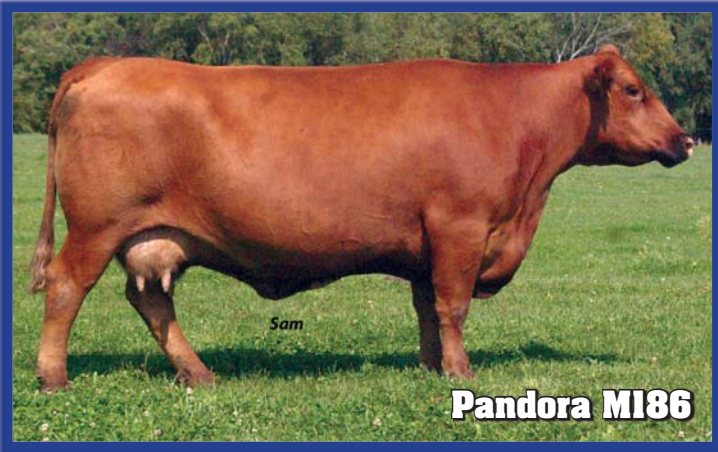
MESSMER PACKER S008  
 DAMAR'S LUCY'S BOY W936  
 LCC LUCY MA961

Base Price: \$5,000

RED FINE LINE MULBERRY 26P  
 DAMAR OH BABY W168  
 RED T-S OLIVIA 706P

*Z084 is destined for breed greatness. The most talked about Red Angus heifer calf at the Iowa State Fair. Sired by W936, a good young herd sire carrying the DMR brand and used to clean up the best cows at Damar. He is now being collected and will be offered sale day. Lucy's Boy is sired by Packer, the EPD legend who possesses calving ease, growth and carcass. Her dam, W168, is out of the Canadian cow, Olivia 256L.*





## DAMAR LINDA'S LACE 2017

RAAA#: 1511102    Tattoo: Z017    100% Cat. 1A Red Angus  
BD: 1/12/12    Act. BW: 80    Adj. WW: 588

BECKTON LANCER T7 M089    **Base Price: \$5,000**  
BECKTON LANCER S281 T7  
BECKTON TAMARA M515 LN  
  
BECKTON WARRIOR N645 T1  
MESSMER LINDA S129  
MESSMER LINDA 2322

*Z017 is a Beckton Lancer S281 out of the S129 Linda cow. We think so much of S281. Damar was contending bidder when he sold at Messmer's sale. Luckily, we found semen and the Linda mating gave us tremendous EPDs to complement her show ring capabilities. Linda is one of our best donor cows.*

### EPDs

CE
BW 0.7
WW 74
YW 119
M 16
TM 53
ME 8
HPG 11
CEM
STAY 11
Marb 0.45
YG -0.11
CW 42
REA 0.36
Fat -0.01



## DAMAR PRECIOUS Z030

RAAA#: 1511112    Tattoo: Z030    100% Cat. 1A Red Angus  
BD: 1/17/12    Act. BW: 75    Adj. WW: 633

BKT JULIAN 7526 G    **Base Price: \$4,000**  
BECKTON JULIAN GG B571  
BKT MARTA 9A13 JL  
  
LELAND MARIAS 271K  
MESSMER PANDORA M186  
MESSMER PANDORA 9976

*Z030 is a Julian daughter of the matriarch, Pandora, and a full sib to Messmer Joshua and Jericho W041. Her mother, Pandora M186, is a true matriarch of the Damar program. Pandora continually produces cattle that are the right kind. You can't find one any better from her genetics to her phenotype. Pandora had bull sales alone in 2012 over \$90,000.*

### EPDs

CE
BW -3.4
WW 56
YW 86
M 22
TM 50
ME 2
HPG 13
CEM
STAY 15
Marb 0.44
YG -0.18
CW 16
REA 0.28
Fat 0.00



## DAMAR LAKOTA Z168

RAAA#: 1509475    Tattoo: Z168    100% Cat. 1A Red Angus  
BD: 3/18/12    Act. BW: 86    Adj. WW: 631

RED TER-RON RELOAD 703T    **Base Price: \$4,000**  
RED TER-RON REAL DEAL 01W  
RED K ADAMS SAVANAH 11S  
  
RED FINE LINE MULBERRY 26P  
DAMAR LOOKIN GOOD W057  
DFRA LAKOTA 532L

*Z168 is a daughter of W057 and the Canadian sire, Real Deal. She is an amazing March heifer with a bright show ring future. She is very impressive on the move with a big soggy middle and lots of capacity. Sired by Real Deal who has commanded some high dollars for his daughters. W057 is a Mulberry daughter, an excellent combination with Real Deal.*

### EPDs

CE
BW 2.6
WW 70
YW 108
M 10
TM 45
ME 1
HPG
CEM
STAY 7
Marb 0.21
YG -0.10
CW 38
REA 0.04
Fat -0.04



## DAMAR NEXA Z110 (OSF)

RAAA#: 1509476    Tattoo: Z110    100% Cat. 1A Red Angus  
BD: 1/1/12    Act. BW: 78    Adj. WW: 730

RED COMPASS MULBERRY 449M    **Base Price: \$4,000**  
RED FINE LINE MULBERRY 26P  
RED DUS FAYETTE 8G  
  
MESSMER JOSHUA 019P  
MESSMER NEXA S037  
MESSMER NEXA 076P

*Z110 - the Mulberry influence on the S037 cow makes for a sweet-fronted, long-necked heifer with that "lady like look." S037 came out of the Messmer dispersal and works with several sires which you will see throughout the offering.*

### EPDs

CE
BW -0.5
WW 65
YW 106
M 15
TM 47
ME 8
HPG 11
CEM
STAY 8
Marb 0.40
YG 0.02
CW 33
REA 0.04
Fat 0.02



**DAMAR ELEANOR Z208**

RAAA#: 1509474    Tattoo: Z208    100% Cat. 1A Red Angus  
 BD: 3/2/12    Act. BW: 85    Adj. WW:

RED LAZY MC STOUT 30S  
 RED LAZY MC COWBOY CUT 26U  
 RED LAZY MC STAR 185M

BECKTON LANCER F442 T  
 SRN ELEANOR 430Z  
 LCHMN ELEANOR J1266

Base Price: \$4,000

**EPDs**

CE	
BW	1.2
WW	65
YW	90
M	16
TM	48
ME	-5
HPG	9
CEM	
STAY	9
Marb	0.24
YG	-0.13
CW	25
REA	0.18
Fat	-0.01

Z208 Eleanor was the Champion Spring Heifer Calf at the 2012 Iowa State Fair. She is a sassy March heifer that is going to stand you in the purple. Her dam SRN Eleanor 430Z is a donor for Damar producing some great females. Tracing back to Beckton Lancer and Leachman cattle. Her sire, Cowboy Cut, has been nothing but sensational from being the Denver Champion to semen sold around the world. Don't miss this one.



**DAMAR DAZZLE Z117**

ASA: 2643029    Tattoo: Z117    Purebred Simmental  
 BD: 2/9/12    Adj. BW 94    Adj. WW

STF DOMINIQUE R170  
 STF DOMINANCE T171  
 MMP KISS THIS 37L

TRIPLE C ULTIMATE FORCE  
 KA SHAMOO U130  
 LILY 130P

Base Price: \$10,000

**EPDs**

CE	5.2
BW	4.6
WW	63.4
YW	85.6
MCE	10.6
MM	19.4
MWW	51.1
CEM	4.5
CW	18.5
YG	-0.25
Marb	0.06
BF	-0.09
REA	0.35
API	94
TI	58

Z117 is a super star. Her dam, Shamoo U130, was the 2010 Denver National Champion. Impressive pedigree, longevity and predictability simply describe this heifer. Z117 is sired by Dominance T171, 2010 Denver national Champion. The mating of the two greats resulted in a big-boned, heavy-muscle, big-butted, clean-fronted heifer that is destined for the donor pen.



**DAMAR DAZZLE Z136**

ASA: 2643066    Tattoo: Z136    Halfblood - SimAngus  
 BD: 2/11/12    Adj. BW 90    Adj. WW

TC STOCKMAN 365  
 NORTHERNIMPROVEMENT 4480  
 BLACKCAP OF R R 5367

TRIPLE C ULTIMATE FORCE  
 KA SHAMOO U130  
 LILY 130P

Base Price: \$10,000

**EPDs**

CE	10.9
BW	0.8
WW	53
YW	81.3
MCE	9.5
MM	25.5
MWW	52
CEM	18.4
CW	11.1
YG	-0.22
Marb	0.32
BF	-0.06
REA	0.34
API	118
TI	62

Z136 is the mating of Northern Improvement 4480 and Shamoo U130. This tremendous heifer is wide based, smooth muscled and deep ribbed, plus she moves like a cat. Look at all the great females in her pedigree - Shamoo U130, a National Champion, all the way back to E700 Queen, now deceased at the age of 17. Longevity! E700 has 261 progeny. Look at the dollars she has commanded. We feel this young halfblood is equally powerful. 4480 has sired numerous champions and high sellers being used in over 600 herds with 1,250 daughters.



**Lot 10**



**DAMAR GIRLFRIEND Z160**

ASA: 2643024 Tattoo: Z160 3/4 SM, 1/8 SS, 1/8 AN  
BD: 3/1/12 Adj. BW 82 Adj. WW

GWS EBONY'S TRADEMARK 6N  
TWCC TRENDSETTER T71  
JM 3956

Base Price: \$10,000

HC POWER DRIVE 88H  
TRIPLE C GIRLFRIENDS310  
TRIPLE C GO GIRL K34G

Z160's mating comes from years and hours of learning and searching to produce a great one. She is feminine in her neck and ties to a clean shoulder full of heart and deep in rib. Check the pedigree – from Girlfriend to Go Girl and then back to the great E700 Queen – unbelievable genetics and great females. Trendsetter, known as the "King of the Ring," was named the first-ever Triple Crown winning Grand Champion Percentage Simmental Bull. Don't miss out on this one. She was the talk at the Iowa State Fair 2012.

**EPDs**

CE	7.3
BW	2
WW	61.2
YW	86
MCE	5.5
MM	23.1
MWW	53.7
CEM	13.3
CW	15.1
YG	-0.22
Marb	0.13
BF	-0.01
REA	0.81
API	99
TI	62



**Triple C Girlfriends310**



**DAMAR TRENDY GIRL Z146**

ASA: 2644399 Tattoo: Z146 3/4 SM, 1/8 SS, 1/8 AN  
BD: 2/17/12 Adj. BW 79 Adj. WW 541

GWS EBONY'S TRADEMARK 6N  
TWCC TRENDSETTER T71  
JM 3956

Base Price: \$4,000

HC POWER DRIVE 88H  
TRIPLE C GIRLFRIENDS310  
TRIPLE C GO GIRL K34G

Z146 is another great Trendsetter daughter. Just like her sibling selling in front of her, all the great cows in the Simmental world are in this pedigree. Sired by the "King of the Ring," she is phenotypically as good as they get. Don't miss out on this one – a chance to give your herd a boost.

**EPDs**

CE	7.3
BW	2
WW	61.2
YW	86
MCE	5.5
MM	23.1
MWW	53.7
CEM	13.3
CW	15.1
YG	-0.22
Marb	0.13
BF	-0.01
REA	0.81
API	99
TI	62



**Lot 12**



**DAMAR ELEANOR Z093**

RAAA#: 1509473 Tattoo: Z093 100% Cat. 1A Red Angus  
BD: 2/28/12 Act. BW: 85 Adj. WW: 728

RED LAZY MC STOUT 30S  
RED LAZY MC COWBOY CUT 26U  
RED LAZY MC STAR 185M

Base Price: \$3,500

BECKTON LANCER F442 T  
SRN ELEANOR 4302  
LCHMN ELEANOR J1266

Z093 is just like her full sib selling in front of her. Cowboy Cut x Eleanor is a mating with tons of brood cow potential.

**EPDs**

CE	
BW	1.2
WW	65
YW	90
M	16
TM	48
ME	-5
HPG	9
CEM	
STAY	9
Marb	0.24
YG	-0.13
CW	25
REA	0.18
Fat	-0.01



**DAMAR ANNIE Z172**

RAAA#: 1511126 Tattoo: Z172 100% Cat. 1A Red Angus  
BD: 4/1/12 Act. BW: 84 Adj. WW: 627

**EPDs**

CE	
BW	-0.9
WW	53
YW	81
M	18
TM	44
ME	-4
HPG	
CEM	
STAY	6
Marb	0.38
YG	-0.06
CW	17
REA	0.03
Fat	0.02

WEBR DOC HOLLIDAY 2N  
WEBR TC CARD SHARK 1015  
PFRR MS NYACK 237  
RED SOO LINE GLADIATOR 5297  
RED SOO LINE ANNIE 8509  
RED SOO MS ANNIE 3154  
Base Price: \$3,500

Z172 Damar Annie is an April heifer that will hang banners or work in the pasture. She is one of the youngest offerings in the sale. Her pedigree goes back to the N154 cow out of the Soo Line program. This heifer exhibits a trait we are seeing in these Card Sharks – extension of the neck and front end making them extremely attractive.



**DAMAR ELLENOR Z261**

RAAA#: 1511098 Tattoo: Z261 100% Cat. 1A Red Angus  
BD: 3/3/12 Act. BW: 73 Adj. WW: 541

MESSMER JOSHUA 019P  
MESSMER PACKER S008  
MESSMER MILLIE 124P

Base Price: \$3,200

BJR MAKE MY DAY 981  
UBAR ELEANOR 001  
LCHMN ELEANOR H1164

Z261 is a heifer by Packer and UBAR Eleanor 001, a Make My Day purchased at UBAR's dispersal. These good Eleanor heifers trace to Leachmann Eleanor, a history-making cow selling for \$21,000. If all the Packer heifers were this nice, every Red Angus cow would be bred to him.

**EPDs**

CE	
BW	-2.1
WW	62
YW	97
M	18
TM	49
ME	4
HPG	13
CEM	
STAY	12
Marb	0.68
YG	-0.13
CW	25
REA	0.27
Fat	0.01



**DAMAR PRIDE Z106**

RAAA#: 1509470    Tattoo: Z106    100% Cat. 1A Red Angus  
 BD: 2/5/12    Act. BW: 86    Adj. WW:

RED COMPASS MULBERRY 449M    **Base Price: \$3,000**  
 RED FINE LINE MULBERRY 26P  
 RED DUS FAYETTE 8G  
 DFRA CHERABULLE M218  
 DFRA PRIDE S648  
 LOG WESTERN PRIDE 641

Z106 is a beautiful Mulberry daughter whose dam, S648, traces to LOG Western Pride 641. She is one of Damar's foundation donor cows.

EPDs	
CE	
BW	0
WW	62
YW	102
M	21
TM	52
ME	9
HPG	9
CEM	
STAY	7
Marb	0.42
YG	-0.03
CW	31
REA	0.08
Fat	0.01



**DAMAR NEXA Z107**

RAAA#: 1511107    Tattoo: Z107    100% Cat. 1A Red Angus  
 BD: 1/1/12    Act. BW: 88    Adj. WW: 694

RED COMPASS MULBERRY 449M    **Base Price: \$3,000**  
 RED FINE LINE MULBERRY 26P  
 RED DUS FAYETTE 8G  
 MESSMER JOSHUA 019P  
 MESSMER NEXA S037  
 MESSMER NEXA 076P

Z107 is another sleek-fronted Mulberry daughter. This heifer will definitely be a front-pasture cow. Her donor dam, S037, traces back to Messmer Joshua. They don't get much better from her genetic value.

EPDs	
CE	
BW	-0.5
WW	65
YW	106
M	15
TM	47
ME	8
HPG	11
CEM	
STAY	8
Marb	0.40
YG	0.02
CW	33
REA	0.04
Fat	0.02



**DAMAR ANNIE Z115**

RAAA#: 1509472    Tattoo: Z115    100% Cat. 1A Red Angus  
 BD: 1/24/12    Act. BW: 89    Adj. WW: 841

WEBR DOC HOLLIDAY 2N    **Base Price: \$3,000**  
 WEBR TC CARD SHARK 1015  
 PFFR MS NYACK 237  
 RED DWAJO GLADIATOR 32L  
 RED SOO MS ANNIE 3154  
 RED MEM ICECAP ANNIE 22Z

Z115 is a great Card Shark-sired heifer from Canadian Soo Line Annie N154. Like Lot 13, she exhibits all the great qualities we see in this mating.

EPDs	
CE	
BW	-1.8
WW	52
YW	76
M	18
TM	43
ME	-5
HPG	
CEM	
STAY	7
Marb	0.49
YG	-0.08
CW	13
REA	0.10
Fat	0.02



**DAMAR ANNIE BERRY Z134**

RAAA#: 1511070    Tattoo: Z134    100% Cat. 1A Red Angus  
 BD: 1/26/12    Act. BW: 92    Adj. WW: 605

RED COMPASS MULBERRY 449M    **Base Price: \$3,000**  
 RED FINE LINE MULBERRY 26P  
 RED DUS FAYETTE 8G  
 RED DWAJO GLADIATOR 32L  
 RED SOO MS ANNIE 3154  
 RED MEM ICECAP ANNIE 22Z

Z134 is Soo Line Annie N154's natural calf sired by Mulberry. What an opportunity to purchase such an individual from the Soo Line Annie family. Also check out Lots 13 and 17 for this tremendous cow family.

EPDs	
CE	
BW	0.6
WW	58
YW	93
M	17
TM	46
ME	0
HPG	9
CEM	
STAY	7
Marb	0.57
YG	-0.06
CW	27
REA	0.19
Fat	0.02



**DAMAR MISS DEAL Z262**

RAAA#: 1511116    Tattoo: Z262    100% Cat. 1A Red Angus  
 BD: 3/4/12    Act. BW: 87    Adj. WW: 543

RED TER-RON RELOAD 703T    **Base Price: \$3,000**  
 RED TER-RON REAL DEAL 01W  
 RED K ADAMS SAVANAH 11S  
 RED LAZY MC SMASH 41N  
 RED LAZY MC MISS 67R  
 RED LAZY MC MISS WORLD 70N

EPDs	
CE	
BW	2.3
WW	59
YW	88
M	16
TM	46
ME	-8
HPG	9
CEM	
STAY	7
Marb	0.14
YG	-0.14
CW	26
REA	-0.04
Fat	-0.04

**OUT**





**DAMAR ECHOE Z308**

RAAA#: 1511097 Tattoo: Z308 100% Cat. 1A Red Angus  
BD: 4/3/12 Act. BW: 84 Adj. WW: 458

SSS BLACK TREND 13B **Base Price: \$3,000**  
RED BRYLOR NEW TREND 22  
MEADOW CK MS SEAMAN 31A  
  
BJR MAKE MY DAY 981  
OLC ECHETA J165  
BECKTON ECHETA G757 WR

Z308 is sired by the female-maker New Trend. The cow, OLC Echeta J165, has produced some of our other donor cows as well as a son now at ABS. Full sib to Lot 21.

EPDs	
CE	
BW	0.2
WW	58
YW	94
M	28
TM	57
ME	6
HPG	11
CEM	
STAY	14
Marb	0.58
YG	-0.10
CW	27
REA	0.04
Fat	-0.02



**DAMAR ECHO Z313**

RAAA#: 1511096 Tattoo: Z313 100% Cat. 1A Red Angus  
BD: 4/3/12 Act. BW: 67 Adj. WW: 550

SSS BLACK TREND 13B **Base Price: \$3,000**  
RED BRYLOR NEW TREND 22  
MEADOW CK MS SEAMAN 31A  
  
BJR MAKE MY DAY 981  
OLC ECHETA J165  
BECKTON ECHETA G757 WR

Z313 is sired by the female-maker New Trend. The cow, OLC Echeta J165, has produced some of our other donor cows as well as a son now at ABS. Full sib to Lot 20.

EPDs	
CE	
BW	0.2
WW	58
YW	94
M	28
TM	57
ME	6
HPG	11
CEM	
STAY	14
Marb	0.58
YG	-0.10
CW	27
REA	0.04
Fat	-0.02



**DAMAR LINDA'S QUEST Z316**

RAAA#: 1511101 Tattoo: Z316 100% Cat. 1A Red Angus  
BD: 3/24/12 Act. BW: 72 Adj. WW: 640

BECKTON JULIAN GG B571 **Base Price: \$3,000**  
HXC CONQUEST 4405P  
HXC ELLIE MAY MA638  
  
BECKTON WARRIOR N645 T1  
MESSMER LINDA S129  
MESSMER LINDA 2322

Z316 is resulting from mating Conquest with our donor cow, Messmer Linda S129. This mating has produced this carcass trait and calving-ease leader.

EPDs	
CE	
BW	-2.3
WW	68
YW	109
M	18
TM	52
ME	8
HPG	11
CEM	
STAY	12
Marb	0.33
YG	-0.18
CW	31
REA	0.49
Fat	0.00



**DAMAR DREAM REY Z132**

ASA: 2644414 Tattoo: Z132 Purebred Simmental  
BD: 1/23/12 Adj. BW: 88 Adj. WW: 697

HC POWER DRIVE 88H **Base Price: \$3,000**  
TRIPLE C EL PODEROSO REY  
JSF FIESTA  
  
DHF JADES DREAMWORKS  
TRIPLE C DREAM GIRL  
TRIPLE C GO GIRL K34G

Z132 is a daughter of W3404 who sold in the Triple C Dispersal for \$12,000, and a granddaughter of Go Girl selling for \$16,000 in the Triple C Dispersal. She is just like her dam and granddam – sleek fronted, long spined and big hiped. Z132 is sired by the genetic giant El Ponderosa Reymond. His values, accuracies and calving ease make this heifer a great choice.

EPDs	
CE	4.9
BW	2.3
WW	68.4
YW	106.2
MCE	10.8
MM	19.5
MWW	53.7
CEM	10.6
CW	27.9
YG	-0.27
Marb	0.09
BF	-0.04
REA	0.85
API	110
TI	65



**DAMAR HOLLYANN Z169**

ASA: 2644416 Tattoo: Z169 3/8 SM, 1/2 CS, 1/8 AN  
BD: 3/23/12 Adj. BW: 85 Adj. WW: 722

DHF JADES DREAMWORKS **Base Price: \$3,000**  
HOUSTON X01  
STCC RUBY P172

Y50

Z169 one of the most talked about heifers in the sale. This heifer is destined to be a showing champion. Loads of style, big hiped, deep ribbed and deep flanked only begins to describe this heifer. She is sired by Houston the Reserve Champion Percentage Bull Calf in Denver 2011, 2011 Simmental Sweepstakes Grand Champion and 2011 Illinois State Fair Grand Champion. Z169 is a maternal half sib to Y273 who sold in last year's sale for \$3,500.

EPDs	
CE	2.6
BW	2.5
WW	47.8
YW	49.3
MCE	7.4
MM	14.4
MWW	38.3
CEM	
CW	-6.5
YG	-0.37
Marb	0.28
BF	-0.02
REA	0.9
API	
TI	



**DAMAR OH SO SHEER Z131**

ASA: 2644412 Tattoo: Z131 Purebred Simmental  
BD: 1/22/12 Adj. BW: 89 Adj. WW: 688

ELLINGSON LEGACY M229 **Base Price: \$2,800**  
OLF ODIN US  
OLF LADY TRIATHLON S655  
  
HOOKS SHEAR FORCE 38K  
TRIPLE C SHEER CLASS  
TRIPLE C MISS LIBERTY P1

Z131 is an Odin daughter out of U1924. U1924 sold in the Triple C Dispersal for \$15,000. Her granddam, "The Liberty Cow," commanded \$50,500. An opportunity to make an investment in some outstanding cow families awaits.

EPDs	
CE	14.1
BW	-0.9
WW	66.2
YW	100.7
MCE	12.5
MM	25.7
MWW	58.8
CEM	14.4
CW	19.7
YG	-0.53
Marb	0.04
BF	-0.08
REA	1.26
API	137
TI	70



**DAMAR DREAMREY Z141**

ASA: 2644400 Tattoo: Z141 Purebred Simmental  
BD: 1/30/12 Adj. BW: 95 Adj. WW: 435

HC POWER DRIVE 88H **Base Price: \$2,700**  
TRIPLE C EL PODEROSO REY  
JSF FIESTA  
  
DHF JADES DREAMWORKS  
TRIPLE C DREAM GIRL  
TRIPLE C GO GIRL K34G

Z141 another great daughter of W3404 Dream Girl sired by Reymond. She is a full sib to Lot 23. We have lots of plans for her dam moving to the top of our Simmental donors. A sleek-fronted, long-necked, long-spined and big-hipped heifer – she is the right kind.

EPDs	
CE	4.9
BW	2.3
WW	68.4
YW	106.2
MCE	10.8
MM	19.5
MWW	53.7
CEM	10.6
CW	27.9
YG	-0.27
Marb	0.09
BF	-0.04
REA	0.85
API	110
TI	65

**27 DAMAR KARRI Z156**

ASA: 2644406 Tattoo: Z156 Purebred Simmental  
BD: 2/27/12 Adj. BW 94 Adj. WW 687

HOOKS SHEAR FORCE 38K Base Price: \$2,700  
TRIPLE C L. TAYLOR  
LUCAS JOSIE 19K  
  
HC POWER DRIVE 88H  
TRIPLE C KARRIE T47K  
HOOKS KARRIE 47K

Z156 is a daughter of the Taylor and T47K mating. If your focus is on genetic value, this young February heifer has "got it goin' on." We feel that Taylor combines phenotype with added genetic values. We purchased Z136's dam to produce working females and she does just that with these Taylor females. She is show ring ready.

EPDs	
CE	11.2
BW	0.9
WW	63.5
YW	88.4
MCE	12.9
MM	21.9
MWW	53.7
CEM	21.4
CW	14.8
YG	-0.37
Marb	0.39
BF	-0.05
REA	0.93
API	142
TI	73

**28 DAMAR KARI TAYLOR Z163**

ASA: 2644402 Tattoo: Z163 Purebred Simmental  
BD: 3/3/12 Adj. BW 85 Adj. WW 630

HOOKS SHEAR FORCE 38K Base Price: \$2,700  
TRIPLE C L. TAYLOR  
LUCAS JOSIE 19K  
  
HC POWER DRIVE 88H  
TRIPLE C KARRIE T47K  
HOOKS KARRIE 47K

Z163 is just like her full sib Lot 27, combining all the right genetics to produce those "Taylor working females." She is show ring ready.

EPDs	
CE	11.2
BW	0.9
WW	63.5
YW	88.4
MCE	12.9
MM	21.9
MWW	53.7
CEM	21.4
CW	14.8
YG	-0.37
Marb	0.39
BF	-0.05
REA	0.93
API	142
TI	73

**29 DAMAR MINOLA Z089**

RAAA#: 1512650 Tattoo: Z089 100% Cat. 1A Red Angus  
BD: 2/13/12 Act. BW: 80 Adj. WW: 588

RED COMPASS MULBERRY 449M Base Price: \$2,700  
RED FINE LINE MULBERRY 26P  
RED DUS FAYETTE 8G  
  
5L NORSEMAN KING 2291  
RED SSS MINOLA 2U  
RED SSS MINOLA 333S

Z089 is a SSS Minola daughter that has us very excited around here. She is a complete heifer being well balanced and free moving. She is sired by Mulberry, making her the "Cowman's Kind."

EPDs	
CE	
BW	-1.3
WW	65
YW	108
M	18
TM	51
ME	8
HPG	7
CEM	
STAY	6
Marb	0.53
YG	-0.04
CW	33
REA	0.32
Fat	0.04

**30 DAMAR REAL GINI Z127**

RAAA#: 1511072 Tattoo: Z127 100% Cat. 1A Red Angus  
BD: 1/16/12 Act. BW: 90 Adj. WW: 608

RED TER-RON RELOAD 703T Base Price: \$2,700  
RED TER-RON REAL DEAL 01W  
RED K ADAMS SAVANAH 11S  
  
LMAN KING ROB 8621  
MESSMER GINNIE 9862  
MESSMER GINNIE 9211

Z127 commands attention from serious cowmen. This moderate-framed, easy-fleshing, and sound-structured heifer combines the show qualities of Real Deal with the carcass traits of Messmer Gini 9862.

EPDs	
CE	
BW	1.5
WW	58
YW	96
M	20
TM	49
ME	1
HPG	11
CEM	
STAY	7
Marb	0.26
YG	-0.09
CW	30
REA	0.06
Fat	-0.02

**31 DAMAR PEANUT Z032**

RAAA#: 1511077 Tattoo: Z032 100% Cat. 1A Red Angus  
BD: 1/18/12 Act. BW: 55 Adj. WW: 418

RED TER-RON RELOAD 703T Base Price: \$2,700  
RED TER-RON REAL DEAL 01W  
RED K ADAMS SAVANAH 11S  
  
DFRA ROCKER 425  
DFRA PRIDE N340  
LOG WESTERN PRIDE 641

Z032 is another great Real Deal sired heifer by N340, a Rocker Daughter. Rocker goes back to some of our foundation genetics here at Damar Farms.

EPDs	
CE	
BW	-2.2
WW	49
YW	79
M	15
TM	39
ME	0
HPG	
CEM	
STAY	8
Marb	0.19
YG	-0.15
CW	36
REA	0.18
Fat	-0.04

**32 DAMAR BARBIE Z142**

RAAA#: 1511078 Tattoo: Z142 100% Cat. 1A Red Angus  
BD: 2/6/12 Act. BW: 72 Adj. WW: 535

RED FINE LINE MULBERRY 26P Base Price: \$2,500  
RED BRYLOR BIG ROCK 85T  
RED CYT CHARITY 10P  
  
BJR MONU 4X-573  
DFRA BARCELONA P410  
BJR BARCELONA 2004

Z142 demonstrates Damar foundation genetics at its best. The combination of Big Rock makes her the right kind. Don't miss her sale day.

EPDs	
CE	
BW	-4
WW	37
YW	62
M	19
TM	37
ME	1
HPG	
CEM	
STAY	10
Marb	0.33
YG	-0.05
CW	13
REA	-0.08
Fat	0.01

**33 DAMAR MATTIE Z108**

RAAA#: 1511084 Tattoo: Z108 100% Cat. 1A Red Angus  
BD: 1/1/12 Act. BW: 78 Adj. WW: 658

RED COMPASS MULBERRY 449M Base Price: \$2,500  
RED FINE LINE MULBERRY 26P  
RED DUS FAYETTE 8G  
  
TPIE LAKOTA II 1086  
DFRA MATTIE R581  
BJR MATTIE 502-216

Z108 is probably the best profiling heifer in the sale. Her dam Damar R581 is a picture-perfect cow with a beautiful udder.

EPDs	
CE	
BW	-2.3
WW	49
YW	80
M	18
TM	42
ME	6
HPG	7
CEM	
STAY	8
Marb	0.33
YG	-0.09
CW	18
REA	0.08
Fat	0.01

**34 DAMAR BRIGHT STAR Z113**

RAAA#: 1511088 Tattoo: Z113 100% Cat. 1A Red Angus  
BD: 1/4/12 Act. BW: 92 Adj. WW: 712

RED FINE LINE MULBERRY 26P Base Price: \$2,500  
RED BRYLOR BIG ROCK 85T  
RED CYT CHARITY 10P  
  
DFRA ROMEO P471  
DFRA TAROKEE T726  
DFRA TAROKEE P421

Z113 has been an impressive heifer all year long. Her mother is one of our favorites. With this heifer's conformation, she is sure to also be a favorite on sale day.

EPDs	
CE	
BW	1.3
WW	65
YW	98
M	17
TM	50
ME	1
HPG	
CEM	
STAY	7
Marb	0.29
YG	-0.08
CW	14
REA	0.03
Fat	0.01



## DAMAR JERI MAY Z123

RAAA#: 1511124 Tattoo: Z123 100% Cat. 1A Red Angus  
BD: 1/13/12 Act. BW: 79 Adj. WW: 648

BECKTON JULIAN GG B571  
MESSMER JERICHO W041  
MESSMER PANDORA M186  
  
RED BRYLOR SQUALL 230S  
DAMAR MAYBE SO W180  
PERKS MISS BUSTER 202R

Base Price: \$2,500

EPDs	
CE	
BW	-3.2
WW	56
YW	84
M	17
TM	45
ME	0
HPG	11
CEM	
STAY	12
Marb	0.26
YG	-0.13
CW	15
REA	0.25
Fat	0.02

Z123 is a very sound-structured female and clean in her lines. Only because of our commitment to sell our best, we offer this heifer for sale.



## DAMAR TARMILY Z140

RAAA#: 1511113 Tattoo: Z140 100% Cat. 1A Red Angus  
BD: 1/29/12 Act. BW: 78 Adj. WW: 653

RED TER-RON RELOAD 703T  
RED TER-RON REAL DEAL 01W  
RED K ADAMS SAVANAH 11S  
  
BIEBER MAKE MIMI 7249  
DFRA TARMILY N512  
DFRA TARMILY N30S

Base Price: \$2,500

EPDs	
CE	
BW	2.2
WW	65
YW	97
M	12
TM	44
ME	-2
HPG	9
CEM	
STAY	8
Marb	0.27
YG	-0.16
CW	31
REA	0.05
Fat	-0.05

Z140 is another attractive Real Deal daughter. A full sib will sell in the National Sale in Reno, Nev., this fall.



## DAMAR MARIA Z143

RAAA#: 1511074 Tattoo: Z143 100% Cat. 1A Red Angus  
BD: 2/11/12 Act. BW: 97 Adj. WW: 773

RED TER-RON RELOAD 703T  
RED TER-RON REAL DEAL 01W  
RED K ADAMS SAVANAH 11S  
  
BJR MONU 4X-573  
DFRA MARIA M223  
BJR MARIA 45-984

Base Price: \$2,500

EPDs	
CE	
BW	4.7
WW	71
YW	107
M	13
TM	48
ME	-1
HPG	
CEM	
STAY	7
Marb	0.31
YG	-0.10
CW	31
REA	0.01
Fat	-0.03

Z143 — once again this is another attractive Real Deal daughter out of M223. A Boot Jack-bred donor dam who produces outstanding growth numbers.



## DAMAR GINNIE JEAN Z166

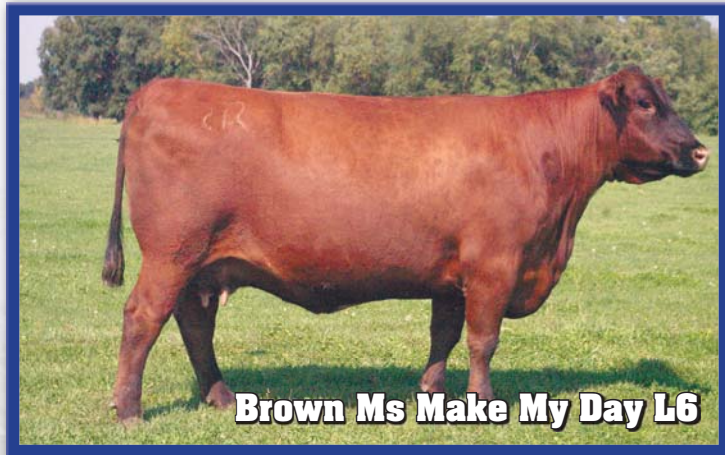
RAAA#: 1511121 Tattoo: Z166 100% Cat. 1A Red Angus  
BD: 3/6/12 Act. BW: 77 Adj. WW: 631

RED CROWFOOT OLE'S OSCAR  
C-BAR ANTICIPATION 101W  
BROWN MS ABIGRACE L7730  
  
BADLANDS NET WORTH 23U  
DAMAR GINNIE JEAN X037  
MESSMER GINNIE S065

Base Price: \$2,500

EPDs	
CE	
BW	-0.2
WW	68
YW	105
M	20
TM	54
ME	7
HPG	10
CEM	
STAY	10
Marb	0.64
YG	-0.07
CW	32
REA	0.20
Fat	0.01

Z166 is a dark red daughter of Anticipation. She will be one of the first Anticipations offered for sale. Her granddam, donor cow Messmer S065, sold to Wild Cat Creek.



## DAMAR MAKE MY HAMLEY Z016

RAAA#: 1511120 Tattoo: Z016 100% Cat. 1A Red Angus  
BD: 1/10/12 Act. BW: 75 Adj. WW: 568

PIE BILLINGS 487  
NBAR HAMLEY S913  
NBAR KELLY 913  
  
BJR MAKE MY DAY 981  
BROWN MS MAKE MY DAY L6  
RABR MS LITTLE JOHN H65

Base Price: \$2,500

EPDs	
CE	
BW	-2.6
WW	37
YW	57
M	13
TM	31
ME	-1
HPG	9
CEM	
STAY	7
Marb	0.59
YG	-0.02
CW	1
REA	-0.22
Fat	0.03

Z016, sired by Hamley, is a calving-ease female with loads of show potential. A very attractive heifer whose dam, L6, was the marbling leader at one time. Full sib to Lot 40.



## DAMAR HADLEY Z042

RAAA#: 1511073 Tattoo: Z042 100% Cat. 1A Red Angus  
BD: 1/24/12 Act. BW: 80 Adj. WW: 615

PIE BILLINGS 487  
NBAR HAMLEY S913  
NBAR KELLY 913  
  
BJR MAKE MY DAY 981  
BROWN MS MAKE MY DAY L6  
RABR MS LITTLE JOHN H65

Base Price: \$2,500

EPDs	
CE	
BW	-2.6
WW	37
YW	57
M	13
TM	31
ME	-1
HPG	9
CEM	
STAY	7
Marb	0.59
YG	-0.02
CW	1
REA	-0.22
Fat	0.03

Z042, sired by Hamley, is a calving-ease female with loads of show potential. A very attractive heifer whose dam, L6, was the marbling leader at one time. Full sib to Lot 39.



**DAMAR LINLEY Z233**

RAAA#: 1511103    Tattoo: Z233    100% Cat. 1A Red Angus  
 BD: 2/28/12    Act. BW: 70    Adj. WW: 558

PIE BILLINGS 487  
 NBAR HAMLEY S913  
 NBAR KELLY 913

Base Price: \$2,500

BECKTON WARRIOR N645 T1  
 MESSMER LINDA S129  
 MESSMER LINDA 2322

Z233 is once again a calving-ease heifer with show potential. Our Messmer Linda S129 cow has surfaced as one of our great genetic values. When mated to Hamley, the results are very impressive. Full sib to Lot 43.

EPDs	
CE	
BW	-0.4
WW	57
YW	91
M	19
TM	48
ME	3
HPG	11
CEM	
STAY	7
Marb	0.23
YG	-0.16
CW	24
REA	0.21
Fat	-0.02



**DAMAR OH DAISY Z235**

RAAA#: 1511111    Tattoo: Z235    100% Cat. 1A Red Angus  
 BD: 2/28/12    Act. BW: 79    Adj. WW: 645

MESSMER JOSHUA 019P  
 MESSMER PACKER S008  
 MESSMER MILLIE 124P

Base Price: \$2,500

LELAND MARIAS 271K  
 MESSMER PANDORA M186  
 MESSMER PANDORA 99760

Z235 reigns at the top 20% in eight different genetic values. This attractive Packer daughter will develop into an outstanding individual.

EPDs	
CE	
BW	-1
WW	65
YW	103
M	19
TM	51
ME	2
HPG	15
CEM	
STAY	12
Marb	0.49
YG	-0.15
CW	30
REA	0.35
Fat	0.00



**DAMAR LEYDA Z241**

RAAA#: 1511104    Tattoo: Z241    100% Cat. 1A Red Angus  
 BD: 2/29/12    Act. BW: 71    Adj. WW: 559

PIE BILLINGS 487  
 NBAR HAMLEY S913  
 NBAR KELLY 913

Base Price: \$2,500

BECKTON WARRIOR N645 T1  
 MESSMER LINDA S129  
 MESSMER LINDA 2322

Z241 is once again a calving-ease heifer with show potential. Our Messmer Linda S129 cow has surfaced as one of our great genetic values. When mated to Hamley, the results are very impressive. Full sib to Lot 41.

EPDs	
CE	
BW	-0.4
WW	57
YW	91
M	19
TM	48
ME	3
HPG	11
CEM	
STAY	7
Marb	0.23
YG	-0.16
CW	24
REA	0.21
Fat	-0.02



**DAMAR IMAGETTE Z273**

RAAA#: 1511115    Tattoo: Z273    100% Cat. 1A Red Angus  
 BD: 3/6/12    Act. BW: 84    Adj. WW: 605

RED TER-RON RELOAD 703T  
 RED TER-RON REAL DEAL 01W  
 RED K ADAMS SAVANAH 11S

Base Price: \$2,500

NSF LEADING EDGE N013  
 DUNN IMAGETTE 0835  
 DUNN 0420

Z273 is an exceptional Real Deal daughter of the 2009 Western Classic Grand Champion Female.

EPDs	
CE	
BW	4.5
WW	74
YW	108
M	12
TM	48
ME	-1
HPG	
CEM	
STAY	9
Marb	0.41
YG	-0.14
CW	41
REA	0.18
Fat	-0.04



**DAMAR TAMARA Z302**

RAAA#: 1511125    Tattoo: Z302    100% Cat. 1A Red Angus  
 BD: 4/1/12    Act. BW: 74    Adj. WW: 606

TPIE LAKOTA 9166  
 TPIE LAKOTA II 1086  
 RCRA ROSEBUD 933

Base Price: \$2,500

BIEBER MAKE MIMI 7249  
 DFRA TARMILY N512  
 DFRA TARMILY N305

Z302 is out of our leading donor dam, R512. R512 is also the dam of Damar Mimi W085 and the Real Deal-bred Z133 who will be offered in Reno.

EPDs	
CE	
BW	-3
WW	45
YW	65
M	21
TM	43
ME	2
HPG	8
CEM	
STAY	11
Marb	0.42
YG	-0.24
CW	4
REA	0.00
Fat	-0.04



**DAMAR ROBIN Z296**

RAAA#: 1511123    Tattoo: Z296    100% Cat. 1A Red Angus  
 BD: 3/14/12    Act. BW: 75    Adj. WW: 505

MESSMER PACKER S008  
 DAMAR'S LUCY'S BOY W936  
 LCC LUCY MA961

Base Price: \$2,500

RED FINE LINE MULBERRY 26P  
 DAMAR ROBIN W156  
 DZA ROBIN 607

Z296 is a daughter of our upcoming herd sire, Damar Lucy's Boy W936. The combination of Packer and Mulberry do great things with this heifer.

EPDs	
CE	
BW	-0.5
WW	31
YW	50
M	10
TM	25
ME	4
HPG	
CEM	
STAY	4
Marb	
YG	
CW	
REA	
Fat	



**DAMAR KUDOS Z109**

ASA: 2643026 Tattoo: Z109 Purebred Simmental  
 BD: 1/10/12 Adj. BW 81 Adj. WW

ELLINGSON LEGACY M229  
 OLF ODIN U5  
 OLF LADY TRIATHLON S655  
 JS BURNING UP 33R  
 TRIPLE C KUDOS  
 TRIPLE C NO DOUBT N26L

Base Price: \$2,200

Z109 is sired by Odin, Olafson's lowest birth weight and highest yearling weight in 2009. Homozygous black and polled. The full sib to her dam, Kudos U216P, was named National Champion bull at Louisville 2012, Triple C Opportunity W60.

**EPDs**

CE	10.9
BW	0.4
WW	62.9
YW	95.3
MCE	12.3
MM	20.7
MWW	52.2
CEM	8.9
CW	18.5
YG	-0.47
Marb	0.03
BF	-0.06
REA	1.17
API	121
TI	65



**DAMAR O'KUDOS Z119**

ASA: 2644410 Tattoo: Z119 Purebred Simmental  
 BD: 1/3/12 Adj. BW 82 Adj. WW 564

ELLINGSON LEGACY M229  
 OLF ODIN U5  
 OLF LADY TRIATHLON S655  
 JS BURNING UP 33R  
 TRIPLE C KUDOS  
 TRIPLE C NO DOUBT N26L

Base Price: \$2,200

Z119 is a full sib to Lot 47, this heifer's maternal granddam, No Doubt N262 sold for \$39,000 at the Triple C Dispersal. With the combination of Opportunity W60, these two heifers have loads of "Opportunity."

**EPDs**

CE	
BW	10.9
WW	0.4
YW	62.9
MCE	95.3
MM	12.3
MWW	20.7
CEM	21.5
CW	8.9
YG	18.5
Marb	-0.47
BF	0.03
REA	-0.06
API	
TI	121



**DAMAR O'SEXY GIRL Z135**

ASA: 2644396 Tattoo: Z135 Purebred Simmental  
 BD: 1/26/12 Adj. BW 88 Adj. WW 678

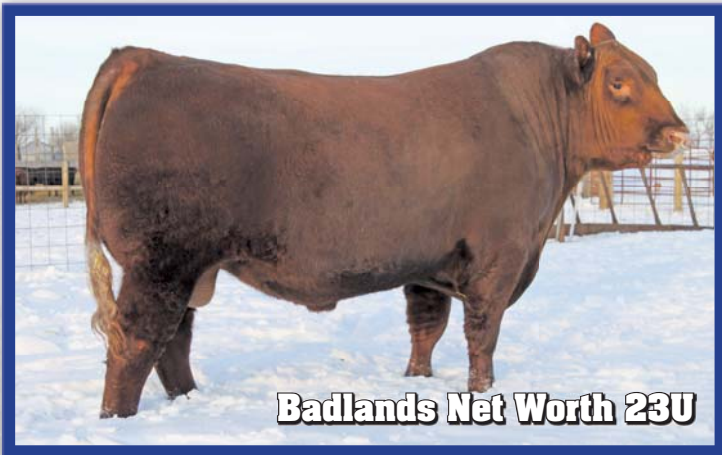
ELLINGSON LEGACY M229  
 OLF ODIN U5  
 OLF LADY TRIATHLON S655  
 BF 0K34 DAYTONA  
 TRIPLE C SEXY GIRL S026  
 TRIPLE C GO GIRL K34G

Base Price: \$2,200

Z135 is another great Odin-sired heifer. The natural calf of her dam, S026, she is structurally correct with plenty of muscle while remaining feminine fronted. The right kind for today's market.

**EPDs**

CE	10.9
BW	0.9
WW	67.9
YW	100.5
MCE	8.1
MM	18.4
MWW	52.3
CEM	11.4
CW	22.1
YG	-0.46
Marb	0
BF	-0.08
REA	1.09
API	121
TI	66



**DAMAR GINNIE Z118**

RAAA#: 1511100 Tattoo: Z118 100% Cat. 1A Red Angus  
 BD: 1/3/12 Act. BW: 87 Adj. WW: 635

PFFR SHAQ 607  
 BADLANDS NET WORTH 23U  
 BADLANDS MEDORA 406  
 MESSMER JOSHUA 019P  
 MESSMER GINNIE S065  
 MESSMER GINNIE 265P

Base Price: \$2,200

Z118 is a full sib to a bull calf who weaned off an actual weight at 850 lbs. The dam of Lot 38 would also be a full sib to this mating.

**EPDs**

CE	
BW	0.7
WW	68
YW	105
M	21
TM	55
ME	3
HPG	
CEM	
STAY	12
Marb	0.38
YG	-0.12
CW	34
REA	0.31
Fat	0.00



**DAMAR ROSELA Z122**

RAAA#: 1511087 Tattoo: Z122 100% Cat. 1A Red Angus  
 BD: 1/12/12 Act. BW: 77 Adj. WW: 601

RED TER-RON RELOAD 703T  
 RED TER-RON REAL DEAL 01W  
 RED K ADAMS SAVANAH 11S  
 DFRA TIDY B  
 DFRA ROSELA S664  
 DFRA ROSELA 430

Base Price: \$2,200

Z122 is a soggy-middled and deep-flanked heifer that will show. She is sired by Real Deal.

**EPDs**

CE	
BW	-0.7
WW	47
YW	71
M	14
TM	37
ME	-3
HPG	
CEM	
STAY	6
Marb	0.26
YG	-0.22
CW	20
REA	0.06
Fat	-0.05

**52 DAMAR BONNEBELL Z125**

RAAA#: 1511089 Tattoo: Z125 100% Cat. 1A Red Angus  
BD: 1/13/12 Act. BW: 81 Adj. WW: 673

RED TER-RON RELOAD 703T **Base Price: \$2,200**  
RED TER-RON REAL DEAL 01W  
RED K ADAMS SAVANAH 11S  
  
DFRA ROMEO P471  
DFRA BONNEBELL T749  
DFRA BONNEBELL P440

Z125 is another attractive Real Deal. This natural calf that will go on to make an outstanding producer.

EPDs	
CE	
BW	0.7
WW	58
YW	91
M	15
TM	44
ME	0
HPG	
CEM	
STAY	6
Marb	0.29
YG	-0.15
CW	33
REA	0.03
Fat	-0.05

**53 DAMAR REAL DIPY DO Z126**

RAAA#: 1511086 Tattoo: Z126 100% Cat. 1A Red Angus  
BD: 1/15/12 Act. BW: 99 Adj. WW: 633

RED TER-RON RELOAD 703T **Base Price: \$2,200**  
RED TER-RON REAL DEAL 01W  
RED K ADAMS SAVANAH 11S  
  
PERKS ADVANCE 121R  
DFRA PERKS DO S630  
BJR DIPY DO 232-929

Z126 is one of our favorite Real Deal heifers. She is loose structured, big boned and huge topped.

EPDs	
CE	
BW	4.9
WW	63
YW	96
M	4
TM	36
ME	-4
HPG	7
CEM	
STAY	8
Marb	0.11
YG	-0.18
CW	33
REA	0.08
Fat	-0.06

**54 DAMAR LAKIMA Z144**

RAAA#: 1511091 Tattoo: Z144 100% Cat. 1A Red Angus  
BD: 2/11/12 Act. BW: 79 Adj. WW: 631

RED FINE LINE MULBERRY 26P **Base Price: \$2,200**  
RED BRYLOR BIG ROCK 85T  
RED CYT CHARITY 10P  
  
/LD ROMEO 2303  
DAMAR LAKIMA U821  
DFRA P439

Z144 is sired by Big Rock who is considered to be Mulberry's best son. This heifer is extended in her skeleton and thick with muscle.

EPDs	
CE	
BW	-2.4
WW	47
YW	75
M	20
TM	44
ME	2
HPG	
CEM	
STAY	8
Marb	0.21
YG	-0.02
CW	13
REA	-0.10
Fat	0.02

**55 DAMAR EMMALEE Z165**

RAAA#: 1511082 Tattoo: Z165 100% Cat. 1A Red Angus  
BD: 3/6/12 Act. BW: 90 Adj. WW: 621

RED FINE LINE MULBERRY 26P **Base Price: \$2,200**  
RED BRYLOR BIG ROCK 85T  
RED CYT CHARITY 10P  
  
DFRA ROCKER 425  
DFRA EMU MAR R543  
DFRA EMU MAR M240

Z165 makes it to the top of our list of so many great open heifers to choose from.

EPDs	
CE	
BW	0.5
WW	57
YW	89
M	19
TM	47
ME	2
HPG	
CEM	
STAY	7
Marb	0.33
YG	-0.02
CW	19
REA	0.01
Fat	0.03

**56 DAMAR LOOKING GOOD Z170**

RAAA#: 1511106 Tattoo: Z170 100% Cat. 1A Red Angus  
BD: 3/24/12 Act. BW: 88 Adj. WW: 612

RED TER-RON RELOAD 703T **Base Price: \$2,200**  
RED TER-RON REAL DEAL 01W  
RED K ADAMS SAVANAH 11S  
  
RED FINE LINE MULBERRY 26P  
DAMAR LOOKIN GOOD W057  
DFRA LAKOTA 532L

Z170 is a full sib to Lot 5. Since making the sale order, we realize they should be selling next to each other.

EPDs	
CE	
BW	2.6
WW	70
YW	108
M	10
TM	45
ME	1
HPG	
CEM	
STAY	7
Marb	0.21
YG	-0.10
CW	38
REA	0.04
Fat	-0.04

**57 DAMAR PATRICIA Z006**

RAAA#: 1511117 Tattoo: Z006 100% Cat. 1A Red Angus  
BD: 1/1/12 Act. BW: 70 Adj. WW: 745

MESSMER JOSHUA 019P **Base Price: \$2,200**  
MESSMER PACKER S008  
MESSMER MILLIE 124P  
  
LJC JAVELIN M08  
DAMAR RED LADY W185  
MESSMER RED LADY 9836

Z006's dam, W185, is out of one of our favorite donor cows, Messmer Red Lady. Check out the genetic values of this young heifer.

EPDs	
CE	
BW	-1
WW	66
YW	102
M	11
TM	44
ME	2
HPG	11
CEM	
STAY	11
Marb	0.51
YG	-0.19
CW	25
REA	0.35
Fat	-0.01

**58 DAMAR CHARLAINE Z012**

RAAA#: 1511119 Tattoo: Z012 100% Cat. 1A Red Angus  
BD: 1/8/12 Act. BW: 75 Adj. WW: 682

MESSMER JOSHUA 019P **Base Price: \$2,200**  
MESSMER PACKER S008  
MESSMER MILLIE 124P  
  
BADLANDS DESIGN 22S  
DAMAR CHALLENGE W952  
COLEY'S 0142 ANNA 542R

Z012 is a daughter of Packer that really clicks with this Badlands Design 22S cow. This heifer has an adjusted weaning weight of 682 lbs.

EPDs	
CE	
BW	-1.2
WW	55
YW	86
M	18
TM	45
ME	1
HPG	14
CEM	
STAY	12
Marb	0.42
YG	-0.19
CW	18
REA	0.37
Fat	0.01

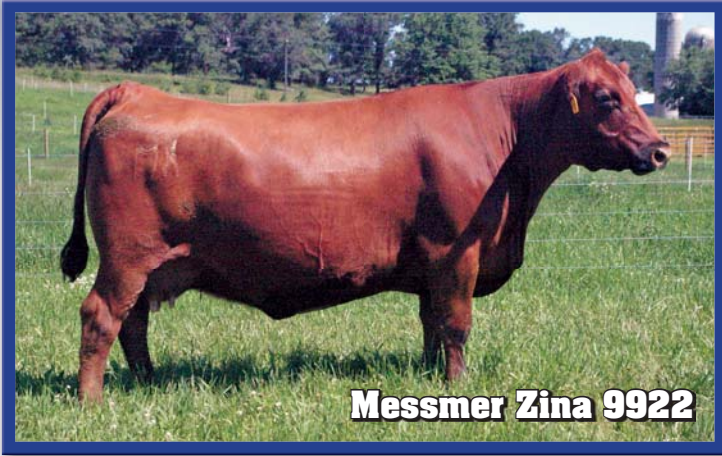
**59 DAMAR VERNICE Z021**

RAAA#: 1511081 Tattoo: Z021 100% Cat. 1A Red Angus  
BD: 1/12/12 Act. BW: 80 Adj. WW: 660

RED TER-RON RELOAD 703T **Base Price: \$2,200**  
RED TER-RON REAL DEAL 01W  
RED K ADAMS SAVANAH 11S  
  
BIEBER MAKE MIMI 7249  
DFRA VERNICE R521  
DFRA VERNICE 436

Z021 is another Real Deal heifer that has caused excitement around here. A big-middled and high-volume type of a female that are big boned with heavy weaning weights. It will be fun to watch these Real Deal heifers grow and mature. She has an adjusted weaning weight 660 lbs.

EPDs	
CE	
BW	3.5
WW	69
YW	103
M	11
TM	46
ME	-2
HPG	8
CEM	
STAY	10
Marb	0.27
YG	-0.16
CW	31
REA	0.03
Fat	-0.05



## DAMAR ZINNIA Z033

RAAA#: 1511114 Tattoo: Z033 100% Cat. 1A Red Angus  
BD: 1/18/12 Act. BW: 95 Adj. WW: 596

MESSMER JOSHUA 019P Base Price: \$2,200  
MESSMER PACKER S008  
MESSMER MILLIE 124P  
  
LMAN KING ROB 8621  
MESSMER ZINA 9922  
MESSMER ZINA 9476

Z033 is just like her mother, Messmer Zina 9922, impressively sound. Packer is doing an outstanding job for us.

### EPDs

CE
BW -1.2
WW 57
YW 89
M 19
TM 47
ME 3
HPG 15
CEM
STAY 11
Marb 0.33
YG -0.15
CW 22
REA 0.23
Fat -0.01



## DAMAR PANDITA Z311

RAAA#: 1511110 Tattoo: Z311 100% Cat. 1A Red Angus  
BD: 3/23/12 Act. BW: 85 Adj. WW: 531

RED TER-RON RELOAD 703T Base Price: \$2,200  
RED TER-RON REAL DEAL 01W  
RED K ADAMS SAVANAH 11S  
  
LCHMN BULLSEYE 1379G  
MESSMER PANDORA M39  
MESSMER PANDORA 9498

Z311 leaves us lost for words. What more can you say about this Real Deal mating with Messmer Pandora M39?

### EPDs

CE
BW 2.9
WW 62
YW 95
M 17
TM 47
ME -2
HPG 9
CEM
STAY 7
Marb 0.36
YG -0.03
CW 31
REA -0.12
Fat -0.02



## DAMAR TIDY LUCY Z323

RAAA#: 1512649 Tattoo: Z323 100% Cat. 1A Red Angus  
BD: 3/25/12 Act. BW: 74 Adj. WW: 626

MESSMER PACKER S008 Base Price: \$2,200  
DAMAR'S LUCY'S BOY W936  
LCC LUCY MA961  
  
PAR DUDE A384N  
DAMAR TIDY AS CAN BE W151  
BJR TIDY BEE 232-140

Z323 is another tremendous heifer out of our young sire, Damar Lucy's Boy W936.

### EPDs

CE
BW -0.5
WW 29
YW 44
M 9
TM 23
ME 3
HPG
CEM
STAY 4
Marb
YG
CW
REA
Fat



## DAMAR KARI Z154

ASA: 2644407 Tattoo: Z154 Purebred Simmental  
BD: 2/26/12 Adj. BW: 82 Adj. WW: 625

HOOKS SHEAR FORCE 38K Base Price: \$2,000  
TRIPLE C L. TAYLOR  
LUCAS JOSIE 19K  
  
HC POWER DRIVE 88H  
TRIPLE C KARRIE T47K  
HOOKS KARRIE 47K

Z154 – look at the fertility in these Taylor x Karrie daughters. Z154's granddam, 47K, just produced 34 transferrable embryos resulting in 32 pregnancies. That is why we call them "Taylor working females."

### EPDs

CE 11.2
BW 0.9
WW 63.5
YW 88.4
MCE 12.9
MM 21.9
MWW 53.7
CEM 21.4
CW 14.8
YG -0.37
Marb 0.39
BF -0.05
REA 0.93
API 142
TI 73



## DAMAR KARYN Z157

ASA: 2644405 Tattoo: Z157 Purebred Simmental  
BD: 2/28/12 Adj. BW: 91 Adj. WW: 658

HOOKS SHEAR FORCE 38K Base Price: \$2,000  
TRIPLE C L. TAYLOR  
LUCAS JOSIE 19K  
  
HC POWER DRIVE 88H  
TRIPLE C KARRIE T47K  
HOOKS KARRIE 47K

Z157 is another great Taylor daughter possessing all the qualities as her siblings before her. Taylor sired three of the five bulls that were named Champion Pen of Bulls in Denver 2010.

### EPDs

CE 11.2
BW 0.9
WW 63.5
YW 88.4
MCE 12.9
MM 21.9
MWW 53.7
CEM 21.4
CW 14.8
YG -0.37
Marb 0.39
BF -0.05
REA 0.93
API 142
TI 73



## DAMAR KARIANN Z158

ASA: 2644398 Tattoo: Z158 Purebred Simmental  
BD: 2/29/12 Adj. BW: 85 Adj. WW: 637

HOOKS SHEAR FORCE 38K Base Price: \$2,000  
TRIPLE C L. TAYLOR  
LUCAS JOSIE 19K  
  
HC POWER DRIVE 88H  
TRIPLE C KARRIE T47K  
HOOKS KARRIE 47K

Z158 is another Taylor working female with proven genetics and value. Taylor was the high-selling bull in the 2007 Bullenium Sale!

### EPDs

CE 11.2
BW 0.9
WW 63.5
YW 88.4
MCE 12.9
MM 21.9
MWW 53.7
CEM 21.4
CW 14.8
YG -0.37
Marb 0.39
BF -0.05
REA 0.93
API 142
TI 73



## DAMAR KARIDA Z161

ASA: 2644401 Tattoo: Z161 Purebred Simmental  
BD: 3/1/12 Adj. BW: 84 Adj. WW: 643

HOOKS SHEAR FORCE 38K Base Price: \$2,000  
TRIPLE C L. TAYLOR  
LUCAS JOSIE 19K  
  
HC POWER DRIVE 88H  
TRIPLE C KARRIE T47K  
HOOKS KARRIE 47K

Z161 – Taylor working girls are truly special – soft made and structurally correct.

### EPDs

CE 11.2
BW 0.9
WW 63.5
YW 88.4
MCE 12.9
MM 21.9
MWW 53.7
CEM 21.4
CW 14.8
YG -0.37
Marb 0.39
BF -0.05
REA 0.93
API 142
TI 73



**Triple C Karrie T47K**



**DAMAR KARILYNN Z162**

ASA: 2644403 Tattoo: Z162 Purebred Simmental  
 BD: 3/3/12 Adj. BW 94 Adj. WW 654

HOOKS SHEAR FORCE 38K  
 TRIPLE C L. TAYLOR  
 LUCAS JOSIE 19K

HC POWER DRIVE 88H  
 TRIPLE C KARRIE T47K  
 HOOKS KARRIE 47K

Base Price: \$2,000

Z162 – This Karrie daughter will do an excellent job, whether in the showing or in the pasture.

**EPDs**

CE	11.2
BW	0.9
WW	63.5
YW	88.4
MCE	12.9
MM	21.9
MWW	53.7
CEM	21.4
CW	14.8
YG	-0.37
Marb	0.39
BF	-0.05
REA	0.93
API	142
TI	73



**DAMAR KARRILINE Z164**

ASA: 2644404 Tattoo: Z164 Purebred Simmental  
 BD: 3/5/12 Adj. BW 91 Adj. WW 682

HOOKS SHEAR FORCE 38K  
 TRIPLE C L. TAYLOR  
 LUCAS JOSIE 19K

HC POWER DRIVE 88H  
 TRIPLE C KARRIE T47K  
 HOOKS KARRIE 47K

Base Price: \$2,000

Z164 – Again this March Taylor x Karrie daughter possesses some of the best Simmental genetics possible. Note the now-deceased Power Drive in the pedigree. Never has a bull in the Simmental breed had as much impact as Power Drive. These cattle have the ability to reproduce and better themselves.

**EPDs**

CE	11.2
BW	0.9
WW	63.5
YW	88.4
MCE	12.9
MM	21.9
MWW	53.7
CEM	21.4
CW	14.8
YG	-0.37
Marb	0.39
BF	-0.05
REA	0.93
API	142
TI	73



**ZP76**

ASA: NA Tattoo: ZP76 Halfblood Simmental  
 BD: 3/1/12 Adj. BW NA Adj. WW

WLE POWER STROKE  
 HC POWER DRIVE 88H  
 KAPPES LADY IRISH F88

Base Price: \$2,000

COMMERCIAL COW

ZP76 is a real eye catcher. Sired by Power Drive Clone R2412, a halfblood produced from one of our good Angus cross cows worthy of being a donor. Power Drive cattle are big boned and large footed with lots of longevity. What an impact Power Drive has been.

**EPDs**

CE	NA
BW	NA
WW	NA
YW	NA
MCE	NA
MM	NA
MWW	NA
CEM	NA
CW	NA
YG	NA
Marb	NA
BF	NA
REA	NA
API	NA
TI	NA



**DAMAR NESSA Z150**

RAAA#: 1511109 Tattoo: Z150 100% Cat. 1A Red Angus  
 BD: 2/20/12 Act. BW: 92 Adj. WW: 652

PFFR SHAQ 607  
 BADLANDS NET WORTH 23U  
 BADLANDS MEDORA 406

MESSMER JOSHUA 019P  
 MESSMER NEXA S037  
 MESSMER NEXA 076P

Base Price: \$2,000

Z150 is a maternal sister to Lot 16. She is sired by the growth giant, Badlands Net Worth. Full sib sells as Lot 71.

**EPDs**

CE	
BW	2.5
WW	71
YW	109
M	13
TM	49
ME	3
HPG	
CEM	
STAY	11
Marb	0.41
YG	-0.10
CW	38
REA	0.22
Fat	-0.01



**DAMAR NETA Z151**

RAAA#: 1511108 Tattoo: Z151 100% Cat. 1A Red Angus  
 BD: 2/21/12 Act. BW: 96 Adj. WW: 654

PFFR SHAQ 607  
 BADLANDS NET WORTH 23U  
 BADLANDS MEDORA 406

MESSMER JOSHUA 019P  
 MESSMER NEXA S037  
 MESSMER NEXA 076P

Base Price: \$2,000

Z151's full sib sells as Lot 70.

**EPDs**

CE	
BW	2.5
WW	71
YW	109
M	13
TM	49
ME	3
HPG	
CEM	
STAY	11
Marb	0.41
YG	-0.10
CW	38
REA	0.22
Fat	-0.01



**DAMAR LAKOTA Z112**

RAAA#: 1511093 Tattoo: Z112 100% Cat. 1A Red Angus  
 BD: 1/3/12 Act. BW: 82 Adj. WW: 659

MESSMER JOSHUA 019P  
 MESSMER PACKER S008  
 MESSMER MILLIE 124P

PIE ADVANCE 5520  
 DAMAR LAKOTA U871  
 DFRA LAKOTA R580

Base Price: \$2,000

Z112 displays Messmer Packer genetics at its best. She is pedigreed for carcass and calving ease.

**EPDs**

CE	
BW	-1
WW	68
YW	102
M	11
TM	45
ME	-3
HPG	12
CEM	
STAY	9
Marb	0.37
YG	-0.15
CW	24
REA	0.20
Fat	-0.01



**DAMAR PRINCESS Z124**

RAAA#: 1511122 Tattoo: Z124 100% Cat. 1A Red Angus  
 BD: 1/13/12 Act. BW: 77 Adj. WW: 672

BECKTON JULIAN GG B571  
 MESSMER JERICO W041  
 MESSMER PANDORA M186

DFRA LUKE S625  
 DAMAR PRINCESS W955  
 DFRA PRINCESS T815

Base Price: \$2,000

Z124 is sired by Accelerated Genetic's Messmer Jericho, the calving-ease specialist. In conjunction with Make Mimi in the pedigree, it makes for an outstanding female.

**EPDs**

CE	
BW	-2.8
WW	55
YW	82
M	18
TM	45
ME	2
HPG	10
CEM	
STAY	12
Marb	0.40
YG	-0.18
CW	15
REA	0.34
Fat	0.01





**DAMAR MAKE ME FAMOUS Z139**

RAAA#: 1511094 Tattoo: Z139 100% Cat. 1A Red Angus  
BD: 1/29/12 Act. BW: 80 Adj. WW: 624

RED FINE LINE MULBERRY 26P **Base Price: \$2,000**  
RED BRYLOR BIG ROCK 85T  
RED CYT CHARITY 10P  
  
MESSMER JOSHUA 019P  
MESSMER BERTHA S158  
MESSMER BERTHA 062P

*Z139 results from a mating of Big Rock and Messmer Bertha S158. Bertha produced a calf selling for \$9,600 at the Mulberry Mayhem Sale.*

EPDs	
CE	
BW	-1.9
WW	52
YW	85
M	19
TM	45
ME	0
HPG	
CEM	
STAY	11
Marb	0.36
YG	-0.11
CW	19
REA	0.10
Fat	0.00



**DAMAR BARBIE Z142**

RAAA#: 1511078 Tattoo: Z142 100% Cat. 1A Red Angus  
BD: 2/6/12 Act. BW: 72 Adj. WW: 535

RED FINE LINE MULBERRY 26P **Base Price: \$2,000**  
RED BRYLOR BIG ROCK 85T  
RED CYT CHARITY 10P  
  
BJR MONU 4X-573  
DFRA BARCELONA P410  
BJR BARCELONA 2004

*Z142 is another Big Rock daughter stemming back to Mono 4X on the bottom side.*

EPDs	
CE	
BW	-4
WW	37
YW	62
M	19
TM	37
ME	1
HPG	
CEM	
STAY	10
Marb	0.33
YG	-0.05
CW	13
REA	-0.08
Fat	0.01



**DAMAR ROSELANI Z147**

RAAA#: 1511079 Tattoo: Z147 100% Cat. 1A Red Angus  
BD: 2/19/12 Act. BW: 72 Adj. WW: 564

RED FINE LINE MULBERRY 26P **Base Price: \$2,000**  
RED BRYLOR BIG ROCK 85T  
RED CYT CHARITY 10P  
  
TPIE LAKOTA II 1086  
DFRA ROSELA P429  
BJR ROSELA 232B-1119

*Z147, a Big Rock-sired female, has exceptional calving-ease numbers.*

EPDs	
CE	
BW	-3.9
WW	34
YW	52
M	16
TM	32
ME	-2
HPG	
CEM	
STAY	8
Marb	0.21
YG	-0.14
CW	4
REA	0.03
Fat	0.01



**DAMAR CHERABELLA Z149**

RAAA#: 1511090 Tattoo: Z149 100% Cat. 1A Red Angus  
BD: 2/20/12 Act. BW: 90 Adj. WW: 723

WEBR DOC HOLLIDAY 2N **Base Price: \$2,000**  
WEBR TC CARD SHARK 1015  
PFFR MS NYACK 237  
  
DFRA VERN P463  
DFRA CHERABELLA T759  
DFRA CHERABELLE R513

*Z149 is one of those nice-fronted Card Shark females backed by tremendous udders on the cow side.*

EPDs	
CE	
BW	-0.3
WW	57
YW	85
M	23
TM	51
ME	3
HPG	
CEM	
STAY	9
Marb	0.37
YG	-0.04
CW	10
REA	-0.07
Fat	0.02



**DAMAR NADIA Z159**

RAAA#: 1512651 Tattoo: Z159 100% Cat. 1A Red Angus  
BD: 2/29/12 Act. BW: 73 Adj. WW: 613

BECKTON JULIAN GG B571 **Base Price: \$2,000**  
MESSMER JERICHO W041  
MESSMER PANDORA M186  
  
RED BRYLOR SQUALL 230S  
DAMAR NADIA X050  
DAMAR LOUISE U811

*Z159 is a super granddaughter of Squall combined with the calving ease of Jericho.*

EPDs	
CE	
BW	-2.8
WW	56
YW	82
M	19
TM	47
ME	-2
HPG	12
CEM	
STAY	14
Marb	0.32
YG	-0.15
CW	15
REA	0.34
Fat	0.02



**DAMAR LOOKIN GOOD Z171**

RAAA#: 1511105 Tattoo: Z171 100% Cat. 1A Red Angus  
BD: 3/26/12 Act. BW: 82 Adj. WW: 587

RED TER-RON RELOAD 703T **Base Price: \$2,000**  
RED TER-RON REAL DEAL 01W  
RED K ADAMS SAVANAH 11S  
  
RED FINE LINE MULBERRY 26P  
DAMAR LOOKIN GOOD W057  
DFRA LAKOTA 532L

*Full sibs to Z171 sell as Lots 5 and 56.*

EPDs	
CE	
BW	2.6
WW	70
YW	108
M	10
TM	45
ME	1
HPG	
CEM	
STAY	7
Marb	0.21
YG	-0.10
CW	38
REA	0.04
Fat	-0.04



**DAMAR PRIDE Z011**

RAAA#: 1511118 Tattoo: Z011 100% Cat. 1A Red Angus  
BD: 1/3/12 Act. BW: 65 Adj. WW: 627

BECKTON JULIAN GG B571 **Base Price: \$2,000**  
MESSMER JERICHO W041  
MESSMER PANDORA M186  
  
RED BRYLOR SQUALL 230S  
DAMAR PRIDE W186  
LOG WESTERN PRIDE 641

*Z011 combines the same pedigree as Lot 78 with the kicker being her dam is out of our foundation donor female LOG Western Pride.*

EPDs	
CE	
BW	-3.7
WW	47
YW	71
M	19
TM	42
ME	0
HPG	11
CEM	
STAY	12
Marb	0.27
YG	-0.17
CW	12
REA	0.30
Fat	0.01



**DAMAR DIPY DO'S DEAL Z029**

RAAA#: 1511092 Tattoo: Z029 100% Cat. 1A Red Angus  
BD: 1/17/12 Act. BW: 75 Adj. WW: 645

RED TER-RON RELOAD 703T **Base Price: \$2,000**  
RED TER-RON REAL DEAL 01W  
RED K ADAMS SAVANAH 11S  
  
COLEY'S SYNERGY 621S  
DAMAR DIPY DO U851  
DFRA DIPY DO R569

*Z029 is more proof of why we like our Real Deals. They possess more muscle, volume and sustenance than most Red Angus.*

EPDs	
CE	
BW	2.9
WW	55
YW	86
M	11
TM	38
ME	-3
HPG	
CEM	
STAY	7
Marb	0.22
YG	-0.17
CW	22
REA	-0.17
Fat	-0.07

**82 DAMAR PAULA Z071**

RAAA#: 1511083 Tattoo: Z071 100% Cat. 1A Red Angus  
BD: 2/6/12 Act. BW: 90 Adj. WW: 556

PFFR SHAQ 607 **Base Price: \$2,000**  
BADLANDS NET WORTH 23U  
BADLANDS MEDORA 406  
TPIE LAKOTA II 1086  
DFRA PAULA R572  
BJR PAULA 551-7H23

We feel these Net Worth females will make functional cows that will contribute to the Red Angus breed.

EPDs	
CE	
BW	4.1
WW	57
YW	83
M	17
TM	46
ME	0
HPG	
CEM	
STAY	10
Marb	0.37
YG	-0.21
CW	26
REA	0.29
Fat	-0.03

**83 DAMAR LARKIN Z294**

RAAA#: 1511085 Tattoo: Z294 100% Cat. 1A Red Angus  
BD: 3/14/12 Act. BW: 74 Adj. WW: 581

MCPHEE PACIFIC PRIDE 4127 **Base Price: \$2,000**  
DAMAR WYATT W250  
DFRA TAROKEE 5642  
DFRA ROCKER 425  
DFRA LARKABA R595  
DFRA LARKABA 437

Z294 is sired by Damar Wyatt W250. He is a Pacific Pride son we used exclusively on our purebred cows. We hope to have many Wyatt daughters over the years.

EPDs	
CE	
BW	1.5
WW	78
YW	118
M	8
TM	47
ME	5
HPG	
CEM	
STAY	8
Marb	0.51
YG	-0.06
CW	32
REA	0.20
Fat	0.01



**CNS Dream On L186**

**84 DAMAR DREAM GIRL Y363**

ASA: 2643036 Tattoo: Y363 Purebred Simmental  
BD: 9/5/11 Adj. BW: 82 Adj. WW: 564

DHF JADES DREAMWORKS **Base Price: \$2,000**  
CNS DREAM ON L186  
RF BLACK JADE 950N  
HC POWER DRIVE 88H  
TRIPLE C GIRLFRIENDS310  
TRIPLE C GO GIRL K34G

**OUT**

EPDs	
CE	4.4
BW	3.5
WW	66.7
YW	96
MCE	7.8
MM	21.4
MWW	54.8
CEM	8.1
CW	23.3
YG	-0.3
Marb	0.13
BF	-0.05
REA	0.79
API	109
TI	64

**85 DAMAR SHAMOO Y283**

ASA: 2644906 Tattoo: Y283 Purebred Simmental  
BD: 9/4/11 Adj. BW: 66 Adj. WW: 633

STF DOMINANCE T171 **Base Price: \$2,500**  
STF FIXATION W155  
GCF MISS CALIENTE  
TRIPLE C ULTIMATE FORCE  
KA SHAMOO U130  
LILY 130P

Y283 is one of those good Shamoo U130 daughters. Let's talk tons of volume on this big-ribbed, red baldy heifer sired by Fixation W155. W155's full sister was back-to-back Champion 2009 and 2010 North American International. Fixation was Bull Calf Champion at the 2009 North American. Also, he was the lead bull in the Reserve Pen at Denver 2010. Check out the U130 daughters, Lots 89 and 116.

EPDs	
CE	2.4
BW	6.7
WW	65.2
YW	88.3
MCE	6.2
MM	18.5
MWW	51.1
CEM	9.2
CW	23.3
YG	-0.18
Marb	0.11
BF	-0.06
REA	0.39
API	92
TI	57

**86 DAMAR KARDRA Y370**

ASA: 2643041 Tattoo: Y370 Purebred Simmental  
BD: 9/9/11 Adj. BW: 86 Adj. WW: 617

DHFJADESSECRETAGENTT501 **Base Price: \$3,000**  
DHF DRAKKAR W242  
DHF STARLIGHT FUSION  
HC POWER DRIVE 88H  
TRIPLE C KARRIE T47K  
HOOKS KARRIE 47K

Y370 is sired by Drakkar W242 and is an easy-to-look at black baldy heifer. She is cool in her kind and free moving. Tremendous cow prospect here.

EPDs	
CE	7.7
BW	1.5
WW	57.2
YW	80.9
MCE	9.8
MM	20.8
MWW	49.4
CEM	10.6
CW	11.5
YG	-0.26
Marb	0.29
BF	-0.04
REA	0.63
API	114
TI	64

**87 DAMAR ESTHER'S GIRL Y346**

RAAA#: 1498547 Tattoo: Y346 100% Cat. 1A Red Angus  
BD: 9/3/11 Act. BW: 69 Adj. WW: 649

MESSMER JOSHUA 019P **Base Price: \$3,000**  
MESSMER PACKER S008  
MESSMER MILLIE 124P  
GLACIER MARIAS 548  
MESSMER ESTHER 2254  
MESSMER ESTHER A900

Y346 is a dark red Packer daughter of Messmer Ester 2254. She is also the dam of Messmer Judge. Loads of donor potential with this female here.

EPDs	
CE	1
BW	-1.2
WW	60
YW	89
M	19
TM	49
ME	5
HPG	13
CEM	4
STAY	11
Marb	0.71
YG	-0.03
CW	21
REA	0.26
Fat	0.00

**88 DAMAR ESTHER'S GIFT Y364**

RAAA#: 1498560 Tattoo: Y364 100% Cat. 1A Red Angus  
BD: 9/7/11 Act. BW: 70 Adj. WW: 570

MESSMER JOSHUA 019P **Base Price: \$3,000**  
MESSMER PACKER S008  
MESSMER MILLIE 124P  
GLACIER MARIAS 548  
MESSMER ESTHER 2254  
MESSMER ESTHER A900

Y364 is a full sib to Lot 87.

EPDs	
CE	1
BW	-1.2
WW	60
YW	89
M	19
TM	49
ME	5
HPG	13
CEM	4
STAY	11
Marb	0.71
YG	-0.03
CW	21
REA	0.26
Fat	0.00



## DAMAR CECILIA Y007

RAAA#: 1426942 Tattoo: Y007 100% Cat. 1A Red Angus  
BD: 2/2/11 Act. BW: 81 Adj. WW: 622

### EPDs

CE	-2
BW	1.1
WW	61
YW	100
M	24
TM	55
ME	-5
HPG	12
CEM	3
STAY	11
Marb	0.34
YG	0.17
CW	32
REA	-0.07
Fat	0.02

RD TER-RON FULLY LOADED 540R **Base Price: \$3,000**  
RED 6 MILE FULL THROTTLE171T  
RED SIX MILE WITZEL 360J *Due January 12, 2013*  
*to Lorenzen Commitment 0615*  
RED BRYLOR NEW TREND 22  
BADLANDS PFFR CEDAR 3363  
BADLANDS CEDAR 922

Y007 results from a mating of Full Throttle and our donor cow Badlands PFFR Cedar 3363 who is a New Trend daughter. She is due to calve 1-12-13 to Lorenzen Commitment (1370013).



## DAMAR GILLIAN Y181

RAAA#: 1426946 Tattoo: Y181 100% Cat. 1A Red Angus  
BD: 3/29/11 Act. BW: 72 Adj. WW: 585

### EPDs

CE	4
BW	-2
WW	61
YW	93
M	16
TM	46
ME	6
HPG	7
CEM	8
STAY	14
Marb	0.44
YG	-0.08
CW	23
REA	0.27
Fat	-0.02

BECKTON LANCER F442 T **Base Price: \$2,700**  
LJC JAVELIN M08  
LJC LOGAN E56 945 *Due February 24, 2013*  
*to Lorenzen Commitment 0615*  
MESSMER JOSHUA 019P  
MESSMER GINNIE S065  
MESSMER GINNIE 265P

Y181 displays carcass genetics at its best. Confirmed safe to calve 2-24-13 to Lorenzen Commitment (1370013).



## DAMAR FULLY EXPRESSED Y039

RAAA#: 1426895 Tattoo: Y039 100% Cat. 1A Red Angus  
BD: 2/19/11 Act. BW: 90 Adj. WW: 537

### EPDs

CE	-2
BW	1.6
WW	54
YW	82
M	17
TM	44
ME	-6
HPG	8
CEM	0
STAY	8
Marb	0.19
YG	0.13
CW	21
REA	-0.09
Fat	0.02

RD TER-RON FULLY LOADED 540R **Base Price: \$2,500**  
RED 6 MILE FULL THROTTLE171T  
RED SIX MILE WITZEL 360J *Due January 14, 2013*  
*to Brown Commitment S7206*  
ODP EXPRESS 3105  
CFRA MS EXPRESS 9919  
LMG 4008

Y039 is a direct granddaughter of the famous LMG 4008. Safe to calve 1-14-13 to Brown Commitment (1120008).



## DAMAR RED RHEA Y052

RAAA#: 1426885 Tattoo: Y052 100% Cat. 1A Red Angus  
BD: 2/20/11 Act. BW: 88 Adj. WW: 513

### EPDs

CE	-4
BW	2.3
WW	50
YW	71
M	12
TM	37
ME	-5
HPG	10
CEM	1
STAY	6
Marb	0.26
YG	-0.04
CW	15
REA	0.07
Fat	-0.02

RED HEARTLAND KNIGHT CHARM 1 **Base Price: \$2,500**  
RD TER-RON FULLY LOADED 540R  
RED TER-RON GOLDIE 240L *Due January 13, 2013*  
*to Red Crowfoot Ole's Oscar*  
BUF CRK CHF 824-1658  
MESSMER RED LADY 9836  
NODAKLADY POUNDMAKER

Y052 is a Fully Loaded daughter out of our donor Messmer Red Lady 9836. Safe with calf due 1-13-13 to Ole's Oscar (1060209).



## DAMAR DIONE Y084

RAAA#: 1426867 Tattoo: Y084 100% Cat. 1A Red Angus  
BD: 3/5/11 Act. BW: 70 Adj. WW: 499

### EPDs

CE	0
BW	-0.4
WW	59
YW	89
M	8
TM	38
ME	1
HPG	12
CEM	3
STAY	13
Marb	0.47
YG	-0.04
CW	22
REA	0.30
Fat	0.00

MESSMER JOSHUA 019P **Base Price: \$2,500**  
MESSMER PACKER S008  
MESSMER MILLIE 124P *Due January 12, 2013*  
*to Brown Commitment S7206*  
BIEBER COMBINATION 10451  
DAMAR DIONNE W130  
DFRA DIPY DO R533

Y084 is a direct daughter of Packer. Calving ease and carcass, enough said. Due 1-12-13 to Brown Commitment (1120008).



## DAMAR YEVON Y087

RAAA#: 1426863 Tattoo: Y087 100% Cat. 1A Red Angus  
BD: 3/6/11 Act. BW: 70 Adj. WW: 484

### EPDs

CE	1
BW	-0.9
WW	58
YW	91
M	14
TM	43
ME	1
HPG	13
CEM	4
STAY	11
Marb	0.29
YG	0.01
CW	23
REA	0.19
Fat	0.01

MESSMER JOSHUA 019P **Base Price: \$2,500**  
MESSMER PACKER S008  
MESSMER MILLIE 124P *Due January 13, 2012*  
*to Brown Commitment S7206*  
GLACIER HI COUNTRY 926  
DANAR LACRECIA W126  
DFRA LARKABA M236

Y087 sired by our AI Sire Glacier Hi Country. AI due 1-13-13 to Brown Commitment (1120008).



## DAMAR GINEVA Y093

RAAA#: 1426868 Tattoo: Y093 100% Cat. 1A Red Angus  
BD: 3/7/11 Act. BW: 70 Adj. WW: 576

### EPDs

CE	2
BW	-0.9
WW	63
YW	96
M	17
TM	48
ME	1
HPG	12
CEM	3
STAY	12
Marb	0.38
YG	-0.11
CW	26
REA	0.40
Fat	-0.02

MESSMER JOSHUA 019P **Base Price: \$2,500**  
MESSMER PACKER S008  
MESSMER MILLIE 124P *Due January 12, 2013*  
*to Lorenzen Commitment 0615*  
COLEY'S HI ROLLER 646S  
DAMAR GINGER W100  
3J MS COUNTRY GINA S140

Y093 is a super heifer in the top 10% for ribeye area and calving ease. Confirmed safe to Lorenzen Commitment (11370013) due 1-12-13.



## DAMAR NANCY Y116

RAAA#: 1426929 Tattoo: Y116 100% Cat. 1A Red Angus  
BD: 3/13/11 Act. BW: 89 Adj. WW: 504

### EPDs

CE	-2
BW	2.9
WW	58
YW	89
M	14
TM	43
ME	0
HPG	9
CEM	3
STAY	8
Marb	0.24
YG	-0.01
CW	27
REA	0.04
Fat	-0.03

RED TER-RON RELOAD 703T **Base Price: \$2,500**  
RED TER-RON REAL DEAL 01W  
RED K ADAMS SAVANAH 115 *Due February 24, 2013*  
*to Messmer Packer S008*  
DFRA ROCKER 425  
DFRA NAN N315  
DFRA NAN 544L

Y116 displays some of our best Rocker foundation genetics. Safe in calf to Packer (1438001) due 2-24-13.

**97 DAMAR CHANDALEER Y274**

RAAA#: 1426994 Tattoo: Y274 100% Cat. 1A Red Angus  
 BD: 3/24/11 Act. BW: 79 Adj. WW: 554

RED NORTHLINE ROB ROY 122K **Base Price: \$2,500**  
 RED DMM BRYLOR THUMP 2T  
 RED STEN ESSENCE 42G  
 GLACIER CHATEAU 744  
 PERKS MISS CHATEAU 215R  
 PERKS MISS ADVANCER

Due January 12, 2013  
 to C-Bar Anticipation 101W

Y274 displays some of Canada's genetics at their best. Safe to calve to Anticipation (1361141) due 1-12-13.

EPDs	
CE	2
BW	-0.3
WW	56
YW	86
M	13
TM	41
ME	2
HPG	8
CEM	8
STAY	7
Marb	0.40
YG	0.10
CW	21
REA	-0.06
Fat	0.01

**98 DAMAR LANNAH Y075**

RAAA#: 1426855 Tattoo: Y075 100% Cat. 1A Red Angus  
 BD: 3/1/11 Act. BW: 70 Adj. WW: 595

MESSMER JOSHUA 019P **Base Price: \$2,500**  
 MESSMER PACKER S008  
 MESSMER MILLIE 124P  
 BIBER COMBINATION 10451  
 DAMAR LANNAH W117  
 DFRA LANA 113

Due February 26, 2013  
 to C-Bar Anticipation 101W

Y075 is a Packer by the foundation cow Monu 4X genetics. She displays growth and carcass numbers at its best. Safe in calf due 2-26-13 to Anticipation (1361141).

EPDs	
CE	1
BW	-0.4
WW	72
YW	108
M	10
TM	46
ME	5
HPG	13
CEM	3
STAY	12
Marb	0.44
YG	0.03
CW	34
REA	0.21
Fat	0.00

**99 DAMAR LOUISA Y011**

RAAA#: 1426922 Tattoo: Y011 100% Cat. 1A Red Angus  
 BD: 2/5/11 Act. BW: 87 Adj. WW: 566

PFFR SHAQ 607 **Base Price: \$2,200**  
 BADLANDS NET WORTH 23U  
 BADLANDS MEDORA 406  
 BJR MONU 4X-303  
 DFRA LOUISE M216  
 BJR LOUISE 171-6181

Due January 30, 2013  
 to Damar Pester Me Y597

Y011 is by the growth leader Net Worth and Monu 4X. Safe with calf to Y597 (1438001) due 1-30-13.

EPDs	
CE	-3
BW	3.6
WW	71
YW	108
M	16
TM	51
ME	5
HPG	10
CEM	1
STAY	12
Marb	0.27
YG	0.02
CW	39
REA	0.26
Fat	-0.01

**100 DAMAR PIPPI Y028**

RAAA#: 1426842 Tattoo: Y028 100% Cat. 1A Red Angus  
 BD: 2/16/11 Act. BW: 70 Adj. WW: 523

MESSMER JOSHUA 019P **Base Price: \$2,200**  
 MESSMER PACKER S008  
 MESSMER MILLIE 124P  
 COLEY'S SYNERGY 6215  
 DAMAR DIPY DO U851  
 DFRA DIPY DO R569

Due February 24, 2013  
 to Mushrush Envy X429

Y028 displays the easy fleshing ability of these Packer daughters. Bred to Mushrush Envy X429 (1421091) due 2-24-13.

EPDs	
CE	3
BW	-2
WW	50
YW	81
M	13
TM	38
ME	0
HPG	11
CEM	5
STAY	12
Marb	0.36
YG	-0.02
CW	16
REA	0.05
Fat	-0.01

**101 DAMAR RIBBIN Y065**

RAAA#: 1426932 Tattoo: Y065 100% Cat. 1A Red Angus  
 BD: 2/24/11 Act. BW: 89 Adj. WW: 484

RED HEARTLAND KNIGHT CHARM 1 **Base Price: \$2,200**  
 RD TER-RON FULLY LOADED 540R  
 RED TER-RON GOLDIE 240L  
 CFLD REBELLAS ROBINHOOD  
 PERKS MISS ROBINHOOD 205R  
 PERKS MISS RAMBO 8908

Due March 6, 2013  
 to Mushrush Envy X429

Y065 is a Fully Loaded from one of our good donor cows. Bred to Mushrush Envy X429 (1421091) due 3-6-13.

EPDs	
CE	-4
BW	2.3
WW	58
YW	83
M	7
TM	35
ME	-2
HPG	8
CEM	3
STAY	8
Marb	0.29
YG	0.09
CW	23
REA	0.13
Fat	0.03

**102 DAMAR TATYANA Y073**

RAAA#: 1426875 Tattoo: Y073 100% Cat. 1A Red Angus  
 BD: 2/28/11 Act. BW: 55 Adj. WW: 453

MESSMER JOSHUA 019P **Base Price: \$2,200**  
 MESSMER PACKER S008  
 MESSMER MILLIE 124P  
 COLEY'S HI ROLLER 646S  
 DAMAR TATJANA W137  
 DFRA TARMILY T756

Due March 16, 2013  
 to Mushrush Envy X429

Y073 is another calving ease Packer daughter in our offering. Bred safe to Mushrush Envy (1421091) due 3-16-13.

EPDs	
CE	4
BW	-3.1
WW	50
YW	78
M	19
TM	44
ME	1
HPG	12
CEM	5
STAY	13
Marb	0.41
YG	-0.13
CW	12
REA	0.30
Fat	-0.02

**103 DAMAR EMERALD Y083**

RAAA#: 1426823 Tattoo: Y083 100% Cat. 1A Red Angus  
 BD: 3/5/11 Act. BW: 85 Adj. WW: 553

MESSMER JOSHUA 019P **Base Price: \$2,200**  
 MESSMER PACKER S008  
 MESSMER MILLIE 124P  
 DFRA VERN P463  
 DFRA EMAR T778  
 BJR EMU-MAR 729-824

Due February 4, 2013  
 to Mushrush Envy X429

Y083 once again displays our values of calving ease and carcass. Confirmed safe to Mushrush Envy X429 (1421091) due 2-4-13.

EPDs	
CE	2
BW	-0.3
WW	65
YW	101
M	16
TM	48
ME	2
HPG	13
CEM	5
STAY	12
Marb	0.49
YG	0.01
CW	30
REA	0.24
Fat	0.00

**104 DAMAR YVETTE Y089**

RAAA#: 1503860 Tattoo: Y089 100% Cat. 1A Red Angus  
 BD: 3/8/11 Act. BW: 70 Adj. WW: 600

MESSMER JOSHUA 019P **Base Price: \$2,200**  
 MESSMER PACKER S008  
 MESSMER MILLIE 124P  
 TPIE LAKOTA II 1086  
 DAMAR LAVERNA W103  
 DFRA VERNICE P423

Due February 4, 2013  
 to Mushrush Envy X429

Y089's EPDs and carcass traits speak for themselves. Due 2-4-13 to Mushrush Envy X429 (1421091).

EPDs	
CE	
BW	-2.2
WW	50
YW	77
M	16
TM	41
ME	-2
HPG	12
CEM	
STAY	12
Marb	0.50
YG	-0.19
CW	13
REA	0.17
Fat	-0.02

**105 DAMAR TARYN Y119**

RAAA#: 1426795 Tattoo: Y119 100% Cat. 1A Red Angus  
 BD: 3/14/11 Act. BW: 80 Adj. WW: 514

RED FINE LINE MULBERRY 26P **Base Price: \$2,200**  
 RED BRYLOR BIG ROCK 85T  
 RED CYT CHARITY 10P *Due January 12, 2013*  
 BFCK CHEROKEE CNYN 4912 *to Lorenzen Commitment 0615*  
 DFRA TAROKEE P421  
 DFRA TARMAR 432

*Y119 is out of one our favorite Cherokee Canyon cows. Safe to calve 1-12-13 to Lorenzen Commitment (1370013).*

EPDs	
CE	3
BW	-1.1
WW	49
YW	74
M	14
TM	39
ME	0
HPG	9
CEM	2
STAY	9
Marb	0.27
YG	0.03
CW	12
REA	0.11
Fat	0.02

**106 DAMAR CLAIRE Y131**

RAAA#: 1426800 Tattoo: Y131 100% Cat. 1A Red Angus  
 BD: 3/17/11 Act. BW: 80 Adj. WW: 541

BADLANDS PFRR NEW DESIGN 347 **Base Price: \$2,200**  
 BADLANDS DESIGN 22S  
 BADLANDS MINDY 622 *Due January 12, 2013*  
 TPIE LAKOTA II 1086 *to Lorenzen Commitment 0615*  
 DFRA CHERABELLE R556  
 DFRA CHERABELLE 403

*Y131 is simply the cow kind. Due 1-12-13 to Lorenzen Commitment (1370013).*

EPDs	
CE	2
BW	-0.2
WW	48
YW	78
M	23
TM	47
ME	2
HPG	11
CEM	6
STAY	12
Marb	0.55
YG	-0.04
CW	17
REA	0.00
Fat	-0.03



**107 DAMAR REAL KANDEE Y148**

RAAA#: 1426815 Tattoo: Y148 100% Cat. 1A Red Angus  
 BD: 3/19/11 Act. BW: 82 Adj. WW:

RED TER-RON RELOAD 703T **Base Price: \$2,200**  
 RED TER-RON REAL DEAL 01W  
 RED K ADAMS SAVANAH 11S *Due April 6, 2013*  
 PERKS ADVANCE 121R *to Damar Bertha's Boy X427*  
 DFRA BLOCKANA S614  
 DFRA BLOCKANA 101

*Y148 displays great growth and traces back to the foundation 1011. Safe to Damar Bertha's Boy (1367942) due 4-6-13.*

EPDs	
CE	0
BW	3.3
WW	66
YW	102
M	7
TM	40
ME	-4
HPG	8
CEM	4
STAY	8
Marb	0.15
YG	-0.04
CW	35
REA	0.08
Fat	-0.05

**108 DAMAR DESIGNIN MATTIE Y190**

RAAA#: 1426829 Tattoo: Y190 100% Cat. 1A Red Angus  
 BD: 3/30/11 Act. BW: 78 Adj. WW: 514

BADLANDS PFRR NEW DESIGN 347 **Base Price: \$2,200**  
 BADLANDS DESIGN 22S  
 BADLANDS MINDY 622 *Due February 14, 2012*  
 DFRA TIDY B *to Messmer Packer S008*  
 DFRA MATTIE T739  
 DFRA 541L

*Y190 stems back to 22S who is a female producing machine. AI safe to Packer (1109534) for a 2-14-13 calf.*

EPDs	
CE	1
BW	0.3
WW	47
YW	77
M	23
TM	46
ME	3
HPG	11
CEM	5
STAY	10
Marb	0.32
YG	0.02
CW	17
REA	0.21
Fat	0.02

**109 DAMAR REAL TONIE Y053**

RAAA#: 1426833 Tattoo: Y053 100% Cat. 1A Red Angus  
 BD: 2/20/11 Act. BW: 76 Adj. WW: 607

RED TER-RON RELOAD 703T **Base Price: \$2,000**  
 RED TER-RON REAL DEAL 01W  
 RED K ADAMS SAVANAH 11S *Due January 14, 2013*  
 COLEY'S SYNERGY 621S *to Lorenzen Commitment 0615*  
 DAMAR MS. TONY U924  
 DFRA MS. TONY P402

*Y053 is a large-framed and heavy-boned female. Safe to calve 1-14-13 to Lorenzen Commitment (1370013).*

EPDs	
CE	0
BW	2.4
WW	68
YW	102
M	10
TM	44
ME	-2
HPG	8
CEM	1
STAY	7
Marb	0.32
YG	-0.08
CW	34
REA	0.18
Fat	-0.05

**110 DAMAR FULL ADVANTAGE Y054**

RAAA#: 1426960 Tattoo: Y054 100% Cat. 1A Red Angus  
 BD: 2/20/11 Act. BW: 85 Adj. WW: 513

RED HEARTLAND KNIGHT CHARM 1 **Base Price: \$2,000**  
 RD TER-RON FULLY LOADED 540R  
 RED TER-RON GOLDIE 240L *Due January 13, 2013*  
 RBJR ADVANCE A709 *to Damar Pester Me Y597*  
 PERKS MISS ADVANDE 9066  
 HMV SUPER STARESS 505

*Y054 stems back to 22S who is a female producing machine. AI safe to Packer (1109534) for a 2-14-13 calf.*

EPDs	
CE	-5
BW	2.3
WW	58
YW	85
M	10
TM	39
ME	-5
HPG	7
CEM	3
STAY	7
Marb	0.45
YG	-0.05
CW	24
REA	0.15
Fat	-0.02

**111 DAMAR SUNNI DEAL Y056**

RAAA#: 1426797 Tattoo: Y056 100% Cat. 1A Red Angus  
 BD: 2/21/11 Act. BW: 75 Adj. WW: 500

RED TER-RON RELOAD 703T **Base Price: \$2,000**  
 RED TER-RON REAL DEAL 01W  
 RED K ADAMS SAVANAH 11S *Due February 9, 2013*  
 LCC RIBEYE A133L *to Damar Pester Me Y597*  
 DFRA SUN R532  
 BJR SUN 232B-075

*Y056 traces back to her grandsire who is in the top 2% for ribeye area. Bred to Y597 (1438001) for a 2-9-13 calf.*

EPDs	
CE	2
BW	1.5
WW	61
YW	90
M	13
TM	44
ME	-3
HPG	9
CEM	-2
STAY	8
Marb	0.15
YG	-0.06
CW	25
REA	0.23
Fat	-0.02

**OUT**

**112 DAMAR DESIREE Y108**

RAAA#: 1426796 Tattoo: Y108 100% Cat. 1A Red Angus  
 BD: 3/13/11 Act. BW: 80 Adj. WW: 571

EPDs	
CE	1
BW	0.5
WW	61
YW	94
M	22
TM	52
ME	4
HPG	11
CEM	-1
STAY	12
Marb	0.30
YG	-0.02
CW	27
REA	0.36
Fat	0.01

BADLANDS PFFR NEW DESIGN 347 **Base Price: \$2,000**  
 BADLANDS DESIGN 22S  
 BADLANDS MINDY 622 *Due February 4, 2013*  
*to Damar Pester Me Y597*  
 BFCK CHEROKEE CNYN 4912  
 DFRA MATTIE P448  
 BJR MATTIE 142-111

Y108 is produced from Badlands 22S, a female maker all the way. Due to Y597 (1438001) on 2-4-13.

**113 DAMAR THORA Y156**

RAAA#: 1426904 Tattoo: Y156 100% Cat. 1A Red Angus  
 BD: 3/20/11 Act. BW: 75 Adj. WW: 378

EPDs	
CE	2
BW	-1
WW	55
YW	86
M	19
TM	46
ME	0
HPG	8
CEM	3
STAY	10
Marb	0.23
YG	0.06
CW	20
REA	-0.11
Fat	-0.01

RD TER-RON FULLY LOADED 540R **Base Price: \$2,000**  
 RED 6 MILE FULL THROTTLE171T  
 RED SIX MILE WITZEL 360J *Due March 31, 2013*  
*to Mushrush Envy X429*  
 BJR MONU 4X-303  
 DFRA LANA 113  
 BJR LANA 968-481

Y156 is a super heifer out of our foundation donor cow. Safe to Mushrush Envy X429 (1421091) due 3-31-13.

**114 DAMAR VERNIQUE Y162**

RAAA#: 1426839 Tattoo: Y165 100% Cat. 1A Red Angus  
 BD: 3/22/11 Act. BW: 80 Adj. WW: 521

EPDs	
CE	2
BW	-0.3
WW	41
YW	68
M	23
TM	43
ME	3
HPG	7
CEM	5
STAY	9
Marb	0.55
YG	0.10
CW	11
REA	-0.14
Fat	0.02

BECKTON EPIC R682 KJ **Base Price: \$2,000**  
 DAMAR WEBER W307  
 MESSMER GINNIE 9862 *Due February 26, 2013*  
*to Red Brylar Big Rock 85T*  
 COLEY'S SYNERGY 621S  
 DAMAR VERNICE U873  
 DFRA VERNICE P423

Y165 results from an Epic son and our donor, Ginnie 9862. Safe to calve 2-26-13 to Big Rock (1338929).

**115 DAMAR PAYLIAN X285**

RAAA#: 1417195 Tattoo: X285 100% Cat. 1A Red Angus  
 BD: 8/18/10 Act. BW: 70 Adj. WW: 618

EPDs	
CE	12
BW	-3.4
WW	56
YW	86
M	22
TM	50
ME	2
HPG	13
CEM	11
STAY	15
Marb	0.44
YG	-0.06
CW	16
REA	0.28
Fat	0.00

BKT JULIAN 7526 G **Base Price: \$2,000**  
 BECKTON JULIAN GG B571  
 BKT MARTA 9A13 JL *Due February 7, 2013*  
*to Mushrush Envy X429*  
 LELAND MARIAS 271K  
 MESSMER PANDORA M186  
 MESSMER PANDORA 9976

X285 is a full sibling to Messmer Joshua. Bred to Mushrush Envy X429 (1421091) due 2-7-13.



**Lot 116**

**116 DMR/KA DAZZLE Y276**

ASA: 2591516 Tattoo: Y276 Purebred Simmental  
 BD: 4/3/11 Adj. BW 83 Adj. WW

EPDs	
CE	5.5
BW	3
WW	60.8
YW	82.6
MCE	7.7
MM	19
MWW	49.3
CEM	10.2
CW	23.2
YG	-0.19
Marb	0.16
BF	-0.05
REA	0.38
API	95.8
TI	59.7

DHFJADESSECRETAGENTT501 **Base Price: \$4,000**  
 DHF DRAKKAR W242  
 DHF STARLIGHT FUSION *Due March 2, 2013*  
*to Ranch Hand R101*  
 TRIPLE C ULTIMATE FORCE  
 KA SHAMOO U130  
 LILY 130P

Y276 is another Drakkar W242 mated with the great Shamoo U130. What an impact Shamoo is having for Damar Farms. Heifers like Y276 secure a future in the Simmental world. Deep flanked and huge middled with a stifle that bulges with every step. She is destined for the donor pen. Currently safe in calf to the calving-ease leader Sand Ranch Hand (2290140) due 3-2-13.



**Lot 117**

**117 DAMAR TOO HOT**

ASA: 2587209 Tattoo: Y221 Purebred Simmental  
 BD: 2/3/11 Adj. BW 92 Adj. WW 570

EPDs	
CE	6.3
BW	2.4
WW	57.4
YW	84.1
MCE	8
MM	22.8
MWW	51.4
CEM	9.1
CW	23.6
YG	-0.26
Marb	-0.05
BF	-0.05
REA	0.6
API	93.4
TI	55.5

WLE POWER STROKE **Base Price: \$2,700**  
 TCF POWER DRIVE R2411  
 KAPPES LADY IRISH F88 *Due March 16, 2013*  
*to Ranch Hand R101*  
 TRIPLE C POWERRANGER K588  
 CPR TOO HOT N78  
 AVCC BLAZIN

**OUT**



**GCF MISS MOHAMMED X167**

ASA: 2579993    Tattoo: X167    Purebred Simmental  
 BD: 9/11/10    Adj. BW 78    Adj. WW 747

SAC MR MT 73G  
 F NICHOLS MUHAMMAD  
 NICHOLS JULIA F34  
 CNS DREAM ON L186  
 GCF WHOWOULDHAVE DREAMED  
 SS MISS BREAK

Base Price: \$2,000

Due February 19, 2013  
 to Triple C.L.Taylor

*A good bred heifer from Grindstone Creek Farm in Missouri. The combination of Taylor and Dream On should be an outstanding mating.*

**EPDs**

CE	6.4
BW	3.6
WW	55.6
YW	78.7
MCE	6.3
MM	23.9
MWW	51.7
CEM	17.1
CW	22.1
YG	-0.23
Marb	0.16
BF	-0.06
REA	0.42
API	104.7
TI	58



**DAMAR SHOW GIRL X286**

ASA: 2576908    Tattoo: X286    Purebred Simmental  
 BD: 9/6/10    Adj. BW 70    Adj. WW 725

HOOKS SHEAR FORCE 38K  
 TRIPLE C L. TAYLOR  
 LUCAS JOSIE 19K  
 LCHMAN LUCKY BUCK 7049C  
 TRIPLE C GO GIRL K34G  
 TRIPLE C REWARDS QUEEN H

Base Price: \$2,000

Due February 11, 2013  
 to Triple C.L.Taylor

*X286 is another Taylor working female by K34G. Her dam, K34G, is one of the most popular Simmental cows the breed has known. X286 possesses phenomenal phenotype, is sleek fronted, moderate framed, long spined and good hipped. Safe in calf to S09E due 2-11-13.*

**EPDs**

CE	11
BW	0.9
WW	66.7
YW	90
MCE	12
MM	19
MWW	24
CEM	18.9
CW	15.5
YG	-0.38
Marb	0.31
BF	-0.06
REA	0.42
API	104.7
TI	58



**Damar Farms was named the Premier Breeder and Premier Exhibitor at the Iowa State Fair!**

**EMBRYO LOTS**

All embryos will be shipped



Damar Passion X166

**120****FLUSH ON DAMAR PASSION X166**

This stout-made Mulberry daughter sold in our sale last year to the Glascock Family in Texas. Passion was named the Grand Champion Female at Fort Worth, San Antonio and Houston. She was also named the Reserve Supreme Heifer at Houston Livestock Show! The bull will be to the buyer's choice. You may contact the Glascocks at 940-367-6245. Here lies another great opportunity at DAMAR's Top Genetics.



Messmer Pandora M186

**121****PANDORA M186 X MULBERRY 26P EMBRYOS**

Imagine all the opportunities that await the lucky buyer of these embryos. Pandora M186 is a true matriarch to the Red Angus breed, in combination with Mulberry, the female maker, what a buy. Selling three #1embryos with one guaranteed pregnancy.

**122****FIRST LADY W012 X CONQUEST 4405P EMBRYOS**

Again opportunity knocks. First Lady W012 is a true breed changer. These embryos should have the perfect balance of EPD numbers and style! Check all the greats in W012's pedigree. Then add Conquest, who is moderate framed with a muscular body and loads of depth. Conquest has a mature weight of 2,530 lbs. with a hip height of 56 in. — moderation and volume. That's to be expected from this mating.



Messmer Millie 124P

**123****MESSMER MILLIE X HXC JACKHAMMER EMBRYOS**

Once more the genetic balance of Messmer Millie and HXC Jackhammer. Stacking those great carcass merits and calving ease traits. Selling three #1embryos with one guaranteed pregnancy. Millie is the dam of Packer, the No. 1 bull for registrations.

**124****TARMILY R512 X REAL DEAL 01W EMBRYOS**

DFRA Tarmily is rapidly becoming one the breeds most sought-after cows. She is the dam of Damar Mimi W085. A full sib to this mating sold to Shuey Stock Farm. Another mating will sell in the Bet On Red Sale in Reno, Nev., on November 2. We put a lot of faith in this mating. If you are a progressive breeder these will be some intriguing breeding animals. Real Deal has swept Canada by storm. He was shown for three years and never defeated. Selling three #1embryos with one guaranteed pregnancy.



DFRA Tarmily N512

**125****MESSMER PANDORA M39 X NET WORTH EMBRYOS**

If you like performance, growth and style, this mating will "Get R Done." Extra length of body and powerful EPDs await. Check out M39's daughter, Lot 61. Selling three #1embryos with one guaranteed pregnancy.

**126****TRIPLE C KARRIE T47K X NLC UPGRADE U8676 EMBRYOS**

Damar began its Simmental division with an unbelievable set of proven genetics. Triple C Karrie T47K came from that dispersal. We wanted to do something special with Karrie. Upgrade — with his dimension, design and volume — should make for an exciting mating. Selling three #1embryos with one guaranteed pregnancy.



Triple C Karrie T47K

**127****TRIPLE C KARRIE T47K X OLF ODIN U5 EMBRYOS**

Let's talk about cattle with integrity! T47K has great lineage, quality udders and stayability. You will have all the great qualities in this set of embryos. Selling three #1embryos with one guaranteed pregnancy.



# SEMEN LOTS

Bring your tanks, available sale day



Triple C L. Taylor S09E

**128**

## W936 DAMAR LUCY'S BOY SEMEN (REG. 1360729)

How much pedigree, performance, and power do you need in a bull? This up-and-coming young sire has a tremendous amount of internal dimension, base width and lots of eye appeal. He's surefooted and can travel a lot of miles. He will produce the right kind of bull calves. Check this outstanding heifer calf out, Lot 2. Semen \$25 per straw, all you want in lots of 5.



OLF Odin U5

**129**

## TRIPLE C L. TAYLOR S09E SEMEN (REG. 2341606)

Homozygous Black and Homozygous Polled. Calving Ease to Carcass. Use him on your best purebred cows or AI your commercial cows to him. He will give you those extra pounds and added dimension. Behind every good bull there is a great cow. So is the case here with Josie 19K. That's the reason Taylor is used in our pasture. Taylor's nine daughters sell and we will have a nice set of Taylor yearlings for our spring bull sale. The AI sires Singeltary and Bettis are full sibs to Taylor. Semen \$10 per unit with no limit.

**130**

## OLF ODIN U5 SEMEN (REG. 2471211)

Homozygous Black and Homozygous Polled. A rare combination of the lowest birth weight and highest yearling weight in the Olafson herd in 2009. He has an adjusted yearling weight of 1,530 lbs. Check his offering in Lots 25, 48, and 49. Odin, now deceased, is known as the tbest son of Legacy who is known by "Olje." Semen is limited to two packs of 5 straws at \$50 per straw.



## Reference Sires



*Qid*

**Taylor**



*Qid*

**Dreamworks**

### #2341606 - Triple C L. Taylor

CE	BW	WW	YW	MCE	MM	MWW	STAY	CW	YG	MARB	BF	REA	API	TI
13.6	0	66.8	88.3	15	20.9	54.3	24.2	13.1	-0.38	0.38	-0.06	0.89	148	76

### #2390164 - DHF Jades Dreamworks

CE	BW	WW	YW	MCE	MM	MWW	STAY	CW	YG	MARB	BF	REA	API	TI
0.3	5.3	71.4	99.3	6.6	17.7	53.3	12.4	36.4	-0.23	0.14	-0.06	0.58	86.7	62.8

L. Taylor is our homozygous polled and black main Simmental herd sire. He is the sire of 3 of our 5 bulls in our 2010 Denver Champion Pen of 5 Bulls. Taylor's genetic values are unmatched. Study them as most are in the top 5% of the breed and some in the top 1%. Bring your semen tanks sale day, we are having a semen special on him sale day only!

**Reference Sires**



**#1109534 - Messmer Packer S008**

CED	BW	WW	YW	MILK	TM	ME	HPG	CEM	STAY	MARB	YG	CW	REA	FAT
1	-2.1	69	109	11	46	-1	16	4	14	0.59	-0.05	32	0.5	0.01



**#1361141 - C-BAR ANTICIPATION 101W**

CED	BW	WW	YW	MILK	TM	ME	HPG	CEM	STAY	MARB	YG	CW	REA	FAT
0	-1.1	67	105	20	54	10	8	13	7	0.89	0.09	31	0.08	0.01



**#1338929 - Red Brylor Big Rock 85T**

CED	BW	WW	YW	MILK	TM	ME	HPG	CEM	STAY	MARB	YG	CW	REA	FAT
2	-1.1	47	77	18	41	-2	8	9	7	0.26	0.13	15	-0.03	0.04



**#2501206 - DHF Drakkar W242**

CE	BW	WW	YW	MCE	MM	MWW	STAY	CW	YG	MARB	BF	REA	API	TI
6.6	1.3	54.2	73.2	8.9	18.8	45.8		15.2	-0.16	0.17	-0.04	0.28	102.3	58.1



**#2336713 - Triple C Ultimate Force**

CE	BW	WW	YW	MCE	MM	MWW	STAY	CW	YG	MARB	BF	REA	API	TI
4.3	3.3	72.2	95.4	3.8	13.7	49.8	20.4	22	-0.2	0.27	-0.05	0.5	118	69



**#2471211 - OLF Odin U5**

CE	BW	WW	YW	MCE	MM	MWW	STAY	CW	YG	MARB	BF	REA	API	TI
17.1	-3.2	66.8	103.5	14.4	20.1	53.5	22.8	26.8	-0.64	0.02	-0.11	1.4	140.9	73.3

## Reference Sires



#1371275 - WEBR TC Card Shark 1015

CED	BW	WW	YW	MILK	TM	ME	HPG	CEM	STAY	MARB	YG	CW	REA	FAT
1	-1.7	57	84	20	48	1	8	6	6	0.25	0.15	18	-0.05	0.04



#1354320 - Red Ter-Ron Real Deal 01W

CED	BW	WW	YW	MILK	TM	ME	HPG	CEM	STAY	MARB	YG	CW	REA	FAT
-5	6.8	74	113	6	43	-7	10	1	6	0.15	-0.01	47	0.01	-0.07



#1267422 - Badlands Net Worth 23U

CED	BW	WW	YW	MILK	TM	ME	HPG	CEM	STAY	MARB	YG	CW	REA	FAT
-5	6.2	87	131	14	58	2	11	3	12	0.42	0	57	0.49	-0.02



#2326709 - TCF Power Drive R2412

CE	BW	WW	YW	MCE	MM	MWW	STAY	CW	YG	MARB	BF	REA	API	TI
4.3	4.8	58.1	86.9	10.7	24.2	53.2	20.5	29	-0.27	-0.01	-0.06	0.63	97.2	53.9



#1151261 - Red Fine Line Mulberry 26P

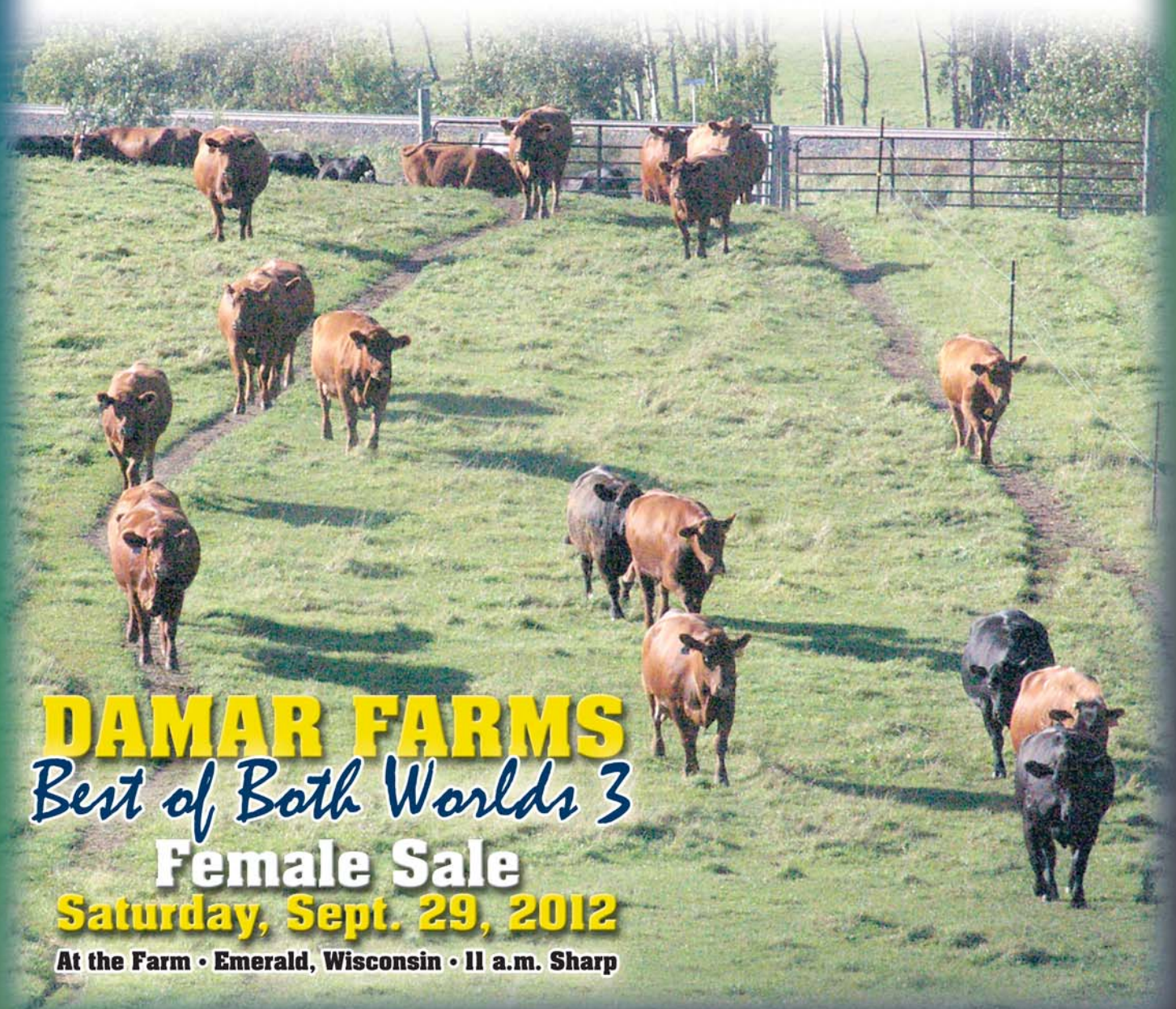
CED	BW	WW	YW	MILK	TM	ME	HPG	CEM	STAY	MARB	YG	CW	REA	FAT
-2	0.3	75	125	18	55	12	9	9	7	0.4	0.2	45	0.13	0.04



#1367942 - Damar Berthas Boy X427

CED	BW	WW	YW	MILK	TM	ME	HPG	CEM	STAY	MARB	YG	CW	REA	FAT
0	1.8	72	112	17	53	3	12	5	15	0.4	-0.13	39	0.39	-0.05

**Damar Farms**  
2609 County Road S  
Emerald, WI 54013



**DAMAR FARMS**  
*Best of Both Worlds 3*  
**Female Sale**  
**Saturday, Sept. 29, 2012**

**At the Farm • Emerald, Wisconsin • 11 a.m. Sharp**