

Majestic Meadows "Pursuit of Perfection" Christmas Egg Sale

An exciting line up including embryos straight run and sexed heifers from Firefly, Windsong, Serabelle, Girlie Girl, Georgina, Doll, Blockannas and more!



Live Online Bidding
 December 26 - 27, 2012
www.anguslive.com



Majestic Peek A Boo X19



Majestic Blockanna 728



Majestic Meadows

The Moxley Family • mmoxley@sdcgroup.com
 443-250-9932
 2405 Pfefferkorn Road
 West Friendship, MD 21794
 Visit our website at www.carcassbulls.com,
 email mmoxley@sdcgroup.com or call (443) 250-9932
 to find out more about our program.



The brand that symbolizes the pursuit of perfection. Look for it at the major Red Angus events!

Welcome,

We believe these embryos represent some of the finest genetics we have been able to to acquire. Many of you know we started a Red Angus herd and the Pursuit of Perfection as the result of the successes of Majestic Lightning 717. The next step was to acquire several donors from many different operations to mate to Lightning; the results have exceeded our expectations. And, with the birth of each calf crop, we continue to be more and more happy with Lightning and now, Sideways. We have had very good luck with Mulberry and we have sampled Cowboy Cut. This offering shares all of those sires with you. The donors represented in this sale represent the best we have acquired. Their offspring were a hit this fall in our "Pursuit of Perfection Vol.1" sale and we expect the calves from these matings to be no less impressive.

The sexed heifer eggs are a result of the extensive IVF work we have done this fall. With the opening of a state-of-the-art Trans Ova IVF center here in Maryland we are able to produce freezable sexed eggs. Our conception rates have been consistent with frozen conventional eggs so we have decided to offer them with the same guarantee. If you are puzzled to not see cows with Majestic prefixes, be patient – we are still growing and many of those cows are being conservatively flushed so as to keep them on their production schedules. We know you'll be impressed with what these donors can produce for you. We want to be a able to guarantee that same satisfaction from our younger donors.

Mark Moxley

SALE INFORMATION

Sale Day Phones:

Mark Moxley	(443) 250-9932
Jason Andrews	(330) 465-4796
Jeremy Haag	(816) 516-1309
Myron Kennedy	(240) 604-8039
Alan "Hootie" Schmidt	(302) 542-3736

Embryo Guarantee

The sexed heifer embryos in this offering are the product of our in vitro fertilization program. They carry the same guarantee as our conventional embryos. Sold in lots of three, three times the money, a guarantee of one pregnancy if implanted by a certified technician within one year of the sale. All embryos are housed at Trans Ova Boonsboro, Md., but may be picked up or shipped from either location, or shipped to the buyer at the buyer's expense.

Online Bidding and Registration

Complete online auction details are available at right. If for any reason anyone is uncomfortable registering on-line or giving a credit card to do so, you may call ahead of time and make payment arrangements with AngusLive.com, or anyone affiliated with the sale offering will be able to direct you in setting up an account or bidding via sale day phones.

BIDDING STYLE

HORSE-RACE STYLE CLOSING FORMAT FOR THIS SALE! WHEN TIME EXPIRES, ALL LOTS ARE DECLARED SOLD! ORIGINAL ENDING TIME: 7PM CST WITH EXTENDED BIDDING TO FOLLOW! EXTENDED BIDDING WILL CONTINUE UNTIL THERE IS NO BIDDING FOR 5 MINUTES!



AngusLive.com

With this option, all lots will close simultaneously. A few benefits to this style of auction are the buyer has the CHOICE to switch to any lot(s) in the offering if he is outbid on his/her current choice; buyer does not have to deal with the sale order of the sale because all lots are offered and bid on simultaneously; and the buyer has a choice(s) and more time to make his/her decision.

Extended Bidding means that the auction is not declared closed until there have been ten minutes of inactivity on the current sale. If there is any bidding during the inactivity period, the auction is extended until there is no bidding for ten minutes during the inactivity period. You can always check the time remaining that appears next to each lot item. REMEMBER TO CLICK ON THE REFRESH BUTTON TO UPDATE THE TIME REMAINING! For this sale the extended bidding period is 5 minutes.

Example 1: Auction closes at 7pm. There is no bidding from 6:55 pm to 7pm. All lots are declared closed and the sale ends at 7pm.

Example 2: Auction closes at 7pm. There is a bid placed at 6:58pm. The Auction is extended 5 additional minutes. No more bidding occurs. All lots are declared closed and the sale ends at 7:03pm.

Example 3: Auction closes at 7pm. There is a bid placed at 6:58pm. Auction is extended by 5 minutes until 7:03 pm. Another bid is placed at 7:02 pm. No more bids are placed. All lots are declared closed and the sale ends at 7:07 pm

*In the event of an extended auction there will be no bids accepted after 11:59 ET.

Maximum Bidding is a feature you may use during the duration of the auction. This feature allows you to place a private maximum bid that only you will be aware of and allow the computer to bid on your behalf when another bidder places a bid on the same animal(s) as you.



FLUSH OF WHITESTONE SERABELLE W118 TO BUYER'S CHOICE OF BULL



Majestic Serabelle W118

WHITESTONE SERABELLE W118

Registration: 1159206 Tattoo: W118 WSRA 1A Category: 100% Birth Date: 1/20/07 BW: 83 205-Day Wt.: 743

CED	BW	WW	YW	Milk	TM	ME	HPG	CEM	Stay	Marb	YG	CW	REA	Fat
1	0.5	69	115	7	42	14	8	6	11	0.05	0.09	39	-0.09	-0.02

LEACHMAN COWBOSS 1129G | LMAN ROBIN HOOD 1174B
LMAN ABIGAIL B1174

LCC VAQUERO 1412J

PARK MISS WIDELOAD F648 | LCHMN WIDE LOAD 1061C
PARK MERCEDES C235

BJR MONU 4X-303 | RED SSS MONU4X 237C
RCRA SAMANTHA

WHITESTONE SERABELLE R080

WSRA SERABELLE 505N | HOLDEN HI HO 574
LMAN SERABELLE 9283

We purchased Whitestone Serabelle W118 as a travel buddy for Lightning and she was our pick of the 2007 Whitestone red calf crop. She was many times a champion, and went on to be Produce Of Dam winner at NAILE. As a donor, she has been nothing short spectacular.

Majestic Wolfpack is working a Lazy J Bar, in Mina, S.D., Majestic Rambo

is working at Iron Mine Branch, Milton, Pa., and Majestic Snitch was a popular Midland Bull Test graduate. Numerous daughters by Lightning have headlined sales the last two sale seasons.

Last year in Denver, Neully Hutchison and Family from Chain Ranches of Canton, Okla., chose Majestic Serabelle Y42 from our string to headline their show string. This year, the Blomme family chose Majestic Serabelle Z110 to be the high-selling female of the Majestic Meadows Pursuit of Perfection Volume 1 Sale.

Serabelle stamps 'em with a perfect structure – long bodied, big hipped and good shaped. We often refer to them as babies, as big boned, hairy and cute.

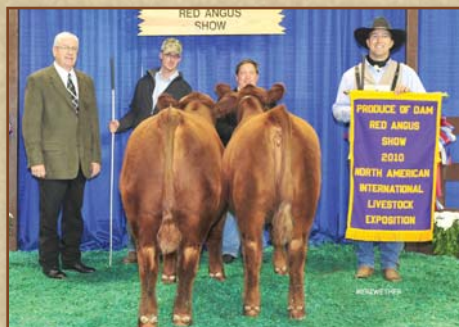
You pick the sire – she'll do the rest!



Majestic Serabelle Z205
VDAR Rambo 323 x Majestic Serabelle W118



Majestic Serabelle Y23
Majestic Lightnng 717 x Majestic Serabelle W118



Produce of Dam, NILE 2010



Majestic Wolfpack X39
Majestic Lightnng 717 x Majestic Serabelle W118

Terms: Buyer can flush to the bull of his choice and must provide no less than four units of semen. There will be a guarantee of six embryos and two pregnancies, if implanted within one year of the recovery date. After one year there is no guarantee of conception. Any amount above six will be prorated if the buyer elects to do so. The embryos above six will be split on a 50/50 basis with the seller getting the seventh and buyer getting option on eighth and so on. Flushing will take place at Trans Ova and flush expenses and freezing expenses will be paid by the buyer. Seller will pay freezing costs of any retained embryos and donor board fees during the flush.

"Pursuit of Perfection" Christmas Egg Sale

WHITESTONE BLOCKANNA X234

Registration: #1234991 Tattoo: X234 Category: WSRA 1A 100% Birth Date: 3/25/08 BW: 78 205-Day Wt: 751

CED	BW	WW	YW	Milk	TM	ME	HPG	CEM	Stay	Marb	YG	CW	REA	Fat
1	0.1	61	91	22	53	4	7	5	8	0.21	0.02	24	0.23	0.01



Majestic Meadows

BECKTON LANCER F442 T

BECKTON LANCER T A664
BKT SUFFEINA A828 DM

LCC GLANCE B062M

LCC ROCKETTE K1105

LCHMN BANDITO UNO1782H
FISCHERS ROCKETTE 4-13

LMN IMPRESSIVE ROB1095B

LMAN KING ROB 8621
LEACHMAN FIRFLY 7522

FEDDES BLOCKANNA 807

FED'S BLOCKANA 692

GLACIER LOGAN 210
BJR BLOCKANA 502-5185

Always a bridesmaid, never a bride. This direct daughter of Blockana 807 got a piece of her division at Denver twice and Louisville once. Had her stall mate Buttercup not won in 2009, she may have taken all the marbles that year. She does not miss when it comes to production. She has a beautiful dark foot and flawless structure. She is big middled, big topped, pretty necked and she stamps them out. These calves by Mulberry and Sideways should be nothing short of exceptional.

THREE EMBRYOS

Red Fine Line Mulberry 26P x
Whitestone Blockanna X234



THREE EMBRYOS

3 Aces Sideways x
Whitestone Blockanna X234



RED FINE LINE MULBERRY 26P

#1151261

CED	BW	WW	YW	Milk	TM	ME	HPG	CEM	Stay	Marb	YG	CW	REA	Fat
-2	0.3	75	125	18	55	12	9	9	7	0.40	0.20	45	0.13	0.04

RED HR RAMBO ET 91K

FCC RAMBO 502
HR MISS PROSPECTOR 26B

RED COMPASS MULBERRY 449M

RED BRYLOR MISS ROC 20H

LARSON RED LIGHTNING
RED CRCC MISS ROC 368D

SILVEIRAS REDFORD

SILVEIRAS PRESLEY
RICKS JUANADABURY 3000

RED DUS FAYETTE 8G

RED MC DOUGALL FAYETTE 59A

RED MC DOUGALL CLASS OF 85 3
RED MC DOUGALL FAYETTE 79W

PROJECTED MATING EPDS

CED	BW	WW	YW	Milk	TM	ME	HPG	CEM	Stay	Marb	YG	CW	REA	Fat
0	0.2	68	108	20	54	8	8	7	8	0.30	0.11	35	0.18	0.03

3 ACES SIDWAYS

#1324131

CED	BW	WW	YW	Milk	TM	ME	HPG	CEM	Stay	Marb	YG	CW	REA	Fat
5	-2.7	47	72	18	42	7	10	10	6	0.29	0.11	9	-0.25	0.01

BUF CRK HOBO 1413

BJR HOBO 800
BJR LANA 3140-302

BUF CRK HOBO 1961

BUF CR CARRIE VC1174

BUF CRK TOMAHAWK 529
BFLO CRK CARIE VC473

J BAR 7 GRAND CANYON 2222

LCHMN GRANDCANYON 1244G
LCHMN DARBY H1046

TROWBRIDGE LANA 707

LANA GAL N78

CITATION 138
JMDF MISS LANA

PROJECTED MATING EPDS

CED	BW	WW	YW	Milk	TM	ME	HPG	CEM	Stay	Marb	YG	CW	REA	Fat
3	-1.3	54	82	20	47	6	9	8	7	0.25	0.07	17	-0.01	0.01

Majestic Meadows

LCOC FIREFLY UA001

Registration: Tattoo: Category: Birth Date: BW: 205-Day Wt.
 #1276215 UA001 LCOC 1A 100% 1/13/08 76 554

CED	BW	WW	YW	Milk	TM	ME	HPG	CEM	Stay	Marb	YG	CW	REA	Fat
5	-1.3	57	90	18	46	10	7	1	16	0.80	-0.03	22	0.48	0.03



Majestic Firefly 109
 Majestic Lightning 717 SGMR x LCOC Firefly UA001



Majestic Firefly 110
 Majestic Lightning 717 SGMR x LCOC Firefly UA001

"Pursuit of Perfection" Christmas Egg Sale

BIEBER MAKE MIMI 7249

BJR MAKE MY DAY 981
 BIBER SIRENA 6708

LCOC HIGH NOON A093R

SRN HI DEE 3021

BFCK CHEROKEE CNYN 4912
 SRN HI DEE 1005

BROWN VACATION H7106

BECKTON JULIAN GG B571
 LCHMN FLOWER C1161

LCOC FIREFLY RA144

LCHMN FIREFLY J1118

BFCK CHEROKEE CNYN 4912
 LEACHMAN FIREFLY C1047

If you've ever sold cattle by the pound or on the hook, these are the kind you want. The highly anticipated mating of the high-selling LCOC Firefly UA001 and the beef bull, Majestic Lightning 717. Due to the popularity of embryos, we are selling the choice of our first two live heifer calves. And no, you can't go two times the money and buy both, however you can elect to go two times the money and get half of both. We believe they are very important to the beef industry as we attempt to make more pounds of beef with less input and more quickly on a great foot. Firefly Z110 (pictured bottom left) was our second-high seller in the fall at \$11,500.



THREE EMBRYOS

HSCC Lightning McQueen 3X x
 LCOC Firefly UA001



HSCC LIGHTNING MCQUEEN 3X

#1351225

CED	BW	WW	YW	Milk	TM	ME	HPG	CEM	Stay	Marb	YG	CW	REA	Fat
-1	1.9	68	102	18	52	7	11	6	5	0.20	0.13	33	-0.24	-0.02

WHITESTONE CAYENNE 423R

LCHMN GRANDCANYON 1244G
 FEDDES BLOCKANNA 807

MAJESTIC LIGHTNING 717 SGMR

WHITESTONE BLOCKANNA R227

WHITESTONE SIZABULL M131
 BLOCKANA 0143 OF WSRA

LCHMN SHARPSHOOTER 1369

LCHMN ON TARGET 1016E
 LEACHMAN DINA C1001

LCC DINA K1140

HW DINA 2198

LMAN ROBIN HOOD 11748
 PRF DINA P236

PROJECTED MATING EPDS

CED	BW	WW	YW	Milk	TM	ME	HPG	CEM	Stay	Marb	YG	CW	REA	Fat
2	0.3	62	96	18	49	9	9	4	10	0.5	0.05	27	0.12	0.00

"Pursuit of Perfection" Christmas Egg Sale

BJR WINDSONG 2269

Registration: #886713 Tattoo: 2269 BJR Category: 1A 100% Birth Date: 9/16/02 BW: 85 205-Day Wt.: 783

CED	BW	WW	YW	Milk	TM	ME	HPG	CEM	Stay	Marb	YG	CW	REA	Fat
1	0.2	59	92	29	58	3	13	2	13	0.31	-0.10	26	0.32	-0.03



THREE EMBRYOS
BJR Hobo 800 x
BJR Windsong 2269



BJR HOBO 800

#177906

CED	BW	WW	YW	Milk	TM	ME	HPG	CEM	Stay	Marb	YG	CW	REA	Fat
-2	0.1	43	66	15	36	3	7	-4	7	0.20	-0.20	10	0.42	-0.03

BJR EXCEL-A-TOR SAYRE PATRIOT
ANKY B999 LASS 54374

BJR YOGO 002-104 RCN CANYON CHIEF
BJR DAKEL 830-967 BJR DAKEL 625-231

UMPIRE 1000 ANKONIAN DYNAMO
KARAMA 657E OF SAYRE

DDF NOOK UMP 800 LEACHMAN CHINOOK 605
KEE CH KANSAS 7831 KEE KANSAS 1422

PROJECTED MATING EPDS

CED	BW	WW	YW	Milk	TM	ME	HPG	CEM	Stay	Marb	YG	CW	REA	Fat
0	0.2	51	79	22	47	3	10	-1	10	0.26	-0.15	18	0.37	-0.03

Majestic Meadows

SSS BLACK TREND 13B

V D A R NEW TREND 315
RED SSS MISS DYNAMO 3W

RED BRYLOR NEW TREND 22

MEADOW CK MS SEAMAN 31A

RED SEAMAN CHIEF 47Y
RED MEADOW CK PRINCESS 10W

SODAK OSCAR 4386

SODAK OSCAR 1397
SODAK 0108

SODAK WINDSONG 7030

SODAK RAIN DANCER 2068

BASIN RAINMAKER 2135
SODAK 0083

BJR Windsong 2269 is a great cow that is easy to mate, as she is massive. She had a 205-day weight of 783 lbs. in 2002 and was the heaviest calf in her calf crop. There's not many places where you can get embryos with the BJR prefix top and bottom. She recently produced the 2012 NAJRAE Bred-and-Owned Grand Champion Female for Nicholas Andrews at Hutchinson, Kan.! Studs and breeders alike often talk about using sires because they are an outcross. We believe in using sires where they work. We have a few of these Hobo 800s on the ground and they're gonna work! Hardy von Forell has a Lightning full sib he thinks is deadly!

THREE EMBRYOS
Majestic Lightning 717 SGMR x
BJR Windsong 2269



MAJESTIC LIGHTNING 717 SGMR

#1155775

CED	BW	WW	YW	Milk	TM	ME	HPG	CEM	Stay	Marb	YG	CW	REA	Fat
-5	4.5	79	119	17	57	6	9	6	4	0.16	0.09	47	0.00	-0.03

LCHMN GRANDCANYON 1244G BUF CRK CHF 824-1658
KRN REBA'S ROBIN

WHITESTONE CAYENNE 423R LMN IMPRESSIVE ROB1095B
FEDDES BLOCKANNA 807 FED'S BLOCKANA 692

WHITESTONE SIZABULL M131 SITZ TRAVELER 8180
GREEN GARDEN SUSIE 1246 S1

WHITESTONE BLOCKANNA R227 LEACHMAN EBV 6703
BLOCKANA 0143 OF WSRA FEDDES BLOCKANNA 807

PROJECTED MATING EPDS

CED	BW	WW	YW	Milk	TM	ME	HPG	CEM	Stay	Marb	YG	CW	REA	Fat
-2	2.4	69	106	23	58	5	11	4	8	0.23	-0.01	36	0.16	-0.03

Majestic Meadows

"Pursuit of Perfection" Christmas Egg Sale

TCB LUANNA 08S

Registration: #1101165 Tattoo: 08S TCB Category: 1A 100% Birth Date: 2/28/06 BW: 70 205-Day Wt.: 777

CED	BW	WW	YW	Milk	TM	ME	HPG	CEM	Stay	Marb	YG	CW	REA	Fat
-4	0.4	51	75	10	36	1	9	7	7	0.20	0.03	15	0.00	0.00



GLACIER CHATEAU 744

LMAN KING ROB 8621
GLACIER REBALA

4L SUPER VISION R2292

4L MR RAMBO R709

VDAR RAMBO 323
GMRA RACHILLE

MEADO-WEST JAZZ

FCC RAMBO 502
PANHANDLE RITA 4091

MEADO-WEST LUANNA

MEADO-WEST BLANCHE

TKP BODACIOUS 693
MNA MISS ABE 2X 603

Sometimes a picture really does say a thousand words. This is a sure-fire mating to Majestic Lightning 717 for champions. Three sexed heifer eggs with a guarantee of one pregnancy. Three full sibs have averaged \$7,500. This is a great opportunity.



Majestic Girlie Girl Z206 will make a splash in Denver for her new owners at Silver Spur. Majestic Girlie Girl Z106

THREE SEXED HEIFER EMBRYOS

Majestic Lightning 717 SGMR x
TCB Luanna 08S



THREE SEXED HEIFER EMBRYOS

Red Lazy MC Cowboy Cut 26U x
TCB Luanna 08S



MAJESTIC LIGHTNING 717 SGMR

#1155775

CED	BW	WW	YW	Milk	TM	ME	HPG	CEM	Stay	Marb	YG	CW	REA	Fat
-5	4.5	79	119	17	57	6	9	6	4	0.16	0.09	47	0.00	-0.03

LCHMN GRANDCANYON 1244G | BUF CRK CHF 824-1658
KRN REBA'S ROBIN

WHITESTONE CAYENNE 423R

FEDDES BLOCKANNA 807 | LMN IMPRESSIVE ROB1095B
FED'S BLOCKANA 692

WHITESTONE SIZABULL M131 | SITZ TRAVELER 8180
GREEN GARDEN SUSIE 1246 S1

WHITESTONE BLOCKANNA R227

BLOCKANA 0143 OF WSRA | LEACHMAN EBV 6703
FEDDES BLOCKANNA 807

PROJECTED MATING EPDS

CED	BW	WW	YW	Milk	TM	ME	HPG	CEM	Stay	Marb	YG	CW	REA	Fat
-4	2.5	65	97	14	46	4	9	6	5	0.18	0.06	31	0.00	-0.01

RED LAZY MC COWBOY CUT 26U

#1329010

CED	BW	WW	YW	Milk	TM	ME	HPG	CEM	Stay	Marb	YG	CW	REA	Fat
-1	1.9	69	95	18	52	-13	9	2	7	0.23	0.09	29	-0.01	0.00

RED LAZY MC SMASH 41N

SSS BOOMER 803B
RED LAURON YB ROSA 11G

RED LAZY MC STOUT 30S

RED LAZY MC SCYTHIA 78N | RED LAZY MC THIRTY X 22L
RED RRD SCYTHIA 16H

LAZY MC WORLDWIDE 5K

WHITESTONE WIDESPREAD MB
RED LAZY MC SCYTHIA 12A

RED LAZY MC STAR 185M

RED LAZY MC STAR 100J | RED GEIS POUND MAKER 22'96
RED LAZY MC DIONA 40G

PROJECTED MATING EPDS

CED	BW	WW	YW	Milk	TM	ME	HPG	CEM	Stay	Marb	YG	CW	REA	Fat
-2	1.1	60	85	14	44	-6	9	4	7	0.22	0.06	22	-0.01	0.00

"Pursuit of Perfection" Christmas Egg Sale

LSF REBELLA R5008 U8245

Registration: #1248586 Tattoo: U8245 LJRA Category: 1A 100% Birth Date: 1/27/08 BW: 77 205-Day Wt: 750

CED	BW	WW	YW	Milk	TM	ME	HPG	CEM	Stay	Marb	YG	CW	REA	Fat
3	-3.5	61	89	20	50	9	17	-3	8	0.86	0.07	17	0.29	0.05



Majestic Rebella Z115
HSCC Lightning McQueen 3X x LSF Rebella R5008 U845



LSF Rebella R5008 U8245

Majestic Meadows

BIEBER MAKE MIMI 7249

BJR MAKE MY DAY 981
BIEBER SIRENA 6708

FEDES BIG SKY R9

FEDES LAKINA 310

LCHMN GRANDCANYON 1244G
FEDES LAKINA 954

LSF COMBINATION A301M

LSF REBELLA 102-502 R5008

RSLND REBELLA 102-502

LCHMN TOP BRASS 1049H
WHF LASS 27G-29J
BFCK CHEROKEE CNYN 4912
KRN REBA'S ROBIN

A purchase at the NILE in the fall of 2009, Rebella has matured into a wonderful young donor. Big, dark foot, deep bodied, and the superlative udder quality we have come to expect from Big Sky daughters.

Her daughter by 2012 Show Bull of the Year, HSCC Lightning McQueen 3X, pictured below, recently sold to the Blomme Family of Iowa and has a very promising show career ahead of her. Rebella stamps them dark cherry red and we anxiously anticipate this mating to Lightning.

THREE EMBRYOS

Majestic Lightning 717 SGMR x
LSF Rebella R5008 U82450



MAJESTIC LIGHTNING 717 SGMR

#1155775

CED	BW	WW	YW	Milk	TM	ME	HPG	CEM	Stay	Marb	YG	CW	REA	Fat
-5	4.5	79	119	17	57	6	9	6	4	0.16	0.09	47	0.00	-0.03

LCHMN GRANDCANYON 1244G | BUF CRK CHF 824-1658
KRN REBA'S ROBIN

WHITESTONE CAYENNE 423R

FEDES BLOCKANNA 807

LMN IMPRESSIVE ROB1095B
FED'S BLOCKANNA 692

WHITESTONE SIZABULL M131

SITZ TRAVELER 8180
GREEN GARDEN SUSIE 1246 S1

WHITESTONE BLOCKANNA R227

BLOCKANNA 0143 OF WSRA

LEACHMAN EBV 6703
FEDES BLOCKANNA 807

PROJECTED MATING EPDS

CED	BW	WW	YW	Milk	TM	ME	HPG	CEM	Stay	Marb	YG	CW	REA	Fat
-1	0.5	70	104	18	53	8	13	2	6	0.51	0.08	32	0.14	0.01

Majestic Meadows

LARSON GWENDOLYN 945-259

Registration: #1313107 Tattoo: 945 DEL Category: 1A 100% Birth Date: 2/14/09 BW: 77 205-Day Wt: 610

CED	BW	WW	YW	Milk	TM	ME	HPG	CEM	Stay	Marb	YG	CW	REA	Fat
3	-1.2	66	103	20	53	5	15	7	12	0.52	-0.02	29	0.31	0.00



"Pursuit of Perfection" Christmas Egg Sale

MESSMER JOSHUA 019P

BECKTON JULIAN GG B571
MESSMER PANDORA M186

MESSMER PACKER S008

MESSMER MILLIE 124P

VGW TOP PICK 130
MESSMER MILLIE 9416

LCHMN NO EQUAL 1174D

LMAN NONE BETTER 9604
LMAN PRAIRIE Q 9308

LARSON GWENDOLYN 259-05

LARSON GWYNDOLYN 051

LCHMN HEVN'S SAKE 1002F
LARSON TAM 556-170

Gwendolyn was purchased with Ludvigson as our choice in the 2012 Larson sale. She has outstanding ultrasound data, over-the-top EPDs and the look that she could have the great one. Check out the projected progeny EPDs below on these matings – positive in every carcass trait.

No matter which one of these 15 numbers you focus on, these progeny can help your herd. We refer to her as good footed, pretty and could have a great one.

THREE EMBRYOS
Majestic Lightning 717 SGMR x
Larson Gwendolyn 945-259

10



THREE EMBRYOS
HSCC Lightning McQueen 3X x
Larson Gwendolyn 945-259

11



MAJESTIC LIGHTNING 717 SGMR #1155775

CED	BW	WW	YW	Milk	TM	ME	HPG	CEM	Stay	Marb	YG	CW	REA	Fat
-5	4.5	79	119	17	57	6	9	6	4	0.16	0.09	47	0.00	-0.03

LCHMN GRANDCANYON 1244G BUF CRK CHF 824-1658
KRN REBA'S ROBIN

WHITESTONE CAYENNE 423R

FEDDES BLOCKANNA 807 LMN IMPRESSIVE ROB1095B
FED'S BLOCKANA 692

WHITESTONE SIZABULL M131 SITZ TRAVELER 8180
GREEN GARDEN SUSIE 1246 S1

WHITESTONE BLOCKANNA R227

BLOCKANA 0143 OF WSRA LEACHMAN EBV 6703
FEDDES BLOCKANNA 807

PROJECTED MATING EPDS

CED	BW	WW	YW	Milk	TM	ME	HPG	CEM	Stay	Marb	YG	CW	REA	Fat
-1	1.6	73	111	18	55	6	12	6	8	0.34	0.03	38	0.15	-0.01

HSCC LIGHTNING MCQUEEN 3X #1351225

CED	BW	WW	YW	Milk	TM	ME	HPG	CEM	Stay	Marb	YG	CW	REA	Fat
-1	1.9	68	102	18	52	7	11	6	5	0.20	0.13	33	-0.24	-0.02

WHITESTONE CAYENNE 423R LCHMN GRANDCANYON 1244G
FEDDES BLOCKANNA 807

MAJESTIC LIGHTNING 717 SGMR

WHITESTONE BLOCKANNA R227 WHITESTONE SIZABULL M131
BLOCKANA 0143 OF WSRA

LCHMN SHARPSHOOTER 1369 LCHMN ON TARGET 1016E
LEACHMAN DINA C1001

LCC DINA K1140

HW DINA 2198 LMAN ROBIN HOOD 1174B
PRF DINA P236

PROJECTED MATING EPDS

CED	BW	WW	YW	Milk	TM	ME	HPG	CEM	Stay	Marb	YG	CW	REA	Fat
1	0.3	67	102	19	53	6	13	6	8	0.36	0.06	31	0.04	-0.01

"Pursuit of Perfection" Christmas Egg Sale

C Q S GEORGINA 0597

Registration: +15963012 Tattoo: 0597 Association: AAA Birth Date: 12/1/06 BW: 205-Day Wt.

CED	BW	WW	YW	CEM	M	CW	Ma	RE	F	\$W	\$F	\$G	\$B
+3	+3.4	+37	+69	+6	+27	+16	-.05	+.28	+.013	+21.60	+14.09	+7.28	+31.35



4005 - Full sister to C Q S Georgina 0597

Majestic Meadows

N BAR EMULATION EXT

EMULATION N BAR 5522
N BAR PRIMROSE 2424

LEACHMAN SAUGHATCHEE 3000C

LEACHMAN B C 7100

RITO 2100 G D A R
CANYON COLOSSAL QUEEN 0727

TC DIVIDEND 963

LEACHMAN PROMOPTER
T C ERICA EILEEN 6006

L L A GEORGINA 05

LYONS GEORGINA 2165

LEACHMAN INTERFACE
LYONS GEORGIA 8099

Lot 12 - These featured frozen embryos of the past Atlantic National Grand Champion Bull and Reserve ROV Bull of the Year, Gambles Safe Bet 4500, stem back to the ever popular Georgina family and a direct daughter of the ten-time All-American Sire of the Year and Pathfinder sire, Leachman Saughatchee 3000C, along with the featured LLA Georgina family. These frozen embryos are elite purebred embryos that offer unlimited genetic potential and tremendous earning power.

Lot 13 - These featured frozen embryos by the one-time, top-selling bull at Schaff Angus Valley, SAV Heavy Hitter 6347, stem back to the ever-popular Georgina family and a direct daughter of the ten-time All-American Sire of the Year and Pathfinder sire, Leachman Saughatchee 3000C, along with the featured LLA Georgina family. These frozen embryos are elite purebred embryos that offer unlimited genetic potential and tremendous earning power.

THREE EMBRYOS

Gambles Safe Bet x
C Q S Georgina 0597



GAMBLES SAFE BET

AAA +16738104

CED	BW	WW	YW	CEM	M	CW	Ma	RE	F	\$W	\$F	\$G	\$B
+11	+7	+43	+76	+13	+25	+36	+.30	+.28	-.059	+30.97	+18.73	+26.87	+68.07

TC STOCKMAN 365

TC STOCKMAN
TC PRIDE 0014

NORTHERN IMPROVEMENT 4480 GF

BLACKCAP OF R R 5367

R R VANTAGE 3352
BLACKCAP OF R R 0238

FAMOUS 7001

S A F FAME
T K KAREN 1369

GAMBLES LADY 961

CHAMPION HILL LADY 703

LEACHMAN SAUGHATCHEE 3000C
CHAMPION HILL LADY STON 731

PROJECTED MATING EPDS

CED	BW	WW	YW	CEM	M	CW	Ma	RE	F	\$W	\$F	\$G	\$B
+7	+2.1	+40	+73	+10	+26	+26	+.13	+.28	-.023	+26.29	+32.82	+17.08	+49.71

THREE EMBRYOS

S A V Heavy Hitter 6347 x
C Q S Georgina 0597



S A V HEAVY HITTER 6347

AAA 15369298

CED	BW	WW	YW	CEM	M	CW	Ma	RE	F	\$W	\$F	\$G	\$B
+2	+4.3	+50	+90	+8	+26	+39	+.41	+.24	+.045	+21.42	+30.45	+17.01	+60.56

SITZ TRAVELER 8180

G D A R TRAVELER 71
SITZ EVERELDA ENTENSE 1137

S A V 8180 TRAVELER 004

BOYD FOREVER LADY 8003

A A R NEW TREND
S V F FOREVER LADY 57D

S A F 598 BANDO 5175

BON VIEW BANDO 598
S A F ROYAL LASS 1002

S A V BESSIE HEIRESS 1184

S A V BESSIE HEIRESS 8067

N BAR EMULATION EXT
S A V BESSIE HEIRESS 6091

PROJECTED MATING EPDS

CED	BW	WW	YW	CEM	M	CW	Ma	RE	F	\$W	\$F	\$G	\$B
+3	+3.9	+44	+80	+7	+27	+28	+.18	+.26	+.029	+21.51	+22.27	+12.15	+49.96

RAVISHING DOLL 669

Registration: #1323255 Tattoo: 669 TBP Category: 1A 100% Birth Date: 3/8/09 BW: 72 205-Day Wt.: 663

CED	BW	WW	YW	Milk	TM	ME	HPG	CEM	Stay	Marb	YG	CW	REA	Fat
-3	0.6	74	111	16	52	10	11	2	10	0.28	0.13	37	0.03	0.01



LCC CHEYENNE B221L

BFCK CHEROKEE CNYN 4912
HXC 701G

GMRA LARAMIE 5110

GMRA LAKOTA 341

BASIN HOBO 79E
GMRA LAKOTA 947

VGW ACE 613

BJR HI HO 916
VGW DORA-SHIP 9348

VGW 613 DOLL 0011

VGW RAM-DOLL 9650

VDAR RAMBO 425
VGW KING DOLL 9015

Every year there is one that catches my eye at birth. Buttercup was the 2009 National Champion Female. Then there was Peek A Boo, 2011 NAILE Grand Champion female, and then there was Doll ... Unfortunately she died from complications due to a Mycoplasma infection. Under the care of Dr. Sweeney, Dr. Fectra and Dr. Richardson, her sweet disposition, stamina and winning spirit made her a special patient at the New Bolton Center. I saw glimpses of Barbaro in this one! Majestic Doll Z43 was our first daughter of Ravishing Doll 669, who descends from the 2001 National Champion Female for the Tiedemans and Smith families. Sired by the great Triple Crown Winner, Majestic Lightning 717, these IVF-produced heifer eggs are so exciting I can't stand it. If they were wrapped and under the tree I'd open them Christmas Eve ... Just saying.

THREE SEXED HEIFER EMBRYOS

Majestic Lightning 717 SGMR x
Ravishing Doll 669



THREE SEXED HEIFER EMBRYOS

3 Aces Sideways x
Ravishing Doll 669



MAJESTIC LIGHTNING 717 SGMR

#1155775

CED	BW	WW	YW	Milk	TM	ME	HPG	CEM	Stay	Marb	YG	CW	REA	Fat
-5	4.5	79	119	17	57	6	9	6	4	0.16	0.09	47	0.00	-0.03

LCHMN GRANDCANYON 1244G | BUF CRK CHF 824-1658
KRN REBA'S ROBIN

WHITESTONE CAYENNE 423R

FEDDES BLOCKANNA 807 | LMN IMPRESSIVE ROB1095B
FED'S BLOCKANNA 692

WHITESTONE SIZABULL M131 | SITZ TRAVELER 8180
GREEN GARDEN SUSIE 1246 S1

WHITESTONE BLOCKANNA R227

BLOCKANNA 0143 OF WSRA | LEACHMAN EBV 6703
FEDDES BLOCKANNA 807

PROJECTED MATING EPDS

CED	BW	WW	YW	Milk	TM	ME	HPG	CEM	Stay	Marb	YG	CW	REA	Fat
-4	2.5	76	115	16	55	8	10	4	7	0.22	0.11	42	0.01	-0.01

3 ACES SIDWAYS

#1324131

CED	BW	WW	YW	Milk	TM	ME	HPG	CEM	Stay	Marb	YG	CW	REA	Fat
5	-2.7	47	72	18	42	7	10	10	6	0.29	0.11	9	-0.25	0.01

BUF CRK HOBO 1413

BJR HOBO 800
BJR LANA 3140-302

BUF CRK HOBO 1961

BUF CR CARRIE VC1174 | BUF CRK TOMAHAWK 529
BFLO CRK CARIE VC473

J BAR 7 GRAND CANYON 2222 | LCHMN GRANDCANYON 1244G
LCHMN DARBY H1046

TROWBRIDGE LANA 707

LANA GAL N78 | CITATION 138
JMDF MISS LANA

PROJECTED MATING EPDS

CED	BW	WW	YW	Milk	TM	ME	HPG	CEM	Stay	Marb	YG	CW	REA	Fat
1	-1.1	60	92	17	47	9	10	6	8	0.29	0.12	23	-0.11	0.01