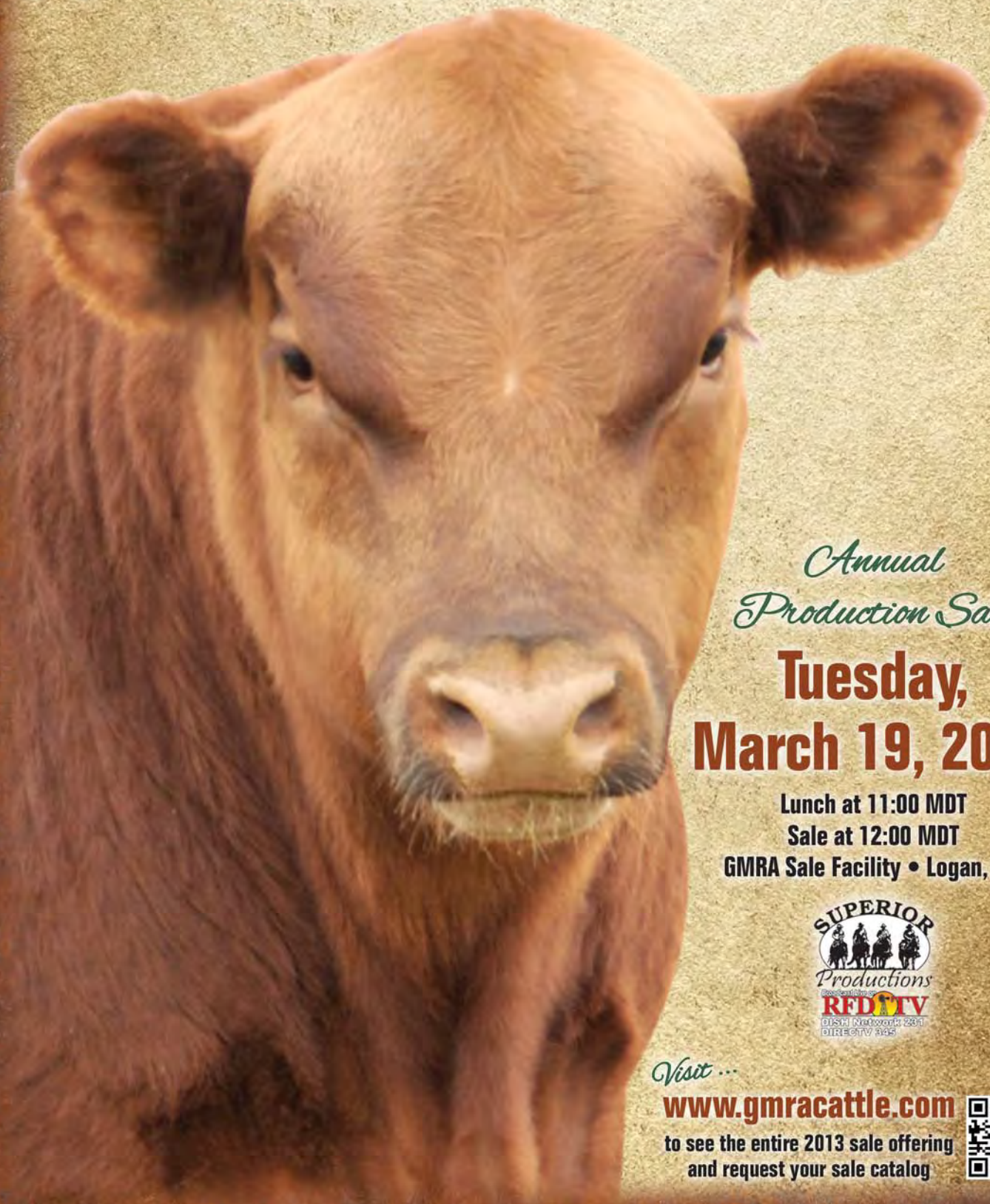




GREEN MOUNTAIN RED ANGUS



*Annual
Production Sale*

**Tuesday,
March 19, 2013**

Lunch at 11:00 MDT

Sale at 12:00 MDT

GMRA Sale Facility • Logan, MT



Visit ...

www.gmracattle.com

to see the entire 2013 sale offering
and request your sale catalog



Welcome



GREEN MOUNTAIN RED ANGUS

Welcome to our 14th annual bull sale! This past year was an exciting one for Green Mountain Red Angus. Our 2012 bull sale was incredible and we'd like to thank all of our loyal customers, as well as our new customers, that have helped to make our sales such a success year after year. We also had our strongest female sale to date in December. We are honored to see people putting such value into our genetics that we have worked so hard to build, and to see our bulls and females going into some of the top purebred and commercial herds across the nation.

This past December, we decided to join forces with Superior Livestock. The only change to this year's sale will be the time. In order for the sale to be featured on RFD-TV we had to move the sale to 12:00 pm. Also, we have catalogued the bulls in sale order. We will still be running the bulls through the ring with a video feed running online as well as RFD-TV. Superior will be handling all conference calls and internet bidding. We are looking forward to this new venture with Superior Livestock.

As we mentioned in last year's catalog, the Red Angus Association of America (RAAA) and the American Simmental Association (ASA) have joined together to create multi-breed EPDS. This past year those EPDs moved to a common base. This has changed the RAAA EPD scale, but percentile ranking have stayed consistent. Bulls that in the past were in the top 10% for any particular EPD will still be in the top 10% of yearling Red Angus bulls on this new multi-breed EPD base. All percentile rankings for sale lots



JD and Jeremy Dunbar

This past August, Jeremy Dunbar, our long-time herdsman and friend, married his best friend, JD Thomas. We are so excited to have JD be an official member of the Green Mountain Red Angus crew! Congratulations, Jeremy and JD!



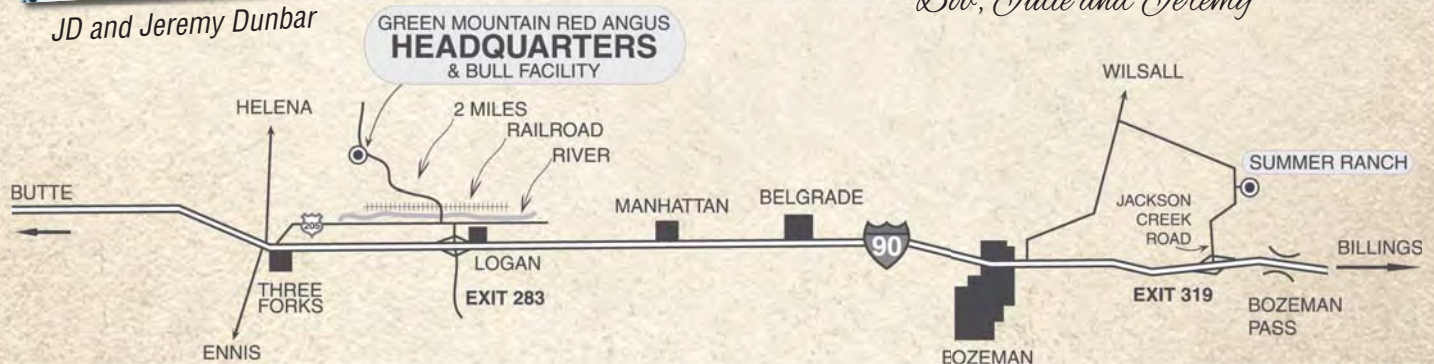
Jim, Julie, Bob and Tom Morton

are listed under the corresponding EPD to help assimilate the actual number adjustments.

This year the first 10 lots in the sale have undergone the Pfizer HD 50K DNA test. This test analyzes over 54,000 markers spread across the entire bovine genome for an incredibly comprehensive analysis. These genetically enhanced EPDS will increase the accuracy of a yearling bull's EPDs to that of a more proven bull with progeny already on the ground and data reported. EPDs are the best information in the industry. When DNA is applied to the calculation of EPDs for each trait, they become even more accurate.

We are proud to offer you this outstanding group of yearling bulls. They showcase 25+ years of hand-picked genetics, culminating in superior performance, phenotype and breed leading EPDs. We hope you enjoy viewing this year's offering and look forward to seeing you at the sale. If you can't make the sale don't hesitate to stop by to view the bulls before-hand or call for more information. You can always bid online or on the phone with Superior. You can go to our website at www.gmracattle.com to view videos of all the lots in the sale. We look forward to seeing you on March 19th!

Bob, Julie and Jeremy



Get off 1-90 at the Logan Exit, #283. Go north and take a left on the frontage road. Proceed west toward Three Forks, about 1/2 mile. Take a right onto Logan Trident Road, heading north. The road immediately crosses the Gallatin River and the railroad tracks, as shown on the map. Green Mountain Red Angus is 2 miles from the railroad tracks. Watch for the large Green Mountain Red Angus sign.

Profit \$implified...

Multi-breed EPD base simplifies selection

Since 2010, the Red Angus Association of America (RAAA) and the American Simmental Association (ASA) have combined their growth and carcass datasets to provide commercial producers with the most reliable EPDs in the beef industry. In the summer of 2012, RAAA and ASA adopted a common base for Growth (BW, WW, YW, Milk) and Carcass (MARB, YG, CW, REA, FAT) EPDs so that all animals registered in either RAAA or ASA can be directly compared – regardless of breed makeup.

What is BASE?

For decades, each breed association has presented EPDs in their own language (the base). Base is no more than a reference point for any trait against which subsequent generations of animals are compared. The establishment of a base ensures that the population future generations are compared to remains stable, which allows the breed's genetic trend to be accurately identified.

Raw Genetic Value + Base Adjustment = Published EPD

Study Percentile Ranks...

Percentile ranks are an easy reference and therefore a powerful tool to assist you in becoming accustomed to the new multi-breed base. Red Angus EPD percentile ranks are presented along with all active animals' EPDs, and reference how animals compare within their respective Red Angus subpopulations, i.e. Sire Summary Sires, Active Dams, Non-Parent Bulls, etc. It's important to realize that although the multi-breed base allows for the direct comparison of Red Angus and Simmental EPDs, the percent ranks for Red Angus animals will continue to simply compare the genetics of Red Angus animals against other Red Angus. Thus, an animal that was in the top 10% for growth under the old Red Angus base will still be in the top 10% for growth in the new Red Angus multi-breed base.

Example:

In the past, you preferred to purchase bulls that had a -2.0 or lower BW EPD.

Since a -2.0 on the old RAAA base represented the top 20% for BW, you now need to use -2.7 as your critical selection threshold as that represents the top 20% for BW on the new multi-breed base.

Other Examples:

Previous Selection Threshold Old RAAA Base		New Selection Threshold New Multi-Breed Base	
EPD	% Rank	EPD	% Rank
36 WW EPD	40%	58 or higher WW EPD	40%
0.08 MARB EPD	50%	0.38 or higher MARB EPD	50%
0.24 REA EPD	20%	0.30 or higher REA EPD	20%

"Old" RAAA BASE	BW	WW	YW	Milk	MARB	YG	CW	REA	FAT
10%	-2.9	46	84	22	0.31	-0.15	52	0.32	-0.03
20%	-2.0	42	77	21	0.23	-0.11	47	0.24	-0.02
30%	-1.4	38	71	19	0.17	-0.08	43	0.18	-0.01
40%	-0.8	36	66	18	0.12	-0.05	40	0.13	-0.01
50%	-0.3	33	62	17	0.08	-0.03	37	0.09	0.00
60%	0.2	30	58	16	0.03	-0.01	34	0.04	0.01
70%	0.8	28	53	15	-0.02	0.02	31	-0.01	0.01
80%	1.4	24	47	13	-0.08	0.05	27	-0.07	0.02
90%	2.3	20	40	12	-0.16	0.09	22	-0.15	0.03

"NEW" Multi- Breed Base	BW	WW	YW	Milk	MARB	YG	CW	REA	FAT
10%	-3.6	68	105	24	0.61	-0.13	33	0.38	-0.03
20%	-2.7	64	98	23	0.53	-0.09	28	0.30	-0.02
30%	-2.1	60	92	21	0.47	-0.06	24	0.24	-0.01
40%	-1.5	58	87	20	0.42	-0.03	21	0.19	-0.01
50%	-1.0	55	83	19	0.38	-0.01	18	0.15	0.00
60%	-0.5	52	79	18	0.33	0.01	15	0.10	0.00
70%	0.1	50	74	17	0.28	0.04	12	0.05	0.01
80%	0.7	46	68	15	0.22	0.07	8	-0.01	0.02
90%	1.6	42	61	14	0.14	0.11	3	-0.09	0.03



HOW TO PARTICIPATE ON THE PHONE OR ONLINE

We have made preparations to bid and buy livestock through Superior Productions' "Call or Click-To-Bid" service for those unable to attend in person on sale day. **Please note that all of the lots in the sale will also be available for viewing online prior to sale day at www.superiorlivestock.com.**

HERE'S HOW IT WORKS

Turn in Bids Over the Phone. This is our traditional method of buying livestock and is the suggested process for anyone who does not have excellent, high-speed internet. To get started simply go online to www.superiorlivestock.com and click on the tab titled "Register for a Buyer Number." Select the registration form for Superior Productions and print the registration form, fill it out and fax it in to Superior Productions at (817) 378-3380 with a signature on it. You can also mail it in to the address provided on the form. Upon receipt of this information Superior will call you with a buyer's number and the bid line phone number that you will use on sale day to place bids over the phone.

Turn in Bids Over the Internet through Click-To-Bid. This is Superior's newest way to buy cattle! **PLEASE NOTE THAT HIGH SPEED INTERNET IS REQUIRED – THIS IS NOT FOR SATELLITE INTERNET OR DIAL-UP INTERNET.** Registration is free, but you must become a member of www.superiorclicktobid.com to sign up. Becoming a member is easy – just go to the homepage of www.superiorclicktobid.com and follow the outlined steps to get started. Input your information and select a username and password. You will receive an e-mail confirming you are a member. From that point forward you just have to sign in and select the sale you would like to register for and once approved by the ranch you will receive an e-mail confirming which sale you are now registered for.

Viewing the Auction. The sale will be broadcast via satellite on Dish Network channel 231 and DirecTV channel 345. Please note that there is a short delay if you are watching the auction on television so call in two lots ahead of the lot you are interested in bidding on. The sale will also be broadcast live on the internet at www.superiorclicktobid.com – just go to the home page and select the auction. Remember you can call in to bid whether you watch on the TV or on the internet, but you must be a member of www.superiorclicktobid.com to "click-to-bid." Your computer must have Flash Media Player installed to view the auction.

Bidders who are successful in making purchases via satellite or internet will be contacted by the ranch after the sale to settle payment and make shipping arrangements.



ASSOCIATION REPRESENTATIVES:

Greg Comstock, CEO..... Red Angus Assn. of America
 Tim Whitley, President..... Red Angus Assn. of America
 Tom Woodward, Vice President..... Red Angus Assn. of America
 Bruce Ketchum, MTRAA President..... Montana Red Angus Assn.
 Donna Laubach, MTRAA Vice President .. Montana Red Angus Assn.
 Cathy Redland, MTRAA Sec/Treas..... Montana Red Angus Assn.

AMERICAN LIVESTOCK INSURANCE:

Jerry Gliko..... 406-860-3181
 Bill Pelton..... 406-671-5100

ACCOMMODATIONS:

Broken Spur, Three Forks..... 1-888-354-3048
 Fort Three Forks Motel, Three Forks..... 1-800-477-5690
 Super 8, Belgrade..... 1-800-800-8000
 Holiday Inn Express, Belgrade..... 1-800-542-6791
 Sacajawea Hotel, Three Forks..... 406-285-6515
 Mention you are attending the Green Mountain Red Angus Bull
 Sale for a discount at the Sacajawea.

406-285-6773 • 1-866-GMRA-COW

Bob's Cell..... 406-580-0348
Jeremy's Cell..... 406-580-6859

SALE REPRESENTATIVES:

Trent Stewart, Auctioneer..... 541-325-3662
 John Andras
 Superior Livestock..... 406-670-5074
 Clint Berry, Director of Commercial Marketing
 Red Angus Association of America..... 417-844-1009
 Myron Edelman, Director of Added Value Programs
 Red Angus Association of America..... 307-351-6032
 John Goggins
 Western Ag Reporter..... 406-698-4159
 Jerry Gliko
 Western Livestock Journal..... 406-860-3181
 Jeff Thomas
 Prairie Star..... 406-581-8859

Catalog and Advertising by Cow Camp Promotions
 Tracey Koester • www.cowcampromotions.com

View video of sale lots at www.gmracattle.com

TERMS AND CONDITIONS

1. The terms of the sale are cash unless prior arrangements have been made.
2. Each animal will be sold to the highest bidder. The person in charge will settle any disputes as to bids, and his decision on such matters shall be final.
3. Any announcement from the seller on sale day will take precedence over printed material.
4. Health certificates will be furnished for shipment anywhere in the United States.
5. Each animal becomes buyer's risk as soon as sold; but it shall be the obligation of the seller to see that animals are fed and cared for, free of charge to purchaser, until loaded for shipment or until the expiration of April 1st of the current year.
6. Retained Interest: Green Mountain Red Angus is retaining one-third revenue share interest in all bulls in the sale. We reserve the right to participate in the collection and marketing of semen. Buyers receive two-thirds interest, full possession and full salvage value. If seller wishes to collect semen for in-herd use only it will be at seller's expense and the buyer's convenience. If the buyer wishes to share in the collection costs and keep his share for in-herd use that is their choice.
7. All claims for adjustment or refund must be made in writing within six months of the sale date. In the event an animal is claimed to be a non-breeder, the Seller shall be entitled to six months' trial following the return of the animal in which to prove the animal is a breeder. If at the end of six months the Seller is unable to prove the animal is a breeder, restitution shall be made, in compliance with the terms set forth by the Red Angus Association of America. Any expenses incurred for transporting the animal shall be the buyer's responsibility.
8. Everyone attending this sale does so at their own risk. Owners, clerks or other helpers do not assume responsibility, legal or otherwise, for damages of any kind.
9. Free delivery within 500 miles of Logan, Montana, by major route. \$50.00 will be deducted from each bull that the buyer takes home from the sale. All other deliveries by arrangement.
10. A certificate of registry and transfer will be furnished for each animal sold as a registered animal, after settlement has been made.
11. The above terms and conditions shall constitute a contract between the buyer and seller of each animal sold.

**These cattle do sell in accordance with the Sale Terms and Conditions
 set forth by the Red Angus Association of America.**



GMRA Laramie 5110

outstanding Marbling EPD. Laramie calves are very long and visiting customers always pick them out because of their extra length. They also show thick muscling with excellent fleshing ability. A quick glance at his pedigree will show the tremendous Lakota cow family, which is one of the foundations of the Green Mountain Red Angus herd.

A **GMRA LARAMIE 5110**

Birth Date: 1/9/05 Reg. #: 1039249 Category: 100% 1A

BFCK CHEROKEE CNYN 4912
LCC CHEYENNE B221L
HXC 701G

BASIN HOBO 79E
GMRA LAKOTA 341
GMRA LAKOTA 947

BUF CRK CHF 824-1658
MRM 1431 8611 9109
LMAN ROBIN HOOD 1174B
HXC 555E
BUF CRK HOBO 2595
DOUBLE FORK 079Z
LARSON RED LIGHTNING
GMRA LAKOTA ET 423

BW	71
WW/Ratio	771 109
YW/Ratio	1265 105
IMF/REA	4.30 12.61
Scrotal	

CED	BW	WW	YW	Milk	TM	ME	HPG	CEM	Stay	Marb	YG	CW	REA	Fat		
-3	-1.3	71	112	22	57	19	12	4	12	0.51	0.22	34	-0.12	0.03		
TOP BREED %		92%	46%	15%	12%	42%	13%	99%	27%	54%	30%	30%	97%	15%	86%	83%

Laramie was our high selling bull in our 2006 sale, selling to ABS. His calves are attracting lots of attention. The birth weights are moderate and the calves' growth has been explosive. In fact, the Laramie sons on test had the 2nd highest average weaning ratio in 2011 and were the 3rd highest in 2012. His 2012 bull calves on test averaged 102 on their IMF ultrasound, backing up his



GMRA Trilogy 0226

bulls on test had the 2nd highest average weaning and yearling ratios. They also turned in top carcass ultrasound data, with an average REA ratio of 104 and an average IMF ratio of 110. This puts the Trilogy sale lots as the #1 IMF group on test. Look for the Trilogy calves to be all around standouts, backed by breed leading numbers. Trilogy himself posts 12 EPD's in the top 1/3rd of the breed, with a Stayability EPD in the top 2%. His sons are slated to produce outstanding replacements.

B **GMRA TRILOGY 0226**

Birth Date: 1/14/10 Reg. #: 1367533 Category: 100% 1A

MESSMER JOSHUA 019P
MESSMER PACKER S008
MESSMER MILLIE 124P

GLACIER CHATEAU 744
GMRA LAKOTA 625
GMRA LAKOTA 380

BECKTON JULIAN GG B571
MESSMER PANDORA M186
VGW TOP PICK 130
MESSMER MILLIE 9416
LMAN KING ROB 8621
GLACIER REBALA
BASIN HOBO 79E
GMRA LAKOTA 527

BW	74
WW/Ratio	646 103
YW/Ratio	1154 104
IMF/REA	3.45 13.55
Scrotal	

CED	BW	WW	YW	Milk	TM	ME	HPG	CEM	Stay	Marb	YG	CW	REA	Fat		
4	-2.5	63	99	20	52	-2	14	6	16	0.47	-0.04	25	0.45	0.01		
TOP BREED %		42%	23%	26%	22%	49%	30%	15%	6%	29%	2%	29%	33%	31%	8%	61%

Trilogy was Accelerated Genetics' pick from our 2011 sale. He is a maternal brother to GMRA Make It Easy 8226, who was also purchased by Accelerated Genetics. We used this moderate framed, muscular young sire heavily this past year. His calves were powerhouses from early on, showing excellent muscling and broad tops, and have carried that on through weaning and yearling.



GMRA Mountain 9287

replacements. He is out of an impressive female himself – his dam has an MPPA of 106.3 on 8 calves, and she comes from a dam with a 102.7 MPPA. The Mountain sons on test turned in the 3rd highest average yearling ratio. They are very attractive with a smooth muscle pattern and have excellent depth of rib.

C **GMRA MOUNTAIN 9287**

Birth Date: 2/6/09 Reg. #: 1322842 Category: 100% 1A

GMRA EBV 935
GMRA EBV 266
BJR ESTONIA 9S-1210

BASIN HOBO 79E
GMRA VENICE 359
GMRA VENICE 146

LEACHMAN EBV 3531
DEL PRIZE ANNA 560
ALALTA ACRES THOR 9S
BJR ESTONIA9102-9134
BUF CRK HOBO 2595
DOUBLE FORK 079Z
LCHMN HEVN'S SAKE 1002F
GMRA VENICE 015

BW	84
WW/Ratio	776 114
YW/Ratio	1250 104
IMF/REA	3.61 11.85
Scrotal	

CED	BW	WW	YW	Milk	TM	ME	HPG	CEM	Stay	Marb	YG	CW	REA	Fat		
5	0.0	59	93	32	62	5	7	1	11	0.46	0.08	25	0.07	0.01		
TOP BREED %		34%	67%	38%	32%	1%	2%	58%	91%	82%	32%	31%	80%	29%	59%	61%

Mountain was one of our top bulls in our 2010 sale. He is a son of the fantastic female producer, GMRA EBV 266. The 266 daughters in production here at GMRA are some of the most consistent performers in the herd. They are highly maternal and raise calves with excellent depth and muscling. We expect Mountain to step into his sire's footsteps and produce his own outstanding



LJC Mission Statement P27

D

LJC MISSION STATEMENT P27

Birth Date: 2/23/04 Reg. # 960383 Category: 100% 1A

BECKTON LANCER T A664
LJC LANCER 806
LJC HB LIZZIE 606

HOLDEN HI HO 753
LJC HANNAH 106
LJC KJ JAMIE 516

BECKTON LANCER 9380
BECKTON COCA 9119 TJ
LCC HEAVEN OR BUST1000B
LJC HEAVENLY QUEEN BEE
HOLDEN HI HO 574
BIEBER MIMI 4151
LMAN KING JAMES 8665
SALL BAMBI 939



BW	89	
WW/Ratio	769	114
YW/Ratio	1267	119
IMF/REA	5.26	12.38
Scrotal		

CED	BW	WW	YW	Milk	TM	ME	HPG	CEM	Stay	Marb	YG	CW	REA	Fat
0	-1.0	69	122	18	53	12	17	-3	13	0.56	-0.24	42	0.93	-0.03
TOP BREED %														
78%	51%	17%	6%	61%	29%	92%	2%	93%	18%	22%	2%	7%	1%	6%

Mission Statement is truly a "no holes" sire. It's not every day you can find a sire that is at the breed average for birth weight, yet gives you the power of a weaning EPD in the top 17% and a yearling EPD in the top 6%. This high growth bull also provides you with outstanding carcass potential. His REA EPD is in the top 1% of the breed and YG EPD is in the top 2%. The Mission Statement calves offer excellent eye appeal and conformation. The daughters in production are doing an excellent job, with MPPAs as high as 108.3.



Messmer Packer S008

E

MESSMER PACKER S008

Birth Date: 2/12/06 Reg. # 1109534 Category: 100% 1A

BECKTON JULIAN GG B571
MESSMER JOSHUA 019P
MESSMER PANDORA M186

VGW TOP PICK 130
MESSMER MILLIE 124P
MESSMER MILLIE 9416

BKT JULIAN 7526 G
BKT MARTA 9A13 JL
LELAND MARIAS 271K
MESSMER PANDORA 9976
NEO-SHO MILLENIUM 065G
VGW KURUBA-RAM 9308
BUF CRK CHF 824-1658
NODAKLADY POUNDMAKER



BW	85	
WW/Ratio	762	114
YW/Ratio	1411	112
IMF/REA	3.72	16.19
Scrotal		

CED	BW	WW	YW	Milk	TM	ME	HPG	CEM	Stay	Marb	YG	CW	REA	Fat
3	-2.3	69	108	8	43	-9	17	1	15	0.53	-0.06	31	0.57	0.01
TOP BREED %														
56%	33%	18%	15%	94%	74%	6%	2%	78%	6%	26%	29%	22%	6%	56%

Packer is an exciting sire in our line up with extremely well balanced numbers. He is a high volume bull with lots of muscling that he passes on to his calves. The bulls on test are extremely thick with good depth and a nice broad top. Several Packer sons are standouts in the feedlot, posting outstanding growth and carcass ratios. Packer bulls on test turned in a 109 average REA ratio, making them the top sire group. They also turned in the highest average weaning ratio of 105.8 and the highest average yearling ratio of 103.7. Look for Packer sons to follow in their sire's footsteps, producing above average REA and top performing calves.



GMRA Make It Easy 8226

F

GMRA MAKE IT EASY 8226

Birth Date: 1/14/08 Reg. # 1250951 Category: 100% 1A

BJR MAKE MY DAY 981
BIEBER MAKE MIMI 7249
BIEBER SIRENA 6708

GLACIER CHATEAU 744
GMRA LAKOTA 625
GMRA LAKOTA 380

BJR EASY RIDER 781
BJR TOW KANA 117-710
BIEBER IMPACT 4399
BIEBER MIMI 4227
LMAN KING ROB 8621
GLACIER REBALA
BASIN HOBO 79E
GMRA LAKOTA 527



BW	81	
WW/Ratio	751	110
YW/Ratio	1171	104
IMF/REA	4.13	12.47
Scrotal		

CED	BW	WW	YW	Milk	TM	ME	HPG	CEM	Stay	Marb	YG	CW	REA	Fat
4	-0.6	77	116	22	61	4	9	6	14	0.52	0.01	37	0.26	-0.01
TOP BREED %														
48%	58%	7%	8%	40%	7%	55%	62%	34%	14%	28%	52%	10%	30%	23%

Make It Easy boasts a pedigree stacked with sires that excel in producing superior females. That is a great combination with the data the Make It Easy calves are turning in. His sons posted the lowest average birth weight of all bulls on test and went on to have an average weaning ratio of over 100. He has had a total of 90 calves reported to the RAAA at weaning with an average ratio of 102 and 76 at yearling with an average ratio of 101. This is backed up by cutting edge EPDs. His WW, YW, TM and CW are all in the top 10% of the breed or higher, along with a Stay in the top 14%.



HXC Conquest 4405P

with excellent eye appeal. The Conquest daughters in production are making outstanding mothers, with broad topped and deep with tons of muscle and had the 2nd highest marbling scores of any sire group.

G **HXC CONQUEST 4405P**

Birth Date: 1/25/04 Reg. # 975924 Category: 100% 1A

BKT JULIAN 7526 G	BECKTON JULIAN 6592
BECKTON JULIAN GG B571	BKT BELGA 6746 GS
BKT MARTA 9A13 JL	BKT JULIAN 7526 G
	BKT MARTA 6498 XM
BFCK CHEROKEE CNYN 4912	BUF CRK CHF 824-1658
HXC ELLIE MAY MA638	MRM 1431 8611 9109
HXC 529E	LMAN KING ROB 8621
	HXC 329C

BW	69
WW/Ratio	664 107
YW/Ratio	1285 111
IMF/REA	3.83 15.79
Scrotal	

CED	BW	WW	YW	Milk	TM	ME	HPG	CEM	Stay	Marb	YG	CW	REA	Fat
16	-6.3	57	93	17	46	6	6	8	14	0.60	-0.02	16	0.31	0.02
TOP BREED %														
3%	5%	48%	35%	67%	61%	66%	92%	19%	11%	17%	42%	57%	25%	73%

Conquest was our top AI sire for heifers for the last three years and we have had great results. His calves are moderate birth and easy calving. In fact, Conquest had the lowest average birth weight of any sire we used in 2011 and 2012. Conquest has an incredible birth to growth spread, and compliments that with outstanding carcass numbers. Look for his progeny to be moderate framed with an average MPPA of 102.8. They have great udders and are easy fleshing. The bulls on test are



GMRA Secret Mission 8258

H **GMRA SECRET MISSION 8258**

Birth Date: 1/25/08 Reg. # 1250870 Category: 100% 1A

LJC LANCER 806	BECKTON LANCER T A664
LJC MISSION STATEMENT P27	LJC HB LIZZIE 606
LJC HANNAH 106	HOLDEN HI HO 753
	LJC KJ JAMIE 516
BASIN HOBBO 79E	BUF CRK HOBBO 2595
GMRA LAKOTA 341	DOUBLE FORK 079Z
GMRA LAKOTA 947	LARSON RED LIGHTNING
	GMRA LAKOTA ET 423

BW	79
WW/Ratio	801 116
YW/Ratio	1269 112
IMF/REA	4.43 13.56
Scrotal	

CED	BW	WW	YW	Milk	TM	ME	HPG	CEM	Stay	Marb	YG	CW	REA	Fat
0	-1.2	67	111	16	50	14	13	3	14	0.37	0.03	34	0.23	0.00
TOP BREED %														
78%	48%	21%	12%	72%	42%	95%	12%	63%	11%	54%	59%	16%	35%	41%

Secret Mission was the high selling bull at our 2009 sale, selling to Laubach and Redland Red Angus. He is the type of bull that showcases all the strengths of the Red Angus breed, from conformation to breed leading EPDs. Over half of his EPDs are in the top half of the breed and 1/3rd of these are in the top 21% or higher. He is a maternal brother to GMRA Laramie and boasts that impressive maternal background. His sons are powerful and thick, with outstanding muscling and a good rear quarter.



C-T Glacier Berry 1021

J **C-T GLACIER BERRY 1021**

Birth Date: 1/26/10 Reg. # 1365682 Category: 100% 1A

RED COMPASS MULBERRY 449M	RED HR RAMBO ET 91K
RED FINE LINE MULBERRY 26P	RED BRYLOR MISS ROC 20H
RED DUS FAYETTE 8G	SILVEIRAS REDFORD
	RED MC DOUGALL FAYETTE 59A
LCC MAJOR LEAGUE A502M	BFCK CHEROKEE CNYN 4912
C-T BLOKANA 0543	KRN REBA'S ROBIN
CTDB BLOKANA 810	GLACIER DIVIDE 310
	FED'S BLOKANA 4231

BW	79
WW/Ratio	784 112
YW/Ratio	1263 110
IMF/REA	4.58 13.77
Scrotal	

CED	BW	WW	YW	Milk	TM	ME	HPG	CEM	Stay	Marb	YG	CW	REA	Fat
-3	0.5	65	102	25	57	2	9	4	9	0.60	0.20	31	0.14	0.06
TOP BREED %														
96%	76%	21%	18%	17%	7%	37%	72%	52%	65%	14%	98%	16%	44%	98%

VGW SCOUT 040

J

Birth Date: 2/28/10 Reg. # 1374288 Category: 100% 1A



BECKTON WARRIOR CL M686
BECKTON WARRIOR R667 CL
BECKTON CHRISTY M855 CH

BECKTON WARRIOR C C355
BECKTON CHRISTY J223 LN
BECKTON CHAMP R3 H338
BECKTON CHRISTY G392 LN

LCC IMF B054M
VGW IMF-CHRSS 0504
VGW 40- CHRSS 0337

GLACIER MARIAS 548
LCC LICORICE K1280
MCM DAYTIME 40-0
VGW M-CHRSS 0126

BW	79	
WW/Ratio	693	103
YW/Ratio	1239	109
IMF/REA	3.15	12.35
Scrotal	35.6	

3C CHEROKEE SQUALL 04W

K

Birth Date: 2/4/09 Reg. # 1317789 Category: 100% 1A



RED BRYLOR PASQUALE 213P
RED BRYLOR SQUALL 230S
RED CYT FANNY 15P

VGW RAMBLER 1000
RED XXX LAKME 70M
RED BRYLOR STALLION 46M
RED PRIME TIME'S FANNY 5'00

BFCK CHEROKEE CNYN 4912
GENCON CHEROKEE MAID
BLUE RIDGE KIMA 930

BUF CRK CHF 824-1658
MRM 1431 8611 9109
GLACIER LOGAN 210
BLUE RIDGE KIMA

BW	83	
WW/Ratio	690	100
YW/Ratio	1182	100
IMF/REA	3.34	15.10
Scrotal	40.1	

CED	BW	WW	YW	Milk	TM	ME	HPG	CEM	Stay	Marb	YG	CW	REA	Fat	
4	-1.3	61	96	20	51	6	15	3	12	0.30	0.08	25	0.21	0.03	
TOP BREED %	42%	41%	33%	26%	49%	35%	72%	4%	64%	22%	68%	80%	30%	32%	86%

CED	BW	WW	YW	Milk	TM	ME	HPG	CEM	Stay	Marb	YG	CW	REA	Fat	
16	-7.4	38	57	23	42	-6	9	5	11	0.27	-0.15	-7	0.20	-0.01	
TOP BREED %	3%	3%	89%	87%	33%	76%	11%	60%	43%	36%	74%	9%	93%	39%	23%



DIAMONDS IN THE BIG SKY



2013 RED ANGUS
NATIONAL CONVENTION
LEWISTOWN, MONTANA

2013 National RAAA Convention
"Diamonds in the Big Sky"
September 11-14 • Lewistown, MT

Schedule of Events

Wednesday, September 11

- Cattleman's Symposium
- Heifer Pen Futurity
- Women's Symposium

Thursday, Septemeber 12

- 60th Annual Convention Convenes
- 2:30 pm - Charlie Russell Chew Choo Campfire gathering

Friday, September 13

- Convention Continues
- 7 pm - RAAA Awards Banquet

Saturday, Sept 14

- CMR Wildlife Refuge Tour
- What the Hay Tour, Fishing
- Golf Tournament

For more info and updates,
please visit us at
www.mtredangus.com



Lot 1 – GMRA Alliance 2216

Alliance has been a standout since early spring and catches the eye of anyone who walks through the bulls. He carries great muscling with a great rear quarter and depth of rib. His dam posts an impressive MPPA of 108.5 on 6 calves. She has an average weaning ratio of 111 and all of her calves have gone on to be replacements or been in the bull sale. Alliance has been great at converting feed to pounds, with the highest weaning ratio in the offering, and has kept on going while on test. He has the 3rd highest yearling ratio and has the 4th highest ADG at mid-test. His numbers place him at the top of the breed where he is tied for the highest WW EPD in the offering and is tied for the #7

YW EPD. He turned in a great REA scan, with a 110 ratio, backing up the 3rd best REA EPD in the offering. He is also tied for the #2 CW EPD. Alliance is an impressive package from one end to the other.



GMRA ALLIANCE 2216

Birth Date: 1/12/12 Reg. #: 1525332 Category: 100% 1A



1
MESSMER JOSHUA 019P
MESSMER PACKER S008
MESSMER MILLIE 124P

BECKTON JULIAN GG B571
MESSMER PANDORA M186
VGW TOP PICK 130
MESSMER MILLIE 9416

BW	91
WW/Ratio	778 120
YW/Ratio	1303 112
IMF/REA	3.25 12.91
Scrotal	40.0

CED	BW	WW	YW	Milk	TM	ME	HPG	CEM	Stay	Marb	YG	CW	REA	Fat
-2	2.4	75	110	15	52	4	13	4	13	0.43	0.03	38	0.64	0.03
TOP BREED %														
94%	95%	3%	6%	87%	22%	59%	6%	51%	22%	39%	60%	5%	1%	89%

HD 50K

GLACIER CHATEAU 744
GMRA LARKOBA 517
GMRA LARKOBA 221

LMAN KING ROB 8621
GLACIER REBALA
GMRA VERMILLION 796
GMRA LARKOBA 649



Lot 2 – GMRA Enterprise 2227

Enterprise is the most complete heifer bull you will find this spring. He came into the world at 57 pounds and never looked back. He started growing the minute he hit the ground and has turned in well above average weaning and yearling ratios. When you start crunching numbers you find the lowest birth weight in the offering, tied for the #4 BW EPD, which is in the top 10% of the breed. He follows this up with an outstanding set of numbers that put 11 of his EPDs in the top 35% of the breed or higher. If you look at these strictly within the GMRA offering you find he has the #2 REA and IMF EPDs, the 4th highest CED, the #5 ME, and he's tied for the 4th highest STAY. I hope I'm not boring you with statistics, but the more you look at the importance of this bull's achievements, the more amazing he is! All of this is backed up by the great Ophelia cow family which has produced several outstanding progeny, including GMRA Cody 7228, who was purchased by Accelerated Genetics. All of this power is wrapped up in a phenotypically correct package with tons of eye appeal. He is nice and smooth and his head and shoulders are built for calving ease, yet he carries excellent muscling, rear quarter and depth of rib. Don't let Enterprise go home with someone else!

GMRA ENTERPRISE 2227

Birth Date: 1/16/12 Reg. #: 1525273 Category: 100% 1A



2
MESSMER JOSHUA 019P
MESSMER PACKER S008
MESSMER MILLIE 124P

BECKTON JULIAN GG B571
MESSMER PANDORA M186
VGW TOP PICK 130
MESSMER MILLIE 9416

BW	57
WW/Ratio	656 108
YW/Ratio	1194 105
IMF/REA	3.90 12.05
Scrotal	39.0

CED	BW	WW	YW	Milk	TM	ME	HPG	CEM	Stay	Marb	YG	CW	REA	Fat
10	-3.7	65	98	18	50	-1	12	4	17	0.65	0.15	22	0.68	0.11
TOP BREED %														
7%	10%	17%	20%	71%	33%	25%	13%	51%	2%	8%	95%	35%	1%	99%

HD 50K

HXC CONQUEST 4405P
GMRA OPHELIA 068
GMRA OPHELIA 840

BECKTON JULIAN GG B571
HXC ELLIE MAY MA638
GMRA LARAMIE 5110
GMRA OPHELIA 441



Augustus has turned in impressive personal performance. Not only are his growth ratios in the top of the offering, but he turned in a 121 REA ratio as well. This puts his REA as the 2nd highest of all the bulls on test. He backs up performance with a top notch set of numbers. 9 of his EPDs are in the top 27% of the breed or higher with WW, YW, HPG, CW and REA in the top 6% or higher. He is tied for the #1 WW EPD, has the #2 YW EPD, is tied for the #2 HPG EPD, and is tied for the 4th highest ME EPD in the offering. Take a look at the maternal pedigree and you find a powerhouse of a dam. She has an MPPA of 108.3, with an average weaning ratio of 110 and an average yearling ratio of 106 on 9 calves. All of her progeny have been retained in the herd or been in the bull sale. Let Augustus put his maternal power and personal performance to work for you.

Lot 3 - GMRA Augustus 2251

GMRA AUGUSTUS 2251

3

Birth Date: 1/24/12 Reg. # 1525297 Category: 100% 1A



MESSMER JOSHUA 019P
MESSMER PACKER S008
MESSMER MILLIE 124P

BECKTON JULIAN GG B571
MESSMER PANDORA M186
VGW TOP PICK 130
MESSMER MILLIE 9416

LMN PROOF POSITIVE1305E
GMRA AMY 209
GMRA AMY 032

RED CR PROOF 20A
LCHMN DUCHESS C1011
LCHMN RED SPREAD 1271F
GMRA AMY 547

BW	88
WW/Ratio	736 114
YW/Ratio	1227 106
IMF/REA	3.00 14.09
Scrotal	40.0

CED	BW	WW	YW	Milk	TM	ME	HPG	CEM	Stay	Marb	YG	CW	REA	Fat		
4	-0.5	75	113	14	51	-1	14	6	13	0.24	0.28	36	0.54	0.12		
TOP BREED %		43%	55%	3%	4%	91%	27%	25%	4%	23%	23%	83%	99%	6%	3%	99%



Stetson is an incredibly solid bull with outstanding personal performance backed up by one of the most impressive sets of EPDS you'll find anywhere this spring. He has the lowest BW EPD in the offering, which places that EPD in the top 2% of the breed. This is true calving ease from a bull that turned in the 4th highest weaning ratio in the offering and is tied for the 7th highest yearling ratio. He also posts the #1 YG and REA EPDs and is tied for the #2 HPG EPD of all bulls on test. 13 of his 15 EPDs are in the top 28% of the breed or higher and 8 of these are in the top 8% or higher. Stetson is out of an outstanding Hobo 79E dam with an MPPA of 106.3 on 8 calves. She has an average weaning ratio of 108 and an average yearling ratio of 103. All of her calves have been retained in the herd or gone on to sell in the bull sale. Stetson is a maternal brother to GMRA Mountain 9287, who is the sire of several lots in the sale. Stetson is a bull that will impact the breed. Make sure it's in your herd!

Lot 4 - GMRA Stetson 2240

GMRA STETSON 2240

4

Birth Date: 1/21/12 Reg. # 1525314 Category: 100% 1A



LJC LANCER 806
LJC MISSION STATEMENT P27
LJC HANNAH 106

BECKTON LANCER T A664
LJC HB LIZZIE 606
HOLDEN HI HO 753
LJC KJ JAMIE 516

BASIN HOB0 79E
GMRA VENICE 359
GMRA VENICE 146

BUF CRK HOB0 2595
DOUBLE FORK 079Z
LCHMN HEVN'S SAKE 1002F
GMRA VENICE 015

BW	77
WW/Ratio	751 116
YW/Ratio	1258 108
IMF/REA	3.30 11.85
Scrotal	38.5

CED	BW	WW	YW	Milk	TM	ME	HPG	CEM	Stay	Marb	YG	CW	REA	Fat		
6	-6.4	66	108	26	59	6	14	6	16	0.38	-0.20	25	0.79	-0.02		
TOP BREED %		27%	2%	15%	8%	7%	3%	72%	4%	23%	5%	51%	4%	28%	1%	12%





Lot 5 - GMRA Deuces 2222

Deuces has turned in some very impressive performance data. He started out with a nice moderate birth weight and has not stopped growing since he hit the ground. His weaning ratio is one of the highest in the offering and his yearling ratio is the 2nd highest. As of mid-test he is the highest ADG bull in the offering. He also turned in the best IMF scan with a 138 ratio, while still having a 107 REA ratio. His numbers back up all of the performance. 11 of his EPDs are in the top 36% of the breed or higher, with an impressive WW EPD in the top 8%. All of this is supported by a stacked maternal pedigree topped off by a dam with a 105.2 MPPA. Don't miss the opportunity to put this bull to work for you.



5

GMRA DEUCES 2222

Birth Date: 1/14/12 Reg. # 1525274 Category: 100% 1A



MESSMER PACKER S008
GMRA TRILOGY 0226
GMRA LAKOTA 625

MESSMER JOSHUA 019P
MESSMER MILLIE 124P
GLACIER CHATEAU 744
GMRA LAKOTA 380

BW	75
WW/Ratio	682 113
YW/Ratio	1281 113
IMF/REA	5.55 12.13
Scrotal	40.0

CED	BW	WW	YW	Milk	TM	ME	HPG	CEM	Stay	Marb	YG	CW	REA	Fat		
2	-1.7	70	100	24	59	5	12	5	17	0.52	0.31	27	0.22	0.11		
TOP BREED %		65%	35%	8%	16%	17%	3%	65%	13%	36%	2%	21%	99%	23%	33%	99%

GMRA LARAMIE 5110
GMRA PRIDSTOM 069
GMRA PRIDSTOM 727

LCC CHEYENNE B221L
GMRA LAKOTA 341
BROWN VACATION H7106
GMRA PRIDSTOM 816

HD 50K



Lot 6 - GMRA Ledoux 2228

Here is a Laramie son that does everything right. He is as complete as it gets, from personal performance to phenotype, to EPDs. He has posted outstanding growth ratios and he also turned in top end carcass ultrasound, with a 117 IMF ratio and a 110 REA ratio. This gives him the 8th highest IMF ratio and the 9th highest REA ratio in the offering. Overall, 10 of his EPDs are in the top 1/3rd of the breed or higher. LeDoux really shines with maternal power, posting a TM and a Stay EPD that are in the top 2%, and a Milk in the top 4%, which ties this EPD for the 3rd highest in the offering. Speaking of maternal power, when you look at this bull's pedigree you see a who's who of the GMRA herd. On the maternal side you have Lakota females with strong MPPAs, starting with his dam posting a 106.3, grand dam is 103.7, great grand dam is 107.4, and a great great grand dam with 108.5. On the top you have Laramie's maternal strength's that take you back to the great foundation female, GMRA Lakota 912. LeDoux is stacked with Lakota power!



6

GMRA LEDOUX 2228

Birth Date: 1/16/12 Reg. # 1525330 Category: 100% 1A



LCC CHEYENNE B221L
GMRA LARAMIE 5110
GMRA LAKOTA 341

BFCO CHEROKEE CNYN 4912
HXC 701G
BASIN HOBBO 79E
GMRA LAKOTA 947

BW	87
WW/Ratio	728 112
YW/Ratio	1217 105
IMF/REA	4.46 12.86
Scrotal	37.0

CED	BW	WW	YW	Milk	TM	ME	HPG	CEM	Stay	Marb	YG	CW	REA	Fat		
-1	-1.8	67	99	28	61	14	12	6	17	0.48	0.32	26	0.19	0.11		
TOP BREED %		89%	33%	13%	17%	4%	2%	99%	14%	23%	2%	28%	99%	24%	38%	99%

BROWN VACATION H7106
GMRA LAKOTA 509
GMRA LAKOTA 338

BECKTON JULIAN GG B571
LCHMN FLOWER C1161
BASIN HOBBO 79E
GMRA LAKOTA 713

HD 50K



Here is a strongly maternal Make It Easy x Minotauro combination. He combines top end growth with some very strong maternal numbers. He is in the top 1% of the breed for Milk and TM EPD and also has the #1 Milk and TM EPDs in the offering. Overall, 9 of his EPDs are in the top 34% or higher. He comes from the performance minded Ophelia cow family. His great grand dam, GMRA Ophelia 036, is the dam of Accelerated Genetics' GMRA Cody 7228. She posts an MPPA of 110 and his grand dam has an MPPA of 103.8. His dam has an MPPA of 108 and has an average weaning ratio of 110 on 6 calves and an average birth ratio. Lincoln is smooth with good length and a super phenotype. Lots of replacement making potential here.

Lot 7 - GMRA Lincoln 2253

7 GMRA LINCOLN 2253

Birth Date: 1/25/12 Reg. # 1525333 Category: 100% 1A



BIEBER MAKE MIMI 7249
GMRA MAKE IT EASY 8226
GMRA LAKOTA 625

BJR MAKE MY DAY 981
BIEBER SIRENA 6708
GLACIER CHATEAU 744
GMRA LAKOTA 380

BW	87
WW/Ratio	731 113
YW/Ratio	1289 111
IMF/REA	3.57 11.73
Scrotal	40.0

GMRA MINOTAURO 3104
GMRA OPHELIA 526
GMRA OPHELIA 229

BJR JR 107
GMRA LENA 108
NSF SPECIAL DELIVERY
GMRA OPHELIA 036

CED	BW	WW	YW	Milk	TM	ME	HPG	CEM	Stay	Marb	YG	CW	REA	Fat		
4	-0.4	68	106	34	68	4	10	6	13	0.41	0.00	32	0.21	-0.03		
TOP BREED %		43%	61%	16%	8%	1%	1%	60%	52%	24%	17%	43%	46%	11%	35%	7%



50K data coming soon.
Please check www.gmracattle.com for updated EPDs.



Lot 8 - GMRA Foundation 2211

Here is a bull that has the strengths to be at the foundation of any herd. His pedigree is full of maternal power, going back to a full sister to GMRA EBV 266, who was a female producing specialist. His young dam has already proven her potential with an MPPA of 104.2. This bull's performance and numbers create a very attractive package. 11 of his 15 EPDs are in the top 36% of the breed or higher. His ME EPD is the 3rd best in the offering and his HPG is the 6th best. He turned in an outstanding REA scan with a 120 ratio that ties him for the 2nd highest scan in the offering. This complements a REA EPD in the top 2% of the breed, which is the 4th highest of all the bulls on test.

8 GMRA FOUNDATION 2211

Birth Date: 1/11/12 Reg. # 1525434 Category: 100% 1A



MESSMER JOSHUA 019P
MESSMER PACKER S008
MESSMER MILLIE 124P

BECKTON JULIAN GG B571
MESSMER PANDORA M186
VGW TOP PICK 130
MESSMER MILLIE 9416

BW	77
WW/Ratio	674 111
YW/Ratio	1143 100
IMF/REA	4.05 13.67
Scrotal	40.0

GMRA MAKE IT EASY 8226
LGR ESTONIA 092
LGR ESTONIA 2002

BIEBER MAKE MIMI 7249
GMRA LAKOTA 625
LCHMN HEVN'S SAKE 1002F
GMRA ESTONIA 312

CED	BW	WW	YW	Milk	TM	ME	HPG	CEM	Stay	Marb	YG	CW	REA	Fat		
6	0.8	72	110	17	53	-2	13	5	14	0.56	0.10	36	0.62	0.06		
TOP BREED %		27%	81%	6%	6%	78%	21%	20%	7%	36%	14%	16%	86%	6%	2%	99%





Lot 9 - GMRA LaCrosse 2237

Lacrosse is the REA powerhouse in the offering. He turned in the highest actual and adjusted REA scan, posting a 122 ratio. He also turned in a 104 IMF scan. He is incredibly complete, with 12 of his 15 EPDs in the top 37% of the breed or higher. Standouts are a REA in the top 2%, a HPG in the top 5%, a YG in the top 6%, and a STAY in the top 7%. In the offering he boasts the 2nd best YG EPD, he is tied for the 2nd highest HPG, and has the 5th highest REA EPD. His dam is a Minotauro daughter, which have been solid producers for us with great dispositions. A Minotauro daughter from Laubach Red Angus produced the high selling 2012 NILE bred heifer, selling for \$11,500. If you are looking

for a beef producer that will provide you with great replacements, take a good, hard look at Lacrosse.



GMRA LACROSSE 2237

9

Birth Date: 1/20/12 Reg. # 1525372 Category: 100% 1A



MESSMER JOSHUA 019P
MESSMER PACKER S008
MESSMER MILLIE 124P

BECKTON JULIAN GG B571
MESSMER PANDORA M186
VGW TOP PICK 130
MESSMER MILLIE 9416

GMRA MINOTAURO 3104
GMRA ANGIE 786
GMRA ANGIE 442

BJR JR 107
GMRA LENA 108
BIEBER MAKE MIMI 7249
GMRA ANGIE 800

BW	81
WW/Ratio	679 105
YW/Ratio	1243 107
IMF/REA	3.97 14.23
Scrotal	38.0

CED	BW	WW	YW	Milk	TM	ME	HPG	CEM	Stay	Marb	YG	CW	REA	Fat
3	-2.9	64	95	18	50	1	14	1	15	0.51	-0.16	22	0.61	-0.02
TOP BREED %		54%	17%	20%	24%	70%	37%	33%	5%	85%	7%	23%	6%	36%

HD 50K



Lot 10 - GMRA Powell 2266

Powell is a deep cherry red with a smooth finish. He is a powerhouse of performance. He has a 118 weaning ratio that is #2 in the offering. He turned in an outstanding IMF scan, ratioing 117. He has some of the most powerful growth numbers on test. His WW, YW, TM, and CW EPDs are all in the top 7% of the breed or higher. His YW EPD is tied for the 3rd highest and his WW EPD is the 4th highest of all sale lots. He has a strong maternal background with a dam posting an MPPA of 105.8 and a great grand dam with a 104.5. His maternal brother, GMRA Make It Red 1243, sold to Bar Open A Red Angus last year for \$5500.



GMRA POWELL 2266

10

Birth Date: 1/29/12 Reg. # 1525298 Category: 100% 1A



LCC CHEYENNE B221L
GMRA LARAMIE 5110
GMRA LAKOTA 341

BFCK CHEROKEE CNYN 4912
HXC 701G
BASIN HOB0 79E
GMRA LAKOTA 947

LCHMN RED SPREAD 1271F
GMRA PRINCESS 227
GMRA PRINCESS 633

LMAN KING ROB 8621
BJR MATTIE 002-1102
LEACHMAN BETTER HVY8041
GMRA PRINCESS 910

BW	87
WW/Ratio	764 118
YW/Ratio	1231 106
IMF/REA	4.45 11.38
Scrotal	37.0

CED	BW	WW	YW	Milk	TM	ME	HPG	CEM	Stay	Marb	YG	CW	REA	Fat
-1	-0.5	74	112	22	59	20	10	4	11	0.45	0.37	35	0.09	0.10
TOP BREED %		89%	55%	4%	5%	36%	4%	99%	57%	51%	44%	34%	99%	7%

HD 50K



Jeremy

top 8% or higher. He turned in a REA ratio of 116, which places him as the 4th highest REA. He's also tied for the 4th highest weaning ratio and has the 6th highest yearling ratio. He is tied for the 2nd highest CW EPD in the offering, tied for the 3rd highest YW EPD, and is tied for the 7th highest WW and Milk EPDs. This bull's dam has a 106.4 MPPA and his grand dam has a 105.8. His dam has an average weaning ratio of 109 on 4 calves, and an average yearling ratio of 107 on 3, and her 2 bull calves have an average REA ratio of 112. Mountain is solid from pedigree to performance to paper.

11 **GMRA MOUNTAIN 2288**
 Birth Date: 2/4/12 Reg. # 1525349 Category: 100% 1A

- GMRA EBV 266
- GMRA MOUNTAIN 9287
- GMRA VENICE 359
- BIEBER MAKE MIMI 7249
- GMRA PRINCESS 631
- GMRA PRINCESS 227
- GMRA EBV 935
- BJR ESTONIA 9S-1210
- BASIN HOBO 79E
- GMRA VENICE 146
- BJR MAKE MY DAY 981
- BIEBER SIRENA 6708
- LCHMN RED SPREAD 1271F
- GMRA PRINCESS 633

BW	92	
WW/Ratio	751	116
YW/Ratio	1266	109
IMF/REA	3.56	13.60
Scrotal	41.0	

CED	BW	WW	YW	Milk	TM	ME	HPG	CEM	Stay	Marb	YG	CW	REA	Fat	
3	0.9	71	112	27	62	12	7	1	13	0.45	0.04	38	0.32	-0.01	
TOP BREED %															
54%	89%	8%	6%	4%	1%	99%	90%	85%	23%	34%	65%	5%	19%	22%	

Mountain 2288 is a great example of why we wanted to keep the EBV 266 line alive in the GMRA herd. He excels at converting feed to pounds from weaning up through yearling. His numbers reflect the personal performance. He has 9 EPDs in the top 1/3rd of the breed or higher, with 5 of those in the top 10% of the breed. He is tied for the 4th highest weaning ratio and has the 6th highest yearling ratio. He is tied for the 2nd highest CW EPD in the offering, tied for the 3rd highest YW EPD, and is tied for the 7th highest WW and Milk EPDs. This bull's dam has a 106.4 MPPA and his grand dam has a 105.8. His dam has an average weaning ratio of 109 on 4 calves, and an average yearling ratio of 107 on 3, and her 2 bull calves have an average REA ratio of 112. Mountain is solid from pedigree to performance to paper.



Lot 12

12 **GMRA CONQUEST 2244**
 Birth Date: 1/22/12 Reg. # 1525258 Category: 100% 1A

- BECKTON JULIAN GG B571
- HXC CONQUEST 4405P
- HXC ELLIE MAY MA638
- VGW NORTHERN CANYON 5109
- GMRA ANGIE ROSE 032
- GMRA ANGIE ROSE 120
- BKT JULIAN 7526 G
- BKT MARTA 9A13 JL
- BFCK CHEROKEE CNYN 4912
- HXC 529E
- GEFB NORTHERN CANYON 2328
- VGW PT YUMA 0278
- LCHMN RED SPREAD 1271F
- GMRA ANGIE ROSE 115

BW	68	
WW/Ratio	659	109
YW/Ratio	1152	101
IMF/REA	4.47	11.43
Scrotal	38.5	

CED	BW	WW	YW	Milk	TM	ME	HPG	CEM	Stay	Marb	YG	CW	REA	Fat	
11	-3.7	66	106	18	51	7	8	5	12	0.51	0.10	28	0.17	0.02	
TOP BREED %															
5%	8%	24%	15%	61%	34%	79%	87%	36%	31%	23%	87%	21%	42%	79%	

Great birth to growth spread on this Conquest son. He has the #2 CED in the offering and is tied for the 4th lowest BW EPD and still turned in a 109 weaning ratio. He performed well through yearling and also turned in great carcass scans with a 111 IMF ratio and a 101 REA ratio. He comes from a strong maternal line with a dam that posts a 103.6 MPPA and a grand dam with a 104.1.



Lot 13

13 **GMRA LARAMIE 2223**
 Birth Date: 1/14/12 Reg. # 1525370 Category: 100% 1A

- LCC CHEYENNE B221L
- GMRA LARAMIE 5110
- GMRA LAKOTA 341
- BROWN VACATION H7106
- GMRA LARKOBA 761
- GMRA LARKOBA 517
- BFCK CHEROKEE CNYN 4912
- HXC 701G
- BASIN HOBO 79E
- GMRA LAKOTA 947
- BECKTON JULIAN GG B571
- LCHMN FLOWER C1161
- GLACIER CHATEAU 744
- GMRA LARKOBA 221

BW	94	
WW/Ratio	672	104
YW/Ratio	1212	104
IMF/REA	3.96	12.13
Scrotal	38.0	

CED	BW	WW	YW	Milk	TM	ME	HPG	CEM	Stay	Marb	YG	CW	REA	Fat	
-5	1.2	69	105	22	57	19	12	3	15	0.40	0.08	34	0.14	-0.01	
TOP BREED %															
99%	92%	9%	8%	28%	6%	99%	17%	65%	7%	46%	81%	9%	48%	22%	

Here is a Laramie son that has performed consistently in all measurable traits. He features a 104 ratio for all growth and carcass data. His growth numbers are at the leading edge of the breed with a WW EPD in the top 9%, YW in the top 8%, and CW in the top 9%. This all falls in line with impressive gains in the feedlot, as he has the 3rd highest ADG as of mid-test. He has maternal power her progeny have been retained at GMRA or been in the bull sale.



Lot 14

14 **GMRA TRILOGY 2295**

Birth Date: 2/9/12 Reg. # 1525414 Category: 100% 1A

MESSMER PACKER S008 | MESSMER JOSHUA 019P
GMRA TRILOGY 0226 | MESSMER MILLIE 124P
 GMRA LAKOTA 625 | GLACIER CHATEAU 744
 | GMRA LAKOTA 380

VGW NORTHERN CANYON 5109 | GEFB NORTHERN CANYON 2328
GMRA LENA 974 | VGW PT YUMA 0278
 GMRA LENA 357 | LCHMN GRANDCANYON 1244G
 | GMRA LENA 541

BW	81	
WW/Ratio	728	112
YW/Ratio	1258	108
IMF/REA	4.76	12.46
Scrotal	38.0	

CED	BW	WW	YW	Milk	TM	ME	HPG	CEM	Stay	Marb	YG	CW	REA	Fat
2	-1.3	67	108	20	54	0	12	3	12	0.54	0.10	32	0.25	0.02
TOP BREED %														
65%	45%	13%	7%	39%	12%	28%	16%	65%	27%	18%	87%	12%	28%	79%

Impressive personal performance out of this Trilogy son, including a 125 IMF ratio that is #5 in the offering and a 107 REA ratio. He has 9 EPDs in the top 28% or higher and is out of a dam with an MPPA of 102.3.



Lot 15

15 **GMRA TRILOGY 2263**

Birth Date: 1/28/12 Reg. # 1525255 Category: 100% 1A

MESSMER PACKER S008 | MESSMER JOSHUA 019P
GMRA TRILOGY 0226 | MESSMER MILLIE 124P
 GMRA LAKOTA 625 | GLACIER CHATEAU 744
 | GMRA LAKOTA 380

GMRA CITADEL 6109 | GLACIER CHATEAU 744
GMRA LENA 024 | GMRA NEXA 235
 GMRA LENA 443 | GMRA VERMILLION 796
 | GMRA LENA 541

BW	71	
WW/Ratio	674	111
YW/Ratio	1172	103
IMF/REA	3.74	12.52
Scrotal	37.0	

CED	BW	WW	YW	Milk	TM	ME	HPG	CEM	Stay	Marb	YG	CW	REA	Fat
6	-1.7	67	101	20	54	4	11	7	13	0.41	-0.01	27	0.37	0.00
TOP BREED %														
27%	24%	21%	21%	40%	18%	55%	30%	14%	23%	43%	42%	22%	14%	45%

Here is a really complete Trilogy son with consistent breed leading EPDs. 10 of his 15 EPDs are in the top 1/3rd of the breed or higher and all 15 are in the top 55% or higher. He has a strong set of numbers for a moderate birth bull with great personal performance and a 110 REA ratio.



Lot 16

16 **GMRA TRILOGY 2202**

Birth Date: 1/5/12 Reg. # 1525263 Category: 100% 1A

MESSMER PACKER S008 | MESSMER JOSHUA 019P
GMRA TRILOGY 0226 | MESSMER MILLIE 124P
 GMRA LAKOTA 625 | GLACIER CHATEAU 744
 | GMRA LAKOTA 380

HXC CONQUEST 4405P | BECKTON JULIAN GG B571
GMRA PEACHA 047 | HXC ELLIE MAY MA638
 GMRA PEACHA 240 | LMN PROOF POSITIVE1305E
 | GMRA PEACHA 214

BW	92	
WW/Ratio	650	107
YW/Ratio	1181	104
IMF/REA	3.42	11.19
Scrotal	38.0	

CED	BW	WW	YW	Milk	TM	ME	HPG	CEM	Stay	Marb	YG	CW	REA	Fat
3	0.4	72	111	17	53	2	11	8	15	0.44	0.11	37	0.21	0.01
TOP BREED %														
54%	93%	5%	5%	65%	12%	46%	37%	8%	7%	36%	89%	6%	35%	61%

Here's a powerful Trilogy son out of a first calf heifer, posting a 102.8 MPPA. This bull has performed well above average at weaning and yearling. This backs up WW & YW EPDs in the top 5% of the breed. In fact he is tied for the 5th highest WW, YW and CW EPDs in the offering and has the 3rd highest CEM. Outstanding numbers backed up by personal performance!





Bob

17 **GMRA SCOUT 2252**

Birth Date: 1/24/12 Reg. # 1525277 Category: 100% 1A

BECKTON WARRIOR R667 CL
VGW SCOUT 040
 VGW IMF-CHRSS 0504

GMRA CITADEL 6109
GMRA LAKOTA 080
 GMRA LAKOTA 645

BECKTON WARRIOR CL M686
 BECKTON CHRISTY M855 CH
 LCC IMF B054M
 VGW 40- CHRSS 0337
 GLACIER CHATEAU 744
 GMRA NEXA 235
 LCC CHEYENNE B221L
 GMRA LAKOTA ET 47

BW	72
WW/Ratio	606 100
YW/Ratio	1143 100
IMF/REA	3.71 11.05
Scrotal	36.0

CED	BW	WW	YW	Milk	TM	ME	HPG	CEM	Stay	Marb	YG	CW	REA	Fat
6	-2.1	58	90	22	51	5	12	8	12	0.40	0.10	20	0.12	0.02
TOP BREED %														
27%	24%	49%	31%	37%	40%	64%	13%	8%	31%	46%	87%	41%	53%	79%



Lot 18

18 **GMRA MISSION STATEMENT 2284**

Birth Date: 2/3/12 Reg. # 1525381 Category: 100% 1A

LJC LANCER 806
LJC MISSION STATEMENT P27
 LJC HANNAH 106

MLK CRK TITLEIST 4158
GMRA LOKOTA 836
 GMRA LOKOTA 655

BECKTON LANCER T A664
 LJC HB LIZZIE 606
 HOLDEN HI HO 753
 LJC KJ JAMIE 516
 VGW TITLEIST 1106
 MLK CRK SHEBA 079
 LCHMN RED SPREAD 1271F
 GMRA LOKOTA 313

BW	99
WW/Ratio	757 117
YW/Ratio	1374 118
IMF/REA	3.36 13.51
Scrotal	41.0

CED	BW	WW	YW	Milk	TM	ME	HPG	CEM	Stay	Marb	YG	CW	REA	Fat
-3	1.9	75	122	15	53	19	11	0	13	0.39	-0.03	46	0.59	-0.01
TOP BREED %														
97%	98%	2%	1%	71%	9%	99%	27%	91%	24%	48%	33%	2%	2%	22%

This Mission Statement son is absolutely packed with performance and power, backed up by a set of some of the highest performance EPDs in the offering. He has a YW EPD in the top 1% of the breed and a WW, CW and REA EPD in the top 2%. In the offering he has the #1 WW, YW and CW EPDs and the 6th highest REA EPD. These numbers are telling the truth and are right in line with yearling ratio. He tied for the 4th highest REA ratio, posting a 116. He is out of an impressive dam

his impressive personal performance. He has the 3rd highest weaning ratio in the offering and the #1 yearling ratio. He tied for the 4th highest REA ratio, posting a 116. He is out of an impressive dam with a 104.2 MPPA and average weaning ratio of 106 and average yearling ratio of 105 on 3.



Lot 19

19 **GMRA MISSION STATEMENT 2235**

Birth Date: 1/19/12 Reg. # 1525292 Category: 100% 1A

LJC LANCER 806
LJC MISSION STATEMENT P27
 LJC HANNAH 106

BASIN HOBO 79E
GMRA PEACHA 135
 GMRA PEACHA 214

BECKTON LANCER T A664
 LJC HB LIZZIE 606
 HOLDEN HI HO 753
 LJC KJ JAMIE 516
 BUF CRK HOBO 2595
 DOUBLE FORK 079Z
 GMRA EBV 935
 WGF MISS PEACHA 86

BW	68
WW/Ratio	677 105
YW/Ratio	1160 100
IMF/REA	5.07 11.30
Scrotal	35.0

CED	BW	WW	YW	Milk	TM	ME	HPG	CEM	Stay	Marb	YG	CW	REA	Fat
6	-3.6	55	85	23	51	6	13	4	15	0.60	-0.08	16	0.38	-0.01
TOP BREED %														
27%	5%	67%	54%	19%	40%	76%	9%	50%	10%	12%	17%	57%	12%	22%

Here is a great heifer bull that has the 7th best BW EPD in the offering and is tied for the 5th best HPG. He turned in the 4th highest IMF scan with a 133 ratio. This matches up with the #4 Marbling EPD of all bulls on test. He also posts the #5 YG EPD.

20 GMRA LARAMIE 2245

Birth Date: 1/22/12 Reg. # 1525379 Category: 100% 1A

LCC CHEYENNE B221L
GMRA LARAMIE 5110
GMRA LAKOTA 341

GMRA CITADEL 6109
GMRA VENICE 829
GMRA VENICE 146

BFCCK CHEROKEE CNYN 4912
HXC 701G
BASIN HOBBO 79E
GMRA LAKOTA 947
GLACIER CHATEAU 744
GMRA NEXA 235
LCHMN HEVN'S SAKE 1002F
GMRA VENICE 015



BW	69	
WW/Ratio	671	104
YW/Ratio	1160	100
IMF/REA	3.20	11.84
Scrotal	36.0	

CED	BW	WW	YW	Milk	TM	ME	HPG	CEM	Stay	Marb	YG	CW	REA	Fat	
5	-2.9	61	93	23	54	12	11	9	12	0.36	0.13	21	0.01	0.02	
TOP BREED %	34%	8%	42%	35%	23%	24%	98%	24%	5%	31%	57%	93%	40%	77%	79%

Nice heifer bull with great maternal power. His dam has a 101.8 MPPA and his grand dam has a 102.7. Notice that CEM that is in the top 5% of the breed and is #2 in this offering.

21 GMRA LARAMIE 2218

Birth Date: 1/13/12 Reg. # 1525435 Category: 100% 1A

LCC CHEYENNE B221L
GMRA LARAMIE 5110
GMRA LAKOTA 341

MLK CRK TITLEIST 4158
LGR HI LASS 641
LGR HI LASS 431

BFCCK CHEROKEE CNYN 4912
HXC 701G
BASIN HOBBO 79E
GMRA LAKOTA 947
VGW TITLEIST 1106
MLK CRK SHEBA 079
LCHMN RED SPREAD 1271F
GMRA HI LASS 237



BW	92	
WW/Ratio	673	104
YW/Ratio	1246	107
IMF/REA	4.12	12.92
Scrotal	36.0	

CED	BW	WW	YW	Milk	TM	ME	HPG	CEM	Stay	Marb	YG	CW	REA	Fat	
-3	0.6	66	103	20	53	17	9	4	11	0.35	0.13	33	0.13	0.02	
TOP BREED %	97%	84%	18%	8%	45%	19%	99%	67%	50%	41%	59%	93%	11%	51%	79%

Laramie 2218 turned in outstanding data across the board, posting all ratios from growth to carcass at 104 or higher. As of mid-test Laramie 2218 has the 5th highest ADG on test. He is out of a powerful dam that has an MPPA of 104.9. All of her calves have ratioed 104 or higher at weaning and have all been retained within the herd.

22 GMRA SQUALL 2289

Birth Date: 2/5/12 Reg. # 1525282 Category: 100% 1A

RED BRYLOR SQUALL 230S
3C CHEROKEE SQUALL 04W
GENCON CHEROKEE MAID

GMRA SECRET MISSION 8258
LAUBACH NEXA 0093
LAUBACH NEXA 344

RED BRYLOR PASQUALE 213P
RED CYT FANNY 15P
BFCCK CHEROKEE CNYN 4912
BLUE RIDGE KIMA 930
LJC MISSION STATEMENT P27
GMRA LAKOTA 341
GMRA KODIAK 765
GMRA NEXA 914



BW	74	
WW/Ratio	684	113
YW/Ratio	1134	100
IMF/REA	3.33	11.53
Scrotal	38.0	

CED	BW	WW	YW	Milk	TM	ME	HPG	CEM	Stay	Marb	YG	CW	REA	Fat	
8	-3.7	51	79	21	47	0	10	6	12	0.22	-0.02	11	0.17	-0.01	
TOP BREED %	15%	16%	68%	70%	24%	47%	27%	42%	24%	27%	86%	37%	70%	42%	22%

Dam has an MPPA of 105.2. 8 of this bull's EPDs are in the top 37% of the breed or higher.

23 GMRA MOUNTAIN 2293

Birth Date: 2/7/12 Reg. # 1525392 Category: 100% 1A

GMRA EBV 266
GMRA MOUNTAIN 9287
GMRA VENICE 359

GMRA LARAMIE 5110
GMRA ESTONIA 909
GMRA ESTONIA 747

GMRA EBV 935
BJR ESTONIA 9S-1210
BASIN HOBBO 79E
GMRA VENICE 146
LCC CHEYENNE B221L
GMRA LAKOTA 341
BIEBER MAKE MIMI 7249
GMRA ESTONIA 228



BW	88	
WW/Ratio	680	105
YW/Ratio	1221	105
IMF/REA	3.37	11.51
Scrotal	40.0	

CED	BW	WW	YW	Milk	TM	ME	HPG	CEM	Stay	Marb	YG	CW	REA	Fat	
1	1.3	70	110	24	59	11	9	3	14	0.46	0.16	38	0.07	0.01	
TOP BREED %	75%	90%	7%	4%	13%	2%	97%	71%	65%	13%	32%	97%	5%	64%	61%



24 GMRA MOUNTAIN 2213

Birth Date: 1/12/12 Reg. # 1525424 Category: 100% 1A

GMRA EBV 266
GMRA MOUNTAIN 9287
GMRA VENICE 359

GMRA CITADEL 6109
GMRA ANGIE ROSE 9116
GMRA ANGIE ROSE 522

GMRA EBV 935
BJR ESTONIA 9S-1210
BASIN HOBBO 79E
GMRA VENICE 146
GLACIER CHATEAU 744
GMRA NEXA 235
BJR MONU 4X-303
GMRA ANGIE ROSE 115



BW	84	
WW/Ratio	649	100
YW/Ratio	1258	108
IMF/REA	3.55	10.30
Scrotal	39.0	

CED	BW	WW	YW	Milk	TM	ME	HPG	CEM	Stay	Marb	YG	CW	REA	Fat	
4	0.0	61	93	24	54	9	7	4	13	0.34	0.14	26	-0.07	0.01	
TOP BREED %	43%	67%	30%	13%	17%	13%	92%	90%	50%	24%	62%	94%	26%	90%	61%

Impressive growth with one of the top yearling ratios in the offering and the #2 ADG at mid-test.



Lot 25

25 GMRA MOUNTAIN 2257

Birth Date: 1/26/12 Reg. # 1525412 Category: 100% 1A

GMRA EBV 266
GMRA MOUNTAIN 9287
GMRA VENICE 359

MESSMER PACKER S008
GMRA MESA MAID 968
GMRA SA MESA MAID 054

GMRA EBV 935
BJR ESTONIA 9S-1210
BASIN HOBO 79E
GMRA VENICE 146
MESSMER JOSHUA 019P
MESSMER MILLIE 124P
LCHMN RED SPREAD 1271F
GMRA MESA MAID 321



BW	87
WW/Ratio	649 100
YW/Ratio	1205 104
IMF/REA	3.29 11.31
Scrotal	38.0

CED	BW	WW	YW	Milk	TM	ME	HPG	CEM	Stay	Marb	YG	CW	REA	Fat
3	-0.1	63	99	22	53	1	10	1	14	0.36	0.12	29	0.12	0.02
TOP BREED %														
54%	74%	21%	12%	30%	14%	34%	58%	85%	12%	57%	91%	18%	53%	79%



Lot 26

26 GMRA MISSION STATEMENT 2255

Birth Date: 1/25/12 Reg. # 1525413 Category: 100% 1A

LJC LANCER 806
LJC MISSION STATEMENT P27
LJC HANNAH 106

BROWN VACATION H7106
GMRA LAKOTA 969
GMRA LAKOTA 380

BECKTON LANCER T A664
LJC HB LIZZIE 606
HOLDEN HI HO 753
LJC KJ JAMIE 516
BECKTON JULIAN GG B571
LCHMN FLOWER C1161
BASIN HOBO 79E
GMRA LAKOTA 527



BW	68
WW/Ratio	655 101
YW/Ratio	1154 99
IMF/REA	3.18 11.88
Scrotal	37.5

CED	BW	WW	YW	Milk	TM	ME	HPG	CEM	Stay	Marb	YG	CW	REA	Fat
6	-3.3	56	91	27	55	9	14	3	18	0.38	-0.13	20	0.50	-0.02
TOP BREED %														
27%	6%	63%	39%	8%	22%	92%	3%	65%	1%	51%	8%	43%	4%	12%

Here is a bona fide heifer bull with an impressive maternal background and a powerful set of numbers. 6 of his EPDs are in the top 8% or higher. He comes from a powerful female family. His grand dam is also the grand dam of GMRA Trilogi 0226 and GMRA Make It Easy 8226 who were both purchased by Accelerated Genetics and are the sires of several lots in this sale. His great grand dam was the foundation female, GMRA Lakota 527 who features a 108.5 MPPA. His own dam has an impressive 105.4 MPPA.



27 GMRA MOUNTAIN 2248

Birth Date: 1/23/12 Reg. # 1525350 Category: 100% 1A

GMRA EBV 266
GMRA MOUNTAIN 9287
GMRA VENICE 359

LSF COMBINATION A301M
GMRA LAKOTA 636S
GMRA LAKOTA 325

GMRA EBV 935
BJR ESTONIA 9S-1210
BASIN HOBO 79E
GMRA VENICE 146
LCHMN TOP BRASS 1049H
WHF LASS 27G-29J
GLACIER CHATEAU 744
GMRA LAKOTA 149



BW	79
WW/Ratio	655 101
YW/Ratio	1177 101
IMF/REA	3.13 12.17
Scrotal	36.0

CED	BW	WW	YW	Milk	TM	ME	HPG	CEM	Stay	Marb	YG	CW	REA	Fat
2	-1.1	58	90	22	51	10	11	5	11	0.51	0.10	22	0.09	0.02
TOP BREED %														
65%	34%	47%	33%	26%	30%	95%	32%	36%	38%	23%	87%	37%	59%	79%



Lot 28

28 GMRA MISSION STATEMENT 2265

Birth Date: 1/28/12 Reg. #: 1525320 Category: 100% 1A

LJC LANCER 806	BECKTON LANCER T A664
LJC MISSION STATEMENT P27	LJC HB LIZZIE 606
LJC HANNAH 106	HOLDEN HI HO 753
	LJC KJ JAMIE 516
BIEBER MAKE MIMI 7249	BJR MAKE MY DAY 981
GMRA MESA MAID 425	BIEBER SIRENA 6708
GMRA SA MESA MAID 054	LCHMN RED SPREAD 1271F
	GMRA MESA MAID 321

BW	82
WW/Ratio	674 104
YW/Ratio	1161 100
IMF/REA	4.51 11.74
Scrotal	39.0

CED	BW	WW	YW	Milk	TM	ME	HPG	CEM	Stay	Marb	YG	CW	REA	Fat
2	-0.7	67	111	18	52	7	12	-1	14	0.50	-0.04	35	0.49	-0.01
TOP BREED %														
65%	45%	16%	8%	62%	27%	81%	14%	95%	13%	24%	29%	7%	5%	22%

Another solid Mission Statement son with 10 of his 15 EPDs in the top 29% of the breed or higher. He turned in a 118 IMF ratio that gives him the 7th highest ratio in the offering. He also has the 5th highest YW EPD of all bulls on test.

29 GMRA TRILOGY 2264

Birth Date: 1/28/12 Reg. #: 1525261 Category: 100% 1A

MESSMER PACKER S008	MESSMER JOSHUA 019P
GMRA TRILOGY 0226	MESSMER MILLIE 124P
GMRA LAKOTA 625	GLACIER CHATEAU 744
	GMRA LAKOTA 380
VGW NORTHERN CANYON 5109	GEFB NORTHERN CANYON 2328
GMRA HI LASS 042	VGW PT YUMA 0278
GMRA HI LASS 769	BROWN VACATION H7106
	GMRA HI LASS 820

BW	67
WW/Ratio	632 104
YW/Ratio	1133 100
IMF/REA	4.47 11.81
Scrotal	35.0

CED	BW	WW	YW	Milk	TM	ME	HPG	CEM	Stay	Marb	YG	CW	REA	Fat
5	-1.9	62	97	21	52	0	13	4	14	0.53	0.04	25	0.23	0.01
TOP BREED %														
34%	16%	42%	29%	44%	39%	30%	11%	50%	12%	20%	65%	28%	31%	61%

Low birth bull with a 111 IMF ratio and 104 REA ratio.

30 GMRA TRILOGY 2282

Birth Date: 2/2/12 Reg. #: 1525359 Category: 100% 1A

MESSMER PACKER S008	MESSMER JOSHUA 019P
GMRA TRILOGY 0226	MESSMER MILLIE 124P
GMRA LAKOTA 625	GLACIER CHATEAU 744
	GMRA LAKOTA 380
LCHMN RED SPREAD 1271F	LMAN KING ROB 8621
GMRA NEXA 672	BJR MATTIE 002-1102
GMRA NEXA 908	FCC RAMBO 502
	GMRA NEXA 918

BW	90
WW/Ratio	673 104
YW/Ratio	1164 100
IMF/REA	4.14 13.52
Scrotal	36.0

CED	BW	WW	YW	Milk	TM	ME	HPG	CEM	Stay	Marb	YG	CW	REA	Fat
0	1.1	68	107	19	53	4	11	6	12	0.29	0.04	35	0.38	0.01
TOP BREED %														
83%	87%	13%	11%	55%	19%	56%	27%	23%	28%	74%	65%	7%	12%	31%

Good solid performance from this Trilogy son. He turned in a 109 IMF ratio and a 116 REA ratio that ties him for the 4th highest REA ratio in the offering. 9 of his EPDs are in the top 31% of the breed. Dam has a 102.5 MPPA.

31 GMRA PACKER 2215

Birth Date: 1/12/12 Reg. #: 1525436 Category: 100% 1A

MESSMER JOSHUA 019P	BECKTON JULIAN GG B571
MESSMER PACKER S008	MESSMER PANDORA M186
MESSMER MILLIE 124P	VGW TOP PICK 130
	MESSMER MILLIE 9416
GMRA GLADIATOR 2126	BASIN HOBO 79E
LGR VENICE 795	GMRA LAKOTA ET 47
LGR VENICE 9002	VGW RAMBLER 1000
	GMRA VENICE 708

BW	80
WW/Ratio	708 109
YW/Ratio	1164 100
IMF/REA	3.31 11.49
Scrotal	40.0

CED	BW	WW	YW	Milk	TM	ME	HPG	CEM	Stay	Marb	YG	CW	REA	Fat
5	-1.7	65	101	17	50	-1	12	7	16	0.48	0.05	27	0.19	0.00
TOP BREED %														
34%	30%	22%	26%	67%	37%	23%	14%	14%	4%	28%	69%	21%	38%	45%

The females in this bull's pedigree have done an outstanding job for us. His dam has an MPPA of 102.7 and has never weaned a calf under 101. His grand dam has an MPPA of 105.7 and has never weaned a calf under 104. Packer 2215 provides an extremely balanced set of numbers with 12 of his 15 EPDs being in the top 39% of the breed or higher and the 4th best ME in the offering.

32 GMRA MAKE IT EASY 2300

Birth Date: 2/12/12 Reg. #: 1525376 Category: 100% 1A

BIEBER MAKE MIMI 7249	BJR MAKE MY DAY 981
GMRA MAKE IT EASY 8226	BIEBER SIRENA 6708
GMRA LAKOTA 625	GLACIER CHATEAU 744
	GMRA LAKOTA 380
GMRA LARAMIE 5110	LCC CHEYENNE B221L
GMRA LAKOTA 817	GMRA LAKOTA 341
GMRA LAKOTA 422	BIEBER TOP MONEY 7948
	GMRA LAKOTA 912

BW	72
WW/Ratio	666 103
YW/Ratio	1183 102
IMF/REA	4.37 12.48
Scrotal	37.0

CED	BW	WW	YW	Milk	TM	ME	HPG	CEM	Stay	Marb	YG	CW	REA	Fat
5	-2.5	69	101	20	55	11	9	6	15	0.45	0.03	26	0.21	-0.01
TOP BREED %														
34%	12%	12%	13%	48%	15%	98%	60%	24%	9%	34%	60%	24%	35%	22%

This Make It Easy son goes back to the foundation cow, GMRA Lakota 912. He scanned well at carcass ultrasound, turning in a 115 IMF ratio and a 107 REA ratio. Impressive set of numbers with 11 of his EPDs in the top 35% of the breed or higher and 8 of those at 25% or higher.



33 GMRA SECRET MISSION 2221

Birth Date: 1/14/12 Reg. # 1525387 Category: 100% 1A

LJC MISSION STATEMENT P27
GMRA SECRET MISSION 8258
 GMRA LAKOTA 341

GMRA CITADEL 6109
GMRA ANGIE 889
 GMRA ANGIE 154

LJC LANCER 806
 LJC HANNAH 106
 BASIN HOBO 79E
 GMRA LAKOTA 947
 GLACIER CHATEAU 744
 GMRA NEXA 235
 BIEBER RED MOON 6042
 GMRA ANGIE 800



BW	80	
WW/Ratio	701	108
YW/Ratio	1146	99
IMF/REA	3.19	12.02
Scrotal	38.0	

CED	BW	WW	YW	Milk	TM	ME	HPG	CEM	Stay	Marb	YG	CW	REA	Fat	
3	-1.1	67	108	18	52	16	11	6	15	0.30	0.13	33	0.07	0.01	
TOP BREED %	54%	38%	17%	17%	60%	26%	99%	22%	24%	9%	72%	93%	11%	64%	61%

Dam has an MPPA of 102.9.



34 GMRA PACKER 2204

Birth Date: 1/6/12 Reg. # 1525269 Category: 100% 1A

MESSMER JOSHUA 019P
MESSMER PACKER S008
 MESSMER MILLIE 124P

GMRA LARAMIE 5110
GMRA LAKOTA 058
 GMRA LAKOTA 667

BECKTON JULIAN GG B571
 MESSMER PANDORA M186
 VGW TOP PICK 130
 MESSMER MILLIE 9416
 LCC CHEYENNE B221L
 GMRA LAKOTA 341
 LSF COMBINATION A301M
 GMRA LAKOTA 456



BW	77	
WW/Ratio	636	105
YW/Ratio	1154	101
IMF/REA	3.46	10.90
Scrotal	36.0	

CED	BW	WW	YW	Milk	TM	ME	HPG	CEM	Stay	Marb	YG	CW	REA	Fat	
1	-2.1	67	105	13	46	1	15	3	14	0.46	0.09	29	0.21	0.02	
TOP BREED %	75%	33%	16%	11%	93%	60%	38%	2%	65%	16%	32%	84%	17%	35%	79%

This bull has shown consistent growth backed up by top end growth EPDs. His dam is following in the footsteps of her performance minded BJR Lakota cow family, already posting a 102 MPPA.

Lot 34



35 GMRA LARAMIE 2277

Birth Date: 2/1/12 Reg. # 1525416 Category: 100% 1A

LCC CHEYENNE B221L
GMRA LARAMIE 5110
 GMRA LAKOTA 341

GMRA EBV 266
GMRA THELMA 984
 GMRA THELMA 919

BFCK CHEROKEE CNYN 4912
 HXC 701G
 BASIN HOBO 79E
 GMRA LAKOTA 947
 GMRA EBV 935
 BJR ESTONIA 9S-1210
 BJR MAKE MY DAY 981
 GMRA THELMA 733



BW	82	
WW/Ratio	652	101
YW/Ratio	1206	104
IMF/REA	3.42	12.70
Scrotal	35.0	

CED	BW	WW	YW	Milk	TM	ME	HPG	CEM	Stay	Marb	YG	CW	REA	Fat	
-1	-0.7	62	100	23	54	14	9	-1	11	0.55	0.11	28	0.09	0.01	
TOP BREED %	89%	51%	28%	12%	21%	13%	99%	73%	95%	39%	17%	89%	19%	59%	61%

This bull turned in a REA ratio of 109.

36 GMRA MOUNTAIN 2281

Birth Date: 2/2/12 Reg. # 1525415 Category: 100% 1A

GMRA EBV 266
GMRA MOUNTAIN 9287
 GMRA VENICE 359

BROWN COMMITMENT S7206
GMRA PRIDSTOM 982
 GMRA PRIDSTOM 035

GMRA EBV 935
 BJR ESTONIA 9S-1210
 BASIN HOBO 79E
 GMRA VENICE 146
 LJC LANCER 806
 BROWN MS SHAZZAM P7940
 LMAN KING ROB 8621
 GMRA PRIDSTOM 644



BW	93	
WW/Ratio	666	103
YW/Ratio	1229	106
IMF/REA	4.02	10.63
Scrotal	39.0	

CED	BW	WW	YW	Milk	TM	ME	HPG	CEM	Stay	Marb	YG	CW	REA	Fat	
-1	2.1	65	99	28	61	3	9	-1	13	0.64	0.13	32	0.08	0.01	
TOP BREED %	89%	96%	19%	12%	3%	2%	52%	61%	95%	20%	8%	93%	11%	62%	61%

This bull's young dam has an MPPA of 108.3 on 2. She has an average weaning ratio of 115 and an average yearling ratio of 111.

Yearling Bulls



GREEN MOUNTAIN RED ANGUS

37 GMRA CONQUEST 2203

Birth Date: 1/5/12 Reg. #: 1525285 Category: 100% 1A



BECKTON JULIAN GG B571
HXC CONQUEST 4405P
HXC ELLIE MAY MA638

BKT JULIAN 7526 G
BKT MARTA 9A13 JL
BFCK CHEROKEE CNYN 4912
HXC 529E

GMRA MAKE IT EASY 8226
GMRA NEXA 097
GMRA NEXA 266

BIEBER MAKE MIMI 7249
GMRA LAKOTA 625
NSF SPECIAL DELIVERY
GMRA NEXA 941

BW	63
WW/Ratio	615 102
YW/Ratio	1073 94
IMF/REA	3.00 11.09
Scrotal	36.0

CED	BW	WW	YW	Milk	TM	ME	HPG	CEM	Stay	Marb	YG	CW	REA	Fat
14	-4.1	63	99	20	51	4	7	10	14	0.42	0.02	23	0.25	0.01
TOP BREED %														
1%	4%	37%	32%	53%	41%	60%	92%	3%	10%	41%	56%	34%	28%	61%

Conquest 2203 has all the makings of a calving ease specialist. He started out with a nice low birth weight of 63, which is the 2nd lowest actual birth weight in the offering, and took that to an above average weaning ratio. He also boasts the highest CED & CEM EPDs in the offering and the #2 BW EPD, placing all of these numbers in the top 4% or higher in the breed. Now, let's combine this with the maternal performance in his pedigree. It is chock full of GMRA maternal power, with no MPPAs lower than 101 and going all the way up to 106.7. Loads of maternal potential here!

38 GMRA MAKE IT EASY 2308

Birth Date: 2/18/12 Reg. #: 1525351 Category: 100% 1A



BIEBER MAKE MIMI 7249
GMRA MAKE IT EASY 8226
GMRA LAKOTA 625

BJR MAKE MY DAY 981
BIEBER SIRENA 6708
GLACIER CHATEAU 744
GMRA LAKOTA 380

GMRA MINOTAURO 3104
GMRA LAKOTA 639
GMRA LAKOTA 422

BJR JR 107
GMRA LENA 108
BIEBER TOP MONEY 7948
GMRA LAKOTA 912

BW	78
WW/Ratio	653 101
YW/Ratio	1098 94
IMF/REA	4.22 10.14
Scrotal	37.0

CED	BW	WW	YW	Milk	TM	ME	HPG	CEM	Stay	Marb	YG	CW	REA	Fat
5	-2.1	61	87	28	59	7	10	6	13	0.31	-0.02	19	0.13	-0.02
TOP BREED %														
34%	19%	36%	52%	5%	6%	84%	50%	24%	19%	69%	37%	48%	51%	12%

This bull is a product of the highly maternal Lakota cow family, going back to GMRA Lakota 912. His dam has a 103.4 MPPA on 5 calves, and all have turned in a weaning ratio of 101 or higher. The maternal strengths are evident in the numbers as well, with a Milk EPD in the top 5% of the breed and a TM in the top 6%. He is tied for the 3rd highest Milk EPD in the offering and is tied for the 5th highest TM. This bull should provide a great opportunity for producing top notch replacements.

39 GMRA SECRET MISSION 2292

Birth Date: 2/7/12 Reg. #: 1525396 Category: 100% 1A



LJC MISSION STATEMENT P27
GMRA SECRET MISSION 8258
GMRA LAKOTA 341

LJC LANCER 806
LJC HANNAH 106
BASIN HOBO 79E
GMRA LAKOTA 947

LCB HOSS A444N
GMRA PRIDSTOM 920
GMRA PRIDSTOM 727

BLUE RIDGE PONDEROSA
RSLND REBELLA 120-502
BROWN VACATION H7106
GMRA PRIDSTOM 816

BW	66
WW/Ratio	665 103
YW/Ratio	1119 96
IMF/REA	3.78 10.57
Scrotal	36.0

CED	BW	WW	YW	Milk	TM	ME	HPG	CEM	Stay	Marb	YG	CW	REA	Fat
4	-2.8	57	91	23	51	6	10	4	18	0.28	0.06	20	0.02	-0.01
TOP BREED %														
43%	7%	62%	49%	27%	43%	75%	45%	50%	1%	76%	74%	42%	75%	22%

Dam has an MPPA of 106, with an average weaning ratio of 110 and an average yearling ratio of 105 on 2 calves.

40 GMRA TRILOGY 2294

Birth Date: 2/8/12 Reg. #: 1525385 Category: 100% 1A



MESSMER PACKER S008
GMRA TRILOGY 0226
GMRA LAKOTA 625

MESSMER JOSHUA 019P
MESSMER MILLIE 124P
GLACIER CHATEAU 744
GMRA LAKOTA 380

GMRA MINOTAURO 3104
GMRA ANGIE 871
GMRA ANGIE 442

BJR JR 107
GMRA LENA 108
BIEBER MAKE MIMI 7249
GMRA ANGIE 800

BW	101
WW/Ratio	724 112
YW/Ratio	1280 110
IMF/REA	5.12 11.36
Scrotal	37.5

CED	BW	WW	YW	Milk	TM	ME	HPG	CEM	Stay	Marb	YG	CW	REA	Fat
-2	1.2	71	109	23	58	2	12	2	16	0.42	0.05	37	0.23	-0.01
TOP BREED %														
94%	98%	4%	4%	16%	2%	44%	14%	77%	5%	41%	69%	6%	31%	22%

This Trilogy son is packed with power. His personal performance is impressive and is balanced out with a breed leading set of numbers. He has 9 EPDs that are in the top 31% of the breed or higher. Impressive growth ratios, including the 5th highest yearling ratio of all bulls on test, back up a WW and a YW EPD in the top 4% of the breed. He is tied for the 2nd highest IMF ratio of all bulls on test with the 3rd highest adjusted scan. This bull's dam is an absolute powerhouse here at GMRA. She has an MPPA of 105.3 on 3 calves. She has an average weaning ratio of 108 and has never had a calf ratio under 106 at weaning, and has an average yearling ratio of 107. If you're looking to sell pounds of beef at weaning look no further.

41 GMRA MISSION STATEMENT 2272

Birth Date: 1/30/12 Reg. #: 1525404 Category: 100% 1A



LJC LANCER 806
LJC MISSION STATEMENT P27
LJC HANNAH 106

BECKTON LANCER T A664
LJC HB LIZZIE 606
HOLDEN HI HO 753
LJC KJ JAMIE 516

LCB HOSS A444N
GMRA VENICE 950
GMRA VENICE 384

BLUE RIDGE PONDEROSA
RSLND REBELLA 120-502
BIEBER TOP MONEY 7948
GMRA VENICE 210

BW	72
WW/Ratio	662 102
YW/Ratio	1122 97
IMF/REA	3.59 11.15
Scrotal	36.0

CED	BW	WW	YW	Milk	TM	ME	HPG	CEM	Stay	Marb	YG	CW	REA	Fat
3	-1.7	58	91	22	51	8	11	1	14	0.38	-0.06	22	0.35	-0.02
TOP BREED %														
54%	19%	50%	45%	35%	38%	87%	27%	85%	10%	51%	22%	38%	16%	12%

Dam has an MPPA of 106.5 on 4 calves, with an average weaning ratio of 109 and an average yearling ratio of 103.

42 GMRA SECRET MISSION 2303

Birth Date: 2/16/12 Reg. #: 1525347 Category: 100% 1A



LJC MISSION STATEMENT P27
GMRA SECRET MISSION 8258
GMRA LAKOTA 341

LJC LANCER 806
LJC HANNAH 106
BASIN HOBO 79E
GMRA LAKOTA 947

BIEBER MAKE MIMI 7249
GMRA PEACHA 622
GMRA PEACHA 409

BJR MAKE MY DAY 981
BIEBER SIRENA 6708
GLACIER CHATEAU 744
GMRA PEACHA 240

BW	86
WW/Ratio	687 106
YW/Ratio	1100 95
IMF/REA	3.77 11.81
Scrotal	38.0

CED	BW	WW	YW	Milk	TM	ME	HPG	CEM	Stay	Marb	YG	CW	REA	Fat
1	-0.3	68	108	20	54	12	11	4	14	0.40	0.04	34	0.26	-0.01
TOP BREED %														
75%	59%	16%	22%	50%	19%	98%	26%	50%	13%	46%	65%	9%	26%	22%

Dam has an MPPA of 106.5 on 4 calves, with an average weaning ratio of 109 and an average yearling ratio of 103.



43 GMRA SECRET MISSION 2283

Birth Date: 2/3/12 *Reg. #* 1525352 *Category:* 100% 1A

LJC MISSION STATEMENT P27
GMRA SECRET MISSION 8258
GMRA LAKOTA 341

LCHMN RED SPREAD 1271F
GMRA JUANA 642
GMRA JUANA 224

LJC LANCER 806
LJC HANNAH 106

BASIN HOBO 79E
GMRA LAKOTA 947

LMAN KING ROB 8621
BJR MATTIE 002-1102

BASIN HOBO 79E
GMRA JUANA 039

BW	93
WW/Ratio	672 104
YW/Ratio	1145 99
IMF/REA	2.97 12.23
Scrotal	35.0

CED	BW	WW	YW	Milk	TM	ME	HPG	CEM	Stay	Marb	YG	CW	REA	Fat
0	-0.8	66	105	18	51	14	13	5	16	0.30	0.07	31	0.23	0.01
TOP BREED %	83%	74%	11%	12%	57%	17%	99%	10%	36%	4%	72%	13%	31%	61%

A nice REA ratio of 105. 7 of his EPDs are in the top 31% of the breed.

44 GMRA MAKE IT EASY 2304

Birth Date: 2/16/12 *Reg. #* 1525400 *Category:* 100% 1A

BIEBER MAKE MIMI 7249
GMRA MAKE IT EASY 8226
GMRA LAKOTA 625

LCB HOSS A444N
GMRA ESTONIA 935W
GMRA ESTONIA 228

BJR MAKE MY DAY 981
BIEBER SIRENA 6708

GLACIER CHATEAU 744
GMRA LAKOTA 380

BLUE RIDGE PONDEROSA
RSLND REBELLA 120-502

LCHMN HEVN'S SAKE 1002F
GMRA ESTONIA 826

BW	68
WW/Ratio	663 102
YW/Ratio	1111 96
IMF/REA	4.19 10.59
Scrotal	35.0

CED	BW	WW	YW	Milk	TM	ME	HPG	CEM	Stay	Marb	YG	CW	REA	Fat	
7	-2.5	63	98	23	54	5	9	8	15	0.38	0.04	24	0.16	-0.01	
TOP BREED %	20%	10%	33%	33%	29%	21%	67%	77%	8%	8%	51%	65%	29%	44%	22%

This bull turned in a nice IMF ratio of 110. His dam has an MPPA of 103.4.

45 GMRA LARAMIE 2243

Birth Date: 1/22/12 *Reg. #* 1525369 *Category:* 100% 1A

LCC CHEYENNE B221L
GMRA LARAMIE 5110
GMRA LAKOTA 341

BIEBER MAKE MIMI 7249
GMRA ESTONIA 747
GMRA ESTONIA 228

BFCK CHEROKEE CNYN 4912
HXC 701G

BASIN HOBO 79E
GMRA LAKOTA 947

BJR MAKE MY DAY 981
BIEBER SIRENA 6708

LCHMN HEVN'S SAKE 1002F
GMRA ESTONIA 826

BW	85
WW/Ratio	619 96
YW/Ratio	1094 94
IMF/REA	3.65 10.93
Scrotal	39.5

CED	BW	WW	YW	Milk	TM	ME	HPG	CEM	Stay	Marb	YG	CW	REA	Fat	
1	0.2	67	106	20	54	18	11	5	13	0.42	0.12	33	0.08	0.01	
TOP BREED %	75%	61%	18%	16%	53%	24%	99%	32%	36%	22%	41%	91%	10%	62%	61%

Dam is from the great Estonia cow family and she has an MPPA of 103.3 on 4 calves.

46 GMRA MOUNTAIN 2225

Birth Date: 1/15/12 *Reg. #* 1525357 *Category:* 100% 1A

GMRA EBV 266
GMRA MOUNTAIN 9287
GMRA VENICE 359

LSF COMBINATION A301M
GMRA LAKOTA 667
GMRA LAKOTA 456

GMRA EBV 935
BJR ESTONIA 9S-1210

BASIN HOBO 79E
GMRA VENICE 146

LCHMN TOP BRASS 1049H
WHF LASS 27G-29J

BJR RAMBLER 5162
GMRA LAKOTA 129

BW	86
WW/Ratio	661 102
YW/Ratio	1070 92
IMF/REA	3.94 12.13
Scrotal	35.0

CED	BW	WW	YW	Milk	TM	ME	HPG	CEM	Stay	Marb	YG	CW	REA	Fat	
2	-0.1	64	98	20	52	7	11	4	7	0.43	0.11	28	0.10	0.01	
TOP BREED %	65%	65%	25%	39%	44%	25%	84%	36%	50%	85%	39%	89%	20%	57%	61%

Another maternal Mountain son backed up by a powerful dam and grand dam. All of their progeny have stayed in the herd or were in the bull sale. His grand dam posts an impressive MPPA of 104.9 on 13 calves.

47 GMRA MOUNTAIN 2219

Birth Date: 1/13/12 *Reg. #* 1525380 *Category:* 100% 1A

GMRA EBV 266
GMRA MOUNTAIN 9287
GMRA VENICE 359

LSF COMBINATION A301M
GMRA THELMA 831
GMRA THELMA 507

GMRA EBV 935
BJR ESTONIA 9S-1210

BASIN HOBO 79E
GMRA VENICE 146

LCHMN TOP BRASS 1049H
WHF LASS 27G-29J

BIEBER MAKE MIMI 7249
GMRA THELMA 303

BW	73
WW/Ratio	615 95
YW/Ratio	1104 95
IMF/REA	3.92 10.40
Scrotal	38.0

CED	BW	WW	YW	Milk	TM	ME	HPG	CEM	Stay	Marb	YG	CW	REA	Fat	
5	-2.2	58	92	23	52	9	11	3	12	0.53	0.11	22	0.06	0.02	
TOP BREED %	34%	13%	56%	40%	29%	39%	92%	34%	65%	32%	20%	89%	37%	66%	79%

Dam has an MPPA of 103.2.

48 GMRA QUEST 2207

Birth Date: 1/7/12 *Reg. #* 1525286 *Category:* 100% 1A

BECKTON JULIAN GG B571
HXC CONQUEST 4405P
HXC ELLIE MAY MA638

VGW NORTHERN CANYON 5109
GMRA LAKOTA 099
GMRA LAKOTA 639

BKT JULIAN 7526 G
BKT MARTA 9A13 JL

BFCK CHEROKEE CNYN 4912
HXC 529E

GFB NORTHERN CANYON 2328
VGW PT YUMA 0278

GMRA MINOTAURO 3104
GMRA LAKOTA 422

BW	75
WW/Ratio	679 112
YW/Ratio	1076 95
IMF/REA	5.43 8.41
Scrotal	34.5

CED	BW	WW	YW	Milk	TM	ME	HPG	CEM	Stay	Marb	YG	CW	REA	Fat	
10	-3.8	66	102	20	53	5	9	7	13	0.56	0.14	25	-0.05	0.01	
TOP BREED %	7%	15%	18%	33%	37%	15%	63%	74%	14%	21%	16%	94%	28%	87%	61%

This bull combines the #3 BW EPD with proven performance, ratioing in the top 10 in the offering at weaning. The antagonistic traits of birth and growth are in sync here, with a CED, BW, and WW EPD all in the top 18% or higher. He also turned in an incredible IMF scan, posting the 2nd highest in the offering with a 135 ratio. This is backed up by the 6th highest IMF EPD. This pedigree showcases the great Lakota cow family. His young dam already posts an MPPA of 104.8.

Yearling Bulls



GREEN MOUNTAIN RED ANGUS

GMRA LARAMIE 2285

49

Birth Date: 2/4/12 Reg. # 1525439 Category: 100% 1A



LCC CHEYENNE B221L
GMRA LARAMIE 5110
GMRA LAKOTA 341

GMRA EBV 266
LGR ESTONIA 964
LGR ESTONIA 1004

BFCK CHEROKEE CNYN 4912
HXC 701G
BASIN HOBO 79E
GMRA LAKOTA 947
GMRA EBV 935
BJR ESTONIA 9S-1210
NSF SPECIAL DELIVERY
GMRA ESTONIA 59

BW	77	
WW/Ratio	675	104
YW/Ratio	1196	103
IMF/REA	3.56	11.05
Scrotal	36.0	

CED	BW	WW	YW	Milk	TM	ME	HPG	CEM	Stay	Marb	YG	CW	REA	Fat
2	-0.7	60	95	25	55	9	9	1	11	0.47	0.15	26	-0.06	0.01
TOP BREED %														
65%	40%	40%	25%	12%	14%	92%	73%	85%	41%	30%	95%	26%	89%	61%

Dam has an MPPA of 103.4.

GMRA PACKER 2206

50

Birth Date: 1/7/12 Reg. # 1525417 Category: 100% 1A



MESSMER JOSHUA 019P
MESSMER PACKER S008
MESSMER MILLIE 124P

4L SUPER VISION R2292
GMRA OPHELIA 985
GMRA OPHELIA 229

BECKTON JULIAN GG B571
MESSMER PANDORA M186
VGW TOP PICK 130
MESSMER MILLIE 9416
GLACIER CHATEAU 744
4L MR RAMBO R709
NSF SPECIAL DELIVERY
GMRA OPHELIA 036

BW	76	
WW/Ratio	624	96
YW/Ratio	1137	98
IMF/REA	4.57	11.91
Scrotal	39.5	

CED	BW	WW	YW	Milk	TM	ME	HPG	CEM	Stay	Marb	YG	CW	REA	Fat
3	-1.4	58	93	19	48	-4	12	5	14	0.51	0.00	23	0.31	0.00
TOP BREED %														
54%	27%	47%	30%	65%	58%	12%	13%	36%	12%	23%	46%	33%	20%	45%

This Packer son turned in an outstanding IMF carcass scan with a 120 ratio. He's got a very complete set of numbers with 9 of his 15 EPDs in the top 36% or higher, and the very best ME EPD in the offering. He is backed up by one of the most powerful families in the GMRA herd, going back to GMRA Ophelia 036, who never had a calf ratio under 109 at weaning and has an MPPA of 111.



Jim

GMRA TRILOGY 2270

51

Birth Date: 1/30/12 Reg. # 1525419 Category: 100% 1A



MESSMER PACKER S008
GMRA TRILOGY 0226
GMRA LAKOTA 625

LAUBACH EXPEDITION 643
GMRA ANNE 992
GMRA ANNE 444

MESSMER JOSHUA 019P
MESSMER MILLIE 124P
GLACIER CHATEAU 744
GMRA LAKOTA 380
BROWN VACATION H7106
GMRA NEXA 941
GMRA VERMILLION 796
GMRA ANNE 837

BW	87	
WW/Ratio	653	101
YW/Ratio	1138	98
IMF/REA	3.93	10.95
Scrotal	38.0	

CED	BW	WW	YW	Milk	TM	ME	HPG	CEM	Stay	Marb	YG	CW	REA	Fat
1	1.2	71	106	18	53	4	12	7	15	0.40	0.07	35	0.19	-0.01
TOP BREED %														
75%	87%	8%	11%	68%	19%	62%	17%	14%	6%	46%	77%	8%	38%	22%

This bull offers 8 of his EPDs in the top 22% or higher.



Lot 52

GMRA MAKE IT EASY 2209

52

Birth Date: 1/9/12 Reg. # 1525325 Category: 100% 1A



BIEBER MAKE MIMI 7249
GMRA MAKE IT EASY 8226
GMRA LAKOTA 625

GMRA VERMILLION 796
GMRA ANNE 444
GMRA ANNE 837

BJR MAKE MY DAY 981
BIEBER SIRENA 6708
GLACIER CHATEAU 744
GMRA LAKOTA 380
BUF CRK CHF 824-1658
GMRA LAKOTA 456
LCHMN RED SPREAD 1271F
GMRA ANNE 639

BW	87	
WW/Ratio	622	96
YW/Ratio	1131	97
IMF/REA	3.67	12.15
Scrotal	34.5	

CED	BW	WW	YW	Milk	TM	ME	HPG	CEM	Stay	Marb	YG	CW	REA	Fat
1	0.4	68	96	18	52	6	9	6	10	0.45	0.04	27	0.15	-0.01
TOP BREED %														
75%	73%	12%	21%	69%	27%	76%	59%	24%	52%	34%	65%	22%	46%	22%



Tom

53 GMRA CONQUEST 2205

Birth Date: 1/7/12 Reg. #: 1525252 Category: 100% 1A

BECKTON JULIAN GG B571
HXC CONQUEST 4405P
 HXC ELLIE MAY MA638

GMRA SECRET MISSION 8258
GMRA TOWKANA 016
 GMRA TOWKANA 570

BKT JULIAN 7526 G
 BKT MARTA 9A13 JL
 BFCK CHEROKEE CNYN 4912
 HXC 529E
 LJC MISSION STATEMENT P27
 GMRA LAKOTA 341
 BIEBER MAKE MIMI 7249
 GMRA TOWKANA 963



BW	73
WW/Ratio	593 98
YW/Ratio	1144 101
IMF/REA	4.16 10.01
Scrotal	36.0

CED	BW	WW	YW	Milk	TM	ME	HPG	CEM	Stay	Marb	YG	CW	REA	Fat		
8	-1.9	64	104	18	50	10	8	5	15	0.50	0.07	29	0.21	0.01		
TOP BREED %		15%	25%	26%	10%	68%	43%	95%	82%	36%	7%	24%	77%	17%	35%	61%

A big birth to growth spread on this bull. He's in the top 26% or higher for CED and BW as well as WW and YW. He is tied for the 5th highest CED EPD of all sale lots.



Lot 54

54 GMRA TRILOGY 2249

Birth Date: 1/23/12 Reg. #: 1525328 Category: 100% 1A

MESSMER PACKER S008
GMRA TRILOGY 0226
 GMRA LAKOTA 625

BIEBER TOP MONEY 7948
GMRA JUANA 481
 GMRA JUANA 130

MESSMER JOSHUA 019P
 MESSMER MILLIE 124P
 GLACIER CHATEAU 744
 GMRA LAKOTA 380
 BIEBER RED MOON 6042
 BIEBER SIRENA 6708
 LARSON RED LIGHTNING
 GMRA JUANA 433



BW	93
WW/Ratio	663 102
YW/Ratio	1136 98
IMF/REA	3.52 12.56
Scrotal	35.0

CED	BW	WW	YW	Milk	TM	ME	HPG	CEM	Stay	Marb	YG	CW	REA	Fat		
-1	0.9	70	100	16	51	0	11	2	14	0.25	0.06	30	0.28	0.01		
TOP BREED %		89%	89%	8%	20%	74%	23%	32%	33%	77%	17%	81%	74%	15%	24%	61%

This bull turned in a REA ratio of 108.



John Goggins

55 GMRA MAKE IT EASY 2231

Birth Date: 1/17/12 Reg. #: 1525319 Category: 100% 1A

BIEBER MAKE MIMI 7249
GMRA MAKE IT EASY 8226
 GMRA LAKOTA 625

BIEBER TOP MONEY 7948
GMRA LAKOTA 422
 GMRA LAKOTA 912

BJR MAKE MY DAY 981
 BIEBER SIRENA 6708
 GLACIER CHATEAU 744
 GMRA LAKOTA 380
 BIEBER RED MOON 6042
 BIEBER SIRENA 6708
 BJR YOGO 002-104
 CFLD LAKOTA 409



BW	64
WW/Ratio	641 99
YW/Ratio	1139 98
IMF/REA	3.92 10.37
Scrotal	38.0

CED	BW	WW	YW	Milk	TM	ME	HPG	CEM	Stay	Marb	YG	CW	REA	Fat		
8	-2.9	62	85	21	52	11	8	6	12	0.27	-0.05	16	0.17	-0.03		
TOP BREED %		15%	4%	45%	50%	48%	44%	96%	79%	24%	30%	78%	25%	57%	42%	7%

Heifer bull whose grand dam was the foundation cow, GMRA Lakota 912.

GMRA Lakota 912, maternal granddam of Lot 55 and great-great granddam of Lots 32, 38 and 72

Yearling Bulls



GREEN MOUNTAIN RED ANGUS



56 GMRA TRILOGY 2214

Birth Date: 1/12/12 Reg. #: 1525280 Category: 100% 1A

MESSMER PACKER S008	MESSMER JOSHUA 019P
GMRA TRILOGY 0226	MESSMER MILLIE 124P
GMRA LAKOTA 625	GLACIER CHATEAU 744
	GMRA LAKOTA 380
BROWN VACATION H7106	BECKTON JULIAN GG B571
GMRA ESTONIA 086	LCHMN FLOWER C1161
GMRA ESTONIA 747	BIEBER MAKE MIMI 7249
	GMRA ESTONIA 228

BW	75
WW/Ratio	569 94
YW/Ratio	1019 90
IMF/REA	4.35 11.17
Scrotal	37.0

CED	BW	WW	YW	Milk	TM	ME	HPG	CEM	Stay	Marb	YG	CW	REA	Fat
4	-0.7	59	93	20	50	6	13	6	18	0.39	-0.04	25	0.37	-0.01
TOP BREED %														
43%	43%	43%	42%	55%	48%	74%	9%	24%	1%	48%	29%	29%	14%	22%

Tied for the top STAY EPD in the offering.

57 GMRA LARAMIE 2310

Birth Date: 2/23/12 Reg. #: 1525386 Category: 100% 1A

LCC CHEYENNE B221L	BFCK CHEROKEE CNYN 4912
GMRA LARAMIE 5110	HXC 701G
GMRA LAKOTA 341	BASIN HOBO 79E
	GMRA LAKOTA 947
BROWN VACATION H7106	BECKTON JULIAN GG B571
GMRA LARKOBA 873	LCHMN FLOWER C1161
GMRA LARKOBA 517	GLACIER CHATEAU 744
	GMRA LARKOBA 221

BW	92
WW/Ratio	697 108
YW/Ratio	1090 94
IMF/REA	
Scrotal	35.5

CED	BW	WW	YW	Milk	TM	ME	HPG	CEM	Stay	Marb	YG	CW	REA	Fat
-4	1.2	70	106	21	56	18	12	5	15	0.38	0.12	35	0.08	0.00
TOP BREED %														
99%	92%	6%	22%	31%	5%	99%	17%	36%	7%	51%	91%	8%	62%	45%

This bull's maternal grand dam is the dam of our featured Lot 1.

58 GMRA LARAMIE 2267

Birth Date: 1/29/12 Reg. #: 1525327 Category: 100% 1A

LCC CHEYENNE B221L	BFCK CHEROKEE CNYN 4912
GMRA LARAMIE 5110	HXC 701G
GMRA LAKOTA 341	BASIN HOBO 79E
	GMRA LAKOTA 947
BIEBER TOP MONEY 7948	BIEBER RED MOON 6042
GMRA NEXA 472	BIEBER SIRENA 6708
GMRA NEXA 54	LMAN LADIES MAN 1144B
	GMRA NEXA 127

BW	83
WW/Ratio	635 98
YW/Ratio	1104 95
IMF/REA	4.17 11.44
Scrotal	36.5

CED	BW	WW	YW	Milk	TM	ME	HPG	CEM	Stay	Marb	YG	CW	REA	Fat
-1	0.3	69	97	12	46	13	10	3	12	0.46	0.20	27	-0.08	0.03
TOP BREED %														
89%	63%	11%	25%	95%	60%	99%	51%	65%	31%	32%	99%	21%	91%	89%

59 GMRA MOUNTAIN 2268

Birth Date: 1/29/12 Reg. #: 1525391 Category: 100% 1A

GMRA EBV 266	GMRA EBV 935
GMRA MOUNTAIN 9287	BJR ESTONIA 9S-1210
GMRA VENICE 359	BASIN HOBO 79E
	GMRA VENICE 146
LAUBACH EXPEDITION 643	BROWN VACATION H7106
GMRA NEXA 901	GMRA NEXA 941
GMRA NEXA 553	GMRA VERMILLION 796
	GMRA NEXA 531

BW	75
WW/Ratio	659 102
YW/Ratio	1150 99
IMF/REA	3.07 11.54
Scrotal	36.0

CED	BW	WW	YW	Milk	TM	ME	HPG	CEM	Stay	Marb	YG	CW	REA	Fat
7	-0.8	60	92	29	59	4	8	6	13	0.31	0.06	23	0.12	0.00
TOP BREED %														
20%	31%	47%	39%	3%	6%	59%	84%	24%	23%	69%	74%	32%	53%	45%

Typical Mountain son with a great Milk EPD in the top 3% of the breed and 2nd highest in the offering. He is out of a powerful dam with a 109.7 MPPA. Her first calf, GMRA Vengeance 1254, sold to Fritz Red Angus in our 2012 sale for \$11,000.

60 GMRA CONQUEST 2239

Birth Date: 1/21/12 Reg. #: 1525355 Category: 100% 1A

BECKTON JULIAN GG B571	BKT JULIAN 7526 G
HXC CONQUEST 4405P	BKT MARTA 9A13 JL
HXC ELLIE MAY MA638	BFCK CHEROKEE CNYN 4912
	HXC 529E
LCHMN RED SPREAD 1271F	LMAN KING ROB 8621
GMRA LARKOBA 659	BJR MATTIE 002-1102
GMRA LARKOBA 151	BJR MAKE MY DAY 981
	GMRA LARKOBA 649

BW	74
WW/Ratio	640 99
YW/Ratio	1053 91
IMF/REA	4.05 10.81
Scrotal	32.0

CED	BW	WW	YW	Milk	TM	ME	HPG	CEM	Stay	Marb	YG	CW	REA	Fat
7	-2.9	62	101	18	49	10	8	3	13	0.52	0.08	26	0.15	0.01
TOP BREED %														
20%	11%	32%	32%	68%	48%	95%	85%	65%	22%	21%	81%	24%	46%	61%



GMRA Lakota 735T, dam of Lot 61

61 Birth Date: 1/25/12 Reg. #: 1525366 Category: 100% 2

LJC LANCER 806
LJC MISSION STATEMENT P27
LJC HANNAH 106

MLK CRK TITLEIST 4158
GMRA LAKOTA 735T
GMRA LAKOTA 380

BECKTON LANCER T A664
LJC HB LIZZIE 606
HOLDEN HI HO 753
LJC KJ JAMIE 516
VGW TITLEIST 1106
MLK CRK SHEBA 079
BASIN HOBO 79E
GMRA LAKOTA 527

BW	83
WW/Ratio	633 98
YW/Ratio	1150 99
IMF/REA	4.01 12.49
Scrotal	38.5

CED	BW	WW	YW	Milk	TM	ME	HPG	CEM	Stay	Marb	YG	CW	REA	Fat	
1	-1.1	57	92	21	50	10	12	1	15	0.49	-0.09	23	0.49	-0.01	
TOP BREED %	75%	42%	42%	27%	41%	37%	96%	20%	85%	7%	26%	14%	32%	5%	22%

This bull turns in a 107 REA ratio and a 105 IMF ratio. He has the #4 YG EPD in the offering and has a REA EPD in the top 5% of the breed.

62 Birth Date: 1/18/12 Reg. #: 1525329 Category: 100% 1A

LCC CHEYENNE B221L
GMRA LARAMIE 5110
GMRA LAKOTA 341

BIEBER MAKE MIMI 7249
GMRA THELMA 507
GMRA THELMA 303

BFCK CHEROKEE CNYN 4912
HXC 701G
BASIN HOBO 79E
GMRA LAKOTA 947
BJR MAKE MY DAY 981
BIEBER SIRENA 6708
BASIN HOBO 79E
GMRA THELMA 132

BW	78
WW/Ratio	611 94
YW/Ratio	1067 92
IMF/REA	3.93 10.57
Scrotal	35.5

CED	BW	WW	YW	Milk	TM	ME	HPG	CEM	Stay	Marb	YG	CW	REA	Fat	
4	-3.2	59	93	25	55	12	10	4	15	0.52	0.12	21	0.05	0.02	
TOP BREED %	43%	11%	42%	39%	15%	17%	98%	38%	50%	8%	21%	91%	41%	68%	79%

63 Birth Date: 1/9/12 Reg. #: 1525281 Category: 100% 1A

BECKTON JULIAN GG B571
HXC CONQUEST 4405P
HXC ELLIE MAY MA638

BROWN VACATION H7106
GMRA JUANA 089
GMRA JUANA 725

BKT JULIAN 7526 G
BKT MARTA 9A13 JL
BFCK CHEROKEE CNYN 4912
HXC 529E
BECKTON JULIAN GG B571
LCHMN FLOWER C1161
BIEBER MAKE MIMI 7249
GMRA JUANA 130

BW	86
WW/Ratio	598 99
YW/Ratio	1075 94
IMF/REA	3.44 11.54
Scrotal	36.0

CED	BW	WW	YW	Milk	TM	ME	HPG	CEM	Stay	Marb	YG	CW	REA	Fat	
6	-1.2	58	90	19	48	6	8	5	16	0.39	-0.02	22	0.30	-0.01	
TOP BREED %	27%	65%	39%	39%	57%	45%	76%	82%	36%	3%	48%	37%	36%	21%	22%

Lots of potential to be a female producer. Note his very high stayability. The Conquest daughters in the herd are doing a great job for us with an average MPPA of 102.8.



64 Birth Date: 1/27/12 Reg. #: 1525300 Category: 100% 1A

LJC LANCER 806
LJC MISSION STATEMENT P27
LJC HANNAH 106

BJR MAKE MY DAY 981
GMRA VENICE 231
GMRA VENICE 959

BECKTON LANCER T A664
LJC HB LIZZIE 606
HOLDEN HI HO 753
LJC KJ JAMIE 516
BJR EASY RIDER 781
BJR TOW KANA 117-710
VGW RAMBLER 1000
GMRA VENICE 210

BW	85
WW/Ratio	636 98
YW/Ratio	1161 100
IMF/REA	3.21 11.22
Scrotal	37.0

CED	BW	WW	YW	Milk	TM	ME	HPG	CEM	Stay	Marb	YG	CW	REA	Fat	
0	0.4	63	104	17	48	12	11	0	12	0.58	-0.05	33	0.32	-0.03	
TOP BREED %	83%	71%	25%	12%	77%	49%	98%	27%	91%	27%	13%	25%	11%	19%	7%



Julie and Flash

65 GMRA LARAMIE 2286

Birth Date: 2/4/12 Reg. #: 1525344 Category: 100% 1A

LCC CHEYENNE B221L
GMRA LARAMIE 5110
GMRA LAKOTA 341

BIEBER TOP MONEY 7948
GMRA NEXA 574
GMRA NEXA 54

BFCCK CHEROKEE CNYN 4912
HXC 701G
BASIN HOBO 79E
GMRA LAKOTA 947
BIEBER RED MOON 6042
BIEBER SIRENA 6708
LMAN LADIES MAN 1144B
GMRA NEXA 127

BW	67	
WW/Ratio	593	92
YW/Ratio	1068	92
IMF/REA	3.68	10.32
Scrotal	36.5	

CED	BW	WW	YW	Milk	TM	ME	HPG	CEM	Stay	Marb	YG	CW	REA	Fat
4	-3.5	56	77	14	42	12	10	4	12	0.41	0.15	10	-0.15	0.03
TOP BREED %														
43%	4%	57%	63%	91%	86%	98%	51%	50%	30%	43%	95%	73%	97%	89%

66 GMRA MAKE IT EASY 2230

Birth Date: 1/17/12 Reg. #: 1525331 Category: 100% 1A

BIEBER MAKE MIMI 7249
GMRA MAKE IT EASY 8226
GMRA LAKOTA 625

LCC CHEYENNE B221L
GMRA ESTONIA 513
GMRA ESTONIA 544

BJR MAKE MY DAY 981
BIEBER SIRENA 6708
GLACIER CHATEAU 744
GMRA LAKOTA 380
BFCCK CHEROKEE CNYN 4912
HXC 701G
GMRA EBV 935
GMRA ESTONIA 031

BW	65	
WW/Ratio	594	92
YW/Ratio	1042	90
IMF/REA	3.07	11.75
Scrotal	37.0	

CED	BW	WW	YW	Milk	TM	ME	HPG	CEM	Stay	Marb	YG	CW	REA	Fat
8	-3.3	55	82	28	55	5	8	6	12	0.47	0.02	14	0.19	0.01
TOP BREED %														
15%	3%	71%	67%	9%	32%	68%	84%	24%	30%	30%	56%	62%	38%	61%

67 GMRA MOUNTAIN 2297

Birth Date: 2/9/12 Reg. #: 1525343 Category: 100% 1A

GMRA EBV 266
GMRA MOUNTAIN 9287
GMRA VENICE 359

BIEBER TOP MONEY 7948
GMRA REBELLA 572
GMRA REBELLA 249

GMRA EBV 935
BJR ESTONIA 9S-1210
BASIN HOBO 79E
GMRA VENICE 146
BIEBER RED MOON 6042
BIEBER SIRENA 6708
NSF SPECIAL DELIVERY
GMRA REBELLA 050

BW	77	
WW/Ratio	627	
YW/Ratio	1133	
IMF/REA	3.88	11.72
Scrotal	36.0	

CED	BW	WW	YW	Milk	TM	ME	HPG	CEM	Stay	Marb	YG	CW	REA	Fat
6	0.0	61	90	25	56	7	8	3	12	0.30	0.08	23	0.04	0.00
TOP BREED %														
27%	65%	29%	35%	12%	9%	80%	86%	65%	32%	72%	81%	33%	71%	45%

Note that this bull is a twin.

68 GMRA SECRET MISSION 2275

Birth Date: 1/31/12 Reg. #: 1525371 Category: 100% 1A

LJC MISSION STATEMENT P27
GMRA SECRET MISSION 8258
GMRA LAKOTA 341

MLK CRK TITLEIST 4158
GMRA PAMELA 762
GMRA PAMELA 042

LJC LANCER 806
LJC HANNAH 106
BASIN HOBO 79E
GMRA LAKOTA 947
VGW TITLEIST 1106
MLK CRK SHEBA 079
VGW RAMBLER 1000
GMRA PAMELA 548

BW	84	
WW/Ratio	629	97
YW/Ratio	1039	89
IMF/REA	3.89	10.15
Scrotal	36.0	

CED	BW	WW	YW	Milk	TM	ME	HPG	CEM	Stay	Marb	YG	CW	REA	Fat
2	-1.6	55	85	17	44	8	8	4	14	0.42	0.05	19	0.05	-0.01
TOP BREED %														
65%	36%	53%	62%	74%	70%	89%	79%	50%	14%	41%	69%	47%	68%	22%

69 GMRA MISSION STATEMENT 2287

Birth Date: 2/4/12 Reg. #: 1525407 Category: 100% 1A

LJC LANCER 806
LJC MISSION STATEMENT P27
LJC HANNAH 106

VGW NORTHERN CANYON 5109
GMRA MESA MAID 957
GMRA MESA MAID 809

BECKTON LANCER T A664
LJC HB LIZZIE 606
HOLDEN HI HO 753
LJC KJ JAMIE 516
GEFB NORTHERN CANYON 2328
VGW PT YUMA 0278
GMRA EBV 266
GMRA MESA MAID 321

BW	76	
WW/Ratio	591	91
YW/Ratio	1106	95
IMF/REA	3.76	10.31
Scrotal	39.0	

CED	BW	WW	YW	Milk	TM	ME	HPG	CEM	Stay	Marb	YG	CW	REA	Fat
2	-1.6	61	104	17	48	3	12	-3	12	0.55	0.00	30	0.30	-0.01
TOP BREED %														
65%	25%	34%	13%	78%	58%	54%	13%	99%	29%	17%	46%	16%	21%	22%

Over half of this bull's EPDs are in the top 1/3rd of the breed.

70 GMRA CONQUEST 2254

Birth Date: 1/25/12 Reg. # 1525418 Category: 100% 1A



BECKTON JULIAN GG B571
HXC CONQUEST 4405P
HXC ELLIE MAY MA638

BKT JULIAN 7526 G
BKT MARTA 9A13 JL
BFCK CHEROKEE CNYN 4912
HXC 529E

BROWN COMMITMENT S7206
GMRA LAKOTA 986
GMRA LAKOTA 046

LJC LANCER 806
BROWN MS SHAZZAM P7940
GMRA KODIAK 765
GMRA LAKOTA 835

BW	82	
WW/Ratio	640	99
YW/Ratio	1154	99
IMF/REA	3.87	11.98
Scrotal	35.0	

CED	BW	WW	YW	Milk	TM	ME	HPG	CEM	Stay	Marb	YG	CW	REA	Fat	
4	-0.3	65	102	19	52	4	9	3	14	0.67	0.08	30	0.30	0.02	
TOP BREED %	43%	55%	22%	16%	58%	31%	61%	67%	65%	11%	7%	81%	15%	21%	79%

Dam has an MPPA of 105.7 and is a product of over 6 generations of females with MPPAs as high as 111.

71 GMRA GLACIER BERRY 2305

Birth Date: 2/17/12 Reg. # 1525437 Category: 100% 1A



RED FINE LINE MULBERRY 26P
C-T GLACIER BERRY 1021
C-T BLOKANA 0543

RED COMPASS MULBERRY 449M
RED DUS FAYETTE 8G
LCC MAJOR LEAGUE A502M
CTDB BLOKANA 810

LSF COMBINATION A301M
LGR VENICE 849
LGR VENICE 2001

LCHMN TOP BRASS 1049H
WHF LASS 27G-29J
LCHMN HEVN'S SAKE 1002F
LGR VENICE 9002

BW	82	
WW/Ratio	622	96
YW/Ratio	1080	93
IMF/REA	4.29	10.90
Scrotal	35.0	

CED	BW	WW	YW	Milk	TM	ME	HPG	CEM	Stay	Marb	YG	CW	REA	Fat	
-1	0.3	65	102	11	44	8	12	8	8	0.53	0.20	31	0.04	0.04	
TOP BREED %	89%	67%	18%	18%	96%	71%	86%	20%	8%	84%	20%	99%	13%	71%	94%

IMF ratio of 113.

72 GMRA SECRET MISSION 2269

Birth Date: 1/29/12 Reg. # 1525398 Category: 100% 1A



LJC MISSION STATEMENT P27
GMRA SECRET MISSION 8258
GMRA LAKOTA 341

LJC LANCER 806
LJC HANNAH 106
BASIN HOB0 79E
GMRA LAKOTA 947

LAUBACH EXPEDITION 643
GMRA LAKOTA 928
GMRA LAKOTA 608

BROWN VACATION H7106
GMRA NEXA 941
LEACHMAN EBV 3531
GMRA LAKOTA 912

BW	69	
WW/Ratio	586	91
YW/Ratio	1122	97
IMF/REA	3.93	10.13
Scrotal	36.0	

CED	BW	WW	YW	Milk	TM	ME	HPG	CEM	Stay	Marb	YG	CW	REA	Fat	
5	-2.0	55	90	22	49	13	10	8	14	0.38	0.03	21	0.08	-0.01	
TOP BREED %	34%	12%	62%	32%	49%	59%	99%	46%	8%	15%	51%	60%	40%	62%	22%

73 GMRA MAKE IT EASY 2226

Birth Date: 1/15/12 Reg. # 1525339 Category: 100% 1A



BIEBER MAKE MIMI 7249
GMRA MAKE IT EASY 8226
GMRA LAKOTA 625

BJR MAKE MY DAY 981
BIEBER SIRENA 6708
GLACIER CHATEAU 744
GMRA LAKOTA 380

GLACIER CHATEAU 744
GMRA NEXA 564
GMRA NEXA 235

LMAN KING ROB 8621
GLACIER REBALA
LCHMN NO EQUAL 1174D
GMRA NEXA 531

BW	80	
WW/Ratio	641	99
YW/Ratio	1136	98
IMF/REA	3.44	11.44
Scrotal	40.0	

CED	BW	WW	YW	Milk	TM	ME	HPG	CEM	Stay	Marb	YG	CW	REA	Fat	
4	-1.9	64	95	22	54	6	10	8	14	0.44	0.03	24	0.13	-0.01	
TOP BREED %	43%	27%	21%	24%	31%	15%	72%	42%	8%	16%	36%	60%	31%	51%	22%

Maternal grand dam is dam of ABS's GMRA Citadel 6109.



Lot 73

Thank You



GREEN MOUNTAIN RED ANGUS







Bob & Julie Morton

2435 Logan Trident Road • Three Forks, MT 59752
Toll Free: (866) GMRA-COW • www.gmracattle.com

FIRST CLASS
US POSTAGE
PAID
MONTEZUMA, IA
PERMIT #30



Annual Production Sale

Tuesday, March 19, 2013

Lunch at 11:00 MDT • Sale at 12:00 MDT
GMRA Sale Facility • Logan, MT

Montana Stockgrowers
Association 2013



Like us on
Facebook!



Visit www.gmracattle.com