

Quality Genetics Built on a Heritage of Commitment

HEART RIVER RANCH

OPEN A ANGUS

**Wednesday,
March 13, 2013**

1:00 p.m. MT
Medora Community Building
Medora, ND



DVAuction
Broadcasting Real-Time Auctions

HD 50K

Throwing a horse



Welcome!

Quality Genetics Built on a Heritage of Commitment

Dear Friends,

Welcome to our 7th annual "Gathering in the Badlands" sale to be held in Medora, ND on Wednesday, March 13, 2013. The dry summer certainly had its challenges but I believe you will find the most uniform group of black and red bulls we have ever offered. All of the bulls offered in this sale are tested with High Density 50K DNA technology which will give more accurate genomic-enhanced expected progeny difference's (GE-EPDs). Information is simply incorporated into the Red Angus and Black Angus EPD calculations. The 50K tests have the capacity to influence the tested animal's EPDs and Accuracy. Mr. Larry Gran from Pfizer Animal Genetics now Zoetis will be explaining GE-EPDs at our complimentary Prime Rib dinner on Tuesday, March 12, 2013 at 6:00 pm at the Medora Community Center in Medora.

As always our program will be offer both calving ease and performance bulls raised on only grass and their dam, no creep or supplemental feed. We are striving to provide you with functional, sound bulls from cattle that have survived selection in limited resource environments.

Carcass ultrasound information will be available prior to the sale upon request and a printed copy available on sale day. If we can assist you with sale selections, please feel free to contact us. Bulls will be available by March 1st for viewing prior to the sale at our bull development lot located 4 miles south of Belfield on US Highway 85 and west on 40th street SW. Don't hesitate to call with any questions you may have on the cattle. We look forward to the opportunity to visit with old and new friends. We look forward to seeing you all in historic Medora.

Heart River Ranch

Chuck & Annette Steffan Family
4291 Hwy 85 South • Belfield, ND 58622
701-575-8145 • Cell: 701-290-9745
heartrr@ndgateway.com • Fax: 701-575-2077

Open A Angus

Jim & Lynn Arthaud Family
701-623-4461 • jima@midstate.net
Dave Solga, Ranch Manager
701-260-4373 cell
PO Box 197 • Medora, ND 58645
openaangus.com

Herd/Feedlot Manager

Wes Obrigewitch • 701-260-6424



General Information

Directions to Heart River Ranch

Cows are located 6 miles north of Belfield right off of US Highway 85. Stop by our home any time 7 miles south of Belfield right off of US Highway 85 or 52 miles north of Bowman, ND on US Highway 85 and look for the Heart River Genetics sign.

Directions to Open A Angus

Cows are located 16 miles north of Belfield. Bred heifers are located 1 mile north of Belfield on US Highway 85 and 1 miles west.

Offering

1 6-Year-Old Red Angus Herd Bull
40 Yearling Red Angus Bulls
60 Yearling Black Angus Bulls

Cattle Viewing

All bulls will be at the bull development lot for viewing prior to the sale after March 1, 2013, located 4 miles south of Belfield off US Highway 85, then ½ miles west on 40th street SW. The sale offering will be available for viewing in the parking lot behind the Medora Community Center in Medora on Tuesday, March 12, 2013.

Schedule of Events

Tuesday, March 12, 2013

Medora Community Center, Medora, ND

Cattle available for viewing thru late evening

No-Host Social 6:00 p.m. (MT)

Complimentary Prime Rib Dinner 6:30 p.m. (MT)

Sponsored by Zoetis (formerly Pfizer Animal Health)

Guest speaker Larry Gran explaining Pfizer 50K test and what it means to bull buyers.

Wednesday, March 13, 2013

Medora Community Center, Medora, ND

Complimentary Lunch 11:00 a.m. (MT)

Sale 1:00p.m. (MT)

Sale Location

Medora Community Center, Medora, ND

701-623-4530 Sale Day Phone

701-623-4531 Sale Day Phone

The bulls will be on display outside of the Medora Community Center. The sale itself will be a video auction in the warmth and comfort of the Medora Community Center.

A DVD will be available upon request and bulls can be viewed online at Openangus.com.

DV Auction

The sale will be available online on DVAuction.

Emergency Phone Numbers

In case you need a phone number to call us on sale day. Please call in advance to make arrangements to call in during the sale.

701-290-9745 **Annette's Cell**

701-260-4630 **Chuck's Cell**

701-290-9015 **Jim's Cell**

701-260-4373 **Dave's Cell**

Sale Order

The sale order will be catalog order.

Mail & Telephone Bids

Bids will be handled in strict confidence by any of the publication representatives or the respective ranches. If you would like to discuss the sale offering, call us, preferably several days before the sale, and we can help select your genetics. After the sale you will need to contact Annette at 701-575-8145 to make arrangements for payment of telephone purchases.

Transportation

Belfield, ND, and Dickinson, ND, are both served by bus. Dickinson, ND, is also served by major airline. Please call 701-575-8145 if you need transportation from the bus or airport.

Lodging

Lodging is available in Medora, ND.

Americinn of Medora

75 East River Road South • Medora, ND 58645

Tel: 701-623-4800 • Fax: 701-623-4890 • www.americinn.com

Sales Team

Auctioneer:

Scott Weishaar 701-426-6826 (c), 701-872-5299 (h)

Ring Service:

Kris Petersen

Cattle Business Weekly 701-339-0305 (c), 701-337-2345 (h)

Vern Frey

American Angus Association 701-721-0344 (c), 701-537-5383 (h)

Terry Robinson

Farm & Ranch Guide 701-471-5153 (c), 701-255-3037 (h)

Scott Dirk

Tri-State Livestock News 605-380-6024 (c)

Clint Berry

Red Angus Association of America 417-844-1009

Joe Blankenship/Travis Hande

Wells Fargo 701-483-3333 (o)

Announcements

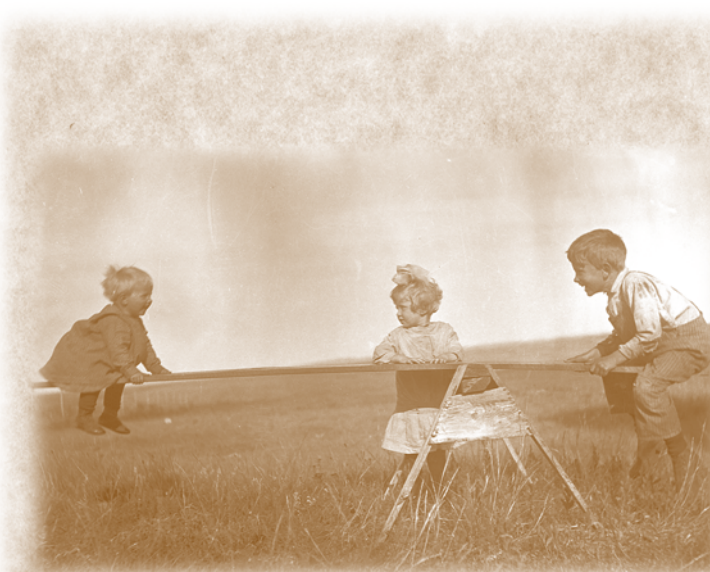
Errors discovered in the catalog will be corrected by announcements from the auction block at sale time and such corrections will take precedence over the printed matter in the catalog.

Liability

All persons who attend the sale do so at their own risk. Neither the owners, management, sales staff, facility or any person connected with this sale assume any liability, legal or otherwise, for property loss or for any accidents that may occur.

Delivery

Free delivery to central points up to 500 miles. Balance will be at cost. We will make every effort to assist in deliveries of greater distance or by private arrangements and volume purchases. Delivery will be made at our convenience. Delivery will be made at our convenience and efforts will be made to have bulls delivered by April 1.



Feeding and Development of Bulls

All bulls of HRR and Open A were weaned in late October and received no creep feed with the exception of a few Open A bulls that were ET calves produced at a recipient herd. Calves received their preweaning and weaning vaccinations and were handled in every respect as all natural. Bulls were fed to gain 2.5# per head per day on a 1% grain and by product ration. Bulls were fed free choice mineral, salt and hay. We took yearling weights at approximately 105 days post weaning with no post weaning adjustment period or warm up period. Our intent was to grow out the bulls for maximum longevity and integrity of the bull.

Historic Photos

All of the historic photos in this catalog were taken by Inez Kessler, Annette's great grandmother, in the early 1900's (1905-1908). Inez was the only person to have a camera in the area and, as a result, she took pictures of many people and events. The town of Gaylord was located about 13 miles south of Belfield, ND, along US Highway 85. The Gaylord Post Office and Store was a stop for traveler's going south. This building still stands at the Curt Molm place.

Red Angus EPD Averages (non-parent)

CED	BW	WW	YW	M	TM	ME	HPG	CETM	ST	MARB	RE	BFAT
4	-1.0	56	83	20	48	2	10	4	11	0.42	0.11	0.00

Angus EPD Averages (non-parent)

CED	BW	WW	YW	CEM	MILK	MW	MARB	REA	FAT	\$W	\$F	\$B
+6	+1.7	+46	+85	+8	+23	+31	+41	+32	+0.10	+26.97	+28.69	+61.21

FCCP Tags

Customers purchasing a Red Angus bull will be eligible to receive one bag of Red Angus Feeder Calf Certification Program ear tags per bull purchased at seller's expense. Each customer must complete paperwork to receive the tags. If the customer would like additional tags it will be at the customer's expense.

Storm Date

In case of sale postponement please listen to the Northern Ag Network, KLTC 1460 AM or go to northernag.net or ndstockmen.org or openangus.com for any postponement announcements. Postponement sale date is set for pre-sale activities: March 14, 2013, 10 am and sale March 14, 2013 1:00 pm.

Sale Terms & Conditions

The terms of the sale are cash. No release will be given until satisfactory settlement has been made. We reserve the right to withhold animals from shipment for whom payments have not been received prior to departure. Every animal sells to the highest bidder and in cases of disputes, the auctioneer's decision will be final.

All sales are subject to an acceptable semen examination. Semen evaluation certificates will be furnished to the buyer.

Bulls were carcass ultrasounded February 22. Data sheets will be provided at the sale.

Health certificates and brand releases will be furnished for shipment anywhere in the United States.

Each animal carries a readable tattoo or freeze brand.



All bulls have been tested using Pfizer 50K genomic testing.

All bulls will be carcass ultra sounded with results available on sale day.

All bulls sell fully guaranteed to be fertile and reproductively sound according to the terms and conditions of the Red Angus Association of America and the American Angus Association.

Breeder's Guarantee: All bulls are guaranteed to be breeders. All claims for adjustment or refund must be made in writing within six months of the sale date. In the event a bull is claimed to be a non-breeder, the purchaser may return the animal to the ranch of the seller if in good condition and complying with the health requirements of the Seller's state. The Seller will be entitled to six months trial following the return of the animal in which to prove that the animal is a breeder. If at the end of six months, the Seller shall be obligated to replace the animal with another of equal value or to refund the purchase price. The return of the full purchase price shall in any case be deemed full satisfaction and settlement. If the Seller proved the animal to be a breeder, it shall be the obligation of the purchaser to take delivery of the animal at the purchaser's expense.

Implied warranty: Except for those stated in the terms and conditions, there are no warranties or implies, as to merchantability or fitness for a particular purpose with respect to the cattle being sold in this auction. The warranties set forth in the terms and condition are in lieu of all other warranties, either expressed or implied and the remedies provided therein shall be the sole and exclusive remedy of the buyer, or any party claiming through the buyer, for any breach of warranty or guarantee therein provided and all other obligations or liabilities.

Health

Bulls and heifers were treated with Enforce at birth and branding and were calfhood vaccinated with 4-way and 7-way. At weaning, calves were given 5-way, 7-way and One Shot, boosters were also given. Calves and cows were poured with Dectomax in the spring, fall and late winter. All bulls will be vaccinated and wormed prior to delivery. All females are bangs vaccinated and on a fall vaccination program.

Semen Tests:

Bulls will be semen tested after the sale

Semen Interests:

Heart River Ranch and Open A Angus are each respectively retaining 50 percent revenue-sharing semen interest in every bull selling in this sale. Full possession and full salvage value sells on all bulls. If a buyer chooses to collect and market semen, the seller will share proportionately in the collection costs and the revenues earned. In the event that the seller chooses to collect semen for "in herd" use, it will be done at the seller's expense and at buyer convenience. Semen will be made available to buyer at cost.

Insurance

Ownership risk to purchaser commences when the auctioneer's hammer falls. Insurance will be available sale day. It is recommended that buyers insure their purchases for safe delivery. Purchaser assumes the risk of death or injury to their livestock immediately after the sale.

Volume Discounts

We are pleased to give a volume buyer discount. You will receive 5% off of purchases of 5 to 9 bulls, and 10% off of 10 or more bulls. Please notify the clerk when you check out to receive your discount. This is another way to say "Thank You" for your trust in our program.



Profit \$implified...

Multi-breed EPD base simplifies selection

Since 2010, the Red Angus Association of America (RAAA) and the American Simmental Association (ASA) have combined their growth and carcass datasets to provide commercial producers with the most reliable EPDs in the beef industry. In the summer of 2012, RAAA and ASA adopted a common base for Growth (BW, WW, YW, Milk) and Carcass (MARB, YG, CW, REA, FAT) EPDs so that all animals registered in either RAAA or ASA can be directly compared – regardless of breed makeup.

What is BASE?

For decades, each breed association has presented EPDs in their own language (the base). Base is no more than a reference point for any trait against which subsequent generations of animals are compared. The establishment of a base ensures that the population future generations are compared to remains stable, which allows the breed's genetic trend to be accurately identified.

Raw Genetic Value + Base Adjustment = Published EPD

Study Percentile Ranks...

Percentile ranks are an easy reference and therefore a powerful tool to assist you in becoming accustomed to the new multi-breed base. Red Angus EPD percentile ranks are presented along with all active animals' EPDs, and reference how animals compare within their respective Red Angus subpopulations, i.e. Sire Summary Sires, Active Dams, Non-Parent Bulls, etc. It's important to realize that although the multi-breed base allows for the direct comparison of Red Angus and Simmental EPDs, the percent ranks for Red Angus animals will continue to simply compare the genetics of Red Angus animals against other Red Angus. Thus, an animal that was in the top 10% for growth under the old Red Angus base will still be in the top 10% for growth in the new Red Angus multi-breed base.

Example:

In the past, you preferred to purchase bulls that had a -2.0 or lower BW EPD.

Since a -2.0 on the old RAAA base represented the top 20% for BW, you now need to use -2.7 as your critical selection threshold as that represents the top 20% for BW on the new multi-breed base.

Other Examples:

Previous Selection Threshold Old RAAA Base		New Selection Threshold New Multi-Breed Base	
EPD	% Rank	EPD	% Rank
36 WW EPD	40%	58 or higher WW EPD	40%
0.08 MARB EPD	50%	0.38 or higher MARB EPD	50%
0.24 REA EPD	20%	0.30 or higher REA EPD	20%

"Old" RAAA BASE	BW	WW	YW	Milk	MARB	YG	CW	REA	FAT
10%	-2.9	46	84	22	0.31	-0.15	52	0.32	-0.03
20%	-2.0	42	77	21	0.23	-0.11	47	0.24	-0.02
30%	-1.4	38	71	19	0.17	-0.08	43	0.18	-0.01
40%	-0.8	36	66	18	0.12	-0.05	40	0.13	-0.01
50%	-0.3	33	62	17	0.08	-0.03	37	0.09	0.00
60%	0.2	30	58	16	0.03	-0.01	34	0.04	0.01
70%	0.8	28	53	15	-0.02	0.02	31	-0.01	0.01
80%	1.4	24	47	13	-0.08	0.05	27	-0.07	0.02
90%	2.3	20	40	12	-0.16	0.09	22	-0.15	0.03

"NEW" Multi- Breed Base	BW	WW	YW	Milk	MARB	YG	CW	REA	FAT
10%	-3.6	68	105	24	0.61	-0.13	33	0.38	-0.03
20%	-2.7	64	98	23	0.53	-0.09	28	0.30	-0.02
30%	-2.1	60	92	21	0.47	-0.06	24	0.24	-0.01
40%	-1.5	58	87	20	0.42	-0.03	21	0.19	-0.01
50%	-1.0	55	83	19	0.38	-0.01	18	0.15	0.00
60%	-0.5	52	79	18	0.33	0.01	15	0.10	0.00
70%	0.1	50	74	17	0.28	0.04	12	0.05	0.01
80%	0.7	46	68	15	0.22	0.07	8	-0.01	0.02
90%	1.6	42	61	14	0.14	0.11	3	-0.09	0.03

HD 50K:

The industry standard for dependable boosts in EPD accuracy for Red and Black Angus animals

- More than 54,000 DNA markers
- 13 economically important traits and parentage verification
- Results are reported as GE-EPDs and percentile ranks associated with molecular breeding values, benchmarked against more than 7,900 Red and Black Angus animals tested with HD 50K, and reported to the nearest 1 percent

Sire prospects and herd sires with GE-EPDs powered by HD 50K and percentile ranks, you can more dependably identify:

- Sires to use extensively, strategically or sparingly, based on your breeding objectives
- Genetically superior young sires to accelerate genetic improvement
- Calving-ease sires for use on replacement heifers
- Sires likely to yield more productive replacement females
- Sires that excel in feedlot growth, efficiency and carcass merit

Traits with HD 50K genomic predictions

- Calving Ease Direct
- Birth Weight
- Weaning Weight
- Yearling Weight
- Milking Ability
- Calving Ease Maternal
- Marbling Score
- Carcass Weight
- Ribeye Area
- Fat Thickness
- Tenderness
- Dry Matter Intake
- Residual Feed Intake





Annette and Chuck Steffan, Quinn Steffan, Fr. Bill Ruelle,
Laura Steffan, Tellan Steffan and Kayla Klein



Jim, Lynn, Grace and Hudson Arthaud



Duane and Lisa Obrigewitch
Mara, Anna, Tanner, Reid and Lacy



Wes Obrigewitch



Dave and Kathy Solga

A special thank you to all of our friends and neighbors for all of your help and support.

Thank You to all the people who have made this sale work!

Catalog and Ad Design

Tracey Koester, 701-475-2736
Cow Camp Promotions

Photography & Video

Annette Steffan

Veterinarians

Terry Hall, DVM
A.J. Domek, DVM

Brand Inspection

Cary Hande
Donovan O'Brien

Carcass Ultrasound

Jason McLennan, 218-790-2860

Meals

Birdie O'Brien
Mony Wolf

Clipping

Jay Temchack,
Laughing Stock Cattle Services

Tuesday Meal Sponsor

Zoetis
Mark Voll, Area Representative

Barn Crew

Chuck Steffan
Tellan Steffan
Annette Steffan
Kayla Klein
Dave Solga
Rod Watson
Justin Killough
Ken Mack
Wes Obrigewitch
Laura Steffan
Tony Marthaler
Dan Donnelly

Office Crew

Heather Weishaar
Angie Dukart
Annette Steffan
Tena Ketchum
Quinn Steffan
Laura Steffan
Kayla Obrigewitch
Mara Obrigewitch
Lacy Obrigewitch
Kristie Blaser

Facility

Medora Community Center Staff
City of Medora

IN LOVING MEMORY OF BERTHA OBRIGEWITCH

JUNE 1, 1912 – JANUARY 10, 2013



Bertha on her 85th birthday

At 100 years of age, our beloved grandmother passed away on January 10, 2013. Bertha was born in South America in the pampas near the town of Machachin. In 1914, she and her family immigrated to the United States. Bertha married Tony Obrigewitch in 1931 and farmed and ranched north of Belfield, ND, where they raised 13 children. Grandma always seemed to have her grandchildren around and we thought we had the best grandma in the world. She was a unique woman that spoke several languages including English, Spanish and German. She always had a huge hug and a kiss for us and always said "liebe" (German-love) to us when we left. We will truly miss her!



Bertha and all of her grand and great grandchildren in 1997

***Goodbye,
Auf Wiedersehen, Adios
and Liebe Dear Mother and
Grandmother.***

Vaya Con Dios!



Red Angus Reference Sires

Quality Genetics Built on a Heritage of Commitment – 7



MLK CRK KNIGHT 7153

MLK CRK Knight 7153 is a very athletic, good footed bull that has been used in big country cleanup since a yearling. He has a great disposition, is clean sheathed and easy to handle. He is a frame 6 and is a very consistent breeder of dark red, performance cattle with eye appeal and structural correctness, good scrotals and above average length of body.

Owners: Heart River Ranch, Belfield, ND, Diamond B Ranch, Fromberg, MT and Milk Creek Reds, Plevna, MT.



SIRE **A**

MLK CRK KNIGHT 7153

BIRTH DATE: 2/6/07 REG. #: 1164885 CAT: 100% 1A

CED	BW	WW	YW	M	TM	ME	HPG	CETM	ST	MARB	RE	BFAT
4	0.8	66	87	12	45	-10	7	9	8	0.47	0.26	-0.01

RED YY 23L TOPPER 408D
RED YY KNIGHT 640F
RED TOP GOLDIE 40U

BJR PROOF 224-159
MLK CRK SHEBA 043
MLK CRK SHEBA 869

BJR TOPPER AGAIN 23L
RED DEVLANE ROZINE 8B
RED LINE FLAME 11N
REDLINE GOLDIE 40K
BJR PROOF 20A-5162
BJR LAKINA 677-3197
GLACIER CUB 446
MLK CRK SHEBA 556

BW	100
ADJ WW	819
WR	119
ADJ YW	1200
YR	108
FRAME	
SCROTAL	
DAM'S MPPA	105.1



MUSHRUSH IMPRESSIVE CA U236



SIRE **B**

MUSHRUSH IMPRESSIVE CA U236

BIRTH DATE: 9/10/08 REG. #: 1295159 CAT: 1A 100%

CED	BW	WW	YW	M	TM	ME	HPG	CETM	ST	MARB	RE	BFAT
11	-6.5	59	85	21	50	-2	11	4	15	0.39	0.31	0.02

BECKTON LANCER F442 T
BUF CRK LANCER R017
BUF CRK JULIET N036

TR JULIAN LT142
MUSHRUSH MADAM LT R265
MUSHRUSH ROBIN M125

BECKTON LANCER T A664
BKT SUFFEINA A828 DM
BECKTON JULIAN GG B571
BUF CRK PRIMROSE 5679
BECKTON JULIAN GG B571
TR LANA G760
BFCK CHEROKEE CANY 4912
MUSHRUSH ZENA 0165

BW	58
ADJ WW	491
WR	119
ADJ YW	971
YR	105
FRAME	
SCROTAL	
DAM'S MPPA	105.3

We are very impressed with the Mushrush Impressive calves. They are moderate in frame and have depth of rib and style.

Owners: Mushrush Red Angus, KS; Genex, WI.



RED RMJ REDMAN 1T



SIRE **C**

RED RMJ REDMAN 1T

BIRTH DATE: 1/30/07 REG. #: 1417390 CAT: 1A 100%

CED	BW	WW	YW	M	TM	ME	HPG	CETM	ST	MARB	RE	BFAT
6	-4.0	47	81	19	42	-5	7	-6	10	0.30	0.64	-0.03

VGW KING OF THE WEST
5L NORSEMAN KING 2291
NORSEMAN 1312 PJM

O C C HUNTER 928H
CROWFOOT KURUBA 4033P
RED CROWFOOT KURUBA 2030M

VGW ACE 613
VGW MT TABITHA 9633
376 P J M 141
P J M POWERPOINT 2009
O C C FOCUS 813F
O C C DIXIE ERICA 960E
MLK CRK CUB 722
RED CROWFOOT KURUBA 9301J

BW	84
ADJ WW	754
WR	100
ADJ YW	1219
YR	100
FRAME	
SCROTAL	
DAM'S MPPA	

Used primarily on flush cows, Redman has produced standouts at sales in Canada. He is a Norseman King X OCC Hunter son and his progeny are consistent with above average growth.



C-T GRAND STATEMENT 1025



SIRE **D**

C-T GRAND STATEMENT 1025

BIRTH DATE: **1/27/10** REG. #: **1365711** CAT: **1A 100%**

CED	BW	WW	YW	M	TM	ME	HPG	CETM	ST	MARB	RE	BFAT
-2	0.9	68	117	22	56	10	14	2	10	0.55	0.37	0.01

LJC LANCER 806
LJC MISSION STATEMENT P27
 LJC HANNAH 106

LCHMN GRANDCANYON 1244G
C-T MISS PAN 0760
 CTDB HOBO'S GAL 803

BECKTON LANCER T A664
 LJC HB LIZZIE 606
 HOLDEN HI HO 753
 LJC KJ JAMIE 516
 BUF CRK CHF 824-1658
 KRN REBA'S ROBIN
 GLACIER NORTHERN KNG656
 CTDB HOBO'S GAL 602

BW	78
ADJ WW	835
WR	119
ADJ YW	1349
YR	118
FRAME	
SCROTAL	
DAM'S MPPA	104.4

Grand Statement is backed by a beautiful, standout dam with an excellent udder confirmation.

Owners: C-T Red Angus, MT, Gill Red Angus, SD, Lucht Red Angus, MT, ABS Global, Inc., WI.



FEDES BIG SKY R9



SIRE **E**

FEDES BIG SKY R9

BIRTH DATE: **1/18/05** REG. #: **1025891** CAT: **1A 100%**

CED	BW	WW	YW	M	TM	ME	HPG	CETM	ST	MARB	RE	BFAT
7	-4.4	57	77	33	61	5	20	-4	10	0.71	0.12	-0.04

BJR MAKE MY DAY 981
BIEBER MAKE MIMI 7249
 BIEBER SIRENA 6708

LCHMN GRANDCANYON 1244G
FEDES LAKINA 310
 FEDES LAKINA 954

BJR EASY RIDER 781
 BJR TOW KANA 117-710
 BIEBER IMPACT 4399
 BIEBER MIMI 4227
 BUF CRK CHF 824-1658
 KRN REBA'S ROBIN
 FED'S IMPRESSIVE 744
 FED'S LAKINA 730

BW	74
ADJ WW	781
WR	116
ADJ YW	1375
YR	119
FRAME	
SCROTAL	37.9
DAM'S MPPA	108

A proven calving ease and maternal foundation sire known for his fertile and productive daughters.

Owners: Feddes Red Angus, MT; Ludvigson Stock Farms, IA; Genex, WI

ADDITIONAL RED ANGUS SIRES INCLUDE:

5L NORSEMAN KING 2291 **806707**

CED	BW	WW	YW	M	TM	ME	HPG	CETM	ST	MARB	RE	BFAT
3	0.1	52	87	17	43	0	7	-10	11	0.52	0.84	-0.03

VGW LIBERTY 523 **1029291**

CED	BW	WW	YW	M	TM	ME	HPG	CETM	ST	MARB	RE	BFAT
12	-2.9	45	74	27	50	5	6	5	8	0.72	0.18	-0.01

5L LEGEND 1553-425V **1261711**

CED	BW	WW	YW	M	TM	ME	HPG	CETM	ST	MARB	RE	BFAT
10	-2.8	46	65	20	43	3	8	2	9	0.30	0.24	0.00

RIDGE JULIAN S005-0099 **1379061**

CED	BW	WW	YW	M	TM	ME	HPG	CETM	ST	MARB	RE	BFAT
15	-6.7	43	63	23	44	-3	11	7	11	0.35	0.07	-0.01

HRR CONFEDERATE 831 **1262926**

CED	BW	WW	YW	M	TM	ME	HPG	CETM	ST	MARB	RE	BFAT
6	-1.3	54	81	24	50	-4	4	4	10	0.51	0.22	-0.03

SHOCO DATA **761532**

CED	BW	WW	YW	M	TM	ME	HPG	CETM	ST	MARB	RE	BFAT
2	1.5	70	93	14	49	14	13	11	7	0.60	0.15	0.02

BECKTON EPIC R397 K **1042135**

CED	BW	WW	YW	M	TM	ME	HPG	CETM	ST	MARB	RE	BFAT
10	-0.4	78	122	14	53	-2	14	8	13	0.57	0.50	0.08



TOMBSTONE 050

SIRE **M**

TOMBSTONE 050

BIRTH DATE: **1/14/10** REG. #: **16644975**

CED	BW	WW	YW	CEM	MILK	MW	MARB	REA	FAT	\$W	\$F	\$B
8	1.8	76	143	7	36	48	0.44	0.28	0.021	40.79	89.34	87.61
											BW	87
											ADJ WW	
											WR	
											ADJ YW	
											YR	
											FRAME	
											SCROTAL	

CONNEALY ONWARD
SITZ UPWARD 307R
 SITZ HENRIETTA PRIDE 81M

 SITZ ALLIANCE 6595
MYTTY COUNTESS 906
 BALDRIDGE COUNTESS 357

CONNEALY LEAD ON
 ALTUNE OF CONANGA 6104
 SITZ VALUE 7097
 SITZ HENRIETTA PRIDE 1370
 SITZ TRAVELER 8180
 SITZ BARBARAMERE JET 2698
 BON VIEW EMULATION EXT 473
 BALDRIDGE COUNTESS 235

Tombstone is an Upward son out of Mytty In Focus's dam, Mytty Countess 905. He was recently added to the Genex bull battery and was the top selling Angus bull at Midland Bull Test in 2011. He is a moderate, easy fleshing bull with a lot of promise. The bulls in this sale are the very first calves to be offered for sale in the country.

Owners: Open A Angus, ND; Miller Angus, SD; Frederickson Ranch, SD



KESSLERS FRONTMAN R001

SIRE **N**

KESSLERS FRONTMAN R001

BIRTH DATE: **1/1/05** REG. #: **15180461**

CED	BW	WW	YW	CEM	MILK	MW	MARB	REA	FAT	\$W	\$F	\$B
10	-0.2	51	88	11	33	85	0.21	0.67	-0.003	32.61	29.88	66.9
											BW	77
											ADJ WW	799
											WR	112
											ADJ YW	1353
											YR	109
											FRAME	
											SCROTAL	

CONNEALY FOREFRONT
CONNEALY FRONT PAGE 0228
 EBONY LIT OF CONANGA 840

 TC RANCHER 056
KESSLERS BELL 0024
 KESSLERS BELL 8055

CONNEALY FRONTLINE
 EILEEN HEARTLAND CONANGA6443
 GDAR TRAVELER 044
 EBONY LIL OF CONANGA
 LEACHMAN PROMPTER
 TC JESTRESS 6004
 B/R NEW DESIGN 036
 KESSLERS RAIN BELL 101

Frontman offers a unique pedigree in a moderate frame and heavy muscle. We used this bull heavily and have been impressed by the deep, open rib and thickness of his calves. They seem to be good Badlands kind of cattle with a good foot.

Owners: Kessler Angus, OR; Boyd Beef Cattle, KY; Conley Cattle, OK; Partisover Ranch, GA; Pembroke Cattle Company, OK; Penner Ranch, OK; Trowbridge Angus, NY; Southern Cattle Company, FL; Spruce Mountain Ranch, LLS, CO; Ray Mar Farms, CA; ABS Global, Inc., WI.



SITZ UPWARD 307R

SIRE **O**

SITZ UPWARD 307R

BIRTH DATE: **3/12/05** REG. #: **#14963730**

CED	BW	WW	YW	CEM	MILK	MW	MARB	REA	FAT	\$W	\$F	\$B
7	2.4	70	136	8	41	49	0.39	0.63	-0.006	48.82	82.62	90.6
											BW	85
											ADJ WW	902
											WR	126
											ADJ YW	1395
											YR	117
											FRAME	
											SCROTAL	

CONNEALY LEAD ON
CONNEALY ONWARD
 ALTUNE OF CONANGA 6104

 SITZ VALUE 7097
SITZ HENRIETTA PRIDE 81M
 SITZ HENRIETTA PRIDE 1370

CONNEALY LEADTIME
 ELIGENCE PLUS OF CONANGA
 GAR TRAVELER 1489
 AVALON 1418 OF CONANGA 6276
 SITZ TRAVELER 6802
 SITZ EISA EVERGREEN 791
 OCC GREAT PLAINS 943G
 SITZ HENRIETTA PRIDE 2155

Upward is a performance bull with progeny that are big, stout and growthy. His progeny are getting a lot of attention nationwide. We felt that he sires shape, dimension and phenotype with added performance.

Owners: Sitz Angus, MT; Eliason Livestock, ID; Leadore Angus Ranch, ID; Genex, WI.




MYTTY IN FOCUS

In Focus is one of the very few bulls that has stood the test of time maintaining a high accuracy birth to yearling spread. He sires a moderate frame with added muscle and a pleasing phenotype. His daughters are doing well in our herd with good functional udders and maintaining fleshing ability.

Owners: Mytty Angus Ranch, MT; Black Pine Farm, MT; Shipwheel Cattle Co., Klint & Lori Swanson, MT; ABS Global, Inc., WI.

SIRE **P**



MYTTY IN FOCUS

BIRTH DATE: **2/18/01** REG. #: **#13880818**

CED	BW	WW	YW	CEM	MILK	MW	MARB	REA	FAT	\$W	\$F	\$B
14	-1.3	53	98	14	26	31	0.76	0.04	0.021	47.14	40.95	62.8
											BW	70
											ADJ WW	766
											WR	111
											ADJ YW	1286
											YR	106
											FRAME	
											SCROTAL	

SAF FAME
SAF FOCUS OF ER
GDAR FOREVER LADY 246


SITZ ALLIANCE 6595
MYTTY COUNTESS 906
BALDRIDGE COUNTESS 357

MINERTS FORTUNE 2000
SAF ROYAL LASS 1027
TRANSFORMER 100 EAR
GDAR FOREVER LADY 718
SITZ TRAVELER 8180
SITZ BARBARAMERE JET 2698
BON VIEW EMULATION EXT 473
BALDRIDGE COUNTESS 235



SAV FINAL ANSWER 0035

SIRE **Q**



SAV FINAL ANSWER 0035

BIRTH DATE: **2/22/00** REG. #: **#13592905**

CED	BW	WW	YW	CEM	MILK	MW	MARB	REA	FAT	\$W	\$F	\$B
13	-1.1	61	105	14	25	14	0.55	0.56	0.069	60.14	45.79	56.19
											BW	69
											ADJ WW	843
											WR	118
											ADJ YW	1353
											YR	112
											FRAME	
											SCROTAL	

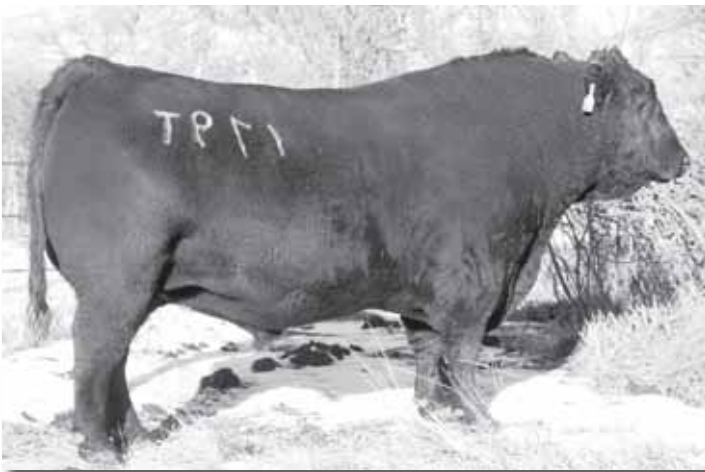
GDAR TRAVELER 71
SITZ TRAVELER 8180
SITZ EVERELDA ENTENSE 1137

BON VIEW BANDO 598
SAV EMULOUS 8145
SAV SKY EMULOUS 2124

TRAVELER 1148 GDAR
GDAR MISS BLACKCAP 567
GDAR RAINMAKER 340
SITZ EVERELDA ENTENSE 2335
TEHAMA BANDO 155
BON VIEW DORA 56
ELLANIN SKY DIVER
TAIL N 0383


The Final Answer calves are deep ribbed and easy fleshing with eye appeal.

Owners: Baker's Lemar Angus, SD; Martin Schaff, ND; Genex, WI.



OPEN A 8180 179T ET

SIRE **R**



OPEN A 8180 179T ET

BIRTH DATE: **3/14/07** REG. #: **15946829**

CED	BW	WW	YW	CEM	MILK	MW	MARB	REA	FAT	\$W	\$F	\$B
8	0.7	29	69	12	21	61	0.25	-0.3	0.028	14.95	17.94	51.33
											BW	94
											ADJ WW	665
											WR	100
											ADJ YW	1129
											YR	100
											FRAME	
											SCROTAL	

GDAR TRAVELER 71
SITZ TRAVELER 8180
SITZ EVERELDA ENTENSE 1137

LEACHMAN RIGHT TIME
OPEN A KRYSSTLE 69L
OPEN A KRYSSTLE 67A

TRAVELER 1148 GDAR
GDAR MISS BLACKCAP 567
GDAR RAINMAKER 340
SITZ EVERELDA ENTENSE 2335
N BAR EMULATION EXT
LEACHMAN ERICA 0025
LEACHMAN RIGHT TIME
K&S KRYSSTLE 406

179T is a Sitz Traveler 8180 son out of a double bred Right Time dam. He is a very complete bull with a lot of thickness, depth and growth. In addition, he is very good footed and athletic.

Owners: Open A Angus, ND

ADDITIONAL ANGUS SIRES INCLUDE:

SITZ TRAVELER 8180..... #11367940

CED	BW	WW	YW	CEM	MILK	MW	MARB	REA	FAT	\$W	\$F	\$B
+6	+1.8	+42	+82	+14	+22	+38	+44	-.38	+0.60	+30.00	+26.95	+44.17

STYLES UPWARD J6 16244343

CED	BW	WW	YW	CEM	MILK	MW	MARB	REA	FAT	\$W	\$F	\$B
-5	-1.9	+45	+90	+7	+19		+23	-.10	+0.03	+22.22	+35.00	+69.90

CONNELY FORWARD..... 15491633

CED	BW	WW	YW	CEM	MILK	MW	MARB	REA	FAT	\$W	\$F	\$B
+16	+1.4	+57	+111	+12	+33	-8	+38	+97	+0.21	+40.47	+55.43	+81.89

H A IMAGE MAKER 0415..... #+13739532

CED	BW	WW	YW	CEM	MILK	MW	MARB	REA	FAT	\$W	\$F	\$B
+11	+4	+65	+107	+11	+37	+47	+20	+44	+0.13	+52.14	+46.36	+69.18

LIMESTONE JUPITER U449..... 16195227

CED	BW	WW	YW	CEM	MILK	MW	MARB	REA	FAT	\$W	\$F	\$B
+1	+4	+47	+84	+4	+19	+35	-.09	+77	-0.17	+32.47	+27.03	+39.19

CAR EFFICIENT 534 15170660

CED	BW	WW	YW	CEM	MILK	MW	MARB	REA	FAT	\$W	\$F	\$B
+11	-1.0	+56	+107	+10	+31	+22	+0.8	+35	+0.22	+39.39	+50.78	+58.46

L T BANDWAGON 3105..... 14502851

CED	BW	WW	YW	CEM	MILK	MW	MARB	REA	FAT	\$W	\$F	\$B
+9	+1.2	+48	+79	+12	+36	+1	+29	-.29	+0.17	+40.48	+20.88	+35.09

CONNELY FINAL PRODUCT 15848422

CED	BW	WW	YW	CEM	MILK	MW	MARB	REA	FAT	\$W	\$F	\$B
+3	+6	+67	+124	+10	+31	+9	+38	+69	+0.61	+39.67	+67.55	+75.55

CONNELY MENTOR 7374 15832714

CED	BW	WW	YW	CEM	MILK	MW	MARB	REA	FAT	\$W	\$F	\$B
+4	+1.3	+58	+108	+5	+31	-11	+31	+1.04	+0.26	+39.64	+51.06	+71.46

TC STOCKMAN 365 #11994601

CED	BW	WW	YW	CEM	MILK	MW	MARB	REA	FAT	\$W	\$F	\$B
+8	+4.4	+39	+71	+15	+24	+42	+41	+31	-.069	+18.52	+15.88	+75.38

Watch & bid online for free at



View the Auction Live!

Bid Online ... you're ringside right at your desk!

Buying online is as easy as 1, 2, 3 ...

1. Create an account at www.dvauction.com under the "register" tab
2. Apply for bidding approval by clicking on the "details" tab at least 24 hours prior to the auction – a DV representative will notify you once you have been approved.
3. Tune in for the sale and make your purchases!

High-speed internet is required for successful bidding. Be sure to check the lag-time monitor in the top left corner to ensure real-time broadcasts.

Proxy bidding – If you can't make time to watch the sale, register a proxy bid and let our system represent your bid while you're away. Look for the "proxy bid" tab on the auction listing and fill in your maximum bids. We'll handle the rest!

Having troubles? During the auction, you can type a message to the operator at any time for assistance. Our full-time support team can also always be reached at (402) 474-5557.

DVA Rep., Justin Dikoff
(605) 290-0635 • jdikoff@dvauction.com

Please feel free to contact me with questions about the sale or to view the cattle for you.

