

JACOBSON RED ANGUS

Quality Genetics ...
Common-Sense Cattle!



SELLING 80 BULLS

- ★ 75 Red Angus Yearling Bulls
Calving-ease to performance bulls
- ★ 5 SimAngus Yearling Bulls
Sired by Beef King out of top Red Angus cows

Private treaty offering available starting Feb. 1

At the Ranch – From Hitterdal: 2 miles E, 1.6 mile S
For more information, call: 701-361-3189

Sample of 2013 offering:



JACOBSON DEPOSIT 2016 (#1550959)
SCOTT DIRECT DEPOSIT 907 x 5L HOB0 BEN 04-4422



JACOBSON KING 2069 (#1551032) SimAngus™
WS BEEF KING W107 x SCOTT INCUMBENT P13-792



JACOBSON DIRECTION 2070 (#1550986)
JACOBSON RED DIRECT 0040 x GLACIER TERRAIN 999



JACOBSON BLAZE ON 2005 (#1551045)
JACOBSON BLAZIN ON 0057 x JACOBSON GOLD 7991



JACOBSON BLAZE ON 2107 (#1551057)
JACOBSON BLAZIN ON 0057x LCHMN GRANDCANYON 1244G

Offering sired by:

5L SUMMIT 1145-6327L
AKO GREAT NORTH WEST 901
BADLANDS NET WORTH 23U
DBAR BRAVE STATEMENT W909
FEDDES DIRECT NORS 7130
GLACIER TERRAIN 999
JACOBSON BLAZIN ON 0057
JACOBSON BRIDGER 7126
JACOBSON RED DIRECT 0040
JACOBSON SHOOTER 9055
SCOTT DIRECT DEPOSIT 907
WS BEEF KING W107

No Creep Feed -

**“Bulls are bred to flesh ...
not fed to flesh!”**

View video online at:
www.jacobsonredangus.com

Carcass ultrasound data available on our
website after February 9, 2013

Bulls will be semen tested before delivery

Free Delivery



JACOBSON RED ANGUS



Gary & Val Jacobson
28280 75th Ave N. • Hitterdal, MN 56552
Phone & Fax: 218-962-3360 • Cell: 701-361-3189
E-mail: gjrangus@telfontel.net
www.jacobsonredangus.com



LOT	ID	REG. #	BD	BW	WW	SIRE	MATERNAL GRAND SIRE	CED	BW	WW	YW	M	TM	ST	MARB	REA
1	2137	1551036	2/17/12	86	763	DBAR BRAVE STATEMENT W909	BIEBER MAKE MIMI 9682	1	1.5	71	111	17	52	13	0.30	0.55
2	2061	1560469	2/5/12	82	606	GLACIER TERRAIN 999	LCC HEAVEN OR BUST1000B	-2	1.4	53	69	26	53	6	0.34	0.07
3	2000	1550968	12/10/11	73	634	BADLANDS DESIGN 46R	CIRCLE A ROBINHOOD 5347	2	0.3	62	101	22	53	10	0.19	0.13
4	2131	1550954	2/14/12	94	653	JACOBSON RED DIRECT 0040	4L SUPER VISION R2292	1	2.7	57	87	20	49	9	0.49	0.19
5	2074	1550944	2/7/12	88	671	JACOBSON SHOOTER 9055	COLEY'S MOJITO 503R	4	1.5	62	96	16	47	8	0.42	-0.01
6	2055	1551058	2/4/12	69	563	5L BLAZIN NORSE 1134-222W	UBAR HIGH CAPACITY 224	5	-2.3	51	70	16	41	8	0.45	0.40
7	2108	1551060	2/11/12	87	673	DBAR BRAVE STATEMENT W909	BJR MAKE MY DAY 981	2	0.5	57	92	25	54	12	0.54	0.33
8	2058	1551047	2/4/12	49	600	MUSHRUSH IMPRESSIVE CA U236	BECKTON EPIC R397 K	8	-6.4	53	82	21	47	14	0.51	0.33
9	2026	1551010	1/30/12	84	734	5L BLAZIN RED 1354-6166	GLACIER RUSTIC 758	1	0.9	59	88	23	52	11	0.42	0.20
10	2068	1551031	2/6/12	89	700	WS BEEF KING W107	BROWN VACATION H7106	2	0.2	71	102	22	58	7	0.36	0.54
11	2046	1551043	2/3/12	62	665	SCOTT NATIONAL 2300	RED FINE LINE MULBERRY 26P	6	-3.5	62	102	25	56	5	0.24	0.25
12	2117	1560470	2/13/12	93	565	BADLANDS NET WORTH 23U	SEEGER DREAMMAKER 9611	-2	2.2	59	92	21	51	9	0.46	0.20
13	2183	1550981	3/3/12	94	563	JACOBSON NORSE DESIGN 0078	GP CATALYST 025	1	3.0	59	92	24	54	11	0.48	0.21
14	2080	1551005	2/7/12	77	733	WS BEEF KING W107	GLACIER RUSTIC 758	3	-1.6	73	108	23	60	3	0.51	0.73
15	2033	1550990	1/31/12	79	623	FEDDES DIRECT NORS 7130	5L DIRECT DESIGN 893-6315	7	-1.8	39	51	27	46	9	0.71	0.12
16	2179	1551023	3/1/12	83	660	JACOBSON RELLER 9028	5L SUMMIT 1145-6327	3	2.7	65	96	17	49	11	0.51	0.03
17	2146	1555733	2/19/12	85	616	EURA NORSE DESIGN 5035-1X	RED DMM BRYLOR THUMP 2T	5	1.1	56	86	24	52	11	0.52	0.02
18	2038	1551065	2/1/12	93	665	JACOBSON RED DIRECT 0040	GLACIER BRIDGER 212	4	1.1	56	87	26	54	11	0.40	0.28
19	2067	1550979	2/5/12	74	681	WS BEEF KING W107	SCOTT NATIONAL 2300	3	0.9	77	110	21	60	4	0.32	0.61
20	2071	1551006	2/6/12	102	689	5L SUMMIT 1145-6327	COLEY'S MOJITO 503R	5	5.0	68	101	11	46	10	0.40	0.14
21	2169	1550911	2/26/12	91	688	JACOBSON RED DIRECT 0040	LCC MAJOR LEAGUE A502M	0	1.6	64	94	23	55	10	0.62	0.21
22	2103	1560473	2/10/12	80	653	5L PERSPECTIVE 3244-8167	BJR MAKE MY DAY 981	3	0.6	69	93	12	47	10	0.55	0.19
23	2056	1551067	2/5/12	89	634	JACOBSON SHOOTER 9055	LCC SOUTHERN KING 1765K	3	1.4	61	95	18	48	7	0.30	0.15
24	2070	1550986	2/6/12	92	706	JACOBSON RED DIRECT 0040	GLACIER TERRAIN 999	1	2.6	62	89	25	56	8	0.46	0.20
25	2104	1551041	2/11/12	69	607	5L BLAZIN NORSE 1134-222W	JACOBSON SUN GRAND 8041	6	-2.3	53	74	17	43	10	0.68	0.33
26	2075	1551008	2/7/12	69	689	FEDDES DIRECT NORS 7130	5L SUMMIT 1145-6327	6	-2.0	47	70	24	47	11	0.44	0.24
27	2192	1550938	3/7/12	78	672	DBAR BRAVE STATEMENT W909	JACOBSON BASIN 79-5052	4	-1.5	56	86	28	55	13	0.56	0.40
28	2041	1551064	2/2/12	79	626	5L PERSPECTIVE 3244-8167	GLACIER LOGAN 210	-1	-0.7	58	76	15	45	11	0.50	0.45
29	2085	1550993	2/8/12	76	654	SCOTT NATIONAL 2300	5L NORSEMAN KING 2291	4	-1.7	55	85	27	55	7	0.36	0.36
30	2005	1551045	1/23/12	68	687	JACOBSON BLAZIN ON 0057	JACOBSON GOLD 7991	7	-2.7	54	76	25	52	11	0.27	0.21
31	2116	1550966	2/13/12	93	681	JACOBSON RED DIRECT 0040	5L DIRECT TRAVLR 363-6325	3	2.7	61	90	24	55	8	0.56	0.28
32	2084	1550908	2/8/12	87	690	SCOTT DIRECT DEPOSIT 907	LCC MAJOR LEAGUE A502M	-2	1.3	67	92	18	52	9	0.09	-0.04
33	2119	1550934	2/13/12	69	633	SCOTT DIRECT DEPOSIT 907	GLACIER LONE PINE 408	-1	1.3	54	73	24	51	9	0.15	-0.13
34	2034	1550958	1/31/12	86	785	WS BEEF KING W107	COLEY'S MOJITO 503R	2	0.6	78	113	20	59	3	0.53	0.53
35	2124	1550949	2/14/12	72	569	JACOBSON RED DIRECT 0040	LCC MAJOR LEAGUE A502M									
36	2761	1561881	3/26/12	89	662	UBAR HIGH CAPACITY 224	CREEK SIDE COPPER	4	-1.4	53	71	19	46	6	0.45	0.04
37	2096	1550957	2/10/12	82	595	JACOBSON BRIDGER 7126	COLEY'S MOJITO 503R	2	-1.6	43	65	24	45	8	0.29	-0.03

LOT	ID	REG. #	BD	BW	WW	SIRE	MATERNAL GRAND SIRE	CED	BW	WW	YW	M	TM	ST	MARB	REA
38	2083	1560475	2/8/12	91	595	NSF LEADING EDGE N013	SEEGER JR107-131	4	1.5	71	101	20	55	11	0.68	0.33
39	2001	1555737	12/30/11	74	647	MMF NORSEMAN X02	BECKTON JULIAN P040 G2	7	-0.8	62	95	14	45	10	0.39	0.19
40	2122	1550915	2/14/12	86	641	SCOTT DIRECT DEPOSIT 907	LCC CHEYENNE B221L	2	0.6	64	96	26	58	9	0.33	0.18
41	2059	1550923	2/4/12	82	726	JACOBSON SHOOTER 9055	MLK CRK LIGHT 912	4	-0.1	59	90	22	51	10	0.32	-0.09
42	2106	1560466	2/11/12	97	628	BADLANDS NET WORTH 23U	SEEGER DREAMMAKER 9611	-2	2.2	59	92	21	51	9	0.46	0.20
43	2016	1550959	1/28/12	91	685	SCOTT DIRECT DEPOSIT 907	5L HOBO BEN 04-4422	5	0.9	55	72	22	50	8	0.33	-0.23
44	2093	1560468	2/9/12	94	627	GLACIER TERRAIN 999	LCC HEAVEN OR BUST1000B	-2	1.4	53	69	26	53	6	0.34	0.07
45	2111	1560465	2/12/12	89	672	BADLANDS NET WORTH 23U	SEEGER DREAMMAKER 9611	-2	2.2	59	92	21	51	9	0.46	0.20
46	2176	1551034	2/28/12	87	672	DBAR BRAVE STATEMENT W909	5L HOBO BEN 04-4422	4	0.2	58	90	22	51	12	0.56	0.14
47	2069	1551032	2/6/12	79	744	WS BEEF KING W107	SCOTT INCUMBENT P13-792	-1	-0.2	77	110	22	61	6	0.63	0.69
48	2107	1551057	2/11/12	77	738	JACOBSON BLAZIN ON 0057	LCHMN GRANDCANYON 1244G	2	0.3	62	89	25	56	10	0.67	0.25
49	2030	1551017	1/31/12	85	585	AKO GREAT NORTH WEST 901	5L NORSEMAN KING 2291	2	1.8	54	77	24	51	7	0.24	0.10
50	2105	1560464	2/11/12	90	711	BADLANDS NET WORTH 23U	SEEGER DREAMMAKER 9611	-2	2.2	59	92	21	51	9	0.46	0.20
51	2004	1551030	1/10/12	60	595	JACOBSON SUN GRAND 8041	JACOBSON EXTREMIST	4	-3.9	50	74	22	47	9	0.19	0.06
52	2015	1550946	1/28/12	70	692	JACOBSON SHOOTER 9055	BROWN VACATION H7106	2	-2.2	54	84	21	47	12	0.48	0.31
53	2092	1560463	2/9/12	86	722	BADLANDS NET WORTH 23U	SEEGER DREAMMAKER 9611	-2	2.2	59	92	21	51	9	0.46	0.20
54	2050	1550955	2/4/12	97	681	5L BLAZIN RED 1354-6166	RED CROWFOOT DOUBLE DUTY 212 0	4.2	75	109	14	51	10	0.10	0.37	
55	2160	1555728	2/22/12	77	670	MESSMER PACKER S008	LCC MAJOR LEAGUE A502M	2	-2.0	67	101	18	51	13	0.47	0.45
56	2115	1550970	2/13/12	99	650	SCOTT DIRECT DEPOSIT 907	SRR RED CANYON 213	-1	4.3	67	94	23	57	8	0.12	0.10
57	2023	1550913	1/29/12	92	587	FEDDES DIRECT NORS 7130	5L HOBO BEN 04-4422	7	0.7	41	62	27	47	8	0.53	-0.01
58	2018	1551028	1/28/12	64	556	LSF HIGH YIELD 8088U	SCOTT NATIONAL 2300	5	-3.5	50	81	20	45	11	0.39	0.18
59	2109	1555730	2/11/12	74	652	EURA NORSE DESIGN 5035-1X	RED SIX MILE SAKIC 832S	6	-1.6	55	82	23	51	9	0.34	0.04
60	2168	1551016	2/26/12	95	602	JACOBSON RED DIRECT 0040	5L FOREVER GRAND 5834	0	3.2	55	89	25	52	8	0.45	0.25
61	2078	1551042	2/7/12	80	582	JACOBSON BLAZIN ON 0057	5L PERSPECTIVE 3244-8167	7	-0.4	57	76	18	47	14	0.41	0.26
62	2566	1561879	3/24/12	90	648	LJC MISSION STATEMENT P27	BECKTON JULIAN GG B571	7	-2.9	58	93	22	51	15	0.44	0.67
63	2165	1550917	2/25/12	84	593	DBAR BRAVE STATEMENT W909	LCC MAJOR LEAGUE A502M	0	-0.8	56	86	21	49	14	0.45	0.38
64	2136	1550924	2/16/12	76	610	DBAR BRAVE STATEMENT W909	BROWN VACATION H7106	4	-2.7	49	77	24	48	15	0.40	0.26
65	2133	1551048	2/16/12	76	646	MUSHRUSH IMPRESSIVE CA U236	BECKTON EPIC R397 K	11	-1.7	65	94	21	54	13	0.51	0.30
66	2172	1550973	2/26/12	95	666	AKO GREAT NORTH WEST 901	RED FINE LINE MULBERRY 26P	-1	2.8	61	89	25	55	7	0.24	-0.18
67	2202	1550909	3/20/12	80	643	DBAR BRAVE STATEMENT W909	BROWN VACATION H7106	4	-2.0	52	84	26	52	15	0.20	0.42
68	2651	1561883	3/27/12		675	5L SUMMIT 1145-6327	GLACIER ARLEE 704	9	-0.1	45	61	9	32	10	0.26	0.09
69	2123	1550965	2/14/12	73	604	JACOBSON BRIDGER 7126	GLACIER MANCHESTER 400	4	-3.9	41	59	28	49	9	0.22	-0.18
70	2037	1555731	2/1/12	63	459	EURA NORSE DESIGN 5035-1X	BROWN VACATION H7106	8	-4.4	42	66	26	47	13	0.54	0.23
71	2207	1550931	3/26/12	81	567	JACOBSON SHOOTER 9055	RRM ET GRAND CANYON HANNAH	3	-0.4	48	72	20	44	7	0.48	0.15
72	2625	1561880	3/22/12	85	694	COLEY'S MOJITO 503R	CREEK SIDE COPPER		-0.3	48	69	19	43	6	0.39	0.08
73	2199	1550985	3/18/12	70	556	JACOBSON BRIDGER 7126	J BAR 7 GRAND CANYON 2222	-3	-2.7	40	69	24	45	8	0.20	-0.12
74	2164	1550988	2/25/12	92	586	AKO GREAT NORTH WEST 901	GLACIER MARIAS 548	1	1.4	50	65	25	49	9	0.32	-0.02

JACOBSON RED ANGUS

Gary & Val Jacobson
28280 75th Ave N.
Hitterdal, MN 56552

Private Treaty Bull Offering

80 Yearling
Red Angus Bulls
At the Ranch

From Hitterdal –
2 miles east, 1.6 miles south



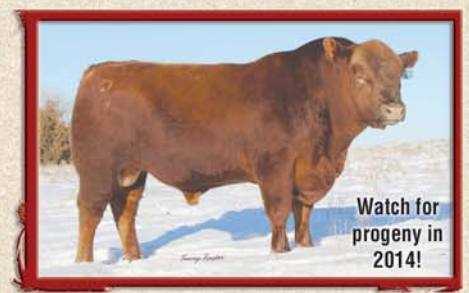
JACOBSON RED ANGUS REFERENCE SIRE



Jacobson Blazin On 0057 (#1370188)
5L Double Blaze 1134-8576 x 5L Explorer 589-7414



Jacobson Shooter 9055 (#1318493)
5L Summit 1145-6327 x Lorenzen Top Cut



Koester Chivas 005 (#1415933)
Glacier Chateau 744 x Red Fine Line Mulberry 26P



AKO Great North West 901 (#1302801)
Red Six Mile Sakic 832S x M L O Mountain High 113



WS Beef King W107 (#2499589 ASA)
WS Beef Maker R13 x CNS Dream On L186



5L Independence 560-298Y (#14503090)
BUF CRK The Right Kind U199 x TC Stockman 365