

33rd Annual

KLAIN **SIMMENTAL RANCH** *Sale*



Saturday,
February 7, 2015

1 p.m. Central Time

Turtle Lake Weigh Station
Turtle Lake, ND

Sale Day Phone: (701) 448-2500



Welcome



Durnell, Darcy, Tyler, Dalyce and Trey & Klain

Welcome to our 2015 Production Sale!

It is with great appreciation that we thank you for many years of interest, support and friendship. With all those years of support and interest we have developed such a great friendship with an elite group of cattlemen. We thank YOU.

At Klain Simmental Ranch we use the highest selection standards in the industry in fertility, birth weight, weaning weight, EPDs, structure, disposition, carcass merit and visual analysis. KSR does not single-trait select cattle. We strive for complete, balanced-performance cattle that convert on a high-roughage ration.

Our cattle will perform in your pastures, in the show ring and on the rail. Our cattle have performed exceptionally well in the Dakota Feeder Calf Show as have our customers' cattle.

We look forward to showing you this deep-bodied set of bulls and females at the ranch till February 4th. After that, they will be at the Turtle Lake Sale Barn from Feb. 5 until sale day. We hope to see you there!

Durnell, Darcy
Tyler, Dalyce and Trey

KLAIN

Simmental Ranch

Durnell & Darcy: 701-448-2408
Cells – Durnell: 701-720-1316 • Darcy: 701-721-1316

*Uniform Bulls Will Sire
Uniform Calves For Your Benefit!*



KLAIN SIMMENTAL RANCH

33rd Annual Production Sale
Saturday, February 7, 2015

1 p.m. CST • Turtle Lake, ND

Selling 84 Lots

45 Simmental & SimAngus™ Bulls • 7 Yearling Angus Bulls
16 Polled Registered Open Heifers
15 Polled Registered Bred Heifers
One Lot of 5 Commercial Open Heifers

Sale Day Phone: (701) 448-2500



Auctioneer: Bill Beggar • (406) 796-2326

Ringmen: Greg Myers • (701) 308-0475
James Kapp • (701) 400-5788

Consultant: Tony Heins • (701) 400-4435

Sale Day Lunch: Lunch provided before the sale.

Announcements: Announcements made from the auction block shall take precedence over printed material in the catalog.

Delivery: We will assist buyers in coordinating loads and making the most economical trucking arrangements possible.

Insurance: Insurance will be available on sale day.

Terms & Conditions:

- All bulls are guaranteed breeders. Purchaser shall let seller know within 6 months of purchase date if bull is unsatisfactory. Bulls will be returned at buyers expense. Seller has the right to semen check the bull. If the bull is found to be unsatisfactory, seller will replace with a bull of equal value agreed upon by both parties, or return purchase price. In no instance shall seller be responsible for more than the purchase price.
- For those who cannot attend the sale, we will honor a telephone order and guarantee your phone purchase to meet your request when inspected personally by you.
- Bulls will be sold to the highest bidder.
- Disputes amongst bidders will be settled by the auctioneer by reopening the bidding among the parties involved. The auctioneer's decision shall be final.
- As we have no control over acts of God, we cannot guarantee these cattle against death loss or sickness. We guarantee cattle to be healthy sale day.
- Certificates of registry will be supplied by the seller to any buyer requesting them on sale day.
- Terms of the sale are cash or check at the time of sale unless other arrangements are made prior to the sale.
- We will abide by the rules set forth by the American Simmental Assn.

Reference Sires



GCF/ZEIS MR COMMANDERO

CNS DREAM ON L186 x ZEIS MISS FORTUNE J79

MGS: SRS FORTUNE 500

CE	BW	WW	YW	MCE	M	MWW	ST	CW	YG	MB	BF	RE	API	TI
8.6	0.4	59.7	77.5	0.4	9.4	39.2	21.9	16.1	-0.17	0.19	-0.020	0.45	125.3	65.2



GCF/Zeis Mr Commandero, reference sire

GFI PURE POWER H017

GW STOP LIGHT 024F x MISS 600U CH D037

MSG: CIRCLE S LEACHMAN 600U

CE	BW	WW	YW	MCE	M	MWW	ST	CW	YG	MB	BF	RE	API	TI
9.2	5.0	80.1	99.3	21.3	28.3	68.3	11.2	34.6	-0.22	-0.01	-0.049	0.63	92.0	69.7

HOOKS SHEAR FORCE 38K

NICHOLS LEGACY G151 x C&D TRACY

MGS: CIRCLE S LEACHMAN 600U

CE	BW	WW	YW	MCE	M	MWW	ST	CW	YG	MB	BF	RE	API	TI
22.4	-3.6	54.5	73.1	12.8	33.6	60.9	28.2	7.8	-0.57	0.55	-0.044	1.39	183.5	82.1

HSR DAKOTA BEEF W217

WS BEEF MAKER R13 x HSR MISS SANDSTONE P67

MGS: TNT SANDSTONE M402

CE	BW	WW	YW	MCE	M	MWW	ST	CW	YG	MB	BF	RE	API	TI
10.8	2.9	69.3	91.3	11.0	29.7	64.3	17.2	27.4	-0.31	0.39	-0.063	0.73	129.7	77.1

KLSR DYNASTY Z18

TNT TANKER U263 x MLC EXTRA 205 U336

MSG: NICHOLS EXTRA K205

CE	BW	WW	YW	MCE	M	MWW	ST	CW	YG	MB	BF	RE	API	TI
4.1	3.7	83.1	137.7	12.4	28.5	70.0		57.1	-0.25	0.14	-0.046	1.04	105.5	75.3

KOCH LC MONTE 803U

GW LUCKY CHARM 665K x LRS MS REVOLUTION 656S

MSG: LRS MS REVOLUTION 60P

CE	BW	WW	YW	MCE	M	MWW	ST	CW	YG	MB	BF	RE	API	TI
11.4	2.1	76.5	118.0	7.9	9.4	47.6	17.3	42.7	-0.11	0.24	-0.021	0.64	128.8	76.8



Reference Sires

KS BLACK DIAMOND W992

WHEATLAND BULL 680S x KS KAYLA J497

MSG: LRS PREFERRED STOCK 370C

CE	BW	WW	YW	MCE	M	MWW	ST	CW	YG	MB	BF	RE	API	TI
1.3	5.2	70.2	118.0	3.1	29.3	64.3	21.0	48.0	-0.45	-0.26	-0.073	1.34	91.4	59.1

KSR HEISMAN 734Y

HC HUMMER 12M x KSR CUT ABOVE 734S

MSG: STF QUICK FIX 160N

CE	BW	WW	YW	MCE	M	MWW	ST	CW	YG	MB	BF	RE	API	TI
10.7	1.8	67.2	98.0	10.3	21.2	54.7		30.3	-0.26	0.22	-0.059	0.63	124.9	68.5

KSR SHEAR FORCE 889W

HOOKS SHEAR FORCE 38K x KSR TIFFY 889T

MGS: GCF/ZEIS MR COMMANDERO

CE	BW	WW	YW	MCE	M	MWW	ST	CW	YG	MB	BF	RE	API	TI
12.2	0.8	68.5	95.0	8.2	19.4	53.5	23.8	26.7	-0.33	0.35	-0.047	0.90	147.1	77.8

KSR TOTAL PACKAGE 219W

CNS DREAM ON L186 x KSR HEART BREAK 219L

MGS: GW LUCKY BREAK 047G

CE	BW	WW	YW	MCE	M	MWW	ST	CW	YG	MB	BF	RE	API	TI
9.7	0.6	68.5	96.9	11.1	14.2	48.4	17.8	27.6	-0.20	0.18	-0.045	0.54		

LRS PREFERRED STOCK 370C

CIRCLE S LEACHMAN 600U x LAS MISS PRINCESS 020Z

MGS: IRISH BLACK KNIGHT

CE	BW	WW	YW	MCE	M	MWW	ST	CW	YG	MB	BF	RE	API	TI
5.8	3.0	74.4	121.0	8.5	15.5	52.7	18.7	46.6	-0.30	0.04	-0.082	0.76	113.3	69.6

MR NLC ICON X0104

TNT TANKER U263 x MS NLC STEVIE R5267

MGS: ESMJ54

CE	BW	WW	YW	MCE	M	MWW	ST	CW	YG	MB	BF	RE	API	TI
7.1	0.4	65.1	101.0	19.8	34.0	66.5	22.3	30.7	-0.29	0.01	-0.032	0.89	120.0	67.7

NEW TREND CRUZAN 6Y

RC CLUB KING 040R x KEYSTONE RADIENCE 13R

MGS: TCF/RCC TEMPTATION GJ640

CE	BW	WW	YW	MCE	M	MWW	ST	CW	YG	MB	BF	RE	API	TI
7.1	4.0	76.2	116.1	7.7	20.3	58.3	16.6	44.3	-0.25	0.13	-0.054	0.81	112.7	72.6

SS PREFERRED VALUE R901

SRS J914 PREFERRED BEEF x SS GOLDEN DREAM N901

MGS: SS GOLDMINE L42

CE	BW	WW	YW	MCE	M	MWW	ST	CW	YG	MB	BF	RE	API	TI
12.3	0.4	57.4	74.0	9.6	16.6	45.2	26.6	13.7	-0.38	0.09	-0.058	0.81	134.2	64.7

Reference Sires



THR NORTHERN 2109

TNT AXIS X307 x LRS THR MS LIBERTY 0122X

MSG: HTP SVF IN DEW TIME

CE	BW	WW	YW	MCE	M	MWW	ST	CW	YG	MB	BF	RE	API	TI
7.1	2.0	69.6	102.4	6.9	17.2	52.0		33.5	-0.19	0.23	0.002	0.90	111.2	68.7

W/C UNITED 956Y

TNT TUITION U238 x MISS WERNING 956W

MSG: S A V BISMARCK 5682

CE	BW	WW	YW	MCE	M	MWW	ST	CW	YG	MB	BF	RE	API	TI
11.9	0.2	92.8	157.0	8.0	16.5	62.9		63.7	-0.03	0.54	0.011	0.83	145.8	93.0

WS ALL IN W111

87.1 x HSF RED FORTUNES SIS 33

MGS: WS MISS TRACY T50

CE	BW	WW	YW	MCE	M	MWW	ST	CW	YG	MB	BF	RE	API	TI
17.2	0.2	84.9	117.5	14.7	40.1	82.6	25.2	39.1	-0.30	0.13	-0.064	0.80	151.1	84.2

WS SOLOMAN X186

WS BEEF KING W107 x WS MISS SABRINA S166

MGS: DCR MR RIBEYE N138

CE	BW	WW	YW	MCE	M	MWW	ST	CW	YG	MB	BF	RE	API	TI
10.8	2.9	86.1	120.0	8.6	17.3	60.3	20.4	44.2	-0.21	0.24	-0.043	0.78	134.7	82.0

COLEMAN REGIS 904 (ANGUS)

S A V FINAL ANSWER 0035 x COLEMAN DONNA 714

MGS: CONNEALY ONWARD

CE	BW	WW	YW	CEM	M	MW	CW	MB	RE	FAT	\$W	\$F	\$G	\$B
15.0	-1.1	55.0	90.0	13.0	25.0	20.0	29.0	0.3	0.8	0.05	63.25	26.180	22.20	66.26

HOMEDALE MAJOR MATRIX

B C MATRIX 4132 x LYNDSIE'S ELBA004 OF HOMEDALEMSG:

S A V 8180 TRAVELER 004

CE	BW	WW	YW	MCE	M	MWW	ST	CW	YG	MB	BF	RE	API	TI
14.9	-0.4	57.6	99.4	6.7	21.5	50.2		28.8	0.04	0.50	0.022	0.33	112.0	61.5

S A V FINAL ANSWER 0035 (ANGUS)

SITZ TRAVELER 8180 x S A V EMULOUS 8145

MGS: BON VIEW BANDO 598

CE	BW	WW	YW	CEM	M	MW	CW	MB	RE	FAT	\$W	\$F	\$G	\$B
12.0	-0.9	62.0	103.0	13.0	23.0	24.0	11.0	0.5	0.7	0.07	74.42	52.740	32.77	59.02

SAV HARVESTOR 0338 (ANGUS)

S A V HERITAGE 6295 x S A V EMBLYNETTE 7749

MSG: S A V NET WORTH 4200

CE	BW	WW	YW	CEM	M	MW	CW	MB	RE	FAT	\$W	\$F	\$G	\$B
-15.07	0	74.0	140.0	-6.0	31.0	37.0	64.0	0.6	0.6	0.12	38.56	106.830	12.19	112.45



Service Sires

COLEMAN REGIS 904 (ANGUS)

S A V FINAL ANSWER 0035 x COLEMAN DONNA 714

MGS: CONNEALY ONWARD

CE	BW	WW	YW	CEM	M	MW	CW	MB	RE	FAT	\$W	\$F	\$G	\$B
15.0	-1.1	55.0	90.0	13.0	25.0	20.0	29.0	0.3	0.8	0.05	63.25	26.180	22.20	66.26

HOOK'S YUKON 80Y

WS BEEF KING W107 x HOOKS MIKA 141M

MSG: HOOKS SHEAR FORCE 38K

CE	BW	WW	YW	MCE	M	MWW	ST	CW	YG	MB	BF	RE	API	TI
12.9	0.2	76.6	105.4	15.7	25.9	64.2	24.3	32.1	-0.52	0.35	-0.062	1.42	153.8	83.8

W/C UNITED 956Y

TNT TUITION U238 x MISS WERNING 956W

MSG: S A V BISMARCK 5682

CE	BW	WW	YW	MCE	M	MWW	ST	CW	YG	MB	BF	RE	API	TI
11.9	0.2	92.8	157.0	8.0	16.5	62.9		63.7	-0.03	0.54	0.011	0.83	145.8	93.0

KSR ZEPHYR 117Z

KSR SHEAR FORCE 889W x KSR OCTAVIA 117X

MSG: S A V NET WORTH 4200

CE	BW	WW	YW	MCE	M	MWW	ST	CW	YG	MB	BF	RE	API	TI
11.0	1.1	66.5	96.9	8.2	22.6	55.8		28.6	-0.21	0.49	-0.029	0.71	137.0	76.6

HXC CONQUEST 4405P (RED ANGUS)

BECKTON JULIAN GG B571 x HXC ELLIE MAY MA638

MSG: BFCK CHEROKEE CNYN 4912

CE	BW	WW	YW	MCE	M	MWW	ST	CW	YG	MB	BF	RE	API	TI
20.2	-6.0	60.6	98.3	6.3	27.1	57.3		19.4	0.09	0.62	0.016	0.01	143.9	73.6

*Thank You for your interest
in our program and genetics!*

American Simmental Association Average EPDs

— Purebred —

CE	BW	WW	YW	MCE	M	MWW	ST	CW	YG	MB	BF	RE	API	TI
8.7	1.9	63.2	92.0	9.4	22.1	53.6	20.8	26.9	-0.31	.14	-0.06	.79	120.6	67.4

— Hybrid —

CE	BW	WW	YW	MCE	M	MWW	ST	CW	YG	MB	BF	RE	API	TI
10.4	0.6	60.7	92.9	8.0	22.8	53.0		25.8	-0.20	.35	-0.03	.60	121.7	68.7

Simmental Bulls



1B

KSR MAVERICK 1B

Polled Red Purebred

BD: Adj BW: Adj WW: SC:

3/7/14 90 700 37.0

WS BEEF KING W107
WS SOLOMAN X186
 WS MISS SABRINA S166
 GCF/ZEIS MR COMMANDERO
KSR PRESTIGE 1W
 KSR SAPPHIRE 401N

Solid-red Solomon son from an elite maternal Commandero dam going back to Sarge.

EPDs	
CE	8.7
BW	1.9
WW	66.7
YW	91.0
MCE	7.3
MM	17.3
MW	50.6
CW	26.4
YG	-0.22
MB	0.17
API	119.9
TI	68.4

16B

KSR TRINITY 16B

Polled Red Purebred

BD: Adj BW: Adj WW: SC:

3/4/14 96 814 41.5

TNT AXIS X307
THR NORTHERN 2109
 LRS THR MS LIBERTY 0122X
 GCF/ZEIS MR COMMANDERO
KSR FLAME 16W
 KSR RED LADY 716S

Dark-red, rugged bull out with an outcross pedigree. Trinity hails from a strong cow family that has produced the top calves here year after year. He is in the top 15% for WW index with 114% WW ratio. Mark him in your catalog!!

EPDs	
CE	5.3
BW	2.6
WW	73.4
YW	103.5
MCE	6.0
MM	16.8
MW	53.5
CW	34.7
YG	-0.14
MB	0.21
API	103.9
TI	68.7



17B

KSR THUNDAR 17B

Polled Black Purebred

BD: Adj BW: Adj WW: SC:

3/14/14 84 683 37.0

SRS J914 PREFERRED BEEF
SS PREFERRED VALUE R901
 SS GOLDEN DREAM N901
 SS PREFERRED VALUE R901
KSR ZORA 17W
 KSR ZODIAC 317M

Double bred Preferred Value son with the added punch for maternal carcass and hybrid vigor in a purebred package. Excellent uddered with high-milking cow family.

EPDs	
CE	9.8
BW	0.9
WW	57.9
YW	73.3
MCE	8.9
MM	16.4
MW	45.4
CW	14.3
YG	-0.33
MB	0.08
API	125.6
TI	62.4



Simmental Bulls

20B KSR BROADWAY 20B

Polled Black Purebred

BD: Adj BW: Adj WW: SC:

3/8/14 98 640 33.5

WHEATLAND BULL 680S

KS BLACK DIAMOND W992

KS KAYLA J497

SS PREFERRED VALUE R901

KSR TOP VALUE 20W

KSR POWERBALL 721S

This Black Diamond son comes complete with natural thickness, depth of middle and a strong topline. This Preferred Value grandson's dam keeps producing the kind of calves feeders — as well as breeders — like. Broadway is a half brother to Trey's 2014 Reserve Champion heifer at the North Star Classic in Valley City.

EPDs	
CE	4.1
BW	4.5
WW	54.0
YW	84.5
MCE	7.1
MM	29.0
MW	56.0
CW	27.4
YG	-0.41
MB	-0.08
API	89.8
TI	53.4

47B KSR BEEF PLUS 47B

Polled Red Purebred

BD: Adj BW: Adj WW: SC:

4/8/14 91 769 36.0

WS BEEF MAKER R13

HSR DAKOTA BEEF W217

HSR MISS SANDSTONE P67

RED CANYON HR P5

KSR WILMA 47W

KSR LUCKY GIRL 747S

An exceptional bull that covers a large spectrum, from birth weight to weaning weight. This April son of Dakota Beef comes in a calving ease, maternal package. 107% WW index.

EPDs	
CE	9.2
BW	2.5
WW	68.0
YW	94.3
MCE	8.9
MM	29.5
MW	63.5
CW	29.3
YG	-0.32
MB	0.20
API	117.3
TI	71.1

59B KSR TITAN 59B

Polled Black 1/4 SM 3/4 AN

BD: Adj BW: Adj WW: SC:

3/10/14 88 776 38.0

B C MATRIX 4132

HOMEDALE MAJOR MATRIX

LYNDSIES ELBA004 OFHOMEDAL

S A V BISMARCK 5682

KSR LILLY 59W

KSR ROSETTE 859T

Titan is a unique 1/4 Simm 3/4 Angus bull whose dam has produced top weaning calves. Boosting a 132 API, 73 TI and indexing 108% in WW and 99% in BW. Don't miss this long-ribbed, large-scrotal bull.

EPDs	
CE	13.6
BW	-0.1
WW	62.7
YW	100.3
MCE	7.3
MM	22.0
MW	53.3
CW	29.7
YG	-0.11
MB	0.47
API	132.3
TI	72.7



59B

Simmental Bulls



86B

KSR PRIDE 86B

Polled Black Purebred

BD: 3/2/14 Adj BW: 96 Adj WW: 708 SC: 42.0

MR NLC ICON X0104

TNT TANKER U263
MS NLC STEVIE R5267
GCF/ZEIS MR COMMANDERO

KSR JUNE 86W

KSR MARRIOTT 375M

This powerful Icon son is out of a strong-milking, super-uddered dam. Pride has the added thickness and depth of middle to produce those top-weaning calves. He also is in the top 15% for MCE milk and docility.

EPDs	
CE	5.3
BW	2.4
WW	63.1
YW	94.3
MCE	13.3
MM	27.7
MW	59.2
CW	29.7
YG	-0.25
MB	0.05
API	109.6
TI	63.7



86B

92B

KSR BRANSON 92B

Polled Red Purebred

BD: 4/2/14 Adj BW: 82 Adj WW: 665 SC: 37.5

WS SOLOMAN X186

WS BEEF KING W107
WS MISS SABRINA S166
GCF/ZEIS MR COMMANDERO

KSR HOT TAMALI 92W

KSR LIBERTY 592P

Super-smooth, maternal son of Solomon going back to the outstanding Hot Tamali cow. Branson should make a low birth weight, calving-ease sire.

EPDs	
CE	10.2
BW	1.4
WW	68.6
YW	93.2
MCE	6.8
MM	18.1
MW	52.4
CW	26.8
YG	-0.25
MB	0.17
API	124.7
TI	70.8



KSR Hot Tamali 92W



Simmental Bulls

107B KSR ECLIPSE 107B
 Polled Black White-Faced Purebred
 BD: Adj BW: Adj WW: SC:
 3/12/14 66 687 34.0

TNT TANKER U263
KLSR DYNASTY Z18
 MLC EXTRA 205 U336
 KSR ARMISTICE 480P
KSR EIDDIE 107X
 KSR ELECTRAS DREAM 707S

A calving-ease son of Dynasty, Eclipse will sire great replacement females and is a smooth-shouldered, white-faced herd sire.

EPDs	
CE	7.0
BW	2.9
WW	84.0
YW	126.1
MCE	8.9
MM	23.8
MW	65.8
CW	48.7
YG	-0.23
MB	0.14
API	111.6
TI	74.9

119B KSR SMOOTH MOVIN 119B
 Polled Black Purebred
 BD: Adj BW: Adj WW: SC:
 3/22/14 82 736 38.5

HC HUMMER 12M
KSR HEISMAN 734Y
 KSR CUT ABOVE 734S
 CNS DREAM ON L186
KSR EVE 219X
 KSR HEART BREAK 219L

Smooth Movin is a must-see herd sire prospect! Very correct, thick-topped, deep-quartered son of our good Heisman 734 bull. Balanced EPDs, 104% BW, 103% WW index make for profitable calves.

EPDs	
CE	11.4
BW	1.0
WW	66.5
YW	95.4
MCE	10.8
MM	18.0
MW	51.3
CW	27.9
YG	-0.25
MB	0.20
API	127.5
TI	68.1



139B KSR FULL MONTE 139B
 Polled Black Purebred
 BD: Adj BW: Adj WW: SC:
 3/3/14 83 749 35.0

GW LUCKY CHARM 665K
KOCH LC MONTE 803U
 LRS MS REVOLUTION 656S
 LRS PREFERRED STOCK 370C
KSR CAMILLE 139X
 KSR KITTY ROSE 39J

An outcross Monte son with excellent BW-to-WW spread, going back to the great 39 cow family. Top 15% WW and YW index. Strong maternal outcross, maternal growth pedigree. 101% BW and 105% WW index.

EPDs	
CE	8.6
BW	2.2
WW	73.9
YW	112.9
MCE	8.0
MM	10.2
MW	47.2
CW	40.2
YG	-0.20
MB	0.08
API	113.6
TI	70.2

Simmental Bulls



143B KSR NEW DESIGN 143B

BD:	Adj BW:	Adj WW:	SC:
3/18/14	82	711	38.5

B C MATRIX 4132
HOMEDALE MAJOR MATRIX
 LYNDSIES ELBA004 OFHOMEDAL
 HC HUMMER 12M
KSR NEW DESIGN 143X
 KSR STAR 943U

Great 134 API in a halfblood Matrix son. 105% BW ratio, powerful, long herdsire with the thickness and pedigree to sire great replacement females and steers that grow and grade.

EPDs	
CE	14.1
BW	-0.5
WW	55.7
YW	91.1
MCE	9.8
MM	23.6
MW	51.4
CW	23.9
YG	-0.15
MB	0.33
API	133.6
TI	66.9

153B KSR EXCEED 153B

BD:	Adj BW:	Adj WW:	SC:
3/15/14	92	722	37.5

CNS DREAM ON L186
KSR TOTAL PACKAGE 219W
 KSR HEART BREAK 219L
 KSR ARMISTICE 480P
KSR EXCEED 153X
 KSR MISTY MORNING 253L

Real long white-faced son of Total Package. Calving ease, carcass and maternal pedigree in a long, smooth-shouldered purebred bull that will Exceed your expectations!

EPDs	
CE	7.5
BW	2.3
WW	69.9
YW	97.1
MCE	10.1
MM	20.0
MW	55.0
CW	30.6
YG	-0.22
MB	0.09
API	110.6
TI	68.0



177B KSR PRAIRIE FIRE 177B

BD:	Adj BW:	Adj WW:	SC:
3/19/14	84	736	37.0

WS BEEF MAKER R13
HSR DAKOTA BEEF W217
 HSR MISS SANDSTONE P67
 GCF/ZEIS MR COMMANDERO
KSR XCELLANT 177X
 KSR TABITHA 870T

Thick, deep son of Dakota Beef — a herdsire purchased from Kevin and Cody Hanson. Prairie Fire is a real moderate, thick, deep herdsire with strong maternal qualities. 103% WW index.

EPDs	
CE	10.3
BW	0.9
WW	63.0
YW	82.2
MCE	6.3
MM	21.5
MW	53.0
CW	19.5
YG	-0.27
MB	0.27
API	123.3
TI	70.6



Simmental Bulls

199B KSR POWER UP 199B

BD:	Adj BW:	Adj WW:	SC:
3/4/14	96	818	39.5

Polled Black Purebred

GW STOP LIGHT 024F
GFI PURE POWER H017
 MISS 600U CH D037
 SS EBONYS GRANDMASTER
KSR COLLEE 199X
 KSR BENCHMARK 909U

Power Up is a powerful son of GFI Pure Power with a 818 lb. WW, 114% WW index. This long-sided, strong-topped bull is a must-see on sale day!

EPDs	
CE	7.1
BW	4.1
WW	75.2
YW	99.0
MCE	12.8
MM	23.2
MW	60.8
CW	34.0
YG	-0.19
MB	0.27
API	109.3
TI	73.1

212B KSR LEGEND 212B

BD:	Adj BW:	Adj WW:	SC:
2/28/14	82	760	36.5

Homo Polled Black Purebred

HSF HIGH ROLLER 12T
WS ALL IN W111
 WS MISS TRACY T50
 TRIPLE C BETTIS S72J
STAV MS BETTIS 213Z
 STAV LIVI VALENTINE 720T

An outcross black herd sire with a 82# BW, exceptional BW-to-WW spread bull with a great disposition. Legend is out of Trey's first-calf heifer, SAV Bettis that he successfully showed last year.

EPDs	
CE	12.9
BW	2.4
WW	91.6
YW	126.0
MCE	12.3
MM	28.4
MW	74.2
CW	47.2
YG	-0.23
MB	0.04
API	131.7
TI	81.2



213B KSR VORTEX 213B

BD:	Adj BW:	Adj WW:	SC:
1/26/14	90	773	41.5

Polled Black 5/8 SM 5/16 AN 1/16 CS

CNS DREAM ON L186
KSR TOTAL PACKAGE 219W
 KSR HEART BREAK 219L
 S A V NET WORTH 4200
KSR LACE 213Y
 KSR JADE 713S

KSR Vortex was born in the middle of a snow storm last January and has not stopped impressing us! Top 3% in WW, YW and CW, as well as 108% WW index. He hails from a strong cow family and is thick, deep and strong topped with added spring of rib and a large scrotal measurement. Don't miss him!!

EPDs	
CE	7.2
BW	2.7
WW	84.9
YW	127.2
MCE	9.2
MM	14.7
MW	57.2
CW	49.0
YG	-0.09
MB	0.37
API	118.9
TI	79.0

Simmental Bulls



214B KSR KING 214B

BD:	Polled	Black	Purebred
1/20/14	Adj BW: 84	Adj WW: 788	SC: 36.5

NICHOLS LEGACY G151
HOOKS SHEAR FORCE 38K
 C&D TRACY
 FLYING B CUT ABOVE
ZF 214Z LADY RAE
 ZF PA 816U

This great Shear Force son has a 84# BW and a 110% WW index. His actual weaning weight of 788# reflects his super growth. Great BW-to-WW spread bull. This one should not be missed!!

EPDs	
CE	12.1
BW	1.3
WW	71.5
YW	103.3
MCE	10.3
MM	21.7
MW	57.5
CW	32.9
YG	-0.35
MB	0.31
API	148.2
TI	77.6



214B

241B KSR ADMIRAL 241B

BD:	Polled	Red	Purebred
3/22/14	Adj BW: 81	Adj WW: 732	SC: 39.0

WS BEEF KING W107
WS SOLOMAN X186
 WS MISS SABRINA S166
 HOOKS SHEAR FORCE 38K
KSR SHERRY 241Y
 KSR FERGIE 41W

Boasting a Solomon, Shear Force and Top Gun pedigree as well as being out of an elite cow family gives Admiral a headstart to the top of his class. This moderate-framed bull with extra spring of rib will definitely benefit any herd. Calving ease, maternal and growth rounds out this complete package.

EPDs	
CE	12.4
BW	1.2
WW	67.9
YW	96.9
MCE	9.6
MM	25.3
MW	59.2
CW	28.9
YG	-0.33
MB	0.22
API	136.0
TI	73.6



WS Soloman Y186, reference sire



Simmental Bulls

249B KSR PIONEER 249B

BD:	Adj BW:	Adj WW:	SC:
3/6/14	92	710	34.0

WS BEEF MAKER R13
HSR DAKOTA BEEF W217
 HSR MISS SANDSTONE P67
 TNT TOP GUN R244

KSR PRINCESS RED 249Y
 KSR ACE OF HEARTS 539P

Out of a perfectly uddered Top Gun dam, this bull has added spring of rib packed into a moderate, calving-ease package.

EPDs	
CE	7.8
BW	4.1
WW	68.0
YW	96.5
MCE	4.9
MM	25.8
MW	59.8
CW	33.1
YG	-0.27
MB	0.18
API	114.7
TI	67.8



249B

281B KSR BUFFER 281B

BD:	Adj BW:	Adj WW:	SC:
3/8/14	78	686	36.0

WS BEEF KING W107
WS SOLOMAN X186
 WS MISS SABRINA S166
 GCF/ZEIS MR COMMANDERO

KSR SARAH 281Y
 KSR NEW DAY 581P

Excellent calving-ease sire with a 78# BW. This dark-red, deep, thick, easy-fleshing, high-maternal herd sire. Must see to fully appreciate this complete, sound-structured bull!

EPDs	
CE	9.3
BW	1.3
WW	69.7
YW	94.2
MCE	4.5
MM	15.4
MW	50.3
CW	27.2
YG	-0.22
MB	0.19
API	125.8
TI	71.3



281B

Simmental Bulls



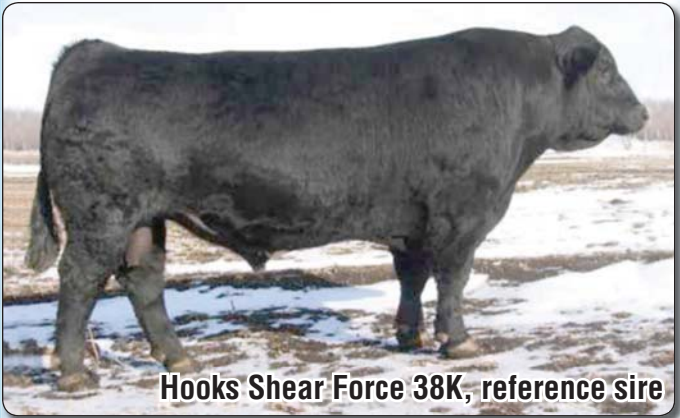
316B KSR SLEEP EASY 316B

BD:	Polled	Black	Purebred
4/1/14	74	760	36.0

HOOKS SHEAR FORCE 38K
KSR SHEAR FORCE 889W
 KSR TIFFY 889T
 GCF/ZEIS MR COMMANDERO
KSR PRETTY GIRL 316Z
 KSR RED DICE 516P

74# BW in a calving-ease heifer bull with thickness of top and spring of rib. 137 API and 78 TI, very complete EPDs and pedigree.

EPDs	
CE	9.9
BW	0.2
WW	75.8
YW	103.0
MCE	7.0
MM	15.2
MW	53.1
CW	30.6
YG	-0.21
MB	0.25
API	137.1
TI	77.8



Hooks Shear Force 38K, reference sire

320B KSR EASY ANSWER 320B

BD:	Polled	Black	1/2 SM 1/2 AN
3/7/14	70	673	41.5

SITZ TRAVELER 8180
S A V FINAL ANSWER 0035
 S A V EMULOUS 8145
 ELLINGSON 680S W948
KSR TESSA 320Z
 KSR GRANDE 902U

Great halfblood Final Answer son boasting a 150 API, 81 TI with a 41.5 scrotal. Easy Answer will make a great curve-bender heifer bull boasting a 70# BW.

EPDs	
CE	14.9
BW	-1.5
WW	73.9
YW	112.5
MCE	10.5
MM	22.8
MW	59.7
CW	34.3
YG	-0.13
MB	0.40
API	148.1
TI	80.5

328B KSR THE GENERAL 328B

BD:	Polled	Black	3/4 SM 1/4 AN
2/20/14	74	695	39.0

TNT TUITION U238
W/C UNITED 956Y
 MISS WERNING 956W
 ELLINGSON 680S W948
KSR KERA 328Z
 KSR VERA 28W

Born from a great first-calf heifer, The General has top EPDs with the top 1% for WW and YW.

EPDs	
CE	9.5
BW	1.1
WW	84.9
YW	134.8
MCE	6.3
MM	18.4
MW	60.9
CW	51.5
YG	-0.16
MB	0.30
API	125.5
TI	81.7



Simmental Bulls

338B KSR BRIDGESTONE 338B

Polled Black 1/2 SM 1/2 AN

BD: Adj BW: Adj WW: SC:

3/1/14 75 810 39.5

COLEMAN REGIS

S A V FINAL ANSWER 0035

904

COLEMAN DONNA 714

KSR TOTAL PACKAGE 219W

KSR ZAG 338Z

KSR TRIUMPH 818T

Excellent scrotal, 39.5 cm, halfblood Regis son from a superior first-calf Total Package daughter. 75# birthweight, indexing 107% with a 113% WW index. A true halfblood herd sire for the most demanding cattleman.

EPDs	
CE	15.0
BW	-1.2
WW	78.3
YW	114.6
MCE	11.1
MM	20.0
MW	59.1
CW	35.7
YG	-0.09
MB	0.34
API	141.5
TI	79.4



363B KSR PROSPER 363B

Polled Black 1/2 SM 1/2 AN

BD: Adj BW: Adj WW: SC:

3/7/14 66 670 39.0

COLEMAN REGIS

S A V FINAL ANSWER 0035

904

COLEMAN DONNA 714

787U

KSR GLEE 363Z

KSR CATALYST 962U

Prosper is a real EPD leader from the top 3%, 50% on all traits, 66# BW and a 118% index. Real curve-bending heifer bull. Excellent herd sire prospect in a sleep-easy package.

EPDs	
CE	17.5
BW	-2.8
WW	63.7
YW	93.0
MCE	13.9
MM	23.1
MW	54.9
CW	20.9
YG	-0.20
MB	0.35
API	157.2
TI	75.1

401B KSR CRIMSON TIDE 401B

Polled Red Purebred

BD: Adj BW: Adj WW: SC:

3/7/14 92 706 36.5

WS SOLOMAN X186

WS BEEF KING W107

WS MISS SABRINA S166

SARGE F6039

KSR SAPPHIRE 401N

KSR PREFERENCE 501C

From an elite, never-miss Sarge daughter. Very strong maternally balanced CE-growth pedigree. Very prominent pedigree in a moderately framed, complete herd sire.

EPDs	
CE	7.8
BW	2.7
WW	67.5
YW	93.3
MCE	7.5
MM	22.1
MW	55.8
CW	28.9
YG	-0.22
MB	0.08
API	110.3
TI	66.1

Simmental Bulls



498B KSR HUMMER 498B

BD:	Adj BW:	Adj WW:	SC:
3/23/14	98	625	32.0

Polled Black 1/2 SM 1/2 AN
 HC HUMMER 12M
KSR HEISMAN 734Y
 KSR CUT ABOVE 734S
 S A V CONQUEST 0169
S A V ERICA 2498
 S A V ERICA 9911

Halfblood, maternal carcass herd sire.

EPDs	
CE	7.8
BW	4.1
WW	68
YW	96.5
MCE	4.9
MM	25.8
MW	59.8
CW	33.1
YG	-0.27
MB	0.18
API	112.3
TI	67.9

509B KSR BLACK COMMANDER 509B

BD:	Adj BW:	Adj WW:	SC:
3/21/14	92	767	38.5

Polled Black Purebred
 CNS DREAM ON L186
KSR TOTAL PACKAGE 219W
 KSR HEART BREAK 219L
 HCC ILL BE BLACK
KSR LUCY 509P
 KSR LUCILLE 239L

Top 20% WW index and a 30% YW index. Great Total Package son from a never-miss I'll Be Black daughter. Buy with confidence — predictable, consistent and proven genetics.

EPDs	
CE	5.1
BW	2.1
WW	70.7
YW	100.7
MCE	10.0
MM	14.6
MW	49.9
CW	32.6
YG	-0.22
MB	0.10
API	110.7
TI	68.0



515B KSR BRAVEHEART 515B

BD:	Adj BW:	Adj WW:	SC:
3/21/14	94	681	36.5

Polled Red Purebred
 CNS DREAM ON L186
GCF/ZEIS MR COMMANDERO
 ZEIS MISS FORTUNE J79
 MV RED LIGHT 406
KSR RED PEPPER 515P
 KSR PEPPERMINT 315M

Moderate, red, calving-ease maternal herd sire. This Commandero son is out of a perfectly uddered Red Light dam.

EPDs	
CE	6.2
BW	2.9
WW	52.7
YW	71.9
MCE	4.2
MM	21.4
MW	47.8
CW	16.9
YG	-0.20
MB	0.13
API	103.4
TI	57.8



Simmental Bulls

608B KSR MATADOR 608B

BD:	Adj BW:	Adj WW:	SC:
3/15/14	60	669	36.0

CNS DREAM ON L186
KSR TOTAL PACKAGE 219W
 KSR HEART BREAK 219L
 BDV TRUE CHOICE 21L

KSR PEARL 608R
 KSR LAYLA 307M

High-marbling, calving-ease pedigree from a good-milking True Choice daughter.

EPDs	
CE	8.3
BW	0.8
WW	68.2
YW	96.3
MCE	8.3
MM	17.0
MW	51.1
CW	28.0
YG	-0.18
MB	0.15
API	114.1
TI	67.2



608B

618B KSR MR MATERNAL 618B

BD:	Adj BW:	Adj WW:	SC:	Purebred
3/23/14	82	607	36.5	

HC HUMMER 12M
KSR HEISMAN 734Y
 KSR CUT ABOVE 734S
 LSS THUMPER KG46

KSR TRIUMPH 618R
 KSR TRIUMPH 218L

Triumph 618R is a great-milking Thumper daughter that has produced three great females in our herd. Mr Maternal has a 82# BW and comes in a great maternal package.

EPDs	
CE	9.3
BW	1.6
WW	56.1
YW	81.0
MCE	9.1
MM	25.7
MW	53.7
CW	20.5
YG	-0.30
MB	0.13
API	111.6
TI	60.1

715B KSR BLACKSMITH 715B

BD:	Adj BW:	Adj WW:	SC:
3/4/14	86	620	38.5

SRS J914 PREFERRED BEEF
SS PREFERRED VALUE R901
 SS GOLDEN DREAM N901
 GA PRIME RIB N341

KSR APRIL SHOWERS 715S
 KSR APRIL SHOWERS 105K

Deep-middle, thick-topped son of Preferred Value with that added thickness for added pounds and profitability. Easy-keeping kind!

EPDs	
CE	10.4
BW	0.8
WW	41.5
YW	54.3
MCE	9.8
MM	22.0
MW	42.8
CW	3.6
YG	-0.36
MB	0.06
API	118.9
TI	53.2

Simmental Bulls



SCROTAL MEASUREMENTS

All the bulls have been adjusted to one year of age.
All bulls are good to excellent.

	Months of Age			
	12-14	15-20	21-30	30+
Excellent	35	37	39	40
Good	30-35	31-37	32-39	33-40
Poor	30	31	32	33

* All measurements are expressed in centimeters.

734B KSR COWBOY 734B

BD:	Adj BW:	Adj WW:	SC:
3/24/14	88	652	35.5

CNS DREAM ON L186
KSR TOTAL PACKAGE 219W

KSR HEART BREAK 219L

STF QUICK FIX 160N

KSR CUT ABOVE 734S

KSR TRANSFORMER 234L

*Very strong cow family, maternal brother to KSR Heisman 734Y, our heifer bull.
Very complete, moderately framed, Total Package son.*

EPDs	
CE	7.7
BW	1.8
WW	54.3
YW	76.7
MCE	7.6
MM	20.0
MW	47.2
CW	18.2
YG	-0.26
MB	0.14
API	105.1
TI	58.1

778B KSR TOPLINE 778B

BD:	Adj BW:	Adj WW:	SC:
3/2/14	92	746	36.5

TNT TANKER U263
MR NLC ICON X0104

MS NLC STEVIE R5267

BON VIEW NEW DESIGN 878

KSR BRIDGET 778S

KSR FANCY BRIDGET 575P

Very thick-topped, deep-middled Icon son from Trey's great Bridget cow!

EPDs	
CE	9.7
BW	1.2
WW	67.4
YW	104.5
MCE	12.2
MM	28.4
MW	62.1
CW	33.9
YG	-0.20
MB	0.17
API	121.9
TI	68.6

818B KSR DELUXE 818B

BD:	Adj BW:	Adj WW:	SC:
3/18/14	88	738	38.0

HC HUMMER 12M
KSR HEISMAN 734Y

KSR CUT ABOVE 734S

GCF/ZEIS MR COMMANDERO

KSR TRIUMPH 818T

KSR TRIUMPH 618R

Deluxe's elite Commandero dam has produced an excellent, well-rounded, black herd sire prospect with a 738# weaning weight and 38 cm scrotal measurement.

EPDs	
CE	8.5
BW	2.3
WW	67.5
YW	96.1
MCE	8.1
MM	21.8
MW	55.6
CW	30.2
YG	-0.23
MB	0.19
API	113.0
TI	66.6



Simmental Bulls

839B KSR RIP TIDE 839B

BD:	Adj BW:	Adj WW:	SC:
3/22/14	93	692	36.5

WS BEEF MAKER R13
HSR DAKOTA BEEF W217
 HSR MISS SANDSTONE P67
 SARGE F6039

KSR ROBIN 839T
 KSR ROBIN 139K

Rip Tide boasts a super pedigree and hails from a great cow family. Should produce top replacement heifers!!

EPDs	
CE	6.9
BW	3.5
WW	65.8
YW	84.7
MCE	7.5
MM	24.1
MW	57.0
CW	24.8
YG	-0.30
MB	0.24
API	113.4
TI	68.1

857B KSR GRANDE 857B

BD:	Adj BW:	Adj WW:	SC:
3/21/14	88	710	37.5

WS BEEF KING W107
WS SOLOMAN X186
 WS MISS SABRINA S166
 SARGE F6039

KSR TALLY 857T
 KSR HEART THROB 277L

This dark-red, deep-sided Solomon son out of a Sarge-sired dam should make a strong-topped herd sire. His dam is an excellent-uddered cow that has consistently produced top calves.

EPDs	
CE	8.2
BW	1.5
WW	67.7
YW	90.8
MCE	6.3
MM	18.3
MW	52.2
CW	25.5
YG	-0.25
MB	0.13
API	116.7
TI	68.5

919B KSR STING 919B

BD:	Adj BW:	Adj WW:	SC:
3/4/14	86	615	39.0

TNT TANKER U263
MR NLC ICON X0104
 MS NLC STEVIE R5267
 STF QUICK FIX 160N

KSR EXCEL 919U
 KSR HEART BREAK 219L

True carcass pedigree in a moderate, calving-ease package.

EPDs	
CE	8.2
BW	-0.2
WW	44.6
YW	69.4
MCE	13.9
MM	27.5
MW	49.8
CW	11.5
YG	-0.27
MB	0.10
API	113.7
TI	54.7

927B KSR RED POWER 927B

BD:	Adj BW:	Adj WW:	SC:
3/28/14	90	770	40.0

WS BEEF MAKER R13
HSR DAKOTA BEEF W217
 HSR MISS SANDSTONE P67
 GCF/ZEIS MR COMMANDERO

KSR IMPERIAL 927U
 KSR SALINA 427N

Here it is – length, length, length. Red Power is a super-long, smooth herd sire prospect that will sire pounds and good replacement heifers. He also should be a calving-ease bull.

EPDs	
CE	8.6
BW	2.2
WW	70.1
YW	95.2
MCE	9.2
MM	23.6
MW	58.7
CW	29.1
YG	-0.25
MB	0.26
API	125.5
TI	73.0

Simmental Bulls



942B KSR GAME CHANGER 942B

BD:	Polled	Black	Purebred
3/22/14	94	752	38.0

SRS J914 PREFERRED BEEF
SS PREFERRED VALUE R901
 SS GOLDEN DREAM N901
 SS PREFERRED VALUE R901
KSR SUGAR 942U
 KSR VALUE BASE 541P

Game Changer is from a super cow family of Dalcyce's. He is a thick-topped, large-scrotal, long-bodied bull boasting a 105% WW index.

EPDs	
CE	8.7
BW	2.5
WW	65.3
YW	89.5
MCE	9.9
MM	17.9
MW	50.5
CW	26.4
YG	-0.35
MB	0.14
API	118.7
TI	66.7



956B KSR RANCHER 956B

BD:	Polled	Black	Purebred
3/29/14	90	735	34.0

SRS J914 PREFERRED BEEF
SS PREFERRED VALUE R901
 SS GOLDEN DREAM N901
 KSR ARMISTICE 480P
KSR AMY 956U
 KSR AYL A 206L

Super herd sire with a strong maternal pedigree going back to Dalcyce's Electra 907H cow family. Consistently predictable strong pedigree.

EPDs	
CE	9.1
BW	1.8
WW	65.3
YW	88.4
MCE	9.9
MM	23.5
MW	56.1
CW	24.6
YG	-0.31
MB	0.05
API	119.9
TI	65.8





Simmental Bulls

974B KSR MARRIOTT 974B

BD:	Adj BW:	Adj WW:	SC:
3/26/14	102	786	37.5

HC HUMMER 12M
KSR HEISMAN 734Y
 KSR CUT ABOVE 734S
 STF QUICK FIX 160N

KSR MARRIOTT 974U
 KSR MARRIOTT 375M

110% WW index, this super growth Heisman 734Y son out of Trey's super-productive, super-uddered Marriott 974M cow family.

EPDs	
CE	7.9
BW	2.7
WW	66.8
YW	98.0
MCE	10.3
MM	21.7
MW	55.1
CW	32.0
YG	-0.23
MB	0.17
API	112.4
TI	65.3

985B KSR CRUSADER 985B

BD:	Adj BW:	Adj WW:	SC:
4/7/14	84	744	36.0

CNS DREAM ON L186
KSR TOTAL PACKAGE 219W
 KSR HEART BREAK 219L
 STF QUICK FIX 160N

KSR KARLY 985U
 KSR FANCY BRIDGET 575P

104% BW and WW ration in a long-sided, strong-topped impressive April herd sire prospect!

EPDs	
CE	10.0
BW	0.4
WW	61.8
YW	87.9
MCE	7.4
MM	18.3
MW	49.2
CW	22.6
YG	-0.26
MB	0.16
API	116.8
TI	64.8

990B KSR REDMAN 990B

BD:	Adj BW:	Adj WW:	SC:
3/22/14	91	647	39.5

WS BEEF KING W107
WS SOLOMAN X186
 WS MISS SABRINA S166
 GCF/ZEIS MR COMMANDERO

KSR TOSICA 990U
 KSR TOSICA 180K

Deep, dark red, stretchy son of Soloman.

EPDs	
CE	8.6
BW	2.3
WW	67.2
YW	91.6
MCE	6.2
MM	21.3
MW	54.9
CW	27.3
YG	-0.24
MB	0.21
API	124.6
TI	69.7

Klain Simmental

... reserves 100 units of semen on all bulls sold for in-herd use only. Bulls will be collected at our expense.

Angus Bulls



40B KSR MATRIX 40B

BD:	Adj BW:	Adj WW:	SC:
4/12/14	68	768	36.5

B C MATRIX 4132
HOMEDALE MAJOR MATRIX
 LYNDSIES ELBA004 OFHOMEDAL
 VIN-MAR O'REILLY FACTOR
BUSHS BLACKBIRD 1040
 BUSHS LADY BLACKBIRD 6583

Elite calving-ease heifer bull.

EPDs	
CE	15.8
BW	-2.1
WW	57.6
YW	101.5
MCE	7.2
MM	21.1
MW	49.9
CW	28
YG	-0.03
MB	0.4
API	118.8
TI	62.4

279B KSR SERGEANT 279B

BD:	Adj BW:	Adj WW:	SC:
3/19/14	84	720	38.0

B C MATRIX 4132
HOMEDALE MAJOR MATRIX
 LYNDSIES ELBA004 OFHOMEDAL
 C A FUTURE DIRECTION 5321
S A V PRISCILLA 3279
 S A V PRISCILLA 0416

Out of a super-uddered, elite dam. Great spread Matrix son.

EPDs	
CE	14.6
BW	-0.3
WW	57.0
YW	97.8
MCE	8.2
MM	24.5
MW	53.0
CW	28.5
YG	-0.06
MB	0.7
API	127.4
TI	66.6

483B KSR MR EZ 483B

BD:	Adj BW:	Adj WW:	SC:
2/25/14	70	695	40.0

SITZ TRAVELER 8180
S A V FINAL ANSWER 0035
 S A V EMULOUS 8145
 S A V WORLDWIDE 9088
S A V EMBLYNETTE 1483
 S A V EMBLYNETTE 0853

Deep-ribbed, soft-middled, easy-keeping, calving-ease Final Answer son.

EPDs	
CE	10.9
BW	-2.3
WW	59.8
YW	103.6
MCE	6.8
MM	24.2
MW	54.1
CW	28.9
YG	0.04
MB	0.6
API	113.3
TI	66.5

485B KSR COLONEL 485B

BD:	Adj BW:	Adj WW:	SC:
4/23/14	85	730	34.5

B C MATRIX 4132
HOMEDALE MAJOR MATRIX
 LYNDSIES ELBA004 OFHOMEDAL
 S A V WORLDWIDE 9088
S A V BLACKCAP MAY 1485
 S A V BLACKCAP MAY 9259

Super calving-ease heifer bull.

EPDs	
CE	5.3
BW	1.4
WW	58.9
YW	105.5
MCE	3.8
MM	22.5
MW	52.0
CW	35.7
YG	0.04
MB	0.4
API	78.8
TI	57.1



Angus Bulls

773B KSR PREMIER 773B

Polled Black Angus

BD: Adj BW: Adj WW: SC:

2/28/14 104 675 37.5

S A V HERITAGE 6295

S A V HARVESTOR 0338

S A V EMBLYNETTE 7749

SITZ ALLIANCE 6595

S A V EMBLYNETTE 0773

EA EMBLYNETTE 104

Excellent Harvester son with added pounds in a growth package. Deep middle, easy fleshing growth bull.

EPDs	
CE	0.0
BW	2.3
WW	71.2
YW	128.1
MCE	0.4
MM	31.1
MW	66.8
CW	50.4
YG	0.26
MB	0.79
API	80.6
TI	71.4

841B KSR HARVESTOR 841B

Polled Black Angus

BD: Adj BW: Adj WW: SC:

2/28/14 82 730 38.0

S A V HERITAGE 6295

S A V HARVESTOR 0338

S A V EMBLYNETTE 7749

S A F 598 BANDO 5175

S A V ERICA 0841

SHADYBROOK ERICA 831

High-growth Harvester son with carcass and maternal pedigree.

EPDs	
CE	0.9
BW	1.4
WW	65.6
YW	124.5
MCE	0.6
MM	32.6
MW	65.4
CW	47.9
YG	0.17
MB	0.76
API	80.9
TI	68.9

911B KSR ADMIRAL 911B

Polled Black Angus

BD: Adj BW: Adj WW: SC:

4/11/14 80 784 34.5

B C MATRIX 4132

HOMEDALE MAJOR MATRIX

LYNDSIES ELBA004 OFHOMEDAL

S A V EFFICIENCY 7056

S A V ERICA 9911

S A V ERICA 771

Very complete, well-balanced, deep-ribbed, easy-keeping Matrix son.

EPDs	
CE	12.5
BW	-0.4
WW	60.3
YW	106.7
MCE	7.0
MM	20.7
MW	50.8
CW	33.7
YG	0.02
MB	0.5
API	110.3
TI	63.0



911B



Open Heifers

510B KSR BETSY 510B

Polled Red Purebred

BD: Adj BW: Adj WW:

4/4/14 84 647

WS SOLOMAN X186

WS BEEF KING W107

WS MISS SABRINA S166

GCF/ZEIS MR COMMANDERO

KSR MARQUIS 810T

KSR POWER CAT 611R

Super-deep, thick, dark-red Solomon daughter with only a 68# birthweight. Betsy comes in an elite maternal package. Don't let this one slip by!

EPDs	
CE	9.5
BW	2.3
WW	72.9
YW	100.3
MCE	8.1
MM	23.9
MW	60.3
CW	32.2
YG	-0.20
MB	0.17
API	123.6
TI	72.5



510B

513B KSR BERTHA 513B

Polled Red Purebred

BD: Adj BW: Adj WW:

3/2/14 68 549

WS SOLOMAN X186

WS BEEF KING W107

WS MISS SABRINA S166

PPSR NOPHALT 20H

KSR STAR 943U

KSR KANSAS LACE 743S

Here is a must-see red open Solomon daughter with super spring of rib. This strong-topped, good-footed heifer would make a potential show heifer and an excellent addition to your herd. A must see.

EPDs	
CE	11.6
BW	0.2
WW	58.8
YW	85.6
MCE	8.9
MM	23.0
MW	52.4
CW	21.1
YG	-0.28
MB	0.11
API	124.6
TI	66.1



513B



Open Heifers

521B KSR BRENNA 521B

Polled Black Purebred

BD: Adj BW: Adj WW:

5/7/14 78 690

HC HUMMER 12M

KSR HEISMAN 734Y

KSR CUT ABOVE 734S

SS EBONY'S GRANDMASTER

KSR GRAND DESIRE 121X

KSR MINDY 922U

This Heisman 734Y daughter has a 102% BW index and a 113% WW index! Here is a tall, stretchy heifer out of a Joker and Hummer dam with excellent EPDs. Brenna is also double polled and double black.

EPDs	
CE	9.8
BW	1.3
WW	69.5
YW	98.4
MCE	10.0
MM	18.8
MW	53.5
CW	30.0
YG	-0.26
MB	0.26
API	125.5
TI	70.7

525B KSR BAYLOR 525B

Polled Black Purebred

BD: Adj BW: Adj WW:

3/26/14 82 636

HC HUMMER 12M

KSR HEISMAN 734Y

KSR CUT ABOVE 734S

GCF/ZEIS MR COMMANDERO

KSR MARY JO 875J

KSR FANCY BRIDGET 575P

Baylor is an impressive Hummer x Commandero open, black purebred heifer who comes with an Elite pedigree. This heifer of Trey's goes back to his productive Marriott 375 cow family which had produced a ringer every time.

EPDs	
CE	9.8
BW	1.3
WW	63.9
YW	90.4
MCE	7.9
MM	19.8
MW	51.8
CW	25.4
YG	-0.27
MB	0.17
API	116.3
TI	65.4

526B KSR BRISA 526B

Polled Black Purebred

BD: Adj BW: Adj WW:

3/9/14 82 572

CNS DREAM ON L186

GCF/ZEIS MR COMMANDERO

ZEIS MISS FORTUNE J79

HCC ILL BE BLACK

KSR ROBIN 326M

KSR EMPRESS 345Z

Here is a solid red Commandero daughter with that added length and stretch for those added pounds. Brisa is very smooth with balanced EPDs.

EPDs	
CE	6.3
BW	0.8
WW	49.6
YW	62.4
MCE	6.0
MM	20.1
MW	44.9
CW	7.9
YG	-0.28
MB	0.06
API	106.1
TI	56.6

529B KSR BLISS 529B

Polled Black 1/2 SM 1/4 AN 1/4 CS

BD: Adj BW: Adj WW:

3/21/14 84 677

HC HUMMER 12M

KSR HEISMAN 734Y

KSR CUT ABOVE 734S

629

Another super Heisman 734Y, perfectly uddered daughter in a halfblood package. Bliss has a 111% WW index coming from a commercial halfblood cow.

EPDs	
CE	8.4
BW	2.0
WW	64.8
YW	95.0
MCE	4.7
MM	20.6
MW	53.0
CW	29.2
YG	-0.22
MB	0.17
API	105.7
TI	65.0



Open Heifers

536B KSR BECCA 536B

Polled Black 1/2 SM 1/2 AN

BD: Adj BW: Adj WW:

4/1/14 84 624

B C MATRIX 4132

HOMEDALE MAJOR MATRIX

LYNDSIESELBA0040FHOMEDAL

NICHOLS LEGACY G151

GSR MS LEGACY 137N

GSR MS BLACK GOLD 137L

Becca is a deep-ribbed, strong-topped, percentage Matrix daughter going back to Legacy as well. This heifer is out of an elite cow family and has a 100% BW index and a 103% WW index.

EPDs	
CE	12.0
BW	0.3
WW	55.7
YW	82.0
MCE	8.5
MM	20.5
MW	48.4
CW	19.2
YG	-0.18
MB	0.39
API	127.8
TI	66.4

544B KSR BESS 544B

Polled Black Purebred

BD: Adj BW: Adj WW:

3/30/14 88 670

CNS DREAM ON L186

KSR TOTAL PACKAGE 219W

KSR HEART BREAK 219L

SS EBONY'S GRANDMASTER

KSR MISSY 144X

KSR LEXUS 934U

Here is a double-bred Dream On heifer with a 110% WW index and complete, balanced EPDs. Bess will make a great front-pasture cow!

EPDs	
CE	7.3
BW	2.4
WW	66.1
YW	92.2
MCE	9.7
MM	17.2
MW	50.2
CW	28.0
YG	-0.23
MB	0.23
API	121.0
TI	68.7

551B KSR BAMBI 551B

Polled Black Purebred

BD: Adj BW: Adj WW:

3/4/14 70 608

NICHOLS LEGACY G151

HOOKS SHEAR FORCE 38K

C&D TRACY

KSR TOTAL PACKAGE 219W

KSR KALLY 351Z

KSR ZELDA 51W

We really enjoy calving our Shear Force heifers and this daughter should be no exception. Out a first-calf Total Package dam, this super broody heifer of Tyler's is in the top 4% of CE, API and TI, as well as having a 150 API.

EPDs	
CE	14.9
BW	-1.0
WW	70.2
YW	99.9
MCE	12.4
MM	22.3
MW	57.4
CW	27.4
YG	-0.36
MB	0.30
API	149.9
TI	79.6

554B KSR BRILEY 554B

Polled Black Purebred

BD: Adj BW: Adj WW:

3/8/14 74 591

NICHOLS LEGACY G151

HOOKS SHEAR FORCE 38K

C&D TRACY

KSR TOTAL PACKAGE 219W

KSR DOUBLE DOWN 355Z

KSR DREAMIN 55W

We feel this heifer has one of the strongest pedigrees possible and is of the top 5% of CE, Marb, API and TI. With excellent spring of rib and depth of middle, Briley will produce some of those top-weaning calves!!

EPDs	
CE	15.2
BW	-0.3
WW	66.0
YW	90.5
MCE	11.4
MM	23.5
MW	56.5
CW	22.8
YG	-0.38
MB	0.39
API	154.6
TI	78.5



Open Heifers

557B KSR BRAELYN 557B

Polled Black Purebred

BD: Adj BW: Adj WW:

3/6/14 74 605

CIRCLE S LEACHMAN 600U
LRS PREFERRED STOCK 370C

LAS MISS PRINCESS 020Z

STF QUICK FIX 160N

KSR CONFIDENCE 759S

GSR MS LEGACY 119N

Great pedigrees — that's what they say makes the cow. Preferred Stock and Legacy combination offers a great rare opportunity. 111% BW index in a maternally bred package.

EPDs	
CE	9.8
BW	0.1
WW	55.2
YW	84.2
MCE	6.8
MM	21.2
MW	48.8
CW	20.4
YG	-0.33
MB	0.13
API	112.5
TI	61.5

563B KSR BRUZAN 563B

Polled Black Purebred

BD: Adj BW: Adj WW:

2/21/14 86 622

RC CLUB KING 040R
NEW TREND CRUZAN 6Y

KEYSTONE RADIENCE 13R

SS PREFERRED VALUE R901

KSR CATALYST 962U

GSR MS LEGACY 161N

A deep, feminine Cruzan daughter with excellent spring of rib and a strong top. Bruzan has a 102% WW index and hails from a Legacy dam!!!

EPDs	
CE	7.7
BW	2.7
WW	65.8
YW	95.0
MCE	10.3
MM	21.0
MW	53.9
CW	30.2
YG	-0.33
MB	0.13
API	120.3
TI	66.9

570B KSR BRITNI 570B

Polled Black White-Faced Purebred

BD: Adj BW: Adj WW:

4/25/14 74 702

SRS J914 PREFERRED BEEF
SS PREFERRED VALUE R901

SS GOLDEN DREAM N901

GA PRIME RIB N341

KSR BETTE 70W

KSR EXCLAIM 708S

White-faced Preferred Value daughter with 108% BW index and 115% WW index, 2/63. This elite female has balanced EPDs, descending from a solid cow family.

EPDs	
CE	10.5
BW	1.3
WW	64.4
YW	88.3
MCE	9.4
MM	18.9
MW	51.1
CW	23.9
YG	-0.32
MB	0.07
API	124.3
TI	66.4

583B KSR BEE 583B

Red Purebred Polled 4/12/14

BD: Adj BW: Adj WW:

88 630

WS BEEF MAKER R13
HSR DAKOTA BEEF W217

HSR MISS SANDSTONE P67

SARGE F6039

KSR NEW DAY 581P

KSR RED DAWN 981H

Coming from a proven cow family is beneficial, making this heifer a definite positive choice for a replacement female in your herd. Bee is a moderate-framed, feminine April-born heifer with a 104% WW index and is in the top 5% for milk. She should produce heavy-weaning, solid-framed calves that will benefit your program.

EPDs	
CE	7.5
BW	2.2
WW	61.0
YW	81.0
MCE	5.9
MM	29.9
MW	60.4
CW	21.0
YG	-0.28
MB	0.20
API	114.8
TI	66.4



Open Heifers

587B KSR BRINLEY 587B

Polled Black Purebred

BD: Adj BW: Adj WW:

3/9/14 84 527

SRS J914 PREFERRED BEEF
SS PREFERRED VALUE R901

SS GOLDEN DREAM N901

KSR ARMISTICE 480P

KSR BALANCE 178X

KSR BRIDGET 778S

This open heifer is another one from Trey's herd. Brinley has a unique pedigree, going back to the New Design 878 sire, she has strong maternal, carcass and calving-ease traits in her strong pedigree.

EPDs	
CE	11.3
BW	1.4
WW	65.7
YW	91.0
MCE	7.7
MM	21.4
MW	54.2
CW	25.7
YG	-0.28
MB	0.15
API	120.2
TI	69.1

591B KSR BRIONA 591B

Polled Black Purebred

BD: Adj BW: Adj WW:

4/1/14 74 683

HC HUMMER 12M
KSR HEISMAN 734Y

KSR CUT ABOVE 734S

ELLINGSON 680S W948

KSR MIA 280Y

KSR CALISTO 780S

Briona is a find — going back to our great Tosica cow family which we have parted with very few of. Her pedigree is proven as we have kept most of Tosicas' daughters and granddaughters in the herd. Take advantage of this offering with a 105% BW index and 112% WW index. Take a look at this one!!

EPDs	
CE	9.3
BW	1.5
WW	71.3
YW	102.9
MCE	10.6
MM	20.5
MW	56.1
CW	32.9
YG	-0.30
MB	0.17
API	121.3
TI	70.0

LOT OF 5 COMMERCIAL OPEN HEIFERS



Open heifers



Bred Heifers

403A KSR RED BOBBI 403A

Polled Red Purebred

BD: Adj BW: Adj WW:

3/21/13 82 637

WS BEEF KING W107

WS SOLOMAN X186

WS MISS SABRINA S166

T 4 HR

KSR RED BOBBI 243Y

KSR KANSAS LACE 743S

AI bred to HXC Conquest 4405P (975924) on 5/31. Pasture exposed to KSR Zephyr 117Z from 6/7 to 8/14. Calf due 3/28/15.

A very feminine, correct daughter out of WS Solomon X186. She has a very balanced set of EPDs with a 105% WW Index.

EPDs	
CE	7.2
BW	2.9
WW	76.2
YW	106.9
MCE	5.3
MM	17.5
MW	55.6
CW	37.1
YG	-0.25
MB	0.10
API	118.8
TI	71.2



403A

408A KSR NORA 408A

Polled Black Purebred

BD: Adj BW: Adj WW:

5/1/13 74 630

WHEATLAND BULL 680S

ELLINGSON 680S W948

ELLINGSON DESPERADO R535

KSR ARMISTICE 480P

KSR EIDDIE 107X

KSR ELECTRAS DREAM 707S

AI bred to RCR Stetson (2396913) on 5/12. Safe to AI date. Bull calf on 2/19/15. Pasture exposed to KSR Zephyr 117Z from 6/7 to 8/14.

Nora 408A is in the top 10% of WW, YW and top 20% TI of 74 females. The Stetson mating will be top 10% for Calving Ease and Birth Weight with a 145 API and 74 TI. Nora goes back to the great Electra cow family of Dalcyce's.

EPDs	
CE	8.5
BW	1.4
WW	76.7
YW	111.3
MCE	6.8
MM	20.3
MW	58.6
CW	37.7
YG	-0.29
MB	0.10
API	124.3
TI	74.1

412A KSR IMAGINATION 412A

Polled Black 1/2 SM 1/2 AN

BD: Adj BW: Adj WW:

2/19/13 76 601

HERO 6267 OF R R 2418

H A IMAGE MAKER 0415

H A RITO BLACKCAP 9038

ELLINGSON LEGACY M229

KSR LENA 202Y

KSR HOT SPICE 272L

AI bred to W/C United (2614725) on 5/21. Pasture exposed to KSR Zephyr 117Z from 6/7 to 8/14. Calf due 3/22/15. This maternal halfblood bred heifer ranks in the top 10% MCE, 3% Milk and 4% MWW. Imagination 412A is bred to the great KSR Zephyr 117Z, a Shear Force grandson we retained in our herd. This Image Maker daughter will make a great addition - she is smooth made and ready to be a great brood cow.

EPDs	
CE	13.9
BW	0.8
WW	66.4
YW	104.8
MCE	11.4
MM	31.6
MW	64.8
CW	33.6
YG	-0.23
MB	0.28
API	133.5
TI	71.5



Bred Heifers

414A KSR EXCEED 414A

Polled Black 3/4 SM 3/16 AN 1/16 CS

BD: Adj BW: Adj WW:

3/14/13 82 655

CNS DREAM ON L186

KSR TOTAL PACKAGE 219W

KSR HEART BREAK 219L

STF QUICK FIX 160N

KSR EXCEED 914U

KSR EXCLAMATION 314M

AI bred to W/C United (2614725) on 5/21. Pasture exposed to KSR Zephyr 117Z from 6/7 to 8/14. Heifer calf, due 3/21/15.

Exceed 414A is a smooth-made Total Package daughter with that extra length, depth and maternal look to make a great female in anyone's herd. Exceed is a very complete and powerful bred heifer.

EPDs	
CE	8.1
BW	1.2
WW	66.2
YW	94.8
MCE	11.4
MM	21.4
MW	54.5
CW	27.8
YG	-0.20
MB	0.15
API	116.6
TI	66.0

419A KSR TRIUMPH 419A

Polled Black Purebred

BD: Adj BW: Adj WW:

2/20/13 78 580

TNT TANKER U263

MR NLC ICON X0104

MS NLC STEVIE R5267

KNH ABNER 43H

KSR TRIUMPH 218L

NLC Z18 ZORAH

AI bred to W/C United (2614725) on 5/20. Safe to AI date. Heifer calf on 2/27/15. Pasture exposed to KSR Zephyr 117Z from 6/7 to 8/14.

A real powerhouse pedigree! All the homework is done on this tremendous female and she's AI bred to United 956Y.

EPDs	
CE	8.1
BW	0.2
WW	60.5
YW	90.1
MCE	18.4
MM	32.8
MW	63.0
CW	23.8
YG	-0.31
MB	-0.06
API	109.9
TI	63.4

429A KSR AMBER 429A

Polled Black 3/8 SM 5/16 AN 5/16 CS

BD: Adj BW: Adj WW:

4/21/13 80 612

CNS DREAM ON L186

KSR TOTAL PACKAGE 219W

KSR HEART BREAK 219L

629

Pasture exposed to KSR Zephyr 117Z from 6/7 to 8/14. Calf due 3/30/15.

KSR Amber is an April daughter of Total Package with a 101% BW and WW index. She comes from a deep maternal cow family with excellent EPDs.

EPDs	
CE	8.3
BW	1.0
WW	61.9
YW	89.5
MCE	5.0
MM	17.9
MW	48.8
CW	24.5
YG	-0.21
MB	0.15
API	101.1
TI	62.5

445A KSR QUEENIE 445A

Polled Red Purebred

BD: Adj BW: Adj WW:

3/7/13 84 682

WS BEEF MAKER R13

WS BEEF KING W107

WS MISS DREAMBOAT T17

DSR SUPER BEAR D21

KSR BRIGHT STAR 441N

KSR STAR WARS 565D

Pasture exposed to KSR Zephyr 117Z from 6/7 to 8/14. Calf due 3/24/15.

A very powerful, dark, dark red Beef King daughter out of Tyler's Bright Star 441. This cow family proves themselves every year. Queenie is a female you definitely don't want to miss out on!

EPDs	
CE	9.4
BW	2.3
WW	78.8
YW	108.2
MCE	15.5
MM	18.7
MW	58.1
CW	36.9
YG	-0.33
MB	0.14
API	124.5
TI	75.1



Bred Heifers

453A KSR SASSY 453A

Polled Black 1/2 SM 1/2 AN

BD: Adj BW: Adj WW:

4/3/13 82 567

B C MATRIX 4132
HOMEDALE MAJOR MATRIX
 LYNDSIESELBA0040FHOMEDAL

HCC ILL BE BLACK
KSR MISTY MORNING 253L
 KSR MISTIQUE 653E

AI bred to W/C United (2614725) on 5/27. Safe to AI date, bull calf due 3/6/15. Pasture exposed to KSR Zephyr 117Z from 6/7 to 8/14.

KSR Sassy is bred right for a 3/4 blood United 956Y bull calf. This heifer is a long, smooth Matrix daughter coming from an elite KSR Mistique 653E granddam that Tyler had shown very successfully. This is a great SimAngus cross female to definitely take a look at.

EPDs	
CE	9.6
BW	1.0
WW	59.2
YW	90.3
MCE	8.2
MM	22.1
MW	51.7
CW	25.3
YG	-0.13
MB	0.20
API	110.0
TI	62.5

458A KSR DIXEY 458A

Polled Red Purebred

BD: Adj BW: Adj WW:

3/31/13 96 676

T 4 HR
 JDJ CHARISMA 20P

HS PRETTY HOT P04L
 RED CANYON HR P5

KSR WILMA 47W
 KSR LUCKY GIRL 747S

AI bred to HXC Conquest 4405P (975924) on 5/18. Safe to AI date, bull calf due 2/25/15. Pasture exposed to KSR Zephyr 117Z from 6/7 to 8/14.

This super bred T4HR Texas daughter has a 111% WW Index and carrying a halfblood Conquest bull calf ... should be very exciting.

EPDs	
CE	3.7
BW	3.5
WW	69.5
YW	100.4
MCE	4.2
MM	23.2
MW	58.0
CW	34.5
YG	-0.29
MB	0.01
API	100.4
TI	64.4

461A KSR SHARP 461A

Polled Black Purebred

BD: Adj BW: Adj WW:

3/4/13 76 639

WHEATLAND BULL 680S
ELLINGSON 680S W948

ELLINGSON DESPERADO R535
 NICHOLS LEGACY G151

GSR MS LEGACY 161N
 GSR MS BACKFIRE 161L

AI bred to Black Enhancer (1290187) on 5/18. Pasture exposed to KSR Zephyr 117Z from 6/7 to 8/14. Bull calf due 3/10/15.

KSR Sharp has a 108% BW index with a 105% WW index from a 680S Legacy granddaughter. This cow family has proven themselves time and time again and KSR Sharp will live up to her name.

EPDs	
CE	6.4
BW	1.2
WW	65.7
YW	97.2
MCE	11.8
MM	22.7
MW	55.5
CW	29.4
YG	-0.38
MB	0.10
API	122.5
TI	68.5



KRS Black Pearl 528B



Bred Heifers

465A KSR ALICE 465A

Polled Black Purebred

BD: Adj BW: Adj WW:

3/18/13 84 632

CNS DREAM ON L186

GCF/ZEIS MR COMMANDERO

ZEIS MISS FORTUNE J79

KNH ABNER 43H

KSR HEAT 327M

KSR RED SPICE 887G

AI bred to W/C United (2614725) on 5/27. Pasture exposed to KSR Zephyr 117Z from 6/7 to 8/14. Calf due on 3/24/15.

Very deep, broody Commandero daughter. Must see on sale day. She should have a good one!

EPDs	
CE	5.5
BW	2.8
WW	68.1
YW	93.7
MCE	7.7
MM	15.4
MW	49.4
CW	29.3
YG	-0.21
MB	0.06
API	109.3
TI	64.6



465A

482A KSR FOUNDATION 482A

Polled Black Purebred

BD: Adj BW: Adj WW:

2/20/13 82 626

NLC STETSON 36S

NLC BREAK FREE 72W

NLC K7551 KAVALINE

CNS DREAM ON L186

KSR JEWEL 802S

KSR NATASHA 480N

AI bred to Hooks Yukon 80Y (2612543) on 5/23. Safe to AI date, heifer calf due 3/2/15. Pasture exposed to KSR Zephyr 117Z from 6/7 to 8/14.

Break Free, Legacy, Sarge and KSR Tosica 180K. Foundation has everything going for her! This great bred female is a mark of Who's Who in the American Simmental breed. You can buy with confidence with Foundation, bred to Yukon 80Y with a heifer calf.

EPDs	
CE	13.4
BW	1.3
WW	77.1
YW	109.5
MCE	10.6
MM	14.8
MW	53.3
CW	36.4
YG	-0.30
MB	0.14
API	132.1
TI	72.6



482A



Bred Heifers

490A KSR ANNA 490A

Polled Black Purebred

BD: ADJ BW: ADJ WW:

3/17/13 82 653

HOOKS SHEAR FORCE 38K

KSR SHEAR FORCE 889W

KSR TIFFY 889T

ELLINGSON 680S W948

KSR MIA 280Y

KSR CALISTO 780S

AI bred to W/C United (2614725) on 5/19. Safe to AI date, heifer calf due 2/26/15. Pasture exposed to KSR Zephyr 117Z from 6/7 to 8/14.

A United 656Y heifer calf out of this Shear Force and Dream On pedigree going back to the KSR Tosica 180K will be an EPD giant!

EPDs	
CE	8.6
BW	2.5
WW	74.2
YW	105.1
MCE	9.6
MM	19.1
MW	56.2
CW	35.5
YG	-0.32
MB	0.24
API	135.1
TI	74.9

491A KSR RUGER 491A

Polled Red Purebred

BD: ADJ BW: ADJ WW:

3/6/13 80 655

WS BEEF KING W107

WS SOLOMAN X186

WS MISS SABRINA S166

GCF/ZEIS MR COMMANDERO

KSR IMPERIAL 927U

KSR SALINA 427N

AI bred to HXC Conquest 4405P (975924) on 5/20.

Pasture exposed to KSR Zephyr 117Z from 6/7 to 8/14. Calf due on 4/2/15.

Very clean-fronted, calving-ease Solomon daughter with a high-maternal pedigree.

EPDs	
CE	9.3
BW	1.5
WW	77.5
YW	107.8
MCE	8.0
MM	17.6
MW	56.4
CW	35.5
YG	-0.21
MB	0.18
API	129.7
TI	75.8

497A KSR REGINA 497A

Polled Black Purebred

BD: ADJ BW: ADJ WW:

5/7/13 78 668

CNS DREAM ON L186

KSR TOTAL PACKAGE 219W

KSR HEART BREAK 219L

RED CANYON HR P5

KSR JASMINE 987U

KSR INTRIGUE 287L

AI bred to W/C United (2614725) on 5/29. Safe to AI date, bull calf due 3/17/15. Pasture exposed to KSR Zephyr 117Z from 6/7 to 8/14.

KSR Regina has a 106% BW index, 110% WW index and she's bred to United 956Y with a bull calf. This will be a very exciting mating! Regina is the daughter to Trey's very first show heifer, Jasmine, who placed 5th overall at The North Central Regional Classic in 2009.

EPDs	
CE	9.1
BW	1.3
WW	72.8
YW	100.0
MCE	8.6
MM	18.1
MW	54.5
CW	30.7
YG	-0.24
MB	0.07
API	115.1
TI	70.5



KSR Jasmine 987U



KLAIN SIMMENTAL RANCH

Durnell & Darcy Klain
1364 20th St NW • Ruso, ND 58778
(701) 448-2408

**Saturday,
February 7, 2015**

1 p.m. Central Time
Turtle Lake Weigh Station
Turtle Lake, ND

Sale Day Phone: (701) 448-2500

PRESORTED
FIRST CLASS
US POSTAGE PAID
UNITED PRINTING

RETURN SERVICE REQUESTED