



TNT ANGUS
&
CARTER'S
POLLED HEREFORDS

Annual Production Sale
New
Sale Date! **Saturday**
February 7, 2015

1:00 p.m. CDT
Lake Region Livestock
Devils Lake, ND

Selling 73 Lots

50 Angus Yearling Bulls
9 Polled Hereford Yearling Bulls
14 Angus Yearling Heifers

Video Auction on:

This sale will be broadcast live on the internet.
DVAuction
Broadcasting Real-Time Auctions
Real time bidding & proxy bidding available.



Dear Friends and Cattlemen,

Welcome to our 2015 production sale! First off we would like to say thank you to all of our past customers for their continued support. It is our privilege to be your source for seedstock, and it is a privilege we don't take lightly. We know your business is cattle, and we do our absolute best to bring you the kind that are in demand at the sale barn.

This year's offering of Angus bulls averaged 772 lbs. of adjusted 205-day weight, and have continued to do extremely well over the early part of the winter. They were averaging 1,031 lbs. as of December 18th. This calf crop has been the healthiest and stoutest top to bottom, start to finish that we have ever had.

The Herefords are sired by A.I. sires NJW Trust, Revolution, World Class and herd bulls 5Z (Tailor Made son) and 11Y (Radar son). The bulls' adjusted 205-day weight averaged 670 lbs. As of December 18, they are averaging 965 lbs. These bulls were born in Freeman, S.D., and were taken to North Dakota in early November to be developed alongside the Angus bulls. We were very discerning when selecting bulls this Fall; they had to be good to make the journey north. We hope you can stop and take a look!

With the sale date being moved up to February 7, the bulls will not be fertility tested prior to the sale, but are fully guaranteed as breeders. We encourage you to let us take the bulls home after the sale to continue with their development. We will keep them free of charge, develop them, fertility test them, and deliver them to you free of charge in April.

The bulls have been developed on a roughage-based TMR ration consisting of grass hay, alfalfa hay, silage, whole corn, dried distiller grains and a protein supplement from J&R Feeds along with a mineral supplement. They have been developed with soundness and longevity in mind. We develop them to reach their genetic potential without sacrificing foot and structural integrity. We feel you will find an excellent set of bulls with an excellent set of feet and legs.

The open heifers were cut straight out the replacement pen. This is a very useful set of replacement heifers and as deep a set as we have offered. They ran alongside their dams without creep feed all summer and were weaned in late October making use of available forage. Post-weaning, the heifers have been developed with free-choice grass hay and a supplemented mixture of silage, whole corn, dry distillers, J&R protein concentrate and mineral.

It's the end of December as I write this and the cowherd is still out grazing corn stalks with their only additional supplement being protein tubs and mineral. We run our cows as economically as possible. This helps to ensure their progeny are capable of doing it the way they are supposed to... on their own. Cattle are designed to be foragers, and we don't feel the need to baby them. The term "easy fleshing" is often associated with moderate-framed cattle. That isn't the case. "Easy fleshing" is a sign of efficiency. Our cattle have to be efficient or they weed themselves out. We encourage you to come evaluate the cowherd we have established. They are a sound, functional bunch with excellent feet and legs, good udders and good dispositions.

Feel free to contact any of us if you would like any additional information or simply want to chat. We look forward to seeing you February 7!

Sincerely,

The Carters and Penners



SALE INFORMATION

TNT ANGUS &

CARTER'S POLLED HEREFORDS

Terry & Mavis Carter

6760 92nd St. NE • Rock Lake, ND 58365
(701) 266-5468 • (701) 370-8730 cell

Troy, Jeri & Harlee Carter

(701)266-5216 • (701)305-0104 cell

Malynda, Jay & Kenzy Penner

(605) 925-7016 • (605) 929-7314 cell

Jimmy Carter • (701) 266-5575

www.carterspolledherefords-tntangus.com

Saturday, February 7, 2015

1:00 pm CDT • Lake Region Livestock • Devils Lake, ND

Selling

50 Angus Yearling Bulls

9 Polled Hereford Yearling Bulls • 14 Yearling Angus Heifers

AUCTIONEER:

Dustin Carter712-898-9972

REPRESENTATIVES & CONSULTANTS:

Frey Livestock Sales & Services

Vern Frey701-721-0344

Cattle Business Weekly

Jim Shirley605-695-0649

Western Ag Reporter

Jason Frey701-300-0845

Dean Price.....701-230-2718

SALE DAY PHONE:

Lake Region Livestock800-858-7049

701-662-2223

Terry Carter..... C: 701-370-8730

Malynda Penner..... C: 605-929-7314

Troy Carter..... C: 701-305-0104

CATTLE INSPECTION:

The sale cattle will be available for inspection at the sale barn beginning Thursday, February 5.

LUNCH:

Complimentary sale day lunch sponsored by J&R Distributing, Inc.

LODGING:

Great American Inn & Suites701-662-4001

Super 8.....701-662-8656

Spirit Lake Casino & Resort.....701-766-4747

GUARANTEE:

Bulls have not been fertility tested but are guaranteed to pass a fertility test, and are guaranteed against breeding injury for the first 90 days after turnout.

LOYALTY DISCOUNT:

Purchase a bull from us at this sale and be eligible for a 1% discount next year with another purchase. Buying 3 consecutive years will ensure you a 3% discount off your total purchase, with the maximum being 5%, one for each CONSECUTIVE year. If a buyer fails to purchase a bull one year his discount level moves back down to zero. This discount is available for BULLS only. Discounts will come as rebate checks after the bull sale.

DELIVERY:

Free delivery up to 300 miles on a total purchase price of \$2,500.

FEEDING:

Bulls kept until April at no charge.

VIDEO SALE:

The sale will be a video format on large-screen monitors. The bulls will be on display in the pens, but not run through the ring.

ONLINE BIDDING:

The sale will be broadcast live on dvauction.com. For information on how to register to bid online, see page 3.

**CATALOG:**

Cow Camp Promotions..... Tracey Koester

Announcements made from the auction block shall take precedence over printed material in the catalog.

ANGUS REFERENCE SIRES

REFERENCE SIRE	REG. #	SIRE	DAM'S SIRE	CED	BW	WW	YW	CEM	MILK	MARB	RE	FAT
Koupals B&B Identity	16710463	Sitz Upward 307R	Connealy Onward	4	1.9	67	125	8	34	0.45	0.97	0.001
Connealy Earnan 076E	16969555	Connealy Consensus	KMK Alliance 6595 187	-12	5.0	79	137	2	22	0.84	0.88	0.052
Hoover Dam	16124994	SydGen CC&7	SAF Connection	8	0.1	51	96	11	29	0.75	1.11	-0.050
FF Dempsey Y11	17012433	Connealy Revenue 7289	SAV Net Worth 4200	9	-1.4	51	109	12	30	0.63	0.55	0.047
Jindra Double Vision	16748826	Connealy Reflection	Bon View New Design 878	10	1.2	73	139	13	25	0.71	0.44	0.002
Connealy Right Answer 746	#15832750	SAV Final Answer 0035	Sitz Traveler 8180	11	-0.2	68	122	11	31	0.48	0.14	0.017
VAR Rocky 80029	16160601	HARB Onward 786 JH	Connealy Onward	-20	5.0	73	126	-1	34	0.71	0.80	0.012
Sitz Upward 307R	#14963730	Connealy Onward	Connealy Lead On	4	2.5	71	132	9	38	0.52	0.76	0.005
MOGCK Danny 321	17103158	Connealy Danny 5398	Connealy Danny Boy	5	1.1	63	98	6	20	0.29	0.65	0.009
BT Impressive 898	16180021	Connealy Impression	Connealy Reflection	4	0.5	59	102	11	29	0.48	0.31	0.020
HT Traveler 756	15496503	SAV 8180 Traveler 004	Sitz Traveler 8180	0	3.3	57	108	5	17	0.19	0.09	0.019
Foxs Rito 4Y	17102396	Foxs Rito 9	Rito 112 of 2536 Rito 616	-1	2.8	42	91	2	22	0.35	0.25	-0.025
TNT Final Product 255	17347138	Connealy Final Product	Connealy Product 568	2	1.0	56	102	6	27	0.14	0.56	0.050
Hoover Hemi L20	17314742	Connealy Hemisphere 957L	GAR New Design 5050	8	1.4	52	93	12	28	0.57	0.86	0.004



HEREFORD REFERENCE SIRES

REFERENCE SIRE	REG. #	SIRE	DAM'S SIRE	CED	BW	WW	YW	MILK	M&G	FAT	REA	MB
NJW 73S M326 Trust 100W ET	43002897	KCF Bennett 3008 M326	PW VICTOR BOOMER P606	-1.9	3.6	69	122	32	66	-0.04	1.28	0.200
DR World Class 517 10H	41000194	Feltons 517	SBR MARATHON MAN 257T	3.9	2.8	61	90	33	63	0.03	0.09	0.080
MSU TCF Revolution 4R	42593689	Feltons Legend 242	REMITALL ONLINE 122L	3.3	2.6	67	107	25	58	0.03	1.00	0.160
PLC Tailored 5Z	43326587	Harvie Tailor Made ET 7W	REMITALL ONLINE 122L	-3.1	5.6	54	93	7	34	-0.01	0.39	0.010
CPH Radar 11Y	43230813	SBS 57G Radar 32K	TIL-TOBA VIP 58Y 22F	-3.3	7.4	55	82	12	39	0.00	0.37	-0.020

SALE INFORMATION

Developmental Duplication Carrier (DDC)

Newly identified simple recessive genetic defect. DD is not a lethal genetic defect, but may cause extra skin folds or additional limbs. For more information ask us or contact the American Angus Association.

Cattle identified as DDC are known carriers of the defect, but if bred to cattle free of the defect you will never have a calf that expresses the trait. The animals identified as DDP are potential carriers and have not yet been tested.

Retaining 1/3 semen interest in all bulls.

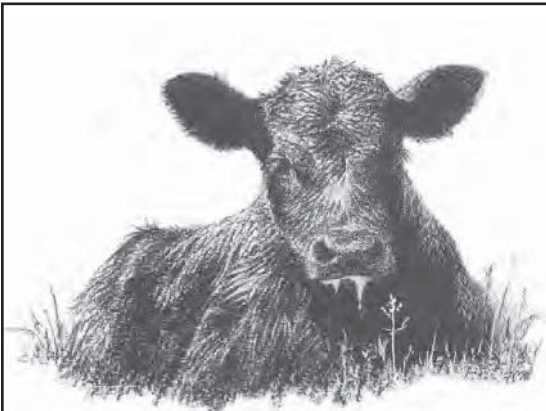
BREED EPD AVERAGES

2015 AAA Avg. EPDs of Non-Parent Bulls:

CED: +5 BW: +1.8 WW: +49 YW: +86 M: +23

2015 AHA Avg. EPDs of 2013 & 2014 Calves:

BW: +3.3 WW: +48 YW: +78 M: +21 M&G: +45



Birth Weight Information

When looking at birth weights a lot of people shy away from the 4 and 5 BW EPD Angus bulls. As a reference to compare a few other breeds a Charolais bull with a 1 BW EPD would compare to a 9.8 EPD in the Angus breed. The largest in our offering is a 5.2.

In the Simmental breed a 1 BW EPD would compare to a 4.4 EPD in the Angus breed.

We are careful when suggesting a bull is a calving ease bull suitable for use on heifers, but there isn't a bull in the offering we feel would give trouble on mature cows.

Watch & bid online for FREE at

DVAuction
Broadcasting Real-Time Auctions

View the Auction Live!
Bid Online... you're ringside
right at your desk!

Buying online is as easy as 1, 2, 3...

1. Create an account at www.dvauction.com under the "register" tab
2. Apply for bidding approval by clicking on the "details" tab at least 24 hours prior to the auction-a DV representative will notify you once you have been approved
3. Tune in for the sale and make your purchases!

High speed internet is required for successful bidding-be sure to check the lag-time monitor in the top left corner to ensure real-time broadcasts.

Proxy Bidding-if you can't make time to watch the sale, register a proxy bid and let our system represent your bid while you're away. Look for the "proxy bid" tab on the auction listing, and fill in your maximum bids. We'll handle the rest!

Having troubles? During the auction, you can type a message to the operator at any time for assistance. Our full-time support team can also always be reached at (402) 474-5557.



DVAuction
Broadcasting Real-Time Auctions

DVA Rep. Justin Dikoff (605) 290-0635 - email: jdikoff@dvauction.com
Please feel free to contact me with questions about the sale or to view the cattle for you.

ANGUS BULLS



TNT IDENTITY 404

	REG	TATTOO	BD	BW	205-ADJ	WR	PROL. 365
BULL	17911462	404	2/10/14	82	745	97	1428

Sitz Upward 307R
Koupals B&B Identity
 B&B Erica 605

FAR Krugerrand 410H
TNT Kathy 621
 TNT Designor Girl 438

{ Connealy Onward
 { Sitz Henrietta Pride 81M
 { GAR Exaltation 3144
 { B&B Erica 4064
 { Krugerrand of Donamere 490
 { FAR Erianna 286F
 { WK New Design 2132
 { TNT Hillary 109

PRODUCTION EPDS						CARCASS EPDS			\$ VALUE EPDS		
CED	BW	WW	YW	CEM	MILK	MARB	RE	FAT	\$W	\$F	\$B
5	1.8	55	103	10	25	1+.32	1+.54	1-.001	36.38	58.51	111.49

A large-framed, growthy son of Identity. A lot of size, length of spine and muscle expression in this top herd sire candidate. Light birth weight performance bull with a very complete performance record and EPD profile. Dam is an angular attractive model Angus cow in our herd with an impeccable udder.



TNT DISTINCTION 409

	REG	TATTOO	BD	BW	205-ADJ	WR	PROL. 365
BULL	17911451	409	2/12/14	88	861	112	1629

Sitz Upward 307R
Koupals B&B Identity
 B&B Erica 605

Connealy Final Product
TNT Queen Dolly 225
 Evenson Queen Dolly 6309

{ Connealy Onward
 { Sitz Henrietta Pride 81M
 { GAR Exaltation 3144
 { B&B Erica 4064
 { Connealy Product 568
 { Ebonista of Conanga 471
 { River Hills Kahuna 175M
 { Evenson Queen Dolly 5195

PRODUCTION EPDS						CARCASS EPDS			\$ VALUE EPDS		
CED	BW	WW	YW	CEM	MILK	MARB	RE	FAT	\$W	\$F	\$B
-3	3.4	70	124	3	31	1+.38	1+.82	1+.024	43.33	84.13	116.80

Top herd sire candidate by Identity that casts a big shadow. He is powerful and impressive when you see him in person. Big bodied and big hipped with an abundance of natural muscle shape. Phenotypically he is tough to fault. He stands on a big correct foot with an abundance of bone. Deep soggy bull that is powerful. Comes from a beautiful first calf Final Product daughter that did a phenomenal job. The grand dam is one of the best females on the place. Pedigree is stacked with performance and maternal power. Take a look at his impressive EPD profile.



TNT DEMPSEY 410

	REG	TATTOO	BD	BW	205-ADJ	WR	PROL. 365
BULL	17911490	410	2/12/14	78	840	110	1308

Connealy Revenue 7289
FF Dempsey Y11
 FF Herrietta Pride W10

Sitz Upward 307R
TNT Queen Dolly 262
 Evenson Queen Dolly 8170

{ SAV Net Worth 4200
 { Hyannis of Conanga 577
 { SAV Final Answer 0035
 { FF Fanny T35
 { Connealy Onward
 { Sitz Henrietta Pride 81M
 { Rally New Frontier 5233
 { Evenson Queen Dolly 5134

PRODUCTION EPDS						CARCASS EPDS			\$ VALUE EPDS		
CED	BW	WW	YW	CEM	MILK	MARB	RE	FAT	\$W	\$F	\$B
6	0.6	60	114	10	31	1+.50	1+.56	1+.022	42.66	73.63	113.61

Calving ease son of Dempsey that's soft made and big bodied. He's got a ton of performance and shape. If you're in search of a calving ease bull this will certainly be one of the highlights. His dam is a two year old Upward daughter with a very attractive profile and excellent udder composition. Grand dam has an excellent track record as well.

ANGUS BULLS



411

TNT HOOVER DAM 411



	REG	TATTOO	BD	BW	205-ADJ	WR	PROJ. 365
BULL	17911354	411	2/12/14	61	694	91	1318

SydGen CC&7
Hoover Dam
 Erica of Ellston C124
 BT Impressive 898
TNT Gina 256
 TNT Gina 719

{ SAF Connection
 SydGen Forever Lady 4087
 TC Gridiron 258
 Erica of Ellston V65
 { Connealy Impression
 HT Miss Erica 436
 Genetics by Design 049
 TNT Princess 574

PRODUCTION EPDS						CARCASS EPDS			\$ VALUE EPDS		
CED	BW	WW	YW	CEM	MILK	MARB	RE	FAT	\$W	\$F	\$B
12	-1.7	51	92	14	26	1+.61	1+.69	1-.021	43.01	43.24	100.85

Sure fire calving ease prospect by Hoover Dam. He's smooth made and nice headed. One of the highest CED bulls in the offering and lightest birth weight. Sleep all night calving ease genetics at its finest right here. Excellent set of numbers back him up with added carcass genetics. Comes from a two year old Impressive daughter, and the grand dam has been an excellent producer.



412

TNT PERFORMAN 412



	REG	TATTOO	BD	BW	205-ADJ	WR	PROJ. 365
BULL	17911510	412	2/12/14	100	904	118	1439

Connealy Consensus
Connealy Earnan 076E
 Brazila of Conanga 3991 839A
 Mgsa 1407 New Design 401
Evenson Ida 7401
 Evenson Ida 033

{ KMK Alliance 6595 187
 Blinda of Conanga 004
 { Connealy Tobin
 Breesha of Conanga 1251
 { Bon View New Design 1407
 SA Power Patty 928
 { Connealy Dateline
 Evenson Ida 8108

PRODUCTION EPDS						CARCASS EPDS			\$ VALUE EPDS		
CED	BW	WW	YW	CEM	MILK	MARB	RE	FAT	\$W	\$F	\$B
-7	5.2	75	118	6	29	1+.69	1+.56	1+.029	45.89	70.57	116.02

Here is the top weaning weight bull of the offering. He came off the cow at a staggering 976 pounds. He's impressive in his phenotype with a tremendous amount of base width, muscle expression, depth of body, and doesn't give up anything in terms of look. If you are looking to add pounds you need to take a hard look at this one. He certainly earned the name Performan. EPD profile backs up his actual performance. Dam is a heavy milking deep bodied female.



413

TNT EARNAN 413



	REG	TATTOO	BD	BW	205-ADJ	WR	PROJ. 365
BULL	17911511	413	2/13/14	88	762	99	1370

Connealy Consensus
Connealy Earnan 076E
 Brazila of Conanga 3991 839A
 TNT Bando Man 304
TNT Bonnie 735
 EMH Famous Gal 1

{ KMK Alliance 6595 187
 Blinda of Conanga 004
 { Connealy Tobin
 Breesha of Conanga 1251
 { SAF 598 Bando 5175
 TNT Shania 002
 Famous 7001
 HB High Rise Gal 745

PRODUCTION EPDS						CARCASS EPDS			\$ VALUE EPDS		
CED	BW	WW	YW	CEM	MILK	MARB	RE	FAT	\$W	\$F	\$B
-2	3.1	58	103	7	21	1+.66	1+.52	1+.027	33.99	56.60	110.44

Attractive and well-constructed son of Earnan. He's got the look of a herd bull with extra extension, depth of body, and a ton of muscle. He's sound in his makeup with an excellent foot and leg structure. These Earnan sons are top notch beef bulls that will add pounds without sacrificing anything on the maternal side. His dam is another model Angus cow with an incredible amount of capacity and udder quality.

ANGUS BULLS



419

TNT HOOVER DAM 419

	REG	TATTOO	BD	BW	205-ADJ	WR	PROJ. 365
BULL	17911353	419	2/17/14	84	764	100	1483

SydGen CC&7
Hoover Dam
Erica of Ellston C124

Vermilion Dateline 7078
TNT Pride 236
4G Pride 521

{ SAF Connection
SydGen Forever Lady 4087
TC Gridiron 258
Erica of Ellston V65
Connealy Dateline
Vermilion Blackbird 5044
Nichols Extra H6
4G Pride 343

PRODUCTION EPDS						CARCASS EPDS			\$ VALUE EPDS		
CED	BW	WW	YW	CEM	MILK	MARB	RE	FAT	\$W	\$F	\$B
3	3.2	53	96	10	26	1+.57	1+.79	1-.034	33.39	48.39	100.69

High performing son of Hoover Dam with an abundance of muscle and bone. He's a soggy beef bull you will find in the pen. Larger framed son of his sire with a lot of growth potential. Hoover Dam is most noted for his calving ease, muscle, and one of the leading carcass bulls in the breed.



423

TNT EARNAN 423

	REG	TATTOO	BD	BW	205-ADJ	WR	PROJ. 365
BULL	17911498	423	2/20/14	83	789	103	1368

Connealy Consensus
Connealy Earnan 076E
Brazila of Conanga 3991 839A

Connealy Impression
TNT Supreme 113
TNT Supreme Nancy 939

{ KMK Alliance 6595 187
Blinda of Conanga 004
Connealy Tobin
Breesha of Conanga 1251
Connealy Reflection
Pearl Pammy of Conanga 194
SAV Net Worth 4200
Diablo Supreme 323

PRODUCTION EPDS						CARCASS EPDS			\$ VALUE EPDS		
CED	BW	WW	YW	CEM	MILK	MARB	RE	FAT	\$W	\$F	\$B
-2	3.6	70	119	7	27	1+.77	1+.87	1+.034	48.82	75.55	127.08

Another big time herd sire prospect by Earnan. He is massive in his body type with an abundance of width, shape, and hip. He's one of the thickest bulls in the pen with a long level hip and bulging lower quarter. If you're looking to stouten up a set of calves while adding carcass this is a top option. He's a true beef bull with Angus character and a tremendous amount of maternal potential. Dam is donor quality. She is an own daughter of Impression with a tremendous amount of capacity, power, and a near perfect udder.



424

TNT RIGHT ANSWER 424

	REG	TATTOO	BD	BW	205-ADJ	WR	PROJ. 365
BULL	17910497	424	2/20/14	80	783	102	1423

SAV Final Answer 0035
Connealy Right Answer 746
Happy Dell of Conanga 262

Styles Upgrade L90
TNT Miss Enchantress 211
TNT Designors Girl 515

{ Sitz Traveler 8180
SAV Emulous 8145
Hyline Right Time 338
Happy Daze of Conanga 6260
Styles Upgrade J59
Plainview Barbara 83V
WK New Design 2132
LA Miss Enchantress 302

PRODUCTION EPDS						CARCASS EPDS			\$ VALUE EPDS		
CED	BW	WW	YW	CEM	MILK	MARB	RE	FAT	\$W	\$F	\$B
7	1.4	58	102	9	29	1+.39	1+.27	1+.008	44.44	54.97	81.36

Calving ease bull with a little more size and stretch. He's bigger and stouter than most Right Answer son's you will find. He's sound in his structure and comes from a two year old daughter that certainly did her job on her first try. He's sure to be a crowd favorite of the calving ease bulls come sale day.

ANGUS BULLS



430

TNT BOULDER 430

	REG	TATTOO	BD	BW	205-ADJ	WR	PROJ. 365
BULL	17911357	430	2/22/14	98	807	105	1443

HARB Onward 786 JH
VAR Rocky 80029
 Vermilion Lass 0029

Connealy Onward
 HARB Juanada Erica G75 JH
 Connealy Dateline
 Vermilion Lass 8107

Rally New Frontier 5233
Evenson Queen Dolly 8170
 Evenson Queen Dolly 5134

{ Connealy New Frontier 095
 Rally Tibbie 5380
 TC Freedom 104
 Evenson Queen Dolly 5195

PRODUCTION EPDS						CARCASS EPDS			\$ VALUE EPDS		
CED	BW	WW	YW	CEM	MILK	MARB	RE	FAT	\$W	\$F	\$B
-11	4.6	65	113	3	28	I+.47	I+.57	I+.010	36.27	68.68	110.13

Large framed performance son of Rocky that is a true herd sire candidate. He's big, long and attractive. If you want to add pounds to a set of calves take a look at his performance record and EPD profile. Dam is another attractive angular female with an excellent udder.



431

TNT DEMPSEY 431

	REG	TATTOO	BD	BW	205-ADJ	WR	PROJ. 365
BULL	17911488	431	2/22/14	95	786	103	1420

Connealy Revenue 7289
FF Dempsey Y11
 FF Herrietta Pride W10

BT Impressive 898
TNT JK Designer Girl 250
 TNT JK Designer Girl 643

{ SAV Net Worth 4200
 Hyannis of Conanga 577
 SAV Final Answer 0035
 FF Fanny T35
 Connealy Impression
 HT Miss Erica 436
 WK New Design 2132
 JAR Yesmar 775

PRODUCTION EPDS						CARCASS EPDS			\$ VALUE EPDS		
CED	BW	WW	YW	CEM	MILK	MARB	RE	FAT	\$W	\$F	\$B
-1	3.3	53	99	7	27	I+.51	I+.38	I+.017	31.92	53.24	96.17

Rugged made big boned son of Dempsey. He is a deep sided soggy beef bull with a lot of potential. He was 95 pounds unassisted out of a two year old heifer. I'm not recommending him for heifers, but when they're made like him they still calve easy. DDC.



432

TNT EARNAN 432

	REG	TATTOO	BD	BW	205-ADJ	WR	PROJ. 365
BULL	17911513	432	2/22/14	92	838	109	1484

Connealy Consensus
Connealy Earnan 076E
 Brazila of Conanga 3991 839A

Leachman Talisker
Leachman Blackcap 4055
 Leachman Blackcap 1105

{ KMK Alliance 6595 187
 Blinda of Conanga 004
 Connealy Tobin
 Breesha of Conanga 1251
 B/R New Design 036
 Leachman Blackbird 4043
 Leachman Quest
 Leachman Blackcap 6209

PRODUCTION EPDS						CARCASS EPDS			\$ VALUE EPDS		
CED	BW	WW	YW	CEM	MILK	MARB	RE	FAT	\$W	\$F	\$B
-6	4.4	70	114	5	21	I+.53	I+.61	I+.015	40.22	67.11	112.63

Big time herd sire by Earnan. Large framed long sided bull that doesn't give up any depth of body or base width. He is a tremendous individual with a ton of performance. He's excellent in his structure stands on a sound foot and is very good legged. He's a big time performance bull that will command your attention. Dam is a big powerful female with a tremendous amount of length and body. Maternal strength and performance.

ANGUS BULLS



TNT DOUBLE VISION 437

	REG	TATTOO	BD	BW	205-Adj	WR	PROJ. 365
BULL	17910583	437	2/23/14	83	666	87	1184

Connealy Reflection
Jindra Double Vision
 Hoff Rachel 8312 405

WK New Design 2132
TNT Designor Girl 654
 HB Miss Recall 405

{ Bon View New Design 878
 { Happy Grill of Conanga 6260
 { Hoff Limited Edition SC 594
 { Hoff Miss Expo SC 4223
 { Bon View New Design 1407
 { WK Unique Time 4384
 { BA Total Recall
 { Miss Stonewall 16

PRODUCTION EPDS						CARCASS EPDS			\$ VALUE EPDS		
CED	BW	WW	YW	CEM	MILK	MARB	RE	FAT	\$W	\$F	\$B
6	1.8	45	83	8	21	1+.48	1+.20	1-.006	31.94	32.77	89.65

The first Double Vision calf of the offering. He is a lighter birth weight bull that might be suitable for larger framed heifers. His dam is a powerfully constructed female with excellent udder quality.



TNT GAINAN 438

	REG	TATTOO	BD	BW	205-Adj	WR	PROJ. 365
BULL	17911509	438	2/24/14	92	899	117	1420

Connealy Consensus
Connealy Earnan 076E
 Brazila of Conanga 3991 839A

Stevenson CE Deluxe 1914
Basin Chloe 9307
 Basin Chloe 3406

{ KMK Alliance 6595 187
 { Blinda of Conanga 004
 { Connealy Tobin
 { Breesha of Conanga 1251
 { CA Future Direction 5321
 { FSHK Pride 180
 { ER Focus M244
 { Basin Chloe N099

PRODUCTION EPDS						CARCASS EPDS			\$ VALUE EPDS		
CED	BW	WW	YW	CEM	MILK	MARB	RE	FAT	\$W	\$F	\$B
-7	4.3	72	123	3	32	1+.90	1+.55	1+.048	44.01	81.06	127.13

Another sale highlight by Earnan. He weaned off at 938 pounds and possesses the look and presence of a herd bull. He's been a standout all year. He's a big framed big outlined bull with a tremendous amount of capacity and muscle. He is a stud and struts around like he knows it. He is a bull you won't have to look hard to find. His dam came to us through Basin's dispersion and has done an excellent job year in and year out. She doesn't miss. EPD profile in terms of performance and carcass is second to none.



TNT DOUBLE VISION 439

	REG	TATTOO	BD	BW	205-Adj	WR	PROJ. 365
BULL	17910582	439	2/26/14	92	791	103	1380

Connealy Reflection
Jindra Double Vision
 Hoff Rachel 8312 405

SAV Net Worth 4200
TNT Blackcat 021
 Leachman Blackcap 4055

{ Bon View New Design 878
 { Happy Grill of Conanga 6260
 { Hoff Limited Edition SC 594
 { Hoff Miss Expo SC 4223
 { SAV 8180 Traveler 004
 { SAV May 2410
 { Leachman Talisker
 { Leachman Blackcap 1105

PRODUCTION EPDS						CARCASS EPDS			\$ VALUE EPDS		
CED	BW	WW	YW	CEM	MILK	MARB	RE	FAT	\$W	\$F	\$B
4	3.6	65	120	10	24	1+.57	1+.46	1+.002	34.40	80.57	120.89

Big-boned, big-bodied son of Double Vision. He is soggy and stout. A highlight of the Double Vision son's in the offering. Incredible amount of internal dimension that really expresses his muscle shape. Dam is a big-bodied, nice-uddered daughter of Net Worth. Granddam is the mother of the 432 bull. Outcross pedigree for most backed by a lot of maternal strength. Check out his EPDs.

ANGUS BULLS

442

TNT EARNAN 442

REG	TATTOO	BD	BW	205-Adj	WR	Proj. 365
BULL	17911499	442	2/27/14	79	731	95 1229

Connealy Consensus
Connealy Earnan 076E
 Brazila of Conanga 3991 839A

BT Impressive 898
TNT Impressive Lady 013
 TNT First Lady 505

{ KMK Alliance 6595 I87
 { Blinda of Conanga 004
 { Connealy Tobin
 { Breesha of Conanga 1251
 { Connealy Impression
 { HT Miss Erica 436
 { Hoff First Edition 058 242
 { TNT Flora 201

PRODUCTION EPDS					CARCASS EPDS			\$ VALUE EPDS			
CED	BW	WW	YW	CEM	MILK	MARB	RE	FAT	\$W	\$F	\$B
3	1.1	62	109	10	22	1+.51	1+.63	1+.044	42.80	63.94	111.68

Large-framed Earnan son with extra length. He's the lightest birth weight son of Earnan in the offering and bordering on being a calving-ease bull. He's a smooth-made, straight-lined bull.



452

TNT REVENUE 452

REG	TATTOO	BD	BW	205-Adj	WR	Proj. 365
BULL	17910162	452	3/9/14	78	801	105 1415

LaGrand Revenue 9219
TH Revenue111
 TH Lass 936

Wk Bobcat
TH Gammer 2032
 TH Gammer 064

{ Rito Revenue 5M2 of 2536 Pre
 { LaGrand Primrose 5935
 { California Traveler
 { TH Lass 725
 { Connealy Right Answer 746
 { WK Miss Angus 7127
 { VAR Predator 86103
 { DH Gammer 8146

PRODUCTION EPDS					CARCASS EPDS			\$ VALUE EPDS			
CED	BW	WW	YW	CEM	MILK	MARB	RE	FAT	\$W	\$F	\$B
5	2.3	46	85	9	28				33.38	35.28	

Calving ease son of Revenue that came in dam from Hoffmanns. 800-lb. WW bull off a first-calf Bobcat daughter that looks to have an excellent future. Dam was a highlight of last year's Pearls of the Prairie sale and started her track record off with a bang. He's a larger framed, longer bodied calving-ease bull with a smooth shoulder and nice head.

453

TNT DOUBLE VISION 453

REG	TATTOO	BD	BW	205-Adj	WR	Proj. 365
BULL	17910587	453	3/10/14	81	767	100 1360

Connealy Reflection
Jindra Double Vision
 Hoff Rachel 8312 405

Ranger G 1720
4G Pride 343
 4G Pride 0113

{ Bon View New Design 878
 { Happy Grill of Conanga 6260
 { Hoff Limited Edition SC 594
 { Hoff Miss Expo SC 4223
 { GAR Precision 1680
 { Sitz Everelda Entense 1137
 { B/R New Design 036
 { Pride of 4G 952C

PRODUCTION EPDS					CARCASS EPDS			\$ VALUE EPDS			
CED	BW	WW	YW	CEM	MILK	MARB	RE	FAT	\$W	\$F	\$B
7	1.3	57	106	10	25	1+.62	1+.32	1+.005	38.87	62.18	104.44

Calving-ease bull by Double Vision. Recommended for larger framed heifers. He reads calving ease and looks that way. Dam has been around a long time and is a model Angus female. Big-bodied, moderate-framed female with an udder you can rave about.

454

TNT DANNY 454

REG	TATTOO	BD	BW	205-Adj	WR	Proj. 365
BULL	17910158	454	3/10/14	69	828	108 1294

Connealy Danny 5398
MOGCK Danny 321
 MOGCK Ruth 509

Sitz Upward 307R
TNT Queen 230
 Evenson Queen 7326

{ Connealy Danny Boy
 { Endova of Conanga 858
 { HARB Pendleton 765 JH
 { MOGCK Ruth 1846
 { Connealy Onward
 { Sitz Henrietta Pride 81M
 { Rally New Frontier 5233
 { Evenson Queen 802

PRODUCTION EPDS					CARCASS EPDS			\$ VALUE EPDS			
CED	BW	WW	YW	CEM	MILK	MARB	RE	FAT	\$W	\$F	\$B
8	-0.3	66	107	10	26	1+.38	1+.56	1+.017	53.99	58.08	102.50

Calving-ease specialist by our herd sire, Danny 321. He's a moderate-framed, soft-made, big-bodied bull with a tremendous amount of width and muscle. 828 lbs. of adjusted weaning weight making him very unique in terms of performance and calving ease. Dam was a 2-year-old Upward daughter and what a job she did. Granddam produced the leadoff bull at this year's ND Select Sale that commanded \$13,000.

455

TNT IMPRESSIVE 455

REG	TATTOO	BD	BW	205-Adj	WR	Proj. 365
BULL	17910140	455	3/10/14	79	657	86 1224

Connealy Impression
BT Impressive 898
 HT Miss Erica 436

HARB Windy 702 JH
Evenson Blackbird 878
 Evenson Blackbird 026

{ Connealy Reflection
 { Pearl Pammy of Conanga 194
 { WAR Alliance 9126 6006
 { HT Miss Erica 534
 { AAR Really Windy 1205
 { HARB Black Lady 073 JH
 { Bubs Direct Deposit 200
 { Evenson Blackbird 812

PRODUCTION EPDS					CARCASS EPDS			\$ VALUE EPDS			
CED	BW	WW	YW	CEM	MILK	MARB	RE	FAT	\$W	\$F	\$B
9	0.1	47	85	13	23	1+.22	1+.21	1+.030	38.63	34.67	67.02

Calving-ease son of Impressive with a lot of body and width. He's smooth through his shoulders and joints. Dam produced a highlight bull in last year's sale by Hammer.

458

TNT RITO 458

REG	TATTOO	BD	BW	205-Adj	WR	Proj. 365
BULL	17910135	458	3/13/14	90	731	95 1349

Foxs Rito 9
Foxs Rito 4Y
 Foxs Barbara 152

Basin Max 602C
Bear Mtn Pride 5063
 Foote Acres Pride 88J

{ Rito 112 of 2536 Rito 616
 { Foxs Barbara 96
 { WPR 3J Dividend 9321
 { Fox Barbara 76
 { GT Maximum
 { Basin Eline Erica 315U
 { Gibb Illini
 { Foote Acres Pride 87G

PRODUCTION EPDS					CARCASS EPDS			\$ VALUE EPDS			
CED	BW	WW	YW	CEM	MILK	MARB	RE	FAT	\$W	\$F	\$B
0	2.6	41	83	4	23	1+.35	1+.08	1+.001	23.51	35.18	74.63

Large-framed performance bull by Rito 4Y. Tremendous amount of size and length. Dam is a big-bodied 602C daughter that has proven her longevity and production.

ANGUS BULLS



TNT RITO 459

REG	TATTOO	BD	BW	205-Adj	WR	Proj. 365
459	BULL 17910154	459	3/13/14	87	743	97 1347
Foxs Rito 9 Foxs Rito 4Y Foxs Barbara 152			Rito 112 of 2536 Rito 616 Foxs Barbara 96 WPR 3J Dividend 9321 Fox Barbara 76 SAV 8180 Traveler 004 TK Prairie Queen 1009 SA Neutron 377 TNT Sable 19J			
HT Traveler 756 TNT Natalie 846 TNT Natalie 303						

PRODUCTION EPDS					CARCASS EPDS			\$ VALUE EPDS			
CED	BW	WW	YW	CEM	MILK	MARB	RE	FAT	\$W	\$F	\$B
-1	3.2	44	89	4	21	1+.27	1+.19	1-.008	21.35	42.78	74.09

Another large-framed, attractive son of the 4Y bull. Cow family has been very productive in our herd.



TNT RITO 460

REG	TATTOO	BD	BW	205-Adj	WR	Proj. 365
460	BULL 17910167	460	3/13/14	79	760	99 1331
Foxs Rito 9 Foxs Rito 4Y Foxs Barbara 152			Rito 112 of 2536 Rito 616 Foxs Barbara 96 WPR 3J Dividend 9321 Fox Barbara 76 SydGen CC&7 Erica of Ellston C124 Famous 7001 RWS Miss Ext 473 67			
Hoover Dam TNT Miss Lynn 114 LF Miss Lynn L101						

PRODUCTION EPDS					CARCASS EPDS			\$ VALUE EPDS			
CED	BW	WW	YW	CEM	MILK	MARB	RE	FAT	\$W	\$F	\$B
4	1.4	44	84	8	24	1+.48	1+.42	1-.033	31.66	34.93	84.08

Calving-ease son of the 4Y bull. Long, attractive and athletic.



TNT RITO 462

REG	TATTOO	BD	BW	205-Adj	WR	Proj. 365
462	BULL 17910157	462	3/14/14	88	820	107 1488
Foxs Rito 9 Foxs Rito 4Y Foxs Barbara 152			Rito 112 of 2536 Rito 616 Foxs Barbara 96 WPR 3J Dividend 9321 Fox Barbara 76 Connealy Onward Sitz Henrietta Pride 81M SA Neutron 377 LF Miss Lynn L101			
Sitz Upward 307R TNT MS Nicole 012 SAK Miss Nicole 407						

PRODUCTION EPDS					CARCASS EPDS			\$ VALUE EPDS			
CED	BW	WW	YW	CEM	MILK	MARB	RE	FAT	\$W	\$F	\$B
-1	3.5	57	108	5	27	1+.39	1+.42	1-.016	31.90	65.50	107.23

One of the highlights of the 4Y sire group. Big-time performance bull with length and width. Big-framed bull that will transmit performance to a set of calves. Dam is a big powerful Upward daughter that has been tremendously productive. Take a look at his weights and EPDs.



TNT RITO 464

REG	TATTOO	BD	BW	205-Adj	WR	Proj. 365
464	BULL 17910143	464	3/14/14	79	675	88 1234
Foxs Rito 9 Foxs Rito 4Y Foxs Barbara 152			Rito 112 of 2536 Rito 616 Foxs Barbara 96 WPR 3J Dividend 9321 Fox Barbara 76 Bon View New Design 1407 WK Unique Time 4384 Hyline Travel Agent LA Erica 816			
WK New Design 2132 TNT Erica 754 LA Erica 316						

PRODUCTION EPDS					CARCASS EPDS			\$ VALUE EPDS			
CED	BW	WW	YW	CEM	MILK	MARB	RE	FAT	\$W	\$F	\$B
4	1.7	29	66	7	22	1+.26	1+.17	1-.028	17.33	16.38	60.26

Calving-ease son of 4Y that is sound in his makeup.



Replacement Heifers



TNT TRAVELER 465

REG	TATTOO	BD	BW	205-Adj	WR	Proj. 365
465	BULL 17910146	465	3/16/14	86	698	91 1269
SAV 8180 Traveler 004 HT Traveler 756 TK Prairie Queen 1009			Sitz Traveler 8180 Boyd Forever Lady 8003 Krugerrand of Donamere 490 TK Prairie Queen 375 Twin Valley Precision E161 SA Erica 270 Bon View New Design 1407 Champion Hill Sara 1711			
SCR Precision E161-523 SCR Miss Sara 50599 Miss Sara 3302 of Foxcross						

PRODUCTION EPDS					CARCASS EPDS			\$ VALUE EPDS			
CED	BW	WW	YW	CEM	MILK	MARB	RE	FAT	\$W	\$F	\$B
1	3.5	46	90	5	23	1+.28	1+.22	1+.017	26.74	43.14	85.67

The first of the 756 sons in the offering. By now you know what to expect out of this sire group - big athletic beef bulls. Dam came out of the Flag Ranch dispersion.



466



TNT RITO 466

REG	TATTOO	BD	BW	205-Adj	WR	Proj. 365
466	BULL 17910165	466	3/16/14	98	789	103 1601
Foxs Rito 9 Foxs Rito 4Y Foxs Barbara 152			Rito 112 of 2536 Rito 616 Foxs Barbara 96 WPR 3J Dividend 9321 Fox Barbara 76 QLC Foundation Vermilion Lass 2005 FAR Krugerrand 410H TNT Dottie 215			
K&B Powerplant 705 TNT Dottie 083 TNT Dottie 609						

PRODUCTION EPDS					CARCASS EPDS			\$ VALUE EPDS			
CED	BW	WW	YW	CEM	MILK	MARB	RE	FAT	\$W	\$F	\$B
-4	4.9	52	102	2	22	1+.29	1+.23	1-.014	20.39	58.77	83.32

High-performing son of 4Y with a lot of look. Big-framed bull with length and muscle. Excellent cow family behind him.

ANGUS BULLS



Kenzy, Grandma Mavis and Harlee



470



TNT TRAVELER 469

	REG	TATTOO	BD	BW	205-Adj	WR	Proj. 365
BULL	17910147	469	3/17/14	81	765	100	1263

SAV 8180 Traveler 004
HT Traveler 756
 TK Prairie Queen 1009
 WK Dakota 5002
TNT Miss Shania 773
 TNT Shania 002

{ Sitz Traveler 8180
 { Boyd Forever Lady 8003
 { Krugerrand of Donamere 490
 { TK Prairie Queen 375
 { KG Dakota
 { WK First Lady 9276
 { TC Stockman 365
 { TNT MS Rita 18G

PRODUCTION EPDS					CARCASS EPDS			\$ VALUE EPDS			
CED	BW	WW	YW	CEM	MILK	MARB	RE	FAT	\$W	\$F	\$B
9	1.6	51	96	10	23	1+.22	1+.36	1+.025	35.92	49.64	83.23

Lighter birth weight son of 756 that may be suitable for larger framed heifers. Attractive-looking bull with a tremendous amount of maternal strength throughout his pedigree. Dam is one of the finest cows on the place. She has had several highlights come through our sale.



TNT EXPRESSIVE 470

	REG	TATTOO	BD	BW	205-Adj	WR	Proj. 365
BULL	17910153	470	3/17/14	92	804	105	1452

Connealy Impression
BT Impressive 898
 HT Miss Erica 436
 Connealy Thunder
Evenson Queen 8133
 Evenson Queen 3154

{ Connealy Reflection
 { Pearl Pammy of Conanga 194
 { WAR Alliance 9126 6006
 { HT Miss Erica 534
 { Baldridge Kaboom K243 KCF
 { Parka of Conanga 241
 { Evenson Right Time 8149
 { Evenson Queen 0207

PRODUCTION EPDS					CARCASS EPDS			\$ VALUE EPDS			
CED	BW	WW	YW	CEM	MILK	MARB	RE	FAT	\$W	\$F	\$B
1	2.7	55	94	9	31	1+.31	1+.30	1-.004	41.43	43.96	90.47

Impressive son with power. He's soggy and good. Another 800-lb, weaning bull that's soft and deep with a lot of width and shape. Dam by Thunder is a top-producing cow.



TNT RITO 471

	REG	TATTOO	BD	BW	205-Adj	WR	Proj. 365
BULL	17910164	471	3/17/14	88	720	94	1267

Foxs Rito 9
Foxs Rito 4Y
 Foxs Barbara 152
 BT Impressive 898
TNT JC MS Traveler 029
 TNT JC MS Traveler 830

{ Rito 112 of 2536 Rito 616
 { Foxs Barbara 96
 { WPR 3J Dividend 9321
 { Fox Barbara 76
 { Connealy Impression
 { HT Miss Erica 436
 { HT Traveler 756
 { 4WLC Miss Direct 573

PRODUCTION EPDS					CARCASS EPDS			\$ VALUE EPDS			
CED	BW	WW	YW	CEM	MILK	MARB	RE	FAT	\$W	\$F	\$B
0	2.5	49	96	5	23	1+.39	1+.37	1+.004	28.28	50.89	88.62

Larger framed, smooth-made bull by 4Y. This sire group is consistent in their kind.



TNT RITO 474

	REG	TATTOO	BD	BW	205-Adj	WR	Proj. 365
BULL	17910163	474	3/19/14	77	745	97	1344

Foxs Rito 9
Foxs Rito 4Y
 Foxs Barbara 152
 Hoover Dam
TNT Lucy 102
 Basin Lucy 9209

{ Rito 112 of 2536 Rito 616
 { Foxs Barbara 96
 { WPR 3J Dividend 9321
 { Fox Barbara 76
 { SydGen CC&7
 { Erica of Ellston C124
 { Stevenson MoneyMaker R185
 { Basin Lucy 3829

PRODUCTION EPDS					CARCASS EPDS			\$ VALUE EPDS			
CED	BW	WW	YW	CEM	MILK	MARB	RE	FAT	\$W	\$F	\$B
5	0.9	49	97	8	24	1+.45	1+.57	1-.005	32.52	52.51	91.88

Moderate-framed, calving-ease candidate by 4Y. He's thick and deep. Great grand dam, Lucy 3829, has been a prolific donor for Basin and Express with many sons in A.I. studs.



TNT EXPRESSIVE 475

	REG	TATTOO	BD	BW	205-Adj	WR	Proj. 365
BULL	17910142	475	3/19/14	87	787	103	1318

Connealy Impression
BT Impressive 898
 HT Miss Erica 436
 D Impact M20
D 20 Hope S698
 D 860 Hope P4234

{ Connealy Reflection
 { Pearl Pammy of Conanga 194
 { WAR Alliance 9126 6006
 { HT Miss Erica 534
 { Rockn D Focus 2007
 { D 550 Miss New Trend H855
 { SRS New Deal 4860L
 { D 8126 Miss Stockman K0122

PRODUCTION EPDS					CARCASS EPDS			\$ VALUE EPDS			
CED	BW	WW	YW	CEM	MILK	MARB	RE	FAT	\$W	\$F	\$B
0	2.4	51	88	8	30	1+.46	1+.34	1+.012	39.54	36.93	85.12

Stout soggy son of Impressive. He's deep and thick with a lot of look. True beef bulls in this sire group.



TNT HEMI 476

	REG	TATTOO	BD	BW	205-Adj	WR	Proj. 365
BULL	17910160	476	3/19/14	78	713	93	1284

Connealy Hemisphere 957L
Hoover Hemi L20
 Erica of Ellston C265
 TNT Bando Man 304
TNT Bonnie 745
 FAR Queen 432H

{ GAR New Design 5050
 { Breela of Conanga 3991
 { TC Gridiron 258
 { GG Erica 9104
 { SAF 598 Bando 5175
 { TNT Shania 002
 { FAR Hi Spade 68E
 { FAR Queen 480F

PRODUCTION EPDS					CARCASS EPDS			\$ VALUE EPDS			
CED	BW	WW	YW	CEM	MILK	MARB	RE	FAT	\$W	\$F	\$B
11	-0.3	43	80	14	23	1+.47	1+.46	1+.008	34.35	29.34	91.12

Outcross calving-ease bull by Hemi. Large-framed, sure-fire calving-ease sons are hard to find, but that's exactly what this one is. Tremendous phenotype with an attractive look. If you're searching for an outcross calving-ease bull, take a good look at this one.

ANGUS BULLS



477

TNT TRAVELER 477



REG	TATTOO	BD	BW	205-Adj	WR	Proj.	365
BULL	17910139	477	3/19/14	88	856	112	1405

SAV 8180 Traveler 004
HT Traveler 756
 TK Prairie Queen 1009
 HARB Windy 702 JH
Evenson Ida 983
 Evenson Ida 9187

{ Sitz Traveler 8180
 Boyd Forever Lady 8003
 Krugerrand of Donamere 490
 TK Prairie Queen 375
 AAR Really Windy 1205
 HARB Black Lady 073 JH
 WK Legend
 Evenson Queen 405

PRODUCTION EPDS						CARCASS EPDS			\$ VALUE EPDS		
CED	BW	WW	YW	CEM	MILK	MARB	RE	FAT	\$W	\$F	\$B
5	1.9	56	101	7	23	1+.14	1-.01	1+.042	36.48	54.60	65.33

The highlight out of the 756 sire group. This bull is a standout. We've raised a lot of good ones out of the Traveler bull, but this one maybe the best. Supremely attractive, big bodied and super stout. Phenotype is near flawless with an abundance of mass and bone. Highly productive dam weaned him off at 856 lbs.



Harlee, Grandpa Terry and Kenzy

TNT RITO 479



REG	TATTOO	BD	BW	205-Adj	WR	Proj.	365
BULL	17910166	479	3/20/14	81	759	99	1342

Foxs Rito 9
Foxs Rito 4Y
 Foxs Barbara 152
 TC Aberdeen 759
TNT JK Ecstasy 144
 TNT JK Ecstasy 905

{ Rito 112 of 2536 Rito 616
 Foxs Barbara 96
 WPR 3J Dividend 9321
 Fox Barbara 76
 CRA Bextor 872 5205 608
 TC Blackbird 4034
 Connealy Impression
 TNT Ms Ecstasy 204

PRODUCTION EPDS						CARCASS EPDS			\$ VALUE EPDS		
CED	BW	WW	YW	CEM	MILK	MARB	RE	FAT	\$W	\$F	\$B
5	1.3	52	96	9	24	1+.42	1+.61	1-.012	36.75	49.02	89.15

Another light birth weight son of 4Y that could be suitable for larger framed heifers.



480

TNT HEMI 480



REG	TATTOO	BD	BW	205-Adj	WR	Proj.	365
BULL	17910136	480	3/20/14	92	847	111	1461

Connealy Hemisphere 957L
Hoover Hemi L20
 Erica of Ellston C265
 Sitz Alliance 6595
TNT MS ALLY 947
 Baldrige Forever Lady K854

{ GAR New Design 5050
 Breela of Conanga 3991
 TC Gridiron 258
 GG Erica 9104
 Sitz Traveler 8180
 Sitz Barabaramere Jet 2698
 Baldrige Oscar
 Baldrige Forever Lady 235G

PRODUCTION EPDS						CARCASS EPDS			\$ VALUE EPDS		
CED	BW	WW	YW	CEM	MILK	MARB	RE	FAT	\$W	\$F	\$B
2	3.4	56	93	7	28	1+.51	1+.46	1+.022	42.26	41.75	96.39

Performance standout by Hemi. This is another feature bull in a very competitive contemporary group. He's a big, stout beef bull with size and substance. He is visually appealing with a pedigree and performance record to catch your attention. 847 lbs. off an excellent 6595 daughter that is a full sister to one of the highlight cows to sell at Baldrige Brothers Dispersion. She is a powerful female.

TNT RITO 481



REG	TATTOO	BD	BW	205-Adj	WR	Proj.	365
BULL	17910144	481	3/20/14	86	751	98	1521

Foxs Rito 9
Foxs Rito 4Y
 Foxs Barbara 152
 WK New Design 2132
TNT MS Bonnie 744
 TNT Fran 444

{ Rito 112 of 2536 Rito 616
 Foxs Barbara 96
 WPR 3J Dividend 9321
 Fox Barbara 76
 Bon View New Design 1407
 WK Unique Time 4384
 SAF Fame
 KFF Elegant Rito 743M

PRODUCTION EPDS						CARCASS EPDS			\$ VALUE EPDS		
CED	BW	WW	YW	CEM	MILK	MARB	RE	FAT	\$W	\$F	\$B
1	2.2	40	83	7	22	1+.35	1+.22	1-.007	22.75	35.78	68.67

Large-framed bull by 4Y with the size and length you'd expect from this sire group. The 4Y cattle convert and gain.

TNT TRAVELER 482



REG	TATTOO	BD	BW	205-Adj	WR	Proj.	365
BULL	17910137	482	3/20/14	89	761	99	1267

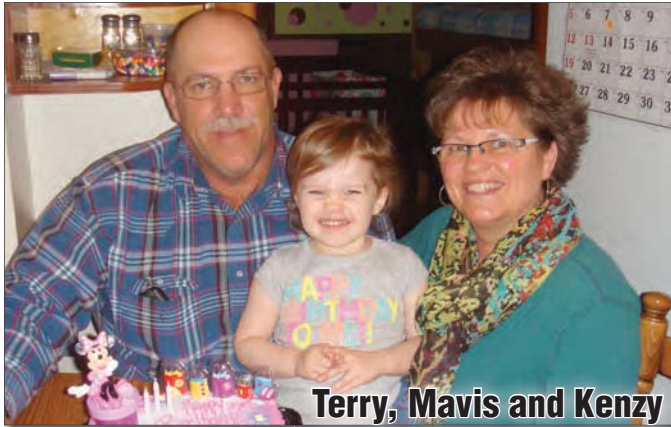
SAV 8180 Traveler 004
HT Traveler 756
 TK Prairie Queen 1009
 HSAF Bando 1961
Evenson Queen 815
 Evenson Queen 661

{ Sitz Traveler 8180
 Boyd Forever Lady 8003
 Krugerrand of Donamere 490
 TK Prairie Queen 375
 SAF 598 Bando 5175
 JKS Miss Cheyenne 196
 Rally New Frontier 5233
 Evenson Queen 360

PRODUCTION EPDS						CARCASS EPDS			\$ VALUE EPDS		
CED	BW	WW	YW	CEM	MILK	MARB	RE	FAT	\$W	\$F	\$B
1	2.2	52	100	5	21	1+.15	1+.21	1+.015	32.60	55.50	89.11

Traveler son with size and extension. He's attractive in his appearance and strides out free and easily. Genuine beef bull with rib and muscle.

ANGUS BULLS



Terry, Mavis and Kenzy



486

TNT IMPRESSIVE 483



	REG	TATTOO	BD	BW	205-Adj	WR	Proj. 365
BULL	17910151	483	3/20/14	84	711	93	1404

Connealy Impression
BT Impressive 898
 HT Miss Erica 436

Sitz Upward 307R
TNT MS Ultimate 018
 Nelsons Blackberry H282

Connealy Reflection
 Pearl Pammy of Conanga 194
 WAR Alliance 9126 6006
 HT Miss Erica 534
 Connealy Onward
 Sitz Henrietta Pride 81M
 Dailey Ext 963
 Nelson Blackberry E205

PRODUCTION EPDS					CARCASS EPDS			\$ VALUE EPDS			
CED	BW	WW	YW	CEM	MILK	MARB	RE	FAT	\$W	\$F	\$B
3	1.8	52	92	10	28	1+.36	1+.44	1+.004	39.77	42.63	101.23

Another stout, soggy son of Impressive. This sire group is very consistent in terms of body type and structural correctness. Big-bodied, thick made-bull that is sound.

TNT IMPRESSIVE 486



	REG	TATTOO	BD	BW	205-Adj	WR	Proj. 365
BULL	17910152	486	3/21/14	100	823	107	1508

Connealy Impression
BT Impressive 898
 HT Miss Erica 436

HT Traveler 756
TNT Traveler 082
 4G Pride 343

Connealy Reflection
 Pearl Pammy of Conanga 194
 WAR Alliance 9126 6006
 HT Miss Erica 534
 SAV 8180 Traveler 004
 TK Prairie Queen 1009
 Ranger G 1720
 4G Pride 0113

PRODUCTION EPDS					CARCASS EPDS			\$ VALUE EPDS			
CED	BW	WW	YW	CEM	MILK	MARB	RE	FAT	\$W	\$F	\$B
-5	4.1	56	99	6	27	1+.42	1+.16	1+.014	33.45	51.35	87.51

Soggy meat wagon in this Impressive son. He's capacious with abundant flank, bone and muscle. A true performance bull with an 823-lb. weaning weight.

TNT RITO 493



	REG	TATTOO	BD	BW	205-Adj	WR	Proj. 365
BULL	17910156	493	3/25/14	79	756	99	1319

Foxs Rito 9
Foxs Rito 4Y
 Foxs Barbara 152

S Chisum 6175
S Lassie 056
 S Lassie 5314

Rito 112 of 2536 Rito 616
 Foxs Barbara 96
 WPR 3J Dividend 9321
 Fox Barbara 76
 S Alliance 3313
 S Gloria 464
 Schurrtop Robinson X193
 Farview Lassie 2163

PRODUCTION EPDS					CARCASS EPDS			\$ VALUE EPDS			
CED	BW	WW	YW	CEM	MILK	MARB	RE	FAT	\$W	\$F	\$B
4	1.7	52	98	9	23	1+.26	1+.49	1+.008	34.04	52.25	95.81

Calving-ease bull with an abundance of rib. Soft, smooth-made bull with extra width and shape. An attractive look to go with this moderate-framed, calving-ease bull.

TNT RITO 496



	REG	TATTOO	BD	BW	205-Adj	WR	Proj. 365
BULL	17910155	496	3/28/14	88	721	94	1296

Foxs Rito 9
Foxs Rito 4Y
 Foxs Barbara 152

LT Total Edge 6154
Evenson Queen 9318
 Evenson Queen 913

Rito 112 of 2536 Rito 616
 Foxs Barbara 96
 WPR 3J Dividend 9321
 Fox Barbara 76
 KCF Bennett Total
 LT Ethelda RT 3049
 Bubs Direct Deposit 200
 Evenson Queen 7118

PRODUCTION EPDS					CARCASS EPDS			\$ VALUE EPDS			
CED	BW	WW	YW	CEM	MILK	MARB	RE	FAT	\$W	\$F	\$B
3	2.4	40	82	7	21	1+.20	1+.27	1-.014	22.01	34.23	70.49

4Y son with a total outcross pedigree. Dam is nice uddered and easy fleshing.

TNT RITO 498



	REG	TATTOO	BD	BW	205-Adj	WR	Proj. 365
BULL	17910138	498	3/30/14	88	775	101	1354

Foxs Rito 9
Foxs Rito 4Y
 Foxs Barbara 152

FAR Kruggerrand 410H
TNT JK Miss Kruggerrand 704
 TNT JK Designer Girl 540

Rito 112 of 2536 Rito 616
 Foxs Barbara 96
 WPR 3J Dividend 9321
 Fox Barbara 76
 Kruggerrand of Donamere 490
 FAR Erianna 286F
 WK New Design 2132
 TNT Shania 110

PRODUCTION EPDS					CARCASS EPDS			\$ VALUE EPDS			
CED	BW	WW	YW	CEM	MILK	MARB	RE	FAT	\$W	\$F	\$B
-1	2.8	48	90	6	19	1+.40	1+.18	1-.006	26.56	41.91	84.30

Higher performing son of the 4Y bull that is sure to transmit length and pounds.

TNT HEMI 4101



	REG	TATTOO	BD	BW	205-Adj	WR	Proj. 365
BULL	17910145	4101	4/3/14	91	773	101	1275

Connealy Hemisphere 957L
Hoover Hemi L20
 Erica of Ellston C265

Connealy Right Direction 3499
Flag Darla 90274
 Darla of Conanga 687

GAR New Design 5050
 Breela of Conanga 3991
 TC Gridiron 258
 GG Erica 9104
 CA Future Direction 5321
 Rona Ray of Conanga 5188
 B/R New Design 036
 Pow of Conanga 677

PRODUCTION EPDS					CARCASS EPDS			\$ VALUE EPDS			
CED	BW	WW	YW	CEM	MILK	MARB	RE	FAT	\$W	\$F	\$B
5	2.5	53	91	10	28	1+.56	1+.69	1+.005	39.49	40.43	102.53

Well-balanced, attractive son of Hemi. He's smooth, long and easy on the eyes.

ANGUS BULLS



TNT 255 FINAL PRODUCT 4103

	REG	TATTOO	BD	BW	205-Adj	WR	Proj. 365
BULL	17910161	4103	4/4/14	82	723	94	1241

Connealy Final Product
TNT Final Product 255
 Evenson Queen 815

SAV Bismarck 5682
TNT JC Barbara 01
 EAR Connection E832

{ Connealy Product 568
 { Ebonista of Conanga 471
 { HSAF Bando 1961
 { Evenson Queen 661
 { GAR Grid Maker
 { SAV Abigale 0451
 { TNT JC Connection 2R
 { CRR Dateline 7270 L198

PRODUCTION EPDS						CARCASS EPDS			\$ VALUE EPDS		
CED	BW	WW	YW	CEM	MILK	MARB	RE	FAT	\$W	\$F	\$B
5	1.5	53	92	10	23	1+.32	1+.53	1+.010	39.41	42.01	85.20

Smooth-made, well-balanced son of the 255 bull we retained and used. Sire was the featured 2-year-old bull in last year's sale. He reads calving ease and may be suitable for use on larger framed heifers.



TNT IMPRESSIVE 4104

	REG	TATTOO	BD	BW	205-Adj	WR	Proj. 365
BULL	17910141	4104	4/9/14	89	705	92	1296

Connealy Impression
BT Impressive 898
 HT Miss Erica 436

Rally New Frontier 5233
Evenson Elba 5333
 Evenson Elba 285

{ Connealy Reflection
 { Pearl Pammy of Conanga 194
 { WAR Alliance 9126 6006
 { HT Miss Erica 534
 { B/R New Frontier 095
 { Rally Tibbie 5380
 { Rockn D Focus 2002
 { Evenson Elba 320

PRODUCTION EPDS						CARCASS EPDS			\$ VALUE EPDS		
CED	BW	WW	YW	CEM	MILK	MARB	RE	FAT	\$W	\$F	\$B
1	2.7	49	91	9	25	1+.28	1+.28	1+.018	31.53	42.88	89.98

Large-framed, long-sided son of Impressive that is sound and athletic.



TNT IMPRESSIVE 4106

	REG	TATTOO	BD	BW	205-Adj	WR	Proj. 365
BULL	17910150	4106	4/12/14	79	745	97	1340

Connealy Impression
BT Impressive 898
 HT Miss Erica 436

HT Traveler 756
TNT MS Pride 974
 4G Pride 343

{ Connealy Reflection
 { Pearl Pammy of Conanga 194
 { WAR Alliance 9126 6006
 { HT Miss Erica 534
 { SAV 8180 Traveler 004
 { TK Prairie Queen 1009
 { Ranger G 1720
 { 4G Pride 0113

PRODUCTION EPDS						CARCASS EPDS			\$ VALUE EPDS		
CED	BW	WW	YW	CEM	MILK	MARB	RE	FAT	\$W	\$F	\$B
4	0.9	51	93	10	25	1+.42	1+.23	1+.018	38.16	44.83	87.04

Calving-ease Impressive son. He's big bodied with an abundance of shape. He can add some phenotype while transmitting some muscle and fleshing ability.



TNT DANNY 4107

	REG	TATTOO	BD	BW	205-Adj	WR	Proj. 365
BULL	17910169	4107	4/17/14	72	763	100	1431

Connealy Danny 5398
MOGCK Danny 321
 MOGCK Ruth 509

Styles Upgrade L90
TNT Mildred 254
 LA Mildred 338

{ Connealy Danny Boy
 { Endova of Conanga 858
 { HARB Pendleton 765 JH
 { MOGCK Ruth 1846
 { Styles Upgrade J59
 { Plainview Barbara 83V
 { Brooks Prime Time 927
 { LA Mildred 901

PRODUCTION EPDS						CARCASS EPDS			\$ VALUE EPDS		
CED	BW	WW	YW	CEM	MILK	MARB	RE	FAT	\$W	\$F	\$B
9	-0.2	53	93	11	23	1+.31	1+.35	1-.002	41.50	43.60	79.89

Calving ease son of Danny with added size and abundance of rib shape. Danny calves come early and light. True calving-ease genetics.



TNT HEMI 4110

	REG	TATTOO	BD	BW	205-Adj	WR	Proj. 365
BULL	17910159	4110	4/28/14	81	713	93	1272

Connealy Hemisphere 957L
Hoover Hemi L20
 Erica of Ellston C265

BC 7022 Raven 7965
TNT MS Rily 805
 SAK Miss Nicole 407

{ GAR New Design 5050
 { Breela of Conanga 3991
 { TC Gridiron 258
 { GG Erica 9104
 { BC Marathon 7022
 { OCC Blackbird 796F
 { SA Neutron 377
 { LF Miss Lynn L101

PRODUCTION EPDS						CARCASS EPDS			\$ VALUE EPDS		
CED	BW	WW	YW	CEM	MILK	MARB	RE	FAT	\$W	\$F	\$B
9	0.6	47	88	13	23	1+.52	1+.75	1-.008	34.45	39.37	100.36

Calving-ease Hemi son with added look. He's smooth and attractive. Don't overlook this April calf.



TNT HEMI 4111

	REG	TATTOO	BD	BW	205-Adj	WR	Proj. 365
BULL	17910170	4111	5/9/14	85	734	96	1261

Connealy Hemisphere 957L
Hoover Hemi L20
 Erica of Ellston C265

BT Impressive 898
TNT JK Ms Ecstasy 185
 TNT Ms Ecstasy 204

{ GAR New Design 5050
 { Breela of Conanga 3991
 { TC Gridiron 258
 { GG Erica 9104
 { Connealy Impression
 { HT Miss Erica 436
 { Vermilion Dateline 7078
 { JAR Yesmar 775

PRODUCTION EPDS						CARCASS EPDS			\$ VALUE EPDS		
CED	BW	WW	YW	CEM	MILK	MARB	RE	FAT	\$W	\$F	\$B
6	1.7	52	93	12	24	1+.48	1+.59	1-.008	37.39	44.21	100.34

Hemi son with base width and dimension. A lot of maternal strength in his pedigree.

ANGUS HEIFERS



408



TNT QUEEN 408

	REG	TATTOO	BD	BW	205-Adj	WR
HEIFER	17937068	408	2/12/14	68	730	100

Connealy Revenue 7289
FF Dempsey Y11
 FF Henrietta Pride W10
 S Chisum 813
TNT Queen 233
 Evenson Queen 661

{ SAV Net Worth 4200
 Hyannis of Conanga 577
 { SAV Final Answer 0035
 FF Fanny T35
 { S Chisum 6175
 S Black Satin 6209
 { Rally New Frontier 5233
 Evenson Queen 360

PRODUCTION EPDS					CARCASS EPDS			\$ VALUE EPDS			
CED	BW	WW	YW	CEM	MILK	MARB	RE	FAT	\$W	\$F	\$B
1+6	1+1.0	1+48	1+97	1+10	1+24	1+.47	1+.36	1+.025	30.93	53.14	97.47

DDC



444



TNT QUEEN 444

	REG	TATTOO	BD	BW	205-Adj	WR
HEIFER	17944340	444	3/1/14	76	609	99

Connealy Onward
Sitz Upward 307R
 Sitz Henrietta Pride 81M
 Rally New Frontier 5233
Evenson Queen 667
 Evenson Queen 2118

{ Connealy Lead On
 { Altune of Conanga 6104
 { Sitz Value 7097
 { Sitz Henrietta Pride 1370
 { B/R New Frontier 095
 { Rally Tibbie 5380
 { V DAR New Trend 315
 { Evenson Queen 6122

PRODUCTION EPDS					CARCASS EPDS			\$ VALUE EPDS			
CED	BW	WW	YW	CEM	MILK	MARB	RE	FAT	\$W	\$F	\$B
8	0.5	54	103	12	30	1+.37	1+.58	1+.009	39.41	59.14	111.40



456



TNT ANDI 456

	REG	TATTOO	BD	BW	205-Adj	WR
HEIFER	17934707	456	3/12/14	69	562	91

Connealy Final Product
TNT Final Product 255
 Evenson Queen 815
 Connealy Onward
Flag Andi 90673
 EXAR Andi 2775

{ Connealy Product 568
 { Ebonista of Conanga 471
 { HSAF Bando 1961
 { Evenson Queen 661
 { Connealy Lead On
 { Altune of Conanga 6104
 { Twin Valley Precision E161
 { EXAR Andi 9763

PRODUCTION EPDS					CARCASS EPDS			\$ VALUE EPDS			
CED	BW	WW	YW	CEM	MILK	MARB	RE	FAT	\$W	\$F	\$B
7	0.7	51	98	8	25	1+.21	1+.45	1+.022	35.71	52.87	97.33



461



TNT SUPREME 461

	REG	TATTOO	BD	BW	205-Adj	WR
HEIFER	17934708	461	3/14/14	83	659	107

Connealy Danny 5398
MOGCK Danny 321
 MOGCK Ruth 509
 Styles Upgrade L90
TNT Supreme 298
 TNT Supreme Nancy 939

{ Connealy Danny Boy
 { Endova of Conanga 858
 { HARB Pendleton 765 JH
 { MOGCK Ruth 1846
 { Styles Upgrade J59
 { Plainview Barbara 83V
 { SAV Net Worth 4200
 { Diablo Supreme 323

PRODUCTION EPDS					CARCASS EPDS			\$ VALUE EPDS			
CED	BW	WW	YW	CEM	MILK	MARB	RE	FAT	\$W	\$F	\$B
1	3.5	56	97	5	25	1+.41	1+.61	1-.002	35.55	48.13	92.95

DDP

ANGUS HEIFERS



TNT GAL 478

REG	TATTOO	BD	BW	205-Adj	WR
HEIFER	17934724	478	3/19/14	70	560 91

Connealy Impression { Connealy Reflection
BT Impressive 898 { Pearl Pammy of Conanga 194
 HT Miss Erica 436 { WAR Alliance 9126 6006
 { HT Miss Erica 534
 { SAV 8180 Traveler 004
 HT Traveler 756 { TK Prairie Queen 1009
TNT Traveler 066 { Famous 7001
 EMH Famous Gal 1 { HB High Rise Gal 745

PRODUCTION EPDS					CARCASS EPDS			\$ VALUE EPDS			
CED	BW	WW	YW	CEM	MILK	MARB	RE	FAT	\$W	\$F	\$B
4	1.0	50	93	8	24	1+.39	1+.14	1+.014	36.00	45.45	86.54



TNT PRIMROSE 484

REG	TATTOO	BD	BW	205-Adj	WR
HEIFER	17976483	484	3/20/14	73	518 84

Connealy Final Product { Connealy Product 568
TNT Final Product 255 { Ebonista of Conanga 471
 Evenson Queen 815 { HSAF Bando 1961
 { Evenson Queen 661
 { Baldrige Kaboom K243 KCF
 Galaxy Star Power 407 { GAR Ext 2928
Flag Primrose 10720 { Vermilion Dateline 7078
 SCR Primroses 50762 { SA Primrose 609

PRODUCTION EPDS					CARCASS EPDS			\$ VALUE EPDS			
CED	BW	WW	YW	CEM	MILK	MARB	RE	FAT	\$W	\$F	\$B
3	2.4	54	103	7	21				30.62	59.14	



TNT STACY 485

REG	TATTOO	BD	BW	205-Adj	WR
HEIFER	17934713	485	3/21/14	67	539 88

Connealy Hemisphere 957L { GAR New Design 5050
Hoover Hemi L20 { Breela of Conanga 3991
 Erica of Ellston C265 { TC Gridiron 258
 { GG Erica 9104
 { Bon View New Design 878
 WCC Special Design L309 { N Bar Primrose 2424
TNT Stacy 573 { Sitz Traveler 8597
 Windac Georgina J472 { Windac Queen 83-5222

PRODUCTION EPDS					CARCASS EPDS			\$ VALUE EPDS			
CED	BW	WW	YW	CEM	MILK	MARB	RE	FAT	\$W	\$F	\$B
10	0.2	47	82	13	20	1+.55	1+.27	1+.008	36.39	30.03	83.62



TNT GINA 487

REG	TATTOO	BD	BW	205-Adj	WR
HEIFER	17934725	487	3/22/14	74	504 82

Foxs Rito 9 { Rito 112 of 2536 Rito 616
Foxs Rito 4Y { Foxs Barbara 96
 Foxs Barbara 152 { WPR 3J Dividend 9321
 { Fox Barbara 76
 Genetics by Design 049 { B/R New Design 036
TNT Gina 719 { GG Clara 859
 TNT Princess 574 { TNT Hurricain 123
 { EMH Famous Gal 1

PRODUCTION EPDS					CARCASS EPDS			\$ VALUE EPDS			
CED	BW	WW	YW	CEM	MILK	MARB	RE	FAT	\$W	\$F	\$B
4	2.1	39	80	7	22	1+.47	1+.14	1-.007	23.24	31.73	82.22

DDP



488



TNT NATALIE 488

REG	TATTOO	BD	BW	205-Adj	WR
HEIFER	17934712	488	3/23/14	73	639 104

Connealy Final Product { Connealy Product 568
TNT Final Product 255 { Ebonista of Conanga 471
 Evenson Queen 815 { HSAF Bando 1961
 { Evenson Queen 661
 { Connealy Impression
 BT Impressive 898 { HT Miss Erica 436
TNT Natalie 179 { HT Traveler 756
 TNT Natalie 846 { TNT Natalie 303

PRODUCTION EPDS					CARCASS EPDS			\$ VALUE EPDS			
CED	BW	WW	YW	CEM	MILK	MARB	RE	FAT	\$W	\$F	\$B
2	1.4	57	99	8	26	1+.23	1+.30	1+.029	43.17	50.73	84.10



TNT MISS 489

REG	TATTOO	BD	BW	205-Adj	WR
HEIFER	17934711	489	3/23/14	91	632 103

Connealy Impression { Connealy Reflection
BT Impressive 898 { Pearl Pammy of Conanga 194
 HT Miss Erica 436 { WAR Alliance 9126 6006
 { HT Miss Erica 534
 { SAV 8180 Traveler 004
 HT Traveler 756 { TK Prairie Queen 1009
TNT JC MS Traveler 830 { Grandview Womack Direct
 4WLC Miss Direct 573 { Blake Miss Illini 979

PRODUCTION EPDS					CARCASS EPDS			\$ VALUE EPDS			
CED	BW	WW	YW	CEM	MILK	MARB	RE	FAT	\$W	\$F	\$B
-2	3.7	57	102	6	24	1+.45	1+.32	1+.032	32.94	55.60	94.77



TNT CHLOE 491

REG	TATTOO	BD	BW	205-Adj	WR
HEIFER	17934710	491	3/23/14	81	647 105

Connealy Danny 5398 { Connealy Danny Boy
MOGCK Danny 321 { Endova of Conanga 858
 MOGCK Ruth 509 { HARB Pendleton 765 JH
 { MOGCK Ruth 1846
 { Connealy Impression
 BT Impressive 898 { HT Miss Erica 436
TNT Chloe 278 { Stevenson CE Deluxe 1914
 Basin Chloe 9307 { Basin Chloe 3406

PRODUCTION EPDS					CARCASS EPDS			\$ VALUE EPDS			
CED	BW	WW	YW	CEM	MILK	MARB	RE	FAT	\$W	\$F	\$B
-1	3.4	62	99	5	27	1+.49	1+.45	1+.021	44.36	47.61	96.49

ANGUS HEIFERS

495

TNT BLACKBIRD 495

REG	TATTOO	BD	BW	205-Adj	WR
HEIFER	17934727	495	3/26/14	81	591 96
Foxx Rito 4Y Foxx Rito 9 Foxx Barbara 152			{ Rito 112 of 2536 Rito 616 { Foxx Barbara 96 { WPR 3J Dividend 9321 { Fox Barbara 76 { CA Future Direction 5321 { Ruby Red of Conanga 436 { TC Trademark 987 { Evenson Blackbird 761		
Evenson Blackbird 7132 Connealy Foundation 426 Evenson Blackbird 2303					

PRODUCTION EPDS					CARCASS EPDS			\$ VALUE EPDS			
CED	BW	WW	YW	CEM	MILK	MARB	RE	FAT	\$W	\$F	\$B
2	2.7	45	89	6	22	1+.35	1+.18	1-.001	25.09	42.17	73.81

499

TNT QUEEN 499

REG	TATTOO	BD	BW	205-Adj	WR
HEIFER	17934729	499	3/31/14	83	559 91
Foxx Rito 4Y Foxx Rito 9 Foxx Barbara 152			{ Rito 112 of 2536 Rito 616 { Foxx Barbara 96 { WPR 3J Dividend 9321 { Fox Barbara 76 { Baldrige Kaboom K243 KCF { Parka of Conanga 241 { Mgsa 1407 New Design 401 { Evenson Queen 3348		
EVENSON Queen 841 Connealy Thunder Evenson Queen 696					

PRODUCTION EPDS					CARCASS EPDS			\$ VALUE EPDS			
CED	BW	WW	YW	CEM	MILK	MARB	RE	FAT	\$W	\$F	\$B
2	2.7	43	85	7	22	1+.40	1+.35	1-.021	24.38	37.09	82.23

DDC



Replacement Heifers

4100

TNT BLACKCAP 4100

REG	TATTOO	BD	BW	205-Adj	WR
HEIFER	17976484	4100	4/1/14	70	503 82
BT Impressive 898 Connealy Impression HT Miss Erica 436			{ Connealy Reflection { Pearl Pammy of Conanga 194 { WAR Alliance 9126 6006 { HT Miss Erica 534 { Connealy Onward { Sitz Henrietta Pride 81M { Leachman Talisker { Leachman Blackcap 1105		
TNT Blackcap 117 Sitz Upward 307R Leachman Blackcap 4055					

PRODUCTION EPDS					CARCASS EPDS			\$ VALUE EPDS			
CED	BW	WW	YW	CEM	MILK	MARB	RE	FAT	\$W	\$F	\$B
5	1.3	50	91	12	27	1+.42	1+.45	1+.001	38.28	42.27	106.76



Feeds for all your livestock needs.

J & R DISTRIBUTING, INC.

Daryl Thomas • 605-366-0554
 Jack Sieben • 605-660-9975
 Lake Norden Office • 800-658-5504

HEREFORD BULLS



PLC TRUST 5B



REG	TATTOO	BD	BW	205-Adj	WR	Proj.	365
BULL	43518614	5B	2/18/14	76	622	100	

KCF BENNETT 3008 M326
NJW 73S M326 TRUST 100W ET
 NJW P606 72N DAYDREAM 73S

MRC JOHNNY CASH 524
MRC TARA 21T
 MRC HANNAH 248

{ RRH MR FELT 3008
 { KCF MISS 459 F284
 { PW VICTOR BOOMER P606
 { NJW 94J DEW 72N
 { REMITALL JONATHON 73J
 { RU 8G ROBYN 27L
 { HARVIE KNOCKOUT 98K
 { MRC MS MERISSA 16G

PRODUCTION EPDS						CARCASS EPDS			\$ INDEX			
CED	BW	WW	YW	MILK	M&G	FAT	REA	MARB	BMI	CEZ	BII	CHB
-0.7	2.2	53	98	22	48	0.00	0.77	0.190	\$21	\$15	\$17	\$30

A really low birth weight Trust son out of an impressive Johnny Cash daughter. Stems back to numerous highly productive cow families.

PLC CPH TRUST 6B



REG	TATTOO	BD	BW	205-Adj	WR	Proj.	365
BULL	43518629	6B	2/18/14	80	618	100	

KCF BENNETT 3008 M326
NJW 73S M326 TRUST 100W ET
 NJW P606 72N DAYDREAM 73S

HARVIE KNOCKOUT 98K
CPH MISS KNOCKOUT 11M
 CPH MISS PRINCESS 13H

{ RRH MR FELT 3008
 { KCF MISS 459 F284
 { PW VICTOR BOOMER P606
 { NJW 94J DEW 72N
 { REMITALL HOLLYWOOD 37H
 { HARVIE MISS NYLON 1Y
 { FELTONS 517
 { CPH DISCO LADY 23T

PRODUCTION EPDS						CARCASS EPDS			\$ INDEX			
CED	BW	WW	YW	MILK	M&G	FAT	REA	MARB	BMI	CEZ	BII	CHB
0.3	2.1	52	95	18	44	-0.01	0.70	0.220	\$24	\$16	\$20	\$31

A dark-red Trust bull with big goggle eyes and a complete red neck. He's extremely thick and sound.

PLC TRUST 8B



REG	TATTOO	BD	BW	205-Adj	WR	Proj.	365
BULL	43518631	8B	2/20/14	92	734	118	

KCF BENNETT 3008 M326
NJW 73S M326 TRUST 100W ET
 NJW P606 72N DAYDREAM 73S

TC CPH RADAR 6T
TC RADIANT 17W
 RAW 951 MS BUSTER 243M

{ RRH MR FELT 3008
 { KCF MISS 459 F284
 { PW VICTOR BOOMER P606
 { NJW 94J DEW 72N
 { SBS 57G RADAR 32K
 { TCPH FALACIA 20H
 { STAR BUSTER 142K
 { RAW 710 MS WRANGLER 951J

PRODUCTION EPDS						CARCASS EPDS			\$ INDEX			
CED	BW	WW	YW	MILK	M&G	FAT	REA	MARB	BMI	CEZ	BII	CHB
-2.2	5.1	69	115	23	58	-0.03	1.07	0.030	\$20	\$12	\$16	\$36

A Trust bull out of a phenomenal cow. She is a big, brood cow with a beautiful udder and never misses. He was the heaviest actual weaning weight of the Hereford group and the highest adjusted 205. He is thick, soggy and has beef bull written all over him.



PLC KIP CLASS ACT 9B



REG	TATTOO	BD	BW	205-Adj	WR	Proj.	365
BULL	43518611	9B	2/22/14	78	681	110	

FELTONS 517
DR WORLD CLASS 517 10H
 VPI MARATHON LADY 0081

CRR ABOUT TIME 743
TC MS BUSTER 2Y
 RAW 951 MS BUSTER 243M

{ FELTONS 403
 { F PRINCESS A80
 { SBR MARATHON MAN 257T
 { BF LADY IMPACT S29
 { THM DURANGO 4037
 { CRR D03 CASSIE 206
 { STAR BUSTER 142K
 { RAW 710 MS WRANGLER 951J

PRODUCTION EPDS						CARCASS EPDS			\$ INDEX			
CED	BW	WW	YW	MILK	M&G	FAT	REA	MARB	BMI	CEZ	BII	CHB
2.5	3.4	56	82	27	55	-0.01	0.30	0.020	\$21	\$18	\$17	\$26

The start of Kenzy's college fund! Her first bull for the sale, and it's a good one. He has been a stand out since early on. He is low birth and lots of performance. Big framed with lots of eye appeal and a very complete bull.



PLC CPH REVOLUTION 19B



REG	TATTOO	BD	BW	205-Adj	WR	Proj.	365
BULL	43518080	19B	3/2/14	82	688	111	

FELTONS LEGEND 242
MSU TCF REVOLUTION 4R
 MSU TCF RACHAEL ET 54N

TC CPH RADAR 6T
CPH MS RACHEL 24X
 CPH MISS 13H BASIC 8L

{ FELTONS DOMINO 774
 { FELTONS G15
 { REMITALL ONLINE 122L
 { HH MISS ADV 786G 1ET
 { SBS 57G RADAR 32K
 { TCPH FALACIA 20H
 { S&S BASIC 1G
 { CPH MISS PRINCESS 13H

PRODUCTION EPDS						CARCASS EPDS			\$ INDEX			
CED	BW	WW	YW	MILK	M&G	FAT	REA	MARB	BMI	CEZ	BII	CHB
0.8	2.9	64	102	19	51	0.04	0.77	0.150	\$21	\$15	\$17	\$32

A moderate-framed bull with an extremely long profile. His dam is a very young, good-uddered cow.

HEREFORD BULLS



PLC REVOLUTION 21B



REG	TATTOO	BD	BW	205-Adj	WR	Proj. 365
BULL 43518087	21B	3/7/14	96	666	107	

FELTONS LEGEND 242
MSU TCF REVOLUTION 4R
 MSU TCF RACHAEL ET 54N

FELTONS DOMINO 774
 FELTONS G15
 REMITALL ONLINE 122L
 HH MISS ADV 786G 1ET
 REMITALL JONATHON 73J
 RU 8G ROBYN 27L
 HARVIE KNOCKOUT 98K
 MRC MS MERISSA 16G

MRC JOHNNY CASH 524
MRC HANNAH 16U
 MRC HANNAH 248

PRODUCTION EPDS						CARCASS EPDS			\$ INDEX			
CED	BW	WW	YW	MILK	M&G	FAT	REA	MARB	BMI	CEZ	BII	CHB
0.3	4.1	56	99	22	50	0.03	0.57	0.110	\$17	\$14	\$14	\$27

A very attractive bull that is full of performance. He's made really deep and soggy and is sure to add some pounds.

PLC JUNE'S TAILOR 22B



REG	TATTOO	BD	BW	205-Adj	WR	Proj. 365
BULL 43529275	22B	3/8/14	96	682	110	

HARVIE TAILOR MDE ET 7W
PLC TAILORED 5Z
 ADK MISS GAI'S DELIGHT 312

HARVIE TRAVELER 69T
 HARVIE MISS FIREFLY 51F
 REMITALL ONLINE 122L
 LH MS EXPRESS 908
 CS BOOMER 29F
 THM 7085 VICTRA 9036
 MRC JOHNNY CASH 524
 MBC SARA 22H

THM DURANGO 4037
MRC MS JUNE 12X
 MRC SARA JUNE 26U

PRODUCTION EPDS						CARCASS EPDS			\$ INDEX			
CED	BW	WW	YW	MILK	M&G	FAT	REA	MARB	BMI	CEZ	BII	CHB
-0.6	4.9	56	94	15	43	-0.01	0.32	0.050	\$18	\$14	\$15	\$27

A dark red, red-necked, bigger framed bull that is extremely thick.

PLC CPH RADAR 25B



REG	TATTOO	BD	BW	205-Adj	WR	Proj. 365
BULL 43518084	25B	3/11/14	92	681	100	

SBS 57G RADAR 32K
CPH RADAR 11Y
 CPH MISS ZODIAC 16H

RU 20X BOULDER 57G
 SBS RAIDINE 12C
 TIL-TOBA VIP 58Y 22F
 CPH MISS 14A WEST 8E
 REMITALL CASINO 12C
 REMITALL ZERMARVEL 111Z
 FELTONS 517
 CPH DISCO LADY 23T

REMITALL GOVERNOR 236G
CPH MS GOVERNESS 20U
 CPH MISS PRINCESS 13H

PRODUCTION EPDS						CARCASS EPDS			\$ INDEX			
CED	BW	WW	YW	MILK	M&G	FAT	REA	MARB	BMI	CEZ	BII	CHB
-1.1	6	55	83	13	40	0.00	0.400	0.06	\$19	\$14	\$17	\$25

A moderate-framed thick, deep bull. He's almost a complete red neck.



PLC CPH TAILOR 33B



REG	TATTOO	BD	BW	205-Adj	WR	Proj. 365
BULL 43529278	33B	3/26/14	94	660	106	

HARVIE TAILOR MDE ET 7W
PLC TAILORED 5Z
 ADK MISS GAI'S DELIGHT 312

HARVIE TRAVELER 69T
 HARVIE MISS FIREFLY 51F
 REMITALL ONLINE 122L
 LH MS EXPRESS 908
 CS BOOMER 29F
 THM 7085 VICTRA 9036
 CPH ONLINE P6
 CH MISS AXCESS P8

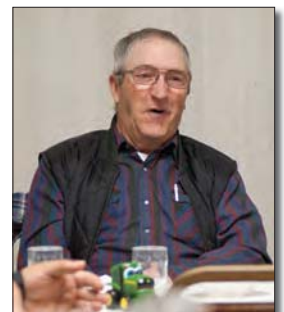
THM DURANGO 4037
CPH MISS DURANGO 3Y
 CPH MS ONLINE 24W

PRODUCTION EPDS						CARCASS EPDS			\$ INDEX			
CED	BW	WW	YW	MILK	M&G	FAT	REA	MARB	BMI	CEZ	BII	CHB
-0.4	4.7	57	94	15	43	-0.02	0.340	0.05	\$19	\$14	\$15	\$27

The youngest bull in the Hereford offering. He's really dark red and made nice and smooth. His Durango dam is a young productive cow.



CARTER'S POLLED HEREFORDS NORTH DAKOTA BREEDER OF THE YEAR



SYDGEN ROCK STAR 3461

ORIGen

NEW SIRE

237AN2689



CED	BW	WW	YW	RADG	SC	DOC	CEM	Milk	CW	MARB	RE	FAT	\$W	\$F	\$G	\$B
+7	+1.7	+71	+121	+30	+48	+8	+10	+29	+52	+38	+81	-.023	+64.10	+82.02	+31.47	+123.43
.35	.44	.33	.35	.31	.46	.40	.14	.22	.24	.35	.29	.33				
30%	50%	1%	1%	1%	75%	70%	30%	10%	10%	65%	10%	10%	1%	1%	45%	3%

Genomic: PF50

SydGen Rock Star 3461

Birth Date: 8-31-2013 Bull 17820603 Tattoo: 3461

#Rockn D Ambush 1531
SydGen Rocky Road 2060
 +14088421 SAF Blackbird 6028

#Paramont Ambush 2172
 MS Blackcap Band of RD 1301
 #+SVF Hi Road
 #+SAF Blackbird 3042

#Connealy Forward
SydGen Forever Lady 8420
 +16098038 SydGen Forever Lady 2352

#Connealy Onward
 Becky Lee of Conanga 74
 #SAF Focus of ER
 #+Three Trees Forever Lady0487



SYDGEN FOREVER LADY
8420 - Dam of ROCK STAR.

SYDGEN FOREVER LADY
4556 - Maternal sister to the
dam of ROCK STAR.



SYDGEN FOREVER LADY
2352 - Grandam of ROCK
STAR.



SEMEN: \$25 - CERTIFICATES: \$40
Volume Discount Eligible

- ROCK STAR excelled in the overall 2013 born Fall calf crop at SydGen, posting the Number 2 adj. WW at 883 lbs. to ratio 122, the Number 1 adj. YW of 1,536 lbs. to ratio 120, and the Number 3 adj. REA of 18.5 sq. in., from the original 200 bull calves weaned from five different contemporary groups.
- A favorite of all who have seen him, ROCK STAR topped the 2014 SydGen Production Sale at \$60,000 for half interest and half possession to a top group of breeders from the Dakotas.
- Phenotypically, ROCK STAR is a powerful individual. He is slick-haired, wide-bodied, deep, thick and capacious, yet clean-made and near perfect on his feet and leg structure.
- He stems from a long line of powerful brood cows, with his great-grandam, Three Trees Forever Lady0487, topping the 2007 SydGen sale at \$15,000, where her calf at side topped the bull calf division at \$15,000.
- This top young sire is already seeing wide-spread sampling, with his unique outcross pedigree to many programs, along with the phenotype to make growthy, easy-fleshing performance cattle.

SydGen Sister Genetics
 Mexico, MO
 (573) 581-1225

TNT Angus

Rock Lake, ND
 (701) 266-5468

his name says it all

Bruns Angus
 Madison, SD
 (605) 480-0625

**DOHRMANN
 CATTLE CO.**

Taylor, ND
 (701) 974-2187

For more information visit www.ORIGenBeef.org - (866) 867-4436

PASTURE TURN OUT



**TNT ANGUS
CARTER'S
POLLED HEREFORDS**
6760 92nd St. NE
ROCKLAKE, ND 58365

PRESORTED
FIRST-CLASS MAIL
U.S. POSTAGE PAID
LivestockDirect.net
PERMIT NO. 29

RETURN SERVICE REQUESTED

FIRST CLASS MAIL – DO NOT DELAY

TNT ANGUS



**CARTER'S
POLLED HEREFORDS**

Annual Production Sale
Saturday
February 7, 2015

1:00 p.m. CDT
Lake Region Livestock
Devils Lake, ND

Selling 73 Lots

50 Angus Yearling Bulls
9 Polled Hereford Yearling Bulls
14 Angus Yearling Heifers

This sale will be broadcast live on the internet.
DVAuction
Broadcasting Real-Time Auctions
Real time bidding & proxy bidding available.