

# "Top 50 Coming-To-Town" Production Sale

**Saturday, March 5, 2016**

**2 p.m. CST • Sitting Bull Auction, Williston, ND**

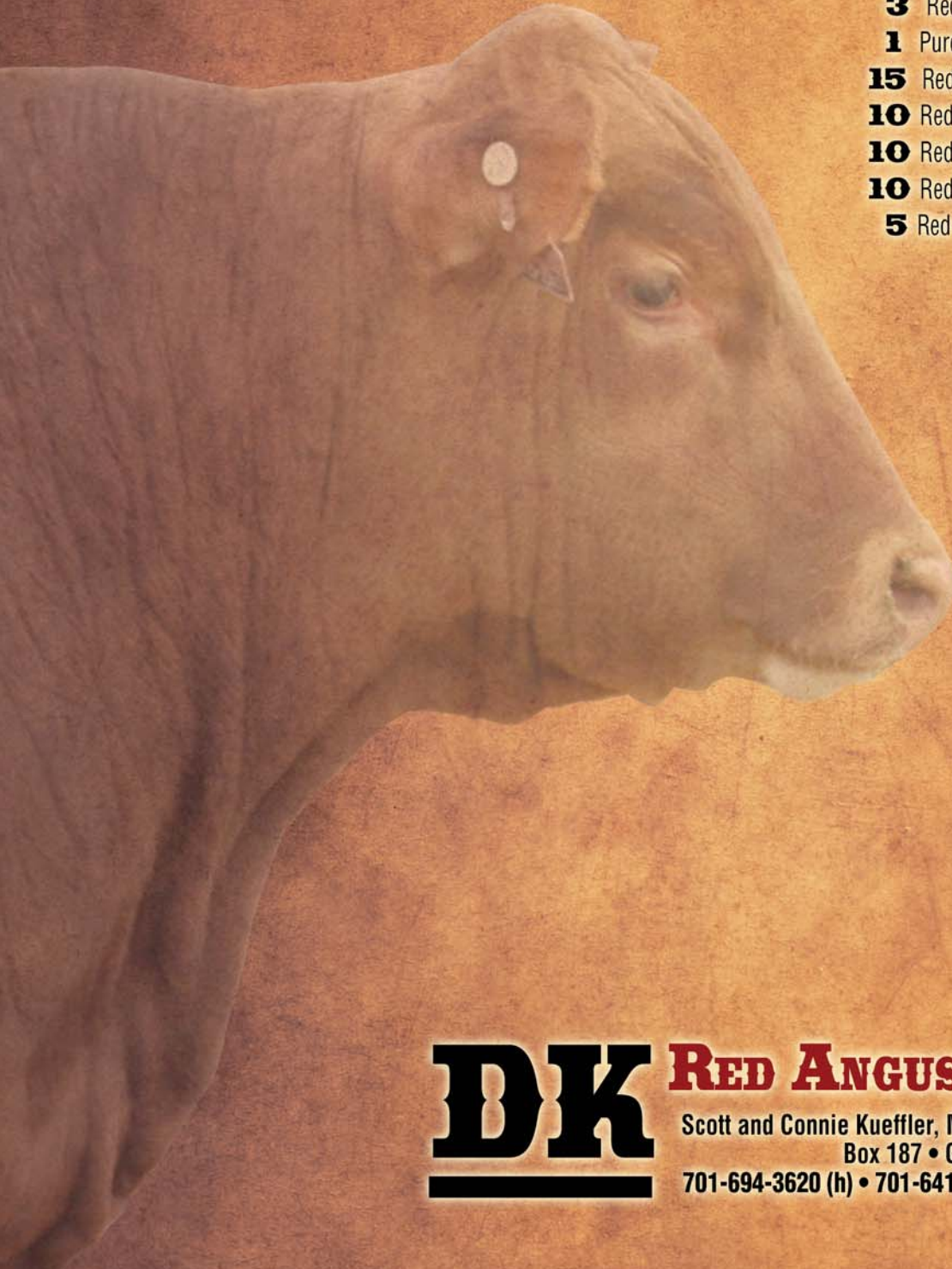
Auctioneer: Butch Haugland • 701-570-3604 or 701-965-6234

Ringmen: Loren Sorenson, 701-694-2627 • Kris Petersen: 701-339-0305

**DVAuction** Broadcasting  
Real-time Auctions

## *Sale Offering:*

- 49** Purebred Red Angus Bulls
- 3** Red Angus/Charolais Composite Bulls
- 1** Purebred Red Simmental Bull
- 15** Red Angus Yearling Heifers
- 10** Red Angus Bred Heifers, Tofte Ranch
- 10** Red Angus Yearling Heifers, Drawbond Ranch
- 10** Red Angus Yearling Heifers, Guenther Ranch
- 5** Red Angus Yearling Heifers, Schilke Ranch



**DK RED ANGUS & CHAROLAIS**  
Scott and Connie Kueffler, Michala and Kirsti • Bonnie Kueffler  
Box 187 • Grenora, ND 58845  
701-694-3620 (h) • 701-641-0519 (c) • [redangus@nccray.com](mailto:redangus@nccray.com)

Welcome,

We would like to welcome you to our production sale. What a nice winter this has been! Hopefully the nice weather continues for calving.

Again the bulls were bucket fed CHS pellets twice a day with free-choice grass hay. They are not fed for the show but to go to work for you and keep growing. We shoot for a 3-lb. daily gain on test and we know these bulls could gain a lot more but would only hurt them in the long run. We feel this is one of our best set of bulls top to bottom. Many of these bulls are suitable to use on heifers.

For those of you that can't make it to the sale, you'll be able to watch & bid on DVAuction.com. Videos of the bulls will be available a couple of weeks before the sale at the DVAuction.com website but remember that the video was shot a month before the sale and the younger bulls are still pretty green. If you have any questions don't hesitate to call us. The bulls will sell pretty much in birthdate order as listed in the catalog.

Also bulls will be delivered free to U.S. central locations within 500 miles and we will work with you on further distances.

You are welcome to come look at the bulls at the ranch before the sale. We would be happy to show you the sires & dams. Give us a call – we'd be glad to assist you in finding the right bull to fit your herd.

Thank you and God Bless,

*The Kuefflers*

Scott and Connie, Michala and Kirsti Kueffler • Bonnie Kueffler

## DK Red Angus & Charolais

Box 187 • Grenora, ND 58845 • (701) 694-3620 (h) • (701) 641-0519 (c)



View pre-sale video footage of the bulls and watch & bid online for free at **DVAuction**  
Broadcasting Real-Time Auctions



Watch & bid online for FREE at

**DVAuction**  
Broadcasting Real-Time Auctions

**View the Auction Live!**  
**Bid Online... you're ringside right at your desk!**

Buying online is as easy as 1, 2, 3...

1. Create an account at [www.dvauction.com](http://www.dvauction.com) under the "register" tab
2. Apply for bidding approval by clicking on the "details" tab at least 24 hours prior to the auction-a DV representative will notify you once you have been approved
3. Tune in for the sale and make your purchases!

**High speed internet** is required for successful bidding-be sure to check the lag-time monitor in the top left corner to ensure real-time broadcasts.

**Proxy Bidding**-if you can't make time to watch the sale, register a proxy bid and let our system represent your bid while you're away. Look for the "proxy bid" tab on the auction listing, and fill in your maximum bids. We'll handle the rest!

**Having troubles?** During the auction, you can type a message to the operator at any time for assistance. Our full-time support team can also always be reached at (402) 474-5557.

## “Top 50 Coming-To-Town” Production Sale **Saturday, March 5, 2016**

**Complimentary Lunch at 12:30 p.m. • Sale at 2 p.m. CST • Sitting Bull Auction, Williston, ND**

### Sale Day Phones:

Sitting Bull Auction, Williston, ND..... 701-572-6701  
Scott Kueffler's Cell..... 701-641-0519

### Auctioneer:

Butch Haugland..... 701-570-3604 or 701-965-6234

### Ringmen:

Loren Sorenson ..... 701-694-2627  
701-641-1140 cell  
Kris Peterson, *Cattle Business Weekly*..... 701-339-0305

Haugland's Auction Service & Sitting Bull Auction

Gary Fike, Director of Commercial Marketing, RAAA ..... 785-410-2608

### Scrotal Measurements and Ultrasound Data:

Scrotal measurements and carcass ultrasound data will be available sale day.

### Semen Interest:

DK Red Angus is retaining 1/3 semen interest in all bulls. The retained semen interest allows us to collect semen, use semen in our herd, and share in revenue of semen sales. Full possession and full salvage value sells on all bulls.

### Delivery:

Delivery is free to U.S. central locations within 500 miles. We will work with you on further distances. \$50 refund per bull picked up within one week of the sale, or \$25 refund per bull picked up after April 25 at the ranch.

### Feeding:

We will feed the yearling bulls free of charge until April 25 and have the bulls semen tested at our expense, but we will not be responsible for sickness or injury. After April 25, there will be a \$2-per-day charge.

### Genetic Defects:

We have collected DNA samples on every bull in the sale with any known genetic defect carrier in the first three generations. The bull tested negative unless otherwise noted.

Osteopetrosis (OS) “Marble-Bone Disease”

OSF – Tested “free” of the genetic defect

OSC – Tested positive as an Osteopetrosis “carrier”

### Calving-Ease Recommendations:

Each bull has been designated with a star rating to assist you in determining the calving-ease of each bull. We have based our recommendations on EPDs, performance, phenotype and bloodlines, but please use your judgement as well.

★★★ Recommended for heifers

★★ Recommended for larger heifers and cows

★ Recommended for cows only

### Bidding:

All animals sell to the highest bidder. Any dispute or challenges regarding bids will be settled by the auctioneer and his decision will be final.

### Terms:

Terms of the sale are cash or check payable immediately upon conclusion of the sale and before animals will be moved. Seller will reserve the right to require a certified check as settlement before releasing any cattle. All animals are the owner's risk prior to their sale and become the property of the purchaser as soon as declared sold by the auctioneer.

### Guarantee:

The bulls are guaranteed to be sound breeders. You may semen test or test breed them prior to breeding season and make your own evaluation. Any bull sold that fails to prove himself a breeder may be returned to the seller after notification by the buyer of the condition within five months of sale date. If a bull is proven unable to breed, the buyer will be given a full refund of purchase price or a replacement bull as acceptable to the buyer or credit in next year's sale.

In no case will the seller be responsible for more than actual purchase price. The seller's guarantee does not apply if the animal in question has developed to be a problem breeder due to negligence or improper management by the buyer.

### Announcements:

Announcements from the auction block will take precedence over printed matter in this catalog.

### Liability:

All persons who attend the sale do so at their own risk and the owner and sale manager assume no liability, legal or otherwise, for accidents which may occur.

**Promotion & Catalog:** Cow Camp Promotions • [www.cowcampsale.com](http://www.cowcampsale.com)

**Printing:** Livestock Direct • [livestockdirect.net](http://livestockdirect.net)

## Performance Codes

### Red Angus Categories:

Category 1A ..... 100% Red Angus

Category 1B ..... 87% to 99% Red Angus

### Performance Information:

BW ..... Actual Birth Weight

WW ..... 205-Day Adjusted Weaning Weight

ADG ..... Average-Daily-Gain on Test

YW ..... 365-Day Adjusted Yearling Weight

WDA..... Weight-Per-Day-of-Age over Lifetime

Dam's Age..... Age of the Dam When Calf was Born

Dam's MPPA..... Dam's Most Probable Producing Ability is a ratio that measures her ability to produce milk for her calf and her contribution of genetics to the calf.



**Andras New Direction R240**

## A

### ANDRAS NEW DIRECTION R240

BD	Cat.	%	Reg. #	Calving Ease
9/25/11	1A	100%	1506922	
BW	WW	YW	ADG	WDA
74	762			
			Dam's Age	Dam's MPPA
			3	100.7

MYTTY IN FOCUS  
**ANDRAS IN FOCUS B152**  
 ANDRAS PINETA B91

MORGANS DIRECTION 111 9901  
**ANDRAS KURUBA B111**  
 ANDRAS KURUBA B71

S A F FOCUS OF E R  
 MYTTY COUNTESS 906  
 S A V 8180 TRAVELER 004  
 DI PINETA 319

C A FUTURE DIRECTION 5321  
 MCC BARBIE 9901 5205 797  
 BOYD NEW DAY 8005  
 ANDRAS KURUBA 428

HB	GM	CED	BW	WW	YW	M	ME	HPG	CEM	ST	MB	YG	CW	REA	FAT
66	53	7	-1.9	74	126	33	-6	10	8	3	0.78	0.27	42	0.18	0.08
73%	10%	32%	39%	13%	7%	3%	26%	44%	15%	89%	12%	98%	11%	39%	99%

New Direction is a bull we AI'd some of our heifers to with great results. He offers a new outcross pedigree. His grandsire, Mytty In Focus, is a calving-ease and maternal bull that has been used very heavily in the Black Angus.



**Silveiras Mission Nexus 1378**

## B

### SILVEIRAS MISSION NEXUS 1378

BD	Cat.	%	Reg. #	Calving Ease
1/24/11	1A	100%	1410853	
BW	WW	YW	ADG	WDA
80	843	1336	3.08	3.58
			Dam's Age	Dam's MPPA
			3	104.4

LJC LANCER 806  
**LJC MISSION STATEMENT P27**  
 LJC HANNAH 106

TROTTERS ROMEO 412  
**SILVEIRAS DAORV 8399**  
 MOORE'S DAORV 5365

BECKTON LANCER T A664  
 LJC HB LIZZIE 606  
 HOLDEN HI HO 753  
 LJC KJ JAMIE 516

BUF CRK ROMEO L081  
 LJT LASS 208  
 WEBR DOC HOLLIDAY 2N  
 SANDPOINT DAORV 3400

HB	GM	CED	BW	WW	YW	M	ME	HPG	CEM	ST	MB	YG	CW	REA	FAT
115	52	6	-3.8	68	109	23	10	10	1	12	0.41	-0.19	29	0.74	-0.01
26%	12%	41%	19%	25%	23%	31%	95%	39%	76%	28%	52%	7%	34%	6%	36%

Nexus was the top-selling bull in the 2012 Silveiras Angus sale in California. He is an outstanding Mission Statement son that is from a very strong maternal cow family. He adds a lot of length and capacity to his calves.



**NS Bronson X079**

## C

### NS BRONSON X079

BD	Cat.	%	Reg. #	Calving Ease
1/2/10	1A	100%	1362252	
BW	WW	YW	ADG	WDA
85	795	1257	2.89	3.42
			Dam's Age	Dam's MPPA
			7	102.6

RED COMPASS MULBERRY 449M  
**RED FINE LINE MULBERRY 26P**  
 RED DUS FAYETTE 8G

HOLDEN HI ROLLER 8106  
**SRN CASSIE 3069**  
 RED CASSIE 6085

RED HR RAMBO ET 91K  
 RED BRYLOR MISS ROC 20H  
 SILVEIRAS REDFORD  
 RED MC DOUGALL FAYETTE 59A

HOLDEN HI HO 574  
 BIEBER MIMI 4151  
 FLYING K COPPER 84D  
 RED POMPEY 4469

HB	GM	CED	BW	WW	YW	M	ME	HPG	CEM	ST	MB	YG	CW	REA	FAT
148	48	4	-3.1	79	103	5	0	11	13	14	0.17	0.08	25	0.31	0.04
7%	69%	56%	25%	8%	30%	97%	47%	30%	2%	9%	88%	73%	43%	26%	91%

NS Bronson was the \$25,000 high selling Red Angus bull at the 2011 Midland Bull Test. In 2011, we traveled a lot of mile looking for a powerhouse bull that was equally impressive in maternal traits. Bronson was our #1 choice that year. His third set of daughters are calving now and we're 110% pleased. They are excellent mothers with a lot of milk. He ranks in the top 7% for HB and top 8% for WW EPD.



**GMRA Bravo 3276**

**B**

**GMRA BRAVO 3276**

BD	Cat.	%	Reg. #	Calving Ease
1/25/13	1A	100%	1605107	
BW	WW	YW	ADG	WDA
92	800	1297	3.11	3.58
			Dam's Age	Dam's MPPA
			8	104.2

BIEBER ROUGH RIDER 10712  
**BIEBER ROOSEVELT W384**  
 BIEBER SHEBA 9602  
 BIEBER TOP MONEY 7948  
**GMRA REBELLA 572**  
 GMRA REBELLA 249

BASIN TREND SETTER 6074  
 BIEBER ADELLE 8958  
 C A FUTURE DIRECTION 5321  
 BIEBER SHEBA 5537  
 BIEBER RED MOON 6042  
 BIEBER SIRENA 6708  
 NSF SPECIAL DELIVERY  
 GMRA REBELLA 050

HB	GM	CED	BW	WW	YW	M	ME	HPG	CEM	ST	MB	YG	CW	REA	FAT
87	47	4	1.0	66	97	23	1	13	4	9	0.22	0.11	29	0.26	0.05
58%	82%	55%	83%	21%	30%	23%	43%	10%	40%	65%	86%	85%	24%	22%	96%

Bravo was the 2014 high-selling bull at Green Mountain Red Angus. He adds a lot of depth and thickness of body to his calves with keeping a moderate frame. His bull calves look really good and his heifer calves look even better.



**HXC Conquest 4405P**

**F**

**HXC CONQUEST 4405P**

BD	Cat.	%	Reg. #	Calving Ease
1/25/04	1A	100%	975924	
BW	WW	YW	ADG	WDA
69	664	1285	3.88	3.34
			Dam's Age	Dam's MPPA
			2	101.9

BKT JULIAN 7526 G  
**BECKTON JULIAN GG B571**  
 BKT MARTA 9A13 JL  
 BFCK CHEROKEE CNYN 4912  
**HXC ELLIE MAY MA638**  
 HXC 529E

BECKTON JULIAN 6592  
 BKT BELGA 6746 GS  
 BKT JULIAN 7526 G  
 BKT MARTA 6498 XM  
 BUF CRK CHF 824-1658  
 MRM 1431 8611 9109  
 LMAN KING ROB 8621  
 HXC 329C

HB	GM	CED	BW	WW	YW	M	ME	HPG	CEM	ST	MB	YG	CW	REA	FAT
124	53	16	-6.1	59	99	25	4	-2	0	13	0.74	0.04	20	0.16	0.02
18%	7%	3%	5%	46%	37%	20%	72%	99%	84%	18%	14%	61%	54%	42%	79%

Conquest has been one of Accelerated Genetics' most widely used Red Angus bulls. His daughters are really starting to shine. He offers a unique package of depth of body, thickness and excellent calving ease.



**Six Mile Game Face 164Y**

**F**

**SIX MILE GAME FACE 164Y**

BD	Cat.	%	Reg. #	Calving Ease
2/22/11	1A	100%	1447630	
BW	WW	YW	ADG	WDA
78	907			
			Dam's Age	Dam's MPPA

VGW GAME PLAN 508  
**VGW GAME PLAN 816**  
 VGW TW DOLL 0270  
 RED LAZY MC SMASH 41N  
**RED SIX MILE LAKOTO 35W**  
 RED STEWART LAKOTO 612S

LCC IMF B054M  
 VGW PT- DORY 0361  
 TW MILKY WAY 2038  
 VGW DIV-DOLL 9716  
 SSS BOOMER 803B  
 RED LAURON YB ROSA 11G  
 RED SIX MILE AVIATOR 217P  
 RED SIX MILE LAKOTO 811E

HB	GM	CED	BW	WW	YW	M	ME	HPG	CEM	ST	MB	YG	CW	REA	FAT
89	47	0	-1.4	51	78	17	-3	9	1	12	0.05	0.04	14	-0.10	-0.01
52%	86%	84%	46%	68%	70%	64%	33%	51%	80%	27%	95%	59%	68%	80%	39%

Game Face is a calving-ease sire that puts a really thick top on his calves in a moderately framed package.



**Feddes Eagle A202**

**G**

## FEDDES EAGLE A202

BD	Cat.	%	Reg. #	Calving Ease		
1/20/13	1A	100%	1607669			
BW	WW	YW	ADG	WDA	Dam's Age	Dam's MPPA
73	803	1399	3.71	3.82	10	109.7

LJC MISSION STATEMENT P27  
**C-T GRAND STATEMENT 1025**  
 C-T MISS PAN 0760

LCHMN GRANDCANYON 1244G  
**FEDDES LAKINA 310**  
 FEDDES LAKINA 954

LJC LANCER 806  
 LJC HANNAH 106  
 LCHMN GRANDCANYON 1244G  
 CTDB HOBOS GAL 803  
 BUF CRK CHF 824-1658  
 KRN REBA'S ROBIN  
 FED'S IMPRESSIVE 744  
 FED'S LAKINA 730

HB	GM	CED	BW	WW	YW	M	ME	HPG	CEM	ST	MB	YG	CW	REA	FAT
73	51	-1	-1.1	74	117	24	2	15	5	7	0.72	0.29	38	0.18	0.09
73%	15%	94%	46%	6%	6%	17%	55%	2%	33%	83%	8%	99%	9%	32%	99%

In 2014, Eagle was our pick at the Feddes and C-T Red Angus bull sale. His sire was their 2011 high-selling bull and his dam has produced many of their high sellers. Eagle is a maternal brother to Feddes Big Sky R9 and Feddes Big Horn Z150. His calves have tremendous growth with excellent maternal potential. We are excited to see his daughters down the road.



**DKK Grand Duke 351**

**H**

## DKK GRAND DUKE 351

BD	Cat.	%	Reg. #	Calving Ease		
2/4/13	1A	100%	1604798			
BW	WW	YW	ADG	WDA	Dam's Age	Dam's MPPA
87	800	1342	3.38	3.66	9	107.4

FRITZ JUSTICE 8013  
**C-T DKK DUKE 1100**  
 GMRA ANGIE ROSE 944

LCHMN GRANDCANYON 1244G  
**DKK AUBURN P35**  
 DKK AUBURN 607

VGW JUSTICE 614  
 FRITZ CHRIS 6047  
 MESSMER PACKER S008  
 GMRA ANGIE ROSE 533  
 BUF CRK CHF 824-1658  
 KRN REBA'S ROBIN  
 BUF CRK HOB0 1961  
 CK RAMBLIN RUDY 213

HB	GM	CED	BW	WW	YW	M	ME	HPG	CEM	ST	MB	YG	CW	REA	FAT
117	50	2	0.6	66	119	29	5	11	7	12	0.21	0.15	43	0.14	0.03
24%	30%	73%	76%	19%	5%	4%	77%	34%	15%	25%	87%	94%	4%	40%	89%

Duke was our pick at the 2014 Klompien Red Angus sale. His dam has an MPPA of 107.4 and he ranks in the top 4% for Milk EPD. Along with high growth EPDs, he produces some of the longest made calves in the Red Angus breed.



**I**

## DK TROJAN V4001

BD	Cat.	%	Reg. #	Calving Ease		
3/17/09	1A	100%	1319676			
BW	WW	YW	ADG	WDA	Dam's Age	Dam's MPPA
94	802	1310	3.18	3.63	5	108.0

RED YY RED KNIGHT 640F  
**HRR TROJAN 709**  
 MLK CRK SHEBA 056

DK HEAVENLY K777  
**DK MISS IMPACT P2001**  
 RPO IMPACT 2001

RED YY 23L TOPPER 408D  
 RED TOP GOLDIE 40U  
 BUF CRK BARNEY 3474  
 MLK CRK SHEBA 556  
 OSTER'S 2 HEAVEN  
 DK MISS HEAVENLY G077  
 HAMMEL IMPACT 6112  
 RPO NEVA 9568

HB	GM	CED	BW	WW	YW	M	ME	HPG	CEM	ST	MB	YG	CW	REA	FAT
70	48	0	2.2	84	111	5	0	7	1	9	0.67	0.16	38	0.02	0.02
69%	67%	87%	89%	3%	20%	97%	46%	88%	82%	54%	19%	90%	16%	61%	76%

DK Trojan V4001 is a bull we raised out of one of our top cows. He adds a lot of depth and performance in his calves. He is in the top 3% for WW EPD. He makes excellent deep-bodied females.



**J** **BMRA MR STATEMENT 998** [MAF OSF]

BD	Cat.	%	Reg. #	Calving Ease
4/1/09	1A	100%	1318125	
BW	WW	YW	ADG	WDA
85	835			
				Dam's Age
				7
				Dam's MPPA
				105.7

LJC LANCER 806  
**LJC MISSION STATEMENT P27**  
 LJC HANNAH 106  
 LCC SOUTHERN KING 1765K  
**SLOW MA868**  
 LTD 1357B-V1K

BECKTON LANCER T A664  
 LJC HB LIZZIE 606  
 HOLDEN HI HO 753  
 LJC KJ JAMIE 516  
 LCHMN GRANDCANYON 1244G  
 LCHMN LARKABA E1149  
 BKT VIKING 8968 XM  
 LTD CH 1191-BAND 1206

HB	GM	CED	BW	WW	YW	M	ME	HPG	CEM	ST	MB	YG	CW	REA	FAT
97	48	5	-2.3	48	97	26	7	13	3	12	0.42	-0.12	26	0.69	0.00
60%	86%	40%	36%	74%	39%	19%	82%	20%	65%	36%	55%	8%	40%	3%	40%

BMRA Mr Statement 998 was the high-selling Red Angus bull at teh 2010 Black Hills Stock Show. His daughters have been outstanding producers.

**K** **HLH PERFECT VISION 0238 2020**

BD	Cat.	%	Reg. #	Calving Ease
2/5/12	1A	100%	1520883	
BW	WW	YW	ADG	WDA
69	607	1261	4.08	3.14
				Dam's Age
				2
				Dam's MPPA
				101.6

RED CROWFOOT OLE'S OSCAR  
**RED SSS OLY 554T**  
 RED SSS GOLD EDGE 77R  
 BECKTON NEBULA P P707  
**HLH MS NEB 5045 0238**  
 HLH MS PONDER 3051 5045

MLK CRK CUB 722  
 RED CROWFOOT OMEGA 9179J  
 5L NORSEMAN KING 2291  
 RED SSS GOLD EDBE 714F  
 BECKTON NEBULA M045  
 BECKTON LANA M809 EP  
 DJH DIAMOND PONDEROSA 314  
 HLH MS JULES 1166 3051

HB	GM	CED	BW	WW	YW	M	ME	HPG	CEM	ST	MB	YG	CW	REA	FAT
145	53	4	-4.2	55	100	22	-3	10	4	15	0.79	0.19	24	-0.19	0.02
8%	9%	53%	15%	59%	35%	36%	35%	45%	48%	6%	12%	94%	46%	90%	82%

2020 was our pick at the 2013 Hall-Pokorny Sale in Nebraska. He has an impressive birth-to-yearling spread and ranks in the top 9% for GM index. He has sons in the sale that will make excellent heifer bulls.

**L** **DK TROJAN JR A425**

BD	Cat.	%	Reg. #	Calving Ease
3/17/13	1A	100%	1628493	
BW	WW	YW	ADG	WDA
96	749	1156	2.54	3.25
				Dam's Age
				9
				Dam's MPPA
				105.2

HRR TROJAN 709  
**DK TROJAN V4001**  
 DK MISS IMPACT P2001  
 BFCK CHEROKEE CNYN 4912  
**FCC TINA 425**  
 BJR TILLY 27C-392

RED YY RED KNIGHT 640F  
 MLK CRK SHEBA 056  
 DK HEAVENLY K777  
 RPO IMPACT 2001  
 BUF CRK CHF 824-1658  
 MRM 1431 8611 9109  
 RD KEYSTONE OF 3R  
 BJR TILLY 041-036

HB	GM	CED	BW	WW	YW	M	ME	HPG	CEM	ST	MB	YG	CW	REA	FAT
69	48	-1	2.5	77	103	14	1	8	-4	10	0.52	0.04	34	0.16	0.00
76%	72%	92%	95%	4%	20%	83%	45%	78%	98%	48%	28%	62%	14%	36%	50%

A well-balanced, thick-topped son of Trojan V4001. His full brother had our heaviest weaning weight this past year and sells as Lot 40.



**TRAXS Rushmore X103**

**M** **TRAXS RUSHMORE X103**

BD	Cat.	%	Reg. #	Calving Ease
2/17/10	PB	SM	3358754	
BW	WW	YW	ADG	WDA
				Dam's Age
				Dam's MPPA

THSF FREEDOM 300N  
**THSF FREEDOM 300N**  
 MISS TRAX U850  
 MULT SIRE  
**BBW 7104T**  
 BBW 4102P

BH TRACKER 998J  
 SAFN MISS ZING 02H  
 LCHMN BRIGHT LIGHT L122L  
 R549  
 MULT SIRE  
 BBW 1108

HB	GM	CED	BW	WW	YW	M	ME	HPG	CEM	ST	MB	YG	CW	REA	FAT
	51		-0.1	70	111	10					0.22	-0.48	35	1.39	-0.06
	20%		65%	20%	20%	89%					83%	1%	21%	1%	2%

ABS Simmental Sire.



## 1 DK NEW DIRECTION C32

BD	Cat.	%	Reg. #	Calving Ease		
1/31/15	1A	100%	3473569	★★		
BW	WW	YW	ADG	WDA	Dam's Age	Dam's MPPA
80	761	1256	3.08	3.20	2	104.8

ANDRAS IN FOCUS B152  
**ANDRAS NEW DIRECTION R240**  
 ANDRAS KURUBA B111  
 DK PACKER POWER Y224  
**DK MISS PACKER POWER A2**  
 DK MISS MULBERRY XMO2

MYTTY IN FOCUS  
 ANDRAS PINETA B91  
 MORGANS DIRECTION 111 9901  
 ANDRAS KURUBA B71  
 MESSMER PACKER S008  
 DK MISS LARAMIE V7224  
 FREYS MULBERRY 528U  
 MESSMER ZINA T102

HB	GM	CED	BW	WW	YW	M	ME	HPG	CEM	ST	MB	YG	CW	REA	FAT
96	52	3	0.0	81	129	24	1	11	5	9	0.61	0.13	47	0.37	0.04
61%	9%	64%	69%	1%	1%	15%	48%	30%	26%	80%	18%	92%	1%	11%	96%



## 2 DK NEW DIRECTION C387

BD	Cat.	%	Reg. #	Calving Ease		
2/6/15	1A	100%	3473564	★★★		
BW	WW	YW	ADG	WDA	Dam's Age	Dam's MPPA
71	735	1173	2.72	3.01	2	103.2

ANDRAS IN FOCUS B152  
**ANDRAS NEW DIRECTION R240**  
 ANDRAS KURUBA B111  
 DK TROJAN V4001  
**DK MISS TROJAN JR A4187**  
 FORSTER LAKETTE 4187

MYTTY IN FOCUS  
 ANDRAS PINETA B91  
 MORGANS DIRECTION 111 9901  
 ANDRAS KURUBA B71  
 HRR TROJAN 709  
 DK MISS IMPACT P2001  
 FORSTER HIGH BEAM 1030  
 FORSTER LAKETTE 1181

HB	GM	CED	BW	WW	YW	M	ME	HPG	CEM	ST	MB	YG	CW	REA	FAT
65	51	5	-1.5	72	109	21	-1	9	4	6	0.70	0.18	32	0.12	0.05
90%	19%	49%	43%	7%	11%	37%	32%	62%	45%	95%	10%	97%	15%	42%	98%



## 3 DK NEW DIRECTION C302

BD	Cat.	%	Reg. #	Calving Ease		
2/9/15	1A	100%	3473572	★★★		
BW	WW	YW	ADG	WDA	Dam's Age	Dam's MPPA
79	716	1216	3.11	3.06	2	102.0

ANDRAS IN FOCUS B152  
**ANDRAS NEW DIRECTION R240**  
 ANDRAS KURUBA B111  
 NS BRONSON X079  
**DK MISS BRONSON A9002**  
 DK MISS GEMSTONE V7002

MYTTY IN FOCUS  
 ANDRAS PINETA B91  
 MORGANS DIRECTION 111 9901  
 ANDRAS KURUBA B71  
 RED FINE LINE MULBERRY 26P  
 SRN CASSIE 3069  
 VRRR GEMSTONE S51  
 SRR KIMA 7002-816

HB	GM	CED	BW	WW	YW	M	ME	HPG	CEM	ST	MB	YG	CW	REA	FAT
95	50	4	-0.6	77	117	21	-2	10	8	8	0.46	0.18	38	0.19	0.05
63%	31%	57%	59%	3%	5%	33%	27%	42%	6%	82%	39%	97%	6%	29%	98%



## 4 DK NEXUS C331

BD	Cat.	%	Reg. #	Calving Ease		
2/10/15	1A	100%	3473574	★★		
BW	WW	YW	ADG	WDA	Dam's Age	Dam's MPPA
83	785	1320	3.33	3.35	2	106.0

LJC MISSION STATEMENT P27  
**SILVEIRAS MISSION NEXUS 1378**  
 SILVEIRAS DAORV 8399  
 NS BRONSON X079  
**DK MISS BRONSON A931**  
 DK MISS GRANDPRIX V431

LJC LANCER 806  
 LJC HANNAH 106  
 TROTTERS ROMEO 412  
 MOORE'S DAORV 5365  
 RED FINE LINE MULBERRY 26P  
 SRN CASSIE 3069  
 FREYS GRAND PRIX 525P  
 MLK CRK LAKOTA 431

HB	GM	CED	BW	WW	YW	M	ME	HPG	CEM	ST	MB	YG	CW	REA	FAT
128	51	4	-1.4	84	127	16	7	11	5	13	0.32	0.00	43	0.45	0.01
22%	16%	61%	43%	1%	1%	73%	93%	36%	35%	30%	73%	46%	3%	7%	72%





**Lot 5**

**5**

## DK NEXUS C024

BD	Cat.	%	Reg. #	Calving Ease		
2/13/15	1A	100%	3473704	★		
BW	WW	YW	ADG	WDA	Dam's Age	Dam's MPPA
90	701	1182	3.01	3.20	5	100.7

LJC MISSION STATEMENT P27  
**SILVEIRAS MISSION NEXUS 1378**  
 SILVEIRAS DAORV 8399

FREYS GRAND PRIX 525P  
**DK MISS GRANDPRIX X5224**  
 FISCHER MS NIBB 5224

LJC LANCER 806  
 LJC HANNAH 106  
 TROTTERS ROMEO 412  
 MOORE'S DAORV 5365  
 UBAR GRAND PRIX 102  
 FREYS MISSIE 513K  
 LCC MARKET PLACE 1270K  
 FISCHERS MS NIBB 224

HB	GM	CED	BW	WW	YW	M	ME	HPG	CEM	ST	MB	YG	CW	REA	FAT
81	50	2	-1.1	65	99	16	7	11	0	9	0.28	-0.12	27	0.39	-0.03
78%	36%	77%	48%	22%	26%	76%	94%	36%	93%	75%	79%	8%	27%	10%	11%



**Lot 6**

**6**

## DK NEXUS C088

BD	Cat.	%	Reg. #	Calving Ease		
2/13/15	1A	100%	3473512	★		
BW	WW	YW	ADG	WDA	Dam's Age	Dam's MPPA
86	623	1150	3.29	3.02	5	104.4

LJC MISSION STATEMENT P27  
**SILVEIRAS MISSION NEXUS 1378**  
 SILVEIRAS DAORV 8399

FREYS MULBERRY 528U  
**DK MISS MULBERRY X6188**  
 DK MISS CHATEAU S4188

LJC LANCER 806  
 LJC HANNAH 106  
 TROTTERS ROMEO 412  
 MOORE'S DAORV 5365  
 RED FINE LINE MULBERRY 26P  
 FREYS MISSIE 511S  
 HOLDEN CHATEAU 408  
 FORSTER SIERRA 4188

HB	GM	CED	BW	WW	YW	M	ME	HPG	CEM	ST	MB	YG	CW	REA	FAT
108	50	2	-0.8	59	96	22	7	10	4	12	0.42	-0.07	26	0.39	0.00
46%	28%	75%	54%	40%	32%	26%	94%	51%	38%	45%	50%	16%	30%	10%	51%



**Conquest, Sire of Lot 7**

**7**

## DK CONQUEST C39

BD	Cat.	%	Reg. #	Calving Ease		
2/13/15	1A	100%	3473581	★★★		
BW	WW	YW	ADG	WDA	Dam's Age	Dam's MPPA
76	660	1106	2.77	2.76	2	98.8

BECKTON JULIAN GG B571  
**HXC CONQUEST 4405P**  
 HXC ELLIE MAY MA638

DK TROJAN V4001  
**DK MISS TROJAN JR A739**  
 DK MISS GRAND PRIX T339

BKT JULIAN 7526 G  
 BKT MARTA 9A13 JL  
 BFCK CHEROKEE CNYN 4912  
 HXC 529E  
 HRR TROJAN 709  
 DK MISS IMPACT P2001  
 FREYS GRAND PRIX 525P  
 MLK CRK LIGHTNING 339

HB	GM	CED	BW	WW	YW	M	ME	HPG	CEM	ST	MB	YG	CW	REA	FAT
90	50	7	-1.8	69	98	18	3	3	0	11	0.56	0.06	25	0.12	0.01
69%	35%	25%	37%	12%	27%	61%	67%	99%	90%	61%	24%	70%	33%	42%	81%



**Lot 8**

**8**

## DK NEXUS C939

BD	Cat.	%	Reg. #	Calving Ease		
2/14/15	1A	100%	3473510	★		
BW	WW	YW	ADG	WDA	Dam's Age	Dam's MPPA
92	734	1325	3.69	3.53	6	106.2

LJC MISSION STATEMENT P27  
**SILVEIRAS MISSION NEXUS 1378**  
 SILVEIRAS DAORV 8399

VRRRA GEMSTONE S51  
**DK MISS GEMSTONE V739**  
 DK MISS GRAND PRIX T339

LJC LANCER 806  
 LJC HANNAH 106  
 TROTTERS ROMEO 412  
 MOORE'S DAORV 5365  
 HAYCOW LIMESTONE 403  
 MISS BHR THE DUKE 779  
 FREYS GRAND PRIX 525P  
 MLK CRK LIGHTNING 339

HB	GM	CED	BW	WW	YW	M	ME	HPG	CEM	ST	MB	YG	CW	REA	FAT
85	49	-1	1.6	79	121	22	6	10	0	11	0.27	-0.03	44	0.41	-0.02
74%	38%	94%	91%	2%	3%	25%	91%	56%	93%	60%	81%	28%	2%	9%	26%



## 9

### DK GAME FACE C40

BD	Cat.	%	Reg. #	Calving Ease
2/15/15	1A	100%	3473597	★★★
BW	WW	YW	ADG	WDA
74	612	1091	3.04	2.98
			Dam's Age	Dam's MPPA
			9	98.4

VGW GAME PLAN 816  
**SIX MILE GAME FACE 164Y**  
 RED SIX MILE LAKOTO 35W

LCC CHEYENNE B221L  
**MESSMER ANISE S040**  
 MESSMER ANISE 2358

VGW GAME PLAN 508  
 VGW TW DOLL 0270  
 RED LAZY MC SMASH 41N  
 RED STEWART LAKOTO 612S  
 BFCK CHEROKEE CNYN 4912  
 HXC 701G  
 HAMMEL CRICKET 100J  
 MESSMER ANISE 6910

HB	GM	CED	BW	WW	YW	M	ME	HPG	CEM	ST	MB	YG	CW	REA	FAT
99	48	4	-3.0	47	69	21	1	9	3	11	0.29	-0.04	7	0.00	-0.01
57%	68%	60%	20%	80%	82%	36%	45%	58%	59%	48%	78%	24%	84%	67%	35%



## 10

### DK NEW DIRECTION C399

BD	Cat.	%	Reg. #	Calving Ease
2/17/15	1A	100%	3473578	★★
BW	WW	YW	ADG	WDA
80	652	1151	3.10	2.85
			Dam's Age	Dam's MPPA
			2	98.4

ANDRAS IN FOCUS B152  
**ANDRAS NEW DIRECTION R240**  
 ANDRAS KURUBA B111

NS BRONSON X079  
**DK MISS BRONSON A8099**  
 DK MISS EXTRA U4099

MYTTY IN FOCUS  
 ANDRAS PINETA B91  
 MORGANS DIRECTION 111 9901  
 ANDRAS KURUBA B71  
 RED FINE LINE MULBERRY 26P  
 SRN CASSIE 3069  
 VGW EXTRA 541  
 FORSTER LORI 4099

HB	GM	CED	BW	WW	YW	M	ME	HPG	CEM	ST	MB	YG	CW	REA	FAT
96	50	4	-1.1	71	112	23	-2	11	6	9	0.53	0.14	35	0.21	0.04
62%	21%	54%	50%	9%	8%	21%	29%	36%	13%	81%	28%	93%	10%	27%	96%



## 11

### DK BRAVO C25

BD	Cat.	%	Reg. #	Calving Ease
2/23/15	1A	100%	3473534	★★
BW	WW	YW	ADG	WDA
79	672	1140	2.93	3.13
			Dam's Age	Dam's MPPA
			3	99.4

BIEBER ROOSEVELT W384  
**GMRA BRAVO 3276**  
 GMRA REBELLA 572

HRR TROJAN 709  
**DK MISS TROJAN Z425**  
 FCC TINA 425

BIEBER ROUGH RIDER 10712  
 BIEBER SHEBA 9602  
 BIEBER TOP MONEY 7948  
 GMRA REBELLA 249  
 RED YY RED KNIGHT 640F  
 MLK CRK SHEBA 056  
 BFCK CHEROKEE CNYN 4912  
 BJR TILLY 27C-392

HB	GM	CED	BW	WW	YW	M	ME	HPG	CEM	ST	MB	YG	CW	REA	FAT
87	48	2	1.1	65	93	19	1	10	0	11	0.44	0.01	27	0.22	0.01
72%	68%	75%	86%	21%	37%	56%	46%	43%	93%	56%	43%	46%	28%	24%	71%

## 12

### DK STATEMENT C63

BD	Cat.	%	Reg. #	Calving Ease
2/25/15	1A	100%	3473563	★★
BW	WW	YW	ADG	WDA
88	709	1145	2.71	2.94
			Dam's Age	Dam's MPPA
			2	101.6

LJC MISSION STATEMENT P27  
**BMRA MR STATEMENT 998**  
 SLOV MA868

HRR TROJAN 709  
**DK MISS TROJAN A463**  
 MLK CRK NUGGET 463

LJC LANCER 806  
 LJC HANNAH 106  
 LCC SOUTHERN KING 1765K  
 LTD 1357B-V1K  
 RED YY RED KNIGHT 640F  
 MLK CRK SHEBA 056  
 VGW TITLEIST 1106  
 MLK CRK NUGGET 077

HB	GM	CED	BW	WW	YW	M	ME	HPG	CEM	ST	MB	YG	CW	REA	FAT
93	50	2	0.4	59	95	20	5	9	3	10	0.51	-0.05	27	0.39	0.00
65%	31%	79%	75%	43%	33%	40%	81%	61%	52%	62%	32%	21%	26%	10%	63%

## 13

### DK BRAVO C297

BD	Cat.	%	Reg. #	Calving Ease
2/28/15	1A	100%	3473693	★★
BW	WW	YW	ADG	WDA
80	681	1193	3.19	3.10
			Dam's Age	Dam's MPPA
			3	99.4

BIEBER ROOSEVELT W384  
**GMRA BRAVO 3276**  
 GMRA REBELLA 572

NS BRONSON X079  
**DK MISS BRONSON Z97**  
 DK MISS EXTRA V7

BIEBER ROUGH RIDER 10712  
 BIEBER SHEBA 9602  
 BIEBER TOP MONEY 7948  
 GMRA REBELLA 249  
 RED FINE LINE MULBERRY 26P  
 SRN CASSIE 3069  
 VGW EXTRA 541  
 DK MISS HEAVENLY P777

HB	GM	CED	BW	WW	YW	M	ME	HPG	CEM	ST	MB	YG	CW	REA	FAT
131	49	6	-1.5	65	96	17	1	11	8	13	0.29	0.04	24	0.25	0.03
19%	55%	37%	43%	22%	31%	66%	48%	28%	6%	29%	77%	66%	35%	21%	91%



**Lot 14**

## 14 DK BRAVO C79

BD	Cat.	%	Reg. #	Calving Ease
3/1/15	1B	99.9%	3473553	★
BW	WW	YW	ADG	WDA
93	601	1218	3.84	3.02
				Dam's Age
				3
				Dam's MPPA
				90.3

BIEBER ROOSEVELT W384  
**GMRA BRAVO 3276**  
 GMRA REBELLA 572  
 HRR TROJAN 709  
**DK MISS TROJAN Z379**  
 DK MISS HEAVENLY N79

BIEBER ROUGH RIDER 10712  
 BIEBER SHEBA 9602  
 BIEBER TOP MONEY 7948  
 GMRA REBELLA 249  
 RED YY RED KNIGHT 640F  
 MLK CRK SHEBA 056  
 DK HEAVENLY K777  
 SK MISS KING RED F179

HB	GM	CED	BW	WW	YW	M	ME	HPG	CEM	ST	MB	YG	CW	REA	FAT
86	49	1	2.2	67	108	15	1	10	2	10	0.44	0.09	38	0.24	0.02
73%	46%	82%	95%	17%	12%	83%	45%	56%	68%	69%	43%	85%	7%	22%	89%

## 15 DK EAGLE C979

BD	Cat.	%	Reg. #	Calving Ease
3/2/15	1B	99.9%	3473511	★★★
BW	WW	YW	ADG	WDA
73	601	1107	3.16	2.97
				Dam's Age
				6
				Dam's MPPA
				97.7

C-T GRAND STATEMENT 1025  
**FEDDES EAGLE A202**  
 FEDDES LAKINA 310

BIEBER MAKIN HAY 9913  
**DK MISS MAKIN HAY V779**  
 DK MISS GRAND PRIX T579

LJC MISSION STATEMENT P27  
 C-T MISS PAN 0760  
 LCHMN GRANDCANYON 1244G  
 FEDDES LAKINA 954  
 BIEBER MAKE MIMI 7249  
 BIEBER ADELLE 8958  
 FREYS GRAND PRIX 525P  
 DK MISS CHEROKEE R379

HB	GM	CED	BW	WW	YW	M	ME	HPG	CEM	ST	MB	YG	CW	REA	FAT
85	50	5	-3.0	60	95	21	5	11	2	8	0.44	0.05	22	0.31	0.04
74%	23%	49%	19%	39%	33%	38%	82%	23%	71%	83%	43%	66%	42%	16%	96%

## 16 DK BRAVO C44

BD	Cat.	%	Reg. #	Calving Ease
3/2/15	1A	100%	3473691	★★
BW	WW	YW	ADG	WDA
80	596	1104	3.15	2.81
				Dam's Age
				3
				Dam's MPPA
				98.3

BIEBER ROOSEVELT W384  
**GMRA BRAVO 3276**  
 GMRA REBELLA 572  
 NS BRONSON X079  
**DK MISS BRONSON Z224**  
 DK MISS LARAMIE V7224

BIEBER ROUGH RIDER 10712  
 BIEBER SHEBA 9602  
 BIEBER TOP MONEY 7948  
 GMRA REBELLA 249  
 RED FINE LINE MULBERRY 26P  
 SRN CASSIE 3069  
 GMRA LARAMIE 5110  
 DK MISS GRAND PRIX T5224

HB	GM	CED	BW	WW	YW	M	ME	HPG	CEM	ST	MB	YG	CW	REA	FAT
128	48	3	-0.9	61	87	20	3	12	6	14	0.29	0.02	20	0.25	0.02
22%	71%	70%	52%	35%	49%	42%	63%	16%	22%	16%	77%	51%	48%	21%	89%

## 17 DK BRAVO C31

BD	Cat.	%	Reg. #	Calving Ease
3/4/15	1A	100%	3473548	★
BW	WW	YW	ADG	WDA
98	670	1294	3.88	3.28
				Dam's Age
				3
				Dam's MPPA
				98.9

BIEBER ROOSEVELT W384  
**GMRA BRAVO 3276**  
 GMRA REBELLA 572

NS BRONSON X079  
**DK MISS BRONSON Z931**  
 DK MISS GRANDPRIX V431

BIEBER ROUGH RIDER 10712  
 BIEBER SHEBA 9602  
 BIEBER TOP MONEY 7948  
 GMRA REBELLA 249  
 RED FINE LINE MULBERRY 26P  
 SRN CASSIE 3069  
 FREYS GRAND PRIX 525P  
 MLK CRK LAKOTA 431

HB	GM	CED	BW	WW	YW	M	ME	HPG	CEM	ST	MB	YG	CW	REA	FAT
115	48	1	2.4	79	120	16	2	12	6	12	0.25	0.14	45	0.19	0.03
36%	64%	85%	96%	2%	3%	74%	57%	18%	17%	36%	84%	93%	2%	29%	90%

## 18 DK OLY C343

BD	Cat.	%	Reg. #	Calving Ease
3/7/15	1A	100%	3473579	★★★
BW	WW	YW	ADG	WDA
72	676	1287	3.80	3.19
				Dam's Age
				2
				Dam's MPPA
				99.6

RED SSS OLY 554T  
**HLH PERFECT VISION 0238 2020**  
 HLH MS NEB 5045 0238

NS BRONSON X079  
**DK MISS BRONSON A843**  
 DK MISS GRAND PRIX U343

RED GROWFOOT OLE'S OSCAR  
 RED SSS GOLD EDGE 77R  
 BECKTON NEBULA P P707  
 HLH MS PONDER 3051 5045  
 RED FINE LINE MULBERRY 26P  
 SRN CASSIE 3069  
 FREYS GRAND PRIX 525P  
 MLK CRK HMA MLTA 343

HB	GM	CED	BW	WW	YW	M	ME	HPG	CEM	ST	MB	YG	CW	REA	FAT
142	52	4	-2.8	69	115	14	0	10	6	14	0.49	0.14	35	0.02	0.02
11%	8%	60%	22%	13%	6%	85%	39%	46%	17%	16%	34%	93%	11%	63%	85%



**LJC Mission Statement P27,  
 Maternal Great Grand sire**

## 19 DK BRAVO C237

BD	Cat.	%	Reg. #	Calving Ease
3/8/15	1A	100%	3473539	★★
BW	WW	YW	ADG	WDA
85	675	1203	3.29	3.13
				Dam's Age
				3
				Dam's MPPA
				98.3

BIEBER ROOSEVELT W384  
**GMRA BRAVO 3276**  
 GMRA REBELLA 572

BMRA MR STATEMENT 998  
**DK MISS STATEMENT Z717**  
 DK MISS EXTRA T317

BIEBER ROUGH RIDER 10712  
 BIEBER SHEBA 9602  
 BIEBER TOP MONEY 7948  
 GMRA REBELLA 249  
 LJC MISSION STATEMENT P27  
 SLOV MA868  
 VGW EXTRA 541  
 MLK CRK LAKOTA 317

HB	GM	CED	BW	WW	YW	M	ME	HPG	CEM	ST	MB	YG	CW	REA	FAT
118	49	5	-0.5	60	98	22	3	12	5	12	0.34	0.02	28	0.29	0.02
32%	39%	42%	61%	37%	26%	28%	70%	22%	29%	41%	69%	51%	24%	17%	82%



## 20 DK BRAVO C 288

BD	Cat.	%	Reg. #	Calving Ease		
3/9/15	1A	100%	3473542	★		
BW	WW	YW	ADG	WDA	Dam's Age	Dam's MPPA
88	679	1222	3.38	3.17	3	101.1

BIEBER ROOSEVELT W384  
**GMRA BRAVO 3276**  
 GMRA REBELLA 572  
 BMRA MR STATEMENT 998  
**DK MISS STATEMENT Z7188**  
 DK MISS EXTRA T4188

BIEBER ROUGH RIDER 10712  
 BIEBER SHEBA 9602  
 BIEBER TOP MONEY 7948  
 GMRA REBELLA 249  
 LJC MISSION STATEMENT P27  
 SLOV MA868  
 VGW EXTRA 541  
 FORSTER SIERRA 4188

HB	GM	CED	BW	WW	YW	M	ME	HPG	CEM	ST	MB	YG	CW	REA	FAT
108	49	4	0.4	64	104	22	3	11	5	11	0.32	0.04	33	0.28	0.01
45%	42%	53%	77%	25%	16%	27%	63%	23%	27%	56%	72%	66%	13%	19%	82%

## 21 DK BRAVO C257

BD	Cat.	%	Reg. #	Calving Ease		
3/9/15	1B	99.9%	3473552	★★		
BW	WW	YW	ADG	WDA	Dam's Age	Dam's MPPA
83	673	1184	3.19	3.11	3	101.7

BIEBER ROOSEVELT W384  
**GMRA BRAVO 3276**  
 GMRA REBELLA 572  
 DK MISSION STATEMENT X820  
**DK MISS STATEMENT Z017**  
 DK MISS TROJAN X317

BIEBER ROUGH RIDER 10712  
 BIEBER SHEBA 9602  
 BIEBER TOP MONEY 7948  
 GMRA REBELLA 249  
 LJC MISSION STATEMENT P27  
 DK MISS CHEYENNE U520  
 HRR TROJAN 709  
 MLK CRK LAKOTA 317

HB	GM	CED	BW	WW	YW	M	ME	HPG	CEM	ST	MB	YG	CW	REA	FAT
118	49	4	0.4	66	102	18	3	11	4	12	0.49	0.02	31	0.31	0.02
33%	37%	53%	75%	19%	20%	59%	71%	23%	45%	37%	35%	56%	17%	15%	82%

## 22 DK DUKE C88

BD	Cat.	%	Reg. #	Calving Ease		
3/10/15	1A	100%	3473521	★		
BW	WW	YW	ADG	WDA	Dam's Age	Dam's MPPA
95	604	1147	3.39	3.04	5	100.7

C-T DKK DUKE 1100  
**DKK GRAND DUKE 351**  
 DKK AUBURN P35  
 VGW EXTRA 541  
**DK MISS EXTRA X4188**  
 FORSTER SIERRA 4188

FRITZ JUSTICE 8013  
 GMRA ANGIE ROSE 944  
 LCHMN GRANDCANYON 1244G  
 DKK AUBURN 607  
 RED BRONZE 386  
 VGW MR-HAZY 0051  
 FORSTER HIGH BEAM 1030  
 RRM-592-9038

HB	GM	CED	BW	WW	YW	M	ME	HPG	CEM	ST	MB	YG	CW	REA	FAT
101	49	2	1.5	59	104	22	4	9	7	11	0.25	0.06	35	0.12	0.00
55%	49%	79%	90%	42%	17%	25%	78%	66%	11%	55%	86%	70%	11%	40%	59%

## 23 DK JUNIOR C021

BD	Cat.	%	Reg. #	Calving Ease		
3/13/15	1A	100%	3473523	★		
BW	WW	YW	ADG	WDA	Dam's Age	Dam's MPPA
96	781	1276	3.09	3.55	5	101.5

RED FINE LINE MULBERRY 26P  
**NS BRONSON X079**  
 SRN CASSIE 3069  
 HRR TROJAN 709  
**DK MISS TROJAN X421**  
 MLK CRK LAKOTA 421

RED COMPASS MULBERRY 449M  
 RED DUS FAYETTE 8G  
 HOLDEN HI ROLLER 8106  
 RED CASSIE 6085  
 RED YY RED KNIGHT 640F  
 MLK CRK SHEBA 056  
 MLK CRK FOUNDATION 110  
 MLK CRK LAKOTA 161

HB	GM	CED	BW	WW	YW	M	ME	HPG	CEM	ST	MB	YG	CW	REA	FAT
129	48	-1	2.0	90	127	4	3	10	8	14	0.36	0.14	48	0.12	0.01
21%	58%	93%	93%	1%	1%	99%	68%	57%	5%	17%	63%	94%	1%	42%	79%

## 24 DK BRONSON C231

BD	Cat.	%	Reg. #	Calving Ease		
3/13/15	1A	100%	3473537	★		
BW	WW	YW	ADG	WDA	Dam's Age	Dam's MPPA
89	764	1206	2.75	3.27	3	105.1

RED FINE LINE MULBERRY 26P  
**NS BRONSON X079**  
 SRN CASSIE 3069  
 BMRA MR STATEMENT 998  
**DK MISS STATEMENT Z631**  
 DK MISS GRAND PRIX S431

RED COMPASS MULBERRY 449M  
 RED DUS FAYETTE 8G  
 HOLDEN HI ROLLER 8106  
 RED CASSIE 6085  
 LJC MISSION STATEMENT P27  
 SLOV MA868  
 FREYS GRAND PRIX 525P  
 MLK CRK LAKOTA 431

HB	GM	CED	BW	WW	YW	M	ME	HPG	CEM	ST	MB	YG	CW	REA	FAT
123	48	2	-0.2	78	109	12	3	11	8	13	0.31	0.05	34	0.32	0.02
27%	58%	78%	67%	2%	11%	94%	68%	25%	7%	32%	73%	66%	12%	14%	89%

## 25 DK EAGLE C83

BD	Cat.	%	Reg. #	Calving Ease		
3/14/15	1A	100%	3473517	★		
BW	WW	YW	ADG	WDA	Dam's Age	Dam's MPPA
105	760	1369	3.80	3.70	5	102.0

C-T GRAND STATEMENT 1025  
**FEDDES EAGLE A202**  
 FEDDES LAKINA 310  
 LELAND RIGHT DIRECTION 8242U  
**DK MISS RIGHT TIME X843**  
 DK MISS GRAND PRIX U343

LJC MISSION STATEMENT P27  
 C-T MISS PAN 0760  
 LCHMN GRANDCANYON 1244G  
 FEDDES LAKINA 954  
 5L RED DIRECTION 691-6046  
 LELAND GRAND CANYON 3068  
 FREYS GRAND PRIX 525P  
 MLK CRK HMA MLTA 343

HB	GM	CED	BW	WW	YW	M	ME	HPG	CEM	ST	MB	YG	CW	REA	FAT
78	50	-3	2.9	86	140	16	5	13	5	8	0.53	0.25	57	0.17	0.04
81%	21%	99%	98%	1%	1%	78%	83%	6%	25%	85%	28%	99%	1%	33%	97%

## 26 DK 25 C030

BD	Cat.	%	Reg. #	Calving Ease		
3/14/15	1A	100%	3473518	★		
BW	WW	YW	ADG	WDA	Dam's Age	Dam's MPPA
90	770	1190	2.62	3.36	5	106.6

DK TROJAN V4001  
**DK TROJAN JR A425**  
 FCC TINA 425  
 DK CHEYENNE U392  
**DK MISS CHEYENNE X830**  
 DK MISS GRANDPRIX U530

HRR TROJAN 709  
 DK MISS IMPACT P2001  
 BFCK CHEROKEE CNYN 4912  
 BJR TILLY 27C-392  
 PRAIRIE PRIDE CHEYENNE 608  
 DK MISS HEAVENLY N92  
 FREYS GRAND PRIX 525P  
 VGW 286-CRISTINA 0530

HB	GM	CED	BW	WW	YW	M	ME	HPG	CEM	ST	MB	YG	CW	REA	FAT
76	48	1	1.7	80	111	12	3	8	1	9	0.44	0.06	38	0.14	0.00
83%	61%	87%	92%	1%	9%	94%	67%	78%	87%	74%	43%	70%	7%	38%	54%



**Lot 27**

## 27 DK BRONSON C977

BD	Cat.	%	Reg. #	Calving Ease		
3/15/15	1A	100%	3473707	★★		
BW	WW	YW	ADG	WDA	Dam's Age	Dam's MPPA
80	760	1370	3.81	3.73	6	102.3

RED FINE LINE MULBERRY 26P  
**NS BRONSON X079**  
 SRN CASSIE 3069  
 GMRA LARAMIE 5110  
**DK MISS LARAMIE V77**  
 DK MISS EXTRA T777

RED COMPASS MULBERRY 449M  
 RED DUS FAYETTE 8G  
 HOLDEN HI ROLLER 8106  
 RED CASSIE 6085  
 LCC CHEYENNE B221L  
 GMRA LAKOTA 341  
 VGW EXTRA 541  
 DK MISS HEAVENLY G077

HB	GM	CED	BW	WW	YW	M	ME	HPG	CEM	ST	MB	YG	CW	REA	FAT
149	50	5	-3.6	77	114	14	4	10	11	14	0.32	0.10	32	0.13	0.02
8%	22%	47%	14%	3%	6%	87%	78%	44%	1%	18%	71%	87%	15%	39%	88%



**C-T Grand Statement 1025,  
Paternal Grand sire**

## 28 DK EAGLE C041

BD	Cat.	%	Reg. #	Calving Ease		
3/16/15	1A	100%	3473702	★		
BW	WW	YW	ADG	WDA	Dam's Age	Dam's MPPA
95	699	1199	3.12	3.29	5	101.5

C-T GRAND STATEMENT 1025  
**FEDDES EAGLE A202**  
 FEDES LAKINA 310  
 DK CHEYENNE U392  
**DK MISS CHEYENNE X741**  
 DK MISS GRAND PRIX S941

LJC MISSION STATEMENT P27  
 C-T MISS PAN 0760  
 LCHMN GRANDCANYON 1244G  
 FEDES LAKINA 954  
 PRAIRIE PRIDE CHEYENNE 608  
 DK MISS HEAVENLY N92  
 FREYS GRAND PRIX 525P  
 DK MISS HEAVENLY I41

HB	GM	CED	BW	WW	YW	M	ME	HPG	CEM	ST	MB	YG	CW	REA	FAT
75	50	-1	1.2	76	119	15	3	12	5	8	0.54	0.20	43	0.18	0.05
83%	32%	95%	86%	3%	4%	82%	70%	15%	26%	88%	27%	98%	3%	32%	98%



**Lot 29**

## 29 DK BRONSON C217

BD	Cat.	%	Reg. #	Calving Ease		
3/18/15	1A	100%	3473533	★		
BW	WW	YW	ADG	WDA	Dam's Age	Dam's MPPA
96	728	1257	3.30	3.41	4	100.7

RED FINE LINE MULBERRY 26P  
**NS BRONSON X079**  
 SRN CASSIE 3069  
 HRR TROJAN 709  
**DK MISS TROJAN Y317**  
 MLK CRK LAKOTA 317

RED COMPASS MULBERRY 449M  
 RED DUS FAYETTE 8G  
 HOLDEN HI ROLLER 8106  
 RED CASSIE 6085  
 RED YY RED KNIGHT 640F  
 MLK CRK SHEBA 056  
 MLK CRK FOUNDATION 110  
 MLK CRK LAKOTA 659

HB	GM	CED	BW	WW	YW	M	ME	HPG	CEM	ST	MB	YG	CW	REA	FAT
126	49	1	1.0	82	118	6	2	9	8	13	0.38	0.12	41	0.14	0.02
24%	56%	86%	85%	1%	4%	99%	60%	74%	4%	23%	57%	92%	4%	38%	85%

## 30 DK DUKE C240

BD	Cat.	%	Reg. #	Calving Ease		
3/18/15	1A	100%	3473536	★★		
BW	WW	YW	ADG	WDA	Dam's Age	Dam's MPPA
79	750	1296	3.40	3.44	3	104.0

C-T DKK DUKE 1100  
**DKK GRAND DUKE 351**  
 DKK AUBURN P35  
 NS BRONSON X079  
**DK MISS BRONSON Z40**  
 MESSMER ANISE S040

FRITZ JUSTICE 8013  
 GMRA ANGIE ROSE 944  
 LCHMN GRANDCANYON 1244G  
 DKK AUBURN 607  
 RED FINE LINE MULBERRY 26P  
 SRN CASSIE 3069  
 LCC CHEYENNE B221L  
 MESSMER ANISE 2358

HB	GM	CED	BW	WW	YW	M	ME	HPG	CEM	ST	MB	YG	CW	REA	FAT
139	50	5	-2.1	73	116	23	4	10	8	14	0.28	0.10	36	0.17	0.02
13%	23%	50%	32%	6%	5%	23%	74%	39%	5%	22%	79%	87%	9%	33%	87%

## 31 DK EAGLE C97

BD	Cat.	%	Reg. #	Calving Ease		
3/19/15	1A	100%	3473711	★★		
BW	WW	YW	ADG	WDA	Dam's Age	Dam's MPPA
79	694	1102	2.55	3.11	6	97.7

C-T GRAND STATEMENT 1025  
**FEDDES EAGLE A202**  
 FEDES LAKINA 310  
 VGW EXTRA 541  
**DK MISS EXTRA V7**  
 DK MISS HEAVENLY P777

LJC MISSION STATEMENT P27  
 C-T MISS PAN 0760  
 LCHMN GRANDCANYON 1244G  
 FEDES LAKINA 954  
 RED BRONZE 386  
 VGW MR-HAZY 0051  
 DK HEAVENLY K777  
 DK MISS HEAVENLY G077

HB	GM	CED	BW	WW	YW	M	ME	HPG	CEM	ST	MB	YG	CW	REA	FAT
90	50	3	-2.2	59	90	20	2	11	7	9	0.59	0.10	20	0.16	0.05
69%	32%	67%	31%	42%	44%	46%	60%	25%	12%	81%	20%	87%	49%	33%	97%



**Lot 32**

## 32

### DK EAGLE C177

BD	Cat.	%	Reg. #	Calving Ease
3/20/15	1A	100%	3473700	★★
BW	WW	YW	ADG	WDA
87	754	1242	3.04	3.41
				Dam's Age
				4
				Dam's MPPA
				108.7

C-T GRAND STATEMENT 1025  
**FEDDES EAGLE A202**  
 FEDDES LAKINA 310

HRR TROJAN 709  
**DK MISS TROJAN Y677**  
 DK MISS GRAND PRIX S777

LJC MISSION STATEMENT P27  
 C-T MISS PAN 0760  
 LCHMN GRANDCANYON 1244G  
 FEDDES LAKINA 954  
 RED YY RED KNIGHT 640F  
 MLK CRK SHEBA 056  
 FREYS GRAND PRIX 525P  
 DK MISS HEAVENLY G077

HB	GM	CED	BW	WW	YW	M	ME	HPG	CEM	ST	MB	YG	CW	REA	FAT
81	50	0	-0.4	76	112	16	2	11	4	8	0.61	0.15	36	0.16	0.04
78%	27%	91%	63%	4%	8%	76%	57%	30%	44%	82%	18%	95%	9%	35%	96%



**Lot 33**

## 33

### DK BRONSON C541

BD	Cat.	%	Reg. #	Calving Ease
3/20/15	1A	100%	3473719	★★
BW	WW	YW	ADG	WDA
88	748	1262	3.19	3.46
				Dam's Age
				10
				Dam's MPPA
				99.1

RED FINE LINE MULBERRY 26P  
**NS BRONSON X079**  
 SRN CASSIE 3069

DK HEAVENLY K777  
**DK MISS HEAVENLY R941**  
 DK MISS HEAVENLY I41

RED COMPASS MULBERRY 449M  
 RED DUS FAYETTE 8G  
 HOLDEN HI ROLLER 8106  
 RED CASSIE 6085  
 OSTER'S 2 HEAVEN  
 DK MISS HEAVENLY G077  
 DK HEAVENLY JR E189  
 DK MISS SUPER EXPOSURE

HB	GM	CED	BW	WW	YW	M	ME	HPG	CEM	ST	MB	YG	CW	REA	FAT
116	50	4	-1.2	76	109	9	1	9	9	11	0.50	0.11	32	0.22	0.03
35%	35%	59%	48%	4%	11%	97%	52%	64%	2%	55%	33%	87%	15%	25%	94%

## 34 DK EAGLE C720

BD	Cat.	%	Reg. #	Calving Ease
3/20/15	1B	99.6%	3473588	★★★
BW	WW	YW	ADG	WDA
68	597	1081	3.02	2.94
				Dam's Age
				8
				Dam's MPPA
				88.5

C-T GRAND STATEMENT 1025  
**FEDDES EAGLE A202**  
 FEDDES LAKINA 310

FREYS GRAND PRIX 525P  
**DK MISS GRAND PRIX T520**  
 VGW NC-RED P0520

LJC MISSION STATEMENT P27  
 C-T MISS PAN 0760  
 LCHMN GRANDCANYON 1244G  
 FEDDES LAKINA 954

UBAR GRAND PRIX 102  
 FREYS MISSIE 513K  
 GEFB NORTHERN CANYON 2328  
 VGW LJ-RED P9809

HB	GM	CED	BW	WW	YW	M	ME	HPG	CEM	ST	MB	YG	CW	REA	FAT
79	51	6	-4.4	56	93	13	3	14	4	6	0.51	0.10	19	0.07	0.03
80%	13%	40%	8%	52%	36%	89%	68%	3%	37%	95%	30%	85%	51%	51%	94%



**Lot 36**

## 35

### DK BRAVO C279

BD	Cat.	%	Reg. #	Calving Ease
3/21/15	1B	99.9%	3473524	★★★
BW	WW	YW	ADG	WDA
79	635	1164	3.29	3.10
				Dam's Age
				4
				Dam's MPPA
				94.7

BIEBER ROOSEVELT W384  
**GMRA BRAVO 3276**  
 GMRA REBELLA 572

HRR TROJAN 709  
**DK MISS TROJAN Y579**  
 DK MISS CHEROKEE R379

BIEBER ROUGH RIDER 10712  
 BIEBER SHEBA 9602  
 BIEBER TOP MONEY 7948  
 GMRA REBELLA 249

RED YY RED KNIGHT 640F  
 MLK CRK SHEBA 056  
 BFCK CHEROKEE CNYN 4912  
 DK MISS HEAVENLY N79

HB	GM	CED	BW	WW	YW	M	ME	HPG	CEM	ST	MB	YG	CW	REA	FAT
102	49	5	-1.1	63	95	17	0	10	1	11	0.47	0.04	25	0.31	0.03
54%	39%	46%	50%	28%	32%	69%	44%	45%	88%	52%	38%	61%	33%	15%	93%

## 36

### DK BRONSON C925

BD	Cat.	%	Reg. #	Calving Ease
3/22/15	1A	100%	3473509	★
BW	WW	YW	ADG	WDA
89	778	1275	3.10	3.58
				Dam's Age
				6
				Dam's MPPA
				105.4

RED FINE LINE MULBERRY 26P  
**NS BRONSON X079**  
 SRN CASSIE 3069

VGW EXTRA 541  
**DK MISS EXTRA V425**  
 FCC TINA 425

RED COMPASS MULBERRY 449M  
 RED DUS FAYETTE 8G  
 HOLDEN HI ROLLER 8106  
 RED CASSIE 6085

RED BRONZE 386  
 VGW MR-HAZY 0051  
 BFCK CHEROKEE CNYN 4912  
 BJR TILLY 27C-392

HB	GM	CED	BW	WW	YW	M	ME	HPG	CEM	ST	MB	YG	CW	REA	FAT
127	49	3	-0.9	79	112	14	1	10	8	13	0.23	-0.01	35	0.36	0.00
22%	46%	65%	54%	2%	8%	87%	53%	42%	7%	30%	87%	36%	10%	12%	64%



**Lot 38**

## 37 DK DUKE C241

BD	Cat.	%	Reg. #	Calving Ease
3/23/15	1A	100%	3473698	★
BW	WW	YW	ADG	WDA
98	695	1156	2.88	3.17
				Dam's Age
				4
				Dam's MPPA
				98.6

C-T DKK DUKE 1100  
**DKK GRAND DUKE 351**  
 DKK AUBURN P35

DK CHEYENNE U392  
**DK MISS CHEYENNE Y9041**  
 DK MISS TROJAN V5041

FRITZ JUSTICE 8013  
 GMRA ANGIE ROSE 944  
 LCHMN GRANDCANYON 1244G  
 DKK AUBURN 607  
 PRAIRIE PRIDE CHEYENNE 608  
 DK MISS HEAVENLY N92  
 HRR TROJAN 709  
 DK MISS CHEROKEE R41

HB	GM	CED	BW	WW	YW	M	ME	HPG	CEM	ST	MB	YG	CW	REA	FAT
94	49	0	2.6	72	114	18	3	9	4	11	0.44	0.15	42	0.13	0.02
64%	52%	91%	97%	8%	7%	61%	72%	58%	40%	55%	45%	95%	4%	40%	90%

## 38 DK BRONSON C224

BD	Cat.	%	Reg. #	Calving Ease
3/23/15	1A	100%	3473705	★★★
BW	WW	YW	ADG	WDA
72	645	1059	2.59	2.97
				Dam's Age
				6
				Dam's MPPA
				105.4

RED FINE LINE MULBERRY 26P  
**NS BRONSON X079**  
 SRN CASSIE 3069

GMRA LARAMIE 5110  
**DK MISS LARAMIE V7224**  
 DK MISS GRAND PRIX T5224

RED COMPASS MULBERRY 449M  
 RED DUS FAYETTE 8G  
 HOLDEN HI ROLLER 8106  
 RED CASSIE 6085

LCC CHEYENNE B221L  
 GMRA LAKOTA 341  
 FREYS GRAND PRIX 525P  
 FISCHER MS NIBB 5224

HB	GM	CED	BW	WW	YW	M	ME	HPG	CEM	ST	MB	YG	CW	REA	FAT
121	48	0	-2.4	63	82	16	5	11	7	14	0.31	-0.02	15	0.22	0.01
29%	71%	88%	26%	28%	59%	75%	81%	28%	12%	20%	73%	36%	65%	26%	81%

## 39 DK 25 C6001

BD	Cat.	%	Reg. #	Calving Ease
3/27/15	1A	100%	3473593	★
BW	WW	YW	ADG	WDA
96	673	1148	2.96	3.18
				Dam's Age
				9
				Dam's MPPA
				99.2

DK TROJAN V4001  
**DK TROJAN JR A425**  
 FCC TINA 425

FREYS GRAND PRIX 525P  
**DK MISS GRAND PRIX S2001**  
 RPO IMPACT 2001

HRR TROJAN 709  
 DK MISS IMPACT P2001  
 BFCK CHEROKEE CNYN 4912  
 BJR TILLY 27C-392  
 UBAR GRAND PRIX 102  
 FREYS MISSIE 513K  
 HAMMEL IMPACT 6112  
 RPO NEVA 9568

HB	GM	CED	BW	WW	YW	M	ME	HPG	CEM	ST	MB	YG	CW	REA	FAT
48	47	0	1.4	63	87	14	2	9	-4	8	0.32	0.00	24	0.09	-0.01
96%	88%	92%	90%	27%	48%	88%	56%	62%	99%	84%	71%	46%	37%	47%	40%



**Lot 40**

## 40 DK JUNIOR C425

BD	Cat.	%	Reg. #	Calving Ease
3/28/15	1A	100%	3473600	★
BW	WW	YW	ADG	WDA
95	857	1289	2.68	3.66
				Dam's Age
				11
				Dam's MPPA
				105.2

HRR TROJAN 709  
**DK TROJAN V4001**  
 DK MISS IMPACT P2001  
 BFCK CHEROKEE CNYN 4912  
**FCC TINA 425**  
 BJR TILLY 27C-392

RED YY RED KNIGHT 640F  
 MLK CRK SHEBA 056  
 DK HEAVENLY K777  
 RPO IMPACT 2001  
 BUF CRK CHF 824-1658  
 MRM 1431 8611 9109  
 RD KEYSTONE OF 3R  
 BJR TILLY 041-036

HB	GM	CED	BW	WW	YW	M	ME	HPG	CEM	ST	MB	YG	CW	REA	FAT
65	48	0	2.5	85	114	12	1	8	-3	9	0.52	0.05	40	0.17	0.00
90%	65%	93%	96%	1%	7%	92%	49%	82%	99%	74%	28%	70%	5%	33%	49%



**Lot 41**

## 41 DK DUKE C120

BD	Cat.	%	Reg. #	Calving Ease
3/28/15	1A	100%	3473696	★
BW	WW	YW	ADG	WDA
93	732	1304	3.57	3.52
				Dam's Age
				4
				Dam's MPPA
				105.3

C-T DKK DUKE 1100  
**DKK GRAND DUKE 351**  
 DKK AUBURN P35

DK CHEYENNE U392  
**DK MISS CHEYENNE Y9020**  
 DK MISS MAKIN HAY V7020

FRITZ JUSTICE 8013  
 GMRA ANGIE ROSE 944  
 LCHMN GRANDCANYON 1244G  
 DKK AUBURN 607  
 PRAIRIE PRIDE CHEYENNE 608  
 DK MISS HEAVENLY N92  
 BIEBER MAKIN HAY 9913  
 DK MISS EXTRA T2020

HB	GM	CED	BW	WW	YW	M	ME	HPG	CEM	ST	MB	YG	CW	REA	FAT
106	51	1	2.1	80	135	20	5	9	4	12	0.38	0.17	54	0.13	0.01
48%	20%	88%	95%	1%	1%	45%	84%	62%	39%	48%	59%	97%	1%	40%	81%

## 42 DK DUKE C117

BD	Cat.	%	Reg. #	Calving Ease
3/28/15	1A	100%	3473529	★
BW	WW	YW	ADG	WDA
96	659	1216	3.47	3.26
			Dam's Age	Dam's MPPA
			4	99.3

C-T DKK DUKE 1100  
**DKK GRAND DUKE 351**  
 DKK AUBURN P35  
 DK CHEYENNE U392  
**DK MISS CHEYENNE Y917**  
 DK MISS FOUNDATION V317

FRITZ JUSTICE 8013  
 GMRA ANGIE ROSE 944  
 LCHMN GRANDCANYON 1244G  
 DKK AUBURN 607  
 PRAIRIE PRIDE CHEYENNE 608  
 DK MISS HEAVENLY N92  
 SRR FOUNDATION 7004  
 MLK CRK LAKOTA 317

HB	GM	CED	BW	WW	YW	M	ME	HPG	CEM	ST	MB	YG	CW	REA	FAT
106	49	1	2.4	72	121	21	6	10	7	11	0.31	0.16	46	0.18	0.03
48%	43%	88%	96%	8%	3%	32%	92%	55%	9%	50%	73%	96%	2%	32%	92%



**Feddes Lakina 310, paternal granddam**



**Lot 45**



## 43 DK CONQUEST C322

TWIN

BD	Cat.	%	Reg. #	Calving Ease
2/5/15	1A	100%	3473690	★★★
BW	WW	YW	ADG	WDA
45	496	936	2.75	2.47
			Dam's Age	Dam's MPPA
			2	0.0

BECKTON JULIAN GG B571  
**HXC CONQUEST 4405P**  
 HXC ELLIE MAY MA638  
 HRR TROJAN 709  
**DK MISS TROJAN A6022**  
 DK MISS GRAND PRIX S4022

BKT JULIAN 7526 G  
 BKT MARTA 9A13 JL  
 BFCK CHEROKEE CNYN 4912  
 HXC 529E  
 RED YY RED KNIGHT 640F  
 MLK CRK SHEBA 056  
 FREYS GRAND PRIX 525P  
 DK MISS IMPACT P2022

HB	GM	CED	BW	WW	YW	M	ME	HPG	CEM	ST	MB	YG	CW	REA	FAT
108	51	11	-4.2	59	90	18	3	3	1	11	0.60	0.00	17	0.14	0.01
45%	13%	9%	8%	43%	43%	62%	64%	99%	81%	50%	18%	41%	58%	38%	70%

## 44 DK EAGLE C020

BD	Cat.	%	Reg. #	Calving Ease
3/29/15	1B	99.8%	3473516	★★
BW	WW	YW	ADG	WDA
85	642	1106	2.90	3.05
			Dam's Age	Dam's MPPA
			5	94.9

C-T GRAND STATEMENT 1025  
**FEDDES EAGLE A202**  
 FEDDES LAKINA 310  
 FREYS MULBERRY 528U  
**DK MISS MULBERRY X720**  
 DK MISS GRAND PRIX T520

LJC MISSION STATEMENT P27  
 C-T MISS PAN 0760  
 LCHMN GRANDCANYON 1244G  
 FEDDES LAKINA 954  
 RED FINE LINE MULBERRY 26P  
 FREYS MISSIE 511S  
 FREYS GRAND PRIX 525P  
 VGW NC-RED P0520

HB	GM	CED	BW	WW	YW	M	ME	HPG	CEM	ST	MB	YG	CW	REA	FAT
85	50	0	-1.0	59	96	16	3	14	5	8	0.57	0.14	26	0.10	0.04
74%	30%	89%	52%	41%	30%	76%	64%	5%	26%	82%	21%	94%	30%	46%	97%

## 45 DK EAGLE C41

BD	Cat.	%	Reg. #	Calving Ease
3/30/15	1A	100%	3473703	★★★
BW	WW	YW	ADG	WDA
72	702	1031	2.05	2.97
			Dam's Age	Dam's MPPA
			5	99.3

C-T GRAND STATEMENT 1025  
**FEDDES EAGLE A202**  
 FEDDES LAKINA 310  
 FREYS GRAND PRIX 525P  
**DK MISS GRANDPRIX X541**  
 DK MISS HEAVENLY R941

LJC MISSION STATEMENT P27  
 C-T MISS PAN 0760  
 LCHMN GRANDCANYON 1244G  
 FEDDES LAKINA 954  
 UBAR GRAND PRIX 102  
 FREYS MISSIE 513K  
 DK HEAVENLY K777  
 DK MISS HEAVENLY 141

HB	GM	CED	BW	WW	YW	M	ME	HPG	CEM	ST	MB	YG	CW	REA	FAT
74	49	4	-3.6	57	80	17	3	12	3	7	0.57	0.06	12	0.14	0.04
84%	40%	56%	13%	47%	63%	66%	67%	15%	54%	90%	22%	70%	73%	39%	95%

## 46 DK DUKE C17

BD	Cat.	%	Reg. #	Calving Ease
3/30/15	1A	100%	3473507	★★
BW	WW	YW	ADG	WDA
87	595	1085	3.06	2.99
			Dam's Age	Dam's MPPA
			7	98.4

C-T DKK DUKE 1100  
**DKK GRAND DUKE 351**  
 DKK AUBURN P35  
 VRRR GEMSTONE S51  
**DK MISS GEMSTONE U517**  
 DK MISS FOUNDATION R317

FRITZ JUSTICE 8013  
 GMRA ANGIE ROSE 944  
 LCHMN GRANDCANYON 1244G  
 DKK AUBURN 607  
 HAYCOW LIMESTONE 403  
 MISS BHR THE DUKE 779  
 MLK CRK CHATEAU 3101  
 MLK CRK LAKOTA 317

HB	GM	CED	BW	WW	YW	M	ME	HPG	CEM	ST	MB	YG	CW	REA	FAT
116	48	3	-0.1	49	83	28	5	10	7	13	0.27	0.11	20	-0.08	0.02
34%	72%	67%	69%	76%	58%	3%	86%	42%	12%	27%	81%	88%	49%	83%	84%





**Lot 47**

## 47 DK BRONSON C817

BD	Cat.	%	Reg. #	Calving Ease		
4/7/15	1A	100%	3473583	★★★		
BW	WW	YW	ADG	WDA	Dam's Age	Dam's MPPA
79	633	1113	3.01	3.11	7	98.5

RED FINE LINE MULBERRY 26P  
**NS BRONSON X079**  
 SRN CASSIE 3069  
 PRAIRIE PRIDE CHEYENNE 608  
**DK MISS CHEYENNE U317**  
 MLK CRK LAKOTA 317

RED COMPASS MULBERRY 449M  
 RED DUS FAYETTE 8G  
 HOLDEN HI ROLLER 8106  
 RED CASSIE 6085  
 LCC CHEYENNE B221L  
 TBS REVA CANYON 128  
 MLK CRK FOUNDATION 110  
 MLK CRK LAKOTA 659

HB	GM	CED	BW	WW	YW	M	ME	HPG	CEM	ST	MB	YG	CW	REA	FAT
130	49	5	-3.0	67	95	11	4	10	10	12	0.36	0.12	21	0.09	0.04
20%	50%	45%	19%	16%	33%	96%	78%	50%	2%	35%	63%	90%	44%	48%	96%



**Lot 48**

## 48 DK BRAVO C188

BD	Cat.	%	Reg. #	Calving Ease		
4/9/15	1A	100%	3473530	★★		
BW	WW	YW	ADG	WDA	Dam's Age	Dam's MPPA
84	726	1234	3.16	3.39	4	100.7

BIEBER ROOSEVELT W384  
**GMRA BRAVO 3276**  
 GMRA REBELLA 572  
 BMRA MR STATEMENT 998  
**DK MISS STATEMENT Y9188**  
 DK MISS FOUNDATION V4188

BIEBER ROUGH RIDER 10712  
 BIEBER SHEBA 9602  
 BIEBER TOP MONEY 7948  
 GMRA REBELLA 249  
 LJC MISSION STATEMENT P27  
 SLOV MA868  
 SRR FOUNDATION 7004  
 FORSTER SIERRA 4188

HB	GM	CED	BW	WW	YW	M	ME	HPG	CEM	ST	MB	YG	CW	REA	FAT
102	49	5	-0.5	67	103	24	4	12	5	10	0.31	0.01	30	0.33	0.02
54%	45%	44%	59%	16%	19%	16%	76%	21%	24%	69%	75%	51%	19%	14%	82%

*Achieve it!*

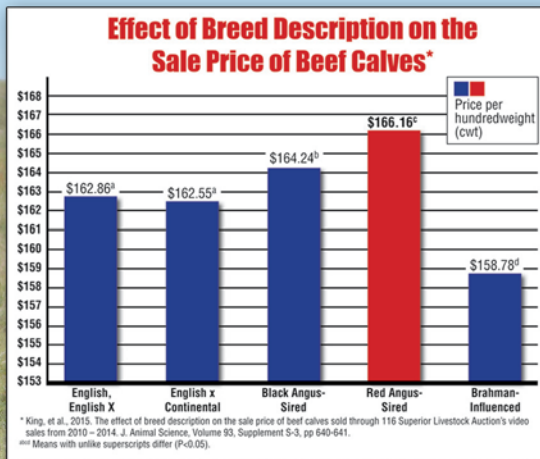
# RETURN ON INVESTMENT

Red Angus genetics will improve your return on investment!



"For 10 to 15 years all the buyers ever talked about was black calves, and the black calves always brought more than everything else. Now I can honestly say that good Red Angus calves outsell the black calves and I know the Red Angus bred heifers will outsell black Angus bred heifers of equal quality every day."

— Jim Davis,  
 Superior Livestock Auction



Ranch Tested. Rancher Trusted.

# Red Angus



RedAngus.org  
 (940) 387-3502

Independent research shows Red Angus-sired calves sold for a higher price than all other breed groups. Red Angus bulls make a positive difference in your breeding program's bottom line.

**Invest in your future today!**



## 49 DK DUKE C199

BD	Cat.	%	Reg. #	Calving Ease
4/16/15	1A	100%	3473528	★
BW	WW	YW	ADG	WDA
88	719	1141	2.63	3.19
				Dam's Age
				4
				Dam's MPPA
				100.0

C-T DKK DUKE 1100  
**DKK GRAND DUKE 351**  
 DKK AUBURN P35  
 BMRA MR STATEMENT 998  
**DK MISS STATEMENT Y8099**  
 DK MISS EXTRA U4099

FRITZ JUSTICE 8013  
 GMRA ANGIE ROSE 944  
 LCHMN GRANDCANYON 1244G  
 DKK AUBURN 607  
 LJC MISSION STATEMENT P27  
 SLOV MA868  
 VGW EXTRA 541  
 FORSTER LORI 4099

HB	GM	CED	BW	WW	YW	M	ME	HPG	CEM	ST	MB	YG	CW	REA	FAT
102	49	3	-0.3	58	99	28	5	11	4	11	0.31	0.01	29	0.24	0.00
53%	37%	68%	65%	44%	26%	3%	85%	27%	50%	54%	73%	46%	23%	23%	67%



Lot 50

## 50 DK RUSHMORE 508C

BD	Cat.	%	ASA Reg. #	Calving Ease
2/8/15	PB SIMMENTAL		3082790	★
BW	WW	YW	ADG	WDA
90	752	1368	3.85	3.46
				Dam's Age
				2

THSF FREEDOM 300N  
**TRAXS RUSHMORE X103**  
 BBW 7104T  
 MR GD Y326  
**MS 206A**  
 MS GUNNER 823X

THSF FREEDOM 300N  
 MISS TRAX U850  
 MULT SIRE  
 BBW 4102P  
 HOOKS SHEAR FORCE 38K  
 MISS GB W325  
 RHG GUNNER 8684  
 MS PERFECTOR 55S

CE	BW	WW	YW	MCE	M	MW	ST	DOC	CW	YG	MA	BF	REA	API	TI
11.3	1.5	71.5	107.6	16.1	17.8	53.6	21.7	13.2	36.0	-0.39	0.15	-0.06	1.07	132.5	74.3
25%	45%	20%	15%	1%	80%	50%	40%	15%	20%	15%	45%	35%	10%	25%	15%



Lot 51

## 51 C790

BD	%	Calving Ease
3/16/15	50/50	★
BW	WW	YW
97	786	1258
		ADG
		2.95
		WDA
		3.54
		Dam's Age
		8

HRR TROJAN 709  
**DK TROJAN V4001**  
 DK MISS IMPACT P2001  
 DK MR BEEF N693  
**T90 - CHAROLAIS**  
 JCH MS FASTTRACK L90

RED YY RED KNIGHT 640F  
 MLK CRK SHEBA 056  
 DK HEAVENLY K777  
 RPO IMPACT 2001

## 52 B451

BD	%	Calving Ease
4/12/15	50/50	★
BW	WW	YW
96	807	1271
		ADG
		2.90
		WDA
		3.61
		Dam's Age
		7

HRR TROJAN 709  
**DK TROJAN V4001**  
 DK MISS IMPACT P2001  
 C-B CHARLIE PLD 162 PLD  
**P051 - CHAROLAIS**  
 JCH MISS DRIVER K51

RED YY RED KNIGHT 640F  
 MLK CRK SHEBA 056  
 DK HEAVENLY K777  
 RPO IMPACT 2001

## 53 C477

BD	%	Calving Ease
3/18/15	75/25	★
BW	WW	YW
102	716	1239
		ADG
		3.27
		WDA
		3.39
		Dam's Age
		11

HRR TROJAN 709  
**DK TROJAN V4001**  
 DK MISS IMPACT P2001  
 C-B CHARLIE PLD 162 PLD  
**P077 - COMMERCIAL**  
 E3077 (AR COMMERCIAL)

RED YY 23L TOPPER 408D  
 RED TOP GOLDIE 40U  
 BUF CRK BARNEY 3474  
 MLK CRK SHEBA 556

# Commercial Females

# Ranchers' Guide to EPDs

**15** Red Angus Commercial Replacement Heifers

---

---

---

**10** Bred Commercial Red Angus Heifers from Tofte Ranch

---

---

---

**10** Bred Commercial Red Angus Heifers from Drawbond Ranch

---

---

---

**10** Red Angus Yearling Heifers from the Guenther Ranch

---

---

---

**5** Red Angus Yearling Heifers from the Schilke Ranch

---

---

---

**HB** ..... HerdBuilder Index – Need bulls for developing a profitable cowherd and maximizing the value of marketed progeny? Select a bull with a high HB value.

**GM** ..... GridMaster Index – If you market all of your calf crop and want to increase the value of that calf crop, select a bull with a high GM value to maximize your profit.

**CED** ..... Calving Ease Direct – Breeding Heifers? Select bulls with a high CED to increase the probability that the heifers will calve unassisted.

**BW**..... Birth Weight – Predicts differences in birth weight. BW is included in the CED EPD, so simplify your decisions by selecting bulls based on CED instead of BW.

**WW** ..... Weaning Weight and **YW** ....Yearling Weight – Predicts differences in weight at weaning and yearling. While selection based on these growth measures can increase your payweight, be cautious what the bull's other EPDs are.

**Milk** .... Milk – Predicts differences in weaning weight of daughter's progeny due to milk production.

**ME** ..... Maintenance Energy – Selecting bulls with a lower ME EPD will decrease the amount of feed his daughters will require to maintain body weight.

**HPG**..... Heifer Pregnancy – Retaining heifers? Select bulls with a high HPG to increase the percentage of exposures that result in a calving observation.

**CEM** .... Calving Ease Maternal – Another number to pay attention to if you are retaining heifers. Selecting bulls with a high CEM will increase the probability of those daughters calving unassisted.

**STAY**.... Stayability – The most important trait if your goal is developing cows that stay productive, thus increasing your profitability. Bulls that have a high Stay EPD are expected to sire daughters that remain productive in the herd until at least 6 years of age.

**MARB** .. Marbling Score – Select bulls with high MARB EPD to increase the number of progeny that grade Choice or Prime.

**YG** ..... Yield Grade – Marketing calves on a grid? Placing selection pressure on YG EPD will decrease the number of YG discounts on grid-marketed progeny.

**CW**..... Carcass Weight – Selecting bulls with a high CW EPD will increase the weight of the hanging carcass, which directly impacts revenue.

**REA** ..... Rib Eye Area – Need to add muscle? Select bulls with a high REA EPD to increase rib eye area, which favorably increases Yield Grade.

**FAT** ..... Backfat – Need to reduce waste in carcasses? Select bulls with a low FAT EPD to reduce backfat, which favorably increases Yield Grade.

*Thank you  
for attending our sale!*



**RED ANGUS & CHAROLAIS**

Scott Kueffler

Box 187 • Grenora, ND 58845

PRESORTED  
FIRST-CLASS MAIL  
U.S. POSTAGE PAID  
LivestockDirect.net  
PERMIT NO. 29

# "Top 50 Coming-To-Town" Production Sale

**Saturday, March 5, 2016**

**2 p.m. CST • Sitting Bull Auction, Williston, ND**

Auctioneer: Butch Haugland • 701-570-3604 or 701-965-6234

Ringmen: Loren Sorenson, 701-694-2627 • Kris Petersen: 701-339-0305

## *Sale Offering:*

- 49** Purebred Red Angus Bulls
- 3** Red Angus/Charolais Composite Bulls
- 1** Purebred Red Simmental Bull
- 15** Red Angus Yearling Heifers
- 10** Red Angus Bred Heifers, Tofte Ranch
- 10** Red Angus Yearling Heifers, Drawbond Ranch
- 10** Red Angus Yearling Heifers, Guenther Ranch
- 5** Red Angus Yearling Heifers, Schilke Ranch

**DVAuction** Broadcasting  
Real-time Auctions

**DK RED ANGUS & CHAROLAIS**