



GREEN MOUNTAIN RED ANGUS



*Annual
Production Sale*

**Tuesday,
March 15, 2016**

Lunch at 12 p.m. MDT
Sale at 1 p.m. MDT
GMRA Sale Facility • Logan, MT



DVAuction

Visit ...

www.gmracattle.com



Welcome



GREEN MOUNTAIN RED ANGUS



Jeremy, JD & Sutton Dunbar; Jim, Bob, Julie and Tom Morton; Sage LaBlanc



Julie



Bob



Jeremy



Sutton



JD



Jim



Tom



Sage

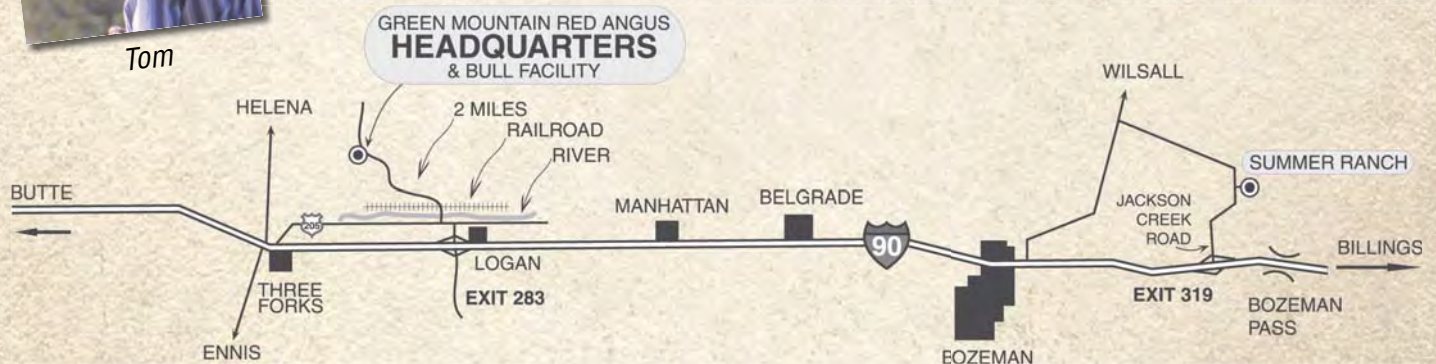
It's a great time to be RED!

Welcome to our 17th annual bull sale! There is a lot of excitement in the Red Angus breed right now. There has never been such a demand for Red Angus and this allows the breed to take a larger share of the market place and we are gaining momentum daily. Independent research has shown that Red Angus sired calves outsold all other breed types on Superior auctions over a five year period. What a testament to the long-term value of the Red Angus breed. This creates such a solid position in the market place for commercial cattlemen utilizing Red Angus genetics.

There is certainly a demand for high quality Red Angus genetics and we strive to provide our customers with an outstanding selection of bulls for their needs, from the first bull through the ring to the last. The following pages contain bulls that combine outstanding structure and phenotype with high end performance and EPD packages. We work very hard to bring you functional cattle that perform well in all arenas of development. As we wrote footnotes it was very rewarding to be able to share with you the accomplishments of the females within the herd. The present day Green Mountain Red Angus cow herd has been built on over 30 years of genetic selection for high end maternal traits and we believe it shows. As Jim Morton, the founder of Green Mountain always said: "It takes great cows to make great bulls!" That's a statement we have founded our breeding philosophy on, and it shows in the success of our mother cows.

With all of the bull sale catalogs filling your mail box this time of year, we appreciate you taking the time to look through the Green Mountain offering. We hope you enjoy looking at the sale lots offered in the following pages as much as we enjoyed putting this information together. The bulls are catalogued in sale order and will be selling at 1:00 pm MDT, with lunch at noon. Superior will be handling all conference calls and internet bidding will be available through both Superior and DVAuction. As always, even though there will be a video feed running, the bulls will still be run through the ring on sale day. Videos of all sale lots will be available to view prior to the sale on our website at www.gmracattle.com. Please don't hesitate to call if we can be of any help or answer any questions about your bull purchases. We look forward to seeing you on March 15th!

Bob, Julie and Jeremy



Get off 1-90 at the Logan Exit, #283. Go north and take a left on the frontage road. Proceed west toward Three Forks, about 1/2 mile. Take a right onto Logan Trident Road, heading north. The road immediately crosses the Gallatin River and the railroad tracks, as shown on the map. Green Mountain Red Angus is 2 miles from the railroad tracks. Watch for the large Green Mountain Red Angus sign.

Green Mountain Red Angus

GMRA is a certified Brucellosis Free Herd • GMRA has no known carriers of any genetic defect in any pedigree.

ASSOCIATION REPRESENTATIVES:

Tom Brink, CEO Red Angus Assn. of America
 Kim Ford, President..... Red Angus Assn. of America
 Kevin Miller, First Vice President..... Red Angus Assn. of America
 Bob Morton, Second Vice President..... Red Angus Assn. of America
 Julie Morton, MTRAA President Montana Red Angus Assn.
 Francis Koenig, MTRAA Vice President .. Montana Red Angus Assn.

LIVESTOCK INSURANCE:

Jerry Gliko..... 406-860-3181
 Tyler Holland, Novich Insurance Agency 406-949-1325
 Tom Holland, PayneWest..... 406-683-6882

ACCOMMODATIONS:

Broken Spur, Three Forks 1-888-354-3048
 Fort Three Forks Motel, Three Forks..... 1-800-477-5690
 Super 8, Belgrade..... 1-800-800-8000
 Holiday Inn Express, Belgrade..... 1-800-542-6791
 Sacajawea Hotel, Three Forks..... 406-285-6515
 Mention you are attending the Green Mountain Red Angus Bull Sale for a discount at the Sacajawea.

DELIVERIES:

Free delivery to any point in MT, ID, WY on all purchases. Free delivery on all bulls selling for over \$3,000 to stockyards in ND, SD, OR and WA. Free delivery on all volume purchases by one buyer of five or more bulls to central points within 1,000 miles of Three Forks, MT. All other deliveries will be by arrangement, with loads being combined as much as possible. All deliveries will be made by April 1st.



**View video of sale lots at
www.gmracattle.com**

Catalog and Advertising by Cow Camp Promotions
 Tracey Koester • www.cowcamppromotions.com

View videos at www.gmracattle.com • All sale bulls have undergone GGP-LD testing and have genomically enhanced EPDs.

PHONE NUMBERS:

Office 406-285-6773
Bob's Cell 406-580-0348
Jeremy's Cell..... 406-580-6859

AUCTIONEER:

Trent Stewart, Auctioneer 541-325-3662

GMRA INDUSTRY PARTNER:

Clint Berry, Seedstock Procurement
 Superior Livestock 417-844-1009

SALE REPRESENTATIVES:

Harold Bertz, Director of Business Development
 Red Angus Association of America 816-661-2289
 John Goggins
 Western Ag Reporter..... 406-698-4159
 Devin Murnin
 Western Livestock Journal 406-696-1502
 Jeff Thomas
 Prairie Star 406-581-8859
 Rowdy Benson 605-569-1493
 Tri State Livestock News
 Cole Owens
 Superior Livestock 541-519-4893
 Jay Rost
 DV Auction 406-978-2124



Auctioneer Trent Stewart



Clint Berry



Harold Bertz



Rowdy Benson



John Goggins



Devin Murnin



Jeff Thomas

TERMS AND CONDITIONS

1. The terms of the sale are cash unless prior arrangements have been made.
2. Each animal will be sold to the highest bidder. The person in charge will settle any disputes as to bids, and his decision on such matters shall be final.
3. Any announcement from the seller on sale day will take precedence over printed material.
4. Health certificates will be furnished for shipment anywhere in the United States.
5. Each animal becomes buyer's risk as soon as sold; but it shall be the obligation of the seller to see that animals are fed and cared for, free of charge to purchaser, until loaded for shipment or until the expiration of April 1st of the current year.
6. Retained Interest: Green Mountain Red Angus is retaining one-third revenue share interest in all bulls in the sale. We reserve the right to participate in the collection and marketing of semen. Buyers receive two-thirds interest, full possession and full salvage value. If seller wishes to collect semen for in-herd use only it will be at seller's expense and the buyer's convenience. If the buyer wishes to share in the collection costs and keep his share for in-herd use that is their choice.
7. All claims for adjustment or refund must be made in writing within six months of the sale date. In the event an animal is claimed to be a non-breeder, the Seller shall be entitled to six months' trial following the return of the animal in which to prove the animal is a breeder. If at the end of six months the Seller is unable to prove the animal is a breeder, restitution shall be made, in compliance with the terms set forth by the Red Angus Association of America. Any expenses incurred for transporting the animal shall be the buyer's responsibility.
8. Everyone attending this sale does so at their own risk. Owners, clerks or other helpers do not assume responsibility, legal or otherwise, for damages of any kind.
9. A certificate of registry and transfer will be furnished for each animal sold as a registered animal, after settlement has been made.
10. The above terms and conditions shall constitute a contract between the buyer and seller of each animal sold.

These cattle do sell in accordance with the Sale Terms and Conditions set forth by the Red Angus Association of America.

DVAuction

Broadcasting Real-Time Auctions

Watch and Bid Online at DVAuction.com

Can't make the sale?

We are pleased to bring you real-time Internet bidding and a live broadcast of this sale through DVAuction. To watch or bid online, simply complete the following steps:

- Visit the DVAuction web site at www.dvauction.com
- Click on the "Creat New Account" tab
- Enter a user name, password and your contact information.
- Complete the Banking Information. (If you are only interested in viewing you can skip this section)
- Select your Time Zone, Accept the Terms and Conditions and click "Create Account"
- Complete the process by answering a few questions, selecting your subscription choices
- Click on "Apply for Bidding" in the upper left corner of your screen to select the sales you wish to bid on
- Be sure to include a personal contact at your bank, we will contact them in order to get a credit reference.
- If you would prefer to be approved using your credit card, call (402) 316-5460.
- Please be sure to apply for bidding at least a day in advance of the sale-every effort will be made to process your application in a timely manner.

DVAuction will contact you once you have been approved to bid. We do not provide buyer numbers until you have purchased a lot in the sale, and that number is only usable for that auction. After the sale contact the sale owner or manager to make arrangements for payment and delivery of your online purchases.

Please Note: High speed Internet access (DSL, T-1, or Broadband) is required to be able to bid successfully during the sale. If you have any questions, please contact DVAuction at (402) 316-5460 or email support@dvauction.com.

Proxy Bidding: If you can't access a computer during the sale, you can now place a "proxy bid" through DVAuction. Simply follow the instructions listed above, and as the sale date nears there will be a "Proxy Bidding" link under the sale listing on the main page of DVAuction. You can then place the maximum amount that you'd like to bid, and our system will represent your bid just as if you were there.



Reaching the World's LARGEST Buyer Base!

Market Your Cattle The Superior Way!

CLINT BERRY
417-844-1009

- 15-Plus Years Marketing Red Angus
- Specializing in Replacement Females
- Custom Seedstock Procurement

www.superiorlivestock.com



HOW TO PARTICIPATE AS AN ABSENTEE BUYER

We have made preparations to bid and buy livestock through Superior Productions' "Call or Click-To-Bid" service for those unable to attend in person on sale day. Please note that all of the lots in the sale will also be available for viewing online prior to sale day at www.superiorlivestock.com. "Call or Click-To-Bid" service for those unable to attend in person on sale day. **Please note that all of the lots in the sale will also be available for viewing online prior to sale day at www.superiorlivestock.com.**

HERE'S HOW IT WORKS

Turn in Bids Over the Phone. This is our traditional method of buying livestock. To get started simply go online to www.superiorlivestock.com and click on the tab titled "Register for a Buyer Number." Select the registration form for Superior Productions and print the registration form, fill it out and fax it in to Superior Productions at (817) 378-3380 with a signature on it, or scan and email the form to info@superiorauction.com. You can also mail it in to the address provided on the form. Upon receipt of this information Superior will call you with a buyer's number and the bid line phone number that you will use on sale day to place bids over the phone..

Click-To-Bid. This is Superior's online bidding program for cattle buying. **PLEASE NOTE THAT HIGH SPEED INTERNET IS REQUIRED – THIS IS NOT FOR DIAL-UP OR SATELLITE INTERNET.** Registration is free, but you must become a member of www.superiorclicktobid.com to sign up. Becoming a member is easy - just go to the homepage of www.superiorclicktobid.com and follow the out-lined steps to get started. Input your information and select a username and password. You will receive an e-mail confirming you are a member. From that point forward you just have to sign in and select the sale you would like to register for and once approved you will receive an e-mail confirming which sale you are now registered for.

Viewing the Auction. There are two places to view the sale broadcast live on the internet: www.superiorlivestock.com or www.superiorclicktobid.com. Just go to the home page of either website and select the auction. If you just want to watch the auction on your computer, smartphone or tablet go to www.superiorlivestock.com, but if you want to bid over the computer you must go to www.superiorclicktobid.com. Remember you can call in to bid on the internet, but you must be a member of www.superiorclicktobid.com to "click-to-bid." Your computer must have Flash Media Player installed for this website to view the auction. If you have any questions, please call the Superior Productions office at 800-431-4452.

***If you plan to bid by phone through Superior Livestock or 'Click-to-Bid', you must register at www.superiorlivestock.com prior to bidding.**



TOP DOLLAR ANGUS®

Now adding value to both Angus and Red Angus feeder calves

Capture premiums by giving your calves the name recognition they deserve!



Should you consider Top Dollar Angus certification for your calves? Absolutely – YES!

If you've consistently invested in high-performing Angus or Red Angus genetics, we can make your calf crop stand out from the pack, and give you access to the Top Dollar Angus premium calf-buyer network, regardless of how you market your cattle (local auction, video, or direct trade). Our goal is to bring more demand to your doorstep.

Moving ahead in 2016, the beef cattle business offers both challenges and opportunities. Lower feeder calf prices underscore the need to capture value-added premiums. Every cow-calf producer with high-end genetics and a solid health program wants to sell their cattle above the average market price, which is exactly why Top Dollar Angus was created.

Top Dollar Angus is a genetic certification and marketing company focused exclusively on the best Angus and Red Angus-influenced feeder calves in the industry. Qualified calves must contain at least two generations of Angus or Red Angus genetics with growth and carcass traits ranking in the top 25% of their respective breed.

Red Angus sires that have a GridMaster Index in the top 25% of the breed or higher meet Top Dollar Angus specifications. Look for the Top Dollar Angus designation on sale lots in this catalog!

This new program is similar to Certified Angus Beef®, except that Top Dollar Angus does its "branding" in the feeder cattle and calf market. It works by certifying calf crops that meet program requirements on the farm or ranch, enabling these cattle to be marketed using the Top Dollar Angus brand name and logo. Top Dollar Angus feeder calves are eligible to receive a \$50 per head premium (sometimes more) over the average market when sold to partner feedyards. One group of Top Dollar Angus steers sold

recently via video auction for \$67 per head above the average market for their weight and location. Another group was forward-sold for a \$52 per head premium. Yet another single load of Montana steer calves beat the market by \$57 per head.

Why are so many profit-minded cattle feeders interested in purchasing Top Dollar Angus calves and yearlings? It's because these cattle perform very well both in the feedyard and on value-based grids. Top Dollar Angus cattle consistently deliver rapid growth and high quality grades. That puts extra dollars in cattle feeders' pockets, which are passed back to cow-calf producers in the form of premium prices.

For more information, please contact Tom Brink at
303-478-4331
 or email
info@topdollarangus.com.



Achieve it!

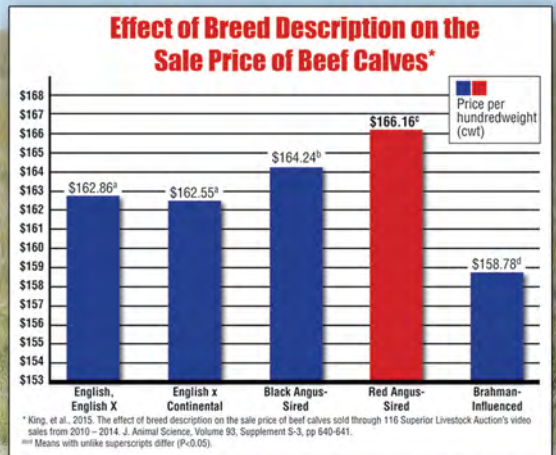
RETURN ON INVESTMENT

Red Angus genetics will improve your return on investment!



"For 10 to 15 years all the buyers ever talked about was black calves, and the black calves always brought more than everything else. Now I can honestly say that good Red Angus calves outsell the black calves and I know the Red Angus bred heifers will outsell black Angus bred heifers of equal quality every day."

– Jim Davis,
 Superior Livestock Auction



Ranch Tested. Rancher Trusted.

Red Angus

RedAngus.org
 (940) 387-3502



Independent research shows Red Angus-sired calves sold for a higher price than all other breed groups. Red Angus bulls make a positive difference in your breeding program's bottom line.

Invest in your future today!



GMRA Trilogy 0226

muscling and broad tops, and have carried that on through wean-ing and yearling. Look for the Trilogy calves to be all around standouts, backed by breed leading numbers. The Trilogy females are becoming highly sought after in the Red Angus breed. His daughters in production at GMRA are doing a great job and carry a deep, broody phenotype with solid udders.

A **GMRA TRILOGY 0226**

Birth Date: 1/14/10 Reg. #: 1367533 Category: 100% 1A

MESSMER JOSHUA 019P
MESSMER PACKER S008
MESSMER MILLIE 124P

GLACIER CHATEAU 744
GMRA LAKOTA 625
GMRA LAKOTA 380

BECKTON JULIAN GG B571
MESSMER PANDORA M186
VGW TOP PICK 130
MESSMER MILLIE 9416
LMAN KING ROB 8621
GLACIER REBALA
BASIN HOBO 79E
GMRA LAKOTA 527

BW	74	
WW/Ratio	646	103
YW/Ratio	1154	104
IMF/REA	3.45	13.55
Scrotal		

HB	GM	CED	BW	WW	YW	MK	ME	HPG	CEM	ST	MB	YG	CW	REA	Fat
170	53	10	-4.7	67	106	13	2	12	6	15	0.75	-0.08	26	0.68	0.03
TOP BREED %															
3%	7%	17%	13%	27%	26%	80%	62%	27%	26%	5%	14%	22%	40%	7%	86%

Trilogy was Accelerated Genetics' pick from our 2011 sale. He is a maternal brother to GMRA Make It Easy 8226, who was also purchased by Accelerated Genetics in 2009. We have been us-ing this moderate framed, muscular sire heavily with great results. His calves are powerhouses from early on, showing excellent



GMRA Peacemaker 1216

through test. The bulls in the feedlot scan well for carcass. They are deep with good muscling. Peacemaker has turned out to be a bona fide heifer bull with superior growth backing up curve bender EPDs.

B **GMRA PEACEMAKER 1216**

Birth Date: 1/13/11 Reg. #: 1428993 Category: 100% 1A

VGW JUSTICE 614
FRITZ JUSTICE 8013
FRITZ CHRIS 6047

LJC MISSION STATEMENT P27
GMRA THELMA 930
GMRA THELMA 319

BUF CRK PATRIOT M183
VGW M82-FIREFLY 0479
5L HOBO BEN 04-4422
FRITZ CRIS 1051
LJC LANCER 806
LJC HANNAH 106
BUF CRK BARNEY 3474
GMRA THELMA 733

BW	74	
WW/Ratio	788	126
YW/Ratio	1312	116
IMF/REA	3.51	14.23
Scrotal		

HB	GM	CED	BW	WW	YW	MK	ME	HPG	CEM	ST	MB	YG	CW	REA	Fat
149	52	9	-2.5	71	109	24	2	11	6	14	0.64	0.01	31	0.33	0.01
TOP BREED %															
7%	17%	23%	33%	18%	22%	26%	58%	36%	25%	10%	21%	50%	30%	25%	72%

Peacemaker was the high selling Justice son in our 2012 sale, selling to Accelerated Genetics and Bieber Red Angus. Peacemaker showcases outstanding phenotype and top end personal performance. His calves are hitting the ground with very moderate birth weights and showcase well above average growth right on



Beckton Epic R397 K

C **BECKTON EPIC R397 K**

Birth Date: 3/19/05 Reg. #: 1042135 Category: 100% 1A

BECKTON EPIC D404
BECKTON EPIC K F075
BECKTON BELGA D483 KR

BECKTON JULIAN GG B571
BECKTON KIT F468 JL
BECKTON KIT A517 NP

BECKTON SAGA KJ B702
BECKTON KURUBA B508 PC
BECKTON KAISER FD 9253
BECKTON BELGA A036 MB
BKT JULIAN 7526 G
BKT MARTA 9A13 JL
BKT NEPTUNE 8460 R
BCHRCH KIT935 35L416

BW	78	
WW/Ratio	638	
YW/Ratio	1171	
IMF/REA	3.90	13.67
Scrotal		

HB	GM	CED	BW	WW	YW	MK	ME	HPG	CEM	ST	MB	YG	CW	REA	Fat
125	51	-4	0.5	75	128	21	-9	14	3	14	0.50	0.19	47	0.44	0.07
TOP BREED %															
19%	123%	97%	72%	12%	6%	45%	19%	7%	63%	12%	39%	93%	6%	17%	98%

Epic has provided a total genetic outcross for the GMRA herd. Bulls on test are gaining well and turn in good carcass scans with above average REA. The Epic calves are phenotypically correct with a nice straight top, excellent volume, and good thickness and muscling. Look for his calves to add power and eye appeal to your herd.



GMRA Stetson 2240

D **GMRA STETSON 2240**

Birth Date: 1/21/12 Reg. #: 1525314 Category: 100% 1A

LJC LANCER 806
LJC MISSION STATEMENT P27
LJC HANNAH 106

BASIN HOBO 79E
GMRA VENICE 359
GMRA VENICE 146

BECKTON LANCER T A664
LJC HB LIZZIE 606
HOLDEN HI HO 753
LJC KJ JAMIE 516
BUF CRK HOBO 2595
DOUBLE FORK 079Z
LCHMN HEVN'S SAKE 1002F
GMRA VENICE 015

BW	77
WW/Ratio	751 116
YW/Ratio	1258 110
IMF/REA	3.30 11.85
Scrotal	

HB	GM	CED	BW	WW	YW	MK	ME	HPG	CEM	ST	MB	YG	CW	REA	Fat
166	52	10	-4.3	59	104	28	3	10	6	16	0.31	0.02	26	0.23	0.01
TOP BREED %															
3%	19%	20%	15%	47%	28%	11%	69%	43%	25%	3%	70%	53%	40%	34%	70%

Stetson is a very solid bull that was purchased by Accelerated Genetics in our 2013 sale. He caught their eye with outstanding personal performance backed up by one of the most consistent sets of EPDs in the offering. He comes from an outstanding Hobo 79E dam with one of the highest MPPAs in the Green Mountain herd. Stetson is a maternal brother to GMRA Mountain 9287, who is the sire of several lots in the sale.



GMRA Make It Easy 8226

E **GMRA MAKE IT EASY 8226**

Birth Date: 1/14/08 Reg. #: 1250951 Category: 100% 1A

BJR MAKE MY DAY 981
BIEBER MAKE MIMI 7249
BIEBER SIRENA 6708

GLACIER CHATEAU 744
GMRA LAKOTA 625
GMRA LAKOTA 380

BJR EASY RIDER 781
BJR TOW KANA 117-710
BIEBER IMPACT 4399
BIEBER MIMI 4227
LMAN KING ROB 8621
GLACIER REBALA
BASIN HOBO 79E
GMRA LAKOTA 527

BW	81
WW/Ratio	751 110
YW/Ratio	1171 106
IMF/REA	4.13 12.47
Scrotal	

HB	GM	CED	BW	WW	YW	MK	ME	HPG	CEM	ST	MB	YG	CW	REA	Fat
134	51	7	-0.8	78	119	15	6	7	7	13	0.60	0.00	39	0.09	-0.03
TOP BREED %															
13%	121%	36%	56%	8%	12%	74%	85%	87%	16%	15%	25%	46%	14%	51%	9%

Make It Easy boasts a pedigree stacked with sires that excel in producing superior females and he is a maternal brother to GMRA Trilogy 0226. That is a great combination with the data the Make It Easy calves are turning in. His daughters in production are doing just what we expected, based on his highly maternal pedigree.



Bieber Roosevelt W384

F **BIEBER ROOSEVELT W384**

Birth Date: 3/1/09 Reg. #: 1311829 Category: 100% 1A

BASIN TREND SETTER 6074
BIEBER ROUGH RIDER 10712
BIEBER ADELLE 8958

C A FUTURE DIRECTION 5321
BIEBER SHEBA 9602
BIEBER SHEBA 5537

RED BRYLOR NEW TREND 22
BASIN ROSE F521
BIEBER TITAN 6894
BIEBER ADELLE 7226
G A R PRECISION 1680
C A MISS POWER FIX 308
JHE CANYON HAWK 1062
BIEBER SHEBA 4404

BW	94
WW/Ratio	781
YW/Ratio	1295
IMF/REA	3.02 13.19
Scrotal	36.0

HB	GM	CED	BW	WW	YW	MK	ME	HPG	CEM	ST	MB	YG	CW	REA	Fat
102	48	3	0.9	56	79	28	-10	15	6	10	0.71	0.10	18	0.21	0.05
TOP BREED %															
39%	69%	61%	77%	56%	67%	12%	18%	6%	26%	48%	16%	79%	58%	36%	95%

Roosevelt is a total outcross to our genetics and comes with tons of power and eye appeal. The Roosevelt calves are standouts from the time they hit the ground. They have the conformation and muscle pattern that we like. They are broad topped, thick and deep, with a good rear quarter and a very solid structure. The calves' early growth is extremely rapid and going on to summer pasture they already show a maturity beyond their age. They are one of the most phenotypically powerful sire groups we have seen.



Bieber Goldbar Y379

G

BIEBER GOLDBAR Y379

Birth Date: **6/6/11** Reg. # **1441761** Category: **100% 1A**

CCF GOLD BAR 0251
LACY GOLD BAR 8123
LACY MS CHEROKEE 557P

LCHMN GOLD ROBBER 1909E
GMRA PRINCESS 720
BFCK CHEROKEE CNYN 4912
LACY MS ANNIE 154M
BUF CRK CHF 824-1658
MRM 1431 8611 9109
GLACIER LOGAN 210
BASIN PRIMROSE H443



BW	83	
WW/Ratio	621	101
YW/Ratio	1171	101
IMF/REA	3.11	16.35
Scrotal	35.2	

BFCK CHEROKEE CNYN 4912
BASIN PRIMROSE 2043
BASIN PRIMROSE 0854

HB	GM	CED	BW	WW	YW	MK	ME	HPG	CEM	ST	MB	YG	CW	REA	Fat
110	51	3	-2.0	71	103	28	-1	12	-2	12	0.65	-0.15	28	0.59	-0.01
TOP BREED %															
30%	20%	65%	39%	17%	30%	11%	42%	23%	94%	21%	20%	11%	36%	10%	36%

Goldbar is a new herd sire that we purchased from Bieber Red Angus in their 2013 fall sale. He offers a complete outcross to our genetics. His calves come easy and grow out with tons of length and thickness.



Fritz Justice 8013

F

FRITZ JUSTICE 8013

Birth Date: **1/31/08** Reg. # **1255322** Category: **100% 1A**

BUF CRK PATRIOT M183
VGW JUSTICE 614
VGW M82-FIREFLY 0479

BECKTON LANGER F442 T
BUF CRK AMBER 3912
MESSMER DIRECTOR M82
VGW HS FIREFLY 0206ET
5L HOB0 BEN 04-4422
5L BLACK BEN 15-898
5L BETHEL 122-04
LCHMN NO EQUAL 1174D
LARSON SUNRISE 946-926



BW	74	
WW/Ratio	801	110
YW/Ratio	1321	110
IMF/REA		
Scrotal		

5L HOB0 BEN 04-4422
FRITZ CHRIS 6047
FRITZ CRIS 1051

HB	GM	CED	BW	WW	YW	MK	ME	HPG	CEM	ST	MB	YG	CW	REA	Fat
138	53	11	-2.0	85	144	28	2	9	11	10	0.66	0.32	53	0.07	0.07
TOP BREED %															
11%	7%	13%	38%	3%	1%	11%	58%	67%	4%	45%	19%	99%	3%	54%	97%

Justice calves come easy and continue on to have explosive growth. He offers that rare combination of super calving ease and breed leading growth numbers, backed up by the personal performance of his progeny. Here at GMRA the Justice calves always perform. Justice daughters are milking well and have nice udders and are raising top end calves.



Feddes Bobcat A230

F

FEDDES BOBCAT A230

Birth Date: **1/29/13** Reg. # **1607674** Category: **100% 1A**

BECKTON EPIC K F075
BECKTON EPIC R397 K
BECKTON KIT F468 JL

BECKTON EPIC D404
BECKTON BELGA D483 KR
BECKTON JULIAN GG B571
BECKTON KIT A517 NP
BFCK CHEROKEE CNYN 4912
SUNR GRAND TILLY 006
FEDDES SUPREME 925
FEDDES LAKINA 056



BW	87	
WW/Ratio	709	101
YW/Ratio	1301	114
IMF/REA	4.31	14.08
Scrotal		

SUNR GRAND CHEROKEE 909N
FEDDES LAKINA 91S
FEDDES LAKINA 308

HB	GM	CED	BW	WW	YW	MK	ME	HPG	CEM	ST	MB	YG	CW	REA	Fat
132	52	0	1.8	84	139	21	-4	14	2	14	0.71	0.19	56	0.46	0.06
TOP BREED %															
12%	7%	88%	91%	1%	1%	35%	18%	6%	74%	11%	9%	97%	1%	9%	98%

Bobcat was our pick of the bull crop at the Feddes/C-T Bull Sale in the Spring of 2014. He had everything we were looking for: great personal performance, carcass scans and gainability. This was combined with great muscling, good depth of rib, lots of power, and a top notch set of numbers to go with.



Buy a Bull – We'll Buy Your Tags!

If you purchase a bull from us, we will purchase one bag of FCP or Allied Access tags per bull for you. All you need to do is call the Red Angus Marketing Department, answer a few management questions, and enroll your calf crop for free. Then start reaping the premiums through Red Angus' marketing programs!

Feeder Calf Certification Program (FCCP) "yellow tags" are for bull customers using ONLY Red Angus bulls. FCCP cattle are accepted into the Choice+ Grid and Pro-Cow Program. Cattle enrolled in FCCP are USDA genetic, source and age verified.



Allied Access "green tags" verify source and age for bull customers utilizing halfblood bulls in their planned crossbreeding program.

Ranch Tested. Rancher Trusted.
Red Angus

RedAngus.org • (940) 387-3502



GMRA MOUNTAIN 9287

Birth Date: 2/6/09 Reg. # 1322842 Category: 100% 1A

GMRA EBV 935
GMRA EBV 266
BJR ESTONIA 9S-1210

BASIN HOBO 79E
GMRA VENICE 359
GMRA VENICE 146

LEACHMAN EBV 3531
DEL PRIZE ANNA 560
ALALTA ACRES THOR 9S
BJR ESTONIA9102-9134
BUF CRK HOBO 2595
DOUBLE FORK 079Z
LCHMN HEVN'S SAKE 1002F
GMRA VENICE 015



BW	84	
WW/Ratio	776	114
YW/Ratio	1250	106
IMF/REA	3.61	11.85
Scrotal		

HB	GM	CED	BW	WW	YW	MK	ME	HPG	CEM	ST	MB	YG	CW	REA	Fat	
120	49	7	0.4	55	95	33	3	7	2	14	0.47	0.13	28	-0.03	0.02	
TOP BREED %	23%	50%	37%	71%	58%	41%	3%	68%	90%	68%	10%	43%	86%	36%	70%	79%

Mountain was one of our top bulls in our 2010 sale. He is a son of the fantastic female producer, GMRA EBV 266. Mountain is out of an impressive female himself – his dam is a high MPPA cow that is also the dam of GMRA Stetson 2240. Look for the Mountain calves to have great depth and muscling with tons of eye appeal.



Keep the Tags – Keep the Premiums!

FCCP yellow-tagged calves qualify exclusively for these Red Angus grids:



Choice+
Premium Red Angus Grid



G.O. RED
RED ANGUS GRID



Enroll your calves today – Free enrollment and only 99¢ per tag.

Feeder Calf Certification Program

- Traceability to at least 50% Red Angus genetics
- Source verified to ranch of origin
- Group age



Allied Access*

- Source verified to ranch of origin
- Group age

*Not eligible for Choice+ or G.O. Red Grids



Contact us today and take advantage of these **VALUE-ADDED OPTIONS.**

Ranch Tested. Feedlot Trusted.

Red Angus

RedAngus.org
(940) 387-3502





If the first two bulls raised by this dam are any indication, she is going to have a high performance career here at GMRA. She is out of a dam with an MPPA of 108 on 9 which ranks as #9 in the herd and is following in those footsteps. She has an MPPA of 105 which ranks her in the top 16% of the entire herd. She has an average WR of 108 and an average YR of 109. Her first calf was an absolute standout Stetson in last year's sale, and this calf is no different. Tulane has outstanding personal performance, including a 110 IMF ratio. He is currently sitting as the #1 ADG bull on test. A great combination of maternal and personal power.

Lot 1

GMRA TULANE 5289

1

Birth Date: 2/10/15 Reg. # 3467029 Category: 100% 1A



LJC MISSION STATEMENT P27
GMRA STETSON 2240
GMRA VENICE 359

LJC LANCER 806
LJC HANNAH 106
BASIN HOBO 79E
GMRA VENICE 146
MESSMER PACKER S008
GMRA LAKOTA 625
BIEBER MAKE MIMI 7249
GMRA TOWKANA 963

GMRA TRILOGY 0226
GMRA TOWKANA 255
GMRA TOWKANA 570

BW	85
WW/Ratio	620 104
YW/Ratio	1176 106
IMF/REA	4.06 10.4
Scrotal	36.0

HB	GM	CED	BW	WW	YW	MK	ME	HPG	CEM	ST	MB	YG	CW	REA	Fat		
152	52	6	-2.6	65	108	25	5	12	5	15	0.55	0.05	31	0.34	0.03		
TOP BREED %		7%	8%	37%	25%	21%	12%	12%	82%	13%	35%	9%	25%	70%	18%	13%	93%



ELIGIBLE



This bull's young dam has posted an MPPA of 106 right out of the chute. His granddam posts a 103 MPPA and is the dam of Lot 8 in this sale, who is also an impressive performance package. Trident has a nice low BW that is tied for the 7th lowest in the offering. His WR is tied for 5th in the offering and he kept on going right through yearling. All that performance is combined with out-standing carcass scans. He has the 2nd highest adjusted IMF scan and REA scan turning in an IMF ratio of 135, and the #2 REA ratio of 126.

Lot 2

GMRA TRIDENT 5219

2

Birth Date: 1/15/15 Reg. # 3467076 Category: 100% 1A



MESSMER PACKER S008
GMRA TRILOGY 0226
GMRA LAKOTA 625

MESSMER JOSHUA 019P
MESSMER MILLIE 124P
GLACIER CHATEAU 744
GMRA LAKOTA 380
VGW JUSTICE 614
FRITZ CHRIS 6047
LCB HOSS A444N
GMRA ESTONIA 228

FRITZ JUSTICE 8013
GMRA ESTONIA 367
GMRA ESTONIA 935W

BW	74
WW/Ratio	669 115
YW/Ratio	1169 108
IMF/REA	5.80 13.7
Scrotal	35.0

HB	GM	CED	BW	WW	YW	MK	ME	HPG	CEM	ST	MB	YG	CW	REA	Fat		
176	52	9	-3.7	74	116	20	4	11	8	16	0.50	0.00	33	0.73	0.06		
TOP BREED %		1%	5%	15%	13%	5%	5%	48%	75%	31%	6%	4%	34%	46%	13%	1%	98%



ELIGIBLE



Trinity is backed up by a great maternal pedigree with 5 generations of MPPAs all over 101. His own dam has an MPPA of 106 on 8 with a below average BW and an average WR of 107 and an average YR of 104. He is tied for the 3rd lowest BW in the offering, yet turned in well above average weaning and yearling ratios. He has the 6th highest IMF ratio of 132 and as of 3rd quarter test weights was the #9 ADG bull.

Lot 3

GMRA TRINITY 5222

3

Birth Date: 1/16/15 Reg. # 3467112 Category: 100% 1A



MESSMER PACKER S008
GMRA TRILOGY 0226
GMRA LAKOTA 625

MESSMER JOSHUA 019P
MESSMER MILLIE 124P

GLACIER CHATEAU 744
GMRA LAKOTA 380

LCC CHEYENNE B221L
GMRA INDIGO 615
GMRA INDIGO 230

BFCX CHEROKEE CNYN 4912
HXC 701G

BUF CRK BARNEY 3474
GMRA INDIGO 512

BW	71
WW/Ratio	635 107
YW/Ratio	1177 106
IMF/REA	4.85 10.5
Scrotal	39.0

HB	GM	CED	BW	WW	YW	MK	ME	HPG	CEM	ST	MB	YG	CW	REA	Fat
167	52	8	-4.5	70	108	18	4	15	7	15	0.70	0.13	27	0.19	0.05
TOP BREED %															
3%	5%	20%	7%	11%	13%	61%	72%	1%	11%	9%	10%	91%	27%	29%	97%



ELIGIBLE



This Trilogy son is a product of the powerfully maternal Ophelia cow family. His dam has an MPPA of 107 on 9 which places her in the top 6% of the herd. She has an average WR of 108 and an average YR of 106 all while maintaining a below average birth ratio. Her 2013 bull sold to Chaney Red Angus in our 2014 sale. Tripoli turns in a moderate BW, high end growth and a great carcass scan with an IMF ratio of 126.

Lot 4

GMRA TRIPOLI 5250

4

Birth Date: 1/24/15 Reg. # 3467108 Category: 100% 1A



MESSMER PACKER S008
GMRA TRILOGY 0226
GMRA LAKOTA 625

MESSMER JOSHUA 019P
MESSMER MILLIE 124P

GLACIER CHATEAU 744
GMRA LAKOTA 380

GMRA MINOTAURO 3104
GMRA OPHELIA 526
GMRA OPHELIA 229

BJR JR 107
GMRA LENA 108

NSF SPECIAL DELIVERY
GMRA OPHELIA 036

BW	78
WW/Ratio	648 109
YW/Ratio	1184 106
IMF/REA	4.64 10.5
Scrotal	39.0

HB	GM	CED	BW	WW	YW	MK	ME	HPG	CEM	ST	MB	YG	CW	REA	Fat
164	52	9	-4.4	62	98	29	4	11	5	16	0.70	0.07	22	0.14	0.03
TOP BREED %															
3%	6%	17%	7%	30%	27%	2%	76%	27%	29%	5%	10%	74%	43%	39%	90%



ELIGIBLE



This bull's young dam is posting an MPPA of 108, which places her at #6 in the herd. Her dam is a maternal sister to GMRA Trilogy 0226 and GMRA Make It Easy 8226, both purchased by Accelerated Genetics, and sires of several lots in this sale. The maternal power is evident, as you have to trace the cow family back 7 generations to 1984 before you can find an MPPA under 100. Titan 5229 is tied for the #1 weaning ratio and posts the #2 adjusted 205 day weight in the offering. He also has the #1 adjusted yearling weight and yearling ratio. His adjusted REA is ranked at #1, as is his REA ratio of 135.

Lot 5

5 **GMRA TITAN 5229**
 Birth Date: 1/18/15 Reg. # 3467049 Category: 100% 1A



- LACY GOLD BAR 8123
- BIEBER GOLDBAR Y379**
- BASIN PRIMROSE 2043

- MESSMER PACKER S008
- GMRA LAKOTA 315**
- GMRA LAKOTA 106

- CCF GOLD BAR 0251
- LACY MS CHEROKEE 557P
- BFCk CHEROKEE CNYN 4912
- BASIN PRIMROSE 0854
- MESSMER JOSHUA 019P
- MESSMER MILLIE 124P
- LJC MISSION STATEMENT P27
- GMRA LAKOTA 625

BW	95
WW/Ratio	702 121
YW/Ratio	1344 125
IMF/REA	4.11 14.6
Scrotal	34.0

HB	GM	CED	BW	WW	YW	MK	ME	HPG	CEM	ST	MB	YG	CW	REA	Fat		
145	53	2	-0.1	89	135	24	4	14	-2	16	0.68	-0.12	49	0.94	0.01		
TOP BREED %		9%	3%	81%	69%	1%	1%	15%	77%	5%	97%	6%	12%	9%	1%	1%	78%



ELIGIBLE



Lots of personal performance and maternal power in this bull. His young dam is posting a 106 MPPA and is out of a pedigree full of maternal standouts. The granddam is a maternal sister to the dam of ABS's GMRA Laramie 5110 who was the 8th most used bull in the Red Angus breed in 2010. Goldmine has been a powerhouse in his own right. He takes a nice BW all the way to the #4 weaning ratio in the offering and is tied for the 5th highest yearling ratio. He tops that off with nice carcass scans and a REA ratio of 108.

Lot 6

6 **GMRA GOLDMINE 5235**
 Birth Date: 1/19/15 Reg. # 3467052 Category: 100% 1A



- LACY GOLD BAR 8123
- BIEBER GOLDBAR Y379**
- BASIN PRIMROSE 2043

- FRITZ JUSTICE 8013
- GMRA LAKOTA 318**
- GMRA LAKOTA 744

- CCF GOLD BAR 0251
- LACY MS CHEROKEE 557P
- BFCk CHEROKEE CNYN 4912
- BASIN PRIMROSE 0854
- VGW JUSTICE 614
- FRITZ CHRIS 6047
- BIEBER MAKE MIMI 7249
- GMRA LAKOTA 947

BW	80
WW/Ratio	673 116
YW/Ratio	1212 112
IMF/REA	3.94 11.8
Scrotal	36.5

HB	GM	CED	BW	WW	YW	MK	ME	HPG	CEM	ST	MB	YG	CW	REA	Fat		
123	53	5	-1.3	80	122	28	1	10	0	13	0.75	-0.01	40	0.54	0.02		
TOP BREED %		27%	4%	52%	47%	1%	3%	3%	52%	49%	91%	29%	7%	36%	5%	3%	82%



ELIGIBLE



Lot 7

There is a ton of performance here backed up by a dam with an impressive track record for GMRA. She has an MPPA of 104 with an average WR of 105 and an average YR of 103 on 4 calves. Triumph follows in his sibling's footsteps with top notch performance complemented by outstanding carcass scans. His adjusted IMF is at the top, turning in an IMF ratio of 137 that is #4 in the offering and a REA ratio of 108.

7

GMRA TRIUMPH 5249

Birth Date: 1/22/15 Reg. # 3466945 Category: 100% 1A



MESSMER PACKER S008
GMRA TRILOGY 0226
 GMRA LAKOTA 625

 VGW NORTHERN CANYON 5109
GMRA LENA 974
 GMRA LENA 357

MESSMER JOSHUA 019P
 MESSMER MILLIE 124P
 GLACIER CHATEAU 744
 GMRA LAKOTA 380
 GEFB NORTHERN CANYON 2328
 VGW PT YUMA 0278
 LCHMN GRANDCANYON 1244G
 GMRA LENA 541

BW	77	
WW/Ratio	648	109
YW/Ratio	1126	101
IMF/REA	5.05	12.4
Scrotal	37.0	

HB	GM	CED	BW	WW	YW	MK	ME	HPG	CEM	ST	MB	YG	CW	REA	Fat	
130	52	7	-4.9	59	94	23	3	13	3	12	0.83	0.11	19	0.26	0.06	
TOP BREED %																
20%	4%	28%	5%	42%	35%	23%	66%	7%	54%	40%	4%	89%	53%	20%	99%	



ELIGIBLE



Lot 8

This Epic son goes back to the powerful Estonia cow family that raised such bulls as GMRA EBV 266. The dam posts an MPPA of 103, with below average birth weights and an average weaning ratio of 104 and an average yearling ratio of 103 on 5. This bull has weaning and yearling ratios in the top 13 of the offering. His IMF ratio is 103 and his REA ratio of 113 is tied for #8.

8

GMRA CLASSIC 5261

Birth Date: 1/28/15 Reg. # 3466936 Category: 100% 1A



BECKTON EPIC K F075
BECKTON EPIC R397 K
 BECKTON KIT F468 JL

 LCB HOSS A444N
GMRA ESTONIA 935W
 GMRA ESTONIA 228

BECKTON EPIC D404
 BECKTON BELGA D483 KR
 BECKTON JULIAN GG B571
 BECKTON KIT A517 NP
 BLUE RIDGE PONDEROSA
 RSLND REBELLA 120-502
 LCHMN HEVN'S SAKE 1002F
 GMRA ESTONIA 826

BW	76	
WW/Ratio	651	110
YW/Ratio	1220	109
IMF/REA	3.79	12.9
Scrotal	39.0	

HB	GM	CED	BW	WW	YW	MK	ME	HPG	CEM	ST	MB	YG	CW	REA	Fat	
165	50	7	-3.7	66	112	24	0	13	7	16	0.25	0.22	31	0.43	0.11	
TOP BREED %																
3%	22%	29%	13%	18%	9%	13%	41%	11%	11%	5%	84%	99%	17%	8%	99%	



ELIGIBLE



9 GMRA PYRAMID 5215

Birth Date: 1/14/15 Reg. #: 3467086 Category: 100% 1A

FRITZ JUSTICE 8013	VGW JUSTICE 614	BW	92
GMRA PEACEMAKER 1216	FRITZ CHRIS 6047	WW/Ratio	684 118
GMRA THELMA 930	LJC MISSION STATEMENT P27	YW/Ratio	1257 117
	GMRA THELMA 319	IMF/REA	3.72 10.7
BIEBER ROOSEVELT W384	BIEBER ROUGH RIDER 10712	Scrotal	35.5
GMRA OPHELIA 392	BIEBER SHEBA 9602	ELIGIBLE	
GMRA OPHELIA 441	BIEBER MAKE MIMI 7249		
	GMRA OPHELIA 036		

HB	GM	CED	BW	WW	YW	MK	ME	HPG	CEM	ST	MB	YG	CW	REA	Fat
124	51	6	1.7	92	144	21	1	9	4	12	0.52	0.16	58	0.23	0.02
TOP BREED %															
25%	12%	36%	91%	1%	1%	32%	50%	77%	46%	39%	29%	96%	1%	23%	85%

This bull is backed up by one impressive cow family. His young Ophelia dam is posting an MPPA of 107 which ranks her in the top 5% of the herd. She is out of a dam with an MPPA of 103 on 10 calves, who have all been retained in the herd or sold in the bull sale. Great granddam has an MPPA of 109 on 9 and is the dam of GMRA Cody 7228, who sold to Accelerated Genetics and maternal power!

Bowden Red Angus. Pyramid ties for the 3rd highest adjusted 205 day weight and WR and has the #4 yearling adjusted weight and the 2nd highest YR. Tons of performance backed up by generations of maternal power!



Lot 10

10 GMRA FULL DRAW 5271

Birth Date: 2/2/15 Reg. #: 3466946 Category: 100% 1A

BECKTON EPIC K F075	BECKTON EPIC D404	BW	89
BECKTON EPIC R397 K	BECKTON BELGA D483 KR	WW/Ratio	638 107
BECKTON KIT F468 JL	BECKTON JULIAN GG B571	YW/Ratio	1197 107
	BECKTON KIT A517 NP	IMF/REA	3.99 12.5
GMRA EBV 266	GMRA EBV 935	Scrotal	37.0
GMRA THELMA 984	BJR ESTONIA 9S-1210	ELIGIBLE	
GMRA THELMA 919	BJR MAKE MY DAY 981		
	GMRA THELMA 733		

HB	GM	CED	BW	WW	YW	MK	ME	HPG	CEM	ST	MB	YG	CW	REA	Fat
145	53	4	-1.7	73	120	24	1	12	-1	16	0.74	0.06	39	0.77	0.08
TOP BREED %															
9%	3%	58%	39%	7%	3%	14%	52%	20%	97%	6%	7%	74%	5%	1%	99%

This bull just doesn't do anything wrong. He's got great personal performance along with top end carcass scans. He is out of a dam with an MPPA of 103 on 4 calves. He turned in an IMF ratio of 109, and a REA ratio of 109 which is tied for 12th in the offering. His numbers are solid across the board and complete the package.



Lot 11

11 GMRA EPIC 5251

Birth Date: 1/24/15 Reg. #: 3467117 Category: 100% 1A

BECKTON EPIC K F075	BECKTON EPIC D404	BW	95
BECKTON EPIC R397 K	BECKTON BELGA D483 KR	WW/Ratio	674 114
BECKTON KIT F468 JL	BECKTON JULIAN GG B571	YW/Ratio	1258 113
	BECKTON KIT A517 NP	IMF/REA	3.94 12.4
LCC CHEYENNE B221L	BFCK CHEROKEE CNYN 4912	Scrotal	41.0
GMRA ANGIE ROSE 663	HXC 701G	ELIGIBLE	
GMRA ANGIE ROSE 385	BIEBER TOP MONEY 7948		
	GMRA ANGIE ROSE 523		

HB	GM	CED	BW	WW	YW	MK	ME	HPG	CEM	ST	MB	YG	CW	REA	Fat
129	51	2	0.7	79	127	24	0	15	2	13	0.67	0.24	47	0.30	0.08
TOP BREED %															
21%	14%	79%	80%	2%	1%	17%	37%	1%	71%	26%	12%	99%	1%	17%	99%

This Epic son is from a highly productive Cheyenne dam with an MPPA of 104 on 7 calves. She has average weaning and yearling ratios of 105. She is backed up by generations of performance. You have to go back to 1991 to find an MPPA under 100. Epic 5251 turns in the #6 adjusted 205 day weight and the #3 adjusted yearling weight in the offering. He also posted nice ultrasound scans with a 107 IMF ratio and a 109 REA ratio. His maternal sib is the dam of Lot 16 in this sale.



12 GMRA GOLDBAR 5304

Birth Date: 2/18/15 Reg. #: 3466995 Category: 100% 1A

LACY GOLD BAR 8123
BIEBER GOLDBAR Y379
BASIN PRIMROSE 2043

CCF GOLD BAR 0251
LACY MS CHEROKEE 557P
BFCK CHEROKEE CNYN 4912
BASIN PRIMROSE 0854
GFCB NORTHERN CANYON 2328
VGW PT YUMA 0278
BROWN VACATION H7106
GMRA LAKOTA 338

VGW NORTHERN CANYON 5109
GMRA LAKOTA 131
GMRA LAKOTA 509

BW	75
WW/Ratio	649 109
YW/Ratio	1144 103
IMF/REA	2.48 11.0
Scrotal	36.0

ELIGIBLE

HB	GM	CED	BW	WW	YW	MK	ME	HPG	CEM	ST	MB	YG	CW	REA	Fat
131	50	6	-3.5	69	100	28	3	12	2	13	0.36	-0.06	24	0.25	-0.01
TOP BREED %															
19%	24%	38%	14%	13%	24%	2%	63%	13%	75%	22%	62%	21%	37%	22%	32%

There is lot of maternal performance in this pedigree. The dam posts an MPPA of 104 and has a below average birth ratio and an average WR and YR of 106. You have to go back 7 generations in the maternal pedigree to find an MPPA under 100. This bull is a great example of all that maternal power. He has one of the lowest birth weights in the offering, yet is in the top 12 for adjusted 205 day weight.



Lot 13

13 GMRA TRILOGY 5262

Birth Date: 1/28/15 Reg. #: 3466931 Category: 100% 1A

MESSMER PACKER S008
GMRA TRILOGY 0226
GMRA LAKOTA 625

MESSMER JOSHUA 019P
MESSMER MILLIE 124P
GLACIER CHATEAU 744
GMRA LAKOTA 380
GLACIER CHATEAU 744
GMRA NEXA 235
BIEBER RED MOON 6042
GMRA ANGIE 800

GMRA CITADEL 6109
GMRA ANGIE 889
GMRA ANGIE 154

BW	78
WW/Ratio	644 108
YW/Ratio	1127 101
IMF/REA	5.30 11.0
Scrotal	36.0

ELIGIBLE

HB	GM	CED	BW	WW	YW	MK	ME	HPG	CEM	ST	MB	YG	CW	REA	Fat
155	51	9	-4.4	58	87	21	6	11	8	15	0.81	0.09	15	0.10	0.04
TOP BREED %															
5%	11%	19%	8%	44%	49%	33%	90%	31%	5%	11%	5%	84%	64%	44%	96%

Trilogy 5262 is out of a dam with a proven track record of below average birth weights followed by high performance. She has an MPPA of 105 with an average WR of 106 and an average yearling ratio of 103 on 6 calves. This bull followed the pattern, with a moderate birth weight turned into performance. He also turned in the #3 IMF ratio of 144.



Lot 14

14 GMRA MAKE IT GAIN 5284

Birth Date: 2/8/15 Reg. #: 3467008 Category: 100% 1A

BIEBER MAKE MIMI 7249
GMRA MAKE IT EASY 8226
GMRA LAKOTA 625

BJR MAKE MY DAY 981
BIEBER SIRENA 6708
GLACIER CHATEAU 744
GMRA LAKOTA 380
VGW JUSTICE 614
FRITZ CHRIS 6047
4L SUPER VISION R2292
GMRA NEXA 266

FRITZ JUSTICE 8013
GMRA NEXA 166
GMRA NEXA 951

BW	98
WW/Ratio	718 121
YW/Ratio	1247 112
IMF/REA	3.41 11.8
Scrotal	39.5

HB	GM	CED	BW	WW	YW	MK	ME	HPG	CEM	ST	MB	YG	CW	REA	Fat
126	49	3	1.5	91	134	17	1	7	10	13	0.37	0.14	51	0.13	0.00
TOP BREED %															
24%	37%	65%	91%	1%	1%	67%	48%	95%	1%	33%	59%	93%	1%	40%	68%

Make It Gain 5284 has one of the most powerful dams in the herd. She posts an MPPA of 109, with an average WR of 113 and an average YR of 103 on 3. She ranks in the top 2% of all GMRA cows in production, and ties for the #4 MPPA rank in the herd. Her 2013 bull calf sold to Crois-sant Red Angus in our 2014 sale. Things really get interesting when you go back throughout the maternal pedigree. The MPPA's read right off the top of the herd and for 9 generations range from 101 - 107. In fact, the first cow in the pedigree with an MPPA under 100 was born in 1973. All of this maternal power is combined with high end personal performance. He has the #1 adjusted 205 day weight and is tied for the #1 WR, and has the #6 yearling adjusted weight and ties for the #5 YR.

HAPPY RETIREMENT, JERRY GLIKO!

Thanks for all the years of your dedication to all the cattlemen of Montana and the Red Angus breed, and mostly your friendship. We will miss you at the sales, but the door is always open at Green Mountain Red Angus!



15 GMRA PEACEMAKER 5297

Birth Date: 2/13/15 Reg. # 3466965 Category: 100% 1A

FRITZ JUSTICE 8013	VGW JUSTICE 614
GMRA PEACEMAKER 1216	FRITZ CHRIS 6047
GMRA THELMA 930	LJC MISSION STATEMENT P27
	GMRA THELMA 319
MESSMER PACKER S008	MESSMER JOSHUA 019P
GMRA NEXA 2104	MESSMER MILLIE 124P
GMRA NEXA 862	GMRA MINOTAURO 3104
	GMRA NEXA 418

BW	86	
WW/Ratio	682	115
YW/Ratio	1234	111
IMF/REA	5.35	11.7
Scrotal	36.0	

ELIGIBLE

HB	GM	CED	BW	WW	YW	MK	ME	HPG	CEM	ST	MB	YG	CW	REA	Fat
153	53	5	-0.4	89	133	19	7	11	5	15	0.88	0.06	48	0.42	0.02
TOP BREED %															
6%	3%	45%	62%	1%	1%	53%	93%	28%	29%	9%	3%	74%	1%	9%	85%

Another performance minded female in the GMRA herd is behind this Peacemaker son. She has an MPPA of 107, which places her in the top 6% of the herd. She posts an average WR of 112 and an average YR of 111. This bull has all the right numbers. He turned in the #5 adjusted 205 day weight and WR, and the #9 adjusted yearling weight and ratio. His REA ratio is 102 and his IMF ratio of 146 is #2 in the offering.



Lot 16

16 GMRA GOLDBAR 5243

Birth Date: 1/20/15 Reg. # 3467089 Category: 100% 1A

LACY GOLD BAR 8123	CCF GOLD BAR 0251
BIEBER GOLDBAR Y379	LACY MS CHEROKEE 557P
BASIN PRIMROSE 2043	BFCF CHEROKEE CNYN 4912
	BASIN PRIMROSE 0854
GMRA MAKE IT EASY 8226	BIEBER MAKE MIMI 7249
GMRA ANGIE ROSE 3100	GMRA LAKOTA 625
GMRA ANGIE ROSE 663	LCC CHEYENNE B221L
	GMRA ANGIE ROSE 385

BW	82	
WW/Ratio	625	108
YW/Ratio	1109	103
IMF/REA	5.63	11.2
Scrotal	33.0	

ELIGIBLE

HB	GM	CED	BW	WW	YW	MK	ME	HPG	CEM	ST	MB	YG	CW	REA	Fat
136	52	4	-2.2	73	105	31	3	12	1	14	0.88	0.01	29	0.42	0.03
TOP BREED %															
15%	7%	54%	31%	6%	15%	1%	69%	14%	85%	13%	3%	51%	23%	9%	92%

There's another great cow family backing up this bull. He is out of a dam with an MPPA of 103 that comes from a pedigree of MPPAs over 100 going back 5 generations. This bull turns in great personal performance along with top end ultrasound scans. He has the 3rd highest adjusted IMF scan with a ratio of 131, and a REA ratio of 103.



Lot 17

17 GMRA PEACEMAKER 5207

Birth Date: 1/12/15 Reg. # 3466941 Category: 100% 1A

FRITZ JUSTICE 8013	VGW JUSTICE 614
GMRA PEACEMAKER 1216	FRITZ CHRIS 6047
GMRA THELMA 930	LJC MISSION STATEMENT P27
	GMRA THELMA 319
BROWN VACATION H7106	BECKTON JULIAN GG B571
GMRA LAKOTA 969	LCHMN FLOWER C1161
GMRA LAKOTA 380	BASIN HOBO 79E
	GMRA LAKOTA 527

BW	88	
WW/Ratio	646	109
YW/Ratio	1173	105
IMF/REA	3.69	11.5
Scrotal	39.0	

ELIGIBLE

HB	GM	CED	BW	WW	YW	MK	ME	HPG	CEM	ST	MB	YG	CW	REA	Fat
186	52	10	-2.8	73	105	23	4	12	7	18	0.67	-0.10	27	0.07	-0.06
TOP BREED %															
1%	8%	11%	23%	7%	16%	22%	79%	20%	10%	1%	12%	11%	26%	51%	4%

This Peacemaker son comes with a prestigious pedigree. His dam has an MPPA of 105 and his great granddam was the foundation female, GMRA Lakota 527 who features a 109 MPPA. His dam is a maternal sister to the dam of GMRA Trilogy 0226 and GMRA Make It Easy 8226, both purchased by Accelerated Genetics, and sires of several lots in this sale. All of her progeny have been kept as a replacement, or sold in the bull sale, with her 2012 bull calf selling to Summers Red Angus. There is a lot of performance here, from growth to carcass.



Lot 18

18 GMRA EPIC 5291
 Birth Date: 2/11/15 Reg. # 3466992 Category: 100% 1A

BECKTON EPIC K F075
 BECKTON EPIC R397 K
 BECKTON KIT F468 JL

LJC MISSION STATEMENT P27
GMRA LAKOTA 106
 GMRA LAKOTA 625

BECKTON EPIC D404
 BECKTON BELGA D483 KR
 BECKTON JULIAN GG B571
 BECKTON KIT A517 NP

LJC LANCER 806
 LJC HANNAH 106

GLACIER CHATEAU 744
 GMRA LAKOTA 380

BW	92	
WW/Ratio	658	111
YW/Ratio	1230	110
IMF/REA	2.84	13.6
Scrotal	36.5	

ELIGIBLE

HB	GM	CED	BW	WW	YW	MK	ME	HPG	CEM	ST	MB	YG	CW	REA	Fat
164	51	4	-0.6	82	133	21	0	14	4	17	0.34	0.11	48	0.65	0.07
TOP BREED %															
3%	12%	59%	58%	1%	1%	33%	38%	5%	38%	3%	69%	89%	1%	1%	99%

This Epic son comes from a Lakota dam with a prestigious lineage. She is a maternal sibling to GMRA Trilogy 0226 and GMRA Make It Easy 8226, both purchased by Accelerated Genetics, and sires of several lots in this sale. Two other siblings have sold into registered herds as well. The maternal power is evident, as you have to trace the cow family back 7 generations to 1984 before you REA scan and ratio that ranks at #3. The maternal power is a great combination with the personal performance.

can find an MPPA under 100. Epic 5291 has the #9 adjusted 205 day weight and WR in the offering, as well as the #10 yearling adjusted weight and he ties for the #11 YR. He also turned in an adjusted

19 GMRA ROOSEVELT 5216
 Birth Date: 1/14/15 Reg. # 3467036 Category: 100% 1A

BIEBER ROUGH RIDER 10712
BIEBER ROOSEVELT W384
 BIEBER SHEBA 9602

LJC MISSION STATEMENT P27
GMRA OPHELIA 279
 GMRA OPHELIA 840

BASIN TREND SETTER 6074
 BIEBER ADELLE 8958

C A FUTURE DIRECTION 5321
 BIEBER SHEBA 5537

LJC LANCER 806
 LJC HANNAH 106

GMRA LARAMIE 5110
 GMRA OPHELIA 441

BW	92	
WW/Ratio	638	107
YW/Ratio	1237	111
IMF/REA	3.87	10.5
Scrotal	37.0	

ELIGIBLE

HB	GM	CED	BW	WW	YW	MK	ME	HPG	CEM	ST	MB	YG	CW	REA	Fat
123	52	3	0.2	72	119	25	0	15	4	12	0.84	0.17	41	0.20	0.04
TOP BREED %															
26%	6%	73%	72%	7%	4%	9%	37%	2%	41%	43%	4%	97%	4%	27%	97%

There is a lot of maternal power backed up by generations of performance here. His dam has an MPPA of 106 and is a member of the powerful Ophelia cow family that produced Accelerated Genetic's GMRA Cody 7228. Roosevelt 5216 has kept on performing, right on through test. He has the #8 adjusted yearling weight and as of 3rd quarter test weights he has the #8 ADG. He also turned in a 105 IMF ratio.

20 GMRA TRILOGY 5303
 Birth Date: 2/18/15 Reg. # 3466948 Category: 100% 1A

MESSMER PACKER S008
GMRA TRILOGY 0226
 GMRA LAKOTA 625

LCB HOSS A444N
GMRA MESA MAID 993
 GMRA MESA MAID 724

MESSMER JOSHUA 019P
 MESSMER MILLIE 124P

GLACIER CHATEAU 744
 GMRA LAKOTA 380

BLUE RIDGE PONDEROSA
 RSLND REBELLA 120-502

MLK CRK TITLEIST 4158
 GMRA MESA MAID 502

BW	75	
WW/Ratio	621	105
YW/Ratio	1099	99
IMF/REA	2.35	13.2
Scrotal	34.0	

HB	GM	CED	BW	WW	YW	MK	ME	HPG	CEM	ST	MB	YG	CW	REA	Fat
150	49	8	-5.2	57	84	21	3	4	8	16	0.10	-0.12	12	0.52	0.02
TOP BREED %															
7%	41%	22%	4%	48%	55%	38%	63%	99%	6%	5%	96%	9%	72%	4%	82%

This Trilogy son comes from a performance minded dam. She has a below average birth ratio combined with a WR average of 106 and a YR average of 102 on 5. She has never weaned a calf with a WR under 100. This bull has one of the lowest birth weights in the offering. He turned in a REA ratio of 116 which is tied for 4th.



Lot 21

21 GMRA TEDDY 5212
 Birth Date: 1/14/15 Reg. # 3467105 Category: 100% 1A

BIEBER ROUGH RIDER 10712
BIEBER ROOSEVELT W384
 BIEBER SHEBA 9602

GLACIER CHATEAU 744
GMRA LARKOBA 517
 GMRA LARKOBA 221

BASIN TREND SETTER 6074
 BIEBER ADELLE 8958

C A FUTURE DIRECTION 5321
 BIEBER SHEBA 5537

LMAN KING ROB 8621
 GLACIER REBALA

GMRA VERMILLION 796
 GMRA LARKOBA 649

BW	89	
WW/Ratio	684	115
YW/Ratio	1224	110
IMF/REA	3.16	11.9
Scrotal	38.0	

HB	GM	CED	BW	WW	YW	MK	ME	HPG	CEM	ST	MB	YG	CW	REA	Fat
109	48	2	1.7	76	107	25	1	13	8	11	0.33	0.10	35	0.30	0.04
TOP BREED %															
43%	177%	78%	91%	4%	13%	9%	50%	8%	7%	51%	71%	87%	10%	17%	95%

Teddy 5212 comes from a dam with an MPPA of 109, which ranks her at #2 in the herd. She has an average WR of 110 and an average YR of 103, both on 9 calves. Every calf she has had has been kept as a replacement or sold in the bull sale. Her 2012 bull was Lot 1 in our 2013 bull sale. All of her calves have excelled in growth and this one is no different. He is tied for the 3rd highest adjusted 205 day weight and turned in the #11 yearling adjusted weight and tied for the 11th highest yearling ratio. He also posted a REA ratio of 104. Don't let all this performance pass you by.



22 GMRA EPIC 5255

Birth Date: 1/27/15 Reg. #: 3466993 Category: 100% 1A

BECKTON EPIC K F075
BECKTON EPIC R397 K
BECKTON KIT F468 JL

GMRA SECRET MISSION 8258
GMRA ANGIE 123
GMRA ANGIE 154

BECKTON EPIC D404
BECKTON BELGA D483 KR
BECKTON JULIAN GG B571
BECKTON KIT A517 NP
LJC MISSION STATEMENT P27
GMRA LAKOTA 341
BIEBER RED MOON 6042
GMRA ANGIE 800

BW	101	
WW/Ratio	654	110
YW/Ratio	1279	115
IMF/REA	3.06	13.2
Scrotal	35.5	

HB	GM	CED	BW	WW	YW	MK	ME	HPG	CEM	ST	MB	YG	CW	REA	Fat
158	50	2	0.2	77	130	18	1	15	6	16	0.22	0.25	48	0.42	0.09
TOP BREED %															
4%	30%	76%	74%	3%	1%	60%	49%	2%	21%	4%	89%	99%	1%	9%	99%

There is lots of performance in this Epic son who comes from a dam with an MPPA of 102 on 3 calves. His adjusted 205 day weight is #10 in the offering and his adjusted yearling is #2. As of 3rd quarter test weights he has the #5 ADG. His REA ratio of 115 and his adjusted REA scan are both ranked #6 in the offering.



Lot 23

23 GMRA MAKE IT EASY 5204

Birth Date: 1/11/15 Reg. #: 3466820 Category: 100% 1A

BIEBER MAKE MIMI 7249
GMRA MAKE IT EASY 8226
GMRA LAKOTA 625

GMRA CITADEL 6109
LGR ESTONIA 180
LGR ESTONIA 2002

BJR MAKE MY DAY 981
BIEBER SIRENA 6708
GLACIER CHATEAU 744
GMRA LAKOTA 380
GLACIER CHATEAU 744
GMRA NEXA 235
LCHMN HEVN'S SAKE 1002F
GMRA ESTONIA 312

BW	72	
WW/Ratio	594	
YW/Ratio	1130	
IMF/REA	4.07	12.3
Scrotal	38.0	

ELIGIBLE

HB	GM	CED	BW	WW	YW	MK	ME	HPG	CEM	ST	MB	YG	CW	REA	Fat
130	51	11	-3.6	66	101	23	6	9	9	11	0.48	0.04	24	0.02	-0.01
TOP BREED %															
20%	17%	7%	14%	20%	22%	23%	89%	75%	2%	54%	37%	61%	35%	62%	48%

This bull scanned very well on carcass. He was a twin so he didn't ratio. Otherwise he would have posted a 110 IMF ratio and a 108 REA ratio. His actual REA measurement puts him in the top 10 in the offering. He goes back to the powerful Estonia cow family and a dam with a 103 MPPA.



Lot 24

24 GMRA EPIC 5208

Birth Date: 1/12/15 Reg. #: 3466989 Category: 100% 1A

BECKTON EPIC K F075
BECKTON EPIC R397 K
BECKTON KIT F468 JL

VGW NORTHERN CANYON 5109
GMRA LAKOTA 099
GMRA LAKOTA 639

BECKTON EPIC D404
BECKTON BELGA D483 KR
BECKTON JULIAN GG B571
BECKTON KIT A517 NP
GEFB NORTHERN CANYON 2328
VGW PT YUMA 0278
GMRA MINOTAURO 3104
GMRA LAKOTA 422

BW	74	
WW/Ratio	598	101
YW/Ratio	1114	100
IMF/REA	4.28	10.6
Scrotal	39.0	

ELIGIBLE

HB	GM	CED	BW	WW	YW	MK	ME	HPG	CEM	ST	MB	YG	CW	REA	Fat
168	51	7	-4.1	60	94	25	1	16	4	17	0.65	0.24	20	0.06	0.09
TOP BREED %															
2%	19%	27%	10%	39%	35%	9%	45%	1%	43%	3%	14%	99%	50%	53%	99%

This bull is out of a great young dam with an MPPA of 104, a below average BW of 74, an average WR of 105 on 4, an average YR of 102 on 3, and an average IMF ratio of 125. She was the dam of GMRA Out West 4251, who was a top bull in last year's sale, selling to Laubach Red Angus. Epic is following the pattern stamped by his dam, showcasing a nice moderate BW with good personal performance and marbling, with an IMF ratio of 116.



Lot 25

25 GMRA PEACEMAKER 5276

Birth Date: 2/5/15 Reg. # 3467125 Category: 100% 1A

FRITZ JUSTICE 8013
GMRA PEACEMAKER 1216
GMRA THELMA 930

BIEBER MAKE MIMI 7249
GMRA LAKOTA 744
GMRA LAKOTA 947

VGW JUSTICE 614
FRITZ CHRIS 6047
LJC MISSION STATEMENT P27
GMRA THELMA 319
BJR MAKE MY DAY 981
BIEBER SIRENA 6708
LARSON RED LIGHTNING
GMRA LAKOTA ET 423



BW	96	
WW/Ratio	640	108
YW/Ratio	1250	112
IMF/REA	2.75	12.1
Scrotal	39.0	

HB	GM	CED	BW	WW	YW	MK	ME	HPG	CEM	ST	MB	YG	CW	REA	Fat
109	49	3	0.4	87	131	18	3	7	4	12	0.21	0.10	48	0.16	0.00
TOP BREED %															
44%	39%	64%	77%	1%	1%	58%	70%	96%	47%	40%	89%	87%	1%	35%	62%

This Peacemaker son comes from the great Lakota cow family. He turned in outstanding performance with a YR that is tied for the #5 position. His REA ratio is a nice 106.



Lot 26

26 GMRA PEACEMAKER 5264

Birth Date: 1/29/15 Reg. # 3466999 Category: 100% 1A

FRITZ JUSTICE 8013
GMRA PEACEMAKER 1216
GMRA THELMA 930

BASIN HOBO 79E
GMRA LAKOTA 149
GMRA LAKOTA 314

VGW JUSTICE 614
FRITZ CHRIS 6047
LJC MISSION STATEMENT P27
GMRA THELMA 319
BUF CRK HOBO 2595
DOUBLE FORK 079Z
XXX FIRESTORM HM 511
GMRA MISS LAKOTA



BW	93	
WW/Ratio	567	96
YW/Ratio	1129	101
IMF/REA	4.08	10.4
Scrotal	38.0	

HB	GM	CED	BW	WW	YW	MK	ME	HPG	CEM	ST	MB	YG	CW	REA	Fat
153	49	7	-1.2	66	96	26	4	6	7	17	0.45	0.15	25	-0.08	0.03
TOP BREED %															
6%	55%	32%	48%	20%	31%	6%	76%	96%	11%	2%	41%	95%	33%	85%	90%

Peacemaker 5264 is out of the #7 MPPA cow in the GMRA herd. She has an impressive 108, with an average weaning ratio of 109 on 13 and an average yearling ratio of 105 on 12. She has had an impressive run at GMRA with many of her bull calves going on to be herd sires in registered herds, including Summers Red Angus, Bar Open A Red Angus, and Barentsen Red Angus. Most recently GMRA Trigger 4248, who was our high selling bull in last year's sale, sold to Lucht Red Angus. This bull is performing at the top of the class on test and as of press was the #6 ADG bull.

27 GMRA TRILOGY 5214

Birth Date: 1/14/15 Reg. # 3467080 Category: 100% 1A

MESSMER PACKER S008
GMRA TRILOGY 0226
GMRA LAKOTA 625

FRITZ JUSTICE 8013
GMRA LAKOTA 383
GMRA LAKOTA 986

MESSMER JOSHUA 019P
MESSMER MILLIE 124P
GLACIER CHATEAU 744
GMRA LAKOTA 380
VGW JUSTICE 614
FRITZ CHRIS 6047
BROWN COMMITMENT S7206
GMRA LAKOTA 046



BW	75	
WW/Ratio	583	101
YW/Ratio	1090	101
IMF/REA	4.41	11.0
Scrotal	36.0	



HB	GM	CED	BW	WW	YW	MK	ME	HPG	CEM	ST	MB	YG	CW	REA	Fat
127	52	7	-2.6	75	116	17	3	10	6	11	0.81	0.11	35	0.29	0.04
TOP BREED %															
22%	4%	28%	24%	4%	6%	68%	63%	43%	20%	50%	5%	87%	11%	18%	96%

Out of a first calf heifer with a dam that has an MPPA of 106 and is a product of over 6 generations of females with MPPAs as high as 111. He turns in a nice moderate BW and is still the #10 ADG bull as of 3rd quarter test weights.

28 GMRA MAKE IT EASY 5245

Birth Date: 1/21/15 Reg. # 3466944 Category: 100% 1A

BIEBER MAKE MIMI 7249
GMRA MAKE IT EASY 8226
GMRA LAKOTA 625

GMRA EBV 266
GMRA JUANA 999
GMRA JUANA 224

BJR MAKE MY DAY 981
BIEBER SIRENA 6708
GLACIER CHATEAU 744
GMRA LAKOTA 380
GMRA EBV 935
BJR ESTONIA 9S-1210
BASIN HOBO 79E
GMRA JUANA 039




BW	72	
WW/Ratio	567	
YW/Ratio	1052	
IMF/REA	4.49	10.9
Scrotal	36.0	

HB	GM	CED	BW	WW	YW	MK	ME	HPG	CEM	ST	MB	YG	CW	REA	Fat
109	49	5	0.8	71	105	24	8	4	5	13	0.47	0.02	33	-0.08	-0.04
TOP BREED %															
43%	45%	53%	82%	9%	16%	15%	97%	99%	30%	28%	37%	56%	13%	83%	6%

This Make It Easy son is out of a powerful maternal pedigree with no females posting an MPPA under 100 for the last 5 generations. He was a twin so didn't ratio, but he did turn in a nice IMF scan that would have ratioed 122.



Lot 29

29 **GMRA EPIC 5293** 

Birth Date: 2/11/15 Reg. #: 3467121 Category: 100% 1A

BECKTON EPIC K F075
BECKTON EPIC R397 K
BECKTON KIT F468 JL

BROWN VACATION H7106
GMRA PRIDSTOM 727
GMRA PRIDSTOM 816

BECKTON EPIC D404
BECKTON BELGA D483 KR
BECKTON JULIAN GG B571
BECKTON KIT A517 NP
BECKTON JULIAN GG B571
LCHMN FLOWER C1161
LMN IMPRESSIVE ROB1095B
GMRA PRIDSTOM 644


BW	89
WW/Ratio	620 104
YW/Ratio	1104 99
IMF/REA	3.30 11.6
Scrotal	35.0

HB	GM	CED	BW	WW	YW	MK	ME	HPG	CEM	ST	MB	YG	CW	REA	Fat	
166	49	7	-1.2	62	102	24	-3	14	3	17	0.33	0.12	29	0.16	0.04	
TOP BREED %																
3%	41%	30%	48%	29%	21%	17%	23%	5%	54%	2%	69%	91%	22%	34%	96%	

This Epic son is the first bull calf from his Vacation dam. She has one of the most interesting maternal pedigrees in the offering. All cows from her dam back 5 more generations have MPPA's over 100, clear back to 1956!



Lot 30

30 **GMRA STETSON 5299** 


Birth Date: 2/14/15 Reg. #: 3467115 Category: 100% 1A

LJC MISSION STATEMENT P27
GMRA STETSON 2240
GMRA VENICE 359

LSF COMBINATION A301M
GMRA LAKOTA 636S
GMRA LAKOTA 325

LJC LANCER 806
LJC HANNAH 106
BASIN HOBO 79E
GMRA VENICE 146
LCHMN TOP BRASS 1049H
WHF LASS 27G-29J
GLACIER CHATEAU 744
GMRA LAKOTA 149

BW	77
WW/Ratio	638 107
YW/Ratio	1156 104
IMF/REA	3.18 11.3
Scrotal	34.5


 ELIGIBLE

HB	GM	CED	BW	WW	YW	MK	ME	HPG	CEM	ST	MB	YG	CW	REA	Fat	
127	51	3	-3.8	63	107	19	8	13	8	12	0.25	0.11	29	0.10	0.03	
TOP BREED %																
22%	18%	71%	12%	27%	13%	51%	97%	7%	5%	37%	84%	89%	23%	44%	91%	

This Stetson son has proved himself from the beginning. You can't beat the birthweight combined with the well above average weaning and yearling ratios.



Lot 31

31 **GMRA ROOSEVELT 5265** 

Birth Date: 1/29/15 Reg. #: 3466809 Category: 100% 1A

BIEBER ROUGH RIDER 10712
BIEBER ROOSEVELT W384
BIEBER SHEBA 9602

GMRA LARAMIE 5110
LGR HI LASS 142
LGR HI LASS 641

BASIN TREND SETTER 6074
BIEBER ADELLE 8958
C A FUTURE DIRECTION 5321
BIEBER SHEBA 5537
LCC CHEYENNE B221L
GMRA LAKOTA 341
MLK CRK TITLEIST 4158
LGR HI LASS 431

BW	95
WW/Ratio	648 109
YW/Ratio	1243 112
IMF/REA	2.71 11.4
Scrotal	35.0

HB	GM	CED	BW	WW	YW	MK	ME	HPG	CEM	ST	MB	YG	CW	REA	Fat	
89	48	-1	2.5	75	113	25	4	10	5	11	0.35	0.12	41	0.25	0.03	
TOP BREED %																
69%	65%	96%	96%	4%	7%	12%	75%	43%	25%	59%	67%	91%	4%	22%	93%	

This Roosevelt son is out of a performance minded dam with an MPPA of 104. She has an average WR of 106 and an average YR of 105 on 3. The granddam has an MPPA of 102 on 7. This bull has a WR that is in the top 12 of the offering and a YR that is tied for the 5th highest. He is currently in the running for high ADG bull, sitting at #2 as of 3rd quarter test weights. Interestingly enough, her calf that sold in last year's sale was also sitting at #2 ADG on test as of press time.

Yearling Bulls



GREEN MOUNTAIN RED ANGUS

32

GMRA PEACEMAKER 5298

Birth Date: 2/14/15 Reg. # 3467129 Category: 100% 1A



FRITZ JUSTICE 8013
GMRA PEACEMAKER 1216
GMRA THELMA 930

VGW NORTHERN CANYON 5109
GMRA FIREFLY 189
GMRA FIREFLY 128

VGW JUSTICE 614
FRITZ CHRIS 6047
LJC MISSION STATEMENT P27
GMRA THELMA 319
GEFB NORTHERN CANYON 2328
VGW PT YUMA 0278
LARSON RED LIGHTNING
GMRA FIREFLY 828

BW	85	
WW/Ratio	617	104
YW/Ratio	1118	100
IMF/REA	3.50	11.8
Scrotal	35.0	

HB	GM	CED	BW	WW	YW	MK	ME	HPG	CEM	ST	MB	YG	CW	REA	Fat
103	50	4	-1.1	69	102	19	-1	12	4	10	0.62	0.15	29	0.11	0.04
TOP BREED %															
52%	32%	56%	48%	13%	21%	51%	36%	16%	51%	64%	16%	95%	23%	44%	97%

This Peacemaker son is a full sibling to GMRA Potosi 3213 that was Lot 7 in our 2014 bull sale. The dam has an MPPA of 101 on 3 and her dam has an MPPA of 104 on 10. All calves out of both the dam and granddam have been kept in the herd or been in the bull sale.

33

GMRA STETSON 5256

Birth Date: 1/27/15 Reg. # 3466943 Category: 100% 1A



LJC MISSION STATEMENT P27
GMRA STETSON 2240
GMRA VENICE 359

BROWN COMMITMENT S7206
GMRA PRIDSTOM 982
GMRA PRIDSTOM 035

LJC LANCER 806
LJC HANNAH 106
BASIN HOBO 79E
GMRA VENICE 146
LJC LANCER 806
BROWN MS SHAZZAM P7940
LMAN KING ROB 8621
GMRA PRIDSTOM 644

BW	73	
WW/Ratio	522	
YW/Ratio	1030	
IMF/REA	2.81	10.4
Scrotal	36.0	



HB	GM	CED	BW	WW	YW	MK	ME	HPG	CEM	ST	MB	YG	CW	REA	Fat
128	50	4	-1.3	62	102	26	9	9	3	15	0.33	-0.06	29	0.30	-0.01
TOP BREED %															
21%	24%	59%	47%	31%	20%	6%	98%	63%	63%	13%	71%	21%	22%	16%	28%

The dam of this twin has an MPPA of 106 on 4 calves which places her in the top 8% of the herd. All calves have been retained as replacements or sold in the sale.

34

GMRA MOUNTAIN 5282

Birth Date: 2/7/15 Reg. # 3467015 Category: 100% 1A



GMRA EBV 266
GMRA MOUNTAIN 9287
GMRA VENICE 359

HXC CONQUEST 4405P
GMRA PEACHA 205
GMRA PEACHA 013

GMRA EBV 935
BJR ESTONIA 9S-1210
BASIN HOBO 79E
GMRA VENICE 146
BECKTON JULIAN GG B571
HXC ELLIE MAY MA638
MESSMER PACKER S008
GMRA PEACHA 135

BW	77	
WW/Ratio	591	100
YW/Ratio	1120	101
IMF/REA	3.80	11.7
Scrotal	37.0	



HB	GM	CED	BW	WW	YW	MK	ME	HPG	CEM	ST	MB	YG	CW	REA	Fat
118	50	10	-3.3	57	96	27	2	4	1	13	0.43	0.13	23	0.24	0.06
TOP BREED %															
32%	22%	14%	16%	48%	31%	5%	58%	99%	82%	27%	46%	92%	41%	23%	99%

This Mountain son's young dam is starting off her career doing everything right. She is turning in below average birth weights on calves that go on to post above average weaning and yearling rati-os. This bull has it all from growth to carcass.

35

GMRA ROOSEVELT 5288

Birth Date: 2/10/15 Reg. # 3467039 Category: 100% 1A



BIEBER ROUGH RIDER 10712
BIEBER ROOSEVELT W384
BIEBER SHEBA 9602

GMRA MAKE IT EASY 8226
GMRA ANGIE ROSE 291
GMRA ANGIE ROSE 120

BASIN TREND SETTER 6074
BIEBER ADELLE 8958
C A FUTURE DIRECTION 5321
BIEBER SHEBA 5537
BIEBER MAKE MIMI 7249
GMRA LAKOTA 625
LCHMN RED SPREAD 1271F
GMRA ANGIE ROSE 115

BW	84	
WW/Ratio	622	105
YW/Ratio	1075	96
IMF/REA	3.72	11.1
Scrotal	34.0	

HB	GM	CED	BW	WW	YW	MK	ME	HPG	CEM	ST	MB	YG	CW	REA	Fat
101	50	5	1.9	75	103	23	-2	10	6	10	0.65	-0.19	34	0.20	-0.09
TOP BREED %															
55%	32%	53%	94%	5%	18%	22%	26%	43%	19%	69%	13%	5%	13%	27%	2%



Lot 36

36

GMRA BOBCAT 5252

Birth Date: 1/25/15 Reg. # 3467100 Category: 100% 1A



BECKTON EPIC R397 K
FEDDES BOBCAT A230
FEDDES LAKINA 91S

GMRA VERMILLION 796
GMRA ANNE 444
GMRA ANNE 837

BECKTON EPIC K F075
BECKTON KIT F468 JL
SUNR GRAND CHEROKEE 909N
FEDDES LAKINA 308
BUF CRK CHF 824-1658
GMRA LAKOTA 456
LCHMN RED SPREAD 1271F
GMRA ANNE 639

BW	99	
WW/Ratio	618	104
YW/Ratio	1190	107
IMF/REA	4.29	12.6
Scrotal	34.5	



HB	GM	CED	BW	WW	YW	MK	ME	HPG	CEM	ST	MB	YG	CW	REA	Fat
117	51	2	0.7	74	118	17	0	12	4	12	0.69	0.04	41	0.48	0.03
TOP BREED %															
33%	11%	81%	80%	5%	4%	67%	44%	13%	43%	43%	10%	66%	4%	7%	92%

This Bobcat son comes from a line of longevity. His dam has produced 10 calves for us and on through the pedigree you can find dams that have produced up to 13 calves at GMRA. Not only does Bobcat have great performance, he scanned very well, turning in a 117 IMF ratio that is 12th, and a REA ratio of 110 that ranks at #11.

37

GMRA GOLDBAR 5206

Birth Date: 1/11/15 Reg. # 3467070 Category: 100% 1A



LACY GOLD BAR 8123
BIEBER GOLDBAR Y379
BASIN PRIMROSE 2043

CCF GOLD BAR 0251
LACY MS CHEROKEE 557P
BFCK CHEROKEE CNYN 4912
BASIN PRIMROSE 0854

GMRA PEACEMAKER 1216
GMRA LARKABA 313
GMRA LARKABA 156

FRITZ JUSTICE 8013
GMRA THELMA 930
MESSMER PACKER S008
GMRA LARKABA 931

BW	71
WW/Ratio	590 102
YW/Ratio	1045 97
IMF/REA	4.19 10.6
Scrotal	35.0



ELIGIBLE

HB	GM	CED	BW	WW	YW	MK	ME	HPG	CEM	ST	MB	YG	CW	REA	Fat
131	51	8	-3.3	63	91	28	0	10	0	14	0.60	-0.05	19	0.42	0.02
TOP BREED %															
18%	20%	24%	17%	26%	42%	3%	43%	57%	90%	15%	19%	22%	54%	9%	86%

One of the lowest actual birth weights in the offering, with a nice WR of 102.



Lot 39

38

GMRA JUSTICE 5232

Birth Date: 1/18/15 Reg. # 3466924 Category: 100% 1A



VGW JUSTICE 614
FRITZ JUSTICE 8013
FRITZ CHRIS 6047

BUF CRK PATRIOT M183
VGW M82-FIREFLY 0479
5L HOB0 BEN 04-4422
FRITZ CRIS 1051

BASIN HOB0 79E
GMRA LAKOTA 822
GMRA LAKOTA 527

BUF CRK HOB0 2595
DOUBLE FORK 079Z
LEACHMAN MONU 2X 8096
GMRA MISS LAKOTA

BW	81
WW/Ratio	569 96
YW/Ratio	1116 100
IMF/REA	3.53 11.5
Scrotal	37.5

HB	GM	CED	BW	WW	YW	MK	ME	HPG	CEM	ST	MB	YG	CW	REA	Fat
174	50	11	-2.7	64	98	28	2	8	13	16	0.49	0.21	24	-0.24	0.03
TOP BREED %															
2%	34%	9%	23%	26%	26%	4%	55%	83%	1%	4%	35%	99%	35%	98%	92%

This Justice son comes from a dam who is a direct daughter of the impressive GMRA Lakota 527. While in production at GMRA, she posted the #1 MPPA in the herd.

39

GMRA PEACEMAKER 5227

Birth Date: 1/18/15 Reg. # 3467082 Category: 100% 1A



FRITZ JUSTICE 8013
GMRA PEACEMAKER 1216
GMRA THELMA 930

VGW JUSTICE 614
FRITZ CHRIS 6047
LJC MISSION STATEMENT P27
GMRA THELMA 319

GMRA MAKE IT EASY 8226
GMRA MESA MAID 385
GMRA MESA MAID 993

BIEBER MAKE MIMI 7249
GMRA LAKOTA 625
LCB HOSS A444N
GMRA MESA MAID 724

BW	65
WW/Ratio	587
YW/Ratio	1037
IMF/REA	5.22 10.3
Scrotal	39.0



ELIGIBLE

HB	GM	CED	BW	WW	YW	MK	ME	HPG	CEM	ST	MB	YG	CW	REA	Fat
138	51	6	-1.1	74	112	20	3	9	6	14	0.54	0.04	35	0.21	0.00
TOP BREED %															
13%	17%	38%	48%	5%	8%	40%	68%	76%	14%	17%	26%	61%	11%	26%	66%

This bull was a twin out of first calf heifer whose dam posts an MPPA of 105 on 5 calves. He turns in the #6 adjusted IMF.



Come for the bulls, stay for the pie!
Thank you, Gallatin County CattleWomen!

40

GMRA STETSON 5226

Birth Date: 1/17/15 Reg. # 3467106 Category: 100% 1A



LJC MISSION STATEMENT P27
GMRA STETSON 2240
GMRA VENICE 359

LJC LANCER 806
LJC HANNAH 106
BASIN HOB0 79E
GMRA VENICE 146

GMRA TRILOGY 0226
GMRA ESTONIA 395
GMRA ESTONIA 124

MESSMER PACKER S008
GMRA LAKOTA 625
VGW NORTHERN CANYON 5109
GMRA ESTONIA 617

BW	77
WW/Ratio	549 95
YW/Ratio	1029 95
IMF/REA	3.93 9.0
Scrotal	35.0



ELIGIBLE

HB	GM	CED	BW	WW	YW	MK	ME	HPG	CEM	ST	MB	YG	CW	REA	Fat
180	51	8	-4.4	52	92	25	4	14	5	18	0.40	0.08	19	0.10	0.03
TOP BREED %															
1%	15%	22%	8%	65%	39%	9%	75%	5%	30%	1%	55%	78%	53%	46%	92%

Yearling Bulls



GREEN MOUNTAIN RED ANGUS

41 GMRA TRILOGY 5280

Birth Date: 2/7/15 Reg. # 3467001 Category: 100% 1A



MESSMER PACKER S008
GMRA TRILOGY 0226
GMRA LAKOTA 625

MESSMER JOSHUA 019P
MESSMER MILLIE 124P
GLACIER CHATEAU 744
GMRA LAKOTA 380

GMRA EBV 266
GMRA REBELLA 155
GMRA REBELLA 572

GMRA EBV 935
BJR ESTONIA 9S-1210
BIEBER TOP MONEY 7948
GMRA REBELLA 249

BW	96
WW/Ratio	609 103
YW/Ratio	1081 97
IMF/REA	4.21 12.3
Scrotal	38.5

HB	GM	CED	BW	WW	YW	MK	ME	HPG	CEM	ST	MB	YG	CW	REA	Fat
109	49	3	1.8	65	95	16	8	11	1	13	0.54	-0.12	29	0.51	-0.01
TOP BREED %															
43%	47%	73%	92%	20%	32%	78%	96%	35%	86%	26%	27%	9%	22%	4%	34%

Carcass scans on this bull rank in the top 25%, with an IMF ratio of 115 and a REA ratio of 107.



Lot 43

42 GMRA JUSTICE 5246

Birth Date: 1/21/15 Reg. # 3466962 Category: 100% 1A



VGW JUSTICE 614
FRITZ JUSTICE 8013
FRITZ CHRIS 6047

BUF CRK PATRIOT M183
VGW M82-FIREFLY 0479
5L HOBO BEN 04-4422
FRITZ CRIS 1051

BROWN VACATION H7106
GMRA VENICE 011X
GMRA VENICE 359

BECKTON JULIAN GG B571
LCHMN FLOWER C1161
BASIN HOBO 79E
GMRA VENICE 146

BW	80
WW/Ratio	587 99
YW/Ratio	1085 97
IMF/REA	4.78 9.6
Scrotal	33.5



HB	GM	CED	BW	WW	YW	MK	ME	HPG	CEM	ST	MB	YG	CW	REA	Fat
189	50	14	-4.8	59	95	25	0	13	10	17	0.51	0.26	20	-0.22	0.06
TOP BREED %															
1%	22%	2%	6%	40%	32%	9%	40%	10%	1%	3%	30%	99%	49%	97%	99%

Here is a bull with a powerful pedigree. His maternal granddam is the dam of GMRA Stetson 2240 and GMRA Mountain 9287 who have both sired several lots in this sale. This bull turned in an outstanding IMF scan, ratioing 130.

43 GMRA MAKE IT EASY 5237

Birth Date: 1/19/15 Reg. # 3466988 Category: 100% 1A



BIEBER MAKE MIMI 7249
GMRA MAKE IT EASY 8226
GMRA LAKOTA 625

BJR MAKE MY DAY 981
BIEBER SIRENA 6708
GLACIER CHATEAU 744
GMRA LAKOTA 380

GMRA CITADEL 6109
GMRA ANNE 095
GMRA ANNE 373

GLACIER CHATEAU 744
GMRA NEXA 235
GMRA EBV 266
GMRA ANNE 514

BW	108
WW/Ratio	637 107
YW/Ratio	1201 108
IMF/REA	2.97 11.3
Scrotal	34.0

HB	GM	CED	BW	WW	YW	MK	ME	HPG	CEM	ST	MB	YG	CW	REA	Fat
110	49	3	2.2	81	122	15	10	7	7	12	0.43	0.14	45	-0.17	-0.02
TOP BREED %															
42%	48%	68%	95%	1%	3%	81%	99%	92%	11%	39%	48%	94%	2%	95%	16%

This bull takes high end personal performance all the way through test. As of 3rd quarter test weights he has the #3 ADG.

44 GMRA EPIC 5272

Birth Date: 2/2/15 Reg. # 3466813 Category: 100% 1A



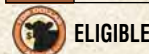
BECKTON EPIC K F075
BECKTON EPIC R397 K
BECKTON KIT F468 JL

BECKTON EPIC D404
BECKTON BELGA D483 KR
BECKTON JULIAN GG B571
BECKTON KIT A517 NP

GMRA GLADIATOR 2126
LGR ESTONIA 7102
LGR ESTONIA 0002

BASIN HOBO 79E
GMRA LAKOTA ET 47
BASIN GOLD 6C
GMRA ESTONIA 312

BW	78
WW/Ratio	604 102
YW/Ratio	1062 95
IMF/REA	4.49 11.2
Scrotal	37.5



HB	GM	CED	BW	WW	YW	MK	ME	HPG	CEM	ST	MB	YG	CW	REA	Fat
177	50	8	-3.9	54	83	28	-8	14	5	18	0.81	0.24	14	0.03	0.09
TOP BREED %															
1%	21%	25%	11%	60%	58%	3%	4%	5%	23%	1%	5%	99%	68%	61%	99%

This Epic son is out of an Estonia dam that always gets the job done right. She has an average birth ratio that is well below average, yet has an average WR of 104 on 7 and an average YR of 102 on 6 resulting in a 103 MPPA. Last year's bull calf graced the Lot 2 position in the catalog. This bull turned in an outstanding IMF scan, with a ratio of 122 which ranks as #11.

45 GMRA GOLDBAR 5239

Birth Date: 1/20/15 Reg. # 3467046 Category: 100% 1A



LACY GOLD BAR 8123
BIEBER GOLDBAR Y379
BASIN PRIMROSE 2043

CCF GOLD BAR 0251
LACY MS CHEROKEE 557P
BFCK CHEROKEE CNYN 4912
BASIN PRIMROSE 0854

GMRA LARAMIE 5110
GMRA ANGIE ROSE 302
GMRA ANGIE ROSE 533

LCC CHEYENNE B221L
GMRA LAKOTA 341
GLACIER CHATEAU 744
GMRA ANGIE ROSE 171

BW	68
WW/Ratio	560 97
YW/Ratio	1002 93
IMF/REA	4.84 9.8
Scrotal	33.0



HB	GM	CED	BW	WW	YW	MK	ME	HPG	CEM	ST	MB	YG	CW	REA	Fat
128	51	4	-4.9	54	75	36	4	14	3	13	0.83	0.05	7	-0.02	0.02
TOP BREED %															
21%	17%	59%	5%	59%	72%	1%	76%	3%	53%	25%	4%	66%	83%	71%	87%

Great IMF scan with a ratio of 113.



Lot 46

46

GMRA MAKE IT EASY 5203

Birth Date: 1/10/15 Reg. # 3466954 Category: 100% 1A

BIEBER MAKE MIMI 7249
GMRA MAKE IT EASY 8226
 GMRA LAKOTA 625

 GMRA SECRET MISSION 8258
GMRA LENA 267
 GMRA LENA 952

BJR MAKE MY DAY 981
 BIEBER SIRENA 6708
 GLACIER CHATEAU 744
 GMRA LAKOTA 380
 LJC MISSION STATEMENT P27
 GMRA LAKOTA 341
 LMAN KING ROB 8621
 GMRA LENA 541



BW	55
WW/Ratio	623
YW/Ratio	1050
IMF/REA	4.15 10.7
Scrotal	32.0

HB	GM	CED	BW	WW	YW	MK	ME	HPG	CEM	ST	MB	YG	CW	REA	Fat
140	49	4	0.1	71	111	18	6	9	6	15	0.30	0.03	36	0.13	-0.01
TOP BREED %															
12%	39%	60%	71%	8%	9%	58%	91%	74%	20%	7%	75%	61%	9%	40%	32%

This bull was a twin, so he has no ratios. However, his IMF scan would have ranked him with a 113 IMF ratio. He is out of a dam with an MPPA of 102.

47

GMRA STETSON 5283

Birth Date: 2/8/15 Reg. # 3467022 Category: 100% 1A

LJC MISSION STATEMENT P27
GMRA STETSON 2240
 GMRA VENICE 359

 MESSMER PACKER S008
GMRA LENA 232
 GMRA LENA 357

LJC LANCER 806
 LJC HANNAH 106
 BASIN HOBO 79E
 GMRA VENICE 146
 MESSMER JOSHUA 019P
 MESSMER MILLIE 124P
 LCHMN GRANDCANYON 1244G
 GMRA LENA 541



BW	87
WW/Ratio	597 101
YW/Ratio	1082 97
IMF/REA	2.21 13.0
Scrotal	36.0

HB	GM	CED	BW	WW	YW	MK	ME	HPG	CEM	ST	MB	YG	CW	REA	Fat
135	50	6	-3.0	60	98	27	5	11	3	14	0.07	-0.17	24	0.55	-0.02
TOP BREED %															
15%	27%	35%	20%	37%	27%	4%	82%	27%	58%	16%	97%	5%	35%	3%	16%

This bull posts the #8 adjusted REA with a 113 ratio.

48

GMRA EPIC 5270

Birth Date: 2/1/15 Reg. # 3466982 Category: 100% 1A

BECKTON EPIC K F075
BECKTON EPIC R397 K
 BECKTON KIT F468 JL

 GMRA SECRET MISSION 8258
GMRA ESTONIA 051
 GMRA ESTONIA 544

BECKTON EPIC D404
 BECKTON BELGA D483 KR
 BECKTON JULIAN GG B571
 BECKTON KIT A517 NP
 LJC MISSION STATEMENT P27
 GMRA LAKOTA 341
 GMRA EBV 935
 GMRA ESTONIA 031



BW	89
WW/Ratio	631 106
YW/Ratio	1155 104
IMF/REA	3.23 13.0
Scrotal	35.5

HB	GM	CED	BW	WW	YW	MK	ME	HPG	CEM	ST	MB	YG	CW	REA	Fat
157	50	7	-1.7	65	99	21	-1	13	2	17	0.35	0.02	27	0.52	0.05
TOP BREED %															
5%	37%	32%	39%	22%	24%	34%	33%	9%	80%	3%	64%	56%	29%	4%	97%

This Epic son is out of the great Estonia cow family. His REA ratio of 113 ties for 8th in the offering.

49

GMRA GOLDBAR 5309

Birth Date: 3/2/15 Reg. # 3467042 Category: 100% 1A

LACY GOLD BAR 8123
BIEBER GOLDBAR Y379
 BASIN PRIMROSE 2043

 C-T GLACIER BERRY 1021
GMRA LARKABA 296
 GMRA LARKABA 316

CCF GOLD BAR 0251
 LACY MS CHEROKEE 557P
 BFCK CHEROKEE CNYN 4912
 BASIN PRIMROSE 0854
 RED FINE LINE MULBERRY 26P
 C-T BLOKANA 0543
 LCHMN RED SPREAD 1271F
 GMRA LARKABA 931



BW	78
WW/Ratio	593 100
YW/Ratio	1052 94
IMF/REA	2.97 12.4
Scrotal	30.0

HB	GM	CED	BW	WW	YW	MK	ME	HPG	CEM	ST	MB	YG	CW	REA	Fat
90	49	2	-1.5	62	89	26	-3	12	2	10	0.52	-0.05	20	0.41	0.02
TOP BREED %															
69%	39%	81%	43%	31%	46%	7%	20%	20%	73%	69%	30%	21%	48%	9%	83%

This bull turned in an adjusted REA that tied for 13th in the offering with a REA ratio of 108.

50

GMRA PEACEMAKER 5225

Birth Date: 1/17/15 Reg. # 3467085 Category: 100% 1A

FRITZ JUSTICE 8013
GMRA PEACEMAKER 1216
 GMRA THELMA 930

 GMRA MAKE IT EASY 8226
GMRA LAKOTA 391
 GMRA LAKOTA 341

VGW JUSTICE 614
 FRITZ CHRIS 6047
 LJC MISSION STATEMENT P27
 GMRA THELMA 319
 BIEBER MAKE MIMI 7249
 GMRA LAKOTA 625
 BASIN HOBO 79E
 GMRA LAKOTA 947



BW	90
WW/Ratio	594 102
YW/Ratio	1129 105
IMF/REA	2.91 11.4
Scrotal	36.5

HB	GM	CED	BW	WW	YW	MK	ME	HPG	CEM	ST	MB	YG	CW	REA	Fat
150	50	4	-0.2	86	129	20	4	7	6	16	0.16	0.03	46	0.18	-0.02
TOP BREED %															
7%	35%	54%	67%	1%	1%	43%	80%	93%	15%	4%	94%	61%	2%	30%	16%

This Peacemaker son comes from a young dam with a 101 MPPA who is out of the powerful Lakota cow family that can trace their lineage back to foundation female, GMRA Lakota 912. He is out of a dam who is a maternal sibling the ABS bull, GMRA Laramie 5110, who was the 8th most used bull in the Red Angus breed in 2010. She is also a maternal sibling to GMRA Secret Mission 8258, who was our high selling bull in 2009, selling to Laubach Red Angus and Redland Red Angus.

Yearling Bulls



GREEN MOUNTAIN RED ANGUS



Lot 51

51 GMRA STETSON 5290

Birth Date: 2/11/15 Reg. # 3466998 Category: 100% 1A

LJC MISSION STATEMENT P27
GMRA STETSON 2240
GMRA VENICE 359

GMRA LARAMIE 5110
GMRA LAKOTA 148
GMRA LAKOTA 744

LJC LANCER 806
LJC HANNAH 106
BASIN HOBO 79E
GMRA VENICE 146
LCC CHEYENNE B221L
GMRA LAKOTA 341
BIEBER MAKE MIMI 7249
GMRA LAKOTA 947

BW	81
WW/Ratio	590 99
YW/Ratio	1183 106
IMF/REA	4.01 12.1
Scrotal	31.0

ELIGIBLE

HB	GM	CED	BW	WW	YW	MK	ME	HPG	CEM	ST	MB	YG	CW	REA	Fat		
133	52	4	-2.2	69	115	28	5	9	5	14	0.50	0.05	36	0.33	0.02		
TOP BREED %		17%	7%	60%	30%	12%	6%	2%	83%	66%	23%	20%	34%	66%	9%	14%	86%

Nice carcass scans, with an IMF ratio of 109 and a REA ratio of 106. He is gaining well on test with the #11 ADG as of press time.

52 GMRA TRILOGY 5263

Birth Date: 1/29/15 Reg. # 3467050 Category: 100% 1A

MESSMER PACKER S008
GMRA TRILOGY 0226
GMRA LAKOTA 625

LCHMN RED SPREAD 1271F
GMRA LARKABA 316
GMRA LARKABA 931

MESSMER JOSHUA 019P
MESSMER MILLIE 124P
GLACIER CHATEAU 744
GMRA LAKOTA 380
LMAN KING ROB 8621
BJR MATTIE 002-1102
GMRA PHOENIX 3X 588
GMRA LARKABA 84

BW	74
WW/Ratio	590 99
YW/Ratio	1077 97
IMF/REA	4.66 10.8
Scrotal	35.0

ELIGIBLE

HB	GM	CED	BW	WW	YW	MK	ME	HPG	CEM	ST	MB	YG	CW	REA	Fat		
135	51	8	-5.3	54	83	21	0	13	8	12	0.59	0.04	12	0.14	0.03		
TOP BREED %		15%	15%	21%	4%	60%	57%	33%	39%	9%	6%	43%	20%	66%	73%	37%	93%

Lots of longevity here – going back several generations are cows that have produced a minimum of 9 calves for GMRA. This bull turned in the #9 IMF ratio in the offering and is a sibling to a bull that went into the Bar Open A Red Angus herd.

53 GMRA GOLDBAR 5302

Birth Date: 2/17/15 Reg. # 3466990 Category: 100% 1A

LACY GOLD BAR 8123
BIEBER GOLDBAR Y379
BASIN PRIMROSE 2043

VGW NORTHERN CANYON 5109
GMRA LAKOTA 0103
GMRA LAKOTA 576

CCF GOLD BAR 0251
LACY MS CHEROKEE 557P
BFCK CHEROKEE CNYN 4912
BASIN PRIMROSE 0854
GEFB NORTHERN CANYON 2328
VGW PT YUMA 0278
BIEBER TOP MONEY 7948
GMRA LAKOTA 212

BW	80
WW/Ratio	603 102
YW/Ratio	1016 91
IMF/REA	2.83 11.5
Scrotal	38.0

HB	GM	CED	BW	WW	YW	MK	ME	HPG	CEM	ST	MB	YG	CW	REA	Fat		
85	48	4	-2.3	61	84	26	-1	10	-1	10	0.35	0.03	16	-0.03	0.00		
TOP BREED %		74%	67%	57%	28%	33%	56%	8%	30%	47%	96%	64%	67%	61%	62%	75%	59%

Dam has an MPPA of 101 on 4 with below average birth weights.



Lot 54

54 GMRA MAKE IT EASY 5224

Birth Date: 1/17/15 Reg. # 3467004 Category: 100% 1A

BIEBER MAKE MIMI 7249
GMRA MAKE IT EASY 8226
GMRA LAKOTA 625

LJC MISSION STATEMENT P27
GMRA LAKOTA 161
GMRA LAKOTA 322

BJR MAKE MY DAY 981
BIEBER SIRENA 6708
GLACIER CHATEAU 744
GMRA LAKOTA 380
LJC LANCER 806
LJC HANNAH 106
BASIN HOBO 79E
GMRA LAKOTA 116

BW	72
WW/Ratio	589 99
YW/Ratio	1102 99
IMF/REA	3.32 10.7
Scrotal	36.5

ELIGIBLE

HB	GM	CED	BW	WW	YW	MK	ME	HPG	CEM	ST	MB	YG	CW	REA	Fat		
155	52	8	-2.7	68	102	21	6	8	3	16	0.70	-0.02	27	0.07	-0.03		
TOP BREED %		5%	9%	21%	23%	13%	19%	39%	89%	86%	53%	4%	10%	32%	29%	52%	11%



55 GMRA MOUNTAIN 5281

Birth Date: 2/7/15 Reg. #: 3466974 Category: 100% 1A

GMRA EBV 266	GMRA EBV 935
GMRA MOUNTAIN 9287	BJR ESTONIA 9S-1210
GMRA VENICE 359	BASIN HOB0 79E
	GMRA VENICE 146
MESSMER PACKER S008	MESSMER JOSHUA 019P
GMRA PRINCESS 916	MESSMER MILLIE 124P
GMRA PRINCESS 227	LCHMN RED SPREAD 1271F
	GMRA PRINCESS 633

BW	99	
WW/Ratio	552	93
YW/Ratio	1085	97
IMF/REA	2.61	13.3
Scrotal	36.0	

HB	GM	CED	BW	WW	YW	MK	ME	HPG	CEM	ST	MB	YG	CW	REA	Fat
127	49	3	1.2	61	100	22	8	7	2	16	0.27	0.00	32	0.28	0.00
TOP BREED %															
22%	52%	72%	87%	36%	23%	28%	96%	92%	71%	6%	82%	46%	16%	18%	62%

This mountain son has the #4 adjusted REA in the offering with a ratio of 116. His impressive granddam is the dam of Lot 57 and you can read about her there.

56 GMRA MOUNTAIN 5275

Birth Date: 2/4/15 Reg. #: 3466976 Category: 100% 1A

GMRA EBV 266	GMRA EBV 935
GMRA MOUNTAIN 9287	BJR ESTONIA 9S-1210
GMRA VENICE 359	BASIN HOB0 79E
	GMRA VENICE 146
MESSMER PACKER S008	MESSMER JOSHUA 019P
GMRA PEACHA 013	MESSMER MILLIE 124P
GMRA PEACHA 135	BASIN HOB0 79E
	GMRA PEACHA 214

BW	88	
WW/Ratio	576	97
YW/Ratio	1089	98
IMF/REA	3.84	10.7
Scrotal	36.0	

ELIGIBLE

HB	GM	CED	BW	WW	YW	MK	ME	HPG	CEM	ST	MB	YG	CW	REA	Fat
145	50	7	-1.1	54	89	29	1	8	3	16	0.72	0.13	22	0.02	0.04
TOP BREED %															
9%	25%	33%	48%	58%	45%	2%	45%	83%	64%	4%	8%	93%	44%	64%	94%

57 GMRA ROOSEVELT 5260

Birth Date: 1/28/15 Reg. #: 3466964 Category: 100% 1A

BIEBER ROUGH RIDER 10712	BASIN TREND SETTER 6074
BIEBER ROOSEVELT W384	BIEBER ADELLE 8958
BIEBER SHEBA 9602	C A FUTURE DIRECTION 5321
	BIEBER SHEBA 5537
LCHMN RED SPREAD 1271F	LMAN KING ROB 8621
GMRA PRINCESS 227	BJR MATTIE 002-1102
GMRA PRINCESS 633	LEACHMAN BETTER HVY8041
	GMRA PRINCESS 910

BW	87	
WW/Ratio	569	96
YW/Ratio	1030	92
IMF/REA	4.09	11.2
Scrotal	35.5	

HB	GM	CED	BW	WW	YW	MK	ME	HPG	CEM	ST	MB	YG	CW	REA	Fat
102	50	4	1.0	53	80	26	3	12	5	10	0.76	-0.18	19	-0.04	-0.09
TOP BREED %															
53%	30%	54%	84%	62%	64%	6%	68%	13%	25%	63%	7%	5%	51%	77%	2%

There is a very powerful dam backing up this Roosevelt son. She earned her keep at GMRA for many years, with an MPPA of 104 on 12. All of her calves were retained as replacements or sold in the bull sale. Roosevelt 5260 is a maternal sibling to GMRA Make It Red 1243 who went on to produce many calves for Bar Open A Red Angus. There is a nice ultrasound scan here with an IMF ratio of 111.



Lot 58

58 GMRA TRILOGY 5266

Birth Date: 1/30/15 Reg. #: 3467005 Category: 100% 1A

MESSMER PACKER S008	MESSMER JOSHUA 019P
GMRA TRILOGY 0226	MESSMER MILLIE 124P
GMRA LAKOTA 625	GLACIER CHATEAU 744
	GMRA LAKOTA 380
GMRA EBV 266	GMRA EBV 935
GMRA LAKOTA 162	BJR ESTONIA 9S-1210
GMRA LAKOTA 667	LSF COMBINATION A301M
	GMRA LAKOTA 456

BW	82	
WW/Ratio	605	102
YW/Ratio	1066	96
IMF/REA	4.07	11.1
Scrotal	35.0	

HB	GM	CED	BW	WW	YW	MK	ME	HPG	CEM	ST	MB	YG	CW	REA	Fat
99	50	5	-1.5	59	86	16	5	10	4	10	0.58	-0.09	19	0.32	-0.01
TOP BREED %															
56%	30%	52%	43%	42%	51%	78%	82%	40%	47%	63%	20%	12%	52%	15%	36%

This bull is out of a dam that posts an MPPA of 103 on 3 calves. All of her calves have been bulls and sold in previous sales. He turned in a nice IMF ratio of 111.




59 GMRA STETSON 5248

Birth Date: 1/22/15 Reg. #: 3466985 Category: 100% 1A


LJC MISSION STATEMENT P27
GMRA STETSON 2240
GMRA VENICE 359

HXC CONQUEST 4405P
GMRA OPHELIA 068
GMRA OPHELIA 840

LJC LANCER 806
LJC HANNAH 106
BASIN HOB0 79E
GMRA VENICE 146
BECKTON JULIAN GG B571
HXC ELLIE MAY MA638
GMRA LARAMIE 5110
GMRA OPHELIA 441



BW	60	
WW/Ratio	588	99
YW/Ratio	1061	95
IMF/REA	4.02	10.5
Scrotal	35.0	

 **ELIGIBLE**

HB	GM	CED	BW	WW	YW	MK	ME	HPG	CEM	ST	MB	YG	CW	REA	Fat			
159	52	13	-8.9	47	82	33	3	6	3	16	0.58	0.20	6	-0.12	0.07			
TOP BREED %			4%	5%	4%	1%	81%	60%	1%	65%	98%	61%	5%	20%	98%	85%	89%	99%

Here's a great heifer bull candidate out of a dam who has always produced top end progeny for GMRA. All of her calves have been retained for the bull sale and her first calf was featured as Lot 2 in our 2013 sale. The dam has an MPPA of 102 on 4 with an average WR of 103. She is backed up by 5 generations of MPPA's over 100 going back to 1994. This bull will make a heifer bull supreme, with the lowest actual BW in the offering and numbers to match, along with a nice IMF scan.

60 GMRA MAKE IT EASY 5205

Birth Date: 1/11/15 Reg. #: 3466811 Category: 100% 1A

BIEBER MAKE MIMI 7249
GMRA MAKE IT EASY 8226
GMRA LAKOTA 625

GMRA CITADEL 6109
LGR ESTONIA 180
LGR ESTONIA 2002

BJR MAKE MY DAY 981
BIEBER SIRENA 6708
GLACIER CHATEAU 744
GMRA LAKOTA 380
GLACIER CHATEAU 744
GMRA NEXA 235
LCHMN HEVN'S SAKE 1002F
GMRA ESTONIA 312



BW	52	
WW/Ratio	544	
YW/Ratio	1019	
IMF/REA	3.75	10.7
Scrotal	37.0	

 **ELIGIBLE**

HB	GM	CED	BW	WW	YW	MK	ME	HPG	CEM	ST	MB	YG	CW	REA	Fat			
130	51	11	-3.6	66	101	23	6	9	9	11	0.48	0.04	24	0.02	-0.01			
TOP BREED %			20%	17%	7%	14%	20%	22%	23%	89%	75%	2%	54%	37%	61%	35%	62%	48%

This twin is a brother to Lot 23. He goes back to the powerful Estonia cow family and a dam with a 103 MPPA.

61 GMRA MAKE IT EASY 5305

Birth Date: 2/18/15 Reg. #: 3466963 Category: 100% 1A

BIEBER MAKE MIMI 7249
GMRA MAKE IT EASY 8226
GMRA LAKOTA 625

MESSMER PACKER S008
GMRA LENA 136
GMRA LENA 350

BJR MAKE MY DAY 981
BIEBER SIRENA 6708
GLACIER CHATEAU 744
GMRA LAKOTA 380
MESSMER JOSHUA 019P
MESSMER MILLIE 124P
BUF CRK BARNEY 3474
GMRA LENA 952



BW	95	
WW/Ratio	576	97
YW/Ratio	1144	103
IMF/REA	3.20	10.5
Scrotal	37.0	

HB	GM	CED	BW	WW	YW	MK	ME	HPG	CEM	ST	MB	YG	CW	REA	Fat			
136	49	2	1.8	78	119	12	5	9	5	15	0.44	0.07	43	0.01	-0.02			
TOP BREED %			15%	14%	74%	92%	2%	4%	94%	84%	59%	23%	9%	45%	78%	3%	64%	16%

62 GMRA EPIC 5231

Birth Date: 1/18/15 Reg. #: 3467116 Category: 100% 1A

BECKTON EPIC K F075
BECKTON EPIC R397 K
BECKTON KIT F468 JL

GMRA MINOTAURO 3104
GMRA LAKOTA 639
GMRA LAKOTA 422

BECKTON EPIC D404
BECKTON BELGA D483 KR
BECKTON JULIAN GG B571
BECKTON KIT A517 NP
BJR JR 107
GMRA LENA 108
BIEBER TOP MONEY 7948
GMRA LAKOTA 912



BW	79	
WW/Ratio	556	94
YW/Ratio	1083	97
IMF/REA	5.82	10.7
Scrotal	38.0	

 **ELIGIBLE**

HB	GM	CED	BW	WW	YW	MK	ME	HPG	CEM	ST	MB	YG	CW	REA	Fat			
150	51	7	-3.9	52	81	28	1	14	3	15	0.82	0.12	12	0.04	0.05			
TOP BREED %			7%	16%	30%	11%	65%	63%	4%	52%	3%	53%	9%	5%	90%	72%	59%	97%

This bull is a product of the highly maternal Lakota cow family, going back just 2 generations to foundation female GMRA Lakota 912. He turns in the #1 adjusted IMF scan and IMF ratio of 158. Her last bull calf sold in the 2014 sale turned in the #4 IMF scan. If you are looking for a bull to pass on high quality grades to his calves this is it!


63 GMRA TRILOGY 5230

Birth Date: 1/18/15 Reg. #: 3467023 Category: 100% 1A

MESSMER PACKER S008
GMRA TRILOGY 0226
GMRA LAKOTA 625

LCHMN NO EQUAL 1174D
GMRA NEXA 235
GMRA NEXA 531

MESSMER JOSHUA 019P
MESSMER MILLIE 124P
GLACIER CHATEAU 744
GMRA LAKOTA 380
LMAN NONE BETTER 9604
LMAN PRAIRIE Q 9308
BUF CRK HOB0 1961
GMRA VENICE 210



BW	79	
WW/Ratio	529	89
YW/Ratio	1045	94
IMF/REA	2.73	10.8
Scrotal	35.0	

HB	GM	CED	BW	WW	YW	MK	ME	HPG	CEM	ST	MB	YG	CW	REA	Fat			
149	49	11	-2.9	60	87	20	5	11	8	14	0.25	0.00	17	0.01	-0.01			
TOP BREED %			8%	17%	9%	21%	39%	51%	46%	86%	25%	4%	16%	84%	46%	59%	64%	41%

This Trilogy son is out of a high producing Nexa dam, with an MPPA of 102 on 11 calves with an average weaning ratio of 102 on 11 and an average yearling ratio of 101 on 10. Her 5 bull calves have an average REA ratio of 102. Every female in her pedigree for at least 4 generations back has produced a minimum of 10 calves for GMRA, with MPPA's over 100 all the way up to 106. This bull is a maternal sibling to GMRA Citadel 6109, who was the high seller in our 2007 bull sale, purchased by ABS, and to GMRA's open heifer selected for the 2014 Prestigious Red Angus NILE sale.



64 GMRA GOLDBAR 5310
 Birth Date: 3/4/15 Reg. #: 3467096 Category: 100% 1A

LACY GOLD BAR 8123	CCF GOLD BAR 0251
BIEBER GOLDBAR Y379	LACY MS CHEROKEE 557P
BASIN PRIMROSE 2043	BFCCK CHEROKEE CNYN 4912
	BASIN PRIMROSE 0854
BIEBER MAKE MIMI 7249	BJR MAKE MY DAY 981
GMRA MESA MAID 425	BIEBER SIRENA 6708
GMRA SA MESA MAID 054	LCHMN RED SPREAD 1271F
	GMRA MESA MAID 321

BW	87
WW/Ratio	590 99
YW/Ratio	1037 93
IMF/REA	2.84 11.4
Scrotal	34.5

HB	GM	CED	BW	WW	YW	MK	ME	HPG	CEM	ST	MB	YG	CW	REA	Fat
97	49	5	-2.8	55	81	27	1	7	-2	12	0.41	0.00	14	0.03	0.00
TOP BREED %															
60%	49%	46%	23%	56%	63%	5%	51%	93%	98%	37%	50%	46%	68%	59%	57%

This bull's dam has always produced well at GMRA. She has an MPPA of 102 on 9 calves, and several of her past bull calves have sold in to registered herds.

65 GMRA BOBCAT 5308
 Birth Date: 2/24/15 Reg. #: 3467062 Category: 100% 1A

BECKTON EPIC R397 K	BECKTON EPIC K F075
FEDDES BOBCAT A230	BECKTON KIT F468 JL
FEDDES LAKINA 91S	SUNR GRAND CHEROKEE 909N
	FEDDES LAKINA 308
BUF CRK BARNEY 3474	BUF CRK BARON 2678
GMRA LENA 350	OLE SUNFLOWER 359 PB08
GMRA LENA 952	LMAN KING ROB 8621
	GMRA LENA 541

BW	82
WW/Ratio	566 95
YW/Ratio	1089 98
IMF/REA	3.01 13.0
Scrotal	33.0

HB	GM	CED	BW	WW	YW	MK	ME	HPG	CEM	ST	MB	YG	CW	REA	Fat
120	50	4	-0.4	60	98	22	-3	12	3	13	0.48	0.07	28	0.40	0.05
TOP BREED %															
29%	32%	62%	62%	39%	26%	25%	21%	21%	58%	29%	37%	78%	24%	10%	98%

This bull's dam has an MPPA of 102 on 10. He turned in the #7 REA ratio of 114, and the #7 adjusted REA scan.

66 GMRA ROOSEVELT 5287
 Birth Date: 2/9/15 Reg. #: 3466967 Category: 100% 1A

BIEBER ROUGH RIDER 10712	BASIN TREND SETTER 6074
BIEBER ROOSEVELT W384	BIEBER ADELLE 8958
BIEBER SHEBA 9602	C A FUTURE DIRECTION 5321
	BIEBER SHEBA 5537
LCHMN RED SPREAD 1271F	LMAN KING ROB 8621
GMRA MESA MAID 352	BJR MATTIE 002-1102
GMRA MESA MAID 321	LCHMN MDLD HVIWT2463
	GMRA MESA MAID 928

BW	81
WW/Ratio	555 94
YW/Ratio	1030 92
IMF/REA	2.99 10.5
Scrotal	33.0

HB	GM	CED	BW	WW	YW	MK	ME	HPG	CEM	ST	MB	YG	CW	REA	Fat
78	47	5	-0.7	53	80	22	-5	13	5	8	0.23	0.11	17	-0.09	0.02
TOP BREED %															
80%	85%	52%	56%	64%	63%	26%	13%	7%	28%	88%	87%	89%	59%	86%	86%

Dam has an MPPA of 101 on 11.

Achieve it! **IMPACT**

- Influence others by amplifying your leadership skills.
- Invest in your future by developing career skills.
- Impact the beef industry.

Join JRA! Be a part of the Red Revolution! Connect with other youth interested in Red Angus who are preparing themselves to impact the future.

For more information and to join, visit redangus.org/jra.

JRA
 Junior Red Angus Association of America
 Kimberly Heller, Coordinator
 515-851-2019 | kim@redangus.org

Ranch Tested. Rancher Trusted.
Red Angus

Yearling Bulls



GREEN MOUNTAIN RED ANGUS



Lot 67

67

GMRA GOLDBAR 5223

Birth Date: 1/16/15 Reg. # 3466968 Category: 100% 1A

LACY GOLD BAR 8123
BIEBER GOLDBAR Y379
BASIN PRIMROSE 2043

HXC CONQUEST 4405P
GMRA ANGIE 394
GMRA ANGIE 955

CCF GOLD BAR 0251
LACY MS CHEROKEE 557P
BFCK CHEROKEE CNYN 4912
BASIN PRIMROSE 0854
BECKTON JULIAN GG B571
HXC ELLIE MAY MA638
LAUBACH EXPEDITION 643
GMRA ANGIE 568



BW	71	
WW/Ratio	558	96
YW/Ratio	1021	95
IMF/REA	5.02	10.6
Scrotal	36.0	



ELIGIBLE

HB	GM	CED	BW	WW	YW	MK	ME	HPG	CEM	ST	MB	YG	CW	REA	Fat
125	51	10	-3.8	57	84	27	3	6	0	13	0.78	-0.05	14	0.39	0.02
TOP BREED %															
24%	12%	12%	12%	47%	57%	5%	63%	97%	89%	22%	6%	21%	68%	11%	87%

A nice low birth weight here, tied for the 3rd lowest birth in the offering, with an adjusted IMF that is #8 and an IMF ratio of 117.

68

GMRA TRILOGY 5274

Birth Date: 2/3/15 Reg. # 3467110 Category: 100% 1A

MESSMER PACKER S008
GMRA TRILOGY 0226
GMRA LAKOTA 625

GMRA VERMILLION 796
GMRA ANGIE 568
GMRA ANGIE 154

MESSMER JOSHUA 019P
MESSMER MILLIE 124P
GLACIER CHATEAU 744
GMRA LAKOTA 380
BUF CRK CHF 824-1658
GMRA LAKOTA 456
BIEBER RED MOON 6042
GMRA ANGIE 800



BW	78	
WW/Ratio	537	90
YW/Ratio	1021	92
IMF/REA	3.73	10.0
Scrotal	38.0	

HB	GM	CED	BW	WW	YW	MK	ME	HPG	CEM	ST	MB	YG	CW	REA	Fat
115	49	9	-4.3	50	70	14	2	10	5	11	0.45	-0.09	6	-0.03	-0.03
TOP BREED %															
36%	41%	14%	8%	73%	80%	85%	56%	51%	35%	53%	41%	14%	86%	73%	9%

69

GMRA PEACEMAKER 5257

Birth Date: 1/27/15 Reg. # 3467026 Category: 100% 1A

FRITZ JUSTICE 8013
GMRA PEACEMAKER 1216
GMRA THELMA 930

GMRA MAKE IT EASY 8226
GMRA ANGIE ROSE 249
GMRA ANGIE ROSE 663

VGW JUSTICE 614
FRITZ CHRIS 6047
LJC MISSION STATEMENT P27
GMRA THELMA 319
BIEBER MAKE MIMI 7249
GMRA LAKOTA 625
LCC CHEYENNE B221L
GMRA ANGIE ROSE 385



BW	82	
WW/Ratio	526	89
YW/Ratio	1065	96
IMF/REA	3.38	10.6
Scrotal	35.5	

HB	GM	CED	BW	WW	YW	MK	ME	HPG	CEM	ST	MB	YG	CW	REA	Fat
134	49	6	-1.8	69	99	21	5	8	6	14	0.42	0.06	26	-0.06	-0.01
TOP BREED %															
16%	42%	37%	36%	13%	25%	33%	81%	80%	21%	15%	48%	70%	31%	81%	36%

The dam has an MPPA of 105 on 2 and is backed up by several more generations of MPPAs over 100.



Lot 70

70

GMRA PEACEMAKER 5221

Birth Date: 1/16/15 Reg. # 3466937 Category: 100% 1A

FRITZ JUSTICE 8013
GMRA PEACEMAKER 1216
GMRA THELMA 930

GMRA LARAMIE 5110
GMRA FIREFLY 945
GMRA FIREFLY 428

VGW JUSTICE 614
FRITZ CHRIS 6047
LJC MISSION STATEMENT P27
GMRA THELMA 319
LCC CHEYENNE B221L
GMRA LAKOTA 341
BJR RAMBLER 5162
GMRA FIREFLY 110



BW	77	
WW/Ratio	579	98
YW/Ratio	1057	95
IMF/REA	3.86	10.8
Scrotal	36.5	

HB	GM	CED	BW	WW	YW	MK	ME	HPG	CEM	ST	MB	YG	CW	REA	Fat
121	49	6	-3.8	59	89	23	6	11	7	12	0.33	0.19	17	-0.08	0.05
TOP BREED %															
28%	50%	38%	11%	43%	44%	23%	91%	36%	11%	37%	71%	98%	57%	83%	98%





Bob & Julie Morton

2435 Logan Trident Road • Three Forks, MT 59752
(406) 285-6773 • www.gmracattle.com

FIRST CLASS
US POSTAGE
PAID
MONTEZUMA, IA
PERMIT #30

