

*Your breeding program isn't a game ...  
Devise a strategy for profitable cattle.*

# Brenner Angus

*Annual Production Sale*

**Saturday, February 26, 2011**

**2:00 p.m. CST**

**Farmers Livestock Exchange, Bismarck, ND**

**70** Yearling Bulls (Red & Black) • **20** 18-Month-Old & 2-Year-Old Bulls

*Offering calving-ease bulls and bulls with growth, phenotype and great maternal traits.*





# Sale Information

## *Brenner Angus Production Sale*

**Saturday, February 26, 2011, 2:00 pm (CST)**

Farmers Livestock, Bismarck, ND

### *Sale Location*

**Farmers Livestock, Bismarck, ND**

1-800-932-8868 • (701) 223-6500

### *Sale Hosts*

**Sidney & Melva Brenner**

(701) 522-3335 – Home

(701) 471-9135 – Cell

5350 94th St SW • Carson, ND 58529

**Jeff & Priscilla Werner**..... (701) 622-3856

**Trampis & Aricka Brenner** ..... (701) 422-3376

### *Auctioneer*

**Lynn Weishaar** ..... (605) 866-4670

### *Ringmen*

**Kris Petersen** ..... (701) 339-0305

Cattle Business Weekly

**Scott Dirk**..... (605) 380-6024 (Cell)

Tri-State Livestock News ....(605) 456-1499 (Home)

### *Lunch*

**Free lunch served on sale day**

### *Cattle Viewing*

Bulls will be at the barn for viewing Thursday evening through sale day, or come any day before to the ranch to see the bulls.

### *Guarantee*

All bulls sell as guaranteed breeders. The yearling bulls have not been semen tested due to their young age. We suggest you have them semen tested before you use them. All claims of non-breeders must be made within six months of purchase. We cannot guarantee against physical injury or illness, but would like you to let us know if you have any problems.

### *Discount*

\$50 off if the buyer hauls his bulls home on either sale day or the following day.

### *Sale Promotion & Catalog*

**Tracey Koester** ..... (701) 475-2736

Cow Camp Promotions

Dear Friends and Cattle Producers,

Greetings from all of us at Brenner Angus!

We would like to take this opportunity to thank all of you for your support over the years and we would like to invite you to our annual sale on Saturday, February 26, 2011.

It seems each year brings new challenges with it. The year of 2010 had its special challenges. In the early spring the ice storm left us without electricity – several times! The longest stretch of powerlessness was for 21 days. It's a good thing that as you get older, your memory isn't as sharp as it once was. This last spring is just a blur.

In March before calving started, we had an addition to our family. Trampis and Aricka had a baby girl, Loraina, who happened to be born on Melva's birthday.

In June, our second granddaughter was in a four-wheeler accident. She broke her right arm and leg. This put a damper on her 4-H cattle exhibits. Her sister and brother helped her out with the animals. But she ended up scratching a few from the show. In January 2011, during a basketball game, Ashley broke her right arm again!

We had a good growing season this year. The corn crop was one of the best we've ever had. We are using the corn and silage in this year's ration for the bulls.

The yearling bulls were weaned the 10th of October. They came off their mammas with no creep feed. After weaning the bulls were fed a ration of a GTA bull challenger, mixed with ground hay and silage. The bulls aren't fed to get fat – only grow and be able to express their growth potential. We like them to be able to be in service for a long time.

Our goal is to have cattle that are as trouble free as possible. We like cows that are able to calve on their own, have good udders with plenty of milk, wean off a good sized calf, breed back and do all of this within a 365-day period. The bulls need to be able to go to the pasture with high fertility and libido on good feet and legs, and sire calves with growth potential and excellent carcasses.

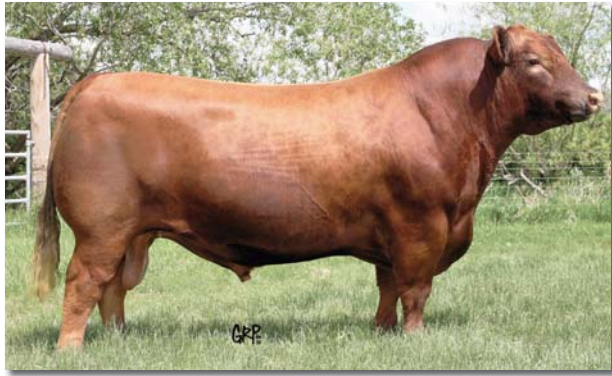
If you have any questions about the cattle or our operation, please call us at 701-522-3335.

We hope to see you at the sale. Come early for lunch and to visit. If you can't make it to the sale and need a bull, please give us a call. We would be happy to work with you. You can visit us at the ranch anytime before the sale.

Best Wishes,

*Sidney, Melva and Families*

# Red Angus Reference Sires



Red Six Mile Sakic 832S

**a**

## RED SIX MILE SAKIC 832S

BD	REG. #	CAT.	%	DAM'S MPPA	DAM'S AGE
2/26/06	1160318	1A	100%		

RED WILDMAN DENALI 19L  
**RED SIX MILE AVIATOR 217P**  
 RED RSL SUE 400F

FCC RAMBO 502  
 RED TOWAW LAKIMA 1S  
 RED FLYING K CHIEF 36Y  
 RED C Y STORMY 454Z

RED SIX MILE CUJO 800M  
**RED SIX MILE SIERA 257P**  
 RED BOUNTY B MISS SIERA BAR

BJR BRAVEHEART 3H  
 RED PTTV PRID 3'97  
 RED 77 BAR 556E  
 RED RSL MISS SIERA 19A

CED	BW	WW	YW	Milk	TM	Stay
3	1.1	44	68	20	42	8

BW: **82**      ADJ. YW:  
 ADJ. WW: **906**      ADJ. SC:

**B**

## TBS MONU 2072

BD	REG. #	CAT.	%	DAM'S MPPA	DAM'S AGE
3/14/02	862610	1A	100%	100	2

RED SSS MONU4X 237C  
**BJR MONU 4X-303**  
 RCRA SAMANTHA

LMAN MONU 4X  
 SSS BLOCKANNA 721A  
 SAMS PROSPECTOR 133Z  
 RCRA MS CARROUSEL

MLK CRK NEXT STEP  
**TBS MS GOLD STEP 0311**  
 TBS MS RED 30-30 6311

LARSON RED LIGHTNING  
 MLK CRK LAKOTA 112-RAMB  
 RED ROCKET II 3030  
 RED ELLIE H311

CED	BW	WW	YW	Milk	TM	Stay
4	-0.9	52	102	17	43	9

BW: **80**      ADJ. YW: **1372**  
 ADJ. WW: **734**      ADJ. SC:

**c**

## TBS ALLI CANYON 7063

BD	REG. #	CAT.	%	DAM'S MPPA	DAM'S AGE
3/24/07	1196167	1A	100%	100.9	2

SITZ ALLIANCE 6595  
**WAR ALLIANCE 9126 6006**  
 WAR BANDO 6006 598 4053

SITZ TRAVELER 8180  
 SITZ BARBARAMERE JET 2698  
 BON VIEW BANDO 598  
 WAR EXT 4053 22 2107

BFCK CHEROKEE CNYN 4912  
**TBS MS CANYON 517**  
 TBS MS COPPERTOP 3934

BUF CRK CHF 824-1658  
 MRM 1431 8611 9109  
 FORSTER COPPERTOP 089  
 TBS MS BRENNER 934-44

CED	BW	WW	YW	Milk	TM	Stay
6	1.2	50	98	21	46	13

BW: **74**      ADJ. YW:  
 ADJ. WW: **752**      ADJ. SC:

**D**

## TBS COPPER VAQUARO 7032

BD	REG. #	CAT.	%	DAM'S MPPA	DAM'S AGE
3/17/07	1196150	1A	100%	100.2	2

LCC VAQUERO 1412J  
**AMBERLIGHT GRAND VAQUERO 559**  
 AMBRLIGHT GALATAEYA 162

LEACHMAN COWBOSS 1129G  
 PARK MISS WIDELOAD F648  
 LCHMN GRANDCANYON 1244G  
 AMBER LIGHT SUNDAE 868

OHRD DAKOTA COPPER 29K  
**MISS BHR COPPER D 581**  
 MISS BHR CLOUD 611X

LCHMAN COPPER ROB 1204D  
 MESSMER OPHELIA 9502  
 LARSON REDCLOUD 3006 ET  
 MISS LICORICE 530

CED	BW	WW	YW	Milk	TM	Stay
4	-1	23	55	24	35	7

BW: **66**      ADJ. YW:  
 ADJ. WW: **757**      ADJ. SC:



LCC Vaquero 1412J, Grandsire of Ref. Sire D



Basin Trend Setter 6074, Sire of Ref. Sire E

**e**

## TBS NEW YEAR 8032

BD	REG. #	CAT.	%	DAM'S MPPA	DAM'S AGE
3/28/08	1263666	1A	100%	92.4	2

RED BRYLOR NEW TREND 22  
**BASIN TREND SETTER 6074**  
 BASIN ROSE F521

SSS BLACK TREND 13B  
 MEADOW CK MS SEAMAN 31A  
 LMAN NONE BETTER 9604  
 BASIN PRIMROSE 258

PRAIRIE PRIDE CENTURY 419  
**TBS MS CENTURY 665**  
 TBS MS DREAMMAKER 765

TBS CENTURY 2029  
 SEEGER EXTRA 161  
 DCB DRMKR 5132  
 STRAKA'S RED EBONY 1065

CED	BW	WW	YW	Milk	TM	Stay
7	0.7	25	47	17	30	11

BW: **71**      ADJ. YW: **1144**  
 ADJ. WW: **624**      ADJ. SC:



# Red Angus Reference Sires

## F TBS PRINCE SENSAT 7000

BD	REG. #	CAT.	%	DAM'S MPPA	DAM'S AGE
3/28/07	1196193	1A	100%	109.1	2

BASIN SENSATION 702E  
**3SCC SENSATION R289**  
 BON VIEW GAMMER 2409  
 BHR PRINCE 335B  
**TBS MS PRINCE 51**  
 MISS BHR JR107 29

GARDENS SENSATION 039 S1  
 STEVENSON ELEMERE 538C  
 HOFF ESSO S C 433  
 BON VIEW GAMMER 2374  
 LODI PRINCE 2632  
 MISS BHR RAMBO 718  
 BJR JR 107  
 MISS BHR DOLLAR 195 073

CED	BW	WW	YW	Milk	TM	Stay
4	2.4	48	85	7	31	11

BW: 83  
ADJ. WW: 759

ADJ. YW:  
ADJ. SC:

## H TBS CAPITAL CNTRY 8048

BD	REG. #	CAT.	%	DAM'S MPPA	DAM'S AGE
3/23/08	1263672	1A	100%	102.2	2

BROWN VACATION H7106  
**LSF CAPITAL 4099P**  
 LSF MELODY J1365  
 PRAIRIE PRIDE CENTURY 419  
**TBS MS CENTURY 682**  
 TBS MS TREND 782

BECKTON JULIAN GG B571  
 LCHMN FLOWER C1161  
 LCHMN NONE HEAV 1354G  
 LJRA NONE HEAV G1361  
 TBS CENTURY 2029  
 SEEGER EXTRA 161  
 BRENNERS 802 OF S M B  
 SODAK EMMIE 0082

CED	BW	WW	YW	Milk	TM	Stay
7	0.5	35	68	12	30	12

BW: 78  
ADJ. WW: 763

ADJ. YW: 1332  
ADJ. SC:



LJC Javelin M08

## G TBS PRINCE 8047

BD	REG. #	CAT.	%	DAM'S MPPA	DAM'S AGE
3/18/08	1263585	1A	100%	108	17

LODI PRINCE 2632  
**BHR PRINCE 335B**  
 MISS BHR RAMBO 718  
 RCRA WHEEL' O FORTUNE  
**EEA 142**  
 EEA 472-4603

CALIFORNIA SUPREME 2087  
 JIL 2560  
 BHR RAMBO 51B  
 MISS RHP FIRE 809  
 RED BRA REDWHEEL 33T  
 SIX MILE GLORIA 546S  
 EEA E02-807 GW  
 BKT BAYA INDIGO 4603

CED	BW	WW	YW	Milk	TM	Stay
-2	3.2	30	56	24	39	11

BW: 78  
ADJ. WW: 750

ADJ. YW: 1179  
ADJ. SC:

## ? TBS SENSATION 8055

BD	REG. #	CAT.	%	DAM'S MPPA	DAM'S AGE
4/2/08	1263612	1A	100%	101.2	4

BASIN SENSATION 702E  
**3SCC SENSATION R289**  
 BON VIEW GAMMER 2409  
 TBS MONU 2072  
**TBS MS MONU 4296**  
 STRAKA'S RED EBONY 1065

GARDENS SENSATION 039 S1  
 STEVENSON ELEMERE 538C  
 HOFF ESSO S C 433  
 BON VIEW GAMMER 2374  
 BJR MONU 4X-303  
 TBS MS GOLD STEP 0311  
 STRAKA HIGHTIMES 007  
 ODP MISS JUDY 8099

CED	BW	WW	YW	Milk	TM	Stay
6	0.6	23	45	8	20	9

BW: 94  
ADJ. WW: 747

ADJ. YW: 1168  
ADJ. SC:

## J LJC JAVELIN M08

BD	REG. #	CAT.	%	DAM'S MPPA	DAM'S AGE
2/21/02	829424	1A	100%	102.2	3

BECKTON LANCER T A664  
**BECKTON LANCER F442 T**  
 BKT SUFFEINA A828 DM  
 GLACIER LOGAN 210  
**LJC LOGAN E56 945**  
 BUCKEYE CHARLOTTE

BECKTON LANCER 9380  
 BECKTON COCA 9119 TJ  
 BECKTON DOMINOR 9455  
 BKT SUFFEINA 9493 TT  
 BFLO CR VC CHIEF 105  
 GLACIER REBALAS  
 LEACHMAN FRONT RUNNER  
 BUCKEYE HYACINTH

CED	BW	WW	YW	Milk	TM	Stay
2	1.3	49	87	0	25	14

BW: 87  
ADJ. WW: 704

ADJ. YW: 1308  
ADJ. SC:



Dunlouise Red Native F207

## K DUNLOUISE RED NATIVE F207

BD	REG. #	CAT.	%	DAM'S MPPA	DAM'S AGE
10/12/06	1236620	1A	100%		

ERNEST OF BUCHAAM  
**PRATTLE OF HAYMOUNT**  
 PARTICLE OF HAYMOUNT  
 DUNLOUISE EXCALIBUR Y070  
**EVERSFIELD RED NENA D252**  
 BUDGEHILL NENA Z008

PADORA'S PRINCE O HUNGERFORD  
 EERIE OF DERLULICH  
 BANNER OF BELLADRU  
 PALOONA OF HAYMOUNT  
 EVESUND OF DUPPLIN  
 EJETA OF TEMPLEHOUSE  
 BETRO OF CLASSLOCHIE  
 BUDGEHILL NENA

CED	BW	WW	YW	Milk	TM	Stay
14	-6.6	-29	-26	25	10	4

BW: 64  
ADJ. WW: 592

ADJ. YW:  
ADJ. SC:

# Yearling Red Angus Bulls



## 1 TBS PRINCE CAN 0268

BD	REG. #	CAT.	%	DAM'S MPPA	DAM'S AGE
3/24/10	1396246	1A	100%	106.9	4

WAR ALLIANCE 9126 6006  
**TBS ALLI CANYON 7063**  
 TBS MS CANYON 517

BHR PRINCE 335B  
**TBS PRINCESS 655**  
 TBS MS DREAMMAKER 7451

SITZ ALLIANCE 6595  
 WAR BANDO 6006 598 4053  
 BFCK CHEROKEE CNYN 4912  
 TBS MS COPPERTOP 3934

LODI PRINCE 2632  
 MISS BHR RAMBO 718  
 DCB DRMKR 5132  
 TBS 451 MISS BRENNER

CED	BW	WW	YW	Milk	TM	Stay
1	4.9	54	100	20	47	12



Last year's sale bulls

BW: **94**      ADJ. YW: **1382**  
 ADJ. WW: **800**      ADJ. SC: **36.8**



Lot 2

## 2 TBS PRINCE 0264

BD	REG. #	CAT.	%	DAM'S MPPA	DAM'S AGE
3/22/10	1396232	1A	100%	106	4

WAR ALLIANCE 9126 6006  
**TBS ALLI CANYON 7063**  
 TBS MS CANYON 517

BHR PRINCE 335B  
**TBS PRINCESS 6000**  
 TBS MS DREAMMAKER 7451

SITZ ALLIANCE 6595  
 WAR BANDO 6006 598 4053  
 BFCK CHEROKEE CNYN 4912  
 TBS MS COPPERTOP 3934

LODI PRINCE 2632  
 MISS BHR RAMBO 718  
 DCB DRMKR 5132  
 TBS 451 MISS BRENNER

CED	BW	WW	YW	Milk	TM	Stay
3	3.4	51	96	19	45	12

BW: **88**      ADJ. YW: **1299**  
 ADJ. WW: **782**      ADJ. SC: **36.7**



Lot 3

## 3 TBS JAVELIN 0265

BD	REG. #	CAT.	%	DAM'S MPPA	DAM'S AGE
4/1/10	1396228	1A	100%	106.7	5

BECKTON LANCER F442 T  
**LJC JAVELIN M08**  
 LJC LOGAN E56 945

BHR PRINCE 335B  
**TBS PRINCESS 58**  
 TBS JOSEPHINE 383

BECKTON LANCER T A664  
 BKT SUFFEINA A828 DM  
 GLACIER LOGAN 210  
 BUCKEYE CHARLOTTE

LODI PRINCE 2632  
 MISS BHR RAMBO 718  
 SHHM CHIEF JOSEPH 54J  
 TBS MS BARNEY 83

CED	BW	WW	YW	Milk	TM	Stay
0	3.7	53	93	11	37	13

BW: **96**      ADJ. YW: **1307**  
 ADJ. WW: **798**      ADJ. SC: **37.5**



Lot 4

## 4 TBS PRINCE 0219

BD	REG. #	CAT.	%	DAM'S MPPA	DAM'S AGE
3/24/10	1396202	1A	100%	101.2	7

BHR PRINCE 335B  
**TBS PRINCE 8047**  
 EEA 142

TBS BODACIOUS LAKOTA 60  
**TBS MS LAKOTA 398**  
 TBS MS DAY 98

LODI PRINCE 2632  
 MISS BHR RAMBO 718  
 RCRA WHEEL 'O FORTUNE  
 EEA 472-4603

TKP BODACIOUS 693  
 TBS MS LAKOTA 602  
 BJR MAKE MY DAY 981  
 TBS MS JULIA 7546

CED	BW	WW	YW	Milk	TM	Stay
-1	1.7	30	59	18	33	9

BW: **83**      ADJ. YW: **1312**  
 ADJ. WW: **706**      ADJ. SC: **38.8**

Suitable for heifers.

# Yearling Red Angus Bulls

## 5 TBS MONU 0227

BD	REG. #	CAT.	%	DAM'S MPPA	DAM'S AGE
3/30/10	1396227	1A	100%	98.7	5

BJR MONU 4X-303  
**TBS MONU 2072**  
TBS MS GOLD STEP 0311

FORSTER RAMBO TOO 2052  
**TBS MS NEW RAMBO 57**  
TBS MS TREND 782

RED SSS MONU4X 237C  
RCRA SAMANTHA  
MLK CRK NEXT STEP  
TBS MS RED 30-30 6311

MABES RAMBO TUO  
LMG DAORV 841  
BRENNERS 802 OF S M B  
SODAK EMMIE 0082

CED	BW	WW	YW	Milk	TM	Stay
4	0.2	38	73	16	35	8

BW: 79      ADJ. YW: 1318  
ADJ. WW: 728      ADJ. SC: 35.0      **Suitable for heifers.**

## 6 TBS PRINCE CANYON 0229

BD	REG. #	CAT.	%	DAM'S MPPA	DAM'S AGE
3/26/10	1396239	1A	100%	101.1	4

3SCC SENSATION R289  
**TBS PRINCE SENSAT 7000**  
TBS MS PRINCE 51

BHR GRAND CANYON 440B  
**TBS MS CANYON 648**  
TBS MS DREAMMAKER 7451

BASIN SENSATION 702E  
BON VIEW GAMMER 2409  
BHR PRINCE 335B  
MISS BHR JR107 29

LCHMN GRANDCANYON 1244G  
MISS BHR GLACIER BO 752  
DCB DRMKR 5132  
TBS 451 MISS BRENNER

CED	BW	WW	YW	Milk	TM	Stay
2	2.3	38	77	14	33	7

BW: 85      ADJ. YW: 1203  
ADJ. WW: 637      ADJ. SC: 36.9



Lot 7

## 7 TBS SENSATION 0223

BD	REG. #	CAT.	%	DAM'S MPPA	DAM'S AGE
4/3/10	1396199	1A	100%	107.5	7

3SCC SENSATION R289  
**TBS PRINCE SENSAT 7000**  
TBS MS PRINCE 51

FORSTER COPPERTOP 089  
**TBS MS COPPERTOP 3793**  
TBS MS MAINSTREAM 7393

BASIN SENSATION 702E  
BON VIEW GAMMER 2409  
BHR PRINCE 335B  
MISS BHR JR107 29

FORSTER CPRTOP 7184ET  
MS FORSTER PRESIDIOS106  
CBR MAINSTREAM 957-3020  
PANHANDLE POLLY 393

CED	BW	WW	YW	Milk	TM	Stay
4	0.6	39	75	12	31	7

BW: 82      ADJ. YW: 1297  
ADJ. WW: 707      ADJ. SC: 36.1      **Suitable for heifers.**



Lot 8

## 8 TBS JAVELIN 0221

BD	REG. #	CAT.	%	DAM'S MPPA	DAM'S AGE
3/27/10	1396230	1A	100%	97.1	5

BECKTON LANCER F442 T  
**LJC JAVELIN M08**  
LJC LOGAN E56 945

OHRD DAKOTA COPPER 29K  
**MISS BHR COPPER D 584**  
MISS BHR MONU 888

BECKTON LANCER T A664  
BKT SUFFEINA A828 DM  
GLACIER LOGAN 210  
BUCKEYE CHARLOTTE

LCHMAN COPPER ROB 1204D  
MESSMER OPHELIA 9502  
LEACHMAN MONU 2X 8096  
MISS BHR MAIN STAR 276

CED	BW	WW	YW	Milk	TM	Stay
2	-0.3	38	65	10	29	10

BW: 84      ADJ. YW: 1280  
ADJ. WW: 682      ADJ. SC: 32.9      **Suitable for heifers.**

## 9 TBS MONU 0266

BD	REG. #	CAT.	%	DAM'S MPPA	DAM'S AGE
3/30/10	1396306	1A	100%	105.2	2

BJR MONU 4X-303  
**TBS MONU 2072**  
TBS MS GOLD STEP 0311

3SCC SENSATION R289  
**TBS MS SENSATION 883**  
MISS BHR LOGAN 371

RED SSS MONU4X 237C  
RCRA SAMANTHA  
MLK CRK NEXT STEP  
TBS MS RED 30-30 6311

BASIN SENSATION 702E  
BON VIEW GAMMER 2409  
BHR LOGAN 734B  
MISS BHR DIVIDE 918

CED	BW	WW	YW	Milk	TM	Stay
3	1.6	45	89	12	35	11

BW: 78      ADJ. YW: 1332  
ADJ. WW: 702      ADJ. SC: 33.0      **Suitable for heifers.**

## 10 TBS MAJOR CANYON 0239

BD	REG. #	CAT.	%	DAM'S MPPA	DAM'S AGE
3/13/10	1396224	1A	100%	108.4	5

WAR ALLIANCE 9126 6006  
**TBS ALLI CANYON 7063**  
TBS MS CANYON 517

LCC MAJOR LEAGUE A502M  
**TBS MS LEAGUE 556**  
TBS 428 MISS BRENNER

SITZ ALLIANCE 6595  
WAR BANDO 6006 598 4053  
BFCK CHEROKEE CNYN 4912  
TBS MS COPPERTOP 3934

BFCK CHEROKEE CNYN 4912  
KRN REBA'S ROBIN  
TBS MR BRENNER 58  
NJB 1143 COUNTRY ROSE

CED	BW	WW	YW	Milk	TM	Stay
7	-2.8	31	63	21	37	10

BW: 70      ADJ. YW: 1164  
ADJ. WW: 687      ADJ. SC: 34.4      **Suitable for heifers.**

2011 Brenner Angus

# Yearling Red Angus Bulls



11

## TBS MONU 0217

BD	REG. #	CAT.	%	DAM'S MPPA	DAM'S AGE
3/26/10	1396307	1A	100%	101.2	2

BJR MONU 4X-303  
**TBS MONU 2072**  
 TBS MS GOLD STEP 0311  
 PRAIRIE PRIDE CENTURY 419  
**TBS MS CENTURY 827**  
 MISS BHR FREEDOM 414

RED SSS MONU4X 237C  
 RCRA SAMANTHA  
 MLK CRK NEXT STEP  
 TBS MS RED 30-30 6311  
 TBS CENTURY 2029  
 SEEGER EXTRA 161  
 RED MEADOW CK 904 52K  
 MISS BHR RAMBO 020

CED	BW	WW	YW	Milk	TM	Stay
2	2	45	84	10	33	8

BW: 82      ADJ. YW: 1227  
 ADJ. WW: 637      ADJ. SC: 35.4

12

## TBS NEXT ALLIANCE 0267

BD	REG. #	CAT.	%	DAM'S MPPA	DAM'S AGE
4/2/10	1396191	1A	100%	100.7	8

WAR ALLIANCE 9126 6006  
**TBS ALLI CANYON 7063**  
 TBS MS CANYON 517  
 MLK CRK NEXT STEP  
**TBS STEP DUSTER 2068**  
 TBS MS DUSTER 593

SITZ ALLIANCE 6595  
 WAR BANDO 6006 598 4053  
 BFCK CHEROKEE CNYN 4912  
 TBS MS COPPERTOP 3934  
 LARSON RED LIGHTNING  
 MLK CRK LAKOTA 112-RAMB  
 BRENNERS DUSTER 31  
 PANHANDLE POLLY 393

CED	BW	WW	YW	Milk	TM	Stay
9	-2.4	31	68	21	36	10

BW: 68      ADJ. YW: 1201  
 ADJ. WW: 676      ADJ. SC: 37.1      **Suitable for heifers.**

13

## TBS JAVELIN 0234

BD	REG. #	CAT.	%	DAM'S MPPA	DAM'S AGE
4/1/10	1396233	1A	100%	96.4	4

BECKTON LANCER F442 T  
**LJC JAVELIN M08**  
 LJC LOGAN E56 945  
 PRAIRIE PRIDE CENTURY 419  
**TBS MS CENTURY 605**  
 TBS MS KANSAS 6105

BECKTON LANCER T A664  
 BKT SUFFEINA A828 DM  
 GLACIER LOGAN 210  
 BUCKEYE CHARLOTTE  
 TBS CENTURY 2029  
 SEEGER EXTRA 161  
 TBS 4213 MR BRENNER  
 RED THELMA T105

CED	BW	WW	YW	Milk	TM	Stay
3	1.6	38	70	2	21	11

BW: 83      ADJ. YW: 1236  
 ADJ. WW: 638      ADJ. SC: 33.5

14

## TBS SEN PRINCE 0257

BD	REG. #	CAT.	%	DAM'S MPPA	DAM'S AGE
4/15/10	1396245	1A	100%	103.1	4

3SCC SENSATION R289  
**TBS SENSATION 8055**  
 TBS MS MONU 4296  
 BHR PRINCE 335B  
**TBS PRINCESS 654**  
 EEA 142

BASIN SENSATION 702E  
 BON VIEW GAMMER 2409  
 TBS MONU 2072  
 STRAKA'S RED EBONY 1065  
 LODI PRINCE 2632  
 MISS BHR RAMBO 718  
 RCRA WHEEL'O FORTUNE  
 EEA 472-4603

CED	BW	WW	YW	Milk	TM	Stay
3	1.4	31	58	17	32	10

BW: 82      ADJ. YW: 1187  
 ADJ. WW: 751      ADJ. SC: 37.5      **Suitable for heifers.**

15

## TBS PRINCE CANYON 0203

BD	REG. #	CAT.	%	DAM'S MPPA	DAM'S AGE
3/31/10	1396241	1A	100%	106.9	4

3SCC SENSATION R289  
**TBS PRINCE SENSAT 7000**  
 TBS MS PRINCE 51  
 BHR GRAND CANYON 440B  
**TBS MS JESSICA CANYON 65**  
 TBS MS JESSICA

BASIN SENSATION 702E  
 BON VIEW GAMMER 2409  
 BHR PRINCE 335B  
 MISS BHR JR107 29  
 LCHMN GRANDCANYON 1244G  
 MISS BHR GLACIER BO 752  
 TBS MR BRENNER 58  
 EEA 142

CED	BW	WW	YW	Milk	TM	Stay
1	3.1	43	83	15	36	8

BW: 89      ADJ. YW: 1283  
 ADJ. WW: 734      ADJ. SC: 34.0

16

## TBS CAPITAL CENTURY 0238

BD	REG. #	CAT.	%	DAM'S MPPA	DAM'S AGE
4/15/10	1396234	1A	100%	96.4	4

LSF CAPITAL 4099P  
**TBS CAPITAL CNTRY 8048**  
 TBS MS CENTURY 682  
 PRAIRIE PRIDE CENTURY 419  
**TBS MS CENTURY 606**  
 TBS 428 MISS BRENNER

BROWN VACATION H7106  
 LSF MELODY J1365  
 PRAIRIE PRIDE CENTURY 419  
 TBS MS TREND 782  
 TBS CENTURY 2029  
 SEEGER EXTRA 161  
 TBS MR BRENNER 58  
 NJB 1143 COUNTRY ROSE

CED	BW	WW	YW	Milk	TM	Stay
7	-0.2	32	61	9	25	9

BW: 77      ADJ. YW: 1265  
 ADJ. WW: 707      ADJ. SC: 36.5      **Suitable for heifers.**

17

## TBS PRINCE 0262

BD	REG. #	CAT.	%	DAM'S MPPA	DAM'S AGE
5/1/10	1396331	1A	100%	102.3	3

3SCC SENSATION R289  
**TBS PRINCE SENSAT 7000**  
 TBS MS PRINCE 51  
 LORENZEN HIGH PRAIRIE 2356  
**KAPP RUBY RED 310T**  
 MESSMER RED ROSE 310R

BASIN SENSATION 702E  
 BON VIEW GAMMER 2409  
 BHR PRINCE 335B  
 MISS BHR JR107 29  
 LCHMN GRAND PRAIRIE  
 LRNZ COUNTESS B028-4023  
 LMN PROOF POSITIVE1305E  
 LCHMN RED ROSE J1169

CED	BW	WW	YW	Milk	TM	Stay
5	1.1	52	94	9	34	8

BW: 80      ADJ. YW: 1298  
 ADJ. WW: 732      ADJ. SC: 33.0      **Suitable for heifers.**  
 2011 Brenner Angus

18

## TBS COPPER PRINCE 0214

BD	REG. #	CAT.	%	DAM'S MPPA	DAM'S AGE
4/12/10	1396201	1A	100%	98.9	7

3SCC SENSATION R289  
**TBS PRINCE SENSAT 7000**  
 TBS MS PRINCE 51  
 FORSTER COPPERTOP 089  
**TBS MS COPPERTOP 3934**  
 TBS MS BRENNER 934-44

BASIN SENSATION 702E  
 BON VIEW GAMMER 2409  
 BHR PRINCE 335B  
 MISS BHR JR107 29  
 FORSTER CPRTOP 7184ET  
 MS FORSTER PRESIDIO5106  
 TBS MR BRENNER 44  
 SODAK GEMMA 2034

CED	BW	WW	YW	Milk	TM	Stay
5	-0.1	39	72	8	27	8

BW: 76      ADJ. YW: 1141  
 ADJ. WW: 705      ADJ. SC: 34.4      **Suitable for heifers.**

# Yearling Red Angus Bulls

19

## TBS PRINCE PRICE 0269

BD	REG. #	CAT.	%	DAM'S MPPA	DAM'S AGE
4/17/10	1396249	1A	100%	99.1	4

3SCC SENSATION R289  
**TBS PRINCE SENSAT 7000**  
 TBS MS PRINCE 51

PRAIRIE PRIDE CENTURY 419  
**TBS MS CENTURY 661**  
 TBS ROSIE RED 561

BASIN SENSATION 702E  
 BON VIEW GAMMER 2409  
 BHR PRINCE 335B  
 MISS BHR JR107 29

TBS CENTURY 2029  
 SEEGER EXTRA 161  
 RED BBCC PRESIDIO 5Z  
 PANHANDLE ELLA 7061

CED	BW	WW	YW	Milk	TM	Stay
3	1.9	38	67	7	26	9

BW: 85      ADJ. YW: 1289  
 ADJ. WW: 679      ADJ. SC: 37.6



Lot 19



Last year's bull offering

20

## TBS SENSATION 0209

BD	REG. #	CAT.	%	DAM'S MPPA	DAM'S AGE
4/4/10	1396322	1A	100%	97.4	3

3SCC SENSATION R289  
**TBS SENSATION 8055**  
 TBS MS MONU 4296

BUF CRK ROMEO L081  
**TBS CAMIEO 771**  
 TBS MS RED DAY 510

BASIN SENSATION 702E  
 BON VIEW GAMMER 2409  
 TBS MONU 2072  
 STRAKA'S RED EBONY 1065

BECKTON JULIAN GG B571  
 BUF CRK PRIMROSE 5679  
 LCHMN RED SPREAD 1271F  
 TBS MS DAY MAKER 0856

CED	BW	WW	YW	Milk	TM	Stay
8	-2.7	27	55	13	27	8

BW: 70      ADJ. YW: 1213  
 ADJ. WW: 678      ADJ. SC: 35.1

Suitable for heifers.

21

## TBS PRINCE MONU 0247

BD	REG. #	CAT.	%	DAM'S MPPA	DAM'S AGE
4/4/10	1396209	1A	100%	101.2	6

3SCC SENSATION R289  
**TBS PRINCE SENSAT 7000**  
 TBS MS PRINCE 51

TBS MONU 2072  
**TBS MS MONU 4296**  
 STRAKA'S RED EBONY 1065

BASIN SENSATION 702E  
 BON VIEW GAMMER 2409  
 BHR PRINCE 335B  
 MISS BHR JR107 29

BJR MONU 4X-303  
 TBS MS GOLD STEP 0311  
 STRAKA HIGHTIMES 007  
 ODP MISS JUDY 8099

CED	BW	WW	YW	Milk	TM	Stay
2	2.3	36	64	13	31	10

BW: 94      ADJ. YW: 1249  
 ADJ. WW: 708      ADJ. SC: 34.1

22

## TBS PRINCE 0202

BD	REG. #	CAT.	%	DAM'S MPPA	DAM'S AGE
3/29/10	1396188	1A	100%	101	10

BHR PRINCE 335B  
**TBS PRINCE 8047**  
 EEA 142

BJR MAKE MY DAY 981  
**TBS MS DAY MAKER 0856**  
 WBAR DAISY 56

LODI PRINCE 2632  
 MISS BHR RAMBO 718  
 RCRA WHEEL 'O FORTUNE  
 EEA 472-4603

BJR EASY RIDER 781  
 BJR TOW KANA 117-710  
 LMAN KING ROB 8621  
 MS FORSTER PAY DAY 719

CED	BW	WW	YW	Milk	TM	Stay
1	-0.1	21	43	23	33	9

BW: 84      ADJ. YW: 1196  
 ADJ. WW: 647      ADJ. SC: 34.9

Suitable for heifers.

23

## TBS PRINCE 0212

BD	REG. #	CAT.	%	DAM'S MPPA	DAM'S AGE
3/30/10	1396264	1A	100%	101.7	12

BHR PRINCE 335B  
**TBS PRINCE 8047**  
 EEA 142

LMAN KING ROB 8621  
**WBAR DAISY 56**  
 MS FORSTER PAY DAY 719

LODI PRINCE 2632  
 MISS BHR RAMBO 718  
 RCRA WHEEL 'O FORTUNE  
 EEA 472-4603

LEACHMAN ROBUST 7222  
 LEACHMAN ELEANOR  
 FORSTERS PAY DAY 376  
 LFS DORIS 442

CED	BW	WW	YW	Milk	TM	Stay
-3	3.7	31	55	22	37	8

BW: 96      ADJ. YW: 1197  
 ADJ. WW: 711      ADJ. SC: 34.0



Lot 23



# Yearling Red Angus Bulls



24

## TBS SENSATION 0211

BD	REG. #	CAT.	%	DAM'S MPPA	DAM'S AGE
4/1/10	1396225	1A	100%	99.1	5

3SCC SENSATION R289  
**TBS SENSATION 8055**  
 TBS MS MONU 4296

BHR PRINCE 335B  
**TBS PRINCESS 55**  
 TBS MS JESSICA

BASIN SENSATION 702E  
 BON VIEW GAMMER 2409  
 TBS MONU 2072  
 STRAKA'S RED EBONY 1065

LODI PRINCE 2632  
 MISS BHR RAMBO 718  
 TBS MR BRENNER 58  
 EEA 142

CED	BW	WW	YW	Milk	TM	Stay
-1	4.2	32	61	12	28	10

BW: 97      ADJ. YW: 1126  
 ADJ. WW: 673      ADJ. SC: 37.0



Lot 24

25

## TBS DAKOTA PRINCE 0210

BD	REG. #	CAT.	%	DAM'S MPPA	DAM'S AGE
3/26/10	1396210	1A	100%	97.2	6

3SCC SENSATION R289  
**TBS PRINCE SENSAT 7000**  
 TBS MS PRINCE 51

OHRD DAKOTA COPPER 29K  
**MISS BHR COPPER D 442**  
 MISS BHR IMPRESS 012H

BASIN SENSATION 702E  
 BON VIEW GAMMER 2409  
 BHR PRINCE 335B  
 MISS BHR JR107 29

LCHMAN COPPER ROB 1204D  
 MESSMER OPHELIA 9502  
 BADLANDS IMPRESSION 743  
 MISS RHP VAN 14

CED	BW	WW	YW	Milk	TM	Stay
0	2	35	60	12	29	9

BW: 88      ADJ. YW: 1130  
 ADJ. WW: 637      ADJ. SC: 35.4

26

## TBS PRINCE 0206

BD	REG. #	CAT.	%	DAM'S MPPA	DAM'S AGE
3/21/10	1396197	1A	100%	97.7	7

BHR PRINCE 335B  
**TBS PRINCE 8047**  
 EEA 142

BHR LOGAN 734B  
**MISS BHR LOGAN 371**  
 MISS BHR DIVIDE 918

LODI PRINCE 2632  
 MISS BHR RAMBO 718  
 RCRA WHEEL 'O FORTUNE  
 EEA 472-4603

GLACIER LOGAN 210  
 MISS RHP LIC 808  
 LOOSLI DIVIDE 735  
 MISS RHP RED S 315

CED	BW	WW	YW	Milk	TM	Stay
-2	2.4	23	47	18	30	12

BW: 52      ADJ. YW: 1111  
 ADJ. WW: 610      ADJ. SC: 35.2

27

## TBS RED NATIVE 0260

BD	REG. #	CAT.	%	DAM'S MPPA	DAM'S AGE
3/24/10	1396270	1A	100%	102	2

PRATTLE OF HAYMOUNT  
**DUNLOUISE RED NATIVE F207**  
 EVERSFIELD RED NENA D252

BUF CRK ROMEO L081  
**TBS MS ROMEO 83**  
 EEA 142

ERNEST OF BUCHAAM  
 PARTICLE OF HAYMOUNT  
 DUNLOUISE EXCALIBUR Y070  
 BUDGEHILL NENA Z008

BECKTON JULIAN GG B571  
 BUF CRK PRIMROSE 5679  
 RCRA WHEEL 'O FORTUNE  
 EEA 472-4603

CED	BW	WW	YW	Milk	TM	Stay
8	-0.8	8	25	24	28	6

BW: 76      ADJ. YW: 1159  
 ADJ. WW: 650      ADJ. SC: 37.3

Suitable for heifers.

28

## TBS RED NATIVE 0243

BD	REG. #	CAT.	%	DAM'S MPPA	DAM'S AGE
4/2/10	1396300	1A	100%	102.8	2

PRATTLE OF HAYMOUNT  
**DUNLOUISE RED NATIVE F207**  
 EVERSFIELD RED NENA D252

NEO-SHO MILLENIUM 065G  
**SPUR M MILLION DOLLAR BABY 8**  
 MCGEE TAMI 120

ERNEST OF BUCHAAM  
 PARTICLE OF HAYMOUNT  
 DUNLOUISE EXCALIBUR Y070  
 BUDGEHILL NENA Z008

LCHMN HIGH YIELD 1802C  
 MS NEO-SHO 2131 C302  
 GLACIER CHATEAU 744  
 LMG TAMEY 728

CED	BW	WW	YW	Milk	TM	Stay
9	-2.6	11	37	21	27	6

BW: 66      ADJ. YW: 1113  
 ADJ. WW: 660      ADJ. SC: 35.1

Suitable for heifers.

29

## TBS MONU 0245

BD	REG. #	CAT.	%	DAM'S MPPA	DAM'S AGE
3/21/10	1396308	1A	100%	100.4	2

BJR MONU 4X-303  
**TBS MONU 2072**  
 TBS MS GOLD STEP 0311

BHR GRAND CANYON 440B  
**TBS MS CANYON 869**  
 TBS MS CANYON RODEO 520

RED SSS MONU4X 237C  
 RCRA SAMANTHA  
 MLK CRK NEXT STEP  
 TBS MS RED 30-30 6311

LCHMN GRANDCANYON 1244G  
 MISS BHR GLACIER BO 752  
 TBS DOWN WIND 506  
 TBS MS RODEO 2022

CED	BW	WW	YW	Milk	TM	Stay
2	0.2	36	74	20	37	7

BW: 78      ADJ. YW: 1110  
 ADJ. WW: 625      ADJ. SC: 36.7

Suitable for heifers.



# Yearling Red Angus Bulls

## 30 TBS RED NATIVE 0255

BD	REG. #	CAT.	%	DAM'S MPPA	DAM'S AGE
3/31/10	1396289	1A	100%	102.8	2

PRATTLE OF HAYMOUNT  
**DUNLOUISE RED NATIVE F207**  
 EVERSFIELD RED NENA D252  
 GMRA CITADEL 6109  
**TBS MS EQUAL CANYON 822**  
 TBS MS CANYON 651

ERNEST OF BUCHAAM  
 PARTICLE OF HAYMOUNT  
 DUNLOUISE EXCALIBUR Y070  
 BUDGEHILL NENA Z008  
 GLACIER CHATEAU 744  
 GMRA NEXA 235  
 BHR GRAND CANYON 440B  
 TBS MS DREAMMAKER 7451

CED	BW	WW	YW	Milk	TM	Stay
8	-1.2	12	34	21	27	5

BW: 71      ADJ. YW: 1093  
 ADJ. WW: 665      ADJ. SC: 31.0      **Suitable for heifers.**

## 31 TBS 2ND CENTURY 0259

BD	REG. #	CAT.	%	DAM'S MPPA	DAM'S AGE
4/25/10	1396207	1A	100%	99.8	6

LSF CAPITAL 4099P  
**TBS CAPITAL CNTRY 8048**  
 TBS MS CENTURY 682  
 TBS DOWN WIND 506  
**TBS WINDY 4260**  
 TBS QUEEN WHEELER 155

BROWN VACATION H7106  
 LSF MELODY J1365  
 PRAIRIE PRIDE CENTURY 419  
 TBS MS TREND 782  
 PIE DEEP CANYON 908  
 MS FORSTER PRESIDIO5069  
 TBS BRENNERS KING 9116  
 TBS REDWHEEL 7243

CED	BW	WW	YW	Milk	TM	Stay
6	0	29	55	15	30	9

BW: 85      ADJ. YW: 1259  
 ADJ. WW: 701      ADJ. SC: 36.8

## 32 TBS CAPITAL CNTRY 0250

BD	REG. #	CAT.	%	DAM'S MPPA	DAM'S AGE
4/1/10	1396237	1A	100%	99.1	4

LSF CAPITAL 4099P  
**TBS CAPITAL CNTRY 8048**  
 TBS MS CENTURY 682  
 BFCK CHEROKEE CNYN 4912  
**TBS MS KEE CANYON 645**  
 TBS MS DREAMMAKER 7451

BROWN VACATION H7106  
 LSF MELODY J1365  
 PRAIRIE PRIDE CENTURY 419  
 TBS MS TREND 782  
 BUF CRK CHF 824-1658  
 MRM 1431 8611 9109  
 DCB DRMKR 5132  
 TBS 451 MISS BRENNER

CED	BW	WW	YW	Milk	TM	Stay
5	0.8	36	66	12	29	11

BW: 80      ADJ. YW: 1078  
 ADJ. WW: 650      ADJ. SC: 33.5      **Suitable for heifers.**

## 33 TBS CAPITAL CNTRY 0254

BD	REG. #	CAT.	%	DAM'S MPPA	DAM'S AGE
4/15/10	1396240	1A	100%	98.7	4

LSF CAPITAL 4099P  
**TBS CAPITAL CNTRY 8048**  
 TBS MS CENTURY 682  
 4L ADVANCE VISION R15P  
**TBS MS VISION 64**  
 SHHM ANDREA4P

BROWN VACATION H7106  
 LSF MELODY J1365  
 PRAIRIE PRIDE CENTURY 419  
 TBS MS TREND 782  
 4L SUPER VISION R2292  
 4L MS ADVANCER R16L  
 NSF BOND L007  
 SHHM ANDREA 04M

CED	BW	WW	YW	Milk	TM	Stay
3	1.2	41	77	13	33	10

BW: 84      ADJ. YW: 1196  
 ADJ. WW: 711      ADJ. SC: 32.5



## Age & Source Verification

### Real Rancher Solutions:

- USDA approved for Age and Source Verification, plus Traceability to Angus Bloodlines
- Free Feeder Cattle Marketing Services
- Value-Based Marketing Options through Angus America and Meyer Natural Angus
- Available in either a Visual Tag only, or Combination: Visual Tag & RFID Tag

No Enrollment Fee!

Your Source for

## Guaranteed Angus!

Contact us today for Certified Red Angus value-added opportunities!

USDA  
PROCESS  
VERIFIED

- Traceability to at least 50% Red Angus Bloodlines
- Source Verified to Ranch of Origin
- Group Age Verified



(940) 387-3502  
[www.RedAngus.org](http://www.RedAngus.org)

# 2-Year-Old Red Angus Bulls



## 34 TBS WIDE PRINCE 9037

BD	REG. #	CAT.	%	DAM'S MPPA	DAM'S AGE
4/20/09	1339492	1A	100%	106.9	3

GMRA WIDE SPREAD 972  
**LMG GILLS WIDE SPREAD 6800**  
 LMG DYNETTE 902  
 BHR PRINCE 335B  
**TBS PRINCESS 655**  
 TBS MS DREAMMAKER 7451

LCHMN RED SPREAD 1271F  
 GMRA OPHELIA 729  
 BUF CRK BARNEY 3474  
 LMG DYNETTE 28  
 LODI PRINCE 2632  
 MISS BHR RAMBO 718  
 DCB DRMKR 5132  
 TBS 451 MISS BRENNER

CED	BW	WW	YW	Milk	TM	Stay
0	2.7	38	73	18	37	9

BW: 91      ADJ. YW: 1294  
 ADJ. WW: 803      ADJ. SC: 31.0



Lot 36

## 35 TBS WIDE RITO 9061

BD	REG. #	CAT.	%	DAM'S MPPA	DAM'S AGE
4/2/09	1339523	1A	100%	99.1	4

GMRA WIDE SPREAD 972  
**LMG GILLS WIDE SPREAD 6800**  
 LMG DYNETTE 902  
 5L RITO MTN 601-5403  
**TBS MS RITO 540**  
 MISS PRIMROSE 640

LCHMN RED SPREAD 1271F  
 GMRA OPHELIA 729  
 BUF CRK BARNEY 3474  
 LMG DYNETTE 28  
 CKRA LONE MOUNTAIN 106  
 GA BLACKBIRD 601  
 H S MAC KENZIE 942  
 NJB 140 DESTINY

CED	BW	WW	YW	Milk	TM	Stay
3	0.1	19	43	15	25	7

BW: 84      ADJ. YW: 1138  
 ADJ. WW: 750      ADJ. SC: 37.4

## 36 TBS PRINCE MONU 9005

BD	REG. #	CAT.	%	DAM'S MPPA	DAM'S AGE
4/12/09	1339529	1A	100%	99.1	4

BJR MONU 4X-303  
**TBS MONU 2072**  
 TBS MS GOLD STEP 0311  
 BHR PRINCE 335B  
**TBS PRINCESS 55**  
 TBS MS JESSICA

RED SSS MONU4X 237C  
 RCRA SAMANTHA  
 MLK CRK NEXT STEP  
 TBS MS RED 30-30 6311  
 LODI PRINCE 2632  
 MISS BHR RAMBO 718  
 TBS MR BRENNER 58  
 EEA 142

CED	BW	WW	YW	Milk	TM	Stay
2	1.3	44	90	16	38	10

BW: 80      ADJ. YW: 1337  
 ADJ. WW: 759      ADJ. SC: 40.5

Suitable for heifers.

## 37 TBS MONU CENTURY 9009

BD	REG. #	CAT.	%	DAM'S MPPA	DAM'S AGE
4/9/09	1339520	1A	100%	91.5	4

BJR MONU 4X-303  
**TBS MONU 2072**  
 TBS MS GOLD STEP 0311  
 TBS CENTURY 2029  
**TBS MS CENTURY 514**  
 TBS MS COUNTRY ROSE 528

RED SSS MONU4X 237C  
 RCRA SAMANTHA  
 MLK CRK NEXT STEP  
 TBS MS RED 30-30 6311  
 RED BAKERS CENTURY  
 EEA 142  
 TBS DYNAMO RAMBO 371  
 NJB 1143 COUNTRY ROSE

CED	BW	WW	YW	Milk	TM	Stay
5	0.3	33	64	13	29	8

BW: 83      ADJ. YW:  
 ADJ. WW: 669      ADJ. SC: 36.0

Suitable for heifers.

## 38 TBS ALLIANCE 9010

BD	REG. #	CAT.	%	DAM'S MPPA	DAM'S AGE
3/19/09	1339551	2	100%	98.3	3

WAR ALLIANCE 9126 6006  
**TBS ALLI CANYON 7063**  
 TBS MS CANYON 517  
 PRAIRIE PRIDE CENTURY 419  
**TBS MS CENTURY 698**  
 TBS MS BARNEY 8

SITZ ALLIANCE 6595  
 WAR BANDO 6006 598 4053  
 BFCK CHEROKEE CNYN 4912  
 TBS MS COPPERTOP 3934  
 TBS CENTURY 2029  
 SEEGER EXTRA 161  
 BUF CRK BARNEY 3474  
 TBS IOWA ROSE 3

CED	BW	WW	YW	Milk	TM	Stay
3	2.3	50	90	13	38	11

BW: 89      ADJ. YW: 1304  
 ADJ. WW: 773      ADJ. SC: 40.9

## 39 TBS WIDE CANYON 9018

BD	REG. #	CAT.	%	DAM'S MPPA	DAM'S AGE
4/27/09	1339501	1A	100%	106.9	3

GMRA WIDE SPREAD 972  
**LMG GILLS WIDE SPREAD 6800**  
 LMG DYNETTE 902  
 BHR GRAND CANYON 440B  
**TBS MS JESSICA CANYON 65**  
 TBS MS JESSICA

LCHMN RED SPREAD 1271F  
 GMRA OPHELIA 729  
 BUF CRK BARNEY 3474  
 LMG DYNETTE 28  
 LCHMN GRANDCANYON 1244G  
 MISS BHR GLACIER BO 752  
 TBS MR BRENNER 58  
 EEA 142

CED	BW	WW	YW	Milk	TM	Stay
5	-0.5	31	67	21	37	5

BW: 70      ADJ. YW: 1196  
 ADJ. WW: 800      ADJ. SC: 31.7

Suitable for heifers.

## 40 TBS SAKIE JOE 9077

BD	REG. #	CAT.	%	DAM'S MPPA	DAM'S AGE
3/15/09	1339446	1A	100%	102.4	6

RED SIX MILE AVIATOR 217P  
**RED SIX MILE SAKIE 832S**  
 RED SIX MILE SIERA 257P  
 SHHM CHIEF JOSEPH 54J  
**TBS JOSEPHINE 383**  
 TBS MS BARNEY 83

RED WILDMAN DENALI 19L  
 RED RSL SUE 400F  
 RED SIX MILE CUJO 800M  
 RED BOUNTY B MISS SIERA BAR  
 VDAR CHIEF JOSEPH 420  
 LTD 1217 BAND-8338 YO  
 BUF CRK BARNEY 3474  
 MS BETTER THAN NONE

CED	BW	WW	YW	Milk	TM	Stay
3	1.4	39	63	17	37	8

BW: 89      ADJ. YW: 1113  
 ADJ. WW: 772      ADJ. SC: 33.8



## 2-Year-Old Red Angus Bulls

### 41 TBS COPPER PRINCE 9074

BD	REG. #	CAT.	%	DAM'S MPPA	DAM'S AGE
3/26/09	1339519	1A	100%	100.9	4

AMBERLIGHT GRAND VAQUERO 559  
**TBS COPPER VAQUARO 7032**  
 MISS BHR COPPER D 581  
 BHR PRINCE 335B  
**TBS MS PRINCE 527**  
 FORSTER SAM-SAGE 9002

LCC VAQUERO 1412J  
 AMBRLIGHT GALATAEYA 162  
 OHRR DAKOTA COPPER 29K  
 MISS BHR CLOUD 611X  
 LODI PRINCE 2632  
 MISS BHR RAMBO 718  
 SAMS PROSPECTOR 133Z  
 SODAK SAGE 7088

CED	BW	WW	YW	Milk	TM	Stay
5	-1.5	19	41	23	33	10

BW: 68      ADJ. YW: 1067  
 ADJ. WW: 718      ADJ. SC: 35.6

Suitable for heifers.

### 42 TBS SENSATION 9034

BD	REG. #	CAT.	%	DAM'S MPPA	DAM'S AGE
4/29/09	1339467	1A	100%	103.7	2

BASIN SENSATION 702E  
**3SCC SENSATION R289**  
 BON VIEW GAMMER 2409  
 BHR GRAND CANYON 440B  
**TBS MS MONU CANYON 760**  
 TBS MS MONU 306

GARDENS SENSATION 039 S1  
 STEVENSON ELEMERE 538C  
 HOFF ESSO S C 433  
 BON VIEW GAMMER 2374  
 LCHMN GRANDCANYON 1244G  
 MISS BHR GLACIER BO 752  
 BJR MONU 4X-303  
 TBS SWEETCLOVER 1817

CED	BW	WW	YW	Milk	TM	Stay
4	2.1	37	75	10	28	8

BW: 84      ADJ. YW: 1180  
 ADJ. WW: 784      ADJ. SC: 31.2



Lot 43

### 43 TBS SENSATION 9040

BD	REG. #	CAT.	%	DAM'S MPPA	DAM'S AGE
4/28/09	1339451	1A	100%	102	2

3SCC SENSATION R289  
**TBS PRINCE SENSAT 7000**  
 TBS MS PRINCE 51  
 MEYER TRAP DOOR 206P  
**TBS MS NEXT DOOR 732**  
 TBS MS NEXT MOON 97

BASIN SENSATION 702E  
 BON VIEW GAMMER 2409  
 BHR PRINCE 335B  
 MISS BHR JR107 29  
 MEYER CHIEF DILLON 403F  
 MEYER MS POLY L018  
 MLK CRK NEXT STEP  
 MISS BRENNER'S BETTER

CED	BW	WW	YW	Milk	TM	Stay
4	1.6	36	66	10	28	9

BW: 81      ADJ. YW: 1191  
 ADJ. WW: 763      ADJ. SC: 36.7



## Fall-Born Red Angus Bulls

### 44 W644

BD	REG. #	CAT.	%	DAM'S MPPA	DAM'S AGE
9/14/09			100%	100	4

AMBERLIGHT GRAND VAQUERO 559  
**TBS COPPER VAQUARO 7032**  
 MISS BHR COPPER D581  
 BFCK CHEROKEE CNYN 4912  
**TBS MS COPPER 644**  
 TBS MS DREAMMAKER 7451

LCC VAQUERO 1412J  
 AMBRLIGHT GALATAEYA 162  
 OHRR DAKOTA COPPER 29K  
 MISS BHR CLOUD 611X  
 BUF CRK CHF 824-1658  
 MRM 1431 8611 9109  
 DCB DRMKR 5132  
 TBS 451 MISS BRENNER

CED	BW	WW	YW	Milk	TM	Stay

BW: 80      ADJ. YW:  
 ADJ. WW: 861      ADJ. SC: 36.0

Suitable for heifers.

10

### 45 W652

BD	REG. #	CAT.	%	DAM'S MPPA	DAM'S AGE
9/24/09			100%	104.8	4

AMBERLIGHT GRAND VAQUERO 559  
**TBS COPPER VAQUARO 7032**  
 MISS BHR COPPER D581  
 BHR GRAND CANYON 440B  
**TBS MS CANYON 652**  
 TBS MS DREAMMAKER 7451

LCC VAQUERO 1412J  
 AMBRLIGHT GALATAEYA 162  
 OHRR DAKOTA COPPER 29K  
 MISS BHR CLOUD 611X  
 LCHMN GRANDCANYON 1244G  
 MISS BHR GLACIER BO 752  
 DCB DRMKR 5132  
 TBS 451 MISS BRENNER

CED	BW	WW	YW	Milk	TM	Stay

BW: 68      ADJ. YW:  
 ADJ. WW: 640      ADJ. SC: 37.0

Suitable for heifers.

2011 Brenner Angus

# Angus Reference Sires



SAV Final Answer 0035, Sire of Ref. Sire L

**L**

## SODAK OVATION T312 [AMC]

BD	REG. #	DAM'S AVERAGE WEANING RATIO
2/6/07	15821666	
SITZ TRAVELER 8180 [AMF-CAF-NHF]		
SAV FINAL ANSWER 0035 [AMF-CAF-NHF]		
SAV EMULOUS 8145 [CAF]		
SODAK DIRECT DRIVE N343 [AMC]		
SODAK PRINCESS R044		
SODAK SHOABANDA L067		
GDAR TRAVELER 71 [AMF-CAF-NHF]		
SITZ EVERELDA ENTENSE 1137		
BON VIEW BANDO 598 [CAC-AMF]		
SAV SKY EMULOUS 2124		
CA FUTURE DIRECTION 5321 [AMC-NHC-CAF]		
SODAK SARAH 6043-96		
WK CHATTER		
SODAK SHOABANDA 6144-96		

CED	BW	WW	YW	CEM	Milk
8	0.5	57	96	8	21

BW: 70  
ADJ. WW: 727

ADJ. YW:  
ADJ. SC:

**M**

## 21AR PENDLETON 8076

BD	REG. #	DAM'S AVERAGE WEANING RATIO
2/5/08	16182078	
SAV FINAL ANSWER 0035 [AMF-CAF-NHF]		
HARB PENDLETON 765 JH [AMF-CAF-NHF]		
HARB BLACK LADY 375 JH		
OCC MAGNITUDE 805M [AMF-CAF-NHF]		
21AR BLACKBIRD LADY 6046		
21AR BLACKBIRD LADY E41		
SITZ TRAVELER 8180 [AMF-CAF-NHF]		
SAV EMULOUS 8145 [CAF]		
HARB HIGH PLAINS 975 JH [AMF-CAF-NHF]		
HARB BLACK LADY 073 JH		
OCC EMBLAZON 854E [CAF]		
OCC POLLYANNA 878G		
GDAR RAINMAKER 340		
21AR BLACKBIRD LADY C41		

CED	BW	WW	YW	CEM	Milk
3	3.6	68	109	7	27

BW: 68  
ADJ. WW: 833

ADJ. YW: 1219  
ADJ. SC:



Why we don't have more bull photos this year!

**N**

## SMB BLACK LAND 8013

BD	REG. #	DAM'S AVERAGE WEANING RATIO
3/12/08	16243999	
TWIN VALLEY PRECISION E161 [NHC-AMF-CAF-RDF]		
BR MIDLAND [AMF-CAF-NHF]		
BR ROYAL LASS 7036-19		
SAF FAME [AMF-CAF-NHF]		
MS WIDE FAME 13 OF SMB		
MS SMB WIDESPREAD 9605		
GAR PRECISION 1680 [AMC-NHC]		
WCC BLACKCAP C9 [RDC]		
SAF NEUTRON [AMF-CAF-NHF]		
SAF ROYAL LASS 7036		
MINERTS FORTUNE 2000 [AMF-CAF-NHF]		
SAF ROYAL LASS 1027		
WHITSTONE WIDESPREAD MB [AMF-NHF]		
MS T BONE OF SMB 605		

CED	BW	WW	YW	CEM	Milk
9	0.1	50	82	12	10

BW: 80  
ADJ. WW: 738

ADJ. YW:  
ADJ. SC:

**O**

## SMB ALLIANCE 8082

BD	REG. #	DAM'S AVERAGE WEANING RATIO
3/20/08	16241403	
SITZ ALLIANCE 6595 [AMF-NHF]		
WAR ALLIANCE 9126 6006 [AMF-CAF-NHF]		
WAR BANDO 6006 598 4053 [CAF]		
BRENNERS FANTASTIC 9791		
MS FANTASTIC 153 OF SMB		
BRENNERS TREND 4245 OF SMB		
SITZ TRAVELER 8180 [AMF-CAF-NHF]		
SITZ BARBARAMERE JET 2698		
BON VIEW BANDO 598 [CAC-AMF]		
WAR EXT 4053 22 2107 [AMF]		
SAF FAME [AMF-CAF-NHF]		
MS T BONE OF SMB 791		
VDAR NEW TREND 802 [AMF-CAF]		
MISS BRENNER 245		

CED	BW	WW	YW	CEM	Milk
1	2.4	63	104	7	24

BW: 88  
ADJ. WW: 769

ADJ. YW:  
ADJ. SC:

**P**

## DUNLOUISE CORTACHY BOY D137

BD	REG. #	DAM'S AVERAGE WEANING RATIO
9/8/2004	14898814	
EROCO OF BANKHEAD		
ASHLEY EULAR		
ASHLEY EULONA		
ASHLEY ELMIGHTY		
CHAMPAGNE CHERRY BEE B117		
CHERRY BEE W9 OF CHAMPAGNE		
RAMBLER OF NEWCROFT		
ELANARA 2 OF BANKHEAD		
EUTHEDAX OF DOUNESIDE		
ASHLEY EULNA		
EVERSTRIKE OF MILLHOUSE		
ASHLEY ELSARA		
EVAN OF CHAMPAGNE		
CHERRY BEE OF CHAMPAGNE		

CED	BW	WW	YW	CEM	Milk
1	1.4	12	14	1	2

BW:  
ADJ. WW:

ADJ. YW:  
ADJ. SC:



Dunlouise Cortachy Boy D137

# Yearling Angus Bulls



## 46 SMB PENDLETON 0280

BD	REG. #	DAM'S AVERAGE WEANING RATIO
4/4/10	16809636	5/108

HARB PENDLETON 765 JH [AMF-CAF-NHF]  
**21AR PENDLETON 8076**  
 21AR BLACKBIRD LADY 6046

CW ULTIMATE DESIGN 51  
**MS DESIGN 435 OF SMB**  
 MS JP RIGHT PRIDE 1597

SAV FINAL ANSWER 0035 [AMF-CAF-NHF]  
 HARB BLACK LADY 375 JH  
 OCC MAGNITUDE 805M [AMF-CAF-NHF]  
 21AR BLACKBIRD LADY E41

BON VIEW NEW DESIGN 1407 [AMF-CAF-NHF]  
 CW 7104 MISS ENCHANTRESS 92  
 BRENNER RIGHT TIME 801  
 SAR NAVIGATOR PRIDE 9772

CED	BW	WW	YW	CEM	Milk
-1	4.1	58	94	4	23

BW: **93**      ADJ. YW: **1335**  
 ADJ. WW: **755**      ADJ. SC: **37.6**



Lot 47

## 47 SMB 0204

BD	REG. #	DAM'S AVERAGE WEANING RATIO
4/4/10	16806810	4/109

SAV FINAL ANSWER 0035 [AMF-CAF-NHF]  
**SODAK OVATION T312 [AMC]**  
 SODAK PRINCESS R044

GREENS 20 20  
**MS 20-20 OF SMB 553**  
 BRENNERS BLACKIE T453 OF SMB

SITZ TRAVELER 8180 [AMF-CAF-NHF]  
 SAV EMULOUS 8145 [CAF]  
 SODAK DIRECT DRIVE N343 [AMC]  
 SODAK SHOBANDA L067

VERMILION DATELINE 7078 [AMF-CAF-NHF]  
 GREENS SAVANNAH 9909  
 BLAKE VALEDICTORIAN W310  
 ANVIL LASSIE 3579-R12-P753

CED	BW	WW	YW	CEM	Milk
3	2.2	57	94	5	23

BW: **81**      ADJ. YW: **1357**  
 ADJ. WW: **727**      ADJ. SC: **34.6**

Suitable for heifers.



Lot 48

## 48 SMB 0251

BD	REG. #	DAM'S AVERAGE WEANING RATIO
4/7/10	16806972	2/106

HARB PENDLETON 765 JH [AMF-CAF-NHF]  
**21AR PENDLETON 8076**  
 21AR BLACKBIRD LADY 6046

WAR ALLIANCE 9126 6006 [AMF-CAF-NHF]  
**SMB ALLIANCE 713**  
 BRENNERS NEBRASKA 50

SAV FINAL ANSWER 0035 [AMF-CAF-NHF]  
 HARB BLACK LADY 375 JH  
 OCC MAGNITUDE 805M [AMF-CAF-NHF]  
 21AR BLACKBIRD LADY E41

SITZ ALLIANCE 6595 [AMF-NHF]  
 WAR BANDO 6006 598 4053 [CAF]  
 BALDRIDGE NEBRASKA 901 [AMF-CAF-NHF]  
 MS 878 OF SMB 365

CED	BW	WW	YW	CEM	Milk
2	3.6	62	107	6	25

BW: **88**      ADJ. YW: **1391**  
 ADJ. WW: **719**      ADJ. SC: **33.7**

## 49 SMB ALLIANCE 0226

BD	REG. #	DAM'S AVERAGE WEANING RATIO
4/1/10	16807157	4/104

WAR ALLIANCE 9126 6006 [AMF-CAF-NHF]  
**SMB ALLIANCE 8082**  
 MS FANTASTIC 153 OF SMB

SAF POWER STROKE 31-90  
**RANCHES STOKE 5655 JF**  
 RANCHERS BANANZA OF IAR 655

SITZ ALLIANCE 6595 [AMF-NHF]  
 WAR BANDO 6006 598 4053 [CAF]  
 BRENNERS FANTASTIC 9791  
 BRENNERS TREND 4245 OF SMB

GAR GRID MAKER [AMF-CAF-NHF]  
 ZAF BLACKCAP 35  
 TC RANCHER 056  
 AMBUSH BONANZA OF IAR 455

CED	BW	WW	YW	CEM	Milk
3	1.8	60	95	8	21

BW: **86**      ADJ. YW: **1281**  
 ADJ. WW: **757**      ADJ. SC: **31.5**

12

## 50 SMB DAKOTA 0274

BD	REG. #	DAM'S AVERAGE WEANING RATIO
3/21/10	16806795	4/102

WCC SPECIAL DESIGN L309 [AMF-CAF-NHF]  
**SMB DAKOTA DESIGN 6036**  
 MS DACOTAH JILL SMB 8604

MR VRD OF SMB 602  
**MS VRD OF SMB52**  
 MS JP RIGHT PRIDE 1597

BON VIEW NEW DESIGN 878 [AMF-CAF-NHF]  
 N BAR PRIMROSE 2424  
 SODAK DACOTAH 6432-96  
 SODAK JILL 6048-96

VERMILION DATELINE 7078 [AMF-CAF-NHF]  
 SODAK LASS 6025-96  
 BRENNER RIGHT TIME 801  
 SAR NAVIGATOR PRIDE 9772

CED	BW	WW	YW	CEM	Milk
-5	5.6	48	82	1	17

BW: **92**      ADJ. YW: **1275**  
 ADJ. WW: **675**      ADJ. SC: **36.1**

2011 Brenner Angus

# Yearling Angus Bulls



Lot 51

**51** **SMB 0216**

BD	REG. #	DAM'S AVERAGE WEANING RATIO
4/7/10	16807096	1/106

HARB PENDLETON 765 JH [AMF-CAF-NHF]  
**21AR PENDLETON 8076**  
 21AR BLACKBIRD LADY 6046

SAV LEGACY 5216 [NHC-AMF-CAF]  
**MD LEGACY 840 OF SMB**  
 MS NEUTRON SMB 680

SAV FINAL ANSWER 0035 [AMF-CAF-NHF]  
 HARB BLACK LADY 375 JH  
 OCC MAGNITUDE 805M [AMF-CAF-NHF]  
 21AR BLACKBIRD LADY E41

SAV PATHFINDER 3134 [CAC]  
 SAV ROSETTA 3350 [AMF]  
 HCC NEUTRON 422  
 MS B HEART 808 OF SMB

CED	BW	WW	YW	CEM	Milk
5	1.9	61	100	8	23

BW: **70** ADJ. YW: **1378**  
 ADJ. WW: **687** ADJ. SC: **36.7**

Suitable for heifers.

**52** **SMB 0256**

BD	REG. #	DAM'S AVERAGE WEANING RATIO
3/15/10	16806943	3/105

BR MIDLAND [AMF-CAF-NHF]  
**SMB BLACK LAND 8013**  
 MS WIDE FAME 13 OF SMB

GAR GRID MAKER [AMF-CAF-NHF]  
**MS MAKER SMB 650**  
 PRIM LASSIE 8234

TWIN VALLEY PRECISION E161 [NHC-AMF-CAF-RDF]  
 BR ROYAL LASS 7036-19  
 SAF FAME [AMF-CAF-NHF]  
 MS SMB WIDESPREAD 9605

GDAR TRAVELER 044 [AMF-CAF-NHF]  
 GAR PRECISION 2536 [AMC-NHF]  
 MARSHALL EILEENMERE 4153  
 PRIM LASSIE 2116

CED	BW	WW	YW	CEM	Milk
9	0.4	48	79	11	13

BW: **69** ADJ. YW: **1206**  
 ADJ. WW: **662** ADJ. SC: **39.9**

Suitable for heifers.

**53** **SMB BLACKIE 0224**

BD	REG. #	DAM'S AVERAGE WEANING RATIO
4/6/10	16806949	2/103

BR MIDLAND [AMF-CAF-NHF]  
**SMB BLACK LAND 8013**  
 MS WIDE FAME 13 OF SMB

QLC LAGRANF FORUM [AMF]  
**MS SMB FORUM 708**  
 SMB ALLIANCE 505 [AMF]

TWIN VALLEY PRECISION E161 [NHC-AMF-CAF-RDF]  
 BR ROYAL LASS 7036-19  
 SAF FAME [AMF-CAF-NHF]  
 MS SMB WIDESPREAD 9605

G 13 STRUCTURE [AMF-CAF-NHF]  
 QLC B7 BLACKBIRD X553A  
 WAR ALLIANCE 9126 6006 [AMF-CAF-NHF]  
 SODAK ERICA 4050

CED	BW	WW	YW	CEM	Milk
6	1.5	55	91	10	16

BW: **75** ADJ. YW: **1274**  
 ADJ. WW: **730** ADJ. SC: **36.7**

Suitable for heifers.

**54** **SMB ALLIANCE 0225**

BD	REG. #	DAM'S AVERAGE WEANING RATIO
3/31/10	16806793	4/103

WAR ALLIANCE 9126 6006 [AMF-CAF-NHF]  
**SMB ALLIANCE 8082**  
 MS FANTASTIC 153 OF SMB

BALDRIDGE NEBRASKA 901 [AMF-CAF-NHF]  
**BRENNERS NEBRASKA 50**  
 MS 878 OF SMB 365

SITZ ALLIANCE 6595 [AMF-NHF]  
 WAR BANDO 6006 598 4053 [CAF]  
 BRENNERS FANTASTIC 9791  
 BRENNERS TREND 4245 OF SMB

SAF FOCUS OF ER [AMF-CAF-NHF]  
 BALDRIDGE FLOSSIE 367  
 BON VIEW NEW DESIGN 878 [AMF-CAF-NHF]  
 MS JP RIGHT PRIDE 1597

CED	BW	WW	YW	CEM	Milk
8	0.3	56	96	10	20

BW: **72** ADJ. YW: **1233**  
 ADJ. WW: **703** ADJ. SC: **36.0**

Suitable for heifers.

**55** **SMB 0248**

BD	REG. #	DAM'S AVERAGE WEANING RATIO
3/22/10	16807152	1/106

HARB PENDLETON 765 JH [AMF-CAF-NHF]  
**21AR PENDLETON 8076**  
 21AR BLACKBIRD LADY 6046

PRAIRIE PRIDE FRONTIER 548  
**SMB PRIDE 888**  
 MS DESIGN 332 OF SMB

SAV FINAL ANSWER 0035 [AMF-CAF-NHF]  
 HARB BLACK LADY 375 JH  
 OCC MAGNITUDE 805M [AMF-CAF-NHF]  
 21AR BLACKBIRD LADY E41

B/R NEW FRONTIER 095 [AMF-CAF-NHF]  
 CARLSON LEADTIME 9157  
 CW ULTIMATE DESIGN 51  
 MISS OSCAR 932 OF SMB

CED	BW	WW	YW	CEM	Milk
2	3.4	56	91	6	24

BW: **83** ADJ. YW: **1273**  
 ADJ. WW: **691** ADJ. SC: **35.6**

**56** **SM B-G13-0244**

BD	REG. #	DAM'S AVERAGE WEANING RATIO
4/16/10	16807145	1/110

G 13 STRUCTURE [AMF-CAF-NHF]  
**MR G13 OF SMB 7026**  
 ALLIANCE 6595 OF SMB 500

SMB NEUTRON 6022  
**SMB NEUTRON 846**  
 PRAIRIE PRIDE BLACKBIRD 462

TC STOCKMAN 365  
 G 13 TRAVELER 9428  
 SITZ ALLIANCE 6595 [AMF-NHF]  
 MS TARGET OF SMB 515

HCC NEUTRON 422  
 MS JULIO 3905 OF SMB  
 RITO 112 OF 2536 RITO 616 [AMF-CAF-NHF]  
 PRAIRIE PRIDE BLACKBIRD 9115

CED	BW	WW	YW	CEM	Milk
6	1	48	86	8	18

BW: **68** ADJ. YW: **1303**  
 ADJ. WW: **718** ADJ. SC: **34.6**

Suitable for heifers.

**57** **SMB 0276**

BD	REG. #	DAM'S AVERAGE WEANING RATIO
4/4/10	16807077	2/103

HARB PENDLETON 765 JH [AMF-CAF-NHF]  
**21AR PENDLETON 8076**  
 21AR BLACKBIRD LADY 6046

PRAIRIE PRIDE EXTRA 5161  
**MS SMB EXTRA 722 [AMF]**  
 MS DESIGN 348 OF SMB

SAV FINAL ANSWER 0035 [AMF-CAF-NHF]  
 HARB BLACK LADY 375 JH  
 OCC MAGNITUDE 805M [AMF-CAF-NHF]  
 21AR BLACKBIRD LADY E41

BAR EXT TRAVELER 205 [AMF-CAF-NHF]  
 PRAIRIE PRIDE BONNIE 878  
 CW ULTIMATE DESIGN 51  
 MS J&P SPREAD 948 OF SMB

CED	BW	WW	YW	CEM	Milk
-1	4.6	59	97	4	25

BW: **94** ADJ. YW: **1271**  
 ADJ. WW: **743** ADJ. SC: **38.6**

# Yearling Angus Bulls

58

**SMB 0279**



BD	REG. #	DAM'S AVERAGE WEANING RATIO
3/24/10	16806942	3/101

HARB PENDLETON 765 JH [AMF-CAF-NHF]  
**21AR PENDLETON 8076**  
 21AR BLACKBIRD LADY 6046

SAV FINAL ANSWER 0035 [AMF-CAF-NHF]  
 HARB BLACK LADY 375 JH  
 OCC MAGNITUDE 805M [AMF-CAF-NHF]  
 21AR BLACKBIRD LADY E41

HCC NEUTRON 422  
**MS NEUTRON SMB 649**  
 SAR 5175 PRIDE 1149

SA NEUTRON 377 [AMF-CAF-NHF]  
 HCC ENCHANTRESS 8009  
 SAF 598 BANDO 5175 [CAC-AMF]  
 SAR RITOS PRIDE 7805

CED	BW	WW	YW	CEM	Milk
-3	5.7	58	98	4	20

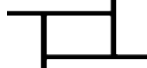
BW: **92**      ADJ. YW: **1166**  
 ADJ. WW: **690**      ADJ. SC: **37.7**



Lot 58

59

**SMB 0261**



BD	REG. #	DAM'S AVERAGE WEANING RATIO
4/10/10	16806931	3/109

SAV FINAL ANSWER 0035 [AMF-CAF-NHF]  
**SODAK OVATION T312 [AMC]**  
 SODAK PRINCESS R044

SITZ TRAVELER 8180 [AMF-CAF-NHF]  
 SAV EMULOUS 8145 [CAF]  
 SODAK DIRECT DRIVE N343 [AMC]  
 SODAK SHOBANDA L067

GREENS 20 20  
**MS 20-20 OF SMB 502**  
 MS T BONE OF SMB 791

VERMILION DATELINE 7078 [AMF-CAF-NHF]  
 GREENS SAVANNAH 9909  
 WKT BONE 4143  
 MISS SAMPSON OF SMB91

CED	BW	WW	YW	CEM	Milk
1	3.2	51	93	4	22

BW: **84**      ADJ. YW: **1218**  
 ADJ. WW: **670**      ADJ. SC: **35.9**



Lot 59

60

**SMB 0242**



BD	REG. #	DAM'S AVERAGE WEANING RATIO
3/27/10	16807081	2/102

BR MIDLAND [AMF-CAF-NHF]  
**SMB BLACK LAND 8013**  
 MS WIDE FAME 13 OF SMB

TWIN VALLEY PRECISION E161 [NHC-AMF-CAF-RDF]  
 BR ROYAL LASS 7036-19  
 SAF FAME [AMF-CAF-NHF]  
 MS SMB WIDESPREAD 9605

PRAIRIE PRIDE EXTRA 5161  
**MS EXTRA 729 SMB [AMF]**  
 MS BLACK HEART OF SMB 0624

BAR EXT TRAVELER 205 [AMF-CAF-NHF]  
 PRAIRIE PRIDE BONNIE 878  
 BRENNERS HEARTLAND 6473  
 MS T BONE 624 OF SMB

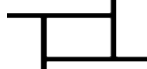
CED	BW	WW	YW	CEM	Milk
1+7	1+.4	1+48	1+81	1+9	1+16

BW: **81**      ADJ. YW: **1220**  
 ADJ. WW: **657**      ADJ. SC: **32.3**

**Suitable for heifers.**

61

**SMB TON 0275**



BD	REG. #	DAM'S AVERAGE WEANING RATIO
3/23/10	16809637	1/111

HARB PENDLETON 765 JH [AMF-CAF-NHF]  
**21AR PENDLETON 8076**  
 21AR BLACKBIRD LADY 6046

SAV FINAL ANSWER 0035 [AMF-CAF-NHF]  
 HARB BLACK LADY 375 JH  
 OCC MAGNITUDE 805M [AMF-CAF-NHF]  
 21AR BLACKBIRD LADY E41

SAV LEGACY 5216 [NHC-AMF-CAF]  
**SMB LEGACY 851**  
 SMB DAKOTA DESIGN 67

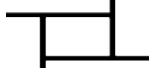
SAV PATHFINDER 3134 [CAC]  
 SAV ROSETTA 3350 [AMF]  
 WCC SPECIAL DESIGN L309 [AMF-CAF-NHF]  
 MS DACOTAH JILL SMB 8604

CED	BW	WW	YW	CEM	Milk
0	3.8	63	103	4	27

BW: **84**      ADJ. YW: **1191**  
 ADJ. WW: **721**      ADJ. SC: **35.7**

62

**SMB 0231**



BD	REG. #	DAM'S AVERAGE WEANING RATIO
3/26/10	16807156	5/97

WAR ALLIANCE 9126 6006 [AMF-CAF-NHF]  
**SMB ALLIANCE 8082**  
 MS FANTASTIC 153 OF SMB

SITZ ALLIANCE 6595 [AMF-NHF]  
 WAR BANDO 6006 598 4053 [CAF]  
 BRENNERS FANTASTIC 9791  
 BRENNERS TREND 4245 OF SMB

RITO 112 OF 2536 RITO 616 [AMF-CAF-NHF]  
**PRAIRIE PRIDE BLACKBIRD 462**  
 PRAIRIE PRIDE BLACKBIRD 9115

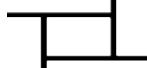
RITO 616 OF 4B20 6807 [AMF-CAF-NHF]  
 GAR PRECISION 2536 [AMC-NHF]  
 RR DAQUANTAE 789E [AMF-CAF-NHF]  
 PRAIRIE PRIDE BLACKBIRD L682

CED	BW	WW	YW	CEM	Milk
1	3	56	94	5	17

BW: **83**      ADJ. YW: **1137**  
 ADJ. WW: **634**      ADJ. SC: **33.8**

63

**SMB 0272**



BD	REG. #	DAM'S AVERAGE WEANING RATIO
4/7/10	16806944	2/95

HARB PENDLETON 765 JH [AMF-CAF-NHF]  
**21AR PENDLETON 8076**  
 21AR BLACKBIRD LADY 6046

SAV FINAL ANSWER 0035 [AMF-CAF-NHF]  
 HARB BLACK LADY 375 JH  
 OCC MAGNITUDE 805M [AMF-CAF-NHF]  
 21AR BLACKBIRD LADY E41

PRAIRIE PRIDE FRONTIER 548  
**MS SMB FRONTIER 701**  
 SAR 5175 PRIDE 1144

B/R NEW FRONTIER 095 [AMF-CAF-NHF]  
 CARLSON LEADTIME 9157  
 SAF 598 BANDO 5175 [CAC-AMF]  
 SAR RITOS PRIDE 7805

CED	BW	WW	YW	CEM	Milk
0	4.9	57	95	5	22

BW: **92**      ADJ. YW: **1210**  
 ADJ. WW: **676**      ADJ. SC: **34.7**



# Yearling Angus Bulls



**64** **SMB 0236**

BD	REG. #	DAM'S AVERAGE WEANING RATIO
4/14/10	16807080	2/104

BR MIDLAND [AMF-CAF-NHF]  
**SMB BLACK LAND 8013**  
 MS WIDE FAME 13 OF SMB

PRAIRIE PRIDE EXTRA 5161  
**MS SMB EXTRA 727 [AMF]**  
 MS 20-20 OF SMB 502

TWIN VALLEY PRECISION E161 [NHC-AMF-CAF-RDF]  
 BR ROYAL LASS 7036-19  
 SAF FAME [AMF-CAF-NHF]  
 MS SMB WIDESPREAD 9605

BAR EXT TRAVELER 205 [AMF-CAF-NHF]  
 PRAIRIE PRIDE BONNIE 878  
 GREENS 20 20  
 MS T BONE OF SMB 791

CED	BW	WW	YW	CEM	Milk
1	3.4	51	89	5	17

**65** **SMB BLACK 0215**

BD	REG. #	DAM'S AVERAGE WEANING RATIO
3/23/10	16806794	3/103

BR MIDLAND [AMF-CAF-NHF]  
**SMB BLACK LAND 8013**  
 MS WIDE FAME 13 OF SMB

RIV NATCHEZ DESIGN  
**MS DESIGN OF SMB51**  
 MS DESIGN 332 OF SMB

TWIN VALLEY PRECISION E161 [NHC-AMF-CAF-RDF]  
 BR ROYAL LASS 7036-19  
 SAF FAME [AMF-CAF-NHF]  
 MS SMB WIDESPREAD 9605

BON VIEW NEW DESIGN 878 [AMF-CAF-NHF]  
 RIV ELBA OF LUCRESIA 182L  
 CW ULTIMATE DESIGN 51  
 MISS OSCAR 932 OF SMB

CED	BW	WW	YW	CEM	Milk
11	-0.9	43	70	11	18

**66** **SMB 0240**

BD	REG. #	DAM'S AVERAGE WEANING RATIO
3/15/10	16807149	1/95

HARB PENDLETON 765 JH [AMF-CAF-NHF]  
**21AR PENDLETON 8076**  
 21AR BLACKBIRD LADY 6046

SMB NEUTRON 6022  
**SMB NEUTRON 857**  
 MS DESIGN SMB 608

SAV FINAL ANSWER 0035 [AMF-CAF-NHF]  
 HARB BLACK LADY 375 JH  
 OCC MAGNITUDE 805M [AMF-CAF-NHF]  
 21AR BLACKBIRD LADY E41

HCC NEUTRON 422  
 MS JULIO 3905 OF SMB  
 J BAR J 036 DESIGN 311  
 IAR THREAT PPD 2280

CED	BW	WW	YW	CEM	Milk
4	2.6	53	92	7	20

**67** **SMB 0205**

BD	REG. #	DAM'S AVERAGE WEANING RATIO
4/1/10	16807153	10/96

WAR ALLIANCE 9126 6006 [AMF-CAF-NHF]  
**SMB ALLIANCE 8082**  
 MS FANTASTIC 153 OF SMB

WOODHILL SUPREME [AMF-CAF-NHF]  
**MS SUPREME 906 OF SMB**  
 MISS BRENNER 206

SITZ ALLIANCE 6595 [AMF-NHF]  
 WAR BANDO 6006 598 4053 [CAF]  
 BRENNERS FANTASTIC 9791  
 BRENNERS TREND 4245 OF SMB

GDAR OSCAR 711 [AMF-NHF]  
 WOODHILL EVERGREEN 120  
 BRENNERS PINE TAR  
 MISS BRENNER 086

CED	BW	WW	YW	CEM	Milk
5	1.5	49	85	7	12

**68** **SMB 0218**

BD	REG. #	DAM'S AVERAGE WEANING RATIO
4/8/10	16807078	2/104

BR MIDLAND [AMF-CAF-NHF]  
**SMB BLACK LAND 8013**  
 MS WIDE FAME 13 OF SMB

PRAIRIE PRIDE FRONTIER 548  
**MS FRONTIER 725 OF 725**  
 MS BLACK OF SMB 593

TWIN VALLEY PRECISION E161 [NHC-AMF-CAF-RDF]  
 BR ROYAL LASS 7036-19  
 SAF FAME [AMF-CAF-NHF]  
 MS SMB WIDESPREAD 9605

B/R NEW FRONTIER 095 [AMF-CAF-NHF]  
 CARLSON LEADTIME 9157  
 SMB BLACK FOUNDATION 103  
 MS CARSON 93 OF SMB

CED	BW	WW	YW	CEM	Milk
10	-0.7	43	73	13	15

**69** **SMB 0278**

BD	REG. #	DAM'S AVERAGE WEANING RATIO
4/11/10	16807076	2/104

HARB PENDLETON 765 JH [AMF-CAF-NHF]  
**21AR PENDLETON 8076**  
 21AR BLACKBIRD LADY 6046

WAR ALLIANCE 9126 6006 [AMF-CAF-NHF]  
**SMB ALLIANCE 721**  
 MS 878 OF SMB 365

SAV FINAL ANSWER 0035 [AMF-CAF-NHF]  
 HARB BLACK LADY 375 JH  
 OCC MAGNITUDE 805M [AMF-CAF-NHF]  
 21AR BLACKBIRD LADY E41

SITZ ALLIANCE 6595 [AMF-NHF]  
 WAR BANDO 6006 598 4053 [CAF]  
 BON VIEW NEW DESIGN 878 [AMF-CAF-NHF]  
 MS JP RIGHT PRIDE 1597

CED	BW	WW	YW	CEM	Milk
3	3.2	61	104	7	25

**70** **SMB BLACK 0241**

BD	REG. #	DAM'S AVERAGE WEANING RATIO
4/1/10	16806948	2/110

BR MIDLAND [AMF-CAF-NHF]  
**SMB BLACK LAND 8013**  
 MS WIDE FAME 13 OF SMB

PRAIRIE PRIDE FRONTIER 548  
**SMB FRONTIER 706**  
 MS B HEART 808 OF SMB

TWIN VALLEY PRECISION E161 [NHC-AMF-CAF-RDF]  
 BR ROYAL LASS 7036-19  
 SAF FAME [AMF-CAF-NHF]  
 MS SMB WIDESPREAD 9605

B/R NEW FRONTIER 095 [AMF-CAF-NHF]  
 CARLSON LEADTIME 9157  
 BRENNERS DATELINE 7589  
 BRENNERS ENFORCER 9382

CED	BW	WW	YW	CEM	Milk
9	0.2	50	79	11	14



Eagle Butte

BW: 71      ADJ. YW: 1179  
 ADJ. WW: 690      ADJ. SC: 35.5  
*2011 Brenner Angus*      **Suitable for heifers.**

# Yearling Angus Bulls

## 71 SMB 0232

BD	REG. #	DAM'S AVERAGE WEANING RATIO
4/21/10	16806945	2/107

BR MIDLAND [AMF-CAF-NHF]  
**SMB BLACK LAND 8013**  
 MS WIDE FAME 13 OF SMB

TC TOTAL 410 [AMF-CAF-NHF]  
**MS SMB TOTAL 703**  
 J BAR J PLOWMAN EMMA 160

TWIN VALLEY PRECISION E161 [NHC-AMF-CAF-RDF]  
 BR ROYAL LASS 7036-19  
 SAF FAME [AMF-CAF-NHF]  
 MS SMB WIDESPREAD 9605

BON VIEW NEW DESIGN 208 [CAC-AMF-NHF]  
 TC ERICA EILEEN 2047 [NHC-AMF]  
 PLOWMAN 1627 OF MILLBRAE SAR [AMF-CAF-NHF]  
 J BAR J CONVEYOR EMMA 618

CED	BW	WW	YW	CEM	Milk
1	3.5	54	93	6	15

BW: **92**      ADJ. YW: **1205**  
 ADJ. WW: **674**      ADJ. SC: **35.3**

## 73 SMB DOUBLE 0273

BD	REG. #	DAM'S AVERAGE WEANING RATIO
4/26/10	16806808	6/96

SAV 8180 TRAVELER 004 [AMF-CAF-NHF-RDF]  
**MR JT DOUBLE 07**  
 MISS JT ESTELLE 110

SAF 598 BANDO 5175 [CAC-AMF]  
**SAR 5175 PRIDE 1149**  
 SAR RITOS PRIDE 7805

SITZ TRAVELER 8180 [AMF-CAF-NHF]  
 BOYD FOREVER LADY 8003  
 HSAF PROMPTER ET [AMF]  
 KFF MAMA ESTELLE J138

BON VIEW BANDO 598 [CAC-AMF]  
 SAF ROYAL LASS 1002  
 RITO 2100 GDAR  
 SAR HOLIDAYS PRIDE 5894

CED	BW	WW	YW	CEM	Milk
3	3.5	44	82	6	20

BW: **83**      ADJ. YW: **1169**  
 ADJ. WW: **631**      ADJ. SC: **35.5**

## 72 SMB 0277

BD	REG. #	DAM'S AVERAGE WEANING RATIO
4/14/10	16806950	2/100

HARB PENDLETON 765 JH [AMF-CAF-NHF]  
**21AR PENDLETON 8076**  
 21AR BLACKBIRD LADY 6046

WAR ALLIANCE 9126 6006 [AMF-CAF-NHF]  
**MS SMB ALLIANCE 710**  
 MS DESIGN 435 OF SMB

SAV FINAL ANSWER 0035 [AMF-CAF-NHF]  
 HARB BLACK LADY 375 JH  
 OCC MAGNITUDE 805M [AMF-CAF-NHF]  
 21AR BLACKBIRD LADY E41

SITZ ALLIANCE 6595 [AMF-NHF]  
 WAR BANDO 6006 598 4053 [CAF]  
 CW ULTIMATE DESIGN 51  
 MS JP RIGHT PRIDE 1597

CED	BW	WW	YW	CEM	Milk
6	1.8	61	105	9	25

BW: **75**      ADJ. YW: **1174**  
 ADJ. WW: **678**      ADJ. SC: **34.0**

Suitable for heifers.

## 74 SMB 0249

BD	REG. #	DAM'S AVERAGE WEANING RATIO
4/2/10	16806947	2/95

BR MIDLAND [AMF-CAF-NHF]  
**SMB BLACK LAND 8013**  
 MS WIDE FAME 13 OF SMB

PRAIRIE PRIDE EXTRA 5161  
**MS EXTRA 705 OF SMB**  
 MS ET BRENNER 329

TWIN VALLEY PRECISION E161 [NHC-AMF-CAF-RDF]  
 BR ROYAL LASS 7036-19  
 SAF FAME [AMF-CAF-NHF]  
 MS SMB WIDESPREAD 9605

BAR EXT TRAVELER 205 [AMF-CAF-NHF]  
 PRAIRIE PRIDE BONNIE 878  
 MR HM 18ET OF SMB  
 SODAK ROWE SKY 2107

CED	BW	WW	YW	CEM	Milk
5	1.6	42	73	8	16

BW: **81**      ADJ. YW: **1160**  
 ADJ. WW: **659**      ADJ. SC: **36.6**

Suitable for heifers.



Ashley with her 4-H Market Steer



Laredo with Hannah, a 21AR Pendleton 8076 daughter



Jessica with her 4-H Market Steer



Ashley holding her Senior Overall Champion Showmanship plaque

# Fall-Born Angus Bulls



**75 SMB BOY 0246**

BD	REG. #	DAM'S AVERAGE WEANING RATIO
3/31/10	16806809	6/105

ASHLEY EULAR  
**DUNLOUISE CORTACHY BOY D137** [AMF-CAF-NHF-RDF]  
 CHAMPAGNE CHERRY BEE B117

BRENNER UNIVERSE 119  
**MS UNIVERSE 367 SMB**  
 MS ROGUE OF SMB 8117

EROCO OF BANKHEAD  
 ASHLEY EULONA  
 ASHLEY ELMIGHTY  
 CHERRY BEE W9 OF CHAMPAGNE

PAPA UNIVERSE 515 [AMF-NHF]  
 S BLACKBIRD 119  
 DOUBLE BAR ROGUE  
 LS DYNAMO ROSE 819

CED	BW	WW	YW	CEM	Milk
0	2.3	22	39	3	11

BW: 73      ADJ. YW: 1021  
 ADJ. WW: 598      ADJ. SC: 37.0

Suitable for heifers.

**76 9504**

BD	REG. #	DAM'S AVERAGE WEANING RATIO
8/29/09		3/102

SAV FINAL ANSWER 0035  
**SODAK OVATION T312**  
 SODAK PRINCESS R044

BRENNERS FANTASTIC 9791  
**MS FANTASTIC SMB 513**  
 MS JULIE 203 OF SMB

SITZ TRAVELER 8180  
 SAV EMULOUS 8145  
 SODAK DIRECT DRIVE N343  
 SODAK SHOBAANDA L067

SAF FAME  
 MS T BONE OF SMB 791  
 BALDRIDGE JULIO 157J  
 MS UNIVERSE OF SMB 051

CED	BW	WW	YW	CEM	Milk
	2.5	51	87	22	

BW: 98      ADJ. YW:  
 ADJ. WW: 787      ADJ. SC: 40.0

**77 9518**

BD	REG. #	DAM'S AVERAGE WEANING RATIO
9/4/09		6/104

SAV FINAL ANSWER 0035  
**SODAK OVATION T312**  
 SODAK PRINCESS R044

BAR EXT TRAVELER 205  
**MS H MAN EXT 007**  
 ERICA OF WETONKA 8231

SITZ TRAVELER 8180  
 SAV EMULOUS 8145  
 SODAK DIRECT DRIVE N343  
 SODAK SHOBAANDA L067

N BAR EMULATION EXT  
 BAR QUEEN TRAVELER 3015  
 MARSHALL EILEENMERE 4153  
 ERICA OF WETONKA 096

CED	BW	WW	YW	CEM	Milk
	0.9	43	77	26	

BW: 84      ADJ. YW:  
 ADJ. WW: 796      ADJ. SC: 38.0

Suitable for heifers.

**78 9512**

BD	REG. #	DAM'S AVERAGE WEANING RATIO
9/5/09		4/101

SAV FINAL ANSWER 0035  
**SODAK OVATION T312**  
 SODAK PRINCESS R044

BON VIEW SPECTRUM 1176  
**MS SPECTRUM 334 SMB**  
 MS BATTLE CRY 134 OF SMB

SITZ TRAVELER 8180  
 SAV EMULOUS 8145  
 SODAK DIRECT DRIVE N343  
 SODAK SHOBAANDA L067

BF RAINMAN 9118 117  
 BON VIEW GAMMER 1324  
 SAR BATTLE CRY 1518  
 MS DUSTER 746 OF SMB

CED	BW	WW	YW	CEM	Milk
	1.5	44	79	24	

BW: 91      ADJ. YW:  
 ADJ. WW: 833      ADJ. SC: 38.5

**79 9507**

BD	REG. #	DAM'S AVERAGE WEANING RATIO
9/12/09		3/108

SAV FINAL ANSWER 0035  
**SODAK OVATION T312**  
 SODAK PRINCESS R044

GAR 1407 NEW DESIGN  
**H MAN GAR 1407 5112 5507**  
 HAR GAR KMK 2021

SITZ TRAVELER 8180  
 SAV EMULOUS 8145  
 SODAK DIRECT DRIVE N343  
 SODAK SHOBAANDA L067

BON VIEW NEW DESIGN 1407  
 GAR OUTLIER 60  
 GAR KMK ALLIANCE 6595  
 CBH PRECISION 9003

CED	BW	WW	YW	CEM	Milk
	0.9	48	92	25	

BW: 82      ADJ. YW:  
 ADJ. WW: 896      ADJ. SC: 36.5

Suitable for heifers.

**80 9516**

BD	REG. #	DAM'S AVERAGE WEANING RATIO
9/11/09		2/99

SAV FINAL ANSWER 0035  
**SODAK OVATION T312**  
 SODAK PRINCESS R044

SMB FANTASTIC 3571  
**MS PRECISION 647 SMB**  
 MS FANTASTIC 147 OF SMB

SITZ TRAVELER 8180  
 SAV EMULOUS 8145  
 SODAK DIRECT DRIVE N343  
 SODAK SHOBAANDA L067

BRENNERS FANTASTIC 9791  
 MS DACOTAH JILL SMB 8604  
 BRENNERS FANTASTIC 9791  
 MISS PRECISION 9339 OF SMB

CED	BW	WW	YW	CEM	Milk
	2.5	46	83	19	

BW: 67      ADJ. YW:  
 ADJ. WW: 845      ADJ. SC: 37.0

Suitable for heifers.

**81 9500**

BD	REG. #	DAM'S AVERAGE WEANING RATIO
9/8/09		1/103

SAV FINAL ANSWER 0035  
**SODAK OVATION T312**  
 SODAK PRINCESS R044

QLC LAGRAND FORUM  
**SMB TWIN FORUM 74**  
 MS JULIO 3129 OF SMB

SITZ TRAVELER 8180  
 SAV EMULOUS 8145  
 SODAK DIRECT DRIVE N343  
 SODAK SHOBAANDA L067

G 13 STRUCTURE  
 QLC B7 BLACKBIRD X553A  
 BALDRIDGE JULIO 157J  
 MS BATTLE CRY 129 OF SMB

CED	BW	WW	YW	CEM	Milk
	1.6	51	86	23	

BW: 72      ADJ. YW:  
 ADJ. WW: 784      ADJ. SC: 38.0

Suitable for heifers.



# BRENNER ANGUS

Sidney & Melva Brenner  
5350 94th St. SW  
Carson, ND 58529

PRESORTED  
STANDARD  
US POSTAGE  
**PAID**  
BISMARCK, ND  
PERMIT #256

CHANGE SERVICE REQUESTED

*Your breeding program isn't a game ...  
Devise a strategy for profitable cattle.*

Whether you need red or black genetics for your program, Brenner Angus can help you strategically breed your cattle for profit. We are raising cattle with strong maternal traits, high fertility, efficient growth, correct phenotype and good dispositions.

**These traits combined with breed-leading genetics will move your breeding program in the right direction.**

*Annual Production Sale*

**Saturday,  
February 26, 2011**

2:00 p.m. CST

Farmers Livestock Exchange,  
Bismarck, ND

**70** Yearling Bulls (Red & Black)

**20** 18-Month-Old & 2-Year-Old Bulls

Offering calving-ease bulls and bulls with growth, phenotype and great maternal traits.

