



24th Annual Production Sale

Wednesday, May 4, 2011

6 p.m. CDT

Selling: 69 Bulls & 16 Heifers

At Hoyt's Angus Ranch • McHenry, ND

(3.5 miles North of McHenry, ND, on Hwy 20, 2 miles East, 0.5 miles North)



EB Net Worth

Grand Champion Angus Bulls and Supreme Champion Bull – North Star Classic

Sale Day Phones:

(701) 785-2425 • (701) 797-7280 • (701) 789-9950

**Fully Guaranteed
Free Delivery**



24th Annual Production Sale

Wednesday,

May 4, 2011 • 6 p.m. CDT

At Hoyt's Angus Ranch • McHenry, ND

(3.5 miles North of McHenry, ND, on Hwy 20, 2 miles East, 0.5 miles North)

Sale Day Phones:

(701) 785-2425 • (701) 797-7280 • (701) 789-9950

Auctioneer:

Roger Jacobs(406) 373-7385, (406) 373-6124

Livestock Representatives:

Terry Robinson,

Farm & Ranch Guide.....(701) 471-5153

Vern Frey, American Angus Assn.....(701) 721-0344

Steve Koester, Special Assignment.....(701) 400-1611

GENERAL SALE INFORMATION

Registration Certificates:

Certificates will be provided to buyers upon request on sale day.

Feeding Arrangements:

Bulls can be fed for \$2.50/day if left at the ranch longer than 10 days following the sale. Liability for death or injury of the bull will remain with the buyer during the feeding period.

Delivery:

We will deliver bulls for free between sale date and 15 days following the sale. If you request us to keep the bulls longer than 15 days, delivery arrangements will be made on an individual basis to accommodate our time schedule. Liability for death or injury of the bull will remain with the buyers.

Hoyt's Angus Guarantee:

All bulls selling over \$2,000 or more are guaranteed for the first-year breeding season against injury. Breeding season is defined as 75 days after exposure. All claims for adjustment must be made by Oct. 1, 2011. All salvage belongs to Hoyt's Angus. The difference between salvage value and purchase price will be given in the form of a replacement bull of equal value, if available, or credit toward a purchase in future sales. Not responsible for death or neglect. This is not a mortality coverage as that is up to the buyer to insure his purchase at his discretion.

Buyers Unable to Attend This Sale:

Mailed or telephone bids will be handled in the most confidential manner. You may contact any of the owners or livestock representatives.

American Angus Association Sale Terms & Conditions for this sale can be found on page 16.

Free Deliver – Fully Guaranteed:

\$50 discount if you haul your bull home on sale day.

Current weights and scrotal measurements will be available on sale day.

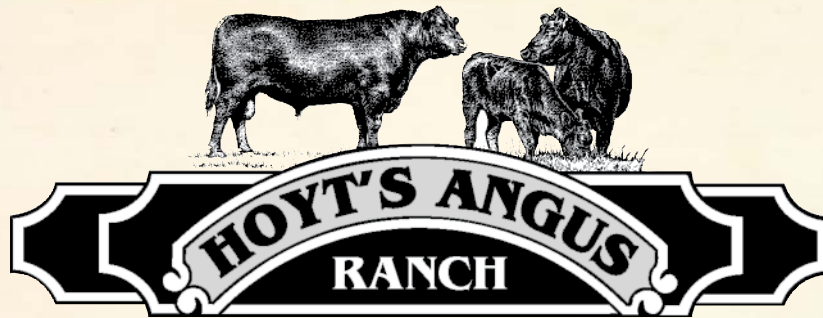
Volume Discount:

Volume discount of \$50 per bull on the third bull (and so on).

Complimentary Supper



Welcome



9446 13th St. NE • McHenry, ND 58464
Vernon - (701) 785-2273 • Bobby - (701) 785-2270
Ryan - (701) 785-2425 • Cody - (701) 785-2414

Welcome cattlemen, friends and valued customers to our annual production sale.

I think you will be pleased with this sale offering. The group of bulls is moderately framed and very uniform. Over the past three years we have started transitioning our breeding program to calving-ease bulls without giving up maternal benefits and growth. There are many new sire groups to choose from to suit returning and new customers.

As always, the bulls are fertility tested, we deliver, and our cattle are fully guaranteed according to the guidelines outlined in this catalog.

The pen of bulls was fed a high-roughage ration of silage, chopped hay and corn with a protein supplement to gain approximately 3.25 lbs. per day. The bulls were fed for moderate gain while maintaining adequate growth and conditioning while showing muscle expression to give the customers a sound bull with longevity. This has always been a high priority at Hoyt's Angus.

In addition to the bulls, we are selling a group of heifers out of our own replacement pen. They are a cross-section of the genetics we have to offer. They should make excellent replacement females for anyone.

We invite you to come preview the bulls and heifers at the farm anytime prior to sale day. You can usually find us somewhere in the yard. We look forward to seeing you on sale day; come out and spend some time visiting, have supper and see what we have to offer.

If you have any questions or need assistance, we will be glad to help you any way we can.

Sincerely,

Bobby Hoyt

Bobby Hoyt
Hoyt's Angus Ranch

Reference Sires



A SAV FINAL ANSWER 0035

EPDs			
BW	WW	YW	M
-1.0	66	105	20

C SPRING VALLEY DANNY BOY 246

EPDs			
BW	WW	YW	M
1.6	54	97	14

E SAF OBJECTIVE 832-13

EPDs			
BW	WW	YW	M
1.5	64	105	30

G HMAN GAR SOLUTION 7325

EPDs			
BW	WW	YW	M
2.3	55	99	23

I CSA GRIDMAKER 475

EPDs			
BW	WW	YW	M
1.4	51	90	22

K BC MATRIX 4132

EPDs			
BW	WW	YW	M
1.8	60	106	21

M CONNEALY THUNDER

EPDs			
BW	WW	YW	M
-0.4	44	92	26

O GAR GAME ON

EPDs			
BW	WW	YW	M
1.0	59	113	27

Q QLC FOUNDATION N397U

EPDs			
BW	WW	YW	M
4.1	51	84	18

B CARLSON MAXIMIZER 726

EPDs			
BW	WW	YW	M
2.3	66	109	24

D HOFF PATHWAY 0319-2016

EPDs			
BW	WW	YW	M
2.9	50	93	30

F SPRING VALLEY DIESEL 10

EPDs			
BW	WW	YW	M
3.0	48	96	25

H BURNS NEW DESIGN R753

EPDs			
BW	WW	YW	M
3.5	53	105	32

J WHITESTONE EXACT TIME G288

EPDs			
BW	WW	YW	M
3.0	40	63	17

L HARB PENDLETON 765 JH

EPDs			
BW	WW	YW	M
0.1	59	107	30

N RITO 6EM6 OF 4LC EMBLAZON

EPDs			
BW	WW	YW	M
-0.5	47	88	22

P BARSTOW PATRIOT 516

EPDs			
BW	WW	YW	M
3.0	57	102	25

R LCC MAJOR LEAGUE A502M (RAAA)

EPDs			
BW	WW	YW	M
-0.8	49	77	17

1

HAR TRAVELER 004-2014

BD: 4/5/09 Tattoo: 2014 Tag: 424

SPRING VALLEY TRAVELER 142

SAV TRAVELER 004
SPRING VALLEY EBONY

HAR BLACK GOLD 424

SPRING VALLEY DIRECT 916
HAR BLACK GOLD 422

Performance					Parental Average EPDs				
BW	205-Day Wt.	ADG	365-Day Wt.	Current Wt.	BW	WW	YW	M	
86	774	3.36	1268	1935	3.4	44	78	22	

2

HAR MAXIMIZER 2009

BD: 4/2/09 Tattoo: 2009 Tag: 152

CARLSON MAXIMIZER 726

BC MATRIX 4132
CARLSON MISS BANDI 503

HAR MS MAID 152

ANKONIAN DIRECT DEPOSIT 109A
HAR LUCY MAID 110

Performance					Parental Average EPDs				
BW	205-Day Wt.	ADG	365-Day Wt.	Current Wt.	BW	WW	YW	M	
82	805	3.53	1238	1955	2.8	49	91	15	

3

HAR THUNDER 247-2008

BD: 1/18/09 Tattoo: 2008 Tag: 247

CONNEALY THUNDER

BALDRIDGE KABOOM K243 KCF
PARKA OF CONANGA 241

HAR MS NEVA 247

SAF RIGHT TIME 124-20
HAR MS NEVA 90

Performance					Parental Average EPDs				
BW	205-Day Wt.	ADG	365-Day Wt.	Current Wt.	BW	WW	YW	M	
70	697	3.56	1190	1860	1.9	44	85	21	



Connealy Thunder

Recommended for heifers.

4

HAR PENDLETON 380-2059

BD: 2/3/09 Tattoo: 2059 Tag: 380

HARB PENDLETON 765 JH

SAV FINAL ANSWER 0035
HARB BLACK LADY 375 JH

BR PROUD LASSIE 380

RITO 5TR8 OF RITA 3X12 RRT
BR PROUD LASSIE 316

Performance					Parental Average EPDs				
BW	205-Day Wt.	ADG	365-Day Wt.	Current Wt.	BW	WW	YW	M	
69	685	3.47	1182	1765	2.0	50	90	24	

Recommended for heifers.



HARB Pendleton 765 JH

Fall Angus Bull

5

HAR RIGHT TIME P465-1170

BD: 9/13/10 Tattoo: 1170 Tag: P465

R&L RIGHT TIME 516

HYLINE RIGHT TIME 338
MASTERFARE ENTENSE 3035

D 270 HOPE P465

VERMILION NEBRASKA L270
D2H MISS HILLARY M229

Performance					Parental Average EPDs				
BW	205-Day Wt.	ADG	365-Day Wt.	Current Wt.	BW	WW	YW	M	
70	935	4.56	1580	1580	3.8	49	90	15	

Current weight taken on 3/20/11.



Lot 5

Yearling Angus Bulls



Lot 7

6

HAR FINAL ANSWER 68-2164

BD: 1/22/10

Tattoo: 2164

Tag: 68

SAV FINAL ANSWER 0035

SITZ TRAVELER 8180

SAV EMULOUS 8145

HAR LASS VOLGA 68

CSA GRIDMAKER 475

HAR VA55 VOLGA 543

Performance

Parental Average EPDs

BW	205-Day Wt.	ADG	365-Day Wt.	BW	WW	YW	M
75	720	3.60	1128	0.8	55	91	20

7

HAR FINAL ANSWER 528-2198

BD: 1/19/10

Tattoo: 2198

Tag: 528

SAV FINAL ANSWER 0035

SITZ TRAVELER 8180

SAV EMULOUS 8145

HAR MIS NEVA 528

BURNS NEW DESIGN R753

HAR MS NEVA 242

Performance

Parental Average EPDs

BW	205-Day Wt.	ADG	365-Day Wt.	BW	WW	YW	M
72	675	3.50	1140	1.5	59	99	21

Recommended for heifers.



SAV Final Answer 0035

9

HAR FINAL ANSWER 58-2203

BD: 1/17/10

Tattoo: 2203

Tag: 58

SAV FINAL ANSWER 0035

SITZ TRAVELER 8180

SAV EMULOUS 8145

HAR BLACK LADY 58

LAGRAND KABOOM 6137

HAR BLACK LADY 504

Performance

Parental Average EPDs

BW	205-Day Wt.	ADG	365-Day Wt.	BW	WW	YW	M
68	650	4.50	1206	0.1	61	103	21

Recommended for heifers.

8

HAR FINAL ANSWER 548-2186

BD: 1/23/10

Tattoo: 2186

Tag: 548

SAV FINAL ANSWER 0035

SITZ TRAVELER 8180

SAV EMULOUS 8145

HAR BLACK LADY 548

SPRING VALLEY TRAVELER 142

HAR BLACK LADY 571

Performance

Parental Average EPDs

BW	205-Day Wt.	ADG	365-Day Wt.	BW	WW	YW	M
67	629	3.46	1065	1.4	53	90	21

Recommended for heifers.

11

HAR FINAL ANSWER 08-2173

BD: 1/28/10

Tattoo: 2173

Tag: 08

SAV FINAL ANSWER 0035

SITZ TRAVELER 8180

SAV EMULOUS 8145

HAR PRIMROSE 08

HILLTOPS NEW DAY E96

HAR PRIMROSE 312

Performance

Parental Average EPDs

BW	205-Day Wt.	ADG	365-Day Wt.	BW	WW	YW	M
75	637	3.96	1120	1.0	54	96	20

Recommended for heifers.

10

HAR FINAL ANSWER 148-2182

BD: 1/17/10

Tattoo: 2182

Tag: 148

SAV FINAL ANSWER 0035

SITZ TRAVELER 8180

SAV EMULOUS 8145

HAR MISSIE 148

LAGRAND KABOOM 6137

HAR MISSIE 404

Performance

Parental Average EPDs

BW	205-Day Wt.	ADG	365-Day Wt.	BW	WW	YW	M
65	612	3.15	1050	1.1	59	101	18

Recommended for heifers.



Yearling Angus Bulls

12

HAR FINAL ANSWER 518-2175

BD: 2/7/10 Tattoo: 2175 Tag: 518

SAV FINAL ANSWER 0035

SITZ TRAVELER 8180
SAV EMULOUS 8145

HAR MISS ELLSTON 518

BURNS NEW DESIGN R753
HAR MISS ELLSTON 632

Performance				Parental Average EPDs			
BW	205-Day Wt.	ADG	365-Day Wt.	BW	WW	YW	M
75	655	3.64	1100	1.2	55	98	21

Recommended for heifers.

13

HAR FINAL ANSWER 2468-2178

BD: 1/22/10 Tattoo: 2178 Tag: 2468

SAV FINAL ANSWER 0035

SITZ TRAVELER 8180
SAV EMULOUS 8145

SPRING VALLEY GWEN 2468

MYTTY IN FOCUS
SPRING VALLEY GWEN 5246

Performance				Parental Average EPDs			
BW	205-Day Wt.	ADG	365-Day Wt.	BW	WW	YW	M
72	545	3.25	1090	-0.1	55	94	20

Recommended for heifers.

14

HAR FINAL ANSWER 8416-2155

BD: 2/5/10 Tattoo: 2155 Tag: 8416

SAV FINAL ANSWER 0035

SITZ TRAVELER 8180
SAV EMULOUS 8145

SPRING VALLEY K BEAUTY 4168

MYTTY IN FOCUS
SPRING VALLEY K BEAUTY 416

Performance				Parental Average EPDs			
BW	205-Day Wt.	ADG	365-Day Wt.	BW	WW	YW	M
72	664	3.82	1200	0.3	59	99	22

15

HAR MAXIMIZER 574-2204

BD: 2/20/10 Tattoo: 2204 Tag: 574

CARLSON MAXIMIZER 726

BC MATRIX 4132
CARLSON MISS BANDI 503

HAR MS NEVA 574

BON VIEW NEW DESIGN 208
HAR MS NEVA 242

Performance				Parental Average EPDs			
BW	205-Day Wt.	ADG	365-Day Wt.	BW	WW	YW	M
80	756	3.14	1140	1.3	57	98	27

Recommended for heifers.

16

HAR MAXIMIZER 571-2166

BD: 2/24/10 Tattoo: 2166 Tag: 571

CARLSON MAXIMIZER 726

BC MATRIX 4132
CARLSON MISS BANDI 503

HAR PRIMROSE 571

ANKONIAN MEDIATOR
HAR PRIMROSE 428

Performance				Parental Average EPDs			
BW	205-Day Wt.	ADG	365-Day Wt.	BW	WW	YW	M
80	710	3.89	1202	3.1	51	93	22

17

HAR MAXIMIZER 425-2154

BD: 2/14/10 Tattoo: 2154 Tag: 425

CARLSON MAXIMIZER 726

BC MATRIX 4132
CARLSON MISS BANDI 503

HAR BLACKEYES 425

ANKONIAN DIRECT DEPOSIT 109A
HAR MS STOCKMAN 204

Performance				Parental Average EPDs			
BW	205-Day Wt.	ADG	365-Day Wt.	BW	WW	YW	M
83	610	3.42	1085	2.1	52	88	18

18

HAR MAXIMIZER 492-2188

BD: 2/28/10 Tattoo: 2188 Tag: 492

CARLSON MAXIMIZER 726

BC MATRIX 4132
CARLSON MISS BANDI 503

HAR ALONZOS PRIMROSE 492

A+B YUKON 0119
HAR ALONZOS PRIMROSE 627

Performance				Parental Average EPDs			
BW	205-Day Wt.	ADG	365-Day Wt.	BW	WW	YW	M
84	688	3.90	1186	3.0	52	92	19

19

HAR MAXIMIZER 64-2149

BD: 3/2/10 Tattoo: 2149 Tag: 64

CARLSON MAXIMIZER 726

BC MATRIX 4132
CARLSON MISS BANDI 503

HAR PRIMROSE 64

BCC BUSHWACKER 41-93
SAF PRIMROSE 057-137

Performance				Parental Average EPDs			
BW	205-Day Wt.	ADG	365-Day Wt.	BW	WW	YW	M
83	630	3.86	1145	3.5	60	97	24

Yearling Angus Bulls



Jerome Short and Cassidy hard at work

20 HAR MAXIMIZER 144-2161

BD: 3/2/10 Tattoo: 2161 Tag: 144

CARLSON MAXIMIZER 726

BC MATRIX 4132
CARLSON MISS BANDI 503

HAR MS JUANADAMERE 144

CIRLE A 216 LTD 9057
HAR MS JUANADAMERE 192

Performance				Parental Average EPDs			
BW	205-Day Wt.	ADG	365-Day Wt.	BW	WW	YW	M
80	659	4.07	1185	2.9	56	93	20

21 HAR MAXIMIZER 253-2163

BD: 2/14/10 Tattoo: 2163 Tag: 253

CARLSON MAXIMIZER 726

BC MATRIX 4132
CARLSON MISS BANDI 503

HAR NEW LOLA 253

SAV 3000C EMULATION 7683
HAR NEW LOLA 338

Performance				Parental Average EPDs			
BW	205-Day Wt.	ADG	365-Day Wt.	BW	WW	YW	M
85	687	3.82	1178	3.9	55	93	21

22 HAR MAXIMIZER 92-2140

BD: 2/17/10 Tattoo: 2140 Tag: 92

CARLSON MAXIMIZER 726

BC MATRIX 4132
CARLSON MISS BANDI 503

HAR MISS NELLY 92

SAV 3000C EMULATION 7683
HAR MISS SPADE 271

Performance				Parental Average EPDs			
BW	205-Day Wt.	ADG	365-Day Wt.	BW	WW	YW	M
80	737	2.75	1100	3.6	54	92	21



Lot 23

23 HAR MAXIMIZER 24-2206

BD: 2/5/10 Tattoo: 2206 Tag: 24

CARLSON MAXIMIZER 726

BC MATRIX 4132
CARLSON MISS BANDI 503

HAR ANITA 24

CONNELLY VIEWPOINT 901
HAR ANITA 282

Performance				Parental Average EPDs			
BW	205-Day Wt.	ADG	365-Day Wt.	BW	WW	YW	M
79	743	3.86	1255	3.2	59	101	23

24 HAR MAXIMIZER 709-2197

BD: 2/25/10 Tattoo: 2197 Tag: 709

CARLSON MAXIMIZER 726

BC MATRIX 4132
CARLSON MISS BANDI 503

HAR MS ANITA 70

CIRCLE A 6807 5020
HAR MS ANITA 144

Performance				Parental Average EPDs			
BW	205-Day Wt.	ADG	365-Day Wt.	BW	WW	YW	M
85	723	3.40	1175	2.8	50	86	20

25 HAR MAXIMIZER 755-2162

BD: 2/12/10 Tattoo: 2162 Tag: 755

CARLSON MAXIMIZER 726

BC MATRIX 4132
CARLSON MISS BANDI 503

HAR MISS PHOBIE 755

ANKONIAN MEDIATOR
HAR MISS PHOBIE 526

Performance				Parental Average EPDs			
BW	205-Day Wt.	ADG	365-Day Wt.	BW	WW	YW	M
80	695	3.86	1260	3.2	53	88	19

26

HAR MAXIMIZER 244-2202

BD: 1/26/10 Tattoo: 2202 Tag: 244

CARLSON MAXIMIZER 726

HAR MS LOLA 244

BC MATRIX 4132
CARLSON MISS BANDI 503
BCC BUSHWACKER 41-93
HAR MS LOLA 198

Performance				Parental Average EPDs			
BW	205-Day Wt.	ADG	365-Day Wt.	BW	WW	YW	M
86	720	3.90	1350	2.9	58	93	22



Joslyn showing Lot 35 at the county fair



Lot 27

27

HAR MAXIMIZER 14-2168

BD: 2/2/10 Tattoo: 2168 Tag: 14

CARLSON MAXIMIZER 726

HAR MS LOLA 14

BC MATRIX 4132
CARLSON MISS BANDI 503
4G TOTAL 193
HAR MS LOLA 272

Performance				Parental Average EPDs			
BW	205-Day Wt.	ADG	365-Day Wt.	BW	WW	YW	M
80	739	4.00	1365	2.8	55	93	18

28

HAR MAXIMIZER 564-2159

BD: 3/1/10 Tattoo: 2159 Tag: 564

CARLSON MAXIMIZER 726

HAR PRIMROSE 564

BC MATRIX 4132
CARLSON MISS BANDI 503
CIRCLE A 216 LTD 9057
HAR PRIMROSE 312

Performance				Parental Average EPDs			
BW	205-Day Wt.	ADG	365-Day Wt.	BW	WW	YW	M
80	671	4.10	1196	3.2	57	97	21

29

HAR MAXIMIZER 700-2180

BD: 1/31/10 Tattoo: 218 Tag: 700

CARLSON MAXIMIZER 726

HAR MS JUANADAMERE 700

BC MATRIX 4132
CARLSON MISS BANDI 503
WHITESTONE WIDESPREAD MB
HAR MS JUANDAMERE 261

Performance				Parental Average EPDs			
BW	205-Day Wt.	ADG	365-Day Wt.	BW	WW	YW	M
80	677	3.96	1186	3.4	54	90	19

30

HAR MAXIMIZER 581-2187

BD: 2/5/10 Tattoo: 2187 Tag: 581

CARLSON MAXIMIZER 726

HAR MS LOLA 581

BC MATRIX 4132
CARLSON MISS BANDI 503
ANKONIAN MEDIATOR
HAR MS LOLA 160

Performance				Parental Average EPDs			
BW	205-Day Wt.	ADG	365-Day Wt.	BW	WW	YW	M
86	637	3.60	1100	3.2	50	91	23

31

HAR MAXIMIZER 5009-2143

BD: 2/11/10 Tattoo: 2143 Tag: 5009

CARLSON MAXIMIZER 726

HAR CIRCLE A 6807 5020 50

BC MATRIX 4132
CARLSON MISS BANDI 503
CIRCLE A 6807 5020
HAR MISS BLACKBIRD 495

Performance				Parental Average EPDs			
BW	205-Day Wt.	ADG	365-Day Wt.	BW	WW	YW	M
84	717	3.07	1204	2.9	53	91	20

Yearling Angus Bulls



32 HAR MAXIMIZER 145-2167

BD: 2/10/10 Tattoo: 2167 Tag: 145

CARLSON MAXIMIZER 726

HAR LOLA 145

BC MATRIX 4132
CARLSON MISS BANDI 503
SPRING VALLEY DIRECT 916
HAR LOLA 352

Performance				Parental Average EPDs			
BW	205-Day Wt.	ADG	365-Day Wt.	BW	WW	YW	M
80	717	3.07	1105	3.1	54	90	21

33 HAR MAXIMIZER 33-2142

BD: 3/8/10 Tattoo: 2142 Tag: 33

CARLSON MAXIMIZER 726

HAR MISS FANCY 33

BC MATRIX 4132
CARLSON MISS BANDI 503
CIRCLE A 216 LTD 9057
HAR MISS FANCY 68

Performance				Parental Average EPDs			
BW	205-Day Wt.	ADG	365-Day Wt.	BW	WW	YW	M
81	803	3.43	1169	2.5	57	89	22

34 HAR MATRIX 4160-2153

BD: 2/20/10 Tattoo: 2153 Tag: 4160

BC MATRIX 4132

BERBOS PRIDE OF NF 4160

OCC EMBLAZON 854E
CAF PURE PRIDE EXT 99
SITZ ALLIANCE 6595
PRIDE OF NORTH FORK 8004

Performance				Parental Average EPDs			
BW	205-Day Wt.	ADG	365-Day Wt.	BW	WW	YW	M
85	667	4.29	1210	2.2	51	93	21



Lot 34

35 HAR MATRIX 04-2192

BD: 2/5/10 Tattoo: 2192 Tag: 04

BC MATRIX 4132

HAR PRIDE 04

OCC EMBLAZON 854E
CAF PURE PRIDE EXT 99
SITZ ALLIANCE 6595
HAR PRIDE 650

Performance				Parental Average EPDs			
BW	205-Day Wt.	ADG	365-Day Wt.	BW	WW	YW	M
79	703	4.29	1252	1.4	49	89	22

36 HAR MATRIX 4004-2184

BD: 2/6/10 Tattoo: 2184 Tag: 4004

BC MATRIX 4132

BERBOS EVERELDA ENTENSE 4004

OCC EMBLAZON 854E
CAF PURE PRIDE EXT 99
SAF 598 BANDO 5175
SITZ EVERELDA ENTENSE 4004

Performance				Parental Average EPDs			
BW	205-Day Wt.	ADG	365-Day Wt.	BW	WW	YW	M
87	706	3.71	1185	2.9	54	99	22

37 HAR OBJECTIVE 417-2201

BD: 2/11/10 Tattoo: 2201 Tag: 417

SAF OBJECTIVE 832-13

HAR LADY 417

QUAKER HILL OBJECTIVE 3J15
SAF ZARA 033-138
BURNS NEW DESIGN R753
HAR LADY 54

Performance				Parental Average EPDs			
BW	205-Day Wt.	ADG	365-Day Wt.	BW	WW	YW	M
80	759	3.79	1215	2.7	57	98	25

38 HAR OBJECTIVE 467-2209

BD: 1/26/10 Tattoo: 2209 Tag: 467

SAF OBJECTIVE 832-13

HAR JESTRESS 467

QUAKER HILL OBJECTIVE 3J15
SAF ZARA 033-138
AB YUKON 0119
BR JESTRESS 250

Performance				Parental Average EPDs			
BW	205-Day Wt.	ADG	365-Day Wt.	BW	WW	YW	M
77	672	3.96	1155	2.6	57	97	25

Recommended for heifers.

39

HAR OBJECTIVE 146-2193

BD: 3/12/10 Tattoo: 2193 Tag: 146

SAF OBJECTIVE 832-13

HAR MISS BLACKBIRD 146

QUAKER HILL OBJECTIVE 3J15
SAF ZARA 033-138
SAF RIGHT TIME 124-20
HAR MISS BLACKBIRD 78

Performance				Parental Average EPDs			
BW	205-Day Wt.	ADG	365-Day Wt.	BW	WW	YW	M
73	698	3.39	1146	2.9	55	93	23

Recommended for heifers.

40

HAR OBJECTIVE 416-2152

BD: 3/8/10 Tattoo: 2152 Tag: 416

SAF OBJECTIVE 832-13

HAR MS BLACKEYES 416

QUAKER HILL OBJECTIVE 3J15
SAF ZARA 033-138
SPRING VALLEY FRONTIER 0268
HAR MS BLACKEYES 620

Performance				Parental Average EPDs			
BW	205-Day Wt.	ADG	365-Day Wt.	BW	WW	YW	M
77	706	3.82	1171	2.6	52	86	24

41

HAR OBJECTIVE 547-2194

BD: 2/16/10 Tattoo: 2194 Tag: 547

SAF OBJECTIVE 832-13

HAR BLACK LADY 547

QUAKER HILL OBJECTIVE 3J15
SAF ZARA 033-138
VERMILION NEBRASKA M404
HAR BLACK LADY 165

Performance				Parental Average EPDs			
BW	205-Day Wt.	ADG	365-Day Wt.	BW	WW	YW	M
83	676	3.71	1127	1.6	56	97	24

42

HAR OBJECTIVE 67-2177

BD: 1/30/10 Tattoo: 2177 Tag: 67

SAF OBJECTIVE 832-13

HAR BLACK LADY 67

QUAKER HILL OBJECTIVE 3J15
SAF ZARA 033-138
SPRING VALLEY TRAVELER 142
HAR BLACK LADY 323

Performance				Parental Average EPDs			
BW	205-Day Wt.	ADG	365-Day Wt.	BW	WW	YW	M
80	687	3.89	1171	2.5	54	90	26

43

HAR OBJECTIVE 407-2190

BD: 2/13/10 Tattoo: 2190 Tag: 407

SAF OBJECTIVE 832-13

HAR POWERS FANCY 407

QUAKER HILL OBJECTIVE 3J15
SAF ZARA 033-138
SAF RIGHT TIME 124-20
HAR POWERS FANCY 00

Performance				Parental Average EPDs			
BW	205-Day Wt.	ADG	365-Day Wt.	BW	WW	YW	M
75	650	4.11	1134	2.5	54	89	25

Recommended for heifers.

44

HAR OBJECTIVE 516-2165

BD: 2/25/10 Tattoo: 2165 Tag: 516

SAF OBJECTIVE 832-13

HAR PRIMROSE 516

QUAKER HILL OBJECTIVE 3J15
SAF ZARA 033-138
SAV 8180 TRAVELER 004
HAR PRIMROSE 564

Performance				Parental Average EPDs			
BW	205-Day Wt.	ADG	365-Day Wt.	BW	WW	YW	M
80	708	3.96	1208	2.1	57	101	27



Lot 45

45

HAR OBJECTIVE 504-2147

BD: 2/16/10 Tattoo: 2147 Tag: 504

SAF OBJECTIVE 832-13

HAR BLACK LADY 504

QUAKER HILL OBJECTIVE 3J15
SAF ZARA 033-138
BON VIEW NEW DESIGN 208
HAR BLACK LADY 292

Performance				Parental Average EPDs			
BW	205-Day Wt.	ADG	365-Day Wt.	BW	WW	YW	M
84	767	4.18	1303	1.1	61	101	31

Yearling Angus Bulls



46

HAR OBJECTIVE 397-2207

BD: 2/19/10 Tattoo: 2207 Tag: 397

SAF OBJECTIVE 832-13

QUAKER HILL OBJECTIVE 3J15
SAF ZARA 033-138

HAR BLACK GOLD 397

SAF RIGHT TIME 124-20
HAR BLACK GOLD 422

Performance				Parental Average EPDs			
BW	205-Day Wt.	ADG	365-Day Wt.	BW	WW	YW	M
72	651	3.26	1095	2.5	55	94	26

Recommended for heifers.

47

HAR OBJECTIVE 197-2170

BD: 2/11/10 Tattoo: 2170 Tag: 197

SAF OBJECTIVE 832-13

QUAKER HILL OBJECTIVE 3J15
SAF ZARA 033-138

HAR MS JUANADAMERE 197

SPRING VALLEY TRAVELER 142
HAR MS JUANADAMERE 57

Performance				Parental Average EPDs			
BW	205-Day Wt.	ADG	365-Day Wt.	BW	WW	YW	M
80	686	4.18	1206	2.8	51	89	25

48

HAR OBJECTIVE 237-2185

BD: 1/27/10 Tattoo: 2185 Tag: 237

SAF OBJECTIVE 832-13

QUAKER HILL OBJECTIVE 3J15
SAF ZARA 033-138

HAR MISS FANCY 237

SPRING VALLEY TRAVELER 142
HAR MISS FANCY 237

Performance				Parental Average EPDs			
BW	205-Day Wt.	ADG	365-Day Wt.	BW	WW	YW	M
75	683	4.82	1210	2.5	54	88	25

49

HAR OBJECTIVE 546-2155

BD: 2/10/10 Tattoo: 2155 Tag: 546

SAF OBJECTIVE 832-13

QUAKER HILL OBJECTIVE 3J15
SAF ZARA 033-138

HAR MS MAID 546

SAV FINAL ANSWER 0035
HAR MS MAID 394

Performance				Parental Average EPDs			
BW	205-Day Wt.	ADG	365-Day Wt.	BW	WW	YW	M
82	658	4.46	1239	0.6	61	98	26

Recommended for heifers.

50

HAR OBJECTIVE 157-2195

BD: 2/2/10 Tattoo: 2195 Tag: 157

SAF OBJECTIVE 832-13

QUAKER HILL OBJECTIVE 3J15
SAF ZARA 033-138

HAR MS LOLA 157

SPRING VALLEY FRONTIER 0268
HAR MS LOLA 443

Performance				Parental Average EPDs			
BW	205-Day Wt.	ADG	365-Day Wt.	BW	WW	YW	M
72	610	4.64	1211	2.5	55	91	25

Recommended for heifers.

51

HAR OBJECTIVE 476-2151

BD: 3/11/10 Tattoo: 2151 Tag: 476

SAF OBJECTIVE 832-13

QUAKER HILL OBJECTIVE 3J15
SAF ZARA 033-138

HAR MS LOLA 476

VERMILION NEBRASKA M404
HAR MS LOLA 74

Performance				Parental Average EPDs			
BW	205-Day Wt.	ADG	365-Day Wt.	BW	WW	YW	M
80	684	3.60	1120	1.5	54	90	24

Recommended for heifers.

52

HAR OBJECTIVE 506-2172

BD: 2/11/10 Tattoo: 2172 Tag: 506

SAF OBJECTIVE 832-13

QUAKER HILL OBJECTIVE 3J15
SAF ZARA 033-138

HAR MS LOLA 506

HILLTOPS NEW DAY E96
HAR MS LOLA 244

Performance				Parental Average EPDs			
BW	205-Day Wt.	ADG	365-Day Wt.	BW	WW	YW	M
80	596	5.07	1269	2.1	56.0	94	27

Recommended for heifers.

53

HAR OBJECTIVE 36-2191

BD: 1/28/10 Tattoo: 2191 Tag: 36

SAF OBJECTIVE 832-13

QUAKER HILL OBJECTIVE 3J15
SAF ZARA 033-138

HAR BLACK LADY 36

HILLTOPS NEW DAY E96
HAR BLACK LADY 231

Performance				Parental Average EPDs			
BW	205-Day Wt.	ADG	365-Day Wt.	BW	WW	YW	M
70	610	3.36	1070	2.1	52	89	25

Recommended for heifers.

54 HAR EMBLAZON 98-2196

BD: 1/17/10 Tattoo: 2196 Tag: 98

RITO 6EM6 OF 4LC EMBLAZON

OCC EMBLAZON 854E
RITA 4L3 OF 2536 208

HAR PRIDE 98

LAGRAND KABOOM 6137
HAR PRIDE 224

Performance				Parental Average EPDs			
BW	205-Day Wt.	ADG	365-Day Wt.	BW	WW	YW	M
64	628	4.36	1175	1.1	48	86	19

Recommended for heifers.



Harlie and a new calf

55 HAR DANNY BOY 557-2145

BD: 3/16/10 Tattoo: 2145 Tag: 557

SPRING VALLEY DANNY BOY 246

CONNEALY DANNY BOY
SPRING VALLEY PRINCESS 1482

HAR MISS FANCY 557

SPRING VALLEY TRAVELER 142
HAR MISS FANCY 33

Performance				Parental Average EPDs			
BW	205-Day Wt.	ADG	365-Day Wt.	BW	WW	YW	M
80	744	4.14	1239	2.4	51	86	18

56 HAR DANNY BOY 54-2158

BD: 3/25/10 Tattoo: 2158 Tag: 54

SPRING VALLEY DANNY BOY 246

CONNEALY DANNY BOY
SPRING VALLEY PRINCESS 1482

HAR BLACK LADY 54

CIRCLE A 216 LTD 9057
TRANSFORMER LADY 212 EA

Performance				Parental Average EPDs			
BW	205-Day Wt.	ADG	365-Day Wt.	BW	WW	YW	M
79	721	3.50	1140	3.0	51	88	17

57 HAR GAME ON 568-2200

BD: 1/17/10 Tattoo: 2200 Tag: 568

GAR GAME ON

GAR RETAIL PRODUCT
GAR 1407 NEW DESIGN 1683

HAR MS BLACKEYES 568

THOMAS NEW DESIGN 208 5108
HAR MS BLACKEYES 620

Performance				Parental Average EPDs			
BW	205-Day Wt.	ADG	365-Day Wt.	BW	WW	YW	M
72	640	3.45	1090	1.6	52	94	25



GAR Game On



Good dispositions

58 HAR LEAD ON 76-2151

BD: 3/20/10 Tattoo: 2157 Tag: 76

HOFF PATHWAY 0319 2016

CONNEALY LEAD ON
HOFF ADA SC 315 0319

HAR PROUD LASSIE 76

HILLTOPS NEW DAY E96
BR PROUD LASSIE 380

Performance				Parental Average EPDs			
BW	205-Day Wt.	ADG	365-Day Wt.	BW	WW	YW	M
82	729	3.71	1184	2.9	47	87	26

Yearling Angus Bulls



Harlie helping Daddy feed the bulls.

59 HAR LEAD ON 484-2150

BD: 3/19/10 Tattoo: 2150 Tag: 484

HOFF PATHWAY 0319 2016

CONNEALY LEAD ON
HOFF ADA SC 315 0319

HAR LADY 484

TC FREEDOM 104
ALBERTS LADY 401 EA

Performance				Parental Average EPDs			
BW	205-Day Wt.	ADG	365-Day Wt.	BW	WW	YW	M
84	711	4.32	1271	2.4	48	87	27

60 HAR NEW DESIGN 121-2146

BD: 3/3/10 Tattoo: 2146 Tag: 121

BURNS NEW DESIGN R753

BON VIEW NEW DESIGN 1407
BURNS QUEEN ERICA M753

HAR MISS NELLY 121

CIRCLE A 216 LTD 9057
HAR MISS NELLY 58

Performance				Parental Average EPDs			
BW	205-Day Wt.	ADG	365-Day Wt.	BW	WW	YW	M
88	747	4.00	1250	4.1	53	90	25

61 HAR NEW DESIGN 4309-2148

BD: 3/19/10 Tattoo: 2148 Tag: 4309

BURNS NEW DESIGN R753

BON VIEW NEW DESIGN 1407
BURNS QUEEN ERICA M753

HAR MS LOLA 430

SAV 3000C EMULATION 7683
LOLA 158 OF HAR

Performance				Parental Average EPDs			
BW	205-Day Wt.	ADG	365-Day Wt.	BW	WW	YW	M
88	711	3.86	1191	3.5	39	80	21

62 HAR FOUNDATION 493-2160

BD: 3/1/10 Tattoo: 2160 Tag: 493

QLC FOUNDATION N 397U

QLC FOUNDATION
QLC B98 CAMILLA L445N

SPRING VALLEY ABBY 493

GRANDVIEW WOMACK DIRECT
SPRING VALLEY ABBY

Performance				Parental Average EPDs			
BW	205-Day Wt.	ADG	365-Day Wt.	BW	WW	YW	M
88	642	3.79	1140	4.2	46	78	22

63 HAR FOUNDATION 274-2179

BD: 2/17/10 Tattoo: 2179 Tag: 274

QLC FOUNDATION N 397U

QLC FOUNDATION
QLC B98 CAMILLA L445N

SPRING VALLEY ELINE 8027

LEACHMAN EXPLORER
SPRING VALLEY LASSIE

Performance				Parental Average EPDs			
BW	205-Day Wt.	ADG	365-Day Wt.	BW	WW	YW	M
86	626	3.86	1130	4.1	44	74	16

64 HAR PATRIOT 8793-2169

BD: 2/8/10 Tattoo: 2169 Tag: 8793

BARSTOW PATRIOT 516

TC PATRIOT 337
RCA ERICA P70

SPRING VALLEY PRINCESS 8793

GRANDVIEW WOMACK DIRECT
SPRING VALLEY MS RIGHT

Performance				Parental Average EPDs			
BW	205-Day Wt.	ADG	365-Day Wt.	BW	WW	YW	M
89	679	3.60	1125	4.3	51	87	17

65 HAR SOLUTION 136-2139

BD: 4/13/10 Tattoo: 2139 Tag: 136

HMAN GAR SOLUTION 7325

GAR SOLUTION
HMAN FINAL ANSWER 5021

HAR MS PRIDE 136

SPRING VALLEY TRAVELER 142
HAR MS PRIDE 990

Performance				Parental Average EPDs			
BW	205-Day Wt.	ADG	365-Day Wt.	BW	WW	YW	M
81	840	35.00	1248	2.5	47	82	22



Yearling Angus Bulls

66

HAR GRIDMAKER 203-2141

BD: 3/23/10 Tattoo: 2141 Tag: 203

CSA GRIDMAKER 475

GAR GRIDMAKER
CSA DIVIDEND BEAUTY 714

HAR PIPER 203

RITO 616 OF 4B20 6807
HAR PIPER 221

Performance				Parental Average EPDs			
BW	205-Day Wt.	ADG	365-Day Wt.	BW	WW	YW	M
87	719	4.11	1234	1.6	47	82	19

67

HAR 2V1 263-2181

BD: 3/20/10 Tattoo: 2181 Tag: 263

SPRING VALLEY DIESEL 10

RITO 2V1 OF 2536 1407
SPRING VALLEY RACHEL

HAR MISS BLACK LADY 263

CIRCLE A 216 LTD 9057
HARMISS BLACKLADY 367

Performance				Parental Average EPDs			
BW	205-Day Wt.	ADG	365-Day Wt.	BW	WW	YW	M
85	779	3.39	1185	3.5	48	83	22

68

HAR EXACT TIME 448-2274

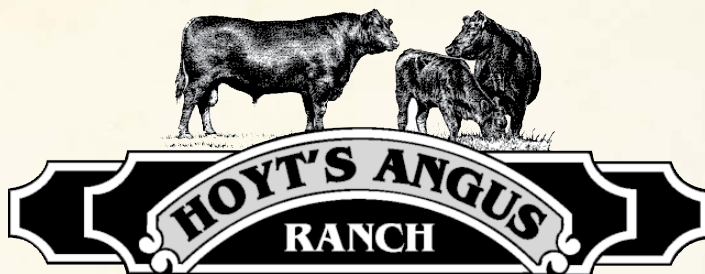
BD: 1/23/10 Tattoo: 2274 Tag: 448

WHITESTONE EXACTTIME G288

LEACHMAN RIGHT TIME
MENGS MISS SKYMERE 275
SPRING VALLEY TRAVELER 142
HAR MISS EILEENMERE 201

HAR MISS EILEENMERE 448

Performance				Parental Average EPDs			
BW	205-Day Wt.	ADG	365-Day Wt.	BW	WW	YW	M
70	713	3.75	1206	3.4	41	75	20



LCC Major League A502M

69

HAR MAJOR LEAGUE 218-2189

BD: 1/23/10 Tattoo: 2189 Tag: 218

LCC MAJOR LEAGUE A502M

BFCK CHEROKEED CNYN 4912
KRN REBA'S ROBIN

HAR MS BLACKEYES 218

LAGRAND KABOOM 6137
HAR MS BLACKEYES 334

Performance				Parental Average EPDs			
BW	205-Day Wt.	ADG	365-Day Wt.	BW	WW	YW	M
70	625	3.64	1095	1.2	53	89	16

Red Bull.



Open Angus Heifers



LOT	TAG	BD	SIRE	DAM'S SIRE	BW	WW	YW	M
70	63	3-10-10	Carlson Maximizer 726	A+B Yukon 7150	3.2	54	101	18
71	597	4-1-10	Spring Valley Direct 10	SAF Right Time 124-20	3.4	51	89	22
72	615	3-26-10	Spring Valley Danny Boy 246	Spring Valley Direct 916	2.9	59	86	17
73	394	4-8-10	Hoff Pathway 0319-2016	Traveler G121	1.3	54	92	23
74	592	3-20-10	Thomas New Design 208 5108	Ankonian Direct Deposit 109A	0.1	40	73	22
75	267	4-6-10	Legend Kaboom 6137	Spring Valley Traveler 142	3.0	48	89	19
76	168	3-26-10	SAV Finalist 8124	Thomas New Design 208 5108	1.2	53	94	24
77	126	4-20-10	Spring Valley Danny Boy 246	Spring Valley Traveler 142	2.3	51	92	18
78	114	2-19-10	Carlson Maximizer 726	Hoff Scotch Cap	3.9	50	93	20
79	436	5-5-10	Carlson Maximizer 726	SAV 8180 Traveler 004	2.2	53	98	23
80	231	3-13-10	Carlson Maximizer 726	SAV 3000C Emulation 7683	2.9	52	88	23
81	178	1-16-10	Connealy Whitman	SAV Traveler 3110	2.9	53	95	20
82	87	2-10-10	SAF Objective 832-13	Ankonian Direct Deposit 109A	2.2	53	95	20
83	511	2-8-10	Carlson Maximizer 726	Circle A 216 LTD 9057	3.6	49	88	49
84	415	3-1-10	Carlson Maximizer 726	Traveler G121	2.2	41	89	24
85	601	3-2-10	SAF Objective 832-13	SAV 3000C Emulation 7683	2.8	49	88	19

Terms & Conditions



(as suggested by the American Angus Association, March 21, 1994.)

Except for those stated in the below terms and conditions, there are no warranties, either expressed or implied, as to merchantability or fitness for a particular purpose with respect to the cattle being sold at this auction.

The warranties and guarantees set forth in the "Terms and Conditions" are in lieu of all other warranties, either expressed or implied, and the remedies provided therein shall be the sole and exclusive remedy of the buyer, or any party claiming through buyer, for any breach of warranty or guarantee therein provided, and all other obligations or liabilities.

BIDDING

1. Each animal will be sold to the highest bidder without reserve. The person in charge will settle any disputes as to bids, and his decision on such matters shall be final.

TERMS

1. Terms of sale are cash unless satisfactory credit arrangements, including any possible reservation of security interest by vendor, have been made with vendor previous to sale.

PURCHASER'S RISK

1. Each animal becomes the risk of the purchaser as soon as sold; but it shall be the obligation of the seller to see that animals are fed and cared for free of charge to purchaser, until loaded for shipment or until the expiration of (48) hours after the sale, whichever occurs sooner.

CERTIFICATE OF REGISTRY

1. A transferred certificate of registry will be furnished to the purchaser for each animal within (45) days following date of sale or receipt of full payment.

HEALTH

1. All animals are eligible for interstate shipment; except as otherwise announced. Interstate health papers will be furnished for each animal requiring T.B. and Bangs tests in accordance with Federal Regulations. A certificate of vaccination will be furnished for each animal that has been vaccinated for Bangs disease.

A.I. SERVICE CERTIFICATES

1. A.I. Service Certificates shall be furnished by the seller, on demand of the buyer, at no cost to the buyer, for all females bred artificially to bulls not owned by the seller.

ANNOUNCEMENTS

1. Any changes from information of any kind in this catalog will be announced from the auction box and such announcements shall take precedence.

BREEDING GUARANTEE

1. All animals are guaranteed to be breeders, with the exception of: a) Calves under twelve months of age; b) Animals shown by purchaser after sale (in cases of animals shown after purchase the breeding guarantees, if any shall be such as agreed upon between the seller and the buyer); c) Injury or disease occurring after sale; d) Gross negligence or willful misconduct on the part of the purchaser.
2. BULLS are guaranteed breeders if not allowed to run with the herd until at least 14 months of age. Any bull which settles cows by natural service and passes a fertility test made by competent veterinarians, mutually agreed upon by buyer and seller, during any 6 month period of trial (provided for in paragraph 2 of the section of these sales terms and conditions entitled "Option and Privilege of Return and Adjustment") shall be considered a breeder. Any guarantees with respect to the ability to freeze semen shall be by separate agreement between the buyer and seller.
3. Safe in Calf Females have been examined by a competent veterinarian and are so guaranteed.
4. Served Females are not guaranteed to be in calf.
5. Pasture-bred Females have been exposed but are not guaranteed to be in calf.
6. Open Females have not been served and are so guaranteed.
7. DONOR FEMALES 1. (a) A female which has been used in an embryo transfer program is not guaranteed to be a breeder after date of sale unless by separate agreement between the buyer and seller. (b) A female is not guaranteed to be a breeder after date of sale, when that female is to be used, or attempted to be used, in an embryo transfer program, unless by separate agreement between the buyer and seller.

IDENTIFICATION

1. Seller offers each animal with a readable tattoo corresponding to its registration.
2. Buyer agrees to check tattoos for accuracy.
3. In those cases where a nickname is used, it shall be accompanied by the official registered name and number of the animal.

OPTIONS AND PRIVILEGES OF RETURN OR ADJUSTMENT

1. All claims for adjustment or refund must be made in writing either within six months of the sale date or no later than six months after the animal reaches 18 months of age, with the exception of claims involving dwarfs or misrepresentation of service sire.
2. In the event an animal is claimed to be a non-breeder, the animal may be returned to the farm of the seller in good condition and complying with the health requirements of the seller's state. The seller shall be entitled to six months trial following the return of the animal in which to prove that the animal is a breeder. If at the end of six months the seller is unable to prove the animal is a breeder, the seller shall, at the option of the buyer, replace the animal with another of equal value or refund the purchase price. The return of the full purchase price shall in any case be deemed full satisfaction and settlement. Any expense incurred for transporting an animal claimed to be a non-breeder shall be the responsibility of the purchaser, except that the seller shall be respon-

sible for transportation costs in excess of the distance between the purchaser's farm and the location where the sale took place. If the seller proves the animal to be a breeder, it shall be the obligation of the purchaser to take delivery of the animal and pay all expense incurred for transportation.

3. If a female sold as "safe in calf" proves not to be in calf, the purchaser may receive service from the bull previously used, if available, or if the bull is not available, the seller shall be obligated to make a satisfactory adjustment on the purchase price to the buyer or, at the buyer's option, refund the purchase price upon return of the animal to the farm of the seller. Any adjustment provided for herein shall absolve the seller from further liability, except in case such female proves to be a non-breeder. If a female represented as "safe in calf" at time of sale to a certain bull proves to have been bred to a different bull, the seller shall be obligated to make a satisfactory adjustment on the purchase price to the buyer or, at the buyer's option, refund the purchase price upon return of the animal to the farm of the seller (adjustments shall not be considered to be a breeding fee or an allocation of the purchase price to any unborn calf). Any expense incurred for transportation shall be the responsibility of the purchaser, except that the seller shall be responsible for transportation costs in excess of the distance between the purchaser's farm and the location where the sale took place.
4. If a female sold as "open" proves to be with calf, the purchaser may return the animal to the farm of the seller prior to calving for a refund of the full purchase price or for another animal of equal value, whichever is acceptable to the purchaser. It shall be the obligation of the seller to bear any expense incurred for the transportation.
5. Cows with calves at side are presumed to be breeders with no further fertility guarantee.
6. White skin or hair shall not be painted or altered. If such painting or alteration has occurred, the buyer may return the animal to the farm of the seller for a refund of the full purchase price or for another animal of equal value, whichever is acceptable to the purchaser. Any expense incurred for transporting the animal shall be the responsibility of the purchaser, except that the seller shall be responsible for transportation costs in excess of the distance between the purchaser's farm and the location where the sale took place.
7. If an animal is sold, and at a later date, proves not to be eligible for registration under the Association rules, the seller shall be obligated to make a satisfactory adjustment on the purchase price to the buyer, or at the buyer's option refund the purchase price upon the return of the animal to the farm of the seller. Any expense incurred for transportation shall be the responsibility of the purchaser, except that the seller shall be responsible for the transportation costs in excess of the distance between the purchaser's farm and the location where the sale took place.
8. If an animal is sold and through blood tying is proven to have incorrect parentage, as represented by the certificate of registration, and for which parentage can be determined, the seller shall be obligated to make a satisfactory adjustment on the purchase price to the buyer or, at the buyer's option refund the purchase price upon the return of the animal to the farm of the seller. Any expense incurred for transportation shall be the responsibility of the purchaser, except that the seller shall be responsible for transportation costs in excess of the distance between the purchaser's farm and the location where the sale took place.

GENETIC DEFECT GUARANTEE

1. All animals are guaranteed not to produce a calf with the following defects for a period of two years from date of sale: Dwarfism, Osteopetrosis (marble bone disease) and Syndactylism (mule foot). This guarantee is effective only under the following conditions: (a) The buyer shall notify the seller in writing immediately upon the birth of a calf suspected of being defective or immediately after determination is made that such calf is defective. (b) The seller at his expense shall be permitted, and provided with reasonable opportunity, to obtain blood samples of an alleged defective calf and its sire and dam for the purpose of blood type analysis to establish parenthood. (c) The animals will be returned by the buyer to the seller at the buyer's expense; provided the animals meet the health requirements of the seller's state. (d) The return of the purchase price in connection with a defect producing animal shall be deemed full satisfaction and settlement.
2. In the event there is a dispute as to whether or not a calf is defective, the "Determination" referred to in paragraph 1(a) above shall be made by a person or persons acceptable to both the buyer and seller, and in the event that the buyer and seller cannot agree on the selection of such person or persons, then each of them shall appoint a representative to make the determination. In the event that such representatives fail to agree, a third person selected by the representatives of the buyer and seller shall make the determination.
3. Registration certificates issued after January 30, 1979, for animals which, prior to issuance of the certificate, have been reported and verified as carriers of recessive genetic defects or genetic factor or have tested free of certain genetic defects or genetic factor contain the following codes relative to such defect: S-Syndactylism; H-Double Muscling; D-Dwarfism; M-Osteopetrosis; HI-Heterochromia Irides; HG-Horn Gene; R-Red; X-Multiple Defects, Check List for Kind; F-Tested For Defect Printed Without Producing Abnormal Calves; GDF-Produced 35 or more calves from Daughters Without a Genetic Defect or Genetic Factor. The absence of any such notation on a pedigree of an animal, in a sale catalogue, does not establish that the animal in question is not a carrier of any such genetic defect or genetic factor.

RIGHTS AND OBLIGATIONS

1. The above terms and conditions of sale shall constitute a contract between the buyer and seller of each animal and shall be equally binding upon both. Each sale or resale of an animal constitutes a separate transaction.
2. Neither the sponsoring association, the sale manager, nor any other person connected with the management of the sale, assumes any liability, legal or otherwise.

**For voluntary consideration and use by sellers in their independent business judgement.*

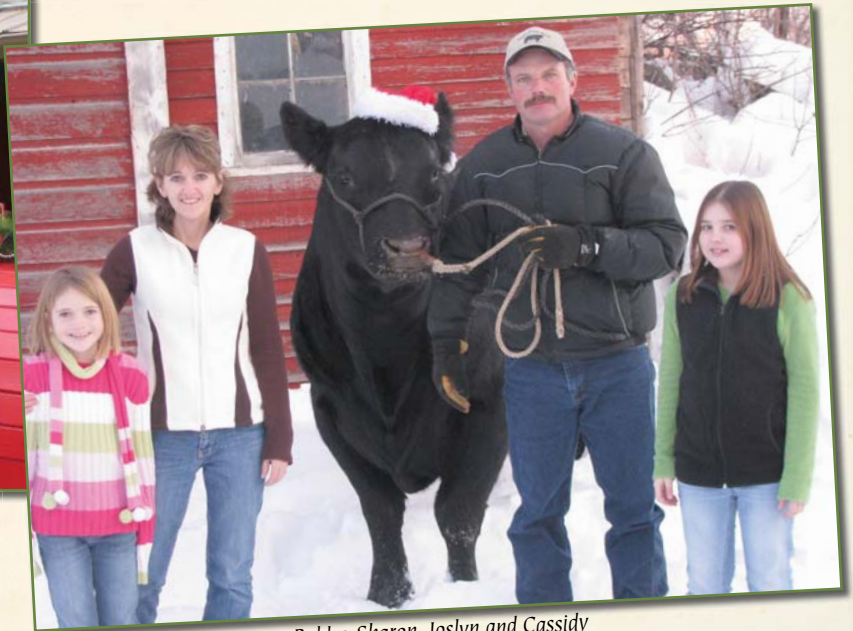


HOYT'S ANGUS RANCH

9446 13th St. NE • McHenry, ND 58464
Vernon - (701) 785-2273 • Bobby - (701) 785-2270
Ryan - (701) 785-2425 • Cody - (701) 785-2414



Vernon and Sheila



Bobby, Sharon, Joslyn and Cassidy



Ryan, Mandy and Harlie



Cody, Charla, Midayla & Wyatt



9446 13th St. NE
McHenry, ND 58464

FIRST CLASS
US POSTAGE
PAID
BISMARCK, ND
PERMIT #256



24th Annual Production Sale

Wednesday, May 4, 2011

6 p.m. CDT

Selling: 69 Bulls & 16 Heifers

At Hoyt's Angus Ranch • McHenry, ND

(3.5 miles North of McHenry, ND, on Hwy 20, 2 miles East, 0.5 miles North)

Sale Day Phones:

(701) 785-2425 • (701) 797-7280 • (701) 789-9950

**Fully Guaranteed
Free Delivery**