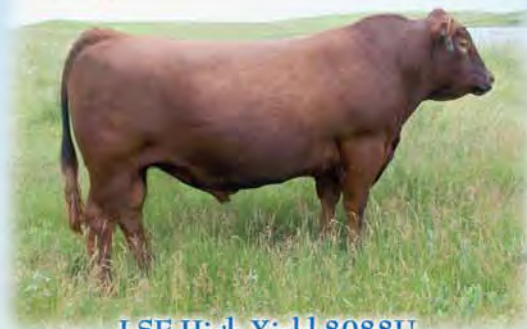


# Putting the puzzle together ...

*to produce more profit  
for your bottom line!*



LBR Crockett R81



LSF High Yield 8088U

*Production Sale*  
**Friday,**  
**April 29, 2011**

*1:00 pm CDT • Napoleon Livestock  
Napoleon, ND*

*Selling:*

**25** *Red Angus Yearling Bulls*

**25** *Simmental & SimAngus Yearling Bulls*

**20** *Simmental Commercial Heifers*



*Kuhn's Red Angus & Crosshair Simmentals*

### Kuhn's Red Angus

James, Stephanie, Elodie and Reagen  
6962 28th Ave SE • Napoleon, ND 58561  
Home: 701-332-6378 • Cell: 701-426-6921



At Kuhns Red Angus we strive to produce cattle that can perform from birth till the hang on the rail. We have been ultrasounding our heifers along with our bulls to give you, the customer, a more accurate measure of carcass quality in our sale offering.

Our bulls are weaned the first of September without creep feed to get a better understanding about how his dam is performing. They are then put on test for 90 to 100 days for their yearling weights. Then switched to a 2-pound gain so they can develop into a sound herd bull. But most of all, we believe in structural soundness, quiet disposition, longevity and a more efficient female, so that we all can stay profitable in the beef industry in the years to come.

I would like to thank you for your continued support and confidence in our program. We look forward to meeting with old friends and new friends at the sale.

**K** James & Stephanie,  
Elodie and Reagen



Our daughter, Brinley Marie, joined our family February 16, weighing 4 lbs, 14 oz.

### Crosshair Simmental

Ben, Cassie and Brinley Kleppe  
3220 48th St SE • Dawson, ND 58428  
Home: 701-327-8330 • Cell: 701-426-9210



Welcome!  
Hello and Welcome to our annual production sale. We are excited to join with Kuhn's Red Angus to bring you a set of bulls that you can put into your program to incorporate what we feel is one of the most beneficial crosses you can use today. Whether you are looking for top-notch females or to weigh down the scales with a set of steer calves, the SimAngus-cross is second to none. Here's a chance to do some one-stop shopping to put either or both breeds to work for you.

The bulls were weaned Oct 2 and were pail fed Bull Challenger pellets and free-choice long-stem hay for 120 days. After that we started them on a complete mixed ration consisting of corn, protein pellet, silage and chopped hay. We do not push the bulls which allow you to see their full genetic potential.

We have also added a new herd sire to our program that we are very excited about. Ellingsons Ideal X13 is a homozygous polled Freedom son. We look forward to seeing his calves spring of 2012.

As always we welcome any feedback you may have on the bulls and are willing to answer any questions about our program anytime. We look forward to visiting with you and hope to see you on April 29th.

Ben, Cassie and Brinley Kleppe

**K**  
**R**

# Kuhn's Red Angus & Crosshair Simmental

## Friday, April 29, 2011 at 1:00 p.m. CDT

Napoleon Livestock, Napoleon ND • 1-800-932-8821 • 701-754-2216

### SALE DAY PHONE:

Ben Kleppe.....	701-426-9210
Cassie Kleppe .....	701-471-2699
James Kuhn.....	701-426-6921
Stephanie Kuhn.....	701-269-9959

### INDEPENDENT REPRESENTATIVE:

Ray Erbele..... 701-226-7288 Cell, 701-754-2216 Work

### SELLING:

20 Commercial Red Heifers  
 25 Purebred Red Angus Bulls  
 22 Simmental Bulls  
 3 Half Blood Simmental / Red Angus Bulls

### SALE ORDER:

Commercial heifers will sell first, followed by the performance Red Angus bulls, Lots 1-15. Then Simmental Lots 26-50 will sell and the sale will conclude with calving ease Red Angus bulls, Lots 16-25.

### CATTLE VIEWING:

Prior to April 28, Kuhn's Red Angus bulls can be viewed at the farmstead 7 miles south of Napoleon on Hwy 3 and 3 miles west then 1/2 mile north.

Crosshair Simmental can be viewed at the farmstead 15 miles north of Napoleon on Hwy 3 and 1 mile west.

We invite you to join us for lunch prior to the sale starting at 11 a.m., at the sale barn. Come early to view the cattle either the morning of the sale or Thursday, April 28, after 7 p.m.

### AUCTIONEER:

Seth Weishaar..... 605-210-1336

### RINGMEN:

Terry Robinson, Farm & Ranch Guide ..... 701-471-5153 Cell  
701-255-3037 Home

Scott Ressler, ND Stockmen's Assn..... 701-223-2522 Office  
701-782-4360 Home

### BREEDING SOUNDNESS GUARANTEE:

The bulls will be semen tested prior to the sale but we recommend testing the bull before turning out for breeding. If a bull is tested as a non-breeder, the seller has 180 days before making an adjustment. If the bull is declared a sound breeder by a competent veterinarian he will be returned to the buyer at the buyers expense. If case an adjustment is required, the bull will be replaced with one of similar quality if possible, or the purchase price will be refunded if the animal is returned in the same body condition.

### TERMS AND CONDITIONS:

As soon as any animal is sold, it becomes the responsibility of the purchaser. We will discount \$25.00 per bull taken home by the customer on sale day. After May 8th a \$2.00 per-day feed cost will be charged.

All Sales are in the U.S dollar. Each animal is to be sold to the highest bidder. The auctioneer shall settle any disputes as to bids.

All cattle are to be paid for by the purchaser during or immediately after the sale and will not be removed until after settlement has been made unless prior arrangements have been made with Kuhn's Red Angus or Crosshair Simmental.

Napoleon Livestock would like the animals removed from their facility as soon as possible.

### LIABILITY

All persons attending the sale do so at their own risk. Kuhn's Red Angus and Crosshair Simmental assume no liability, legal or otherwise, of any accidents which may occur.

### NAPOLEON AUCTION MARKET

#### ALTERNATIVE BIDDING:

We will be offering the Kuhn's Red Angus and Crosshair Simmental Sale on the internet. To bid from your computer, you will need to follow these steps:

- 1) Log on to [www.napoleonlivestock.com](http://www.napoleonlivestock.com) and click on the green oval that says: "Live Auction."
- 2) Click on "Viewer Registration" and register your information. Click the "Proceed" button at the bottom.

This should all be done at least one day prior to the sale to allow time for approval. If you purchase your animals, you will need to contact Napoleon Livestock at 1-800-932-8821 to make payment arrangements and to make arrangements to pick up or to have livestock delivered.

You must have DSL to be able to bid during the sale.

### ONLINE CATALOG:

Catalog online at: [www.cowcampcatalogs.com](http://www.cowcampcatalogs.com)

Promotion and catalog by Cow Camp Promotions  
Tracey Koester • Steele, ND • [www.cowcamppromotions.com](http://www.cowcamppromotions.com).

Printed at United Printing • Bismarck, ND • 701-223-0505



LSF High Yield 8088U

**A** **LSF HIGH YIELD 8088U** #1248523  
 BD: 2/6/08 Cat: 1A 100% Dam's MPPA: 96.2 Dam's Age: 3  
 BW: 80 WW: 711 WR: 102 YW: 1205 YR: 101 ADG: 3.09 %IMF: 4.98 Rat: 117 REA: 13.03 Rat: 105

**K** MESSMER PACKER S008  
 LSF COVER GIRL K1426 R5057

MESSMER JOSHUA 019P  
 MESSMER MILLIE 124P  
 BROWN VACATION H7106  
 LSF COVER GIRL K1426

	CED	BW	WW	YW	Milk	TM	ME	HPG	CEM	Stay	Marb	YG	CW	REA	Fat
EPD	7	-1.4	26	56	18	30	6	14	7	15	0.23	-0.17	32	0.29	-0.02
%	28	26	72	62	48	67	67	3	12	5	17	5	65	12	11

High Yield is doing a great job for us this year. We have had 20 calves out of him with an average BW of 82 lbs. for heifers and bulls. We used him on first-calf heifers with no assisted births. His progeny ratio 105 for marbling and a 101 for ribeye. I truly believe this bull is going to be a great carcass bull. If I had to choose one word to describe High Yield, it would be balance. Owned with Koester Red Angus and Ludvigson Stock Farm. Leased to Accelerated Genetics.

**B** **SCHULER ENVY 7342T** #1184633  
 BD: 3/1/07 Cat: 1A 100% Dam's MPPA: 107.1 Dam's Age: 6  
 BW: 82 WW: 667 WR: 109 YW: 1245 YR: 111 ADG: 3.61 %IMF: 3.79 Rat: 117 REA: 14.72 Rat: 114

**K** 5L NORSEMAN KING 2291  
 SOR DUCHESS ENT 1052L

VGW KING OF THE WEST  
 NORSEMAN 1312 PJM  
 LCHMN ENTERPRISE 1370H  
 SOR DUCHESS LM 8536H

	CED	BW	WW	YW	Milk	TM	ME	HPG	CEM	Stay	Marb	YG	CW	REA	Fat
EPD	6	0.6	32	65	19	35	4	6	-1	7	0.66	-0.13	41	0.36	-0.01
%	41	61	54	45	37	42	53	84	84	69	2	14	42	11	26

Schuler Envy 7342T offers the power of a Norseman King with a +0 CED. Backed by an Enterprise x Ladies Man dam with an outstanding 107.7 MPPA, impressive individual performance ratios 94 BW, 100 WW, 111 YW, 117 %IMF and 114 REA. Some of his first daughters are calving at Wedel Red Angus and they have great udders and teats, good milk, good mothering ability and are easy keeping cows. We used Envy hard this year with an average BW of 83.8 lbs. ABS bull.



Schuler Envy 7342T

**C** **5L TRADESMAN 1715-6237** #1187423  
 BD: 2/2/07 Cat: 1A 100% Dam's MPPA: 103.7 Dam's Age: 2  
 BW: 87 WW: 721 WR: YW: 1264 YR: ADG: 3.39 %IMF: 4.54 Rat: REA: 12.52 Rat:

**K** 5L TRADITION 203-6145  
 5L LAKOTA 41C-1715

O C C LEGEND 616L  
 5L HAZEL 1821-203  
 5L TRAVELING GRAND 5113  
 BASIN LAKOTA C999

	CED	BW	WW	YW	Milk	TM	ME	HPG	CEM	Stay	Marb	YG	CW	REA	Fat
EPD	12	-1.5	24	50	21	32	6	12	7	9	0.07	0.12	28	-0.02	0.06
%	14	29	75	72	29	55	66	19	19	44	46	90	73	62	97

Tradesman is a Tradition son who is very balanced phenotypically and is very easy fleshing. 5L had 150 calves out of him this year and he really stamps them. His daughters have a soft, easy look we love to see in a cow. Larry's really excited about his future.



5L Tradesman 1715-6237

**D** **KUHN'S IMPERIAL 6007** #1128873  
 BD: 2/9/06 Cat: 1A 100% Dam's MPPA: 102.2 Dam's Age: 8  
 BW: 88 WW: 722 WR: 104 YW: 1310 YR: 103 ADG: 3.68 %IMF: 5.67 Rat: 136 REA: 14.89 Rat: 99

**K** LCC CHEYENNE B221L  
 MS KUHN'S LOGAN

BFCK CHEROKEE CNYN 4912  
 HXC 701G  
 GLACIER LOGAN 210  
 MS KUHN'S RAM

	CED	BW	WW	YW	Milk	TM	ME	HPG	CEM	Stay	Marb	YG	CW	REA	Fat
EPD	0	0.8	42	79	18	39	4	9	6	11	0.64	-0.01	49	0.03	-0.02
%	90	69	18	16	43	19	47	49	19	24	1	58	16	52	11

He is a long, deep, square-butted, thick bull with good feet. The real story about this bull is that he is my cow-making bull. His dam is 13 years old with a ratio on 11 calves: BW 98, WW 103, YW 102, MPPA 102.2, %IMF 11.3, REA 101, Fat 87. She had an AI heifer calf this year - in fact she has stuck AI for the past 6 years. Wow! What a cow!

**E** **LORENZEN SANTIAM ENCORE 8400** #1242937  
 BD: 2/6/08 Cat: 1A 100% Dam's MPPA: 105.6 Dam's Age: 10  
 BW: 82 WW: 847 WR: 111 YW: 1432 YR: 110 ADG: 3.66 %IMF: 3.16 Rat: 86 REA: 16.42 Rat: 108

**K** PIE GRIDMASTER 589  
 SANTIAM'S GOLDIE K21

LCB HOSS A444N  
 PIE KRUGGER KANYON 353  
 LCHMN GOLD ROBBER 1909E  
 SANTIAM'S GOLDIE

	CED	BW	WW	YW	Milk	TM	ME	HPG	CEM	Stay	Marb	YG	CW	REA	Fat
EPD	-1	3.0	50	91	15	40	9	12	2	11	0.01	0.09	59	0.21	0.03
%	94	97	5	5	65	14	87	15	64	25	61	91	3	20	89

Encore is a big, cherry red bull with a good foot structure and great hooves. There is some good growth, and power in this bull with a big ribeye. His sons and daughters have shown this to us. Owned by Koester Red Angus and Leland Red Angus.

**F**

**8001 KUHN'S CHEY BOND**

#1253220

BD: 1/26/08 Cat: 1A 100% Dam's MPPA: 105.1 Dam's Age: 2

BW: 76 WW: 727 WR: 103 YW: 1378 YR: 99 ADG: 4.07 %IMF: 4.53 Rat: 115 REA: 11.35 Rat: 102

**K**

NSF BOND L007

VAR CHEYENNE ELSIE 6013

BIEBER MAKE MIMI 7249  
MS NSF PROOF POSITIVE J

LCC CHEYENNE B221L  
ALBERG ELSIE 171

EPD	CED	BW	WW	YW	Milk	TM	ME	HPG	CEM	Stay	Marb	YG	CW	REA	Fat
12	-4.7	17	50	24	33	4	10	5	8	0.30	-0.07	24	0.05	0.00	
%	6	3	90	73	8	53	41	47	29	52	10	29	84	48	48

Bond is a rock-solid heifer bull. Last year his progeny averaged 69 lbs. on BW and this year 72 lbs. They have a lot of eye appeal, are long and thick, but smooth made with great marbling ability and pretty little heads. He is going to get used hard this year. I have a lot of confidence in this bull.



8001 Kuhn's Chey Bond



Watch for this Envy son in next year's sale!

**G**

**LSF CLASSIC PACKER 8008U**

#1248473

BD: 1/3/08 Cat: 1A 100% Dam's MPPA: 105.1 Dam's Age: 7

BW: 67 WW: 653 WR: YW: 1129 YR: ADG: 2.98 %IMF: 2.84 Rat: REA: 12.98 Rat:

**K**

MESSMER PACKER S008

LSF LOGAN H1375 LA414

MESSMER JOSHUA 019P  
MESSMER MILLIE 124P  
LCHMN NO EQUAL 1174D  
LSF CLASSIC H1375

EPD	CED	BW	WW	YW	Milk	TM	ME	HPG	CEM	Stay	Marb	YG	CW	REA	Fat
6	-1.8	49	82	16	40	4	15	6	11	0.39	0.07	46	0.13	0.03	
%	36	21	6	11	60	13	50	2	19	25	5	86	21	32	89

We used Classic Packer on heifers and I did not have to touch a single calve. They averaged 73 lbs. He is from the same cow family as High Yield.

**H**

**GLACIER TERRAIN 999**

#712181

BD: 11/11/99 Cat: 1A 100% Dam's MPPA: 106.3 Dam's Age: 16

BW: 85 WW: 577 WR: YW: 1023 YR: ADG: 2.79 %IMF: Rat: REA: Rat:

**K**

TASSEL ROBIN HOOD 78E

GLACIER HI-RB-LS

LMAN ROBIN HOOD 1174B  
TASSEL LANA 15A

LCHMN HIGH RISE 2430  
WHITES REBALAS 882

EPD	CED	BW	WW	YW	Milk	TM	ME	HPG	CEM	Stay	Marb	YG	CW	REA	Fat
2	-3.3	9	16	23	27	1	7	4	5	-0.23	-0.17	5	-0.07	-0.02	
%	73	13	95	97	20	76	29	77	44	86	94	7	98	71	14

I bought some bred heifers from Jacobson Red Angus and this is how we got the sons out of Terrain and Hard Drive. Gary told me Terrain has been a good heifer bull for him. Terrain is also out of the granddam of Logan 210. The Terrain daughters have gone on to make some good cows for Jacobson.



Kuhn bulls



2011 Central Dakota Bull Days

**I**

**SCOTT HARD DRIVE 816**

#1241644

BD: 1/29/08 Cat: 1A 100% Dam's MPPA: 104.2 Dam's Age: 5

BW: 78 WW: 614 WR: 98 YW: 1019 YR: 102 ADG: 2.53 %IMF: Rat: REA: Rat:

**K**

5L NORSEMAN KING 2291

KNOW RAINBOW N46

VGW KING OF THE WEST  
NORSEMAN 1312 PJM  
BJR MAKE MY DAY 981  
KNOW RAINBOW L46

EPD	CED	BW	WW	YW	Milk	TM	ME	HPG	CEM	Stay	Marb	YG	CW	REA	Fat
3	-3.0	16	44	21	29	3	8	-2	8	0.40	-0.25	23	0.36	-0.03	
%	66	10	92	83	21	73	37	77	92	50	5	1	86	7	4

Hard Drive has also has been a good heifer bull for Gary. What is cool about this bull is he is a Norseman King son out of a Make My Day Dam.



LBR Crockett R81

**J LBR CROCKETT R81** #2288554  
 BD: 2/14/05 PUREBRED POLLED RED  
 BW: 102 WW: 852 WR: 100 YW: 1643 YR: 100

**K** KENCO/MF POWERLINE 204L HC POWER DRIVE 88H  
 SAFN GLAMOUR 11J  
**R** LBR NIGHT DREAM M22 BLACK SHAMROCK E157  
 LBR RIGHT DREAM H830

	CE	BW	WW	YW	MCE	M	MW	STAY	CW	YG	MARB	BF	REA	API	TI
EPD	2	4.1	48	85	-7	7	31	19	19	-0.04	0.32	0.05	0.73	112	72
%	99	99	3	2	99	25	3	40	2	30	10	99	1	35	5

**K TNT TOP GUN R244** #2321664  
 BD: 2/25/05 PUREBRED POLLED RED  
 BW: 100 WW: 872 WR: 112 YW: 1574 YR: 114

**K** TNT GUNNER N208 RC STINGER 072K  
 TNT MISS HONEY L9  
**R** TNT MISS SADIE M68 TNT IMPACT H21  
 TNT MISS JADEN J318

	CE	BW	WW	YW	MCE	M	MW	STAY	CW	YG	MARB	BF	REA	API	TI
EPD	10	1.0	47	86	5	-5	18	15	15	0.14	-0.06	0.04	0.04	98	66
%	15	55	4	2	25	99	65	80	4	9	99	90	65	70	30



TNT Top Gun R244

**L WS BEEF MAKER R13** #2289889  
 BD: 2/6/05 PUREBRED POLLED RED  
 BW: 92 WW: 794 WR: 102

**K** HOOKS SHEAR FORCE 38K NICHOLS LEGACY G151  
 C&D TRACY  
**R** DCR MS RIBEYE N72 R PLUS RED RIBEYE 1134L  
 DCR MISS ZINGER

	CE	BW	WW	YW	MCE	M	MW	STAY	CW	YG	MARB	BF	REA	API	TI
EPD	14	-1.3	45	70	2	12	35	25	2	-0.06	0.55	0.03	0.45	159	85
%	1	15	10	20	65	4	1	5	40	20	1	75	3	1	1



WS Beef Maker R13

**M DAVES R S 630** #2372300  
 BD: 3/19/06 PUREBRED POLLED RED  
 BW: 91 WW: 782 WR: 101 YW: 1293 YR: 103

**K** LAZY S RED SHOCKER 226L TNT SHOCKER J46  
 MS LAZY S BLACK P 217J  
**R** MISS ARNOLD K2165 ESGE37  
 MISS ARNOLD A9286

	CE	BW	WW	YW	MCE	M	MW	STAY	CW	YG	MARB	BF	REA	API	TI
EPD	1	1.5	40	72	2	2	22	16	8	0.06	0.22	0.01	-0.02	97	66
%	99	65	20	15	65	65	35	70	20	80	30	30	80	75	30

**N TNT SHEAR FORCE T278** #2421843  
 BD: 2/27/07 PUREBRED POLLED RED  
 BW: 92 WW: 871 WR: 111 YW: 1529 YR: 107

**K** HOOKS SHEAR FORCE 38K NICHOLS LEGACY G151  
 C&D TRACY  
**R** TNT MISS R58 TNT GUNNER N208  
 TNT MISS JUPITER L320

	CE	BW	WW	YW	MCE	M	MW	STAY	CW	YG	MARB	BF	REA	API	TI
EPD	15	-0.8	31	56	6	11	26	20	-5	-0.08	0.4	0.02	0.35	136	72
%	1	20	60	60	15	10	15	25	65	15	3	50	10	3	5



**DAVES GUNNER 848**

#2470435

BD: 3/15/08 PUREBRED POLLED RED

BW: 91 WW: 837 WR: 105

**K** TNT GUNNER N208

RC STINGER 072K  
TNT MISS HONEY L9

**R** DAVES F BUILDER R563

TNT FORTUNE BUILDER M404  
MISS DEVORE M203

	CE	BW	WW	YW	MCE	M	MW	STAY	CW	YG	MARB	BF	REA	API	TI
EPD	9	1.7	28	55	1	6	21	15	-2	0.05	0.03	0.03	0.05	92	57
%	25	70	75	60	80	35	45	80	50	80	85	75	65	85	85



**WINCHESTER HR P8315**

#2252969

BD: 2/8/04 PUREBRED POLLED RED

BW: 82 WW: 807 WR: 100

**K** CNS DREAM ON L186

NICHOLS LEGACY G151  
CNS SHEEZA DREAM K107W

**R** HS REFLECTIONS J34

BS MR ARAPAHOE 811A  
HF/GFI RUBY RED 33E

	CE	BW	WW	YW	MCE	M	MW	STAY	CW	YG	MARB	BF	REA	API	TI
EPD	16	-1.9	24	36	5	1	13	27	-19	-0.27	0.11	-0.01	0.48	134	62
%	1	10	85	99	25	75	90	2	99	1	65	4	2	4	55

Our new herd sire ...



Ellingson Ideal 13X



**ELLINGSON IDEAL 13X**

#2563890

BD: 1/28/10 PUREBRED POLLED RED

**K** THSF FREEDOM 300N

BH TRACKER 9983  
SAFN MISS ZING 02H

**R** ELLINGSON POWERLINE S681

ELLINGSON POWERLINE P430  
ELLINGSON LONG CUT N343

	CE	BW	WW	YW	MCE	M	MW	STAY	CW	YG	MARB	BF	REA	API	TI
EPD	5	2.3	53	102	5	5	32	23	27	-0.17	-0.15	-0.02	0.69	104	67
%	80	80	1	1	25	40	2	15	1	1	99	1	1	55	25

Owned with Genex CRI.



# Crosshair Simmental Commercial Heifers

The heifers are poured and vaccinated with PreGuard Gold prior to the sale. They were fed hay since weaning and, for 30 days before the sale, they received silage and oats along with free-choice hay. The heifers are all home raised.

**Group A** – 5 head purebred Simmental open heifers

---

**Group B** – 5 head purebred Simmental open heifers

---

**Group C** – 5 head Red Angus x Simmental open heifers

---

**Group D** – 5 head Red Angus x Simmental open heifers

---

## Average Breed EPDs

### RED ANGUS NON-PARENT EPD AVERAGES

	CED	BW	WW	YW	Milk	TM	ME	HPG	CEM	Stay	Marb	YG	CW	REA	Fat
EPD	5	-0.1	32	60	17	33	4	10	3	9	0.08	-0.03	36	0.09	0.00

### PUREBRED SIMMENTAL EPD AVERAGES

	CE	BW	WW	YW	MCE	M	MW	STAY	CW	YG	MARB	BF	REA	API	TI
EPD	7	0.9	32	58	3	4	20	18	-1.5	0.00	0.15	0.02	0.10	106	63

### HYBRID SIMMENTAL EPD AVERAGES

	CE	BW	WW	YW	MCE	M	MW	STAY	CW	YG	MARB	BF	REA	API	TI
EPD		-0.6	27	55		3	16		-6	0.10	0.34	0.04	-0.04	109	64



Dr. JJ Hovde ultrasounding & Stephanie keeping track of the barnsheets.



Soaking up the sun!







Lot 1

**1** **KUHNS ENVY X023** #1375803  
 BD: 2/16/10 Cat: 1A 100% Dam's MPPA: 99.5 Dam's Age: 6 Calving Ease: 0  
 BW: 91 WW: 686 WR: 99 YW: 1355 YR: 106 ADG: 4.18 %IMF: 3.20 Rat: 100 REA: 13.98 Rat: 112

**K** SCHULER ENVY 7342T 5L NORSEMAN KING 2291  
 SOR DUCHESS ENT 1052L  
 KUHN'S OSCAR QUEEN FORSTER KING ROB 9028  
 KUHN'S BLAZING OSCAR

	CED	BW	WW	YW	Milk	TM	ME	HPG	CEM	Stay	Marb	YG	CW	REA	Fat
EPD	4	0.9	26	62	24	37	6	7	0	7	0.18	-0.11	35	0.37	0.00
%	59	69	73	47	4	24	68	89	85	77	24	14	54	6	47

We are starting the sale with this performance sire that seems to do everything right. He is long and big butted and also deep and thick across the back. He is out of a strong cow family that always has one of the biggest ribeye ultrasounds.

**2** **KUHN HIGH YIELD X046** #1375851  
 BD: 2/22/10 Cat: 1A 100% Dam's MPPA: 105.1 Dam's Age: 3 Calving Ease: 1  
 BW: 86 WW: 745 WR: 108 YW: 1419 YR: 109 ADG: 4.21 %IMF: 3.02 Rat: 94 REA: 14.00 Rat: 112

**K** LSF HIGH YIELD 8088U MESSMER PACKER S008  
 LSF COVER GIRL K1426 R5057  
 KUHN'S LAD RATT 7015 DLC LOGAN LAD 4125  
 KUHN'S QUEEN RATT

	CED	BW	WW	YW	Milk	TM	ME	HPG	CEM	Stay	Marb	YG	CW	REA	Fat
EPD	4	0.2	36	76	19	37	6	10	6	10	0.23	-0.02	40	0.27	0.02
%	59	55	33	17	32	25	75	32	15	42	16	50	37	13	82

This High Yield son is one that performance-minded cattlemen will want to take a look at! 1-Star Calving Ease because his EPDs read very well.



Lot 2

**3** **KUHNS ENCORE X014** #1375842  
 BD: 2/13/10 Cat: 1A 100% Dam's MPPA: 104.3 Dam's Age: 3 Calving Ease: 1  
 BW: 70 WW: 716 WR: 104 YW: 1380 YR: 108 ADG: 4.15 %IMF: 3.37 Rat: 105 REA: 14.83 Rat: 119

**K** LORENZEN SANTIAM ENCORE 8400 PIE GRIDMASTER 589  
 SANTIAM'S GOLDIE K21  
 KUHN'S BAILEY QUEEN 7039 FORSTER BAILEY 4005  
 MS KUHN'S KING ROB

	CED	BW	WW	YW	Milk	TM	ME	HPG	CEM	Stay	Marb	YG	CW	REA	Fat
EPD	4	-0.1	37	73	19	37	7	10	1	8	0.02	0.02	47	0.37	0.02
%	59	48	32	23	32	24	79	31	77	58	64	68	17	6	82

This bull is an outcross in most herds. He is very strong footed with a lot of eye appeal.



Lot 3

**4** **KUHNS ENVY X028** #1375885  
 BD: 2/17/10 Cat: 1A 100% Dam's MPPA: 106.4 Dam's Age: 10 Calving Ease: 0  
 BW: 82 WW: 734 WR: 106 YW: 1298 YR: 102 ADG: 3.53 %IMF: 2.74 Rat: 86 REA: 11.80 Rat: 94

**K** SCHULER ENVY 7342T 5L NORSEMAN KING 2291  
 SOR DUCHESS ENT 1052L  
 KUHN'S BLAZING OSCAR FORSTER BLAZE 6110  
 MS FORSTER OSCAR 4074

	CED	BW	WW	YW	Milk	TM	ME	HPG	CEM	Stay	Marb	YG	CW	REA	Fat
EPD	7	-0.2	27	49	21	34	4	6	0	7	0.18	-0.14	32	0.30	0.01
%	30	46	69	75	19	43	53	94	85	71	24	7	62	10	65

X028 is out of an 11-year-old with an MPPA of 106. She always puts a calf in my replacement or sale pens.

### Kuhn's Red Angus Calving Ease Scores

**Three** – Recommended for heifers. Expect little to no assistance on normal births.

**Two** – Recommended for heifers. Easy calving with minimal assist on birth.

**One** – Recommended on growthy heifers. May assist a few normal births.

**Zero** – Not recommended on heifers. Use on mature females.



Lot 5

**5** **KUHNS I.P. KING X053** #1375811  
 BD: 2/26/10 Cat: 1A 100% Dam's MPPA: 101.1 Dam's Age: 5 Calving Ease: 0  
 BW: 90 WW: 725 WR: 105 YW: 1350 YR: 104 ADG: 3.91 %IMF: 4.06 Rat: 127 REA: 12.25 Rat: 98

**K** KUHNS IMPERIAL 6007 LCC CHEYENNE B221L  
 MS KUHN'S LOGAN  
 KUHNS BLAZING QUEEN FORSTER KING ROB 9028  
 KUHN'S BLAZING HORIZON

	CED	BW	WW	YW	Milk	TM	ME	HPG	CEM	Stay	Marb	YG	CW	REA	Fat
EPD	0	1.9	37	71	20	38	6	9	5	8	0.25	-0.02	43	-0.04	-0.02
%	92	86	32	27	25	19	67	68	24	57	15	50	29	74	9

X053 is a strong growth bull with a 127 IMF ratio! He comes from a dam with a lot of maternal instinct.

**6** **KUHNS MARIAS PÄCKRE X007** #1375870  
 BD: 2/3/10 Cat: 1A 100% Dam's MPPA: 104.0 Dam's Age: 2 Calving Ease: 2  
 BW: 78 WW: 770 WR: 110 YW: 1349 YR: 111 ADG: 3.62 %IMF: 2.43 Rat: 75 REA: 11.78 Rat: 102

**K** LSF CLASSIC PACKER 8008U MESSMER PACKER S008  
 LSF LOGAN H1375 LA414  
 8002 KUHN'S MARIAS GLACIER MARIAS 548  
 KUHN'S CHEY GIRL 6003

	CED	BW	WW	YW	Milk	TM	ME	HPG	CEM	Stay	Marb	YG	CW	REA	Fat
EPD	4	-0.5	50	87	18	43	6	12	5	11	0.17	0.08	47	0.09	0.03
%	59	40	4	5	45	5	72	10	24	27	26	86	16	43	91

Here is a bull with a "Who's Who" pedigree from top to bottom.



Elodie and Reagen Kuhn shopping for their first bull.



Lot 7

**7** **KUHNS TRADESMAN X043** #1375876  
 BD: 2/21/10 Cat: 1A 100% Dam's MPPA: 99.6 Dam's Age: 2 Calving Ease: 1  
 BW: 86 WW: 695 WR: 99 YW: 1318 YR: 102 ADG: 3.89 %IMF: 4.05 Rat: 124 REA: 10.45 Rat: 91

**K** 5L TRADESMAN 1715-6237 5L TRADITION 203-6145  
 5L LAKOTA 41C-1715  
 5L ROXIE X 1102-1188 5L RED DIRECTION 691-6046  
 5L ROXIE X854-1102

	CED	BW	WW	YW	Milk	TM	ME	HPG	CEM	Stay	Marb	YG	CW	REA	Fat
EPD	7	0.5	26	60	21	34	5	12	8	10	0.15	0.04	33	0.02	0.04
%	30	61	73	52	18	45	61	10	5	41	29	75	59	60	96

I bought his mother out of the 5L program as a bred heifer. Here is an opportunity to grab some new genetics.

**8** **KUHNS HIGH YIELD X044** #1375826  
 BD: 2/21/10 Cat: 1A 100% Dam's MPPA: 99.6 Dam's Age: 4 Calving Ease: 1  
 BW: 82 WW: 727 WR: 105 YW: 1323 YR: 101 ADG: 3.73 %IMF: 2.88 Rat: 90 REA: 12.05 Rat: 96

**K** LSF HIGH YIELD 8088U MESSMER PACKER S008  
 LSF COVER GIRL K1426 R5057  
 KUHN'S LAD QUEEN 6035 DLC LOGAN LAD 4125  
 MS KUHN'S KING & QUEEN

	CED	BW	WW	YW	Milk	TM	ME	HPG	CEM	Stay	Marb	YG	CW	REA	Fat
EPD	5	-0.4	29	57	19	33	6	11	6	11	0.11	-0.06	32	0.06	-0.01
%	48	42	63	59	32	48	68	27	15	28	40	31	63	50	23

This High Yield son has been a favorite of mine since birth. He always seems to catch your eye.



Lot 8

**9** **KUHNS DUSTY ENCORE X040** #1375890  
 BD: 2/19/10 Cat: 1A 100% Dam's MPPA: 106.1 Dam's Age: 9 Calving Ease: 0  
 BW: 86 WW: 765 WR: 111 YW: 1331 YR: 102 ADG: 3.54 %IMF: 2.51 Rat: 78 REA: 13.23 Rat: 106

**K** LORENZEN SANTIAM ENCORE 8400 | PIE GRIDMASTER 589  
 SANTIAM'S GOLDIE K21  
 KUHN'S DUSTY ROB | FORSTER KING ROB 9028  
 MS KUHN'S DUSTY BLAZE

	CED	BW	WW	YW	Milk	TM	ME	HPG	CEM	Stay	Marb	YG	CW	REA	Fat
EPD	1	1.6	41	69	23	43	8	9	1	7	-0.05	0.04	48	0.12	0.01
%	87	82	19	31	10	4	90	51	77	72	81	75	15	37	65

I thought long and hard about keeping this strong, cherry red bull for myself. He would be a great addition to any cattle program.



Lot 9



Lot 10

**10** **KUHNS ENVY X009** #1375818  
 BD: 2/10/10 Cat: 1A 100% Dam's MPPA: 98.7 Dam's Age: 5 Calving Ease: 1  
 BW: 80 WW: 651 WR: 94 YW: 1281 YR: 100 ADG: 3.94 %IMF: 2.47 Rat: 77 REA: 11.19 Rat: 89

**K** SCHULER ENVY 7342T | 5L NORSEMAN KING 2291  
 SOR DUCHESS ENT 1052L  
 KUHN'S PRESID QUEEN | FORSTER KING ROB 9028  
 KUHN'S FLAME PRESID

	CED	BW	WW	YW	Milk	TM	ME	HPG	CEM	Stay	Marb	YG	CW	REA	Fat
EPD	6	-0.6	20	47	22	32	6	7	2	6	0.19	-0.08	29	-0.06	-0.02
%	38	38	87	78	11	56	74	89	66	86	23	23	71	79	9

Here is a strong Envy son who moves with ease and he is strong footed.

**11** **KUHNS KOPPER ENVY X015** #1375852  
 BD: 2/13/10 Cat: 1A 100% Dam's MPPA: 100.3 Dam's Age: 3 Calving Ease: 0  
 BW: 89 WW: 705 WR: 102 YW: 1234 YR: 97 ADG: 3.31 %IMF: 2.72 Rat: 85 REA: 11.93 Rat: 95

**K** SCHULER ENVY 7342T | 5L NORSEMAN KING 2291  
 SOR DUCHESS ENT 1052L  
 KUHN'S BAILEY KOPPER 7030 | FORSTER BAILEY 4005  
 MS FORSTER KOPPER 6049

	CED	BW	WW	YW	Milk	TM	ME	HPG	CEM	Stay	Marb	YG	CW	REA	Fat
EPD	4	1.4	24	42	17	29	3	8	-1	7	0.36	-0.13	26	0.06	-0.02
%	59	79	79	85	48	73	33	82	91	74	6	10	78	50	9

X015 is another strong Envy son whose grandmother is 10 years old and just dropped an Envy daughter who might be the best replacement heifer this year!



Lot 11

**12** **KUHNS ENCORE X024** #1375845  
 BD: 2/16/10 Cat: 1A 100% Dam's MPPA: 102.3 Dam's Age: 3 Calving Ease: 0  
 BW: 91 WW: 751 WR: 109 YW: 1376 YR: 108 ADG: 3.91 %IMF: 3.07 Rat: 96 REA: 13.28 Rat: 106

**K** LORENZEN SANTIAM ENCORE 8400 | PIE GRIDMASTER 589  
 SANTIAM'S GOLDIE K21  
 KUHN'S BAILEY QUEEN 7035 | FORSTER BAILEY 4005  
 KUHN'S QUEEN + KING

	CED	BW	WW	YW	Milk	TM	ME	HPG	CEM	Stay	Marb	YG	CW	REA	Fat
EPD	-1	3.2	38	74	16	35	7	11	1	9	0.03	0.00	43	0.16	0.01
%	96	97	28	21	59	37	78	27	77	54	61	60	27	29	65

This deep Encore son has a lot of power. He ratioed a 106 on ribeye area.

**13** **KUHNS ENCORE X039** #1375834  
 BD: 2/18/10 Cat: 1A 100% Dam's MPPA: 92.7 Dam's Age: 4 Calving Ease: 0  
 BW: 86 WW: 681 WR: 99 YW: 1264 YR: 99 ADG: 3.64 %IMF: 3.13 Rat: 98 REA: 12.60 Rat: 101

**K** LORENZEN SANTIAM ENCORE 8400 | PIE GRIDMASTER 589  
 SANTIAM'S GOLDIE K21  
 KUHN'S RATT 6025 | LMG GILLS RATTLER 2556  
 MS KUHN'S BLAZE

	CED	BW	WW	YW	Milk	TM	ME	HPG	CEM	Stay	Marb	YG	CW	REA	Fat
EPD	3	1.6	35	63	10	28	8	9	3	8	-0.03	-0.03	39	0.08	-0.01
%	69	82	37	45	94	80	88	63	51	63	75	45	42	45	23

This is a strong herd bull that's well balanced.

**14 KUHNS ENVY X049** #1375894  
 BD: 2/24/10 Cat: 1A 100% Dam's MPPA: 99.8 Dam's Age: 8 Calving Ease: 0  
 BW: 92 WW: 724 WR: 105 YW: 1339 YR: 103 ADG: 3.84 %IMF: 2.96 Rat: 93 REA: 12.91 Rat: 103

**K** SCHULER ENVY 7342T  
 MS KUHN'S KING & QUEEN  
 5L NORSEMAN KING 2291  
 SOR DUCHESS ENT 1052L  
 FORSTER KING ROB 9028  
 KUHN'S FLAME

	CED	BW	WW	YW	Milk	TM	ME	HPG	CEM	Stay	Marb	YG	CW	REA	Fat
EPD	2	1.4	27	60	20	34	6	7	1	7	0.25	-0.04	35	0.15	0.01
%	79	79	68	52	22	44	68	89	77	75	15	40	53	31	65

X049 is a very powerful bull whose offspring should put money in your pocket.

**15 KUHNS ENVY X045** #1375817  
 BD: 2/22/10 Cat: 1A 100% Dam's MPPA: 99.1 Dam's Age: 5 Calving Ease: 0  
 BW: 90 WW: 692 WR: 100 YW: 1295 YR: 99 ADG: 3.77 %IMF: 3.43 Rat: 107 REA: 12.08 Rat: 97

**K** SCHULER ENVY 7342T  
 KUHN'S FLAME QUEEN  
 5L NORSEMAN KING 2291  
 SOR DUCHESS ENT 1052L  
 FORSTER KING ROB 9028  
 KUHN'S FLAME

	CED	BW	WW	YW	Milk	TM	ME	HPG	CEM	Stay	Marb	YG	CW	REA	Fat
EPD	3	1.9	28	56	19	34	6	7	1	7	0.28	-0.15	35	0.21	-0.02
%	69	86	64	61	29	47	67	89	77	79	11	6	54	20	9

He is a growth bull with strong carcass value.

## CALVING EASE BULLS

The following bulls are calving ease #2 and #3. We will sell Lots 16-25 following the Simmental.

**16 KUHNS PACKER X012** #1375873  
 BD: 2/12/10 Cat: 1A 100% Dam's MPPA: 101.6 Dam's Age: 2 Calving Ease: 3  
 BW: 68 WW: 730 WR: 104 YW: 1235 YR: 101 ADG: 3.16 %IMF: 2.86 Rat: 88 REA: 12.71 Rat: 110

**K** LSF CLASSIC PACKER 8008U  
 KUHN'S BIRMINGHAM FOREST  
 MESSMER PACKER S008  
 LSF LOGAN H1375 LA414  
 COLEY'S BIRMINGHAM 622S  
 FORSTER FOREST 9024

	CED	BW	WW	YW	Milk	TM	ME	HPG	CEM	Stay	Marb	YG	CW	REA	Fat
EPD	6	-2.1	34	54	15	33	4	11	5	8	0.23	0.12	31	0.05	0.06
%	38	16	41	66	66	54	48	29	24	57	16	90	65	53	99

This is our lead-off heifer bull that started out at 68 lbs. He grew to a 1,235-lb. YW and kept it in a moderate frame.



Lot 16



Lot 17

**17 KUHNS HIGH YIELD X013** #1375839  
 BD: 2/13/10 Cat: 1A 100% Dam's MPPA: 101.4 Dam's Age: 3 Calving Ease: 3  
 BW: 70 WW: 656 WR: 95 YW: 1283 YR: 100 ADG: 3.92 %IMF: 4.88 Rat: 153 REA: 11.63 Rat: 93

**K** LSF HIGH YIELD 8088U  
 KUHN'S CHY BLAZE 7012  
 MESSMER PACKER S008  
 LSF COVER GIRL K1426 R5057  
 LCC CHEYENNE B221L  
 KUHN'S BLAZING HORIZON

	CED	BW	WW	YW	Milk	TM	ME	HPG	CEM	Stay	Marb	YG	CW	REA	Fat
EPD	7	-1.5	24	55	19	31	5	11	5	11	0.38	-0.08	36	0.10	-0.01
%	30	23	77	63	34	64	66	20	24	21	5	23	51	41	23

This High Yield son is very long and very thick with calving ease.

**18 KUHNS G.P. PACKER X006** #1375861  
 BD: 2/3/10 Cat: 1A 100% Dam's MPPA: 101.2 Dam's Age: 2 Calving Ease: 2  
 BW: 72 WW: 717 WR: 103 YW: 1273 YR: 104 ADG: 3.47 %IMF: 2.31 Rat: 71 REA: 11.99 Rat: 104

**K** LSF CLASSIC PACKER 8008U  
 8057 KUHN'S GALENA PROSP.  
 MESSMER PACKER S008  
 LSF LOGAN H1375 LA414  
 FORSTER PROSPECTOR 5252  
 KUHN'S QUEEN GALENA

	CED	BW	WW	YW	Milk	TM	ME	HPG	CEM	Stay	Marb	YG	CW	REA	Fat
EPD	4	-0.5	37	66	18	37	5	12	5	7	0.10	-0.02	40	0.07	-0.01
%	59	40	30	37	42	28	62	14	24	74	41	50	36	48	23

This heifer bull has some extra frame and growth. His progeny should add to the pocket book.

**19 KUHNS HARD DRIVE X057** #1375878  
 BD: 2/28/10 Cat: 1A 100% Dam's MPPA: 98.8 Dam's Age: 2 Calving Ease: 3  
 BW: 62 WW: 676 WR: 97 YW: 1242 YR: 96 ADG: 3.54 %IMF: 5.40 Rat: 166 REA: 10.22 Rat: 89

**K** SCOTT HARD DRIVE 816  
 JACOBSON REBA 8203  
 5L NORSEMAN KING 2291  
 KNOW RAINBOW N46  
 SHOCC DATA  
 GLACIER REBA 759

	CED	BW	WW	YW	Milk	TM	ME	HPG	CEM	Stay	Marb	YG	CW	REA	Fat
EPD	7	-3.3	18	32	19	28	5	9	4	8	0.51	-0.14	20	0.02	-0.01
%	30	7	91	94	29	78	63	59	37	70	2	7	85	60	23

This heifer bull that is unique in his pedigree - Norsemen King, Shocco Data and Make My Day.

**20 KUHNS MAJOR TERRAIN X005 #1375855**  
 BD: 2/1/10 Cat: 1A 100% Dam's MPPA: 97.2 Dam's Age: 2 Calving Ease: 3  
 BW: 66 WW: 650 WR: 93 YW: 1170 YR: 96 ADG: 3.25 %IMF: 3.23 Rat: 99 REA: 12.56 Rat: 109

**K** GLACIER TERRAIN 999 TASSEL ROBIN HOOD 78E  
 GLACIER HI-RB-LS  
 JDRA RED 801 LCC MAJOR LEAGUE A502M  
 JACOBSON RED 6017

	CED	BW	WW	YW	Milk	TM	ME	HPG	CEM	Stay	Marb	YG	CW	REA	Fat
EPD	1	-4.0	18	34	21	30	3	9	0	8	0.03	-0.10	18	0.05	-0.01
%	87	4	91	93	15	66	32	67	85	64	61	17	88	53	23

X005 is a rock-solid heifer bull out of a Major League daughter.



Elodie



Reagen



Lot 21

**21 KUHNS I.P. KING X084 #1375891**  
 BD: 3/23/10 Cat: 1A 100% Dam's MPPA: 105.3 Dam's Age: 8 Calving Ease: 2  
 BW: 78 WW: 712 WR: 103 YW: 1308 YR: ADG: 3.73 %IMF: Rat: REA: Rat:

**K** KUHN'S IMPERIAL 6007 LCC CHEYENNE B221L  
 MS KUHN'S LOGAN  
 MS KUHN'S KING ROB FORSTER KING ROB 9028  
 KUHN'S RAM FLAME

	CED	BW	WW	YW	Milk	TM	ME	HPG	CEM	Stay	Marb	YG	CW	REA	Fat
EPD	3	-0.6	31	64	25	41	7	8	5	9	0.20	-0.03	38	0.02	-0.01
%	69	38	53	43	3	9	78	73	24	56	20	45	44	60	23

Here is a heifer bull that should give you some very strong replacement females.

**22 KUHNS TERRAIN STAR X004 #1405122**  
 BD: 2/1/10 Cat: 1A 100% Dam's MPPA: 100.0 Dam's Age: 2 Calving Ease: 3  
 BW: 76 WW: 683 WR: 100 YW: 1252 YR: 100 ADG: 3.56 %IMF: 3.64 Rat: REA: 10.86 Rat:

**K** GLACIER TERRAIN 999 TASSEL ROBIN HOOD 78E  
 GLACIER HI-RB-LS  
 JACOBSON STAR 8052 MLK CRK TITLEIST 4158  
 CRA BRANDY STAR

	CED	BW	WW	YW	Milk	TM	ME	HPG	CEM	Stay	Marb	YG	CW	REA	Fat
EPD		-2.0	17	34	20	29	4	7		6	0.04	-0.13	18	0.02	-0.02
%		17	92	93	22	74	52	89		85	57	10	88	60	9

X004 is a Terrain son out of a Titlist heifer who is known for calving ease.

**23 KUHNS ROCKET BOND X090 #1375815**  
 BD: 4/7/10 Cat: 1A 100% Dam's MPPA: 106.3 Dam's Age: 3 Calving Ease: 3  
 BW: 72 WW: 690 WR: 111 YW: 1034 YR: 102 ADG: 2.15 %IMF: Rat: REA: Rat:

**K** 8001 KUHN'S CHEY BOND NSF BOND L007  
 VAR CHEYENNE ELSIE 6013  
 KUHN'S SEE RATT 7041 LMG GILLS RATTLER 2556  
 MS KUHN'S SEE KING ROB

	CED	BW	WW	YW	Milk	TM	ME	HPG	CEM	Stay	Marb	YG	CW	REA	Fat
EPD	10	-2.9	27	54	21	34	7	8	5	6	0.15	0.01	31	-0.12	0.00
%	12	10	70	64	18	42	80	75	24	85	29	63	66	89	47

This Bond son has always caught my eye - from the pastures to the pens - for the muscle that he carries in him.

**24 KUHNS BOND X088 #1375853**  
 BD: 4/6/10 Cat: 1A 100% Dam's MPPA: 97.2 Dam's Age: 3 Calving Ease: 3  
 BW: 70 WW: 622 WR: YW: 1094 YR: ADG: 2.95 %IMF: Rat: REA: Rat:

**K** 8001 KUHN'S CHEY BOND NSF BOND L007  
 VAR CHEYENNE ELSIE 6013  
 KUHN'S BAILEY LOGAN 7032 FORSTER BAILEY 4005  
 MS KUHN'S LOGAN

	CED	BW	WW	YW	Milk	TM	ME	HPG	CEM	Stay	Marb	YG	CW	REA	Fat
EPD	6	-1.9	24	52	17	29	3	10	3	9	0.23	-0.10	29	0.13	-0.01
%	38	18	78	69	52	75	35	43	51	54	16	96	97	35	23

Here is a Bond-sired heifer bull who is a little bit deeper made. He is out of Bailey Logan daughter with a great udder.

**25 KUHNS GOLD PACKER X003 #1375857**  
 BD: 1/31/10 Cat: 1A 100% Dam's MPPA: 100.0 Dam's Age: 2 Calving Ease: 2  
 BW: 76 WW: 696 WR: 100 YW: 1142 YR: 94 ADG: 2.79 %IMF: 2.51 Rat: 77 REA: 11.05 Rat: 96

**K** LSF CLASSIC PACKER 8008U MESSMER PACKER S008  
 LSF LOGAN H1375 LA414  
 8051 KUHN'S GAL. PROSPECTOR FORSTER PROSPECTOR 5252  
 KUHN'S GALENA

	CED	BW	WW	YW	Milk	TM	ME	HPG	CEM	Stay	Marb	YG	CW	REA	Fat
EPD	4	-0.4	30	46	16	31	5	12	5	8	0.18	-0.08	31	0.14	0.01
%	59	42	57	81	64	65	59	12	24	63	24	23	65	33	65

Here is a heifer bull with a little bit more performance out of a Prospector daughter who is becoming one of my favorite cows for her docility, ruggedness and all around mothering ability.



Lot 26

**26 CROSSHAIR X54** #9706349  
 BD: 3/23/10 PUREBRED POLLED RED Dam's Age: 5  
 BW: 95 WW: 833 WR: 114 YW: 1429 YR: 114 ADG: 3.80 %IMF: 2.54 Rat: 102 REA: 16.36 Rat: 111

**K** WS BEEF MAKER R13  
**R** DAVES F BUILDER 682

HOOKS SHEAR FORCE 38K  
 DCR MS RIBEYE N72  
 TNT FORTUNE BUILDER M404  
 MISS DEVORE M203

	CE	BW	WW	YW	MCE	M	MW	STAY	CW	YG	MARB	BF	REA	API	TI
EPD	9	2.7	57	97	1	8	37	22	24	0.04	0.26	0.03	0.43	126	78
%	25	85	1	1	85	20	1		1	75	20	75	3		

This bull tied for the top Adj. YW and ranks in the top 1% for WW, YW, MWW and CW, and the top 3% for REA. He is a Beef Maker son that has been a favorite to many who have seen him. He is very complete from end to end. Don't miss him on sale day.

**27 CROSSHAIR X14** #9706288  
 BD: 3/16/10 PUREBRED POLLED RED Dam's Age: 7  
 BW: 92 WW: 845 WR: 115 YW: 1413 YR: 113 ADG: 3.20 %IMF: 2.38 Rat: 96 REA: 14.94 Rat: 102

**K** TNT TOP GUN R244  
**R** MISS DEVORE P405

TNT GUNNER N208  
 TNT MISS SADIE M68  
 MV RED LIGHT 406  
 MISS DEVORE M200

	CE	BW	WW	YW	MCE	M	MW	STAY	CW	YG	MARB	BF	REA	API	TI
EPD	8	1.7	53	97	2	-1	26	12	22	0.2	0.12	0.04	-0.02	99	72
%	35	70	1	1	65	85	15		1	100	60	90	80		

This bull had the second-highest Adj. WW and he ranks in the top 1% for WW, YW and CW. He is a big, long, Top Gun son and is sure to be a favorite with power and performance to spare here.



Lot 27



Lot 28

**28 CROSSHAIR X25** #9706300  
 BD: 3/18/10 PUREBRED POLLED RED Dam's Age: 7  
 BW: 93 WW: 837 WR: 114 YW: 1399 YR: 112 ADG: 3.50 %IMF: 1.62 Rat: 65 REA: 17.68 Rat: 120

**K** TNT TOP GUN R244  
**R** MISS DEVORE P456

TNT GUNNER N208  
 TNT MISS SADIE M68  
 TNT FORTUNE BUILDER M404  
 MISS ARNOLD L2483

	CE	BW	WW	YW	MCE	M	MW	STAY	CW	YG	MARB	BF	REA	API	TI
EPD	8	2.2	50	89	1	-2	23	15	19	0.04	-0.16	0.03	0.36	88	63
%	35	80	2	1	75	90	30		2	75	100	75	10		

This is the third highest Adj. WW bull and he has been a standout since birth. He is as thick as they come with pure muscle from front to back.

**29 CROSSHAIR X125** #9706267  
 BD: 4/15/10 PUREBRED POLLED RED Dam's Age: 9  
 BW: 97 WW: 810 WR: 111 YW: 1402 YR: 112 ADG: 3.55 %IMF: 2.36 Rat: 95 REA: 16.23 Rat: 110

**K** LBR CROCKETT R81  
**R** MISS DEVORE M209

KENCO/MF POWERLINE 204L  
 LBR NIGHT DREAM M22  
 LRS RED REALITY 33J  
 MISS ARNOLD F1394

	CE	BW	WW	YW	MCE	M	MW	STAY	CW	YG	MARB	BF	REA	API	TI
EPD	3	3.0	46	85	-4	5	27	17	17	0.05	0.18	0.06	0.57	102	68
%	90	90	5	3	100	45	10		2	80	40	100	1		

Here is the full brother to last year's high seller. He is extra thick and deep with a great hind quarter. If you want to add some meat to your calf crop, here's your guy.



Lot 29

**30 CROSSHAIR X28** #9706317

BD: 3/19/10 PUREBRED POLLED RED Dam's Age: 6  
 BW: 88 WW: 763 WR: 104 YW: 1284 YR: 103 ADG: 3.10 %IMF: 3.07 Rat: 123 REA: 12.59 Rat: 86

**K** WS BEEF MAKER R13 HOOKS SHEAR FORCE 38K  
**R** DAVES R QUAR, R559 DCR MS RIBEYE N72  
 BAR 5 RED LITE 270L  
 MISS DEVORE N303

CE	BW	WW	YW	MCE	M	MW	STAY	CW	YG	MARB	BF	REA	API	TI
10	0.2	38	60	3	9	27	23	-2	0.1	0.41	0.02	-0.15	132	72
%	15	35	25	45	55	15	10		55	95	2	50	95	

A cherry red Beef Maker son that is a very deep-bodied bull. His mother has a beautiful udder.



Brinley Marie



Lot 31

**31 CROSSHAIR X83** #9706397

BD: 4/3/10 PUREBRED POLLED RED Dam's Age: 3  
 BW: 82 WW: 786 WR: 107 YW: 1399 YR: 112 ADG: 4.30 %IMF: 3.27 Rat: 131 REA: 14.13 Rat: 96

**K** TNT SHEAR FORCE T278 HOOKS SHEAR FORCE 38K  
**R** DAVES R DREAM 822 DILLONS K217 RED DREAM  
 DAVES 414 626

CE	BW	WW	YW	MCE	M	MW	STAY	CW	YG	MARB	BF	REA	API	TI
12	0.1	39	75	5	10	30	19	8	0.06	0.46	0.02	0.05	134	76
%	3	35	20	10	25	10	4		20	80	1	50	65	

He is out of a first-calf heifer but has an impressive Adj. WW of 780 and Adj. YW of 1,399! He ranks in the top 1% for Marb, top 3% CE, top 4% MWW and top 10% for YW and Milk. He is long and smooth shouldered. This T278 son has really performed well since weaning.

**32 CROSSHAIR X106** #9706351

BD: 4/9/10 PUREBRED POLLED RED Dam's Age: 5  
 BW: 92 WW: 782 WR: 107 YW: 1320 YR: 105 ADG: 3.20 %IMF: 3.79 Rat: 152 REA: 15.23 Rat: 104

**K** DAVES R S 630 LAZY S RED SHOCKER 226L  
**R** DAVES 414 686 MISS ARNOLD K2165  
 MR DEVORE R LITE P414  
 MISS DEVORE M221

CE	BW	WW	YW	MCE	M	MW	STAY	CW	YG	MARB	BF	REA	API	TI
2	2.2	39	69	3	3	23	15	7	0.07	0.44	0.02	-0.01	107	70
%	95	80	20	25	55	35		20	85	1	50	75		

A dark, cherry red bull that I like better every time I see him. Be sure to check him out.

**33 CROSSHAIR X35** #9706328

BD: 3/20/10 PUREBRED POLLED RED Dam's Age: 5  
 BW: 96 WW: 790 WR: 108 YW: 1368 YR: 109 ADG: 3.55 %IMF: 1.71 Rat: 69 REA: 13.01 Rat: 88

**K** TNT TOP GUN R244 TNT GUNNER N208  
**R** DAVES BOLD 614 TNT MISS SADIE M68  
 TRIGLAV BOLDHERC POLLED  
 MISS DEVORE P405

CE	BW	WW	YW	MCE	M	MW	STAY	CW	YG	MARB	BF	REA	API	TI
10	2.6	51	90	4	-2	24	17	19	0.23	-0.06	0.03	-0.28	98	65
%	15	85	1	1	40	90	25		2	100	100	75	100	

He ranks in the top 1% for WW and YW and the top 2% for CW. He's a dark cherry red Top Gun son with lots of length and muscle and plenty of performance to spare on this guy.

**34 CROSSHAIR X24** #9706353

BD: 3/18/10 PUREBRED POLLED RED Dam's Age: 5  
 BW: 97 WW: 811 WR: 111 YW: 1383 YR: 110 ADG: 3.15 %IMF: 1.62 Rat: 65 REA: 15.78 Rat: 107

**K** TNT TOP GUN R244 TNT GUNNER N208  
**R** DAVES 407 688 TNT MISS SADIE M68  
 MR DEVORE R LITE P407  
 MISS DEVORE P476

CE	BW	WW	YW	MCE	M	MW	STAY	CW	YG	MARB	BF	REA	API	TI
7	3.1	52	99	3	4	30	14	26	0.12	-0.13	0.02	0.12	87	64
%	45	90	1	1	60	55	5		1	100	100	50		

He ranks in the top % for WW, YW and CW, and the top 5% for MWW. He's a larger framed Top Gun son that will work well with smaller framed cows.



Lot 33



Lot 35

**35 CROSSHAIR X2** #9706396  
 BD: 3/10/10 1/2 SM 1/2 AR POLLED RED Dam's Age: 3  
 BW: 88 WW: 796 WR: 109YW: 1429 YR: 114 ADG: 3.90 %IMF: 4.67 Rat: 188 REA: 13.65 Rat: 93

**K** LCC MAJOR LEAGUE A502M BFCK CHEROKEE CNYN 4912  
**R** DAVES R DREAM 818 KRN REBAS ROBIN  
 DILLONS K217 RED DREAM  
 DAVES 414 662

	CE	BW	WW	YW	MCE	M	MW	STAY	CW	YG	MARB	BF	REA	API	TI
EPD	0.4	53	96		3	29		20	0.27	0.8	0.05	-0.24	134	89	
%	70	1	1		55	3		1	100	1	55	90			

This halfblood is out of a first-calf heifer. He had an Adj. WW of 796 and an Adj. YW of 1,429. He ranks in the top 1% for WW, YW, CW and Marb, and the top 3% for MW. We couldn't be happier with his Red Dream dam. He's the pet of the pen and loaded with depth. Don't miss this guy!

**36 CROSSHAIR X61** #9706329  
 BD: 3/25/10 1/2 SM 1/2 AR POLLED RED Dam's Age: 5  
 BW: 97 WW: 818 WR: 112YW: 1346 YR: 108 ADG: 3.60 %IMF: 3.42 Rat: 137 REA: 15.79 Rat: 107

**K** LELAND BIG LEAGUE 4093 LCC MAJOR LEAGUE A502M  
**R** DAVES R S 619 LELAND SMOOTHY 7326  
 LAZY S RED SHOCKER 226L  
 MISS ARNOLD L2510

	CE	BW	WW	YW	MCE	M	MW	STAY	CW	YG	MARB	BF	REA	API	TI
EPD	2.2	55	90		-3	25		19	0.24	0.5	0.08	0.09	112	78	
%	95	1	2		90	10		2	95	20	95	25			

He ranks in the top 1% for WW, top 2% for YW and CW and top 10% for MW. This is a very attractive and correct halfblood bull and he is easy to find in the pen. You're sure going to like the females out of this bull!



Lot 36

**37 CROSSHAIR X84** #9706355  
 BD: 4/3/10 1/2 SM 1/2 AR POLLED RED Dam's Age: 5  
 BW: 97 WW: 831 WR: 113YW: 1301 YR: 104 ADG: 3.95 %IMF: 2.16 Rat: 87 REA: 15.03 Rat: 102

**K** 8004 KUHN'S BIRMINGHAM COLEY'S BIRMINGHAM 622S  
**R** DAVES F BUILDER 6102 MS KUHN'S LOGAN  
 TNT FORTUNE BUILDER M404  
 MISS DEVORE M217

	CE	BW	WW	YW	MCE	M	MW	STAY	CW	YG	MARB	BF	REA	API	TI
EPD	1.5	38	65		6	25		3	0.21	0.15	0.06	-0.17	89	58	
%	85	15	30		30	10		25	90	85	70	80			

This cherry red halfblood is sure to add depth and thickness to a set of calves. His sire was the high selling in Kuhn's Red Angus 2008 sale.



Lot 37

**38 CROSSHAIR X56** #9706330  
 BD: 3/24/10 PUREBRED POLLED RED Dam's Age: 5  
 BW: 92 WW: 761 WR: 104YW: 1328 YR: 106 ADG: 3.75 %IMF: 1.79 Rat: 72 REA: 16.47 Rat: 112

**K** TNT TOP GUN R244 TNT GUNNER N208  
**R** DAVES G SLAM 623 TNT MISS SADIE M68  
 WHF GRAND SLAM H21  
 MISS DEVORE M210

	CE	BW	WW	YW	MCE	M	MW	STAY	CW	YG	MARB	BF	REA	API	TI
EPD	8	2.0	45	83	2	0	22	18	15	0.04	-0.05	0.02	0.21	97	63
%	45	75	10	3	65	80	35		4	75	95	50	30		

A dark red Top Gun son with a great hip and hind quarter – without a doubt one of my favorite bulls.

**39 CROSSHAIR X76** #9706274  
 BD: 3/31/10 PUREBRED POLLED RED Dam's Age: 9  
 BW: 91 WW: 812 WR: 111YW: 1311 YR: 105 ADG: 3.05 %IMF: 1.61 Rat: 65 REA: 13.89 Rat: 94

**K** LBR CROCKETT R81 KENCO/MF POWERLINE 204L  
**R** MISS DEVORE M229 LBR NIGHT DREAM M22  
 BOZ REDCAT D162  
 MISS ARNOLD J1900

	CE	BW	WW	YW	MCE	M	MW	STAY	CW	YG	MARB	BF	REA	API	TI
EPD	4	1.8	40	65	-3	5	25	19	3	0.06	-0.03	0.04	0.18	91	60
%	85	70	20	35	100	40	20		35	80	95	90	35		

A dark red Crockett son that is thick from end to end with a great hip and hind quarter.



**40 CROSSHAIR X105** #9706313  
 BD: 4/9/10 PUREBRED POLLED RED Dam's Age: 6

BW: 98 WW: 857 WR: 117 YW: 1407 YR: 112 ADG: 3.50 %IMF: 2.58 Rat: 104 REA: 13.73 Rat: 93

**K** DAVES R S 630 LAZY S RED SHOCKER 226L  
 MISS ARNOLD K2165  
**R** DAVES G SLAM R515 WHF GRAND SLAM H21  
 MISS ARNOLD L5958

	CE	BW	WW	YW	MCE	M	MW	STAY	CW	YG	MARB	BF	REA	API	TI
EPD	2	3.4	52	93	1	4	30	17	23	0.22	0.2	0.03	-0.17	101	70
%	100	95	1	1	80	55	5		1	100	35	75	95		

This is the top Adj. WW bull and he ranks in the top 1% for WW, YW and CW, and top 3% for MW. He is a dark red, long bodied bull that is really made well from front to back.

**41 CROSSHAIR X33** #9706414  
 BD: 3/20/10 PUREBRED POLLED RED Dam's Age: 3

BW: 90 WW: 771 WR: 105 YW: 1280 YR: 102 ADG: 3.05 %IMF: 2.3 Rat: 92 REA: 13.91 Rat: 95

**K** WINCHESTER HR P8315 CNS DREAM ON L186  
 HS REFLECTIONS J34  
**R** DAVES B MAKER 880 WS BEEF MAKER R13  
 MISS DEVORE P477

	CE	BW	WW	YW	MCE	M	MW	STAY	CW	YG	MARB	BF	REA	API	TI
EPD	13	0.7	37	58	3	3	22	24	-2	-0.08	0.13	0	0.23	124	65
%	3	50	30	50	60	60	40		55	15	60	15	25		

A nice Winchester out of a beautiful Beef Maker daughter who did a great job with this guy. He's long and thick with a good hip.

**42 CROSSHAIR X79** #9706413  
 BD: 4/1/10 PUREBRED POLLED RED Dam's Age: 3

BW: 87 WW: 821 WR: 112 YW: 1307 YR: 104 ADG: 3.10 %IMF: 2.6 Rat: 104 REA: 14.3 Rat: 97

**K** TNT SHEAR FORCE T278 HOOKS SHEAR FORCE 38K  
 TNT MISS R58  
**R** DAVES R DREAM 866 DILLONS K217 RED DREAM  
 DAVES 407 688

	CE	BW	WW	YW	MCE	M	MW	STAY	CW	YG	MARB	BF	REA	API	TI
EPD	12	1.3	44	77	5	9	31	20	10	0.02	0.3	0.01	0.12	128	74
%	3	60	10	10	25	15	3		15	60	15	30	50		

This bull is out of a first-calf heifer and ranks in the top 3% for CE, MW and top 10% for WW and YW. Red Dream is a great uddered female with a super disposition.

**43 CROSSHAIR X11** #9706398  
 BD: 3/16/10 PUREBRED POLLED RED Dam's Age: 3

BW: 80 WW: 744 WR: 102 YW: 1236 YR: 99 ADG: 3.25 %IMF: 2.74 Rat: 110 REA: 14.44 Rat: 98

**K** WINCHESTER HR P8315 CNS DREAM ON L186  
 HS REFLECTIONS J34  
**R** DAVES B MAKER 821 WS BEEF MAKER R13  
 MISS ARNOLD L2705

	CE	BW	WW	YW	MCE	M	MW	STAY	CW	YG	MARB	BF	REA	API	TI
EPD	13	-0.8	32	46	4	5	21	24	-12	0.09	0.24	0.01	0.26	129	67
%	3	20	55	85	35	45	45		90	10	25	30	20		

If you are looking to add some depth in your calves, then look no further. This Winchester son is just that - deep! He is out of a moderate-framed Beef Maker daughter that did a great job with this guy.

**44 CROSSHAIR X48** #9706305  
 BD: 3/22/10 PUREBRED POLLED RED Dam's Age: 7

BW: 89 WW: 803 WR: 110 YW: 1267 YR: 101 ADG: 3.00 %IMF: 2.31 Rat: 93 REA: 15.64 Rat: 106

**K** WS BEEF MAKER R13 HOOKS SHEAR FORCE 38K  
 DCR MS RIBEYE N72  
**R** MISS DEVORE P471 BAR 5 VERDICT 250K  
 MISS DEVORE M215

	CE	BW	WW	YW	MCE	M	MW	STAY	CW	YG	MARB	BF	REA	API	TI
EPD	8	0.1	39	58	2	12	31	19	-3	0.05	0.21	0.02	0.24	113	69
%	30	35	20	50	70	5	3		60	25	35	50	25		

Here is a rugged Beef Maker son that is long bodied and good boned. He should sire some great steers.



Lot 44



Lot 45

**45 CROSSHAIR X163** #9706265  
 BD: 5/5/10 PUREBRED POLLED RED Dam's Age: 7

BW: 95 WW: 819 WR: 114 YW: 1429 YR: 109 ADG: 3.85 %IMF: 2.37 Rat: 101 REA: 15.25 Rat: 101

**K** LBR CROCKETT R81 KENCO/MF POWERLINE 204L  
 LBR NIGHT DREAM M22  
**R** MISS DEVORE M205 ESGE37  
 MISS ARNOLD K2160

	CE	BW	WW	YW	MCE	M	MW	STAY	CW	YG	MARB	BF	REA	API	TI
EPD	3	2.7	45	78	-3	10	32	16	13	0.04	0.21	0.03	0.29	99	68
%	90	85	10	10	100	10	2		10	75	35	75	15		

He tied for the top Adj. YW and ranks in the top 10% of the breed for WW, YW, Milk and CW, and the top 2% for MW. This young Crockett son hit the ground growing and hasn't stopped. Don't let his age fool you - there's plenty of bull here.

## 46 CROSSHAIR X145 #9706356

BD: 4/25/10 PUREBRED POLLED RED Dam's Age: 5  
 BW: 95 WW: 827 WR: 115 YW: 1394 YR: 106 ADG: 2.95 %IMF: 2.34 Rat: 100 REA: 14.99 Rat: 99

**K** LBR CROCKETT R81 KENCO/MF POWERLINE 204L  
 LBR NIGHT DREAM M22  
**R** DAVES F BUILDER 6103 TNT FORTUNE BUILDER M404  
 MISS ARNOLD F9627

CE	BW	WW	YW	MCE	M	MW	STAY	CW	YG	MARB	BF	REA	API	TI
3	3.4	44	72	-5	8	30	16	10	-0.05	0.11	0.02	0.46	91	65
%	95	95	10	15	100	20	4	10	25	65	50	2		

Another younger Crockett that is full of meat and muscle. He would be a great fit for larger framed cows.

## 47 CROSSHAIR X68 #9706408

BD: 3/29/10 PUREBRED POLLED RED Dam's Age: 3  
 BW: 80 WW: 745 WR: 102 YW: 1266 YR: 101 ADG: 3.35 %IMF: 2.25 Rat: 90 REA: 14.05 Rat: 96

**K** TNT SHEAR FORCE T278 HOOKS SHEAR FORCE 38K  
 TNT MISS R58  
**R** DAVES R DREAM 842 DILLONS K217 RED DREAM  
 DAVES 414 686

CE	BW	WW	YW	MCE	M	MW	STAY	CW	YG	MARB	BF	REA	API	TI
12	0.0	31	55	5	9	24	20	-5	-0.05	0.24	-0.01	0.07	121	66
%	3	35	60	60	25	15	25	65	25	25	4	60		

Here is a moderate T278 son that is dark red and put together nice. His Red Dream dam is deep and has a beautiful udder.

## 48 CROSSHAIR X45 #9706309

BD: 3/22/10 PUREBRED POLLED RED Dam's Age: 6  
 BW: 87 WW: 708 WR: 97 YW: 1299 YR: 104 ADG: 3.90 %IMF: 2.74 Rat: 110 REA: 14.54 Rat: 99

**K** WS BEEF MAKER R13 HOOKS SHEAR FORCE 38K  
 DCR MS RIBEYE N72  
**R** DAVES G SLAM R502 WHF GRAND SLAM H21  
 MISS DEVORE M221

CE	BW	WW	YW	MCE	M	MW	STAY	CW	YG	MARB	BF	REA	API	TI
9	0.3	40	66	3	6	26	24	2	0.03	0.36	0.02	0.08	132	72
%	25	40	20	30	55	35	15	40	70	5	50	55		

A dark cherry red Beef Maker son that continues to impress me more and more everyday. You will love the dark red females out of this guy!



Lot 48

## 49 CROSSHAIR X41 #9706410

BD: 3/21/10 PUREBRED POLLED RED Dam's Age: 3  
 BW: 83 WW: 726 WR: 99 YW: 1206 YR: 96 ADG: 3.00 %IMF: 2.72 Rat: 109 REA: 12.52 Rat: 85

**K** DILLONS K217 RED DREAM CNS DREAM ON L186  
 LF KANDY KISSES  
**R** DAVES B MAKER 853 WS BEEF MAKER R13  
 MISS ARNOLD J1792

CE	BW	WW	YW	MCE	M	MW	STAY	CW	YG	MARB	BF	REA	API	TI
13	-0.2	31	52	4	9	25	23	-7	0.02	0.32	0.01	-0.07	130	68
%	2	30	60	70	35	15	20	75	60	10	30	85		

Here is a Red Dream son - the only one I have this year. The Red Dream daughters have been great. They are good uddered and easy to work with. This guy's daughters should also be like that.

## 50 CROSSHAIR X127 #9706304

BD: 4/15/10 PUREBRED POLLED RED Dam's Age: 7  
 BW: 96 WW: 816 WR: 111 YW: 1303 YR: 104 ADG: 3.10 %IMF: 1.86 Rat: 75 REA: 15.03 Rat: 102

**K** DAVES R S 630 LAZY S RED SHOCKER 226L  
 MISS ARNOLD K2165  
**R** MISS DEVORE P469 TNT FORTUNE BUILDER M404  
 MISS ARNOLD J1900

CE	BW	WW	YW	MCE	M	MW	STAY	CW	YG	MARB	BF	REA	API	TI
4	2.4	38	60	0	3	22	16	1	0.04	-0.06	0.03	0.11	82	57
%	90	80	25	45	90	60	40	40	75	100	75	50		

A Red Shocker grandson that moves out well and is smooth in his design. He has a great disposition that comes from the cow family.

# Thank you!

We would like to extend a sincere  
**"THANK YOU"**  
 to all of our friends, family and neighbors  
 for all the work and help  
 they have given us during the year  
 and especially recently with calving.  
 Without their help, none of this  
 would have been possible.

All of the help has truly touched our hearts  
 and there aren't enough words  
 to express how much we appreciate it.

So, thank you,  
 from the bottom of our hearts.

*Ben, Cassie and Family*

## Red Angus Guide to EPDs

Courtesy of the Red Angus Association of America  
For more information on EPDs, visit [redangus.org](http://redangus.org).

**CED** ..... Calving Ease Direct – predicts the probability of calves being born unassisted out of 2-year-old heifers.

**BW**..... Birth Weight – predicts the difference, in pounds, for birth weight, and is also used in the calculation of Red Angus' Calving Ease Direct (CED) EPD.

**WW** ..... Weaning Weight – predicts the difference, in pounds, for weaning weight (adjusted to age of dam and a standard 205 days of age).

**YW**..... Yearling Weight – predicts the expected difference, in pounds, for yearling weight (adjusted to a standard 365 days of age).

**Milk** .... Milk – predicts the difference in maternal production of an individual animal's daughters as expressed by the weaning weight of their calves.

**TM** ..... Total Maternal – predicts the rancher's actual observation of weaning weights of calves raised by an animal's daughters.  $TM\ EPD = Milk\ EPD + 1/2\ (WW\ EPD)$

**ME** ..... Maintenance Energy – predicts a bull's daughters that will require less feed to maintain her body weight and condition; thus increasing profitability.

**HPG**..... Heifer Pregnancy – predicts the probability of heifers conceiving to calve at two years of age.

**CEM** .... Calving Ease Maternal – predicts the probability of a given animal's daughters calving unassisted at two years of age.

**STAY**.... Stayability – predicts the probability that a bull's daughters will remain in the herd until at least 6 years of age.

**MARB** .. Marbling Score – predicts differences for carcass marbling score as expressed in marbling score units. Higher marbling scores are positively correlated with higher carcass quality grades.

**YG** ..... Yield Grade – predicts differences in USDA Yield Grade score, and is expressed in USDA Yield Grade units.

**CW**..... Carcass Weight – predicts differences in hot carcass weight and is expressed in pounds. Because Red Angus' CW EPD is a multi-trait.

**REA** ..... Rib Eye Area – predicts differences of carcass Rib Eye Area between the 12th and 13th rib.

**FAT** ..... 12th Rib Fat Thickness – predicts differences for carcass fat depth over the 12th rib, as expressed in inches.

## Simmental Guide to EPDs

Courtesy of the America Simmental Association  
For more information on EPDs, visit [simmental.org](http://simmental.org).

**CE** ..... Calving Ease – predicts the ease with which a bull's calves are born to first-calf heifers or mature cows. Larger number indicates higher percentage of unassisted births for calves sired by this bull.

**BW**..... Birth Weight – predicts the difference in average birth weight of a bull's progeny compared to other bulls.

**WW** ..... Weaning Weight – predicts the difference in average 205-day weight of a bull's progeny.

**YW**..... Yearling Weight – predicts the difference in average 365-day weight of a bull's progeny compared to other bulls.

**MCE** ..... Maternal Calving Ease – The ease with which a sire's daughters calve as first-calf heifers or mature cows. Larger number indicates higher percentage of unassisted births for calves born out of this sire's daughters.

**Milk** .... Milk – predicts the milking ability of a bull's daughter. A positive value indicates above average milking ability.

**MWW** ..... Maternal Weaning Weight – predicts the weaning weight of a bull's daughter's calves in pounds. A positive value indicates higher-than-average weaning weights.

**CW**..... Carcass Weight – predicts the difference in average hot carcass weight. A positive number indicates heavier-than-average carcass weights.

**REA** .... Ribeye Area – predicts the average difference in ribeye area between the 12th and 13th rib of an animal's progeny. Express in sq. inches.

**MARB** .. Marbling Score – A subjective evaluation of the amount and distribution of intramuscular fat (IMF) measured between the 12th and 13th rib. A positive value indicates higher-than-average marbling.

**BF or FAT** ..... Backfat – predicts the average differences between an animal's progeny in external fat thickness at the 12th and 13th rib. Express in inches at a given age endpoint.

**YG** ..... Yield Grade – predicts the average differences in cutability and is expressed as a deviation. A negative or lower value is desirable just as a lower Yield Grade is desirable.

**STAY** ..... Stayability – predicts the probability that a sire's daughters entering the herd will stay in production through 6 years of age. A higher value indicates greater stayability.

**API** ..... All-Purpose Index – Evaluates sires for use on the entire cow herd with a portion of their daughters required to maintain herd size and the remaining progeny put on feed.

**TI** ..... Terminal Index – Evaluates sires for use on mature Angus cows with all offspring put on feed. Maternal traits are not considered in this index.

James and Stephanie Kuhn  
6962 28th Ave SE  
Napoleon, ND 58561

CHANGE SERVICE REQUESTED

PRESORTED  
STANDARD  
US POSTAGE  
**PAID**  
BISMARCK, ND  
PERMIT #256

# Putting the puzzle together ...

*Production Sale*

**Friday,**

**April 29, 2011**

*1:00 pm CDT • Napoleon Livestock  
Napoleon, ND*

*to produce more profit  
for your bottom line!*

*Selling:*

**25** *Red Angus Yearling Bulls*

**25** *Simmental & SimAngus Yearling Bulls*

**20** *Simmental Commercial Heifers*



*Kuhn's Red Angus & Crosshair Simmentals*