

BIG SKY ELITE

GREEN MOUNTAIN RED ANGUS • C-T RED ANGUS
 FEDDES RED ANGUS • KLOMPIEN RED ANGUS

Female Sale

Thursday,
December 6, 2012

Offering:
**Montana's Premier
 Maternal Genetics**

Lunch at noon • Sale at 1:00 pm
 Green Mountain Red Angus • Logan, MT

110 Sale Lots
 Bred Females • Elite Picks • Embryo Packages

Performance-Minded Cattle • Balanced EPDs • Outstanding Dispositions • Great Mothers



Bob & Julie Morton
 2435 Logan Trident Road
 Three Forks, MT 59752
(866) GMRA-COW
www.gmracattle.com



Chuck & Carol Feddes
 2610 Churchill Road
 Manhattan, MT 59741
406-284-3203
www.feddesredangus.com



C-T Red Angus

Craig & Taryn DeBoer
 4740 Churchill Road
 Manhattan, MT 59741
406-282-9029
www.ctredangus.com



Dave & Kay Klompien
 8129 Amsterdam Road
 Manhattan, MT 59741
406-282-7537
www.klompienredangus.com

 **Bill Pelton**
Livestock

Our goal is to have you on the seats...but if you can't make it sale day, we're fixin' to get you "on the line!"

Sale day...



CONFERENCE CALL

Easy as 1- 2- 3...

1. **IN ADVANCE**— you call the breeder to pre register for your buyer number
2. **PRIOR TO**— the sale you will receive an email or phone call from the breeder with the toll free conference call number, pin number, and instructions
3. **SALE DAY**—at or during sale time, you call the toll free number and enter your pin to be placed on the call

**Watch it LIVE and bid in
real-time on**

DVAuction
Broadcasting Real-Time Auctions

The Livestock Industry's Leading Online Marketplace!

www.dvauction.com

Technical Support

(402) 474-5557 | support@dvauction.com

ASSOCIATION REPRESENTATIVES:

Greg Comstock, CEO Red Angus Assn. of America
 Tim Whitley, President Red Angus Assn. of America
 Tom Woodward, Vice President Red Angus Assn. of America
 Bruce Ketchum, MTRAA President Montana Red Angus Assn.
 Donna Laubach, MTRAA Vice President . . Montana Red Angus Assn.
 Cathy Redland, MTRAA Sec/Treas Montana Red Angus Assn.

AMERICAN LIVESTOCK INSURANCE:

Bill Pelton (406) 671-5100

ACCOMMODATIONS:

Broken Spur, Three Forks 1-888-354-3048
 Fort Three Forks Motel, Three Forks 1-800-477-5690
 Super 8, Belgrade 1-800-800-8000
 Holiday Inn Express, Belgrade 1-800-542-6791
 Sacajawea Hotel, Three Forks 406-285-6515


406-285-6773 • 1-866-GMRA-COW

Bob's Cell 406-580-0348
Chuck's Cell 406-581-8826
Jake's Cell 406-581-8157
Craig's Cell 406-570-3304
Kay's Cell 406-581-2126

SALE REPRESENTATIVES:

Kyle Gilchrist, Auctioneer (641) 919-1077
 Bill Pelton,
 Bill Pelton Livestock (406) 671-5100
 Dan Broz, DV Auction (402) 649-3172
 John Goggins
 Western Ag Reporter (406) 698-4159
 Jerry Gliko
 Western Livestock Journal (406) 860-3181
 Garth Isbell, Ring Staff (406) 224-1158

View the catalog online at:
www.redcows.net
or contact us for your catalog today!!



Gilchrist Auction Co.
 Kyle Gilchrist: 641/919-1077
 14075 120th St. • Douds, IA 52551
 redcowseller@yahoo.com

A production of
 Star G Ranch, Inc.

Catalog and Advertising by Cow Camp Promotions

**View video of all sale lots at www.billpelton.com or at any of the breeder's websites.
 DVDs of the females are also available. Just give us a call and we'll send one to you!**

TERMS AND CONDITIONS

1. The terms of the sale are cash unless prior arrangements have been made.
2. Each animal will be sold to the highest bidder. The person in charge will settle any disputes as to bids, and his decision on such matters shall be final.
3. Any announcement from the seller on sale day will take precedence over printed material.
4. Health certificates will be furnished for shipment anywhere in the United States.
5. Each animal becomes buyer's risk as soon as sold; but it shall be the obligation of the seller to see that animals are fed and cared for, free of charge to purchaser, until loaded for shipment or until the expiration of December 20th of the current year.
6. All claims for adjustment for bred females must be made before May 1st of the following year. All claims for adjustment for heifer calves must be made by September 1st of the following year.
7. Everyone attending this sale does so at their own risk. Owners, clerks or other helpers do not assume responsibility, legal or otherwise, for damages of any kind.
8. Delivery costs and scheduling shall be the sole responsibility of the buyer.
9. A certificate of registry and transfer shall be furnished for each registered bred female sold at a final bid price of \$1,200 or higher. A certificate of registry and transfer shall be furnished for each registered heifer calf sold at a final bid price of \$900 or higher. If final bid price is less than either of these amounts the cattle will be considered commercial. Certificates of registry may be purchased for the difference.
10. The above terms and conditions shall constitute a contract between the buyer and seller of each animal sold.

**These cattle do sell in accordance with the Sale Terms and Conditions
 set forth by the Red Angus Association of America.**

Females that have sold in the



have gone on to produce high-performance stand outs!



GMRA ANGIE ROSE 944

GMRA Angie Rose 944, Big Sky Elite Alum that sold to C-T Red Angus and Klompien Red Angus and produced C-T DKK Duke 1100.



C-T DKK DUKE 1100

C-T DKK Duke 1100 was the high-selling bull in the 2012 Feddes and C-T Bull Sale, selling to Josh Rush, Rust Mountain View Ranch, Turtle Lake, N.D., for \$27,000.



Feddes Rainbow X108, Big Sky Elite Alum that sold to Wildcat Creek Ranch.



SON OF FEDDES RAINBOW X108

Wildcat Creek Ranch of Newton, Kan., purchased Feddes Rainbow X108 in the 2010 Big Sky Elite Female Sale. Her first calf was just named the 2012 Grand Champion Bull at the Tulsa State Fair.



Jim, Julie, Bob and Tom Morton

Welcome to the Big Sky Elite Female Sale!

When we talk about “elite females” in the Red Angus breed, many things come to mind. Some folks will think show heifers, some will think donor cows, while others will think extremely great brood cows. Well, I believe the Big Sky Elite encompasses all of the above. The four operations that band together to produce this annual sale certainly don’t need national introduction. They have been leaders in the Red Angus breed for decades and produce some of the most elite Red Angus females within the breed today.

I had the opportunity to go through the sale cattle from each of these operations in late October. As expected, I saw some of the most exciting Red Angus genetics to sell this fall while in the Bozeman, Manhattan and Three Forks areas of Montana. The Red Angus females are diverse and unique to each of the four operations and offer extreme quality in many angles of the beef business. All of these operations have produced bulls that have landed in many of the major studs in North America and each of these operations are dedicated to constantly improving and changing their cattle with the times. Whether you are hunting a premier donor matron to add to your herd or getting your very first start to building a Red Angus program, I highly advise being at the Big Sky Elite sale or tuning in via DVAuction on the internet.

The drought and lack of moisture across the country has been a major concern to all of us in the marketing and “selling” business. But the reality of this fall auction season has been that the good Red Angus cattle are in very strong demand. It may, however, be one of the exceptional years – as a buyer – that you can “lay them in under the money” for what the future cattle market will become. With beef cow numbers at record lows, the future prices for cattle once this country gets adequate moisture will, no doubt, be astronomical. In short, get your cattle bought now – when the rains come, there will be profit potential like we have never seen before in the beef business.

I look forward to seeing you at the Green Mountain sale facility in Three Forks, Mont. If I can assist you in any way regarding this auction, feel free to call or shoot me an email.

Best Regards, **Kyle Gilchrist**



Craig, Taryn, Traig, Cayl and Trac DeBoer

Dave, Kay & Kara Klompier; Renee & Brad



Chuck and Carol Feddes



GREEN MOUNTAIN RED ANGUS HEADQUARTERS & BULL FACILITY



Get off 1-90 at the Logan Exit, #283. Go north and take a left on the frontage road. Proceed west toward Three Forks, about 1/2 mile. Take a right onto Logan Trident Road, heading north. The road immediately crosses the Gallatin River and the railroad tracks, as shown on the map. Green Mountain Red Angus is 2 miles from the railroad tracks. Watch for the large Green Mountain Red Angus sign.

C-T RED ANGUS



Putting the Females First.

C-T Red Angus is opening up the gates to both the bred heifer pasture or the heifer calf pasture with this choice. We have some very exciting females to choose from, including our first set of C-T Grand Statements 1025 daughters, some great C-T Chris 426 daughters and also many Conquests, Packers, Ole's Oscars and Mission Statements. There is definitely a female in this pick that could influence any herd.

Pick will include all of our 2012 heifer calves and all of our 2011 Bred Heifers.



C-T RED ANGUS ELITE PICK BRED HEIFER OR OPEN HEIFER

Bred heifer sire lines include:

- CONQUEST 4405**
- PACKER S008**
- OLE'S OSCAR**
- MISSION STATEMENT P27**
- HOBO DESIGN**
- LUCHT PASQUALE 923**
- RED SMOKE**

Open heifer sire lines include:

- C-T GRAND STATEMENT 1025**
- FEDDES BIG SKY**
- CONQUEST 4405**
- OLE'S OSCAR**
- RED SMOKE**
- LUCHT PASQUALE 923**



*C-T
Red Angus
branding*



Traig at the 2009 NILE



C-T Red Angus bred heifer



C-T Grand Statement 1025



**GREEN MOUNTAIN
 RED ANGUS**



Home of performance-minded females

Lots 2 and 3 are a pick right out of the top of our bred heifers and replacements! Only one bred heifer and one replacement heifer calf Elite Pick will be sold. Purchase of these lots allows you to shop after the sale, review performance records, and choose the female that best fits your program.

The Green Mountain cowherd has produced several high-performance herd sires going into stud facilities such as Accelerated Genetics and ABS, including GMRA Make It Easy 8226, GMRA Trilogy 0226, GMRA Peacemaker 1216 and GMRA Laramie 5110, who was the eighth most-used bull in the Red Angus breed in 2009. Green Mountain females that have sold in previous Big Sky Elite sales have gone on to produce high-performance standouts like C-T DKK Duke 1100, son of GMRA Angie Rose 944, who was the high-selling bred heifer in 2010. Duke sold at the 2012 Feddes/C-T Bull Sale to Josh Rust of Rust Mountain View Ranch, Turtle Lake, N.D., for \$27,000.

Don't miss this tremendous opportunity to have complete control in purchasing a foundation female.



GMRA Bred Heifers



Outstanding heifer calf at weaning



**GREEN MOUNTAIN ELITE PICK
 BRED HEIFER**

Take your pick of any one of Green Mountain's top replacement bred heifers! There are 45 bred heifers to choose from.

Sire lines include:

- FRITZ JUSTICE 8013**
- GMRA LARAMIE 5110**
- HXC CONQUEST 4405P**
- LJC MISSION STATEMENT P27**
- MESSMER PACKER S008**
- GMRA MAKE IT EASY 8226**
- GMRA SECRET MISSION 8258**
- GMRA CITADEL 6109**
- GMRA EBV 266**



**GREEN MOUNTAIN ELITE PICK
 HEIFER CALF**

Take your pick of any one of Green Mountain's top replacement heifer calves! There are over 60 heifer calves to choose from.

Sire lines include:

- GMRA LARAMIE 5110**
- HXC CONQUEST 4405P**
- LJC MISSION STATEMENT P27**
- MESSMER PACKER S008**
- GMRA TRILOGY 0226**
- GMRA MAKE IT EASY 8226**
- GMRA SECRET MISSION 8258**
- GMRA MOUNTAIN 9287**

KLOMPIEN RED ANGUS

Breeding the Best — Cutting the Rest



DKK Angie Rose 2079, Reg. #1512409, is the representative for the Klompien Red Angus Elite Pick. Klompien Red Angus & C-T Red Angus purchased her dam in the 2010 Big Sky Elite Sale from Green Mountain Red Angus. At that time, she was pregnant with C-T DKK Duke 1100; the bull calf that would top the 2012 Feddes/C-T bull sale at \$27,000. The dam, GMRA Angie Rose 944, has already established a MPPA of 110.6. On only two calves; her average WR is 118.

The sire, 5L Red Smoke is a high-growth, high stayability carcass bull from none other than the 5L Red Angus Ranch. Angie Rose 2079 has turned many heads this summer and is sporting a WR of 111. She is in the top 3% of the Red Angus breed for WW, top 4% for YW, top 5% for TM, top 15% for Stayability, top 11% for YG, top 6% for CW and top 19% for REA. That's just her stats.

Now, let's look at her phenotypically ... simply put ... sweet, sweet style, class and ... wow! To sweeten the pot even more; if you have the highest bid on our elite pick, you may choose Angie Rose 2079; OR you are welcome to select any other heifer calf from all of our replacement heifers (47 head).



DKK ANGIE ROSE 2079



DKK ANGIE ROSE 2079

Birth Date:
2/8/12

Reg. #
1512409

Category:
100% 1A

5L BLAZIN RED 1354-6166 [OSF]
5L RED SMOKE 1246-42V
 5L REDBIRD 2534-1246 [OSF]

5L BLAZIN HOBO 404-5654 [MAF,OSF]
 5L REBA 60-1354 [OSF]
 5L DIRECT FIRE 1641-6443 [AMF,MAF,NHF,OSF]
 5L REDBIRD 661-2534 [OSF]

MESSMER PACKER S008 [MAF, OSF]
GMRA ANGIE ROSE 944
 GMRA ANGIE ROSE 533 [OSF]

MESSMER JOSHUA 109P [OSF]
 MESSMER MILLIE 124P [OSF]
 GLACIER CHATEAU 744 [OSF]
 GMRA ANGIE ROSE 171

CED	BW	WW	YW	Milk	TM	ME	HPG	CEM	Stay	Marb	YG	CW	REA	Fat
2.4	72	111	19	55	5				12	0.50	-0.15	34	0.33	-0.01





It takes great cows to make great bulls!



FEDDES BLOCKANA Z22



C-T GRAND STATEMENT 1025



FEDDES LAKINA 310



FEDDES BIG SKY R9



BECKTON EPIC R397 K



FEDDES LAKINA 87S

Catalog online at www.redcows.net • Video online at www.billpelton.com



FEDDES BLOCKANA Z22

Birth Date:
1/22/12

Reg. #
#1516350

Category:
100% 1A

RED FINE LINE MULBERRY 26P [AMF,MAF,OSF]
FED FLIKK MULBERRY X648 [OSF]
MEADO-WEST STELLA [OSC]

BIEBER ROMERO 9136 [MAF,OSF]
FEDDES BLOCKANA 808
FEDDES BLOCKANA 23S [OSF]

RED COMPASS MULBERRY 449M
RED DUS FAYETTE 8G
UBAR GRAND PRIX 102 [OSC]
MISS MFIN MYSTIC M5 [OSF]
BUF CRK ROMEO L081 [OSC,MAF]
BIEBER MELLSSIE 8337 [OSF]
5L FOREVER GRAND 5834 [OSC,MAF]
FEDDES BLOCKANA 376

CED	BW	WW	YW	Milk	TM	ME	HPG	CEM	Stay	Marb	YG	CW	REA	Fat
	0.5	78	120	21	60	2	10		6	0.41	-0.09	21	0.17	0.02

Bred to:

Due Date:

We are selling Feddes Blockana Z22 OR the pick of all of the Feddes Red Angus AI and natural-sired 2012 heifer calves. Z22 is a powerful individual that stood out ever since she was a few weeks old. She is halter broke and could compete very well in the show ring. We have refused several offers on her, but she will be for sale at the Big Sky Elite on December 6.



FOUR EMBRYOS

LJC MISSION STATEMENT P27 [MAF, OSF]
C-T GRAND STATEMENT 1025 [OSF]
C-T MISS PAN 0760 [OSF]

LJC LANCER 806 [OSF]
LJC HANNAH 106 [OSF]
LCHMN GRANDCANYON 1244G [OSC, MAF]
CTDB HOBO'S GAL 803
BUG CRK CHF 824-1658 [OSC, MAF]
KRN REBA'S ROBIN
FED'S IMPRESSIVE 744
FED'S LAKINA 730

LCHMN GRANDCANYON 1244G [OSC, MAF]
FEDDES LAKINA 310 [OSF]
FEDDES LAKINA 954

CED	BW	WW	YW	Milk	TM	ME	HPG	CEM	Stay	Marb	YG	CW	REA	Fat
-2	-0.2	64	102	27	59	8	14	-0	8	0.49	0.01	31	0.24	0.00

310 needs no introduction to Red Angus breeders. She is the dam of Feddes Big Sky, one of the top maternal sires in the breed today. Grand Statement is a bull that will make a splash in the Red Angus breed. His sons on test look very promising and his daughters are deep bodied, easy fleshing, moderate females that are very feminine. Don't forget that Red Angus is a maternal breed, here is your chance to get some great maternal genetics. We have only sold 310 embryos one time before at Reds On Ice. Lake View Cattle Co. purchased them. Four embryos resulted in 3 calves. The bull calf topped the Midland Bull Test Sale in 2012 at \$17,000. The other two are heifers, one which Peyton showed with very good success. We are selling 4 embryos, guaranteed 1 pregnancy if implanted by a certified technician.



THREE EMBRYOS

BECKTON EPIC K F075
BECKTON EPIC R397 K [OSF]
BECKTON KIT F468 JL

BECKTON EPIC D404 [MAF, OSF]
BECKTON BELGA D483
BECKTON JULIAN GG B571 [OSF]
BECKTON KIT A517 NP
BJR MAKE MY DAY 981 [MAF, OSF]
BIEBER SIRENA [OSF]
LCHMAN LITTLE JOHN 1509D [OSF]
FEDDES LAKINA 106 [OSF]

BIEBER MAKE MIMI 7249 [MAF, OSF]
FEDDES LAKINA 87S
FEDDES LAKINA 453

CED	BW	WW	YW	Milk	TM	ME	HPG	CEM	Stay	Marb	YG	CW	REA	Fat
7	-0.6	69	108	18	53	3	13	5	13	0.56	0.11	34	0.32	0.04

87S is a moderate-framed cow with lots of rib, is easy fleshing and has a perfect udder. She comes from a long line of females that exhibit the same traits. We used her Packer son as a pasture bull this summer. She has a full brother in the 2012 bulls that looks equally as good. Epic R397 has earned a reputation as the sire of moderate-framed, easy-fleshing cattle that cover all the bases. His EPD profile is extremely balanced. We implanted several of this mating and look forward to these calves in 2013. We are selling 3 embryos, guaranteed 1 pregnancy if implanted by a certified technician.



LOT 7 – GMRA FIREFLY 358



GMRA FIREFLY 358

[OSF]

Birth Date:
1/26/03

Reg. #
#910310

Category:
100% 1A

BUF CRK CHF 824-1658 [OSC,MAF]
LCHMN GRANDCANYON 1244G [OSC,MAF]
KRN REBA'S ROBIN [OSF]

BUF CRK CHIEF092-824 [OSC]
BFLO CRK CARIE VC473

LMAN ROBIN HOOD 1174B [OSF]
KRN REBELLA 805/314

BJR RAMBLER 5162 [OSF]

FCC RAMBO 502 [OSF]
BJR GOLDI 355-1122

GMRA FIREFLY 428
GMRA FIREFLY 110

OAK RIDGE STOCKMAN
RCN FIREFLY-CT 505

CED	BW	WW	YW	Milk	TM	ME	HPG	CEM	Stay	Marb	YG	CW	REA	Fat
-2	1.2	53	90	25	51	9	10	3	5	0.32	0.03	26	0.17	0.01

Bred to: C-T GLACIER BERRY 1021 (#1365682)

Due Date: 3/26/13

Grand Canyon has produced some of the most productive females in the Red Angus breed and Firefly 358 is no exception. She has an MPPA of 102.5 on 8 calves and has consistently produced top-end progeny. None of her calves have been culled – all have gone into production here at GMRA or been in a production sale. Her bull calves have always made the cut as 'picture bulls' for our bull sale catalog. Firefly 358 is just a true, solid-performance cow with no holes, and posts 5 of her 15 EPDs in the top 29% of the breed or higher. Grand Canyon is OSC, but it should be noted that Firefly 358 has been tested OSF.



LOT 8 – GMRA NEXA 564



LOT 8 – GMRA NEXA 564

Birth Date:
2/3/05

Reg. #
#1039224

Category:
100% 1A

LMAN KING ROB 8621 [MAF,OSF]
GLACIER CHATEAU 744 [OSF]
GLACIER REBALA

LEACHMAN ROBUST 7222
LEACHMAN ELEANOR

LCHMN MDLH HVYWT2463 [OSF]
GLACIER REBALAS

LCHMN NO EQUAL 1174D [MAF,OSF]

LMAN NONE BETTER 9604 [MAF,OSF]
LMAN PRAIRIE Q 9308

GMRA NEXA 235 [OSF]
GMRA NEXA 531

BUF CRK HOB0 1961 [MAF,OSF]
GMRA VENICE 210

CED	BW	WW	YW	Milk	TM	ME	HPG	CEM	Stay	Marb	YG	CW	REA	Fat
6	-3.3	51	74	21	46	10	11	11	9	0.38	-0.02	9	0.01	-0.01

Bred to: FRITZ JUSTICE 8013 (#1255322)

Due Date: 3/6/13

This deep, thick Chateau daughter is a full sister to GMRA Citadel 6109, our high-selling bull in 2007, purchased by ABS. Her 2011 bull calf, Merit 1302, was a featured picture bull in our 2012 bull sale catalog and sold to longtime customer, Clyde Thompson, for \$5250. Merit 1302 had an excellent phenotype combined with an outstanding disposition. Nexa 564 is bred to EPD growth leader, Justice, who had our high-selling sire group in our 2012 sale. Imagine the power of the calf that will hit the ground next spring!



LOT 9 – GMRA PEACHA 671



GMRA PEACHA 671

[OSF]

Birth Date:
2/8/06

Reg. #
#1111722

Category:
100% 1A

BJR MAKE MY DAY 981 [MAF,OSF]
BIEBER MAKE MIMI 7249 [MAF,OSF]
BIEBER SIRENA 6708 [OSF]

BJR EASY RIDER 781
BJR TOW KANA 117-710

BIEBER IMPACT 4399
BIEBER MIMI 4227

BUF CRK HOB0 1961 [MAF,OSF]

BUF CRK HOB0 1413 [OSF]
BUF CR CARRIE VC1174 [OSF]

GMRA PEACHA 723
GMRA PEACHA 214

GMRA EBV 935
WGF MISS PEACHA 86

CED	BW	WW	YW	Milk	TM	ME	HPG	CEM	Stay	Marb	YG	CW	REA	Fat
5	1.7	65	98	16	49	7	8	4	11	0.49	-0.01	31	0.08	-0.03

Bred to: C-T GLACIER BERRY 1021 (#1365682)

Due Date: 4/22/13

Peacha 671 is a great Make Mimi x Hobo 1961 combination. She is really coming into her own, weaning a Conquest daughter this year with a 107 NR. This follows up an impressive 2011 bull calf that sold to Knoll Red Angus in our 2012 bull sale for \$5500. Eight of Peacha 671's EPDs are in the top third of the breed or higher, showcasing a WW and CW in the top 11%, a YW in the top 14%, and a Marbling in the top 18%.



LOT 10 – GMRA LARKABA 716



GMRA LARKABA 716

Birth Date:
1/7/07

Reg. #
#1177173

Category:
100% 1A

VGW TITLEIST 1106
MLK CRK TITLEIST 4158 [MAF,OSF]
MLK CRK SHEBA 079

SHOCO SIR ROBIN
VGW LIGHT-STAR 9721
MLK CRK CUB 722 [MAF,OSF]
BJR SHEBA 4X-551 [OSF]
BJR MAKE MY DAY 981 [MAF,OSF]
BIEBER SIRENA 6708 [OSF]
LCHMN RED SPREAD 1271F [MAF,OSF]
GMRA LARKABA 931 [OSF]

BIEBER MAKE MIMI 7249 [MAF,OSF]
GMRA LARKABA 510
GMRA LARKABA 316

CED	BW	WW	YW	Milk	TM	ME	HPG	CEM	Stay	Marb	YG	CW	REA	Fat
7	-3.4	50	78	21	46	3	7	4	11	0.33	0.00	12	0.05	0.00

Bred to: **C-T GLACIER BERRY 1021 (#1365682)**

Due Date: **4/17/13**

Larkaba 716 comes from a strong line of maternal longevity in the GMRA herd. Most of the females in her pedigree have stayed with us well into their teens and some have gone on to be embryo donors. Larkaba 716 holds her flesh well and will keep easy.



LOT 11 – GMRA LAKOTA 735T



GMRA LAKOTA 735T

Birth Date:
1/14/07

Reg. #
#1177136

Category:
100% 1A

VGW TITLEIST 1106
MLK CRK TITLEIST 4158 [MAF,OSF]
MLK CRK SHEBA 079

SHOCO SIR ROBIN
VGW LIGHT-STAR 9721
MLK CRK CUB 722 [MAF,OSF]
BJR SHEBA 4X-551 [OSF]
BUF CRK HOBO 2595
DOUBLE FORK 079Z
LEACHMAN MONU 2X 8096 [OSF]
GMRA MISS LAKOTA

BASIN HOBO 79E [MAF,OSF]
GMRA LAKOTA 380 [OSF]
GMRA LAKOTA 527

CED	BW	WW	YW	Milk	TM	ME	HPG	CEM	Stay	Marb	YG	CW	REA	Fat
4	-2.3	46	63	24	47	0	7	4	12	0.31	0.00	4	0.03	0.01

Bred to: **FRITZ JUSTICE 8013 (#1255322)**

Due Date: **3/29/13**

Lakota 735 is a maternal sister to the dam of AI sires, GMRA Trilogy 0226, and GMRA Make It Easy 8226, who both sold to Accelerated Genetics. She comes from a long line of maternal power. Her dam has an MPPA on 100.5 on 8, and her granddam has an impressive MPPA of 108.5. Lakota 735 has good depth and shows a great rear quarter.



LOT 12 – GMRA NEXA 862



GMRA NEXA 862

Birth Date:
1/22/08

Reg. #
#1250886

Category:
100% 1A

BJR JR 107 [MAF,OSF]
GMRA MINOTAURO 3104 [OSF]
GMRA LENA 108 [OSF]

LMB JOHNY REB 091
BJR TIDY BEE 677-6186
BASIN HOBO 79E [MAF,OSF]
GMRA LENA 944
LMAN KING ROB 8621 [MAF,OSF]
GLACIER REBALA
LCHMN NO EQUAL 1174D [MAF,OSF]
GMRA NEXA 531

GLACIER CHATEAU 744 [OSF]
GMRA NEXA 418
GMRA NEXA 235 [OSF]

CED	BW	WW	YW	Milk	TM	ME	HPG	CEM	Stay	Marb	YG	CW	REA	Fat
1	-0.1	62	97	30	61	7	12	7	9	0.18	0.01	28	0.05	-0.02

Bred to: **C-T GLACIER BERRY 1021 (#1365682)**

Due Date: **3/9/13**

Nexa 862 is a typical, nice-uddered Minotauro daughter, weaning performance-minded calves with good dispositions – all of whom have stayed in the herd. A Minotauro daughter out of the Laubach Red Angus herd raised the high-selling bred heifer at the prestigious 2012 NILE Red Angus Sale for \$11,500 to Silver Spur Ranches of Encampment, WY. Nexa 862 posts an MPPA of 101.8. Her dam is a full sister to GMRA Citadel 6109, who sold to ABS as the high seller in our 2007 bull sale. Eight of her EPDs are in the top 19% of the breed or higher, showcasing a Milk EPD in the top 3% and a TM EPD in the top 2%.



GMRA NEXA 949

Birth Date: 1/17/09

Reg. # #1322894

Category: 100% 1A

GLACIER CHATEAU 744 [OSF]
4L SUPER VISION R2292 [MAF,OSF]
4L MR RAMBO R709 [OSF]

BIEBER TOP MONEY 7948 [MAF,OSF]
GMRA NEXA 577
GMRA NEXA 004

LMAN KING ROB 8621 [MAF,OSF]
GLACIER REBALA
VDAR RAMBO 323 [OSF]
GMRA RACHILLE
BIEBER RED MOON 6042 [OSF]
BIEBER SIRENA 6708 [OSF]
LCHMN NO EQUAL 1174D [MAF,OSF]
GMRA NEXA 827

CED	BW	WW	YW	Milk	TM	ME	HPG	CEM	Stay	Marb	YG	CW	REA	Fat
2	-1.5	53	78	15	41	3	9	7	10	0.25	0.02	14	0.00	0.00

Bred to: C-T GLACIER BERRY 1021 (#1365682)

Due Date: 4/17/13

Nexa 949 sports a beautiful, dark, cherry-red hide. The Super Vision daughters are making great brood cows. This is no surprise if you look at the maternal strengths of the Chateau daughters who are some of the most sought-after females in the breed. A great combination with the good-uddered Nexa family.



LGR ESTONIA 964

Birth Date: 1/20/09

Reg. # #1322780

Category: 100% 1A

GMRA EBV 935
GMRA EBV 266 [OSF]
BJR ESTONIA 9S-1210

NSF SPECIAL DELIVERY [MAF,OSF]
LGR ESTONIA 1004 [OSF]
GMRA ESTONIA 59

LEACHMAN EBV 3531
DEL PRIZE ANNA 560
ALALTA ACRES THOR 9S
BJR ESTONIA9102-9134
LMN PROOF POSITIVE1305E [OSF]
MS NEO-SHO BUFCRK D073
BUF CRK HOBO 1961 [MAF,OSF]
GMRA ESTONIA 312

CED	BW	WW	YW	Milk	TM	ME	HPG	CEM	Stay	Marb	YG	CW	REA	Fat
5	0.1	48	77	28	52	7	6	-1	7	0.40	-0.02	16	0.09	-0.01

Bred to: FRITZ JUSTICE 8013 (#1255322)

Due Date: 3/27/13

Estonia 964 comes from the great Estonia foundation cow family. You can read more about this family in the footnote of Lot 108. She has been off to a great start in her career here at GMRA. Her calves have performed well above average at weaning - 108 and 104 NR - backing up an impressive Milk EPD in the top 5% of the breed. She posts an impressive MPPA of 103.4.



LOT 15 - GMRA VENICE 021



GMRA VENICE 021

Birth Date: 1/11/10

Reg. # #1367581

Category: 100% 1A

LJC LANCER 806 [OSF]
LJC MISSION STATEMENT P27 [MAF,OSF]
LJC HANNAH 106 [OSF]

GMRA CITADEL 6109 [MAF,OSF]
GMRA VENICE 829
GMRA VENICE 146

BECKTON LANCER T A664 [OSF]
LJC HB LIZZIE 606
HOLDEN HI HO 753
LJC KJ JAMIE 516
GLACIER CHATEAU 744 [OSF]
GMRA NEXA 235 [OSF]
LCHMN HEVN'S SAKE 1002F [OSF]
GMRA VENICE 015

CED	BW	WW	YW	Milk	TM	ME	HPG	CEM	Stay	Marb	YG	CW	REA	Fat
3	-1.7	60	97	20	50	11	13	4	12	0.39	-0.13	26	0.54	-0.01

Bred to: C-T GLACIER BERRY 1021 (#1365682)

Due Date: 4/8/13

A young female that features a low-birth-to-high-growth spread. Her BW EPD is in the top 27% of the breed, while WW is in the top 26% and YW is in the top 16%. And she doesn't stop there! Eleven of her 15 EPDs are in the top 30% or higher, topping out with a REA in the top 4%.



LOT 16 - GMRA ANGIE 031



GMRA ANGIE 031

Birth Date: 1/14/10

Reg. # #1367597

Category: 100% 1A

LJC MISSION STATEMENT P27 [MAF,OSF]
GMRA SECRET MISSION 8258 [OSF]
GMRA LAKOTA 341 [OSF]

GMRA CITADEL 6109 [MAF,OSF]
GMRA ANGIE 889
GMRA ANGIE 154 [OSF]

LJC LANCER 806 [OSF]
LJC HANNAH 106 [OSF]
BASIN HOBO 79E [MAF,OSF]
GMRA LAKOTA 947
GLACIER CHATEAU 744 [OSF]
GMRA NEXA 235 [OSF]
BIEBER RED MOON 6042 [OSF]
GMRA ANGIE 800

CED	BW	WW	YW	Milk	TM	ME	HPG	CEM	Stay	Marb	YG	CW	REA	Fat
0	0.5	72	120	20	56	12	11	5	13	0.31	0.13	43	0.02	0.00

Bred to: C-T GLACIER BERRY 1021 (#1365682)

Due Date: 4/20/13

Lots of potential in this Secret Mission daughter. She has an excellent phenotype combined with top-end personal performance that she will pass on to her progeny. She features breed-leading growth numbers, with a WW EPD in the top 4% of the breed, and a YW in the top 1%. Growth numbers and milk may be antagonistic, but she still posts a Milk EPD in the top 32%. Overall, 7 of her 15 EPDs are in the top 32% of the breed or higher. 031 has the makings of a powerhouse foundation female.



GMRA ANGIE ROSE 032

Birth Date: 1/14/10

Reg. # #1367452

Category: 100% 1A

GEFB NORTHERN CANYON 2328 [MAF,OSF]
VGW NORTHERN CANYON 5109 [OSF]
 VGW PT YUMA 0278

BFCK CHEROKEE CNYN 4912 [MAF,OSF]
 GEF DAYLIGHT DIANA 2114

5L PRIME TIME 2559 [MAF,OSF]
 VGW EQ-YUMA 9928

LCHMN RED SPREAD 1271F [MAF,OSF]

GMRA ANGIE ROSE 120 [OSF]

GMRA ANGIE ROSE 115

LMAN KING ROB 8621 [MAF,OSF]
 BJR MATTIE 002-1102

LCHMN MDLD HVYWT2463 [OSF]
 DEL ANGIE ROSE 506

CED	BW	WW	YW	Milk	TM	ME	HPG	CEM	Stay	Marb	YG	CW	REA	Fat
2	0.1	71	112	15	51	7	10	2	9	0.36	0.11	37	0.01	0.00

Bred to: **FRITZ JUSTICE 8013 (#1255322)**

Due Date: 3/12/13

Angie Rose 032 is from the Angie Rose cow family that produced GMRA Angie Rose 944, the top-selling bred heifer in our 2010 Big Sky Elite Sale. She went on to produce C-T/DKK Duke 1100, who sold for \$27,000 at the Feddes/C-T Bull Sale last spring. Angie Rose 032 has an MPPA of 103.6, with her first calf posting a 109 NR after hitting the ground with a 68-lb. birth weight. She is bred to Justice and this mating puts the calf's projected EPDs in the top 10% for Total Maternal and the top 1% for CW, WW and YW. Just imagine the potential of this young female!



LOT 19 – GMRA PRINCESS 071



LOT 20 – GMRA INDIGO 075



LGR HI LASS 033

Birth Date: 1/15/10

Reg. # #1367431

Category: 100% 1A

GEFB NORTHERN CANYON 2328 [MAF,OSF]
VGW NORTHERN CANYON 5109 [OSF]
 VGW PT YUMA 0278

BFCK CHEROKEE CNYN 4912 [MAF,OSF]
 GEF DAYLIGHT DIANA 2114

5L PRIME TIME 2559 [MAF,OSF]
 VGW EQ-YUMA 9928

MLK CRK TITLEIST 4158 [MAF,OSF]

LGR HI LASS 641 [OSF]

LGR HI LASS 431

VGW TITLEIST 1106
 MLK CRK SHEBA 079

LCHMN RED SPREAD 1271F [MAF,OSF]
 GMRA HI LASS 237

CED	BW	WW	YW	Milk	TM	ME	HPG	CEM	Stay	Marb	YG	CW	REA	Fat
5	-2.1	61	97	16	47	5	10	6	10	0.42	0.10	25	-0.02	0.01

Bred to: **C-T GLACIER BERRY 1021 (#1365682)**

Due Date: 4/26/13

This young cow has lots of potential. Her dam posts a 104.9 MPPA and has never posted a NR under 104. We have kept all of her heifer calves as replacements. Hi Lass 033 has 9 EPDs in the top 37% of the breed or higher, with a great birth-to-growth spread. Her BW EPD is in the top 21%, her WW is in the top 21% and her YW is in the top 16%.



GMRA PRINCESS 071

Birth Date: 1/26/10

Reg. # #1367461

Category: 100% 1A

LJC LANCER 806 [OSF]
LJC MISSION STATEMENT P27 [MAF,OSF]
 LJC HANNAH 106 [OSF]

BECKTON LANCER T A664 [OSF]
 LJC HB LIZZIE 606

HOLDEN HI HO 753
 LJC KJ JAMIE 516

LCHMN RED SPREAD 1271F [MAF,OSF]

GMRA PRINCESS 227 [OSF]

GMRA PRINCESS 633

LMAN KING ROB 8621 [MAF,OSF]
 BJR MATTIE 002-1102

LEACHMAN BETTER HVY8041
 GMRA PRINCESS 910

CED	BW	WW	YW	Milk	TM	ME	HPG	CEM	Stay	Marb	YG	CW	REA	Fat
2	-1.8	66	117	20	53	15	12	-1	11	0.47	-0.12	37	0.50	-0.03

Bred to: **FRITZ JUSTICE 8013 (#1255322)**

Due Date: 3/26/13

Princess 071 is deep ribbed with lots of capacity. She comes from a strongly maternal line known for their longevity. Her dam is still in the herd with a 105.8 MPPA on 9 calves, her granddam had 11 calves for us with a 104.5 MPPA, and her great granddam was in production late into her teens. 071 has one of the most complete sets of EPDs in the offering, with 12 of the 15 in the top 31% of the breed. Just imagine the potential of her Justice calf.



GMRA INDIGO 075

Birth Date: 1/30/10

Reg. # #1367607

Category: 100% 1A

LCC CHEYENNE B221L [MAF,OSF]
GMRA LARAMIE 5110 [MAF,OSF]
 GMRA LAKOTA 341 [OSF]

BFCK CHEROKEE CNYN 4912 [MAF,OSF]
 HXC 701G

BASIN HOBO 79E [MAF,OSF]
 GMRA LAKOTA 947

LJC MISSION STATEMENT P27 [MAF,OSF]

GMRA INDIGO 8112

GMRA INDIGO 230 [OSF]

LJC LANCER 806 [OSF]
 LJC HANNAH 106 [OSF]

BUF CRK BARNEY 3474 [MAF,OSF]
 GMRA INDIGO 512

CED	BW	WW	YW	Milk	TM	ME	HPG	CEM	Stay	Marb	YG	CW	REA	Fat
-2	-0.4	65	101	20	52	9	13	3	15	0.46	0.08	29	0.16	0.02

Bred to: **C-T GLACIER BERRY 1021 (#1365682)**

Due Date: 5/1/13

Don't miss this chance to take home one of only two Laramie daughters in the offering. The Laramie daughters are well built, with great length and the great udders from the Lakota cow family. Eight of Indigo's 15 EPDs are in the top 35% of the breed and an impressive 6 of those are in the top 13%.



GMRA LAKOTA 080

Birth Date: 2/1/10

Reg. # #1367540

Category: 100% 1A

GLACIER CHATEAU 744 [OSF]
GMRA CITADEL 6109 [MAF, OSF]
GMRA NEXA 235 [OSF]

LCC CHEYENNE B221L [MAF, OSF]
GMRA LAKOTA 645 [OSF]
GMRA LAKOTA ET 47

LMAN KING ROB 8621 [MAF, OSF]
GLACIER REBALA
LCHMN NO EQUAL 1174D [MAF, OSF]
GMRA NEXA 531
BFCK CHEROKEE CNYN 4912 [MAF, OSF]
HXC 701G
LEACHMAN EBV 3531
GMRA LAKOTA 912

CED	BW	WW	YW	Milk	TM	ME	HPG	CEM	Stay	Marb	YG	CW	REA	Fat
6	-1.8	57	86	21	50	8	10	12	10	0.48	0.05	19	0.06	0.01

Bred to: FRITZ JUSTICE 8013 (#1255322)

Due Date: 3/1/13

This young Lakota cow has one of the most well-rounded resumés in the offering. Her great granddam is the GMRA foundation female, GMRA Lakota 912. She posted an MPPA of 104.5, and through natural and embryo production provided us with 27 progeny, only one of which was cullled. 080's granddam was one of 912's embryo calves and posts an MPPA of 104.6 on 12. Of those 12, eight were heifers and every one of them went into production here at GMRA. 080 has the potential to be a great foundation female in her own right.



GMRA ANNE 094

Birth Date: 2/10/10

Reg. # #1367455

Category: 100% 1A

BIEBER MAKE MIMI 7249 [MAF, OSF]
GMRA MAKE IT EASY 8226 [MAF, OSF]
GMRA LAKOTA 625

GMRA VERMILLION 796 [MAF, OSF]
GMRA ANNE 144 [OSF]
GMRA ANNE 837

BJR MAKE MY DAY 981 [MAF, OSF]
BIEBER SIRENA 6708 [OSF]
GLACIER CHATEAU 744 [OSF]
GMRA LAKOTA 380 [OSF]
BUF CRK CHF 824-1658 [OSC, MAF]
GMRA LAKOTA 456
LCHMN RED SPREAD 1271F [MAF, OSF]
GMRA ANNE 639

CED	BW	WW	YW	Milk	TM	ME	HPG	CEM	Stay	Marb	YG	CW	REA	Fat
1	0.6	72	105	19	54	9	10	4	10	0.46	0.05	33	0.16	0.00

Bred to: C-T GLACIER BERRY 1021 (#1365682)

Due Date: 4/12/13

Anne 094 posted a 102 NR on her first calf, which hit the ground at 67 lbs. She is following in the footsteps of her 107.4 MPPA dam, who has an average weaning ratio of 109 on 9 calves, an average yearling ratio of 102 on 8. She also has an average REA ratio of 103 and average IMF ratio of 102 on 4. Anne 094 has WW, YW, TM and CW EPDs in the top 8% of the breed or higher. If you are looking to add longevity and maternal performance to your herd, look no further.



LAUBACH NEXA 0093

Birth Date: 2/19/10

Reg. # #1368396

Category: 100% 1A

LJC MISSION STATEMENT P27 [MAF, OSF]
GMRA SECRET MISSION 8258 [OSF]
GMRA LAKOTA 341 [OSF]

GMRA KODIAK 765
LAUBACH NEXA 344
GMRA NEXA 914

LJC LANCER 806 [OSF]
LJC HANNAH 106 [OSF]
BASIN HOBO 79E [MAF, OSF]
GMRA LAKOTA 947
LMAN KING ROB 8621 [MAF, OSF]
GMRA AMY 31
LARSON RED LIGHTNING [OSF]
GMRA NEXA 918

CED	BW	WW	YW	Milk	TM	ME	HPG	CEM	Stay	Marb	YG	CW	REA	Fat
0	-1.2	48	76	21	45	7	11	5	11	0.20	0.00	14	0.08	0.00

Bred to: FRITZ JUSTICE 8013 (#1255322)

Due Date: 3/19/13

We hate to see this Laubach heifer go, but she's just too far out of our calving season. She is dam to an outstanding bull calf that ratioed 113 at weaning, giving Nexa 0093 an impressive 105.2 MPPA.



GMRA LAKOTA 0106

Birth Date: 3/5/10

Reg. # #1367536

Category: 100% 1A

BROWN VACATION H7106 [MAF, OSF]
LAUBACH EXPEDITION 643 [OSF]
GMRA NEXA 941

LSF COMBINATION A301M [MAF, OSF]
GMRA LAKOTA 636S
GMRA LAKOTA 325

BECKTON JULIAN GG B571 [OSF]
LCHMN FLOWER C1161
VGW RAMBLER 1000 [OSF]
GMRA NEXA 415
LCHMN TOP BRASS 1049H
WHF LASS 27G-29J [OSF]
GLACIER CHATEAU 744 [OSF]
GMRA LAKOTA 149 [OSF]

CED	BW	WW	YW	Milk	TM	ME	HPG	CEM	Stay	Marb	YG	CW	REA	Fat
-2	2.0	73	116	15	52	10	13	9	14	0.45	0.09	42	0.15	0.00

Bred to: C-T GLACIER BERRY 1021 (#1365682)

Due Date: 4/15/13

This dark, cherry red Expedition daughter carries lots of depth and capacity along with an impressive set of numbers. Her WW and YW EPDs are in the top 3% and 2%, respectively, along with CW in the top 2%. All in all, she has 8 of her 15 EPDs in the top 25% or higher, and 5 of those are in single digits.



Julie and Flash



GMRA LAKOTA 0107

Birth Date: 3/5/10

Reg. # #1367564

Category: 100% 1A

GLACIER CHATEAU 744 [OSF]
GMRA CITADEL 6109 [MAF, OSF]
GMRA NEXA 235 [OSF]

4L ADVANCE VISION R15P
GMRA LAKOTA 760
GMRA LAKOTA 322 [OSF]

LMAN KING ROB 8621 [MAF, OSF]
GLACIER REBALA
LCHMN NO EQUAL 1174D [MAF, OSF]
GMRA NEXA 531
4L SUPER VISION R2292 [MAF, OSF]
4L MS ADVANCER R16L
BASIN HOBO 79E [MAF, OSF]
GMRA LAKOTA 116

CED	BW	WW	YW	Milk	TM	ME	HPG	CEM	Stay	Marb	YG	CW	REA	Fat
5	-1.6	58	83	21	50	5	10	11	11	0.33	0.02	17	0.06	0.00

Bred to: C-T GLACIER BERRY 1021 (#1365682)

Due Date: 3/29/13

Lakota 0107 is a beautiful, dark red and will add length to her calves. She comes from a strong maternal pedigree. Her dam has an MPPA of 103.1 on 3 calves and her granddam has an MPPA of 105.4 on 8, with an impressive average weaning ratio of 106 on 8 and an average yearling ratio of 104 on 7. This maternal strength is matched up with equally strong numbers. Eleven of her 15 EPDs are in the top 50% of the breed, ranging all the way up to a CEM in the top 2%.

KLOMPIEN RED ANGUS

BIG SKY ELITE Female Sale

Mature Cows



LOT 26 – DKK DAZZLE N30



DKK DAZZLE N30

Birth Date:
1/31/03

Reg. #
#923318

Category:
100% 1A

LMAN KING ROB 8621 [MAF,OSF]
GLACIER CHATEAU 744 [OSF]
GLACIER REBALA

BUF CRK HOBO 1961 [MAF,OSF]
DKK DAZZLE 911 [OSF]
DKK DAZZLE 310

LEACHMAN ROBUST 7222
LEACHMAN ELEANOR
LCHMN MDLD HVVYT2463 [OSF]
GLACIER REBALAS
BUF CRK HOBO 1413 [OSF]
BUF CR CARRIE VC1174 [OSF]
FCC RAMBO 502 [OSF]
CK'S MISS ANNE 08

CED	BW	WW	YW	Milk	TM	ME	HPG	CEM	Stay	Marb	YG	CW	REA	Fat
2	-1.6	50	80	17	42	7	10	10	10	0.21	0.01	16	0.09	0.01

Bred to: C-T THUNDERBIRD 0811 (#1235622)

Due Date: 4/25/13

This super-clean, moderate-framed fancy lady is backed by the great Dazzle cow family. She is a direct Chateau 744 daughter, going back to Hobo 1961 and Rambo 502 on the dam's side. She has never missed a beat, calving each year with a calving interval of 367 days; and bringing home a big soggy calf each fall. Milks well with strong udder supports, great feet and legs. Her first calf was selected by Lee Beerman of Hawaii. Her second calf was selected by Gary Peacock of Texas – with a 2012 heifer that was selected for this year's Bet on Red Sale in Reno, Nev. Four daughters are retained in the Klompien herd and her 2012 bull will be in their sale next spring. MPPA: 101.6. We have used C-T Thunderbird on this cow in the past and the calves are great. You're sure to like her calf next spring.



Kara, Dave and Renee



Renee and Brad



DKK ELEANOR R06

Birth Date:
1/14/05

Reg. #
#1025688

Category:
100% 1A

BFCK CHEROKEE CNYN 4912 [MAF,OSF]
LCC CHEYENNE B221L [MAF,OSF]
HXC 701G

FCC RAMBO 502 [OSF]
DKK ELEANOR L01 [OSF]
CK'S MISS ANNE 4011

BUF CRK CHF 824-1658 [OSC,MAF]
MRM 1431 8611 9109 [OSF]
LMAN ROBIN HOOD 1174B [OSF]
HXC 555E
CV FOUR TIMES
COPPER LASS 2392
FN PERFECT 50H-2536
CK'S MISS PAN 2028

CED	BW	WW	YW	Milk	TM	ME	HPG	CEM	Stay	Marb	YG	CW	REA	Fat
4	-1.8	57	93	11	39	6	8	6	9	0.51	0.07	23	0.03	0.01

Bred to: DKK AUTHORITY 152 (#1427298)

Due Date: 3/1/13

Here is a Cheyenne daughter that goes back to the great Rambo 502. She has five traits in the top 30% of the breed. This is a high-capacity female and transmits this trait to her progeny. Her calving interval is 366 days. DKK Authority should cross well with this cow.



LOT 28 – DKK DAZZLE 701



DKK DAZZLE 701

Birth Date:
1/15/07

Reg. #
#1162203

Category:
100% 1A

LMAN KING ROB 8621 [MAF,OSF]
GLACIER CHATEAU 744 [OSF]
GLACIER REBALA

LCC CHEYENNE B221L [MAF,OSF]
DKK DAZZLE R04
DKK DAZZLE L12 [OSF]

LEACHMAN ROBUST 7222
LEACHMAN ELEANOR
LCHMN MDLD HVVYT2463 [OSF]
GLACIER REBALAS
BFCK CHEROKEE CNYN 4912 [MAF,OSF]
HXC 701G
BUF CRK HOBO 1961 [MAF,OSF]
DKK DAZZLE 910

CED	BW	WW	YW	Milk	TM	ME	HPG	CEM	Stay	Marb	YG	CW	REA	Fat
3	-2.8	59	92	24	54	11	10	11	11	0.47	0.05	21	0.08	0.01

Bred to: DKK AUTHORITY 152 (#1427298)

Due Date: 3/6/13

Another female out of the Dazzle family; this gal's calves are light weight at birth and then explode with a very impressive spread from birth to weaning. She has eight traits in the top 30% of the breed and sports a MPPA of 106.7. The weaning ratio on her calves is 104 with a yearling ratio of 102. A moderate-framed cow with lots of punch. Bred to DKK Authority; this calf should be exceptional.



LOT 29 – DKK ROSE 8058



DKK ROSE 8058

Birth Date: 2/8/08
Reg. # #1229759
Category: 100% 1A

BFCK CHEROKEE CNYN 4912 [MAF,OSF]
LCC MAJOR LEAGUE A502M [MAF,OSF]
KRN REBA'S ROBIN [OSF]
FCC RAMBO 502 [OSF]
DKK RAMBO'S ROSE 816
DKK ROSEBUD 427

BUF CRK CHF 824-1658 [OSC,MAF]
MRM 1431 8611 9109 [OSF]
LMAN ROBIN HOOD 1174B [OSF]
KRN REBELLA 805/314
CV FOUR TIMES
COPPER LASS 2392
DKK RAMBO 217
CK'S MISS FUTURE1073

CED	BW	WW	YW	Milk	TM	ME	HPG	CEM	Stay	Marb	YG	CW	REA	Fat
0	-2.0	50	67	14	39	2	7	1	10	0.33	-0.07	7	0.11	-0.01

Bred to: DKK ULTIMATE 9032 (#1304546) Due Date: 2/8/13

This is a Major League daughter that goes back two times to Rambo 502 on the dam's side. She is a moderate-framed, clean-made, very quiet cow. Her 2012 Grand Statement bull calf will be in the Klompien Bull sale next spring. Wait until you see her 2013 Ultimate calf. DKK Ultimate proved to have superior RFI at Midland Bull Test and sold to Sun River Red Angus. The calves are consistent, eye catching, and all who have used him have been very impressed. DKK Ultimate should really complement this cow.



LOT 30 – MLK CRK SHEBA 908



MLK CRK SHEBA 908

Birth Date: 2/14/09
Reg. # #1309348
Category: 100% 1A [OSF]

BECKTON JULIAN GG B571 [OSF]
TR JULIAN LT142 [OSF]
TR LANA G760 [OSF]
RED YY RED KNIGHT 640F [OSF]
M LK CRK SHEBA 725
MLK CRK SHEBA 558

BKT JULIAN 7526 G
BKT MARTA 9A13 JL [OSF]
BECKTON CODY V E023
BECKTON LANA E828 SC
RED YY 23L TOPPER 408D
RED TOP GOLDIE 40U
BUF CRK GIULIANI L851 [MAF,OSF]
MLK CRK SHEBA 043 [OSF]

CED	BW	WW	YW	Milk	TM	ME	HPG	CEM	Stay	Marb	YG	CW	REA	Fat
10	-2.0	62	90	20	51	-1	12	10	12	0.35	0.00	20	0.06	-0.01

Bred to: DKK AUTHORITY 152 (#1427298) Due Date: 5/3/13

This beauty was selected by Klompien & C-T as the 2009 pick of the Milk Creek replacement heifers. She has 10 traits in the top 30% of the breed. Her amazing 2011 heifer is retained in the Klompien herd. MPPA: 102.8. Mated to DKK Authority; the calf should definitely be a "keeper."



LOT 31 – DKK 9058



DKK 9058

Birth Date: 2/20/09
Reg. # #1304553
Category: 100% 1A [OSF]

BUF CRK CHF 824-1658 [OSC,MAF]
LCHMN GRANDCANYON 1244G [OSC,MAF]
KRN REBA'S ROBIN [OSF]
GLACIER CHATEAU 744 [OSF]
DKK DAZZLE N30
DKK DAZZLE 911 [OSF]

BUF CRK CHIEF092-824 [OSC]
BFLO CRK CARIE VC473
LMAN ROBIN HOOD 1174B [OSF]
KRN REBELLA 805/314
LMAN KING ROB 8621 [MAF,OSF]
GLACIER REBALA
BUF CRK HOBO 1961 [MAF,OSF]
DKK DAZZLE 310

CED	BW	WW	YW	Milk	TM	ME	HPG	CEM	Stay	Marb	YG	CW	REA	Fat
-2	-0.9	58	95	26	55	11	11	6	5	0.33	0.09	26	0.10	0.02

Bred to: DKK AUTHORITY 152 (#1427298) Due Date: 2/20/13

A rare OSF Grand Canyon daughter out of the great Dazzle family. This girl has explosive growth on her calves and sports an MPPA of 104.3. As I am writing this, I am wondering, "Why am I selling some of these cows?" A young cow with her whole life ahead of her. Thank goodness I kept her 2011 heifer in our herd. Her DKK Authority calf should be outstanding.



LOT 32 – DKK DAZZLE 031



DKK DAZZLE 031

Birth Date: **2/8/10** Reg. # **#1363911** Category: **100% 1A**

VGW KING OF THE WEST [MAF,OSF]
5L NORSEMAN KING 2291 [MAF,OSF]
NORSEMAN 1312 PJM
LSF COMBINATION A301M [MAF,OSF]
DKK DAZZLE 639
DKK DAZZLE L20 [OSF]

VGW ACE 613
VGW MT TABITHA 9633
376 P J M 141
P J M POWERPOINT 2009
LCHMN TOP BRASS 1049H
WHF LASS 27G-29J [OSF]
BJR JR 107 [MAF,OSF]
DKK DAZZLE 939

CED	BW	WW	YW	Milk	TM	ME	HPG	CEM	Stay	Marb	YG	CW	REA	Fat
-1	0.7	62	99	12	43	8	11	-3	5	0.50	-0.08	30	0.43	-0.01

Bred to: **DKK GRAND VISION 025 (#1363924)** Due Date: **4/23/13**

Wow – this girl is a beauty. Phenotypically flawless. Out of the cow-making machine, Norseman King. Dazzle 031 is only a coming 3 year old and already has an MPPA of 102, which is no surprise when you look at her EPDs showing her WW in the top 20% and YW in the top 12%. Then check out her carcass: REA in the top 4%, CW in the top 10%, YG and Marb both in the top 20%. Her incredible 2012 heifer is retained in the Klompien herd. Don't miss this opportunity to own a herd-building cow. The DKK Grand Vision 025 calves are outstanding – this calf should be no exception.



DKK IDEAL 068

Birth Date: **2/23/10** Reg. # **#1363917** Category: **100% 1A**

4L 429 CANYON 37S
C-T THUNDERBIRD 0811 [AMF,OSF]
CTDB VRDALE 012 [OSF]

C-T CANYON 429 [AMF,MAF,OSF]
MS ADVANCER OF 4L R29N
DKK POWER SURGE 708
FED'S VRDALE 5122
LSF COMBINATION A301M [MAF,OSF]
CTDB MONA 128
DKK OUTLOOK L13
DKK IDEAL K01

C-T WILDFIRE 0515 [AMF,OSF]
DKK IDEAL 721
DKK IDEAL P60 [OSF]

CED	BW	WW	YW	Milk	TM	ME	HPG	CEM	Stay	Marb	YG	CW	REA	Fat
1	0.5	70	102	15	50	8	8	5	3	0.44	0.12	31	0.01	0.01

Bred to: **DKK GRAND VISION 025 (#1363924)** Due Date: **4/28/13**

Another great opportunity here. This is a fancy young lady. Her MPPA is already 102.4. What a gem. Her WW is in the top 5% of the breed; followed by a YW in the top 10%. Carcass EPDs show her CW in the top 10% and her Marb in the top 30%. Her 2012 heifer calf is retained in the herd. You'll love her DKK Grand Vision 025 calf.



DKK DANDY 0111

Birth Date: **3/20/10** Reg. # **#1364010** Category: **100% 1A**

FCC RAMBO 502 [OSF]
DKK KEYSTONE 657 [AMF,OSF]
DKK DAZZLE ME M34
GLACIER CHATEAU 744 [OSF]
DKK DANDY P11 [OSF]
DKK DANDY M73 [OSF]

CV FOUR TIMES
COPPER LASS 2392
BUF CRK BARNEY 3474 [MAF,OSF]
CK'S MISS ANNE 08
LMAN KING ROB 8621 [MAF,OSF]
GLACIER REBALA
FEDDES HOT PURSUIT 010
CK'S DANDY 132

CED	BW	WW	YW	Milk	TM	ME	HPG	CEM	Stay	Marb	YG	CW	REA	Fat
-1	1.3	64	91	15	47	6	7	6	6	0.11	0.05	26	0.06	0.00

Bred to: **DKK GRIT 121 (#1427292)** Due Date: **5/15/13**

This Dandy heifer has several maternal sisters that have been selected for NILE and Bet on Red Sales and are going on to be great cows a crossed the country. 0111 has a WW in the top 15% of the breed and her YW is in the top 25%. Phenomenal cow family and she goes back to Rambo 502 on the sire's side. DKK Grit should complement this female.





LOT 35 – C-T CHRIS 426



C-T CHRIS 426

[OSF]

Birth Date:
2/7/04

Reg. #
#957307

Category:
100% 1A

CV FOUR TIMES
FCC RAMBO 502 [OSF]
COPPER LASS 2392

DEL JOHN 536-CIT-768
LARSON CRIS 926
BCH CRIS 523-4427

UMPIRE 1000
CV MS JULY DUCHESS
RCN CANYON CHIEF
ZIMROXY 6239
GET-A-LONG LICORICE [MAF,OSF]
SUS ELIZ 516-514-03
SECURITY 4427
SUS CRIS 2847-2970

CED	BW	WW	YW	Milk	TM	ME	HPG	CEM	Stay	Marb	YG	CW	REA	Fat
0	0.3	44	63	19	42	-1	5	3	9	0.27	0.01	8	-0.02	0.00

Bred to: OPEN READY TO FLUSH

Due Date:

We have struggled with the decision to sell this foundation donor cow, but have decided to let another program benefit from her genetics. She is one of the best Rambo 502 daughters I've ever seen, and then having the dam of Larson Cris 926 makes her something special. She has a proven track record of producing embryos and great calves. We have sold several herd bulls out of her including some to Heart River Ranch and Wildcat Red Angus. Her daughters are incredible like her, no matter what the sire is. She holds a 101.5 MPPA, with the best foot and udder structure you could make on a cow. Cows like this don't come along every day! She sells open and ready to flush or breed back.



LOT 36 – C-T VERDI 0529



C-T VERDI 0529

Category:
100% 1A

Birth Date:
2/2/05

Reg. #
#1030200

LMN IMPRESSIVE ROB1095B [OSF]
LARSON RED LIGHTNING [OSF]
LARSON CRIS 926

LMB ELWAY 938
CTDB VERDI 904
FED'S VERDI 5150

LMAN KING ROB 8621 [MAF,OSF]
LEACHMAN FIRFLY 7522
DEL JOHN 536-CIT-768
BCH CRIS 523-4427
SIE ELWAY 1570
LMB ST MONA 740
FED'S POINT 389
FED'S VERDI 2109

CED	BW	WW	YW	Milk	TM	ME	HPG	CEM	Stay	Marb	YG	CW	REA	Fat
-2	1.0	57	85	29	57	3	4	1	8	0.19	0.00	22	0.13	-0.01

Bred to: LUCHT'S PASQUALE 923 (#1350972)

Due Date: 4/1/13

Powerful and good comes to mind with this solid Red Lighting daughter. She has produced some great progeny selling a beautiful heifer calf to VF Red Angus at Reno in 2011 and making a 108 WR Grand Statement daughter in 2012. This cow has donor quality with one of our highest MPPA of 106.



LOT 37 – C-T MATTIE 0525



C-T MATTIE 0525

[OSF]

Birth Date:
1/31/05

Reg. #
#1030154

Category:
100% 1A

BUF CRK CHF 824-1658 [OSC,MAF]
LCHMN GRANDCANYON 1244G [OSC,MAF]
KRN REBA'S ROBIN [OSF]

BUF CRK BARNEY 3474 [MAF,OSF]
CTDB MATTIE 118
BJR MATTIE-677-6153

BUF CRK CHIEF092-824 [OSC]
BFLO CRK CARIE VC473
LMAN ROBIN HOOD 1174B [OSF]
KRN REBELLA 805/314
BUF CRK BARON 2678
OLE SUNFLOWER 359 PB08 [OSF]
BJR RAMBLER 5162 [OSF]
BJR MATTIE 2206-4111

CED	BW	WW	YW	Milk	TM	ME	HPG	CEM	Stay	Marb	YG	CW	REA	Fat
1	-1.6	45	71	22	44	7	10	5	5	0.31	0.07	10	0.03	0.03

Bred to: LUCHT'S PASQUALE 923 (#1350972)

Due Date: 3/10/13

This is a nice Grand Canyon daughter from the very maternal Mattie cow family. She will leave you some great daughters and some strong bulls.



LOT 38 – C-T MISS PAN 0554

38 **C-T MISS PAN 0554** [OSF]
 Birth Date: 2/21/05 Reg. # #1030148 Category: 100% 1A

LCHMN GRANDCANYON 1244G [OSC,MAF] | BUF CRK CHF 824-1658 [OSC,MAF]
C-T GRAND CANYON 347 | KRN REBA'S ROBIN [OSF]
 CTDB BLOCKANA 810 [AMF,OSF] | GLACIER DIVIDE 310
 FED'S BLOCKANA 4231

DKK POWER SURGE 708 | FCC RAMBO 502 [OSF]
CTDB MISS PAN 026 | CK'S MISS ANNE 4011
 CTDB HOBOS GAL 602 | BUF CRK HOBOS 1961 [MAF,OSF]
 DKK MISS 401

CED	BW	WW	YW	Milk	TM	ME	HPG	CEM	Stay	Marb	YG	CW	REA	Fat
3	-2.0	59	92	23	52	8	9	6	1	0.23	0.04	22	-0.12	-0.02

Bred to: **5L RED SMOKE (#1261617)** Due Date: 2/22/13
 Here is a Grand Canyon-bred cow that will pay her way. She comes with a beautiful phenotype and udder, and a great set of EPDs and a 102.5 MPPA. She weaned off a Packer bull calf this fall with a 106 WR.



LOT 39 – C-T TINA 0820

39 **C-T TINA 0820**
 Birth Date: 1/20/08 Reg. # #1235687 Category: 100% 1A

FCC RAMBO 502 [OSF] | CV FOUR TIMES
VDAR RAMBO 323 [OSF] | COPPER LASS 2392
 BJR BLOCKANA2206-3149 | BJR C-CHIEF 811 [MAF,OSF]
 BJR BLOCKANA 30K-71L

BJR RAMBLER 5162 [OSF] | FCC RAMBO 502 [OSF]
CTDB TINA 113 [OSF] | BJR GOLDI 355-1122
 BJR TINA 002-158 | BJR EXCEL-A-TOR
 BJR TINA 862-608

CED	BW	WW	YW	Milk	TM	ME	HPG	CEM	Stay	Marb	YG	CW	REA	Fat
5	-0.2	45	67	16	38	-2	4	6	7	0.17	-0.06	10	0.11	-0.01

Bred to: **LUCHT'S PASQUALE 923 (#1350972)** Due Date: 3/5/13
 A good young Rambo 323 daughter from the very maternal Tina cow family. Will make a great cross with Pasquale 923.



LOT 40 – C-T VERDI 0814

40 **C-T VERDI 0814**
 Birth Date: 1/17/08 Reg. # #1235661 Category: 100% 1A

LCHMN GRANDCANYON 1244G [OSC,MAF] | BUF CRK CHF 824-1658 [OSC,MAF]
C-T CANYON 429 [AMF,MAF,OSF] | KRN REBA'S ROBIN [OSF]
 CTDB MISS PAN 011 | FCC RAMBO 502 [OSF]
 CK'S MISS ANNE 4011

GLACIER CHATEAU 744 [OSF] | LMAN KING ROB 8621 [MAF,OSF]
C-T VERDI 0502 | GLACIER REBALA
 C-T VERDI 312 | BJR MAKE MY DAY 981 [MAF,OSF]
 CTDB VERDI 109

CED	BW	WW	YW	Milk	TM	ME	HPG	CEM	Stay	Marb	YG	CW	REA	Fat
0	-0.9	61	96	21	52	10	8	5	3	0.48	0.12	26	0.11	0.03

Bred to: **FEDDES MONTANA X44 (#1368650)** Due Date: 2/17/13
 This good Canyon 429 daughter has been doing a great job. The Verdi cow family has made a big splash in our herd and this cow packs a great set of EPDs. She is bred to the exciting new Feddes X44 bull by Make Mimi.



LOT 41 – C-T MISS PAN 0835

41 **C-T MISS PAN 0835**
 Birth Date: 1/29/08 Reg. # #1235663 Category: 100% 1A
 C-T CANYON 429 [AMF,MAF,OSF] | LCHMN GRANDCANYON 1244G [OSC,MAF]
4L 429 CANYON 37S | CTDB MISS PAN 011
 MS ADVANCER OF 4L R29N | PERKS ADVANCER 9088 [MAF,OSF]
 MS HIWOOD HERO 4L 338
 C-T GRAND CANYON 347 | LCHMN GRANDCANYON 1244G [OSC,MAF]
C-T MISS PAN 0559 [OSF] | CTDB BLOCKANA 810 [AMF,OSF]
 DKK MISS 401 | RCRA EXPEDITION 1989
 CK'S MISS PAN 4053

CED	BW	WW	YW	Milk	TM	ME	HPG	CEM	Stay	Marb	YG	CW	REA	Fat
1	-1.2	60	89	21	51	3	8	3	4	0.67	0.16	21	-0.11	0.03

Breed to: **5L RED SMOKE (#1261617)** Due Date: **3/25/13**
 A very productive young Miss Pan cow, with a great set of numbers. Her mating with Red Smoke should be an exciting one. MPPA 102.



LOT 42 – SUNR FLO MARIE 770

42 **SUNR FLO MARIE 770**
 Birth Date: 1/20/07 Reg. # #1160450 Category: 100% 1A
 BECKTON JULIAN GG B571 [OSF] | BKT JULIAN 7526 G
BROWN VACATION H7106 [MAF,OSF] | BKT MARTA 9A13 JL [OSF]
 LCHMN FLOWER C1161 | LMAN KING ROB 8621 [MAF,OSF]
 LEACHMAN FLOWER 7140
 BFCK CHEROKEE CNYN 4912 [MAF,OSF] | BUF CRK CHF 824-1658 [OSC,MAF]
SRR FLO-MARIE 431-185 | MRM 1431 8611 9109 [OSF]
 LARSON FLO-MARIE 185 [OSF] | LEACHMAN MONU 2X 8096 [OSF]
 LARS FLOMARIE 866-324

CED	BW	WW	YW	Milk	TM	ME	HPG	CEM	Stay	Marb	YG	CW	REA	Fat
8	-4.0	53	75	26	52	5	13	1	17	0.32	-0.14	8	0.30	-0.02

Breed to: **FEDDES OSCAR X51 (#1368646)** Due Date: **3/28/13**
 If you like Brown Vacation daughters don't miss this one. She is a cow we purchased from Sun River Red Angus and has proved herself to be a good one. She has a solid set of EPDs and a 101.3 MPPA.



LOT 43 – C-T RAINBOW 1098

43 **C-T RAINBOW 1098**
 Birth Date: 3/16/10 Reg. # #1365714 Category: 100% 1A
 BIEBER MAKE MIMI 7249 [MAF,OSF] | BJR MAKE MY DAY 981 [MAF,OSF]
DKK LEGACY 705 [OSF] | BIEBER SIRENA 6708 [OSF]
 DKK HARMONY R36 [OSF] | LCC CHEYENNE B221L [MAF,OSF]
 DKK HARMONY 915
 FEDES BIG SKY R9 [MAF,OSF] | BIEBER MAKE MIMI 7249 [MAF,OSF]
C-T RAINBOW 0836 | FEDES LAKINA 310 [OSF]
 FEDES RAINBOW 919 [AMF,OSF] | LARSON RED LIGHTNING [OSF]
 FED'S RAINBOW 6121 [OSF]

CED	BW	WW	YW	Milk	TM	ME	HPG	CEM	Stay	Marb	YG	CW	REA	Fat
5	-1.6	62	94	25	56	6	11	0	12	0.55	-0.01	23	-0.01	-0.03

Breed to: **LUCHT'S PASQUALE 923 (#1350972)** Due Date: **3/1/13**
 A nice young, double-bred Make Mimi cow. She has great personal performance with a 117 WR and a 110 YR. She is in the top 4% of the breed for TM, with a 101.6 MPPA.



LOT 44 – C-T VERDI 1054



C-T VERDI 1054

Birth Date: 2/5/10

Reg. # #1365740

Category: 100% 1A

LCHMN GRANDCANYON 1244G [OSC,MAF]
C-T CANYON 429 [AMF,MAF,OSF]
CTDB MISS PAN 011

BUF CRK BARNEY 3474 [MAF,OSF]
CTDB VERDI 04
FED'S VERDI 5150

BUF CRK CHF 824-1658 [OSC,MAF]
KRN REBA'S ROBIN [OSF]
FCC RAMBO 502 [OSF]
CK'S MISS ANNE 4011
BUF CRK BARON 2678
OLE SUNFLOWER 359 PB08 [OSF]
FED'S POINT 389
FED'S VERDI 2109

CED	BW	WW	YW	Milk	TM	ME	HPG	CEM	Stay	Marb	YG	CW	REA	Fat
0	-0.7	51	72	21	46	4	7	3	6	0.38	0.10	12	0.05	0.04

Bred to: C-T DKK DUKE 1100 (#1426214)

Due Date: 2/18/13

This is a unique opportunity to buy a great young cow bred to C-T Duke 1100. This exciting young sire topped Feddes/C-T bull sale in 2012 to Josh Rust, ND. He sports amazing growth and EPDs all with a beautiful phenotype. Don't miss this mating.



LOT 45 – C-T TINA 1084



C-T TINA 1084

Birth Date: 2/26/10

Reg. # #1365732

Category: 100% 1A

BIEBER MAKE MIMI 7249 [MAF,OSF]
DKK LEGACY 705 [OSF]
DKK HARMONY R36 [OSF]

VDAR RAMBO 323 [OSF]
C-T TINA 0820
CTDB TINA 113 [OSF]

BJR MAKE MY DAY 981 [MAF,OSF]
BIEBER SIRENA 6708 [OSF]
LCC CHEYENNE B221L [MAF,OSF]
DKK HARMONY 915
FCC RAMBO 502 [OSF]
BJR BLOCKNA2206-3149
BJR RAMBLER 5162 [OSF]
BJR TINA 002-158

CED	BW	WW	YW	Milk	TM	ME	HPG	CEM	Stay	Marb	YG	CW	REA	Fat
7	-1.8	45	71	20	43	1	6	4	11	0.39	-0.06	10	0.06	-0.02

Bred to: LOOSLI RIGHT DESIGN 107 (#1432777)

Due Date: 4/1/13

A solid young Make Mimi bred cow from the very maternal Tina cow family. She is in calf to the exciting young Loosli Right Kind 107 that we purchased with Feddes and Wildcat.



LOT 46 – C-T MISS PAN 1083



C-T MISS PAN 1083

Birth Date: 2/26/10

Reg. # #1365736

Category: 100% 1A

LCHMN GRANDCANYON 1244G [OSC,MAF]
C-T CANYON 429 [AMF,MAF,OSF]
CTDB MISS PAN 011

DKK POWER SURGE 708
CTDB MISS PAN 026
CTDB HOBO'S GAL 602

BUF CRK CHF 824-1658 [OSC,MAF]
KRN REBA'S ROBIN [OSF]
FCC RAMBO 502 [OSF]
CK'S MISS ANNE 4011
FCC RAMBO 502 [OSF]
CK'S MISS ANNE 4011
BUF CRK HOBO 1961 [MAF,OSF]
DKK MISS 401

CED	BW	WW	YW	Milk	TM	ME	HPG	CEM	Stay	Marb	YG	CW	REA	Fat
2	-1.0	54	84	20	47	6	7	5	2	0.28	0.10	19	-0.02	0.02

Bred to: LOOSLI RIGHT DESIGN 107 (#1432777)

Due Date: 1/25/13

A nice young Grand Canyon, Rambo bred cow. She has a solid set of EPDs and will make a nice cross with Right Design 107.



DeBoer family in Arizona



C-T MATTIE 1066

[OSF]

Birth Date: 2/14/10

Reg. # #1365677

Category: 100% 1A

LCHMN GRANDCANYON 1244G [OSC,MAF]
C-T CANYON 429 [AMF,MAF,OSF]
CTDB MISS PAN 011

BUF CRK CHF 824-1658 [OSC,MAF]
KRN REBA'S ROBIN [OSF]

LCHMN GRANDCANYON 1244G [OSC,MAF]
C-T MATTIE 0514 [OSC]
CTDB MATTIE 014

BUF CRK CHF 824-1658 [OSC,MAF]
KRN REBA'S ROBIN [OSF]
DKK POWER SURGE 708
BJR MATTIE-677-6153

CED	BW	WW	YW	Milk	TM	ME	HPG	CEM	Stay	Marb	YG	CW	REA	Fat
-1	-0.5	59	93	23	52	8	8	4	2	0.36	0.09	25	0.15	0.03

Bred to: LUCHT'S PASQUALE 923 (#1350972)

Due Date: 3/15/13

Another nice, young Mattie cow, with a double-bred Grand Canyon pedigree. TM is in the top 13% of the breed.



LOT 48 – C-T MISCHIEF 1091



C-T MISCHIEF 1091

Birth Date: 3/8/10

Reg. # #1365719

Category: 100% 1A

BIEBER MAKE MIMI 7249 [MAF,OSF]
DKK LEGACY 705 [OSF]
DKK HARMONY R36 [OSF]

BJR MAKE MY DAY 981 [MAF,OSF]
BIEBER SIRENA 6708 [OSF]
LCC CHEYENNE B221L [MAF,OSF]
DKK HARMONY 915

4L SUPER VISION R2292 [MAF,OSF]
C-T MISCHIEF 0821
C-T MISCHIEF 326

GLACIER CHATEAU 744 [OSF]
4L MR RAMBO R709 [OSF]
BADLANDS MR BEEF 805 [MAF,OSF]
DKK FANCY 331

CED	BW	WW	YW	Milk	TM	ME	HPG	CEM	Stay	Marb	YG	CW	REA	Fat
7	-2.6	62	98	20	51	7	9	6	12	0.49	0.01	25	-0.05	-0.03

Bred to: LUCHT'S PASQUALE 923 (#1350972)

Due Date: 2/15/13

Don't miss this young Make Mimi cow if you like production. She had a 119 WR, 115 YR and has five traits in the top 20% of the breed. Pasquale 923 will cross well with this Mischief cow. MPPA 100.8.



LOT 49 – C-T BLOCKANA 0940



C-T BLOCKANA 0940

Birth Date: 2/3/09

Reg. # #1309201

Category: 100% 1A

BJR MAKE MY DAY 981 [MAF,OSF]
BIEBER MAKE MIMI 7249 [MAF,OSF]
BIEBER SIRENA 6708 [OSF]

BJR EASY RIDER 781
BJR TOW KANA 117-710

LMAN KING ROB 8621 [MAF,OSF]
C-T BLOCKANA 320
CTDB BLOCKANA 810 [AMF,OSF]

BIEBER IMPACT 4399
BIEBER MIMI 4227
LEACHMAN ROBUST 7222
LEACHMAN ELEANOR
GLACIER DIVIDE 310
FED'S BLOCKANA 4231

CED	BW	WW	YW	Milk	TM	ME	HPG	CEM	Stay	Marb	YG	CW	REA	Fat
5	-2.0	53	82	27	53	7	10	2	10	0.40	-0.07	16	0.25	-0.01

Bred to: 5L RED SMOKE (#1261617)

Due Date: 3/1/13

Here is a Direct Make Mimi daughter with a solid set of EPDs, and a +26 Milk, top 9% of the breed. She is moderate framed with a super udder and leg set. MPPA 101.1.



LOT 50 – C-T MISS PAN 0984

50 **C-T MISS PAN 0984**
 Birth Date: 2/28/09 Reg. # #1309229 Category: 100% 1A

C-T CANYON 429 [AMF,MAF,OSF] | LCHMN GRANDCANYON 1244G [OSC,MAF]
 4L 429 CANYON 37S | CTDB MISS PAN 011
 MS ADVANCER OF 4L R29N | PERKS ADVANCER 9088 [MAF,OSF]
 MS HIWOOD HERO 4L 338
 BIEBER MAKE MIMI 7249 [MAF,OSF] | BJR MAKE MY DAY 981 [MAF,OSF]
 BIEBER SIRENA 6708 [OSF]
C-T MISS PAN 0629 | BUF CRK BARNEY 3474 [MAF,OSF]
 CTDB MISS PAN 213 | CTDB MISS PAN 801

CED	BW	WW	YW	Milk	TM	ME	HPG	CEM	Stay	Marb	YG	CW	REA	Fat
4	-1.0	60	85	18	48	4	7	3	10	0.45	0.09	19	0.13	0.03

Bred to: **5L RED SMOKE (#1261617)** Due Date: **3/1/13**
 A solid, young Grand Canyon, Make Mimi bred cow with loads of volume and performance. MPPA 100.3.



LOT 51 – C-T MISS PAN 0918

51 **C-T MISS PAN 0918**
 Birth Date: 1/29/09 Reg. # #1432022 Category: 100% 1A

BIEBER MAKE MIMI 7249 [MAF,OSF] | BJR MAKE MY DAY 981 [MAF,OSF]
C-T BUFFALO HORN 0712 [OSF] | BIEBER SIRENA 6708 [OSF]
 C-T VERDI 0502 | GLACIER CHATEAU 744 [OSF]
 C-T VERDI 312
 LSF COMBINATION A301M [MAF,OSF] | LCHMN TOP BRASS 1049H
 WHF LASS 27G-29J [OSF]
C-T MONA 0704 | FEDDES LIGHTNING 912
 C-T MONA 446 | CTDB MONA 507

CED	BW	WW	YW	Milk	TM	ME	HPG	CEM	Stay	Marb	YG	CW	REA	Fat
3	-2.5	58	88	8	36	9	11	4	8	0.43	-0.03	19	0.16	-0.01

Bred to: **LUCHT'S PASQUALE 923 (#1350972)** Due Date: **2/15/13**
 A nice productive young cow from the famed Miss Pan Cow family. She will cross well with Pasquale 923. MPPA 100.



Luchts Pasquale 923



Bringing 'em home



LOT 52 – C-T VERDI 0904



C-T VERDI 0904

Birth Date: 1/22/09
Reg. # #1309176
Category: 100% 1A

LCHMN GRANDCANYON 1244G [OSC,MAF]
C-T CANYON 429 [AMF,MAF,OSF]
CTDB MISS PAN 011

BUF CRK HOB0 1961 [MAF,OSF]
CTDB MISS HOB0 702
FED'S VERDI 5150

BUF CRK CHF 824-1658 [OSC,MAF]
KRN REBA'S ROBIN [OSF]
FCC RAMBO 502 [OSF]
CK'S MISS ANNE 4011
BUF CRK HOB0 1413 [OSF]
BUF CR CARRIE VC1174 [OSF]
FED'S POINT 389
FED'S VERDI 2109

CED	BW	WW	YW	Milk	TM	ME	HPG	CEM	Stay	Marb	YG	CW	REA	Fat
4	-1.6	49	73	20	44	4	7	6	4	0.19	0.08	11	0.01	0.03

Bred to: LUCHT'S PASQUALE 923 (#1350972) Due Date: 2/15/13
A good young Verdi cow with a lot of calves left in her.



C-T MATTIE 0947

Birth Date: 2/7/09
Reg. # #1309199
Category: 100% 1A

5L DIRECT FIRE 1641-6443 [AMF,MAF,NHF,OSF]
FEDDES DIRECT KING 7144 [OSF]
FEDDES BLOCKANA R11 [OSF]

DKK POWER SURGE 708
CTDB MATTIE 014
BJR MATTIE-677-6153

C A FUTURE DIRECTION 5321 [AMC,NHC,CAF]
5L FIREFLY 174-1641 ET
5L NORSEMAN KING 2291 [MAF,OSF]
FEDDES BLOCKANA 173 [AMF,OSF]
FCC RAMBO 502 [OSF]
CK'S MISS ANNE 4011
BJR RAMBLER 5162 [OSF]
BJR MATTIE 2206-4111

CED	BW	WW	YW	Milk	TM	ME	HPG	CEM	Stay	Marb	YG	CW	REA	Fat
4	0.2	49	74	15	40	0	10	6	7	0.24	-0.08	15	0.26	-0.01

Bred to: LUCHT'S PASQUALE 923 (#1350972) Due Date: 2/5/13
This Feddes Direct King daughter comes from the powerful Mattie cow family and will make a good cross with Pasquale 923.



C-T VRDALE 0963

Birth Date: 2/16/09
Reg. # #1309214
Category: 100% 1A

C-T CANYON 429 [AMF,MAF,OSF]
4L 429 CANYON 375
MS ADVANCER OF 4L R29N

LCC MAJOR LEAGUE A502M [MAF,OSF]
C-T VRDALE 0519
CTDB VRDALE 012 [OSF]

LCHMN GRANDCANYON 1244G [OSC,MAF]
CTDB MISS PAN 011
PERKS ADVANCER 9088 [MAF,OSF]
MS HIWOOD HERO 4L 338
BFCK CHEROKEE CNYN 4912 [MAF,OSF]
KRN REBA'S ROBIN [OSF]
DKK POWER SURGE 708
FED'S VRDALE 5122

CED	BW	WW	YW	Milk	TM	ME	HPG	CEM	Stay	Marb	YG	CW	REA	Fat
1	-1.1	57	81	18	47	4	7	3	7	0.62	0.07	16	0.18	0.04

Bred to: LUCHT'S PASQUALE 923 (#1350972) Due Date: 2/10/13
A young Grand Canyon-bred cow.



LOT 55 – C-T MISS LASS 411



C-T MISS LASS 411

Birth Date: 1/24/04
Reg. # #956494
Category: 100% 1A

BUF CRK CHF 824-1658 [OSC,MAF]
BFCK CHEROKEE CNYN 4912 [MAF,OSF]
MRM 1431 8611 9109 [OSF]

LARSON RED LIGHTNING [OSF]
TKF LIGHTNING LASS 2126
TKF T LASS HEART

BUF CRK CHIEF092-824 [OSC]
BFLO CRK CARIE VC473
BUF CRK CHEROKEE1431
MRM 8454 8219 8611
LMN IMPRESSIVE ROB1095B [OSF]
LARSON CRIS 926
BJR RAMBLER 5162 [OSF]
BLAIRS TALL T LASS

CED	BW	WW	YW	Milk	TM	ME	HPG	CEM	Stay	Marb	YG	CW	REA	Fat
0	1.1	61	86	16	46	1	10	-6	11	0.21	-0.06	23	0.29	-0.01

Bred to: LUCHT'S PASQUALE 923 (#1350972) Due Date: 2/20/13
This Cherokee Canyon cow has been a sold producer with two daughters retained in our herd, and numerous sons selling. She will pay her way. She will make a great cross with Pasquale 923.



LOT 56 – CTDB MISS PAN 220



CTDB MISS PAN 220

Birth Date: **2/2/02** Reg. # **#841902** Category: **100% 1A**

LMN IMPRESSIVE ROB1095B [OSF] | LMAN KING ROB 8621 [MAF,OSF]
 LARSON RED LIGHTNING [OSF] | LEACHMAN FIRFLY 7522
 LARSON CRIS 926 | DEL JOHN 536-CIT-768
 DCC ROCKY DIVIDE 52 | BCH CRIS 523-4427
 CTDB MISS PAN 905 | GLACIER DIVIDE 310
 DKK MISS 401 | DCC COPPER LASS 30
 RCRA EXPEDITION 1989
 CK'S MISS PAN 4053

CED	BW	WW	YW	Milk	TM	ME	HPG	CEM	Stay	Marb	YG	CW	REA	Fat
-3	1.1	63	101	30	61	6	8	0	7	0.21	0.12	32	-0.24	-0.02

Bred to: **LUCHT'S PASQUALE 923 (#1350972)** Due Date: **2/27/13**

This Red Lightning daughter is worth a look if you like power and performance. She still has a great udder and feet, and her calf will not disappoint you in the fall. We have retained daughters in our herd and she weaned an 800-lb. bull calf this fall. She has four EPDs in the top 10% of the breed, with a 61 TM and a 108 MPPA.



LOT 57 – CTDB MISS PAN 227



CTDB MISS PAN 227

Birth Date: **2/7/02** Reg. # **#841936** Category: **100% 1A**

LARSON KING JOHN 659 [OSF] | LMN KING ROB 8621 [MAF,OSF]
 BJR KING SPREAD 035 | LARSON FLO-MARIE 185 [OSF]
 BJR LAKINA 4X-5129 | BJR MONU 4X-303 [MAF,OSF]
 FCC RAMBO 502 [OSF] | BJR LAKINA 319-810
 CTDB MISS PAN 011 | CV FOUR TIMES
 CK'S MISS ANNE 4011 | COPPER LASS 2392
 FN PERFECT 50H-2536
 CK'S MISS PAN 2028

CED	BW	WW	YW	Milk	TM	ME	HPG	CEM	Stay	Marb	YG	CW	REA	Fat
1	0.1	54	76	19	46	7	5	2	9	0.06	0.00	16	0.05	0.00

Bred to: **C-T GRAND STATEMENT 1025 (#1365711)** Due Date: **2/20/13**

I have always liked this Miss Pan cow. She has a great udder, moderate framed and a pretty phenotype with lots of volume. She is bred to our new exciting, young ABS sire, C-T Grand Statement 1025. This will be an exciting mating.



Traig and his first kill



Trac and Craig fishing



LOT 58 – FEDDES LARKABA 322



FEDDES LARKABA 322

Birth Date: 1/29/03 Reg. # #906734 Category: 100% 1A

LARSON RED LIGHTNING [OSF] | LMN IMPRESSIVE ROB1095B [OSF]
 FEDDES SUPREME 925 | LARSON CRIS 926
 FED'S BLOCKANA 4231 | BJR RAMBLER 5162 [OSF]
 | BJR BLOCKANA 502-5185
 GLACIER GRIZ 146 | GLACIER TOP POINT
 | GLACIER LASS
 MPK LARKABA 390 | LCHMN MDLD HVYWT2463 [OSF]
 BLUE RIDGE LARKABA 138 | BLUE RIDGE 614 GIRL

CED	BW	WW	YW	Milk	TM	ME	HPG	CEM	Stay	Marb	YG	CW	REA	Fat
6	-2.5	41	67	29	50	4	6	6	7	0.29	-0.07	7	0.15	-0.01

Bred to: FEDDES GRAND CHER 7125 (#1169367) Due Date: 3/18/13

322 has been a solid producer and has some good years left. She has an MPPA of 100.1, and she has sound feet and legs with a very sound udder. We sold a daughter in the 2010 Big Sky Elite Sale to Wildcat Creek Ranch. Her first calf is their consignment to Bet On Red sale in Reno in Nov. 2012.



LOT 59 – FEDDES BLOCKANA 351



FEDDES BLOCKANA 351

Birth Date: 2/5/03 Reg. # #906755 Category: 100% 1A

LMAN ROBIN HOOD 1174B [OSF] | LMAN KING ROB 8621 [MAF,OSF]
 LCHMAN LITTLE JOHN 1509D [OSF] | LEACHMAN PRILARK
 RBRTS LAKOTA 60B | MC INTOSH RED 910
 | LEACHMAN LAKOTA 7536
 LMAN KING ROB 8621 [MAF,OSF] | LEACHMAN ROBUST 7222
 | LEACHMAN ELEANOR
 FEDDES BLOCKANA 957 | FCC RAMBO 502 [OSF]
 BJR BLOCKANA 502-5185 | BJR BLOCKANA 50M-113

CED	BW	WW	YW	Milk	TM	ME	HPG	CEM	Stay	Marb	YG	CW	REA	Fat
-4	0.7	53	82	20	46	0	13	5	6	0.42	0.19	20	-0.10	0.04

Bred to: WCAT RIBEYE 127Y (#1446494) Due Date: 3/27/13

The 351 cow has been a favorite of mine for many years. If you are looking to add some depth and power to your cowherd, don't overlook her. Her bull calf last year sold to Gill Red Angus and Lucht Red Angus in our 2012 spring sale. We are flushing a daughter. A granddaughter was chosen as the Pick of the Feddes heifer calves in 2011 Big Sky Elite sale. I am sure glad we have several really good daughters and granddaughters, or selling this cow would be even more painful. We decided to sell all the 2003 females (or embryos on them), or this cow would not be for sale.



LOT 60 – FEDDES BLOCKANA 392



FEDDES BLOCKANA 392

Birth Date: 2/24/03 Reg. # #906787 Category: 100% 1A

LMAN KING ROB 8621 [MAF,OSF] | LEACHMAN ROBUST 7222
 GLACIER CHATEAU 744 [OSF] | LEACHMAN ELEANOR
 GLACIER REBALA | LCHMN MDLD HVYWT2463 [OSF]
 | GLACIER REBALAS
 LARSON RED LIGHTNING [OSF] | LMN IMPRESSIVE ROB1095B [OSF]
 | LARSON CRIS 926
 FEDDES BLOCKANA 899 [AMF,OSF] | BJR RAMBLER 5162 [OSF]
 FED'S BLOCKANA 4231 | BJR BLOCKANA 502-5185

CED	BW	WW	YW	Milk	TM	ME	HPG	CEM	Stay	Marb	YG	CW	REA	Fat
3	-3.2	43	66	28	49	4	9	8	9	0.30	-0.04	5	0.15	0.01

Bred to: C-T GRAND STATEMENT 1025 (#1365711) Due Date: 1/23/13

392 also has several daughters and granddaughters in our herd. She is a big capacity cow with a very sound udder and legs. Her dam (899) was the \$20,000-cow in our 2005 female sale selling to Ken Marquis. She was flushed until she was 13 years old. This is a female-building cow. Remember: There is a lot more to a good cow than EPDs (Don't tell the computer smart people that I said that).



LOT 61 – FEDDES BLOCKANA R5

61 **FEDDES BLOCKANA R5**
 Birth Date: 1/16/05 Reg. # #1025887 Category: 100% 1A

LCHMN TOP BRASS 1049H
 LSF COMBINATION A301M [MAF,OSF]
 WHF LASS 27G-29J [OSF]

GLACIER CHATEAU 744 [OSF]
FEDDES BLOCKANA 384
 FEDDES BLOCKANA 899 [AMF,OSF]

WOODHILL TOP BRASS
 LEACHMAN MATTIE F1274
 GLACIER LOGAN 210 [MAF,OSF]
 WF LASS 27G [OSC]
 LMAN KING ROB 8621 [MAF,OSF]
 GLACIER REBALA
 LARSON RED LIGHTNING [OSF]
 FED'S BLOCKANA 4231

CED	BW	WW	YW	Milk	TM	ME	HPG	CEM	Stay	Marb	YG	CW	REA	Fat
-1	-2.2	56	88	11	39	13	14	7	6	0.51	0.05	19	0.07	0.01

Bred to: **WCAT RIBEYE 127Y (#1446494)** Due Date: **3/5/13**
 R5 is a moderately framed female that is powerful and easy fleshing. She comes from the Blockana cow family.



LOT 62 – FEDDES BLOCKANA 54S

62 **FEDDES BLOCKANA 54S**
 Birth Date: 2/4/06 Reg. # #1096190 Category: 100% 1A

VGW KING OF THE WEST [MAF,OSF]
5L NORSEMAN KING 2291 [MAF,OSF]
 NORSEMAN 1312 PJM

LARSON RED LIGHTNING [OSF]
FEDDES BLOCKANA 899 [AMF,OSF]
 FED'S BLOCKANA 4231

VGW ACE G13
 VGW MT TABITHA 9633
 376 P J M 141
 P J M POWERPOINT 2009
 LMN IMPRESSIVE ROB1095B [OSF]
 LARSON CRIS 926
 BJR RAMBLER 5162 [OSF]
 BJR BLOCKANA 502-5185

CED	BW	WW	YW	Milk	TM	ME	HPG	CEM	Stay	Marb	YG	CW	REA	Fat
4	-2.1	39	59	23	43	-2	7	-2	6	0.45	-0.23	3	0.44	-0.02

Bred to: **FEDDES GRAND CHER 7125 (#1169367)** Due Date: **3/23/13**
 54S is a moderately framed Norseman King daughter that comes from a solid cow family. We have a daughter in the herd.

63 **FEDDES MISCHIEF 828** [OSF]
 Birth Date: 1/22/08 Reg. # #1235162 Category: 100% 1A

LCHMN GRANDCANYON 1244G [OSC,MAF]
5L FOREVER GRAND 5834 [OSC,MAF]
 NORSEMAN 1312 PJM

BIEBER MAKE MIMI 7249 [MAF,OSF]
FEDDES MISCHIEF R23
 CTDB MISCHIEF 025

BUF CRK CHF 824-1658 [OSC,MAF]
 KRN REBA'S ROBIN [OSF]
 376 P J M 141
 P J M POWERPOINT 2009
 BJR MAKE MY DAY 981 [MAF,OSF]
 BIEBER SIRENA 6708 [OSF]
 BUF CRK BARNEY 3474 [MAF,OSF]
 DKK FANCY 331

CED	BW	WW	YW	Milk	TM	ME	HPG	CEM	Stay	Marb	YG	CW	REA	Fat
2	-0.8	51	75	24	50	3	9	2	5	0.46	-0.02	13	0.19	0.01

Bred to: **WCAT RIBEYE 127Y (#1446494)** Due Date: **4/20/13**
 828's MPPA is 100.2 She stacks Make Mimi and Grand Canyon, two of the top female producers in the breed. If she was bred earlier she would be staying here.

65 **FEDDES LARKABA 9119** [OSF]
 Birth Date: 1/28/09 Reg. # #1323066 Category: 100% 1A

5L NORSEMAN KING 2291 [MAF,OSF]
FEDDES ATLAS 12S [AMF,MAF,OSF]
 FEDDES BLOCKANA 472 [OSF]

FEDDES GRAND 430 [OSC,MAF]
FEDDES LARKABA 50S [OSC]
 MPK LARKABA 390

VGW KING OF THE WEST [MAF,OSF]
 NORSEMAN 1312 PJM
 LCHMN GRANDCANYON 1244G [OSC,MAF]
 FEDDES BLOCKANA 899 [AMF,OSF]
 LCHMN GRANDCANYON 1244G [OSC,MAF]
 FED'S BLOCKANA 5116
 GLACIER GRIZ 146
 BLUE RIDGE LARKABA 138

CED	BW	WW	YW	Milk	TM	ME	HPG	CEM	Stay	Marb	YG	CW	REA	Fat
1	-0.5	50	77	22	47	2	8	1	3	0.35	-0.13	16	0.42	-0.01

Bred to: **WCAT RIBEYE 127Y (#1446494)** Due Date: **4/2/13**
 9119 stacks a lot of great female makers in her pedigree. Atlas 12S, Norseman King, Grand Canyon (twice), Rambler 5162 and Rambo. Combine these sires and a very well-balanced set of EPDs on a young cow, and it makes her future look bright.



LOT 66 – FEDDES RAINBOW 9141



FEDDES RAINBOW 9141

Birth Date: 2/2/09 Reg. # #1323163 Category: 100% 1A

BIEBER MAKE MIMI 7249 [MAF,OSF]
FEDDES BIG SKY R9 [MAF,OSF]
 FEDDES LAKINA 310 [OSF]
 LSF COMBINATION A301M [MAF,OSF]
FEDDES RAINBOW R71
 FEDDES RAINBOW 154

BJR MAKE MY DAY 981 [MAF,OSF]
 BIEBER SIRENA 6708 [OSF]
 LCHMN GRANDCANYON 1244G [OSC,MAF]
 FEDDES LAKINA 954
 LCHMN TOP BRASS 1049H
 WHF LASS 27G-29J [OSF]
 5L MILLENNIUM RED 816 [MAF,OSF]
 FEDDES RAINBOW 833

CED	BW	WW	YW	Milk	TM	ME	HPG	CEM	Stay	Marb	YG	CW	REA	Fat
0	-1.3	58	86	20	49	7	17	-2	7	0.60	-0.02	20	0.05	-0.02

Bred to: **FEDDES EMPIRE Y105 (#1423236)** Due Date: 4/20/13

We tend to hoard the Big Sky females – OK we do hoard them and for good reason. They are making really good young cows. Many of them show much less udder than their mothers and yet out-produce them. That is a trait we like, I think they will continue to be found in the bottom side of top-producing cattle. 9141 would not sell if she was not bred late. We do have a very nice Grand Statement daughter in the replacement pen of 2012.



FEDDES CAVALIER 9161

Birth Date: 2/6/09 Reg. # #1323087 Category: 100% 1A

SUNR GRAND CHEROKEE 909N [MAF,OSF]
FEDDES GRAND CHER 7125 [MAF,OSF]
 FEDDES OSCE 149
 FEDDES ROB 803
FEDDES BLOCKANA 186
 FEDDES BLOCKANA 875

BFCK CHEROKEE CNVN 4912 [MAF,OSF]
 SUNR GRAND TILLY 006 [OSF]
 LARSON RED LIGHTNING [OSF]
 FED'S OSCE 646
 LMN IMPRESSIVE ROB1095B [OSF]
 FED'S RAINBOW 6121 [OSF]
 LMB ELWAY 938
 FED'S BLOCKANA 4225 [AMF,OSF]

CED	BW	WW	YW	Milk	TM	ME	HPG	CEM	Stay	Marb	YG	CW	REA	Fat
1	-1.0	44	64	29	51	-1	8	-1	10	0.26	-0.08	7	0.24	0.00

Bred to: **FEDDES EMPIRE Y105 (#1423236)** Due Date: 4/28/13

9161 boasts an MPPA 104. Her milk is in the top 4% of the breed, TM 22%, ME 18%, YG and REA 19%. Her dam is still in the herd as a coming 12-year-old.



FEDDES BLOCKANA X30

Birth Date: 1/25/10 Reg. # #1368563 Category: 100% 1A

5L NORSEMAN KING 2291 [MAF,OSF]
FEDDES ATLAS 12S [AMF,MAF,OSF]
 FEDDES BLOCKANA 472 [OSF]
 C-T RAM TOUGH 441
FEDDES BLOCKANA 51S
 FEDDES BLOCKANA 392

VGW KING OF THE WEST [MAF,OSF]
 NORSEMAN 1312 PJM
 LCHMN GRANDCANYON 1244G [OSC,MAF]
 FEDDES BLOCKANA 899 [AMF,OSF]
 FCC RAMBO 502 [OSF]
 LARSON CRIS 926
 GLACIER CHATEAU 744 [OSF]
 FEDDES BLOCKANA 899 [AMF,OSF]

CED	BW	WW	YW	Milk	TM	ME	HPG	CEM	Stay	Marb	YG	CW	REA	Fat
3	-2.0	42	62	22	43	-1	8	2	6	0.17	-0.22	4	0.47	-0.02

Bred to: **FEDDES EMPIRE Y105 (#1423236)** Due Date: 3/28/13

X30's pedigree is loaded with maternal giants. Feddes Atlas 12S, Norseman King, Grand Canyon, Rambo 502, Chateau 744 and Red Lightning all show up in five generations, along with Blockana 4231 and 899 both top and bottom side of the pedigree.



McKenzie loving her horse!



FEDDES BLOCKANA X40

Birth Date: 1/26/10 Reg. # #1368652 Category: 100% 1A

MLK CRK CUB 722 [MAF,OSF]
RED CROWFOOT OLE'S OSCAR [MAF,OSF]
 RED CROWFOOT OMEGA 9179J
 FEDDES BIG SKY R9 [MAF,OSF]
FEDDES BLOCKANA 8128
 FEDDES BLOCKANA 173 [AMF,OSF]

GLACIER CUB 446 [MAF,OSF]
 MLK CRK LAKOTA 152-HOBO [OSF]
 RED PRICE 631 [AMF,OSF]
 RED OMEGA 7456'
 BIEBER MAKE MIMI 7249 [MAF,OSF]
 FEDDES LAKINA 310 [OSF]
 HOLDEN HI HO 574 [OSF]
 FEDDES BLOCKANA 899 [AMF,OSF]

CED	BW	WW	YW	Milk	TM	ME	HPG	CEM	Stay	Marb	YG	CW	REA	Fat
4	-2.5	53	80	24	50	-2	8	8	8	0.58	0.00	14	0.06	0.00

Bred to: **FEDDES EMPIRE Y105 (#1423236)** Due Date: 4/30/13

X40 is an Ole's Oscar daughter that produced a bull calf with a 99 birth ratio and 108 WR. She is stacked with maternal power, including Oscar, Feddes Big Sky, Grand Canyon, Glacier Griz 146, Hobo 1961, Make Mimi and Red Lightning. Her later calving date is our loss, but a great opportunity for breeders with a later calving season.



Cordon and his best friend



Dairy Queen ... nothin' better!



FEDDES FIREFLY X72

Birth Date: 2/2/10

Reg. # #1368693

Category: 100% 1A

BJR MAKE MY DAY 981 [MAF,OSF]
BIEBER MAKE MIMI 7249 [MAF, OSF]
 BIEBER SIRENA 6708 [OSF]

BJR EASY RIDER 781
 BJR TOW KANA 117-710
 BIEBER IMPACT 4399
 BIEBER MIMI 4227

BECKTON EPIC S163 K5 [AMF,MAF,OSF]
VGW S163-FIREFLY 0893
 VGW NC-FIREFLY 0529

BECKTON EPIC K5 P071
 BECKTON LANA P073 EP
 GEFB NORTHERN CANYON 2328 [MAF,OSF]
 VGW NE-FIREFLY 9715

CED	BW	WW	YW	Milk	TM	ME	HPG	CEM	Stay	Marb	YG	CW	REA	Fat
8	-2.0	64	96	20	52	5	10	0	14	0.59	0.00	24	0.18	0.00

Bred to: **FEDDES EMPIRE Y105 (#1423236)**

Due Date: 4/30/13

X72 is a Mimi daughter that has a bright future. Her bull calf in 2012 has a BR of 92 and 101 WR.



FEDDES LARKABU X92

Birth Date: 2/16/10

Reg. # #1368551

Category: 100% 1A

5L DIRECT FIRE 1641-6443 [AMF,MAF,NHF,OSF]
FEDDES DIRECT KING 7144 [OSF]
 FEDDES BLOCKANA R11 [OSF]

C A FUTURE DIRECTION 5321 [AMC,NHC,CAF]
 5L FIREFLY 174-1641 ET

LCC CHEYENNE B221L [MAF,OSF]
FEDDES LARKABU 3S
 FEDDES LARKABU 402

5L NORSEMAN KING 2291 [MAF,OSF]
 FEDDES BLOCKANA 173 [AMF,OSF]
 BFCK CHEROKEE CNYN 4912 [MAF,OSF]
 HXC 701G
 FEDDES ROB 283
 FEDDES LARKABA 202

CED	BW	WW	YW	Milk	TM	ME	HPG	CEM	Stay	Marb	YG	CW	REA	Fat
2	0.8	58	90	22	51	8	13	7	13	0.34	0.00	25	0.30	0.01

Bred to: **FEDDES EMPIRE Y105 (#1423236)**

Due Date: 4/30/13

X92 has a very balanced set of EPDs. Her first calf had a ratio of 100. Her maternal sister by Feddes Atlas 12S is one of the top bred heifers in our replacements.



Don't mess with me!



FEDDES BLOCKANA X112

Birth Date: 2/22/10

Reg. # #1368678

Category: 100% 1A

SUNR GRAND CHEROKEE 909N [MAF,OSF]
FEDDES GRAND CHER 7125 [MAF, OSF]
 FEDDES OSCE 149

BFCK CHEROKEE CNYN 4912 [MAF,OSF]
 SUNR GRAND TILLY 006 [OSF]
 LARSON RED LIGHTNING [OSF]
 FED'S OSCE 646

5L NORSEMAN KING 2291 [MAF,OSF]
FEDDES BLOCKANA 62S
 FEDDES BLOCKANA 880 [AMF,OSF]

VGW KING OF THE WEST [MAF,OSF]
 NORSEMAN 1312 PJM
 GLACIER DIVIDE 310
 FED'S BLOCKANA 4231

CED	BW	WW	YW	Milk	TM	ME	HPG	CEM	Stay	Marb	YG	CW	REA	Fat
1	-0.1	50	81	25	49	1	10	-2	5	0.31	-0.12	19	0.42	-0.01

Bred to: **FEDDES EMPIRE Y105 (#1423236)**

Due Date: 4/20/13

X112 has a very balanced set of EPDs. She should be a solid producer for years to come. A maternal brother by Feddes Big Sky sold to Cliff Raile, KS. His sons are outperforming many of his Charolais bulls on the cow and on test. 880 passed on a lot of power and performance, and I am sure this young female will be no exception. We have a full sister in the replacement pen, so it is a little easier to let this on go.



LOT 72 – FEDDES BLOCKANA X112



Our best hired hand, Ben



FEDDES BLOCKANA X122

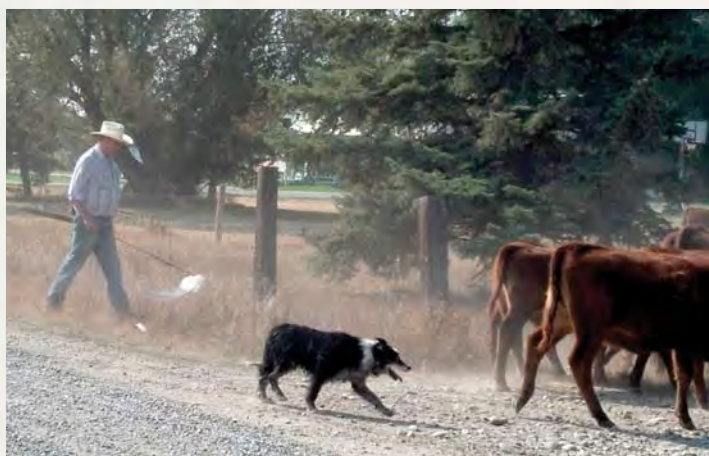
Birth Date: 2/27/10 Reg. # #1368699 Category: 100% 1A

BLUE RIDGE PONDEROSA | LCHMN NO EQUAL 1174D [MAF,OSF]
LCB HOSS A444N [MAF,OSF] | BLUE RIDGE KIMA 794 [OSF]
RSLND REBELLA 120-502 [OSF] | BASIN HOBO 79E [MAF,OSF]
 | KRN REBA'S ROBIN [OSF]
FED'S ELWAY 766 [OSF] | LMB ELWAY 938
FEDDES BLOCKANA 041 [AMF,OSF] | FED'S VRDALE 360
FED'S BLOCKANA 765 | LMN IMPRESSIVE ROB1095B [OSF]
 | FED'S BLOCKANA 4227

CED	BW	WW	YW	Milk	TM	ME	HPG	CEM	Stay	Marb	YG	CW	REA	Fat
1	-0.6	50	76	29	55	2	4	4	10	0.19	-0.01	15	0.12	0.00

Bred to: FEDDES EMPIRE Y105 (#1423236) Due Date: 3/8/13

X122 is a product of our ET program. We flushed 041 for Australian export, and we had more eggs than they agreed on, resulting in this female. 041 is a powerful female with a perfect udder attachment and very small teats. We flushed her several times, and then sold her to Wildcat Creek at 10 years old. This young female is a bit bigger frame than most of our cattle.



Our other best hired hand



FEDDES BLOCKANA X142

Birth Date: 3/5/10 Reg. # #1368671 Category: 100% 1A

SUNR GRAND CHEROKEE 909N [MAF,OSF] | BFCK CHEROKEE CNYN 4912 [MAF,OSF]
FEDDES GRAND CHER 7125 [MAF,OSF] | SUNR GRAND TILLY 006 [OSF]
FEDDES OSCE 149 | LARSON RED LIGHTNING [OSF]
 | FED'S OSCE 646
GLACIER CHATEAU 744 [OSF] | LMAN KING ROB 8621 [MAF,OSF]
FEDDES BLOCKANA R82 | GLACIER REBALA
FED'S BLOCKANA 4225 [AMF,OSF] | BUF CRK HOBO 1961 [MAF,OSF]
 | BJR BLOCKANA 502-5185

CED	BW	WW	YW	Milk	TM	ME	HPG	CEM	Stay	Marb	YG	CW	REA	Fat
2	-0.9	49	77	27	51	4	9	5	9	0.30	-0.03	15	0.26	0.01

Bred to: FEDDES EMPIRE Y105 (#1423236) Due Date: 3/18/13

X142 is a granddaughter of 4225, who we flushed until she was 15. Grand Canyon, Red Lightning, Hobo 1961, Chateau 744 and Rambo 502 are all stacked in a 5-generation pedigree.



LOT 75 – FEDDES SLEEK X22



FEDDES SLEEK X22

Birth Date: 1/25/10 Reg. # #1368687 Category: 100% 1A

BFCK CHEROKEE CNYN 4912 [MAF,OSF] | BUF CRK CHF 824-1658 [OSC,MAF]
SUNR GRAND CHEROKEE 909N [MAF,OSF] | MRM 1431 8611 9109 [OSF]
SUNR GRAND TILLY 006 [OSF] | LCHMN GRANDCANYON 1244G [OSC,MAF]
 | BJR TILLY 091-0102
5L NORSEMAN KING 2291 [MAF,OSF] | VGW KING OF THE WEST [MAF,OSF]
FEDDES SLEEK 833 | NORSEMAN 1312 PJM
FEDDES SLEEK R128 | FEDDES GRAND 230 [OSF]
 | FEDDES SLEEK 830

CED	BW	WW	YW	Milk	TM	ME	HPG	CEM	Stay	Marb	YG	CW	REA	Fat
3	-1.0	59	82	15	45	1	11	-1	6	0.42	-0.12	17	0.56	0.01

Bred to: FEDDES EMPIRE Y105 (#1423236) Due Date: 3/13/13

X22 has a very solid set of EPDs. She lost her calf this year, but I think she has a lot of cow potential. We breed for balance in all traits, and she covers most of them pretty well.

KLOMPIEN RED ANGUS



Bred Heifers



DKK ELEANOR 148

Birth Date: 2/10/11

Reg. # #1427294

Category: 100% 1A

4L 429 CANYON 37S
C-T THUNDERBIRD 0811 [AMF,OSF]
CTDB VRDALE 012 [OSF]

C-T CANYON 429 [AMF,MAF,OSF]
MS ADVANCER OF 4L R29N

DKK POWER SURGE 708
FED'S VRDALE 5122

LCC CHEYENNE B221L [MAF,OSF]

BFCK CHEROKEE CNYN 4912 [MAF,OSF]
HXC 701G

DKK ELEANOR R06

DKK ELEANOR L01 [OSF]

FCC RAMBO 502 [OSF]
CK'S MISS ANNE 4011

CED	BW	WW	YW	Milk	TM	ME	HPG	CEM	Stay	Marb	YG	CW	REA	Fat
7	-3.7	50	74	18	43	2	7	6	7	0.52	0.04	9	0.05	0.02

Bred to: DKK TUFF 146 (#1427198)

Due Date: 4/30/13

Eleanor 148 is calving-ease deluxe. Her CED is in the top 18% of the breed with her BW in the top 8%. This is a classy, moderate-framed bred heifer with lots of potential. Bred to DKK Tuff, you can expect her to calve easily and the calf to have great carcass.



Kara



LOT 79 – DKK DAZZLE 188



DKK HARMONY 162

Birth Date: 2/15/11

Reg. # #1427295

Category: 100% 1A

4L 429 CANYON 37S
C-T THUNDERBIRD 0811 [AMF,OSF]
CTDB VRDALE 012 [OSF]

C-T CANYON 429 [AMF,MAF,OSF]
MS ADVANCER OF 4L R29N

DKK POWER SURGE 708
FED'S VRDALE 5122

LCC CHEYENNE B221L [MAF,OSF]

BFCK CHEROKEE CNYN 4912 [MAF,OSF]
HXC 701G

DKK HARMONY R36 [OSF]

DKK HARMONY 915

RD DREAMMAKER OF 3R
DKK HARMONY 532

CED	BW	WW	YW	Milk	TM	ME	HPG	CEM	Stay	Marb	YG	CW	REA	Fat
1	0.8	58	81	19	48	2	8	5	8	0.53	0.08	19	-0.04	0.01

Bred to: DKK TUFF 146 (#1427198)

Due Date: 5/4/13

Harmony 162 is a really cool, moderate-framed, low-maintenance, high-marbling bred heifer. Her maternal sister was selected for the 2000 Denver Classic. Her dam DKK Harmony is one of the Klompien favorites because she is a powerhouse. DKK Tuff should complement this heifer.



DKK ELEANOR 168

Birth Date: 2/20/11

Reg. # #1427262

Category: 100% 1A

4L 429 CANYON 37S
C-T THUNDERBIRD 0811 [AMF,OSF]
CTDB VRDALE 012 [OSF]

C-T CANYON 429 [AMF,MAF,OSF]
MS ADVANCER OF 4L R29N

DKK POWER SURGE 708
FED'S VRDALE 5122

FCC RAMBO 502 [OSF]

CV FOUR TIMES
COPPER LASS 2392

DKK ELEANOR L01 [OSF]

CK'S MISS ANNE 4011

FN PERFECT 50H-2536
CK'S MISS PAN 2028

CED	BW	WW	YW	Milk	TM	ME	HPG	CEM	Stay	Marb	YG	CW	REA	Fat
3	-0.8	49	70	16	41	2	4	5	3	0.38	0.02	11	0.05	0.01

Bred to: BECKTON EPIC R397 K (#1042135)

Due Date: 1/29/13

This is a low-maintenance, classy young lady. Her mother, DKK Eleanor L01, is easy on the eyes and this bred heifer follows in her footsteps. Bred to Beckton Epic R397 K, the calving ease, growth, low-maintenance, carcass specialist.



DKK DAZZLE 188

Birth Date: 2/28/11

Reg. # #1427293

Category: 100% 1A

FCC RAMBO 502 [OSF]
DKK KEYSTONE 657 [AMF,OSF]
DKK DAZZLE ME M34

CV FOUR TIMES
COPPER LASS 2392

BUF CRK BARNEY 3474 [MAF,OSF]
CK'S MISS ANNE 08

LCC CHEYENNE B221L [MAF,OSF]

BFCK CHEROKEE CNYN 4912 [MAF,OSF]
HXC 701G

DKK DAZZLE R04

DKK DAZZLE L12 [OSF]

BUF CRK HOBO 1961 [MAF,OSF]
DKK DAZZLE 910

CED	BW	WW	YW	Milk	TM	ME	HPG	CEM	Stay	Marb	YG	CW	REA	Fat
1	0.8	75	110	11	49	6	7	7	11	0.36	0.14	36	-0.01	0.01

Bred to: KCC MAKE MIMI X09 (#1370431)

Due Date: 2/11/13

Another awesome heifer coming out of the Dazzle Family. DKK Dazzle 188 is in the top 2% of the breed for WW, top 4% for YW, top 4% for CW and no wonder when you check out her ratios – WR: 111 and YR:113. This girl is just that good. Her dam's MPPA is 101.7.



LOT 80 – DKK IMPRESS 189



DKK IMPRESS 189

Birth Date: 3/1/11 Reg. # #1427227 Category: 100% 1A

4L 429 CANYON 37S
C-T THUNDERBIRD 0811 [AMF,OSF]
CTDB VRDALE 012 [OSF]
BALLENSKY GOLDRBR 2046 [AMF,OSF]
DKK IMPRESS 8107
DKK IMPRESS 744 [OSF]
C-T CANYON 429 [AMF,MAF,OSF]
MS ADVANCER OF 4L R29N
DKK POWER SURGE 708
FED'S VRDALE 5122
LCHMN GOLD ROBBER 1909E [MAF,OSF]
BALLENSKY MS RAM 0068
BIEBER IMPACT 4399
CK'S PRETTY PAN 115

CED	BW	WW	YW	Milk	TM	ME	HPG	CEM	Stay	Marb	YG	CW	REA	Fat
4	-1.4	53	75	19	46	-4	8	4	6	0.47	0.03	13	0.05	0.01

Bred to: DKK TUFF 146 (#1427198) Due Date: 4/26/13

This sweet heifer combines quite the package of low birth, low maintenance and high marbling. Bred to DKK Tuff, the resulting calf should reflect the same great traits as his or her mama.



DKK MELODY 192

Birth Date: 3/2/11 Reg. # #1427290 Category: 100% 1A

FCC RAMBO 502 [OSF]
DKK KEYSTONE 657 [AMF,OSF]
DKK DAZZLE ME M34
LARSON RED LIGHTNING [OSF]
DKK MELODY P42 [OSF]
DKK MELODY L54
CV FOUR TIMES
COPPER LASS 2392
BUF CRK BARNEY 3474 [MAF,OSF]
CK'S MISS ANNE 08
LMN IMPRESSIVE ROB1095B [OSF]
LARSON CRIS 926
DKK POWER SURGE 708
DKK MELODY 531

CED	BW	WW	YW	Milk	TM	ME	HPG	CEM	Stay	Marb	YG	CW	REA	Fat
-3	2.6	64	87	17	48	6	5	3	8	0.10	0.04	25	0.01	-0.01

Bred to: VGW VISION 009 (#1374374) Due Date: 1/29/13

A bred heifer coming from the great Melody cow family. Her dam's MPPA is 104.9. WR is 102 and WW EPD in the top 16% of the breed. Bred to VGW Vision, you can expect her to calve very easily.



DKK AUBURN 199

Birth Date: 3/7/11 Reg. # #1427282 Category: 100% 1A

FCC RAMBO 502 [OSF]
DKK KEYSTONE 657 [AMF,OSF]
DKK DAZZLE ME M34
FEDDES HOT PURSUIT 010
DKK AUBURN N56 [OSF]
DKK AUBURN 919 [OSF]
CV FOUR TIMES
COPPER LASS 2392
BUF CRK BARNEY 3474 [MAF,OSF]
CK'S MISS ANNE 08
BUF CRK CHF 824-1658 [OSC,MAF]
FED'S BLOCKANA 5115
LMB ELWAY 938
DKK AUBURN 607

CED	BW	WW	YW	Milk	TM	ME	HPG	CEM	Stay	Marb	YG	CW	REA	Fat
-1	2.4	68	98	11	45	5	6	4	8	0.25	0.08	31	0.04	0.00

Bred to: BECKTON EPIC R397 K (#1042135) Due Date: 1/29/13

Auburn 199 sports a WR of 104 and a YR of 102 which is echoed by her WW being in the top 8% of the breed and yearling in the top 15% of the breed. Another female bred to the calving ease, growth, low-maintenance, carcass specialist – Beckton Epic R397 K.



Kay and 8013



DKK AUBURN 1105

Birth Date: 3/10/11 Reg. # #1427233 Category: 100% 1A

LJC MISSION STATEMENT P27 [MAF,OSF]
GMRA MISSION 8214 [AMF,OSF]
GMRA LAKOTA 325
LMB ELWAY 938
DKK AUBURN 919 [OSF]
DKK AUBURN 607
LJC LANCER 806 [OSF]
LJC HANNAH 106 [OSF]
GLACIER CHATEAU 744 [OSF]
GMRA LAKOTA 149 [OSF]
SIE ELWAY 1570
LMB ST MONA 740
BUF CRK HOBO 1961 [MAF,OSF]
CK RAMBLIN RUDY 213

CED	BW	WW	YW	Milk	TM	ME	HPG	CEM	Stay	Marb	YG	CW	REA	Fat
-1	0.2	61	97	18	49	7	9	4	14	0.37	-0.08	29	0.36	-0.02

Bred to: DKK TUFF 146 (#1427198) Due Date: 4/15/13

Another heifer out of the Auburn cow family. 1105 lists seven traits in the top 30% of the breed. Her WR is 106 with a YR of 107. Dam's MPPA 101.7.



LOT 84 – DKK STARLETTE 1108



DKK STARLETTE 1108

Birth Date: 3/11/11 Reg. # #1427205 Category: 100% 1A

LJC MISSION STATEMENT P27 [MAF,OSF] | LJC LANCER 806 [OSF]
GMRA MISSION 8214 [AMF,OSF] | LJC HANNAH 106 [OSF]
GMRA LAKOTA 325 | GLACIER CHATEAU 744 [OSF]
GMRA LAKOTA 149 [OSF]
DKK PRIORITY R07 [OSF] | LCC MAJOR LEAGUE A502M [MAF,OSF]
DKK STARLETTE 8013 | DKK SASSINA M23
DKK STARLETTE R70 [OSF] | C-T BARNEY 317
DKK STARLETTE K28 [OSF]

CED	BW	WW	YW	Milk	TM	ME	HPG	CEM	Stay	Marb	YG	CW	REA	Fat
2	-2.9	52	84	24	51	7	11	3	14	0.44	-0.12	16	0.40	-0.01

Bred to: **BECKTON EPIC R397 K (#1042135)** Due Date: 1/29/13

This low-birth, high-carcass, high-maternal, fancy heifer comes from a great cow family. With eight traits in the top 30%, she posts a milk EPD in the top 8% and stayability in the top 6%. Definitely a heifer to put a mark by in your catalog. Mated to Beckton Epic R397 K; expect great things out of the resulting calf.



Dave's big fish



DKK ROXY 1122

Birth Date: 3/17/11 Reg. # #1427217 Category: 100% 1A

LJC MISSION STATEMENT P27 [MAF,OSF] | LJC LANCER 806 [OSF]
GMRA MISSION 8214 [AMF,OSF] | LJC HANNAH 106 [OSF]
GMRA LAKOTA 325 | GLACIER CHATEAU 744 [OSF]
GMRA LAKOTA 149 [OSF]
DKK VOLTAGE 509 | BUF CRK HOBO 1961 [MAF,OSF]
DKK RIKKI 855 [OSF] | DKK 321
DKK ROXY 508 | BUF CRK HOBO 1961 [MAF,OSF]
DKK DUTCHESS 322

CED	BW	WW	YW	Milk	TM	ME	HPG	CEM	Stay	Marb	YG	CW	REA	Fat
4	-1.7	50	78	17	42	6	12	6	13	0.41	-0.08	14	0.16	-0.02

Bred to: **DKK TUFF 146 (#1427198)** Due Date: 5/4/13

Roxy 1122 posted a WR of 107 and a YR of 104 which is pretty awesome; but also look at the fact that mama is 15 years old and still going strong. Dam's calving interval is 368 days and she is bred up and looking forward to a 2013 baby. The dam has calved unassisted every year and brought home a calf every fall.



LOT 86 – DKK RAZZLE 1138



DKK RAZZLE 1138

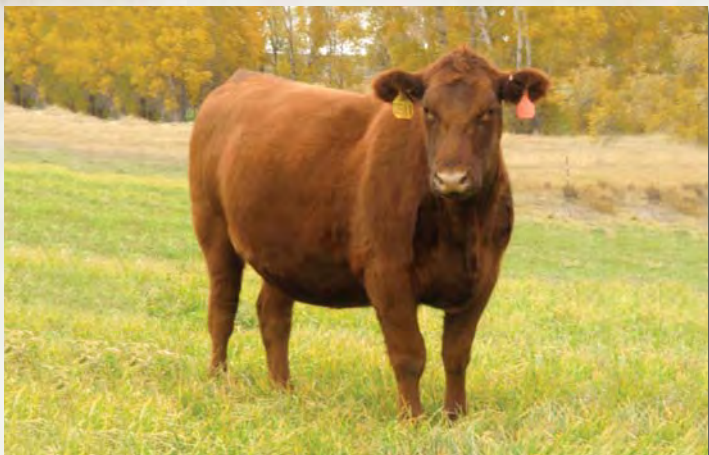
Birth Date: 4/20/11 Reg. # #1427254 Category: 100% 1A

DKK ADDICTION N10 [OSF] | BJR JR 107 [MAF,OSF]
DKK VIGOR 9027 [OSF] | DKK DIXIE 901
DKK PEACE 791 [OSC] | BALLENSKY GOLDRBR 2046 [AMF,OSF]
DKK RAZZLE 9087 | LSF COMBINATION A301M [MAF,OSF]
DKK RAZZLE 617 | CTDB MONA 128
GLACIER CHATEAU 744 [OSF]
DKK RAZZLE P57 [OSF]

CED	BW	WW	YW	Milk	TM	ME	HPG	CEM	Stay	Marb	YG	CW	REA	Fat
6	-2.9	63	97	20	52	11	11	8	5	0.33	0.08	23	0.02	0.01

Bred to: **VGW VISION 009 (#1374374)** Due Date: 2/1/13

DKK Razzle 1138 has nine traits in the top 30% of the Red Angus Breed. She started out at only 62 lbs. and then packed on the pounds to ratio 121 at weaning and 116 at yearling ...that's smokin'! It's obviously in her genes – her dam's MPPA is 108.4. With a -2.9 BW EPD, mated to VGW Vision with a -1.9 BW EPD and 74 WW EPD the calf should just pop out and grow like crazy.



LOT 87 – C-T HONEST GIRL 1180



C-T HONEST GIRL 1180

Birth Date: 2/16/11

Reg. # #1426183

Category: 100% 1A

HXC HEMI 4400P [OSF]
 HXC JACKHAMMER 8800U [AMF,OSF]
 HXC JOLENE 301N [OSF]

BECKTON LANCER F442 T [MAF,OSF]
 HXC 701G
 BECKTON JULIAN GG B571 [OSF]
 HXC JAYLO LB136 [OSF]
 C-T CANYON 429 [AMF,MAF,OSF]
 MS ADVANCER OF 4L R29N
 BUF CRK BARNEY 3474 [MAF,OSF]
 ASV HONEST GIRL 803

4L 429 CANYON 37S
 C-T HONEST GIRL 0861
 C-T HONEST GIRL 417

CED	BW	WW	YW	Milk	TM	ME	HPG	CEM	Stay	Marb	YG	CW	REA	Fat
1	1.3	82	127	13	54	9	8	5	13	0.59	0.23	47	0.09	0.04

Bred to: LOOSLI RIGHT DESIGN 107 (#1432777)

Due Date: 2/15/13

If you are looking for a bred heifer with amazing individual performance and EPDs, this heifer will fit that bill. She is in the top 1% for three traits and has a 116 WR and a 118 YR. These Jackhammer daughters look like they will make great cows. This will also be an exciting mating bred to our powerful new Right Kind son.



LOT 88 – C-T MISS PAN 1127



C-T MISS PAN 1127

Birth Date: 1/28/11

Reg. # #1426149

Category: 100% 1A

MESSMER JOSHUA 019P [OSF]
 MESSMER PACKER S008 [MAF,OSF]
 MESSMER MILLIE 124P [OSF]

BECKTON JULIAN GG B571 [OSF]
 MESSMER PANDORA M186 [OSF]
 VGW TOP PICK 130
 MESSMER MILLIE 9416
 BUF CRK BARON 2678
 OLE SUNFLOWER 359 PB08 [OSF]
 LARSON RED LIGHTNING [OSF]
 CTDB MISS PAN 905

BUF CRK BARNEY 3474 [MAF,OSF]
 C-T MISS PAN 0511
 CTDB MISS PAN 220

CED	BW	WW	YW	Milk	TM	ME	HPG	CEM	Stay	Marb	YG	CW	REA	Fat
0	-0.4	69	107	18	52	4	12	3	14	0.44	0.05	33	0.16	0.00

Bred to: LOOSLI RIGHT DESIGN 107 (#1432777)

Due Date: 2/15/13

A Packer daughter with good performance and a great set of EPDs. These Miss Pan Cows have been making some of the best cows in the business. She is also bred to our exciting Right Kind son.



Ropin' calves



C-T MATTIE 1156

Birth Date: 2/6/11

Reg. # #1426202

Category: 100% 1A

5L DESTINATION 893-6215 [AMF,NHF,OSF]
 5L HOBO DESIGN 273-7047 [MAF,OSF]
 5L ANALISE 1591-273

5L DIRECT FIRE 1641-6443 [AMF,MAF,NHF,OSF]
 5L ADINA 525-893 [OSF]
 BUF CRK HOBO 1961 [MAF,OSF]
 5L ANALISE 585-1591

FEDDES DIRECT KING 7144 [OSF]
 C-T MATTIE 0947
 CTDB MATTIE 014

5L DIRECT FIRE 1641-6443 [AMF,MAF,NHF,OSF]
 FEDDES BLOCKANA R11 [OSF]
 DKK POWER SURGE 708
 BJR MATTIE-677-6153

CED	BW	WW	YW	Milk	TM	ME	HPG	CEM	Stay	Marb	YG	CW	REA	Fat
9	-0.8	54	81	14	41	0	12	12	13	0.34	-0.06	17	0.23	-0.01

Bred to: C-T THE QUEST 1103 (#1426142)

Due Date: 1/25/13

An early-calving Hobo Design daughter with a great mating to C-T Quest 1103 and a Conquest son that sold to 5L and Hamilton Ranch.



Taryn and May at a rodeo



C-T HONEST GIRL 1143

Birth Date: 2/2/11 Reg. # #1426180 Category: 100% 1A

LJC LANCER 806 [OSF] | BECKTON LANCER T A664 [OSF]
 LJC MISSION STATEMENT P27 [MAF, OSF] | LJC HB LIZZIE 606
 LJC HANNAH 106 [OSF] | HOLDEN HI HO 753
 LJC KJ JAMIE 516
 4L SUPER VISION R2292 [MAF, OSF] | GLACIER CHATEAU 744 [OSF]
 4L MR RAMBO R709 [OSF]
C-T HONEST GIRL 0804 | BADLANDS MR BEEF 805 [MAF, OSF]
 C-T HONEST GIRL 334 | CTDB HONEST GIRL 018

CED	BW	WW	YW	Milk	TM	ME	HPG	CEM	Stay	Marb	YG	CW	REA	Fat
-1	-0.9	59	101	18	47	8	13	2	12	0.44	-0.11	30	0.45	-0.02

Bred to: **LOOSLI RIGHT DESIGN 107 (#1432777)** Due Date: 2/15/13
 Another nice Mission Statement daughter from the strong Honest Girl cow family. Will be a great mating with Right Design 107.



LOT 91 – C-T MISS PAN 111



C-T MISS PAN 111

Birth Date: 3/20/11 Reg. # #1426188 Category: 100% 1A

5L BLAZIN RED 1354-6166 [OSF] | 5L BLAZIN HOBO 404-5654 [MAF, OSF]
 5L RED SMOKE 1246-42V | 5L REBA 60-1354 [OSF]
 5L REDBIRD 2534-1246 [OSF] | 5L DIRECT FIRE 1641-6443 [AMF, MAF, NHF, OSF]
 5L REDBIRD 661-2534 [OSF]
 4L 429 CANYON 37S | C-T CANYON 429 [AMF, MAF, OSF]
C-T MISS PAN 0877 | MS ADVANCER OF 4L R29N
 C-T MISS PAN 0536 | LSF COMBINATION A301M [MAF, OSF]
 CTDB MISS LOGAN 704

CED	BW	WW	YW	Milk	TM	ME	HPG	CEM	Stay	Marb	YG	CW	REA	Fat
-1	0.9	64	96	15	47	5	12	5	9	0.64	0.02	28	0.19	0.00

Bred to: **DKK TUFF 146 (#1427198)** Due Date: 3/15/13
 This Red Smoke daughter has as balanced a set of EPDs as she has phenotype.



LOT 92 – C-T MISS PAN 1137



C-T MISS PAN 1137

Birth Date: 1/31/11 Reg. # #1426158 Category: 100% 1A

LJC LANCER 806 [OSF] | BECKTON LANCER T A664 [OSF]
 LJC MISSION STATEMENT P27 [MAF, OSF] | LJC HB LIZZIE 606
 LJC HANNAH 106 [OSF] | HOLDEN HI HO 753
 LJC KJ JAMIE 516
 BIEBER MAKE MIMI 7249 [MAF, OSF] | BJR MAKE MY DAY 981 [MAF, OSF]
C-T MISS PAN 0629 | BIEBER SIRENA 6708 [OSF]
 CTDB MISS PAN 213 | BUF CRK BARNEY 3474 [MAF, OSF]
 CTDB MISS PAN 801

CED	BW	WW	YW	Milk	TM	ME	HPG	CEM	Stay	Marb	YG	CW	REA	Fat
2	-2.4	52	86	20	45	7	12	-2	15	0.41	-0.21	18	0.53	-0.03

Bred to: **LOOSLI RIGHT DESIGN 107 (#1432777)** Due Date: 2/25/13
 This Mission Statement daughter from a solid Make Mimi cow will make a great replacement. Don't miss this exciting mating to Right King 107.



LOT 93 – C-T MISS PAN 1148



C-T MISS PAN 1148

Birth Date: 2/2/11

Reg. # #1426229

Category: 100% 1A

LJC LANCER 806 [OSF]
LJC MISSION STATEMENT P27 [MAF,OSF]
LJC HANNAH 106 [OSF]

BECKTON LANCER T A664 [OSF]
LJC HB LIZZIE 606
HOLDEN HI HO 753
LJC KJ JAMIE 516
GLACIER DIVIDE 310
FED'S BLOCKANA 5115
GLACIER LOGAN 210 [MAF,OSF]
DKK 337

FEDDES DIVIDE 851
CTDB MISS PAN 237
CTDB MISS LOGAN 704

CE	BW	WW	YW	Milk	TM	ME	HPG	CEM	Stay	Marb	YG	CW	REA	Fat
-3	0.0	61	99	21	51	7	13	0	11	0.66	-0.10	29	0.40	-0.02

Bred to: HXC CONQUEST 4405 (#975924)

Due Date: 1/25/13

If you like them with volume and power, you will like this heifer. She is bred to Conquest 4405, which will make a great cross. She is also in the top 10% of the breed from both carcass traits.



Cattle-working crew



C-T LARKABA 1188

Birth Date: 2/22/11

Reg. # #1426168

Category: 100% 1A

5L BLAZIN RED 1354-6166 [OSF]
5L RED SMOKE 1246-42V
5L REDBIRD 2534-1246 [OSF]

5L BLAZIN HOBO 404-5654 [MAF,OSF]
5L REBA 60-1354 [OSF]
5L DIRECT FIRE 1641-6443 [AMF,MAF,NHF,OSF]
5L REDBIRD 661-2534 [OSF]
SHOCO SIR ROBIN
VDAR BLACKANA 303
LCHMN TOP BRASS 1049H
JST LARKABA M3205

SHOCO DATA [MAF,OSF]
C-T LARKABA 0733
JST LARKABA 4401 [OSF]

CE	BW	WW	YW	Milk	TM	ME	HPG	CEM	Stay	Marb	YG	CW	REA	Fat
0	1.0	65	95	14	46	6	14	5	12	0.52	0.04	28	0.20	0.01

Bred to: DKK TUFF 146 (#1427198)

Due Date: 4/15/13

This Red Smoke x Shoco Data has a unique pedigree, with a very solid set of EPDs and a nice phenotype.



Loosli Right Design 107



Fall heifer gather



LOT 95 – FEDDES MISCHIEF Y14



FEDDES MISCHIEF Y14

Birth Date: **1/23/11** Reg. # **#1423155** Category: **100% 1A**

5L DESTINATION 893-6215 [AMF,NHF,OSF]
5L HOB0 DESIGN 273-7047 [MAF,OSF]
 5L ANALISE 1591-273

5L DIRECT FIRE 1641-6443 [AMF,MAF,NHF,OSF]
 5L ADINA 525-893 [OSF]
 BUF CRK HOB0 1961 [MAF,OSF]
 5L ANALISE 585-1591
 5L NORSEMAN KING 2291 [MAF,OSF]
 FEDDES BLOCKANA 472 [OSF]
 BIEBER MAKE MIMI 7249 [MAF,OSF]
 CTDB MISCHIEF 025

FEDDES ATLAS 12S [AMF,MAF,OSF]
FEDDES MISCHIEF 9176
 FEDDES MISCHIEF R23

CED	BW	WW	YW	Milk	TM	ME	HPG	CEM	Stay	Marb	YG	CW	REA	Fat
6	0.3	69	103	16	51	2	11	8	12	0.42	-0.07	32	0.36	-0.02

Bred to: **FEDDES MIMI Y48 (#1423203)** Due Date: **3/18/13**

Y14 is very hard to let go of. We are excited to see the Hobo Design females in production, but we have a number of them in the replacement group. She sports a "no holes" EPD profile, and is very easy on the eyes. Her dam is a beautiful Feddes Atlas 12S daughter. You will also find Norseman King, Grand Canyon, Mimi and Hobo 1961 in five generations.



LOT 96 – FEDDES BLOCKANA Y75



FEDDES BLOCKANA Y75

Birth Date: **2/6/11** Reg. # **#1423310** Category: **100% 1A**

FEDDES BIG SKY R9 [MAF,OSF]
C-T BIG CHIEF 0934 [OSF]
 C-T MISCHIEF 0765

BIEBER MAKE MIMI 7249 [MAF,OSF]
 FEDDES LAKINA 310 [OSF]
 S R CHEROKEE CHIEF
 C-T MISCHIEF 0504
 5L FOREVER GRAND 5834 [OSC,MAF]
 SODAK OPAL K0052 [OSF]
 RED BRYLOR NEW TREND 22 [MAF,OSF]
 FEDDES BLOCKANA 134

5L GRAND EXT 0052-5956 [OSC,MAF]
FEDDES BLOCKANA 8138 [OSF]
 FEDDES BLOCKANA 468

CED	BW	WW	YW	Milk	TM	ME	HPG	CEM	Stay	Marb	YG	CW	REA	Fat
2	-1.1	61	94	23	54	1	13	-3	10	0.32	0.00	25	0.20	0.00

Bred to: **FEDDES MIMI Y48 (#1423203)** Due Date: **3/18/13**

Y75 is another heifer that is hard to sell. We really like the looks of the Big Chief replacement heifers at this point. The Big Sky daughters are making great cows all across the country and I expect the Big Chiefs to do the same. There is a lot of power and balance in this lot.



LOT 97 – FEDDES BLOCKANA Y96



FEDDES BLOCKANA Y96

Birth Date: **2/10/11** Reg. # **#1423231** Category: **100% 1A**

5L NORSEMAN KING 2291 [MAF,OSF]
FEDDES ATLAS 12S [AMF,MAF,OSF]
 FEDDES BLOCKANA 472 [OSF]

VGW KING OF THE WEST [MAF,OSF]
 NORSEMAN 1312 PJM
 LCHMN GRANDCANYON 1244G [OSC,MAF]
 FEDDES BLOCKANA 899 [AMF,OSF]
 BIEBER MAKE MIMI 7249 [MAF,OSF]
 FEDDES LAKINA 310 [OSF]
 LCHMAN LITTLE JOHN 1509D [OSF]
 FEDDES BLOCKANA 957

FEDDES BIG SKY R9 [MAF,OSF]
FEDDES BLOCKANA 7162
 FEDDES BLOCKANA 351

CED	BW	WW	YW	Milk	TM	ME	HPG	CEM	Stay	Marb	YG	CW	REA	Fat
1	-0.3	58	87	22	51	-1	12	-2	6	0.41	-0.11	21	0.42	-0.01

Bred to: **C-T MAKIN DESIGNS 1157 (#1426212)** Due Date: **3/5/13**

Y96 is a beautiful Feddes Atlas 12S daughter, from a Big Sky daughter that has one of our very best 2012 heifer calves. She shows a combination of growth and power with balanced traits throughout her EPD profile. Her granddam sells as Lot 59. Note the female producers in her pedigree: Atlas, Norseman King, Grand Canyon, Big Sky, Mimi and Little John. She is Blockana both top and bottom.



LOT 98 – FEDES BLOCKANA Y146



FEDES BLOCKANA Y146

Birth Date: 3/4/11 Reg. # #1423267 Category: 100% 1A

SUNR GRAND CHEROKEE 909N [MAF,OSF] | BFGK CHEROKEE CNVN 4912 [MAF,OSF]
 FEDES GRAND CHER 7125 [MAF,OSF] | SUNR GRAND TILLY 006 [OSF]
 FEDES OSCE 149 | LARSON RED LIGHTNING [OSF]
 FED'S OSCE 646
 5L NORSEMAN KING 2291 [MAF,OSF] | VGW KING OF THE WEST [MAF,OSF]
 NORSEMAN 1312 PJM
 FEDES BLOCKANA 7211 | LCHMN GRANDCANYON 1244G [OSC,MAF]
 FEDES BLOCKANA 472 [OSF] | FEDES BLOCKANA 899 [AMF,OSF]

CED	BW	WW	YW	Milk	TM	ME	HPG	CEM	Stay	Marb	YG	CW	REA	Fat
1	-0.4	50	80	25	50	1	9	-2	5	0.42	-0.11	18	0.45	0.00

Bred to: C-T MAKIN DESIGNS 1157 (#1426212) Due Date: 3/27/13

Y146 is as good as her picture and equally good on paper. She combines our "Osce and Blockana" cow families. She is due to calve to our Makin Designs bull (Hobo Design X Right Time) who we are really excited about. This should be a very good mating, as they should complement each other very well. Females like these gives breeders a lot of options in matings, because there aren't big holes to worry about.



LOT 99 – FEDES BLOCKANA Y171



FEDES BLOCKANA Y171

Birth Date: 3/17/11 Reg. # #1423308 Category: 100% 1A [OSF]

BLUE RIDGE PONDEROSA | LCHMN NO EQUAL 1174D [MAF,OSF]
 LCB HOSS A444N [MAF,OSF] | BLUE RIDGE KIMA 794 [OSF]
 RSLND REBELLA 120-502 [OSF] | BASIN HOBO 79E [MAF,OSF]
 KRN REBA'S ROBIN [OSF]
 FED'S ELWAY 766 [OSF] | LMB ELWAY 938
 FEDES BLOCKANA 041 [AMF,OSF] | FED'S VRDALE 360
 FED'S BLOCKANA 765 | LMN IMPRESSIVE ROB1095B [OSF]
 FED'S BLOCKANA 4227

CED	BW	WW	YW	Milk	TM	ME	HPG	CEM	Stay	Marb	YG	CW	REA	Fat
1	-0.6	50	76	29	55	2	4	4	10	0.19	-0.01	15	0.12	0.00

Bred to: FEDES MIMI Y48 (#1423203) Due Date: 3/3/13

Y171 is another Hoss X 041 ET female. Her dam has a MPPA of 106.5. She will be a little bit larger frame than most of our cattle, but if she produces like her dam she will have a happy owner.



Exhausted after moving cows



FEDES FAYETTE Y175

Birth Date: 3/20/11 Reg. # #1423295 Category: 100% 1A

SUNR GRAND CHEROKEE 909N [MAF,OSF] | BFGK CHEROKEE CNVN 4912 [MAF,OSF]
 FEDES GRAND CHER 7125 [MAF,OSF] | SUNR GRAND TILLY 006 [OSF]
 FEDES OSCE 149 | LARSON RED LIGHTNING [OSF]
 FED'S OSCE 646
 5L NORSEMAN KING 2291 [MAF,OSF] | VGW KING OF THE WEST [MAF,OSF]
 NORSEMAN 1312 PJM
 FEDES FAYETTE 855 | FEDES SUPREME 925
 FEDES FAYETTE 132 | MPK FAYETTE 3118

CED	BW	WW	YW	Milk	TM	ME	HPG	CEM	Stay	Marb	YG	CW	REA	Fat
1	0.2	49	76	23	47	1	7	-2	6	0.36	-0.14	16	0.44	-0.01

Bred to: FEDES MIMI Y48 (#1423203) Due Date: 3/18/13

Y175 is a younger heifer that shows a lot of potential. She also has a balanced EPD profile to go with a lot of maternal potential. She is stacked with maternal sires.



LOT 101 – LGR VENICE 103



LGR VENICE 103

Birth Date: 1/10/11

Reg. # #1429053

Category: 100% 1A

VGW JUSTICE 614
FRITZ JUSTICE 8013 [AMF,MAF,OSF]
FRITZ CHRIS 6047 [OSF]

GMRA CITADEL 6109 [MAF,OSF]
LGR VENICE 9118
LGR VENICE 479 [OSF]

BUF CRK PATRIOT M183 [AMF,MAF,OSF]
VGW M82-FIREFLY 0479
5L HOBBO BEN 04-4422 [OSC]
FRITZ CRIS 1051
GLACIER CHATEAU 744 [OSF]
GMRA NEXA 235 [OSF]
BIEBER TOP MONEY 7948 [MAF,OSF]
GMRA VENICE 708

CED	BW	WW	YW	Milk	TM	ME	HPG	CEM	Stay	Marb	YG	CW	REA	Fat
6	-0.3	79	118	15	54	10	10	9	11	0.34	0.14	39	0.20	0.03

Bred to: VGW SCOUT 040 (#1374288)

Due Date: 4/17/13

The Justice calves are some of the most sought after in the country and here is the only bred heifer sired by Justice in the offering. She has great length and is nice and deep. Her breeding gives her top-notch growth numbers, with a WW EPD in the top 1% of the breed, a YW in the top 2%, and a CW in the top 3%.



LOT 102 – GMRA LARKOBA 107



GMRA LARKOBA 107

Birth Date: 1/12/11

Reg. # #1428957

Category: 100% 1A

LCC CHEYENNE B221L [MAF,OSF]
GMRA LARAMIE 5110 [MAF,OSF]
GMRA LAKOTA 341 [OSF]

BROWN VACATION H7106 [MAF,OSF]
GMRA LARKOBA 761
GMRA LARKOBA 517 [OSF]

BFCK CHEROKEE GNYN 4912 [MAF,OSF]
HXC 701G
BASIN HOBBO 79E [MAF,OSF]
GMRA LAKOTA 947
BECKTON JULIAN GG B571 [OSF]
LCHMN FLOWER C1161
GLACIER CHATEAU 744 [OSF]
GMRA LARKOBA 221

CED	BW	WW	YW	Milk	TM	ME	HPG	CEM	Stay	Marb	YG	CW	REA	Fat
-4	0.8	72	108	20	56	12	13	4	15	0.39	0.04	35	0.13	-0.01

Bred to: VGW SCOUT 040 (#1374288)

Due Date: 3/11/13

This nice, smooth Larkoba heifer brings a lot of maternal power to the table. Her dam has an MPPA of 103.1, with an average weaning ratio of 104 on 4 and her granddam has an impressive 108.5 MPPA, with an average weaning ratio of 111 on 6. Six of Larkoba 107's EPDs are in the top 7% of the breed or higher – HPG is in the top 7%, YW and CW are in the top 5%, and WW, TM and Stay are in the top 4%.



LOT 103 – GMRA VENICE 118



GMRA VENICE 118

Birth Date: 1/17/11

Reg. # #1429000

Category: 100% 1A

BECKTON JULIAN GG B571 [OSF]
HXC CONQUEST 4405P [MAF,OSF]
HXC ELLIE MAY MA638 [OSF]

LCB HOSS A444N [MAF,OSF]
GMRA VENICE 950
GMRA VENICE 384 [OSF]

BKT JULIAN 7526 G
BKT MARTA 9A13 JL [OSF]
BFCK CHEROKEE GNYN 4912 [MAF,OSF]
HXC 529E
BLUE RIDGE PONDEROSA
RSLND REBELLA 120-502 [OSF]
BIEBER TOP MONEY 7948 [MAF,OSF]
GMRA VENICE 210

CED	BW	WW	YW	Milk	TM	ME	HPG	CEM	Stay	Marb	YG	CW	REA	Fat
9	-2.3	58	83	19	48	5	6	6	16	0.39	0.01	16	0.15	0.01

Bred to: VGW SCOUT 040 (#1374288)

Due Date: 3/4/13

Plenty of performance in a highly maternal background. The Venice cow family always provides above-average MPPAs and, as a result, have great longevity in the herd. Venice 118 has 2/3 of her EPDs in the top 50% of the breed or better, all the way up to Stay in the top 3%.



LOT 104 – GMRA LARKABA 119



GMRA LARKABA 119

Birth Date: 1/18/11

Reg. # #1428890

Category: 100% 1A

LJC LANCER 806 [OSF]
LJC MISSION STATEMENT P27 [MAF, OSF]
LJC HANNAH 106 [OSF]

BIEBER TOP MONEY 7948 [MAF, OSF]
GMRA LARKABA 386 [OSF]
GMRA LARKABA 8100

BECKTON LANCER T A664 [OSF]
LJC HB LIZZIE 606
HOLDEN HI HO 753
LJC KJ JAMIE 516
BIEBER RED MOON 6042 [OSF]
BIEBER SIRENA 6708 [OSF]
GMRA LAKOTA 458
GMRA LARKABA 84

CED	BW	WW	YW	Milk	TM	ME	HPG	CEM	Stay	Marb	YG	CW	REA	Fat
1	-0.9	61	100	15	46	9	12	-1	12	0.40	-0.07	29	0.41	-0.01

Bred to: VGW SCOUT 040 (#1374288)

Due Date: 3/17/13

This bred heifer has great depth of rib with lots of capacity. She has cutting-edge EPDs – 11 of her numbers are in the top 44% or higher, with a negative birth EPD while WW and YW are in the top 21% and 11%, respectively.



LOT 105 – GMRA LAKOTA 146



GMRA LAKOTA 146

Birth Date: 1/27/11

Reg. # #1428877

Category: 100% 1A

LJC LANCER 806 [OSF]
LJC MISSION STATEMENT P27 [MAF, OSF]
LJC HANNAH 106 [OSF]

GLACIER CHATEAU 744 [OSF]
GMRA LAKOTA 325
GMRA LAKOTA 149 [OSF]

BECKTON LANCER T A664 [OSF]
LJC HB LIZZIE 606
HOLDEN HI HO 753
LJC KJ JAMIE 516
LMAN KING ROB 8621 [MAF, OSF]
GLACIER REBALA
BASIN HOBO 79E [MAF, OSF]
GMRA LAKOTA 314

CED	BW	WW	YW	Milk	TM	ME	HPG	CEM	Stay	Marb	YG	CW	REA	Fat
2	-3.4	52	88	24	50	9	13	2	14	0.50	-0.15	18	0.49	-0.01

Bred to: VGW SCOUT 040 (#1374288)

Due Date: 3/3/13

A nice, deep, broody Lakota female. She's a complete package with a powerful set of numbers. Three-fourths of her EPDs are in the top 50% of the breed or higher, and 2/3 of those are in the top 30% of the breed or higher.



Jeremy heading to gather off of Green Mountain



GMRA VENICE 176

Birth Date: 2/11/11

Reg. # #1428871

Category: 100% 1A

BECKTON JULIAN GG B571 [OSF]
HXC CONQUEST 4405P [MAF, OSF]
HXC ELLIE MAY MA638 [OSF]

BJR MAKE MY DAY 981 [MAF, OSF]
GMRA VENICE 231
GMRA VENICE 959 [OSF]

BKT JULIAN 7526 G
BKT MARTA 9A13 JL [OSF]
BFCK CHEROKEE CNYN 4912 [MAF, OSF]
HXC 529E
BJR EASY RIDER 781
BJR TOW KANA 117-710
VGW RAMBLER 1000 [OSF]
GMRA VENICE 210

CED	BW	WW	YW	Milk	TM	ME	HPG	CEM	Stay	Marb	YG	CW	REA	Fat
10	-2.4	61	95	15	45	8	6	6	14	0.63	0.04	23	0.07	0.00

Bred to: VGW SCOUT 040 (#1374288)

Due Date: 4/22/13

This Venice female has the potential to be a true curve bender. She has a CED, BW, WW and YW EPD all in the top 22% of the breed or higher. Rarely do you see these powerful growth numbers on a true calving-ease, low-birthweight dam.



LOT 107 – GMRA LAKOTA 179Y



GMRA LAKOTA 179Y

Birth Date: 2/12/11 Reg. # #1428965 Category: 100% 1A

LJC LANCER 806 [OSF] | BECKTON LANCER T A664 [OSF]
 LJC MISSION STATEMENT P27 [MAF, OSF] | LJC HB LIZZIE 606
 LJC HANNAH 106 [OSF] | HOLDEN HI HO 753
 | LJC KJ JAMIE 516
 GMRA LARAMIE 5110 [MAF, OSF] | LCC CHEYENNE B221L [MAF, OSF]
 GMRA LAKOTA 817 | GMRA LAKOTA 341 [OSF]
 GMRA LAKOTA 422 [OSF] | BIEBER TOP MONEY 7948 [MAF, OSF]
 | GMRA LAKOTA 912

CED	BW	WW	YW	Milk	TM	ME	HPG	CEM	Stay	Marb	YG	CW	REA	Fat
3	-4.0	62	101	18	49	10	13	0	14	0.39	-0.15	25	0.52	-0.02

Bred to: VGV SCOUT 040 (#1374288) Due Date: 4/17/13

Lakota 179 boasts a maternal pedigree graced with the foundation female, GMRA Lakota 912. You can read more about her in Lot 21's footnote. Lakota 179's EPDs place her at the top of the breed with a BW in the top 6% while maintaining a WW in the top 20% and a YW in the top 11%. All but two of her EPDs place her in the top 51% or higher and of those, 10 are in the top 26% of the breed or higher.



Bob and Daisy



LGR ESTONIA 183

Birth Date: 2/17/11 Reg. # #1429041 Category: 100% 1A

LJC MISSION STATEMENT P27 [MAF, OSF] | LJC LANCER 806 [OSF]
 GMRA SECRET MISSION 8258 [OSF] | LJC HANNAH 106 [OSF]
 GMRA LAKOTA 341 [OSF] | BASIN HOBO 79E [MAF, OSF]
 | GMRA LAKOTA 947
 LSF COMBINATION A301M [MAF, OSF] | LCHMN TOP BRASS 1049H
 LGR ESTONIA 669 | WHF LASS 27G-29J [OSF]
 LGR ESTONIA 0002 [OSF] | BASIN GOLD 6C
 | GMRA ESTONIA 312

CED	BW	WW	YW	Milk	TM	ME	HPG	CEM	Stay	Marb	YG	CW	REA	Fat
-10	2.5	69	110	12	47	12	13	0	10	0.40	0.07	39	0.17	0.00

Bred to: VGV SCOUT 040 (#1374288) Due Date: 3/13/13

Estonia 183 is a member of the elite Estonia cow family that has produced such notables as GMRA EBV 266 and CCF Estonia 626-920. GMRA EBV 266 was the high-selling bull at Midland Bull Test in '93. His dam, BJR Estonia 9S-1210, eventually moved in to the program at Chicken Creek Farms of Tennessee. Her granddaughter, CCF Estonia 626-920 was the 2004 National Red Angus show Produce of Dam champion, and she sold in the 2007 Stocking Stuffer sale in Marshfield, NC, to Polzin Cattle in MN, for \$10,000. Outstanding growth and performance potential here, with a WW EPD in the top 7% of the breed, a YW in the top 4%, and a CW in the top 2%.



LOT 109 – GMRA MESA MAID 188



GMRA MESA MAID 188

Birth Date: 2/19/11 Reg. # #1428858 Category: 100% 1A

MESSMER PACKER S008 [MAF, OSF] | MESSMER JOSHUA 019P [OSF]
 LAUBACH LOMBARDI 9014 [OSF] | MESSMER MILLIE 124P [OSF]
 LARSON MARIE 724-328 | 5L NORSEMAN KING 2291 [MAF, OSF]
 | LARSON MARIE 328-9101
 LCHMN RED SPREAD 1271F [MAF, OSF] | LMAN KING ROB 8621 [MAF, OSF]
 GMRA SA MESA MAID 054 | BJR MATTIE 002-1102
 GMRA MESA MAID 321 | LCHMN MDLD HVYWT2463 [OSF]
 | GMRA MESA MAID 928

CED	BW	WW	YW	Milk	TM	ME	HPG	CEM	Stay	Marb	YG	CW	REA	Fat
2	-0.2	63	104	16	48	6	10	1	10	0.38	0.04	32	0.17	0.00

Bred to: VGV SCOUT 040 (#1374288) Due Date: 3/9/13

This is the type of worry-free female that will stay in your herd and consistently produce year after year if you let her. Her maternal pedigree is full of long-lived dams that stayed in the GMRA herd their entire productive lives. She posts YW and CW EPDs in the top 8% of the breed.



LOT 110 – GMRA INDIGO 190



GMRA INDIGO 190

Birth Date:
2/22/11

Reg. #
#1428870

Category:
100% 1A

LJC LANCER 806 [OSF]
 LJC MISSION STATEMENT P27 [MAF, OSF]
 LJC HANNAH 106 [OSF]

BECKTON LANCER T A664 [OSF]
 LJC HB LIZZIE 606

BUF CRK BARNEY 3474 [MAF, OSF]

HOLDEN HI HO 753
 LJC KJ JAMIE 516

GMRA INDIGO 230 [OSF]

BUF CRK BARON 2678
 OLE SUNFLOWER 359 PB08 [OSF]

GMRA INDIGO 512

BUF CRK HOBO 1961 [MAF, OSF]
 GMRA INDIGO RED 327

CE	BW	WW	YW	Milk	TM	ME	HPG	CEM	Stay	Marb	YG	CW	REA	Fat
1	-1.3	58	93	21	50	7	12	1	13	0.43	-0.06	24	0.44	0.01

Bred to: VGW SCOUT 040 (#1374288)

Due Date: 3/1/13

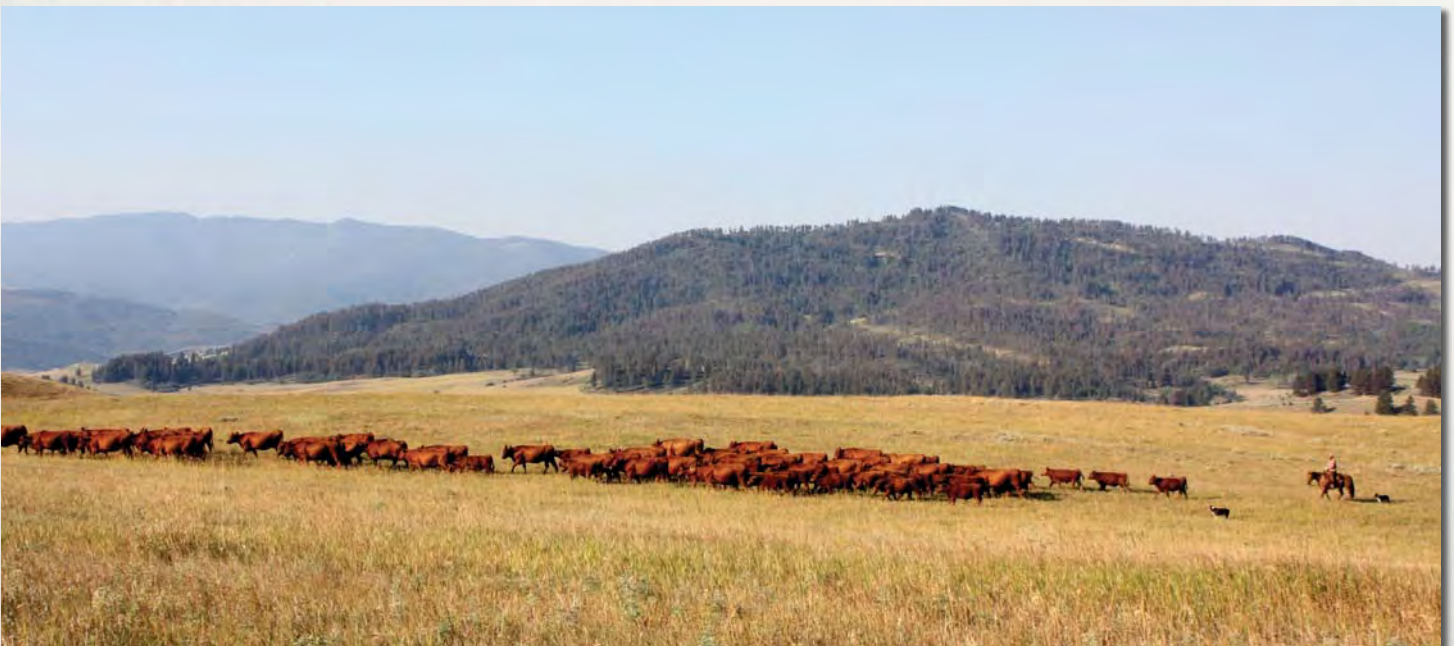
Indigo 190 comes from a long line of maternal performance. Her dam has an MPPA of 101.9 on 8 calves, her granddam has a 104.8 MPPA on 6, and her great grand dam has a 102.9 on 5 ... I could go on, but you get the ideal! Ten of her 15 EPDs are in the top 35% or higher, topping out with a REA EPD in the top 7%.



Jim



Tom



Thank You!

BIG SKY ELITE

GREEN MOUNTAIN RED ANGUS • C-7 RED ANGUS
PINKIE RED ANGUS • EL DORADO RED ANGUS

Female Sale

BIG SKY ELITE FEMALE SALE





Gilchrist Auction Co.

Kyle Gilchrist: 641/919-1077

14075 120th St. • Douds, IA 52551

redcowseller@yahoo.com

A production of
Star G Ranch, Inc.



FIRST CLASS
US POSTAGE
PAID
MONTEZUMA, IA
PERMIT #30

**TIME-DATED MATERIAL
DO NOT DELAY!**

BIG SKY ELITE

GREEN MOUNTAIN RED ANGUS • C-T RED ANGUS
FEDDES RED ANGUS • KLOMPIEN RED ANGUS

Female Sale

Thursday,

December 6, 2012

Lunch at noon • Sale at 1:00 pm
Green Mountain Red Angus • Logan, MT



Bob & Julie Morton
2435 Logan Trident Road
Three Forks, MT 59752
(866) GMRA-COW
www.gmracattle.com



Chuck & Carol Feddes
2610 Churchill Road
Manhattan, MT 59741
406-284-3203
www.feddesredangus.com



C-T Red Angus

Craig & Taryn DeBoer
4740 Churchill Road
Manhattan, MT 59741
406-282-9029
www.ctredangus.com



Dave & Kay Klompier
8129 Amsterdam Road
Manhattan, MT 59741
406-282-7537
www.klompierredangus.com