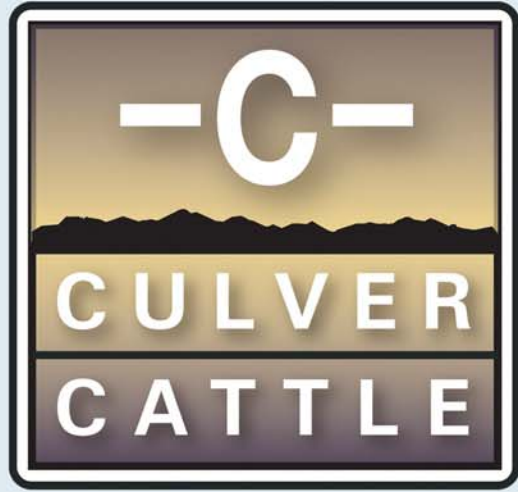




Mountain Pass

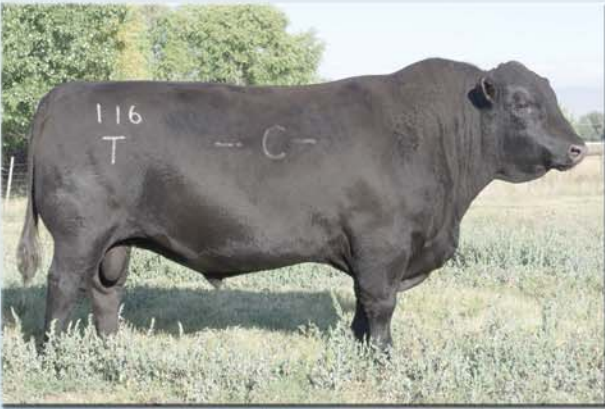


## Annual Bull Sale

**Tuesday, March 27, 2012**  
Owl Creek Ranch • Walden, Colorado

Selling **93** AAA

ALTITUDE ADJUSTED ANGUS BULLS



"Rib Eye"



Napolean

Easy Fleshing • Superior Carcass • Moderate Frame • Feed Efficient • Raised at 8,200 Ft.

# Reference Sires



Sinclair Mountain Pass 4P138

## SINCLAIR MOUNTAIN PASS 4P138

4/18/04 • 15081884

Gardens Prime Time  
**N Bar Prime Time D806**  
 N Bar Miss Emulous A404

O C C Exodus 712E  
**N Bar Kinochtry Beauty V1490**  
 N Bar Kinochtry Beauty 4317

{ R R Traveler 5204  
 { Green Garden Susie 1246  
 { N Bar Emulation EXT Z52  
 { N Bar Miss Emulation X3091  
 { O C C Bonanza 880B  
 { Dixie Erica of C H 1019  
 { Leachman Bold Driver  
 { N Bar Kinochtry Beauty 2414

PRODUCTION EPDS						CARCASS EPDS				\$ VALUE EPDS		
CED	BW	WW	YW	CEM	MILK	CW	MARB	RE	FAT	SW	SF	SB
+6	+1.0	+44	+79	+6	+18	+21	+66	-.02	+1.06	+27.53	+21.38	+41.16

*This heavy muscled, high volume bull has become the cornerstone sire of the Culver Cattle breeding program. Mountain Pass has been the most widely used bull in our A.I. program; we are attracted to his ability to consistently produce low birth weight calves that are vigorous and grow rapidly. Currently there are over 400 Mountain Pass daughters and granddaughters in the Culver Cattle herd. They are all deep bodied, easy fleshing, structurally sound females with perfect udders and ample milk to wean heavy calves. Mountain Pass is the sire of the 2009, 2010 and 2011 Grand Champion carloads of commercial heifer calves, and sire or maternal grandsire of the 2012 Grand Champion Commercial Heifer Carload at the National Western Stock Show. In addition to producing fantastic females, Mountain Pass also transmits feed efficiency and positive carcass traits. The 2007 steer calves sired by Mountain Pass graded 51% Prime 49% Choice with \$170.73 paid in premiums. Semen available – \$20.00 per straw (volume discounts available).*



SVF Shamrock In Focus 116T "Rib Eye"

## SVF SHAMROCK IN FOCUS "RIB EYE" 116T

1/27/01 • 15895211

S A F Focus of ER  
**Mytty In Focus**  
 Mytty Countess 906

Stevenson Maximum 42C  
**Shamrocks Clova Pride 172G**  
 Basin Clova Pride 6941

{ S A F Farms  
 { G D A R Forevery Lady 246  
 { Sitz Alliance 6595  
 { Baldrige Countess 357  
 { G T Maximum  
 { J R S Elga 495R  
 { P J M Montana Power 45  
 { Basin Clova Pride 2312

PRODUCTION EPDS						CARCASS EPDS				\$ VALUE EPDS		
CED	BW	WW	YW	CEM	MILK	CW	MARB	RE	FAT	SW	SF	SB
+9	+2	+51	+90	+11	+24	+25	+59	+33	+0.15	+32.83	+30.03	+65.34

*"Rib Eye" is producing offspring true to his pedigree – low birth weights and explosive growth. His sons are heavy muscled bulls with large scrotal measurements. His sire group topped our 2011 sale where 14 sons averaged \$5,179. His first AI daughters are in production and are trouble-free, long-bodied cows with near-perfect udders that really milk. He was the co-sire of our 2011 and 2012 NWSS Grand Champion Commercial Heifer Carloads. Semen available – \$15.00 per straw (volume discounts available).*



Redland Napoleon 2475

## REDLAND NAPOLEAN 2475

7/7/05 • 15314879

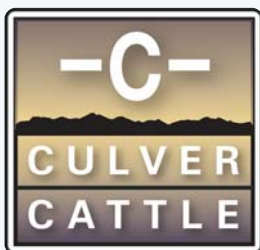
O C C Legend 616L  
**O C C Napoleon 649N**  
 O C C Dixie Erica 743L

Toebben Richt Tiem 057H  
**Redland Bonnie Bonnie 134Z**  
 Redland Bonnie Bell 706

{ O C C Emblazon 854E  
 { O C C Blackbird 632J  
 { O C C Headliner 661H  
 { O C C Dixie Erica 639J  
 { Leachman Right Time  
 { V D A R Lucy 427  
 { Paramount Ambush 2172  
 { Redland Bonnie Bell 452

PRODUCTION EPDS						CARCASS EPDS				\$ VALUE EPDS		
CED	BW	WW	YW	CEM	MILK	CW	MARB	RE	FAT	SW	SF	SB
+7	+9	+33	+63	+6	+17	+6	-.02	+2.0	+0.006	+23.42	+9.79	+23.06

*Napolean has been recognized as the bull to use on the cow families with heavy birth weights. He sires very small, attractive calves that grow rapidly. The Napoleon daughters in production are deep bodied, heavy-made females with beautiful udders and plenty of milk. He has sired or co-sired our 2010, 2011 and 2012 NWSS Grand Champion Commercial Heifer Carloads. Semen available – \$15.00 per straw (volume discounts available).*



# Culver Cattle Annual Bull Sale

## Tuesday, March 27, 2012 • 1 p.m. MDT

Owl Creek Ranch • Walden, Colorado

Offering 93  Altitude Adjusted Angus Bulls

### Sale Day Phones:

Jon Gabel Cell: ..... 303-594-5520  
Greg Carter Cell: ..... 970-620-1044  
Neil Effertz Cell: ..... 701-471-0153

*Join us for lunch before the sale, provided by the  
North Park Stockgrowers'/Cattle Women Cowherd.*

### Directions to the sale site:

From Walden (Highway 125) Main Street to 5th Street turn east 3 ¼ mile to Owl Creek Ranch - North Ranch turn south (right) go 1.5 miles to sale barn. (5th Street will turn into County Road 12E) Sale Address is 3178 County Road 12E.

### Special Representatives:

Curt Cox ..... Cell 307-630-4604  
Wyoming Livestock Roundup  
Jim Gies ..... Cell 970-590-0500 • Home 970-454-3836  
Western Livestock Journal

### Insurance:

Insurance will be available at the settlement desk.

### Herd Vet:

Dr. Lanny Weddle D.V.M. .... 970-723-8314  
Dr. Weddle has performed all PAP and fertility testing on the sale bulls.

### PAP Testing:

The yearling bulls will be PAP tested at 8,200' and their PAP scores will be available sale day.

### About the AAA Altitude Adjusted Angus Bulls

The commercial bulls selling are out of 2-year-old first calf heifers and backed by generations of A.I. matings. All the sale bulls were produced by bulls that are proven in the country. All of our herd bulls including AI sires stand at the ranch and service cows at Owl Creek Ranch at 8,200'. The sires of the sale bulls have been PAP tested at 8,200'.

We are confident that through generations of high altitude adaptation these bulls will be able to be put out with cows in any environment and perform during the breeding season. Furthermore, we are confident that these bulls will produce low birth weight calves that will be hardy and grow rapidly to make a profitable weaned calf. We sell no bulls with birthweights over 90 lbs. The weights in this catalog are actual weights. The bulls were weaned September 27, scanned January 20 and yearling weights and scrotal measurements were taken February 17. In talking with our customers that purchased bulls last spring, the consensus on these bulls is that they are dog gentle, aggressive breeders that come in from the breeding pasture in good shape.

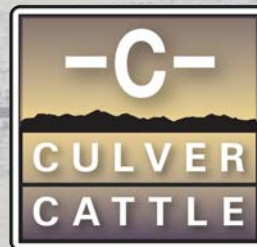
The registered bulls in this offering stem from the successful 5N Ranch cow herd previously owned by Patty Lufkin, Saratoga, Wyo. This cow herd was developed through rigorous PAP testing and the use of popular A.I. sires.

### Culver Cattle "Pasture Fed" Bull Development Program

The bulls were weaned in late September and placed on pasture where they were supplemented with a pellet feed at the rate of one pound per hundred pounds of body weight. The bulls also received free choice grass hay. These bulls have never had whole corn or silage in their diet. This was to ensure that the bulls were to grow at a natural rate and reduce the risk of break down in the first breeding season.



*Sinclair Mountain Pass 4P138*



7490 Clubhouse Road, Suite 201  
Boulder CO 80301

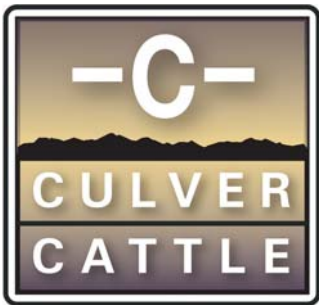
303-530-4444 • [www.CulverCattle.com](http://www.CulverCattle.com)

Jon Gabel • 303-594-5520 • [jon@culvercattle.com](mailto:jon@culvercattle.com)  
Greg Carter • 970-620-1044 • [greg@culvercattle.com](mailto:greg@culvercattle.com)



**Sale Manager & Auctioneer**  
**Auction Effertz, Ltd.**

Your Market Masters • NEIL & JAN EFFERTZ  
[effertz@bektel.com](mailto:effertz@bektel.com) • 17350 Hwy. 1804 N. • Bismarck, ND 58503  
Ph: 701-223-5202 • Fax: 701-223-5458 • Cell: 701-471-0153  
[www.auctioneffertz.com](http://www.auctioneffertz.com)



Lot 5 – He is the stoutest made, heaviest muscled bull in the sale with a great ribeye-area-per-hundred-weight.



Lot 7 – He’s a real “Home Run.” This big weaning weight and yearling weight XXP son is out of an own daughter of 036. What a great looking herdsire prospect.

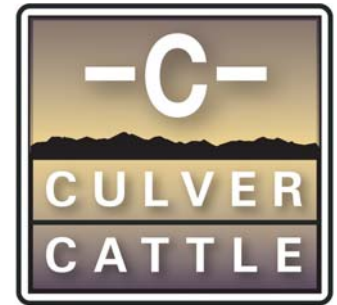


Lot 9 – Here’s a real easy-fleshing, deep-ribbed Mountain Pass son with a great weaning weight. Might work to keep some heifers out of this guy.

## REGISTERED ANGUS YEARLING BULLS

LOT	TAG	SIRE	MGS
1	15	Sinclair Mountain Pass 4P138	B/R Recovery 980
2	18	Sinclair Mountain Pass 4P138	B/R Destination 727-928
3	120	Sinclair Mountain Pass 4P138	Ironwood New Level
4	121	Sinclair Emulation XXP	Bon View New Design 208
5	125	Sinclair Mountain Pass 4P138	Morgans Direction 111 9101
6	126	Sinclair Emulation XXP	Morgans Direction 111 9101
7	127	Sinclair Emulation XXP	B/R New Design 036
8	128	Sinclair Mountain Pass 4P138	GAR High Design
9	132	Sinclair Mountain Pass 4P138	Ironwood New Level
10	133	Sinclair Emulation XXP	VDAR Lucy Boy
11	134	Sinclair Mountain Pass 4P138	VDAR Right Time 3134
12	136	HD Dunn Great Plains 5086	VDAR Right Now 2151
13	137	Sinclair Mountain Pass 4P138	VDAR Right Time 3134
14	140	SVF Shamrock In Focus 116T	N BAR Emulation EXT
15	142	Sinclair Mountain Pass 4P138	Bon View New Design 878
16	144	Sinclair Mountain Pass 4P138	GAR Predestined 577
17	145	Sinclair Emulation XXP	Bon View New Design 878
18	148	Sinclair Emulation XXP	Vermillion Dateline 7078
19	149	Sinclair Mountain Pass 4P138	VDAR New Design 2122
20	152	Sinclair Mountain Pass 4P138	Rito 4L60 Of 2536 BVND 208
21	154	Sinclair Mountain Pass 4P138	Morgans Direction 111 9101
22	155	Sinclair Mountain Pass 4P138	VDAR Right Time 3134
23	156	HD Dunn Great Plains 5086	Ironwood New Level
24	157	Sinclair Mountain Pass 4P138	GAR Predestined 577
25	160	Sinclair Emulation XXP	Sitz Alliance 6595
26	163	SVF Shamrock In Focus 116T	Morgans Direction 111 9101
27	166	Sinclair Emulation XXP	Bon View New Design 878
28	168	Sinclair Mountain Pass 4P138	GAR High Design
29	169	Sinclair Mountain Pass 4P138	B/R Precision Design 3121
30	172	Sinclair Emulation XXP	Ironwood New Level
31	173	HD Dunn Great Plains 5086	VDAR New Trend 1076

Born	BW	9/27 WW	2/17 YW	WDA	Rib Fat	REA	IMF	1/20 REA/CWT	2/17 SC	Lot
1/30/11	66	808	1218	3.18	0.24	11.6	4.86	1.05	36.7	1
2/3/11	82	734	1116	2.94	0.21	9.8	4.58	0.99	34	2
2/3/11	86	772	1170	3.08	0.19	10.3	4.67	0.98	37.5	3
2/3/11	78	780	1158	3.05	0.09	11.2	3.06	1.06	38	4
2/5/11	64	724	1164	3.08	0.09	15.2	2.73	1.46	32.5	5
2/6/11	78	740	1136	3.02	0.15	10.7	2.97	1	34	6
2/6/11	84	870	1266	3.36	0.16	10.9	3.85	0.95	35	7
2/6/11	80	780	1146	3.05	0.15	11.5	2.83	1.19	34.5	8
2/6/11	78	742	1156	3.07	0.32	10.3	3.46	1	38.7	9
2/6/11	86	702	1138	3.02	0.24	9.5	2.62	0.93	37	10
2/6/11	72	586	988	2.62	0.14	9.1	4.05	1.08	34	11
2/7/11	84	800	1148	3.06	0.15	10.5	2.21	1.02	37.5	12
2/7/11	82	696	1108	2.95	0.24	9.8	4.29	0.99	36.5	13
2/10/11	84	796	1248	3.35	0.22	10.8	4.46	0.96	40	14
2/10/11	90	696	1080	2.9	0.15	9.4	3.22	0.96	38	15
2/11/11	58	586	974	2.62	0.18	9.5	4.4	1.09	34	16
2/11/11	82	852	1230	3.31	0.3	10.6	4.57	0.94	38.5	17
2/13/11	82	696	1068	2.87	0.16	9.6	2.46	1	34	18
2/13/11	66	746	1180	3.18	0.24	11.1	2.68	1.04	40	19
2/14/11	80	688	1062	2.87	0.15	10.8	2.74	1.14	38	20
2/14/11	86	712	1100	2.97	0.17	9.7	2.7	0.99	38	21
2/14/11	70	650	1102	2.97	0.19	10.4	2.94	1.06	36.8	22
2/15/11	68	772	1160	3.13	0.19	9.8	3.14	0.94	36.5	23
2/15/11	78	656	1092	2.96	0.2	11.1	2.23	1.14	37	24
2/16/11	88	850	1240	3.36	0.13	11.3	2.87	1	38.5	25
2/17/11	58	642	1008	2.73	0.15	11	3.82	1.21	34	26 (Tw)
2/20/11	72	718	1036	2.81	0.15	8.9	3.29	0.94	32.5	27
2/20/11	80	664	1050	2.85	0.2	10.1	3.45	1.07	40.6	28
2/20/11	80	692	1028	2.83	0.15	9.6	2.88	1.03	38	29
2/21/11	88	788	1090	3.01	0.24	9.5	4.2	0.95	37.3	30
2/21/11	70	636	958	2.65	0.13	9.4	3.58	0.94	36.8	31



Lot 17 – Here’s a calf photo of this high-performing son of the linebred XXP bull. He’ll put power in your calf crop and has awesome ultrasound data for IMF.

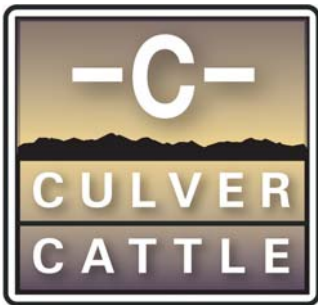


Lot 25 – The XXP’s are some of our top performers and here’s a dandy. Look how stout and masculine this long sided “beef machine” is!



Lot 29 – Look at this deep-ribbed, full-bodied Mountain Pass son. He’s the fleshy kind.

**Easy Fleshing - Superior Carcass - Moderate Frame - Feed Efficient - Raised and PAP Tested at 8,200'**



Lot 45 - Another super low birthweight bull that should work on heifers. Check out his terrific IMF ultrasound and a big WDA!



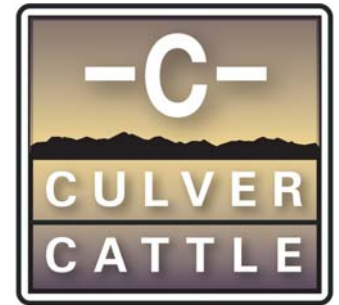
Lot 50 - What a great Mountain Pass son out of a Napoleon daughter! He's a stout made, big-butted bull with a low birthweight, good yearling and IMF data.



Lot 51 - He was a summer favorite of the ranch crew, pictured last fall right before weaning.

REGISTERED ANGUS YEARLING BULLS			
LOT	TAG	SIRE	MGS
32	176	Sinclair Emulation XXP	VDAR Right Time 3134
33	177	SVF Shamrock In Focus 116T	GDAR Dutch 5226
34	181	SVF Shamrock In Focus 116T	VDAR Ambush 2098
35	188	SVF Shamrock In Focus 116T	Bon View New Design 1407
36	190	SVF Shamrock In Focus 116T	GAR Retail Product
37	192	Redland Napoleon 2475	BCC Bushwacker 41-93
38	193	Redland Napoleon 2475	VDAR Right Time 3134
39	194	SVF Shamrock In Focus 116T	VDAR Dentinator 1168
40	196	Redland Napoleon 2475	B/R Precision Design 3121
41	199	SVF Shamrock In Focus 116T	VDAR Right Time 3134
42	103	SVF Shamrock In Focus 116T	B/R Destination 727-928
COMMERCIAL ANGUS YEARLING BULLS			
43	Y7-832	SVF Shamrock In Focus 116T	Sinclair Mountain Pass 4P138
44	Y7-633	SVF Shamrock In Focus 116T	Sinclair Mountain Pass 4P138
45	Y7-500	SVF Shamrock In Focus 116T	Sinclair Mountain Pass 4P138
46	Y7-520	SVF Shamrock In Focus 116T	HD DunnGreat Plains 5086
47	Y7-574	SVF Shamrock In Focus 116T	Redland Napoleon 2475
48	Y10-742	Sinclair Mountain Pass 4P138	HD DunnGreat Plains 5086
49	Y7-509	SVF Shamrock In Focus 116T	Sinclair Mountain Pass 4P138
50	Y10-527	Sinclair Mountain Pass 4P138	Redland Napoleon 2475
51	Y10-632	Sinclair Mountain Pass 4P138	Redland Napoleon 2475
52	Y7-575	SVF Shamrock In Focus 116T	Sinclair Mountain Pass 4P138
53	Y7-622	SVF Shamrock In Focus 116T	Sinclair Mountain Pass 4P138
54	Y7-696	SVF Shamrock In Focus 116T	Sinclair Mountain Pass 4P138
55	Y7-844	SVF Shamrock In Focus 116T	Sinclair Mountain Pass 4P138
56	Y7-824	SVF Shamrock In Focus 116T	Sinclair Mountain Pass 4P138
57	Y7-531	SVF Shamrock In Focus 116T	Sinclair Mountain Pass 4P138
58	Y7-644	SVF Shamrock In Focus 116T	Sinclair Mountain Pass 4P138
59	Y9-779	Redland Napoleon 2475	Shamrock Right Time 1983
60	Y7-579	SVF Shamrock In Focus 116T	Sinclair Mountain Pass 4P138
61	Y7-582	SVF Shamrock In Focus 116T	Redland Napoleon 2475
62	Y7-618	SVF Shamrock In Focus 116T	Sinclair Mountain Pass 4P138

Born	BW	9/27 WW	2/17 YW	WDA	Rib Fat	REA	IMF	1/20 REA/CWT	2/17 SC	Lot
2/23/11	86	764	1124	3.3	..18	10	3.56	0.98	33.2	32
2/27/11	86	808	1182	3.12	0.2	10.5	4.37	0.97	39.6	33
2/28/11	76	762	1126	3.17	0.24	12	4.41	1.17	36.5	34
3/12/11	86	742	1084	3.06	0.13	9.5	3.45	0.96	36.5	35
3/13/11	78	606	998	2.91	0.15	10.1	4.09	1.13	35.5	36
3/16/11	66	652	1052	3.1	0.11	10.9	2.39	1.16	33.6	37
3/17/11	82	674	1086	3.21	0.16	10.5	2.05	1.08	34.5	38
3/17/11	84	674	1008	3	0.24	9.3	3.89	1.02	34.5	39
3/18/11	72	596	942	2.81	0.19	10.9	2.68	1.29	33	40
3/24/11	80	662	1020	3.1	0.14	9.9	3.94	1.07	34.3	41
4/3/11	80	636	1006	3.15	0.2	11.2	3.93	1.24	30.5	42
1/27/11	64	684	1030	2.67	0.13	9	3.6	.98	38	43
1/30/11	62	704	1082	2.92	0.15	11.8	2.86	1.13	37.8	44
2/1/11	54	712	1126	2.95	0.29	11.5	5.02	1.13	32.5	45
2/1/11	62	676	1030	2.7	0.2	10.1	4.5	1.08	37	46
2/1/11	58	680	1036	2.7	0.18	11.8	2.64	1.25	35	47
2/2/11	60	598	944	2.48	0.11	8.2	3.23	0.96	36.2	48
2/3/11	64	662	1017	2.68	0.13	9.3	4.29	1.02	36	49
2/3/11	66	706	1108	2.92	0.24	9.9	4.24	0.99	36	50
2/3/11	72	654	992	2.6	0.13	8.8	2.6	0.98	35	51
2/4/11	64	692	1030	2.72	0.11	9.4	3.75	1.02	39.5	52
2/5/11	72	592	1026	2.72	0.1	9.5	3.62	1.05	37.3	53
2/5/11	72	646	1042	2.77	0.09	8.8	3.99	0.94	36	54
2/5/11	84	708	1070	2.83	0.2	9.7	4.05	1.01	37.8	55
2/5/11	60	690	1082	2.88	0.2	11.2	3.86	1.15	37	56
2/6/11	78	708	1102	2.94	0.18	10.8	3.3	1.09	41.3	57
2/6/11	50	590	1030	2.74	0.2	9.1	3.5	1	34.8	58
2/6/11	74	648	1074	2.86	0.13	9.7	2.88	1.1	33.2	59
2/6/11	78	632	1076	2.86	0.13	10.3	3.37	1.08	34.8	60
2/7/11	62	664	1056	2.82	0.17	9	3.23	1.13	36.5	61
2/7/11	76	763	1122	3	0.16	10	5.26	1	43	62



Lot 44 - Here's that "Rib Eye" X Mountain Pass combination bull that is a real tank - big bodied and well muscled.

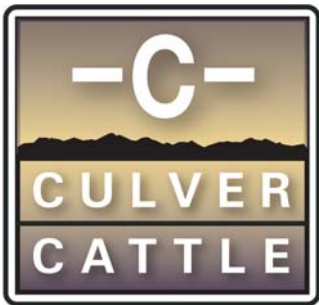


Lot 57 - This is the "Rib Eye" X Mountain Pass mating that really works. He's a good lookin' rascal that's got the right numbers all across the board.



Lot 64 - What a straight-topped, deep-sided, well-balanced Neapolitan son out of the "Right Time" cow!

**Easy Flething - Superior Carcass - Moderate Frame - Feed Efficient - Raised and PAP Tested at 8,200'**



Lot 69 – Low birthweight, excellent weaning and yearling numbers with a big ribeye area – but why wouldn’t you expect that out of another “Rib Eye” X Mountain Pass mating?



Lot 74 – Another real outstanding “Rib Eye” son out of a young Mountain Pass cow. He’s got the look, the muscle and the performance to back it up.



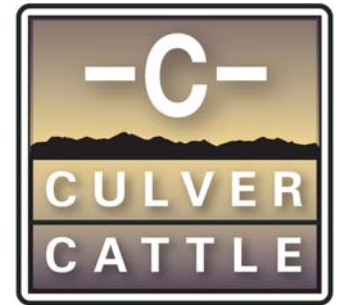
Lots 54, 87, 44, 81 – What an awesome group of range-raised, super-sound yearlings that will add longevity and low maintenance to your program.

## COMMERCIAL ANGUS YEARLING BULLS

LOT	TAG	SIRE	MGS
63	Y7-736	SVF Shamrock In Focus 116T	HD DunnGreat Plains 5086
64	Y9-820	Redland Napoleon 2475	Shamrock Right Time 1983
65	Y7-523	SVF Shamrock In Focus 116T	Sinclair Mountain Pass 4P138
66	Y7-760	SVF Shamrock In Focus 116T	Sinclair Mountain Pass 4P138
67	Y7-604	SVF Shamrock In Focus 116T	Sinclair Mountain Pass 4P138
68	Y9-657	Redland Napoleon 2475	Shamrock Right Time 1983
69	Y7-533	SVF Shamrock In Focus 116T	Sinclair Mountain Pass 4P138
70	Y9-564	Redland Napoleon 2475	Shamrock Right Time 1983
71	Y10-731	Sinclair Mountain Pass 4P138	Redland Napoleon 2475
72	Y7-761	SVF Shamrock In Focus 116T	Sinclair Mountain Pass 4P138
73	Y7-771	SVF Shamrock In Focus 116T	Sinclair Mountain Pass 4P138
74	Y7-819	SVF Shamrock In Focus 116T	Sinclair Mountain Pass 4P138
75	Y9-831	Redland Napoleon 2475	Shamrock Right Time 1983
76	Y7-591	SVF Shamrock In Focus 116T	Sinclair Mountain Pass 4P138
77	Y7-695	SVF Shamrock In Focus 116T	Sinclair Mountain Pass 4P138
78	Y7-825	SVF Shamrock In Focus 116T	Sinclair Mountain Pass 4P138
79	Y7-870	SVF Shamrock In Focus 116T	Sinclair Mountain Pass 4P138
80	Y7-587	SVF Shamrock In Focus 116T	Sinclair Mountain Pass 4P138
81	Y7-594	SVF Shamrock In Focus 116T	HD DunnGreat Plains 5086
82	Y9-625	Redland Napoleon 2475	Shamrock Right Time 1983
83	Y7-689	SVF Shamrock In Focus 116T	Sinclair Mountain Pass 4P138
84	Y7-700	SVF Shamrock In Focus 116T	Sinclair Mountain Pass 4P138
85	Y7-510	SVF Shamrock In Focus 116T	Sinclair Mountain Pass 4P138
86	Y7-581	SVF Shamrock In Focus 116T	Sinclair Mountain Pass 4P138
87	Y7-512	SVF Shamrock In Focus 116T	Sinclair Mountain Pass 4P138
88	Y7-842	SVF Shamrock In Focus 116T	Sinclair Mountain Pass 4P138
89	Y7-694	SVF Shamrock In Focus 116T	Sinclair Mountain Pass 4P138
90	Y-558	Sinclair XX 9XX7	Redland Napoleon 2475
91	Y-898	Yardley Lad 273	Sinclair Mountain Pass 4P138
92	Y7-163	SVF Shamrock In Focus 116T	Shamrock Right Time 1983
93	Y9-60	Redland Napoleon 2475	Sinclair Mountain Pass 4P138



<i>Born</i>	<i>BW</i>	<i>2/27 WW</i>	<i>2/17 YW</i>	<i>WDA</i>	<i>Rib Fat</i>	<i>REA</i>	<i>IMF</i>	<i>1/20 REA/CWT</i>	<i>2/17 SC</i>	<i>Lot</i>
2/7/11	58	556	920	2.45	0.15	8.1	4.68	1	37	63
2/7/11	70	594	1040	2.78	0.15	10.1	2.5	1.1	33.2	64
2/8/11	70	724	1120	2.77	0.11	10.18	3.96	1	40.2	65
2/8/11	68	576	936	2.5	0.13	9.4	3.63	1.13	34.5	66
2/9/11	62	652	1048	2.81	0.19	10.2	2.81	1.08	38	67
2/9/11	70	590	980	2.63	0.15	9.5	2.96	1.09	32	68
2/10/11	64	714	1102	2.96	0.15	11.1	2.77	1.11	35.5	69
2/10/11	62	628	1108	2.97	0.15	9.86	2.97	1	33.4	70
2/10/11	68	568	1006	2.7	0.09	10.4	2.18	1.16	33.5	71
2/10/11	64	682	1072	2.88	0.16	9.6	2.68	1	31	72
2/10/11	70	626	1094	2.94	0.19	10	4.46	1.02	34.5	73
2/11/11	82	762	1196	3.22	0.23	11.2	2.78	1.03	39.7	74
2/11/11	68	610	984	2.65	0.22	9.8	2.7	1.12	35.5	75
2/11/11	74	732	1132	3.05	0.15	10	3.72	0.98	37.5	76
2/11/11	70	608	992	2.66	0.15	9.9	3.76	1.12	36.5	77
2/16/11	62	622	1004	2.74	0.15	9.8	4.1	1.08	35.5	78
2/17/11	68	726	1210	3.31	0.22	10.3	4.16	0.95	37.8	79
2/18/11	72	674	1138	3.12	0.2	11.5	2.88	1.13	38.4	80
2/18/11	60	602	1014	2.78	0.16	9.7	3.47	1.08	33	81
2/18/11	64	596	968	2.65	0.15	9.1	3.02	1.06	33.5	82
2/19/11	72	706	1064	2.94	0.15	10.6	4.16	1.1	35.5	83
2/19/11	68	660	1042	2.88	0.16	9.8	3.61	1.05	36	84
2/22/11	74	760	1172	3.25	0.16	10	4.82	0.95	37.5	85
2/22/11	82	722	1166	3.25	0.2	10.7	3.48	1.1	37.3	86
2/23/11	72	596	964	2.7	0.13	9.2	3.47	1.06	36.5	87
2/23/11	66	680	1048	2.93	0.22	10.9	4.13	1.15	38	88
2/24/11	58	560	946	2.64	0.11	10.2	2.71	1.21	32	89
2/26/11	60	616	954	2.69	0.11	9.9	2.58	1.16	36	90
3/22/11	76	751	1040	3.15	0.11	11.3	2.21	1.21	34.5	91
4/1/11	84	648	1120	3.47	0.13	11.1	3.02	1.11	35.3	92
4/17/11	74	606	954	3.12	0.19	9.9	2.66	1.16	32	93



Lot 80 – Just one after the other, these “Rib Eye” sons have excellent REA/CWT and plenty of depth and length.



Lot 19 – Take a close look at this low birthweight Mountain Pass son with great numbers and a super scrotal.



Lots 74, 67, 43 – They are big bodied, developed on a high roughage ration and will work in high country. Pick one of these.

**Easy Flething - Superior Carcass - Moderate Frame - Feed Efficient - Raised and PAP Tested at 8,200'**

## Real-World Performance

## Terms & Conditions



2-year-old  
Mountain Pass  
daughter

### Average January 2012 Scan Data

51 AAA

**Commercial Bulls**

Avg. Wt:..... 940#

Avg Rib Fat: ..... 0.16

Avg. REA: ..... 10.02

Avg. Marbling:..... 3.47

*Eating 10# pellets and free choice grass hay on pasture.*

42 AAA

**Registered Bulls**

Avg Wt:..... 990#

Avg Rib Fat: ..... 0.177

Avg REA: ..... 10.42

Avg. Marbling..... 3.44

**323 Commercial  
Angus Heifers**

*(Majority are closely related to the  
commercial bulls selling.)*

Avg. Wt:..... 731#

Avg. Rib Fat: ..... 0.28

Avg REA: ..... 8.58

Avg Marbling:..... 4.97

**37 Registered**

**Replacement Heifers**

*(Half sisters to the registered  
bulls selling.)*

Avg. Wt:..... 821#

Avg. Rib Fat: ..... 0.28

Avg REA: ..... 9.03

Avg Marbling:..... 4.50

*Eating silage, distillers grains and ground hay.*

**Terms:** Terms of the sale are cash or check payable immediately upon conclusion of the sale and before animals will be moved. Seller reserves the right to require a certified check as settlement before releasing any cattle.

**Guarantee:** All bulls selling are covered by the Culver Cattle guarantee. If a bull purchased from Culver Cattle breaks down or is injured during the first breeding season and is unable to perform breeding service, have the bull examined by a veterinarian and submit a written diagnosis of the injury to Culver Cattle. The bull will be sold for salvage with the salvage payment sent to Culver Cattle. In return Culver Cattle will give the bull buyer 100% credit on a bull in our next sale. In the case of death no credit will apply. We suggest placing insurance on your bulls purchased in case of death loss.

**Insurance of Purchases and Risk:** All animals are the seller's risk prior to their sale and become property of the buyer as soon as declared sold by the auctioneer. Arrangements will be made to have insurance available when making settlement.

**Bidding:** All animals sell to the highest bidder. Any disputes or challenges regarding bids will be settled by the auctioneer and his decision will be final.

**Health and Export:** Our herd vet will be on hand to write interstate health certificates.

**Announcements:** Any errors or changes of information contained in the catalog will be announced from the auction block and such announcements shall take precedence over information contained in the catalog.

**Liabilities:** All persons who attend the sale do so at their own risk and Culver Cattle or Auction Effertz, Ltd. assume no liability for any accidents that may occur. Neither does Culver Cattle or Auction Effertz, Ltd. assume any liability for loss or injury to livestock due to theft, mysterious disappearance, sickness, improper handling or Act of God. It is also to be clearly understood that Auction Effertz, Ltd. act only as a medium between the buyer and the seller. They are not responsible in any way for any failure on the part of the buyer and the seller to live up to their obligations for the truth of any warranties or representations, express or implied. Neither does Auction Effertz, Ltd., assume any financial obligation to collect or enforce collection of monies between parties. Any legal action that may in exceptional cases be taken, must be between the buyer and the seller.

**Contract:** The above terms and conditions shall constitute a contract between the buyer and the seller of each animal sold.

**Mail bid:** Mail or wire bids may be furnished. Bids must be in the hands of the sale manager in ample time prior to the sale and will be handled in strict confidence.

## Notes

## Culver Cattle Females



Culver Cattle won Grand Champion honors again this year at the National Western Stock Show 2012 Commercial Heifer Pen Show.

These two "Rib Eye" daughters, pictured just before weaning, were members of our Grand Champion Pen of Commercial Heifers.



Culver Cattle has established a reputation for extremely high-quality, AAA Altitude Adjusted Angus replacement females that are sold each year by private treaty. We know more about these replacement females than ever before. These cattle have been evaluated for the past eight years by a panel of the most reputable livestock judges in America, winning 12 banners (10 Grand Champions and two Reserve Grand Champions) at the prestigious National Western Stock Show Commercial Heifer Pen Show and the Colorado Cattlemen's Association Producer Commercial Heifer Pen Show. While they have been very successful at the NWSS Pen Show, they are not "show heifers." They have been raised, developed and evaluated with the needs of the commercial cattleman in mind. These are the kind of cattle – easy fleshing and structurally correct with good dispositions – that will work at altitude or on the plains. Replacement heifers are available for mid-October delivery. Contact Jon Gabel for more information.





Culver Cattle  
7490 Clubhouse Road, Suite 201  
Boulder CO 80301  
www.CulverCattle.com

PRESORTED  
STANDARD  
US POSTAGE  
**PAID**  
BISMARCK, ND  
PERMIT #256

**Culver Cattle Annual Bull Sale**  
**Tuesday, March 27, 2012**  
Owl Creek Ranch • Walden, Colorado

*Selling* **93** AAA  
ALTITUDE ADJUSTED ANGUS BULLS



**Pasture raised, not feedlot pampered.**