

DAHL LAND & CATTLE CO.

RED ANGUS • SOUTH DEVON • OPTIMIZERS



**Tuesday,
May 1,
2012**

1:00 pm • Napoleon Livestock • Napoleon, ND

Sale Day Phone: 1-800-932-8821

Broadcast via internet: www.napoleonlivestock.com



Selling in Catalog Order:

70 Bulls • 105 Females

Red Angus • South Devon • Optimizers

Welcome to



Jack Dan John Jeff

"Heterosis Headquarters"

41st Annual Production Sale

Dan – (701) 424-3726
Jeff – (701) 485-3762
John – (701) 485-3766
Jack – (701) 485-3206

Welcome to Dahl Land & Cattle Co.'s 41st Annual Sale, 2012 looks like it's shaping up to be a record-breaking year in the cow-calf industry. Cow herd numbers are at record lows and cattle prices are at record highs. That is a tough combination to beat! One of the biggest advantages of a planned crossbreeding program is calf vigor at birth and hardiness of a cowherd. As we all remember, 2011 was a challenging year environmentally in N.D. It was a year that tested the hardiness of cattle and producers alike. As a testament to the hardiness and fertility of our cattle, this fall at pregnancy check time, we had 93 2-year-old cows that weaned their first calf. Of those 93 there was one that failed to rebreed.

Our goal is to produce cattle with low birth weights that perform well with no creep to mask what nature can produce. In other words we are looking for genetics that will give us a big spread from birth to weaning and beyond. At the same time our cattle must be structurally functional and be fertile. It is a fairly lofty goal and one we continue to work diligently on.

When we ultra sounded the bulls the technician said, "These bulls are hard." The bulls have been on a 54 mega-calorie ration of 15 lbs. of ground hay, 4 lbs. of wet distiller's grain and 12 lbs. of cracked corn per day. During the feed trial

we had several bulls gaining over 4 lbs. per day with all but three gaining over 3 lbs. per day.

We are again starting the sale with a large group of replacement heifers. As always these heifers come right from the heart of the replacement heifers we raised. The heifers have been grown and not pushed. They were on a 35 mega-calorie ration of 23 lbs. of ground hay, 4 lbs. of wet distiller's grain and 3 lbs. of cracked corn.

We advertise that we are the "Program that Builds Cowherds." A cowherd is, by its very nature, maternal. Webster defines "Maternal" as: "of, relating to, belonging to, or characteristic of a mother; motherly." We would add to that one culling criteria for maintaining a maternal cowherd; If you have to run a cow in the chute for any reason except to help with a mis-presented calf at birth, she's not maternal enough. It's a goal we strive for.

In closing, we want to "Thank you" for your continued support and confidence in our program. We look forward to serving you in the future.

We also want to thank Our Lord for bringing us together again, for helping us with our decisions and for providing our nation and ourselves with countless blessings.

Bull Credit

If you purchased females from us in 2011, you can receive a \$100 credit towards the purchase of a Dahl Land & Cattle Co. bull.

Yearling Bull Data

- 82 lbs – Avg. Actual BW
- 715 lbs – Avg. Adj. 205 Wt.
- 1177 lbs – Avg. Adj. 365 Wt.

Calving-Ease Code

- 1 Use only on cows
- 2 Use on cows & heifers with a known birth weight and calving ease history
- 3 Use on heifers and all cows

Our recommendations are based on our cow female histories for birth weights and calving ease. Also, with aid from EPDs based on our reference sires and the individual animal.

Annual Production Sale

Tues., May 1, 2012

1:00 p.m. CDT • Napoleon Livestock Market
• Napoleon, ND

Sale Day Phone: 1-800-932-8821, 701-754-2216 •

Sale Day Internet: www.napoleonlivestock.com

Lunch: Starting at 11:30 am CDT

Sale Order: Yearling Heifers start the sale,
Yearling Bulls selling in catalog order



Roger Jacobs



Terry Robinson



Scott Ressler



Kris Petersen



Ray Erbele



Steve Koester

Auctioneer:

Roger Jacobs406-373-6124 (home)
Billings, MT (406) 698-7686 (cell)

If you cannot attend the sale and are interested in making a purchase, please contact our professional independent representative.

Representatives:

Terry Robinson701-255-3037 (home)
Farm & Ranch Guide.....701-471-5153 (cell)
Scott Ressler701-782-4360 (home)
ND Stockmen's Assn...701-223-2522 (office)
Kris Petersen701-377-2345 (home)
Cattle Business Weekly701-339-0305 (cell)

Professional Independent Representative:

Ray Erbele.....701-226-7288 (cell)
701-754-2216 (w), 701-424-3307 (home)
Steve Koester.....701-400-1611 (cell)

Catalog & Promotion by Cow Camp Promotions, www.cowcampromotions.com

Printing by United Printing, Bismarck, ND, 701-223-0505

Dahl Land & Cattle Co. Annual Production Sale



Bidding: All animals sell to the highest bidder. Any disputes will be settled by the auctioneer and his decision will be final.

Mail and Phone Bids: Mail or phone bids will be handled in strict confidence by us and we ask that they be in our hands in ample time prior to sale date.

Napoleon Auction Market Alternative Bidding Options:

We will be offering the Dahl Production Sale on the internet. To bid from your computer, you will need to follow these steps:

- 1) Log on to www.napoleonlivestock.com and click the green oval that says: "Live Auction."
- 2) Click on "Viewer Registration" and register your information. Click the "Proceed" button at the bottom.

This should all be done at least one day prior to the sale to allow time for approval. If you purchase any animals, you will need to contact Napoleon Livestock at 1-800-932-8821 to make payment arrangements and to make arrangements to pick up your livestock. You must have DSL to be able to bid during the sale.

Terms: Terms of the sale are cash or check, payable immediately upon the conclusion of the sale and before animals are moved.

Purchases and Risk: All animals are the owner's risk prior to the sale and become buyer's property as soon as declared sold by the auctioneer.

Announcements: Any errors or changes of information printed in this catalog will be announced from the auction block and such announcements shall take precedence.

Breeding Guarantee: All bulls in this sale are guaranteed to have passed a fertility examination by our veterinarian. The buyer of each bull will receive a certificate of such exam upon paying for the bull. We assume no liability, legal or otherwise, to make any further guarantee to the buyer. No other warranty is expressed or implied.

Liability: All persons who attend this sale do so at their own risk. Dahl Land & Cattle Co. and Napoleon Livestock Market assume no liability for any accidents that may occur. Neither do they assume any liability for loss or injury to livestock due to theft, mysterious disappearance, sickness, improper handling or Act of God.

Herd Veterinarian: Dr. Dan Schuler, Wishek Veterinary Clinic

Health: All cattle in this sale are in excellent condition and health. All females have been officially calfhod Bangs and Preg-Guard Gold 10 vaccinated. All shots and treatments comply with the ND Beef Quality Assurance Program and Pfizer's Beef Friendly program. Where needed, health certificates will be furnished for shipment anywhere in the U.S. Sight Unseen Purchases are fully guaranteed for soundness and quality.

Contract: The above terms and guarantee constitute a contract between buyer and seller of each animal sold.

Bull Delivery:

- \$25 discount if you take your bull home sale day
- If buyer can't haul bull on sale day, we will feed your bull at our feedlot, buyer's risk
- One week at no charge and \$2 per day thereafter
- We will waive the feed costs if the buyer picks up the bull within two weeks of sale date
- We will cooperate with delivery wherever possible

RED ANGUS HERD SIRES

HXC Jackhammer 8800U



A **HXC JACKHAMMER 8800U**
 RED POLLED 100% 1A #1269438

HXC HEMI 4400P { BECKTON LANCER F442 T
 HXC 701G

HXC JOLENE 301N { BECKTON JULIAN GG B571
 HXC JAYLO LB136

BD	BW
1/16/08	71
205 WT	WR
687	
365 WT	YR
1434	
%IMF	REA
4.76	16.99
FAT	DAM'S MPPA
0.32	99.2

EPDs/Breed Ranking														
CED	BW	WW	YW	Milk	TM	ME	HPG	CEM	Stay	Marb	YG	CW	REA	Fat
2	1.2	63	98	3	34	5	9	6	15	0.65	0.15	60	0.17	0.04
71%	74%	2%	5%	97%	47%	60%	61%	30%	6%	2%	94%	6%	34%	91%

A complete package with incredible performance – 71-lb. BW, 1,434-lb. Adj. YW and 16.99 REA. He sires performance to weaning and yearling with added marbling. He ranks in the top 2% for WW and Marb. He is phenotypically flawless with added muscle, fleshing ability and moderate BW. His dam is a super-uddered, moderate-framed Julian daughter.

Red Crowfoot Ole's Oscar



B **RED CROWFOOT OLE'S OSCAR**
 RED POLLED 100% 1A #1060209

MLK CRK CUB 722 { GLACIER CUB 446
 MLK CRK LAKOTA 152-HOBO

RED CROWFOOT OMEGA 9179J { RED PRICE 631
 RED OMEGA 7456

BD	BW
1/16/02	71
205 WT	WR
669	100
365 WT	YR
1286	100
%IMF	REA
FAT	DAM'S MPPA

EPDs/Breed Ranking														
CED	BW	WW	YW	Milk	TM	ME	HPG	CEM	Stay	Marb	YG	CW	REA	Fat
7	-3.6	32	66	19	35	7	3	15	8	0.42	0.09	35	-0.02	0.04
32%	12%	52%	43%	42%	45%	76%	98%	1%	67%	7%	85%	57%	63%	91%

Ole's Oscar is a calving ease and maternal sire with a flexible pedigree – MLK CRK Cub 722 x Canadian bloodlines. He is a proven low birth weight bull with adequate growth and strong carcass traits. Ole's Oscar is one of the most popular Red Angus sires around the world, siring moderation, muscle, substance, excellent feet and outstanding udders.

BHR Golden Boy 453B



C **BHR GOLDEN BOY 453B**
 RED POLLED 100% 1A #976768

LMB GOLDEN BOY 719 { LMB GOLDEN BOY 5146
 ST SARA ROSE 468

MISS BHR LOGAN 017 { BHR LOGAN 734B
 MISS BHR DOLLAR 895

BD	BW
4/7/04	84
205 WT	WR
744	105
365 WT	YR
1330	106
%IMF	REA
4.76	12.78
FAT	DAM'S MPPA
0.45	95.4

EPDs/Breed Ranking														
CED	BW	WW	YW	Milk	TM	ME	HPG	CEM	Stay	Marb	YG	CW	REA	Fat
1	0.3	44	86	11	33	6	21	2	9	0.26	0.05	52	0.36	0.04
77%	60%	20%	14%	83%	55%	74%	1%	69%	48%	19%	75%	15%	12%	91%

Golden Boy is an easy-fleshing sire that is super deep sided and moderate framed. His progeny have been well received wherever he is used. His dam is a very functional daughter of BHR Logan 734B. His calves are moderate at birth with good growth and extra depth.

DLC Sir Classic 5102



D **DLC SIR CLASSIC 5102**
 RED POLLED 100% 1A #1063916

BADLANDS CLASSIC 069 { QV ROBIN HOOD 917 G33
 RED RACHEL R405

DLC MS CHIEFTON 720 { DLC CHIEFTON 3107
 DLC LADY RAMBO 274

BD	BW
4/7/05	78
205 WT	WR
744	103
365 WT	YR
1254	103
%IMF	REA
3.23	14.25
FAT	DAM'S MPPA
0.26	104.2

EPDs/Breed Ranking														
CED	BW	WW	YW	Milk	TM	ME	HPG	CEM	Stay	Marb	YG	CW	REA	Fat
6	-1.8	25	49	16	28	5	6	0	8	-0.39	-0.11	27	0.03	-0.02
38%	27%	72%	75%	60%	75%	60%	91%	82%	62%	99%	21%	76%	55%	14%

5102 is incredibly eye appealing and flashy. He has exceptional structure, balance and thickness and sires calves with moderate BWs, smooth design, thickness and performance. His stylish, perfectly structured dam was a terrific producer with an MPPA over 104.
 Igenity Profile: Tenderness: 9 Fat Thickness: 7 YG: 7 REA: 5 CEM: 8 % Choice: 7 Marb: 7

RED ANGUS HERD SIRES

Koester Cheyenne 706



E KOESTER CHEYENNE 706

RED POLLED 99.3% 1B #1216330

LCC CHEYENNE B221L

{ BFCCK CHEROKEE CNYN 4912
HXC 701G

LELAND CHATEAU 744-3013

{ GLACIER CHATEAU 744
LELAND CRKT 2195-3117C

BD	BW
8/22/07	82
205 WT	WR
570	90
365 WT	YR
1172	96
%IMF	REA
2.69	12.37
FAT	DAM'S MPPA
0.18	4/95.1

EPDs/Breed Ranking

CED	BW	WW	YW	Milk	TM	ME	HPG	CEM	Stay	Marb	YG	CW	REA	Fat
5	-1.6	25	53	21	34	7	11	7	10	0.42	-0.04	30	0.13	0.01
40%	24%	77%	70%	21%	51%	80%	25%	15%	44%	5%	42%	72%	35%	64%

Purchased from Koester Red Angus, "Cheyenne Steve" really stamps all of his offspring with the same body type. His progeny are small-headed, clean and smooth-shouldered, and display good length of body. "Cheyenne Steve" sires calves that display tons of calving ease and style, and have as much performance as the big guys.

F DLC RAMPAGE 7123

RED POLLED 99.7% 1B #1209757

OHRR 31K MK RAMPAGE 8P

{ OHRR 10H DIVIDE 77M
OHRR 503 MAC SHAREE 31K

DLC MISS CANYON 552

{ LELAND GRAND CANYON 3129
DLC MS RED HANFORD 839

BD	BW
5/10/07	58
205 WT	WR
715	100
365 WT	YR
1159	100
%IMF	REA
FAT	DAM'S MPPA
	94.2

EPDs/Breed Ranking

CED	BW	WW	YW	Milk	TM	ME	HPG	CEM	Stay	Marb	YG	CW	REA	Fat
8	-3.7	23	42	18	29	6	12	4	8	-0.11	-0.13	20	0.03	-0.02
19%	6%	83%	87%	45%	77%	66%	12%	47%	64%	85%	12%	91%	55%	11%

Rampage is a sire that we've used exclusively on first-calf heifers with tremendous success. The Rampage cattle display that front end that is sought after for use on heifers. All of his progeny have been born unassisted and some of his sons have shown promise of being multi-functional sires.

G DLC ROB ROY 9152

RED POLLED 99.9% 1B #1347461

BIEBER ROB ROY 10444

{ BIEBER ROB ROY 6990
BIEBER EULCA 8969

DLC MISS LOGAN 472

{ DLC MR. LOGAN 2122
DLC MS ROBIN HOOD 256

BD	BW
4/19/09	90
205 WT	WR
691	93
365 WT	YR
1140	100
%IMF	REA
2.88	11.9
FAT	DAM'S MPPA
0.24	101.2

EPDs/Breed Ranking

CED	BW	WW	YW	Milk	TM	ME	HPG	CEM	Stay	Marb	YG	CW	REA	Fat
0	3.8	36	66	17	35	8	8	3	5	-0.23	0.05	45	0.00	0.01

9152 is a taller, smoother made Rob Roy son that we used to produce many of the Optimizer bulls in this offering. 9152 progeny have style and extra length of body. His dam is a beautiful Logan daughter with tremendous fleshing ability and body length. She has a perfect udder and good feet and legs.

EPD NOTES

Expected Progeny Differences (EPDs) give cattlemen a useful tool with which to evaluate the genetic potential of breeding animals.

The printed EPDs in this catalog have been furnished to us by the Red Angus Association of America and the North American South Devon Association.

EPD Breed Averages for 2011-Born Cattle

Red Angus

CED	BW	WW	YW	Milk	TM	ME	HPG	CEM	Stay	Marb	YG	CW	REA	Fat
5	-0.5	33	62	17	33	3	10	4	9	0.08	-0.02	37	0.07	0.00

South Devon

BW	WW	YW	SC	MILK	MWW	FAT	REA	MARB	C.WT
2.6	41	76	-0.2	23	43	0.01	0.21	0.2	24.9

The non-registered bulls' EPDs are "Across Breed" EPDs.



SOUTH DEVON HERD SIRES



X-E Rock P296



X-E ROCK P296

RED POLLED PUREBRED #181098

SBCC 8103

{ LEACHMAN DEVONAIRE 9034E
{ SLF LADY 1027A

X-E AMBER M296

{ CIMARRON HUSTLER 036K
{ 896 SD/SM DAM

BD	1/30/04	BW	84
205 WT	698	WR	118
365 WT	1274	YR	106
%IMF	3.02	REA	13.8
FAT	0.03		

EPDs/Breed Ranking

BW	WW	YW	SC	MILK	MWW	FAT	REA	MARB	C WT
2.5	42	91	0.0	31	52	0.01	0.12	0.5	30.6
50%	45%	15%	30%	5%	10%	20%	95%	25%	25%

"The Rock" has proven himself as an outstanding producer and his sons have been well accepted over the years! His structure is flawless, his muscle is exceptional and his frame is moderate. He sires performance, maternal and carcass cattle.

Igenity Profile: Tenderness: 6 Fat Thickness: 6 YG: 6 REA: 6 CWT: 6 % Choice: 7 Marb: 6



DLCC Hudson 82U



DLCC HUDSON 82U

RED POLLED PERCENTAGE #193574

MJB SHUR LOC 106S

{ DLCC SURE-ENUF
{ MJB PROMISE 4550P

DLCC PRINCESS MIA 78P

{ DLCC POLLED PRO 111H
{ DLCC POPEYE 170K

BD	3/20/08	BW	80
205 WT	717	WR	
365 WT	1208	YR	
%IMF	4.16	REA	16.3
FAT			

EPDs/Breed Ranking

BW	WW	YW	SC	MILK	MWW	FAT	REA	MARB	C WT
1.5	51	98	-0.2	27	53	0.00	0.32	0.3	40.3
25%	15%	10%	50%	15%	10%	70%	5%	40%	5%

Hudson sires long, thick, moderate-framed progeny and stamps on extra muscle throughout their hind quarters. His daughters in production are easy fleshing, structurally correct ad feminine. Hudson was the Reserve National Calf Champion at Denver in 2009.



DLC Legacy 71



DLC LEGACY 71

RED POLLED PUREBRED #190815

SBCC ROYAL LEGACY 5123

{ NORTH PADDLE LEGACY 32L
{ MJB HEATHER 8671H

DLC ROYAL LASSS 415

{ DLC MR ROYAL 115
{ DLC MISS IMPACT 995

BD	5/3/07	BW	86
205 WT	1106	WR	106
365 WT	1339	YR	100
%IMF		REA	
FAT			

EPDs/Breed Ranking

BW	WW	YW	SC	MILK	MWW	FAT	REA	MARB	C WT
3.8	43	76		23	44	0.01	0.20	0.1	20.9
80%	40%	50%		50%	45%	20%	55%	60%	75%

Legacy 71 is a herd bull who displayed extreme growth. He exhibits a deep, thick, heavy-muscled body type, and he is the only bull we've raised who has an Adj. 205-Day Wt over 1,000 lbs.! His sons display this same rapid growth and thickness. You'll appreciate these Legacy calves if you are seeking an increase in the pay weight of your calf crop. His dam is a big, thick cow who is one of the top cows of the breed.



DLC BLACK LAD 60W

BLACK POLLED PUREBRED #195937

DLC MR ROYAL DUKE 40

{ DLC ROYAL DUKE 63
{ DLC MISS IMPACT 321

DLC LADY IMPACT 526

{ DLC IMPACT LAD 343
{ DLC MS IMPACT 020

EPDs/Breed Ranking

BW	WW	YW	SC	MILK	MWW	FAT	REA	MARB	C WT
2.0	29	72	0.9	28	42	0.01	0.05	0.6	17.5
35%	90%	60%	1%	15%	55%	20%	99%	20%	90%

60W was used in late season after the Hudson bull came up lame with foot rot. 60W sired a few calves for us that have done a good job keeping up with the other calves. He is a taller-framed bull with good thickness and depth of body. His pedigree reads with a lot of performance and cow-making bloodlines (Royal x Impact).

PUREBRED YEARLING HEIFER OFFERING

Purebred heifers will be selling in groups of 10.

Buyers will have the option to purchase choice two times, then the balance will be sold to go.

Group 1: 10 head of purebred Red Angus heifers.

Group 2: 10 head of purebred South Devon heifers.

Group 3: 5 head of black South Devon halfblood heifers.

COMMERCIAL YEARLING HEIFER OFFERING

Commercial heifers will be sold at a minimum of five head gate cut. On bigger drafts, the buyer of the last heifers in the ring (should there be a cut made), will have the option to take the remaining heifers of that group for the same price.

Group 4: 10 head of red Optimizer heifers – 50% South Devon x 50% Salers

Group 5: 10 head of black Optimizer heifers – 50% South Devon x 50% Salers

Group 6: 5 head of black **Pro-Cow** heifers – 50% Red Angus x 50% Salers

Group 7: 25 head red **Pro-Cow** heifers – 75% Red Angus

Group 8: 30 head red **Pro-Cow** heifers – 50% Red Angus

Red Angus Replacements for Professional Cattlemen

The maternal qualities of Red Angus females make them an obvious cornerstone for commercial cow/calf operations.

- Early Puberty with High Fertility
- Easy Calving
- Moderate Frame with Low Maintenance
- Maternal Efficiency
- Longevity
- Docile Disposition
- Unbiased, Reliable EPDs
- “Angus” Carcass Qualities

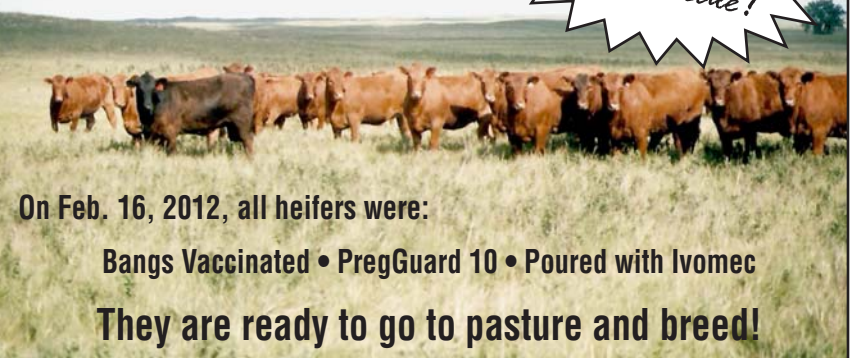
Pro-Cow

Red Angus Association of America
(940) 387-3502 • www.redangus.org

105 Sale Heifers

Avg BW – 74 lbs.
Avg 205 Wt – 646 lbs.

Yearling heifers will start the sale!



On Feb. 16, 2012, all heifers were:

Bangs Vaccinated • PregGuard 10 • Poured with Ivomec

They are ready to go to pasture and breed!

For more information on this and other Red Angus programs, contact:

- The only tag that provides USDA-verification of Angus.
- Offers source verification to ranch of origin.
- The first USDA Process Verified Program.
- Added Value Services for both ranchers and feeders.
- Experienced staff assistance.



Red Angus Marketing Programs

(940) 387-3502 • Fax (940) 383-4036 • www.RedAngus.org

DLC PUREBRED RED ANGUS HEIFER OFFERING

**Purebred heifers will be selling in groups of 10.
Buyers will have the option to purchase choice two times, then the balance will be sold to go.**

ID #	REG #	CAT	B. DATE	SIRE	DAM	DAM'S SIRE	DAM AGE/MPPA		BW	WW	WR			
153	#1457380	1B	4/19/11	CLASSIC 5102	641	LEL GR CANYON 3129	5/98		60	630	98			
					BW	WW	YW	M	TM	HPG	STAY	MARB	REA	FAT
					-2.7	22	45	18	29	9	8	-0.16	-0.01	-0.02
155	#1457372	1B	4/20/11	CLASSIC 5102	554	LEL GR CANYON 3129	6/104.3		70	690	107			
					BW	WW	YW	M	TM	HPG	STAY	MARB	REA	FAT
					0.3	33	59	21	38	9	8	-0.25	0.08	-0.01
156	#1457383	1B	4/21/11	CLASSIC 5102	644	LEL GR CANYON 3129	5/103.1		72	653	102			
					BW	WW	YW	M	TM	HPG	STAY	MARB	REA	FAT
					1.0	33	59	18	34	9	7	-0.16	0.16	0.00
162	#1457362	1B	4/22/11	CLASSIC 5102	460	DLC HOBO 2105	7/99.2		70	637	99			
					BW	WW	YW	M	TM	HPG	STAY	MARB	REA	FAT
					-1.0	19	40	17	27	7	9	-0.24	-0.02	-0.03
163	#1457412	1B	4/11/11	RAMPAGE 7123	973	DLC SIR CLASSIC 5102	2/99.6		60	610	99			
					BW	WW	YW	M	TM	HPG	STAY	MARB	REA	FAT
					-3.1	21	41	18	29		9	-0.18	0.03	-0.02
195	#1457402	1B	4/2/11	RAMPAGE 7123	971	OLE'S OSCAR	2/95.2		50	541	88			
					BW	WW	YW	M	TM	HPG	STAY	MARB	REA	FAT
					-5.8	16	36	20	28	10	8	0.07	-0.01	0.01
196	#1457416	1B	3/28/11	RAMPAGE 7123	981	DLC SIR CLASSIC 5102	2/98		50	586	95			
					BW	WW	YW	M	TM	HPG	STAY	MARB	REA	FAT
					-5.4	14	30	17	24		8	-0.15	0.04	-0.02
197	#1457417	1B	3/29/11	RAMPAGE 7123	982	DLC SIR CLASSIC 5102	2/97.6		60	579	94			
					BW	WW	YW	M	TM	HPG	STAY	MARB	REA	FAT
					-3.4	16	32	19	27		9	-0.14	0.02	-0.03
198	#1457410	1B	3/18/11	RAMPAGE 7123	968	ABOVE & BEYOND 1300J	2/98.8		60	600	97			
					BW	WW	YW	M	TM	HPG	STAY	MARB	REA	FAT
					-3.5	17	38	19	27	11	8	-0.02	-0.07	-0.01
199	#1457403	1B	3/18/11	RAMPAGE 7123	972	CELEBRATION	2/98.8		72	597	97			
					BW	WW	YW	M	TM	HPG	STAY	MARB	REA	FAT
					0	27	49	16	29		11	-0.01	0.11	-0.01

DLC PUREBRED SOUTH DEVON HEIFER OFFERING

**Purebred heifers will be selling in groups of 10.
Buyers will have the option to purchase choice two times, then the balance will be sold to go.**

ID #	REG #	CAT	B. DATE	SIRE	DAM	DAM'S SIRE	COLOR	P/H/S	BW	WW	WR			
106	#200015	FB	4/13/11	DLC LEGACY 71	717	BLACK ENUF 127J	BLACK	POLLED	70	564	90			
					BW	WW	YW	M	MWW	FAT	REA	MARB	CED	CEM
					+1.7	+30	+53	+21	+35	+0.01	+0.21	+0.1	+0.9	+0.4
107	#200008	FB	4/18/11	DLC LEGACY 71	703	BLACK ENUF 127J	RED	POLLED	70	588	94			
					BW	WW	YW	M	MWW	FAT	REA	MARB	CED	CEM
					+2.9	+38	+66	+21	+40	+0.02	+0.22	+0.3	0.0	+0.5
109	#200042	PB	4/22/11	HUDSON 82U	824U	ROYAL LAD 21	RED	POLLED	88	645	103			
					BW	WW	YW	M	MWW	FAT	REA	MARB	CED	CEM
					+4.6	+51	+95	+21	+47	+0.01	+0.26	+0.6	+0.2	-1.2
116	#199980	PB	4/9/11	X-E ROCK P296	522	ASTOUND LAD 202	RED	POLLED	82	606	97			
					BW	WW	YW	M	MWW	FAT	REA	MARB	CED	CEM
					+3.7	+42	+87	+23	+44	+0.01	+0.15	+0.4	+0.3	-0.2
118	#200002	PB	4/24/11	HUDSON 82U	630	MR ROYAL 115	BLACK	POLLED	70	605	101			
					BW	WW	YW	M	MWW	FAT	REA	MARB	CED	CEM
					+2.0	+50	+92	+27	+52	+0.01	+0.23	+0.5	+2.1	-0.2
124	#199985	PB	4/23/11	DLC LEGACY 71	521	ASTOUND LAD 202	RED	POLLED	80	553	88			
					BW	WW	YW	M	MWW	FAT	REA	MARB	CED	CEM
					+3.8	+36	+71	+17	+35	0.00	+0.23	-0.1	-0.4	-0.2
125	#199947	FB	4/26/11	X-E ROCK P296	38	CIM. IMPACT 758G	RED	POLLED	88	621	104			
					BW	WW	YW	M	MWW	FAT	REA	MARB	CED	CEM
					+6.0	+53	+101	+25	+52	+0.01	+0.09	+0.4	-0.5	-0.7
129	#200009	FB	4/24/11	DLC LEGACY 71	705	BLACK ENUF 127J	BLACK	POLLED	90	609	102			
					BW	WW	YW	M	MWW	FAT	REA	MARB	CED	CEM
					+5.9	+44	+82	+22	+44	+0.01	+0.23	+0.2	-2.1	-0.7
130	#199958	FB	4/27/11	DLC LEGACY 71	334	ASTOUND 75F	RED	POLLED	72	543	91			
					BW	WW	YW	M	MWW	FAT	REA	MARB	CED	CEM
					+3.1	+33	+65	+15	+32	0.00	+0.23	-0.3	+1.0	+0.4
149	#200041	FB	5/4/11	BLACK LAD 60W	819U	ROYAL LEGACY 5123	BLACK	POLLED	62	634	106			
					BW	WW	YW	M	MWW	FAT	REA	MARB	CED	CEM
					+2.2	+41	+75	+27	+48	+0.01	+0.15	+0.3	+0.6	+0.3

RED ANGUS HERD BULL PROSPECTS



Lot 1



1

DLC HAMMER 1152

RED POLLED 100% 1A #1457385

HXC JACKHAMMER 8800U

{ HXC HEMI 4400P
{ HXC JOLENE 301N

DLC KING ROB LASS 649

{ KUHN'S KING ROB
{ DLC MISS HOBO 252

BD	BW
4/1/11	90
205 WT	365 WT
847	1361
TEST ADG	SC
4.3	40
%IMF	REA
2.94	12.97
CALVING EASE	DAM'S AGE/MPPA
1	5/103.6

EPDs

CED	BW	WW	YW	Milk	TM	ME	HPG	CEM	Stay	Marb	YG	CW	REA	Fat
2.8	54	85	13	40	5	9		13	0.30	0.04	43	0.09	0.02	

- A very exciting Jack Hammer son with tremendous thickness throughout and great structure.
- Performance from weaning to yearling – 843 lbs. 205 weight with a 1361 yearling.
- Moderate-framed, easy-fleshing, gained over 4 lbs. per day.
- Dam is a beautiful, top-producing, great-uddered cow.
- Ranks top 3% of breed for WW and 12% for yearling weight.
- A great carcass bull.
- Retaining ¼ semen interest



Lot 2

2

DLC GOLDEN BOY 1151

RED POLLED 99.9% 1B #1457369

BHR GOLDEN BOY 453B

{ LMB GOLDEN BOY 719
{ MISS BHR LOGAN 017

DLC CLASSIC LADY 545

{ BADLANDS CLASSIC 069
{ DLC MS CHIEFTON 844

BD	BW
4/2/11	92
205 WT	365 WT
718	1274
TEST ADG	SC
3.7	40
%IMF	REA
1.96	15.17
CALVING EASE	DAM'S AGE/MPPA
1	6/104.8

EPDs

CED	BW	WW	YW	Milk	TM	ME	HPG	CEM	Stay	Marb	YG	CW	REA	Fat
2.4	44	81	12	34	15		9	0.01	-0.01	49	0.34	0.02		

- A thick, moderate-framed Golden Boy with good balance.
- 1151 has a world of muscle with a tremendous quarter.
- One of the naturally thickest bulls you'll find this spring.
- Ranks in the top 15% in WW, YW and HPG and top 35% for REA.
- Retaining ¼ semen interest.

RED ANGUS HERD BULL PROSPECTS



Lot 3

3

DLC CLASSIC 1160

RED POLLED 100% 1A #1457368

DLC SIR CLASSIC 5102

{ BADLANDS CLASSIC 069
DLC MS CHIEFTON 720

DLC CLASSIC LADY 544

{ BADLANDS CLASSIC 069
DLC MS CHIEFTON 719

BD	BW
4/20/11	78
205 WT	365 WT
800	1321
TEST ADG	SC
3.6	35
%IMF	REA
2.15	13.18
CALVING EASE	DAM'S AGE/MPPA
2	6/102.8

EPDs

CED	BW	WW	YW	Milk	TM	ME	HPG	CEM	Stay	Marb	YG	CW	REA	Fat
-0.4	33	61	14	31			5		8	-0.30	-0.09	27	0.06	-0.01

- Phenotypically correct with added length and muscle.
- Double-bred Classic calf with a moderate birth weight.
- His pre-weaning WDA was 4 lbs. and his 205 weight was 800 lbs.
- Dam is a great producer year in and year out, with a perfect udder.
- Retaining ¼ semen interest.



Lot 4

4

DLC'S OSCAR 1166

RED POLLED 99.8% 1B #1457357

RED CROWFOOT OLE'S OSCAR

{ MLK CRK CUB 722
RED CROWFOOT OMEGA 9179J

DLC MISS LOGAN 396

{ DLC LOGAN 9118
DLC MS CHIEFTON 851

BD	BW
4/10/11	82
205 WT	365 WT
745	1280
TEST ADG	SC
3.7	40
%IMF	REA
2.99	13.80
CALVING EASE	DAM'S AGE/MPPA
2	8/102.9

EPDs

CED	BW	WW	YW	Milk	TM	ME	HPG	CEM	Stay	Marb	YG	CW	REA	Fat
-1.3	29	62	21	36	5	5			10	0.30	-0.01	33	-0.04	0.00

- A moderate birth weight Ole' son who displays extra length, smoothness, structural soundness, and eye appeal.
- Dam is a correct, solid-footed cow with a great personality.
- 1166 ranks in the top 30% for BW, 10% for Milk, 15% for Marbling.
- Retaining ¼ semen interest.

RED ANGUS YEARLING BULLS



Lot 5

5 **DLC CHEYENNE 1156** RED POLLED 99.2% 1B #1457390

KOESTER CHEYENNE 706

{ LCC CHEYENNE B221L
LELAND CHATEAU 744-3013

DLC MS CANYON 852

{ LELAND GRAND CANYON 3129
DLC MS CLASSIC 389

BD	BW
4/14/11	82
205 WT	365 WT
719	1334
TEST ADG	SC
4.7	39
%IMF	REA
1.97	11.98
CALVING EASE	DAM'S AGE/MPPA
2	3/100.9

EPDs

CED	BW	WW	YW	Milk	TM	ME	HPG	CEM	Stay	Marb	YG	CW	REA	Fat
0.9	34	64	20	37			10		7	0.16	0.04	38	0.01	0.02

- A small-headed, smooth-fronted Cheyenne calf with a moderate birth weight, and gained over 4 lbs. per day on test.
- He has lots of thickness in his rear quarter.
- His yearling weight is over 1300 lbs.
- He ranks in the top 45% for WW, 15% Milk, 20% Marbling and 50% REA.



Lot 6

6 **DLC'S OSCAR 1150** RED POLLED 99.5% 1B #1457375

RED CROWFOOT OLE'S OSCAR

{ MLK CRK CUB 722
RED CROWFOOT OMEGA 9179J

DLC MISS CANYON 568

{ LELAND GRAND CANYON 3129
DLC MS LADIES MAN 056

BD	BW
4/6/11	80
205 WT	365 WT
683	1257
TEST ADG	SC
3.6	38
%IMF	REA
2.24	14.64
CALVING EASE	DAM'S AGE/MPPA
2	6/100.8

EPDs

CED	BW	WW	YW	Milk	TM	ME	HPG	CEM	Stay	Marb	YG	CW	REA	Fat
-2	30	59	19	34	6	5			7	0.25	-0.01	33	0.21	0.03

- A thick-made Ole calf with a modest birth weight.
- This bull has a lot of eye appeal and is put together right.
- Ranks in the top 15% for BW, 45% YW, 25% Milk and 25% Marbling.



Lot 7

7 **DLC RAMPAGE 1199** RED POLLED 99.9% 1B #1457404

DLC RAMPAGE 7123

{ OHRR 31K MK RAMPAGE 8P
DLC MISS CANYON 552

DLC MISS LOGAN 961

{ DLC LOGAN LAD 4125
DLC MISS HOBO 374

BD	BW
3/20/11	82
205 WT	365 WT
670	1206
TEST ADG	SC
4.0	38
%IMF	REA
1.85	13.67
CALVING EASE	DAM'S AGE/MPPA
2	2/98

EPDs

CED	BW	WW	YW	Milk	TM	ME	HPG	CEM	Stay	Marb	YG	CW	REA	Fat
0.3	26	46	18	31					7	-0.12	-0.12	28	0.09	-0.02

- A thick-made Rampage calf with a modest birth weight.
- This bull has a lot of eye appeal and is put together right.
- Ranks in the top 15% for BW, 45% YW, 25% Milk and 25% Marbling.

8 **DLC HAMMER 1189** RED POLLED 100% 1A #1457420

HXC JACKHAMMER 8800U

{ HXC HEMI 4400P
HXC JOLENE 301N

DLC MS HIGH PRAIRIE 7122

{ LELAND HIGH PRAIRIE 5363R
DLC MISS CLASSIC 466

BD	BW
4/3/11	88
205 WT	365 WT
719	1293
TEST ADG	SC
3.9	39
%IMF	REA
2.43	12.89
CALVING EASE	DAM'S AGE/MPPA
1	4/104

EPDs

CED	BW	WW	YW	Milk	TM	ME	HPG	CEM	Stay	Marb	YG	CW	REA	Fat
2.4	51	86	10	36	6	10			12	0.20	0.11	55	0.06	0.03

- A very interesting pedigree on this herd bull prospect.
- Jack Hammer x High Prairie.
- 1189 gained 3.9 lbs. per day with a 1293 yearling weight.
- He ranks in the top 7% for WW, 10% YW, 30% HPG, 35% Stay and 25% Marbling.

9 **DLC GOLDEN BOY 1187** RED POLLED 100% 1A #1457433

BHR GOLDEN BOY 453B

{ LMB GOLDEN BOY 719
MISS BHR LOGAN 017

DLC MS RAMPAGE 776

{ OHRR 31K MK RAMPAGE 8P
DLC MS KING ROB 559

BD	BW
4/7/11	86
205 WT	365 WT
695	1224
TEST ADG	SC
3.1	39
%IMF	REA
2.35	13.24
CALVING EASE	DAM'S AGE/MPPA
1	4/100.4

EPDs

CED	BW	WW	YW	Milk	TM	ME	HPG	CEM	Stay	Marb	YG	CW	REA	Fat
1.3	37	68	15	34			16		8	0.09	-0.04	41	0.24	0.01

- A really well-balanced Golden Boy out of a very feminine top-producing High Prairie cow, who has a perfect udder, great feet, and legs, and is an easy keeper.
- 1187 has well balanced performance and EPD figures.

RED ANGUS YEARLING BULLS

10

DLC CLASSIC 1155

RED POLLED 99.3% 1B #1457358

DLC SIR CLASSIC 5102

{ BADLANDS CLASSIC 069
{ DLC MS CHIEFTON 720

DLC MISS CLASSIC 440

{ BADLANDS CLASSIC 069
{ DLC MS RED TOP 151

BD	BW
4/22/11	88
205 WT	365 WT
701	1228
TEST ADG	SC
3.8	35
%IMF	REA
1.68	11.87
CALVING EASE	DAM'S AGE/MPPA
1	7/101.7

EPDs

CED	BW	WW	YW	Milk	TM	ME	HPG	CEM	Stay	Marb	YG	CW	REA	Fat
	1	32	53	11	27		7		6	-0.27	-0.12	27	0.07	-0.02

- Another one of those long-sided, clean-made Classic sons.
- He gained 3.8 lbs. per day on test with a 1228 lb. yearling weight.
- He ranks in the top 40% for WW and 40% in HPG.
- If you need extra length in your calves, come and find 1155!

11

DLC'S OSCAR 1192

RED POLLED 99.8% 1B #1457424

RED CROWFOOT OLE'S OSCAR

{ MLK CRK CUB 722
{ RED CROWFOOT OMEGA 9179J

DLC MS CHATEAU 749

{ PERKS CHATEAU 309R
{ DLC MS RED TOP 152

BD	BW
4/5/11	88
205 WT	365 WT
671	1236
TEST ADG	SC
4.4	39
%IMF	REA
2.00	13.11
CALVING EASE	DAM'S AGE/MPPA
1	4/94.3

EPDs

CED	BW	WW	YW	Milk	TM	ME	HPG	CEM	Stay	Marb	YG	CW	REA	Fat
	1.3	40	76	12	32	7	2		7	0.16	0.00	44	0.22	0.02

- A real stout Ole son, gaining over 4.5 lbs. per day!
- This bull is a thick, straight-topped, has tons of muscle and steps down wide on all four.
- 1192 ranks in the top 25% for Marbling and top 15% for REA.

12

DLC'S OSCAR 1180

RED POLLED 100% 1A #1457426

RED CROWFOOT OLE'S OSCAR

{ MLK CRK CUB 722
{ RED CROWFOOT OMEGA 9179J

DLC MS RAMPAGE 751

{ OHRR 31K MK RAMPAGE 8P
{ DLC MISS LOGAN 570

BD	BW
4/4/11	80
205 WT	365 WT
704	1227
TEST ADG	SC
3.5	38
%IMF	REA
3.02	11.60
CALVING EASE	DAM'S AGE/MPPA
3	4/100

EPDs

CED	BW	WW	YW	Milk	TM	ME	HPG	CEM	Stay	Marb	YG	CW	REA	Fat
	-1.8	28	54	19	33	6	7		8	0.23	0.01	25	-0.13	0.01

- A bull with calving ease built in on both sides of his pedigree.
- Moderate birth weight with an added punch of performance.
- 1180 gained 3.4 lbs. per day on the cow and 3.5 lbs. per day on test.
- He ranks in the top 20% for BW, top 20% for Milk and top 20% Marbling.

13

DLC CLASSIC 1161

RED POLLED 100% 1A #1457379

DLC SIR CLASSIC 5102

{ BADLANDS CLASSIC 069
{ DLC MS CHIEFTON 720

DLC LADY ROB 579

{ KUHN'S KING ROB
{ DLC MS CHIEFTON 076

BD	BW
4/20/11	78
205 WT	365 WT
719	1259
TEST ADG	SC
4.0	35
%IMF	REA
2.01	13.66
CALVING EASE	DAM'S AGE/MPPA
3	6/103.2

EPDs

CED	BW	WW	YW	Milk	TM	ME	HPG	CEM	Stay	Marb	YG	CW	REA	Fat
	-1.8	16	33	20	28		8		8	-0.24	-0.19	15	0.13	-0.02

- Heifer-bull candidate with extra length of body.
- Smooth-fronted, straight-topped, good feet and legs.
- Explosive birth-to-weaning growth; 78 lbs. to 171 lbs. Check out his ADG of 4 lbs. per day on test.
- He ranks in the top 20% of the breed for BW and 15% for Milk.

14

DLC CHEYENNE 1164

RED POLLED 99.7% 1B #1457397

KOESTER CHEYENNE 706

{ LCC CHEYENNE B221L
{ LELAND CHATEAU 744-3013

DLC MS CLASSIC 874

{ DLC MR CLASSIC 4115
{ DLC MS CHIEFTON 716

BD	BW
4/23/11	80
205 WT	365 WT
761	1393
TEST ADG	SC
4.6	39
%IMF	REA
3.11	14.05
CALVING EASE	DAM'S AGE/MPPA
2	3/102.3

EPDs

CED	BW	WW	YW	Milk	TM	ME	HPG	CEM	Stay	Marb	YG	CW	REA	Fat
	1.2	38	72	17	36		10		9	0.12	0.03	40	0.14	0.03

- Tremendous performance in this modest birth weight bull.
- 1164 had a weaning ratio of 110, gained 4.6 lbs. per day on test.
- Tons of thickness yet is stamped with a small front end like all the Cheyennes.
- He ranks in the top 30% for YW, the top 40% for WW, Milk and HPG.

15

DLC CHEYENNE 1159

RED POLLED 99.7% 1B #1457396

KOESTER CHEYENNE 706

{ LCC CHEYENNE B221L
{ LELAND CHATEAU 744-3013

DLC MS CLASSIC 873

{ DLC MR CLASSIC 4115
{ DLC MS CHIEFTON 717

BD	BW
4/18/11	80
205 WT	365 WT
729	1300
TEST ADG	SC
3.9	38
%IMF	REA
2.60	11.73
CALVING EASE	DAM'S AGE/MPPA
2	3/102.3

EPDs

CED	BW	WW	YW	Milk	TM	ME	HPG	CEM	Stay	Marb	YG	CW	REA	Fat
	0.7	32	62	17	33		8		9	0.08	0.00	36	0.02	0.01

- Another modest birth weight Cheyenne bull with all the performance needed to be a great herd bull.
- Posted an 80-lb. WW, 723 lb. WW, 1,300 YW and gained just under 4 lbs. per day.
- Like most of the Cheyenne bulls, he shows promise to be a top-notch carcass bull.

16

DLC CHEYENNE 1186

RED POLLED 99.3% 1B #1457394

KOESTER CHEYENNE 706

{ LCC CHEYENNE B221L
{ LELAND CHATEAU 744-3013

DLC MS TREND SETTER 862

{ BASIN TREND SETTER 6074
{ DLC MISS CLASSIC 440

BD	BW
4/5/11	78
205 WT	365 WT
722	1298
TEST ADG	SC
3.9	40
%IMF	REA
3.06	12.72
CALVING EASE	DAM'S AGE/MPPA
3	3/102

EPDs

CED	BW	WW	YW	Milk	TM	ME	HPG	CEM	Stay	Marb	YG	CW	REA	Fat
	-0.9	28	51	20	34		10		10	0.24	-0.08	26	0.11	0.00

- Heifer-bull candidate out of a good Trend Setter cow.
- Moderate framed with a good thickness and depth of body.
- His dam is a half sister to Lot 10.
- He ranks in the top 35% for BW, 25% for Milk, top 15% Marbling and 35% REA.

17

DLC RAMPAGE 1190

RED POLLED 99.9% 1B #1457415

DLC RAMPAGE 7123

{ OHRR 31K MK RAMPAGE 8P
{ DLC MISS CANYON 552

DLC MISS CLASSIC 980

{ DLC MR CLASSIC 4115
{ DLC MS DESIGN 088

BD	BW
4/1/11	60
205 WT	365 WT
745	1233
TEST ADG	SC
3.9	37
%IMF	REA
2.68	12.85
CALVING EASE	DAM'S AGE/MPPA
3	2/102.4

EPDs

CED	BW	WW	YW	Milk	TM	ME	HPG	CEM	Stay	Marb	YG	CW	REA	Fat
	-4.5	24	50	13	25		10		7	-0.14	-0.13	25	0.15	-0.01

- Heifer-bull candidate gaining 3.9 lbs. per day on test.
- His weaning ratio was 106.
- Dam goes back to the great Rambo bull.
- 1190 ranks in the top 5% of the breed for BW.

RED ANGUS YEARLING BULLS

18

DLC GOLDEN BOY 1194

RED POLLED 100% 1A #1457431

BD	BW
4/2/11	75
205 WT	365 WT
660	1146
TEST ADG	SC
3.1	37
%IMF	REA
1.94	12.95
CALVING EASE	DAM'S AGE/MPPA
2	4/98.4

BHR GOLDEN BOY 453B { LMB GOLDEN BOY 719
MISS BHR LOGAN 017

DLC MS KING ROB 764 { KUHN'S KING ROB
DLC MS RED HANFORD 839

EPDs

CED	BW	WW	YW	Milk	TM	ME	HPG	CEM	Stay	Marb	YG	CW	REA	Fat
-1.6	20	44	15	25		17		9	0.04	-0.09	29	0.24	0.01	

- **Heifer-bull candidate out of Golden Boy.**
- Dam is a structurally correct, good-uddered King Rob daughter.
- Ranks in the top 20% for BW, top 10% for HPG and top 40% REA.

19

DLC RAMPAGE 1198

RED POLLED 99.8% 1B #1457418

BD	BW
3/19/11	82
205 WT	365 WT
788	1322
TEST ADG	SC
4.0	37
%IMF	REA
2.76	11.75
CALVING EASE	DAM'S AGE/MPPA
2	2/104.8

DLC RAMPAGE 7123 { OHRR 31K MK RAMPAGE 8P
DLC MISS CANYON 552

DLC MISS ROB ROY 987 { BIEBER ROB ROY 10444
DLC MS LOGAN 450

EPDs

CED	BW	WW	YW	Milk	TM	ME	HPG	CEM	Stay	Marb	YG	CW	REA	Fat
1.1	34	60	22	39				8	-0.09	-0.09	29	0.04	-0.02	

- A moderate birth weight Rampage bull out of a good-producing Rob Roy daughter.
- He has a weaning ratio of 112, 205 weight of 785, gained 4 lbs. per day on test and a YW of 1,322.
- Ranks in the top 45% for WW, top 10% for Milk, 45% for Stay.

20

DLC RAMPAGE 1197

RED POLLED 99.9% 1B #1457400

BD	BW
3/29/11	78
205 WT	365 WT
650	1184
TEST ADG	SC
4.2	38
%IMF	REA
2.32	12.30
CALVING EASE	DAM'S AGE/MPPA
3	2/96.8

DLC RAMPAGE 7123 { OHRR 31K MK RAMPAGE 8P
DLC MISS CANYON 552

DLC LOGAN LASS 959 { DLC LOGAN LAD 4125
DLC MS CLASSIC 572

EPDs

CED	BW	WW	YW	Milk	TM	ME	HPG	CEM	Stay	Marb	YG	CW	REA	Fat
-1	24	45	17	29				7	-0.09	-0.09	28	0.00	-0.02	

- **Heifer-bull candidate out of a great young Logan cow.**
- Granddam is one of our best Classic daughters.
- Should produce females of the care-free kind.
- He gained 4.2 lbs. per day on test.
- Ranks in the top 30% for BW and 40% for Milk.

21

DLC RAMPAGE 1196

RED POLLED 99.9% 1B #1457411

BD	BW
3/25/11	68
205 WT	365 WT
660	1190
TEST ADG	SC
3.9	38
%IMF	REA
2.14	13.54
CALVING EASE	DAM'S AGE/MPPA
3	2/97.2

DLC RAMPAGE 7123 { OHRR 31K MK RAMPAGE 8P
DLC MISS CANYON 552

DLC MS CELEBRATION 969 { BROWN-LSF CELEBRATION
DLC MS KING ROB 764

EPDs

CED	BW	WW	YW	Milk	TM	ME	HPG	CEM	Stay	Marb	YG	CW	REA	Fat
-4.1	12	27	19	25				11	-0.03	-0.22	13	0.26	-0.02	

- **Heifer-bull candidate. This bull has calving ease on sides of his pedigree.**
- Dam is a long, clean, great-footed Celebration cow.
- His granddam is the mother to Lot 18.
- Ranks in the top 5% for BW, 40% for Milk, 45% Stay, and 35% for REA.

22

DLC RAMPAGE 1162

RED POLLED 99.6% 1B #1457399

BD	BW
4/10/11	72
205 WT	365 WT
723	1244
TEST ADG	SC
3.9	33
%IMF	REA
2.09	14.08
CALVING EASE	DAM'S AGE/MPPA
3	2/100.8

DLC RAMPAGE 7123 { OHRR 31K MK RAMPAGE 8P
DLC MISS CANYON 552

DLC MISS CLASSIC 958 { DLC MR CLASSIC 4115
DLC MISS CANYON 568

EPDs

CED	BW	WW	YW	Milk	TM	ME	HPG	CEM	Stay	Marb	YG	CW	REA	Fat
-2.5	26	49	17	30				7	-0.13	-0.13	24	0.23	0.00	

- **Heifer-bull candidate gained 3.9 lbs. per day on test.**
- His weaning ratio was 102.
- Very good production in this bull: 72 BW, 720 WW, 1244 YW.

23

DLC'S OSCAR 1195

RED POLLED 99.7% 1B #1457371

BD	BW
4/1/11	60
205 WT	365 WT
636	1091
TEST ADG	SC
3.4	37
%IMF	REA
1.93	13.34
CALVING EASE	DAM'S AGE/MPPA
3	6/94.2

RED CROWFOOT OLE'S OSCAR { MLK CRK CUB 722
RED CROWFOOT OMEGA 9179J

DLC MISS CANYON 552 { LELAND GRAND CANYON 3129
DLC MS RED HANFORD 839

EPDs

CED	BW	WW	YW	Milk	TM	ME	HPG	CEM	Stay	Marb	YG	CW	REA	Fat
-6.3	20	46	16	26	6	9		7	0.19	0.01	28	0.05	0.03	

- **Heifer-bull candidate.**
- His Canyon dam produces light birth weight offspring every year.
- Moderate-framed bull with thickness and smooth fronted.
- Ranks in the top 5% for BW, 40% for Milk, 25% for Marbling and 45% for REA.

24

DLC'S OSCAR 1193

RED POLLED 99.9% 1B #1457423

BD	BW
4/1/11	88
205 WT	365 WT
681	1142
TEST ADG	SC
3.9	38
%IMF	REA
2.70	10.44
CALVING EASE	DAM'S AGE/MPPA
1	4/99.1

RED CROWFOOT OLE'S OSCAR { MLK CRK CUB 722
RED CROWFOOT OMEGA 9179J

DLC MS ACCELERATOR 746 { PIE ACCELERATOR 4028
DLC MISS LOGAN 445

EPDs

CED	BW	WW	YW	Milk	TM	ME	HPG	CEM	Stay	Marb	YG	CW	REA	Fat
1.2	29	61	14	28	5	6		7	0.20	0.07	36	-0.13	0.02	

- A moderate-framed bull that displayed good performance on test gaining 3.9/day.
- Dam is a very attractive Accelerator daughter with great feet and legs and a picture perfect udder.
- Ranks in the top 45% for YW and Marbling and top 50% for REA.

25

DLC CLASSIC 1163

RED POLLED 99.6% 1B #1457374

BD	BW
4/9/11	76
205 WT	365 WT
654	1129
TEST ADG	SC
3.7	37
%IMF	REA
1.96	11.35
CALVING EASE	DAM'S AGE/MPPA
2	6/100.5

DLC SIR CLASSIC 5102 { BADLANDS CLASSIC 069
DLC MS CHIEFTON 720

DLC MS CLASSIC 567 { BADLANDS CLASSIC 069
DLC MS CHIEFTON 858

EPDs

CED	BW	WW	YW	Milk	TM	ME	HPG	CEM	Stay	Marb	YG	CW	REA	Fat
-1.2	24	46	18	29			6		7	-0.32	-0.01	36	-0.04	-0.01

- **Heifer bull candidate that is double-bred Classic.**
- Smooth-made, long-bodied.
- Dam's udder was injured sometime last summer.
- He ranks in the top 30% for BW and 40% for Milk.

The **BEST VALUE** in

Age & Source Verification

Real Rancher Solutions:

- USDA approved for Age and Source Verification, plus Traceability to Angus Bloodlines
- Free Feeder Cattle Marketing Services
- Value-Based Marketing Options through Angus America and Meyer Natural Angus
- Available in either a Visual Tag only, or Combination: Visual Tag & RFID Tag

No Enrollment Fee

Your Source for
**Guaranteed
Angus!**

Contact us today for
Certified Red Angus
value-added opportunities!



- Traceability to at least 50% Red Angus Bloodlines
- Source Verified to Ranch of Origin
- Group Age Verified

**CERTIFIED
RED ANGUS**
(940) 387-3502
www.RedAngus.org



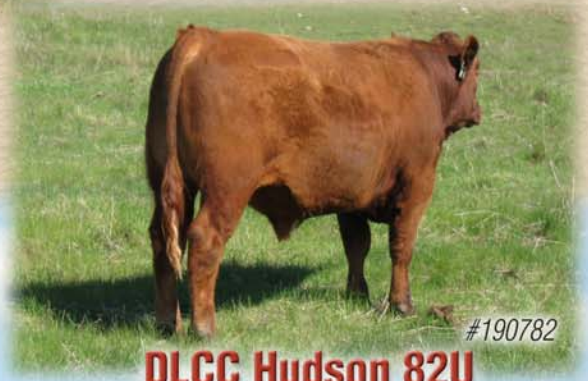
DAHL LAND & CATTLE CO.

South Devon

The only major beef breed without any known lethal genetic defects!



DLC Rock 50U #193694
Champion Junior Bull, 2010 National Western Stock Show



DLCC Hudson 82U #190782
Reserve Champion Junior Bull, 2010 National Western Stock Show



SOUTH DEVON HERD BULL PROSPECTS



Lot 26

26

DLC LEGACY LAD 1105

RED POLLED FULLBLOOD #199992

DLC LEGACY 71

{ SBCC ROYAL LEGACY 5123
{ DLC ROYAL LASS 415

DLC BOLERO LASS 601

{ DLC BOLERO LAD K98
{ DLC MISS MARVEL 306

BD	BW
4/15/11	85
205 WT	365 WT
735	1310
TEST ADG	SC
3.7	41
%IMF	REA
2.40	15.94
CALVING EASE	PROG/AVG WR
1	5/106

EPDs

BW	WW	YW	MILK	MWW	FAT	REA	MARB	RY%	C.WT	STAY	CED	CEM
3.1	47	78	25	49	0.02	0.25	0.3	0.7	24.2		0.1	0.5

- A complete package! Long-bodied, heavy-muscled, a great balanced bull not only phenotypically, but with performance and EPD value.
- This moderate birth weight 71T son is probably one of the best all-around Devon bulls we've raised.
- Dam is as close to ideal as you could ever find – a great-producing Bolero daughter.
- 1105 ranks in the top 25% of the breed for WW, Milk and MWW.
- Retaining ¼ semen interest.



Lot 27

27

DLC LEGACY 1121

BLACK POLLED FULLBLOOD #200036

DLC LEGACY 71

{ SBCC ROYAL LEGACY 5123
{ DLC ROYAL LASS 415

DLC MS SURE ENUF 811U

{ DLCC SURE-ENUF
{ DLC MISS ROYAL 631

BD	BW
4/21/11	86
205 WT	365 WT
749	1408
TEST ADG	SC
3.8	41
%IMF	REA
2.70	12.61
CALVING EASE	PROG/AVG WR
1	3/103

EPDs

BW	WW	YW	MILK	MWW	FAT	REA	MARB	RY%	C.WT	STAY	CED	CEM
3.3	51	93	23	48	0.01	0.25	0.3	0.8	32		0.7	0.8

- Tremendous growth and thickness with a powerful herd bull appearance.
- Offers breed leading performance in a thick, long-bodied, sound-moving, black package.
- A big scrotal bull with a Yearling Weight of over 1,400 lbs.
- Ranks in the top 10% of the breed in WW, YW and top 30% for MWW.
- Retaining 1/4 Semen Interest.

SOUTH DEVON HERD BULL PROSPECTS



Lot 28

28

DLC ROYAL LAD 137

BLACK POLLED PUREBRED #200029

DLC BLACK LAD 60W

{ DLC MR ROYAL DUKE 40
{ DLC LADY IMPACT 526

DLC ROCKETTE 800U

{ X-E ROCK P296
{ DLC MISS ROYAL 236

BD	BW
5/9/11	90
205 WT	365 WT
768	1451
TEST ADG	SC
4.3	37
%IMF	REA
NA	NA
CALVING EASE	PROG/AVG WR
1	3/110

EPDs

BW	WW	YW	MILK	MWW	FAT	REA	MARB	RY%	C.WT	STAY	CED	CEM
2.7	47	95	31	55	0.01	0.08	0.6	0.4	27.8		1.8	-0.2

- Tons of thickness and performance in this young 60W bull.
- Check out his birth to yearling gain; 768-lb. 205 and 1,451-lb. YW.
- This black calf gained 4.3 lbs. per day on test.
- Dam is one of the great, top-producing "Rocky" daughters.
- 137 ranks in the top 5% for YW and MWW and the top 10% for Milk and top 15% for WW.
- Retaining ¼ semen interest.



Lot 29

29

DLC SOLID ROCK 1120

RED POLLED FULLBLOOD #199957

X-E ROCK P296

{ SBCC 8103
{ X-E AMBER M296

DLC MISS MARVEL 333

{ B3C SQUIRT "EM" OUT 5L
{ DLC MISS IMPACT 112

BD	BW
4/24/11	95
205 WT	365 WT
788	1411
TEST ADG	SC
4.2	40
%IMF	REA
2.16	12.67
CALVING EASE	PROG/AVG WR
1	8/111

EPDs

BW	WW	YW	MILK	MWW	FAT	REA	MARB	RY%	C.WT	STAY	CED	CEM
5.2	59	103	31	61	0.01	0.1	0.5	0.5	31		-1.4	0.0

- Super growth with excellent EPDs and superb performance.
- Gained 4.1 lbs. per day on his dam and 4.2 lbs. per day on test.
- Dam is a perfect-uddered, top-producing Marvel cow.
- Ranks in the top 1% of the breed for YW and MWW, the top 5% for WW and Milk.
- Retaining ¼ semen interest.

SOUTH DEVON YEARLING BULLS



Lot 30



Lot 31

30

DLC HUDSON LAD 1118

BLACK POLLED 87.5% SD #199982

BD	4/20/11	BW	92
205 WT	660	365 WT	1307
TEST ADG	3.8	SC	37
%IMF	1.96	REA	13.62
CALVING EASE	1	PROG/AVG WR	6/98

DLC HUDSON 82U { MJB SHUR LOC 106S
DLC PRINCESS MIA 78P

DLC LADY IMPACT 526 { DLC IMPACT LAD 343
DLC MS IMPACT 020

EPDs

BW	WW	YW	MILK	MWW	FAT	REA	MARB	RY%	C WT	STAY	CED	CEM
2.9	39	83	24	43	0.01	0.18	0.6	0.7	28.1		1.4	-0.6

- Tremendous power, muscle shape and style.
- Interesting pedigree with power and maternal strength.
- Dam is a clean, feminine, good-milking Impact, with a picture-perfect udder and sound feet and legs.
- Very stylish bull gaining 3.8 lbs. per day on test.

31

DLC MR ROCK 1126

RED SCURRED FULLBLOOD #199961

BD	4/27/11	BW	82
205 WT	715	365 WT	1287
TEST ADG	4.0	SC	37
%IMF	NA	REA	NA
CALVING EASE	1	PROG/AVG WR	7/97

X-E ROCK P296 { SBCC 8103
X-E AMBER M296

DLC IMPACT LASS 409 { DLC IMPACT SON 80
DLC MISS BOLERO 008

EPDs

BW	WW	YW	MILK	MWW	FAT	REA	MARB	RY%	C WT	STAY	CED	CEM
2.7	46	86	24	47	0.01	0.14	0.4	0.6	28.8		1.2	0.5

- Style, length of body, easy-moving, best describe this high-performing Rocky son.
- Moderate birth weight bull gaining 4 lbs. per day.
- Dam is one of the most structurally correct Impact daughters.
- Ranks in the top 25% for WW and 20% for YW.

32

DLC LEGACY LAD 1119

RED POLLED PUREBRED #199960

BD	4/24/11	BW	90
205 WT	723	365 WT	1366
TEST ADG	4.1	SC	39
%IMF	1.78	REA	15.55
CALVING EASE	1	PROG/AVG WR	7/102

DLC LEGACY 71 { SBCC ROYAL LEGACY 5123
DLC ROYAL LASS 415

DLC MISS IMPACT 402 { DLC IMPACT SON 80
DLC MS ROYAL 019

EPDs

BW	WW	YW	MILK	MWW	FAT	REA	MARB	RY%	C WT	STAY	CED	CEM
4.7	49	87	20	45	0.02	0.16	0.4	0.6	24.3		-1.0	-0.3

- A larger-framed, thick-patterned bull with the performance influence of Legacy and Impact.
- 1119 gained 3.8 lbs. per day pre-weaning and 4.1 lbs. per day on test.
- Ranks in the top 10% of the breed for WW and top 20% for YW.

33

DLC LEGACY LAD 1137

BLACK POLLED PUREBRED #199999

BD	5/3/11	BW	82
205 WT	720	365 WT	1277
TEST ADG	4.0	SC	37
%IMF	NA	REA	NA
CALVING EASE	1	PROG/AVG WR	5/102

DLC LEGACY 71 { SBCC ROYAL LEGACY 5123
DLC ROYAL LASS 415

DLC MS BLACK ENUF 620 { DLCC BLACK ENUF 127J
DLC MISS ROYAL 236

EPDs

BW	WW	YW	MILK	MWW	FAT	REA	MARB	RY%	C WT	STAY	CED	CEM
2.0	45	76	25	47	0.02	0.18	0.3	0.6	22.7		0.6	0.3

- A modest birth weight, weaning off at 720 lbs.
- Moderate framed 71T calf out of a very functional Black Enuf cow.
- A top performance bull gaining 4 lbs. per day.
- Ranks in the top 35% for BW and the top 25% for WW and MWW.

34

DLC LEGACY LAD 1101

RED POLLED PUREBRED #199976

BD	4/15/11	BW	95
205 WT	716	365 WT	1280
TEST ADG	3.6	SC	42
%IMF	1.86	REA	16.11
CALVING EASE	1	PROG/AVG WR	6/103

DLC LEGACY 71 { SBCC ROYAL LEGACY 5123
DLC ROYAL LASS 415

DLC MISS BOLERO 507 { DLC BOLERO LAD K98
DLC ROYAL LADY 210

EPDs

BW	WW	YW	MILK	MWW	FAT	REA	MARB	RY%	C WT	STAY	CED	CEM
4.8	47	79	24	47	0.02	0.28	0.2	0.8	23.4		-0.8	-0.7

- A thick-made, strong-topped, balanced son of 71T.
- Dam is one of the best-producing daughters in the herd.
- Large scrotal bull.
- Ranks in the top 20% for WW and MWW.

35

DLC HUDSON LAD 1108

RED POLLED PUREBRED #200046

BD	4/26/11	BW	90
205 WT	714	365 WT	1353
TEST ADG	3.7	SC	35
%IMF	2.22	REA	15.31
CALVING EASE	1	PROG/AVG WR	3/108

DLCC HUDSON 82U { MJB SHUR LOC 106S
DLCC PRINCESS MIA 78P

DLC MS ROYAL LAD 832U { DLC ROYAL LAD 21
DLC IMPACT LASS 409

EPDs

BW	WW	YW	MILK	MWW	FAT	REA	MARB	RY%	C WT	STAY	CED	CEM
4.3	53	95	22	49	0.01	0.24	0.5	0.8	33.4		0.2	-1.8

- A thick, heavy-quartered son of Hudson who steps down on a wide base.
- Breed leading performance EPDs.
- Dam is a sound, heavy milking Royal female.
- Ranks in the top 5% for WW, 15% for YW and 20% for MWW.

SOUTH DEVON YEARLING BULLS

36 JDLC HUDSON LAD 1110

RED POLLED 87.5% SD #200005

DLCC HUDSON 82U

{ MJB SHUR LOC 106S
{ DLCC PRINCESS MIA 78P

DLC MS ROYAL 40-637

{ DLC MR ROYAL 40
{ DLC MISS ROYAL 130

BD	4/19/11	BW	88
205 WT		365 WT	
692		1276	
TEST ADG		SC	
3.4		38	
%IMF		REA	
2.36		15.15	
CALVING EASE		PROG/AVG WR	
1		5/98	

EPDs

BW	WW	YW	MILK	MWW	FAT	REA	MARB	RY%	C WT	STAY	CED	CEM
2.8	47	87	24	47	0.01	0.28	0.1	1.0	30.6		1.3	-0.4

- Tremendous thickness from front to rear.
- Heavy hind quarter
- Dam is a beautiful, sound, perfect-uddered Royal daughter.
- Should produce heavy, big-butted steers and replacement heifers.

37 DLC LEGACY 1103

RED POLLED PUREBRED #200019

DLC LEGACY 71

{ SBCC ROYAL LEGACY 5123
{ DLC ROYAL LASS 415

DLC ROCKETTE 732

{ X-E ROCK P296
{ DLC MS MONARCH G75

BD	4/17/11	BW	100
205 WT		365 WT	
716		1329	
TEST ADG		SC	
3.9		37	
%IMF		REA	
2.35		12.88	
CALVING EASE		PROG/AVG WR	
1		4/107	

EPDs

BW	WW	YW	MILK	MWW	FAT	REA	MARB	RY%	C WT	STAY	CED	CEM
5.0	51	92	27	52	0.01	0.18	0.2	0.7	28.8		-1.4	0.0

- Performance-orientated 71T son with thickness and good structure.
- Dam is a powerful cow.
- Gained 3.9 lbs. per day on test.
- Ranks in the top 15% of the breed for WW, YW and Milk.

38 DLC MR ROCK 1127

RED POLLED FULLBLOOD #200000

X-E ROCK P296

{ SBCC 8103
{ X-E AMBER M296

DLC MISS ROYAL 622

{ DLC MR ROYAL 115
{ DLC MISS BOLERO 003

BD	4/25/11	BW	82
205 WT		365 WT	
691		1281	
TEST ADG		SC	
3.7		36	
%IMF		REA	
2.27		14.03	
CALVING EASE		PROG/AVG WR	
1		5/100	

EPDs

BW	WW	YW	MILK	MWW	FAT	REA	MARB	RY%	C WT	STAY	CED	CEM
3.0	47	93	26	49	0.02	0.14	0.6	0.5	30.2		1.5	0.5

- A moderate birth weight, thick-made Rock son with breed leading EPDs.
- Dam is a feminine, sound, long-bodied Royal.
- Ranks in the top 20% for WW, 5% for YW and 15% for both Milk and MWW.

39 DLC HUDSON LAD 1128

RED POLLED PUREBRED #200052

DLCC HUDSON 82U

{ MJB SHUR LOC 106S
{ DLCC PRINCESS MIA 78P

DLC MISS ROYAL 844U

{ DLC MR ROYAL DUKE 40
{ DLC MISS BOLERO 332

BD	4/29/11	BW	92
205 WT		365 WT	
704		1353	
TEST ADG		SC	
3.5		37	
%IMF		REA	
NA		NA	
CALVING EASE		PROG/AVG WR	
1		3/108	

EPDs

BW	WW	YW	MILK	MWW	FAT	REA	MARB	RY%	C WT	STAY	CED	CEM
3.1	43	88	28	50	0.01	0.26	0.4	0.9	31.2		1.3	-0.4

- Clean-made, structurally sound, long-bodied Hudson son.
- A strong, maternal bull.
- Dam is a heavy-milking cow with a great udder.
- Ranks in the top 15% of the breed for Milk and MWW.

40 DLC HUDSON LAD 1107

RED POLLED PUREBRED #200051

DLCC HUDSON 82U

{ MJB SHUR LOC 106S
{ DLCC PRINCESS MIA 78P

DLC MS ROYAL 843U

{ DLC MR ROYAL DUKE 40
{ DLC MISS BOLERO 007

BD	4/21/11	BW	80
205 WT		365 WT	
676		1277	
TEST ADG		SC	
4.0		37	
%IMF		REA	
1.89		14.64	
CALVING EASE		PROG/AVG WR	
2		3/97	

EPDs

BW	WW	YW	MILK	MWW	FAT	REA	MARB	RY%	C WT	STAY	CED	CEM
2.4	42	87	29	50	0.00	0.28	0.3	0.9	33.3		2.2	-0.2

- A moderate birth weight Hudson son, who is smooth made, long bodied and has potential to becoming a heifer bull.
- 1107 gained 4 lbs. per day on test.
- Ranks in the top 40% of the breed for BW and top 15% for Milk.

41 DLC MR ROYAL 1142

BLACK POLLED PUREBRED #199995

DLC BLACK LAD 60W

{ DLC MR ROYAL DUKE 40
{ DLC LADY IMPACT 526

DLC ROCKETTE 607

{ X-E ROCK P296
{ DLC ROYAL LADY 210

BD	5/17/11	BW	90
205 WT		365 WT	
748		1369	
TEST ADG		SC	
4.3		37	
%IMF		REA	
NA		NA	
CALVING EASE		PROG/AVG WR	

EPDs

BW	WW	YW	MILK	MWW	FAT	REA	MARB	RY%	C WT	STAY	CED	CEM
3.9	45	89	32	54	0.01	0.14	0.4	0.6	25		0.5	-0.7

- Thick-made, strong-topped young son of 60W.
- Performance bull! He gained 4.3 lbs. per day on test.
- This black bull ranks in the top 10% of the breed for YW.



42 DLC HUDSON LAD 1109

RED POLLED PUREBRED #200045

DLCC HUDSON 82U

{ MJB SHUR LOC 106S
{ DLCC PRINCESS MIA 78P

DLC MS ROYAL LAD 830U

{ DLC ROYAL LAD 21
{ DLC MISS MARVEL 333

BD	4/14/11	BW	85
205 WT		365 WT	
702		1273	
TEST ADG		SC	
3.8		35	
%IMF		REA	
1.97		13.57	
CALVING EASE		PROG/AVG WR	
1		3/103	

EPDs

BW	WW	YW	MILK	MWW	FAT	REA	MARB	RY%	C WT	STAY	CED	CEM
4.1	57	98	24	52	0.01	0.22	0.5	0.8	34.3		0.0	-1.6

- Another stout, thick-made, wide-topped Hudson son.
- Dam is a very productive daughter of the great Royal had 21 bull.
- Ranks in the top 10% for WW and top 20% for YW.

SOUTH DEVON YEARLING BULLS

43 DLC HUDSON LAD 1111

RED POLLED PUREBRED #200017

DLC HUDSON 82U

{ MJB SHUR LOC 106S
{ DLC PRINCESS MIA 78P

DLC ROCKETTE 730

{ X-E ROCK P296
{ DLC ASTOUND LASS 335

EPDs

BW	VV	YW	MILK	MWW	FAT	REA	MARB	RY%	C WT	STAY	CED	CEM
1.2	44	87	25	46	0.00	0.25	0.2	0.9	34		2.5	0.4

- This Hudson bull combines length, thickness, smooth shoulders and a very modest birth weight of 80 lbs.
- He gained 3.7 lbs. per day and posed a yearling weight over 1,300 lbs.
- Ranks in the top 10% of the breed on BW and 30% for WW and MWW.

44 DLC LEGACY 1106

BLACK POLLED FULLBLOOD #200040

DLC LEGACY 71

{ SBCC ROYAL LEGACY 5123
{ DLC ROYAL LASS 415

DLC MS SURE ENUF 817U

{ DLCC SURE-ENUF
{ DLC ROCKETTE 623

EPDs

BW	VV	YW	MILK	MWW	FAT	REA	MARB	RY%	C WT	STAY	CED	CEM
2.0	43	81	26	48	0.01	0.22	0.2	0.7	26.3		1.6	1.1

- This 80 lb.-birth weight 71T son is clean and smooth made.
- Dam is a feminine, long-sided Sure Enuf daughter known for calving ease.
- Ranks in the top 35% of the breed for BW and YW and top 25% Milk and MWW.

45 DLC LEGACY LAD 1104

RED SCURRED FULLBLOOD #199977

DLC LEGACY 71

{ SBCC ROYAL LEGACY 5123
{ DLC ROYAL LASS 415

DLC MISS ROYAL LASS 508

{ DLC ROYAL LAD 21
{ DLC MISS IMPACT 952

EPDs

BW	VV	YW	MILK	MWW	FAT	REA	MARB	RY%	C WT	STAY	CED	CEM
4.1	38	77	23	42	0.02	0.18	0.5	0.6	21.9		0.1	-1.5

- Thick-topped, performance 71T son, with eye-appeal.
- Dam is a Hallmark dam with plenty of milk.
- Steps down square and is free moving.

46 DLC THE ROCK 1112

RED SCURRED PUREBRED #199955

X-E ROCK P296

{ SBCC 8103
{ X-E AMBER M296

DLC BOLERO LASS 326

{ DLC BOLERO LAD K98
{ DLC MS ROYAL 013

EPDs

BW	VV	YW	MILK	MWW	FAT	REA	MARB	RY%	C WT	STAY	CED	CEM
3.2	36	79	26	44	0.02	0.18	0.6	0.5	26		0.9	0.8

- Extra length of body, style and thick topped.
- Dam is a good Bolero cow with excellent structure and a picture-perfect udder.
- Slight Scurs (Removed).

47 DLC ROYAL LAD 1139

RED POLLED FULLBLOOD #200031

DLC BLACK LAD 60W

{ DLC MR ROYAL DUKE 40
{ DLC LADY IMPACT 526

DLC ROCKETTE 803U

{ X-E ROCK P296
{ DLC MISS IMPACT 104

EPDs

BW	VV	YW	MILK	MWW	FAT	REA	MARB	RY%	C WT	STAY	CED	CEM
0.4	33	70	27	44	0.01	0.08	0.5	0.5	20.1		3.4	0.5

- A small birth weight bull with heifer bull potential.
- Smooth fronted yet thick topped with plenty of quarter.
- Dam is a smaller framed, young cow averaging 72 lbs. birth weight.

48 DLC LEGACY 1102

RED POLLED FULLBLOOD #200037

DLC LEGACY 71

{ SBCC ROYAL LEGACY 5123
{ DLC ROYAL LASS 415

DLC MS SURE ENUF 812U

{ DLCC SURE-ENUF
{ DLC MISS BOLERO 602

EPDs

BW	VV	YW	MILK	MWW	FAT	REA	MARB	RY%	C WT	STAY	CED	CEM
2.0	39	75	20	39	0.01	0.27	0.2	0.8	27.1		1.4	1

- Modest birth weight with plenty of performance.
- Dam is a correctly structured, feminine Sure Enuf daughter with a great udder.
- Ranks in the top 30% of the breed for birth weight.

49 DLC ROCKY LAD 1113

RED SCURRED PUREBRED #199962

X-E ROCK P296

{ SBCC 8103
{ X-E AMBER M296

DLC ROYAL LASS 415

{ DLC MR ROYAL 115
{ DLC MISS IMPACT 995

EPDs

BW	VV	YW	MILK	MWW	FAT	REA	MARB	RY%	C WT	STAY	CED	CEM
4.1	41	88	26	46	0.02	0.16	0.5	0.5	27.8		0.0	-0.1

- Another long-bodied Rock son with style and is structurally correct.
- Dam is a past Hallmark dam – she is the dam of 71T.
- Ranks in the top 20% for YW, 15% for Milk and 25% for MWW.

50 DLC LEGACY LAD 1125

RED POLLED PUREBRED #199993

DLC LEGACY 71

{ SBCC ROYAL LEGACY 5123
{ DLC ROYAL LASS 415

DLC MISS BOLERO 602

{ DLC BOLERO LAD K98
{ DLC MS MONARCH 878

EPDs

BW	VV	YW	MILK	MWW	FAT	REA	MARB	RY%	C WT	STAY	CED	CEM
3.5	38	72	22	41	0.01	0.23	0.3	0.8	23.4		-0.3	0.1

- Long-sided, thick-made, free-moving 71T son.
- Gained 3.9 lbs. per day on test and posted over 1,200 lbs. yearling weight.
- Dam is another very correct, perfect-uddered Bolero cow.

SOUTH DEVON YEARLING BULLS



Lot 51

51

DLC ROCKY 122

RED POLLED FULLBLOOD #199988

X-E ROCK P296 { SBCC 8103
X-E AMBER M296

DLC MS ROYAL L21-618 { DLC ROYAL LAD 21
DLC MS BOLERO 219

BD 5/2/11	BW 95
205 WT 736	365 WT 1214
TEST ADG 2.9	SC 38
%IMF NA	REA NA
CALVING EASE 1	PROG/AVG WR 5/108

EPDs

BW	WW	YW	MILK	MWW	FAT	REA	MARB	RY%	C WT	STAY	CED	CEM
5.6	54	101	28	55	0.01	0.14	0.6	0.5	30.7		-0.4	-0.9

- A young son of Rocky who posted performance rankings as good as the older guys.
- Dam is a heavy-milking, solid-footed, long-bodied Royal.
- Ranks in the top 5% of the breed in WW, YW, Milk and MWW.

52

DLC HUDSON LAD 1124

RED POLLED PUREBRED #200049

DLC HUDSON 82U { MJB SHUR LOC 106S
DLC PRINCESS MIA 78P

DLC ROCKETTE 840U { X-E ROCK P296
DLC BOLERO LASS 967

BD 4/25/11	BW 78
205 WT 653	365 WT 1220
TEST ADG 3.4	SC 35
%IMF 1.97	REA 13.25
CALVING EASE 2	PROG/AVG WR 3/96

EPDs

BW	WW	YW	MILK	MWW	FAT	REA	MARB	RY%	C WT	STAY	CED	CEM
0.7	34	74	26	43	0.01	0.24	0.4	0.8	29.3		2.8	0.4

- Another heifer-bull candidate out of Hudson.
- Clean and smooth-made, posting a 1,220 lb. yearling weight.
- Dam is as structurally strong, very feminine cow.
- Ranks in the top 10% of the breed for BW and top 15% for Milk.

54

DLC LEGACY LAD 1132

BLACK POLLED FULLBLOOD #199965

DLC LEGACY 71 { SBCC ROYAL LEGACY 5123
DLC ROYAL LASS 415

DLC MS BLACK IMPACT 482 { DLC IMPACT SON 80
DLC MISS BLACK MARBLE

BD 4/29/11	BW 85
205 WT 673	365 WT 1184
TEST ADG 2.8	SC 35
%IMF NA	REA NA
CALVING EASE 1	PROG/AVG WR 7/100

EPDs

BW	WW	YW	MILK	MWW	FAT	REA	MARB	RY%	C WT	STAY	CED	CEM
4.0	40	68	21	41	0.01	0.15	0.1	0.7	17.9		-0.2	-0.1

- A long-sided, thick-made bull with excellent EPD ratings.
- Free moving with good structure.
- Dam is a clean-made, long, taller-framed Marble cow.
- Should sire those long-bodied typed calves.



Dan on Otter

53

DLC LEGACY 1131

RED POLLED FULLBLOOD #200013

DLC LEGACY 71 { SBCC ROYAL LEGACY 5123
DLC ROYAL LASS 415

DLC MISS BOLERO 711 { DLC BOLERO LAD K98
DLC LADY MARVEL 309

BD 4/29/11	BW 80
205 WT 643	365 WT 1203
TEST ADG 3.5	SC 37
%IMF NA	REA NA
CALVING EASE 1	PROG/AVG WR 4/99

EPDs

BW	WW	YW	MILK	MWW	FAT	REA	MARB	RY%	C WT	STAY	CED	CEM
2.1	25	50	24	37	0.02	0.2	0.4	0.6	13.4		0.7	0.6

- Another modest birth weight, clean-made, thick 71T son.
- Notice his 80 BW, 643WW, 1203YW.
- Plenty of growth without a bigger birth weight.
- Ranks in the top 35% in BW and 25% for Milk.

55

DLC LEGACY 1135

RED POLLED FULLBLOOD #200020

DLC LEGACY 71 { SBCC ROYAL LEGACY 5123
DLC ROYAL LASS 415

DLC ROCKETTE 736 { X-E ROCK P296
DLC MISS IMPACT 402

BD 5/3/11	BW 85
205 WT 723	365 WT 1220
TEST ADG 2.9	SC 36
%IMF NA	REA NA
CALVING EASE 1	PROG/AVG WR 4/105

EPDs

BW	WW	YW	MILK	MWW	FAT	REA	MARB	RY%	C WT	STAY	CED	CEM
3.7	47	86	25	48	0.01	0.16	0.3	0.6	25.7		-0.1	0.2

- Very deep-bodied bull with strong growth and maternal rankings.
- Solid-footed and free-moving.
- Thick-quartered bull that has an easy-fleshing appearance.
- Ranks in the top 15% of the breed in WW and YW, top 20% in MWW and top 30% in Milk.



Jeff on Dollar

COMPOSITE YEARLING BULLS



Lot 56

56 DLC COTEAU LAD 1

BLACK POLLED 50%SD,50%SA #200071

DLC SPARKY 6170 { DLC BANKSHOT 4128
DLC MS HIGH PLAINS P55

DLC MISS ROCKETTE 920W { X-E ROCK P296
DLC MISS IMPACT 321

BD	BW
3/31/11	90
205 WT	365 WT
716	1336
TEST ADG	SC
4.3	35
%IMF	REA
1.58	13.59
CALVING EASE	PROG/AVG WR
1	2/105

EPDs

BW	WW	YW	MILK	MWW	FAT	REA	MARB	RY%	C WT	STAY	CED	CEM
3.0	48	92	29	54	0.01	0.22	0.2	0.7	32.8		0.5	0.3



Jack on Scout

57 DLC MR COTEAU 232

RED POLLED 19%SD, 75%AR #200055

DLC ROB ROY 9152 { BIEBER ROB ROY 10444
DLC MISS LOGAN 472

DLC MS RED COTEAU 895U { DLC SIR CLASSIC 5102
DLC MS ROYAL 012

BD	BW
4/11/11	90
205 WT	365 WT
752	1289
TEST ADG	SC
3.7	34
%IMF	REA
2.41	13.42
CALVING EASE	PROG/AVG WR
1	3/107

EPDs

BW	WW	YW	MILK	MWW	FAT	REA	MARB	RY%	C WT	STAY	CED	CEM
3.1	53	99	23	49	0.01	0.3	-0.1	0.9	36.5		-1.1	0.3



Lot 58

58 DLC MR RAMPAGE 205

RED POLLED 9%SD,62%AR,28%SA #200061

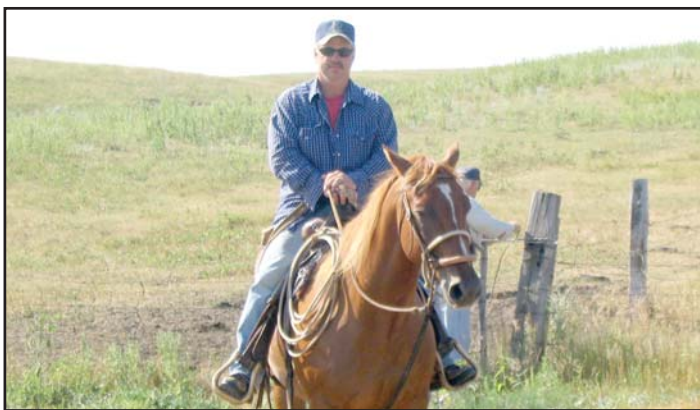
DLC RAMPAGE 7123 { OHRR 31K NJ RAQNOAGE 80
DLC MISS CANYON 552

DLC MS BLACK COTEAU 170W { DLC SPARKY 6170
DLC MISS COTEAU 930

BD	BW
4/1/11	70
205 WT	365 WT
718	1189
TEST ADG	SC
3.7	39
%IMF	REA
1.90	12.15
CALVING EASE	PROG/AVG WR
2	2/105

EPDs

BW	WW	YW	MILK	MWW	FAT	REA	MARB	RY%	C WT	STAY	CED	CEM
-1.3	43	67	25	46	0.01	0.25	-0.1	0.9	24.6		3.2	1



John on Slim

59 DLC RED COTEAU 251

RED POLLED 25%SD,50%AR,25%SA #200006

DLC ROB ROY 9152 { BIEBER ROB ROY 10444
DLC MISS LOGAN 472

DLC MS COTEAU 824 { DLC HIGH PLAINS 278
DLC MS BLACK IMPACT 482

BD	BW
4/15/11	88
205 WT	365 WT
613	1166
TEST ADG	SC
3.5	39
%IMF	REA
2.86	15.37
CALVING EASE	PROG/AVG WR
1	4/96

EPDs

BW	WW	YW	MILK	MWW	FAT	REA	MARB	RY%	C WT	STAY	CED	CEM
2.4	28	46	23	37	0.01	0.13	0.1		10.6		-0.7	0.3

NON-REGISTERED YEARLING BULLS

60 DLC Rob Roy 9152
DLC COTEAU 206
 DLC Ms Coteau 628

{ Bieber Rob Roy 10444
 DLC Ms Logan 472
 DLC Classic 4115
 MAC Kalamazoo

BD: 3/30/11 • Red • Polled • 25% SA, 75% AR

61 DLC Rob Roy 9152
DLC COTEAU 10
 DLC Ms Coteau 830

{ Bieber Rob Roy 10444
 DLC Ms Logan 472
 DLC High Plains 278
 DLC Ideal Lady 542

BD: 4/4/11 • Red • Polled • 50% SA, 50% AR

62 DLC Black Lad 60W
DLC BLACK COTEAU 1133
 DLC Rockette 833

{ DLC Royal Duke 40
 DLC ms Impact 526
 X-E Rock 296
 DLC Ms Impact 108

BD: 5/1/11 • Black • Polled • PB South Devon

63 DLC Legacy 55
DLC BLACK COTEAU 26
 DLC Bank Shot 047

{ SBCC Royal Legacy
 DLC Ms Bolero 221
 DLC Bank Shot 3162
 DLC Ms Eclipse 650

BD: 4/15/11 • Black • Polled • 50% SA, 50% SD

64 DLC Rob Roy 9152
DLC BLACK COTEAU 230
 DLC Black Coteau 936

{ Bieber Rob Roy 10444
 DLC Ms Logan 472
 DLC High Plains P38
 DLC Ms Logan 470

BD: 4/8/11 • Black • Polled • 25% SA, 75% AR

65 DLC Rob Roy 9152
DLC COTEAU 224
 MS HIGH PLAINS 564

{ Bieber Rob Roy 10444
 DLC Ms Logan 472
 DLC HIGH PLAINS 278
 DLC Ms Bankshot

BD: 4/8/11 • Red • Polled • 50% SA, 50% AR

66 DLC Royal Duke 405
DLC COTEAU 291
 DLC Miss Classic 388

{ DLC Royal Duke 63
 DLC Ms Impact 321
 Badlands Classic
 DLC Chiefton 844

BD: 4/23/11 • Red • Polled • 50% SA, 50% SD



Lot 60

	BW	205 WT	WEANING WDA	365 WT	100-DAY ADG	SC	MARB	REA		
	86	805	4.0	1306	3.6	38		1.87	12.60	
EPDs	BW	WW	YW	MILK	MWW			CALVING EASE	DAM'S AGE	DAM'S MPPA
	3.1	57	95	17	54			1	6	106

A thick-made powerhouse with very impressive EPDs. 206 should sire scale top-pers and females to go back into your herd. See photo at bottom of page.

	BW	205 WT	WEANING WDA	365 WT	100-DAY ADG	SC	MARB	REA		
	87	719	3.5	1214	3.4	36		3.16	14.20	
EPDs	BW	WW	YW	MILK	MWW			CALVING EASE	DAM'S AGE	DAM'S MPPA
	2.9	37	68	28	46			1	5	102

A thick, soggy-made bull with tons of eye appeal. He has great feet and legs and great structure. Dam has a picture-perfect udder.

	BW	205 WT	WEANING WDA	365 WT	100-DAY ADG	SC	MARB	REA		
	82	655	3.1	1268	3.9	37		2.47	12.50	
EPDs	BW	WW	YW	MILK	MWW			CALVING EASE	DAM'S AGE	DAM'S MPPA
	2.6	43	85	46	25			1	3	101

This young calf has all the performance needed to stay with the big guys. His dam is a picture-perfect cow. He doesn't have a paper but he has a powerful pedigree.

	BW	205 WT	WEANING WDA	365 WT	100-DAY ADG	SC	MARB	REA		
	88	691	3.4	1251	3.8	38		2.15	12.30	
EPDs	BW	WW	YW	MILK	MWW			CALVING EASE	DAM'S AGE	DAM'S MPPA
	2.9	24	51	26	37			1	11	101

A really nice-made bull with great length of body and smooth front end. His dam is still producing at 12 years of age.

	BW	205 WT	WEANING WDA	365 WT	100-DAY ADG	SC	MARB	REA		
	70	814	3.8	1292	4.1	35		1.99	12.50	
EPDs	BW	WW	YW	MILK	MWW			CALVING EASE	DAM'S AGE	DAM'S MPPA
	-1.4	35	66	16	42			2	4	104

A smooth-made bull with a wide rear end. His dam is a moderately framed, heavy milking cow.

	BW	205 WT	WEANING WDA	365 WT	100-DAY ADG	SC	MARB	REA		
	75	693	3.4	1247	3.2	38		1.74	15.80	
EPDs	BW	WW	YW	MILK	MWW			CALVING EASE	DAM'S AGE	DAM'S MPPA
	-1.1	36	58	28	47			2	8	101

Another smooth-made bull out of a great-producing cow. He has great birth-to-weaning spread and lots of length of body. See photo at bottom of page.

	BW	205 WT	WEANING WDA	365 WT	100-DAY ADG	SC	MARB	REA		
	85	724	3.6	1236	3.9	39		1.70	14.00	
EPDs	BW	WW	YW	MILK	MWW			CALVING EASE	DAM'S AGE	DAM'S MPPA
	3.4	31	42	12	32			1	9	102

A long-bodied bull with a smooth front end. His dam is perfectly structured with an ideal udder.



Lot 65

NON-REGISTERED YEARLING BULLS

67 DLC Rob Roy 9152
DLC BLACK COTEAU 277
 DLC Miss Coteau 906

Bieber Rob Roy 10444
 DLC Ms Logan 472
 DLC High Plains P38
 DLC Ms Bank Shot 156

BD: 4/18/11 • Black • Polled • 50% SA, 50% AR

68 DLC Rampage 7123
DLC BLACK COTEAU 223
 DLC Ms Coteau 203

OHRP Rampage 8P
 DLC Ms Canyon 553 MAC
 Kalamazoo
 DLC Ms Blackstar

BD: 4/8/11 • Black • Polled • 50% SA, 50% AR

69 DLC Rampage 7123
DLC BLACK COTEAU 211
 DLC Ms Coteau 163

OHRP Rampage 8P
 DLC Ms Canyon 552
 DLC Sparky 6170
 DLC Ms Coteau 934

BD: 3/31/11 • Black • Polled • 50% SA, 50% AR

70 DLC Rob Roy 9152
DLC COTEAU 278
 DLC Ms Coteau 608

Bieber Rob Roy 10444
 DLC Ms Logan 472
 DLC High Plains 278
 DLC Black Star 284

BD: 4/18/11 • Red • Polled • 50% SA, 50% AR

	BW	205 WT	WEANING WDA	365 WT	100-DAY ADG	SC		MARB	REA		
	68	723	3.4	1192	3.4	40		1.92	11.70		
EPDs	BW	WW	YW	MILK	MWW			CALVING EASE	DAM'S AGE	DAM'S MPPA	
	-0.9	27	49	16	31			2	3	104	

A small birth weight bull with over a 700-lb. weaning weight. His dam goes back to one of our great Salers bloodlines.

	BW	205 WT	WEANING WDA	365 WT	100-DAY ADG	SC		MARB	REA		
	55	686	3.2	1131	3.2	37		1.85	12.90		
EPDs	BW	WW	YW	MILK	MWW			CALVING EASE	DAM'S AGE	DAM'S MPPA	
	-2.6	27	50	26	38			2	3	100	

Lots of calving ease in this smooth-fronted, small-headed black bull. His dam is going to be one of our top producers and is a favorite.

	BW	205 WT	WEANING WDA	365 WT	100-DAY ADG	SC		MARB	REA		
	70	637	2.9	1091	3.4	40		2.54	13.30		
EPDs	BW	WW	YW	MILK	MWW			CALVING EASE	DAM'S AGE	DAM'S MPPA	
	-2.1	25	40	18	29			2	2	102	

Another calving-ease bull out of the Rampage sire who we've used with great success on heifers. Dam is perfectly structured and very feminine.

	BW	205 WT	WEANING WDA	365 WT	100-DAY ADG	SC		MARB	REA		
	78	648	3.2	1154	3.3	37		2.45	11.00		
EPDs	BW	WW	YW	MILK	MWW			CALVING EASE	DAM'S AGE	DAM'S MPPA	
	-0.9	33	71	21	38			2	5	102	

A long, smooth-made bull out of one of our favorites. Lots of style in this bull. His dam is perfectly structured and has a great udder.

SIMPLIFYING CROSSBREEDING

There are three kinds of heterosis in cattle – individual, maternal and paternal. Of these, paternal heterosis has received the least attention. Research trials report up to a 25% increase in pounds of calf weaned/cow exposed to a bull when crossbred cows produce crossbred calves. Crossbred calves demonstrate increased weaning and yearling weights when compared with the average of parent breeds.

Let's look at possible advantages of utilizing paternal heterosis and improved reproductive traits of the bull. Crossbred sires simplify crossbreeding. After you've settled on an optimal proportion for your herd, you can keep it that way by using crossbred bulls. If you want a half-Angus (red or black), and half-South Devon cowherd, you can use a South Devon bull on your Angus cows and produce heifers of the desired mix. The next step is to use a South Devon/Angus bull on your replacements to maintain the desired proportion of each breed, this results in higher uniformity than if you rotate back and forth between purebred sires.

In herds that have become less crossbred, using a Composite bull can restore heterosis in a much simpler way than using elaborate rotational systems, especially in small herds. Using a Composite bull, you can introduce heterosis. By keeping the heifers, maternal heterosis can be added without having wide fluctuations in breed composition from one generation to the next. Another option would be to use a Composite bull that has breed not found in the Composite cows – creating a calf with genetics of four breeds, for maximum heterosis.

One more benefit of the complementation that Composites bring, is that you don't have to deal with the big swings in cow



size or biological type that can occur when using purebred bulls of one breed and then another.

Composite bulls also have higher – than – average fertility and longevity. These traits appear to be a natural result of heterosis. Research has shown that semen traits and fertility along with increased survivability of sperm in Composite bulls may have an influence on overall pregnancy rates.

We have been cross-breeding for many years and have been offering F1 females to our customers in many of our past production sales. In fact, we were one of the first breeders in ND to offer a large selection of F1 females at our sales. We like to think that we do the work so you don't have to! We invite you to come and take a good look at our offering. There are 80 Composite females and 15 Composite bulls (both red and black) for you to choose from in this year's offering.

INFORMATION ON EXPECTED PROGENY DIFFERENCES (EPDs)

Red Angus Guide to EPDs

Courtesy of the Red Angus Association of America
For more information on EPDs, visit redangus.org.

CED Calving Ease Direct – predicts the probability of calves being born unassisted out of 2-year-old heifers.

BW..... Birth Weight – predicts the difference, in pounds, for birth weight, and is also used in the calculation of Red Angus' Calving Ease Direct (CED) EPD.

WW Weaning Weight – predicts the difference, in pounds, for weaning weight (adjusted to age of dam and a standard 205 days of age).

YW..... Yearling Weight – predicts the expected difference, in pounds, for yearling weight (adjusted to a standard 365 days of age).

Milk Milk – predicts the difference in maternal production of an individual animal's daughters as expressed by the weaning weight of their calves.

TM Total Maternal – predicts the rancher's actual observation of weaning weights of calves raised by an animal's daughters. $TM\ EPD = Milk\ EPD + 1/2\ (WW\ EPD)$

ME Maintenance Energy – predicts a bull's daughters that will require less feed to maintain her body weight and condition; thus increasing profit ability.

HPG..... Heifer Pregnancy – predicts the probability of heifers conceiving to calve at two years of age.

CEM Calving Ease Maternal – predicts the probability of a given animal's daughters calving unassisted at two years of age.

STAY.... Stayability – predicts the probability that a bull's daughters will remain in the herd until at least 6 years of age.

MARB .. Marbling Score – predicts differences for carcass marbling score as expressed in marbling score units. Higher marbling scores are positively correlated with higher carcass quality grades.

YG Yield Grade – predicts differences in USDA Yield Grade score, and is expressed in USDA Yield Grade units.

CW..... Carcass Weight – predicts differences in hot carcass weight and is expressed in pounds. Because Red Angus' CW EPD is a multi-trait.

REA Rib Eye Area – predicts differences of carcass Rib Eye Area between the 12th and 13th rib.

FAT 12th Rib Fat Thickness – predicts differences for carcass fat depth over the 12th rib, as expressed in inches.

South Devon Guide to EPDs

Courtesy of the North American South Devon Association
For more information on EPDs, visit southdevon.com.

Birth EPD (pounds) is based on the measured birth weight of progeny, adjusted for dam age. The lower the value the lighter the calf at birth and the lower the likelihood of a difficult birth. This is particularly important when selecting sires for use over heifers.

Weaning EPD (pounds) is calculated from the weight of progeny taken between 80 and 300 days of age. Values are adjusted to 205 days and for age of dam. This EPD is the best single estimate of an animal's genetic merit for growth to early ages.

Yearling EPD (pounds) is calculated from the weight of progeny taken between 301 and 450 days of age, adjusted to 365 days and for age of dam. This EPD is the best single estimate of a sire's genetic merit for yearling weight.

Scrotal Circumference EPD (centimetres) is calculated from measurements of scrotal size in yearling bulls, adjusted to 365 days. Scrotal circumference is a good indicator of puberty, fertility and semen quality/quantity. Increased scrotal size will also result in decreased age of puberty in daughters and greater lifetime production. Positive EPD values indicate larger scrotal circumference.

Milk EPD (pounds) is an estimate of an animal's milking ability. For sires, this EPD indicates the effect of the daughter's milking ability, inherited from the sire, on the weaning and yearling weights of her calves. For dams, it indicates her own milking ability.

Maternal Weaning Weight EPD (pounds) is a combination of Milk and Weaning EPDs and estimates the genetic merit of the animal to produce a calf at weaning.



This steer was part of a load sold on 11/12/10 off the cow with a pay weight of 667 lbs., no creep and topped the market that day. Here is what the buyer said about that load.

"There were zero treats and zero death loss, extremely happy with them. These cattle shipped to Knobbe Feedlot, Westpoint, NE. Thanks again Dahls for the many years your ranch has allowed me to represent your Ranch. "Tremendous Pride" is the most fitting word I can describe when I get to call a feedlot to market animals raised on the Dahl Ranch."

Thank you to the bidders and buyers at our 2011 sale ...





6442 55th Ave SE
Gackle, ND 58442

FIRST CLASS
US POSTAGE
PAID
BISMARCK, ND
PERMIT #256

Please bring this catalog with you to the sale.

Heterosis Headquarters

