



# **HOUSTON LIVESTOCK SHOW™**

*International Lowline Sale*

**Sunday, March 4, 2012**

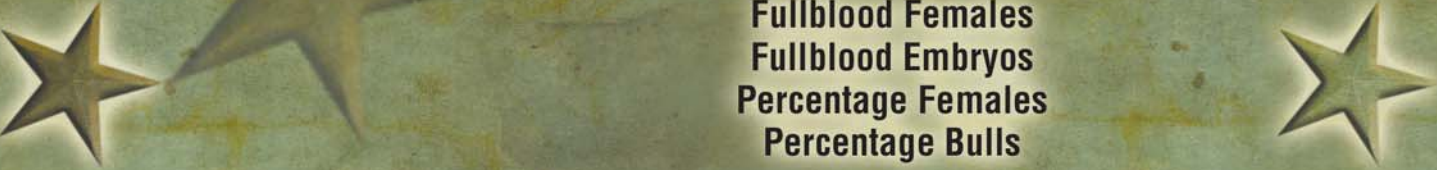
**7 p.m. • Reliant Center East Arena**

**Houston Livestock Show • Houston, Texas**

Houston Livestock Show  
International Lowline Show  
Monday, March 5 • 8 a.m.  
Reliant Center Main Arena



Offering **36** Lots of Exceptional Quality



Fullblood Females  
Fullblood Embryos  
Percentage Females  
Percentage Bulls



# HOUSTON LIVESTOCK SHOW

*International Lowline Show*

**Sunday, March 4, 2012**

**7 p.m. • Reliant Center East Arena**  
Houston Livestock Show International Lowline Show:  
Monday, March 5 • 8 a.m.

**Sale Day Phone:**

Neil Effertz..... cell: 701-471-0153  
Dean Pike..... cell: 303-810-7605

**Offering 36 Lots**

4 Fullblood Pairs • 14 Fullblood Females  
4 Fullblood Embryo Packages • 4 Percentage Females  
6 Fullblood Bulls • 3 Percentage Bulls • 1 Halfblood Fat Steer

**Special Representatives:**

Dean Pike, American Lowline Registry..... 303-810-7605  
Ralph Means, Western Livestock Reporter ..... 817-235-9708

**Sale Location:**

Houston Livestock Show • Reliant Center  
8334 Fannin Street • Houston, Texas 77054

**Supplement Sheet:**

Updated breeding information, photos and other data will be posted on a supplement sheet on our website: [www.auctioneffertz.com](http://www.auctioneffertz.com)

**Registration Papers:**

All of the sale cattle are registered with their respective breed association. Registration papers will be transferred to the buyer promptly after the sale at the sellers expense.

**Trucking:** Auction Effertz will assist in making trucking arrangements.

**Insurance:** Will be available at the settlement desk.

**Can't attend the sale? Watch and bid online:**



Gary Holub • 830-221-5550 or Meredith Deborde • 972-523-6888

**Junior Auction Items:**

A new MVE XC20 Millenium semen tank will be sold for the benefit of the juniors. Also included will be the following semen and embryos:

- |  |                               |
|--|-------------------------------|
| 5 straws LTL Peyton                          | 5 straws EZ Nova              |
| 2 straws Doc Holliday                        | 5 straws Jamberoo             |
| 5 straws Double J's Handy Dandy              | 5 straws GTL Unique U02       |
| 5 straws MCR Findon's Monarchy               | 5 straws Spring Creek Ulysses |
| 5 straws KBW Poke                            | 5 straws Lik Lik Blinky       |
| 5 straws Legend (Red Fullblood)              | 5 straws Nevada N060          |
| 5 straws Midshipman M206                     |                               |
| 10 straws Lazy G Chase (Black Red Carrier)   |                               |
| 5 straws Double J's Who Called Me Shorty 85U |                               |
| 3 Embryos The Brick X ALM Grace 123H         |                               |

**Thank you to these generous donors!**

Bovine Elite, Carl Rugg; Ten Triple X Ranch, Joe & Connie Mitchell & Ronnie & Teresa Bowles; Diamond J Ranch, George Jenkins; Dakota Lowlines, Rick Lloyd; Pecan Creek Farm, Bill & Joan Cabaniss & Colin & Jacqui Schiller; K Bar W Ranch, Chris & Paula Kluding; Tallgrass Prairie Farms, Jeff Canterbury; Effertz EZ Ranch, Neil & Jan Effertz; Rocking B Lowlines, Charlie & Mr. Bill "Big Dog" Waldroff; Flying J & L Ranch, Larry & Kim Watkins; 7 R Ranch, Mark & Jennifer Roesler; Texas Spur Lowlines, David Welch.

**Sponsored by:**

Southwest Lowline Angus Breeders Association  
Mark Roesler, President 713-805-5916 • [www.slaba.us](http://www.slaba.us)



**Sale Manager & Auctioneer**  
**Auction Effertz, Ltd.**

Your Market Masters • NEIL & JAN EFFERTZ  
[effertz@bektel.com](mailto:effertz@bektel.com) • 17350 Hwy. 1804 N. • Bismarck, ND 58503  
Ph: 701-223-5202 • Fax: 701-223-5458 • Cell: 701-471-0153  
[www.auctioneffertz.com](http://www.auctioneffertz.com)

**Consignors' Index**

- Ahr Farms, Pat and Dorothy Ahr** ..... Lot 30  
Mico, TX • 830-6112-3217
- Ausmerica Alliance** ..... Lot 19  
Gilbert and Stebbins, Hermantown, MN • 218-729-9591
- Big Island Lowlines**..... Lots 5,6,8,10,15,28,31  
Darrell and Barbara Gotaas, Edmonton, Alberta • 780-486-7553
- Diamond J Ranch** ..... Lots 13, 14, 24, 36  
George Jenkins, North Platte, NE • 308-534-0363
- Effertz EZ Ranch**..... Lots 16, 21, 25, 27, 34  
Neil and Jan Effertz, Bismarck, ND • 701-471-0153
- Sara Elam** ..... Lot 35  
Hutto, TX • 512-659-4138
- Five Star Ranch** ..... Lots 22, 33  
Jean Amundson, Elk Mound, WI • 715-456-4090
- Flying J & L Ranch**..... Lot 23  
Larry, Kim and Elizabeth Watkins, Groesbeck, TX • 979-481-0951
- Grassfed Lowline Angus** ..... Lot 20  
Bryan and Linda Butler, Spring, TX • 713-591-3042
- K Bar W Ranches, Chris and Paula Kluding** ..... Lots 7,11,12, 29  
McLoud, TX • 405-255-0893
- Pecan Creek Farm** ..... Lots 1, 3  
Bill and Joan Cabaniss, Taylor TX • 512-365-5840
- Shady Acres Farm** ..... Lots 2, 4, 26  
Kade Long, Joshua, TX • 469-867-7564
- Sigel Sunset Ranch**..... Lots 9, 17, 18  
Mark Gilles, Cadott, WI • 715-215-9864
- Tummons Cattle Co.**, ..... Lot 32  
Brad and Julie Tummons, Gallatin, MO • 660-334-0011





# 1 PCF Odessa 1W

BD: 2/18/09 BW: 49 H/P/S: P Color: Black Reg. #: FF8508 ID: PCF1W

Consignor: Pecan Creek Farm

MA BRENTONS MACHISMO  
PCF NAPOLEON  
SUN CREEKS RUBY

ELIZA PARK BRENTON  
BEAUMONT MATILDA  
KNIGHTCRAWLER  
GLENFIDDICH JACQUIE

NEVADA N060  
EZ MISS OLIVE 38L  
BR THUNDER SONG

BOSUN L006  
GLEN INNES J389  
QUARTERMASTER Q117  
BR OLIVE II M053

Fullblood bull calf at side born 1/4/12 sired by the great Dillon son LTL Peyton BW: 43#. This spectacular deep bodied yet feminine young fullblood female was flushed as a heifer and produced 7 grade 1 embryos.



Lot 1

# 2 LLB U782 Nikmac

BD: 6/21/08 H/P/S: P Color: Black Reg. #: FF7666 ID: LLBU782

Consignor: Shady Acres Ranch

FAIRWYNS MACHINE  
MAC  
LCM VALENTINE 1K

TEQUILA T245  
FAIRWYNS NATESSA  
QUARTERMASTER Q117  
BRAMBLETYE Q131

TEQUILA T245  
NIKQUILA  
BAR J NELL 7G2

ATHANLEE HERMAN R007  
BR AGNES J306  
NAVIGATOR N323  
MUGGA ELLEN E315

Fullblood heifer calf KL1Y at side born 9/2/11 sired by DJRs Yes Yes 16T. She is bred to DJRs Yes Yes 16T FM5901 January 2, 2012. Nikmac was the 2010 Austin Reserve Champion.



Lot 2



Lot 2's calf

# 3 PCF Tivo Lee

BD: 11/6/08 BW: 51 H/P/S: P Color: Black Reg. #: FF8820 ID: PCF4U

Consignor: Pecan Creek Farm

MA BRENTONS MACHISMO  
PCF NAPOLEON  
SUN CREEKS RUBY

ELIZA PARK BRENTON  
BEAUMONT MATILDA  
KNIGHTCRAWLER  
GLENFIDDICH JACQUIE

NEVADA N060  
EZ MISS TILDIE LEE 23L  
EZ MATILDA 06G

BOSUN L006  
GLEN INNES J389  
NAVIGATOR N323  
MUGGA ELLEN E315

Fullblood bull calf PCF6Y at side born 7/18/11 sired by Murrumbong Roulette. Breeding information will be available sale day. She was the 2010 Star of Texas Grand Champion Female. Her granddam is a full sister to the foundation female of John Reed's Bar J Nell and Bar J Nellie cow families.



Lot 3

# 4 EZ Ellenor 42R

BD: 5/6/05 BW: 41 H/P/S: P Color: Black Reg. #: FF3648 ID: EZ42R

Consignor: Shady Acres Ranch

MIDSHIPMAN M206  
EZ MAGNUM 72J  
MUGGA MARNIE L290

KAPTAIN PLANET K001  
TRANGIE C124  
TRANGIE J260  
TRANGIE C192

NEVADA N060  
EZ MISS TILDIE LEE 23L  
EZ MATILDA 06G

BOSUN L006  
GLEN INNES J389  
NAVIGATOR N323  
MUGGA ELLEN E315

Fullblood heifer calf KL2Y at side born 9/6/11 sired by DJRs Yes Yes 16T and she is bred back the same way. She was the Reserve Champion Cow/Calf Pair at the 2011 Houston show. She's a half sister to the lot 3 cow from the same great dam.



Lot 4



Lot 4's calf



## 5 Alta Rhyanne BIL 313U

Bred Fullblood Cow  
 BD: 6/12/08 BW: 42 H/P/S: P Color: Black Reg. #: Can 354 ID: BIL313U

Consignor: Big Island Lowlines

QUARTERMASTER Q117  
**RJ RYAN 60K**  
 RJ ROBERTA 64H

ZEUS SCR 47J  
**ALTA BELLE BIL 13S**  
 ALTA KATIE BIL 13K

MIDSHIPMAN M206  
 BR FELICITY J167  
 ADMIRAL J222  
 TRANGIE F183

TRANGIE M214  
 GLENFIDDICH AMY Q003  
 KOTINGA ROCKY  
 KOTINGA SHEBA

Alta Rhyanne BIL 313U is a well balanced, moderate framed cow. She sells safe in calf, due in July, to Alta Magnum BIL 16U, a red factor bull out of a Dillon daughter. This bred cow will be a valuable addition to your herd! Non vaccinate for brucellosis, check your state requirements.

## 6 Alta Ella BIL 513Y

Open Fullblood Heifer  
 BD: 8/1/11 BW: 46 H/P/S: P Color: Black Reg. #: Pending ID: BIL513Y

Consignor: Big Island Lowlines

MURRUMBONG LGL BLUEY  
**ALTA MAGNUM BIL 160**  
 LTL ALMA

RJ RYAN 60K  
**ALTA RHYANNE BIL313U**  
 ALTA BELLE BIL13S

GOAN WANDOO II  
 GOAN BLACK OPAL  
 BRENTONS IMAGE 272K  
 MISS JETS RAPHAEL 258K

QUARTERMASTER Q117  
 RJ ROBERTA 64H  
 ZEUS SCR 47J  
 ALTA KATIE BIL 13K

Alta Ella BIL 513Y is a very stylish heifer out of a red factor sire. She has lots of growth, balance and eye appeal. She has a wonderful temperament and will be a solid addition to your herd. Her dam sells as lot 5.

## 7 Miss Double J 54T

Bred Fullblood Cow  
 BD: 4/16/07 BW: 45 H/P/S: P Color: Black Reg. #: FF5861 ID: JJC54T

Consignor: K Bar W Ranches LLC

SANTE FE MAXIMILLION  
**VITULUS YES YES YES**  
 WYZENBEEF LAADY WARATAH

ELIZA PARK BRENTON N001  
**MISS JETS BRENTON 268K**  
 BURRA OPAL

TRANGIE L204  
 GLEN INNES N396  
 THE GLEBE WOODSTOCK  
 WYZENBEEF LADY CALYPSO

BOSUN L006  
 BR SUZAN J369  
 BR WARREGO  
 TRANGIE J304

A truly fantastic young Yes Yes cow that has already provided us two top notch females for our donor pen. She has also cranked out a herdsire prospect and a couple of successful flushes including a five embryo flush using sexed semen. This is a cornerstone female. She was bred to Findon's Monarchy on 12/2/11.



Lot 6, the daughter of Lot 5

## 8 BM Xclusive 21X

Bred Fullblood Heifer  
 BD: 4/3/10 H/P/S: P Color: Black Reg. #: Can 542 ID: BM21X

Consignor: Big Island Lowlines

AVONSLEIGH JULIUS  
**GLT MR MUSCLE U03**  
 KIMBOLTON HARMONY

GLLANT MLP 8G  
**BM DARKIE 5P**  
 JANS MARANDA 3M

CASUARINA SAMSON  
 CASUARINA BROOKE  
 TRANGIE J037  
 KIMBOLTON MIRACLE

ADROSSAN PETER  
 MUGGA ELLEN E315  
 JANS KIWI 11K  
 BR TARA III

BM Xclusive 21X is a heifer with a different pedigree. Her sire, Mr. Muscle, is out of Ardrossan Harmony. 21X is a moderate framed, very stylish heifer with lots of balance and a deep rib. She was AI'd August 10 to Alta Wild Card FM8269. Non vaccinate for brucellosis, check your state requirements.



Lot 7

## 9 BM Xcellence 1X

Bred Fullblood Heifer  
 BD: 4/5/10 H/P/S: P Color: Black Reg. #: Can534 ID: BM1X

Consignor: Sigel Sunset Ranch

ZEUS SCR 47S  
**ALTA SPANKY BIL14S**  
 ALTA MAY BIL14K

JKL JACKSON 15P  
**BM TWILA 5T**  
 VALLEY PARK LADY SARAH

TRANGIE M214  
 GLENFIDDICH AMY Q003  
 KOTINGA ROCKY  
 KOTINGA GINGER

EZ SHERMAN 24J  
 JKL SUNRISE 5L  
 BM DUKE OF EARL 4K  
 VALLEY PARK MELANIE

Here's a marvelous, straight topped, clean fronted, long sided female due for a summer calf by the Awesome Red son, Alta Sheldon, pasture exposed 9/1 - 11/15/11. Non vaccinate for brucellosis, check your state requirements.



Lot 8



Lot 9



# 10 Bar J Frosty OX45

Bred Fullblood Heifer  
BD: 6/2/10 BW: 43 H/P/S: P Color: Black Reg. #: FF12510 ID: OX45

Consignor: Big Island Lowlines

TEQUILA  
BAR J CABO 7T39  
BAR J NELL 0K49

BAR J LATIGO  
BAR J FROSTY 4P56-7T26  
BAR J FROSTY 7G8-4P56

ATHANLEE HERMAN R007  
BR AGNES J306  
NEVADA N060  
BAR J NELL 7G2  
FAIRWYNS LEGACY  
BAR J NELLIE 7G1 2M14  
BAR J PONDEROSA 0K13  
BAR J FROSTY 7G8

Bar J Frosty OX45 is a beautiful, sweet fronted Cabo daughter with a strong Bar J pedigree - both Tequila and Nevada on the top and bottom side. She is linebred to the breed's greats and should really work with an outcross bull. She sells bred 9/1/11 to Royal Rescue BIL 911W, a Findon Royale son out of MCR Everlasting, the 2009 Reserve Champion Female in Denver.

Lot 10



Lot 11

# 11 KBW Borodins Unice

Bred Fullblood Heifer  
BD: 8/15/10 H/P/S: P Color: Black Reg. #: FF14356 ID: KBW9X

Consignor: K Bar W Ranches LLC

APPERTARRA RANDY  
COLOMBO PARK BORODIN  
COLOMBO PARK YAROSLAVNA

MONTE ALLEGRO ARTUSI  
SPRING CREEK UNICE  
COLOMBO PARK ARIA CPS A032

MUGGA MAJURA  
TRANGIE J117  
COLOMBO PARK TANNHAUSER  
MUGGA SABRINA  
APPERTARRA RANDY  
ARDROSSAN DANA  
APPERTARRA RANDY  
COLOMBO PARK VIOLETTA

This feminine heifer offers a completely Australian outcross pedigree, modestly framed yet long-bodied and stylish. Unice's sire is a brother to the popular Colombo Park Zeffirelli. Bred to MCR Findon's Monarchy on 12/14/11.

Lot 12



Lot 13

# 12 KBW Rumor

Open Fullblood Heifer  
BD: 9/14/10 H/P/S: P Color: Black Reg. #: FF14361 ID: KBW16X

Consignor: K Bar W Ranches LLC

DCB HANK  
KBW POKE  
ASPENS MELODY

ARDROSSAN NERON  
BAR J NADINE 9J33-8U4  
BAR J NADINE 9J33

MIDSHIPMAN M206  
BR CRACKLIN ROSIE  
LTL TELLURIDE  
LTL ASPEN  
BROKEN ARROW NERO  
ARDROSSAN DELVENE  
QUARTERMASTER Q117  
BAR J NADINE 7G7

This heifer is long-spined, square made and definitely the front pasture kind. Her sire, KBW Poke, has excelled in producing high quality females, both fullblood and percentage. On the bottom side, Rumor stems from the fantastic Bar J Nadine cow family. Bred to MCR Findon's Monarchy on 1/10/12.

Lot 14



# 13 JJC I'm Just Right 26X

Open Fullblood Heifer  
BD: 10/5/10 BW: 45 H/P/S: P Color: Black Reg. #: FF14798 ID: JJC26X

Consignor: Diamond J Ranch

COLOMBO PARK ZEFFIRELLI  
DOUBLE JS THE BRICK 281  
MISS JETS BRENTON 267K

VITULUS YES YES YES  
DJRS YES I SPARKLE 26T  
BAR J MIRACLE 7G9 2M42

APPERTARRA RANDY  
COLOMBO PARK VIOLETTA  
ELIZA PARK BRENTON  
GLEN INNES N331  
SANTA FE MAXIMILLION  
WYZENBEEF LADY WARATAH  
BAR J PONDEROSA 0K13  
BAR J MIRACLE 7G9

Her pedigree reads like the Who's Who in the Lowline breed. Out of Double J's The Brick, the only 2 time fullblood National Champion. Her dam, the 2008 National Champion is a flush sister to the 2008 Reserve Champion Female, the dam of the high selling fullblood at the 2011 Star of Texas Sale. I'm Just Right is a full sib to Double Js Handy Dandy, 2 time Houston Champion Bull. This will be the finest heifer we offer for sale in 2012. Don't miss her.

# 14 JJC Elegant Force 53Y

Open Fullblood Heifer  
BD: 2/28/11 BW: 50 H/P/S: P Color: Black Reg. #: FF15097 ID: JJC53Y

Consignor: Diamond J Ranch

COLOMBO PARK ZEFFIRELLI  
DOUBLE JS THE BRICK 281  
MISS JETS BRENTON 267K

VITULUS YES YES YES  
MISS DOUBLE J 53T  
MS ROCKING BRENTON 259K

APPERTARRA RANDY  
COLOMBO PARK VIOLETTA  
ELIZA PARK BRENTON  
GLEN INNES N331  
SANTA FE MAXIMILLION  
WYZENBEEF LADY WARATAH  
ELIZA PARK BRENTON  
GLEN INNES N221

Gathering several 1st in class, Division Champion and Reserve Champion Fullblood Female titles, this heifer is very nice, deep bodied, big ribbed, sound footed with a rocket front end. This is a tremendous heifer and will be ready to take home and breed or or worth continuing her show career. She would make a great fullblood heifer for the TJLA youth program.



# 15 Alta Rachel BIL 510Y

Open Fullblood Heifer

BD: Mar-11 BW: 56 H/P/S: P Color: Black Reg.#: Can 526 ID: BIL510Y

Consignor: Darrell Gotaas

WANAMARA FINDON ROYALE  
**ROYAL RESCUE BIL911W**  
 MCR EVERLASTING

ARROSSAN FINDON  
 KIMBOLTON DAPHNE  
 TRUNGLEY TIGERS EYE  
 FAIRWYNS NAMI

ALTA GRIZZ BIL6K  
**ALTA BLOSSOM BIL310T**  
 ALTA ROSIE BIL110R

ADMIRAL II  
 GRETA MLP1G  
 ZEUS SCR 47J  
 ALTA AURORA BIL10N

"Alta Rachel BIL 510Y has loads of eye appeal and style and an outcross pedigree. She was part of the Grand Champion Lowline Breeders Herd at the 2011 Farm Fair. This fancy heifer stood at the top end of her class at Armstrong, BC and at the Canadian National in Edmonton. She is calffood vaccinated for brucellosis.



Lot 15 was a member of the Champion Breeders Herd at the 2011 Farm Fair

# 16 Bonanza's Quadrille 7Y

Open Fullblood Heifer

BD: 4/5/11 H/P/S: P Color: Black Reg.#: FF15215 ID: DLW7Y

Consignor: Effertz EZ Ranch

MONTE ALLEGRO ARTUSI  
**SPRING CREEK TONKA**  
 ELANDRA PARK ANGEL

APPERTARRA RANDY  
 ARROSSAN DANA  
 BOSUNS MATE N066  
 ELANDRA PARK SARAH

COLOMBO PARK XERXES  
**BONANZA LLC QUADRILLE**  
 MUGGA QUADRILLE

COLUMBO PARK TANNHAUSER  
 MUGGA SABRINA  
 MUGGA MAJURA  
 GLEN INNES N361

A truly unique pedigree featuring Australia's best genetics close up in her lineage. She is long sided and feminine with the powerful Tannhauser son, Xerxes, and the widely popular Artusi as grandsires. She is very special with an added bit of frame and growth for a fullblood. Seller reserves the right to one successful flush or half interest in two successful flushes at the seller's expense and buyers convenience.



Lot 16

# 17 MRG Missy 5Y

Open Fullblood Heifer

BD: 5/7/11 H/P/S: P Color: Black Reg.#: FF15173 ID: MRG5Y

Consignor: Sigel Sunset Ranch

TEQUILA  
**BAR J TEQUILA 6S39**  
 01L

ATHANLEE HERMAN R007  
 BR AGNES J306  
 RAD PILGRIM 01H  
 RAD ELLIE 01G

VITULUS YES YES YES  
**MISS DOUBLE J 73T**  
 MISS JETS BRENTON 268K

SANTA FE MAXIMILLION  
 WYZENBEEF LADY WARATAH  
 ELIZA PARK BRENTON  
 BURRA OPAL

Missy is a granddaughter of Tequila, the Australian Champion and Yes Yes Yes, the sire of the US National Champion Female and traces to the powerful Eliza Park Brenton on the dam's side. This May heifer calf is fancy!



Lot 17

# 18 MRG Selena 19Y

Open Fullblood Heifer

BD: 6/16/11 H/P/S: P Color: Black Reg.#: FF15175 ID: MRG19Y

Consignor: Sigel Sunset Ranch

DAKOTA  
**MR. DAKOTA 602S**  
 BONANZA'S LEXI 302N

NAVIGATOR N323  
 BR GERALDINE III  
 BONANZAS BRENTON 02L  
 BHR LEXI

APOLLO SCR 43J  
**ALTA SELENA BIL10U**  
 ALTA VELVET BIL10K

GLENFIDDICH ANGUS  
 CASUARINA ADELINA TRAL223  
 KOTINGA ROCKY  
 KOTINGA SHEBA

A straight top and a nice front end compliment this outcross Dakota granddaughter out of the Alberta bred Apollo daughter.



Lot 18



# 19 Embryo Package

4 Grade 1 Embryos

Consignor: **Ausmerica Alliance**

**BROKEN ARROW NERO**  
**ARDROSSAN NERON**  
**ARDROSSAN DELVENE**

**TRANGIE J037**  
**KIMBOLTON HARMONY**  
**KIMBOLTON MIRACLE**

- [ TRANGIE K121
- [ BROKEN ARROW OPAL NERA
- [ MINIKIN QUINTUS
- [ GLEN INNES E367
- [ TRANGIE F249
- [ TRANGIE C144
- [ ARDROSSAN PETER
- [ GLEN INNES J354



Kimbolton Harmony



Harmony (HH 45 1/2", Genestar M2 T7 FE7) is a big, deep ribbed cow with good feet, exceptional top line, excellent temperament and muscle definition. Her sire Jock was to be retained at Trangie after the final sale but circumstances changed and he was purchased by Ardrossan. He has no other progeny in the US. Ardrossan Neron (HH 49" Genestar M3 T6 F6, REA 16" at 2 yrs) is out of the larger framed, productive Ardrossan Delvene and by the proven muscle maker Broken Arrow Nero (HH 49", REA 16.74")

# 20 Embryo Package

6 Embryos

Consignor: **Grassfed Lowline Angus**

**AVONSLEIGH JULIUS**  
**GTL UNIQUE U02**  
**ARDROSSAN DELVENE**

**EUNGELLA TRENTHAM**  
**ARDROSSAN ISADORA**  
**BROKEN ARROW OPAL NERA**

- [ CASUARINA SAMSON
- [ CASUARINA BROOKE
- [ MINIKIN QUINTUS
- [ GLEN INNES E367
- [ ELIZA PARK BRENTON
- [ MUGGA MORAY
- [ TRANGIE M249
- [ TRANGIE M235



Ardrossan Isadora

This mating offers an exclusive combination of fertility, early maturity, muscle power and the ability to finish on grass. Isadora (Genestar M2 T2 FE7, ) is a half sister to Ardrossan Neron and one of only 2 daughters of Broken Arrow Opal Nera. She is very complete with fertility, perfect udder, great feet, depth, muscle, longevity and good disposition. Unique was selected for this mating for the correctness, muscle, early maturity and growth of his dam and sire.

# 21A Embryo Package

4 Embryos

Consignor: **Effertz EZ Ranch**

**ELIZA PARK BRENTON**  
**BRENTONS BEST BRUISER**  
**BEAUMONT MATILDA**

**FAIRWYNS MACHINE 201M**  
**EZ MERCEDES 11T**  
**EZ MAGGIE 33P**

- [ BOSUN L006
- [ BR SUZANNAH J369
- [ ROUSEABOUT
- [ GLEN INNES F415
- [ TEQUILA
- [ FAIRWYNS NATESSA U349
- [ EZ MAGNUM 72J
- [ MISS PANMURE L357



Brentons Best Bruiser

EZ Mercedes 11T



Here are some very interesting embryos that pair Jim Eldridge's powerful beef sire "Bruiser" with one of the most popular Machine daughters ever. Mercedes topped the Discover Lowlines Sale at \$20,000 and her dam was the popular 2006 National Champion EZ Maggie 33P.

# 21B Donor Dam: Brambletye W332

4 Embryo

Consignor: **Effertz EZ Ranch**

**KAPTAIN MIDNIGHT**  
**BROKEN ARROW PANMURE**  
**TRANGIE K004**

**COMMANDER II M045**  
**BRAMBLETYE Q116**  
**BR TARA II M042**

Reg: **FF2180**

- [ NIGHTCRAWLER
- [ GLEN INNES N308
- [ TRANGIE H153
- [ TRANGIE H307
- [ COMMANDER K162
- [ BR PERFECTION F183
- [ COMMODORE J001
- [ BR TARA J534



Brambletye W332



Fancy Pants



Utah

W332 is the extremely fertile, well muscled, easy fleshing donor dam of the American Royal Grand Champion EZ Fancy Pants 12R and the dam of our popular champion bull EZ Update 16U, now in the Southern Hills herd in Ohio. She's a great embryo producer. 2 embryos by MCR Opinionated (sire of Boxcar, the reigning National Calf Champion and Reserve Grand and 2 embryos by Utah that will be full sibs to Fancy Pants.



## 22 FSR Red Nicole

BD: 5/1/11 BW: 60 H/P/S: P Color: Red Reg.#: XF13100 ID: FSR106Y

Consignor: Five Star Ranch

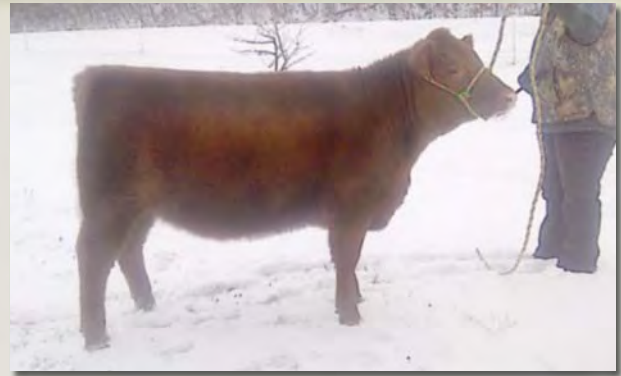
MURRUMBONG LGL BLUEY  
**RED HERCULES I**  
BESS' PRIDE

5L NORSEMAN KING 2291 RED ANG  
**FSRN KING NIKKI 916W RED ANG**  
FSR VISION NORA ET 703T RED ANG

[ GOAN WANDOO II  
GOAN BLACK OPAL  
LB DUKE 44J  
ALM BESS 102H

[ VGW KING OF THE WEST RED ANG  
NORSEMAN 1312 JM RED ANG  
4L SUPER VISION R2292 RED ANG  
MEADO-WEST 541R RED ANG

*This big bodied, stout made red halfblood May heifer calf has a world of style and balance. She was the 2011 NAILE Spring Heifer Division Champion. Her Red Angus dam has two Denver winners on her maternal side - Meado-West Bailey and Solution Regulator.*



Lot 22

## 23 Miss FJL Skunk

BD: 2/4/11 BW: H/P/S: P Color: Black Reg.#: Pending ID: FJL5Y

Consignor: Flying J & L Ranch

EZ LEXUS 18L  
**EZ SABRE 12S**  
BR PERFECTION W334

COMMERCIAL COW

[ NEVADA N060  
ST. LOUISE S208  
BROKEN ARROW PANMURE  
BR PERFECTION VI

*Found steaming in the snow as a newborn, Larry thought she was a skunk and the name stuck. EZ Sabre is known for siring attractive, well muscled calves that fit well into our all natural beef program. Her dam is a great milker. She sells with 2 straws of EZ Nova 20N, our high carcass 13 Genestar bull.*



Red Angus dam of Lots 22 and 33

## 24 DJRs Miss Proper 778Y

BD: 3/21/11 BW: 70 H/P/S: P Color: Black Reg.#: XF14935 ID: DJR778Y

Consignor: Double J Ranch

COLOMBO PARK ZEFFIERELLI  
**DOUBLE JS WHO CALLED ME SHORTY 85U**  
DOUBLE JS WHO AM I

DOUBLE JS THE BRICK  
**DJRS THE BRICKS FIRST EDITION 778W**  
MAINE ANJOU COW

[ APPERTARRA RANDY  
COLOMBO PARK VIOLETTA  
ANGUS BULL  
MISS JETS J222 04H

*A really fancy heifer out of a 1st calf cow. She is making a really nice show heifer that will later be a great foundation cow. Tons of great genetic breeding. Deep bodied, rocket front ended and tons of hair. Champions on every line in this pedigree.*



Lot 24

## 25 EZ Suri 316Y

BD: 4/11/11 BW: 50 H/P/S: P Color: Black Reg.#: XF15563 ID: EZ316Y

Consignor: Effertz EZ Ranch

BAR J SPARKS  
**BAR J SULTAN 6S96**  
BAR J NADINE 9J32 3N57

MIDSHIPMAN M206  
**EZ MISS MIDSHIPMAN 182P**  
ANGUS

[ BAR J PONDEROSA 0K13  
BAR J TINA 8H30K48  
TEQUILA T245  
BAR J NADINE 9J32

[ KAPTAIN PLANET K001  
TRANGIE C124

*Here's a full sister to last year's Houston Grand Champion Female, EZ Sultress 335W. She's got the same great look. She's a dandy that we shouldn't be selling but here she is!*



Lot 25





## 26 DJRs Yes Yes 16T

BD: 4/19/07 BW: 50 H/P/S: P Color: Black Reg. #: FM5901 ID: DJR16T

Consignor: Shady Acres Ranch

SANTE FE MAXIMILLION  
VITULUS YES YES YES  
WYZENBEEF LAADY WARATAH

TRANGIE L204  
GLEN INNES N396  
THE GLEBE WOODSTOCK  
WYZENBEEF LADY CALYPSO

BAR J PONDEROSA 0K13  
BAR J MIRACLE 7G9 2M42  
BAR J MIRACLE 7G9

NEVADA N060  
BAR J NELLIE 7G1  
SNOTTY P090  
GERALDINE II N071

Kade has consigned a full brother to the 2008 National and Reserve National Champion Females. He's a long aged, well muscled breeding bull that can put some excellent genetics into your calf crop.



Lot 26

## 27 EZ Baldwin 7X

BD: 3/21/10 BW: 44 H/P/S: P Color: Black Reg. #: Pending ID: EZ7X

Consignor: Effertz EZ Ranch

EZ MAGNUM 72J  
EZ PETE 14P  
ALM TAYLA 38J

MIDSHIPMAN M206  
MUGGA MARNIE L290  
ROUSEABOUT  
GLENFIDDICH AMY Q003

COMMANDER II M045  
EZ MANDIE 4S  
BRAMBLETYE T983

COMMANDER K162  
BR PERFECTION F183  
NEVADA N060  
TAINUI ANNE TLS943

EZ Baldwin is a long sided, super correct coming two year old son of Pete, the brother to EZ Pistol 23P who has sired so many champions just last year. This exciting fullblood herdsire prospect should produce some great show calves with exceptional correctness and longevity. Both his dam and granddam have near perfect udders. His maternal granddam is the mother of Pistol!



Lot 27

## 28 Alta Preston BIL 13X

BD: 5/17/10 BW: 48 H/P/S: P Color: Black Reg. #: Can 527 ID: BIL13X

Consignor: Big Island Lowlines

BRACKENGRAE BEAU LAD  
BONANZASTOBY 706T  
BR RED SKY

TRANGIE M390  
GLEN INNES M343  
ADMIRAL FITZROY N065  
GLEN INNES M442

KOTINGA ROCKY  
ALTA KATIE BIL 13K  
KOTINGA SHEBA

CAPTAIN III N063  
BR ELATION II  
ADMIRAL II  
TRANGIE J152

"Big Island's Bonanza Toby sons are all stamped the same: lots of volume, big butts, excellent feet and legs. Alta Preston BIL 13X is a big striding bull with the right ankle and pastern movement. If you have some cows that need some foot improvement, look no further. Alta Preston was Reserve Junior Champion at Armstrong, BC and at the Canadian National. Alta Preston gene tested homozygous for feed efficiency as well as homozygous for tenderness.



Lot 28

## 29 KBW El Toro Rojo

BD: 11/6/10 H/P/S: P Color: Red Reg. #: FM14777 ID: KBW24X

Consignor: K Bar W Ranches LLC

GOAN WANDOO II  
MURRUMBONG LGL BLUEY  
GOAN BLACK OPAL

GLEN INNES N249  
GOAN WATTLE III  
TRANGIE M377  
TRANGIE L109

ADMIRAL J222  
ALM BESS 102H  
BR TARA J534

TRANGIE F249  
TRANGIE F037  
TRANGIE E087  
GLEN INNES E383

This fullblood Bluey son is about as long-bodied and square hipped as you can make one. His dam, Bess, is the only known fullblood Lowline to carry a true red gene (other than her offspring). This red bull is a tick framier than many of his contemporaries and keeps getting better. Watch it - he'll grow on you! Selling one half interest and full possession.



Lot 29



## 30 Ahr Show Boy

**Fullblood Bull**  
 BD: 1/28/11 BW: 48 H/P/S: P Color: Black Reg.#: FM14589 ID: AHR2Y

Consignor: Ahr Farms

COLOMBO PARK ZEFFIRELLI  
**DJRS SHOWSTOPPER 196W**  
 VITULUS AMBITIOUS

APPERTARRA RANDY  
 COLOMBO PARK VIOLETTA  
 VITULUS WINNER  
 BROKEN ARROW MOONLIGHT

BR ULTRA BEAU U321  
**EZ LOUISA 21R**  
 ST. LOUISE S208

BRACKENGRÆ BEAU LAD  
 BR PERFECTION VI  
 ADMRIAL J222  
 BR AGNESS II M044

Pat and Dorothy have consigned a dandy son of Showstopper out of a sister to last year's National Calf Champion and American Royal Champion EZ Captain Jack. Showboy is an easy fleshing, long framed bull with a great disposition. His dam Louisa is out of a Sydney Royal Champion and his sire Showstopper was a two time Houston Reserve Division Champion. Ahrs are retaining 25 units of semen at their expense.



Lot 30

## 31 Alta Phillipian BIL 305Y

**Fullblood Bull**  
 BD: 2/12/11 BW: 52 H/P/S: P Color: Black Reg.#: Can 568 ID: BIL305Y

Consignor: Big Island Lowlines

WANAMARA FINDON ROYALE  
**ROYAL RESCUE BIL911W**  
 MCR EVERLASTING

ARDROSSAN FINDON  
 KIMBOLTON DAPHNE  
 TRUNGLEY TIGERS EYE  
 FAIRWYNS NAMI

TITUS SCR44J  
**ALTA SHELBY BIL5U**  
 ALTA LOUISE BIL5K

KAPTAIN KNIGHTCRAWLER  
 GLENFIDDICH JACQUIE  
 KOTINGA ROCKY  
 KOTINGA SHEBA

Alta Phillipian BIL 305Y has been an eye catcher right from the time he was born. If you like bulls with butts and guts, this is your kind of bull! This long fronted bull is Royal Rescue's only son to date. Alta Phillipian has been gene tested. He is homozygous for feed efficiency as well as homozygous for tenderness. His sire's dam was a Denver Champion.



Lot 31

## 32 TCS Red Million 1Y

**5/8 Bull**  
 BD: 1/19/11 BW: 53 H/P/S: P Color: Red Reg.#: XM12982 ID: TCS1Y

Consignor: Tummons Cattle Co

ALM DAKOTA PRIDE 60J  
**EZ SAWYER 321S**  
 MISS DAKOTA CLASSIC 008J

NEVADA N060  
 BR MORVEN L004  
 BOSUNS MATE N066  
 ANGUS

FAIRWYNS LOW BEAU 204M  
**MILLION DOLLAR MINNIE**  
 POLLED SHORTHORN COW

BRACKENGRÆ BEAU LAD  
 BR AGNES J306

Red Million is a dark red bull, clean, long fronted and excellent hipped with a world of pedigree behind him. He will be a cow changer. If you want to put some zip in your calf crop, here's your bull. They should be super attractive, well muscled and will all be red or red gene carriers!



Lot 32

## 33 FSR Red Neon

**Halfblood Bull**  
 BD: 3/7/11 BW: 78 H/P/S: P Color: Red Reg.#: XM12906 ID: FSR105Y

Consignor: Five Star Ranch

GOAN WANDOO II  
**MURRUMBONG LGL BLUEY**  
 GOAN BLACK OPAL

GLEN INNES N249  
 GOAN WATTLE III  
 TRIANGIE M377  
 TRANGIE L109

5L NORSEMAN KING 2291 RED ANG  
**FSRN KING NIKKI 916W RED ANG**  
 FSR VISION NORA ET 703T RED ANG

VGW KING OF THE WEST RED ANG  
 NORSEMAN 1312 JM RED ANG  
 4L SUPER VISION R2292 RED ANG  
 MEADO-WEST 541R RED ANG

Style and performance in a red package! His registered Red Angus dam traces to two Denver champions on the maternal side - Meado-West Bailey and Solution Regulator. He won his class at the 2011 NAILE.



Lot 33



# 34 EZ Rusty 106Y

BD: 4/8/11 BW: 65 H/P/S: P Color: Red Reg. #: XM15565 ID: EZ106Y  
Halfblood Bull

Consignor: Effertz EZ Ranch

GOAN WANDOO II  
MURRUMBONG LGL BLUEY  
GOAN BLACK OPAL

GLEN INNES N249  
GOAN WATTLE III  
TRIANGIE M377  
TRANGIE L109

CHAR 350



Lot 34

Straight, upheaded, thick and correct, this young red halfblood will put some power in his calf crop. Look at his rib and study the pop in his stifle. He's going to grow up to be a powerful, high capacity "beef" sire with that special eye catching look.

# 35 Ten XXX BO

BD: 10/1/10 BW: 62 H/P/S: P Color: Black Reg. #: 14501 ID: 246X  
Halfblood Fat Steer

Consignor:

Sara Elam

BJC TALLADEGA

ANGUS



Lot 35

This is a market show steer. He placed 3rd at the Williamson County Livestock Show, in the British class. There were other Angus as well as Herefords and Shorthorns. The judge liked his top and the power of the steer. He is ready to be butchered.

# 36 Double J's The Brick 281

4 Embryos

Consignor: Diamond J Ranch

APPERTARRA RANDY  
COLOMBO PARK ZEFFIRELLI  
COLOMBO PARK VIOLETTA

MUGGA MAJURA  
TRANGIE J117  
COLOMBO PARK TANNHAUSER  
MUGGA SABRINA

ELIZA PARK BRENTON  
MISS JETS BRENTON 267K  
GLEN INNES N331

BOSUN L006  
BR SUZANNAH J369  
TRANGIE K231  
MUGGA FIDELITY F338



Double J's The Brick 281

Diamond J is offering two exciting matings with their two-time National Champion Bull, The Brick.

Lot 36A - 2 embryos out of Diamond J's Yes I Sparkle FF5840, the 2008 National Champion Female. These embryos are full sibs to lot 13.

Lot 36B - 2 embryos out of Diamond J's Yes I Am 17S FF4505. George will be showing a full sib in Houston, Double J's I'm Elite 017X FF14799.

## Terms and Conditions

**Terms:** Terms of the sale are cash or check payable immediately upon conclusion of the sale and before animals will be moved. Seller will reserve the right to require a certified check as settlement before releasing any cattle.

**Insurance of Purchases and Risk:** All animals are the seller's risk prior to their sale and become property of the buyer as soon as declared sold by the auctioneer. Arrangements will be made to have insurance available when making settlement.

**Bidding:** All animals sell to the highest bidder. Any disputes or challenges regarding bids will be settled by the auctioneer and his decision will be final.

**Health and Export:** A vet will be on hand to write interstate health certificates.

**Registration and Transfer:** All animals sell with registration papers from their respective breed Association and will be transferred after the sale at the seller's expense. In the case of dual registered cattle, both registration papers will be transferred.

**Announcements:** Any errors or changes of information contained in the catalog will be announced from the auction block and such announcements shall take precedence over information contained in the catalog.

**Breeding Guarantee:** Every effort will be made to make the most up-to-date information regarding pregnancy check available to the buyers.

Lowline bred females in the sale have been pregnancy examined by a veterinarian and found to be safe in calf. The open heifers selling are guaranteed to be breeders. If a female appears to be a non-breeder within 6 months of the sale (or within 6 months of when she reaches breeding age) she may be returned to the seller at the buyer's expense. The seller will then reserve the right to prove the animal a breeder within a six month period, using any fullblood registered Lowline bull of his choice through AI or natural service. If successful, seller will return animal to buyer, again at buyer's expense. Should the animal fail to prove a breeder, the seller at his option may either return the purchase price to the buyer or replace the animal

with another of equal value in full settlement and satisfaction of all claims. In no event shall the seller be responsible for more than the purchase price.

In case the animal in question should develop to be a problem breeder due to negligence or improper management by the buyer or if the female has been subjected to any hormonal or surgical reproduction techniques, the seller's guarantee does not apply. No guarantee is given that bred females will deliver a live calf. No guarantee is given that a female will produce eggs suitable for transplant.

All bulls over 14 months of age have been fertility tested and are breeders. Bulls under 14 months of age are guaranteed to pass a semen test at 14 months

**Liabilities:** All persons who attend the sale do so at their own risk and Auction Effertz, Ltd. and SLABA and the sale consignors assume no liability for any accidents that may occur. Neither does Auction Effertz, Ltd. or SLABA and the sale consignors assume any liability for loss or injury to livestock due to theft, mysterious disappearance, sickness, improper handling or Act of God. It is also to be clearly understood that Auction Effertz, Ltd. acts only as a medium between the buyer and the seller. They are not responsible in any way for any failure on the part of the buyer and the seller to live up to their obligations or for the truth of any warranties or representations, express or implied. Neither does Auction Effertz, Ltd. assume any financial obligation to collect or enforce collection of monies between parties. Any legal action that may in exceptional cases be taken, must be between the buyer and the seller.

**Contract:** The above terms and conditions shall constitute a contract between the buyer and the seller of each animal sold.

**Mail bid:** Mail or wire bids may be furnished. Bids must be in the hands of the sale manager in ample time prior to the sale and will be handled in strict confidence.





**Sale Manager & Auctioneer  
Auction Effertz, Ltd.**

Your Market Masters • NEIL & JAN EFFERTZ  
effertz@bektel.com • 17350 Hwy. 1804 N. • Bismarck, ND 58503  
Ph: 701-223-5202 • Fax: 701-223-5458 • Cell: 701-471-0153  
www.auctioneffertz.com

PRESORTED  
STANDARD  
US POSTAGE  
**PAID**  
BISMARCK, ND  
PERMIT #256



# HOUSTON LIVESTOCK SHOW™



*International Lowline Sale*



## Sunday, March 4, 2012

7 p.m. • Reliant Center East Arena

Houston Livestock Show, Houston, TX



Houston Livestock Show International Lowline Show  
Monday, March 5 • 8 a.m. • Reliant Center Main Arena

Offering **36** Lots

Fullblood Females  
Fullblood Embryos  
Percentage Females  
Percentage Bulls

