

Quality Genetics Built on a Heritage of Commitment

HEART RIVER RANCH

OPEN A ANGUS

**Wednesday,
March 13, 2013**

1:00 p.m. MT
Medora Community Building
Medora, ND



DVAuction
Broadcasting Real-Time Auctions

HD 50K

Showing a horse



Welcome!

Quality Genetics Built on a Heritage of Commitment

Dear Friends,

Welcome to our 7th annual "Gathering in the Badlands" sale to be held in Medora, ND on Wednesday, March 13, 2013. The dry summer certainly had its challenges but I believe you will find the most uniform group of black and red bulls we have ever offered. All of the bulls offered in this sale are tested with High Density 50K DNA technology which will give more accurate genomic-enhanced expected progeny difference's (GE-EPDs). Information is simply incorporated into the Red Angus and Black Angus EPD calculations. The 50K tests have the capacity to influence the tested animal's EPDs and Accuracy. Mr. Larry Gran from Pfizer Animal Genetics now Zoetis will be explaining GE-EPDs at our complimentary Prime Rib dinner on Tuesday, March 12, 2013 at 6:00 pm at the Medora Community Center in Medora.

As always our program will be offer both calving ease and performance bulls raised on only grass and their dam, no creep or supplemental feed. We are striving to provide you with functional, sound bulls from cattle that have survived selection in limited resource environments.

Carcass ultrasound information will be available prior to the sale upon request and a printed copy available on sale day. If we can assist you with sale selections, please feel free to contact us. Bulls will be available by March 1st for viewing prior to the sale at our bull development lot located 4 miles south of Belfield on US Highway 85 and west on 40th street SW. Don't hesitate to call with any questions you may have on the cattle. We look forward to the opportunity to visit with old and new friends. We look forward to seeing you all in historic Medora.

Heart River Ranch

Chuck & Annette Steffan Family
4291 Hwy 85 South • Belfield, ND 58622
701-575-8145 • Cell: 701-290-9745
heartrr@ndgateway.com • Fax: 701-575-2077

Open A Angus

Jim & Lynn Arthaud Family
701-623-4461 • jima@midstate.net
Dave Solga, Ranch Manager
701-260-4373 cell
PO Box 197 • Medora, ND 58645
openaangus.com

Herd/Feedlot Manager

Wes Obrigewitch • 701-260-6424



General Information

Directions to Heart River Ranch

Cows are located 6 miles north of Belfield right off of US Highway 85. Stop by our home any time 7 miles south of Belfield right off of US Highway 85 or 52 miles north of Bowman, ND on US Highway 85 and look for the Heart River Genetics sign.

Directions to Open A Angus

Cows are located 16 miles north of Belfield. Bred heifers are located 1 mile north of Belfield on US Highway 85 and 1 miles west.

Offering

1 6-Year-Old Red Angus Herd Bull
40 Yearling Red Angus Bulls
60 Yearling Black Angus Bulls

Cattle Viewing

All bulls will be at the bull development lot for viewing prior to the sale after March 1, 2013, located 4 miles south of Belfield off US Highway 85, then ½ miles west on 40th street SW. The sale offering will be available for viewing in the parking lot behind the Medora Community Center in Medora on Tuesday, March 12, 2013.

Schedule of Events

Tuesday, March 12, 2013

Medora Community Center, Medora, ND

Cattle available for viewing thru late evening

No-Host Social 6:00 p.m. (MT)
Complimentary Prime Rib Dinner 6:30 p.m. (MT)

Sponsored by Zoetis (formerly Pfizer Animal Health)

Guest speaker Larry Gran explaining Pfizer 50K test and what it means to bull buyers.

Wednesday, March 13, 2013

Medora Community Center, Medora, ND

Complimentary Lunch 11:00 a.m. (MT)
Sale 1:00p.m. (MT)

Sale Location

Medora Community Center, Medora, ND

701-623-4530 Sale Day Phone

701-623-4531 Sale Day Phone

The bulls will be on display outside of the Medora Community Center. The sale itself will be a video auction in the warmth and comfort of the Medora Community Center.

A DVD will be available upon request and bulls can be viewed online at Openangus.com.

DV Auction

The sale will be available online on DVAuction.

Emergency Phone Numbers

In case you need a phone number to call us on sale day. Please call in advance to make arrangements to call in during the sale.

701-290-9745 **Annette's Cell**

701-260-4630 **Chuck's Cell**

701-290-9015 **Jim's Cell**

701-260-4373 **Dave's Cell**

Sale Order

The sale order will be catalog order.

Mail & Telephone Bids

Bids will be handled in strict confidence by any of the publication representatives or the respective ranches. If you would like to discuss the sale offering, call us, preferably several days before the sale, and we can help select your genetics. After the sale you will need to contact Annette at 701-575-8145 to make arrangements for payment of telephone purchases.

Transportation

Belfield, ND, and Dickinson, ND, are both served by bus. Dickinson, ND, is also served by major airline. Please call 701-575-8145 if you need transportation from the bus or airport.

Lodging

Lodging is available in Medora, ND.

Americinn of Medora

75 East River Road South • Medora, ND 58645

Tel: 701-623-4800 • Fax: 701-623-4890 • www.americinn.com

Sales Team

Auctioneer:

Scott Weishaar 701-426-6826 (c), 701-872-5299 (h)

Ring Service:

Kris Petersen

Cattle Business Weekly 701-339-0305 (c), 701-337-2345 (h)

Vern Frey

American Angus Association 701-721-0344 (c), 701-537-5383 (h)

Terry Robinson

Farm & Ranch Guide 701-471-5153 (c), 701-255-3037 (h)

Scott Dirk

Tri-State Livestock News 605-380-6024 (c)

Clint Berry

Red Angus Association of America 417-844-1009

Joe Blankenship/Travis Hande

Wells Fargo 701-483-3333 (o)

Announcements

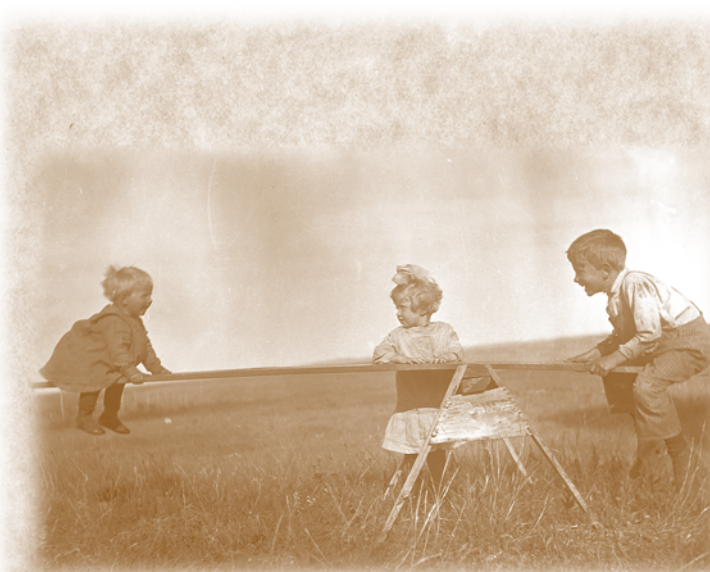
Errors discovered in the catalog will be corrected by announcements from the auction block at sale time and such corrections will take precedence over the printed matter in the catalog.

Liability

All persons who attend the sale do so at their own risk. Neither the owners, management, sales staff, facility or any person connected with this sale assume any liability, legal or otherwise, for property loss or for any accidents that may occur.

Delivery

Free delivery to central points up to 500 miles. Balance will be at cost. We will make every effort to assist in deliveries of greater distance or by private arrangements and volume purchases. Delivery will be made at our convenience. Delivery will be made at our convenience and efforts will be made to have bulls delivered by April 1.



Feeding and Development of Bulls

All bulls of HRR and Open A were weaned in late October and received no creep feed with the exception of a few Open A bulls that were ET calves produced at a recipient herd. Calves received their preweaning and weaning vaccinations and were handled in every respect as all natural. Bulls were fed to gain 2.5# per head per day on a 1% grain and by product ration. Bulls were fed free choice mineral, salt and hay. We took yearling weights at approximately 105 days post weaning with no post weaning adjustment period or warm up period. Our intent was to grow out the bulls for maximum longevity and integrity of the bull.

Historic Photos

All of the historic photos in this catalog were taken by Inez Kessler, Annette's great grandmother, in the early 1900's (1905-1908). Inez was the only person to have a camera in the area and, as a result, she took pictures of many people and events. The town of Gaylord was located about 13 miles south of Belfield, ND, along US Highway 85. The Gaylord Post Office and Store was a stop for traveler's going south. This building still stands at the Curt Molm place.

Red Angus EPD Averages (non-parent)

CED	BW	WW	YW	M	TM	ME	HPG	CETM	ST	MARB	RE	BFAT
4	-1.0	56	83	20	48	2	10	4	11	0.42	0.11	0.00

Angus EPD Averages (non-parent)

CED	BW	WW	YW	CEM	MILK	MW	MARB	REA	FAT	\$W	\$F	\$B
+6	+1.7	+46	+85	+8	+23	+31	+41	+32	+0.10	+26.97	+28.69	+61.21

FCCP Tags

Customers purchasing a Red Angus bull will be eligible to receive one bag of Red Angus Feeder Calf Certification Program ear tags per bull purchased at seller's expense. Each customer must complete paperwork to receive the tags. If the customer would like additional tags it will be at the customer's expense.

Storm Date

In case of sale postponement please listen to the Northern Ag Network, KLTC 1460 AM or go to northernag.net or ndstockmen.org or openangus.com for any postponement announcements. Postponement sale date is set for pre-sale activities: March 14, 2013, 10 am and sale March 14, 2013 1:00 pm.

Sale Terms & Conditions

The terms of the sale are cash. No release will be given until satisfactory settlement has been made. We reserve the right to withhold animals from shipment for whom payments have not been received prior to departure. Every animal sells to the highest bidder and in cases of disputes, the auctioneer's decision will be final.

All sales are subject to an acceptable semen examination. Semen evaluation certificates will be furnished to the buyer.

Bulls were carcass ultrasounded February 22. Data sheets will be provided at the sale.

Health certificates and brand releases will be furnished for shipment anywhere in the United States.

Each animal carries a readable tattoo or freeze brand.



All bulls have been tested using Pfizer 50K genomic testing.

All bulls will be carcass ultra sounded with results available on sale day.

All bulls sell fully guaranteed to be fertile and reproductively sound according to the terms and conditions of the Red Angus Association of America and the American Angus Association.

Breeder's Guarantee: All bulls are guaranteed to be breeders. All claims for adjustment or refund must be made in writing within six months of the sale date. In the event a bull is claimed to be a non-breeder, the purchaser may return the animal to the ranch of the seller if in good condition and complying with the health requirements of the Seller's state. The Seller will be entitled to six months trial following the return of the animal in which to prove that the animal is a breeder. If at the end of six months, the Seller shall be obligated to replace the animal with another of equal value or to refund the purchase price. The return of the full purchase price shall in any case be deemed full satisfaction and settlement. If the Seller proved the animal to be a breeder, it shall be the obligation of the purchaser to take delivery of the animal at the purchaser's expense.

Implied warranty: Except for those stated in the terms and conditions, there are no warranties or implies, as to merchantability or fitness for a particular purpose with respect to the cattle being sold in this auction. The warranties set forth in the terms and condition are in lieu of all other warranties, either expressed or implied and the remedies provided therein shall be the sole and exclusive remedy of the buyer, or any party claiming through the buyer, for any breach of warranty or guarantee therein provided and all other obligations or liabilities.

Health

Bulls and heifers were treated with Enforce at birth and branding and were calfhood vaccinated with 4-way and 7-way. At weaning, calves were given 5-way, 7-way and One Shot, boosters were also given. Calves and cows were poured with Dectomax in the spring, fall and late winter. All bulls will be vaccinated and wormed prior to delivery. All females are bangs vaccinated and on a fall vaccination program.

Semen Tests:

Bulls will be semen tested after the sale

Semen Interests:

Heart River Ranch and Open A Angus are each respectively retaining 50 percent revenue-sharing semen interest in every bull selling in this sale. Full possession and full salvage value sells on all bulls. If a buyer chooses to collect and market semen, the seller will share proportionately in the collection costs and the revenues earned. In the event that the seller chooses to collect semen for "in herd" use, it will be done at the seller's expense and at buyer convenience. Semen will be made available to buyer at cost.

Insurance

Ownership risk to purchaser commences when the auctioneer's hammer falls. Insurance will be available sale day. It is recommended that buyers insure their purchases for safe delivery. Purchaser assumes the risk of death or injury to their livestock immediately after the sale.

Volume Discounts

We are pleased to give a volume buyer discount. You will receive 5% off of purchases of 5 to 9 bulls, and 10% off of 10 or more bulls. Please notify the clerk when you check out to receive your discount. This is another way to say "Thank You" for your trust in our program.



Profit \$implified...

Multi-breed EPD base simplifies selection

Since 2010, the Red Angus Association of America (RAAA) and the American Simmental Association (ASA) have combined their growth and carcass datasets to provide commercial producers with the most reliable EPDs in the beef industry. In the summer of 2012, RAAA and ASA adopted a common base for Growth (BW, WW, YW, Milk) and Carcass (MARB, YG, CW, REA, FAT) EPDs so that all animals registered in either RAAA or ASA can be directly compared – regardless of breed makeup.

What is BASE?

For decades, each breed association has presented EPDs in their own language (the base). Base is no more than a reference point for any trait against which subsequent generations of animals are compared. The establishment of a base ensures that the population future generations are compared to remains stable, which allows the breed's genetic trend to be accurately identified.

Raw Genetic Value + Base Adjustment = Published EPD

Study Percentile Ranks...

Percentile ranks are an easy reference and therefore a powerful tool to assist you in becoming accustomed to the new multi-breed base. Red Angus EPD percentile ranks are presented along with all active animals' EPDs, and reference how animals compare within their respective Red Angus subpopulations, i.e. Sire Summary Sires, Active Dams, Non-Parent Bulls, etc. It's important to realize that although the multi-breed base allows for the direct comparison of Red Angus and Simmental EPDs, the percent ranks for Red Angus animals will continue to simply compare the genetics of Red Angus animals against other Red Angus. Thus, an animal that was in the top 10% for growth under the old Red Angus base will still be in the top 10% for growth in the new Red Angus multi-breed base.

Example:

In the past, you preferred to purchase bulls that had a -2.0 or lower BW EPD.

Since a -2.0 on the old RAAA base represented the top 20% for BW, you now need to use -2.7 as your critical selection threshold as that represents the top 20% for BW on the new multi-breed base.

Other Examples:

Previous Selection Threshold Old RAAA Base		New Selection Threshold New Multi-Breed Base	
EPD	% Rank	EPD	% Rank
36 WW EPD	40%	58 or higher WW EPD	40%
0.08 MARB EPD	50%	0.38 or higher MARB EPD	50%
0.24 REA EPD	20%	0.30 or higher REA EPD	20%

"Old" RAAA BASE	BW	WW	YW	Milk	MARB	YG	CW	REA	FAT
10%	-2.9	46	84	22	0.31	-0.15	52	0.32	-0.03
20%	-2.0	42	77	21	0.23	-0.11	47	0.24	-0.02
30%	-1.4	38	71	19	0.17	-0.08	43	0.18	-0.01
40%	-0.8	36	66	18	0.12	-0.05	40	0.13	-0.01
50%	-0.3	33	62	17	0.08	-0.03	37	0.09	0.00
60%	0.2	30	58	16	0.03	-0.01	34	0.04	0.01
70%	0.8	28	53	15	-0.02	0.02	31	-0.01	0.01
80%	1.4	24	47	13	-0.08	0.05	27	-0.07	0.02
90%	2.3	20	40	12	-0.16	0.09	22	-0.15	0.03

"NEW" Multi- Breed Base	BW	WW	YW	Milk	MARB	YG	CW	REA	FAT
10%	-3.6	68	105	24	0.61	-0.13	33	0.38	-0.03
20%	-2.7	64	98	23	0.53	-0.09	28	0.30	-0.02
30%	-2.1	60	92	21	0.47	-0.06	24	0.24	-0.01
40%	-1.5	58	87	20	0.42	-0.03	21	0.19	-0.01
50%	-1.0	55	83	19	0.38	-0.01	18	0.15	0.00
60%	-0.5	52	79	18	0.33	0.01	15	0.10	0.00
70%	0.1	50	74	17	0.28	0.04	12	0.05	0.01
80%	0.7	46	68	15	0.22	0.07	8	-0.01	0.02
90%	1.6	42	61	14	0.14	0.11	3	-0.09	0.03

HD 50K:

The industry standard for dependable boosts in EPD accuracy for Red and Black Angus animals

- More than 54,000 DNA markers
- 13 economically important traits and parentage verification
- Results are reported as GE-EPDs and percentile ranks associated with molecular breeding values, benchmarked against more than 7,900 Red and Black Angus animals tested with HD 50K, and reported to the nearest 1 percent

Sire prospects and herd sires with GE-EPDs powered by HD 50K and percentile ranks, you can more dependably identify:

- Sires to use extensively, strategically or sparingly, based on your breeding objectives
- Genetically superior young sires to accelerate genetic improvement
- Calving-ease sires for use on replacement heifers
- Sires likely to yield more productive replacement females
- Sires that excel in feedlot growth, efficiency and carcass merit

Traits with HD 50K genomic predictions

- Calving Ease Direct
- Birth Weight
- Weaning Weight
- Yearling Weight
- Milking Ability
- Calving Ease Maternal
- Marbling Score
- Carcass Weight
- Ribeye Area
- Fat Thickness
- Tenderness
- Dry Matter Intake
- Residual Feed Intake





Annette and Chuck Steffan, Quinn Steffan, Fr. Bill Ruelle,
Laura Steffan, Tellan Steffan and Kayla Klein



Jim, Lynn, Grace and Hudson Arthaud



Duane and Lisa Obrigewitch
Mara, Anna, Tanner, Reid and Lacy



Wes Obrigewitch



Dave and Kathy Solga

A special thank you to all of our friends and neighbors for all of your help and support.

Thank You to all the people who have made this sale work!

Catalog and Ad Design

Tracey Koester, 701-475-2736
Cow Camp Promotions

Photography & Video

Annette Steffan

Veterinarians

Terry Hall, DVM
A.J. Domek, DVM

Brand Inspection

Cary Hande
Donovan O'Brien

Carcass Ultrasound

Jason McLennan, 218-790-2860

Meals

Birdie O'Brien
Mony Wolf

Clipping

Jay Temchack,
Laughing Stock Cattle Services

Tuesday Meal Sponsor

Zoetis
Mark Voll, Area Representative

Barn Crew

Chuck Steffan
Tellan Steffan
Annette Steffan
Kayla Klein
Dave Solga
Rod Watson
Justin Killough
Ken Mack
Wes Obrigewitch
Laura Steffan
Tony Marthaler
Dan Donnelly

Office Crew

Heather Weishaar
Angie Dukart
Annette Steffan
Tena Ketchum
Quinn Steffan
Laura Steffan
Kayla Obrigewitch
Mara Obrigewitch
Lacy Obrigewitch
Kristie Blaser

Facility

Medora Community Center Staff
City of Medora

IN LOVING MEMORY OF BERTHA OBRIGEWITCH

JUNE 1, 1912 – JANUARY 10, 2013



Bertha on her 85th birthday

At 100 years of age, our beloved grandmother passed away on January 10, 2013. Bertha was born in South America in the pampas near the town of Machachin. In 1914, she and her family immigrated to the United States. Bertha married Tony Obrigewitch in 1931 and farmed and ranched north of Belfield, ND, where they raised 13 children. Grandma always seemed to have her grandchildren around and we thought we had the best grandma in the world. She was a unique woman that spoke several languages including English, Spanish and German. She always had a huge hug and a kiss for us and always said "liebe" (German-love) to us when we left. We will truly miss her!



Bertha and all of her grand and great grandchildren in 1997

***Goodbye,
Auf Wiedersehen, Adios
and Liebe Dear Mother and
Grandmother.***

Vaya Con Dios!



Red Angus Reference Sires

Quality Genetics Built on a Heritage of Commitment – 7



MLK CRK KNIGHT 7153

MLK CRK Knight 7153 is a very athletic, good footed bull that has been used in big country cleanup since a yearling. He has a great disposition, is clean sheathed and easy to handle. He is a frame 6 and is a very consistent breeder of dark red, performance cattle with eye appeal and structural correctness, good scrotals and above average length of body.

Owners: Heart River Ranch, Belfield, ND, Diamond B Ranch, Fromberg, MT and Milk Creek Reds, Plevna, MT.



SIRE **A**

MLK CRK KNIGHT 7153

BIRTH DATE: 2/6/07 REG. #: 1164885 CAT: 100% 1A

CED	BW	WW	YW	M	TM	ME	HPG	CETM	ST	MARB	RE	BFAT
4	0.8	66	87	12	45	-10	7	9	8	0.47	0.26	-0.01

RED YY 23L TOPPER 408D
RED YY KNIGHT 640F
RED TOP GOLDIE 40U

BJR PROOF 224-159
MLK CRK SHEBA 043
MLK CRK SHEBA 869

BJR TOPPER AGAIN 23L
RED DEVLANE ROZINE 8B
RED LINE FLAME 11N
REDLINE GOLDIE 40K
BJR PROOF 20A-5162
BJR LAKINA 677-3197
GLACIER CUB 446
MLK CRK SHEBA 556

BW	100
ADJ WW	819
WR	119
ADJ YW	1200
YR	108
FRAME	
SCROTAL	
DAM'S MPPA	105.1



MUSHRUSH IMPRESSIVE CA U236



SIRE **B**

MUSHRUSH IMPRESSIVE CA U236

BIRTH DATE: 9/10/08 REG. #: 1295159 CAT: 1A 100%

CED	BW	WW	YW	M	TM	ME	HPG	CETM	ST	MARB	RE	BFAT
11	-6.5	59	85	21	50	-2	11	4	15	0.39	0.31	0.02

BECKTON LANCER F442 T
BUF CRK LANCER R017
BUF CRK JULIET N036

TR JULIAN LT142
MUSHRUSH MADAM LT R265
MUSHRUSH ROBIN M125

BECKTON LANCER T A664
BKT SUFFEINA A828 DM
BECKTON JULIAN GG B571
BUF CRK PRIMROSE 5679
BECKTON JULIAN GG B571
TR LANA G760
BFCK CHEROKEE CANY 4912
MUSHRUSH ZENA 0165

BW	58
ADJ WW	491
WR	119
ADJ YW	971
YR	105
FRAME	
SCROTAL	
DAM'S MPPA	105.3

We are very impressed with the Mushrush Impressive calves. They are moderate in frame and have depth of rib and style.

Owners: Mushrush Red Angus, KS; Genex, WI.



RED RMJ REDMAN 1T



SIRE **C**

RED RMJ REDMAN 1T

BIRTH DATE: 1/30/07 REG. #: 1417390 CAT: 1A 100%

CED	BW	WW	YW	M	TM	ME	HPG	CETM	ST	MARB	RE	BFAT
6	-4.0	47	81	19	42	-5	7	-6	10	0.30	0.64	-0.03

VGW KING OF THE WEST
5L NORSEMAN KING 2291
NORSEMAN 1312 PJM

O C C HUNTER 928H
CROWFOOT KURUBA 4033P
RED CROWFOOT KURUBA 2030M

VGW ACE 613
VGW MT TABITHA 9633
376 P J M 141
P J M POWERPOINT 2009
O C C FOCUS 813F
O C C DIXIE ERICA 960E
MLK CRK CUB 722
RED CROWFOOT KURUBA 9301J

BW	84
ADJ WW	754
WR	100
ADJ YW	1219
YR	100
FRAME	
SCROTAL	
DAM'S MPPA	

Used primarily on flush cows, Redman has produced standouts at sales in Canada. He is a Norseman King X OCC Hunter son and his progeny are consistent with above average growth.



C-T GRAND STATEMENT 1025



SIRE **D**

C-T GRAND STATEMENT 1025

BIRTH DATE: **1/27/10** REG. #: **1365711** CAT: **1A 100%**

CED	BW	WW	YW	M	TM	ME	HPG	CETM	ST	MARB	RE	BFAT
-2	0.9	68	117	22	56	10	14	2	10	0.55	0.37	0.01

LJC LANCER 806
LJC MISSION STATEMENT P27
 LJC HANNAH 106

LCHMN GRANDCANYON 1244G
C-T MISS PAN 0760
 CTDB HOBO'S GAL 803

BECKTON LANCER T A664
 LJC HB LIZZIE 606
 HOLDEN HI HO 753
 LJC KJ JAMIE 516
 BUF CRK CHF 824-1658
 KRN REBA'S ROBIN
 GLACIER NORTHERN KNG656
 CTDB HOBO'S GAL 602

BW	78
ADJ WW	835
WR	119
ADJ YW	1349
YR	118
FRAME	
SCROTAL	
DAM'S MPPA	104.4

Grand Statement is backed by a beautiful, standout dam with an excellent udder confirmation.

Owners: C-T Red Angus, MT, Gill Red Angus, SD, Lucht Red Angus, MT, ABS Global, Inc., WI.



FEDES BIG SKY R9



SIRE **E**

FEDES BIG SKY R9

BIRTH DATE: **1/18/05** REG. #: **1025891** CAT: **1A 100%**

CED	BW	WW	YW	M	TM	ME	HPG	CETM	ST	MARB	RE	BFAT
7	-4.4	57	77	33	61	5	20	-4	10	0.71	0.12	-0.04

BJR MAKE MY DAY 981
BIEBER MAKE MIMI 7249
 BIEBER SIRENA 6708

LCHMN GRANDCANYON 1244G
FEDES LAKINA 310
 FEDES LAKINA 954

BJR EASY RIDER 781
 BJR TOW KANA 117-710
 BIEBER IMPACT 4399
 BIEBER MIMI 4227
 BUF CRK CHF 824-1658
 KRN REBA'S ROBIN
 FED'S IMPRESSIVE 744
 FED'S LAKINA 730

BW	74
ADJ WW	781
WR	116
ADJ YW	1375
YR	119
FRAME	
SCROTAL	37.9
DAM'S MPPA	108

A proven calving ease and maternal foundation sire known for his fertile and productive daughters.

Owners: Feddes Red Angus, MT; Ludvigson Stock Farms, IA; Genex, WI

ADDITIONAL RED ANGUS SIRES INCLUDE:

5L NORSEMAN KING 2291 **806707**

CED	BW	WW	YW	M	TM	ME	HPG	CETM	ST	MARB	RE	BFAT
3	0.1	52	87	17	43	0	7	-10	11	0.52	0.84	-0.03

VGW LIBERTY 523 **1029291**

CED	BW	WW	YW	M	TM	ME	HPG	CETM	ST	MARB	RE	BFAT
12	-2.9	45	74	27	50	5	6	5	8	0.72	0.18	-0.01

5L LEGEND 1553-425V **1261711**

CED	BW	WW	YW	M	TM	ME	HPG	CETM	ST	MARB	RE	BFAT
10	-2.8	46	65	20	43	3	8	2	9	0.30	0.24	0.00

RIDGE JULIAN S005-0099 **1379061**

CED	BW	WW	YW	M	TM	ME	HPG	CETM	ST	MARB	RE	BFAT
15	-6.7	43	63	23	44	-3	11	7	11	0.35	0.07	-0.01

HRR CONFEDERATE 831 **1262926**

CED	BW	WW	YW	M	TM	ME	HPG	CETM	ST	MARB	RE	BFAT
6	-1.3	54	81	24	50	-4	4	4	10	0.51	0.22	-0.03

SHOCO DATA **761532**

CED	BW	WW	YW	M	TM	ME	HPG	CETM	ST	MARB	RE	BFAT
2	1.5	70	93	14	49	14	13	11	7	0.60	0.15	0.02

BECKTON EPIC R397 K **1042135**

CED	BW	WW	YW	M	TM	ME	HPG	CETM	ST	MARB	RE	BFAT
10	-0.4	78	122	14	53	-2	14	8	13	0.57	0.50	0.08



TOMBSTONE 050

SIRE **M**

TOMBSTONE 050

BIRTH DATE: **1/14/10** REG. #: **16644975**

CED	BW	WW	YW	CEM	MILK	MW	MARB	REA	FAT	\$W	\$F	\$B	
8	1.8	76	143	7	36	48	0.44	0.28	0.021	40.79	89.34	87.61	
												BW	87
												ADJ WW	
												WR	
												ADJ YW	
												YR	
												FRAME	
												SCROTAL	

CONNEALY ONWARD
SITZ UPWARD 307R
 SITZ HENRIETTA PRIDE 81M

 SITZ ALLIANCE 6595
MYTTY COUNTESS 906
 BALDRIDGE COUNTESS 357

CONNEALY LEAD ON
 ALTUNE OF CONANGA 6104
 SITZ VALUE 7097
 SITZ HENRIETTA PRIDE 1370
 SITZ TRAVELER 8180
 SITZ BARBARAMERE JET 2698
 BON VIEW EMULATION EXT 473
 BALDRIDGE COUNTESS 235

Tombstone is an Upward son out of Mytty In Focus's dam, Mytty Countess 905. He was recently added to the Genex bull battery and was the top selling Angus bull at Midland Bull Test in 2011. He is a moderate, easy fleshing bull with a lot of promise. The bulls in this sale are the very first calves to be offered for sale in the country.

Owners: Open A Angus, ND; Miller Angus, SD; Frederickson Ranch, SD



KESSLERS FRONTMAN R001

SIRE **N**

KESSLERS FRONTMAN R001

BIRTH DATE: **1/1/05** REG. #: **15180461**

CED	BW	WW	YW	CEM	MILK	MW	MARB	REA	FAT	\$W	\$F	\$B	
10	-0.2	51	88	11	33	85	0.21	0.67	-0.003	32.61	29.88	66.9	
												BW	77
												ADJ WW	799
												WR	112
												ADJ YW	1353
												YR	109
												FRAME	
												SCROTAL	

CONNEALY FOREFRONT
CONNEALY FRONT PAGE 0228
 EBONY LIT OF CONANGA 840

 TC RANCHER 056
KESSLERS BELL 0024
 KESSLERS BELL 8055

CONNEALY FRONTLINE
 EILEEN HEARTLAND CONANGA6443
 GDAR TRAVELER 044
 EBONY LIL OF CONANGA
 LEACHMAN PROMPTER
 TC JESTRESS 6004
 B/R NEW DESIGN 036
 KESSLERS RAIN BELL 101

Frontman offers a unique pedigree in a moderate frame and heavy muscle. We used this bull heavily and have been impressed by the deep, open rib and thickness of his calves. They seem to be good Badlands kind of cattle with a good foot.

Owners: Kessler Angus, OR; Boyd Beef Cattle, KY; Conley Cattle, OK; Partisover Ranch, GA; Pembroke Cattle Company, OK; Penner Ranch, OK; Trowbridge Angus, NY; Southern Cattle Company, FL; Spruce Mountain Ranch, LLS, CO; Ray Mar Farms, CA; ABS Global, Inc., WI.



SITZ UPWARD 307R

SIRE **O**

SITZ UPWARD 307R

BIRTH DATE: **3/12/05** REG. #: **#14963730**

CED	BW	WW	YW	CEM	MILK	MW	MARB	REA	FAT	\$W	\$F	\$B	
7	2.4	70	136	8	41	49	0.39	0.63	-0.006	48.82	82.62	90.6	
												BW	85
												ADJ WW	902
												WR	126
												ADJ YW	1395
												YR	117
												FRAME	
												SCROTAL	

CONNEALY LEAD ON
CONNEALY ONWARD
 ALTUNE OF CONANGA 6104

 SITZ VALUE 7097
SITZ HENRIETTA PRIDE 81M
 SITZ HENRIETTA PRIDE 1370

CONNEALY LEADTIME
 ELIGENCE PLUS OF CONANGA
 GAR TRAVELER 1489
 AVALON 1418 OF CONANGA 6276
 SITZ TRAVELER 6802
 SITZ EISA EVERGREEN 791
 OCC GREAT PLAINS 943G
 SITZ HENRIETTA PRIDE 2155

Upward is a performance bull with progeny that are big, stout and growthy. His progeny are getting a lot of attention nationwide. We felt that he sires shape, dimension and phenotype with added performance.

Owners: Sitz Angus, MT; Eliason Livestock, ID; Leadore Angus Ranch, ID; Genex, WI.




MYTTY IN FOCUS

In Focus is one of the very few bulls that has stood the test of time maintaining a high accuracy birth to yearling spread. He sires a moderate frame with added muscle and a pleasing phenotype. His daughters are doing well in our herd with good functional udders and maintaining fleshing ability.

Owners: Mytty Angus Ranch, MT; Black Pine Farm, MT; Shipwheel Cattle Co., Klint & Lori Swanson, MT; ABS Global, Inc., WI.

SIRE **P**



MYTTY IN FOCUS

BIRTH DATE: **2/18/01** REG. #: **#13880818**

CED	BW	WW	YW	CEM	MILK	MW	MARB	REA	FAT	\$W	\$F	\$B
14	-1.3	53	98	14	26	31	0.76	0.04	0.021	47.14	40.95	62.8
											BW	70
											ADJ WW	766
											WR	111
											ADJ YW	1286
											YR	106
											FRAME	
											SCROTAL	

SAF FAME
SAF FOCUS OF ER
GDAR FOREVER LADY 246


SITZ ALLIANCE 6595
MYTTY COUNTESS 906
BALDRIDGE COUNTESS 357

MINERTS FORTUNE 2000
SAF ROYAL LASS 1027
TRANSFORMER 100 EAR
GDAR FOREVER LADY 718
SITZ TRAVELER 8180
SITZ BARBARAMERE JET 2698
BON VIEW EMULATION EXT 473
BALDRIDGE COUNTESS 235



SAV FINAL ANSWER 0035

SIRE **Q**



SAV FINAL ANSWER 0035

BIRTH DATE: **2/22/00** REG. #: **#13592905**

CED	BW	WW	YW	CEM	MILK	MW	MARB	REA	FAT	\$W	\$F	\$B
13	-1.1	61	105	14	25	14	0.55	0.56	0.069	60.14	45.79	56.19
											BW	69
											ADJ WW	843
											WR	118
											ADJ YW	1353
											YR	112
											FRAME	
											SCROTAL	

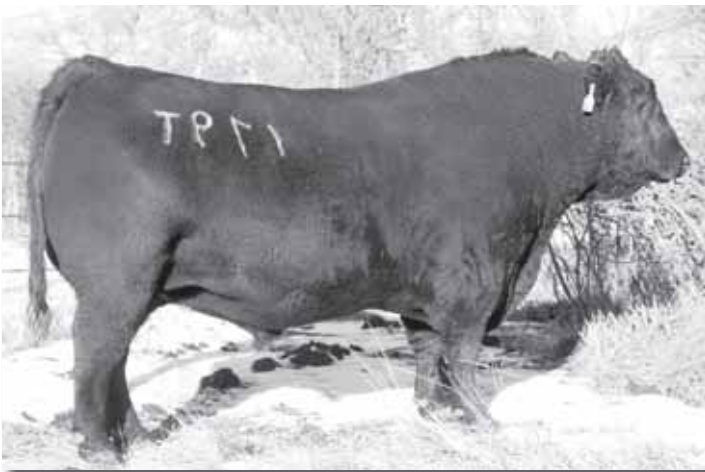
GDAR TRAVELER 71
SITZ TRAVELER 8180
SITZ EVERELDA ENTENSE 1137

BON VIEW BANDO 598
SAV EMULOUS 8145
SAV SKY EMULOUS 2124

TRAVELER 1148 GDAR
GDAR MISS BLACKCAP 567
GDAR RAINMAKER 340
SITZ EVERELDA ENTENSE 2335
TEHAMA BANDO 155
BON VIEW DORA 56
ELLANIN SKY DIVER
TAIL N 0383


The Final Answer calves are deep ribbed and easy fleshing with eye appeal.

Owners: Baker's Lemar Angus, SD; Martin Schaff, ND; Genex, WI.



OPEN A 8180 179T ET

SIRE **R**



OPEN A 8180 179T ET

BIRTH DATE: **3/14/07** REG. #: **#15946829**

CED	BW	WW	YW	CEM	MILK	MW	MARB	REA	FAT	\$W	\$F	\$B
8	0.7	29	69	12	21	61	0.25	-0.3	0.028	14.95	17.94	51.33
											BW	94
											ADJ WW	665
											WR	100
											ADJ YW	1129
											YR	100
											FRAME	
											SCROTAL	

GDAR TRAVELER 71
SITZ TRAVELER 8180
SITZ EVERELDA ENTENSE 1137

LEACHMAN RIGHT TIME
OPEN A KRISTLE 69L
OPEN A KRISTLE 67A

TRAVELER 1148 GDAR
GDAR MISS BLACKCAP 567
GDAR RAINMAKER 340
SITZ EVERELDA ENTENSE 2335
N BAR EMULATION EXT
LEACHMAN ERICA 0025
LEACHMAN RIGHT TIME
K&S KRISTLE 406

179T is a Sitz Traveler 8180 son out of a double bred Right Time dam. He is a very complete bull with a lot of thickness, depth and growth. In addition, he is very good footed and athletic.

Owners: Open A Angus, ND

ADDITIONAL ANGUS SIRES INCLUDE:

SITZ TRAVELER 8180..... #11367940

CED	BW	WW	YW	CEM	MILK	MW	MARB	REA	FAT	\$W	\$F	\$B
+6	+1.8	+42	+82	+14	+22	+38	+44	-.38	+0.60	+30.00	+26.95	+44.17

STYLES UPWARD J6 16244343

CED	BW	WW	YW	CEM	MILK	MW	MARB	REA	FAT	\$W	\$F	\$B
-5	-1.9	+45	+90	+7	+19		+23	-.10	+0.03	+22.22	+35.00	+69.90

CONNELLY FORWARD..... 15491633

CED	BW	WW	YW	CEM	MILK	MW	MARB	REA	FAT	\$W	\$F	\$B
+16	+1.4	+57	+111	+12	+33	-8	+38	+.97	+0.21	+40.47	+55.43	+81.89

H A IMAGE MAKER 0415..... #+13739532

CED	BW	WW	YW	CEM	MILK	MW	MARB	REA	FAT	\$W	\$F	\$B
+11	+4	+65	+107	+11	+37	+47	+20	+.44	+0.13	+52.14	+46.36	+69.18

LIMESTONE JUPITER U449..... 16195227

CED	BW	WW	YW	CEM	MILK	MW	MARB	REA	FAT	\$W	\$F	\$B
+1	+4	+47	+84	+4	+19	+35	-.09	+.77	-0.17	+32.47	+27.03	+39.19

CAR EFFICIENT 534 15170660

CED	BW	WW	YW	CEM	MILK	MW	MARB	REA	FAT	\$W	\$F	\$B
+11	-1.0	+56	+107	+10	+31	+22	+0.8	+.35	+0.22	+39.39	+50.78	+58.46

L T BANDWAGON 3105..... 14502851

CED	BW	WW	YW	CEM	MILK	MW	MARB	REA	FAT	\$W	\$F	\$B
+9	+1.2	+48	+79	+12	+36	+1	+.29	-.29	+0.17	+40.48	+20.88	+35.09

CONNELLY FINAL PRODUCT 15848422

CED	BW	WW	YW	CEM	MILK	MW	MARB	REA	FAT	\$W	\$F	\$B
+3	+6	+67	+124	+10	+31	+9	+38	+.69	+0.61	+39.67	+67.55	+75.55

CONNELLY MENTOR 7374 15832714

CED	BW	WW	YW	CEM	MILK	MW	MARB	REA	FAT	\$W	\$F	\$B
+4	+1.3	+58	+108	+5	+31	-11	+31	+1.04	+0.26	+39.64	+51.06	+71.46

TC STOCKMAN 365 #11994601

CED	BW	WW	YW	CEM	MILK	MW	MARB	REA	FAT	\$W	\$F	\$B
+8	+4.4	+39	+71	+15	+24	+42	+4.1	+.31	-.069	+18.52	+15.88	+75.38

Watch & bid online for free at



View the Auction Live!

Bid Online ... you're ringside right at your desk!

Buying online is as easy as 1, 2, 3 ...

1. Create an account at www.dvauction.com under the "register" tab
2. Apply for bidding approval by clicking on the "details" tab at least 24 hours prior to the auction – a DV representative will notify you once you have been approved.
3. Tune in for the sale and make your purchases!

High-speed internet is required for successful bidding. Be sure to check the lag-time monitor in the top left corner to ensure real-time broadcasts.

Proxy bidding – If you can't make time to watch the sale, register a proxy bid and let our system represent your bid while you're away. Look for the "proxy bid" tab on the auction listing and fill in your maximum bids. We'll handle the rest!

Having troubles? During the auction, you can type a message to the operator at any time for assistance. Our full-time support team can also always be reached at (402) 474-5557.

DVA Rep., Justin Dikoff
(605) 290-0635 • jdikoff@dvauction.com

Please feel free to contact me with questions about the sale or to view the cattle for you.





SIRE 1

MLK CRK KNIGHT 7153

BIRTH DATE: 2/6/07 REG. #: 1164885 CAT: 100% 1A

GED	BW	WW	YW	M	TM	ME	HPG	GETM	ST	MARB	RE	BFAT
4	0.8	66	87	12	45	-10	7	9	8	0.47	0.26	-0.01

RED YY 23L TOPPER 408D
RED YY KNIGHT 640F
 RED TOP GOLDIE 40U

BJR PROOF 224-159
MLK CRK SHEBA 043
 MLK CRK SHEBA 869

- BJR TOPPER AGAIN 23L
- RED DEVLANE ROZINE 8B
- RED LINE FLAME 11N
- REDLINE GOLDIE 40K
- BJR PROOF 20A-5162
- BJR LAKINA 677-3197
- GLACIER CUB 446
- MLK CRK SHEBA 556

BW	100
ADJ WW	819
WR	119
ADJ YW	1200
YR	108
FRAME	
SCROTAL	
DAM'S MPPA	105.1

A unique opportunity to purchase a proven herd bull used extensively in the Heart River Ranch, Diamond B Red Angus and Milk Creek Red Angus herds with over 250 progeny in production. 7153 was a standout performer as a yearling with all performance ratios over 105 for growth and carcass traits. He sires super dispositions and dark red, attractive cattle with great feet and legs. At age 6, he travels like a good quarter horse and had to in many of the pastures he was used in. His dam as notable sons in registered and commercial herds and is still in production at 13 years of age with a 103.7 MPPA. She is an uncommon dam in that she has as much body and width as you could expect for a proven calving ease matron. Selling full possession, 10% semen interest and 50 straws of semen. Semen is available.



MLK CRK SHEBA 043
 Dam of MLK CRK Knight 7153



LOT 2

HRR IMPRESSIVE 227

BIRTH DATE: 3/1/12 REG. #: 1567292 CAT: 1A 100%

GED	BW	WW	YW	M	TM	ME	HPG	CETM	ST	MARB	RE	BFAT
8	-4.2	59	86	22	51	1	11	4	13	0.37	0.17	0.01

BUF CRK LANCER R017
MUSHRUSH IMPRESSIVE CA U236
 MUSHRUSH MADAM LT R265

STEADFAST BOAZ T71
HRR BANA 031
 HRR BANA 870

BECKTON LANCER F442 T
 BUF CRK JULIET N036
 TR JULIAN LT142
 MUSHRUSH ROBIN M125
 MUSHRUSH ROCKET P016
 MUSHRUSH LANA LT R040
 LCHMN GRANDCANYON 1244G
 BIEBER BANA 4466

BW	80
ADJ WW	642
WR	100
ADJ YW	1105
YR	100
FRAME	4.5
SCROTAL	34.6
DAM'S MPPA	100

Here is a calving-ease heifer bull out of Musrush Impressive that has enough growth to go on and be used on cows. Great spread from birth to yearling, maternal side of the pedigree is solid out of a Steadfast Boaz two-year-old with a lot of future. Maternal Grand dam and great grand dam both have MPPAs of 106. He ranks in the top 15% of the breed in CED and top 7% in BW.



HRR BANA 031

Dam of Lot 2 as a first-calf heifer in 2012





LOT 3

This is an opportunity to tap into calving ease if you are looking to for clean up bulls on heifers. MLK CRK Lakota 953 was as sound as you could find in a cow her age and as a donor she produced over 60 calves. With a milk EPD of 33, you can count on easy



HRR REDMAN 225

BIRTH DATE: 3/1/12 REG. #: 1546294 CAT: 1A 100%

CED	BW	WW	YW	M	TM	ME	HPG	CETM	ST	MARB	RE	BFAT
6	-3.5	29	36	26	40	-1	6	-4	8	0.00	0.04	-0.04
											BW	89
											ADJ WW	544
											WR	100
											ADJ YW	1104
											YR	100
											FRAME	4.5
											SCROTAL	36.6
											DAM'S MPPA	99.5

5L NORSEMAN KING 2291
RED RMJ REDMAN 1T
 CROWFOOT KURUBA 4033P
 LARSON RED LIGHTNING
MLK CRK LAKOTA 953
 MLK CRK LAKOTA 112-RAMB

VGW KING OF THE WEST
 NORSEMAN 1312 PJM
 O C C HUNTER 928H
 RED CROWFOOT KURUBA 2030M
 LMN IMPRESSIVE ROB1095B
 LARSON CRIS 926
 FCC RAMBO 502
 CFLD LAKOTA 112-914

keeping productive daughters if you are looking to retain breeding stock. Her progeny have topped sales for us in the past. Redman brings added length and calving ease to the Norseman King line. This bull and a couple of his brothers are herd sire material. A maternal brother topped the sale in 2011.



LOT 4



HRR IMPRESSIVE 244

BIRTH DATE: 3/6/12 REG. #: 1567273 CAT: 1A 100%

CED	BW	WW	YW	M	TM	ME	HPG	CETM	ST	MARB	RE	BFAT
7	-5.2	50	71	19	44	-5	6	5	13	0.47	0.22	0.01
											BW	87
											ADJ WW	582
											WR	100
											ADJ YW	1069
											YR	100
											FRAME	4.3
											SCROTAL	36.8
											DAM'S MPPA	

BUF CRK LANCER R017
MUSHRUSH IMPRESSIVE CA U236
 MUSHRUSH MADAM LT R265
 RED YY RED KNIGHT 640F
HRR OMEGA 8151
 RED CROWFOOT OMEGA 9179J

BECKTON LANCER F442 T
 BUF CRK JULIET N036
 TR JULIAN LT142
 MUSHRUSH ROBIN M125
 RED YY 23L TOPPER 408D
 RED TOP GOLDI 40U
 RED PRICE 631
 RED OMEGA 7456'

If his picture doesn't grab your attention, check him in the pen. Calving ease deluxe in a phenotype you just don't find every day. Top 2% for CED and BW EPDs. Great CED and performance combination. (Bull pedigree was corrected at the time of catalog print and correct EPDs will be available at sale time. Above EPDs are parental averages.)



LOT 5



HRR LEGEND 230

BIRTH DATE: 3/2/12 REG. #: 1546278 CAT: 1A 100%

CED	BW	WW	YW	M	TM	ME	HPG	CETM	ST	MARB	RE	BFAT
9	0.0	53	70	21	47	0	9	5	11	0.26	0.46	0.05
											BW	97
											ADJ WW	660
											WR	103
											ADJ YW	1142
											YR	105
											FRAME	4.3
											SCROTAL	36.6
											DAM'S MPPA	101.2

5L LAKOTA LEGEND 7074
5L LEGEND 1553-425V
 5L HAZEL 45L-1553
 BUF CRK LANCER-F L297
HRR EILEEN 023
 HRR EILEEN 892

O C C LEGEND 616L
 BASIN LAKOTA C999
 5L NORSEMAN KING 2291
 LA TRAVLIN 124 HAZEL 45
 BECKTON LANCER F442 T
 BUF CRK LASS 4158
 SHOCO DATA
 JAYNBEE WILEEN 468F

This bull is a complete, deep based powerhouse with an outcross pedigree on top and bottom. HRR Legend 230 has a great disposition and is smooth, balanced and thick. He will add pounds to the scale and grow after weaning. His maternal side is backed by cow makers such as 5L Legend, Buf Crk Lancer 297 and Bando 598. Use him on cows and keep the daughters, steers should put the scale under a load.



LOT 6



LOT 6 HRR KNIGHT 2100

BIRTH DATE: **3/24/12** REG. #: **1546352** CAT: **1A 100%**

CED	BW	WW	YW	M	TM	ME	HPG	CETM	ST	MARB	RE	BFAT
3	-0.4	59	76	21	51	-1	8	7	10	0.40	0.10	0.08
											BW	76
											ADJ WW	639
											WR	100
											ADJ YW	1081
											YR	95
											FRAME	4.8
											SCROTAL	36.3
											DAM'S MPPA	97.8

RED YY RED KNIGHT 640F
MLK CRK KNIGHT 7153
 MLK CRK SHEBA 043
 5L PRIME TIME 2559
HRR FREYJA 814
 HRR FREYJA 308

RED YY 23L TOPPER 408D
 RED TOP GOLDIE 40U
 BJR PROOF 224-159
 MLK CRK SHEBA 869
 LCHMN GRANDCANYON 1244G
 5L FIREFLY 66-32
 BJR MAKE MY DAY 981
 HRR FREYJA 116

Here is a smooth, moderate-framed, long, balanced and thick-made bull with a small head. His dam goes back to the HRR Freyja 308 donor cow with a 103 MPPA. He is really correct and deep. If you want to moderate but leave nothing on the table, here is an option for you. HRR Knight 2100 is really mellow bull to be around.



LOT 7



LOT 7 HRR REDMAN 242

BIRTH DATE: **3/6/12** REG. #: **1546295** CAT: **1A 100%**

CED	BW	WW	YW	M	TM	ME	HPG	CETM	ST	MARB	RE	BFAT
6	-4.2	37	61	26	44	-1	6	-4	8	0.13	0.27	-0.03
											BW	88
											ADJ WW	603
											WR	100
											ADJ YW	1111
											YR	100
											FRAME	4.5
											SCROTAL	34.5
											DAM'S MPPA	99.5

5L NORSEMAN KING 2291
RED RMJ REDMAN 1T
 CROWFOOT KURUBA 4033P
 LARSON RED LIGHTNING
MLK CRK LAKOTA 953
 MLK CRK LAKOTA 112-RAMB

VGW KING OF THE WEST
 NORSEMAN 1312 PJM
 O C C HUNTER 928H
 RED CROWFOOT KURUBA 2030M
 LMN IMPRESSIVE ROB1095B
 LARSON CRIS 926
 FCC RAMBO 502
 CFLD LAKOTA 112-914

Full brother to lots 3, 10 and 25.



LOT 8



LOT 8 HRR KING 262

BIRTH DATE: **3/12/12** REG. #: **1546364** CAT: **1A 100%**

CED	BW	WW	YW	M	TM	ME	HPG	CETM	ST	MARB	RE	BFAT
3	-2.1	50	74	19	44	5	9	1	9	0.69	0.64	0.04
											BW	90
											ADJ WW	615
											WR	96
											ADJ YW	1094
											YR	96
											FRAME	5.1
											SCROTAL	35.9
											DAM'S MPPA	101.6

VGW KING OF THE WEST
5L NORSEMAN KING 2291
 NORSEMAN 1312 PJM
 SHOCO DATA
HRR BLOCKANA 845
 FEDDES BLOCKANA 940

VGW ACE 613
 VGW MT TABITHA 9633
 376 P J M 141
 P J M POWERPOINT 2009
 SHOCO SIR ROBIN
 VDAR BLACKANA 303
 LEACHMAN MONU 2X 8096
 FED'S BLOCKANA 4225

HRR King 262 is a lot like his half brother – HRR King 261. He is really thick made, great carcass with more calving ease going back to a maternal Blockana bred donor dam.



HRR LAKOTA 018

Dam of Lot 9 as a first-calf heifer in 2012



HRR LIBERTY 235

LOT 9

BIRTH DATE: 3/4/12 REG. #: 1546277 CAT: 1A 100%

CED	BW	WW	YW	M	TM	ME	HPG	CETM	ST	MARB	RE	BFAT
14	-2.9	54	73	22	49	4	7	6	10	0.38	-0.02	-0.18

VGW UNLIMITED 819
VGW LIBERTY 523
 VGW KW- DORA 0334

BUF CRK LANCER-F L297
HRR LAKOTA 018
 HRR LAKOTA 886

VGW RAMBLER 1000
 VGW CAN-FIREFLY 9608
 VGW KING OF THE WEST
 VGW DORA 9244
 BECKTON LANCER F442 T
 BUF CRK LASS 4158
 SHOCO DATA
 MLK CRK LAKOTA 152-HOBO

BW	65
ADJ WW	608
WR	95
ADJ YW	1134
YR	104
FRAME	4.5
SCROTAL	31.7
DAM'S MPPA	98

This bull has a light birth weight, high CED heifer bull prospect with a balanced set of EPDs, and a moderate frame.



LOT 10



HRR REDMAN 217

LOT 10

BIRTH DATE: 3/24/12 REG. #: 1546292 CAT: 1A 100%

CED	BW	WW	YW	M	TM	ME	HPG	CETM	ST	MARB	RE	BFAT
6	-5.1	30	32	26	41	-1	6	-4	8	-0.03	0.01	-0.17

5L NORSEMAN KING 2291
RED RMJ REDMAN 1T
 CROWFOOT KURUBA 4033P

LARSON RED LIGHTNING
MLK CRK LAKOTA 953
 MLK CRK LAKOTA 112-RAMB

VGW KING OF THE WEST
 NORSEMAN 1312 PJM
 O C C HUNTER 928H
 RED CROWFOOT KURUBA 2030M
 LMN IMPRESSIVE ROB1095B
 LARSON CRIS 926
 FCC RAMBO 502
 CFLD LAKOTA 112-914

BW	92
ADJ WW	697
WR	
ADJ YW	1178
YR	
FRAME	4.6
SCROTAL	37.8
DAM'S MPPA	99.5

Full brother to lots 3, 7, and 25.



LOT 11



HRR IMPRESSIVE 215

LOT 11

BIRTH DATE: 2/28/12 REG. #: 1567296 CAT: 1A 100%

CED	BW	WW	YW	M	TM	ME	HPG	CETM	ST	MARB	RE	BFAT
11	-4.8	49	71	20	45	1	9	8	12	0.33	0.11	0.01

BUF CRK LANCER R017
MUSHRUSH IMPRESSIVE CA U236
 MUSHRUSH MADAM LT R265

BUF CRK HOBO 1961
HRR LAKOTA 0176
 HRR LAKOTA 869

BECKTON LANCER F442 T
 BUF CRK JULIET N036
 TR JULIAN LT142
 MUSHRUSH ROBIN M125
 BUF CRK HOBO 1413
 BUF CR CARRIE VC1174
 VGW LIBERTY 523
 HRR LAKOTA 633

BW	77
ADJ WW	579
WR	100
ADJ YW	1217
YR	100
FRAME	4.5
SCROTAL	35.5
DAM'S MPPA	100

The Impressive bulls have been consistent in type and look to provide balance, rib and adequate muscle in a moderate frame. HRR Impressive 215 is dark red and easy keeping out of a first calf heifer. We do want to point out that he has one testicle that is not aligned like we like to see but we believe this is not genetic. We will test him prior to sale and if you are not in the business of raising purebred bulls, this might be a bargain in disguise. Top 5% of the breed in CED and BW. One of the top ADG yearling weight bulls in the sale.



LOT 12



LOT 12
HRR KNIGHT 2108

BIRTH DATE: **3/30/12** REG. #: **1550792** CAT: **1A 100%**

CED	BW	WW	YW	M	TM	ME	HPG	CETM	ST	MARB	RE	BFAT	
5	-3.8	55	74	21	49	-4	6	10	7	0.60	-0.13	0.00	
												BW	83
												ADJ WW	625
												WR	100
												ADJ YW	1188
												YR	100
												FRAME	4.9
												SCROTAL	38.0
												DAM'S MPPA	100

RED YY RED KNIGHT 640F
MLK CRK KNIGHT 7153
MLK CRK SHEBA 043

RED CROWFOOT OLE'S OSCAR
HRR BANA 904
HRR BANNA 781

RED YY 23L TOPPER 408D
RED TOP GOLDIE 40U
BJR PROOF 224-159
MLK CRK SHEBA 869
MLK CRK CUB 722
RED CROWFOOT OMEGA 9179J
LEACHMAN EBV 3531
BIEBER BANA 4466

Here is a heifer bull with good performance, large scrotal, and easy to appreciate the phenotype. He is a young calf at the top end of the scale.



LOT 13



LOT 13
HRR REDMAN 223

BIRTH DATE: **3/1/12** REG. #: **1546304** CAT: **1A 100%**

CED	BW	WW	YW	M	TM	ME	HPG	CETM	ST	MARB	RE	BFAT	
1	-5.5	48	68	20	44	4	7	-3	11	0.57	0.55	-0.06	
												BW	88
												ADJ WW	574
												WR	100
												ADJ YW	993
												YR	100
												FRAME	4.7
												SCROTAL	35.6
												DAM'S MPPA	103.1

5L NORSEMAN KING 2291
RED RMJ REDMAN 11
CROWFOOT KURUBA 4033P

BJR MAKE MY DAY 981
HRR FREYJA 308
HRR FREYJA 116

VGW KING OF THE WEST
NORSEMAN 1312 PJM
O C C HUNTER 928H
RED CROWFOOT KURUBA 2030M
BJR EASY RIDER 781
BJR TOW KANA 117-710
MLK CRK CUB 722
HRR FREYJA 909

Full brother to lots 3 and 7. Normally these three full brothers would post the exact same EPDs, here you get a feel for the value of 50K. Note the difference 50K brings to the data. HRR Freyja 308 has a 103 MPPA and is one of the most prolific donors in our herd. All of her performance ratios on 7 natural calves post at 102 or better.



LOT 14



LOT 14
HRR GRAND STATEMENT 277

BIRTH DATE: **3/16/12** REG. #: **1545717** CAT: **1A 100%**

CED	BW	WW	YW	M	TM	ME	HPG	CETM	ST	MARB	RE	BFAT	
-4	-1.3	59	88	21	50	9	10	2	10	0.33	0.37	-0.08	
												BW	93
												ADJ WW	541
												WR	84
												ADJ YW	1084
												YR	95
												FRAME	5.4
												SCROTAL	35.6
												DAM'S MPPA	96.6

LJC MISSION STATEMENT P27
C-T GRAND STATEMENT 1025
C-T MISS PAN 0760

MLK CRK CUB 722
TFS INATE XXI 351
HOLDEN HITEX 7137

LJC LANCER 806
LJC HANNAH 106
LCHMN GRANDCANYON 1244G
CTDB HOBO'S GAL 803
GLACIER CUB 446
MLK CRK LAKOTA 152-HOBO
HOLDEN HI HO 574
ODP MS INATEXYI 7207

A C-T Grand Statement son with solid growth EPDs. HRR Grand Statement 277 did end up being a graft calf and did lose some ground early in life, but you couldn't tell now.

RED ANGUS FEEDER CALF CERTIFICATION PROGRAM TAG VOUCHER

Age and Source verify you feeder calves free or at minimal cost to increase potential for premiums in the Red Angus Feeder Calf Certification Program.

1. Call Red Angus Association at 1-940-387-3502 to answer a few questions to enroll.
2. Calves sired by Heart River Ranch bulls qualify for the FCCP and Red Angus will invoice the cost of the tags to us at the rate of one bag of 25 tags per bull purchased in 2013.
3. If additional tags are needed, they can be purchased by the bag for \$99/tag but must be used only in calves that qualify for certification.
4. The FCCP tags are serial numbered at the bottom leaving space on both the front and back for additional ID numbers as desired.



LOT 16



LOT 17

LOT 15



HRR BIG SKY 282

BIRTH DATE: 3/16/12 REG. #: 1546343 CAT: 1A 100%

CED	BW	WW	YW	M	TM	ME	HPG	CETM	ST	MARB	RE	BFAT
3	-1.6	65	92	24	56	6	15	2	10	0.59	0.17	-0.03

BIEBER MAKE MIMI 7249
FEDES BIG SKY R9
 FEDES LAKINA 310

MESSMER JUDGE 36N
LELAND JULIA 8302U
 LELAND HOLLY 5050R

BJR MAKE MY DAY 981
 BIEBER SIRENA 6708
 LCHMN GRANDCANYON 1244G
 FEDES LAKINA 954
 BECKTON JULIAN GG B571
 MESSMER ESTHER 2254
 WEBR DOC HOLLIDAY 2N
 LELAND GOLDEN 719-181K

BW	83
ADJ WW	676
WR	105
ADJ YW	
YR	
FRAME	
SCROTAL	
DAM'S MPPA	99.3

Here is a moderate birth weight Feddes Big Sky son that ranks high in the breed in several EPD categories.

LOT 16



HRR KING 249

BIRTH DATE: 3/8/12 REG. #: 1546326 CAT: 1A 100%

CED	BW	WW	YW	M	TM	ME	HPG	CETM	ST	MARB	RE	BFAT
8	-1.5	58	83	24	53	5	10	1	10	0.63	1.03	0.06

VGW KING OF THE WEST
5L NORSEMAN KING 2291
 NORSEMAN 1312 PJM

SHOCO DATA
HRR COLLEEN 632
 HRR COLLEEN 339

VGW ACE 613
 VGW MT TABITHA 9633
 376 P J M 141
 P J M POWERPOINT 2009
 SHOCO SIR ROBIN
 VDAR BLACKANA 303
 GLACIER LOGAN 210
 HOLDEN COLLEEN 6024

BW	65
ADJ WW	638
WR	99
ADJ YW	1117
YR	98
FRAME	4.6
SCROTAL	37.3
DAM'S MPPA	102.8

A calving ease 5L Norseman King son with balanced numbers out of a proven Shoco Data 102 dam with a 103 MPPA. This bull is in the top 1% of the breed for REA. Really complete - hard to find a hole here.

LOT 17



HRR GRAND STATEMENT 258

BIRTH DATE: 3/11/12 REG. #: 1546345 CAT: 1A 100%

CED	BW	WW	YW	M	TM	ME	HPG	CETM	ST	MARB	RE	BFAT
0	5.6	61	85	21	51	9	12	5	12	0.49	0.33	-0.04

LJC MISSION STATEMENT P27
C-T GRAND STATEMENT 1025
 C-T MISS PAN 0760

SHOCO DATA
HRR FREYJA 8101
 BJR MATTIE 074-361

LJC LANCER 806
 LJC HANNAH 106
 LCHMN GRANDCANYON 1244G
 CTDB HOBO'S GAL 803
 SHOCO SIR ROBIN
 VDAR BLACKANA 303
 BJR YOGO 355-71L
 BJR MATTIE 881-774

BW	92
ADJ WW	641
WR	100
ADJ YW	1166
YR	102
FRAME	5.1
SCROTAL	36.9
DAM'S MPPA	100.4

Here is a long spined, deep bodied bull like his sire; he is a performance bull to use on cows.



LOT 18



HRR JULIAN 265

LOT 18

BIRTH DATE: 3/13/12 REG. #: 1546268 CAT: 1A 100%

CED	BW	WW	YW	M	TM	ME	HPG	CETM	ST	MARB	RE	BFAT
8	-0.1	53	73	20	46	1	0	7	10	0.22	-0.03	-0.10

MUSHRUSH LTJULIAN LG S005
RIDGE JULIAN S005-0099
 RIDGE SARA F7-8025

HRR RUSTLER 657
HRR LAKOTA 0108
 HRR LAKOTA 633

TR JULIAN LT142
 MUSHRUSH LOGA N288
 5L NORSEMAN KING 2291
 BARGER F7
 HRR SIR REAL 440ET
 VGW PT-STAR 0438
 VDAR RAMBO 323
 MLK CRK LAKOTA 577

BW	75
ADJ WW	656
WR	102
ADJ YW	1134
YR	104
FRAME	3.9
SCROTAL	32.0
DAM'S MPPA	100.8

A nice profile, well built bull with high CED from a first calf heifer.



HRR BIG SKY 271

LOT 19

BIRTH DATE: 3/15/12 REG. #: 1546368 CAT: 1A 100%

CED	BW	WW	YW	M	TM	ME	HPG	CETM	ST	MARB	RE	BFAT
2	-3.0	63	78	26	57	-5	7	6	9	0.45	0.22	-0.17

BIEBER MAKE MIMI 7249
FEDDES BIG SKY R9
 FEDDES LAKINA 310

MLK CRK KNIGHT 7153
HRR KNIGHT 943
 HRR BANA 201

BJR MAKE MY DAY 981
 BIEBER SIRENA 6708
 LCHMN GRANDCANYON 1244G
 FEDDES LAKINA 954
 RED YY RED KNIGHT 640F
 MLK CRK SHEBA 043
 HOLDEN KRYPTONITE 0101
 HOLDEN BANA 6027

BW	89
ADJ WW	616
WR	96
ADJ YW	1113
YR	97
FRAME	5.4
SCROTAL	35.0
DAM'S MPPA	98.9

A Big Sky son that goes back to a MLK CRK Knight 7153 daughter. Low birth, good growth and milk combination.



HRR CONFEDERATE 266

LOT 20

BIRTH DATE: 3/14/12 REG. #: 1546258 CAT: 1A 100%

CED	BW	WW	YW	M	TM	ME	HPG	CETM	ST	MARB	RE	BFAT
13	-5.7	59	77	25	54	-2	10	8	10	0.45	-0.28	-0.04

BIEBER MAKE MIMI 7249
HRR CONFEDERATE 831
 JAYNBEE WILEEN 468F

MUSHRUSH LTJULIAN LG S005
HRR LAKOTA 902
 HRR LAKOTA 783

BJR MAKE MY DAY 981
 BIEBER SIRENA 6708
 BON VIEW BANDO 598
 JAYNEBEE EILEEN 675B
 TR JULIAN LT142
 MUSHRUSH LOGA N288
 LCC VAQUERO 1412J
 MLK CRK LAKOTA 112-RAMB

BW	77
ADJ WW	684
WR	107
ADJ YW	1175
YR	103
FRAME	5.4
SCROTAL	36.0
DAM'S MPPA	101.4

Here is the top CED and low BW bull in the sale with exceptional performance. The bases are covered for this heifer bull prospect. Note the spread from birth to weaning. Top 3% for CED and BW.



LOT 21



HRR GRAND STATEMENT 285

LOT 21

BIRTH DATE: 3/17/12 REG. #: 1546353 CAT: 1A 100%

CED	BW	WW	YW	M	TM	ME	HPG	CETM	ST	MARB	RE	BFAT
-2	0.1	69	99	25	59	10	11	4	12	0.52	0.59	-0.07

LJC MISSION STATEMENT P27
C-T GRAND STATEMENT 1025
 C-T MISS PAN 0760

SHOCO DATA
HRR BLOCKANA 8123
 HRR BLOCKANA 302

LJC LANCER 806
 LJC HANNAH 106
 LCHMN GRANDCANYON 1244G
 CTDB HOBOS GAL 803
 SHOCO SIR ROBIN
 VDAR BLACKANA 303
 MLK CRK CUB 722
 FEDDES BLOCKANA 166

BW	91
ADJ WW	671
WR	105
ADJ YW	1095
YR	96
FRAME	6.0
SCROTAL	33.6
DAM'S MPPA	100.9

A top Grand Statement son with a lot of growth and one of the best EPD profiles in the sale.we really like his young dam, she has produced bulls in past sales.



LOT 22

HRR REDMAN 224

BIRTH DATE: 3/1/12 REG. #: 1546305 CAT: 1A 100%

CED	BW	WW	YW	M	TM	ME	HPG	CETM	ST	MARB	RE	BFAT
1	-5.8	48	66	16	40	4	7	-3	11	0.42	0.52	-0.05

5L NORSEMAN KING 2291
RED RMJ REDMAN 1T
 CROWFOOT KURUBA 4033P
 BJR MAKE MY DAY 981
HRR FREYJA 308
 HRR FREYJA 116

VGW KING OF THE WEST
 NORSEMAN 1312 PJM
 O C C HUNTER 928H
 RED CROWFOOT KURUBA 2030M
 BJR EASY RIDER 781
 BJR TOW KANA 117-710
 MLK CRK CUB 722
 HRR FREYJA 909

BW	93
ADJ WW	637
WR	
ADJ YW	1166
YR	
FRAME	5.5
SCROTAL	38.1
DAM'S MPPA	103.1

Full brother to Lot 13 and Lot 33.



LOT 23

HRR LIBERTY 296

BIRTH DATE: 3/22/12 REG. #: 1546260 CAT: 2 100%

CED	BW	WW	YW	M	TM	ME	HPG	CETM	ST	MARB	RE	BFAT
6	-0.5	65	94	28	61	2	9	4	9	0.59	0.26	-0.01

VGW UNLIMITED 819
VGW LIBERTY 523
 VGW KW- DORA 0334
 LCC MAJOR LEAGUE A502M
HRR EILEEN 9159
 JAYNBEE WILEEN 468F

VGW RAMBLER 1000
 VGW CAN-FIREFLY 9608
 VGW KING OF THE WEST
 VGW DORA 9244
 BFCK CHEROKEE CNYN 4912
 KRN REBA'S ROBIN
 BON VIEW BANDO 598
 JAYNBEE EILEEN 675B

BW	83
ADJ WW	663
WR	103
ADJ YW	1208
YR	106
FRAME	4.8
SCROTAL	34.8
DAM'S MPPA	106.3

Black/red carrier. HRR Liberty 523 is one of the high performing, high maternal bulls of the sale with a balanced set of EPDs and an MPPA of 106. You can see why we kept using the 523 sire beyond a cleanup bull over the years here.



LOT 24

HRR GRAND STATEMENT 268

BIRTH DATE: 3/15/12 REG. #: 1546320 CAT: 1A 100%

CED	BW	WW	YW	M	TM	ME	HPG	CETM	ST	MARB	RE	BFAT
1	-0.8	63	97	25	56	7	14	1	10	0.55	0.20	-0.01

LJC MISSION STATEMENT P27
C-T GRAND STATEMENT
 C-T MISS PAN 0760
 FEDDES BIG SKY R9
HRR BONNEBELL 805
 MLK CRK BONNEBELL 209

LJC LANCER 806
 LJC HANNAH 106
 LCHMN GRANDCANYON 1244G
 CTDB HOBO'S GAL 803
 BIEBER MAKE MIMI 7249
 FEDDES LAKINA 310
 BUF CRK BARNEY 3474
 MLK CRK BONNEBELL 865

BW	85
ADJ WW	657
WR	108
ADJ YW	
YR	
FRAME	
SCROTAL	
DAM'S MPPA	101.8

A straight-topped, big-hipped performance bull. His dam is a good Big Sky daughter and it comes through in this bull. He has above-average rankings across his EPD profile. (Bull pedigree was corrected at the time of catalog print and correct EPDs will be available at sale time. Printed EPDs are parental averages.)



LOT 25



LOT 25

HRR REDMAN 218

BIRTH DATE: **2/29/12** REG. #: **1546293** CAT: **1A 100%**

CED	BW	WW	YW	M	TM	ME	HPG	CETM	ST	MARB	RE	BFAT
6	-3.3	29	41	24	39	-1	6	-4	8	0.01	0.02	-0.05

5L NORSEMAN KING 2291
RED RMJ REDMAN 1T
 CROWFOOT KURUBA 4033P
 LARSON RED LIGHTNING
MLK CRK LAKOTA 953
 MLK CRK LAKOTA 112-RAMB

VGW KING OF THE WEST
 NORSEMAN 1312 PJM
 O C C HUNTER 928H
 RED CROWFOOT KURUBA 2030M
 LMN IMPRESSIVE ROB1095B
 LARSON CRIS 926
 FCC RAMBO 502
 CFLD LAKOTA 112-914

BW	90
ADJ WW	650
WR	
ADJ YW	1056
YR	
FRAME	5.5
SCROTAL	34.6
DAM'S MPPA	99.5

A full brother to Lots 3, 7 and 10.



LOT 26



LOT 26

HRR KNIGHT 2132

BIRTH DATE: **4/10/12** REG. #: **1546300** CAT: **1A 100%**

CED	BW	WW	YW	M	TM	ME	HPG	CETM	ST	MARB	RE	BFAT
2	1.2	67	97	16	50	-1	7	5	8	0.35	0.35	-0.04

RED YY RED KNIGHT 640F
MLK CRK KNIGHT 7153
 MLK CRK SHEBA 043
 CBR CHEIF 286-726
VGW TRAV-MERCEDES 0426
 VGW 613-MERCEDES 9955

RED YY 23L TOPPER 408D
 RED TOP GOLDIE 40U
 BJR PROOF 224-159
 MLK CRK SHEBA 869
 CFRA T3 CHIEF 9912
 CBR MISS KITTY 316-566
 VGW ACE 613
 VGW MT-MERCEDES 9634

BW	93
ADJ WW	713
WR	111
ADJ YW	1153
YR	101
FRAME	5.1
SCROTAL	33.9
DAM'S MPPA	105.4

Young bull with lots of performance out of a top producing dam with a 105.4 MPPA. Knight 2132 has a super disposition and strong carcass EPDs.



LOT 27

HRR JULIAN 295

BIRTH DATE: **3/22/12** REG. #: **1567298** CAT: **1A 100%**

CED	BW	WW	YW	M	TM	ME	HPG	CETM	ST	MARB	RE	BFAT
8	-3.2	48	71	18	41	0	8	2	10	0.30	0.20	-0.02

MUSHRUSH LTJULIAN LG S005
RIDGE JULIAN S005-0099
 RIDGE SARA F7-8025

5L NORSEMAN KING 2291
HRR LAKOTA 820
 MLK CRK LAKOTA 152-HOBO

TR JULIAN LT142
 MUSHRUSH LOGA N288
 5L NORSEMAN KING 2291
 BARGER F7
 VGW KING OF THE WEST
 NORSEMAN 1312 PJM
 BUF CRK HOBO 1961
 MLK CRK LAKOTA 802-RAMB

BW	77
ADJ WW	532
WR	100
ADJ YW	1232
YR	100
FRAME	5.5
SCROTAL	35.3
DAM'S MPPA	100

A heifer bull that keeps coming on. One of the high yearling weight bulls in the sale, yet he ranks in the top 15% of the breed n CED and BW.





LOT 28



HRR KING 261

LOT 28

BIRTH DATE: **3/12/12** REG. #: **1546328** CAT: **1A 100%**

CED	BW	WW	YW	M	TM	ME	HPG	CETM	ST	MARB	RE	BFAT
1	2.2	54	76	24	51	3	8	-4	9	0.52	1.03	-0.11

VGW KING OF THE WEST
5L NORSEMAN KING 2291
NORSEMAN 1312 PJM

SHOCO DATA
HRR BANA 687
BIEBER BANA 4466

VGW ACE 613	ADJ BW	95
VGW MT TABITHA 9633	WR	103
376 P J M 141	ADJ YW	1143
P J M POWERPOINT 2009	YR	100
SHOCO SIR ROBIN	FRAME	5.5
VDAR BLACKANA 303	SCROTAL	33.4
BIEBER DESIGN 1325-082	DAM'S MPPA	108.5
BIEBER BANA 3881		

A really thick Norseman King son who is designed to be a carcass bull by his epds. He is out of a super cow family and a dam with a 108 MPPA. He should sire some productive daughters.



LOT 29



HRR BIG SKY 284

LOT 29

BIRTH DATE: **3/17/12** REG. #: **1546355** CAT: **1A 100%**

CED	BW	WW	YW	M	TM	ME	HPG	CETM	ST	MARB	RE	BFAT
3	-3.6	63	73	26	57	9	15	1	11	0.53	0.16	-0.16

BIEBER MAKE MIMI 7249
FEDDES BIG SKY R9
FEDDES LAKINA 310

SHOCO DATA
HRR GOLDI 8111
HRR GOLDI 516

BJR MAKE MY DAY 981	BW	92
BIEBER SIRENA 6708	ADJ WW	690
LCHMN GRANDCANYON 1244G	WR	108
FEDDES LAKINA 954	ADJ YW	1131
SHOCO SIR ROBIN	YR	99
VDAR BLACKANA 303	FRAME	5.7
PERKS ADVANCER 9088	SCROTAL	36.1
SHOCO GOLDI EXE 206	DAM'S MPPA	106.4

A Big Sky son that is really made well and does a complete job on his paperwork. His young dam out of Shoco Data 102 does a good job as indicated by a 106 MPPA. He may be more performance here than I would recommend for heifers across the board, but a really good bull late in the sale.



HRR KNIGHT 2133

LOT 30

BIRTH DATE: **4/10/12** REG. #: **1546373** CAT: **1A 100%**

CED	BW	WW	YW	M	TM	ME	HPG	CETM	ST	MARB	RE	BFAT
1	1.8	75	103	18	56	0	7	9	10	0.44	0.34	0.03

RED YY RED KNIGHT 640F
MLK CRK KNIGHT 7153
MLK CRK SHEBA 043

SHOCO DATA
HRR BLOCKANA 993
HRR BLOCKANA 618

RED YY 23L TOPPER 408D	BW	95
RED TOP GOLDIE 40U	ADJ WW	714
BJR PROOF 224-159	WR	111
MLK CRK SHEBA 869	ADJ YW	1187
SHOCO SIR ROBIN	YR	104
VDAR BLACKANA 303	FRAME	5.3
VDAR RAMBO 323	SCROTAL	34.9
FEDDES BLOCKANA 166	DAM'S MPPA	98.9

One of the youngest bulls in the sale with loads of performance. Don't overlook this guy.



LOT 31



LOT 31 HRR CONFEDERATE 270

BIRTH DATE: **3/15/12** REG. #: **1546375** CAT: **1A 100%**

CED	BW	WW	YW	M	TM	ME	HPG	CETM	ST	MARB	RE	BFAT	
9	-6.9	43	59	23	45	-1	10	5	11	0.58	-0.23	-0.08	
												BW	83
												ADJ WW	617
												WR	96
												ADJ YW	1106
												YR	97
												FRAME	4.4
												SCROTAL	35.0
												DAM'S MPPA	96.3

BIEBER MAKE MIMI 7249
HRR CONFEDERATE 831
JAYNBEЕ WILEEN 468F

MUSHRUSH LTJULIAN LG S005
HRR GOLDI 923
HRR FREYJA 722

BJR MAKE MY DAY 981
BIEBER SIRENA 6708
BON VIEW BANDO 598
JAYNEBEE EILEEN 675B
TR JULIAN LT142
MUSHRUSH LOGA N288
BIEBER MAKE MIMI 7249
HRR GOLDI 442

Here is a heifer bull within the top 7% for CED and top 1% for BW EPD.



LOT 32



LOT 32 HRR KNIGHT 2104

BIRTH DATE: **3/26/12** REG. #: **1546362** CAT: **1A 100%**

CED	BW	WW	YW	M	TM	ME	HPG	CETM	ST	MARB	RE	BFAT	
4	2.9	68	98	19	53	-1	8	7	8	0.41	0.19	-0.09	
												BW	92
												ADJ WW	769
												WR	120
												ADJ YW	1220
												YR	107
												FRAME	6.3
												SCROTAL	36.4
												DAM'S MPPA	104.9

RED YY RED KNIGHT 640F
MLK CRK KNIGHT 7153
MLK CRK SHEBA 043

VGW LIBERTY 523
HRR LAKOTA 897
HRR LAKOTA 659

RED YY 23L TOPPER 408D
RED TOP GOLDIE 40U
BJR PROOF 224-159
MLK CRK SHEBA 869
VGW UNLIMITED 819
VGW KW- DORA 0334
HRR SIR REAL 440ET
HRR LAKOTA 480

Here is the top weaning performance bull of the sale. If you need weight on the trucks, look no further. HRR Knight 2104's dam has a 105 MPPA.



LOT 33



LOT 33 HRR REDMAN 205

BIRTH DATE: **2/25/12** REG. #: **1546302** CAT: **1A 100%**

CED	BW	WW	YW	M	TM	ME	HPG	CETM	ST	MARB	RE	BFAT	
0	-6.1	50	73	18	43	4	7	-3	11	0.34	0.18	-0.08	
												BW	95
												ADJ WW	592
												WR	
												ADJ YW	1148
												YR	
												FRAME	5.7
												SCROTAL	32.9
												DAM'S MPPA	103.1

5L NORSEMAN KING 2291
RED RMJ REDMAN 1T
CROWFOOT KURUBA 4033P

BJR MAKE MY DAY 981
HRR FREYJA 308
HRR FREYJA 116

VGW KING OF THE WEST
NORSEMAN 1312 PJM
O C C HUNTER 928H
RED CROWFOOT KURUBA 2030M
BJR EASY RIDER 781
BJR TOW KANA 117-710
MLK CRK CUB 722
HRR FREYJA 909

A performance bull with our heaviest actual yearling weight and a little more frame. Full brothers are lots 13 and 22.



MLK CRK LAKOTA 953
Dam of Lots 3, 7, 10 and 25.



LOT 34
HRR KNIGHT 2166

BIRTH DATE: 4/30/12 REG. #: 1546313 CAT: 1A 100%

CED	BW	WW	YW	M	TM	ME	HPG	CETM	ST	MARB	RE	BFAT
1	-2.1	69	94	18	53	1	8	6	10	0.40	0.31	-0.04

RED YY RED KNIGHT 640F
MLK CRK KNIGHT 7153
MLK CRK SHEBA 043

SHOCO DATA
HRR BANA 620
HRR BANA 313

RED YY 23L TOPPER 408D
RED TOP GOLDIE 40U
BJR PROOF 224-159
MLK CRK SHEBA 869
SHOCO SIR ROBIN
VDAR BLACKANA 303
MLK CRK CUB 722
HOLDEN BANA 6027

BW	85
ADJ WW	716
WR	112
ADJ YW	1195
YR	105
FRAME	5.9
SCROTAL	34.5
DAM'S MPPA	101.8

A really attractive top performance calf that has always looked the part. HRR Knight 2166 is the youngest bull in the sale out of a picture perfect dam.



LOT 35
HRR DATA 246

BIRTH DATE: 3/7/12 REG. #: 1546312 CAT: 1A 100%

CED	BW	WW	YW	M	TM	ME	HPG	CETM	ST	MARB	RE	BFAT
5	-1.9	55	76	24	51	10	12	11	9	0.41	0.02	0.01

SHOCO SIR ROBIN
SHOCO DATA
VDAR BLACKANA 303

LCC HEAVEN OR BUST1000B
MLK CRK THELMA 076
MLK CRK THELMA 875

LMAN ROBIN HOOD 1174B
VDAR BARLEE GB 3
FCC RAMBO 502
BJR BLOCKNA2206-3149
LEACHMAN HEAVENLY 8141
LMAN MARY 9003
GLACIER CUB 446
MLK CRK THELMA 179-HOBO

BW	83
ADJ WW	659
WR	
ADJ YW	1092
YR	
FRAME	5.1
SCROTAL	36.8
DAM'S MPPA	106.9

The MLK CRK Thelma 076 cow is another highly productive cow with a 107 MPPA and the following ratios: 93 BW, 108 WW, 105 YW, 103 REA on 10 head. She is a 13 year old cow that does not show her age. Heifer bull. She has had sale toppers in past sales.



LOT 36
HRR KING 2118

BIRTH DATE: 4/5/12 REG. #: 1546256 CAT: 1A 100%

CED	BW	WW	YW	M	TM	ME	HPG	CETM	ST	MARB	RE	BFAT
0	-3.9	60	77	17	47	-2	6	4	7	0.30	0.00	-0.01

RED YY RED KNIGHT 640F
MLK CRK KNIGHT 7153
MLK CRK SHEBA 043

MLK CRK CUB 722
HRR FIREFLY 965
SHOCO FIREFLY 9505

RED YY 23L TOPPER 408D
RED TOP GOLDIE 40U
BJR PROOF 224-159
MLK CRK SHEBA 869
GLACIER CUB 446
MLK CRK LAKOTA 152-HOBO
BJR RAMBLER 5162
RCN FIREFLY-CT 505

BW	90
ADJ WW	745
WR	116
ADJ YW	1170
YR	102
FRAME	5.2
SCROTAL	32.7
DAM'S MPPA	106.4

A spread bull with top weaning performance and out of a good young cow.



LOT 37
HRR HRR KNIGHT 2101

BIRTH DATE: 3/25/12 REG. #: 1545719 CAT: 1A 100%

CED	BW	WW	YW	M	TM	ME	HPG	CETM	ST	MARB	RE	BFAT
5	-2.0	59	81	16	45	-2	7	5	8	0.45	0.22	-0.01

RED YY RED KNIGHT 640F
MLK CRK KNIGHT 7153
MLK CRK SHEBA 043

BIEBER MAKE MIMI 7249
HRR SARA 703
TFS SARA 592

RED YY 23L TOPPER 408D
RED TOP GOLDIE 40U
BJR PROOF 224-159
MLK CRK SHEBA 869
BJR MAKE MY DAY 981
BIEBER SIRENA 6708
SEEGER ROBIN HOOD
DLHLKE SARA 176H

BW	80
ADJ WW	680
WR	106
ADJ YW	1147
YR	100
FRAME	5.8
SCROTAL	35.4
DAM'S MPPA	101.1

Here is a really balanced bull in phenotype and on paper. In addition, HRR Knight 2101 has nice weaning performance with a moderate birth.



LOT 38



LOT 38
HRR BIG SKY 236

BIRTH DATE: **3/4/12** REG. #: **1546287** CAT: **1A 100%**

CED	BW	WW	YW	M	TM	ME	HPG	CETM	ST	MARB	RE	BFAT
2	-2.5	62	75	29	60	5	15	1	13	0.59	0.02	-0.09

BIEBER MAKE MIMI 7249
FEDDES BIG SKY R9
FEDDES LAKINA 310

5L BLAZIN RED 1354-6166
HRR BLOCKANA 056
FEDDES BLOCKANA 940

BJR MAKE MY DAY 981
BIEBER SIRENA 6708
LCHMN GRANDCANYON 1244G
FEDDES LAKINA 954
5L BLAZIN HOBO 404-5654
5L REBA 60-1354
LEACHMAN MONU 2X 8096
FED'S BLOCKANA 4225

BW	81
ADJ WW	650
WR	101
ADJ YW	1089
YR	100
FRAME	4.3
SCROTAL	32.7
DAM'S MPPA	100.4

A Feddes Big Sky son with a neat profile and light birth weight. HRR Big Sky 236 is a heifer bull prospect that will add milk and have strength in the HPG and stay categories.



LOT 39
HRR JULIAN 299

BIRTH DATE: **3/23/12** REG. #: **1567272** CAT: **1A 100%**

CED	BW	WW	YW	M	TM	ME	HPG	CETM	ST	MARB	RE	BFAT
9	-2.6	52	73	17	43	3	11	7	10	0.38	0.19	-0.01

MUSHRUSH LTJULIAN LG S005
RIDGE JULIAN S005-0099
RIDGE SARA F7-8025

SHOCO DATA
HRR MISS GOLDEN MARY 069
PJMC MS GOLDEN BOY 305

TR JULIAN LT142
MUSHRUSH LOGA N288
5L NORSEMAN KING 2291
BARGER F7
SHOCO SIR ROBIN
VDAR BLACKANA 303
LMB GOLDEN BOY 719
CYCLONE LADY

BW	85
ADJ WW	531
WR	100
ADJ YW	1136
YR	100
FRAME	4.6
SCROTAL	34.3
DAM'S MPPA	100

Could be used on larger heifers.



LOT 40
HRR JULIAN 288

BIRTH DATE: **3/19/12** REG. #: **1546289** CAT: **1A 100%**

CED	BW	WW	YW	M	TM	ME	HPG	CETM	ST	MARB	RE	BFAT
9	-5.2	41	52	24	45	0	8	2	9	0.11	0.08	0.02

TR JULIAN LT142
MLK CRK LT 0188
BJR LAKINA 319-810

5L NORSEMAN KING 2291
HRR LAKOTA 035
MLK CRK LAKOTA 953

BECKTON JULIAN GG B571
TR LANA G760
BJR HIGH HO 5112-23L
BJR LAKINA 502-647
VGW KING OF THE WEST
NORSEMAN 1312 PJM
LARSON RED LIGHTNING
MLK CRK LAKOTA 112-RAMB

BW	69
ADJ WW	633
WR	99
ADJ YW	1042
YR	96
FRAME	4.0
SCROTAL	35.7
DAM'S MPPA	99.6

No losing sleep here. Heifer bull with good performance.



LOT 41
HRR JULIAN 275

BIRTH DATE: **3/15/12** REG. #: **1546284** CAT: **1A 100%**

CED	BW	WW	YW	M	TM	ME	HPG	CETM	ST	MARB	RE	BFAT
8	-4.6	46	58	19	43	-3	0	6	10	0.25	0.04	-0.07

MUSHRUSH LTJULIAN LG S005
RIDGE JULIAN S005-0099
RIDGE SARA F7-8025

MLK CRK KNIGHT 7153
HRR BLOCKANA 097
HRR BLOCKANA 302

TR JULIAN LT142
MUSHRUSH LOGA N288
5L NORSEMAN KING 2291
BARGER F7
RED YY RED KNIGHT 640F
MLK CRK SHEBA 043
MLK CRK CUB 722
FEDDES BLOCKANA 166

BW	74
ADJ WW	645
WR	100
ADJ YW	992
YR	91
FRAME	4.2
SCROTAL	33.0
DAM'S MPPA	100

Heifer bull prospect.





LOT 42

OPEN A 220S JUPITER Z2244

BIRTH DATE: 3/30/12 REG. #: 17412380

CED	BW	WW	YW	CEM	MILK	MW	MARB	REA	FAT	\$W	\$F	\$B
1+4	1+.8	1+49	1+98	1+7	1+21		1+.08	1+.35	1+.019	25.23	42.87	48.06

OCC JUPITER 671J
LIMESTONE JUPITER U449
 LIMESTONE EVERELDA R187
 SITZ ALLIANCE 6595
OPEN A 6595 220S
 OPEN A DIRECT 909M

OCC EMBLAZON 854E
 OCC DIXIE ERICA 816B
 EXAR NEW LOOK 2971
 THREE TREES EVERELDA 1995
 SITZ TRAVELER 8180
 SITZ BARBARAMERE JET 2698
 EVENSON DIRECT DEPOSIT 054
 OPEN A BEATRICE 909A

BW	78
ADJ WW	630
WR	105
ADJ YW	1380
YR	118
FRAME	5.6
SCROTAL	32.8

Lot 42 has been a standout since day one and you will be hard pressed to find a bull anywhere that will stack up to Open A 220S Jupiter Z2244. He is super long, deep ribbed, huge quartered and is an exceptional free, easy moving bull. Yearling ratio of 118 and weaning ratio of 105 and, to top it off, a 78-lb. BW and a 0.8 BW EPD. A completely balanced EPD package with a great disposition in an outcross pedigree. Herd bull prospect.



LIMESTONE JUPITER U449
 Sire of Lot 42



LOT 43 OPEN A 265 TRAVELER Z2417

BIRTH DATE: 3/16/12 REG. #: 17412403

CED	BW	WW	YW	CEM	MILK	MW	MARB	REA	FAT	\$W	\$F	\$B
1+9	1+0	1+38	1+68	1+13	1+20		1+.28	1-.11	1+.056	27.98	13.04	45.33

GDAR TRAVELER 71
SITZ TRAVELER 8180
 SITZ EVERELDA ENTENSE 1137
 HOFF HEAD OF THE CLASS SC534
SSAF HC RACHEL 265
 SSAF RACHEL D 302

TRAVELER 1148 GDAR
 GDAR MISS BLACKCAP 567
 GDAR RAINMAKER 340
 SITZ EVERELDA ENTENSE 2335
 AMDAHL'S FIRST CLASS 12
 HOFF ULTRESS SC 716
 TC DIVIDEND 963
 SAF GRAND RACHEL 0117

BW	87
ADJ WW	714
WR	100
ADJ YW	1095
YR	100
FRAME	4.9
SCROTAL	34.9

Open A Z2417 is out of an exceptional cow, SSAF HC Rachel 265 who comes from Silbernagel Angus at Napoleon ND. He was raised as an ET calf at Home On The Range and was an obvious standout when he came in at weaning. He is volume, thickness and depth and is very structural sound. Herd bull prospect.



SSAF HC RACHEL 265
 Dam of Lot 43





LOT 44

LOT 44

OPEN A 165X FRONTMAN Z26

BIRTH DATE: **2/23/12** REG. #: **17412407**

CED	BW	WW	YW	CEM MILK	MW	MARB	REA	FAT	\$W	\$F	\$B	
+1.7	+52	+97		+27					28.42	40.2		
											BW	74
											ADJ WW	630
											WR	105
											ADJ YW	1312
											YR	112
											FRAME	5.3
											SCROTAL	33.2

CONNEALY FRONT PAGE 0228
KESSLERS FRONTMAN R001
 KESSLERS BELL 0024
 SITZ RAINMAKER 9723
OPEN A 9723 PATRICIA 165X
 OPEN A 878 149R

CONNEALY FOREFRONT
 EBONY LIT OF CONANGA 840
 TC RANCHER 056
 KESSLERS BELL 8055
 SITZ RAINMAKER 6169
 SITZ MISS BURGESS 1591
 BON VIEW NEW DESIGN 878
 OPEN A PATRICIA 6381

This is a bull that you really appreciate when you get up and study him. He has a moderate frame with a lot of natural thickness and eye appeal. The Frontman cattle have performed very well and this bull is no exception. One of the top yearling weight bulls.



LOT 45

LOT 45

OPEN A 468F STOCKMAN Z2413

BIRTH DATE: **3/4/12** REG. #: **17412402**

CED	BW	WW	YW	CEM MILK	MW	MARB	REA	FAT	\$W	\$F	\$B	
+6	+2.6	+37	+64	+11	+21	+33	+.30	+.06	-.041	23.97	9.18	57.34
											BW	ET
											ADJ WW	713
											WR	100
											ADJ YW	1159
											YR	100
											FRAME	6.0
											SCROTAL	37.5

TC STOCKMAN
TC STOCKMAN 365
 TC PRIDE 0014
 BON VIEW BANDO 598
JAYNBEE EILEEN 468F
 JAYNBEE EILEEN 675B

LEACHMAN PROMPTER
 TC JESTRESS 6004
 VDAR NEW TREND 315
 TC PRIDE 8013
 TEHAMA BANDO 155
 BON VIEW DORA 56
 GDAR RAINMAKER 340
 JAYNBEE EILEEN 453

A very attractive profile bull with balance and exceptional muscle pattern. He is out of an outstanding dam and sired by TC Stockman 365. Another ET calf raised at Home On The Range. This is a unique pedigree and he is test free of genetic defects.



LOT 46

LOT 46

OPEN A 128X IN FOCUS Z240

BIRTH DATE: **3/3/12** REG. #: **17412400**

CED	BW	WW	YW	CEM MILK	MW	MARB	REA	FAT	\$W	\$F	\$B	
+1.1	+45	+83		+25					28.5	26.77		
											BW	76
											ADJ WW	598
											WR	92
											ADJ YW	1134
											YR	94
											FRAME	4.7
											SCROTAL	32.5

MYTTY IN FOCUS
 MYTTY COUNTESS 906
 BT RIGHT TIME 24J
OPEN A 24J MISS WARRENT 128X
 OPEN A 878 47R

SAF FAME
 GDAR FOREVER LADY 246
 SITZ ALLIANCE 6595
 BALDRIDGE COUNTESS 357
 LEACHMAN RIGHT TIME
 SITZ EVERELDA ENTENSE 1905
 BON VIEW NEW DESIGN 878
 OPEN A MISS WARRANT 209L

An outstanding Mytty In Focus son that has attracted attention. He combines thickness, style and balance and is out of a very good young cow.



LOT 47



LOT 47

OPEN A 22P F ANSWER Z2142

BIRTH DATE: **3/21/12** REG. #: **17412356**

CED	BW	WW	YW	CEM	MILK	MW	MARB	REA	FAT	\$W	\$F	\$B
1+11	1+.4	1+47	1+90	1+13	1+22		1+.36	1+.16	1+.043	27.79	34.08	46.3

SITZ TRAVELER 8180
SAV FINAL ANSWER 0035
 SAV EMULOUS 8145

 SITZ VALUE 7097
OPEN A VALUE 22P
 OPEN A PATRICIA 6380

GDAR TRAVELER 71
 SITZ EVERELDA ENTENSE 1137
 BON VIEW BANDO 598
 SAV SKY EMULOUS 2124
 SITZ TRAVELER 6802
 SITZ EISA EVERGREEN 791
 JAYBEE F TRAVELER 433F
 OPEN A PATRICIA 638A

BW	78
ADJ WW	567
WR	95
ADJ YW	1194
YR	102
FRAME	4.7
SCROTAL	36.1

Here is a soggy deep bodied bull out of a proven dam that has produced bulls in the past. You can't go wrong with Final Answer as a sire in this mating. Heifer bull prospect.



LOT 48



LOT 48

OPEN A 258X MENTOR Z2415

BIRTH DATE: **3/20/12** REG. #: **17446218**

CED	BW	WW	YW	CEM	MILK	MW	MARB	REA	FAT	\$W	\$F	\$B
9	0.1	50	94	9	31	2	0.48	0.86	0.007	39.16	37.49	74.62

GAR RETAIL PRODUCT
CONNELY MENTOR 7374
 EXECUTA OF CONANGA 939

 DHD TRAVELER 6807
OPEN A 6807 MADAME PRIDE 258
 SAV MADAME PRIDE 2330

GAR PRECISION 1680
 GAR EXT 4927
 JAUER 353 TRAVELER 589 27
 EXEC OF CONANGA 6940
 QAS TRAVELER 23-4
 BEMINDFUL MAID DHD 0807
 SAV FINAL ANSWER 0035
 SAV MADAME PRIDE 0075

BW	84
ADJ WW	674
WR	100
ADJ YW	1164
YR	100
FRAME	4.7
SCROTAL	33.4

A unique pedigree in a combination of Connealy Mentor and Traveler 6807. His great grand dam is an outstanding cow in SAV Madame Pride 2330. His dam is a young cow that has a bright future in the Open A herd. Z2415 is a very attractive, well balance calf with thickness and volume.



LOT 49



LOT 49

OPEN A 2308 TRAVELER Z2427

BIRTH DATE: **3/20/12** REG. #: **17449441**

CED	BW	WW	YW	CEM	MILK	MW	MARB	REA	FAT	\$W	\$F	\$B
8	1.7	51	90	14	31	33	0.18	-0.13	0.051	35.66	32.23	47.21

GDAR TRAVELER 71
SITZ TRAVELER 8180
 SITZ EVERELDA ENTENSE 1137

 SAV 8180 TRAVELER 004
SAV CHERYL 2308
 SAV CHERYL 9030

TRAVELER 1148 GDAR
 GDAR MISS BLACKCAP 567
 GDAR RAINMAKER 340
 SITZ EVERELDA ENTENSE 2335
 SITZ TRAVELER 8180
 BOYD FOREVER LADY 8003
 BON VIEW BANDO 598
 SAV CHERYL 7188

BW	81
ADJ WW	672
WR	100
ADJ YW	1146
YR	100
FRAME	4.9
SCROTAL	36.0

An ET calf with Sitz Traveler 8180 on both sides of his pedigree. He is stacked with maternal genetics and he looks the part. He is long, deep and thick and should be a strong maternal herd builder.



LOT 50



LOT 50

OPEN A 55P F ANSWER Z2267

BIRTH DATE: **4/1/12** REG. #: **17412386**

CED	BW	WW	YW	CEM	MILK	MW	MARB	REA	FAT	\$W	\$F	\$B
I+11	I+1.4	I+48	I+87	I+12	I+23		I+.36	I+.14	I+.033	28.99	30.07	38.86

SITZ TRAVELER 8180
SAV FINAL ANSWER 0035
 SAV EMULOUS 8145

 SITZ VALUE 7097
OPEN A VALUE 55P
 JAYNBEЕ FAWN 413F

GDAR TRAVELER 71
 SITZ EVERELDA ENTENSE 1137
 BON VIEW BANDO 598
 SAV SKY EMULOUS 2124
 SITZ TRAVELER 6802
 SITZ EISA EVERGREEN 791
 VDAR TRAVELER 722
 JAYNBEЕ FAWN 26D

BW	86
ADJ WW	643
WR	107
ADJ YW	1259
YR	107
FRAME	5.9
SCROTAL	35.4

A really deep bodied bull with performance and calving ease genetics.



LOT 51



LOT 51

OPEN A 314X FRONTMAN Z243

BIRTH DATE: **3/4/12** REG. #: **17412404**

CED	BW	WW	YW	CEM	MILK	MW	MARB	REA	FAT	\$W	\$F	\$B
	I+2.3	I+52	I+101		I+27					25.09	45.15	

CONNELLY FRONT PAGE 0228
KESSLERS FRONTMAN R001
 KESSLERS BELL 0024

 B/R NEW FRONTIER 095
OPEN A 095 MISS WESTY 314X
 KR MISS WESTY 2717

CONNELLY FOREFRONT
 EBONY LIT OF CONANGA 840
 TC RANCHER 056
 KESSLERS BELL 8055
 B/R NEW DESIGN 036
 WHITE FENCE PRIDE H1
 HOFF WESTWIND SC 070
 KR ELINE 717

BW	80
ADJ WW	652
WR	109
ADJ YW	1402
YR	120
FRAME	5.5
SCROTAL	29.5

Another outstanding Frontman son that is clean fronted and also has thickness and depth. He is an outcross pedigree and has performance posting an adjusted 1402 yearling wt.



LOT 52



LOT 52

OPEN A 808S IN FOCUS Z2147

BIRTH DATE: **3/22/12** REG. #: **17412357**

CED	BW	WW	YW	CEM	MILK	MW	MARB	REA	FAT	\$W	\$F	\$B
I+11	I-.8	I+49	I+94	I+13	I+25		I+.48	I+0	I+.035	29.72	37.96	63.16

SAF FOCUS OF ER
MYTTY IN FOCUS
 MYTTY COUNTESS 906

 SAV 8180 TRAVELER 004
OPEN A 004 808S
 OPEN A KRYSTLE 69L

SAF FAME
 GDAR FOREVER LADY 246
 SITZ ALLIANCE 6595
 BALDRIDGE COUNTESS 357
 SITZ TRAVELER 8180
 BOYD FOREVER LADY 8003
 LEACHMAN RIGHT TIME
 OPEN A KRYSTLE 67A

BW	72
ADJ WW	606
WR	101
ADJ YW	1200
YR	102
FRAME	5.0
SCROTAL	29.6

Z2147 goes back to an outstanding double bred Leachman Right Time cow. He is a very complete, well balanced bull with a strong top and lots of muscle expression. Heifer bull prospect.



LOT 53



LOT 53
OPEN A 870U TOMBSTONE Z2279

BIRTH DATE: **4/4/12** REG. #: **17411427**

CED	BW	WW	YW	CEM	MILK	MW	MARB	REA	FAT	\$W	\$F	\$B	
1+8	1+1.8	1+62	1+115	1+10	1+30			1+.39	1+.23	1+.030	29.02	58.13	77.39

SITZ UPWARD 307R
TOMBSTONE 050
MYTTY COUNTESS 906

SAV 8180 TRAVELER 004
OPEN A 004 GLORIA 870U
OPEN A 878 1R

CONNEALY ONWARD
SITZ HENRIETTA PRIDE 81M
SITZ ALLIANCE 6595
BALDRIDGE COUNTESS 357
SITZ TRAVELER 8180
BOYD FOREVER LADY 8003
BON VIEW NEW DESIGN 878
OPEN A LAV 1N

BW	82
ADJ WW	671
WR	104
ADJ YW	1265
YR	106
FRAME	5.6
SCROTAL	36.8

This is the first Tombstone 050 calf to be offered for sale in the country. Tombstone 050 was recently leased to Genex and was the high selling Angus bull at Midland bull test in 2011. These calves appear to have style with fleshing ability in a calving ease package.



LOT 54



LOT 54
OPEN A 201W UPWARD Z282

BIRTH DATE: **3/23/12** REG. #: **17412408**

CED	BW	WW	YW	CEM	MILK	MW	MARB	REA	FAT	\$W	\$F	\$B
1+4	1+3.6	1+58	1+112	1+7	1+29					21.98	56.23	

CONNEALY ONWARD
SITZ UPWARD 307R
SITZ HENRIETTA PRIDE 81M

SAV 8180 TRAVELER 004
OPEN A 004 PRIDE RUBY 201W
JAYNBEE PRIDE RUBY 430F

CONNEALY LEAD ON
ALTUNE OF CONANGA 6104
SITZ VALUE 7097
SITZ HENRIETTA PRIDE 1370
SITZ TRAVELER 8180
BOYD FOREVER LADY 8003
THOMAS LATIGO
PRIDE RUBY OF JAYNBEE 210

BW	84
ADJ WW	599
WR	100
ADJ YW	1207
YR	103
FRAME	5.7
SCROTAL	35.6

A big soggy, long bodied Upward son that offers eye appeal and balance.



LOT 55



LOT 55
OPEN A 117X FRONTMAN Z24

BIRTH DATE: **2/22/12** REG. #: **17412399**

CED	BW	WW	YW	CEM	MILK	MW	MARB	REA	FAT	\$W	\$F	\$B
	1-.3	1+47	1+85		1+27					32.13	28.19	

CONNEALY FRONT PAGE 0228
KESSLERS FRONTMAN R001
KESSLERS BELL 0024

BC MID EMBLAZON 854E 702
OPEN A 702 PATRICIA 117X
OPEN A VALUE 22P

CONNEALY FOREFRONT
EBONY LIT OF CONANGA 840
TC RANCHER 056
KESSLERS BELL 8055
OCC EMBLAZON 854E
GIBBET HILL MIGNONNE E37
SITZ VALUE 7097
OPEN A PATRICIA 6380

BW	68
ADJ WW	626
WR	97
ADJ YW	1199
YR	100
FRAME	4.0
SCROTAL	31.2

A moderate bull that is structurally correct, easy moving deep bodied and wide topped. Here is a bull made for tough country in an easy fleshing package. Out of a young cow, heifer bull prospect.



LOT 56



LOT 56
OPEN A 820S TOMBSTONE Z2154

BIRTH DATE: **3/23/12** REG. #: **17412359**

CED	BW	WW	YW	CEM	MILK	MW	MARB	REA	FAT	\$W	\$F	\$B
1+8	1+.8	1+56	1+106	1+9	1+26		1+.32	1+.12	1+.033	29.05	49.5	71.61

SITZ UPWARD 307R
TOMBSTONE 050
MYTTY COUNTLESS 906

SAV 8180 TRAVELER 004
OPEN A 004 820S
OPEN A KRYSSTLE 69L

CONNEALY ONWARD
SITZ HENRIETTA PRIDE 81M
SITZ ALLIANCE 6595
BALDRIDGE COUNTLESS 357
SITZ TRAVELER 8180
BOYD FOREVER LADY 8003
LEACHMAN RIGHT TIME
OPEN A KRYSSTLE 67A

BW	75
ADJ WW	554
WR	92
ADJ YW	1066
YR	91
FRAME	4.7
SCROTAL	33.0

A long bodied calving ease bull out of Tombstone 050.



LOT 57



LOT 57
OPEN A 9W FORWARD Z296

BIRTH DATE: **3/28/12** REG. #: **17412412**

CED	BW	WW	YW	CEM	MILK	MW	MARB	REA	FAT	\$W	\$F	\$B
1+13	1+2.4	1+60	1+115	1+11	1+26		1+.39	1+.55	1+.019	24.95	59.15	72.71

CONNEALY ONWARD
CONNEALY FORWARD
BECKY LEE OF CONANGA 74

MYTTY IN FOCUS
OPEN A MIF PRIDE RUBY 9W
OPEN A 2700 92T ET

CONNEALY LEAD ON
ALTUNE OF CONANGA 6104
GAR GRID MAKER
BECKON LEE OF CONANGA 73
SAF FOCUS OF ER
MYTTY COUNTLESS 906
LEACHMAN RIGHT TIME
JAYNBEЕ PRIDE RUBY 430F

BW	86
ADJ WW	701
WR	117
ADJ YW	1405
YR	120
FRAME	6.0
SCROTAL	39.8

A frame 6 bull with the length, muscle and mass to complete his frame. One of the high yearling weight bulls of the sale with a high weaning to yearling EPD spread and high weaning and yearling ratios.



LOT 58
OPEN A 13R TOMBSTONE Z2270

BIRTH DATE: **4/2/12** REG. #: **17412388**

CED	BW	WW	YW	CEM	MILK	MW	MARB	REA	FAT	\$W	\$F	\$B
1+8	1+1.9	1+54	1+104	1+9	1+30		1+.43	1+.22	1+.012	26.64	47.95	77.03

SITZ UPWARD 307R
TOMBSTONE 050
MYTTY COUNTLESS 906

BON VIEW NEW DESIGN 878
OPEN A 878 13R
OPEN A DATELINE 92N

CONNEALY ONWARD
SITZ HENRIETTA PRIDE 81M
SITZ ALLIANCE 6595
BALDRIDGE COUNTLESS 357
B/R NEW DESIGN 036
BON VIEW GAMMER 85
CONNEALY DATELINE
JAYNBEЕ PATRICIA 465F

BW	92
ADJ WW	615
WR	103
ADJ YW	1196
YR	102
FRAME	5.1
SCROTAL	37.4

Weaning ratio of 103 and yearling ratio of 102.



LOT 59



LOT 59

OPEN A 95P TOMBSTONE Z2294

BIRTH DATE: **3/26/12** REG. #: **17412394**

CED	BW	WW	YW	CEM	MILK	MW	MARB	REA	FAT	\$W	\$F	\$B
1+6	1+1.9	1+61	1+108	1+7	1+26		1+.30	1+.20	1+.025	30.54	49.58	71.09

SITZ UPWARD 307R
TOMBSTONE 050
 MYTTY COUNTESS 906
 N BAR EMULATION EXT
OPEN A EXT 95P
 JAYNBEЕ DORA 555F

CONNEALY ONWARD
 SITZ HENRIETTA PRIDE 81M
 SITZ ALLIANCE 6595
 BALDRIDGE COUNTESS 357
 EMULATION N BAR 5522
 N BAR PRIMROSE 2424
 POWERLINE DUAL POWER
 JAYNBEЕ DORA 169

BW	84
ADJ WW	625
WR	104
ADJ YW	1175
YR	100
FRAME	5.5
SCROTAL	34.2

A very complete calf with a square hip and is really stylish.



LOT 60



LOT 60

OPEN A 8146U UPGRADE Z2254

BIRTH DATE: **3/31/12** REG. #: **17412382**

CED	BW	WW	YW	CEM	MILK	MW	MARB	REA	FAT	\$W	\$F	\$B
1+11	1+1.7	1+49	1+84	1+12	1+26		1+.39	1+.37	1-.004	31.16	26.13	75.2

SITZ UPWARD 307R
STYLES UPGRADE J59
 PLAINVIEW LASSIE 71B
 SITZ RAINMAKER 6169
OPEN A 6169 MALINDA 8146U
 OPEN A 878 649N

CONNEALY ONWARD
 SITZ HENRIETTA PRIDE 81M
 BON VIEW NEW DESIGN 1407
 PLAINVIEW LASSIE 92X
 SITZ RAINMAKER 8987
 SITZ BARBARAMERE JET 3007
 BON VIEW NEW DESIGN 878
 OPEN A MALINDA 649A

BW	84
ADJ WW	584
WR	97
ADJ YW	1117
YR	95
FRAME	5.3
SCROTAL	35.1

The only Styles Upgrade calf of the sale. He is a straight topped solid calf with a lot of growth potential.



LOT 61



LOT 61

OPEN A 142R IN FOCUS Z2232

BIRTH DATE: **3/29/12** REG. #: **17412378**

CED	BW	WW	YW	CEM	MILK	MW	MARB	REA	FAT	\$W	\$F	\$B
1+10	1-.1	1+48	1+89	1+12	1+23		1+.47	1-.09	1+.013	29.2	32.43	56.81

SAF FOCUS OF ER
MYTTY IN FOCUS
 MYTTY COUNTESS 906
 VERMILION DATELINE 7021
OPEN A 7021 142R
 OPEN A BLACKCAP 821

SAF FAME
 GDAR FOREVER LADY 246
 SITZ ALLIANCE 6595
 BALDRIDGE COUNTESS 357
 CONNEALY DATELINE
 FAIRVIEW BIG BETTY 5005
 OPEN A RIGHT TIME 177A
 JAYNBEЕ BLACKCAP 595F

BW	80
ADJ WW	590
WR	98
ADJ YW	1246
YR	106
FRAME	6.1
SCROTAL	38.3

Another attractive In Focus son that has a lot of eye appeal with a smooth shoulder and yet muscle expression. Calving ease.



LOT 62



LOT 62
OPEN A 130R EFFICIENT Z2258

BIRTH DATE: **4/1/12** REG. #: **17412384**

CED	BW	WW	YW	CEM	MILK	MW	MARB	REA	FAT	\$W	\$F	\$B
+11	+1.5	+53	+99	+11	+27		+.29	+.12	+.013	28.42	42.19	61.9

KCF BENNETT EFFICIENT
CAR EFFICIENT 534
CAR MISS SUSIE 308

BON VIEW NEW DESIGN 878
OPEN A 878 130R
OPEN A DATELINE 127M

CONNEALY FOREFRONT
KCF BL MISS 5522 E152
CAR DUKE 104
CAR MISS TRENDY 449
B/R NEW DESIGN 036
BON VIEW GAMMER 85
CONNEALY DATELINE
OPEN A CASSANDRA 127A

BW	88
ADJ WW	653
WR	109
ADJ YW	1277
YR	109
FRAME	5.4
SCROTAL	32.9

A really nice clean fronted bull that is thick and wide based. A rancher's kind of calf.



LOT 63



LOT 63
OPEN A 159S UPWARD Z2242

BIRTH DATE: **3/30/12** REG. #: **17412379**

CED	BW	WW	YW	CEM	MILK	MW	MARB	REA	FAT	\$W	\$F	\$B
+8	+1.5	+63	+122	+10	+36		+.38	+.25	+.030	27.05	66.94	79.94

CONNEALY ONWARD
SITZ UPWARD 307R
SITZ HENRIETTA PRIDE 81M

SITZ ALLIANCE 6595
OPEN A 6595 159S
OPEN A NEW DESIGN 69N

CONNEALY LEAD ON
ALTUNE OF CONANGA 6104
SITZ VALUE 7097
SITZ HENRIETTA PRIDE 1370
SITZ TRAVELER 8180
SITZ BARBARAMERE JET 2698
BON VIEW NEW DESIGN 878
OPEN A KRYSTLE 69L

BW	82
ADJ WW	664
WR	111
ADJ YW	1342
YR	115
FRAME	5.8
SCROTAL	38.3

A long, deep side thick performance bull.



LOT 64



LOT 64
OPEN A 8237U F ANSWER Z2206

BIRTH DATE: **3/27/12** REG. #: **17412367**

CED	BW	WW	YW	CEM	MILK	MW	MARB	REA	FAT	\$W	\$F	\$B
	+1.2	+46	+91		+22		+.50	+.33	+.033	25.16	35.74	61.29

SITZ TRAVELER 8180
SAV FINAL ANSWER 0035
SAV EMULOUS 8145

BON VIEW NEW DESIGN 878
OPEN A 878 PRIDERUBY 8237U
JAYNBEE PRIDE RUBY 430F

GDAR TRAVELER 71
SITZ EVERELDA ENTENSE 1137
BON VIEW BANDO 598
SAV SKY EMULOUS 2124
B/R NEW DESIGN 036
BON VIEW GAMMER 85
THOMAS LATIGO
PRIDE RUBY OF JAYNBEE 210

BW	82
ADJ WW	543
WR	91
ADJ YW	1202
YR	103
FRAME	5.0
SCROTAL	35.4

A squared hipped, big topped bull that stands on a wide base.



LOT 65



LOT 65

OPEN A 871U UPWARD Z2231

BIRTH DATE: **3/29/12** REG. #: **17412377**

CED	BW	WW	YW	CEM	MILK	MW	MARB	REA	FAT	\$W	\$F	\$B
1+7	1+1.3	1+56	1+115	1+9	1+32		1+.39	1+.25	1+.022	24.39	61.2	79.9

CONNEALY ONWARD
SITZ UPWARD 307R
 SITZ HENRIETTA PRIDE 81M

 SITZ ALLIANCE 6595
OPEN A 6595 FAWN 871U
 OPEN A 7021 139R

CONNEALY LEAD ON
 ALTUNE OF CONANGA 6104
 SITZ VALUE 7097
 SITZ HENRIETTA PRIDE 1370
 SITZ TRAVELER 8180
 SITZ BARBARAMERE JET 2698
 VERMILION DATELINE 7021
 OPEN A FAWN 551

BW	78
ADJ WW	608
WR	102
ADJ YW	1358
YR	116
FRAME	5.6
SCROTAL	37.0

A clean fronted stylish bull with a lot of muscle expression.



LOT 66



LOT 66

OPEN A 708S FRONTMAN Z2152

BIRTH DATE: **3/23/12** REG. #: **17412358**

CED	BW	WW	YW	CEM	MILK	MW	MARB	REA	FAT	\$W	\$F	\$B
1+9	1+.5	1+47	1+93	1+11	1+27		1+.21	1+.37	1+.015	26.94	37.69	64.58

CONNEALY FRONT PAGE 0228
KESSLERS FRONTMAN R001
 KESSLERS BELL 0024

 SAV 8180 TRAVELER 004
OPEN A 004 708S
 OPEN A KRYSSTLE 69L

CONNEALY FOREFRONT
 EBONY LIT OF CONANGA 840
 TC RANCHER 056
 KESSLERS BELL 8055
 SITZ TRAVELER 8180
 BOYD FOREVER LADY 8003
 LEACHMAN RIGHT TIME
 OPEN A KRYSSTLE 67A

BW	78
ADJ WW	586
WR	98
ADJ YW	1271
YR	109
FRAME	5.5
SCROTAL	34.1

A deep ribbed, long hipped bull whose great grand dam is the double bred Right Time cow, Open A Krystle 69L.



LOT 67



LOT 67

OPEN A 171X FRONTMAN Z237

BIRTH DATE: **3/2/12** REG. #: **17412398**

CED	BW	WW	YW	CEM	MILK	MW	MARB	REA	FAT	\$W	\$F	\$B
	1+2.9	1+50	1+87		1+30					28.31	29.16	

CONNEALY FRONT PAGE 0228
KESSLERS FRONTMAN R001
 KESSLERS BELL 0024

 BT RIGHT TIME 24J
OPEN A 24J PATRICIA 171X
 OPEN A 878 100R

CONNEALY FOREFRONT
 EBONY LIT OF CONANGA 840
 TC RANCHER 056
 KESSLERS BELL 8055
 LEACHMAN RIGHT TIME
 SITZ EVERELDA ENTENSE 1905
 BON VIEW NEW DESIGN 878
 OPEN A PATRICIA 639A

BW	88
ADJ WW	640
WR	107
ADJ YW	1251
YR	107
FRAME	5.2
SCROTAL	31.5

The Frontman cattle exhibit depth of rib and thickness. Z237 is a clean-fronted, stylish bull with a lot of muscle expression and a high adj. YW with a 116 yearling ratio.



LOT 68



LOT 68
OPEN A 240S FRONTMAN Z2314

BIRTH DATE: **4/21/12** REG. #: **17412396**

CED	BW	WW	YW	CEM MILK	MW	MARB	REA	FAT	\$W	\$F	\$B	
1+8	1+.8	1+52	1+93	1+12	1+29		1+.25	1+.38	1+.025	31.19	35.35	65.04

CONNEALY FRONT PAGE 0228
KESSLERS FRONTMAN R001
KESSLERS BELL 0024

SITZ ALLIANCE 6595
OPEN A 6595 240S
OPEN A FAME 13N

CONNEALY FOREFRONT
EBONY LIT OF CONANGA 840
TC RANCHER 056
KESSLERS BELL 8055
SITZ TRAVELER 8180
SITZ BARBARAMERE JET 2698
SAF FAME
OPEN A CHARICE 01A

BW	74
ADJ WW	741
WR	123
ADJ YW	1126
YR	120
FRAME	5
SCROTAL	37.9

This is a young calf with loads of potential. He is out of an outstanding cow who raised the lot 1 black bull calf in our 2012 sale. His profile, balance and muscle make him a bull to really look at.



LOT 69



LOT 69
OPEN A 141X FRONTMAN Z211

BIRTH DATE: **2/24/12** REG. #: **17412351**

CED	BW	WW	YW	CEM MILK	MW	MARB	REA	FAT	\$W	\$F	\$B
	1+2.3	1+51	1+90		1+28				29.4	32.23	

CONNEALY FRONT PAGE 0228
KESSLERS FRONTMAN R001
KESSLERS BELL 0024

21AR OUTFITTER 6032
OPEN A 6032 ZARA 141X
OPEN A 004 29P

CONNEALY FOREFRONT
EBONY LIT OF CONANGA 840
TC RANCHER 056
KESSLERS BELL 8055
OCC MAGNITUDE 805M
21AR SARA E802
SAV 8180 TRAVELER 004
OPEN A RITE 71M

BW	80
ADJ WW	625
WR	104
ADJ YW	1206
YR	103
FRAME	5.1
SCROTAL	34.8

Another attractive Kessler Frontman calf out of a first calf heifer. He has a weaning ratio of 104 and yearling ratio of 103.



LOT 70



LOT 70
OPEN A 166X FRONTMAN Z232

BIRTH DATE: **2/29/12** REG. #: **17411426**

CED	BW	WW	YW	CEM MILK	MW	MARB	REA	FAT	\$W	\$F	\$B

CONNEALY FRONT PAGE 0228
KESSLERS FRONTMAN R001
KESSLERS BELL 0024

BC MID EMBLAZON 854E 702
OPEN A 702 PATRICIA 166X
OPEN A 878 13R

CONNEALY FOREFRONT
EBONY LIT OF CONANGA 840
TC RANCHER 056
KESSLERS BELL 8055
OCC EMBLAZON 854E
GIBBET HILL MIGNONNE E37
BON VIEW NEW DESIGN 878
OPEN A DATELINE 92N

BW	78
ADJ WW	645
WR	100
ADJ YW	1194
YR	100
FRAME	5
SCROTAL	35.4

Out of a first-calf heifer. Z232 has a lot of volume and muscle expression. EPDs will be available sale day.



LOT 71

OPEN A 123X FRONTMAN Z233

BIRTH DATE: 2/29/12 REG. #: 17412397

CED	BW	WW	YW	CEM	MILK	MW	MARB	REA	FAT	\$W	\$F	\$B
4	0.9	49	83	9	30	50	0.34	0.36	0.001	33.79	24.98	63.8

CONNEALY FRONT PAGE 0228
KESSLERS FRONTMAN R001
 KESSLERS BELL 0024

 SITZ RAINMAKER 9723
OPEN A 9723 MALINDA 123X
 OPEN A 878 649N

CONNEALY FOREFRONT
 EBONY LIT OF CONANGA 840
 TC RANCHER 056
 KESSLERS BELL 8055
 SITZ RAINMAKER 6169
 SITZ MISS BURGESS 1591
 BON VIEW NEW DESIGN 878
 OPEN A MALINDA 649A

BW	88
ADJ WW	636
WR	108
ADJ YW	1246
YR	100
FRAME	5.2
SCROTAL	34.3



LOT 72

OPEN A 121W TOMBSTONE Z287

BIRTH DATE: 3/27/12 REG. #: 17412411

CED	BW	WW	YW	CEM	MILK	MW	MARB	REA	FAT	\$W	\$F	\$B
1+7	1+1.4	1+68	1+119	1+8	1+32		1+34	1+18	1+0.019	33.18	60.33	75.9

SITZ UPWARD 307R
TOMBSTONE 050
 MYTTY COUNTESS 906

 HA IMAGE MAKER 0415
OPEN A 0415 KARAMA 121W
 OPEN A 6595 80P

CONNEALY ONWARD
 SITZ HENRIETTA PRIDE 81M
 SITZ ALLIANCE 6595
 BALDRIDGE COUNTESS 357
 HERO 6267 OF RR 2418
 HA RITO BLACKCAP 9038
 SITZ ALLIANCE 6595
 JAYNBEЕ KARAMA 562F

BW	76
ADJ WW	668
WR	103
ADJ YW	1215
YR	101
FRAME	5.1
SCROTAL	34.8



LOT 73

OPEN A 8115U IM MAKER Z2171

BIRTH DATE: 3/25/12 REG. #: 17412362

CED	BW	WW	YW	CEM	MILK	MW	MARB	REA	FAT	\$W	\$F	\$B
1+8	1+2.0	1+65	1+103	1+10	1+29		1+.21	1+.25	1+.027	36.82	41.38	65.17

HERO 6267 OF RR 2418
HA IMAGE MAKER 0415
 HA RITO BLACKCAP 9038

 KMK ALLIANCE 6595 187
OPEN A 187 PRINCESS 8115U
 OPEN A 878 32P

RR HERO 6267
 RR EVERELDA ENTENSE 0413
 H 96 RITO 2100 7371
 H 96 BLACKCAP 3835
 SITZ ALLIANCE 6595
 GAR EXT 916
 BON VIEW NEW DESIGN 878
 OPEN A RITE 87M

BW	86
ADJ WW	690
WR	115
ADJ YW	1207
YR	103
FRAME	5.5
SCROTAL	37.4



LOT 74

OPEN A 47R RAINMAKER Z284

BIRTH DATE: 3/24/12 REG. #: 17412409

CED	BW	WW	YW	CEM	MILK	MW	MARB	REA	FAT	\$W	\$F	\$B
1+8	1-.4	1+41	1+76	1+11	1+22		1+.35	1+.18	1+.014	28.35	20.56	55.55

SITZ RAINMAKER 9723
OPEN A 9723 RAINMAKER 161W
 OPEN A HEROINE 51M

 BON VIEW NEW DESIGN 878
OPEN A 878 47R
 OPEN A MISS WARRANT 209L

SITZ RAINMAKER 6169
 SITZ MISS BURGESS 1591
 OPEN A RIGHT TIME 177A
 JAYNBEЕ HEROINE 417F
 B/R NEW DESIGN 036
 BON VIEW GAMMER 85
 JAYNBEЕ F TRAVELER 433F
 OPEN A MISS WARRANT 207A

BW	68
ADJ WW	598
WR	100
ADJ YW	1137
YR	97
FRAME	6.0
SCROTAL	38.2



LOT 75

OPEN A 58T UPWARD Z2219

BIRTH DATE: 3/28/12 REG. #: 17412371

CED	BW	WW	YW	CEM	MILK	MW	MARB	REA	FAT	\$W	\$F	\$B
1+6	1+1.0	1+56	1+110	1+9	1+33		1+.39	1+.29	1+.029	27.25	54.64	79.74

CONNEALY ONWARD
SITZ UPWARD 307R
 SITZ HENRIETTA PRIDE 81M

 SITZ ALLIANCE 6595
OPEN A 6595 58T
 OPEN A DATE 821N

CONNEALY LEAD ON
 ALTUNE OF CONANGA 6104
 SITZ VALUE 7097
 SITZ HENRIETTA PRIDE 1370
 SITZ TRAVELER 8180
 SITZ BARBARAMERE JET 2698
 CONNEALY DATELINE
 OPEN A BLACKCAP 821

BW	74
ADJ WW	615
WR	103
ADJ YW	1218
YR	104
FRAME	5.8
SCROTAL	37.8





OPEN A KRYSTLE 69L
Maternal granddam of Lot 76



LOT 76
OPEN A 183S UPWARD Z2141

BIRTH DATE: **3/21/12** REG. #: **17412355**

CED	BW	WW	YW	CEM MILK	MW	MARB	REA	FAT	\$W	\$F	\$B
1+2.0	1+52	1+109		1+33		1+34	1+17	1+013	21.64	55.35	78.52

CONNEALY ONWARD
SITZ UPWARD 307R
SITZ HENRIETTA PRIDE 81M

SITZ ALLIANCE 6595
OPEN A 6595 183S
OPEN A KRYSTLE 69L

CONNEALY LEAD ON
ALTUNE OF CONANGA 6104
SITZ VALUE 7097
SITZ HENRIETTA PRIDE 1370
SITZ TRAVELER 8180
SITZ BARBARAMERE JET 2698
LEACHMAN RIGHT TIME
OPEN A KRYSTLE 67A

BW	83
ADJ WW	576
WR	96
ADJ YW	1227
YR	105
FRAME	6.0
SCROTAL	35.1



LOT 77
OPEN A 32P UPWARD Z2218

BIRTH DATE: **2/28/12** REG. #: **17412370**

CED	BW	WW	YW	CEM MILK	MW	MARB	REA	FAT	\$W	\$F	\$B	
1+5	1+2.2	1+50	1+98	1+8	1+32		1+35	1+29	1+003	24.69	42.39	79.68

CONNEALY ONWARD
SITZ UPWARD 307R
SITZ HENRIETTA PRIDE 81M

BON VIEW NEW DESIGN 878
OPEN A 878 32P
OPEN A RITE 87M

CONNEALY LEAD ON
ALTUNE OF CONANGA 6104
SITZ VALUE 7097
SITZ HENRIETTA PRIDE 1370
B/R NEW DESIGN 036
BON VIEW GAMMER 85
OPEN A RIGHT TIME 177A
JAYNBEЕ PRINCESS 498F

BW	82
ADJ WW	546
WR	91
ADJ YW	1130
YR	96
FRAME	5.4
SCROTAL	32.9



LOT 78
OPEN A 140W IM MAKER Z2450

BIRTH DATE: **3/30/12** REG. #: **17412405**

CED	BW	WW	YW	CEM MILK	MW	MARB	REA	FAT	\$W	\$F	\$B	
1+9	1+1.7	1+56	1+97	1+11	1+27		1+18	1+17	1+009	31.82	38.31	56.57

HERO 6267 OF RR 2418
HA IMAGE MAKER 0415
HA RITO BLACKCAP 9038

SITZ VALUE 7097
OPEN A 7097 ENCHANTRESS 140W
OPEN A STOCKMAN 83N

RR HERO 6267
RR EVERELDA ENTENSE 0413
H 96 RITO 2100 7371
H 96 BLACKCAP 3835
SITZ TRAVELER 6802
SITZ EISA EVERGREEN 791
TC STOCKMAN 365
JAYNBEЕ ENCHANTRESS 489F

BW	80
ADJ WW	651
WR	109
ADJ YW	1278
YR	109
FRAME	5.3
SCROTAL	35.9



LOT 70



LOT 79
OPEN A 178R TRAVELER Z2262

BIRTH DATE: **4/1/12** REG. #: **17412385**

CED	BW	WW	YW	CEM MILK	MW	MARB	REA	FAT	\$W	\$F	\$B	
1+9	1+9	1+34	1+72	1+11	1+22		1+37	1-07	1+023	22.14	19.12	54.33

SITZ TRAVELER 8180
OPEN A 8180 179T ET
OPEN A KRYSTLE 69L

BON VIEW NEW DESIGN 878
OPEN A 878 178R
JAYNBEЕ PATRICIA 409F

GDAR TRAVELER 71
SITZ EVERELDA ENTENSE 1137
LEACHMAN RIGHT TIME
OPEN A KRYSTLE 67A
B/R NEW DESIGN 036
BON VIEW GAMMER 85
THOMAS LATIGO
JAYNBEЕ PATRICIA 96

BW	82
ADJ WW	586
WR	98
ADJ YW	1144
YR	98
FRAME	5.1
SCROTAL	36.4



FREEZE BRANDING

LOT 80

OPEN A 8233U OUTFITTER Z2299

BIRTH DATE: **4/17/12** REG. #: **17460804**

CED	BW	WW	YW	CEM	MILK	MW	MARB	REA	FAT	\$W	\$F	\$B
								1+.23	1+.24	1+.030		

21AR OUTFITTER 6032
OPEN A 4R OUTFITTER159X
 OPEN A VALUE 4R

BON VIEW NEW DESIGN 878
OPEN A 878 FAWN 8233U
 OPEN A 004 13P

OCC MAGNITUDE 805M
 21AR SARA E802
 SITZ VALUE 7097
 OPEN A 878 12N
 B/R NEW DESIGN 036
 BON VIEW GAMMER 85
 SAV 8180 TRAVELER 004
 OPEN A FAWN 551

BW	78
ADJ WW	625
WR	104
ADJ YW	1224
YR	102
FRAME	5.0
SCROTAL	36.0



LOT 81

LOT 81

OPEN A 118W UPWARD Z2451

BIRTH DATE: **5/1/12** REG. #: **17412406**

CED	BW	WW	YW	CEM	MILK	MW	MARB	REA	FAT	\$W	\$F	\$B
1+9	1+1.1	1+53	1+103	1+9	1+31		1+.40	1+.54	1-.012	27.34	47.18	85.91

CONNEALY ONWARD
SITZ UPWARD 307R
 SITZ HENRIETTA PRIDE 81M

RITO 616 OF 4B20 6807
OPEN A 616 KARAMA 118W
 OPEN A 878 67P

CONNEALY LEAD ON
 ALTUNE OF CONANGA 6104
 SITZ VALUE 7097
 SITZ HENRIETTA PRIDE 1370
 DHD TRAVELER 6807
 RITA 4B20 OF OFB1 BANDO
 BON VIEW NEW DESIGN 878
 JAYNBEЕ KARAMA 587F

BW	80
ADJ WW	692
WR	115
ADJ YW	1282
YR	112
FRAME	5.8
SCROTAL	32.9

This is a young Sitz Upward calf that has loads of potential in a very complete, stylish package. WR of 115 and a YR of 112 – lots of growth potential here.

LOT 82

OPEN A 263X FRONTMAN Z223

BIRTH DATE: **2/27/12** REG. #: **17412376**

CED	BW	WW	YW	CEM	MILK	MW	MARB	REA	FAT	\$W	\$F	\$B
	1+1.5	1+47	1+83		1+24					30.38	25.87	

CONNEALY FRONT PAGE 0228
KESSLERS FRONTMAN R001
 KESSLERS BELL 0024

OCC EMBLAZON 854E
OPEN A 854E PRIDE RUBY 263X
 OPEN A 8180 218S

CONNEALY FOREFRONT
 EBONY LIT OF CONANGA 840
 TC RANCHER 056
 KESSLERS BELL 8055
 DHD TRAVELER 6807
 DIXIE ERICA OF CH 1019
 SITZ TRAVELER 8180
 JAYNBEЕ PRIDE RUBY 430F

BW	76
ADJ WW	567
WR	95
ADJ YW	1148
YR	98
FRAME	4.1
SCROTAL	32.0





LOT 83



LOT 83

OPEN A 218S PAXTON Z2132

BIRTH DATE: **5/10/12** REG. #: **PENDING**

CED	BW	WW	YW	CEM MILK	MW	MARB	REA	FAT	\$W	\$F	\$B

O C C FOCUS 813F
O C C PAXTON 730P
 O C C BLACKIRD 736K
 SITZ TRAVELER 8180
OPEN A 8180 218S
 JAYNBEE PRIDE RUBY 430F

BASIN RAINMAKER 654X
 DIXIE ERICA OF C H 1019
 O C C GREAT PLAINS 943G
 O C C BLACKBIRD 824G
 G D A R TRAVELER 71
 SITZ EVERELDA ENTENSE 1137
 THOMAS LATIGO
 PRIDE RUBY OF JAYNEBEE 210

BW	84
ADJ WW	649
WR	108
ADJ YW	1041
YR	107
FRAME	5.0
SCROTAL	34.9

An outcross pedigree in the youngest calf of the sale. He is very balanced with depth and thickness. His EPDs will be available sale day. We are waiting on an AI certificate.



LOT 84



LOT 84

OPEN A 8135U TOMBSTONE Z2288

BIRTH DATE: **4/6/12** REG. #: **17449825**

CED	BW	WW	YW	CEM MILK	MW	MARB	REA	FAT	\$W	\$F	\$B	
3	2.1	61	112	5	31	73	0.51	0.15	0.024	31.87	54.72	79.29

SITZ UPWARD 307R
TOMBSTONE 050
 MYTTY COUNTESS 906
 SAV 5175 BANDO 2061
OPEN A 2061 PATRICIA 8135U
 OPEN A VALUE 16P

CONNELLY ONWARD
 SITZ HENRIETTA PRIDE 81M
 SITZ ALLIANCE 6595
 BALDRIDGE COUNTESS 357
 SAF 598 BANDO 5175
 SAV EMULOUS 8145
 SITZ VALUE 7097
 OPEN A PATRICIA 921

BW	88
ADJ WW	592
WR	98
ADJ YW	1156
YR	99
FRAME	5.7
SCROTAL	32.5



LOT 85



LOT 85

OPEN A 218X FRONTMAN Z218

BIRTH DATE: **2/26/12** REG. #: **17412363**

CED	BW	WW	YW	CEM MILK	MW	MARB	REA	FAT	\$W	\$F	\$B
	1+.2	1+45	1+80		1+27				31.73	23.33	

CONNELLY FRONT PAGE 0228
KESSLERS FRONTMAN R001
 KESSLERS BELL 0024
 BT RIGHT TIME 24J
OPEN A 24J BLACKCAP 218X
 OPEN A 7021 142R

CONNELLY FOREFRONT
 EBONY LIT OF CONANGA 840
 TC RANCHER 056
 KESSLERS BELL 8055
 LEACHMAN RIGHT TIME
 SITZ EVERELDA ENTENSE 1905
 VERMILION DATELINE 7021
 OPEN A BLACKCAP 821

BW	70
ADJ WW	556
WR	93
ADJ YW	1140
YR	98
FRAME	4.6
SCROTAL	33.3



ANNETTE AND JIM

LOT 86

OPEN A 159W IMAGE MAKER Z286

BIRTH DATE: **3/25/12** REG. #: **17412410**

CED	BW	WW	YW	CEM MILK	MW	MARB	REA	FAT	\$W	\$F	\$B	
1+11	1+1.1	1+57	1+88	1+11	1+29		1+.30	1+.25	1+.013	38.48	27.17	59.49

HERO 6267 OF RR 2418
HA IMAGE MAKER 0415
 HA RITO BLACKCAP 9038

MYTTY IN FOCUS
OPEN A MIF LINDSEY 159W
 OPEN A DIRECT 780M

RR HERO 6267
 RR EVERELDA ENTENSE 0413
 H 96 RITO 2100 7371
 H 96 BLACKCAP 3835
 SAF FOCUS OF ER
 MYTTY COUNTNESS 906
 EVENSON DIRECT DEPOSIT 054
 OPEN A CHAR 780

BW	78
ADJ WW	646
WR	108
ADJ YW	1076
YR	92
FRAME	4.3
SCROTAL	31.7



LOT 87

LOT 87

OPEN A 200W Z2278

BIRTH DATE: **4/4/12** REG. #: **17412390**

CED	BW	WW	YW	CEM MILK	MW	MARB	REA	FAT	\$W	\$F	\$B
							1+.23	1-.04	1+.017		

SITZ RAINMAKER 9723
OPEN A 9723 RAINMAKER 161W
 OPEN A HEROINE 51M

SAV 8180 TRAVELER 004
OPEN A 004 EILEEN 200W
 JAYNBE EILEEN 468F

SITZ RAINMAKER 6169
 SITZ MISS BURGESS 1591
 OPEN A RIGHT TIME 177A
 JAYNBE HEROINE 417F
 SITZ TRAVELER 8180
 BOYD FOREVER LADY 8003
 BON VIEW BANDO 598
 JAYNBE EILEEN 675B

BW	81
ADJ WW	612
WR	101
ADJ YW	1145
YR	100
FRAME	5.6
SCROTAL	37.5

LOT 88

OPEN A 2308 TRAVELER 2414

BIRTH DATE: **3/17/12** REG. #: **PENDING**

CED	BW	WW	YW	CEM MILK	MW	MARB	REA	FAT	\$W	\$F	\$B	
8	1.7	51	90	14	31	33	0.18	-0.13	0.051	35.66	32.23	47.21

G D A R TRAVELER 71
SITZ TRAVELER 8180
 SITZ EVERELDA ENTENSE 1137

S A V 8180 TRAVELER 004
S A V CHERYL 2308
 S A V CHERYL 9030

TRAVELER 1148 G D A R
 G D A R MISS BLACKCAP 567
 G D A R RAINMAKER 340
 SITZ EVERELDA ENTENSE 2335
 SITZ TRAVELER 8180
 BOYD FOREVER LADY 8003
 BON VIEW BANDO 598
 S A V CHERYL 7188

BW	79
ADJ WW	693
WR	100
ADJ YW	1157
YR	100
FRAME	5.0
SCROTAL	34.0

LOT 89

OPEN A 38W FRONTMAN Z2111

BIRTH DATE: **4/1/12** REG. #: **17412352**

CED	BW	WW	YW	CEM MILK	MW	MARB	REA	FAT	\$W	\$F	\$B	
1+10	1-1.0	1+45	1+79	1+12	1+32		1+.28	1+.26	1+.019	33.25	22.19	59.63

CONNELLY FRONT PAGE 0228
KESSLERS FRONTMAN R001
 KESSLERS BELL 0024

HARB CINCHA 829
OPEN A 829 KRYSTLE 39W
 OPEN A 6595 159S

CONNELLY FOREFRONT
 EBONY LIT OF CONANGA 840
 TC RANCHER 056
 KESSLERS BELL 8055
 CH QUANTUM 3330
 HARB JUMBOLEEN D03
 SITZ ALLIANCE 6595
 OPEN A NEW DESIGN 69N

BW	70
ADJ WW	567
WR	95
ADJ YW	1053
YR	90
FRAME	5.1
SCROTAL	33.9

Full brother to Lot 49. This calf got lost in the mix, thus the reason why he has a pending registration. He is an ET calf raised at Home On The Range that is very well balanced and goes back to the SAV Cheryl 2308 cow.



LOT 90



LOT 90
OPEN A 1P TOMBSTONE Z2181

BIRTH DATE: **3/26/13** REG. #: **17417114**

CED	BW	WW	YW	CEM MILK	MW	MARB	REA	FAT	\$W	\$F	\$B	
9	1.6	52	90	10	28	28	.26	.32	.023	36.15	31.78	60.32

SITZ UPWARD 307R
TOMBSTONE 050
MYTTY COUNTESS 906

LEACHMAN SAUGAHATCHEE 3000C
OPEN A SAUG 1P
OPEN A CHASITY 119A

CONNEALY ONWARD
SITZ HENRIETTA PRIDE 81M
SITZ ALLIANCE 6595
BALDRIDGE COUNTESS 357
N BAR EMULATION EXT
LEACHMAN B C 7100
JAYN BEE F TRAVELER 433F
K&S CHASITY 413

BW	76
ADJ WW	576
WR	96
ADJ YW	1147
YR	98
FRAME	4.5
SCROTAL	34.2



LOT 91
OPEN A 8117U IM MAKER Z2209

BIRTH DATE: **3/27/12** REG. #: **17412368**

CED	BW	WW	YW	CEM MILK	MW	MARB	REA	FAT	\$W	\$F	\$B	
1+9	1+1.9	1+52	1+88	1+11	1+29		1+.28	1+.21	1+.007	31.96	29.42	63.71

HERO 6267 OF RR 2418
HA IMAGE MAKER 0415
HA RITO BLACKCAP 9038

SAF FOCUS OF ER
OPEN A FOC ENCHANTRES 8117U
OPEN A RIGHT TIME 89M

RR HERO 6267
RR EVERELDA ENTENSE 0413
H 96 RITO 2100 7371
H 96 BLACKCAP 3835
SAF FAME
GDAR FOREVER LADY 246
LEACHMAN RIGHT TIME
JAYN BEE ENCHANTRESS 588F

BW	84
ADJ WW	575
WR	96
ADJ YW	1098
YR	94
FRAME	4.8
SCROTAL	30.9



LOT 92
OPEN A 50W TOMBSTONE Z2282

BIRTH DATE: **4/5/12** REG. #: **17412392**

CED	BW	WW	YW	CEM MILK	MW	MARB	REA	FAT	\$W	\$F	\$B	
1+8	1+1.5	1+56	1+107	1+10	1+30		1+.35	1-.01	1+.019	27.87	50.78	67.79

SITZ UPWARD 307R
TOMBSTONE 050
MYTTY COUNTESS 906

HARB CINCHA 829
OPEN A 829 KRYSTLE 50W
OPEN A 004 820S

CONNEALY ONWARD
SITZ HENRIETTA PRIDE 81M
SITZ ALLIANCE 6595
BALDRIDGE COUNTESS 357
CH QUANTUM 3330
HARB JUMBOLEEN D03
SAV 8180 TRAVELER 004
OPEN A KRYSTLE 69L

BW	78
ADJ WW	579
WR	96
ADJ YW	1049
YR	98
FRAME	5.1
SCROTAL	33.0



LOT 93
OPEN A 69S F ANSWER Z2137

BIRTH DATE: **3/19/12** REG. #: **17412354**

CED	BW	WW	YW	CEM MILK	MW	MARB	REA	FAT	\$W	\$F	\$B	
1+10	1-.7	1+51	1+86	1+13	1+24		1+.34	1+.23	1+.048	35.08	27.55	56.91

SITZ TRAVELER 8180
SAV FINAL ANSWER 0035
SAV EMULOUS 8145

SAV 8180 TRAVELER 004
OPEN A 004 69S
OPEN A KRYSTLE 69L

GDAR TRAVELER 71
SITZ EVERELDA ENTENSE 1137
BON VIEW BANDO 598
SAV SKY EMULOUS 2124
SITZ TRAVELER 8180
BOYD FOREVER LADY 8003
LEACHMAN RIGHT TIME
OPEN A KRYSTLE 67A

BW	72
ADJ WW	587
WR	98
ADJ YW	1021
YR	87
FRAME	4.4
SCROTAL	30.0



LOT 94
OPEN A 50T TOMBSTONE Z2222

BIRTH DATE: **3/29/12** REG. #: **17412373**

CED	BW	WW	YW	CEM MILK	MW	MARB	REA	FAT	\$W	\$F	\$B	
1+8	1+.7	1+51	1+98	1+9	1+27		1+.29	1+.10	1+.028	27.99	41.91	67.18

SITZ UPWARD 307R
TOMBSTONE 050
MYTTY COUNTESS 906

SAV 8180 TRAVELER 004
OPEN A 004 50T
OPEN A RITE 88N

CONNEALY ONWARD
SITZ HENRIETTA PRIDE 81M
SITZ ALLIANCE 6595
BALDRIDGE COUNTESS 357
SITZ TRAVELER 8180
BOYD FOREVER LADY 8003
OPEN A RIGHT TIME 177A
JAYN BEE ELBA 449F

BW	78
ADJ WW	524
WR	87
ADJ YW	1098
YR	94
FRAME	5.3
SCROTAL	34.3

Heifer bull prospect.



LOT 95



OPEN A 190S Z2221

BIRTH DATE: **3/29/12** REG. #: **17412372**

CED	BW	WW	YW	CEM	MILK	MW	MARB	REA	FAT	\$W	\$F	\$B
1+6	1+.1	1+47	1+84	1+9	1+20		1+.18	1+.15	1+.003	29.55	27.03	53.93

SITZ RAINMAKER 9723
OPEN A 9723 RAINMAKER 161W
 OPEN A HEROINE 51M

 BCC BUSHWACKER 41-93
OPEN A 41-93
 OPEN A KRYSTLE 69L

SITZ RAINMAKER 6169
 SITZ MISS BURGESS 1591
 OPEN A RIGHT TIME 177A
 JAYNBEЕ HEROINE 417F
 PARAMONT AMBUSH 2172
 RC ANITA T BANDO 918903
 LEACHMAN RIGHT TIME
 OPEN A KRYSTLE 67A

BW	70
ADJ WW	599
WR	100
ADJ YW	1170
YR	100
FRAME	6.1
SCROTAL	31.8

Heifer bull prospect.



OPEN A 28T IMAGE MAKER Z2224

BIRTH DATE: **3/29/12** REG. #: **17412374**

CED	BW	WW	YW	CEM	MILK	MW	MARB	REA	FAT	\$W	\$F	\$B
1+8	1+2.5	1+56	1+89	1+7	1+31		1+.28	1+.38	1+.011	33.67	28.78	63.93

HERO 6267 OF RR 2418
HA IMAGE MAKER 0415
 HA RITO BLACKCAP 9038

 BT RIGHT TIME 24J
OPEN A 24J 28T
 OPEN A 878 67P

RR HERO 6267
 RR EVERELDA ENTENSE 0413
 H 96 RITO 2100 7371
 H 96 BLACKCAP 3835
 LEACHMAN RIGHT TIME
 SITZ EVERELDA ENTENSE 1905
 BON VIEW NEW DESIGN 878
 JAYNBEЕ KARAMA 587F

BW	92
ADJ WW	642
WR	107
ADJ YW	1128
YR	96
FRAME	5.6
SCROTAL	36.3



OPEN A 6807 MADAME PRIDE 258
 Dam of Lot 98



OPEN A 27T TOMBSTONE Z2268

BIRTH DATE: **4/2/12** REG. #: **17412387**

CED	BW	WW	YW	CEM	MILK	MW	MARB	REA	FAT	\$W	\$F	\$B
1+6	1+2.4	1+59	1+99	1+7	1+27		1+.31	1+.31	1+.025	32.24	39.33	72.32

SITZ UPWARD 307R
TOMBSTONE 050
 MYTTY COUNTESS 906

 BT RIGHT TIME 24J
OPEN A 24J 27T
 OPEN A 004 71P

CONNELLY ONWARD
 SITZ HENRIETTA PRIDE 81M
 SITZ ALLIANCE 6595
 BALDRIDGE COUNTESS 357
 LEACHMAN RIGHT TIME
 SITZ EVERELDA ENTENSE 1905
 SAV 8180 TRAVELER 004
 JAYNBEЕ ZARA 514F

BW	83
ADJ WW	595
WR	99
ADJ YW	1025
YR	87
FRAME	4.4
SCROTAL	32.5



OPEN A 258X MENTOR Z2420

BIRTH DATE: **3/15/12** REG. #: **17446217**

CED	BW	WW	YW	CEM	MILK	MW	MARB	REA	FAT	\$W	\$F	\$B
1+6	1+.9	1+55	1+101	1+7	1+29	1+18	1+.43	1+.77	1+.013	40.67	43.7	73.85

GAR RETAIL PRODUCT
CONNELLY MENTOR 7374
 EXECUTA OF CONANGA 939

 DHD TRAVELER 6807
OPEN A 6807 MADAME PRIDE 258
 SAV MADAME PRIDE 2330

GAR PRECISION 1680
 GAR EXT 4927
 JAUER 353 TRAVELER 589 27
 EXEC OF CONANGA 6940
 QAS TRAVELER 23-4
 BEMINDFUL MAID DHD 0807
 SAV FINAL ANSWER 0035
 SAV MADAME PRIDE 0075

BW	75
ADJ WW	603
WR	100
ADJ YW	1069
YR	100
FRAME	5.9
SCROTAL	34.0

LOT 98



LOT 99

OPEN A 3W UPWARD Z289

BIRTH DATE: 3/27/12 REG. #: 17449577

CED	BW	WW	YW	CEM	MILK	MW	MARB	REA	FAT	\$W	\$F	\$B
6	0.7	48	95	9	33	50	0.11	0.23	0.003	30.47	39.65	66.22

CONNEALY ONWARD
SITZ UPWARD 307R
 SITZ HENRIETTA PRIDE 81M

BAR EXT TRAVELER 205
OPEN A 205 MISS BANDO 3W
 OPEN A 004 22T

CONNEALY LEAD ON
 ALTUNE OF CONANGA 6104
 SITZ VALUE 7097
 SITZ HENRIETTA PRIDE 1370
 N BAR EMULATION EXT
 BAR QUEEN TRAVELER 3015
 SAV 8180 TRAVELER 004
 OPEN A VALUE 19P

BW	77
ADJ WW	575
WR	96
ADJ YW	1087
YR	93
FRAME	5.8
SCROTAL	36.8



LOT 100

OPEN A 115W Z2122

BIRTH DATE: 4/18/12 REG. #: 17412353

CED	BW	WW	YW	CEM	MILK	MW	MARB	REA	FAT	\$W	\$F	\$B
1+8	1+1.4	1+44	1+81	1+9	1+21		1+19	1+16	1+0.22	26.97	24.91	49.53

SITZ RAINMAKER 9723
OPEN A 9723 RAINMAKER 161W
 OPEN A HEROINE 51M

OCC GREAT PLAINS 943G
OPEN A 943G OAKLEAF 115W
 OPEN A 46P 004

SITZ RAINMAKER 6169
 SITZ MISS BURGESS 1591
 OPEN A RIGHT TIME 177A
 JAYNBEЕ HEROINE 417F
 N BAR EMULATION EXT
 DIXIE ERICA OF CH 1019
 SAV 8180 TRAVELER 004
 SAV OAKLEAF 293

BW	74
ADJ WW	635
WR	98
ADJ YW	1086
YR	98
FRAME	5.6
SCROTAL	36.0



LOT 101



LOT 101

OPEN A 83P JUPITER Z2155

BIRTH DATE: 3/23/12 REG. #: 17412360

CED	BW	WW	YW	CEM	MILK	MW	MARB	REA	FAT	\$W	\$F	\$B
1+4	1+3	1+42	1+64	1+8	1+15		1+.08	1+.34	1+.005	32.62	7.14	40.65

OCC JUPITER 671J
LIMESTONE JUPITER U449
 LIMESTONE EVERELDA R187

SAV 8180 TRAVELER 004
OPEN A 004 83P
 JAYNBEЕ ENCHANTRESS 489F

OCC EMBLAZON 854E
 OCC DIXIE ERICA 816B
 EXAR NEW LOOK 2971
 THREE TREES EVERELDA 1995
 SITZ TRAVELER 8180
 BOYD FOREVER LADY 8003
 JAYNBEЕ POWER FIX 254
 JAYNBEЕ ENCHANTRESS 578A

BW	74
ADJ WW	553
WR	92
ADJ YW	948
YR	81
FRAME	4.9
SCROTAL	32.1

A young bull with a lot of style and a great way to end the sale. This bull has depth and thickness that combines with a 74-lb. BW and a 0.3 BW EPD.



BELFIELD, NORTH DAKOTA

Main Street -- 1906

Broke ranch geldings available throughout the year.

Broke in big country and worked in feedlot situations.



Tellan Steffan • 701-260-0412
4291 Highway 85 S • Belfield, ND 58622



A Gathering in the Badlands ...

Chuck and Annette Steffan
4291 Highway 85 South
Belfield, ND 58622
email: heartrr@ndgateway.com

FIRST CLASS
US POSTAGE
PAID
BISMARCK, ND
PERMIT #256

Quality Genetics Built on a Heritage of Commitment

Wednesday, March 13, 2013

Medora Community Building • Medora, ND • Lunch 11:30 am MT • Sale 1:00 pm MT

41 Red Angus Bulls • 60 Angus Bulls

