



*Private Treaty  
Bull Sale*

Opening Day

**Friday,  
February 1, 2013**

Cattle Viewing at 11 a.m.  
Bidding Closes at 1 p.m.  
At the Ranch • McHenry, ND  
Directions: 9 miles N. of McHenry,  
2 miles E. and 1/2 mile N.

Lunch Served

Free Feed & Delivery for  
Bulls Sold in February

**Offering**

**25** Yearling Red Angus Bulls

**10** High-Performance Commercial  
Red Angus x Simmental Open Heifers



## Welcome ...

Cattlemen,

It was a long summer for most of us. With record-high temperatures and not much rain fall, we did not know if the pastures were going to hold up. But on a brighter note it's hard not to enjoy these cattle prices. It's hard not to be optimistic about the cattle market with such low cattle numbers across the country. Lets just hope 2013 brings more rain and an end to the drought.



This set of bulls is the most uniform group of bulls that I have raised. Over half of them are out of some the breed-leading AI sires. These bulls were not creep fed and have been fed a ration of alfalfa, corn silage, corn and dry distillers. The bulls were fed to grow and mature but not pushed too hard to help promote longevity of the bull.

This year we will once again be doing the silent auction. So all the bulls start at a base price and you will be allowed to raise your bid if out bid on a bull. The silent auction closes at 1 pm.

We also have a new addition to the Twedt household. On July 19, 2012, we had a baby girl, Nora Beth Twedt. We are enjoying every minute with her.

I would also like to thank you to all past and returning customers for your business. If you have any questions or would like to see the bulls please give me a call anytime! Hope to see you Feb. 1st at the ranch!!

Twedt Red Angus

*Samuel Twedt*



Sam Twedt  
2061 95th Ave NE • McHenry, ND 58464  
twedtredangus@hotmail.com  
www.twedtredangus.com  
(701) 388-4035 • (701) 262-4768

## *Private Treaty Opening Day*

**Friday,  
February 1, 2013**  
Cattle View at 11 a.m.  
Bidding Closes at 1 p.m.  
At the Ranch • McHenry, ND

### *Directions:*

9 miles N. of McHenry, 2 miles E. and 1/2 mile N.

### *Offering:*

**25 Yearling Red Angus Bulls (No Creep)**  
**10 High-Performance Commercial Red  
Angus x Simmental Open Heifers**

**Lunch Served**

**Free Feed & Delivery for Bulls Sold in February**

### *Online Catalog:*

[www.twedtredangus.com](http://www.twedtredangus.com) or [www.cowcampcatalogs.com](http://www.cowcampcatalogs.com)

Catalog designed by Cow Camp Promotions  
Tracey Koester • [www.cowcamppromotions.com](http://www.cowcamppromotions.com)

Printed by United Printing • Bismarck, ND

# Terms & Conditions

- All bulls start out at a base price. If two parties are interested in the same bull you are allowed to bid in the form of a silent auction. The silent auction closes at 1 pm. The highest bidder on the sheet gets the bull.
- **Viewing starts at 11 a.m. Bidding closes at 1 p.m. for people interested in the same bull.**
- For people not able to attend the sale, the bulls may be viewed all week leading up to Feb. 1.
- All bulls sold in February will be fed and delivered for free. Bulls sold in March and beyond will have a \$100 feed and delivery charge.
- All bulls will be receive a breeding soundness exam in the middle of April and delivered shortly after. All bulls are guaranteed to breed for one year.
- When the bull is sold, the buyer may leave the bull at the ranch until delivery at the buyer's risk. We will take care of the bull to the best of our ability, but the bull is the buyer's responsibility.
- Twedt Red Angus assumes no liability for accidents or injuries that occur on the sale premises.



# Reference Sires

## A RED SIX MILE SAKIC 832S

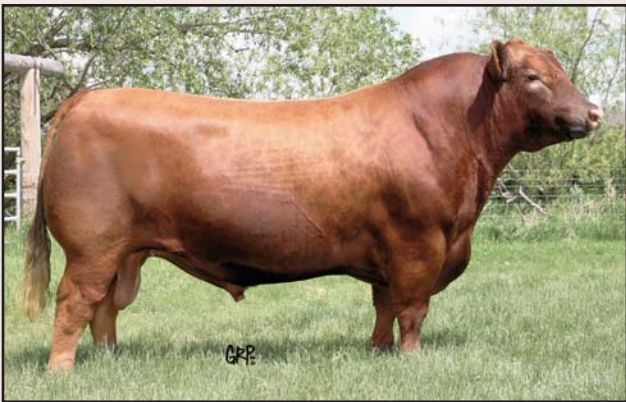
	BD	Cat.	%	Tattoos	Reg. #	Dam's MPPA					
	2/26/06	1A	100%	832S SIXM	1160318						
BW	Adj. WW	Adj. YW									
82	906										
CED	BW	WW	YW	Milk	TM	CEM	Stay	Marb	YG	CW	REA
0	-0.1	65	88	23	56	16	6	-0.19	0.05	22	-0.16

RED SIX MILE AVIATOR 217P

{ RED WILDMAN DENALI 19L  
 { RED RSL SUE 400F

RED SIX MILE SIERA 257P

{ RED SIX MILE CUJO 800M  
 { RED BOUNTY B MISS SIERA BAR



*Red Six Mile Sakic 832S*

## B BADLANDS NET WORTH 23U

	BD	Cat.	%	Tattoos	Reg. #	Dam's MPPA					
	2/12/08	1A	100%	23U CSF	1267422	100.5					
BW	Adj. WW	Adj. YW									
88	892	1552									
CED	BW	WW	YW	Milk	TM	CEM	Stay	Marb	YG	CW	REA
-5	6.2	87	131	14	58	3	12	0.42	0.00	57	0.49

PFFR SHAQ 607

{ S A V 8180 TRAVELER 004  
 { RRM-NANCY-8965-9606

BADLANDS MEDORA 406

{ LCC CHEYENNE B221L  
 { BADLANDS MEDORA 440



*Badlands Net Worth 23U*

# C LSF JBOB EXPECTATION 6034S

	BD	Cat.	%	Tattoos	Reg. #	Dam's MPPA					
	1/24/06	1A	100%	6034S JBOB	1108741	103.5					
BW	Adj. WW	Adj. YW									
87	805	1289									
CED	BW	WW	YW	Milk	TM	CEM	Stay	Marb	YG	CW	REA
1	-0.9	75	113	22	59	3	10	1.28	0.06	35	0.40

LCHMN ENTERPRISE 1370H

{ LCHMN ON TARGET 1016E  
PARK CHERISH D419

LSF SWEETNESS J1358 P4085

{ LCC NEW CHAPTER A705L  
LSF SWEETNESS J1358



*LSF JBOB Expectation 6034S*

# D MESSMER PACKER S008

	BD	Cat.	%	Tattoos	Reg. #	Dam's MPPA					
	2/12/06	1A	100%	S008 2MS	1109534	104.4					
BW	Adj. WW	Adj. YW									
85	762	1411									
CED	BW	WW	YW	Milk	TM	CEM	Stay	Marb	YG	CW	REA
1	-2.1	69	109	11	46	4	14	0.59	-0.05	32	0.50

MESSMER JOSHUA 019P

{ BECKTON JULIAN GG B571  
MESSMER PANDORA M186

MESSMER MILLIE 124P

{ VGW TOP PICK 130  
MESSMER MILLIE 9416



*Messmer Packer S008*

# MAJESTIC LIGHTNING 717 SGMR

	BD	Cat.	%	Tattoos	Reg. #	Dam's MPPA					
	2/25/07	1A	100%	717 SGMR	1155775	99.3					
BW	Adj. WW	Adj. YW									
80	867	1410									
CED	BW	WW	YW	Milk	TM	CEM	Stay	Marb	YG	CW	REA
-5	4.5	79	119	17	57	6	4	0.16	0.09	47	0.00

WHITESTONE CAYENNE 423R

{ LCHMN GRANDCANYON 1244G  
FEDDES BLOCKANNA 807

WHITESTONE BLOCKANNA R227

{ WHITESTONE SIZABULL M131  
BLOCKANA 0143 OF WSRA



*Majestic Lightning 717 SGMR*

# SIX MILE WIN-CHESTER 745W

	BD	Cat.	%	Tattoos	Reg. #	Dam's MPPA					
	2/17/09	1A	100%	745W *SIXM	1371780						
BW	Adj. WW	Adj. YW									
76	875										
CED	BW	WW	YW	Milk	TM	CEM	Stay	Marb	YG	CW	REA
-1	0.7	59	92	20	50	1	14	0.11	0.01	26	0.12

RED TOWAW INDEED 104H

{ RED CC EXPANSION 5E  
RED TOWAW MOLLY 67C

RED SIX MILE SHAWNEE 116T

{ 5L NORSEMAN KING 2291  
RED CROWFOOT SHAWNEE 9124J



*Six Mile Win-Chester 745W*

# 9 BROWN COVENANT U7548

BD Cat. % Tattoos Reg. # Dam's MPPA  
 1/25/08 1A 100% U7548 RABS 1282948 102

BW Adj. WW Adj. YW  
 85 600 922

CED	BW	WW	YW	Milk	TM	CEM	Stay	Marb	YG	CW	REA
5	-4.5	55	89	22	50	3	14	0.83	0.04	17	0.32

BROWN COMMITMENT S7206

{ LJC LANCER 806  
 BROWN MS SHAZZAM P7940

BROWN MS MONU P7930

{ BJR MONU 4X-303  
 RABS MS VICILA H7552

# H BAR R IRON MAN 806

BD Cat. % Tattoos Reg. # Dam's MPPA  
 3/8/08 1A 100% 806 RRHR 1255974 104

BW Adj. WW Adj. YW  
 88 721

CED	BW	WW	YW	Milk	TM	CEM	Stay	Marb	YG	CW	REA
1	1.7	73	117	18	54	-1	10	0.34	0.04	42	0.24

LINK SEQUOYA 53S

{ CCF SEQUOYA 0361

{ RHRA Z-LINE 6990 616

RHRA FLASH 587 915

{ LARSON RED FLASH 745

{ RHRA ION NB 3355



Bar R Iron Man 806

## Red Angus Association of America BREED AVERAGE EPDS

### PROVEN & OPPORTUNITY SIRES - FALL 2012

CED	BW	WW	YW	Milk	TM	CEM	Stay	Marb	YG	CW	REA
4	-1.2	55	83	19	46	5	9	0.39	0.00	18	0.13

### NON-PARENTS UNDER 2 YEARS OF AGE - FALL 2012

CED	BW	WW	YW	Milk	TM	CEM	Stay	Marb	YG	CW	REA
4	-1.0	55	83	19	47	4	10	0.38	-0.01	18	0.15



# 1 STRA SAKIC 201

	BD	Cat.	%	Tattoos		Reg. #	Dam's MPPA				
	2/9/12	1A	100%	201 STRA		1535398	100.4				
BW	Adj. WW										
77	659										
CED	BW	WW	YW	Milk	TM	CEM	Stay	Marb	YG	CW	REA
	-1.1	59	84	24	53		5	0.05	-0.06	17	-0.12

**RED SIX MILE SAKIC 832S**

{ RED SIX MILE AVIATOR 217P  
{ RED SIX MILE SIERA 257P

**RRHR MISS RAMBO 717**

{ FORSTER RAMBO 1061  
{ BAR R MISS GRAND CANYON 023

*Lot 1 has been a stand out calf since he was born. He is deep and thick. He is out of the famous Genex bull Six Mile Sakic. He has calving ease and still weaned off at 659 lbs. He has excelled since we weaned and is surely one of the stand outs in the bull pen. He should be a favorite come sale day.*



Lot 1

# 2 STRA PACKER 212

	BD	Cat.	%	Tattoos		Reg. #	Dam's MPPA				
	2/18/12	1A	100%	212 STRA		1535425	100.4				
BW	Adj. WW										
70	690										
CED	BW	WW	YW	Milk	TM	CEM	Stay	Marb	YG	CW	REA
	-2.9	59	95	18	48		14	0.61	-0.15	24	0.34

**MESSMER PACKER S008**

{ MESSMER JOSHUA 019P  
{ MESSMER MILLIE 124P

**BIEBER ENCHANTRESS 203X**

{ BECKTON EPIC U368 KM  
{ BASIN ENCHANTRESS 6435

*STRA Packer 212 is my favorite Packer son. He is long and deep. He is out of a first-calf heifer that I purchased from Bieber Red Angus two years ago. She did not let me down. Being born at 70 lbs. and weaning off a 690 lbs. - you can't beat that! This bull should calf really easy and grow like crazy!! Would be a great heifer bull.*

# 3 STRA WIN-CHESTER 214

	BD	Cat.	%	Tattoos		Reg. #	Dam's MPPA				
	2/19/12	1A	100%	214 STRA		1535448	101.0				
BW	Adj. WW										
84	671										
CED	BW	WW	YW	Milk	TM	CEM	Stay	Marb	YG	CW	REA
	-0.3	49	65	24	49		11	0.28	-0.14	4	0.00

**SIX MILE WIN-CHESTER 745W**

{ RED TOWAW INDEED 104H  
{ RED SIX MILE SHAWNEE 116T

**SEEGER RACHLE**

{ GLACIER XTRA 440  
{ GMRA RACHLE 332

*Lot 3 is out of the powerful Badlands Net Worth bull that Genex bought a couple years ago for \$30,000. He is a performance machine. Use the Net Worth bulls to add frame to your cow herd.*

## 4 STRA WIN-CHESTER 214

BD	Cat.	%	Tattoos	Reg. #	Dam's MPPA
2/19/12	1A	100%	214 STRA	1535448	101.0
BW	Adj. WW				
84	671				

CED	BW	WW	YW	Milk	TM	CEM	Stay	Marb	YG	CW	REA
	-0.3	49	65	24	49		11	0.28	-0.14	4	0.00

**SIX MILE WIN-CHESTER 745W** { RED TOWAW INDEED 104H  
 { RED SIX MILE SHAWNEE 116T  
**SEEGER RACHLE** { GLACIER XTRA 440  
 { GMRA RACHLE 332

Lot 4 is a powerful son out of Six Mile Win-Chester who's popularity is going like crazy. This bull is out of a cow that was born in 1997. Do the math on that and this is her 13th calf! I sold her this fall but she probably could have went another year. She was good footed and strong uddered still at age 15. If you want consistency and stayability in your cow herd, use this bull.



Lot 4

## 5 STRA LIGHTNING 216

BD	Cat.	%	Tattoos	Reg. #	Dam's MPPA
2/19/12	1A	100%	216 STRA	1535440	99.3
BW	Adj. WW				
74	642				

CED	BW	WW	YW	Milk	TM	CEM	Stay	Marb	YG	CW	REA
	-1.1	59	87	17	46		5	0.21	-0.13	27	0.07

**MAJESTIC LIGHTNING 717 SGMR** { WHITESTONE CAYENNE 423R  
 { WHITESTONE BLOCKANNA R227  
**MS HAMMEL BANDITO N10** { LCHMN BANDITO TRES1781H  
 { MS HAMMEL R-CLOUD H210

216 is a Majestic Lightning son. The Majestic Lightning sons are more moderate framed with a lot of length and thickness. 216 is out of one of my favorite cows. She brings one to the top of the bull pen every year.

## 6 STRA LIGHTNING 217

BD	Cat.	%	Tattoos	Reg. #	Dam's MPPA
2/19/12	1A	100%	217 STRA	1535397	100.2
BW	Adj. WW				
77	642				

CED	BW	WW	YW	Milk	TM	CEM	Stay	Marb	YG	CW	REA
	-0.4	56	87	22	49		6	0.21	-0.06	27	-0.02

**MAJESTIC LIGHTNING 717 SGMR** { WHITESTONE CAYENNE 423R  
 { WHITESTONE BLOCKANNA R227  
**BAF REVLIN 4218** { CFLD REBELLAS ROBINHOOD  
 { JPF REDLIN 421B

Lot 6 is another powerful Majestic Lightning son that is long and deep. I would not recommend any of the Majestic Lightning bulls to be used on heifers but they should be easy calving as they come out long and fairly small.

# 7 STRA FULL THROTTLE 218

BD 2-19-12 Cat. 1A % 100% Tattoos 218 STRA Reg. # PENDING Dam's MPPA 105.1

BW 84 Adj. WW 795

CED	BW	WW	YW	Milk	TM	CEM	Stay	Marb	YG	CW	REA
0	0.6	56	89	19	47	1	6	0.21	0.10	24	-0.09

**RED 6 MILE FULL THROTTLE 171T**

{ RD TER-RON FULLY LOADED 540R  
{ RED SIZ MILE WITZEL 360J

**LMG MISS ROXIE 4110**

{ LMG GILLS HORIZON 1551  
{ LMG ROXIE 1080

*Lot 7 is an embryo bull that I raised out of one my dad's commercial cows. I purchased this embryo a few years back at the Santa Sale in West Fargo. This bull made it well worth it. He is out of the famous Gill Red Angus Cow, LMG Miss Roxie 4110. He weaned off the cow at 795 lbs. making him the high weaning weight bull of the group. This is one powerful bull with genetics to back it up.*



Lot 7

# 8 STRA COVENANT 219

BD 2/19/12 Cat. 1A % 100% Tattoos 219 STRA Reg. # 1535434 Dam's MPPA 97.2

BW 80 Adj. WW 638

CED	BW	WW	YW	Milk	TM	CEM	Stay	Marb	YG	CW	REA
	-0.9	57	86	18	47		9	0.62	-0.04	18	0.14

**BROWN COVENANT U7548**

{ BROWN COMMITMENT S7206  
{ BROWN MS MONU P7930

**STRA TOP VALUE 009**

{ BIEBER TOP VALUE 10088  
{ BAR R MISS RAMBO 71P

*Lot 8 is a bull out of Select Sires bull Brown Covenant. This bull is out of a first-calf heifer out of Bieber Top Value. This bull should be good to use on larger framed heifers.*



Fall gather

# 9 STRA SAKIC 221

	BD	Cat.	%	Tattoos		Reg. #	Dam's MPPA				
	2/20/12	1A	100%	221 STRA		1535391	100.4				
BW	Adj. WW										
86	662										
CED	BW	WW	YW	Milk	TM	CEM	Stay	Marb	YG	CW	REA
	0.4	59	83	23	52		5	-0.06	-0.10	16	-0.06

**RED SIX MILE SAKIC 832S**

{ RED SIX MILE AVIATOR 217P  
 { RED SIX MILE SIERA 257P

**BAR R MISS ECHETA 653**

{ FORSTER RAMBO 1061  
 { LMG ECHETA 3054

*STRA Sakic 221 is another great Sakic bull. He is long and fancy looking. This bull has stood out in the pasture to me all summer. He should make a great bull for someone.*



Lot 9

# 10 STRA EXPECTATION 222

	BD	Cat.	%	Tattoos		Reg. #	Dam's MPPA				
	2/20/12	1A	100%	222 STRA		1535401	97.6				
BW	Adj. WW										
80	686										
CED	BW	WW	YW	Milk	TM	CEM	Stay	Marb	YG	CW	REA
	-1.0	70	105	15	50		9	0.90	-0.07	25	0.22

**LSF JBOB EXPECTATION 6034S**

{ LCHMN ENTERPRISE 1370H  
 { LSF SWEETNESS J1358 P4085

**RRHR MISS TOP DAY 735**

{ BIEBER TOP VALUE 10088  
 { HLG MISS MAKE MY DAY 229

*STRA Expectation 222 is a very thick and deep bodied bull. His mother is a Top Value daughter which is where I think that the performance and thickness comes from. She is a very easy-keeping momma. This bull will give you the calving ease you desire and still give you the pounds in the fall. And those of you interested in carcass traits, this bull is in the top 1% in the breed for carcass.*



Lot 10

# 11 STRA NET WORTH 223

	BD	Cat.	%	Tattoos	Reg. #	Dam's MPPA					
	2/20/12	1A	100%	223 STRA	1535411	98.7					
BW	Adj. WW										
91	668										
CED	BW	WW	YW	Milk	TM	CEM	Stay	Marb	YG	CW	REA
	3.9	75	110	12	49		8	0.40	-0.05	37	0.19

**BADLANDS NET WORTH 23U**

{ PFFR SHAQ 607  
 { BADLANDS MEDORA 406

**RRHR MISS TOP VALUE 708**

{ BIEBER TOP VALUE 10088  
 { BAR MISS RAMBO 5P

*STRA Net Worth 223 is another thick, deep-bodied calf that has really turned it on in the feedlot. He snapped a great picture for us and you won't be disappointed come sale day. He is a little moderate framed but packs the pounds. He is in the top 5% for WW and top 8% for yearling.*



Lot 11

# 12 STRA NET WORTH 225

	BD	Cat.	%	Tattoos	Reg. #	Dam's MPPA					
	2/21/12	1A	100%	225 STRA	1535383	98.3					
BW	Adj. WW										
84	665										
CED	BW	WW	YW	Milk	TM	CEM	Stay	Marb	YG	CW	REA
	0.5	66	99	18	51		13	0.59	-0.15	27	0.17

**BADLANDS NET WORTH 23U**

{ PFFR SHAQ 607  
 { BADLANDS MEDORA 406

**JACOBSON REBALS P31**

{ JACOBSON MY DAY L09  
 { JACOBSON BANDO M21

*225 is another Net Worth son with a lot of frame and performance. He is not the most eye appealing bull but he will sure add the pounds to your not calf crop.*



Fall gather

# 13 STRA LIGHTNING 227

	BD	Cat.	%	Tattoos	Reg. #	Dam's MPPA					
	2/21/12	1B	99.8%	227 STRA	1535392	98.0					
BW	Adj. WW										
95	684										
CED	BW	WW	YW	Milk	TM	CEM	Stay	Marb	YG	CW	REA
	3.0	64	92	21	53		4	0.22	-0.10	21	-0.06

**MAJESTIC LIGHTNING 717 SGMR**

{ WHITESTONE CAYENNE 423R  
{ WHITESTONE BLOCKANNA R227

**BAR R MISS POLLY 654**

{ FORSTER RAMBO 1061  
{ BAR R MISS HOBO

227 is probably my favorite Majestic Lightning calf. He is out of a great Forster Rambo daughter. The Rambo daughters all rise to the top in my cow herd. This will make a great bull for someone.



Lot 13

# 14 STRA PACKER 233

	BD	Cat.	%	Tattoos	Reg. #	Dam's MPPA					
	2/23/12	1A	100%	233 STRA	1535422	100.4					
BW	Adj. WW										
64	690										
CED	BW	WW	YW	Milk	TM	CEM	Stay	Marb	YG	CW	REA
	-3.1	59	94	15	44		11	0.51	-0.10	27	0.32

**MESSMER PACKER S008**

{ MESSMER JOSHUA 019P  
{ MESSMER MILLIE 124P

**NSFR MTX X100**

{ NSFR RATTLER K1281 T98  
{ LMG MTX 3032

STRA Packer 233 is another outstanding Packer son. These Packer calves are some of the most sought after bull calves in the breed. They are easy calving and grow like crazy. If you want a sleep-through-the-night heifer bull this is the one you want. He is out a first-calf heifer that I purchased from Nordland Stock Farms a couple years ago. She is turning into a great cow.



Lot 14

# 15 STRA COVENANT 235

BD	Cat.	%	Tattoos	Reg. #	Dam's MPPA
2/24/12	1A	100%	235 STRA	1535428	102.0
BW	Adj. WW				
80	719				

CED	BW	WW	YW	Milk	TM	CEM	Stay	Marb	YG	CW	REA
	0.0	71	107	15	51		10	0.66	0.01	27	0.11

**BROWN COVENANT U7548**

{ BROWN COMMITMENT S7206  
{ BROWN MS MONU P7930

**STRA TOP VALUE 007**

{ BIEBER TOP VALUE 10088  
{ BIEBER PRINOLA 10186

*STRA Covenant 235 is a bull that packs in the pounds. He is very thick but a more moderate-framed bull. His dam combines Bieber Top Value and Bieber Prinola 10186. 10186 is probably my favorite cow on the ranch. Her bull calf sold last year to Roger Ouse for \$5,500. The bull has the genetics to be great – top 4% for WW, top 6% for YW and top 7% for Marbling.*

# 16 238 - COMMERCIAL

BD	Cat.	%	Tattoos	Reg. #	Dam's MPPA
2-24-12				COMM	
BW	Adj. WW				
78	678				

CED	BW	WW	YW	Milk	TM	CEM	Stay	Marb	YG	CW	REA
NA	NA	NA	NA	NA	NA	NA	NA	NA	NA	NA	NA

**LSF JBOB EXPECTATION 6034S**

{ LCHMN ENTERPRISE 1370H  
{ LSF SWEETNESS J1358 P4085

**BAR R 897 (COMMERCIAL)**

{ FORSTER SIERRA 017  
{ LSF COMBINATION A301M

*238 is a bull that I am listing as a commercial bull. He is registered but his mom never got registered due to some blood work that I never got done. So don't let the commercial part fool you about this bull cause he is really good. He is deep and very thick and will surely add pounds to you next calf crop. He is an AI calf out LSF Expectation.*

# 17 STRA STATEMENT 239

BD	Cat.	%	Tattoos	Reg. #	Dam's MPPA
2/25/12	1A	100%	239 STRA	1535407	105.8
BW	Adj. WW				
71	735				

CED	BW	WW	YW	Milk	TM	CEM	Stay	Marb	YG	CW	REA
4	-2.7	61	98	22	52	1	12	0.43	-0.10	24	0.42

**LJC MISSION STATEMENT P27**

{ LJC LANCER 806  
{ LJC HANNAH 106

**RRHR LAKOTA 736 ET**

{ SHOCO DATA  
{ MLK CRK LAKOTA 953

*This is the only Mission Statement bull calf in the sale and boy, is he a dandy. He was born at 71 lbs. and weaned off at 735 lbs. You don't find that big of a spread very often. He is surely going to catch peoples eyes sale day. His dam posts a 105 MPPA.*

# 18 STRA IRON MAN 246

BD	Cat.	%	Tattoos	Reg. #	Dam's MPPA
3/1/12	1A	100%	246 STRA	1535381	102.0
BW	Adj. WW				
74	627				

CED	BW	WW	YW	Milk	TM	CEM	Stay	Marb	YG	CW	REA
	-2.1	55	91	21	48		10	0.46	-0.11	29	0.10

**BAR R IRON MAN 806**

{ LINK SEQUOYA 53S  
{ RHRA FLASH 587 915

**BIEBER YODDA 10148**

{ BIEBER RED I6 9611  
{ BIEBER YODDY 9457

*This is the first of the BAR R Iron Man 806 calves in the catalog. These calves are going to be a little younger because they are not in the group of AI calves but that hasn't slowed them down a bit. They fit right in. I have a full sister to this bull ready to calf in February and she is probably my favorite bred heifer.*

# 19 STRA MR. MAN 252

BD 3/9/12 Cat. 1B 99.7% Tattoos 252 STRA Reg. # 1535387 Dam's MPPA 104.4

BW 80 Adj. WW 693

CED	BW	WW	YW	Milk	TM	CEM	Stay	Marb	YG	CW	REA
	-1.3	57	90	22	51		11				

BAR R IRON MAN 806

{ LINK SEQUOYA 53S  
{ RHRA FLASH 587 915

BAR R MISS RAMBLER 503

{ BIEBER RAMBLER 8250  
{ BAR R MISS LODI-PRINCE 21N

Another great Iron Man bull calf out of one of my favorite cows. This cow is picture perfect, great uddered and has good feet. This bull is athletic and stylish with the performance to back it up. He will be a great bull for someone.

# 20 STRA MAN 254

BD 3/13/12 Cat. 1A 100% Tattoos 254 STRA Reg. # 1535439 Dam's MPPA 100.2

BW 87 Adj. WW 680

CED	BW	WW	YW	Milk	TM	CEM	Stay	Marb	YG	CW	REA
	1.4	63	95	19	50		10				

BAR R IRON MAN 806

{ LINK SEQUOYA 53S  
{ RHRA FLASH 587 915

SEEGER CULLIE 3108

{ MLK CRK LIGHT 912  
{ LMG LARK 061

Yes, another great Iron Man bull out of a great cow. This bull is deep and thick. If you looking for a maternal characteristics in your bulls these Iron Man bulls should do the trick for you.

# 21 STRA DAWG 257

BD 3/17/12 Cat. 1A 100% Tattoos 257 STRA Reg. # 1535418 Dam's MPPA 100.3

BW 69 Adj. WW 641

CED	BW	WW	YW	Milk	TM	CEM	Stay	Marb	YG	CW	REA
	-2.9	66	102	19	52		11	0.32	-0.17	32	0.47

OHRR TRACKER II 25R-13W

{ WR MR. RED DAWG 5335  
{ OHRR 42L COPPER HONEY 25R

BASIN BONNEBELL W042

{ BASIN CHEROKEE 5856  
{ BASIN BONNEBELL 5018 BR

Here is the first of the OHRR Tracker II 25R-13W calves. This guy is easy calving and grew well. He would work on heifers.

# 22 STRA GUNSLINGER 258

BD 3/17/12 Cat. 1B 99.3% Tattoos 258 STRA Reg. # 1535450 Dam's MPPA

BW 73 Adj. WW 696

CED	BW	WW	YW	Milk	TM	CEM	Stay	Marb	YG	CW	REA
	2.0	65	99	18	50		9	0.39	-0.11	32	0.22

BIEBER GUN SLINGER W361

{ BIEBER BOONE 8000  
{ BIEBER MINERVA 9141

BAR M MS DIRECT KING 0054

{ FEDDES DIRECT KING 7144  
{ BARM LODI PRINCE 2632-3051

258 is a out of a cow I purchased last February from Barenthsen-Bullinger Red Angus. 258 is a twin to a heifer. I lost a calf the same day this cow had twins so I took the bull calf off this cow and put it on the cow that lost her calf. The BW is 63 lbs. but since he was a twin wouldn't recommend him on heifers.



## 23 STRA DAWG 260

BD 3/17/12 Cat. 1A % 100% Tattoos 260 STRA Reg. # 1535443 Dam's MPPA 103.3

BW 101 Adj. WW 715

CED	BW	WW	YW	Milk	TM	CEM	Stay	Marb	YG	CW	REA
	3.7	73	104	23	59		6	0.18	-0.16	23	0.19

**OHRR TRACKER II 25R-13W**

{ WR MR. RED DAWG 5335  
{ OHRR 42L COPPER HONEY 25R

**LARSON LIBRA 4109-623**

{ LARSON BANNER 213  
{ LARSON LIBRA 623-948

*This Tracker son came out big and weaned big. His mom has a big calf and weans off a big calf ever year. She had the high WWt calf last year and this one wasn't far behind. All her calves are born unassisted between 95 and 105 lbs. She has never had calving trouble. If you're not afraid of a little BW then this bull will surely add pounds to your next calf crop.*

## 24 STRA MAN 262

BD 3/18/12 Cat. 1A % 100% Tattoos 262 STRA Reg. # 1535404 Dam's MPPA 99.8

BW 78 Adj. WW 622

CED	BW	WW	YW	Milk	TM	CEM	Stay	Marb	YG	CW	REA
1	-0.4	60	91	18	48	1	9	0.35	0.09	24	0.00

**BAR R IRON MAN 806**

{ LINK SEQUOYA 53S  
{ RHRA FLASH 587 915

**RRHR MISS TOP VALUE 762**

{ BIEBER ROP VALU 10088  
{ LARSON REBA 4107-933

*This is another Iron Man bull that really turned it on in the feedlot. He is an all-around well-balanced bull.*

## 25 STRA DAWG 266

BD 3/24/12 Cat. 1A % 100% Tattoos 266 STRA Reg. # 1535413 Dam's MPPA 105.6

BW 70 Adj. WW 718

CED	BW	WW	YW	Milk	TM	CEM	Stay	Marb	YG	CW	REA
	-2.6	70	108	19	54		8	0.24	-0.20	33	0.52

**OHRR TRACKER II 25R-13W**

{ WR MR. RED DAWG 5335  
{ OHRR 42L COPPER HONEY 25R

**DAMAR TINA U845**

{ LCC GRAVITY B252L  
{ DFRA TINA N339

*Another great Tracker son out of a one of my favorite cows. Don't miss this guy even though he was born a little later. He was born at 70 lbs. and weaned off at 718 lbs. He is in the top 7% for WW and top 10% for YW. His dam posts a 105.6 MPPA.*

## 26 STRA MAN 271

BD 3/30/12 Cat. 1A % 100% Tattoos 271 STRA Reg. # 1535402 Dam's MPPA 103.5

BW 81 Adj. WW 712

CED	BW	WW	YW	Milk	TM	CEM	Stay	Marb	YG	CW	REA
	-0.3	63	97	22	53		8				

**BAR R IRON MAN 806**

{ LINK SEQUOYA 53S  
{ RHRA FLASH 587 915

**RRHR MISS RAMBO 741**

{ FORSTER RAMBO 1061  
{ BAR R MISS RAMBLER 68P

*This is the last Iron Man calf and he caught up well and fits right in the with the rest of the bulls. He should make a great bull for someone.*

## 27 STRA EXT 274

	BD	Cat.	%	Tattoos		Reg. #	Dam's MPPA				
	4/6/12	1A	100%	274	STRA	1535449	102.5				
BW	Adj. WW										
94	704										
CED	BW	WW	YW	Milk	TM	CEM	Stay	Marb	YG	CW	REA
	2.2	68	104	19	53		11	0.16	-0.13	26	0.33

**BASIN EXT W103**

{ BASIN EXT 6359  
{ BASIN LAURIE 0515

**BIEBER KRISTIN 9161**

{ VGW VALUE 157  
{ BIEBER KRISTIN 8623

*This bull is out of a cow that I purchased last December from Bieber Red Angus. Through out the catalog and in past years you have see the name Bieber Top Value who was a herd sire for these cows for many years. Well, this cow, Bieber Kristin 9161, is the mother of Bieber Top Value. You have the chance to buy a half brother to Bieber Top Value out of Basin Ext W103. This bull is the youngest bull in the sale but his genetics are outstanding. Be sure to check him out.*

## Commercial Heifers

### 28-37

### 10 High-Performance Commercial Red Angus x Simmental Open Heifers

*These heifers are hand picked from the heart of my dad Gerald Twedt's herd. They are Simmental-Red Angus cross heifers. The Simmental bulls used are mostly Kjølgaard Simmental bulls and Red Angus bulls used are Twedt Red Angus and BAR R Red Angus Bulls. I think these heifers would go into any herd and make a difference. They sell all as one group. The heifers will be guaranteed open.*

*Thank you for your interest in our program!*



# Rancher's Guide to EPDs

Courtesy of the Red Angus Assn. of America

**For more information on EPDs, visit [redangus.org](http://redangus.org).**

- CED..... Calving Ease Direct** – predicts the probability of calves being born unassisted out of 2-year-old heifers.
- BW..... Birth Weight** – predicts the difference, in pounds, for birth weight, and is also used in the calculation of Red Angus' Calving Ease Direct (CED) EPD.
- WW..... Weaning Weight** – predicts the difference, in pounds, for weaning weight (adjusted to age of dam and a standard 205 days of age).
- YW..... Yearling Weight** – predicts the expected difference, in pounds, for yearling weight (adjusted to a standard 365 days of age).
- Milk .... Milk** – predicts the difference in maternal production of an individual animal's daughters as expressed by the weaning weight of their calves.
- TM..... Total Maternal** – predicts the rancher's actual observation of weaning weights of calves raised by an animal's daughters.  $TM\ EPD = Milk\ EPD + 1/2\ (WW\ EPD)$
- ME..... Maintenance Energy** – predicts a bull's daughters that will require less feed to maintain her body weight and condition; thus increasing profitability.
- HPG..... Heifer Pregnancy** – predicts the probability of heifers conceiving to calve at two years of age.
- CEM .... Calving Ease Maternal** – predicts the probability of a given animal's daughters calving unassisted at two years of age.
- STAY ... Stayability** – predicts the probability that a bull's daughters will remain in the herd until at least six years of age.
- MARB .. Marbling Score** – predicts differences for carcass marbling score as expressed in marbling score units. Higher marbling scores are positively correlated with higher carcass quality grades.
- YG ..... Yield Grade** – predicts differences in USDA Yield Grade score, and is expressed in USDA Yield Grade units.
- CW..... Carcass Weight** – predicts differences in hot carcass weight and is expressed in pounds.
- REA..... Rib Eye Area** – predicts differences of carcass Rib Eye Area between the 12th and 13th rib, expressed in inches.
- FAT..... 12th Rib Fat Thickness** – predicts differences for carcass fat depth over the 12th rib, as expressed in inches.

*Private Treaty Bull Sale*

Opening Day

**Friday, February 1, 2013**

Cattle Viewing at 11 a.m. • Bidding closes at 1 p.m.  
At the Ranch • McHenry, ND

Directions: 9 miles N. of McHenry, 2 miles E. and 1/2 mile N.

Lunch Served

Free Feed & Delivery for Bulls Sold in February

Offering **25** Yearling Red Angus Bulls  
**10** High-Performance Commercial  
Red Angus x Simmental Open Heifers



Sam Twedt  
2061 95th Ave NE  
McHenry, ND 58464