



DAHL LAND & CATTLE CO.
RED ANGUS • SOUTH DEVON • COMPOSTIES

**Tuesday,
May 6, 2014**

1 p.m. CDT

Napoleon Livestock, Napoleon, ND

Sale Day Phone: 1-800-932-8821

Selling in Catalog Order:

60 Range-Ready Yearling Bulls

125 Yearling Replacement Females

This sale will be broadcast live on the internet.

DVAuction
Broadcasting Real-Time Auctions

Real time bidding & proxy bidding available.

Welcome to



Jack

Dan

JD

Jeff

"Heterosis Headquarters"

43rd Annual Production Sale

Dan – (701) 424-3726

Jeff – (701) 485-3762

JD – (701) 485-3766

Jack – (701) 485-3206

Welcome to Dahl Land & Cattle Co.'s 43rd Annual Sale!

2014 looks like it's shaping up to be another great year in the cattle industry. Cowherd numbers are at record lows and cattle prices are at record highs. That is a tough combination to beat! One of the biggest advantages of a planned crossbreeding program is calf vigor at birth and hardiness of a cowherd. We all remember that 2012 and 2013 were challenging years environmentally, not only in N.D. but nationally as well. They were years that tested the hardiness of cattle and producers alike with drought and cold temperatures requiring extra feed. As a testament to the hardiness and fertility of our cattle, this fall at pregnancy check time, we had 96 2-year-old cows that weaned their first calf. Of those 96 there were only four that failed to rebreed.

Our goal is to produce cattle with low birth weights that perform well with no creep to mask what nature can produce. In other words, we are looking for genetics that will give us a big spread from birth to weaning and beyond. At the same time our cattle must be structurally functional and be fertile. It is a fairly lofty goal and one we continue to work diligently on.

When we ultrasounded the bulls the technician said, "These bulls are hard." The bulls have been on a 54 mega-calorie ration of 10 lbs. of ground oat/pea/alfalfa hay, 6 lbs. of wet distiller's grain and 9 lbs. of cracked corn per day. During the feed trial

we had several bulls gaining over 4 lbs. per day. Of the 63 bulls listed in the sale, 46 gained over 3.0 lbs. per day. That's pretty impressive when you consider we've had 70-plus days of zero or below-zero temperatures this winter.

We are again starting the sale with a large group of replacement heifers. As always, these heifers come right from the heart of the replacement heifers we raised. The heifers have been grown and not pushed. They were on a 35 mega-calorie ration of 14 lbs. of ground oat/pea/alfalfa hay, 6 lbs. of wet distiller's grain and 2 lbs. of cracked corn. We advertise that we are the "Program that Builds Cowherds." A cowherd is by its very nature maternal. Webster defines "maternal" as: "Of relating to, belonging to or characteristic of a mother; motherly." We would add to that one culling criteria for maintaining a maternal cowherd; if you have to run a cow in the chute for any reason except normal processing or to help with a mis-presented calf at birth, she's not maternal enough. It's a goal we strive for.

In closing, we want to thank you for your continued support and confidence in our program. We look forward to serving you in the future. We also want to thank Our Lord for bringing us together again, for helping us with our decisions and for providing our nation and ourselves with countless blessings.

*Sincerely,
The Dahls*

Bull Credit

If you purchased females from us in 2013, you can receive a \$100 credit towards the purchase of a Dahl Land & Cattle Co. bull.

Yearling Bull Data

- 83 lbs. – Avg. Actual BW
- 716 lbs. – Avg. Adj. 205 Wt.
- 1161 lbs. – Avg. Adj. 365 Wt.

50% of the yearling sale bulls are considered calving-ease bulls.

Calving-Ease Code

- * Use only on cows
- ** Use on cows & heifers with a known birth weight and calving ease history
- *** Use on heifers and all cows

Our recommendations are based on our cow female histories for birth weights and calving ease. Also, with aid from EPDs based on our reference sires and the individual animal.

Annual Production Sale

DAHL LAND & CATTLE CO.

Tues., May 6, 2014

1 p.m. CDT • Napoleon Livestock Market • Napoleon, ND

Sale Day Phone: 1-800-932-8821, 701-754-2216

Lunch: Starting at 11:30 a.m. CDT

Sale Order: Yearling Heifers start the sale,
Yearling Bulls selling in catalog order



Roger Jacobs



Ray Erbele



Kris Petersen



Kirby Goettsch



Scott Ressler

Auctioneer:

Roger Jacobs406-373-6124 (home)
Billings, MT..... (406) 698-7686 (cell)

If you cannot attend the sale and are interested in making a purchase, please contact our professional independent representative.

Representatives:

Kirby Goettsch 605-380-3939 (cell)
Farm & Ranch Guide
Scott Ressler..... 701-391-7310 (cell)
ND Stockmen's Assn701-223-2522 (office)
Kris Petersen.....701-377-2345 (home)
Cattle Business Weekly 701-339-0305 (cell)

Professional Independent Representative:

Ray Erbele 701-226-7288 (cell)
701-754-2216 (w), 701-424-3307 (home)

Lodging:

Napoleon, ND:

The Mozy Inn, 701-754-2420, www.mozyinn.com
The Broken Bell Inn, 701-754-2242, www.thebrokenbellinn.com
House of 1904, Bed & Breakfast & other B & Bs, 701-754-2417
The Downtowner Hotel, 701-754-2260

Don's Motel, Linton, ND 701-254-5457

Wishek Inn, Wishek, ND 701-452-4223

Dahl Land & Cattle Co. Annual Production Sale

Bidding:

All animals sell to the highest bidder. Any disputes will be settled by the auctioneer and his decision will be final.

Mail and Phone Bids:

Mail or phone bids will be handled in strict confidence by us and we ask that they be in our hands in ample time prior to sale date.

Online Bidding:

The sale will be broadcast live on dvauction.com. For information on how to register to bid online, see page 2.

This sale will be broadcast live on the internet.

DVAuction

Terms:

Terms of the sale are cash or check, payable immediately upon the conclusion of the sale and before animals are moved.

Purchases and Risk:

We recommend purchasing insurance. A representative will be present sale day.

Announcements:

Any errors or changes of information printed in this catalog will be announced from the auction block and such announcements shall take precedence.

Breeding Guarantee:

All bulls in this sale are guaranteed to have passed a fertility examination by our veterinarian. The buyer of each bull will receive a certificate of such exam upon paying for the bull. We assume no liability, legal or otherwise, to make any further guarantee to the buyer. No other warranty is expressed or implied.

We will be preg checking and evaluating the heifers so they will be guaranteed open and breedable.

Liability:

All persons who attend this sale do so at their own risk. Dahl Land & Cattle Co. and Napoleon Livestock Market assume no liability for any accidents that may occur. Neither do they assume any liability for loss or injury to livestock due to theft, mysterious disappearance, sickness, improper handling or Act of God.

Herd Veterinarian:

Dr. Dan Schuler, Wishek Veterinary Clinic

Health:

All cattle in this sale are in excellent condition and health. All females have been officially calffood Bangs and Preg-Guard Gold 10 vaccinated. All shots and treatments comply with the ND Beef Quality Assurance Program and Pfizer's Beef Friendly program. Where needed, health certificates will be furnished for shipment anywhere in the U.S. Sight Unseen Purchases are fully guaranteed for soundness and quality.

Contract:

The above terms and guarantee constitute a contract between buyer and seller of each animal sold.

Bull Delivery:

- \$50 discount if you take your bull home sale day
- If you cannot take your bull(s) home sale day we will feed him (them) for one week at our feedlot at no charge, buyer's risk.
- If you cannot pick your bull(s) up there will be a \$3/day feed charge per head.
- We will cooperate with delivery wherever possible.

Catalog & Promotion by Cow Camp Promotions, www.cowcampromotions.com

Printing by United Printing, Bismarck, ND, 701-223-0505

SALE INFORMATION

EPD NOTES

Expected Progeny Differences (EPDs) give cattlemen a useful tool with which to evaluate the genetic potential of breeding animals.

The printed EPDs in this catalog have been furnished to us by the Red Angus Association of America and the North American South Devon Association.

EPD Breed Averages for Non-Parent Animals Under 2 Years of Age (Spring 2014)

Red Angus

GED	BW	WW	YW	Milk	TM	ME	HPG	CEM	Stay	Marb	YG	CW	REA	Fat
4	-1.0	56	83	20	48	1	10	5	11	0.43	-0.01	19	0.15	0.00

South Devon

BW	WW	YW	SC	MILK	MWW	FAT	REA	MARB	RY%	C WT
2.7	33.5	65.8	0.0	19.8	36.6	0.01	0.22	0.4	0.8	27.3

The non-registered bulls' EPDs are "Across Breed" EPDs.



This is the behind-the-scenes force that keep the cattle moving through smoothly on sale day. (L to R) Gary Reed, Jay Reed, Ben Bowman, Andrew Dosch and Jeff Bowman.

TERRY ROBINSON

We miss you in so many ways. Thank you for helping us to improve our advertising, and to place the ads; to developing logos and taking pictures of the sale cattle. You encouraged us to become one of the first bull sellers to successfully include yearling commercial heifers at our sale. We enjoyed touring our pastures with you because of your knowledge, wit and friendship. You had no peer as a ring man. You did it with style, humor and great ability.



We miss you!



Watch & bid online for FREE at

DVAuction
Broadcasting Real-Time Auctions

View the Auction Live!
Bid Online... you're ringside right at your desk!

Buying online is as easy as 1, 2, 3...

1. Create an account at www.dvauction.com under the "register" tab
2. Apply for bidding approval by clicking on the "details" tab at least 24 hours prior to the auction-a DV representative will notify you once you have been approved
3. Tune in for the sale and make your purchases!

High speed internet is required for successful bidding-be sure to check the lag-time monitor in the top left corner to ensure real-time broadcasts.

Proxy Bidding-if you can't make time to watch the sale, register a proxy bid and let our system represent your bid while you're away. Look for the "proxy bid" tab on the auction listing, and fill in your maximum bids. We'll handle the rest!

Having troubles? During the auction, you can type a message to the operator at any time for assistance. Our full-time support team can also always be reached at (402) 474-5557.



DVAuction
Broadcasting Real-Time Auctions

DVA Rep. Justin Dikoff (605) 290-0635 - email: jdikoff@dvauction.com
Please feel free to contact me with questions about the sale or to view the cattle for you.

RED ANGUS HERD SIRES

DLC HAMMER 1152



A **DLC HAMMER 1152**
RED POLLED 100% 1A #1457385

HXC JACKHAMMER 8800U

{ HXC HEMI 4400P
{ HXC JOLENE 301N

DLC KING ROB LASS 649

{ KUHN'S KING ROB
{ DLC MISS HOBO 252

BD	BW
4/1/11	90
205 WT	WR
847	123
365 WT	YR
1292	113
%IMF	REA
2.94	13.0
FAT	DAM'S MPPA
0.20	5/102.3

EPDs/BREED RANKING

CE	BW	WW	YW	Milk	TM	ME	HPG	CEM	Stay	Marb	YG	CW	REA	Fat
-3	4.4	92	135	9	55	5	11	3	13	0.63	0.23	55	-0.04	0.01
95%	99%	1%	1%	97%	10%	76%	25%	67%	18%	15%	99%	1%	77%	61%

Jack Hammer sires thick, easy-keeping, moderate-framed type cattle with good feet and legs. His offspring appear to be excellent carcass cattle with large REAs, and his sons had an average marbling ratio of 131.

B DLC ROB ROY 9152

RED POLLED 99.9% 1B #1347461

BIEBER ROB ROY 10444

{ BIEBER ROB ROY 6990
{ BIEBER EULCA 8969

DLC MISS LOGAN 472

{ DLC MR. LOGAN 2122
{ DLC MS ROBIN HOOD 256

BD	BW
4/19/09	90
205 WT	WR
691	93
365 WT	YR
1140	100
%IMF	REA
2.88	11.9
FAT	DAM'S MPPA
0.24	5/99.5

EPDs/BREED RANKING

CE	BW	WW	YW	Milk	TM	ME	HPG	CEM	Stay	Marb	YG	CW	REA	Fat
-2	4.6	54	87	19	46	7	8	4	3	0.16	0.08	29	0.10	0.01
87%	99%	53%	49%	48%	50%	82%	80%	56%	99%	89%	68%	28%	50%	54%

9152 was our pick from all of the Rob Roys! He sires extra length, taller framed, smooth-made offspring with modest birth weights. Daughters have fleshing ability with correct foot and udder structure.

C L83 TIDAL WAVE 014

RED POLLED 100% 1A #1388283

RED SIX MILE TIDAL WAVE 254T

{ RED TOWAW INDEED 104H
{ RED RSL DUCHESS 914L

L83 STRAWBERRY 854

{ MFIN FINCHBULL M75
{ L83 STRAWBERRY 04

BD	BW
2/22/10	65
205 WT	WR
680	88
365 WT	YR
1342	109
%IMF	REA
3.18	14.85
FAT	DAM'S MPPA
0.24	2/105.1

EPDs/BREED RANKING

CE	BW	WW	YW	Milk	TM	ME	HPG	CEM	Stay	Marb	YG	CW	REA	Fat
1	1.1	53	88	25	51	-5	10	5	10	0.35	0.02	24	-0.02	-0.02
73%	89%	59%	48%	10%	21%	12%	47%	44%	55%	64%	55%	36%	73%	11%

Tidal Wave sires moderate birth weight calves that display extra body thickness as they get older. Sons and daughters are easy-fleshing and display nice muscle expression with nice dispositions.

LSF ACQUISITION 0421X



D LSF ACQUISITION 0421X

RED POLLED 100% 1A #1382580

HXC CONQUEST 4405P

{ BECKTON JULIAN GG B571
{ HXC ELLIE MAY MA638

LSF COVER GIRL LA414 S6074

{ LCC NEW CHAPTER A705L
{ LSF LOGAN H1375 LA414

BD	BW
2/7/10	75
205 WT	WR
550	
365 WT	YR
1028	
%IMF	REA
4.93	12.8
FAT	DAM'S MPPA
0.20	4/103.3

EPDs/BREED RANKING

CE	BW	WW	YW	Milk	TM	ME	HPG	CEM	Stay	Marb	YG	CW	REA	Fat
13	-4.4	58	90	24	53	5	8	1	15	0.63	-0.05	17	0.46	0.03
3%	9%	42%	41%	13%	15%	70%	80%	85%	5%	15%	27%	57%	7%	86%

Used AI, this Conquest son is a calving-ease sire deluxe. His offspring are long, thick, moderate framed with nice patterns. His sons also exhibit good carcass qualities and nice dispositions. Owned by ABS.

E HBR CHICAWA 062

RED POLLED 100% 1A #1391899

BARM CHICAWA 366-5013

{ PIE CHICAWA 366
{ MLK CRK EMUMAR 314

HBR SUGARLAND 616-749

{ L83 COMANCHE 504
{ LMG LARK 616

BD	BW
3/3/10	76
205 WT	WR
619	102
365 WT	YR
1091	98
%IMF	REA
3.12	14.6
FAT	DAM'S MPPA
0.38	3/100

EPDs/BREED RANKING

CE	BW	WW	YW	Milk	TM	ME	HPG	CEM	Stay	Marb	YG	CW	REA	Fat
7	-6.3	41	58	22	43	0	10	4	11	0.42	-0.10	-5	0.30	0.02
22%	2%	88%	92%	24%	71%	37%	60%	56%	45%	48%	13%	95%	19%	77%

Chicawa could be called "a sleep all night heifer bull." We used him on first-calf heifers without any assists. Calves have small birth weights yet are aggressive nursers. We feel that his sons could be used safely on all types of heifers.

F DLC'S OSCAR 1191

RED POLLED 100% 1A #1457359

RED CROWFOOT OLE'S OSCAR

{ MLK CRK CUB 722
{ RED CROWFOOT OMEGA 9179J

DLC MISS CLASSIC 444

{ BADLANDS CLASSIC 069
{ DLC MS LADIES MAN 143

BD	BW
3/30/11	68
205 WT	WR
586	85
365 WT	YR
1025	90
%IMF	REA
2.23	13.1
FAT	DAM'S MPPA
0.15	7/91.3

EPDs/BREED RANKING

CE	BW	WW	YW	Milk	TM	ME	HPG	CEM	Stay	Marb	YG	CW	REA	Fat
6	-5.3	39	62	13	32	0	5	9	6	0.48	-0.08	-1	0.11	0.00
28%	4%	91%	89%	88%	97%	33%	98%	9%	90%	35%	17%	93%	47%	44%

1191 was our choice of the Ole's Oscar calves to continue the calving-ease qualities of this bloodline. We've used him extensively on heifers with no problems. Moderately framed and thick made best describes the Oscar cattle; females have great udders and structure.

SOUTH DEVON HERD SIRES

DLCC Hudson 82U



G DLCC HUDSON 82U

RED POLLED PERCENTAGE #193574

MJB SHUR LOC 106S

{ DLCC SURE-ENUF
{ MJB PROMISE 4550P

DLCC PRINCESS MIA 78P

{ DLCC POLLED PRO 111H
{ DLCC POPEYE 170K

BD	BW
3/20/08	80
205 WT	WR
717	
365 WT	YR
1208	
%IMF	REA
4.16	16.3
FAT	

EPDs/BREED RANKING

BW	WW	YW	MILK	MWW	FAT	REA	MARB	RBV	C WT
+1.6	+44	+97	+32	+54	+0.01	+0.60	+0.1	+1.5	+45.8

Hudson sires thick, moderately framed progeny and stamps them with extra muscle expression. Calves show good efficiency in all stages of life! Hudson is the #2 ranked South Devon sire for the "\$-Profit" index.

DLC Legacy 55T



H DLC LEGACY 55T

RED POLLED PERCENTAGE #190782

SBCC ROYAL LEGACY 5123

{ NORTH PADDLE LEGACY 32L
{ MJB HEATHER 8671H

DLC MISS BOLERO 221

{ DLC BOLERO LAD 96
{ DLC MS ROYAL 012

BD	BW
4/20/07	57
205 WT	WR
687	
365 WT	YR
1244	
%IMF	REA
FAT	

EPDs/BREED RANKING

BW	WW	YW	MILK	MWW	FAT	REA	MARB	RBV	C WT
+2.3	+36	+72	+44	+62	+0.03	+0.11	+0.2	+0.4	+20.6

"The Calendar Bull," 55T is a very stylish, correctly structured bull who stamps his offspring with those same characteristics. His offspring are lighter boned, long bodied, strong maternally and are positive in carcass traits. Co-owned with MJB Ranch in Montana.

MJB Legend 338X



I MJB LEGEND 338X

BLACK POLLED PERCENTAGE #198128

DLCC LEGEND 145T

{ DLCC SURE THING 34P
{ DLCC LA DI DA 14K

MJB EMPRESS 7542T

{ M A R MIDLAND EMPIRE 3092
{ MJB NORTHERN LIGHT 5691R

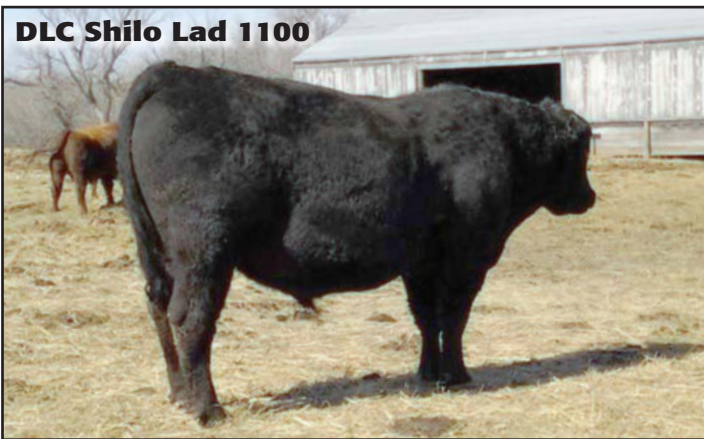
BD	BW
3/1/10	71
205 WT	WR
669	105
365 WT	YR
%IMF	REA
FAT	

EPDs/BREED RANKING

BW	WW	YW	MILK	MWW	FAT	REA	MARB	RBV	C WT
+1.4	+52	+73	+24	+50	+0.01	-0.06	+1.2	+0.4	+16.1

We purchased 338 from MJB Ranch in Montana because of his promising growth, maternal and carcass qualities. He has not disappointed us and always sires some of the thickest, top-performing bulls in the sale.

DLC Shilo Lad 1100



J DLC SHILO LAD 1100

BLACK POLLED FB #200083

BC SHILO 63S

{ DLCC SURE-ENUG
{ CIMARRON PLAYMATE 893H

MJB ROCKETTE 9594W

{ DLC THE ROCK 52
{ MJB SERENTY 6642S

BD	BW
2/27/11	
205 WT	WR
365 WT	YR
%IMF	REA
FAT	

EPDs/BREED RANKING

BW	WW	YW	MILK	MWW	FAT	REA	MARB	RBV	C WT
+4.0	+60	+111	+36	+66	+0.01	+0.12	+0.8	+0.6	+36.7

1100 is a thick, high-performance Shilo son who has nice muscle expression and good foot structure. He is moderate framed and has a great disposition. This young bull is siring top-performing calves that show easy-fleshing ability and top-carcass characteristics.

POUND MAKER HERD SIRES



DLC Classic Lad 070

K **DLC CLASSIC LAD 070**

RED POLLED 100% AR #U203657

DLC SIR CLASSIC 5102

{ BADLANDS CLASSIC 09
DLC MS CHIEFTON 720

DLC MISS CANYONO 554

{ LELAND GRAND CANYON 3129
DLC MIS HANFORD 054

BD	BW
5/14/10	88
205 WT	WR
840	98
365 WT	YR
1348	101
%IMF	REA
2.25	13.29
FAT	
0.28	

EPDs/BREED RANKING

BW	WW	YW	MILK	MWW	FAT	REA	MARB	RBV	C WT
+0.7	+27	+67	+22	+35	+0.01	+0.29	-0.1	+0.9	+24.6

The Classic bloodline may not be the most popular line in the Red Angus breed but we've found it to be one of the most functional. Cattle have body length, gain well, muscle and good feet. Females are exceptionally feminine and have great udders. 070 excels in muscle and fleshing ability. We used him in our Pound Maker program.

South Devon Dominate in Efficiency

NASDA News, Fall 2012

Eleven fall-born South Devon bulls out of MJB Ranch were efficiency tested at Midland Bull Test facility with very impressive results. The bulls were fed with a larger group of fall-born Angus bulls and, as you can see from the chart, every South Devon bull was negative for RFI with fantastic feed conversion (the more negative the number for RFI, the more efficient the bull is).

Why is it important to test a bull for feed efficiency? This is a highly heritable trait and the big factor will be the daughters that these bulls produce. Efficiency is going to be the key to staying alive in the cow business. It seems that our input costs increase every day which means the cows have to work even harder, and those hard-doing, bring-me-a-feed-bucket kind of cows will not pencil out anymore.

South Devon shine when put on an efficiency test, especially when compared to "more popular" outside breeds. Once again, these cattle are proving that they are impressive in a number of traits – not just a couple.

Number	BW	WW	ADG	DMI	FCR	RFI
MJB 70Y	70	732	2.82	14.60	5.18	-0.564
MJB 71Y	74	718	3.47	13.90	4.00	-2.180
MJB 72Y	74	628	4.02	13.50	3.36	-2.450
MJB 73Y	70	820	3.37	15.40	4.58	-1.230
MJB 74Y	72	730	2.85	13.70	4.81	-1.690
MJB 75Y	72	692	2.92	12.90	4.45	-2.260
MJB 76Y	77	820	3.65	15.40	4.22	-1.450
MJB 77Y	72	752	3.60	16.40	4.56	-0.304
MJB 78Y	72	726	4.20	15.90	3.78	-1.200
MJB 79Y	73	706	2.97	13.30	4.49	-2.090
MJB 80Y	81	670	3.73	15.60	4.18	-0.714



PUREBRED YEARLING HEIFER OFFERING

Purebred heifers will be selling in groups of 5.
Buyers will have the option to purchase choice three times, then the balance will be sold to go.

Group 1: 5 head of purebred Red Angus heifers.

Group 2: 5 head of purebred South Devon heifers.

COMMERCIAL YEARLING HEIFER OFFERING

Commercial heifers will be sold at a minimum of five head gate cut. On bigger drafts, the buyer of the last heifers in the ring (should there be a cut made), will have the option to take the remaining heifers of that group for the same price.

Group 3: 10 head of non-registered purebred Red Angus heifers.

Group 4: 10 head of 75% Red Angus heifers.

Group 5: 25 head of Red Angus x South Devon heifers.

Group 6: 35 head of Red Angus x Salers heifers.

Group 7: 20 head of black-hided Red Angus x Salers heifers.

Group 8: 15 head three-way-cross heifers (AR x SA x SD).

125 Sale Heifers

Avg. BW – 72 lbs.

Avg. 205 Wt – 637 lbs.

Act. 3-25-14 Wt – 894 lbs.

Yearling heifers will start the sale!



All heifers are:

Bangs Vaccinated • PregGuard 10 • Poured with Ivomec
Preg checked guaranteed open and ready to breed.

They are ready to go to pasture and breed!

Red Angus Pro-Cow



Pro-Cow is a tool used by the Red Angus Association of America to identify replacement-quality females. Only females enrolled in the FCCP will be eligible to be labeled as Pro-Cows, therefore ensuring at least 50% Red Angus bloodlines.



How to label females as Pro-Cow:

- Enroll calf crop in the Feeder Calf Certification Program (FCCP).
- Purchase 99-cent Pro-Cow tags or have the Pro-Cow logo imprinted on your FCCP tag.



RedAngus.org • (940) 387-3502

Red Angus Feeder Calf Certification Program



For nearly two decades the FCCP has been delivering results for bull customers using ONLY Red Angus



Genetic, Source & Age

Released in 2012, Allied Access provides an added-value option for Red Angus customers using multiple breeds in a rotation, hybrids and/or composite bulls to capture heterosis in their crossbreeding programs.

Source & Age



RedAngus.org • (940) 387-3502

DLC PUREBRED RED ANGUS HEIFER OFFERING

Purebred heifers will be selling in groups of 5.
Buyers will have the option to purchase choice three times, then the balance will be sold to go.

ID #	REG #	CAT	B. DATE	SIRE	DAM	DAM'S SIRE	DAM AGE/MPPA		BW	WW	YW			
363	#1619175	1B	4/2/13	DLC HAMMER 1152	037	DLC SIR CLASSIC 5102	3/102.3		90	760	1053			
					BW	WW	YW	M	TM	HPG	STAY	MARB	REA	FAT
					3.9	78	105	9	48	11	11	0.35	0.00	0.00
364	#1619185	1B	4/6/13	DLC HAMMER 1152	067	DLC SIR CLASSIC 5102	3/98.6		85	688	1009			
					BW	WW	YW	M	TM	HPG	STAY	MARB	REA	FAT
					2.5	66	95	12	45	1	13	0.38	-0.02	-0.01
370	#1619242	1B	4/9/13	L83 TIDAL WAVE 014	763	KUHN'S KING ROB	6/93.8		80	636	998			
					BW	WW	YW	M	TM	HPG	STAY	MARB	REA	FAT
					0.7	48	77	18	42	11	9	0.27	0.02	-0.02
371	#1619215	1B	4/19/13	L83 TIDAL WAVE 014	977	BIEBER ROB ROY 10444	4/109.1		90	763	1118			
					BW	WW	YW	M	TM	HPG	STAY	MARB	REA	FAT
					4.7	69	100	22	57	9	6	0.21	0.14	-0.01
375	#1619208	1A	4/9/13	DLC HAMMER 1152	959	DLC LOGAN LAD 4125	4/103.1		90	793	1091			
					BW	WW	YW	M	TM	HPG	STAY	MARB	REA	FAT
					4.8	86	115	11	54	13	10	0.43	-0.07	-0.01

DLC PUREBRED SOUTH DEVON HEIFER OFFERING

ID #	REG #	CAT	B. DATE	SIRE	DAM	DAM'S SIRE	COLOR	P/H/S	BW	WW	YW			
303	#203638	PB	4/10/13	HUDSON 82U	515	DLC MR ROYAL 40	RED	POLLED	89	641	1007			
					BW	WW	YW	M	MWW	FAT	REA	MARB	RBY	CW
					+6.6	+57	+105	+31	+59	+0.01	+0.41	+0.1	+1.1	+36.6
304	#203651	PB	4/17/13	HUDSON 82U	630	MR ROYAL 115	RED	POLLED	67	641	1003			
					BW	WW	YW	M	MWW	FAT	REA	MARB	CED	CEM
					+2.3	+54	+103	+31	+58	+0.01	+0.38	+0.4	+1+1	+40.8
310	#203676	85%	4/8/13	LEGEND 338X	817U	DLCC SURE-ENUF	BLACK	POLLED	85	740	1077			
					BW	WW	YW	M	MWW	FAT	REA	MARB	RBY	CW
					+3.9	+65	+102	+30	+62	+0.02	+0.10	+0.9	+0.5	+30.2
316	#203641	FB	4/18/13	DLC LEGACY 55	532	MR ROYAL 40	RED	POLLED	91	638	1002			
					BW	WW	YW	M	MWW	FAT	REA	MARB	RBY	CW
					+5.7	+50	+92	+36	+61	+0.02	+0.14	+0.3	+0.5	+25.9
334	#203672	PB	4/25/13	HUDSON 82U	807U	ROYAL LEGACY 5123	RED	POLLED	92	562	933			
					BW	WW	YW	M	MWW	FAT	REA	MARB	RBY	CW
					+5.6	+42	+90	+31	+52	+0.01	+0.37	+0.2	+1.0	+31.3

RED ANGUS YEARLING BULLS



Lot 1

1 DLC TIDAL WAVE 3135

RED POLLED 100% 1A #1619237

L83 TIDAL WAVE 014

{ RED SIX MILE TIDAL WAVE 254T
L83 STRAWBERRY 854

DLC MS HIGH PRAIRIE 7122

{ LELAND HIGH PRAIRIE 5363R
DLC MISS CLASSIC 466

BD	BW
4/13/13	100
205 WT	365 WT
858	1415
TEST ADG	SC
4.5	44.0
%IMF	REA
1.80	15.4
CALVING EASE	DAM'S AGE/MPPA
★	6/108

EPDs

CED	BW	WW	YW	Milk	TM	ME	HPG	CEM	Stay	Marb	YG	CW	REA	Fat
-4	3.6	69	116	21	55	-1	13	2	9	0.19	0.13	45	0.06	-0.02

"Performance herd bull candidate!" 858 lb. 205 wt. and a 1415 lb. yearling wt. He is big, thick, and full of muscle with a large REA and gained 4.5 lbs./day on test. 858 is structurally correct with good feet and legs, he travels well with a long stride and has one of the largest scrotal measurements in the sale. Top 2% CW, 4% YW, 3% TM and 9% WW.



Lot 2

2 DLC MR RAMBO 3125

RED POLLED 100% 1A #1619170

SMJ RAMBO AB U292

{ MLK CRK RAMBO 4145
SMJ A.B. DAY R290

HBR MISS CHICK 741-173

{ MLK CRK EPIC 9183
HBR MISS CHICAWA 518-741

BD	BW
3/17/13	68
205 WT	365 WT
769	1284
TEST ADG	SC
3.5	41.1
%IMF	REA
3.32	13.6
CALVING EASE	DAM'S AGE/MPPA
★★★	2/102.8

EPDs

CED	BW	WW	YW	Milk	TM	ME	HPG	CEM	Stay	Marb	YG	CW	REA	Fat
8	-4.7	63	93	25	57	3	9	9	14	0.63	0.15	18	-0.08	0.02

Here is a bull that combines all the qualities of an outstanding future herd bull. Calving-ease with performance and a very nice phenotype. Weaning off the cow at over 800 lbs. (dam was a first-calf heifer). He is carrying on the high marbling of the Rambo line with a marbling ratio of 109. Top 5% Milk, 6% BW, 7% TM and 15% CED.



Lot 3

3 DLC HAMMER LAD 3131

RED POLLED 100% 1A #1619176

DLC HAMMER 1152

{ HXC JACKHAMMER 8800U
DLC KING ROB LASS 649

DLC MISS CLASSIC 038

{ DLC SIR CLASSIC 5102
DLC MISS HOBO 252

BD	BW
4/10/13	82
205 WT	365 WT
876	1361
TEST ADG	SC
3.4	38.9
%IMF	REA
4.03	15.2
CALVING EASE	DAM'S AGE/MPPA
★	3/105.7

EPDs

CED	BW	WW	YW	Milk	TM	ME	HPG	CEM	Stay	Marb	YG	CW	REA	Fat
1	2.2	78	112	14	53	4	11	4	13	0.47	0.17	39	-0.03	0.00

3131 is a complete package, modest birth weight, 800 lb. weaning weight and over 1300 lb. yearling weight. He also has a large REA and he's the highest marbling bull in the entire offering with a ratio of 138. Top 2% WW, 4% CW, 6% YW and 10% TM.



Lot 4

4 DLC CONQUEST 3140

RED POLLED 100% 1A #1619241

LSF ACQUISITION 0421X

{ HXC CONQUEST 4405P
LSF COVER GIRL LA414 S6074

DLC MS HIGH PRAIRIE 759

{ LELAND HIGH PRAIRIE 5363R
DLC MS DESIGN 083

BD	BW
4/8/13	75
205 WT	365 WT
734	1231
TEST ADG	SC
3.6	36.8
%IMF	REA
2.47	14.1
CALVING EASE	DAM'S AGE/MPPA
★★	6/98.5

EPDs

CED	BW	WW	YW	Milk	TM	ME	HPG	CEM	Stay	Marb	YG	CW	REA	Fat
8	-2.4	56	88	20	48	3	10	2	14	0.49	0.09	19	0.16	0.03

A light birth weight bull with tons of thickness! Dam is hitting home runs year after year!! He is an easy keeping type calf and had over a 14-inch REA. Top 15% BW and 15% Stay.

RED ANGUS YEARLING BULLS



Lot 5

5 **DLC MR ROB ROY 3134**

RED POLLED 99.9% 1B #1619198

DLC ROB ROY 9152

}

BIEBER ROB ROY 10444
DLC MISS LOGAN 472

DLC MS CELEBRATION 742

}

BROWN-LSF CELEBRATION
DLC MS CLASSIC 572

BD	BW
4/3/13	88
205 WT	365 WT
814	1257
TEST ADG	SC
4.1	40.7
%IMF	REA
1.83	13.9
CALVING EASE	DAM'S AGE/MPPA
★	6/101.8

EPDs

CED	BW	WW	YW	Milk	TM	ME	HPG	CEM	Stay	Marb	YG	CW	REA	Fat
1	2.4	58	85	16	45	2	9	6	8	0.27	0.07	24	0.08	0.00

A taller, longer bodied bull, smooth made whose dam is a top producer. He weaned off with a 111 weaning ratio and continued to gain at 4 lbs./day on test.



Lot 6

6 **DLC HAMMER LAD 3155**

RED POLLED 100% 1A #1619178

DLC HAMMER 1152

}

HXC JACKHAMMER 8800U
DLC KING ROB LASS 649

DLC EPIC LASS 045

}

MLK CRK EPIC 7176
DLC MS HIGH PRAIRIE 855

BD	BW
4/18/13	92
205 WT	365 WT
831	1266
TEST ADG	SC
3.6	33.2
%IMF	REA
4.16	14.1
CALVING EASE	DAM'S AGE/MPPA
★	3/106.9

EPDs

CED	BW	WW	YW	Milk	TM	ME	HPG	CEM	Stay	Marb	YG	CW	REA	Fat
-1	1.4	77	112	15	53	3	13	4	12	0.59	0.17	38	0.01	0.01

Here is a top marbling bull with a large REA. He is a heavy weaning bull with weaning ratio of 113. Here is a "cattlemen's type bull!" Top 2% WW, 6% YW, 6% TM, 6% CW and 7% HPG.



Lot 7

7 **DLC ROB ROY 3157**

RED POLLED 99% 1B #1619196

DLC ROB ROY 9152

}

BIEBER ROB ROY 10444
DLC MISS LOGAN 472

DLC MS GRAND CANYON 645

}

LELAND GRAND CANYON 3129
DLC MS UMPIRE 617

BD	BW
4/27/13	88
205 WT	365 WT
812	1268
TEST ADG	SC
3.2	38.0
%IMF	REA
2.28	14.4
CALVING EASE	DAM'S AGE/MPPA
★	7/101.1

EPDs

CED	BW	WW	YW	Milk	TM	ME	HPG	CEM	Stay	Marb	YG	CW	REA	Fat
-1	3.4	58	89	18	47	6	8	4	7	0.29	0.16	28	-0.03	0.02

Here is an all-around good bull: Out of one of our top Red Angus cows with great feet and udder. She is also an easy keeper and great to get along with! He has a modest birth weight and a 110 ratio at weaning.



Lot 8

8 **DLC HAMMER LAD 3147**

RED POLLED 99.9% 1B #1619177

DLC HAMMER 1152

}

HXC JACKHAMMER 8800U
DLC KING ROB LASS 649

DLC MS CHEYENNE 041

}

KOESTER CHEYENNE 706
DLC MS HIGH PRAIRIE 758

BD	BW
4/15/13	80
205 WT	365 WT
750	1219
TEST ADG	SC
3.2	36.1
%IMF	REA
3.66	13.1
CALVING EASE	DAM'S AGE/MPPA
★	3/99.1

EPDs

CED	BW	WW	YW	Milk	TM	ME	HPG	CEM	Stay	Marb	YG	CW	REA	Fat
2	0.1	68	102	11	45	4	12	4	11	0.63	0.19	31	-0.14	0.01

Here is another modest birth weight top marbling Jack Hammer son. He's long and smooth made with a 102 ratio at weaning and a 126 marbling ratio. Top 14% Marb.

RED ANGUS YEARLING BULLS



9 **DLC CHICAWA 3127** RED POLLED 100% 1A #1619227

HBR CHICAWA 062

{ BARM CHICAWA 366-5013
{ HBR SUGARLAND 616-749

DLC MISS CLASSIC 177

{ DLC SIR CLASSIC 5102
{ DLC MISS CLASSIC 449

BD	BW
3/20/13	70
205 WT	365 WT
736	1221
TEST ADG	SC
3.3	39.7
%IMF	REA
2.63	14.9
CALVING EASE	DAM'S AGE/MPPA
★★★	2/100.8

EPDs

CED	BW	WW	YW	Milk	TM	ME	HPG	CEM	Stay	Marb	YG	CW	REA	Fat
4	-3.8	44	65	19	40	1	9	2	11	0.23	-0.03	3	0.16	0.01

Heifer bull with performance. 77 lb. birth-weight to a 1200 lb. yearling weight plus, he posted a 14-inch REA. Top 12% BW.



10 **DLC CONQUEST 353** RED POLLED 100% 1A #1619204

LSF ACQUISITION 0421X

{ HXC CONQUEST 4405P
{ LSF COVER GIRL LA414 S6074

DLC MS ABOVE & BEYOND 865

{ LCC ABOVE & BEYOND 1300J
{ DLC MISS DIVIDE 651

BD	BW
4/11/13	70
205 WT	365 WT
716	1223
TEST ADG	SC
3.5	41.4
%IMF	REA
2.10	14.9
CALVING EASE	DAM'S AGE/MPPA
★★★	5/98

EPDs

CED	BW	WW	YW	Milk	TM	ME	HPG	CEM	Stay	Marb	YG	CW	REA	Fat
13	-4.6	49	82	24	48	4	8	6	15	0.43	0.04	13	0.15	0.02

Calving-ease bull deluxe. He gained over 3.5 lbs. per day, and posted a 1200 + lb. yearling weight. He's also a large scrotal bull with a big REA. Top 2% CED, 5% Stay, 7% BW and 12% Milk.

11 **DLC CONQUEST 383** RED POLLED 99.9% 1B #1619203

LSF ACQUISITION 0421X

{ HXC CONQUEST 4405P
{ LSF COVER GIRL LA414 S6074

DLC MS ABOVE & BEYOND 863

{ LCC ABOVE & BEYOND 1300J
{ DLC MS GRAND CANYON 674

BD	BW
4/19/13	78
205 WT	365 WT
717	1172
TEST ADG	SC
3.2	39.7
%IMF	REA
2.71	15.7
CALVING EASE	DAM'S AGE/MPPA
★★★	5/102

EPDs

CED	BW	WW	YW	Milk	TM	ME	HPG	CEM	Stay	Marb	YG	CW	REA	Fat
11	-2.7	53	84	22	48	4	9	5	15	0.53	0.08	16	0.20	0.03

We've always liked the looks of this Conquest son. Out of one of our top cows, he has the pedigree to be easy-calving and top performing. He is one of the largest REA Red Angus bulls in the offering. Top 5% CED.

12 **DLC MR ROB ROY 3144** RED POLLED 99.7% 1B #1619238

DLC ROB ROY 9152

{ BIEBER ROB ROY 10444
{ DLC MISS LOGAN 472

DLC MS ABOVE & BEYOND 741

{ LCC ABOVE & BEYOND 1300J
{ DLC MISS CANYON 554

BD	BW
4/11/13	95
205 WT	365 WT
703	1173
TEST ADG	SC
3.1	37.9
%IMF	REA
3.68	12.9
CALVING EASE	DAM'S AGE/MPPA
★	6/105.7

EPDs

CED	BW	WW	YW	Milk	TM	ME	HPG	CEM	Stay	Marb	YG	CW	REA	Fat
2	1.8	49	79	24	48	5	9	7	8	0.31	0.13	20	-0.07	0.01

Here's just a big all-around good bull. Dam is ideal, one of the best! He should sire nice looking, good doing calves. He is also a top marbling bull with a 126 marbling ratio.

13 **DLC JACKHAMMER 3133** RED POLLED 100% 1A #1619182

DLC HAMMER 1152

{ HXC JACKHAMMER 8800U
{ DLC KING ROB LASS 649

DLC MS HIGH YIELD 053

{ LSF HIGH YIELD 8088U
{ DLC MISS LOGAN 570

BD	BW
4/15/13	86
205 WT	365 WT
731	1166
TEST ADG	SC
3.9	40.1
%IMF	REA
3.42	13.9
CALVING EASE	DAM'S AGE/MPPA
★	3/96.9

EPDs

CED	BW	WW	YW	Milk	TM	ME	HPG	CEM	Stay	Marb	YG	CW	REA	Fat
-2	2.0	63	93	11	43	4	14	5	13	0.69	0.12	28	-0.05	-0.01

Another good-doing top marbling son of Jack Hammer. Dam has a picture perfect udder and a pleasant personality. Lot 13 also posted a 3.9 lb. per day gain on test.

14 **DLC CHICAWA 3129** RED POLLED 100% 1A #1619174

HBR CHICAWA 062

{ BARM CHICAWA 366-5013
{ HBR SUGARLAND 616-749

DLC LOGAN LASS 031

{ DLC LOGAN LAD 4125
{ DLC MISS CLASSIC 573

BD	BW
3/31/13	50
205 WT	365 WT
691	1148
TEST ADG	SC
3.4	39.6
%IMF	REA
4.12	16.1
CALVING EASE	DAM'S AGE/MPPA
★★★	3/98.9

EPDs

CED	BW	WW	YW	Milk	TM	ME	HPG	CEM	Stay	Marb	YG	CW	REA	Fat
11	-6.8	35	50	20	38	0	11	6	9	0.37	-0.13	-10	0.25	-0.01

Heifer bull with a ton of marbling and REA! Top 1% BW, 5% CED.

RED ANGUS YEARLING BULLS

15 **DLC CONQUEST 382**
 RED POLLED 99.5% 1B #1619195

BD	BW
4/19/13	70
205 WT	365 WT
711	1175
TEST ADG	SC
3.0	41.2
%IMF	REA
2.64	14.6
CALVING EASE	DAM'S AGE/MPPA
★★★	8/99.9

LSF ACQUISITION 0421X { HXC CONQUEST 4405P
LSF COVER GIRL LA414 S6074

DLC MISS CANYON 568 { LELAND GRAND CANYON 3129
DLC MS LADIES MAN 056

EPDs

CED	BW	WW	YW	Milk	TM	ME	HPG	CEM	Stay	Marb	YG	CW	REA	Fat
10	-3.8	51	78	21	46	4	9	3	12	0.47	0.04	11	0.29	0.04

Here is a heifer bull with good performance, muscle, large scrotal and large REA. Dam is an easy keeping cow with a perfect udder.

16 **DLC CONQUEST 3138**
 RED POLLED 100% 1A #1619240

BD	BW
4/9/13	62
205 WT	365 WT
678	1188
TEST ADG	SC
3.5	40.4
%IMF	REA
2.98	13.2
CALVING EASE	DAM'S AGE/MPPA
★★	6/96.8

LSF ACQUISITION 0421X { HXC CONQUEST 4405P
LSF COVER GIRL LA414 S6074

DLC MS HIGH PRAIRIE 758 { LELAND HIGH PRAIRIE 5363R
DLC MISS CLASSIC 444

EPDs

CED	BW	WW	YW	Milk	TM	ME	HPG	CEM	Stay	Marb	YG	CW	REA	Fat
13	-6.0	46	79	18	41	3	10	2	13	0.45	0.06	9	0.11	0.03

Heifer bull with a lot of marbling and thickness throughout. Dam is a gentle, perfect uddered top producer. Top 2% CED and 2% BW.

17 **DLC CONQUEST 354**
 RED POLLED 100% 1A #1619190

BD	BW
4/14/13	60
205 WT	365 WT
666	1047
TEST ADG	SC
3.2	35.5
%IMF	REA
2.75	13.4
CALVING EASE	DAM'S AGE/MPPA
★★★	8/96.6

LSF ACQUISITION 0421X { HXC CONQUEST 4405P
LSF COVER GIRL LA414 S6074

DLC MISS CLASSIC 575 { BADLANDS CLASSIC 069
DLC MS NONE BETTER 502

EPDs

CED	BW	WW	YW	Milk	TM	ME	HPG	CEM	Stay	Marb	YG	CW	REA	Fat
13	-6.0	38	48	17	36	2	9	2	13	0.34	-0.08	-11	0.08	-0.01

Heifer bull out of a free-moving, easy keeping, nicely uddered and consistent producing cow; she is a real "cowman's kind of cow!" Top 2% CED and 2% BW.

18 **DLC TIDAL WAVE 3156**
 RED POLLED 100% 1A #1619184

BD	BW
4/23/13	82
205 WT	365 WT
704	1194
TEST ADG	SC
3.8	41.3
%IMF	REA
2.85	15.2
CALVING EASE	DAM'S AGE/MPPA
★	3/100

L83 TIDAL WAVE 014 { RED SIX MILE TIDAL WAVE 254T
L83 STRAWBERRY 854

DLC MISS LOGAN 063 { DLC LOGAN LAD 4125
DLC MS CLASSIC 572

EPDs

CED	BW	WW	YW	Milk	TM	ME	HPG	CEM	Stay	Marb	YG	CW	REA	Fat
1	0.1	46	76	22	45	-2	13	6	9	0.28	0.00	16	0.01	-0.03

Here's a modest birth-weight, big REA, top gaining Tidal Wave bull that has more than enough performance to "Play with the big boys"! He gained almost 4 lbs. per day on test and he's also a large scrotal bull. Top 6% Fat.



19 **DLC TIDAL WAVE 3154**
 RED POLLED 100% 1A #1619219

BD	BW
4/19/13	92
205 WT	365 WT
687	1196
TEST ADG	SC
3.4	37.2
%IMF	REA
2.20	14.2
CALVING EASE	DAM'S AGE/MPPA
★	4/98.7

L83 TIDAL WAVE 014 { RED SIX MILE TIDAL WAVE 254T
L83 STRAWBERRY 854

DLC MS ROB ROY 988 { BIEBER ROB ROY 10444
DLC MISS DIVIDE 651

EPDs

CED	BW	WW	YW	Milk	TM	ME	HPG	CEM	Stay	Marb	YG	CW	REA	Fat
-2	3.4	55	93	22	50	2	9	5	7	0.23	0.10	31	0.02	-0.01

Here's a good doing, really great looking bull out of probably our best Rob Roy daughter! There may be some extra birth weight here but, there should also be good performance too.

20 **DLC ROB ROY 3158**
 RED POLLED 99.4% 1B #1619205

BD	BW
4/27/13	90
205 WT	365 WT
701	1218
TEST ADG	SC
3.6	40.5
%IMF	REA
3.35	15.0
CALVING EASE	DAM'S AGE/MPPA
★	5/99.6

DLC ROB ROY 9152 { BIEBER ROB ROY 10444
DLC MISS LOGAN 472

DLC MS CANYON 881 { LELAND GRAND CANYON 3129
DLC MS RED TOP 152

EPDs

CED	BW	WW	YW	Milk	TM	ME	HPG	CEM	Stay	Marb	YG	CW	REA	Fat
-1	3.2	58	95	17	46	6	10	4	5	0.35	0.12	32	0.16	0.02

Here's a big REA and high marbling Rob Roy bull - "a carcass bull"! If you are interested in improving your calves' carcasses, take a good look at this guy.

21 **DLC ROB ROY 3174**
 RED POLLED 99.9% 1B #1619206

BD	BW
4/10/13	88
205 WT	365 WT
657	1102
TEST ADG	SC
3.1	33.9
%IMF	REA
2.26	14.4
CALVING EASE	DAM'S AGE/MPPA
★	5/101.8

DLC ROB ROY 9152 { BIEBER ROB ROY 10444
DLC MISS LOGAN 472

DLC MS CLASSIC 882 { DLC MR CLASSIC 4115
DLC MS LOGAN 450

EPDs

CED	BW	WW	YW	Milk	TM	ME	HPG	CEM	Stay	Marb	YG	CW	REA	Fat
0	1.9	45	70	21	43	5	9	4	6	0.23	0.04	15	0.02	-0.01

A moderate birth weight, good-performing Rob Roy with extra length and eye appeal. Dam is a nice going, longer and taller Red Angus cow with a great udder.

RED ANGUS YEARLING BULLS

22

DLC CHICAWA 3130

RED POLLED 99.9% 1B #1619223

HBR CHICAWA 062

{ BARM CHICAWA 366-5013
{ HBR SUGARLAND 616-749

DLC MS CHEYENNE 159

{ KOESTER CHEYENNE 706
{ DLC MS HIGH PRAIRIE 855

BD	BW
3/26/13	62
205 WT	365 WT
745	1140
TEST ADG	SC
2.5	35.4
%IMF	REA
3.77	15.6
CALVING EASE	DAM'S AGE/MPPA
★★★	2/101.2

EPDs

CED	BW	WW	YW	Milk	TM	ME	HPG	CEM	Stay	Marb	YG	CW	REA	Fat
6	-5.2	45	58	22	44	2	11	5	10	0.59	-0.06	-3	0.18	0.01

Heifer bull with extra marbling and a larger REA! His weaning index was 103 off a first calf heifer. Top 4% BW.

23

DLC CHICAWA 3159

RED POLLED 100% 1A #1619231

HBR CHICAWA 062

{ BARM CHICAWA 366-5013
{ HBR SUGARLAND 616-749

DLC MS HAMMER 188

{ HXC JACKHAMMER 8800U
{ DLC MISS HOB0 473

BD	BW
4/25/13	65
205 WT	365 WT
757	1209
TEST ADG	SC
3.8	33.4
%IMF	REA
3.27	14.0
CALVING EASE	DAM'S AGE/MPPA
★★★	2/102

EPDs

CED	BW	WW	YW	Milk	TM	ME	HPG	CEM	Stay	Marb	YG	CW	REA	Fat
4	-3.2	56	78	17	45	3	10	5	12	0.57	0.09	11	0.02	0.02

Heifer bull with extra marbling! He has a 105 weaning index and gained 3.8 lbs. per day on test.

24

DLC CHICAWA 3128

RED POLLED 100% 1A #1619232

HBR CHICAWA 062

{ BARM CHICAWA 366-5013
{ HBR SUGARLAND 616-749

DLC MS GOLDEN BOY 189

{ BHR GOLDEN BOY 453B
{ DLC MS CELEBRATION 743

BD	BW
3/25/13	60
205 WT	365 WT
730	1112
TEST ADG	SC
2.3	40.4
%IMF	REA
2.91	15.2
CALVING EASE	DAM'S AGE/MPPA
★★★	2/100.4

EPDs

CED	BW	WW	YW	Milk	TM	ME	HPG	CEM	Stay	Marb	YG	CW	REA	Fat
6	-4.8	48	61	17	41	1	12	5	12	0.47	-0.05	-1	0.30	0.02

Heifer bull with a big REA. Posting over 700 lbs. at weaning plus he's a big scrotal bull. Top 6% BW.

25

DLC CHICAWA 3139

RED POLLED 100% 1A #1619220

HBR CHICAWA 062

{ BARM CHICAWA 366-5013
{ HBR SUGARLAND 616-749

DLC MISS HAMMER 150

{ HXC JACKHAMMER 8800U
{ DLC MS CLASSIC 572

BD	BW
4/5/13	70
205 WT	365 WT
708	1104
TEST ADG	SC
2.6	35.8
%IMF	REA
3.79	14.1
CALVING EASE	DAM'S AGE/MPPA
★★★	2/99.2

EPDs

CED	BW	WW	YW	Milk	TM	ME	HPG	CEM	Stay	Marb	YG	CW	REA	Fat
1	-2.4	57	73	15	43	2	11	4	12	0.55	0.07	9	0.05	0.02

Heifer bull with extra marbling. Dam is a good looking, easy keeping young cow with a lot of promise.

26

DLC CHICAWA 3126

RED POLLED 99.9% 1B #1619224

HBR CHICAWA 062

{ BARM CHICAWA 366-5013
{ HBR SUGARLAND 616-749

DLC MS CHEYENNE 164

{ KOESTER CHEYENNE 706
{ DLC MS LADIES MAN 143

BD	BW
3/24/13	50
205 WT	365 WT
698	1096
TEST ADG	SC
2.9	30.9
%IMF	REA
2.96	14.4
CALVING EASE	DAM'S AGE/MPPA
★★★	2/98.8

EPDs

CED	BW	WW	YW	Milk	TM	ME	HPG	CEM	Stay	Marb	YG	CW	REA	Fat
10	-7.5	35	41	20	37	1	9	6	10	0.50	-0.09	-17	0.09	0.01

Heifer bull with a lot of eye appeal. He's free moving with a pedigree full of calving ease. Top 1% BW and 8% CED.

27

DLC CHICAWA 3172

RED POLLED 99.9% 1B #1619234

HBR CHICAWA 062

{ BARM CHICAWA 366-5013
{ HBR SUGARLAND 616-749

DLCMISS OSCAR 192

{ RED CROWFOOT OLE'S OSCAR
{ DLC MS LOGAN 450

BD	BW
4/27/13	55
205 WT	365 WT
707	1153
TEST ADG	SC
3.3	32.5
%IMF	REA
3.05	15.7
CALVING EASE	DAM'S AGE/MPPA
★★★	2/99.2

EPDs

CED	BW	WW	YW	Milk	TM	ME	HPG	CEM	Stay	Marb	YG	CW	REA	Fat
6	-5.8	38	53	23	42	1	8	7	10	0.62	-0.06	-7	0.18	0.01

Heifer bull with plenty of marbling and REA. Built-in calving ease and eye appeal. Top 3% BW.



28

DLC CHICAWA 3145

RED POLLED 99.9% 1B #1619235

HBR CHICAWA 062

{ BARM CHICAWA 366-5013
{ HBR SUGARLAND 616-749

DLC MS GOLDEN BOY 193

{ BHR GOLDEN BOY 453B
{ DLC MS KING ROB 763

BD	BW
4/19/13	60
205 WT	365 WT
707	1088
TEST ADG	SC
2.4	38.2
%IMF	REA
1.75	14.6
CALVING EASE	DAM'S AGE/MPPA
★★★	2/99.2

EPDs

CED	BW	WW	YW	Milk	TM	ME	HPG	CEM	Stay	Marb	YG	CW	REA	Fat
6	-4.5	44	55	17	39	2	13	4	11	0.37	-0.04	-5	0.23	0.02

Heifer bull with a large REA. Dam is a nice, easy-going, thick-made young cow for whom we have high hopes for a great career. Top 7% BW.

RED ANGUS YEARLING BULLS



29 DLC ROBY ROY 3171

RED POLLED 99.6% 1B COMMERCIAL

DLC ROB ROY 9152

{ BIEBER ROB ROY 10444
DLC MISS LOGAN 472

DLC TREND SETTER 862

{ BASIN TREND SETTER 6074
DLC MISS CLASSIC 440

BD	BW
4/27/13	72
205 WT	365 WT
673	1185
TEST ADG	SC
3.3	37.0
%IMF	REA
2.32	12.3
CALVING EASE	DAM'S AGE/MPPA
★★	5/103.1

EPDs

CE	BW	WW	YW	Milk	TM	ME	HPG	CEM	Stay	Marb	YG	CW	REA	Fat
2.6	29	56	16	30	7	2			10	0.18	0.06		0.10	-0.01

Here's a light birth weight bull out of a Rob Roy and a great Trend Setter daughter. He gained 3.8 lbs. on test. Dam is an extra long bodied nicely uddered cow. *No Registration papers.*



30 DLC ROBY ROY 3153

RED POLLED 1B COMERCIAL

DLC ROB ROY 9152

{ BIEBER ROB ROY 10444
DLC MISS LOGAN 472

DLC CLASSIC 554

{

BD	BW
4/23/13	88
205 WT	365 WT
722	1178
TEST ADG	SC
3.0	36.0
%IMF	REA
1.81	13.4
CALVING EASE	DAM'S AGE/MPPA
★	8/NA

EPDs

CE	BW	WW	YW	Milk	TM	ME	HPG	CEM	Stay	Marb	YG	CW	REA	Fat
2.8	34	62	18	34	9	4			7	0.04	0.18		0.09	0.00

Here's a big, thick, muscular bull. Dam is built the same way. A lot of beef with little feed in this guy! *No Registration papers.*

Red Angus Guide to EPDs

Courtesy of the Red Angus Association of America For more information on EPDs, visit redangus.org.

CED Calving Ease Direct – predicts the probability of calves being born unassisted out of 2-year-old heifers.

BW..... Birth Weight – predicts the difference, in pounds, for birth weight, and is also used in the calculation of Red Angus' Calving Ease Direct (CED) EPD.

WW Weaning Weight – predicts the difference, in pounds, for weaning weight (adjusted to age of dam and a standard 205 days of age).

YW..... Yearling Weight – predicts the expected difference, in pounds, for yearling weight (adjusted to a standard 365 days of age).

Milk Milk – predicts the difference in maternal production of an individual animal's daughters as expressed by the weaning weight of their calves.

TM Total Maternal – predicts the rancher's actual observation of weaning weights of calves raised by an animal's daughters. TM EPD = Milk EPD + 1/2 (WW EPD)

ME Maintenance Energy – predicts a bull's daughters that will require less feed to maintain her body weight and condition; thus increasing profitability.

Dahl Land & Cattle Co. Annual Production Sale

HPG..... Heifer Pregnancy – predicts the probability of heifers conceiving to calve at two years of age.

CEM Calving Ease Maternal – predicts the probability of a given animal's daughters calving unassisted at two years of age.

STAY.... Stayability – predicts the probability that a bull's daughters will remain in the herd until at least 6 years of age.

MARB .. Marbling Score – predicts differences for carcass marbling score as expressed in marbling score units. Higher marbling scores are positively correlated with higher carcass quality grades.

YG Yield Grade – predicts differences in USDA Yield Grade score, and is expressed in USDA Yield Grade units.

CW..... Carcass Weight – predicts differences in hot carcass weight and is expressed in pounds. Because Red Angus' CW EPD is a multi-trait.

REA Rib Eye Area – predicts differences of carcass Rib Eye Area between the 12th and 13th rib.

FAT 12th Rib Fat Thickness – predicts differences for carcass fat depth over the 12th rib, as expressed in inches.

SOUTH DEVON YEARLING BULLS



31 **DLC SHILO LAD 3102**

RED POLLED FULLBLOOD #203706

DLC SHILO LAD 1100 { BC SHILO 63S
MJB ROCKETTE 9594W

DLC MS LEGACY 008X { DLC LEGACY 55
DLC ROCKETTE 607

BD	BW
4/20/13	90
205 WT	365 WT
809	1347
TEST ADG	SC
3.8	36.5
%IMF	REA
2.34	15.2
CALVING EASE	PROG/AVG WR
★	2/115

EPDs

BW	WW	YW	MILK	MWW	FAT	REA	MARB	RY%	C WT
5.0	69	120	40	75	0.01	0.16	0.4	0.7	38.1

Check out this bull's performance record and his breed leading EPDs. Come and admire him on sale day and you'll agree – he's the best South Devon bull we've raised to date! We would like to retain 1/2 semen rights on 3102 so we are selling full possession and 1/2 semen interest.



32 **DLC LEGEND LAD 3115**

BLACK SCURRED 85.2% #203703

MJB LEGEND 338X { DLCC LEGEND 145T
MJB EMPRESS 7542T

MJB ROCKETTE 9594W { DLC THE ROCK 52
MJB SERENITY 6642S

BD	BW
4/14/13	100
205 WT	365 WT
816	1368
TEST ADG	SC
4.5	
%IMF	REA
2.24	15.1
CALVING EASE	PROG/AVG WR
★	3/117

EPDs

BW	WW	YW	MILK	MWW	FAT	REA	MARB	RY%	C WT
4.1	67	110	34	67	0.01	0.00	0.9	0.4	29.6

This bull is a growthy, correctly made, thick, performance bull. He posted a 121 weaning ratio. He gained 4.5 lbs. per day on test and scanned a 15 inch REA, plus he's double black and out of a great producing cow with the world's best disposition.



33 **DLC LEGEND 3107**

BLACK POLLED 85.2% #203696

MJB LEGEND 338X { DLCC LEGEND 145T
MJB EMPRESS 7542T

DLC MISS LEGACY 926W { DLC LEGACY 55
DLC MISS ROYAL 614

BD	BW
4/8/13	90
205 WT	365 WT
768	1331
TEST ADG	SC
3.9	40.4
%IMF	REA
2.92	15.5
CALVING EASE	PROG/AVG WR
★	3/117

EPDs

BW	WW	YW	MILK	MWW	FAT	REA	MARB	RY%	C WT
3.0	55	92	35	62	0.02	0.05	0.8	0.5	22.9

3107 is a great performance bull with top EPDs. He ratioed 114 at weaning, gained almost 4 lbs. per day on test, scanned a 15.5 REA and he has one of the largest scrotums in the offering. He is out of a very feminine, top producing young cow with great feet, legs and udder.



34 **DLC LEGEND 3124**

BLACK POLLED 85.2% #203690

MJB LEGEND 338X { DLCC LEGEND 145T
MJB EMPRESS 7542T

DLC MS BLACK ROCK 910W { X-E ROCK P296
DLC MISS IMPACT 038

BD	BW
4/18/13	88
205 WT	365 WT
754	1249
TEST ADG	SC
3.5	36.1
%IMF	REA
2.10	14.1
CALVING EASE	PROG/AVG WR
★	3/111

EPDs

BW	WW	YW	MILK	MWW	FAT	REA	MARB	RY%	C WT
3.2	61	100	28	58	0.01	0.05	0.8	0.5	27.0

3124 is a taller, long bodied, double black, moderate birth weight South Devon bull. He posted a 112 weaning ratio and a 1249 yearling weight. His dam is sound footed, perfect uddered and is an easy keeping cow.

SOUTH DEVON YEARLING BULLS



Lot 35

35 **DLC LEGEND 3105** BLACK POLLED 85.2% #203674

MJB LEGEND 338X

{ DLCC LEGEND 145T
MJB EMPRESS 7542T

DLC MS SURE ENUF 811U

{ DLCC SURE-ENUF
DLC MISS ROYAL 631

BD	BW
4/4/13	88
205 WT	365 WT
730	1223
TEST ADG	SC
3.1	36.5
%IMF	REA
2.34	13.8
CALVING EASE	PROG/AVG WR
★	3/104

EPDs

BW	WW	YW	MILK	MWW	FAT	REA	MARB	RY%	C WT
1.9	49	87	25	50	0.01	0.13	0.8	0.6	26.8

Here is yet another double black, performance minded 338 son. He has excellent EPDs and ratioed 105 at weaning. His dam is a taller, longer bodied cow with great feet and an ideal udder.



Lot 36

36 **DLC SHILO LAD 3112** BLACK POLLED FULLBLOOD #203705

DLC SHILO LAD 1100

{ BC SHILO 63S
MJB ROCKETTE 9594W

DLC MS BLK LEGACY 007

{ DLC LEGACY 55
DLC MS BLACK ENUF 707

BD	BW
4/14/13	92
205 WT	365 WT
713	1217
TEST ADG	SC
3.6	36.5
%IMF	REA
2.73	15.0
CALVING EASE	PROG/AVG WR
★	2/101

EPDs

BW	WW	YW	MILK	MWW	FAT	REA	MARB	RY%	C WT
3.9	53	96	32	58	0.01	0.11	0.6	0.6	29.2

This is an all around good bull! Great EPDs, good performance, good carcass data, great pedigree and out of one of our best and most favorite cows! Plus he's double black!!

37 **DLC SHILO LAD 3100** BLACK POLLED FULLBLOOD #203708

DLC SHILO LAD 1100

{ BC SHILO 63S
MJB ROCKETTE 9594W

DLC BLACK LEGACY 010

{ DLC LEGACY 55
DLC MS BLK BOLERO 327

BD	BW
4/3/13	88
205 WT	365 WT
720	1230
TEST ADG	SC
3.6	31.9
%IMF	REA
3.04	14.5
CALVING EASE	PROG/AVG WR
★	2/109

EPDs

BW	WW	YW	MILK	MWW	FAT	REA	MARB	RY%	C WT
4.1	51	95	36	62	0.02	0.11	0.7	0.5	27.0

Here is a high marbling, big REA, double black, long sided, free moving South Devon bull. This guy should work great on smaller framed type cows. He was born polled but grew small scurs.

38 **DLC SHILO LAD 3120** RED POLLED FULLBLOOD #203710

DLC SHILO LAD 1100

{ BC SHILO 63S
MJB ROCKETTE 9594W

DLC MS HUDSON 018

{ DLCC HUDSON 82U
DLC MS ROYAL L21-636

BD	BW
4/23/13	94
205 WT	365 WT
731	1250
TEST ADG	SC
3.2	37.7
%IMF	REA
2.09	13.5
CALVING EASE	PROG/AVG WR
★	2/100

EPDs

BW	WW	YW	MILK	MWW	FAT	REA	MARB	RY%	C WT
4.6	56	108	31	60	0.01	0.26	0.6	0.8	38.8

Here is a bull with a very interesting pedigree, easy-keeping individuals throughout! If you like cattle that gain with fewer inputs, this guy is worth taking a look at!



Lot 39

39 **DLC HUDSON LAD 3103** RED POLLED PUREBRED #203645

DLCC HUDSON 82U

{ MJB SHUR LOC 106S
DLCC PRINCESS MIA 78P

DLC BOLERO LASS 601

{ DLC BOLERO LAD K98
DLC MISS MARVEL 306

BD	BW
4/20/13	90
205 WT	365 WT
654	1179
TEST ADG	SC
3.7	35.9
%IMF	REA
2.91	13.0
CALVING EASE	PROG/AVG WR
★	6/102

EPDs

BW	WW	YW	MILK	MWW	FAT	REA	MARB	RY%	C WT
2.5	37	79	28	47	0.02	0.46	0.4	1.1	32.7

Well, you've found him! The only son in the sale sired by the great Hudson! Profit minded cattlemen will enjoy this guy. He's out of one of our favorite and out of our top producing Bolero daughters. Check him out on sale day.

SOUTH DEVON YEARLING BULLS



40 **DLC LEGACY LAD 3111**
RED POLLED PUREBRED #203653

BD	BW
4/19/13	88
205 WT	365 WT
721	1186
TEST ADG	SC
3.2	35.3
%IMF	REA
3.06	13.2
CALVING EASE	PROG/AVG WR
★	6/99

DLC LEGACY 55 { SBCC ROYAL LEGACY 5123
 DLC MISS BOLERO 221

DLC MS ROYAL 40-637 { DLC MR ROYAL 40
 DLC MISS ROYAL 130

EPDs

BW	WW	YW	MILK	MWW	FAT	REA	MARB	RY%	C WT
3.0	48	86	33	57	0.01	0.21	0.0	0.8	26.4

This is one of the last bulls sired by the great "Calendar bull" 55T. He is out of a great cow! Modest birth weight ratioed 107 at weaning and continued to grow! Expect great females out of this bull for this is a female making pedigree!

41 **DLC LEGEND 3121**
BLACK POLLED 85.2% #203699

BD	BW
4/16/13	82
205 WT	365 WT
669	1168
TEST ADG	SC
3.4	35.5
%IMF	REA
3.15	13.9
CALVING EASE	PROG/AVG WR
★★	3/104

MJB LEGEND 338X { DLCC LEGEND 145T
 MJB EMPRESS 7542T

DLC MS ROYAL LAD 934W { DLC MR ROYAL DUKE 40
 DLC MISS MARVEL 306

EPDs

BW	WW	YW	MILK	MWW	FAT	REA	MARB	RY%	C WT
1.2	43	73	28	50	0.01	0.08	0.8	0.5	18.1

This guy is one of the top marbling South Devon bulls in the offering. He also has a modest 82-lb. birth weight. He has South Devon calving-ease plus good rate-of-gain. Dam is a long-bodied, smooth made cow with a perfect udder!

42 **DLC LEGEND 3166**
BLACK POLLED 85.2% #203689

BD	BW
4/29/13	86
205 WT	365 WT
753	1215
TEST ADG	SC
3.3	36.4
%IMF	REA
2.25 ACT	14.4 ACT
CALVING EASE	PROG/AVG WR
★	3/110

MJB LEGEND 338X { DLCC LEGEND 145T
 MJB EMPRESS 7542T

DLC MISS ROYAL 905W { DLC MR ROYAL DUKE 40
 DLC BOLERO LASS 326

EPDs

BW	WW	YW	MILK	MWW	FAT	REA	MARB	RY%	C WT
2.2	47	78	31	55	0.01	0.08	1.0	0.5	20.2

Here is the youngest bull in the sale. However, since he posted such top-notch performance, we felt he needed to be in the sale! Modest birth weight, 112 ratio at weaning, 1200-lb. yearling weight, plus he scanned a 14 inch REA. Dam is a great young cow with excellent structure.



43 **DLC LEGEND 313**
BLACK POLLED 85.2% #203698

BD	BW
4/20/13	85
205 WT	365 WT
693	1140
TEST ADG	SC
3.3	37.2
%IMF	REA
2.87	14.4
CALVING EASE	PROG/AVG WR
★	3/100

MJB LEGEND 338X { DLCC LEGEND 145T
 MJB EMPRESS 7542T

DLC LADY LEGACY 931W { DLC LEGACY 55
 DLC MS ROYAL L21-636

EPDs

BW	WW	YW	MILK	MWW	FAT	REA	MARB	RY%	C WT
2.0	44	72	28	50	0.02	0.04	0.8	0.4	18.6

313 could be an all-around type sire. Modest birth weight, great weaning data, good feedlot gains and a top yearling weight. He also has a big REA, big scrotal and out of a great cow!

44 **DLC SHILO LAD 3101**
BLACK POLLED FULLBLOOD #203720

BD	BW
4/7/13	88
205 WT	365 WT
725	1174
TEST ADG	SC
3.1	37.3
%IMF	REA
2.92	13.3
CALVING EASE	PROG/AVG WR
★	2/104

DLC SHILO LAD 1100 { BC SHILO 63S
 MJB ROCKETTE 9594W

DLC MS BLK LEGACY 260 { DLC LEGACY 67U
 DLC MS SURE ENUF 811U

EPDs

BW	WW	YW	MILK	MWW	FAT	REA	MARB	RY%	C WT
2.9	53	97	32	58	0.01	0.22	0.6	0.7	34.7

Here is a double black bull with great EPDs, moderately framed, easy-keeping son of Shilo. His dam is a smaller framed, good footed and has a picture-perfect udder!

45 **DLC SHILO LAD 3109**
RED POLLED FULLBLOOD #203716

BD	BW
4/12/13	80
205 WT	365 WT
726	1171
TEST ADG	SC
3.3	36.3
%IMF	REA
1.84	14.6
CALVING EASE	PROG/AVG WR
★★	2/104

DLC SHILO LAD 1100 { BC SHILO 63S
 MJB ROCKETTE 9594W

DLC MS HUDSON 029 { DLCC HUDSON 82U
 DLC ROCKETTE 729

EPDs

BW	WW	YW	MILK	MWW	FAT	REA	MARB	RY%	C WT
2.2	54	99	32	58	0.01	0.27	0.5	0.9	37.6

3109 is a low birth weight South Devon bull with a 108 weaning ratio, gaining over 3 lbs. per day on test. Plus, he scanned a 14.6 REA. Check out this guy's EPDs!

SOUTH DEVON YEARLING BULLS



Lot 46

46 **DLC LEGEND 3119**
RED SCURRED 85.2% #203697

MJB LEGEND 338X { DLCC LEGEND 145T
MJB EMPRESS 7542T

DLC MS LEGACY 929W { DLC LEGACY 55
DLC MISS ROYAL 631

BD	BW
4/13/13	92
205 WT	365 WT
674	1124
TEST ADG	SC
3.5	37.0
%IMF	REA
3.67	14.7
CALVING EASE	PROG/AVG WR
★	3/101

EPDs

BW	WW	YW	MILK	MWW	FAT	REA	MARB	RY%	C WT
2.5	43	75	28	49	0.02	0.06	0.9	0.4	20.8

Here's a cowman's bull! EPDs plus REA plus marbling and he gained over 3.5 lbs. per day on our high roughage ration. Dam has a perfect udder, great disposition and always brings home a good one! 3119 was born polled but grew small scurs.



Lo 47

47 **DLC LEGACY 3118**
RED POLLED FULLBLOOD #203634

DLC LEGACY 55 { SBCC ROYAL LEGACY 5123
DLC MISS BOLERO 221

DLC MISS MARVEL 333 { B3C SQUIRT "EM" OUT 5L
DLC MISS IMPACT 112

BD	BW
4/21/13	78
205 WT	365 WT
746	1176
TEST ADG	SC
3.1	39.9
%IMF	REA
2.22	13.0
CALVING EASE	PROG/AVG WR
★★	8/111

EPDs

BW	WW	YW	MILK	MWW	FAT	REA	MARB	RY%	C WT
2.9	51	84	40	65	0.02	0.11	0.4	0.6	25.6

3118 is a light birth weight, good performing South Devon son of 55T. He has a 101 weaning ratio and a large scrotal measurement. Dam is an easy-fleshing, good footed, nice uddered Marvel cow. Please use this guy with caution on 1st calf heifers as 333 has a history of bigger birth weights, averaging 84 lbs. on 8 calves.

48 **DLC LEGACY 3163**
RED POLLED PUREBRED #203669

DLC LEGACY 55 { SBCC ROYAL LEGACY 5123
DLC MISS BOLERO 221

DLC ROCKETTE 800U { X-E ROCK P296
DLC MISS ROYAL 236

BD	BW
4/23/13	82
205 WT	365 WT
665	1122
TEST ADG	SC
2.8	38.2
%IMF	REA
2.26	15.1
CALVING EASE	PROG/AVG WR
★★	4/106

EPDs

BW	WW	YW	MILK	MWW	FAT	REA	MARB	RY%	C WT
1.1	36	74	40	57	0.02	0.14	0.4	0.5	23.1

3163 is yet another low birth weight 55T son with a below breed average birth weight EPD. He is long bodied, smooth made and travels well. His dam is easy-fleshing with good muscle expression.

49 **DLC SHILO LAD 326**
BLACK POLLED FULLBLOOD #203717

DLC SHILO LAD 1100 { BC SHILO 63S
MJB ROCKETTE 9594W

DLC MS BLK HUDSON 075 { DLCC HUDSON 82U
DLC MS BLACK ROYAL 630

BD	BW
5/2/13	82
205 WT	365 WT
611	1113
TEST ADG	SC
3.6	32.7
%IMF	REA
1.54 ACT	13.2 ACT
CALVING EASE	PROG/AVG WR
★★	2/102

EPDs

BW	WW	YW	MILK	MWW	FAT	REA	MARB	RY%	C WT
1.5	39	85	33	52	0.01	0.25	0.6	0.8	30.0

This is the youngest bull in the sale. He has great numbers and performance. He's a modest birth weight, double black Shilo son with good thickness and good feet and legs.



SOUTH DEVON YEARLING BULLS

50

DLC SHILO LAD 307

BLACK POLLED FULLBLOOD #203709

BD	BW
4/25/13	86
205 WT	365 WT
625	1061
TEST ADG	SC
2.7	35.7
%IMF	REA
2.61	12.9
CALVING EASE	PROG/AVG WR
★	2/98

DLC SHILO LAD 1100

{ BC SHILO 63S
MJB ROCKETTE 9594W

DLC MISS ROYAL 013

{ DLC MR ROYAL DUKE 40
DLC BOLERO LASS 738

EPDs

BW	WW	YW	MILK	MWW	FAT	REA	MARB	RY%	C WT
2.7	36	74	30	48	0.01	0.17	0.8	0.6	23.9

Here's a good doing Shilo son out of a moderate framed, thick made Duke daughter. His grandmother is an easy-keeping, perfect uddered Bolero cow. His pedigree is filled with good doing, easy-fleshing cattle.

53

DLC LEGEND 3167

RED POLLED 85.2% #203671

BD	BW
4/24/13	85
205 WT	365 WT
664	1139
TEST ADG	SC
2.9	40.1
%IMF	REA
2.81	13.5
CALVING EASE	PROG/AVG WR
★	4/100

MJB LEGEND 338X

{ DLCC LEGEND 145T
MJB EMPRESS 7542T

DLC MISS LEGACY 806U

{ SBCC ROYAL LEGACY 5123
DLC MISS BOLERO 507

EPDs

BW	WW	YW	MILK	MWW	FAT	REA	MARB	RY%	C WT
2.8	38	63	26	45	0.01	0.13	0.6	0.6	15.8

3167 is a long bodied, free moving bull with a large REA and is high in marbling. Modest birth weight, large scrotal, his dam is very feminine and has a picture-perfect udder.

54

DLC LEGEND 3104

BLACK PUREBRED COMMERCIAL

BD	BW
4/16/13	78
205 WT	365 WT
670	1132
TEST ADG	SC
3.0	36.0
%IMF	REA
1.55	14.7
CALVING EASE	PROG/AVG WR
★★	5/NA

MJB LEGEND 338X

{ DLCC LEGEND 145T
MJB EMPRESS 7542T

DLC SURENUF 816

EPDs

BW	WW	YW	MILK	MWW	FAT	REA	MARB	RY%	C WT
-0.3	36	79	33	52					

3104 is a non-registered, double black, light birth weight 338 son. He scanned a large REA. His dam has a history of smaller birth weights; she's a smaller framed easy keeping Sure Enuf daughter.



South Devon Guide to EPDs

Courtesy of the North American South Devon Association *For more information on EPDs, visit southdevon.com.*

Birth EPD (pounds) is based on the measured birth weight of progeny, adjusted for dam age. The lower the value the lighter the calf at birth and the lower the likelihood of a difficult birth. This is particularly important when selecting sires for use over heifers.

Weaning EPD (pounds) is calculated from the weight of progeny taken between 80 and 300 days of age. Values are adjusted to 205 days and for age of dam. This EPD is the best single estimate of an animal's genetic merit for growth to early ages.

Yearling EPD (pounds) is calculated from the weight of progeny taken between 301 and 450 days of age, adjusted to 365 days and for age of dam. This EPD is the best single estimate of a sire's genetic merit for yearling weight.

Scrotal Circumference EPD (centimetres) is calculated from measurements of scrotal size in yearling bulls, adjusted to 365 days. Scrotal circumference is a good indicator of puberty, fertility and semen quality/quantity. Increased scrotal size will also result in decreased age of puberty in daughters and greater lifetime production. Positive EPD values indicate larger scrotal circumference.

Milk EPD (pounds) is an estimate of an animal's milking ability. For sires, this EPD indicates the effect of the daughter's milking ability, inherited from the sire, on the weaning and yearling weights of her calves. For dams, it indicates her own milking ability.

Maternal Weaning Weight EPD (pounds) is a combination of Milk and Weaning EPDs and estimates the genetic merit of the animal to produce a calf at weaning.



We sold 100 April-born steers on Oct. 31, 2013, at Napoleon Livestock. With no creep, right off the cow and after a 30-mile haul, they weighed 622 lbs. and topped the market that day. They went to Wayne Schulz's feedlot and were fed for a 3.0-lb.-per-day gain. On Jan. 20, 2014, they weighed 899 lbs. and had gained 3.42 lbs. per day during one of the coldest winters in recent memory. There was only one calf doctored in the group. All of these steers were out of F1 cows.

On Jan. 24, 2014, we sold another load of steers that weighed 813 lbs. and averaged over \$1,300.

We prove that our genetics work and we offer those same genetics to you!

Dahl Land & Cattle Co. Annual Production Sale

POUND MAKER YEARLING BULLS

55

DLC MR COTEAU 499

BLACK POLLED 25DS,50AR,23SA #203658

DLC CLASSIC LAD 070

{ DLC SIR CLASSIC 5102
{ DLC MISS CANYON 554

DLC MS COTEAU 824

{ DLC HIGH PLAINS 278
{ DLC MS BLACK IMPACT 482

BD	BW
4/19/13	92
205 WT	365 WT
672	1223
TEST ADG	SC
3.9	38.2
%IMF	REA
3.01	14.9
CALVING EASE	PROG/AVG WR
★	5/96

EPDs

BW	WW	YW	MILK	MWW	FAT	REA	MARB	RY%	C WT
2.1	36	68	22	40	0.00	0.15	-0.2	0.8	19.1

499 is a stout bull who puts growth, muscle and maternal values in one package. He gained almost 4 lbs./day at the feedlot. He scanned a large REA and he's great on his marbling score, plus he has a large scrotal measurement. 499 is also out of a great cow, she's long, thick and feminine.

56

DLC COTEAU CLASSIC 491

BLACK POLLED 50DS, 50AR #203724

DLC CLASSIC 167

{ DLC SIR CLASSIC 5102
{ DLC LADY LOGAN 563

DLC HUDSON LASS 101

{ DLCC HUDSON 82U
{ MJB DAQUARI 5671R

BD	BW
3/30/13	82
205 WT	365 WT
748	1204
TEST ADG	SC
3.2	38.3
%IMF	REA
2.37	15.6
CALVING EASE	PROG/AVG WR
★	1/107

EPDs

BW	WW	YW	MILK	MWW	FAT	REA	MARB	RY%	C WT
1.7	51	101	26	52	0.00	0.41	0.0	1.1	44.0

A big growth, high gaining bull from a young productive cow. He scanned a 15.6 REA, his weaning ratio was 107 and he is over 1200 lbs. as a yearling. Lot 56 has impressive EPDs across the board. He grew small scurrs since weaning.

57

DLC COTEAU 492

BLACK POLLED 22DS, 50AR, 28SA #203667

DLC CLASSIC LAD 070

{ DLC SIR CLASSIC 5102
{ DLC MISS CANYON 554

DLC MS COTEAU 913

{ DLC HIGH PLAINS P38
{ DLC MISS BOLERO 501

BD	BW
4/5/13	88
205 WT	365 WT
586	1090
TEST ADG	SC
3.5	34.0
%IMF	REA
2.26	13.9
CALVING EASE	PROG/AVG WR
★★	5/93

EPDs

BW	WW	YW	MILK	MWW	FAT	REA	MARB	RY%	C WT
-0.6	18	50	20	29	0.01	0.18	0.1	0.7	15.5

Here's a modest birth weight black Pound Maker bull that is in the top 10% of the breed for birth weight EPD (South Devon). He also gained 3.5 lbs. per day and scanned a 15.6 REA. Lot 57's dam is smaller framed, easy-keeping, free moving and perfect uddered.

58

DLC COTEAU 506

RED POLLED 19DS, 75AR, 55A #203682

DLC CLASSIC LAD 070

{ DLC SIR CLASSIC 5102
{ DLC MISS CANYON 554

DLC MS RED COTEAU 895U

{ DLC SIR CLASSIC 5102
{ DLC MS ROYAL 012

BD	BW
4/20/13	90
205 WT	365 WT
712	1254
TEST ADG	SC
3.4	38.1
%IMF	REA
1.87	15.2
CALVING EASE	PROG/AVG WR
★	4/105

EPDs

BW	WW	YW	MILK	MWW	FAT	REA	MARB	RY%	C WT
1.7	42	92	25	47	0.00	0.31	-0.1	1.0	34.2

Here's a big, long, tall Pound Maker who is doing everything right. Progressive cattle-men will appreciate all of this guy's stats.



Lot 59

59

DLC COTEAU 508

RED POLLED 72DS, 25AR,3AN #203701

DLC MR ROYAL 187

{ DLC MR ROYAL DUKE 40
{ DLC MISS BOLERO 507

DLC MS RED COTEAU 948W

{ DLC LOGAN LAD 4125
{ DLC MS ROYAL DUKE 303

BD	BW
4/23/13	82
205 WT	365 WT
650	1166
TEST ADG	SC
3.5	36.2
%IMF	REA
3.57	15.9
CALVING EASE	PROG/AVG WR
★★	3/93

EPDs

BW	WW	YW	MILK	MWW	FAT	REA	MARB	RY%	C WT
0.8	34	70	30	47	0.01	0.32	0.3	0.9	23.4

This guy has it all! Modest birth weight good weaning weight, he gained 3.5 lbs. per day on test plus he's a big REA bull with above average marbling.



60

DLC COTEAU 503

RED POLLED 50DS, 50AR #203734

DLC CLASSIC 167

{ DLC SIR CLASSIC 5102
{ DLC LADY LOGAN 563

DLC LEGACY LASS 123

{ DLC LEGACY 71

BD	BW
4/22/13	60
205 WT	365 WT
698	1020
TEST ADG	SC
2.6	35.6
%IMF	REA
2.15	13.7
CALVING EASE	PROG/AVG WR
★★	1/104

EPDs

BW	WW	YW	MILK	MWW	FAT	REA	MARB	RY%	C WT
-0.9	49	81	24	48	0.00	0.31	0.0	1.0	35.2

503 is a light birth weight bull with a weaning index of 104. His sire comes from a long history of calving-ease and his dam is a good, thick made, young cow with a nice disposition and great feet and legs.

POUND MAKER YEARLING BULLS



61 **DLC COTEAU 106A** BLACK POLLED 13DS, 63AR, 25SA #203747

DLC'S OSCAR 1191 { RED CROWFOOT OLE'S OSCAR
DLC MISS CLASSIC 444

DLC MISS COTEAU 400 { DLC SPARKY 6170
DLC MS RED COTEAU 951W

BD	BW
3/21/13	52
205 WT	365 WT
667	1073
TEST ADG	SC
2.8	33.7
%IMF	REA
2.52	13.6
CALVING EASE	PROG/AVG WR
★★	1/100

EPDs

BW	WW	YW	MILK	MWW	FAT	REA	MARB	RY%	C WT
-4.3	20	42	19	29	0.01	0.20	-0.2		16.7

This is a long, clean, smooth, taller made Pound Maker with a breed-leading birth weight EPD. He comes out of a young Saler cross cow who has calving-ease throughout her pedigree.



Lot 62

62 **DLC COTEAU CLASSIC 490** RED POLLED 44DS, 53AR, 3AN #203723

DLC CLASSIC 167 { DLC SIR CLASSIC 5102
DLC LADY LOGAN 563

DLC MS SURE THING 100 { DLCC SURE THING TOO 119T
MJB MONARCH 9613W

BD	BW
4/7/13	70
205 WT	365 WT
680	1056
TEST ADG	SC
2.8	36.5
%IMF	REA
2.79	13.7
CALVING EASE	PROG/AVG WR
★★	1/101

EPDs

BW	WW	YW	MILK	MWW	FAT	REA	MARB	RY%	C WT
1.2	52	93	24	50	0.00	0.27	0.3	0.9	40.1

490 is another light birth weight, calving-ease style bull with a smooth structure. Lot 62 also has excellent weaning weight and yearling weight EPDs. His dam is an ideal Sure Thing Too daughter who we think has a very bright future.

63 **DLC COTEAU 125** RED POLLED 13DS, 88AR #203743

DLC CLASSIC 167 { DLC SIR CLASSIC 5102
DLC LADY LOGAN 563

DLC MS RED COTEAU 344 { DLC ROB ROY 9152
DLC MS RED COTEAU 8154U

BD	BW
4/6/13	80
205 WT	365 WT
693	1086
TEST ADG	SC
2.8	36.2
%IMF	REA
2.84	13.3
CALVING EASE	PROG/AVG WR
★	1/100

EPDs

BW	WW	YW	MILK	MWW	FAT	REA	MARB	RY%	C WT
2.9	54	101	23	50	0.00	0.30	0.0	0.9	38.4

125 is a long, smooth-made 167 son with a deep rib and thick pattern. His dam is easy-fleshing and free moving with a picture perfect udder.

64 **DLC COTEAU 153** BLACK POLLED 5DS, 81AR, 14SA #203748

DLC'S OSCAR 1191 { RED CROWFOOT OLE'S OSCAR
DLC MISS CLASSIC 444

DLC MS RAMPAGE 403 { DLC RAMPAGE 7123
DLC MS BLACK COTEAU 174W

BD	BW
4/16/13	60
205 WT	365 WT
659	1113
TEST ADG	SC
2.7	38.2
%IMF	REA
2.66	12.9
CALVING EASE	PROG/AVG WR
★★	1/98

EPDs

BW	WW	YW	MILK	MWW	FAT	REA	MARB	RY%	C WT
-2.2	30	53	20	35	0.01	0.20	-0.1		17.8

This is a nice-made, light birth weight, black Pound Maker out of the Ole 1191 calving-ease specialist! He's long-bodied, smooth shouldered and free-moving.



65 **DLC COTEAU 494** RED POLLED 9DS, 63AR, 27SA #203687

DLC CLASSIC LAD 070 { DLC SIR CLASSIC 5102
DLC MISS CANYON 554

DLC MS BLACK COTEAU 174W { DLC SPARKY 6170
DLC MISS COTEAU 935

BD	BW
4/4/13	72
205 WT	365 WT
590	994
TEST ADG	SC
2.8	34.6
%IMF	REA
1.95	14.4
CALVING EASE	PROG/AVG WR
★★	2/88

EPDs

BW	WW	YW	MILK	MWW	FAT	REA	MARB	RY%	C WT
-0.9	27	54	19	32	0.01	0.23	-0.1	0.8	20.6

Someone always has to be last; however, this guy has calving-ease, gain-ability and a large REA. Lot 65 also has a "super-sweet" mother.

FUTURE RED ANGUS HERD SIRES



LCOC DENIRO A024Z

LCOC DENIRO A024Z

RED POLLED 100% 1A #1510881

LEACHMAN DENIRO A090X

{ LCOC ROMERO A07T
{ SRN TYRA 7155

SN FORTUNE 7011

{ LCOC HIGH NOON A093R
{ SRN MS. FORTUNE 5111

BD	BW
3/7/12	76
205 WT	WR
692	
365 WT	YR
1104	
%IMF	REA
4.27	12.89
FAT	DAM'S MPPA
0.27	5/101.5

EPDs/BREED RANKING

CED	BW	WW	YW	Milk	TM	ME	HPG	CEM	Stay	Marb	YG	CW	REA	Fat
13	-5.6	52	87	22	48	4	6	6	14	0.79	0.01	14	0.24	0.01
2%	3%	61%	46%	19%	34%	72%	95%	28%	13%	5%	48%	65%	28%	60%

We bought this bull at Leachman's 2013 spring sale. He combines a very high feed-efficiency rating with built-in calving ease. His first calves this spring have born easy and look good.



KOESTER MAGNUM 139

KOESTER MAGNUM 139

RED POLLED 99.7% 1B #1497123

LJC MAGNUM 014W

{ LJC MISSION STATEMENT P27
{ LJC DYNA 522 014

KOESTER MS BIG SKY 721

{ FEDES BIG SKY R9
{ KOESTER MISS HOLLIDAY 515

BD	BW
9/20/11	80
205 WT	WR
638	100
365 WT	YR
1098	98
%IMF	REA
2.55	13.47
FAT	DAM'S MPPA
0.21	4/98.5

EPDs/BREED RANKING

CED	BW	WW	YW	Milk	TM	ME	HPG	CEM	Stay	Marb	YG	CW	REA	Fat
5	-4.4	56	88	19	47	-2	12	3	14	0.54	-0.12	16	0.41	-0.01
36%	8%	44%	44%	46%	41%	29%	13%	71%	9%	25%	9%	60%	11%	22%

Purchased at Koester's 2013 sale. A bull with all the credentials to be a calving-ease sire and his first calf crop certainly is!



Red Crowfoot Ole's Oscar, sire

DLC'S OSCAR 1191

RED POLLED 100% 1A #1457359

RED CROWFOOT OLE'S OSCAR

{ MLK CRK CUB 722
{ RED CROWFOOT OMEGA 9179J

DLC MISS CLASSIC 4444

{ BADLANDS CLASSIC 069
{ DLC MS LADIES MAN 143

BD	BW
3/30/11	68
205 WT	WR
586	85
365 WT	YR
1025	90
%IMF	REA
2.23	13.11
FAT	DAM'S MPPA
0.15	7/91.3

EPDs/BREED RANKING

CED	BW	WW	YW	Milk	TM	ME	HPG	CEM	Stay	Marb	YG	CW	REA	Fat
6	-5.3	39	62	13	32	-0	5	9	6	0.48	-0.08	-1	0.11	0.00
28%	4%	91%	89%	88%	97%	33%	98%	9%	91%	35%	17%	93%	47%	44%

Our pick of our 2011 Oscar sons for a calving-ease sire. We were right. He definately is a good one.

FUTURE SOUTH DEVON HERD SIRE

MJB ROMEO 337Z

BLACK SCURRED PUREBRED #201824

MJB ROMEO 125R

{ CIMARRON CASSANOVA 354N
{ MJB NIKKI 3657N

MJB SHERIDAN 6867S

{ DLCC SURE-ENUF
{ MJB REMI 8541H

BD	BW
3/7/12	71
205 WT	WR
692	106
365 WT	YR
1119	103
%IMF	REA
FAT	RFI
	-0.24

EPDs/BREED RANKING

BW	WW	YW	MILK	MWW	FAT	REA	MARB	RBY	C.WT
+0.1	+44	+83	+25	+47	-0.01	+0.16	+0.4	+1.0	+29.9

Purchased from Jim Brown at the 2013 Midland Bull Test Sale. His first calves born this spring have come easy and are outstanding in phenotype.



6442 55th Ave SE
Gackle, ND 58442

FIRST CLASS
US POSTAGE
PAID
BISMARCK, ND
PERMIT #256

Please bring this catalog with you to the sale.



Heterosis Headquarters