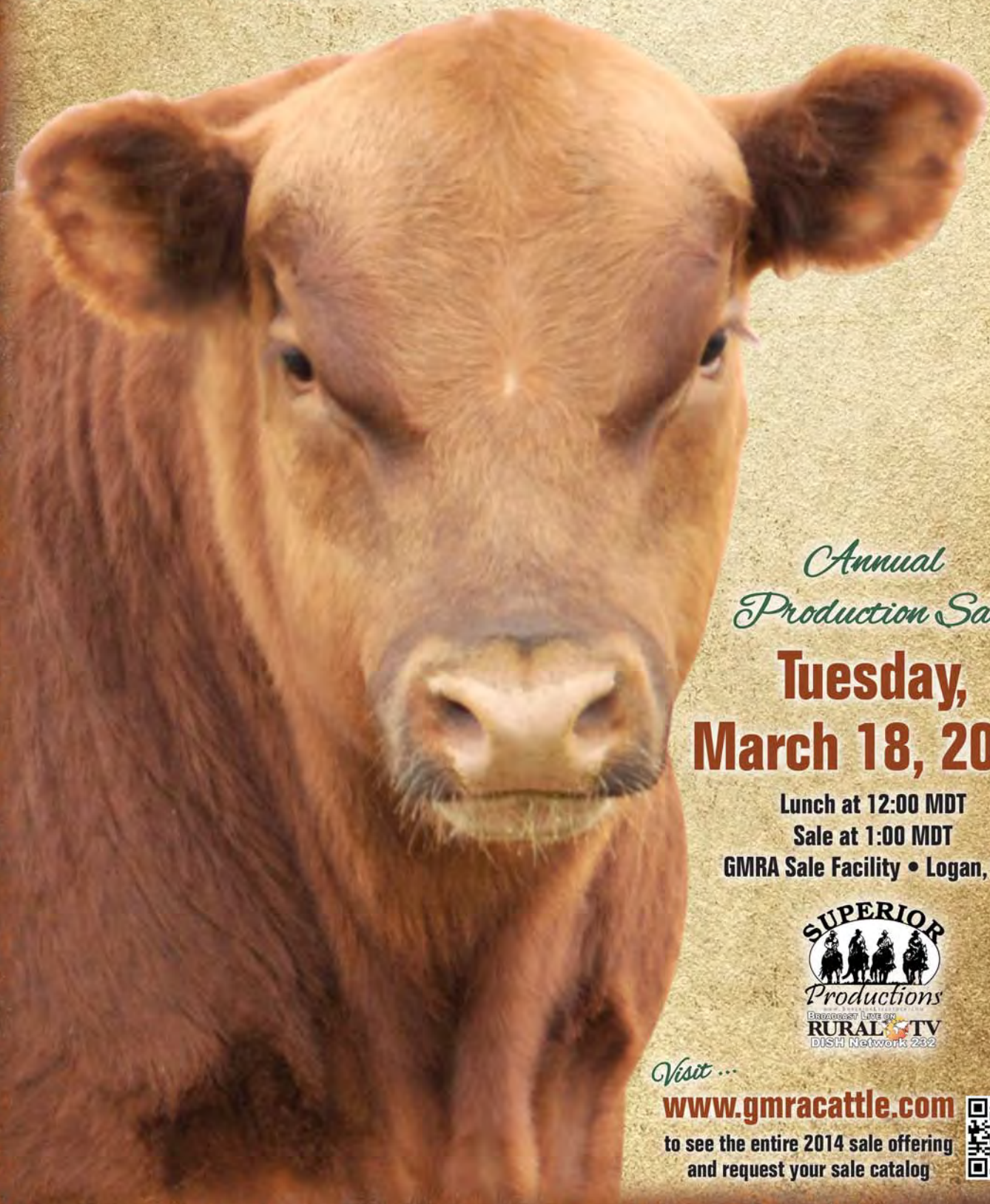




# GREEN MOUNTAIN RED ANGUS



*Annual  
Production Sale*

**Tuesday,  
March 18, 2014**

Lunch at 12:00 MDT

Sale at 1:00 MDT

GMRA Sale Facility • Logan, MT



*Visit ...*

**[www.gmracattle.com](http://www.gmracattle.com)**

to see the entire 2014 sale offering  
and request your sale catalog



Welcome



GREEN MOUNTAIN RED ANGUS



Jeremy and JD Dunbar; Julie, Bob, Jim and Tom Morton

Welcome to our 15th annual bull sale! It's hard to believe that so many years have flown by since our first sale in 2000. We initially started raising Red Angus in 1985, and the man who purchased our first bull is still buying bulls from us today. We are honored to be a part of so many producers' lives that have put their trust in our program for almost 30 years. This year we have an outstanding group of yearling bulls. They showcase almost 30 years of hand-picked genetics, culminating in superior performance, phenotype and breed leading EPDs. We have combined those numbers with incredibly functional, highly efficient cattle that work in the real world. Bob has toured several of our customer's ranches this year and it is satisfying to see our bulls working in so many different environments. It's very rewarding to see a bull with a  $\Sigma$  on his side doing a great job for producers.



This year there are lots throughout the sale that have undergone the RAA 80K DNA test. This test observes 80,000 locations on the animal's genome and identifies which genes that animal possesses and their impact on various traits. This provides genetically enhanced EPDS that will increase the accuracy of a yearling bull's EPDs to that of a more proven bull with progeny already on the ground and data reported.

There are always new advancements in the industry and recently RAA and Tyson Foods announced a new pricing grid for FCCP tagged cattle. This program has incentives equivalent to "Angus" premiums for cattle that grade upper 2/3 Choice, as well as additional incentives for load lots of cattle grading a high percentage Choice and Prime. The program is for FCCP enrolled cattle only, and every calf sired by a GMRA bull qualifies. Make sure and enroll so you can utilize all the benefits that come with your calves wearing the FCCP tag.

We hope you enjoy viewing this year's offering and look forward to seeing you at the sale. We are back to our original sale time of 1:00 pm, with lunch at noon. The bulls are catalogued in sale order. The bulls will be run through the ring with a video feed running online as well as on RuralTV. Superior will be handling all conference calls and internet bidding. If you can't make the sale don't hesitate to stop by to view the bulls before hand or call for more information. You can always bid online or on the phone with Superior. You can go to our website at [www.gmracattle.com](http://www.gmracattle.com) to view videos of all the lots in the sale. We look forward to seeing you on March 18th!



Julie



Bob



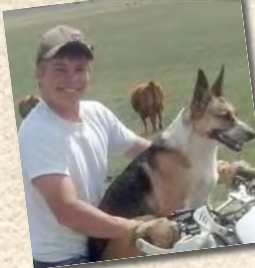
Jeremy



JD



Jim

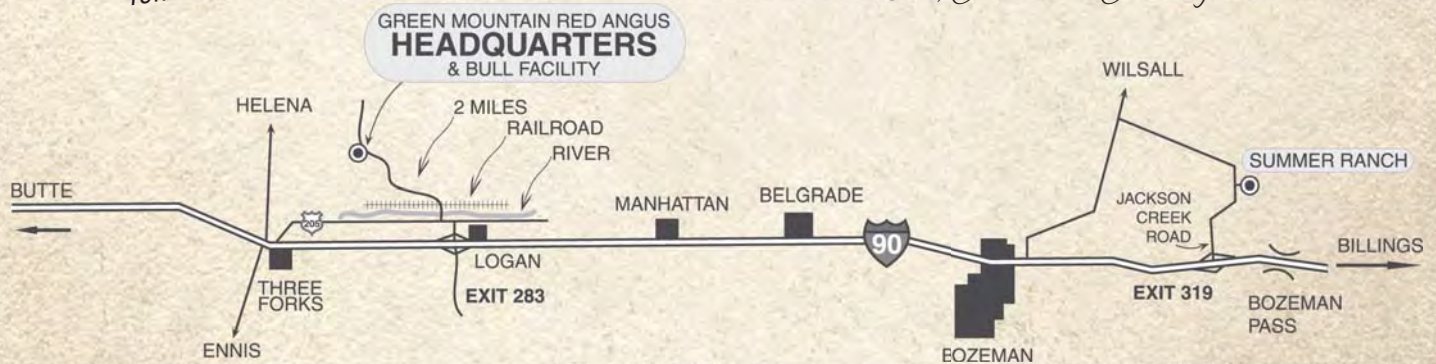


Tom



Sage

Bob, Julie and Jeremy



Get off 1-90 at the Logan Exit, #283. Go north and take a left on the frontage road. Proceed west toward Three Forks, about 1/2 mile. Take a right onto Logan Trident Road, heading north. The road immediately crosses the Gallatin River and the railroad tracks, as shown on the map. Green Mountain Red Angus is 2 miles from the railroad tracks. Watch for the large Green Mountain Red Angus sign.

**ASSOCIATION REPRESENTATIVES:**

Twig Marston, CEO ..... Red Angus Assn. of America  
 Kim Ford, First Vice President ..... Red Angus Assn. of America  
 Barry Horsley, Second Vice President ... Red Angus Assn. of America  
 Donna Laubach, MTRAA President ..... Montana Red Angus Assn.  
 Julie Morton, MTRAA Vice President ..... Montana Red Angus Assn.

**LIVESTOCK INSURANCE:**

Jerry Gliko ..... 406-860-3181  
 Tyler Holland, PayneWest ..... 800-497-1012

**ACCOMMODATIONS:**

Broken Spur, Three Forks ..... 1-888-354-3048  
 Fort Three Forks Motel, Three Forks ..... 1-800-477-5690  
 Super 8, Belgrade ..... 1-800-800-8000  
 Holiday Inn Express, Belgrade ..... 1-800-542-6791  
 Sacajawea Hotel, Three Forks ..... 406-285-6515  
 Mention you are attending the Green Mountain Red Angus Bull Sale for a discount at the Sacajawea.

**DELIVERIES:**

Free delivery to any point in MT, ID, WY on all purchases. Free delivery on all bulls selling for over \$3,000 to stockyards in ND, SD, OR and WA. Free delivery on all volume purchases by one buyer of five or more bulls to central points within 1,000 miles of Three Forks, MT. All other deliveries will be by arrangement, with loads being combined as much as possible. All deliveries will be made by April 1st.



**View video of sale lots at  
[www.gmracattle.com](http://www.gmracattle.com)**

Catalog and Advertising by Cow Camp Promotions  
 Tracey Koester • [www.cowcamppromotions.com](http://www.cowcamppromotions.com)

View video of the sale bulls at [www.gmracattle.com](http://www.gmracattle.com)

**406-285-6773 • 1-866-GMRA-COW**

**Bob's Cell** ..... 406-580-0348  
**Jeremy's Cell** ..... 406-580-6859

**AUCTIONEER:**

Trent Stewart, Auctioneer ..... 541-325-3662

**GMRA INDUSTRY PARTNER:**

Clint Berry, Seedstock Procurement  
 Superior Livestock ..... 417-844-1009

**SALE REPRESENTATIVES:**

Myron Edelman, Director of Added Value Programs  
 Red Angus Association of America ..... 307-351-6032  
 John Goggins  
 Western Ag Reporter ..... 406-698-4159  
 Jerry Gliko  
 Western Livestock Journal ..... 406-860-3181  
 Jeff Thomas  
 Prairie Star ..... 406-581-8859  
 John Andras  
 Superior Livestock ..... 406-670-5074



**Auctioneer Trent Stewart**



**Clint Berry**



**Myron Edelman**



**John Andras**



**John Goggins**



**Jerry Gliko**



**Jeff Thomas**

## TERMS AND CONDITIONS

1. The terms of the sale are cash unless prior arrangements have been made.
2. Each animal will be sold to the highest bidder. The person in charge will settle any disputes as to bids, and his decision on such matters shall be final.
3. Any announcement from the seller on sale day will take precedence over printed material.
4. Health certificates will be furnished for shipment anywhere in the United States.
5. Each animal becomes buyer's risk as soon as sold; but it shall be the obligation of the seller to see that animals are fed and cared for, free of charge to purchaser, until loaded for shipment or until the expiration of April 1st of the current year.
6. Retained Interest: Green Mountain Red Angus is retaining one-third revenue share interest in all bulls in the sale. We reserve the right to participate in the collection and marketing of semen. Buyers receive two-thirds interest, full possession and full salvage value. If seller wishes to collect semen for in-herd use only it will be at seller's expense and the buyer's convenience. If the buyer wishes to share in the collection costs and keep his share for in-herd use that is their choice.
7. All claims for adjustment or refund must be made in writing within six months of the sale date. In the event an animal is claimed to be a non-breeder, the Seller shall be entitled to six months' trial following the return of the animal in which to prove the animal is a breeder. If at the end of six months the Seller is unable to prove the animal is a breeder, restitution shall be made, in compliance with the terms set forth by the Red Angus Association of America. Any expenses incurred for transporting the animal shall be the buyer's responsibility.
8. Everyone attending this sale does so at their own risk. Owners, clerks or other helpers do not assume responsibility, legal or otherwise, for damages of any kind.
9. A certificate of registry and transfer will be furnished for each animal sold as a registered animal, after settlement has been made.
10. The above terms and conditions shall constitute a contract between the buyer and seller of each animal sold.

**These cattle do sell in accordance with the Sale Terms and Conditions  
set forth by the Red Angus Association of America.**



## HOW TO PARTICIPATE ON THE PHONE OR ONLINE

We have made preparations to bid and buy livestock through Superior Productions' "Call or Click-To-Bid" service for those unable to attend in person on sale day. **Please note that all of the lots in the sale will also be available for viewing online prior to sale day at [www.superiorlivestock.com](http://www.superiorlivestock.com).**

### HERE'S HOW IT WORKS

**Turn in Bids Over the Phone.** This is our traditional method of buying livestock and is the suggested process for anyone who does not have consistent, high-speed internet. To get started simply go online to [www.superiorlivestock.com](http://www.superiorlivestock.com) and click on the tab titled "Register for a Buyer Number." Select the registration form for Superior Productions and print the registration form, fill it out and fax it in to Superior Productions at (817) 378-3380 with a signature on it, or scan and email the form to [info@superiorauction.com](mailto:info@superiorauction.com).

[www.superiorlivestock.com](http://www.superiorlivestock.com). You can also mail it in to the address provided on the form. Upon receipt of this information Superior will call you with a buyer's number and the bid line phone number that you will use on sale day to place bids over the phone.

**Click-To-Bid.** This is Superior's online bidding program for cattle buying! **PLEASE NOTE THAT HIGH SPEED INTERNET IS REQUIRED – THIS IS NOT FOR DIAL-UP OR SATELLITE INTERNET.** Registration is free, but you must become a member of [www.superiorclicktobid.com](http://www.superiorclicktobid.com) to sign up. Becoming a member is easy – just go to the homepage of [www.superiorclicktobid.com](http://www.superiorclicktobid.com) and follow the outlined steps to get started. Input your information and select a username and password. You will receive an e-mail confirming you are a member. From that point forward you just have to sign in and select the sale you would like to register for and once approved by the ranch you will receive an e-mail confirming which sale you are now registered for.

**Viewing the Auction.** The sale will be broadcast via satellite on Dish Network channel 232 (RURAL-TV). *Please note that there is a short delay if you are watching the auction on television so be sure to call in a couple lots ahead of the lot you are interested in bidding on.* The sale will also be broadcast live on the internet at [www.superiorclicktobid.com](http://www.superiorclicktobid.com) – just go to the home page and select the auction. Remember you can call in to bid whether you watch on the TV or on the internet, but you must be a member of [www.superiorclicktobid.com](http://www.superiorclicktobid.com) to "click-to-bid." Your computer must have Flash Media Player installed to view the auction. If you have questions, please call the Superior Productions office at 800-431-4452.

**Bidders who are successful in making purchases via satellite or internet will be contacted by the ranch after the sale to settle payment and make shipping arrangements.**



GMRA Trilogy 0226

ling. His entire 2013 calf crop tied for the highest weaning ratio of all sires and his bulls on test have an average weaning ratio of 103.4. His average REA ratio for bulls on test both last year and this year is 104, backed up by a REA EPD in the top 5% of the breed. Look for the Trilogy calves to be all around standouts, backed by breed leading numbers. We now have the first Trilogy daughters in production and they look to be great producers.

**A**

**GMRA TRILOGY 0226**

Birth Date: 1/14/10 Reg. # 1367533 Category: 100% 1A

MESSMER JOSHUA 019P  
MESSMER PACKER S008  
MESSMER MILLIE 124P

BECKTON JULIAN GG B571  
MESSMER PANDORA M186  
VGW TOP PICK 130  
MESSMER MILLIE 9416

GLACIER CHATEAU 744  
GMRA LAKOTA 625  
GMRA LAKOTA 380

LMAN KING ROB 8621  
GLACIER REBALA  
BASIN HOBO 79E  
GMRA LAKOTA 527



BW	74	
WW/Ratio	646	103
YW/Ratio	1154	104
IMF/REA	3.45	13.55
Scrotal		

CED	BW	WW	YW	Milk	TM	ME	HPG	CEM	Stay	Marb	YG	CW	REA	Fat	
9	-4.6	70	116	17	52	-1	12	10	17	0.81	-0.02	33	0.63	0.02	
TOP BREED %	18%	14%	15%	10%	61%	24%	35%	24%	10%	3%	9%	36%	20%	5%	70%

Trilogy was Accelerated Genetics' pick from our 2011 sale. He is a maternal brother to GMRA Make It Easy 8226, who was also purchased by Accelerated Genetics in 2009. We used this moderate framed, muscular young sire heavily this past year. His calves are powerhouses from early on, showing excellent muscling and broad tops, and have carried that on through weaning and yearling.



Fritz Justice 8013

yearling ratio sire group for all sale lots. All of this, and his bulls on test scanned above average for both REA and MARB. We had our first Justice daughters in production last year and their calves had an average weaning ratio of 108.6 and an average yearling ratio of 103.3, giving the GMRA Justice daughters an average MPPA of 103.4. This has brought Justice's Milk EPD into the top 1/3rd of the breed.

**B**

**FRITZ JUSTICE 8013**

Birth Date: 1/31/08 Reg. # 1255322 Category: 100% 1A

BUF CRK PATRIOT M183  
VGW JUSTICE 614  
VGW M82-FIREFLY 0479

BECKTON LANGER F442 T  
BUF CRK AMBER 3912  
MESSMER DIRECTOR M82  
VGW HS FIREFLY 0206ET

5L HOBO BEN 04-4422  
FRITZ CHRIS 6047  
FRITZ CRIS 1051

5L BLACK BEN 15-898  
5L BETHEL 122-04  
LCHMN NO EQUAL 1174D  
LARSON SUNRISE 946-926



BW	74	
WW/Ratio	801	110
YW/Ratio	1321	110
IMF/REA		
Scrotal		

CED	BW	WW	YW	Milk	TM	ME	HPG	CEM	Stay	Marb	YG	CW	REA	Fat	
10	-2.3	83	131	22	63	6	8	11	10	0.41	0.34	45	-0.02	0.06	
TOP BREED %	15%	38%	3%	3%	33%	2%	74%	80%	6%	46%	53%	99%	6%	70%	96%

Justice calves come easy and continue on to have explosive growth. He offers that rare combination of super calving ease and breed leading growth numbers, backed up by the personal performance of his progeny. His overall performance ratios are 103 for WW and 104 for YW on all calves reported to AAAA. Here at GMRA his 2013 calf crop tied for the highest weaning sire group and he showcases the top average weaning ratio and



GMRA Peacemaker 1216

100.2. Super calving ease is combined with cutting edge EPDs: CED is in the top 10%, BW in the top 14% and WW, YW and REA all in the top 6%. Peacemaker bulls on test also turned in the 3rd highest average MARB ratio.

**C**

**GMRA PEACEMAKER 1216**

Birth Date: 1/13/11 Reg. # 1428993 Category: 100% 1A

VGW JUSTICE 614  
FRITZ JUSTICE 8013  
FRITZ CHRIS 6047

BUF CRK PATRIOT M183  
VGW M82-FIREFLY 0479  
5L HOBO BEN 04-4422  
FRITZ CRIS 1051

LJC MISSION STATEMENT P27  
GMRA THELMA 930  
GMRA THELMA 319

LJC LANCER 806  
LJC HANNAH 106  
BUF CRK BARNEY 3474  
GMRA THELMA 733




BW	74	
WW/Ratio	788	126
YW/Ratio	1312	116
IMF/REA	3.51	14.23
Scrotal		

CED	BW	WW	YW	Milk	TM	ME	HPG	CEM	Stay	Marb	YG	CW	REA	Fat	
12	-4.6	77	124	19	57	3	10	6	14	0.44	0.07	37	0.58	0.04	
TOP BREED %	10%	14%	6%	6%	51%	9%	57%	47%	38%	12%	47%	65%	13%	6%	87%

Peacemaker was the high selling Justice son in our 2012 sale, selling to Accelerated Genetics and Bieber Red Angus. Peacemaker showcases outstanding phenotype and top end personal performance. He has turned out to be a bona fide heifer bull, with the lowest average birth weight ratio of all sire groups at GMRA. Bulls on test have an average weaning ratio of 103.2 and an average yearling ratio of



Bieber Roosevelt W384

**D** **BIEBER ROOSEVELT W384** 

Birth Date: 3/1/09 Reg. # 1311829 Category: 100% 1A


BASIN TREND SETTER 6074	RED BRYLOR NEW TREND 22	<b>BW</b>	<b>94</b>
<b>BIEBER ROUGH RIDER 10712</b>	BASIN ROSE F521		
BIEBER ADELLE 8958	BIEBER TITAN 6894	<b>WW/Ratio</b>	<b>781</b>
	BIEBER ADELLE 7226	<b>YW/Ratio</b>	<b>1295</b>
C A FUTURE DIRECTION 5321	G A R PRECISION 1680	<b>IMF/REA</b>	<b>3.02 13.19</b>
<b>BIEBER SHEBA 9602</b>	C A MISS POWER FIX 308	<b>Scrotal</b>	<b>36.0</b>
BIEBER SHEBA 5537	JHE CANYON HAWK 1062		
	BIEBER SHEBA 4404		

CED	BW	WW	YW	Milk	TM	ME	HPG	CEM	Stay	Marb	YG	CW	REA	Fat	
<b>9</b>	<b>-0.1</b>	<b>55</b>	<b>83</b>	<b>31</b>	<b>59</b>	<b>-14</b>	<b>13</b>	<b>10</b>	<b>10</b>	<b>0.82</b>	<b>0.14</b>	<b>19</b>	<b>0.21</b>	<b>0.05</b>	
<b>TOP BREED %</b>	<b>18%</b>	<b>70%</b>	<b>51%</b>	<b>56%</b>	<b>4%</b>	<b>6%</b>	<b>3%</b>	<b>18%</b>	<b>10%</b>	<b>52%</b>	<b>8%</b>	<b>83%</b>	<b>50%</b>	<b>36%</b>	<b>93%</b>

Roosevelt is new to the sire line-up this year. He is a total outcross to our genetics and comes with tons of power and eye appeal. The Roosevelt calves have been standouts ever since they hit the ground. They have the conformation and muscle pattern that we like. They are broad topped, thick and deep, with a good rear quarter and a very solid structure. The calves' early growth is extremely rapid and going on to summer pasture they were already showing a maturity beyond their age. They are one of the most phenotypically powerful sire groups we have seen. The bulls on test have an average weaning ratio of 103.7 and an average yearling ratio of 100.5, placing him as the 2nd high sire group for both. Roosevelt is also a maintenance specialist with an ME EPD in the top 3%.



Messmer Packer S008

**E** **MESSMER PACKER S008** 

Birth Date: 2/12/06 Reg. # 1109534 Category: 100% 1A

BECKTON JULIAN GG B571	BKT JULIAN 7526 G	<b>BW</b>	<b>85</b>
<b>MESSMER JOSHUA 019P</b>	BKT MARTA 9A13 JL		
MESSMER PANDORA M186	LELAND MARIAS 271K	<b>WW/Ratio</b>	<b>762 114</b>
	MESSMER PANDORA 9976	<b>YW/Ratio</b>	<b>1411 112</b>
VGW TOP PICK 130	NEO-SHO MILLENIUM 065G	<b>IMF/REA</b>	<b>3.72 16.19</b>
<b>MESSMER MILLIE 124P</b>	VGW KURUBA-RAM 9308	<b>Scrotal</b>	
MESSMER MILLIE 9416	BUF CRK CHF 824-1658		
	NODAKLADY POUNDMAKER		

CED	BW	WW	YW	Milk	TM	ME	HPG	CEM	Stay	Marb	YG	CW	REA	Fat	
<b>5</b>	<b>-2.9</b>	<b>69</b>	<b>111</b>	<b>5</b>	<b>40</b>	<b>-6</b>	<b>14</b>	<b>7</b>	<b>16</b>	<b>0.60</b>	<b>-0.11</b>	<b>32</b>	<b>0.82</b>	<b>0.01</b>	
<b>TOP BREED %</b>	<b>38%</b>	<b>29%</b>	<b>17%</b>	<b>15%</b>	<b>96%</b>	<b>77%</b>	<b>15%</b>	<b>9%</b>	<b>24%</b>	<b>6%</b>	<b>24%</b>	<b>12%</b>	<b>21%</b>	<b>2%</b>	<b>54%</b>

Packer is a high volume bull with lots of muscling that he passes on to his calves. We have weaned a total of 108 Packer calves at GMRA and they have an average weaning ratio of 101, and an average yearling ratio of 101.9 on 80. The bulls on test are extremely thick with good depth and a nice broad top. Packer sons on test turned in the #1 REA and MARB ratios, averaging 105 on both. Look for these sale lots to follow in their sire's footsteps, producing above average REA and top performing calves.





GMRA Make It Easy 8226

for WW and 102 for YW on all calves reported to RAAA. His daughters in production are doing just what we expected, based on his highly maternal pedigree. They have an average weaning ratio of 104.4 and an average yearling ratio of 102, giving the Make It Easy daughters an average MPPA of 102.

**A** Birth Date: 1/14/08 Reg. #: 1250951 Category: 100% 1A

BJR MAKE MY DAY 981  
BIEBER MAKE MIMI 7249  
BIEBER SIRENA 6708

GLACIER CHATEAU 744  
GMRA LAKOTA 625  
GMRA LAKOTA 380

BJR EASY RIDER 781  
BJR TOW KANA 117-710  
BIEBER IMPACT 4399  
BIEBER MIMI 4227  
LMAN KING ROB 8621  
GLACIER REBALA  
BASIN HOBO 79E  
GMRA LAKOTA 527

BW	81	
WW/Ratio	751	110
YW/Ratio	1171	104
IMF/REA	4.13	12.47
Scrotal		

CED	BW	WW	YW	Milk	TM	ME	HPG	CEM	Stay	Marb	YG	CW	REA	Fat	
5	-1.2	76	118	21	60	2	6	7	14	0.64	0.05	38	0.10	-0.03	
TOP BREED %															
38%	53%	7%	9%	34%	5%	53%	90%	24%	11%	20%	60%	11%	50%	6%	

Make It Easy boasts a pedigree stacked with sires that excel in producing superior females and he is a maternal brother to GMRA Trilogy 0226. That is a great combination with the data the Make It Easy calves are turning in. A total of 68 Make It Easy calves born at GMRA have turned in below average birth ratios, and an average weaning ratio of 101.5. His overall performance ratios are 101



HXC Conquest 4405P

MPPA of 101.5. They have great udders and are easy fleshing. The average weaning ratio of all calves out of Conquest daughters is 103.4. Conquest has continued to provide us with a great set of bona fide heifer bulls. His CED is in the top 1%, with a BW EPD in the top 6%. He is one of the top 5 high accuracy sires for CED in the Red Angus breed.

**G** Birth Date: 1/25/04 Reg. #: 975924 Category: 100% 1A

BKT JULIAN 7526 G  
BECKTON JULIAN GG B571  
BKT MARTA 9A13 JL

BFCK CHEROKEE CNYN 4912  
HXC ELLIE MAY MA638  
HXC 529E

BECKTON JULIAN 6592  
BKT BELGA 6746 GS  
BKT JULIAN 7526 G  
BKT MARTA 6498 XM  
BUF CRK CHF 824-1658  
MRM 1431 8611 9109  
LMAN KING ROB 8621  
HXC 329C

BW	69	
WW/Ratio	664	107
YW/Ratio	1285	111
IMF/REA	3.83	15.79
Scrotal		

CED	BW	WW	YW	Milk	TM	ME	HPG	CEM	Stay	Marb	YG	CW	REA	Fat	
21	-6.5	57	93	22	51	4	2	7	14	0.67	-0.02	16	0.50	0.03	
TOP BREED %															
1%	6%	46%	39%	30%	28%	61%	99%	24%	14%	17%	36%	58%	10%	80%	

Conquest was our top AI sire for heifers for the last four years and we have had great results. His calves are moderate birth and easy calving. In fact, Conquest had the lowest average birth weight of any sire we used in 2011 and 2012. Look for his progeny to be moderate framed with excellent eye appeal. The Conquest daughters in production are making outstanding mothers, with an average



Beckton Epic R397 K

**H** Birth Date: 3/19/05 Reg. #: 1042135 Category: 100% 1A

BECKTON EPIC D404  
BECKTON EPIC K F075  
BECKTON BELGA D483 KR

BECKTON JULIAN GG B571  
BECKTON KIT F468 JL  
BECKTON KIT A517 NP

BECKTON SAGA KJ B702  
BECKTON KURUBA B508 PC  
BECKTON KAISER FD 9253  
BECKTON BELGA A036 MB  
BKT JULIAN 7526 G  
BKT MARTA 9A13 JL  
BKT NEPTUNE 8460 R  
BCHRCH KIT935 35L416

BW	78	
WW/Ratio	638	
YW/Ratio	1171	
IMF/REA	3.90	13.67
Scrotal		

CED	BW	WW	YW	Milk	TM	ME	HPG	CEM	Stay	Marb	YG	CW	REA	Fat	
-2	-0.2	72	120	17	53	-2	15	7	14	0.67	0.24	42	0.49	0.09	
TOP BREED %															
87%	70%	11%	8%	61%	20%	25%	6%	24%	10%	17%	97%	8%	10%	99%	

The Epic bull caught our attention a couple of years ago, but we didn't use him as an AI sire until the spring of 2013. The Epic son in the sale this year is out of a bred heifer we purchased at the 2012 Big Sky Elite sale from Klompfen Red Angus. Look for more to come in our 2015 bull sale.

**GMRA MOUNTAIN 9287**

*J*

Birth Date: 2/6/09 Reg. # 1322842 Category: 100% 1A



GMRA EBV 935  
GMRA EBV 266  
BJR ESTONIA 9S-1210

LEACHMAN EBV 3531  
DEL PRIZE ANNA 560  
ALALTA ACRES THOR 9S  
BJR ESTONIA9102-9134  
BUF CRK HOB0 2595  
DOUBLE FORK 079Z  
LCHMN HEVN'S SAKE 1002F  
GMRA VENICE 015

BW	84	
WW/Ratio	776	114
YW/Ratio	1250	104
IMF/REA	3.61	11.85
Scrotal		

BASIN HOB0 79E  
GMRA VENICE 359  
GMRA VENICE 146

CED	BW	WW	YW	Milk	TM	ME	HPG	CEM	Stay	Marb	YG	CW	REA	Fat	
5	0.1	58	100	33	62	4	7	3	14	0.41	0.16	30	0.03	0.02	
TOP BREED %	35%	76%	41%	23%	1%	1%	63%	93%	67%	11%	51%	94%	19%	63%	77%

Mountain was one of our top bulls in our 2010 sale. He is a son of the fantastic female producer, GMRA EBV 266 whose daughters in production are some of the most consistent performers in the herd. They are highly maternal and raise calves with excellent depth and muscling. We are expecting Mountain to produce his own outstanding replacements. At our Big Sky Elite female sale, a Mountain daughter was chosen by Bill Schreurs of Mud Creek Reds in Alford, IA, as the Elite Pick of all GMRA bred heifers. Mountain's dam is impressive – she has an MPPA of 105.8 on 9 calves, and she comes from a dam with a 102.7 MPPA. The Mountain sons on test turned in the 2nd highest average MARB ratio of 104.

**BUF CRK SPITN IMAGE X014**

*K*

Birth Date: 4/8/10 Reg. # 1379421 Category: 100% 1A



BECKTON JULIAN GG B571  
RED HILL B571 JULIAN 84S  
BECKTON BARMAID M554 CH

BKT JULIAN 7526 G  
BKT MARTA 9A13 JL  
BECKTON CHAMP R3 H338  
BECKTON BARMAID H031 HR  
BUF CRK CHF 824-1658  
MRM 1431 8611 9109  
BUF CRK CHFLY GOLD 4526  
BUF CRK BLOCKANNA 2974

BW	76	
WW/Ratio	675	105
YW/Ratio	1077	106
IMF/REA	2.54	14.83
Scrotal	35.4	

BFCK CHEROKEE CNYN 4912  
BUF CRK BLOCKANNA U227  
BUF CRK BLOCKANA L257

CED	BW	WW	YW	Milk	TM	ME	HPG	CEM	Stay	Marb	YG	CW	REA	Fat	
8	0.7	69	100	13	48	-3	11	3	13	0.53	0.01	30	0.44	0.01	
TOP BREED %	17%	84%	10%	23%	86%	42%	19%	31%	67%	16%	27%	51%	19%	8%	61%

**C-T GLACIER BERRY 1021**

*J*

Birth Date: 1/26/10 Reg. # 1365682 Category: 100% 1A



RED COMPASS MULBERRY 449M  
RED FINE LINE MULBERRY 26P  
RED DUS FAYETTE 8G

RED HR RAMBO ET 91K  
RED BRYLOR MISS ROC 20H  
SILVEIRAS REDFORD  
RED MC DOUGALL FAYETTE 59A  
BFCK CHEROKEE CNYN 4912  
KRN REBA'S ROBIN  
GLACIER DIVIDE 310  
FED'S BLOCKANA 4231

BW	79	
WW/Ratio	784	112
YW/Ratio	1263	110
IMF/REA	4.58	13.77
Scrotal		

LCC MAJOR LEAGUE A502M  
C-T BLOKANA 0543  
CTDB BLOKANA 810

CED	BW	WW	YW	Milk	TM	ME	HPG	CEM	Stay	Marb	YG	CW	REA	Fat	
-5	1.5	64	99	21	53	1	10	6	10	0.60	0.19	31	0.11	0.05	
TOP BREED %	99%	93%	22%	25%	30%	14%	44%	57%	32%	51%	18%	97%	18%	47%	95%

**SUNR CHEROKEE LANCE M969W**

*L*

Birth Date: 1/29/09 Reg. # 1295829 Category: 100% 1A



BFCK CHEROKEE CNYN 4912  
SUNR GRAND CHEROKEE 909N  
SUNR GRAND TILLY 006

BUF CRK CHF 824-1658  
MRM 1431 8611 9109  
LCHMN GRANDCANYON 1244G  
BJR TILLY 091-0102  
BECKTON LANCER T A664  
BKT SUFFEINA A828 DM  
LCHMN NO EQUAL 1174D  
LCHMN JIBA D1107

BW	90	
WW/Ratio	676	107
YW/Ratio	1156	103
IMF/REA	5.23	15.27
Scrotal		

BECKTON LANCER F442 T  
LCC JIBA MA969  
LCC JIBA K1057

CED	BW	WW	YW	Milk	TM	ME	HPG	CEM	Stay	Marb	YG	CW	REA	Fat	
8	-4.8	54	75	17	44	-1	11	4	8	0.65	-0.25	7	0.81	0.01	
TOP BREED %	24%	13%	53%	69%	59%	61%	34%	40%	56%	73%	19%	1%	78%	2%	54%

**Feeder Calf Certification Program**

1. Make the call.
2. Provide special documentation.
3. Purchase tags.
4. Tag calves.
5. Fill out Enrollment Agreement.
6. Receive Certificate of Compliance (COC).

Red Angus Marketing Programs | redangus.org | (940) 387-3502





Casey St. Blanc

Lot 1

Sterling has caught the eye of everyone who steps into the bull pen. One look at his phenotype and you think 'power bull.' He does have all the power of a high performance specialist but he is also one of the most bona fide heifer bulls in the offering. His RAAA 80K results increased his CED and lowered his BW, confirming his heifer bull status. His REA EPD also took a huge jump, backed up by a 108 REA ratio. He turns in a great set of numbers overall with 9 EPDs in top 28% of the breed. This bull provides you with great carcass traits, the #1 STAY and HPG in the offering and the #7 ME. He is a great genetic package, out of a high performance Hobo 79E daughter, with an average WR of 106 on 9 calves and an MPPA of 105.

### GMRA STERLING 3298

1

Birth Date: 2/6/13 Reg. # 1605075 Category: 100% 1A



MESSMER JOSHUA 019P  
MESSMER PACKER S008  
MESSMER MILLIE 124P

BECKTON JULIAN GG B571  
MESSMER PANDORA M186  
VGW TOP PICK 130  
MESSMER MILLIE 9416  
BUF CRK HOB0 2595  
DOUBLE FORK 079Z  
BASIN GOLD 6C  
GMRA LAKOTA 704

BASIN HOB0 79E  
GMRA LAKOTA 322  
GMRA LAKOTA 116

BW	76
WW/Ratio	647 102
YW/Ratio	1130 97
IMF/REA	3.86 12.56
Scrotal	39.0

CED	BW	WW	YW	Milk	TM	ME	HPG	CEM	Stay	Marb	YG	CW	REA	Fat		
8	-4.7	51	82	22	47	-4	14	6	21	0.70	-0.02	13	0.53	0.04		
TOP BREED %		15%	7%	65%	57%	25%	43%	17%	4%	28%	1%	8%	36%	70%	3%	93%



Casey St. Blanc

Lot 2

Gemini is just an incredible package. He came into the world as a twin, but was raised as a single on his own dam. His personal performance is outstanding. Granted a twin doesn't receive ratios, but when compared with his contemporaries he would have received a 106 at both weaning and yearling. He turned in the #7 adjusted yearling weight of all bulls on test and was #9 at mid-test. This bull is smooth and deep with a great rear quarter and a broad top. Gemini's EPDs are 80K enhanced and stay strong, with the #2 WW and Stay EPD in the offering, #3 REA, #6 YW, #7 YG.

### GMRA GEMINI 3240

2

Birth Date: 1/14/13 Reg. # 1605010 Category: 100% 1A



MESSMER JOSHUA 019P  
MESSMER PACKER S008  
MESSMER MILLIE 124P

BECKTON JULIAN GG B571  
MESSMER PANDORA M186  
VGW TOP PICK 130  
MESSMER MILLIE 9416  
GLACIER CHATEAU 744  
GMRA NEXA 235  
GMRA EBV 266  
GMRA SA MESA MAID 054

GMRA CITADEL 6109  
GMRA MESA MAID 057  
GMRA MESA MAID 368

BW	72
WW/Ratio	668
YW/Ratio	1246
IMF/REA	2.99 11.62
Scrotal	36.0

CED	BW	WW	YW	Milk	TM	ME	HPG	CEM	Stay	Marb	YG	CW	REA	Fat		
5	-2.0	71	115	16	52	3	10	3	16	0.51	-0.01	36	0.56	0.01		
TOP BREED %		36%	36%	6%	4%	71%	17%	65%	41%	72%	3%	30%	41%	8%	3%	61%



# Yearling Bulls



## GREEN MOUNTAIN RED ANGUS



Vintage is one of the most complete all around packages in this year's sale offering. He is a nice, deep cherry red with fantastic eye appeal. He carries his muscling well, with a great rear quarter and nice depth of rib. He turned in a nice, balanced set of personal performance numbers, including a 109 REA ratio, which places him in the top 10 for his REA scan. This bull's consistent performance is complemented by a solid set of numbers. 7 of his EPDs are in the top 23% or higher, with 4 of them in single digits. All of this combined with his great phenotype make him a standout.

### 3

## GMRA VINTAGE 3267

Birth Date: 1/21/13 Reg. # 1605148 Category: 100% 1A



FRITZ JUSTICE 8013  
GMRA PEACEMAKER 1216  
GMRA THELMA 930

VGW JUSTICE 614  
FRITZ CHRIS 6047  
LJC MISSION STATEMENT P27  
GMRA THELMA 319

BROWN VACATION H7106  
GMRA PAMELA 892  
GMRA PAMELA 042

BECKTON JULIAN GG B571  
LCHMN FLOWER C1161  
VGW RAMBLER 1000  
GMRA PAMELA 548

BW	87	
WW/Ratio	675	106
YW/Ratio	1212	104
IMF/REA	3.40	12.63
Scrotal	35.0	

CED	BW	WW	YW	Milk	TM	ME	HPG	CEM	Stay	Marb	YG	CW	REA	Fat	
10	-2.0	71	109	15	50	9	5	3	15	0.19	0.10	32	0.31	0.03	
TOP BREED %	8%	36%	7%	9%	78%	23%	97%	98%	72%	9%	91%	85%	14%	19%	87%

**RA50K**  
A GENESEK PRODUCT



This Roosevelt son packs absolute power. He posts the #1 weaning ratio and weight, the #1 yearling ratio and weight and has the highest mid-test weight. He tied for the #1 actual REA scan and posted the #2 REA ratio of 118. He is out of a strong maternal line with no MPPA's under 101 for 4 generations, and his dam posts an MPPA of 104. His personal performance backs up one of the most impressive sets of EPDs in the offering. He posts 10 EPDs in the top 28% or higher, showcasing top end growth, ME and CW. If you want to increase your bottom line at weaning with pounds sold this is the bull to add to your program.

### 4

## GMRA BRAVO 3276

Birth Date: 1/25/13 Reg. # 1605107 Category: 100% 1A



BIEBER ROUGH RIDER 10712  
BIEBER ROOSEVELT W384  
BIEBER SHEBA 9602

BASIN TREND SETTER 6074  
BIEBER ADELLE 8958  
C A FUTURE DIRECTION 5321  
BIEBER SHEBA 5537

BIEBER TOP MONEY 7948  
GMRA REBELLA 572  
GMRA REBELLA 249

BIEBER RED MOON 6042  
BIEBER SIRENA 6708  
NSF SPECIAL DELIVERY  
GMRA REBELLA 050

BW	92	
WW/Ratio	800	126
YW/Ratio	1297	111
IMF/REA	2.97	13.73
Scrotal	35.5	

CED	BW	WW	YW	Milk	TM	ME	HPG	CEM	Stay	Marb	YG	CW	REA	Fat	
7	2.2	77	112	24	62	-3	11	6	9	0.35	0.18	39	0.24	0.04	
TOP BREED %	21%	97%	2%	6%	12%	1%	24%	24%	28%	77%	66%	97%	5%	28%	93%

**RA50K**  
A GENESEK PRODUCT



Casey St. Blanc

Lot 5

Here is a Justice son that not only looks good on paper but has the structure to match. The proven strength of the Justice numbers combined with the phenotype of the EBV 266 line is a great combination. Equity posts a BW EPD in the top 30% and is in the top 2% and 1% for WW and YW, respectively. This gives him the #1 YW EPD in the offering and he is tied for the #5 WW EPD. His carcass numbers are impressive as well and he tied for the top actual REA scan and turned in a ratio of 117. His marbling scan stayed in the top 15, which is impressive given his REA data. This bull will give you calves that hit the ground running and still perform at the top of the herd.

**5 GMRA EQUITY 3269**

Birth Date: 1/21/13 Reg. # 1605172 Category: 100% 1A



VGW JUSTICE 614  
FRITZ JUSTICE 8013  
FRITZ CHRIS 6047

BUF CRK PATRIOT M183  
VGW M82-FIREFLY 0479

5L HOBO BEN 04-4422  
FRITZ CHRIS 1051

GMRA EBV 266  
GMRA THELMA 984  
GMRA THELMA 919

GMRA EBV 935  
BJR ESTONIA 9S-1210  
BJR MAKE MY DAY 981  
GMRA THELMA 733

BW	79	
WW/Ratio	642	101
YW/Ratio	1210	104
IMF/REA	4.02	13.63
Scrotal	37.0	

CED	BW	WW	YW	Milk	TM	ME	HPG	CEM	Stay	Marb	YG	CW	REA	Fat	
5	-2.4	76	127	19	57	7	5	2	13	0.55	0.11	42	0.42	0.03	
TOP BREED %	36%	30%	2%	1%	42%	3%	93%	99%	82%	21%	23%	88%	3%	10%	87%



Casey St. Blanc

Lot 6

The first Make It Easy son in the sale is a great representation of all the strengths of the Make It Easy progeny. He is deep and thick with a solid structure. He's got a broad top and carries a nice deep rear quarter. He turned in the #3 yearling ratio in the offering and the #3 adjusted yearling weight, and has the 2nd high mid-test weight. Make It Right is out of a dam with an MPPA of 103.8. On 4 calves she has an average weaning ratio of 105 and an average yearling ratio of 108. All of her calves have stayed in the herd or gone into the bull sale.

**6 GMRA MAKE IT RIGHT 3242**

Birth Date: 1/15/13 Reg. # 1605141 Category: 100% 1A



BIEBER MAKE MIMI 7249  
GMRA MAKE IT EASY 8226  
GMRA LAKOTA 625

BJR MAKE MY DAY 981  
BIEBER SIRENA 6708

GLACIER CHATEAU 744  
GMRA LAKOTA 380

MLK CRK TITLEIST 4158  
GMRA LOKOTA 836  
GMRA LOKOTA 655

VGW TITLEIST 1106  
MLK CRK SHEBA 079  
LCHMN RED SPREAD 1271F  
GMRA LOKOTA 313

BW	83	
WW/Ratio	649	102
YW/Ratio	1265	108
IMF/REA	3.08	12.14
Scrotal	39.0	

CED	BW	WW	YW	Milk	TM	ME	HPG	CEM	Stay	Marb	YG	CW	REA	Fat	
4	-1.4	66	113	18	51	17	6	6	11	0.43	0.06	36	0.15	-0.02	
TOP BREED %	46%	45%	15%	5%	55%	21%	99%	97%	28%	53%	47%	72%	8%	44%	12%



Here is one of the most interesting heifer bulls in the offering. He turns in the lowest actual birth weight in the offering and the #4 BW EPD. When you see Potosi, he just has the look of a sleep all night type of calving ease sire. He's built right, with a nice smooth front end, yet carries excellent muscling and depth. He is out of a first calf heifer that is looking to follow in her dam's footsteps. Potosi's maternal grand dam has an MPPA of 104 and has reported 10 calves with an average birth ratio under 100, while posting an average weaning ratio of 105. All 10 of her calves have been kept in the herd or been in the bull sale. With all of this maternal power and calving ease, Potosi ranks 12 of his 15 EPDs in the top 50% of the breed or higher, with 7 of those in the top 1/3rd or higher.

### 7 GMRA POTOSI 3213

Birth Date: 1/9/13 Reg. # 1605064 Category: 100% 1A



- FRITZ JUSTICE 8013
- GMRA PEACEMAKER 1216
- GMRA THELMA 930
- VGW NORTHERN CANYON 5109
- GMRA FIREFLY 189
- GMRA FIREFLY 128

- VGW JUSTICE 614
- FRITZ CHRIS 6047
- LJC MISSION STATEMENT P27
- GMRA THELMA 319
- GEFB NORTHERN CANYON 2328
- VGW PT YUMA 0278
- LARSON RED LIGHTNING
- GMRA FIREFLY 828

BW	63	
WW/Ratio	610	101
YW/Ratio	1092	97
IMF/REA	3.97	10.04
Scrotal	35.5	

CE	BW	WW	YW	Milk	TM	ME	HPG	CEM	Stay	Marb	YG	CW	REA	Fat	
9	-5.1	59	96	21	51	1	10	5	11	0.49	0.10	20	0.13	0.03	
TOP BREED %	11%	5%	34%	27%	28%	21%	50%	47%	42%	52%	34%	85%	47%	48%	87%



Triad is one of the most exciting packages in the sale. He has an incredible combination of maternal strength, breed leading numbers, and personal power. Triad's young dam posts an MPPA of 104.8, but things really get interesting when you go back throughout the maternal pedigree. The MPPA's read right off the top of the herd and for 9 generations range from 102.2 – 106.8. In fact, the first cow in the pedigree with an MPPA of under 100 was born in 1973. And that's combined with the maternal power of Trilogy! Triad turned in a great REA scan, with the 7th highest actual and a ratio of 112. His 205 ratio is #6 in the offering, backing up the highest WW EPD in the sale. He also has the #2 YW EPD, is tied for the #1 HPG, and has the #1 REA EPD. Numbers are unparalleled with 9 EPDs in the top 26% of the breed are higher with 7 of them in single digits.

### 8 GMRA TRIAD 3248

Birth Date: 1/15/13 Reg. # 1605054 Category: 100% 1A



- MESSMER PACKER S008
- GMRA TRILOGY 0226
- GMRA LAKOTA 625
- FRITZ JUSTICE 8013
- GMRA NEXA 166
- GMRA NEXA 951

- MESSMER JOSHUA 019P
- MESSMER MILLIE 124P
- GLACIER CHATEAU 744
- GMRA LAKOTA 380
- VGW JUSTICE 614
- FRITZ CHRIS 6047
- 4L SUPER VISION R2292
- GMRA NEXA 266

BW	79	
WW/Ratio	680	112
YW/Ratio	1118	100
IMF/REA	2.83	12.53
Scrotal	36.0	

CE	BW	WW	YW	Milk	TM	ME	HPG	CEM	Stay	Marb	YG	CW	REA	Fat	
7	-0.8	81	123	14	54	1	14	10	13	0.48	0.02	41	0.79	0.04	
TOP BREED %	21%	57%	1%	2%	86%	9%	46%	4%	3%	26%	36%	54%	3%	1%	93%





Judge is a maternal brother to GMRA Make It Easy 8226 and GMRA Trilogy 0226, who are both represented in the Accelerated Genetics catalog. We have used both of those bulls extensively in our own breeding program and the results are outstanding. Both bulls throw super stylish calves with lots of depth and eye appeal. Judge's dam, with an MPPA of 103.7, stacks generations of top end Lakota females, going back to the powerful 527 cow, whose lifetime production gave her an MPPA of 108.5. There's no need to wonder what this bull can do – we've seen the power of his maternal brothers and that combined with Justice will place him at the front of any herd sire pen. He has 8 EPDs in the top 21% of the breed or higher and is tied for the #5 TM and has the #2 CEM EPD in the offering.



### GMRA JUDGE 3208

9

Birth Date: 1/8/13 Reg. # 1605111 Category: 100% 1A



VGW JUSTICE 614  
FRITZ JUSTICE 8013  
FRITZ CHRIS 6047

BUF CRK PATRIOT M183  
VGW M82-FIREFLY 0479

5L HOB0 BEN 04-4422  
FRITZ CRIS 1051

LMAN KING ROB 8621  
GLACIER REBALA

GLACIER CHATEAU 744  
GMRA LAKOTA 625  
GMRA LAKOTA 380

BASIN HOB0 79E  
GMRA LAKOTA 527

BW	83
WW/Ratio	649 102
YW/Ratio	1164 100
IMF/REA	3.34 11.53
Scrotal	37.0

CED	BW	WW	YW	Milk	TM	ME	HPG	CEM	Stay	Marb	YG	CW	REA	Fat
7	-3.1	71	111	26	61	5	9	12	12	0.42	0.21	31	0.01	0.04
TOP BREED %														
21%	19%	6%	7%	5%	1%	79%	78%	1%	36%	49%	99%	15%	72%	93%



Here is another Trilogy son that has a great maternal background, top and bottom. His dam is a member of the great Ophelia cow family and goes back to Ophelia 8102, who was the dam of GMRA EBV 266. Here is another cow family that stacks the performance generation after generation. You have to go clear back to a 1974 model cow before you find an MPPA under 100. Trifecta posts a solid set of numbers with 11 of them being in the top 47% and 7 of those are in the top 21% of the breed or higher. In the offering he has the #5 REA EPD, is tied for the 5th highest YG and Stay, and has the #6 HPG.

### GMRA TRIFECTA 3218

10

Birth Date: 1/11/13 Reg. # 1605109 Category: 100% 1A



MESSMER PACKER S008  
GMRA TRILOGY 0226  
GMRA LAKOTA 625

MESSMER JOSHUA 019P  
MESSMER MILLIE 124P  
GLACIER CHATEAU 744  
GMRA LAKOTA 380

LMAN KING ROB 8621  
BJR MATTIE 002-1102

LCHMN RED SPREAD 1271F  
GMRA ESTONIA 617  
BJR ESTONIA 9S-1210

ALALTA ACRES THOR 9S  
BJR ESTONIA9102-9134

BW	87
WW/Ratio	646 102
YW/Ratio	1173 100
IMF/REA	3.66 11.98
Scrotal	38.0

CED	BW	WW	YW	Milk	TM	ME	HPG	CEM	Stay	Marb	YG	CW	REA	Fat
3	-0.6	66	108	18	51	5	12	5	14	0.43	-0.02	34	0.50	0.00
TOP BREED %														
57%	64%	15%	9%	57%	21%	77%	18%	42%	14%	47%	36%	10%	6%	44%





**RA50K**  
A GENESEK PRODUCT

### 11 GMRA MAKIN PEACE 3222



**11** Birth Date: 1/11/13 Reg. # 1605194 Category: 100% 1A

FRITZ JUSTICE 8013  
GMRA PEACEMAKER 1216  
GMRA THELMA 930

GMRA MAKE IT EASY 8226  
LGR ESTONIA 157  
LGR ESTONIA 7102

VGW JUSTICE 614  
FRITZ CHRIS 6047  
LJC MISSION STATEMENT P27  
GMRA THELMA 319  
BIEBER MAKE MIMI 7249  
GMRA LAKOTA 625  
GMRA GLADIATOR 2126  
LGR ESTONIA 0002

BW	72	
WW/Ratio	702	116
YW/Ratio	1141	102
IMF/REA	3.43	10.87
Scrotal	38.5	

CED	BW	WW	YW	Milk	TM	ME	HPG	CEM	Stay	Marb	YG	CW	REA	Fat	
9	-3.3	77	114	20	59	0	7	7	15	0.38	0.16	33	0.08	0.02	
TOP BREED %	11%	18%	2%	5%	35%	2%	38%	91%	17%	6%	59%	96%	12%	58%	78%

Makin Peace is one of the top heifer bull prospects in the sale. He comes from the strong maternal Estonia cow family. His dam has an MPPA of 106.4 and his grand dam is a 102.3. If you go back a couple more generations you find Estonia 8102, who was the dam of GMRA EBV 266. This bull has a nice low birth weight that is validated by a CED in the top 11% of the breed and a BW EPD in the top 18%. And he still has the #2 weaning ratio in the offering with a WW EPD that is tied for the 3rd highest in the sale. 10 of his EPDs are in the top 38% of the breed or higher, with growth numbers in the single digits.



Casey St. Blanc

Lot 12

**RA50K**  
A GENESEK PRODUCT

### 12 GMRA JUSTICE 3266



**12** Birth Date: 1/20/13 Reg. # 1605176 Category: 100% 1A

VGW JUSTICE 614  
FRITZ JUSTICE 8013  
FRITZ CHRIS 6047

GMRA EBV 266  
GMRA LARKABA 995  
GMRA LARKABA 316

BUF CRK PATRIOT M183  
VGW M82-FIREFLY 0479  
5L HOBO BEN 04-4422  
FRITZ CHRIS 1051  
GMRA EBV 935  
BJR ESTONIA 9S-1210  
LCHMN RED SPREAD 1271F  
GMRA LARKABA 931

BW	87	
WW/Ratio	656	103
YW/Ratio	1206	103
IMF/REA	3.78	12.33
Scrotal	37.5	

CED	BW	WW	YW	Milk	TM	ME	HPG	CEM	Stay	Marb	YG	CW	REA	Fat	
4	1.4	74	121	22	59	4	6	4	10	0.36	0.20	44	0.10	0.02	
TOP BREED %	46%	92%	3%	2%	23%	2%	69%	97%	58%	60%	64%	98%	2%	54%	78%

Here is a great Justice calf out of a powerful EBV 266 dam with a 104.9 MPPA. He has all the depth and muscling of the 266 cattle combined with the growth and EPDs of Justice. He has the #8 WW, is tied for the #4 YW and has the #2 CW EPD in the offering. As of the 3rd quarter test weights he is #7 for ADG.



Casey St. Blanc

Lot 13

**RA50K**  
A GENESEK PRODUCT

### 13 GMRA ROOSEVELT 3228



**13** Birth Date: 1/12/13 Reg. # 1605149 Category: 100% 1A

BIEBER ROUGH RIDER 10712  
BIEBER ROOSEVELT W384  
BIEBER SHEBA 9602

GMRA MINOTAURO 3104  
GMRA LENA 893  
GMRA LENA 357

BASIN TREND SETTER 6074  
BIEBER ADELLE 8958  
C A FUTURE DIRECTION 5321  
BIEBER SHEBA 5537  
BJR JR 107  
GMRA LENA 108  
LCHMN GRANDCANYON 1244G  
GMRA LENA 541

BW	74	
WW/Ratio	653	103
YW/Ratio	1136	97
IMF/REA	3.90	11.59
Scrotal	32.5	

CED	BW	WW	YW	Milk	TM	ME	HPG	CEM	Stay	Marb	YG	CW	REA	Fat	
5	-3.3	51	81	32	57	1	11	6	9	0.56	0.05	14	0.17	0.02	
TOP BREED %	36%	17%	65%	61%	1%	3%	47%	26%	28%	78%	22%	68%	67%	40%	78%

Here's a stout Roosevelt son that will add capacity and muscle to any cow herd. He's got great birth stats and comes from a dam with an MPPA of 102.6. His Milk EPD is #2 in the offering and is in the top 1% of the breed and his TM is in the top 4%. If you are looking for maternal strength and milk, look no further.



Casey St. Blanc

Lot 14

**14** **GMRA ROOSEVELT 3215**  
 Birth Date: 1/10/13 Reg. # 1605140 Category: 100% 1A

BIEBER ROUGH RIDER 10712  
 BIEBER ROOSEVELT W384  
 BIEBER SHEBA 9602

LSF COMBINATION A301M  
**GMRA THELMA 831**  
 GMRA THELMA 507

BASIN TREND SETTER 6074  
 BIEBER ADELLE 8958  
 C A FUTURE DIRECTION 5321  
 BIEBER SHEBA 5537

LCHMN TOP BRASS 1049H  
 WHF LASS 27G-29J  
 BIEBER MAKE MIMI 7249  
 GMRA THELMA 303

BW	96	
WW/Ratio	691	109
YW/Ratio	1227	105
IMF/REA	3.47	11.37
Scrotal	36.0	

CED	BW	WW	YW	Milk	TM	ME	HPG	CEM	Stay	Marb	YG	CW	REA	Fat		
6	0.8	65	102	22	55	-1	13	8	9	0.71	0.17	32	0.17	0.04		
TOP BREED %		28%	85%	16%	17%	21%	7%	35%	5%	10%	68%	8%	97%	13%	40%	93%

This bull is out of a high production Combination dam with an MPPA of 104.4 and a strong maternal pedigree. You need to go back 6 generations before you find a dam with an MPPA under 100. This bull's 2010 maternal sister was sold in our 2011 Big Sky Elite Female sale and chosen by Wildcat Creek Ranch in Newton, KS, as the Elite Pick of our bred heifers. His 2012 maternal brother sold in our 2013 Bull Sale to Shamrock Nook Red Angus of Albany, WI. Roosevelt 3215 has the #8 weaning and yearling ratios and turned in the #3 mid-test weight. He has 10 of his EPDs in the top 35% of the breed or higher. A very complete package!



Casey St. Blanc

Lot 15

**15** **GMRA ROOSEVELT 3253**  
 Birth Date: 1/16/13 Reg. # 1605142 Category: 100% 1A

BIEBER ROUGH RIDER 10712  
 BIEBER ROOSEVELT W384  
 BIEBER SHEBA 9602

GMRA LARAMIE 5110  
**GMRA OPHELIA 840**  
 GMRA OPHELIA 441

BASIN TREND SETTER 6074  
 BIEBER ADELLE 8958  
 C A FUTURE DIRECTION 5321  
 BIEBER SHEBA 5537

LCC CHEYENNE B221L  
 GMRA LAKOTA 341  
 BIEBER MAKE MIMI 7249  
 GMRA OPHELIA 036

BW	82	
WW/Ratio	660	104
YW/Ratio	1199	103
IMF/REA	3.98	9.56
Scrotal	38.0	

CED	BW	WW	YW	Milk	TM	ME	HPG	CEM	Stay	Marb	YG	CW	REA	Fat		
5	-1.5	59	100	29	59	0	11	5	13	0.72	0.27	28	0.14	0.08		
TOP BREED %		36%	43%	36%	21%	1%	2%	39%	24%	42%	18%	7%	99%	23%	46%	99%

There's not enough o's in smooth to describe this bull. He's just built right, with all the power of the Roosevelt calves. On the maternal side, if you go back 3 generations you have the dam who produced GMRA Cody 7228, who sold to Accelerate Genetics. Numbers are strong across the board with all but 2 of his EPDs in the top 45% or higher, with a Milk in the top 1% that ties for the #3 Milk EPD in the offering.



Casey St. Blanc

Lot 16

**16** **GMRA ROOSEVELT 3271**  
 Birth Date: 1/22/13 Reg. # 1605112 Category: 100% 1A

BIEBER ROUGH RIDER 10712  
 BIEBER ROOSEVELT W384  
 BIEBER SHEBA 9602

BIEBER MAKE MIMI 7249  
**GMRA PRINCESS 631**  
 GMRA PRINCESS 227

BASIN TREND SETTER 6074  
 BIEBER ADELLE 8958  
 C A FUTURE DIRECTION 5321  
 BIEBER SHEBA 5537

BJR MAKE MY DAY 981  
 BIEBER SIRENA 6708  
 LCHMN RED SPREAD 1271F  
 GMRA PRINCESS 633

BW	93	
WW/Ratio	639	101
YW/Ratio	1144	98
IMF/REA	3.84	11.75
Scrotal	37.0	

CED	BW	WW	YW	Milk	TM	ME	HPG	CEM	Stay	Marb	YG	CW	REA	Fat		
8	1.0	61	92	25	56	3	8	4	12	0.83	0.01	26	0.45	0.02		
TOP BREED %		15%	89%	28%	36%	7%	5%	60%	90%	58%	30%	3%	50%	26%	8%	78%

This Roosevelt son is out of a performance minded Princess cow line. MPPA's in the first 3 generations back are never lower than 104.2. His maternal sister was chosen as our 2012 bred heifer Elite Pick by Loosli Red Angus of Ashton, ID, in our Big Sky Elite sale. His grand dam's 2011 bull calf sold to Bar Open A Red Angus, in Hamer, ID. Roosevelt 3271 has 8 EPDs in the top 30% of the breed or higher with outstanding carcass. He has the #1 Marb EPD and the #9 REA EPD in the offering.

# Yearling Bulls



## GREEN MOUNTAIN RED ANGUS



Casey St. Blanc

Lot 17

### 17 GMRA JUSTICE 3270

Birth Date: 1/22/13  
 Reg. # 1605070  
 Category: 100% 1A

VGW JUSTICE 614  
 FRITZ JUSTICE 8013  
 FRITZ CHRIS 6047

BUF CRK PATRIOT M183  
 VGW M82-FIREFLY 0479  
 5L HOB0 BEN 04-4422  
 FRITZ CRIS 1051  
 LMN PROOF POSITIVE1305E  
 MS NEO-SHO BUFCRK D073  
 GMRA EBV 266  
 GMRA OPHELIA 729



BW	81
WW/Ratio	669 106
YW/Ratio	1273 109
IMF/REA	3.43 10.26
Scrotal	36.0

CED	BW	WW	YW	Milk	TM	ME	HPG	CEM	Stay	Marb	YG	CW	REA	Fat
11	-2.7	62	110	28	59	4	8	10	10	0.42	0.17	32	-0.03	0.01
TOP BREED %														
5%	24%	26%	8%	2%	2%	69%	89%	3%	60%	49%	97%	13%	79%	61%

Lots of performance here with a strong maternal pedigree. His dam has an MPPA of 104 and his grand dam has an MPPA of 110. She produced GMRA Cody 7228, who sold to Accelerated Genetics. This bull has tons of personal performance and turned in the #2 yearling ratio and the #5 mid-test weight. After 3rd quarter test weights he has the #4 ADG. This is all complemented by a solid set of numbers with 8 in the top 26% of the breed or higher and 5 are in single digits.

### 18 GMRA JUSTICE 3264

Birth Date: 1/20/13  
 Reg. # 1605043  
 Category: 100% 1A

VGW JUSTICE 614  
 FRITZ JUSTICE 8013  
 FRITZ CHRIS 6047

BUF CRK PATRIOT M183  
 VGW M82-FIREFLY 0479  
 5L HOB0 BEN 04-4422  
 FRITZ CRIS 1051  
 BUF CRK HOB0 2595  
 DOUBLE FORK 079Z  
 XXX FIRESTORM HM 511  
 GMRA MISS LAKOTA



BW	93
WW/Ratio	730 115
YW/Ratio	1251 107
IMF/REA	3.75 11.84
Scrotal	38.0

CED	BW	WW	YW	Milk	TM	ME	HPG	CEM	Stay	Marb	YG	CW	REA	Fat
8	-0.5	63	93	29	61	3	8	10	14	0.49	0.23	25	-0.06	0.05
TOP BREED %														
15%	64%	23%	33%	1%	1%	63%	83%	3%	14%	34%	99%	32%	84%	97%

Here we are, 18 deep in the sale, and this bull could just as easily be in the top 5, proving the strength of this year's offering. He is out of a powerful Hobo 79E dam that has sold several bull calves into purebred operations. Unfortunately, she was stifled and left the herd this year after 11 calves and the #1 MPPA in the herd of 109. The maternal strength is there, with MPPAs from 101.3 and higher since 1984. This Justice son is tied for the #3 weaning ratio in the offering, has the #6 yearling ratio, and was #7 for weight as of mid-test. All of this is combined with a solid set of numbers with 9 in the top 1/3rd of the breed or higher, with several in single digits.



Casey St. Blanc

Lot 20

### 19 GMRA JUSTICE 3209

Birth Date: 1/9/13  
 Reg. # 1605099  
 Category: 100% 1A

VGW JUSTICE 614  
 FRITZ JUSTICE 8013  
 FRITZ CHRIS 6047

BUF CRK PATRIOT M183  
 VGW M82-FIREFLY 0479  
 5L HOB0 BEN 04-4422  
 FRITZ CRIS 1051  
 LMAN KING ROB 8621  
 GLACIER REBALA  
 GMRA VERMILLION 796  
 GMRA LARKOBA 649



BW	87
WW/Ratio	694 109
YW/Ratio	1206 103
IMF/REA	4.87 10.85
Scrotal	39.5

CED	BW	WW	YW	Milk	TM	ME	HPG	CEM	Stay	Marb	YG	CW	REA	Fat
4	-0.6	72	110	23	59	12	8	10	9	0.45	0.18	34	0.03	0.02
TOP BREED %														
46%	61%	5%	8%	15%	2%	99%	80%	3%	68%	42%	97%	10%	68%	78%

Here's another Justice son out of one of our top production cows in the herd. His dam has an MPPA of 108.5, which makes her our #5 MPPA cow. All of her progeny have been kept as replacements or sold in the bull sale. Her 2012 bull calf was our Lot 1 bull in last year's sale, selling for \$6250 to Waddell Ranch of Wilsall, MT. Justice 3209 turned in the #8 weaning ratio and as of 3rd quarter test weights had the #2 ADG. He also turned in the #1 actual and adjusted IMF scan, ratioing 133. He is in pretty elite company with 6 of his EPDs in the top 15% of the breed or higher, with several in single digits.

### 20 GMRA PEACEMAKER 3206

Birth Date: 1/7/13  
 Reg. # 1605143  
 Category: 100% 1A

FRITZ JUSTICE 8013  
 GMRA PEACEMAKER 1216  
 GMRA THELMA 930

VGW JUSTICE 614  
 FRITZ CHRIS 6047  
 LJC MISSION STATEMENT P27  
 GMRA THELMA 319  
 BECKTON JULIAN GG B571  
 LCHMN FLOWER C1161  
 LCHMN NO EQUAL 1174D  
 GMRA NEXA 827



BW	90
WW/Ratio	636 100
YW/Ratio	1188 102
IMF/REA	4.02 11.32
Scrotal	37.5

CED	BW	WW	YW	Milk	TM	ME	HPG	CEM	Stay	Marb	YG	CW	REA	Fat
9	-1.6	70	112	19	54	10	11	6	14	0.46	0.06	34	0.28	0.01
TOP BREED %														
11%	41%	7%	6%	50%	10%	98%	31%	28%	11%	40%	72%	9%	23%	61%

Impressive numbers - 12 of his EPDs are in the top half of the breed or higher.






### 21 GMRA ROOSEVELT 3272

Birth Date: 1/23/13 Reg. #: 1605170 Category: 100% 1A

BIEBER ROUGH RIDER 10712 | BASIN TREND SETTER 6074  
 BIEBER ROOSEVELT W384 | BIEBER ADELLE 8958  
 BIEBER SHEBA 9602 | C A FUTURE DIRECTION 5321  
 | BIEBER SHEBA 5537

VGW NORTHERN CANYON 5109 | GEFB NORTHERN CANYON 2328  
 GMRA LENA 974 | VGW PT YUMA 0278  
 GMRA LENA 357 | LCHMN GRANDCANYON 1244G  
 | GMRA LENA 541



BW	80	
WW/Ratio	649	102
YW/Ratio	1126	96
IMF/REA	3.77	10.76
Scrotal	33.5	

CED	BW	WW	YW	Milk	TM	ME	HPG	CEM	Stay	Marb	YG	CW	REA	Fat		
6	-2.1	55	87	26	54	-5	11	5	8	0.71	0.15	19	0.05	0.04		
TOP BREED %		28%	33%	49%	47%	4%	9%	14%	21%	42%	81%	8%	95%	50%	64%	93%

Dam has an MPPA of 102.2. This bull ties for the #3 ME and the #4 Marb EPD in the offering.



Casey St. Blanc


Lot 22

### 22 GMRA TRILOGY 3306

Birth Date: 2/15/13 Reg. #: 1605094 Category: 100% 1A

MESSMER PACKER S008 | MESSMER JOSHUA 019P  
 GMRA TRILOGY 0226 | MESSMER MILLIE 124P  
 GMRA LAKOTA 625 | GLACIER CHATEAU 744  
 | GMRA LAKOTA 380

BIEBER TOP MONEY 7948 | BIEBER RED MOON 6042  
 GMRA NEXA 472 | BIEBER SIRENA 6708  
 GMRA NEXA 54 | LMAN LADIES MAN 1144B  
 | GMRA NEXA 127



BW	97	
WW/Ratio	645	102
YW/Ratio	1160	99
IMF/REA	3.88	13.21
Scrotal	35.0	

CED	BW	WW	YW	Milk	TM	ME	HPG	CEM	Stay	Marb	YG	CW	REA	Fat		
5	1.2	75	108	9	47	3	10	6	13	0.62	0.10	35	0.35	0.03		
TOP BREED %		36%	90%	3%	10%	98%	46%	63%	55%	28%	20%	15%	85%	8%	15%	87%

This bull turned in the #6 actual REA scan for a 114 ratio.



Lot 23

### 23 GMRA PEACEMAKER 3294

Birth Date: 2/2/13 Reg. #: 1605015 Category: 100% 1A

FRITZ JUSTICE 8013 | VGW JUSTICE 614  
 GMRA PEACEMAKER 1216 | FRITZ CHRIS 6047  
 GMRA THELMA 930 | LJC MISSION STATEMENT P27  
 | GMRA THELMA 319

HXC CONQUEST 4405P | BECKTON JULIAN GG B571  
 GMRA OPHELIA 068 | HXC ELLIE MAY MA638  
 GMRA OPHELIA 840 | GMRA LARAMIE 5110  
 | GMRA OPHELIA 441



BW	74	
WW/Ratio	662	104
YW/Ratio	1185	102
IMF/REA	3.87	11.41
Scrotal	36.0	

CED	BW	WW	YW	Milk	TM	ME	HPG	CEM	Stay	Marb	YG	CW	REA	Fat		
13	-5.7	64	106	24	56	3	8	6	14	0.51	0.05	25	0.35	0.03		
TOP BREED %		2%	3%	18%	12%	12%	5%	64%	89%	28%	10%	30%	68%	31%	15%	87%

Here is the maternal brother to GMRA Enterprise 2227, who was the Lot 2 bull in last year's sale, selling for \$7000 to Big Sky Red Angus of Dagmar, MT. The dam has an MPPA of 103.4 and his grand dam is the dam of Lot 15 in this sale. He has a great set of numbers with 11 in the top 1/3rd of the breed or higher. He is tied for the #1 CED and has the #2 BW EPD in the offering. Growth and maternal numbers are in the top 18% of the breed or higher. Just a tremendous spread on numbers, combined with performance and maternal power.

# Yearling Bulls



## GREEN MOUNTAIN RED ANGUS



Lot 24

### 24 GMRA EPIC 3279

Birth Date: 1/27/13 Reg. # 1605056 Category: 100% 1A

BECKTON EPIC K F075  
BECKTON EPIC R397 K  
BECKTON KIT F468 JL

C-T THUNDERBIRD 0811  
DKK ELEANOR 168  
DKK ELEANOR L01

BECKTON EPIC D404  
BECKTON BELGA D483 KR  
BECKTON JULIAN GG B571  
BECKTON KIT A517 NP  
4L 429 CANYON 37S  
CTDB VRDALE 012  
FCC RAMBO 502  
CK'S MISS ANNE 4011



BW	69	
WW/Ratio	655	108
YW/Ratio	1162	104
IMF/REA	3.44	12.51
Scrotal	37.0	

CED	BW	WW	YW	Milk	TM	ME	HPG	CEM	Stay	Marb	YG	CW	REA	Fat	
-1	-1.9	60	98	17	47	-2	10	2	9	0.55	0.12	26	0.35	0.05	
TOP BREED %	90%	36%	31%	23%	67%	46%	30%	54%	82%	73%	23%	90%	27%	15%	97%

Dam posts an MPPA of 103.2. Powerful Epic son – you'll see more like this next year.



Lot 25

### 25 GMRA SMOOTH 'N EASY 3304

Birth Date: 2/14/13 Reg. # 1605108 Category: 100% 1A

BIEBER MAKE MIMI 7249  
GMRA MAKE IT EASY 8226  
GMRA LAKOTA 625

LCC CHEYENNE B221L  
GMRA INDIGO 615  
GMRA INDIGO 230

BJR MAKE MY DAY 981  
BIEBER SIRENA 6708  
GLACIER CHATEAU 744  
GMRA LAKOTA 380  
BFCK CHEROKEE CNYN 4912  
HXC 701G  
BUF CRK BARNEY 3474  
GMRA INDIGO 512



BW	83	
WW/Ratio	667	105
YW/Ratio	1171	100
IMF/REA	3.56	11.03
Scrotal	33.0	

CED	BW	WW	YW	Milk	TM	ME	HPG	CEM	Stay	Marb	YG	CW	REA	Fat	
6	-2.8	64	101	24	56	2	8	7	13	0.58	0.13	26	0.00	0.01	
TOP BREED %	28%	23%	18%	18%	11%	5%	53%	84%	17%	22%	19%	92%	27%	74%	61%

A great maternal pedigree with no MPPA's under 101.9 for 5 generations, and his dam has an MPPA of 106.4. Numbers are strong with 10 of the 15 in the top 28% or higher.

### 26 GMRA TRILOGY 3211

Birth Date: 1/9/13 Reg. # 1605051 Category: 100% 1A

MESSMER PACKER S008  
GMRA TRILOGY 0226  
GMRA LAKOTA 625

GMRA EBV 266  
GMRA LAKOTA 162  
GMRA LAKOTA 667

MESSMER JOSHUA 019P  
MESSMER MILLIE 124P  
GLACIER CHATEAU 744  
GMRA LAKOTA 380  
GMRA EBV 935  
BJR ESTONIA 9S-1210  
LSF COMBINATION A301M  
GMRA LAKOTA 456



BW	68	
WW/Ratio	642	106
YW/Ratio	1059	95
IMF/REA	3.46	12.24
Scrotal	36.0	

CED	BW	WW	YW	Milk	TM	ME	HPG	CEM	Stay	Marb	YG	CW	REA	Fat	
4	-2.0	64	96	15	47	5	11	4	13	0.44	0.02	24	0.48	0.03	
TOP BREED %	46%	36%	20%	28%	76%	41%	78%	24%	58%	25%	44%	54%	34%	7%	87%

Dam has an MPPA of 102.4. This Trilogy is a heifer bull with great carcass. His REA ratio is 109 and his carcass EPDs are right at the top of the breed.



### 27 GMRA JUSTICE 3293

Birth Date: 2/1/13 Reg. # 1605096 Category: 100% 1A

VGW JUSTICE 614  
FRITZ JUSTICE 8013  
FRITZ CHRIS 6047

BIEBER MAKE MIMI 7249  
GMRA THELMA 507  
GMRA THELMA 303

BUF CRK PATRIOT M183  
VGW M82-FIREFLY 0479  
5L HOBO BEN 04-4422  
FRITZ CRIS 1051  
BJR MAKE MY DAY 981  
BIEBER SIRENA 6708  
BASIN HOBO 79E  
GMRA THELMA 132



BW	97	
WW/Ratio	727	115
YW/Ratio	1265	108
IMF/REA	4.10	12.83
Scrotal	37.0	

CED	BW	WW	YW	Milk	TM	ME	HPG	CEM	Stay	Marb	YG	CW	REA	Fat	
11	-0.1	79	121	25	64	5	8	8	13	0.53	0.18	42	0.21	0.03	
TOP BREED %	5%	71%	1%	2%	9%	1%	77%	85%	10%	22%	26%	97%	3%	33%	87%

Who made the sale order? This Justice son's performance jumps off the page. He's tied for the #3 adjusted WW and YW and ratios of the offering. He's never quit converting feed to pounds and as of the 3rd quarter test weights has stayed in the top 10 for ADG. He turned in great carcass scans, 112 IMF ratio and 111 REA ratio. He's backed up by 5 maternal generations all boasting MPPA's of 100 or higher. His EPDs keep him in some pretty elite company with 10 in the top 1/3rd of the breed or higher, and 7 of those in the top 10% or higher. He does have the #1 TM, the #2 WW, the #3 CW, is tied for the #3 CED and the #4 YW EPD in the offering.



### 28 GMRA MAKE IT EASY 3241

Birth Date: 1/15/13 Reg. #: 1605098 Category: 100% 1A

BIEBER MAKE MIMI 7249  
GMRA MAKE IT EASY 8226  
GMRA LAKOTA 625

LCC CHEYENNE B221L  
GMRA ESTONIA 513  
GMRA ESTONIA 544

BJR MAKE MY DAY 981  
BIEBER SIRENA 6708  
GLACIER CHATEAU 744  
GMRA LAKOTA 380

BFCK CHEROKEE CNYN 4912  
HXC 701G

GMRA EBV 935  
GMRA ESTONIA 031



BW	80	
WW/Ratio	674	106
YW/Ratio	1157	99
IMF/REA	3.21	10.84
Scrotal	41.0	

CED	BW	WW	YW	Milk	TM	ME	HPG	CEM	Stay	Marb	YG	CW	REA	Fat
6	-2.9	60	92	25	55	4	6	6	11	0.53	0.07	20	0.05	0.00
TOP BREED %														
28%	21%	31%	36%	8%	7%	72%	96%	28%	46%	26%	76%	46%	64%	44%

7 generations of maternal power with no MPPA's under 100.

### 29 GMRA CONQUEST 3231

Birth Date: 1/13/13 Reg. #: 1605193 Category: 100% 1A

BECKTON JULIAN GG B571  
HXC CONQUEST 4405P  
HXC ELLIE MAY MA638

GMRA LARAMIE 5110  
LGR HI LASS 142  
LGR HI LASS 641

BKT JULIAN 7526 G  
BKT MARTA 9A13 JL

BFCK CHEROKEE CNYN 4912  
HXC 529E

LCC CHEYENNE B221L  
GMRA LAKOTA 341

MLK CRK TITLEIST 4158  
LGR HI LASS 431



BW	68	
WW/Ratio	641	106
YW/Ratio	1097	98
IMF/REA	3.89	9.89
Scrotal	34.0	

CED	BW	WW	YW	Milk	TM	ME	HPG	CEM	Stay	Marb	YG	CW	REA	Fat
10	-3.5	63	99	22	53	12	6	7	12	0.56	0.09	24	0.19	0.02
TOP BREED %														
8%	15%	23%	21%	23%	11%	99%	96%	17%	31%	22%	82%	34%	36%	78%

Here's a heifer specialist with a strong maternal background and impressive numbers. He's tied for the 3rd lowest actual birth weight and is tied for the #6 CED EPD, and maintains over half of his numbers in the top 23% of the breed or higher.



Lot 31

### 30 GMRA JUSTICE 3219

Birth Date: 1/11/13 Reg. #: 1605081 Category: 100% 1A

VGW JUSTICE 614  
FRITZ JUSTICE 8013  
FRITZ CHRIS 6047

LCHMN GRANDCANYON 1244G  
GMRA LENA 357  
GMRA LENA 541

BUF CRK PATRIOT M183  
VGW M82-FIREFLY 0479

5L HOBO BEN 04-4422  
FRITZ CHRIS 1051

BUF CRK CHF 824-1658  
KRN REBA'S ROBIN

GMRA EBV 266  
GMRA LARKOBA 010



BW	81	
WW/Ratio	674	106
YW/Ratio	1175	101
IMF/REA	3.07	11.88
Scrotal	36.0	

CED	BW	WW	YW	Milk	TM	ME	HPG	CEM	Stay	Marb	YG	CW	REA	Fat
5	-2.0	67	107	23	56	8	7	5	8	0.37	0.21	31	0.08	0.05
TOP BREED %														
36%	34%	13%	11%	18%	5%	94%	90%	42%	81%	61%	99%	16%	58%	97%

### 31 GMRA JUSTICE 3290

Birth Date: 2/1/13 Reg. #: 1605171 Category: 100% 1A

VGW JUSTICE 614  
FRITZ JUSTICE 8013  
FRITZ CHRIS 6047

BROWN COMMITMENT S7206  
GMRA PRIDSTOM 982  
GMRA PRIDSTOM 035

BUF CRK PATRIOT M183  
VGW M82-FIREFLY 0479

5L HOBO BEN 04-4422  
FRITZ CHRIS 1051

LJC LANCER 806  
BROWN MS SHAZZAM P7940

LMAN KING ROB 8621  
GMRA PRIDSTOM 644



BW	84	
WW/Ratio	641	101
YW/Ratio	1186	102
IMF/REA	3.56	12.70
Scrotal	38.0	

CED	BW	WW	YW	Milk	TM	ME	HPG	CEM	Stay	Marb	YG	CW	REA	Fat
4	-1.2	70	113	23	58	4	10	4	11	0.63	0.18	36	0.13	0.03
TOP BREED %														
46%	49%	7%	5%	17%	3%	76%	52%	58%	52%	14%	97%	8%	48%	87%

Dam has an MPPA of 106.7.

# Yearling Bulls



## GREEN MOUNTAIN RED ANGUS

### 32 GMRA MOUNTAIN 3203

GMRA EBV 266  
GMRA MOUNTAIN 9287  
GMRA VENICE 359

FRITZ JUSTICE 8013  
GMRA PRINCESS 104  
GMRA PRINCESS 916

GMRA EBV 935  
BJR ESTONIA 9S-1210  
BASIN HOBO 79E  
GMRA VENICE 146  
VGW JUSTICE 614  
FRITZ CHRIS 6047  
MESSMER PACKER S008  
GMRA PRINCESS 227

BW	79	
WW/Ratio	611	101
YW/Ratio	1113	99
IMF/REA	4.03	10.70
Scrotal	37.5	

CED	BW	WW	YW	Milk	TM	ME	HPG	CEM	Stay	Marb	YG	CW	REA	Fat	
6	0.1	65	110	25	58	4	8	6	13	0.52	0.13	36	0.19	0.02	
TOP BREED %	28%	75%	15%	8%	8%	3%	73%	84%	28%	17%	28%	92%	8%	36%	78%

### 33 GMRA PEACEMAKER 3204

FRITZ JUSTICE 8013  
GMRA PEACEMAKER 1216  
GMRA THELMA 930

MESSMER PACKER S008  
GMRA LENA 175  
GMRA LENA 893

VGW JUSTICE 614  
FRITZ CHRIS 6047  
LJC MISSION STATEMENT P27  
GMRA THELMA 319  
MESSMER JOSHUA 019P  
MESSMER MILLIE 124P  
GMRA MINOTAURO 3104  
GMRA LENA 357

BW	69	
WW/Ratio	578	96
YW/Ratio	1112	99
IMF/REA	4.71	11.00
Scrotal	36.0	

CED	BW	WW	YW	Milk	TM	ME	HPG	CEM	Stay	Marb	YG	CW	REA	Fat	
7	-3.7	66	113	18	51	5	11	5	13	0.52	0.03	32	0.49	0.02	
TOP BREED %	21%	13%	13%	5%	55%	19%	81%	26%	42%	22%	28%	59%	13%	7%	78%

This bull turned in the #2 actual IMF scan, with a ratio of 122. He's in elite company with 10 EPDs in the top 28% or higher.



Lot 34

### 34 GMRA CONQUEST 3302

BECKTON JULIAN GG B571  
HXC CONQUEST 4405P  
HXC ELLIE MAY MA638

LCHMN RED SPREAD 1271F  
GMRA NEXA 672  
GMRA NEXA 908

BKT JULIAN 7526 G  
BKT MARTA 9A13 JL  
BFCK CHEROKEE CNYN 4912  
HXC 529E  
LMAN KING ROB 8621  
BJR MATTIE 002-1102  
FCC RAMBO 502  
GMRA NEXA 918

BW	88	
WW/Ratio	675	106
YW/Ratio	1182	101
IMF/REA	3.38	13.76
Scrotal	36.5	

CED	BW	WW	YW	Milk	TM	ME	HPG	CEM	Stay	Marb	YG	CW	REA	Fat	
10	-0.9	65	104	20	52	6	6	7	11	0.37	0.00	31	0.47	0.01	
TOP BREED %	8%	55%	17%	14%	38%	14%	86%	98%	17%	41%	61%	45%	16%	8%	61%

Dam's MPPA is 102.9. This Conquest son has the #1 adjusted REA scan, with a ratio of 119. He boasts 7 EPDs in the top 17% of the breed or higher.

### 35 GMRA JUSTICE 3274

VGW JUSTICE 614  
FRITZ JUSTICE 8013  
FRITZ CHRIS 6047

GLACIER CHATEAU 744  
GMRA FIREFLY 461  
GMRA FIREFLY 029

BUF CRK PATRIOT M183  
VGW M82-FIREFLY 0479  
5L HOBO BEN 04-4422  
FRITZ CRIS 1051  
LMAN KING ROB 8621  
GLACIER REBALA  
BASIN GOLD 6C  
GMRA FIREFLY 428

BW	89	
WW/Ratio	674	106
YW/Ratio	1133	97
IMF/REA	3.18	11.98
Scrotal	38.0	

CED	BW	WW	YW	Milk	TM	ME	HPG	CEM	Stay	Marb	YG	CW	REA	Fat	
4	-0.3	73	110	21	58	10	8	8	10	0.33	0.16	35	0.13	0.03	
TOP BREED %	46%	67%	4%	8%	26%	3%	98%	83%	10%	64%	71%	96%	9%	48%	87%

This bull's dam is a high production Chateau daughter with an MPPA of 104.3. Her 2011 heifer calf was chosen by C-T Red Angus of Manhattan, MT as our Elite Pick of the heifer calves in the 2011 Big Sky Elite sale. This bull has some powerful rankings, with 5 of his EPDs in the top 10% of the breed or higher.

### 36 GMRA JUSTICE 3273

VGW JUSTICE 614  
FRITZ JUSTICE 8013  
FRITZ CHRIS 6047

GMRA GLADIATOR 2126  
LGR ESTONIA 7102  
LGR ESTONIA 0002

BUF CRK PATRIOT M183  
VGW M82-FIREFLY 0479  
5L HOBO BEN 04-4422  
FRITZ CRIS 1051  
BASIN HOBO 79E  
GMRA LAKOTA ET 47  
BASIN GOLD 6C  
GMRA ESTONIA 312

BW	82	
WW/Ratio	668	105
YW/Ratio	1217	104
IMF/REA	3.62	10.08
Scrotal	37.0	

CED	BW	WW	YW	Milk	TM	ME	HPG	CEM	Stay	Marb	YG	CW	REA	Fat	
9	-2.9	65	104	26	58	-2	8	9	11	0.38	0.21	28	-0.11	0.03	
TOP BREED %	11%	21%	17%	14%	5%	2%	25%	87%	5%	51%	59%	99%	23%	91%	87%

Dam's MPPA is 102.3. Strong numbers with 9 EPDs in the top 25% of the breed or higher.



Lot 37

**37 GMRA ROOSEVELT 3232**

Birth Date: 1/13/13 Reg. #: 1605197 Category: 100% 1A

BIEBER ROUGH RIDER 10712  
BIEBER ROOSEVELT W384  
BIEBER SHEBA 9602

MLK CRK TITLEIST 4158  
LGR HI LASS 641  
LGR HI LASS 431

BASIN TREND SETTER 6074  
BIEBER ADELLE 8958  
C A FUTURE DIRECTION 5321  
BIEBER SHEBA 5537

VGW TITLEIST 1106  
MLK CRK SHEBA 079  
LCHMN RED SPREAD 1271F  
GMRA HI LASS 237



BW	78	
WW/Ratio	626	99
YW/Ratio	1171	100
IMF/REA	3.41	11.10
Scrotal	34.0	

CED	BW	WW	YW	Milk	TM	ME	HPG	CEM	Stay	Marb	YG	CW	REA	Fat		
6	-2.3	50	84	25	50	2	10	8	9	0.51	0.07	17	0.19	0.03		
TOP BREED %		28%	30%	70%	53%	7%	26%	52%	56%	10%	76%	30%	76%	55%	36%	87%

Dam's MPPA is 104.1.

**38 GMRA PEACEMAKER 3301**

Birth Date: 2/8/13 Reg. #: 1605039 Category: 100% 1A

FRITZ JUSTICE 8013  
GMRA PEACEMAKER 1216  
GMRA THELMA 930

GMRA VERMILLION 796  
GMRA ANNE 144  
GMRA ANNE 837

VGW JUSTICE 614  
FRITZ CHRIS 6047  
LJC MISSION STATEMENT P27  
GMRA THELMA 319  
BUF CRK CHF 824-1658  
GMRA LAKOTA 456  
LCHMN RED SPREAD 1271F  
GMRA ANNE 639



BW	84	
WW/Ratio	727	115
YW/Ratio	1164	100
IMF/REA	3.76	11.81
Scrotal	36.0	

CED	BW	WW	YW	Milk	TM	ME	HPG	CEM	Stay	Marb	YG	CW	REA	Fat		
7	-1.8	71	99	19	54	5	10	6	10	0.46	0.05	26	0.32	0.02		
TOP BREED %		21%	38%	6%	21%	47%	8%	78%	48%	28%	60%	40%	68%	28%	18%	78%

Here is a Peacemaker son that comes from one of the most powerful dams in the GMRA herd. His dam's MPPA is 108.2 on 10 calves, ranking her as #6 in the herd. She has raised standouts, such as GMRA Anne 262, who was our high selling bred heifer in the 2013 Big Sky Elite sale, selling to Gil Hammer of Flaxville, MT, for \$5500. Peacemaker 3301 tied for the #3 adjusted weaning weight and ratio. 7 of his EPDs are in the top 28% of the breed or higher. Pretty impressive when you realize his dam is a 2001 model and maintained breed leading numbers for 14 years.



Lot 40

**39 GMRA ROOSEVELT 3238**

Birth Date: 1/14/13 Reg. #: 1605150 Category: 100% 1A

BIEBER ROUGH RIDER 10712  
BIEBER ROOSEVELT W384  
BIEBER SHEBA 9602

LAUBACH EXPEDITION 643  
GMRA NEXA 901  
GMRA NEXA 553

BASIN TREND SETTER 6074  
BIEBER ADELLE 8958  
C A FUTURE DIRECTION 5321  
BIEBER SHEBA 5537

BROWN VACATION H7106  
GMRA NEXA 941  
GMRA VERMILLION 796  
GMRA NEXA 531



BW	96	
WW/Ratio	612	97
YW/Ratio	1124	96
IMF/REA	3.29	12.12
Scrotal	36.0	

CED	BW	WW	YW	Milk	TM	ME	HPG	CEM	Stay	Marb	YG	CW	REA	Fat		
8	1.2	58	88	26	55	-5	11	11	11	0.49	0.08	24	0.23	0.02		
TOP BREED %		15%	90%	38%	44%	5%	7%	15%	33%	2%	52%	34%	79%	32%	30%	78%

This Roosevelt son has 9 EPDs in the top 1/3rd of the breed or higher and has the #2 ME and the #3 CEM in the offering. He is out of a dam with an MPPA of 106.9. His maternal brother sold in our 2012 sale to Fritz Red Angus of Brady, MT, for \$11,000.

**40 GMRA JUSTICE 3201**

Birth Date: 1/1/13 Reg. #: 1605152 Category: 100% 1A

VGW JUSTICE 614  
FRITZ JUSTICE 8013  
FRITZ CHRIS 6047

BROWN VACATION H7106  
GMRA JUANA 910  
GMRA JUANA 725

BUF CRK PATRIOT M183  
VGW M82-FIREFLY 0479  
5L HOBO BEN 04-4422  
FRITZ CHRIS 1051

BECKTON JULIAN GG B571  
LCHMN FLOWER C1161  
BIEBER MAKE MIMI 7249  
GMRA JUANA 130



BW	68	
WW/Ratio	635	
YW/Ratio	1130	
IMF/REA	3.78	11.93
Scrotal	36.5	

CED	BW	WW	YW	Milk	TM	ME	HPG	CEM	Stay	Marb	YG	CW	REA	Fat		
8	-2.4	68	108	22	56	7	8	8	13	0.38	0.14	31	0.13	0.02		
TOP BREED %		15%	28%	10%	10%	20%	5%	90%	81%	10%	26%	59%	93%	16%	48%	78%

This bull may be a twin, but his picture says it all. He's out of a high performance dam with an MPPA of 104.9 and has 9 EPDs in the top 28% of the breed or higher.

# Yearling Bulls



## GREEN MOUNTAIN RED ANGUS

### 41 GMRA JUSTICE 3257

Birth Date: 1/18/13 Reg. # 1605007 Category: 100% 1A



VGW JUSTICE 614  
FRITZ JUSTICE 8013  
FRITZ CHRIS 6047

GMRA SECRET MISSION 8258  
GMRA ESTONIA 051  
GMRA ESTONIA 544

BUF CRK PATRIOT M183  
VGW M82-FIREFLY 0479  
5L HOBO BEN 04-4422  
FRITZ CRIS 1051  
LJC MISSION STATEMENT P27  
GMRA LAKOTA 341  
GMRA EBV 935  
GMRA ESTONIA 031

BW	82	
WW/Ratio	611	96
YW/Ratio	1183	101
IMF/REA	3.59	12.18
Scrotal	35.5	

CED	BW	WW	YW	Milk	TM	ME	HPG	CEM	Stay	Marb	YG	CW	REA	Fat	
7	-2.0	68	112	21	55	8	7	7	11	0.37	0.22	34	0.06	0.04	
TOP BREED %	21%	34%	11%	6%	32%	8%	95%	91%	17%	52%	61%	99%	10%	62%	93%

This bull is in the top 10 for ADG on test.

### 42 GMRA PACKER 3235

Birth Date: 1/14/13 Reg. # 1605036 Category: 100% 1A



MESSMER JOSHUA 019P  
MESSMER PACKER S008  
MESSMER MILLIE 124P

GMRA MAKE IT EASY 8226  
GMRA VENICE 132  
GMRA VENICE 664

BECKTON JULIAN GG B571  
MESSMER PANDORA M186  
VGW TOP PICK 130  
MESSMER MILLIE 9416  
BIEBER MAKE MIMI 7249  
GMRA LAKOTA 625  
GMRA MINOTAURO 3104  
GMRA VENICE 384

BW	75	
WW/Ratio	609	101
YW/Ratio	1138	102
IMF/REA	4.13	11.61
Scrotal	37.0	

CED	BW	WW	YW	Milk	TM	ME	HPG	CEM	Stay	Marb	YG	CW	REA	Fat	
5	-2.0	64	104	17	49	-1	12	7	14	0.56	-0.05	29	0.47	-0.01	
TOP BREED %	36%	34%	19%	15%	67%	33%	33%	20%	17%	14%	22%	25%	20%	8%	22%

If you go back 6 generations on this bull's maternal side you will never find a dam with an MPPA under 100. This bull is as consistent as it gets. He doesn't fall out of bed on anything. He's got a nice low birth weight, turns in above average performance, an IMF ratio of 107 and a REA ratio of 104. As of printing he is the #6 ADG bull on test. All of his EPDs but 1 are in the top 36% of the breed or higher. Absolutely complete from one end to the other.

### 43 GMRA ROOSEVELT 3258

Birth Date: 1/18/13 Reg. # 1605137 Category: 100% 1A



BIEBER ROUGH RIDER 10712  
BIEBER ROOSEVELT W384  
BIEBER SHEBA 9602

GMRA LARAMIE 5110  
GMRA LAKOTA 817  
GMRA LAKOTA 422

BASIN TREND SETTER 6074  
BIEBER ADELLE 8958  
C A FUTURE DIRECTION 5321  
BIEBER SHEBA 5537  
LCC CHEYENNE B221L  
GMRA LAKOTA 341  
BIEBER TOP MONEY 7948  
GMRA LAKOTA 912

BW	97	
WW/Ratio	671	106
YW/Ratio	1255	108
IMF/REA	3.52	10.30
Scrotal	38.0	

CED	BW	WW	YW	Milk	TM	ME	HPG	CEM	Stay	Marb	YG	CW	REA	Fat	
7	1.1	67	104	25	59	2	11	9	11	0.58	0.17	34	0.06	0.02	
TOP BREED %	21%	89%	13%	14%	6%	2%	52%	21%	5%	52%	19%	97%	10%	62%	78%

This Roosevelt son has an elite pedigree, going back to the foundation female, GMRA Lakota 912, on the dam's side. He turns in the #5 adjusted yearling weight and is tied for the #3 yearling ratio. As of 3rd quarter test weights he is the #3 ADG bull on test. This is all backed up by 9 EPDs in the top 21% of the breed or higher.

### 44 GMRA TRILOGY 3226

Birth Date: 1/11/13 Reg. # 1605104 Category: 100% 1A



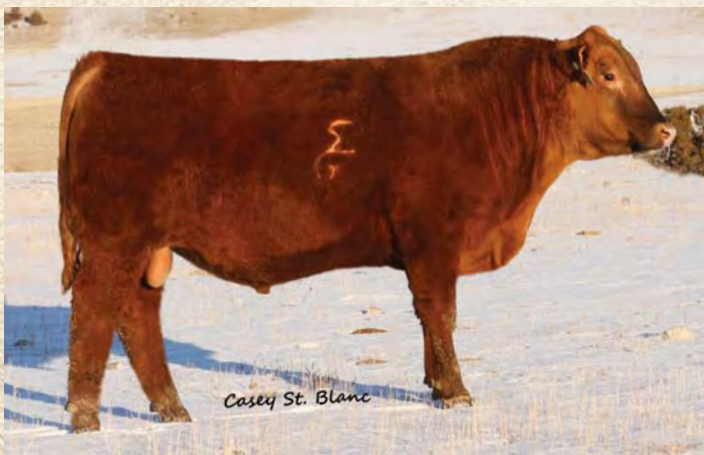
MESSMER PACKER S008  
GMRA TRILOGY 0226  
GMRA LAKOTA 625

GMRA VERMILLION 796  
GMRA ANGIE 568  
GMRA ANGIE 154

MESSMER JOSHUA 019P  
MESSMER MILLIE 124P  
GLACIER CHATEAU 744  
GMRA LAKOTA 380  
BUF CRK CHF 824-1658  
GMRA LAKOTA 456  
BIEBER RED MOON 6042  
GMRA ANGIE 800

BW	77	
WW/Ratio	610	96
YW/Ratio	1139	98
IMF/REA	3.39	11.27
Scrotal	38.0	

CED	BW	WW	YW	Milk	TM	ME	HPG	CEM	Stay	Marb	YG	CW	REA	Fat	
8	-3.8	58	92	15	44	2	10	9	12	0.54	0.05	19	0.17	0.01	
TOP BREED %	15%	12%	38%	36%	77%	61%	54%	54%	5%	39%	25%	68%	49%	40%	61%



Lot 45

### 45 GMR MOUNTAIN 3246

Birth Date: 1/15/13 Reg. # 1605093 Category: 100% 1A



GMRA EBV 266  
GMR MOUNTAIN 9287  
GMRA VENICE 359

LCHMN RED SPREAD 1271F  
GMR LARKOBA 464  
GMR LARKOBA 151

GMRA EBV 935  
BJR ESTONIA 9S-1210  
BASIN HOBO 79E  
GMRA VENICE 146  
LMAN KING ROB 8621  
BJR MATTIE 002-1102  
BJR MAKE MY DAY 981  
GMR LARKOBA 649

BW	83	
WW/Ratio	652	103
YW/Ratio	1138	97
IMF/REA	3.50	11.34
Scrotal	34.0	

CED	BW	WW	YW	Milk	TM	ME	HPG	CEM	Stay	Marb	YG	CW	REA	Fat	
1	-0.5	61	100	27	58	8	8	1	12	0.45	0.15	29	0.03	0.02	
TOP BREED %	77%	64%	29%	19%	3%	3%	95%	81%	90%	31%	42%	95%	19%	68%	78%

Dam has a 102.9 MPPA.



**46 GMRA MAKE IT EASY 3239**

Birth Date: 1/14/13 Reg. #: 1605072 Category: 100% 1A

BIEBER MAKE MIMI 7249  
**GMRA MAKE IT EASY 8226**  
 GMRA LAKOTA 625

LCHMN NO EQUAL 1174D  
**GMRA NEXA 235**  
 GMRA NEXA 531

BJR MAKE MY DAY 981  
 BIEBER SIRENA 6708  
 GLACIER CHATEAU 744  
 GMRA LAKOTA 380  
 LMAN NONE BETTER 9604  
 LMAN PRAIRIE Q 9308  
 BUF CRK HOBO 1961  
 GMRA VENICE 210



BW	88	
WW/Ratio	654	103
YW/Ratio	1145	98
IMF/REA	3.51	10.92
Scrotal	39.0	

CED	BW	WW	YW	Milk	TM	ME	HPG	CEM	Stay	Marb	YG	CW	REA	Fat	
7	-0.8	68	99	21	55	5	9	7	12	0.50	0.14	27	-0.19	-0.02	
TOP BREED %	21%	57%	11%	22%	30%	8%	80%	73%	17%	30%	32%	93%	23%	97%	12%

Another strong maternal pedigree with no MPPA's under 100 as far back as 5 generations. This bull is a maternal brother to GMRA Citadel 6109 who sold to ABS in our 2007 sale for \$10,000. He features 10 EPDs in the top 1/3rd of the breed or higher.

**47 GMRA SPITN IMAGE 3260**

Birth Date: 1/18/13 Reg. #: 1605067 Category: 100% 1A

RED HILL B571 JULIAN 84S  
**BUF CRK SPITN IMAGE X014**  
 BUF CRK BLOCKANNA U227

VGW WARRIOR 969  
**SRR DORY JIBA 1161-663**  
 SRR DORY JIBA 663-784

BECKTON JULIAN GG B571  
 BECKTON BARMAID M554 CH  
 BFCK CHEROKEE CNYN 4912  
 BUF CRK BLOCKANNA L257  
 BECKTON WARRIOR R667 CL  
 VGW 400-FIREFLY 0449  
 LMAN KING ROB 8621  
 LARSON DORYJIBA 784-834



BW	76	
WW/Ratio	630	104
YW/Ratio	1178	105
IMF/REA	4.28	11.37
Scrotal	33.5	

CED	BW	WW	YW	Milk	TM	ME	HPG	CEM	Stay	Marb	YG	CW	REA	Fat	
5	0.4	68	114	16	50	1	12	3	12	0.58	0.03	39	0.40	0.00	
TOP BREED %	36%	80%	11%	5%	75%	28%	44%	18%	72%	36%	19%	59%	5%	11%	44%

This bull offers a total outcross pedigree. We purchased his dam from Strawberry Ridge Reds at the 2012 NILE. He's turned in consistent top end performance and ranks with the #8 yearling ratio and the #6 IMF actual scan, with a 111 ratio. He features 9 EPDs in the top 36% of the breed or higher and is tied for the #6 HPG and CW and tied for the #7 YW EPD.

**48 GMRA MOUNTAIN 3281**

Birth Date: 1/28/13 Reg. #: 1605151 Category: 100% 1A

GMRA EBV 266  
**GMRA MOUNTAIN 9287**  
 GMRA VENICE 359

GMRA LARAMIE 5110  
**GMRA ESTONIA 909**  
 GMRA ESTONIA 747

GMRA EBV 935  
 BJR ESTONIA 9S-1210  
 BASIN HOBO 79E  
 GMRA VENICE 146  
 LCC CHEYENNE B221L  
 GMRA LAKOTA 341  
 BIEBER MAKE MIMI 7249  
 GMRA ESTONIA 228



BW	90	
WW/Ratio	623	98
YW/Ratio	1170	100
IMF/REA	4.31	11.83
Scrotal	40.0	

CED	BW	WW	YW	Milk	TM	ME	HPG	CEM	Stay	Marb	YG	CW	REA	Fat	
3	0.8	66	111	25	58	10	9	5	14	0.48	0.15	38	0.08	0.01	
TOP BREED %	57%	85%	14%	7%	7%	2%	98%	74%	42%	12%	36%	95%	6%	58%	61%

This bull has the #7 actual IMF with a 118 ratio. As of 3rd quarter test weights he is the #8 ADG bull in the sale. 6 EPDs rank in the top 14% or higher, with 4 of those in single digits.



Casey St. Blanc

Lot 49

**49 GMRA MAKE IT EASY 3233**

Birth Date: 1/13/13 Reg. #: 1605069 Category: 100% 1A

BIEBER MAKE MIMI 7249  
**GMRA MAKE IT EASY 8226**  
 GMRA LAKOTA 625

LCHMN RED SPREAD 1271F  
**GMRA PRINCESS 227**  
 GMRA PRINCESS 633

BJR MAKE MY DAY 981  
 BIEBER SIRENA 6708  
 GLACIER CHATEAU 744  
 GMRA LAKOTA 380  
 LMAN KING ROB 8621  
 BJR MATTIE 002-1102  
 LEACHMAN BETTER HVY8041  
 GMRA PRINCESS 910



BW	73	
WW/Ratio	598	94
YW/Ratio	1086	93
IMF/REA	3.85	11.10
Scrotal	36.5	

CED	BW	WW	YW	Milk	TM	ME	HPG	CEM	Stay	Marb	YG	CW	REA	Fat	
6	-4.2	55	92	22	49	12	7	7	12	0.55	-0.01	19	0.07	-0.03	
TOP BREED %	28%	9%	50%	35%	23%	29%	99%	93%	17%	34%	23%	41%	49%	60%	7%

A Make It Easy son out of a high production dam, with an MPPA of 104.9 on 10 calves. This bull's full brother sold in our 2012 sale to Bar Open A Red Angus of Hamer, ID, for \$5500, and is doing a great job for them. 9 EPDs rank in the top 35% or higher.



### 50 GMRA MOUNTAIN 3291

Birth Date: 2/1/13  
 Reg. # 1605004  
 Category: 100% 1A

GMRA EBV 266  
 GMRA MOUNTAIN 9287  
 GMRA VENICE 359

GMRA EBV 935  
 BJR ESTONIA 9S-1210  
 BASIN HOBO 79E  
 GMRA VENICE 146  
 BECKTON JULIAN GG B571  
 HXC ELLIE MAY MA638  
 LCHMN RED SPREAD 1271F  
 GMRA NEXA 908



BW	88	
WW/Ratio	661	104
YW/Ratio	1198	103
IMF/REA	3.37	11.31
Scrotal	35.0	

CED	BW	WW	YW	Milk	TM	ME	HPG	CEM	Stay	Marb	YG	CW	REA	Fat
5	0.9	67	112	26	59	5	6	5	13	0.40	0.14	38	0.12	0.01
TOP BREED %														
36%	87%	12%	6%	5%	2%	77%	97%	42%	23%	54%	93%	5%	50%	61%

Dam has an MPPA of 102.6.

### 51 GMRA ROOSEVELT 3299

Birth Date: 2/7/13  
 Reg. # 1605012  
 Category: 100% 1A

BIEBER ROUGH RIDER 10712  
 BIEBER ROOSEVELT W384  
 BIEBER SHEBA 9602

BASIN TREND SETTER 6074  
 BIEBER ADELLE 8958  
 C A FUTURE DIRECTION 5321  
 BIEBER SHEBA 5537  
 BIEBER MAKE MIMI 7249  
 GMRA LAKOTA 625  
 GLACIER CHATEAU 744  
 GMRA PEACHA 240



BW	92	
WW/Ratio	649	102
YW/Ratio	1179	101
IMF/REA	3.58	12.34
Scrotal	35.0	

CED	BW	WW	YW	Milk	TM	ME	HPG	CEM	Stay	Marb	YG	CW	REA	Fat
7	1.0	64	99	26	58	-6	11	10	11	0.67	0.11	31	0.21	0.02
TOP BREED %														
21%	88%	18%	21%	5%	3%	10%	37%	3%	53%	10%	88%	16%	33%	78%

Dam has an MPPA of 102.6. 9 EPDs rank in the top 21% of the breed or higher and he boasts the #1 ME in the offering.



Lot 53

### 52 GMRA JUSTICE 3229

Birth Date: 1/12/13  
 Reg. # 1605139  
 Category: 100% 1A

VGW JUSTICE 614  
 FRITZ JUSTICE 8013  
 FRITZ CHRIS 6047

BUF CRK PATRIOT M183  
 VGW M82-FIREFLY 0479  
 5L HOBO BEN 04-4422  
 FRITZ CRIS 1051  
 GLACIER CHATEAU 744  
 GMRA NEXA 235  
 LCHMN HEVN'S SAKE 1002F  
 GMRA VENICE 015



BW	78	
WW/Ratio	631	100
YW/Ratio	1142	98
IMF/REA	3.92	13.19
Scrotal	34.0	

CED	BW	WW	YW	Milk	TM	ME	HPG	CEM	Stay	Marb	YG	CW	REA	Fat
10	-3.9	62	99	23	55	5	9	13	10	0.33	0.18	23	0.11	0.05
TOP BREED %														
8%	11%	23%	22%	13%	8%	78%	73%	1%	64%	71%	97%	36%	52%	97%

This Justice son carries quite a spread from birth to growth. He has the #1 CEM in the offering and his BW EPD is in the top 11% while his WW and YW are still in the top 23%. He turns in the #4 actual REA scan with a ratio of 114.

### 53 GMRA ROOSEVELT 3251

Birth Date: 1/16/13  
 Reg. # 1605029  
 Category: 100% 1A

BIEBER ROUGH RIDER 10712  
 BIEBER ROOSEVELT W384  
 BIEBER SHEBA 9602

BASIN TREND SETTER 6074  
 BIEBER ADELLE 8958  
 C A FUTURE DIRECTION 5321  
 BIEBER SHEBA 5537  
 LMAN KING ROB 8621  
 BJR MATTIE 002-1102  
 LCHMN MDLD HYYWT2463  
 DEL ANGIE ROSE 506



BW	87	
WW/Ratio	654	103
YW/Ratio	1173	100
IMF/REA	3.74	11.35
Scrotal	38.0	

CED	BW	WW	YW	Milk	TM	ME	HPG	CEM	Stay	Marb	YG	CW	REA	Fat
4	0.4	60	94	25	55	-2	9	4	10	0.49	0.12	27	0.20	0.03
TOP BREED %														
46%	81%	30%	30%	7%	6%	26%	70%	58%	66%	34%	90%	24%	35%	87%

Dam has an MPPA of 103.8. Over half of this bull's EPDs are in the top 1/3rd of the breed or higher.



**54 GMRA ROOSEVELT 3263**

BIEBER ROUGH RIDER 10712  
BIEBER ROOSEVELT W384  
BIEBER SHEBA 9602

GMRA MINOTAURO 3104  
GMRA OPHELIA 526  
GMRA OPHELIA 229

BASIN TREND SETTER 6074  
BIEBER ADELLE 8958  
C A FUTURE DIRECTION 5321  
BIEBER SHEBA 5537  
BJR JR 107  
GMRA LENA 108  
NSF SPECIAL DELIVERY  
GMRA OPHELIA 036

BW	88
WW/Ratio	661 104
YW/Ratio	1178 101
IMF/REA	3.71 11.82
Scrotal	38.0

CED	BW	WW	YW	Milk	TM	ME	HPG	CEM	Stay	Marb	YG	CW	REA	Fat	
8	-0.8	51	84	37	63	-5	11	9	10	0.57	0.02	19	0.19	0.00	
TOP BREED %	15%	57%	65%	54%	1%	1%	13%	25%	5%	59%	20%	54%	49%	36%	44%

This Roosevelt son comes from a high performance dam who ranks #6 in the herd with an MPPA of 107.4. He has 7 EPDs in the top 25% of the breed or higher, specializing in maternal numbers. He turns in the #1 Milk in the offering, the #2 TM and is tied for the #2 ME.

**55 GMRA JUSTICE 3308**

VGW JUSTICE 614  
FRITZ JUSTICE 8013  
FRITZ CHRIS 6047

GMRA MINOTAURO 3104  
GMRA ANGIE 786  
GMRA ANGIE 442

BUF CRK PATRIOT M183  
VGW M82-FIREFLY 0479  
5L HOBO BEN 04-4422  
FRITZ CHRIS 1051  
BJR JR 107  
GMRA LENA 108  
BIEBER MAKE MIMI 7249  
GMRA ANGIE 800

BW	98
WW/Ratio	666 105
YW/Ratio	1239 106
IMF/REA	
Scrotal	37.5

CED	BW	WW	YW	Milk	TM	ME	HPG	CEM	Stay	Marb	YG	CW	REA	Fat	
6	1.3	76	123	24	62	8	8	7	10	0.38	0.18	45	0.10	0.01	
TOP BREED %	28%	91%	2%	2%	12%	1%	96%	81%	17%	56%	59%	97%	2%	54%	61%

A great set of performance numbers here. He turned in the #7 yearling ratio, which matches up with a YW EPD tied for #2 in the offering. He is also tied for the #5 WW, tied for the #3 TM and has the #1 CW EPD in the offering. Overall 7 of his numbers are in the top 28% or higher.

**56 GMRA TRILOGY 3210**

MESSMER PACKER S008  
GMRA TRILOGY 0226  
GMRA LAKOTA 625

GMRA VERMILLION 796  
GMRA NEXA 553  
GMRA NEXA 531

MESSMER JOSHUA 019P  
MESSMER MILLIE 124P  
GLACIER CHATEAU 744  
GMRA LAKOTA 380  
BUF CRK CHF 824-1658  
GMRA LAKOTA 456  
BUF CRK HOBO 1961  
GMRA VENICE 210

BW	81
WW/Ratio	595 94
YW/Ratio	1098 94
IMF/REA	3.90 10.14
Scrotal	36.5

CED	BW	WW	YW	Milk	TM	ME	HPG	CEM	Stay	Marb	YG	CW	REA	Fat	
8	-3.0	60	90	15	45	1	10	9	12	0.54	0.05	19	0.14	0.01	
TOP BREED %	15%	20%	33%	40%	76%	55%	50%	49%	5%	39%	25%	68%	49%	46%	61%

**57 GMRA MOUNTAIN 3225**

GMRA EBV 266  
GMRA MOUNTAIN 9287  
GMRA VENICE 359

HXC CONQUEST 4405P  
GMRA PEACHA 047  
GMRA PEACHA 240

GMRA EBV 935  
BJR ESTONIA 9S-1210  
BASIN HOBO 79E  
GMRA VENICE 146  
BECKTON JULIAN GG B571  
HXC ELLIE MAY MA638  
LMN PROOF POSITIVE1305E  
GMRA PEACHA 214

BW	81
WW/Ratio	632 100
YW/Ratio	1167 100
IMF/REA	3.98 9.57
Scrotal	38.0

CED	BW	WW	YW	Milk	TM	ME	HPG	CEM	Stay	Marb	YG	CW	REA	Fat	
8	-1.1	62	103	26	56	5	6	7	12	0.43	0.18	30	-0.11	0.01	
TOP BREED %	15%	51%	26%	15%	6%	5%	78%	98%	17%	34%	47%	97%	17%	91%	61%



Casey St. Blanc

Lot 58

**58 GMRA ROOSEVELT 3223**

BIEBER ROUGH RIDER 10712  
BIEBER ROOSEVELT W384  
BIEBER SHEBA 9602

BIEBER MAKE MIMI 7249  
GMRA VENICE 557  
GMRA VENICE 210

BASIN TREND SETTER 6074  
BIEBER ADELLE 8958  
C A FUTURE DIRECTION 5321  
BIEBER SHEBA 5537  
BJR MAKE MY DAY 981  
BIEBER SIRENA 6708  
GMRA EBV 935  
GMRA VENICE 015

BW	74
WW/Ratio	590
YW/Ratio	1113
IMF/REA	3.91 9.97
Scrotal	36.0

CED	BW	WW	YW	Milk	TM	ME	HPG	CEM	Stay	Marb	YG	CW	REA	Fat	
7	0.4	55	81	26	53	-4	9	6	11	0.64	0.06	19	0.14	0.01	
TOP BREED %	21%	80%	51%	60%	5%	12%	20%	69%	28%	51%	13%	72%	50%	46%	61%

It should be noted that this calf is a twin.

# Yearling Bulls



## GREEN MOUNTAIN RED ANGUS

### 59 GMRA JUSTICE 3217

Birth Date: 1/10/13 Reg. # 1605074 Category: 100% 1A



VGW JUSTICE 614  
FRITZ JUSTICE 8013  
FRITZ CHRIS 6047

LCHMN RED SPREAD 1271F  
GMRA LARKABA 316  
GMRA LARKABA 931

BUF CRK PATRIOT M183  
VGW M82-FIREFLY 0479  
5L HOBO BEN 04-4422  
FRITZ CRIS 1051  
LMAN KING ROB 8621  
BJR MATTIE 002-1102  
GMRA PHOENIX 3X 588  
GMRA LARKABA 84

BW	79	
WW/Ratio	644	102
YW/Ratio	1171	100
IMF/REA	4.43	11.16
Scrotal	36.0	

CED	BW	WW	YW	Milk	TM	ME	HPG	CEM	Stay	Marb	YG	CW	REA	Fat	
9	-3.9	62	101	23	54	2	10	9	9	0.36	0.25	25	-0.11	0.05	
TOP BREED %	11%	11%	25%	18%	14%	9%	58%	59%	5%	68%	64%	99%	31%	91%	97%

Great IMF scan, turning in the #3 actual and a ratio of 121. 7 EPDs in the top 25% or higher.

### 60 GMRA ROOSEVELT 3262

Birth Date: 1/18/13 Reg. # 1605106 Category: 100% 1A



BIEBER ROUGH RIDER 10712  
BIEBER ROOSEVELT W384  
BIEBER SHEBA 9602

GMRA GLADIATOR 2126  
GMRA VENICE 571  
GMRA VENICE 327

BASIN TREND SETTER 6074  
BIEBER ADELLE 8958  
C A FUTURE DIRECTION 5321  
BIEBER SHEBA 5537  
BASIN HOBO 79E  
GMRA LAKOTA ET 47  
GLACIER CHATEAU 744  
GMRA VENICE 959

BW	82	
WW/Ratio	658	104
YW/Ratio	1151	99
IMF/REA	3.25	11.88
Scrotal	37.0	

CED	BW	WW	YW	Milk	TM	ME	HPG	CEM	Stay	Marb	YG	CW	REA	Fat	
7	-1.6	55	87	28	56	-6	10	11	12	0.61	0.09	19	0.16	0.03	
TOP BREED %	21%	41%	49%	48%	2%	5%	13%	41%	2%	39%	16%	82%	48%	42%	87%

Dam has an MPPA of 105.1 on 7. All but 2 EPDs in the top 1/2 of the breed with a Milk tied for #5 in the offering, a CEM tied for #3 and a ME tied for #1.

### 61 GMRA MAKE IT EASY 3292

Birth Date: 2/1/13 Reg. # 1605147 Category: 100% 1A



BIEBER MAKE MIMI 7249  
GMRA MAKE IT EASY 8226  
GMRA LAKOTA 625

MLK CRK TITLEIST 4158  
GMRA PEACHA 890  
GMRA PEACHA 240

BJR MAKE MY DAY 981  
BIEBER SIRENA 6708  
GLACIER CHATEAU 744  
GMRA LAKOTA 380  
VGW TITLEIST 1106  
MLK CRK SHEBA 079  
LMN PROOF POSITIVE1305E  
GMRA PEACHA 214

BW	87	
WW/Ratio	632	100
YW/Ratio	1198	103
IMF/REA	4.00	11.70
Scrotal	37.0	

CED	BW	WW	YW	Milk	TM	ME	HPG	CEM	Stay	Marb	YG	CW	REA	Fat	
5	-0.7	66	103	17	50	7	6	8	10	0.52	0.07	30	0.03	-0.02	
TOP BREED %	36%	59%	15%	15%	66%	27%	90%	97%	10%	58%	28%	76%	16%	68%	12%

IMF ratio of 110.

### 62 GMRA MAKE IT EASY 3237

Birth Date: 1/14/13 Reg. # 1605167 Category: 100% 1A



BIEBER MAKE MIMI 7249  
GMRA MAKE IT EASY 8226  
GMRA LAKOTA 625

GMRA CITADEL 6109  
GMRA ANGIE ROSE 967  
GMRA ANGIE ROSE 171

BJR MAKE MY DAY 981  
BIEBER SIRENA 6708  
GLACIER CHATEAU 744  
GMRA LAKOTA 380  
GLACIER CHATEAU 744  
GMRA NEXA 235  
NSF SPECIAL DELIVERY  
GMRA ANGIE ROSE 951

BW	77	
WW/Ratio	622	98
YW/Ratio	1103	94
IMF/REA	2.86	10.51
Scrotal	38.5	

CED	BW	WW	YW	Milk	TM	ME	HPG	CEM	Stay	Marb	YG	CW	REA	Fat	
6	-2.9	61	94	22	52	-1	8	9	12	0.48	0.07	21	-0.06	-0.02	
TOP BREED %	28%	21%	27%	32%	24%	15%	34%	90%	5%	39%	36%	76%	42%	84%	12%

### 63 GMRA GLACIER BERRY 3311

Birth Date: 2/27/13 Reg. # 1605008 Category: 100% 1A



RED FINE LINE MULBERRY 26P  
C-T GLACIER BERRY 1021  
C-T BLOKANA 0543

HXC CONQUEST 4405P  
GMRA PEACHA 055  
GMRA PEACHA 563

RED COMPASS MULBERRY 449M  
RED DUS FAYETTE 8G  
LCC MAJOR LEAGUE A502M  
CTDB BLOKANA 810  
BECKTON JULIAN GG B571  
HXC ELLIE MAY MA638  
BIEBER MAKE MIMI 7249  
GMRA PEACHA 240

BW	95	
WW/Ratio	656	103
YW/Ratio	1129	97
IMF/REA		
Scrotal	35.0	

CED	BW	WW	YW	Milk	TM	ME	HPG	CEM	Stay	Marb	YG	CW	REA	Fat	
4	1.5	65	95	21	54	1	7	7	11	0.56	0.13	28	0.16	0.03	
TOP BREED %	46%	92%	17%	29%	28%	10%	44%	95%	17%	42%	22%	92%	21%	42%	87%

Dam has an MPPA of 103.1.

### 64 GMRA CONQUEST 3220

Birth Date: 1/11/13 Reg. # 1605066 Category: 100% 1A



BECKTON JULIAN GG B571  
HXC CONQUEST 4405P  
HXC ELLIE MAY MA638

VGW NORTHERN CANYON 5109  
GMRA TOWKANA 192  
GMRA TOWKANA 963

BKT JULIAN 7526 G  
BKT MARTA 9A13 JL  
BFCK CHEROKEE CNYN 4912  
HXC 529E  
GEFB NORTHERN CANYON 2328  
VGW PT YUMA 0278  
GMRA KODIAK 765  
BJR TOWKANA 757-710

BW	68	
WW/Ratio	608	101
YW/Ratio	1082	97
IMF/REA	4.28	11.07
Scrotal	34.0	

CED	BW	WW	YW	Milk	TM	ME	HPG	CEM	Stay	Marb	YG	CW	REA	Fat	
11	-2.9	61	99	17	48	3	6	7	11	0.67	0.09	25	0.20	0.02	
TOP BREED %	5%	21%	27%	22%	62%	38%	62%	95%	17%	51%	10%	82%	31%	35%	78%

This bull ties for the #7 Marbling EPD in the sale and backs that up with the #5 actual IMF scan that gives him a 111 ratio. He also has the #2 CED in the offering and the 3rd lowest actual birth weight.



**65 GMRA JUSTICE 3247**

Birth Date: 1/15/13 Reg. #: 1605110 Category: 100% 1A

VGW JUSTICE 614  
FRITZ JUSTICE 8013  
FRITZ CHRIS 6047

BIEBER MAKE MIMI 7249  
GMRA PEACHA 622  
GMRA PEACHA 409

BUF CRK PATRIOT M183  
VGW M82-FIREFLY 0479  
5L HOBO BEN 04-4422  
FRITZ CRIS 1051  
BJR MAKE MY DAY 981  
BIEBER SIRENA 6708  
GLACIER CHATEAU 744  
GMRA PEACHA 240



BW	87	
WW/Ratio	664	105
YW/Ratio	1145	98
IMF/REA	2.96	11.04
Scrotal	37.0	

CED	BW	WW	YW	Milk	TM	ME	HPG	CEM	Stay	Marb	YG	CW	REA	Fat	
8	-1.3	71	108	22	57	6	8	9	11	0.41	0.16	32	0.08	0.02	
TOP BREED %	15%	47%	6%	9%	23%	3%	88%	90%	5%	46%	51%	96%	13%	58%	78%

Dam has a 106.2 MPPA on 5 calves.



Lot 66

**66 GMRA PACKER 3297**

Birth Date: 2/5/13 Reg. #: 1605002 Category: 100% 1A

MESSMER JOSHUA 019P  
MESSMER PACKER S008  
MESSMER MILLIE 124P

LJC MISSION STATEMENT P27  
GMRA LARKOBA 038  
GMRA LARKOBA 761

BECKTON JULIAN GG B571  
MESSMER PANDORA M186  
VGW TOP PICK 130  
MESSMER MILLIE 9416  
LJC LANCER 806  
LJC HANNAH 106  
BROWN VACATION H7106  
GMRA LARKOBA 517



BW	80	
WW/Ratio	624	98
YW/Ratio	1147	98
IMF/REA	3.76	12.05
Scrotal	36.0	

CED	BW	WW	YW	Milk	TM	ME	HPG	CEM	Stay	Marb	YG	CW	REA	Fat	
2	-1.8	67	109	11	44	4	14	4	15	0.56	-0.12	33	0.70	-0.01	
TOP BREED %	67%	38%	12%	8%	95%	61%	73%	4%	58%	6%	22%	9%	12%	1%	22%

Here is the #1 YG bull in the offering that also has the #2 REA EPD. Overall, 9 of his EPDs are in the top 22% of the breed or higher. As of the 3rd quarter test weights he has the #5 ADG.

**67 GMRA ROOSEVELT 3300**

Birth Date: 2/7/13 Reg. #: 1605014 Category: 100% 1A

BIEBER ROUGH RIDER 10712  
BIEBER ROOSEVELT W384  
BIEBER SHEBA 9602

LJC MISSION STATEMENT P27  
GMRA LAKOTA 065  
GMRA LAKOTA 646

BASIN TREND SETTER 6074  
BIEBER ADELLE 8958  
C A FUTURE DIRECTION 5321  
BIEBER SHEBA 5537  
LJC LANCER 806  
LJC HANNAH 106  
LCHMN RED SPREAD 1271F  
GMRA LAKOTA 322



BW	92	
WW/Ratio	625	99
YW/Ratio	1141	98
IMF/REA	3.48	12.26
Scrotal	34.0	

CED	BW	WW	YW	Milk	TM	ME	HPG	CEM	Stay	Marb	YG	CW	REA	Fat	
6	1.3	67	106	24	57	-2	13	6	12	0.63	0.07	35	0.38	0.02	
TOP BREED %	28%	91%	13%	11%	10%	3%	26%	7%	28%	34%	14%	76%	8%	13%	78%

An elite set of numbers with 12 of his 15 EPDs are in the top 1/3rd of the breed or higher.

**68 GMRA ROOSEVELT 3256**

Birth Date: 1/17/13 Reg. #: 1605204 Category: 100% 1A

BIEBER ROUGH RIDER 10712  
BIEBER ROOSEVELT W384  
BIEBER SHEBA 9602

GMRA CITADEL 6109  
LGR VENICE 9118  
LGR VENICE 479

BASIN TREND SETTER 6074  
BIEBER ADELLE 8958  
C A FUTURE DIRECTION 5321  
BIEBER SHEBA 5537  
GLACIER CHATEAU 744  
GMRA NEXA 235  
BIEBER TOP MONEY 7948  
GMRA VENICE 708



BW	73	
WW/Ratio	615	97
YW/Ratio	1114	95
IMF/REA	2.85	10.46
Scrotal	35.0	

CED	BW	WW	YW	Milk	TM	ME	HPG	CEM	Stay	Marb	YG	CW	REA	Fat	
8	-3.7	53	80	26	52	-5	11	9	10	0.51	0.12	12	0.03	0.03	
TOP BREED %	15%	13%	59%	62%	6%	16%	16%	30%	5%	55%	30%	90%	71%	68%	87%

8 EPDs in the top 30% of the breed or higher and tied for the #3 ME in the offering.

# Yearling Bulls



## GREEN MOUNTAIN RED ANGUS

### GMRA PEACEMAKER 3234

**69** Birth Date: 1/13/13 Reg. # 1605057 Category: 100% 1A



FRITZ JUSTICE 8013  
GMRA PEACEMAKER 1216  
GMRA THELMA 930

GMRA EBV 266  
GMRA VENICE 169  
GMRA VENICE 359

VGW JUSTICE 614  
FRITZ CHRIS 6047  
LJC MISSION STATEMENT P27  
GMRA THELMA 319  
GMRA EBV 935  
BJR ESTONIA 9S-1210  
BASIN HOBO 79E  
GMRA VENICE 146

BW	74	
WW/Ratio	630	104
YW/Ratio	1134	101
IMF/REA	3.99	11.00
Scrotal		

CED	BW	WW	YW	Milk	TM	ME	HPG	CEM	Stay	Marb	YG	CW	REA	Fat	
10	-2.5	63	106	26	57	3	9	5	13	0.49	0.09	30	0.29	0.03	
TOP BREED %	8%	27%	23%	12%	6%	4%	63%	75%	42%	22%	34%	82%	18%	22%	87%



Lot 71

### GMRA TRILOGY 3287

**70** Birth Date: 1/30/13 Reg. # 1605071 Category: 100% 1A



MESSMER PACKER S008  
GMRA TRILOGY 0226  
GMRA LAKOTA 625

BJR MAKE MY DAY 981  
GMRA VENICE 231  
GMRA VENICE 959

MESSMER JOSHUA 019P  
MESSMER MILLIE 124P  
GLACIER CHATEAU 744  
GMRA LAKOTA 380  
BJR EASY RIDER 781  
BJR TOW KANA 117-710  
VGW RAMBLER 1000  
GMRA VENICE 210

BW	89	
WW/Ratio	660	104
YW/Ratio	1038	89
IMF/REA	4.25	12.42
Scrotal	34.0	

CED	BW	WW	YW	Milk	TM	ME	HPG	CEM	Stay	Marb	YG	CW	REA	Fat	
6	-0.6	67	94	15	49	4	8	7	14	0.75	0.00	24	0.26	-0.01	
TOP BREED %	28%	61%	11%	32%	76%	30%	76%	80%	17%	14%	6%	45%	32%	25%	22%

Super Marbling bull with the #2 Marbling EPD backed up by the 8th highest actual and adjusted IMF scan and a ratio of 116. Overall he's got 10 numbers in the top 32% or higher.

### GMRA PEACEMAKER 3227

**71** Birth Date: 1/11/13 Reg. # 1605089 Category: 100% 1A



FRITZ JUSTICE 8013  
GMRA PEACEMAKER 1216  
GMRA THELMA 930

BIEBER MAKE MIMI 7249  
GMRA ANGIE 442  
GMRA ANGIE 800

VGW JUSTICE 614  
FRITZ CHRIS 6047  
LJC MISSION STATEMENT P27  
GMRA THELMA 319  
BJR MAKE MY DAY 981  
BIEBER SIRENA 6708  
GMRA HEAVY POWER 463  
GMRA ANGIE 024

BW	73	
WW/Ratio	622	98
YW/Ratio	1110	95
IMF/REA	3.68	11.07
Scrotal	34.0	

CED	BW	WW	YW	Milk	TM	ME	HPG	CEM	Stay	Marb	YG	CW	REA	Fat	
10	-5.3	60	94	17	47	5	8	4	13	0.50	0.01	18	0.29	0.01	
TOP BREED %	8%	4%	33%	30%	62%	43%	79%	81%	58%	23%	32%	50%	52%	22%	61%

### GMRA GLACIER BERRY 3313

**72** Birth Date: 3/2/13 Reg. # 1605017 Category: 100% 1A



RED FINE LINE MULBERRY 26P  
C-T GLACIER BERRY 1021  
C-T BLOKANA 0543

GMRA SECRET MISSION 8258  
GMRA VENICE 083  
GMRA VENICE 733

RED COMPASS MULBERRY 449M  
RED DUS FAYETTE 8G  
LCC MAJOR LEAGUE A502M  
CTDB BLOKANA 810  
LJC MISSION STATEMENT P27  
GMRA LAKOTA 341  
BROWN VACATION H7106  
GMRA VENICE 231

BW	93	
WW/Ratio	660	104
YW/Ratio	1151	99
IMF/REA		
Scrotal	34.0	

CED	BW	WW	YW	Milk	TM	ME	HPG	CEM	Stay	Marb	YG	CW	REA	Fat	
-2	2.0	67	102	19	52	8	10	5	14	0.50	0.14	34	0.10	0.02	
TOP BREED %	95%	95%	13%	17%	47%	15%	95%	45%	42%	14%	32%	93%	10%	54%	78%

### GMRA CONQUEST 3285

**73** Birth Date: 1/29/13 Reg. # 1605062 Category: 100% 1A



BECKTON JULIAN GG B571  
HXC CONQUEST 4405P  
HXC ELLIE MAY MA638

GMRA EBV 266  
GMRA NEXA 185  
GMRA NEXA 862

BKT JULIAN 7526 G  
BKT MARTA 9A13 JL  
BFCK CHEROKEE CNYN 4912  
HXC 529E  
GMRA EBV 935  
BJR ESTONIA 9S-1210  
GMRA MINOTAURO 3104  
GMRA NEXA 418

BW	85	
WW/Ratio	642	106
YW/Ratio	1142	102
IMF/REA	3.87	10.74
Scrotal	36.0	

CED	BW	WW	YW	Milk	TM	ME	HPG	CEM	Stay	Marb	YG	CW	REA	Fat	
9	1.3	65	108	25	58	8	5	3	11	0.55	0.07	37	0.29	0.01	
TOP BREED %	11%	91%	16%	9%	7%	3%	95%	99%	72%	43%	23%	76%	7%	22%	61%

Dam has an MPPA of 102.4. Over half of this bull's numbers are in the top 25% of the breed or higher.



**74 GMRA CONQUEST 3221**

BECKTON JULIAN GG B571  
**HXC CONQUEST 4405P**  
 HXC ELLIE MAY MA638  
  
 LCB HOSS A444N  
**GMRA VENICE 950**  
 GMRA VENICE 384

BKT JULIAN 7526 G  
 BKT MARTA 9A13 JL  
  
 BFCK CHEROKEE CNYN 4912  
 HXC 529E  
  
 BLUE RIDGE PONDEROSA  
 RSLND REBELLA 120-502  
  
 BIEBER TOP MONEY 7948  
 GMRA VENICE 210

<b>BW</b>	<b>67</b>
<b>WW/Ratio</b>	<b>596 94</b>
<b>YW/Ratio</b>	<b>1023 88</b>
<b>IMF/REA</b>	<b>3.38 10.47</b>
<b>Scrotal</b>	<b>36.0</b>

CED	BW	WW	YW	Milk	TM	ME	HPG	CEM	Stay	Marb	YG	CW	REA	Fat
13	-6.9	44	62	23	45	5	4	6	13	0.42	-0.01	-3	0.11	0.02
TOP BREED %														
2%	1%	84%	90%	16%	56%	80%	99%	28%	23%	49%	41%	96%	52%	78%

Calving ease specialist with the 2nd lowest actual birth weight in the offering. He has the #1 BW EPD, which is in the top 1% of the breed, and is tied for the #1 CED in the offering, which is in the top 2%.

**75 GMRA MAKE IT EASY 3268**

BIEBER MAKE MIMI 7249  
**GMRA MAKE IT EASY 8226**  
 GMRA LAKOTA 625  
  
 GMRA GLADIATOR 2126  
**GMRA MESA MAID 799**  
 GMRA MESA MAID 352

BJR MAKE MY DAY 981  
 BIEBER SIRENA 6708  
  
 GLACIER CHATEAU 744  
 GMRA LAKOTA 380  
  
 BASIN HOBO 79E  
 GMRA LAKOTA ET 47  
  
 LCHMN RED SPREAD 1271F  
 GMRA MESA MAID 321

<b>BW</b>	<b>90</b>
<b>WW/Ratio</b>	<b>602 95</b>
<b>YW/Ratio</b>	<b>1167 100</b>
<b>IMF/REA</b>	<b>3.16 11.53</b>
<b>Scrotal</b>	<b>36.0</b>

CED	BW	WW	YW	Milk	TM	ME	HPG	CEM	Stay	Marb	YG	CW	REA	Fat
4	0.1	67	110	20	53	0	7	8	13	0.47	0.11	36	0.04	-0.01
TOP BREED %														
46%	75%	13%	8%	37%	11%	37%	92%	10%	21%	38%	88%	8%	66%	22%

**76 GMRA CHRKEE LANCE 3314**

SUNR GRAND CHEROKEE 909N  
**SUNR CHEROKEE LANCE M969W**  
 LCC JIBA MA969  
  
 GMRA MINOTAURO 3104  
**LAUBACH LARKABA 7186**  
 LAUBACH LARKABA 927

BFCK CHEROKEE CNYN 4912  
 SUNR GRAND TILLY 006  
  
 BECKTON LANCER F442 T  
 LCC JIBA K1057  
  
 BJR JR 107  
 GMRA LENA 108  
  
 GLACIER MARIAS 548  
 GMRA LARKOBA 614

<b>BW</b>	<b>91</b>
<b>WW/Ratio</b>	<b>696 110</b>
<b>YW/Ratio</b>	<b>1098 104</b>
<b>IMF/REA</b>	
<b>Scrotal</b>	<b>34.5</b>

CED	BW	WW	YW	Milk	TM	ME	HPG	CEM	Stay	Marb	YG	CW	REA	Fat
4	-1.0	61	88	26	57	3	11	4	9	0.47	-0.09	21	0.43	-0.02
TOP BREED %														
46%	53%	28%	44%	5%	4%	67%	32%	58%	77%	38%	14%	43%	9%	12%

**77 GMRA JUSTICE 3282**

VGW JUSTICE 614  
**FRITZ JUSTICE 8013**  
 FRITZ CHRIS 6047  
  
 BASIN GOLD 6C  
**LGR ESTONIA 0002**  
 GMRA ESTONIA 312

BUF CRK PATRIOT M183  
 VGW M82-FIREFLY 0479  
  
 5L HOBO BEN 04-4422  
 FRITZ CHRIS 1051  
  
 BITTERROOT GOLD 25XA  
 DOUBLE FORK 023A  
  
 GMRA EBV 935  
 BJR ESTONIA 9S-1210

<b>BW</b>	<b>79</b>
<b>WW/Ratio</b>	<b>597 94</b>
<b>YW/Ratio</b>	<b>1080 93</b>
<b>IMF/REA</b>	<b>4.17 10.90</b>
<b>Scrotal</b>	<b>36.0</b>

CED	BW	WW	YW	Milk	TM	ME	HPG	CEM	Stay	Marb	YG	CW	REA	Fat
8	-3.2	56	84	23	51	0	7	5	9	0.39	0.10	15	0.01	0.02
TOP BREED %														
15%	18%	44%	54%	17%	20%	42%	92%	42%	77%	56%	85%	63%	72%	78%

IMF ratio of 114.

**78 GMRA MAKE IT EASY 3289**

BIEBER MAKE MIMI 7249  
**GMRA MAKE IT EASY 8226**  
 GMRA LAKOTA 625  
  
 GMRA MINOTAURO 3104  
**GMRA LAKOTA 639**  
 GMRA LAKOTA 422

BJR MAKE MY DAY 981  
 BIEBER SIRENA 6708  
  
 GLACIER CHATEAU 744  
 GMRA LAKOTA 380  
  
 BJR JR 107  
 GMRA LENA 108  
  
 BIEBER TOP MONEY 7948  
 GMRA LAKOTA 912

<b>BW</b>	<b>89</b>
<b>WW/Ratio</b>	<b>617 97</b>
<b>YW/Ratio</b>	<b>1196 102</b>
<b>IMF/REA</b>	<b>4.52 13.39</b>
<b>Scrotal</b>	<b>38.0</b>

CED	BW	WW	YW	Milk	TM	ME	HPG	CEM	Stay	Marb	YG	CW	REA	Fat
6	-1.5	60	96	26	56	7	8	7	12	0.47	-0.06	25	0.21	-0.04
TOP BREED %														
28%	43%	31%	27%	6%	6%	90%	87%	17%	29%	38%	22%	30%	33%	4%

Well, we like to prove that there are good bulls scattered all through the sale! This Make It Easy son comes from a dam with an MPPA of 102.3. He turned in some of the most impressive carcass scans of the offering. He has the #5 actual REA scan with a ratio of 115 and the #4 actual IMF scan with the 2nd highest ratio of 124. To top it all off, as of 3rd quarter test weights he is the #1 ADG bull on test. A set of numbers with 13 of the 15 EPDs in the top 43% of the breed or higher make this a very complete package.

**79 GMRA MAKE IT EASY 3277**

BIEBER MAKE MIMI 7249  
**GMRA MAKE IT EASY 8226**  
 GMRA LAKOTA 625  
  
 LCHMN HEVN'S SAKE 1002F  
**LGR ESTONIA 2002**  
 GMRA ESTONIA 312

BJR MAKE MY DAY 981  
 BIEBER SIRENA 6708  
  
 GLACIER CHATEAU 744  
 GMRA LAKOTA 380  
  
 LAKOTAS HEAVENLY 305  
 LEACHMAN PRILARK  
  
 GMRA EBV 935  
 BJR ESTONIA 9S-1210

<b>BW</b>	<b>75</b>
<b>WW/Ratio</b>	<b>622 98</b>
<b>YW/Ratio</b>	<b>1071 92</b>
<b>IMF/REA</b>	<b>3.73 10.47</b>
<b>Scrotal</b>	<b>38.5</b>

CED	BW	WW	YW	Milk	TM	ME	HPG	CEM	Stay	Marb	YG	CW	REA	Fat
10	-4.7	54	84	24	51	5	8	9	10	0.49	0.04	13	-0.02	-0.01
TOP BREED %														
8%	6%	53%	54%	10%	19%	81%	90%	5%	66%	34%	64%	69%	78%	22%

The last bull in the sale and he's out of the terrific Estonia cow family, going back to the dam of GMRA EBV 266. His own dam has done a great job for us with an MPPA of 102.4 on 10 calves, with all of her heifer calves being kept as replacements and all of her bull making the sale.

# Choice<sup>+</sup>

Premium Red Angus Grid

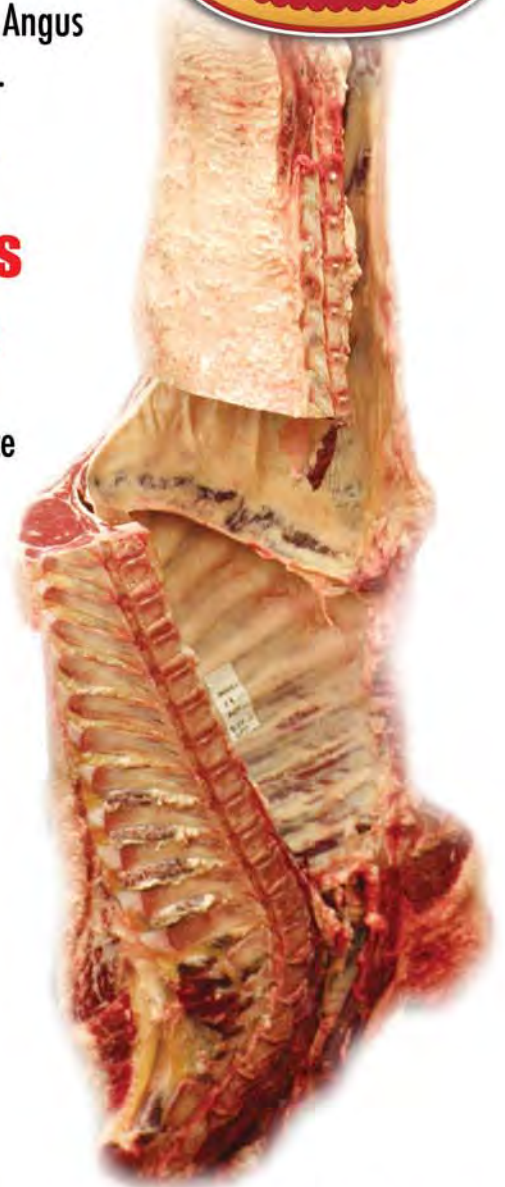
## Grid Marketing with



A carefully constructed grid focusing on the strengths of Red Angus cattle verified through the FCCP "Yellow Tag" program.

**"Angus"  
Premiums  
Include:**

- Choice
- Upper 2/3 Choice
- Prime



**Ranch Tested. Packer Trusted.**

# Red Angus

Contact Myron Edelman, Director of Breed Growth  
for more information at 307-351-6032.







**Bob & Julie Morton**

2435 Logan Trident Road • Three Forks, MT 59752  
Toll Free: (866) GMRA-COW • [www.gmracattle.com](http://www.gmracattle.com)

FIRST CLASS  
US POSTAGE  
PAID  
MONTEZUMA, IA  
PERMIT #30



*Annual Production Sale*

**Tuesday, March 18, 2014**

Lunch at 12:00 MDT • Sale at 1:00 MDT  
GMRA Sale Facility • Logan, MT



*Visit ...*

[www.gmracattle.com](http://www.gmracattle.com)

Like us on  
Facebook!

