



Annual Production Sale

Thursday, February 20, 2014

Lunch 12:00 pm • **Auction 1:00 pm**

At the Ranch • 11 miles South of Mandan on Hwy. 6

Over Three Decades

of Breeding Gelbvieh Seedstock



DDGR ALL IN 1A



DDGR NITRO 84A



DDGR FRISCO 130A



DDGR SMOKIN JOE 68A

The Gustin Crew ...



Top: Al, Peg, Sherry and Dennis
Bottom: Steve, Lauren and Katie Stensgard, Jess Gustin,
Sarah Gustin and fiancé Richie Heinrich



Steve and Kim Barnhardt
Brittany, Bailey, Bradley and Bellany

Steve Barnhardt continues to be a valued member of the Gustin's Diamond D Gelbvieh team. We greatly appreciate his expertise in handling the cattle as well as his trucking and repair skills. Thanks Steve for your dedication and hard work.

Sale Auctioneer: Shane Wolff, Golden Valley, N.D. • (701) 983-4573

Catalog designed by Tracey Koester • Cow Camp Promotions • www.cowcamppromotions.com

Printed by United Printing • 701-223-0505



Thank you for your interest in our program; and welcome to our annual production sale. We have been breeding Gelbvieh cattle for 31 years and continue to be thankful for the support of the great people that we have been associated with in this business.

Our goal continues to be to provide you with the best Gelbvieh and Balancer genetics available, with calves sired by top AI sires and National Champion bulls. We believe the Gelbvieh breed offers the best combination of disposition, maternal excellence and growth of any breed. We also are firm believers in balanced trait selection, putting emphasis on many different areas including, disposition, calving ease, performance, maternal traits, structural soundness, eye appeal, EPDs and carcass traits.

This year we are again offering both purebred Gelbvieh and Balancer bulls, along with 12 select bred heifers. We are pleased with the consistency of our offering this year. The bulls and bred heifers are similar genetically to past years' offerings. Due to a variety of factors, mainly wet weather, we were forced to delay weaning this past fall. As a result, our adjusted weaning weights are not as strong as in the past.

We believe that by not creep feeding we are better able to select our replacement females; and feel we are on the right track as our first-calf heifers continue to put a larger number of high quality calves in the sale each year.

The calves have been doing great since weaning. We continue to feed a total mixed ration of homegrown feeds and distillers grain for a moderate 3.25 to 3.5 pound average daily gain after weaning that will keep the bulls sound and maintain longevity.

Watch for Dams of Merit and Distinction in the footnotes. These are high-producing cows identified by the AGA. Fewer than 5% of Gelbvieh cows achieve Dam of Merit status; and fewer than 1% achieve Dam of Distinction status.

Bull numbers 305 to 344 are share cattle by our cooperating herd of Matt and Lisa Rebenitsch. They are out of our cows and under similar management during calving and the summer and are fed here with the other bulls after weaning. Matt and Lisa do a great job with the cattle.

The sale schedule will run the same as last year. At 10:30 a.m. the bulls will be penned for viewing and the complimentary lunch will be served at noon. The sale will be at 1:00 p.m. in the heated sale barn, with telephone bidding available for those unable to attend. As always, we guarantee satisfaction on all sight-unseen purchases.

Complete Igenity DNA profiles, homozygous polled and homozygous black information, adjusted yearling weights and scrotal measurements will be available online and on sale day. Videos of each sale lot will also be posted on our website as they were last year. Please call or come early to select your bulls. We enjoy visiting with you about your program and will do our best to assist you in making your selections.

We will deduct \$50 off the purchase price of any bull taken home on sale day. Or, buyers can pay half on sale day and we will feed the bulls free until April 1. After April 1, there will be a \$2/day feed charge. Please call if we can assist you with these services.

Again, thank you for your continued interest and confidence in our breeding program. Give us a call, visit our website at www.gustinsdiamondd.com or e-mail us at gustinsd@gmail.com for information or a catalog. We look forward to visiting with you on sale day.

The Gustins

Dennis & Sherry Gustin and Family
5135 Hwy 6 • Mandan, ND 58554
(701) 663-7266 • (701) 400-3483 cell

Al & Peggy Gustin
5125 Hwy 6 • Mandan, ND 58554
(701) 663-1230

www.gustinsdiamondd.com • gustinsd@gmail.com

REFERENCE SIRES



CIRS Decade 278U2

A CIRS DECADE 278U2

Red Purebred Polled Sire
 BD: 11/22/2008 BW: 78 Adj. WW: 602 Adj. YW: 1151

EGL FOSTERS L017 ET

SLC FREEDOM 178F ET
 EGL PHOEBE G374

EGL GAIL M278

EGL GUIDO K051 ET
 EGL H802

CE	BW	WW	YW	M	TM	CED	YG	CW	REA	MA	FT	CV	FM
11	1.2	82	105	28	69	5	-0.25	32	0.67	-0.35	-0.05	-10.23	31.38

We saw his progeny in Denver and knew we needed to use him. He has a great EPD profile and produces thick-made, eye-appealing calves.



PLA Big Dog 101Y

B PLA BIG DOG 101Y

Black Purebred Polled Sire
 BD: 1/29/2011 BW: 92 Adj. WW: 777 Adj. YW: 1356

HYEK BLACK IMPACT 3960N

HYEK BLACK IMPULSE 1296L
 HYEK BLACK RUBY 9604J

EGL P190

EGL FOSTERS L017 ET
 EGL H230

CE	BW	WW	YW	M	TM	CED	YG	CW	REA	MA	FT	CV	FM
5	2.7	95	126	23	71	3	-0.12	47	0.54	-0.21	-0.04	3.60	43.09

Denver futurity winner that combines Black Impact and Fosters genetics. We are happy with his calves as are the other syndicate owners.



DDGR High Impact 40X

C DDGR HIGH IMPACT 40X

Red Purebred Polled Sire
 BD: 3/13/2010 BW: 94 Adj. WW: 767 Adj. YW: 1332

JDPD ASTRO 407S

JDPD ROLEX 151M
 HAD PRINCESS OF ALOT 407P

DDGR COOKIE 62R

JRI PLD FREE AGENT 125J3
 DDGR SHAMROCK 82F

CE	BW	WW	YW	M	TM	CED	YG	CW	REA	MA	FT	CV	FM
7	2.0	77	107	29	67	11	-0.06	35	0.11	-0.23	-0.05	-1.75	36.42

An Astro son of the DDGR 62R dam, we raised this bull and sold him to Chimney Butte Ranch. He adds frame and performance to his calves.



DVE Davidson Mr Dakota 151X

D DVE DAVIDSON MR DAKOTA 151X

Red Purebred Polled Sire
 BD: 3/11/2010 BW: 80 Adj. WW: 762 Adj. YW: 1349

DCHD GOLDEN BUCKLE GELV 003U

DCHD GOLDEN BUCKLE GELV 117S
 DCHD GOLDEN BUCKLE GELV 003N

DVE DAVIDSON MS MARK 99U

DVE DAVIDSON PLD MARK 194P
 DVE DAVIDSON MS RED WRAP 91P

CE	BW	WW	YW	M	TM	CED	YG	CW	REA	MA	FT	CV	FM
7	1.3	43	60	46	68	6	-0.21	7	0.18	-0.18	-0.06	-23.02	15.58

High seller at the 2011 Davidson sale in Canada. He has a super phenotype in a moderate-framed package. His calves are long bodied, wide topped and heavy quartered.

REFERENCE SIRES



DDGR Home Run 35W

E

DDGR HOME RUN 35W

Red Purebred Polled Sire
 BD: 3/4/2009 BW: 92 Adj. WW: 706 Adj. YW: 1245

RID R COLLATERAL 2R

JCGR BAR GT FLASHBACK 410M ET
 JCGR BAR GT LONI 27N ET

DDGR COOKIE 62R

JRI PLD FREE AGENT 125J3
 DDGR SHAMROCK 82F

CE	BW	WW	YW	M	TM	CED	YG	CW	REA	MA	FT	CV	FM
10	0.4	71	96	29	64	6	-0.26	26	0.44	-0.10	-0.07	8.90	30.03

A Collateral son of the DDGR 62R cow we raised here. His calves are high-performance cattle with extra extension and larger frame.



THUL X159

F

THUL X159

Black Purebred Polled Sire
 BD: 3/25/2010 BW: 83 Adj. WW: 776 Adj. YW: 1208

BNC CADILLAC JACK T717

ACGC AMERICAN IDEAL 309N
 BNC K021

THUL P403

HAD KNOCKOUT
 BNC J945

CE	BW	WW	YW	M	TM	CED	YG	CW	REA	MA	FT	CV	FM
8	2.3	82	104	28	69	11	-0.23	33	0.54	-0.12	-0.06	11.70	30.91

We purchased this bull from the Hojer Ranch in South Dakota for his balanced EPDs, length and muscle mass. His calves have the length and muscle of their sire.

G

RLFG RANGE LINE COCOA

Black Purebred Horned Sire
 BD: 2/11/2008 BW: 89 Adj. WW: 847 Adj. YW: 1522

TLR COCOA 35C

BEA POLLED MIDNIGHT
 TLR MISS KAISER 449Y

RLFG MISS SUGAR BUCK

GKT BUCK 19L
 RLFG MISS SUGAR PIE

CE	BW	WW	YW	M	TM	CED	YG	CW	REA	MA	FT	CV	FM
3	3.7	89	131	26	71	9	-0.25	52	0.83	-0.20	-0.06	6.13	51.13

Tremendous performance in this Cocoa son we purchased from the Gross Ranch in Minnesota. He sired the high seller in our 2012 sale and has weaning, yearling and feedlot merit EPDs in the top 3%.



H

GRW 7 BAR J 1004X

Black Purebred Polled Sire
 BD: 1/26/2010 BW: 82 Adj. WW: 712 Adj. YW: 1277

BABR RID ROOSTER COGBURN 854U

BABR WHO HOTT 552R
 GDY 464P

RID 7 BAR J MS MARY 809U

JCGR BAR GT LOUIE 2J
 GRW 7 BAR J MS MARY 601S

CE	BW	WW	YW	M	TM	CED	YG	CW	REA	MA	FT	CV	FM
18	-2.9	56	77	23	51	11	-0.27	11	0.48	-0.18	-0.05	-15.33	22.36

High-selling bull at the 2011 Jumping Cow sale in Colorado. This calving-ease specialist has a calving ease EPD in the top 1% and adds length to his calves.

I

KKC NOBILITY 123Y

Red Purebred Polled Sire
 BD: 4/12/2011 BW: 88 Adj. WW: 899

KKC COMMANDER 51W

DDGR LAREDO 154R
 KKC MS 142P

KKC MS GRAND 64L

KKC GRAND SLAM 20F
 DDF MS COCOA 812H

CE	BW	WW	YW	M	TM	CED	YG	CW	REA	MA	FT	CV	FM
9	-0.3	73	98	28	64	10	-0.19	26	0.39	-0.16	-0.05	2.62	30.45

High seller at Kal-Kota's 2012 sale, this bull lowers birthweight while keeping performance strong and makes his calves dark red.



REFERENCE SIRES



J

FRL FIR RIVER TED 489Y

Red Purebred Polled Sire
BD: 2/11/2011 BW: 85 Adj. WW: 730 Adj. YW: 1311

SLC MASTERPLAN 512T

SLC MASTER PLAN 134N

FRL FIR RIVER WHITNEY 62W

XXB BIG N' RICH 911P ET

CE	BW	WW	YW	M	TM	CED	YG	CW	REA	MA	FT	CV	FM
13	0.6	64	82	26	58	10	-0.19	19	0.35	-0.17	-0.05	-6.56	22.52

A moderate-framed, well-muscled, calving-ease bull we purchased in Canada. He brings outcross genetics and calving ease EPDs in the top 10% to our program.



S A V Iron Mountain 8066

K

VRT LAZY TV POWERHOUSE X554

Black Purebred Polled Sire
BD: 3/2/2010 BW: 78 Adj. WW: 603 Adj. YW: 1270

DVE DAVIDSON POWERHOUSE 13U

STON SECRET WEAPON 6S
DVE DAVIDSON MS JIM 13P

EGL N020 ET

XXB DREW 565K
EGL GRETA JO43 ET

CE	BW	WW	YW	M	TM	CED	YG	CW	REA	MA	FT	CV	FM
3	4.6	66	100	31	64	7	-0.09	36	0.34	-0.27	-0.04	-3.07	35.81

Our pick of the purebred bulls at Thorstonsens' 2011 sale. This performance sire adds growth, thickness and eye appeal.

L

S A V IRON MOUNTAIN 8066

Black Angus Polled Sire

BD: 2/24/08

TC GRIDIRON 258

G A R GRID MAKER
TC BLACKBIRD 7049

S A V MADAM PRIDE 3249

S A V 8180 TRAVELER 004
S A V MADAM PRIDE 8264

CED	BW	WW	YW	CEM	M	CW	MA	REA	FAT	\$W	\$F	\$G	\$B
4	3.6	60	104	7	10	32	0.87	0.27	0.022	25.58	48.37	39.22	89.29

A popular Angus sire from the Schaff program that adds eye appeal, length and muscle mass.

M

S A V FINAL ANSWER 0035

Black Angus Polled Sire

BD: 2/22/00

SITZ TRAVELER 8180

G D A R TRAVLER 71
SITZ EVERELDA ENTENSE 1137

S A V EMULOUS 8145

BON VIEW BANDO 598
S A V SKY EMULOUS 2124

CED	BW	WW	YW	CEM	M	CW	MA	REA	FAT	\$W	\$F	\$G	\$B
13	-1.0	61	103	13	25	6	.53	.49	.037	60.79	46.50	35.43	51.39

The most-popular Angus sire ever used that adds calving ease, thickness and carcass traits to his calves.



S A V Final Answer 0035

N

HXC CONQUEST 4405P

Red Red Angus Polled Sire

BD: 1/24/04 BW: 69 Adj. WW: 664 Adj. YW: 1285

BECKTON JULIAN GG B571

BKT JULIAN 7526 G
BKT MARTA 9A13 JL

HXC ELLIE MAY MA638

BFCK CHEROKEE CNYN 4912
HXC 529E

CED	BW	WW	YW	M	TM	ME	CEM	ST	MA	YG	CW	REA	FAT
21	-6.5	57	93	22	51	4	7	14	0.67	-0.02	16	0.50	0.03

A moderate-framed Red Angus AI sire we used to lower birthweight and add thickness to his calves.



HXC Conquest 4405P



YEARLING BULLS



1A

1A

DDGR ALL IN 1A

Black Purebred Polled Bull

BD: 2/18/2013 BW: 87 Adj. WW: 681

DCSF POST ROCK GRANITE 200P2

BTI GRANITE 2135M
DCSF POST ROCK TWILA 223M2

JMDS Y6

RHRT INDEPENDENCE L19
CRAN W919

CE	BW	WW	YW	M	TM	CED	YG	CW	REA	MA	FT	CV	FM
11	-0.1	72	106	34	70	10	-0.06	32	0.21	-0.17	-0.04	4.84	38.78

All In is a typical Granite son with his moderate frame and excellent thickness. He has been a standout all year and will make a great set of steers. Strong growth EPDs.

9A

CMR TARGET 9A

Black Purebred Scurred Bull

BD: 2/27/2013 BW: 83 Adj. WW: 689

LWHF UPGRADE 425X

DCSF POST ROCK GRANITE 200P2
KCF MISS M211 R368

DCH HILLE Y195

CGCC WAYLON 936W
DCH HILLE W320 WELL OFF

CE	BW	WW	YW	M	TM	CED	YG	CW	REA	MA	FT	CV	FM
9	1.8	74	106	36	73	7	-0.13	35	0.36	-0.23	-0.05	0.97	37.62

Here's a calf with good thickness and spring of rib, boasting well-balanced EPDs with a strong maternal influence with a milk EPD of 36.



14A

14A

CMR PATRIOT 14A

Black Purebred Polled Bull

BD: 3/1/2013 BW: 97 Adj. WW: 641

DCH HILLE U145 UPPERCUT

DCHD GOLDEN BUCKLE GELV 030P
DCH HILLE N197 NURTURE

DCH HILLE Y180 ET

ELK 214R
DCH HILLE L112 LAVISH

CE	BW	WW	YW	M	TM	CED	YG	CW	REA	MA	FT	CV	FM
8	2.8	74	110	30	67	8	-0.11	39	0.35	-0.12	-0.05	13.25	40.81

Here's a larger framed calf, packed with performance. Chimney Butte Ranch thought enough of his granddam to put her into their ET donor program.

16A

DDGR VOYAGER 16A

Black Purebred Polled Bull

BD: 3/2/2013 BW: 50 Adj. WW: 600

KHR 08W

KHR 31T
KHR 708T

DDGR 44Y

OZZ EXT GOVERNOR 3N
DDGR 285W

CE	BW	WW	YW	M	TM	CED	YG	CW	REA	MA	FT	CV	FM
15	-5.3	60	81	37	67	16	-0.38	9	0.61	-0.09	-0.07	-8.75	23.55

Voyager is sired by the calving-ease KHR 08W sire and has calving ease all over his pedigree. This very low birthweight bull still had good performance and thickness from a first-calf heifer. Definite heifer bull prospect here.

19A

DDGR CHARGER 19A

Black Balancer 50% Polled Bull

BD: 3/4/2013 BW: 85 Adj. WW: 671

S A V FINAL ANSWER 0035

SITZ TRAVELER 8180
S A V EMULOUS 8145

DDGR DDGR GOOD LOOKING 221Y

MSH MY SEASON ET
DDGR QUEENIE 43P

CE	BW	WW	YW	M	TM	CED	YG	CW	REA	MA	FT	CV	FM
11	1.6	79	111	25	64	10	-0.02	37	0.38	0.23	-0.01	48.39	38.95

The Final Answer sire has worked well in our herd over the years. This son is really coming on in the pen and has strong growth EPDs.



YEARLING BULLS



20A DDGR TRACKER 20A

Black Purebred Polled Bull

BD: 3/4/2013 BW: 77 Adj. WW: 611

DCSF POST ROCK GRANITE 200P2

BTI GRANITE 2135M
DCSF POST ROCK TWILA 223M2

DDGR 136Y

RLFG RANGE LINE COCOA
DDGR MITZI 94P

CE	BW	WW	YW	M	TM	CED	YG	CW	REA	MA	FT	CV	FM
9	0.8	75	108	33	70	8	-0.12	34	0.34	-0.30	-0.05	-6.42	38.11

Very strong genetic package here with the Granite sire on the top side while his grand-dam was a donor cow for us this year and is a Dam of Merit. Nice job by a first-calf heifer

21A DDGR HOWIE 21A

Black Purebred Polled Bull

BD: 3/4/2013 BW: 60 Adj. WW: 595

VRT LAZY TV SAM U451

KHR SAM SPADE 02S
VRT LAZY TV MS FULLBACK L643

DDGR 167Y

000 U823
DDGR SHANIA 178S

CE	BW	WW	YW	M	TM	CED	YG	CW	REA	MA	FT	CV	FM
14	-0.6	68	92	37	71	7	-0.28	23	0.58	-0.20	-0.06	-2.30	28.56

We introduced the Sam U451 bull for his calving ease and were well satisfied. This low birthweight son has a calving ease EPD in the top 2% of the breed in an attractive package.

24A CMR TWO BITS 24A

Black Balancer 75% Scurred Bull

BD: 3/5/2013 BW: 77 Adj. WW: 610

VRT LAZY TV SAM U451

KHR SAM SPADE 02S
VRT LAZY TV MS FULLBACK L643

CMR MEADOW 89Y

GARRET'S EMBLAZON 457D
VVG R MISS 820R

CE	BW	WW	YW	M	TM	CED	YG	CW	REA	MA	FT	CV	FM
15	0.2	72	102	34	70	6	-0.24	30	0.64	-0.03	-0.05	20.61	34.52

This calf's dam, a fancy first-calf heifer, did a good job bringing him to weaning, and he's really come on since.

26A DDGR BIG ROC 26A

Red Hybrid 22% Polled Bull

BD: 3/5/2013 BW: 92 Adj. WW: 702

HXC HXC CONQUEST 4405P

WF BECKTON JULIAN GG B571
HXC HXC ELLIE MAY MA638

DDGR 218Y

TPLR ROUSE CHATEAU S37
DDGR PRAIRIE ROSE 65K

CE	BW	WW	YW	M	TM	CED	YG	CW	REA	MA	FT	CV	FM
13	-2.1	62	95	27	58	5	-0.08	23	0.40	0.42	-0.01	55.37	34.56

A Conquest son that combines an excellent calving-ease EPD with a 700+ weaning weight and is out of a first-calf heifer. His granddam was a Dam of Distinction.

27A DDGR NITE RIDER 27A

Red Purebred Polled Bull

BD: 3/5/2013 BW: 76 Adj. WW: 678

DDGR HIGH IMPACT 40X

JDPD ASTRO 407S
DDGR COOKIE 62R

DDGR 72Y

SINK FULL THROTTLE 27T
DDGR DAFFODIL 65P

CE	BW	WW	YW	M	TM	CED	YG	CW	REA	MA	FT	CV	FM
10	0.1	68	90	31	65	10	-0.20	22	0.31	-0.26	-0.06	-11.13	26.46

We have been impressed with our Full Throttle daughters and this first-calf heifer posted a 106 nursing ratio. This bull is one of the fastest gainers in the pen. Check him out.

30A DDGR BLACKJACK 30A

Black Balancer 50% Polled Bull

BD: 3/6/2013 BW: 72 Adj. WW: 645

S A V FINAL ANSWER 0035

SITZ TRAVELER 8180
S A V EMULOUS 8145

DDGR 107Y

000 U823
DDGR TAMMY 189U

CE	BW	WW	YW	M	TM	CED	YG	CW	REA	MA	FT	CV	FM
16	-2.1	69	105	28	62	11	-0.07	28	0.40	0.30	-0.01	49.99	38.49

A Final Answer son with a calving ease EPD in the top 5% of the breed, yet has the depth and muscle mass that his sire is known for. Definite heifer-bull prospect.

34A DDGR BOOMER 34A

Black Balancer 50% Polled Bull

BD: 3/3/2013 BW: 95 Adj. WW: 631

S A V FINAL ANSWER 0035

SITZ TRAVELER 8180
S A V EMULOUS 8145

DDGR 118Y

RLFG RANGE LINE COCOA
DDGR SHADOW 137L

CE	BW	WW	YW	M	TM	CED	YG	CW	REA	MA	FT	CV	FM
11	0.7	77	115	24	62	10	-0.13	39	0.75	0.20	0.00	50.56	44.04

This Final Answer son picked up more of the performance of the Range Line Cocoa sire with weaning and yearling EPDs in the top 10% of the breed.

36A DDGR STATESMAN 36A

Black Balancer 50% Polled Bull

BD: 3/7/2013 BW: 89 Adj. WW: 655

HXC HXC CONQUEST 4405P

WF BECKTON JULIAN GG B571
HXC HXC ELLIE MAY MA638

DDGR 43Y

DCSF POST ROCK SILVER 233U1
DDGR HONEYCOMB 68R

CE	BW	WW	YW	M	TM	CED	YG	CW	REA	MA	FT	CV	FM
11	0.2	78	120	23	62	8	-0.08	41	0.48	0.18	-0.02	46.66	47.18

We used the moderate-framed Conquest sire on this bull's larger framed dam and were very happy with the result. Nice depth and thickness on this calf.



YEARLING BULLS



38A DDGR BLACKTOP 38A

Black Balancer 75% Scurred Bull

BD: 3/8/2013 BW: 88 Adj. WW: 655

PLA BIG DOG 101Y

HYEK BLACK IMPACT 3960N
EGL P190

DDGR 20Y

B C MATRIX 4132
DDGR LADYBIRD 83W

CE	BW	WW	YW	M	TM	CED	YG	CW	REA	MA	FT	CV	FM
7	2.3	83	115	25	67	3	-0.10	40	0.49	-0.08	-0.03	18.22	39.47

We saw the Big Dog sire in Denver, purchased a syndicate interest in him and used him on this beautiful Matrix daughter. Check out the growth EPDs with a weaning weight EPD in the top 1% of the breed.

42A DDGR PRIMECUT 42A

Black Purebred Polled Bull

BD: 3/9/2013 BW: 75 Adj. WW: 600

VRT LAZY TV SAM U451

KHR SAM SPADE 02S
VRT LAZY TV MS FULLBACK L643

DDGR 9Y

DCSF POST ROCK GRANITE 200P2
DDGR NAOMI 55W

CE	BW	WW	YW	M	TM	CED	YG	CW	REA	MA	FT	CV	FM
16	-1.2	66	93	36	69	7	-0.25	23	0.56	-0.11	-0.05	6.11	30.46

Birth weight, EPDs and pedigree all indicate that this bull should work on heifers. We have used both the U451 and Granite sires on heifers with good success.

55A DDGR YUKON 55A

Red Purebred Polled Bull

BD: 3/11/2013 BW: 69 Adj. WW: 618

CIRS DECADE 278U2

EGL FOSTERS L017 ET
EGL GAIL M278

DDGR BUTTERCUP 159R

BNC L185
DDGR ZSA ZSA 22M

CE	BW	WW	YW	M	TM	CED	YG	CW	REA	MA	FT	CV	FM
8	3.1	76	102	29	66	8	-0.26	34	0.57	-0.33	-0.07	-8.11	32.77

This twin calf combines the genetics of the Decade bull with the Judge sire on the dam's side, two red sires we have been very happy with. Nice thickness on this bull and his granddam is a Dam of Merit.

58A DDGR JOYRIDE 58A

Black Purebred Polled Bull

BD: 3/12/2013 BW: 102 Adj. WW: 622

VRT LAZY TV POWERHOUSE X554

DVE DAVIDSON POWERHOUSE 13U
EGL N020 ET

DDGR DAWN 152W

RED FORTUNATE 681
DDGR SAPPHIRE 167P

CE	BW	WW	YW	M	TM	CED	YG	CW	REA	MA	FT	CV	FM
4	4.3	66	98	30	63	5	-0.15	34	0.41	-0.18	-0.05	6.09	34.63

A larger framed son of our Powerhouse son that has been gaining very well since weaning. The 152W dam is also the mother of the 114Z bred heifer.



67A

67A DDGR RINGO 67A

Black Balancer 50% Scurred Bull

BD: 3/14/2013 BW: 90 Adj. WW: 654

TC FREEDOM 104

CONNELLY FOREFRONT
T C RUBY 9095

DDGR LADYBIRD 83W

MSH MY SEASON ET
DDGR WYNONA 58M

CE	BW	WW	YW	M	TM	CED	YG	CW	REA	MA	FT	CV	FM
9	1.6	61	91	34	65	8	-0.12	26	0.31	0.10	-0.04	27.24	31.44

A stylish son of T C Freedom, who we have used for years. His calves have consistently had excellent dispositions, growth and eye appeal. His granddam was a Dam of Merit.



68A

68A DDGR SMOKIN JOE 68A

Black Balancer 50% Scurred Bull

BD: 3/14/2013 BW: 90 Adj. WW: 699

S A V IRON MOUNTAIN 8066

TC GRIDIRON 258
S A V MADAME PRIDE 3249

DDGR HALEY 159X

ELK CK RIMFIRE 173S
DDGR SHEBA 174T

CE	BW	WW	YW	M	TM	CED	YG	CW	REA	MA	FT	CV	FM
9	2.4	76	112	23	60	5	-0.02	39	0.27	0.36	-0.02	61.81	41.18

We introduced the Iron Mountain sire to add muscle mass and eye appeal. This bull has excellent growth EPDs as well as carcass and feedlot merit EPDs and was one of our heaviest weaning calves this year.



YEARLING BULLS



... reserves a
1/3 semen interest
in each bull in the offering.



74A



84A



86A

69A DDGR ROCKET MAN 69A

Black Purebred Polled Bull

BD: 3/15/2013 BW: 74 Adj. WW: 656

GRW 7 BAR J 1004X

BABR RID ROOSTER COGBURN 854U
RID 7 BAR J MS MARY 809U

DDGR 122Y

JKGF W95
DDGR MOCHA 93R

CE	BW	WW	YW	M	TM	CED	YG	CW	REA	MA	FT	CV	FM
14	-1.5	57	77	29	58	11	-0.32	13	0.54	-0.15	-0.06	-9.81	21.85

Heifer-bull candidate. Excellent calving ease on this bull that is sired by the bull we have used on heifers for the past several years.

74A DDGR NORTHLANDER 74A

Red Purebred Polled Bull

BD: 3/16/2013 BW: 89 Adj. WW: 727

DVE DAVIDSON MR DAKOTA 151X

DCHD GOLDEN BUCKLE GELV 003U
DVE DAVIDSON MS MARK 99U

DDGR SAHARA 18S

JRI HEAVY EQUIPMENT 125M3
DDGR SALLY 25P

CE	BW	WW	YW	M	TM	CED	YG	CW	REA	MA	FT	CV	FM
7	2.1	64	90	40	73	7	-0.19	26	0.30	-0.24	-0.07	-6.04	28.86

One of our favorites all summer, this son of the Dakota sire is larger framed and has a nursing ratio of 114. His dam has done a super job. Check out this herdsire prospect. His dam and granddam are both Dams of Merit.

84A DDGR NITRO 84A

Red Purebred Polled Bull

BD: 3/18/2013 BW: 104 Adj. WW: 721

DDGR HIGH IMPACT 40X

JDPD ASTRO 407S
DDGR COOKIE 62R

DDGR SWEET PEA 148R

WVR WEAVER NORDIC 195N
DDGR FANCY 183N

CE	BW	WW	YW	M	TM	CED	YG	CW	REA	MA	FT	CV	FM
6	3.2	73	100	34	71	8	-0.18	33	0.34	-0.36	-0.07	-13.58	32.32

The Nitro bull continues to impress us with his eye appeal, growth to weaning and gains in the feedlot. One of our favorites out of a super dam. His granddam is a Dam of Merit.

86A DDGR NIGHTLIFE 86

Black Balancer 75% Polled Bull

BD: 3/18/2013 BW: 73 Adj. WW: 638

JCB LAZY TV ANSWER W280

S A V FINAL ANSWER 0035
LJCB 097K

DDGR BUTTERCUP 238T

ELK CK BLACK ANSWER 702L
DDGR STARBRIGHT 321L

CE	BW	WW	YW	M	TM	CED	YG	CW	REA	MA	FT	CV	FM
11	-0.7	69	91	30	65	11	-0.16	22	0.29	0.00	-0.05	12.51	27.19

This is a nicely balanced calf who also has nicely balanced EPDs. Be sure to check out his length of body. His granddam is a Dam of Merit.



YEARLING BULLS



87A DDGR GAMBLER 87A

Black Balancer 25% Polled Bull

BD: 3/18/2013 BW: 72 Adj. WW: 621

S A V IRON MOUNTAIN 8066

TC GRIDIRON 258
S A V MADAME PRIDE 3249

DDGR DAISY 8X

TPLR ROUSE CHATEAU S37
DDGR UPBEAT 200U

CE	BW	WW	YW	M	TM	CED	YG	CW	REA	MA	FT	CV	FM
13	-1.0	58	90	21	50	2	-0.02	22	0.26	0.61	0.01	69.54	32.01

The SAV Iron Mountain sons are attractive calves with lots of thickness. This calf also has nicely balanced EPDs, ranking in the top 15% for calving ease.



84A and his dam



91A

96A DDGR KODIAK 96A

Red Purebred Polled Bull

BD: 3/19/2013 BW: 96 Adj. WW: 638

DDGR HIGH IMPACT 40X

JDPD ASTRO 407S
DDGR COOKIE 62R

DDGR DAFFODIL 65P

JCGR BAR GT LOUIE 2J
DDGR NAOMI 142L

CE	BW	WW	YW	M	TM	CED	YG	CW	REA	MA	FT	CV	FM
7	2.5	75	100	24	61	9	-0.20	32	0.41	-0.28	-0.06	-5.68	31.24

This bull is a high-performance calf with strong growth EPDs. We can't say enough about the DDGR High Impact calves. They are very consistent. His granddam is a Dam of Merit.

88A DDGR MAXIMUM 88A

Red Purebred Polled Bull

BD: 3/18/2013 BW: 93 Adj. WW: 711

DDGR HIGH IMPACT 40X

JDPD ASTRO 407S
DDGR COOKIE 62R

DDGR WANDA 177W

LWM 105T
DDGR HOPSCOTCH 134N

CE	BW	WW	YW	M	TM	CED	YG	CW	REA	MA	FT	CV	FM
9	1.4	73	98	33	69	10	-0.17	29	0.33	-0.23	-0.06	-2.71	30.96

This large-framed, long-bodied DDGR High Impact son is one of the fastest gainers and heaviest calves in the pen. Use him to add frame and performance.

90A DDGR EIGHT BALL 90A

Black Purebred Polled Bull

BD: 3/18/2013 BW: 106 Adj. WW: 707

VRT LAZY TV POWERHOUSE X554

DVE DAVIDSON POWERHOUSE 13U
EGL N020 ET

DDGR WYNONA 58M

DDGR APACHE 42H
DDGR LUCY 73G

CE	BW	WW	YW	M	TM	CED	YG	CW	REA	MA	FT	CV	FM
1	5.5	71	101	34	70	6	-0.12	37	0.32	-0.26	-0.05	-2.48	34.26

This Lazy TV Powerhouse son is sure to perform. He's a nicely balanced calf with plenty of growth and thickness. His dam is a Dam of Merit.

91A CMR UPSHOT 91A

Red Purebred Polled Bull

BD: 3/19/2013 BW: 87 Adj. WW: 671

KHR 08W

KHR 31T
KHR 708T

CMR SUNNY 44S

ELK CK BLACK ANSWER 702L
CMR MARYLOU 6M

CE	BW	WW	YW	M	TM	CED	YG	CW	REA	MA	FT	CV	FM
7	1.2	77	100	31	69	12	-0.26	30	0.45	-0.23	-0.08	-1.56	30.27

Calving ease on the top side and performance on the bottom combine to make a nice package. His dam is a Dam of Merit.

99A DDGR STRETCH 99A

Black Purebred Polled Bull

BD: 3/20/2013 BW: 101 Adj. WW: 632

JDPD ASTRO 407S

JDPD ROLEX 151M
HAD PRINCESS OF ALOT 407P

DDGR BLACKBIRD 33R

MLLC M/L ADVANTAGE
DDGR SHEBA 204N

CE	BW	WW	YW	M	TM	CED	YG	CW	REA	MA	FT	CV	FM
8	3.5	69	101	31	65	10	-0.09	35	0.27	-0.13	-0.04	9.91	35.69

This is the only Astro son in the pen. The Astro sons have been very well received in our previous sales and we love our Astro daughters – lots of depth and femininity. His dam is a Dam of Merit.

YEARLING BULLS



105A

105A DDGR ACES WILD 105A

Red Balancer 50% Polled Bull
BD: 3/20/2013 BW: 92 Adj. WW: 672

HXC HXC CONQUEST 4405P

WF BECKTON JULIAN GG B571
HXC HXC ELLIE MAY MA638

DDGR SAHARA 183T

SEGA PUNCHLINE 203P
DDGR PENNY 113L

CE	BW	WW	YW	M	TM	CED	YG	CW	REA	MA	FT	CV	FM
10	0.0	67	102	27	60	6	-0.12	30	0.42	0.11	-0.03	33.02	37.43

This is one of the fastest gainers in the pen and is also one of the heaviest. This Conquest calf is out of a beautiful dam.



106A

106A DDGR FULLBACK 106A

Red Purebred Polled Bull
BD: 3/21/2013 BW: 93 Adj. WW: 675

RLFG RANGE LINE COCOA

TLR COCOA 35C
RLFG MISS SUGAR BUCK

DDGR CLASSY LADY 167T

WVR WEAVER NORDIC 195N
DDGR 74R

CE	BW	WW	YW	M	TM	CED	YG	CW	REA	MA	FT	CV	FM
5	3.1	78	109	36	76	8	-0.24	38	0.57	-0.31	-0.07	-4.93	36.93

This calf has been a standout. He's been the pick of the pen for several people who've stopped by. A Range Line Cocoa son topped our sale two years ago, and this calf has the style and depth you're looking for. His granddam is a Dam of Merit.

108A DDGR TOP GUN 108A

Black Purebred Polled Bull
BD: 3/21/2013 BW: 98 Adj. WW: 615

VRT LAZY TV POWERHOUSE X554

DVE DAVIDSON POWERHOUSE 13U
EGL N020 ET

DDGR JEWEL 79U

MLH STRAIT FORWARD R89
DDGR BROWN SUGAR 12L

CE	BW	WW	YW	M	TM	CED	YG	CW	REA	MA	FT	CV	FM
5	3.2	68	101	21	55	7	-0.08	34	0.28	-0.27	-0.04	-3.96	36.24

Top Gun is the fastest gainer in the pen and has really come on since weaning. His dam is also the dam of the 102Z bred heifer.

113A DDGR BOLD RULER 113A

Black Purebred Polled Bull
BD: 3/21/2013 BW: 102 Adj. WW: 673

RLFG RANGE LINE COCOA

TLR COCOA 35C
RLFG MISS SUGAR BUCK

DDGR ROSALYN 191W

MSH MY SEASON ET
DDGR MISS SHADOW 92F

CE	BW	WW	YW	M	TM	CED	YG	CW	REA	MA	FT	CV	FM
3	3.9	73	101	31	67	7	-0.26	35	0.71	-0.15	-0.06	11.65	33.15

This is a high-performance son of the Rangeline Cocoa bull. His WW and YW EPDs are in the top 20% of the breed and his granddam is a Dam of Merit.

119A DDGR BLACKSTONE 119A

Black Purebred Polled Bull
BD: 3/21/2013 BW: 86 Adj. WW: 640

PLA BIG DOG 101Y

HYEK BLACK IMPACT 3960N
EGL P190

DDGR CHAI 125U

MSH MY SEASON ET
DDGR FOXY LADY 40R

CE	BW	WW	YW	M	TM	CED	YG	CW	REA	MA	FT	CV	FM
7	1.1	74	96	26	63	6	-0.16	27	0.42	-0.21	-0.04	-1.86	28.09

This calf is sired by the 2013 National Futurity Winner in Denver. The reports have been very good all over on the Big Dog calves and Black Stone has a very balanced EPD profile.

120A DDGR HIGH VOLTAGE 120A

Red Balancer 50% Polled Bull
BD: 3/21/2013 BW: 78 Adj. WW: 600

RAB BIEBER BOONE 10696

RAB BIEBER BOONE 8000
RAB BIEBER EULCA 8969

DDGR SADIE 28X

JRI PLD FREE AGENT 125J3
DDGR KANDY KORN 80U

CE	BW	WW	YW	M	TM	CED	YG	CW	REA	MA	FT	CV	FM
14	-2.2	53	78	24	51	7	-0.06	13	0.18	0.00	-0.01	1.26	25.24

This calf ranks in the top 10% for calving ease and low birth. He's a well-balanced calf that should work on heifers. His dam is also the mother of the 231Z bred heifer.



YEARLING BULLS



87R and her heifer calf

121A DDGR THUNDERBOLT 121A

Black Purebred Polled Bull
BD: 3/22/2013 BW: 113 Adj. WW: 777

CIRS DECADE 278U2

EGL FOSTERS L017 ET
EGL GAIL M278

DDGR REBA 162R

VRT LAZY TV LINEBACKER N452
DDGR SHELLEY 36M

CE	BW	WW	YW	M	TM	CED	YG	CW	REA	MA	FT	CV	FM
8	3.7	82	111	27	68	6	-0.19	40	0.54	-0.16	-0.06	10.02	36.69

This Decade son is a standout in the pen. He's loaded with meat and muscle. His mother has been a "never miss" kind of cow. We can't say enough about this powerful bull.



127A

127A DDGR KEYSTONE 127A

Black Balancer 50% Polled Bull
BD: 3/22/2013 BW: 90 Adj. WW: 637

S A V IRON MOUNTAIN 8066

TC GRIDIRON 258
S A V MADAME PRIDE 3249

DDGR 259W

MSH MY SEASON ET
DDGR DAWN 128R

CE	BW	WW	YW	M	TM	CED	YG	CW	REA	MA	FT	CV	FM
8	1.9	65	97	21	54	4	-0.06	30	0.32	0.37	-0.02	56.89	34.19

Another thick SAV Iron Mountain son that has a well-balanced EPD profile. His dam has had several outstanding bull calves.



130A

130A DDGR FRISCO 130A

Red Purebred Polled Bull
BD: 3/22/2013 BW: 86 Adj. WW: 652

KKC NOBILITY 123Y

KKC COMMANDER 51W
KKC MS GRAND 64L

DDGR CHERI 207T

EGL MIGUEL R056 ET
DDGR DAISY 150P

CE	BW	WW	YW	M	TM	CED	YG	CW	REA	MA	FT	CV	FM
9	0.7	72	98	21	57	8	-0.23	28	0.41	-0.27	-0.07	-6.58	30.95

Frisco is a very stylish calf with a great profile. We have been very happy with our calves out of the KKC Nobility sire and he is one of our favorites.



132A and his dam

131A DDGR BONANZA 131A

Black Purebred Polled Bull
BD: 3/22/2013 BW: 93 Adj. WW: 688

THUL X159

BNC CADILLAC JACK T717
THUL P403

DDGR ANNIE 117T

BTI 2134P
DDGR RUBY 39P

CE	BW	WW	YW	M	TM	CED	YG	CW	REA	MA	FT	CV	FM
8	2.1	78	104	28	67	10	-0.17	33	0.38	-0.21	-0.06	1.65	32.88

This is an outstanding, long-bodied calf with strong parentage. He's got the style and genetics to produce a powerful pen of steers.



YEARLING BULLS



132A

132A DDGR DURAMAX 132A

Black Balancer 75% Polled Bull

BD: 3/23/2013 BW: 110 Adj. WW: 721

PLA BIG DOG 101Y

HYEK BLACK IMPACT 3960N
EGL P190

DDGR FOXY ROXY 40T

TC FREEDOM 104
DDGR SHANIA 198N

CE	BW	WW	YW	M	TM	CED	YG	CW	REA	MA	FT	CV	FM
5	4.5	89	129	26	70	5	-0.05	52	0.41	-0.06	-0.04	16.72	49.20

This high-performance Big Dog son has been a standout all year. He's our heaviest calf and one of the fastest gainers, plus he's got a great disposition. If you don't find him on sale day, he'll come find you! Both his granddam and dam are Dams of Merit.

133A DDGR JENSEN 133A

Red Purebred Scurred Bull

BD: 3/23/2013 BW: 90 Adj. WW: 639

KKC NOBILITY 123Y

KKC COMMANDER 51W
KKC MS GRAND 64L

DDGR MAGGIE 225S

BTI 2134P
DDGR DAFODIL 92J

CE	BW	WW	YW	M	TM	CED	YG	CW	REA	MA	FT	CV	FM
8	1.4	69	95	26	61	10	-0.14	27	0.24	-0.24	-0.06	-5.60	30.18

This bull has great genetics. His dam had one of our cover picture bulls last year. Plus, he's got a good EPD profile and he's been a great gainer.

135A DDGR TRAVELLER 135A

Red Purebred Polled Bull

BD: 3/23/2013 BW: 85 Adj. WW: 616

PLA BIG DOG 101Y

HYEK BLACK IMPACT 3960N
EGL P190

DDGR DRIFTER 14S

BTI EXTRA 2106K ET
DDGR NAOMI 34P

CE	BW	WW	YW	M	TM	CED	YG	CW	REA	MA	FT	CV	FM
7	3.0	85	112	22	64	5	-0.07	39	0.32	-0.26	-0.04	-2.76	36.22

This Big Dog son has strong growth EPDs. He's in the top 10% for his weaning and yearling numbers and his mother, DDGR 14S is one of the most powerful cows in the herd. His granddam is a Dam of Merit.



136A

136A DDGR CROCKETT 136A

Black Purebred Polled Bull

BD: 3/23/2013 BW: 100 Adj. WW: 700

CIRS DECADE 278U2

EGL FOSTERS L017 ET
EGL GAIL M278

DDGR FOXY LADY 230W

RED FORTUNATE 681
DDGR SNOWFLAKES 58S

CE	BW	WW	YW	M	TM	CED	YG	CW	REA	MA	FT	CV	FM
8	2.9	80	107	30	70	3	-0.23	37	0.62	-0.27	-0.06	-0.87	34.99

This Decade son has a nursing ratio of 110. A strong calf at weaning that is long bodied, moderate framed and heavy muscled.

139A DDGR AWESOME 139A

Black Balancer 50% Polled Bull

BD: 3/23/2013 BW: 88 Adj. WW: 625

S A V IRON MOUNTAIN 8066

TC GRIDIRON 258
S A V MADAME PRIDE 3249

DDGR CUPCAKE 118W

MSH MY SEASON ET
DDGR QUEEN OF HEARTS

CE	BW	WW	YW	M	TM	CED	YG	CW	REA	MA	FT	CV	FM
9	2.0	67	99	17	50	2	-0.03	31	0.26	0.37	-0.02	57.61	35.25

A nice, stylish SAV Iron Mountain son that has a well-balanced EPD profile and has plenty of thickness and depth.

140A DDGR POWERHOUSE 140A

Black Balancer 75% Scurred Bull

BD: 3/23/2013 BW: 104 Adj. WW: 711

RLFG RANGE LINE COCOA

TLR COCOA 35C
RLFG MISS SUGAR BUCK

DDGR 41T

TC FREEDOM 104
RLFG LILY

CE	BW	WW	YW	M	TM	CED	YG	CW	REA	MA	FT	CV	FM
3	5.6	82	125	29	70	8	-0.17	52	0.65	-0.05	-0.05	21.14	49.40

A very high-performing calf that has lots of thickness and depth. His weaning and yearling EPDs indicate strong performance and he just continues to gain and improve in the pen.



YEARLING BULLS



143A

143A DDGR POWERPLAY 143A

Black Purebred Polled Bull

BD: 3/23/2013 BW: 85 Adj. WW: 649

VRT LAZY TV SAM U451

KHR SAM SPADE 02S
VRT LAZY TV MS FULLBACK L643

DDGR ARIANNA 162X

000 U823
DDGR SUNNY 113S

CE	BW	WW	YW	M	TM	CED	YG	CW	REA	MA	FT	CV	FM
11	1.2	78	107	34	73	6	-0.25	34	0.60	-0.17	-0.06	8.44	35.52

This bull is in the top 20% for both weaning and yearling weight. You have to appreciate his growth and style. He's combines a lot of performance with calving ease. His granddam is a Dam of Merit.

145A DDGR JOKER 145A

Black Purebred Polled Bull

BD: 3/24/2013 BW: 83 Adj. WW: 603

TAU GUNSLINGER 19U

SGRI HONOR ROLL S232
TAU GUNNISON 5151R

DDGR NUTMEG 40W

HYEK BLACK IMPACT 3960N
DDGR BOOTS 61J

CE	BW	WW	YW	M	TM	CED	YG	CW	REA	MA	FT	CV	FM
12	0.1	57	74	32	60	9	-0.50	13	0.98	-0.23	-0.08	-13.18	19.08

This bull's calving-ease EPD is in the top 5% of the breed. He's a well-balanced, long-bodied Gunslinger son. His granddam is a Dam of Distinction.

147A DDGR TRADITION 147A

Black Balancer 75% Polled Bull

BD: 3/24/2013 BW: 90 Adj. WW: 612

JCB LAZY TV ANSWER W280

S A V FINAL ANSWER 0035
LJCB 097K

DDGR SAHARA 134X

RED FORTUNATE 681
DDGR POLLYANNA 26M

CE	BW	WW	YW	M	TM	CED	YG	CW	REA	MA	FT	CV	FM
11	-0.8	65	96	31	63	9	-0.16	25	0.36	0.10	-0.04	26.75	33.40

This calf's birthweight EPD is in the top 25% of the breed. The Final Answer breeding line has done a great job in our herd.

148A DDGR SLAPSHOT 148A

Black Balancer 50% Polled Bull

BD: 3/24/2013 BW: 107 Adj. WW: 667

S A V IRON MOUNTAIN 8066

TC GRIDIRON 258
S A V MADAME PRIDE 3249

DDGR COSMOS 127U

MSH MY SEASON ET
DDGR STARBRIGHT 167R

CE	BW	WW	YW	M	TM	CED	YG	CW	REA	MA	FT	CV	FM
7	3.3	72	104	20	56	4	-0.02	36	0.25	0.38	-0.02	61.76	36.92

SlapShot is one of Sarah's favorites. He's a fast gainer that is loaded with meat and muscle and has a great profile.. He's super stylish and his granddam is a Dam of Merit.

150A DDGR MAGIC MAN 150A

Black Purebred Polled Bull

BD: 3/24/2013 BW: 92 Adj. WW: 622

THUL X159

BNC CADILLAC JACK T717
THUL P403

DDGR UPBEAT 200U

MSH MY SEASON ET
DDGR GWEN 109K

CE	BW	WW	YW	M	TM	CED	YG	CW	REA	MA	FT	CV	FM
6	3.1	71	89	30	66	9	-0.22	26	0.45	-0.14	-0.06	3.74	23.89

This bull is long bodied and out of a My Season dam who's doing a great job in our herd. His granddam is a Dam of Distinction.



136A and his dam

163A DDGR FLASHBACK 163A

Black Balancer 50% Polled Bull

BD: 3/26/2013 BW: 105 Adj. WW: 659

S A V IRON MOUNTAIN 8066

TC GRIDIRON 258
S A V MADAME PRIDE 3249

DDGR CHOCOLATE CHIP 182R

ELK CK BLACK ANSWER 702L
DDGR SAHARA 4J

CE	BW	WW	YW	M	TM	CED	YG	CW	REA	MA	FT	CV	FM
7	3.8	76	110	21	59	5	-0.04	40	0.23	0.34	-0.04	59.27	39.16

This is a thick-bodied, deep-made calf, that's been gaining very fast since weaning. He has very powerful genetics with a great dam that doesn't miss.



YEARLING BULLS



168A

168A CMR SWAGGER 168A

Black Balancer 75% Polled Bull
BD: 3/28/2013 BW: 89 Adj. WW: 654

RLFG RANGE LINE COCOA

TLR COCOA 35C
RLFG MISS SUGAR BUCK

CVV MISS 05U

GKG HARLEY
CVV MISS 60S

CE	BW	WW	YW	M	TM	CED	YG	CW	REA	MA	FT	CV	FM
7	2.3	78	118	29	67	9	-0.20	43	0.63	-0.04	-0.05	25.03	45.36

This moderate-framed calf is wide topped with a good rear quarter. His EPDs for weaning weight, yearling weight, total maternal and feedlot merit are well above the breed average.

172A DDGR CENTENNIAL 172A

Black Purebred Scurred Bull
BD: 3/28/2013 BW: 90 Adj. WW: 658

THUL X159

BNC CADILLAC JACK T717
THUL P403

DDGR SLAPSHOT 141X

MSH MY SEASON ET
DDGR REBA 162R

CE	BW	WW	YW	M	TM	CED	YG	CW	REA	MA	FT	CV	FM
8	2.8	72	92	29	65	10	-0.21	27	0.46	-0.10	-0.05	9.00	25.97

We really like the calves out of the X159 sire. They are long bodied and have great profiles. This calf is no exception.

178A DDGR NOBLEMAN 178A

Red Purebred Scurred Bull
BD: 3/30/2013 BW: 89 Adj. WW: 684

FRL FIR RIVER TED 489Y

SLC MASTERPLAN 512T
FRL FIR RIVER WHITNEY 62W

DDGR HONEYSUCKLE 61P

LJSA GET SHOCKED
DDGR BUTTERSCOTCH 132AG

CE	BW	WW	YW	M	TM	CED	YG	CW	REA	MA	FT	CV	FM
9	1.4	68	86	33	67	10	-0.20	22	0.31	-0.22	-0.06	-8.26	23.63

This is a moderate-framed calf out of our new herd sire FIR River Ted. His Milk EPD is in the top 1% and his dam is a consistent, strong producer. Use him to add maternal in your herd. His dam is a Dam of Merit.



190A and his dam

182A DDGR FREIGHTLINER 182A

Black Purebred Polled Bull
BD: 3/30/2013 BW: 82 Adj. WW: 637

VRT LAZY TV POWERHOUSE X554

DVE DAVIDSON POWERHOUSE 13U
EGL N020 ET

DDGR CLAIRE 81X

RED FORTUNATE 681
DDGR SIERRA 145T

CE	BW	WW	YW	M	TM	CED	YG	CW	REA	MA	FT	CV	FM
7	1.6	59	85	34	64	8	-0.20	23	0.38	-0.19	-0.05	-3.22	27.54

This bull has been gaining very well since weaning. He's well balanced and long bodied and goes back to the RED Fortunate sire that sired the Navaho bull that Davidsons purchased.

184A DDGR GRIZZLY 184A

Black Purebred Polled Bull
BD: 3/31/2013 BW: 88 Adj. WW: 666

THUL X159

BNC CADILLAC JACK T717
THUL P403

DDGR SHANIA 178S

SEGA PUNCHLINE 203P
DDGR POLLYANNA 26M

CE	BW	WW	YW	M	TM	CED	YG	CW	REA	MA	FT	CV	FM
9	0.9	72	96	32	68	11	-0.19	27	0.37	-0.20	-0.06	-0.91	29.62

Another nicely put together X159 son out of a very consistent dam. He's a low birthweight calf with good growth numbers.

186A DDGR BLAZER 186A

Red Purebred Polled Bull
BD: 3/31/13 BW: 84 Adj. WW: 679

FAITH'S CHESTER 121U ET

MISSISSIPPI GAMBLER
DC FAITH 111P

133U

2134P
HONEYSUCKLE 84P

CE	BW	WW	YW	M	TM	CED	YG	CW	REA	MA	FT	CV	FM
9	0.9	70	94	26	61	7	-0.25	26	0.24	-0.34	-0.10	-16.28	28.89

This is a moderate-framed, deep-bodied Chester son, that should produce an excellent set of steers. Check out his well-balanced EPD profile.



YEARLING BULLS



190A

190A DDGR TRIPLE PLAY 190A

Red Purebred Polled Bull
BD: 4/1/2013 BW: 104 Adj. WW: 655

FRL FIR RIVER TED 489Y

SLC MASTERPLAN 512T
FRL FIR RIVER WHITNEY 62W

DDGR MARILYN 124T

EGL MIGUEL R056 ET
DDGR HANNAH 2N

CE	BW	WW	YW	M	TM	CED	YG	CW	REA	MA	FT	CV	FM
6	4.1	78	108	23	62	6	-0.18	39	0.41	-0.28	-0.07	-3.51	36.34

This is a large-framed, heavy-muscled bull out of a high-performance EGL Miguel dam that's adds performance to all of her calves.

192A DDGR RICOCHET 192A

Black Balancer 75% Polled Bull
BD: 4/1/2013 BW: 73 Adj. WW: 700

JCB LAZY TV ANSWER W280

S A V FINAL ANSWER 0035
LJCB 097K

DDGR BLACK MAGIC 74X

ELK CK RIMFIRE 173S
DDGR JASMINE 54J

CE	BW	WW	YW	M	TM	CED	YG	CW	REA	MA	FT	CV	FM
14	-2.9	69	95	32	67	12	-0.15	21	0.30	0.08	-0.04	19.26	30.15

Ricochet has a great birth-to-weaning spread. We really appreciate this calf for his profile and his EPDs. He's in the top 10% for calving ease and should work on heifers. His granddam is a Dam of Distinction.

193A DDGR CASANOVA 193A

Red Purebred Polled Bull
BD: 4/1/2013 BW: 83 Adj. WW: 657

FRL FIR RIVER TED 489Y

SLC MASTERPLAN 512T
FRL FIR RIVER WHITNEY 62W

DDGR 124Y

EGL MIGUEL R056 ET
DDGR HELGA 148N

CE	BW	WW	YW	M	TM	CED	YG	CW	REA	MA	FT	CV	FM
10	1.9	70	97	28	63	10	-0.22	30	0.39	-0.27	-0.07	-5.57	31.82

Another FIR River Ted son with a calving-ease EPD in the top 20%. We appreciate how that sire is consistent in stamping those calves with an attractive look. His granddam is a Dam of Distinction.

194A DDGR NIGHT PATROL 194A

Black Purebred Polled Bull
BD: 4/2/2013 BW: 89 Adj. WW: 636

GRW 7 BAR J 1004X

BABR RID ROOSTER COGBURN 854U
RID 7 BAR J MS MARY 809U

DDGR DUSTY ROSE 37R

BTI EXTRA 2106K ET
DDGR GINGER 10N

CE	BW	WW	YW	M	TM	CED	YG	CW	REA	MA	FT	CV	FM
12	1.0	67	91	21	54	9	-0.10	24	0.27	-0.19	-0.03	-3.00	27.84

This twin bull is in the top 5% for calving ease. His mother has some great genetics behind her and his granddam is a Dam of Merit.

204A DDGR HURRICANE 204A

Black Balancer 63% Polled Bull
BD: 4/3/2013 BW: 95 Adj. WW: 635

THUL X159

BNC CADILLAC JACK T717
THUL P403

DDGR JEWEL 71X

TPLR ROUSE CHATEAU S37
DDGR MISS SHADOW 92F

CE	BW	WW	YW	M	TM	CED	YG	CW	REA	MA	FT	CV	FM
9	1.4	62	81	29	60	8	-0.19	19	0.41	0.06	-0.04	15.99	22.80

This calf is moderate framed like his dam but has the thickness of his sire. His granddam is a Dam of Merit.

217A DDGR ADVANCER 217A

Black Purebred Polled Bull
BD: 4/9/2013 BW: 87 Adj. WW: 695

SINK FULL THROTTLE 27T

KIT TABASCO J26 ET
SINK TRINA 027R

DDGR RUBY 269W

MSH MY SEASON ET
DDGR NANCY 12N

CE	BW	WW	YW	M	TM	CED	YG	CW	REA	MA	FT	CV	FM
6	2.1	63	79	41	72	6	-0.24	19	0.40	-0.24	-0.06	-12.37	20.37

A Advancer's dam had a super strong calf in the pen last year and came back with this Full Throttle son whose milk EPD is off the charts. Use him to add maternal. His granddam is a Dam of Merit.

250A DDGR DUKES OF HAZARD 250A

Red Purebred Scurred Bull
BD: 4/19/2013 BW: 95 Adj. WW: 688

KKC NOBILITY 123Y

KKC COMMANDER 51W
KKC MS GRAND 64L

DDGR AMBER 268W

EGL MIGUEL R056 ET
WVR LUCINDA 158L

CE	BW	WW	YW	M	TM	CED	YG	CW	REA	MA	FT	CV	FM
6	1.6	75	105	28	66	4	-0.20	34	0.41	-0.22	-0.07	1.67	35.56

Dukes of Hazard is in the top 15% for weaning and yearling EPDs. His dam had the lead bull in the 2012 sale. He's out of a very impressive cow family and is a stylish calf that's coming on strong in the pen.



YEARLING BULLS



264A DDGR MAINSTAY 264A

Red Purebred Scurred Bull

BD: 4/24/2013 BW: 91 Adj. WW: 722

KKC NOBILITY 123Y

KKC COMMANDER 51W
KKC MS GRAND 64L

DDGR CARMEL 181S

DDGR ENFORCER 79P
DDGR LADY PRIMROSE 218J

CE	BW	WW	YW	M	TM	CED	YG	CW	REA	MA	FT	CV	FM
8	0.8	74	100	38	76	8	-0.22	29	0.40	-0.22	-0.07	-1.21	31.27

His dam never misses. She had our high-selling bull in our 2011 sale. This calf has a nursing ratio of 113, and we expect Mainstay to do great things. His mother is a Dam of Merit and his grandmother is a Dam of Distinction.



307A

305A DDGR PROSPECTOR 305A

Red Purebred Polled Bull

BD: 3/19/2013 BW: 96 Adj. WW: 636

DDGR HOME RUN 35W

RID R COLLATERAL 2R
DDGR COOKIE 62R

DDGR REHANA 72U

RID R COLLATERAL 2R
RLFG LILY

CE	BW	WW	YW	M	TM	CED	YG	CW	REA	MA	FT	CV	FM
7	2.5	73	101	28	65	6	-0.25	33	0.48	-0.03	-0.08	20.72	33.64

This bull has high-growth numbers that put him in the top 20% of the breed. The DDGR Home Run calves have consistently been top performers.

307A DDGR KINGPIN 307A

Red Purebred Polled Bull

BD: 3/20/14 BW: 88 Adj. WW: 738

HOME RUN 35W

R COLLATERAL 2R
COOKIE 62R

GOLDEN GIRL 116P

GAUGLER RANCH 678K
MISS SUMMIT 111D

CE	BW	WW	YW	M	TM	CED	YG	CW	REA	MA	FT	CV	FM
11	0.6	67	92	34	67	7	-0.23	25	0.32	-0.17	-0.08	-0.26	28.94

This is one of the best calves in the pen with lots of thickness. This DDGR Home Run son has a weaning ratio of 116 and his dam has produced several outstanding bulls.

309A DDGR LONESTAR 309A

Red Purebred Polled Bull

BD: 3/21/2013 BW: 100 Adj. WW: 637

DDGR HOME RUN 35W

RID R COLLATERAL 2R
DDGR COOKIE 62R

DDGR DAWN 89S

CPG RENO 226T ET
DDGR 102N

CE	BW	WW	YW	M	TM	CED	YG	CW	REA	MA	FT	CV	FM
4	4.0	70	95	31	66	6	-0.28	31	0.47	-0.21	-0.09	1.54	29.82

A bull that has strong maternal genetics going back to the CPG Reno bull on the dam's side and the DDGR Cookie 62R cow on the sire's side. His granddam was a Dam of Merit

313A DDGR RIGHT TIME 313A

Red Purebred Polled Bull

BD: 3/23/2013 BW: 88 Adj. WW: 611

DDGR HOME RUN 35W

RID R COLLATERAL 2R
DDGR COOKIE 62R

DDGR TEQUILA 196S

DDGR HOSS 75N
DDGR NUTMEG 70K

CE	BW	WW	YW	M	TM	CED	YG	CW	REA	MA	FT	CV	FM
10	0.5	65	85	31	63	8	-0.28	20	0.41	-0.16	-0.08	-3.50	23.93

His pedigree combines the power of our home-grown genetics with the DDGR Home Run sire and his dam going back to the DDGR Hoss 75N bull. His granddam was a Dam of Merit.

319A DDGR WRANGLER 319A

Black Purebred Polled Bull

BD: 3/25/2013 BW: 96 Adj. WW: 629

JKGF W95

JKGF TRENDSETTER 55R ET
JKGF 95N

DDGR CARRIE 255W

LWM 105T
DDGR FOXY LADY 40R

CE	BW	WW	YW	M	TM	CED	YG	CW	REA	MA	FT	CV	FM
8	2.8	70	94	30	65	8	-0.31	29	0.70	-0.18	-0.07	5.45	29.17

Wrangler is out of one of our most attractive females, going back to the LWM 105T bull. His sire had the high seller in last year's sale.

326A DDGR REVOLUTION 326A

Black Balancer 75% Polled Bull

BD: 3/28/2013 BW: 74 Adj. WW: 618

JKGF W95

JKGF TRENDSETTER 55R ET
JKGF 95N

DDGR MOONBEAM 57U

G A R PREDESTINED
DDGR MOONBEAM 161L

CE	BW	WW	YW	M	TM	CED	YG	CW	REA	MA	FT	CV	FM
11	-0.8	59	85	34	63	10	-0.29	19	0.63	0.25	-0.05	35.02	27.23

This calf is out of an excellent cow family. His granddam, DDGR 161L, is still doing a great job of producing in our herd.



YEARLING BULLS



333A DDGR VIKING 333A

Red Purebred Scurred Bull

BD: 3/31/2013 BW: 88 Adj. WW: 665

DDGR HOME RUN 35W

RID R COLLATERAL 2R
DDGR COOKIE 62R

DDGR COURTNEY 170U

EGL MIGUEL R056 ET
DDGR HILLARY 4N

CE	BW	WW	YW	M	TM	CED	YG	CW	REA	MA	FT	CV	FM
10	-0.5	69	94	22	57	5	-0.30	24	0.51	-0.25	-0.08	-6.26	29.70

This future herd sire combines the genetics of the EGL Miguel and the DDGR Home Run herd sires, two of our best red bulls. His granddam is a Dam of Merit

336A DDGR DRIFTER 336A

Black Balancer 75% Polled Bull

BD: 4/2/2013 BW: 94 Adj. WW: 683

JKGF W95

JKGF TRENDSETTER 55R ET
JKGF 95N

DDGR STRAWBERRY 46U

G A R PREDESTINED
DDGR 203R

CE	BW	WW	YW	M	TM	CED	YG	CW	REA	MA	FT	CV	FM
5	3.1	69	99	32	67	7	-0.24	32	0.68	0.21	-0.05	46.22	33.34

This bull has a weaning ratio of 107 and goes back to the great Angus sire, Predestined.

337A DDGR AFTERSHOCK 337A

Black Purebred Polled Bull

BD: 4/3/2013 BW: 93 Adj. WW: 694

JKGF W95

JKGF TRENDSETTER 55R ET
JKGF 95N

DDGR NELLY 153R

ELK CK BLACK ANSWER 702L
DDGR BLACK PEARL 16L

CE	BW	WW	YW	M	TM	CED	YG	CW	REA	MA	FT	CV	FM
5	4.6	81	106	29	70	9	-0.28	38	0.55	-0.23	-0.09	2.21	32.71

This calf has a weaning ratio at 109. He's also got strong growth EPDs being in the top 4% for weaning and the top 15% for yearling.

339A DDGR BLIZZARD 339A

Black Purebred Polled Bull

BD: 4/3/2013 BW: 74 Adj. WW: 711

JKGF W95

JKGF TRENDSETTER 55R ET
JKGF 95N

DDGR LADYBUG 254U

MSH MY SEASON ET
DDGR COUNTESS 66R

CE	BW	WW	YW	M	TM	CED	YG	CW	REA	MA	FT	CV	FM
10	0.0	65	82	37	70	8	-0.29	17	0.55	-0.26	-0.06	-14.35	21.74

This bull has a great birth-to-growth spread with a weaning weight ratio at 112, plus his milk EPD is in the top 5% of the breed.

344A DDGR BONANZA 344A

Black Purebred Polled Bull

BD: 4/9/2013 BW: 86 Adj. WW: 664

JKGF W95

JKGF TRENDSETTER 55R ET
JKGF 95N

DDGR JASMINE 75T

GSBR 89P
DDGR QUEENIE 43P

CE	BW	WW	YW	M	TM	CED	YG	CW	REA	MA	FT	CV	FM
8	2.2	72	93	27	63	8	-0.30	27	0.58	-0.23	-0.07	-2.22	27.03

This bull has a nicely balanced EPD profile and is the son of JKGF W95, who did an excellent job for us.

513A SHWN HULIO 513

Red Balancer 75% Polled Bull

BD: 2/14/2013 BW: 95 Adj. WW: 675

JRI HEAVY EQUIPMENT 125M3

SLC FREEDOM 178F ET
JRI MS PLD GRAND PRIX 125G3

SHWN EMMA

BTK MLK CRK CUB 722
DDGR MELODY 308L

CE	BW	WW	YW	M	TM	CED	YG	CW	REA	MA	FT	CV	FM
8	1.1	62	91	27	58	6	-0.12	26	0.18	-0.18	-0.05	-1.16	31.44

This 3/4 Balancer bull is out of the powerful Heavy Equipment sire and a cow the Bergers purchased from us. This is a large framed bull with lots of length.



All of the bulls have been DNA profiled by IGENITY. We will post the results of their profile, homozygous black status, yearling weights and scrotal measurements on our website, www.gustinsdiamonddd.com, as soon as they are available. We will also have them available on sale day.



YEARLING BULLS



ACTIVE GELBIEH SIRES' AVERAGE EPDS

CE	BW	WW	YW	MK	TM	CED	ST	YG	CW	REA	MB	FT	CV	FM
9	1.3	66	91	29	62	7	5	-0.24	25	0.45	-0.18	-0.06	-3.47	28.84

ACTIVE BALANCER SIRES' AVERAGE EPDS

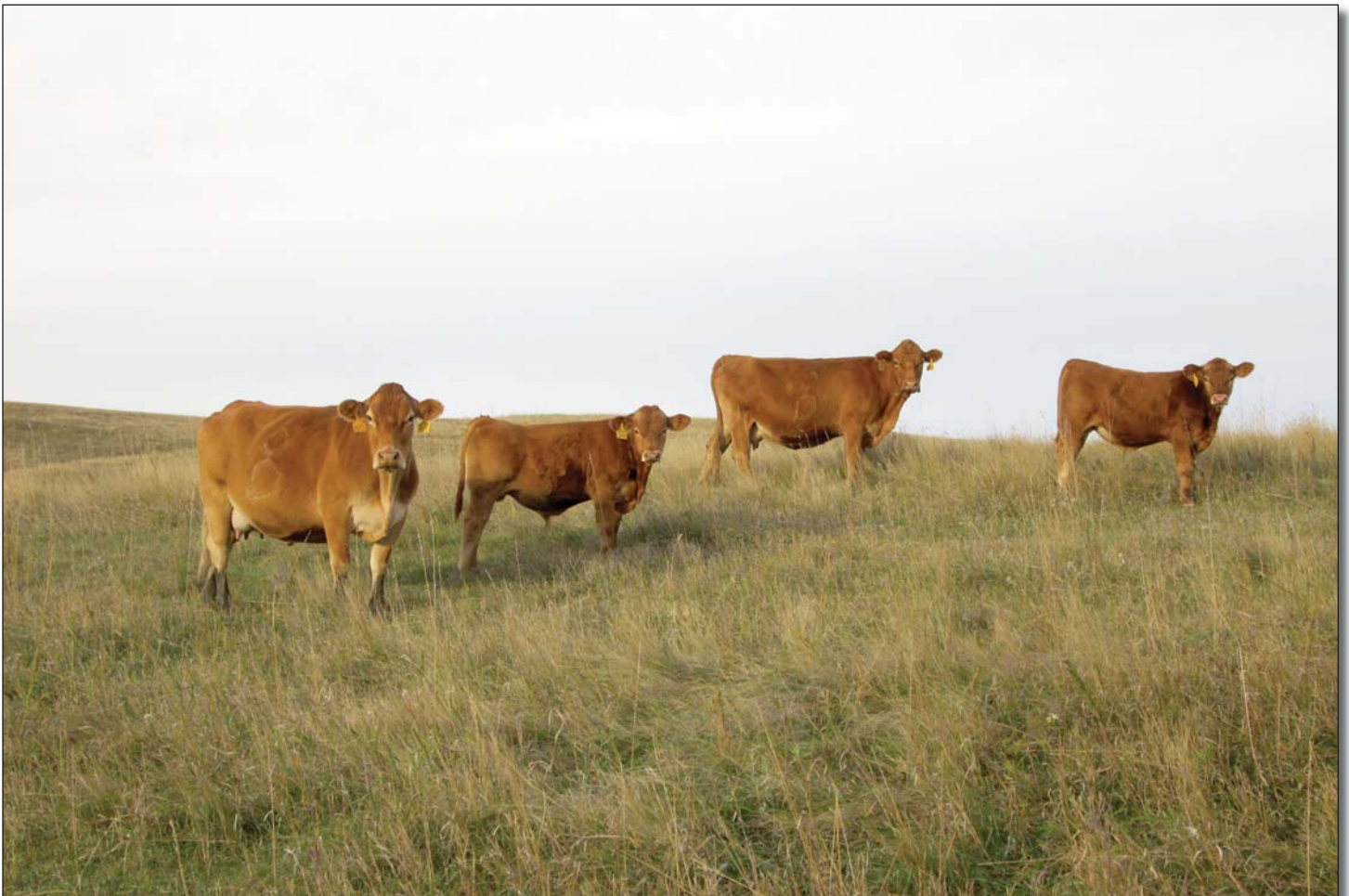
CE	BW	WW	YW	MK	TM	CED	ST	YG	CW	REA	MB	FT	CV	FM
11	0.2	64	97	27	58	7	4	-0.12	27	0.41	0.25	-0.03	40.41	35.35

NON-PARENT GELBIEH ANIMALS' AVERAGE EPDS

CE	BW	WW	YW	MK	TM	CED	ST	YG	CW	REA	MB	FT	CV	FM
9	1.4	65	90	29	62	7	6	-0.24	25	0.44	-0.19	-0.06	-3.26	28.33

NON-PARENT BALANCER ANIMALS' AVERAGE EPDS

CE	BW	WW	YW	MK	TM	CED	ST	YG	CW	REA	MB	FT	CV	FM
11	0.3	64	95	27	58	7	5	-0.14	27	0.40	0.19	-0.03	35.02	34.14





BRED HEIFERS



Our 2014 Golden Rule consignment – A Conquest daughter

32Z DDGR DDGR CHIFFON 32Z
Red Purebred Polled Cow
BD: 3/2/2012 BW: 62 Adj. WW: 537

DCHD GLDN BKL 030W WINCHESTER
DCHD GOLDEN BUCKLE GELV 030L
EGL MIGUEL R056 ET
DDGR SABRINA 14M

CE	BW	WW	YW	M	TM	CED	YG	CW	REA	MA	FT	CV	FM
12	-1.1	56	80	31	59	10	-0.26	15	0.43	-0.32	-0.06	-21.99	24.83

This heifer has excellent calving ease but should still add the performance of her dam's sire, the Miguel bull. Due March 10 to the Red Angus Conquest bull with a heifer calf.

102Z DDGR DDGR SUGAR PLUM 102Z
Black Purebred Polled Cow
BD: 3/21/2012 BW: 90 Adj. WW: 652

VRT LAZY TV POWERHOUSE X554
DVE DAVIDSON POWERHOUSE 13U
EGL N020 ET
MLH STRAIT FORWARD R89
DDGR BROWN SUGAR 12L

CE	BW	WW	YW	M	TM	CED	YG	CW	REA	MA	FT	CV	FM
5	3.5	72	106	20	56	7	-0.09	38	0.20	-0.29	-0.06	-6.03	38.51

Strong growth EPDs on this daughter of the Powerhouse sire. She is out of the same dam as the 108A bull and is due with a heifer calf on April 1 by the 7 Bar J 1004X sire.

124Z DDGR 124Z
Black Balancer 50% Polled Cow
BD: 3/24/2012 BW: 71 Adj. WW: 600

LT BANDWAGON 9178
LT ELITE LADY 2086
MRCO NEW DIRECTION 905
DDGR JASMINE 54J

CE	BW	WW	YW	M	TM	CED	YG	CW	REA	MA	FT	CV	FM
11	-0.1	59	84	33	62	10	-0.09	20	0.02	0.08	-0.05	15.28	27.28

We are happy with the calves by the Lindskov-Thiel bred Bandwagon bull. Her milk EPD of 33 indicates excellent maternal and she is due with a heifer calf by the 7 Bar J 1004X sire.

17Z DDGR DDGR CAT WOMAN 17Z
Black Balancer 50% Polled Cow
BD: 2/26/2012 BW: 76 Adj. WW: 703

S A V FINAL ANSWER 0035
SITZ TRAVELER 8180
S A V EMULOUS 8145
DDGR ONYX 154X
RLFG RANGE LINE COCOA
DDGR CHOCOLATE CHIP 182R

CE	BW	WW	YW	M	TM	CED	YG	CW	REA	MA	FT	CV	FM
12	0.6	87	128	26	70	12	-0.17	46	0.52	-0.11	-0.06	16.03	49.23

An attractive Final Answer daughter that has excellent depth and a super strong EPD profile. She is due in mid-April with a calf by the 7 Bar J 1004X sire.

60Z DDGR ALTIMA 60Z
Black Purebred Polled Cow
BD: 3/15/2012 BW: 80 Adj. WW: 619

GRW 7 BAR J 1004X
BABR RID ROOSTER COGBURN 854U
RID 7 BAR J MS MARY 809U
DDGR AMELIA 207X
ELK CK RIMFIRE 173S
DDGR MAGGIE 103T

CE	BW	WW	YW	M	TM	CED	YG	CW	REA	MA	FT	CV	FM
12	0.8	66	84	28	61	12	-0.21	20	0.27	-0.18	-0.07	-6.48	23.47

A larger framed heifer that has calving ease on both sides of her pedigree as the 1004X and Rimfire sires were both used as heifer bulls. Due on 4-7 with a calf by the RHGF 11Z sire.

114Z DDGR DDGR KELLY 114Z
Black Balancer 50% Polled Cow
BD: 3/23/2012 BW: 85 Adj. WW: 609

LT BANDWAGON 9178
LT ELITE LADY 2086
DDGR DAWN 152W
RED FORTUNATE 681
DDGR SAPPHIRE 167P

CE	BW	WW	YW	M	TM	CED	YG	CW	REA	MA	FT	CV	FM
7	2.7	59	91	29	58	6	-0.07	28	0.25	0.30	-0.03	47.85	32.99

A nicely balanced, larger framed 50% Balancer that combines the Bandwagon and Red Fortunate bloodlines. Due April 1 with a heifer calf by the 7 Bar J 1004X sire.

149Z DDGR 149Z
Red Balancer 50% Polled Cow
BD: 3/29/2012 BW: 82 Adj. WW: 613

RAB BIEBER BOONE 10696
RAB BIEBER BOONE 8000
RAB BIEBER EULCA 8969
DDGR NELLY 174S
DDGR HOSS 75N
DDGR NANCY 12N

CE	BW	WW	YW	M	TM	CED	YG	CW	REA	MA	FT	CV	FM
10	-0.2	56	78	32	60	8	-0.06	16	0.19	-0.17	-0.01	-10.57	23.70

This Bieber Boone daughter is out of a super mother and is cherry red. She is bred to the DDGR High Impact 40X bull for a March 10 heifer calf.



BRED HEIFERS



158Y and her heifer calf

185Z DDGR 185Z

Red Purebred Polled Cow
BD: 4/6/2012 BW: 79 Adj. WW: 645

DVE DAVIDSON MR DAKOTA 151X

DCHD GOLDEN BUCKLE GELV 003U
DVE DAVIDSON MS MARK 99U

DDGR CARMEN 192R

DDGR FULLBACK 99N
DDGR MARIGOLD 61F

CE	BW	WW	YW	M	TM	CED	YG	CW	REA	MA	FT	CV	FM
8	1.0	60	79	43	73	8	-0.22	17	0.13	-0.39	-0.09	-29.56	21.64

This is the only Dakota 151Z daughter we will be selling this year. Her sire was the high seller at Davidson Gelbvieh's 2011 sale. Due March 10 with a heifer calf by the DCHD Winchester sire.

231Z DDGR 231Z

Red Purebred Polled Cow
BD: 5/1/2012 BW: 61 Adj. WW: 576

LWM 105T

LWM 25R
LWM 25J

DDGR SADIE 28X

JRI PLD FREE AGENT 125J3
DDGR KANDY KORN 80U

CE	BW	WW	YW	M	TM	CED	YG	CW	REA	MA	FT	CV	FM
17	-3.1	45	57	31	53	8	-0.35	-1	0.63	-0.04	-0.04	-21.92	12.74

A 105T daughter that has birth weight and calving ease EPDs in the top 1% of the breed. She is due March 10 with a heifer calf by the DDGR High Impact sire.

236Z DDGR 236Z

Black Purebred Polled Cow
BD: 5/7/2012 BW: 93 Adj. WW:

JKGF W95

JKGF TRENDSETTER 55R ET
JKGF 95N

DDGR CLASSY LADY 167T

WVR WEAVER NORDIC 195N
DDGR 74R

CE	BW	WW	YW	M	TM	CED	YG	CW	REA	MA	FT	CV	FM
4	4.6	76	100	37	75	6	-0.27	35	0.56	-0.31	-0.08	-6.21	31.22

The JKGF W95 and Weaver Nordic lines combined to give this young female a milk EPD of 37 putting her in the top 5% of the breed. Her sire had the top selling bull in last year's sale. Due March 27 with a heifer by 7 Bar J 1004X.

251Z DDGR 251Z

Black Balancer 75% Polled Cow
BD: BW: Adj. WW:

RANGE LINE COCOA

COCOA 35C
MISS SUGAR BUCK

MISS 866U

LAZY TV BEECH JET R052ET
M682

CE	BW	WW	YW	M	TM	CED	YG	CW	REA	MA	FT	CV	FM
8	2.6	75	107	26	63	6	-0.29	36	0.79	-0.04	-0.06	24.63	37.19

Excellent growth EPDs on this moderate framed ¾ Balancer by the Range Line Cocoa sire that sired the top selling bull in our 2012 sale. Due April 12 to the 7 Bar J 1004X bull.

308Z DDGR 308Z

Red Purebred Polled Cow
BD: 3/18/2012 BW: 74 Adj. WW: 631

GRW 7 BAR J 1004X

BABR RID ROOSTER COGBURN 854U
RID 7 BAR J MS MARY 809U

DDGR EMMA 54X

MSH MY SEASON ET
DDGR NELLY 174S

CE	BW	WW	YW	M	TM	CED	YG	CW	REA	MA	FT	CV	FM
12	-0.2	58	75	30	59	10	-0.26	13	0.31	-0.14	-0.07	-10.68	19.49

A larger framed daughter of the 1004X sire that will pass on his calving ease and length. Due on March 28 with a heifer calf by the RHGF 11Z bull.



Thank you ...
for attending our sale
this year and for all the
previous years of
support!

Thank you to our customers!



Gustin's  Gelbvieh





5135 Hwy 6 • Mandan, ND 58554

Dennis & Sherry Gustin and Family

Al & Peggy Gustin

(701) 663-7266

PRESORTED
FIRST CLASS
US POSTAGE PAID
UNITED PRINTNG

RETURN SERVICE REQUESTED

Annual Production Sale

Thursday, February 20, 2014

Lunch 12:00 pm • Auction 1:00 pm

At the Ranch • 11 miles South of Mandan on Hwy 6

