

HALL ~ POKORNY

Red Angus

38th Annual Production Sale
THURSDAY, MARCH 13, 2014

1:30 p.m.

Lincoln County Fairgrounds • North Platte, Nebraska

This sale will be broadcast live on the internet.

DVAuction

Broadcasting Real-Time Auctions

Real time bidding & proxy bidding available.

Selling

130 Yearling Red Angus Bulls

Moderate Framed • Low Maintenance

Muscular • Calving Ease

Volume Discounts



Brad & Paula Pokorny

308-636-2275

76 County Road 230 • Stapleton, NE 69163

bbpokorny@gpcom.net



Helen Hall

308-654-3220

83222 Rodeo Lane • Bartlett, NE 68622

hallreds@nntc.net

Visit our website at **www.hallredangus.com** for more information.

HALL~POKORNY

Red Angus

BRAD & PAULA POKORNY

76 Co. Rd 230
Stapleton, NE 69163
(308) 636-2275

Visit our website at:
www.hallredangus.com

HALL RED ANGUS

Helen Hall
P.O. Box 25 • Bartlett, NE 68622
(308) 654-3220



Catalog designed by Cow Camp Promotions
Tracey Koester • www.cowcampromotions.com

Printed by United Printing • 701-223-0505

We would like to welcome you to our 38th Annual Production Sale.

This year we pay tribute to my dad who passed away in October after a hard-fought battle with cancer. He and mom started this whole program in 1976 when they purchased 20 registered cows. He had a great passion for the selection and breeding of good functional cattle and a special admiration and respect for the Red Angus breed.

He tried to look at the big picture when it came to measurable traits – keeping birth weights light to moderate without sacrificing performance. He believed in keeping things simple which to him meant cows that calve without assistance, are moderate and easy fleshing, sound uddered and good dispositioned. We have tried to raise bulls that are the same type – moderate framed, thick and easy fleshing with a good temperament.

We run our cows like many commercial breeders. They don't get any special treatment. We winter graze and supplement with cake until they come in for calving. We also are on a seasonal mineral program which allows our cows to better utilize our grass.

We weaned the calves the first week in October. The bulls were again grown at Darr. Mitch and his crew do a great job and the bulls are in good condition but not fat. They are fed to gain around 3 lbs. per day and this year's average test gain was 3.3 lbs. per day.

The bulls have been videoed and will be available for viewing March 1st on our website. We will again be selling the bulls via video screen. The bulls will be at the sale facility on the afternoon of Wednesday, March 12, and on sale day.

As always the bulls carry a first-breeding-season guarantee. We appreciate your interest in our program and are glad to assist you in any way.

We hope to see you March 13th in North Platte!

Sincerely,

Brad, Paula and Helen



Sale Information

HALL~POKORNY Red Angus

Annual Production Sale

Featuring 130 yearling Red Angus bulls!

THURSDAY, MARCH 13, 2014

1:30 p.m. (Central Time) • Lincoln County Fairgrounds, North Platte, NE 69103

5015 West Hwy 30 (Rodeo Rd) • North Platte NE 69103

(Fairgrounds is located on the northwest side of North Platte)

SALE DAY PHONES:

Brad Pokorny cell(308) 223-9888
Paula Pokorny, cell(308) 750-8468
Cris Hoelscher, officecell(402) 719-8501

AUCTIONEER:

Kyle Gilchrist(641) 919-1077

BUYER REPS/RINGMEN

LARRY KEENAN
Red Angus Assn. of America(580) 504-1919
BILL ANGELL
Western Livestock Journal(970) 396-5594
GALEN GERDES
Special Assignment(308) 380-0302
SCOTT DIRK
Tri-State Livestock News(605) 380-6024
JAY ELFELDT
Livestock Plus, Inc.(308) 293-3049

These buyer representatives are available to assist you in making your purchases. Feel free to call them to place bids or for live cattle evaluation at the auction.

SALE ORDER:

Bulls will sell in catalog order.

HEALTH AND ULTRASOUND

Feel free to contact Dr. Rob Petrie, Cow Country Animal Clinic, Thedford, NE, (308) 645-2281 with any questions.

FIRST BREEDING SEASON GUARANTEE

FREE DELIVERY IN NEBRASKA

VOLUME DISCOUNTS!!

5% Discount on 5 or more bulls
\$100 off for bulls picked up sale day.

RETAINING 1/3 INTEREST

We are retaining 1/3 revenue-sharing interest in every bull in the catalog unless otherwise indicated. We are doing this so we may, at some point in time, collect and use these bulls in our herd. This will be done strictly at the buyer's convenience when you are not using the bull, and at our expense. Complete salvage value goes to the buyer.

AREA MOTELS

Best Western Chalet Lodge(308) 532-2313
Comfort Inn.....(308) 532-6144
Days Inn.....(308) 532-9321
Holiday Inn.....(308) 532-9500
Ramada Inn Limited.....(308) 532-3120

ONLINE BIDDING

View and bid online at dvauctions.com. See page 3 for registration and bidding instructions.

This sale will be broadcast live on the internet.

DVAuction
Broadcasting Real-Time Auctions
Real time bidding & proxy bidding available.

EPD Averages for Non-Parents under Two Years of Age

CED	BW	WW	YW	M	TM	ME	HPG	CEM	St	Marb	YG	CW	REA	Fat
4	-1.0	56	83	20	48	1	10	5	11	0.43	-0.01	19	0.15	0.00

SALE BULL AVERAGE EPDS

CED	BW	WW	YW	M	TM	ME	HPG	CEM	St	Marb	YG	CW	REA	Fat
8	-2.7	57	89	19	47	2	10	5	13	0.52	0.05	19	0.15	0.01

Can't make the sale?

We are pleased to bring you real-time Internet bidding and a live broadcast of this sale through DV Auction. To watch or bid online, simply complete the following steps:

- 1) Visit the DVAuction web site at www.dvauction.com
- 2) Click on the "Register" tab
- 3) Enter a user name, password and your contact information.
- 4) Click on "Apply for Bidding."
 - Select the sale from the list of other auctions and click "Apply".
 - Complete the process by filling out the Banking & Lending information requested.
 - Be sure to include a personal contact at your bank, we will contact them in order to get a credit reference.
 - If you would prefer to be approved using your credit card, call (402) 316-5460.
 - Please be sure to apply for bidding at least a day in advance of the sale-every effort will be made to process your application in a timely manner.

DVAuction will contact you once you have been approved to bid. We do not provide buyer numbers until you have purchased a lot in the sale, and that number is only usable for that auction. After the sale contact the sale owner or manager to make arrangements for payment and delivery of your online purchases.

Please Note: High speed Internet access (DSL, T-1, or Broadband) is required to be able to bid successfully during the sale. If you have any questions, please contact DVAuction at (402) 316-5460 or (402) 474-5557 or email support@dvauction.com.

Proxy Bidding: If you can't access a computer during the sale, you can now place a "proxy bid" through DV Auction. Simply follow the instructions listed above, and as the sale date nears there will be a "Proxy Bidding" link under the sale listing on the main page of DV Auction. You can then place the maximum amount that you'd like to bid, and our system will represent your bid just as if you were there.



Reference Sires



Red Hill B571 Julian 84S

A RED HILL B571 JULIAN 84S

Birthdate: 9/2/06 Category: 1A 100% Tattoo: 84S 1BWJ Reg. #: 1147702

CED	BW	WW	YW	Milk	TM	ME	HPG	CEM	Stay	Marb	YG	CW	REA	Fat
17	-4.2	54	80	15	42	-7	11	7	18	0.33	-0.08	11	0.40	0.00
TOP BREED %														
2%	17%	53%	61%	69%	67%	12%	36%	24%	2%	67%	19%	70%	17%	40%

BKT JULIAN 7526 G														BW	80
BECKTON JULIAN GG B571														WW	517
BKT MARTA 9A13 JL														YW	992
BECKTON CHAMP R3 H338															
BECKTON BARMAID M554 CH															
BECKTON BARMAID H031 HR															



B BC MAC

Birthdate: 4/2/09 Category: 1A 100% Tattoo: 9539 NLB Reg. #: 1386482

CED	BW	WW	YW	Milk	TM	ME	HPG	CEM	Stay	Marb	YG	CW	REA	Fat
2	-0.9	57	89	16	45	6	12	-6	8	0.50	0.07	22	0.11	0.02
TOP BREED %														
63%	56%	44%	44%	67%	59%	80%	20%	99%	74%	32%	75%	43%	47%	77%

BUF CRK CHF 824-1658														BW	84
BFCK CHEROKEE CNYN 4912														WW	667
MRM 1431 8611 9109														YW	
LCHMAN LITTLE JOHN 1509D															
SSS MISS TRICIA 024															
LCHMN CHIEFETTE C1074															



BUF CRK BRAVADO U013

C BUF CRK BRAVADO U013

Birthdate: 3/19/08 Category: 1A 100% Tattoo: U013 BUF Reg. #: 1260175

CED	BW	WW	YW	Milk	TM	ME	HPG	CEM	Stay	Marb	YG	CW	REA	Fat
7	-1.2	59	96	23	53	7	13	5	13	0.68	0.22	25	-0.17	0.04
TOP BREED %														
29%	53%	39%	34%	26%	21%	80%	17%	47%	18%	17%	95%	35%	87%	87%

BUF CRK GOLD MEDAL L091														BW	70
BUF CRK MEDALLION N328														WW	625
BUF CRK BELGA 6114														YW	999
BUF CRK AMULET P008															
BUF CRK ANASCO S101															
BUF CRK ANASCO P219															



HXC Conquest 4405P

D HXC CONQUEST 4405P

Birthdate: 1/25/04 Category: 1A 100% Tattoo: 4405P HXC Reg. #: 975924

CED	BW	WW	YW	Milk	TM	ME	HPG	CEM	Stay	Marb	YG	CW	REA	Fat
21	-6.5	57	93	22	51	4	2	7	14	0.67	-0.02	16	0.50	0.03
TOP BREED %														
1%	6%	46%	39%	30%	28%	61%	99%	24%	14%	17%	35%	58%	10%	80%

BKT JULIAN 7526 G														BW	69
BECKTON JULIAN GG B571														WW	664
BKT MARTA 9A13 JL														YW	1285
BFCK CHEROKEE CNYN 4912															
HXC ELLIE MAY MA638															
HXC 529E															

Reference Sires

E CRS DIAMND FRANKLIN 988

Birthdate: 4/24/09 Category: 1A 100% Tattoo: 988 FORD Reg. #: 1332701

CED	BW	WW	YW	Milk	TM	ME	HPG	CEM	Stay	Marb	YG	CW	REA	Fat
2	-1.1	76	98	8	46	0	16	-4	7	0.45	-0.03	25	0.49	0.03
TOP BREED %														
63%	55%	7%	30%	93%	51%	37%	5%	96%	83%	45%	33%	36%	10%	80%



ARO DOUBLE STUFFED 324
ARO TRIPLE PLAY 503
 ARO RAMROD 307
 BFCK CHEROKEE CNYN 4912
RRS CHEROKEE ROBIN 4017
 RRS TASSEL ROBIN 0012

BW	84
WW	608
YW	863

F BUF CRK JAMMER W025

Birthdate: 4/21/09 Category: 1A 100% Tattoo: W025 VC Reg. #: 1329292

CED	BW	WW	YW	Milk	TM	ME	HPG	CEM	Stay	Marb	YG	CW	REA	Fat
17	-4.7	57	79	18	47	5	7	8	15	0.68	0.00	9	0.15	0.02
TOP BREED %														
1%	7%	45%	67%	52%	48%	74%	90%	14%	5%	11%	46%	78%	40%	77%



BKT JULIAN 7526 G
BECKTON JULIAN GG B571
 BKT MARTA 9A13 JL
 RCN DYNAMO 732
BUF CRK AMBER 3912
 BUF CRK AMBER 2594

BW	68
WW	559
YW	998

G BECKTON JORDAN U520

Birthdate: 3/24/08 Category: 1A 100% Tattoo: U520 WF Reg. #: 1258996

CED	BW	WW	YW	Milk	TM	ME	HPG	CEM	Stay	Marb	YG	CW	REA	Fat
15	-4.3	47	86	15	39	0	6	5	16	0.82	-0.01	15	0.02	-0.01
TOP BREED %														
5%	16%	70%	51%	71%	81%	40%	89%	47%	5%	8%	39%	59%	63%	23%



TR JULIAN LT151
TR JULIAN RT561
 TR DYNA HT824
 BECKTON JULIAN GG B571
BECKTON SUFFEINA P643 J
 BKT SUFFEINA A828 DM

BW	76
WW	635
YW	1155

H BUF CRK ROCKY W006

Birthdate: 3/19/09 Category: 1A 100% Tattoo: W006 BUF Reg. #: 1329467

CED	BW	WW	YW	Milk	TM	ME	HPG	CEM	Stay	Marb	YG	CW	REA	Fat
7	-2.2	51	76	15	40	-8	10	4	13	0.24	-0.06	12	0.33	0.01
TOP BREED %														
22%	33%	66%	71%	76%	80%	7%	49%	56%	18%	86%	24%	72%	16%	61%



BECKTON NEPTUNE R2 K065
BECKTON NEBULA M045
 BECKTON BELGA K285 JL
 BUF CRK LANCER F M328
BUF CRK RED PRIDE T057
 MRM 2309 8203 9501

BW	74
WW	583
YW	1042



Beckton Lancer F442 T

I BECKTON LANCER F442 T

Birthdate: 3/19/96 Category: 1A 100% Tattoo: F442 WF Reg. #: 533603

CED	BW	WW	YW	Milk	TM	ME	HPG	CEM	Stay	Marb	YG	CW	REA	Fat
5	-1.2	53	76	5	31	-2	4	3	15	0.48	-0.19	14	0.60	-0.02
TOP BREED %														
38%	53%	56%	67%	97%	95%	30%	98%	64%	7%	42%	4%	64%	5%	14%



BECKTON LANCER 9380
BECKTON LANCER T A664
 BECKTON COCA 9119 TJ
 BECKTON DOMINOR 9455
BKT SUFFEINA A828 DM
 BKT SUFFEINA 9493 TT

BW	82
WW	623
YW	1084



Red SSS Oly 554T

J RED SSS OLY 554T

Birthdate: 1/22/07 Category: 1A 100% Tattoo: 554T *SBB Reg. #: 1411448

CED	BW	WW	YW	Milk	TM	ME	HPG	CEM	Stay	Marb	YG	CW	REA	Fat
-3	-6.7	63	105	15	47	-9	7	-1	5	0.57	0.02	23	0.32	0.01
TOP BREED %														
90%	5%	29%	21%	70%	46%	9%	84%	88%	96%	28%	50%	41%	24%	54%



MLK CRK CUB 722
RED CROWFOOT OLE'S OSCAR
 RED CROWFOOT OMEGA 9179J
 5L NORSEMAN KING 2291
RED SSS GOLD EDGE 77R
 RED SSS GOLD EDBE 714F

BW	68
WW	761
YW	

Reference Sires



Loosli Right Kind 145

K LOOSLI RIGHT KIND 145

Birthdate: 2/7/11 Category: 1A 100% Tattoo: 145 LBLF Reg. #: 1432598

CED	BW	WW	YW	Milk	TM	ME	HPG	CEM	Stay	Marb	YG	CW	REA	Fat
8	-1.6	54	82	22	48	-5	12	4	14	0.54	-0.02	16	0.10	-0.01
TOP BREED %														
17%	43%	55%	61%	28%	37%	12%	13%	56%	8%	25%	39%	60%	50%	22%

BUF CRK LANCER R017													BW	82
BUF CRK THE RIGHT KIND U199													WW	612
BUF CRK SHOSHONE R353													YW	1151
LCC NEW CHAPTER A705L														
MISS LL NEW 418														
MISS LL DIVIDE 731														



Bieber H Hughes W109

L BIEBER H HUGHES W109

Birthdate: 1/23/09 Category: 1A 100% Tattoo: W109 RAB Reg. #: 1311331

CED	BW	WW	YW	Milk	TM	ME	HPG	CEM	Stay	Marb	YG	CW	REA	Fat
5	-2.6	76	115	19	56	2	11	7	20	0.41	0.17	34	0.44	0.07
TOP BREED %														
38%	34%	7%	11%	51%	11%	53%	38%	24%	1%	53%	89%	17%	14%	97%

BASIN HOBO 79E													BW	86
BASIN HOBO 0545													WW	678
BASIN ERICA 330E													YW	1232
RED BRYLOR NEW TREND 22														
BASIN ROSE 06T0														
BASIN ROSE F521														



Design In Mind

M DESIGN IN MIND

Birthdate: 1/24/11 Category: 1A 100% Tattoo: 106 LBLF Reg. #: 1432668

CED	BW	WW	YW	Milk	TM	ME	HPG	CEM	Stay	Marb	YG	CW	REA	Fat
5	-1.3	63	103	26	57	4	14	10	12	0.32	-0.05	29	0.39	0.00
TOP BREED %														
35%	49%	25%	19%	8%	4%	64%	5%	6%	25%	71%	27%	22%	11%	44%

5L DESTINATION 893-6215													BW	85
5L HOBO DESIGN 273-7047													WW	628
5L ANALISE 1591-273													YW	1257
LCB GOLDROBBER A451N														
LOOSLI GOLD 616														
LOOSLI CHER 317														



LSF Endeavor 1431Y

N LSF ENDEAVOR 1431Y

Birthdate: 1/27/11 Category: 1A 100% Tattoo: 1431Y PARK Reg. #: 1445417

CED	BW	WW	YW	Milk	TM	ME	HPG	CEM	Stay	Marb	YG	CW	REA	Fat
5	-2.6	51	80	27	53	7	9	3	10	0.32	-0.04	14	0.35	0.02
TOP BREED %														
35%	26%	67%	64%	5%	16%	85%	69%	68%	54%	71%	31%	66%	14%	77%

LCHMN ON TARGET 1016E													BW	90
LCHMN ENTERPRISE 1370H													WW	687
PARK CHERISH D419													YW	1164
BFCK CHEROKEE CNYN 4912														
BUF CRK KANSAS L033														
BUF CRK KANSAS 5525														

Reference Sires



C-T Grand Statement 1025

O C-T GRAND STATEMENT 1025

Birthdate: 1/27/10 Category: 1A 100% Tattoo: 1025 CTDB Reg. #: 1365711

CED	BW	WW	YW	Milk	TM	ME	HPG	CEM	Stay	Marb	YG	CW	REA	Fat
-5	-0.2	60	97	20	50	6	13	4	9	0.99	0.16	28	-0.06	0.01
TOP BREED %														
97%	69%	36%	33%	41%	29%	78%	15%	56%	60%	3%	87%	31%	76%	54%

LJC LANCER 806														BW	78
LJC MISSION STATEMENT P27														WW	835
LJC HANNAH 106														YW	1349
LCHMN GRANDCANYON 1244G															
C-T MISS PAN 0760															
CTDB HOBOS GAL 803															



Loosli Hobo 159

P LOOSLI HOB0 159

Birthdate: 2/10/11 Category: 1A 100% Tattoo: 159 LBLF Reg. #: 1432599

CED	BW	WW	YW	Milk	TM	ME	HPG	CEM	Stay	Marb	YG	CW	REA	Fat
5	-0.9	64	97	25	56	4	12	10	9	0.26	0.00	26	0.20	0.00
TOP BREED %														
35%	56%	22%	29%	11%	6%	66%	15%	6%	63%	83%	46%	30%	33%	44%

5L DESTINATION 893-6215														BW	88
5L HOB0 DESIGN 273-7047														WW	647
5L ANALISE 1591-273														YW	1212
LEACHMAN ROB LOW 1115G															
LOOSLI CHER 315															
MISS LL NONE 937															

Q BUF CRK GOLDEN NUGGET X144

Birthdate: 5/20/10 Category: 1A 100% Tattoo: X144 BUF Reg. #: 1379331

CED	BW	WW	YW	Milk	TM	ME	HPG	CEM	Stay	Marb	YG	CW	REA	Fat
11	-3.1	52	81	20	46	5	10	8	9	0.47	-0.07	13	0.17	-0.01
TOP BREED %														
7%	20%	63%	63%	36%	50%	70%	58%	14%	71%	38%	20%	68%	37%	22%

BECKTON JULIAN GG B571														BW	87
RED HILL B571 JULIAN 84S														WW	628
BECKTON BARMAID M554 CH														YW	994
BUF CRK ROMEO L081															
BUF CRK MARIGOLD R077															
BUF CRK MARIGOLD1230															

R BUF CRK JUBILATION X019

Birthdate: 4/8/10 Category: 1A 100% Tattoo: X019 BUF Reg. #: 1379423

CED	BW	WW	YW	Milk	TM	ME	HPG	CEM	Stay	Marb	YG	CW	REA	Fat
8	-1.2	53	76	17	43	3	11	4	15	0.48	0.02	13	0.04	0.01
TOP BREED %														
17%	50%	58%	71%	62%	67%	53%	34%	56%	8%	35%	55%	68%	61%	61%

BECKTON JULIAN GG B571														BW	72
RED HILL B571 JULIAN 84S														WW	595
BECKTON BARMAID M554 CH														YW	923
BUF CRK MARIMBA N058															
BUF CRK TAWN U241															
BUF CRK TAWN R216															



Hall & Pokorny Bulls



1 HLH CONQUEST 1171 3009

Birthdate: 2/3/13 Category: 1B 99.9% Tattoo: 3009 HLH Reg. #: 1605627



BECKTON JULIAN GG B571
HXC CONQUEST 4405P
 HXC ELLIE MAY MA638
 BUF CRK BRAVADO U013
HLH MS BRAVADO 3143 1171
 HLH MS TECH 8111 3143

BW	70	
WW/Ratio	626	105
YW/Ratio	1225	104
ADG	3.8	
Scrotal/FS	36	4.9
IMF/REA	3.73	13.60
Dam's MPPA/Age	102.0	2
Dam's Wt/Frame	1206	5

CED	BW	WW	YW	Milk	TM	ME	HPG	CEM	Stay	Marb	YG	CW	REA	Fat
13	-4.2	54	86	23	50	3	7	7	14	0.61	0.06	15	0.20	0.03
TOP BREED %														
2%	9%	54%	50%	17%	26%	63%	93%	17%	14%	15%	71%	62%	35%	87%



Lot 2

2 HLH OLY 1070 3013

CALVING EASE

Birthdate: 2/4/13 Category: 1B 99.9% Tattoo: 3013 HLH Reg. #: 1605591



RED CROWFOOT OLE'S OSCAR
RED SSS OLY 554T
 RED SSS GOLD EDGE 77R
 BECKTON CODY K2 R168
HLH MS C168 8238 1070
 HLH SHYANN 7108 8238

BW	65	
WW/Ratio	657	110
YW/Ratio	1226	104
ADG	3.6	
Scrotal/FS	36	3.7
IMF/REA	2.49	13.51
Dam's MPPA/Age	104.0	2
Dam's Wt/Frame	1056	5

CED	BW	WW	YW	Milk	TM	ME	HPG	CEM	Stay	Marb	YG	CW	REA	Fat
4	-6.3	60	98	18	47	-2	8	3	7	0.44	0.05	20	0.21	0.02
TOP BREED %														
46%	2%	32%	23%	60%	41%	25%	86%	72%	92%	44%	67%	48%	33%	78%

3 HLH BRAVADO 0015 3131

CALVING EASE

Birthdate: 2/27/13 Category: 1B 99.9% Tattoo: 3131 HLH Reg. #: 1605456



BUF CRK MEDALLION N328
BUF CRK BRAVADO U013
 BUF CRK ANASCO S101
 BECKTON JORDAN U520
HLH MS JORDAN 8287 0015
 HLH LADY LANCE 5164 8287

BW	79	
WW/Ratio	721	114
YW/Ratio	1331	117
ADG	3.9	
Scrotal/FS	36	5.3
IMF/REA		
Dam's MPPA/Age	106.3	3
Dam's Wt/Frame	1288	5

CED	BW	WW	YW	Milk	TM	ME	HPG	CEM	Stay	Marb	YG	CW	REA	Fat
9	-2.7	61	108	22	52	4	11	5	14	0.60	0.18	31	0.01	0.02
TOP BREED %														
11%	24%	27%	10%	23%	15%	74%	28%	42%	10%	17%	97%	15%	72%	78%



Hall & Pokorny Bulls



Lot 4



Lot 4



Lot 5

4 HLH HIGH LIFE 6090 3055

CALVING EASE

Birthdate: 2/15/13 Category: 1A 100% Tattoo: 3055 HLH Reg. #: 1605732



RED CROWFOOT OLE'S OSCAR
 RED SSS OLY 554T
 RED SSS GOLD EDGE 77R
 LCC CHEYENNE B221L
 HLH MS SHY ANN 1166 6090
 HLH MS TECH 308 1166

BW	83	
WW/Ratio	684	108
YW/Ratio	1278	112
ADG	3.7	
Scrotal/FS	38	5.6
IMF/REA	3.24	16.49
Dam's MPPA/Age	108.4	7
Dam's Wt/Frame	1510	5

CED	BW	WW	YW	Milk	TM	ME	HPG	CEM	Stay	Marb	YG	CW	REA	Fat
-2	-2.7	67	115	19	53	-1	9	2	9	0.44	0.04	35	0.39	0.01
TOP BREED %														
95%	24%	12%	4%	43%	13%	35%	67%	82%	79%	44%	63%	8%	12%	61%



Lot 4

5 HLH JUBILATION 5137 3157

Birthdate: 3/1/13 Category: 1B 99.8% Tattoo: 3157 HLH Reg. #: 1605710



RED HILL B571 JULIAN 84S
 BUF CRK JUBILATION X019
 BUF CRK TAWN U241
 FEDES CUB 311
 HLH MS CUB 651 5137
 HLH MS BUSTER 448 651

BW	88	
WW/Ratio	686	108
YW/Ratio	1142	100
ADG	2.9	
Scrotal/FS	36	5.8
IMF/REA	3.34	13.27
Dam's MPPA/Age	106.4	8
Dam's Wt/Frame	1508	5

CED	BW	WW	YW	Milk	TM	ME	HPG	CEM	Stay	Marb	YG	CW	REA	Fat
3	-0.1	56	78	22	50	3	11	5	11	0.51	0.07	16	-0.11	-0.01
TOP BREED %														
57%	71%	46%	67%	21%	25%	65%	38%	42%	45%	30%	75%	60%	91%	22%

6 HLH FRANKLIN 9190 3231

Birthdate: 3/6/13 Category: 1B 99.9% Tattoo: 3231 HLH Reg. #: 1605886



ARO TRIPLE PLAY 503
 CRS DIAMND FRANKLIN 988
 RRS CHEROKEE ROBIN 4017
 5L SUMMIT 1145-6327
 HLH MS SUMMIT 4021 9190
 HLH MS BUSTER 2095 4021

BW	86	
WW/Ratio	665	105
YW/Ratio	1191	105
ADG	3.3	
Scrotal/FS	36	5.6
IMF/REA	3.91	12.95
Dam's MPPA/Age	102.2	4
Dam's Wt/Frame	1350	5

CED	BW	WW	YW	Milk	TM	ME	HPG	CEM	Stay	Marb	YG	CW	REA	Fat
6	-1.2	68	98	9	43	2	16	1	9	0.44	0.07	26	0.19	0.01
TOP BREED %														
28%	49%	9%	24%	98%	70%	54%	1%	90%	68%	44%	75%	28%	36%	61%

7 HLH OLY 5002 3163

CALVING EASE

Birthdate: 3/1/13 Category: 1A 100% Tattoo: 3163 HLH Reg. #: 1605693



RED CROWFOOT OLE'S OSCAR
 RED SSS OLY 554T
 RED SSS GOLD EDGE 77R
 LCC ABOVE & BEYOND 1300J
 HLH ABBIE 3026 5002
 HLH MS CHATEAU 709 3026

BW	71	
WW/Ratio	543	89
YW/Ratio	860	90
ADG	3.2	
Scrotal/FS	36	5.1
IMF/REA	4.13	13.52
Dam's MPPA/Age	99.8	8
Dam's Wt/Frame	1428	5

CED	BW	WW	YW	Milk	TM	ME	HPG	CEM	Stay	Marb	YG	CW	REA	Fat
6	-7.5	54	92	21	48	-1	7	6	8	0.49	0.06	14	0.07	0.01
TOP BREED %														
28%	1%	54%	35%	32%	40%	34%	91%	28%	86%	34%	71%	65%	60%	61%

Hall & Pokorny Bulls



Rod & Cris Hoelscher, George & Becky Serres – thanks for your help!

9 HLH GRANDUER 7211 3090

Birthdate:	Category:	Tattoo:	Reg. #	BW											
2/24/13	1B 99.9%	3090 HLH	1605768	76											
				WW/Ratio	690										
				YW/Ratio	1265										
				ADG	3.7										
				Scrotal/FS	38	5.5									
				IMF/REA	3.75	14.24									
				Dam's MPPA/Age	106.2	6									
				Dam's Wt/Frame	1356	5									
CED	BW	WW	YW	Milk	TM	ME	HPG	CEM	Stay	Marb	YG	CW	REA	Fat	
-1	-1.1	59	93	23	53	7	10	6	11	0.80	0.11	24	0.01	0.01	
TOP BREED %				90%	51%	34%	33%	15%	13%	92%	45%	28%	41%	4%	87%
				34%	33%	15%	13%	92%	45%	28%	41%	4%	87%	34%	



LJC MISSION STATEMENT P27
C-T GRAND STATEMENT 1025
 C-T MISS PAN 0760
 LCC CHEYENNE B221L
HLH SHYANN 4216 7211
 HLH MS CHATEAU 955 4216

8 HLH JULIAN 1125 3039

Birthdate:	Category:	Tattoo:	Reg. #	BW											
2/10/13	1B 99.9%	3039 HLH	1605611	73											
				WW/Ratio	561		94								
				YW/Ratio	1163		99								
				ADG	3.8										
				Scrotal/FS	34	4.3									
				IMF/REA	3.43	13.57									
				Dam's MPPA/Age	97.6	2									
				Dam's Wt/Frame	1070	5									
CED	BW	WW	YW	Milk	TM	ME	HPG	CEM	Stay	Marb	YG	CW	REA	Fat	
13	-3.7	50	76	15	40	-6	10	8	15	0.45	-0.07	10	0.37	0.01	
TOP BREED %				2%	13%	68%	70%	79%	83%	12%	55%	10%	6%	42%	19%
				77%	14%	61%									



BECKTON JULIAN GG B571
RED HILL B571 JULIAN 84S
 BECKTON BARMAID M554 CH
 MESSMER PACKER S008
HLH MS PACKER 1009 1125
 HLH MS RAMI 955 1009

10 HLH BRAVADO 0073 3286

Birthdate:	Category:	Tattoo:	Reg. #	BW											
3/9/13	1A 100%	3286 HLH	1605475	82											
				WW/Ratio	728		115								
				YW/Ratio	1369		120								
				ADG	4.0										
				Scrotal/FS	38	5.7									
				IMF/REA	3.52	13.96									
				Dam's MPPA/Age	103.1	3									
				Dam's Wt/Frame	1376	5									
CED	BW	WW	YW	Milk	TM	ME	HPG	CEM	Stay	Marb	YG	CW	REA	Fat	
5	-0.3	76	129	20	58	7	12	6	13	0.66	0.28	47	0.04	0.04	
TOP BREED %				36%	67%	2%	1%	38%	3%	92%	16%	28%	24%	11%	99%
				1%	38%	3%	92%	16%	28%	24%	11%	99%	1%	66%	



BUF CRK MEDALLION N328
BUF CRK BRAVADO U013
 BUF CRK ANASCO S101
 5L QUARTERBACK 1205-5337
HLH MS QB 6090 0073
 HLH MS SHY ANN 1166 6090

11 HLH OLY 6075 3180

Birthdate:	Category:	Tattoo:	Reg. #	BW											
3/3/13	1A 100%	3180 HLH	1605729	94											
				WW/Ratio	746		118								
				YW/Ratio	1197		105								
				ADG	2.8										
				Scrotal/FS	38	5.6									
				IMF/REA	3.57	13.65									
				Dam's MPPA/Age	102.8	7									
				Dam's Wt/Frame	1238	5									
CED	BW	WW	YW	Milk	TM	ME	HPG	CEM	Stay	Marb	YG	CW	REA	Fat	
-1	0.5	75	109	15	52	0	8	3	7	0.48	0.14	35	0.01	0.00	
TOP BREED %				90%	81%	3%	9%	79%	15%	41%	81%	72%	92%	36%	93%
				9%	79%	15%	41%	81%	72%	92%	36%	93%	9%	72%	



RED CROWFOOT OLE'S OSCAR
RED SSS OLY 554T
 RED SSS GOLD EDGE 77R
 HALFMANN GOLDEN BEEF
HLH GOLDEN BOY 959 6075
 HLH ROBBI 606 959



Lot 11

12 HLH GRANDUER 3052 3127

Birthdate:	Category:	Tattoo:	Reg. #	BW											
2/27/13	1B 99.9%	3127 HLH	1605668	80											
				WW/Ratio	650		103								
				YW/Ratio	1178		103								
				ADG	3.3										
				Scrotal/FS	35	5.3									
				IMF/REA	4.02	15.53									
				Dam's MPPA/Age	98.2	10									
				Dam's Wt/Frame	1402	5									
CED	BW	WW	YW	Milk	TM	ME	HPG	CEM	Stay	Marb	YG	CW	REA	Fat	
-1	-1.6	60	94	16	46	4	12	-1	10	0.69	0.10	24	0.16	0.02	
TOP BREED %				90%	41%	33%	32%	69%	49%	70%	15%	97%	55%	9%	85%
				35%	42%	78%									



LJC MISSION STATEMENT P27
C-T GRAND STATEMENT 1025
 C-T MISS PAN 0760
 BFCK CHEROKEE CNYN 4912
HLH MS CHEROKEE 872 3052
 HLH TORRI 568 872

13 HLH JULIAN 8110 3186

Birthdate:	Category:	Tattoo:	Reg. #	BW											
3/3/13	1A 100%	3186 HLH	1605815	78											
				WW/Ratio	648		102								
				YW/Ratio	1268		111								
				ADG	3.9										
				Scrotal/FS	37	5.1									
				IMF/REA	3.58	15.25									
				Dam's MPPA/Age	100.7	5									
				Dam's Wt/Frame	1352	5									
CED	BW	WW	YW	Milk	TM	ME	HPG	CEM	Stay	Marb	YG	CW	REA	Fat	
13	-4.1	53	93	17	43	-5	10	6	15	0.37	-0.02	20	0.33	0.00	
TOP BREED %				2%	10%	57%	34%	68%	68%	16%	51%	28%	7%	61%	36%
				47%	17%	43%									



BECKTON JULIAN GG B571
RED HILL B571 JULIAN 84S
 BECKTON BARMAID M554 CH
 BUF CRK LANCE R102
HLH LADY LANCE 5105 8110
 HLH MS POWER 2055 5105

Hall & Pokorny Bulls

14 HLH JULIAN 8034 3278

Birthdate:	Category:	Tattoo:	Reg. #	BW	84	
3/8/13	1B 99.9%	3278 HLH	1605803	WW/Ratio	659	100
				YW/Ratio	1328	100
				ADG	4.2	
				Scrotal/FS	36	5.7
				IMF/REA	3.48	15.36
				Dam's MPPA/Age	96.4	5
				Dam's Wt/Frame	1302	5

BECKTON JULIAN GG B571
RED HILL B571 JULIAN 84S
 BECKTON BARMAID M554 CH
HLH LADY LANCE 6189 8034
 BUF CRK LANCE R102
 HLH MS FRONTIER 4061 6189

CED	BW	WW	YW	Milk	TM	ME	HPG	CEM	Stay	Marb	YG	CW	REA	Fat
11	-2.1	66	108	14	47	0	8	6	16	0.45	0.05	32	0.34	0.01
TOP BREED %														
5%	33%	14%	9%	83%	41%	39%	82%	28%	5%	42%	67%	14%	16%	61%

15 HLH GRANDUER 8159 3215

CALVING EASE

Birthdate:	Category:	Tattoo:	Reg. #	BW	79	
3/5/13	1B 99.9%	3215 HLH	1605819	WW/Ratio	638	101
				YW/Ratio	1177	103
				ADG	3.4	
				Scrotal/FS	35	5.9
				IMF/REA	3.90	13.64
				Dam's MPPA/Age	101.5	5
				Dam's Wt/Frame	1282	5

LJC MISSION STATEMENT P27
C-T GRAND STATEMENT 1025
 C-T MISS PAN 0760
 LCC MAJOR LEAGUE A502M
HLH MAJORETTE 3011 8159
 HLH MS BUSTER 1009 3011

CED	BW	WW	YW	Milk	TM	ME	HPG	CEM	Stay	Marb	YG	CW	REA	Fat
1	-3.4	58	91	19	48	7	11	5	11	0.77	0.09	20	-0.03	0.00
TOP BREED %														
77%	16%	40%	37%	43%	35%	92%	37%	42%	52%	5%	82%	48%	79%	43%

16 HLH BRAVADO 0134 3369

CALVING EASE

Birthdate:	Category:	Tattoo:	Reg. #	BW	75	
3/16/13	1A 100%	3369 HLH	1605508	WW/Ratio	693	109
				YW/Ratio	1170	103
				ADG	3.0	
				Scrotal/FS	34	5.5
				IMF/REA		
				Dam's MPPA/Age	104.0	3
				Dam's Wt/Frame	1210	5

BUF CRK MEDALLION N328
BUF CRK BRAVADO U013
 BUF CRK ANASCO S101
 BECKTON JORDAN U520
HLH MS JORDAN 7298 0134
 HLH MS DATA 2160 7298

CED	BW	WW	YW	Milk	TM	ME	HPG	CEM	Stay	Marb	YG	CW	REA	Fat
9	-3.0	57	88	21	50	5	11	6	15	0.65	0.14	18	-0.10	0.02
TOP BREED %														
11%	20%	41%	45%	30%	27%	81%	22%	28%	7%	12%	93%	53%	90%	78%

17 HLH HUGHES 7088 3160

Birthdate:	Category:	Tattoo:	Reg. #	BW	87	
3/1/13	1A 100%	3160 HLH	1605765	WW/Ratio	621	98
				YW/Ratio	1210	106
				ADG	3.7	
				Scrotal/FS	38	5.6
				IMF/REA	4.11	14.59
				Dam's MPPA/Age	100.2	6
				Dam's Wt/Frame	1376	5

BASIN HOBO 0545
BIEBER H HUGHES W109
 BASIN ROSE 06T0
 FHCC FRONTIER 3111
HLH MS FRONTIER 5174 7088
 HLH MS JULES 831 5174

CED	BW	WW	YW	Milk	TM	ME	HPG	CEM	Stay	Marb	YG	CW	REA	Fat
6	-2.4	60	99	22	52	5	12	7	15	0.46	0.15	26	0.21	0.05
TOP BREED %														
28%	28%	31%	22%	20%	15%	80%	20%	17%	5%	40%	94%	29%	33%	97%

18 HLH FRANKLIN 9001 3395

Birthdate:	Category:	Tattoo:	Reg. #	BW	80	
3/20/13	1A 100%	3395 HLH	1605836	WW/Ratio	643	102
				YW/Ratio	972	85
				ADG	2.1	
				Scrotal/FS	34	4.9
				IMF/REA		
				Dam's MPPA/Age	100.4	4
				Dam's Wt/Frame	1346	5

ARO TRIPLE PLAY 503
CRS DIAMOND FRANKLIN 988
 RRS CHEROKEE ROBIN 4017
 RED CROWFOOT OLE'S OSCAR
HLH OLE'S MISS 7004 9001
 HLH ABBIE 5054 7004

CED	BW	WW	YW	Milk	TM	ME	HPG	CEM	Stay	Marb	YG	CW	REA	Fat
7	-3.8	62	76	16	47	1	12	5	7	0.58	0.03	9	0.25	0.03
TOP BREED %														
21%	12%	24%	70%	72%	43%	50%	11%	42%	90%	19%	59%	80%	27%	87%

19 HLH JULIAN 1121 3017

CALVING EASE

Birthdate:	Category:	Tattoo:	Reg. #	BW	66	
2/5/13	1B 99.9%	3017 HLH	1605610	WW/Ratio	551	93
				YW/Ratio	1138	97
				ADG	3.7	
				Scrotal/FS	35	4.2
				IMF/REA	4.65	13.21
				Dam's MPPA/Age	97.2	2
				Dam's Wt/Frame	1002	5

BECKTON JULIAN GG B571
RED HILL B571 JULIAN 84S
 BECKTON BARMAID M554 CH
 MESSMER PACKER S008
HLH MS PACKER 3139 1121
 HLH MS JULES 1169 3139

CED	BW	WW	YW	Milk	TM	ME	HPG	CEM	Stay	Marb	YG	CW	REA	Fat
11	-5.3	47	71	15	39	-6	13	7	16	0.42	-0.06	5	0.32	0.01
TOP BREED %														
5%	4%	78%	79%	78%	88%	12%	7%	17%	4%	49%	21%	88%	18%	61%



Hall & Pokorny Bulls



Lot 20 with his dam



Dane

22 HLH JULIAN 6004 3256

CALVING EASE

Birthdate: 3/7/13 Category: 1B 99.9% Tattoo: 3256 HLH Reg. #: 1605723



BECKTON JULIAN GG B571
RED HILL B571 JULIAN 84S
 BECKTON BARMAID M554 CH
 LCC ABOVE & BEYOND 1300J
HLH ABBIE 4035 6004
 HLH MS BUSTER 2164 4035

BW	81	
WW/Ratio	660	104
YW/Ratio	1243	109
ADG	3.7	
Scrotal/FS	40	5.4
IMF/REA	4.08	15.83
Dam's MPPA/Age	104.0	7
Dam's Wt/Frame	1410	5

CED	BW	WW	YW	Milk	TM	ME	HPG	CEM	Stay	Marb	YG	CW	REA	Fat
17	-4.3	59	102	20	49	1	11	10	14	0.40	0.03	25	0.22	0.00
TOP BREED %														
1%	9%	35%	17%	40%	30%	50%	29%	3%	13%	54%	59%	31%	31%	43%



Lot 24

20 HLH BRAVADO 0238 3343

Birthdate: 3/13/13 Category: 1A 100% Tattoo: 3343 HLH Reg. #: 1605544



BUF CRK MEDALLION N328
BUF CRK BRAVADO U013
 BUF CRK ANASCO S101
 BECKTON NEBULA P P707
HLH MS NEB 5045 0238
 HLH MS PONDER 3051 5045

BW	85	
WW/Ratio	695	110
YW/Ratio	1204	106
ADG	3.2	
Scrotal/FS	37	4.7
IMF/REA	5.25	14.55
Dam's MPPA/Age	103.7	3
Dam's Wt/Frame	1174	5

CED	BW	WW	YW	Milk	TM	ME	HPG	CEM	Stay	Marb	YG	CW	REA	Fat
6	-0.2	65	103	21	53	4	12	5	14	0.68	0.24	31	-0.02	0.04
TOP BREED %														
28%	69%	16%	15%	31%	11%	72%	13%	42%	10%	10%	99%	15%	77%	93%

21 HLH JORDAN 1105 3207

CALVING EASE

Birthdate: 3/4/13 Category: 1A 100% Tattoo: 3207 HLH Reg. #: 1605605



TR JULIAN RT561
BECKTON JORDAN U520
 BECKTON SUFFEINA P643 J
 BECKTON EPIC KM M115
HLH MS M115 3132 1105
 HLH MS HOB0 957 3132

BW	62	
WW/Ratio	610	103
YW/Ratio	1056	90
ADG	2.8	
Scrotal/FS	33	
IMF/REA	3.80	12.65
Dam's MPPA/Age	101.2	2
Dam's Wt/Frame	1118	5

CED	BW	WW	YW	Milk	TM	ME	HPG	CEM	Stay	Marb	YG	CW	REA	Fat
11	-5.9	47	69	21	45	2	9	7	13	0.62	0.08	2	-0.22	0.00
TOP BREED %														
5%	3%	77%	82%	26%	57%	52%	75%	17%	20%	15%	79%	91%	98%	43%

23 POKE CONQUEST 1089 3048

CALVING EASE

Birthdate: 2/12/13 Category: 1B 99.9% Tattoo: 3048 POKE Reg. #: 1605596



BECKTON JULIAN GG B571
HXC CONQUEST 4405P
 HXC ELLIE MAY MA638
 BECKTON CODY K2 R168
POKE MS C168 9022 1089
 HLH MS LIMIT 7053 9022

BW	69	
WW/Ratio	611	103
YW/Ratio	1165	99
ADG	3.5	
Scrotal/FS	34	4.8
IMF/REA	3.95	13.51
Dam's MPPA/Age	101.2	2
Dam's Wt/Frame	NA	NA

CED	BW	WW	YW	Milk	TM	ME	HPG	CEM	Stay	Marb	YG	CW	REA	Fat
15	-5.2	61	96	20	50	5	5	7	12	0.52	0.04	19	0.29	0.02
TOP BREED %														
1%	4%	29%	27%	38%	24%	80%	99%	17%	34%	28%	63%	48%	22%	78%

24 HLH RIGHT KIND 8024 3143

Birthdate: 2/28/13 Category: 1A 100% Tattoo: 3143 HLH Reg. #: 1605800



BUF CRK THE RIGHT KIND U199
LOOSLI RIGHT KIND 145
 MISS LL NEW 418
 BECKTON HALFMANNHUSTLER R588
HLH MS HUSTLER 6215 8024
 HLH MS JULES 004 6215

BW	86	
WW/Ratio	687	108
YW/Ratio	1233	108
ADG	3.4	
Scrotal/FS	37	5.5
IMF/REA	3.24	14.40
Dam's MPPA/Age	106.9	5
Dam's Wt/Frame	1398	5

CED	BW	WW	YW	Milk	TM	ME	HPG	CEM	Stay	Marb	YG	CW	REA	Fat
9	-1.5	64	104	19	51	2	12	6	13	0.47	0.10	30	0.07	0.00
TOP BREED %														
11%	43%	19%	14%	43%	18%	51%	18%	28%	20%	38%	85%	18%	60%	43%

Hall & Pokorny Bulls



Lot 25

25 HLH CONQUEST 8292 3319

Birthdate:	Category:	Tattoo:	Reg. #	BW	92																
3/12/13	1A 100%	3319 HLH	1605832	WW/Ratio	722	114															
				YW/Ratio	1397	123															
				ADG	4.2																
				Scrotal/FS	36	5.5															
				IMF/REA	3.18	15.92															
				Dam's MPPA/Age	110.9	5															
				Dam's Wt/Frame	1520	5															
				RED HILL B571 JULIAN 84S																	
				BUF CRK GOLDEN NUGGET X144																	
				BUF CRK MARIGOLD R077																	
				NEO-SHO ICE BOX L795																	
				HLH MS ICE 2057 8292																	
				HLH CHERI 709 2057																	
				CEB	BW	WW	YW	Milk	TM	ME	HPG	CEM	Stay	Marb	YG	CW	REA	Fat			
				3	2.2	72	127	23	59	6	10	4	10	0.40	0.08	50	0.23	-0.02			
				TOP BREED %				57%	96%	5%	1%	15%	2%	86%	58%	59%	54%	79%	1%	30%	12%

26 HLH JULIAN 1324 3046

Birthdate:	Category:	Tattoo:	Reg. #	BW	86																	
2/12/13	1A 100%	3046 HLH	1605660	WW/Ratio	650	109																
				YW/Ratio	1324	113																
				ADG	4.2																	
				Scrotal/FS	37	5.3																
				IMF/REA	4.00	14.43																
				Dam's MPPA/Age	103.6	2																
				Dam's Wt/Frame	1158	5																
				BECKTON JULIAN GG B571																		
				RED HILL B571 JULIAN 84S																		
				BECKTON BARMAID M554 CH																		
				BUF CRK BRAVADO U013																		
				HLH MS BRAVADO7291 1324 1324																		
				HLH MS ICY 908 7291																		
				CEB	BW	WW	YW	Milk	TM	ME	HPG	CEM	Stay	Marb	YG	CW	REA	Fat				
				11	0.8	64	102	19	51	0	11	7	15	0.45	0.08	32	0.20	0.01				
				TOP BREED %				5%	85%	19%	16%	46%	20%	37%	32%	17%	7%	42%	79%	13%	35%	61%

27 HLH JAMMER 0110 3401

Birthdate:	Category:	Tattoo:	Reg. #	BW	71																	
3/22/13	1B 99.9%	3401 HLH	1605494	WW/Ratio	657	104																
				YW/Ratio	1184	104																
				ADG	3.3																	
				Scrotal/FS	33	5.1																
				IMF/REA																		
				Dam's MPPA/Age	101.4	3																
				Dam's Wt/Frame	1262	5																
				BECKTON JULIAN GG B571																		
				BUF CRK JAMMER W025																		
				BUF CRK AMBER 3912																		
				BUF CRK LANCE R102																		
				HLH MS LANCE 7250 0110																		
				HLH MS COPPER 4101 7250																		
				CEB	BW	WW	YW	Milk	TM	ME	HPG	CEM	Stay	Marb	YG	CW	REA	Fat				
				10	-4.9	55	84	19	46	3	8	6	14	0.48	-0.01	13	0.25	0.01				
				TOP BREED %				8%	6%	49%	54%	50%	48%	62%	85%	28%	12%	36%	40%	69%	27%	61%

28 HLH HUGHES 8253 3089

Birthdate:	Category:	Tattoo:	Reg. #	BW	82																	
2/23/13	1A 100%	3089 HLH	1605827	WW/Ratio	622	98																
				YW/Ratio	1183	104																
				ADG	3.5																	
				Scrotal/FS	38	5.5																
				IMF/REA	3.78	14.38																
				Dam's MPPA/Age	101.6	5																
				Dam's Wt/Frame	1392	5																
				BASIN HOBO 0545																		
				BIEBER H HUGHES W109																		
				BASIN ROSE 06T0																		
				BIEBER MAKE MIMI 7249																		
				HLH MS MIMI 4224 8253																		
				HLH MS CHATEAU 840 4224																		
				CEB	BW	WW	YW	Milk	TM	ME	HPG	CEM	Stay	Marb	YG	CW	REA	Fat				
				5	-2.5	64	104	21	52	6	9	6	17	0.46	0.08	29	0.35	0.03				
				TOP BREED %				36%	27%	19%	14%	33%	14%	85%	79%	28%	2%	40%	79%	21%	15%	87%

29 POKE OLY 1243 3011

Birthdate:	Category:	Tattoo:	Reg. #	BW	80																	
2/4/13	1A 100%	3011 POKE	1605650	WW/Ratio	702	118																
				YW/Ratio	1477	126																
				ADG	4.8																	
				Scrotal/FS	39	5.7																
				IMF/REA	4.98	12.63																
				Dam's MPPA/Age	107.2	2																
				Dam's Wt/Frame	944	5																
				RED CROWFOOT OLE'S OSCAR																		
				RED SSS OLY 554T																		
				RED SSS GOLD EDGE 77R																		
				BECKTON JORDAN U520																		
				POKE MS JORDAN 9067 1243																		
				HLH LANCERS MS 7209 9067																		
				CEB	BW	WW	YW	Milk	TM	ME	HPG	CEM	Stay	Marb	YG	CW	REA	Fat				
				3	-2.2	68	124	16	50	-4	8	1	11	0.68	0.12	42	0.16	0.00				
				TOP BREED %				57%	31%	10%	2%	75%	27%	18%	81%	90%	48%	10%	90%	3%	42%	43%

30 HLH FRANKLIN 9192 3174

Birthdate:	Category:	Tattoo:	Reg. #	BW	88																	
3/2/13	1A 100%	3174 HLH	1605887	WW/Ratio	683	108																
				YW/Ratio	1218	107																
				ADG	3.3																	
				Scrotal/FS	34	5.8																
				IMF/REA	3.10	13.90																
				Dam's MPPA/Age	100.4	4																
				Dam's Wt/Frame	1332	5																
				ARO TRIPLE PLAY 503																		
				CRS DIAMND FRANKLIN 988																		
				RRS CHEROKEE ROBIN 4017																		
				BECKTON EPIC KM M115																		
				HLH MS EPIC 2160 9192																		
				HLH RAMY 0109 2160																		
				CEB	BW	WW	YW	Milk	TM	ME	HPG	CEM	Stay	Marb	YG	CW	REA	Fat				
				4	-0.3	72	106	17	53	3	14	1	10	0.47	0.18	32	0.02	0.02				
				TOP BREED %				46%	67%	5%	11%	64%	12%	62%	3%	90%	61%	38%	97%	13%	70%	78%

31 HLH RIGHT KIND 6170 3139

Birthdate:	Category:	Tattoo:	Reg. #	BW	87																	
2/28/13	1B 99.9%	3139 HLH	1605746	WW/Ratio	625	99																
				YW/Ratio	1324	116																
				ADG	4.4																	
				Scrotal/FS	41	4.8																
				IMF/REA	4.13	13.48																
				Dam's MPPA/Age	101.1	7																
				Dam's Wt/Frame	1550	6																
				BUF CRK THE RIGHT KIND U199																		
				LOOSLI RIGHT KIND 145																		
				MISS LL NEW 418																		
				HALFMANN GOLDEN BEEF																		
				HLH GOLDIE 2150 6170																		
				HLH MS CAP 960 2150																		
				CEB	BW	WW	YW	Milk	TM	ME	HPG	CEM	Stay	Marb	YG	CW	REA	Fat				
				8	-1.4	55	100	20	48	2	12	5	12	0.54	0.14	29	-0.14	-0.01				
				TOP BREED %				15%	45%	51%	19%	36%	39%	59%	17%	42%	38%	25%	93%	20%	94%	22%

Hall & Pokorny Bulls

32 HLH HUGHES 3106 3070

CALVING EASE

Birthdate:	Category:	Tattoo:	Reg. #	BW	78	
2/19/13	1A 100%	3070 HLH	1605670	WW/Ratio	622	98
				YW/Ratio	1040	91
				ADG	2.6	
				Scrotal/FS	35	4.7
				IMF/REA	3.10	13.61
				Dam's MPPA/Age	97.4	10
				Dam's Wt/Frame	1380	5

BASIN HOBO 0545
BIEBER H HUGHES W109
 BASIN ROSE 06T0

BFCR CHEROKEE CNYN 4912
HLH MS CHEROKEE 724 3106
 HLH LIGHTN LASS 312 724

CED	BW	WW	YW	Milk	TM	ME	HPG	CEM	Stay	Marb	YG	CW	REA	Fat
4	-3.1	61	81	19	50	2	11	-1	16	0.39	0.06	13	0.26	0.04
TOP BREED %														
46%	19%	27%	61%	43%	25%	52%	31%	97%	3%	56%	71%	69%	25%	93%

33 HLH FRANKLIN 9075 3396

Birthdate:	Category:	Tattoo:	Reg. #	BW	87	
3/21/13	1B 99.9%	3396 HLH	1605858	WW/Ratio	677	107
				YW/Ratio	1107	97
				ADG	2.8	
				Scrotal/FS	36	5.4
				IMF/REA		
				Dam's MPPA/Age	104.2	4
				Dam's Wt/Frame	1180	5

ARO TRIPLE PLAY 503
CRS DIAMND FRANKLIN 988
 RRS CHEROKEE ROBIN 4017

BUF CRK LANCER R095
HLH LANCERS MS 7078 9075
 HLH MS NORA 673 7078

CED	BW	WW	YW	Milk	TM	ME	HPG	CEM	Stay	Marb	YG	CW	REA	Fat
5	-1.5	61	77	15	45	-1	14	0	11	0.48	-0.08	13	0.42	0.00
TOP BREED %														
36%	43%	28%	68%	80%	55%	35%	4%	94%	53%	36%	16%	69%	10%	43%



Lot 34

34 HLH HUGHES 6192 3237

Birthdate:	Category:	Tattoo:	Reg. #	BW	81	
3/6/13	1A 100%	3237 HLH	1605752	WW/Ratio	682	108
				YW/Ratio	1144	100
				ADG	2.9	
				Scrotal/FS	36	4.9
				IMF/REA	2.76	14.07
				Dam's MPPA/Age	97.8	7
				Dam's Wt/Frame	1312	5

BASIN HOBO 0545
BIEBER H HUGHES W109
 BASIN ROSE 06T0

FEDDES CUB 311
HLH MS CUB 1017 6192
 HLH MS RAMI 902 1017

CED	BW	WW	YW	Milk	TM	ME	HPG	CEM	Stay	Marb	YG	CW	REA	Fat
6	-2.7	65	95	18	51	1	9	8	15	0.40	0.17	22	0.08	0.04
TOP BREED %														
28%	24%	16%	29%	52%	20%	46%	72%	10%	6%	54%	97%	40%	58%	93%



35 HLH HUGHES 5135 3233

Birthdate:	Category:	Tattoo:	Reg. #	BW	90	
3/6/13	1B 99.9%	3233 HLH	1605709	WW/Ratio	679	107
				YW/Ratio	1157	102
				ADG	3.1	
				Scrotal/FS	35	5.9
				IMF/REA	4.11	15.88
				Dam's MPPA/Age	102.7	8
				Dam's Wt/Frame	1482	5

BASIN HOBO 0545
BIEBER H HUGHES W109
 BASIN ROSE 06T0

FHCC FRONTIER 3111
HLH MS FRONTIER 0112 5135
 HLH SUPY 569 0112

CED	BW	WW	YW	Milk	TM	ME	HPG	CEM	Stay	Marb	YG	CW	REA	Fat
4	-0.6	67	99	21	55	4	10	7	15	0.42	0.13	28	0.28	0.04
TOP BREED %														
46%	61%	12%	21%	26%	7%	76%	56%	17%	7%	49%	92%	22%	23%	93%



36 HLH CONQUEST 1100 3053

CALVING EASE

Birthdate:	Category:	Tattoo:	Reg. #	BW	70	
2/13/13	1A 100%	3053 HLH	1605602	WW/Ratio	564	95
				YW/Ratio	1069	91
				ADG	3.2	
				Scrotal/FS	38	4.6
				IMF/REA	4.27	11.70
				Dam's MPPA/Age	98.0	2
				Dam's Wt/Frame	1104	5

BECKTON JULIAN GG B571
HXC CONQUEST 4405P
 HXC ELLIE MAY MA638

5L QUARTERBACK 1205-5337
HLH MS QB 2160 1100
 HLH RAMY 0109 2160

CED	BW	WW	YW	Milk	TM	ME	HPG	CEM	Stay	Marb	YG	CW	REA	Fat
14	-4.5	55	82	21	49	5	6	7	13	0.67	0.08	12	0.16	0.03
TOP BREED %														
1%	7%	48%	57%	29%	32%	77%	96%	17%	24%	10%	79%	71%	42%	87%



37 HLH JULIAN 5097 3296

CALVING EASE

Birthdate:	Category:	Tattoo:	Reg. #	BW	70	
3/10/13	1A 100%	3296 HLH	1605703	WW/Ratio	586	93
				YW/Ratio	1060	93
				ADG	3.0	
				Scrotal/FS	37	4.7
				IMF/REA	4.49	14.96
				Dam's MPPA/Age	96.9	8
				Dam's Wt/Frame	NA	NA

BECKTON JULIAN GG B571
RED HILL B571 JULIAN 84S
 BECKTON BARMAID M554 CH

BFCR CHEROKEE CNYN 4912
HLH MS CHEROKEE 092 5097
 HLH ROBBY 736 092

CED	BW	WW	YW	Milk	TM	ME	HPG	CEM	Stay	Marb	YG	CW	REA	Fat
11	-5.0	51	76	14	39	-2	12	1	15	0.40	-0.07	8	0.31	0.00
TOP BREED %														
5%	5%	66%	70%	84%	85%	25%	18%	90%	9%	54%	19%	81%	19%	43%



38 POKE FRANKLIN 9005 3236

Birthdate:	Category:	Tattoo:	Reg. #	BW	92	
3/6/13	1B 99.9%	3236 POKE	1605838	WW/Ratio	623	98
				YW/Ratio	1138	100
				ADG	3.3	
				Scrotal/FS	36	4.9
				IMF/REA	3.06	14.25
				Dam's MPPA/Age	103.1	4
				Dam's Wt/Frame	1176	5

ARO TRIPLE PLAY 503
CRS DIAMND FRANKLIN 988
 RRS CHEROKEE ROBIN 4017

BECKTON CODY T085 K2
HLH MS CODY 7036 9005
 HLH MS COPPER 5157 7036

CED	BW	WW	YW	Milk	TM	ME	HPG	CEM	Stay	Marb	YG	CW	REA	Fat
3	0.1	65	93	13	45	1	10	2	8	0.37	0.07	25	0.31	0.03
TOP BREED %														
57%	5%	75%	17%	33%	89%	54%	49%	39%	82%	82%	61%	75%	30%	19%



Hall & Pokorny Bulls

39 HLH RIGHT KIND 6189 3140

Birthdate:	Category:	Tattoo:	Reg. #	BW	87														
2/28/13	1B 99.9%	3140 HLH	1605750	WW/Ratio	631	100													
				YW/Ratio	1080	95													
				ADG	2.9														
				Scrotal/FS	33	4.5													
				IMF/REA	5.20	14.46													
				Dam's MPPA/Age	102.5	7													
				Dam's Wt/Frame	1442	5													
				CED	BW	WW	YW	Milk	TM	ME	HPG	CEM	Stay	Marb	YG	CW	REA	Fat	
				7	-1.3	56	87	23	51	3	9	7	13	0.72	0.10	20	0.06	0.02	
				TOP BREED %															
				21%	47%	48%	47%	15%	20%	63%	70%	17%	17%	7%	85%	46%	62%	78%	


 BUF CRK THE RIGHT KIND U199
LOOSLI RIGHT KIND 145
 MISS LL NEW 418
 FHCC FRONTIER 3111
HLH MS FRONTIER 4061 6189
 HLH ABBIE 1121 4061

40 HLH FRANKLIN 9043 3250

CALVING EASE


Birthdate:	Category:	Tattoo:	Reg. #	BW	77														
3/7/13	1B 99.9%	3250 HLH	1605850	WW/Ratio	670	106													
				YW/Ratio	1188	104													
				ADG	3.3														
				Scrotal/FS	34	5.1													
				IMF/REA	2.88	14.97													
				Dam's MPPA/Age	104.4	4													
				Dam's Wt/Frame	1136	5													
				CED	BW	WW	YW	Milk	TM	ME	HPG	CEM	Stay	Marb	YG	CW	REA	Fat	
				6	-3.9	63	89	16	48	2	12	1	9	0.43	0.04	17	0.28	0.03	
				TOP BREED %															
				28%	11%	23%	42%	69%	38%	59%	15%	90%	69%	47%	63%	57%	23%	87%	


 ARO TRIPLE PLAY 503
CRS DIAMND FRANKLIN 988
 RRS CHEROKEE ROBIN 4017
 HLH OUTER LIMIT 851 4073
HLH MS LIMIT 7061 9043
 HLH MS LANCER 4037 7061

41 HLH GRANDUER 5180 3111

CALVING EASE

Birthdate:	Category:	Tattoo:	Reg. #	BW	69														
2/26/13	1A 100%	3111 HLH	1605716	WW/Ratio	576	91													
				YW/Ratio	1096	96													
				ADG	3.3														
				Scrotal/FS	36	4.8													
				IMF/REA	5.45	12.31													
				Dam's MPPA/Age	93.3	8													
				Dam's Wt/Frame	1236	5													
				CED	BW	WW	YW	Milk	TM	ME	HPG	CEM	Stay	Marb	YG	CW	REA	Fat	
				4	-6.2	41	69	22	42	3	10	7	9	0.78	0.08	3	-0.20	0.00	
				TOP BREED %															
				46%	2%	90%	81%	24%	73%	60%	58%	17%	72%	5%	79%	90%	97%	43%	


 LJC MISSION STATEMENT P27
C-T GRAND STATEMENT 1025
 C-T MISS PAN 0760
 FEDDES CUB 311
HLH MS CUB 1019 5180
 HLH MS RAMI 978 1019

42 POKE HOBO DESIGN 1007 3015


Birthdate:	Category:	Tattoo:	Reg. #	BW	86														
2/5/13	1B 99.9%	3015 HLH	1605574	WW/Ratio	553	93													
				YW/Ratio	1330	113													
				ADG	4.9														
				Scrotal/FS	38	4.9													
				IMF/REA	4.07	12.92													
				Dam's MPPA/Age	97.2	2													
				Dam's Wt/Frame	1128	5													
				CED	BW	WW	YW	Milk	TM	ME	HPG	CEM	Stay	Marb	YG	CW	REA	Fat	
				4	-2.3	60	113	17	47	-2	8	4	8	0.51	0.11	35	0.18	0.01	
				TOP BREED %															
				46%	30%	32%	6%	66%	45%	25%	83%	58%	86%	30%	87%	9%	38%	61%	


 RED CROWFOOT OLE'S OSCAR
RED SSS OLY 554T
 RED SSS GOLD EDGE 77R
 BECKTON CODY K2 R168
POKE MS C168 9058 1007
 HLH LANCERS MS 7014 9058

43 POKE FRANKLIN 9011 3209

CALVING EASE

Birthdate:	Category:	Tattoo:	Reg. #	BW	72														
3/4/13	1A 100%	3209 POKE	1605840	WW/Ratio	594	94													
				YW/Ratio	1107	97													
				ADG	3.2														
				Scrotal/FS	31	5.4													
				IMF/REA	4.16	12.48													
				Dam's MPPA/Age	98.2	4													
				Dam's Wt/Frame	1394	5													
				CED	BW	WW	YW	Milk	TM	ME	HPG	CEM	Stay	Marb	YG	CW	REA	Fat	
				4	-4.5	56	80	11	39	2	15	1	10	0.47	0.07	11	0.07	0.02	
				TOP BREED %															
				46%	7%	47%	62%	94%	86%	56%	2%	90%	57%	38%	75%	75%	60%	78%	


 ARO TRIPLE PLAY 503
CRS DIAMND FRANKLIN 988
 RRS CHEROKEE ROBIN 4017
 BECKTON NEBULA L P093
HLH MS NEBULA 7088 9011
 HLH MS FRONTIER 5174 7088


44 HLH RIGHT KIND 2150 3253

Birthdate:	Category:	Tattoo:	Reg. #	BW	88														
3/7/13	1B 99.9%	3253 HLH	1605513	WW/Ratio	666	105													
				YW/Ratio	1232	108													
				ADG	3.6														
				Scrotal/FS	35	4.2													
				IMF/REA	4.29	14.79													
				Dam's MPPA/Age	100.3	11													
				Dam's Wt/Frame	1326	6													
				CED	BW	WW	YW	Milk	TM	ME	HPG	CEM	Stay	Marb	YG	CW	REA	Fat	
				9	-1.8	53	86	22	49	1	11	3	12	0.52	0.09	19	-0.12	-0.01	
				TOP BREED %															
				11%	38%	59%	49%	19%	32%	44%	28%	72%	39%	28%	82%	49%	92%	22%	


 BUF CRK THE RIGHT KIND U199
LOOSLI RIGHT KIND 145
 MISS LL NEW 418
 MLK CRK CAPSTONE 901
HLH MS CAP 960 2150
 HLH ROBBI 568 960

45 HLH RIGHT KIND 7209 3064

Birthdate:	Category:	Tattoo:	Reg. #	BW	85														
2/18/13	1A 100%	3064 HLH	1605767	WW/Ratio	652	103													
				YW/Ratio	1193	105													
				ADG	3.4														
				Scrotal/FS	35	4.6													
				IMF/REA	3.88	13.01													
				Dam's MPPA/Age	101.1	6													
				Dam's Wt/Frame	1326	5													
				CED	BW	WW	YW	Milk	TM	ME	HPG	CEM	Stay	Marb	YG	CW	REA	Fat	
				6	-1.0	57	88	19	47	-1	13	6	14	0.47	0.07	21	0.04	0.00	
				TOP BREED %															
				28%	53%	42%	45%	49%	42%	33%	10%	28%	13%	38%	75%	43%	66%	43%	


 BUF CRK THE RIGHT KIND U199
LOOSLI RIGHT KIND 145
 MISS LL NEW 418
 SHOCO DATA
HLH MS DATA 2117 7209
 HLH MS TECH 202 2117

46 HLH RIGHT KIND 6105 3154

Birthdate:	Category:	Tattoo:	Reg. #	BW	91														
3/1/13	1B 99.9%	3154 HLH	1605737	WW/Ratio	647	102													
				YW/Ratio	1235	108													
				ADG	3.7														
				Scrotal/FS	38	5.6													
				IMF/REA	2.93	14.82													
				Dam's MPPA/Age	101.2	7													
				Dam's Wt/Frame	1458	5													
				CED	BW	WW	YW	Milk	TM	ME	HPG	CEM	Stay	Marb	YG	CW	REA	Fat	
				10	-1.3	53	88	22	49	1	12	8	13	0.44	0.07	21	0.02	-0.01	
				TOP BREED %															
				8%	47%	56%	46%	22%	33%	46%	19%	10%	26%	44%	75%	44%	70%	22%	


 BUF CRK THE RIGHT KIND U199
LOOSLI RIGHT KIND 145
 MISS LL NEW 418
 HALFMANN GOLDEN BEEF
HLH GOLDIE 1041 6105
 HLH RAMY 9100 1041

Hall & Pokorny Bulls

47 HLH RIGHT KIND145 1029 3056 CALVING EASE

Birthdate:	Category:	Tattoo:	Reg. #	BW	75									
2/16/13	1B 99.9%	3056 HLH	1605577	WW/Ratio	600	101								
				YW/Ratio	1167	99								
				ADG	3.6									
				Scrotal/FS	33	4.1								
				IMF/REA	4.98	13.27								
				Dam's MPPA/Age	100.4	2								
				Dam's Wt/Frame	980	5								
BUF CRK THE RIGHT KIND U199 LOOSLI RIGHT KIND 145 MISS LL NEW 418 BECKTON CODY K2 R168 HLH MS C168 9153 1029 HLH MS SUMMIT 2064 9153														
CED	BW	WW	YW	Milk	TM	ME	HPG	CEM	Stay	Marb	YG	CW	REA	Fat
11	-3.0	56	85	16	44	-1	11	5	13	0.52	0.05	16	0.06	0.00
TOP BREED %														
5%	20%	47%	52%	69%	62%	31%	27%	42%	26%	28%	67%	59%	62%	43%

48 HLH CONQUEST 4072 3347

Birthdate:	Category:	Tattoo:	Reg. #	BW	84									
3/14/13	1B 99.9%	3347 HLH	1605683	WW/Ratio	659	104								
				YW/Ratio	1147	101								
				ADG	3.1									
				Scrotal/FS	37	5.0								
				IMF/REA										
				Dam's MPPA/Age	102.5	9								
				Dam's Wt/Frame	1652	6								
BECKTON JULIAN GG B571 HXC CONQUEST 4405P HXC ELLIE MAY MA638 BFCK CHEROKEE CNYN 4912 HLH MS CHEROKEE 10083 4072 HLH LADY CHATEAU 569 10														
CED	BW	WW	YW	Milk	TM	ME	HPG	CEM	Stay	Marb	YG	CW	REA	Fat
11	-2.7	66	102	21	54	6	8	2	12	0.63	0.02	26	0.42	0.02
TOP BREED %														
5%	24%	14%	17%	27%	9%	88%	84%	82%	27%	14%	54%	26%	10%	78%

49 HLH JULIAN 6128 3227

Birthdate:	Category:	Tattoo:	Reg. #	BW	91									
3/6/13	1A 100%	3227 HLH	1605741	WW/Ratio	625	99								
				YW/Ratio	1142	100								
				ADG	3.2									
				Scrotal/FS	39	5.1								
				IMF/REA	3.72	15.36								
				Dam's MPPA/Age	99.7	7								
				Dam's Wt/Frame	1620	6								
BECKTON JULIAN GG B571 RED HILL B571 JULIAN 84S BECKTON BARMAID M554 CH HALFMANN GOLDEN BEEF HLH GOLDIE 750 6128 HLH COPPER LASS 435 750														
CED	BW	WW	YW	Milk	TM	ME	HPG	CEM	Stay	Marb	YG	CW	REA	Fat
10	0.0	62	96	17	47	2	9	8	12	0.35	0.04	28	0.15	-0.01
TOP BREED %														
8%	73%	25%	26%	68%	40%	54%	80%	10%	36%	66%	63%	23%	44%	22%

50 HLH BRAVADO 0054 3275

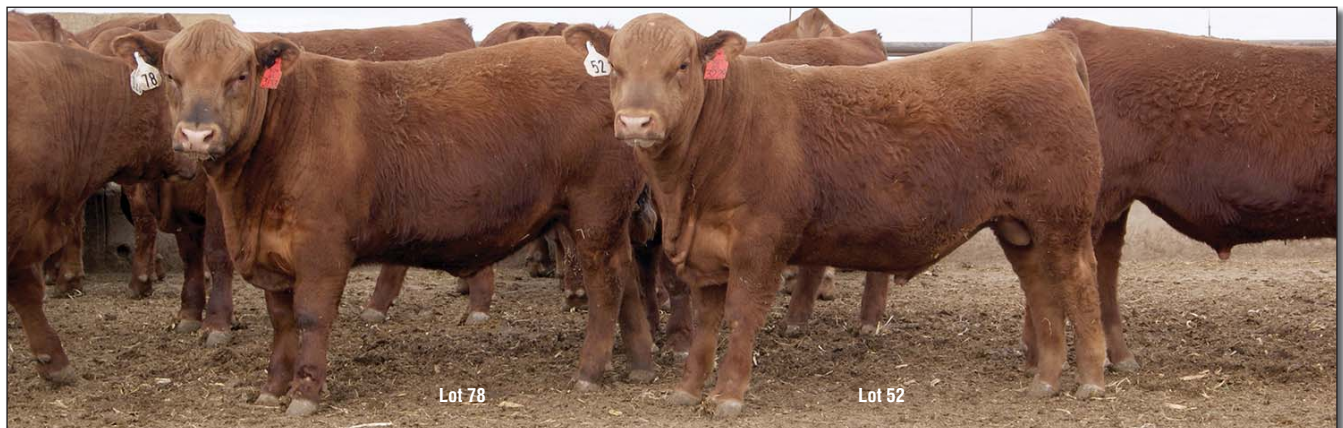
Birthdate:	Category:	Tattoo:	Reg. #	BW	91									
3/8/13	1A 100%	3275 HLH	1605468	WW/Ratio	674	106								
				YW/Ratio	1166	102								
				ADG	3.1									
				Scrotal/FS	38	5.4								
				IMF/REA	2.96	13.87								
				Dam's MPPA/Age	99.4	3								
				Dam's Wt/Frame	1170	5								
BUF CRK MEDALLION N328 BUF CRK BRAVADO U013 BUF CRK ANASCO S101 BUF CRK LANCE R102 HLH MS LANCE 079 0054 HLH RAMI 002 079														
CED	BW	WW	YW	Milk	TM	ME	HPG	CEM	Stay	Marb	YG	CW	REA	Fat
9	0.1	59	87	21	50	1	9	6	13	0.55	0.14	22	0.00	0.02
TOP BREED %														
11%	75%	35%	47%	31%	24%	50%	72%	28%	24%	23%	93%	41%	74%	78%

51 HLH CONQUEST 7275 3251 CALVING EASE

Birthdate:	Category:	Tattoo:	Reg. #	BW	67									
3/7/13	1A 100%	3251 HLH	1605778	WW/Ratio	603	95								
				YW/Ratio	1131	99								
				ADG	3.3									
				Scrotal/FS	35	4.7								
				IMF/REA	3.47	14.95								
				Dam's MPPA/Age	98.8	6								
				Dam's Wt/Frame	1190	5								
BECKTON JULIAN GG B571 HXC CONQUEST 4405P HXC ELLIE MAY MA638 FHCC FRONTIER 3111 HLH MS FRONTIER 1147 7275 HLH EQUALIZER 864 1147														
CED	BW	WW	YW	Milk	TM	ME	HPG	CEM	Stay	Marb	YG	CW	REA	Fat
17	-8.4	43	75	24	46	5	6	8	12	0.58	0.01	3	0.21	0.03
TOP BREED %														
1%	1%	86%	73%	10%	52%	80%	96%	10%	35%	19%	49%	90%	33%	87%

52 HLH GRANDUER 5127 3229 CALVING EASE

Birthdate:	Category:	Tattoo:	Reg. #	BW	68									
3/6/13	1A 100%	3229 HLH	1605707	WW/Ratio	604	95								
				YW/Ratio	1060	93								
				ADG	2.9									
				Scrotal/FS	36	3.9								
				IMF/REA	3.41	13.10								
				Dam's MPPA/Age	102.3	8								
				Dam's Wt/Frame	1362	5								
LJC MISSION STATEMENT P27 C-T GRAND STATEMENT 1025 C-T MISS PAN 0760 BR POWER STROKE 229 HLH MS PONDER 2160 5127 HLH RAMY 0109 2160														
CED	BW	WW	YW	Milk	TM	ME	HPG	CEM	Stay	Marb	YG	CW	REA	Fat
5	-6.2	39	64	23	42	4	14	7	11	0.67	0.07	0	-0.14	0.01
TOP BREED %														
36%	2%	93%	88%	15%	71%	74%	3%	17%	52%	10%	75%	94%	94%	61%



Lot 78

Lot 52

Hall & Pokorny Bulls

53 HLH GRANDUER 5164 3300

CALVING EASE

Birthdate:	Category:	Tattoo:	Reg. #	BW	75									
3/10/13	1B 99.9%	3300 HLH	1605714	WW/Ratio	628	99								
				YW/Ratio	1095	96								
				ADG	3.0									
				Scrotal/FS	36	4.7								
				IMF/REA	3.02	15.49								
				Dam's MPPA/Age	99.8	8								
				Dam's Wt/Frame	1230	5								
<p>LJC MISSION STATEMENT P27 C-T GRAND STATEMENT 1025 C-T MISS PAN 0760</p> <p>BUF CRK JULESBURG L048 HLH MS JULES 1111 5164 HLH LADY CHATEAU 762 11</p>														
CED	BW	WW	YW	Milk	TM	ME	HPG	CEM	Stay	Marb	YG	CW	REA	Fat
2	-4.8	44	70	24	46	5	14	5	11	0.54	0.02	5	0.12	0.02
TOP BREED %														
67%	6%	84%	81%	11%	49%	83%	2%	42%	48%	25%	54%	87%	50%	78%

54 HLH RIGHT KIND 5148 3067

Birthdate:	Category:	Tattoo:	Reg. #	BW	85									
2/19/13	1A 100%	3067 HLH	1605711	WW/Ratio	648	102								
				YW/Ratio	1203	106								
				ADG	3.5									
				Scrotal/FS	38	5.4								
				IMF/REA	3.64	14.34								
				Dam's MPPA/Age	98.8	8								
				Dam's Wt/Frame	NA	NA								
<p>BUF CRK THE RIGHT KIND U199 LOOSLI RIGHT KIND 145 MISS LL NEW 418</p> <p>BUF CRK JULESBURG L048 HLH MS JULES 639 5148 HLM MS BUSTER 717 639</p>														
CED	BW	WW	YW	Milk	TM	ME	HPG	CEM	Stay	Marb	YG	CW	REA	Fat
7	-1.6	53	79	21	48	-1	15	5	13	0.41	0.01	15	0.09	-0.01
TOP BREED %														
21%	41%	56%	64%	30%	39%	36%	2%	42%	17%	51%	49%	63%	56%	22%

55 HLH GRANDUER 7232 3225

Birthdate:	Category:	Tattoo:	Reg. #	BW	90									
3/6/13	1A 100%	3225 HLH	1605772	WW/Ratio	605	96								
				YW/Ratio	1116	98								
				ADG	3.2									
				Scrotal/FS	36	5.6								
				IMF/REA	4.36	14.64								
				Dam's MPPA/Age	103.7	6								
				Dam's Wt/Frame	1382	5								
<p>LJC MISSION STATEMENT P27 C-T GRAND STATEMENT 1025 C-T MISS PAN 0760</p> <p>LCC MAJOR LEAGUE A502M HLH MAJORETTE 868 7232 HLH LIGHTN LASS 312 868</p>														
CED	BW	WW	YW	Milk	TM	ME	HPG	CEM	Stay	Marb	YG	CW	REA	Fat
-5	0.4	59	88	20	49	6	12	1	10	0.79	0.12	23	0.04	0.02
TOP BREED %														
99%	80%	35%	44%	42%	30%	86%	14%	90%	57%	5%	90%	36%	66%	78%

56 HLH CONQUEST 1181 3054

CALVING EASE

Birthdate:	Category:	Tattoo:	Reg. #	BW	75									
2/15/13	1A 100%	3954 HLH	1605632	WW/Ratio	627	105								
				YW/Ratio	1204	103								
				ADG	3.6									
				Scrotal/FS	40	5.1								
				IMF/REA	2.31	15.26								
				Dam's MPPA/Age	102.0	2								
				Dam's Wt/Frame	1064	5								
<p>BECKTON JULIAN GG B571 HXC CONQUEST 4405P HXC ELLIE MAY MA638</p> <p>TR EPIC ST618 HLH MSTR EPIC618 5180 1181 HLH MS CUB 1019 5180</p>														
CED	BW	WW	YW	Milk	TM	ME	HPG	CEM	Stay	Marb	YG	CW	REA	Fat
15	-3.7	60	96	23	52	1	7	8	13	0.45	0.01	22	0.42	0.02
TOP BREED %														
1%	13%	33%	27%	18%	15%	46%	95%	10%	20%	42%	49%	39%	10%	78%

57 HLH JUBILATION 9318 3431

Birthdate:	Category:	Tattoo:	Reg. #	BW	89									
4/1/13	1B 99.8%	3431 HLH	1605906	WW/Ratio	631	100								
				YW/Ratio	1252	110								
				ADG	3.9									
				Scrotal/FS	35	5.3								
				IMF/REA										
				Dam's MPPA/Age	96.9	4								
				Dam's Wt/Frame	1200	5								
<p>RED HILL B571 JULIAN 84S BUF CRK JUBILATION X019 BUF CRK TAWN U241</p> <p>JULIAN CHEROKEE 3007 HLH JULIE 8111 9318 HLH HILASSI 947 8111</p>														
CED	BW	WW	YW	Milk	TM	ME	HPG	CEM	Stay	Marb	YG	CW	REA	Fat
9	-0.7	50	83	20	45	1	10	4	13	0.54	0.07	19	0.07	0.01
TOP BREED %														
11%	59%	67%	57%	41%	58%	49%	46%	58%	18%	25%	75%	51%	60%	61%

58 HLH OLY 4207 3076

CALVING EASE

Birthdate:	Category:	Tattoo:	Reg. #	BW	76									
2/20/13	1A 100%	3076 HLH	1605689	WW/Ratio	555	88								
				YW/Ratio	1143	100								
				ADG	3.7									
				Scrotal/FS	38	5.2								
				IMF/REA	3.32	14.72								
				Dam's MPPA/Age	101.9	9								
				Dam's Wt/Frame	1176	5								
<p>RED CROWFOOT OLE'S OSCAR RED SSS OLY 554T RED SSS GOLD EDGE 77R</p> <p>LCC ABOVE & BEYOND 1300J HLH ABBIE 724 4207 HLH LIGHTN LASS 312 724</p>														
CED	BW	WW	YW	Milk	TM	ME	HPG	CEM	Stay	Marb	YG	CW	REA	Fat
4	-6.2	43	80	23	44	-3	9	4	8	0.54	0.09	9	0.08	0.03
TOP BREED %														
46%	2%	86%	63%	18%	61%	22%	78%	58%	87%	25%	82%	78%	58%	87%

59 HLH LANCER 0186 3406

Birthdate:	Category:	Tattoo:	Reg. #	BW	88									
3/23/13	1B 99.9%	3406 HLH	1605530	WW/Ratio	653	103								
				YW/Ratio	1237	109								
				ADG	3.7									
				Scrotal/FS	34	5.4								
				IMF/REA										
				Dam's MPPA/Age	101.1	3								
				Dam's Wt/Frame	1118	5								
<p>BECKTON LANCER T A664 BECKTON LANCER F442 T BKT SUFFEINA A828 DM</p> <p>5L SUMMIT 1145-6327 HLH MS SUMMIT 3052 0186 HLH MS CHEROKEE 872 3052</p>														
CED	BW	WW	YW	Milk	TM	ME	HPG	CEM	Stay	Marb	YG	CW	REA	Fat
4	0.6	60	92	6	36	-1	8	2	14	0.42	-0.03	26	0.38	-0.01
TOP BREED %														
46%	83%	33%	35%	99%	94%	33%	82%	82%	10%	49%	32%	27%	13%	22%

60 HLH DESIGN 1320 3026

CALVING EASE

Birthdate:	Category:	Tattoo:	Reg. #	BW	72									
2/6/13	1B 99.9%	3026 HLH	1605658	WW/Ratio	594	100								
				YW/Ratio	1238	106								
				ADG	4.1									
				Scrotal/FS	36	4.7								
				IMF/REA	3.48	14.23								
				Dam's MPPA/Age	100.0	2								
				Dam's Wt/Frame	1132	5								
<p>5L HOB0 DESIGN 273-7047 DESIGN IN MIND LOOSLI GOLD 616</p> <p>BUF CRK MEDALLION U198 HLH MS MEDALLION 8123 1320 HLH MS PERKS 4096 8123</p>														
CED	BW	WW	YW	Milk	TM	ME	HPG	CEM	Stay	Marb	YG	CW	REA	Fat
5	-2.3	61	101	21	52	2	12	8	13	0.35	0.00	27	0.27	-0.01
TOP BREED %														
36%	30%	27%	19%	30%	18%	59%	14%	10%	26%	66%	45%	25%	24%	22%

Hall & Pokorny Bulls

61 HLH HUGHES 8225 3084

CALVING EASE

Birthdate:	Category:	Tattoo:	Reg. #	BW	80									
2/23/13	1B 99.9%	3084 HLH	1605824	WW/Ratio	642	101								
				YW/Ratio	1113	98								
				ADG	3.0									
				Scrotal/FS	36	5.5								
				IMF/REA	3.49	12.30								
				Dam's MPPA/Age	101.1	5								
				Dam's Wt/Frame	1288	5								
CED	BW	WW	YW	Milk	TM	ME	HPG	CEM	Stay	Marb	YG	CW	REA	Fat
9	-4.5	60	90	21	50	3	10	9	16	0.57	0.17	17	0.07	0.05
TOP BREED %														
11%	7%	32%	40%	33%	23%	65%	53%	5%	3%	20%	97%	57%	60%	97%



BASIN HOBO 0545
BIEBER H HUGHES W109
 BASIN ROSE 06T0
 LCC CHEYENNE B221L
HLH SHYANN 083 8225
 HLH RAMI 766 083

62 HLH JORDAN 1005 3057

CALVING EASE

Birthdate:	Category:	Tattoo:	Reg. #	BW	70									
2/16/13	1B 99.9%	3057 HLH	1605573	WW/Ratio	556	93								
				YW/Ratio	1064	91								
				ADG	3.2									
				Scrotal/FS	37	4.9								
				IMF/REA	3.44	14.24								
				Dam's MPPA/Age	97.2	2								
				Dam's Wt/Frame	1024	5								
CED	BW	WW	YW	Milk	TM	ME	HPG	CEM	Stay	Marb	YG	CW	REA	Fat
14	-5.3	43	73	16	38	1	7	5	13	0.60	-0.04	6	0.24	0.01
TOP BREED %														
1%	4%	86%	76%	69%	89%	48%	94%	42%	17%	17%	28%	85%	28%	61%



TR JULIAN RT561
BECKTON JORDAN U520
 BECKTON SUFFEINA P643 J
 BECKTON CODY T085 K2
HLH MS CODY 9141 1005
 HLH NORA 6104 9141

63 HLH JULIAN 1269 3049

CALVING EASE

Birthdate:	Category:	Tattoo:	Reg. #	BW	74									
2/12/13	1B 99.9%	3049 HLH	1605652	WW/Ratio	535	90								
				YW/Ratio	1161	99								
				ADG	4.0									
				Scrotal/FS	37	4.3								
				IMF/REA	3.16	13.29								
				Dam's MPPA/Age	96.0	2								
				Dam's Wt/Frame	1048	5								
CED	BW	WW	YW	Milk	TM	ME	HPG	CEM	Stay	Marb	YG	CW	REA	Fat
14	-3.4	51	85	14	40	-3	10	4	17	0.44	0.01	16	0.21	0.01
TOP BREED %														
1%	16%	65%	52%	84%	84%	22%	56%	58%	2%	44%	49%	60%	33%	61%



BECKTON JULIAN GG B571
RED HILL B571 JULIAN 845
 BECKTON BARMAID M554 CH
 BECKTON JORDAN U520
HLH MS JORDAN 3052 1269
 HLH MS CHEROKEE 872 3052

64 HLH LANCER 0347 3386

CALVING EASE

Birthdate:	Category:	Tattoo:	Reg. #	BW	76									
3/18/13	1A 100%	3386 HLH	1605571	WW/Ratio	640	101								
				YW/Ratio	1275	112								
				ADG	4.0									
				Scrotal/FS	36	4.6								
				IMF/REA										
				Dam's MPPA/Age	98.9	3								
				Dam's Wt/Frame	1114	5								
CED	BW	WW	YW	Milk	TM	ME	HPG	CEM	Stay	Marb	YG	CW	REA	Fat
7	-2.2	59	99	8	38	1	8	8	13	0.59	-0.03	26	0.38	-0.01
TOP BREED %														
21%	31%	37%	22%	98%	91%	46%	87%	10%	25%	18%	32%	27%	13%	22%



BECKTON LANCER T A664
BECKTON LANCER F442 T
 BKT SUFFEINA A828 DM
 LONK FUTURE DESIGN 734T
HLH MISS LFD 7091 0347
 HLH MS FRONTIER 5061 7091

65 HLH CONQUEST 1154 3024

CALVING EASE

Birthdate:	Category:	Tattoo:	Reg. #	BW	63									
2/6/13	1B 99.8%	3024 HLH	1605621	WW/Ratio	581	98								
				YW/Ratio	1124	96								
				ADG	3.5									
				Scrotal/FS	37	4.2								
				IMF/REA	3.84	13.23								
				Dam's MPPA/Age	99.2	2								
				Dam's Wt/Frame	1100	5								
CED	BW	WW	YW	Milk	TM	ME	HPG	CEM	Stay	Marb	YG	CW	REA	Fat
14	-6.4	52	78	17	42	2	5	7	13	0.53	-0.08	7	0.29	-0.01
TOP BREED %														
1%	2%	62%	67%	68%	72%	57%	99%	17%	21%	26%	16%	84%	22%	22%



BECKTON JULIAN GG B571
HXC CONQUEST 4405P
 HXC ELLIE MAY MA638
 BECKTON LANCER F442 T
HLH MSLANCER 940 1154
 HLH MS LOGAN 345 940

66 HLH RIGHT KIND145 0220 3387

CALVING EASE

Birthdate:	Category:	Tattoo:	Reg. #	BW	86									
3/18/13	1A 100%	3387 HLH	1605539	WW/Ratio	696	110								
				YW/Ratio	1300	114								
				ADG	3.8									
				Scrotal/FS	36	4.8								
				IMF/REA										
				Dam's MPPA/Age	105.4	3								
				Dam's Wt/Frame	1418	5								
CED	BW	WW	YW	Milk	TM	ME	HPG	CEM	Stay	Marb	YG	CW	REA	Fat
6	0.1	65	109	24	56	-1	13	5	13	0.55	0.18	35	-0.04	0.01
TOP BREED %														
28%	75%	16%	9%	13%	5%	35%	8%	42%	21%	23%	97%	8%	81%	61%



BUF CRK THE RIGHT KIND U199
LOOSLI RIGHT KIND 145
 MISS LL NEW 418
 BECKTON EPIC KM M115
HLH MS EPIC 5166 0220
 HLH MS JULES 0132 5166

67 HLH CONQUEST 1092 3020

CALVING EASE

Birthdate:	Category:	Tattoo:	Reg. #	BW	78									
2/5/13	1A 100%	3020 HLH	1605599	WW/Ratio	564	95								
				YW/Ratio	1181	101								
				ADG	3.9									
				Scrotal/FS	40	4.7								
				IMF/REA	3.44	13.12								
				Dam's MPPA/Age	98.0	2								
				Dam's Wt/Frame	1062	5								
CED	BW	WW	YW	Milk	TM	ME	HPG	CEM	Stay	Marb	YG	CW	REA	Fat
13	-2.5	56	89	18	46	2	6	6	12	0.65	0.03	19	0.40	0.03
TOP BREED %														
2%	27%	45%	43%	53%	47%	57%	96%	28%	27%	12%	59%	48%	11%	87%



BECKTON JULIAN GG B571
HXC CONQUEST 4405P
 HXC ELLIE MAY MA638
 5L QUARTERBACK 1205-5337
HLH MS QB 7261 1092
 HLH MS NORA 706 7261

68 HLH FRANKLIN 9103 3332

CALVING EASE

Birthdate:	Category:	Tattoo:	Reg. #	BW	74									
3/12/13	1B 99.9%	3332 HLH	1605862	WW/Ratio	582	92								
				YW/Ratio	1034	91								
				ADG	2.9									
				Scrotal/FS	33	4.7								
				IMF/REA	3.23	12.88								
				Dam's MPPA/Age	95.8	4								
				Dam's Wt/Frame	1542	5								
CED	BW	WW	YW	Milk	TM	ME	HPG	CEM	Stay	Marb	YG	CW	REA	Fat
7	-5.4	57	79	17	45	3	14	1	9	0.50	0.12	9	-0.12	0.02
TOP BREED %														
21%	4%	42%	64%	65%	53%	62%	3%	90%	73%	32%	90%	79%	92%	78%



ARO TRIPLE PLAY 503
CRS DIAMND FRANKLIN 988
 RRS CHEROKEE ROBIN 4017
 BECKTON EPIC KM M115
HLH MS EPIC 2150 9103
 HLH MS CAP 960 2150

Hall & Pokorny Bulls

69 POKE OLY 1211 3033

Birthdate:	Category:	Tattoo:	Reg. #	BW	82														
2/8/13	1B 99.9%	3033 POKE	1605644	WW/Ratio	637	107													
				YW/Ratio	1267	108													
				ADG	4.0														
				Scrotal/FS	34	5.7													
				IMF/REA	4.23	14.77													
				Dam's MPPA/Age	102.8	2													
				Dam's Wt/Frame	1012	5													
				CE	BW	WW	YW	Milk	TM	ME	HPG	CEM	Stay	Marb	YG	CW	REA	Fat	
				1	-1.4	64	105	15	47	-5	8	-2	10	0.62	0.00	30	0.35	-0.01	
				TOP BREED %	77%	45%	20%	13%	76%	42%	15%	85%	99%	55%	15%	45%	16%	15%	22%



RED CROWFOOT OLE'S OSCAR
RED SSS OLY 554T
 RED SSS GOLD EDGE 77R
 BECKTON JORDAN U520
POKE MS JORDAN 9241 1211
 HLH NORA 4099 9241

70 HLH RIGHT KIND 1036 3035

CALVING EASE

Birthdate:	Category:	Tattoo:	Reg. #	BW	73														
2/8/13	1B 99.9%	3035 HLH	1605580	WW/Ratio	562	94													
				YW/Ratio	1190	101													
				ADG	4.0														
				Scrotal/FS	36	4.0													
				IMF/REA	4.36	12.95													
				Dam's MPPA/Age	97.6	2													
				Dam's Wt/Frame	1032	5													
				CE	BW	WW	YW	Milk	TM	ME	HPG	CEM	Stay	Marb	YG	CW	REA	Fat	
				10	-3.4	49	80	18	42	-2	12	5	13	0.46	0.03	13	0.08	0.00	
				TOP BREED %	8%	16%	70%	63%	58%	72%	28%	16%	42%	25%	40%	59%	69%	58%	43%



BUF CRK THE RIGHT KIND U199
LOOSLI RIGHT KIND 145
 MISS LL NEW 418
 BECKTON CODY K2 R168
HLH MS C168 9119 1036
 HLH MS SUMMIT 6198 9119

71 HLH CONQUEST 7343 3309

CALVING EASE

Birthdate:	Category:	Tattoo:	Reg. #	BW	76														
3/11/13	1A 100%	3309 HLH	1605791	WW/Ratio	610	96													
				YW/Ratio	1210	106													
				ADG	3.8														
				Scrotal/FS	34	4.7													
				IMF/REA	3.79	13.91													
				Dam's MPPA/Age	98.9	6													
				Dam's Wt/Frame	1438	5													
				CE	BW	WW	YW	Milk	TM	ME	HPG	CEM	Stay	Marb	YG	CW	REA	Fat	
				14	-4.5	48	89	25	49	5	6	6	11	0.42	-0.05	17	0.29	-0.01	
				TOP BREED %	1%	7%	75%	43%	7%	30%	81%	97%	28%	50%	49%	25%	56%	22%	22%



BECKTON JULIAN GG B571
HXC CONQUEST 4405P
 HXC ELLIE MAY MA638
 NEO-SHO ICE BOX L795
HLH MS ICY 068 7343
 HLH ROBBY 734 068

72 HLH JUBILATION 6127 3367

CALVING EASE

Birthdate:	Category:	Tattoo:	Reg. #	BW	73														
3/16/13	1A 100%	3367 HLH	1605740	WW/Ratio	647	102													
				YW/Ratio	1107	97													
				ADG	2.9														
				Scrotal/FS	35	5.5													
				IMF/REA															
				Dam's MPPA/Age	104.5	7													
				Dam's Wt/Frame	1368	6													
				CE	BW	WW	YW	Milk	TM	ME	HPG	CEM	Stay	Marb	YG	CW	REA	Fat	
				2	-3.5	52	73	20	46	5	11	2	12	0.46	0.04	8	-0.02	0.00	
				TOP BREED %	67%	15%	62%	76%	35%	48%	78%	38%	82%	30%	40%	63%	81%	77%	43%



RED HILL B571 JULIAN 84S
BUF CRK JUBILATION X019
 BUF CRK TAWN U241
 LCC MAJOR LEAGUE A502M
HLH MAJORETTE 709 6127
 HLH LIGHTN LASS 317 709

73 HLH CONQUEST 1063 3004

CALVING EASE

Birthdate:	Category:	Tattoo:	Reg. #	BW	66														
1/31/13	1B 99.9%	3004 HLH	1605589	WW/Ratio	566	TW													
				YW/Ratio	1052	TW													
				ADG	3.1														
				Scrotal/FS	35	3.6													
				IMF/REA	4.23	12.85													
				Dam's MPPA/Age	93	2													
				Dam's Wt/Frame	1220	5													
				CE	BW	WW	YW	Milk	TM	ME	HPG	CEM	Stay	Marb	YG	CW	REA	Fat	
				13	-4.5	56	84	20	48	3	9	5	14	0.68	-0.05	13	0.33	0.00	
				TOP BREED %	2%	7%	45%	55%	36%	34%	67%	67%	42%	14%	10%	25%	69%	17%	43%



BECKTON JULIAN GG B571
HXC CONQUEST 4405P
 HXC ELLIE MAY MA638
 FEDDES BIG SKY R9
HLH MS BIG SKY 9163 1063
 HLH MS SUMMIT 1129 9163

74 HLH JAMMER 0088 3356

CALVING EASE

Birthdate:	Category:	Tattoo:	Reg. #	BW	73														
3/14/13	1B 99.9%	3356 HLH	1605485	WW/Ratio	656	104													
				YW/Ratio	1146	101													
				ADG	3.1														
				Scrotal/FS	37	5.0													
				IMF/REA															
				Dam's MPPA/Age	104.6	3													
				Dam's Wt/Frame	1264	5													
				CE	BW	WW	YW	Milk	TM	ME	HPG	CEM	Stay	Marb	YG	CW	REA	Fat	
				12	-4.6	59	88	19	48	5	9	6	13	0.58	-0.02	15	0.24	0.00	
				TOP BREED %	3%	7%	37%	45%	44%	34%	81%	75%	28%	19%	19%	36%	62%	28%	43%



BECKTON JULIAN GG B571
BUF CRK JAMMER W025
 BUF CRK AMBER 3912
 BUF CRK LANCE R102
HLH MS LANCE 7318 0088
 HLH GOLDIE 4072 7318

75 HLH CONQUEST 1084 3059

CALVING EASE

Birthdate:	Category:	Tattoo:	Reg. #	BW	64														
2/16/13	1B 99.9%	3059 HLH	1605594	WW/Ratio	561	94													
				YW/Ratio	1163	99													
				ADG	3.8														
				Scrotal/FS	34	4.1													
				IMF/REA	3.92	15.45													
				Dam's MPPA/Age	97.6	2													
				Dam's Wt/Frame	962	5													
				CE	BW	WW	YW	Milk	TM	ME	HPG	CEM	Stay	Marb	YG	CW	REA	Fat	
				14	-7.0	48	79	18	42	0	9	7	14	0.53	-0.10	7	0.55	0.02	
				TOP BREED %	1%	1%	76%	65%	53%	73%	41%	79%	17%	10%	26%	12%	83%	3%	78%



BECKTON JULIAN GG B571
HXC CONQUEST 4405P
 HXC ELLIE MAY MA638
 MESSMER PACKER S008
HLH MS PACKER 3063 1084
 HLH MS JULES 1111 3063

76 HLH JORDAN 1189 3244

Birthdate:	Category:	Tattoo:	Reg. #	BW	80														
3/6/13	1A 100%	3244 POKE	1605636	WW/Ratio	584	98													
				YW/Ratio	1074	92													
				ADG	3.1														
				Scrotal/FS	34	4.6													
				IMF/REA	4.27	11.37													
				Dam's MPPA/Age	99.2	2													
				Dam's Wt/Frame	1044	5													
				CE	BW	WW	YW	Milk	TM	ME	HPG	CEM	Stay	Marb	YG	CW	REA	Fat	
				11	-1.5	54	83	21	48	1	8	6	13	0.74	0.19	18	-0.37	0.00	
				TOP BREED %	5%	43%	55%	56%	31%	39%	50%	81%	28%	17%	6%	98%	55%	99%	43%



TR JULIAN RT561
BECKTON JORDAN U520
 BECKTON SUFFEINA P643 J
 BECKTON EPIC KM M115
POKE MS M115 1027 1189
 HLH MS RAMBLIN 9123 102

Hall & Pokorny Bulls



Lot 77

77 HLH FRANKLIN 9047 3128

CALVING EASE

Birthdate: 2/27/13 Category: 1B 99.9% Tattoo: 3128 HLH Reg. #: 1605851



ARO TRIPLE PLAY 503
CRS DIAMND FRANKLIN 988
RRS CHEROKEE ROBIN 4017
BECKTON NEBULA M045
HLH MS NEBULA 7245 9047
HLH MS COPPER 3120 7245

BW	71	
WW/Ratio	633	100
YW/Ratio	1074	94
ADG	2.8	
Scrotal/FS	33	4.5
IMF/REA	2.58	13.92
Dam's MPPA/Age	106.2	4
Dam's Wt/Frame	1254	5

CED	BW	WW	YW	Milk	TM	ME	HPG	CEM	Stay	Marb	YG	CW	REA	Fat
7	-6.0	56	76	13	41	0	14	3	9	0.43	0.07	6	0.08	0.03
TOP BREED %														
21%	2%	46%	71%	87%	77%	36%	3%	72%	68%	47%	75%	86%	58%	87%

78 HLH GRANDUER 5174 3133

Birthdate: 2/27/13 Category: 1A 100% Tattoo: 3133 HLH Reg. #: 1605715



LJC MISSION STATEMENT P27
C-T GRAND STATEMENT 1025
C-T MISS PAN 0760
BUF CRK JULESBURG L048
HLH MS JULES 831 5174
HLH MS BUSTER 611 831

BW	95	
WW/Ratio	610	96
YW/Ratio	1118	98
ADG	3.2	
Scrotal/FS	37	5.3
IMF/REA	3.14	13.63
Dam's MPPA/Age	103.5	8
Dam's Wt/Frame	1432	5

CED	BW	WW	YW	Milk	TM	ME	HPG	CEM	Stay	Marb	YG	CW	REA	Fat
-1	0.6	53	81	22	48	6	14	5	9	0.59	0.11	19	-0.03	0.01
TOP BREED %														
90%	83%	56%	60%	24%	34%	88%	2%	42%	68%	18%	87%	49%	79%	61%

79 HLH JULIAN 1045 3036

CALVING EASE

Birthdate: 2/8/13 Category: 1B 99.9% Tattoo: 3036 POKE Reg. #: 1605583



BECKTON JULIAN GG B571
RED HILL B571 JULIAN 84S
BECKTON BARMAID M554 CH
BUF CRK LANCE R102
POKE MS LANCE 9211 1045
HLH MS MIMI 3011 9211

BW	76	
WW/Ratio	588	99
YW/Ratio	1308	111
ADG	4.6	
Scrotal/FS	37	5.2
IMF/REA	3.00	15.47
Dam's MPPA/Age	99.6	2
Dam's Wt/Frame	1126	5

CED	BW	WW	YW	Milk	TM	ME	HPG	CEM	Stay	Marb	YG	CW	REA	Fat
13	-3.0	57	99	16	44	-3	9	6	15	0.36	-0.10	25	0.50	-0.02
TOP BREED %														
2%	20%	43%	22%	72%	60%	24%	70%	28%	5%	64%	12%	30%	6%	12%

80 HLH JULIAN 1322 3006

CALVING EASE

Birthdate: 2/2/13 Category: 1B 99.9% Tattoo: 3006 HLH Reg. #: 1605659



BECKTON JULIAN GG B571
RED HILL B571 JULIAN 84S
BECKTON BARMAID M554 CH
BUF CRK BRAVADO U013
HLH MS BRAVADO 4061 1322
HLH ABBIE 1121 4061

BW	55	
WW/Ratio	525	TW
YW/Ratio	1072	TW
ADG	3.5	
Scrotal/FS	33	3.7
IMF/REA	4.51	11.37
Dam's MPPA/Age	90	2
Dam's Wt/Frame	1086	5

CED	BW	WW	YW	Milk	TM	ME	HPG	CEM	Stay	Marb	YG	CW	REA	Fat
13	-2.7	59	94	19	49	1	10	8	16	0.49	0.08	22	0.16	0.02
TOP BREED %														

81 HLH RIGHT KIND 7298 3211

Birthdate: 3/5/13 Category: 1A 100% Tattoo: 3211 HLH Reg. #: 1605782



BUF CRK THE RIGHT KIND U199
LOOSLI RIGHT KIND 145
MISS LL NEW 418
SHOCO DATA
HLH MS DATA 2160 7298
HLH RAMY 0109 2160

BW	92	
WW/Ratio	577	91
YW/Ratio	1011	89
ADG	2.7	
Scrotal/FS	34	4.4
IMF/REA		
Dam's MPPA/Age	99.1	6
Dam's Wt/Frame	1556	6

CED	BW	WW	YW	Milk	TM	ME	HPG	CEM	Stay	Marb	YG	CW	REA	Fat
5	0.6	55	75	19	47	1	12	6	14	0.47	0.03	15	0.03	-0.01
TOP BREED %														
36%	83%	49%	72%	43%	43%	47%	11%	28%	14%	38%	59%	61%	68%	22%

TWIN

82 HLH HUGHES 8028 3109

CALVING EASE

Birthdate: 2/25/13 Category: 1B 99.9% Tattoo: 3109 HLH Reg. #: 1605802



BASIN HOBO 0545
BIEBER H HUGHES W109
BASIN ROSE 06T0
OHRD DAKOTA COPPER 29K
HLH MS COPPER 6135 8028
HLH MS SHY ANN 1009 6135

BW	75	
WW/Ratio	600	95
YW/Ratio	1010	89
ADG	2.6	
Scrotal/FS	35	4.5
IMF/REA	4.61	12.78
Dam's MPPA/Age	97.8	5
Dam's Wt/Frame	1248	5

CED	BW	WW	YW	Milk	TM	ME	HPG	CEM	Stay	Marb	YG	CW	REA	Fat
5	-5.2	56	77	21	49	3	10	9	16	0.53	0.09	8	0.14	0.04
TOP BREED %														
36%	4%	46%	68%	27%	30%	67%	57%	5%	4%	26%	82%	81%	46%	93%

83 HLH LANCER 0096 3261

Birthdate: 3/7/13 Category: 1B 99.9% Tattoo: 3261 HLH Reg. #: 1605488



BECKTON LANCER T A664
BKT SUFFEINA A828 DM
BECKTON CODY T085 K2
HLH MZ CODY 3086 0096
HLH MS CHEROKEE 651 3086

BW	83	
WW/Ratio	596	94
YW/Ratio	1198	105
ADG	3.8	
Scrotal/FS	36	4.9
IMF/REA	3.41	13.93
Dam's MPPA/Age	94.0	3
Dam's Wt/Frame	1286	5

CED	BW	WW	YW	Milk	TM	ME	HPG	CEM	Stay	Marb	YG	CW	REA	Fat
8	-2.1	56	95	10	38	2	7	3	13	0.52	-0.03	24	0.38	0.00
TOP BREED %														
15%	33%	45%	29%	97%	90%	55%	94%	72%	20%	28%	32%	34%	13%	43%

Hall & Pokorny Bulls

84 HLH GRANDUER 3026 3312

Birthdate:	Category:	Tattoo:	Reg. #	BW	80									
3/11/13	1A 100%	3312 HLH	1605666	WW/Ratio	622	98								
				YW/Ratio	1053	92								
				ADG	2.7									
				Scrotal/FS	35	4.7								
				IMF/REA	3.63	13.80								
				Dam's MPPA/Age	99.3	10								
				Dam's Wt/Frame	1484	5								
LJC MISSION STATEMENT P27 C-T GRAND STATEMENT 1025 C-T MISS PAN 0760 GLACIER CHATEAU 744 HLH MS CHATEAU 709 3026 HLH LIGHTN LASS 317 709														
CED	BW	WW	YW	Milk	TM	ME	HPG	CEM	Stay	Marb	YG	CW	REA	Fat
-1	-2.6	50	74	23	48	7	10	6	9	0.67	0.08	10	-0.09	0.01
TOP BREED %														
90%	25%	67%	75%	16%	36%	93%	55%	28%	68%	10%	79%	77%	88%	61%

85 HLH JUBILATION 8303 3447

Birthdate:	Category:	Tattoo:	Reg. #	BW	89									
4/9/13	1A 100%	3447 HLH	1605834	WW/Ratio	742	117								
				YW/Ratio	1235	109								
				ADG	3.1									
				Scrotal/FS	33	5.9								
				IMF/REA										
				Dam's MPPA/Age	106.7	5								
				Dam's Wt/Frame	1382	5								
RED HILL B571 JULIAN 84S BUF CRK JUBILATION X019 BUF CRK TAWN U241 NEO-SHO ICE BOX L795 HLH MS ICE0113 8303 HLH ROBBIE 624 0113														
CED	BW	WW	YW	Milk	TM	ME	HPG	CEM	Stay	Marb	YG	CW	REA	Fat
3	1.8	61	88	20	51	4	10	3	11	0.35	0.08	25	0.05	-0.01
TOP BREED %														
57%	95%	27%	44%	36%	21%	73%	42%	72%	42%	66%	79%	30%	64%	22%

86 HLH HUGHES 6002 3072

Birthdate:	Category:	Tattoo:	Reg. #	BW	78									
2/20/13	1B 99.9%	3072 HLH	1605722	WW/Ratio	638	101								
				YW/Ratio	1077	95								
				ADG	2.8									
				Scrotal/FS	34	5.2								
				IMF/REA	3.29	12.44								
				Dam's MPPA/Age	101.3	7								
				Dam's Wt/Frame	1372	5								
BASIN HOBO 0545 BIEBER H HUGHES W109 BASIN ROSE 06T0 LCC ABOVE & BEYOND 1300J HLH ABBIE 4014 6002 HLH MS JULES 20344014														
CED	BW	WW	YW	Milk	TM	ME	HPG	CEM	Stay	Marb	YG	CW	REA	Fat
11	-5.0	57	82	24	53	3	10	9	16	0.38	0.17	11	-0.04	0.05
TOP BREED %														
5%	5%	41%	57%	11%	13%	61%	43%	5%	3%	59%	97%	73%	81%	97%

87 HLH JORDAN 1147 3063

Birthdate:	Category:	Tattoo:	Reg. #	BW	70									
2/17/13	1A 100%	3063 HLH	1605618	WW/Ratio	619	104								
				YW/Ratio	1181	101								
				ADG	3.5									
				Scrotal/FS	36	4.6								
				IMF/REA	4.43	13.77								
				Dam's MPPA/Age	101.6	2								
				Dam's Wt/Frame	1046	5								
TR JULIAN RT561 BECKTON JORDAN U520 BECKTON SUFFEINA P643 J TR EPIC ST618 HLH MS TR EPIC618 1157 1147 HLH MS TECH 218 1157														
CED	BW	WW	YW	Milk	TM	ME	HPG	CEM	Stay	Marb	YG	CW	REA	Fat
11	-3.7	53	89	17	43	-2	10	7	15	0.64	0.07	18	0.14	0.02
TOP BREED %														
5%	13%	59%	42%	66%	69%	28%	49%	17%	7%	13%	75%	53%	46%	78%

88 HLH JULIAN 8001 3221

Birthdate:	Category:	Tattoo:	Reg. #	BW	78									
3/5/13	1B 99.9%	3221 HLH	1605793	WW/Ratio	574	91								
				YW/Ratio	986	87								
				ADG	2.6									
				Scrotal/FS	36	5.1								
				IMF/REA	3.38	14.46								
				Dam's MPPA/Age	101.1	5								
				Dam's Wt/Frame	NA	NA								
BECKTON JULIAN GG B571 RED HILL B571 JULIAN 84S BECKTON BARMAID M554 CH BECKTON HALFMANNHUSTLER R588 HLH MS HUSTLER 6007 8001 HLH ABBIE 4257 6007														
CED	BW	WW	YW	Milk	TM	ME	HPG	CEM	Stay	Marb	YG	CW	REA	Fat
17	-6.1	45	61	17	39	-1	11	9	15	0.41	0.00	-3	0.13	0.02
TOP BREED %														
1%	2%	83%	91%	65%	85%	33%	26%	5%	7%	51%	45%	96%	48%	78%

89 HLH CONQUEST 1110 3050

Birthdate:	Category:	Tattoo:	Reg. #	BW	70									
2/12/13	1A 100%	3050 HLH	1605607	WW/Ratio	619	104								
				YW/Ratio	1251	107								
				ADG	3.9									
				Scrotal/FS	37	5.3								
				IMF/REA	4.52	12.01								
				Dam's MPPA/Age	101.6	2								
				Dam's Wt/Frame	1006	5								
BECKTON JULIAN GG B571 HXC CONQUEST 4405P HXC ELLIE MAY MA638 BUF CRK BRAVADO U013 HLH MS BRAVADO 2148 1110 HLH MS TECH 706 2148														
CED	BW	WW	YW	Milk	TM	ME	HPG	CEM	Stay	Marb	YG	CW	REA	Fat
12	-3.3	55	93	21	48	3	8	7	13	0.61	0.11	21	0.10	0.02
TOP BREED %														
3%	17%	49%	33%	33%	35%	62%	86%	17%	21%	15%	87%	43%	53%	78%



Brad

91 HLH RIGHT KIND 6176 3117

Birthdate:	Category:	Tattoo:	Reg. #	BW	76									
2/26/13	1A 100%	3117 POKE	1605747	WW/Ratio	616	97								
				YW/Ratio	1120	98								
				ADG	3.2									
				Scrotal/FS	36	5.0								
				IMF/REA	3.86	14.51								
				Dam's MPPA/Age	95.7	7								
				Dam's Wt/Frame	1672	6								
BUF CRK THE RIGHT KIND U199 LOOSLI RIGHT KIND 145 MISS LL NEW 418 BUF CRK JULESBURG L048 POKE MS JULES 839 6176 HLH LIGHTN LASS 512 839														
CED	BW	WW	YW	Milk	TM	ME	HPG	CEM	Stay	Marb	YG	CW	REA	Fat
5	-3.1	47	70	19	43	-3	13	4	14	0.40	-0.03	7	0.11	-0.01
TOP BREED %														
36%	19%	78%	81%	43%	70%	24%	5%	58%	12%	54%	32%	83%	51%	22%

Hall & Pokorny Bulls

100 POKE LANCER 0011 3433

CALVING EASE

Birthdate: 4/2/13 Category: 1A 100% Tattoo: 3433 POKE Reg. #: 1605455



BECKTON LANCER T A664
BECKTON LANCER F442 T
 BKT SUFFEINA A828 DM
 RED CROWFOOT OLE'S OSCAR
POKE OSCAR'S MS 8170 0011
 POKE MAJORETTE 5011 8170

BW	78	
WW/Ratio	582	92
YW/Ratio	1184	104
ADG	3.8	
Scrotal/FS	37	4.3
IMF/REA		
Dam's MPPA/Age	99.7	3
Dam's Wt/Frame	1056	5

CED	BW	WW	YW	Milk	TM	ME	HPG	CEM	Stay	Marb	YG	CW	REA	Fat	
6	-3.6	49	84	14	38	1	6	6	12	0.58	-0.06	15	0.39	0.00	
TOP BREED %	28%	14%	72%	54%	86%	89%	46%	98%	28%	31%	19%	21%	62%	12%	43%

102 HLH HUGHES 6203 3137

Birthdate: 2/28/13 Category: 1A 100% Tattoo: 3137 HLH Reg. #: 1605753



BASIN HOBO 0545
BIEBER H HUGHES W109
 BASIN ROSE 06T0
 HALFMANN GOLDEN BEEF
HLH GOLDIE 908 6203
 HLH MS RAMI 734 908

BW	94	
WW/Ratio	637	101
YW/Ratio	1185	104
ADG	3.4	
Scrotal/FS	34	5.5
IMF/REA	3.01	14.86
Dam's MPPA/Age	95.1	7
Dam's Wt/Frame	1512	5

CED	BW	WW	YW	Milk	TM	ME	HPG	CEM	Stay	Marb	YG	CW	REA	Fat	
6	0.7	71	108	17	52	4	11	10	15	0.34	0.16	35	0.14	0.03	
TOP BREED %	28%	84%	6%	10%	66%	15%	73%	28%	3%	7%	68%	96%	8%	46%	87%

104 HLH RIGHT KIND 8063 3098

Birthdate: 2/24/13 Category: 1A 100% Tattoo: 3098 HLH Reg. #: 1605813



BUF CRK THE RIGHT KIND U199
LOOSLI RIGHT KIND 145
 MISS LL NEW 418
 BUF CRK LANCER R095
HLH LANCERS MS 6136 8063
 HLH MS DATA 2122 6136

BW	83	
WW/Ratio	614	97
YW/Ratio	1151	101
ADG	3.4	
Scrotal/FS	36	5.0
IMF/REA	3.42	14.50
Dam's MPPA/Age	98.2	5
Dam's Wt/Frame	1390	5

CED	BW	WW	YW	Milk	TM	ME	HPG	CEM	Stay	Marb	YG	CW	REA	Fat	
10	-3.0	46	71	22	45	-2	12	6	15	0.51	-0.05	8	0.14	-0.02	
TOP BREED %	8%	20%	81%	79%	23%	59%	29%	13%	28%	8%	30%	25%	81%	46%	12%



Cade

101 HLH JULIAN 1322 3007

CALVING EASE

Birthdate: 2/2/13 Category: 1B 99.9% Tattoo: 3007 HLH Reg. #: 1605909



BECKTON JULIAN GG B571
RED HILL B571 JULIAN 84S
 BECKTON BARMAID M554 CH
 BUF CRK BRAVADO U013
HLH MS BRAVADO 4061 1322
 HLH ABBIE 1121 4061

BW	55	
WW/Ratio	525	TW
YW/Ratio	1320	TW
ADG	5.0	
Scrotal/FS	38	4.7
IMF/REA	4.55	15.18
Dam's MPPA/Age	93	2
Dam's Wt/Frame	1086	5

CED	BW	WW	YW	Milk	TM	ME	HPG	CEM	Stay	Marb	YG	CW	REA	Fat	
13	-2.7	59	94	19	49	1	10	8	16	0.49	0.08	22	0.16	0.02	
TOP BREED %	2%	24%	35%	32%	43%	31%	44%	46%	10%	5%	34%	79%	40%	42%	78%

TWIN

103 POKE FRANKLIN 9035 3305

Birthdate: 3/10/13 Category: 1A 100% Tattoo: 3305 POKE Reg. #: 1605848



ARO TRIPLE PLAY 503
CRS DIAMND FRANKLIN 988
 RRS CHEROKEE ROBIN 4017
 BUF CRK LANCER R095
HLH LANCERS MS 7015 9035
 HLH ABBIE 5034 7015

BW	82	
WW/Ratio	663	105
YW/Ratio	1027	90
ADG	2.3	
Scrotal/FS	35	5.2
IMF/REA	3.07	14.26
Dam's MPPA/Age	102.0	4
Dam's Wt/Frame	1184	5

CED	BW	WW	YW	Milk	TM	ME	HPG	CEM	Stay	Marb	YG	CW	REA	Fat	
8	-3.3	60	70	16	46	0	14	3	10	0.48	-0.01	5	0.21	0.02	
TOP BREED %	15%	17%	31%	81%	75%	53%	39%	4%	72%	63%	36%	40%	86%	33%	78%

105 HLH HOBO DESIGN 10593044

CALVING EASE

Birthdate: 2/11/13 Category: 1B 99.9% Tattoo: 3044 HLH Reg. #: 1605586



LJC MISSION STATEMENT P27
SMBA LIDDY'S MISSION Y60
 SMBA LIL LIDDY U15
 BECKTON CODY K2 R168
HLH MS C168 8028 1059
 HLH MS COPPER 6135 8028

BW	70	
WW/Ratio	570	96
YW/Ratio	1062	91
ADG	3.1	
Scrotal/FS	36	5.0
IMF/REA	4.21	12.88
Dam's MPPA/Age	98.4	2
Dam's Wt/Frame	1190	5

CED	BW	WW	YW	Milk	TM	ME	HPG	CEM	Stay	Marb	YG	CW	REA	Fat	
8	-4.3	55	85	19	47	8	10	6	12	0.33	0.00	15	0.24	0.01	
TOP BREED %	15%	9%	50%	50%	46%	46%	94%	52%	28%	36%	71%	45%	64%	28%	61%

106 HLH ENDEAVOR 6079 3335

Birthdate: 3/12/13 Category: 1A 100% Tattoo: 3335 HLH Reg. #: 1605730



LCHMN ENTERPRISE 1370H
LSF ENDEAVOR 1431Y
 BUF CRK KANSAS L033
 SHOCO DATA
HLH MS DATA 2152 6079
 HLH MS CAP 720 2152

BW	88	
WW/Ratio	605	96
YW/Ratio	1188	104
ADG	3.6	
Scrotal/FS	36	6.0
IMF/REA	3.01	15.23
Dam's MPPA/Age	93.2	7
Dam's Wt/Frame	1426	5

CED	BW	WW	YW	Milk	TM	ME	HPG	CEM	Stay	Marb	YG	CW	REA	Fat	
6	-1.4	55	90	20	47	6	10	6	11	0.40	0.04	22	0.20	0.01	
TOP BREED %	28%	45%	49%	40%	42%	42%	87%	58%	28%	49%	54%	63%	40%	35%	61%

Hall & Pokorny Bulls



Lot 107



Lot 108



Lot 109

110 HLH JULIAN 7251 3341

Birthdate: 3/13/13 Category: 1B 99.9% Tattoo: 3341 HLH Reg. #: 1605776



BECKTON JULIAN GG B571
RED HILL B571 JULIAN 84S
 BECKTON BARMAID M554 CH
 SHOCO DATA
HLH MS DATA 2076 7251
 HLH RAMY 070 2076

BW	89
WW/Ratio	593 94
YW/Ratio	1104 97
ADG	3.3
Scrotal/FS	33 4.5
IMF/REA	3.18 13.91
Dam's MPPA/Age	100.4 6
Dam's Wt/Frame	1562 6

CED	BW	WW	YW	Milk	TM	ME	HPG	CEM	Stay	Marb	YG	CW	REA	Fat
12	-1.8	55	83	17	45	0	11	8	14	0.37	0.05	17	0.18	0.02
TOP BREED %														
3%	38%	49%	56%	64%	59%	39%	31%	10%	9%	61%	67%	57%	38%	78%

107 HLH JAMMER 0313 3372

Birthdate: 3/16/13 Category: 1B 99.9% Tattoo: 3372 HLH Reg. #: 1605562



BECKTON JULIAN GG B571
BUF CRK JAMMER W025
 BUF CRK AMBER 3912
 BUF CRK LANCE R102
HLH MS LANCE 7026 0313
 HLH ABBIE 5172 7026

BW	92
WW/Ratio	732 116
YW/Ratio	1345 118
ADG	3.9
Scrotal/FS	38 5.3
IMF/REA	
Dam's MPPA/Age	104.6 3
Dam's Wt/Frame	1220 5

CED	BW	WW	YW	Milk	TM	ME	HPG	CEM	Stay	Marb	YG	CW	REA	Fat
12	0.3	75	119	17	54	4	9	7	14	0.53	0.12	41	0.18	0.01
TOP BREED %														
3%	78%	3%	3%	65%	8%	69%	72%	17%	16%	26%	90%	3%	38%	61%

108 HLH LANCER 0277 3370

Birthdate: 3/16/13 Category: 1B 99.9% Tattoo: 3370 HLH Reg. #: 1605555



BECKTON LANCER T A664
BECKTON LANCER F442 T
 BKT SUFFEINA A828 DM
 PERKS CHATEAU 213R
HLH MS PERKS 5164 0277
 HLH MS JULES 1111 5164

BW	88
WW/Ratio	606 96
YW/Ratio	1111 97
ADG	3.2
Scrotal/FS	36 4.5
IMF/REA	
Dam's MPPA/Age	99.7 3
Dam's Wt/Frame	1082 5

CED	BW	WW	YW	Milk	TM	ME	HPG	CEM	Stay	Marb	YG	CW	REA	Fat
6	-1.4	51	75	14	39	1	8	5	13	0.32	-0.12	13	0.43	-0.02
TOP BREED %														
28%	45%	66%	72%	84%	85%	49%	89%	42%	22%	73%	9%	69%	9%	12%

109 HLH JAMMER 0037 3355

Birthdate: 3/14/13 Category: 1A 100% Tattoo: 3355 HLH Reg. #: 1605462



BECKTON JULIAN GG B571
BUF CRK JAMMER W025
 BUF CRK AMBER 3912
 BUF CRK LANCE R102
HLH MS LANCE 8166 0037
 HLH GRAND LADY 0109 8166

BW	86
WW/Ratio	580 92
YW/Ratio	1155 101
ADG	3.6
Scrotal/FS	36 4.8
IMF/REA	
Dam's MPPA/Age	98.6 3
Dam's Wt/Frame	1254 5

CED	BW	WW	YW	Milk	TM	ME	HPG	CEM	Stay	Marb	YG	CW	REA	Fat
10	-1.3	56	92	18	46	3	8	5	13	0.56	0.04	23	0.25	0.01
TOP BREED %														
8%	47%	47%	36%	53%	49%	64%	88%	42%	26%	22%	63%	36%	27%	61%

111 POKE MAC 9211 3218

Birthdate: 3/5/13 Category: 1B 99.9% Tattoo: 3218 POKE Reg. #: 1605891



BFCK CHEROKEE CNYN 4912
BC MAC
 SSS MISS TRICIA 024
 BIEBER MAKE MIMI 7249
HLH MS MIMI 3011 9211
 HLH MS BUSTER 1009 3011

BW	83
WW/Ratio	683 108
YW/Ratio	1187 104
ADG	3.2
Scrotal/FS	33 5.4
IMF/REA	3.50 15.86
Dam's MPPA/Age	104.4 4
Dam's Wt/Frame	1296 5

CED	BW	WW	YW	Milk	TM	ME	HPG	CEM	Stay	Marb	YG	CW	REA	Fat
9	-2.7	60	91	18	48	7	10	1	10	0.55	-0.01	20	0.24	-0.01
TOP BREED %														
11%	24%	31%	37%	57%	38%	90%	44%	90%	56%	23%	40%	46%	28%	22%

Hall & Pokorny Bulls

112 HLH OLY 6118 3105

CALVING EASE

Birthdate:	Category:	Tattoo:	Reg. #	BW	79	
2/25/13	1A 100%	3105 HLH	1605739	WW/Ratio	539	85
				YW/Ratio	1102	97
				ADG	3.5	
				Scrotal/FS	32	4.7
				IMF/REA	2.75	12.27
				Dam's MPPA/Age	98.7	7
				Dam's Wt/Frame	1544	5

RED CROWFOOT OLE'S OSCAR
RED SSS OLY 554T
 RED SSS GOLD EDGE 77R
 LCC CHEYENNE B221L
HLH MS SHY ANN 085 6118
 HLH ROBBY 504 085

CED	BW	WW	YW	Milk	TM	ME	HPG	CEM	Stay	Marb	YG	CW	REA	Fat
-1	-4.6	56	100	17	45	-1	9	2	7	0.46	0.10	23	0.03	0.01
TOP BREED %														
90%	7%	45%	20%	62%	54%	33%	66%	82%	91%	40%	85%	36%	68%	61%

113 HLH LANCER 0185 3364

Birthdate:	Category:	Tattoo:	Reg. #	BW	86	
3/15/13	1B 99.8%	3364 HLH	1605529	WW/Ratio	614	97
				YW/Ratio	1124	99
				ADG	3.2	
				Scrotal/FS	34	4.5
				IMF/REA		
				Dam's MPPA/Age	99.4	3
				Dam's Wt/Frame	1356	5

BECKTON LANCER T A664
BECKTON LANCER F442 T
 BKT SUFFEINA A828 DM
 5L QUARTERBACK 1205-5337
HLH MS QB 4104 0185
 HLH MS JULES 1123 4104

CED	BW	WW	YW	Milk	TM	ME	HPG	CEM	Stay	Marb	YG	CW	REA	Fat
4	-0.4	58	82	10	39	1	9	5	14	0.55	-0.04	18	0.39	0.01
TOP BREED %														
46%	65%	40%	58%	97%	88%	45%	77%	42%	16%	23%	28%	53%	12%	61%

114 HLH JAMMER 0079 3408

Birthdate:	Category:	Tattoo:	Reg. #	BW	93	
3/23/13	1A 100%	3408 HLH	1605479	WW/Ratio	698	110
				YW/Ratio	1348	119
				ADG	4.1	
				Scrotal/FS	36	5.4
				IMF/REA		
				Dam's MPPA/Age	104.0	3
				Dam's Wt/Frame	1276	5

BECKTON JULIAN GG B571
BUF CRK JAMMER W025
 BUF CRK AMBER 3912
 5L SUMMIT 1145-6327
HLH MS SUMMIT 7304 0079
 HLH MAJORETTE 0109 7304

CED	BW	WW	YW	Milk	TM	ME	HPG	CEM	Stay	Marb	YG	CW	REA	Fat
8	1.7	72	115	15	51	5	10	5	15	0.58	0.15	41	0.15	0.01
TOP BREED %														
15%	94%	5%	4%	81%	22%	82%	52%	42%	7%	19%	94%	3%	44%	61%

115 HLH LANCER 0248 3234

CALVING EASE

Birthdate:	Category:	Tattoo:	Reg. #	BW	65	
3/6/13	1A 100%	3234 HLH	1605547	WW/Ratio	643	102
				YW/Ratio	1196	105
				ADG	3.5	
				Scrotal/FS	36	4.9
				IMF/REA	3.79	14.22
				Dam's MPPA/Age	101.4	3
				Dam's Wt/Frame	1154	5

BECKTON LANCER T A664
BECKTON LANCER F442 T
 BKT SUFFEINA A828 DM
 JULIAN CHEROKEE 3007
HLH JULIE 5003 0248
 HLH MS POWER 3009 5003

CED	BW	WW	YW	Milk	TM	ME	HPG	CEM	Stay	Marb	YG	CW	REA	Fat
11	-6.4	45	73	12	34	0	9	6	14	0.51	-0.09	4	0.27	-0.01
TOP BREED %														
5%	2%	82%	76%	93%	96%	38%	75%	28%	14%	30%	14%	88%	24%	22%

116 HLH HOBO DESIGN 1180 3260

Birthdate:	Category:	Tattoo:	Reg. #	BW	89	
3/7/13	1B 99.9%	3260 HLH	1605631	WW/Ratio	663	111
				YW/Ratio	1241	106
				ADG	3.7	
				Scrotal/FS	35	5.6
				IMF/REA	2.14	15.06
				Dam's MPPA/Age	104.4	2
				Dam's Wt/Frame	1082	5

LJC MISSION STATEMENT P27
SMBA LIDDY'S MISSION Y60
 SMBA LIL LIDDY U15
 TR EPIC ST618
HLH MS TR EPIC618 5047 1180
 HLH MS PONDER 2105 5047

CED	BW	WW	YW	Milk	TM	ME	HPG	CEM	Stay	Marb	YG	CW	REA	Fat
6	1.0	64	102	22	54	4	14	6	13	0.20	0.01	32	0.39	0.00
TOP BREED %														
28%	88%	18%	17%	22%	9%	71%	3%	28%	20%	90%	49%	13%	12%	43%

117 HLH JORDAN 1076 3088

CALVING EASE

Birthdate:	Category:	Tattoo:	Reg. #	BW	72	
2/23/13	1B 99.9%	3088 HLH	1605593	WW/Ratio	549	92
				YW/Ratio	1083	92
				ADG	3.4	
				Scrotal/FS	39	4.0
				IMF/REA	2.99	13.53
				Dam's MPPA/Age	96.8	2
				Dam's Wt/Frame	1248	5

TR JULIAN RT561
BECKTON JORDAN U520
 BECKTON SUFFEINA P643 J
 BECKTON CODY K2 R168
HLH MS C168 4211 1076
 HLH MS CHEROKEE 821 4211

CED	BW	WW	YW	Milk	TM	ME	HPG	CEM	Stay	Marb	YG	CW	REA	Fat
11	-3.8	53	86	15	41	3	7	3	13	0.51	0.04	16	0.12	0.01
TOP BREED %														
5%	12%	59%	49%	78%	77%	60%	92%	72%	23%	30%	63%	60%	50%	61%

118 HLH JULIAN 7063 3268

Birthdate:	Category:	Tattoo:	Reg. #	BW	86	
3/8/13	1A 100%	3268 HLH	1605762	WW/Ratio	602	95
				YW/Ratio	1128	99
				ADG	3.3	
				Scrotal/FS	35	4.7
				IMF/REA	3.82	13.75
				Dam's MPPA/Age	96.8	6
				Dam's Wt/Frame	1434	5

BECKTON JULIAN GG B571
RED HILL B571 JULIAN 84S
 BECKTON BARMAID M554 CH
 FHCC FRONTIER 3111
HLH MS FRONTIER 5184 7063
 HLH MS POWER 0113 5184

CED	BW	WW	YW	Milk	TM	ME	HPG	CEM	Stay	Marb	YG	CW	REA	Fat
13	-3.3	48	75	18	42	-2	11	7	14	0.47	0.03	10	0.06	0.01
TOP BREED %														
2%	17%	74%	73%	52%	71%	27%	28%	17%	14%	38%	59%	77%	62%	61%

119 HLH BRAVADO 0228 3263

CALVING EASE

Birthdate:	Category:	Tattoo:	Reg. #	BW	77	
3/8/13	1A 100%	3263 HLH	1605540	WW/Ratio	624	99
				YW/Ratio	1096	96
				ADG	2.9	
				Scrotal/FS	38	4.7
				IMF/REA	3.31	13.23
				Dam's MPPA/Age	102.6	3
				Dam's Wt/Frame	1154	5

BUF CRK MEDALLION N328
BUF CRK BRAVADO U013
 BUF CRK ANASCO S101
 BUF CRK LANCE R102
HLH MS LANCE 7289 0228
 HLH MAJORETTE 827 7289

CED	BW	WW	YW	Milk	TM	ME	HPG	CEM	Stay	Marb	YG	CW	REA	Fat
5	-2.4	55	85	21	48	3	11	3	13	0.53	0.08	17	0.04	0.01
TOP BREED %														
36%	28%	49%	52%	30%	34%	67%	36%	72%	24%	26%	79%	56%	66%	61%

Hall & Pokorny Bulls

120 POKE FRANKLIN 9040 3172

Birthdate:	Category:	Tattoo:	Reg. #	BW	91														
3/2/13	1A 100%	3172 POKE	1605849	WW/Ratio	652	103													
				YW/Ratio	1218	107													
				ADG	3.5														
				Scrotal/FS	35	5.3													
				IMF/REA	4.27	12.40													
				Dam's MPPA/Age	98.9	4													
				Dam's Wt/Frame	1382	5													
				CED	BW	WW	YW	Milk	TM	ME	HPG	CEM	Stay	Marb	YG	CW	REA	Fat	
				3	0.2	69	106	11	45	0	10	-1	9	0.57	0.18	33	0.01	0.02	
				TOP BREED %	57%	76%	8%	12%	95%	55%	38%	42%	97%	72%	20%	97%	12%	72%	78%

ARO TRIPLE PLAY 503
CRS DIAMND FRANKLIN 988
 RRS CHEROKEE ROBIN 4017
 BECKTON NEBULA M045
HLH MS NEBULA 7326 9040
 HLH MS ICY 901 7326

121 POKE MAC 9125 3239

Birthdate:	Category:	Tattoo:	Reg. #	BW	99														
3/6/13	1B 99.9%	3239 POKE	1605868	WW/Ratio	701	111													
				YW/Ratio	1276	112													
				ADG	3.7														
				Scrotal/FS	36	6.1													
				IMF/REA	4.09	14.52													
				Dam's MPPA/Age	104.0	4													
				Dam's Wt/Frame	1466	5													
				CED	BW	WW	YW	Milk	TM	ME	HPG	CEM	Stay	Marb	YG	CW	REA	Fat	
				2	2.0	70	115	23	58	7	11	0	11	0.51	0.19	41	0.04	0.02	
				TOP BREED %	67%	95%	7%	5%	18%	3%	90%	31%	94%	53%	30%	98%	3%	66%	78%

BFCK CHEROKEE CNYN 4912
BC MAC
 SSS MISS TRICIA 024
 BECKTON EPIC KM M115
HLH MS EPIC 4216 9125
 HLH MS CHATEAU 955 4216

122 HLH JULIAN 5189 3292

Birthdate:	Category:	Tattoo:	Reg. #	BW	95														
3/9/13	1A 100%	3292 HLH	1605719	WW/Ratio	636	100													
				YW/Ratio	1122	98													
				ADG	3.0														
				Scrotal/FS	40	5.7													
				IMF/REA	3.96	15.61													
				Dam's MPPA/Age	100.7	8													
				Dam's Wt/Frame	1604	5													
				CED	BW	WW	YW	Milk	TM	ME	HPG	CEM	Stay	Marb	YG	CW	REA	Fat	
				7	1.4	63	88	15	46	-1	13	6	16	0.43	0.05	24	0.26	0.02	
				TOP BREED %	21%	92%	23%	44%	78%	47%	32%	9%	28%	4%	47%	67%	33%	25%	78%

BECKTON JULIAN GG B571
RED HILL B571 JULIAN 84S
 BECKTON BARMAID M554 CH
 BUF CRK JULESBURG L048
HLH MS JULES 715 5189
 HLH EXPLOR LASS 504 715

123 HLH BRAVADO 0141 3374

Birthdate:	Category:	Tattoo:	Reg. #	BW	84														
3/16/13	1B 99.9%	3374 HLH	1605510	WW/Ratio	628	99													
				YW/Ratio	1116	98													
				ADG	3.1														
				Scrotal/FS	32	5.0													
				IMF/REA															
				Dam's MPPA/Age	98.3	3													
				Dam's Wt/Frame	1230	5													
				CED	BW	WW	YW	Milk	TM	ME	HPG	CEM	Stay	Marb	YG	CW	REA	Fat	
				5	-0.7	58	89	17	46	5	10	6	12	0.61	0.13	22	0.04	0.02	
				TOP BREED %	36%	59%	38%	42%	61%	47%	80%	50%	28%	29%	15%	92%	40%	66%	78%

BUF CRK MEDALLION N328
BUF CRK BRAVADO U013
 BUF CRK ANASCO S101
 BECKTON LANCER F442 T
HLH MS LANCER 1078 0141
 HLH MS CHATEAU 884 1078

124 HLH JULIAN 7237 3185

Birthdate:	Category:	Tattoo:	Reg. #	BW	95														
3/3/13	1B 99.9%	3185 HLH	1605773	WW/Ratio	666	105													
				YW/Ratio	1118	98													
				ADG	2.9														
				Scrotal/FS	35	4.8													
				IMF/REA	3.24	14.20													
				Dam's MPPA/Age	101.8	6													
				Dam's Wt/Frame	1286	5													
				CED	BW	WW	YW	Milk	TM	ME	HPG	CEM	Stay	Marb	YG	CW	REA	Fat	
				11	-0.7	61	91	19	49	0	10	7	13	0.43	0.05	23	0.17	0.01	
				TOP BREED %	5%	59%	27%	38%	48%	28%	39%	44%	17%	20%	47%	67%	37%	40%	61%

BECKTON JULIAN GG B571
RED HILL B571 JULIAN 84S
 BECKTON BARMAID M554 CH
 LCC CHEYENNE B221L
HLH SHYANN 7108 7237
 HLH MS COPPER 830 7108

125 HLH GRANDUER 6007 3119

CALVING EASE

Birthdate:	Category:	Tattoo:	Reg. #	BW	67														
2/27/13	1B 99.9%	3119 HLH	1605724	WW/Ratio	553	87													
				YW/Ratio	1029	90													
				ADG	3.0														
				Scrotal/FS	38	4.5													
				IMF/REA	2.79	13.19													
				Dam's MPPA/Age	97.5	7													
				Dam's Wt/Frame	1252	5													
				CED	BW	WW	YW	Milk	TM	ME	HPG	CEM	Stay	Marb	YG	CW	REA	Fat	
				6	-7.3	38	60	25	43	4	13	8	11	0.66	0.09	-4	-0.14	0.03	
				TOP BREED %	28%	1%	94%	91%	9%	66%	76%	6%	10%	48%	11%	82%	97%	94%	87%

LJC MISSION STATEMENT P27
C-T GRAND STATEMENT 1025
 C-T MISS PAN 0760
 LCC ABOVE & BEYOND 1300J
HLH ABBIE 4257 6007
 HLH MS JULES 082 4257

126 HLH JORDAN 1135 3101

CALVING EASE

Birthdate:	Category:	Tattoo:	Reg. #	BW	75														
2/24/13	1B 99.9%	3101 HLH	1605614	WW/Ratio	581	98													
				YW/Ratio	1185	101													
				ADG	3.8														
				Scrotal/FS	35	4.5													
				IMF/REA	3.28	13.87													
				Dam's MPPA/Age	99.2	2													
				Dam's Wt/Frame	992	5													
				CED	BW	WW	YW	Milk	TM	ME	HPG	CEM	Stay	Marb	YG	CW	REA	Fat	
				13	-3.1	54	91	16	43	3	8	8	13	0.70	0.06	20	0.10	0.01	
				TOP BREED %	2%	19%	52%	37%	73%	69%	65%	86%	10%	21%	8%	71%	45%	53%	61%

TR JULIAN RT561
BECKTON JORDAN U520
 BECKTON SUFFEINA P643 J
 5L QUARTERBACK 1205-5337
HLH MS QB 3011 1135
 HLH MS BUSTER 1009 3011

127 HLH FRANKLIN 7061 3371

Birthdate:	Category:	Tattoo:	Reg. #	BW	87														
3/16/13	1B 99.9%	3371 HLH	1605761	WW/Ratio	612	97													
				YW/Ratio	1110	97													
				ADG	3.2														
				Scrotal/FS	35	5.0													
				IMF/REA															
				Dam's MPPA/Age	100.9	6													
				Dam's Wt/Frame	1262	5													
				CED	BW	WW	YW	Milk	TM	ME	HPG	CEM	Stay	Marb	YG	CW	REA	Fat	
				7	-2.5	62	82	12	43	1	13	1	9	0.48	-0.01	15	0.38	0.02	
				TOP BREED %	21%	27%	26%	57%	91%	69%	45%	10%	90%	73%	36%	40%	64%	13%	78%

ARO TRIPLE PLAY 503
CRS DIAMND FRANKLIN 988
 RRS CHEROKEE ROBIN 4017
 BECKTON LANCER F442 T
HLH MS LANCER 4037 7061
 HLH ABBIE 2049 4037

Hall & Pokorny Bulls

128 POKE ENDEAVOR 9197 3110

Birthdate:	Category:	Tattoo:	Reg. #	BW	84									
2/25/13	1A 100%	3110 POKE	1605888	WW/Ratio	663	105								
				YW/Ratio	1194	105								
				ADG	3.3									
				Scrotal/FS	37	5.5								
				IMF/REA	4.09	13.32								
				Dam's MPPA/Age	110.9	4								
				Dam's Wt/Frame	1324	5								
CED	BW	WW	YW	Milk	TM	ME	HPG	CEM	Stay	Marb	YG	CW	REA	Fat
4	-1.6	52	83	26	51	3	9	1	11	0.51	0.01	17	0.19	0.00
TOP BREED %														
46%	41%	63%	57%	6%	19%	66%	75%	90%	49%	30%	49%	56%	36%	43%



LCHMN ENTERPRISE 1370H
LSF ENDEAVOR 1431Y
 BUF CRK KANSAS L033
 BUF CRK LANCE R102
HLH LADY LANCE 6068 9197
 HLH MS SHY ANN 981 6086

129 HLH LANCER 0127 3404

Birthdate:	Category:	Tattoo:	Reg. #	BW	87									
3/23/13	1A 100%	3404 HLH	1605503	WW/Ratio	623	98								
				YW/Ratio	1179	104								
				ADG	3.5									
				Scrotal/FS	33	4.7								
				IMF/REA										
				Dam's MPPA/Age	100.6	3								
				Dam's Wt/Frame	1204	5								
CED	BW	WW	YW	Milk	TM	ME	HPG	CEM	Stay	Marb	YG	CW	REA	Fat
6	-1.5	51	73	16	41	-1	9	3	13	0.58	-0.10	11	0.33	-0.02
TOP BREED %														
28%	43%	66%	75%	74%	78%	32%	76%	72%	20%	19%	12%	73%	17%	12%



BECKTON LANCER T A664
BECKTON LANCER F442 T
 BKT SUFFEINA A828 DM
 FEDDES BIG SKY R9
HLH MS BIG SKY 2146 0127
 HLH MS TECH 002 2146



Cool drink of water

130 HLH ROCKY 0036 3097

Birthdate:	Category:	Tattoo:	Reg. #	BW	79									
2/24/13	1A 100%	3097 HLH	1605461	WW/Ratio	582	92								
				YW/Ratio	1249	110								
				ADG	4.2									
				Scrotal/FS	37	5.0								
				IMF/REA	2.49	15.49								
				Dam's MPPA/Age	96.9	3								
				Dam's Wt/Frame	1326	5								
CED	BW	WW	YW	Milk	TM	ME	HPG	CEM	Stay	Marb	YG	CW	REA	Fat
9	-3.4	50	95	14	39	-3	10	5	12	0.33	-0.01	22	0.32	0.00
TOP BREED %														
11%	16%	70%	30%	85%	88%	22%	59%	42%	31%	71%	40%	38%	18%	43%



BECKTON NEBULA M045
BUF CRK ROCKY W006
 BUF CRK RED PRIDE T057
 BUF CRK LANCE R102
HLH MS LANCE 8006 0036
 HLH MS HUSTLER 6045 8006

CALVING EASE

131 HLH JAMMER 0232 3455

Birthdate:	Category:	Tattoo:	Reg. #	BW	80									
4/14/13	1B 99.9%	3455 HLH	1605541	WW/Ratio	638	101								
				YW/Ratio	1203	106								
				ADG	3.6									
				Scrotal/FS	33	5.5								
				IMF/REA										
				Dam's MPPA/Age	101.4	3								
				Dam's Wt/Frame	1124	5								
CED	BW	WW	YW	Milk	TM	ME	HPG	CEM	Stay	Marb	YG	CW	REA	Fat
15	-4.1	56	89	19	47	5	10	8	14	0.58	0.03	17	0.16	0.01
TOP BREED %														
1%	10%	46%	42%	47%	44%	82%	52%	10%	11%	19%	59%	56%	42%	61%



BECKTON JULIAN GG B571
BUF CRK JAMMER W025
 BUF CRK AMBER 3912
 BUF CRK LANCER R095
HLH LANCERS MS 8020 0232
 HLH MS HUSTLER 6008 8020

CALVING EASE

132 HLH RIGHT KIND 6021 3075

Birthdate:	Category:	Tattoo:	Reg. #	BW	72									
2/20/13	1A 100%	3075 HLH	1605726	WW/Ratio	544	86								
				YW/Ratio	1037	91								
				ADG	3.1									
				Scrotal/FS	34	4.4								
				IMF/REA	3.03	13.71								
				Dam's MPPA/Age	99.2	7								
				Dam's Wt/Frame	1294	5								
CED	BW	WW	YW	Milk	TM	ME	HPG	CEM	Stay	Marb	YG	CW	REA	Fat
10	-5.5	39	64	24	44	1	11	8	13	0.49	0.03	1	0.00	0.01
TOP BREED %														
8%	3%	92%	87%	11%	64%	44%	37%	10%	20%	34%	59%	93%	74%	61%



BUF CRK THE RIGHT KIND U199
LOOSLI RIGHT KIND 145
 MISS LL NEW 418
 LCC ABOVE & BEYOND 1300J
HLH ABBIE 4224 6021
 HLH MS CHATEAU 840 4224

CALVING EASE



Hall & Pokorny Bulls

133 HLH BRAVADO 0301 3282

CALVING EASE

Birthdate: 3/9/13 Category: 1A 100% Tattoo: 3282 HLH Reg. #: 1605559



BUF CRK MEDALLION N328
BUF CRK BRAVADO U013
 BUF CRK ANASCO S101
 JULIAN CHEROKEE 3007
HLH JULIE 6127 0301
 HLH MAJORETTE 709 6127

BW	74	
WW/Ratio	591	93
YW/Ratio	1096	96
ADG	3.2	
Scrotal/FS	34	4.2
IMF/REA	3.61	13.83
Dam's MPPA/Age	94.6	3
Dam's Wt/Frame	1092	5

CED	BW	WW	YW	Milk	TM	ME	HPG	CEM	Stay	Marb	YG	CW	REA	Fat
7	-3.6	50	77	22	47	5	12	4	13	0.55	0.10	11	-0.05	0.02
TOP BREED %														
21%	14%	68%	68%	21%	43%	77%	15%	58%	25%	23%	85%	74%	83%	78%

134 POKE RIGHT KIND 145 4020 3204



BUF CRK THE RIGHT KIND U199
LOOSLI RIGHT KIND 145
 MISS LL NEW 418
 LCC ABOVE & BEYOND 1300J
POKE ABBIE 2043 4020
 POKE CHERI 839 2043

BW	95	
WW/Ratio	707	112
YW/Ratio	1181	104
ADG	3.0	
Scrotal/FS	34	4.9
IMF/REA	3.52	15.55
Dam's MPPA/Age	104.8	9
Dam's Wt/Frame	NA	NA

CED	BW	WW	YW	Milk	TM	ME	HPG	CEM	Stay	Marb	YG	CW	REA	Fat
9	0.7	66	93	21	54	-1	11	5	14	0.50	0.04	26	0.18	-0.01
TOP BREED %														
11%	84%	14%	33%	26%	8%	36%	33%	42%	16%	32%	63%	27%	38%	22%

135 HLH LANCER 0194 3323

CALVING EASE

Birthdate: 3/12/13 Category: 1B 99.9% Tattoo: 3323 HLH Reg. #: 1605533



BECKTON LANCER T A664
BECKTON LANCER F442 T
 BKT SUFFEINA A828 DM
 BUF CRK LANCER R095
HLH LANCERS MS 8043 0194
 HLH MS COPPER 6069 8043

BW	81	
WW/Ratio	699	110
YW/Ratio	1156	101
ADG	2.9	
Scrotal/FS	36	5.2
IMF/REA	3.30	14.93
Dam's MPPA/Age	103.7	3
Dam's Wt/Frame	1214	5

CED	BW	WW	YW	Milk	TM	ME	HPG	CEM	Stay	Marb	YG	CW	REA	Fat
6	-2.2	57	80	13	42	1	8	5	15	0.48	-0.12	14	0.42	-0.02
TOP BREED %														
28%	31%	41%	63%	89%	76%	47%	86%	42%	7%	36%	9%	66%	10%	12%

136 HLH HOBO DESIGN 1173 3429



5L HOBO DESIGN 273-7047
LSF HOBO DESIGN 1066Y
 LSF SANDY S6060 U8067
 BECKTON NEBULA P P707
HLH MS NEBP707 0109 1173
 HLH DAISY 308 0109

BW	88	
WW/Ratio	622	105
YW/Ratio	1101	103
ADG	3.0	
Scrotal/FS	36	5.3
IMF/REA		
Dam's MPPA/Age	102.0	2
Dam's Wt/Frame	1180	5

CED	BW	WW	YW	Milk	TM	ME	HPG	CEM	Stay	Marb	YG	CW	REA	Fat
8	0.9	72	110	23	59	4	12	7	15	0.90	0.15	36	0.07	0.01
TOP BREED %														
15%	87%	5%	8%	14%	2%	69%	15%	17%	6%	2%	94%	7%	60%	61%

Terms & Conditions

The terms of the sale are cash and settlement must be made immediately after the completion of the auction.

The auctioneer will settle any disputes on bids and his decision will be final.

Phone bids will be accepted and will be handled in strict confidence.

Each animal becomes buyer's risk after being sold by the auctioneer.

All bulls are guaranteed to be breeders by the seller and sell fully guaranteed as outlined in the RAAA Code of Ethical Sale Practices.

A certificate of registry for each animal will be transferred to the buyer at the seller's expense.

Everyone attending this sale does so at their own risk. The owners, sale barn, auctioneer, sale manager, clerks and other helpers do not assume responsibility, legal or otherwise, for damages of any kind.





**Lamoine Hall
1941 – 2013**

On Oct. 26, 2013, we said goodbye to our husband, father and grandfather after a courageous battle to cancer.

Lamoine Hall, son of Elmer and Frances (Santo) Hall, was born Jan. 25, 1941, at Stapleton, Neb. He was a graduate of Stapleton High School and the University of Nebraska-Lincoln where he was a member of R.B Warren's successful livestock judging teams of 1962 and 1963. During the fall of 1963, they won every contest, except for the International in Chicago. No other UNL team has ever been able to match that. Following graduation, Lamoine worked at the Fort Robinson UNL Beef Research Station, near Crawford, Neb., heading up research on beef crossbreeding. Lamoine's judging abilities were in demand at livestock competitions and fairs during the summers.



On Oct. 11, 1969, Lamoine married Helen Serres at Harrison, Neb. The couple made their home near Bartlett, Neb., where Lamoine managed Wagonhammer Cattle Co.

until his retirement in 1999. In 1976, Lamoine and Helen started their registered Red Angus cattle herd that is continued on by his oldest daughter Paula, and her husband Brad Pokorny.

He is survived by his wife Helen Hall of Bartlett, Neb.; two daughters and their families – Paula and Brad Pokorny and their children Gade, Cauby and Dane of Stapleton, Neb.; Cris and Rodney Hoelscher and their children Loren, Paige, Brooke, Evan and Isaac of Linwood, Neb.; and one sister Mary Scholz and husband Stan of Scottsdale, Ariz.; and numerous nieces and nephews.

Lamoine was preceded in death by his parents.



WHEN THE BOSS IS GONE

When the boss has left the coffee shop, the boys they don't know what to do.
Conversation has no direction; it's scattered; it's lost all its glue.

When the boss was here, he'd listen to a fuss and with a glint he might even provoke.
But when the fight had gone on long enough, he'd respond and it would settle like smoke.

Humble men don't want to be boss; they don't like to be thought of that way.
But it's others that elect a man the boss, for what he knows, not what he can say.

Like most, our boss was a quiet man, who would communicate with a nod or a smile.
He could say more, by saying less than folks who drone words on for a mile.

I'm not sure what his schedule is now no doubt his new boys elected him boss.
Even Will Rogers, Einstein, John Wayne and the rest, they need someone when they get lost.

And besides, our boss is teaching things to these great folks, but ignorant I fear.
Especially in heaven, they need to understand about, tall grass, red cows, and red beer.

Though most don't know how to say it, the boys miss our boss and his ways.
His chair is usually left empty, and out of respect things are calmer these days.

We're also sure he drops by now and then to make sure things are going right and all.
About nine o'clock every morning, our friends still see you there, Mr. Hall.



There is a tradition in Montana, that when a friend passes, his friend would write a cowboy poem about some aspect of their friendship. It is frequently some of the worst Cowboy Poetry you could ever hear, but it comes from the heart. This is a short poem I wrote for Lamoine. – Ralph Rogers, Winifred MT

HALL~POKORNY

Red Angus

Helen Hall
P.O. Box 25 • Bartlett, NE 68622
(308) 654-3220
www.hallredangus.com

FIRST CLASS
US POSTAGE
PAID
UNITED PRINTING

38th Annual Production Sale

**THURSDAY,
MARCH 13, 2014**

1:30 p.m.
Lincoln County Fairgrounds
North Platte, Nebraska

Selling

130 Yearling Red Angus Bulls

Moderate Framed • Low Maintenance

Muscular • Calving Ease

Volume Discounts



Brad & Paula Pokorny
308-636-2275
76 County Road 230 • Stapleton, NE 69163
bbpokorny@gpcom.net



Helen Hall
308-654-3220
83222 Rodeo Lane • Bartlett, NE 68622
hallreds@nntc.net

Visit our website at www.hallredangus.com for more information.