

Get-Back-To-Grass

Lowline Sale

Saturday, October 10, 2015

Red River Livestock Market • Overbrook, Oklahoma

Offering 54 Lots:

- 22** Fullblood Females,
several with calves at side
- 22** Percentage Females
- 1** Embryo Package
- 6** Fullblood and Percentage Bulls
- 1** Prospect Steer

Sponsored By:

**Southwest Lowline Angus
Breeders Association**

www.slaba.us

Bill Cabaniss, President
Taylor, TX

Can't attend the sale?
Watch and bid online:

LIVE ON THE INTERNET. LIVE AUDIO. VIDEO.
LiveAuctions.TV



Get-Back-To-Grass *Lowline Sale* *Saturday, October 10, 2015*

Red River Livestock Market • Overbrook, Oklahoma • 1 p.m. CDT

Sale Day Phone:

Neil Effertz, cell 701-471-0153
Red River Livestock Market 580-226-6933

Sale Location:

Red River Livestock Market
238 Lodge Rd, Overbrook, OK • 580-226-6933
7 miles south of Ardmore just off I 35, exit 24,
on the northeast side of the exit.

Area Motel:

Winstar World Casino and Resort
777 Casino Ave, Thackerville OK 73459 580-276-4229

Quality Hotel
2705 West Broadway, Ardmore OK 73401 580-223-7130

Comfort Inn and Suites
410 Railway Express St., Ardmore OK 73401 580-490-9996

Special Representatives:

Dean Pike, American Lowline Registry 303-810-7605

Schedule of Events:

10:00 a.m. Picture This!
A good picture is one of a cattleman's best marketing tools. Learn to take better pictures and use them effectively in your marketing program. Kendall Harsh of Focus Marketing Group will present a livestock photography workshop on Saturday morning before the sale at 10 a.m. This is a great opportunity – plan to attend!

12 Noon Lunch sponsored by SLABA

1:00 p.m. Get-Back-To-Grass Sale



Supplement Sheet:

Updated breeding information, photos, video and other data will be posted on our website: www.auctioneffertz.com.

Registration Papers:

All of the sale cattle are registered with the American Lowline Registry. Registration papers will be transferred to the buyer promptly after the sale at the seller's expense.

Trucking:

Auction Effertz, Ltd. will assist in making trucking arrangements.

Insurance:

Will be available at the settlement desk.

Terms & Conditions:

The sale will be conducted under a standard set of terms and conditions. Please refer to the inside back cover.

Can't attend the sale? Watch and bid online:

Realtime bidding is available via the internet. Please visit www.liveauctions.tv



at least two days prior to the sale to create an account. If you have difficulty during the sale, please call 701-471-0153 or 701-471-0152.

Sponsored by:

Southwest Lowline Angus Breeders Association
Bill Cabaniss, President, Taylor, TX • www.slaba.us



Sale Manager:

Auction Effertz, Ltd.

Your Market Masters • NEIL & JAN EFFERTZ
effertz@bektel.com • Cell: 701-471-0153
17350 Hwy. 1804 N. • Bismarck, ND 58503
Ph: 701-223-5202
www.auctioneffertz.com

Frame Down and Power Up ... with Lowline Genetics

Use Lowline genetics for ease of calving on first-calf heifers, to reduce mature cow size while increasing muscle, carcass yield and quality. Perfect for forage based beef production systems.

1 KBW Sparkle

Black

Tattoo: KBW8A

ALR#: FF20922

Fullblood Cow
BD: 4/18/13

Consignor: K Bar W Ranch

Wanamara Findon Royale
MCR Findon's Monarchy
EZ Tinkerbell 27L

BCC Doc Holiday 04P
KBW Rosita
Double J's Miss 28T

[Ardrossan Findon
[Kimbolton Daphne
[Beau Lad
[EZ Fantasia 20J

[Kintyre Dundee
[Kintyre Melrose Abbey
[Colombo Park Zeffirelli
[Miss Jet's Brenton 268K

With Findon Royale, Beau Lad, Doc Holiday and Zeffirelli in her pedigree, Sparkle is as well bred as you can make one. She was shown in Denver in 2014, standing second in the always competitive April class. Sparkle just weaned a fantastic Kessler bull calf, proving her worth as a producer. Pregnancy status pending.



Lot 1

2 KBW 3775

Black

Tattoo: KBW 75B

ALR#: Pending

Fullblood Heifer
BD: 4/2/14

Consignor: K Bar W Ranch

Wanamara Findon Royale
MCR Findon's Monarchy
EZ Tinkerbell 27L

BCC Doc Holiday 04P
KBW Rosita
Double J's Miss 28T

[Ardrossan Findon
[Kimbolton Daphne
[Beau Lad
[EZ Fantasia 20J

[Kintyre Dundee
[Kintyre Melrose Abbey
[Colombo Park Zeffirelli
[Miss Jet's Brenton 268K

Another super fullblood female, right off the top of the herd ... top of the breed for that matter. She's a full sister to Lot 1 and as you can see, this mating really works! She is halter broke and will compete anywhere. Her flush mate brother, KBW Zeke, was a division champ at Denver, selling for \$7,500 in our 2014 sale.



Lot 2

3 MCR Standing Ovation

Black

Tattoo: MCRY037

ALR#: FF17364

Bred Fullblood Cow
BD: 8/28/11

Consignor: Hutch's Cattle Co.

Union Pacific
MCR Crazy Train
EZ Fancy Pants 12R

Brackengrae Beau Lad
LTL Bovina
BR Trangie Girl

[Athanlee Herman
[BR Tara IV
[Utah
[Brambletye W332

[Beau Aaron M390
[Glen Innes M343
[Quarterdeck Q118
[Glen Innes J306

Ovation was the 2013 Houston Grand Champion Female. She combines old school genetics including Union Pacific, Utah and Beau Lad. She is the mother of the 2015 Reserve Champion Futurity Female at the Junior Nationals, purchased by Molly Hougham. She is bred to the National Champion Little Joe FM 3119 since May, 2015.



Lot 3

Get-Back-To-Grass

Fullblood Females

4

7C Miracle W3

Bred Fullblood Cow
BD: 4/9/09

Black Tattoo: RL03 ALR#: FF8643

Consignor: Hutch's Cattle Co.

Texas
JJD Jericho
Charlie's Angel

Bar J Ponderosa 0K13
Bar J Miracle 7G9 2M42
Bar J Miracle 7G9

- [Rouseabout M214
- [Binnowee Super Sally
- [Kaptain Planet K001
- [Beaumont Matilda
- [Nevada N060
- [Bar J Nellie 7G1
- [BR Snotty P090
- [BR Geraldine II

A maternal sister to the 2008 Grand and Reserve National Champion Females, this heavy bodied, easy fleshing Jericho daughter traces back to two of Australia's greatest breeding lines, Rouseabout and Beaumont Matilda. Bred to the National Champion Little Joe FM 3119 since May, 2015.



Lot 4

5

Alta Willow BIL 210Z

Bred FB Cow
BD: 5/1/12

Black Tattoo: BIL210Z ALR#: FF19198

Consignor: Hutch's Cattle Co.

Ardrossan Neron
Ardrossan Jamberoo
Ardrossan Nardia

Zeus SCR 47J
Alta Charlotte BIL 10P
Alta Velvet BIL 10K

- [Broken Arrow Nero
- [Ardrossan Delvene
- [Minikin Quintus
- [Ardrossan Carla
- [Rouseabout
- [Glenfiddich Amy Q003
- [Kotina Rocky
- [Kotinga Sheba

Willow is an exciting Jamberoo daughter with a terrific outcross pedigree that traces to Zeus, Rouseabout and Kotinga Rocky. She is bred to Little Joe FM 3119, sire of the 2015 National Champion Pen of Bulls, since May, 2015.



Little Joe, service sire to Lots 4 & 5 and all of the Hutch's Cattle consignments

6

HH Jambaroo 420Z

Bred FB Heifer
BD: 3/15/14

Black Tattoo: HH B20Z ALR#: FF24176

Consignor: Double HH Ranch

Wilde's Raphael R204
Wilde's 204 Raphael 02
Wilde's Charlotte 02

Ardrossa Jamberoo
WWL Nellie Jambaroo 909WIV
Wilde's Nellie 03

- [Duniera Raphael
- [Duneira Rebecca
- [Beau Lad
- [Eliza Park Charlotte
- [Ardrossan Neron
- [Ardrossan Nardia
- [Eliza Park Brenton
- [Glen Innes N146

Here is a nice made, broody fullblood bred heifer whose dam is an own daughter of the Australian great Jamberoo. She scored very well on the Igenity DNA carcass and beef production traits RFI - 7, ADG 6, Marbling 6, Percent Choice 6, Yield Grade 7. She is bred to Wilde's Brenton Raphael 932 FM 12959 from May 3 - August 1, 2015.



Lot 6

7

EZ Sizzle 39X

FB BC Pair
BD: 10/16/10

Black Tattoo: EZ39X ALR#: FF12607

Consignor: Cold Springs Farm

Colombo Park Zeffirelli
Double J's The Brick 281
Miss Jets Brenton 267K

Wanamara Findon Royale
EZ Bedazzle 66U
EZ Fantasia 20J

- [Appertarra Randy
- [Colombo Park Violetta
- [Eliza Park Brenton
- [Glen Innes N331
- [Ardrossan Findon
- [Kimbolton Daphne
- [Brambletye Arunta
- [Mugga Fidelity F338

Lot 7A: Fullblood bull calf CSC 8C born 5/19/15, sired by Jack HCK 1039 FM13177. Sizzle is an own daughter of the multiple National Champion The Brick out of Bedazzle 66U, the outstanding big bodied, beefy full sister to EZ Cinderella 61U, the dam of the two National Champions. She is safe in calf to our powerful Jackaroo son, Jack Hck 1039 FM13177, 25 days safe on 8/18/15.



Lot 7

8 **PCF Natasha** **FB HC Pair**
Black **Tattoo: PCF 3T** **ALR#: FF6638** **BD: 11/28/07**
Consignor: RLS Ranch
 Athanlee Herman
Brambletye Vanquish
 Brambletye Agness II
 Trangie M419
Binnowie Natalie
 Glen Innes L488
 Mugga Majura
 Trangie J235
 Brambletye Comma
 Brambletye J306
 Trangie K080
 Trangie J211
 Trangie H322
 Glen Innes E361

Lot 8A: Fullblood heifer calf RLS Miss Lucy 10C, carrying the red gene and born 3/23/15, sired by Lazy G Rudys Red Comet FM15253. Natasha boasts a pure first generation all - Australian pedigree, both top and bottom side! She is bred back to Rudy's Red Comet, pasture exposed since March 23.

9 **Miss Natasha 10A** **Bred Fullblood Heifer**
Black **Tattoo: RLS 10A** **ALR#: FF22830** **BD: 2/19/13**
Consignor: RLS Ranch
 EZ Lisbon 29L
EZ Undercover Agent 10U
 EZ Fantasia 20J
 Brambletye Vanquish
PCF Natasha
 Binnowie Natalie
 Beau Lad
 EZ Olivia 15G
 Brambletye Arunta
 Mugga Fidelity F338
 Athanlee Herman
 Brambletye Agness II
 Trangie M419
 Glen Innes L488

Miss Natasha 10A is a daughter of lot 8 who is straight topped, clean fronted and structurally sound with the strong yet feminine look of a powerful, productive female. She is bred to the red fullblood Lazy G Rudy's Red Comet FM15253 since 1/24/15.

10 **RLS Miss Natasha 5B** **Bred Fullblood Heifer**
Black **Tattoo: RLS 5B** **ALR#: FF26411** **BD: 2/17/14**
Consignor: RLS Ranch
 EZ Lisbon 29L
EZ Undercover Agent 10U
 EZ Fantasia 20J
 Brambletye Vanquish
PCF Natasha
 Binnowie Natalie
 Beau Lad
 EZ Olivia 15G
 Brambletye Arunta
 Mugga Fidelity F338
 Athanlee Herman
 Brambletye Agness II
 Trangie M419
 Glen Innes L488

This full sister to Lot 9 stems from the great Natasha cow family and incorporates one of the great producing females in the breed, the 2001 National Champion EZ Fantasia 20J, the dam of Cinderella who has also produced 2 National Champions. She is bred to the red fullblood Lazy G Rudys Red Comet FM15253, exposed for a spring 2016 calf.



Lot 10

11 **Miss Wichata 8A** **Bred Fullblood Heifer**
Black **Tattoo: RLS 8A** **ALR#: FF22829** **BD: 2/11/13**
Consignor: RLS Ranch
 EZ Lisbon 29L
EZ Undercover Agent 10U
 EZ Fantasia 20J
 MA Mario
RLS Witchata
 Bar J Tawney 8H4 6S75
 Beau Lad
 EZ Olivia 15G
 Brambletye Arunta
 Mugga Fidelity F338
 LB Dusty 151L 102H
 Beaumont Matilda
 Bar J Sparks 4P16
 Bar J Tawny 8H4

This long fronted, long bodied female is another Undercover Agent daughter whose dam traces to the productive Bar J Tawney cow family. She is bred to Lazy G Rudys Red Comet FM 15253, a red fullblood bull, since 1/31/15.



EZ Undercover Agent 10U, sire of Lots 9 – 12

12 **Miss Katie 4A** **Bred Fullblood Heifer**
Black **Tattoo: RLS 4A** **ALR#: FF22828** **BD: 1/21/13**
Consignor: RLS Ranch
 EZ Lisbon 29L
EZ Undercover Agent 10U
 EZ Fantasia 20J
 Bar J Latigo
RLS Katie
 Bar J Tara 8H5 5R23
 Beau Lad
 EZ Olivia 15G
 Brambletye Arunta
 Mugga Fidelity F338
 Fairwyn's Legacy
 Bar J Nellie 7G1 2M14
 Bar J Ponderosa 0K13
 Bar J Tara 8H5

Here is a chance to put together a nice set of half sisters, all sired by Undercover Agent. Kate comes with the best genetics from the foundation EZ Ranch and Bar J Ranch herds. She is bred to the red fullblood Lazy G Rudys Red Comet FM15253 since 1/20/15.

13 **UF Miss 22Y** **Bred FB Cow**
Black **Tattoo: FIN 22Y** **ALR#: FF17650** **BD: 9/10/11**
Consignor: Square S Ranch
 Bar J Ponderosa 0K13
Bar J Hoss 5R14
 Bar J Nell 0K9
 Colombo Park Zeffirelli
Double J's Miss 45U
 Miss Jets Brenton 261K
 Nevada N060
 Bar J Nellie 7G1
 Nevada N060
 Bar J Nell 7G2
 Appertarra Randy
 Colombo Park Violetta
 Eliza Park Brenton
 Glen Innes N331

This powerful young female has some of the breeds' thickest, most muscular bulls in her pedigree and is bred to KBW Achilles, a son of the National Champion The Brick ... should be a beefy calf. Bred to KBW Achilles FM15659 since August, 2015.

Get-Back-To-Grass

Possum Creek Percentage Females

14

KBW Zola

Bred Fullblood Cow
Tattoo: KBW74Z ALR#: FF21812 BD: 9/10/12

Black
Consignor: Hutch's Cattle Co.

Beau Lad
KBW Beau Vine
Brambletye W332

Vitulus Yes Yes Yes
Miss Double J 22T
Bar J Miracle 7G9 2M42

[Beau Aaron M390
[Glen Innes M343
[Broken Arrow Panmure
[Brambletye Q116
[Santa Fe Maximillion
[Wyzenbeef Lady Waratah
[Bar J Ponderosa OK13
[Bar J Miracle 7G9

Zola's big middle, compliments of Beau Vine, couples with plenty of femininity from her donor cow mother, Miss Double J 22T, a full sister to the 2008 National Champion Female. She is bred to the National Champion Little Joe FM3119 since May 2015.



KBW Beau Vine, sire of Lot 14

15

Hutch Ms Zola B102

Open Fullblood Heifer

Tattoo: NMH B102 ALR#: FF25554 BD: 9/1/14

Black
Consignor: Hutch's Cattle Co.

Wanamara Findon Royale
MCR Findon's Monarchy
EZ Tinkerbelle 27L

KBW Beau Vine
KBW Zola
Miss Double J 22T

[Ardrossan Findon
[Kimbolton Daphne
[Beau Lad
[EZ Fantasia 20J
[Beau Lad
[Brambletye W332
[Vitulus Yes Yes Yes
[Bar J Miracle 7G9 2M42

This senior heifer calf has a pedigree stacked with outstanding Lowline breeding and is a daughter of lot 14.



MCR Findon's Monarchy, sire of Lot 15

16

Miss Jet's Brick 41Z

Bred Fullblood Cow
Tattoo: JET41Z ALR#: FF18401 BD: 4/10/12

Black
Consignor: Hutch's Cattle Co.

Colombo Park Zeffirelli
Double J's The Brick 281
Miss Jet's Brenton 267K

Vitulus Yes Yes Yes
Miss Double J 113T
Miss Jet's Brenton 267K

[Appertarra Randy
[Colombo Park Violetta
[Eliza Park Brenton
[Glen Innes N331
[Santa Fe Maximillion
[Wyzenbeef Lady Waratah
[Eliza Park Brenton
[Glen Innes N331

Sired by the great Brick, the only two-time National Champion Bull and out of a Yes, Yes dam, she has style to spare. She is bred to Little Joe FM3119, sire of the 2014 NWSS Champion Pen of Commercial Heifers.

17

K2K Sassafras 706Y

Bred Fullblood Cow
Tattoo: KCK706Y ALR#: FF14598 BD: 7/6/11

Black
Consignor: Hutch's Cattle Co.

Colombo Park Zeffirelli
TTT Zeff's Kryptonite
Ardrossan Nardia

DJR's Mr. Yes Yes Yes 49T
U of F Miss Willow 05W
Double J's Miss 181T

[Appertarra Randy
[Colombo Park Violetta
[Minikin Quintus
[Ardrossan Carla
[Vitulus Yes Yes Yes
[Bar J Miracle 7G9 2M42
[Vitulus Yes Yes Yes
[Miss Jet's Raphael 265K

Lots of outcross "down-under" pedigree here, packaged in a modest frame. Sired by the fantastic, high marbling bull, TTT Zeff's Kryptonite, that scored +65.53 Tru Marbling MGW. She is bred to Little Joe FM3119 since May 2015.

18

JH Miss Magic 1B

Bred Fullblood Heifer
Tattoo: JH1B ALR#: FF24255 BD: 2/8/14

Black
Consignor: Abby Schroder

Ardrossan Neron
EZ Underdog 20U
Brambletye St. Louise S208

Wilders Jambaroo 906V
Wildes Miss Magic Jambaroo 13
Wildes Magic Amy R50

[Broken Arrow Nero
[Ardrossan Delvene
[Admiral J222
[Brambletye Agness II
[Ardrossan Jambaroo
[Wilde's Moray 41
[Trangie M460
[Glenfiddich Amy Q003

Miss Magic is a beautiful, long bodied Underdog daughter whose phenotype reminds me of her maternal granddam Glenfiddich Amy, a great producing Australian foundation cow from the Glenfiddich herd in New South Wales. She is bred to Lil Joe since May, 2015.



Lot 18

Fullblood Females

Get-Back-To-Grass

19 **CSC The Chunk**

Black **Tattoo:** JMF1Z **ALR#:** FF18804 **FB Bred Cow**
BD: 8/20/12
Consignor: Cold Springs Farm
 Kintyre Dundee
BCC Doc Holliday 04P
 Kintyre Melrose Abbey
 Bar J Don Julio 3N36
WWF Ruth 701
 Fairwyn's Riley
 Rouseabout
 Trangie J303
 Bosun II
 Trangie K238
 Tequila
 Bar J Nellie OK2
 Transam
 DCB Katrina

This straight topped, beefy yet feminine Doc Holliday daughter maintains her flesh. She is bred to the powerful Jack HCK 1039 FM13177, a son of the now deceased Australian Champion Jackaroo, 40 days safe in calf on 8/18/15.



Lot 19



Jack Hck,
Service Sire for Lots 19, 20 & 21

20 **Nikbay P172**

Black **Tattoo:** LLB P172 **ALR#:** FF2564 **FB BC Pair**
BD: 9/2/04
Consignor: Cold Springs Farm
 Beau Lad
Bay Ladd
 Brambletye Q124
 Tequila
Nikquila
 Bar J Nell 7G2
 Beau Aaron M390
 Glen Innes M343
 Commander II M045
 Glen Innes M442
 Athanlee Herman
 Glen Innes J306
 Navigator N323
 Mugga Ellen E315

Lot 19A: Fullblood bull calf CSC3C born 5/9/15 sired by Jack Hck 1039 FM 13177. Nikbay is an incredibly productive Beau Lad granddaughter who has had a calf every year we've owned her and has a dandy calf at side. She is bred back to Jack HCK 1039 from May 10 - August 16, 2015.



Lot 20

21 **WWF Ruth 701**

Black **Tattoo:** 701T **ALR#:** FF7868 **FB HC Pair**
BD: 7/4/07
Consignor: Cold Springs Farm
 Tequila
Bar J Don Julio 3N36
 Bar J Nellie OK2
 Athanlee Herman
 Glen Innes J306
 Nevada N060
 Bar J Nellie 7G1
 Athanlee Herman
 Brambletye September L503
 Quartermaster Q117
 Brambletye Perfection VI

Lot 20A: Fullblood heifer calf CSC5C born 5/10/15 sired by Jack HCK 1039 FM13177. Ruth may look a little thin but she gives everything to her calves. We are keeping 3 daughters in the herd. She has only produced heifers for us. She is bred back to our Jackaroo son Jack HCK 1039 May 10 - August 16, 2015.



Lot 21A

22 **Bar J Nadine 9J32 3N57**

Black **Tattoo:** 3N57 **ALR#:** FF2184 **Bred Fullblood Cow**
BD: 9/14/03
Consignor: Hutch's Cattle Co.
 Athanlee Herman
Tequila
 Glen Innes J306
 Quartermaster Q117
Bar J Nadine 9J32
 Bar J Nadine 7G7
 Mugga Majura
 Trangie J325
 Trangie E088
 Glen Innes F403
 Midshipman M206
 BR Felicity J167
 Navigator N331
 BR Geraldine II

A National Champion bred to a National Champion! Nadine was the 2005 National Champion Female. She is extremely attractive, modest - sized, show - type female that complements an assortment of bulls. She is bred to Little Joe FM 3119 since May, 215.



Bar J
Nadine
9J32 3N57,
2005
National
Champion,
Lot 22

Get-Back-To-Grass

Percentage Females

23

7C Rhinestone Cowgirl 25Z

Bred Halfblood Cow

Black

Tattoo: **WRC 25Z** ALR#: **XF17417** BD: **6/3/12**

Consignor: **Laramie Coffey**

Murrumbong LGL Bluey

7C Keechi W4

Bar J Miracle 7G9 2M 42

[Goan Wandoo II
Goan Black Opal
Bar J Ponderosa
Bar J Miracle 7G9

WRC CH Dam 25X



Lot 23



Duff Rebar, service sire

7C Rhinestone Cowgirl is a long sided, feminine Keechi daughter that was 2014 Reserve Champion Cow/Calf Pair at the Junior Nationals. She is bred to Duff Rebar MM25442, a powerful, beefy, easy fleshing Lowline Moderator bull with a big top and well muscled hind quarter.

24

7C May

Open Halfblood Heifer

Black

Tattoo: **WRC 35C** ALR#: **MF26585** BD: **5/5/15**

Consignor: **Wyatt Coffey**

Yarra Ranges Jackaroo

MRG Peter

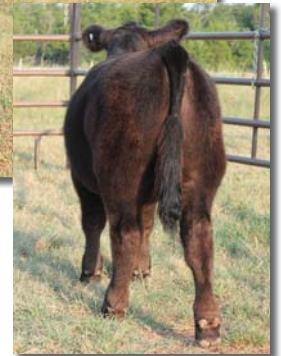
EZ Mercedes 11T

[Colombo Park Tannhauser
Monte Allegro Zelma
Fairwyn's Machine
EZ Maggie 33P

WRC Maine Anjou Dam 35



Lot 24



May is a Peter daughter that's a stablemate to the heifers that have done so well at the Junior National Shows. If you have a youngster looking for a show heifer that can win, keep 7C May in your sights.

25

EBC Tiger Ace 247C

Open Halfblood Heifer

Red

Tattoo: **EBC247C** ALR#: **Pending** BD: **3/5/15**

Consignor: **Schmit Farms**

Wanamara Findon Royale

EBC Ace X74

Schmit CA Dam

[Ardrossan Findon
Kimbolton Daphne

Wanamara Findon Royale

EBC Miss Royale Tiger 403X

EBC CA/MA Dam 40

[Ardrossan Findon
Kimbolton Daphne



Lot 25

This powerful, fancy March heifer calf is out of our donor Royale Tiger 403X and the National Champion EBC Ace. She's spectacular flashy and red, sure to catch the judge's attention.

Percentage Females

Get-Back-to-Grass

26 **KBW 39B** **Open 3/4 Heifer**
Black **Tattoo: KBW 39B** **ALR#: Pending** **BD: 11/15/14**
Consignor: K Bar W Ranch
 Spring Creek Ulysses
KBW Kessler
 CJN Nanna
 KBW Poke
KBW Zerlina
 KBW Comm Dam
 Monte Allegro Artusi
 Colombo Park Alcina
 Mr. Dakota 602S
 Bar J Ellie 07P
 DCB Hank
 Aspen's Melody



Lot 26

Here is a fancy winter heifer calf, sired by the National Champion KBW Kessler that carries the maternal strength of the KBW Poke breeding from her dam's side. She is halter broke.

27 **EZ Riley 323W** **3/4 Cow & PB HC**
Black **Tattoo: EZ323W** **ALR#: XF9175** **BD: 4/21/09**
Consignor: S & B Farm
 Utah
EZ Reno 18R
 EZ Scarlett 018K
 Nevada N060
 Bronwyn II M051
 Commander Bligh N076
 ALM Tarella 33H
 Utah
SLA Blackbird Freda 417P
 Angus Cow
 Nevada N060
 Bronwyn II M051

28 **AMY Riley 923Y** **Bred PB Cow**
Black **Tattoo: AMY923Y** **ALR#: PF16147** **BD: 9/23/11**
Consignor: S & B Farm
 Brambletye Arunta
EZ Sherman 24J
 Mugga Fidelity F338
 EZ Reno 18R
EZ Riley 323W
 SLA Blackbird Freda 417
 Trangie J038
 Trangie J117
 Trangie C203
 Trangie C094
 Utah
 EZ Scarlett 018K
 Utah
 Angus Cow

Lot 26A: Purebred heifer calf BSB 1C born 8/6/15 sired by Bigham Bob FM 16691. Riley is an extremely long bodied, long fronted 3/4 blood who exhibits the stretch and added frame that the Utah son Reno frequently sires in his offspring.

Amy Riley, a nice made purebred Sherman daughter is modest framed, easy fleshing and has the udder confirmation and quality that Sherman daughters are famous for. She is bred to Bigham Bob FM16691 since February, 2015.

29 **HH Lady 4206** **Bred Halfblood Heifer**
Black **Tattoo: HHB206** **ALR#: MF24174** **BD: 3/19/14**
Consignor: Double HH Ranch
 Wilde's Raphael R204
Wilde's 204 Raphael 02
 Wilde's Charlotte 02
 Duniera Raphael
 Duneira Rebecca
 Beau Lad
 Eliza Park Charlotte
HH Angus Dam 206



EZ Sherman, sire of Lot 28

Lady is a March halfblood bred heifer, deep ribbed and straight topped and bred to Wilde's Brenton Raphael 932 FM 12959, exposed from May 3 - August 1, 2015.

30 **HH Lady 4205** **Bred Halfblood Heifer**
Black **Tattoo: HHB205** **ALR#: MF24175** **BD: 3/13/14**
Consignor: Double HH Ranch
 Wilde's Raphael R204
Wilde's 204 Raphael 02
 Wilde's Charlotte 02
 Duniera Raphael
 Duneira Rebecca
 Beau Lad
 Eliza Park Charlotte
HH Angus Dam 205



Lot 30

She is a sweet made March yearling halfblood who is long bodied and structurally correct - the picture of an ideal beef cow. She is bred to Wildes Brenton Raphael 932 FM12959, exposed from May 3 - August 1, 2015.

Get-Back-To-Grass

Percentage Females

31

Miss FJL Laverne 137

Black **Tattoo:** FJL24B **ALR#:** MF23220 **Bred 3/4 Heifer**
BD: 1/21/14

Consignor: Dawson Schroder

Murrumbong LGL Bluey
Lazy G Red Wave
 Lazy G Iris

RDM Megamark
Miss FJL 77/24Z
 FJL Commercial Dam

[Goan Wandoo II
 Goan Black Opal
 Goan Wandoo II
 Murrumbong LGL Rd Tulip
 Fairlawn Rebel
 JJC's Yes Ima Sensation

Check out Laverne! She's a long sided 3/4 bred heifer whose dam is by Megamark, one of the outstanding carcass trait bulls in the breed. She's black but carries the red gene. She is bred to Lil Joe since May, 2015.



Lot 31

32

TCM Lady

Black **Tattoo:** TCM17A **ALR#:** MF19941 **Bred 3/4 Heifer**
BD: 6/4/13

Consignor: Abby Schroder

BCC Doc Holliday 04P
J & K Kojak
 J & K Gloria

BCR Bow Lad LD01
SSH Liberty SG01
 BCR Bosun's Anv MN010

[Kintyre Dundee
 Kintyre Melrose Abbey
 General Sherman
 Tarentaise Cow
 Beau Lad
 NS Rudy 19G
 ALM Anvil 10J
 Angus Cow

Lady is a deep bodied double 3/4 bred heifer sired by an excellent 3/4 son of Doc Holliday and out of a 3/4 granddaughter of Beau Lad. She is bred to Lil Joe since May, 2015



Lot 32

33

Miss FJL Sammy Lou 148

Black **Tattoo:** FJL35B **ALR#:** MF23221 **Bred 3/4 Heifer**
BD: 1/26/14

Consignor: Dawson Schroder

LTL Dillon
LTL Peyton
 Miss Jets Raphael 258K

Quartermaster Q117
PX20L
 Gelbvieh Cow

[Nevada
 Bar J Nellie 7G1
 Duneira Raphael
 Duneira Rachel
 Midshipman M206
 Brambletye Felicity J167

Sammy Lou is a smaller framed 3/4 bred heifer by Peyton, a son of the powerful National Champion Dillon and a Gelbvieh base cow. She is bred to Lil Joe since May, 2015.

34

KS Queen Blossom

Black **Tattoo:** KS1A **ALR#:** Pending **Bred PB Cow**
BD: 1/5/13

Consignor: Square S Ranch

Commander Bligh N076
PCF Silver Dollar
 Brambletye Silver

RRR Colombo Park Zeferelli
5EF EF2X
 Two Rivers Wendi

[Commander K162
 Brambletye Felicity J167
 Palmdale Horatio
 Glen Innes K301
 Colombo Park Zeffirelli
 Bar J Miracle 7G9 2M42
 Fairwyn's Machine
 Angus Cow

Queen Blossom is a very well bred purebred bred heifer whose sire Silver Dollar has several popular Australian sires represented. Her dam is out of an own daughter of Fairwyn's Machine, the fullblood Lowline bull featured in the Kit Pharo herd in Colorado. She is bred to KBW Achilles FM15659 since August, 2015.

35

HH Moray 4203

Black **Tattoo:** HH B203 **ALR#:** PF24177 **Bred PB Heifer**
BD: 3/5/14

Consignor: Double HH Ranch

Wilde's Raphael R204
Wilde's 204 Raphael 02
 Wilde's Charlotte 02

Wilde's Raphael R204
Wilde's Moray Raphael W913
 Wilde's Moray 20

[Duniera Raphael
 Duneira Rebecca
 Beau Lad
 Eliza Park Charlotte
 Duneira Raphael
 Duneira Rebecca
 Angus Bull
 Wilde's Moray 01

This March yearling purebred bred heifer is strategically double bred to Wildes Raphael R204 to reinforce the superior Lowline carcass traits. She is bred to Wildes Brenton Raphael 932 FM12959, exposed from May 3 - August 1, 2015.

36

TCS Beau's Erica 39X

Black **Tattoo:** TCS39X **ALR#:** XF13221 **Bred Halfblood Cow**
BD: 11/4/10

Consignor: Schmit Farms

Beau Lad
Fairwyn's Low Beau 204M
 Glen Innes J306

OCC Missing Link 830M Angus
TC Erica 7U Angus
 TC Erica 27P Angus

[Beau Aaron M390
 Glen Innes M343
 Trangie E088
 Glen Innes F403

Wow, what a genetic package – a registered halfblood recip that features the best breeding from Duff Cattle Co. and traces to a fine Ohlde bred cow on the bottom side. More good news – she carries a Duff Pure Beef embryo out of the fullblood donor KBW Baxa, a PX Baxter daughter of Lady Jane. It doesn't get any better than this. Due March 4, 2016.

Percentage Females

Get-Back-to-Grass

37 EBC Low Beau 60X Bred Halfblood Cow
 Black Tattoo: EBC60X ALR#: Pending BD:
 Consignor: Schmit Farms
 Beau Lad
Fairwyn's Low Beau 204M [Beau Aaron M390
 Glen Innes M343
 Glen Innes J306 [Trangie E088
 Glen Innes F403
EBC Commercial Cow

Here's a halfblood Low Beau daughter who is carrying a halfblood embryo sired by the National Champion Percentage Bull EBC Ace and the Classy Beau 33X cow that was pick of the Tummons Cattle Co. herd, due March 4, 2016.



Duff's Pure Beef, sire of the embryos carried by Lots 36 and 37

38 EBC Simmy Infurno 165Z Bred 1/4 Cow
 Black Tattoo: EBC165Z ALR#: MF25361 BD: 3/28/12
 Consignor: Schmit Farms
 Vitulus Branded Red
EBC Infurno 864W [Vitulus Y-R
 Commercial Cow [Camdon Red
EBC Sim X Ang Dam

She is a quarterblood Lowline out of a Sim X Angus base bred to EBC Ace X74, the 2012 National Champion Percentage bull.



EBC Ace, 2012 National Champion and service sire to Lot 38 and 39

39 Koski 364S Bred Halfblood Cow
 Black Tattoo: EBC364S ALR#: XF5034 BD: 3/25/06
 Consignor: Schmit Farms
 Tequila
Fairwyn's Machine [Athanlee Herman
 Bramb Fairwyn's Natesa [Glen Innes J306
 [Beau Lad
 [Brambleyte Bronwyn II
Angus Cow

Here's a registered halfblood Fairwyn's Machine daughter bred to EBC Ace XM11309 and due for an April calf.

40 EBC Koski R313 Bred Halfblood Cow
 Black Tattoo: EBCR313 ALR#: XF3895 BD: 4/10/05
 Consignor: Schmit Farms
 Athanlee Herman
Tequila [Mugga Majura
 Glen Innes J306 [Trangie J325
 [Trangie E088
 [Glen Innes F403
Angus Cow

This halfblood Tequila daughter out of a Koski cow is safe in calf, due for a halfblood embryo calf due March 4 by EBC Ace and out of our double halfblood EBC Miss Tiger Infurno 403. Ace is a red gene carrier.

41 KTM Maya Angelou Bred 3/4 Heifer
 Black Tattoo: KTM7B ALR#: MF22659 BD: 4/24/14
 Consignor: Dawson Schroder
 BCC Doc Holliday 04P
J & K Kojak [Kintyre Dundee
 J & K Gloria [Kintyre Melrose Abbey
 [General Sherman
 [Tarentaise Cow
 HSR Junin Jack Flash 18 [Nik
HSR Polly's Junebug 11X [Tequila EZ Hot Shot
 Bar J Polly 22N-T63 [Tequila
 [Bar J Polly 22N

Maya is a double bred 3/4 blood whose sire Kojak is an excellent Doc Holliday son. Her dam stems from the National Champion Polly cow family. She's long bodied and won her class at the 2015 Junior National Show in Manhattan, Kansas. She is bred to Lil Joe since May, 2015.



Lot 41

Get-Back-To-Grass

Percentage Females & Embryos

42

April

Black

Tattoo: CCHB3

ALR#: MF23023

Bred 3/4 Heifer
BD: 4/24/14

Consignor: Abby Schroder

Commander Bligh N076

TXS Bull's Eye
TXS Esther

PCF Ribeye

TXS Phebe

Hereford Cow

Commander K162
Brambletye Felicity J167
MA Brenton's Machismo
Sun Creek's Ruby
ALM Lonestar 55J
Jojo WF



Lot 42

April is a deep bodied, easy fleshing 3/4 blood Bull's Eye daughter. She was Reserve Champion Female at our county fair. She is bred to Lil Joe since May, 2015.

Here's a sweet package of quarterblood Lowline heifers sired by the top-selling Duff's Pure Beef bull, Lot 1 in the 2014 Duff bull sale, for \$17,000. These quarterblood females have a multitude of uses. They can be bred to a 3/4 Lowline bull to raise registered halfblood calves or can be used as excellent replacement females to be bred to show-calf sires of a number of different breeds. I just say one thing, "Try 'em. You'll like 'em!"

43

EBC 313C

Black

Tattoo: 313C

ALR#: Pending

Open 1/4 Heifer
BD: 3/30/15

Consignor: Schmit Farms

Duff E-Blast 8138 (Angus)

Pure Beef (Angus)

OCC Juanda 927K (Angus)

Tequila

EBC Koski R313

Angus Cross

Duff New Attraction (Angus)
Duff Dixie Erica 624
OCC Emblazon 854R
OCC Juanada 624G



Duff's Pure Beef, sire of Lots 43, 44 & 45

44

EBC 23C

White

Tattoo: 23C

ALR#: Pending

Open 1/4 Heifer
BD: 4/18/15

Consignor: Schmit Farms

Duff E-Blast 8138 (Angus)

Pure Beef (Angus)

OCC Juanda 927K (Angus)

Fairwyn Low Beau

HH Miss Devine Tempress

CH Dam

Duff New Attraction (Angus)
Duff Dixie Erica 624
OCC Emblazon 854R
OCC Juanada 624G

45

EBC 403C

Black

Tattoo: 403C

ALR#: Pending

Open 1/4 Heifer
BD: 4/25/15

Consignor: Schmit Farms

Duff E-Blast 8138 (Angus)

Pure Beef (Angus)

OCC Juanda 927K (Angus)

EBC Mr. Infurno 864W

EBC Miss Tiger Infurno 403Z

EBC Miss Royal Tiger 403X

Duff New Attraction (Angus)
Duff Dixie Erica 624
OCC Emblazon 854R
OCC Juanada 624G

46

Four Halfblood Embryos

Consignor: Flying J & L Ranch

Duff Basic Instinct

Duff Primo 944 Angus

DCC FS 750H Merle 135

Fairwyn's Shag

Fairwyn's Contessa

7L151 Goldilocks

OCC Missing Link 830M
OCC Dixie Erica 814G
OCC Freestyle 921F
CM Merle 750K

Brambletye Transam
BHR McKenzie
Admiral J222
Brambletye Madame C208



Duff Primo (left),
Fairwyn's
Contessa
(inset)



Contessa is a wide-based, deep-bodied, correct fullblood Lowline donor that consistently produces double digit eggs in each flush. She brings longevity and great udder quality to any mating. Duff Primo is possibly the best Angus son of Duff Basic Instinct 6501. He comes from the Merle cow family, producer of many donors and top-selling bulls for some of the best programs in the country. Progeny from this mating will be backed by years of successful forage-based breeding programs and represent two powerful cow families.

47 **Mr. Rockin Neal 12Z** **71.9% Bull**
Black **Tattoo: JET 12Z ALR#: XM18404 BD: 4/1/12**
Consignor: K Bar W Ranch
 Bar J Sparks 4P16
EZ Tioga 710T
 EZ Miss Showstopper 715
 Dr. Who Maine Anjou
Double J's Who Do You Like 12W
 Miss Rocking Brenton 259K
 Bar J Ponderosa 0K13
 Bar J Tina 8H3-0K48
 EZ Keno 046K
 EZ Miss Clout 390M
 Eliza Park Brenton
 Glen Innes N221

We bought "Rocky" at the 2013 Houston sale. He has not disappointed - lots of length and muscle in his calves along with expovise growth! Awesome bull that combines proven calving ease and performance. Time for us to retain his daughters - here's your opportunity.



Lot 47

48 **KBW TroubaLo** **Halfblood Bull**
Tan **Tattoo: KBW 88A ALR#: Pending BD: 9/23/13**
Consignor: K Bar W Ranch
 MT-HLS Lead On 197/0 Char
KBC Troubadour (Charolais X)
 KBC 410
 Nevada N060
Bar J Nell 0K9
 Bar J Nell 7G2
 BT Mr Thomas 148/6 Char
 MT Miss Hemingway H/6 Char
 GCR Supreme Bandit T11 Char
 Shorthorn X Maine Anjou
 Brambletye Bosun L006
 Glen Innes J389
 Navigator N323
 Mugga Ellen E315

TroubaLo is an exciting halfblood Char cross, sired by the now deceased superstar Troubadour. Troubadour's semen now commands hundreds of dollars per unit - if you can find it. TroubaLo's dam, Bar J Nell 0K9, was a standout here in our program. He isn't huge for a halfblood - he'll do great on higher percentage Lowline females. TroubaLo will add muscle, bone and COLOR to your calf crop!



Lot 48

49 **CRL Mr. Chain A1** **Halfblood Bull**
Black **Tattoo: CRLA1 ALR#: MM20975 BD: 2/15/13**
Consignor: Hutch's Cattle Co.
 Bonanza's Brenton 02L
Little Joe 305R
 Bonanza's Sara 200M
 Eliza Park Brenton
 Beaumont Matilda
 Dakota
 BHR Sara
Commercial Dam

Here's a brother to the 2015 National Champion Percentage Bull. He's emen tested, trich tested and ready for heavy service. Ideal for first calf commercial heifers or as a herdsire for your Moderator breeding program.



Lots 47,48 and 49 are brothers to the 2015 National Champion Pen of Bulls, sire by Little Joe

50 **CRL Mr. Chain A2** **Halfblood Bull**
Black **Tattoo: CRLA2 ALR#: MM20976 BD: 3/15/13**
Consignor: Hutch's Cattle Co.
 Bonanza's Brenton 02L
Little Joe 305R
 Bonanza's Sara 200M
 Eliza Park Brenton
 Beaumont Matilda
 Dakota
 BHR Sara
Commercial Dam

Another son of the 2006 National Champion Fullblood Bull. This halfblood Moderator is ready to work for you. His sisters were the National Champion Pen of Commercial Heifers in 2014 in Denver.

51 **CRL Mr. Chain B1** **Halfblood Bull**
Black **Tattoo: CRLB1 ALR#: MM23980 BD: 2/27/14**
Consignor: Hutch's Cattle Co.
 Bonanza's Brenton 02L
Little Joe 305R
 Bonanza's Sara 200M
 Eliza Park Brenton
 Beaumont Matilda
 Dakota
 BHR Sara
Chain Ranch XX Dam

Here's a yearling bull bred just like Lots 49 and 50. Lots of great future in this herd sire prospect!

52

Hutch Mr. Kessler B103

Black

Tattoo: NMH B103 ALR#: FM25552 BD: 10/2/14

Fullblood Bull

Consignor: Hutch's Cattle Co.

Spring Creek Ulysses
KBW Kessler
 CJN Nanna

TTT Zeff's Kryptonite
K2K Sassafras 706Y
 U of F Miss Willow 05W

- [Monte Allegro Artusi
- [Colombo Park Alcina
- [Mr. Dakota 602S
- [Bar J Ellie 07P
- [Colombo Park Zeffirelli
- [Ardrossan Nardia
- [DJR's Mr. Yes Yes Yes 49T
- [Double J's Miss 181T

An own son of the 2012 National Grand Champion Fullblood Bull KBW Kessler. These Kessler sons are a rare commodity. This is one of the few chances to win a great son of the National Champion. There are only 3 registered fullblood sons of Kessler in the ALR herdbook to date.



KBW Kessler, sire of Lot 52

53

EBC Nhance 35C

Black

Tattoo: EBC35C ALR#: Pending BD: 3/22/15

3/4 Steer

Consignor: Schmit Farms

Ardrossan Nhance
EBC Mr Nhance 2Z
 Ardrossan Isadora

Fairwyns Low Beau 204M
EBC Low Beau 60X
 EBC Commercial Dam

- [Ardrossan Richmond
- [Casuarina Becky
- [Eungella Trentham
- [Broken Arrow Opal Nera
- [Beau Lad
- [Glen Innes J306

Here's your chance to acquire an outstanding Lowline show steer out of a great Low Beau daughter and sired by the Nhance bull who is laced with that powerful Australian Ardrossan breeding. He's a March.



Lots 49, 50 and 51 are brothers to CRL Mr. Chain A4, 2015 National Champion Percentage Bull

Notes

Consignors' Index

Laramie and Wyatt Coffey

Stillwater, OK
405-880-6908..... 23, 24

Cold Spring Farm

Tom Ciolek
Belchertown, MA
413-575-2513..... 7, 19 - 21

Double HH Ranch

David Holland
Arlington, TX
214-232-4372..... 6, 29, 30, 35

Flying J & L Ranch

Larry and Kim Watkins
Groesbeck, TX
979-481-0951..... 46

Hutch's Cattle Company

Newley and Mandy Hutchison
Canton, OK
580-886-5085..... 3 - 5, 14 - 17, 22, 49 - 52

K Bar W Ranches

McLoud, OK
405-255-8267..... 1, 2, 26, 47, 48, 53
RLS Ranch

Rick and Lucy Stiffler

Kempner, TX
512-556-0016..... 8, 9, 10, 11, 12

S & B Farm

Ballinger, TX
325-365-1850..... 27, 28

Schmit Farms

Doug Schmit
Oakes, ND
701-710-0144 25, 36 - 40, 43 - 45, 54

Abby and Dawson Schroder

Yukon, OK
405-740-6139 18, 31 - 33, 41, 42

Keith Sharpe

Fredricksburg, TX
830-998-6233..... 13, 34

Terms and Conditions

Terms: Terms of the sale are cash or check payable immediately upon conclusion of the sale and before animals will be moved. Seller will reserve the right to require a certified check as settlement before releasing any cattle.

Insurance of Purchases and Risk: All animals are the seller's risk prior to their sale and become property of the buyer as soon as declared sold by the auctioneer. Arrangements will be made to have insurance available when making settlement.

Bidding: All animals sell to the highest bidder. Any disputes or challenges regarding bids will be settled by the auctioneer and his decision will be final.

Health and Export: A vet will be on hand to write interstate health certificates.

Registration and Transfer: All animals, except where noted, sell with registration papers from their respective breed Association and will be transferred after the sale at the seller's expense. In the case of dual registered cattle, both registration papers will be transferred.

Announcements: Any errors or changes of information contained in the catalog will be announced from the auction block and such announcements shall take precedence over information contained in the catalog.

Breeding Guarantee: Every effort will be made to make the most up-to-date information regarding pregnancy check available to the buyers.

Lowline bred females in the sale have been pregnancy examined by a veterinarian and found to be safe in calf. The open heifers selling are guaranteed to be breeders. If a female appears to be a non-breeder within 6 months of the sale (or within 6 months of when she reaches breeding age) she may be returned to the seller at the buyer's expense. The seller will then reserve the right to prove the animal a breeder within a six month period, using any fullblood registered Lowline bull of his choice through AI or natural service. If successful, seller will return animal to buyer, again at buyer's expense. Should the animal fail to prove a breeder, the seller at his option may either return the purchase price to the buyer or replace the animal with another of equal value in full settlement and satisfaction of all claims. In no event shall the seller be responsible for more than the purchase price.

In case the animal in question should develop to be a problem breeder due to negligence or improper management by the buyer or if the female has been subjected to any hormonal or surgical reproduction techniques, the seller's guarantee does not apply. No guarantee is given that bred females will deliver a live calf. No guarantee is given that a female will produce eggs suitable for transplant.

Liabilities: All persons who attend the sale do so at their own risk and Auction Effertz, Ltd. and SLABA and the sale consignors assume no liability for any accidents that may occur. Neither does Auction Effertz, Ltd. or SLABA and the sale consignors assume any liability for loss or injury to livestock due to theft, mysterious disappearance, sickness, improper handling or Act of God. It is also to be clearly understood that Auction Effertz, Ltd. acts only as a medium between the buyer and the seller. They are not responsible in any way for any failure on the part of the buyer and the seller to live up to their obligations of for the truth of any warranties or representations, express or implied. Neither does Auction Effertz, Ltd. assume any financial obligation to collect or enforce collection of monies between parties. Any legal action that may in exceptional cases be taken, must be between the buyer and the seller.

Contract: The above terms and conditions shall constitute a contract between the buyer and the seller of each animal sold.

Mail bid: Mail or wire bids may be furnished. Bids must be in the hands of the sale manager in ample time prior to the sale and will be handled in strict confidence.



Auction Effertz, Ltd.

Your Market Masters

NEIL & JAN EFFERTZ

effertz@bektel.com • Cell: 701-471-0153

17350 Hwy. 1804 N. • Bismarck, ND 58503

Ph: 701-223-5202

www.auctioneffertz.com

PRESORTED
FIRST-CLASS MAIL
U.S. POSTAGE PAID
LivestockDirect.net
PERMIT NO. 29

Get-Back-To-Grass

Lowline Sale

Saturday, October 10, 2015

Red River Livestock Market • Overbrook, Oklahoma



WAYNE JENKINS