



Annual Production Sale

Thursday, February 19, 2015

Lunch 12:00 pm • **Auction 1:00 pm**

At the Ranch • 11 miles South of Mandan on Hwy. 6

Over Three Decades

of Breeding Gelbvieh Seedstock



DDGR NOBLE MAN 79B



DDGR RICOCHET 9B



DDGR JACKPOT 64B



DDGR SMOOTH CRIMINAL 22B

The Gustin Crew ...



Al and Peg Gustin



(L to R) Steve, Lauren and Katie Stensgard,
Sarah and Richie Heinrich,
Sherry and Dennis Gustin and Jess Gustin



Steve and Kim Barnhardt
Brittany, Bailey, Bradley and Bellany

Steve Barnhardt continues to be a valued member of the Gustin's Diamond D Gelbvieh team. We greatly appreciate his expertise in handling the cattle as well as his trucking and repair skills. Thanks, Steve, for your dedication and hard work.

Sale Auctioneer: Shane Wolff, Golden Valley, N.D. • (701) 983-4573

Catalog designed by Tracey Koester • Cow Camp Promotions • www.cowcamppromotions.com

Printed by United Printing • 701-223-0505



WELCOME



Greetings,

Thank you for your interest in our program; and welcome to our annual production sale. We have been breeding Gelbvieh cattle for 32 years and continue to be thankful for the support of the great people that we have been associated with in this business.

Our goal continues to be to provide you with the best Gelbvieh and Balancer genetics available. We believe the Gelbvieh breed offers the best combination of disposition, maternal excellence and growth of any breed.

Our online catalog, performance information, and videos of each sale lot will also be posted by January 30 on our website as they were last year. Give us a call, visit our website at www.gustinsdiamondd.com or e-mail us at gustindd@wildblue.net for information or a catalog. We enjoy visiting with you about your program and will do our best to assist you in making your selections.

The Offering

This year we are again offering both purebred Gelbvieh and Balancer bulls along with 25 bred heifers, selected from the heart of our program. We are pleased with the consistency of our offering this year.

Our Program

We are firm believers in balanced trait selection, putting emphasis on many different areas including, disposition, calving ease, performance, maternal traits, structural soundness, eye appeal, EPDs and carcass traits. We believe that by not creep feeding we are better able to select our replacement females; and feel we are on the right track as our first-calf heifers continue to put a larger number of high quality calves in the sale each year.

We continue to feed a total mixed ration of homegrown feeds and distillers grain for a moderate 3.25 to 3.5 pound average daily gain after weaning that will keep the bulls sound and maintain longevity.

Something to Watch For

Watch for Dams of Merit and Distinction in the footnotes. These are high-producing cows identified by the AGA. Fewer than 5% of Gelbvieh cows achieve Dam of Merit status; and fewer than 1% achieve Dam of Distinction status. Our herd ranks 8th in the nation for number of dams of merit and dams of distinction owned.

Bull numbers 400 to 460 are share cattle from Richie and Sarah Heinrich, our daughter and son-in-law. Bull numbers 305 to 344 are share cattle from our cooperating herd of Matt and Lisa Rebenitsch. All the bulls are out of our cows and are raised under similar management during calving and the summer; and are fed here with the other bulls after weaning.

Schedule and Terms

The sale schedule will run the same as last year. At 10:30 a.m. the bulls will be penned for viewing and the complimentary lunch will be served at noon. The sale will be at 1:00 p.m. in the heated sale barn, with DV Auction and telephone bidding available for those unable to attend. As always, we guarantee satisfaction on all sight-unseen purchases.

We will deduct \$50 off the purchase price of any bull taken home on sale day. Or, buyers can pay half on sale day and the balance after April 1. and we will feed the bulls free until April 1. After April 1, there will be a \$2/day feed charge. We will provide free delivery within 250 miles after April 1st and will work with buyers on longer deliveries. Please let us know if we can assist you with these services.

Thank you again for your interest in our program.

Dennis & Sherry Gustin and Family
5135 Hwy 6 • Mandan, ND 58554
(701) 663-7266 • (701) 400-3483 cell

Al & Peggy Gustin
5125 Hwy 6 • Mandan, ND 58554
(701) 663-1230

www.gustinsdiamondd.com • gustindd@wildblue.net



Watch & bid online for FREE at

DVAuction

Broadcasting Real-Time Auctions

View the Auction Live! Bid Online... you're ringside right at your desk!

Buying online is as easy as 1, 2, 3...

1. Create an account at www.dvauction.com under the "register" tab
2. Apply for bidding approval by clicking on the "details" tab at least 24 hours prior to the auction-a DV representative will notify you once you have been approved
3. Tune in for the sale and make your purchases!

High speed internet is required for successful bidding-be sure to check the lag-time monitor in the top left corner to ensure real-time broadcasts.

Proxy Bidding-if you can't make time to watch the sale, register a proxy bid and let our system represent your bid while you're away. Look for the "proxy bid" tab on the auction listing, and fill in your maximum bids. We'll handle the rest!

Having troubles? During the auction, you can type a message to the operator at any time for assistance. Our full-time support team can also always be reached at (402) 474-5557.



DVAuction
Broadcasting Real-Time Auctions

DVA Rep. Justin Dikoff (605) 290-0635 - email: jdikoff@dvauction.com
Please feel free to contact me with questions about the sale or to view the cattle for you.

FEEDER PROFIT INDEX (FPI)



The Feeder Profit Index (FPI) is designed to aid producers in selecting sires whose progeny will perform in the feedlot and when sold on a carcass-merit basis. FPI is expressed in dollars of profit with a higher number representing more profitable genetics for performance in the feedlot and at slaughter. Well-ranking sires for FPI have higher marbling and carcass weight than their contemporaries. As a terminal index, little emphasis is put on maternal traits such as stayability and calving ease.



REFERENCE SIRES



A

VRT LAZY TV SAM U451

Black • Purebred • Polled • Sire

BD: 5/2/08

BW: 80

Adj. WW: 732

KHR SAM SPADE 02S

KHR 03N
KHR 413P

VRT LAZY TV MS FULLBACK L643

WAC FULLBACK 011G
VRT LAZY TV E271

CED	BW	WW	YW	M	TM	CED	YG	CW	REA	MB	FT	FPI
18	-0.6	81	111	44	84	7	-0.71	34	0.84	-0.09	-0.09	81.82

This popular AI sire is homozygous black and works great on heifers, adding eye appeal and depth of body.



DDGR High Impact 40X

B

DCSF POST ROCK CAPTAIN 1532Z

Black • Purebred • Polled • Sire

BD: 3/2/12

BW: 82

Adj. WW: 784

GBNR BAR NONE CAPTAIN 42XET

CTR HIGHLIGHT 066K
EGL P016 ET

DCSF POST ROCK RHONDA 250N2ET

BDCG CITIZEN F39L ET
DCSF POST ROCK RHONDA 55D2

CED	BW	WW	YW	M	TM	CED	YG	CW	REA	MB	FT	FPI
5	2.1	97	143	21	70	9	-0.30	57	0.27	-0.32	-0.04	75.01

We love our Captain calves for their eye appeal and thickness. Captain ranks in the top 1% for both weaning weight and yearling weight. This sire is sure to add performance to your herd.

C

DDGR HIGH IMPACT 40X

Red • Purebred • Polled • Sire

BD: 3/13/10

BW: 94

Adj. WW: 767

JDPD ASTRO 407S

JDPD ROLEX 151M
HAD PRINCESS OF AL0T 407P

DDGR COOKIE 62R

JRI PLD FREE AGENT 125J3
DDGR SHAMROCK 82F

CED	BW	WW	YW	M	TM	CED	YG	CW	REA	MB	FT	FPI
8	1.4	79	106	26	65	10	-0.14	33	0.29	-0.35	-0.06	64.24

An Astro son of the DDGR 62R dam, we raised this bull and sold him to Chimney Butte Ranch. He adds thickness, eye appeal and performance to his calves.

D

DVE DAVIDSON MR DAKOTA 151X

Red • Purebred • Polled • Sire

BD: 3/11/10

BW: 80

Adj. WW: 762

DCHD GOLDEN BUCKLE GELV 003U

DCHD GOLDEN BUCKLE GELV 117S
DCHD GOLDEN BUCKLE GELV 003N

DVE DAVIDSON MS MARK 99U

DVE DAVIDSON PLD MARK 194P
DVE DAVIDSON MS RED WRAP 91P

CED	BW	WW	YW	M	TM	CED	YG	CW	REA	MB	FT	FPI
7	1.5	47	66	46	70	7	-0.42	11	0.06	-0.02	-0.04	56.51

High seller at the 2011 Davidson sale in Canada. He has a super phenotype in a moderate-framed package. He stamps his calves with a wide top and thick quarter. His first daughters in production are deep bodied with excellent udders.



DVE Davidson Mr Dakota 151X

E

DDGR HOME RUN 35W

Red • Purebred • Polled • Sire

BD: 3/4/09

BW: 92

Adj. WW: 706

RID R COLLATERAL 2R

JCGR BAR GT FLASHBACK 410M ET
JCGR BAR GT LONI 27N ET

DDGR COOKIE 62R

JRI PLD FREE AGENT 125J3
DDGR SHAMROCK 82F

CED	BW	WW	YW	M	TM	CED	YG	CW	REA	MB	FT	FPI
10	1.6	71	92	27	62	6	-0.58	26	0.33	-0.35	-0.09	61.72

A Collateral son of the DDGR 62R cow we raised here. His calves are high-performance cattle with extra extension and larger frame.



DDGR Home Run 35W



REFERENCE SIRES



KKC Nobility 123Y

F

KKC NOBILITY 123Y

Red • Purebred • Polled • Sire

BD: 4/12/11 BW: 88 Adj. WW: 899

KKC COMMANDER 51W

DDGR LAREDO 154R
KKC MS 142P

KKC MS GRAND 64L

KKC GRAND SLAM 20F
DDF MS COCOA 812H

CED	BW	WW	YW	M	TM	CED	YG	CW	REA	MB	FT	FPI
8	0.9	82	118	29	71	11	-0.20	40	0.61	0.00	-0.05	76.77

High seller at Kal-Kota's 2012 sale. This bull maintains or lowers birthweight while keeping performance strong and makes his calves dark red. He has excellent EPDs.



VRT Lazy TV Powerhouse X554

G

VRT LAZY TV POWERHOUSE X554

Black • Purebred • Polled • Sire

BD: 3/2/10 BW: 78 Adj. WW: 603

DVE DAVIDSON POWERHOUSE 13U

STON SECRET WEAPON 6S
DVE DAVIDSON MS JIM 13P

EGL N020 ET

XXB DREW 565K
EGL GRETA JO43 ET

CED	BW	WW	YW	M	TM	CED	YG	CW	REA	MB	FT	FPI
4	3.4	72	110	33	69	11	-0.46	40	0.39	-0.32	-0.06	60.35

Our pick of the purebred bulls at Thorstenson's 2011 sale. This performance sire adds growth, thickness and eye appeal.

H

FRL FIR RIVER TED 489Y

Red • Purebred • Polled • Sire

BD: 2/11/11 BW: 85 Adj. WW: 730

SLC MASTERPLAN 512T

SLC MASTER PLAN 134N

FRL FIR RIVER WHITNEY 62W

XXB BIG N' RICH 911P ET

CED	BW	WW	YW	M	TM	CED	YG	CW	REA	MB	FT	FPI
12	1.6	57	81	29	58	10	-0.15	20	0.29	-0.19	-0.04	56.77

A moderate-framed, well-muscled, calving-ease bull we purchased in Canada. He brings outcross genetics and calving ease EPDs in the top 10% to our program.

I

GRW 7 BAR J 1004X

Black • Purebred • Polled • Sire

BD: 1/26/10 BW: 82 Adj. WW: 712

BABR RID ROOSTER COGBURN 854U

BABR WHO HOTT 552R
GDH 464P

RID 7 BAR J MS MARY 809U

JCGR BAR GT LOUIE 2J
GRW 7 BAR J MS MARY 601S

CED	BW	WW	YW	M	TM	CED	YG	CW	REA	MB	FT	FPI
21	-2.8	57	73	26	54	12	-0.60	8	0.25	-0.46	-0.08	59.05

High-selling bull at the 2011 Jumping Cow sale in Colorado. This calving-ease specialist has a calving ease EPD in the top 1%, birthweight EPD in the top 2% of the breed and adds length to his calves.

J

DTKF FAITH'S CHESTER 121U ET

Red • Balancer 88% • Polled • Sire

BD: 4/5/08 BW: 81 Adj. WW: 795

RAW MISSISSIPPI GAMBLER

ATM TEJAS ROLLS ROYCH 868
AWD ROYAL LADY 400Z

BDCG DC FAITH 111P

KIT TABASCO J26 ET
TWA 111M

CED	BW	WW	YW	M	TM	CED	YG	CW	REA	MB	FT	FPI
10	0.2	66	84	30	63	5	-0.59	19	0.45	-0.52	-0.07	56.44

A herdbull we purchased from Randy Sinknecht. We are happy with the daughters of this sire who adds length and eye appeal to his calves.

K

RHGF MR LOADED 44U

Black • Purebred • Polled • Sire

BD: 2/29/08 BW: 80 Adj. WW: 648

JRI FULLY LOADED 282M81

JRI PLD FREE AGENT 125J3
JRI MS PLD PACIFIC 282D71

RHGF MISS BENZ 60M

BMW BENZ
KKC 17K

CED	BW	WW	YW	M	TM	CED	YG	CW	REA	MB	FT	FPI
10	2.8	86	121	14	57	5	-0.46	45	0.28	-0.38	-0.08	67.16

This Fully Loaded son is a high performance sire who adds pounds on the scale. Our 44U calves are larger framed, long bodied calves that are loaded with thickness.



REFERENCE SIRES



THUL X159

L

THUL X159

Black • Purebred • Polled • Sire

BD: 3/25/10 BW: 83 Adj. WW: 776

BNC CADILLAC JACK T717

ACGC AMERICAN IDEAL 309N
BNC K021

THUL P403

HAD KNOCKOUT
BNC J945

CED	BW	WW	YW	M	TM	CED	YG	CW	REA	MB	FT	FPI
8	3.2	89	112	24	68	13	-0.69	39	0.92	-0.16	-0.08	74.63

We purchased this bull from the Hojer Ranch in South Dakota for his balanced EPDs, length and muscle mass. His calves have the length and muscle of their sire.



Connealy In Focus 4925

M

CONNELY IN FOCUS 4925

Black • Angus • Polled • Sire

BD: 3/2/06

MYTTY IN FOCUS

SAF FOCUS OF ER
MYTTY COUNTESS 906

BLACK CANA OF CONANGA 206

MILLERS BULLSEYE J373
BLACK CRYSE OF CONANGA 204

CED	BW	WW	YW	CEM	M	MW	CW	MB	RE	F	\$W	\$B
0	1.9	82	10	7	32	79	69	0.57	1.07	-0.016	67.96	137.89

This sire packs his calves with meat, muscle and eye appeal in a moderate frame package. We will have more 4925 calves in our 2016 sale.



Ellingson Identity 9104

N

ELLINGSON IDENTITY 9104

Black • Angus • Polled • Sire

BD: 2/19/09

TC ABERDEEN 759

CRA BEXTO 872 5205 608
TC BLACKBIRD 4034

EA QUEEN DOLLY 7813

WULFFS EXT 6106
EA QUEEN DOLLY 5029

CED	BW	WW	YW	CEM	M	MW	CW	MB	RE	F	\$W	\$B
13	-0.2	51	88	17	29	1	38	0.64	0.95	0.062	53.79	96.49

We used this Angus sire on heifers and are very happy how he stamps his calves. With an actual birthweight of 76 and a weaning weight of 872 this sire combines calving ease and performance.



HXC Conquest 4405P

O

HXC CONQUEST 4405P

Red • Red Angus • Polled • Sire

BD: 1/24/04 BW: 69 Adj. WW: 664 Adj. YW: 1285

BECKTON JULIAN GG B571

BKT JULIAN 7526 G
BKT MARTA 9A13 JL

HXC ELLIE MAY MA638

BFCK CHEROKEE CNYN 4912
HXC 529E

HB	GM	CED	BW	WW	YW	M	ST	MB	YG	CW	REA	F
144	55	17	-6.0	61	98	27	14	0.69	0.10	20	0.16	0.03

A moderate-framed Red Angus AI sire we used to lower birthweights and add thickness to his calves. We are very happy with the performance and eye appeal this sire adds. With a -6.0 birthweight EPD and a 98 YW, he really puts it all together.



EPD INFORMATION



ACTIVE GELBIEH SIRES' AVERAGE EPDS

GED	BW	WW	YW	M	TM	GED	YG	CW	REA	MB	FT	FPI
9	1.9	71	96	31	66	8	-0.27	29	0.47	-0.20	-0.07	63.99

ACTIVE BALANCER® SIRES' AVERAGE EPDS

GED	BW	WW	YW	M	TM	GED	YG	CW	REA	MB	FT	FPI
11	0.5	67	101	27	60	8	-0.16	30	0.43	0.22	-0.03	74.12

NON-PARENT GELBIEH ANIMALS' AVERAGE EPDS

GED	BW	WW	YW	M	TM	GED	YG	CW	REA	MB	FT	FPI
9	1.9	70	97	31	65	7	-0.25	29	0.47	-0.18	-0.07	63.99

NON-PARENT BALANCER® ANIMALS' AVERAGE EPDS

GED	BW	WW	YW	M	TM	GED	YG	CW	REA	MB	FT	FPI
11	0.5	67	100	27	60	8	-0.15	30	0.43	0.21	-0.03	73.53



GENOMIC-ENHANCED EPDS (CE-EPDS)

... combine pedigree, individual performance and genomic information to save time and money, reduce risk and accelerate rate of genetic progress.

Save time and money

- Get more accurate EPDs on bulls and females two to four years sooner
- Select superior young sires that will accelerate genetic improvement
- Identify sires to use for specific corrective mating situations
- More accurately select sires that excel in feedlot and carcass traits, especially marbling
- Choose bulls that can be confidently used on replacement heifers

Replacement heifers and donor prospects

- Find maternally focused bulls that will produce superior replacement females
- Select replacement heifers and potential donor dams with more confidence
- Get EPDs with ACC values equal to or greater than a lifetime of progeny
- Test ET flush mates to assess their true genetic differences

Customer confidence

- Make better bull-buying decisions
- DNA testing is not affected by the environment
- Greater confidence in their seedstock supplier



Look for this logo identifying Gustin Diamond D Gelbvieh bulls whose EPDs have been genetically enhanced through the high-density DNA test.





YEARLING BULLS



... reserves a
1/3 semen interest
in each bull in the offering.



9B

10B

DDGR BLACKHAWK 10B

Homo Black • Balancer 50% • Homo Polled • Bull
BD: 3/3/14 BW: 73 Adj. WW: 738

CONNELLY IN FOCUS 4925

MYTTY IN FOCUS
BLACK CANA OF CONANGA 206

DDGR 161Z

VRT LAZY TV POWERHOUSE X554
DDGR BUTTERSCOTCH 230T

CED	BW	WW	YW	M	TM	CED	YG	CW	REA	MB	FT	FPI
12	-1.1	82	126	34	75	12	-0.56	42	1.02	0.54	-0.05	96.26

This bull has a rare combination with a BW ratio of 84 and a WW ratio of 107. Tremendous job by a first-calf heifer with a super EPD profile. Herd bull buyers, check this moderate-framed, thick calf out.



16B

DDGR JACK DANIELS 16B

Homo Black • Balancer 50% • Homo Polled • Bull
BD: 3/3/14 BW: 85 Adj. WW: 743

ELLINGSON IDENTITY 9104

TC ABERDEEN 759
EA QUEEN DOLLY 7813

DDGR PEBBLES 98Z

VRT LAZY TV POWERHOUSE X554
DDGR TANYA 122W

CED	BW	WW	YW	M	TM	CED	YG	CW	REA	MB	FT	FPI
9	0.2	78	126	35	74	12	-0.45	45	0.79	0.57	-0.01	92.14

The Ellingson Identity sire definitely stamped his calves with style and an excellent muscle pattern. This is a son that balances calving ease with performance, and is gaining very well in the pen.



7B

DDGR SCOUT 7B

Red • Purebred • Polled • Bull
BD: 3/2/14 BW: 84 Adj. WW: 698

KKC NOBILITY 123Y

KKC COMMANDER 51W
KKC MS GRAND 64L

DDGR 155Z

DVE DAVIDSON MR DAKOTA 151X
DDGR FARRAH 49U

CED	BW	WW	YW	M	TM	CED	YG	CW	REA	MB	FT	FPI
8	1.5	72	102	34	70	9	-0.17	32	0.38	-0.04	-0.06	68.75

We are very happy with the daughters of both the DVE 151X and KKC 123Y sires. This bull combines the two and should produce some excellent females.

9B

DDGR RICOCHET 9B

Red • Balancer 50% • Homo Polled • Bull
BD: 3/3/14 BW: 74 Adj. WW: 719

HXC HXC CONQUEST 4405P

WF BECKTON JULIAN GG B571
HXC HXC ELLIE MAY MA638

DDGR SPICE 4Z

GJH PATRIOT'S MINUTE MAN
DDGR LILA 75X

CED	BW	WW	YW	M	TM	CED	YG	CW	REA	MB	FT	FPI
19	-4.5	64	90	30	62	8	-0.35	16	0.11	0.25	-0.03	82.11

A 50% Balancer that was one of our favorites all summer. The Conquest sons have been excellent for us and he has the pedigree, calving ease, performance and eye appeal to be a great herdsire.



11B

DDGR BOOTLEGGER 11B

Red • Purebred • Polled • Bull
BD: 3/3/14 BW: 83 Adj. WW: 668

DDGR HIGH IMPACT 40X

JDPD ASTRO 407S
DDGR COOKIE 62R

DDGR 163Z

LWM 105T
DDGR DAFODIL 33X

CED	BW	WW	YW	M	TM	CED	YG	CW	REA	MB	FT	FPI
12	0.6	68	90	26	59	9	-0.24	23	0.42	-0.26	-0.07	62.00

A larger framed bull that has the eye appeal of the High Impact calves and a balanced EPD profile with excellent calving ease and birthweight EPDs. The High Impact sire has worked well both at Chimney Butte Ranch and for us.

19B

DDGR BROKEN GLASS 19B

Red • Balancer 50% • Polled • Bull
BD: 3/4/14 BW: 60 Adj. WW: 699

HXC HXC CONQUEST 4405P

WF BECKTON JULIAN GG B571
HXC HXC ELLIE MAY MA638

DDGR 164Z

LWM 105T
DDGR HONEYSUCKLE 61P

CED	BW	WW	YW	M	TM	CED	YG	CW	REA	MB	FT	FPI
19	-5.2	59	84	35	65	9	-0.15	12	0.27	0.16	-0.03	77.51

Calving ease deluxe here. This Conquest son has a birth weight EPD in the top 1% of the breed, yet his weaning index is above herd average at 102. Nice thickness and eye appeal in a moderate frame.



YEARLING BULLS



22B

22B

DDGR SMOOTH CRIMINAL 22B

Homo Black • Balancer 50% • Homo Polled • Bull

BD: 3/5/14

BW: 73

Adj. WW: 743

CONNEALY IN FOCUS 4925

MYTTY IN FOCUS

BLACK CANA OF CONANGA 206

DDGR ONYX 84Z

VRT LAZY TV POWERHOUSE X554

DDGR SABRINA 182P

GED	BW	WW	YW	M	TM	GED	YG	CW	REA	MB	FT	FPI
12	-2.1	81	125	34	74	12	-0.53	40	1.00	0.52	-0.03	96.24

We will have more of these 4925 sons next year, and his daughters are impressive also. They have moderate birthweights, excellent thickness and super EPDs.



24B

DDGR BAXTER 24B

Red • Purebred • Polled • Bull

BD: 3/5/14

BW: 79

Adj. WW: 686

DDGR HIGH IMPACT 40X

JDPD ASTRO 407S

DDGR COOKIE 62R

DDGR BROWN SUGAR 3Z

GJH PATRIOT'S MINUTE MAN

DDGR LILA 75X

GED	BW	WW	YW	M	TM	GED	YG	CW	REA	MB	FT	FPI
10	0.8	70	92	29	64	8	-0.16	24	0.18	-0.34	-0.07	60.74

A moderate-framed High Impact son with excellent thickness and depth. His Minuteman dam had one of the nicest udders this spring.

29B

DDGR FRONTIER 29B

Homo Black • Balancer 50% • Polled • Bull

BD: 3/7/14

BW: 72

Adj. WW: 646

ELLINGSON IDENTITY 9104

TC ABERDEEN 759

EA QUEEN DOLLY 7813

DDGR BLACK LICORICE 115Z

DCSF POST ROCK GRANITE 200P2

DDGR COSMOS 127U

GED	BW	WW	YW	M	TM	GED	YG	CW	REA	MB	FT	FPI
18	-2.6	64	98	34	66	13	-0.20	24	0.70	0.30	-0.01	81.26

This bull's EPDs and birthweight indicate he should work on heifers. His dam adds another generation of calving ease as we have used the Granite 200P2 sire on heifers for several years.

30B

DDGR MAGIC TRICK 30B

Homo Black • Balancer 75% • Horned • Bull

BD: 3/7/14

BW: 74

Adj. WW: 711

VRT LAZY TV SAM U451

KHR SAM SPADE 02S

VRT LAZY TV MS FULLBACK L643

DDGR CUPCAKE 20Z

S A V FINAL ANSWER 0035

DDGR BLACK MAGIC 74X

GED	BW	WW	YW	M	TM	GED	YG	CW	REA	MB	FT	FPI
17	-1.8	76	108	39	77	10	-0.37	31	0.52	0.09	-0.06	82.72

Another bull with two generations of calving ease with the Sam and Final Answer sires. This bull combines excellent calving ease with strong growth EPDs. Heifer bull candidate.

36B

DDGR LARIAT 36B

Red • Balancer 75% • Polled • Bull

BD: 3/8/14

BW: 93

Adj. WW: 746

KKC NOBILITY 123Y

KKC COMMANDER 51W

KKC MS GRAND 64L

DDGR SNICKERS 105Z

RAB BIEBER BOONE 10696

DDGR DAZZLER 123W

GED	BW	WW	YW	M	TM	GED	YG	CW	REA	MB	FT	FPI
8	2.2	80	114	28	68	6	-0.14	40	0.48	0.02	-0.05	73.71

A 75% Balancer that had an excellent birth-to-weaning spread and is one of the fastest gainers in the pen. Great job by a first-calf heifer.



Our granddaughter Lauren celebrating NDSU's fourth national championship!

38B

DDGR PATZ 38B

Red • Purebred • Scurred • Bull

BD: 3/8/14

BW: 83

Adj. WW: 686

DDGR HIGH IMPACT 40X

JDPD ASTRO 407S

DDGR COOKIE 62R

DDGR 218Z

DVE DAVIDSON MR DAKOTA 151X

DDGR CARMEL CRUNCH 118U

GED	BW	WW	YW	M	TM	GED	YG	CW	REA	MB	FT	FPI
9	1.0	63	83	36	67	11	-0.20	20	0.28	-0.28	-0.06	58.26

This bull should work excellent if you want to retain replacements with a Milk EPD in the top 10% of the breed. Our Mr Dakota daughters were some of our favorites this spring, with nice depth of body and beautiful udders.



YEARLING BULLS



39B

39B

DDGR EIGHT BALL 39B

Homo Black • Balancer 25% • Polled • Bull

BD: 3/9/14 BW: 83 Adj. WW: 707

ELLINGSON IDENTITY 9104

TC ABERDEEN 759
EA QUEEN DOLLY 7813

DDGR JOLENE 224Z

DDGR RAINMAKER 90W
DDGR 41T

CED	BW	WW	YW	M	TM	CED	YG	CW	REA	MB	FT	FPI
15	0.5	69	114	35	69	13	-0.17	39	0.82	0.42	-0.01	83.33

This Identity son has strong growth EPDs and very nice muscle expression. Excellent genetic potential with a calving ease EPD in the top 10%, and yearling and marbling EPDs in the top 20%.



Sarah and Richie

42B

DDGR KNIGHT 42B

Homo Black • Balancer 50% • Polled • Bull

BD: 3/10/14 BW: 76 Adj. WW: 698

ELLINGSON IDENTITY 9104

TC ABERDEEN 759
EA QUEEN DOLLY 7813

DDGR MYA 113Z

VRT LAZY TV POWERHOUSE X554
DDGR KILO 96T

CED	BW	WW	YW	M	TM	CED	YG	CW	REA	MB	FT	FPI
18	-1.5	66	108	38	71	13	-0.42	32	0.55	0.52	-0.02	88.39

A low birth Identity son with excellent growth to weaning. He combines calving ease with maternal and should work on heifers.



44B

44B

DDGR AMERICAN SNIPER 44B

Black • Balancer 50% • Homo Polled • Bull

BD: 3/11/14 BW: 85 Adj. WW: 810

HXC HXC CONQUEST 4405P

WF BECKTON JULIAN GG B571
HXC HXC ELLIE MAY MA638

DDGR 129Z

DCSF POST ROCK SILVER 233U1
DDGR MANDY 32S

CED	BW	WW	YW	M	TM	CED	YG	CW	REA	MB	FT	FPI
12	-0.7	90	140	27	72	9	0.03	51	0.33	0.17	-0.02	87.95

This bull puts everything together. Low birthweight, high growth to weaning, great EPDs, strong pedigree, high daily gain on feed, and large scrotal. Herd bull deluxe.



52B

52B

CMR LEGEND 52B

Homo Black • Balancer 63% • Homo Polled • Bull

BD: 3/16/14 BW: 96 Adj. WW: 705

DCSF POST ROCK CAPTAIN 153Z2

GBNR BAR NONE CAPTAIN 42XET
DCSF POST ROCK RHONDA 250N2ET

CMR FREE SPIRIT 43W

TC FREEDOM 104
WVR MISS MARPLE 260M

CED	BW	WW	YW	M	TM	CED	YG	CW	REA	MB	FT	FPI
10	1.5	82	126	32	73	11	-0.39	46	0.47	0.07	-0.04	79.77

A very stylish Balancer son of the Post Rock Captain sire. This calf has well-balanced EPDs, a nursing ratio of 104 and great eye appeal.





YEARLING BULLS



53B

53B

DDGR TAHOE 53B

Red • Purebred • Polled • Bull

BD: 3/16/14 BW: 91 Adj. WW: 723

DTKF FAITH'S CHESTER 121U ET

RAW MISSISSIPPI GAMBLER
BDCG DC FAITH 111P

DDGR ANNIE 117T

BTI 2134P
DDGR RUBY 39P

CED	BW	WW	YW	M	TM	CED	YG	CW	REA	MB	FT	FPI
9	1.1	69	92	30	65	7	-0.37	25	0.35	-0.41	-0.07	58.63

A larger framed, longer bodied son of the Chester sire. He has a balanced EPD profile and a nursing ratio of 105 on a very nice, productive female with a lifetime nursing ratio of 107.

59B

DDGR BLIZZARD 59B

Black • Purebred • Polled • Bull

BD: 3/17/14 BW: 85 Adj. WW: 635

DCSF POST ROCK CAPTAIN 153Z2

GBNR BAR NONE CAPTAIN 42XET
DCSF POST ROCK RHONDA 250N2ET

DDGR FANCY 183N

CTR KASH 052K
DDGR MISS ROLLS 40A

CED	BW	WW	YW	M	TM	CED	YG	CW	REA	MB	FT	FPI
6	2.5	80	116	26	66	10	-0.34	42	0.49	-0.39	-0.07	63.45

We are impressed with the growth of the Captain calves. Very strong growth EPDs on this well-made son. Dam is a Dam of Merit.

63B

DDGR HIGHLANDER 63B

Black • Purebred • Polled • Bull

BD: 3/18/14 BW: 88 Adj. WW: 675

DCSF POST ROCK CAPTAIN 153Z2

GBNR BAR NONE CAPTAIN 42XET
DCSF POST ROCK RHONDA 250N2ET

DDGR SABRINA 151S

KCF BENNETT PREMIER Z104
DDGR SAHARA 186L

CED	BW	WW	YW	M	TM	CED	YG	CW	REA	MB	FT	FPI
8	3.1	85	119	27	70	11	-0.27	44	0.40	-0.28	-0.05	68.27

Strong maternal in this bull with a dam whose lifetime weaning index is 106. His growth EPDs indicate his calves should be strong at weaning and yearling. Granddam was a Dam of Merit.



64B

64B

DDGR JACKPOT 64B

Homo Black • Purebred • Polled • Bull

BD: 3/18/14 BW: 98 Adj. WW: 760

THUL X159

BNC CADILLAC JACK T717
THUL P403

DDGR LEAH 67X

RED FORTUNATE 681
DDGR 142S

CED	BW	WW	YW	M	TM	CED	YG	CW	REA	MB	FT	FPI
9	2.8	78	105	27	66	9	-0.48	35	0.76	-0.18	-0.07	68.10

This calf has a lot of eye appeal. He has excellent weaning and yearling EPDs which are supported by his nursing ratio of 111 on his young dam.



65B

65B

CMR VALIANT 65B ET

Red • Purebred • Polled • Bull

BD: 3/19/14 BW: 93 Adj. WW: 759

DVE DAVIDSON MR DAKOTA 151X

DCHD GOLDEN BUCKLE GELV 003U
DVE DAVIDSON MS MARK 99U

DDGR COOKIE 62R

JRI PLD FREE AGENT 125J3
DDGR SHAMROCK 82F

CED	BW	WW	YW	M	TM	CED	YG	CW	REA	MB	FT	FPI
8	1.4	65	88	39	72	8	-0.48	23	0.24	-0.34	-0.06	59.06

An ET son of our "never fails" 62R cow, who boasts a weaning weight ratio of 106 on eight calves. This calf combines strong maternal genetics with excellent growth and muscle.





YEARLING BULLS



66B

66B DDGR POKER FACE 66B

Red • Purebred • Scurred • Bull

BD: 3/19/14 BW: 97 Adj. WW: 808

KKC NOBILITY 123Y

KKC COMMANDER 51W
KKC MS GRAND 64L

DDGR HONEYSUCKLE 61P

LJSA GET SHOCKED
DDGR BUTTERSCOTCH 132AG

CED	BW	WW	YW	M	TM	CED	YG	CW	REA	MB	FT	FPI
6	2.8	85	117	36	78	10	-0.18	42	0.49	-0.14	-0.07	71.98

A KKC Nobility sired bull that is larger framed. His 808# 205-day weight gives him a 118 nursing ratio and his dam's lifetime weaning ratio is 107. He has very strong performance and maternal EPDs. Her calf last year was a top red bull going to Kim Clauson at Kathryn, ND.



68B

68B DDGR ANCHOR MAN 68B

Red • Purebred • Polled • Bull

BD: 3/19/14 BW: 83 Adj. WW: 736

KKC NOBILITY 123Y

KKC COMMANDER 51W
KKC MS GRAND 64L

DDGR CARMEL CRUNCH 118U

KALA KALINA SABLE 6021S
DDGR TAFFY 155S

CED	BW	WW	YW	M	TM	CED	YG	CW	REA	MB	FT	FPI
11	-0.7	66	88	37	70	12	-0.27	20	0.44	-0.13	-0.07	66.72

A dark red, lower birthweight son of the Nobility sire that is attractive and well balanced. His dam's heaviest birthweight calf has been 83# while maintaining a nursing ratio of 103. Granddam is a Dam of Merit.

74B DDGR DRIFTER 74B

Red • Purebred • Polled • Bull

BD: 3/21/14 BW: 91 Adj. WW: 770

RHGF RHGF 11Z

JRI HOT TOPIC 282X21
RHGF MISS MAX 33T

DDGR CINNAMON 44Z

DCHD GLDN BKL 030W WINCHESTER
DDGR GOLDEN GIRL 258X

CED	BW	WW	YW	M	TM	CED	YG	CW	REA	MB	FT	FPI
10	2.1	63	89	33	64	10	-0.17	25	0.31	-0.20	-0.06	59.27

An excellent job by a first-calf heifer. This bull has a 770# 205-day weight without creep while having birth and milk EPDs in the top 20% of the breed.



79B

76B DDGR SMOKIN' JOE 76B

Red • Purebred • Horned • Bull

BD: 3/21/14 BW: 85 Adj. WW: 758

KKC NOBILITY 123Y

KKC COMMANDER 51W
KKC MS GRAND 64L

DDGR COOKIE 62R

JRI PLD FREE AGENT 125J3
DDGR SHAMROCK 82F

CED	BW	WW	YW	M	TM	CED	YG	CW	REA	MB	FT	FPI
10	0.3	79	108	31	71	11	-0.21	33	0.46	-0.20	-0.07	70.67

This is a very strong, horned bull with excellent muscle mass, a nursing ratio of 110 and is the natural calf by the donor dam 62R. She is a super consistent cow with a nursing ratio of 106 and is the dam of the Homerun 35W and High Impact 40X sires we are using. Excellent genetics here.

79B DDGR NOBLE MAN 79B

Red • Purebred • Homo Polled • Bull

BD: 3/22/14 BW: 96 Adj. WW: 831

KKC NOBILITY 123Y

KKC COMMANDER 51W
KKC MS GRAND 64L

DDGR HOPE 245W

SINK FULL THROTTLE 27T
DDGR SUPERSTAR 73J

CED	BW	WW	YW	M	TM	CED	YG	CW	REA	MB	FT	FPI
5	3.3	82	118	39	80	10	-0.54	44	0.61	-0.40	-0.07	65.32

Possibly the most complete, deepest bodied red bull we have ever raised. His young dam has a nursing ratio of 113 on her first four calves and her and the granddam are both Dams of Merit. This bull has great spring of rib, is dark red and homo polled. Selling half possession and half semen interest with the buyer getting possession the first year and alternating in the following years.





YEARLING BULLS



91B

DDGR NIGHT TRAIN 91B

Homo Black • Purebred • Polled • Bull

BD: 3/24/14 BW: 87 Adj. WW: 711

VRT LAZY TV POWERHOUSE X554

DVE DAVIDSON POWERHOUSE 13U
EGL N020 ET

DDGR 107Y

000 U823
DDGR TAMMY 189U

CED	BW	WW	YW	M	TM	CED	YG	CW	REA	MB	FT	FPI
6	3.0	71	105	34	69	10	-0.34	36	0.42	-0.20	-0.06	63.07

This bull's young dam continues to produce high-performing calves, with one of our top bred heifers from the 2013 crop and came back with this Powerhouse son. Excellent growth and milk EPDs say he should make above-average weaning weights and excellent replacement females.

99B

DDGR CINCH 99B

Red • Purebred • Polled • Bull

BD: 3/25/14 BW: 94 Adj. WW: 713

DVE DAVIDSON MR DAKOTA 151X

DCHD GOLDEN BUCKLE GELV 003U
DVE DAVIDSON MS MARK 99U

DDGR MITZI 94P

EGL FOSTERS LO17 ET
DDGR KRYSTAL 92L

CED	BW	WW	YW	M	TM	CED	YG	CW	REA	MB	FT	FPI
7	1.6	69	88	44	78	10	-0.47	23	0.20	-0.53	-0.07	56.23

This bull combines the genetics of the Mr Dakota sire and 94P cow which gives him a milk EPD in the top 1% of the breed. His dam is a Dam of Merit and a donor cow. His daughters will be great mama cows.



101B

DDGR THUNDAR 101B

Black • Balancer 75% • Polled • Bull

BD: 3/25/14 BW: 70 Adj. WW: 654

VRT LAZY TV POWERHOUSE X554

DVE DAVIDSON POWERHOUSE 13U
EGL N020 ET

DDGR 20Y

B C MATRIX 4132
DDGR LADYBIRD 83W

CED	BW	WW	YW	M	TM	CED	YG	CW	REA	MB	FT	FPI
8	2.0	71	105	31	66	8	-0.29	35	0.43	-0.12	-0.04	65.95

A low birthweight son of the Powerhouse sire that still maintains growth and milk EPDs well above breed average. His granddam is a Dam of Merit.



106B

96B

DDGR FENDER 96B

Black • Purebred • Polled • Bull

BD: 3/25/14 BW: 86 Adj. WW: 704

DCSF POST ROCK CAPTAIN 153Z2

GBNR BAR NONE CAPTAIN 42XET
DCSF POST ROCK RHONDA 250N2ET

DDGR REBA 162R

VRT LAZY TV LINEBACKER N452
DDGR SHELLEY 36M

CED	BW	WW	YW	M	TM	CED	YG	CW	REA	MB	FT	FPI
8	1.9	78	113	28	67	9	-0.28	39	0.39	-0.12	-0.05	70.15

These are our first Captain calves and they are attractive and high performing. This bull's dam is very consistent, had one of our highest performing bulls last year and is a Dam of Merit.

100B

DDGR AVENGER 100B

Black • Purebred • Polled • Bull

BD: 3/25/14 BW: 89 Adj. WW: 776

RHGF MR LOADED 44U

JRI FULLY LOADED 282M81
RHGF MISS BENZ 60M

DDGR CHOCOLATE CHIP 182R

ELK CK BLACK ANSWER 702L
DDGR SAHARA 4J

CED	BW	WW	YW	M	TM	CED	YG	CW	REA	MB	FT	FPI
7	4.0	85	112	26	69	9	-0.34	41	0.28	-0.39	-0.09	64.09

Another high-performance bull with a 776# 205-day weight and very strong growth EPDs. His sire puts excellent muscle on his calves.

105B

DDGR AMARILLO SKY 105B

Black • Balancer 75% • Polled • Bull

BD: 3/26/14 BW: 99 Adj. WW: 767

RHGF MR LOADED 44U

JRI FULLY LOADED 282M81
RHGF MISS BENZ 60M

DDGR 41T

TC FREEDOM 104
RLFG LILY

CED	BW	WW	YW	M	TM	CED	YG	CW	REA	MB	FT	FPI
7	4.4	76	111	25	63	6	-0.28	42	0.34	-0.13	-0.06	65.20

This bull's T C Freedom dam is deep bodied and a strong producer. Her lifetime nursing ratio is 112 as is this calf's ratio. Strong performance in this bull.

106B

CMR PLAYBOY 106B

Red • Purebred • Homo Polled • Bull

BD: 3/26/14 BW: 97 Adj. WW: 792

DVE DAVIDSON MR DAKOTA 151X

DCHD GOLDEN BUCKLE GELV 003U
DVE DAVIDSON MS MARK 99U

DCH HILLE Y140

GIRS DECADE 278U2
DCH HILLE P200 POPPY

CED	BW	WW	YW	M	TM	CED	YG	CW	REA	MB	FT	FPI
7	2.6	73	99	41	78	5	-0.42	32	0.17	-0.16	-0.06	66.50

If you want to add productive replacement females to your herd, the 106B calf is for you. On the top side, his sire has a Milk EPD of 45, which is in the top 1% of the breed. On the bottom side, his young dam boasts a weaning weight ratio of 110 on her first two calves.





YEARLING BULLS



127B

DDGR JACKSON 127B

Black • Balancer 75% • Polled • Bull

BD: 3/29/14 BW: 83 Adj. WW: 628

GRW 7 BAR J 1004X

BABR RID ROOSTER COGBURN 854U
RID 7 BAR J MS MARY 809U

DDGR JADE 22Z

S A V FINAL ANSWER 0035
DDGR SADIE 53X

CED	BW	WW	YW	M	TM	CED	YG	CW	REA	MB	FT	FPI
18	-1.9	67	93	26	59	12	-0.40	21	0.45	-0.07	-0.06	72.19

Excellent calving ease EPDs in this 75% Balancer. Two generations of calving ease sires and his low birthweight indicates that he should work on heifers.

131B

DDGR PRINCE CHARMING 131B

Black • Purebred • Horned • Bull

BD: 3/29/14 BW: 101 Adj. WW: 776

DCSF POST ROCK CAPTAIN 153Z2

GBNR BAR NONE CAPTAIN 42XET
DCSF POST ROCK RHONDA 250N2ET

DDGR CROCUS 195U

ELK CK RIMFIRE 173S
DDGR TWIZZLER 49K

CED	BW	WW	YW	M	TM	CED	YG	CW	REA	MB	FT	FPI
7	2.0	84	116	31	73	12	-0.45	41	0.33	-0.28	-0.07	70.47

This larger framed, longer bodied son of the Captain bull has an excellent rear quarter. He had a nursing ratio of 113 and is one of the fastest gainers since weaning.

147B

CMR INTREPID 147B

Homo Black • Purebred • Polled • Bull

BD: 3/31/14 BW: 108 Adj. WW: 830

DVE DAVIDSON NATURAL 37Z

DDGR NAVAHO 188X
DVE DAVIDSON MS JULIO 38P

CMR SUZIE 270W

RED FORTUNATE 681
CMR LACEY 2L

CED	BW	WW	YW	M	TM	CED	YG	CW	REA	MB	FT	FPI
3	5.0	94	130	33	80	5	-0.17	53	0.57	-0.17	-0.07	72.64

A standout all summer, there's lots of performance in this well-balanced calf. His dam is one of AI's top cows. She has a yearling weight ratio of 107 on four head and a rib eye EPD that's in the top 15% of the breed.

149B

DDGR FOURWINDS 149B

Red • Purebred • Polled • Bull

BD: 4/1/14 BW: 68 Adj. WW: 645

DTKF FAITH'S CHESTER 121U ET

RAW MISSISSIPPI GAMBLER
BDCG DC FAITH 111P

DDGR SIERRA 126S

SEGA PUNCHLINE 203P
DDGR WILDFLOWER 133K

CED	BW	WW	YW	M	TM	CED	YG	CW	REA	MB	FT	FPI
10	0.7	57	74	30	58	6	-0.40	14	0.41	-0.42	-0.05	52.22

A very low birthweight son of the Chester sire with calving ease and birthweight EPDs in the top 10% of the breed. He is dark red in color, strong topped, and should work on heifers.

153B

DDGR LASSO 153B

Red • Purebred • Polled • Bull

BD: 4/1/14 BW: 89 Adj. WW: 649

KKC NOBILITY 123Y

KKC COMMANDER 51W
KKC MS GRAND 64L

DDGR CHERRY 122N

KKC EXTRA 86L
DDGR MIDNIGHT CINDERELLA 44F

CED	BW	WW	YW	M	TM	CED	YG	CW	REA	MB	FT	FPI
7	2.3	75	105	31	68	10	-0.25	35	0.60	-0.16	-0.07	66.39

Dam of Merit genetics in the dam and granddam of this bull. He combines very strong growth EPDs with above-average carcass EPDs.

154B

DDGR BIG TIME 154B

Black • Purebred • Polled • Bull

BD: 4/1/14 BW: 79 Adj. WW: 693

THUL X159

BNC CADILLAC JACK T717
THUL P403

DDGR 9Y

DCSF POST ROCK GRANITE 200P2
DDGR NAOMI 55W

CED	BW	WW	YW	M	TM	CED	YG	CW	REA	MB	FT	FPI
10	1.7	77	104	27	66	11	-0.41	33	0.62	-0.04	-0.06	72.16

This bull's dam had a 75# birthweight bull last year that sold to purebred breeder Gary Martens of Iowa. This bull is similar in type being moderate framed and thick, with excellent calving ease EPDs.

155B

DDGR HEARTBREAKER 155B

Black • Purebred • Polled • Bull

BD: 4/1/14 BW: 106 Adj. WW: 759

RHGF MR LOADED 44U

JRI FULLY LOADED 282M81
RHGF MISS BENZ 60M

DDGR SPICE 36S

ELK CK BLACK ANSWER 702L
DDGR GWEN 109K

CED	BW	WW	YW	M	TM	CED	YG	CW	REA	MB	FT	FPI
6	4.0	86	113	20	63	9	-0.33	41	0.28	-0.28	-0.09	66.89

One of the strongest performance calves in the pen, this guy has a nursing ratio of 110 and continues to excel as one of the fastest gainers since weaning.

162B

DDGR 162B

Black • Purebred • Scurred • Bull

BD: 4/2/14 BW: 0 Adj. WW: 668

FRL FIR RIVER TED 489Y

SLC MASTERPLAN 512T
FRL FIR RIVER WHITNEY 62W

DDGR SUGAR 108T

OZZ EXT GOVERNOR 3N
DDGR MISS DARK SHADOW 34E

CED	BW	WW	YW	M	TM	CED	YG	CW	REA	MB	FT	FPI
9	2.0	64	93	33	65	10	-0.22	27	0.49	-0.09	-0.06	62.98

A moderate birthweight son of the 108T dam who put all three of her bull calves in the bull sale and has a lifetime nursing ratio of 104.



YEARLING BULLS



163B

DDGR GENERATOR 163B

Black • Purebred • Polled • Bull

BD: 4/2/14 BW: 74 Adj. WW: 680

DVE DAVIDSON NATURAL 37Z

DDGR NAVAHO 188X
DVE DAVIDSON MS JULIO 38P

DDGR 27Y

HYEK BLACK IMPACT 3960N
DDGR FOXY LADY 235W

CED	BW	WW	YW	M	TM	CED	YG	CW	REA	MB	FT	FPI
12	0.0	76	99	31	68	8	-0.21	27	0.47	-0.15	-0.06	70.48

This is our first calf crop out of the Davidson Natural sire, and we are well pleased. He adds growth and performance while also adding carcass. Check out the EPDs on this well-made calf.

164B

DDGR HUDSON 164B

Red • Purebred • Scurred • Bull

BD: 4/3/14 BW: 103 Adj. WW: 701

KKC NOBILITY 123Y

KKC COMMANDER 51W
KKC MS GRAND 64L

DDGR BUTTERCUP 159R

BNC L185
DDGR ZSA ZSA 22M

CED	BW	WW	YW	M	TM	CED	YG	CW	REA	MB	FT	FPI
6	3.4	78	112	28	67	11	-0.43	40	0.67	-0.20	-0.08	66.49

The 159R dam has had several strong bulls for us, and using the Nobility sire on her will add to this bull's predictability and performance. His granddam was a Dam of Distinction.

165B

CMR THUNDER 165B

Black • Balancer 75% • Polled • Bull

BD: 4/3/14 BW: 87 Adj. WW: 659

KKC NOBILITY 123Y

KKC COMMANDER 51W
KKC MS GRAND 64L

CMR DOLLY 239X

VVGR MISS 178G

CED	BW	WW	YW	M	TM	CED	YG	CW	REA	MB	FT	FPI
8	1.2	70	96	28	62	8	-0.28	28	0.42	-0.17	-0.09	64.42

This Nobility son has the frame and profile of his sire. You'll appreciate his thickness and muscle pattern.

167B

DDGR LONE STAR 167B

Homo Black • Purebred • Scurred • Bull

BD: 4/3/14 BW: 73 Adj. WW: 678

VRT LAZY TV POWERHOUSE X554

DVE DAVIDSON POWERHOUSE 13U
EGL N020 ET

DDGR 52Y

DCSF POST ROCK SILVER 233U1
DDGR NELLY 174S

CED	BW	WW	YW	M	TM	CED	YG	CW	REA	MB	FT	FPI
6	3.0	75	114	33	70	11	-0.34	41	0.48	-0.27	-0.07	63.91

The strong EPD profile on this bull is not surprising with several Dams of Merit in his pedigree.

168B

DDGR FREE STYLE 168B

Homo Black • Purebred • Polled • Bull

BD: 4/3/14 BW: 79 Adj. WW: 732

THUL X159

BNC CADILLAC JACK T717
THUL P403

DDGR 95Y

MSH MY SEASON ET
DDGR DAWN 27R

CED	BW	WW	YW	M	TM	CED	YG	CW	REA	MB	FT	FPI
7	2.5	71	87	28	64	12	-0.46	24	0.64	-0.13	-0.07	64.61

Excellent birth to weaning spread on this bull with a 79# birthweight and a nursing ratio of 107. He is clean fronted with loads of muscle.

170B

DDGR AVALANCHE 170B

Black • Balancer 75% • Polled • Bull

BD: 4/3/14 BW: 88 Adj. WW: 681

DCSF POST ROCK CAPTAIN 153Z2

GBNR BAR NONE CAPTAIN 42XET
DCSF POST ROCK RHONDA 250N2ET

DDGR TANYA 22T

L T 598 BANDO 9074
DDGR DUSTY ROSE 37R

CED	BW	WW	YW	M	TM	CED	YG	CW	REA	MB	FT	FPI
7	2.2	86	132	25	68	10	-0.05	51	0.12	0.12	-0.01	79.41

The 22T cow's first four bull calves had an average yearling weight of 1,369#. Mating her to the Captain sire gave this calf a moderate frame with extra genetic predictability.

171B

DDGR KING RANCH 171B

Red • Purebred • Scurred • Bull

BD: 4/3/14 BW: 83 Adj. WW: 664

DVE DAVIDSON MR DAKOTA 151X

DCHD GOLDEN BUCKLE GELV 003U
DVE DAVIDSON MS MARK 99U

DDGR SABRINA 180T

MSH MY SEASON ET
DDGR POPPY 11M

CED	BW	WW	YW	M	TM	CED	YG	CW	REA	MB	FT	FPI
8	0.7	53	73	42	68	9	-0.35	14	0.28	-0.07	-0.05	59.44

The 180T dam has produced several strong bull calves with an average nursing ratio of 103. This Mr Dakota son has a milk EPD in the top 1% of the breed. If you retain heifers, he should add a strong maternal influence.

175B

DDGR LADY'S MAN 175B

Red • Purebred • Horned • Bull

BD: 4/4/14 BW: 92 Adj. WW: 757

KKC NOBILITY 123Y

KKC COMMANDER 51W
KKC MS GRAND 64L

DDGR SWEET PEA 148R

WVR WEAVER NORDIC 195N
DDGR FANCY 183N

CED	BW	WW	YW	M	TM	CED	YG	CW	REA	MB	FT	FPI
8	1.6	73	100	37	74	9	-0.45	31	0.62	-0.41	-0.07	61.64

This bull is loaded with muscle and performance, with a nursing ratio of 110. His dam is one of our strongest producers with lifetime nursing and yearling ratios of 107. Her calf last year was one of our top red bulls going to the Eslinger Brothers at Elgin. His dam and granddam are both Dams of Merit.



YEARLING BULLS



180B

DDGR JACKED UP 180B

Black • Balancer 75% • Polled • Sire

BD: 4/5/14 BW: 90 Adj. WW: 700

DVE DAVIDSON NATURAL 37Z

DDGR NAVAHO 188X
DVE DAVIDSON MS JULIO 38P

DDGR 74Y

LT BANDWAGON 9178
DDGR SABRINA 182P

CED	BW	WW	YW	M	TM	CED	YG	CW	REA	MB	FT	FPI
6	3.2	75	102	29	66	8	-0.14	34	0.41	0.00	-0.05	68.11

A Davidson Natural son with very nice growth and milk EPDs. He has a strong top with nice eye appeal.

184B

DDGR BUCKSTOP 184B

Black • Purebred • Polled • Bull

BD: 4/6/14 BW: 94 Adj. WW: 736

RHGF MR LOADED 44U

JRI FULLY LOADED 282M81
RHGF MISS BENZ 60M

DDGR CENTERFOLD 49P

ELK CK BLACK ANSWER 702L
DDGR CHOCOLATE CHIP 74G

CED	BW	WW	YW	M	TM	CED	YG	CW	REA	MB	FT	FPI
6	4.3	86	114	19	62	8	-0.45	42	0.20	-0.26	-0.08	67.40

The 49P dam was a show heifer for our girls and is the granddam of the 424B bull in the sale this year. Another performance son of the 44U sire.

185B

DDGR BULLETPROOF 185B

Homo Black • Purebred • Polled • Bull

BD: 4/7/14 BW: 93 Adj. WW: 740

DVE DAVIDSON NATURAL 37Z

DDGR NAVAHO 188X
DVE DAVIDSON MS JULIO 38P

DDGR 21Y

HYEK BLACK IMPACT 3960N
DDGR SNICKERS 233W

CED	BW	WW	YW	M	TM	CED	YG	CW	REA	MB	FT	FPI
7	3.1	84	111	30	72	5	-0.16	39	0.48	-0.13	-0.05	70.59

We are pleased with the Davidson 37Z progeny and this bull's dam has a nursing ratio of 108. With his strong growth EPDs, he should add pounds and profit to your calves.

187B

DDGR BIG BANG 187B

Black • Purebred • Polled • Bull

BD: 4/8/14 BW: 101 Adj. WW: 761

KKC NOBILITY 123Y

KKC COMMANDER 51W
KKC MS GRAND 64L

DDGR SAHARA 183T

SEGA PUNCHLINE 203P
DDGR PENNY 113L

CED	BW	WW	YW	M	TM	CED	YG	CW	REA	MB	FT	FPI
4	4.3	83	120	30	72	8	-0.19	46	0.61	-0.20	-0.06	66.93

This bull's dam had our favorite red Balancer last year that went to Honeyman Gelbvieh. She is a Dam of Merit and her calves have been below average for birth and have a nursing ratio of 104.



188B

188B

DDGR ARMSTRONG 188B

Homo Black • Purebred • Polled • Bull

BD: 4/8/14 BW: 93 Adj. WW: 725

DVE DAVIDSON NATURAL 37Z

DDGR NAVAHO 188X
DVE DAVIDSON MS JULIO 38P

DDGR ROSIE 234S

GSBR 89P
DDGR MOONBEAM 94J

CED	BW	WW	YW	M	TM	CED	YG	CW	REA	MB	FT	FPI
6	3.5	78	103	32	71	9	-0.16	35	0.41	-0.12	-0.06	66.90

This bull has eye appeal and the added length we like to see in our calves. His granddam was a Dam of Distinction and one of our best cows ever, and his dam has put several calves in the bull pen.





YEARLING BULLS



195B

DDGR JOURNEY 195B

Black • Purebred • Polled • Bull

BD: 4/10/14 BW: 98 Adj. WW: 823

VRT LAZY TV POWERHOUSE X554

DVE DAVIDSON POWERHOUSE 13U
EGL N020 ET

DDGR FOXY LADY 230W

RED FORTUNATE 681
DDGR SNOWFLAKES 58S

CED	BW	WW	YW	M	TM	CED	YG	CW	REA	MB	FT	FPI
6	3.3	74	109	35	72	7	-0.37	39	0.57	-0.29	-0.06	62.35

Talk about consistency, this bull's dam put all four of her calves in the bull pen and made Dam of Merit her first year eligible. Her Decade son last year was one of our top purebreds and sold for \$6,000. 195B has the highest 205-day weight in the sale with a nursing ratio of 120.

200B

DDGR HALL OF FAME 200B

Homo Black • Purebred • Polled • Bull

BD: 4/11/14 BW: 98 Adj. WW: 627

DCSF POST ROCK CAPTAIN 153Z2

GBNR BAR NONE CAPTAIN 42XET
DCSF POST ROCK RHONDA 250N2ET

DCSF POST ROCK DIAMOND 173T2

MRCO NEW DIRECTION 905
DCSF POST ROCK DIAMOND 74L2

CED	BW	WW	YW	M	TM	CED	YG	CW	REA	MB	FT	FPI
10	1.0	81	115	23	64	9	-0.17	39	0.39	-0.18	-0.01	70.62

We purchased this bull's dam from Post Rock last year and she put both her 2013 and 2014 calves in the bull pen. He is long sided, well made, and has weaning and yearling EPDs in the top 15% of the breed.

207B

DDGR SMIRNOFF 207B

Black • Purebred • Polled • Bull

BD: 4/15/14 BW: 76 Adj. WW: 748

RHGF MR LOADED 44U

JRI FULLY LOADED 282M81
RHGF MISS BENZ 60M

DDGR 114Y

JKGF W95
DDGR SAMANTHA 125P

CED	BW	WW	YW	M	TM	CED	YG	CW	REA	MB	FT	FPI
8	3.5	81	111	25	66	6	-0.41	40	0.59	-0.30	-0.07	65.60

The young JKGF W95 daughters are doing a great job. This bull has a low birthweight and a nursing ratio of 109, and her heifer calf last year ratioed 108 at weaning. Consistent production from a young female and her son posts an impressive EPD profile.

215B

DDGR COORS 215B

Homo Black • Purebred • Polled • Bull

BD: 4/21/14 BW: 101 Adj. WW: 771

DVE DAVIDSON NATURAL 37Z

DDGR NAVAHO 188X
DVE DAVIDSON MS JULIO 38P

DDGR SIERRA 145T

MSH MY SEASON ET
DDGR MOONBEAM 161L

CED	BW	WW	YW	M	TM	CED	YG	CW	REA	MB	FT	FPI
4	4.0	80	101	31	70	10	-0.18	34	0.43	-0.17	-0.06	65.13

This bull's nursing ratio is 112 and his dam's other two bull calves both made the bull pen. This is another strong son of the Davidson Natural sire.

196B

DDGR BATMAN 196B

Black • Balancer 63% • Polled • Bull

BD: 4/10/14 BW: 91 Adj. WW: 666

DVE DAVIDSON NATURAL 37Z

DDGR NAVAHO 188X
DVE DAVIDSON MS JULIO 38P

DDGR JEWEL 71X

TPLR ROUSE CHATEAU S37
DDGR MISS SHADOW 92F

CED	BW	WW	YW	M	TM	CED	YG	CW	REA	MB	FT	FPI
8	1.3	63	83	30	62	5	-0.17	20	0.39	0.07	-0.04	65.63

A Davidson Natural 75% Balancer in a moderate-framed package. His granddam was a Dam of Merit.

206B

DDGR ARIAT 206B

Red • Purebred • Polled • Bull

BD: 4/14/14 BW: 79 Adj. WW: 750

RHGF RHGF 11Z

JRI HOT TOPIC 282X21
RHGF MISS MAX 33T

DDGR 146Z

RLFG RANGE LINE COCOA
DDGR SHEBA 39S

CED	BW	WW	YW	M	TM	CED	YG	CW	REA	MB	FT	FPI
11	0.8	59	84	34	64	9	-0.30	20	0.51	-0.28	-0.07	57.60

This bull's calving ease EPD is in the top 20% of the breed. Very nice spread from birth to weaning by his 2-year-old dam. The 11Z sire is our new red heifer bull and doing a nice job. Heifer bull potential.

209B

DDGR SPIDERMAN 209B

Homo Black • Purebred • Polled • Bull

BD: 4/15/14 BW: 87 Adj. WW: 783

DCSF POST ROCK CAPTAIN 153Z2

GBNR BAR NONE CAPTAIN 42XET
DCSF POST ROCK RHONDA 250N2ET

DDGR FAITH 127X

MSH MY SEASON ET
DDGR COUNTESS 66R

CED	BW	WW	YW	M	TM	CED	YG	CW	REA	MB	FT	FPI
6	2.0	79	109	31	71	9	-0.26	37	0.32	-0.28	-0.05	66.13

The combination of the high milk production of the 127X cow family with the performance of the Captain sire worked very well on this bull. His nursing ratio was 114 after having a moderate birthweight.

219B

DDGR SHOCK TOP 219B

Red • Purebred • Polled • Bull

BD: 4/26/14 BW: 85 Adj. WW: 691

DVE DAVIDSON MR DAKOTA 151X

DCHD GOLDEN BUCKLE GELV 003U
DVE DAVIDSON MS MARK 99U

DDGR MARIGOLD 55T

WVR WEAVER NORDIC 195N
DDGR DAWN 128R

CED	BW	WW	YW	M	TM	CED	YG	CW	REA	MB	FT	FPI
7	2.5	58	76	42	71	7	-0.36	18	0.32	-0.12	-0.06	58.26

The 55T female is a deep-bodied Weaver Nordic daughter and a Dam of Merit. The Nordic daughters are some of our best females. With a milk EPD in the top 1% of the breed, this bull should make some great daughters.



YEARLING BULLS



300B

DDGR BOXER 300B

Red • Purebred • Polled • Bull

BD: 3/24/14 BW: 73 Adj. WW: 658

DDGR HOME RUN 35W

RID R COLLATERAL 2R
DDGR COOKIE 62R

DDGR GOLDEN GIRL 116P

GAR GAUGLER RANCH 678K
DDGR MISS SUMMIT 111D

CED	BW	WW	YW	M	TM	CED	YG	CW	REA	MB	FT	FPI
11	1.2	62	84	35	66	8	-0.42	21	0.29	-0.28	-0.09	58.92

The 116P cow is a Dam of Distinction who has produced several top bulls. Last year's full brother to this bull went to purebred producer Dennis Davis of Iowa. Her lifetime weaning ratio is 104 and yearling ratio is 107.

307B

DDGR FEDERAL 307B

Red • Purebred • Polled • Bull

BD: 3/26/14 BW: 92 Adj. WW: 622

DDGR HOME RUN 35W

RID R COLLATERAL 2R
DDGR COOKIE 62R

DDGR TEQUILA 196S

DDGR HOSS 75N
DDGR NUTMEG 70K

CED	BW	WW	YW	M	TM	CED	YG	CW	REA	MB	FT	FPI
9	1.7	69	89	30	64	9	-0.44	24	0.38	-0.30	-0.09	60.87

The 196S dam is a deep-bodied cow that has put several calves in the pen over the years. Her dam is a Dam of Merit.



Richie and Sarah

308B

DDGR PROFIT 308B

Red • Purebred • Polled • Bull

BD: 3/26/14 BW: 87 Adj. WW: 701

DDGR HOME RUN 35W

RID R COLLATERAL 2R
DDGR COOKIE 62R

DDGR LADY 266W

SINK FULL THROTTLE 27T
DDGR RAINDROP 191N

CED	BW	WW	YW	M	TM	CED	YG	CW	REA	MB	FT	FPI
10	0.3	69	86	33	68	6	-0.44	20	0.38	-0.35	-0.08	61.61

The 266W dam's first three calves averaged 61# at birth, while being above average at weaning. This bull was below average at birth and above at weaning, a nice combination and should sire calves with strong performance with moderate birthweights.



313B

313B

DDGR SWITCHBLADE 313B

Homo Black • Purebred • Polled • Bull

BD: 3/30/14 BW: 80 Adj. WW: 687

RLFG RANGE LINE COCOA

TLR COCOA 35C
RLFG MISS SUGAR BUCK

DDGR LADYBUG 254U

MSH MY SEASON ET
DDGR COUNTESS 66R

CED	BW	WW	YW	M	TM	CED	YG	CW	REA	MB	FT	FPI
7	1.6	71	96	40	76	9	-0.45	28	0.63	-0.39	-0.07	60.83

The 41 milk EPD on this calf is no fluke – his dam has never weaned a calf below average and every one has either made a bull or replacement female. Her lifetime weaning ratio is 107. Add maternal and eye appeal with this calf.

317B

DDGR BLUE MOON 317B

Red • Purebred • Polled • Bull

BD: 4/4/14 BW: 98 Adj. WW: 641

DDGR HOME RUN 35W

RID R COLLATERAL 2R
DDGR COOKIE 62R

DDGR JUDY 202T

BTI 2134P
DDGR POWDER PUFF 135N

CED	BW	WW	YW	M	TM	CED	YG	CW	REA	MB	FT	FPI
9	2.2	68	93	26	60	10	-0.37	28	0.28	-0.34	-0.08	58.03

A larger framed son of the Home Run bull we raised. Homerun's dam, 62R, is probably the most consistent-producing and fertile cows we have ever had. This bull should pass on the maternal of his dam and granddam.

320B

DDGR FIRESTONE 320B

Red • Purebred • Scurred • Bull

BD: 4/5/14 BW: 98 Adj. WW: 741

DDGR HOME RUN 35W

RID R COLLATERAL 2R
DDGR COOKIE 62R

DDGR ROSIE 80R

DDGR HOSS 75N
DDGR KRYSTAL 92L

CED	BW	WW	YW	M	TM	CED	YG	CW	REA	MB	FT	FPI
8	2.6	72	94	34	69	9	-0.38	28	0.28	-0.33	-0.09	60.58

This bull's dam is a strong producer with a lifetime nursing ratio of 106 and his grand-dam was a Dam of Merit. He continues to perform well in the pen and should add performance to his calves.



YEARLING BULLS



Moving Cows

400B DDGR MR. MACHO 400B ET

Black • Purebred • Polled • Sire

BD: 3/17/14 BW: 105 Adj. WW: 653

MLH GOLDRUSH VISA J40

MLLC M/L ADVANTAGE
MLH MISS GOLDRUSH F42

DDGR MITZI 94P

EGL FOSTERS L017 ET
DDGR KRYSTAL 92L

CED	BW	WW	YW	M	TM	CED	YG	CW	REA	MB	FT	FPI
6	1.7	82	113	26	67	14	-0.48	38	0.41	-0.37	-0.07	66.74

This bull is a full brother to the 32S cow, the dam of the \$15,000 Navaho sire we sold to the Davidsons in Canada. The 94P dam we flushed to get this calf is one of our deepest and longest bodied cows. Strong genetics in this calf.

406B DDGR GAMBLER 406B

Black • Purebred • Polled • Bull

BD: 3/17/14 BW: 84 Adj. WW: 641

DCSF POST ROCK CAPTAIN 153Z2

GBNR BAR NONE CAPTAIN 42XET
DCSF POST ROCK RHONDA 250N2ET

DDGR TINA 111W

ELK CK RIMFIRE 173S
DDGR PRAIRIE ROSE 236T

CED	BW	WW	YW	M	TM	CED	YG	CW	REA	MB	FT	FPI
12	-0.5	70	97	32	66	13	-0.47	26	0.23	-0.30	-0.06	65.39

Another Post Rock Captain son out of a moderate-framed, nicely balanced dam. You'll like this calf's eye appeal and performance, combined with plenty of calving ease.



418B

326B DDGR DENALI 326B

Black • Purebred • Polled • Bull

BD: 4/15/14 BW: 98 Adj. WW: 678

RLFG RANGE LINE COCOA

TLR COCOA 35C
RLFG MISS SUGAR BUCK

DDGR HONEYSUCKLE 96U

ELK CK RIMFIRE 173S
DDGR KRYSTAL 110N

CED	BW	WW	YW	M	TM	CED	YG	CW	REA	MB	FT	FPI
6	3.4	77	106	34	72	9	-0.44	37	0.60	-0.35	-0.08	62.24

This bull's dam had a nursing ratio of 102 and is a Rimfire daughter, another sire that left his mark in our herd by the females he left. He is a heavy muscled bull with a wide top.

401B DDGR GUNNER 401B

Black • Purebred • Scurred • Bull

BD: 3/10/14 BW: 107 Adj. WW: 708

VRT LAZY TV POWERHOUSE X554

DVE DAVIDSON POWERHOUSE 13U
EGL N020 ET

DDGR QUEEN OF SPADES 190W

RED FORTUNATE 681
DDGR AMBER 71S

CED	BW	WW	YW	M	TM	CED	YG	CW	REA	MB	FT	FPI
8	2.0	69	104	36	70	8	-0.51	34	0.40	-0.24	-0.07	63.62

A high performance Lazy TV Powerhouse son. This calf is loaded with meat and muscle. Gunner was a stand out in the pasture and continues to be one in the pen. You'll appreciate his growth numbers and weaning weight.

411B DDGR REVOLUTION 411B

Red • Purebred • Polled • Bull

BD: 3/20/14 BW: 90 Adj. WW: 618

DTKF FAITH'S CHESTER 121U ET

RAW MISSISSIPPI GAMBLER
BDCG DC FAITH 111P

DDGR 133U

BTI 2134P
DDGR HONEYSUCKLE 84P

CED	BW	WW	YW	M	TM	CED	YG	CW	REA	MB	FT	FPI
8	2.1	70	94	27	62	7	-0.34	28	0.28	-0.42	-0.07	57.16

We really appreciate our Chester calves for their moderate frame, thickness and eye appeal. The dam of this bull is a consistent producer in our herd.

418B DDGR HIGH ASSIST 418B

Homo Black • Balancer 75% • Polled • Bull

BD: 3/25/14 BW: 88 Adj. WW: 720

VRT LAZY TV POWERHOUSE X554

DVE DAVIDSON POWERHOUSE 13U
EGL N020 ET

DDGR FOXY ROXY 40T

TC FREEDOM 104
DDGR SHANIA 198N

CED	BW	WW	YW	M	TM	CED	YG	CW	REA	MB	FT	FPI
8	3.0	71	111	34	69	11	-0.26	40	0.33	-0.12	-0.05	65.72

Foxy Roxy 40T is one of the most attractive and docile females in the herd. This calf is loaded with eye appeal and performance. He's been one of our favorites all year long. Foxy Roxy's son last year sold to past customer, Leif Jellested for \$5,000.



YEARLING BULLS



424B

424B DDGR BENELLI NOVA 424B

Homo Black • Purebred • Polled • Bull

BD: 3/28/14 BW: 94 Adj. WW: 736

DCSF POST ROCK CAPTAIN 153Z2

GBNR BAR NONE CAPTAIN 42XET
DCSF POST ROCK RHONDA 250N2ET

DDGR 285W

ELK CK RIMFIRE 173S
DDGR CENTERFOLD 49P

CED	BW	WW	YW	M	TM	CED	YG	CW	REA	MB	FT	FPI
7	1.2	86	116	27	70	12	-0.40	39	0.11	-0.21	-0.06	73.12



A nicely balanced, moderate-framed Post Rock Captain son with great growth numbers. This calf is loaded with depth and thickness, just like his momma.

425B DDGR REMINGTON 425B

Black • Purebred • Polled • Bull

BD: 3/28/14 BW: 98 Adj. WW: 727

DVE DAVIDSON NATURAL 37Z

DDGR NAVAHO 188X
DVE DAVIDSON MS JULIO 38P

DDGR ROSALYN 191W

MSH MY SEASON ET
DDGR MISS SHADOW 92F

CED	BW	WW	YW	M	TM	CED	YG	CW	REA	MB	FT	FPI
5	3.6	74	94	33	70	7	-0.22	29	0.56	-0.08	-0.05	65.14

You'll appreciate this calf for his thickness, moderate frame, and eye appeal. His mom has been an excellent producer in our herd with a weaning ratio of 107.

444B DDGR DESTINATION 444B

Homo Black • Balancer 75% • Polled • Bull

BD: 4/6/14 BW: 104 Adj. WW: 623

RHGF MR LOADED 44U

JRI FULLY LOADED 282M81
RHGF MISS BENZ 60M

DDGR SHANIA 76W

K C F BENNETT TOTAL
DDGR CHOCOLATE CHIP 48J

CED	BW	WW	YW	M	TM	CED	YG	CW	REA	MB	FT	FPI
10	3.0	78	112	19	58	7	-0.20	40	0.27	-0.14	-0.03	67.43

Check out the YW and CE EPDs on this Fully Load Son. The DDGR 76W dam is a Dam of Merit. This Bennett Total Dam consistently puts an impressive calf in the pen.

450B DDGR BOOMER 450B

Black • Purebred • Polled • Bull

BD: 4/18/14 BW: 99 Adj. WW: 699

THUL X159

BNC CADILLAC JACK T717
THUL P403

DDGR VIOLET 121X

LWM 105T
DDGR SAHARA 183T

CED	BW	WW	YW	M	TM	CED	YG	CW	REA	MB	FT	FPI
9	2.8	76	99	28	66	10	-0.51	31	0.81	-0.23	-0.07	66.01

A high-performance calf with great growth numbers. His mother is an eye-appealing cow who's moderate framed and deep bodied. His granddam, 183T, is a Dam of Merit.

451B DDGR BIG TOP 451B

Red • Purebred • Polled • Bull

BD: 4/20/14 BW: 89 Adj. WW: 695

DVE DAVIDSON MR DAKOTA 151X

DCHD GOLDEN BUCKLE GELV 003U
DVE DAVIDSON MS MARK 99U

DDGR TOOTSIE 197X

MSH MY SEASON ET
DDGR SHADOW 137L

CED	BW	WW	YW	M	TM	CED	YG	CW	REA	MB	FT	FPI
8	1.6	54	68	38	65	9	-0.40	12	0.47	-0.14	-0.04	56.00

A growthy calf with plenty of stretch. His dam is a very feminine, high-milking female. Big Top also has a very strong milk EPD.

459B DDGR CUMMINS 459B

Black • Purebred • Scurred • Sire

BD: 5/1/14 BW: 86 Adj. WW: 769

VRT LAZY TV POWERHOUSE X554

DVE DAVIDSON POWERHOUSE 13U
EGL N020 ET

DDGR CINNAMON 158W

MSH MY SEASON ET
DDGR SUNNY 113S

CED	BW	WW	YW	M	TM	CED	YG	CW	REA	MB	FT	FPI
4	3.9	73	103	33	70	10	-0.31	36	0.39	-0.24	-0.06	60.96

A high-performing 1st of May calf. His dam is an awesome female with a weaning ratio of 106. His granddam is a Dam of Merit. We really like this bull for his birth-to-weaning spread.

814B JACK 814B

Red • Purebred • Polled • Bull

BD: 3/14/14 BW: 82 Adj. WW: 696

DVE DAVIDSIB CASSANOVA

CK REMINGTON 89R
DVE DAVIDSON MR MARK 40U

KEK 1K11Y

CRAN BUDDY BOY T729
LJSA EMMA 309N

CED	BW	WW	YW	M	TM	CED	YG	CW	REA	MB	FT	FPI
8	2.2	76	108	24	62	10	-0.21	37	0.46	-0.31		62.82

A larger framed, longer bodied bull with a moderate birthweight and strong weaning weight. He is from Randy and Patty Berger, neighbors who have purchased cattle from us for their sons to show at the county fair. They have brought a quality bull to the sale for the last several years.



BRED HEIFERS



60A

DDGR LICORICE 60A

Black • Purebred • Polled • Heifer

BD: 3/12/13 BW: 78 Adj. WW: 596

PLA BIG DOG 101Y

HYEK BLACK IMPACT 3960N
EGL P190

DDGR 158Y

DDGR GOALTENDER 61W
DDGR BELLE 10L

CED	BW	WW	YW	M	TM	CED	YG	CW	REA	MB	FT	FPI
9	1.6	76	99	33	71	6	-0.32	30	0.33	-0.20	-0.06	67.43

Great numbers on this Big Dog daughter with low birth weight, above-average weaning weight and a strong set of EPDs. Due with a bull calf by Sitz Dash on March 8.

103A

DDGR DAISY 103A

Red • Purebred • Polled • Heifer

BD: 3/20/13 BW: 82 Adj. WW: 564

DVE DAVIDSON MR DAKOTA 151X

DCHD GOLDEN BUCKLE GELV 003U
DVE DAVIDSON MS MARK 99U

DDGR BROWN SUGAR 54S

BTI 2134P
DDGR PRAIRIE ROSE 65K

CED	BW	WW	YW	M	TM	CED	YG	CW	REA	MB	FT	FPI
6	1.8	60	87	35	65	10	-0.47	24	0.23	-0.20	-0.06	58.65

A beautifully made, deep-bodied daughter of the Davidson Mr Dakota sire, who has made some great females in our herd. Due March 18 with a heifer calf by the RHGF 11Z sire.

104A

DDGR COROLLA 104A

Black • Purebred • Polled • Heifer

BD: 3/20/13 BW: 85 Adj. WW: 573

TAU GUNSLINGER 19U

SGRI HONOR ROLL S232
TAU GUNNISON 5151R

DDGR QUEEN OF SPADES 77X

HYEK BLACK IMPACT 3960N
DDGR MOONBEAM 94J

CED	BW	WW	YW	M	TM	CED	YG	CW	REA	MB	FT	FPI
11	2.8	68	90	31	65	9	-0.55	26	0.80	-0.16	-0.08	63.85

The granddam of this heifer was the 94J cow, one of the top females we have ever had. Add the Gunslinger genetics and she should be a very productive cow. Due April 13 to the All In 1A sire.

112A

CMR 112A

Black • Balancer 75% • Polled • Heifer

BD: 3/21/13 BW: 63 Adj. WW: 568

GRW 7 BAR J 1004X

BABR RID ROOSTER COGBURN 854U
RID 7 BAR J MS MARY 809U

CMR PROMISE 4Y

HYEK BLACK IMPACT 3960N
CMR FREE SPIRIT 43W

CED	BW	WW	YW	M	TM	CED	YG	CW	REA	MB	FT	FPI
19	-2.8	57	76	31	59	9	-0.41	10	0.38	-0.22	-0.06	64.07

A moderate-framed, well-made heifer. Her pedigree reads calving ease and she's above breed average for milk. AI bred to the Ten-X sire for a March 8 heifer calf.





BRED HEIFERS



128A

DDGR SKITTLES 128A

Red • Balancer 75% • Polled • Heifer

BD: 3/22/13 BW: 77 Adj. WW: 595

CIRS DECADE 278U2

EGL FOSTERS L017 ET
EGL GAIL M278

DDGR SASHA 52X

JHL LCC FIELD DAY A614N
DDGR RUBY 34R

GED	BW	WW	YW	M	TM	GED	YG	CW	REA	MB	FT	FPI
8	1.6	81	110	28	69	5	-0.34	36	0.42	-0.05	-0.07	73.83

The 52X dam is super deep bodied and attractive and has an excellent heifer calf in the pen again this year. Check out the excellent EPD profile on this bred heifer. She is due April 13 to the DDGR All In 1A sire.

134A

DDGR RIDDLES 134A

Red • Purebred • Polled • Heifer

BD: 3/23/13 BW: 87 Adj. WW: 626

KKC NOBILITY 123Y

KKC COMMANDER 51W
KKC MS GRAND 64L

DDGR MARIGOLD 55T

WVR WEAVER NORDIC 195N
DDGR DAWN 128R

GED	BW	WW	YW	M	TM	GED	YG	CW	REA	MB	FT	FPI
7	2.7	79	107	33	72	8	-0.26	36	0.61	0.02	-0.07	72.62

The 55T dam is a Dam of Merit and has done a great job. This heifer has excellent IMF and we hate to part with her, but she will fit better into a later calving program and will do well there. Due April 23 to the All In 1A sire.

Can't make the sale?
Watch it LIVE and bid in
real-time on

DVAuction

Broadcasting Real-Time Auctions

www.dvauction.com

Technical Support

(402) 474-5557 | support@dvauction.com

141A

DDGR JENNY 141A

Red • Purebred • Polled • Heifer

BD: 3/23/13 BW: 78 Adj. WW: 620

KKC NOBILITY 123Y

KKC COMMANDER 51W
KKC MS GRAND 64L

DDGR BELLE 42P

KIT TABASCO J26 ET
DDGR HANNAH 90L

GED	BW	WW	YW	M	TM	GED	YG	CW	REA	MB	FT	FPI
10	0.2	75	101	31	68	7	-0.37	29	0.97	-0.28	-0.06	66.90

Dam of Distinction genetics in this heifer, with the 42P dam being a Dam of Distinction with great consistency in her calves. Check out the EPD profile on this female. Due April 14 to the All In 1A sire.

142A

DDGR SASSY FRAS 142A

Red • Purebred • Polled • Heifer

BD: 3/23/13 BW: 77 Adj. WW: 573

DVE DAVIDSON MR DAKOTA 151X

DCHD GOLDEN BUCKLE GELV 003U
DVE DAVIDSON MS MARK 99U

DDGR FARRAH 84W

JCGR BAR GT LOUIE 2J
DDGR 102N

GED	BW	WW	YW	M	TM	GED	YG	CW	REA	MB	FT	FPI
8	2.2	60	80	38	68	8	-0.55	20	0.38	-0.22	-0.07	57.88

Combining the maternal of the Mr Dakota 151X bull with the 84W dam that is a Dam of Merit gives this female excellent potential. Due March 8 with a heifer calf by the Red Angus Fritz Justice sire.

157A

DDGR COVERGIRL 157A

Black • Balancer 75% • Polled • Heifer

BD: 3/26/13 BW: 94 Adj. WW: 497

JDPD ASTRO 407S

JDPD ROLEX 151M
HAD PRINCESS OF ALOT 407P

DDGR FOXY LADY 41X

MYTTY IN FOCUS
DDGR GWEN 109K

GED	BW	WW	YW	M	TM	GED	YG	CW	REA	MB	FT	FPI
9	3.4	68	98	23	57	11	-0.08	33	0.01	0.38	-0.07	73.71

The granddam of this heifer was a Dam of Distinction. This black Astro daughter has an IMF ratio of 111. Due March 8 with a bull calf by the Ellingson Identity sire.

161A

DDGR MIDNIGHT LADY 161A

Black • Purebred • Polled • Heifer

BD: 3/26/13 BW: 75 Adj. WW: 600

GRW 7 BAR J 1004X

BABR RID ROOSTER COGBURN 854U
RID 7 BAR J MS MARY 809U

DDGR 70Y

RLFG RANGE LINE COCOA
DDGR MISTY 201S

GED	BW	WW	YW	M	TM	GED	YG	CW	REA	MB	FT	FPI
12	1.4	71	98	30	66	8	-0.41	29	0.44	-0.41	-0.07	60.77

A heifer with a very low birthweight and weaning performance above average. Her granddam is a Dam of Merit. Due March 8 with a bull calf by the Sitz Dash bull.



BRED HEIFERS



164A DDGR MISS ASPEN 164A

Black • Purebred • Polled • Heifer

BD: 3/27/13 BW: 80 Adj. WW: 607

RLFG RANGE LINE COCOA

TLR COCOA 35C
RLFG MISS SUGAR BUCK

DDGR QUEEN OF SPADES 190W

RED FORTUNATE 681
DDGR AMBER 71S

GED	BW	WW	YW	M	TM	GED	YG	CW	REA	MB	FT	FPI
8	2.5	76	112	36	74	7	-0.61	40	0.65	-0.33	-0.09	65.58

This heifer excels in her EPDs for milk, growth and carcass. She also has quite a bit of calving ease bred into her. Due March 8 with a heifer by the Granite 200P2 sire.

173A DDGR MALIBU 173A

Red • Purebred • Polled • Heifer

BD: 3/28/13 BW: 88 Adj. WW: 584

DVE DAVIDSON MR DAKOTA 151X

DCHD GOLDEN BUCKLE GELV 003U
DVE DAVIDSON MS MARK 99U

DDGR NIKKI 102W

LWM 105T
DDGR SARA 188T

GED	BW	WW	YW	M	TM	GED	YG	CW	REA	MB	FT	FPI
10	0.7	54	74	37	64	8	-0.41	15	0.34	-0.14	-0.07	58.77

A larger framed daughter of the Mr Dakota sire. They all have high milk EPDs and the ones we have calved have lived up to the numbers. Due April 13 to the RHGF 11Z sire.

198A DDGR SUGAR PLUM 198A

Red • Purebred • Polled • Heifer

BD: 4/2/13 BW: 75 Adj. WW: 538

FRL FIR RIVER TED 489Y

SLC MASTERPLAN 512T
FRL FIR RIVER WHITNEY 62W

DDGR RAINDROP 191N

KKC EXTRA 86L
DDGR COSMOS 91F

GED	BW	WW	YW	M	TM	GED	YG	CW	REA	MB	FT	FPI
12	0.8	62	82	31	62	10	-0.18	19	0.37	-0.48	-0.04	53.32

There will be a lot of breeding options with this female, as she has a low birthweight and a calving ease EPD in the top 15% of the breed. Due March 8 with a bull calf by the DCHD Winchester bull.

202A DDGR MISS ZALES 202A

Red • Purebred • Polled • Heifer

BD: 4/3/13 BW: 80 Adj. WW: 658

DDGR GOALTENDER 61W

HYEK BLACK IMPACT 3960N
DDGR MOONBEAM 94J

DDGR PROUD MARY 32X

ELK CK RIMFIRE 173S
DDGR SIERRA 8P

GED	BW	WW	YW	M	TM	GED	YG	CW	REA	MB	FT	FPI
11	1.2	77	104	31	69	10	-0.17	32	0.43	-0.24	-0.05	67.38

This heifer has a super EPD profile, a 112 weaning index, and a pedigree with a Dam of Distinction on the sire side and a Dam of Merit on the dam side-predictable genetics. Due to the VRT Lazy TV Sam bull on March 8.

209A DDGR DADDY'S MONEY 209A

Black • Purebred • Polled • Heifer

BD: 4/5/13 BW: 80 Adj. WW: 603

RLFG RANGE LINE COCOA

TLR COCOA 35C
RLFG MISS SUGAR BUCK

DDGR SNICKERS 233W

MKT S#10
DDGR FANCY 183N

GED	BW	WW	YW	M	TM	GED	YG	CW	REA	MB	FT	FPI
5	3.6	76	107	31	69	9	-0.47	38	0.64	-0.37	-0.09	60.60

Another heifer with a low birthweight and strong growth EPDs. Her granddam is a Dam of Merit. Due March 8 with a heifer calf by the Sitz Dash sire.

234A DDGR FANCY LADY 234A

Black • Purebred • Polled • Heifer

BD: 4/13/13 BW: 73 Adj. WW: 527

GRW 7 BAR J 1004X

BABR RID ROOSTER COGBURN 854U
RID 7 BAR J MS MARY 809U

DDGR 220Y

OOO U823
DDGR PEPPERMINT PATTY 32U

GED	BW	WW	YW	M	TM	GED	YG	CW	REA	MB	FT	FPI
15	-0.8	62	81	27	58	10	-0.40	16	0.36	-0.29	-0.06	60.91

This is a low birthweight daughter of our black heifer bull, the 1004X sire. Her calving ease EPDs are in the top 10% of the breed. Due with a bull calf by the Granite 200P2 sire on March 8.

237A DDGR M&M'S 237A

Red • Balancer 63% • Polled • Heifer

BD: 4/16/13 BW: 90 Adj. WW: 614

DTKF FAITH'S CHESTER 121U ET

RAW MISSISSIPPI GAMBLER
BDCG DC FAITH 111P

DDGR REESE 256W

TPLR ROUSE CHATEAU S37
DDGR MILLIE 73T

GED	BW	WW	YW	M	TM	GED	YG	CW	REA	MB	FT	FPI
8	2.1	66	91	29	62	3	-0.36	26	0.43	-0.06	-0.06	64.36

One of the few Balancers we are offering, this female had a nursing ratio of 104 and one of the highest IMF ratios when we ultrasounded the heifers last spring. Due March 25 with a bull calf by the RHGF 11Z sire.

252A DDGR LADY 252A

Red • Purebred • Polled • Heifer

BD: 4/20/13 BW: 68 Adj. WW: 588

DDGR GOALTENDER 61W

HYEK BLACK IMPACT 3960N
DDGR MOONBEAM 94J

DDGR TANYA 122W

MKT S#10
DDGR SHANIA 178S

GED	BW	WW	YW	M	TM	GED	YG	CW	REA	MB	FT	FPI
12	-1.1	64	87	39	71	10	-0.11	19	0.27	-0.13	-0.03	65.80

A very low birthweight female with excellent calving ease EPDs. Her granddam is a Dam of Merit. Due March 8 with a heifer calf by the DCSF Ten Plus sire, our new Balancer heifer bull.



BRED HEIFERS



254A

DDGR CAPPACCINO 254A

Black • Purebred • Polled • Heifer

BD: 4/22/13 BW: 86 Adj. WW: 596

VRT LAZY TV POWERHOUSE X554

DVE DAVIDSON POWERHOUSE 13U
EGL N020 ET

DDGR GABBY 135S

WVR WEAVER NORDIC 195N
DDGR MOONBEAM 57P

CED	BW	WW	YW	M	TM	CED	YG	CW	REA	MB	FT	FPI
6	2.4	64	90	37	69	10	-0.34	26	0.34	-0.23	-0.06	59.20

This Powerhouse daughter has a milk EPD in the top 10% of the breed and had a high IMF ratio last spring, which indicates good maternal and carcass. Due March 8 with a heifer calf by the Sitz Dash sire.

260A

DDGR STARBUCKS 260A

Black • Purebred • Polled • Heifer

BD: 4/22/13 BW: 98 Adj. WW: 637

VRT LAZY TV POWERHOUSE X554

DVE DAVIDSON POWERHOUSE 13U
EGL N020 ET

DDGR BUTTERSCOTCH 230T

GSBR 89P
DDGR LILY 70J

CED	BW	WW	YW	M	TM	CED	YG	CW	REA	MB	FT	FPI
6	3.0	71	100	32	67	10	-0.36	33	0.40	-0.23	-0.07	61.52

A high performance female with a nursing ratio of 108 and whose granddam was a Dam of Merit. Due April 10 to the DDGR All In 1A sire.

268A

DDGR HOT TAMALES 268A

Red • Purebred • Polled • Heifer

BD: 4/27/13 BW: 94 Adj. WW: 641

KKC NOBILITY 123Y

KKC COMMANDER 51W
KKC MS GRAND 64L

DDGR 74R

EGL FOSTERS L017 ET
DDGR DOUBLE PLAY 102G

CED	BW	WW	YW	M	TM	CED	YG	CW	REA	MB	FT	FPI
4	4.4	89	122	35	80	10	-0.20	47	0.37	0.10	-0.10	77.90

We are super pleased with the KKC Nobility calves, with moderate birthweights, high growth and carcass EPDs well above breed average. This is a high-growth, high-carcass female that is due March 8 with a heifer calf by the Connealy In Focus 4925 sire.

269A

DDGR LEXI 269A

Black • Purebred • Polled • Heifer

BD: 4/27/13 BW: 86 Adj. WW: 581

VRT LAZY TV POWERHOUSE X554

DVE DAVIDSON POWERHOUSE 13U
EGL N020 ET

DDGR DAZZLER 123W

LWM 105T
DDGR MANGO 215T

CED	BW	WW	YW	M	TM	CED	YG	CW	REA	MB	FT	FPI
6	4.6	75	107	30	68	8	-0.39	39	0.51	-0.27	-0.08	61.02

The Powerhouse bull added frame and power to his calves and we expect his daughters to be high-producing females. This heifer is due March 8 with a bull calf by the Sitz Dash sire.

273A

DDGR FLICKA 273A

Black • Purebred • Polled • Heifer

BD: 5/4/13 BW: 85 Adj. WW: 647

VRT LAZY TV POWERHOUSE X554

DVE DAVIDSON POWERHOUSE 13U
EGL N020 ET

DDGR GINGER 10N

RAG MR EXTRA WONDERFUL ET
DDGR BELLE 10L

CED	BW	WW	YW	M	TM	CED	YG	CW	REA	MB	FT	FPI
4	4.1	76	107	34	72	10	-0.30	38	0.43	-0.27	-0.05	61.74

A high-performance daughter of the Powerhouse bull whose ribeye EPD is in the top 5% of the breed and her actual REA ratio was 123. Dam is a Dam of Merit. This heifer is due March 8 to the Sitz Dash sire.

329A

DDGR MISS PRETTY FACE 329A

Red • Purebred • Heifer

BD: 3/29/13 BW: 90 Adj. WW: 596

DDGR HOME RUN 35W

RID R COLLATERAL 2R
DDGR COOKIE 62R

DDGR GOLDIE 232U

EGL MIGUEL R056 ET
DDGR ZSA ZSA 22M

CED	BW	WW	YW	M	TM	CED	YG	CW	REA	MB	FT	FPI
7	4.0	78	109	24	63	8	-0.40	40	0.42	-0.33	-0.09	62.24

Very strong growth EPDs on this female. Her dam is a Dam of Merit with a lifetime nursing ratio of 103. Due with a heifer calf on March 8 by the Fritz Justice Red Angus sire.



Gustin's D Gelbvieh

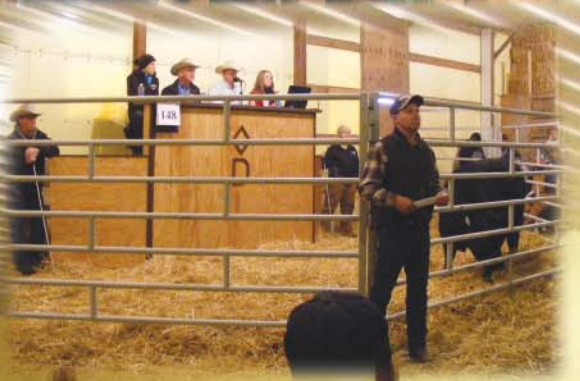
*Thank you ...
for attending our sale
this year and for all the
previous years of
support!*

Daily Ranch Life ...

Gustin's  Gelbvieh



Thank you to our customers!





5135 Hwy 6 • Mandan, ND 58554

Dennis & Sherry Gustin and Family

Al & Peggy Gustin

(701) 663-7266

PRESORTED
FIRST CLASS
US POSTAGE PAID
UNITED PRINTNG

RETURN SERVICE REQUESTED

Annual Production Sale

Thursday, February 19, 2015

Lunch 12:00 pm • Auction 1:00 pm

At the Ranch • 11 miles South of Mandan on Hwy 6

