

PICK OF THE CROP

Special Female Sale



SUNDAY,
NOVEMBER 1, 2015

AT THE RANCH • 2 P.M. CST
6760 92nd St. NE • Rocklake, ND 58365

DVAuction



Offering Choice of:
34 ANGUS BRED HEIFERS
60 ANGUS OPEN HEIFERS

Offering:
11 ANGUS BRED COWS
5 POLLED HEREFORD BRED HEIFERS
6 POLLED HEREFORD OPEN HEIFERS

**TNT ANGUS &
CARTER'S POLLED HEREFORDS**

Welcome Friends and Cattlemen,

We would like to welcome everyone to our "Pick of the Crop" female sale. A lot of thought has gone into putting this sale together. We have waited for an opportunity like this to showcase our breeding program and highlight the strength of our cow herd. At the same time we wanted to be able to hold on to our future. So we compromised on the "pick of the crop". Every female born from our 2014 and 2015 calf crops is being offered. You will have the option to choose between the A and B lots for each of these choice lots. You will have your pick of the crop, and we will take the one you don't choose and put right back into our own herd for production. Nothing is being held back and you will have a special opportunity to cut right out of the heart of our herd.

The selection is very strong. This is one of the best sets of bred heifers I can remember, and this set of heifer calves is extremely deep. There is tremendous quality throughout the entire offering. I promise you will not be disappointed. Each lot will have video available prior to the sale, and the sale will be broadcasted through DV Auction in a video format.

The bred heifers have been ultrasounded, and guaranteed bred. The cows will be pregnancy checked, and breeding information will be available prior to the sale. EPD update on the heifer calves will be available prior to the sale, as some of them will have changed significantly after going through AHIR post weaning.

As always you are welcome to come take a look through the selection or the entire herd at any time. We would be more than happy to show you around the cow herd.

Sincerely,

TNT Angus



Welcome!

We are excited to be a part of the "Pick of The Crop"! We realize we were not able to choose any lots like the Angus due to location, however, we feel we picked right from the heart of the herd. The females are ready to go to work for you.

We strive for soundness, easy fleshing and super udders. Come take a look at the herd anytime you're in South Dakota - I don't think you will be disappointed. We don't play any favorites either - if they are open, they are shipped. They must perform or they go to town. These cows have survived the harshest winters and don't get any extra pampering. We calve in a small, unheated barn and they get turned out quickly to the real world. We expect these cows to get the job done year after year.

We've been in business for over 50 years thanks to loyal customers and good cows. We expect these females to work well for each of you. If you have questions don't hesitate to call or stop by. Thanks for taking time to take a look and we look forward to seeing you on November 1st (and by the way, be ready for some cake as someone has a birthday that day ... 78 candles to be exact.)

The Penners

TNT ANGUS & CARTER'S POLLED HEREFORDS

Terry & Mavis Carter

6760 92nd St. NE • Rock Lake, ND 58365
(701) 266-5468 • (701) 370-8730 cell

Troy, Jeri & Harlee Carter

(701) 305-0104 cell

Malynda, Jay, Kenzy & Keely Penner

(605) 925-7016 • (605) 929-7314 cell

Jimmy Carter • (701) 266-5575

PICK OF THE CROP *Special Female Sale*

Sunday, November 1, 2015

2:00 p.m. CST • At the Ranch • Rocklake, ND

Selling Choice of: 34 Angus Bred Heifers
60 Angus Open Heifers

Offering: 11 Angus Bred Cows
5 Polled Hereford Bred Heifers
6 Polled Hereford Open Heifers

AUCTIONEER:

Dustin Carter712-898-9972

REPRESENTATIVES & CONSULTANTS:

Frey Livestock Sales & Services

Vern Frey701-721-0344

Cattle Business Weekly

Kris Petersen605-339-0305

Farm & Ranch Guide

Kirby Goettsch605-380-3939

SALE DAY PHONES:

Terry Carter.....C: 701-370-8730

Malynda Penner.....C: 605-929-7314

Troy Carter.....C: 701-305-0104

DIRECTIONS TO THE RANCH:

From Cando, ND, go 10 miles North on US Highway 281. At the stop sign (junction of Hwy 281 & ND 66) go left (West) 2 miles. At that intersection take 281 North for 8.1 miles until you see the TNT Angus Sign. Turn right (east) for 1.7 miles on gravel road 92nd St NE. Farm will be on the south side of the road. (See map on page 3.)

CATTLE INSPECTION:

Angus cattle can be viewed at the ranch anytime prior to the sale. Herefords will be available by mid-October. Please call to ensure they are at the ranch. Cattle will be on display beginning Saturday, Oct. 31.

TERMS & CONDITIONS:

The cattle sell under the suggested terms and conditions of the American Angus Association. All persons who attend the sale do so at their own risk. We are not responsible for accidents or losses.

LUNCH:

Complimentary sale day lunch.

ANNOUNCEMENTS:

An updated supplement sheet with breeding information and EPD changes will be available at the sale. If you would like an earlier copy please contact us. Announcements made from the auction block shall take precedence over printed material in the catalog.

LODGING:

Great American Inn & Suites701-662-4001
Super 8701-662-8656
Spirit Lake Casino & Resort.....701-766-4747

HEALTH:

Cattle will be accompanied with proper health certificates for immediate shipment. Turtle Mountain Vet Service, Dr. Jill Franks, 701-228-3075.

GUARANTEE:

Bred females are guaranteed to be safe in calf. Open females are guaranteed to be open.

DELIVERY:

Buyers are responsible for delivery, but TNT Angus and Carter's Polled Herefords will assist in arrangements.

VIDEO SALE:



The sale will be a video format on large-screen monitors. The cattle will be on display in the pens, but not run through the ring.

ONLINE BIDDING:

The sale will be broadcast live on dvauction.com. For information on how to register to bid online, see page 2.

CATALOG DESIGN:

Cow Camp Promotions..... Tracey Koester

DIRECTIONS TO THE RANCH:

From Cando, ND, go 10 miles North on US Highway 281.

At the stop sign (junction of Hwy 281 & ND 66) go left (West) 2 miles.

At that intersection take 281 North for 8.1 miles until you see the TNT Angus Sign.

Turn right (east) for 1.7 miles on gravel road 92nd St NE. Farm will be on the south side of the road.

** Note map is not to scale.*



Developmental Duplication Carrier (DDC)

Newly identified simple recessive genetic defect. DD is not a lethal genetic defect, but may cause extra skin folds or additional limbs. For more information ask us or contact the American Angus Association.

Cattle identified as DDC are known carriers of the defect, but if bred to cattle free of the defect you will never have a calf that expresses the trait. The animals identified as DDP are potential carriers and have not yet been tested.

Watch & bid online for FREE at

DVAuction
Broadcasting Real-Time Auctions

**View the Auction Live!
Bid Online... you're ringside
right at your desk!**

Buying online is as easy as 1, 2, 3...

1. Create an account at www.dvauction.com under the "register" tab
2. Apply for bidding approval by clicking on the "details" tab at least 24 hours prior to the auction-a DV representative will notify you once you have been approved
3. Tune in for the sale and make your purchases!

High speed internet is required for successful bidding-be sure to check the lag-time monitor in the top left corner to ensure real-time broadcasts.

Proxy Bidding-if you can't make time to watch the sale, register a proxy bid and let our system represent your bid while you're away. Look for the "proxy bid" tab on the auction listing, and fill in your maximum bids. We'll handle the rest!

Having troubles? During the auction, you can type a message to the operator at any time for assistance. Our full-time support team can also always be reached at (402) 474-5557.



DVAuction
Broadcasting Real-Time Auctions

DVA Rep. Justin Dikoff (605) 290-0635 - email: jdikoff@dvauction.com
Please feel free to contact me with questions about the sale or to view the cattle for you.

BRED ANGUS HEIFERS

PICK OF THE CROP

Special Female Sale

1A TNT QUEEN 401

REG # TATTOO BD BW 205-ADJ WR 365-ADJ YR
 BRED HEIFER 17934719 401 2/6/14 79 666 108 904 101

BT Crossover 758N
Flag Cross Country 90052
 SCR Queen Idelette 50596

BT Impressive 898
TNT Queen 108
 Baldrige Queen of NP N17

CA Future Direction 5321
 BT Royal Pride 237G
 Triple E Special Addition
 SCR Queen Idelette 702
 Connealy Impression
 HT Miss Erica 436
 Sitz Alliance 6595
 Baldrige Queen of NP L138

PRODUCTION EPDS						CARCASS EPDS			\$ VALUE EPDS		
CED	BW	WW	YW	CEM	MILK	MARB	RE	FAT	\$W	\$F	\$B
+9	+1.0	+57	+95	+11	+21	1+.44	1+.56	1+.034	+51.88	+49.40	+107.02

Dam BW 2@99, WW 2@102, YW 2@98. AI bred to AAR Ten 7008 SA on May 2. Examined safe carrying a heifer calf by Ten X. Exposed to Hart Time Changer 4113.



Lot 2A

1B TNT BLACK LADY 402

REG # TATTOO BD BW 205-ADJ WR 365-ADJ YR
 BRED HEIFER 17934720 402 2/6/14 60 577 94 849 95

HT Traveler 756
TNT Program 821
 TNT Designors Girl 515

Hylene Right Time 338
Tokach Black Lady 5439
 Tokach Black Lady 9971

SAV 8180 Traveler 004
 TK Prairie Queen 1009
 WK New Design 2132
 LA Miss Enchantress 302
 Leachman Right Time
 Hylene Pride 265
 SVF Hi Road
 T Black Lady 9173

PRODUCTION EPDS						CARCASS EPDS			\$ VALUE EPDS		
CED	BW	WW	YW	CEM	MILK	MARB	RE	FAT	\$W	\$F	\$B
+11	-1.7	+50	+85	+11	+19	1+.37	1+.27	1+.004	+47.30	+36.29	+100.11

Dam BW 8@94, WW 8@93, YW 7@96. AI bred to AAR Ten X 7008 SA on May 1. PE to Hart Time Changer. Examined safe carrying a bull calf by Time Changer due March 18.

2A TNT SHANIA 405

REG # TATTOO BD BW 205-ADJ WR 365-ADJ YR
 BRED HEIFER 17937250 405 2/11/14 77 635 103 987 110

Connealy Product 568
Connealy Final Product
 Ebonista of Conanga 471

HT Traveler 756
TNT Shania 855
 TNT Shania 002

GAR Retail Product
 Pride Fine of Conanga 566
 Connealy Deep Canyon 454
 Ebonisa of Conanga 5469
 SAV 8180 Traveler 004
 TK Prairie Queen 1009
 TC Stockman 365
 TNT MS Rita 18G

PRODUCTION EPDS						CARCASS EPDS			\$ VALUE EPDS		
CED	BW	WW	YW	CEM	MILK	MARB	RE	FAT	\$W	\$F	\$B
+5	+1.0	+56	+109	+8	+25	1+.25	1+.47	1+.012	+49.63	+72.94	+103.30

Dam BW 5@99, WW 5@101, YW 5@105. AI bred to Sydgen Rock Star on May 16. Pasture exposed to Hart Time Changer 4113. Due to Time Changer carrying a heifer calf due March 14.



Lot 2B

2B TNT CAMILLA 418

REG # TATTOO BD BW 205-ADJ WR 365-ADJ YR
 BRED HEIFER 17935098 418 2/17/14 86 725 118 1069 119

Hylene Right Time 338
Pine Ridge Hammer S322
 Belmont Lady 9015 3313

Basin Franchise P142
Basin Camilla 9033
 Basin Camilla 2817

Leachman Right Time
 Hylene Pride 265
 SAF Strategy 9015
 Belmont Laddy Expl 0124
 CA Future Direction 5321
 Basin Chloe 812L
 Basin Payweight 9333
 Basin Camilla 4942

PRODUCTION EPDS						CARCASS EPDS			\$ VALUE EPDS		
CED	BW	WW	YW	CEM	MILK	MARB	RE	FAT	\$W	\$F	\$B
+4	+3.0	+74	+123	+10	+29	1+.56	1+.61	1+.027	+66.99	+89.75	+159.80

Dam BW 4@99, WW 4@115, YW 4@111, IMF 3@112. AI bred May 11 to Connealy Conservative. Carrying a heifer calf by Time Changer due March 13.

3A TNT QUEEN DOLLY 414

REG # TATTOO BD BW 205-ADJ WR 365-ADJ YR
 BRED HEIFER 17935438 414 2/14/14 70 660 107 935 104

Sitz Upward 307R
Koupals B&B Identity
 B&B Erica 605

Rally New Frontier 5233
Evenson Queen Dolly 6264
 Evenson Queen Dolly 336

Connealy Onward
 Sitz Henrietta Pride 81M
 GAR Exaltation 3144
 B&B Erica 4064
 B/R New Frontier 095
 Rally Tibbie 5380
 DMM Dynasty 03G
 Evenson Queen Dolly 1104

PRODUCTION EPDS						CARCASS EPDS			\$ VALUE EPDS		
CED	BW	WW	YW	CEM	MILK	MARB	RE	FAT	\$W	\$F	\$B
+8	-.4	+60	+107	+10	+31	1+.41	1+.58	1+.033	+61.82	+69.48	+131.12

Dam BW 8@89, WW 8@101, YW 7@101. AI bred to HF Tiger 5T May 21. Due to calve March 24 carrying a heifer calf by Time Changer.

3B TNT DOTTIE 420

REG # TATTOO BD BW 205-ADJ WR 365-ADJ YR
 BRED HEIFER 17935425 420 2/18/14 63 636 103 905 101

Sitz Upward 307R
Koupals B&B Identity
 B&B Erica 605

Hoover Dam
TNT Dottie 203
 TNT Dottie 083

Connealy Onward
 Sitz Henrietta Pride 81M
 GAR Exaltation 3144
 B&B Erica 4064
 SydGen CC&7
 Erica of Ellston C124
 K&B Powerplant 705
 TNT Dottie 609

PRODUCTION EPDS						CARCASS EPDS			\$ VALUE EPDS		
CED	BW	WW	YW	CEM	MILK	MARB	RE	FAT	\$W	\$F	\$B
+7	+7	+61	+115	+8	+33	1+.51	1+.80	1+.009	+59.48	+84.01	+151.53

Dam BW 1@89, WW 1@103, YW 1@101. AI bred to Connealy Arsenal May 14. Carrying a bull calf by Time Changer due March 14.

4A

TNT JK MILDRED 415

REG # TATTOO BD BW 205-ADJ WR 365-ADJ YR
BRED HEIFER 17939738 415 2/15/14 82 599 97 860 96

Connealy Consensus
Connealy Earnan 076E
Brazila of Conanga 3991 839A

HT Traveler 756
TNT JC MS Traveler 813
LA Mildred 338

{ KMK Alliance 6595 187
Blinda of Conanga 004
Connealy Tobin
Breasha of Conanga 1251
SAV 8180 Traveler 004
TK Prairie Queen 1009
Brooks Prime Time 927
LA Mildred 901

PRODUCTION EPDS						CARCASS EPDS			\$ VALUE EPDS		
CED	BW	WW	YW	CEM	MILK	MARB	RE	FAT	\$W	\$F	\$B
-3	+3.0	+61	+113	+6	+18	1+.57	1+.37	1+.031	+39.00	+80.16	+139.43

Dam BW 4@92, WW 4@93, YW 3@100. AI bred Connealy Arsenal May 9. Safe to Arsenal carrying a heifer calf due February 15.

4B

TNT JK POLLY 434

REG # TATTOO BD BW 205-ADJ WR 365-ADJ YR
BRED HEIFER 17939724 434 2/23/14 97 658 107 911 102

Connealy Consensus
Connealy Earnan 076E
Brazila of Conanga 3991 839A

HT Traveler 756
TNT JK MS Polly 970
Bear Mtn Polly 3095

{ KMK Alliance 6595 187
Blinda of Conanga 004
Connealy Tobin
Breasha of Conanga 1251
SAV 8180 Traveler 004
TK Prairie Queen 1009
Vermilion Dateline 7078
VDAR Polly 4021

PRODUCTION EPDS						CARCASS EPDS			\$ VALUE EPDS		
CED	BW	WW	YW	CEM	MILK	MARB	RE	FAT	\$W	\$F	\$B
-10	+5.7	+67	+113	+0	+18	1+.59	1+.34	1+.011	+38.62	+75.71	+135.98

Dam BW 4@109, WW 4@98, YW 3@100. Exposed to Hart Time Changer 4113.

5A

TNT DOTTIE 421

REG # TATTOO BD BW 205-ADJ WR 365-ADJ YR
BRED HEIFER 17937254 421 2/18/14 80 653 106 951 106

Connealy Product 568
Connealy Final Product
Ebonista of Conanga 471

FAR Krugerrand 410H
TNT Dottie 609
TNT Dottie 215

{ GAR Retail Product
Pride Fine of Conanga 566
Connealy Deep Canyon 454
Ebonisa of Conanga 5469
Krugerrand of Donamere 490
FAR Erianna 286F
Vermilion Dateline 7078
Big Rok Diamond Star 624

PRODUCTION EPDS						CARCASS EPDS			\$ VALUE EPDS		
CED	BW	WW	YW	CEM	MILK	MARB	RE	FAT	\$W	\$F	\$B
+3	+1.7	+57	+106	+8	+27	1+.30	1+.49	1+.024	+50.12	+69.79	+112.87

Dam BW 7@99, WW 7@108, YW 7@106. AI bred Connealy Conservative 3129 on May 23. Due to calve April 4 by Time Changer.

5B

TNT DAISY 440

REG # TATTOO BD BW 205-ADJ WR 365-ADJ YR
BRED HEIFER 17939743 440 2/26/14 85 618 100 970 108

Connealy Consensus
Connealy Earnan 076E
Brazila of Conanga 3991 839A

Rally New Frontier 5233
Evenson Daisy 5208
Evenson Daisy 298

{ KMK Alliance 6595 187
Blinda of Conanga 004
Connealy Tobin
Breasha of Conanga 1251
B/R New Frontier 095
Rally Tibbie 5380
Rockn D Focus 2002
Evenson Daisy 671

PRODUCTION EPDS						CARCASS EPDS			\$ VALUE EPDS		
CED	BW	WW	YW	CEM	MILK	MARB	RE	FAT	\$W	\$F	\$B
-6	+4.5	+59	+112	+3	+22	1+.57	1+.20	1+.018	+33.46	+79.72	+136.60

Dam BW 9@106, WW 9@108, YW 6@111. AI bred May 14 to Connealy Conservative. Carrying a bull calf by Conservative due February 20.

6A

TNT JK MS ECSTACY 422

REG # TATTOO BD BW 205-ADJ WR 365-ADJ YR
BRED HEIFER 17935458 422 2/19/14 81 579 94 816 91

Exar Lutton 1831
74-51 Changing Time 060
Grandview Womack Miss 7172

Connealy Impression
TNT JK Ecstacy 905
TNT Ms Ecstacy 204

{ Northern Improvement 4480 GF
Exar Saras Dream 9809
Twin Valley Precision E161
Grandview Womack Miss 1900
Connealy Reflection
Pearl Pammy of Conanga 194
Vermilion Dateline 7078
JAR Yesmar 775

PRODUCTION EPDS						CARCASS EPDS			\$ VALUE EPDS		
CED	BW	WW	YW	CEM	MILK	MARB	RE	FAT	\$W	\$F	\$B
+7	+3.0	+53	+92	+14	+24	1+.42	1+.43	1-.047	+43.13	+46.77	+110.01

Dam BW 4@96, WW 4@102, YW 4@100. AI bred May 25 to Connealy Right Answer. Carrying a bull calf due March 2 to Right Answer. Exposed to Time Changer.

6B

TNT FRANNY 450

REG # TATTOO BD BW 205-ADJ WR 365-ADJ YR
BRED HEIFER 17934722 450 3/7/14 72 610 99 842 94

Connealy Impression
BT Impressive 898
HT Miss Erica 436

SAF Fame
TNT Franny 723
TNT Designor Girl 517

{ Connealy Reflection
Pearl Pammy of Conanga 194
WAR Alliance 9126 6006
HT Miss Erica 534
Minerts Fortune 2000
SAF Royal Lass 1027
WK New Design 2132
Big Rok Diamond Star 624

PRODUCTION EPDS						CARCASS EPDS			\$ VALUE EPDS		
CED	BW	WW	YW	CEM	MILK	MARB	RE	FAT	\$W	\$F	\$B
+4	+7	+51	+81	+11	+24	1+.43	1+.22	1+.016	+52.60	+28.56	+86.50

Dam BW 6@91, WW 7@99, YW 6@96. Pasture exposed to Time Changer.



Hart Time Changer 4113



AAR Ten X 7008 S A

BRED ANGUS HEIFERS

PICK OF THE CROP

Special Female Sale



7A

TNT BARB 425

REG # TATTOO BD BW 205-ADJ WR 365-ADJ YR
BRED HEIFER 17937253 425 2/20/14 81 640 104 976 109

Connealy Product 568
Connealy Final Product
 Ebonista of Conanga 471
 Evenson Krugerrand 479
Evenson Barb 621
 Evenson Barb 177

GAR Retail Product
 Pride Fine of Conanga 566
 Connealy Deep Canyon 454
 Ebonisa of Conanga 5469
 FAR Krugerrand 410H
 Evenson Queen 8189
 Evenson Legend 980
 Evenson Barb 344

PRODUCTION EPDS						CARCASS EPDS			\$ VALUE EPDS		
CED	BW	WW	YW	CEM	MILK	MARB	RE	FAT	\$W	\$F	\$B
+2	+1.8	+55	+102	+8	+25	1+.33	1+.41	1+.029	+46.24	+63.74	+98.98

Dam BW 7@98, WW 7@105, YW 5@106, IMF 2@125. AI bred May 7 to Sydgen Rock Star. Exposed to Hart Time Changer 4113.



7B

TNT QUEEN 441

REG # TATTOO BD BW 205-ADJ WR 365-ADJ YR
BRED HEIFER 17939740 441 2/27/14 86 663 108 948 106

Connealy Consensus
Connealy Earnan 076E
 Brazila of Conanga 3991 839A
 BT Crossover 758N
SCR Queen 71530
 Plattermere Queen W 440

KMK Alliance 6595 187
 Blinda of Conanga 004
 Connealy Tobin
 Breesha of Conanga 1251
 CA Future Direction 5321
 BT Royal Pride 237G
 Leachman Right Time
 Plattermere Queen W 331

PRODUCTION EPDS						CARCASS EPDS			\$ VALUE EPDS		
CED	BW	WW	YW	CEM	MILK	MARB	RE	FAT	\$W	\$F	\$B
-4	+3.7	+66	+113	+3	+22	1+.57	1+.59	1+.003	+49.37	+76.45	+150.57

Dam BW 6@107, WW 6@107, YW 5@105. AI bred May 19 to Sitz Logic. Carrying a bull calf by Logic due February 25.



8A

TNT PRINCESS 426

REG # TATTOO BD BW 205-ADJ WR 365-ADJ YR
BRED HEIFER 17937243 426 2/20/14 76 677 110 915 102

Mytty In Focus
Summitcrest Focus 2U66
 Summitcrest Elba 1M17
 BT Impressive 898
TNT Princess 207
 TNT Princess 12J

SAF Focus of ER
 Mytty Countess 906
 Vermilion Dateline 7078
 Summitcrest Elba 1F43
 Connealy Impression
 HT Miss Erica 436
 Young Dale Black Prince 3G
 LA Erica 316

PRODUCTION EPDS						CARCASS EPDS			\$ VALUE EPDS		
CED	BW	WW	YW	CEM	MILK	MARB	RE	FAT	\$W	\$F	\$B
+5	+1.6	+55	+91	+11	+29	1+.36	1+.35	1-.003	+57.12	+43.56	+95.75

Dam BW 1@105, WW 1@110, YW 1@102. Safe to Hart Time Changer 4113. Carrying a bull calf due March 21.



8B

TNT CAMILLA 443

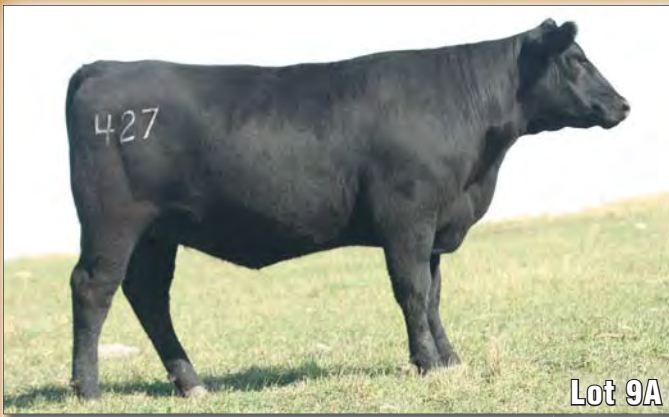
REG # TATTOO BD BW 205-ADJ WR 365-ADJ YR
BRED HEIFER 17934706 443 3/1/14 80 706 115 944 105

Connealy Danny 5398
MOGCK Danny 321
 MOGCK Ruth 509
 Styles Upgrade L90
TNT Camilla 214
 Basin Camilla 9033

Connealy Danny Boy
 Endova of Conanga 858
 HARB Pendleton 765 JH
 MOGCK Ruth 1846
 Styles Upgrade J59
 Plainview Barbara 83V
 Basin Franchise P142
 Basin Camilla 2817

PRODUCTION EPDS						CARCASS EPDS			\$ VALUE EPDS		
CED	BW	WW	YW	CEM	MILK	MARB	RE	FAT	\$W	\$F	\$B
+3	+2.7	+61	+102	+6	+27	1+.40	1+.53	1+.009	+55.67	+59.41	+115.38

Dam BW 1@110, WW 1@115, YW 1@105. AI bred to HF Tiger 5T May 13. Due to calve April 4 to Time Changer.



9A

TNT LADY ELISE 427

REG # TATTOO BD BW 205-ADJ WR 365-ADJ YR
BRED HEIFER 17939745 427 2/21/14 92 626 102 903 101

Connealy Consensus
Connealy Earnan 076E
Brazila of Conanga 3991 839A

SAF Connection
TNT JC Miss Connection P9
TNT Madge 18M

{ KMK Alliance 6595 187
Blinda of Conanga 004
Connealy Tobin
Breasha of Conanga 1251
SVF Gdar 216 LTD
SAF Royal Queen 5084
JAR Mega Bucks 9155
Jar Lady Elise OF RDH 098

PRODUCTION EPDS						CARCASS EPDS			\$ VALUE EPDS		
CED	BW	WW	YW	CEM	MILK	MARB	RE	FAT	\$W	\$F	\$B
-6	+5.0	+60	+103	+2	+20	1+.63	1+.31	1+.011	+37.37	+67.96	+135.10

Dam BW 9@108, WW 9@99, YW 7@98. AI bred May 15 to Connealy Conservative. Carrying a bull calf by Time Changer due March 14.



9B

TNT QUEEN RUTH 435

REG # TATTOO BD BW 205-ADJ WR 365-ADJ YR
BRED HEIFER 17935132 435 2/23/14 79 605 98 925 103

Hyline Right Time 338
Pine Ridge Hammer S322
Belmont Lady 9015 3313

WK New Design 2132
TNT JC Designers Lady 743
Queen Ruth BH 715

{ Leachman Right Time
Hyline Pride 265
SAF Strategy 9015
Belmont Laddy Expl 0124
Bon View New Design 1407
WK Unique Time 4384
TC Stockman 365
Queen Ruth BH 289

PRODUCTION EPDS						CARCASS EPDS			\$ VALUE EPDS		
CED	BW	WW	YW	CEM	MILK	MARB	RE	FAT	\$W	\$F	\$B
+5	+2.9	+55	+96	+11	+24	1+.49	1+.39	1-.016	+44.82	+52.64	+136.70

Dam BW 7@98, WW 7@101, YW 6@102, IMF 5@121, REA 5@106. AI May 16 to DL Incentive 228. Examined safe carrying a heifer calf due February 22 by Incentive. Exposed to Time Changer.

10A TNT FLORA 433

REG # TATTOO BD BW 205-ADJ WR 365-ADJ YR
BRED HEIFER 17935432 433 2/23/14 73 666 108 824 92

Connealy Reflection
Jindra Double Vision
Hoff Rachel 8312 405

Hoff First Edition 058 242
TNT First Lady 505
TNT Flora 201

{ Bon View New Design 878
Happy Grill of Conanga 6260
Hoff Limited Edition SC 594
Hoff Miss Expo SC 4223
Hoff Head of The Class SC534
Hoff Witch of SC 7131 058
Bon View New Design 1407
Swindon Flora 4K

PRODUCTION EPDS						CARCASS EPDS			\$ VALUE EPDS		
CED	BW	WW	YW	CEM	MILK	MARB	RE	FAT	\$W	\$F	\$B
1+.9	+1	+60	+102	1+.12	+23	1+.35	1+.43	1+.030	+56.90	+60.13	+138.15

Dam BW 7@93, WW 7@98, YW 5@98. AI May 18 to DL Incentive 228. Carrying a heifer calf by Time Changer due March 18.

10B TNT LADY 446

REG # TATTOO BD BW 205-ADJ WR 365-ADJ YR
BRED HEIFER 17935430 446 3/3/14 90 647 105 938 105

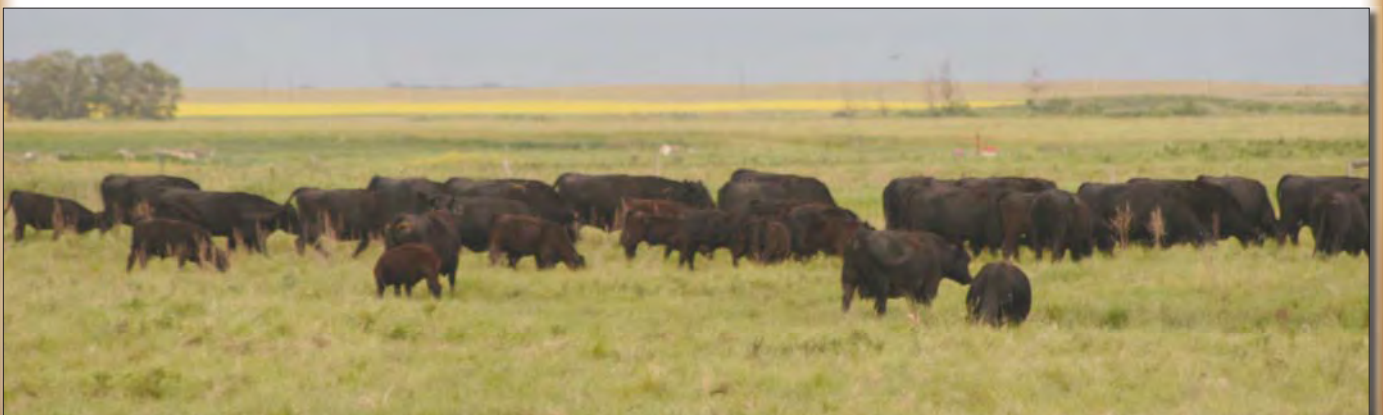
Connealy Reflection
Jindra Double Vision
Hoff Rachel 8312 405

BC 7022 Raven 7965
TNT Designer Ann 915
TNT Designers Lady 435

{ Bon View New Design 878
Happy Grill of Conanga 6260
Hoff Limited Edition SC 594
Hoff Miss Expo SC 4223
BC Marathon 7022
OCC Blackbird 796F
WK New Design 2132
Bando Lady 92 EA

PRODUCTION EPDS						CARCASS EPDS			\$ VALUE EPDS		
CED	BW	WW	YW	CEM	MILK	MARB	RE	FAT	\$W	\$F	\$B
+3	+3.0	+55	+102	+6	+22	1+.58	1+.44	1-.019	+39.06	+63.74	+136.21

Dam BW 5@112, WW 5@102, YW 4@98, IMF 3@126. AI bred to Ten X May 16. Exposed to Time Changer.



BRED ANGUS HEIFERS

PICK OF THE CROP

Special Female Sale



Lot 11A

11A

TNT BONNIE 436

REG # TATTOO BD BW 205-ADJ WR 365-ADJ YR
BRED HEIFER 17939741 436 2/23/14 81 575 93 807 90

Connealy Consensus
Connealy Earnan 076E
 Brazila of Conanga 3991 839A

TNT Bando Man 304
TNT Bonnie 769
 LF Miss Lynn L101

{ KMK Alliance 6595 187
 { Blinda of Conanga 004
 { Connealy Tobin
 { Breesha of Conanga 1251
 { SAF 598 Bando 5175
 { TNT Shania 002
 { Famous 7001
 { RWS Miss Ext 473 67

PRODUCTION EPDS						CARCASS EPDS			\$ VALUE EPDS		
CED	BW	WW	YW	CEM	MILK	MARB	RE	FAT	SW	\$F	\$B
-1	+2.6	+53	+91	+5	+22	1+.66	1+.41	1+.009	+43.13	+44.96	+134.98

Dam BW 5@104, WW 5@101, YW 5@98. AI May 4 to AAR Ten X 7008 S A. Safe to Ten X carrying a heifer calf due February 10. Exposed to Time Changer.



Lot 11B

11B

TNT JK LADY 467

REG # TATTOO BD BW 205-ADJ WR 365-ADJ YR
BRED HEIFER 17934715 467 3/16/14 87 708 115 1116 124

Foxs Rito 9
Foxs Rito 4Y
 Foxs Barbara 152

BT Impressive 898
TNT Lady 182
 Bear Mtn Lady 6117

{ Rito 112 of 2536 Rito 616
 { Foxs Barbara 96
 { WPR 3J Dividend 9321
 { Fox Barbara 76
 { Connealy Impression
 { HT Miss Erica 436
 { Bear Mtn Freight Train 350L
 { Bear Mtn Lady 2127

PRODUCTION EPDS						CARCASS EPDS			\$ VALUE EPDS		
CED	BW	WW	YW	CEM	MILK	MARB	RE	FAT	SW	\$F	\$B
+0	+2.6	+57	+117	+5	+28	1+.34	1+.25	1-.003	+41.51	+90.90	+118.08

467 Dam BW 3@109, WW 3@115, YW 1@124. AI bred to Sitz Logic May 13. Examined safe carrying a heifer calf by Time Changer due March 11.



Connealy Final Product

12A

TNT LADY ELISE 445

REG # TATTOO BD BW 205-ADJ WR 365-ADJ YR
BRED HEIFER 17937230 445 3/2/14 80 602 98 893 100

Connealy Product 568
Connealy Final Product
 Ebonista of Conanga 471

HT Traveler 756
TNT JC Travel Connection 076
 TNT JC Miss Connection P9

{ GAR Retail Product
 { Pride Fine of Conanga 566
 { Connealy Deep Canyon 454
 { Ebonista of Conanga 5469
 { SAV 8180 Traveler 004
 { TK Prairie Queen 1009
 { SAF Connection
 { TNT Madge 18M

PRODUCTION EPDS						CARCASS EPDS			\$ VALUE EPDS		
CED	BW	WW	YW	CEM	MILK	MARB	RE	FAT	SW	\$F	\$B
+2	+2.0	+56	+103	+8	+24	1+.37	1+.33	1+.024	+46.04	+64.88	+102.55

Dam BW 3@96, WW 3@100, YW 3@102. AI bred May 19 to DL Incentive 228. Carrying a bull calf by Incentive due to calve February 24.



Lot 12B

12B

TNT QUEEN 447

REG # TATTOO BD BW 205-ADJ WR 365-ADJ YR
BRED HEIFER 17935231 447 3/4/14 84 636 103 953 106

Hylina Right Time 338
Pine Ridge Hammer S322
 Belmont Lady 9015 3313

Lemar Really Windy 2025
Evenson Queen 5211
 Evenson Queen 334

{ Leachman Right Time
 { Hylina Pride 265
 { SAF Strategy 9015
 { Belmont Lady Expl 0124
 { AAR Really Windy 1205
 { Lemar Queen Pamela 42K
 { SAF Focus of ER
 { Evenson Queen 1170

PRODUCTION EPDS						CARCASS EPDS			\$ VALUE EPDS		
CED	BW	WW	YW	CEM	MILK	MARB	RE	FAT	SW	\$F	\$B
+7	+2.3	+60	+110	+11	+22	1+.37	1+.39	1-.007	+48.49	+82.60	+143.34

Dam BW 8@98, WW 8@100, YW 6@103. AI May 15 to Musgrave Big Sky. Examined safe to Big Sky carrying a bull calf due February 21. Exposed to Time Changer.



Lot 13A

13A TNT PRIDE 448
REG # TATTOO BD BW 205-ADJ WR 365-ADJ YR
BRED HEIFER 17934721 448 3/4/14 78 678 110 960 107

Connealy Danny 5398
MOGCK Danny 321
MOGCK Ruth 509

Styles Upgrade L90
TNT Pride 252
Bear Mtn Pride 5063

Connealy Danny Boy
Endova of Conanga 858
HARB Pendleton 765 JH
MOGCK Ruth 1846
Styles Upgrade J59
Plainview Barbara 83V
Basin Max 602C
Foote Acres Pride 88J

PRODUCTION EPDS						CARCASS EPDS			\$ VALUE EPDS		
CED	BW	WW	YW	CEM	MILK	MARB	RE	FAT	\$W	\$F	\$B
+3	+2.2	+59	+102	+5	+25	1+.32	1+.40	1+0	+52.11	+60.85	+109.58

Dam BW 1@108, WW 1@110, YW 1@107. AI bred May 23 to Ten X. Exposed to Time Changer.



BT Impressive 898

13B TNT KATHY 490
REG # TATTOO BD BW 205-ADJ WR 365-ADJ YR
BRED HEIFER 17934726 490 3/23/14 77 597 97 895 100

Connealy Impression
BT Impressive 898
HT Miss Erica 436

HT Traveler 756
TNT Kathy 139
TNT Kathy 621

Connealy Reflection
Pearl Pammy of Conanga 194
WAR Alliance 9126 6006
HT Miss Erica 534
SAV 8180 Traveler 004
TK Prairie Queen 1009
FAR Krugerrand 410H
TNT Designor Girl 438

PRODUCTION EPDS						CARCASS EPDS			\$ VALUE EPDS		
CED	BW	WW	YW	CEM	MILK	MARB	RE	FAT	\$W	\$F	\$B
+4	+1.3	+54	+99	+9	+24	1+.36	1+.22	1+.017	+46.99	+58.88	+116.87

Dam BW 2@98, WW 2@101, YW 2@101. Exposed to Time Changer. Carrying a heifer calf due March 25 to Time Changer.



Lot 14A

14A TNT ELINE 449
REG # TATTOO BD BW 205-ADJ WR 365-ADJ YR
BRED HEIFER 17938462 449 3/6/14 73 700 114 982 110

Connealy Tobin
Connealy Confidence 0100
Becka Gala of Conanga 8281

WMR Timeless 458
Tokach Eline 2207
Tokach Eline 8235

Bon View New Design 208
Delia of Conanga 667
Connealy Thunder
Becka Lee of Conanga 37
Leachman Right Time 338-5605
WMR Blackcap 521
TC Total 410
Tokach Eline 0524

PRODUCTION EPDS						CARCASS EPDS			\$ VALUE EPDS		
CED	BW	WW	YW	CEM	MILK	MARB	RE	FAT	\$W	\$F	\$B
+12	+5	+63	+107	+15	+21	1+.42	1+.93	1+.032	+56.55	+67.29	+117.67

Dam BW 1@102, WW 1@114, YW 1@110. AI bred May 19 to AAR Ten X 7008 S A. Carrying a bull calf by Ten X due to calve February 25. Exposed to Time Changer.



Connealy Confidence 0100

Chris Mitchell



14B TNT ELINE 451
REG # TATTOO BD BW 205-ADJ WR 365-ADJ YR
BRED HEIFER 17938464 451 3/9/14 74 669 109 879 98

Connealy Tobin
Connealy Confidence 0100
Becka Gala of Conanga 8281

Connealy Impression
Tokach Eline 2102
Tokach Eline 8292

Bon View New Design 208
Delia of Conanga 667
Connealy Thunder
Becka Lee of Conanga 37
Connealy Reflection
Pearl Pammy of Conanga 194
B/R New Frontier 095
Tokach Eline 9709

PRODUCTION EPDS						CARCASS EPDS			\$ VALUE EPDS		
CED	BW	WW	YW	CEM	MILK	MARB	RE	FAT	\$W	\$F	\$B
+12	+6	+55	+91	+16	+19	1+.47	1+.82	1-.001	+49.08	+43.56	+85.00

Dam BW 1@103, WW 1@109, YW 1@98. AI bred May 23 to AAR Ten X 7008 S A. Carrying a heifer calf due February 29 to Ten X. Exposed to Time Changer.

BRED ANGUS HEIFERS

PICK OF THE CROP

Special Female Sale

15A TNT QUEEN 457

REG # TATTOO BD BW 205-ADJ WR 365-ADJ YR
BRED HEIFER 17934723 457 3/12/14 88 544 88 798 89

Foxs Rito 9
Foxs Rito 4Y
 Foxs Barbara 152

BC 7022 Raven 7965
TNT Queen Ann 935
 Baldridge Queen of NP N17

Rito 112 of 2536 Rito 616
 Foxs Barbara 96
 WPR 3J Dividend 9321
 Fox Barbara 76
 BC Marathon 7022
 OCC Blackbird 796F
 Sitz Alliance 6595
 Baldridge Queen of NP L138

PRODUCTION EPDS						CARCASS EPDS			\$ VALUE EPDS		
CED	BW	WW	YW	CEM	MILK	MARB	RE	FAT	\$W	\$F	\$B
-2	+3.7	+37	+80	+1	+22	1+.32	1+.31	1-.015	+16.53	+36.36	+84.94

Dam BW 4@112, WW 4@102, YW 3@99. AI bred to Connealy Right Answer. Due to calve March 30 to Time Changer.

15B TNT GAL 4108

REG # TATTOO BD BW 205-ADJ WR 365-ADJ YR
BRED HEIFER 17934718 4108 4/21/14 68 622 101

Foxs Rito 9
Foxs Rito 4Y
 Foxs Barbara 152

Connealy Right Answer 746
TNT Gal 129
 EMH Famous Gal 1

Rito 112 of 2536 Rito 616
 Foxs Barbara 96
 WPR 3J Dividend 9321
 Fox Barbara 76
 SAV Final Answer 0035
 Happy Dell of Conanga 262
 Famous 7001
 HB High Rise Gal 745

PRODUCTION EPDS						CARCASS EPDS			\$ VALUE EPDS		
CED	BW	WW	YW	CEM	MILK	MARB	RE	FAT	\$W	\$F	\$B
+7	-.1	+48	+101	+7	+25	1+.36	1+.12	1-.005	+38.72	+66.94	+87.60

Dam BW 2@93, WW 2@102, YW 1@100. Examined safe to Hart Time Changer 4113 carrying a heifer calf due March 6.

16A TNT PAMELA 492

REG # TATTOO BD BW 205-ADJ WR 365-ADJ YR
BRED HEIFER 17934709 492 3/24/14 78 571 93 897 100

Connealy Hemisphere 957L
Hoover Hemi L20
 Erica of Ellston C265

Vermilion Payweight J847
Basin Pamela 2786
 Basin Pamela 0772

GAR New Design 5050
 Breaula of Conanga 3991
 TC Gridiron 258
 GG Erica 9104
 Vermilion Dateline 7078
 Vermilion Lass 7969
 Diamond Max H572
 Basin Pamela 6230

PRODUCTION EPDS						CARCASS EPDS			\$ VALUE EPDS		
CED	BW	WW	YW	CEM	MILK	MARB	RE	FAT	\$W	\$F	\$B
+2	+1.3	+49	+93	+8	+28	1+.42	1+.69	1+.011	+46.48	+52.27	+127.86

Dam BW 5@104, WW 5@101, YW 4@103. AI bred May 12 to DL Incentive 228. Exposed to Hart Time Changer 4113.

16B TNT LADY ELBA 494

REG # TATTOO BD BW 205-ADJ WR 365-ADJ YR
BRED HEIFER 17934714 494 3/26/14 73 617 100 958 107

Connealy Final Product
TNT Final Product 255
 Evenson Queen 815

Mytty In Focus
TNT Lady Elba 124
 TNT Lady Elba 977

Connealy Product 568
 Ebonista of Conanga 471
 HSAF Bando 1961
 Evenson Queen 661
 SAF Focus of ER
 Mytty Countess 906
 HT Traveler 756
 Bear Mtn Elba 3097

PRODUCTION EPDS						CARCASS EPDS			\$ VALUE EPDS		
CED	BW	WW	YW	CEM	MILK	MARB	RE	FAT	\$W	\$F	\$B
+6	+0	+56	+106	+9	+26	1+.37	1+.30	1+.018	+50.81	+70.52	+116.00

Dam BW 2@100, WW 2@104, YW 2@106. AI bred Connealy Arsenal 2174 on May 16. Carrying a bull calf by Arsenal due February 22.

17A TNT FOREVER LADY 4102

REG # TATTOO BD BW 205-ADJ WR 365-ADJ YR
BRED HEIFER 17934716 4102 4/4/14 79 610 99 826 92

Connealy Impression
BT Impressive 898
 HT Miss Erica 436

Hyline Right Time 338
TNT Forever Lady 924
 Bear Mtn Forever Lady 4086

Connealy Reflection
 Pearl Pammy of Conanga 194
 WAR Alliance 9126 6006
 HT Miss Erica 534
 Leachman Right Time
 Hyline Pride 265
 B/R New Design 036
 Bear Mtn Forever Blackcap

PRODUCTION EPDS						CARCASS EPDS			\$ VALUE EPDS		
CED	BW	WW	YW	CEM	MILK	MARB	RE	FAT	\$W	\$F	\$B
+3	+1.5	+52	+88	+8	+24	1+.47	1+.28	1-.001	+49.09	+40.26	+123.82

Dam BW 5@100, WW 5@96, YW 4@97, IMF 3@110. AI bred May 23 to AAR Ten X 7008 S A. Carrying a bull calf due February 29 by Ten X.

17B TNT QUEEN 4105

REG # TATTOO BD BW 205-ADJ WR 365-ADJ YR
BRED HEIFER 17934717 4105 4/9/14 81 654 106 876 97

Connealy Impression
BT Impressive 898
 HT Miss Erica 436

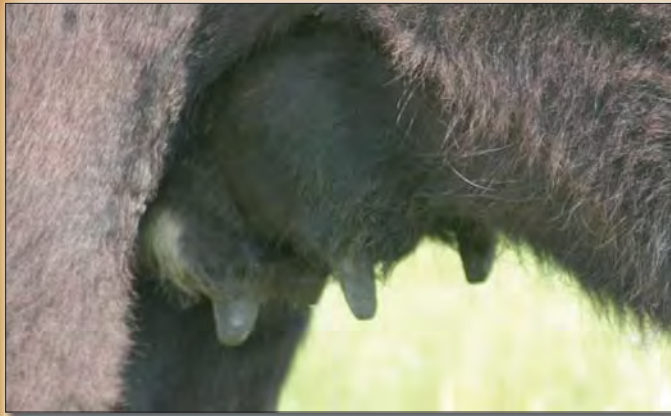
TNT Program 821
TNT Queenie 027
 Baldridge Queen of NP N17

Connealy Reflection
 Pearl Pammy of Conanga 194
 WAR Alliance 9126 6006
 HT Miss Erica 534
 HT Traveler 756
 TNT Designers Girl 515
 Sitz Alliance 6595
 Baldridge Queen of NP L138

PRODUCTION EPDS						CARCASS EPDS			\$ VALUE EPDS		
CED	BW	WW	YW	CEM	MILK	MARB	RE	FAT	\$W	\$F	\$B
+2	+1.8	+59	+96	+7	+28	1+.36	1+.27	1+.028	+59.75	+49.81	+108.97

Dam BW 4@107, WW 4@104, YW 3@104. AI bred May 16 to Ten X. Exposed to Hart Time Changer 4113.





Lot 18B

18A TNT BLACKCAP 502

REG # TATTOO BD BW 205-ADJ WR
OPEN HEIFER 18196691 502 1/30/15 70 749 109

SAV Final Answer 0035 } Sitz Traveler 8180
DL Incentive 228 } SAV Emulous 8145
DL Princess 233 } SAF Focus of ER
 } DL Princess 471
BT Impressive 898 } Connealy Impression
TNT Blackcap 362 } HT Miss Erica 436
Leachman Blackcap 4055 } Leachman Talisker
 } Leachman Blackcap 1105

PRODUCTION EPDS						CARCASS EPDS			\$ VALUE EPDS		
CED	BW	WW	YW	CEM	MILK	MARB	RE	FAT	\$W	\$F	\$B
I+5	I+.6	I+72	I+120	I+9	I+23	I+.30	I+.38	I+.008	+66.69	+85.43	+111.68

Dam BW 1@100, WW 1@109

18B TNT PRIDE 516

REG # TATTOO BD BW 205-ADJ WR
OPEN HEIFER 18196821 516 2/14/15 79 758 110

Sitz Upward 307R } Connealy Onward
Koupals B&B Identity } Sitz Henrietta Pride 81M
B&B Erica 605 } GAR Exaltation 3144
 } B&B Erica 4064
Nichols Extra H6 } N Bar Emulation EXT
4G Pride 521 } Nichols Eileen May F261
4G Pride 343 } Ranger G 1720
 } 4G Pride 0113

PRODUCTION EPDS						CARCASS EPDS			\$ VALUE EPDS		
CED	BW	WW	YW	CEM	MILK	MARB	RE	FAT	\$W	\$F	\$B
I+5	I+2.0	I+58	I+108	I+8	I+36	I+.46	I+.46	I+.029	+57.24	+72.84	+134.20

Dam BW 8@102, WW 8@108, YW 6@106

19A TNT QUEEN 503

REG # TATTOO BD BW 205-ADJ WR
OPEN HEIFER 18196881 503 1/30/15 53 702 102

Connealy Consensus } KMK Alliance 6595 187
Connealy Earnan 076E } Blinda of Conanga 004
Brazila of Conanga 3991 839A } Connealy Tobin
 } Breesha of Conanga 1251
Rally New Frontier 5233 } B/R New Frontier 095
Evenson Queen 667 } Rally Tibbie 5380
Evenson Queen 2118 } VDAR New Trend 315
 } Evenson Queen 6122

PRODUCTION EPDS						CARCASS EPDS			\$ VALUE EPDS		
CED	BW	WW	YW	CEM	MILK	MARB	RE	FAT	\$W	\$F	\$B
I+2	I+1.4	I+57	I+105	I+8	I+21	I+.54	I+.51	I+.020	+44.98	+67.90	+124.56

Dam BW 7@92, WW 7@101, YW 5@102

19B TNT QUEEN 504

REG # TATTOO BD BW 205-ADJ WR
OPEN HEIFER 18196883 504 1/30/15 51 683 99

Connealy Consensus } KMK Alliance 6595 187
Connealy Earnan 076E } Blinda of Conanga 004
Brazila of Conanga 3991 839A } Connealy Tobin
 } Breesha of Conanga 1251
Rally New Frontier 5233 } B/R New Frontier 095
Evenson Queen 667 } Rally Tibbie 5380
Evenson Queen 2118 } VDAR New Trend 315
 } Evenson Queen 6122

PRODUCTION EPDS						CARCASS EPDS			\$ VALUE EPDS		
CED	BW	WW	YW	CEM	MILK	MARB	RE	FAT	\$W	\$F	\$B
I+2	I+1.4	I+57	I+105	I+8	I+21	I+.54	I+.51	I+.020	+44.98	+67.90	+124.56

Dam BW 7@92, WW 7@101, YW 5@102

20A TNT QUEEN DOLLY 505

REG # TATTOO BD BW 205-ADJ WR
OPEN HEIFER 18212745 505 2/1/15 66 657 96

HF Kodiak 5R } Sandy Bar Advantage 43M
HF Tiger 5T } Wilbar Ruby 955N
HF Echo 84R } TC Freedom 104
 } HFDF Echo 6N
Connealy Onward } Connealy Lead On
TNT Queen Dolly 344 } Altune of Conanga 6104
Evenson Queen Dolly 6264 } Rally New Frontier 5233
 } Evenson Queen Dolly 336

PRODUCTION EPDS						CARCASS EPDS			\$ VALUE EPDS		
CED	BW	WW	YW	CEM	MILK	MARB	RE	FAT	\$W	\$F	\$B
I+12	I-.1	I+56	I+108	I+10	I+29	I+.37	I+.51	I+.035	+52.64	+74.31	+136.03

Dam BW 1@95, WW 1@96

20B TNT QUEEN 551

REG # TATTOO BD BW 205-ADJ WR
OPEN HEIFER 18212746 551 3/2/15 80 707 103

HF Kodiak 5R } Sandy Bar Advantage 43M
HF Tiger 5T } Wilbar Ruby 955N
HF Echo 84R } TC Freedom 104
 } HFDF Echo 6N
BT Crossover 758N } CA Future Direction 5321
SCR Queen 71530 } BT Royal Pride 237G
Plattemere Queen W 440 } Leachman Right Time
 } Plattemere Queen W 331

PRODUCTION EPDS						CARCASS EPDS			\$ VALUE EPDS		
CED	BW	WW	YW	CEM	MILK	MARB	RE	FAT	\$W	\$F	\$B
I+7	I+1.5	I+59	I+107	I+7	I+29	I+.26	I+.46	I+.001	+55.61	+70.21	+130.64

Dam BW 6@107, WW 6@107, YW 5@105

OPEN ANGUS HEIFERS

PICK OF THE CROP

Special Female Sale



Lot 21A

21A TNT MISS SHANIA 506

REG #	TATTOO	BD	BW	205-ADJ	WR
OPEN HEIFER	18196873	506	2/1/15	76	673 98

Connealy Consensus
Connealy Earnan 076E
 Brazila of Conanga 3991 839A

Wk Dakota 5002
TNT Miss Shania 773
 TNT Shania 002

KMK Alliance 6595 187
 Blinda of Conanga 004
 Connealy Tobin
 Breasha of Conanga 1251
 KG Dakota
 WK First Lady 9276
 TC Stockman 365
 TNT MS Rita 18G

PRODUCTION EPDS						CARCASS EPDS			\$ VALUE EPDS		
CED	BW	WW	YW	CEM	MILK	MARB	RE	FAT	\$W	\$F	\$B
I+2	I+2.5	I+62	I+109	I+7	I+24	I+.56	I+.63	I+.031	+64.92	+82.64	+150.40

Dam BW 7@98, WW 7@104, YW 6@104



Lot 21B

21B TNT NATALIE 521

REG #	TATTOO	BD	BW	205-ADJ	WR
OPEN HEIFER	18196869	521	2/19/15	98	773 113

Connealy Consensus
Connealy Earnan 076E
 Brazila of Conanga 3991 839A

Connealy Impression
TNT Natalie 948
 TNT Natalie 303

KMK Alliance 6595 187
 Blinda of Conanga 004
 Connealy Tobin
 Breasha of Conanga 1251
 Connealy Reflection
 Pearl Pammy of Conanga 194
 SA Neutron 377
 TNT Sable 19J

PRODUCTION EPDS						CARCASS EPDS			\$ VALUE EPDS		
CED	BW	WW	YW	CEM	MILK	MARB	RE	FAT	\$W	\$F	\$B
I-3	I+3.4	I+65	I+113	I+7	I+21	I+.64	I+.53	I+.019	+47.74	+77.19	+133.56

Dam BW 4@101, WW 4@105, YW 2@99



Lot 22A

22A TNT DOTTIE 507

REG #	TATTOO	BD	BW	205-ADJ	WR
OPEN HEIFER	18196109	507	2/2/15	78	710 103

Sitz Dimension 8607
SITZ Logic Y46
 Sitz Forever Lady 612T

SAV Heartbeat 9222
TNT Dottie 331
 TNT Dottie 083

Sitz Upward 307R
 Sitz Everelda Entense 264
 Connealy Thunder
 Sitz Forever Lady 63M
 SAV Heritage 6295
 SAV Emblynette 5299
 K&B Powerplant 705
 TNT Dottie 609

PRODUCTION EPDS						CARCASS EPDS			\$ VALUE EPDS		
CED	BW	WW	YW	CEM	MILK	MARB	RE	FAT	\$W	\$F	\$B
I+3	I+2.9	I+62	I+116	I+8	I+25	I+.43	I+.19	I+.041	+46.84	+85.19	+116.40

Dam BW 1@111, WW 1@103

DVAuction
 Broadcasting Real-Time Auctions

Visit www.DVAuction.com
 and Register Today!

For General Questions Please Contact Our Office:
 (402) 316-5460 or support@dvauction.com

22B TNT IDA 529

REG #	TATTOO	BD	BW	205-ADJ	WR
OPEN HEIFER	18196950	529	2/20/15	72	712 104

Connealy Capitalist 028
Connealy Conservative 3129
 Enchanted of Conanga 145L

Pine Ridge Hammer S322
TNT Ida 317
 Evenson Ida 983

SAV Final Answer 0035
 Prides Pita of Conanga 8821
 Kesslers Frontman R001
 Endon of Conanga 858
 Hyline Right Time 338
 Belmont Lady 9015 3313
 HARB Windy 702 JH
 Evenson Ida 9187

PRODUCTION EPDS						CARCASS EPDS			\$ VALUE EPDS		
CED	BW	WW	YW	CEM	MILK	MARB	RE	FAT	\$W	\$F	\$B
I+9	I+.9	I+65	I+112	I+10	I+26	I+.27	I+.53	I+.035	+61.60	+75.28	+119.44

Dam BW 1@103, WW 1@104

23A TNT FRANNY 508
REG # TATTOO BD BW 205-ADJ WR
OPEN HEIFER 18196909 508 2/6/15 78 638 93

Connealy Consensus
Connealy Consensus 7229
Blue Lilly of Conanga 16

SAF Fame
TNT Franny 723
TNT Designer Girl 517

{ KMK Alliance 6595 187
Blinda of Conanga 004
Woodhill Admiral 77K
Blue Cash of Conanga 6020
Minerts Fortune 2000
SAF Royal Lass 1027
WK New Design 2132
Big Rok Diamond Star 624

PRODUCTION EPDS						CARCASS EPDS			\$ VALUE EPDS		
CED	BW	WW	YW	CEM	MILK	MARB	RE	FAT	\$W	\$F	\$B
I+2	I+2.0	I+53	I+85	I+6	I+24	I+.70	I+.35	I+.022	+50.67	+34.23	+92.74

Dam BW 6@91, WW 7@99, YW 6@96

23B TNT JK MISS ECSTASY 535
REG # TATTOO BD BW 205-ADJ WR
OPEN HEIFER 18196035 535 2/23/15 72 691 101

Connealy Reflection
Jindra Double Vision
Hoff Rachel 8312 405

Woodhill Foresight
TNT Foresight Girl 032
TNT JK Designors Girl 531

{ Bon View New Design 878
Happy Grill of Conanga 6260
Hoff Limited Edition SC 594
Hoff Miss Expo SC 4223
Papa Forte 1921
Bon View Gammer 85
WK New Design 2132
TNT Ms Ecstasy 204

PRODUCTION EPDS						CARCASS EPDS			\$ VALUE EPDS		
CED	BW	WW	YW	CEM	MILK	MARB	RE	FAT	\$W	\$F	\$B
I+8	I+1.0	I+60	I+109	I+12	I+25	I+.53	I+.41	I-.017	+53.43	+73.26	+146.69

Dam BW 4@90, WW 4@101, YW 3@99
DDP

24A TNT DAISY 511
REG # TATTOO BD BW 205-ADJ WR
OPEN HEIFER 18196935 511 2/8/15 78 735 107

Connealy Consensus
Connealy Consensus 7229
Blue Lilly of Conanga 16

Rally New Frontier 5233
Evenson Daisy 5208
Evenson Daisy 298

{ KMK Alliance 6595 187
Blinda of Conanga 004
Woodhill Admiral 77K
Blue Cash of Conanga 6020
B/R New Frontier 095
Rally Tibbie 5380
Rockn D Focus 2002
Evenson Daisy 671

PRODUCTION EPDS						CARCASS EPDS			\$ VALUE EPDS		
CED	BW	WW	YW	CEM	MILK	MARB	RE	FAT	\$W	\$F	\$B
I+1	I+3.2	I+55	I+98	I+4	I+27	I+.66	I+.16	I+.013	+44.85	+56.32	+116.86

Dam BW 9@106, WW 9@108, YW 6@111

24B TNT QUEEN DOLLY 545
REG # TATTOO BD BW 205-ADJ WR
OPEN HEIFER 18196926 545 2/28/15 92 679 99

Connealy Consensus
Connealy Consensus 7229
Blue Lilly of Conanga 16

River Hills Kahuna 175M
Evenson Queen Dolly 6309
Evenson Queen Dolly 5195

{ KMK Alliance 6595 187
Blinda of Conanga 004
Woodhill Admiral 77K
Blue Cash of Conanga 6020
Baldrige Kahuna 39K
Pleasanta of Conanga 736
Transformer 100 EAR
Evenson Queen Dolly 0127

PRODUCTION EPDS						CARCASS EPDS			\$ VALUE EPDS		
CED	BW	WW	YW	CEM	MILK	MARB	RE	FAT	\$W	\$F	\$B
I+3	I+2.8	I+56	I+97	I+2	I+26	I+.72	I+.39	I-.001	+58.45	+50.49	+108.74

Dam BW 7@107, WW 7@103, YW 4@108, REA 2@119



25A TNT MISS BONNIE 513
REG # TATTOO BD BW 205-ADJ WR
OPEN HEIFER 18196961 513 2/9/15 65 669 97

Connealy Earnan 076E
Musgrave Big Sky
SAV Primrose 7861

WK New Design 2132
TNT MS Bonnie 744
TNT Fran 444

{ Connealy Consensus
Brazila of Conanga 3991 839A
SAF 598 Bando 5175
SAV Primrose 8244
Bon View New Design 1407
WK Unique Time 4384
SAF Fame
KFF Elegant Rito 743M

PRODUCTION EPDS						CARCASS EPDS			\$ VALUE EPDS		
CED	BW	WW	YW	CEM	MILK	MARB	RE	FAT	\$W	\$F	\$B
I+5	I+1.4	I+60	I+109	I+10	I+24	I+.66	I+.30	I+.021	+51.73	+73.26	+109.88

Dam BW 6@94, WW 6@99, YW 5@102



25B TNT BONNIE 541
REG # TATTOO BD BW 205-ADJ WR
OPEN HEIFER 18196964 541 2/26/15 88 718 105

Connealy Earnan 076E
Musgrave Big Sky
SAV Primrose 7861

TNT Bando Man 304
TNT Bonnie 735
EMH Famous Gal 1

{ Connealy Consensus
Brazila of Conanga 3991 839A
SAF 598 Bando 5175
SAV Primrose 8244
SAF 598 Bando 5175
TNT Shania 002
Famous 7001
HB High Rise Gal 745

PRODUCTION EPDS						CARCASS EPDS			\$ VALUE EPDS		
CED	BW	WW	YW	CEM	MILK	MARB	RE	FAT	\$W	\$F	\$B
I+5	I+1.3	I+59	I+104	I+9	I+23	I+.73	I+.29	I+.017	+51.95	+64.58	+112.84

Dam BW 6@97, WW 6@97, YW 4@95

OPEN ANGUS HEIFERS

PICK OF THE CROP

Special Female Sale



Connealy Earnan 076E

26A

TNT BLACKCAP 517

REG # TATTOO BD BW 205-ADJ WR

OPEN HEIFER 18196965 517 2/14/15 70 634 92

Connealy Earnan 076E
Musgrave Big Sky
 SAV Primrose 7861

Leachman Talisker
Leachman Blackcap 4055
 Leachman Blackcap 1105

Connealy Consensus
 Brazila of Conanga 3991 839A
 SAF 598 Bando 5175
 SAV Primrose 8244
 B/R New Design 036
 Leachman Blackbird 4043
 Leachman Quest
 Leachman Blackcap 6209

PRODUCTION EPDS						CARCASS EPDS			\$ VALUE EPDS		
CED	BW	WW	YW	CEM	MILK	MARB	RE	FAT	\$W	\$F	\$B
+1.3	+2.1	+1.67	+1.110	+1.9	+1.23	+1.59	+1.39	+1.005	+59.91	+70.02	+122.64

Dam BW 10@98, WW 10@100, YW 8@100



Lot 26B

26B

TNT GINA 518

REG # TATTOO BD BW 205-ADJ WR

OPEN HEIFER 18196963 518 2/15/15 82 657 96

Connealy Earnan 076E
Musgrave Big Sky
 SAV Primrose 7861

Genetics by Design 049
TNT Gina 719
 TNT Princess 574

Connealy Consensus
 Brazila of Conanga 3991 839A
 SAF 598 Bando 5175
 SAV Primrose 8244
 B/R New Design 036
 GG Clara 859
 TNT Hurrincain 123
 EMH Famous Gal 1

PRODUCTION EPDS						CARCASS EPDS			\$ VALUE EPDS		
CED	BW	WW	YW	CEM	MILK	MARB	RE	FAT	\$W	\$F	\$B
+1.4	+2.0	+1.67	+1.113	+1.9	+1.24	+1.79	+1.22	+1.021	+59.59	+75.71	+127.23

Dam BW 7@98, WW 7@99, YW 6@99



Lot 27A

27A

TNT BLACKCAT 520

REG # TATTOO BD BW 205-ADJ WR

OPEN HEIFER 18196021 520 2/17/15 88 753 110

LCC New Standard
RB Active Duty 010
 BA Lady 6807 305

SAV Net Worth 4200
TNT Blackcat 021
 Leachman Blackcap 4055

Bon View New Design 1407
 LCC Sunset K3118
 Vermilion Dateline 7078
 GD Lady Hi Flyer 302
 SAV 8180 Traveler 004
 SAV May 2410
 Leachman Talisker
 Leachman Blackcap 1105

PRODUCTION EPDS						CARCASS EPDS			\$ VALUE EPDS		
CED	BW	WW	YW	CEM	MILK	MARB	RE	FAT	\$W	\$F	\$B
+1.6	+2.8	+1.63	+1.119	+1.10	+1.26	+1.35	+1.44	-1.001	+48.21	+90.26	+134.01

Dam BW 3@105, WW 3@104, YW 2@105



Lot 27B

27B

TNT DESIGNER ANN 533

REG # TATTOO BD BW 205-ADJ WR

OPEN HEIFER 18196022 533 2/22/15 90 744 108

LCC New Standard
RB Active Duty 010
 BA Lady 6807 305

BC 7022 Raven 7965
TNT Designer Ann 915
 TNT Designers Lady 435

Bon View New Design 1407
 LCC Sunset K3118
 Vermilion Dateline 7078
 GD Lady Hi Flyer 302
 BC Marathon 7022
 OCC Blackbird 796F
 WK New Design 2132
 Bando Lady 92 EA

PRODUCTION EPDS						CARCASS EPDS			\$ VALUE EPDS		
CED	BW	WW	YW	CEM	MILK	MARB	RE	FAT	\$W	\$F	\$B
+1.4	+2.7	+1.53	+1.103	+1.7	+1.23	+1.37	+1.43	-1.018	+37.16	+67.06	+106.25

Dam BW 5@112, WW 5@102, YW 4@98, IMF 3@126

28A TNT MISS 524
REG # TATTOO BD BW 205-ADJ WR
OPEN HEIFER 18196780 524 2/19/15 72 744 108

SAV Final Answer 0035
DL Incentive 228
DL Princess 233

Styles Upgrade L90
TNT Miss 382
TNT JC MS Traveler 029

{ Sitz Traveler 8180
{ SAV Emulous 8145
{ SAF Focus of ER
{ DL Princess 471
{ Styles Upgrade J59
{ Plainview Barbara 83V
{ BT Impressive 898
{ TNT JC MS Traveler 830

PRODUCTION EPDS						CARCASS EPDS			\$ VALUE EPDS		
CED	BW	WW	YW	CEM	MILK	MARB	RE	FAT	\$W	\$F	\$B
I+4	I+1.5	I+72	I+128	I+7	I+24	I+.32	I+.41	I+.012	+61.42	+101.10	+123.48

Dam BW 1@103, WW 1@108

28B TNT QUEEN RUTH 542
REG # TATTOO BD BW 205-ADJ WR
OPEN HEIFER 18196820 542 2/26/15 72 616 90

Sitz Upward 307R
Koupals B&B Identity
B&B Erica 605

WK New Design 2132
TNT JC Designers Lady 743
Queen Ruth BH 715

{ Connealy Onward
{ Sitz Henrietta Pride 81M
{ GAR Exaltation 3144
{ B&B Erica 4064
{ Bon View New Design 1407
{ WK Unique Time 4384
{ TC Stockman 365
{ Queen Ruth BH 289

PRODUCTION EPDS						CARCASS EPDS			\$ VALUE EPDS		
CED	BW	WW	YW	CEM	MILK	MARB	RE	FAT	\$W	\$F	\$B
I+5	I+1.7	I+50	I+90	I+9	I+32	I+.51	I+.57	I+.004	+51.11	+45.25	+126.91

Dam BW 7@98, WW 7@101, YW 6@102, IMF 5@121, REA 5@106

29A TNT PRIDE 525
REG # TATTOO BD BW 205-ADJ WR
OPEN HEIFER 18196107 525 2/19/15 82 767 112

Sitz Dimension 8607
SITZ Logic Y46
Sitz Forever Lady 612T

Pine Ridge Hammer S322
TNT Pride 306
4G Pride 521

{ Sitz Upward 307R
{ Sitz Everelda Entense 264
{ Connealy Thunder
{ Sitz Forever Lady 63M
{ Hyline Right Time 338
{ Belmont Lady 9015 3313
{ Nichols Extra H6
{ 4G Pride 343

PRODUCTION EPDS						CARCASS EPDS			\$ VALUE EPDS		
CED	BW	WW	YW	CEM	MILK	MARB	RE	FAT	\$W	\$F	\$B
I+6	I+2.5	I+66	I+116	I+12	I+26	I+.44	I+.37	I+.037	+56.27	+82.20	+132.50

Dam BW 1@116, WW 1@112

29B TNT JK LADY 528
REG # TATTOO BD BW 205-ADJ WR
OPEN HEIFER 18196105 528 2/20/15 74 694 101

Sitz Dimension 8607
SITZ Logic Y46
Sitz Forever Lady 612T

FF Dempsey Y11
TNT JK Lady 327
Bear Mtn Lady 6117

{ Sitz Upward 307R
{ Sitz Everelda Entense 264
{ Connealy Thunder
{ Sitz Forever Lady 63M
{ Connealy Revenue 7289
{ FF Henrietta Pride W10
{ Bear Mtn Freight Train 350L
{ Bear Mtn Lady 2127

PRODUCTION EPDS						CARCASS EPDS			\$ VALUE EPDS		
CED	BW	WW	YW	CEM	MILK	MARB	RE	FAT	\$W	\$F	\$B
I+7	I+1.2	I+63	I+118	I+12	I+27	I+.42	I+.47	I+.043	+55.12	+88.32	+133.58

Dam BW 1@105, WW 1@ 101

30A TNT ANDI 537
REG # TATTOO BD BW 205-ADJ WR
OPEN HEIFER 18196846 537 2/25/15 69 671 101

Connealy Consensus
Connealy Consensus 7229
Blue Lilly of Conanga 16

Connealy Onward
Flag Andi 90673
EXAR Andi 2775

{ KMK Alliance 6595 187
{ Blinda of Conanga 004
{ Woodhill Admiral 77K
{ Blue Cash of Conanga 6020
{ Connealy Lead On
{ Altune of Conanga 6104
{ Twin Valley Precision E161
{ EXAR Andi 9763

PRODUCTION EPDS						CARCASS EPDS			\$ VALUE EPDS		
CED	BW	WW	YW	CEM	MILK	MARB	RE	FAT	\$W	\$F	\$B
I+5	I+2.7	I+57	I+105	I+4	I+26	I+.68	I+.43	I+.013	+60.66	+57.33	+131.58

Dam BW 4@107, WW 4@101, YW 4@108

30B TNT ANDI 538
REG # TATTOO BD BW 205-ADJ WR
OPEN HEIFER 18196848 538 2/25/15 65 729 106

Connealy Consensus
Connealy Consensus 7229
Blue Lilly of Conanga 16

Connealy Onward
Flag Andi 90673
EXAR Andi 2775

{ KMK Alliance 6595 187
{ Blinda of Conanga 004
{ Woodhill Admiral 77K
{ Blue Cash of Conanga 6020
{ Connealy Lead On
{ Altune of Conanga 6104
{ Twin Valley Precision E161
{ EXAR Andi 9763

PRODUCTION EPDS						CARCASS EPDS			\$ VALUE EPDS		
CED	BW	WW	YW	CEM	MILK	MARB	RE	FAT	\$W	\$F	\$B
I+5	I+2.7	I+57	I+105	I+4	I+26	I+.68	I+.43	I+.013	+60.66	+57.33	+131.58

Dam BW 4@107, WW 4@101, YW 4@108

31A TNT QUEEN DOLLY 539
REG # TATTOO BD BW 205-ADJ WR
OPEN HEIFER 18196885 539 2/25/15 60 625 91

Connealy Consensus
Connealy Earnan 076E
Brazila of Conanga 3991 839A

Rally New Frontier 5233
Evenson Queen Dolly 6264
Evenson Queen Dolly 336

{ KMK Alliance 6595 187
{ Blinda of Conanga 004
{ Connealy Tobin
{ Breesha of Conanga 1251
{ B/R New Frontier 095
{ Rally Tibbie 5380
{ DMM Dynasty 03G
{ Evenson Queen Dolly 1104

PRODUCTION EPDS						CARCASS EPDS			\$ VALUE EPDS		
CED	BW	WW	YW	CEM	MILK	MARB	RE	FAT	\$W	\$F	\$B
I+1	I+1.8	I+62	I+108	I+8	I+20	I+.57	I+.48	I+.028	+49.62	+69.90	+130.33

Dam BW 8@89, WW 8@101, YW 7@101

31B TNT QUEEN 555
REG # TATTOO BD BW 205-ADJ WR
OPEN HEIFER 18196872 555 3/7/15 94 638 93

Connealy Consensus
Connealy Earnan 076E
Brazila of Conanga 3991 839A

HSAF Bando 1961
Evenson Queen 815
Evenson Queen 661

{ KMK Alliance 6595 187
{ Blinda of Conanga 004
{ Connealy Tobin
{ Breesha of Conanga 1251
{ SAF 598 Bando 5175
{ JKS Miss Cheyenne 196
{ Rally New Frontier 5233
{ Evenson Queen 360

PRODUCTION EPDS						CARCASS EPDS			\$ VALUE EPDS		
CED	BW	WW	YW	CEM	MILK	MARB	RE	FAT	\$W	\$F	\$B
I+4	I+2.7	I+63	I+113	I+3	I+22	I+.49	I+.45	I+.019	+63.94	+81.73	+154.20

Dam BW 6@108, WW 6@103, YW 5@106, REA 3@110

OPEN ANGUS HEIFERS

PICK OF THE CROP

Special Female Sale



Lot 32A

32A TNT QUEEN DOLLY 540

REG # TATTOO BD BW 205-ADJ WR
 OPEN HEIFER 18196860 540 2/26/15 89 792 115

Connealy Consensus
Connealy Earnan 076E
 Brazila of Conanga 3991 839A

Sitz Upward 307R
TNT Queen Dolly 262
 Evenson Queen Dolly 8170

KMK Alliance 6595 187
 Blinda of Conanga 004
 Connealy Tobin
 Breesha of Conanga 1251
 Connealy Onward
 Sitz Henrietta Pride 81M
 Rally New Frontier 5233
 Evenson Queen Dolly 5134

PRODUCTION EPDS						CARCASS EPDS			\$ VALUE EPDS		
CED	BW	WW	YW	CEM	MILK	MARB	RE	FAT	\$W	\$F	\$B
1-3	1+3.1	1+69	1+121	1+5	1+26	1+.65	1+.58	1+.026	+56.34	+89.63	+167.27

Dam BW 2@109, WW 2@113, YW 1@101



Lot 32B

32B TNT IDA 544

REG # TATTOO BD BW 205-ADJ WR
 OPEN HEIFER 18196867 544 2/27/15 84 685 100

Connealy Consensus
Connealy Earnan 076E
 Brazila of Conanga 3991 839A

HARB Windy 702 JH
Evenson Ida 983
 Evenson Ida 9187

KMK Alliance 6595 187
 Blinda of Conanga 004
 Connealy Tobin
 Breesha of Conanga 1251
 AAR Really Windy 1205
 HARB Black Lady 073 JH
 WK Legend
 Evenson Queen 405

PRODUCTION EPDS						CARCASS EPDS			\$ VALUE EPDS		
CED	BW	WW	YW	CEM	MILK	MARB	RE	FAT	\$W	\$F	\$B
1+0	1+2.6	1+59	1+105	1+4	1+24	1+.48	1+.28	1+.050	+47.16	+66.45	+119.06

Dam BW 5@105, WW 5@107, YW 4@105

33A TNT RUTH 548

REG # TATTOO BD BW 205-ADJ WR
 OPEN HEIFER 18196951 548 3/2/15 80 648 94

Connealy Capitalist 028
Connealy Conservative 3129
 Enchanted of Conanga 145L

Vermilion Dateline 7078
TNT Ruth 310
 TNT JC Designers Lady 743

SAV Final Answer 0035
 Prides Pita of Conanga 8821
 Kesslers Frontman R001
 Endon of Conanga 858
 Connealy Dateline
 Vermilion Blackbird 5044
 WK New Design 2132
 Queen Ruth BH 715

PRODUCTION EPDS						CARCASS EPDS			\$ VALUE EPDS		
CED	BW	WW	YW	CEM	MILK	MARB	RE	FAT	\$W	\$F	\$B
1+9	1+.8	1+61	1+103	1+12	1+23	1+.43	1+.75	1+.004	+56.88	+61.27	+113.63

Dam BW 1@113, WW 1@94

33B TNT BLACKBIRD 569

REG # TATTOO BD BW 205-ADJ WR
 OPEN HEIFER 18195734 569 3/18/15 85 668 97

SAV 8180 Traveler 004
HT Traveler 756
 TK Prairie Queen 1009

Connealy Foundation 426
Evenson Blackbird 7132
 Evenson Blackbird 2303

Sitz Traveler 8180
 Boyd Forever Lady 8003
 Krugerrand of Donamere 490
 TK Prairie Queen 375
 CA Future Direction 5321
 Ruby Red of Conanga 436
 TC Trademark 987
 Evenson Blackbird 761

PRODUCTION EPDS						CARCASS EPDS			\$ VALUE EPDS		
CED	BW	WW	YW	CEM	MILK	MARB	RE	FAT	\$W	\$F	\$B
1+3	1+2.8	1+50	1+95	1+7	1+20	1+.28	1+.09	1+.021	+31.80	+54.36	+96.38

Dam BW 7@103, WW 7@96, YW 2@97

34A TNT BONNIE 549

REG # TATTOO BD BW 205-ADJ WR
 OPEN HEIFER 18195727 549 3/2/15 69 643 94

Connealy Danny 5398
MOGCK Danny 321
 MOGCK Ruth 509

FF Dempsey Y11
TNT Bonnie 324
 TNT MS Bonnie 744

Connealy Danny Boy
 Endova of Conanga 858
 HARB Pendleton 765 JH
 MOGCK Ruth 1846
 Connealy Revenue 7289
 FF Henrietta Pride W10
 WK New Design 2132
 TNT Fran 444

PRODUCTION EPDS						CARCASS EPDS			\$ VALUE EPDS		
CED	BW	WW	YW	CEM	MILK	MARB	RE	FAT	\$W	\$F	\$B
1+9	1-.8	1+52	1+95	1+10	1+24	1+.41	1+.50	1+.014	+49.25	+52.94	+101.36

Dam BW 1@99, WW 1@94

34B TNT JK YESSMAR 561

REG # TATTOO BD BW 205-ADJ WR
 OPEN HEIFER 18195731 561 3/11/15 74 700 102

Connealy Danny 5398
MOGCK Danny 321
 MOGCK Ruth 509

Foxs Rito 4Y
TNT JK Yesmar 357
 TNT JK Miss Krugerrand 704

Connealy Danny Boy
 Endova of Conanga 858
 HARB Pendleton 765 JH
 MOGCK Ruth 1846
 Foxs Rito 9
 Foxs Barbara 152
 FAR Krugerrand 410H
 TNT JK Designer Girl 540

PRODUCTION EPDS						CARCASS EPDS			\$ VALUE EPDS		
CED	BW	WW	YW	CEM	MILK	MARB	RE	FAT	\$W	\$F	\$B
1+2	1+2.2	1+54	1+96	1+6	1+21	1+.36	1+.47	1+.003	+42.57	+53.35	+106.55

Dam BW 1@105, WW 1@102

35A TNT PRIDE 556

REG # TATTOO BD BW 205-ADJ WR
OPEN HEIFER 18195728 556 3/8/15 82 660 96

Connealy Hemisphere 957L
Hoover Hemi L20
Erica of Ellston C265

Ranger G 1720
4G Pride 343
4G Pride 0113

{ GAR New Design 5050
Breela of Conanga 3991
TC Gridiron 258
GG Erica 9104
GAR Precision 1680
Sitz Everelda Entense 1137
B/R New Design 036
Pride of 4G 952C

PRODUCTION EPDS						CARCASS EPDS			\$ VALUE EPDS		
CED	BW	WW	YW	CEM	MILK	MARB	RE	FAT	\$W	\$F	\$B
I+4	I+2.0	I+44	I+81	I+9	I+29	I+.54	I+.52	I+.004	+41.69	+33.33	+98.10

556 Dam BW 10@104, WW 10@97, YW 7@97

35B TNT GINA 559

REG # TATTOO BD BW 205-ADJ WR
OPEN HEIFER 18195729 559 3/10/15 65 704 103

Connealy Hemisphere 957L
Hoover Hemi L20
Erica of Ellston C265

BT Impressive 898
TNT Gina 256
TNT Gina 719

{ GAR New Design 5050
Breela of Conanga 3991
TC Gridiron 258
GG Erica 9104
Connealy Impression
HT Miss Erica 436
Genetics by Design 049
TNT Princess 574

PRODUCTION EPDS						CARCASS EPDS			\$ VALUE EPDS		
CED	BW	WW	YW	CEM	MILK	MARB	RE	FAT	\$W	\$F	\$B
I+8	I+.6	I+54	I+94	I+12	I+27	I+.52	I+.54	I+.003	+53.90	+49.70	+121.40

559 Dam BW 2@84, WW 2@97, YW 1@91

36A TNT JK LADY 560

REG # TATTOO BD BW 205-ADJ WR
OPEN HEIFER 18195730 560 3/11/15 81 807 118

SAV 8180 Traveler 004
HT Traveler 756
TK Prairie Queen 1009

BT Impressive 898
TNT Lady 182
Bear Mtn Lady 6117

{ Sitz Traveler 8180
Boyd Forever Lady 8003
Krugerrand of Donamere 490
TK Prairie Queen 375
Connealy Impression
HT Miss Erica 436
Bear Mtn Freight Train 350L
Bear Mtn Lady 2127

PRODUCTION EPDS						CARCASS EPDS			\$ VALUE EPDS		
CED	BW	WW	YW	CEM	MILK	MARB	RE	FAT	\$W	\$F	\$B
I+3	I+1.8	I+59	I+110	I+8	I+26	I+.26	I+.16	I+.018	+50.05	+75.90	+123.48

Dam BW 3@109, WW 3@115, YW 1@124

36B TNT YESMAR 570

REG # TATTOO BD BW 205-ADJ WR
OPEN HEIFER 18195735 570 3/19/15 70 650 95

Connealy Impression
BT Impressive 898
HT Miss Erica 436

FAR Krugerrand 410H
TNT JK Miss Krugerrand 704
TNT JK Designer Girl 540

{ Connealy Reflection
Pearl Pammy of Conanga 194
WAR Alliance 9126 6006
HT Miss Erica 534
Krugerrand of Donamere 490
FAR Erianna 286F
WK New Design 2132
TNT Shania 110

PRODUCTION EPDS						CARCASS EPDS			\$ VALUE EPDS		
CED	BW	WW	YW	CEM	MILK	MARB	RE	FAT	\$W	\$F	\$B
I+4	I+1.0	I+51	I+90	I+11	I+23	I+.47	I+.19	I+.016	+46.18	+44.55	+117.21

Dam BW 6@96, WW 6@95, YW 4@100, IMF 3@117, REA 3@104

37A TNT BLACK GIRL 562

REG # TATTOO BD BW 205-ADJ WR
OPEN HEIFER 18195732 562 3/12/15 64 682 99

Connealy Danny 5398
MOGCK Danny 321
MOGCK Ruth 509

Flag Cross Country 90052
TNT Black Girl 328
Evenson Black Girl 6303

{ Connealy Danny Boy
Endova of Conanga 858
HARB Pendleton 765 JH
MOGCK Ruth 1846
BT Crossover 758N
SCR Queen Idelette 50596
Connealy Danny Boy
Evenson Black Girl 04

PRODUCTION EPDS						CARCASS EPDS			\$ VALUE EPDS		
CED	BW	WW	YW	CEM	MILK	MARB	RE	FAT	\$W	\$F	\$B
+9	+0.4	+60	+98	+9	+17	I+.39	I+.56	I+.012	+52.06	+52.76	+29.93

Dam BW 1@93, WW 1@99

37B TNT MISS SARA 574

REG # TATTOO BD BW 205-ADJ WR
OPEN HEIFER 18195736 574 3/20/15 68 625 91

Connealy Impression
BT Impressive 898
HT Miss Erica 436

SCR Precision E161-523
SCR Miss Sara 50599
Miss Sara 3302 of Foxcross

{ Connealy Reflection
Pearl Pammy of Conanga 194
WAR Alliance 9126 6006
HT Miss Erica 534
Twin Valley Precision E161
SA Erica 270
Bon View New Design 1407
Champion Hill Sara 1711

PRODUCTION EPDS						CARCASS EPDS			\$ VALUE EPDS		
CED	BW	WW	YW	CEM	MILK	MARB	RE	FAT	\$W	\$F	\$B
I+2	I+2.1	I+53	I+95	I+7	I+29	I+.42	I+.31	I+.013	+61.93	+52.23	+116.29

Dam BW 8@100, WW 8@105, YW 6@104

38A TNT ERICA 564

REG # TATTOO BD BW 205-ADJ WR
OPEN HEIFER 18195733 564 3/15/15 80 686 100

Connealy Impression
BT Impressive 898
HT Miss Erica 436

WK New Design 2132
TNT Erica 754
LA Erica 316

{ Connealy Reflection
Pearl Pammy of Conanga 194
WAR Alliance 9126 6006
HT Miss Erica 534
Bon View New Design 1407
WK Unique Time 4384
Hyline Travel Agent
LA Erica 816

PRODUCTION EPDS						CARCASS EPDS			\$ VALUE EPDS		
CED	BW	WW	YW	CEM	MILK	MARB	RE	FAT	\$W	\$F	\$B
I+4	I+1.4	I+40	I+74	I+10	I+27	I+.33	I+.17	I-.008	+38.54	+23.79	+83.95

Dam BW 7@99, WW 7@98, YW 6@96

38B TNT CHLOE 593

REG # TATTOO BD BW 205-ADJ WR
OPEN HEIFER 18195745 593 4/3/15 69 670 98

Connealy Impression
BT Impressive 898
HT Miss Erica 436

Stevenson CE Deluxe 1914
Basin Chloe 9307
Basin Chloe 3406

{ Connealy Reflection
Pearl Pammy of Conanga 194
WAR Alliance 9126 6006
HT Miss Erica 534
CA Future Direction 5321
FSHK Pride 180
ER Focus M244
Basin Chloe N099

PRODUCTION EPDS						CARCASS EPDS			\$ VALUE EPDS		
CED	BW	WW	YW	CEM	MILK	MARB	RE	FAT	\$W	\$F	\$B
I-1	I+2.2	I+58	I+102	I+6	I+35	I+.73	I+.21	I+.027	+69.84	+61.57	+134.11

Dam BW 4@105, WW 4@114, YW 2@109

OPEN ANGUS HEIFERS

PICK OF THE CROP

Special Female Sale

39A TNT JK POLLY 577

REG # TATTOO BD BW 205-ADJ WR
 OPEN HEIFER 18195737 577 3/22/15 65 681 99

Connealy Danny 5398
MOGCK Danny 321
 MOGCK Ruth 509

Foxs Rito 4Y
TNT JK Polly 339
 Bear Mtn Polly 3095

{ Connealy Danny Boy
 Endova of Conanga 858
 HARB Pendleton 765 JH
 MOGCK Ruth 1846
 Foxs Rito 9
 Foxs Barbara 152
 Vermilion Dateline 7078
 VDAR Polly 4021

PRODUCTION EPDS						CARCASS EPDS			\$ VALUE EPDS		
CED	BW	WW	YW	CEM	MILK	MARB	RE	FAT	\$W	\$F	\$B
I+4	I+1.8	I+53	I+96	I+6	I+22	I+.34	I+.42	I-.016	+43.33	+54.06	+93.91

Dam BW 1@94, WW 1@99

39B TNT ANN 5100

REG # TATTOO BD BW 205-ADJ WR
 OPEN HEIFER 18195747 5100 4/9/15 74 716 104

Connealy Danny 5398
MOGCK Danny 321
 MOGCK Ruth 509

BT Whispering Wind 780
TNT Ann 390
 TNT Designer Ann 915

{ Connealy Danny Boy
 Endova of Conanga 858
 HARB Pendleton 765 JH
 MOGCK Ruth 1846
 MOGCK Whispering Wind 584
 BT Bonnie 66
 BC 7022 Raven 7965
 TNT Designers Lady 435

PRODUCTION EPDS						CARCASS EPDS			\$ VALUE EPDS		
CED	BW	WW	YW	CEM	MILK	MARB	RE	FAT	\$W	\$F	\$B
I+2	I+2.8	I+58	I+95	I+5	I+20	I+.41	I+.51	I-.019	+46.81	+48.70	+94.96

Dam BW 1@105, WW 1@104

40A TNT QUEENIE 578

REG # TATTOO BD BW 205-ADJ WR
 OPEN HEIFER 18195738 578 3/22/15 81 715 104

Foxs Rito 9
Foxs Rito 4Y
 Foxs Barbara 152

TNT Program 821
TNT Queenie 027
 Baldrige Queen of NP N17

{ Rito 112 of 2536 Rito 616
 Foxs Barbara 96
 WPR 3J Dividend 9321
 Fox Barbara 76
 HT Traveler 756
 TNT Designers Girl 515
 Sitz Alliance 6595
 Baldrige Queen of NP L138

PRODUCTION EPDS						CARCASS EPDS			\$ VALUE EPDS		
CED	BW	WW	YW	CEM	MILK	MARB	RE	FAT	\$W	\$F	\$B
I-1	I+2.7	I+49	I+96	I+3	I+25	I+.29	I+.25	I+.011	+36.01	+56.91	+94.09

Dam BW 4@107, WW 4@104, YW 3@104

40B TNT SUPREME 5107

REG # TATTOO BD BW 205-ADJ WR
 OPEN HEIFER 18195751 5107 4/20/15 77 598 87

Foxs Rito 9
Foxs Rito 4Y
 Foxs Barbara 152

Styles Upgrade L90
TNT Supreme 298
 TNT Supreme Nancy 939

{ Rito 112 of 2536 Rito 616
 Foxs Barbara 96
 WPR 3J Dividend 9321
 Fox Barbara 76
 Styles Upgrade J59
 Plainview Barbara 83V
 SAV Net Worth 4200
 Diablo Supreme 323

PRODUCTION EPDS						CARCASS EPDS			\$ VALUE EPDS		
CED	BW	WW	YW	CEM	MILK	MARB	RE	FAT	\$W	\$F	\$B
I+2	I+2.4	I+42	I+94	I+5	I+28	I+.46	I+.40	I-.017	+28.69	+58.23	+108.14

Dam BW 2@109, WW 2@97, YW 1@101
 DDP

41A TNT MISS LYNN 579

REG # TATTOO BD BW 205-ADJ WR
 OPEN HEIFER 18195739 579 3/23/15 64 738 107

Connealy Impression
BT Impressive 898
 HT Miss Erica 436

BC 7022 Raven 7965
TNT MS Rily 805
 SAK Miss Nicole 407

{ Connealy Reflection
 Pearl Pammy of Conanga 194
 WAR Alliance 9126 6006
 HT Miss Erica 534
 BC Marathon 7022
 OCC Blackbird 796F
 SA Neutron 377
 LF Miss Lynn L101

PRODUCTION EPDS						CARCASS EPDS			\$ VALUE EPDS		
CED	BW	WW	YW	CEM	MILK	MARB	RE	FAT	\$W	\$F	\$B
I+7	I+.3	I+52	I+95	I+12	I+24	I+.49	I+.46	I-.004	+47.43	+52.94	+120.61

Dam BW 5@93, WW 5@99, YW 4@104

41B TNT MISS LYNN 580

REG # TATTOO BD BW 205-ADJ WR
 OPEN HEIFER 18195740 580 3/23/15 45 705 103

Connealy Impression
BT Impressive 898
 HT Miss Erica 436

BC 7022 Raven 7965
TNT MS Rily 805
 SAK Miss Nicole 407

{ Connealy Reflection
 Pearl Pammy of Conanga 194
 WAR Alliance 9126 6006
 HT Miss Erica 534
 BC Marathon 7022
 OCC Blackbird 796F
 SA Neutron 377
 LF Miss Lynn L101

PRODUCTION EPDS						CARCASS EPDS			\$ VALUE EPDS		
CED	BW	WW	YW	CEM	MILK	MARB	RE	FAT	\$W	\$F	\$B
I+7	I+.3	I+52	I+95	I+12	I+24	I+.49	I+.46	I-.004	+47.43	+52.94	+120.61

Dam BW 5@93, WW 5@99, YW 4@104

42A TNT BLACKBIRD 584

REG # TATTOO BD BW 205-ADJ WR
 OPEN HEIFER 18195741 584 3/28/15 70 573 83

Connealy Hemisphere 957L
Hoover Hemi L20
 Erica of Ellston C265

HARB Windy 702 JH
Evenson Blackbird 878
 Evenson Blackbird 026

{ GAR New Design 5050
 Breela of Conanga 3991
 TC Gridiron 258
 GG Erica 9104
 AAR Really Windy 1205
 HARB Black Lady 073 JH
 Bubs Direct Deposit 200
 Evenson Blackbird 812

PRODUCTION EPDS						CARCASS EPDS			\$ VALUE EPDS		
CED	BW	WW	YW	CEM	MILK	MARB	RE	FAT	\$W	\$F	\$B
I+11	I+.5	I+49	I+88	I+13	I+24	I+.27	I+.51	I+.023	+47.54	+45.40	+91.78

Dam BW 5@91, WW 5@94, YW 3@95

42B TNT MISS 599

REG # TATTOO BD BW 205-ADJ WR
 OPEN HEIFER 18195746 599 4/9/15 91 690 101

Connealy Hemisphere 957L
Hoover Hemi L20
 Erica of Ellston C265

BT Impressive 898
TNT JC MS Traveler 029
 TNT JC MS Traveler 830

{ GAR New Design 5050
 Breela of Conanga 3991
 TC Gridiron 258
 GG Erica 9104
 Connealy Impression
 HT Miss Erica 436
 HT Traveler 756
 4WLC Miss Direct 573

PRODUCTION EPDS						CARCASS EPDS			\$ VALUE EPDS		
CED	BW	WW	YW	CEM	MILK	MARB	RE	FAT	\$W	\$F	\$B
I+5	I+1.4	I+57	I+100	I+10	I+28	I+.50	I+.66	I+.016	+55.37	+58.58	+126.05

Dam BW 3@110, WW 3@101, YW 2@103

43A TNT FOREVER LADY 587
REG # TATTOO BD BW 205-ADJ WR
OPEN HEIFER 18195742 587 3/29/15 75 703 102

Connealy Impression
BT Impressive 898
HT Miss Erica 436

Sitz Alliance 6595
TNT MS ALLY 947
Baldrige Forever Lady K854

Connealy Reflection
Pearl Pammy of Conanga 194
WAR Alliance 9126 6006
HT Miss Erica 534
Sitz Traveler 8180
Sitz Barbaramere Jet 2698
Baldrige Oscar
Baldrige Forever Lady 235G

PRODUCTION EPDS						CARCASS EPDS			\$ VALUE EPDS		
CED	BW	WW	YW	CEM	MILK	MARB	RE	FAT	\$W	\$F	\$B
1+0	1+2.7	1+53	1+90	1+7	1+29	1+47	1+18	1+023	+59.17	+43.16	+115.95

Dam BW 4@108, WW 4@105, YW 3@100

43B TNT GAMMER 5104
REG # TATTOO BD BW 205-ADJ WR
OPEN HEIFER 18195749 5104 4/13/15 70 703 102

Connealy Impression
BT Impressive 898
HT Miss Erica 436

WK Bobcat
TH Gammer 2032
TH Gammer 064

Connealy Reflection
Pearl Pammy of Conanga 194
WAR Alliance 9126 6006
HT Miss Erica 534
Connealy Right Answer 746
WK Miss Angus 7127
VAR Predator 86103
DH Gammer 8146

PRODUCTION EPDS						CARCASS EPDS			\$ VALUE EPDS		
CED	BW	WW	YW	CEM	MILK	MARB	RE	FAT	\$W	\$F	\$B
1+5	1+1.5	1+58	1+101	1+9	1+29	1+45	1+19	1-001	+68.67	+59.71	+108.08

Dam BW 2@97, WW 2@104, YW 1@99, IMF 2@113

44A TNT BARBARA 591
REG # TATTOO BD BW 205-ADJ WR
OPEN HEIFER 18195743 591 4/1/15 82 627 91

Connealy Hemisphere 957L
Hoover Hemi L20
Erica of Ellston C265

SAV Bismarck 5682
TNT JC Barbara 01
EAR Connection E832

GAR New Design 5050
Breele of Conanga 3991
TC Gridiron 258
GG Erica 9104
GAR Grid Maker
SAV Abigale 0451
TNT JC Connection 2R
CRR Dateline 7270 L198

PRODUCTION EPDS						CARCASS EPDS			\$ VALUE EPDS		
CED	BW	WW	YW	CEM	MILK	MARB	RE	FAT	\$W	\$F	\$B
1+9	1+1.4	1+52	1+88	1+13	1+25	1+53	1+69	1-015	+50.33	+40.26	+108.96

Dam BW 4@99, WW 4@95, YW 2@94

44B TNT QUEEN 592
REG # TATTOO BD BW 205-ADJ WR 365-ADJ YR
OPEN HEIFER 18195744 592 4/2/15 69 625 91

Connealy Hemisphere 957L
Hoover Hemi L20
Erica of Ellston C265

Sitz Upward 307R
TNT Queen 230
Evenson Queen 7326

GAR New Design 5050
Breele of Conanga 3991
TC Gridiron 258
GG Erica 9104
Connealy Onward
Sitz Henrietta Pride 81M
Rally New Frontier 5233
Evenson Queen 802

PRODUCTION EPDS						CARCASS EPDS			\$ VALUE EPDS		
CED	BW	WW	YW	CEM	MILK	MARB	RE	FAT	\$W	\$F	\$B
1+9	1+.5	1+57	1+101	1+12	1+31	1+54	1+65	1+026	+59.05	+60.43	+143.45

Dam BW 2@92, WW 2@100, YW 1@102

45A TNT FOREVER LADY 5101
REG # TATTOO BD BW 205-ADJ WR
OPEN HEIFER 18195748 5101 4/9/15 77 641 93

HF Tiger 5T
BT Tiger 1723
XCR Premier Elba P260

Hyline Right Time 338
TNT Forever Lady 924
Bear Mtn Forever Lady 4086

HF Kodiak 5R
HF Echo 84R
FAR Krugerrand 410H
WL Elba 527
Leachman Right Time
Hyline Pride 265
B/R New Design 036
Bear Mtn Forever Blackcap

PRODUCTION EPDS						CARCASS EPDS			\$ VALUE EPDS		
CED	BW	WW	YW	CEM	MILK	MARB	RE	FAT	\$W	\$F	\$B
1+5	1+2.5	1+52	1+96	1+7	1+22				+39.00	+54.77	

Dam BW 5@100, WW 5@96, YW 4@97, IMF 3@110

45B TNT JK ECSTASY 5105
REG # TATTOO BD BW 205-ADJ WR
OPEN HEIFER 18195750 5105 4/16/15 88 744 108

Connealy Hemisphere 957L
Hoover Hemi L20
Erica of Ellston C265

BT Impressive 898
TNT JK Ms Ecstasy 185
TNT Ms Ecstasy 204

GAR New Design 5050
Breele of Conanga 3991
TC Gridiron 258
GG Erica 9104
Connealy Impression
HT Miss Erica 436
Vermilion Dateline 7078
JAR Yesmar 775

PRODUCTION EPDS						CARCASS EPDS			\$ VALUE EPDS		
CED	BW	WW	YW	CEM	MILK	MARB	RE	FAT	\$W	\$F	\$B
1+7	1+.9	1+52	1+94	1+12	1+26	1+48	1+57	1-014	+48.91	+51.11	+122.16

Dam BW 3@107, WW 3@102, YW 1@100

46A TNT QUEEN ANN 5110
REG # TATTOO BD BW 205-ADJ WR
OPEN HEIFER 18195752 5110 4/26/15 80 736 107

SAV 8180 Traveler 004
HT Traveler 756
TK Prairie Queen 1009

BC 7022 Raven 7965
TNT Queen Ann 935
Baldrige Queen of NP N17

Sitz Traveler 8180
Boyd Forever Lady 8003
Krugerrand of Donamere 490
TK Prairie Queen 375
BC Marathon 7022
OCC Blackbird 796F
Sitz Alliance 6595
Baldrige Queen of NP L138

PRODUCTION EPDS						CARCASS EPDS			\$ VALUE EPDS		
CED	BW	WW	YW	CEM	MILK	MARB	RE	FAT	\$W	\$F	\$B
1-1	1+3.4	1+49	1+91	1+3	1+20	1+24	1+22	1+006	+30.90	+47.76	+97.24

Dam BW 4@112, WW 4@102, YW 3@99

46B TNT QUEEN 5114
REG # TATTOO BD BW 205-ADJ WR
OPEN HEIFER 18195753 5114 5/3/15 72 634 92

Connealy Hemisphere 957L
Hoover Hemi L20
Erica of Ellston C265

LT Total Edge 6154
Evenson Queen 9318
Evenson Queen 913

GAR New Design 5050
Breele of Conanga 3991
TC Gridiron 258
GG Erica 9104
KCF Bennett Total
LT Ethelda RT 3049
Bubs Direct Deposit 200
Evenson Queen 7118

PRODUCTION EPDS						CARCASS EPDS			\$ VALUE EPDS		
CED	BW	WW	YW	CEM	MILK	MARB	RE	FAT	\$W	\$F	\$B
1+9	1+1.0	1+45	1+84	1+12	1+27	1+31	1+57	1-001	+42.29	+37.96	+104.04

Dam BW 5@96, WW 5@98, YW 4@97

BRED ANGUS COWS

PICK OF THE CROP

Special Female Sale



Lot 47



Lot 47 with 2015 Heifer Calf, Lot 21B

47

TNT NATALIE 948

REG # TAILOO BD BW 205-ADJ WR 365-ADJ YR
BRED COW 16464274 948 2/24/09 80 611 96 950 104

Connealy Reflection { Bon View New Design 878
Connealy Impression { Happy Grill of Conanga 6260
 Pearl Pammy of Conanga 194 { Vermilion Dateline 7078
 { Pearl Jam of Conanga 6114
 SA Neutron 377 { SAF Neutron
TNT Natalie 303 { SA Queen Susan 102
 TNT Sable 19J { Young Dale General 35F
 { Big Rok Diamond Star 624

PRODUCTION EPDS						CARCASS EPDS			\$ VALUE EPDS		
CED	BW	WW	YW	CEM	MILK	MARB	RE	FAT	\$W	\$F	\$B
+5	+2.3	+52	+92	+12	+24	+42	+43	+0.06	+43.99	+47.47	+87.54

BW 4@101, WW 4@105, YW 2@99. AI bred May 5 to Musgrave Big Sky. Pasture exposed to Hoover Hemi L20.

48

TNT DOTTIE 203

REG # TAILOO BD BW 205-ADJ WR 365-ADJ YR
BRED COW 17347173 203 2/9/12 80 633 103 900 109

SydGen CC&7 { SAF Connection
Hoover Dam { SydGen Forever Lady 4087
 Erica of Ellston C124 { TC Gridiron 258
 { Erica of Ellston V65
 K&B Powerplant 705 { QLC Foundation
TNT Dottie 083 { Vermilion Lass 2005
 TNT Dottie 609 { FAR Krugerrand 410H
 { TNT Dottie 215

PRODUCTION EPDS						CARCASS EPDS			\$ VALUE EPDS		
CED	BW	WW	YW	CEM	MILK	MARB	RE	FAT	\$W	\$F	\$B
+4	+2.6	+55	+107	+8	+25	+47	+77	-.025	+40.82	+73.14	+126.12

BW 1@89, WW 1@103, YW 1@101. Pasture exposed to HCC Consensus 4330.

49

TNT PRIDE 252

REG # TAILOO BD BW 205-ADJ WR 365-ADJ YR
BRED COW 17347187 252 2/28/12 87 697 114 905 111

Styles Upgrade J59 { Sitz Upward 307R
Styles Upgrade L90 { Plainview Lassie 71B
 Plainview Barbara 83V { Bon View Paragon 2353
 { Plainview Barbara 65K
 Basin Max 602C { GT Maximum
Bear Mtn Pride 5063 { Basin Eline Erica 315U
 Foote Acres Pride 88J { Gibb Illini
 { Foote Acres Pride 87G

PRODUCTION EPDS						CARCASS EPDS			\$ VALUE EPDS		
CED	BW	WW	YW	CEM	MILK	MARB	RE	FAT	\$W	\$F	\$B
+4	+2.1	+49	+97	+6	+29	+32	+12	-.007	+41.45	+58.76	+112.63

BW 1@108, WW 1@110, YW 1@107. Pasture exposed to HCC Consensus 4330.

50

TNT MILDRED 254

REG # TATTOO BD BW 205-ADJ WR 365-ADJ YR
BRED COW 17347133 254 2/28/12 65 655 107 876 107

Styles Upgrade J59
Styles Upgrade L90
Plainview Barbara 83V

Brooks Prime Time 927
LA Mildred 338
LA Mildred 901

{ Sitz Upward 307R
Plainview Lassie 71B
{ Bon View Paragon 2353
Plainview Barbara 65K
{ Gardens Prime Time
Blackbird 7159 BCBR
{ HC Sitz Traveler 602
LA Mildred 721

PRODUCTION EPDS						CARCASS EPDS			\$ VALUE EPDS		
CED	BW	WW	YW	CEM	MILK	MARB	RE	FAT	\$W	\$F	\$B
+11	-1.3	+43	+92	+14	+28	+34	+02	-009	+39.63	+53.83	+97.22

BW 2@74, WW 2@88, YW 1@107. Pasture exposed to TNT Distinction 409.

51

TNT SUPREME 298

REG # TATTOO BD BW 205-ADJ WR 365-ADJ YR
BRED COW 17347166 298 3/18/12 75 605 99 823 100

Styles Upgrade J59
Styles Upgrade L90
Plainview Barbara 83V

SAV Net Worth 4200
TNT Supreme Nancy 939
Diablo Supreme 323

{ Sitz Upward 307R
Plainview Lassie 71B
{ Bon View Paragon 2353
Plainview Barbara 65K
{ SAV 8180 Traveler 004
SAV May 2410
{ B/R New Design 323
Diablo Supreme Pine 843

PRODUCTION EPDS						CARCASS EPDS			\$ VALUE EPDS		
CED	BW	WW	YW	CEM	MILK	MARB	RE	FAT	\$W	\$F	\$B
+5	+2.3	+43	+90	+7	+32	+56	+54	-009	+36.53	+50.18	+124.04

BW 2@109, WW 2@97, YW 1@101. Pasture exposed to HCC Consensus 4330.
DDC

52

TNT QUEEN 108

REG # TATTOO BD BW 205-ADJ WR 365-ADJ YR
BRED COW 17030953 108 2/6/11 74 620 102 849 100

Connealy Impression
BT Impressive 898
HT Miss Erica 436

Sitz Alliance 6595
Baldridge Queen of NP N17
Baldridge Queen of NP L138

{ Connealy Reflection
Pearl Pammy of Conanga 194
{ WAR Alliance 9126 6006
HT Miss Erica 534
{ Sitz Traveler 8180
Sitz Bararamere Jet 2698
{ GDAR SVF Traveler 234D
JLB Queen of Wetonka 431

PRODUCTION EPDS						CARCASS EPDS			\$ VALUE EPDS		
CED	BW	WW	YW	CEM	MILK	MARB	RE	FAT	\$W	\$F	\$B
+6	+3	+54	+89	+10	+29	+27	+27	+031	+61.71	+40.66	+101.71

BW 2@99, WW 2@102, YW 2@98. Pasture exposed to BT Tiger 1723.

53

TNT TRAVELER 066

REG # TATTOO BD BW 205-ADJ WR 365-ADJ YR
BRED COW 16748146 066 3/4/10 88 649 102 865 108

SAV 8180 Traveler 004
HT Traveler 756
TK Prairie Queen 1009

Famous 7001
EMH Famous Gal 1
HB High Rise Gal 745

{ Sitz Traveler 8180
Boyd Forever Lady 8003
{ Krugerrand of Donamere 490
TK Prairie Queen 375
{ SAF Fame
TK Karen 1369
{ E&b 1483 High Rise 407
HB Gal 424

PRODUCTION EPDS						CARCASS EPDS			\$ VALUE EPDS		
CED	BW	WW	YW	CEM	MILK	MARB	RE	FAT	\$W	\$F	\$B
-3	+3.8	+46	+90	+1	+20	+31	-04	+009	+24.59	+48.06	+89.95

BW 3@107, WW 3@99, YW 2@95, IMF 1@126. Pasture exposed to BT Impressive 898.

54

TNT JC MS TRAVELER 830

REG # TATTOO BD BW 205-ADJ WR 365-ADJ YR
BRED COW 16151674 830 2/19/08 81 719 111 1077 115

SAV 8180 Traveler 004
HT Traveler 756
TK Prairie Queen 1009

Grandview Womack Direct
4WLC Miss Direct 573
Blake Miss Illini 979

{ Sitz Traveler 8180
Boyd Forever Lady 8003
{ Krugerrand of Donamere 490
TK Prairie Queen 375
{ B/R New Design 036
Mengs Miss Skymere 78B
{ Gibb Illini
Blake Miss Stone 347

PRODUCTION EPDS						CARCASS EPDS			\$ VALUE EPDS		
CED	BW	WW	YW	CEM	MILK	MARB	RE	FAT	\$W	\$F	\$B
-1	+3.7	+51	+99	+4	+20	+41	+31	+046	+30.34	+61.03	+114.71

BW 5@104, WW 5@98, YW, 4@105, IMF 3@131. Pasture exposed to HCC Consensus 4330.

55

TNT BONNIE 745

REG # TATTOO BD BW 205-ADJ WR 365-ADJ YR
BRED COW 15825569 745 2/27/07 64 673 102 937 101

SAF 598 Bando 5175
TNT Bando Man 304
TNT Shania 002

FAR Hi Spade 68E
FAR Queen 432H
FAR Queen 480F

{ Bon View Bando 598
SAF Royal Lass 1002
{ TC Stockman 365
TNT MS Rita 18G
{ GMAR Hi Spade 039
FAR Missie 17V
{ OGL Battle Cry 427 128
FAR Queen 340U

PRODUCTION EPDS						CARCASS EPDS			\$ VALUE EPDS		
CED	BW	WW	YW	CEM	MILK	MARB	RE	FAT	\$W	\$F	\$B
+12	-1.2	+35	+67	+14	+19	+37	+04	+015	+29.47	+15.08	+87.11

BW 6@93, WW 6@94, YW 6@97, IMF 5@109. Pasture exposed to BT Impressive 898.

56

TNT STACY 573

REG # TATTOO BD BW 205-ADJ WR 365-ADJ YR
BRED COW 15272511 573 3/22/05

Bon View New Design 878
WCC Special Design L309
N Bar Primrose 2424

Sitz Traveler 8597
Windac Georgina J472
Windac Queen 83-5222

{ B/R New Design 036
Bon View Gammer 85
{ Emulation 31
Primrose N Bar 9962
{ Traveler 124 GDAR
Sitz Elsiemere 486
{ Leachman Prompter
Windac Queen Lois 0136

PRODUCTION EPDS						CARCASS EPDS			\$ VALUE EPDS		
CED	BW	WW	YW	CEM	MILK	MARB	RE	FAT	\$W	\$F	\$B
+5	+2.1	+42	+73	+11	+12	+53	-.35	+017	+23.66	+20.72	+61.80

BW 8@96, WW 8@92, YW 7@94, IMF 5@113. Pasture exposed to BT Impressive 898.

57

TNT JC MISS CONNECTION P9

REG # TATTOO BD BW 205-ADJ WR 365-ADJ YR
BRED COW 14890908 P9 3/2/04 82 678 104 1000 103

SVF Gdar 216 LTD
SAF Connection
SAF Royal Queen 5084

JAR Mega Bucks 9155
TNT Madge 18M
Jar Lady Elise OF RDH 098

{ Traveler 124 GDAR
GDAR Forever Lady 718
{ Bon View Bando 598
SAF Royal Queen 9022
{ Bubs Direct Deposit 200
JAR Erica 295
{ HC Alberto Jumbo 841
HC Lady Elise 818

PRODUCTION EPDS						CARCASS EPDS			\$ VALUE EPDS		
CED	BW	WW	YW	CEM	MILK	MARB	RE	FAT	\$W	\$F	\$B
+4	+3.5	+41	+72	+6	+22	+39	+0	-010	+29.67	+24.67	+84.70

BW 9@108, WW 9@99, YW 7@98. AI bred to Tour of Duty May 16.
Pasture exposed to BT Tiger 1723.

BRED HEREFORD HEIFERS

PICK OF THE CROP

Special Female Sale



Lot 58

58

PLC REBA 2B

REG # TATTOO BD BW 205-ADJ WR 365-ADJ YR
BRED HEIFER P43518615 2B 2/13/14 76 613 105 931 99

FELTONS 517
DR WORLD CLASS 517 10H
 VPI MARATHON LADY 0081

BLAIR-A-THON 20 THE ROCK ET 19M
MRC REBA 17Y
 MRC DANIELLE 565

FELTONS 403
 F PRINCESS A80
 SBR MARATHON MA 257T
 BF LADY IMPACT S29

REMITALL KEYNOTE 20X
 MHR 35A HAZEL 54A 18D
 CPH 122L UNDERLINE 3N
 MBC SARA 22H

PRODUCTION EPDS						CARCASS EPDS			\$ VALUE EPDS			
CED	BW	WW	YW	MILK	M&G	FAT	REA	MARB	BMI	CEZ	BII	CHB
1.8	3.5	56	83	26	54	0.009	0.35	0.01	\$20	\$17	\$15	\$25

A flashy dark World Class heifer with pigment in both eyes. She is long and deep and has cow power all over her. She comes from a long line of productive dams in herd. AI'd May 23 to American Made - Ultrasounded safe to American Made, due Feb 29, 2016.



Lot 59



59

PLC DANIELLE 14B

REG # TATTOO BD BW 205-ADJ WR 365-ADJ YR
BRED HEIFER P43518612 14B 2/24/14 86 583 99 976 103

KCF BENNETT 3008 M326
NJW 73S M326 TRUST 100W ET
 NJW P606 72N DAYDBREAM 73S

CPH 122L UNDERLINE 3N
MRC DANIELLE 565
 MBC SARA 22H 3-D

RRH MR FELT 3008
 KCF MISS 549 F284
 PW VICTOR BOOMER P606
 NJW 94J DEW 72N

REMITALL ONLINE 122L
 T0PH FALACIA 20H
 TIL-TOBA VIP 58Y 22F
 LS SARA 3-D

PRODUCTION EPDS						CARCASS EPDS			\$ VALUE EPDS			
CED	BW	WW	YW	MILK	M&G	FAT	REA	MARB	BMI	CEZ	BII	CHB
-0.4	3.3	54	94	23	50	-0.040	0.880	0.1	\$21	\$15	\$18	\$31

One of my favorite bred heifers! She has always had that cow look. A tremendous Trust daughter that has a super productive pedigree with longevity. She's put together in a solid package - nice and square, solid topped and deep. I can't wait to see what she produces - she's going to be a money maker. AI'd May 8 to American Made - Ultrasounded safe to American Made, due Feb Feb 11, 2016.



Lot 60

60

PLC TARA 15B

REG # TATTOO BD BW 205-ADJ WR 365-ADJ YR
BRED HEIFER P43521995 15B 2/26/14 70 463 79 820 87

CS BOOMER 29F
THM DURANGO 4037
 THM 7085 VICTRA 9036

CKP GIT TIME 0928
PLC TARA 22Z
 MRC TARA 21T

REMITALL BOOMER 46B
 CS MISS 1ST FLAG 21A
 THM VICTOR DOM 7085
 THM VICTRA 5404 7073

CRR ABOUT TIME 743
 CKP DELLA 0735
 MRC JOHNNY CASH 524
 MRC HANNAH 248

PRODUCTION EPDS						CARCASS EPDS			\$ VALUE EPDS			
CED	BW	WW	YW	MILK	M&G	FAT	REA	MARB	BMI	CEZ	BII	CHB
4.4	1.1	44	73	18	40	0.000	0.080	0.22	\$18	\$19	\$15	\$25

A Durango daughter that is super solid and full of performance. Lots of body and thick made. She has that super profile and will raise a great one! AI'd May 18 to York - Ultrasounded safe to York, due Feb 26, 2016.



Lot 61

61

PLC BRINLEY 20B

REG # TATTOO BD BW 205-ADJ WR 365-ADJ YR
BRED HEIFER P43518091 20B 3/4/14 96 604 104 909 96

SBS 57G RADAR 32K { RU 20X BOULDER 57G
SBS RAIDINE 12C
CPH RADAR 11Y { TIL-TOPA VIP 58Y 22F
CPH MISS ZODIAC 16H { CPH MISS 14A WEST 8E
STAR BRIGHT FUTURE 533P ET { REMITALL ONLINE 122L
RB L1 DOMINETTE 8116
TC MS FUTURE 8U { HA FREEWAY 607F
LH MS EXPRESS 908 { LH MS STAR DON 450

PRODUCTION EPDS						CARCASS EPDS			\$ VALUE EPDS			
CED	BW	WW	YW	MILK	M&G	FAT	REA	MARB	BMI	CEZ	BII	CHB
-4.8	6.8	54	81	15	42	0.003	0.270	0.3	\$16	\$10	\$15	\$22

A really long and maternal bred heifer that is super feminine and pretty. She's out of a long line of super productive females. Al'd May 14 to American Made - Ultrasounded safe to American Made, due Feb 21, 2016.



Harvie Traveler 69T

62

PLC CPH DANI JO 28B

REG # TATTOO BD BW 205-ADJ WR 365-ADJ YR
BRED HEIFER P43529276 28B 3/14/14 80 538 92 877 93

HARVIE TAILOR MADE ET { HARVIE TRAVELER 69T
HARVIE MISS FIREFLY 51F
PLC TAILORED 5Z { REMITALL ONLINE 122L
LH MS EXPRESS 908
ADK MISS GAI'S DELIGHT 312 { RRH MR FELT 3008
CPH TC OPTINA 2E
DAN 3008 DANIEL 2E 3N { FELTONS 517
CPH MISS PRINCESS 13H { CPH DISCO LADY 23T

PRODUCTION EPDS						CARCASS EPDS			\$ VALUE EPDS			
CED	BW	WW	YW	MILK	M&G	FAT	REA	MARB	BMI	CEZ	BII	CHB
1.4	2.6	43	74	11	33	-0.008	0.160	0.25	\$23	\$18	\$21	\$25

A low birth weight female that is long and maternal. Dam has been very productive in herd. Also stems back to one of the first heifers Grandpa bought over 50 years ago. Al'd May 7 to York - Ultrasounded safe to York due Feb 11, 2016.



OPEN HEREFORD HEIFERS

PICK OF THE CROP

Special Female Sale



Lot 63

63

PLC CPH MS TRUST 3C

REG # TATTOO BD BW 205-ADJ WR
 OPEN HEIFER P43620336 3C 2/18/15 86 549 102

KCF BENNETT 3008 M326 } RRH MR FELT 3008
 NJW 73S M326 TRUST 100W ET } KCF MISS 549 F284
 NJW P606 72N DAYDBREAM 73S } PW VICTOR BOOMER P606
 REMITALL GOVERNOR 236G } NJW 94J DEW 72N
 CPH MS GOVERNESS 20U } REMITALL CASINO 12C
 CPH MISS PRINCESS 13H } REMITALL ZERMARVEL 111Z
 } FELTONS 517
 } CPH DISCO LADY 23T

PRODUCTION EPDS						CARCASS EPDS			\$ VALUE EPDS			
CED	BW	WW	YW	MILK	M&G	FAT	REA	MARB	BMI	CEZ	BII	CHB
-0.7	3.6	57	95	23	51	-0.025	0.078	0.19	\$25	\$16	\$21	\$33

One of the favorites when looking at the heifer crop! A Trust heifer that will not disappoint – she's been good since birth. She has all the pieces. Long, dark, pigment in both eyes, sound and deep. She stems back to one of the first heifers Grandpa bought over 50 years ago. Don't miss this good rip!



NJW 73S W18 HOMETOWN 10Y ET

64

PLC FREIDA 8C

REG # TATTOO BD BW 205-ADJ WR
 OPEN HEIFER P43620339 8C 3/2/15 86 599 111

SHF WONDER M326 W18ET } KCF BENNETT 3008 M326
 NJW 73S W18 HOMETOWN 10Y ET } SHF GOVERNESS 236G L37
 NJW P606 72N DAYDBREAM 73S } PW VICTOR BOOMER P606
 DAN 122L RAMBO 96H 7R ET } NJW 94J DEW 72N
 DAN 7R FRIEDA 48N 28T } REMITALL ONLINE 122L
 DAN MS OPTION 27J 48N } REMITALL AMBER 96H
 } DAN BASIC OPTION 36K
 } DAN FREIDA 60F 27J

PRODUCTION EPDS						CARCASS EPDS			\$ VALUE EPDS			
CED	BW	WW	YW	MILK	M&G	FAT	REA	MARB	BMI	CEZ	BII	CHB
-0.6	4	64	109	25	56	0.037	0.490	0.39	\$23	\$14	\$18	\$36

We love this Hometown daughter out of a cow we bought from DAN Polled Herefords. She's big, long and deep and will make an awesome cow. Her mother never misses – I would expect nothing less from this one.



Lot 65

65

PLC CAITLYN 10C

REG # TATTOO BD BW 205-ADJ WR
 OPEN HEIFER P43619855 10C 3/15/15 76 559 104

SBS 57G RADAR 32K } RU 20X BOULDER 57G
 CPH RADAR 11Y } SBS RAIDINE 12C
 CPH MISS ZODIAC 16H } TIL-TOPA VIP 58Y 22F
 THM DURANGO 4037 } CPH MISS 14A WEST 8E
 MRC MS JUNE 12X } CS BOOMER 29F
 MRC SARA JUNE 26U } THM 7085 VICTRA 9036
 } MRC JOHNNY CASH 52A
 } MBC SARA 22H

PRODUCTION EPDS						CARCASS EPDS			\$ VALUE EPDS			
CED	BW	WW	YW	MILK	M&G	FAT	REA	MARB	BMI	CEZ	BII	CHB
-0.1	2.9	50	77	17	41	-0.001	0.260	0.05	\$18	\$15	\$16	\$23

A really long, pretty-made heifer. The Radar daughters have been great!

66

PLC CPH TAYLOR 11C

REG # TATTOO BD BW 205-ADJ WR

OPEN HEIFER P43619856 11C 3/15/15 82 537 100

HARVIE TAILOR MADE ET
PLC TAILORED 5Z
 ADK MISS GAI'S DELIGHT 312
 CKP GIT TIME 0928
CPH MISS TIME 21Y
 CPH MS GOVERNESS 20U

HARVIE TRAVELER 69T
 HARVIE MISS FIREFLY 51F
 REMITALL ONLINE 122L
 LH MS EXPRESS 908
 CRR ABOUT TIME 743
 CKP DELLA 0735
 REMITALL GOVERNOR 236G
 CPH MISS PRINCESS 13H

PRODUCTION EPDS						CARCASS EPDS			\$ VALUE EPDS			
CED	BW	WW	YW	MILK	M&G	FAT	REA	MARB	BMI	CEZ	BII	CHB
-1.1	4.7	52	93	12	38	-0.007	0.330	0.11	\$20	\$14	\$18	\$26

Out of a dam who always has one in the replacement pen. She gets the job done. This heifer has a maternal background that comes from a long line of great producers in herd. This heifer is put together nice and will not disappoint.

67

PLC DANIELLE 15C

REG # TATTOO BD BW 205-ADJ WR

OPEN HEIFER P43619860 15C 3/19/15 80 516 96

SBS 57G RADAR 32K
CPH RADAR 11Y
 CPH MISS ZODIAC 16H
 HARVIE TAILOR MADE ET 7W
PLC DANIELLE 11Z
 MRC DANIELLE 565

RU 20X BOULDER 57G
 SBS RAIDINE 12C
 TIL-TOPA VIP 58Y 22F
 CPH MISS 14A WEST 8E
 HARVIE TRAVELER 69T
 HARVIE MISS FIREFLY 51F
 CPH 122L UNDERLINE 3N
 MBC SARA 22H

PRODUCTION EPDS						CARCASS EPDS			\$ VALUE EPDS			
CED	BW	WW	YW	MILK	M&G	FAT	REA	MARB	BMI	CEZ	BII	CHB
-2.7	4.8	50	76	9	34	-0.020	0.420	-0.03	\$19	\$13	\$18	\$22

A nice Radar daughter that is made in a super package. Lots of maternal power!



68

PLC CPH SUNSHINE 19C

REG # TATTOO BD BW 205-ADJ WR

OPEN HEIFER P43619864 19C 3/27/15 100 620 115

SBS 57G RADAR 32K
CPH RADAR 11Y
 CPH MISS ZODIAC 16H
 THM DURANGO 4037
CPH MISS SUNSHINE 95
 CK MISS SUNSHINE 95

RU 20X BOULDER 57G
 SBS RAIDINE 12C
 TIL-TOPA VIP 58Y 22F
 CPH MISS 14A WEST 8E
 CS BOOMER 29F
 THM 7085 VICTRA 9036
 SHF RIB EYE M326 R117
 KAYLA SUNSHINE 0711

PRODUCTION EPDS						CARCASS EPDS			\$ VALUE EPDS			
CED	BW	WW	YW	MILK	M&G	FAT	REA	MARB	BMI	CEZ	BII	CHB
1.3	6.3	65	100	19	52	-0.007	0.340	0.09	\$21	\$16	\$16	\$32

The heifer that turns a lot of eyes! A great show prospect that is moderate, complete and full of dimension! She will make a tremendous cow. We probably should have kept her in the herd.



**TNT ANGUS
CARTER'S
POLLED HEREFORDS**
6760 92nd St. NE
ROCKLAKE, ND 58365

FIRST CLASS MAIL – DO NOT DELAY

RETURN SERVICE REQUESTED

PICK OF THE CROP

Special Female Sale

SUNDAY,
NOVEMBER 1, 2015

AT THE RANCH • 2 P.M. CST
6760 92nd St. NE • Rocklake, ND 58365

DVAuction

Offering Choice of:

34 ANGUS BRED HEIFERS
60 ANGUS OPEN HEIFERS

Offering:

11 ANGUS BRED COWS
5 POLLED HEREFORD BRED HEIFERS
6 POLLED HEREFORD OPEN HEIFERS

**TNT ANGUS &
CARTER'S POLLED HEREFORDS**

