

CROISSANT RED ANGUS

LUC *A Better Brand of Bull* LUC

Join us for our Annual Production Sale on

SATURDAY
MARCH 26, 2016

1 p.m. MDT • At the Ranch • Briggsdale, Colorado

79 RED ANGUS BULLS • 30 COMMERCIAL HEIFERS



All Bulls
PAP Tested

DVAuction Broadcasting
Real-time Auctions



We have hit another milestone at Croissant Red Angus. Larry and Jean celebrated their 50th wedding anniversary this past December. It was great to have family and friends gather and help them celebrate.



Kelly & Kitty
Sorensen

SALE DAY SCHEDULE:

Cattle Viewing9 am – 1 pm
 Coffee & Sweets.....9 am – 11 am
 Lunch.....11 am – 1 pm
SALE.....1 pm
 Loadout after sale 3 pm on

SALE DAY PHONES:

Larry970-590-4981
 Kevin.....970-222-6094
 Sallie970-371-0214
 Greg Comstock804-647-0127
 Gary Fike785-410-2608
 Kelly Sorensen435-823-0829

See videos of bulls at croissantredangus.com

Welcome to the annual Croissant Red Angus sale.

We have an outstanding set of bulls this year. Once again we are honored to have the Sorensen family as cooperators this year. They have brought a solid set of bulls again this year.

It is an excellent time to invest in Red Angus genetics that will promote value within the beef industry. If you take a look at the Superior data referenced on page 47, you can see that Red Angus genetics are providing more value in the market place. The Red Angus FCCP tag program is still providing value, but there is a new way for top genetics to garner more premiums, Top Dollar Angus. Page 48 will give you a brief overview of the program, but if you have any questions please let us know. This program is adding values of \$50/head premiums. It is a program to look at if you qualify. The bulls in the sale that are Top Dollar eligible will be designated with the Top Dollar logo.

This year Dr. Holt has PAP tested all the bulls. This information will be available in the sale day supplement. High altitude customers can buy with greater confidence. We still recommend reevaluation after acclimation at altitude.

Please enjoy coffee and doughnuts in the morning. After lunch we will begin the sale at 1 p.m. Mountain.

As always we are here to help and answer any questions that you may have. We thank you for the trust and confidence in our program and look forward to working with you in your success.

Sincerely,

The Croissant Red Angus Family

Larry, Jean, Kevin and Sallie



SALE TERMS:

- Animals are unconditionally guaranteed to be sound and to be breeders for the first breeding season. Bulls are guaranteed to have libido and heifers are guaranteed to cycle. We do not guarantee against injury or illness.
- Each animal will be at the buyer's risk as soon as sold, but will be cared for by the seller for a reasonable time after the sale. Animals need to be picked up by **April 15th**.
- The bulls and heifers will have passed a Breeding Soundness exam before sale day.
- Free delivery of bulls for the first 250 miles. After 250 miles delivery will be charged at cost. Deliveries will be scheduled as soon after the sale as possible. We do not offer delivery on heifers but will work with the buyer to arrange delivery if needed.
- **A \$50 credit will be given to purchasers who pick up their bulls by April 15th.**
- **A \$50 credit will be given to purchasers of multiple bulls.**
- We will be retaining a 1/3 interest in bulls we designate and wish to collect and use in our herd. They will be noted in this catalog. Semen collection is at buyer's convenience. **Buyer has full possession & full salvage value.**
- Registration papers will be transferred to the buyer which provides eligibility for the **RAAA FCCP**.
- Announcements from sale block take precedence over printed catalog.

SALE PROCEDURES:

- Animals are **always** available for inspection at the ranch.
- Bulls & heifers will be penned in small groups on sale day.
- Each animal will sell in catalog order in a video setting, rather than through a sale ring.
- Bids will be accepted:
 - Live at the auction.
 - On one of the sale day phones.
 - On the Internet at **DVAuction.com** with no buyer's fee.
 - Call Larry or Kevin for help and to leave sight unseen bids.
 - All bids will be handled in strict confidence and be treated as if you were present.
- **Absentee bidders please register before sale day!**
- **Internet viewing and bidding at DVAuction.com**

SALE DAY PHONE NUMBERS:

(970) 590-4981 • (970) 222-6094

(970) 301-3998 • (970) 371-0214

(804) 647-0127 • (785) 410-2608 • (435) 823-0829



Can't make the sale?

We are pleased to bring you real-time Internet bidding and a live broadcast of this sale through DV Auction. To watch or bid online, simply complete the following steps:

- 1) Visit the DVAuction web site at www.dvauction.com
- 2) Click on the "Register" tab
- 3) Enter a user name, password and your contact information.
- 4) Click on "Apply for Bidding."
 - Select the sale from the list of other auctions and click "Apply".
 - Complete the process by filling out the Banking & Lending information requested.
 - Be sure to include a personal contact at your bank, we will contact them in order to get a credit reference.
 - If you would prefer to be approved using your credit card, call (402) 316-5460.
 - Please be sure to apply for bidding at least a day in advance of the sale-every effort will be made to process your application in a timely manner.

DVAuction will contact you once you have been approved to bid. We do not provide buyer numbers until you have purchased a lot in the sale, and that number is only usable for that auction. After the sale contact the sale owner or manager to make arrangements for payment and delivery of your online purchases.

Please Note: High speed Internet access (DSL, T-1, or Broadband) is required to be able to bid successfully during the sale. If you have any questions, please contact DVAuction at (402) 316-5460 or (402) 474-5557 or email support@dvauction.com.

Proxy Bidding: If you can't access a computer during the sale, you can now place a "proxy bid" through DV Auction. Simply follow the instructions listed above, and as the sale date nears there will be a "Proxy Bidding" link under the sale listing on the main page of DV Auction. You can then place the maximum amount that you'd like to bid, and our system will represent your bid just as if you were there.

1

LJC MERLIN PRIDE 365C

Bull 3467806 26-Feb-15 1A 100%

LJC MERLIN 937Z

LJC MERLIN T179
TR CARRIE WT937

LJC TIVOLI 365

MPPA: 103.6 AOD: 2

5L TRADN DESIGNS 2367-331W
LJC CHARDONNAY 657

		Ratio
BW	85	110
205 Adj	725	109
365 Adj	1291	112
ADG	3.54	119
%IMF	3.40	90
REA	14.3	110
Fat	0.23	116
Frame	5.1	

HB	GM	CED	BW	WW	YW	MILK	ME	HPG	CEM	STAY	MARB	YG	CW	REA
164	52	13	-1.3	67	111	17	2	12	6	15	0.50	-0.07	34	0.42
4%	8%	4%	47%	17%	9%	70%	58%	15%	18%	13%	34%	18%	12%	9%



RA80K
A GENESIEK PRODUCT

Our leadoff bull is sired by featured Genex cowherd builder and "Spread" bull, LJC Merlin 937Z. Born unassisted out of a sweet first-calf heifer by Tradin Designs. Single-digit percent rank in both HerdBuilder & GridMaster are supported by best 4% CED to top 9% YW spread and an elite suite of repro traits. **Retaining 1/3 semen interest.**



Lot
1

2

LJC ADMIRAL 333C

Bull 3467797 23-Feb-15 1A 100%

5L ADMIRAL 1070-163A

5L ADVANTAGE 3267-221Y
5L RAINA 6118-1070

LJC LANDER 333

MPPA: 108.0 AOD: 2

LJC LANCER 806
LJC TANSY 837

		Ratio
BW	87	111
205 Adj	795	120
365 Adj	1314	114
ADG	3.24	109
%IMF	3.38	89
REA	13.5	104
Fat	0.19	130
Frame	5.2	

HB	GM	CED	BW	WW	YW	MILK	ME	HPG	CEM	STAY	MARB	YG	CW	REA
152	53	10	-1.3	86	133	17	-1	11	4	13	0.71	0.04	46	0.37
7%	3%	10%	45%	1%	1%	66%	32%	38%	36%	23%	9%	65%	1%	11%



RA80K
A GENESIEK PRODUCT

If you'd like to build a cowherd that is moderate and thick with enough middle to consume ample low-quality forage look no further than Lot 2. He is a tank! At 10 CED to 133 YW, and born unassisted out of a first-calf heifer the day before she turned 2. And, she's already calved again in less than 365 days. 333C is one of the elite "Spread" bulls to sell this spring. Top 1% for all pay-weight traits yet he's still in the top third of the breed for low maintenance energy, heifer pregnancy, daughters that calve unassisted and cows that stay productive and last. **Top \$ Angus is just right for the progeny of 333C - He's got Gain & Grade. Retaining 1/3 semen interest.**

Croissant RedAngus



Lot
3

3 LJC MERLIN 837C

Bull 3467919 28-Feb-15 1A 100%

LJC MERLIN T179

LJC MISSION STATEMENT P27
BUF CRK REDPRIDE N179

LJC TANSY 837

MPPA: 104.8 AOD: 7

TR JULIAN LT142
LJC LANORE 610

		Ratio
BW	83	98
205 Adj	714	108
365 Adj	1255	108
ADG	3.38	114
%IMF	4.87	128
REA	10.9	84
Fat	0.42	46
Frame	5.2	

HB	GM	CED	BW	WW	YW	MILK	ME	HPG	CEM	STAY	MARB	YG	CW	REA
152	53	14	-4.5	64	98	20	1	6	3	15	0.87	0.06	22	0.28
7%	4%	2%	7%	26%	27%	40%	48%	97%	66%	13%	3%	74%	44%	18%



RA80K
A GENESSEE PRODUCT

Paternal brother to Merlin 937Z and like him an exceptional calving ease bull with tremendous thickness from front to back. However, this little brother comes with more horsepower and breed leading carcass value as evident by his top 4% GridMaster Index, best 4% Marbling and 18% REA EPDs. His 8-year-old dam is deep, hi-volume, sound uddered and is the only cow we have flushed in the last five years. **Retaining 1/3 semen interest.**



Lot
2

Croissant Red Angus

4

LJC EMINENT 156C

Bull 3467863 8-Mar-15 1B 98.6%

BROWN EMINENT Z7325**LJC PEPPER 156**

MPPA: 100.0 AOD: 4

BROWN PARAMOUNT X7879
BROWN MS MISSION STMT W7525
TR EPIC WT989
LJC COSMOS 722

		Ratio
BW	74	90
205 Adj	691	104
365 Adj	1210	105
ADG	3.24	109
%IMF	3.83	101
REA	13.0	100
Fat	0.28	100
Frame	5.8	

HB	GM	CED	BW	WW	YW	MILK	ME	HPG	CEM	STAY	MARB	YG	CW	REA
180	53	10	-6.1	54	87	18	-3	14	1	17	0.79	-0.07	13	0.33
1%	2%	12%	2%	59%	49%	63%	23%	4%	86%	2%	6%	18%	70%	15%


RA80K
 A GENESSEE PRODUCT

Top 1% HerdBuilder comes with exceptional cowherd building traits of high fertility & longevity with low maintenance energy requirements. 156C is long bodied and heavily muscled and is similarly stacked in calf value traits. He will improve quality grade and yield grade simultaneously.


**Lot
4**

5

LJC TRILOGY 131C

Bull 3467865 28-Feb-15 1B 99.9%

GMRA TRILOGY 0226**LJC NECIA 131**

MPPA: 91.3 AOD: 4

MESSMER PACKER S008
GMRA LAKOTA 625
BECKTON NEBULA R367
LJC EXQUISITE 639

		Ratio
BW	81	98
205 Adj	619	93
365 Adj	1121	97
ADG	3.14	106
%IMF	4.91	129
REA	11.1	85
Fat	0.34	75
Frame	5.2	

HB	GM	CED	BW	WW	YW	MILK	ME	HPG	CEM	STAY	MARB	YG	CW	REA
200	52	13	-5.6	59	96	8	2	10	4	20	0.62	0.21	19	0.00
1%	10%	3%	3%	43%	32%	99%	56%	40%	51%	1%	17%	98%	53%	68%


RA80K
 A GENESSEE PRODUCT

This attractive Trilogy son passed the top 1% for HerdBuilder - \$22 ago! Not bad for a heifer bull that predicts best 3% Calving ease and lowest 3% birthweight! 131C also ranks in the single digits for GridMaster Index - thanks in part to his monster 129 IMF ratio.

Dam
of
Lot 3



6 LJC TRILOGY 325C

Bull 3467812 4-Mar-15 1A 100%

GMRA TRILOGY 0226

LJC JED'S GEM 325

MPPA: 97.6

AOD: 2

MESSMER PACKER S008

GMRA LAKOTA 625

CHOAT JED X13

LJC GEMINI 326

		Ratio
BW	82	106
205 Adj	624	94
365 Adj	1143	99
ADG	3.24	109
%IMF	4.69	124
REA	12.3	94
Fat	0.30	90
Frame	4.8	

HB	GM	CEU	BW	WW	YW	MILK	ME	HPG	CEM	STAY	MARB	YG	CW	REA
170	51	8	-2.9	58	90	16	3	14	6	17	0.75	0.09	19	0.18
3%	16%	26%	21%	44%	43%	77%	63%	3%	17%	3%	8%	84%	51%	32%



RA80K
GENESTEK PRODUCT

A tight sheathed, deep-ribbed half brother to Lot 5 and like him a tremendous IMF scan, and like him genetic predictions for profitability through improved fertility and longevity in the cowherd and carcass value in the calf crop – study his indices plus his STAY and marbling EPDs. **Retaining 1/3 semen interest.**



Lot
6

Croissant Red Angus

7

LJC TRILOGY 512C

Bull 3467979 26-Feb-15 1A 100%

GMRA TRILOGY 0226

LJC LANCER CROCUS 512

MPPA: 104.3 AOD: 10

MESSMER PACKER S008
GMRA LAKOTA 625
BECKTON LANCER F442 T
LJC CROCUS 321

		Ratio
BW	81	97
205 Adj	722	109
365 Adj	1176	102
ADG	2.84	96
%IMF	6.68	176
REA	13.4	103
Fat	0.29	94
Frame	5.4	

HB	GM	CED	BW	WW	YW	MILK	ME	HPG	CEM	STAY	MARB	YG	CW	REA
157	53	10	-4.4	68	101	14	1	11	2	15	0.98	-0.04	23	0.56
5%	2%	12%	7%	15%	22%	86%	45%	28%	73%	11%	2%	28%	39%	3%



RA80K
A GENESSEE PRODUCT

We plan to sample this Trilogy son heavily in our program, and not just because his 11-yr-old dam calved again this year with a 362-day calving interval. We don't like choosing between cow-herd profitability and calf value – 512C's balance of traits offers both. Best 12% CED to 100+ YW spread, longevity, fertility and exceptional end product value – supported by his "off the charts" 176 IMF scan. **Retaining 1/3 semen interest.**

8

LJC ADMIRAL 354C

Bull 3467951 27-Feb-15 1A 100%

5L ADMIRAL 1070-163A

LJC MARGO 354

MPPA: 102.4 AOD: 2

5L ADVANTAGE 3267-221Y
5L RAINA 6118-1070
LJC MERLIN T179
LJC MAGIC VALENTINE 153

		Ratio
BW	69	90
205 Adj	705	106
365 Adj	1168	101
ADG	2.89	97
%IMF	2.94	78
REA	13.6	105
Fat	0.24	112
Frame	4.8	

HB	GM	CED	BW	WW	YW	MILK	ME	HPG	CEM	STAY	MARB	YG	CW	REA
148	51	13	-3.4	67	107	19	1	9	1	15	0.31	0.03	29	0.41
8%	18%	4%	16%	16%	14%	53%	45%	74%	86%	11%	75%	56%	23%	10%



RA80K
A GENESSEE PRODUCT

2016 will be the first set of sons we've offered from Admiral, who caught our eye with ratios of 89 birth, 119 weaning, 116 yearling and 118 REA. This is a high performing, deep ribbed, wide based sire group; 354C is all of that in a heifer bull who delivers best 4% calving ease to 107 YW spread. **Retaining 1/3 semen interest.**



Lot
8

9

LJC ADMIRAL 353C

Bull 3467955 17-Mar-15 1B 99.9%

5L ADMIRAL 1070-163A

5L ADVANTAGE 3267-221Y
5L RAINA 6118-1070

LJC MARIANNA 353

MPPA: 99.6

AOD: 2

LJC MERLIN T179
LJC MORAINÉ 140

		Ratio
BW	78	101
205 Adj	658	99
365 Adj	1207	104
ADG	3.43	116
%IMF	2.97	78
REA	13.5	104
Fat	0.29	95
Frame	5.0	

HB	GM	CED	BW	WW	YW	MILK	ME	HPG	CEM	STAY	MARB	YG	CW	REA
132	49	11	-2.2	71	114	17	0	10	1	13	0.08	0.16	34	0.12
19%	45%	8%	31%	9%	7%	71%	43%	42%	84%	27%	96%	95%	11%	42%

The easy choice between lots 8 & 9 is to buy both and add pay-weight and shape to your calf crop and longevity to your cow herd. 353C combines best 8% calving ease with single digit weaning & yearling weights.

Lot
9

10

LJC MERLIN 573C

Bull 3467948 19-Feb-15 1A 100%

LJC MERLIN T179

LJC MISSION STATEMENT P27
BUF CRK REDPRIDE N179

5L SUNBURST 1880-1573

MPPA: 100.0

AOD: 2

5L ADVANTAGE 3267-221Y
5L SUNBURST 1615-1880

		Ratio
BW	71	92
205 Adj	662	100
365 Adj	1120	97
ADG	2.86	97
%IMF	3.91	103
REA	12.1	94
Fat	0.20	127
Frame	4.8	

HB	GM	CED	BW	WW	YW	MILK	ME	HPG	CEM	STAY	MARB	YG	CW	REA
147	51	11	-2.8	67	103	16	3	10	5	14	0.54	-0.09	27	0.30
9%	10%	8%	23%	16%	19%	73%	70%	57%	33%	20%	27%	12%	28%	16%



Merlin x Advantage is a recipe to add shape, fleshing ability and maternal traits in a moderate package and that describes 573C very well. 9 traits in the top 25%. Two indices in the best 10%. **Retaining 1/3 semen interest.**



Croissant RedAngus

9

11 LJC TRADIN DESIGN 950C

Bull 3467903 9-Mar-15 1A 100%

5L TRADN DESIGNS 2367-331W

5L HOB0 DESIGN 273-7047
5L ADINA 384-2367
BECKTON NEBULA R367
LJC TORI 737

LJC NEBULA TORY 950

MPPA: 100.0 AOD: 6

		Ratio
BW	92	109
205 Adj	733	111
365 Adj	1217	105
ADG	3.03	102
%IMF	4.41	116
REA	13.3	103
Fat	0.44	42
Frame	5.2	

HB	GM	CED	BW	WW	YW	MILK	ME	HPG	CEM	STAY	MARB	YG	CW	REA
190	49	10	0.5	65	96	14	-6	17	6	18	0.73	0.17	28	0.11
1%	42%	12%	77%	23%	30%	88%	10%	1%	16%	1%	8%	96%	25%	43%

We love the Tradin Designs daughters, and we anticipate even better when 950C's come into production with his best 1% predictions for fertility, stayability and cow herd profitability. If you like them, long, deep and thick be sure to study 950C.



Lot
11

12 LJC NEXUS 701C

Bull 3467930 28-Feb-15 1A 100%

BECKTON NEBULA X038 N4

BECKTON NEBULA U206 V3
BKT PINE MARIE U621 NB
BFCK CHEROKEE CNYN 4912
LJC LINDSEY 418

LJC CHELSEA 701

MPPA: 100.8 AOD: 8

		Ratio
BW	88	104
205 Adj	684	103
365 Adj	1194	103
ADG	3.19	107
%IMF	3.62	95
REA	13.8	106
Fat	0.27	101
Frame	5.0	

HB	GM	CED	BW	WW	YW	MILK	ME	HPG	CEM	STAY	MARB	YG	CW	REA
174	50	7	-0.7	77	117	11	3	9	-3	20	0.36	-0.03	38	0.28
2%	23%	30%	58%	3%	5%	96%	71%	72%	99%	1%	62%	32%	7%	18%



Like any rancher, we like the paycheck that comes with the extra pounds a bull like Lot 12 delivers, but we refuse to write the check required to feed the daughters of typical growth bulls. There is where 701C breaks the paradigm. All those pounds packed in a long-hipped, deep, wide based, low-5 frame package. And with his best 1% Stayability EPD. Daughters will be built to last. Retaining 1/3 semen interest.



Lot
13

13 LJC NEXUS 234C

Bull 3467844 4-Mar-15 1A 100%

BECKTON NEBULA X038 N4

LJC MERIT 234

MPPA: 105.7 AOD: 3

BECKTON NEBULA U206 V3
BKT PINE MARIE U621 NB
LJC MERLIN T179
LJC CHOKECHERRY 323

		Ratio
BW	88	109
205 Adj	719	109
365 Adj	1234	107
ADG	3.22	108
%IMF	3.16	83
REA	14.0	108
Fat	0.24	111
Frame	5.0	

HB	GM	CED	BW	WW	YW	MILK	ME	HPG	CEM	STAY	MARB	YG	CW	REA
150	51	7	-1.2	74	113	15	3	9	-2	17	0.38	-0.09	35	0.45
8%	18%	33%	47%	5%	8%	83%	68%	74%	98%	2%	59%	12%	11%	8%



RA80K
A GENESSEE PRODUCT

A Nexus son with a very similar EPD profile to his half brother, lot 12. Here's another pair of brothers to consider turning out together, as 234C adds best 10% or better ranks for HerdBuilder, Stayability, REA, WW and YW.



Lot
12

Croissant Red Angus

14 LJC MERLIN PRIDE 050C

Bull 3467938 4-Mar-15 1A 100%

LJC MERLIN 937Z

LJC CLOUD 050

MPPA: 101.5 AOD: 5

LJC MERLIN T179
TR CARRIE WT937
TR COLT 45 UT806
LJC PEARL 732

		Ratio
BW	85	101
205 Adj	685	103
365 Adj	1208	104
ADG	3.27	110
%IMF	3.30	87
REA	12.8	98
Fat	0.25	108
Frame	4.8	

HB	GM	CED	BW	WW	YW	MILK	ME	HPG	CEM	STAY	MARB	YG	CW	REA
173	50	13	-4.5	55	90	14	1	9	0	18	0.37	0.03	17	-0.08
2%	21%	4%	7%	56%	44%	88%	51%	59%	89%	1%	62%	61%	59%	83%



RA80K
A GENESSEE PRODUCT

We start a strong run of heifer bulls with a son of featured Genex calving ease specialist, LJC Merlin 937Z who is moderate, deep, thick and good. He ranks in the top 2% for cowherd profitability for ranchers who retain their own replacements. Retaining 1/3 semen interest.



Lot
14

15 LJC MERLIN PRIDE 233C

Bull 3467849 20-Mar-15 1B 99%

LJC MERLIN 937Z

LJC LEGACY CLEO 233

MPPA: 103.4 AOD: 3

LJC MERLIN T179
TR CARRIE WT937
LJC LEGACY 467W
LJC CLEO 049

		Ratio
BW	70	88
205 Adj	683	103
365 Adj	1172	101
ADG	3.05	103
%IMF	4.95	130
REA	12.7	98
Fat	0.32	84
Frame	5.2	

HB	GM	CED	BW	WW	YW	MILK	ME	HPG	CEM	STAY	MARB	YG	CW	REA
163	50	15	-5.4	55	86	14	3	6	4	16	0.44	0.08	13	-0.15
4%	22%	1%	4%	58%	53%	85%	66%	98%	48%	4%	44%	82%	70%	93%



RA80K
A GENESSEE PRODUCT

Half brother to Lot 14, with similar shape, eye appeal, 233C adds best 1% Calving Ease to his top 4% rank in HerdBuilder and is supported by an equally elite breed rank for Stayability. Retaining 1/3 semen interest.

16 LJC RIGHT KIND 137C

Bull 3467858 21-Mar-15 1A 100%

LOOSLI RIGHT KIND 205

LJC MOSEY 137

MPPA: 100.0 AOD: 4

BUF CRK THE RIGHT KIND U199
MISS LL PACKER 005
BECKTON NEBULA M045
LJC MISSY 920

		Ratio
BW	73	88
205 Adj	656	99
365 Adj	1149	99
ADG	3.08	104
%IMF	4.19	110
REA	13.7	106
Fat	0.30	91
Frame	5.1	

HB	GM	CED	BW	WW	YW	MILK	ME	HPG	CEM	STAY	MARB	YG	CW	REA
176	52	15	-5.5	52	86	20	1	18	0	16	0.46	-0.16	14	0.82
2%	6%	1%	3%	68%	51%	45%	45%	1%	92%	6%	41%	6%	68%	1%



RA80K
A GENESSEE PRODUCT

Top 6% or better for eight traits earn this Right Kind 205 son elite herd profit indices for both HerdBuilder & GridMaster. Use this best 1% Calving Ease bull on heifers and keep all the daughters with his top 1% prediction for heifer pregnancy rate.

17 LJC RIGHT KIND 352C

Bull 3467779 24-Feb-15 1B 99.9%

LOOSLI RIGHT KIND 205

LJC MURIEL 352

MPPA: 98.4 AOD: 2

BUF CRK THE RIGHT KIND U199
MISS LL PACKER 005
LJC MERLIN T179
LJC COLLEEN 051

		Ratio
BW	64	84
205 Adj	638	96
365 Adj	1200	104
ADG	3.51	118
%IMF	4.00	105
REA	13.4	103
Fat	0.31	87
Frame	4.6	

HB	GM	CED	BW	WW	YW	MILK	ME	HPG	CEM	STAY	MARB	YG	CW	REA
161	53	15	-5.0	60	103	21	3	11	1	15	0.53	-0.03	25	0.69
4%	3%	1%	5%	39%	18%	37%	71%	35%	82%	11%	29%	32%	34%	1%



RA80K
A GENESSEE PRODUCT

Half brother to Lot 16 and like him a best 1% calving ease bull with strong index values and reproductive EPDs. 352C delivers an added component of feeder calf value with excellent predictions for post-weaning gain, ribeye area and marbling.

18 LJC RIGHT KIND 108C

Bull 3467943 8-Mar-15 1A 100%

LOOSLI RIGHT KIND 205

LJC LONESTAR TORI 108

MPPA: 98.7 AOD: 4

BUF CRK THE RIGHT KIND U199
MISS LL PACKER 005
BROWN LONESTAR S7279
LJC TORI 737

		Ratio
BW	63	77
205 Adj	674	102
365 Adj	1128	98
ADG	2.84	96
%IMF	3.35	88
REA	12.0	93
Fat	0.30	93
Frame	4.5	

HB	GM	CED	BW	WW	YW	MILK	ME	HPG	CEM	STAY	MARB	YG	CW	REA
188	51	17	-7.9	46	76	23	1	18	5	16	0.24	-0.09	4	0.38
1%	16%	1%	1%	82%	72%	19%	50%	1%	33%	4%	87%	14%	89%	11%



RA80K
A GENESSEE PRODUCT

108C is the third best 1% Calving Ease son of Right Kind 205 to sell – but these half brothers offer much more than light birth weights. 352C is a best 1% Herd-Builder predicting \$84 higher profit per cow exposed than the average non-parent Red Angus bull.

19 LJC TRILOGY 363C

Bull 3467954 19-Feb-15 1B 99.9%

GMRA TRILOGY 0226

LJC NOEL 363

MPPA: 99.6

AOD: 2

MESSMER PACKER S008
GMRA LAKOTA 625
BECKTON NEBULA X038 N4
LJC CHERYL 142

		Ratio
BW	63	83
205 Adj	653	99
365 Adj	1094	95
ADG	2.76	93
%IMF	3.37	89
REA	13.1	101
Fat	0.36	69
Frame	3.7	

HB	GM	CED	BW	WW	YW	MILK	ME	HPG	CEM	STAY	MARB	YG	CW	REA
193	51	14	-6.5	62	93	13	0	9	3	19	0.37	-0.02	15	0.43
1%	12%	3%	1%	32%	37%	91%	44%	66%	55%	1%	60%	33%	63%	8%



RA80K
GENESSEE PRODUCT

We believe heifer bulls need to do it all – not just deliver small calves at birth. 363C exemplifies this with above average growth, the genetic makeup to eliminate Yield Grade 4 discounts while producing daughters that stay in the herd.

20 LJC TRILOGY 03C

Bull 3467773 3-Mar-15 1A 100%

GMRA TRILOGY 0226

CPC PAWNEE CANDY 03

MPPA: 105.8

AOD: 5

MESSMER PACKER S008
GMRA LAKOTA 625
LJC PAWNEE CANYON P4
CPC HEIDI 867

		Ratio
BW	72	85
205 Adj	684	103
365 Adj	1121	97
ADG	2.73	92
%IMF	4.45	117
REA	14.8	114
Fat	0.32	82
Frame	5.2	

HB	GM	CED	BW	WW	YW	MILK	ME	HPG	CEM	STAY	MARB	YG	CW	REA
155	51	14	-5.6	56	82	19	0	11	3	14	0.64	-0.09	10	0.65
6%	10%	2%	3%	51%	60%	56%	40%	33%	61%	14%	15%	14%	77%	1%



RA80K
GENESSEE PRODUCT

Half brother to Lot 19, and like him elite status for calving ease, ribeye area, improved yield grade and stayability. 03C brings an added dimension of exceptional carcass quality supported by his 117 IMF ratio.

21 LJC TRIAD 830C

Bull 3467924 13-Mar-15 1A 100%

GMRA TRIAD 3248

LJC ARIES 830

MPPA: 99.2

AOD: 7

GMRA TRILOGY 0226
GMRA NEXA 166
TR JULIAN LT142
LJC CHARIOT 317

		Ratio
BW	85	101
205 Adj	663	100
365 Adj	1126	97
ADG	2.89	97
%IMF	3.81	100
REA	12.6	97
Fat	0.21	125
Frame	5.5	

HB	GM	CED	BW	WW	YW	MILK	ME	HPG	CEM	STAY	MARB	YG	CW	REA
158	51	14	-3.4	64	99	18	5	12	5	14	0.41	-0.06	24	0.40
5%	16%	3%	16%	26%	26%	60%	82%	14%	29%	15%	52%	19%	37%	10%



RA80K
GENESSEE PRODUCT

We follow two Trilogy sons with a grandson. 830C is the first son to sell by our Triad bull, and he's special. Just like his uncles, lots 19 & 20, this bull is packed with elite calving ease, above average growth, superior reproductive traits and the genetic predisposition to sire calves that earn YG 1 & 2 premiums.

22 LJC MERLIN PRIDE 939C

Bull 3467906 3-Mar-15 1A 100%

LJC MERLIN 937Z

LJC MERLIN T179
TR CARRIE WT937

LJC PACKER WILLIE 939

MPPA: 98.5 AOD: 6

MESSMER PACKER S008
MESSMER WILLIE S041

		Ratio
BW	90	107
205 Adj	668	101
365 Adj	1200	104
ADG	3.32	112
%IMF	3.80	100
REA	13.8	107
Fat	0.24	111
Frame	5.8	

HB	GM	CED	BW	WW	YW	MILK	ME	HPG	CEM	STAY	MARB	YG	CW	REA
175	50	12	-2.2	63	97	13	4	14	3	18	0.28	-0.10	24	0.53
2%	32%	7%	30%	27%	30%	90%	79%	6%	67%	2%	81%	12%	36%	4%

If you raise your own replacements and want cowherds built to last, consider this 18 STAY EPD son of featured Genex herd sire LJC Merlin 937Z. 939C should increase YG 1 & 2 premiums with his elite rank for YG and ribeye area. His 7-yr-old Packer dam has already met all required stayability observations and produced the high performing Lot 14 bull in our 2015 sale.



23 LJC ADMIRAL 863C

Bull 3467947 13-Mar-15 1A 100%

5L ADMIRAL 1070-163A

5L ADVANTAGE 3267-221Y
5L RAINA 6118-1070

5L KARUBA 9559-1863

MPPA: 106.8 AOD: 2

5L BLAZIN KIND 189-228Y
5L KARUBA 835-9559

		Ratio
BW	84	108
205 Adj	773	117
365 Adj	1322	114
ADG	3.43	116
%IMF	3.12	82
REA	15.5	119
Fat	0.26	107
Frame	5.0	

HB	GM	CED	BW	WW	YW	MILK	ME	HPG	CEM	STAY	MARB	YG	CW	REA
111	52	8	-0.1	80	129	19	-1	13	4	9	0.33	-0.10	46	0.81
42%	9%	22%	67%	1%	1%	54%	33%	8%	44%	78%	71%	11%	2%	1%

Here is a half-brother to Lots 2, 8, & 9. He too is a top 1% weaning & yearling weight sire, and has one of the biggest REA scans in the entire offering at 119 ratio. His 2 yr old dam starts with a 107 MPPA. **Retaining 1/3 semen interest.**



Lot 23

Croissant Red Angus



Alisa
checking
calves

24 LJC TRADIN DESIGN 035C

Bull 3467895 25-Feb-15 1A 100%

5L TRADN DESIGNS 2367-331W

5L HOBO DESIGN 273-7047
5L ADINA 384-2367

LJC HOWDY PENNY 035

MPPA: 111.6 AOD: 5

MCPHEE HOWDY 216
LJC CHEROKEE PENNY 702

		Ratio
BW	90	108
205 Adj	776	117
365 Adj	1282	111
ADG	3.16	107
%IMF	5.42	143
REA	14.9	115
Fat	0.45	36
Frame	5.2	

HB	GM	CED	BW	WW	YW	MILK	ME	HPG	CEM	STAY	MARB	YG	CW	REA
111	50	6	0.3	64	97	24	6	11	2	12	0.73	-0.04	28	0.59
42%	22%	36%	74%	25%	30%	15%	88%	24%	80%	46%	9%	25%	25%	2%



RA80K
GENESTEK PRODUCT

If you retain ownership and sell on a grid - or if you want to take care of the feeder who buys your calves - look at this long-hipped, deep ribbed son of Tradin Designs that ranks in the top 25% or better for carcass weight, yield grade, marbling, REA and GridMaster!



Lot
24

Lot
25



25 LJC NEXUS 235C

Bull 3467944 14-Mar-15 1B 99.9%

BECKTON NEBULA X038 N4

BECKTON NEBULA U206 V3
BKT PINE MARIE U621 NB

LJC MERLIN CHARITY 235

MPPA: 110.9 AOD: 3

LJC MERLIN T179
LJC CHARITY 329

		Ratio
BW	92	114
205 Adj	774	117
365 Adj	1310	113
ADG	3.35	113
%IMF	3.14	83
REA	13.6	105
Fat	0.23	117
Frame	5.3	

HB	GM	CED	BW	WW	YW	MILK	ME	HPG	CEM	STAY	MARB	YG	CW	REA
133	50	6	0.4	88	136	10	7	8	-3	16	0.09	-0.09	51	0.42
17%	24%	40%	76%	1%	1%	97%	95%	84%	99%	7%	96%	12%	1%	9%



RA80K
GENESTEK PRODUCT

This guy is a Hoss! Top 1% pay weight regardless of how you market your calves and loaded with muscle. Top 9% REA and best 12% Yield Grade supported by a 105 REA ratio.

26 LJC NEXUS 462C

Bull 3467987 9-Mar-15 1B 98%

BECKTON NEBULA X038 N4

BECKTON NEBULA U206 V3
BKT PINE MARIE U621 NB

LJC COPPER 462

MPPA: 103.5 AOD: 11

BECKTON CHAMP M300 R1
LJC LOGAN FREIDA 136

		Ratio
BW	87	104
205 Adj	755	114
365 Adj	1252	108
ADG	3.11	105
%IMF	2.35	62
REA	14.2	110
Fat	0.24	114
Frame	4.9	

HB	GM	CED	BW	WW	YW	MILK	ME	HPG	CEM	STAY	MARB	YG	CW	REA
159	49	6	-0.8	68	104	13	2	13	4	17	0.15	-0.11	30	0.37
5%	44%	34%	54%	15%	17%	92%	59%	6%	51%	3%	94%	10%	19%	12%

RA80K
GENESTEK PRODUCT

Croissant Red Angus

27 LJC NEXUS 442C

Bull 3467984 1-Mar-15 1A 100%

BECKTON NEBULA X038 N4

BECKTON NEBULA U206 V3
BKT PINE MARIE U621 NB

LJC JADE 442

MPPA: 99.1 AOD: 11

LJC JUSTICE M04
LJC LOGAN 509 909

		Ratio
BW	88	106
205 Adj	639	96
365 Adj	1141	99
ADG	3.14	106
%IMF	3.93	103
REA	12.1	93
Fat	0.32	83
Frame	4.7	

HB	GM	CED	BW	WW	YW	MILK	ME	HPG	CEM	STAY	MARB	YG	CW	REA
166	48	8	-1.3	67	94	8	2	12	5	17	0.25	-0.05	23	-0.05
3%	62%	25%	45%	17%	36%	99%	59%	15%	30%	2%	84%	24%	39%	79%



28 LJC TRIAD 505C

Bull 3467976 27-Feb-15 1A 100%

GMRA TRIAD 3248

GMRA TRILOGY 0226
GMRA NEXA 166

LJC CHERISE 505

MPPA: 98.3 AOD: 10

BFCK CHEROKEE CNYN 4912
LJC HOB0 611 804

		Ratio
BW	83	100
205 Adj	768	116
365 Adj	1244	108
ADG	2.97	100
%IMF	3.43	90
REA	13.1	101
Fat	0.20	126
Frame	5.3	

HB	GM	CED	BW	WW	YW	MILK	ME	HPG	CEM	STAY	MARB	YG	CW	REA
103	49	7	-1.7	63	90	17	-1	12	-1	11	0.18	-0.18	21	0.55
52%	54%	26%	40%	28%	43%	67%	30%	15%	95%	57%	92%	5%	47%	3%



Lot
28

29 LJC TRIAD 759C

Bull 3467933 8-Mar-15 1A 100%

GMRA TRIAD 3248

LJC CASTANET 759

MPPA: 99.2

AOD: 8

GMRA TRILOGY 0226
GMRA NEXA 166
BUF CRK CARUSO P228
LJC YAMPA 313

		Ratio
BW	86	102
205 Adj	668	101
365 Adj	1152	100
ADG	3.03	102
%IMF	2.86	75
REA	12.6	97
Fat	0.28	100
Frame	4.9	

HB	GM	CED	BW	WW	YW	MILK	ME	HPG	CEM	STAY	MARB	YG	CW	REA
152	50	10	-3.3	61	94	18	-3	15	3	14	0.31	-0.11	21	0.66
7%	23%	12%	16%	36%	35%	62%	20%	3%	56%	15%	75%	11%	46%	1%



RA80K
A GENESSEE PRODUCT

30 LJC NEXUS 05C

Bull 3467891 13-Mar-15 1A 100%

BECKTON NEBULA X038 N4

LJC LARISSA 05

MPPA: 107.3

AOD: 5

BECKTON NEBULA U206 V3
BKT PINE MARIE U621 NB
LJC LANCER 806
LJC ARIES 830

		Ratio
BW	81	96
205 Adj	705	106
365 Adj	1142	99
ADG	2.73	92
%IMF	3.56	94
REA	10.2	79
Fat	0.24	114
Frame	5.5	

HB	GM	CED	BW	WW	YW	MILK	ME	HPG	CEM	STAY	MARB	YG	CW	REA
178	51	13	-4.5	67	103	13	9	8	1	19	0.39	0.05	25	-0.34
1%	16%	3%	7%	16%	18%	91%	98%	83%	86%	1%	57%	70%	34%	99%



RA80K
A GENESSEE PRODUCT

We lead off this a nice run of heifer bulls with this best 3% Calving Ease and top 1% Herdbuilder son of Nexus. We're approaching the halfway mark of the sale and these 6 heifer bulls average best 5% CED and top 4% HerdBuilder.

31 LJC NEXUS 031C

Bull 3467884 17-Mar-15 1B 99.9%

BECKTON NEBULA X038 N4

LJC CONTATA 031

MPPA: 100.7

AOD: 5

BECKTON NEBULA U206 V3
BKT PINE MARIE U621 NB
BUF CRK CARUSO P228
LJC LUNA 312

		Ratio
BW	86	103
205 Adj	659	100
365 Adj	1087	94
ADG	2.68	90
%IMF	2.69	71
REA	12.5	96
Fat	0.21	124
Frame	4.5	

HB	GM	CED	BW	WW	YW	MILK	ME	HPG	CEM	STAY	MARB	YG	CW	REA
192	49	11	-1.5	63	98	11	4	12	3	20	0.11	-0.09	26	0.05
1%	50%	9%	43%	27%	28%	96%	76%	23%	61%	1%	95%	12%	31%	57%

RA80K
A GENESSEE PRODUCT

Croissant Red Angus

32 LJC MERLIN PRIDE 752C

Bull 3467958 2-Mar-15 1A 100%

LJC MERLIN 937Z

LJC MAJIC 752

MPPA: 103.3 AOD: 8

LJC MERLIN T179
TR CARRIE WT937
BECKTON NEBULA R367
LJC CASEY 308

		Ratio
BW	86	102
205 Adj	697	105
365 Adj	1147	99
ADG	2.81	95
%IMF	2.81	74
REA	12.4	96
Fat	0.16	141
Frame	5.1	

HB	GM	CED	BW	WW	YW	MILK	ME	HPG	CEM	STAY	MARB	YG	CW	REA
178	50	13	-3.5	60	92	15	-1	10	-2	19	0.34	-0.06	20	0.21
1%	26%	3%	15%	39%	39%	81%	35%	55%	98%	1%	69%	21%	50%	27%



33 LJC MERLIN PRIDE 251C

Bull 3467853 11-Mar-15 1B 99.9%

LJC MERLIN 937Z

LJC TRADER PAM 251

MPPA: 102.3 AOD: 3

LJC MERLIN T179
TR CARRIE WT937
5L TRADN DESIGNS 2367-331W
LJC PAM 02

		Ratio
BW	76	95
205 Adj	671	101
365 Adj	1186	103
ADG	3.22	108
%IMF	3.01	79
REA	13.9	107
Fat	0.30	92
Frame	4.8	

HB	GM	CED	BW	WW	YW	MILK	ME	HPG	CEM	STAY	MARB	YG	CW	REA
161	50	16	-5.8	53	83	18	0	9	3	15	0.30	-0.03	11	0.32
4%	23%	1%	2%	62%	57%	64%	43%	59%	64%	9%	76%	28%	75%	15%



Lot
33

Croissant Red Angus

34 LJC MERLIN PRIDE I38C

Bull 3467996 17-Mar-15 1A 100%

LJC MERLIN 937Z

LJC RUFUS MAGGIE 138

MPPA: 105.4 AOD: 14

LJC MERLIN T179
TR CARRIE WT937
BTH MR RAM 4190
LJC MAGIC

		Ratio
BW	80	96
205 Adj	613	93
365 Adj	1110	96
ADG	3.11	105
%IMF	6.89	182
REA	10.5	81
Fat	0.33	81
Frame	5.3	

HB	GM	CED	BW	WW	YW	MILK	ME	HPG	CEM	STAY	MARB	YG	CW	REA
135	51	12	-2.8	45	69	18	-1	8	2	14	0.96	0.05	7	0.01
16%	19%	5%	23%	85%	82%	59%	35%	88%	73%	21%	2%	66%	83%	66%



RA80K
A GENESIEK PRODUCT

This will be the last opportunity to buy a son of featured Genex calving ease sire, LJC Merlin 937Z in this year's sale. And we're ending this sire group with a very special individual – A best 5% calving ease bull that happens to be the highest IMF bull in the sale at 182 ratio.



Lot
35

35 LJC EMINENT 520C

Bull 3467977 3-Mar-15 1A 100%

BROWN EMINENT Z7325

LJC JUDEE 520

MPPA: 102.6 AOD: 10

BROWN PARAMOUNT X7879
BROWN MS MISSION STMT W7525
BECKTON JULIAN GG B571
LJC DEE 332

		Ratio
BW	77	92
205 Adj	704	106
365 Adj	1171	101
ADG	2.92	98
%IMF	3.06	81
REA	12.7	98
Fat	0.36	68
Frame	5.1	

HB	GM	CED	BW	WW	YW	MILK	ME	HPG	CEM	STAY	MARB	YG	CW	REA
190	51	12	-4.6	61	97	17	5	15	6	18	0.30	-0.04	21	0.46
1%	16%	6%	6%	36%	30%	70%	86%	1%	20%	1%	77%	28%	47%	8%



RA80K
A GENESIEK PRODUCT

The second highest HerdBuilder Index in the sale and we've saved him for halfway down the sale order. You'll want all of this bull's daughters in production with top 1% ranks for Heifer Pregnancy Rate & Stayability.

Croissant Red Angus

36 LJC TRADIN DESIGN I 66C

Bull 3467867 25-Feb-15 1A 100%

5L TRADN DESIGNS 2367-331W

5L HOBO DESIGN 273-7047
5L ADINA 384-2367

LJC ACACIA 166

MPPA: 106.7 AOD: 4

5L ALLIANCE 2526-246V
LJC PANSY 620

		Ratio
BW	88	107
205 Adj	788	119
365 Adj	1298	112
ADG	3.19	107
%IMF	4.00	105
REA	13.9	107
Fat	0.18	134
Frame	5.5	

HB	GM	CED	BW	WW	YW	MILK	ME	HPG	CEM	STAY	MARB	YG	CW	REA
140	52	5	1.8	76	125	22	1	19	5	12	0.70	-0.02	47	0.43
13%	7%	48%	93%	3%	2%	28%	50%	1%	26%	36%	10%	32%	1%	9%



RA80K
A GENESIEK PRODUCT

This power bull is a maternal brother to the Lot 1 bull in our 2015 sale, and like him really outstanding ratios across the board with top 3% or better ranks for pay-weight traits. A son of Tradin Designs so the best 1% Heifer Pregnancy EPD comes as no surprise.

37 ISLC NEXUS I 32C

Bull 3471421 20-Feb-15 1A 100%

ANDRAS NEW DIRECTION R240

ANDRAS IN FOCUS B152
ANDRAS KURUBA B111

1SLC MM MISTY 132

MPPA: 95.3 AOD: 4

MRR MM 12TA
LJC MISTY 734

		Ratio
BW	80	97
205 Adj	667	101
365 Adj	1267	110
ADG	3.75	127
%IMF	4.20	123
REA	13.4	108
Fat	0.24	97
Frame	5.8	

HB	GM	CED	BW	WW	YW	MILK	ME	HPG	CEM	STAY	MARB	YG	CW	REA
99	51	5	-0.5	69	115	16	0	10	2	10	0.39	0.00	38	0.46
58%	15%	44%	62%	13%	6%	77%	37%	47%	79%	71%	55%	42%	7%	8%



RA80K
A GENESIEK PRODUCT

38 ISLC BIG IRON 240C

Bull 3471404 16-Mar-15 1B 99.9%

1SLC BIG IRON 309

HXC BIG IRON 0024X
1SLC KARI 139

1SLC IDA 240

MPPA: 106.3 AOD: 3

5L FOREVER FIRE 1186-674W
1SLC IDA V29

		Ratio
BW	95	117
205 Adj	812	123
365 Adj	1417	123
ADG	3.78	128
%IMF	3.17	93
REA	13.8	111
Fat	0.24	98
Frame	5.9	

HB	GM	CED	BW	WW	YW	MILK	ME	HPG	CEM	STAY	MARB	YG	CW	REA
106	51	1	1.3	82	129	17	4	10	6	11	0.46	0.09	48	0.08
48%	20%	88%	88%	1%	1%	68%	75%	51%	19%	54%	41%	84%	1%	50%



RA80K
A GENESIEK PRODUCT

Here's a long bodied, sound moving Power bull that will add pounds and muscle. He's one of the highest ratioing bulls in the sale with 123 weaning, 123 yearling and 111 REA ratios.

39 ISLC BIG IRON 244C

Bull 3471414 26-Mar-15 1A 100%

1SLC BIG IRON 309

HXC BIG IRON 0024X
1SLC KARI 139

1SLC JOLENE 244

MPPA: 103.4 AOD: 3

5L FOREVER FIRE 1186-674W
MISS CANYON 914

		Ratio
BW	88	109
205 Adj	740	112
365 Adj	1257	109
ADG	3.23	109
%IMF	3.43	101
REA	13.3	107
Fat	0.27	84
Frame	5.9	

HB	GM	CED	BW	WW	YW	MILK	ME	HPG	CEM	STAY	MARB	YG	CW	REA
110	52	4	-1.0	76	120	20	4	10	6	10	0.66	0.04	40	0.15
42%	7%	63%	52%	3%	3%	47%	72%	42%	21%	62%	13%	65%	5%	35%



RA80K
A GENESSEE PRODUCT

40 ISLC BIG IRON 604C

Bull 3471433 21-Mar-15 1A 100%

1SLC BIG IRON 309

HXC BIG IRON 0024X
1SLC KARI 139

BIEBER NATIE 135S

MPPA: 103.4 AOD: 9

BASIN TREND SETTER 6074
BIEBER NATIE 9984

		Ratio
BW	95	114
205 Adj	737	112
365 Adj	1288	112
ADG	3.45	116
%IMF	3.36	98
REA	12.6	102
Fat	0.23	102
Frame	5.3	

HB	GM	CED	BW	WW	YW	MILK	ME	HPG	CEM	STAY	MARB	YG	CW	REA
84	49	2	1.7	70	115	23	3	9	5	9	0.48	0.19	41	-0.33
76%	39%	76%	92%	10%	6%	20%	69%	74%	25%	79%	37%	98%	4%	99%

RA80K
A GENESSEE PRODUCT



Lot
38

Croisrant Red Angus

REFERENCE SIRES

Reg #	Name	HB %HB	GM %GM	CED %CED	BW %BW	WW %WW	YW %YW
1176927	LJC MERLIN T179	125 18%	51 21%	9 24%	-3.9 18%	66 29%	106 26%
1329680	5L TRADN DESIGNS 2367-331W	120 22%	50 41%	3 63%	3.0 93%	70 20%	115 16%
1367533	GMRA TRILOGY 0226	170 3%	53 7%	10 17%	-4.7 12%	67 26%	106 26%
1383395	BECKTON NEBULA X038 N4	184 1%	50 32%	7 35%	-1.2 49%	81 5%	123 8%
1447665	BAST FAT TONY 101	109 32%	48 67%	6 33%	-3.9 11%	37 93%	55 93%
1457441	HAYCOW MULBERRY 183	126 16%	49 45%	-1 94%	0.5 74%	60 36%	100 26%
1506922	ANDRAS NEW DIRECTION R240	66 73%	53 10%	7 32%	-1.9 39%	74 13%	126 7%
1523153	LOOSLI RIGHT KIND 205	133 13%	50 32%	12 10%	-5.6 7%	42 85%	71 79%
1535025	LJC MERLIN 937Z	158 4%	52 16%	17 3%	-6.5 4%	53 64%	85 58%
1550662	BROWN EMINENT Z7325	178 1%	54 1%	7 31%	-3.3 16%	64 25%	109 12%
1605054	GMRA TRIAD 3248	151 4%	51 16%	9 18%	-2.5 24%	63 29%	100 25%
1609552	1SLC FIRE STARTER 306	102 41%	49 42%	7 28%	-1.1 47%	60 39%	91 43%
1609569	1SLC BIG IRON 309	121 20%	51 15%	2 79%	1.7 90%	81 2%	138 1%
1610681	LJC NEXUS 554A	147 5%	50 33%	9 16%	-1.7 36%	65 23%	103 21%
1610804	LJC NEXUS 118A	148 5%	50 28%	9 14%	-4.2 8%	59 42%	86 52%
1627922	5L ADMIRAL 1070-163A	84 57%	52 18%	9 21%	-1.8 41%	73 15%	114 17%

	MLK %MLK	ME %ME	HPG %HPG	CEM %CEM	STAY %STAY	MARB %MARB	YG %YG	CW %CW	REA %REA
	18 60%	9 93%	8 73%	-2 93%	14 12%	0.31 68%	-0.08 22%	27 38%	0.46 16%
	18 57%	3 70%	17 2%	7 17%	11 33%	0.58 28%	0.07 71%	43 10%	0.16 41%
	13 80%	2 62%	12 27%	6 26%	15 5%	0.75 14%	-0.08 22%	26 41%	0.68 7%
	4 97%	2 64%	13 16%	-1 88%	20 1%	0.26 78%	-0.02 39%	41 12%	0.03 61%
	26 9%	-2 26%	8 81%	5 31%	12 27%	0.38 57%	-0.03 32%	-3 94%	0.16 36%
	20 49%	6 82%	13 12%	8 8%	14 11%	0.30 74%	0.01 49%	30 22%	0.29 20%
	33 3%	-6 26%	10 44%	8 16%	3 89%	0.78 12%	0.27 98%	42 11%	0.18 39%
	26 18%	2 62%	16 2%	5 37%	11 31%	0.47 42%	0.02 53%	5 84%	0.58 10%
	20 48%	4 71%	10 48%	5 36%	14 10%	0.58 27%	0.00 42%	11 74%	0.27 29%
	15 80%	3 61%	14 4%	3 54%	17 1%	0.82 5%	-0.04 30%	31 21%	0.35 15%
	19 56%	-1 32%	14 5%	9 7%	13 15%	0.40 54%	-0.10 12%	26 33%	0.80 1%
	21 35%	1 46%	11 34%	6 23%	10 58%	0.43 46%	-0.02 35%	22 45%	0.15 37%
	22 30%	5 74%	11 34%	3 57%	13 17%	0.36 61%	0.12 88%	54 1%	-0.07 78%
	16 73%	3 62%	8 79%	2 75%	16 3%	0.41 49%	0.13 89%	29 26%	0.04 56%
	12 90%	1 44%	4 99%	-3 98%	18 1%	0.32 71%	-0.14 7%	15 66%	0.31 19%
	22 33%	-5 30%	11 37%	4 48%	6 81%	0.60 25%	0.00 46%	35 22%	0.52 13%

41 LJC TRILOGY 039C

Bull 3467939 3-Mar-15 1A 100%

GMRA TRILOGY 0226

LJC HOPI 039

MPPA: 102.2

AOD: 5

MESSMER PACKER S008
GMRA LAKOTA 625
MCPHEE HOWDY 216
LJC HOPE 766

		Ratio
BW	77	92
205 Adj	684	103
365 Adj	1090	94
ADG	2.54	86
%IMF	4.35	115
REA	13.0	100
Fat	0.36	68
Frame	5.1	

HB	GM	CED	BW	WW	YW	MILK	ME	HPG	CEM	STAY	MARB	YG	CW	REA
156	51	10	-4.9	58	89	18	4	10	5	15	0.66	0.04	16	0.31
6%	10%	11%	5%	47%	45%	60%	78%	47%	35%	9%	13%	66%	62%	16%



RA80K
A GENESSEE PRODUCT

42 LJC TRILOGY 146C

Bull 3467864 25-Feb-15 1A 100%

GMRA TRILOGY 0226

LJC CALIOPE 146

MPPA: 100.7

AOD: 2

MESSMER PACKER S008
GMRA LAKOTA 625
TR COLT 45 UT806
LJC CHEROKEE PENNY 702

		Ratio
BW	87	106
205 Adj	682	103
365 Adj	1132	98
ADG	2.81	95
%IMF	4.17	110
REA	14.0	108
Fat	0.32	83
Frame	4.2	

HB	GM	CED	BW	WW	YW	MILK	ME	HPG	CEM	STAY	MARB	YG	CW	REA
159	51	10	-3.2	64	100	17	-3	12	1	16	0.30	-0.13	25	0.68
5%	19%	14%	17%	23%	24%	72%	20%	13%	84%	6%	77%	8%	35%	1%



RA80K
A GENESSEE PRODUCT

Eliminate YG 4s with this moderate-framed, thick TrilogY son that offers double digit calving ease and triple digit growth. 146C ranks in the top 1% of non-parent Red Angus for REA and best 8% for Yield Grade.

43 LJC TRILOGY 316C

Bull 3467776 28-Feb-15 1B 99.9%

GMRA TRILOGY 0226

LJC CHANEL 316

MPPA: NA

AOD: 2

MESSMER PACKER S008
GMRA LAKOTA 625
TR COLT 45 UT806
LJC LONESTAR TIFFANY 107

		Ratio
BW	61	81
205 Adj	681	
365 Adj	1131	
ADG	2.81	
%IMF	4.65	
REA	11.1	
Fat	0.31	
Frame	5.0	

HB	GM	CED	BW	WW	YW	MILK	ME	HPG	CEM	STAY	MARB	YG	CW	REA
170	53	13	-7.1	57	92	17	1	11	5	15	0.85	0.06	15	0.13
3%	1%	3%	1%	48%	38%	72%	50%	24%	33%	10%	4%	74%	66%	41%



RA80K
A GENESSEE PRODUCT

44 LJC EMINENT 934C

Bull 3467900 20-Mar-15 1A 100%

BROWN EMINENT Z7325

TR CEDAR WT934

MPPA: 96.2 AOD: 6

BROWN PARAMOUNT X7879
BROWN MS MISSION STMT W7525
BECKTON NEBULA M045
TR CEDAR TT726

		Ratio
BW	80	95
205 Adj	623	94
365 Adj	1155	100
ADG	3.32	112
%IMF	4.12	108
REA	11.6	89
Fat	0.21	124
Frame	5.9	

HB	GM	CED	BW	WW	YW	MILK	ME	HPG	CEM	STAY	MARB	YG	CW	REA
207	53	14	-6.3	52	88	12	-1	14	5	19	0.62	-0.05	14	0.01
1%	3%	3%	2%	68%	48%	93%	36%	3%	26%	1%	17%	22%	69%	66%



RA80K
A GENESSEE PRODUCT

45 LJC EMINENT 662C

Bull 3467968 23-Feb-15 1A 100%

BROWN EMINENT Z7325

LJC GOLDA 662

MPPA: 99.2 AOD: 9

BROWN PARAMOUNT X7879
BROWN MS MISSION STMT W7525
LJC COLORADO GOLD P42
LJC HILDA

		Ratio
BW	91	109
205 Adj	697	105
365 Adj	1229	106
ADG	3.32	112
%IMF	3.93	104
REA	14.2	109
Fat	0.25	109
Frame	5.2	

HB	GM	CED	BW	WW	YW	MILK	ME	HPG	CEM	STAY	MARB	YG	CW	REA
141	52	6	-1.7	57	92	16	4	12	3	14	0.63	-0.20	23	0.65
12%	9%	40%	38%	49%	39%	77%	80%	18%	53%	14%	16%	5%	41%	1%



RA80K
A GENESSEE PRODUCT

Balanced performance comes with this wide-based Eminent son who ratioed well above average for weaning, yearling, ADG, IMF and REA.



Lot
45

Croissant Red Angus

46 LJC NEXUS PRIDE 448C

Bull 3467986 5-Mar-15 1A 100%

LJC NEXUS 554A

LJC BRONZE 448

MPPA: 107.8 AOD: 11

BECKTON NEBULA X038 N4
LJC ANNABELLE 554
BROWN VACATION H7106
LJC LC ELEANOR 222

		Ratio
BW	90	108
205 Adj	739	112
365 Adj	1215	105
ADG	2.97	100
%IMF	3.20	84
REA	13.8	106
Fat	0.21	122
Frame	5.6	

HB	GM	CED	BW	WW	YW	MILK	ME	HPG	CEM	STAY	MARB	YG	CW	REA
165	49	8	-1.0	59	93	20	6	9	4	18	0.25	-0.04	24	0.18
3%	50%	21%	51%	41%	36%	43%	89%	59%	36%	1%	86%	28%	36%	32%



Lot
46

47 LJC ADMIRAL 259C

Bull 3467830 2-Mar-15 1A 100%

5L ADMIRAL 1070-163A

LJC VALENTINE OPAL 259

MPPA: 103.4 AOD: 3

5L ADVANTAGE 3267-221Y
5L RAINA 6118-1070
BUF CRK VALENTINE T146
LJC OPAL 731

		Ratio
BW	87	108
205 Adj	719	109
365 Adj	1212	105
ADG	3.08	104
%IMF	3.24	85
REA	14.1	109
Fat	0.33	79
Frame	5.3	

HB	GM	CED	BW	WW	YW	MILK	ME	HPG	CEM	STAY	MARB	YG	CW	REA
126	48	7	-1.1	64	94	15	0	13	3	13	0.08	-0.03	24	0.43
24%	74%	26%	49%	24%	35%	83%	41%	10%	58%	29%	96%	32%	37%	9%



48 ISLC NEXUS 372C

Bull 3471402 12-Mar-15 1A 100%

LJC NEXUS 118A

ISLC NATALIE 372

MPPA: 102.8 AOD: 2

BECKTON NEBULA X038 N4
LJC MORGAN 118
5L FOREVER FIRE 1186-674W
BIEBER NATIE 135S

		Ratio
BW	89	114
205 Adj	706	107
365 Adj	1204	104
ADG	3.11	105
%IMF	2.89	85
REA	12.1	98
Fat	0.17	129
Frame	5.3	

HB	GM	CED	BW	WW	YW	MILK	ME	HPG	CEM	STAY	MARB	YG	CW	REA
132	50	7	-0.9	63	98	14	1	7	1	15	0.52	0.00	27	0.17
18%	28%	29%	54%	29%	28%	89%	50%	96%	87%	10%	30%	41%	28%	32%



49 ISLC FAT TONY 811C

Bull 3471430 16-Mar-15 1A 100%

BAST FAT TONY 101

LJC CONCHA 811

MPPA: 102.4 AOD: 7

RED NORTHLINE FAT TONY 605U
BAST BRAYDEN 333
BROWN CHEROKEE N7426
LJC LANCE 519 919

		Ratio
BW	85	101
205 Adj	637	96
365 Adj	1105	96
ADG	2.93	99
%IMF	3.00	88
REA	12.1	97
Fat	0.26	90
Frame	5.5	

HB	GM	CED	BW	WW	YW	MILK	ME	HPG	CEM	STAY	MARB	YG	CW	REA
96	46	8	-3.6	36	50	22	0	6	2	12	0.07	-0.09	-5	0.13
62%	95%	26%	14%	96%	97%	27%	39%	97%	75%	42%	96%	12%	97%	39%



Larry and Jean with all the grandkids at Christmas

Croissant Red Angus

50 LJC NEXUS 201C

Bull 3467836 27-Feb-15 1A 100%

BECKTON NEBULA X038 N4

LJC ALFIE 201

MPPA: 103.4

AOD: 3

BECKTON NEBULA U206 V3
BKT PINE MARIE U621 NB
BROWN AFFIRMED W7691
LJC POLLY 615

		Ratio
BW	83	103
205 Adj	708	107
365 Adj	1140	99
ADG	2.70	91
%IMF	4.57	120
REA	11.6	89
Fat	0.21	123
Frame	4.6	

HB	GM	CED	BW	WW	YW	MILK	ME	HPG	CEM	STAY	MARB	YG	CW	REA
172	50	8	-4.1	61	84	7	-1	13	1	18	0.41	-0.12	13	-0.04
2%	34%	26%	10%	33%	56%	99%	33%	7%	85%	1%	50%	9%	69%	75%

In most enterprise-wide economic selection indices, Stayability is the trait with the greatest impact on a cow/calf producer's profitability. Just so happens this long, deep and thick son of Nexus is top 1% STAY EPD and top 2% HerdBuilder Index.



Lot
50

51 LJC TRILOGY 318C

Bull 3467949 28-Feb-15 1A 100%

GMRA TRILOGY 0226

LJC CAROLYN 318

MPPA: 102.0

AOD: 2

MESSMER PACKER S008
GMRA LAKOTA 625
TR COLT 45 UT806
LJC ESTONA 167

		Ratio
BW	78	101
205 Adj	694	105
365 Adj	1157	100
ADG	2.89	97
%IMF	4.17	110
REA	13.2	102
Fat	0.29	94
Frame	4.3	

HB	GM	CED	BW	WW	YW	MILK	ME	HPG	CEM	STAY	MARB	YG	CW	REA
135	52	8	-4.6	57	89	19	-1	12	2	13	0.77	0.03	16	0.23
16%	7%	26%	7%	50%	45%	55%	35%	15%	78%	26%	7%	61%	60%	25%



318C provides both cowherd building traits as well as calf value on the backside, with his best 16% Herdbuilder and 7% Gridmaster. He has top 7% marbling and top 25% REA in a mid 4 frame bull with good muscle expression and shape. Don't overlook this one.

52 LJC ADMIRAL 359C

Bull 3467794 27-Mar-15 1A 100%

5L ADMIRAL 1070-163A

LJC NEXUS MAGIC 359

MPPA: 103.6 AOD: 2

5L ADVANTAGE 3267-221Y
5L RAINA 6118-1070
BECKTON NEBULA X038 N4
LJC MISS MAGIC CJ 902

		Ratio
BW	76	98
205 Adj	721	109
365 Adj	1153	100
ADG	2.70	91
%IMF	3.09	81
REA	13.4	103
Fat	0.26	105
Frame	4.9	

HB	GM	CED	BW	WW	YW	MILK	ME	HPG	CEM	STAY	MARB	YG	CW	REA
144	51	10	-1.2	69	106	19	-1	12	1	14	0.67	0.06	31	0.25
10%	16%	11%	49%	12%	15%	54%	33%	13%	86%	16%	12%	71%	18%	22%



RA80K
A GENESSEE PRODUCT

53 LJC RIGHT KIND 336C

Bull 3467784 24-Feb-15 1B 99.9%

LOOSLI RIGHT KIND 205

LJC LARGO 336

MPPA: 100.0 AOD: 2

BUF CRK THE RIGHT KIND U199
MISS LL PACKER 005
LJC LEGACY 467W
LJC CONTATA 031

		Ratio
BW	75	97
205 Adj	660	100
365 Adj	1114	96
ADG	2.84	96
%IMF	4.41	116
REA	12.7	98
Fat	0.38	61
Frame	4.7	

HB	GM	CED	BW	WW	YW	MILK	ME	HPG	CEM	STAY	MARB	YG	CW	REA
170	50	14	-4.7	48	75	21	3	15	5	16	0.40	0.01	8	0.36
3%	35%	2%	6%	78%	73%	34%	67%	2%	30%	6%	53%	51%	82%	13%

We've tried to make it easy for ranchers to increase uniformity by turning out half brothers. Lots 53-56 are all Right Kind sons that are heifer bulls and make great replacement females. These 4 brothers average: Top 2% HerdBuilder, Top 5% Stayability, Top 1% Heifer Pregnancy Rate.

RA80K
A GENESSEE PRODUCT



Lot
51

Croissant Red Angus

54 LJC RIGHT KIND 140C

Bull 3467857 12-Mar-15 1B 99.9%

LOOSLI RIGHT KIND 205

LJC MORAINÉ 140

MPPA: 96.7 AOD: 4

BUF CRK THE RIGHT KIND U199
MISS LL PACKER 005
BECKTON NEBULA M045
LJC STARLA 936

		Ratio
BW	72	88
205 Adj	647	98
365 Adj	1097	95
ADG	2.81	95
%IMF	3.17	84
REA	12.1	93
Fat	0.32	85
Frame	4.7	

HB	GM	CED	BW	WW	YW	MILK	ME	HPG	CEM	STAY	MARB	YG	CW	REA
188	50	15	-5.4	52	88	19	2	19	3	17	0.19	0.03	15	0.29
1%	25%	1%	4%	68%	47%	51%	57%	1%	56%	3%	92%	56%	65%	17%



RA80K
A GENESSEE PRODUCT

55 LJC RIGHT KIND 327C

Bull 3467808 24-Feb-15 1A 100%

LOOSLI RIGHT KIND 205

LJC JED'S CHARM 327

MPPA: 101.6 AOD: 2

BUF CRK THE RIGHT KIND U199
MISS LL PACKER 005
CHOAT JED X13
LJC CHARM 563

		Ratio
BW	71	92
205 Adj	689	104
365 Adj	1186	103
ADG	3.11	105
%IMF	3.52	93
REA	14.3	110
Fat	0.34	76
Frame	4.9	

HB	GM	CED	BW	WW	YW	MILK	ME	HPG	CEM	STAY	MARB	YG	CW	REA
164	50	11	-3.4	58	98	28	2	17	5	15	0.29	0.07	24	0.54
3%	25%	7%	16%	45%	28%	3%	62%	1%	30%	10%	77%	78%	38%	4%



RA80K
A GENESSEE PRODUCT

56 LJC RIGHT KIND 454C

Bull 3467990 2-Apr-15 1A 100%

LOOSLI RIGHT KIND 205

LJC MARTA 454

MPPA: 103.5 AOD: 11

BUF CRK THE RIGHT KIND U199
MISS LL PACKER 005
GLACIER MARIAS 548
LJC JULIAN 837 037

		Ratio
BW	71	85
205 Adj	615	93
365 Adj	1060	92
ADG	2.78	94
%IMF	3.77	99
REA	11.9	92
Fat	0.35	72
Frame	4.8	

HB	GM	CED	BW	WW	YW	MILK	ME	HPG	CEM	STAY	MARB	YG	CW	REA
194	49	12	-6.4	40	63	22	1	19	5	19	0.36	0.05	-1	0.32
1%	43%	6%	1%	93%	89%	31%	48%	1%	25%	1%	62%	70%	95%	15%

RA80K
A GENESSEE PRODUCT

57 LJC TRADIN DESIGN 912C

Bull 3467937 13-Mar-15 1A 100%

5L TRADN DESIGNS 2367-331W

5L HOBO DESIGN 273-7047
5L ADINA 384-2367

TR LANA WT912

MPPA: 99.2 AOD: 6

TR JULIAN LT151
TR LANA NT329

		Ratio
BW	85	101
205 Adj	645	97
365 Adj	1043	90
ADG	2.49	84
%IMF	3.32	88
REA	11.9	92
Fat	0.23	118
Frame	4.7	

HB	GM	CED	BW	WW	YW	MILK	ME	HPG	CEM	STAY	MARB	YG	CW	REA
159	49	11	-1.0	50	77	20	-2	14	6	15	0.53	-0.02	14	0.05
5%	49%	8%	52%	74%	70%	44%	28%	6%	16%	8%	27%	36%	66%	57%



58 LJC EMINENT 261C

Bull 3467822 31-Mar-15 1A 100%

BROWN EMINENT Z7325

BROWN PARAMOUNT X7879
BROWN MS MISSION STMT W7525

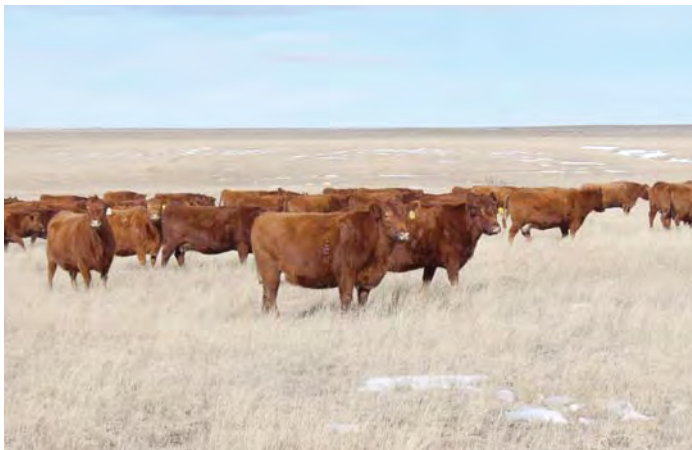
LJC VALENTINE PRINCESS 261

MPPA: 97.7 AOD: 3

BUF CRK VALENTINE T146
LJC NENA 848

		Ratio
BW	66	83
205 Adj	639	96
365 Adj	1123	97
ADG	3.03	102
%IMF	3.48	92
REA	13.1	101
Fat	0.23	116
Frame	4.1	

HB	GM	CED	BW	WW	YW	MILK	ME	HPG	CEM	STAY	MARB	YG	CW	REA
165	52	13	-5.0	57	94	13	0	11	3	15	0.47	-0.03	19	0.08
3%	8%	4%	5%	49%	35%	91%	44%	27%	58%	8%	39%	32%	52%	49%



Croissant Red Angus

59 LJC NEXUS PRIDE 303C

Bull 3467799 20-Feb-15 1A 100%

LJC NEXUS 554A

LJC AFFIRMED MARISSA 303

MPPA: 99.2

AOD: 2

BECKTON NEBULA X038 N4

LJC ANNABELLE 554

BROWN AFFIRMED W7691

LJC MARISSA 823

		Ratio
BW	86	110
205 Adj	651	98
365 Adj	1092	94
ADG	2.76	93
%IMF	3.52	93
REA	12.8	98
Fat	0.15	145
Frame	4.8	

HB	GM	CED	BW	WW	YW	MILK	ME	HPG	CEM	STAY	MARB	YG	CW	REA
161	52	9	-1.5	77	118	15	2	12	1	16	0.65	-0.05	37	0.19
4%	6%	15%	42%	3%	5%	84%	60%	18%	86%	5%	14%	22%	7%	29%



60 LJC NEXUS 208C

Bull 3467945 11-Apr-15 1B 99.6%

BECKTON NEBULA X038 N4

LJC AVIS 208

MPPA: 101.1

AOD: 3

BECKTON NEBULA U206 V3

BKT PINE MARIE U621 NB

BROWN AFFIRMED W7691

LJC MITZI 918

		Ratio
BW	82	102
205 Adj	676	102
365 Adj	1061	92
ADG	2.41	81
%IMF	2.96	78
REA	10.9	84
Fat	0.20	129
Frame	4.1	

HB	GM	CED	BW	WW	YW	MILK	ME	HPG	CEM	STAY	MARB	YG	CW	REA
177	51	8	-3.7	68	100	9	0	12	0	19	0.36	-0.15	23	0.10
2%	17%	22%	12%	14%	24%	98%	37%	18%	92%	1%	62%	6%	39%	46%



61 LJC TRIAD 141C

Bull 3467879 30-Mar-15 1A 100%

GMRA TRIAD 3248

LJC CLEMENTINE 141

MPPA: 101.3

AOD: 4

GMRA TRILOGY 0226

GMRA NEXA 166

TR COLT 45 UT806

LJC LK GALE 124

		Ratio
BW	89	107
205 Adj	684	103
365 Adj	1147	99
ADG	2.89	97
%IMF	3.24	85
REA	13.3	102
Fat	0.23	116
Frame	4.7	

HB	GM	CED	BW	WW	YW	MILK	ME	HPG	CEM	STAY	MARB	YG	CW	REA
119	49	7	-2.0	61	96	18	-5	14	3	11	0.17	-0.05	24	0.22
31%	43%	26%	35%	34%	31%	60%	13%	5%	64%	50%	93%	21%	35%	25%



62 LJC TRIAD 218C

Bull 3467833 27-Mar-15 1B 97%

GMRA TRIAD 3248

GMRA TRILOGY 0226
GMRA NEXA 166
TR COLT 45 UT806
LJC CHELLE 703

LJC CODI 218

MPPA: 98.9

AOD: 3

		Ratio
BW	77	96
205 Adj	657	99
365 Adj	1081	93
ADG	2.65	89
%IMF	2.91	77
REA	13.8	107
Fat	0.20	127
Frame	4.2	

HB	GM	CED	BW	WW	YW	MILK	ME	HPG	CEM	STAY	MARB	YG	CW	REA
138	51	11	-3.4	60	102	18	0	13	3	12	0.23	-0.12	26	0.73
14%	13%	10%	16%	37%	20%	64%	38%	9%	56%	35%	88%	9%	30%	1%



RA80K
A GENESLEK PRODUCT



Lot
62

63 LJC RIGHT KIND 355C

Bull 3467950 24-Feb-15 1B 99%

LOOSLI RIGHT KIND 205

BUF CRK THE RIGHT KIND U199
MISS LL PACKER 005
LJC MERLIN T179
LJC PEPPER 156

LJC MERLIN PEPPER 355

MPPA: 99.6

AOD: 2

		Ratio
BW	71	92
205 Adj	655	99
365 Adj	1074	93
ADG	2.62	88
%IMF	3.79	100
REA	13.0	100
Fat	0.25	108
Frame	4.1	

HB	GM	CED	BW	WW	YW	MILK	ME	HPG	CEM	STAY	MARB	YG	CW	REA
166	51	12	-6.6	48	76	23	1	14	-1	17	0.47	-0.13	6	0.65
3%	10%	6%	1%	79%	72%	20%	51%	6%	94%	3%	39%	8%	86%	1%



RA80K
A GENESLEK PRODUCT

Lot 63 and 64 are both sons of Right Kind 205 with best 6% or better Calving Ease, lowest 4% or better BW EPDs and Top 3% HerdBuilder – look for both of these bulls to improve reproductive traits and REA.

Crossbred Red Angus

64 LJC RIGHT KIND 330C

Bull 3467953 27-Feb-15 1A 100%

LOOSLI RIGHT KIND 205

LJC JEDI 330

MPPA: NA

AOD: 2

BUF CRK THE RIGHT KIND U199
MISS LL PACKER 005
CHOAT JED X13
LJC CLARA 148

		Ratio
BW	62	82
205 Adj	651	
365 Adj	1083	
ADG	2.70	
%IMF	2.85	
REA	14.7	
Fat	0.26	
Frame	4.5	

HB	GM	CED	BW	WW	YW	MILK	ME	HPG	CEM	STAY	MARB	YG	CW	REA
166	50	14	-5.3	53	89	25	1	18	5	14	0.24	0.01	16	0.50
3%	21%	3%	4%	64%	46%	10%	47%	1%	33%	14%	86%	51%	63%	6%



RA80K
A GENESSEE PRODUCT

65 ISLC FIRE STARTER 058C

Bull 3471425 31-Mar-15 1A 100%

1SLC FIRE STARTER 306

1SLC MARIA W12

MPPA: 100.7

AOD: 5

5L FOREVER FIRE 1186-674W
BIEBER PRIMROSE 121S
BUF CRK MARIAS N155
MRR 024T

		Ratio
BW	75	89
205 Adj	644	97
365 Adj	1064	92
ADG	2.62	89
%IMF	5.56	163
REA	12.5	101
Fat	0.34	54
Frame	5.0	

HB	GM	CED	BW	WW	YW	MILK	ME	HPG	CEM	STAY	MARB	YG	CW	REA
132	49	5	-2.0	53	75	24	4	14	4	14	0.71	0.08	11	-0.11
19%	48%	49%	33%	63%	74%	17%	79%	6%	36%	17%	9%	82%	75%	89%

RA80K
A GENESSEE PRODUCT

66 ISLC NEXUS 376C

Bull 3471411 7-Mar-15 1A 100%

LJC NEXUS 118A

1SLC ROBINS 376

MPPA: 99.2

AOD: 2

BECKTON NEBULA X038 N4
LJC MORGAN 118
MESSMER PACKER S008
MISS T ROBIN 945C

		Ratio
BW	88	112
205 Adj	646	98
365 Adj	1051	91
ADG	2.53	86
%IMF	3.22	94
REA	12.3	99
Fat	0.18	125
Frame	4.6	

HB	GM	CED	BW	WW	YW	MILK	ME	HPG	CEM	STAY	MARB	YG	CW	REA
115	49	5	-1.6	66	98	9	4	8	0	14	0.32	-0.04	25	0.24
35%	43%	50%	41%	19%	28%	97%	77%	83%	94%	21%	73%	28%	32%	22%

RA80K
A GENESSEE PRODUCT

67 LJC TRILOGY 243C

Bull 3467816 2-Mar-15 1B 99.9%

GMRA TRILOGY 0226

LJC NEVIS 243

MPPA: 100.0 AOD: 3

MESSMER PACKER S008
GMRA LAKOTA 625
BECKTON NEBULA R367
LJC ALOHA 962

		Ratio
BW	81	101
205 Adj	697	105
365 Adj	1134	98
ADG	2.73	92
%IMF	2.86	75
REA	13.9	107
Fat	0.17	137
Frame	5.4	

HB	GM	CED	BW	WW	YW	MILK	ME	HPG	CEM	STAY	MARB	YG	CW	REA
179	51	13	-5.5	57	85	13	1	14	6	16	0.44	-0.03	12	0.09
1%	20%	3%	3%	47%	54%	91%	49%	6%	19%	4%	45%	28%	73%	48%



RA80K
A GENESSEE PRODUCT

68 LJC TRILOGY 308C

Bull 3467804 28-Feb-15 1B 96.9%

GMRA TRILOGY 0226

LJC CORAL 308

MPPA: 98.8 AOD: 2

MESSMER PACKER S008
GMRA LAKOTA 625
TR COLT 45 UT806
LJC CHELLE 703

		Ratio
BW	76	98
205 Adj	641	97
365 Adj	1125	97
ADG	3.03	102
%IMF	4.02	106
REA	11.9	92
Fat	0.20	126
Frame	4.5	

HB	GM	CED	BW	WW	YW	MILK	ME	HPG	CEM	STAY	MARB	YG	CW	REA
141	51	10	-3.4	57	88	16	2	12	2	14	0.59	-0.04	18	0.11
12%	16%	12%	15%	48%	47%	77%	54%	14%	72%	21%	20%	28%	57%	44%



RA80K
A GENESSEE PRODUCT



Lot
68

Croissant Red Angus

69 LJC NEXUS 118C

Bull 3467871 24-Feb-15 1A 100%

BECKTON NEBULA X038 N4

BECKTON NEBULA U206 V3
BKT PINE MARIE U621 NB

LJC MORGAN 118

MPPA: 101.3 AOD: 4

LJC MERLIN T179
LJC LANCER CROCUS 512

		Ratio
BW	85	103
205 Adj	695	105
365 Adj	1076	93
ADG	2.38	80
%IMF	2.96	78
REA	11.9	92
Fat	0.23	116
Frame	4.4	

HB	GM	CED	BW	WW	YW	MILK	ME	HPG	CEM	STAY	MARB	YG	CW	REA
156	49	10	-3.8	62	93	13	1	8	-1	18	0.13	-0.08	20	0.26
6%	41%	12%	12%	31%	37%	91%	46%	87%	97%	2%	95%	16%	50%	21%



70 ISLC NEXUS 379C

Bull 3471409 16-Mar-15 1A 100%

LJC NEXUS 118A

BECKTON NEBULA X038 N4
LJC MORGAN 118

1SLC NOVAS 379

MPPA: 99.2 AOD: 2

5L FOREVER FIRE 1186-674W
LJC NOVA 756

		Ratio
BW	67	89
205 Adj	645	98
365 Adj	1079	93
ADG	2.71	92
%IMF	3.02	88
REA	13.5	109
Fat	0.30	72
Frame	4.1	

HB	GM	CED	BW	WW	YW	MILK	ME	HPG	CEM	STAY	MARB	YG	CW	REA
150	49	14	-4.0	58	89	14	0	7	3	15	0.20	0.05	17	0.28
8%	48%	3%	10%	44%	45%	87%	44%	91%	61%	9%	91%	70%	59%	19%



71 ISLC BIG IRON 252C

Bull 3471405 2-Apr-15 1A 100%

1SLC BIG IRON 309

HXC BIG IRON 0024X
1SLC KARI 139

1SLC ELSIE 252

MPPA: 94.9 AOD: 3

BIEBER MAKE MIMI 7249
1SLC ELSA W10

		Ratio
BW	69	85
205 Adj	645	98
365 Adj	1079	93
ADG	2.71	92
%IMF	3.41	100
REA	11.1	90
Fat	0.19	117
Frame	5.0	

HB	GM	CED	BW	WW	YW	MILK	ME	HPG	CEM	STAY	MARB	YG	CW	REA
123	50	9	-4.4	54	82	22	6	10	2	13	0.53	0.02	12	-0.30
26%	24%	19%	7%	59%	60%	29%	88%	49%	72%	31%	27%	56%	72%	99%



**Sallie serving
second year
as Colorado
Cattlemen
President**



72 LJC TRIAD 221C

Bull 3467819 27-Mar-15 1A 100%

GMRA TRIAD 3248

GMRA TRILOGY 0226
GMRA NEXA 166

LJC COLT CHARM 221

MPPA: 100.6 AOD: 3

TR COLT 45 UT806
LJC NEBULA CHARM 946

		Ratio
BW	79	98
205 Adj	676	102
365 Adj	1113	96
ADG	2.73	92
%IMF	3.59	95
REA	12.2	94
Fat	0.32	83
Frame	4.2	

HB	GM	CED	BW	WW	YW	MILK	ME	HPG	CEM	STAY	MARB	YG	CW	REA
170	49	13	-4.6	56	85	15	-4	10	5	17	0.16	0.04	14	0.05
2%	51%	4%	6%	53%	54%	83%	17%	49%	29%	3%	93%	66%	68%	55%

RA80K
A GENESSEE PRODUCT

73 LJC RIGHT KIND 036C

Bull 3467831 1-Mar-15 1B 99.9%

BROWN EMINENT Z7325

BROWN PARAMOUNT X7879
BROWN MS MISSION STMT W7525

LJC LEGACY PRIDE 229

MPPA: 99.4 AOD: 3

LJC LEGACY 467W
LJC PRIDE 717

		Ratio
BW	75	94
205 Adj	701	
365 Adj	1090	
ADG	2.43	
%IMF	4.42	
REA	13.2	
Fat	0.25	
Frame	4.5	

HB	GM	CED	BW	WW	YW	MILK	ME	HPG	CEM	STAY	MARB	YG	CW	REA
156	49	13	-4.4	41	57	22	-1	14	3	15	0.51	-0.03	-3	-0.07
6%	74%	4%	7%	92%	94%	26%	32%	6%	56%	8%	32%	32%	96%	83%

RA80K
A GENESSEE PRODUCT

Crossbred Red Angus



Kevin on the USS Midway

74 ISLC NEXUS 383C

Bull 3471408 15-Mar-15 1A 100%

LJC NEXUS 118A

BECKTON NEBULA X038 N4
LJC MORGAN 118

1SLC ALISON 383

MPPA: 101.2 AOD: 2

BAST FAT TONY 101
1SLC ELSA W10

		Ratio
BW	69	91
205 Adj	680	103
365 Adj	1051	91
ADG	2.32	78
%IMF	2.55	75
REA	12.5	101
Fat	0.26	90
Frame	4.6	

HB	GM	CED	BW	WW	YW	MILK	ME	HPG	CEM	STAY	MARB	YG	CW	REA
124	48	10	-5.2	43	61	17	2	4	1	15	0.10	-0.11	-1	0.22
25%	72%	14%	4%	89%	91%	73%	54%	99%	88%	10%	96%	11%	95%	26%



75 ISLC BIG IRON 247C

Bull 3471413 25-Mar-15 1A 100%

1SLC BIG IRON 309

HXC BIG IRON 0024X
1SLC KARI 139

1SLC MARIAS ROSE 247

MPPA: 99.4 AOD: 3

RED NORTHLINE FAT TONY 605U
1SLC MARIAS W08

		Ratio
BW	87	108
205 Adj	699	106
365 Adj	1226	106
ADG	3.29	111
%IMF	3.57	105
REA	11.8	95
Fat	0.21	110
Frame	5.6	

HB	GM	CED	BW	WW	YW	MILK	ME	HPG	CEM	STAY	MARB	YG	CW	REA
75	48	2	-0.2	53	83	25	1	7	4	9	0.43	0.12	19	-0.30
83%	70%	76%	67%	61%	59%	10%	47%	96%	41%	75%	48%	91%	52%	99%

Deep in the offering is one of the strong ADG bulls in the sale. This Big iron son has strong ratios for weaning, yearling and IMF – in addition to gain.



76 ISLC MULBERRY 801C

Bull 3471431 20-Feb-15 1B 99.9%

HAYCOW MULBERRY 183

1SLC KARI U05

MPPA: 96.8

AOD: 7

RED FINE LINE MULBERRY 26P
JLG TIARRA KING 21
MRR GOLD ROBBER 17SA
GHR KARI S28

		Ratio
BW	81	96
205 Adj	656	99
365 Adj	1095	93
ADG	2.74	95
%IMF	3.35	98
REA	10.6	85
Fat	0.20	114
Frame	5.7	

HB	GM	CED	BW	WW	YW	MILK	ME	HPG	CEM	STAY	MARB	YG	CW	REA
87	47	-1	0.8	50	82	24	6	10	10	10	0.09	-0.01	21	0.07
73%	86%	95%	83%	73%	59%	17%	90%	57%	1%	67%	96%	41%	46%	51%



77 LJC TRILOGY 028C

Bull 3467941 1-Mar-15 1A 100%

GMRA TRILOGY 0226

LJC MISS MONTANA 028

MPPA: 98.6

AOD: 5

MESSMER PACKER S008
GMRA LAKOTA 625
BECKTON NEBULA M045
5L MONTANA X240-758

		Ratio
BW	79	94
205 Adj	621	94
365 Adj	1036	90
ADG	2.59	87
%IMF	4.96	131
REA	12.5	96
Fat	0.29	93
Frame	4.8	

HB	GM	CED	BW	WW	YW	MILK	ME	HPG	CEM	STAY	MARB	YG	CW	REA
170	54	11	-5.6	61	98	19	-1	13	4	15	1.13	0.06	20	0.25
2%	1%	8%	3%	34%	26%	50%	35%	7%	46%	10%	1%	74%	48%	22%



Here we are 3 lots from the end of the sale and find a best 1% GridMaster – best 2% HerdBuilder. This Trilogy son was one of the top IMF bulls in the sale with a 131 ratio.



Chef Jason out for a visit to learn about our industry

Croissant Red Angus

78 LJC TRILOGY 314C

Bull 3467781 25-Feb-15 1A 100%

GMRA TRILOGY 0226

LJC CLIPPER 314

MPPA: 98.4 AOD: 2

MESSMER PACKER S008
GMRA LAKOTA 625
TR COLT 45 UT806
LJC VALENTINE CASEY 041

		Ratio
BW	64	85
205 Adj	636	96
365 Adj	1120	97
ADG	3.03	102
%IMF	4.57	120
REA	14.1	109
Fat	0.31	87
Frame	4.4	

HB	GM	CED	BW	WW	YW	MILK	ME	HPG	CEM	STAY	MARB	YG	CW	REA
153	52	12	-5.9	62	93	17	-2	11	1	14	0.53	-0.06	17	0.52
7%	7%	6%	2%	31%	36%	72%	28%	33%	81%	14%	29%	19%	60%	4%



RA80K
A GENESSEE PRODUCT

79 LJC TRILOGY 467C

Bull 3467985 27-Feb-15 1A 100%

GMRA TRILOGY 0226

LJC BOWIE 467

MPPA: 103.5 AOD: 11

MESSMER PACKER S008
GMRA LAKOTA 625
BASIN HOBO 79E
LJC LM QUEEN 704

		Ratio
BW	66	79
205 Adj	632	95
365 Adj	987	85
ADG	2.22	75
%IMF	4.95	131
REA	12.3	95
Fat	0.35	72
Frame	5.0	

HB	GM	CED	BW	WW	YW	MILK	ME	HPG	CEM	STAY	MARB	YG	CW	REA
212	52	13	-6.7	51	75	21	1	11	10	20	0.86	0.10	5	0.24
1%	9%	4%	1%	70%	73%	37%	45%	38%	1%	1%	4%	85%	88%	22%



RA80K
A GENESSEE PRODUCT



Look for
Commercial
Heifers Next

Pro-Cow



30 PRO-COW OPEN HEIFERS

We have another outstanding set of commercial heifers this year. These heifers come from two Croissant Red Angus customers. These programs believe in improving cowherd traits and adding value from weaning forward in the production system. The heifers will be required to pass a breeding soundness exam and will be vaccinated the same as the Croissant Red Angus heifers. They have been on the same development program as our heifers and will be ready to go to work for you. **THEY ARE TOP QUALITY!**

This year the heifers will be sorted into three 10 head groups based on size and performance to maximize success in your operation.

Lot 501 - 10 head moderate, maternal Red Angus heifers

Lot 511 - 10 head of power Red Angus heifers

Lot 521 - 10 head of smaller, maternal Red Angus heifers

These are outstanding heifers; they will be ready to breed and go to work for you.

You will have the option of additional groups if you are the high bidder. There will be a supplemental sheet sale day that will give the average weights of each group.

OUR GOAL: Produce functional cattle for our short grass semi-arid environment and provide honest value and service to our customers.

OUR PROGRAM: Our program is founded on balanced trait selection using proven sires. We put the emphasis on Carcass, Maintenance, and Reproductive traits including low birth weight and do not chase extreme growth. These traits add value through carcass quality, lower maintenance costs, increased longevity of the females, and reduced labor inputs with the added benefit of the accompanying “convenience traits.” The growth traits do require extra inputs. We focus on fertile, easy handling females with mothering ability.

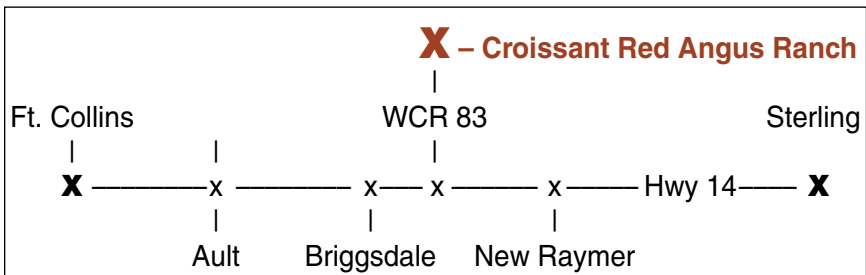
The cattle presented here are out of cows that are bred to work within our limited resources, producing calves that excel at weaning, perform in the feedyard and add value on the rail. We hold our females to a “no excuses” production criteria. If they can’t raise a calf every year in our environment they are culled from the herd.

You are welcome any time to come and evaluate our cattle prior to the sale. This allows more time for us to assist you with your selections. If you can’t make the sale, we can be reached at the numbers below and will be live on the internet at DVAuction.com. All bulls sold on the phone or internet come with a sight unseen guarantee.

Your trust & confidence in our cattle, our program, and us is appreciated and taken with the utmost sincerity.

Larry & Jean – Kevin & Sallie

RANCH DIRECTIONS: We are located halfway between Sterling & Fort Collins on Highway 14, then 5 miles North on County Road 83. We have a sign pointing North at the intersection of Highway 14 and County Road 83.



HEALTH: The cow herd is vaccinated at prebreeding time with PregGuard FP10. Precalving vaccinations are Vision 7, Clostridium Type A, Scour Bos 9, plus parasite control.

The heifers have had their branding, preconditioning, and weaning shots of 5 way BRD, Pasteurella, 7-way Somnus, and a parasite control. They have had their Bangs vaccination, StayBred VL5, plus a prebreeding exam & PregGuard Gold 10 FP. They are ready to breed!

Bulls are given the same calfhooed vaccinations as the heifers, and recently a StayBred VL5. Dr. Shoemaker will fertility test all bulls and the results will be provided for each bull sold. Dr. Holt will PAP score bulls for those interested in taking bulls to higher altitude. This information will be available as a sale day supplement. If you have questions regarding this information, please contact Kevin, Larry or Dr. Holt.

DEVELOPMENT PROGRAM: The bulls are developed on the ranch. After weaning the bulls are grazed out on pasture for a month and then fed a high quality roughage ration with a vitamin-mineral supplement to gain 3.25 lb/day on average. The bulls are kept in a large dry pen, which gives plenty of exercise. We do not target 1,300 or 1,400 lb. yearling weights. The development program is designed for the bulls to make their own way on the range and hold up to the rigors of their first breeding season.

They are guaranteed breeders & ready to work!

Check our website for the videos:

CroissantRedAngus.com

CATALOG INFORMATION: All EPDs, including carcass, have been updated to reflect the latest performance data including ultrasound and 80K DNA Genomic Panels. Percentile rankings are listed below the EPD table. The measurement data with their in-herd performance ratios are listed in a table just to the right of the pedigree. Scrotal measurements will be on a supplement sheet available sale day and posted on our website as soon as fertility testing is completed.

We present all the data on all the bulls to make your selection easier and more complete!

Sale day announcements will take precedence over the catalog information.

Extended pedigrees can be seen on the Red Angus website (RedAngus.org). Enter the registration # in the table accessed by the “Animal Search” button.

SELECTION: We do supply all the raw measurement data and in-herd performance ratios; but when making your selections, more reliance should be put on the EPDs. The EPDs, have already factored in each animal’s performance ratios, including the carcass ultrasound data, and 80K panels.

To aid in your interpretation and application of the RAAA EPDs, the Red Angus Association has published “Ranchers Guide to EPDs.” You can get a brochure by calling the Association (940-387-3502). This is an excellent source of information and is worth requesting a copy. Of course we will help you interpret any of the information in this catalog.

CROISSANT RED ANGUS
49316 WCR 83
BRIGGS DALE, CO 80611
LCroissant@wigginstel.com
www.CroissantRedAngus.com

970-656-3545
970-590-4981 Larry’s cell
970-222-6094 Kevin’s cell
970-371-0214 Sallie’s cell

Achieve it!

RETURN ON INVESTMENT

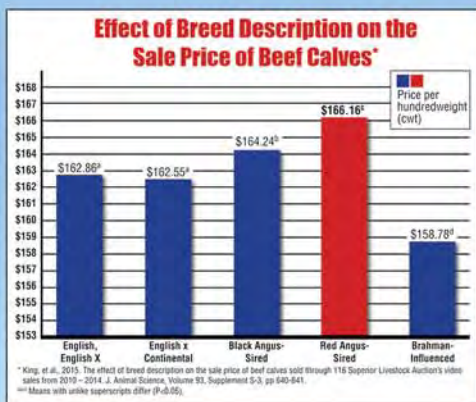
Independent research shows Red Angus-sired calves sold for a higher price than all other breed groups. Red Angus bulls make a positive difference in your breeding program's bottom line.

Invest in your future!



"For 10 to 15 years all the buyers ever talked about was black calves, and the black calves always brought more than everything else. Now I can honestly say that good

Red Angus calves outsell the black calves and I know the Red Angus bred heifers will outsell black Angus bred heifers of equal quality every day."



Red Angus Marketing Programs

- Free-Enrollment Tag Programs
- Dedicated Feeder Calf Sales
- Free Marketing Assistance from RAAA Staff
- Red Angus Grids
 - Tyson's Choice+ Premium Grid
 - Greater Omaha's G.O. Red Grid

Ranch Tested. Rancher Trusted.

Red Angus

RedAngus.org
(940) 387-3502





TOP DOLLAR ANGUS®

*Now adding value
to both Angus and
Red Angus feeder calves*



Capture premiums by giving your calves the name recognition they deserve!

Moving ahead in 2016, the beef cattle business offers both challenges and opportunities. Lower feeder calf prices underscore the need to capture value-added premiums. Every cow-calf producer with high-end genetics and a solid health program wants to sell their cattle above the average market price, which is exactly why Top Dollar Angus was created.

Top Dollar Angus is a genetic certification and marketing company focused exclusively on the best Angus and Red Angus-influenced feeder calves in the industry. Qualified calves must contain at least two generations of Angus or Red Angus genetics with growth and carcass traits ranking in the top 25% of their respective breed.

Red Angus sires that have a GridMaster Index in the top 25% of the breed or higher meet Top Dollar Angus specifications. Look for the Top Dollar Angus designation on sale lots in this catalog!

This new program is similar to Certified Angus Beef®, except that Top Dollar Angus does its

“branding” in the feeder cattle and calf market. It works by certifying calf crops that meet program requirements on the farm or ranch, enabling these cattle to be marketed using the Top Dollar Angus brand name and logo. Top Dollar Angus feeder calves are eligible to receive a \$50 per head premium (sometimes more) over the average market when sold to partner feedyards. One group of Top Dollar Angus steers sold recently via video auction for \$67 per head above the average market for their weight and location. Another group was forward-sold for a \$52 per head premium. Yet another single load of Montana steer calves beat the market by \$57 per head.

Why are so many profit-minded cattle feeders interested in purchasing Top Dollar Angus calves and yearlings? It's because these cattle perform very well both in the feedyard and on value-based grids. Top Dollar Angus cattle consistently deliver rapid growth and high quality grades. That puts extra dollars in cattle feeders' pockets, which are passed back to cow-calf producers in the form of premium prices.



*For more information, please
contact Tom Brink at
303-478-4331
or email
info@topdollarangus.com.*

THANK YOU FOR YOUR SUPPORT!



Croissant Red Angus

LVC *A Better Brand of Bull* LVC

Join us for our Annual Production sale on

SAT., MARCH 26, 2016

1 p.m. MDT • At the Ranch • Briggsdale, Colorado

79 RED ANGUS BULLS • 35 COMMERCIAL HEIFERS

DVAuction

Broadcasting
Real-time Auctions

Croissant Red Angus

Larry & Jean Croissant

Kevin & Sallie Miller

49316 WCR 83

Briggsdale, CO 80611

www.CroissantRedAngus.com

PRESORTED
FIRST-CLASS MAIL
U.S. POSTAGE PAID
LivestockDirect.net
PERMIT NO. 29

