

Quality Red Angus Cattle Bred to Function Efficiently



Annual Bull Sale

Saturday, March 19, 2016

At the Ranch, Plevna, MT • 1:00 pm MDT

Selling **100**
Yearling Red Angus Bulls

*Bulls can be viewed at Bruce Bowman's
feedlot, 1 mile south of Rhame, ND,
until three days prior to the sale.*

DVAuction Broadcasting
Real-time Auctions

Catalog & video available online

www.milkcreekreds.com



Welcome



Welcome to our 2016 sale offering and Thank You for your consideration of our program. We hope that as you view our information that we have compiled in this catalog that you will find it to be informative for your selection process. Our carcass, scrotal, and hip height information did not make the catalog but will be available on our website as well as a supplement on sale day. If you come across questions along the way please give us a call or email us so that we can give you all the information that you need.

The offering this year continues to have some of the sires that are the mainstay for the type of cattle that we are striving to produce but also introduces you to a couple new herd bulls that we have acquired and feel that they have met and exceeded our expectations. We continue to work toward our goal of producing a consistent type and kind of cattle using many different sire lines.

Our main goal continues to center around producing the cow that will perform within the environment we challenge them in by limiting our inputs to a minimum. We feel by challenging the genetics through environmental constraints it will allow us to produce more profitable cattle for the industry. Even though we place a lot of emphasis on the cow side of the equation of our business we don't ignore the economic importance of feeding and packing side of our industry. We marketed our steer calves from our Red Angus commercial herd to a feeder in southwest Iowa and hope to get feedback on how the cattle gain and grade. What we have seen in our cattle thus far is that they can gain and grade as long as they are not fed too long. If our type of cattle are fed too long they tend to lay down too much cover which we want in their female counterparts out winter grazing in Eastern Montana. With this information we feel that our cattle will work profitably in the feedlot without sacrificing the type of cow that we need to be profitable in the cow/calf segment of the beef industry.

As I write this letter we are blessed to be in the middle of calving with April-type weather in February. With this weather we are pasture calving our heifers right alongside the cows in a 300-plus-acre pasture and they are getting checked at daybreak and before dark when we weigh, tag and move pairs out. We feel by managing our heifers this way we can truly determine that the sires that we are using have the calving ease that we need but more importantly that our customers can enjoy.

Red Angus continues to grow as a breed of choice in the commercial segment of our industry. With this growth our breed association has added staff to accommodate the growing needs to secure more markets for our Red Angus commercial customers. We don't know of another breed that places as much emphasis on the commercial segment of the business. If you are in need of assistance in marketing Red Angus cattle of any type let us know and we will do our best to assist you in the process as well as getting you in contact with other people and programs that can assist also.

We thank God for allowing us to be a part of such a great breed and building relationships with great people. We look forward to visiting with you in the near future.

Milk Creek Reds
Bruce, Tena, Cele & Jaclyn Ketchum

*As servants of the Lord,
we are striving to be
stewards of the land and
cattle that He created and
allowed us to manage so
that we may glorify Him.*



The Ketchums: Bruce, Tena, Cele and Jaclyn

Bruce & Tena Ketchum • 1721 Plevna Road • Plevna, MT 59344
(406) 778-3819 ketchum@midrivers.com • www.milkcreekreds.com

*Quality Red Angus Cattle
Bred to Function Efficiently*





Sale Information

Milk Creek Reds Bull Sale Saturday, March 19, 2016

1 p.m. MDT • Milk Creek Reds Ranch • Plevna, MT

Selling:

100 Yearling Red Angus Bulls

SALE DAY LUNCH:

Complimentary lunch and pie will be served at 11:30 a.m.

SALE LOCATION:

At the Ranch (see map on page 2 for directions)
2093 Plevna Road South, Plevna, Mont. 406-778-3819

CATTLE VIEWING:

The bulls can be viewed at Bruce & Eric Bowman's feed 1 mile south of Rhame, N.D., until March 16th. After this time the bulls will be at the ranch.

SALE VIDEO

The video of the sale cattle will be available to view at www.milkcreekreds.com or www.billpelton.com by March 1, 2016. If you don't have high speed internet or are unable to view the video over the internet contact us for a DVD on the sale cattle.

SALE FORMAT:

Once again we will be offering the bulls through a rancher's auction. We will have an auctioneer that will auction the sale in a relaxed atmosphere. Each interested buyer will be able to bid on the bull of their choice with low pressure and the ability to be comfortable.

PHONE ORDERS

Buyers unable to attend the sale may call or send their bids to the owners, Bruce or Tena Ketchum. If you would like to discuss the sale offering, call us and describe your needs and budget and we can select your genetics for you. We can bid on the animal for you and you pay only the bid price established by the auction. Bids are handled in confidence on all orders. If there are several people needing to use this method for the sale we will set up a conference call for you to call into during the sale. Please call a few days in advance if this is needed so that we may set this up and get you the necessary phone number and information ahead of sale time.

SALE CONTACTS:

Milk Creek Reds
Bruce and Tena Ketchum 406-778-3819 (Home)
406-978-3819 (Cell)

Auctioneer:
Scott Weishaar 701-872-5299

Red Angus Association of America:
Harold Bertz 816-612-2289

Videos:
Bill Pelton Livestock 406-671-5100 (cell)

DV Auction:
Tami McIntosh 308-870-3661

AIR TRANSPORTATION

Billings, Mont. 230 miles
Rapid City, S.D. 190 Miles
Bismark, N.D. 230 miles

LIABILITY

All persons who attend the sale or view the cattle do so at their own risk. The owners assume no liability, legal or otherwise, for any accidents that occur on the sale or viewing premises.

ACCOMODATIONS:

Baker, Mont.

(If planning to stay please reserve early as the oil field activity can cause room shortages.)

Montana Motel 406-778-3315 or 800-779-8353
Red River Inn 406-778-3321
Sagebrush Inn 406-778-3341

Miles City, Mont.

Comfort Inn 406-234-3141
Holiday Inn Express 406-234-1000

TERMS

The terms of the sale are cash. All settlements will be made with clerks of the sale immediately following the conclusion of the sale and before any cattle will be released. We will follow the Terms and Conditions set forth by the Red Angus Association of America. Announcements made by seller on sale day take precedence over any statements printed in this catalog or advertisement.

DELIVERY

We will provide delivery up to 300 miles. Over 300 miles we will work with the buyer to make arrangements on delivery. **A \$100 credit per bull will be applied to the purchase price of the bull if the new owner picks up the bull(s) on the day of the sale.** Delivery of the bulls will start the week after the sale.

BULL HEALTH PROGRAM

The bulls received Vision 7 at branding and then were preconditioned in September with Zoetis One Shot Ultra 7, Bovishield 5 Gold. The bulls were injected with Dectomax and poured with Ultra Saber in December, poured with Clean Up in February and Poured with Ivermectin the end of February. The bulls also received a Fusiguard injection and then a booster four weeks later. Semen evaluations were performed by Dr. Liam Robbins of the Fallon County Veterinary Service prior to the sale and all the evaluations forms will be available sale day.

BULL DEVELOPMENT

The bulls are fed on a ration to develop them into sound functional useable bulls for big country. They are fed to gain 2.5 lb per day. The ration consists of whole kernel corn (7.5 lbs), distiller's grain (1.5 lbs), and a mix of ground grass/alfalfa hay and corn silage. This ration is developed to use 1% of the feed base being grain to reach our goal of 2.5 lb gain. They have been developed at Bruce & Eric Bowman's feedlot which is located 1 mile south of Rhame, N.D.

SEMEN INTEREST

Milk Creek Reds is retaining one-half revenue-sharing semen interest in all bulls in the sale. The retained semen interest by Milk Creek Reds allows us to collect semen, use semen on the bull in our herd, as well as share in semen revenue if the bull would develop interest to be used in other herds or semen marketing companies. Any semen collection would be at the buyer's convenience in the off-season use. Full possession and full salvage value sells on all bulls in this sale..

CATALOG & PROMOTION:

Tracey Koester, Cow Camp Promotions (701) 475-2736
www.cowcampromotions.com

Sale Information



WATCH AND BID ONLINE AT DVAUCTION.COM

Can't make the sale?

We are pleased to bring you real-time Internet bidding and a live broadcast of this sale through DV Auction. To watch or bid online, simply complete the following steps:

- Visit the DVAuction web site at www.dvauction.com
- Click on the "Register" tab
- Enter a user name, password and your contact information.
- Click on "Apply for Bidding."
- Select the sale from the list of other auctions and click "Apply".
- Complete the process by filling out the Banking & Lending information requested.

Be sure to include a personal contact at your bank, we will contact them in order to get a credit reference.

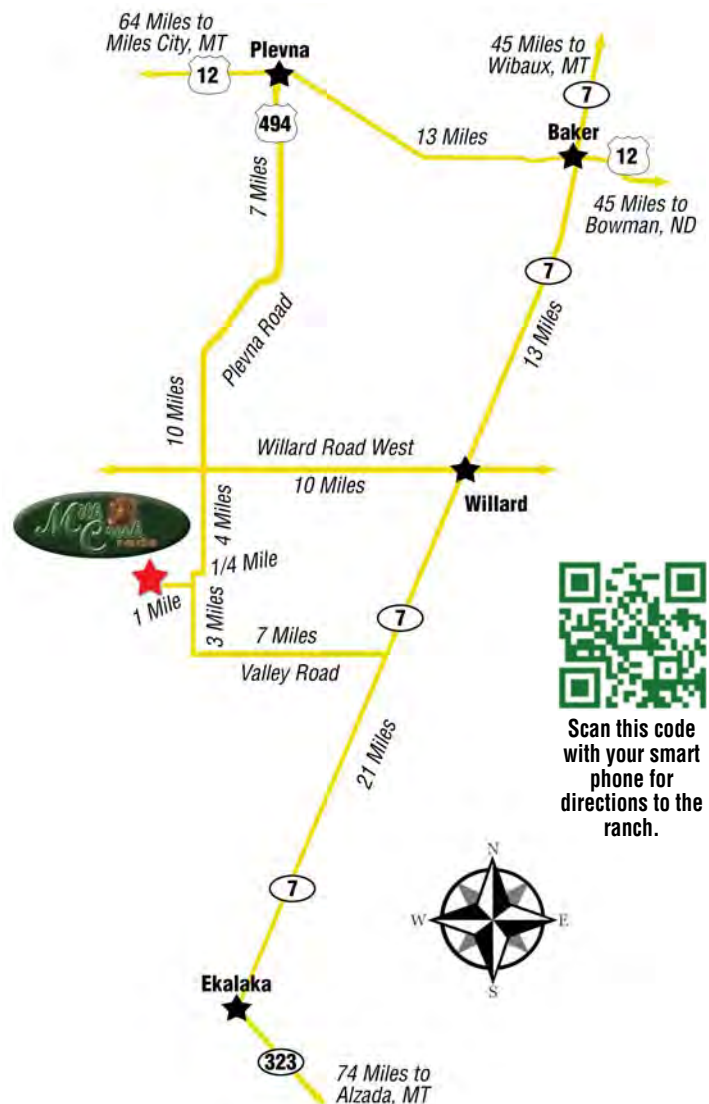
If you would prefer to be approved using your credit card, call (402) 474-5557.

Please be sure to apply for bidding at least a day in advance of the sale—every effort will be made to process your application in a timely manner.

DVAuction will contact you once you have been approved to bid. We do not provide buyer numbers until you have purchased a lot in the sale, and that number is only usable for that auction. After the sale contact the sale owner or manager to make arrangements for payment and delivery of your online purchases.

Please Note: High speed Internet access (DSL, T-1, or Broadband) is required to be able to bid successfully during the sale. If you have any questions, please contact DVAuction at (402) 474-5557 or email support@dvauction.com.

Proxy Bidding: If you can't access a computer during the sale, you can now place a "proxy bid" through DVAuction. Simply follow the instructions listed above, and as the sale date nears there will be a "Proxy Bidding" link under the sale listing on the main page of DVAuction. You can then place the maximum amount that you'd like to bid, and our system will represent your bid just as if you were there.



Can't make the sale?
Watch it LIVE and bid in
real-time on
DVAuction
Broadcasting Real-Time Auctions
www.dvauction.com
Technical Support
(402) 474-5557 | support@dvauction.com

Achieve it!

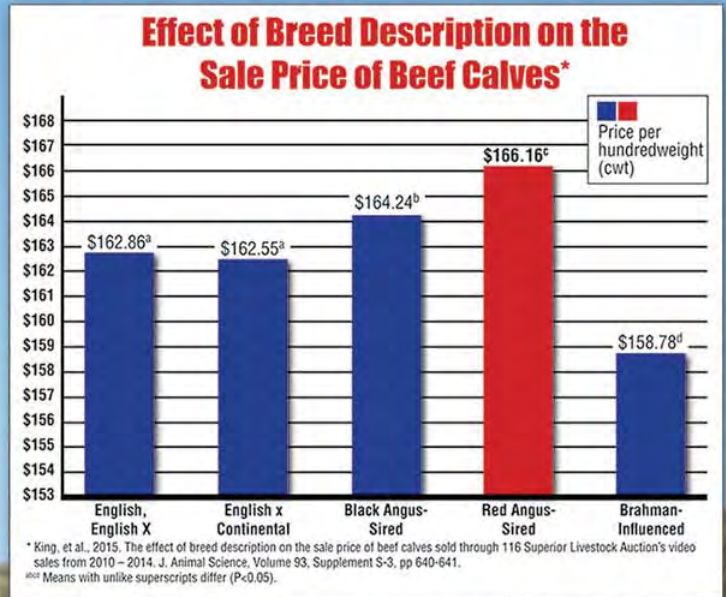
RETURN ON INVESTMENT

Red Angus genetics will improve your return on investment!



"For 10 to 15 years all the buyers ever talked about was black calves, and the black calves always brought more than everything else. Now I can honestly say that good Red Angus calves outsell the black calves and I know the Red Angus bred heifers will outsell black Angus bred heifers of equal quality every day."

— Jim Davis, Superior Livestock Auction



Independent research shows Red Angus-sired calves sold for a higher price than all other breed groups. Red Angus bulls make a positive difference in your breeding program's bottom line.

Invest in your future today!

Red Angus Marketing Programs

- Free-Enrollment Tag Programs
- Dedicated Feeder Calf Sales
- Free Marketing Assistance from RAAA Staff
- Red Angus Grids
 - Tyson's Choice+ Premium Grid
 - Greater Omaha's G.O. Red Grid

Contact the Association today for more information on achieving the most return on your Red Angus investment.

Ranch Tested. Rancher Trusted.

Red Angus

RedAngus.org
(940) 387-3502



Proof Is in the Progress



Cowherd-building traits



Beef-building traits

	HB	CED	BW	M	ME	HPG	YW	GM	MARB	YG	CW	REA
2005	93	1	-1.2	19	5	10	97	50	0.49	0.05	26	0.18
2015	142	8	-2.8	22	0	11	106	52	0.69	0.09	29	0.24
Breed Imprvmt	49	7	-1.6	3	-5	1	9	2	0.2	0.04	3	0.06

By comparing the 100 most-used sires from the reported 2015 vs. 2005 calf crops, producers will notice phenomenal improvement in all Economically Relevant Traits.

Add this genetic boost to your breeding program today!

Ranch Tested. Rancher Trusted.

Red Angus

RedAngus.org • (940) 387-3502

Achieve it!

IMPACT

- Influence others by amplifying your leadership skills.
- Invest in your future by developing career skills.
- Impact the beef industry.

Join JRA!

Be a part of the Red Revolution!

Connect with other youth interested in Red Angus who are preparing themselves to impact the future.

For more information and to join, visit redangus.org/jra.



National Junior Red Angus Association



Junior Red Angus Association of America
Kimberly Heller, Coordinator
515-851-2019 | kim@redangus.org

Ranch Tested. Rancher Trusted.

Red Angus



Reference Sires



BECKTON EPIC R397 K



A
REG. # **1042135**

BECKTON EPIC R397 K

IATTOO: **R397 WF** BD: **3/19/05** **100% 1A**

BECKTON EPIC D404
BECKTON EPIC K F075
BECKTON BELGA D483 KR

BECKTON SAGA KJ B702
BECKTON KURUBA B508 PC
BECKTON KAISER FD 9253
BECKTON BELGA A036 MB

BECKTON JULIAN GG B571
BECKTON KIT F468 JL
BECKTON KIT A517 NP

BKT JULIAN 7526 G
BKT MARTA 9A13 JL
BKT NEPTUNE 8460 R
BCHRCH KIT935 35L416

HB	GM	CED	BW	WW	YW	M	ME	HPG	CEM	ST	MB	YG	CW	REA	FAT
125	51	-4	0.5	75	128	21	-9	14	3	14	0.50	0.19	47	0.44	0.07
TOP BREED %															
19%	23%	97%	72%	12%	6%	45%	19%	7%	63%	12%	39%	93%	6%	17%	98%

Epic is a bull that won't go out of style on our operation anytime soon. We have 9-year-old daughters in production and are still using 40 units of semen a year AI because of all the things that he does well in. The depth of body, thickness as well as performance that he puts into his progeny in to many of the higher selling bulls in our sales. Look for us to continue to use this bull in the future

a moderate frame package is hard to come by. The daughters that we have in production are the dams until we find other genetics that will match or exceed what he offers.



ANDRAS FUSION R236



B
REG. # **1506931**

ANDRAS FUSION R236

IATTOO: **R236 WSA** BD: **9/18/11** **100% 1A**

MYTTY IN FOCUS
ANDRAS IN FOCUS B175
DI ESTONIA 316

S A F FOCUS OF E R
MYTTY COUNTESS 906
BUF CRK COUNTERCHF 5107
LGR ESTONIA 8001

ANDRAS THUNDER B105
ANDRAS BELLE B167
ANDRAS BELLE 416

CONNELLY THUNDER
DI AMY 244
COLLIER TOP FLIGHT 183
BUF CRK BELLE 4231

HB	GM	CED	BW	WW	YW	M	ME	HPG	CEM	ST	MB	YG	CW	REA	FAT
115	53	17	-3.4	45	90	33	1	9	7	8	0.98	0.12	20	-0.20	0.01
TOP BREED %															
26%	7%	2%	23%	79%	50%	3%	53%	69%	17%	70%	5%	82%	54%	90%	63%

Fusion sires attractive progeny that have above average muscle and shape. We calved the third calf crop out of him and his first daughters are currently calving. We are pleased with their mothering ability, udder structure, feet and legs. After calving heifers AI'd to Fusion we are confident in his calving ease.



MLK CRK REDSTONE



C
REG. # **1309407**

MLK CRK REDSTONE

IATTOO: **9102 BTK** BD: **2/9/09** **100% 1A**

BECKTON JULIAN GG B571
TR JULIAN LT142
TR LANA G760

BKT JULIAN 7526 G
BKT MARTA 9A13 JL
BECKTON CODY V E023
BECKTON LANA E828 SC

BECKTON EPIC R397 K
MLK CRK LENA 763
MLK CRK LENA 533

BECKTON EPIC K F075
BECKTON KIT F468 JL
MLK CRK CHATEAU 3101
MLK CRK LENA 313

HB	GM	CED	BW	WW	YW	M	ME	HPG	CEM	ST	MB	YG	CW	REA	FAT
119	52	5	-2.0	75	114	22	-2	14	4	11	0.84	0.19	34	-0.06	0.02
TOP BREED %															
23%	17%	52%	39%	12%	17%	38%	36%	6%	48%	39%	9%	94%	23%	74%	81%

Redstone sires the type and kind of progeny that work for the cow calf operations as well as the feeder. His dark red progeny perform well at weaning and yearling and include good carcass traits as a bonus. He has sired 120 plus progeny with an 81-lb BW average, 101 WW ratio and 104 YW ratio. He also has young daughters in production that we really like.

Reference Sires



HRR Impressive 227



D HRR IMPRESSIVE 227

REG. # **1567292** TATTOO: **227 BCO** BD: **3/1/12** **100% 1A**
 BUF CRK LANCER R017 [BECKTON LANCER F442 T
MUSHRUSH IMPRESSIVE CA U236 [BUF CRK JULIET N036
 MUSHRUSH MADAM LT R265 [TR JULIAN LT142
 [MUSHRUSH ROBIN M125
 STEADFAST BOAZ T71 [MUSHRUSH ROCKET P016
HRR BANA 031 [MUSHRUSH LANA LT R040
 HRR BANA 870 [LCHMN GRANDCANYON 1244G
 [BIEBER BANA 4466

HB	GM	CED	BW	WW	YW	M	ME	HPG	CEM	ST	MB	YG	CW	REA	FAT
111	49	8	-2.7	67	99	21	-2	12	3	11	0.32	0.05	24	0.18	0.02
TOP BREED %															
30%	39%	23%	21%	18%	27%	37%	28%	16%	64%	47%	71%	64%	37%	34%	82%



RIDGE LEGEND 2069



E RIDGE LEGEND 2069

REG. # **1545794** TATTOO: **2069 OTT** BD: **2/19/12** **100% 1A**
 5L LAKOTA LEGEND 7074 [O C C LEGEND 616L
5L LEGEND 1553-425V [BASIN LAKOTA C999
 5L HAZEL 45L-1553 [5L NORSEMAN KING 2291
 [LA TRAVLIN 124 HAZEL 45
 5L NORMANDY CANYON 6024 [LCHMN GRANDCANYON 1244G
RIDGE AQUILA 552-8066 [NORSEMAN 1312 PJM
 RIDGE AQUILA 213-552 [MLK CRK FLAGSTONE
 [RIDGE AQUILA 366-213ET

HB	GM	CED	BW	WW	YW	M	ME	HPG	CEM	ST	MB	YG	CW	REA	FAT
103	49	10	-5.4	23	49	31	3	9	4	10	0.39	0.06	-7	0.31	0.09
TOP BREED %															
38%	54%	17%	9%	99%	95%	6%	63%	62%	48%	41%	55%	66%	95%	26%	99%

2069 was the high selling bull in the 2013 Flat Water Gang's sale. We really like how this bull is put together and how he has maintained his condition throughout the breeding season. We have used 2069 for three breeding seasons and have put him with 80-90 head of heifers that were time AI bred and we were pleased with his conception rates. The heifers that were bred to him were pastured calved and checked twice a day reflecting his calving ease.



MLK CRK EXPRESS 9141



F MLK CRK EXPRESS 9141

REG. # **1309401** TATTOO: **9141 BTK** BD: **2/22/09** **100% 1A**
 5L NORSEMAN EXPRESS [5L NORSEMAN KING 2291
5L GRAND EXPRESS 453-5655 [5L MARTHA 197-159
 5L RUBY 01-453 [5L NORSEMAN KING 2291
 [5L RUBY 199-01
 MLK CRK CUB 722 [GLACIER CUB 446
MLK CRK SHEBA 079 [MLK CRK LAKOTA 152-HOBO
 BJR SHEBA 4X-551 [BJR MONU 4X-303
 [BJR SHEBA 171-878

HB	GM	CED	BW	WW	YW	M	ME	HPG	CEM	ST	MB	YG	CW	REA	FAT
106	48	5	-0.3	67	88	4	1	6	3	12	0.38	-0.13	21	0.22	-0.04
TOP BREED %															
35%	69%	49%	63%	27%	53%	98%	53%	95%	62%	20%	58%	12%	52%	35%	5%

He sires very attractive cattle that perform well at weaning, yearling and as young females in our herd. To date he has sired over 150 progeny with an average 86-lb BW, WW Ratio 102 and YW ratio of 100. He is heavy muscled, attractive, good footed and a tremendous breeding bull. We sold him in our 2014 female sale to Heart River Red Angus.



Reference Sires



LACY KING 9240



LACY KING 9240

REG. # **1356331** TATTOO: **9240 LACY** BD: **9/27/09** **100% 1A**

5L SIGNATURE 5615
LACY SIGNATURE 7006
 LACY REBALAS 53L

CCF GOLD BAR 0251
LACY LAKOTA 7155
 LACY MS CHEROKEE 94M

5L NORSEMAN KING 2291
 5L RUBY 199-01
 SHOCO RAMBLE 72
 LACY MISS LOGAN 12H
 LCHMN GOLD ROBBER 1909E
 GMRA PRINCESS 720
 BFCK CHEROKEE CNYN 4912
 LACY MIS LASS 145K

HB	GM	CED	BW	WW	YW	M	ME	HPG	CEM	ST	MB	YG	CW	REA	FAT
94	51	5	-5.2	37	62	24	-3	15	-6	11	0.71	-0.07	0	0.23	0.02
TOP BREED %															
48%	25%	51%	10%	92%	86%	26%	34%	5%	99%	38%	17%	24%	89%	34%	77%

We purchased Lacy King from Dale and Kay Lacy in Missouri. We really liked his dam and her half-sisters as young cows in the Lacy herd as well as his sire's daughters that were in production. We have 2, 3, and 4 year old females in production. They have good udders and a good disposition.



MUSHRUSH IMPRESSIVE CA U236



MUSHRUSH IMPRESSIVE CA U236

REG. # **1295159** TATTOO: **U236 MUS** BD: **9/10/08** **100% 1A**

BECKTON LANCER F442 T
BUF CRK LANCER R017
 BUF CRK JULIET N036

TR JULIAN LT142
MUSHRUSH MADAM LT R265
 MUSHRUSH ROBIN M125

BECKTON LANCER T A664
 BKT SUFFEINA A828 DM
 BECKTON JULIAN GG B571
 BUF CRK PRIMROSE 5679
 BECKTON JULIAN GG B571
 TR LANA G760
 BFCK CHEROKEE CNYN 4912
 MUSHRUSH ZENA 0165

HB	GM	CED	BW	WW	YW	M	ME	HPG	CEM	ST	MB	YG	CW	REA	FAT
124	51	6	-4.5	57	81	21	-5	13	-5	14	0.73	-0.01	11	0.21	0.02
TOP BREED %															
19%	27%	42%	14%	53%	64%	40%	28%	15%	98%	9%	16%	42%	74%	35%	81%

We have used Impressive for 6 breeding seasons AI on both heifers and cows. We like his ability to produce progeny that come easy and grow well but also have above average thickness over the top and in the lower quarter. His progeny have been very well accepted in our bull sales and his daughters in production are the right type of cows.



5L LEGEND 1553-425V

REG. # **1261711** TATTOO: **425V FLR** BD: **3/12/08** **100% 1A**

O C C LEGEND 616L
5L LAKOTA LEGEND 7074
 BASIN LAKOTA C999

5L NORSEMAN KING 2291
5L HAZEL 45L-1553
 LA TRAVLIN 124 HAZEL 45

O C C EMBLAZON 854E
 O C C BLACKBIRD 632J
 FCC RAMBO 502
 BJR LAKOTA 002-955
 VGW KING OF THE WEST
 NORSEMAN 1312 PJM
 FSHK TRAVELER 347
 LV D A R HAZEL 740

HB	GM	CED	BW	WW	YW	M	ME	HPG	CEM	ST	MB	YG	CW	REA	FAT
74	50	9	-3.4	37	71	23	0	8	3	7	0.33	0.02	8	0.39	0.06
TOP BREED %															
67%	46%	21%	23%	92%	78%	31%	45%	73%	65%	77%	66%	52%	79%	20%	95%

We have used Legend the past two years AI after seeing and purchasing progeny out of him. He offers an attractive pattern to his offspring with moderate birth weights and good performance. His first daughters are calving now and have excellent udders and are going to make great cows. He is owned by Choat Cattle Company, Sandbur Ridge Red Angus, and 5L Ranch.



RIDGE ADMIRAL 3411

REG. # **1589182** TATTOO: **3411 OTT** BD: **2/5/13** **100% 1A**

5L LAKOTA LEGEND 7074
5L LEGEND 1553-425V
 5L HAZEL 45L-1553

MLK CRK EXPRESS 9127
RIDGE GRANDIOSE 629-1112
 RIDGE GRANDIOSE 435-629

O C C LEGEND 616L
 BASIN LAKOTA C999
 5L NORSEMAN KING 2291
 LA TRAVLIN 124 HAZEL 45
 5L GRAND EXPRESS 453-5655
 MLK CRK SHEBA 043
 HOLDEN HI HO 753
 PANHANDLE GRANDIOSE 435

HB	GM	CED	BW	WW	YW	M	ME	HPG	CEM	ST	MB	YG	CW	REA	FAT
96	49	6	-1.5	63	98	18	-1	9	2	10	0.39	0.18	26	0.26	0.08
TOP BREED %															
46%	55%	40%	45%	37%	38%	59%	40%	69%	67%	46%	55%	93%	41%	31%	98%

We are very pleased with our first offering of Admiral 3411 progeny. He has crossed very well on our genetics and has brought us moderate birth weight, above average weaning and yearling weight. Along with the above traits, the progeny are moderate framed, thick made and easy fleshing cattle. His offspring ratio as good if not better than the highly proven AI sires we are using. He is owned with Sandbur Ridge Red Angus.

Reference Sires



K RED CROWFOOT REDMAN 3107A

REG. # 1665754 IATTOO: 3107A CFCC BD: 2/21/13 100% 1A

RED RMJ REDMAN 1T
RED LAZY MC REDMAN 94Y
RED BROX ICECAP 1R

[5L NORSEMAN KING 2291
L CROWFOOT KURUBA 4033P
[RED CANYON CREEK SENSATION
L RED BROX ICECAP 62N
[CROWFOOT 6004S
L RED CROWFOOT BRNDINA 6359S
[RED YY HEAT 902J
L RED CROWFOOT BRNDINA 2067M

RED CROWFOOT MOONSHINE 8081U
RED CROWFOOT BRNDINA 1103Y
RED CROWFOOT BRNDINA 6378S

HB	GM	CED	BW	WW	YW	M	ME	HPG	CEM	ST	MB	YG	CW	REA	FAT
142	49	16	-5.8	37	57	21	-13	7	3	14	0.30	-0.12	-4	0.16	-0.01
TOP BREED %															
7%	45%	1%	3%	93%	92%	37%	2%	91%	56%	13%	74%	10%	95%	36%	39%



L BECKTON DOMINOR A038 J7

REG. # 1626083 IATTOO: A038 BSF BD: 3/8/13 100% 1A

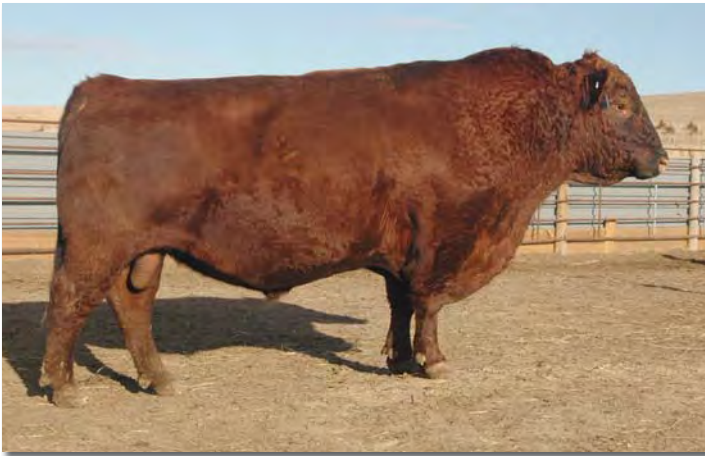
BECKTON DOMINOR W640 C5
BECKTON DOMINOR Y052 N6
BECKTON INDIGO W772 N

[BECKTON DOMINOR Z1 R610
L BECKTON MONA R166 CQ
[BECKTON NEBULA T398 V3
L BECKTON INDIGO T613 JT
[BECKTON JULIAN G5 S107
L BECKTON CHRISTY J743 JL
[BECKTON LOKI CL S284
L BECKTON TARA R609 JC

BECKTON JULIAN W841 J5
BECKTON TARA Y111 J
BECKTON TARA W482 L

HB	GM	CED	BW	WW	YW	M	ME	HPG	CEM	ST	MB	YG	CW	REA	FAT
186	51	10	-2.3	60	102	22	-3	14	3	18	0.73	0.24	27	-0.02	0.06
TOP BREED %															
1%	12%	11%	28%	38%	22%	28%	24%	4%	54%	1%	8%	99%	29%	69%	98%

This will be the first offering of the Dominor progeny. He has met and exceeded our expectations in offering progeny that are moderate framed, deep, thick and once again above average performance. When you study his EPD's he is very well balanced across the traits leaving him with very high marks in the HerdBuilder and GridMaster indices. He is owned with Beckton Red Angus.



MLK CRK EXPRESS 9127



M MLK CRK EXPRESS 9127

REG. # 1309400 IATTOO: 9127 BTK BD: 2/18/09 100% 1A

5L NORSEMAN EXPRESS
5L GRAND EXPRESS 453-5655
5L RUBY 01-453

[5L NORSEMAN KING 2291
L 5L MARTHA 197-159
[5L NORSEMAN KING 2291
L 5L RUBY 199-01
[BJR PROOF 20A-5162
L BJR LAKINA 677-3197
[GLACIER CUB 446
L MLK CRK SHEBA 556

BJR PROOF 224-159
MLK CRK SHEBA 043
MLK CRK SHEBA 869

HB	GM	CED	BW	WW	YW	M	ME	HPG	CEM	ST	MB	YG	CW	REA	FAT
76	47	11	-3.7	60	75	7	-6	8	4	6	0.23	-0.02	8	-0.03	-0.01
TOP BREED %															
64%	79%	13%	20%	45%	74%	94%	25%	73%	45%	81%	82%	38%	79%	69%	30%



TNT TOP GUN R244



N TNT TOP GUN R244

REG. # 3358231 IATTOO: R244 BD: 2/25/05 SIMMENTAL

RC STINGER 072K
TNT GUNNER N208
TNT MISS HONEY L9

[CCR GRIFFEY
L MISS RC 600U 501F
[JF NEW DIMENSION 903J
L TNT MISS ALLIE J1
[SRS FORTUNE 500
L TNT MISS 600U F86
[DX PREFERRED ZIMA
L TNT MISS BL JACK E178

TNT IMPACT H21
TNT MISS SADIE M68
TNT MISS JADEN J318

HB	GM	CED	BW	WW	YW	M	ME	HPG	CEM	ST	MB	YG	CW	REA	FAT
	48		2.9	74	120	9					-0.14	-0.19	45	0.56	-0.07
TOP BREED %															
	65%		93%	13%	12%	92%					99%	7%	8%	11%	1%



Yearling Bulls



5192 MLK CRK DOMINOR 5192

REG. # 3468288 IATTOO: 5192 BTK BD: 3/8/15 100% 1A

BECKTON DOMINOR Y052 N6
BECKTON DOMINOR A038 J7
 BECKTON TARA Y111 J

BECKTON DOMINOR W640 C5
 BECKTON INDIGO W772 N

BECKTON JULIAN W841 J5
 BECKTON TARA W482 L

RIDGE TRADESMAN 6237-0002
MLK CRK LAKOTA 298
 MLK CRK LAKOTA 831

5L TRADESMAN 1715-6237
 PVRA DESIGN LASS 515
 OHRR DAKOTA COPPER 29K
 MLK CRK LAKOTA 662

BW/Ratio	92	109
WW/Ratio	686	99
YW/Ratio	1088	98
ADG/Ratio	2.50	96
Dam's MPPA/Age	92.0	3

HB	GM	CED	BW	WW	YW	M	ME	HPG	CEM	ST	MB	YG	CW	REA	FAT
158	49	7	-0.8	54	89	17	0	14	5	17	0.43	0.13	22	-0.01	0.03
TOP BREED %															
5%	52%	32%	56%	58%	45%	72%	39%	5%	28%	3%	48%	92%	42%	70%	92%



5200 CMK CHAZ 5200

REG. # 3468258 IATTOO: 5200 CMK BD: 2/10/15 100% 1A

5L LAKOTA LEGEND 7074
5L LEGEND 1553-425V
 5L HAZEL 45L-1553

O C C LEGEND 616L
 BASIN LAKOTA C999

5L NORSEMAN KING 2291
 LA TRAVLIN 124 HAZEL 45

MLK CRK TITLIEIST 4158
CMK ANGEL 804
 CMK ANGEL 615

VGW TITLIEIST 1106
 MLK CRK SHEBA 079
 SHOCO DATA
 MLK CRK SHEBA 154

BW/Ratio	50	TWN
WW/Ratio	642	TWN
YW/Ratio	965	TWN
ADG/Ratio	2.02	TWN
Dam's MPPA/Age	100.0	7

HB	GM	CED	BW	WW	YW	M	ME	HPG	CEM	ST	MB	YG	CW	REA	FAT
65	48	5	-0.8	51	81	19	4	7	3	7	0.32	0.01	17	0.29	0.03
TOP BREED %															
90%	63%	47%	55%	69%	62%	49%	77%	95%	55%	88%	72%	46%	57%	17%	91%



5201 CMK CHUCK 5201

REG. # 3468257 IATTOO: 5201 CMK BD: 2/10/15 100% 1A

5L LAKOTA LEGEND 7074
5L LEGEND 1553-425V
 5L HAZEL 45L-1553

O C C LEGEND 616L
 BASIN LAKOTA C999

5L NORSEMAN KING 2291
 LA TRAVLIN 124 HAZEL 45

MLK CRK TITLIEIST 4158
CMK ANGEL 804
 CMK ANGEL 615

VGW TITLIEIST 1106
 MLK CRK SHEBA 079
 SHOCO DATA
 MLK CRK SHEBA 154

BW/Ratio	55	TWN
WW/Ratio	603	TWN
YW/Ratio	1087	TWN
ADG/Ratio	3.03	TWN
Dam's MPPA/Age	100.0	7

HB	GM	CED	BW	WW	YW	M	ME	HPG	CEM	ST	MB	YG	CW	REA	FAT
65	48	5	-0.8	51	81	19	4	7	3	7	0.32	0.01	17	0.29	0.03
TOP BREED %															
90%	63%	47%	55%	69%	62%	49%	77%	95%	55%	88%	72%	46%	57%	17%	91%



5202 MLK CRK FUSION 5202

REG. # 3468393 IATTOO: 5202 BTK BD: 2/12/15 100% 1A

ANDRAS IN FOCUS B175
ANDRAS FUSION R236
 ANDRAS BELLE B167

MYTTY IN FOCUS
 DI ESTONIA 316

ANDRAS THUNDER B105
 ANDRAS BELLE 416

5L GRAND EXPRESS 453-5655
MLK CRK SHEBA 900
 MLK CRK SHEBA 403

5L NORSEMAN EXPRESS
 5L RUBY 01-453
 GLACIER CHATEAU 744
 MLK CRK SHEBA 055

BW/Ratio	82	93
WW/Ratio	687	99
YW/Ratio	1143	103
ADG/Ratio	2.85	110
Dam's MPPA/Age	100.0	6

HB	GM	CED	BW	WW	YW	M	ME	HPG	CEM	ST	MB	YG	CW	REA	FAT
113	52	14	-4.2	48	86	28	0	10	7	8	0.64	-0.02	16	0.10	0.00
TOP BREED %															
39%	6%	2%	9%	78%	53%	3%	39%	56%	10%	82%	15%	36%	63%	46%	52%

This Fusion X Grand Express bull puts together a complete package. He combines a moderate birth weight with balanced growth, adds carcass and descends from a solid cow family. His dam is very moderate with a beautiful udder, good feet and dark red. When you study the phenotype the bull carries above average muscle and depth for his moderate birth weight.



MLK CRK Sheba 900, dam of 5202



5202

Yearling Bulls



5203 MLK CRK EPIC 5203

REG. # 3468264 TATTOO: 5203 BTK BD: 2/11/15 100% 1A

BECKTON EPIC K F075
BECKTON EPIC R397 K
 BECKTON KIT F468 JL

BECKTON EPIC D404
 BECKTON BELGA D483 KR
 BECKTON JULIAN GG B571
 BECKTON KIT A517 NP

VDAR RAMBO 323
MLK CRK LANA 664
 MLK CRK LANA 704-HOBO

FCC RAMBO 502
 BJR BLOCKNA2206-3149
 BUF CRK HOBO 1961
 PCH LANA 107

BW/Ratio	82	TWN
WW/Ratio	666	TWN
YW/Ratio	1057	TWN
ADG/Ratio	2.44	TWN
Dam's MPPA/Age	103.5	9

HB	GM	CED	BW	WW	YW	M	ME	HPG	CEM	ST	MB	YG	CW	REA	FAT
109	50	2	-0.1	65	104	22	-3	10	5	12	0.48	0.13	32	0.19	0.04
TOP BREED %															
45%	36%	82%	69%	23%	18%	30%	22%	44%	22%	47%	35%	91%	16%	30%	96%

Twin out of a solid producing 10-year-old dam with a 103 MPPA



5204 MLK CRK IMPRESSIVE 5204

REG. # 3468489 TATTOO: 5204 BTK BD: 2/12/15 100% 1A

BUF CRK LANCER R017
MUSHRUSH IMPRESSIVE CA U236
 MUSHRUSH MADAM LT R265

BECKTON LANCER F442 T
 BUF CRK JULIET N036

BECKTON EPIC R397 K
MLK CRK LAKOTA 173
 MLK CRK LAKOTA 825

TR JULIAN LT142
 MUSHRUSH ROBIN M125
 BECKTON EPIC K F075
 BECKTON KIT F468 JL
 RED YY RED KNIGHT 640F
 MLK CRK LAKOTA 611

BW/Ratio	82	95
WW/Ratio	703	101
YW/Ratio	1141	103
ADG/Ratio	2.73	105
Dam's MPPA/Age	100.7	4

HB	GM	CED	BW	WW	YW	M	ME	HPG	CEM	ST	MB	YG	CW	REA	FAT
128	51	4	-2.8	63	95	20	-4	11	0	14	0.63	0.02	22	0.22	0.02
TOP BREED %															
22%	16%	63%	23%	29%	33%	40%	17%	25%	93%	17%	15%	56%	42%	25%	85%

5204 stood out all fall and has continued to increase his performance on test. He brings a dark red phenotype with a moderate frame and good muscle expression. If you want to use a bull that will make great females we have found that his sire and maternal grandsire does it very well not to mention how his dam looks and produces.



5204



MLK CRK Lakota 173, dam of 5204



Yearling Bulls



UPPER SPRING



5205 MLK CRK IMPRESSIVE 5205

REG. # 3468405 TATTOO: 5205 BTK BD: 2/12/15 100% 1A

BUF CRK LANCER R017
MUSHRUSH IMPRESSIVE CA U236
 MUSHRUSH MADAM LT R265

BECKTON LANCER F442 T
 BUF CRK JULIET N036

TR JULIAN LT142
 MUSHRUSH ROBIN M125

BUF CRK BARNEY 3474
MLK CRK LAKOTA 848
 MLK CRK LAKOTA 112-RAMB

BUF CRK BARON 2678
 OLE SUNFLOWER 359 PB08
 FCC RAMBO 502
 CFLD LAKOTA 112-914

BW/Ratio	65	74
WW/Ratio	667	96
YW/Ratio	1020	92
ADG/Ratio	2.21	85
Dam's MPPA/Age	101.6	7

HB	GM	CED	BW	WW	YW	M	ME	HPG	CEM	ST	MB	YG	CW	REA	FAT
102	49	8	-4.8	45	60	25	-1	9	-1	12	0.52	-0.02	-1	-0.05	0.00
TOP BREED %															
54%	54%	22%	6%	85%	92%	9%	33%	66%	95%	47%	30%	32%	95%	79%	62%

Low birth weight out of a solid cow family with generations of longevity. 5205's dam is 8 years old, her dam produced up to 16 and her grand dam up to 15.



5206



5206 MLK CRK LEGEND 5206

REG. # 3468401 TATTOO: 5206 BTK BD: 2/13/15 100% 1A

5L LAKOTA LEGEND 7074
5L LEGEND 1553-425V
 5L HAZEL 45L-1553

O C C LEGEND 616L
 BASIN LAKOTA C999

5L NORSEMAN KING 2291
 LA TRAVLIN 124 HAZEL 45

RED CROWFOOT OLE'S OSCAR
MLK CRK LAKOTA 861
 MLK CRK LAKOTA 651

MLK CRK CUB 722
 RED CROWFOOT OMEGA 9179J
 GLACIER LOGAN 210
 MLK CRK LAKOTA Y46-HOBO

BW/Ratio	90	102
WW/Ratio	742	107
YW/Ratio	1187	107
ADG/Ratio	2.78	107
Dam's MPPA/Age	95.2	7

HB	GM	CED	BW	WW	YW	M	ME	HPG	CEM	ST	MB	YG	CW	REA	FAT
103	50	6	-2.6	52	89	18	2	9	8	9	0.49	0.07	20	0.14	0.03
TOP BREED %															
52%	23%	34%	25%	65%	44%	59%	61%	64%	5%	76%	35%	74%	49%	39%	91%

When you study the bulls you will find the Legend 425V calves quite easily because of their performance and muscle expression and 5206 is no exception. He has maintained a 107 weaning and yearling ratio and combines that performance with a powerful phenotype.



UPPER SPRING



5207 MLK CRK REDSTONE 5207

REG. # 3468423 TATTOO: 5207 BTK BD: 2/14/15 100% 1A

TR JULIAN LT142
MLK CRK REDSTONE
 MLK CRK LENA 763

BECKTON JULIAN GG B571
 TR LANA G760

BECKTON EPIC R397 K
 MLK CRK LENA 533

BUF CRK GIULIANI L851
MLK CRK LAKOTA 769
 MLK CRK LAKOTA 356

BKT JULIAN 7526 G
 BUF CRK MARIGOLD1230
 MLK CRK MARIAS 013
 MLK CRK LAKOTA 969

BW/Ratio	88	100
WW/Ratio	712	103
YW/Ratio	1106	99
ADG/Ratio	2.46	95
Dam's MPPA/Age	100.8	8

HB	GM	CED	BW	WW	YW	M	ME	HPG	CEM	ST	MB	YG	CW	REA	FAT
94	49	4	-0.5	66	100	20	1	14	3	9	0.49	0.08	28	0.03	0.01
TOP BREED %															
64%	40%	61%	60%	19%	24%	42%	48%	4%	56%	77%	35%	78%	24%	60%	69%

Yearling Bulls



5208



5208

JNK MAHOGANY 5208

REG. # 3468246

TATTOO: 5208 JNK

BD: 2/15/15

100% 1A

ANDRAS IN FOCUS B175
ANDRAS FUSION R236
 ANDRAS BELLE B167

MYTTY IN FOCUS
 DI ESTONIA 316

ANDRAS THUNDER B105
 ANDRAS BELLE 416

RED YY RED KNIGHT 640F
JNK MONIQUE 639
 MLK CRK BLOCKANNA 459

RED YY 23L TOPPER 408D
 RED TOP GOLDIE 40U

MLK CRK CUB 722
 MLK CRK BLOCKANNA 768

BW/Ratio	78	TW
WW/Ratio	686	TW
YW/Ratio	1131	TW
ADG/Ratio	2.78	107
Dam's MPPA/Age	107.7	9

HB	GM	CED	BW	WW	YW	M	ME	HPG	CEM	ST	MB	YG	CW	REA	FAT
105	51	8	-1.6	54	93	27	4	9	7	9	0.74	0.07	24	-0.16	-0.01
TOP BREED %															
50%	12%	22%	41%	58%	37%	4%	74%	70%	9%	75%	8%	78%	37%	93%	28%



5209



5209

MLK CRK LEGEND 5209

REG. # 3468364

TATTOO: 5209 BTK

BD: 2/13/15

100% 1A

5L LAKOTA LEGEND 7074
5L LEGEND 1553-425V
 5L HAZEL 45L-1553

O C C LEGEND 616L
 BASIN LAKOTA C999

5L NORSEMAN KING 2291
 LA TRAVLIN 124 HAZEL 45

MLK CRK REDSTONE
MLK CRK SHEBA 1014
 MLK CRK SHEBA 966X

TR JULIAN LT142
 MLK CRK LENA 763

BECKTON EPIC R397 K
 MLK CRK SHEBA 333

BW/Ratio	78	91
WW/Ratio	729	105
YW/Ratio	1235	111
ADG/Ratio	3.15	121
Dam's MPPA/Age	106.0	4

HB	GM	CED	BW	WW	YW	M	ME	HPG	CEM	ST	MB	YG	CW	REA	FAT
111	51	6	-2.8	60	101	23	-1	11	4	10	0.57	0.10	26	0.22	0.04
TOP BREED %															
41%	11%	34%	22%	38%	22%	19%	32%	28%	41%	65%	21%	87%	30%	25%	96%

Last year we kept 5209's maternal brother out of the sale because of his exceptional individual performance. This year his dam, 1014 proved that she can do a repeat performance in her 5209 son. This bull started out at only 78 pounds but has continued to pour on pounds of dense muscle ever since. He has stood out throughout the summer, fall and winter and is easy to find in this pen of bulls.



5209X

MLK CRK LEGEND 5209X

REG. # 3468267

TATTOO: 5209X BTK

BD: 2/14/15

100% 1A

5L LAKOTA LEGEND 7074
5L LEGEND 1553-425V
 5L HAZEL 45L-1553

O C C LEGEND 616L
 BASIN LAKOTA C999

5L NORSEMAN KING 2291
 LA TRAVLIN 124 HAZEL 45

MLK CRK EPIC 8171
MLK CRK LAKOTA 0109
 MLK CRK LAKOTA 218

BECKTON EPIC R397 K
 MLK CRK SHEBA 403

MLK CRK CAPSTONE 901
 MLK CRK LAKOTA 953

BW/Ratio	90	103
WW/Ratio	668	96
YW/Ratio	1076	97
ADG/Ratio	2.54	98
Dam's MPPA/Age	102.2	5

HB	GM	CED	BW	WW	YW	M	ME	HPG	CEM	ST	MB	YG	CW	REA	FAT
78	49	6	-2.3	44	75	24	0	7	4	8	0.32	0.06	12	0.12	0.04
TOP BREED %															
82%	56%	37%	30%	88%	74%	13%	37%	91%	50%	83%	71%	70%	73%	40%	94%



5211

MLK CRK REDSTONE 5211

REG. # 3468527

TATTOO: 5211 BTK

BD: 2/16/15

100% 1A

TR JULIAN LT142
MLK CRK REDSTONE
 MLK CRK LENA 763

BECKTON JULIAN GG B571
 TR LANA G760

BECKTON EPIC R397 K
 MLK CRK LENA 533

5L GRAND EXPRESS 453-5655
MLK CRK LAKOTA 082
 MLK CRK LAKOTA 953

5L NORSEMAN EXPRESS
 5L RUBY 01-453

LARSON RED LIGHTNING
 MLK CRK LAKOTA 112-RAMB

BW/Ratio	82	94
WW/Ratio	711	103
YW/Ratio	1114	100
ADG/Ratio	2.52	97
Dam's MPPA/Age	108.0	5

HB	GM	CED	BW	WW	YW	M	ME	HPG	CEM	ST	MB	YG	CW	REA	FAT
89	50	6	-2.9	58	88	24	-2	11	2	9	0.47	0.00	18	0.10	0.00
TOP BREED %															
70%	32%	34%	21%	44%	47%	13%	25%	33%	78%	80%	39%	46%	55%	45%	62%



Yearling Bulls



5212

JNK DUKE 5212

REG. # 3468252

TATTOO: 5212 JNK

BD: 2/16/15

100% 1A

ANDRAS IN FOCUS B175
ANDRAS FUSION R236
 ANDRAS BELLE B167

MYTTY IN FOCUS
 DI ESTONIA 316

ANDRAS THUNDER B105
 ANDRAS BELLE 416

TR JULIAN LT151
 TR LANA G760

RED YY RED KNIGHT 640F
 MLK CRK BLOCKANNA 459

BW/Ratio	70	82
WW/Ratio	668	96
YW/Ratio	1100	99
ADG/Ratio	2.69	103
Dam's MPPA/Age	97.3	4

TR JULIAN WT951
JNK TALLY 177
 JNK MONIQUE 639

HB	GM	CED	BW	WW	YW	M	ME	HPG	CEM	ST	MB	YG	CW	REA	FAT
123	52	13	-4.1	46	81	29	2	9	8	10	0.75	0.04	13	-0.11	0.00
TOP BREED %															
27%	8%	3%	10%	83%	62%	2%	53%	59%	7%	68%	7%	65%	70%	88%	54%



5213

MLK CRK FUSION 5213

REG. # 3468430

TATTOO: 5213 BTK

BD: 2/16/15

100% 1A

ANDRAS IN FOCUS B175
ANDRAS FUSION R236
 ANDRAS BELLE B167

MYTTY IN FOCUS
 DI ESTONIA 316

ANDRAS THUNDER B105
 ANDRAS BELLE 416

BECKTON EPIC K F075
 BECKTON KIT F468 JL

SHOCO DATA
 MLK CRK BONIBEL 219

BW/Ratio	82	93
WW/Ratio	666	96
YW/Ratio	1139	102
ADG/Ratio	2.95	113
Dam's MPPA/Age	100.0	8

BECKTON EPIC R397 K
MLK CRK BONIBEL 752
 MLK CRK BONIBEL 527

HB	GM	CED	BW	WW	YW	M	ME	HPG	CEM	ST	MB	YG	CW	REA	FAT
130	52	11	-3.6	50	89	28	-1	10	5	12	0.82	0.11	18	0.07	0.04
TOP BREED %															
20%	6%	9%	14%	72%	46%	3%	31%	48%	31%	44%	4%	87%	55%	53%	95%

Fusion continues to produce cattle that can be used with confidence on heifers yet excel in their ability to gain on test. 5213 is out of a nine year old Epic R397 daughter that has proven herself within our herd.

5213



5214

MLK CRK EPIC 5214

REG. # 3468385

TATTOO: 5214 BTK

BD: 2/16/15

100% 1A

BECKTON EPIC K F075
BECKTON EPIC R397 K
 BECKTON KIT F468 JL

BECKTON EPIC D404
 BECKTON BELGA D483 KR

BECKTON JULIAN GG B571
 BECKTON KIT A517 NP

RED YY 23L TOPPER 408D
 RED TOP GOLDIE 40U

MLK CRK LIGHT 912
 BJR ESTONIA 968-775

BW/Ratio	91	103
WW/Ratio	697	101
YW/Ratio	1180	106
ADG/Ratio	3.02	116
Dam's MPPA/Age	104.6	6

RED YY RED KNIGHT 640F
MLK CRK ESTONIA 933
 SEEGER ESTONIA 355

HB	GM	CED	BW	WW	YW	M	ME	HPG	CEM	ST	MB	YG	CW	REA	FAT
116	50	-1	0.3	67	110	20	-4	10	5	12	0.47	0.06	36	0.26	0.02
TOP BREED %															
35%	24%	93%	76%	16%	10%	42%	15%	39%	23%	34%	37%	74%	9%	20%	82%

Epic R397 sons and daughters never go out of style. If you want to add muscle and performance in a moderate frame package Epic will do it consistently. We are calving the ninth calf crop out Epic this spring because he does so many things right. 5214 not only has Epic on the top side of his pedigree but also has a strong Red Knight dam that has produced well above average in our herd.

5214

Yearling Bulls



5215 MLK CRK FUSION 5215

REG. # 3468518 IATTOO: 5215 BTK BD: 2/16/15 100% 1A

ANDRAS IN FOCUS B175
ANDRAS FUSION R236
 ANDRAS BELLE B167

MLK CRK EPIC 8171
MLK CRK SHEBA 147
 MLK CRK SHEBA 935

MYTTY IN FOCUS
 DI ESTONIA 316
 ANDRAS THUNDER B105
 ANDRAS BELLE 416
 BECKTON EPIC R397 K
 MLK CRK SHEBA 403
 RED CROWFOOT OLE'S OSCAR
 MLK CRK SHEBA 447

BW/Ratio	80	93
WW/Ratio	647	93
YW/Ratio	1094	98
ADG/Ratio	2.79	107
Dam's MPPA/Age	100.0	4

HB	GM	CED	BW	WW	YW	M	ME	HPG	CEM	ST	MB	YG	CW	REA	FAT
126	52	12	-4.5	44	80	30	0	8	9	10	0.82	0.06	12	-0.04	0.01
TOP BREED %															
24%	5%	5%	7%	88%	64%	1%	42%	83%	2%	63%	5%	70%	73%	77%	80%



5218 MLK CRK FUSION 5218

REG. # 3468440 IATTOO: 5218 BTK BD: 2/16/15 100% 1A

ANDRAS IN FOCUS B175
ANDRAS FUSION R236
 ANDRAS BELLE B167

MLK CRK DATA 4154
MLK CRK LAKOTA 680
 MLK CRK LAKOTA 183

MYTTY IN FOCUS
 DI ESTONIA 316
 ANDRAS THUNDER B105
 ANDRAS BELLE 416
 SHOCO DATA
 MLK CRK LAKOTA 953
 MLK CRK CORNERSTONE JC
 MLK CRK LAKOTA 651

BW/Ratio	94	108
WW/Ratio	758	109
YW/Ratio	1134	102
ADG/Ratio	2.34	90
Dam's MPPA/Age	101.7	9

HB	GM	CED	BW	WW	YW	M	ME	HPG	CEM	ST	MB	YG	CW	REA	FAT
111	50	9	-1.3	53	89	25	2	9	5	11	0.58	0.10	22	0.01	0.02
TOP BREED %															
42%	29%	15%	47%	63%	45%	9%	57%	71%	34%	58%	21%	87%	43%	66%	88%

5218 is another Fusion son that brings performance and phenotype to the offering. He is out of a 10 year old Data granddaughter that continues to bring in calves above the average. He is strong topped and carries muscle well into his quarter.



5219 MLK CRK IMPRESSIVE 5219

REG. # 3468386 IATTOO: 5219 BTK BD: 2/16/15 100% 1A

BUF CRK LANCER R017
MUSHRUSH IMPRESSIVE CA U236
 MUSHRUSH MADAM LT R265

RED CROWFOOT OLE'S OSCAR
MLK CRK LAKOTA 932
 MLK CRK LAKOTA 330

BECKTON LANCER F442 T
 BUF CRK JULIET N036
 TR JULIAN LT142
 MUSHRUSH ROBIN M125
 MLK CRK CUB 722
 RED CROWFOOT OMEGA 9179J
 MLK CRK CAPSTONE 901
 MLK CRK LAKOTA 020

BW/Ratio	80	91
WW/Ratio	695	100
YW/Ratio	1069	96
ADG/Ratio	2.34	90
Dam's MPPA/Age	101.5	6

HB	GM	CED	BW	WW	YW	M	ME	HPG	CEM	ST	MB	YG	CW	REA	FAT
106	51	7	-5.3	51	72	24	1	11	2	10	0.70	-0.03	5	0.06	0.00
TOP BREED %															
49%	18%	29%	4%	70%	77%	14%	46%	34%	75%	62%	10%	32%	87%	55%	68%



5220 MLK CRK REDSTONE 5220

REG. # 3468441 IATTOO: 5220 BTK BD: 2/17/15 100% 1A

TR JULIAN LT142
MLK CRK REDSTONE
 MLK CRK LENA 763

VDAR RAMBO 323
MLK CRK SUN GAL 678
 BJR SUN GAL 4X-561

BECKTON JULIAN GG B571
 TR LANA G760
 BECKTON EPIC R397 K
 MLK CRK LENA 533
 FCC RAMBO 502
 BJR BLOCKNA2206-3149
 BJR MONU 4X-303
 BJR SUN GAL 1193-375

BW/Ratio	97	111
WW/Ratio	750	108
YW/Ratio	1178	106
ADG/Ratio	2.67	103
Dam's MPPA/Age	100.9	9

HB	GM	CED	BW	WW	YW	M	ME	HPG	CEM	ST	MB	YG	CW	REA	FAT
86	51	2	0.2	72	110	19	2	10	0	10	0.70	0.10	35	0.00	0.00
TOP BREED %															
73%	20%	81%	72%	8%	10%	55%	55%	53%	93%	69%	10%	87%	10%	67%	59%

This bull has a birthmark on his shoulder that displays as a black patch of hair. He has red pigmented skin so can be registered as 1A.



5221



5221 MLK CRK IMPRESSIVE 5221

REG. # 3468384 IATTOO: 5221 BTK BD: 2/17/15 100% 1A

BUF CRK LANCER R017
MUSHRUSH IMPRESSIVE CA U236
 MUSHRUSH MADAM LT R265

RED CROWFOOT OLE'S OSCAR
MLK CRK SHEBA 935
 MLK CRK SHEBA 447

BECKTON LANCER F442 T
 BUF CRK JULIET N036
 TR JULIAN LT142
 MUSHRUSH ROBIN M125
 MLK CRK CUB 722
 RED CROWFOOT OMEGA 9179J
 VGV TITLEIST 1106
 MLK CRK SHEBA 172

BW/Ratio	90	102
WW/Ratio	690	100
YW/Ratio	1065	96
ADG/Ratio	2.34	90
Dam's MPPA/Age	100.0	6

HB	GM	CED	BW	WW	YW	M	ME	HPG	CEM	ST	MB	YG	CW	REA	FAT
110	50	6	-3.6	51	73	23	-1	10	3	11	0.75	0.00	8	0.12	0.02
TOP BREED %															
43%	25%	42%	13%	69%	76%	21%	34%	40%	54%	51%	7%	41%	82%	41%	83%



Yearling Bulls



5222 MLK CRK LEGEND 5222

REG. # 3468438 IATTOO: 5222 BTK BD: 2/13/15 100% 1A

5L LAKOTA LEGEND 7074
5L LEGEND 1553-425V
 5L HAZEL 45L-1553

SHOCO DATA
MLK CRK BONNEBELL 711
 MLK CRK BONNEBELL 312

○ O C C LEGEND 616L
 BASIN LAKOTA C999
 5L NORSEMAN KING 2291
 LA TRAVLIN 124 HAZEL 45
 SHOCO SIR ROBIN
 VDAR BLACKANA 303
 MLK CRK FOUNDATION 110
 MLK CRK BONNEBELL 459

BW/Ratio	80	TWN
WW/Ratio	653	TWN
YW/Ratio	1059	TWN
ADG/Ratio	2.54	TWN
Dam's MPPA/Age	104.2	8

HB	GM	CED	BW	WW	YW	M	ME	HPG	CEM	ST	MB	YG	CW	REA	FAT
102	49	7	-1.8	48	76	22	4	8	4	11	0.47	0.04	13	0.15	0.03
TOP BREED %															
54%	53%	32%	38%	77%	71%	26%	74%	89%	36%	54%	38%	61%	70%	36%	92%



5223 MLK CRK LEGENDARY 5223

REG. # 3468295 IATTOO: 5223 BTK BD: 2/18/15 100% 1A

5L LEGEND 1553-425V
RIDGE LEGEND 2069
 RIDGE AQUILA 552-8066

LACY KING 9240
MLK CRK LAKOTA 308
 MLK CRK LAKOTA 653

5L LAKOTA LEGEND 7074
 5L HAZEL 45L-1553
 5L NORMANDY CANYON 6024
 RIDGE AQUILA 213-552
 LACY SIGNATURE 7006
 LACY LAKOTA 7155
 SHOCO DATA
 MLK CRK LANA 704-HOBO

BW/Ratio	77	95
WW/Ratio	636	92
YW/Ratio	1000	90
ADG/Ratio	2.26	87
Dam's MPPA/Age	96.8	2

HB	GM	CED	BW	WW	YW	M	ME	HPG	CEM	ST	MB	YG	CW	REA	FAT
116	49	9	-5.7	27	45	27	2	11	1	12	0.55	-0.04	-10	0.20	0.04
TOP BREED %															
35%	40%	14%	3%	99%	98%	4%	53%	27%	83%	38%	25%	28%	99%	28%	97%



5225 CMK COLT 5225

REG. # 3468260 IATTOO: 5225 CMK BD: 2/18/15 100% 1A

5L LEGEND 1553-425V
RIDGE LEGEND 2069
 RIDGE AQUILA 552-8066

BECKTON EPIC R397 K
CMK ABBI 312
 CMK ANGEL 804

5L LAKOTA LEGEND 7074
 5L HAZEL 45L-1553
 5L NORMANDY CANYON 6024
 RIDGE AQUILA 213-552
 BECKTON EPIC K F075
 BECKTON KIT F468 JL
 MLK CRK TITLEIST 4158
 CMK ANGEL 615

BW/Ratio	77	95
WW/Ratio	650	94
YW/Ratio	1010	91
ADG/Ratio	2.23	86
Dam's MPPA/Age	97.6	2

HB	GM	CED	BW	WW	YW	M	ME	HPG	CEM	ST	MB	YG	CW	REA	FAT
104	48	6	-3.2	40	64	25	1	10	4	11	0.39	0.03	4	0.30	0.06
TOP BREED %															
50%	61%	40%	18%	93%	88%	9%	50%	50%	40%	49%	56%	56%	89%	17%	99%



5226 MLK CRK EPIC 5226

REG. # 3468412 IATTOO: 5226 BTK BD: 2/18/15 100% 1A

BECKTON EPIC K F075
BECKTON EPIC R397 K
 BECKTON KIT F468 JL

BIEBER MAKE MIMI 7249
MLK CRK LANA 824
 MLK CRK LANA 664

BECKTON EPIC D404
 BECKTON BELGA D483 KR
 BECKTON JULIAN GG B571
 BECKTON KIT A517 NP
 BJR MAKE MY DAY 981
 BIEBER SIRENA 6708
 VDAR RAMBO 323
 MLK CRK LANA 704-HOBO

BW/Ratio	91	103
WW/Ratio	711	103
YW/Ratio	1206	108
ADG/Ratio	3.10	119
Dam's MPPA/Age	102.4	7

HB	GM	CED	BW	WW	YW	M	ME	HPG	CEM	ST	MB	YG	CW	REA	FAT
119	51	2	-0.4	69	113	21	-2	10	4	13	0.52	0.08	37	0.31	0.03
TOP BREED %															
31%	16%	75%	63%	13%	7%	37%	27%	44%	51%	33%	29%	78%	8%	16%	91%



5227 MLK CRK REDSTONE 5227

REG. # 3468516 IATTOO: 5227 BTK BD: 2/18/15 100% 1A

TR JULIAN LT142
MLK CRK REDSTONE
 MLK CRK LENA 763

MUSHRUSH IMPRESSIVE CA U236
MLK CRK EMUMAR 150
 MLK CRK EMUMAR 641

BECKTON JULIAN GG B571
 TR LANA G760
 BECKTON EPIC R397 K
 MLK CRK LENA 533
 BUF CRK LANCER R017
 MUSHRUSH MADAM LT R265
 LCC VAQUERO 1412J
 MLK CRK EMUMAR 854

BW/Ratio	85	99
WW/Ratio	659	95
YW/Ratio	1099	99
ADG/Ratio	2.74	106
Dam's MPPA/Age	100.0	4

HB	GM	CED	BW	WW	YW	M	ME	HPG	CEM	ST	MB	YG	CW	REA	FAT
118	51	6	-3.3	59	92	21	0	13	3	11	0.77	0.11	20	-0.05	0.02
TOP BREED %															
33%	12%	39%	16%	41%	39%	34%	39%	7%	54%	54%	6%	87%	49%	78%	87%

Yearling Bulls



5229

REG. # 3468398

MLK CRK FUSION 5229

TATTOO: 5229 BTK BD: 2/18/15 100% 1A

ANDRAS IN FOCUS B175
ANDRAS FUSION R236
 ANDRAS BELLE B167

BUF CRK GIULIANI L851
MLK CRK SUN GAL 880
 MLK CRK SUN GAL 557

MYTTY IN FOCUS
 DI ESTONIA 316
 ANDRAS THUNDER B105
 ANDRAS BELLE 416
 BKT JULIAN 7526 G
 BUF CRK MARIGOLD1230
 VDAR RAMBO 323
 BJR SUN GAL 4X-561

BW/Ratio	89	101
WW/Ratio	669	97
YW/Ratio	1095	98
ADG/Ratio	2.66	102
Dam's MPPA/Age	100.8	7

HB	GM	CED	BW	WW	YW	M	ME	HPG	CEM	ST	MB	YG	CW	REA	FAT
95	51	11	-1.7	49	89	24	1	9	2	9	0.61	0.06	21	-0.07	0.00
TOP BREED %															
63%	17%	9%	39%	74%	46%	14%	52%	68%	69%	81%	17%	70%	45%	83%	52%



5231

REG. # 3468484

MLK CRK LEGEND 5231

TATTOO: 5231 BTK BD: 2/16/15 100% 1A

5L LAKOTA LEGEND 7074
5L LEGEND 1553-425V
 5L HAZEL 45L-1553

TR JULIAN WT951
MLK CRK LAKOTA 194
 MLK CRK LAKOTA 769

O C C LEGEND 616L
 BASIN LAKOTA C999
 SL NORSEMAN KING 2291
 LA TRAVLIN 124 HAZEL 45
 TR JULIAN LT151
 TR LANA G760
 BUF CRK GIULIANI L851
 MLK CRK LAKOTA 356

BW/Ratio	85	99
WW/Ratio	663	96
YW/Ratio	1121	101
ADG/Ratio	2.86	110
Dam's MPPA/Age	97.7	4

HB	GM	CED	BW	WW	YW	M	ME	HPG	CEM	ST	MB	YG	CW	REA	FAT
86	49	8	-1.8	49	85	22	0	11	4	8	0.34	0.03	19	0.25	0.03
TOP BREED %															
74%	39%	22%	37%	76%	53%	30%	43%	36%	48%	86%	69%	56%	53%	22%	91%

5231



5232

REG. # 3468495

MLK CRK REDSTONE 5232

TATTOO: 5232 BTK BD: 2/15/15 100% 1A

TR JULIAN LT142
MLK CRK REDSTONE
 MLK CRK LENA 763

MLK CRK EXPRESS 9127
MLK CRK SALLEE 153
 MLK CRK SALLEE 948

BECKTON JULIAN GG B571
 TR LANA G760
 BECKTON EPIC R397 K
 MLK CRK LENA 533
 5L GRAND EXPRESS 453-5655
 MLK CRK SHEBA 043
 BECKTON EPIC R397 K
 HRR SALLEE 766

BW/Ratio	100	116
WW/Ratio	743	107
YW/Ratio	1022	92
ADG/Ratio	1.74	67
Dam's MPPA/Age	100.7	4

HB	GM	CED	BW	WW	YW	M	ME	HPG	CEM	ST	MB	YG	CW	REA	FAT
113	49	5	-1.7	63	85	18	-3	12	5	11	0.61	0.07	17	0.01	0.02
TOP BREED %															
39%	53%	52%	38%	28%	54%	65%	23%	12%	35%	49%	17%	75%	58%	65%	83%

Bred heifers winter grazing



Yearling Bulls



5234



5234

MLK CRK IMPRESSIVE 5234

REG. # 3468419 IATTOO: 5234 BTK BD: 2/19/15 100% 1A

BUF CRK LANCER R017
MUSHRUSH IMPRESSIVE CA U236
 MUSHRUSH MADAM LT R265

BECKTON LANCER F442 T
 BUF CRK JULIET N036
 TR JULIAN LT142
 MUSHRUSH ROBIN M125

SHOCO DATA
MLK CRK LAKOTA 813
 MLK CRK LAKOTA 059

SHOCO SIR ROBIN
 VDAR BLACKANA 303
 LCC HEAVEN OR BUST1000B
 MLK CRK LAKOTA 851

BW/Ratio	96	109
WW/Ratio	663	96
YW/Ratio	1075	97
ADG/Ratio	2.57	99
Dam's MPPA/Age	100.0	7

HB	GM	CED	BW	WW	YW	M	ME	HPG	CEM	ST	MB	YG	CW	REA	FAT
119	49	3	-1.3	56	79	19	1	12	2	13	0.58	0.03	15	0.04	0.01
TOP BREED %															
32%	57%	66%	47%	51%	67%	54%	48%	13%	73%	23%	21%	56%	66%	57%	74%



5235

MLK CRK KING 5235

REG. # 3468299 IATTOO: 5235 BTK BD: 2/19/15 100% 1A

LACY SIGNATURE 7006
LACY KING 9240
 LACY LAKOTA 7155

5L SIGNATURE 5615
 LACY REBALAS 53L
 CCF GOLD BAR 0251
 LACY MS CHEROKEE 94M

MUSHRUSH IMPRESSIVE CA U236
MLK CRK LAKOTA 315
 MLK CRK LAKOTA 046

BUF CRK LANCER R017
 MUSHRUSH MADAM LT R265
 MLK CRK EPIC 8171
 MLK CRK LAKOTA 239

BW/Ratio	65	82
WW/Ratio	720	104
YW/Ratio	1137	102
ADG/Ratio	2.59	100
Dam's MPPA/Age	101.6	2

HB	GM	CED	BW	WW	YW	M	ME	HPG	CEM	ST	MB	YG	CW	REA	FAT
116	51	8	-6.6	46	74	24	-3	14	-3	12	0.60	-0.04	4	0.17	0.01
TOP BREED %															
35%	10%	24%	1%	82%	75%	14%	22%	3%	99%	45%	19%	25%	88%	33%	81%

5235 is a calving ease bull that has performance to go with it. He has three generations of sires that we have used on heifers successfully.



5237

MLK CRK IMPRESSIVE 5237

REG. # 3468432 IATTOO: 5237 BTK BD: 2/20/15 100% 1A

BUF CRK LANCER R017
MUSHRUSH IMPRESSIVE CA U236
 MUSHRUSH MADAM LT R265

BECKTON LANCER F442 T
 BUF CRK JULIET N036
 TR JULIAN LT142
 MUSHRUSH ROBIN M125

BECKTON EPIC R397 K
MLK CRK BONNEBELL 746
 MLK CRK BONIBEL 510

BECKTON EPIC K F075
 BECKTON KIT F468 JL
 BUF CRK HOB0 1961
 MLK CRK BONIBEL 658

BW/Ratio	90	102
WW/Ratio	666	96
YW/Ratio	1101	99
ADG/Ratio	2.72	104
Dam's MPPA/Age	106.6	8

HB	GM	CED	BW	WW	YW	M	ME	HPG	CEM	ST	MB	YG	CW	REA	FAT
124	50	2	-2.1	53	79	24	-5	13	-1	14	0.62	0.02	14	0.15	0.02
TOP BREED %															
26%	36%	81%	33%	63%	65%	14%	12%	6%	95%	14%	16%	51%	67%	35%	86%



5239

MLK CRK IMPRESSIVE 5239

REG. # 3468333 IATTOO: 5239 BTK BD: 2/21/15 100% 1A

BUF CRK LANCER R017
MUSHRUSH IMPRESSIVE CA U236
 MUSHRUSH MADAM LT R265

BECKTON LANCER F442 T
 BUF CRK JULIET N036
 TR JULIAN LT142
 MUSHRUSH ROBIN M125

MLK CRK EXPRESS 9127
MLK CRK EMUMAR 324X
 MLK CRK EMUMAR 158

5L GRAND EXPRESS 453-5655
 MLK CRK SHEBA 043
 BECKTON EPIC R397 K
 MLK CRK EMUMAR 336

BW/Ratio	71	89
WW/Ratio	678	98
YW/Ratio	1121	101
ADG/Ratio	2.76	106
Dam's MPPA/Age	99.2	2

HB	GM	CED	BW	WW	YW	M	ME	HPG	CEM	ST	MB	YG	CW	REA	FAT
122	50	7	-4.3	59	85	20	-4	12	0	13	0.50	0.00	14	0.15	0.01
TOP BREED %															
28%	27%	29%	8%	42%	55%	41%	15%	18%	93%	32%	32%	41%	68%	37%	76%

This Impressive son should produce calving ease while making good females. Our Impressive and Express 9127 daughters are working very well for us as young cows.



5242

MLK CRK LEGEND 5242

REG. # 3468466 IATTOO: 5242 BTK BD: 2/22/15 100% 1A

5L LAKOTA LEGEND 7074
5L LEGEND 1553-425V
 5L HAZEL 45L-1553

O C C LEGEND 616L
 BASIN LAKOTA C999
 5L NORSEMAN KING 2291
 LA TRAVLIN 124 HAZEL 45

MLK CRK REDSTONE
MLK CRK LAKINA 373
 MLK CRK LAKINA 970

TR JULIAN LT142
 MLK CRK LENA 763
 BECKTON EPIC R397 K
 MLK CRK LAKINA 523

BW/Ratio	75	93
WW/Ratio	636	92
YW/Ratio	1094	98
ADG/Ratio	2.85	110
Dam's MPPA/Age	96.8	2

HB	GM	CED	BW	WW	YW	M	ME	HPG	CEM	ST	MB	YG	CW	REA	FAT
115	50	6	-2.7	49	81	23	-1	12	4	11	0.52	0.07	15	0.20	0.04
TOP BREED %															
37%	30%	34%	23%	76%	61%	18%	32%	18%	47%	50%	29%	74%	65%	28%	97%

Yearling Bulls



5244



5244

MLK CRK LEGEND 5244

REG. # 3468524 IATTOO: 5244 BTK BD: 2/22/15 100% 1A

5L LAKOTA LEGEND 7074
5L LEGEND 1553-425V
 5L HAZEL 45L-1553

BECKTON EPIC R397 K
MLK CRK ASTER 0100
 MLK CRK ASTER 175

O C C LEGEND 616L
 BASIN LAKOTA C999
 5L NORSEMAN KING 2291
 LA TRAVLIN 124 HAZEL 45
 BECKTON EPIC K F075
 BECKTON KIT F468 JL
 MLK CRK CORNERSTONE JC
 MLK CRK ASTER 462

BW/Ratio	84	97
WW/Ratio	711	103
YW/Ratio	1107	100
ADG/Ratio	2.47	95
Dam's MPPA/Age	102.9	5

HB	GM	CED	BW	WW	YW	M	ME	HPG	CEM	ST	MB	YG	CW	REA	FAT
90	50	5	-2.7	50	83	22	-2	10	0	10	0.42	0.04	16	0.30	0.05
TOP BREED %															
69%	36%	45%	23%	72%	59%	27%	24%	49%	90%	70%	49%	61%	63%	17%	97%



5246



5246

MLK CRK EXPRESSION 5246

REG. # 3468327 IATTOO: 5246 BTK BD: 2/22/15 100% 1A

5L GRAND EXPRESS 453-5655
MLK CRK EXPRESS 9127
 MLK CRK SHEBA 043

TR JULIAN YT180
TR LANA AT338
 TR LANA YT113

5L NORSEMAN EXPRESS
 5L RUBY 01-453
 BJR PROOF 224-159
 MLK CRK SHEBA 869
 BECKTON JULIAN GG B571
 TR LANA G760
 TR EPIC ST618
 TR LANA NT329

BW/Ratio	77	95
WW/Ratio	727	105
YW/Ratio	1177	106
ADG/Ratio	2.80	108
Dam's MPPA/Age	102.0	2

HB	GM	CED	BW	WW	YW	M	ME	HPG	CEM	ST	MB	YG	CW	REA	FAT
120	49	10	-2.6	64	92	14	-6	12	3	12	0.44	0.07	20	0.08	0.02
TOP BREED %															
30%	44%	14%	25%	26%	40%	85%	10%	18%	67%	46%	46%	74%	48%	50%	86%

We bred three heifers that we bought from Crump Red Angus to Express 9127 and here is one of the progeny that will work on heifers and can be later turned in on cows. 5246 has good depth and spring of rib along with a good muscle pattern.



5247

MLK CRK REDSTONE 5247

REG. # 3468433 IATTOO: 5247 BTK BD: 2/23/15 100% 1A

TR JULIAN LT142
MLK CRK REDSTONE
 MLK CRK LENA 763

SHOCO DATA
MLK CRK LAKOTA 736
 MLK CRK LAKOTA 173

BECKTON JULIAN GG B571
 TR LANA G760
 BECKTON EPIC R397 K
 MLK CRK LENA 533
 SHOCO SIR ROBIN
 LDVAR BLACKANA 303
 MLK CRK CORNERSTONE JC
 MLK CRK LAKOTA 858

BW/Ratio	90	102
WW/Ratio	759	110
YW/Ratio	1154	104
ADG/Ratio	2.47	95
Dam's MPPA/Age	104.9	8

HB	GM	CED	BW	WW	YW	M	ME	HPG	CEM	ST	MB	YG	CW	REA	FAT
117	49	3	-0.4	74	105	20	2	13	3	12	0.65	0.15	31	0.00	0.03
TOP BREED %															
33%	38%	70%	63%	6%	16%	41%	56%	11%	55%	35%	14%	95%	17%	68%	90%

5247 is a stout Redstone son out of a Data daughter that has performed very well. His dam is very consistent in her production with a 105 weaning ratio and 102.5 yearling ratio. This bull should produce sons that perform well and daughters that you will want to keep in the herd.



5248

MLK CRK LEGEND 5248

REG. # 3468467 IATTOO: 5248 BTK BD: 2/23/15 100% 1A

5L LAKOTA LEGEND 7074
5L LEGEND 1553-425V
 5L HAZEL 45L-1553

MUSHRUSH IMPRESSIVE CA U236
MLK CRK LANA 369
 MLK CRK LANA 1021

O C C LEGEND 616L
 BASIN LAKOTA C999
 5L NORSEMAN KING 2291
 LA TRAVLIN 124 HAZEL 45
 BUF CRK LANCER R017
 MUSHRUSH MADAM LT R265
 MLK CRK REDSTONE
 MLK CRK LANA 987

BW/Ratio	78	97
WW/Ratio	669	97
YW/Ratio	1076	97
ADG/Ratio	2.53	97
Dam's MPPA/Age	98.8	2

HB	GM	CED	BW	WW	YW	M	ME	HPG	CEM	ST	MB	YG	CW	REA	FAT
100	50	8	-4.0	45	73	22	-2	12	1	10	0.48	0.01	8	0.25	0.04
TOP BREED %															
56%	30%	22%	10%	86%	76%	25%	28%	21%	82%	70%	36%	46%	81%	21%	95%



Yearling Bulls



5254 MLK CRK IMPRESSIVE 5254

REG. # 3468265 IATTOO: 5254 BTK BD: 2/20/15 100% 1A

BUF CRK LANCER R017
MUSHRUSH IMPRESSIVE CA U236
MUSHRUSH MADAM LT R265

BECKTON LANCER F442 T
BUF CRK JULIET N036

TR JULIAN LT142
MUSHRUSH ROBIN M125

5L GRAND EXPRESS 453-5655
MLK CRK SHEBA 043

MLK CRK CORNERSTONE JC
MLK CRK LAKOTA 858

MLK CRK EXPRESS 9127
MLK CRK LAKOTA 103
MLK CRK LAKOTA 173

BW/Ratio	88	102
WW/Ratio	653	94
YW/Ratio	1086	98
ADG/Ratio	2.70	104
Dam's MPPA/Age	100.0	4

HB	GM	CED	BW	WW	YW	M	ME	HPG	CEM	ST	MB	YG	CW	REA	FAT
105	49	6	-2.6	54	79	20	-3	11	-2	12	0.44	0.00	13	0.11	0.01
TOP BREED %															
50%	50%	42%	25%	60%	67%	45%	20%	27%	98%	40%	44%	41%	71%	44%	72%



5256 MLK CRK DOMINOR 5256

REG. # 3468512 IATTOO: 5256 BTK BD: 2/20/15 100% 1A

BECKTON DOMINOR Y052 N6
BECKTON DOMINOR A038 J7
BECKTON TARA Y111 J

BECKTON DOMINOR W640 C5
BECKTON INDIGO W772 N

BECKTON JULIAN W841 J5
BECKTON TARA W482 L

5L TRADESMAN 1715-6237
PVRA DESIGN LASS 515

BUF CRK GIULIANI L851
MLK CRK BLOCKANNA 065

RIDGE TRADESMAN 6237-0002
MLK CRK BLOCKANNA 273
MLK CRK BLOCKANNA 777

BW/Ratio	92	109
WW/Ratio	690	100
YW/Ratio	1111	100
ADG/Ratio	2.62	101
Dam's MPPA/Age	98.9	3

HB	GM	CED	BW	WW	YW	M	ME	HPG	CEM	ST	MB	YG	CW	REA	FAT
143	50	9	-1.6	56	95	18	-1	13	3	14	0.47	0.13	25	-0.04	0.03
TOP BREED %															
11%	31%	16%	41%	52%	33%	63%	31%	6%	60%	16%	39%	93%	34%	75%	90%



5257



5257 MLK CRK ADMIRAL 5257

REG. # 3468538 IATTOO: 5257 BTK BD: 2/20/15 100% 1A

5L LEGEND 1553-425V
RIDGE ADMIRAL 3411
RIDGE GRANDIOSE 629-1112

5L LAKOTA LEGEND 7074
5L HAZEL 45L-1553

MLK CRK EXPRESS 9127
RIDGE GRANDIOSE 435-629

5L TRADITION 203-6145
5L LAKOTA 41C-1715

SHOCO DATA
MLK CRK LAKOTA 066

5L TRADEMARK 1715-6317
MLK CRK LAKOTA 007
MLK CRK LAKOTA 429

BW/Ratio	100	114
WW/Ratio	829	120
YW/Ratio	1255	113
ADG/Ratio	2.66	102
Dam's MPPA/Age	105.8	5

HB	GM	CED	BW	WW	YW	M	ME	HPG	CEM	ST	MB	YG	CW	REA	FAT
100	49	3	1.0	75	113	15	3	10	4	11	0.44	0.17	39	0.07	0.03
TOP BREED %															
56%	49%	66%	84%	5%	7%	81%	63%	45%	49%	58%	45%	97%	6%	52%	93%

The Admiral sire has demonstrated his ability to perform against some well proven sires. 5257 is the lead off Admiral son that posted the highest weaning weight and the 3rd highest yearling weight. He is backed up by a productive 6 year old 5L trademark daughter that has a 106 MPPA and udder scored a 7 on attachment and 8 on teat size on the 15th of February 2016.



5258



5258 MLK CRK EPIC 5258

REG. # 3468444 IATTOO: 5258 BTK BD: 2/20/15 100% 1A

BECKTON EPIC K F075
BECKTON EPIC R397 K
BECKTON KIT F468 JL

BECKTON EPIC D404
BECKTON BELGA D483 KR

BECKTON JULIAN GG B571
BECKTON KIT A517 NP

BKT JULIAN 7526 G
BUF CRK MARIGOLD1230

LCC HEAVEN OR BUST1000B
MLK CRK THELMA 875

BUF CRK GIULIANI L851
MLK CRK THELMA 655
MLK CRK THELMA 076

BW/Ratio	98	112
WW/Ratio	661	95
YW/Ratio	1105	99
ADG/Ratio	2.77	106
Dam's MPPA/Age	98.3	9

HB	GM	CED	BW	WW	YW	M	ME	HPG	CEM	ST	MB	YG	CW	REA	FAT
97	49	0	0.9	60	102	18	-3	13	4	11	0.31	0.10	32	0.18	0.03
TOP BREED %															
60%	52%	91%	84%	37%	21%	60%	22%	8%	48%	59%	75%	85%	15%	32%	90%

Yearling Bulls



5267 MLK CRK EXPRESSION 5267

REG. # 3468326 IATTOO: 5267 BTK BD: 2/25/15 100% 1A

5L GRAND EXPRESS 453-5655
MLK CRK EXPRESS 9127
MLK CRK SHEBA 043

5L NORSEMAN EXPRESS
5L RUBY 01-453

BJR PROOF 224-159
MLK CRK SHEBA 869

BECKTON JULIAN GG B571
TR LANA G760

TR NEBULA TT779
TR KIT ST660

BW/Ratio	62	78
WW/Ratio	668	96
YW/Ratio	1092	98
ADG/Ratio	2.63	101
Dam's MPPA/Age	98.4	2

TR JULIAN YT180
TR KIT AT342
TR KIT YT128

HB	GM	CED	BW	WW	YW	M	ME	HPG	CEM	ST	MB	YG	CW	REA	FAT
132	49	14	-5.7	51	72	17	-3	12	5	11	0.41	0.03	4	-0.05	0.01
TOP BREED %															
19%	43%	2%	2%	69%	78%	69%	22%	18%	30%	48%	50%	61%	89%	79%	81%



5268 MLK CRK LEGEND 5268

REG. # 3468452 IATTOO: 5268 BTK BD: 2/26/15 100% 1A

5L LAKOTA LEGEND 7074
5L LEGEND 1553-425V
5L HAZEL 45L-1553

O C C LEGEND 616L
BASIN LAKOTA C999

5L NORSEMAN KING 2291
LA TRAVLIN 124 HAZEL 45

SHOCO SIR ROBIN
VDAR BLACKANA 303

LARSON RED LIGHTNING
MLK CRK LAKOTA 112-RAMB

BW/Ratio	84	104
WW/Ratio	662	96
YW/Ratio	1083	97
ADG/Ratio	2.62	101
Dam's MPPA/Age	98.4	2

SHOCO DATA
MLK CRK LAKOTA 397
MLK CRK LAKOTA 953

HB	GM	CED	BW	WW	YW	M	ME	HPG	CEM	ST	MB	YG	CW	REA	FAT
75	48	6	-1.8	44	71	22	2	8	3	9	0.29	0.02	10	0.18	0.03
TOP BREED %															
83%	68%	38%	36%	87%	79%	24%	56%	86%	65%	82%	78%	51%	77%	31%	92%



5270 MLK CRK KING 5270

REG. # 3468297 IATTOO: 5270 BTK BD: 2/27/15 100% 1A

LACY SIGNATURE 7006
LACY KING 9240
LACY LAKOTA 7155

5L SIGNATURE 5615
LACY REBALAS 53L

CCF GOLD BAR 0251
LACY MS CHEROKEE 94M

5L GRAND EXPRESS 453-5655
MLK CRK SHEBA 043

BUF CRK LANCER-F L297
MLK CRK BONNEBELL 885

BW/Ratio	70	87
WW/Ratio	651	94
YW/Ratio	1035	93
ADG/Ratio	2.39	92
Dam's MPPA/Age	97.6	2

MLK CRK EXPRESS 9127
MLK CRK BONNEBEL 313
MLK CRK BONNEBELL 039

HB	GM	CED	BW	WW	YW	M	ME	HPG	CEM	ST	MB	YG	CW	REA	FAT
112	50	10	-6.2	42	64	21	-4	13	-1	11	0.51	-0.07	-1	0.14	0.01
TOP BREED %															
41%	25%	13%	2%	90%	88%	37%	16%	9%	95%	58%	32%	16%	94%	37%	74%



5271 JNK FITZ 5271

REG. # 3468248 IATTOO: 5271 JNK BD: 2/27/15 100% 1A

BUF CRK LANCER R017
MUSHRUSH IMPRESSIVE CA U236
MUSHRUSH MADAM LT R265

BECKTON LANCER F442 T
BUF CRK JULIET N036

TR JULIAN LT142
MUSHRUSH ROBIN M125

TR JULIAN LT142
MLK CRK LENA 763

BECKTON EPIC R397 K
MLK CRK BLOCKANNA 459

BW/Ratio	70	87
WW/Ratio	719	FST
YW/Ratio	1210	FST
ADG/Ratio	3.06	117
Dam's MPPA/Age		2

MLK CRK REDSTONE
JNK LACE 334
JNK LUCY 187

HB	GM	CED	BW	WW	YW	M	ME	HPG	CEM	ST	MB	YG	CW	REA	FAT
75	51	6	-4.8	57	86	23	-3	14	0	14	0.70	0.04	14	0.11	0.02
TOP BREED %															
18%	11%	39%	6%	49%	51%	21%	24%	4%	92%	22%	10%	65%	67%	44%	88%



5273



5273 MLK CRK FUSION 5273

REG. # 3468354 IATTOO: 5273 BTK BD: 2/24/15 100% 1A

ANDRAS IN FOCUS B175
ANDRAS FUSION R236
ANDRAS BELLE B167

MYTTY IN FOCUS
DI ESTONIA 316

ANDRAS THUNDER B105
ANDRAS BELLE 416

5L BLAZIN TRAIL 1336-237V
HRR THUNDER 751

BUF CRK LANCER-F L297
MLK CRK THELMA 616

BW/Ratio	84	103
WW/Ratio	712	103
YW/Ratio	1206	108
ADG/Ratio	3.08	118
Dam's MPPA/Age	101.2	2

MLK CRK BLAZIN TRAIL 1162
MLK CRK THELMA 3100
MLK CRK THELMA 016

HB	GM	CED	BW	WW	YW	M	ME	HPG	CEM	ST	MB	YG	CW	REA	FAT
124	52	10	-1.4	64	104	25	1	10	5	11	0.77	0.05	30	0.08	0.00
TOP BREED %															
26%	7%	12%	45%	26%	17%	10%	49%	46%	34%	52%	6%	70%	20%	49%	59%

This Fusion son out of a first calf heifer has done very well across the board. He has a balanced birth to weaning performance and has finished as one of the top gaining and yearling bulls in the group. He also brings a very balanced EPD package along with his performance.



Yearling Bulls



Bred heifers winter grazing



5274

MLK CRK IMPRESSIVE 5274

REG. # 3468422

IATTOO: 5274 BTK

BD: 2/24/15

100% 1A

BUF CRK LANCER R017
MUSHRUSH IMPRESSIVE CA U236
 MUSHRUSH MADAM LT R265

BECKTON LANCER F442 T
 BUF CRK JULIET N036
 TR JULIAN LT142
 MUSHRUSH ROBIN M125

BUF CRK GIULIANI L851
MLK CRK BLOCKANNA 777
 MLK CRK BLOCKANNA 065

BKT JULIAN 7526 G
 BUF CRK MARIGOLD1230
 BUF CRK BARNEY 3474
 MLK CRK BLOCKANNA 768

BW/Ratio	94	107
WW/Ratio	699	101
YW/Ratio	1109	100
ADG/Ratio	2.56	98
Dam's MPPA/Age	97.6	8

HB	GM	CED	BW	WW	YW	M	ME	HPG	CEM	ST	MB	YG	CW	REA	FAT
91	50	5	-1.8	61	93	17	0	12	-3	10	0.51	0.03	23	0.07	0.00
TOP BREED %															
68%	31%	48%	36%	35%	37%	71%	39%	18%	99%	66%	32%	61%	40%	51%	62%



5276



5276

MLK CRK LEGEND 5276

REG. # 3468377

IATTOO: 5276 BTK

BD: 2/24/15

100% 1A

5L LAKOTA LEGEND 7074
5L LEGEND 1553-425V
 5L HAZEL 45L-1553

O C C LEGEND 616L
 BASIN LAKOTA C999
 5L NORSEMAN KING 2291
 LA TRAVLIN 124 HAZEL 45

BECKTON EPIC R397 K
MLK CRK BONIBEL 961
 MLK CRK BONIBEL 527

BECKTON EPIC K F075
 BECKTON KIT F468 JL
 SHOCO DATA
 MLK CRK BONIBEL 219

BW/Ratio	96	109
WW/Ratio	727	105
YW/Ratio	1181	106
ADG/Ratio	2.83	109
Dam's MPPA/Age	101.6	6

HB	GM	CED	BW	WW	YW	M	ME	HPG	CEM	ST	MB	YG	CW	REA	FAT
109	50	4	-1.1	60	99	18	-2	11	3	11	0.44	0.10	28	0.37	0.06
TOP BREED %															
44%	31%	56%	49%	37%	25%	59%	25%	28%	57%	51%	43%	87%	25%	12%	99%

Our Epic daughters continue to bring powerful progeny in year after year and 961 did an exceptional job with her 2015 Legend son. 5276 carries a lot of muscle through his loin and quarter as well as having above average depth and spring of rib.



5277



5277

MLK CRK ADMIRAL 5277

REG. # 3468492

IATTOO: 5277 BTK

BD: 2/24/15

100% 1A

5L LEGEND 1553-425V
RIDGE ADMIRAL 3411
 RIDGE GRANDIOSE 629-1112

5L LAKOTA LEGEND 7074
 5L HAZEL 45L-1553
 MLK CRK EXPRESS 9127
 RIDGE GRANDIOSE 435-629

MLK CRK EXPRESS 9141
MLK CRK LAKOTA 165
 MLK CRK LAKOTA 842

5L GRAND EXPRESS 453-5655
 MLK CRK SHEBA 079
 BECKTON EPIC R397 K
 MLK CRK LAKOTA 330

BW/Ratio	90	104
WW/Ratio	749	108
YW/Ratio	1270	114
ADG/Ratio	3.25	125
Dam's MPPA/Age	104.0	4

HB	GM	CED	BW	WW	YW	M	ME	HPG	CEM	ST	MB	YG	CW	REA	FAT
95	50	4	-0.7	76	119	15	-1	8	2	10	0.38	0.15	40	0.16	0.03
TOP BREED %															
63%	27%	62%	56%	4%	4%	80%	36%	79%	74%	67%	57%	94%	5%	35%	93%

5277 is another Admiral son that has performed exceptionally well posting a 108 weaning ratio and following it with the highest yearling ratio in the group offered. This bull is deep and thick and is backed by a very moderate 5 year old Express 9141 daughter.

Yearling Bulls



5278 MLK CRK EPIC 5278

REG. # 3468416 IATTOO: 5278 BTK BD: 2/22/15 100% 1A

BECKTON EPIC K F075
BECKTON EPIC R397 K
 BECKTON KIT F468 JL

MLK CRK TITLEIST 4158
MLK CRK LAKOTA 819
 MLK CRK LIGHTNING 804

BECKTON EPIC D404
 BECKTON BELGA D483 KR

BECKTON JULIAN GG B571
 BECKTON KIT A517 NP

VGW TITLEIST 1106
 MLK CRK SHEBA 079

LARSON RED LIGHTNING
 MLK CRK LAKOTA Y46-HOBO

BW/Ratio	88	TWN
WW/Ratio	717	TWN
YW/Ratio	1116	TWN
ADG/Ratio	2.50	TWN
Dam's MPPA/Age	104.9	7

HB	GM	CED	BW	WW	YW	M	ME	HPG	CEM	ST	MB	YG	CW	REA	FAT
75	49	-2	0.7	64	104	24	-1	7	1	10	0.39	0.07	33	0.28	0.03
TOP BREED %															
84%	45%	98%	82%	24%	18%	13%	31%	91%	87%	66%	55%	78%	14%	18%	92%



5280 MLK CRK ADMIRAL 5280

REG. # 3468483 IATTOO: 5280 BTK BD: 2/24/15 100% 1A

5L LEGEND 1553-425V
RIDGE ADMIRAL 3411
 RIDGE GRANDIOSE 629-1112

C-T GRAND STATEMENT 1025
MLK CRK SHEBA 200
 MLK CRK SHEBA 900

5L LAKOTA LEGEND 7074
 5L HAZEL 45L-1553

MLK CRK EXPRESS 9127
 RIDGE GRANDIOSE 435-629

LJC MISSION STATEMENT P27
 C-T MISS PAN 0760

5L GRAND EXPRESS 453-5655
 MLK CRK SHEBA 403

BW/Ratio	85	101
WW/Ratio	717	104
YW/Ratio	1116	100
ADG/Ratio	2.48	95
Dam's MPPA/Age	101.1	3

HB	GM	CED	BW	WW	YW	M	ME	HPG	CEM	ST	MB	YG	CW	REA	FAT
112	50	7	-2.6	58	87	19	-2	10	5	11	0.52	0.04	18	0.23	0.03
TOP BREED %															
41%	33%	29%	24%	47%	50%	50%	29%	48%	33%	57%	29%	66%	56%	24%	94%



5283 MLK CRK ADMIRAL 5283

REG. # 3468408 IATTOO: 5283 BTK BD: 3/8/15 100% 1A

5L LEGEND 1553-425V
RIDGE ADMIRAL 3411
 RIDGE GRANDIOSE 629-1112

SHOCO DATA
MLK CRK LAKOTA 829
 MLK CRK LAKOTA 876

5L LAKOTA LEGEND 7074
 5L HAZEL 45L-1553

MLK CRK EXPRESS 9127
 RIDGE GRANDIOSE 435-629

SHOCO SIR ROBIN
 V DAR BLACKANA 303

GLACIER CUB 446
 MLK CRK LAKOTA 565

BW/Ratio	96	109
WW/Ratio	728	105
YW/Ratio	1179	106
ADG/Ratio	2.82	108
Dam's MPPA/Age	104.0	7

HB	GM	CED	BW	WW	YW	M	ME	HPG	CEM	ST	MB	YG	CW	REA	FAT
102	48	3	0.0	64	97	18	1	9	4	11	0.47	0.15	27	0.12	0.05
TOP BREED %															
54%	59%	64%	71%	24%	30%	61%	49%	60%	43%	51%	39%	95%	26%	42%	97%

MLK CRK Lakota 829 has produced a moderate thick made Admiral son that will add pounds to his progeny at weaning and post weaning.



5286 MLK CRK IMPRESSION 5286

REG. # 3468414 IATTOO: 5286 BTK BD: 3/5/15 100% 1A

MUSHRUSH IMPRESSIVE CA U236
HRR IMPRESSIVE 227
 HRR BANA 031

5L GRAND EXPRESS 453-5655
MLK CRK SHEBA 822
 MLK CRK SHEBA 979

BUF CRK LANCER R017
 MUSHRUSH MADAM LT R265

STEADFAST BOAZ T71
 HRR BANA 870

5L NORSEMAN EXPRESS
 5L RUBY 01-453

MLK CRK CUB 722
 BJR SHEBA 4X-551

BW/Ratio	90	102
WW/Ratio	697	101
YW/Ratio	1135	102
ADG/Ratio	2.74	105
Dam's MPPA/Age	99.2	7

HB	GM	CED	BW	WW	YW	M	ME	HPG	CEM	ST	MB	YG	CW	REA	FAT
87	49	5	-1.8	62	95	16	0	9	1	9	0.27	-0.04	23	0.26	-0.01
TOP BREED %															
72%	44%	43%	37%	30%	34%	73%	40%	68%	85%	74%	81%	25%	38%	20%	48%



5286X



5286X MLK CRK ADMIRAL 5286X

REG. # 3468514 IATTOO: 5286X BTK BD: 3/7/15 100% 1A

5L LEGEND 1553-425V
RIDGE ADMIRAL 3411
 RIDGE GRANDIOSE 629-1112

MLK CRK EXPRESS 9141
MLK CRK VAL 277
 MLK CRK VAL 886

5L LAKOTA LEGEND 7074
 5L HAZEL 45L-1553

MLK CRK EXPRESS 9127
 RIDGE GRANDIOSE 435-629

5L GRAND EXPRESS 453-5655
 MLK CRK SHEBA 079

BUF CRK GIULIANI L851
 BJR VAL 4X-5114

BW/Ratio	94	111
WW/Ratio	758	109
YW/Ratio	1239	111
ADG/Ratio	2.99	115
Dam's MPPA/Age	101.7	3

HB	GM	CED	BW	WW	YW	M	ME	HPG	CEM	ST	MB	YG	CW	REA	FAT
87	49	4	0.8	77	119	12	0	9	2	9	0.28	0.11	42	0.25	0.02
TOP BREED %															
73%	43%	63%	82%	3%	4%	94%	42%	72%	69%	76%	79%	87%	4%	22%	88%

This bull is a 3/4 brother to 5277 and this combination seems to be working quite well. He has above average muscle and depth with a nice look which comes from his attractive 4 year old 9141 dam. With a 109 weaning and 111 yearling ratios he will add the performance needed for heavier weaning weights as well feedlot gain while leaving feminine productive daughters in the herd.



Yearling Bulls



MLK CRK EXPRESS 5287

REG. # 3468523 IATTOO: 5287 BTK BD: 3/7/15 100% 1A

5L GRAND EXPRESS 453-5655
MLK CRK EXPRESS 9141
 MLK CRK SHEBA 079

MLK CRK KNIGHT 7153
MLK CRK SHEBA 102
 MLK CRK SHEBA 403

5L NORSEMAN EXPRESS
 5L RUBY 01-453
 MLK CRK CUB 722
 BJR SHEBA 4X-551
 RED YY RED KNIGHT 640F
 MLK CRK SHEBA 043
 GLACIER CHATEAU 744
 MLK CRK SHEBA 055

BW/Ratio	84	97
WW/Ratio	736	106
YW/Ratio	1116	100
ADG/Ratio	2.37	91
Dam's MPPA/Age	104.0	4

HB	GM	CED	BW	WW	YW	M	ME	HPG	CEM	ST	MB	YG	CW	REA	FAT
108	49	6	-1.5	65	86	13	1	7	5	12	0.45	-0.09	18	0.16	-0.03
TOP BREED %															
45%	55%	42%	41%	22%	51%	91%	47%	94%	26%	46%	43%	14%	54%	35%	11%



MLK CRK EXPRESS 5288

REG. # 3468425 IATTOO: 5288 BTK BD: 3/7/15 100% 1A

5L GRAND EXPRESS 453-5655
MLK CRK EXPRESS 9141
 MLK CRK SHEBA 079

BECKTON EPIC R397 K
MLK CRK LAKINA 766
 MLK CRK LAKINA 502

5L NORSEMAN EXPRESS
 5L RUBY 01-453
 MLK CRK CUB 722
 BJR SHEBA 4X-551
 BECKTON EPIC K F075
 BECKTON KIT F468 JL
 BFCK CHEROKEE CNYN 4912
 MLK CRK LAKINA 156

BW/Ratio	98	111
WW/Ratio	785	113
YW/Ratio	1068	96
ADG/Ratio	1.77	68
Dam's MPPA/Age	109.1	8

HB	GM	CED	BW	WW	YW	M	ME	HPG	CEM	ST	MB	YG	CW	REA	FAT
100	47	1	0.6	71	88	16	0	10	0	13	0.43	-0.06	22	0.25	-0.01
TOP BREED %															
57%	82%	87%	80%	10%	47%	78%	43%	48%	90%	31%	46%	18%	42%	22%	32%



5290



MLK CRK EXPRESS 5290

REG. # 3468387 IATTOO: 5290 BTK BD: 3/7/15 100% 1A

5L GRAND EXPRESS 453-5655
MLK CRK EXPRESS 9141
 MLK CRK SHEBA 079

TR JULIAN LT142
MLK CRK LAKOTA 929
 MLK CRK LAKOTA 621

5L NORSEMAN EXPRESS
 5L RUBY 01-453
 MLK CRK CUB 722
 BJR SHEBA 4X-551
 BECKTON JULIAN GG B571
 TR LANA G760
 SHOCO DATA
 MLK CRK LAKOTA 166

BW/Ratio	88	100
WW/Ratio	736	106
YW/Ratio	1162	104
ADG/Ratio	2.66	102
Dam's MPPA/Age	103.9	6

HB	GM	CED	BW	WW	YW	M	ME	HPG	CEM	ST	MB	YG	CW	REA	FAT
119	49	8	-1.5	67	91	11	2	7	5	12	0.42	-0.04	21	0.14	-0.02
TOP BREED %															
31%	54%	24%	43%	17%	41%	94%	62%	90%	23%	36%	48%	28%	45%	39%	26%



MLK CRK Lakota 929, dam of 5290



MLK CRK KING 5291

REG. # 3468369 IATTOO: 5291 BTK BD: 3/9/15 100% 1A

LACY SIGNATURE 7006
LACY KING 9240
 LACY LAKOTA 7155

BECKTON EPIC R397 K
MLK CRK SUN GAL 1001
 BJR SUN GAL 4X-561

5L SIGNATURE 5615
 LACY REBALAS 53L
 CCF GOLD BAR 0251
 LACY MS CHEROKEE 94M
 BECKTON EPIC K F075
 BECKTON KIT F468 JL
 BJR MONU 4X-303
 BJR SUN GAL 1193-375

BW/Ratio	90	104
WW/Ratio	720	104
YW/Ratio	1219	110
ADG/Ratio	3.11	120
Dam's MPPA/Age	96.0	4

HB	GM	CED	BW	WW	YW	M	ME	HPG	CEM	ST	MB	YG	CW	REA	FAT
100	51	0	-1.6	60	102	18	-3	13	-5	12	0.59	0.06	29	0.21	0.02
TOP BREED %															
57%	12%	91%	39%	38%	20%	58%	23%	7%	99%	41%	19%	70%	22%	27%	86%

We have used Lacy King for five years on heifers and cows and appreciate the daughters that he is leaving in the herd. 5291 brings Epic in to picture from the bottom side of the pedigree which allows the performance of this sire to pull through to the next generation. The combination of these two pedigrees should make some excellent females that are very productive and their steer mates should perform very well.

Yearling Bulls



5292 MLK CRK ADMIRAL 5292

REG. # 3468287 IATTOO: 5292 BTK BD: 3/9/15 100% 1A

5L LEGEND 1553-425V
RIDGE ADMIRAL 3411
 RIDGE GRANDIOSE 629-1112

 LACY KING 9240
MLK CRK SUN GAL 297
 MLK CRK SUN GAL 678

5L LAKOTA LEGEND 7074
 5L HAZEL 45L-1553
 MLK CRK EXPRESS 9127
 RIDGE GRANDIOSE 435-629

 LACY SIGNATURE 7006
 LACY LAKOTA 7155
 VDAR RAMBO 323
 BJR SUN GAL 4X-561

BW/Ratio	84	100
WW/Ratio	695	100
YW/Ratio	1069	96
ADG/Ratio	2.32	89
Dam's MPPA/Age	98.9	3

HB	GM	CED	BW	WW	YW	M	ME	HPG	CEM	ST	MB	YG	CW	REA	FAT
91	49	4	-2.0	53	82	20	0	10	-3	11	0.49	0.01	16	0.20	0.02
TOP BREED %															
68%	41%	56%	33%	63%	61%	44%	42%	54%	99%	54%	35%	51%	62%	27%	87%



5293 MLK CRK ADMIRAL 5293

REG. # 3468503 IATTOO: 5293 BTK BD: 3/8/15 100% 1A

5L LEGEND 1553-425V
RIDGE ADMIRAL 3411
 RIDGE GRANDIOSE 629-1112

 MUSHRUSH IMPRESSIVE CA U236
MLK CRK ESTONIA 248
 MLK CRK ESTONIA 058

5L LAKOTA LEGEND 7074
 5L HAZEL 45L-1553
 MLK CRK EXPRESS 9127
 RIDGE GRANDIOSE 435-629

 BUF CRK LANCER R017
 MUSHRUSH MADAM LT R265
 BECKTON EPIC R397 K
 MLK CRK ESTONIA 762

BW/Ratio	84	100
WW/Ratio	647	93
YW/Ratio	1070	96
ADG/Ratio	2.63	101
Dam's MPPA/Age	95.4	3

HB	GM	CED	BW	WW	YW	M	ME	HPG	CEM	ST	MB	YG	CW	REA	FAT
106	49	6	-2.7	53	84	19	-3	11	1	11	0.45	0.08	16	0.23	0.05
TOP BREED %															
48%	41%	39%	23%	62%	57%	50%	20%	32%	85%	51%	42%	78%	62%	23%	98%



5294 MLK CRK KING 5294

REG. # 3468537 IATTOO: 5294 BTK BD: 3/9/15 100% 1A

LACY SIGNATURE 7006
LACY KING 9240
 LACY LAKOTA 7155

 5L GRAND EXPRESS 453-5655
MLK CRK RED TOP 013
 MLK CRK RED TOP 232

5L SIGNATURE 5615
 LACY REBALAS 53L
 CCF GOLD BAR 0251
 LACY MS CHEROKEE 94M

 5L NORSEMAN EXPRESS
 5L RUBY 01-453
 MLK CRK CUB 722
 MS HAMMEL RED TOP 6309

BW/Ratio	95	108
WW/Ratio	687	99
YW/Ratio	1137	102
ADG/Ratio	2.81	108
Dam's MPPA/Age	102.2	5

HB	GM	CED	BW	WW	YW	M	ME	HPG	CEM	ST	MB	YG	CW	REA	FAT
78	50	3	-2.0	49	81	20	-2	12	-3	9	0.54	-0.02	16	0.21	0.01
TOP BREED %															
81%	27%	70%	33%	77%	62%	43%	26%	18%	99%	76%	27%	32%	62%	27%	74%



5296 MLK CRK DOMINOR 5296

REG. # 3468534 IATTOO: 5296 BTK BD: 2/24/15 100% 1A

BECKTON DOMINOR Y052 N6
BECKTON DOMINOR A038 J7
 BECKTON TARA Y111 J

 BUF CRK LANCER-F L297
MLK CRK BONNEBELL 039
 MLK CRK BONNEBELL 885

BECKTON DOMINOR W640 C5
 BECKTON INDIGO W772 N
 BECKTON JULIAN W841 J5
 BECKTON TARA W482 L

 BECKTON LANCER F442 T
 BUF CRK LASS 4158
 BECKTON EPIC R397 K
 MLK CRK BONNEBELL 444

BW/Ratio	94	107
WW/Ratio	747	108
YW/Ratio	1202	108
ADG/Ratio	2.84	109
Dam's MPPA/Age	103.6	5

HB	GM	CED	BW	WW	YW	M	ME	HPG	CEM	ST	MB	YG	CW	REA	FAT
157	51	11	-3.1	61	99	22	-4	13	3	15	0.56	0.13	24	0.07	0.04
TOP BREED %															
5%	16%	9%	18%	36%	26%	27%	18%	10%	53%	10%	24%	91%	35%	52%	95%

5296 brings a new line of genetics to our operation with his sire producing his first offspring for this offering. If you appreciate moderate cattle that perform above average, have above average muscle and shape, and carry a little extra flesh you will like the Dominor progeny.



MLK CRK Emu Mar 812, dam of 5299



5299 MLK CRK EXPRESS 5299

REG. # 3468420 IATTOO: 5299 BTK BD: 3/10/15 100% 1A

5L GRAND EXPRESS 453-5655
MLK CRK EXPRESS 9141
 MLK CRK SHEBA 079

 RED YY RED KNIGHT 640F
MLK CRK EMU MAR 812
 MLK CRK EMU MAR 951

5L NORSEMAN EXPRESS
 5L RUBY 01-453
 MLK CRK CUB 722
 BJR SHEBA 4X-551

 RED YY 23L TOPPER 408D
 RED TOP GOLDIE 40U
 BJR JR 107-136
 BJR EMU-MAR 293-112

BW/Ratio	85	97
WW/Ratio	721	104
YW/Ratio	1059	95
ADG/Ratio	2.11	81
Dam's MPPA/Age	105.6	7

HB	GM	CED	BW	WW	YW	M	ME	HPG	CEM	ST	MB	YG	CW	REA	FAT
111	48	5	-1.5	56	73	14	0	6	4	13	0.36	-0.14	11	0.08	-0.05
TOP BREED %															
42%	73%	44%	41%	53%	76%	88%	43%	97%	47%	28%	64%	7%	76%	49%	5%



Yearling Bulls



5300



5300 MLK CRK KING 5300

REG. # 3468529 IATTOO: 5300 BTK BD: 3/11/15 100% 1A

LACY SIGNATURE 7006
LACY KING 9240
 LACY LAKOTA 7155

5L SIGNATURE 5615
 LACY REBALAS 53L
 CCF GOLD BAR 0251
 LACY MS CHEROKEE 94M
 5L TRAVLIN EXPRESS 1892-6295
 5L SERENA 3234-1766
 MLK CRK DATA 4156
 MLK CRK MALTA 176

BW/Ratio	78	89
WW/Ratio	755	109
YW/Ratio	1127	101
ADG/Ratio	2.32	89
Dam's MPPA/Age	104.4	5

HB	GM	CED	BW	WW	YW	M	ME	HPG	CEM	ST	MB	YG	CW	REA	FAT
116	51	8	-4.4	51	76	22	-1	11	0	12	0.69	-0.04	9	0.20	0.01
TOP BREED %															
35%	16%	24%	8%	70%	71%	30%	30%	26%	93%	42%	11%	25%	80%	29%	75%

5300 is another Lacy King son that is very moderate in birth weight but he didn't let that hold him back on his way to weaning. His dam is a moderate Trailblazer dam that posts a 98 BW ratio, 106 WW ratio and 106 YW ratio. The biggest challenge would be determining if you want to use him on heifers or cows.



5301 MLK CRK EXPRESS 5301

REG. # 3468429 IATTOO: 5301 BTK BD: 3/11/15 100% 1A

5L GRAND EXPRESS 453-5655
MLK CRK EXPRESS 9141
 MLK CRK SHEBA 079

5L NORSEMAN EXPRESS
 5L RUBY 01-453

MLK CRK CUB 722
 BJR SHEBA 4X-551

RED YY 23L TOPPER 408D
 RED TOP GOLDIE 40U

LEACHMAN MONU 2X 8096
 FED'S BLOCKANA 4225

BW/Ratio	96	109
WW/Ratio	680	98
YW/Ratio	1120	101
ADG/Ratio	2.74	106
Dam's MPPA/Age	104.9	8

HB	GM	CED	BW	WW	YW	M	ME	HPG	CEM	ST	MB	YG	CW	REA	FAT
118	48	4	0.7	62	87	12	1	7	7	13	0.40	-0.05	23	0.03	-0.04
TOP BREED %															
32%	71%	62%	80%	31%	49%	93%	52%	95%	10%	23%	55%	24%	41%	61%	7%

RED YY RED KNIGHT 640F
MLK CRK BLOCKANA 754
 FEDDES BLOCKANA 940



5302 JNK OLIVER 5302

REG. # 3468243 IATTOO: 5302 JNK BD: 3/10/15 100% 1A

RED LAZY MC REDMAN 94Y
RED CROWFOOT REDMAN 3107A
 RED CROWFOOT BRNDINA 1103Y

RED RMJ REDMAN 1T
 RED BROX ICECAP 1R
 RED CROWFOOT MOONSHINE 8081U
 RED CROWFOOT BRNDINA 6378S

BW/Ratio	75	92
WW/Ratio	643	93
YW/Ratio	1062	95
ADG/Ratio	2.66	102
Dam's MPPA/Age	97.2	2

LACY KING 9240
JNK PRIM 3120
 LAUBACH PRIDSTOM 0012

LACY SIGNATURE 7006
 LACY LAKOTA 7155
 GMRA SECRET MISSION 8258
 LAUBACH PRIDSTOM 8112

HB	GM	CED	BW	WW	YW	M	ME	HPG	CEM	ST	MB	YG	CW	REA	FAT
138	50	11	-5.0	42	66	22	-5	11	2	14	0.41	-0.10	2	0.12	-0.01
TOP BREED %															
14%	31%	8%	5%	91%	86%	24%	14%	36%	74%	17%	50%	12%	91%	40%	36%



5303 MLK CRK LEGENDARY 5303

REG. # 3468455 IATTOO: 5303 BTK BD: 3/11/15 100% 1A

5L LEGEND 1553-425V
RIDGE LEGEND 2069
 RIDGE AQUILA 552-8066

5L LAKOTA LEGEND 7074
 5L HAZEL 45L-1553

5L NORMANDY CANYON 6024
 RIDGE AQUILA 213-552

5L GRAND EXPRESS 453-5655
 MLK CRK SHEBA 079

SHOCO DATA
 MLK CRK LAKOTA 183

BW/Ratio	90	110
WW/Ratio	705	102
YW/Ratio	1110	100
ADG/Ratio	2.52	97
Dam's MPPA/Age	100.8	2

HB	GM	CED	BW	WW	YW	M	ME	HPG	CEM	ST	MB	YG	CW	REA	FAT
96	48	3	0.3	51	80	20	3	9	3	12	0.37	0.03	19	0.23	0.03
TOP BREED %															
62%	72%	72%	74%	69%	64%	47%	68%	63%	62%	46%	61%	61%	54%	23%	92%

MLK CRK EXPRESS 9141
MLK CRK LAKOTA 392
 MLK CRK LAKOTA 526



5305 MLK CRK ADMIRAL 5305

REG. # 3468509 IATTOO: 5305 BTK BD: 3/12/15 100% 1A

5L LEGEND 1553-425V
RIDGE ADMIRAL 3411
 RIDGE GRANDIOSE 629-1112

5L LAKOTA LEGEND 7074
 5L HAZEL 45L-1553
 MLK CRK EXPRESS 9127
 RIDGE GRANDIOSE 435-629

BW/Ratio	88	104
WW/Ratio	690	100
YW/Ratio	1153	104
ADG/Ratio	2.88	111
Dam's MPPA/Age	97.7	3

BECKTON EPIC R397 K
MLK CRK SUN GAL 268
 MLK CRK SUN GAL 888

BECKTON EPIC K F075
 BECKTON KIT F468 JL
 BUF CRK GIULIANI L851
 MLK CRK SUN GAL 552

HB	GM	CED	BW	WW	YW	M	ME	HPG	CEM	ST	MB	YG	CW	REA	FAT
103	50	3	-1.0	66	107	16	-1	11	0	11	0.40	0.15	33	0.26	0.06
TOP BREED %															
52%	32%	71%	52%	20%	13%	76%	30%	25%	89%	50%	53%	95%	14%	20%	99%

Yearling Bulls



5306 MLK CRK IMPRESSION 5306
 REG. # 3468383 IATTOO: 5306 BTK BD: 3/12/15 100% 1A

MUSHRUSH IMPRESSIVE CA U236
HRR IMPRESSIVE 227
 HRR BANA 031

5L GRAND EXPRESS 453-5655
MLK CRK THELMA 938
 MLK CRK THELMA 655

BUF CRK LANCER R017
 L MUSHRUSH MADAM LT R265

STEADFAST BOAZ T71
 HRR BANA 870

5L NORSEMAN EXPRESS
 5L RUBY 01-453

BUF CRK GIULIANI L851
 MLK CRK THELMA 076

BW/Ratio	94	107
WW/Ratio	708	102
YW/Ratio	1108	100
ADG/Ratio	2.50	96
Dam's MPPA/Age	102.3	6

HB	GM	CED	BW	WW	YW	M	ME	HPG	CEM	ST	MB	YG	CW	REA	FAT
96	48	7	-0.9	61	91	18	-1	11	3	10	0.25	0.00	23	0.17	0.00
TOP BREED %															
61%	63%	30%	54%	34%	40%	64%	30%	30%	55%	73%	86%	41%	40%	32%	60%

5307 MLK CRK EXPRESS 5307
 REG. # 3468323 IATTOO: 5307 BTK BD: 3/12/15 100% 1A

5L GRAND EXPRESS 453-5655
MLK CRK EXPRESS 9141
 MLK CRK SHEBA 079

5L NORSEMAN EXPRESS
 5L RUBY 01-453

MLK CRK CUB 722
 BJR SHEBA 4X-551

BUF CRK BARNEY 3474
 MLK CRK LAKOTA 850

FCC RAMBO 502
 CFLD LAKOTA 112-914

BW/Ratio	102	116
WW/Ratio	753	109
YW/Ratio	1100	99
ADG/Ratio	2.17	83
Dam's MPPA/Age	102.3	6

HB	GM	CED	BW	WW	YW	M	ME	HPG	CEM	ST	MB	YG	CW	REA	FAT
102	47	5	-0.1	58	78	16	4	6	5	12	0.42	-0.03	16	-0.04	-0.03
TOP BREED %															
53%	81%	48%	67%	45%	69%	78%	76%	98%	24%	40%	50%	28%	63%	75%	12%



5309 MLK CRK EXPRESS 5309
 REG. # 3468532 IATTOO: 5309 BTK BD: 3/14/15 100% 1A

5L GRAND EXPRESS 453-5655
MLK CRK EXPRESS 9141
 MLK CRK SHEBA 079

5L NORSEMAN EXPRESS
 5L RUBY 01-453

MLK CRK CUB 722
 BJR SHEBA 4X-551

TR JULIAN WT951
 TR LANA G760

MLK CRK DATA 4156
 MLK CRK LAKOTA 654

BW/Ratio	88	100
WW/Ratio	706	102
YW/Ratio	1096	99
ADG/Ratio	2.43	94
Dam's MPPA/Age	100.7	5

HB	GM	CED	BW	WW	YW	M	ME	HPG	CEM	ST	MB	YG	CW	REA	FAT
106	49	4	-1.0	61	89	11	-2	9	3	12	0.40	-0.05	21	0.25	0.00
TOP BREED %															
48%	51%	56%	50%	33%	45%	95%	27%	74%	54%	46%	52%	24%	45%	21%	52%



5310

5310 MLK CRK EXPRESS 5310
 REG. # 3468366 IATTOO: 5310 BTK BD: 3/14/15 100% 1A

5L GRAND EXPRESS 453-5655
MLK CRK EXPRESS 9141
 MLK CRK SHEBA 079

5L NORSEMAN EXPRESS
 5L RUBY 01-453

MLK CRK CUB 722
 BJR SHEBA 4X-551

TR JULIAN WT951
 TR LANA G760

MLK CRK DATA 4156
 MLK CRK LAKOTA 654

BW/Ratio	92	107
WW/Ratio	714	103
YW/Ratio	1083	97
ADG/Ratio	2.30	88
Dam's MPPA/Age	102.0	4

HB	GM	CED	BW	WW	YW	M	ME	HPG	CEM	ST	MB	YG	CW	REA	FAT
95	48	6	-0.6	58	80	13	1	7	4	11	0.42	-0.05	16	0.09	-0.02
TOP BREED %															
62%	69%	39%	58%	46%	65%	92%	45%	93%	37%	61%	48%	21%	62%	46%	20%

1008, the dam to 5310 is our biggest ribbed cow on the ranch. We have troubles getting her to squeeze into a chute because of her capacity. She has passed on some of her capacity and thickness to her Express 9141 son.



Yearling Bulls



5314

MLK CRK EXPRESS 5314

REG. # 3468321 IATTOO: 5314 BTK BD: 3/16/15 100% 1A

5L GRAND EXPRESS 453-5655
MLK CRK EXPRESS 9141
 MLK CRK SHEBA 079

5L NORSEMAN EXPRESS
 5L RUBY 01-453

MLK CRK CUB 722
 BJR SHEBA 4X-551
 BKT JULIAN 7526 G
 BUF CRK MARIGOLD1230
 MLK CRK MARIAS 013
 MLK CRK FIREFLY 656

BW/Ratio	100	114
WW/Ratio	717	104
YW/Ratio	1085	98
ADG/Ratio	2.30	88
Dam's MPPA/Age	95.9	8

HB	GM	CED	BW	WW	YW	M	ME	HPG	CEM	ST	MB	YG	CW	REA	FAT
95	47	5	0.2	57	80	9	0	10	2	11	0.31	-0.06	17	0.09	-0.02
TOP BREED %															
62%	83%	46%	74%	48%	65%	98%	41%	43%	68%	58%	73%	21%	58%	48%	14%



5315

MLK CRK KING 5315

REG. # 3468521 IATTOO: 5315 BTK BD: 3/15/15 100% 1A

LACY SIGNATURE 7006
LACY KING 9240
 LACY LAKOTA 7155

5L SIGNATURE 5615
 LACY REBALAS 53L
 CCF GOLD BAR 0251
 LACY MS CHEROKEE 94M

5L TRADESMAN 1715-6237
MLK CRK THELMA 128
 MLK CRK THELMA 616

5L TRADITION 203-6145
 5L LAKOTA 41C-1715
 RED YY RED KNIGHT 640F
 MLK CRK THELMA 315

BW/Ratio	100	115
WW/Ratio	741	107
YW/Ratio	1189	107
ADG/Ratio	2.79	107
Dam's MPPA/Age	104.7	4

HB	GM	CED	BW	WW	YW	M	ME	HPG	CEM	ST	MB	YG	CW	REA	FAT
102	51	5	-2.2	56	94	20	0	12	-1	11	0.58	0.05	23	0.10	0.01
TOP BREED %															
53%	17%	46%	30%	52%	36%	45%	40%	12%	95%	59%	21%	70%	40%	44%	81%



5316

MLK CRK EXPRESS 5316

REG. # 3468427 IATTOO: 5316 BTK BD: 3/12/15 100% 1A

5L GRAND EXPRESS 453-5655
MLK CRK EXPRESS 9141
 MLK CRK SHEBA 079

5L NORSEMAN EXPRESS
 5L RUBY 01-453

MLK CRK CUB 722
 BJR SHEBA 4X-551
 SHOCO SIR ROBIN
 VDAR BLACKANA 303
 FCC RAMBO 502
 PCH BONNEBELL Y50

BW/Ratio	84	TWN
WW/Ratio	546	TWN
YW/Ratio	1032	TWN
ADG/Ratio	3.04	TWN
Dam's MPPA/Age	107.0	8

HB	GM	CED	BW	WW	YW	M	ME	HPG	CEM	ST	MB	YG	CW	REA	FAT
90	48	4	-0.2	63	84	12	4	7	3	11	0.35	-0.05	19	0.15	-0.02
TOP BREED %															
69%	78%	61%	65%	29%	56%	93%	73%	95%	66%	55%	67%	21%	52%	37%	24%



5321

MLK CRK DOMINOR 5321

REG. # 3468359 IATTOO: 5321 BTK BD: 3/18/15 100% 1A

BECKTON DOMINOR Y052 N6
BECKTON DOMINOR A038 J7
 BECKTON TARA Y111 J

BECKTON DOMINOR W640 C5
 BECKTON INDIGO W772 N
 BECKTON JULIAN W841 J5
 BECKTON TARA W482 L

MLK CRK EXPRESS 9141
MLK CRK LAKOTA 2115
 MLK CRK LAKOTA 932

5L GRAND EXPRESS 453-5655
 MLK CRK SHEBA 079
 RED CROWFOOT OLE'S OSCAR
 MLK CRK LAKOTA 330

BW/Ratio	76	91
WW/Ratio	669	97
YW/Ratio	1060	95
ADG/Ratio	2.43	94
Dam's MPPA/Age	102.3	3

HB	GM	CED	BW	WW	YW	M	ME	HPG	CEM	ST	MB	YG	CW	REA	FAT
141	50	9	-4.0	52	80	21	0	11	5	14	0.59	0.03	12	0.05	0.01
TOP BREED %															
12%	23%	15%	11%	66%	63%	34%	39%	34%	28%	19%	20%	56%	73%	56%	80%



5322

MLK CRK LEGENDARY 5322

REG. # 3468474 IATTOO: 5322 BTK BD: 3/18/15 100% 1A

5L LEGEND 1553-425V
RIDGE LEGEND 2069
 RIDGE AQUILA 552-8066

5L LAKOTA LEGEND 7074
 5L HAZEL 45L-1553

5L NORMANDY CANYON 6024
 RIDGE AQUILA 213-552
 5L GRAND EXPRESS 453-5655
 MLK CRK SHEBA 079
 5L BLAZIN TRAIL 1336-237V
 MLK CRK LAKOTA 515

BW/Ratio	64	81
WW/Ratio	650	94
YW/Ratio	1057	95
ADG/Ratio	2.53	97
Dam's MPPA/Age	97.6	2

HB	GM	CED	BW	WW	YW	M	ME	HPG	CEM	ST	MB	YG	CW	REA	FAT
111	50	10	-5.4	39	63	24	3	9	3	11	0.40	-0.06	0	0.31	0.03
TOP BREED %															
41%	35%	13%	3%	94%	89%	13%	67%	57%	56%	54%	55%	18%	94%	15%	92%

Yearling Bulls



5323 MLK CRK ADMIRAL 5323

REG. # 3468286 IATTOO: 5323 BTK BD: 3/18/15 100% 1A

5L LEGEND 1553-425V
RIDGE ADMIRAL 3411
 RIDGE GRANDIOSE 629-1112

 RIDGE TRADESMAN 6237-0002
MLK CRK LAKOTA 296
 MLK CRK LAKOTA 445

5L LAKOTA LEGEND 7074
 5L HAZEL 45L-1553
 MLK CRK EXPRESS 9127
 RIDGE GRANDIOSE 435-629
 5L TRADESMAN 1715-6237
 PVRA DESIGN LASS 515
 VGW TITLLEIST 1106
 MLK CRK LAKOTA 183

BW/Ratio	82	98
WW/Ratio	662	96
YW/Ratio	1102	99
ADG/Ratio	2.74	105
Dam's MPPA/Age	93.1	3

HB	GM	CED	BW	WW	YW	M	ME	HPG	CEM	ST	MB	YG	CW	REA	FAT
107	49	6	-1.0	58	92	16	0	10	3	11	0.29	0.10	24	0.17	0.04
TOP BREED %															
46%	57%	40%	50%	46%	38%	77%	37%	56%	54%	49%	77%	85%	37%	34%	95%



5325 MLK CRK EXPRESS 5325

REG. # 3468374 IATTOO: 5325 BTK BD: 3/17/15 100% 1A

5L GRAND EXPRESS 453-5655
MLK CRK EXPRESS 9141
 MLK CRK SHEBA 079

 5L GRAND EXPRESS 453-5655
MLK CRK LAKINA 973
 BJR LAKINA 319-810

5L NORSEMAN EXPRESS
 5L RUBY 01-453
 MLK CRK CUB 722
 BJR SHEBA 4X-551
 5L NORSEMAN EXPRESS
 5L RUBY 01-453
 BJR HIGH HO 5112-23L
 BJR LAKINA 502-647

BW/Ratio	100	114
WW/Ratio	738	107
YW/Ratio	1124	101
ADG/Ratio	2.41	93
Dam's MPPA/Age	98.5	6

HB	GM	CED	BW	WW	YW	M	ME	HPG	CEM	ST	MB	YG	CW	REA	FAT
87	48	4	0.9	62	88	9	-3	8	3	10	0.27	-0.13	23	0.25	-0.04
TOP BREED %															
72%	75%	62%	84%	30%	47%	98%	23%	88%	64%	66%	83%	8%	38%	21%	6%



5328



5328 MLK CRK DOMINOR 5328

REG. # 3468378 IATTOO: 5328 BTK BD: 3/20/15 100% 1A

BECKTON DOMINOR Y052 N6
BECKTON DOMINOR A038 J7
 BECKTON TARA Y111 J

 BECKTON EPIC R397 K
MLK CRK EMUMAR 959
 MLK CRK EMUMAR 854

BECKTON DOMINOR W640 C5
 BECKTON INDIGO W772 N
 BECKTON JULIAN W841 J5
 BECKTON TARA W482 L
 BECKTON EPIC K F075
 BECKTON KIT F468 JL
 GLACIER LOGAN 210
 MLK CRK EMUMAR695

BW/Ratio	80	91
WW/Ratio	633	91
YW/Ratio	1110	100
ADG/Ratio	2.98	115
Dam's MPPA/Age	93.9	6

HB	GM	CED	BW	WW	YW	M	ME	HPG	CEM	ST	MB	YG	CW	REA	FAT
158	51	7	-4.0	51	90	22	-1	14	5	15	0.58	0.09	18	0.04	0.03
TOP BREED %															
5%	10%	26%	11%	71%	44%	24%	32%	5%	29%	8%	20%	84%	54%	59%	90%



5329



5329 MLK CRK DOMINOR 5329

REG. # 3468275 IATTOO: 5329 BTK BD: 3/18/15 100% 1A

BECKTON DOMINOR Y052 N6
BECKTON DOMINOR A038 J7
 BECKTON TARA Y111 J

 MUSHRUSH IMPRESSIVE CA U236
MLK CRK LANA 210
 MLK CRK LANA 409

BECKTON DOMINOR W640 C5
 BECKTON INDIGO W772 N
 BECKTON JULIAN W841 J5
 BECKTON TARA W482 L
 BUF CRK LANCER R017
 MUSHRUSH MADAM LT R265
 GLACIER CHATEAU 744
 MLK CRK LANA 965

BW/Ratio	82	97
WW/Ratio	634	92
YW/Ratio	1079	97
ADG/Ratio	2.77	107
Dam's MPPA/Age	94.3	3

HB	GM	CED	BW	WW	YW	M	ME	HPG	CEM	ST	MB	YG	CW	REA	FAT
139	51	8	-3.9	49	81	22	-1	14	-1	15	0.63	0.08	13	0.07	0.04
TOP BREED %															
13%	18%	24%	11%	76%	62%	26%	35%	4%	94%	12%	15%	82%	71%	52%	95%



Yearling Bulls



5331 MLK CRK REDSTONE 5331

REG. # 3497873 IATTOO: 5331 BTK BD: 3/22/15 100% 1A

TR JULIAN LT142
MLK CRK REDSTONE
 MLK CRK LENA 763

SHOCO DATA
MLK CRK LAKINA 523
 MLK CRK LAKINA 228

BECKTON JULIAN GG B571
 TR LANA G760

BECKTON EPIC R397 K
 MLK CRK LENA 533

SHOCO SIR ROBIN
 VDAR BLACKANA 303
 MLK CRK MARIAS 013
 MLK CRK LAKINA 071

BW/Ratio	104	ET
WW/Ratio	768	ET
YW/Ratio	1164	ET
ADG/Ratio	2.46	ET
Dam's MPPA/Age	112.4	10

HB	GM	CED	BW	WW	YW	M	ME	HPG	CEM	ST	MB	YG	CW	REA	FAT
115	50	2	0.3	73	105	25	2	14	4	12	0.77	0.18	32	-0.09	0.02
TOP BREED %															
36%	35%	80%	76%	7%	16%	10%	58%	5%	42%	39%	6%	97%	15%	86%	88%



5333 MLK CRK REDSTONE 5333

REG. # 3497867 IATTOO: 5333 BTK BD: 3/23/15 100% 1A

TR JULIAN LT142
MLK CRK REDSTONE
 MLK CRK LENA 763

SHOCO DATA
MLK CRK LAKINA 523
 MLK CRK LAKINA 228

BECKTON JULIAN GG B571
 TR LANA G760

BECKTON EPIC R397 K
 MLK CRK LENA 533

SHOCO SIR ROBIN
 VDAR BLACKANA 303
 MLK CRK MARIAS 013
 MLK CRK LAKINA 071

BW/Ratio	80	ET
WW/Ratio	751	ET
YW/Ratio	1127	ET
ADG/Ratio	2.33	ET
Dam's MPPA/Age	112.4	10

HB	GM	CED	BW	WW	YW	M	ME	HPG	CEM	ST	MB	YG	CW	REA	FAT
115	50	2	0.3	73	105	25	2	14	4	12	0.77	0.18	32	-0.09	0.02
TOP BREED %															
36%	35%	80%	76%	7%	16%	10%	58%	5%	42%	39%	6%	97%	15%	86%	88%

ET full brothers that combine the Redstone bull with the 523 Data daughter that sold to Sandbur Ridge Red Angus in our 2014 Female sale.



MLK CRK Lakina 523, dam of Lots 5331 and 5333



5334 MLK CRK ADMIRAL 5334

REG. # 3468277 IATTOO: 5334 BTK BD: 3/24/15 100% 1A

5L LEGEND 1553-425V
RIDGE ADMIRAL 3411
 RIDGE GRANDIOSE 629-1112

MUSHRUSH IMPRESSIVE CA U236
MLK CRK LAKINA 214
 MLK CRK LAKINA 425

5L LAKOTA LEGEND 7074
 5L HAZEL 45L-1553

MLK CRK EXPRESS 9127
 RIDGE GRANDIOSE 435-629

BUF CRK LANCER R017
 MUSHRUSH MADAM LT R265
 MLK CRK FOUNDATION 110
 MLK CRK LAKINA 228

BW/Ratio	86	101
WW/Ratio	709	102
YW/Ratio	1202	108
ADG/Ratio	3.07	118
Dam's MPPA/Age	99.4	3

HB	GM	CED	BW	WW	YW	M	ME	HPG	CEM	ST	MB	YG	CW	REA	FAT
120	50	6	-2.4	62	97	23	1	11	3	12	0.47	0.12	24	0.17	0.05
TOP BREED %															
30%	32%	34%	28%	30%	29%	18%	47%	29%	61%	38%	38%	90%	36%	34%	97%

5334 is another good performing Admiral son backed by a productive cow family.



5335 MLK CRK DOMINOR 5335

REG. # 3468501 IATTOO: 5335 BTK BD: 3/24/15 100% 1A

BECKTON DOMINOR Y052 N6
BECKTON DOMINOR A038 J7
 BECKTON TARA Y111 J

BECKTON EPIC R397 K
MLK CRK LAKOTA 245
 MLK CRK LAKOTA 601

BECKTON DOMINOR W640 C5
 BECKTON INDIGO W772 N

BECKTON JULIAN W841 J5
 BECKTON TARA W482 L

BECKTON EPIC K F075
 BECKTON KIT F468 JL
 RED YY RED KNIGHT 640F
 MLK CRK LAKOTA 850

BW/Ratio	80	94
WW/Ratio	693	100
YW/Ratio	1130	102
ADG/Ratio	2.72	104
Dam's MPPA/Age	97.7	3

HB	GM	CED	BW	WW	YW	M	ME	HPG	CEM	ST	MB	YG	CW	REA	FAT
170	51	7	-2.9	58	95	22	-2	13	6	17	0.59	0.13	23	0.04	0.04
TOP BREED %															
2%	18%	28%	21%	45%	33%	30%	26%	8%	21%	2%	20%	93%	41%	59%	95%

Yearling Bulls



5336 MLK CRK TOP GUN 5336

REG. # 3497875 IATTOO: 5336 BTK BD: 3/24/15 50% 3

TNT GUNNER N208
TNT TOP GUN R244
TNT MISS SADIE M68

LARSON RED LIGHTNING
MLK CRK LAKOTA 953
MLK CRK LAKOTA 112-RAMB

RC STINGER 072K
TNT MISS HONEY L9
TNT IMPACT H21
TNT MISS JADEN J318
LMN IMPRESSIVE ROB1095B
LARSON CRIS 926
FCC RAMBO 502
CFLD LAKOTA 112-914

BW/Ratio	75	ET
WW/Ratio	733	ET
YW/Ratio	1049	ET
ADG/Ratio	2.02	ET
Dam's MPPA/Age	99.0	16

HB	GM	CED	BW	WW	YW	M	ME	HPG	CEM	ST	MB	YG	CW	REA	FAT
8	47	3	-0.6	52	84	20	0	2	-1	3	-0.14	-0.15	20	0.25	-0.04
TOP BREED %															
99%	83%	71%	58%	67%	56%	43%	39%	99%	97%	99%	99%	7%	51%	21%	6%

Our only Simmental Cross ET bull in the offering.



5338 MLK CRK KING 5338

REG. # 3497872 IATTOO: 5338 BTK BD: 3/27/15 100% 1A

LACY SIGNATURE 7006
LACY KING 9240
LACY LAKOTA 7155

SHOCO DATA
MLK CRK LAKINA 523
MLK CRK LAKINA 228

5L SIGNATURE 5615
LACY REBALAS 53L
CCF GOLD BAR 0251
LACY MS CHEROKEE 94M
SHOCO SIR ROBIN
VDAR BLACKANA 303
MLK CRK MARIAS 013
MLK CRK LAKINA 071

BW/Ratio	80	ET
WW/Ratio	683	ET
YW/Ratio	1057	ET
ADG/Ratio	2.32	ET
Dam's MPPA/Age	112.4	10

HB	GM	CED	BW	WW	YW	M	ME	HPG	CEM	ST	MB	YG	CW	REA	FAT
103	49	2	-1.2	54	79	26	2	14	-1	12	0.70	0.05	15	0.05	0.02
TOP BREED %															
53%	43%	80%	47%	60%	67%	6%	55%	4%	96%	39%	10%	70%	65%	57%	86%



5339



5339 MLK CRK DOMINOR 5339

REG. # 3468360 IATTOO: 5339 BTK BD: 3/28/15 100% 1A

BECKTON DOMINOR Y052 N6
BECKTON DOMINOR A038 J7
BECKTON TARA Y111 J

MLK CRK EXPRESS 9141
MLK CRK BONNEBELL 2111
MLK CRK BONNEBELL 962

BECKTON DOMINOR W640 C5
BECKTON INDIGO W772 N
BECKTON JULIAN W841 J5
BECKTON TARA W482 L
5L GRAND EXPRESS 453-5655
MLK CRK SHEBA 079
BECKTON EPIC R397 K
MLK CRK BONNEBELL 604

BW/Ratio	90	107
WW/Ratio	688	99
YW/Ratio	1126	101
ADG/Ratio	2.72	105
Dam's MPPA/Age	97.7	3

HB	GM	CED	BW	WW	YW	M	ME	HPG	CEM	ST	MB	YG	CW	REA	FAT
140	50	5	-0.7	63	101	16	-1	11	4	15	0.52	0.09	29	0.15	0.02
TOP BREED %															
13%	29%	45%	58%	28%	22%	73%	34%	25%	46%	11%	29%	82%	22%	36%	89%



5340 MLK CRK KING 5340

REG. # 3497870 IATTOO: 5340 BTK BD: 3/28/15 100% 1A

LACY SIGNATURE 7006
LACY KING 9240
LACY LAKOTA 7155

SHOCO DATA
MLK CRK LAKINA 523
MLK CRK LAKINA 228

5L SIGNATURE 5615
LACY REBALAS 53L
CCF GOLD BAR 0251
LACY MS CHEROKEE 94M
SHOCO SIR ROBIN
VDAR BLACKANA 303
MLK CRK MARIAS 013
MLK CRK LAKINA 071

BW/Ratio	96	ET
WW/Ratio	674	ET
YW/Ratio	1099	ET
ADG/Ratio	2.64	ET
Dam's MPPA/Age	112.4	10

HB	GM	CED	BW	WW	YW	M	ME	HPG	CEM	ST	MB	YG	CW	REA	FAT
103	49	2	-1.2	54	79	26	2	14	-1	12	0.70	0.05	15	0.05	0.02
TOP BREED %															
53%	43%	80%	47%	60%	67%	6%	55%	4%	96%	39%	10%	70%	65%	57%	86%



5341 MLK CRK EPIC 5341

REG. # 3497871 IATTOO: 5341 BTK BD: 3/28/15 100% 1A

BECKTON EPIC K F075
BECKTON EPIC R397 K
BECKTON KIT F468 JL

SHOCO DATA
MLK CRK LAKINA 523
MLK CRK LAKINA 228

BECKTON EPIC D404
BECKTON BELGA D483 KR
BECKTON JULIAN GG B571
BECKTON KIT A517 NP
SHOCO SIR ROBIN
VDAR BLACKANA 303
MLK CRK MARIAS 013
MLK CRK LAKINA 071

BW/Ratio	87	ET
WW/Ratio	610	ET
YW/Ratio	1008	ET
ADG/Ratio	2.47	ET
Dam's MPPA/Age	112.4	10

HB	GM	CED	BW	WW	YW	M	ME	HPG	CEM	ST	MB	YG	CW	REA	FAT
118	49	-3	1.6	73	112	25	-1	14	3	14	0.60	0.18	38	0.16	0.05
TOP BREED %															
33%	41%	98%	91%	6%	9%	12%	31%	5%	52%	21%	19%	97%	6%	35%	97%



Yearling Bulls



5342



5342

MLK CRK DOMINOR 5342

REG. # 3468335 IATTOO: 5342 BTK BD: 3/28/15 100% 1A

BECKTON DOMINOR Y052 N6
BECKTON DOMINOR A038 J7
 BECKTON TARA Y111 J

BECKTON DOMINOR W640 C5
 BECKTON INDIGO W772 N
 BECKTON JULIAN W841 J5
 BECKTON TARA W482 L
 CBR RUMBLER 2362-8586
 RED CROWFOOT LADY ERICA 8080
 RED SSS OLY 22U
 RED CROWFOOT LADY 6503S

BW/Ratio	95	110
WW/Ratio	663	96
YW/Ratio	1049	94
ADG/Ratio	2.46	95
Dam's MPPA/Age	101.7	3

RED CROWFOOT 83X
RED XO CROWFOOT LADY 2444Z
 RED XO CROWFOOT LADY 076X

HB	GM	CED	BW	WW	YW	M	ME	HPG	CEM	ST	MB	YG	CW	REA	FAT
138	48	8	-0.9	53	82	21	-8	11	4	15	0.49	0.13	18	-0.05	0.03
TOP BREED %															
14%	60%	19%	52%	64%	60%	39%	5%	24%	51%	12%	35%	92%	56%	77%	94%

This bull would be a complete outcross from anything that we have ever offered. His dam was purchased at the Crowfoot Cattle Co. dispersion in Canada and his sire line hasn't been offered until this year.



5343

MLK CRK DOMINOR 5343

REG. # 3468276 IATTOO: 5343 BTK BD: 3/28/15 100% 1A

BECKTON DOMINOR Y052 N6
BECKTON DOMINOR A038 J7
 BECKTON TARA Y111 J

BECKTON DOMINOR W640 C5
 BECKTON INDIGO W772 N
 BECKTON JULIAN W841 J5
 BECKTON TARA W482 L

BW/Ratio	104	122
WW/Ratio	754	109
YW/Ratio	1176	106
ADG/Ratio	2.63	101
Dam's MPPA/Age	101.7	3

BECKTON EPIC R397 K
MLK CRK SHEBA 211
 MLK CRK SHEBA 731

BECKTON EPIC K F075
 BECKTON KIT F468 JL
 MLK CRK TITLEIST 4158
 BJR SHEBA 4X-551

HB	GM	CED	BW	WW	YW	M	ME	HPG	CEM	ST	MB	YG	CW	REA	FAT
146	50	5	-0.9	66	107	19	-1	12	3	16	0.55	0.16	32	0.16	0.05
TOP BREED %															
10%	25%	52%	54%	18%	14%	49%	33%	19%	52%	7%	25%	95%	15%	34%	97%



5344

MLK CRK KING 5344

REG. # 3497868 IATTOO: 5344 BTK BD: 3/29/15 100% 1A

LACY SIGNATURE 7006
LACY KING 9240
 LACY LAKOTA 7155

5L SIGNATURE 5615
 LACY REBALAS 53L
 CCF GOLD BAR 0251
 LACY MS CHEROKEE 94M

BW/Ratio	86	ET
WW/Ratio	737	ET
YW/Ratio	1115	ET
ADG/Ratio	2.35	ET
Dam's MPPA/Age	112.4	10

SHOCO DATA
MLK CRK LAKINA 523
 MLK CRK LAKINA 228

SHOCO SIR ROBIN
 VDAR BLACKANA 303
 MLK CRK MARIAS 013
 MLK CRK LAKINA 071

HB	GM	CED	BW	WW	YW	M	ME	HPG	CEM	ST	MB	YG	CW	REA	FAT
103	49	2	-1.2	54	79	26	2	14	-1	12	0.70	0.05	15	0.05	0.02
TOP BREED %															
53%	43%	80%	47%	60%	67%	6%	55%	4%	96%	39%	10%	70%	65%	57%	86%



5346

MLK CRK IMPRESSION 5346

REG. # 3468341 IATTOO: 5346 BTK BD: 3/31/15 100% 1A

MUSHRUSH IMPRESSIVE CA U236
HRR IMPRESSIVE 227
 HRR BANA 031

BUF CRK LANCER R017
 MUSHRUSH MADAM LT R265
 STEADFAST BOAZ T71
 HRR BANA 870

BW/Ratio	93	107
WW/Ratio	810	117
YW/Ratio	1264	114
ADG/Ratio	2.82	108
Dam's MPPA/Age	107.0	11

MLK CRK FOUNDATION 110
MLK CRK FIREFLY 4109
 MLK CRK FIREFLY 251

BUF CRK BARNEY 3474
 MLK CRK LAKOTA 850
 MLK CRK CORNERSTONE JC
 MLK CRK FIREFLY 656

HB	GM	CED	BW	WW	YW	M	ME	HPG	CEM	ST	MB	YG	CW	REA	FAT
117	49	4	0.4	76	114	21	3	12	3	13	0.29	0.11	38	-0.05	-0.01
TOP BREED %															
34%	53%	60%	76%	3%	7%	36%	66%	17%	60%	34%	79%	89%	7%	79%	45%

5346 is a High performance bull out a 12 year old Foundation daughter with a 107 MPPA. This young bull ranks 2nd in weaning and yearling performance.



5347

MLK CRK DOMINOR 5347

REG. # 3468389 IATTOO: 5347 BTK BD: 3/31/15 100% 1A

BECKTON DOMINOR Y052 N6
BECKTON DOMINOR A038 J7
 BECKTON TARA Y111 J

BECKTON DOMINOR W640 C5
 BECKTON INDIGO W772 N
 BECKTON JULIAN W841 J5
 BECKTON TARA W482 L

BW/Ratio	80	91
WW/Ratio	743	107
YW/Ratio	1126	101
ADG/Ratio	2.39	92
Dam's MPPA/Age	101.5	6

5L GRAND EXPRESS 453-5655
MLK CRF THELMA 921
 MLK CRK THELMA 436

5L NORSEMAN EXPRESS
 5L RUBY 01-453
 SHOCO DATA
 MLK CRK THELMA 687

HB	GM	CED	BW	WW	YW	M	ME	HPG	CEM	ST	MB	YG	CW	REA	FAT
151	51	10	-3.0	60	94	19	-1	13	4	14	0.56	0.07	22	0.12	0.02
TOP BREED %															
7%	20%	12%	20%	37%	34%	54%	34%	12%	43%	13%	23%	74%	44%	41%	88%

Yearling Bulls



5350



5350

MLK CRK ADMIRAL 5350

REG. # 3468396 IATTOO: 5350 BTK BD: 4/1/15 100% 1A

5L LEGEND 1553-425V
RIDGE ADMIRAL 3411
 RIDGE GRANDIOSE 629-1112

5L LAKOTA LEGEND 7074
 5L HAZEL 45L-1553
 MLK CRK EXPRESS 9127
 RIDGE GRANDIOSE 435-629

BUF CRK GIULIANI L851
MLK CRK LAKOTA 887
 MLK CRK LAKOTA 515

BKT JULIAN 7526 G
 BUF CRK MARIGOLD1230
 SHOCO DATA
 MLK CRK LAKOTA 858

BW/Ratio	90	102
WW/Ratio	686	99
YW/Ratio	1148	103
ADG/Ratio	2.89	111
Dam's MPPA/Age	100.0	7

HB	GM	CED	BW	WW	YW	M	ME	HPG	CEM	ST	MB	YG	CW	REA	FAT
100	49	7	-1.2	60	97	18	1	10	2	10	0.28	0.10	26	0.16	0.03
TOP BREED %															
56%	50%	32%	48%	38%	30%	64%	48%	39%	69%	64%	79%	85%	30%	35%	94%



MLK CRK Lakota 887, dam of 5350



5352

MLK CRK EXPRESS 5352

REG. # 3468533 IATTOO: 5352 BTK BD: 4/2/15 100% 1A

5L GRAND EXPRESS 453-5655
MLK CRK EXPRESS 9141
 MLK CRK SHEBA 079

5L NORSEMAN EXPRESS
 5L RUBY 01-453
 MLK CRK CUB 722
 BJR SHEBA 4X-551

MLK CRK EPIC 8171
MLK CRK LANA 044
 MLK CRK LANA 760

BECKTON EPIC R397 K
 MLK CRK SHEBA 403
 BUF CRK CHF 824-1658
 MLK CRK LANA 704-HOBO

BW/Ratio	95	108
WW/Ratio	728	105
YW/Ratio	1153	104
ADG/Ratio	2.66	102
Dam's MPPA/Age	100.7	5

HB	GM	CED	BW	WW	YW	M	ME	HPG	CEM	ST	MB	YG	CW	REA	FAT
109	49	6	-1.5	61	86	13	-1	8	4	12	0.49	-0.04	19	0.08	-0.02
TOP BREED %															
43%	47%	41%	43%	35%	51%	90%	33%	86%	38%	46%	34%	28%	53%	50%	21%



5361

MLK CRK ADMIRAL 5361

REG. # 3468504 IATTOO: 5361 BTK BD: 4/7/15 100% 1A

5L LEGEND 1553-425V
RIDGE ADMIRAL 3411
 RIDGE GRANDIOSE 629-1112

5L LAKOTA LEGEND 7074
 5L HAZEL 45L-1553
 MLK CRK EXPRESS 9127
 RIDGE GRANDIOSE 435-629

LACY KING 9240
MLK CRK BONNEBELL 252
 MLK CRK BONNEBELL 039

LACY SIGNATURE 7006
 LACY LAKOTA 7155
 BUF CRK LANCER-F L297
 MLK CRK BONNEBELL 885

BW/Ratio	85	100
WW/Ratio	701	101
YW/Ratio	1173	105
ADG/Ratio	2.94	113
Dam's MPPA/Age	98.9	3

HB	GM	CED	BW	WW	YW	M	ME	HPG	CEM	ST	MB	YG	CW	REA	FAT
121	50	8	-3.8	53	88	22	-3	11	1	12	0.46	0.05	17	0.22	0.04
TOP BREED %															
30%	21%	22%	12%	62%	47%	27%	23%	27%	85%	40%	41%	70%	58%	25%	95%



6424

JNK BLAKE 6424

REG. # 3468251 IATTOO: 6424 JNK BD: 3/14/15 100% 1A

5L GRAND EXPRESS 453-5655
MLK CRK EXPRESS 9141
 MLK CRK SHEBA 079

5L NORSEMAN EXPRESS
 5L RUBY 01-453
 MLK CRK CUB 722
 BJR SHEBA 4X-551

BECKTON EPIC R397 K
JNK LUCY 187
 MLK CRK BLOCKANNA 459

BECKTON EPIC K F075
 BECKTON KIT F468 JL
 MLK CRK CUB 722
 MLK CRK BLOCKANNA 768

BW/Ratio	85	99
WW/Ratio	652	94
YW/Ratio	1058	95
ADG/Ratio	2.48	95
Dam's MPPA/Age	96.7	4

HB	GM	CED	BW	WW	YW	M	ME	HPG	CEM	ST	MB	YG	CW	REA	FAT
102	49	3	-2.1	55	79	15	1	9	4	11	0.43	-0.06	14	0.14	-0.01
TOP BREED %															
53%	50%	67%	33%	57%	65%	83%	49%	60%	49%	49%	46%	21%	67%	37%	36%

Keep the Tags – Keep the Premiums!



FCCP yellow-tagged calves qualify exclusively for these Red Angus grids:



Choice⁺
Premium Red Angus Grid



GREATER
OMAHA

**G.O.
RED**
RED ANGUS GRID



Enroll your calves today – Free enrollment and only 99¢ per tag.

Feeder Calf Certification Program

- Traceability to at least 50% Red Angus genetics
- Source verified to ranch of origin
- Group age



Allied Access*

- Source verified to ranch of origin
- Group age



**Not eligible for
Choice+ or G.O. Red Grids*



Contact us today and
take advantage of these
VALUE-ADDED OPTIONS.

Ranch Tested. Feedlot Trusted.

Red Angus

RedAngus.org
(940) 387-3502





Bruce & Tena Ketchum
1721 Plevna Road
Plevna, MT 59344
(406) 778-3819
ketchum@midrivers.com

PRESORTED
STANDARD
US POSTAGE
PAID
BISMARCK, ND
PERMIT #256

Catalog & video available online
www.milkcreekreds.com



Annual Bull Sale
Saturday, March 19, 2016

DVAuction Broadcasting
Real-time Auctions