



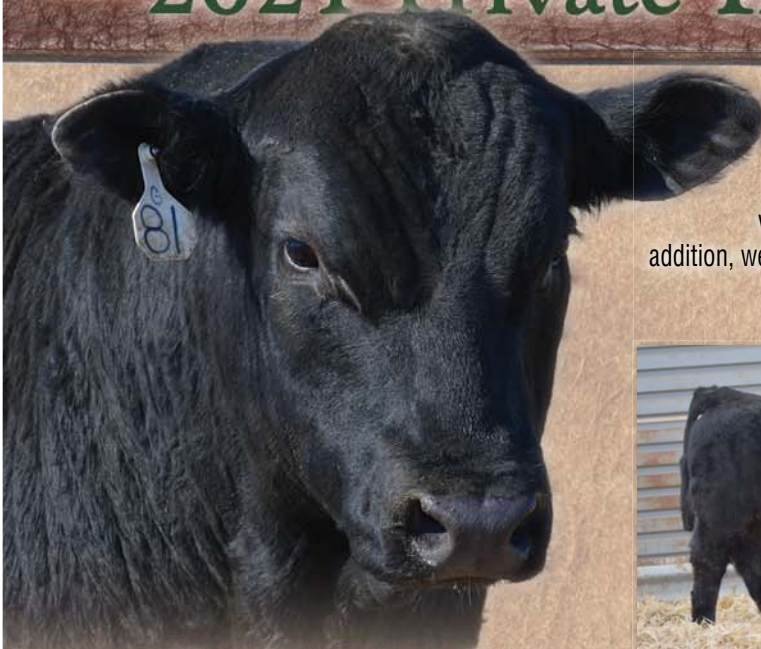
Dwight, Christina,  
Cierra & Dalton Dockter  
Bailey & Austin March  
Cheyenne & Taylor Ketterling  
4956 41st St. SE  
Medina, ND 58467

FIRST CLASS  
US POSTAGE  
PAID  
UNITED PRINTNG

RETURN SERVICE REQUESTED



## 2021 Private Treaty Bull Offering



Welcome Cattlemen! We would like to extend a big thank you to our past customers for your support of our program. We invite you to take a look at our 2021 bull and female offering at the ranch or call us to discuss your needs. We think you'll be impressed and are confident we can help you find a bull that works for your operation. You will find a link to the bull videos and any updates on our website and Facebook page. In addition, we have a select group of bred and open replacement heifers for sale. Feel free to come to the ranch to view the bulls and females anytime.

Videos online at [www.goldenbucklegelbvieh.com](http://www.goldenbucklegelbvieh.com)



**DCHD 117H**

AWB TWIN VIEW FOREMAN 43F x  
DCH HILLE W128 WESTBY



**BDOC 300H**

JLSL DINERO 676D x  
GOLDEN BUCKLE GELV 105A



**DCHD 011H**

DVE DAVIDSON MCGRAW 21B x  
DCH HILLE T504 TREMOR ET



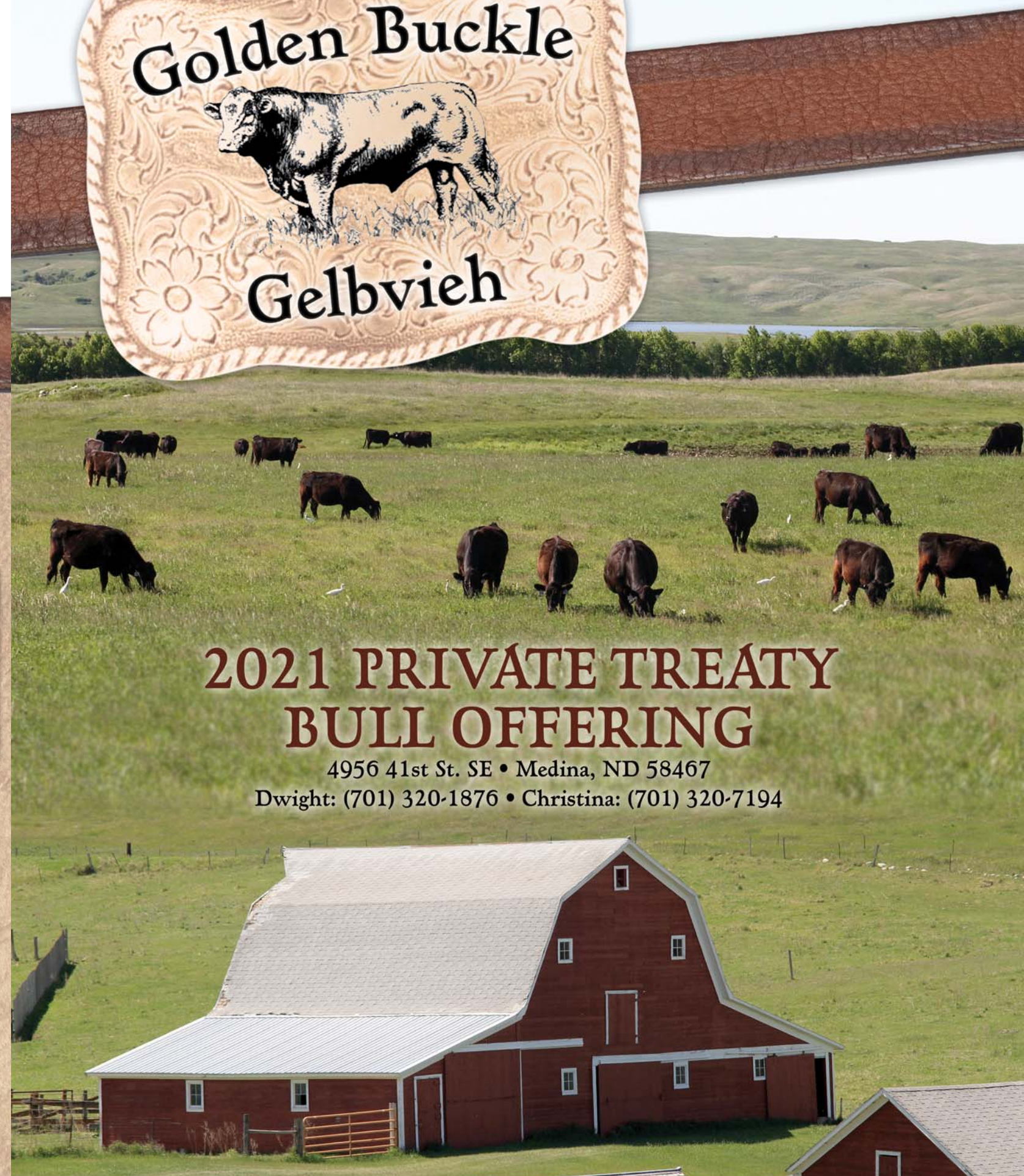
**DCHD 040H**

AWB TWIN VIEW FOREMAN 43F x  
DCH HILLE T504 TREMOR ET



**DCHD 055H**

AWB 4D GOLD ONE x  
DCHD CAPTAIN MORGAN 217C ET



## 2021 PRIVATE TREATY BULL OFFERING

4956 41st St. SE • Medina, ND 58467

Dwight: (701) 320-1876 • Christina: (701) 320-7194

# 2021 Golden Buckle Gelbvieh Private Treaty Bull Offering

## Golden Buckle Gelbvieh

Ranch Location: 4 miles south on Hwy 30 (Exit 228) and 3.25 miles west  
701-486-3494 • Dwight: 701-320-1876 • Christina: 701-320-7194  
gbgelb@daktel.com • www.goldenbucklegelbvieh.com

### YEARLING BULLS

Tattoo	BD	Color	Polled	% GV	BW	Adj										Sire	Dam	Maternal Grand Sire		
						WW	CED	BW	WW	YW	MK	TM	CEM	YG	CW				REA	MB
DCHD 011H	4/15/20	Red	Polled	PB 99.9	84	740	13	0.1	64	79	23	55	6	-0.23	26	0.66	0.08	DVE DAVIDSON MCGRAW 21B	DCHD 011A	DCH HILLE T504 TREMOR ET
DCHD 040H	4/25/20	Het Blk	Het Polled	PB 91	90	814	9	3.0	70	93	27	62	4	-0.23	36	0.84	0.22	AWB TWIN VIEW FOREMAN 43F	DCHD 040Z	DCH HILLE T504 TREMOR ET
DCHD 055H	4/4/20	Red	Scurs	PB 99.9	70	776	16	-1.9	70	98	25	59	8	-0.18	27	0.61	0.13	AWB 4D COLD ONE	DCHD 055F	DCHD CAPT MORGAN 217C ET
DCHD 067H	4/1/20	Het Blk	Polled	PB 99.9	80	754	10	1.8	80	108	21	61	6	-0.24	32	0.72	0.26	DCHD GBG EXCALIBUR 070E	DCHD 067E	DCHD CAPT MORGAN 217C ET
DCHD 070H	3/27/20	Red	Homo P	PB 99.9	78	749	11	1.2	68	83	21	55	4	-0.25	40	0.85	0.05	DVE DAVIDSON MCGRAW 21B	DCHD 070W	DCH HILLE R126 ROY
DCHD 072H	4/4/20	Red	Polled	PB 93.8	100	710	10	2.1	68	94	24	57	4	-0.17	25	0.49	0.15	DDGR 140F RENEGADE	DCHD 072A	CIRS 81NY
DCHD 075H	4/2/20	Red	Polled	PB 99.9	85	705	12	0.4	66	87	23	56	8	-0.22	25	0.61	0.19	DCHD GBG EXCALIBUR 070E	DCHD 075Z	DCH HILLE W287 WOW
DCHD 081H	5/10/20	Het Blk	Polled	PB 96.1	88	883	10	2.0	66	91	28	62	4	-0.20	34	0.71	0.23	AWB TWIN VIEW FOREMAN 43F	DCHD 081Z	DCH HILLE R126 ROY
DCHD 096H	4/4/20	Het Blk	Polled	PB 94.9	70	751	17	-2.2	61	87	24	55	10	-0.15	22	0.47	0.13	AWB 4D COLD ONE	DCHD 096F	DCH HILLE W128 WESTBY
DCHD 117H	4/23/20	Het Blk	Homo P	PB 96.1	88	824	8	2.3	73	107	28	64	5	-0.16	39	0.70	0.28	AWB TWIN VIEW FOREMAN 43F	DCHD 117Y	DCH HILLE W128 WESTBY
BDOC 123H	4/17/20	Het Blk	Polled	PB 91	88	776	11	1.3	72	96	25	61	6	-0.21	36	0.72	0.09	AWB TWIN VIEW FOREMAN 43F	BDOC 123Y	DCH HILLE T504 TREMOR ET
DCHD 153H	4/3/20	Red	Polled	PB 93.8	70	665	13	0.2	64	90	23	55	5	-0.17	22	0.51	0.15	DDGR 140F RENEGADE	DCHD 153B	CIRS 81NY
DCHD 160H	4/18/20	Het Blk	Polled	PB 96.1	85	746	11	1.6	69	93	27	62	6	-0.20	36	0.72	0.15	AWB TWIN VIEW FOREMAN 43F	DCHD 160X	DCH HILLE R126 ROY
DCHD 161H	4/11/20	Red	Polled	PB 96.1	78	711	11	1.0	74	106	18	55	5	-0.23	33	0.68	0.26	DCHD GBG EXCALIBUR 070E	DCHD 161B ET	CAROLINA EXCLUSIVE 1230Y
DCHD 198H	4/2/20	Het Blk	Polled	PB 93.8	70	643	10	1.1	57	80	9	38	3	-0.29	22	0.63	0.17	JLSL DINERO 676D	DCHD 198A	CIRS 81NY
DCHD 217H	4/15/20	Het Blk	Homo P	PB 91	84	736	11	2.4	80	110	23	64	6	-0.17	44	0.77	0.32	AWB TWIN VIEW FOREMAN 43F	DCHD 217D	BDOC BAILEY'S GUY 205X
DCHD 221H	4/18/20	Het Blk	Polled	PB 96.1	78	776	10	1.1	83	114	23	64	4	-0.29	37	0.85	0.14	DCHD CAPT MORGAN 217C ET	DCHD 221D	BDOC BAILEY'S GUY 205X
DDOC 278H	4/10/20	Red	Homo P	PB 91	80	779	13	0.2	66	88	28	61	8	-0.23	36	0.76	0.09	AWB TWIN VIEW FOREMAN 43F	DCHD 278A	DCH HILLE T504 TREMOR ET
DDOC 287H	3/30/20	Het Blk	Homo P	PB 99.9	84	737	12	0.7	65	87	23	55	7	-0.19	30	0.63	0.20	DVE DAVIDSON MCGRAW 21B	DCHD 287C	HILLE W128 WESTBY
DDOC 294H	4/5/20	Red	Polled	PB 93.8	84	758	12	0.3	66	96	28	61	4	-0.21	28	0.62	-0.02	DDGR 140F RENEGADE	BDOC 294Z	DCH HILLE T504 TREMOR ET
DCHD 296H	4/5/20	Het Blk	Polled	PB 99.9	92	689	10	2.1	74	98	17	54	3	-0.28	31	0.79	0.08	DVE DAVIDSON MCGRAW 21B	DCHD 296B	BDOC BAILEY'S GUY 205X
BDOC 300H	4/9/20	Het Blk	Polled	PB 85.9	88	678	6	2.1	63	96	13	44	0	-0.27	31	0.77	0.16	JLSL DINERO 676D	DCHD 300C	GOLDEN BUCKLE GELV 105A
DCHD 301H	4/1/20	Red	Homo P	PB 93.8	85	736	11	-0.6	62	90	29	60	4	-0.16	22	0.54	0.18	DDGR 140F RENEGADE	DCHD 301D	DVE DAVIDSON MCGRAW 21B
BDOC 353H	4/14/20	Hom Blk	Polled	PB 93.8	90	665	11	1.2	59	87	10	39	5	-0.28	23	0.65	0.10	JLSL DINERO 676D	BDOC 353C	GOLDEN BUCKLE GELV 245Z

### 2-YEAR-OLD BULLS

Tattoo	BD	Color	Polled	% GV	BW	Adj										Sire	Dam	Maternal Grand Sire		
						WW	CED	BW	WW	YW	MK	TM	CEM	YG	CW				REA	MB
DCHD 081G	3/24/19	Het Blk	Homo P	PB 96.1	84	757	7	2.6	69	91	27	62	2	-0.24	23	0.67	0.35	GBG CAPTAIN MORGAN 217C ET	DCHD 081Z	HILLE R126 ROY
DCHD 143G	3/31/19	Hom Blk	Homo P	PB 96.1	86	760	7	3.3	88	126	26	70	4	-0.18	42	0.76	0.13	GBG CAPTAIN MORGAN 217C ET	DCHD 143A	GOLDEN BUCKLE GELV 721Y
BDOC 219G	3/31/19	Het Blk	Polled	PB 96.1	83	690	9	1.9	76	107	23	61	4	-0.26	34	0.77	0.28	GBG CAPTAIN MORGAN 217C ET	BDOC 219C	RWG INTENSE Z501
DCHD 268G	4/20/19	Red	Polled	PB 99.9	88	702	10	2.6	78	109	21	60	5	-0.27	39	0.81	0.06	DVE DAVIDSON MCGRAW 21B	DCHD 268X	000 U8189



**DCHD 070H**  
DVE DAVIDSON MCGRAW 21B x  
DCH HILLE R126 ROY



**DDOC 287H**  
DVE DAVIDSON MCGRAW 21B x  
HILLE W128 WESTBY



**DCHD 096H**  
AWB 4D COLD ONE x  
DCH HILLE W128 WESTBY



**DCHD 153H**  
DDGR 140F RENEGADE x  
CIRS 81NY



**DCHD 217H**  
AWB TWIN VIEW FOREMAN 43F x  
BDOC BAILEY'S GUY 205X



**DDOC 278H**  
AWB TWIN VIEW FOREMAN 43F x  
DCH HILLE T504 TREMOR ET



**DDOC 294H**  
DDGR 140F RENEGADE x  
DCH HILLE T504 TREMOR ET



**DCHD 301H**  
DDGR 140F RENEGADE x  
DVE DAVIDSON MCGRAW 21B