

Joint Production Sale

Saturday, February 19, 2022

Hub City Livestock, Aberdeen, SD
1 p.m. CST (Red Angus) - 1:45 p.m. CST (Simmental)

Flittie Simmental // Schnabel Simmental // Lazy J Bar Ranch

Selling 90 Simmental Bulls - 40 Red Angus Bulls



Lot 2 - MR FR J2



Lot 55 - MR SR J1855



Lot 302 - LAZYJ DECLARTAIION 1104-5210



Lot 42 - MR FR J42



Lot 72 - MR SR J1900



Lot 319 - LAZYJ FARM POWER 193-6104

DVAuction Catalog and videos will be available online at www.dvauction.com.

Sale Information

Joint Production Sale **Saturday, February 19, 2022**

Hub City Livestock. Aberdeen, SD – 1 p.m. CST (Red Angus) – 1:45 p.m. (Simmental)

Flittie Simmental // Schnabel Simmental // Lazy J Bar Ranch

Sale Day Phone

(605) 225-3273 • 1-800-889-3273

Auctioneer

Kyle Gilchrist.....(641) 919-1077

Sale Hosts

Bruce & Sandy Flittie

(605) 283-2662 • (605) 380-9311

Tom & Meghan Schnabel

(605) 380-2811 • (605) 577-6286

John & Steph Jung

(605) 228-1743 • (605) 380-1796

Representatives

Jim Scheel(605) 545-1521

Cattleman Business Weekly

Jason Frey(701) 300-0845

Marty Ropp(406) 581-7835

Harold Bertz(816) 661-2289

Insurance

Katie Williams(605) 770-9986

Sale Order

All Red Angus bulls will sell at 1p.m. in catalog order. Simmental bulls to follow starting at approximately 1:45 p.m. with alternating lots between Flittie and Schnabel bulls. Sale order will be on the supplement sheet posted on DVAuction 12 hours before the sale.

Trucking

Haul your purchase on sale day and receive a \$100 discount.

Delivery

Delivery will be available at the least possible cost to the buyer

Feeding

Bulls will be fed free of charge till March 15th. After that there will be a \$3/day/head charge.

Retained Interest

One-third semen interest will be retained by the consignors.

Online Broadcast

The sale will be broadcast live on:

DVAuction Broadcasting Real-time Auctions

Herd Veterinarians

Hosmer, Wetonka and Bowdle
Veterinary Clinics

Hosmer, SD.....(605) 283-2278

Dr. Holly Roe-Johnson

Dr. Cassie Holtz

Dr. Tim Kruse

Dr. Stephanie Smith

Catalog and Promotion

Cow Camp Promotions
cowcamppromotions.com
cowcampcatalogs.com

Catalog Printing

Quality Quick Print
Aberdeen, SD • www.mqprint.com



Watch & bid online for **FREE** at

DVAuction
Broadcasting Real-Time Auctions

View the Auction Live!
Bid Online... you're ringside
right at your desk!

Buying online is as easy as 1, 2, 3...

1. Create an account at www.dvauction.com under the "register" tab
2. Apply for bidding approval by clicking on the "details" tab at least 24 hours prior to the auction-a DV representative will notify you once you have been approved
3. Tune in for the sale and make you purchases!

High speed internet is required for successful bidding-be sure to check the lag-time monitor in the top left corner to ensure real-time broadcasts.

Proxy Bidding-if you can't make time to watch the sale, register a proxy bid and let our system represent your bid while you're away. Look for the "proxy bid" tab on the auction listing, and fill in your maximum bids. We'll handle the rest!

Having troubles? During the auction, you can type a message to the operator at any time for assistance. Our full-time support team can also always be reached at (402) 474-5557.

DVAuction
Broadcasting Real-Time Auctions

DVA Rep. Justin Dikoff (605) 290-0635 - email: jdikoff@dvauction.com
Please feel free to contact me with questions about the sale or to view the cattle for you.



Welcome to our 2022 production sale! It is hard to believe that this is the 20th year that we have been raising and marketing bulls. When I started selling bulls privately, I never expected that we would be so blessed to gain so many new friends that we call customers. This has been a very challenging year for numerous ranchers needing to make extremely challenging decisions due to drought. We are a family operation and all 4 of our kids are always out helping and developing a passion for the cattle, just ask the kids and they will probably talk your ear off.

We focus very hard on having a strong maternal cow herd. I always say you can't build a house on a weak foundation, and I feel that is the same for a cow herd. You need a solid foundation to develop cattle that will be functional and marketable. We do NOT creep feed any of the calves as we expect them to grow and excel with mother's milk and grass alone. Disposition is EXTREMELY important to us with the kids always with the cows.

The bulls are being fed similar rations that we have used for the last few years developed by Dewayne Siebrasse of Cattlecents Consulting (605-228-5788). He has developed rations to achieve maximum growth while keeping the bulls athletically sound and to have longevity. The rations this year we have limited the bulls to a maximum of only 12.5# of corn along with a combination of oat/pea haylage, corn silage, oats hay, alfalfa hay, and 1.5 oz RIO backgrounder loose mineral. All our feedstuffs are 100% homegrown. They also always have free choice salt and Rio Nutrition tubs.

All cattle are on a strict herd health program put together with the Hosmer Vet Clinic (Dr. Holly Roe Johnson)

Supplement sheets will be available sale day with genomically enhanced EPDs, coat color, horn/poll, ADG, adj YW, carcass ultrasound, and scrotal measurements.

Again, this year we will be retaining 1/3 semen interest on all the bulls. You will be buying full possession and 2/3 semen rights.

Thank you for your interest in our program. Please feel free to contact us at any time, follow us on Facebook, or visit our website www.srsimms.com to learn more about the cattle. Visitors are always welcome to view the bulls prior to the sale.

Thanks,

*Tom & Meghan Schnabel, Schnabel Ranch Simmentals
Peyton (12), Mallory (10), Danyelle (9), Korbyn (6)*



Welcome to our 2022 bull sale. It seems like just yesterday we sold our first Simmental bulls but this year will be 40 years. The old saying of "time flies when you are having fun" must be true. We have customers that have been buying our bulls for many of those years.

The past year was challenging at times and good at the other time. The dry spring made for an easy calving year, but the drought made for a poor hay and crop year. The late September and October rains were welcome and gave us all hope for a better next year.

The calves did quite well this summer even with the dry conditions. The dry grass always seems to have a little more punch. As in the past, the bulls have been fed the same type of rations consisting of ground hay, corn silage, modified distillers and corn.

All the bulls have been DNA tested for homozygous black, horned/poll, and the diluter gene. Also, all have been genomic tested to add to the accuracy of the EPDs. These results will be available sale day and also online at DVAuction.com along with videos of the bulls.

As always you are welcome to come view the bulls at the ranch.

Thank you for your interest,

Bruce Flittie, Flittie Simmentals

Welcome



We can all agree that this decade has been one for the record books. We have had many new challenges along the way but I keep circling back to one of the phrases John repeated day after day a few years ago when we were plenty dry. "Rain always comes after a drought." Admittedly, sometimes that phrase got a little old, or maybe a lot old – but it also holds true. Rain does always come after a drought and good times always come after challenging times. Life is a cycle and so is the industry we all love so much because we do really love it or we wouldn't be here today...right?!

Red Angus has been highly sought after most of the past decade and there are new faces every day that have realized the value that Red Angus cattle can add to a herd. I spent the better part of a week in Oklahoma City at the Cattleman's Congress and was very excited to see so many exhibitors in the Red Angus Show – especially the junior show! Seeing all new junior's faces did this mama's heart some good!

Did you know that by purchasing a registered Red Angus bull and getting that bull transferred to you makes you eligible to enroll those calves sired by that bull in our FCCP Program? Have you been seeing the growing trend of the consumer wanting to know where their product comes from? Did you know that Red Angus has one of the only source and age verified programs available? Have you also heard that RAAA recently completed negotiations with USDA on the breed's Live Animals Specification form or GLA Schedule? The result is that at the request of each brand owner, Red Angus can be included in Angus-labeled branded beef programs. Red Angus is "Angus" and now USDA has officially acknowledged that fact by enabling Red Angus and Red Angus-influenced cattle that meet certain requirements to join black-hided animals in as many Angus brands that decide in favor of their inclusion. Both genotypic and phenotypic qualification criteria are contained in the new GLA Live Animal Specification Schedule. You can read more on that in the Red Angus E-news at redangus.org from Dec 15, 2021 or give us a call. Take it from someone who has raised Red Angus cattle since the late 1980s when that red hide was heavily discounted – this is definitely exciting and promising news.

We are excited to offer you some bulls with some different pedigrees than the past. We have quite a few calving ease bulls with a wide spread from birth to weaning and yearling growth. With that said, our calving ease bulls are not short gestation bulls. We have AI dates available upon request. We still focus on a maternal herd that has plenty of growth, with good feet and udders. We don't have any more time to babysit cows than you do. Our mama cows are currently still running corn stalks while getting supplementation, including the mother to the bred heifer that just won the junior shows at the NAILE in Louisville and Cattleman's Congress in OKC. These dams have to do their job and do it well or they get a one-way ticket out of here. We spend a lot of time thinking about what you, our customer wants and needs. You and your operations are important to us. You will also find that while our bulls carry plenty of body condition, they are not over conditioned by any means and if you choose to leave them here to feed after the sale they will actually be gradually backed down to a lower mega cal grower diet so they can transition better at delivery time. You, the customer, are always at the front of our minds. We would love to talk cattle (or goats...hahaha!) with you and help you make your herd bull decisions.

We will have video footage of the bulls the week prior to the sale. The bulls will be at Hub City on Friday before the sale for you to sort through. They have been on a strict herd health program. We will have ultrasound carcass data available sale day. They have genomic enhanced EPDs and are parent-verified. Some are enrolled in the Top Dollar program. They will also be semen checked prior to sale day.

New this year is that ALL THE RED ANGUS BULLS WILL SELL AT 1PM IN CATALOG ORDER. The Flittie and Schnabel bulls will sell immediately after the Red Angus, approximately 1:45 pm. Sale Supplement sheets will be available sale day.

Hope to see you sale day! If not, you are always welcome to stop in for a visit! As always, don't forget about our goat sale April 23, 2022 broadcast live on DVAuction.

Sit down, buckle up and buy Red! I think we have some exciting times ahead!

Steph and the Crew at Lazy J Bar Ranch

John, Kale and Jacob



Better genetics are being rewarded in marketplaces all over this nation. Choosing great genetics from herds associated with Allied Genetic Resources puts you the position to take advantages of these opportunities and so many more as we look toward the future. The Allied logo stands for quality, it stands for commitment to the future and it means that you can expect the very best in customer services, year after year. There is no room in the future of the beef business for average genetics and no producer should settle for less than profit improvement with each new set of bulls and each new generation.

Once you have made the choice to use genetics backed by the industry leading herds using the Allied logo, take the next step and look to Allied for services. Our growing list of feeder cattle marketing specialists are there to help produce more dollars for loads of calves that deserve them. Our consulting services too are available as you navigate a world with ever more advanced genetic tools for selection and progress. Regardless of your specific needs, when it comes to genetics for the future, we simply offer more. This year our members will market nearly 10,000 commercially focused bulls, all from the 26 states that they call home. The Allied program is backed by a national presence but is based on a locally produced and serviced product from the very best and most experienced group of independent seedstock producers. Contact any one of our service-oriented staff to learn more about the value proposition offered by Allied and the producers that own it.

www.alliedgeneticresources.com

**Marty Ropp 406-581-7835 • Rocky Forseth 406-590-7984 • Corey Wilkins 256-590-2487
Clint Berry 417-844-1009 • Leoma Wells 559-696-4941**

Top Dollar Angus Feeder Calf Program



Promote Your Verified Genetic Investment

Top Dollar Angus is the industry leader in third-party genetic verification and marketing assistance for superior Angus and Red Angus-based feeder cattle. Our program stamps a unique identity on the 'best of the best' by verifying and then showcasing their genetic merit. The Top Dollar Angus team works directly with a large number of feedyards and buyers to provide them with documented superior

feeder cattle, coupled with genetic risk mitigation and the precision understanding they need to pursue your cattle with absolute confidence.

Top Dollar Angus enables cow-calf producers to benefit from the genetic value already built into their herds. Producers that invest in high-end genetics, as well as strong health and nutrition programs, need a means of positively differentiating their calves from average cattle. Top Dollar Angus does that. Industry demand is strong for genetically superior feeder calves with the right supporting documentation. Don't make buyers guess, let them know by putting the Top Dollar Angus badge of honor on your premium genetic investment.



Contact our team for more information and a free evaluation:

   www.topdollarangus.com

Nate Smith, General Manager • (620) 546-4839 • nate@topdollarangus.com

Kaytlin Hokanson • (307) 461-7687 • kaytlin@topdollarangus.com

Jake Feddes • (406) 581-8157 • jake@topdollarangus.com

Jim Akers • (859) 361-4221 • akersjim@bellsouth.net

Jason Gagnon • (559) 723-6362 • jason@topdollarangus.com

Andy Albrecht • (402) 922-1000 • andy@topdollarangus.com

Sale Terms & Conditions

TERMS: Terms of the sale are cash, check, sight draft or other terms agreed to in writing between seller, buyer, and sale manager payable immediately upon conclusion of the sale and before animals will be moved. Sale manager reserves the right to require a certified check as settlement before releasing any cattle.

PURCHASER'S RISK: All animals are the owner's risk prior to their sale and become property of the purchaser as soon as declared sold by the auctioneer.

BIDDING: Any disputes or challenges regarding bids or tie bids will be settled by the auctioneer and his decision will be final.

ANNOUNCEMENTS: Any errors or changes in information contained in the catalog will be announced from the auction block and such announcements shall take precedence over information contained herein.

HEALTH: All animals are eligible for interstate shipment. Interstate health papers prepared by an accredited veterinarian will be furnished on each animal sold. Arrangements for International Shipments should be made with the sale manager prior to the auction.

All efforts for the exportation of cattle can be arranged through sale management.

BREEDING GUARANTEE: All animals are guaranteed by the seller as outlined by the American Simmental Association. Guarantees will be handled on an individual basis, with credit towards another animal.

LIABILITIES: All persons who attend the sale do so at their own risk. The seller, Hub City Livestock, and sale manager assume no liability for any accidents that may occur. Neither does the seller, Hub City Livestock or sale manager assume any liability for loss or injury to livestock due to theft, mysterious disappearance, sickness, improper handling or Act of God. It is to be clearly understood that the sale manager and its representatives act only as a medium between the buyer and seller. They are not responsible in any way for the failure on the part of the buyer and seller to live up to his obligations or for the truth of any warranties or representation, express or implied. Neither does the sale manager assume any financial obligations to collect or enforce collection of monies between parties. Any legal action, that may in exceptional cases be taken, must be between the buyer and seller. This catalog has been prepared by the Sale Manager from pedigrees and information supplied to them by sources deemed reliable; however, the Sale Manager will in no way guarantee the pedigree, percentage of the animals selling, or data included in this catalog. Any exceptions taken are between buyer and seller.

CONTRACT: The above terms and conditions of sale shall constitute a contract between the buyer and seller of each animal and shall be equally binding upon both. Each sale or resale of an animal constitutes a separate transaction.

MAIL BIDS: Mail or wire bids may be furnished. Bids must be in the hands of the sale manager in ample time prior to sale date and will be handled in strict confidence.

PHONE BIDS: Telephone bids will be taken by the sale manager and will be treated in strict confidence. Sale day phone numbers are:
Hub City Livestock (605) 225-3273 or (800) 889-3273
Jim Scheel (605) 545-1521

THANK YOU



**LIVESTOCK
SPECIALISTS
INC.**

**605.225.2599
ABERDEEN, SD**

**for sponsoring the
sale day lunch!**



BULL BUYER'S QUICK GUIDE TO ASA EPDS AND \$ INDEXES

Expected Progeny Differences (EPDs): EPDs are the most accurate and effective tool available for comparing genetic levels. In using EPDs, the difference between two sires' EPDs represents the unit difference expected in the performance of their progeny. For example, if sires A and B have EPDs of +10 and -5, a 15-unit difference would be expected in their progeny (moving from -5 to +10 yields 15 units). Key to using EPDs is knowing what units they are expressed in. For example, if the above case referred to weaning weight EPDs, A would be expected to sire 15-percent more unassisted births in first-calf heifers; in other words, if B sired 30 assists in a group of 100 heifers, we'd expect A to require 15 assists.

A percentile-ranking chart is required to determine where a bull's EPDs rank him relative to other bulls in the breed. For percentile rankings or more detailed information about EPDs and \$ indexes visit www.simmental.org.

\$ Indexes: Though EPDs allow for the comparison of genetic levels for many economically important traits, they only provide a piece of the economic puzzle. That's where \$ indexes come in. Through well-conceived, rigorous mathematical computation, \$ indexes blend EPDs and economics to estimate an animal's overall impact on your bottom line. The same technology that led to the dramatic progress in swine, poultry and dairy genetics over the last several decades was used to develop the following \$ indexes:

All-Purpose Index (API): Evaluates sires for use on the entire cow herd (bred to both Angus first-calf heifers and mature cows) with the portion of their daughters required to maintain herd size retained and the remaining heifers and steers put on feed and sold grade and yield.

Terminal Index (TI): Evaluates sire for use on mature Angus cows with all offspring put on feed and sold grade and yield.

Using API and TI: First, determine which index to use; if you're keeping replacements use API, if not, TI. Then just as with EPDs, zero in on the unit difference between bulls. (As described above, index units are in dollars per cow exposed.) The difference can be used to determine how much a bull is worth compared to another. Or, put another way, how much you can pay for one bull compared to another. For example, when buying an all-purpose-type sire, you can quickly figure a bull scoring +100 for API is worth an extra \$6,000 over a \$50 bull if both are exposed to 30 cows over 4 years (\$50 diff. x 30 hd. x 4 yr. = \$6,000). A percentile-ranking chart is required to determine where a bull's index value ranks him relative to other bulls in the breed. For percentile rankings or more detailed information about EPDs and \$ indexes visit www.simmental.org.

Explanation of How to Utilize API and TI Indexes

First, determine which index to use; if you're keeping replacements use API, if not, TI. Then, just as with EPDs, zero in on the unit difference between bulls. (As described to the left, index units are in dollars per cow exposed.) The difference can be used to determine how much a bull is worth compared to another. Or, put another way, how much you can pay for one bull compared to another. For example, when buying an all-purpose-type sire, you can quickly figure a bull scoring +100 for API is worth an extra \$6,000 over a \$50 bull if both are exposed to 30 cows over 4 years (\$50 diff. x hd. x 4 yr. = \$6,000). A percentile-ranking chart is required to determine where a bull's index value ranks him relative to other bulls in the breed. For more information, visit www.simmental.org.

Definitions of Terms

Expected Progeny Differences (EPDs): EPDs are the most accurate and effective tool available for comparing genetic levels.

Back Fat (BF): Inches of backfat.

Birth Weight (BW): Pounds of birth weight.

Calving Ease (CE): Percent of unassisted births when used on heifers.

Carcass Weight (CW): Pounds of carcass weight.

Maternal Calving Ease (MCE): Percent of unassisted births in first-calving daughters.

Milk (MLK): Pounds of weaning weight due to milk.

Marbling (MRB): Marbling score.

Maternal Weaning Weight (MWW): Pounds of weaning weight due to milk and growth.

Ribeye Area (REA): Square inches of ribeye.

Warner-Bratzler Shear Force (WBSF): Pounds of force required to shear a steak.

Stayability (STAY): Percent of daughters remaining in the cowherd at 6 years of age.

Terminal Index (TI): Dollars per cow exposed under a terminal-sire scenario.

Weaning Weight (WW): Pounds of weaning weight.

Yearling Weight (YW): Pounds of yearling weight.

Yield Grade (YG): Yield grade score.

Sale Information

TESTICLE MEASUREMENTS

Testicular size is an indicator of puberty in both bulls and females, so selecting bulls with larger scrotal circumference measurements will not only ensure you of a bull who can service more cows over a given period of time, but will also provide you with daughters who will cycle earlier.

Recommendations for Scrotal Circumference

	Months of Age			
	12-14	15-20	21-30	30+
Excellent	35	37	39	40
Good	30-35	31-37	32-39	33-40
Poor	30	31	32	33

All measurements are expressed in centimeters.

GENOMICALLY-ENHANCED EPDS

All the bulls of both breeds have been genetically profiled through Igenity to enhance the accuracy of their EPDs, verify parentage and, on the Simmentals, determine polledness and color.



Cattlecents CONSULTING, INC.

Dewayne L. Siebrasse, President
Nutritional Consultant

Providing technical expertise for
the nutritional management
of your beef cattle enterprise.



3522 Rolling Meadows • Aberdeen, SD 57401
Cell 605-228-5788 • Office/Fax 605-225-5090
email: cattlecents@gmail.com

RED ANGUS GUIDE TO EPDS

RedAngus.org

ProS..... Profitability and Sustainability is an all-purpose index that predicts average economic differences in all segments in the beef supply chain. This index is a combination of the breeding objectives modeled in the HerdBuilder and GridMaster selection indexes. In this index, replacement heifers are retained from within the herd and all remaining progeny are fed out to slaughter and sold on a quality-based grid. Traits included in this index include calving ease, growth, HPG, STAY, Mature Weight, Dry Matter Intake and carcass traits. The resulting index is expressed in dollars per head born (Index/High Value).

HB..... HerdBuilder is a maternal selection index that predicts the economic differences of animals for traits that are important from conception through weaning. Expressed as dollars per head born, HB is calculated based on the scenario that bulls are mated to heifers and cows, replacement heifers are retained and all remaining progeny are marketed at weaning. Traits included in the HB index include Calving Ease Direct, Calving Ease Maternal, Weaning Weight, Milk, Mature Weight, Heifer Pregnancy and Stayability (Index/High Value).

GM..... GridMaster is a selection index that predicts the average economic difference of non-replacement calves through the post-weaning phase of production. GM places selection pressure on growth, feedyard performance and carcass traits. Expressed as dollars per head born, GM is calculated based on the scenario that progeny are fed out to slaughter and marketed on a quality-based carcass grid. Traits included in GM include Average Daily Gain, Carcass Weight, Dry Matter Intake, Marbling, Back Fat and Rib Eye Area (Index/High Value).

CED..... Calving Ease Direct predicts differences in the percent of calves born unassisted out of 2-year-old dams. (Percent/High Value)

BW..... Birth Weight predicts differences in actual birth weight of progeny. (Pounds/Low Value)

WW..... Weaning Weight predicts differences in 205-day weaning weight. (Pounds/High Value)

YW..... Yearling Weight predicts differences in 365-day yearling weight. (Pounds/High Value)

ADG..... Average Daily Gain predicts differences in weight gain between 205 and 365 days of age. (Pounds/High Value)

DMI..... Dry Matter Intake predicts differences in daily feed intake as measured in a feedlot during the post-weaning period. (Pounds/Low Value)

MILK..... Milk predicts differences in weaning weight attributed to the milking ability of the animal's daughters. (Pounds/High Value)

ME..... Maintenance Energy predicts the difference in maintenance energy requirements. (Mcal per Month/Low Value)

HPG..... Heifer Pregnancy predicts differences in the percent of daughters who are able to conceive and calve at 2 years of age following exposure to breeding. (Percent/High Value)

CEM..... Calving Ease Maternal predicts differences in the percent of daughters who are able to calve unassisted as 2-year-old heifers. (Percent/High Value)

STAY..... Stayability predicts differences in the ability of an animals' retained daughters to remain productive in the herd – calve every year – through 6 years of age. (Percent/High Value)

MARB..... Marbling predicts differences in marbling score – amount of intramuscular fat measured at the 13th rib. (Marbling Score Units/High Value)

YG..... Yield Grade predicts differences in USDA Yield Grade, which is calculated using CW, REA and Fat. (Yield Grade Units/Low Value)

CW..... Carcass Weight predicts differences in actual hot carcass weight. (Pounds/High Value)

REA..... Ribeye Area predicts differences in square inches of ribeye area measured at the 13th rib. (Square Inches/High Value)

FAT..... Fat predicts differences in the depth of backfat measured between the 12th and 13th ribs. (Inches/Low Value)



Lot 1

1

MR FR J1

BD: 4/1/21 Reg: 3977894
 BW: 86 205-Day Wt.: 792

1/2 SM 1/2 AN
 Black Polled

GW ROBUST 605Z
KS MUSTANG E1323
 KS WANDY W82

S A V FINAL ANSWER 0035
MISS FR D602
 MISS FR B402

[GW PREMIUM BEEF 021TS
 GW MISS GPRD 123X
 [B C MATRIX 4132
 KS KAYLA J497
 [SITZ TRAVELER 8180
 S A V EMULOUS 8145
 [MR NLC UPGRADE 2115Z
 MISS FR X002

CE	BW	WW	YW	ADG	MCE	MK	MWW	STAY	DOC	CW	YG	MB	REA	API	TI
12.2	0.1	86.2	122.6	0.23	6.1	26.1	69.2	20.0	21.1	42.0	-0.14	0.19	0.67	136.5	81.1
55%	45%	15%	40%	75%	65%	25%	15%	10%	1%	20%	80%	75%	50%	40%	40%

We only have a few Mustang calves this year since he got injured a year ago. If you're looking for an outstanding SimAngus bull this is a good one. From a SAV Final Answer dam.



Lot 2

2

MR FR J2

BD: 4/1/21 Reg: 3977902
 BW: 84 205-Day Wt.: 764

1/2 SM 1/2 AN
 Black Polled

BASIN PAYWEIGHT 1682
TEX PLAYBOOK 5437
 RITA 1C43 OF 9M26 COMPLETE

TJ 586C
MISS FR G942
 MISS FRZ242

[BASIN PAYWEIGHT 006S
 21AR O LASS 7017
 [SUMMITCREST COMPLETE 1P55
 RITA 9M26 OF RITA 5F56 PRED
 [CCR SANTA FE 9349Z
 TJ MS 38W
 [CLO LTS ENTOURAGE 72T
 MISS FR X042

CE	BW	WW	YW	ADG	MCE	MK	MWW	STAY	DOC	CW	YG	MB	REA	API	TI
12.5	-0.1	82.8	130.5	0.30	8.1	22.9	64.3	16.3	20.0	42.6	0.01	0.31	0.40	136.6	82.1
50%	45%	25%	25%	25%	30%	50%	30%	40%	1%	20%	99%	50%	90%	40%	35%

Could be one of the best SimAngus 1/2 bloods we have raised. Comes from an excellent cow family. His dam is a first-calf heifer.



Lot 2 on August 15th

3

MR FR J3

BD: 4/6/21 Reg: 3977871
 BW: 92 205-Day Wt.: 773

1/2 SM 7/16 AN 1/16 AR
 Black Polled

GW ROBUST 605Z
KS MUSTANG E1323
 KS WANDY W82

B C MATRIX 4132
MISS FR Y199
 MISS FR U899

[GW PREMIUM BEEF 021TS
 GW MISS GPRD 123X
 [B C MATRIX 4132
 KS KAYLA J497
 [O C C EMBLAZON 854E
 CAF PURE PRIDE EXT 99
 [KS REACTOR P870
 G729

CE	BW	WW	YW	ADG	MCE	MK	MWW	STAY	DOC	CW	YG	MB	REA	API	TI
10.5	1.9	87.7	128.8	0.26	5.1	26.1	69.9	20.6	17.6	48.1	-0.10	0.11	0.66	124.6	75.9
75%	80%	15%	25%	55%	80%	25%	15%	4%	3%	10%	90%	90%	50%	65%	60%

Here is another good Mustang 1/2 blood.



Lot 4

4

MR FR J4

BD: 4/3/21 Reg: 3977868
 BW: 78 205-Day Wt.: 705

3/4 SM 1/4 AR
 Black Polled

CDI MAINLINE 265D
HOOK'S FOCAL POINT 212F
 HOOK'S ULTIMO 14U

SCHULER REBEL 0029X
MISS FR F835
 MISS FR D635

[TJ MAIN EVENT 503B
 HOOK'S BEYONCE 82B
 [TRIPLE C INVASION R47K
 HOOKS SHIMMER 37S
 [BECKTON NEBULA P P707
 SOR RUTH RMR 5055R
 [CDI MISSION 234Y
 MISS FR X075

CE	BW	WW	YW	ADG	MCE	MK	MWW	STAY	DOC	CW	YG	MB	REA	API	TI
13.9	-1.1	70.5	110.6	0.25	7.3	26.9	62.0	19.1	10.9	25.8	-0.25	0.24	0.57	138.5	75.9
30%	25%	70%	65%	60%	40%	20%	45%	15%	70%	70%	45%	65%	70%	35%	60%

This calf is heterozygous black. Could be a good calving ease choice.

6

MR FR J6

BD: 4/10/21 Reg: 3977859
 BW: 88 205-Day Wt.: 768

3/4 SM 3/16 AR 1/16 CS
 Red Polled

CDI CENTURY 315C
MR FR E76
 MISS FR B413

WS GUNSMOKE X32
MISS FR A371
 MISS FR U881 OPRAH

[CDI PERSPECTIVE 238A
 HOOK'S UNION 68U
 [CDI MISSION 234Y
 MISS FR U812
 [HOOKS SHEAR FORCE 38K
 WS MISS SPEEDWAY T44
 [WEBR DOC HOLLIDAY 2N
 MISS FR S681

CE	BW	WW	YW	ADG	MCE	MK	MWW	STAY	DOC	CW	YG	MB	REA	API	TI
11.7	-0.1	84.9	122.7	0.24	6.1	17.8	60.3	19.8	11.3	27.8	-0.38	0.22	0.87	138.5	81.6
60%	45%	20%	40%	70%	65%	90%	55%	10%	65%	65%	15%	70%	20%	35%	35%

7

MR FR J7

BD: 4/11/21 Reg: 3977858
 BW: 64 205-Day Wt.: 694

Purebred
 Red Polled

CDI CENTURY 315C
MR FR E76
 MISS FR B413

ANKONIAN RED CAESAR
MISS FR Z278
 MISS FR T778

[CDI PERSPECTIVE 238A
 HOOK'S UNION 68U
 [CDI MISSION 234Y
 MISS FR U812
 [BOZ REDCOAT
 GFI CANDACE G51
 [MEYERS RED TOP
 MISS FR N378

CE	BW	WW	YW	ADG	MCE	MK	MWW	STAY	DOC	CW	YG	MB	REA	API	TI
14.4	-2.5	66.3	92.4	0.16	11.1	22.3	55.4	20.3	9.0	17.5	-0.46	0.05	0.73	141.2	74.5
10%	3%	90%	95%	99%	1%	60%	85%	10%	85%	90%	30%	70%	85%	30%	65%

This good red bull had a 64# BW but probably has a little too much performance to be a heifer bull.



Mic Drop out working

8

MR FR J8

BD: 4/11/21 Reg: 3977839
 BW: 86 205-Day Wt.: 831

Purebred
 Red Polled

CDI CENTURY 315C
MR FR E76
 MISS FR B413

WS TRANSFORMER Z34
MISS FR E704
 MISS FR W904

[CDI PERSPECTIVE 238A
 HOOK'S UNION 68U
 [CDI MISSION 234Y
 MISS FR U812
 [WS HIGH STAKES W115
 WS BLACK ROSE X165
 [MR FR S07
 MISS FR L140

CE	BW	WW	YW	ADG	MCE	MK	MWW	STAY	DOC	CW	YG	MB	REA	API	TI
12.8	0.4	85.8	126.0	0.25	7.6	25.1	68.0	18.6	13.5	35.5	-0.43	0.16	0.95	145.5	86.0
25%	25%	20%	30%	45%	20%	40%	25%	25%	25%	25%	50%	40%	35%	20%	20%

110 WW ratio on this red purebred. 831# WW.



Lot 9

9

MR FR J9

BD: 4/11/21 Reg: 3977872
 BW: 90 205-Day Wt.: 775

Purebred
 Black Polled

CDI MAINLINE 265D
HOOK'S FOCAL POINT 212F
 HOOK'S ULTIMO 14U

WS GUNSMOKE X32
MISS FR A358
 MISS FR S658

[T.J. MAIN EVENT 503B
 HOOK'S BEYONCE 82B
 [TRIPLE C INVASION R47K
 HOOKS SHIMMER 37S
 [HOOKS SHEAR FORCE 38K
 WS MISS SPEEDWAY T44
 [KS FULL DIMENSION M17
 MISS FR K068

CE	BW	WW	YW	ADG	MCE	MK	MWW	STAY	DOC	CW	YG	MB	REA	API	TI
11.3	1.0	73.3	114.1	0.26	6.5	24.1	60.7	20.5	14.9	29.6	-0.42	0.14	0.90	141.5	77.4
45%	40%	70%	55%	40%	35%	45%	60%	10%	15%	50%	55%	45%	45%	25%	55%

Heterozygous black bull with a 102 WW ratio.



MR SR MIC DROP F1534

12

MR FR J12

BD: 4/14/21 Reg: 3977854
 BW: 78 205-Day Wt.: 696

Purebred
 Black Polled

MR SR 71 RIGHT NOW E1538
MR SR MIC DROP G1534
 MISS SR C1534

MR NLC WESS Y1153
MISS FR C530
 MISS FR X030

[HOOK'S BOZEMAN 8B
 MISS SR C1538
 [JBS BIG CASINO 336Y
 MISS SR Z1214
 [ELLINGSON LEGACY M229
 OCC 429 LADY 878
 [HTP SVF IN DEW TIME
 MISS FR T729

CE	BW	WW	YW	ADG	MCE	MK	MWW	STAY	DOC	CW	YG	MB	REA	API	TI
16.0	-2.6	73.2	114.0	0.25	8.9	21.8	58.3	18.9	16.7	27.6	-0.37	0.14	0.76	150.5	81.7
4%	3%	70%	55%	45%	10%	65%	70%	25%	4%	55%	80%	45%	80%	15%	35%

The first of the MR SR Mic Drop calves. Mic Drop is a bull we purchased from Schnabel Ranch two years ago. There are a number of good calves sired by him in the sale. He has a blaze face.



Lot 13

13

MR FR J13

BD: 4/14/21 Reg: 3977846
 BW: 82 205-Day Wt.: 690

3/4 SM 1/4 AN
 Black Polled

GW ROBUST 605Z
KS MUSTANG E1323
 KS WANDY W82

KS DREAMBOAT R38
MISS FR Z217
 MISS FR S607

[GW PREMIUM BEEF 021TS
 GW MISS GPRD 123X
 [B C MATRIX 4132
 KS KAYLA J497
 [CNS DREAM ON L186
 HHSF SHALENA
 [GSR NEW FORTUNE 176N
 MISS FR P407

CE	BW	WW	YW	ADG	MCE	MK	MWW	STAY	DOC	CW	YG	MB	REA	API	TI
12.6	0.3	74.0	104.8	0.19	6.9	23.1	60.0	20.7	13.3	31.4	-0.31	0.07	0.71	138.4	75.6
50%	50%	60%	75%	95%	50%	50%	55%	4%	35%	50%	30%	95%	45%	35%	60%

A heterozygous black 3/4 blood SimAngus sired by KS Mustang. Moderate BW with excellent performance.



15

MR FR J15

BD: 4/16/21 Reg: 3977826
BW: 80 205-Day Wt.: 723

Purebred
Black Polled

CDI MAINLINE 265D
HOOK'S FOCAL POINT 212F
HOOK'S ULTIMO 14U

[TJ MAIN EVENT 503B
HOOK'S BEYONCE 82B
[TRIPLE C INVASION R47K
HOOKS SHIMMER 37S
[WESTFALL VOYAGER 721P
BCLR MISS VICTORIA U824
[JFKAPPES RISEN STAR 352N
MISS FR K077

BCLR VOYAGER X824
MISS FR A376
MISS FR T776

CE	BW	WW	YW	ADG	MCE	MK	MWW	STAY	DOC	CW	YG	MB	REA	API	TI
13.0	-0.3	66.4	103.3	0.23	7.3	27.1	60.3	20.0	9.4	25.8	-0.42	0.07	0.82	137.9	73.3
25%	20%	90%	80%	60%	25%	25%	60%	15%	80%	65%	55%	65%	65%	35%	75%

Heterozygous black.

Lot 15

16

MR FR J16

BD: 4/16/21 Reg: 3977883
BW: 90 205-Day Wt.: 751

Purebred
Red Polled

WS RED MOON D76
MR SR F1336
MISS FR A368

[W/C EXECUTIVE ORDER 8543B
DCR MS MOONSHINE B38

KS BASES LOADED B47
MISS FR D680
MISS FR A381

[ELLINGSON IDEAL X13
MISS FR X068
[BCLR SHAMWOW W611
KS ZASHA Z906
[CDI MISSION 234Y
MISS FR N381

CE	BW	WW	YW	ADG	MCE	MK	MWW	STAY	DOC	CW	YG	MB	REA	API	TI
11.2	1.4	87.4	126.3	0.24	6.2	27.8	71.5	17.2	13.5	35.3	-0.43	0.06	1.03	133.2	83.0
45%	45%	20%	30%	55%	45%	20%	15%	45%	25%	30%	50%	65%	20%	45%	30%

A good red purebred that goes back to KS Bases Loaded on the dam side.

18

MR FR J18

BD: 4/17/21 Reg: 3977840
BW: 80 205-Day Wt.: 718

Purebred
Black Polled

MR SR 71 RIGHT NOW E1538
MR SR MIC DROP G1534
MISS SR C1534

[HOOK'S BOZEMAN 8B
MISS SR C1538
[JBS BIG CASINO 336Y
MISS SR Z1214
[CNS DREAM ON L186
HTP SVF HONEYDEW
[HOOKS SHEAR FORCE 38K
MISS FR T792

HTP SVF IN DEW TIME
MISS FR Z292
MISS FR W992

CE	BW	WW	YW	ADG	MCE	MK	MWW	STAY	DOC	CW	YG	MB	REA	API	TI
13.9	-0.8	72.1	107.9	0.22	7.6	27.0	63.0	19.2	23.1	16.5	-0.43	0.10	0.78	141.8	78.1
15%	15%	75%	70%	70%	20%	25%	45%	20%	1%	95%	50%	55%	75%	25%	50%

Another good SR Mic Drop calf with In Dew Time & Hook's Shear Force on the dam side. Good calving ease & birth weight.

19

MR FR J19

BD: 4/18/21 Reg: 3977890
BW: 80 205-Day Wt.: 740

Purebred
Red Polled

WS ALL ABOARD B80
KBHR BOARDING PASS F153
KBHR D054

[WS ALL-AROUND Z35
WS LITTLE SISTER W37
[LSF TBJ TAKEBACK 4856B
KBHR B166

MR FR E76
MISS FR G976
MISS FR C576

[CDI CENTURY 315C
MISS FR B413
[CDI MISSION 234Y
MISS FR S676

CE	BW	WW	YW	ADG	MCE	MK	MWW	STAY	DOC	CW	YG	MB	REA	API	TI
16.9	-1.3	80.8	118.6	0.24	10.6	22.9	63.2	16.0	10.0	29.4	-0.50	0.27	1.12	152.8	88.2
2%	10%	40%	45%	55%	2%	55%	45%	60%	70%	50%	15%	20%	10%	15%	15%

KBHR Boarding Pass is a bull that we used on heifers. This calf's dam is a first-calf heifer.

21

MR FR J21

BD: 4/20/21 Reg: 3977862
BW: 82 205-Day Wt.: 745

Purebred
Red Polled

WS ALL ABOARD B80
KBHR BOARDING PASS F153
KBHR D054

[WS ALL-AROUND Z35
WS LITTLE SISTER W37
[LSF TBJ TAKEBACK 4856B
KBHR B166
[CDI PERSPECTIVE 238A
HOOK'S UNION 68U
[WS TRANSFORMER Z34
MISS FR Z278

CDI CENTURY 315C
MISS FR G971
MISS FR B478

CE	BW	WW	YW	ADG	MCE	MK	MWW	STAY	DOC	CW	YG	MB	REA	API	TI
16.2	-0.9	78.4	115.9	0.23	9.8	23.1	62.3	17.0	16.5	26.3	-0.47	0.23	1.00	150.2	85.3
4%	10%	50%	50%	60%	3%	55%	50%	45%	4%	60%	25%	25%	25%	15%	20%

A good Boarding Pass bull from a first-calf heifer. Excellent calving ease EPD. 153 API

22 MR FR J22

BD: 4/21/21 Reg: 3977874
 BW: 85 205-Day Wt.: 754

3/4 SM 1/4 AR
 Red Polled

WS RED MOON D76
MR SR F1336
 MISS FR A368
 HXC CONQUEST 4405P
MISS FR C573
 MISS FR A373

W/G EXECUTIVE ORDER 8543B
 DCR MS MOONSHINE B38
 ELLINGSON IDEAL X13
 MISS FR X068
 BECKTON JULIAN GG B571
 HXC ELLIE MAY MA638
 ANKONIAN RED CAESAR
 MISS FR X034

CE	BW	WW	YW	ADG	MCE	MK	MWW	STAY	DOC	CW	YG	MB	REA	API	TI
12.4	-0.4	80.5	120.9	0.25	8.6	30.5	70.7	18.3	12.8	26.8	-0.27	0.09	0.69	128.4	77.2
50%	35%	35%	40%	60%	20%	10%	10%	20%	40%	70%	40%	90%	45%	55%	55%

3/4 blood red SimAngus. HXC Conquest on the dam side.

23 MR FR J23

BD: 4/22/21 Reg: 3977822
 BW: 86 205-Day Wt.: 727

3/4 SM 1/4 AN
 Black Polled

MR SR 71 RIGHT NOW E1538
MR SR MIC DROP G1534
 MISS SR C1534
 S A V FINAL ANSWER 0035
MISS FR B417
 MISS FR Z217

HOOK'S BOZEMAN 8B
 MISS SR C1538
 JBS BIG CASINO 336Y
 MISS SR Z1214
 SITZ TRAVELER 8180
 S A V EMULOUS 8145
 KS DREAMBOAT R38
 MISS FR S607

CE	BW	WW	YW	ADG	MCE	MK	MWW	STAY	DOC	CW	YG	MB	REA	API	TI
13.7	-0.5	82.1	130.5	0.30	8.4	21.8	62.8	19.8	20.9	25.0	-0.26	0.16	0.54	138.9	79.7
35%	35%	30%	25%	25%	25%	60%	40%	10%	1%	75%	45%	80%	75%	35%	45%

A thick made Mic Drop with SAV Final Answer on the dam side. Outstanding cow family.



Lot 24

24 MR FR J24

BD: 4/22/21 Reg: 3977835
 BW: 85 205-Day Wt.: 823

1/2 SM 7/16 AR 1/16 CS
 Red Polled

CDI CENTURY 315C
MR FR E76
 MISS FR B413
 HXC CONQUEST 4405P
MISS FR B440
 MISS FR Z240

CDI PERSPECTIVE 238A
 HOOK'S UNION 68U
 CDI MISSION 234Y
 MISS FR U812
 BECKTON JULIAN GG B571
 HXC ELLIE MAY MA638
 HLH BUSTER 406 603
 MISS FR X040

CE	BW	WW	YW	ADG	MCE	MK	MWW	STAY	DOC	CW	YG	MB	REA	API	TI
14.3	-2.1	84.0	123.7	0.25	8.5	18.9	60.8	18.9	9.8	27.6	-0.21	0.24	0.57	144.0	83.8
25%	15%	20%	35%	60%	25%	85%	50%	15%	80%	65%	60%	65%	70%	25%	30%

Red SimAngus bull with HXC Conquest on the dam side. Only 83# BW and an 823# WW.



Lot 26

26 MR FR J26

BD: 4/27/21 Reg: 3977879
 BW: 92 205-Day Wt.: 713

Purebred
 Black Polled

MR SR 71 RIGHT NOW E1538
MR SR MIC DROP G1534
 MISS SR C1534
 MR NLC TRILOGY T7944
MISS FR Y131
 MISS FR M231

HOOK'S BOZEMAN 8B
 MISS SR C1538
 JBS BIG CASINO 336Y
 MISS SR Z1214
 DCC GRID MAKER 743R
 205M
 GW BODYBUILDER 677K
 3C CROCUS D631 R

CE	BW	WW	YW	ADG	MCE	MK	MWW	STAY	DOC	CW	YG	MB	REA	API	TI
11.8	0.5	70.4	109.6	0.24	7.5	29.8	65.0	20.2	22.1	23.7	-0.41	0.08	0.78	137.9	75.3
40%	30%	80%	65%	55%	20%	15%	40%	10%	1%	70%	60%	60%	75%	35%	65%

Another soggy Mic Drop son.

27 MR FR J27

BD: 4/27/21 Reg: 3977847
 BW: 84 205-Day Wt.: 844

5/8 SM 5/16 AR 1/16 CS
 Red Polled

CDI CENTURY 315C
MR FR E76
 MISS FR B413

HXC CONQUEST 4405P
MISS FR D641
 MISS FR B441

[CDI PERSPECTIVE 238A
 HOOK'S UNION 68U
 [CDI MISSION 234Y
 MISS FR U812
 [BECKTON JULIAN GG B571
 HXC ELLIE MAY MA638
 [WS TRANSFORMER Z34
 MISS FR Z241

CE	BW	WW	YW	ADG	MCE	MK	MWW	STAY	DOC	CW	YG	MB	REA	API	TI
14.8	-1.3	88.4	130.2	0.26	8.5	22.3	66.5	17.7	19.7	29.6	-0.31	0.27	0.78	144.7	87.1
25%	25%	15%	25%	55%	25%	55%	25%	25%	1%	60%	30%	60%	30%	25%	20%

Another red SimAngus with Conquest on the dam side. The Conquest cows all seem to produce good calves. This was the number 4 calf at weaning – 111 WW ratio.

29 MR FR J29

BD: 4/28/21 Reg: 3977831
 BW: 88 205-Day Wt.: 859

3/4 SM 1/4 AN
 Black Polled

MR SR 71 RIGHT NOW E1538
MR SR MIC DROP G1534
 MISS SR C1534

S A V FINAL ANSWER 0035
MISS FR B494
 MISS FR Z294

[HOOK'S BOZEMAN 8B
 MISS SR C1538
 [JBS BIG CASINO 336Y
 MISS SR Z1214
 [SITZ TRAVELER 8180
 S A V EMULOUS 8145
 [KS DREAMBOAT R38
 MISS FR T794

CE	BW	WW	YW	ADG	MCE	MK	MWW	STAY	DOC	CW	YG	MB	REA	API	TI
13.1	-0.3	87.3	136.0	0.30	7.9	26.8	70.5	18.8	22.9	30.6	-0.29	0.15	0.68	137.6	83.1
40%	40%	15%	15%	25%	30%	20%	10%	15%	1%	55%	35%	85%	50%	35%	30%

This Mic Drop son was the number 3 calf at weaning with a 113 WW ratio. His dam is a SAV Final Answer daughter.



60 **CDI PERSPECTIVE 238A**

31 MR FR J31

BD: 5/1/21 Reg: 3977888
 BW: 95 205-Day Wt.: 909

Purebred
 Red Polled

CDI CENTURY 315C
MR FR E76
 MISS FR B413

COTT GFI PACESETTER T149
MISS FR X080
 MISS FR U880

[CDI PERSPECTIVE 238A
 HOOK'S UNION 68U
 [CDI MISSION 234Y
 MISS FR U812
 [HOOKS PACESETTER 8P
 COTT LEANNA 149L
 [WS SHEAR GENIUS S2
 R590

CE	BW	WW	YW	ADG	MCE	MK	MWW	STAY	DOC	CW	YG	MB	REA	API	TI
12.2	1.4	87.7	127.6	0.25	6.9	24.7	68.6	20.6	11.9	32.9	-0.40	0.15	0.93	146.3	85.2
30%	45%	20%	25%	45%	30%	40%	25%	10%	45%	35%	65%	40%	40%	20%	25%

A red purebred. He was the number 1 calf at weaning with a 909# adjusted WW.



AK **Lot 32**

32 MR FR J32

BD: 5/3/21 Reg: 3977850
 BW: 86 205-Day Wt.: 804

3/4 SM 1/4 AN
 Black Polled

GW ROBUST 605Z
KS MUSTANG E1323
 KS WANDY W82

HSF HIGH ROLLER 12T
MISS FR B429
 MISS FR Z229

[GW PREMIUM BEEF 021TS
 GW MISS GPRD 123X
 [B C MATRIX 4132
 KS KAYLA J497
 [TJ 57J THE GAMBLER
 HSF RED FORTUNES SIS 33
 [CLO LTS ENTOURAGE 72T
 MISS FR X029

CE	BW	WW	YW	ADG	MCE	MK	MWW	STAY	DOC	CW	YG	MB	REA	API	TI
14.6	-0.4	81.1	117.1	0.22	7.6	29.6	70.1	19.5	13.0	35.3	-0.37	0.06	0.94	131.8	77.2
25%	35%	30%	50%	80%	35%	10%	10%	10%	40%	40%	15%	95%	10%	50%	55%

A young KS Mustang calf. As thick as you can make a calf. Number 11 at weaning. He is possibly the best of the Mustang sons.



Lot 33

33

MR FR J33

BD: 5/9/21 Reg: 3977851
 BW: 90 205-Day Wt.: 776

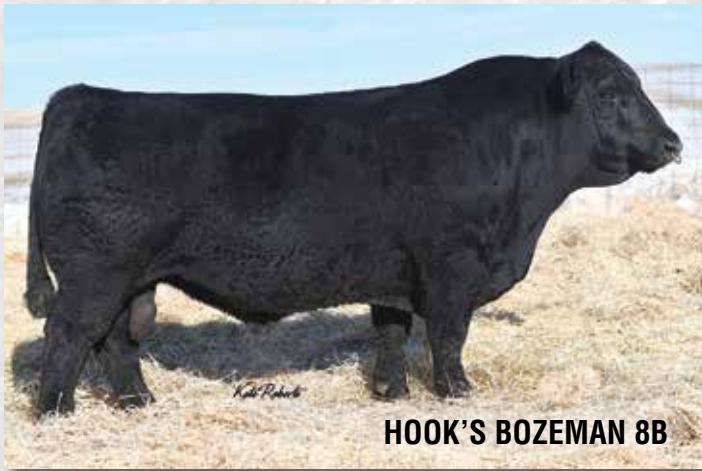
Purebred
 Red Polled

WS RED MOON D76
MR SR F1336
 MISS FR A368
 KR MR BULLFROG W23
MISS FR Z227
 MISS FR U829

[W/C EXECUTIVE ORDER 8543B
 DCR MS MOONSHINE B38
 [ELLINGSON IDEAL X13
 MISS FR X068
 [TNT TOP GUN R244
 KR RB BUILDER M11
 [WINCHESTER HR P8315
 MISS FR S629

CE	BW	WW	YW	ADG	MCE	MK	MWW	STAY	DOC	CW	YG	MB	REA	API	TI
9.2	1.9	79.7	116.5	0.23	5.6	29.1	68.8	18.3	13.6	23.4	-0.41	-0.05	0.78	122.8	74.7
75%	55%	40%	50%	60%	55%	15%	20%	30%	25%	75%	60%	90%	75%	70%	65%

Good performance with this bull. 102 WW ratio.



HOOK'S BOZEMAN 8B

35

MR FR J35

BD: 5/15/21 Reg: 3977893
 BW: 86 205-Day Wt.: 838

Purebred
 Black Polled

MR SR 71 RIGHT NOW E1538
MR SR MIC DROP G1534
 MISS SR C1534
 HOOKS SHEAR FORCE 38K
MISS FR Y108
 MISS FR W908

[HOOK'S BOZEMAN 8B
 MISS SR C1538
 [JBS BIG CASINO 336Y
 MISS SR Z1214
 [NICHOLS LEGACY G151
 C&D TRACY
 [MR NLC TRILOGY T7944
 MISS FR S608

CE	BW	WW	YW	ADG	MCE	MK	MWW	STAY	DOC	CW	YG	MB	REA	API	TI
14.2	-0.8	82.0	128.6	0.29	8.5	25.9	66.9	21.0	19.9	28.0	-0.45	0.18	0.97	155.3	86.4
15%	15%	35%	25%	20%	10%	35%	30%	10%	1%	55%	35%	35%	30%	10%	20%

Another young Mic Drop calf with excellent performance. Number 5 at weaning with a 111 WW ratio. Hook's Shear Force on the dam side.



Lot 36

36

MR FR J36

BD: 5/17/21 Reg: 3977843
 BW: 65 205-Day Wt.: 680

3/4 SM 1/4 AN
 Black Polled

MR SR 71 RIGHT NOW E1538
MR SR MIC DROP G1534
 MISS SR C1534
 MR NLC UPGRADE 2115Z
MISS FR B402
 MISS FR X002

[HOOK'S BOZEMAN 8B
 MISS SR C1538
 [JBS BIG CASINO 336Y
 MISS SR Z1214
 [MR NLC UPGRADE U8676
 MISS NLC P4078 BLK
 [MR NLC TRILOGY T7944
 MISS FR N382

CE	BW	WW	YW	ADG	MCE	MK	MWW	STAY	DOC	CW	YG	MB	REA	API	TI
14.1	-2.8	63.6	98.9	0.22	8.0	26.2	58.0	20.1	17.1	21.0	-0.42	0.12	0.74	145.8	75.9
30%	10%	90%	85%	80%	30%	25%	65%	10%	4%	85%	10%	90%	35%	25%	60%

A black, blaze face son of SR Mic Drop. He would be a good choice for a heifer bull. Only a 64# BW.



37

MR FR J37

BD: 5/18/21 Reg: 3977892
BW: 87 205-Day Wt.: 789

3/4 SM 1/4 AN
Black Polled

CDI MAINLINE 265D
HOOK'S FOCAL POINT 212F
HOOK'S ULTIMO 14U

- [T J MAIN EVENT 503B
- [HOOK'S BEYONCE 82B
- [TRIPLE C INVASION R47K
- [HOOKS SHIMMER 37S
- [SPRINGCREEK BLK TANK201W
- [3C CROCUS Y1331 B
- [B C MATRIX 4132
- [MISS FR U824

3C PASQUE 4596B
MISS FR F814
MISS FR Y124

CE	BW	WW	YW	ADG	MCE	MK	MWW	STAY	DOC	CW	YG	MB	REA	API	TI
11.1	1.1	79.8	121.6	0.26	5.3	21.4	61.2	19.2	14.4	33.8	-0.26	0.15	0.65	129.4	75.6
70%	65%	35%	40%	55%	75%	65%	50%	10%	25%	45%	45%	85%	55%	55%	60%

A young Hook's Focal Point bull. He had a 104 WW ratio.

Lot 37

38

MR FR J38

BD: 5/20/21 Reg: 3977828
BW: 87 205-Day Wt.: 814

3/4 SM 1/4 AR
Red Polled

WS RED MOON D76
MR SR F1336
MISS FR A368

- [W/C EXECUTIVE ORDER 8543B
- [DCR MS MOONSHINE B38
- [ELLINGSON IDEAL X13
- [MISS FR X068
- [BECKTON JULIAN GG B571
- [HXC ELLIE MAY MA638
- [BCLR VOYAGER X824
- [MISS FR W923

HXC CONQUEST 4405P
MISS FR B423
MISS FR Z223

CE	BW	WW	YW	ADG	MCE	MK	MWW	STAY	DOC	CW	YG	MB	REA	API	TI
13.4	-0.7	79.2	116.0	0.23	8.2	31.9	71.4	18.5	13.8	23.6	-0.25	0.10	0.64	129.9	77.0
35%	30%	35%	55%	75%	30%	4%	10%	15%	30%	80%	45%	90%	55%	50%	55%

Red SimAngus again with HXC Conquest on the dam side. 105 WW ratio.

39

MR FR J39

BD: 5/20/21 Reg: 3977821
BW: 88 205-Day Wt.: 793

3/4 SM 1/4 AN
Black Polled

GW ROBUST 605Z
KS MUSTANG E1323
KS WANDY W82

- [GW PREMIUM BEEF 021TS
- [GW MISS GPRD 123X
- [B C MATRIX 4132
- [KS KAYLA J497
- [CNS DREAM ON L186
- [HTP SVF HONEYDEW
- [HC HUMMER 12M
- [MISS FR N329

HTP SVF IN DEW TIME
MISS FR X030
MISS FR T729

CE	BW	WW	YW	ADG	MCE	MK	MWW	STAY	DOC	CW	YG	MB	REA	API	TI
13.2	0.3	80.4	109.2	0.18	6.0	24.7	64.9	20.9	11.4	33.6	-0.30	0.13	0.82	144.6	80.9
40%	50%	35%	70%	95%	65%	35%	30%	4%	60%	45%	30%	85%	25%	25%	40%

Youngest of the KS Mustang sons. In Dew Time on the dam side. 105 WW ratio.



42

MR FR J42

BD: 5/26/21 Reg: 3977841
BW: 88 205-Day Wt.: 906

Purebred
Red Polled

WS RED MOON D76
MR SR F1336
MISS FR A368

- [W/C EXECUTIVE ORDER 8543B
- [DCR MS MOONSHINE B38
- [ELLINGSON IDEAL X13
- [MISS FR X068
- [WESTFALL VOYAGER 721P
- [BCLR MISS VICTORIA U824
- [COTT GFI PACESETTER T149
- [MISS FR T723

BCLR VOYAGER X824
MISS FR Z223
MISS FR W923

CE	BW	WW	YW	ADG	MCE	MK	MWW	STAY	DOC	CW	YG	MB	REA	API	TI
12.8	0.5	83.1	118.4	0.22	7.6	33.3	74.8	20.1	12.8	29.1	-0.38	-0.03	0.87	135.1	79.6
25%	30%	30%	45%	70%	20%	4%	10%	15%	35%	50%	75%	90%	55%	40%	45%

Youngest calf in the sale. Super thick and good. 906# adjusted WW and was #2 at weaning.

Lot 42

Improved Buying Confidence with Greater Genomic **ASSURANCE**

Access to more and better information has always been key to making wise decisions. The evolution and improvement of genetic evaluation tools too has given us an ever-clearer picture of the true genetic makeup of cattle and thus a better view of the value proposition. RightMate, powered by Top Genomics LLC is taking the evaluation of genetics and genomics one giant step further. By combining specific genomic information with the long-proven value of EPDs, this new advancement in technology improves our depth and precision when evaluating the actual ability to transmit value and profit.

The 3 Accreditation Logos below are designed to simplify bull selection and improve buyer confidence by more accurately describing the genetics offered and by reducing risk. What this means to you as a customer is a much greater assurance that you are getting both what you want and need from the genetics you purchase. What it means to your seedstock provider is access to RightMate technology that simply sets them apart from the rest of the industry.



ACCREDITED CALVING EASE – Simply find bulls with the ACE logo for third party Accredited, secure Calving Ease bulls. Though we have had tools in the past to assist in choosing heifer bulls, we've never had one nearly this effective. The reduced risk that comes with this genomic certification will simply make your decisions easier and your heifer calving season more successful. Purchase special purpose ACE bulls with confidence. They will deliver consistent and predictable calving ease.



ACCREDITED TERMINAL MATE – Just like an ATM machine makes it simpler to access your cash, the ATM Logo highlights bulls accredited to generate extra cash income as soon as your next calf crop! These bulls are meant specifically to use only on mature cows and for the purpose of adding performance, pay weight and end product value to market.



ACCREDITED GENOMIC PLUS – For the majority of producers who simply need consistent and balanced genetic improvement, without genomic setbacks, G+ Accredited bulls should be on your list for premium purchase. These sires will absolutely move you forward for both cost reduction and income producing traits and substantially reduce risk when compared to all other evaluation programs. It's simple, the right genes are in these bulls to help secure a profitable future and they have great EPDs to match!



Lot 50

50

MR SR J1347

BD: 3/22/21 Reg: 3935692
 BW: 100 205-Day Wt: 761

3/4 SM 1/4 AN
 Black Polled

WS PROCLAMATION E202
BCLR MANIFESTO G352
 ELLIOTT MISS 352
 GW PREDESTINED 701T
MISS FR A352
 MISS FR Y152

CCR COWBOY CUT 5048Z
 WS MISS SUGAR C4
 GW PREDESTINED 701T
 TRI E MISS N56
 G A R PREDESTINED
 GW MISS LUCKY STRIKE 363
 MR NLC OLIE U8664 B
 MISS FR U852

CE	BW	WW	YW	ADG	MCE	MK	MWW	STAY	DOC	CW	YG	MB	REA	API	TI
7.0	2.8	90.7	132.1	0.26	3.0	34.7	80.0	19.2	17.2	30.1	-0.21	0.44	0.59	139.8	87.3
99%	95%	10%	20%	55%	99%	1%	1%	10%	4%	55%	60%	30%	65%	35%	20%

A super correct double bred 701T son. His 9-year-old dam is sound uddered with great feet. He has 8 EPDs in top 35%, top 10% WW & STAY, top 4% for Docility, & 1% Milk & MWW. Maternal brother was one of our high sellers last year to Leroy Beittespacher & Sons from Bowdle. Three maternal sisters are in our herd.



Lot 51

51

MR SR J1518

BD: 3/13/21 Reg: 3935704
 BW: 86 205-Day Wt: 741

3/4 SM 1/4 AN
 Black Polled

WS PROCLAMATION E202
BCLR MANIFESTO G352
 ELLIOTT MISS 352
 JBS BIG CASINO 336Y
MISS SR C1518
 MISS SR S807

CCR COWBOY CUT 5048Z
 WS MISS SUGAR C4
 GW PREDESTINED 701T
 TRI E MISS N56
 RC CLUB KING 040R
 JBS MISS DES 301 512N

CE	BW	WW	YW	ADG	MCE	MK	MWW	STAY	DOC	CW	YG	MB	REA	API	TI
10.1	1.4	95.5	142.8	0.30	5.1	26.6	74.4	14.3	16.4	39.6	-0.30	0.18	0.91	125.6	86.0
80%	75%	3%	10%	25%	80%	20%	4%	60%	10%	25%	30%	75%	15%	60%	20%

Another really correct son of BCLR Manifesto. His white-faced dam has always been a favorite of mine. He has 10 EPDs in the top 35%, 10% YW & Docility, 4% MWW, & 3% WW. Maternal brother sold to Dale & Jesse Rueb.



BCLR MANIFESTO G352

52

MR SR J1610

BD: 4/11/21 Reg: 3935926
 BW: 95 205-Day Wt: 833

Purebred
 Black Polled

WS PROCLAMATION E202
BCLR MANIFESTO G352
 ELLIOTT MISS 352
 LRS A PLUS 219A
MISS SR D1610
 MISS SR Y1106

CCR COWBOY CUT 5048Z
 WS MISS SUGAR C4
 GW PREDESTINED 701T
 TRI E MISS N56
 MCM TOP GRADE 018X
 LRS MS DAKOTA 559R
 SVF/NJC BUILT RIGHT N48
 915 GR

CE	BW	WW	YW	ADG	MCE	MK	MWW	STAY	DOC	CW	YG	MB	REA	API	TI
8.7	2.9	95.5	142.9	0.30	4.3	30.2	77.9	17.3	16.5	38.3	-0.30	0.32	0.80	145.3	92.2
80%	80%	5%	10%	15%	80%	10%	3%	45%	4%	20%	95%	15%	70%	20%	10%

108 WW ratio and 10 EPDs in top 35%, 10% YW, Milk, TI, 5% WW, 4% Docility, 3% MWW



Lot 53

53

MR SR J1643

BD: 4/4/21 Reg: 3935946
BW: 99 205-Day Wt: 870

Purebred
Black Polled

WS PROCLAMATION E202
BCLR MANIFESTO G352
ELLIOTT MISS 352

HOOK'S BOZEMAN 8B
MISS SR D1643
MISS FR A397

[CCR COWBOY CUT 5048Z
WS MISS SUGAR C4
GW PREDESTINED 701T
TRI E MISS N56
GW-WBF SUBSTANCE 820Y
HOOK'S WILL POWER 24W
WS INTERSTATE X57
MISS FR U898

CE	BW	WW	YW	ADG	MCE	MK	MWW	STAY	DOC	CW	YG	MB	REA	API	TI
8.5	2.3	95.2	142.4	0.30	5.3	30.6	78.1	18.2	14.3	39.7	-0.36	0.34	0.94	149.0	93.4
80%	65%	5%	10%	15%	60%	10%	3%	30%	15%	15%	80%	15%	40%	15%	5%

113 WW ratio plus 11 EPDs in top 35%, 10% or better for WW, YW, MILK, MWW, & TI. Maternal brothers working in the Johnson and Schaible herds in Hosmer.



WS PROCLAMATION E202

54

MR SR J1656

BD: 3/13/21 Reg: 3935727
BW: 98 205-Day Wt: 774

Purebred
Black Polled

WS PROCLAMATION E202
BCLR MANIFESTO G352
ELLIOTT MISS 352

HOOK'S BOZEMAN 8B
MISS SR D1656
MISS SR B1433

[CCR COWBOY CUT 5048Z
WS MISS SUGAR C4
GW PREDESTINED 701T
TRI E MISS N56
GW-WBF SUBSTANCE 820Y
HOOK'S WILL POWER 24W
LFE GOOSE 443X
MISS SR T908

CE	BW	WW	YW	ADG	MCE	MK	MWW	STAY	DOC	CW	YG	MB	REA	API	TI
7.8	2.7	92.9	140.2	0.30	5.3	27.6	74.0	18.6	15.0	42.8	-0.27	0.31	0.81	145.5	90.0
90%	75%	10%	10%	15%	60%	25%	10%	25%	15%	10%	99%	15%	70%	20%	10%

These Manifesto sons will add pounds and structural correctness to any cowherd. 11 EPDs in the top 35% of the breed again with WW, YW, MWW, CW, & TI all in the top 10%.



Lot 55

55

MR SR J1855

BD: 3/10/21 Reg: 3935816
BW: 97 205-Day Wt: 839

Purebred
Black Polled

WS PROCLAMATION E202
BCLR MANIFESTO G352
ELLIOTT MISS 352

HOOK'S BLACK HAWK 50B
MISS SR F1855
MISS SR D1643

[CCR COWBOY CUT 5048Z
WS MISS SUGAR C4
GW PREDESTINED 701T
TRI E MISS N56
HOOK'S XAVIER 14X
HOOK'S YVETTE 100Y
HOOK'S BOZEMAN 8B
MISS FR A397

CE	BW	WW	YW	ADG	MCE	MK	MWW	STAY	DOC	CW	YG	MB	REA	API	TI
8.9	2.3	99.3	151.7	0.33	5.4	31.4	81.0	19.5	16.8	45.0	-0.29	0.33	0.93	153.8	95.8
80%	65%	2%	3%	10%	60%	10%	2%	20%	4%	10%	99%	15%	40%	15%	4%

This guy has been a favorite of mine all year. A purebred who is long sided, big topped, and packed with red meat with a 109 WW ratio. His young Black Hawk X Bozeman dam looks to have a bright future ahead of her. She is 2 for 2 having bulls make the sale. He has 10 EPDs in the top 15% of the breed. This calf is sure to make an impact.

56

MR SR J1629

BD: 3/15/21 Reg: 3935720
 BW: 98 205-Day Wt: 762

5/8 SM 3/8 AN
 Black Polled

J BAR J NIGHTRIDE 225Z
BRIDLE BIT REMBRANDT D630
 BRIDLE BIT MISS A361

JBS BIG CASINO 336Y
MISS SR D1629
 MISS SR Z1216

[GW PREMIUM BEEF 021TS
 J BAR J MISS ND 793X
 [BAR CK TEBOW 1006X
 BRIDLE BIT MISS U805
 [RC CLUB KING 040R
 JBS MISS DES 301 512N

CE	BW	WW	YW	ADG	MCE	MK	MWW	STAY	DOC	CW	YG	MB	REA	API	TI
9.8	0.8	84.2	137.8	0.34	5.6	14.5	56.5	18.0	12.5	35.6	-0.20	0.32	0.75	138.2	82.2
85%	60%	20%	15%	10%	75%	99%	75%	20%	45%	40%	60%	50%	35%	35%	35%

The baldy power bull sired by Rembrandt. He will add that extra shot of frame and length.

57

MR SR J1925

BD: 3/2/21 Reg: 3936016
 BW: 56 205-Day Wt: 661

5/8 SM 3/8 AN
 Black Polled

J BAR J NIGHTRIDE 225Z
BRIDLE BIT REMBRANDT D630
 BRIDLE BIT MISS A361

KBHR WENTZ E190
MISS SR G1925
 MISS FR A317

[GW PREMIUM BEEF 021TS
 J BAR J MISS ND 793X
 [BAR CK TEBOW 1006X
 BRIDLE BIT MISS U805
 [G A R PROPHET
 KBHR X281
 [WS INTERSTATE X57
 MISS FR S618

CE	BW	WW	YW	ADG	MCE	MK	MWW	STAY	DOC	CW	YG	MB	REA	API	TI
11.3	1.0	82.0	127.2	0.28	6.9	21.1	62.0	18.0	13.4	50.9	-0.20	0.32	0.89	137.7	81.2
65%	65%	30%	30%	40%	50%	70%	45%	20%	35%	5%	60%	50%	15%	35%	40%

This calf was a twin out of a first calf heifer which is why he was so small. The Rembrandt calves have a great physical presence to them.



Lot 58

58

MR SR J1927

BD: 3/7/21 Reg: 3936018
 BW: 81 205-Day Wt: 774

5/8 SM 3/8 AN
 Black Polled

J BAR J NIGHTRIDE 225Z
BRIDLE BIT REMBRANDT D630
 BRIDLE BIT MISS A361

MR SR WIDE RIDE E1502
MISS SR G1927
 MISS SR B1400

[GW PREMIUM BEEF 021TS
 J BAR J MISS ND 793X
 [BAR CK TEBOW 1006X
 BRIDLE BIT MISS U805
 [J BAR J NIGHTRIDE 225Z
 MISS SR C1502
 [MR NLC UPGRADE U8676
 MISS SR S820

CE	BW	WW	YW	ADG	MCE	MK	MWW	STAY	DOC	CW	YG	MB	REA	API	TI
13.0	-0.3	79.1	122.3	0.27	6.4	19.7	59.2	17.6	11.1	40.3	-0.25	0.48	0.91	149.3	85.3
45%	40%	40%	40%	45%	60%	80%	60%	25%	65%	25%	45%	25%	15%	20%	25%

Another calving ease prospect, 81# actual BW out of a SR Wide Ride first calf heifer.



Lot 59

59

MR SR J1938

BD: 3/6/21 Reg: 3936027
 BW: 67 205-Day Wt: 747

5/8 SM 3/8 AN
 Black Polled

J BAR J NIGHTRIDE 225Z
BRIDLE BIT REMBRANDT D630
 BRIDLE BIT MISS A361

KBHR WENTZ E190
MISS SR G1938
 MISS SR C1518

[GW PREMIUM BEEF 021TS
 J BAR J MISS ND 793X
 [BAR CK TEBOW 1006X
 BRIDLE BIT MISS U805
 [G A R PROPHET
 KBHR X281
 [JBS BIG CASINO 336Y
 MISS SR S807

CE	BW	WW	YW	ADG	MCE	MK	MWW	STAY	DOC	CW	YG	MB	REA	API	TI
14.3	-1.5	83.4	129.1	0.29	7.7	18.0	59.7	14.5	12.4	43.5	-0.22	0.25	0.91	135.7	83.4
25%	20%	25%	25%	30%	35%	90%	55%	60%	45%	15%	55%	65%	15%	40%	30%

Tremendous calving ease. Only 67# at birth out of a powerful KBHR Wentz first calver. He has 8 EPDs in the top 35% or better.



60

MR SR J1719

BD: 4/2/21 Reg: 3935958
BW: 85 205-Day Wt: 793

Purebred
Black

Polled

WELSH'S WARSAW 312Z
HART STATE OF WAR 056C
HART MISS 102A

BCLR CASH FLOW C820
MISS SR E1719
MISS SR Z1204

[FBFS WARSAW 068W
WELSHS ROSIE 102W
[SKORS BLACK ENTICER 287Y
HART MISS X534
[CCR WIDE RANGE 9005A
BCLR MISS MONICA U820
[SCR RIGHT CROSS 70024
MISS SR U005

CE	BW	WW	YW	ADG	MCE	MK	MWW	STAY	DOC	CW	YG	MB	REA	API	TI
12.8	1.6	103.8	161.0	0.36	7.3	22.8	74.7	18.5	12.9	55.1	-0.40	0.10	1.23	148.3	94.1
25%	50%	1%	1%	2%	25%	60%	10%	30%	30%	2%	65%	55%	3%	20%	5%

The first of the State of War calves and has a powerful EPD profile. He has a 115 WW ratio with 11 EPDs in the top 35% including 10% MWW, 5% TI, 2% ADG & CW, & 1% WW & YW. We have two maternal sisters in the herd.

61

MR SR J1820

BD: 3/9/21 Reg: 3935784
BW: 87 205-Day Wt: 746

Purebred
Black

Polled

WELSH'S WARSAW 312Z
HART STATE OF WAR 056C
HART MISS 102A

JBS BIG CASINO 336Y
MISS SR F1820
MISS SR A1315

[FBFS WARSAW 068W
WELSHS ROSIE 102W
[SKORS BLACK ENTICER 287Y
HART MISS X534
[RC CLUB KING 040R
JBS MISS DES 301 512N
[MR NLC UPGRADE U8676
BRANT BLACK CHERRY X47G

CE	BW	WW	YW	ADG	MCE	MK	MWW	STAY	DOC	CW	YG	MB	REA	API	TI
15.8	-0.7	86.7	132.2	0.28	8.4	23.5	66.9	17.3	12.2	39.7	-0.45	-0.08	1.06	137.0	82.6
5%	15%	20%	20%	25%	10%	50%	30%	45%	40%	15%	35%	95%	15%	35%	30%

12 EPDs in top 35% or better.

62

MR SR J1962

BD: 3/4/21 Reg: 3936047
BW: 78 205-Day Wt: 839

3/4 SM 1/4 AN
Black

Polled

WELSH'S WARSAW 312Z
HART STATE OF WAR 056C
HART MISS 102A

KBHR WENTZ E190
MISS SR G1962
MISS SR D1648

[FBFS WARSAW 068W
WELSHS ROSIE 102W
[SKORS BLACK ENTICER 287Y
HART MISS X534
[G A R PROPHET
KBHR X281
[HOOK'S BOZEMAN 8B
MISS SR A352

CE	BW	WW	YW	ADG	MCE	MK	MWW	STAY	DOC	CW	YG	MB	REA	API	TI
16.2	0.1	101.8	155.7	0.34	8.9	28.4	79.2	17.9	14.7	45.3	-0.31	0.10	0.99	152.2	95.0
15%	45%	1%	2%	10%	20%	15%	1%	20%	20%	15%	30%	90%	10%	15%	4%

The only percentage State of War son out of a beautiful Wentz first calf heifer. Only 78# at birth and adjusted to a 839# WW with no creep feed. 15 EPDs in the top 35% or better.



63

MR SR J1973

BD: 2/23/21 Reg: 3936057
BW: 70 205-Day Wt: 739

Purebred
Black

Polled

WELSH'S WARSAW 312Z
HART STATE OF WAR 056C
HART MISS 102A

MR SR 71 RIGHT NOW E1538
MISS SR G1973
MISS SR E1721

[FBFS WARSAW 068W
WELSHS ROSIE 102W
[SKORS BLACK ENTICER 287Y
HART MISS X534
[HOOK'S BOZEMAN 8B
MISS SR C1538
[TJ CORNHUSKER 226A
MISS SR A1335

CE	BW	WW	YW	ADG	MCE	MK	MWW	STAY	DOC	CW	YG	MB	REA	API	TI
18.5	-2.3	81.9	129.1	0.29	10.4	27.8	68.7	15.8	14.4	34.7	-0.42	0.14	0.97	151.1	87.9
1%	3%	35%	25%	20%	2%	20%	25%	60%	15%	30%	55%	45%	30%	15%	15%

The stripe-faced calving ease prospect out of a SR Right Now daughter and he was only 70# at birth. He has 12 EPDs in the top 35% including top 3% BW, 2% MCE, and 1% CE.



Lot 64

64

MR SR J1233

BD: 3/5/21 Reg: 3935685
BW: 82 205-Day Wt: 888

Purebred
Black Polled

HOOK'S BLACK HAWK 50B
HOOK'S EAGLE 6E
HOOK'S CRYSTAL 1C

NICHOLS MANIFEST T79
MISSFR Z207
MISS FR T708

[HOOK'S XAVIER 14X
HOOK'S YVETTE 100Y
[GW-WBF SUBSTANCE 820Y
HOOK'S UNDERESTIMATED 6U
[NICHOLS LEGACY M72
NICHOLS MCM N13
[KS DREAMBOAT R38
MISS FR N308

CE	BW	WW	YW	ADG	MCE	MK	MWW	STAY	DOC	CW	YG	MB	REA	API	TI
13.2	-1.6	98.3	151.7	0.33	8.2	24.0	73.1	21.0	14.7	49.7	-0.33	0.29	1.14	167.4	99.2
20%	10%	3%	3%	10%	15%	50%	10%	10%	15%	3%	90%	20%	10%	3%	2%

Lot 64 & 65 are so similar in structure and design they could be twins. This purebred Eagle son out of a 10-year-old Manifest dam was only 82# at birth and adjusted to 888# at weaning for a 115 ratio. The amount of mass, rib shape, and soundness in this calf is crazy. He has 11 of his 16 EPDs in the top 15%.

65

MR SR J1435

BD: 3/31/21 Reg: 3935887
BW: 92 205-Day Wt: 927

3/4 SM 1/4 AN
Black Polled

HOOK'S BLACK HAWK 50B
HOOK'S EAGLE 6E
HOOK'S CRYSTAL 1C

MR NLC UPGRADE U8676
MISS SR B1435
MISS SR T920

[HOOK'S XAVIER 14X
HOOK'S YVETTE 100Y
[GW-WBF SUBSTANCE 820Y
HOOK'S UNDERESTIMATED 6U
[ELLINGSON LEGACY M229
MS NLC MOJO S6119 B
[HART ABOVE PAR P104
PAR'S DUTIFUL WESTWIND 731

CE	BW	WW	YW	ADG	MCE	MK	MWW	STAY	DOC	CW	YG	MB	REA	API	TI
12.2	0.3	99.3	151.7	0.33	4.7	18.8	68.4	16.7	15.9	48.2	-0.34	0.30	1.10	144.1	92.5
55%	50%	2%	3%	10%	85%	85%	15%	35%	10%	10%	20%	55%	3%	25%	10%

This 3/4 blood Eagle son is extremely soggy, carries himself freely and super correct on a great hoof. He has 11 EPDs in the top 35% and boasts a 927# adj weaning weight with a 120 WW ratio. These 2 are sure to add dimension to a calf crop.

66

MR SR J1536

BD: 4/9/21 Reg: 3935908
BW: 93 205-Day Wt: 889

1/2 SM 1/2 AN
Black Polled

HOOK'S BLACK HAWK 50B
HOOK'S EAGLE 6E
HOOK'S CRYSTAL 1C

LFE GOOSE 443X
MISS SR C1536
MISS SR Z1204

[HOOK'S XAVIER 14X
HOOK'S YVETTE 100Y
[GW-WBF SUBSTANCE 820Y
HOOK'S UNDERESTIMATED 6U
[S A V NET WORTH 4200
BIG SKY MAF DIAMOND MIST 300
[SCR RIGHT CROSS 70024
MISS SR U005

CE	BW	WW	YW	ADG	MCE	MK	MWW	STAY	DOC	CW	YG	MB	REA	API	TI
8.3	1.2	99.1	157.4	0.36	6.0	23.5	73.0	19.1	15.1	57.6	-0.19	0.44	0.97	149.6	94.1
95%	70%	2%	2%	4%	65%	45%	10%	15%	15%	2%	65%	30%	10%	20%	5%

The larger framed son of Eagle out a massive LFE Goose Angus cow. 115 WW ratio and 8 of his EPDs in the top 15% of the breed. He will add skeletal frame and extra growth.



Hook's Eagle



67

MR SR J1912

BD: 3/24/21 Reg: 3936003
BW: 75 205-Day Wt: 807

Purebred
Black Polled

HOOK'S YELLOWSTONE 97Y
MR FR D4
MISS FR B429

KBHR HIGH ROAD E283
MISS SR G1912
KAPPES FRANNY U156 Y74

[HOOKS TAURUS 24T
HOOKS SHEYENNE 77S
[HSF HIGH ROLLER 12T
MISS FR Z229
[HOOK'S BEACON 56B
WS MISS SUGAR C4
[SS EBONYS MASTERPIECE
KAPPES FRANNY U156

CE	BW	WW	YW	ADG	MCE	MK	MWW	STAY	DOC	CW	YG	MB	REA	API	TI
16.9	-1.6	78.4	119.3	0.26	10.3	29.9	69.0	17.8	13.8	32.0	-0.46	0.19	1.09	152.2	85.9
2%	10%	50%	45%	40%	2%	15%	20%	35%	20%	40%	30%	35%	15%	15%	20%

These are the last progeny we will have from FR D4 "Rolling Stone". He sired calves that came small with extra dimension and dispositions of a house cat. This calf has 11 EPDs in the top 35%.



68

MR SR J1941

BD: 3/26/21 Reg: 3936029
BW: 85 205-Day Wt: 863

Purebred
Black Polled

HOOK'S YELLOWSTONE 97Y
MR FR D4
MISS FR B429

[HOOKS TAURUS 24T
HOOKS SHEYENNE 77S
[HSF HIGH ROLLER 12T
MISS FR Z229
[GIBBS 4340B NIGHTHAWK
GIBBS 4072B GINGER 2522Z
[MR NLC UPGRADE U8676
MISS SR T910

GIBBS 6176D FACEBOOK
MISS SR G1941
MISS SR C1547

CE	BW	WW	YW	ADG	MCE	MK	MWW	STAY	DOC	CW	YG	MB	REA	API	TI
13.7	0.8	85.2	127.7	0.27	7.7	28.0	70.5	14.6	9.2	31.5	-0.43	0.29	0.94	144.9	88.8
15%	35%	25%	25%	30%	20%	20%	15%	70%	80%	40%	50%	20%	40%	20%	15%

Super cool baldy with calving ease, growth, and a balanced EPD profile. He is out of a first calf heifer and weaned off at 863# adjusted without creep claiming a 112 WW ratio. He has 11 EPDs in top 35%.



69

MR SR J1949

BD: 4/7/21 Reg: 3936036
BW: 86 205-Day Wt: 763

Purebred
Black Polled

HOOK'S YELLOWSTONE 97Y
MR FR D4
MISS FR B429

[HOOKS TAURUS 24T
HOOKS SHEYENNE 77S
[HSF HIGH ROLLER 12T
MISS FR Z229
[J BAR J NIGHTRIDE 225Z
DS MS LR 55X 149B
[JBS BIG CASINO 336Y
MISS SR Y1114

DS KNIGHT RIDE 9D
MISS SR G1949
MISS SR D1613

CE	BW	WW	YW	ADG	MCE	MK	MWW	STAY	DOC	CW	YG	MB	REA	API	TI
11.5	1.0	72.5	110.6	0.24	6.4	20.4	56.6	15.6	13.2	23.7	-0.35	0.10	0.70	117.7	70.5
40%	40%	75%	65%	55%	40%	75%	80%	60%	30%	70%	85%	55%	90%	80%	85%

Nice outcross pedigree baldy out of a first-calf heifer.



70

MR SR J1538

BD: 4/29/21 Reg: 3935910
BW: 96 205-Day Wt: 883

Purebred
Black Polled

WS TRANSFORMER Z34
MR FR E58
MISS FR A324

[WS HIGH STAKES W115
WS BLACK ROSE X165
[GW PREDESTINED 701T
MISS FR Y124
[HOOKS TAURUS 24T
HOOKS SHEYENNE 77S
[WS INTERSTATE X57
MISS FR S669

HOOK'S YELLOWSTONE 97Y
MISS SR C1538
MISS FR A309

CE	BW	WW	YW	ADG	MCE	MK	MWW	STAY	DOC	CW	YG	MB	REA	API	TI
11.4	1.0	85.4	131.7	0.29	6.2	33.3	75.9	18.4	16.3	35.2	-0.40	0.24	0.95	147.4	87.8
45%	40%	25%	20%	20%	45%	4%	5%	30%	5%	30%	65%	25%	35%	20%	15%

This purebred calf could be one of the sleepers of the whole deal. Born April 29th and still weaned off at 883#. He is a maternal brother to MR SR 71 Right Now, the popular calving ease sire owned by Werring Cattle Co. This calf is sired by the FR E58 bull who is a gentle giant. 11 EPDs in top 35% of the breed. Another maternal brother sold to R & K Simmental in Iowa.



MR SR RIGHT NOW

71

MR SR J1873

BD: 5/2/21 Reg: 3935831
 BW: 96 205-Day Wt: 870

5/8 SM 3/8 AN
 Black Polled

KS MUSTANG E1323
MR FR HORSEPOWER G24
 MISS FR B490

BALDRIDGE COMPASS C041
MISS FR F810
 MISS FR D610

[GW ROBUST 605Z
 [KS WANDY W82
 [MR NLC UPGRADE 2115Z
 [MISS FR Y190
 [EF COMMANDO 1366
 [BALDRIDGE ISABEL Y69
 [HOOK'S YELLOWSTONE 97Y
 [MISS FR 410

CE	BW	WW	YW	ADG	MCE	MK	MWW	STAY	DOC	CW	YG	MB	REA	API	TI
11.7	1.3	93.9	141.0	0.29	4.5	28.5	75.4	17.1	16.4	50.7	-0.23	0.31	0.87	139.4	88.3
60%	70%	4%	10%	30%	85%	15%	3%	30%	10%	5%	55%	50%	20%	35%	15%

This is another baby of the group born May 2nd he is still claiming a 113 WW ratio with an 870# adjusted WW. 10 EPDs in the top 35%.



Lot 72

72

MR SR J1900

BD: 3/2/21 Reg: 3935992
 BW: 83 205-Day Wt: 826

Purebred
 Black Polled

HOOK'S BOZEMAN 8B
MR SR 71 RIGHT NOW E1538
 MISS SR C1538

GIBBS 6176D FACEBOOK
MISS SR G1900
 MISS SR U005

[GW-WBF SUBSTANCE 820Y
 [HOOK'S WILL POWER 24W
 [HOOK'S YELLOWSTONE 97Y
 [MISS FR A309
 [GIBBS 4340B NIGHTHAWK
 [GIBBS 4072B GINGER 2522Z
 [KSR MILESTONE 243N
 [MISS SR N505

CE	BW	WW	YW	ADG	MCE	MK	MWW	STAY	DOC	CW	YG	MB	REA	API	TI
8.7	2.2	102.2	163.6	0.38	5.8	30.8	81.8	14.6	11.8	45.9	-0.48	0.15	1.16	137.3	94.3
80%	65%	1%	1%	1%	50%	10%	1%	70%	45%	10%	20%	40%	10%	35%	5%

This purebred baldy is sure to be a crowd favorite. Sired by MR SR 71 Right Now out of a first-calf Facebook daughter. Claiming 10 EPDs in the top 35% with 7 in the top 10%, and 4 in the top 1%.



Lot 73

73

MR SR J1922

BD: 3/8/21 Reg: 3936013
 BW: 96 205-Day Wt: 808

Purebred
 Black Polled

HOOK'S BOZEMAN 8B
MR SR 71 RIGHT NOW E1538
 MISS SR C1538

KBHR HIGH ROAD E283
MISS SR G1922
 MISS SR A1322

[GW-WBF SUBSTANCE 820Y
 [HOOK'S WILL POWER 24W
 [HOOK'S YELLOWSTONE 97Y
 [MISS FR A309
 [HOOK'S BEACON 56B
 [WS MISS SUGAR C4
 [TNT TANKER U263
 [915 GR

CE	BW	WW	YW	ADG	MCE	MK	MWW	STAY	DOC	CW	YG	MB	REA	API	TI
9.5	1.7	97.5	154.8	0.36	5.2	30.9	79.6	13.4	16.0	40.4	-0.41	0.25	1.14	140.2	94.5
70%	55%	3%	2%	2%	60%	10%	2%	85%	10%	15%	60%	25%	10%	30%	4%

This Right Now X High Road son has had a puppy dog demeanor since birth. He has 10 EPDs in top 35%, 7 in top 10%, 5 in the top 5% of the breed.

74 MR SR J1963

BD: 3/5/21 Reg: 3936048
BW: 88 205-Day Wt: 770

Purebred
Black Polled

HOOK'S BOZEMAN 8B
MR SR 71 RIGHT NOW E1538
MISS SR C1538

LRS A PLUS 219A
MISS SR G1963
MISS SR D1650

[GW-WBF SUBSTANCE 820Y
HOOK'S WILL POWER 24W
HOOK'S YELLOWSTONE 97Y
MISS FR A309
MCM TOP GRADE 018X
LRS MS DAKOTA 559R
IR RANGE BOSS Y623
MISS SR B1407

CE	BW	WW	YW	ADG	MCE	MK	MWW	STAY	DOC	CW	YG	MB	REA	API	TI
10.3	1.5	88.3	139.0	0.32	6.2	30.7	74.8	16.3	15.7	33.4	-0.42	0.25	0.98	143.6	89.3
60%	50%	15%	10%	10%	45%	10%	10%	55%	10%	35%	55%	25%	30%	25%	15%

10 EPDs in top 35%, 7 in the top 15%.

75 MR SR J1425

BD: 4/3/21 Reg: 3935882
BW: 80 205-Day Wt: 754

Purebred
Black Polled

TJ COWBOY UP 529B
MR SR GUNSLINGER F1239
MISS FR Z214

GW PREDESTINED 701T
MISS SR B1425
MISSFR Z207

[CCR COWBOY CUT 5048Z
TJ MS 46W
CLO LTS ENTOURAGE 72T
MISS FR X014
G A R PREDESTINED
GW MISS LUCKY STRIKE 363
NICHOLS MANIFEST T79
MISS FR T708

CE	BW	WW	YW	ADG	MCE	MK	MWW	STAY	DOC	CW	YG	MB	REA	API	TI
15.3	-1.6	76.4	113.0	0.23	10.0	25.6	63.8	22.4	13.7	26.5	-0.28	0.43	0.67	170.2	89.1
10%	10%	55%	60%	60%	3%	35%	45%	2%	25%	60%	99%	10%	95%	3%	15%

High API son sired by MR SR Gunslinger. 9 EPDs in top 35%.



Lot 76

76 MR SR J1647

BD: 3/21/21 Reg: 3935723
BW: 101 205-Day Wt: 904

3/4 SM 7/32 AR 1/32 AN
Black Polled

TJ COWBOY UP 529B
MR SR GUNSLINGER F1239
MISS FR Z214

TNT WHISKY RIVER B298
MISS SR D1647
MISS FR A374

[CCR COWBOY CUT 5048Z
TJ MS 46W
CLO LTS ENTOURAGE 72T
MISS FR X014
TNT BOOTLEGGERS Z268
TNT MISS Y90
HXC CONQUEST 4405P
MISS FR T774

CE	BW	WW	YW	ADG	MCE	MK	MWW	STAY	DOC	CW	YG	MB	REA	API	TI
11.0	2.7	97.8	146.9	0.31	7.5	25.1	74.0	17.5	8.6	36.1	-0.37	0.25	0.85	135.9	87.8
70%	90%	2%	5%	20%	40%	30%	4%	25%	90%	35%	15%	65%	20%	40%	15%

Heterozygous black son of Gunslinger. These calves are extremely thick and structurally correct. Adjusted WW of 904#, 117 WW ratio and 10 EPDs in top 35% and 6 in the top 15%. Maternal brother sold to Dale & Sherry Jung of Hosmer. We also have 2 sisters in the herd.



MR SR GUNSLINGER F1239

77 MR SR J1867

BD: 3/15/21 Reg: 3935826
BW: 79 205-Day Wt: 752

Purebred
Black Polled

TJ COWBOY UP 529B
MR SR GUNSLINGER F1239
MISS FR Z214

CDI CENTURY 315C
MISS FR F842
MISS FR X041

[CCR COWBOY CUT 5048Z
TJ MS 46W
CLO LTS ENTOURAGE 72T
MISS FR X014
CDI PERSPECTIVE 238A
HOOK'S UNION 68U
MLC BEEFMAKER T6
MISS FR T741

CE	BW	WW	YW	ADG	MCE	MK	MWW	STAY	DOC	CW	YG	MB	REA	API	TI
15.9	-0.6	79.4	116.0	0.23	9.0	19.7	59.4	20.2	14.9	27.0	-0.40	0.28	0.83	158.2	86.0
4%	15%	45%	50%	60%	10%	80%	65%	10%	15%	60%	65%	20%	65%	10%	20%

Another hetero black with great calving ease, only 79# at birth. He has 8 EPDs in the top 35%.



Lot 78

78

MR SR J1976

BD: 2/25/21 Reg: 3936059
BW: 87 205-Day Wt: 808

Purebred
Black Polled

TJ COWBOY UP 529B
MR SR GUNSLINGER F1239
MISS FR Z214

[CCR COWBOY CUT 5048Z
TJ MS 46W
[CLO LTS ENTOURAGE 72T
MISS FR X014
[HOOK'S YELLOWSTONE 97Y
MISS FR B429
[WS ZENITH Z55
KAPPES TIZCAT J121 Z605

MR FR D4
MISS SR G1976
MISS SR E1728

CE	BW	WW	YW	ADG	MCE	MK	MWW	STAY	DOC	CW	YG	MB	REA	API	TI
12.8	1.6	87.2	128.9	0.26	8.6	24.5	68.1	18.1	13.6	26.9	-0.44	0.27	0.90	149.1	88.2
25%	50%	20%	25%	40%	10%	45%	25%	35%	25%	60%	40%	20%	45%	15%	15%

This heterozygous black calf is out of Mallory's first calf heifer. He has been an eye catcher all summer with tremendous rib shape and design.



Lot 79

79

MR SR J1223

BD: 4/5/21 Reg: 3935855
BW: 80 205-Day Wt: 826

Purebred
Black Polled

KBHR HIGH ROAD E283
MR SR HIGHLIFE G1609
MISS SR D1609

[HOOK'S BEACON 56B
WS MISS SUGAR C4
[JBS BIG CASINO 336Y
MISS SR Y1102
[ELLINGSON LEGACY M229
MS NLC MOJO S6119 B
[GW LUCKY BREAK 047G
MISS SR P601

MR NLC UPGRADE U8676
MISS SR Z1223
MISS SR S824

CE	BW	WW	YW	ADG	MCE	MK	MWW	STAY	DOC	CW	YG	MB	REA	API	TI
15.9	-0.4	88.9	132.7	0.27	8.9	24.2	68.6	16.1	10.6	31.5	-0.50	0.11	0.97	145.1	88.3
4%	15%	15%	20%	30%	10%	45%	25%	55%	65%	40%	15%	55%	30%	20%	15%

The first of the MR SR Highlife G1609 sons. I have had my eye on this calf since he was a couple hours old. The amount of raw power and muscle shape he has was there on day 1, even with an 80# BW. His 10-year-old Upgrade dam has done a great job again. A 107 WW ratio and 11 EPDs in the top 35% and 7 of them in the top 15%. Maternal brother sold to Toennies of Cresbard.

80

MR SR J1660

BD: 4/7/21 Reg: 3935950
BW: 96 205-Day Wt: 778

Purebred
Black Polled

KBHR HIGH ROAD E283
MR SR HIGHLIFE G1609
MISS SR D1609

[HOOK'S BEACON 56B
WS MISS SUGAR C4
[JBS BIG CASINO 336Y
MISS SR Y1102
[TJ EASY MONEY 101W
TJ 59X
[KSR MILESTONE 243N
KAPPES LORI L45

TJ CORNHUSKER 226A
MISS SR D1660
MISS SR R7022

CE	BW	WW	YW	ADG	MCE	MK	MWW	STAY	DOC	CW	YG	MB	REA	API	TI
13.6	0.9	85.1	129.2	0.28	6.5	23.6	66.1	17.7	9.4	29.3	-0.49	0.12	0.92	142.1	84.4
20%	35%	25%	25%	25%	35%	50%	35%	40%	80%	50%	20%	50%	40%	25%	25%

Another baldy with great length of body and 11 EPDs in the top 35%. Maternal brother sold to Henningson of Monango, and 2 maternal sisters in the herd.

81

MR SR J1732

BD: 3/14/21 Reg: 3935745
BW: 97 205-Day Wt: 764

3/4 SM 1/4 AN
Black Polled

KBHR HIGH ROAD E283
MR SR HIGHLIFE G1609
MISS SR D1609

[HOOK'S BEACON 56B
WS MISS SUGAR C4
[JBS BIG CASINO 336Y
MISS SR Y1102
[CCR COWBOY CUT 5048Z
TJ MS 46W
[MCATL PURE PRODUCT903-55
106 BL

TJ COWBOY UP 529B
MISS SR E1732
MISS SR A1307

CE	BW	WW	YW	ADG	MCE	MK	MWW	STAY	DOC	CW	YG	MB	REA	API	TI
10.7	2.7	94.9	145.9	0.32	6.9	24.5	71.9	19.1	14.0	40.9	-0.21	0.42	0.72	157.2	94.1
75%	90%	4%	10%	15%	50%	35%	10%	15%	25%	20%	60%	30%	40%	10%	5%

Smooth-made, solid black son of Highlife with 11 EPDs in the top 35%. Maternal brother sold to Melius of Faulkton last year and maternal sister is the dam to lot 89 this year.



Lot 82

82

MR SR J1738

BD: 3/14/21 Reg: 3935746
BW: 90 205-Day Wt: 739

5/8 SM 1/4 CS 1/8 AN
Black Polled

KBHR HIGH ROAD E283
MR SR HIGHLIFE G1609
MISS SR D1609

TJ CORNHUSKER 226A
MISS SR E1738
MISS SR A1329

[HOOK'S BEACON 56B
WS MISS SUGAR C4
JBS BIG CASINO 336Y
MISS SR Y1102
TJ EASY MONEY 101W
TJ 59X

CE	BW	WW	YW	ADG	MCE	MK	MWW	STAY	DOC	CW	YG	MB	REA	API	TI
13.1	0.6	86.0	130.6	0.28	6.7	23.5	66.4	14.2	10.9	26.6	-0.41	0.29	0.82	144.8	89.3
40%	55%	15%	25%	40%	55%	45%	25%	60%	70%	70%	10%	55%	25%	25%	15%

A really cool looking, white stripe face, 5/8 blood calf with a great presence.



Lot 83

83

MR SR J1836

BD: 3/23/21 Reg: 3935797
BW: 85 205-Day Wt: 772

Purebred
Black Polled

KBHR HIGH ROAD E283
MR SR HIGHLIFE G1609
MISS SR D1609

TJ COWBOY UP 529B
MISS SR F1836
MISS SR C1514

[HOOK'S BEACON 56B
WS MISS SUGAR C4
JBS BIG CASINO 336Y
MISS SR Y1102
CCR COWBOY CUT 5048Z
TJ MS 46W
HOOK'S YELLOWSTONE 97Y
MISS FR A317

CE	BW	WW	YW	ADG	MCE	MK	MWW	STAY	DOC	CW	YG	MB	REA	API	TI
14.0	1.0	92.3	134.7	0.26	9.0	23.8	69.9	20.7	9.8	34.4	-0.42	0.24	0.92	156.8	91.1
15%	40%	10%	15%	40%	10%	50%	20%	10%	75%	30%	55%	25%	40%	10%	10%

This bald face calf looks like a carbon copy of his sire, MR SR Highlife. He has really started to become one of my favorites in the pen. His young Cowboy Up dam looks to be a promising piece for us with putting her first calf in the replacement pen as a heifer and now this guy. He has 11 EPDs in the top 35% and 7 of them in the top 15%.



Lot 84

84

MR SR J1851

BD: 3/8/21 Reg: 3935812
BW: 84 205-Day Wt: 827

Purebred
Black Polled

KBHR HIGH ROAD E283
MR SR HIGHLIFE G1609
MISS SR D1609

LRS ELEVATE 213B
MISS SR F1851
MISS SR D1623

[HOOK'S BEACON 56B
WS MISS SUGAR C4
JBS BIG CASINO 336Y
MISS SR Y1102
HOOK'S YELLOWSTONE 97Y
LRS MS DUAL FOCUS 213Z
TJ CORNHUSKER 226A
KAPPES PINTEREST 928 Y72

CE	BW	WW	YW	ADG	MCE	MK	MWW	STAY	DOC	CW	YG	MB	REA	API	TI
16.0	-0.7	89.4	137.8	0.30	8.4	26.4	71.0	15.7	8.8	35.9	-0.47	0.15	1.02	148.1	90.4
4%	15%	15%	15%	15%	10%	30%	15%	60%	85%	25%	25%	40%	25%	20%	10%

This guy is my favorite of the Highlife calves. He has been fun to watch develop all summer. Powerful in his rib design with tremendous length of body. Only 84# at birth and achieved a 107 WW ratio. 13 EPDs in the top 35%, 8 of them in the top 15%. This guy is definitely something special.



Lot 85

85

MR SR J1315

BD: 4/10/21 Reg: 3935865
 BW: 81 205-Day Wt: 858

Purebred
 Black Polled

MR SR 71 RIGHT NOW E1538
MR SR MIC DROP G1534
 MISS SR C1534

MR NLC UPGRADE U8676
MISS SR A1315
 BRANT BLACK CHERRY X47G

[HOOK'S BOZEMAN 8B
 MISS SR C1538
 [JBS BIG CASINO 336Y
 MISS SR Z1214
 [ELLINGSON LEGACY M229
 MS NLC MOJO S6119 B
 [HCC/CSC ZEUS
 BONINA COCA COLA 5447

CE	BW	WW	YW	ADG	MCE	MK	MWW	STAY	DOC	CW	YG	MB	REA	API	TI
15.1	-1.0	85.9	133.6	0.30	9.1	25.0	67.8	15.2	14.3	37.3	-0.54	0.05	1.17	140.0	86.3
10%	10%	20%	20%	15%	10%	40%	25%	65%	15%	25%	5%	70%	10%	30%	20%

The first of the MR SR Mic Drop calves and this one has not disappointed. Out of a great Upgrade cow, he claimed a 111 WW ratio with a 858# WW. He has 13 EPDs in the top 35%, and 7 in the top 15%. His disposition is second to none. We actually had to push him into place to take his picture.



Lot 86

86

MR SR J1558

BD: 4/5/21 Reg: 3935919
 BW: 98 205-Day Wt: 954

1/2 SM 1/2 AN
 Black Polled

MR SR 71 RIGHT NOW E1538
MR SR MIC DROP G1534
 MISS SR C1534

MISS SR C1558

[HOOK'S BOZEMAN 8B
 MISS SR C1538
 [JBS BIG CASINO 336Y
 MISS SR Z1214

CE	BW	WW	YW	ADG	MCE	MK	MWW	STAY	DOC	CW	YG	MB	REA	API	TI
9.7	2.4	105.7	175.1	0.43	6.1	35.4	88.2	11.6	17.5	47.5	-0.19	0.28	0.68	129.9	94.7
85%	90%	1%	1%	1%	65%	1%	1%	85%	3%	10%	65%	55%	50%	50%	4%

Possibly one of the biggest framed and most powerful calves in the sale. If you want to add skeletal size and pounds, this is your guy. He crushed the scales at 954# to claim a 124 WW ratio. He may have more leather through his throat than I would like to see but it is very hard to discount him for that when he can grow like he has. 9 EPDs in the top 35% and 5 of them are in the top 1% (WW, YW, Milk, MWW, ADG).

87

MR SR J1559

BD: 4/15/21 Reg: 3935920
 BW: 99 205-Day Wt: 852

1/2 SM 1/2 AN
 Black Polled

MR SR 71 RIGHT NOW E1538
MR SR MIC DROP G1534
 MISS SR C1534

MISS SR C1559

[HOOK'S BOZEMAN 8B
 MISS SR C1538
 [JBS BIG CASINO 336Y
 MISS SR Z1214

CE	BW	WW	YW	ADG	MCE	MK	MWW	STAY	DOC	CW	YG	MB	REA	API	TI
9.4	1.7	93.0	160.8	0.42	5.7	27.3	73.8	10.9	16.9	44.9	-0.20	0.28	0.74	125.1	87.4
85%	80%	5%	1%	1%	70%	20%	5%	90%	5%	15%	60%	55%	35%	60%	20%

Another high growth 1/2 blood son of Mic Drop with 110 WW ratio. He has 8 EPDs in top 35% and 5 in the top 5%.

88

MR SR J1730

BD: 4/4/21 Reg: 3935962
 BW: 80 205-Day Wt: 835

Purebred
 Black Polled

MR SR 71 RIGHT NOW E1538
MR SR MIC DROP G1534
 MISS SR C1534

LRS A PLUS 219A
MISS SR E1730
 MISS SR A1302

[HOOK'S BOZEMAN 8B
 MISS SR C1538
 [JBS BIG CASINO 336Y
 MISS SR Z1214
 [MCM TOP GRADE 018X
 LRS MS DAKOTA 559R
 [OLF ODIN U5
 MISS SR Y1122

CE	BW	WW	YW	ADG	MCE	MK	MWW	STAY	DOC	CW	YG	MB	REA	API	TI
12.2	-0.2	83.7	132.2	0.30	5.5	28.7	70.5	15.5	12.4	35.0	-0.43	0.15	0.95	139.7	85.9
30%	20%	30%	20%	15%	55%	20%	15%	65%	40%	30%	50%	40%	35%	30%	20%

A solid black, purebred, calving ease prospect. With only an 80# BW he got a 108 WW ratio. This calf has 11 EPDs in the top 35%. Maternal brother sold last year to Kegler of Ashton.



Lot 89

89

MR SR J1977

BD: 2/27/21 Reg: 3936060
BW: 90 205-Day Wt: 768

Purebred
Black Polled

MR SR 71 RIGHT NOW E1538
MR SR MIC DROP G1534
MISS SR C1534

[HOOK'S BOZEMAN 8B
MISS SR C1538
[JBS BIG CASINO 336Y
MISS SR Z1214
[HOOK'S BEACON 56B
HOOK'S CHATTER 63C
[TJ COWBOY UP 529B
MISS SR A1307

HOOK'S ENCORE 65E
MISS SR G1977
MISS SR E1732

CE	BW	WW	YW	ADG	MCE	MK	MWW	STAY	DOC	CW	YG	MB	REA	API	TI
7.4	2.4	89.4	141.6	0.33	4.5	26.1	70.8	19.8	17.8	30.3	-0.36	0.37	0.90	151.9	90.7
90%	70%	15%	10%	10%	75%	30%	15%	15%	2%	45%	80%	10%	45%	15%	10%

This stripe face calf is out of an Encore first-calf heifer. He has 10 EPDs in the top 35% and 9 of them are in the top 15%.



Lot 90

90

MR SR J1309

BD: 3/14/21 Reg: 3935689
BW: 96 205-Day Wt: 833

5/8 SM 1/4 AR 1/8 AN
Red Polled

GW MOVIN ON 183C
GW MAJOR MOVE 590E
GW MISS PREDESTINED 147Y

[GW PREMIUM BEEF 021TS
GW MISS PREDESTINED 117Y
[GW PREDESTINED 701T
GW MISS RED COAT 523T
[UBAR HIGH CAPACITY 224
LUVAS MISS CHERRY R557-97
[WS SHEAR GENIUS S2
MISS FR S658

LAZY J HI CAPACITY 0101-R557
MISS SR A1309
MISS FR Y157

CE	BW	WW	YW	ADG	MCE	MK	MWW	STAY	DOC	CW	YG	MB	REA	API	TI
9.0	1.7	86.9	130.7	0.27	6.6	32.9	76.3	22.4	16.7	25.4	-0.21	0.30	0.70	142.2	83.3
90%	80%	15%	25%	45%	55%	3%	3%	2%	10%	75%	60%	55%	45%	30%	30%

The only Major Move bull we had this year, but he is a tank. Long bodied, great rib shape, and just a little extra shot of frame. He will sire tremendous females. He weaned at 833# and claimed a 108 WW ratio. 8 EPDs in the top 35%. Maternal brothers working for Kunz Northern Kross of Eureka and VanderWal of Bruce, SD.



Lot 91

91

MR SR J1210

BD: 4/3/21 Reg: 3935850
BW: 90 205-Day Wt: 782

Purebred
Red Polled

IR IMPERIAL B772
IR IMPERIAL D948
IR MS DUAL FOCUS W086

[WS BEEF KING W107
IR MS LAUSANNE U022
[TNT DUAL FOCUS T249
IR MS LUCKY CHARM T976
[BOZ REDCOAT
GFI CANDACE G51
[MR FR H838
MISS FR H801

ANKONIAN RED CAESAR
MISS SR 1210
MISS FR M207

CE	BW	WW	YW	ADG	MCE	MK	MWW	STAY	DOC	CW	YG	MB	REA	API	TI
14.2	-0.2	66.1	102.1	0.23	10.0	23.9	56.9	15.0	9.5	22.6	-0.51	0.34	0.94	144.6	80.1
15%	20%	90%	80%	60%	3%	50%	80%	70%	80%	75%	15%	15%	40%	25%	40%

A very correct, moderate-framed son of IR Imperial. 7 EPDs in the top 35%. Maternal brother sold to Witlock of Eureka.



IR IMPERIAL D948

92

MR SR J1419

BD: 4/8/21 Reg: 3935880
 BW: 86 205-Day Wt: 850

Purebred
 Red Polled

IR IMPERIAL B772
IR IMPERIAL D948
 IR MS DUAL FOCUS W086

[WS BEEF KING W107
 IR MS LAUSANNE U022
 [TNT DUAL FOCUS T249
 IR MS LUCKY CHARM T976
 [LFE BLACK LAKOTA 385W
 IPU WHISLER 67T
 [WS SHEAR GENIUS S2
 MISS FR S667

SWAN LAKE TOMBSTONE 40Y
MISS SR B1419
 MISS FR Y167

CE	BW	WW	YW	ADG	MCE	MK	MWW	STAY	DOC	CW	YG	MB	REA	API	TI
15.2	-0.3	75.2	118.9	0.27	7.7	21.2	58.7	18.6	13.8	29.3	-0.51	0.44	1.13	163.3	88.4
10%	20%	60%	45%	30%	20%	70%	70%	25%	20%	50%	15%	5%	10%	5%	15%

Another calving ease bull with a 110 WW ratio and 11 EPDs in the top 35%.



Lot 93

93

MR SR J1616

BD: 3/20/21 Reg: 3935715
 BW: 97 205-Day Wt: 735

Purebred
 Red Polled

IR IMPERIAL B772
IR IMPERIAL D948
 IR MS DUAL FOCUS W086

[WS BEEF KING W107
 IR MS LAUSANNE U022
 [TNT DUAL FOCUS T249
 IR MS LUCKY CHARM T976
 [TNT BOOTLEGGER Z268
 TNT MISS Y90
 [WS SHEAR GENIUS S2
 MISS FR T771

TNT WHISKY RIVER B298
MISS SR D1616
 MISS FR Y171

CE	BW	WW	YW	ADG	MCE	MK	MWW	STAY	DOC	CW	YG	MB	REA	API	TI
11.0	1.6	74.2	118.0	0.27	6.8	21.2	58.2	18.1	9.9	30.8	-0.45	0.61	1.01	162.1	88.9
50%	50%	65%	45%	30%	30%	70%	70%	35%	75%	45%	35%	1%	25%	5%	15%

A dark cherry red calf that will add some base width and a little extra frame.



Lot 94

94

MR SR J1654

BD: 4/7/21 Reg: 3935948
 BW: 99 205-Day Wt: 920

Purebred
 Red Polled

IR IMPERIAL B772
IR IMPERIAL D948
 IR MS DUAL FOCUS W086

[WS BEEF KING W107
 IR MS LAUSANNE U022
 [TNT DUAL FOCUS T249
 IR MS LUCKY CHARM T976
 [GW RED COAT 099TS
 HSF MISS SKY 87U
 [TRAXS RUSHMORE X103
 MISS SR S8042

WS ZENITH Z55
MISS SR D1654
 MISS SR B1430

CE	BW	WW	YW	ADG	MCE	MK	MWW	STAY	DOC	CW	YG	MB	REA	API	TI
11.9	1.4	88.9	136.7	0.30	6.8	22.1	66.5	19.6	13.4	33.3	-0.51	0.51	1.14	166.1	95.6
35%	45%	15%	15%	30%	65%	30%	15%	25%	35%	15%	3%	10%	4%	4%	

The baldy power bull that everyone has been looking for. His WS Zenith dam has been a great cow for us. She has placed a bull in the Dale Jung herd in Hosmer and a female to Warrington in Oklahoma. This guy adjusted to a 920# WW to boast a 119 WW ratio and claimed 14 EPDs in the top 35% of the breed and 8 of them in the top 15%.



Lot 95

95

MR SR J1414

BD: 3/14/21 Reg: 3935695
BW: 98 205-Day Wt: 859

Purebred

Red Polled


BAR CK HUNTER 3006A
KBHR SNIPER E036
KBHR C078

WS PRIME BEEF Z8
MISS SR B1414
MISS SR Y1121

[HOOKS SHEAR FORCE 38K
[BAR CK MS 759 A906X
[GW REDESTINED 642X
[KBHR U122
[WS BEEF KING W107
[HSF MISS SKY 87U
[MR FR U61
[001 PUR

CE	BW	WW	YW	ADG	MCE	MK	MWW	STAY	DOC	CW	YG	MB	REA	API	TI
15.5	-0.4	87.9	134.8	0.29	8.5	30.2	74.1	16.7	9.9	43.3	-0.40	0.41	1.09	162.2	95.6
5%	15%	15%	15%	20%	10%	10%	10%	50%	75%	10%	65%	10%	15%	5%	4%

This KBHR Sniper son is a powerhouse with a 111 WW ratio out of a real broody Prime Time female. He has 12 EPDs in the top 35% of the breed and 8 of them in the top 10% or better.


NATURAL
DAKOTA
 — SOY —
 605-725-6111
*Quality soy products for
quality animal production*



96

MR SR J1819

BD: 3/11/21 Reg: 3935783
BW: 104 205-Day Wt: 835

3/4 SM 3/16 AR 1/16 AN
Red Polled

BAR CK HUNTER 3006A
KBHR SNIPER E036
KBHR C078

- [HOOKS SHEAR FORCE 38K
- [BAR CK MS 759 A906X
- [GW REDESTINED 642X
- [KBHR U122
- [TNT BOOTLEGGER Z268
- [TNT MISS Y90
- [LAZY J HI CAPACITY 0101-R557
- [MISS FR Y157

TNT WHISKY RIVER B298
MISS SR F1819
MISS SR A1309

CE	BW	WW	YW	ADG	MCE	MK	MWW	STAY	DOC	CW	YG	MB	REA	API	TI
10.1	4.1	95.5	148.5	0.33	6.8	30.8	78.4	19.2	13.2	41.4	-0.33	0.38	0.98	142.5	88.5
80%	99%	3%	4%	10%	50%	5%	2%	10%	35%	20%	25%	40%	10%	30%	15%

Another powerful, bigger framed, dark cherry red, Sniper son. 108 WW ratio and 12 EPDs in the top 35%.



97

MR SR J1955

BD: 3/4/21 Reg: 3936041
BW: 78 205-Day Wt: 749

Purebred
Red Polled

BAR CK HUNTER 3006A
KBHR SNIPER E036
KBHR C078

- [HOOKS SHEAR FORCE 38K
- [BAR CK MS 759 A906X
- [GW REDESTINED 642X
- [KBHR U122
- [W/C EXECUTIVE ORDER 8543B
- [DCR MS MOONSHINE B38
- [MR SR B1236
- [MISS SR Z1215

WS RED MOON D76
MISS SR G1955
MISS SR D1628

CE	BW	WW	YW	ADG	MCE	MK	MWW	STAY	DOC	CW	YG	MB	REA	API	TI
18.0	-1.2	78.3	118.6	0.25	9.7	28.8	67.9	15.8	13.9	33.6	-0.38	0.33	0.91	145.3	84.1
1%	10%	50%	45%	45%	3%	15%	25%	60%	20%	35%	75%	15%	45%	20%	25%

A calving ease prospect out of a WS Red Moon first calf heifer. 10 EPDs in top 35% and top 1% CE.



98 **MR SR J1750**

BD: 4/5/21 Reg: 3935754
BW: 90 205-Day Wt: 860

Purebred
Red Polled

KS BASES LOADED B47
MR FR GRAND SLAM F26
MISS FR A316

WS ZENITH Z55
MISS SR E1751
MISS SR B1420

[BCLR SHAMWOW W611
KS ZASHA Z906
[BCLR VOYAGER X824
MISS FR S616
[GW RED COAT 099TS
HSF MISS SKY 87U
[MSR RED IMAGE 9246W
MISS FR Y139

CE	BW	WW	YW	ADG	MCE	MK	MWW	STAY	DOC	CW	YG	MB	REA	API	TI
12.8	1.8	86.3	136.7	0.31	7.5	21.3	64.4	17.6	13.7	37.2	-0.47	0.02	1.04	135.8	81.7
25%	55%	20%	15%	15%	20%	70%	40%	40%	25%	25%	25%	75%	20%	40%	35%

This FR Grand Slam son posted a 111 WW ratio and has 10 EPDs in the top 35%.

99 **MR SR J773**

BD: 5/7/21 Reg: 3975127
BW: 99 205-Day Wt: 841

Purebred
Red Polled

CDI CENTURY 315C
MR FR E76
MISS FR B413

KS BASES LOADED B47
MISS FR E773
MISS FR A373

[CDI PERSPECTIVE 238A
HOOK'S UNION 68U
[CDI MISSION 234Y
MISS FR U812
[BCLR SHAMWOW W611
KS ZASHA Z906
[ANKONIAN RED CAESAR
MISS FR X034

CE	BW	WW	YW	ADG	MCE	MK	MWW	STAY	DOC	CW	YG	MB	REA	API	TI
12.3	1.3	91.5	134.3	0.27	7.1	15.9	61.6	18.5	14.0	35.9	-0.41	0.14	0.93	143.9	86.8
30%	45%	10%	15%	30%	25%	99%	55%	30%	20%	25%	60%	45%	40%	25%	20%

This calf is out of a cow we bought from Bruce last year. He is the youngest bull we have in the sale and still posted a 108 WW ratio and has 10 EPDs in the top 35%.



100 **MR SR J1612**

BD: 4/21/21 Reg: 3935928
BW: 98 205-Day Wt: 832

Purebred
Red Polled

TRPH RRR NIGHTFORCE B30
MR SR E1545
MISS SR C1545

WS PRIME TIME B6
MISS SR D1612
MISS SR Y1112

[J BAR J NIGHTRIDE 225Z
HRM MS SHEAR FORCE U814
[W/C WIDE TRACK 694Y
MISS SR T922
[WS PRIME BEEF Z8
WS MAJESTIC Z133
[TNT GUNNER N208
606 PUR

CE	BW	WW	YW	ADG	MCE	MK	MWW	STAY	DOC	CW	YG	MB	REA	API	TI
8.0	2.9	80.5	124.3	0.27	2.7	24.0	64.2	17.7	11.6	23.9	-0.32	0.35	0.68	141.4	83.4
85%	80%	40%	30%	30%	95%	50%	40%	40%	50%	70%	95%	10%	90%	25%	30%

This calf is out of a bull we retained a few years ago. He has an impressive rib design and mass.

101 **MR SR J1139**

BD: 3/22/21 Reg: 3935679
BW: 91 205-Day Wt: 725

Purebred
Red Polled

TJ COWBOY UP 529B
MR SR GUNSLINGER F1239
MISS FR Z214

MR FR W39
MISS FR Y139
MISS FR S 634

[CCR COWBOY CUT 5048Z
TJ MS 46W
[CLO LTS ENTOURAGE 72T
MISS FR X014
[HOOKS/KS SEQUOIA 35S
R580
[JFKAPPES RISEN STAR 352N
3C CROCUS D631 R

CE	BW	WW	YW	ADG	MCE	MK	MWW	STAY	DOC	CW	YG	MB	REA	API	TI
15.1	0.7	74.7	111.0	0.23	10.9	25.1	62.5	18.2	10.4	26.9	-0.40	0.28	0.79	149.4	82.2
10%	30%	65%	60%	60%	1%	40%	50%	30%	65%	60%	65%	20%	75%	15%	35%

This baldy has an interesting pedigree, he is sired by MR SR Gunslinger and out of the dam of MR SR Redwood, who we sold to Eagle Pass Ranch of Highmore. His dam is 11 years old and still has sound feet and udder structure. She has three females in the herd and placed three bulls in herds.

102 **MR SR J1642**

BD: 4/7/21 Reg: 3935945
BW: 95 205-Day Wt: 856

Purebred
Red Polled

TJ COWBOY UP 529B
MR SR GUNSLINGER F1239
MISS FR Z214

WS ZENITH Z55
MISS SR D1642
MISS FR A355

[CCR COWBOY CUT 5048Z
TJ MS 46W
[CLO LTS ENTOURAGE 72T
MISS FR X014
[GW RED COAT 099TS
HSF MISS SKY 87U
[ELLINGSON IDEAL X13
MISS FR X055

CE	BW	WW	YW	ADG	MCE	MK	MWW	STAY	DOC	CW	YG	MB	REA	API	TI
10.3	2.3	89.3	134.1	0.28	5.9	22.5	67.1	21.3	13.9	34.9	-0.44	0.25	0.93	151.0	87.6
60%	65%	15%	15%	25%	50%	60%	30%	5%	20%	30%	40%	25%	40%	15%	15%

These Gunslinger calves are easy to look at. You have to appreciate the overall mass, body & balance they possess. This calf posted a 111 WW ratio & has 11 EPDs in top 35%.



103

MR SR J1746

BD: 3/22/21 Reg: 3935751
BW: 95 205-Day Wt: 803

5/8 SM 9/32 AR 3/32 AN
Red Polled

TJ COWBOY UP 529B
MR SR GUNSLINGER F1239
MISS FR Z214

BIEBER SPARTACUS A193
MISS SR E1746
MISS SR B1405

[CCR COWBOY CUT 5048Z
TJ MS 46W
CLO LTS ENTOURAGE 72T
MISS FR X014
BIEBER ROUSE SAMURAI X22
BIEBER TILLY 233U
SWAN LAKE TOMBSTONE 40Y
JAZZY RED PHOENIX X281T

CE	BW	WW	YW	ADG	MCE	MK	MWW	STAY	DOC	CW	YG	MB	REA	API	TI
11.9	1.2	84.8	128.9	0.28	6.8	20.6	63.0	16.8	15.8	26.9	-0.17	0.43	0.48	141.9	84.9
60%	70%	20%	25%	40%	50%	75%	40%	30%	10%	70%	70%	30%	80%	30%	25%

A massive, long-bodied bull that is deep cherry red in color. 104 WW ratio.



104

MR SR J1935

BD: 3/1/21 Reg: 3936025
BW: 74 205-Day Wt: 767

Purebred
Red Polled

TJ COWBOY UP 529B
MR SR GUNSLINGER F1239
MISS FR Z214

GW MAJOR MOVE 590E
MISS SR G1935
MISS SR C1507

[CCR COWBOY CUT 5048Z
TJ MS 46W
CLO LTS ENTOURAGE 72T
MISS FR X014
GW MOVIN ON 183C
GW MISS PREDESTINED 147Y
LONG'S STEEL SHOT
MISS FR Y157

CE	BW	WW	YW	ADG	MCE	MK	MWW	STAY	DOC	CW	YG	MB	REA	API	TI
13.9	0.3	81.1	120.2	0.24	8.5	26.0	66.5	19.9	14.7	28.4	-0.36	0.27	0.91	153.5	85.9
15%	25%	35%	40%	55%	10%	35%	30%	15%	15%	55%	80%	20%	45%	15%	20%

One of my favorite reds we have this year. Out of a Major Move first-calf heifer, only 74# at birth, and he has tremendous mass. He is a purebred outcross pedigree to just about every red pedigree out there. He should sire females that stay in the herd for years and be productive. He has 11 traits in the top 35% of the breed.



105

MR SR J1632

BD: 4/9/21 Reg: 3935937
BW: 102 205-Day Wt: 877

3/4 SM 1/4 AR
Red Polled

BIEBER SPARTACUS A193
MR SR REDWOOD D1139
MISS FR Y139

WS PRIME TIME B6
MISS SR D1632
MISS SR Z1227

[BIEBER ROUSE SAMURAI X22
BIEBER TILLY 233U
MR FR W39
MISS FR S 634
WS PRIME BEEF Z8
WS MAJESTIC Z133
MR FR X29
MISS SR N502

CE	BW	WW	YW	ADG	MCE	MK	MWW	STAY	DOC	CW	YG	MB	REA	API	TI
9.9	2.7	91.8	142.6	0.32	6.6	27.4	73.3	12.3	9.3	44.3	-0.34	0.13	0.84	115.8	81.3
80%	90%	10%	10%	15%	55%	20%	5%	80%	85%	15%	20%	85%	20%	80%	40%

If you are looking for a red that will add a touch of frame to your calves and have the chance to add a little chrome to them, this is the bull for you. This calf is as long as a freight train and posted a 114 WW ratio top 10% WW & YW. Maternal sib to the dam of lot 106.



Lot 106

106

MR SR J1854

BD: 3/13/21 Reg: 3935815
BW: 92 205-Day Wt: 779

5/8 SM 3/8 AR
Red Polled

BIEBER SPARTACUS A193
MR SR REDWOOD D1139
MISS FR Y139

[BIEBER ROUSE SAMURAI X22
BIEBER TILLY 233U

PLR IDEALISTIC 183C
MISS SR F1854
MISS SR D1632

[MR FR W39
MISS FR S 634
[SILVEIRAS MISSION NEXUS 1378
PLR MISS MIKAYLA 183Y
[WS PRIME TIME B6
MISS SR Z1227

CE	BW	WW	YW	ADG	MCE	MK	MWW	STAY	DOC	CW	YG	MB	REA	API	TI
11.0	1.9	84.6	127.8	0.27	7.7	27.9	70.1	12.9	11.3	34.9	-0.31	0.24	0.69	121.8	80.4
70%	80%	20%	30%	45%	35%	15%	10%	75%	65%	40%	30%	65%	45%	70%	40%

This deep cherry red son of Redwood who has above average WW.



Lot 107

107

MR SR J1857

BD: 3/11/21 Reg: 3935817
BW: 88 205-Day Wt: 851

5/8 SM 11/32 AR 1/32 AN
Red Polled

BIEBER SPARTACUS A193
MR SR REDWOOD D1139
MISS FR Y139

[BIEBER ROUSE SAMURAI X22
BIEBER TILLY 233U

WS RED MOON D76
MISS SR F1857
MISS SR D1647

[MR FR W39
MISS FR S 634
[W/C EXECUTIVE ORDER 8543B
DCR MS MOONSHINE B38
[TNT WHISKY RIVER B298
MISS SR A374

CE	BW	WW	YW	ADG	MCE	MK	MWW	STAY	DOC	CW	YG	MB	REA	API	TI
14.9	0.2	90.5	142.7	0.33	9.8	28.1	73.3	14.6	9.4	41.1	-0.29	0.28	0.83	139.1	87.9
20%	50%	10%	10%	10%	10%	15%	5%	55%	85%	20%	35%	55%	25%	35%	15%

This stout dark red son has an incredible EPD profile. Only 88# at birth and adjusted to 851# at weaning. He has 12 EPDs in the top 35% and 7 of them in the top 15%.



Wheatland Affinity 8196F

108

MR SR J1766

BD: 3/14/21 Reg: 3935759
BW: 78 205-Day Wt: 708

Purebred
Red Polled

CCLT ALLIANCE 91C
WHEATLAND AFFINITY 8196F
WHEATLAND LADY 913W

[WS PILGRIM H182U
BROOKS SHINIA 1A
[GOLDEN OPPORTUNITYHRR851
WHEATLAND LADY 751 T

TRPH RRR NIGHTFORCE B30
MISS SR E1766
MISS SR C1553

[J BAR J NIGHTRIDE 225Z
HRM MS SHEAR FORCE U814
[WS ALL-AROUND Z35
MISS SR W102

CE	BW	WW	YW	ADG	MCE	MK	MWW	STAY	DOC	CW	YG	MB	REA	API	TI
12.8	0.4	68.7	96.6	0.17	4.7	23.3	57.6	17.6	8.0	19.1	-0.38	0.24	0.65	139.5	76.8
25%	25%	85%	90%	95%	70%	55%	75%	40%	90%	90%	75%	25%	95%	30%	55%

A smaller framed, structurally correct son of Wheatland Affinity. He is not quite as dark as his pen mates.



Lot 109

109

MR SR J1809

BD: 3/14/21 Reg: 3935775
 BW: 83 205-Day Wt: 821

Purebred
 Red Polled

CCLT ALLIANCE 91C
WHEATLAND AFFINITY 8196F
 WHEATLAND LADY 913W

[WS PILGRIM H182U
 BROOKS SHINIA 1A
 [GOLDEN OPPORTUNITYHRR851
 WHEATLAND LADY 751 T
 [W/C EXECUTIVE ORDER 8543B
 DCR MS MOONSHINE B38
 [MR FR W39
 MISS FR S 634

WS RED MOON D76
MISS SR F1809
 MISS FR Y139

CE	BW	WW	YW	ADG	MCE	MK	MWW	STAY	DOC	CW	YG	MB	REA	API	TI
13.7	-0.1	72.9	100.7	0.17	7.0	30.6	67.0	15.5	4.3	23.0	-0.43	0.12	0.77	132.9	78.1
15%	20%	70%	85%	95%	30%	10%	30%	65%	99%	75%	50%	50%	80%	45%	50%

A big, powerful, blaze faced son of Affinity. This guy is an eye catcher in the bull pen. He has an incredible presence walking around. He posted a 106 WW ratio and is sure to pass it on.



RAISED ON
RIOMAX
 360°

- ✓ INCREASE CONCEPTION RATES BY 7-10%
- ✓ OPTIMIZE GENETIC POTENTIAL
- ✓ TIGHTEN BREEDING WINDOW

CONTACT SR SUPPLY | 605.380.2811



Bieber Let's Roll B563, sire of Lot 301

301 LAZYJ LETS ROLL 147-360

BD: 3/4/21 Reg: 4437371 Cat: 100% 1A
 BW: 92 205-Day Wt.: 713

BIEBER ROLLIN DEEP Y118
BIEBER LET'S ROLL B563
 BASIN PRIMROSE 2043

LAZYJ HIGH VOLTAGE 003-3002
LAZYJ ABELINA 360-E115
 EEA 115

[BIEBER ROOSEVELT W384
 BIEBER TILLY 399W
 [BFCR CHEROKEE CNYN 4912
 BASIN PRIMROSE 0854
 [MAJESTIC LIGHTNING 717 SGMR
 1SL MS CHATEAU LADY 3002-101
 [BUF CRK CHIEF 4430-4383
 EEA 4006-218

ProS	HB	GM														
102	66	36														
43%	47%	44%														
CED	BW	WW	YW	ADG	DMI	M	ME	HPG	CEM	ST	MARB	YG	CW	REA	FAT	
9	-1.3	67	111	0.28	2.24	31	13	12	4	20	0.31	0.08	41	0.42	0.04	
92%	59%	24%	18%	15%	99%	8%	97%	33%	94%	3%	73%	66%	3%	5%	86%	

Here is a bull the industry has been wanting – high growth, large frame and carcass. We still sell pounds and this bull is backed by a powerful cow family going back to the good “ole foundation mama” cows from the Ed Artz program.



Lot 302

302 LAZYJ DECLARTAIION 1104-5210

BD: 3/21/21 Reg: 4437449 Cat: 100% 1A
 BW: 85 205-Day Wt.: 695



HXC DECLARATION 5504C
LAZYJ DECLARATION926-511B ET
 BIEBER PRIMROSE 511B

LSF RAB PERFORMANCE 2772Z
LAZYJ MISS CLEMENTINE 5210-4
 LUVAS MS FIRELIGHT 421-115

[LEACHMAN PLEDGE A282Z
 HXC190Y
 [BIEBER ROLLIN DEEP Y118
 BASIN PRIMROSE 70T9
 [BROWN PARAMOUNT X7879
 BROWN MS REVELATION T7650
 [JR HOLDEN SPOTLIGHT 143
 EEA 115

ProS	HB	GM														
121	61	59														
17%	56%	8%														
CED	BW	WW	YW	ADG	DMI	M	ME	HPG	CEM	ST	MARB	YG	CW	REA	FAT	
10	-0.3	62	106	0.28	1.04	25	5	12	6	17	0.46	0.19	34	-0.04	0.03	
83%	78%	40%	27%	16%	21%	52%	68%	27%	62%	37%	37%	97%	10%	81%	75%	

Once again, when you talk cow families this one goes back to the same cow as the lot 301 bull. Not just a coincidence that both bulls are at the top of the sale! This bull is very wide topped and deep in his stifle.



Lot 303

303 LAZYJ DECLARATION 137-630

BD: 3/2/21 Reg: 4437463 Cat: 100% 1A
 BW: 92 205-Day Wt.: 665

HXC DECLARATION 5504C
LAZYJ DECLARATION926-511B ET
 BIEBER PRIMROSE 511B

LSF RAB PERFORMANCE 2772Z
LAZYJ MS DANICA 630-9129
 LAZYJ MS WINNIE 9129-505

[LEACHMAN PLEDGE A282Z
 HXC190Y
 [BIEBER ROLLIN DEEP Y118
 BASIN PRIMROSE 70T9
 [BROWN PARAMOUNT X7879
 BROWN MS REVELATION T7650
 [JDRA MR MOJITO 753
 1SL MACARONI CANYN 505-479

ProS	HB	GM														
111	66	45														
29%	47%	26%														
CED	BW	WW	YW	ADG	DMI	M	ME	HPG	CEM	ST	MARB	YG	CW	REA	FAT	
8	0.8	80	129	0.31	1.86	25	14	12	5	20	0.46	0.20	40	0.03	0.03	
94%	91%	2%	3%	6%	88%	53%	97%	41%	90%	5%	37%	98%	3%	66%	84%	

This guy can add a little frame to his offspring. He falls in the top 5% for nine traits as of catalog time. From an excellent cow family that has over 5 generations of dams with over a 100 MPPA. The granddam would have made the donor pen had

she not been struck by lightning in the pasture in the summer of 2016. A bull backed by generations of good uddered, good footed mama cows that go back to one of Steph's old show heifers from the summer of 1991. We will be sampling this bull in our own herd.



Lot 304

304 LAZYJ LETS ROLL 152-976 ET

BD: 3/5/21 Reg: 4437397 Cat: 100% 1A
 BW: 81 205-Day Wt.: 697

BIEBER ROLLIN DEEP Y118
BIEBER LET'S ROLL B563
 BASIN PRIMROSE 2043

COLEY'S MOJITO 503R
LAZYJ MISS WANETTE 976-122
 JDRA MS SOFFI 122

BIEBER ROOSEVELT W384
 BIEBER TILLY 399W
 BFCK CHEROKEE CNYN 4912
 BASIN PRIMROSE 0854
 PERKS ADVANCE 121R
 NER COPPER QUEEN 2657
 SHHM CHIEF JOSEPH 28J
 JDRA MS ONWARD 804

ProS	HB	GM														
97	59	39														
51%	61%	39%														
CED	BW	WW	YW	ADG	DMI	M	ME	HPG	CEM	ST	MARB	YG	CW	REA	FAT	
12	0.3	64	109	0.28	1.91	25	8	12	8	17	0.25	0.06	39	0.38	0.03	
60%	86%	34%	23%	14%	90%	50%	86%	40%	35%	37%	87%	54%	5%	7%	70%	

A very thick, stout-made beef bull. A set of feeder steers like this would help fill your bank account. The dam is our 976 donor cow and her progeny continue to top our bull and female sales year after year. Full brothers sell as lots 305, 312 and 313.

305 LAZYJ LETS ROLL 166-976 ET

BD: 3/8/21 Reg: 4437469 Cat: 100% 1A
 BW: 83 205-Day Wt.: 588



BIEBER ROLLIN DEEP Y118
BIEBER LET'S ROLL B563
 BASIN PRIMROSE 2043

COLEY'S MOJITO 503R
LAZYJ MISS WANETTE 976-122
 JDRA MS SOFFI 122

BIEBER ROOSEVELT W384
 BIEBER TILLY 399W
 BFCK CHEROKEE CNYN 4912
 BASIN PRIMROSE 0854
 PERKS ADVANCE 121R
 NER COPPER QUEEN 2657
 SHHM CHIEF JOSEPH 28J
 JDRA MS ONWARD 804

ProS	HB	GM														
122	53	69														
15%	72%	3%														
CED	BW	WW	YW	ADG	DMI	M	ME	HPG	CEM	ST	MARB	YG	CW	REA	FAT	
11	1.1	70	126	0.35	1.91	25	8	10	6	16	0.32	0.03	54	0.54	0.00	
77%	93%	15%	4%	1%	90%	50%	86%	62%	64%	38%	70%	31%	1%	2%	23%	

Full ET brother to lots 304, 312 and 313. Same power with a tick more frame.

306 LAZYJ DECLARATION 113-865

BD: 4/25/21 Reg: 4437507 Cat: 100% 1A
 BW: 82 205-Day Wt.: 875



HXC DECLARATION 5504C
LAZYJ DECLARATION926-511B ET
 BIEBER PRIMROSE 511B

SODAK FINAL ANSWER A504
LAZYJ FAIRY 865-033
 GNRA MISS BLACKBERRY 033

LEACHMAN PLEDGE A282Z
 HXC190Y
 BIEBER ROLLIN DEEP Y118
 BASIN PRIMROSE 7079
 SODAK FINAL ANSWER Y544
 SODAK DIMENSION Y035
 RED FINE LINE MULBERRY 26P
 E&B LADY LEAD ON 537

ProS	HB	GM														
121	55	66														
17%	69%	4%														
CED	BW	WW	YW	ADG	DMI	M	ME	HPG	CEM	ST	MARB	YG	CW	REA	FAT	
12	-1.1	77	122	0.29	1.41	22	10	9	7	17	0.69	0.09	35	0.11	0.01	
58%	64%	5%	6%	12%	49%	79%	90%	80%	44%	35%	6%	68%	8%	46%	27%	

A very unique pedigree on this bull. The 033 granddam is a black-red carrier who is a solid 7 frame cow. She is a deep-bodied, good uddered, good footed, easy-fleshing cow who is still in production at our place.



307 LAZYJ LETS ROLL 160-8150

BD: 3/6/21 Reg: 4437547 Cat: 100% 1A
 BW: 86 205-Day Wt.: 663

BIEBER ROLLIN DEEP Y118
BIEBER LET'S ROLL B563
 BASIN PRIMROSE 2043

RRA AMENDMENT 626
LZYJ KCCO FOLKLORE 8150-5123
 LAZYJ MISS CHANTEL 5123-9037

BIEBER ROOSEVELT W384
 BIEBER TILLY 399W
 BFCK CHEROKEE CNYN 4912
 BASIN PRIMROSE 0854
 PIE ONE OF A KIND 352
 RRA MILLIE N512 406
 RRA ROLL TIDE 135 355
 JACOBSON REBALAS 9037

ProS	HB	GM														
73	36	36														
88%	93%	44%														
CED	BW	WW	YW	ADG	DMI	M	ME	HPG	CEM	ST	MARB	YG	CW	REA	FAT	
8	0.9	73	121	0.30	2.19	28	14	11	6	15	0.37	0.00	31	0.38	0.01	
95%	92%	9%	7%	7%	98%	21%	98%	50%	79%	61%	58%	19%	14%	7%	37%	

This is a long-made, dark cherry red, stylish bull with lots of growth potential for his future progeny.



Lot 308

308 LAZYJ YARDMASTER 107-589

BD: 2/23/21 Reg: 4437437 Cat: 100% 1A
 BW: 96 205-Day Wt.: 584

- RED LAZY MC COWBOY CUT 26U [RED LAZY MC STOUT 30S
- SLGN YARDMASTER 125Y [RED LAZY MC STAR 185M
- SLGN BAILEY'S TESS 751T [UBAR HIGH CAPACITY 224
- LSF RAB PERFORMANCE 2772Z [MEADO-WEST BAILEY 019K
- LAZY MISS CATALEYA 589-0553 [BROWN PARAMOUNT X7879
- JACOBSON KURUBA 0553 [BROWN MS REVELATION T7650
- [BROWN VACATION H7106
- [PSR BRIDGET 882

ProS	HB	GM														
86	58	28														
71%	62%	65%														
CED	BW	WW	YW	ADG	DMI	M	ME	HPG	CEM	ST	MARB	YG	CW	REA	FAT	
12	-1.0	64	97	0.21	1.64	17	6	12	7	16	0.23	0.06	38	0.35	0.02	
60%	66%	34%	47%	64%	72%	98%	77%	27%	57%	38%	90%	52%	5%	9%	61%	

One of the larger-framed bulls in the sale, yet carries a lot of capacity and muscle.

309 LZYZ KPRA LETS ROLL 138-231B

BD: 3/3/21 Reg: 4437633 Cat: 100% 1A
 BW: 74 205-Day Wt.: 620

- BIEBER ROLLIN DEEP Y118 [BIEBER ROOSEVELT W384
- BIEBER LET'S ROLL B563 [BIEBER TILLY 399W
- BASIN PRIMROSE 2043 [BFCK CHEROKEE CNYN 4912
- BASIN HOBO 79E [BASIN PRIMROSE 0854
- DAHLKE 79E ROSIE 231B [BUF CRK HOBO 2595
- DAHLKE NORSE ROSIE 214Z [DOUBLE FORK 079Z
- [DAHLKE NORSE STYLE 169X
- [DAHLKE UE ROSIE

ProS	HB	GM														
100	73	27														
47%	33%	66%														
CED	BW	WW	YW	ADG	DMI	M	ME	HPG	CEM	ST	MARB	YG	CW	REA	FAT	
13	-2.7	66	105	0.24	1.91	30	6	11	8	18	0.29	0.07	32	0.29	0.03	
39%	32%	26%	29%	36%	91%	11%	76%	47%	29%	15%	78%	57%	13%	15%	74%	

Here is where we will get to the "his and her" footnotes. John thinks with his set of numbers he wouldn't be afraid to use him on a set of heifers. Steph knows this cow family can throw some power at the calf and the dam tends to breed true to the sire she is mated with. While she would use this bull on heifers, she would also caution you to know your heifers. We both think you won't sacrifice performance with this lot.

311 LAZYJ DEEP ZONE 169-4144

BD: 3/8/21 Reg: 4437411 Cat: 100% 1A
 BW: 96 205-Day Wt.: 621

- BIEBER ROOSEVELT W384 [BIEBER ROUGH RIDER 10712
- TRCC DEEP ZONE 26E [BIEBER SHEBA 9602
- PBAR MISS NORTHERN LANA 1017 [FRASER GREAT NORTHERN
- LSF RAB PERFORMANCE 2772Z [BECKTON LANA P208 HR
- LAZYJ MS BRUCIE 4144-307 [BROWN PARAMOUNT X7879
- MLK CRK ASTER 307 [BROWN MS REVELATION T7650
- [MLK CRK CAPSTONE 901
- [MLK CRK ASTER 164

ProS	HB	GM														
83	46	37														
75%	83%	43%														
CED	BW	WW	YW	ADG	DMI	M	ME	HPG	CEM	ST	MARB	YG	CW	REA	FAT	
9	2.9	82	121	0.25	1.87	23	9	13	5	14	0.43	0.12	43	0.18	0.01	
93%	99%	2%	7%	35%	89%	68%	87%	19%	88%	66%	43%	81%	2%	32%	39%	

We don't have many Deep Zone calves but the ones we do have are big, deep, stout-made cattle. The rancher's kind.

310 LAZYJ DEFENDER 151-252

BD: 3/5/21 Reg: 4437363 Cat: 100% 1A
 BW: 73 205-Day Wt.: 589

- 5L DEFENDER 560-30Z [5L ADVOCATE 817-14W
- RRA DEFENDER 826 [5L BLACK ADINA 525-560
- RRA RACHEL 746 144 [RRA MULBERRY 26P 922
- [RRA RACHEL 246 746
- LAZYJ HIGH VOLTAGE 003-300Z [MAJESTIC LIGHTNING 717 SGMR
- LAZYJ MONIQUE 252-018 [1SL MS CHATEAU LADY 3002-101
- 1SL MONIQUE 018 [BIEBER THUNDER 5577
- [1SL MINNIE MOUSE 479

ProS	HB	GM														
71	56	15														
89%	67%	87%														
CED	BW	WW	YW	ADG	DMI	M	ME	HPG	CEM	ST	MARB	YG	CW	REA	FAT	
16	-2.5	54	85	0.20	1.69	30	6	14	8	16	0.39	0.15	14	-0.16	0.03	
11%	36%	71%	72%	71%	76%	10%	77%	14%	33%	48%	53%	93%	72%	95%	79%	

We would use this bull and keep every female to build a herd around. This bull is backed by excellent cow families going right back to the same foundation cow of Steph's herd and old show heifer as the lot 303 bull. Are you starting to see a trend?

312 LAZYJ LETS ROLL 182-976 ET

BD: 3/14/21 Reg: 4437553 Cat: 100% 1A
 BW: 86 205-Day Wt.: 602

- BIEBER ROLLIN DEEP Y118 [BIEBER ROOSEVELT W384
- BIEBER LET'S ROLL B563 [BIEBER TILLY 399W
- BASIN PRIMROSE 2043 [BFCK CHEROKEE CNYN 4912
- COLEY'S MOJITO 503R [BASIN PRIMROSE 0854
- LAZYJ MISS WANETTE 976-122 [PERKS ADVANCE 121R
- JDR MS SOFFI 122 [NER COPPER QUEEN 2657
- [SHHM CHIEF JOSEPH 28J
- [JDR MS ONWARD 804

ProS	HB	GM														
118	64	54														
20%	50%	13%														
CED	BW	WW	YW	ADG	DMI	M	ME	HPG	CEM	ST	MARB	YG	CW	REA	FAT	
10	-0.4	62	107	0.28	1.91	25	8	12	6	18	0.24	0.05	54	0.57	0.02	
82%	76%	41%	26%	14%	90%	50%	86%	31%	62%	19%	89%	47%	1%	2%	61%	

Another full sib ET bull to lots 304, 305 and 313.

Red Angus Bulls



313 LAZYJ LETS ROLL 172-976 ET

BD: 3/9/21 Reg: 4437375 Cat: 100% 1A
 BW: 64 205-Day Wt.: 643

BIEBER ROLLIN DEEP Y118
BIEBER LET'S ROLL B563
 BASIN PRIMROSE 2043

[BIEBER ROOSEVELT W384
 BIEBER TILLY 399W
 [BFCK CHEROKEE CNYN 4912
 BASIN PRIMROSE 0854
 [PERKS ADVANCE 121R
 NER COPPER QUEEN 2657
 [SHHM CHIEF JOSEPH 28J
 JDRA MS ONWARD 804

ProS HB GM
118 77 41
 20% 25% 35%

COLEY'S MOJITO 503R
LAZYJ MISS WANETTE 976-122
 JDRA MS SOFFI 122

ProS	HB	GM	CED	BW	WW	YW	ADG	DMI	M	ME	HPG	CEM	ST	MARB	YG	CW	REA	FAT
118	77	41	14	-2.3	61	103	0.27	1.91	25	8	10	9	20	0.44	0.04	25	0.25	0.02
26%	40%	47%	34%	21%	90%	50%	86%	64%	15%	4%	41%	40%	30%	20%	64%			

Also a full sib ET bull to Lots 304, 305 and 313.

314 LAZYJ DECLARATION 1110-268

BD: 3/23/21 Reg: 4437359 Cat: 100% 1A
 BW: 93 205-Day Wt.: 642

HXC DECLARATION 5504C
LAZYJ DECLARATION926-511B ET
 BIEBER PRIMROSE 511B

[LEACHMAN PLEDGE A282Z
 HXC190Y
 [BIEBER ROLLIN DEEP Y118
 BASIN PRIMROSE 7079
 [RED TOWAW INDEED 104H
 RED SHODEREE ECHETA 193N
 [LCHMN NO EQUAL 1174D
 LARSON JOAN 898-213

ProS HB GM
69 59 10
 91% 61% 93%

SIX MILE TIMBERLAKE 180T
SRR JOAN 268-8017
 SRR JOAN 8017

ProS	HB	GM	CED	BW	WW	YW	ADG	DMI	M	ME	HPG	CEM	ST	MARB	YG	CW	REA	FAT
69	59	10	9	-0.3	70	115	0.28	1.83	24	8	11	7	17	0.23	0.11	16	-0.12	0.02
93%	78%	14%	13%	14%	86%	60%	84%	49%	57%	32%	90%	80%	65%	92%	49%			

This bull has had the style and growth since he has been born. He will add some pounds to your herd. Out of an 11-year-old top HerdBuilder cow.

315 LAZYJ FRONTMAN 179-3209

BD: 3/12/21 Reg: 4437379 Cat: 100% 1A
 BW: 86 205-Day Wt.: 577

5L OUT IN FRONT 1701-457B
JACOBSON FRONT MAN 6154
 GLACIER FRITZ 501 ET

[C-T THE QUEST 1103
 5L FIREFLY 3109-1701
 [GLACIER CHATEAU 744
 GLACIER FRITZ 675
 [VGW KING OF THE WEST
 NORSEMAN 1312 PJM
 [STRATHE ONWARD 620
 SODAK GEM 1034

ProS HB GM
54 9 44
 98% 99% 27%

5L NORSEMAN KING 2291
LAZYJ MISS GEM 3209-H8058
 SODAK GEM H8058

ProS	HB	GM	CED	BW	WW	YW	ADG	DMI	M	ME	HPG	CEM	ST	MARB	YG	CW	REA	FAT
54	9	44	6	1.6	68	119	0.31	1.47	27	8	10	4	11	0.23	0.02	33	0.35	0.01
98%	96%	19%	9%	4%	56%	33%	85%	78%	93%	93%	90%	28%	12%	9%	42%			

Nice made, stylish bull with a lot of good parts to him and out of a good old Norseman King dam.

316 LAZYJ LETS ROLL 131-5211

BD: 3/1/21 Reg: 4437429 Cat: 100% 1A
 BW: 95 205-Day Wt.: 624

BIEBER ROLLIN DEEP Y118
BIEBER LET'S ROLL B563
 BASIN PRIMROSE 2043

[BIEBER ROOSEVELT W384
 BIEBER TILLY 399W
 [BFCK CHEROKEE CNYN 4912
 BASIN PRIMROSE 0854
 [BROWN PARAMOUNT X7879
 BROWN MS REVELATION T7650
 [JR HOLDEN SPOTLIGHT 143
 EEA 115

ProS HB GM
134 86 48
 7% 14% 20%

LSF RAB PERFORMANCE 2772Z
LAZYJ CECILIA 5211-421
 LUVVAAS MS FIRELIGHT 421-115

ProS	HB	GM	CED	BW	WW	YW	ADG	DMI	M	ME	HPG	CEM	ST	MARB	YG	CW	REA	FAT
134	86	48	10	-0.9	66	114	0.30	1.91	25	6	12	7	21	0.55	0.25	31	-0.07	0.05
82%	67%	27%	14%	6%	91%	50%	73%	27%	60%	2%	20%	99%	14%	85%	98%			

You have to appreciate the Let's Roll calves for their mass and muscle shape. If you need to up the carcass traits in your herd, this is the bull. He also goes back to the same cow family as lots 301 and 302.

317 LAZYJ DEFENDER 1134-4281

BD: 3/30/21 Reg: 4437401 Cat: 100% 1A
 BW: 94 205-Day Wt.: 619

5L DEFENDER 560-30Z
RRA DEFENDER 826
 RRA RACHEL 746 144

[5L ADVOCATE 817-14W
 5L BLACK ADINA 525-560
 [RRA MULBERRY 26P 922
 RRA RACHEL 246 746
 [RED FINE LINE MULBERRY 26P
 GMRA ESTONIA 626
 [AEE HOLDEN HI 580
 AEE QUEEN IDELETTE 5117

ProS HB GM
63 40 23
 95% 90% 74%

LMG GILLS MULBERRY 8512-84Z
EAR QUEEN IDELETTE 4281
 AEE QUEEN IDELETTE 717

ProS	HB	GM	CED	BW	WW	YW	ADG	DMI	M	ME	HPG	CEM	ST	MARB	YG	CW	REA	FAT
63	40	23	7	0.9	66	113	0.29	1.90	24	9	9	2	18	0.25	0.04	21	0.03	0.00
97%	92%	25%	16%	10%	90%	61%	87%	87%	98%	21%	87%	36%	46%	66%	13%			

A well-balanced bull that is going to have a little extra frame and horsepower.

318 LAZYJ VAQUERO 171-831

BD: 3/9/21 Reg: 4437649 Cat: 100% 1A
 BW: 88 205-Day Wt.: 591

LCC VAQUERO 1412J
JDRA VAQUERO 636
 GMRA KARUBA 926

[LEACHMAN COWBOSS 1129G
 PARK MISS WIDELOAD F648
 [LCHMN NO EQUAL 1174D
 GMRA KARUBA 517
 [SIX MILE GAME FACE 164Y
 DAMAR PASSION X166
 [SLGN YARDMASTER 125Y
 1SL MISS MARIA PARK 524-124

ProS HB GM
92 54 38
 60% 70% 40%

TWG TOMMY JACK 166A
LAZYJ FELICIA 831-307
 LAZYJ ASHTYN 307-524

ProS	HB	GM	CED	BW	WW	YW	ADG	DMI	M	ME	HPG	CEM	ST	MARB	YG	CW	REA	FAT
92	54	38	13	-1.1	66	111	0.29	1.82	22	10	14	7	15	0.44	0.16	26	-0.03	0.03
46%	64%	27%	18%	11%	86%	77%	91%	11%	43%	55%	41%	94%	27%	79%	82%			

Every now and then we go back to some old genetics in the tank. This bull's sire made some awesome females – just ask Jerry Kaup. He purchased every female he could out of this sire and he purchased the sire too. It's no coincidence when you see that this calf also goes back to lot 301's cow family. Steph was behind the mating and was hoping for a heifer calf to put back in the herd.



Lot 319

319 LAZYJ FARM POWER 193-6104

BD: 3/17/21 Reg: 4437455 Cat: 100% 1A
 BW: 73 205-Day Wt.: 601

RED SOO LINE POWER EYE 161X
LAZYJ FARM POWER 811-2657ET
 NER COPPER QUEEN 2657

RED COCKBURN RIBEYE 308U
 RED TR LYNN 301R
 RED BRYLOR NEW TREND 22
 FORSTER COPPRQUEEN 7166
 5L INDEPENDENCE 560-298Y
 JACOBSON HEIDI 2099
 RED LAZY MC COWBOY CUT 26U
 NER COPPER QUEEN 2657

ProS HB GM
75 29 46
 85% 96% 24%

JACOBSON FREEDOM 4056
RRA ASHLEI 3220 6104
 GJRA/LZYJ ASHLEI 3220-2657

ProS	HB	GM	CED	BW	WW	YW	ADG	DMI	M	ME	HPG	CEM	ST	MARB	YG	CW	REA	FAT
75	29	46	14	0.0	63	104	0.26	1.67	28	6	13	8	11	0.68	0.17	20	-0.04	0.04
85%	96%	24%	29%	82%	36%	31%	27%	75%	26%	74%	20%	35%	93%	6%	95%	48%	81%	94%

A double bred CopperQueen 2657. If you follow our program at all, you know that dam was always one to produce top selling progeny – just ask Kyle Gilchrist how well he liked the cow. This calf is in the top for Marbling. With the beef consumer demanding better quality beef, this bull would be one to add to your herd that won't sacrifice your pounds of calf sold in the fall.



Lot 320

320 LAZYJ DRAFT PICK 184-801

BD: 3/15/21 Reg: 4437551 Cat: 100% 1A
 BW: 87 205-Day Wt.: 605

C-T RED QUEST 4010
OVER DRAFT PICK 413D
 OVER BLUSH 413B

BROWN JYJ REDEMPTION Y1334
 C-T BLOCKANA 2023
 SLGN YARDMASTER 125Y
 C-BAR ABIGRACE X13
 BIEBER ROUSE SAMURAI X22
 BIEBER TILLY 233U
 BIEBER HARD DRIVE Y120
 BIEBER SUSIE 244B

ProS HB GM
96 10 86
 54% 99% 1%

BIEBER SPARTACUS A193
LAZYJ FARYN 801-132D
 BIEBER SUSIE 132D

ProS	HB	GM	CED	BW	WW	YW	ADG	DMI	M	ME	HPG	CEM	ST	MARB	YG	CW	REA	FAT
96	10	86	10	0.6	85	139	0.34	2.04	22	11	5	7	11	0.82	0.07	54	0.41	0.01
54%	99%	1%	80%	89%	1%	1%	1%	95%	75%	93%	99%	43%	93%	1%	59%	1%	6%	30%

I don't know if you could make one any better on paper. Top percentage ranks in all the profitable traits plus he has the look. He also happens to be backed by his granddam who is the dam to the heifer Ryeleigh Morris showed most recently, winning the junior shows at Louisville and Oklahoma City this past few months.



321 LAZYJ RELENTLESS 106-924

BD: 2/23/21 Reg: 4437589 Cat: 100% 1A
 BW: 67 205-Day Wt.: 626

BIEBER DRIVEN C540
STRA RELENTLESS
 STRA CHEREBAL 305

BIEBER HARD DRIVE Y120
 BIEBER JOAN 309Y
 LARSON SUN KING 016
 STRA MISS TRACKER 141
 BROWN JYJ REDEMPTION Y1334
 FEDDES LAKINA Y17
 5L FOREVER GRAND 5834
 NER COPPER QUEEN 2657

ProS HB GM
106 40 66
 35% 89% 4%

FEDDES SILVER BOW B226
LAZYJ MS GOLD 924-950ET
 FOREVER QUEEN 950-2657

ProS	HB	GM	CED	BW	WW	YW	ADG	DMI	M	ME	HPG	CEM	ST	MARB	YG	CW	REA	FAT
106	40	66	14	-4.1	54	88	0.21	1.68	34	7	9	10	13	0.69	0.18	43	0.26	0.05
35%	89%	4%	28%	13%	72%	68%	60%	75%	2%	80%	83%	6%	76%	6%	96%	2%	18%	97%

The Relentless bulls are the true calving ease, sleep-all-night kind. Good carcass attributes going back to a CopperQueen family.

Red Angus Bulls



Lot 322

322 LAZYJ DRAFT PICK 135-5220

BD: 3/2/21 Reg: 4437639 Cat: 100% 1A
 BW: 77 205-Day Wt.: 556



C-T RED QUEST 4010
OVER DRAFT PICK 413D
 OVER BLUSH 413B

[BROWN JYJ REDEMPTION Y1334
 C-T BLOCKANA 2023
 [SLGN YARDMASTER 125Y
 C-BAR ABIGRACE X13
 [RED COCKBURN RIBEYE 308U
 RED TR LYNN 301R
 [RED NORTHLINE EQUALIZER 189N
 RED SOUTHLAND MABEL 61P

RED SOO LINE POWER EYE 161X
LAZYJ CLAUDIA 5220-36S
 RED SOUTHLANS MABEL 36S

ProS	HB	GM														
113	58	56														
26%	64%	11%														
CED	BW	WW	YW	ADG	DMI	M	ME	HPG	CEM	ST	MARB	YG	CW	REA	FAT	
17	-1.0	65	111	0.29	1.70	17	5	9	10	16	0.57	0.07	27	0.02	0.00	
7%	66%	31%	19%	11%	77%	98%	69%	89%	3%	47%	17%	56%	24%	68%	15%	

Calving ease prospect without sacrificing too much growth out of a past show heifer of Kale's. She consistently has lighter birthweight calves that make the sale pen each and every year.

323 LAZYJ RELENTLESS 115-908

BD: 2/26/21 Reg: 4437563 Cat: 100% 1A
 BW: 81 205-Day Wt.: 630



BIEBER DRIVEN C540
STRA RELENTLESS
 STRA CHEREBAL 305

[BIEBER HARD DRIVE Y120
 BIEBER JOAN 309Y
 [LARSON SUN KING 016
 STRA MISS TRACKER 141
 [BROWN JYJ REDEMPTION Y1334
 FEDDES LAKINA Y17
 [5L FOREVER GRAND 5834
 NER COPPER QUEEN 2657

FEDDES SILVER BOW B226
LAZYJ MS GABRIELLE 908-950ET
 FOREVER QUEEN 950-2657

ProS	HB	GM														
113	43	70														
26%	86%	3%														
CED	BW	WW	YW	ADG	DMI	M	ME	HPG	CEM	ST	MARB	YG	CW	REA	FAT	
11	-1.4	65	109	0.28	1.69	33	7	13	8	13	0.83	0.10	30	0.27	0.04	
69%	58%	30%	22%	16%	77%	3%	80%	26%	22%	83%	1%	72%	17%	17%	89%	

A Relentless back to a CopperQueen – calving ease with performance and carcass. What else could a rancher, feeder, or the industry want??

324 LAZYJ RELENTLESS 132-9120

BD: 3/2/21 Reg: 4437577 Cat: 100% 1A
 BW: 81 205-Day Wt.: 635

BIEBER DRIVEN C540
STRA RELENTLESS
 STRA CHEREBAL 305

[BIEBER HARD DRIVE Y120
 BIEBER JOAN 309Y
 [LARSON SUN KING 016
 STRA MISS TRACKER 141
 [RED RINGSTEAD KARGO 215U
 LAZYJ MISS WANETTE 976-122
 [LCC FIELD DAY A614N
 BIEBER TORYANNA 6952

LAZYJ KARGO 759-976
LAZYJ 9120-313W
 BIEBER TORYANNA 313W

ProS	HB	GM														
108	66	42														
33%	47%	31%														
CED	BW	WW	YW	ADG	DMI	M	ME	HPG	CEM	ST	MARB	YG	CW	REA	FAT	
13	-4.3	50	73	0.14	1.50	29	10	12	9	18	0.60	0.08	27	0.26	0.04	
39%	11%	83%	88%	92%	59%	14%	92%	28%	15%	19%	14%	63%	25%	18%	86%	

A definite calving ease prospect out of a granddam that had plenty of volume, mass and natural muscle.

325 LAZYJ RELENTLESS 103-9130

BD: 2/22/21 Reg: 4437579 Cat: 100% 1A
 BW: 62 205-Day Wt.: 607

BIEBER DRIVEN C540
STRA RELENTLESS
 STRA CHEREBAL 305

[BIEBER HARD DRIVE Y120
 BIEBER JOAN 309Y
 [LARSON SUN KING 016
 STRA MISS TRACKER 141
 [PZC TMAS FIRESTORM 1800 ET
 RED BAR-E-L KASSIE 117X
 [HUST CHIEF SEQUOYA R336
 C-BAR & BROWN ABIGRACE T714

ROJAS TR CHIVAS 17109
LAZYJ MS GLORY 9130-Y7816
 BROWN MS SEQUOYA Y7816

ProS	HB	GM														
121	71	50														
17%	36%	18%														
CED	BW	WW	YW	ADG	DMI	M	ME	HPG	CEM	ST	MARB	YG	CW	REA	FAT	
16	-4.6	48	75	0.17	1.16	34	-3	13	11	15	0.73	0.02	12	0.12	0.02	
10%	8%	86%	86%	84%	29%	2%	28%	24%	3%	52%	4%	28%	79%	44%	50%	

A true calving ease prospect with good Marbling for those selling on the grid. Granddam is none other than that "little Brown cow" as John so affectionately calls her. He does have to admit she has been one of our top \$ revenue dams on our place and always puts them in the sale pen.

326 LAZYJ RELENTLESS 120-9152

BD: 2/27/21 Reg: 4437667 Cat: 100% 1A
 BW: 50 205-Day Wt.: 541

BIEBER DRIVEN C540
STRA RELENTLESS
 STRA CHEREBAL 305

[BIEBER HARD DRIVE Y120
 BIEBER JOAN 309Y
 [LARSON SUN KING 016
 STRA MISS TRACKER 141
 [BIEBER ROOSEVELT W384
 PBAR MISS NORTHERN LANA 1017
 [SLGN YARDMASTER 125Y
 LAZYJ MS WINTERBERRY 905-139

TRCC DEEP ZONE 26E
LAZYJ MS GLADYS 9152-3214
 LZYJ BRIESIA 3214-905

ProS	HB	GM														
117	71	47														
20%	37%	23%														
CED	BW	WW	YW	ADG	DMI	M	ME	HPG	CEM	ST	MARB	YG	CW	REA	FAT	
18	-7.2	51	82	0.20	1.46	25	8	13	11	18	0.71	0.19	20	-0.13	0.04	
3%	1%	81%	78%	71%	54%	50%	85%	26%	2%	21%	5%	97%	51%	92%	90%	

Calving ease extreme going back to that super-clean, long-necked show heifer that Kale showed successfully around the region in 2014.

327 LAZYJ RELENTLESS 123-935

BD: 2/28/21 Reg: 4437593 Cat: 100% 1A
 BW: 85 205-Day Wt.: 605

BIEBER DRIVEN C540
STRA RELENTLESS
 STRA CHEREBAL 305

BIEBER HARD DRIVE Y120
 BIEBER JOAN 309Y
 LARSON SUN KING 016
 STRA MISS TRACKER 141
 RED SIX MILE WARCRAFT 254Z
 RED SIX MILE TRAVELOCITY 318X
 RED SIX MILE PRIDE 902S
 RIGGINS PRI-DESTINED 611
 DI ANNE 343

ProS	HB	GM
81	56	25
77%	66%	70%

RED SIX MILE WARCRAFT 254Z
LAZYJ MS GALANT 935-903ET
 RIGGINS ANNE 903

CED	BW	WW	YW	ADG	DMI	M	ME	HPG	CEM	ST	MARB	YG	CW	REA	FAT
11	-3.4	49	69	0.13	1.23	29	3	10	9	16	0.57	0.10	10	-0.06	0.03
74%	21%	85%	91%	94%	33%	17%	61%	77%	13%	45%	17%	74%	84%	84%	77%

Largest birthweight Relentless calf we had but still only topped the scale at 85#. There is a lot of power in this Riggins bred cow family.

328 LAZYJ RELENTLESS 116-948

BD: 2/27/21 Reg: 4437597 Cat: 100% 1A
 BW: 68 205-Day Wt.: 528

BIEBER DRIVEN C540
STRA RELENTLESS
 STRA CHEREBAL 305



BIEBER HARD DRIVE Y120
 BIEBER JOAN 309Y
 LARSON SUN KING 016
 STRA MISS TRACKER 141
 PZC TMAS FIRESTORM 1800 ET
 AHL DUCHESS 42W
 RED FINE LINE MULBERRY 26P
 E&B LADY LEAD ON 537

ProS	HB	GM
127	69	58
12%	41%	9%

AHL FLASHBACK 446B
LAZYJ MS GABBY 948-033
 GNRA MISS BLACKBERRY 033

CED	BW	WW	YW	ADG	DMI	M	ME	HPG	CEM	ST	MARB	YG	CW	REA	FAT
13	-3.4	69	109	0.25	1.50	24	6	15	9	15	0.53	0.10	41	0.31	0.03
48%	21%	17%	22%	32%	59%	56%	77%	5%	15%	55%	23%	72%	3%	13%	70%

You will really appreciate this calving ease bull when he matures. His dam goes back to the same black red carrier as lot 306.



Lot 329

329 LAZYJ WIDELOAD 187-Y7816 ET

BD: 3/15/21 Reg: 4437399 Cat: 100% 1A
 BW: 68 205-Day Wt.: 634

SLGN WIDELOAD 920W
PELTON WIDELOAD 78B
 PELTON MISS JAYLA 0508S

UBAR HIGH CAPACITY 224
 MEADO-WEST PERSUASION
 NEO-SHO DIRECT TICKET M517
 PELTONS MISS CORY 5037N
 CCF SEQUOYA 0361
 LCC REBELLA NA123
 LJC MISSION STATEMENT P27
 BROWN MS ABIGRACE L7730

ProS	HB	GM
70	54	16
90%	71%	85%

HUST CHIEF SEQUOYA R336
BROWN MS SEQUOYA Y7816
 C-BAR & BROWN ABIGRACE T714

CED	BW	WW	YW	ADG	DMI	M	ME	HPG	CEM	ST	MARB	YG	CW	REA	FAT
11	-4.1	61	90	0.18	1.74	31	-4	11	6	15	0.63	0.09	5	-0.03	0.04
67%	13%	47%	64%	79%	80%	8%	24%	45%	78%	64%	11%	71%	94%	79%	91%

Another ET calf that will sire some excellent females in a moderate package packed full of natural muscle shape. Backed by the 7816 donor cow.

330 LAZYJ CHIVAS 173-6204 ET

BD: 3/10/21 Reg: 4437421 Cat: 100% 1A
 BW: 95 205-Day Wt.: 516

PZC TMAS FIRESTORM 1800 ET
ROJAS TR CHIVAS 17109
 RED BAR-E-L KASSIE 117X

RED SIX MILE SAKIC 832S
 GT CITA 4060
 RED WHEEL ALLIANCE 22U
 RED BAR-E-L KASSIE 23P
 PIE BILLINGS 487
 NBAR KELLY 913
 UBAR HIGH CAPACITY 224
 FORSTER COPPRQUEEN 7168

ProS	HB	GM
47	59	-13
99%	61%	99%

NBAR HAMLEY S913
LAZYJ MS DAFFODIL 6204-506ET
 UBAR COPPERQUEEN 506

CED	BW	WW	YW	ADG	DMI	M	ME	HPG	CEM	ST	MARB	YG	CW	REA	FAT
11	-0.3	57	80	0.15	0.97	24	-10	9	6	15	0.07	0.10	9	-0.15	0.02
72%	78%	62%	81%	91%	18%	59%	10%	80%	78%	55%	99%	73%	87%	94%	54%

I guess here is where we will see how much anyone pays attention to footnotes. We always question if you read them. If you have read this set, you need to text your first and last name to Steph at six zero five three eight zero one seven nine six and you will be put in a drawing for a prize at the bull sale.

331 LAZYJ FARM POWER 1137-835

BD: 3/30/21 Reg: 4437679 Cat: 100% 1A
 BW: 89 205-Day Wt.: 566

RED SOO LINE POWER EYE 161X
LAZYJ FARM POWER 811-2657ET
 NER COPPER QUEEN 2657

RED COCKBURN RIBEYE 308U
 RED TR LYNN 301R
 RED BRYLOR NEW TREND 22
 FORSTER COPPRQUEEN 7166
 RRA LOGISTICS 227
 DAMAR W085 MIME Z391
 NBAR HAMLEY S913
 UBAR COPPERQUEEN 506

ProS	HB	GM
21	11	10
99%	99%	92%

RRA LOGISTICS 5119
LAZYJ FEBE 835-6204
 LAZYJ MS DAFFODIL 6204-506ET

CED	BW	WW	YW	ADG	DMI	M	ME	HPG	CEM	ST	MARB	YG	CW	REA	FAT
11	-1.2	52	78	0.16	1.34	25	3	7	5	12	0.30	0.08	12	-0.11	0.01
72%	62%	77%	83%	86%	43%	55%	57%	98%	88%	88%	77%	65%	80%	91%	43%

Deep bodied, square made with a good foot and legs. CopperQueen top and bottom. Solid maternal and performance.

332 LAZYJ DEEP ZONE 1128-8121

BD: 3/28/21 Reg: 4437545 Cat: 100% 1A
 BW: 91 205-Day Wt.: 631

BIEBER ROOSEVELT W384
TRCC DEEP ZONE 26E
 PBAR MISS NORTHERN LANA 1017
 LAZYJ KODIAK 5217 ET
LAZYJ FERNEY 8121-5210
 LAZYJ CECILIA 5211-421

BIEBER ROUGH RIDER 10712
 BIEBER SHEBA 9602
 FRASER GREAT NORTHERN
 BECKTON LANA P208 HR
 BLACK BRYLOR KODIAK 204Y
 5L SEOLA 1343-1676
 LSF RAB PERFORMANCE 2772Z
 LUVVAAS MS FIRELIGHT 421-115

ProS	HB	GM
70	38	31
91%	91%	56%

CED	BW	WW	YW	ADG	DMI	M	ME	HPG	CEM	ST	MARB	YG	CW	REA	FAT
9	-0.5	69	100	0.20	1.77	27	8	14	4	14	0.48	0.19	37	0.13	0.05
92%	75%	18%	40%	71%	83%	34%	84%	14%	92%	73%	33%	97%	6%	42%	95%

The 1128 will work for any rancher to improve their calf crop. Moderate birth, above average carcass and high growth.

333 LAZYJ FARM POWER 1120-472E

BD: 3/27/21 Reg: 4437487 Cat: 100% 1A
 BW: 78 205-Day Wt.: 597

RED SOO LINE POWER EYE 161X
LAZYJ FARM POWER 811-2657ET
 NER COPPER QUEEN 2657
 MLK CRK UNIFIED 4207
BIEBER PRIMROSE 472E
 BIEBER PRIMROSE 223A

RED COCKBURN RIBEYE 308U
 RED TR LYNN 301R
 RED BRYLOR NEW TREND 22
 FORSTER COPPROQUEEN 7166
 ANDRAS FUSION R236
 MLK CRK LAKOTA 953
 BIEBER REAL MCCOY Y124
 BIEBER PRIMROSE 266X

ProS	HB	GM
84	50	34
74%	77%	51%

CED	BW	WW	YW	ADG	DMI	M	ME	HPG	CEM	ST	MARB	YG	CW	REA	FAT
12	-0.7	65	101	0.22	1.68	24	7	9	8	16	0.47	0.07	24	0.06	0.01
55%	71%	30%	39%	52%	76%	59%	82%	83%	33%	47%	35%	55%	33%	59%	30%

Well balanced set of numbers out of a dark chery red cow.

334 LAZYJ VAQUERO 183-27D

BD: 3/15/21 Reg: 4437641 Cat: 100% 1A
 BW: 73 205-Day Wt.: 557

LCC VAQUERO 1412J
JDRA VAQUERO 636
 GMRA KARUBA 926
 FLYING W MAGNUM 195A
RCRA LACEY 27D
 RCRA LACEY 10T

LEACHMAN COWBOSS 1129G
 PARK MISS WIDELoad F648
 LCHMN NO EQUAL 1174D
 GMRA KARUBA 517
 RCRA MAGNUM PI 841
 FLYING W SKYLAR 215Y
 PIE ADVANTAGE 4139
 RCRA LACEY FARGO 35P

ProS	HB	GM
101	54	47
44%	71%	22%

CED	BW	WW	YW	ADG	DMI	M	ME	HPG	CEM	ST	MARB	YG	CW	REA	FAT
18	-2.3	58	99	0.26	1.63	23	6	6	11	17	0.44	0.05	26	0.23	0.02
3%	40%	59%	43%	25%	71%	71%	74%	98%	3%	34%	41%	43%	26%	23%	56%

Calving ease with a little extra grow power and frame than the others. Give this mid-March born calf a chance to add some frame to your herd. His dam is a solid 6.5 frame cow.

335 LAZYJ KPRA DRAFT PIK 136-80Y

BD: 3/2/21 Reg: 4437657 Cat: 100% 1A
 BW: 82 205-Day Wt.: 540



C-T RED QUEST 4010
OVER DRAFT PICK 413D
 OVER BLUSH 413B
 C-BAR EVOLUTION 107Y
LAZYJ FERRARI 807-D182
 MS ZEUS D182

BROWN JYJ REDEMPTION Y1334
 C-T BLOCKANA 2023
 SLGN YARDMASTER 125Y
 C-BAR ABIGRACE X13
 TR COLT 45 UT806
 LGS ABBY 689S
 3SCC ZEUS Y124
 LAZYJ BETTE 3114-Y7816

ProS	HB	GM
99	45	55
47%	85%	12%

CED	BW	WW	YW	ADG	DMI	M	ME	HPG	CEM	ST	MARB	YG	CW	REA	FAT
15	-1.5	68	111	0.27	1.77	22	12	11	9	14	0.42	0.03	42	0.23	-0.01
20%	56%	21%	19%	19%	83%	80%	95%	50%	9%	69%	45%	32%	2%	23%	3%

We sure hit the home run on offering a large set of calving ease bulls this year. Another prospect that wont sacrifice growth or carcass.

336 LAZYJ FARM POWER 1129-638X

BD: 3/29/21 Reg: 4437365 Cat: 100% 1A
 BW: 92 205-Day Wt.: 586

RED SOO LINE POWER EYE 161X
LAZYJ FARM POWER 811-2657ET
 NER COPPER QUEEN 2657
 RED SSS PURSUE 192U
RED SSS MABEL 638X
 RED SSS MABEL 598T

RED COCKBURN RIBEYE 308U
 RED TR LYNN 301R
 RED BRYLOR NEW TREND 22
 FORSTER COPPROQUEEN 7166
 RED SSS PURSUE 99M
 RED SSS DUCHESS 606P
 RED SSS NORDIC 126R
 RED SSS MABEL 718L

ProS	HB	GM
64	44	20
94%	85%	80%

CED	BW	WW	YW	ADG	DMI	M	ME	HPG	CEM	ST	MARB	YG	CW	REA	FAT
8	2.4	59	92	0.20	1.48	28	3	7	3	18	0.41	0.05	11	0.11	0.03
94%	98%	54%	60%	65%	57%	22%	58%	97%	97%	21%	48%	46%	83%	46%	81%

A bull out of another 6.5 to 7 frame cow. Well balanced bull.

337 LAZYJ DEFENDER 1139-8175

BD: 3/31/21 Reg: 4437497 Cat: 100% 1A
 BW: 72 205-Day Wt.: 617

5L DEFENDER 560-30Z
RRA DEFENDER 826
 RRA RACHEL 746 144
 LAZYJ DINNERTIME 4141-080
LAZYJ FERRI 8175-046
 MS HIGH QUEEN 046-2657

5L ADVOCATE 817-14W
 5L BLACK ADINA 525-560
 RRA MULBERRY 26P 922
 RRA RACHEL 246 746
 GJRA/LZYJ 50'CLOCK SUMMWHERE
 LAZYJ MISS ROYAL 080-036
 UBAR HIGH CAPACITY 224
 NER COPPER QUEEN 2657

ProS	HB	GM
77	52	25
83%	73%	71%

CED	BW	WW	YW	ADG	DMI	M	ME	HPG	CEM	ST	MARB	YG	CW	REA	FAT
13	-2.2	56	92	0.22	2.07	29	12	13	6	17	0.33	-0.02	23	0.22	0.00
42%	41%	64%	59%	52%	96%	16%	94%	20%	66%	31%	68%	14%	40%	24%	13%

A BW ratio of 87 to WW ratio of 108. Don't let him slip by if you need performance in a moderate birth package. His dam goes back to the CopperQueen cow family.

338 LAZYJ LOGISTICS 1147-435B

BD: 4/1/21 Reg: 4437393 Cat: 100% 1A
 BW: 77 205-Day Wt.: 605

RRA LOGISTICS 227
RRA LOGISTICS 5119
 DAMAR W085 MIME Z391

C-T DKK DUKE 1100

RUST MISS 435B
 BKT LARKEISA M288 CK

[HXC CONQUEST 4405P
 [RRA RACHEL 246 746
 [C-BAR ANTICIPATION 101W
 [DAMAR MIMI W085
 [FRITZ JUSTICE 8013
 [GMRA ANGIE ROSE 944
 [BECKTON COLT G552
 [BKT LARKEISA D822 CB

ProS	HB	GM
77	43	34
83%	87%	49%

CED	BW	WW	YW	ADG	DMI	M	ME	HPG	CEM	ST	MARB	YG	CW	REA	FAT
13	-2.5	63	111	0.30	1.80	27	9	10	8	15	0.31	0.01	22	0.16	0.00
49%	36%	35%	19%	8%	85%	30%	86%	77%	35%	62%	73%	26%	43%	35%	24%

Another bull that came small and grew fast considering his age and early weaning due to the drought.

339 LAZYJ PROFITBUILDER1144-9103

BD: 4/1/21 Reg: 4437569 Cat: 100% 1A
 BW: 66 205-Day Wt.: 559

H2R PROFITBUILDER B403
LRA PROFIT BUILDER 751
 LRA MS WELLINGTON 0116

RRA AMENDMENT 626
LAZYJ MS GRETCHEN 9103-589
 LAZYJ MISS CATALEYA 589-0553

[LSF TAKEOVER 8943W
 [BROWN MS P707 Y6674
 [LRA WELLINGTON 893
 [LRA MS DREAM VACATION 880
 [PIE ONE OF A KIND 352
 [RRA MILLIE N512 406
 [LSF RAB PERFORMANCE 2772Z
 [JACOBSON KURUBA 0553

ProS	HB	GM
98	52	46
49%	75%	23%

CED	BW	WW	YW	ADG	DMI	M	ME	HPG	CEM	ST	MARB	YG	CW	REA	FAT
12	-1.3	65	105	0.25	1.65	27	12	13	7	16	0.59	0.04	22	0.04	0.00
58%	59%	30%	30%	31%	73%	28%	95%	22%	46%	47%	15%	41%	41%	63%	16%

When we get down in the sale order we realize that John doesn't like writing foot-notes at all and we will give you an additional chance if you text this lot number to that phone number in the footnotes about nine lots previous to this.

HOSMER VETERINARY CLINIC

PROUDLY SERVING
 FOUR LOCATIONS

HOSMER

605-283-2278

WETONKA

605-225-7176

EUREKA

605-284-2509

BOWDLE

605-285-6888

-VETERINARIANS-

ROE-JOHNSON, HOLTZ, KRUSE, SMITH



340 LAZYJ DEFENDER 125-810F

BD: 3/1/21 Reg: 4437505 Cat: 75% AR 22.7% SM
 BW: 80 205-Day Wt.: 532

BIEBER ROOSEVELT W384
TRCC DEEP ZONE 26E
 PBAR MISS NORTHERN LANA 1017
 TNT BOOTLEGGER Z268
LAZYJ FLORA 810F-U147ET
 TNTS MISS U147

[BIEBER ROUGH RIDER 10712
 BIEBER SHEBA 9602
 FRASER GREAT NORTHERN
 BECKTON LANA P208 HR
 DCR MNR MOON SHINE X102
 TNT MISS W70
 BECKTON HUSTLER S426 C2
 TBS MS MILLINEUM 4269

ProS	HB	GM													
96	64	32													
53%	51%	54%													
CED	BW	WW	YW	ADG	DMI	M	ME	HPG	CEM	ST	MARB	YG	CW	REA	FAT
13	3.2	76	114	0.24	1.53	24	3	10	6	18	0.38	-0.06	26	0.39	0.00
48%	99%	5%	14%	41%	62%	64%	59%	78%	79%	19%	55%	6%	27%	7%	12%

3/4 RA and 1/4 Sim twins that the dam raised and will be a little larger framed with a lot of grow.

341 LAZYJ DEFENDER 126-810F

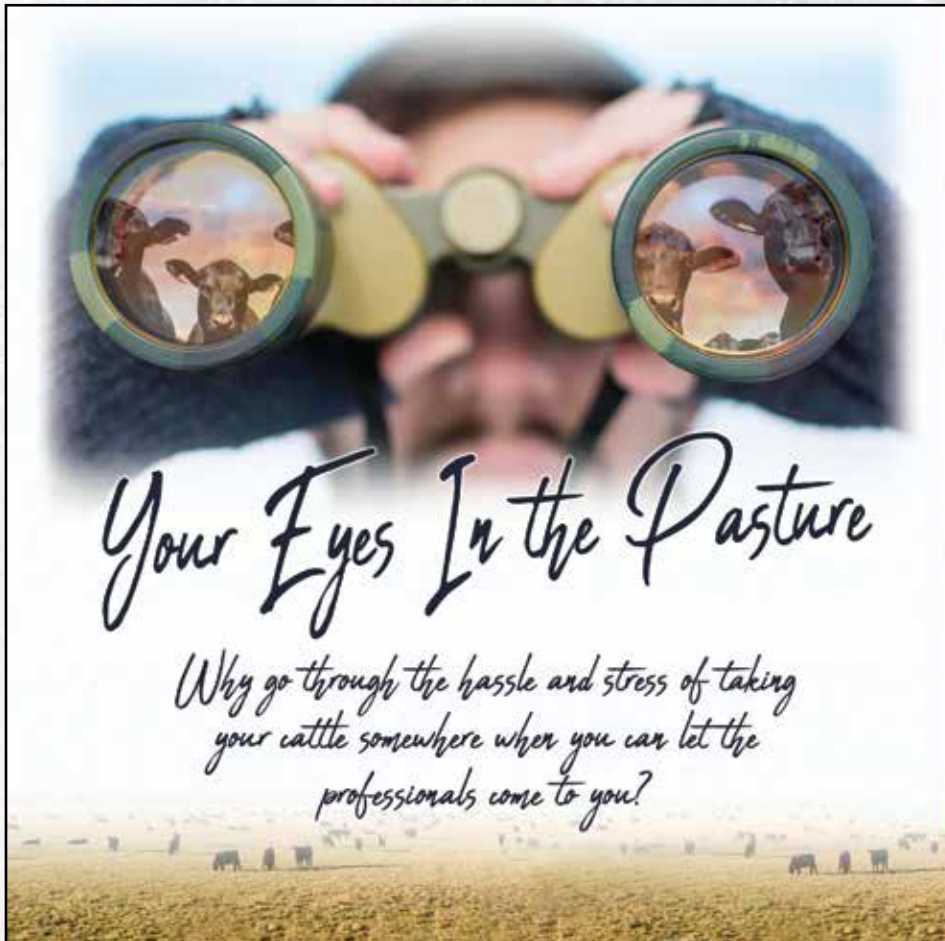
BD: 3/1/21 Reg: 4437621 Cat: 75% AR 22.7% SM
 BW: 87 205-Day Wt.: 573

BIEBER ROOSEVELT W384
TRCC DEEP ZONE 26E
 PBAR MISS NORTHERN LANA 1017
 TNT BOOTLEGGER Z268
LAZYJ FLORA 810F-U147ET
 TNTS MISS U147

[BIEBER ROUGH RIDER 10712
 BIEBER SHEBA 9602
 FRASER GREAT NORTHERN
 BECKTON LANA P208 HR
 DCR MNR MOON SHINE X102
 TNT MISS W70
 BECKTON HUSTLER S426 C2
 TBS MS MILLINEUM 4269

ProS	HB	GM													
68	43	25													
92%	86%	71%													
CED	BW	WW	YW	ADG	DMI	M	ME	HPG	CEM	ST	MARB	YG	CW	REA	FAT
11	2.0	75	112	0.23	1.53	24	3	10	5	15	0.35	0.05	26	0.27	0.02
72%	97%	6%	18%	48%	62%	64%	59%	62%	89%	64%	63%	43%	27%	17%	68%

3/4 RA and 1/4 Sim twins that the dam raised and will be a little larger framed with a lot of grow.



Your Eyes In the Pasture

Why go through the hassle and stress of taking your cattle somewhere when you can let the professionals come to you?

- ON-FARM SEMEN COLLECTION AND FREEZING
- FERTILITY CHECKS

AA

BREEDERS
and services

JUSTIN CURTIS
 EPWORTH, IA
 563.845.9325

NOLD

GETTYSBURG,
SOUTH DAKOTA

ANIMAL SUPPLY INC.

The Baby Calf's Best Friend

- Your home for Starter Paste and Rejuvenate and other Probiotics
- Also, your complete herd health solutions for Respiratory issues such as Mycoplasma
- Call us Today at (605)765-2451



RED ANGUS FCCP MARKETING PROGRAMS

The Red Angus Feeder Calf Certification Program is the first step in differentiating your cattle to buyers, feedlots and packers.

Experience industry-leading return on investment for just the cost of an ear tag – with no enrollment fees.

The Red Angus Association of America Marketing Team offers assistance to Red Angus bull customers at no charge.



Feeder Calf Certification Program



- Traceability to at least 50% Red Angus genetics
- Source verified to ranch of origin
- Group age verified

Eligible for Choice+ and G.O. Red Grids.
No enrollment fee, 99¢/tag
840-compliant EIDs available upon request

GENETICS
SOURCE • AGE

RED ANGUS
RANCH TESTED. RANCHER TRUSTED.
RedAngus.org • (940) 226-4762

Lazy J Bar Ranch
John and Stephanie Jung
36813 131st St.
Mina, SD 57451

PRSR
FIRST CLASS
U.S. POSTAGE
PAID
ABERDEEN, SD
PERMIT NO. 200

**Time-Dated Material –
Do Not Delay!**

Joint Production Sale

Saturday, February 19, 2022

Hub City Livestock. Aberdeen, SD
1 p.m. CST (Red Angus) - 1:45 p.m. CST (Simmental)

Flittie Simmental // Schnabel Simmental // Lazy J Bar Ranch

Selling 90 Simmental Bulls - 40 Red Angus Bulls



DVAuction Catalog and videos will be available online at www.dvauction.com